

DISTANCES FROM SIDE STAKES FOR CROSS-SECTIONING
SLOPE 1 TO 1. ROADWAY OF ANY WIDTH

	0	.1	.2	.3	.4	.5	.6	.7	.8	.9	
0	0.00	0.10	0.20	0.30	0.40	0.50	0.60	0.70	0.80	0.90	0
1	1.00	1.10	1.20	1.30	1.40	1.50	1.60	1.70	1.80	1.90	1
2	2.00	2.10	2.20	2.30	2.40	2.50	2.60	2.70	2.80	2.90	2
3	3.00	3.10	3.20	3.30	3.40	3.50	3.60	3.70	3.80	3.90	3
4	4.00	4.10	4.20	4.30	4.40	4.50	4.60	4.70	4.80	4.90	4
5	5.00	5.10	5.20	5.30	5.40	5.50	5.60	5.70	5.80	5.90	5
6	6.00	6.10	6.20	6.30	6.40	6.50	6.60	6.70	6.80	6.90	6
7	7.00	7.10	7.20	7.30	7.40	7.50	7.60	7.70	7.80	7.90	7
8	8.00	8.10	8.20	8.30	8.40	8.50	8.60	8.70	8.80	8.90	8
9	9.00	9.10	9.20	9.30	9.40	9.50	9.60	9.70	9.80	9.90	9
10	10.00	10.10	10.20	10.30	10.40	10.50	10.60	10.70	10.80	10.90	10
11	11.00	11.10	11.20	11.30	11.40	11.50	11.60	11.70	11.80	11.90	11
12	12.00	12.10	12.20	12.30	12.40	12.50	12.60	12.70	12.80	12.90	12
13	13.00	13.10	13.20	13.30	13.40	13.50	13.60	13.70	13.80	13.90	13
14	14.00	14.10	14.20	14.30	14.40	14.50	14.60	14.70	14.80	14.90	14
15	15.00	15.10	15.20	15.30	15.40	15.50	15.60	15.70	15.80	15.90	15
16	16.00	16.10	16.20	16.30	16.40	16.50	16.60	16.70	16.80	16.90	16
17	17.00	17.10	17.20	17.30	17.40	17.50	17.60	17.70	17.80	17.90	17
18	18.00	18.10	18.20	18.30	18.40	18.50	18.60	18.70	18.80	18.90	18
19	19.00	19.10	19.20	19.30	19.40	19.50	19.60	19.70	19.80	19.90	19
20	20.00	20.10	20.20	20.30	20.40	20.50	20.60	20.70	20.80	20.90	20
21	21.00	21.10	21.20	21.30	21.40	21.50	21.60	21.70	21.80	21.90	21
22	22.00	22.10	22.20	22.30	22.40	22.50	22.60	22.70	22.80	22.90	22
23	23.00	23.10	23.20	23.30	23.40	23.50	23.60	23.70	23.80	23.90	23
24	24.00	24.10	24.20	24.30	24.40	24.50	24.60	24.70	24.80	24.90	24
25	25.00	25.10	25.20	25.30	25.40	25.50	25.60	25.70	25.80	25.90	25
26	26.00	26.10	26.20	26.30	26.40	26.50	26.60	26.70	26.80	26.90	26
27	27.00	27.10	27.20	27.30	27.40	27.50	27.60	27.70	27.80	27.90	27
28	28.00	28.10	28.20	28.30	28.40	28.50	28.60	28.70	28.80	28.90	28
29	29.00	29.10	29.20	29.30	29.40	29.50	29.60	29.70	29.80	29.90	29
30	30.00	30.10	30.20	30.30	30.40	30.50	30.60	30.70	30.80	30.90	30
31	31.00	31.10	31.20	31.30	31.40	31.50	31.60	31.70	31.80	31.90	31
32	32.00	32.10	32.20	32.30	32.40	32.50	32.60	32.70	32.80	32.90	32
33	33.00	33.10	33.20	33.30	33.40	33.50	33.60	33.70	33.80	33.90	33
34	34.00	34.10	34.20	34.30	34.40	34.50	34.60	34.70	34.80	34.90	34
35	35.00	35.10	35.20	35.30	35.40	35.50	35.60	35.70	35.80	35.90	35
36	36.00	36.10	36.20	36.30	36.40	36.50	36.60	36.70	36.80	36.90	36
37	37.00	37.10	37.20	37.30	37.40	37.50	37.60	37.70	37.80	37.90	37
38	38.00	38.10	38.20	38.30	38.40	38.50	38.60	38.70	38.80	38.90	38
39	39.00	39.10	39.20	39.30	39.40	39.50	39.60	39.70	39.80	39.90	39
40	40.00	40.10	40.20	40.30	40.40	40.50	40.60	40.70	40.80	40.90	40
41	41.00	41.10	41.20	41.30	41.40	41.50	41.60	41.70	41.80	41.90	41
42	42.00	42.10	42.20	42.30	42.40	42.50	42.60	42.70	42.80	42.90	42
43	43.00	43.10	43.20	43.30	43.40	43.50	43.60	43.70	43.80	43.90	43
44	44.00	44.10	44.20	44.30	44.40	44.50	44.60	44.70	44.80	44.90	44
45	45.00	45.10	45.20	45.30	45.40	45.50	45.60	45.70	45.80	45.90	45
46	46.00	46.10	46.20	46.30	46.40	46.50	46.60	46.70	46.80	46.90	46
47	47.00	47.10	47.20	47.30	47.40	47.50	47.60	47.70	47.80	47.90	47
48	48.00	48.10	48.20	48.30	48.40	48.50	48.60	48.70	48.80	48.90	48
49	49.00	49.10	49.20	49.30	49.40	49.50	49.60	49.70	49.80	49.90	49
50	50.00	50.10	50.20	50.30	50.40	50.50	50.60	50.70	50.80	50.90	50

Distance of slope stake from side or shoulder stake for any width roadway, slope 1 to 1. If ground is nearly level, the cut or fill at side stake is located by the double entry method in left column and top row. The number in body of table in same row and column gives distance from side stake to slope stake. If ground is not level estimate the difference in elevation between the side stake and slope stake, lower target by this amount if cut, elevate if fill. Add this amount to cut or fill and find distance in table. Set up rod at this point, and line of sight should cut target. If it does not make the slight adjustment necessary.

Sewer Prelim.
La Jolla Hills

	Page
Soledad Rt - East of Lookout Dr.	1
Lots 50-53-54-55 L.J. Hills	4
From Lot #3 - Thru Lot #9 - South on Lookout + East on Soledad to Lot # 52	15
East Roseland Dr.	18
East Roseland Drive to Soledad + Look out	19
Lots 25 + 26	22
Boulevard Place and Lots 36 to 40.	45
Lookout D. South of Boulevard	⁴⁵ 54
Torrey Pine Rd. + Boulevard	57
Lot 8A Villa Tract and also Primrose St.	63
Change "H" line $\frac{FB 2325}{16}$	66
Boulevard place line + Culvert Int.	68

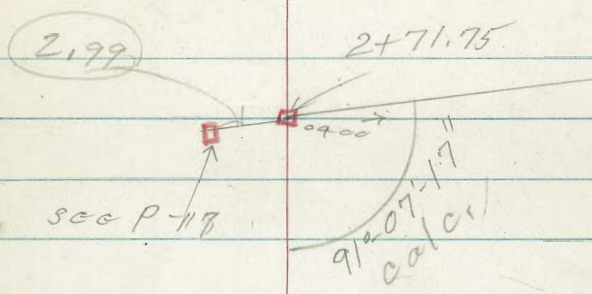
Soledad Road
East of Look out, Dr.

Also thru lots # 50-53-54-55
La Jolla Hills - Map # 1479

- denotes disk or LIT Found
- ◻ " 1/2 set.
- x " cross cut
- E.P. " edge of Pavc

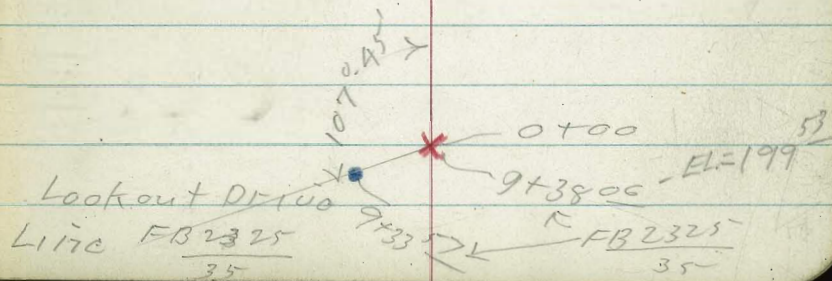
References : FB 2325 - P 11

X 2



See new line
P-15

Levels P-6



Soledad Ave.

Ely from Look out

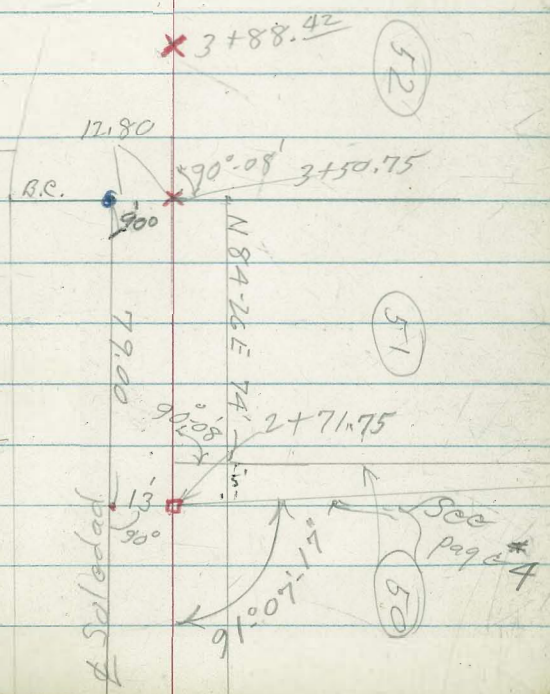
#

X 3
✓

~~3~~

(30)

(31)

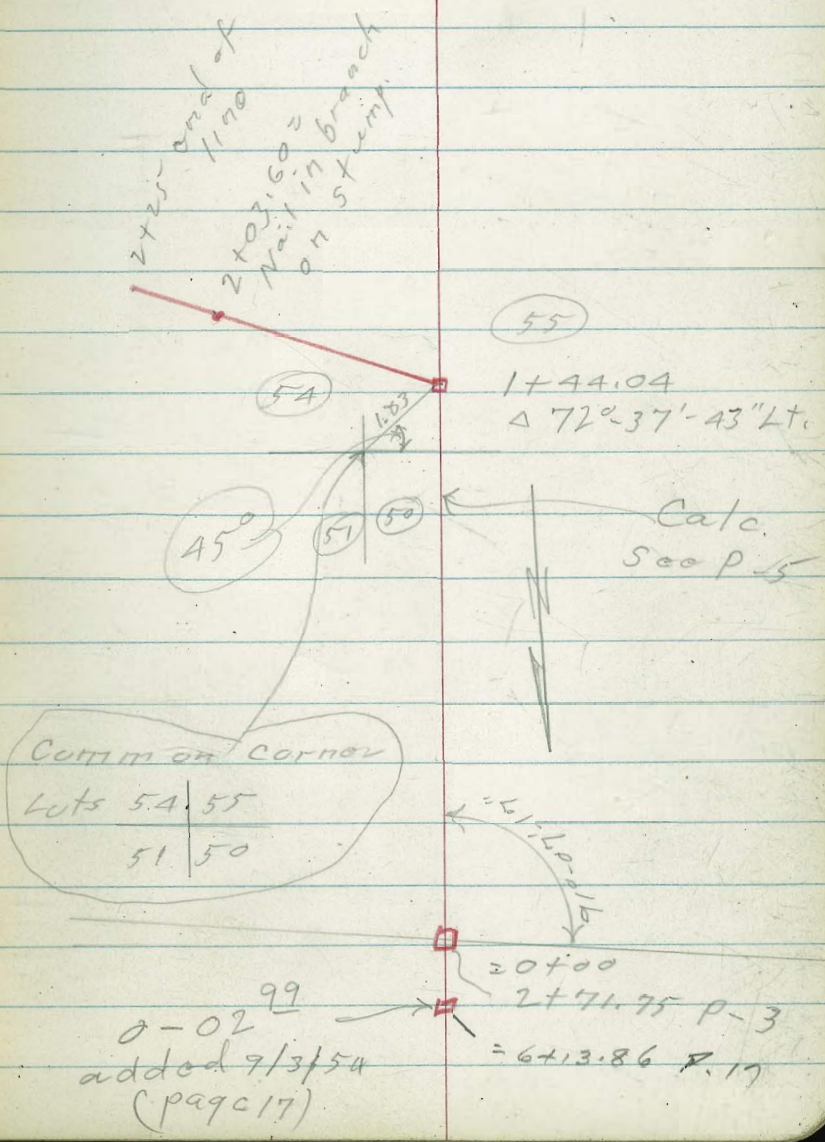


Line thru lots #50-53-54 & 55
Sly. from Soledad Ave.

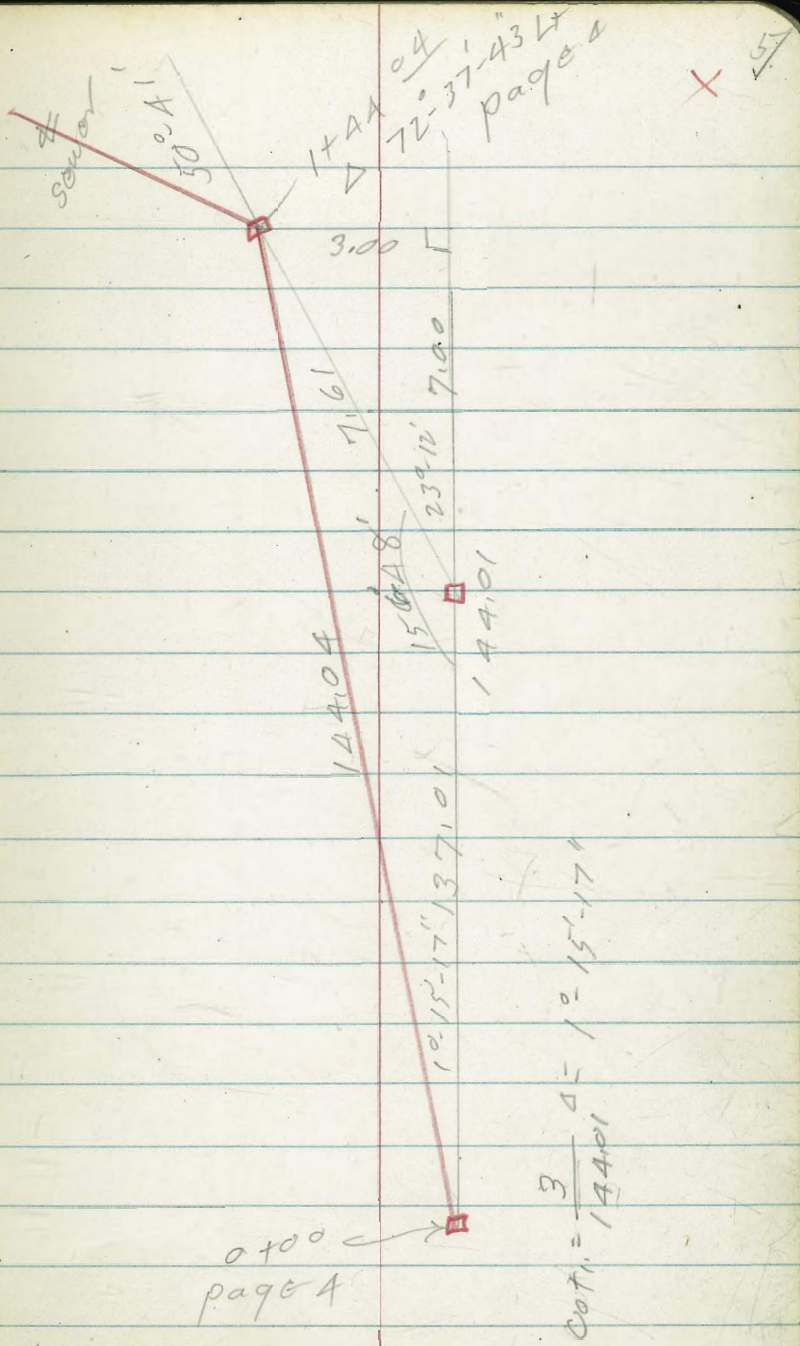
8/16/54

X 4
✓

Levels - Page 10



Calculations for line
0+00 to 1+44⁰⁴ page 4



Soledad Ave.

Ely of Lookout Dr.

Sketch - page 2

F.P. = Edge of pavement

(W) = Cross water service.

T.B. = Toe of bank

0+50

201.25	202.6	203.9
6.82	5.5	4.2
3		5
E.P.		

0+42 end of bricks.

200.93	201.0	201.37	202.3
7.14	7.08	6.7	5.8
5	22		5
	E.P.		

0+36 = cross ϕ 12' wide loose brick drive.

0+22 = leave Paved

200.21	200.46	200.7
7.86	7.61	7.4
5	E.P.	6
		slly edge bricks

0+10 = cross underground (b.c.) (?)

Brick Parking Area.
 6' ϕ = slly edge loose
 Page 2

0+00

9+38.06

199.11	199.53	199.88
8.96	8.54	8.19
5		62
	(208.07)	E.P.
		122
		slly edge bricks

8.54 (208.07) - (199.53)

X=9+38.06 F.B. 2325 = 0+00 This line
42

4

X 7 ✓

Cedar

1+69 = start patch of ground

1+50

204.4 [✓]	205.5 [✓]	206.8 [✓]
3.65	2.6	1.3
3		5
E.P.		

1+25

203.6 [✓]	204.5 [✓]	206.1 [✓]
4.50	3.8	0.10
3		5

1+18 - 1' NT = 8' high Calif. Holly bush.

1+00

202.85 [✓]	203.7 [✓]	206.1 [✓]
5.22	4.4	0.10
3		5
E.P.		

0+95 3' NT = pole # P 2125

0+76 = (W)

201.83 [✓]	202.7 [✓]	205.8 [✓]
6.24	5.4	2.3
3		5
E.P.		

0+70

along edge of drive
13' NT = Nly end of 6" curb

0+67 1/2 along edge drive

202.24[✓]
5.83

0+52³ = wly edge Conci Drive

201.92[✓]
6.15

208.04[✓]

208.07[✓]

Solcudad.
Ely From Look out

2+76^E 3¹ Pt. = pole# P 2159

T.B.M. on 1/2

6.22 $\langle 208.66 \rangle$

2+71⁷⁵ (Also = 0+00 page 4)

2+50

T.P.

8.91
8.51

$\langle 214.88 \rangle$
~~214.48~~

2.10 $\langle 205.97 \rangle$

2+00

1+98⁴ = Ely edge conc. drive

also: wly edge Conc. drive:
1+82⁵ = old patch of ground cedar

✓
208.23 ✓ 208.66 ✓ 208.8 ✓
6.55 6.22 6.1
3 1/2 5
E.P.

✓
207.60 ✓ 208.1 ✓ 208.0 ✓
7.28 6.8 6.9
3 5
E.P. $\langle 214.88 \rangle$

✓
206.0 ✓ 206.17 ✓ 206.4 ✓
2.11 1.9 1.7
3 5

✓
205.94 ✓ 206.10 ✓ 206.37 ✓
2.13 1.97 1.70
3 5
E.P.

✓
205.23 ✓ 205.67 ✓ 206.03 ✓
2.64 2.40 2.04
3 5
E.P.

$\langle 208.07 \rangle$

X 8 ✓

3+72 5^E loose rock wall.
Rt. = start 15' high

3+59⁹ = \pm drive.

3+46⁶ = wly edge conc. drive

3+45 3' Lt. = N. wly. Cor. drive

3+14

3+00

2+96 = cross (W)

Drive has flare into
edge of Pavc. Flare Rad. = 5⁵'

2+87 = \pm 8' wide conc. drive

$\langle 214.88 \rangle$

211.24[✓] 211.8[✓] 213.13[✓]
3.64[✓] 3.04[✓] 1.75[✓]
3[✓] 5[✓]
E.P.

211.40[✓]
3.48[✓]

210.64[✓] 211.0[✓] 212.3[✓] 212.5[✓]
4.24[✓] 3.9[✓] 2.6[✓] 2.4[✓]
3[✓] 5[✓] 6[✓]
E.P. T.B.

209.6[✓] 209.7[✓] 210.3[✓] 213.0[✓]
5.28[✓] 5.2[✓] 4.6[✓] 1.9[✓]
3[✓] 6[✓] 11[✓]
E.P.

209.2[✓] 209.4[✓] 209.9[✓]
5.73[✓] 5.5[✓] 5.0[✓]
3[✓] 5[✓]
E.P.

208.73[✓] 209.0[✓] 209.5[✓]
6.15[✓] 5.92[✓] 5.42[✓]
3[✓] 5[✓]
E.P.

$\langle 214.88 \rangle$

Soledad Ely from
Lookout.

±

X 10 ✓

T.P. 12.04 $\langle 220.70 \rangle$ 6.22 $\langle 208.66 \rangle$

4700

212.84 ✓
2.04
19
E.P.

212.93 ✓
1.95

213.1 ✓

1.80
75
edge of slab

3788⁴² = P.O.T. cross

212.5 ✓
2.40
22
E.P.

212.6 ✓
2.30

212.8 ✓

2.11
52
edge slab

3775 A RT = S.W.ly Cor. conc. slab.

212.4 ✓
2.46
42
slab

T.W. = top of wall.
B.W. = base of wall.

parking Area -
and N. Ely Cor. Conc. slab

3774 - 3' Lt = N. Ely Cor. drive
= CROSS (W)

211.9 ✓
3.02
26
drive + slab.
Also = E.P.

211.7 ✓
2.7

212.5 ✓
2.4

214.0 ✓
0.9

5
B.W.

6
T.W.

3772⁸ = Ely edge Conc. drive.

212.2 ✓
2.46

$\langle 214.88 \rangle$ ✓

$\langle 214.88 \rangle$ ✓

Thru Lots # 50-#53-54-55

Sketch Page 4

232.94

T.P. 12.62 (232.94) 0.38 (220.32)

0+65

217.4	217.4	216.9
3.5	3.5	3.8
5		5

0+52 6' Lt. = 8" Eucalyptus

0+50 { wire fence.
4' Lt. = start old post

214.3	214.3	214.1
6.4	6.4	6.6
5		5

0+30

211.6	211.4	210.7
9.1	9.5	10.0
5		5

0+26- 9⁵ Lt. = N. wly. cor. Sing. Gar.

0+12 { 70' high shrubs
6' Lt. = start row of 8'

0+04- 4' Lt. = pole # P 2159

208.9	208.7	208.5
11.8	12.04	12.2
5	220.70	5

0+00 - Page 4

2+11.75

↑ from page 10

Lots. # 50-53-54-55.

T.P. 12.11 $\langle 253.31 \rangle$ 0123 $\langle 241.20 \rangle$

partly cut out
this will have to be

1+43 3' Lt. = 14" low Eucalyptus

1+42 2' Lt. = end fence.

1+40 3' Lt. = end row of bushes

1+35

$\langle 253.31 \rangle$

236.6	237.0	237.4
4.8	4.4	4.0
5		5

$\langle 241.43 \rangle$

T.P. 9.85 $\langle 241.43 \rangle$ 1.30 $\langle 231.58 \rangle$

1+15

227.7	227.9	229.4	229.6	230.1
5.2	5.0	3.5	3.3	2.8
10	5	3		3

1+00

225.6	225.7	225.8
7.3	7.2	7.1
5		5

1+90 3' Lt. = start lath fence.
3' Lt. = end wire fence

1+80 2' Lt. = line of fence.

220.4	220.4	220.0
12.5	12.5	12.9
5		5

$\langle 232.94 \rangle$

$\langle 232.94 \rangle$

12
✓

Lots. 450-53-54-55

2+00
 1+94 7⁵ Lt. = 3' high citrus
 1+93 5⁵ Rt. = 5' high citrus
 1+90
 1+84 2⁵ Lt. = 5' high citrus tree.
 1+81 9⁸ Lt. = 4" tree
 1+80
 1+76 8² Lt. = 3" tree
 6⁴ Lt. = 3" diam tree
 1+72 2⁴ Rt. = 4' high citrus
 1+65
 1+57⁵ 4⁵ Rt. = 5' high peach tree.
 1+55 2¹ Lt. = 2" diam pine
 (save trees from here on.)
 1+50 6' Rt. = N.E. ly. cor fence wire
 (sec. on split of A
 on hub 12.11 24120
 1+44⁰⁴ = Δ 72°-37'-43" Lt. (P-4)

<253.21>

13

244.7 ✓
 8.6 ✓
 5 ✓
 246.3 ✓
 7.0 ✓
 5 ✓
 248.1 ✓
 5.2 ✓
 5 ✓
 242.6 ✓
 10.7 ✓
 5 ✓
 244.1 ✓
 9.2 ✓
 5 ✓
 245.7 ✓
 7.6 ✓
 5 ✓
 240.9 ✓
 12.4 ✓
 5 ✓
 242.6 ✓
 10.7 ✓
 5 ✓
 244.7 ✓
 8.6 ✓
 5 ✓
 240.7 ✓
 12.6 ✓
 5 ✓
 242.3 ✓
 11.0 ✓
 5 ✓
 244.1 ✓
 9.2 ✓
 5 ✓
 240.8 ✓
 12.5 ✓
 5 ✓
 243.1 ✓
 10.2 ✓
 5 ✓
 245.3 ✓
 8.0 ✓
 5 ✓
 239.8 ✓
 13.5 ✓
 5 ✓
 241.8 ✓
 11.5 ✓
 5 ✓
 245.1 ✓
 8.2 ✓
 5 ✓

<253.31>

Lots #50-53-54 & 55.

14
✓

(246.04)

check

7.28 <246.03> -

stub. T.P. - FB.2325 - page 76.

2+25

249.5 [✓]	250.5 [✓]	251.6 [✓]
3.8	2.8	1.7
5		5

2+23 - 3' Lt. = 10' high shrub

246.0 [✓]	247.7 [✓]	248.8 [✓]
7.3	5.6	4.5
5		5

2+10

2+08 7' Lt. = 6" avocado

stump; can come out,

2+04 o^l Rt. = 12" diam 7' high

<253.31> ✓

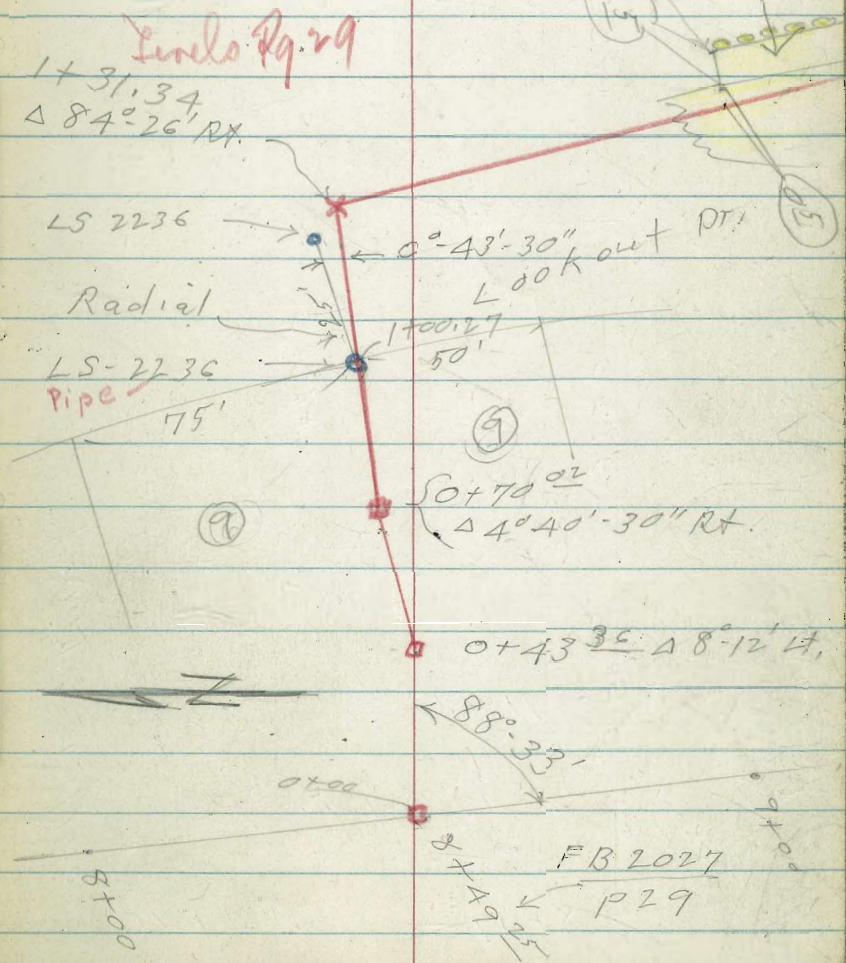
253.31

From Lot #3 - Thru Lot #9 - thence
South on Lookout Dr., then
East on Soledad to Lot #52

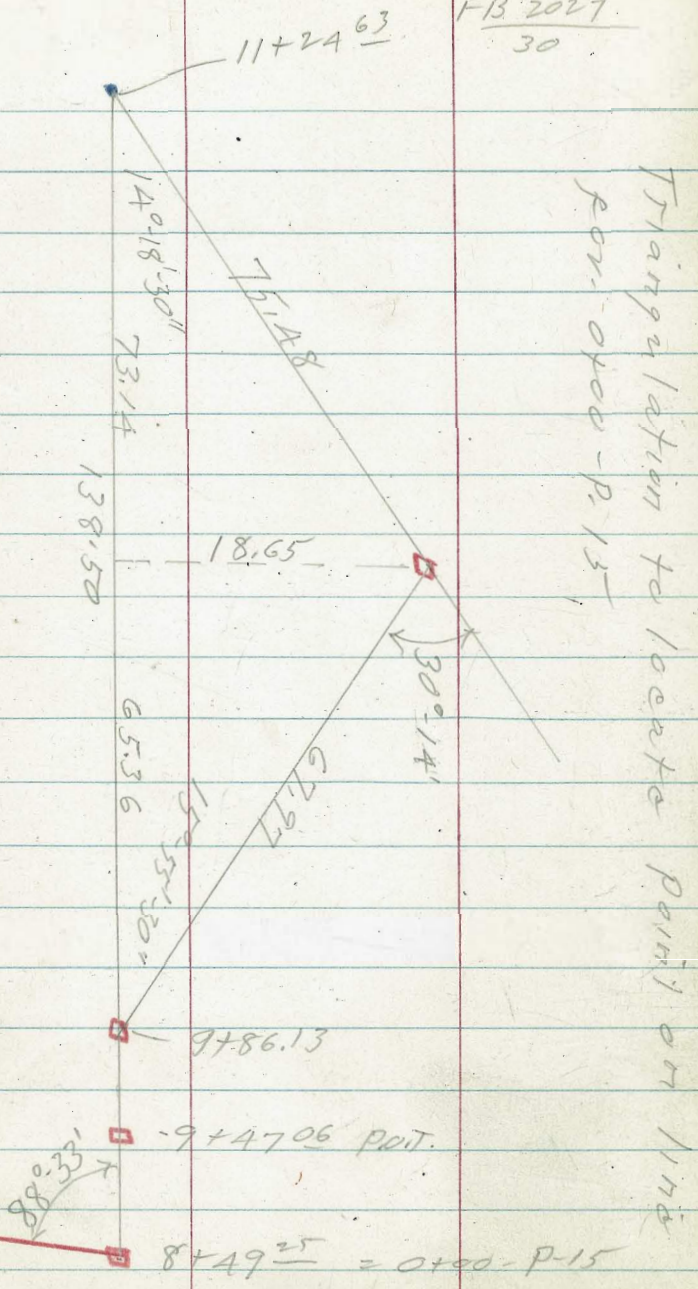
9-3-54

Levels - Page 2A

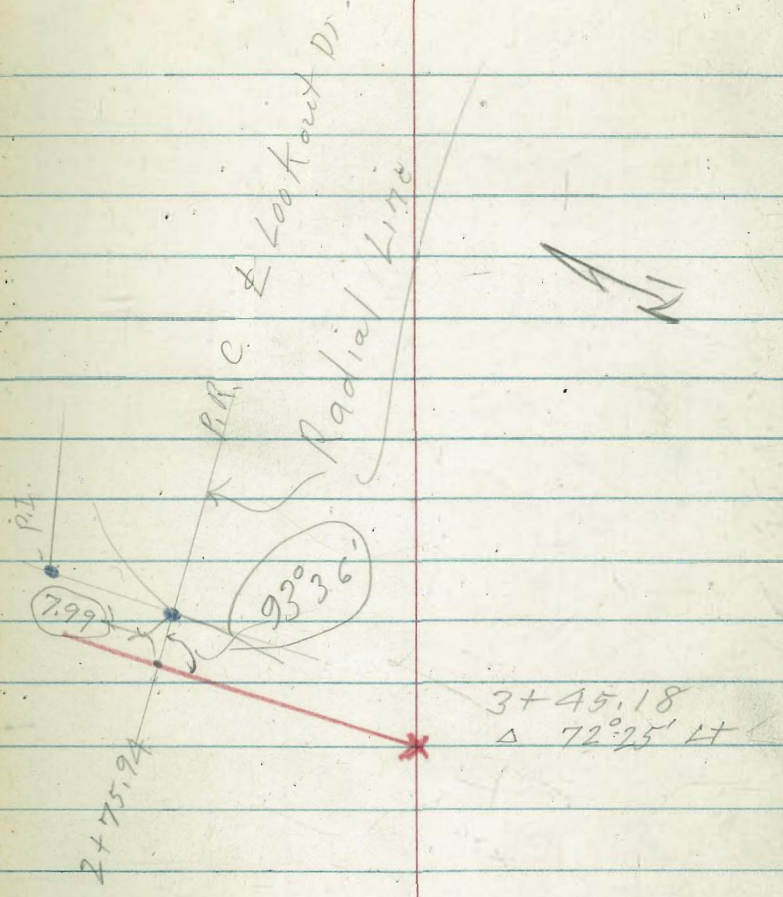
15' wide 2 1/2" thick
Conc. gutter - Rocks
(conc. is poor.) along edge.



FB 2027
30



Triangulation to locate point on line for 0+00-P-15



3+45.18
Δ 72° 25' H

* 7+24.48 end

Δ Soledad 7

2-99.82

6+13.86 P.O.T.

10.03

91° 10'

2+71.75

page 2

Δ = 91° 09'

← orig line page 2

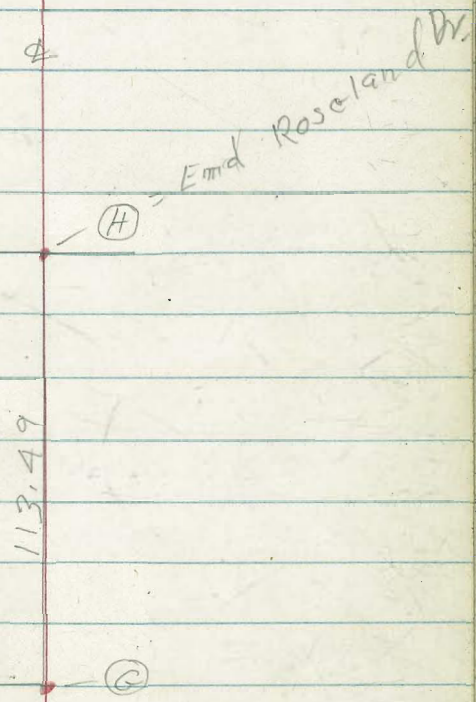
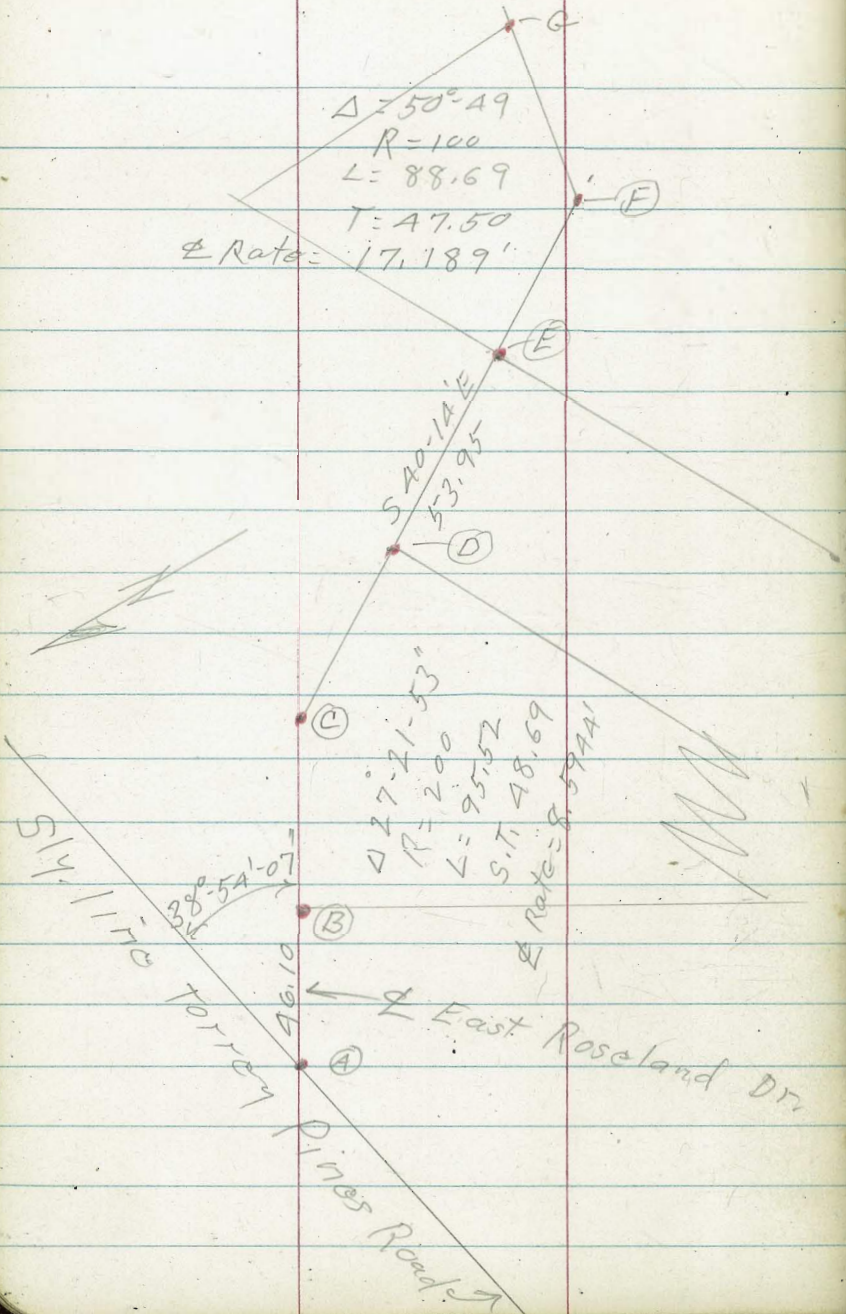
89° 58'

90°

4+34.17

10.07

Alignment East Roseland Dr



East Roseland Drive to
Soledad Rd. + Lookout Dr.

9-3-54

Levels - P-35

SC

1+73.82 }
Δ 46° 26' Lt.

Sec.
FB 2395
P 61

0+45.02 }
Δ 17° 20' 30" Rt

Sly line
to Jay Pines Rd

63.90

5.05

0+00 = End
Existing sewer

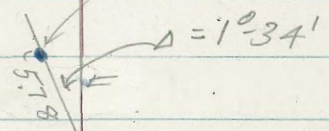
±^E Roseland Dr.
point (A)
page 18

5.10
Radial
Point (E)
P-18

0+73.58
E.C. of E. Roseland Dr.
= point (D) P-18

19

Point (A) - page 18
End E. Roseland Dr



3+26.15
 $\Delta 74^{\circ} 20' RK$

152.33

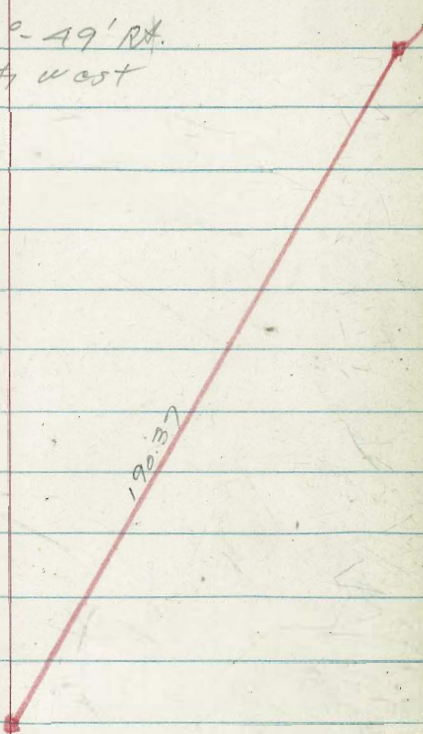
1+73.82

6+97.45 Δ 14°-49' RT.
ALSO= 0+00 TO NORTH WEST

5+07⁰⁸
 Δ 32°-50'-30" RT.

180.93

180.37



9+66.71
P.O.I.T.

22

LS. 2300
Sly. Cor. Lot 26
+ wly. Cor. Lot 27

269.26

3'

(27)

(26)

Levels
P. 43

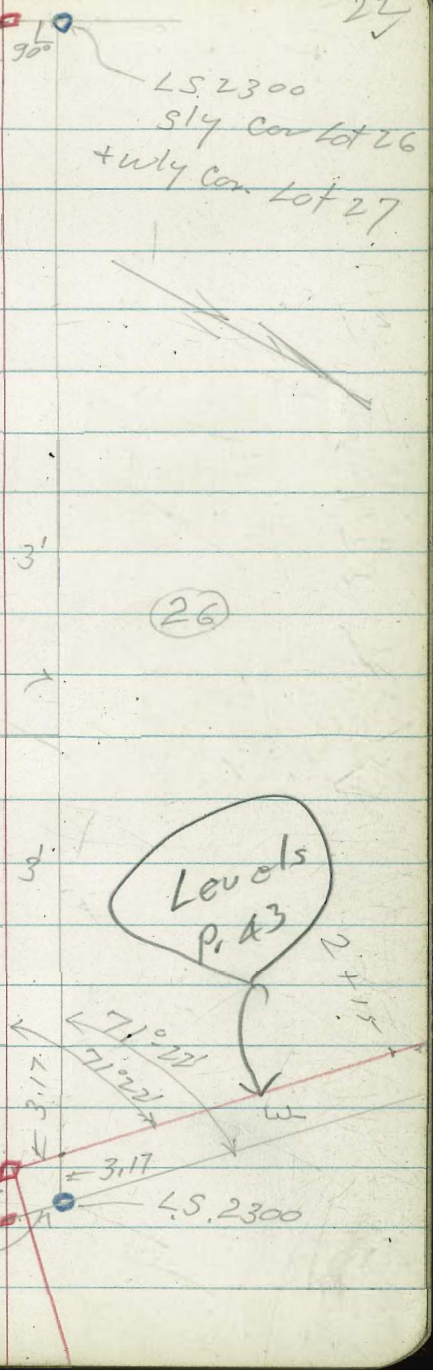
24.15

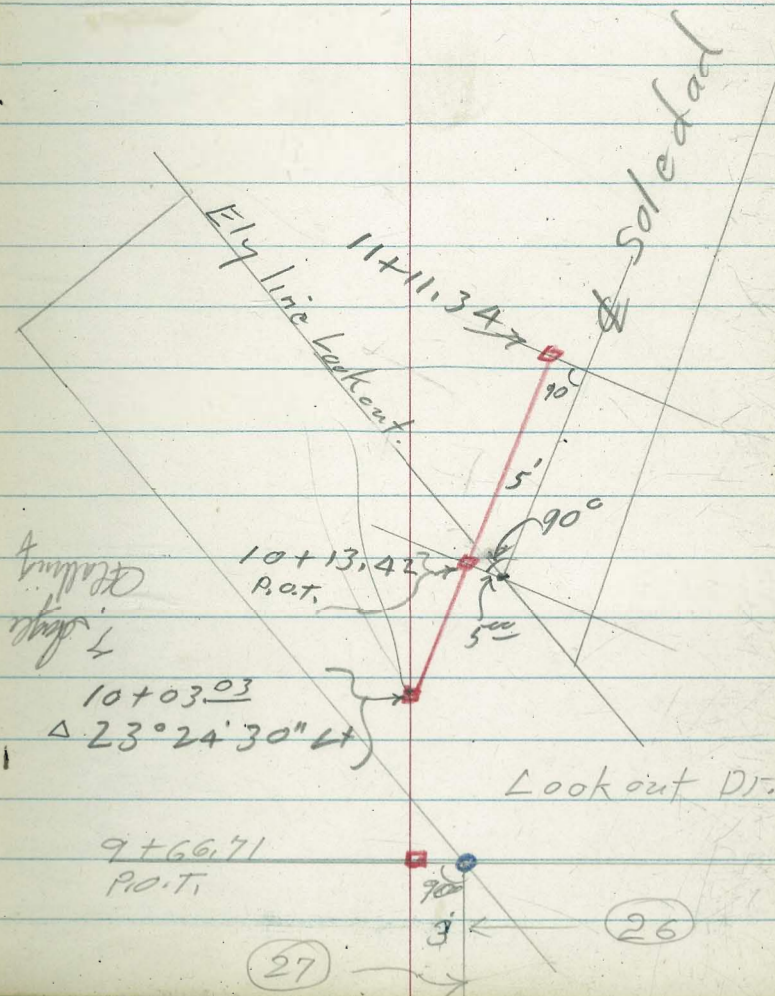
$\Delta 14^{\circ} 49' \text{RX}$

6+97.45

also: 0+00 to N. westing
Page 43.
Levels

(3.17)





From Lot # 3^{La Jolla Hills} - thru Lot # 9
thence South on Lookout + East
on Soledad to Lot # 52

Sketch - Page 75

T.P. 9123 $\langle 181.11 \rangle$ 0.28 $\langle 171.88 \rangle$

0+36

0+31 1' RT = Calif Honey tree
A trunk (3" diam.)

0+29

0+24 A' Lt = 2" mack orange

0+18

0+15 3' Lt = 4" peach tree

0+00 $\frac{1}{2}$

8+49.25 F.B. 2027 Page 29 = 0+00

T.P. 1.10 $\langle 172.16 \rangle$ 11.84 $\langle 171.06 \rangle$

T.P. 0.53 $\langle 182.90 \rangle$ 7.01 $\langle 182.37 \rangle$

T.P. 2.14 $\langle 189.38 \rangle$ 13.18 $\langle 187.24 \rangle$

B.M. 0.89 $\langle 200.42 \rangle$ - $\langle 199.53 \rangle$

24

✓
4.8

$\langle 181.11 \rangle$

171.7[✓] 171.7[✓] 171.8[✓]
0.5 0.5 0.4
5 5

171.0[✓] 171.1[✓] 171.1[✓]
1.2 1.1 1.1
5 5

167.4[✓] 167.4[✓] 167.4[✓]
4.8 4.8 4.8
5 5

166.3[✓] 166.36[✓] 166.5[✓]
5.9 5.80 5.7
5 5

$\langle 172.16 \rangle$

X-in Pauc. 9+38⁰⁶ ($\frac{F.B. 2325}{42}$)

cygona hedge

0+74 3' Lt. = start 15' high

0+71- 3' Rt. = end fence

0+70⁰² = 1/2 L 4° 40' - 30" Rt.

0+67 - 4' Lt. = palm.

(climbs on fence)

0+65 2' Rt. = rose bush - (C)

0+59^E 3' Rt. = start brick walk + steps

160.4	140.76	180.8	181.0
7.9	7.53	7.5	7.3
5	1	3	3 walk

T.P. 9.35 <188.29> 2.17 <178.94>

0+59 2' Rt. = start fence.

0+57 15' Lt. = 12" Cypress

0+54 0.5' Lt. = 2" diam Mock orange

0+51 2' Lt. = 16" Cypress

0+50

177.9	177.1	179.3
10.6	10.6	9.0
<188.29>		3 walk
	25	

177.2	177.1	177.1
3.9	4.0	4.0
5		5

176.2	176.7	174.9	175.1	175.2
4.9	4.4	6.2	6.0	5.9
10	5	3		5

0+45 3' Lt. = 18" Cypress

0+43³⁵ 1/2 L 8° 12' Lt.

173.6	173.64	173.6
7.5	7.47	7.5
5		5

0+39 5' Lt. = 10" Cypress

<181.11>

181.11

See sketch. p. 26

also = end porch.

1² Rt. = B.C. right in walk

0+95 2' Lt. = end hedge

183.6 [✓]	184.0 [✓]	184.0 [✓]	185.03 [✓]
4.7	4.3	4.3	3.26
5		12	12
		end walk + porch	

start porch.

0+86 2¹ Rt. = end steps +

183.3 [✓]	185.09 [✓]
5.0	3.20
2 ¹	2 ¹
Grd.	porch

0+83 2⁵ Rt. = start steps.

183.09 [✓]
5.20
2 ⁵

start conc. walk + ^{steps.}

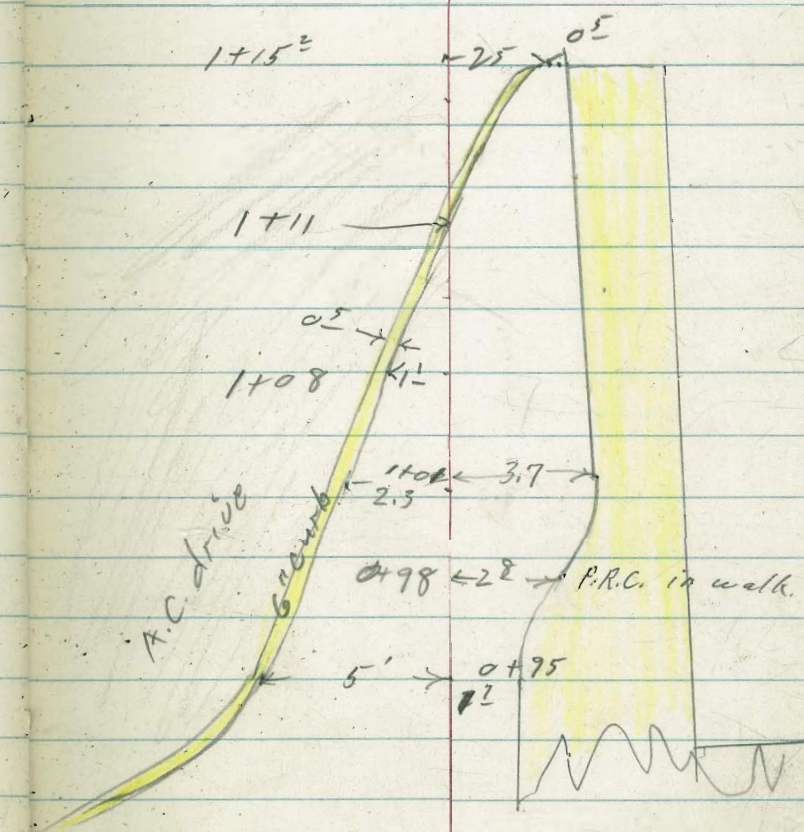
0+80 2³ Rt. = end brick walk

182.2 [✓]	182.3 [✓]	182.3 [✓]	183.01 [✓]
6.1	6.0	6.0	5.28
5		26	23
		walk	

0+78 1' Rt. = 6" grass palm

188.29[✓]

188.29[✓]



3⁰ Rt. = end walk
 2⁵ Rt. = end cl.
 1+15² = Start Conc. pave
 = end A.C. drive

183.84	184.14	184.45	184.44	184.33
6.18	5.88	5.75	5.56	5.67
5		2.3	3	5
		cl.	walk	pave

1+11 = cross back of cl.

184.0	184.30	184.35
6.00	5.70	5.65
5 ⁰	05	cl.
	drive	

1+08 1¹ Lt. = back of cl.

6.00	5.75	5.63
63	12	12
	drive	cl.

3.7 Rt. = line of walk

1+01 - 2.3 Lt. = back of curb

183.40	183.76	183.95	184.6	184.9
6.00	6.22	6.05	5.4	5.10
8	3 ⁰	22		31
	drive	curb.		walk

1+00²⁷ = Prep. pipe 5.45 LS 2236

184.86
 7.14
 Ord.

T.P. 5.47 <190.00> 3.76 <184.53>

<190.00>

0+98-

184.7	184.94
3.6	3.35
29	29
	walk

<188.29>

T.P. 10.48 $\langle 200.38 \rangle$ 0.10 $\langle 189.90 \rangle$

$\langle 200.38 \rangle$

gutter)

2+00 (see sketch. Page 15 for

1+98 0' Lt. = end hedge.

1+80 6' Lt. = start hedge

1+76 4' Lt. = end hedge

15' Lt. = Edge Pavo.

1+63 4' Lt. = start Large hedge

1+41 2⁸ Lt. = E.P.

1+32 6⁷ Lt. = edge pavo.

1+31³⁴ = \triangle 84°-26' Rt.

$\langle 190.00 \rangle$

188.0 [✓]	187.45 [✓]	187.48 [✓]	187.48 [✓]	187.55 [✓]
2.0	2.52 [✓]	2.52	2.52	2.45
5	G.	OE		5
		E.P.		

185.8 [✓]	185.39 [✓]	185.37 [✓]	185.5 [✓]
4.2	4.61	4.63	4.50
4	1 ⁵		5
	E.P.		

184.33 [✓]	184.37 [✓]
5.67	5.63
2 ⁸	
E.P.	

183.86 [✓]	183.97 [✓]	184.0 [✓]
6.14	6.23	6.00
6 ²		5
E.P.		

183.94 [✓]	
6.32	6.26
90° to	
back tang.	
5'	

~~90° to
Fwd.
Tang.
5'~~

$\langle 190.00 \rangle$

3+33^E = Cross gas line

3+33 5' Lt. = water line

3+00 4' Lt. = ϕ water trench

2+92^E Conc. drive,
= end gutter & start
4² Lt. = E.P. also

2+77 2' Lt. = E.P. = Aprox P.C.C.,
14 pauc

2+50 12 Lt. = edge Pauc

2+45 18 Lt. = E.P. also = ϕ 3' walk
(conci)

$\langle 200.38 \rangle$

198.51 [✓]	198.45 [✓]	198.37 [✓]
1.87	1.93	2.01
5		5

194.98 [✓]	194.96 [✓]	194.93 [✓]	194.94 [✓]
5.40	5.42	5.45	5.44
CE	5		5
E.P. + drive			

195.3 [✓]	195.0 [✓]	194.26 [✓]	194.21 [✓]	194.17 [✓]	194.15 [✓]
5.06	5.14	6.12	6.11	6.21	6.23
9	9	6	4 ²		5
drive	Grd.		E.P. + drive		

192.4 [✓]	192.90 [✓]	192.93 [✓]	192.91 [✓]	192.83 [✓]
7.2	7.48	7.45	7.47	7.55
5	6	2		5
		E.P.		

191.3 [✓]	190.88 [✓]	190.91 [✓]	190.83 [✓]	190.79 [✓]
7.1	7.50	7.47	7.55	7.59
5	6	12		5
		E.P.		

190.40 [✓]	190.48 [✓]	190.58 [✓]
9.58	9.90	9.80
6 ⁸	12	12
walk		E.P.

$\langle 200.38 \rangle$

3+93 = start conc. drive on Rt.

201.09 5.80 5	201.26 5.63 E.P. + drive	202.29 4.60 drive
---------------------	--------------------------------	-------------------------

3+86. 0² Lt. = end drive

200.84 6.05 5	200.99 5.90	201.01 5.88 .07 E.P.	202.74 4.15 11 drive
---------------------	----------------	-------------------------------	-------------------------------

3+72 = start brick drive
2⁴ Rt. = end parking area

200.24 6.65 5	200.54 6.35	200.64 6.25 24 E.P.	202.39 4.50 124 drive
---------------------	----------------	------------------------------	--------------------------------

3+51 = cross water line.

199.44 7.67 5	199.59 7.30	199.94 6.95 5
---------------------	----------------	---------------------

3+50

Parking Area.
8² Rt. = Nly edge brick

3+45¹⁸ - 90° to Fwd Tang

199.44 7.47	199.75 7.14	199.95 6.74 87 E.P.
----------------	----------------	------------------------------

T.P. 7.36 $\langle 206.89 \rangle$ 0.85 $\langle 199.53 \rangle$ orig B.M. P-24

$\langle 206.89 \rangle$

3+45¹⁸ = Lt 72°-25' Lt.

199.42 0.96	199.30 1.08
----------------	----------------

$\langle 200.38 \rangle$

$\langle 200.38 \rangle$

90° to back
T979

5+41 = end drive

205.71 ✓
5.40
5

205.94 ✓
5.17
E.P. + drive

206.19 ✓
4.92
5
drive

5+24 on ϕ = start Conc. drive ^{to RT}

205.24 ✓
5.87
5

205.44 ✓
5.67
E.P. + drive

206.70 ✓
4.41
16
at Cor.

211.11 ✓

T.P. 6.03 (211.11) 1.81 (205.08) ✓
cypress bed.

5+19. 3' RT = ϕ 10' long dwarf

5+00

204.51 ✓
2.38
5

204.69 ✓
2.20
E.P.
1
Top of bank

204.9 ✓
2.0
5

205.9 ✓
1.0
5

A+50

202.88 ✓
4.01
5

203.09 ✓
3.80
E.P.

204.4 ✓
2.15
4
Top of bank

A+38 6th RT = Pole P2125

4+13 = end drive on RT.

201.61 ✓
5.28
5

201.84 ✓
5.05
E.P. + drive

202.54 ✓
4.35
5
drive

206.89 ✓

206.89 ✓

T/R 7.36 $\langle 216.67 \rangle$ 1.80 $\langle 209.31 \rangle$

6+50

6+38 = cross water service.

6+29^E = ϕ 8' wide Conc. drive

↳ into edge of Pavc
 ↳ drive has 5 $\frac{1}{2}$ ' Rad. flare.

6+19 6^I RA = Pole # P 2159

6+13⁸⁶ = P.O. t. = 0 - 299 page 2.

6+00

5+50

$\langle 216.67 \rangle$

209.29[✓]
 1.82
 5

209.41[✓]
 1.70
 E.P.

209.81[✓]
 1.13
 5

208.60[✓]
 2.51
 5

208.70[✓]
 2.41
 E.P.

208.99[✓]
 2.12
 5
 drive

208.06[✓]
 3.05
 5

208.24[✓]
 2.87
 E.P.

208.65[✓]
 2.46
 2.99
 1/2

207.64[✓]
 3.47
 5

207.79[✓]
 3.32
 E.P.

208.4[✓]
 2.7
 5

205.96[✓]
 5.15
 5

206.16[✓]
 4.95
 E.P.

206.5[✓]
 4.6
 5

$\langle 211.11 \rangle$

$\langle 211.11 \rangle$

£

T.B.M.

A.45. 212.22

7+24 ⁴⁸ = cross = end of line



212.07 ✓	212.22 ✓	212.27 ✓	212.47 ✓
4.60	A.45	4.40	4.20
5		0.2	5
		E.P.	

0.4' RT. = start conc. parking slab
7+16 = cross water service also.

211.87 ✓	212.29 ✓
4.80	4.38
0.4	5.
E.P. + slab.	on slab

0.4' RT.
7+15 = end conc. drive

211.76 ✓	211.84 ✓	211.84 ✓	212.99 ✓
4.91	4.83	4.83	3.68
5		0.4	5
		E.P. + drive	drive

6+86 = start conc. drive on £

210.56 ✓	210.66 ✓	211.69 ✓
6.11	6.01	4.98
5	E.P. + drive	5 on drive

216.67 ✓

East Roseland Drive to
Soledad Ave & Look out Dr.

Sketch - Page 19

1+25

50' Lt. = Cor. House

60.9	75.9	81.9
10.0	15.0	9.0
50	50	
Approx	Ord	
bottom of Floor Joists		

1+00

60.5
10.4

T.P.

12.00 $\langle 90.92 \rangle$ 1.30 $\langle 78.92 \rangle$
 $\frac{1}{2} - 0 + 45^\circ$

$\langle 90.92 \rangle$

on split of Δ

$0 + 45^\circ = \Delta 17^\circ - 20' - 30''$ Rt.

66.1	70.9	76.6	76.9
14.1	9.3	11.4	1.3
100	55	12	

0+00

76.0
2.2

9.31 $\langle 80.22 \rangle$ - $\langle 70.91 \rangle$

$\langle 80.22 \rangle$

$\frac{1}{2}$ Sta. 0+00 $\frac{F.B. 2325}{17}$ East Roseland Dr.
to Torrey Road

3+19 1A' Lt. end row of bushes

91.6 ✓

12.0

3 ~

bushes & for shrubs.

2+80- 12' Lt. start row of 16' wide

TIP 13.29 103.63 0.58 90.34

1103.63 ✓

noted at sta. 1+25

2+60 35' Lt. Ely. cor. of house

82.3 ✓

88.9 ✓

88.7 ✓

8.6

2.0

2.2

35
end.

7

88.0 ✓

2.9

2+50

85.5 ✓

5.4

2+00

on split of A.

1+73.82 = L 46-26' Lt.

84.1 ✓

85.03 ✓

85.5 ✓

6.8

5.89

5.4

10

7/2

7

Toe of

bank

90.92 ✓

A+00

104.6	103.8	103.4	103.3
10.6	11.4	11.8	11.9
21	12		3
E.P.			E.P.

115.23

FP 11.84 (115.23) 0.24 (103.39)

3+70

99.0	98.3	98.1
4.6	5.3	5.5
12		5
E.P.		E.P.

(E.P. = edge of oil)
private way.

3+40 = start oil drive in
9' Lt. = 4" pepper tree.

93.5	93.3	92.0
10.1	10.3	11.6
8		27
E.P.		E.P.

garage floor level?
Plumbing can be turned at

50' Lt. = to near cor. of
on split of A

89.6	92.6
14.0	11.0
Bar. Floor	50
	Floor

at 90° to back Tang

3+26.15 L = 94° 20' Rt.
35' Lt. = Front of garage

92.5	92.8
13.1	10.8
35	
Floor	

103.63

103.63

T.P. 11.99 $\langle 137.49 \rangle$ 0.37 $\langle 125.50 \rangle$

5+28 = 8^ELt. = Δ in wall

5+18 11³Lt. = Δ in wall

5+07.08 } 10²Lt. = line of wall
on split of Δ
 Δ 32" - 50" - 30" Rht.

5+05 11' Lt. = Δ in wall

5+01 5^ELt. = Δ in wall

4+91 } stone wall
6' Lt. = start 4' high cut

4+80 100' Rht. = Near side of house

T.P. 10.76 $\langle 125.87 \rangle$ 0.12 $\langle 115.11 \rangle$

4+50

4+30

$\langle 115.23 \rangle$

$\langle 137.49 \rangle$

123.1 ✓
2.8
8^E
E.P.

122.6 ✓
3.3
11.
E.P.

122.1 ✓
3.8
11.
E.P.

120.5 ✓
5.4
10^E
E.P.

119.81 ✓
6.06
Nail

119.8 ✓
6.1
18
E.P.

116.0 ✓
9.9

115.8 ✓
10.1

110.5 ✓
15.4

109.9 ✓
16.0

$\langle 125.87 \rangle$ ✓

11
E.P.

35
Floor
& Grd.

111.5 ✓
3.7
14
E.P.

111.5 ✓
3.7
5
E.P.

111.6 ✓
3.6

108.4 ✓
6.8
20
E.P.

108.5 ✓
6.7

108.6 ✓
6.6
3
E.P.

$\langle 115.23 \rangle$

6+20 = ϕ 15' wide oiled road to right

133.4 [✓]	133.4 [✓]	137.5
4.1	4.1	0.0
2		100
E.P.		17 ϕ of oil.

6+10

132.9 [✓]	132.6 [✓]	133.0 [✓]
4.6	4.9	4.5
11		14
E.P.		E.P.

6+00

131.6[✓]
5.9

5+90

131.0 [✓]	130.4 [✓]	130.4 [✓]
6.5	7.1	7.1
17		32
E.P.		E.P.

5+70 16' Lt. = end of wall 1' high at this end.

128.4 [✓]	127.9 [✓]	127.8 [✓]
9.1	9.6	9.7
16		3
E.P.		E.P.

5+50

126.0 [✓]	125.5 [✓]	125.2 [✓]
11.5	12.0	12.3
12		7
E.P.		E.P.

<137.49>

<137.49>

T.P. 11.28 <168.43> 0.81 <157.15>
8+50

135.0
23.0
120
in wash
142.8
151.2
70
157.1
0.9
<168.43>

8+00

151.8
6.2

T.P. 12.06 <157.96> 1.13 <145.90>

<157.96>

7+50

142.1
4.9

T.B.M. ss 9.40 137.63
6+97⁴⁵ Δ 14° 49' RT.

132.4
14.6
50
132.5
14.5
30
137.6
9.4
<147.03>

T.P. 11.54 <147.03> 2.00 <135.49>

126.4
11.3
133
bottom of wash
129.5
8.0
100
130.5
7.0
50
134.8
2.7

6+50

133.5
4.0
E.P.

5. 6+21 = leave oiled road.

<137.49>

<137.49>

not used
End on Rt. is higher than d

T.P. 9.9C <200.58> 1.91 <190.62>

T.P. 12.45 <192.53> 0.63 <180.08>

9+78

9+66⁷¹ - 1/2 P.O.T. (see sketch P-22)

9+50

9+20

T.P. 12.45 <180.71> 0.17 <168.26>

9+00

8+70

<168.43>

41
L+Disk & Look out

179.5

1.2

171.1

9.0

30

176.88

3.83

1/2

172.3

8.4

150.7

30.0

100'

166.3

14.4

20

167.6

13.1

<180.71>

162.1

6.3

30

166.4

2.0

158.6

9.8

<168.43>

max 200

check T.B.M.

4.98 $\langle 212.23 \rangle$

T.B.M. sta 7+24⁴⁸ page 34 EL. = 212.22

T.P. 7.22 $\langle 217.12 \rangle$ 2.00 $\langle 209.99 \rangle$ ^{1/2} Sta. 11+11.34

End of line.

11+00 11' RT. = near edge ^{Pave.} Conc.

203.1
8.3
30

206.5
5.5

205.54
6.45
112
E.P.

9+67 10' RT. = near edge of ^{Conc. Pave}

194.6
17.2
30

202.0
10.0
5

207.1
9.9
 $\langle 211.99 \rangle$

201.30
10.69
10
E.P.

T.P. 11.85 $\langle 211.99 \rangle$ 0.44 $\langle 200.14 \rangle$

10+50

198.3
2.3

99 RT. = E.P.

10+13⁴² (1/2 - page 23)

192.48
8.10
1/2

194.40
6.18
99

194.4
6.18
10
Disk

90° to back Tang.

10+03⁰³ Δ 23°-24'-30" Lt. 1/2

10⁸ RT. = near edge Conc. Pave

$\langle 200.58 \rangle$

78.8
21.8
50

190.29
10.29
1/2

193.6
7.0
5

192.88
7.70
108
E.P.

$\langle 200.58 \rangle$

James Taylor

Levels Lots 25+26

±

43 ✓

Sketch - Page 22

1+10

148.4 ✓	142.2 ✓	138.2 ✓
7.4	13.4	17.6
	50	65
		E.R.

<155.80>

TIP 9.10 <155.80> 1.89 <146.70>

0+90

146.9 ✓
1.7

wide diked road.

E.R. = Near edge of 10'-15'

than ±

0+50 Grad to left is higher

145.6 ✓	135.9 ✓
3.0	12.7
	70
	E.R.

= 0+00

137.6 ✓
11.0

6+97⁴⁵ Page 22

<148.59>

10.90 <148.59> <137.63>

6+97⁴⁵ 0. Page AD = B.M. EL. = 5

not used

2+15 End of line

149.4 ✓	145.0 ✓	136.5 ✓
6.4	10.8	19.3
	38	63
		EIR.

1+90

148.7 ✓
7.1

1+50

147.7 ✓
8.1

1+25

148.0 ✓
7.8

155.80 ✓

Boulevard Place Line.

Line on portion of Lookout Dr.

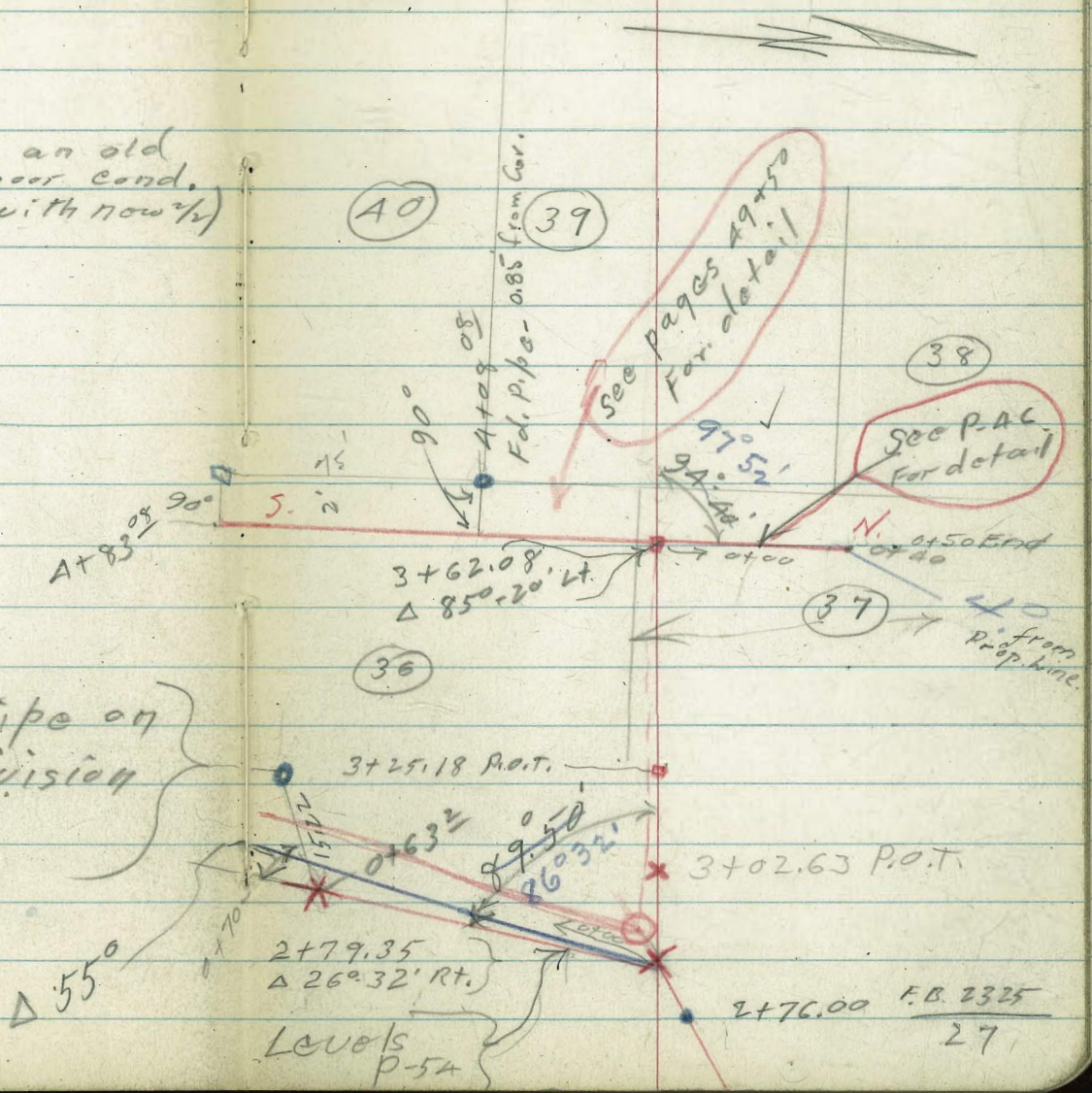
● = Fd. Pipe

● = " disk

□ = Fd. 1/2 hub. (This was an old hub. in poor cond. Replaced with new 1/2)

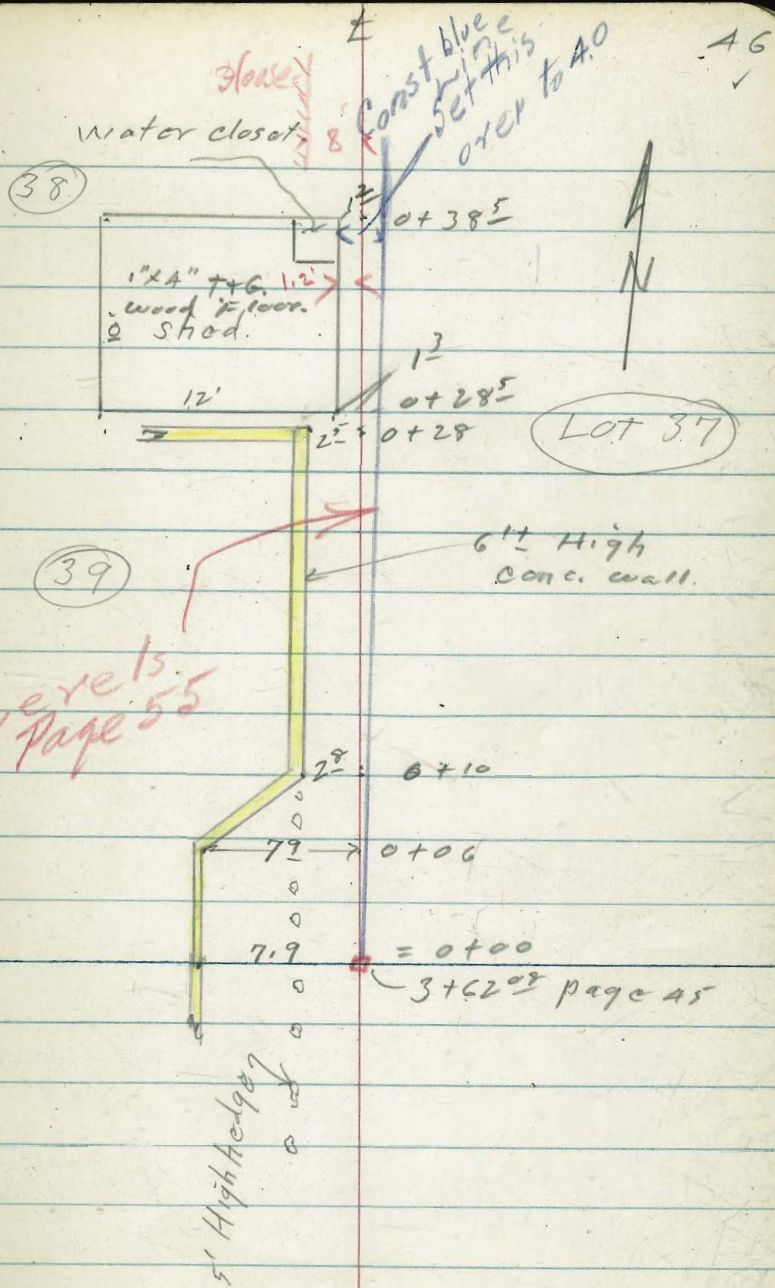
□ = set 1/2 hub.

x = cut. cross in conc.



portion of
 Detail for a line shown
 on page 45

Levels P-55



3+62.09

#

17

✓ 194

3+09 4⁵ Lt. = large Thorn bush

155.0 [✓]	154.7 [✓]	154.1 [✓]
3.4	3.7	4.3
5		5

3+05

3+04⁸ = leave conc. Pauc.

154.01 [✓]	153.81 [✓]	153.6 [✓]
4.94	4.64	4.83
5		5

3+02⁶³ = P.O.T. cross

2+86⁴

154.09 [✓]	154.0 [✓]	153.8 [✓]
4.36	4.43	4.58
5		5

2+79³⁵ = Δ 26°-32' Rt. = cross

153.91 [✓]
4.54

2+70

153.19 [✓]
4.66
dist

4.66 $\langle 158.45 \rangle$ - $\langle 153.79 \rangle$
 = 2+76⁰⁰

2+76⁰⁰ $\frac{FB2325}{31}$ EL. = $\langle 153.79 \rangle$
 dist

$\langle 158.45 \rangle$

Levels Cont. on p-51

T.P. 5.51 $\langle 170.68 \rangle$ 0.73 $\langle 165.17 \rangle$
3+62 ⁰⁸ = Δ 85°-20' Lt.
 $\frac{41}{3+21}$

3+48 - 5' Lt. = oleander bush

3+43 5' Lt. = small shrub.

3+62 - 2' Lt. = wall. (No mortar) start cut stone

162.4	162.4	163.4	163.3	163.8
3.7	3.7	2.7	2.6	2.1
5	2	2		5
	B.W	T.W		
	and.			

3+45 5' Lt. = 8' high bush

161.9	162.0	162.2
4.0	3.9	3.6
5		5

3+39 5' Lt. = shrub 6' high bush

3+25 ¹⁹ on 1/2 P.O.T. 458

3+22 - 1' Lt. = 8' high shrub

161.4	161.2	160.4	160.4
4.5	4.6	5.5	5.5
5		5	10

3+20 { 1' Rt. = 6' High Calif Honey tree
6' Lt. = 3-10" trunks olive

T.P. 8.73 $\langle 165.90 \rangle$ 1.28 $\langle 157.17 \rangle$

~~165.90~~

~~158.45~~

~~158.45~~

165.17 ✓
0.73
Hub.

Detail for portion of
line shown on P AS

A+08 - 2 1/2 RT. = corner of wall

A+00 0.5 RT. = face rock wall

3+98 = ctr. 1' x 1' grate + sly end
under ground drain pipe

drain runs under + walk
comb. gutter

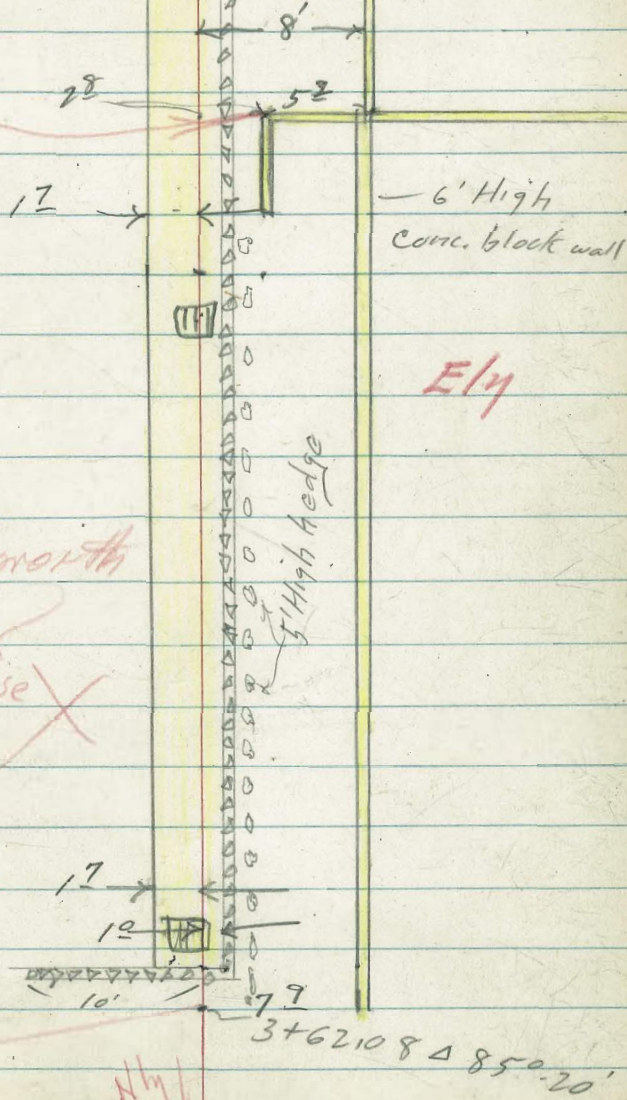
3+65 1/2 = ctr. 1' x 1' grate.

SLM

49

A+20

← 6' High
conc. block
wall.



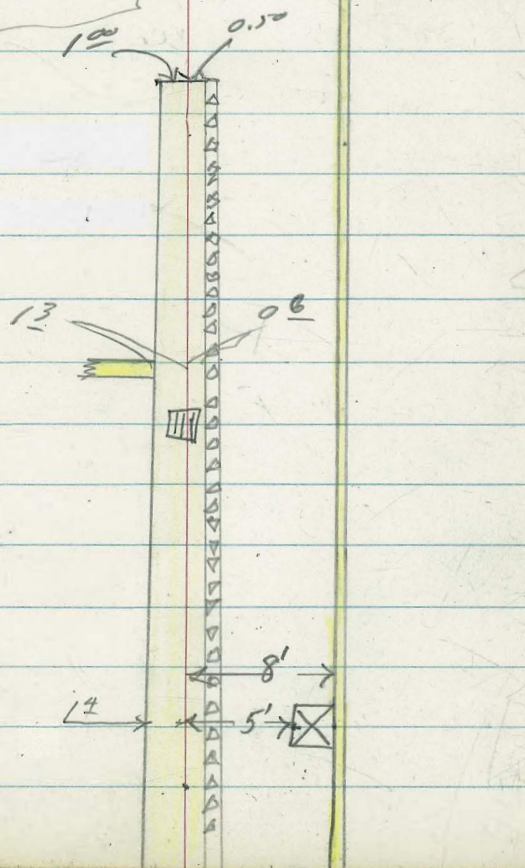
7⁵ RT. = end Conc. wall
4+83 = Fd 1/2 2' RT. of #

also = end conc. walk + gutter.
= end rock wall
4+57 - 0⁵ RT. = face of rock wall

4+43 = # 6" wide 1' High Conc. wall
4+40 = Ctr. 1' x 1' grate

4+23 = # buttress

Small native
shrubs
in this
area.



T.P 6.00 (168.67) 8.01 (162.67)

4+03- wall - (see P-49)
2⁸ Rt. = start conc. block
3' Rt. = end hedge

3+85

3+75 { 6' Lt. = start house
4' Lt. = start flower garden
3+67 = 3' Lt. = 6' shrub

3+64⁵ { 8' Rt. = Face of 6' High Conc. wall
1' Rt. = pole - # P.C. 2075
(see sketch.)
= start conc. walk + drain

3+64 = 1' Rt. = Face of N. + S. loose rock wall.
Top. of loose rock wall
3' Rt. = line of hedge.

Levels cont. from P-48

166.6

4.1

28

End at wall

162.8	162.59	162.53	162.56	166.7	167.4
7.7	8.09	8.15	8.12	4.0	3.5
6	12		1	1	8
			B.W.	T.W.	End. at conc. wall.

162.4	162.39	162.32	162.35	166.3	167.4	167.7
8.5	8.31	8.36	8.37	4.4	3.5	3.0
3	12		1	1	8	15
			B.W.	T.W.	End.	

162.1	163.4	165.1	165.2
8.6	7.5	5.6	5.5
10	10		1
B.W.	West end of wall		T.W.

(170.68)

1⁵ Lt. = end flower garden
 4+30 1³ Lt. = end fence

1⁴ Lt. = line of fence.
 wall,
 8' Rt. = Face of conc. block
 5' Rt. = \pm 2' wide buttress
 4+23 } 0² Rt. = Face loose rock wall

163.39	163.29	163.34	166.5	166.5
5.28	5.38	5.85	3.2	3.2
14		02	02	5

170.7
 + 2.0
 10
 Ord. west of wall

(4' apart) Trees.
 4+12 4⁵ Rt. = start row of small

4+10⁵ 2' Lt. = start flower garden
 6' Lt. = end house
 4' Lt. = end flower garden
 4+10 } 1⁵ Lt. = start 5' high fence

8' Rt. = Face of wall.
 4+08 } 2⁵ Rt. = Corner of wall (P49)
 1' Rt. = Face of loose cut
 stone wall.

163.1	163.01	162.86	162.94	166.3	166.3
5.6	5.66	5.81	5.75	2.4	2.4
6	12		1	1	2.8

166.7
 2.0
 8
 Ord.

B.W. Tim. Ord.

<168.67>

Ord. at conc. wall

(153.79)

Starting B.M. 8.75 153.79

T.P. 1.09 (162.54) 12.80 (161.45)

T.P. 4.49 (174.25) 2.45 (169.76)

A+84 - 1' Mt. = Pole # P.C. 2055

(Cord rises to south)

A+83 7⁵ Rt. = end of conc wall

A+64 - 8' Lt. = 20" eucalyptus

A+60 - 1' Mt. = 3" diam eucalyptus

171.4
1.0 1.0 1.68 0.8 0.8
8 2 7.5 7.5
Hub. End at T.W.
walls +
Cord.
west of
wall.

A+58 7' Lt. = 6" diam tree

170.5
1.5 1.7 1.3
6 6

T.P. 7.60 (172.21) 4.06 (164.61)

(172.21)

(0⁵ Rt. = end loose-cut stone wall, surface. & drain
A+57 = end Comb. walk

164.44
1.8 2.0 3.70 3.83 3.80 1.9 1.6
5 3 1 0.5 0.5 8
B.W. T.W. at Conc.
wall.

A+55 - 4' Rt. = end row of small trees

A+43 13 Lt. = 6" wide conc wall

164.1
4.4 4.48 4.60 4.60 3.0 2.5
5 13 0.5 0.5 8
Cord. at wall B.W. T.W. at wall

(168.67)

Lookout - South of Boulevard (M)
Sketch. Page 45

To Serve Lots 36 + S^h Lot 35 etc.

0+70 end of line

✓
158.5
4.0

0+63^E = end A.C. Drive
= edge of Pavc. + also

✓
157.54
5.02
5
157.40
5.14
5
157.79
4.75
5
on drive

0+50 = start A.C. drive
9^E Rt. = Edge Pavc + also

✓
156.51
6.03
5
✓
156.34
6.20
✓
156.20
6.34
5
✓
156.11
6.43
9^E
E.P.
+ drive

0+38

✓
155.54
7.00
5
✓
155.57
6.97
5
✓
155.55
6.99
5

0+22 5⁸ Lt. = Near cor. C.I. box.

✓
154.40
8.34
5⁸
on box
✓
154.49
8.05
✓
154.62
7.92
5

0+12 = cross water line

= 0+00

✓
159.80
8.74
5
✓
159.90
8.64
5
✓
159.88
8.66
5

2+79³⁵ Page 45

from p. 53 = $\langle \frac{162.54}{5} \rangle$

Levels - Lot # 37
 Sketch - P-4C

0+28⁵ 1³ Lt. = 8.1 Ely. cor. 10x12^{shed}

0+28- 2⁵ Lt. = corner of wall

169.0	166.4	167.4	167.4	166.7
2.2	5.0	4.0	4.0	4.5
5	2.8	2.8		5
end	B.W.			
west of wall				

0+12 1⁵ Lt. = dead man

0+10 - 2.8 Lt. = Δ in wall.

169.0	166.5	167.5	166.4	165.0
2.2	4.7	3.7	4.8	6.3
4	2.8	2.8		5
end	B.W.			
west of wall				

0+09- 3' Lt. = end hedge

0+06 - 7.9 Lt. = Δ in wall

169.4	165.7	164.5
4.0	5.5	6.7
7.9		5
end		

0+00 3' Lt. = Δ hedge

167.4	167.4	165.17
3.8	4.0	6.08
10	7.9	
end	end	
west of wall at wall		
<u>171.25</u>		

3+62⁰⁸ - Page 45 = 0+00

6.08 171.25 - 165.17

3+62⁰⁸ p-48 (2/2)

Lot #37

56

#

2/5/55
1+20 - 6' Lt. = Top of septic tank

El. = 161.4

1+15 8' Lt. = N. Ely. cor. house

✓ 163.1	✓ 163.1	✓ 162.7
6.9	6.9	7.3
8		5

T.P. 2.53 (169.96) 3.82 (169.43)

169.96

1' dabe House conc. floor.
0+42 = 8' Lt. N.S. Ely. Cor. House

✓ 169.1	✓ 169.0	✓ 166.7
3.8	4.2	4.5
8		5
at house		

Plumbing at this corner
0+38^S 1² Lt. = end shed

✓ 169.1	✓ 169.0	✓ 166.8
4.0	4.2	4.4
5		5

171.25

From Torrey Pines Rd
at Boulevard Place
to Lot 14 La Jolla Hills

C.H.S.
B099
Scholin

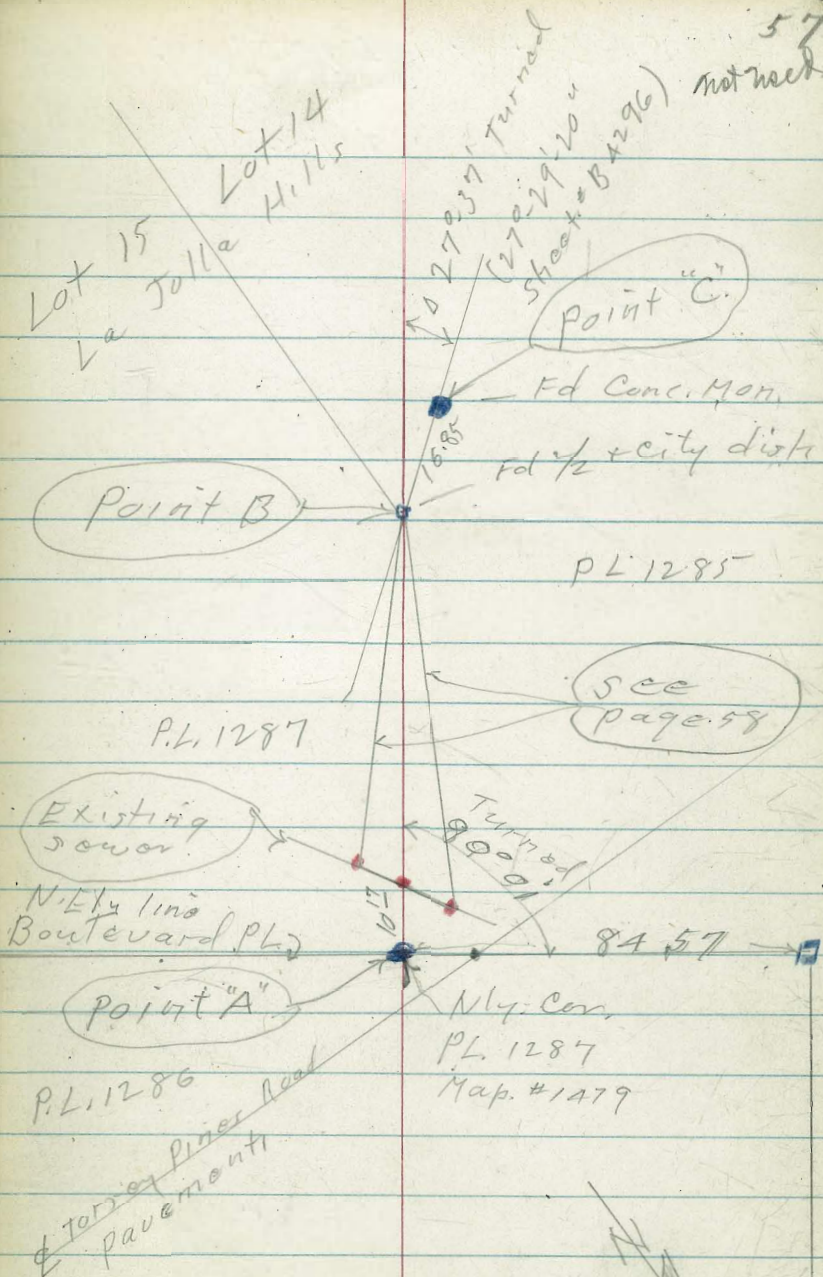
9-20-54

Sheet B-4296

Map # 1479

F.B. 1564-P-3

4384 B

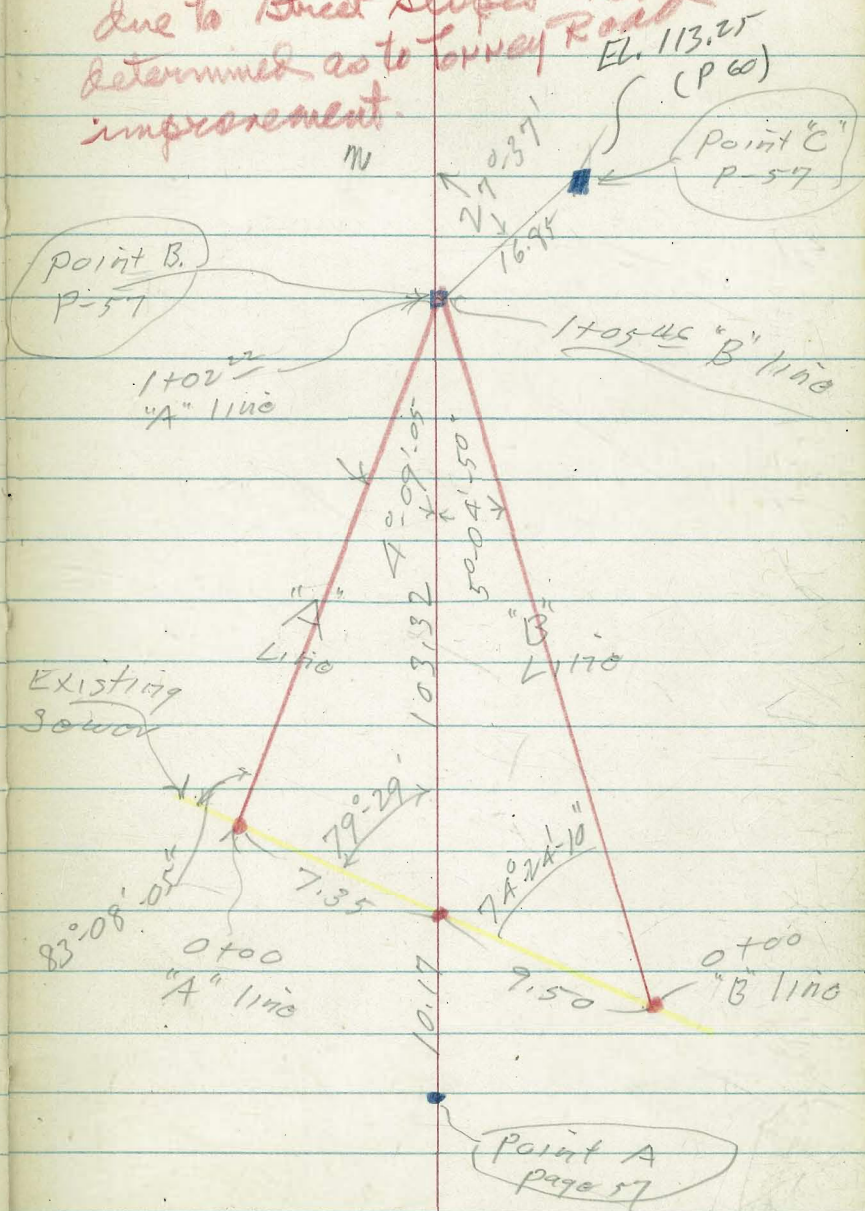


* To Lot 14 La Jolla Hills
See page 57 for ties

Note!

check future curb location
to determine which line
should be used. ~~AAA~~

58
* Lot 14 not served
due to street slopes not
determined as to Torrey Road
improvement.



✕ "A" Line P-58

0+41

T.P. 12.10 $\langle 108.57 \rangle$ 0.10 $\langle 96.47 \rangle$

0+33 = end oiled road.

0+20 = start oiled road.

0+19 = Cross 18" high fence

0+10 5' ht = 30" Eucalyptus.

0+07

0+05± (see "B" line for Fire Hydrant pipe)

0+01 5' ht = 6" Lateral Stand

0+00 Existing sewer

0-09 edge of pave

G.A.O. $\langle 96.57 \rangle$ - 90.17

±

59
not used

99.2 ✓

9.4

$\langle 108.57 \rangle$ ✓

94.9 ✓

1.7

96.3 ✓

0.3

96.4 ✓

0.2

85.9 ✓

10.7

84.54 ✓

12.03

$\langle 96.57 \rangle$ ✓

N.W.B.P. Torrey Pines Rd &
Little St. FB 2019
19

60
not used

A. line

X

set. B.M.

1.54 $\langle 113.25 \rangle$

= Mer. 16⁸⁵ @ 2832' - 21' 50" RT ahead of 1102⁰⁰

also = Cor. lots 14+15-

1102⁰⁰ = 1/2 end of line.

111.58 ✓
3.21

0+96 = Cross steps of loose bricks.

T.P. 8.52 $\langle 114.79 \rangle$ 2.30 $\langle 106.27 \rangle$

0+90 7' ht. = 12" Cypress

110.0 ✓
4.8
 $\langle 114.79 \rangle$

0+77

106.1 ✓
2.5

0+58

100.0 ✓
8.6

$\langle 108.57 \rangle$ ✓

$\langle 108.57 \rangle$ ✓

X

"B" line - Page 58

±

61
not used

T.P. 12.10

$\langle 108.57 \rangle$ 0.10 $\langle 96.47 \rangle$

93.4
3.2

0+42 = leave oiled road

0+33 6⁸ Ft. = 30" Eucalyptus

94.0^v
2.6

0+30 = start oiled road.

0+29 = cross 2' high picket fence

93.6^v
3.0

0+20

86.5^v
10.3

0+12

0+09 7" Lt. = Fire Hydt.

85.0^v
11.30

0+06 = leave Paue

0+00 = ϕ existing sewer

0-06 - 1' Lt. = water gate cap

85.04^v
11.48
5

85.01^v
11.16
5

85.64^v
10.93
5

$\langle 96.57 \rangle$

6.40 $\langle 96.57 \rangle$ - $\langle 90.17 \rangle$

M.W.B.P. Torrey Pines Rd. & Little St.

X

"B" line

1+05 $\frac{46}{2} = \frac{1}{2}$ = end of line

1+00

0+97⁵ = Cross Loose brick steps.

TIP. 8.52 $\langle \underline{114.79} \rangle$ 2.30 $\langle \underline{106.27} \rangle$

0+85

0+67

0+52

$\langle \underline{108.57} \rangle$

±

62
not used

111.58
3.21

110.5
4.3

$\langle \underline{114.79} \rangle$

106.1
2.5

99.2
9.4

98.6
10.0

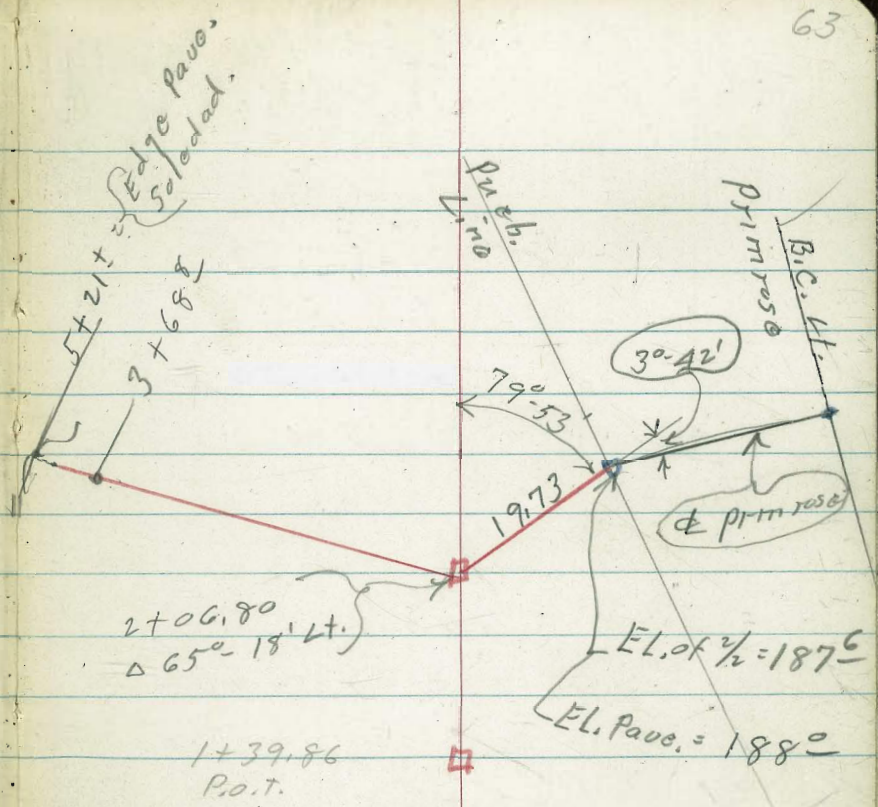
$\langle \underline{108.57} \rangle$

"C" line thru Lot #84
Villa Tract - La Jolla Park

C.H.S.

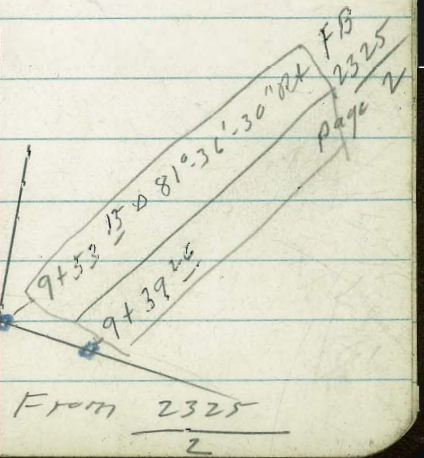
10-9-57

For. Ref. See F.B. 2325 - P. 2



2+06.80
Δ 65°-18' Lt.

= 0400° C line and
 9+53.15
 Δ 78°-37'-30" ← Now → Δ 84°-25'-30" Rt.



Levels - Lot 84 Villa Tract
+ on Primavera (sketch - P 63)

⌘

64

C.H.S.

B099

7-1-54

Schelin

Pullen

Elevations shown.

direct Elev. rod used.

1+40 11" RT = 24" Eucalyptus

172.2

be saved.

1+36 - 2' Lt. = clump of bamboo to

1+27

171.2

1+25

170.2

1+00

169.4

0+50

168.0

0+45 2' RT = 3" Avocado

0+30 - 2' Lt. = 3" Avocado

0+25

169.2

0+15 2' Lt. = 3" Avocado

= 0+00

171.2

9+53.15

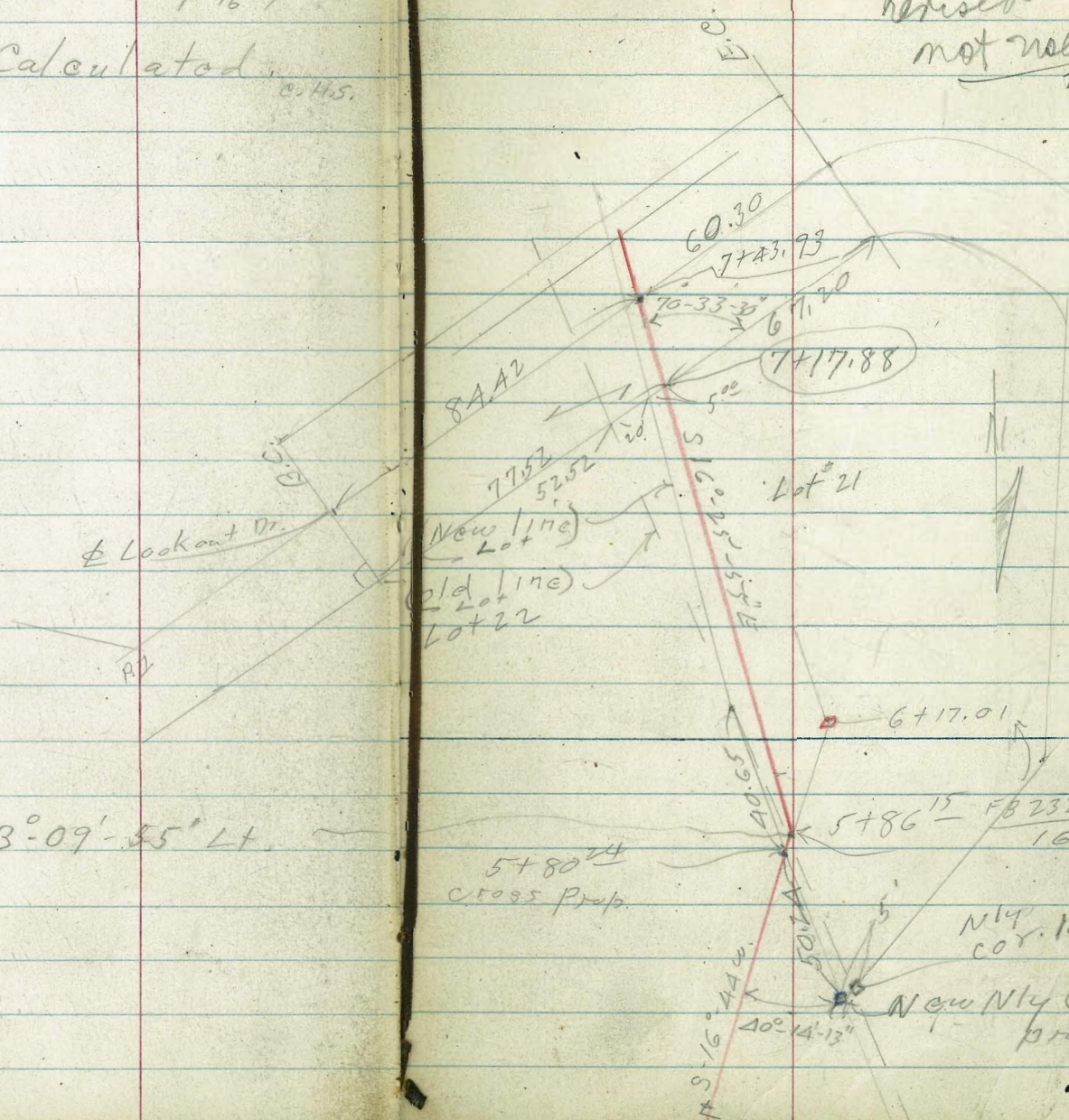
Elevation of points is shown.

Soledad Ave.		
5+21±	= edge of page on	
3+60 ⁸	end of line	195.5
3+30		190.0
3+00		186.8
2+75		184.9
2+50		184.2
2+06.80	= A 65'-18' Lt.	186.6
2+00		187.2
1+94	3' Lt. = stump of 18" eucalyptus	
1+84		178.3
1+78	2' Lt. = ^{conc. steps} near corner of loose brick wall.	
1+71	0 ⁵ Lt. = wly end 1 1/2' high	177.2
1+70		177.0
1+60		177.2
1+45		171.7

Change H. line from
5+86¹⁵ on. (From P.B. $\frac{2325}{P 16}$)

Line + Ties Calculated. o. H.S.

Revised
not used
n.



5+86¹⁵ = Δ 33°-09'-55" Lt.

Nly cor. lot 21

New Nly Cor. prop.

H. line

sketch p. 66
1-5-55

±

Revised 67
not used.

7+43.93 - ± look out.

181.0

7+34

181.6

7+26

182.4

7+25 - 3' Lt. = dead man

7+18

176.0

7+00

169.7

6+80

167.1

6+60 2' Lt. = small fruit tree

6+50

162.5

6+45 on Lt. = fruit tree

6+33 - on line - fruit tree

6+30

159.2

5+92

141.0

IN. wash

5+84^{1/2} Δ 33° 09' 55" Lt.

144.5

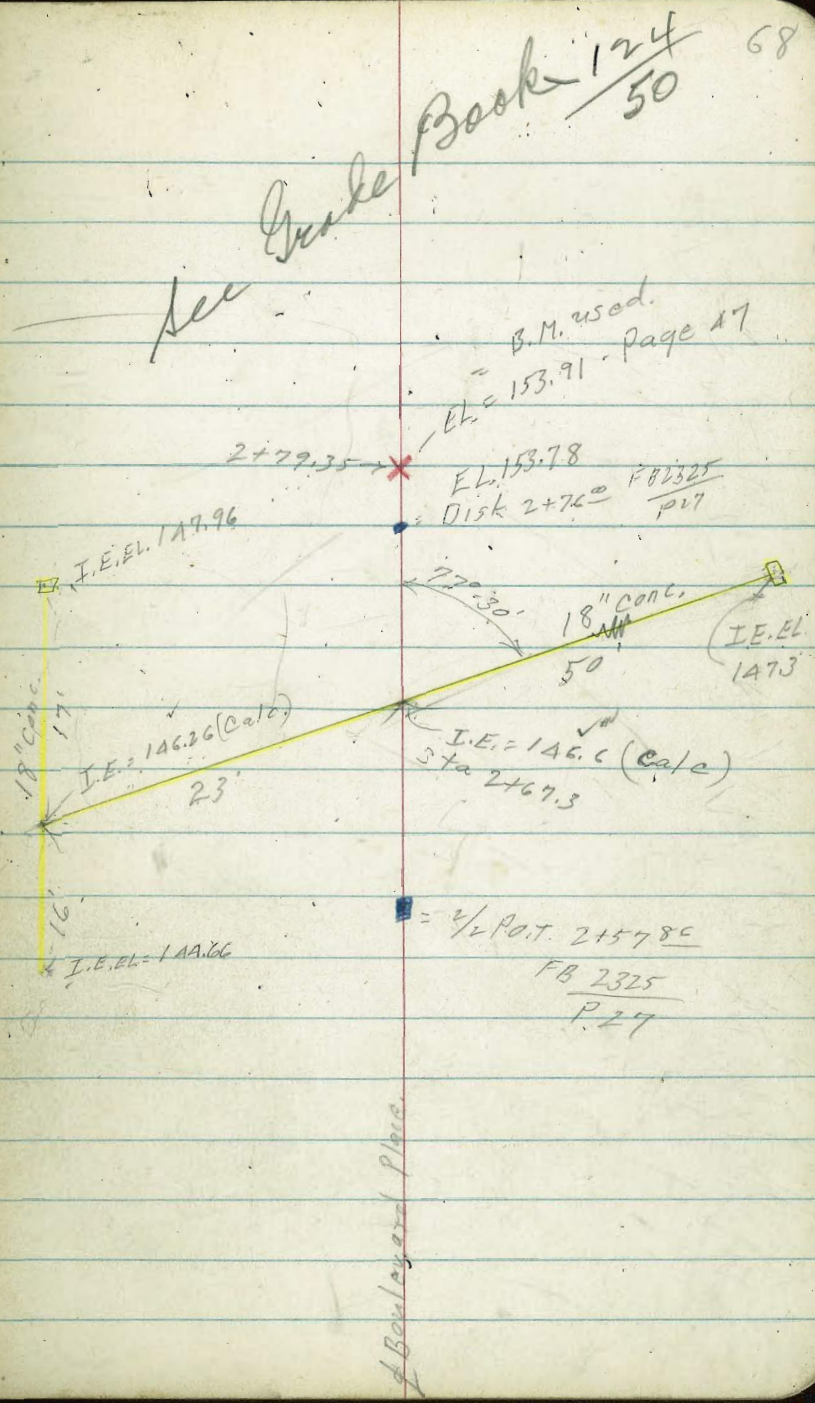
Location & Elev. of

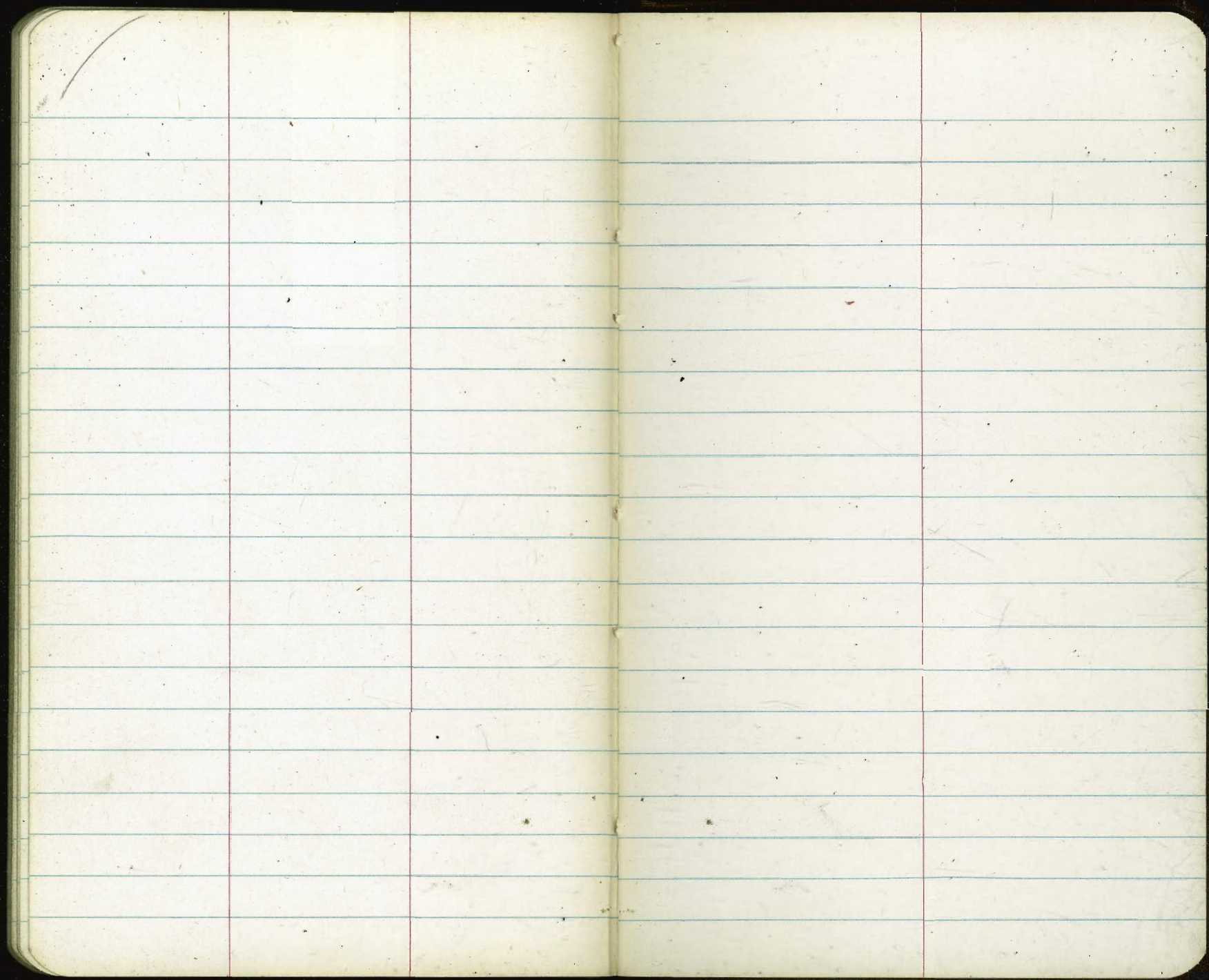
18" Conc. pipe culvert.

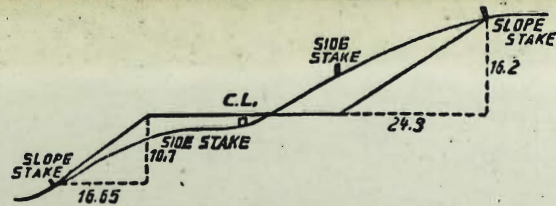
C.H.S. at Sta. 2+67.3 - P 27 4/30/55
 Bogg
 Schelin
 Puller.

N.O. 31841
 3 Hrs. digging time

This is tied into line of
 Boulevard place as shown
 on page 27 in F.B. #2325







DISTANCES FROM SIDE STAKES FOR CROSS-SECTIONING.
SLOPE 1½ TO 1. ROADWAY OF ANY WIDTH.

	0	.1	.2	.3	.4	.5	.6	.7	.8	.9	
0	0.00	0.15	0.30	0.45	0.60	0.75	0.90	1.05	1.20	1.35	0
1	1.50	1.65	1.80	1.95	2.10	2.25	2.40	2.55	2.70	2.85	1
2	3.00	3.15	3.30	3.45	3.60	3.75	3.90	4.05	4.20	4.35	2
3	4.50	4.65	4.80	4.95	5.10	5.25	5.40	5.55	5.70	5.85	3
4	6.00	6.15	6.30	6.45	6.60	6.75	6.90	7.05	7.20	7.35	4
5	7.50	7.65	7.80	7.95	8.10	8.25	8.40	8.55	8.70	8.85	5
6	9.00	9.15	9.30	9.45	9.60	9.75	9.90	10.05	10.20	10.35	6
7	10.50	10.65	10.80	10.95	11.10	11.25	11.40	11.55	11.70	11.85	7
8	12.00	12.15	12.30	12.45	12.60	12.75	12.90	13.05	13.20	13.35	8
9	13.50	13.65	13.80	13.95	14.10	14.25	14.40	14.55	14.70	14.85	9
10	15.00	15.15	15.30	15.45	15.60	15.75	15.90	16.05	16.20	16.35	10
11	16.50	16.65	16.80	16.95	17.10	17.25	17.40	17.55	17.70	17.85	11
12	18.00	18.15	18.30	18.45	18.60	18.75	18.90	19.05	19.20	19.35	12
13	19.50	19.65	19.80	19.95	20.10	20.25	20.40	20.55	20.70	20.85	13
14	21.00	21.15	21.30	21.45	21.60	21.75	21.90	22.05	22.20	22.35	14
15	22.50	22.65	22.80	22.95	23.10	23.25	23.40	23.55	23.70	23.85	15
16	24.00	24.15	24.30	24.45	24.60	24.75	24.90	25.05	25.20	25.35	16
17	25.50	25.65	25.80	25.95	26.10	26.25	26.40	26.55	26.70	26.85	17
18	27.00	27.15	27.30	27.45	27.60	27.75	27.90	28.05	28.20	28.35	18
19	28.50	28.65	28.80	28.95	29.10	29.25	29.40	29.55	29.70	29.85	19
20	30.00	30.15	30.30	30.45	30.60	30.75	30.90	31.05	31.20	31.35	20
21	31.50	31.65	31.80	31.95	32.10	32.25	32.40	32.55	32.70	32.85	21
22	33.00	33.15	33.30	33.45	33.60	33.75	33.90	34.05	34.20	34.35	22
23	34.50	34.65	34.80	34.95	35.10	35.25	35.40	35.55	35.70	35.85	23
24	36.00	36.15	36.30	36.45	36.60	36.75	36.90	37.05	37.20	37.35	24
25	37.50	37.65	37.80	37.95	38.10	38.25	38.40	38.55	38.70	38.85	25
26	39.00	39.15	39.30	39.45	39.60	39.75	39.90	40.05	40.20	40.35	26
27	40.50	40.65	40.80	40.95	41.10	41.25	41.40	41.55	41.70	41.85	27
28	42.00	42.15	42.30	42.45	42.60	42.75	42.90	43.05	43.20	43.35	28
29	43.50	43.65	43.80	43.95	44.10	44.25	44.40	44.55	44.70	44.85	29
30	45.00	45.15	45.30	45.45	45.60	45.75	45.90	46.05	46.20	46.35	30
31	46.50	46.65	46.80	46.95	47.10	47.25	47.40	47.55	47.70	47.85	31
32	48.00	48.15	48.30	48.45	48.60	48.75	48.90	49.05	49.20	49.35	32
33	49.50	49.65	49.80	49.95	50.10	50.25	50.40	50.55	50.70	50.85	33
34	51.00	51.15	51.30	51.45	51.60	51.75	51.90	52.05	52.20	52.35	34
35	52.50	52.65	52.80	52.95	53.10	53.25	53.40	53.55	53.70	53.85	35
36	54.00	54.15	54.30	54.45	54.60	54.75	54.90	55.05	55.20	55.35	36
37	55.50	55.65	55.80	55.95	56.10	56.25	56.40	56.55	56.70	56.85	37
38	57.00	57.15	57.30	57.45	57.60	57.75	57.90	58.05	58.20	58.35	38
39	58.50	58.65	58.80	58.95	59.10	59.25	59.40	59.55	59.70	59.85	39
40	60.00	60.15	60.30	60.45	60.60	60.75	60.90	61.05	61.20	61.35	40
41	61.50	61.65	61.80	61.95	62.10	62.25	62.40	62.55	62.70	62.85	41
42	63.00	63.15	63.30	63.45	63.60	63.75	63.90	64.05	64.20	64.35	42
43	64.50	64.65	64.80	64.95	65.10	65.25	65.40	65.55	65.70	65.85	43
44	66.00	66.15	66.30	66.45	66.60	66.75	66.90	67.05	67.20	67.35	44
45	67.50	67.65	67.80	67.95	68.10	68.25	68.40	68.55	68.70	68.85	45
46	69.00	69.15	69.30	69.45	69.60	69.75	69.90	70.05	70.20	70.35	46
47	70.50	70.65	70.80	70.95	71.10	71.25	71.40	71.55	71.70	71.85	47
48	72.00	72.15	72.30	72.45	72.60	72.75	72.90	73.05	73.20	73.35	48
49	73.50	73.65	73.80	73.95	74.10	74.25	74.40	74.55	74.70	74.85	49
50	75.00	75.15	75.30	75.45	75.60	75.75	75.90	76.05	76.20	76.35	50

THE NATIONAL BLANK BOOK COMPANY
 HOLYOKE MASSACHUSETTS
 NEW YORK CHICAGO BOSTON SAN FRANCISCO