

Index

Sewers - Hidden Valley Area

see

P. 2

Index of Hidden Valley
area Sewer Prelim

"A" line - Ardath Road -
(From La Jolla Shores Dr. 3-24
"B" line - (From 17+12th "A" line)
To South 25-35
"C" line - From 11+06th (on "A" line)
To south - P-36-38
"D" line - Hidden Valley Road
Sly. Fly. of Ardath Rd. 39-53

"C" line	FB 2335	P-36
"D" line	"	39
E "	"	54
F "	"	58
G "	"	66
H "	"	69
I "	"	74
J "	"	76
K "	F.B. 2395	2
L "	"	5

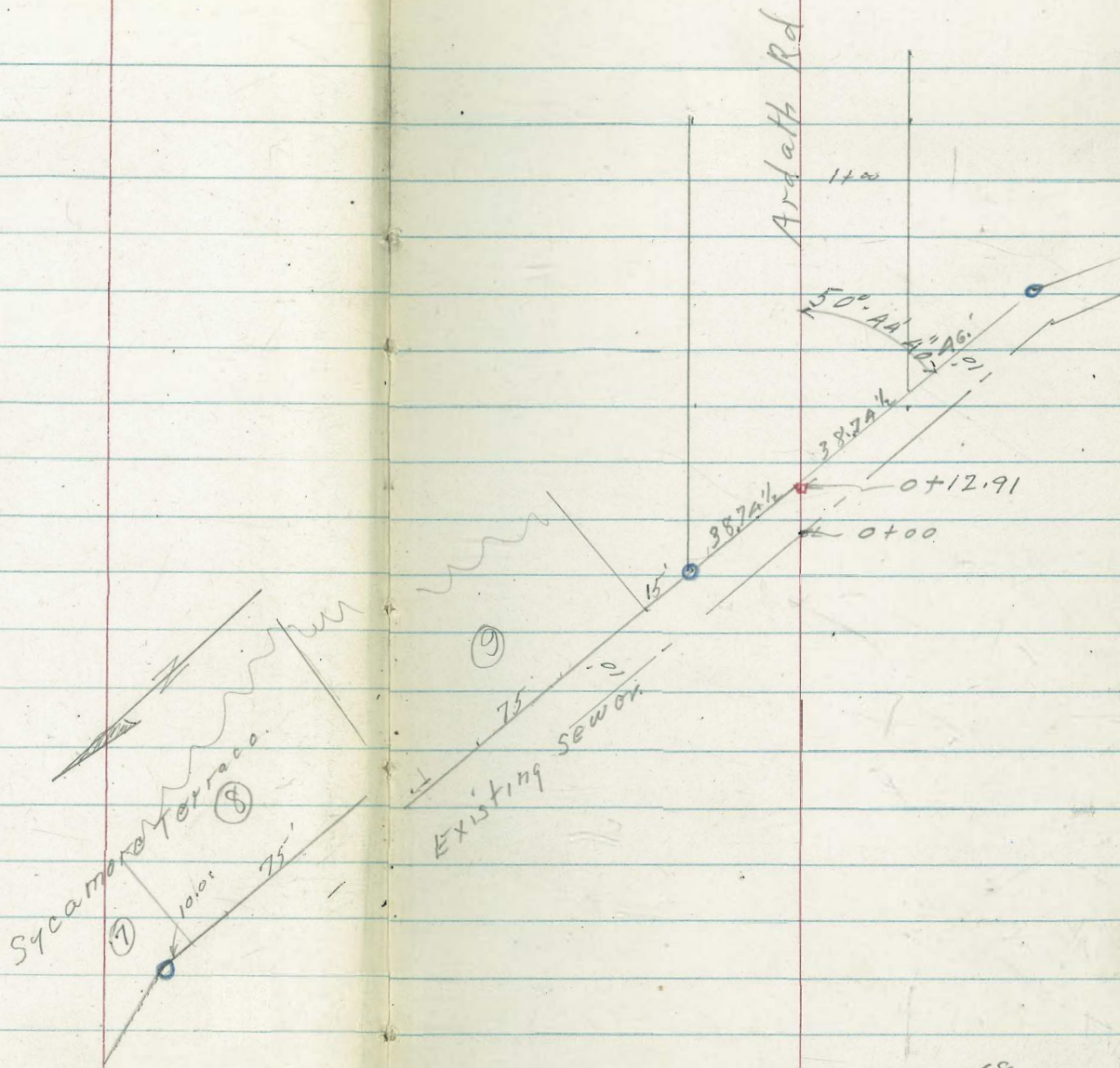
2

See Index sheet - front of book.

M - line	F.B. 2395	15
N "	"	20
O "	"	68 + 22
P "	"	25
Q "	"	25
R "	"	31
S "	"	36
T "	"	39
U "	"	43
V "	"	68
W "	"	68

A" 1170

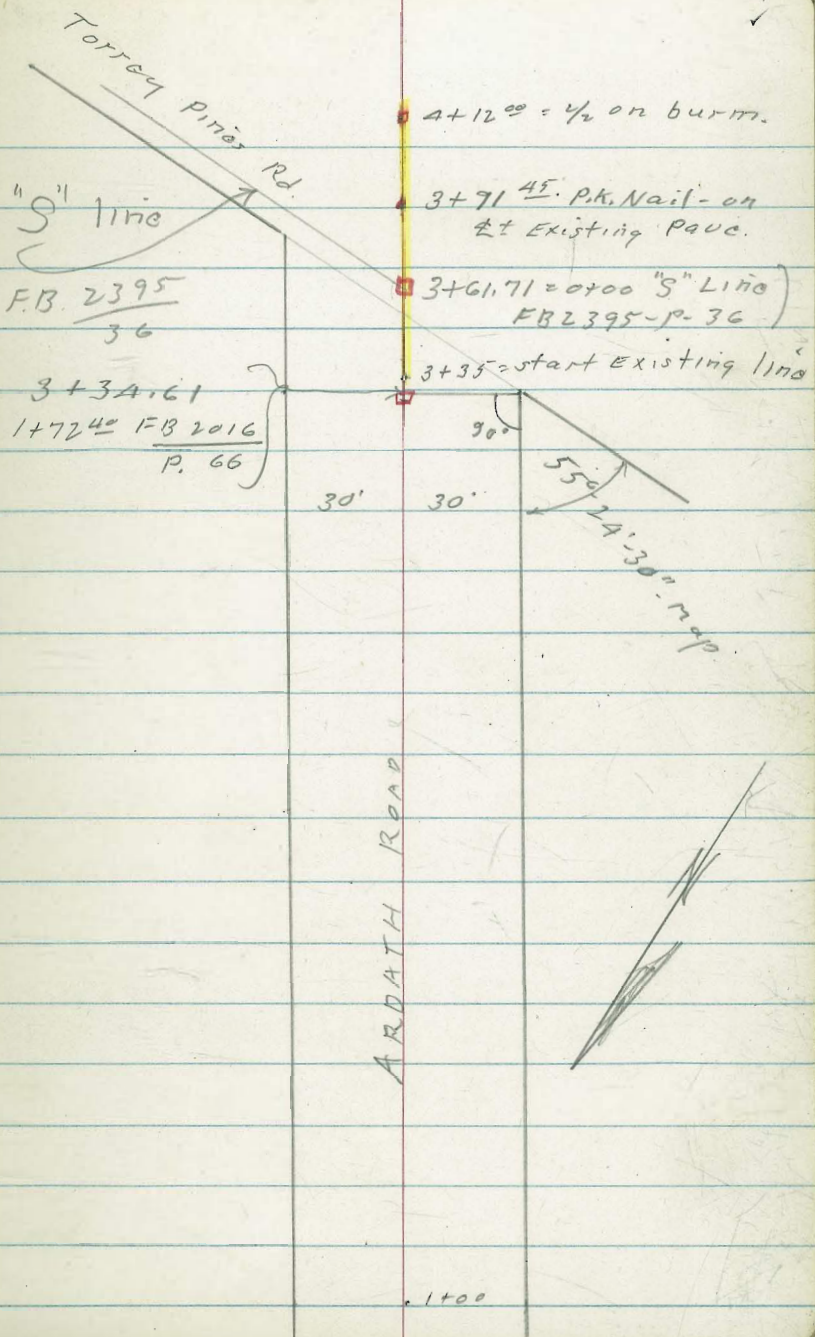
3 ✓

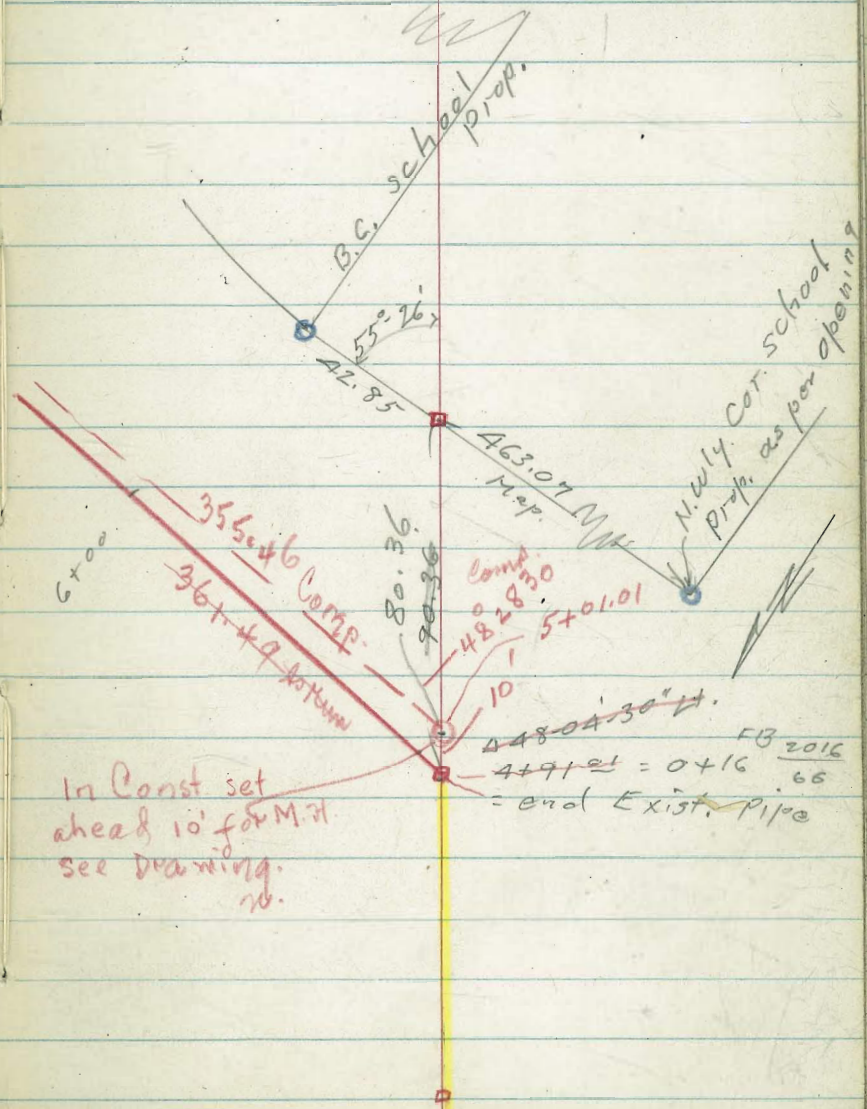


* 0-155⁶⁸ = cross
on wly ab. La Jolla
Shores Drive.

A

A



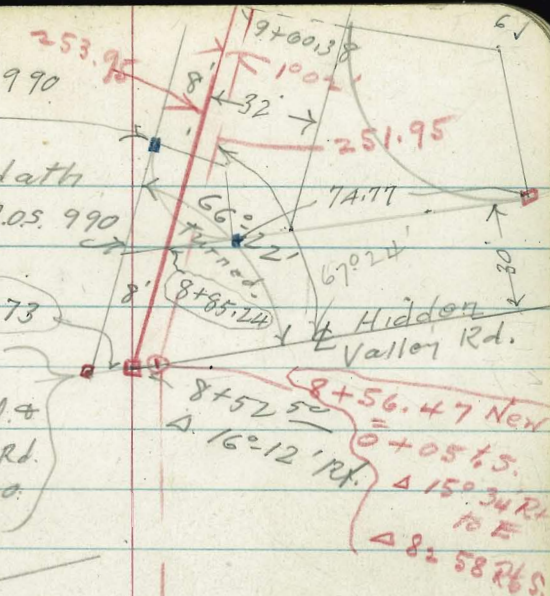


A

See R.O.S. #990

Sly. line Ardath
Road as per. R.O.S. 990

old. P.I. sly
line Ardath Rd. &
Hidden Valley Rd.
as per. R.O.S. 990.



A

11+80

71

"C" line

11+06.45

Also = 0+00 to left

11+08.42

$\Delta 1^{\circ} 02' \text{ Rt}$

8 ← 32



sly line Ardath Rd

line as changed from as run in fld. as run in fld.

1002

9+60.38

200

E.C.

R=40
D 113.36-43
ST. 61.1A map

piper

Ely line Hidden Valley Road

Water Meters

25
8+70

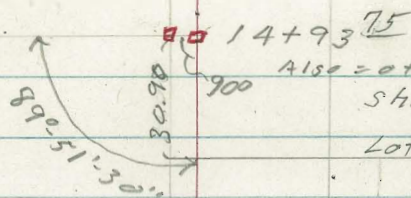
10+00

9-

A

81

J line
P. 76



14+93.75
Also noted to Lt.
Shette. D.F.
Lot line

Gustafson DR.

P.O.T. 13+67.47
" 13+62.47



8' - 32'

Laura Rogers

Sly Line Ardath Road

14 ~

13 ~

12 ~

A.

18 ~

17 ~

16 ~

15 + 50 = P.K. in drive

15 ~

9 ✓

Hay. Av.

8' 32'

Baker - T.N.

Cross lot line
17 + 15.25

Lot. Line

B Line
p. 15

17 + 12.25

Also: 0 to 0 to Rt.

90° 06'

Footc. C.H.

90° 06'
Turned.



1/4 Mile Ardelt Rd

Footc. C.H.

8' 32'

Shette D.E.

Water }
pipes } < 13' >

A



21~

Brown H.F.

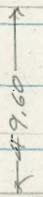
20~

Lee. I.F.



19+31.53 P.O.T.C. 
 19+29.50 

"C" line
 page 66



19~

Hay. P.W.

end opening
 18+15.25 (Map)



32'

sky line
 Ardath Rd

18~

A

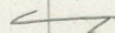
24~

23+9754

8 32

Hamilton Cattle Co.

Chadbourne
H.L.



23~

22+81.27

Road

Sly. line Ardalt

"I" line
P-74

22+6927

Fayman
N.G.



22~

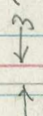
Rot.
21+68⁰⁰

"H" line P-69

90°00'30"

21+65⁰⁰
Δ 0°-02'RX

8 32



Brown
H.F.

21~

ARDAATH ROAD 12/6/59
Proposed Sewer

T.P. 9.50 $\langle 52.78 \rangle$ 1.43 $\langle 43.28 \rangle$

1+00

0+00 - (Page 3) line of Existing Sewer

B.M.#2 10.76 $\langle 44.71 \rangle$ 5.50 $\langle 33.95 \rangle$
7.27 $\langle 39.45 \rangle$ - $\langle 32.18 \rangle$

7.34 $\langle 7.64 \rangle$

T.P.#5 1.81 $\langle 14.98 \rangle$ 10.35 $\langle 13.17 \rangle$

T.P.#4 1.02 $\langle 23.52 \rangle$ 12.01 $\langle 24.50 \rangle$

T.P.#3 2.33 $\langle 34.51 \rangle$ 9.28 $\langle 32.18 \rangle$

T.P.#2 1.60 $\langle 41.46 \rangle$ 12.63 $\langle 39.86 \rangle$

T.P.#1 0.24 $\langle 52.49 \rangle$ 3.94 $\langle 52.23 \rangle$

B.M.#1 1.50 $\langle 56.19 \rangle$ - 54.69

41.2 ✓

3.5

39.3 ✓

5.4

$\langle 44.71 \rangle$ ✓ m/100

x-on ch. (0-155.68) page 3.

T.P.#3

F.B. 2019-P-2 (EL. 27.67)

N.E.B.P. Calle de la Plata + Paseo Dorado.

Jolla Shores Dr. - F.B. 2016-C8 (EL. 52.07)
Top Hydt. sly side Torrey Pines Rd. at La

N.E.B.P. Calle de la Plata + Torrey Pines Rd.

Ardath Rd.

±

13
✓

T.P. 12.63 $\langle 68.73 \rangle$ 1.99 $\langle 56.10 \rangle$

6+00

55.5^v
2.6

5+00

53.1^v
5.0

B.M. #3 $\nearrow \frac{1}{2}$

5.15 52.94

4+91^{ol} Page 5 = End existing sewer

52.94^v
5.15^v
Hub

T.P. 5.55 $\langle 58.09 \rangle$ 0.24 $\langle 52.54 \rangle$

(F.B. 2016-P 66)

$\langle 58.09 \rangle$ ^v

3+35 = start existing sewer

47.6^v
5.2^v
Ord.

3+00

46.4^v
6.4

2~

44.8^v
8.0

$\langle 52.78 \rangle$

Ardath Rd.

14 ✓

±

63.4 ✓
5.3

8+30

60.7 ✓
8.0

8+24

60.4 ✓
8.3

8+00

57.6 ✓
11.1

7+00

57.2 ✓
11.5

6+89

54.1 ✓
14.6

6+81 = ± N. + S. open ditch

56.5 ✓
12.2

6+73

68.73 ✓

Ardath Road

13

T.P. 11.55 $\langle 79.60 \rangle$ 0.68 $\langle 68.05 \rangle$

9+00 12" Line of power poles

65.4^v

3.3

8+85²⁴ = Ely line Road-Produced
Hidden Valley

64.5^v

4.2

8+80

(long bank of 13 water meters
8+70) - 2nd Lt. = sly. end of 20'

64.7^v

4.0

8+62 = Ely edge Pave.

BM[#] 3 A. (on 1/2) 4.27 $\langle 64.46 \rangle$

↓ Also = 0+00 to south.

8+52⁵⁰ = 1/2 = Δ 16°-10' RT.

64.46^v64.6^v

4.27

4.1

Hub

Pave

8+44 = 1" to 2" thick
wly edge A.C. Pave

64.0^v

4.7

8+34 9th Rt = deadman

 $\langle 68.73 \rangle$ ^v

Ardath Rd.

4

16

13+50 07 $\phi = 2''$ nearly dead avocado ^{tree}

13+31 3' Lt. = 2" nearly dead avocado ^{tree}

13+00

83.3 ✓

7.3

12+90 5^E Lt. = 2" nearly dead Plum ^{tree}

12+67 7^E Lt. = 2" nearly dead apple ^{tree}

$\langle 90.56 \rangle$ ✓

T.P. 12.11 $\langle 90.56 \rangle$ 1.15 $\langle 78.45 \rangle$ ✓

12+00

77.9 ✓

1.7

11+69 7' Lt. = 4" Tree to come out

B.M. # 4 - $\frac{1}{2}$

5.93 73.67

page 7

11+06.45 = $\frac{1}{2}$ = P.O.T. = 0700 to north

73.67 ✓

5.93

$\frac{1}{2}$

11+00

73.5 ✓

6.1

10+00

69.3 ✓

10.3

$\langle 79.60 \rangle$ ✓

Ardath Road

4

17

12⁵ ft. = line of power poles
 14+85 7⁵ ft. = dead man

ice plant - geraniums - etc.
 14+70 = start improved area

94.3 ✓
 8.0

14+60

91.9 ✓
 10.4

102.31 ✓

T.P. 13.27 <102.31> 1.52 <89.04>

88.6 ✓
 2.0

14+00

87.74 ✓
 2.82

13+78⁵ = Ely edge of drive

87.33 ✓
 3.23

13+68⁵ = wly edge A.C. drive 2" to 3" thick

86.8 ✓
 3.8

90.50 ✓

B.M. #5 Mon. 8' H. of 4.10 86.46

13+62⁴⁷

2

Ardath road.

T.P. 12.16 $\langle 113.99 \rangle$ 0.48 $\langle 101.83 \rangle$

15+72

100.9 ✓
1.4

15+60

98.2 ✓
4.1

15+54² = Ely. edge A.C. drive.

97.81 ✓
4.50

15+44² = wly edge ^{3" ± thick} A.C. drive.

95.9
6.4
39
sly edge
Traveled road.
97.60 ✓
4.71

15 — 13' Lt. = ^{water pipes} sly edge line of

95.9 ✓
6.4

B.M. #6 $\frac{1}{2}$ ✓

6.71 $\langle 95.60 \rangle$

14+93⁷⁵ = p.o.t. $\frac{1}{2}$ (also = 0+00 to north)

95.6 ✓
6.7

$\langle 102.31 \rangle$ ✓

Ardath Rd.

#

19
✓

Pine trees

17+80 7' RT. = 1" diam 4' high

109.4 ✓
4.6

17+25

107.7 ✓
6.3

17+15²⁵ = Prop. line (P. 9) = 1/2

B.M. ± 7 = 1/2 7.11 (106.88) ✓

106.88 ✓
7.11

17+12²⁵ = 1/2 P.O.T. = 0+00 to south (P. 9)

106.6 ✓
7.4

17+10 = Ely. edge drive

106.1 ✓
7.9

17+00 = wly. edge 3"± thick A.C. drive

7.3
25
sly edge
traveled road

102.5 ✓
11.5

16+00

(113.99) ✓

Ardath Rd.

4

20

19+00

115.3[✓]
8.1

123.44[✓]

T.P.

10.46 123.44 1.01 112.98

112.8[✓]
1.2

18+50

B.

111.5[✓]
2.5

18+25

18+09 = Ely edge drive

✓
110.99
3.00
10⁶
N.E. Cor.
drive

111.65[✓]
2.34

18+00 on drive

111.56[✓]
2.43

17+92⁵ = wly edge 3" thick Corica drive

3.24
10⁶
N.W. Cor
drive

111.35[✓]
2.64

113.99[✓]

TIP, 9.68 $\langle 132.82 \rangle$ 0.30 $\langle 123.14 \rangle$
5' LT = Nly end of same

20+61 Cross 4' wide N. & S. Hedge

20+00

19+60

19+58 = Ely edge oiled drive

rock + oil drive
19+41 = wly. edge 2" thick

wide N. & S. Hedge

19+39^E 9^E RT. = Nly. end of 7'

B.M. #8

19+31^E $\frac{1}{2}$ P.O.T. 6.87 116.57

114.7

8.7

150

North of wash

119.9^v

3.5

118.5^v

4.9

118.0^v

5.4

114.5^v

9.1

slly³¹ edge
Traveled road.

117.2^v

6.2

$\langle 123.44 \rangle$ ^v

21+57 - end shrubs etc.
4' RX. = end fence

21+00

126.6 ✓
6.2

roses etc.
6' RX. also start shrubs
20+89 - 7' RX. = start rail fence.

20+85

124.9 ✓
7.9

20+80 = Ely. edge drive

123.4 ✓
9.6

20+67 = wly edge rock + oil
drive

122.8 ✓
10.0

ground. (ice plant etc.)
also = end improved

20+65 = cross 3/4" water line

123.4 ✓
9.4

132.82 ✓

B.M. #10 177 drive
22+81²² = P.K. Nail 11.07 <131.35> ✓

22+75 = wly edge A.C. drive (3" thick)

131.2 ✓
11.2

22+73
20' H. = sly. edge E. + W. pipe lines line

131.7 ✓
10.7

22+72 = cross @ 170 1 1/2" + one 1" water

131.8 ✓
10.6
on pipe

22+70

131.9 ✓
10.5

T.P. 11.07 <142.42> 11.47 <131.35> ✓

<142.42> ✓

22+00

128.5 ✓
4.5

BM #9
21+65⁰⁰ 1/2 5.02 <127.80> ✓
Δ 0°-02' RT.

127.9 ✓
4.9
Good

132.82 ✓

24+00

132.6 ✓
9.8

136.4 ✓
6.0

30.
sly. edge
traveled road.

B.M. # 11

23+97 ⁵⁴ = 1/2

G. 41 (136.0) ✓
Prop. pipe 8' lt. of E

142.4 ✓	131.9 ✓	130.1 ✓	136.30 ✓
0.0	10.5	12.3	6.12
220	190	100	1/2

23+00

132.8 ✓
9.6

22+90

132.4 ✓
10.0

22+89 = Fly. edge A.C. drive

131.6 ✓
10.8

(142.42) ✓

"B" line

12/7/54

25

1

Hay P.W.

Hawthorne
Neece

148203 map 40

34.17 ←

Baker T.N.

Foote C.H.

Prop. Cor.

82° 58'

0432

0400

"A" line

0400

17+12.25
"A" line P. 9



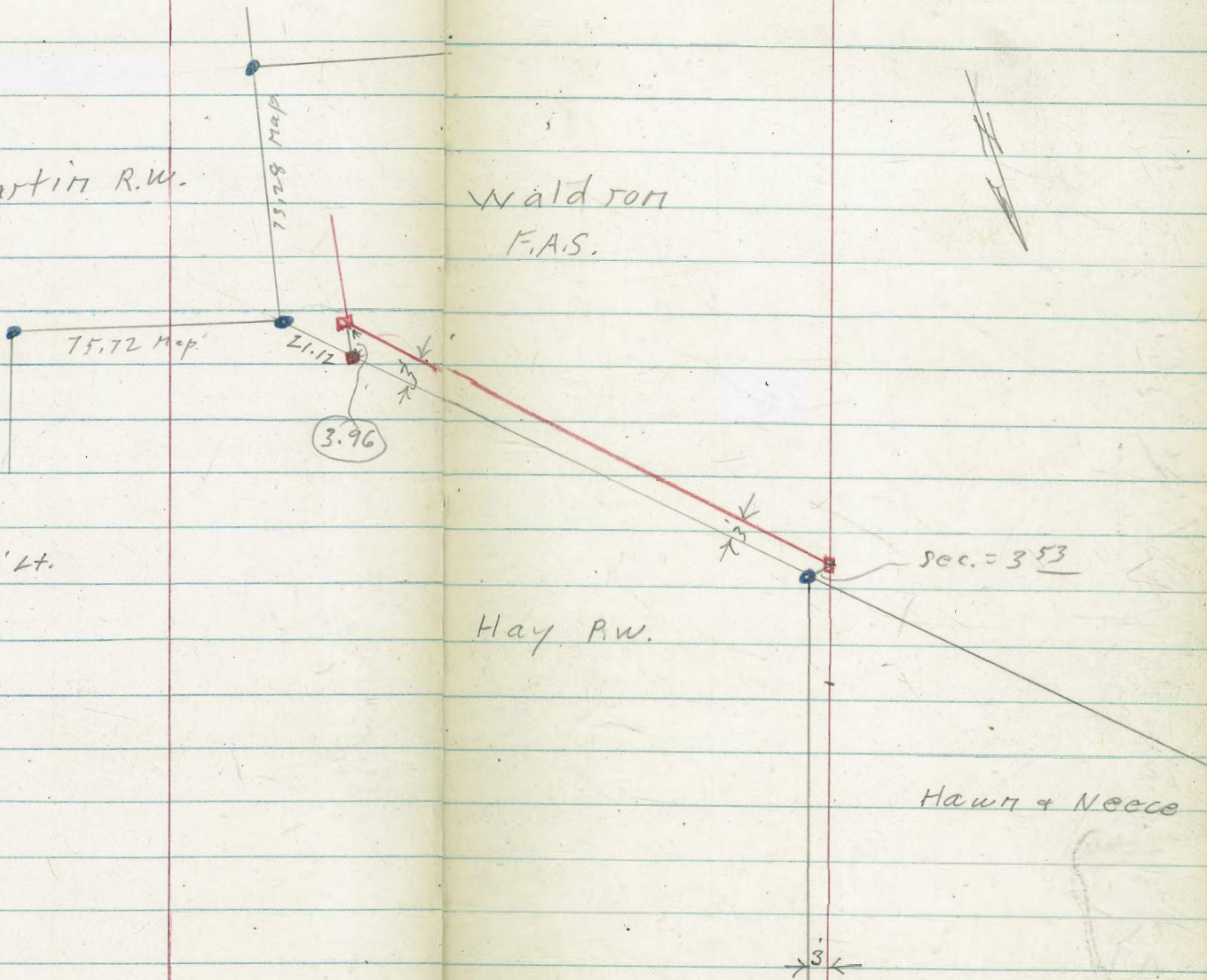
B

26

Martin R.W.

Waldron
F.A.S.

4+83.73
Δ 49° 12' Rt.



3+33.97 = Δ 63°-38' Lt.

3 -

2 -

Continued FB2395 page 46 FB2395

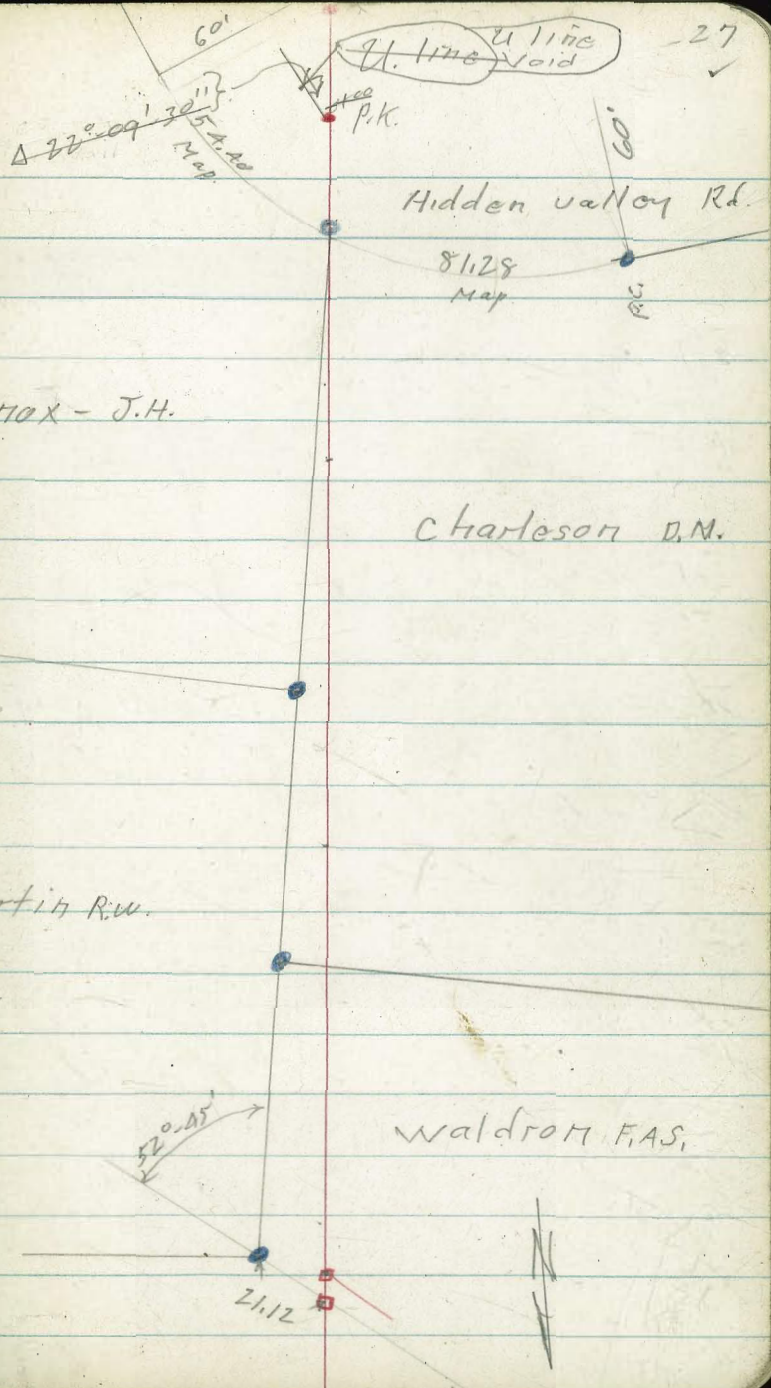
P.O.T. = 0100 on "U" line (P-13)
8+29.23 New end of "B" line. (3/24/55)

7+59.47 = Prop. Cor. = P.O.T.

7 ~

6 ~

A+83.73 Δ 49° 12' Rt



Hidden valley Rd

81.28
Map

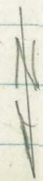
Knox - J.H.

Charleson D.M.

Martin R.W.

Waldrom F.A.S.

21.12



Note
Not used See Page 27

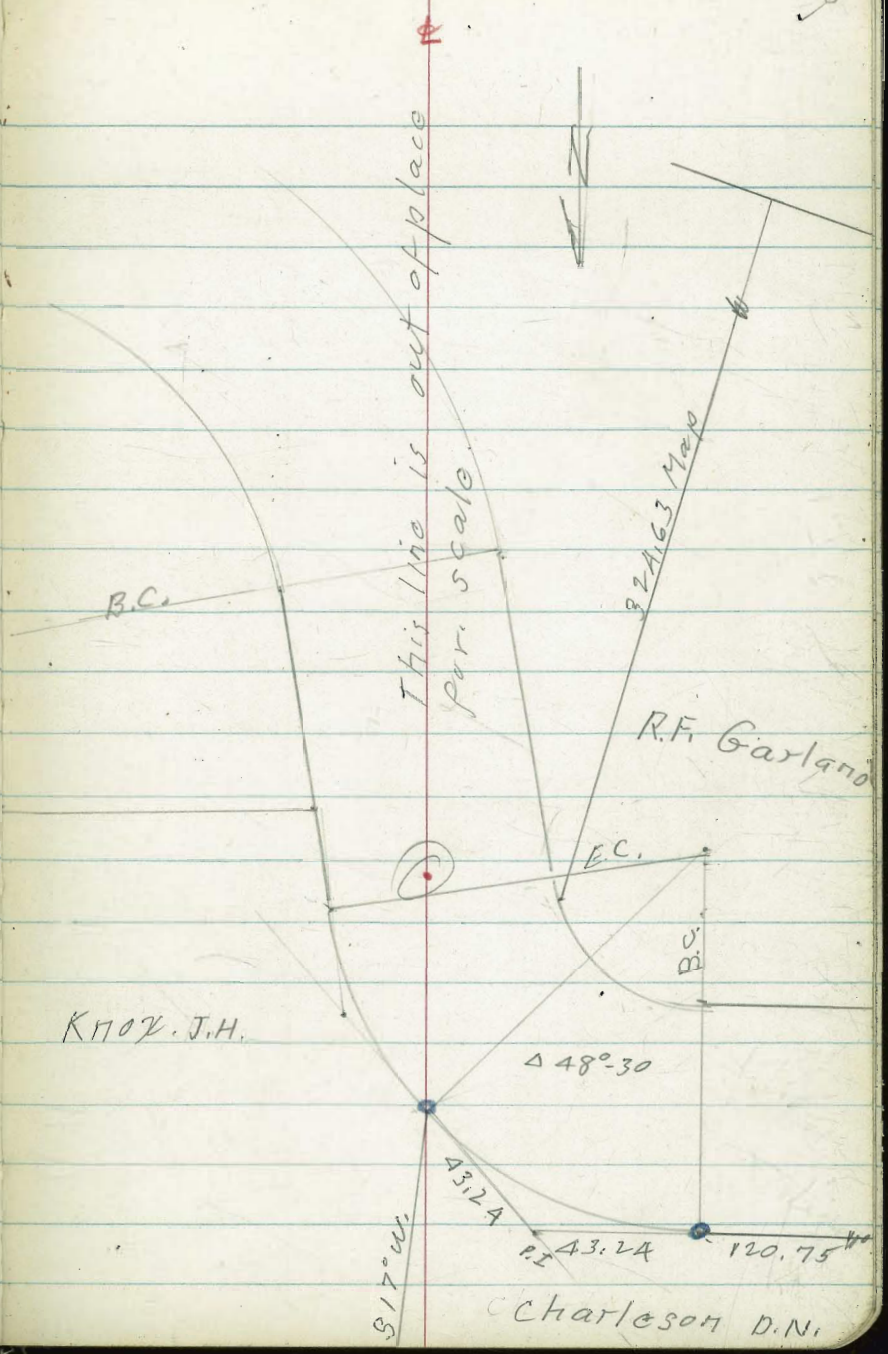
also FB 2395
P-AZ 3/24/55

A.M.
CHASE

8+29.23 = A.K. Nail

7+59.47

KNOX. J.H.



"B" line

T.P. 13.00 $\langle 129.13 \rangle$ 0.60 $\langle 116.13 \rangle$
1+30 7' Lt. = 6' high shrub

1+25 3⁵ Lt. = \pm E+W. conc. wall

1+20 - 4⁵ Lt. = end row of shrubs

1+00

0+84

0+41 4⁵ Lt. = start row of shrubs

0+32

0+00 E.D. denotes edge of A.C. drive

17+12.25 "A" line page 9 = 0+00 p. 25

9.85 $\langle 116.73 \rangle$ - $\langle 106.88 \rangle$

114.9 [✓]	111.5 [✓]	113.1 [✓]	113.8 [✓]	113.48 [✓]	113.32 [✓]
1.8	5.2	3.6	2.9	3.25	3.41
3 ⁵	3 ⁵	3 ⁵		2 ⁵	12 ⁵
T.W.	B.W.	Grd		E.D.	E.D.

111.8 [✓]	111.0 [✓]	111.6 [✓]	110.85 [✓]	110.55 [✓]
4.9	4.7	5.1	5.88	6.18
5	2		2	12
			E.D.	E.D.

111.5 [✓]	111.5 [✓]	110.1 [✓]	109.19 [✓]	108.99 [✓]
5.2	5.2	6.6	7.54	7.74
5	1		2	12
			E.D.	E.D.

108.7 [✓]	108.4 [✓]	107.68 [✓]	107.41 [✓]
8.0	8.3	9.05	9.32
5		2	12
		E.D.	E.D.

108.1 [✓]	106.8 [✓]	106.61 [✓]	106.07 [✓]
8.6	9.9	10.12	10.66
5		22	123
		E.D.	E.D.

$\langle 116.73 \rangle$

B.M.#7 Page 19 = 0+00 this line

T.P. 12.49 $\langle 152.85 \rangle$ 0.68 $\langle 140.39 \rangle$
 2+75 20' RT = face of conc. wall

136.1 ✓
 2.6 ✓
 5 ✓
 138.1 ✓
 2.9 ✓
 5 ✓
 136.9 ✓
 4.1 ✓
 5 ✓
 130.9 ✓
 10.1 ✓
 16 ✓
 130.8 ✓
 10.2 ✓
 20 ✓
 129.8 ✓
 11.2 ✓
 20 ✓
 B.W.

2+50 6' RT = face of wall

133.1 ✓
 7.8 ✓
 5 ✓
 130.0 ✓
 8.0 ✓
 5 ✓
 132.6 ✓
 8.4 ✓
 2 ✓
 130.5 ✓
 10.5 ✓
 5 ✓
 130.4 ✓
 10.6 ✓
 6' ✓
 129.3 ✓
 11.7 ✓
 6' ✓
 B.W.

T.P. 12.66 $\langle 141.04 \rangle$ 0.75 $\langle 128.38 \rangle$
 0.65 $\langle 128.48 \rangle$

$\langle 141.04 \rangle$

4' RT = E.D. (Drive Curves to west)
 under const. (Curves to west.)

2+30 13' RT = start 8" conc. wall

128.1 ✓
 0.7 ✓
 5 ✓
 128.1 ✓
 0.7 ✓
 5 ✓
 128.3 ✓
 0.8 ✓
 13 ✓
 9rd. ✓
 127.1 ✓
 1.7 ✓
 13 ✓
 B.W. ✓
 128.01 ✓
 1.12 ✓
 4.5 ✓
 E.D. ✓
 127.94 ✓
 1.41 ✓
 14.6 ✓
 E.D.

1+90

122.1 ✓
 6.7 ✓
 10 ✓
 122.1 ✓
 6.7 ✓
 5 ✓
 121.7 ✓
 7.4 ✓
 7 ✓
 121.25 ✓
 7.88 ✓
 3 ✓
 E.D. ✓
 121.28 ✓
 7.85 ✓
 13 ✓
 E.D.

1+78

116.6 ✓
 12.5 ✓
 17 ✓
 116.6 ✓
 12.5 ✓
 7 ✓
 119.3 ✓
 7.8 ✓
 1 ✓
 119.6 ✓
 7.5 ✓
 7 ✓
 119.60 ✓
 9.53 ✓
 2.5 ✓
 E.D. ✓
 119.67 ✓
 7.46 ✓
 12.5 ✓
 E.D.

1+77 7' Lt

1+65 8' Lt

1+54 8' Lt

} = 3" diam. Eucalyptus

$\langle 129.13 \rangle$

T.P. 7.63 <160.27> 0.21 <152.64>
A+00

✓
150.8 ✓
2.0 151.55 ✓
10 1.3 151.6 ✓
10

3+50

✓
148.85 ✓
4.0

B.M.#12 } on pipe A.71 <148.14>

3+33 97 } 353 Lt. on split = 2" prop. pipe
Δ 63°-38' Lt. Sec. on split of Δ

✓
144.8 ✓
8.0 A.C. 148.5 ✓
30 20 4 148.14 ✓
353 150.33 ✓
prop. pipe 2.52 154.3 ✓
10 20 154.8 ✓

3+20

✓
147.7 ✓
5.1

3+10

✓
147.1 ✓
5.7 147.0 ✓
10 5.9 145.6 ✓
10 7.2 ✓
10

2+90

✓
141.8 ✓
11.0 142.0 ✓
10 10.8 138.6 ✓
20 14.2 ✓
20

<152.85> ✓

"B" line

4

32
✓

5+94 - 19' RT. = N.E. Cor. House.

✓
171.0
0.9
19
and.

5+80 16' Lt. = start 6' wide 9' high hedge

✓
165.7
6.2
15

✓
163.2
8.7
6

✓
164.9
7.0

✓
166.4
5.5
10

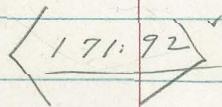
5+60

✓
160.8
11.1
10

✓
160.9
11.0

✓
161.1
10.8
10

T.P. 12.140 $\langle 171.92 \rangle$ 0.75 $\langle 159.52 \rangle$



5+00

✓
154.1
6.2

19' East of Sta A+8373 }
B.M. # 13 - 4" prop. pipe }
B.M. # 13 5.29 154.98

Sec. on S split of Δ.
A+8373 = Δ 49°-12' RT.

✓
150.8
9.5
10

✓
151.8
8.5

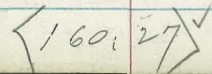
✓
153.5
6.8
10

A+55

✓
149.9
10.4
5

✓
150.9
9.4

✓
152.0
8.3
5



7+00 15' Lt. = φ shrubs

175.98	175.4	175.4
6.58	7.2	7.4
4		10
E.D.		

6+75 25' Lt. = φ shrubs

173.45	172.8	173.2
9.11	9.8	9.4
53		10
E.D.		

6+50 5' Lt. = φ hedge shrubs

170.6	170.2	172.6
12.00	12.4	10.0
8		10
E.D.		

6+35 7' Lt. = start row of v't wide shrubs.

6+33 { 10' Lt. = wly. edge 10' A.C. drive
 5' Lt. = end hedge
 11' Lt. = S.E. cor. House.

166.5	168.2	172.0
14.02	14.4	10.6
10		11
E.D.		end

T.P. 11.95 <182.56> 1.31 <170.61>

<182.56>

6+00 11' Lt. = φ hedge

166.1	164.8	165.7	170.7
5.8	7.1	6.2	1.2
10	5		15

171.92

{ also = cross Elec. Conduit.

7+73 } 6' RT = end of shrubs.

7+72 = cross shrubs.

7+70 - 3' RT }
7+68 - 4' RT } = water meter

7+67 6³ RT = Fire Hydt.

4" pipe L. risk & Sta 7+59.47

B.M.#14 . 6.85 <187.25> 2.16 <180.40>

182.1
5.1

<187.25>

7+64 10' RT = pole # 62041

7+61 3' RT = dead man

7+59.47 = cross prop. con.
5' Lt. = & shrubs

7+56 0⁵ Lt. = gas meter

✓
180.51 179.5 180.1
2.05 3.1 2.5
8⁵ 10
E.D.

7+44 7⁸ Lt. = B.C. RT. in A.C. drive
5' Lt. = & shrubs

✓
179.66 179.3 179.6
2.90 3.3 3.0
78 10
E.D.

7+16 2' Lt. = 3/4" stand pipe

7+15 1⁵ Lt. = & shrubs

✓
177.29 176.9 177.2
5.27 5.7 5.4
42 5
E.D.

<182.56>

BM #14-A

4.66 (182.59)

200' Lt. = N.W. Corn House

8+29²³ = P.K. Nail P.O.T.

✓ 114.5	✓ 183.15	✓ 187.13	✓ 182.59	✓ 182.5 ⁿ	✓ 182.5
12.7	4.10	4.12	4.66	4.73	4.7
200	28	12	Nail	08	5
I.E.	E.P.	Pavo.		E.P.	

4" Ld.
at house

8+02 = $\frac{1}{2}$ Rock + oil Pavo.

✓ 182.41	✓ 182.49	✓ 182.30
4.84	4.76	4.95
5		5

* Start rock + oil Pavo.
7+85 End A.C. drive on $\frac{1}{2}$

✓ 182.25	✓ 182.05	✓ 182.03
5.00	5.20	5.22
5 drive		5 Rock + oil

7+80 start rock + oil pavo
5' RT and A.C. drive $\frac{1}{2}$

✓ 180.6	✓ 182.2 ⁿ	✓ 182.23	✓ 181.97
6.6	5.03	5.02	5.28
75	5		5
House floor			

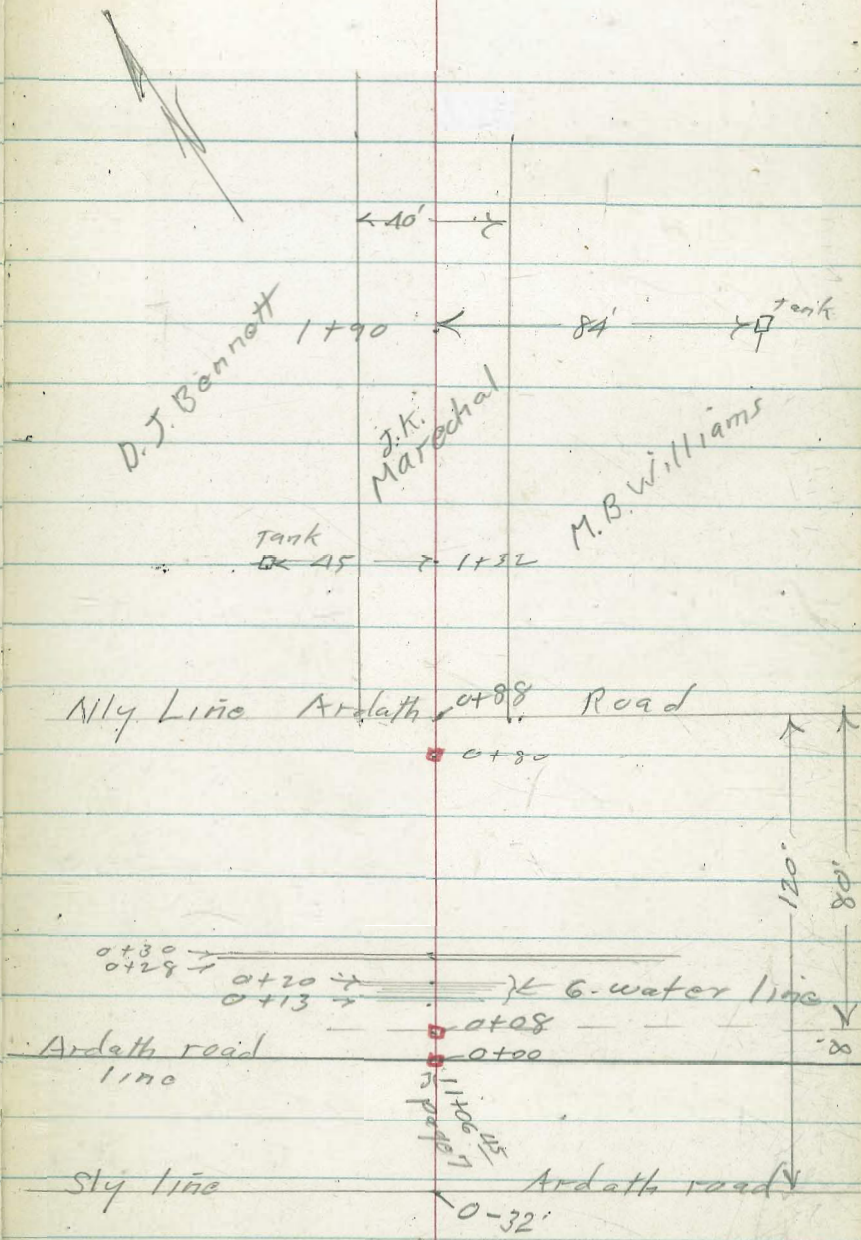
7+75 = { post - with Elec. light inside
3⁴ RT = 2' x 2' conc. mail box
Edge A.C. drive on $\frac{1}{2}$

✓ 182.01	✓ 182.19	✓ 182.5
5.24	5.06	4.7
5	E.D.	3
on drive		

(187.25) ✓

3" line
 Stub line in Ardath Road
 N. Ely to Marechal Property
 12-10-54

0+80- End of line



"C" line

37 ✓

71.7 ✓
4.9

0+56

72.8 ✓
5.8

0+42 = sly edge dirt road

73.7 ✓
4.9

0+41

0+30 = cross water pipe (E+W. pipe)

0+28⁵ cross water pipe (E+W. pipe)

74.1 ✓
4.5

0+25

0+20 = end same.

0+13 - start row of 6 ^{pipes} E+W. water

73.67 ✓
4.92

= 0+00

11406.45 - "A" line page 7

78.59 ✓

4.92 $\langle 78.59 \rangle - \langle 73.67 \rangle$

B.M.# 4 - Page 16

"C" line

4

38 ✓

1+90 84' Rt = Approx. location of tank

79.9 ✓

+1.3

84
Ord.

1+32 45' Lt = Approx. location of tank

75.4 ✓

5.4

45
around

0+80 = 1/2 End of line

74.41 ✓

4.18

0+71 cross 2 E+W water pipes

74.6 ✓

4.0

0+69

0+68 Nly. edge dirt road

73.4 ✓

5.4

78.59 ✓

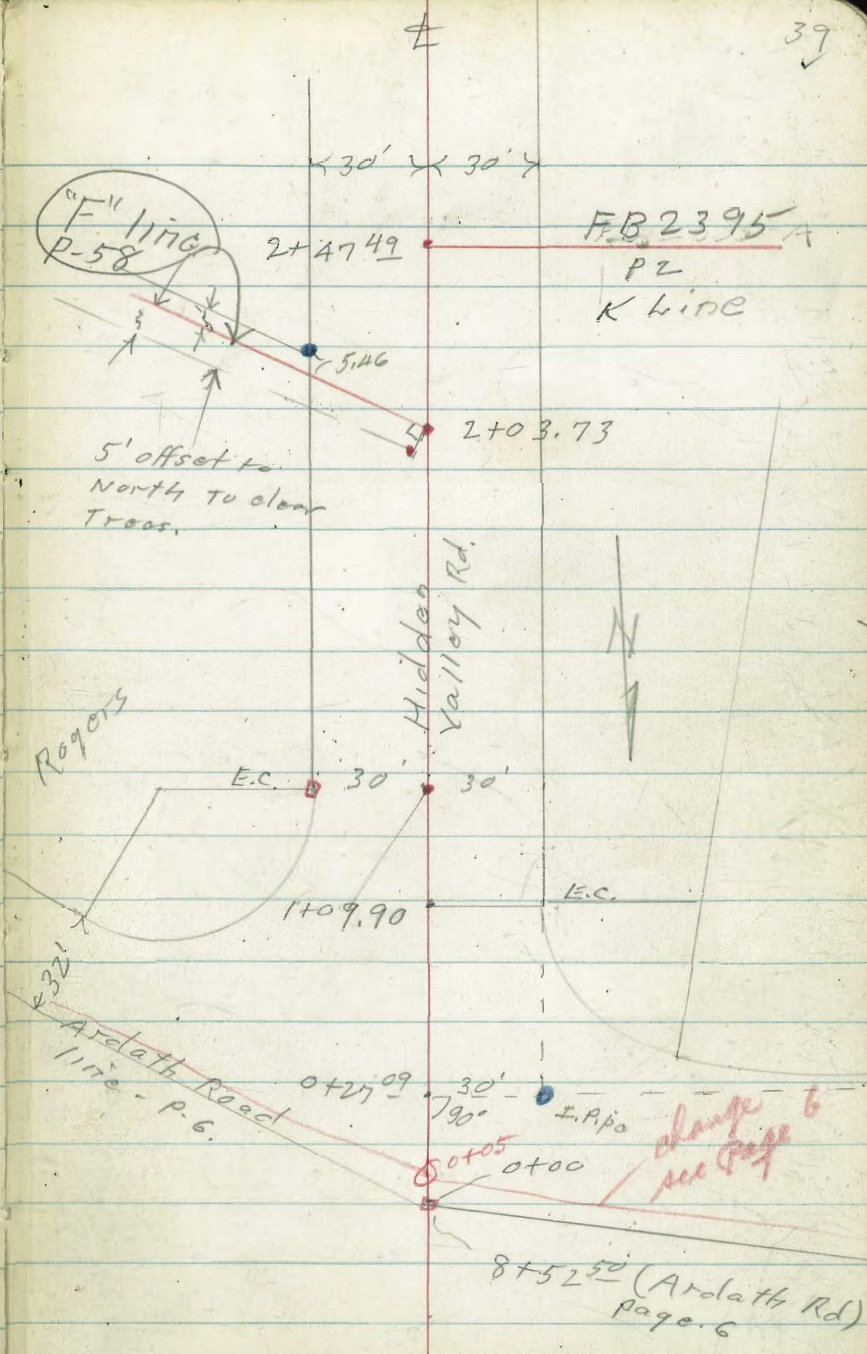
Hidden Valley Road.

From Ardath Road To South + East.
"D" line

R.S-1298

12-10-54

(X) denotes ctr. of water meter box



change
see Page 6

D.
Hidden Valley Road

5+42³³ Δ 38°-32'-30" Rt.

5+00

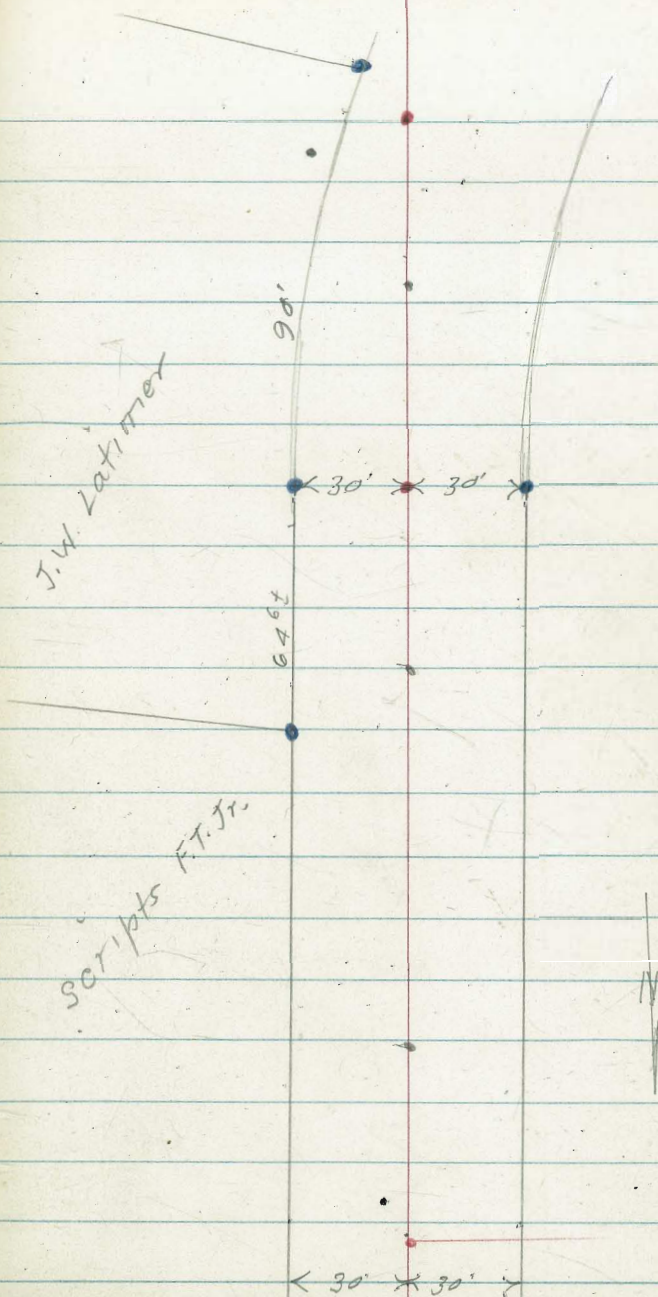
4+44" - Prop. R.C. $\left\{ \begin{array}{l} \text{E.R.} = 280.12 \\ \Delta 38^{\circ}.33' \end{array} \right\}$ R.S. 1298

4+00

3+00

2+4749
P-39

40



D

8+00

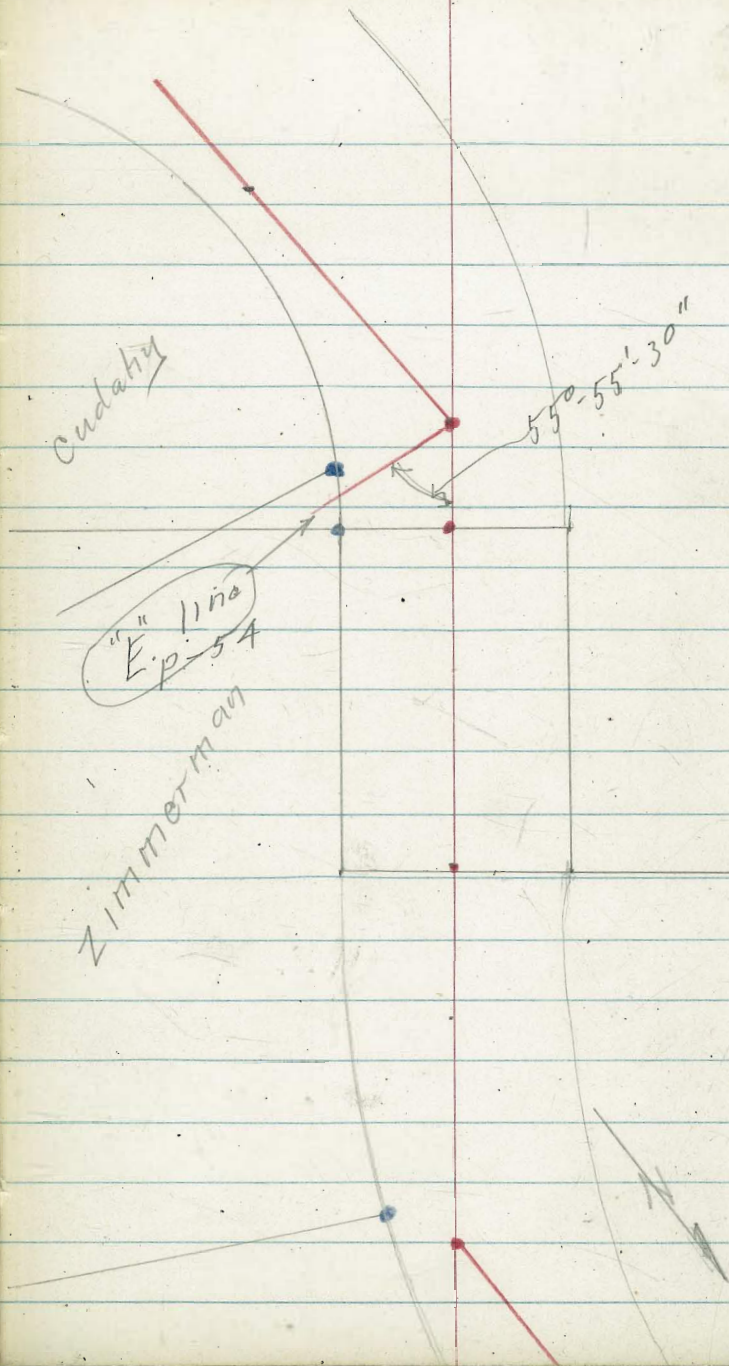
7+21.97 = Δ 39°-40' Lt

6+93.39 = Prop. B.C. $\left[\begin{array}{l} \pm R. 150. \\ \Delta 100^{\circ}-12'-30'' \end{array} \right] R.S. 1299$

6+40.03 = Prop. E.C.

5+42.33 = Δ 38°-32' - 30' Rt

41
✓



D

42

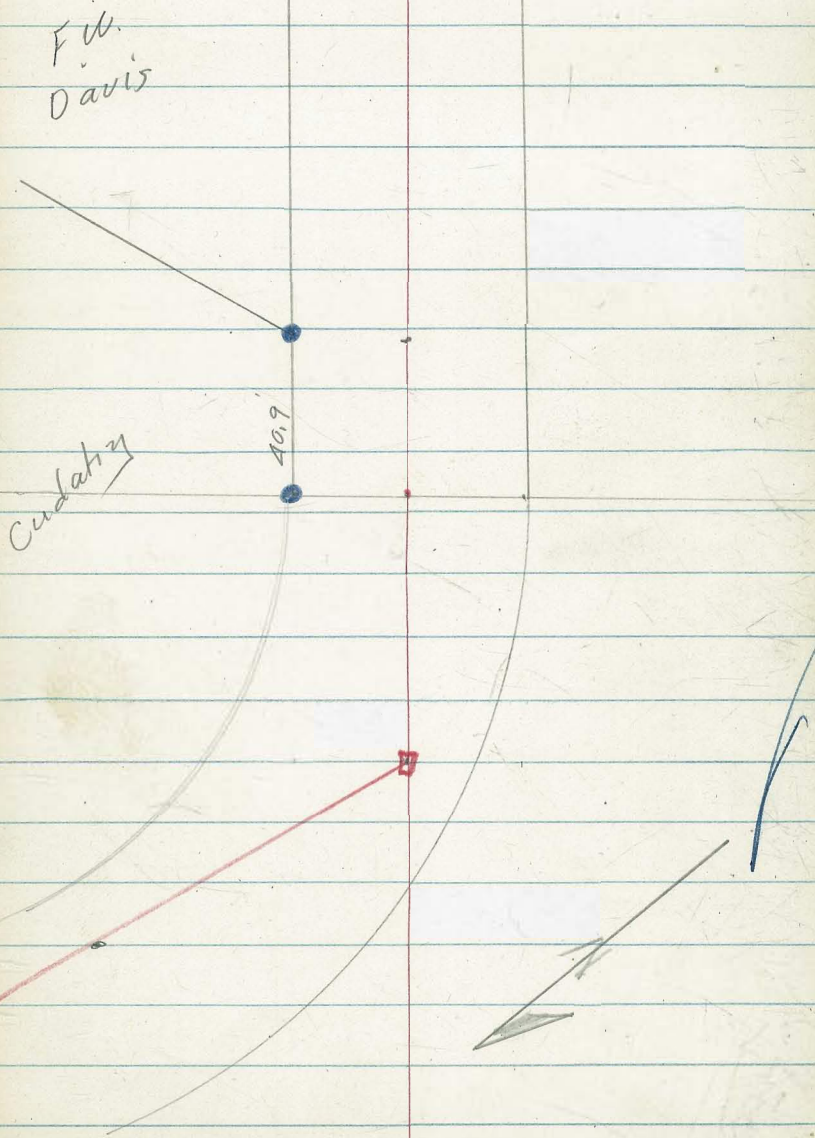
11+00

10+00

9+61³⁶ = Prop. E.C.

8+92.18 = Δ 60°-32' Lt.

8+00



D

13+8830 ~~New = P.O.T.~~
~~End of line~~

Continued 1/7/55

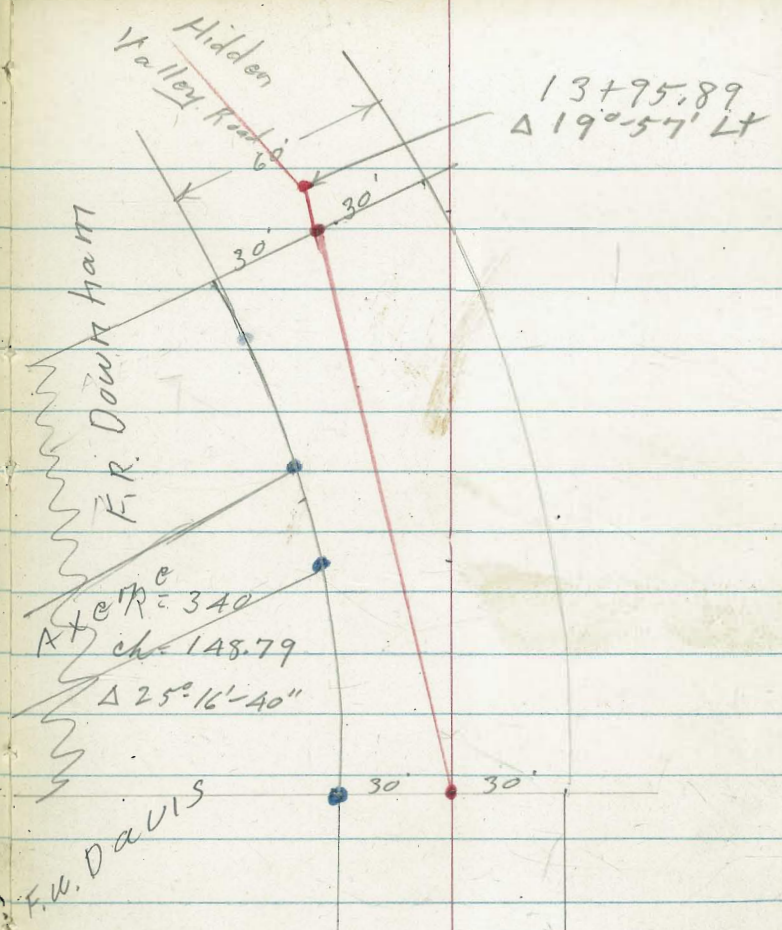
148.79

12+3951 = Prop. B.C. $\left\{ \begin{array}{l} = \Delta 120^{\circ} 38' 20'' \text{ Lt.} \\ \text{R} = 340. \\ \Delta 32^{\circ} 16' 15'' \text{ Map.} \end{array} \right.$

12+00

11+00

43



"D"
Line Hidden Valley Road
Sketch - P. 39-44

E.P. denotes edge of 1 1/2" thick
oil pavement.

B.M.#16 on nail 9.70 $\langle 67.33 \rangle$
2+47⁴⁹ = 0+00 to RA.

67.3
9.7
12
E.P.

67.35
9.70
8
E.P.

67.0
10.0
8
E.P.

B.M.#15 10.25 $\langle 77.03 \rangle$ 3.60 $\langle 66.78 \rangle$
2+03⁷³ = 0+00 to left. on nail

$\langle 77.03 \rangle$

66.18
3.60

2+00

66.6
3.8
10
E.P.

66.8
3.6
7
E.P.

66.4
4.0
7
E.P.

62.2
8.2
100

1+00

65.6
4.8
11
E.P.

65.6
4.8
7
E.P.

65.2
5.2
7
E.P.

61.1
9.3
100

0+38 20' Ltr. = Fire Hydr.

= 0+00 Page 39 5.92
on nail

8+52⁵⁰ Ardath Road line (PG)

64.7
5.7
9
E.P.

64.7
5.7
9
E.P.

64.1
6.3
9
E.P.

5.92 $\langle 70.38 \rangle$ ~~2+47~~ $\langle 64.46 \rangle$ ^{on 1/4" nail}

B.M.#3A - page 15

$\langle 70.38 \rangle$

Hidden Valley Road

2

46

4+50

thick rock tail Pass.
End oil Pass and start 1" to 2"

ATAA 30' RT } = Prop. B.C.
ATAA 30' RT }

T.P.

12.50

88.33

1.20

75.83

4+00

73.8
3.7
13
E.P.

73.8
3.2

73.4
3.6
11
E.P.

3+50

69.8
7.2
14
E.P.

70.2
6.8

69.4
7.6
11
E.P.

3+00

68.3
8.7
13
E.P.

68.4
8.6

68.0
9.0
7
E.P.

62.7
1A.3
100

2+50

67.4
9.6

77.03

78.4
9.9

77.9
10.4
12
E.P.

77.9
10.4

77.6
10.7
12
E.P.

88.33

Hidden Valley Rd.

6+40.03 = $\left. \begin{matrix} 30' \text{ L.A.} \\ 30' \text{ R.A.} \end{matrix} \right\} = \text{Prop. E.C.}$

6+00

5+75

5+50

B.M. #17

12.81

$\langle 99.41 \rangle$

1.73

$\langle 86.60 \rangle$

= A Nail 5+42.33

5+42³³ = Sec. on split of Δ
38°-32'-30" R.A.

5+42 45' L.A. = \odot

5+00

47

95.7 ✓
3.7
11
E.P.

96.0 ✓
3.4
12
E.P.

95.2 ✓
4.2
12
E.P.

92.1 ✓
7.3
7
E.P.

92.1 ✓
7.3
15
E.P.

91.3 ✓
8.1
15
E.P.

89.6 ✓
9.8
2
E.P.

89.6 ✓
9.8
20
E.P.

88.7 ✓
10.7
20
E.P.

87.8 ✓
11.6
9
E.P.

87.4 ✓
12.0
20
E.P.

86.5 ✓
12.9
20
E.P.

$\langle 99.41 \rangle$

86.6 ✓
1.7
2
E.P.

86.6 ✓
1.7
29
E.P.

86.3 ✓
2.0
29
E.P.

83.1 ✓
5.2
5
E.P.

83.1 ✓
5.2
18
E.P.

83.0 ✓
5.3
18
E.P.

$\langle 88.83 \rangle$

Hidden Valley Road

7+50

sewer outlet on wly side of house
 7+30 50' RT = N. Ely. Cor. house

B.M. #18

S.S.

7.57

$\langle 103.29 \rangle$

7+21.92

$\Delta 39^\circ 40'$ RT

on nail

Sec. on split of Δ

CORNER at 90° to back tang. =
 approx. location of tank

7+00

6+93.39

3d L

30' RT } = Prop. B.C.

T.P.

11.78

$\langle 110.86 \rangle$

0.33

$\langle 99.08 \rangle$

6+50

105.9

5.0

4

E.P.

104.6

6.3

105.9

5.0

19

E.P.

103.9

7.0

Grid & plan

50 50

Grid at

back of house

101.7

9.2

10

E.P.

on Grid

over tank

98.2

12.7

85

103.3

7.6

15

E.P.

103.5

7.6

103.4

7.7

10

E.P.

94.2

16.7

60

101.4

9.5

100.6

10.3

13

E.P.

100.80

10.06

Nail

100.5

10.4

12

E.P.

$\langle 110.86 \rangle$

96.9

2.5

$\langle 99.41 \rangle$

Hidden Valley Road.

49 ✓

on right.

8+68- 10' dist. = E.P. + start drive

115.1 ✓	115.4 ✓
5.4	5.7
Pave.	E.P. + drive

8+64 = approx ♀. Pave

115.7 ✓	115.5 ✓	114.9 ✓
5.4	5.6	6.2
13		12
E.P.		E.P.

8+28 = start pave.

114.6 ✓	112.8 ✓	112.5 ✓
6.5	8.8	8.6
10	E.P.	Pave
		10

8+00

110.1 ✓
11.0

7+96

115.3 ✓	109.7 ✓	109.5 ✓	109.5 ✓	109.6 ✓
5.8	11.4	11.6	11.6	11.5
13	2		4	10
Top of bank			E.P.	on Pave

T.P. 10.39 $\langle 121.11 \rangle$ 01A $\langle 110.72 \rangle$

$\langle 121.11 \rangle$

7+65 = leave pave.

108.9 ✓	106.9 ✓	106.7 ✓	107.4 ✓
2.0	4.0	4.2	3.5
10	6	E.P.	on Pave.

$\langle 110.86 \rangle$

Hidden Valley Road

50

9+25

119.0	119.6	119.5	119.3
11.3	10.7	10.8	11.0
17	4		7
E.P.			E.P.

= start pave.
9+00 - 5' RT. = dead man

117.8	117.5	117.8
12.5	12.8	12.5
5	E.P.	5

T.P. 12.95 $\langle 130.34 \rangle$ 3.72 $\langle 117.39 \rangle$ = 2" x 2" Hub

$\langle 130.34 \rangle$

7' RT. = Pole # P. 61758
Sec. on split.

8+92 $\frac{48}{2}$ Δ 60'-32' Lt. $\frac{1}{2}$

117.5	117.1	117.39	117.7	118.1
3.6	4.0	3.72	3.4	3.0
10 on pave.	2 E.P.	$\frac{1}{2}$	6 Edge of drive	11 drive

2' Lt. = E.P. + end of drive

8+91 = leave drive

116.9	117.1
4.2	4.0
2 E.P. + drive	

= start A.C. drive

8+87 = leave Rock + oil Pave.

117.4	116.8	117.0
3.7	4.3	4.1
10 pave.	E.P. + drive	10 drive

$\langle 121.11 \rangle$

Hidden Valley Road

12+00

T.P. 13.08 $\langle 155.97 \rangle$ 0.04 $\langle 142.89 \rangle$

11+50

11+00

10+50

T.P. 12.90 $\langle 142.93 \rangle$ 0.31 $\langle 130.03 \rangle$

10+00

9+61 $\frac{35}{-}$ $\left. \begin{array}{l} 30' \text{ Alt.} \\ 30' \text{ Lt.} \end{array} \right\} = \text{Prop. E.C.}$

147.0 ✓	147.0 ✓	147.0 ✓
8.8	8.8	9.0
E.P.	$\langle 155.97 \rangle$ ✓	12
		E.P.

142.3 ✓
0.6

137.1 ✓	137.0 ✓	136.8 ✓
5.8	5.7	6.1
12		12
E.P.		E.P.

131.6 ✓
11.3

$\langle 142.93 \rangle$ ✓

125.9 ✓	126.1 ✓	126.0 ✓
4.4	4.2	4.3
12		12
E.P.		E.P.

121.9 ✓	122.5 ✓	122.3 ✓
8.4	7.8	8.0
13		12
E.P.		E.P.

$\langle 130.34 \rangle$ ✓

Hidden Valley Roads

B.M.#20 12.84 $\langle 178.66 \rangle$ 3.04 $\langle 165.82 \rangle$
 2 Nail 2 30 = Nail P.O.T

13+61 63 Lt = S. Ely. Cor. Conc. drive

13+34 4' Lt. = S. Wly. Cor. Conc. drive

13+00

T.P 13.15 $\langle 168.86 \rangle$ 0.26 $\langle 155.71 \rangle$

12+50

B.M.#19 = Nail 4.97 $\langle 151.00 \rangle$

30' Rt }
 30' Lt } = Prop. B.C.

12+39⁵¹ = Δ 12°-38'-20" Lt

165.6[✓] 165.8[✓] 165.5[✓]
 3.3 3.04 3.4
 11 12
 E.P. E.P.

163.4[✓] 163.4[✓] 163.1[✓]
 5.7 5.7 5.8
 63 drive pave 7 on pave
 + E.P.

160.4[✓] 160.4[✓] 160.6[✓]
 8.5 8.5 8.3
 4 pave 7 on pave
 E.P. + 04 drive

156.8[✓] 156.9[✓] 156.9[✓]
 12.1 12.0 12.1
 4 21
 E.P. $\langle 168.86 \rangle$ E.P.

151.9[✓]
 4.1

150.9 151.00[✓] 150.6[✓]
 5.1 4.97 5.4
 12 12
 E.P. E.P.

$\langle 155.97 \rangle$ [✓]

90-87
88.30
7

Hidden Valley Road.

±

53
✓

16+00 59' Lt. = house under Cont.

172.3 180.40
Ond. at S.W. cor.
59

15+77 end line here

179.66 179.76 179.70

15+50

178.70

15+00

175.62 175.66 175.58

14+50 approx ± 24' Pauc.

171.65

13+95.89 = Δ 19° 57' Lt.

166.27 166.51 166.35
13
E.P. 11
E.P.

Datum from B.M. #20 - page 52

↑ taken 1/7/55 - Elevation of points shown - not rods

5.94 < 180.43 > (180.40) B.M. #1A - Page 35

3.75 < 182.62 > B.M. #1A-A - Page 35 (182.59)

T.P. 8.00 < 186.37 > 0.29 < 178.37 >

< 178.66 >

< 186.37 >

"E" line

4

55
not used.

around improved yard.

0+59 3³ Rt. = start fence.

Tip. 13.10 $\langle 126.36 \rangle$ 1.52 $\langle 113.26 \rangle$

0+42 = start ice plant.

0+34⁸⁷ 3' Rt at 90° = Prop pipe.

0+34

0+22

0+16 leave Pauc

=0+00 on rock + oil Pauc

7+21.97 page 41

11.49 $\langle 114.78 \rangle$ - $\langle 103.29 \rangle$

$\langle 126.36 \rangle$

✓
12.3
2.5
5

✓
11.8
2.0

✓
113.3
1.5
5

105.1 ✓
9.7

✓
102.2
12.6

102.4 ✓
12.4

103.3 ✓
11.5

$\langle 114.78 \rangle$

B.M. #18 - page 48 (=0+00 this line)

"E" line

T.P. 8.29 $\langle 133.84 \rangle$ 0.81 125.55 ✓

1+70

1+30

1+00

0+80

0+60

0+59.02 = $\frac{1}{2}$ P.O.T. 13.33

$\langle 133.84 \rangle$ ✓

126.1 ✓
0.3

119.4 ✓
7.0
3

120.1 ✓
6.3

120.7 ✓
5.7
3

116.9 ✓
9.5

114.6 ✓
11.8

122.7 ✓
13.7
3

113.1 ✓
13.3

113.9 ✓
12.5
3

$\langle 126.36 \rangle$ ✓

56

not used.

E line

Nail 2+29²⁸

57
Not used
(Line used)

Map. Distance 3.16 130.68
 ← End of line
 2+29²⁸ { 5⁶ Lt. = line of fence
 3' Rt. = Prop pipe
 2+26 3² Rt. = end fence
 2+22 on ϕ = deadman

✓	✓	✓	✓	✓
126.7	126.8	129.0	130.7	131.4
7.1	7.0	4.8	3.1	2.4
15	8	7		3

2+07 { 24 Lt. = S.Wly Cor. house
 50 Rt. = Nly side house
 2³ Lt. = Pole P. 62050

125.8	128.0	129.5
8.0	5.8	4.3
24		30
at house		at house

2+03 7' Lt. = end A.C. drive

✓	✓	✓	✓
125.8	127.9	127.8	127.6
8.0	5.9	6.0	6.0
7	5		3
drive			

2+02 3³ Lt. = start fence.

128.1
5.7

1+90

1+77 5³ Lt. = start A.C. drive

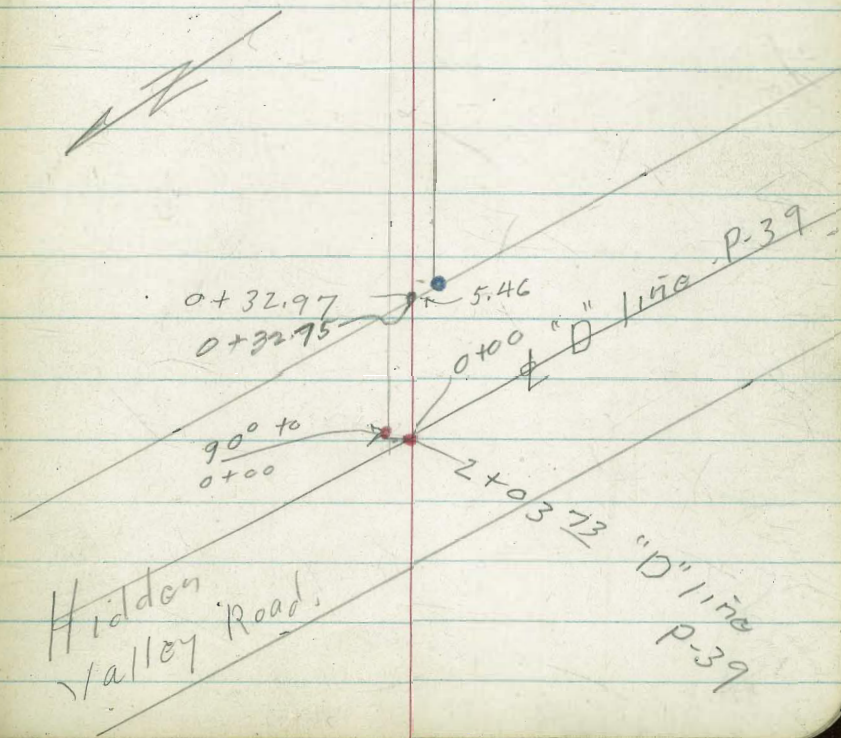
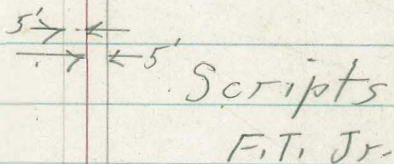
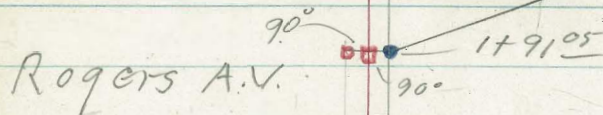
✓	✓	✓	✓
124.3	125.8	127.0	127.5
9.5	8.0	6.8	6.3
52	3		3
drive			

133.84

F. line S E 1/4, 14/13

From 2+03.73 on Hidden Valley Road line; Ely and Sly. thry. easements.

U.T. Ins + Tr. Co.



"F" line

Gustafson - D.G.

5184

$\Delta + 19.44$
 $\Delta 58^{\circ} 53' 30''$ RT,

Rogers

59 ✓
Hawn +
Neece Co

Melander
F. A. S.

U.T. Irr. + Tr. Co

Scripts

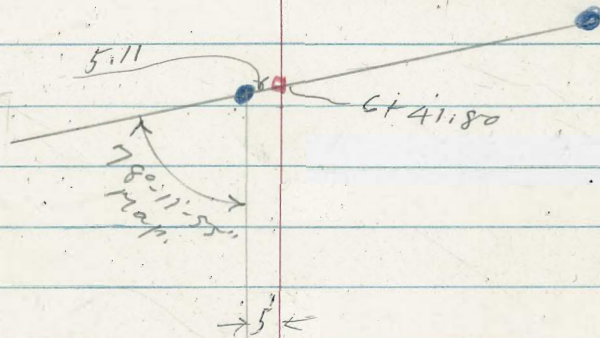
"F" line

60

Prop. line

6+41.80 = End of line = Intersect

Palmer G.



Hawn +
Neece Co.

Melander A.R.

Gustafson

4+28.90

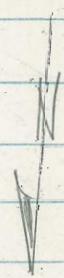
4+25.28 = Cross Prop. line
4+19.44 = $\Delta 58^{\circ} 53' - 30''$ RT

5.84
3.24
8.56

5.84

Rogers

U.T. Trs. + Tr. Co.



"F" line

1+26 2' RT - 12' high acacia tree

1+17 5th RT 15' high acacia tree

1+10 10' RT. 15' high Acacia Tree

1+00

70.5
4.1

0+50

68.0
6.6

0+32⁷⁵ Ely. Hidden Valley Rd.

67.6
7.0

0+12 = leave Pavc

66.8
7.8

0+00 on oil pave.

66.8
7.8

74.58

7.80 <74.58> - <66.78>

B.M. #15 - Page 45 = otovsta. this line

2+03.73 P. 45 = 0+00

"F" line

T.P. 12.44

$\langle 98.63 \rangle$ 1.04 $\langle 86.19 \rangle$

3+50

3+10

3+00

2+00

T.P. 13.10

$\langle 87.23 \rangle$ 0.45 $\langle 74.13 \rangle$
1/2 P.O.T. 1+91.05

1+83

3' P.T. = 1" diam ^{Tree} 8' High

1+60

Improved to Sta. 1+80
yard on right is

1+30

62

19.8

7.4
75

80.5

6.7
25

98.63

83.9 ✓
3.3

81. ✓
5.8

79.6 ✓
7.6

12.8
14.4
80

14.7 ✓
12.5

$\langle 87.23 \rangle$ ✓

72.3 ✓
2.3

71. ✓
3.4

74.58 ✓

"F" line

T.P. 12.51 $\langle 121.78 \rangle$ 0.26 $\langle 109.27 \rangle$

A+70

A+50

A+20 12' A.C. drive
E.D. = wly edge of

T.P. 12.65 $\langle 109.53 \rangle$ 1.75 $\langle 96.88 \rangle$
0.9 $\frac{1}{2}$

A+19.44 $\approx \Delta$

10X

A+00

3+65

63
not used

107.8 ✓
1.7 ✓
9 ✓
E.D. ✓

105.4 ✓
4.3 ✓

103.4 ✓
6.1 ✓
15 ✓

102.1 ✓
7.4 ✓

99.4 ✓
10.1 ✓
16 ✓
E.D. ✓

97.4 ✓
12.1 ✓

95.4 ✓
14.1 ✓
15 ✓

$\langle 109.53 \rangle$

96.88 ✓
1.75 ✓
 $\frac{1}{2}$

87.6 ✓
16.0 ✓
75 ✓

89.6 ✓
15.0 ✓
45 ✓

93.2 ✓
5.4 ✓

86.6 ✓
12.0 ✓

$\langle 98.63 \rangle$

"F" line

2

64
not used

T.P. 11.75 $\langle 145.26 \rangle$ 1105 $\langle 133.51 \rangle$

6432 22' Lt. = end of drive

✓	✓	✓
133.5	133.8	134.6
1.1	0.8	0.0
22		30
E.D.		

6400

✓
132.9
1.7

5488

✓	✓	✓
132.75	132.6	127.6
2.3	2.0	7.0
17		30
E.D.		

5470

✓	✓	✓
129.8	127.6	125.0
4.8	7.0	9.6
15		30
E.D.		

5462 - 6' Lt. = pole J.P. 61723

5450

✓
123.0
11.6

T.P. 13.10 $\langle 134.56 \rangle$ 0.32 $\langle 121.46 \rangle$

$\langle 134.56 \rangle$ ✓

5400

✓	✓	✓
114.6	110.6	110.4
7.2	11.2	14.4
12		15
E.D.		

$\langle 121.78 \rangle$ ✓

not used ⁶⁵

(Along Prop. line)

B.M.#21 5.05 134.46

4" pipe 130' ± Rt. of Sta 6+41.80

8.88 130.63
Nail in Grd.

Nail 2+29.48 Page 57 EL. = 130.68

T.P. 4.09 139.51 9.84 135.42

Intersect to

7+00

141.9 ✓
3.4

142.8
2.5
57' dist. at
N.E. 1/4. Cor.
House

6+80

140.6 ✓
4.7

6+60

137.5 ✓
8.0

6+41.80 = Intersect Prop. (Map dist.)

137.1 ✓	137.1 ✓	134.50 ✓	135.0 ✓
8.2	8.2	10.76	10.3
30	15	1/2	30

145.20 ✓

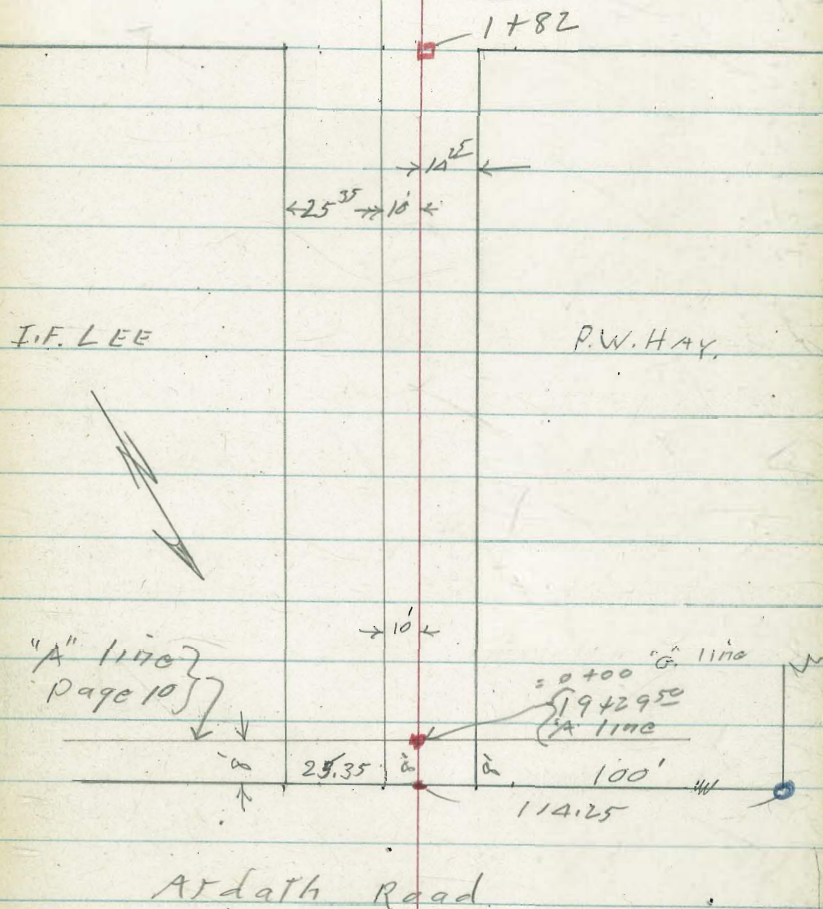
"G" line (see P-10)

From Ardath Road Thru.

P. W. Hay Prop. 12/21/54

FAYMAN

P. W. HAY



"G" Nric Levels

±

67

1+64. 12⁵ RT. = end fence

123.5
3.8

119.3
8.0
100

1+40

121.4
6.1

1+00

0+60 9' Lt. = ϕ hedge

119.7
7.6

0+37 6⁵ RT. = gas motor

0+32 13' RT. = start rail fence

118.4
8.9

0+30

0+08 10' Lt. = ϕ 8' wide hedge

116.1
10.6

0+00 : 19+29.50 10.61
Hub.

127.29

10.72 $\langle 127.29 \rangle$ - $\langle 116.57 \rangle$

"G." line

~~2~~

68

1+82

1.70
Hub

125.6 ✓
1.7

126.8 ✓
0.5
50

<127.29> ✓

"H" line
 From Ardath Road Sly.
 thru Fayman Prop.
 + Lyerly Prop. to G. Parker
 Prop.
 12-21-54

J.D.
 Lyerly

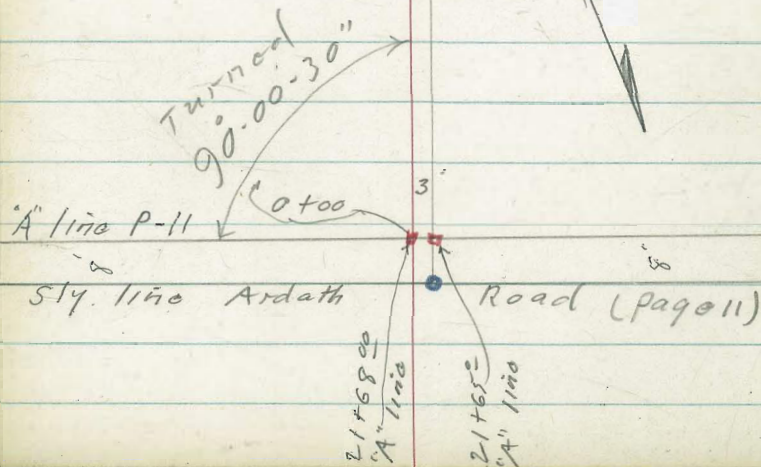
Not Used ⁶⁹

L.G. Fayman.

1788.98
 $\Delta 0^{\circ}-42'44''$

N.G.
 Fayman.

H.F. Brown



"H" line

70
Not Used

4784.79 (Map)

G. Parker

R.W. Martin

B+71.52
 $\Delta 89^{\circ}.05' \text{ Lt.}$

116.27
Map.

116.27
Map.

90⁰⁰.55'
Turned

3+65.51
Cross Prop.

L.G. Fayman

J.D. Lyerly

L.G. Fayman



1788.98
 $\Delta 0^{\circ}.42' \text{ Lt.}$

Brown

"H" line

BM#22 12.47 $\langle 150.29 \rangle$ 1.40 $\langle 137.82 \rangle$

1+88⁹⁸ = A 0° AD Lt.

1+00

0+85

0+50 6' RT. = end hedge

0+14 6' RT. start 4' wide hedge

0+00

21+68⁰⁰ Page 11 - "A" line =

11.42 $\langle 139.22 \rangle$ - $\langle 127.80 \rangle$

±

71
Not used

B.M. on pipe 3' RT. of 1+88⁹⁸

137.74 ✓
1.48

132.6 ✓
6.6

129.4 ✓
9.8
13
at house

131.7 ✓
7.5

129.4 ✓
9.8
8
11

APPROX.
Tank.

129.9 ✓
9.3

127.6 ✓
11.60

$\langle 139.22 \rangle$ ✓

B.M.#9 - page 11

at line

3+00

144.1 ✓
6.2

72
not used.

2+80

143.5 ✓
6.8

2+37

cross Ely + wly fence
= leave oiled drive +

140.5 ✓
9.5
drive

2+36

also start Nly + slyt fence
2' rt. = cor. of oiled drive

140.7 ✓ 140.6
9.6 9.7
drive 2 cor.
drive

2+32

= start oil drive

140.5 ✓
9.8
drive

2+14

9' 6" = start oiled Drive

↓
140.0
10.3
9
drive

139.1 ✓
11.2

2+00

138.4 ✓
11.9

? 1345
1518
75

150.29 ✓

of LINE

73
Not used.

4+90 95' Lt. = approx. location tank
1' Lt. = line of fence.
6' Lt. = lot Cor. (Map)
4+84⁷⁹ = End of line

146.0
8.3
95
Ord.

150.0
4.3

4+81 - 6' Lt. = Pole # 61893

146.3
7.9
40

146.4
7.8
2.8

150.7
5.5

4+46 5' Lt. = end Row of Eucalyptus

4+00 75' Lt. = start row of Eucalyptus

149.5
6.7

T.P. 8.00 (156.25) 2.04 (148.25)
1' Lt. = start Ely + wly fence.
3+77 = Cross Nly + Sly wire fence

(156.25)

3+71⁵² = A 89°-05' Lt.

148.25
2.04
146

3+65⁵¹ = Cross Prop.

3+30 25' Lt. = Approx tank
also = Cross Ely + wly fence

145.4
4.9
25
Ground

144.7
5.6

3+15 - 2' Rt. = end of fence

(150.29)

I. Line

7A

From Ardath Road Sly
Thru N.G. Fayman Prop.

L.G. Fayman

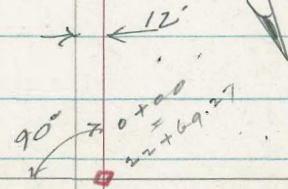
J.O. Lyerly

178935

H.F.
Chadbourne

L.G. Fayman

A. Line P-11
Sly 11mo Ardath Road



"I" line

75

1+89³² } 12' Lt. = Prop. Cor. (Map.)
= P.K. = end of line

✓
141.0
3.4
7 on
drive

✓
140.8
3.60

✓
140.7
3.7
E.O.

1+65 = start drive on ϕ

✓
139.9
4.5
E.O.

1+50

✓
139.2
5.2
2
E.O.

✓
139.1
5.3

this point)
(loose line of pipes at
water pipes on line

1+00 } 2' Lt. = Edge drive

✓
139.9
7.5
2
E.O.

✓
136.9
7.5

✓
134.5
10.1
50

0+50

✓
134.1
10.3

5 Lt. = wly edge A.C. drive
2.5 Lt } just under ground.
3.1 Lt } = Nly. + Sly. 1" water line.

22+69²⁷ Page 11 =

✓
131.2
131.8
13.2
12.6

5
E.O. < 144.42 >

13.07 < 144.42 > - < 131.35 >

B.M. #10 - P-23

"J" line

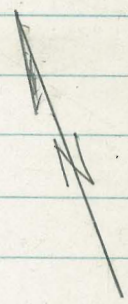
Ardath Rd. Nly

Along Wly line of C.C. Ramsey Jr.
prop.

2+63⁸⁹

M. De Tachiville

C.C. Ramsey Jr.



0+88¹¹ = Pipe

0+32

0+14

0+00

} 8 water lines

"A" line
page 8

0+00
14+93.75 "A" line
page 8

Sly line Ardath Rd.

0-32

"J." line

0+71 A' Lt. = pole # 51A 498H

93.9 ✓
4.3

0+68

92.5 ✓
5.7

0+65

92.5 ✓
5.7

0+40

93.1 ✓
4.5

0+32 = end row of pipes

pipes on top of ground

0+14 = start row of 8 - E. + W. water

93.9 ✓
4.3

0+13 7⁵ Lt. = pole # 6152A

95.60 ✓
2.57

0+00

98.17 ✓

2.57 <98.17> - <95.60>

B.M. # 6 Page 18

"J" line

4

78

2+33 - 1' Lt. = start post + pole

94.0 ✓

4.6

2+30

T.P. 5.42 $\langle 98.64 \rangle$ 4.95 $\langle 93.22 \rangle$

$\langle 98.64 \rangle$ ✓

2+00 80' Lt. = approx. location of tank

89.1 ✓

8.5

93.8 ✓

4.4

1+86 15' Rt. = dead man

80

and.

1+62 2' Rt. = Pole P 61580

93.9 ✓

1+60

4.3

1+16

93.9 ✓

4.3

Con. Iron culvert

1+08 65' Rt. = wly end 12"

90.5 ✓

91.6 ✓

7.7

6.6

65

I.E. outlet

0+88¹¹ = prop. pipe

93.4 ✓

4.8

and.

$\langle 98.17 \rangle$ ✓

J line

±

79

2+75 100 Lt. = approx. location of Tank.

2+65 - 1⁴ Lt. = Pole # 62109

2+64⁵ = cross fence

2+63⁸⁹ = Prop. pipe

2+57 0⁵ Lt. = end corral

✓
91.0

7.6

100
G.d.

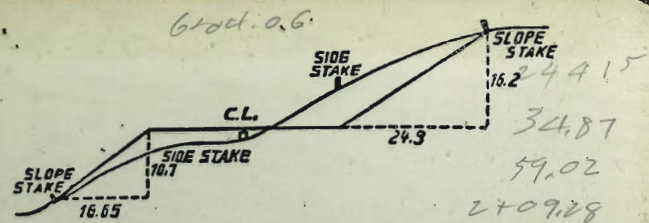
94.91 ✓

3.67

pipe + G.d.

98.64 ✓

951
 74
 877
 371.52
 113.27
 484.79



DISTANCES FROM SIDE STAKES FOR CROSS-SECTIONING.
 SLOPE 1/4 TO 1. ROADWAY OF ANY WIDTH.

	0	.1	.2	.3	.4	.5	.6	.7	.8	.9	
0	0.00	0.15	0.30	0.45	0.60	0.75	0.90	1.05	1.20	1.35	0
1	1.50	1.65	1.80	1.95	2.10	2.25	2.40	2.55	2.70	2.85	1
2	3.00	3.15	3.30	3.45	3.60	3.75	3.90	4.05	4.20	4.35	2
3	4.50	4.65	4.80	4.95	5.10	5.25	5.40	5.55	5.70	5.85	3
4	6.00	6.15	6.30	6.45	6.60	6.75	6.90	7.05	7.20	7.35	4
5	7.50	7.65	7.80	7.95	8.10	8.25	8.40	8.55	8.70	8.85	5
6	9.00	9.15	9.30	9.45	9.60	9.75	9.90	10.05	10.20	10.35	6
7	10.50	10.65	10.80	10.95	11.10	11.25	11.40	11.55	11.70	11.85	7
8	12.00	12.15	12.30	12.45	12.60	12.75	12.90	13.05	13.20	13.35	8
9	13.50	13.65	13.80	13.95	14.10	14.25	14.40	14.55	14.70	14.85	9
10	15.00	15.15	15.30	15.45	15.60	15.75	15.90	16.05	16.20	16.35	10
11	16.50	16.65	16.80	16.95	17.10	17.25	17.40	17.55	17.70	17.85	11
12	18.00	18.15	18.30	18.45	18.60	18.75	18.90	19.05	19.20	19.35	12
13	19.50	19.65	19.80	19.95	20.10	20.25	20.40	20.55	20.70	20.85	13
14	21.00	21.15	21.30	21.45	21.60	21.75	21.90	22.05	22.20	22.35	14
15	22.50	22.65	22.80	22.95	23.10	23.25	23.40	23.55	23.70	23.85	15
16	24.00	24.15	24.30	24.45	24.60	24.75	24.90	25.05	25.20	25.35	16
17	25.50	25.65	25.80	25.95	26.10	26.25	26.40	26.55	26.70	26.85	17
18	27.00	27.15	27.30	27.45	27.60	27.75	27.90	28.05	28.20	28.35	18
19	28.50	28.65	28.80	28.95	29.10	29.25	29.40	29.55	29.70	29.85	19
20	30.00	30.15	30.30	30.45	30.60	30.75	30.90	31.05	31.20	31.35	20
21	31.50	31.65	31.80	31.95	32.10	32.25	32.40	32.55	32.70	32.85	21
22	33.00	33.15	33.30	33.45	33.60	33.75	33.90	34.05	34.20	34.35	22
23	34.50	34.65	34.80	34.95	35.10	35.25	35.40	35.55	35.70	35.85	23
24	36.00	36.15	36.30	36.45	36.60	36.75	36.90	37.05	37.20	37.35	24
25	37.50	37.65	37.80	37.95	38.10	38.25	38.40	38.55	38.70	38.85	25
26	39.00	39.15	39.30	39.45	39.60	39.75	39.90	40.05	40.20	40.35	26
27	40.50	40.65	40.80	40.95	41.10	41.25	41.40	41.55	41.70	41.85	27
28	42.00	42.15	42.30	42.45	42.60	42.75	42.90	43.05	43.20	43.35	28
29	43.50	43.65	43.80	43.95	44.10	44.25	44.40	44.55	44.70	44.85	29
30	45.00	45.15	45.30	45.45	45.60	45.75	45.90	46.05	46.20	46.35	30
31	46.50	46.65	46.80	46.95	47.10	47.25	47.40	47.55	47.70	47.85	31
32	48.00	48.15	48.30	48.45	48.60	48.75	48.90	49.05	49.20	49.35	32
33	49.50	49.65	49.80	49.95	50.10	50.25	50.40	50.55	50.70	50.85	33
34	51.00	51.15	51.30	51.45	51.60	51.75	51.90	52.05	52.20	52.35	34
35	52.50	52.65	52.80	52.95	53.10	53.25	53.40	53.55	53.70	53.85	35
36	54.00	54.15	54.30	54.45	54.60	54.75	54.90	55.05	55.20	55.35	36
37	55.50	55.65	55.80	55.95	56.10	56.25	56.40	56.55	56.70	56.85	37
38	57.00	57.15	57.30	57.45	57.60	57.75	57.90	58.05	58.20	58.35	38
39	58.50	58.65	58.80	58.95	59.10	59.25	59.40	59.55	59.70	59.85	39
40	60.00	60.15	60.30	60.45	60.60	60.75	60.90	61.05	61.20	61.35	40
41	61.50	61.65	61.80	61.95	62.10	62.25	62.40	62.55	62.70	62.85	41
42	63.00	63.15	63.30	63.45	63.60	63.75	63.90	64.05	64.20	64.35	42
43	64.50	64.65	64.80	64.95	65.10	65.25	65.40	65.55	65.70	65.85	43
44	66.00	66.15	66.30	66.45	66.60	66.75	66.90	67.05	67.20	67.35	44
45	67.50	67.65	67.80	67.95	68.10	68.25	68.40	68.55	68.70	68.85	45
46	69.00	69.15	69.30	69.45	69.60	69.75	69.90	70.05	70.20	70.35	46
47	70.50	70.65	70.80	70.95	71.10	71.25	71.40	71.55	71.70	71.85	47
48	72.00	72.15	72.30	72.45	72.60	72.75	72.90	73.05	73.20	73.35	48
49	73.50	73.65	73.80	73.95	74.10	74.25	74.40	74.55	74.70	74.85	49
50	75.00	75.15	75.30	75.45	75.60	75.75	75.90	76.05	76.20	76.35	50

THE NATIONAL BLANK BOOK COMPANY
 HOLYOKE MASSACHUSETTS
 NEW YORK CHICAGO BOSTON SAN FRANCISCO