

96

FIELD BOOK

Levels on CLIVE, Mont OC.  
by 41st, Central. Contlo, Stockton, from  
El Cajon to Monroe

F.B. 590

WELGEN

# EUGENE DIETZGEN CO.

DRAWING MATERIALS, MATHEMATICAL and  
SURVEYING INSTRUMENTS

Chicago New York San Francisco New Orleans Pittsburg Toronto

Distances from Center of Roadway for Cross-Sectioning  
Roadway 16 feet wide. Side Slopes 1 on 1.  
For Single Track Embankment.

H	0	.1	.2	.3	.4	.5	.6	.7	.8	.9	H
0	8.0	8.1	8.2	8.3	8.4	8.5	8.6	8.7	8.8	8.9	0
1	9.0	9.1	9.2	9.3	9.4	9.5	9.6	9.7	9.8	9.9	1
2	10.0	10.1	10.2	10.3	10.4	10.5	10.6	10.7	10.8	10.9	2
3	11.0	11.1	11.2	11.3	11.4	11.5	11.6	11.7	11.8	11.9	3
4	12.0	12.1	12.2	12.3	12.4	12.5	12.6	12.7	12.8	12.9	4
5	13.0	13.1	13.2	13.3	13.4	13.5	13.6	13.7	13.8	13.9	5
6	14.0	14.1	14.2	14.3	14.4	14.5	14.6	14.7	14.8	14.9	6
7	15.0	15.1	15.2	15.3	15.4	15.5	15.6	15.7	15.8	15.9	7
8	16.0	16.1	16.2	16.3	16.4	16.5	16.6	16.7	16.8	16.9	8
9	17.0	17.1	17.2	17.3	17.4	17.5	17.6	17.7	17.8	17.9	9
10	18.0	18.1	18.2	18.3	18.4	18.5	18.6	18.7	18.8	18.9	10
11	19.0	19.1	19.2	19.3	19.4	19.5	19.6	19.7	19.8	19.9	11
12	20.0	20.1	20.2	20.3	20.4	20.5	20.6	20.7	20.8	20.9	12
13	21.0	21.1	21.2	21.3	21.4	21.5	21.6	21.7	21.8	21.9	13
14	22.0	22.1	22.2	22.3	22.4	22.5	22.6	22.7	22.8	22.9	14
15	23.0	23.1	23.2	23.3	23.4	23.5	23.6	23.7	23.8	23.9	15
16	24.0	24.1	24.2	24.3	24.4	24.5	24.6	24.7	24.8	24.9	16
17	25.0	25.1	25.2	25.3	25.4	25.5	25.6	25.7	25.8	25.9	17
18	26.0	26.1	26.2	26.3	26.4	26.5	26.6	26.7	26.8	26.9	18
19	27.0	27.1	27.2	27.3	27.4	27.5	27.6	27.7	27.8	27.9	19
20	28.0	28.1	28.2	28.3	28.4	28.5	28.6	28.7	28.8	28.9	20
21	29.0	29.1	29.2	29.3	29.4	29.5	29.6	29.7	29.8	29.9	21
22	30.0	30.1	30.2	30.3	30.4	30.5	30.6	30.7	30.8	30.9	22
23	31.0	31.1	31.2	31.3	31.4	31.5	31.6	31.7	31.8	31.9	23
24	32.0	32.1	32.2	32.3	32.4	32.5	32.6	32.7	32.8	32.9	24
25	33.0	33.1	33.2	33.3	33.4	33.5	33.6	33.7	33.8	33.9	25
26	34.0	34.1	34.2	34.3	34.4	34.5	34.6	34.7	34.8	34.9	26
27	35.0	35.1	35.2	35.3	35.4	35.5	35.6	35.7	35.8	35.9	27
28	36.0	36.1	36.2	36.3	36.4	36.5	36.6	36.7	36.8	36.9	28
29	37.0	37.1	37.2	37.3	37.4	37.5	37.6	37.7	37.8	37.9	29
30	38.0	38.1	38.2	38.3	38.4	38.5	38.6	38.7	38.8	38.9	30
31	39.0	39.1	39.2	39.3	39.4	39.5	39.6	39.7	39.8	39.9	31
32	40.0	40.1	40.2	40.3	40.4	40.5	40.6	40.7	40.8	40.9	32
33	41.0	41.1	41.2	41.3	41.4	41.5	41.6	41.7	41.8	41.9	33
34	42.0	42.1	42.2	42.3	42.4	42.5	42.6	42.7	42.8	42.9	34
35	43.0	43.1	43.2	43.3	43.4	43.5	43.6	43.7	43.8	43.9	35
36	44.0	44.1	44.2	44.3	44.4	44.5	44.6	44.7	44.8	44.9	36
37	45.0	45.1	45.2	45.3	45.4	45.5	45.6	45.7	45.8	45.9	37
38	46.0	46.1	46.2	46.3	46.4	46.5	46.6	46.7	46.8	46.9	38
39	47.0	47.1	47.2	47.3	47.4	47.5	47.6	47.7	47.8	47.9	39
40	48.0	48.1	48.2	48.3	48.4	48.5	48.6	48.7	48.8	48.9	40

Example—If point is 22.6 ft. above grade, how far should it be from center line to be a slope stake point? Ans. from Table 30.6. For same slopes but other widths of roadbed, correct above figures by one-half difference in width of roadbed; thus in example above, for 20 ft. roadbed distance will be  $30.6 + (20 - 16) \times 2$  or 2 ft. added to  $30.6 = 32.6$ . For slopes of 1 on 1½ see inside of back cover.

Copyright, 1914, by Eugene Dietzgen Co.

gash Market  
Fund

380.4

386.4

380.4

380.40

6

374.40

300.40

150.20

300.40

150.20

156.20

260

350

245

9724

30.47 North  
28.09 South

	Page
X See El Cajon X Nabash to ERL Reed	23-28
✓        ✓ Colonial to Euola	30-37
✓        ✓ Fairmount El Cajon to Olive	38-41
X See 5 <sup>th</sup> St. El Cajon to Monroe	40-41V

Cuts on 5 <sup>th</sup>	El Cajon to Monroe	44
"	Stockton - El Cajon to Monroe	45
"	Conklin        "        "	46
"	Central        "        "	47
"	4 <sup>th</sup> "        "	48
"	Daley        "        "	49
"	Thomas        "        "	50
"	Reed        "        "	51

Daley North From ElCajon to Olive

Sta.	+	∧	—	—	Elev.
S.W.C. EL Co. & Central			West Side	East Side	
	7.51	372.15			369.64
T.P.			5.50		366.65
N.P.L. ElCajon Daley North 0+00	6.26	372.91			
			6.0	6.3	
0+50			5.8	6.2	
1+00			5.6	5.8	
1+50			5.3	6.0	
2+00			5.5	5.6	
2+50			5.5	5.5	
3+00			5.0	5.3	
3+50			4.9	5.0	
4+00			4.5	4.8	
4+50			4.4	4.9	
5+00			4.0	4.3	
5+50 S.P.L. Olive			3.5	4.1	
6+00			4.3	3.8	
T.P.			3.72		368.19
	6.79	375.9.8			

Profile for Daley-4th St 8-2-23  
Central, Conklin - Stockton  
North of EL Cajon to Monroe 1

Elev. W. Side Elev. E. Side

366.9	366.6
367.1	366.7
367.3	367.1
367.6	366.9
367.4	367.3
367.4	367.4
367.9	367.6
368.0	367.9
368.4	368.1
368.5	368.0
368.9	368.6
369.4	368.8
368.6	369.1

Daley North from Olive to Monroe

Ellis Walker  
steek

8-2-23

2

v

Sta	+	π	West Side	East Side	Elev	Elev West Side	Elev East Side
		37598					
N.P. Olive							
0+00			6.2	6.2		369.8	369.8
0+50			5.7	6.0		370.3	370.0
1+00			5.5	5.4		370.5	370.6
1+50			5.1	5.4		370.9	370.6
2+00			4.8	4.4		371.2	371.6
2+50			3.9	3.7		372.1	372.3
3+00			3.5	3.3		372.5	372.7
3+50			3.0	3.1		373.0	372.9
4+00			2.9	2.7		373.1	373.3
4-50			3.1	3.4		372.9	372.6
T.P.			3.8.8		372.10		
	4.51	376.61					
5+00			4.5	5.4		372.1	371.2
5+50			5.4	5.9		371.2	370.7
S.P. of Monroe							
6+00			6.7	6.1		369.9	370.5
North Side of Monroe			West Side of Daley Produced	East Side of Daley Produced		N.P. Monroe	N.P. Monroe
			7.35	6.63		371.26	369.98
" " "							

Sta	T	K	-	-	Elev	Elev West side	Elev East side
T.P.		376.61	3.8.8		372.73		
	3.75	376.48					
North Side of Monroe			meets road 41st. Road with on curb	East side of with P. school on curb		NEL of Monroe	NEL of Monroe
			4.5.6	5.0.5		371.92	371.43
South Side of Monroe			3.5	4.9		373.0	371.6
0+00							
0+50			4.2	4.0		372.3	372.0
1+00			4.3	4.0		372.2	372.0
1+50			4.2	4.9		372.3	371.6
2+00			4.3	4.0		372.2	372.0
2+50			4.1	4.1		372.4	372.4
3+00			3.9	3.4		372.6	373.1
3+50			4.3	3.9		372.2	373.3
4+00			5.0	4.8		371.5	371.1
4+50			5.2	5.2		371.3	371.3
5+00			5.5	6.0		371.0	370.5
5+50			6.4	5.5		370.1	371.0
North Side of Olive			6+00	6.5		370.1	370.0
T.P.			6.79		369.69		
	2.49	372.18					

## 4th South From Olive to El Cajon

Ellis  
Walker  
Steele

8-2-23

4

Sta	+	π	-	-	Elev	W side Elev	Elev of East side
		372.18					
South side of Olive			4.00	3.6		368.2	368.6
0700							
0750			3.8	3.8		368.4	368.9
1400			4.1	4.4		368.1	367.8
1450			4.6	4.8		367.6	367.4
2100			5.3	5.2		366.9	367.0
2450			5.1	5.5		367.1	366.7
3400			4.9	5.7		367.3	366.5
3450			5.3	5.9		366.9	366.5
4400			5.8	5.4		366.4	366.8
4450			6.1	5.8		366.1	366.4
5400			5.8	6.4		366.4	365.8
5450			5.6	6.3		366.6	365.9
NFL of El Cajon							
6400			5.7	5.5		366.5	366.7
T.P.			5.61		366.57		
S.W.C. Central + El Cajon	415	370.72					
BN			6.08		364.64		

	Central	North	From	ElCajon	Olive	Elles						8-2-23
Sta	+	π	-	-	Olive	Walker						5
BM 5 West El Cajon Central	6'				364.64	stock						
	657	37121	West side	East side			Elev West side	Elev East side				
0+00			6.1	6.1			365.1	365.1				
0+50			6.1	6.1			365.1	365.1				
1+00			5.8	6.1			365.4	365.1				
1+50			5.7	5.8			365.5	365.4				
2+00			5.2	5.4			366.0	365.8				
2+50			4.9	5.2			366.3	366.0				
3+00			4.6	4.9			366.6	366.3				
3+50			4.4	4.4			366.8	366.8				
4+00			3.9	4.3			367.3	366.7				
4+50			3.7	4.4			367.5	366.8				
5+00			3.4	4.6			367.8	366.6				
5+50			3.5	4.2			367.7	367.0				
6+00			2.8	3.4			368.4	367.8				
SWC. Central T.P.			2.96		368.25							



Central From Olcott to Monroe

Ellis  
Walker  
Steele

8-2-23

6

Sta	+	+	-	-	Elev	West Side Elev	East Side Elev
S.W.C. Central T.P.	5.67				368.25		
		373.92					
N.P.L. Olcott			West side	East Side			
0+00			4.7	5.0		369.2	368.7
0+50			3.8	4.3		370.1	369.6
1+00			3.2	3.9		370.7	370.0
1+50			3.3	4.4		370.6	369.5
2+00			3.7	5.0		370.2	368.9
2+50			4.0	5.3		369.5	368.3
3+00			5.2	6.2		368.7	367.7
3+50			5.6	6.9		368.3	368.0
4+00			6.0	6.9		367.9	367.0
4+50			6.1	7.3		367.8	366.6
5+00			6.7	7.4		367.2	366.5
5+50			7.0	7.2		366.9	366.7
6+00			6.4	6.3		367.5	367.6
N.P.L. Monroe			3.98	4.03		369.94	369.89
T.P.			3.97		369.5		
	3.25	373.20					

Sta	+	Conktr From Monticello line		Elev	Ellis Walker steck	West Side Elev	East Side Elev		
		κ	-						
		373.70							8-2-23 7
N.P.L. Monroe			West Side 2.85	East Side 2.80		370.35	370.40		67 737.0 45.61 559
S.P.L. Monroe									
0700			4.2	3.8		369.0	369.4		
0750			4.6	4.3		368.6	368.9		
1700			5.1	4.3		368.1	368.9		
1750			4.7	4.7		368.5	368.5		
2700			5.2	5.0		368.0	368.2		
2750			5.6	5.3		367.6	367.9		
3700			6.1	5.4		367.1	367.8		
3750			6.1	5.4		367.1	367.8		
4700			5.8	5.2		367.4	368.0		67.61 3.67 27.28
4750			5.3	5.2		367.9	368.0		
5700			5.2	5.1		368.0	368.1		
5750 N.P.L. Monroe			5.3	5.6		368.9	367.6		
6700			5.4	5.5		367.8	367.7		
T.P.			5.59		367.61				
	3.67	371.28							

Crossing From Olive to El Cajon

Ellis  
Walker  
stack

8-2-23

8

Sta	T	K	-	-	Elev	West Side Elev	East Side Elev
		371.28	West Side	East Side			
SP Olive							
0+00			3.44	3.0		368.0	368.4
0+50			3.9	3.5		367.5	367.9
1+00			4.3	3.7		367.1	367.7
1+50			4.9	4.2		366.5	367.2
2+00			5.1	4.9		366.3	366.5
2+50			5.5	4.5		365.9	366.9
3+00			5.7	5.5		365.7	365.9
3+50			6.0	5.7		365.3	365.4
4+00			6.2	5.3		365.1	366.0
4+50			6.3	6.6		365.0	364.7
5+00			6.4	6.7		364.9	364.6
5+50			6.5	6.5		364.8	364.8
N.P. El Cajon			6.6	6.6		364.7	364.7
6+00							
T.P.			6.59		364.69		
B.M. BW	5.31	369.90					
			5.36		364.64		

579 + Olive From West PL of Daley  
 + East PL of Daley  
 - - - Elev.

South Side North Side

5.14

369.19

West PL Daley 374.34

	South Side	North Side	Elev.
West PL Daley	5.0	4.5	
East PL Daley			
0+00	5.2	4.5	
0+50	5.4	4.5	
1+00	5.7	4.6	
1+50	5.7	4.4	
2+00	6.1	4.3	
2+50	6.0	4.3	
West PL	6.1	4.2	
Sission Hill			
T.P.	4.64		368.76

EPL Sission Hill 5.41 375.11

	South Side	North Side	Elev.
0+00	6.2	5.1	
0+50	6.1	4.8	
1+00	6.1	4.9	
1+50	5.7	4.9	
2+00	6.1	5.2	
2+50	6.6	5.5	

Ellis Walker Stack

Profile for Olive  
 and Monroe from West PL of Daley  
 to EPL of Stockton 8-6-23 9

S.PL Olive N.PL Olive

S.PL Olive	N.PL Olive
369.4	369.9
369.2	369.9
369.0	369.9
368.7	369.8
368.7	370.0
368.3	370.1
368.4	370.1
368.3	370.1
368.9	370.0
369.0	370.2
369.0	370.1
369.4	370.1
369.0	369.8
368.4	369.6

Sta	+	T	SPL Oline	NPL Oline	Elev	E/LS Walker Steak	SPL Oline	NPL Oline
WPL Central		375.11	6.8	5.9			368.2	369.1
T.P.			6.97		368.24			
WPL Central	4.92	373.6						
0 100			5.4	4.3			367.8	368.9
0 150			5.7	4.6			367.5	368.6
0 1700			5.8	4.8			367.4	368.4
1 150			5.1	5.1			368.1	368.1
1 2700			4.9	5.2			368.3	368.0
2 250 WPL Conklin			4.9	5.1			368.3	368.1
			5.3	5.4			367.9	367.8
T.P.			5.55		367.6			
T EPIC Conklin	4.65	372.26						
EP 0 100			4.9	4.7			368.2	367.5
0 150			4.7	4.6			367.5	367.6
0 1700			4.6	4.1			367.6	368.1
1 1750			5.1	4.0			367.1	368.2
1 2700			5.3	5.3			366.9	366.9
2 2750 WPL Stockton			5.8	5.3			366.4	366.9
2			5.8	6.1			366.4	366.1

8-7-23

10

Stickton Ave North From  
El Cajon To Monroe

Ellis  
Walker  
steek

8-7-23  
11

Sta	+	-	-	-	Elev
NWC Station T.P.		372.26	6.21	EPL	366.05
	4.86	370.91	West P.L.	EPL	
NPL-El Cajon					
0+00			6.1	5.6	364.8 365.3
0+50			5.3	5.5	365.6 365.4
1+00			5.3	5.0	365.3 365.9
2+00			5.0	4.8	365.9 366.1
2+50			5.1	5.5	365.8 365.4
3+00			5.0	5.2	365.9 365.7
3+50			5.2	4.9	365.7 366.0
4+00			5.1	5.1	365.8 365.8
4+50			4.9	5.4	366.0 365.5
5+00			4.7	5.0	366.2 365.9
5+50 SPL Olive			4.7	4.6	366.2 366.3
6+00 NWC Station Olive			4.6	5.2	366.3 365.7
TP	5.30				366.05
NPL Olive		371.35	5.2		
0+00			5.2	5.3	366.1 366.0
0+50			4.9	5.5	366.4 365.8
1+00			5.4	4.4	365.9 366.9

Stockton Ave. From El Cajon to  
Monroe

Ellis  
Walker  
Steck

8-7-23

12

Sta	T	A	WPL	EPL	Elev	WPL Stockton	EPL Stockton
1+50		371.35	5.4	4.5		365.9	366.8
2+00			4.4	4.2		366.9	367.1
2+50			4.0	4.1		367.3	367.2
3+00			3.8	3.6		367.5	367.7
3+50			3.5	3.5		367.8	367.8
4+00			2.9	3.8		368.4	367.5
4+50			2.9	3.9		368.4	367.9
5+00 SPL Monroe			2.5	2.8		368.8	368.5
			2.4	2.6		368.9	368.7

S.P.L. of Monroe From 40 St to EPL Station

Ellis  
Walker  
Street

8-7-23  
13

Sta  
SW College  
T.P.

+	π	-	-	Elev
				369.19

6.71	375.90			
------	--------	--	--	--

T.P.		3.78		372.12
------	--	------	--	--------

4.55	376.67			
------	--------	--	--	--

T.P.		3.92		372.75
------	--	------	--	--------

7.75	375.00			
------	--------	--	--	--

WPL 4th St.  
S.P.L. of Monroe

EPL 4th St.  
S.P.L. of Monroe  
0+00.

0+50		2.0		373.0
------	--	-----	--	-------

1+00		3.2		371.8
------	--	-----	--	-------

1+50		4.1		370.9
------	--	-----	--	-------

2+00		5.6		369.4
------	--	-----	--	-------

WPL of Central

2+50		6.1		368.9
------	--	-----	--	-------

T.P.		6.8		368.2
------	--	-----	--	-------

3+00		7.8		367.2
------	--	-----	--	-------

3+50		5.05		369.95
------	--	------	--	--------

EPL Central	3.60	373.55		
-------------	------	--------	--	--

0+00		6.3		367.2
------	--	-----	--	-------

0+50		6.5		367.0
------	--	-----	--	-------

1+00		8.9		367.6
------	--	-----	--	-------

1+50		5.6		367.9
------	--	-----	--	-------

S.P.L. Monroe



SPL Mon-

Ellis  
Walker  
Steck

8-22 14

Sta	+	T	-	-	Elev	SPL Mon
2+00 W.P.L. Conklin		373.00	5.1			368.4
			4.5			369.0
T.P.			4.44		369.11	
E.P.L. Conklin	5.38	374.49				
0+00			5.2			369.3
0+50			4.9			369.6
1+00			4.9			369.6
1+50			5.0			369.5
2+00 W.P.L. Stockton			5.4			369.1
			5.5			369.0
E.P.L. Stockton			5.6			368.9
T.P.			5.53		368.96	
B.M. Old + N.W.C. Stockton	3.20	372.16				
			6.11		366.05	

Elev on curbs Stockton Ave  
El Cajon to Monroe

Ellis  
and  
Street

8-7-23

15

10

Sta.	+	⌈	-	-	Elev				
			WPL	EPL	366.95		WPL	EPL	
N.P.L. El Cajon	5.03	371.08							
0+00			5.46	5.73			365.62	365.35	
0+50			5.40	5.83			365.68	365.25	
1+00			5.47	5.54			365.61	365.34	
1+50			5.48	5.66			365.63	365.42	
2+00			5.38	5.52			365.70	365.56	
2+50			5.25	5.37			365.83	365.71	
3+00			5.24	5.34			365.84	365.74	
3+50			5.20	5.34			365.88	365.74	
4+00			5.00	5.29			366.08	365.79	
4+50			4.99	5.20			366.09	365.88	
5+00			4.78	5.15			366.10	365.93	
5+50 S.P.L. Olive			4.86	5.16			366.22	365.92	
			4.85	5.04			366.23	366.04	

8-9-23  
16 **16**

Sta	Elev on Curve +	Station to X	WPL -	EPL -	Ellis Walker Stake Elev	WPL Stake	EPL Stake
					36605		
NPL 0110-c	4.52	370.57				WPL Stake	EPL Stake
0+00			4.52	4.63		366.05	365.94
0+50			4.33	4.30		366.24	366.27
1+00			4.07	4.06		366.50	366.51
1+50			3.82	3.70		366.75	366.87
2+00			3.53	3.47		367.04	367.10
2+50			3.31	3.34		367.26	367.23
3+00			3.03	3.04		367.54	367.53
3+50			2.82	2.86		367.75	367.71
4+00			2.41	2.65		368.16	367.92
4+50			2.31	2.40		368.26	368.16
5+00			2.09	2.08		368.48	368.49
5+50			1.81	1.70		368.76	368.87
SPL Monroe			1.61	1.62		368.96	368.95

Elev on Sinaloa Conklin Ave From El Cajon  
 To Manzanillo  
 +      -      -      -      Elev  
 579  
 T.P. NNCor  
 Blue Conklin      367.6

MSL El Cajon	373	371.34			
0+00		6.75			
6750		6.75	Curb cuts		
1+00		6.68			
1+50		6.50			
2+00		6.32			
2+50		6.23			
3+00		6.03		5.35	
3+50		5.83		4.83	
4+00		5.36		4.55	
4+50		4.87		4.19	
5+00		4.37		3.79	
5+50		3.89	3.40		
SP. Olive		3.55	3.10		

MSL Conklin Elev Conklin		
364.59		
364.59		
364.86		
365.84		
365.02		
365.11		
365.31	365.99	
365.51	366.51	
365.98	366.79	
366.47	367.15	
366.97	367.55	
367.45	367.94	
367.79	368.24	

Sta	Elevon +	Curve = N	WPL Conklin Ave Mansore	EPL Elevation to	Flev
					36761
NPL line	5.51	373.11			
0700			5.51	5.27	
0750			5.50	5.28	
1400			5.52	5.22	
1450			5.53	5.15	
2700			5.51	5.12	
2750			5.36	5.05	
3400			5.36	4.85	
3450			5.24	4.70	
4100			5.05	4.51	
4150			4.95	4.27	
5100			4.83	4.20	
SPL Mansore			4.04	3.64	

WPL Conklin	EPL Conklin
367.60	367.84
367.61	367.83
367.59	367.89
367.58	367.96
367.60	367.99
367.75	368.06
367.75	368.26
367.87	368.41
368.06	368.60
368.16	368.84
368.22	369.11
369.09	369.47

Elev on Curbs Central Ave El Cajon to  
Olive

Sta	+	∇	-	-	Elev
			WPL	EPL	36945
	352	371.77			
NPL El Cajon					
0400			6.58	6.64	
0450			6.51	6.59	
1400			6.47	6.34	
1750			6.27	6.19	
2400			6.00	5.94	
2450			5.53	5.70	
3400			5.16	5.32	
3750			4.89	5.10	
4400			4.49	4.86	
4450			4.26	4.81	
5100			4.06	4.73	
5450			3.96	4.48	
SPL Olive			352	4.08	

WPL Central	EPL Central
365.19	365.13
365.26	365.18
365.30	365.43
365.50	365.58
365.77	365.83
366.24	366.07
366.61	366.45
366.88	366.67
367.28	366.91
367.51	366.97
367.71	367.04
367.81	367.29
368.25	367.49

19  
19

Elev on Curbs of 5th Ave From  
El Cajon to Monroe

Ellis  
Walker  
Boston

21723  
20

5+9.  
NW 5th St  
at  
T.P.

	+	x	-
			366.05
4.34	370.39		
		5.21	365.18

W-Curb E-Curb  
Elev. Elev

	W Curb.	E Curb.		
0+00	5.32	5.73	364.4	363.99
0+50	5.15	5.68		
1+00	5.13	5.59	364.59	364.18
1+50	5.09	5.52		
2+00	5.04	5.50	364.68	364.22
2+50	4.93	5.45		
3+00	4.92	5.43	364.8	364.29
3+50	4.80	5.33		
4+00	4.75	5.32	364.97	364.4
4+50	4.7	5.26		
5+00	4.65	5.18	365.07	364.54
5+50	4.6	5.13	L	
6+00	4.54	5.00	365.19	364.72

Levels on 5<sup>th</sup> Olive to Monroe

579  
P.B.N.S. Wagon  
5th Olive

N.W. Cor 5th  
Olive

0750  
1700  
1750  
2700  
2750  
3700  
3750  
3770  
4700  
4750  
5400  
5450  
5470

+ 6.93  
- 3721.1

W Curb  
E Curb L.  
36578  
7.50 7.36  
6.95 6.85  
6.50 6.30  
5.85 5.75  
5.30 5.18  
4.92 4.54  
4.28 3.85  
3.64 3.15  
3.38 2.90  
3.50 3.10  
3.70 3.42  
3.76 4.80  
3.85 4.33  
3.92 4.33

W Curb  
E Curb  
Elev  
Elev.  
364.61 364.75  
365.61 365.81  
366.81 366.93  
367.83 368.26  
Break.  
368.73 369.21  
368.61 369.01  
368.35 367.31  
368.19 367.78



Farmington Olive to El Cajon.

Sta	+	π	-	-	3
	2.88				365.18
		368.06	17.91		355.15
	2.20	357.35			
0+00			7.55	8.0	
0+50			7.50	7.6	
1+00			7.35	7.3	
1+50			7.21	7.1	
2+00			7.10	7.1	
2+50			7.00	7.15	
3+00			6.85	7.0	
3+50			6.80	7.0	
4+00			6.62	7.1	
4+50			6.50	6.8	
5+00			6.40	7.1	
5+50			6.35	6.7	
6+00			6.25	6.4	
				5.9	

H. Curb L.  
Curb L.

E. Curb L.

22



X Sec El Cajon Wash to - EPL, Rec 9

Ellis  
Walker  
Prof for  
C. Abel

10-19-23

24

Sta	+	-	Elev	SPL	$\frac{1}{2}$	$\frac{1}{4}$	4 Cutbank	N.P.L.	24
1400		385.00		$\frac{6.2}{378.8}$	$\frac{6.0}{379.9}$	$\frac{5.1}{379.9}$	$\frac{5.6}{379.9}$ $\frac{4.9}{379.4}$ $\frac{4.9}{380.1}$	$\frac{4.0}{381.0}$	✓ 380.1 <sup>c</sup>
1750				$\frac{4.1}{378.9}$	$\frac{5.5}{379.5}$	$\frac{5.1}{379.9}$	$\frac{5.1}{379.9}$ $\frac{5.4}{379.9}$ $\frac{4.7}{380.3}$	$\frac{4.5}{380.6}$	✓ 380.7 <sup>c</sup>
2+00				$\frac{6.0}{379.0}$	$\frac{5.9}{379.1}$	$\frac{4.8}{380.1}$	$\frac{5.0}{380.0}$ $\frac{5.2}{379.8}$ $\frac{4.6}{380.4}$	$\frac{4.3}{380.7}$	✓ 380.3 <sup>c</sup>
2765	WPL Sea View N		Swift S	$\frac{5.2}{380.0}$	$\frac{6.0}{379.0}$	$\frac{4.9}{380.1}$	$\frac{4.8}{380.2}$ $\frac{5.3}{379.7}$ $\frac{4.6}{380.4}$	$\frac{4.2}{380.8}$	✓ 380.4 <sup>L</sup>
T.P.			5.82 379.18				SW El Cajon + Swift		
0400	779 EPL Sea View N	386.91	Swift S	$\frac{7.7}{379.3}$	$\frac{7.8}{379.2}$	$\frac{6.4}{381.0}$	$\frac{4.9}{381.0}$ $\frac{7.0}{380.0}$ $\frac{6.2}{380.8}$	$\frac{5.6}{381.4}$	✓ 380.6 <sup>c</sup>
0450				$\frac{7.1}{379.9}$	$\frac{7.4}{379.6}$	$\frac{6.2}{380.8}$	$\frac{6.5}{380.5}$ $\frac{6.7}{380.2}$ $\frac{6.0}{381.0}$	$\frac{5.3}{381.7}$	✓ 380.8 <sup>c</sup>
1700				$\frac{7.2}{379.8}$	$\frac{6.8}{380.2}$	$\frac{6.2}{380.8}$	$\frac{6.4}{380.6}$ $\frac{6.5}{380.6}$ $\frac{5.9}{381.2}$	$\frac{5.4}{381.6}$	✓ 381. <sup>c</sup>
1750				$\frac{7.2}{379.8}$	$\frac{7.2}{379.8}$	$\frac{5.9}{381.1}$	$\frac{6.0}{381.0}$ $\frac{6.3}{380.7}$ $\frac{5.5}{381.0}$	$\frac{4.9}{382.1}$	✓ 380.1 <sup>P</sup> 381. <sup>c</sup>

X Sec E/Cajon Wabash to - EPL Reed

Ellis Walker Boston Dept 10-19-23 25

Sta	+	-	Elev
2100			386.91
2+65	Second St. N	Pacific S	
0400	Second St. N.		
0450			
1+25	End of Carb S Side		
1+50			
2700			
2+65	WPL Wilson		
T.P.		6.09	380.82
	2.16		382.97

SPL							NPL
6.4 390.6	4.7 382.3	2.80 382.3	5.9 381.2	5.8 381.2	6.0 381.0	5.2 381.9	381.8 ✓
380.3	4.6 390.4	6.3 390.7	5.4 381.2	5.5 381.0	5.7 381.3	5.1 381.9	381.4 ✓
380.16	5.6 381.4	6.5 380.5	6.2 380.2	6.0 381.0	5.3 381.7	5.0 382.0	381.7 ✓
381.0	5.9 381.1	6.1 380.9	6.4 380.6	5.1 381.9	5.5 381.5	5.7 381.9	381.7 ✓
380.8	6.1 380.9	6.2 380.2	6.5 380.6	5.2 381.7	5.7 381.3	5.3 381.7	381.8 ✓
380.5	6.7 380.3	6.6 380.7	5.4 381.8	5.3 381.2	6.0 381.0	5.5 381.5	381.5 ✓
380.4	7.2 379.8	6.6 380.4	5.3 381.7	5.8 381.1	6.4 380.6	5.8 381.2	381.4 ✓
380.7	7.0 380.0	6.4 380.6	5.5 381.0	5.9 381.1	6.4 380.6	5.8 381.2	381.7 ✓
380							381 ✓

381.4 ✓  
381.7 ✓  
381.7 ✓  
381.8 ✓  
381.5 ✓  
381.4 ✓  
381.7 ✓  
381 ✓

XSec El Cajon Nabash - EPL Road

Ellis Walker  
Boston  
Dial  
10-19-23

Sta	+	x	-	Elev	SPL	L	¢	1/2 Grit Cont.	NPL	228
0+00	EPL	Nabash		38297	$\frac{3.1}{379.9}$	$\frac{3.0}{380.0}$	$\frac{2.9}{380.1}$	$\frac{2.3}{380.7}$ $\frac{2.7}{380.1}$ $\frac{2.1}{380.9}$	$\frac{1.8}{381.2}$	✓
0+50					$\frac{3.2}{379.1}$	$\frac{3.3}{379.7}$	$\frac{3.3}{379.7}$	$\frac{2.9}{380.1}$ $\frac{3.1}{379.9}$ $\frac{2.5}{380.2}$	$\frac{2.3}{380.7}$	✓
1+00					$\frac{4.2}{378.9}$	$\frac{4.4}{378.6}$	$\frac{2.9}{380.1}$	$\frac{3.6}{379.4}$ $\frac{3.9}{378.1}$ $\frac{3.2}{379.7}$	$\frac{2.9}{380.1}$	✓
1+50					$\frac{5.2}{377.8}$	$\frac{5.1}{377.9}$	$\frac{3.4}{377.6}$	$\frac{4.1}{378.9}$ $\frac{4.0}{378.5}$ $\frac{3.6}{379.4}$	$\frac{3.5}{379.5}$	✓
2+00					$\frac{5.5}{377.8}$	$\frac{5.5}{377.6}$	$\frac{4.0}{378.0}$	$\frac{4.0}{378.5}$ $\frac{4.9}{378.1}$ $\frac{4.1}{378.9}$	$\frac{3.7}{377.3}$	✓
2+65	W.P.L.	Storey			$\frac{5.7}{377.3}$	$\frac{5.9}{377.1}$	$\frac{4.5}{378.5}$	$\frac{4.7}{378.3}$ $\frac{5.3}{377.7}$ $\frac{4.4}{378.6}$	$\frac{4.3}{378.7}$	✓
0+00	EPL	Storey			$\frac{6.2}{376.8}$	$\frac{6.1}{376.9}$	$\frac{5.0}{378.0}$	$\frac{5.2}{377.8}$ $\frac{5.8}{377.2}$ $\frac{4.9}{378.1}$	$\frac{4.6}{378.4}$	✓
0+50					$\frac{6.7}{376.3}$	$\frac{6.6}{376.4}$	$\frac{5.3}{377.7}$	$\frac{5.7}{377.3}$ $\frac{6.1}{376.9}$ $\frac{5.2}{378.2}$	$\frac{4.9}{378.1}$	✓
1+00					$\frac{7.0}{376.9}$	$\frac{6.7}{376.3}$	$\frac{5.5}{377.6}$	$\frac{6.0}{377.0}$ $\frac{6.3}{376.7}$ $\frac{5.5}{378.0}$	$\frac{4.8}{378.2}$	✓
					377. ✓					377.6 ✓

X Sec El Cajon Wabash to - EPL Recd

Sta 1450 + 382.97 Elev

SPL  
76  
375.4

75  
375.5

77  
377.3

Ellis  
Winkler  
Preston  
Doble  
1/2 Galt Carb  
42 63 87  
376.8 376.5 377.3

11-19-23  
NPL  
5.3  
377.7

27  
27

2700

376.7

78  
375.2

76  
375.4

88  
377.1

66 68 89  
376.4 376.2 377.1

51  
377.9

377.4

2765 WPL Bradt N Cherokee South

376.3

80  
375.0

75  
375.5

62  
376.8

66 71 63  
376.4 376.9 376.7

59  
377.1

377.1

T.P. 659 376.38

NE Co El Cajon Bradt

261 378.99

38  
375.2

36  
375.4

26  
376.4

31 34 29  
375.7 375.6 376.3

24  
376.6

376.5

0700 EPL Bradt N Cherokee South

376.7

43  
374.7

43  
374.7

29  
376.1

33 36 28  
375.7 375.4 376.2

25  
376.5

376.3

0+50

375.3

42  
374.8

40  
375.0

32  
375.8

35 36 30  
375.5 375.4 376.0

28  
376.2

376.1

1700

374.8

41  
374.9

33  
375.2

32  
375.7

37 39 32  
375.2 375.1 375.8

26  
376.4

375.9

1750

374.4

45  
374.5

51  
374.0

34  
375.6

38 40 34  
375.2 375.0 375.6

24  
376.6

375.7

2700

373.9

X Sec E1 Cajon, N100ash to EPL Reed

Ellis  
10-29-23 28  
28

Sta	+	T	-	Elev	SPL	W	Φ	1/4 Cont. Curb	NPL	✓
2+65		378.99		Reed South	$\frac{5.40}{378.6}$	$\frac{5.2}{378.8}$	$\frac{3.6}{378.4}$	$\frac{3.7}{378.4}$ $\frac{4.4}{374.6}$ $\frac{3.6}{378.4}$	$\frac{3.3}{378.7}$	✓
					373.4					375.5
0+00	3rd 5th N			Reed South	$\frac{1.52}{378.8}$	$\frac{5.0}{374.0}$	$\frac{3.9}{375.2}$	$\frac{4.0}{375.0}$ $\frac{4.8}{374.0}$ $\frac{3.9}{375.1}$	$\frac{3.6}{375.4}$	✓
					373.1					375.2
0+50					$\frac{4.8}{374.2}$	$\frac{5.2}{373.8}$	$\frac{4.2}{374.8}$	$\frac{4.7}{374.3}$ $\frac{5.1}{373.8}$ $\frac{4.4}{374.6}$	$\frac{4.1}{374.9}$	✓
					373.1					373.7
					372.7					374.6
1+00					$\frac{5.1}{373.9}$	$\frac{5.6}{372.4}$	$\frac{4.6}{374.4}$	$\frac{5.2}{373.8}$ $\frac{5.8}{373.2}$ $\frac{4.7}{374.9}$	$\frac{4.7}{374.3}$	✓
					372.8					374.3
1+50					$\frac{4.8}{373.0}$	$\frac{5.8}{373.2}$	$\frac{5.1}{373.9}$	$\frac{5.6}{373.4}$ $\frac{5.9}{373.1}$ $\frac{5.3}{373.8}$	$\frac{5.3}{373.7}$	✓
					372.7					373.9
2+00					$\frac{6.0}{372.4}$	$\frac{6.1}{372.4}$	$\frac{5.8}{373.5}$	$\frac{6.1}{372.9}$ $\frac{6.4}{372.6}$ $\frac{5.7}{373.2}$	$\frac{5.7}{373.3}$	✓
					372.6					373.5
2+65	WPL			Reed N	$\frac{6.2}{372.8}$	$\frac{7.0}{372.0}$	$\frac{5.9}{373.1}$	$\frac{6.2}{372.8}$ $\frac{6.8}{371.1}$ $\frac{6.1}{372.9}$	$\frac{5.7}{373.8}$	✓
					372.4					373.0
3+10	EPL			Reed N	$\frac{6.7}{372.3}$	$\frac{6.8}{372.1}$	$\frac{6.1}{372.9}$	$\frac{6.8}{372.2}$ $\frac{7.2}{371.8}$ $\frac{6.2}{372.9}$	$\frac{6.2}{372.8}$	✓
					372.3					372.7
T.P		6.20		372.79						

N.E.C. Reed

10-19-23  
29

XSec El Cajon

Sta + - Elev  
362.38

0+00 213 369.51

0+50

1+00

1+50

2+00

2+65

NPL Van Dyke

Side

ON

SPL 1/4 1/4 NPL

S.N. Cor. Copeland & El Cajon  
6.9  
362.9 5.3 364.2 5.1 364.4 1.0 363.3 6.2

5.3  
364.2 4.0 363.2 5.1 364.4 4.8 362.7 5.9 363.6

5.3  
364.2 6.1 363.1 5.1 364.4 6.7 362.8 6.5 363.0

5.1  
364.4 6.1 363.4 5.0 364.5 5.1 364.4 4.8 364.7

4.8  
364.7 5.3 364.2 5.0 364.5 4.0 363.5 5.0 364.5

4.6  
364.6 4.9 364.6





X See El Cajon Colonial to Euclid

Ellis  
width of  
P. corolla  
D. beak  
N.P.L.

10-20-73  
31 **31**

S.P.L.	Cent	Corolla	1/2	4	1/4	N.P.L.
519 6150	46 356.9	49 356.6	54 356.1	49 356.6	3.5 358.0	4.2 357.3
1400	43 357.2	47 356.8	52 356.3	47 356.8	3.4 358.1	4.0 357.5
1450	43 357.2	47 356.8	52 356.3	47 356.8	3.3 358.2	3.6 357.9
2100	42 357.3	42 357.0	52 356.3	45 356.7	3.3 358.1	3.2 358.0
2150	41 357.4	43 357.2	51 356.4	46 356.9	3.3 358.2	3.6 357.9
2773 <sup>59</sup>	40 357.5	42 357.3	47 356.8	46 356.9	3.3 358.2	3.7 357.8
T.P.		42.9		357.21 <sup>89</sup>		
467 0400	5.89 E.P.L.	363.10 Cabrillo		South		
0750	5.2 357.9	5.6 357.7	6.2 356.9	5.9 357.2	4.7 358.4	5.4 357.7

356.7L

357.2

357.2

357.4

357.6

357.7

358.2

358.2



27386  
175.9  
X Sec EICajon Colonial - Euclid

Sta	+	π	-	Elev
1+00		363.10		

S.P.L.      Cut-Cut 4      E      4 Cut Curb      N.P.L.  
 80      8.2 8.8 8.1      7.2      7.8 7.8 7.1      7.1  
 3551      354.9 354.3 355.0      355.9      355.3 355.3 356.0      356.0

E11.3  
Stat. for  
Pres. for  
D. bel  
10-20-29  
3333

T.P.      8.44      354.66  
 364      358.30

1+50

3.2	4.0	4.4	4.2	3.0	3.5	3.5	2.7	3.2
350.8	354.3	353.9	354.2	355.3	354.8	353.8	355.4	355.1

354.6 ✓      355.3 ✓

1+76      W.P.L. Monte Vista      North

3.6	4.3	4.6	4.4	3.3	3.8	3.9	3.1	3.2
353.7	354.0	353.7	353.9	355.0	354.5	353.9	355.2	355.1

353.6 ✓      355.1 ✓

2+00

3.7	4.5	5.0	4.6	3.8	3.6			3.4
354.4	353.8	353.5	353.7	354.3	354.7			354.7

353.4 ✓      354.9 ✓

2+36      E.P.L. Monte Vista      North

4.3	4.9	5.4	5.1	3.9	4.3			3.9
354.0	353.4	352.9	353.2	354.4	354.0			354.4

353. ✓      354.6 ✓

2+50<sup>14</sup>

4.4	5.1	5.5	5.0	4.1	4.3			3.9
353.9	353.2	352.8	353.3	354.2	354.0			354.4

352.8 ✓      354.5 ✓

2+79<sup>38</sup>      W.P.L. Montone      South

5.1	5.2	5.6	5.3	4.3	4.4			4.1
353.2	353.1	352.8	353.0	354.0	353.9			354.0

352.5 ✓      354.3 ✓

0+00<sup>99</sup>      E.P.L. Montone      South

5.3	5.6	5.7	5.1	4.7	5.0			4.0
352.8	352.7	352.6	352.6	353.6	353.3			353.8

353.1 ✓      353.9 ✓

275.18 X Sec El Cajon Colonial - Euclid

Sta +  $\pi$  - Elev  
 0+50 358.30

W.P.L. Cont. Cut  $\frac{1}{2}$   $\frac{1}{4}$   $\frac{1}{2}$   
 $\frac{5.7}{352.6}$   $\frac{6.0}{352.3}$   $\frac{6.2}{352.1}$   $\frac{6.0}{352.3}$   $\frac{5.4}{352.9}$   $\frac{5.1}{353.2}$   
 Bills  
 W.P.L.  $\frac{4.6}{353.7}$

10-70-23  
 34 34

1+00

352.70  
 $\frac{5.7}{352.6}$   $\frac{5.5}{352.8}$   $\frac{5.9}{352.4}$   $\frac{5.4}{352.9}$   $\frac{5.6}{352.7}$   $\frac{5.1}{353.2}$   $\frac{4.8}{353.0}$

353.6

1+50

352.30  
 $\frac{5.5}{352.8}$   $\frac{4.9}{353.4}$   $\frac{3.0}{351.5}$   $\frac{4.4}{351.9}$   $\frac{6.1}{352.2}$   $\frac{5.8}{352.5}$   $\frac{4.5}{353.8}$

353.3

2+00

351.9  
 $\frac{4.8}{353.5}$   $\frac{5.7}{352.6}$   $\frac{+3.0}{7.2}$   $\frac{7.0}{351.3}$   $\frac{6.7}{351.6}$   $\frac{6.7}{351.6}$   $\frac{3.5}{354.0}$   $\frac{4.2}{354.1}$

353.0

2+50

351.50  
 $\frac{3.7}{354.4}$   $\frac{3.3}{355.8}$   $\frac{+2.8}{7.7}$   $\frac{7.7}{350.6}$   $\frac{7.4}{350.9}$   $\frac{7.2}{351.1}$   $\frac{+3.0}{7.1}$   $\frac{+3.8}{3.5}$   $\frac{3.2}{354.8}$   $\frac{3.2}{355.2}$

352.6

2+75<sup>10</sup> W.P.L. Menlo South

351.1  
 $\frac{2.9}{353.9}$   $\frac{2.8}{355.5}$   $\frac{+2.0}{7.1}$   $\frac{7.9}{350.9}$   $\frac{7.6}{350.7}$   $\frac{7.2}{351.0}$   $\frac{+3.0}{4.9}$   $\frac{+2.0}{3.2}$   $\frac{3.0}{354.3}$   $\frac{3.0}{355.3}$

352.3

2+87 W.P.L. Menlo North

351  
 $\frac{2.8}{355.8}$   $\frac{2.7}{355.6}$   $\frac{+3.0}{7.3}$   $\frac{8.1}{350.2}$   $\frac{7.6}{350.7}$   $\frac{7.5}{350.8}$   $\frac{5.8}{352.5}$

352.1

T.P. On Bottom step 6.06 352.24  
 2.04 354.28

N.P.L. of El Cajon's tops 25' W of W.P.L. Menlo

352.0

17380

X Sec E/Cajon Colonial to Euclid

Ellis Walker Boston Dibal N.P.L.

10-21-23

385

Sta	+ 35428	π	-	Elev	S.P.L	Corr.	1/2	1/4	1/8	1/16	N.P.L.	
0+00	E.P.L. Merlo	South			$\frac{31}{351.2}$	$\frac{35}{350.8}$	$\frac{40}{350.3}$	$\frac{43}{350.0}$	$\frac{59}{350.4}$	$\frac{42}{350.3}$	$\frac{38}{351.8}$	351.2 ✓
6+18	E.P.L.		North		$\frac{36}{350.7}$	$\frac{37}{350.6}$	$\frac{41}{350.2}$	$\frac{43}{350.0}$	$\frac{41}{350.2}$	$\frac{41}{350.1}$	$\frac{35}{350.8}$	351.2 ✓
0+50					$\frac{41}{350.2}$	$\frac{42}{350.1}$	$\frac{47}{349.6}$	$\frac{46}{349.7}$	$\frac{45}{349.8}$	$\frac{46}{349.7}$	$\frac{35}{350.8}$	350.6 ✓
1+00					$\frac{46}{349.7}$	$\frac{51}{349.2}$	$\frac{52}{348.6}$	$\frac{54}{348.7}$	$\frac{50}{349.3}$	$\frac{53}{349.0}$	$\frac{42}{350.1}$	350.4 ✓
1+50					$\frac{53}{349.0}$	$\frac{62}{348.1}$	$\frac{67}{347.6}$	$\frac{52}{347.1}$	$\frac{52}{347.1}$	$\frac{52}{348.8}$	$\frac{49}{349.4}$	349.5 ✓
2+00					$\frac{43}{348.0}$	$\frac{65}{347.8}$	$\frac{65}{347.8}$	$\frac{58}{348.0}$	$\frac{60}{347.9}$	$\frac{60}{348.3}$	$\frac{49}{349.4}$	349.5 ✓
2+50					$\frac{62}{348.1}$	$\frac{72}{347.1}$	$\frac{67}{347.8}$	$\frac{62}{347.8}$	$\frac{62}{347.8}$	$\frac{62}{347.8}$	$\frac{57}{348.6}$	349. ✓
2+73.80	N.P.L. Sierra	South			$\frac{48}{347.5}$	$\frac{72}{347.1}$	$\frac{64}{347.9}$	$\frac{64}{347.9}$	$\frac{67}{347.9}$	$\frac{67}{347.6}$	$\frac{43}{348.1}$	348.4 ✓
0+00	E.P.L. Sierra	South			$\frac{73}{347.0}$	$\frac{72}{347.1}$	$\frac{76}{346.7}$	$\frac{75}{346.8}$	$\frac{67}{347.6}$	$\frac{72}{347.1}$	$\frac{70}{347.3}$	348.1 ✓
					$\frac{73}{347.0}$	$\frac{72}{347.1}$	$\frac{76}{346.7}$	$\frac{75}{346.8}$	$\frac{67}{347.6}$	$\frac{72}{347.1}$	$\frac{70}{347.3}$	347.5 ✓

X Sec El Cajon Colonnad to Euclid

Ellis  
Walters  
Passton  
Dibel  
N.P.L.

10-21-23

3636

Sta	+	x	-	Elev	S.P.L	Sub. Cont. 1/2	E	W		
		354.28								
T.P.			7.24	347.04						
	491	351.95								
0+50					$\frac{54}{346.5}$	$\frac{53}{346.6}$	$\frac{52}{346.7}$	$\frac{51}{346.8}$	$\frac{50}{346.9}$	
					346.8					347.1
0+66	X.P.L.	Granada			$\frac{53}{346.6}$	$\frac{52}{346.7}$	$\frac{51}{346.8}$	$\frac{50}{346.9}$	$\frac{49}{347.0}$	
					346.7					347.0
1+00					$\frac{56}{346.3}$	$\frac{55}{346.4}$	$\frac{54}{346.5}$	$\frac{53}{346.6}$	$\frac{52}{346.7}$	
					346.4					346.5
1+26	E.P.L.	Granada			$\frac{56}{346.3}$	$\frac{55}{346.4}$	$\frac{54}{346.5}$	$\frac{53}{346.6}$	$\frac{52}{346.7}$	
					346.7					346.8
1+50					$\frac{57}{346.2}$	$\frac{56}{346.3}$	$\frac{55}{346.4}$	$\frac{54}{346.5}$	$\frac{53}{346.6}$	
					346.1					346.2
2+00					$\frac{62}{345.7}$	$\frac{61}{345.8}$	$\frac{60}{345.9}$	$\frac{59}{346.0}$	$\frac{58}{346.1}$	
					345.6					345.7
2+50					$\frac{70}{344.9}$	$\frac{68}{345.1}$	$\frac{66}{345.3}$	$\frac{64}{345.5}$	$\frac{62}{345.7}$	
					345.2					345.3
2+7380	E.P.L.	Euclid	Right Δ's		$\frac{7.0}{344.9}$	$\frac{6.5}{345.4}$	$\frac{6.0}{345.9}$	$\frac{5.5}{346.4}$	$\frac{5.0}{346.9}$	
					345.1					345.2
					345.1					345.2

X See El Cajon Colonial to Euclid

Sta

+

T

-

Elev

SPL

4

4

4

Ellis  
Walk  
Preston  
Dibel  
A.P.L.

10-21-23

387

2+73<sup>50</sup> 351.95

2+73<sup>50</sup> E.P.L. Euclid from SW Cor to NW Cor

4.6  
345.3

4.3  
345.6

5.4  
346.5

5.5  
346.4

5.1  
346.8

345.4



X Sec Fairmount E/Cajon to Olive

Ellis  
Winkler  
Preston  
Dubel  
E.P.L.

10-21-23  
3838

St + K - Elev  
T.P.M. 354.79

N.P.L. Subst. 4 4 4  
S.W. Cor Colonial.

3.13 357.92

T.P. 6.49 351.43

4.34 355.77

A

0+00 N.P.L. of E/Cajon from NW to NE on A

$\frac{4.5}{351.3}$   $\frac{4.5}{351.3}$   $\frac{4.6}{351.2}$   $\frac{4.6}{351.2}$   $\frac{4.4}{351.4}$

351.1

351.2

0+00 From N.W.P. Cor. Right Angles to Fairmount.

$\frac{4.5}{351.1}$   $\frac{4.5}{351.3}$   $\frac{5.1}{350.7}$   $\frac{4.7}{351.1}$   $\frac{4.7}{351.1}$   $\frac{4.6}{351.2}$

351.1

351.2

0+50

$\frac{4.8}{351.0}$   $\frac{4.6}{351.2}$   $\frac{5.0}{350.8}$   $\frac{5.0}{350.8}$   $\frac{4.7}{351.1}$   $\frac{4.9}{350.9}$   $\frac{4.7}{351.1}$

350.

351.1

1+00

$\frac{4.9}{350.9}$   $\frac{4.8}{351.0}$   $\frac{5.4}{350.4}$   $\frac{5.7}{350.7}$   $\frac{4.9}{350.9}$   $\frac{5.1}{350.7}$   $\frac{4.9}{350.9}$

350.9

351.

1+50

$\frac{5.0}{350.8}$   $\frac{4.8}{350.9}$   $\frac{5.4}{350.4}$   $\frac{5.1}{350.7}$   $\frac{5.0}{350.8}$   $\frac{5.3}{350.6}$   $\frac{4.6}{351.2}$

350.7

350.8

2+00

$\frac{5.0}{350.8}$   $\frac{5.0}{350.8}$   $\frac{5.7}{350.4}$   $\frac{5.3}{350.7}$   $\frac{4.9}{350.9}$   $\frac{5.2}{350.5}$   $\frac{4.7}{351.1}$

350.6

350.7

2+50

$\frac{5.0}{350.8}$   $\frac{5.1}{350.7}$   $\frac{5.4}{350.4}$   $\frac{5.4}{350.4}$   $\frac{4.8}{351.0}$   $\frac{5.2}{350.6}$   $\frac{4.7}{351.1}$

350.5

350.6

X See Fairmount Elcajon Olive

Ellis  
Walker  
Preston  
D. Del  
FPL

10-21-23

3939

Sta	+	T	-	Flow	WPL	Cont. Cut	1/4	1/4	1/4	1/4	1/4
3+00		355.77			$\frac{4.7}{351.1}$	$\frac{5.2 \quad 5.9 \quad 5.3}{350.6 \quad 349.9 \quad 350.3}$	$\frac{4.9}{350.9}$	$\frac{5.3}{350.2}$	$\frac{5.0}{350.8}$		
					350.4						350.5
3+50					$\frac{5.0}{350.8}$	$\frac{5.3 \quad 5.9 \quad 5.6}{350.5 \quad 349.9 \quad 350.2}$	$\frac{4.9}{350.9}$	$\frac{5.2}{350.6}$	$\frac{5.1}{350.7}$		✓
					350.3						350.4
4+00					$\frac{4.8}{351.0}$	$\frac{5.4 \quad 5.9 \quad 5.7}{350.4 \quad 349.9 \quad 350.1}$	$\frac{5.1}{350.7}$	$\frac{5.8}{350.4}$	$\frac{4.9}{350.9}$		
					350.2						350.3
4+50					$\frac{5.0}{350.8}$	$\frac{5.6 \quad 6.3 \quad 5.7}{350.2 \quad 349.5 \quad 350.1}$	$\frac{5.1}{350.7}$	$\frac{5.3}{350.5}$	$\frac{4.7}{351.1}$		
					350.						350.1
5+00					$\frac{5.6}{350.8}$	$\frac{5.7 \quad 6.0 \quad 5.8}{350.1 \quad 349.8 \quad 350.3}$	$\frac{5.1}{350.7}$	$\frac{5.3}{350.5}$	$\frac{4.9}{350.9}$		
					349.9						349.9
5+50					$\frac{5.6}{350.8}$	$\frac{5.9 \quad 6.3 \quad 6.0}{349.7 \quad 349.0 \quad 349.8}$	$\frac{5.4}{350.4}$	$\frac{5.6}{350.2}$	$\frac{5.6}{350.2}$		
					349.8						349.8
6+07	taken at Right angle to Fairmount				$\frac{5.6}{350.8}$	$\frac{5.9 \quad 6.2 \quad 6.1}{349.9 \quad 349.6 \quad 349.7}$	$\frac{5.6}{350.2}$	$\frac{6.0}{349.8}$	$\frac{5.6}{350.2}$		
					349.7						349.7
6+?	3PL Olive on angle				$\frac{5.6}{350.8}$	$\frac{5.9 \quad 6.2 \quad 6.0}{349.9 \quad 349.6 \quad 349.8}$	$\frac{5.7}{350.1}$	$\frac{6.0}{349.8}$	$\frac{5.9}{349.9}$		
					349.7						349.7



See 5th St El Cajon to Monroe

F1112  
R/V

10-21-57

41 **41**

Sta + - Elev  
4+00 369.39

WPL Sub Cont. 1/4 \$  
4.5 4.4 5.2 4.9 4.7  
364.9 365.0 364.7 364.5 364.7  
5.3 5.5 5.0 5.0  
364.1 363.9 364.0 364.4

4+50

364.8  
4.8 4.4 5.0 4.9 4.7  
365.0 364.8 364.5 364.5 364.7  
5.4 5.6 4.9 5.3  
364.0 363.8 364.0 364.1

364.4

5+00

364.9  
4.1 4.3 5.0 5.0 4.7  
365.3 365.1 364.9 364.4 364.7  
5.2 5.5 4.9 5.0  
364.2 363.9 364.5 364.4

364.5

5+50

365.  
4.2 4.3 5.0 4.9 4.8  
365.2 365.1 364.9 364.5 364.6  
5.2 5.3 4.8 5.0  
364.0 363.9 364.6 364.4

364.5

6+07 SPL Olive

365.  
3.8 4.2 4.8 4.8 4.7  
365.6 365.2 364.6 364.6 364.7  
5.1 5.2 4.7 4.3  
364.0 364.2 364.6 365.1

364.6

T.P. 4.21 365.8  
7.99 373.17

365.1  
8.4 8.5 8.9 8.7 8.7  
364.8 364.7 364.3 364.2 364.6  
8.6 8.9 8.4 8.4  
364.6 364.3 364.6 364.8

364.7

0+00 HPL Olive

364.6  
8.0 8.0 8.5 8.3 7.8  
365.2 365.0 364.7 364.9 365.4  
8.3 8.6 7.9 7.9  
364.9 364.6 365.3 365.3

364.7

0+50

365.1  
7.4 7.5 8.1 8.0 7.5  
365.8 365.7 365.1 365.2 365.7  
7.8 8.1 7.4 7.4  
365.4 365.1 365.8 365.8

365.3

1+00

365.7  
6.6 6.9 7.2 7.2 6.7  
366.6 366.3 365.7 365.9 366.5  
7.2 7.2 6.8 6.8  
366.0 365.7 366.9 366.4

365.7

1+50

366.2  
6.6 6.9 7.2 7.2 6.7  
366.6 366.3 365.7 365.9 366.5  
7.2 7.2 6.8 6.8  
366.0 365.7 366.9 366.4

366.5

1560 5<sup>th</sup> St El Cajon to Monroe

Sta +  $\pi$  - Elev

2+00 379.17

2+50

3+00

3+50

3+70

break

4+00

4+50

5+00

5+50

5+70 SPL Monroe

T.P.

4.94 368.23

W.P.L.  $\frac{5.8}{367.4}$   $\frac{6.3}{369}$   $\frac{6.9}{363}$   $\frac{6.2}{367.0}$   $\frac{6.2}{367.0}$   $\frac{6.2}{367.0}$   $\frac{6.2}{367.0}$

366.8

$\frac{5.5}{367.7}$   $\frac{5.9}{367.3}$   $\frac{6.4}{366.8}$   $\frac{6.2}{367.0}$   $\frac{5.3}{367.9}$   $\frac{4.1}{370.1}$   $\frac{4.1}{367.1}$   $\frac{5.6}{367.6}$   $\frac{5.2}{368.0}$

367-3

$\frac{5.1}{368.1}$   $\frac{5.3}{367.9}$   $\frac{5.8}{367.4}$   $\frac{5.7}{367.3}$   $\frac{4.9}{368.3}$   $\frac{5.2}{368.0}$   $\frac{5.4}{367.8}$   $\frac{4.9}{368.3}$   $\frac{4.4}{368.8}$

367.9

$\frac{4.8}{368.4}$   $\frac{4.6}{368.6}$   $\frac{5.3}{367.9}$   $\frac{5.1}{368.1}$   $\frac{4.2}{369.0}$   $\frac{4.8}{368.4}$   $\frac{5.0}{368.2}$   $\frac{4.2}{367.0}$   $\frac{3.8}{369.4}$

368.7

$\frac{4.4}{368.8}$   $\frac{4.3}{368.7}$   $\frac{5.0}{368.2}$   $\frac{4.8}{368.4}$   $\frac{4.1}{369.1}$   $\frac{4.8}{368.4}$   $\frac{4.9}{368.3}$   $\frac{4.1}{369.1}$   $\frac{4.1}{369.1}$

368.6

$\frac{4.4}{368.8}$   $\frac{4.7}{368.5}$   $\frac{5.2}{368.0}$   $\frac{5.1}{368.1}$   $\frac{4.4}{368.8}$   $\frac{4.8}{368.4}$   $\frac{4.9}{368.3}$   $\frac{4.5}{368.8}$   $\frac{4.3}{368.9}$

368.5

$\frac{4.7}{368.5}$   $\frac{4.9}{368.3}$   $\frac{5.4}{367.8}$   $\frac{5.2}{367.1}$   $\frac{4.6}{368.6}$   $\frac{5.1}{368.1}$   $\frac{5.4}{367.8}$   $\frac{4.9}{368.3}$   $\frac{4.6}{368.6}$

368.3

$\frac{4.9}{368.7}$   $\frac{4.9}{368.3}$   $\frac{5.5}{367.7}$   $\frac{5.2}{367.9}$   $\frac{5.0}{368.2}$   $\frac{5.8}{367.4}$   $\frac{5.9}{367.3}$   $\frac{5.2}{368.0}$   $\frac{5.6}{367.6}$

368.2

$\frac{4.7}{368.5}$   $\frac{4.9}{368.3}$   $\frac{5.6}{367.6}$   $\frac{5.4}{367.6}$   $\frac{5.1}{368.5}$   $\frac{4.1}{367.1}$   $\frac{4.4}{367.0}$   $\frac{5.5}{367.7}$   $\frac{4.9}{366.8}$

S.W. Cor. 5<sup>th</sup> Monroe

368.2

5110  
Walker  
Reef or  
D. be!  
EPL  
 $\frac{5.9}{367.3}$

70-21-23

42

367.1

367.7

368.3

369.2

369

368.6

368.2

368.1

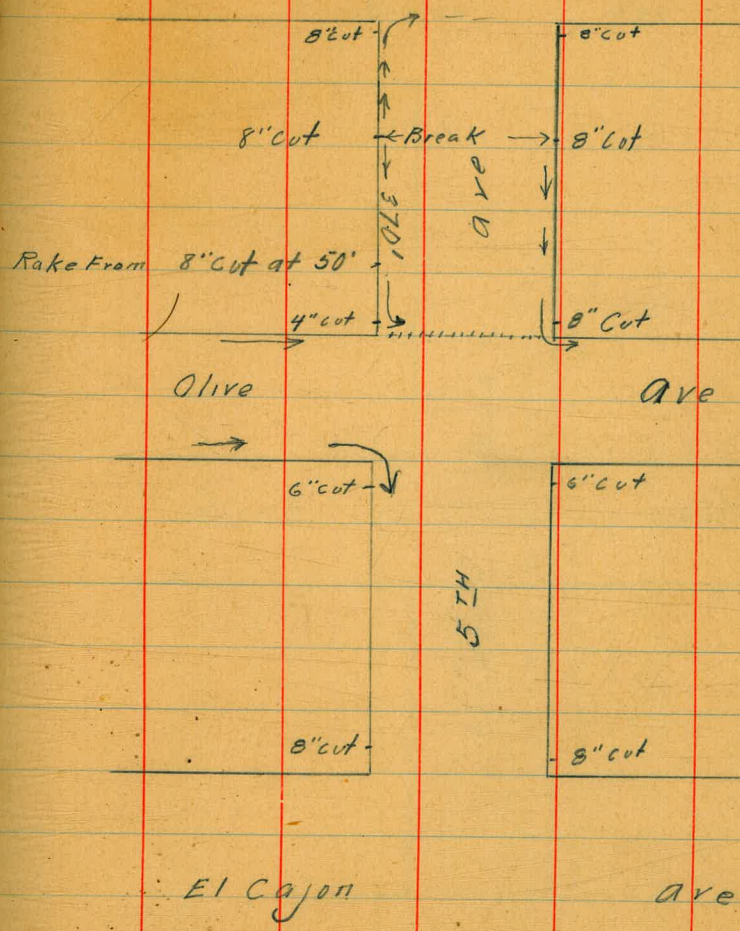
367.8

Sta.	+	H.I.	-	Elev.
B.M. NW Cor Central + Olive	5.0	374.33		369.33
			5.0	369.33
			5.35	368.98
T.P.	7.72	374.76	7.29	367.04
			1.91	372.85
			2.31	372.45
			4.78	369.98
			4.38	371.38
			5.64	369.12
T.P.			5.05	369.71

Top of curb  
NE Cor of  
Terrace Drive

NW Cor. Central + Olive Top Curb  
 NE. " " " " " "  
 S. " " " " " "  
 SW Cor 4<sup>th</sup> + Monroe Top Curb  
 SE " " " " " "  
 S.E. Cor Monroe + Central " "  
 SW Cor " " " " " "  
 SW Cor " " " " " "

Monroe Ave



8' cut

8' cut

8' cut

Break

8' cut

Rake from 8' cut at 50''

3rd Ave

Ave

4' cut

8' cut

Olive Ave

Ave

6' cut

6' cut

5th Ave

8' cut

8' cut

El Cajon Ave

Ave

4545

Monroe Ave

Olive

Ave

Stockton Ave

El Cajon

Ave.



46<sup>46</sup>

Monroe Ave

Ave

Olive Ave

Ave

Conklin

7' Crown

-305.5'

7' Crown

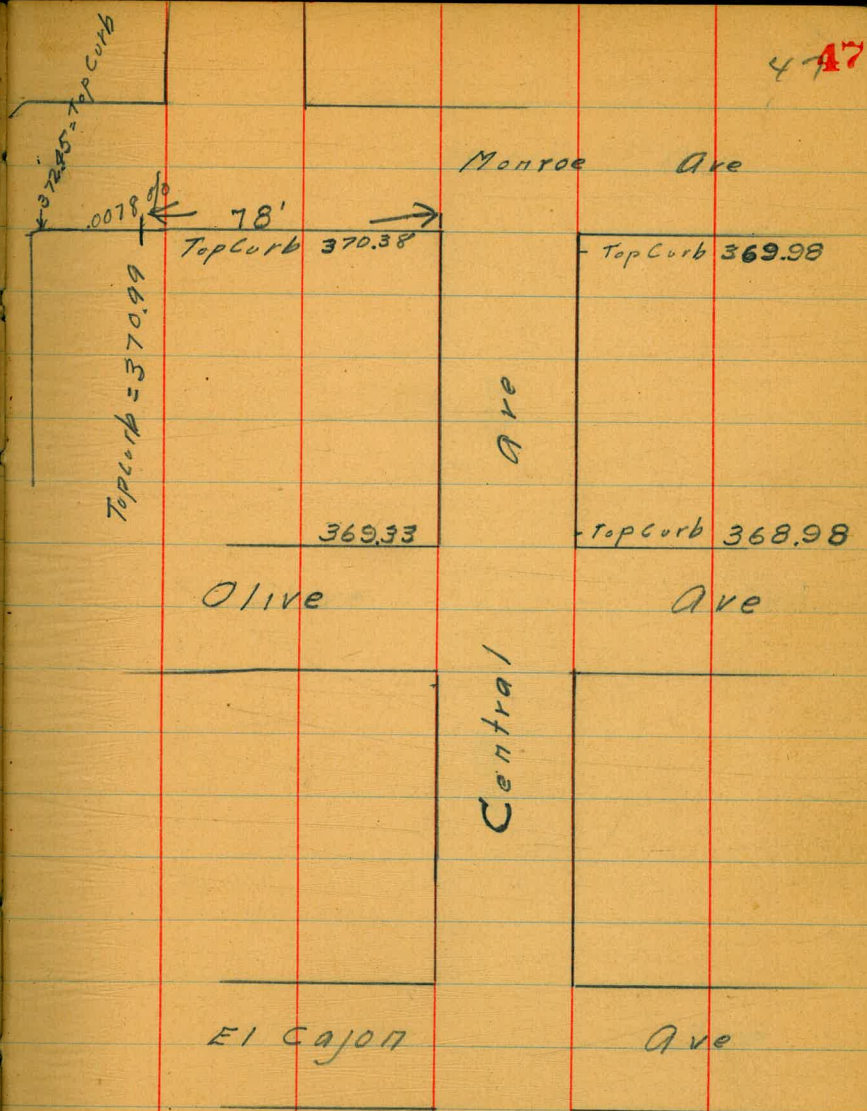
7' Crown

- Crown figured from 8'  
cut on the East.  
Curb is lower than  
West curb

El Cajon Ave

Ave

47A7



48

Monroe Ave

ST.

Olive

Ave

4<sup>TH</sup>

El Cajon

Ave

Monroe

ave

ave

Olive

ave

Daley

El Cajon

ave

Monroe Ave

ave

Olive

ave

THOMAS

El Cajon

Ave

Monroe Ave

ave

Olive

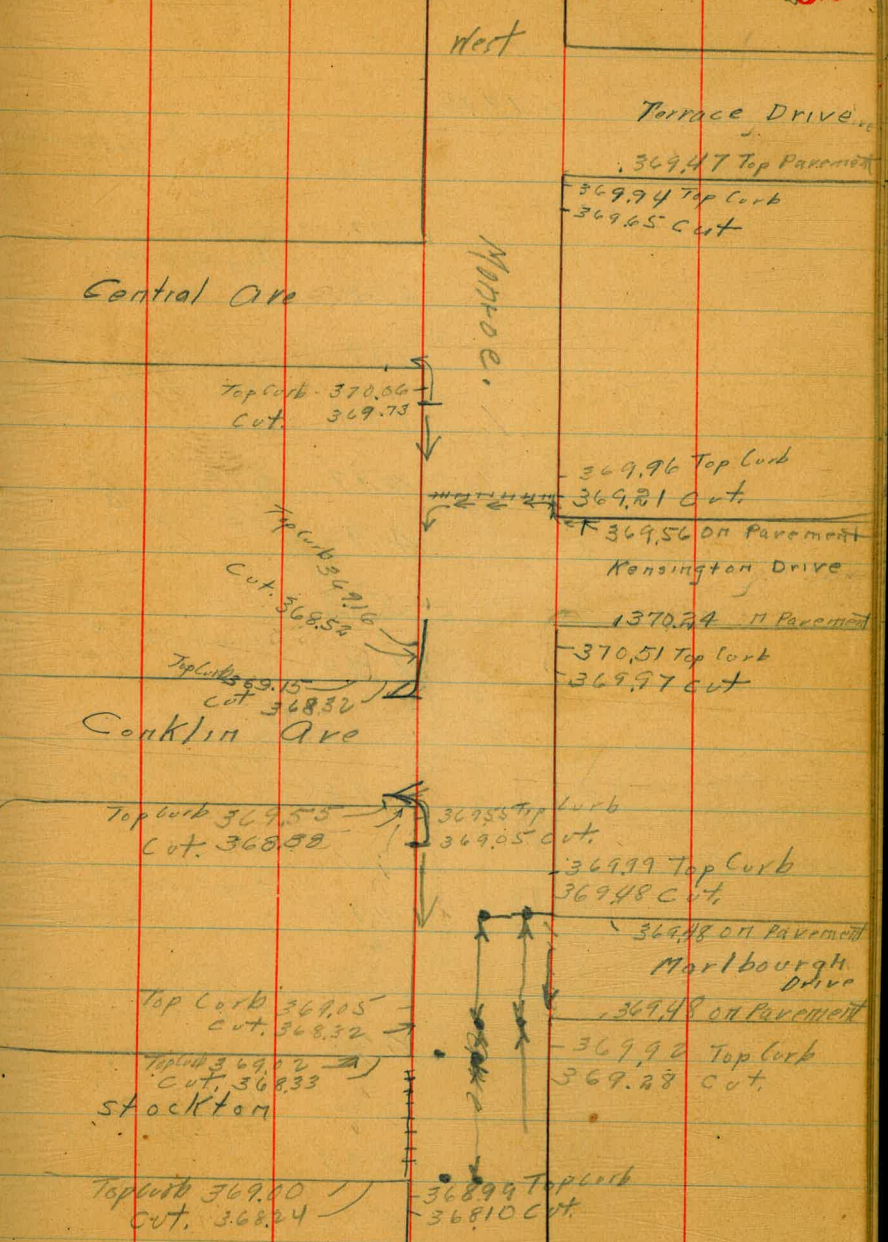
Ave

Reed

El Cajon

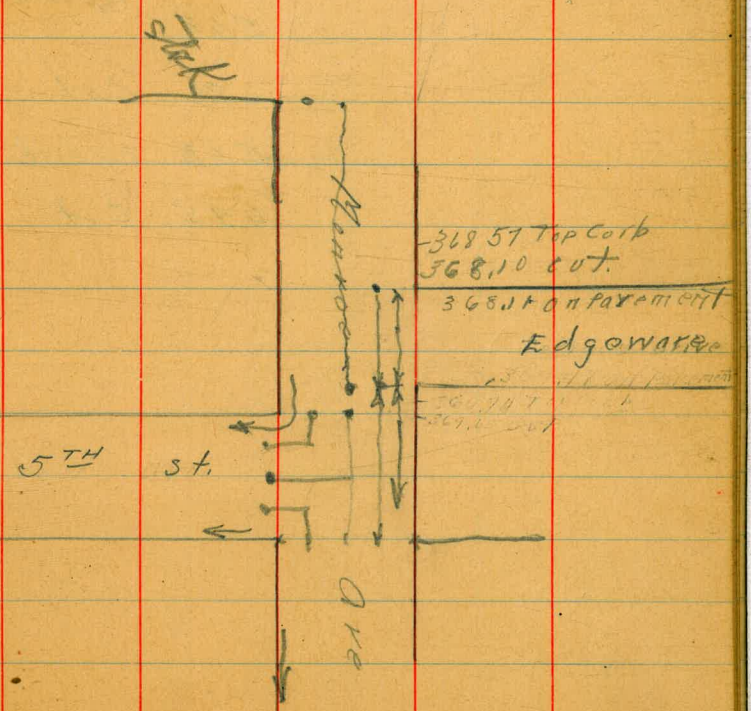
Ave

Sta	+	H.E.	-	Elev.	
B.M. N.E. Cor. Terrace Drive	5.06	374.76		369.71	on Pavement
			5.29		NE Cor Terrace Drive
			4.82		top Curb + NE Cor + Central
			5.11		NE Cor, Manroe
			4.70		Central Top Curb S.E. Cor Conklin
			5.03		S.E. Cor Central, Manroe
			4.80		top Curb N.W. Cor Kensington Drive
			5.55		Cut. Top Pavement. "
			5.20		" NE. "
			4.52		Top Curb "
			4.25		" "
			4.79		Cut. N.E. Corner + Manroe.
			5.60		Top Curb SW Cor. to Conklin + Manroe
			6.24		Cut. "
			5.61		Top Curb SW. Cor. Manroe Conklin
			6.44		Cut. "
			5.21		Top Curb S.E. Cor. Manroe + Conklin
			5.71		8' cut. S.E. Cor Conklin + Manroe
T.P.	4.22	373.45	5.53	369.23	



+ #1 -  
373.45

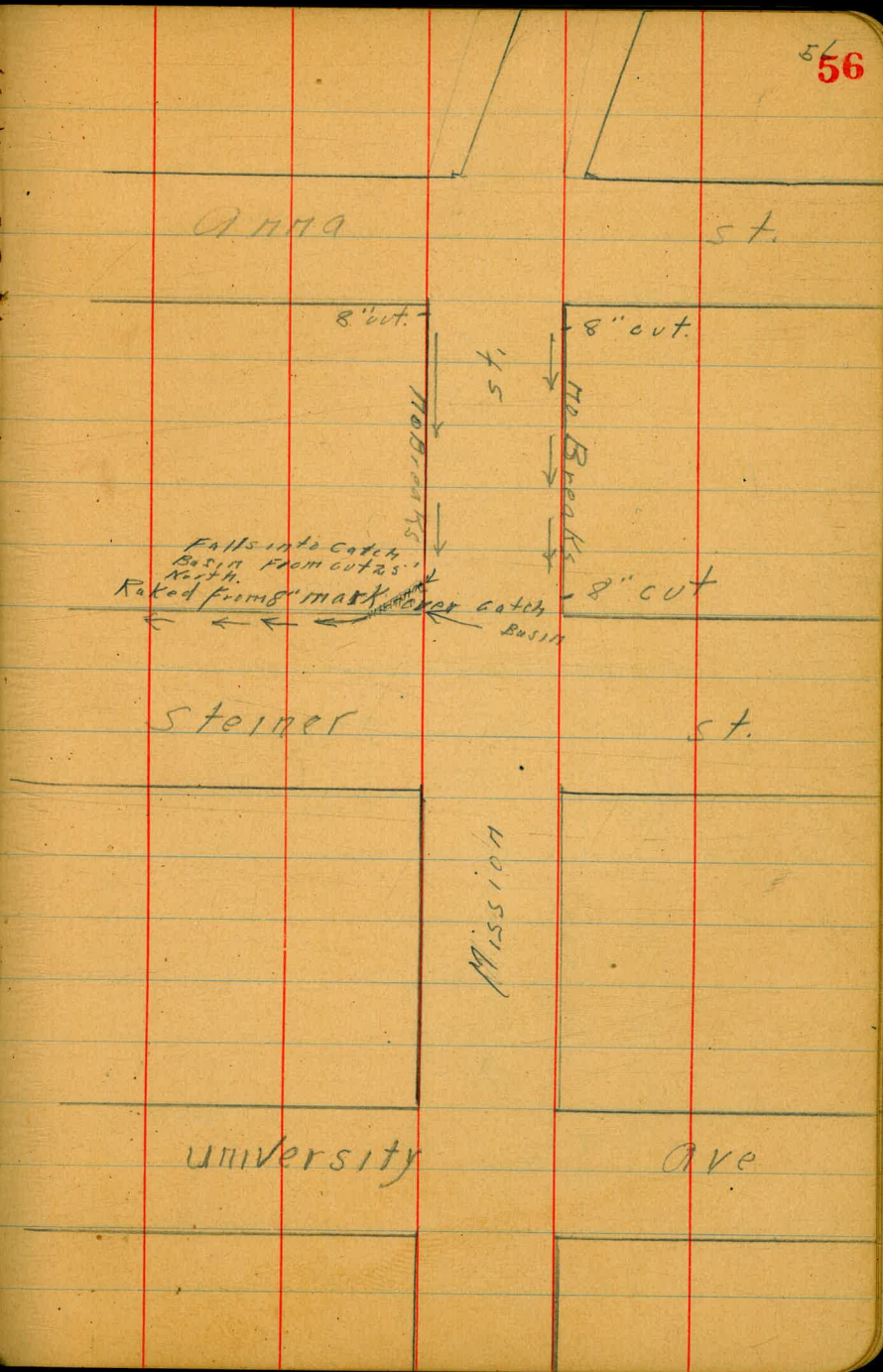
3.46	Top Curb	N.W. Cor Monroe
3.97	cut	
3.97	top Pavement	
3.97	"	"
3.53	top curb	N.E. Cor Hobbs + Monroe
4.17	cut	
4.40	top curb	S.W. Stock Monroe
5.13	cut	SW Monroe + Stockton
4.43	top curb	SW Cor Stock + Monroe
5.12	cut	
4.45	top curb	SE Cor. Monroe + Stock.
5.21	cut	
4.96	top curb	S.E. Cor Stockton + Monroe
5.35	cut	
4.88	top curb	N.W. Cor Edge Ward + Monroe
5.35	cut	"
5.34	Top Pavement	
5.46		N.E. Monroe



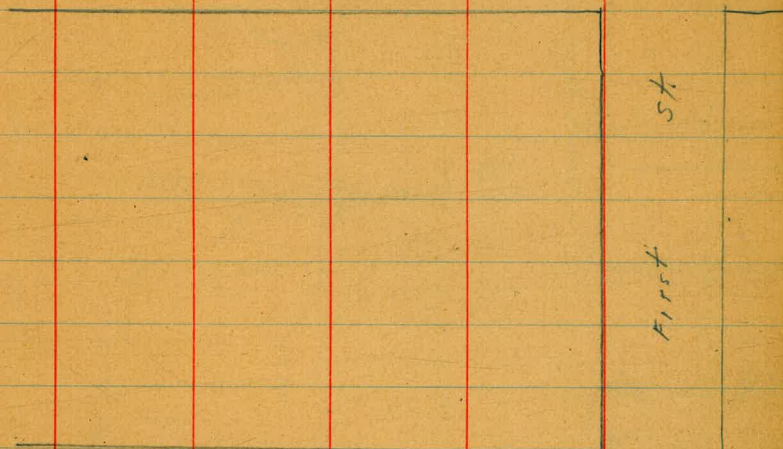


5.08	5.08	Top Corb	NE. Edge Wood + Monroe
	5.72	Cut.	"
	5.15	Top Corb	SW Cor 5 <sup>TH</sup> Monroe
	5.81	Cut.	SW. Monroe
	5.15	Top Corb	+ 5 <sup>TH</sup>
	5.81	Cut.	"
	5.62	Top Corb	SE. Monroe + 5 <sup>TH</sup> .
	6.30	Cut.	" S.E. 5 <sup>TH</sup> .
	5.62	Top Corb	+ Monroe
	6.95	Cut.	"





El Cajon Ave



Orange Ave

8" cut

8" cut

NO BROOKS

MISSION ST

NO BROOKS

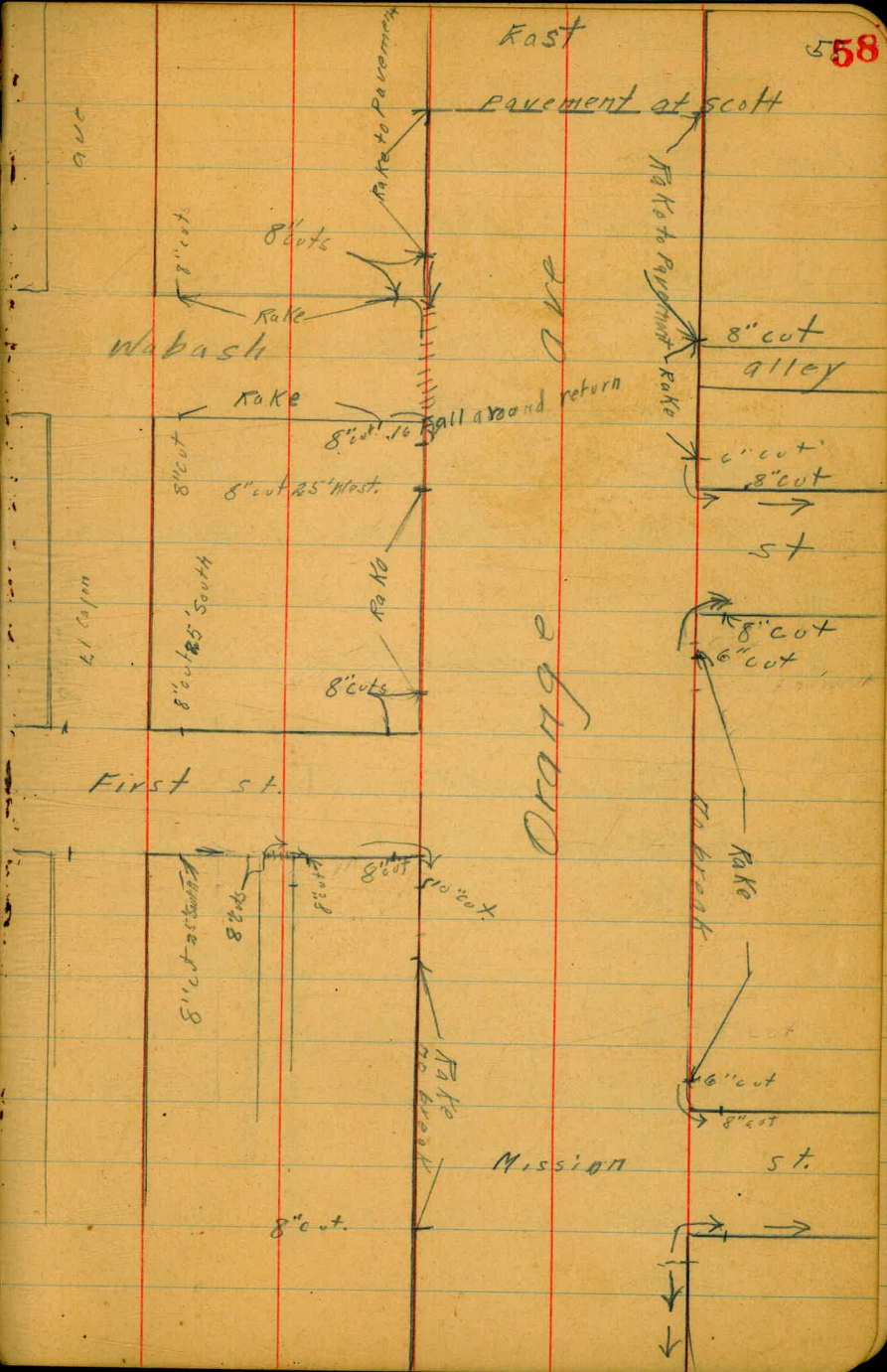
Waxed from 8" cut

8" cut

Anna

St





Cross Section Alley Block 55 Units  
 Monroe to Madison Bet. Oregon - Idaho  
 See Sketch 1533 Page 14 20' wide

BM	5.95	384.82	378.87	SFBP Madison Idaho
	0-14 = Sub. Madison			
F on Paviny		5.30	379.52	✓
N " "		5.23	379.59	✓
	0+0 = Sub. Madison			
N Top cb		4.27	380.55	✓
Gutter on Paviny		4.51	380.31	✓
L " "		4.73	380.09	✓
Gutter " "		4.64	380.18	✓
F Top cb		4.50	380.32	✓
	0+45 = Nly Conc. Walk on N			
-0.5 = 1/2 Conc. Walk		4.84	379.98	✓
F		5.1	379.7	
L		5.0	379.8	
N		4.5	380.3	
+2 = Fly 2 Conc. Walk		4.18	380.64	
	0+63			
-2 = Fly 2 Conc. Walk		4.25	380.57	
N		4.4	380.4	

Red plot on profile 1931  
11/24-57 C.B.H.

Indexed  
C.S.K.

384.82

L	5.1	379.7
F	5.3	379.5
+2.5 = Fly Conc. Apron	5.27	379.45 ✓
+4 = 2 Garage Conc. Floor	5.29	379.53 ✓
	0+67	
N-0.2 = Fly Conc. Apron	4.38	380.44
N-4 = 2 Garage Conc. Floor	4.23	380.59
	0+74	
1.5 F of Walk = Fly Porter Pole		
	1+0	
F	5.3	379.5
L	5.2	379.6
N	4.8	380.0
	1+15	
0.6 N of N.L. = 2 Garage Dirt Floor	4.9	379.9
	1+50	
N	5.0	379.8
L	5.1	379.7
L	5.0	379.8

Nov. 21. 39 595  
 S. J. J. J.  
 Northberg  
 Osborn

384.82

1770

13' E of N.L. = Wly Postpr Pole

TP 5.02 384.61 5.23 379.59

1791

E - 4.2 = Wly Conc Apron 5.45 379.16 ✓

E - 8.2 = ~~L~~ Garage Conc Floor 5.37 379.24 ✓

210

E 5.4 379.2

L 5.0 379.6

W 4.6 380.0

2150

W 4.5 380.1

L 4.8 379.8

E 4.9 379.7

2163

+0.25 = Wly Do Garage Conc Floor 4.83 379.78 ✓

E 4.9 379.7

L 4.7 380.1

W

384.61

2172

0.9' E of N.L. = Wly Postpr Pole

2181

W 4.7 379.9

L 4.8 379.8

E 4.9 379.7

+0.2 = Wly Do Garage Conc Floor 4.87 379.74 ✓

210

E 5.0 379.6

L 4.8 379.8

W 4.6 380.0

2130

W 4.4 380.2

L 4.6 380.0

E 4.6 380.0

+4.2 = Wly Do Garage Conc Floor 4.37 380.24 ✓

2146

-4.2 = Wly Do Garage Conc Floor 4.39 380.22 ✓

E 4.6 380.0

L 4.6 380.0

W 4.4 380.2

65  
60

384.61

3+58

W		4.6	380.0
L		4.6	380.0
F	= 1/2 Do Garage Dir Floor	4.6	380.0 ✓
TP	4.39	384.61	4.39 380.22
	3+79		
W-3	= 1/2 Garage Conc Floor	4.43	380.18 ✓
	3+95		
F		4.8	379.8
L		4.4	380.2
W		4.4	380.2
+3.4	= 1/2 Do Garage 17 Wide Conc Floor	4.34	380.27 ✓
	4+24		
W		4.6	380.0
+0.5	= 1/2 Ply Paper Pad		
L		4.8	379.8
F		4.7	379.9
+3.5	= 1/2 Conc Apron	4.64	379.97 ✓
+4.5	= 1/2 Garage Conc Floor	4.47	380.14 ✓

61

384.61

4+49 = 1/2 End Conc Apron of 5 Garages on E

3' E of Eln = 1/2 Conc Apron	4.64	379.97	
4+72			
F-8.7 = Conc Floor 5 Garages	4.51	380.00	
F-2' = 1/2 Conc Apron	4.63	379.98	
F	4.7	379.9	
L	5.0	379.6	
W	4.8	379.8	
+3.8	= 1/2 Garage Conc Floor	4.74	379.87 ✓
	4+99		
F-3' = 1/2 Conc Apron	4.54	380.07	
	5+0		
W	4.9	379.7	
L	4.9	379.7	
F	4.9	379.7	
+4.5	= 1/2 Conc Apron of 5 Car Garages	4.74	379.87
+6	= 1/2 Conc Floor of 5 Car Garages	4.61	380.00
	5+18		
W-1.1 = 1/2 Conc Apron	4.67	379.94	
W-3' = 1/2 Do Garage Conc Floor	4.54	380.07	



384.61

5+31

0.4' E of N.L. = W/4 Paper Pole

5+46

E-6' = S/4 of 5' Cor Garage Conc. Floor 4.68

379.93 ✓

E-4.5' = W/4 Conc Apron 4.82

379.79 ✓

5+54

-3' = 1/2 Garage Conc Floor 5.02

379.59

-1' = W/4 Conc Apron 5.30

379.31

E 5.3

379.3

E 5.1

379.5

N 5.0

379.6

5+85

N 5.6

379.0

E 6.1

378.5

E 5.7

378.9

5+98.80 = N.L. Monroe

E Top of 6.65

377.96

Gutter on Pav. 6.69

377.92

E " " 6.95

377.66

384.61

N Gutter on Pav. 6.77

377.84

N Top of 6.59

378.02

6+12.80 = N.C.B. Monroe

N on Pav. 7.36

377.25

E " " 7.41

377.20

E " " 7.55

377.06

TP 5.83

384.00

6.44

378.17

BM

5.03

378.97

S.E. Monroe  
+ Garage  
8' P. Out  
379.00

The image shows an open notebook with two facing pages. Both pages are cream-colored and feature light blue horizontal ruling. Each page has two vertical red margin lines, one on each side of the central gutter. The pages are otherwise blank. In the top right corner of the right page, the number '63' is printed in a small, red, sans-serif font. The notebook is placed on a white surface, and the dark cover of the notebook is visible at the very edges.

Cross Section 36 1/2 ft  
Adams to Mountain View

60' wide  
12' Cb's  
9' Q's

Indexed  
C.S.K.

Nov. 21-39  
Sunday  
Northboro  
O.S. 64

BM. 6.50 392.28 385.78

S.F.B.P.  
Adams &  
Cherof...

0-12 = 1/2 Cb Adams

E Top Cb 4.60 387.68

Gutter on Pav 5.02 386.96

Cb " " 5.27 387.01

1/4 " " 5.22 387.06

1/2 " " 5.23 387.05

1/4 " " 5.24 387.04

Cb " " 5.18 387.10

1/2 Gutter " " 5.07 387.21

1/2 Top Cb 4.45 387.83

0+0 = 1/2 Adams

1/2 Cb Top 4.37 387.91

Gutter on paving 4.97 387.31

1/4 " " 4.61 387.67

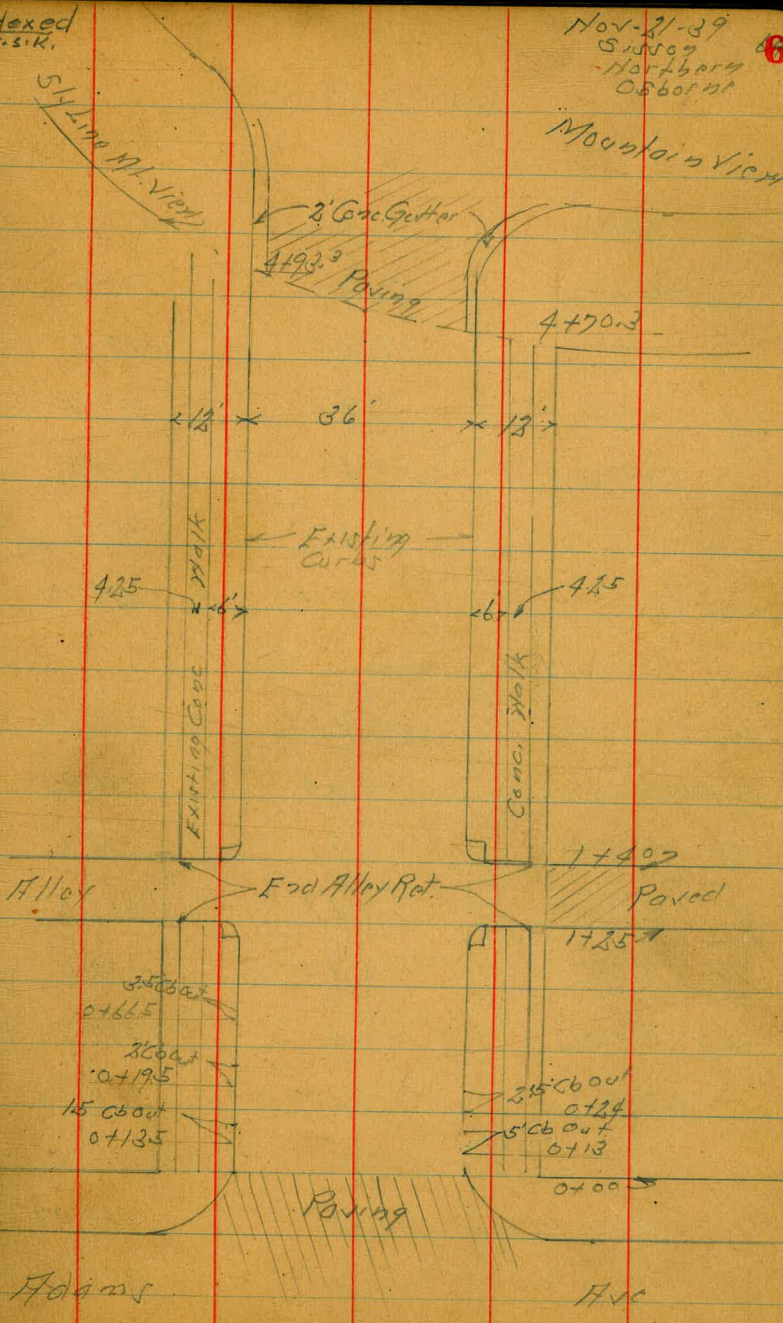
1/2 " " 4.52 387.76

1/4 " " 4.63 387.65

Gutter " " 5.08 387.20

ECb Top 4.51 387.77

Notes Rec'd. plot. 11-25-39 opposite 1628  
C.S.K.



392.28

0750

E cb Top	4.37	387.91
Gutter	4.9	387.4
1/4	4.5	387.8
1/2	4.4	387.9
1/4	4.6	387.7
Gutter	4.7	387.6
W cb Top	4.15	388.13

170

W cb	3.83	388.45
Gutter	4.4	387.9
1/4	4.1	388.2
1/2	4.1	388.2
1/4	4.3	388.0
Gutter	4.6	387.7
E cb Top	4.19	388.09

1725 = S b Alley

E on Alley Paving	3.91	388.37
Cb Top	4.17	388.11

392.28

Gutter	4.4	387.9
1/4	4.1	388.2
1/2	4.0	388.3
1/4	4.0	388.3
Gutter	4.1	388.2
W cb Top	3.74	388.54
17025 = End Alley Ret.	3.95	388.83

1740

W cb - 10.25 = End Alley Ret.	3.28	388.90
Cb	3.59	388.69
Gutter	4.0	388.3
1/4	3.9	388.4
1/2	3.9	388.4
1/4	4.1	388.2
Gutter	4.4	387.9
E cb	4.04	388.24
E on Alley Ret.	3.86	388.42

392.28

1+50

Ecb Top	3.88	388.40
Gutter	4.5	387.8
1/4	4.1	388.2
1/2	3.9	388.4
1/4	3.9	388.4
Gutter	4.0	388.3
Hcb Top	3.60	388.68

2+0

Hcb Top	3.27	389.01
Gutter	3.7	388.6
1/4	3.7	388.6
1/2	3.7	388.6
1/4	3.8	388.5
Gutter	4.0	388.3
Fcb Top	3.65	388.63

2+50

Fcb Top	3.45	388.83
Gutter	3.9	388.4

392.28

1/4	3.5	388.8
1/2	3.3	389.0
1/4	3.4	388.9
Gutter	3.6	388.7
Hcb Top	3.02	389.26
3+0		
Hcb Top	2.81	389.47
Gutter	3.3	389.0
1/4	3.2	389.1
1/2	3.2	389.1
1/4	3.4	388.9
Gutter	3.6	388.7
Fcb Top	3.19	389.09
TP	7.40	395.85
3+50		
Fcb Top	6.55	389.30
Gutter	7.0	388.9
1/4	6.7	389.2
1/2	6.5	389.4

395.85

1/4	6.6	389.3
Gutter	6.7	389.2
Wcb Top	6.11	389.74
	4+0	
Wcb Top	5.92	389.93
Gutter	6.4	389.5
1/4	6.3	389.6
1/2	6.3	389.6
1/4	6.6	389.3
Gutter	6.9	389.0
Ecb Top	6.40	389.45
	4+50	
Ecb Top	6.21	389.64
Gutter	6.9	389.0
1/4	6.3	389.6
1/2	6.2	389.7
1/4	6.1	389.8
Gutter	6.2	389.7
Wcb	5.63	390.22

67

395.85

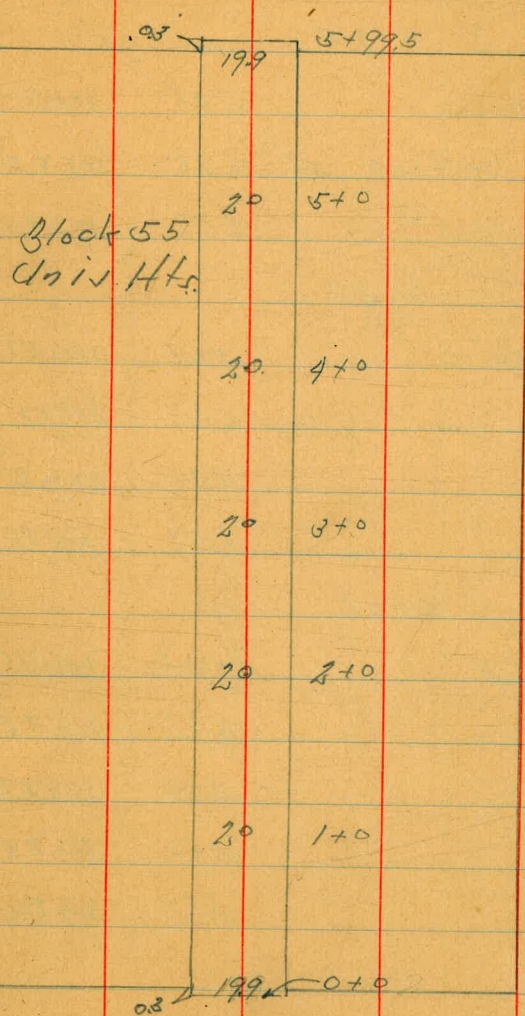
	4+20.3 = Sly Paving on F	
Wcb	5.48	390.37
Gutter	6.0	389.9
1/4	6.0	389.9
1/2	6.1	389.8
1/4	6.4	389.5
Gutter on Pav	6.66	389.19
E Top Cb	6.12	389.73
	4+20.3 on F = Sly Edge Pav. of Mt. View 4+93.3 on W	
Ecb	6.12	389.73
Gutter on Paving	6.66	389.19
1/4	" "	6.27
1/2	" "	6.06
1/4	" "	5.99
Gutter	" "	6.11
Wcb Top	5.48	390.37
TP	332	392.28
8M	6.50	389.06
	6.50	385.78
		SERP Hollow Character 385.78

Final Paving Alley Block 55 Univ. Hts.  
~~INDEXED~~  
EFB

May 23-4 68  
Sisson  
Hortberg  
W Moore

Madison

Alc



Monroe

Alc

Paving Levels S.H. Cor  
36th St + Mountain View Dr.

BM 5.11 395.48 390.37

0-25

Wcb Top 5.06 390.42

Gutter on Pavement 5.66 389.82

5' F " " 5.58 389.90

0-20

Wcb Top 5.03 390.45

Gutter 5.63 389.85

5' F 5.58 389.90

10' F 5.58 389.90

0-15

Wcb Top 5.03 390.45

Gutter 5.62 389.86

5' F 5.59 389.89

10' F 5.60 389.88

15' F 5.62 389.86

0-10

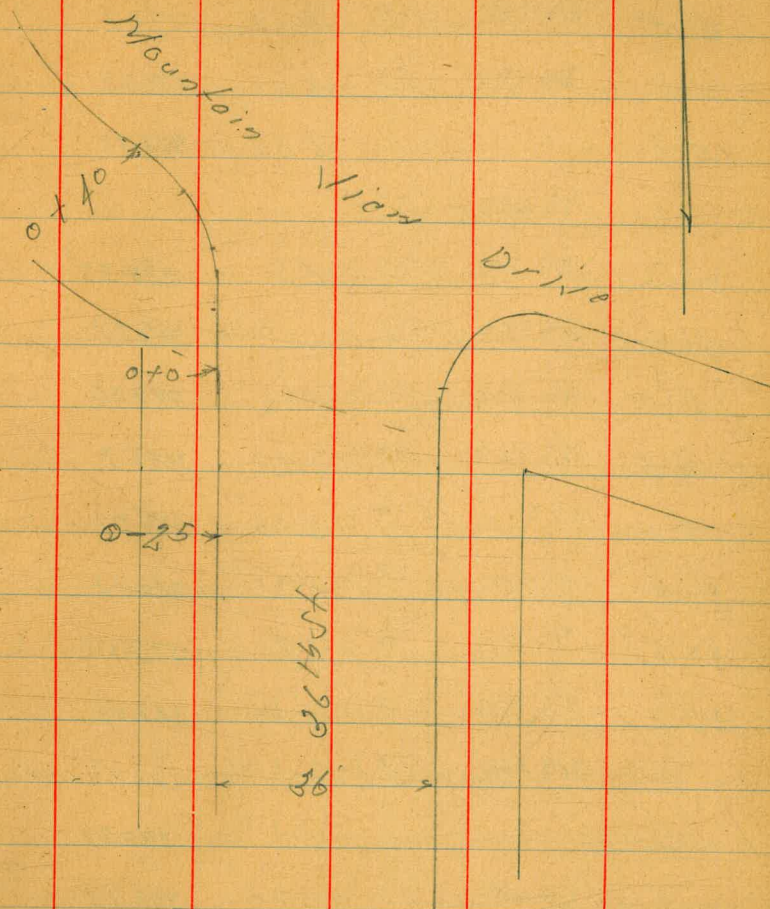
Wcb to Drive 5.59 389.89

Gutter 5.63 389.85

Top of S.H.  
Wcb to Wcb  
36th St.

Oct 28.40  
S. S. 1907  
Northberry  
H. Moore

69





395.48

5' E	5.60	389.88
10' E	5.60	389.88
15' E	5.63	389.85
W Cb Top	5.11	390.37
Gutter	5.67	389.81
5' E	5.62	389.86
10' E	5.59	389.89
15' E	5.66	389.82
20' E	5.71	389.77
30' E	5.90	389.58
36' E	5.99	389.49

0+0 = S L East Mountain View

W Cb Top	5.11	390.37
Gutter	5.73	389.75
5' E	5.63	389.85
10' E	5.60	389.88
15' E	5.69	389.79
20	5.75	389.73

25	5.92	389.56
30	6.02	389.46
0+5		
W Cb Top	5.09	390.39
Gutter	5.72	389.76
2' E Fly 2 Conc Gut	5.62	389.86
5' E	5.58	389.90
10' E	5.60	389.88
15' E	5.71	389.77
20' E	5.78	389.70
25	5.90	389.58
30	5.96	389.52
35	6.05	389.43

0+10

W Cb Top	5.05	390.43
Gutter	5.70	389.78
2' E Fly Conc Gut	5.58	389.90
5' E	5.55	389.93
10' E	5.60	389.88

15' F	5.73	389.75
20	5.77	389.71
25	5.90	389.58
30	5.94	389.54
35	6.02	389.46

0 + 15

WCB TOP	5.00	390.48
Gutter	5.66	389.82
2' F	5.53	389.95
5' F	5.54	389.99
10' F	5.63	389.85
15' F	5.71	389.77
20' F	5.75	389.73
25' F	5.82	389.66
30' F	5.94	389.54
35' F	6.03	389.45

0 + 20

WCB TOP	5.03	390.45
Gutter	5.60	389.88

2' F	5.49	389.99
5' F	5.52	389.96
10	5.59	389.89
15	5.69	389.79
20	5.74	389.74
25	5.82	389.66
30	5.93	389.55
35	6.03	389.45

0 + 25

WCB	5.03	390.45
Gutter	5.60	389.88
2' F	5.48	390.00
5' F	5.44	390.04
10' F	5.62	389.86

0 + 30

WCB	4.99	390.49
Gutter	5.57	389.91
2' F	5.47	390.01
5' F	5.49	389.99

0 + 35

Wcb 4.94 390.54

Gutter 5.57 389.91

2'E 5.46 390.02

5'E 5.51 389.97

0 + 40

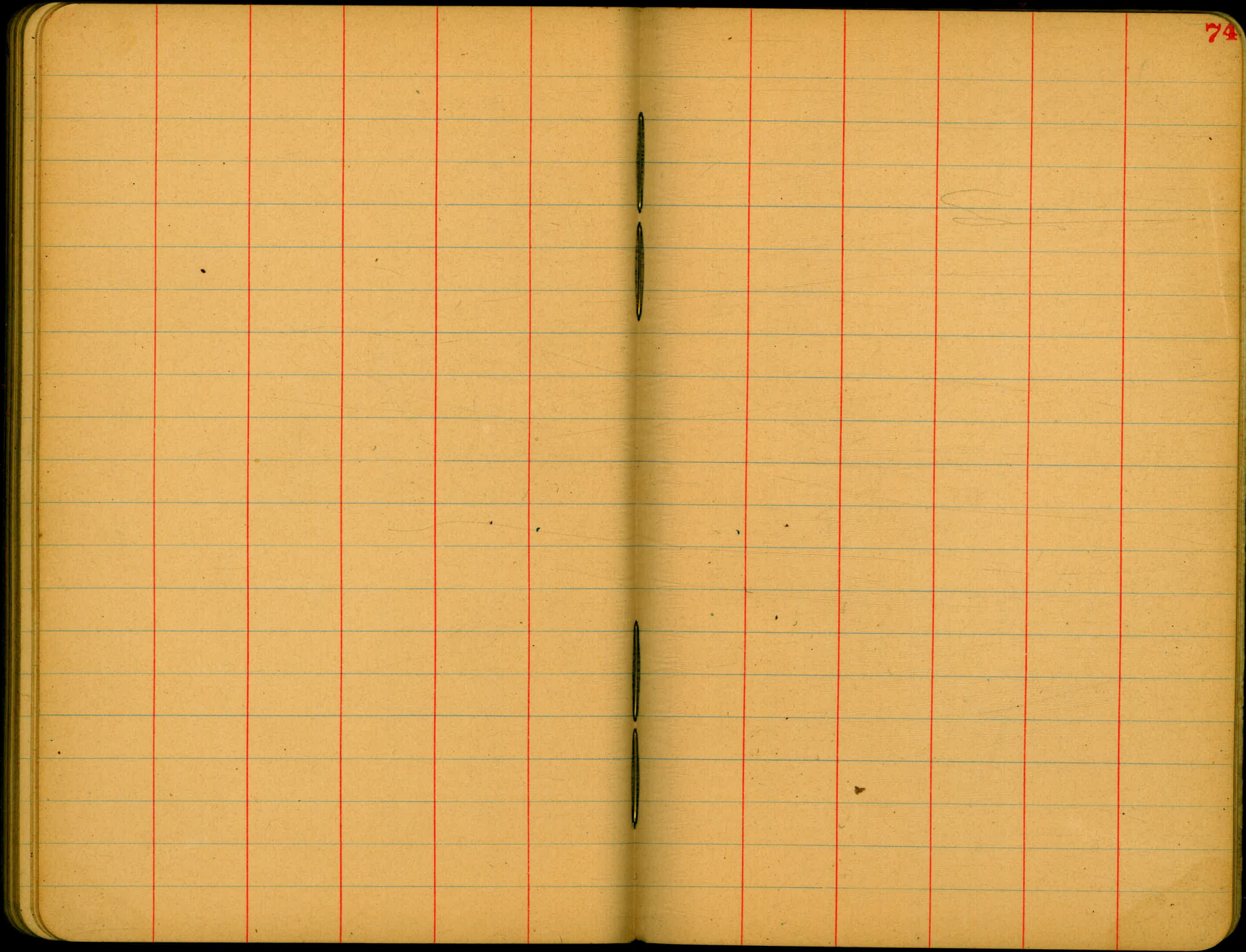
Wcb 4.89 390.59

Gutter 5.52 389.96

2'E 5.43 390.05

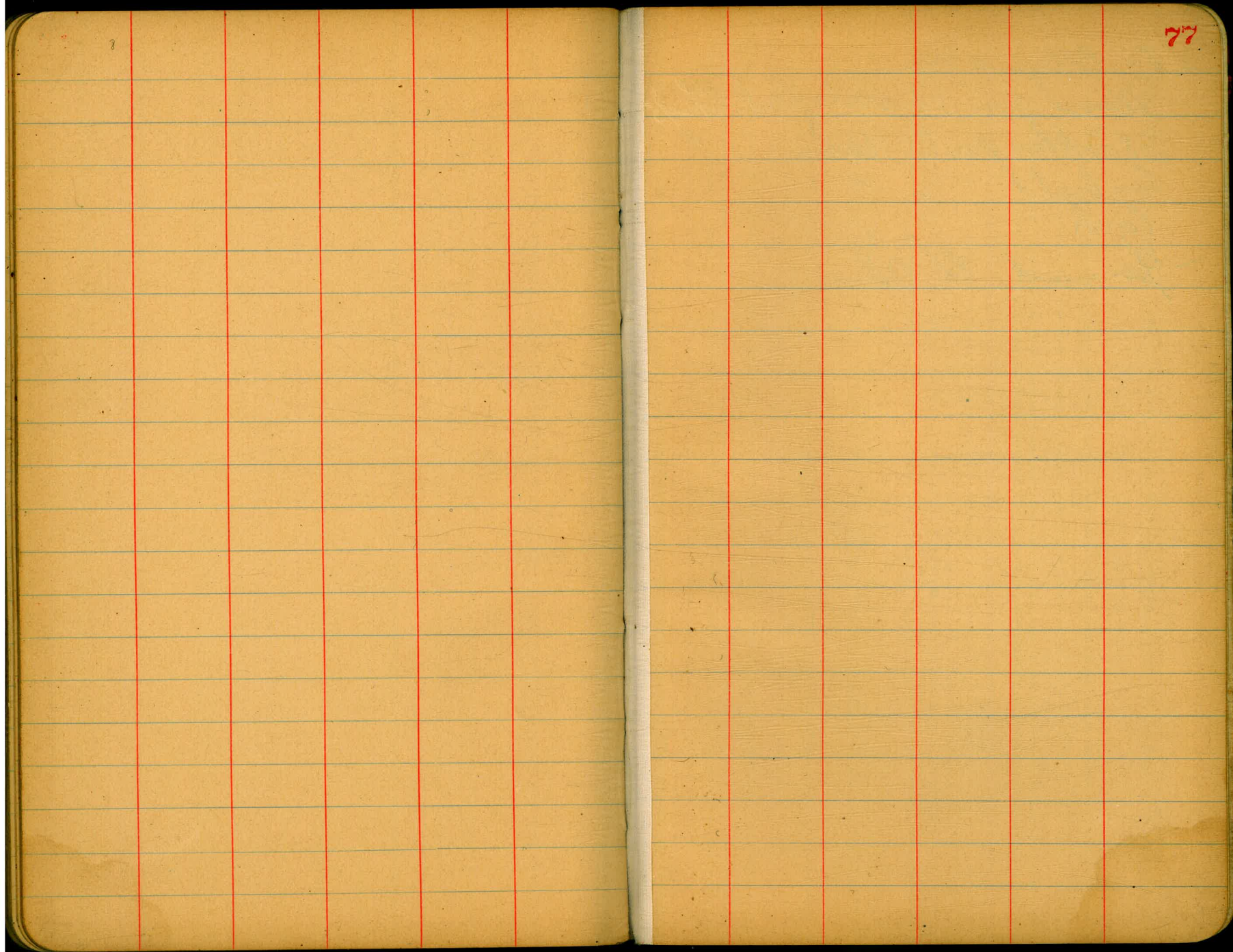
5'E 5.52 389.96













15- El Cajon to Mission  
Mammals from 78 West of Cent. Edwards  
Stockler from El. Mission.  
Central. ✓ ✓  
Combs. ✓ ✓  
- Hammond El. Ohio

36819  
36778  
41

36944  
4.21  
3 65 23

CALCULATION OF EARTHWORK.

Width	HEIGHT														
	1	2	3	4	5	6	7	8	9	10	11	12	13	14	15
1	.02	.04	.06	.07	.09	.11	.13	.15	.17	.18	.20	.22	.24	.26	.28
2	.04	.07	.11	.15	.18	.22	.26	.30	.33	.37	.41	.44	.48	.52	.56
3	.06	.11	.17	.22	.28	.33	.39	.44	.50	.56	.61	.67	.72	.78	.83
4	.07	.15	.22	.30	.37	.44	.52	.59	.67	.74	.81	.89	.96	1.04	1.11
5	.09	.19	.28	.37	.46	.56	.65	.74	.83	.93	1.02	1.11	1.20	1.30	1.39
6	.11	.22	.33	.44	.56	.67	.78	.89	1.00	1.11	1.22	1.33	1.44	1.55	1.67
7	.13	.26	.39	.52	.65	.78	.91	1.04	1.16	1.30	1.42	1.55	1.68	1.81	1.94
8	.15	.30	.44	.59	.74	.89	1.04	1.19	1.33	1.48	1.63	1.78	1.92	2.08	2.22
9	.17	.33	.50	.67	.83	1.00	1.17	1.33	1.50	1.67	1.83	2.00	2.17	2.33	2.50
10	.18	.37	.56	.74	.93	1.11	1.30	1.48	1.67	1.85	2.04	2.22	2.41	2.59	2.78
11	.20	.41	.61	.82	1.02	1.22	1.43	1.63	1.83	2.04	2.24	2.44	2.65	2.85	3.06
12	.22	.44	.67	.89	1.11	1.33	1.56	1.78	2.00	2.22	2.44	2.67	2.89	3.11	3.33
13	.24	.48	.72	.96	1.20	1.44	1.68	1.92	2.16	2.41	2.65	2.89	3.13	3.37	3.61
14	.26	.52	.78	1.04	1.30	1.55	1.81	2.08	2.33	2.59	2.85	3.11	3.37	3.63	3.89
15	.28	.56	.83	1.11	1.39	1.67	1.94	2.22	2.50	2.78	3.06	3.33	3.61	3.89	4.17
16	.30	.59	.89	1.18	1.48	1.78	2.07	2.37	2.67	2.96	3.26	3.56	3.85	4.15	4.44
17	.31	.63	.94	1.26	1.57	1.89	2.20	2.52	2.83	3.15	3.46	3.78	4.09	4.41	4.72
18	.33	.67	1.00	1.33	1.67	2.00	2.33	2.67	3.00	3.33	3.67	4.00	4.33	4.67	5.00
19	.35	.70	1.06	1.41	1.76	2.11	2.46	2.82	3.17	3.52	3.87	4.22	4.57	4.92	5.28
20	.37	.74	1.11	1.48	1.85	2.22	2.59	2.96	3.33	3.70	4.07	4.44	4.81	5.18	5.56
21	.39	.78	1.17	1.55	1.94	2.33	2.72	3.11	3.50	3.89	4.28	4.67	5.06	5.44	5.83
22	.41	.81	1.22	1.63	2.04	2.44	2.85	3.26	3.67	4.07	4.48	4.89	5.30	5.70	6.11
23	.43	.85	1.28	1.70	2.13	2.56	2.98	3.41	3.83	4.26	4.68	5.11	5.54	5.96	6.39
24	.44	.89	1.33	1.78	2.22	2.67	3.11	3.56	4.00	4.44	4.89	5.33	5.78	6.22	6.67
25	.46	.92	1.39	1.85	2.31	2.78	3.24	3.70	4.17	4.63	5.09	5.56	6.02	6.48	6.94
26	.48	.96	1.44	1.92	2.41	2.89	3.37	3.85	4.33	4.82	5.30	5.78	6.26	6.74	7.24
27	.50	1.00	1.50	2.00	2.50	3.00	3.50	4.00	4.50	5.00	5.50	6.00	6.50	7.00	7.50
28	.52	1.04	1.55	2.07	2.59	3.11	3.63	4.15	4.67	5.18	5.70	6.22	6.74	7.26	7.78
29	.54	1.07	1.61	2.15	2.68	3.22	3.76	4.30	4.83	5.37	5.91	6.44	6.98	7.52	8.06
30	.56	1.11	1.67	2.22	2.78	3.33	3.89	4.44	5.00	5.55	6.11	6.67	7.22	7.78	8.33
31	.57	1.15	1.72	2.30	2.87	3.44	4.02	4.59	5.17	5.74	6.32	6.89	7.46	8.04	8.61
32	.59	1.18	1.78	2.37	2.96	3.56	4.15	4.74	5.33	5.92	6.52	7.11	7.70	8.30	8.89
33	.61	1.22	1.83	2.44	3.05	3.67	4.28	4.89	5.50	6.11	6.72	7.33	7.94	8.55	9.17
34	.63	1.26	1.89	2.52	3.15	3.78	4.40	5.04	5.67	6.29	6.93	7.56	8.18	8.81	9.44
35	.65	1.30	1.94	2.59	3.24	3.89	4.53	5.18	5.83	6.48	7.13	7.78	8.42	9.08	9.72
36	.67	1.33	2.00	2.67	3.33	4.00	4.66	5.33	6.00	6.67	7.33	8.00	8.67	9.33	10.00
37	.68	1.37	2.06	2.74	3.42	4.11	4.79	5.48	6.17	6.85	7.54	8.22	8.91	9.59	10.28
38	.70	1.41	2.11	2.82	3.52	4.22	4.92	5.63	6.33	7.03	7.74	8.44	9.15	9.85	10.56
39	.72	1.44	2.17	2.89	3.61	4.33	5.05	5.78	6.50	7.22	7.95	8.67	9.39	10.11	10.83
40	.74	1.48	2.22	2.96	3.70	4.44	5.18	5.92	6.67	7.41	8.15	8.89	9.63	10.37	11.11

Table gives cu. yds. in 1 ft. of a triangle of given width and height. Corrections for tenths of width are one tenth the values found under each height considering the widths from 1 to 9 as tenths and similarly the corrections for tenths of height are one tenth the figures opposite width considering the heights from 1 to 9 as tenths. Thus if  $w = 16.2$  and  $h = 5.3$ , cu. yds.  $= 1.48 \times .028 \times .089 = 1.597$  cu. yds. or practically 160 cu. yds. per 100 ft. If  $w$  exceeds 40 ft., use one half and multiply result by 2, if both  $w$  and  $h$  are large use one half of each and multiply result by 4. Any cross-section may be divided into triangles by the following rule. To the triangle of the sum of the outside cuts (or fills)  $= h$ , and  $\frac{1}{2}$  the roadbed  $= w$ , add the triangles formed by taking the distance out to each break in turn ( $= w$ 's) by the difference between the cuts (or fills) on each side of it ( $= h$ 's) always subtracting the outer from the inner.

2977  
310  
608.2

307.5  
223.5  
304.0  
297.5

ROADWAY FROM CENTER OF ROADWAY FOR CROSS-SECTIONING.

Roadway 16 feet wide. Side Slopes 1 on 1 1/2.  
For Single Track Embankment.

H	0	.1	.2	.3	.4	.5	.6	.7	.8	.9	H
0	8.0	8.2	8.3	8.5	8.6	8.8	8.9	9.1	9.2	9.4	0
1	9.5	9.7	9.8	10.0	10.1	10.3	10.4	10.6	10.7	10.9	1
2	11.0	11.2	11.3	11.5	11.6	11.8	11.9	12.1	12.2	12.4	2
3	12.5	12.7	12.8	13.0	13.1	13.3	13.4	13.6	13.7	13.9	3
4	14.0	14.2	14.3	14.5	14.6	14.8	14.9	15.1	15.2	15.4	4
5	15.5	15.7	15.8	16.0	16.1	16.3	16.4	16.6	16.7	16.9	5
6	17.0	17.2	17.3	17.5	17.6	17.8	17.9	18.1	18.2	18.4	6
7	18.5	18.7	18.8	19.0	19.1	19.3	19.4	19.6	19.7	19.9	7
8	20.0	20.2	20.3	20.5	20.6	20.8	20.9	21.1	21.2	21.4	8
9	21.5	21.7	21.8	22.0	22.1	22.3	22.4	22.6	22.7	22.9	9
10	23.0	23.2	23.3	23.5	23.6	23.8	23.9	24.1	24.2	24.4	10
11	24.5	24.7	24.8	25.0	25.1	25.3	25.4	25.6	25.7	25.9	11
12	26.0	26.2	26.3	26.5	26.6	26.8	26.9	27.1	27.2	27.4	12
13	27.5	27.7	27.8	28.0	28.1	28.3	28.4	28.6	28.7	28.9	13
14	29.0	29.2	29.3	29.5	29.6	29.8	29.9	30.1	30.2	30.4	14
15	30.5	30.7	30.8	31.0	31.1	31.3	31.4	31.6	31.7	31.9	15
16	32.0	32.2	32.3	32.5	32.6	32.8	32.9	33.1	33.2	33.4	16
17	33.5	33.7	33.8	34.0	34.1	34.3	34.4	34.6	34.7	34.9	17
18	35.0	35.2	35.3	35.5	35.6	35.8	35.9	36.1	36.2	36.4	18
19	36.5	36.7	36.8	37.0	37.1	37.3	37.4	37.6	37.7	37.9	19
20	38.0	38.2	38.3	38.5	38.6	38.8	38.9	39.1	39.2	39.4	20
21	39.5	39.7	39.8	40.0	40.1	40.3	40.4	40.6	40.7	40.9	21
22	41.0	41.2	41.3	41.5	41.6	41.8	41.9	42.1	42.2	42.4	22
23	42.5	42.7	42.8	43.0	43.1	43.3	43.4	43.6	43.7	43.9	23
24	44.0	44.2	44.3	44.5	44.6	44.8	44.9	45.1	45.2	45.4	24
25	45.5	45.7	45.8	46.0	46.1	46.3	46.4	46.6	46.7	46.9	25
26	47.0	47.2	47.3	47.5	47.6	47.8	47.9	48.1	48.2	48.4	26
27	48.5	48.7	48.8	49.0	49.1	49.3	49.4	49.6	49.7	49.9	27
28	50.0	50.2	50.3	50.5	50.6	50.8	50.9	51.1	51.2	51.4	28
29	51.5	51.7	51.8	52.0	52.1	52.3	52.4	52.6	52.7	52.9	29
30	53.0	53.2	53.3	53.5	53.6	53.8	53.9	54.1	54.2	54.4	30
31	54.5	54.7	54.8	55.0	55.1	55.3	55.4	55.6	55.7	55.9	31
32	56.0	56.2	56.3	56.5	56.6	56.8	56.9	57.1	57.2	57.4	32
33	57.5	57.7	57.8	58.0	58.1	58.3	58.4	58.6	58.7	58.9	33
34	59.0	59.2	59.3	59.5	59.6	59.8	59.9	60.1	60.2	60.4	34
35	60.5	60.7	60.8	61.0	61.1	61.3	61.4	61.6	61.7	61.9	35
36	62.0	62.2	62.3	62.5	62.6	62.8	62.9	63.1	63.2	63.4	36
37	63.5	63.7	63.8	64.0	64.1	64.3	64.4	64.6	64.7	64.9	37
38	65.0	65.2	65.3	65.5	65.6	65.8	65.9	66.1	66.2	66.4	38
39	66.5	66.7	66.8	67.0	67.1	67.3	67.4	67.6	67.7	67.9	39
40	68.0	68.2	68.3	68.5	68.6	68.8	68.9	69.1	69.2	69.4	40

Example—If point is 22.6 ft. above grade, how far should it be from center line to be a slope stake point? Ans. from Table 41.9. For same slopes but other widths of roadbed correct above figures by one-half difference in width of roadbed; thus in example above for 20 ft. roadbed distance will be  $41.9 + (20 - 16) \times 2$  or 2 ft. added to 41.9 = 43.9. For slopes of 1 on 1 see inside of front cover.