

100E
EL CAJON

DIST 69

MINING
TRANSIT BOOK

384

F.B. 595

F. B. 595

MICROFILMED
DEC 14 1964

FREDERICK
POST
COMPANY
SAN FRANCISCO, CAL.

Ind.

Page.

El. Cajon From Euclid to Pueblo. 1 to 17

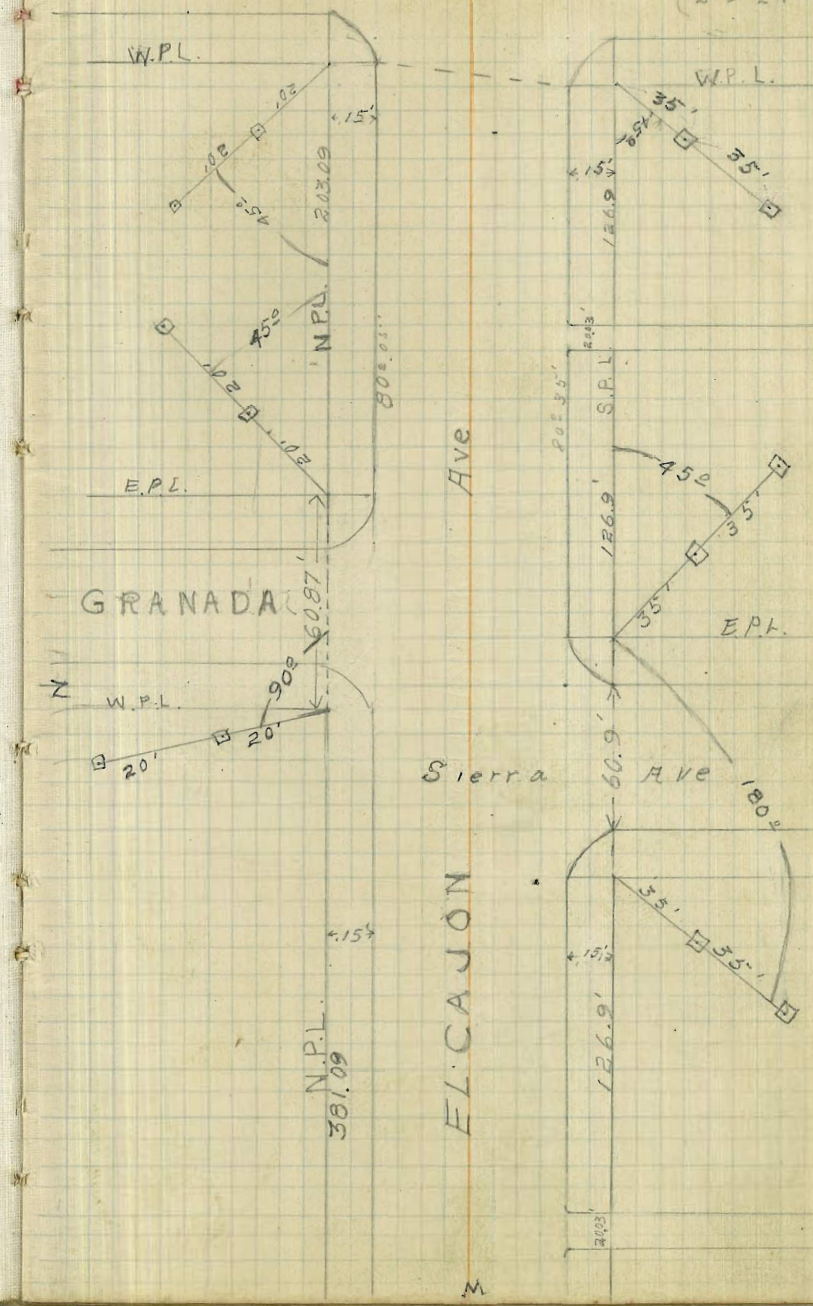
Monroe From 5th st to Central 19+20

Olive From 5th st to Reed - 22+23

Fairmount ave. El. Cajon to olive. 24

Walker
Preston
Hartigan
2-9-24

EUCLID AVE



E

Ave

Sierra Ave

EL CAJON

M

GRANADA

W.P.L.

E.P.L.

W.P.L.

N.P.L.
381.09

80 ft. r.s.

W.P.L.

E.P.L.

S.P.L.

126.9'

2003

180°

35'
85'
35'

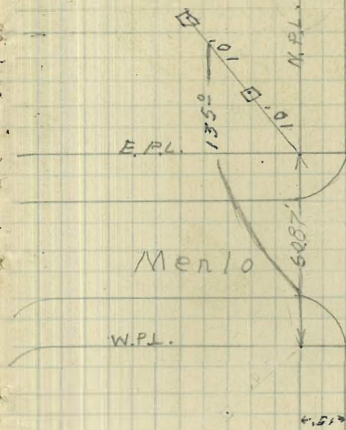
45°
35'

35'
35'

15°

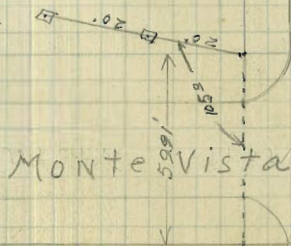
15°

7' Lead plugs on El Cajon are square to El Cajon only with a 45° Turn.



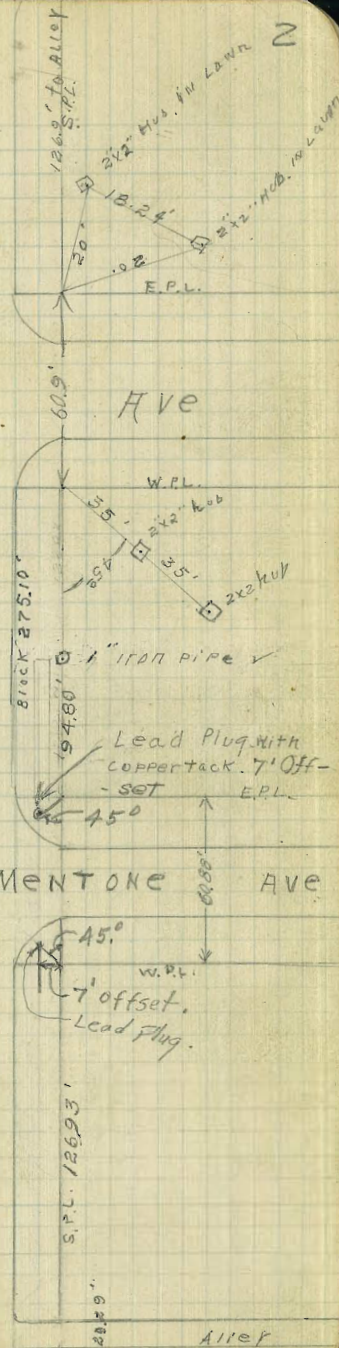
W.P.L.

N.P.L. 388.5'



Ave

EL CAJON



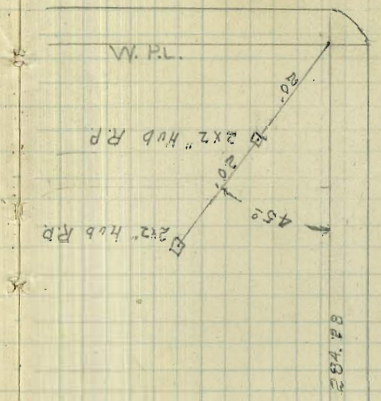
Ave

MENTONE AVE

Alley

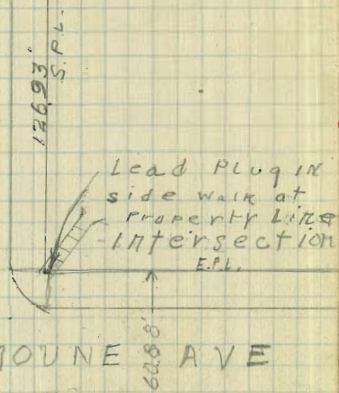
East
MONTE VISTA

3



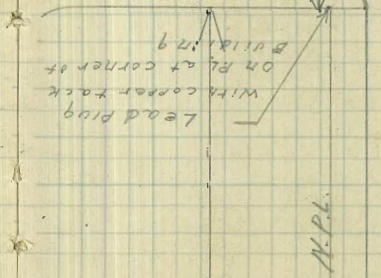
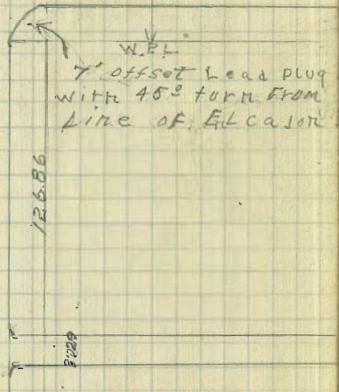
AVE

CHAMOUNE AVE

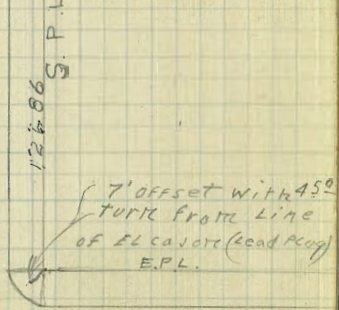


EL CAJON

ORCHARD AVE



CABRILLO AVE



Lead Plug
with corner tack
on R.L. at corner of
Building

distance on next page

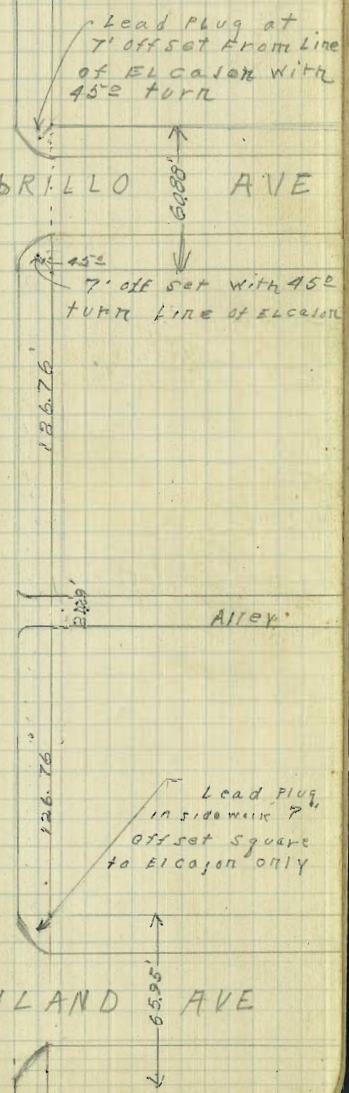
This block is .23 long making the corrected distance 443.58'

E
AVE

EL CAJON

CABRILLO AVE

HIGHLAND AVE



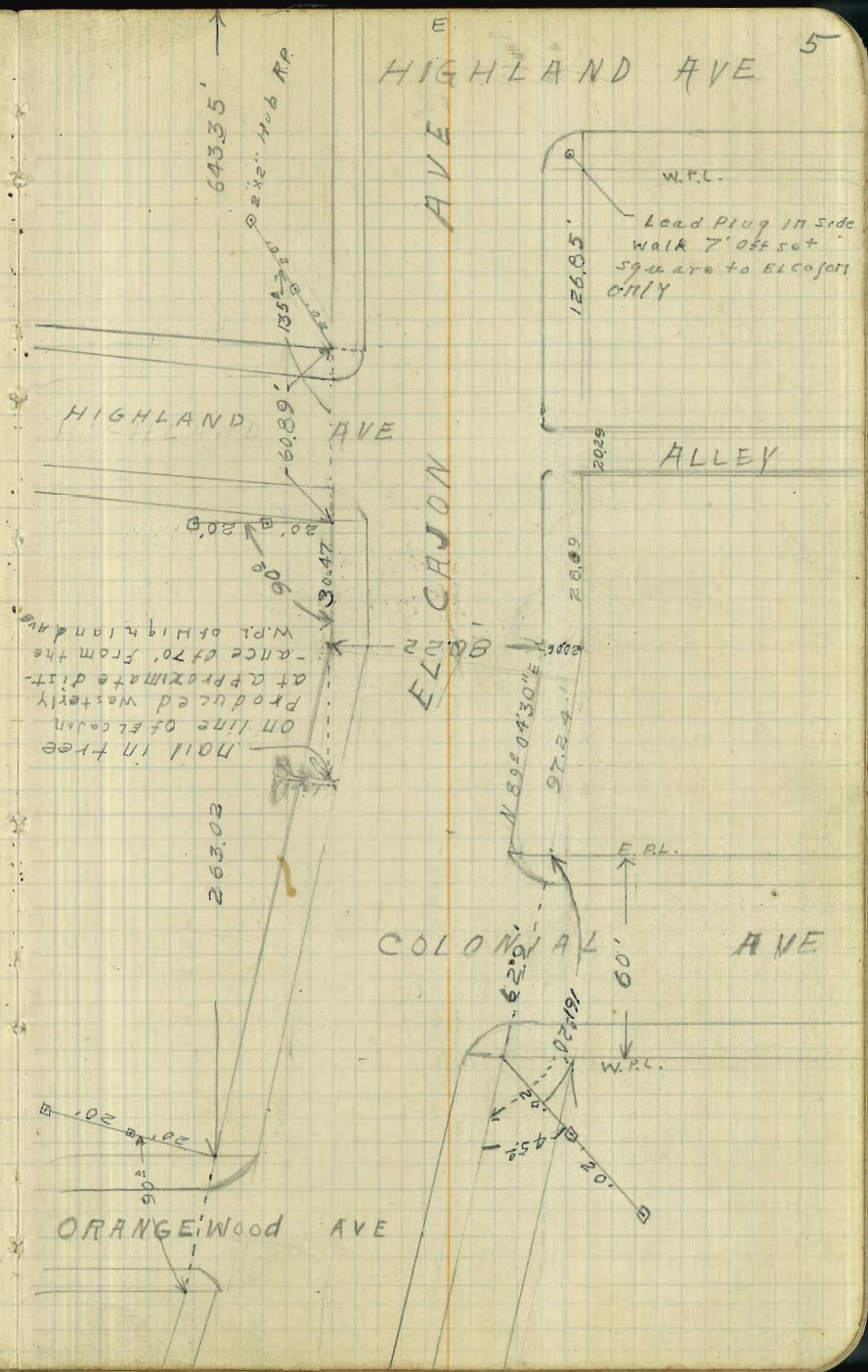
HIGHLAND AVE

AVE

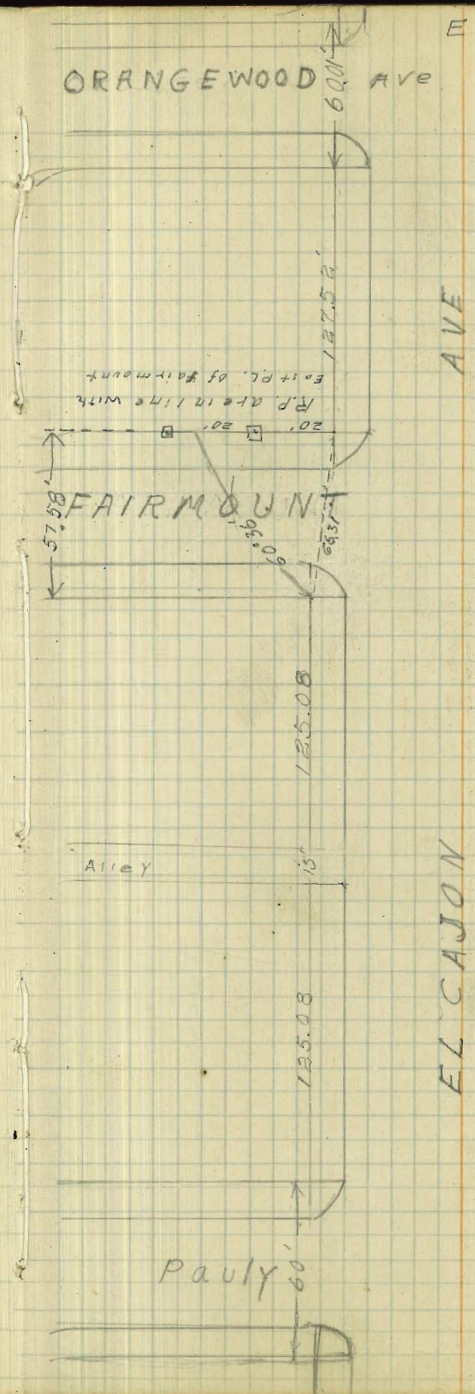
EL CAJON

COLONIAL AVE

ORANGEWOOD AVE



ORANGEWOOD AVE



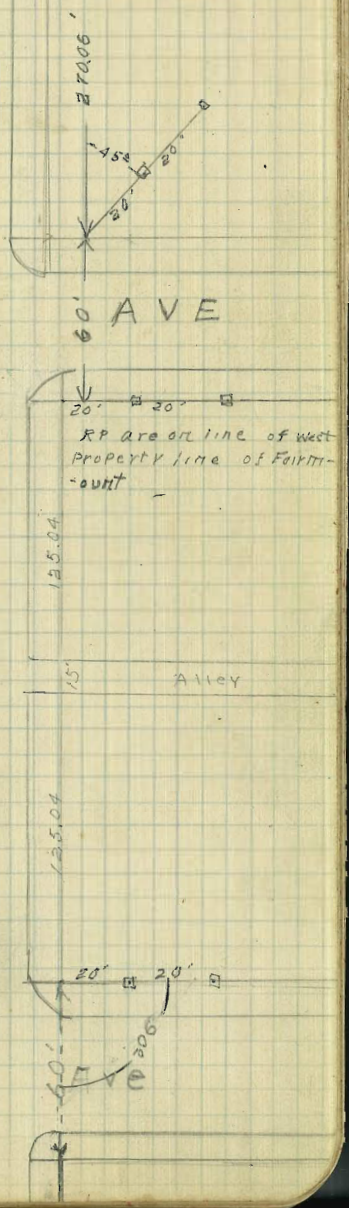
E

AVE

EL CAJON

270.06'

60 AVE



20'

15.04'

15'

125.04'

20'

20'

20'

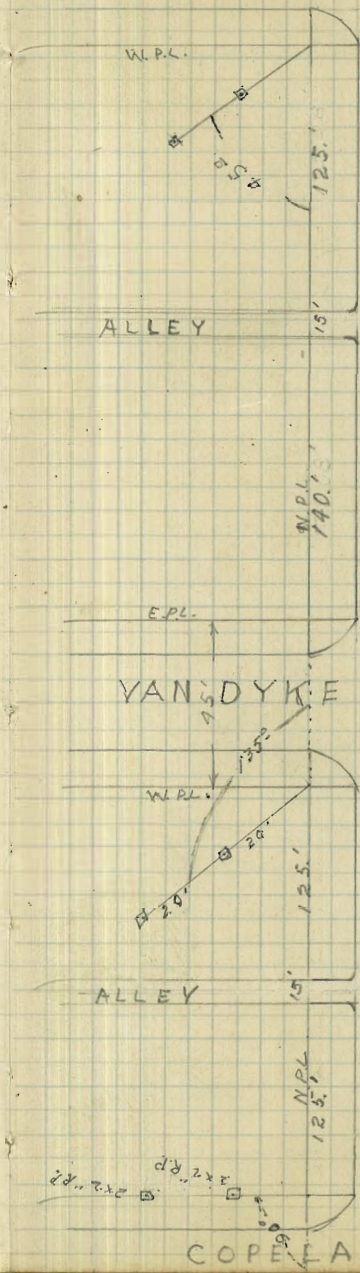
20'

PAULY

E

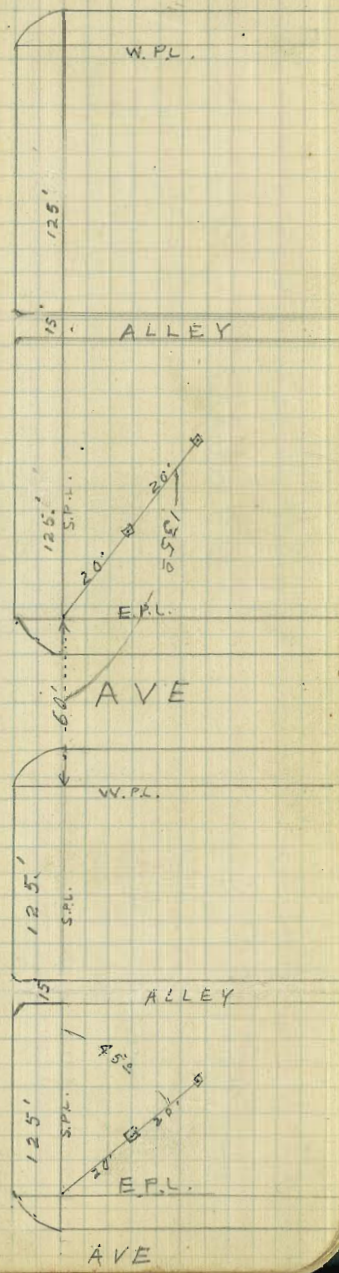
AVE

7



AVE

EL CAJON



COPELAND

W.P.L.

60'

N.P.L. 125'

Alley

15'

110'

E.P.L.

5TH

80'

20' 20' 20'

N.P.L. 124.25'

Alley

15'

Block 13, 1, 1889

90°

12.5'

20' 20' 20'

STOCKTON

E

AVE

EL CAJON

AVE 8

60'

W.P.L.

S.P.L. 125'

Alley

15'

S.P.L. 110'

E.P.L.

80'

W.P.L.

S.P.L. 125'

Alley

15'

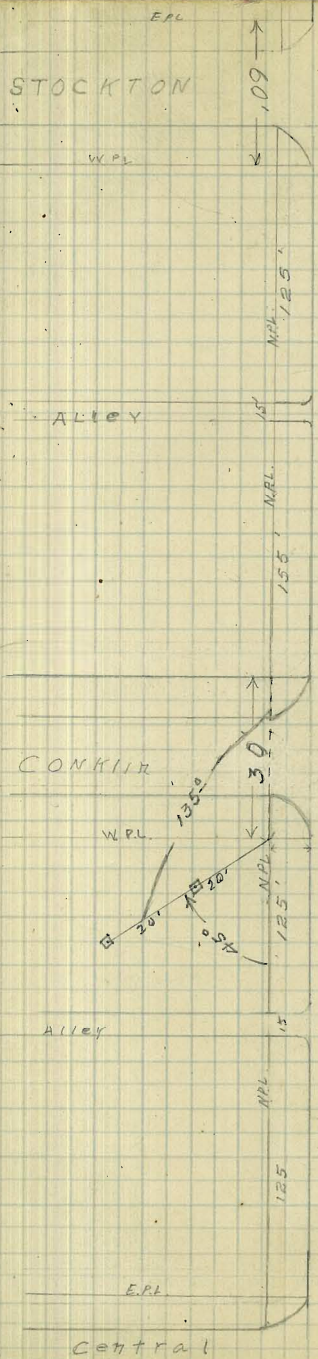
S.P.L. 125'

45°

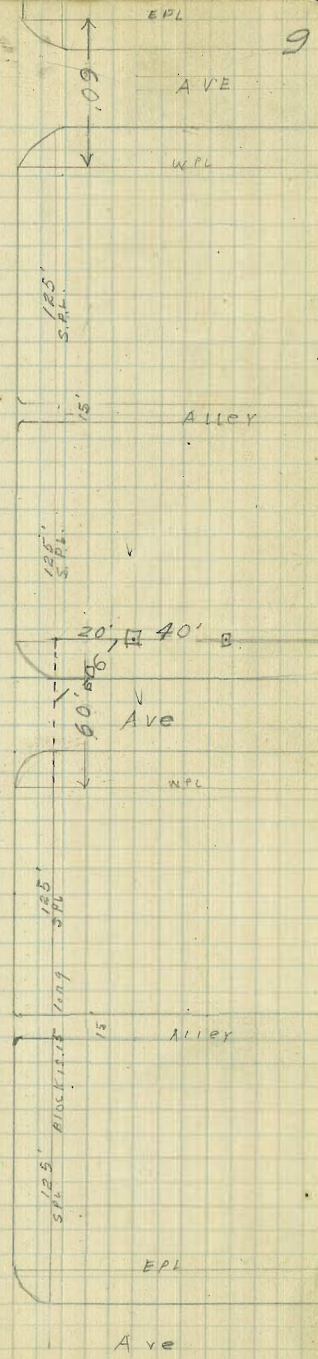
E.P.L.

AVE

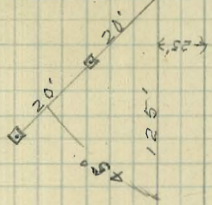
12.5
13.5
1.5
29.5



E
AVE
EL CAJON



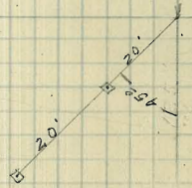
Central



Alley

125'

4TH



Alley

265'

DALEY AVE

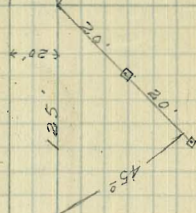
E

Ave

El Cajon

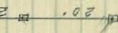
10

Ave



Alley

125'

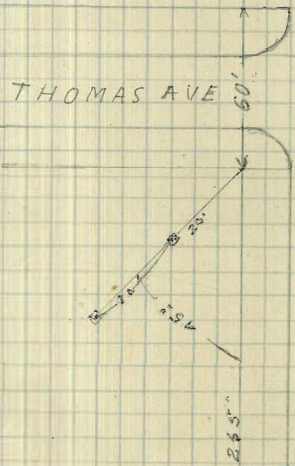
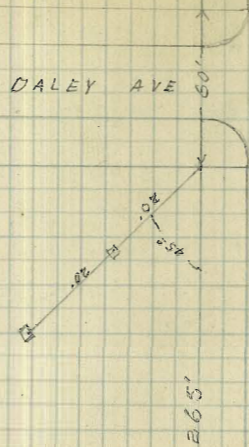


STREET

240'

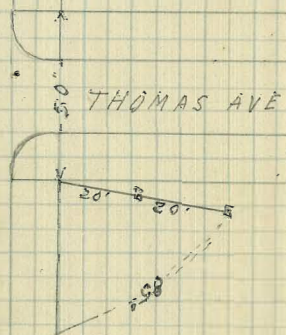
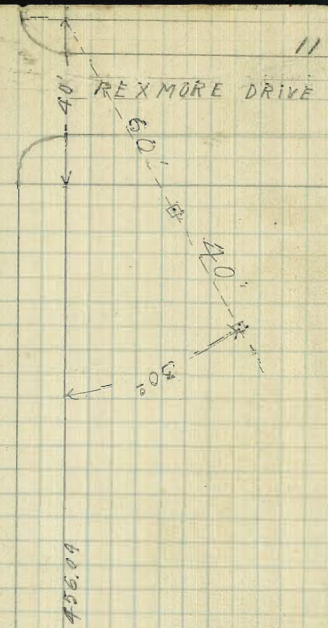
Alley

REXMORE DRIVE



E

FL CAJON AVE



11

REED AVE

90°

20' 20'

265'

E
AVE

3rd

80'

120'¹⁶
E L CANYON
120'

446.16'

26'

STREET

30'

125'

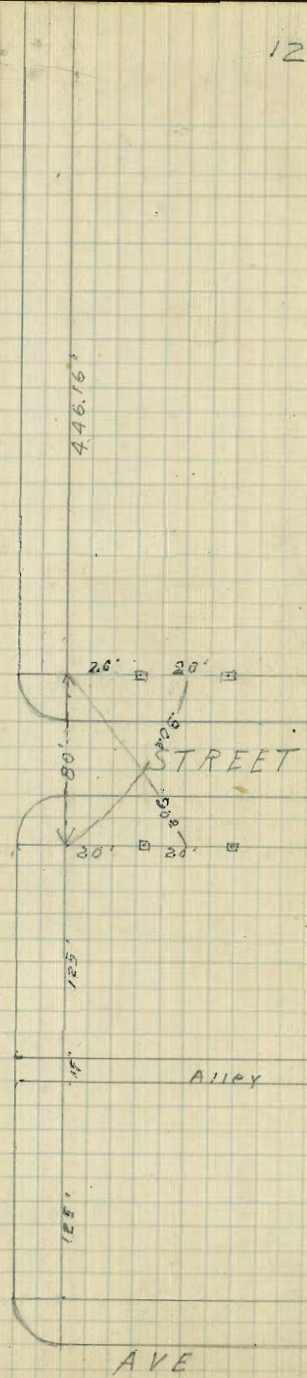
14'

Alley

265'

CHEROKEE

AVE



CHEROKEE

60'

265'

STOREY

60'

265'

WILSON

E

EL CAYON AVE

60'

AVE

30'

30'

125'

15'

Block 15-52 Lorry dist. 26522'

Alley

125'

60'

AVE

30'

20'

125'

15'

Alley

125'

AVE

WILSON

60'

265'

2ND

80'

265'

SEA VIEW

60'

E

Ave

El Cajon

60'

Ave

265.08'

124.04

126.04

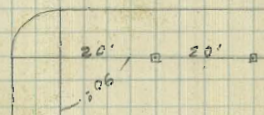
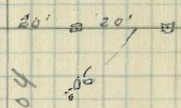
80'

Pacific Ave

265.08'

60'

SWIFT ST



SEA VIEW

E

15

Swift St

20' 20'

206

265'
Block 16.24 long Making
the correct dist 265.24'

20' 20'

206

Perfect St

60'

EL CAJON

Scott Ave

60'

265'

265'

Prospect St

60'

60'

Wabash Ave

PROSPECT ST

60'

265'

80'

496'

35TH ST

E
EL CAJON AVE

16

WABASH AVE

60'

80'

20'

30'

265'

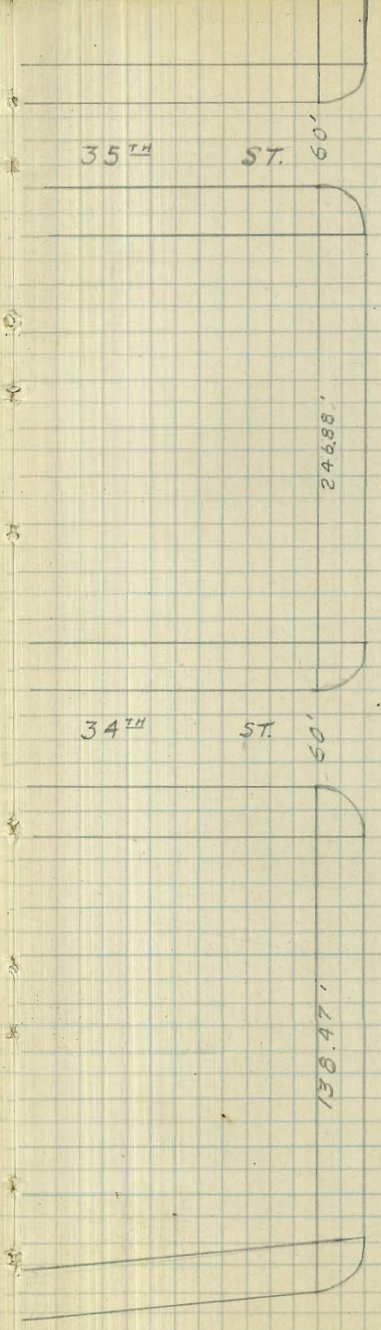
80'

STREET

80'

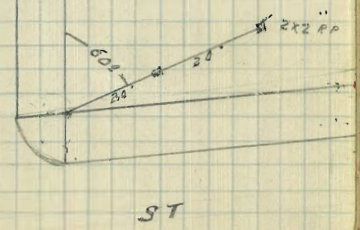
75'

25'



E
AVE
EL CAJON

966'



ST

BOUNDARY

East

19

5th

5th

365.25'

Ave

60'

Stockton Ave

90°

20'

Monroe

265.08'

45°

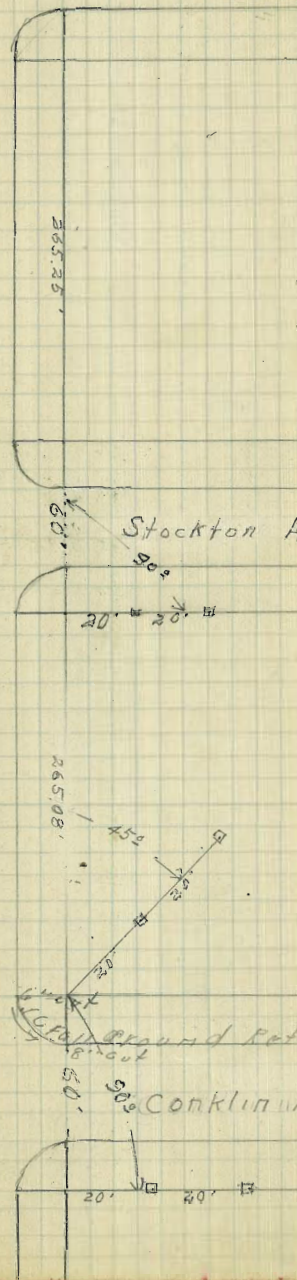
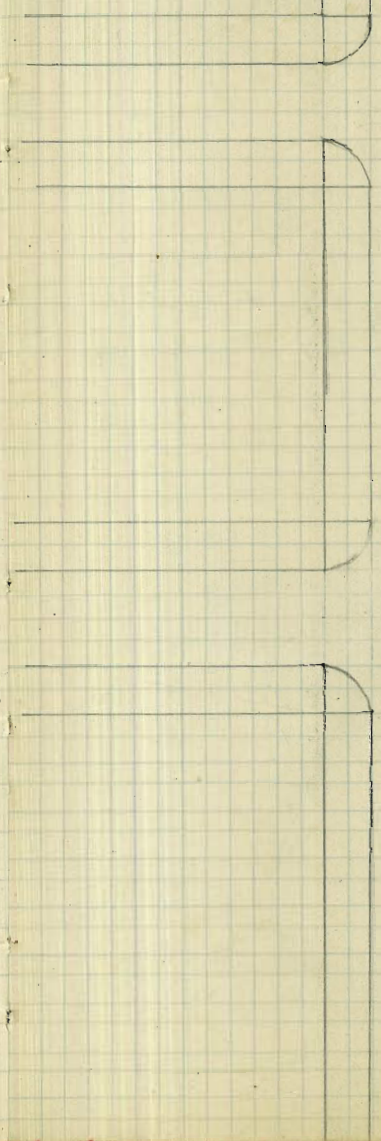
Underground Return
Main

50'

Conklin Ave

20'

20'



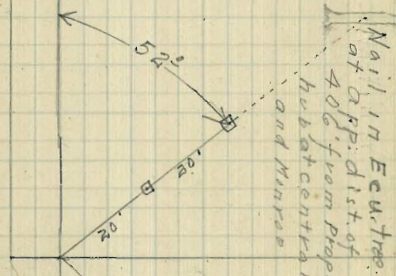
Conklin ave

10' cut

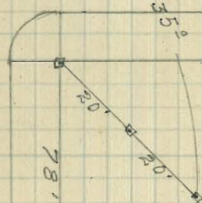
In fall around Return

5' cut

Ave



Central ave

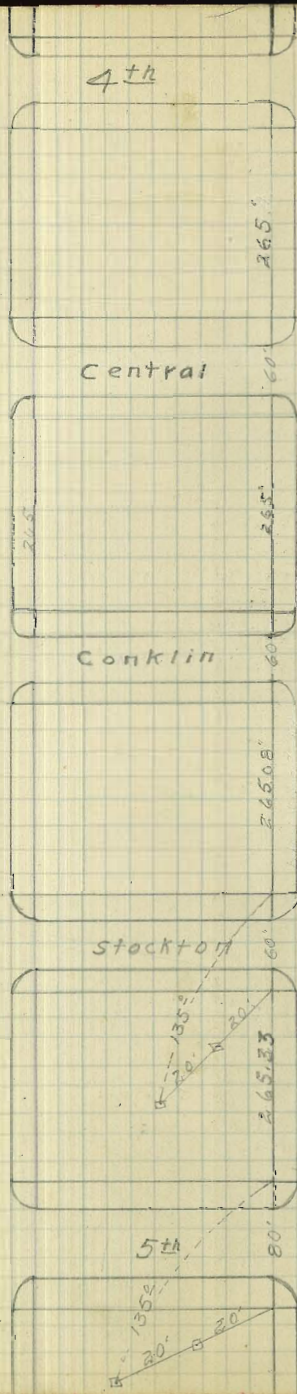


Monroe

Red yew hrb on south line of Monroe Ave

Ave

EL COJON



West

4th

Central

Conklin

Stockton

5th

80'

265'

60'

265'

60'

265.08'

60'

265.23'

80'

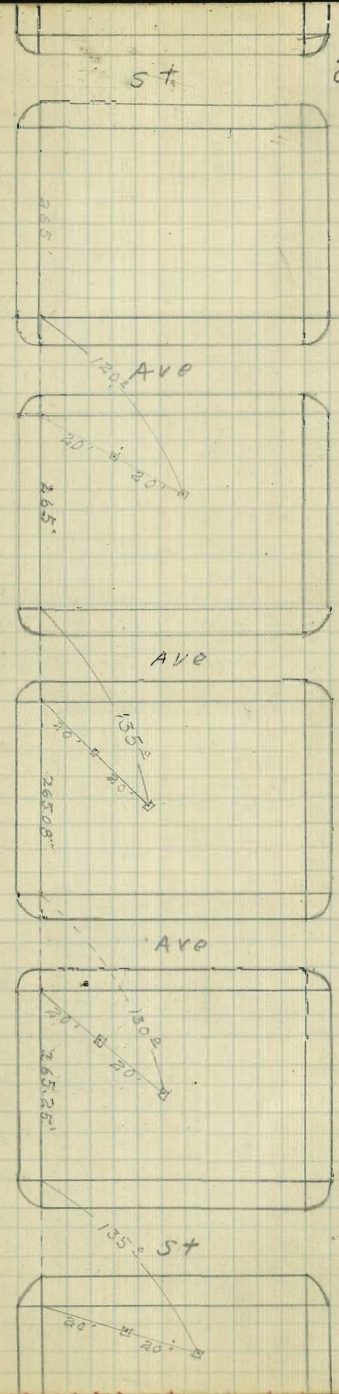
ST

OLIVE

80'

5th

22



Ave

MORROE

265'

60'

265'

265.08'

265.23'

80'

Ave

Ave

Ave

135° ST

80'

20'

20'

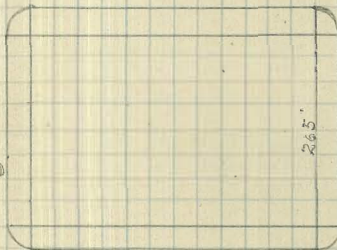
20'

20'

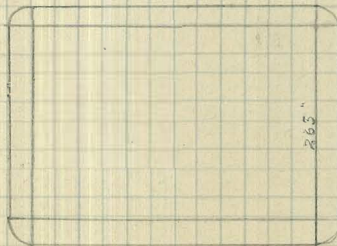
EL CAJON Ave



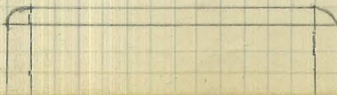
Reed



Daley



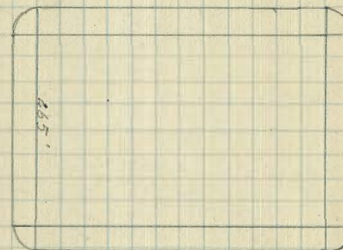
4th



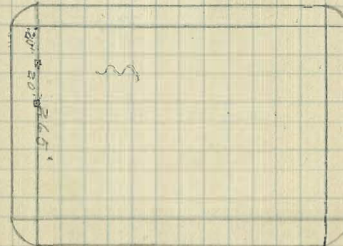
Ave



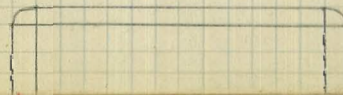
Ave



Ave



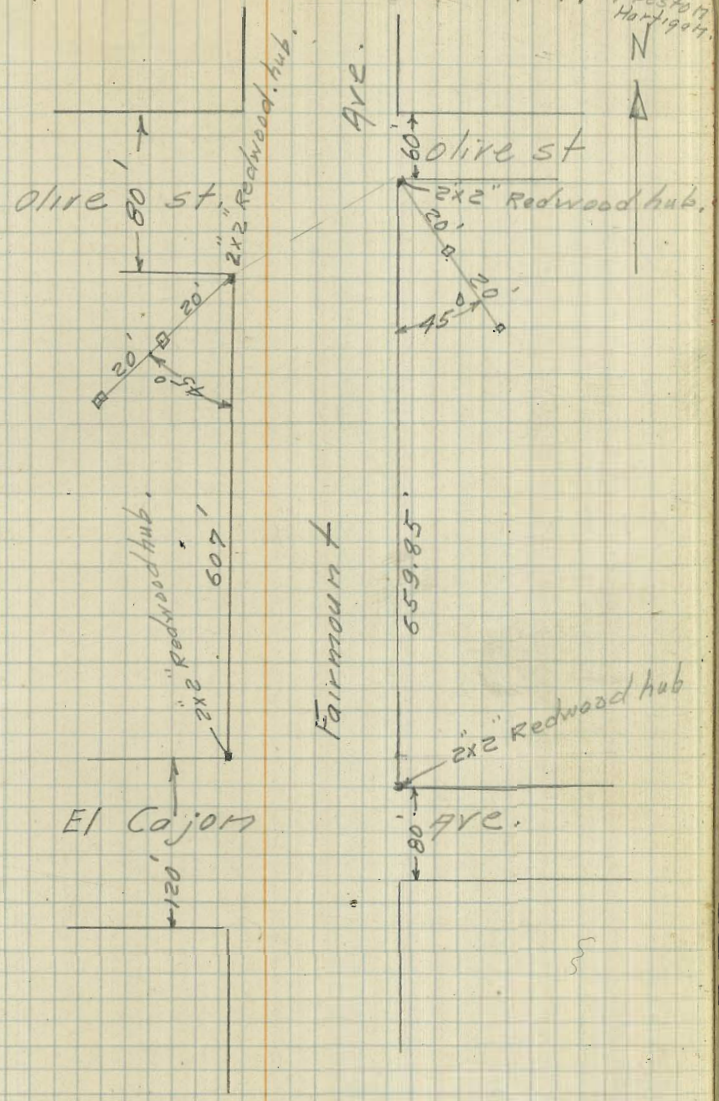
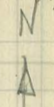
5th



Ave

Monroe

24 Hile
Walker
5/13/24. Preston
Hardy



Harbor St. Levels

0+50

0+00 N.L. Fish

00-14 N of Line Fish

00-31.2

00-40 E Fish

00-80 = 2L Fish

T.P. 3.06 9.53 ✓ 5.97 6.47

N.E.B.P. 7.20 12.44 ✓ 5.24

Pacific Beach

City Datum

LT.

90 4.19 5.34
4.5 4.63 4.90

4.44 5.29 8.11
4.73 4.80

4.43 5.30 9.0 8.11
4.63 4.90 4.5

4.40 5.33 9.0
4.03 5.50 9.0
4.61 4.92 4.5

4.43 5.30 9.0
4.08 5.45 9.0
4.72 4.81 4.5

4.47 5.26 9.0
4.03 5.50 9.0
4.67 4.86 4.5

Bessel's

5.17 4.36
5.50 4.08

5.15 4.38
5.45 4.08

5.17 4.36
5.42 4.11 3.0

5.12 4.41
5.32 4.21 3.0

5.14 4.39
5.39 4.14 3.0

5.07 4.42
5.33 4.15 3.0

RT.

60-907 5.74 3.79

5.71 3.82

5.65 3.88 2.0

5.66 3.82 2.0

5.72 3.81 2.0

5.63 3.90 2.0

26

60-66 6.37 3.16

6.51 3.02

6.10 6.80

5.98 6.69 3.73 2.5
5.55 2.0 1.35

5.83 3.70 2.5

5.89 3.64 2.5
6.13 3.40 1.35

5.86 3.67 2.5
6.57 2.96 2.5

9.53 ✓

+50

3400

+50

7400

+50

1400

9.53 ✓

	LT	RT	GASOLINE	30	60	27	
	90	45				60-06	
	4.21 5.37	4.63 4.90	5.20 4.33	5.50 4.03	5.77 3.76	6.42 3.11	
	4.40 5.33	4.63 4.90	5.19 4.34	5.47 4.06	5.81 3.72	6.43 3.10	
	4.22 5.31	4.53 5.00	5.19 4.34	5.48 4.05	5.78 3.75	6.44 3.11	
	3.87 5.66 11.5	4.24 5.29	4.53 5.0	5.19 4.34	5.47 4.06	5.76 3.77	6.38 3.15
	4.18 5.35	4.73 4.80	5.18 4.35	5.49 4.04	5.76 3.77	6.37 3.12	
	3.86 5.07 11.5	4.20 5.33 9.0	4.63 4.90	5.16 4.37	5.46 4.07	5.75 3.78	6.38 3.15

9.531
3

+50

6+00

+50

5+00

+50

4+00

T.P.

660

1309v

310

643

LT

Baseline

RT

90v

28⁰⁶

90

45

30

60

60

4.28
8.81

4.69
8.40

5.17
7.92

5.46
7.63

5.75
7.34

6.37
6.74

3.88

921
115

4.27
8.84

4.69
8.40

5.16
7.93

5.47
7.62

5.78
7.31

6.44
6.67

4.29
8.80

4.69
8.40

5.16
7.93

5.47
7.62

5.79
7.30

6.44
6.65

4.26
8.83

4.59
8.50

5.14
7.95

5.45
7.64

5.73
7.36

6.35
6.74

4.25
884
90

4.69
8.40

5.22
7.87

5.46
7.63

5.77
7.32

6.39
6.70

3.86

923
115

4.26
8.83
90

4.79
8.50

5.20
7.89

5.45
7.64

5.76
7.33

6.38
6.71

1309v

+37.97 OPPOSITE E of PG

9+00

+50

8+00

+50

7+00

1309

	LT.		Baseline	RT	90	29
	90	45		30	60	60-26
	4.17	4.59	5.30	5.46	5.69	6.34
	8.94	8.50	7.89	7.63	7.40	6.75
	4.16	4.69	5.19	5.45	5.71	6.35
	8.93	8.40	7.90	7.64	7.38	6.74
	4.19	4.59	5.18	5.45	5.77	6.36
	8.90	8.50	7.91	7.64	7.37	6.73
	3.87			5.43	5.74	6.41
	9.24	4.17	4.59	5.16	5.43	6.41
	11.5	8.92	8.50	7.93	7.66	7.35
	4.18	4.69	5.41	5.46	5.77	6.37
	8.91	8.40	7.88	7.63	7.35	6.72
	4.44	4.79	5.17	5.49	5.74	6.39
	8.85	8.30	7.92	7.60	7.37	6.70

1309
7

#8	7.03	6.06	
#7	7.03	6.06	
#6	7.34	5.77	
#5	7.32	5.76	
#4	7.57	5.52	
#3	7.58	5.51	
#1	7.58	5.51	
#1	oil Co. Valve Boxes	7.68	5.41

10 on ground

9755.50 nly. end 60' conc. pay.

1309 ✓

90 27. 45
 87 30 904 60 30
 30 60 30
 30

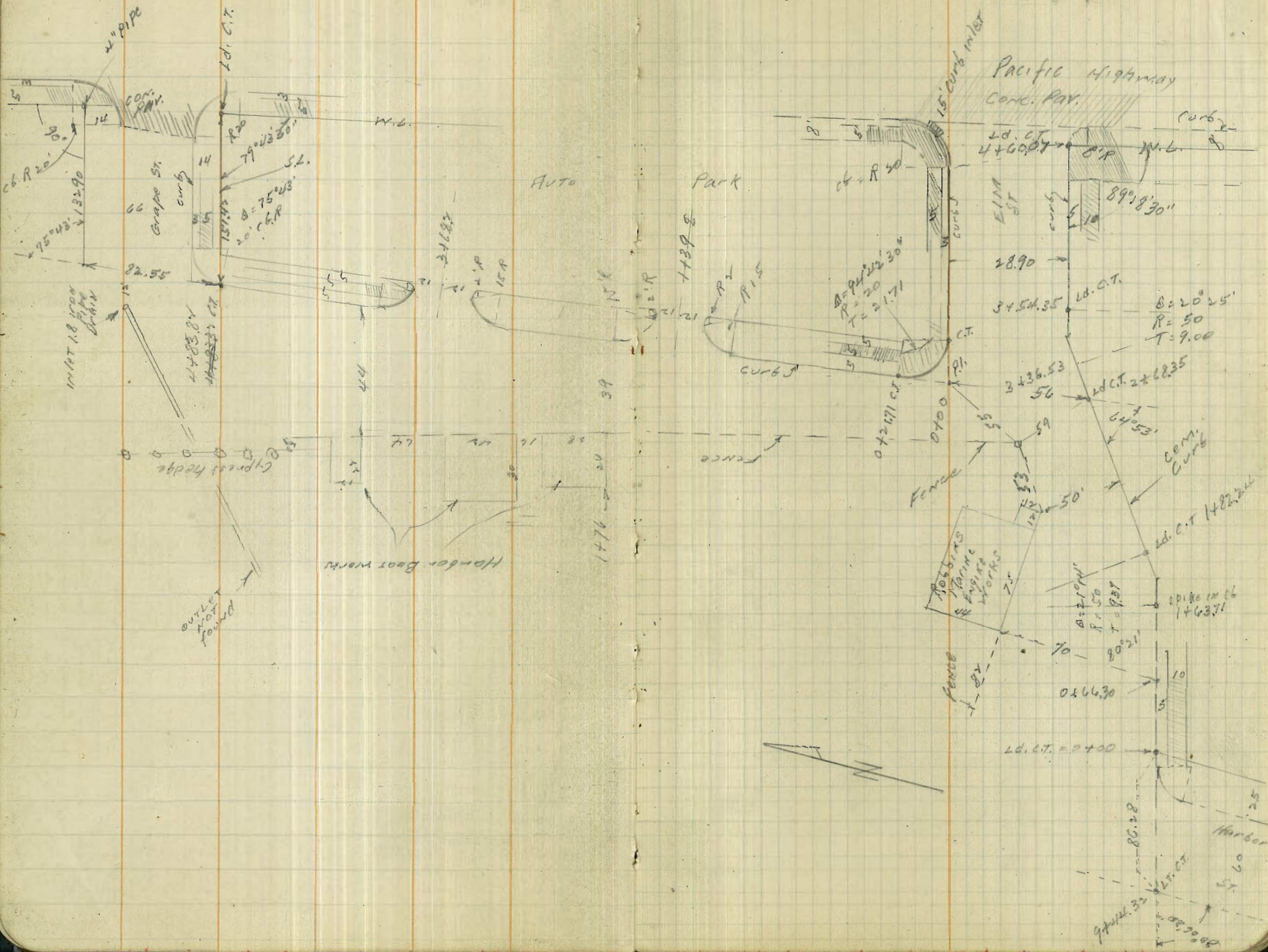
Baseline

4.11	4.29	4.79	4.99	5.49
<u>898</u>	<u>880</u>	<u>830</u>	<u>810</u>	<u>7.60</u>
90				

2.82

4.19	4.49	5.22	5.45	5.74
<u>8.90</u>	<u>8.60</u>	<u>7.87</u>	<u>7.64</u>	<u>7.37</u> par
90				

1309 ✓



Levels on EINT ST.?
Harbor to Pacific

+8224 cb EC

+6371 cb PL

+50

0400 CT curb E.L. Harbor St & Job Line EINT

0-857 = EC Curb Return See P 25

1309-

40' LT
20' 947.
5.99 6.79 6.79 7.31
7.10 6.30 6.30 5.78
GT CB

5.79 6.69 6.79 7.30
7.30 6.40 6.30 5.79
SPIKE
IN
CB

5.69 6.69 6.19 6.87
7.40 6.40 6.90 6.22

5.49 6.79 6.09 6.66
7.60 6.80 7.00 6.43

5.59 6.06 6.09 6.45
7.50 7.03 7.0 6.64
GT

ON THE
PAVING BOX

6.44
6.67

1309v
7

4 + 60.07 ^{500 TAKEN} W.L. Pacific 06 P.C. on South to 06 P.C. on N.

3.74 7.96 7.76 3.76 3.87
 $\frac{11.52}{66}$ $\frac{17.30}{907}$ $\frac{12.50}{E}$ $\frac{10.00}{907}$ $\frac{11.44}{}$

4 + 00

4.59 4.06 4.66 4.66 5.15
 $\frac{10.67}{N 06}$ $\frac{11.40}{907}$ $\frac{10.60}{E}$ $\frac{10.60}{907}$ $\frac{10.11}{}$

3 + 54.35 06 E.C.

5.36 4.76 5.56 5.66 6.20
 $\frac{9.90}{N 06}$ $\frac{10.50}{907}$ $\frac{9.70}{E}$ $\frac{9.60}{907}$ $\frac{9.06}{}$

3 + 36.53 06 P.C.

5.76 4.96 5.56 5.86 6.59
 $\frac{9.50}{N 06}$ $\frac{10.30}{907}$ $\frac{9.70}{E}$ $\frac{9.40}{907}$ $\frac{8.67}{}$

2 + 68.35

5.96 6.36 6.46 6.88
 $\frac{9.30}{40}$ $\frac{8.90}{50}$ $\frac{9.00}{907}$ $\frac{8.38}{}$

2 + 00

5.96 6.66 6.56 7.19
 $\frac{9.30}{40}$ $\frac{8.60}{50}$ $\frac{8.70}{907}$ $\frac{8.07}{}$

check to Brass disc. N.W. Car. 314 12.12 18.286
 U.S.G.S. H8 CIVIC B19.
 T.P. 807 15.261 590 719
 13.09

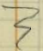
12.12
 6.119
 18.239
 2.047

15.261
 2

W cb on Pacific

15.26 ✓

2.53	3.43	2.64	2.62	2.68	2.90	3.64	3.43	3.77
<u>11.73</u>	<u>11.83</u>	12.67	12.14	<u>12.58</u>	12.30	11.62	12.03	11.49
grate		Pav	Ncb	Pav	Pav	8	9.07	5.0
2 Return	16K.	gut	Pav.				12.29	
		cb PL.					<u>9.07</u>	
							8'	

15.26 ✓


Harbor St.
ELM to Grape

2+00

750

1+00

0+50

+21.71 cb PC

0+00 = Pl. Curb

15.20 ✓

LT.

40

20

947

5000

17
35

5.66
9.60

5.16
10.10

5.16
10.10

5.93
9.33

4.06
11.20

4.66
10.60

5.16
10.10

14 drive
dirt

3.16
12.10

4.46
11.00

5.06
10.20

5.83
9.43

3.16
12.10

4.26
11.00

5.06
10.20

5.81
~~9.43~~

3.96
11.30
40

4.76
10.50
40

5.26
10.00

5.86
9.40 PC cb.
0.71

5.90

9.30
3.71
cb

15.20 ✓
3

4+838v
4+838v = Sk Grape St.

+50

4+00

3+50

T.P. 487 10.53v 9.60 5.66

3+00

3+50

15.26v

5.83 40
4.70
E of Int. Sec. → 5.33
40 N of → 5.70

5.63
4.90

5.63
4.90

5.33
5.70

5.76
9.30

5.76
9.50

20
5.83
4.70

5.53
5.00

5.53
5.00

5.33
5.70

5.56
9.70

5.36
9.90

90v

5.43
5.10

5.43
5.30

5.43
5.10

5.43
5.10

5.36
9.90

5.36
9.90

36
5.92
4.61

5.72
4.61

5.89
4.61

5.43
5.10
indirect
dir

5.90
9.30

5.93
9.33

10.53v
3

15.26v
3

Levels on Grape St
Harbor to Pac.

check to SEBP ^{Grape} Pacific 3.89 6.64 $\frac{6.64}{0.00}$

W 9th Pac. on Pav.

12 W of W 6 Pac. edge Pav.

0+00 E.C. cb Return SW Cor Harbor Grape

0-17

10.531

N.L.

17

NOV

E

9th

S of Grape

37

5.54

$\frac{4.99}{11.2 \text{ Pav}}$

5.33

$\frac{5.20}{\text{Pav}}$
E

5.13

$\frac{5.40}{\text{Pav}}$
S.L.

6.15

$\frac{4.38}{26}$
end Ret.

5.54

$\frac{5.01}{9th \text{ Pav}}$

5.51

5.04

5.70

$\frac{5.33}{9th \text{ Pav}}$

5.83

$\frac{4.70}{66 \text{ PC}}$

6.73

3.80

4.73

5.80

6.03

4.50

6.03

4.50

5.53

5.00

5.91

4.67

4.43

$\frac{4.10}{10.53} = \text{FL. 1.8 Iron Pipe}$
IN LET

10.53 ✓

Harbor St.
E/M to Grape

1+51

1+39

1+27

1+187 CB PC 1+12.18

0+21.71 PC

0+21.71 P.C.

0+00 = P.I.

USGS

324

15.36

1X17

NW Corner
Civic Bldg

15.36

30

E/LK

5.7	6.38	5.8
10.2	8.98	9.6
9rd.	<u>15</u>	9.7
	06	15

5.7	5.7	6.1	6.4	6.1	5.3	4.73	4.4
10.2	9.7	9.3	9.0	9.3	10.1	10.63	11.0
9rd.	<u>15</u>	<u>29</u>	<u>60</u>	<u>90</u>	120	142.5	9.7
	9rd.					06	

5.7	6.36	5.6
10.2	9.00	9.8
9rd.	<u>15</u>	15.7
	14	

5.3	5.84	6.36	5.8
10.1	9.52	9.00	9.6
9rd.	<u>15</u>	<u>15</u>	9.7
		06	

4.59	3.95
10.77	11.41
<u>142</u>	<u>142.5</u>
06	F.L. INLET DRAIN

6.39	5.9	6.34	5.9	6.13	5.7	5.58	5.3	5.07	4.7
8.97	9.5	9.04	9.5	9.23	9.7	9.78	10.1	10.29	10.7
<u>15</u>	<u>15</u>	<u>30</u>	<u>30</u>	<u>60</u>	<u>60</u>	<u>90</u>	<u>90</u>	<u>120</u>	<u>120</u>
06	9rd.	06	9rd.	58	9rd.	06	9rd.	06	9rd.

4483.8v PC 16 = 5L. Grape St. C.S. Moore.

3+93.05 16 PC 3+95.02

3+80.2

3+68.2

3+56.2

3+43.35 16 PC 3+41.38

T.P. 434 10.60v 910 626

1+43.85 16 PC 1+65.82

15.36

F
4

6.43	5.9	6.48	6.0	6.59	6.2	6.65	6.2	6.72
4.17	4.7	4.12	4.6	4.21	4.1	3.95	4.4	3.88
<u>15</u>	<u>15</u>	<u>30</u>	<u>30</u>	<u>40</u>	<u>60</u>	<u>90</u>	<u>90</u>	<u>118.7</u>
26	92T	26		26	26	26		26

39
6.2
4.4
118.7
92T

5.5	6.0	6.43	5.9
5.1	4.60	4.17	4.7
<u>15</u>	<u>15</u>	<u>15</u>	<u>15</u>
92T	26	26	92T

5.6	6.43	5.8
5.0	4.17	4.8
<u>15</u>	<u>15</u>	<u>15</u>
92T	26	92T

5.6	5.8	6.1	6.4	6.2	5.6	5.4	5.93
5.0	4.8	4.5	4.2	4.4	5.0	5.2	4.7
<u>15</u>	<u>15</u>	<u>30</u>	<u>60</u>	<u>90</u>	<u>120</u>	<u>127</u>	<u>127</u>
92T	92T						26

5.6	6.39	5.8
5.0	4.21	4.8
<u>15</u>	<u>15</u>	<u>15</u>
92T	26	92T

5.4	5.95	6.39	5.8
5.2	4.65	4.21	4.8
<u>15</u>	<u>15</u>	<u>15</u>	<u>15</u>
92T	26	26	159T

10.60v
2

5.2	5.98	6.44	5.9
10.2	9.38	8.92	9.5
<u>15</u>	<u>15</u>	<u>15</u>	<u>15</u>
92T	26	26	159T

15.36
2

check to B.M. Grape & Pac. 390 000 ~~224~~

cb. P.C. NL Grape & w cb Pac.

16 P.C. SL Grape & w cb Pac.

10.60

6.10	5.60
<u>4.50</u>	<u>5.00</u>
cb	907

50' N/4

6.44	5.78
<u>4.10</u>	<u>4.87</u>
cb	907

5.79	5.16
<u>4.81</u>	<u>5.44</u>
cb	907

50' S/4

5.40	4.81
<u>5.20</u>	<u>5.79</u>
cb	907

10.60
?

Indexed
C.S.R.

Moore
7-19-39

XSEC of 15' alley BIK 78 Park Villas

SEBP 8.74 299.574 285.31 LANDIS ARIZONA.

0-10 N cb of Landis

134.38	W	cb	8.18	285.39
"	"	PAV.	8.74	284.85
W	cb		5.18	288.39
W	dirt		5.8	287.8
E	"		5.5	288.1
E	cb		4.90	288.7
124.88	E	cb	2.10	291.47
"	"	PAV.	2.38	291.19

0-1.8 N. edge walk

5	TOP	WALK	4.56	289.01
C			5.1	288.5
W		"	4.93	288.64

0+00 N of Landis

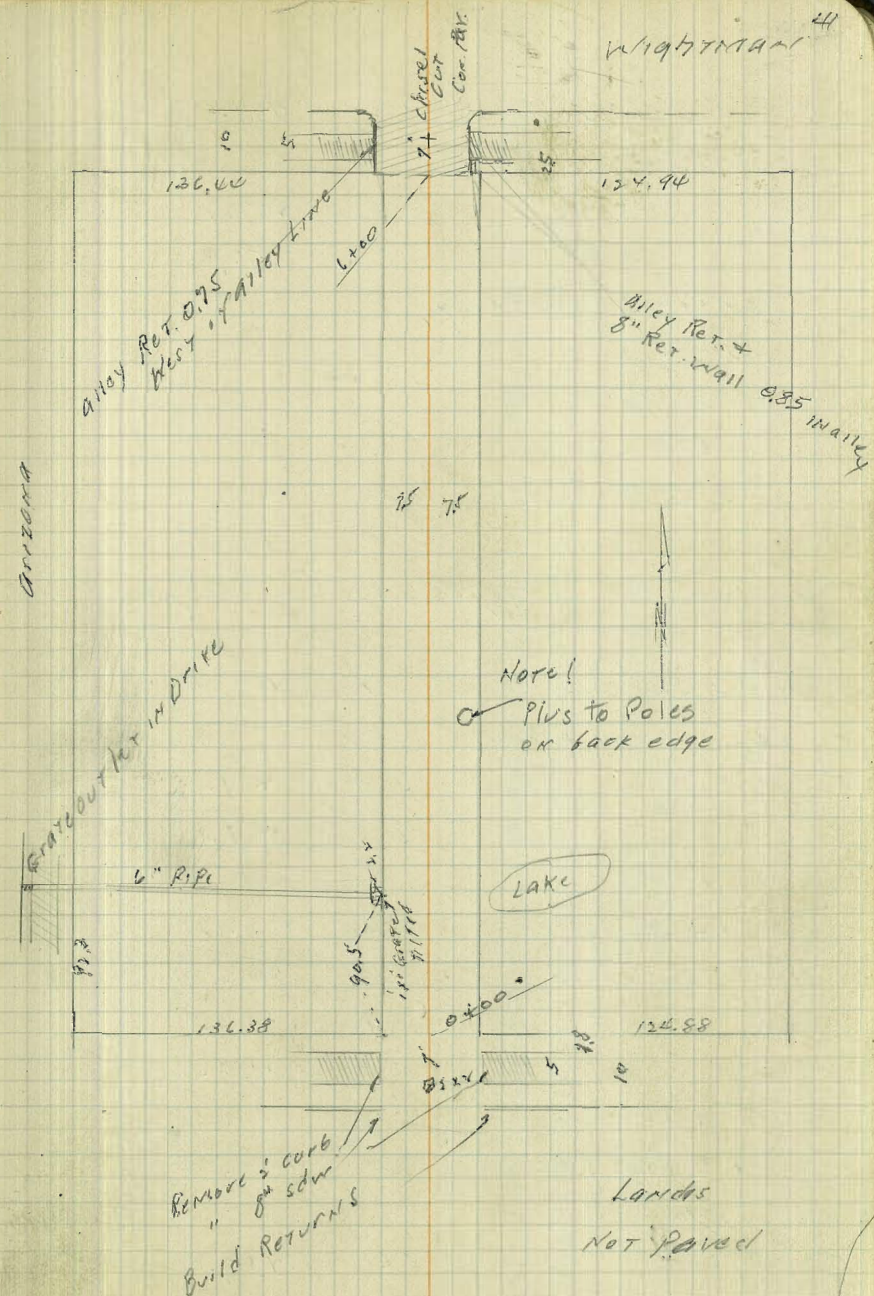
W			5.2	288.4
C			5.3	288.3
E			4.8	288.8

0+02

E + 1.2 back edge of ret. Pole

0+24

E			5.2	287.8
C			5.9	287.7
W			6.1	287.5



293.57

W + 7.5 Six. gar dirt	6.2	787.4
0 + 50		
W	6.0	787.6
C	5.9	787.7
E beg fence of alley	5.9	787.7
0 + 73		
W + 0.7 1 st Power Pole		
0 + 78		
E end of fence of alley		
T.P. 5.22 292.56	4.23	787.34
0 + 89		
E - 0.8 Six. gar Cem.	4.74	787.84
E - 1.00		
E + 0.8 Cem. Apron	4.98	787.58
C	5.5	787.1
W	5.5	787.1
0 + 90.5		
- 2.2 Fl 6" P. Po.	4.38	786.18
- 1.0 Bot. grate	4.3	786.3
W	5.9	786.7
C	5.5	787.1
+ 6.7 Cem. Apron	4.92	787.58
E + 0.8 gar fl.	4.74	787.84
1 + 00		
E - 10	5.6	787.0
E - 1.0 Top. Nudge apron	4.68	787.88
F + 0.7 Bot. "	4.98	787.58

292.56

12

1 + 01		
- 10	5.4	787.0
E	5.4	787.4
C	5.5	787.1
W	5.4	787.2
+ 0.2	4.7	787.9
1 + 10		
- 10	5.7	786.9
- 1	5.5	787.1
W	4.5	788.1
+ 3	5.0	787.6
C	5.3	787.3
E	5.5	787.1
+ 10	5.6	787.0
1 + 37		
- 5 do. gar dirt	5.4	787.2
E	5.3	787.3
C	4.9	787.7
W against shed	4.5	788.1
1 + 49.3		
E + 1.1 9" Tel Pole		
1 + 67		
- 5.3 Six. gar Cem.	5.25	787.31
W	5.4	787.2
C	4.9	787.7
E	4.9	787.7
+ 10	4.9	787.7

297.50

1+94

- 4.8	Six gal Cent	4.42	788.14
E + 0.3	Cent a Prox	4.67	787.89
C		4.8	787.8
W	16" Pers. Pole + fence	4.8	787.8
+ 10		5.3	787.3

2+100

- 10		5.3	787.3
W		4.8	787.8
C		4.7	787.9
+ 7.3	Bay. 8d Fence	4.4	788.0
+ 10		4.4	788.7

fence
originally

2+33

E end fence on line	4.2	788.4
C	4.5	788.1
W	3.9	788.7

2+41

- 10		4.5	788.1
- 4		4.5	788.1
- 3		3.7	788.9
W		3.8	788.8
C		4.3	788.3
E		3.9	788.7
+ 4.6	Six gal dirt	3.8	788.8

292.56

43

2+58

- 5	Six gal Cent	3.35	789.21
E		3.8	788.8
C		4.0	788.6
W		3.8	788.8
+ 5		3.8	788.8

2+67

- 1.8	Six gal dirt	3.8	788.8 W entrance
W		3.6	789.6 from Arizona
C		3.7	788.9
+ 3		4.0	788.6
E		3.7	789.4

2+75

E + 0.8 9" Tel. Pole

2+100

E		3.3	789.3
C		3.4	789.7
W		3.1	789.5
+ 5		3.7	788.9

T.P. 509 294.43 3.22 789.34

3+31

- 8	Six gal dirt	5.2	789.7
W		4.9	789.5
C		5.0	789.4
E		5.0	789.4
+ 14.5	" " "	4.6	789.8

3+04 on W.
15" Pole on
Line

294.43

3+49

E	4.0	290.4	
+ 2	4.6	289.8	
C	4.8	289.6	
W	4.2	290.2	
+ 1.7	6sq. Cem apron	3.77	290.66
+ 7.7	5 edge 3 ear gap	3.39	291.04 cell

3+46

- 7.7	gar cem	3.41	291.02
- 1.7	cem apron	3.62	290.81
W		3.8	290.6
C		3.9	290.5
+ 4		4.2	290.2
E		3.7	290.7

3+83

- 5		3.3	291.1
E		3.0	291.4
+ 4		3.7	290.9
C		3.5	290.9
W		3.4	291.0
+ 1.7	N. end cem apron	3.32	291.11
+ 7.7	" 3 ear gap Cem	3.38	291.05

3+90.3

E + 0.5 9" Tel. Pole

294.43

44

3+94

- 4	do. gar dirt	3.1	291.3
W		3.0	291.4
C		3.3	291.1
E		3.1	291.3
+ 5		2.9	291.5

4+04
15" Power Pole on Line

4+14

- 5.6	do. gar dirt	2.5	291.9	16" W. do
E		2.4	291.8	
C		3.0	291.4	
W		3.0	291.4	
+ 4	" " "	3.0	291.4	

4+50

W		2.1	292.3
C		2.3	292.1
E		2.2	292.2

4+69

- 6.5	Sim. gar Cem	1.21	293.22
E		1.7	292.7
C		1.8	292.6
W		1.9	292.5
+ 5		2.3	292.1

T.P. 6.54 299.85 1.14 293.29

4+94
18" Pow. Pole on W.L.

5+00

+	4	7.0	294.8
W		4.4	293.2
C		4.5	293.3
E		4.5	293.3
+	4	4.6	293.4

5+12

E		4.2	293.6
C		4.3	293.5
W		4.4	293.4

+ 37 do. gar dirt 4.3 293.5 16" wide

5+23

E + 0.6 10" Tol Pole

5+34

+	4.3	do. gar dirt	5.6	294.2	"	"
W			5.6	294.2		
C			5.4	294.4		
E			5.4	294.2		
+	6	" " "	5.5	294.3	"	"

5+55

E		5.0	294.8	
C		5.2	294.6	
W		5.3	294.5	
+	34	do. gar dirt	5.5	294.3

5+65

W	E 12" ^{cont} wall	5.93	294.84
C		4.7	295.1
E		4.6	295.2

5+85

E		4.2	295.6
C		4.2	295.6
W		4.4	295.4

5+95

W		4.3	295.5
+	1 12" Pol. Pole	4.5	295.5
C		4.9	294.9
E		4.0	295.8

T.P. 5.83 300.14 ✓ 5.54 296.81

6+00 SL WIGHTMAN

E	TOP 8" Cam. Wall	4.21	295.93
E	" ob	5.57	294.57
E	PAV	5.74	294.40
C	"	6.07	294.07
W	"	5.93	294.21
W	TOP ob	5.78	294.36
W	4+10 = 5 ob WIGHTMAN	6.58	293.56
E	"	6.32	293.84

SE DP ariz. WIGHTMAN 10.35 289.79 ✓ 289.80

Monroe. Har. Cross Section
30th St to Ohio St.

80' wide
14 Cb's
13' 1/4

indexed
C.S.K.

46 Oct 5-39
S. No. 7
Northbrn

BM 7.57 386.52 378.95 S.F.B.P. Monroe 130 1+0 386.52

0-14 = E. Cb L. of 30th St

S on Pav 8.23 378.29
Cb " " 8.01 378.51
1/4 " " 7.87 378.65
1/2 " " 7.81 378.71
1/4 " " 7.66 378.86
Cb " " 7.55 378.97
H " " 7.50 379.02

0+0 = E. L. 30th St

H Cb Top 7.02 379.50
Gutter on Pav 7.52 379.00
1/4 " " 7.33 379.19
1/2 " " 7.34 379.18
1/4 " " 7.59 378.93
Gutter " " 7.92 378.60
S Cb Top 7.44 379.08

0+50

S Cb Top 6.64 379.88
Gutter 7.1 379.4
1/4 6.8 379.7
1/2 6.5 380.0
1/4 6.5 380.0
Gutter 6.5 380.0
H Cb Top 6.14 380.38

Reduced 10-9-39
 1694
 Obt. on profile

H Cb Top 5.29 381.23
Gutter 5.7 380.8
1/4 5.6 380.9
1/2 5.6 380.9
1/4 6.0 380.5
Gutter 6.5 380.0
S Cb 5.93 380.59

1+40 = Alley

S Top Alley Ret 5.11 381.41
Cb Top 5.32 381.20
Gutter 5.9 380.6
1/4 5.3 381.2
1/2 5.0 381.5
1/4 5.1 381.4
Gutter 5.3 381.2
Cb Top 4.51 382.01
H Top Alley Ret 4.21 382.31

1+60 = E.L. Alley

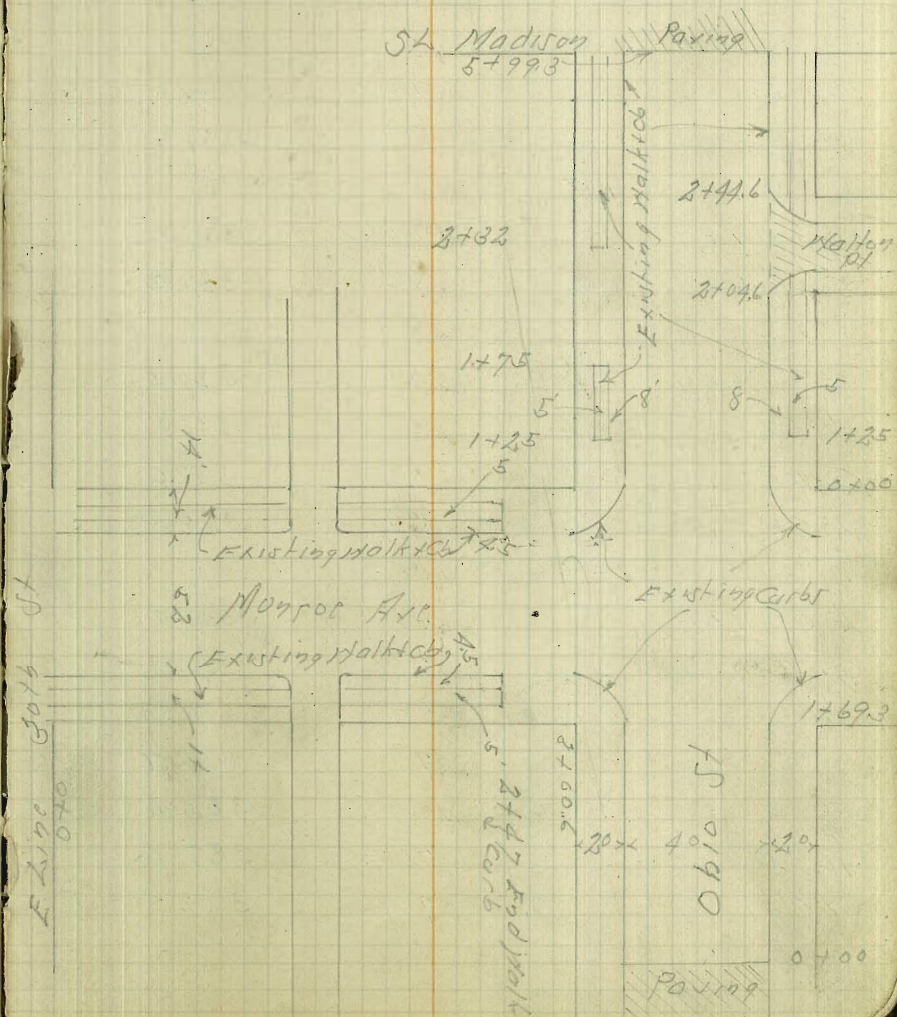
H Top Alley Ret 3.98 382.54
Cb Top 4.15 382.37
Gutter 4.9 381.6
1/4 4.7 381.8
1/2 4.7 381.8
1/4 5.0 381.5

386.52

Gutter	5.5	381.0
SCB	4.87	381.65
S.L. Top Alley Ref	4.64	381.88
2+0		
SCB TOP	4.28	382.24
Gutter	4.9	381.6
"	4.3	382.2
"	4.1	382.4
"	4.1	382.4
Gutter	3.7	382.8
N.C.B. TOP	3.43	383.09
2+47 - Ely of Curb + Walk N+S		
N.C.B. TOP	2.74	383.78
Gutter	3.3	383.2
"	3.3	383.2
"	3.4	383.1
"	3.8	382.7
Gutter	4.1	382.4
SCB TOP	3.60	382.92
3+00.6 - XL Ohio St.		
SCB TOP	2.78	383.74
Gutter	3.2	383.3
"	3.9	383.6
"	3.5	384.0
"	3.5	384.0
Gutter	3.7	383.8

386.52

N.C.B. TOP	1.87	384.65
TP	5.17	389.82
	1.87	384.65



47

Ohio St. Cross Section
Madison South to End of Parapet

indexed
c.s. 15.

389.82

070 - N End of Parapet

E Cb Top	7.84	381.98	✓
Gutter on Par	8.52	381.30	✓
"	8.48	381.34	
"	8.55	381.27	✓
"	8.98	380.84	
Gutter " "	9.89	380.43	✓
W Cb Top	8.70	381.12	✓

0750

W Cb Top	9.85	381.97	✓
Gutter	8.6	381.2	
"	8.3	381.5	
"	8.0	381.8	
"	7.7	382.1	
Gutter	7.8	382.0	
E Cb Top	6.99	382.83	✓

140

E Cb Top	6.16	383.66	✓
Gutter	7.0	382.8	
"	6.6	383.2	
"	7.1	382.7	
"	7.4	382.4	
Gutter	7.8	382.0	
W Cb Top	7.08	382.74	✓

80 Wide
30 Cbs
10' 1/4

48

389.82

1750

W Cb Top	6.31	383.51	✓
Gutter	7.1	382.7	
"	6.6	383.2	
"	6.2	383.6	
"	5.9	383.9	
Gutter	6.0	383.8	
E Cb Top	5.30	384.52	✓

1769.3 = S.L. Monroe

E Cb Top	4.97	384.88	✓
Gutter	5.7	384.1	
"	5.5	384.3	
"	5.9	383.9	
"	6.2	383.6	
Gutter	6.6	383.2	
W Cb Top	6.00	383.82	✓

S.Cb L. Monroe

W Gutter	6.3	383.5	
"	5.8	384.0	
"	5.7	384.1	
"	5.4	384.4	
Cb	5.3	384.5	
E Gutter	5.0	384.8	
E Top Cb	4.97	384.85	✓

389.82

L Monitor

E	4.4	385.4
Cb	5.1	384.7
1/4	4.9	384.9
L	5.3	384.5
1/4	5.4	384.4
Cb	5.6	384.2

H Cb L Monitor

H Cb	5.7	384.1
1/4	5.1	384.7
L	5.0	384.8
1/4	4.7	385.1
Cb	4.6	385.2
E Cb Top X Gutter	3.94	385.88 ✓

0+0 = H L Monitor

E Cb Top	3.91	385.91 ✓
Gutter	4.7	385.1
1/4	4.5	385.3
L	4.8	385.0
1/4	5.3	384.5
Gutter	5.6	384.2
H Cb Top	4.94	384.88 ✓

0+50

389.82

H Cb Top	4.67	385.15 ✓
Gutter	5.2	384.6
1/4	4.8	385.0
L	4.4	385.4
1/4	4.3	385.5
Gutter	4.4	385.4
E Cb Top	3.74	386.08 ✓

1+0

E Cb Top	3.95	386.37 ✓ +25 =
Gutter	4.2	385.6 Sky End
1/4	4.0	385.8 of walk
L	4.0	385.8 of FAX
1/4	4.4	385.4
Gutter	4.9	384.9
H Cb Top	4.36	385.46 ✓

1+50

H Cb Top	4.00	385.82 ✓
Gutter	4.6	385.2
1/4	4.2	385.6
L	3.8	386.0
1/4	3.7	386.1
Gutter	3.8	386.0
E Cb Top	3.10	386.72 ✓

1+75 =
H L End
walk on
walk

389.82

2704.6 = SCB BC Walton PI

E cb top	2.89	386.93	✓
Gutter on Pav Nly Edge	3.70	386.12	
"	3.4	386.4	
⊥	3.4	386.4	
"	3.8	386.0	
Gutter	4.2	385.6	
W cb top	3.67	386.15	✓

2713 = SCB L Walton PI

W cb top	3.63	386.19	✓
Gutter	4.1	385.7	2752 = 0.1
"	3.7	386.1	0.1
⊥	3.3	386.5	
"	3.3	386.5	
Gutter on Pav Nly Edge	3.57	386.25	✓

2736.6 = NCB L Walton PI

E Gutter on Pav	3.44	386.38	✓
"	3.1	386.7	
⊥	3.2	386.6	
"	3.6	386.2	
Gutter	3.9	385.9	
W cb Top	3.40	386.42	✓

TP 5.77 392.24 3.35 386.47

50

392.24

2744.6 = NCB BC Walton PI

W cb top	5.77	386.47	✓
Gutter	6.3	385.9	
"	5.9	386.3	
⊥	5.5	386.7	
"	5.5	386.7	
Gutter on Pav Nly Edge	5.80	386.44	✓
E cb top	5.11	387.13	✓

370

E cb top	4.91	387.33	✓
Gutter	5.4	386.8	
"	5.3	386.9	
⊥	5.3	386.9	
"	5.5	386.7	
Gutter	5.8	386.4	
W cb top	5.25	386.89	✓

3750

W cb top	5.09	387.15	✓
Gutter	5.5	386.7	
"	5.2	387.0	
⊥	5.1	387.1	
"	5.0	387.2	
Gutter	5.1	387.1	
E cb top	4.61	387.63	✓

392.24

470

ECb Top	4.35	387.89 ✓
Gutter	4.7	387.5
"	4.6	387.6
"	4.8	387.4
"	4.9	387.3
Gutter	5.2	387.0
HCb Top	4.71	387.53 ✓

4750

HCb Top	4.40	387.84 ✓
Gutter	4.9	387.3
"	4.5	387.7
"	4.3	387.9
"	4.4	387.8
Gutter	4.6	387.6
ECb Top	4.16	388.08 ✓

570

ECb Top	3.83	388.41 ✓
Gutter	4.3	387.9
"	4.0	388.2
"	4.1	388.1
"	4.2	388.0
Gutter	4.6	387.6
HCb Top	4.02	388.22 ✓

51

392.24

5750

HCb Top	3.66	388.58 ✓
Gutter	4.1	388.1
"	4.0	388.2
"	3.9	388.3
"	3.8	388.4
Gutter	4.0	388.2
ECb Top	3.56	388.68 ✓

5799.3 - Sty Pav. S.L. Madison Ave.

ECb Top	3.15	389.09 ✓
Gutter on Pav	3.91	388.33
" " "	3.58	388.66
" " "	3.45	388.79
" " "	3.59	388.65
Gutter " "	3.91	388.33
HCb Top	3.27	388.97 ✓

Reduced 10-9-39
Plated on Profile 694

Contd P 55

Cross Section Alley Block 4
Hartleys North Park

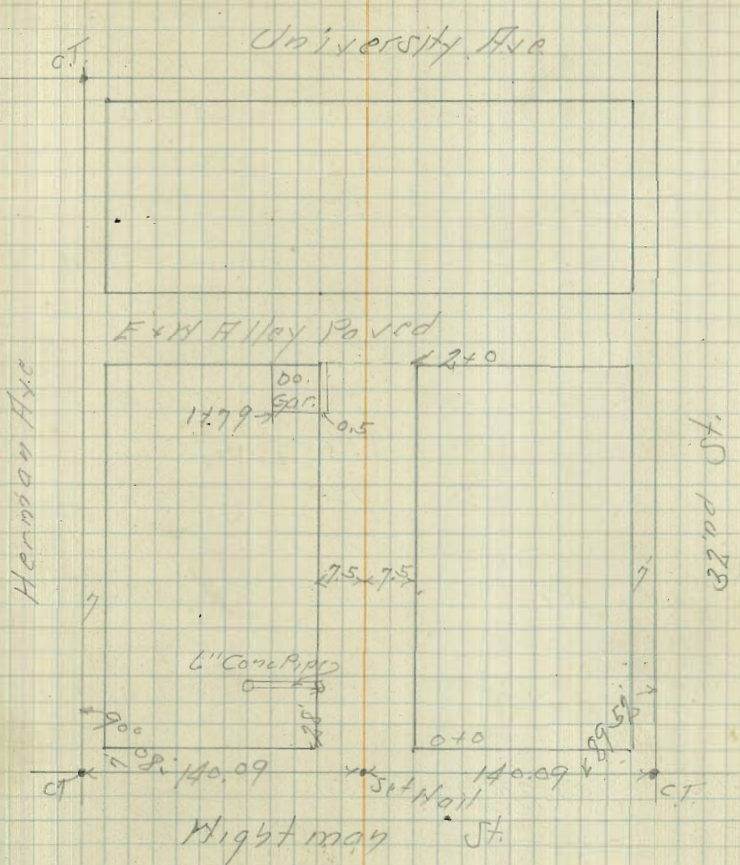
Indexed
L.S.K.

B.M.	612	352.52	346.40
	0-10 = H.C. L. Nightman		
E	on Paving	5.02	347.50
L	" "	4.86	347.66
H	" "	4.82	347.70
	0+0 = H.L. Nightman		
H	Top Alley Ret	3.96	348.56
	Gutter on Pav.	4.24	348.18
L	" "	4.57	347.95
	Gutter " "	4.56	347.96
E	Top Alley Ret.	4.37	348.15
	0+06		
-9'	L Sing. Garage So. Foot Conc Floor	3.67	348.85
E	" "	3.7	348.8
L	" "	3.9	348.6
H	" "	3.5	349.0
+10	L De Garage Conc Floor South Entrance	3.10	349.42
	0+15		
H	" "	3.0	349.5
L	" "	3.1	349.4
E	" "	3.3	349.2
	0+28		
E	" "	3.0	349.5
+0.6	= Fly Pole		

Reduced T.Plot. Profile 2002 N-11-39

Oct. 6-39 52
S10902
North Park

See Book 1124-22 For 1st cross section



352.52

£	2.8	349.7
+5	2.8	349.7
+7.2 = E.L. Existing 6" Conc. Driv	3.88	348.64
W	3.3	349.2
+2 = 5/4 Conc Slab	2.58	349.94
0+48		
-2 = 1/4 Conc Slab	2.51	350.01
W	2.5	350.0
£	2.6	349.9
F	2.8	349.7
TP	6.02	356.20
0+52		
2' W of W.L. 18" Conc Gutter	6.15	350.105
0+53		
2' W of W.L. 5/4 Conc Slab	5.72	350.48
0+75.5		
-6.5 = 2' Groove Dirt Flow South Entrance	5.9	350.3
F	6.0	350.2
£	5.7	350.5
W	5.9	350.3
+2 on Conc Slab	5.68	350.52
0+98		
-2 = 1/4 Conc Slab	5.58	350.62
W	5.7	350.2
£	5.5	350.7
F	5.6	350.6

356.20

1+25		
F	5.5	350.7
£	5.2	351.0
W	5.3	350.9
1+50		
W = 1/4 Power Pole	4.7	351.5
£	4.9	351.3
F	4.8	351.4
1+79		
F	4.4	351.8
+0.4 = Ely Pole		
£	4.3	351.9
+7 = 5/4 End Dr Garage		
W	4.4	351.8
1+98		
W+0.5 = 1/4 End Dr Garage Conc. Driv. 1/4 Edge Slab	4.20	352.00
£	4.5	351.7
F	4.3	351.9
2+0 = 5/4 Edge Paving Ex W All		
F on Paving	4.78	351.42 ✓
£ " "	4.69	351.51
W " "	4.58	351.62 ✓

Maore
10-10-39

check B.M.s for alley
B.K. + Harveys N. Park

nwBP	3.85	341.83	357.98	UNIV. 122
T.P.	1.99	358.71	5.11	356.72
T.P.	2.35	354.41	4.45	352.06
		2.53	351.88	TOP CB.
check to B.M. P 52		8.01	346.40	344.40
on Pav. at alley		2.99	351.42	351.42

Ld. in but Br. plug gone

Top cb. N.W. Univ. Iowa B.P. gone New curb
on Iowa

SWI UNIV. + 3rd B.P. gone

SWBP WIGHTMAN + 3rd

200 P 53

X see for sidewalks at
Ohio & Monroe
See P 47

hours
3-9-40

389.71

55

10.76 389.71 378.95

0 + 00

E 7.0 382.7
+ 7 7.37 382.34
+ 12 7.42 382.29
W 8.2 381.5
+ 7 8.30 381.41
+ 12 8.34 381.37

0 + 50

W 7.0 382.3
+ 7 7.6 382.1
+ 12 7.5 382.2
E 5.9 383.8
+ 7 6.6 383.1
+ 12 7.1 382.6

1 + 00

E 5.2 384.5
+ 7 5.7 384.0
+ 12 6.1 383.6
W 6.6 383.1
+ 7 6.9 382.8
+ 12 6.8 382.9

1 + 50

W 6.1 383.6
+ 7 6.1 383.6
+ 12 6.1 383.6
E 4.9 384.8
+ 7 5.1 384.6
+ 12 5.1 384.6

1 + 693 S L Monroe

E 4.5 385.2
+ 7 4.7 385.0
+ 12 4.7 385.0
W 5.7 384.0
+ 7 5.8 383.9
+ 12 5.8 383.9
W - 15 5.2 384.5
" - 30 6.6 383.1
" - 45 6.2 383.5
" - 53 6.5 383.2

S L Monroe + 45

Sedgewick

W - 53 6.6 383.07
" - 45 5.9 383.8
" - 30 6.6 383.1
" - 15 5.2 384.5
W 5.7 384.0
+ 7 5.8 383.9
+ 12 5.8 383.9

389.71

S L Monroe + 4.5

E	4.5	385.2
+7	4.6	385.1
+12	4.4	385.1

S L Monroe + 9.5

E	4.7	385.0
+7	4.4	385.1
+12	4.7	385.0
W	5.6	384.1
+7	5.7	384.0
+12	5.8	383.9
W - 15	5.8	383.9
" - 30	6.7	383.0
" - 45	5.9	383.8
" - 53	6.74	382.97

N 06 Monroe + 4.5 S edge wk

W - 53	5.83	383.88
" - 40	5.1	384.6
" - 15	5.6	384.1
W	5.2	384.5
+7	4.8	384.9
+12	4.8	384.9
E	3.7	386.0
+7	3.8	385.9
+12	3.8	385.9

389.71

56

N 06 + 9.5 N edge wk

E	3.6	386.1
+7	3.8	385.9
+12	3.7	386.0
W	4.7	385.0
+7	4.8	384.9
+12	4.7	385.0
W - 15	5.4	384.3
W - 45	5.1	384.6
W - 53	5.79	383.92

- 53 N L Monroe = 0 + 00

W	5.5	384.2
	4.9	384.8
+7	4.6	385.1
+12	4.6	385.1
E	3.6	386.1
+7	3.7	386.0
+12	3.7	386.0

0 + 50

E	3.4	386.3
+7	3.4	386.3
+12	3.4	386.3
W	4.4	385.3
+7	4.3	385.4
+12	4.3	385.4

389.71

57

1+00

W	4.2	385.5
+7	4.1	385.6
+12	4.0	385.7
F	3.0	386.7
+7	3.1	386.6
+12	3.1	386.6

1+25

E	3.0	386.7
+7	2.89	386.82
+12	2.98	386.73
W	3.6	386.1
+7	3.89	385.82
+12	4.00	385.71

1+75

W	3.4	386.3
+7	3.44	386.27
+12	3.50	386.21

2+32

W	3.2	386.5
+7	3.27	386.44
+12	3.27	386.44

Final Meas. alley

Blk C Altadena

511.20 ✓

2+64 13.8

195.30 ✓

2+50 14.1

722.50 ✓

2+00 14.8

742.50 ✓

1+50 14.9

740.00 ✓

1+00 14.7

740.00 ✓

0+50 14.9

747.50 ✓

10.12 ✓
0+00
2.2
9.7
5.8

Thorn

12.3 8" curb

2.9 x 5 = 14.5
Sidewalk

INDEXED
EFB

58

Moore

8-13-40

160 Sq. ft. Top over old par.

UPAS

5+83.90 14.8

341.21 ✓

5+61 15

296.00 ✓

216.75 ✓ 5+41 14.6

312.40 ✓ 5+26 14.3

570.00 ✓ 5+04 14.1

4+64 14.4

203.00 ✓ 4+50 14.6

732.50 ✓ 4+00 14.7

732.50 ✓ 3+50 14.6

730.00 ✓ 3+00 14.6

8533.36 = in alley.
10.12 = Thorn

8-14-40
CCH

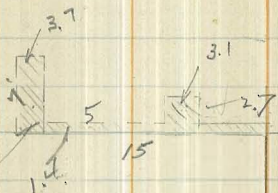
Final Meas Alley

Measure
8-13-40

BIK 25 Teraita

El Canyon

6+07.2



Extra Pav.
Top over
old Pav.?

1+50

15

1+00

15

0+66

14.7

0+49

14.6

0+48

14.9

old Pav. May have
been N.G.

No Curb

0+00

15



Pav. over
water lined
ditch

Orange

INDEXED
FFB

59

$$\begin{array}{r} 15.0 \\ 3.7 \\ \hline 11.7 \times 1.4 = 15.82 \\ 3.1 \times 2.7 = 8.37 \\ 7.0 \times 3.7 = 25.90 \\ \hline 50.09 \end{array}$$

$$\frac{15.0 + 15.0}{2} \times 507.2 = 7,608.00$$

$$\frac{14.7 + 15.0}{2} \times 34 = 504.90$$

$$\frac{14.6 + 14.7}{2} \times 17 = 249.05$$

$$\frac{14.9 + 14.6}{2} \times 1 = 14.75$$

$$\frac{15.0 + 14.9}{2} \times 48 = 717.60$$

$$9094.30$$

$$9108.40$$

8/14/40
E.B.H.

$$10.0 \times 2.5 = 25.0$$

$$15.0 \times 2.0 = 30.0$$

$$55.0$$

Proposed Sewer in Block 49 And Section
Block 48 Eastern Add.

BM	1.02	256.50		258.48
TP	7.33	254.26	9.57	246.93
BM			3.24	251.02
TP	3.66	255.00	2.92	251.34
0+0 = 150' S of 1/2 Hartberg			9.6	245.4
60' Rt = H.H. Col House Floor Elev			1.70	253.30
+05'			8.8	246.2
+12'			5.3	249.7
+50'			4.7	250.3
10' Lt			5.1	249.9
2' Rt - Top Cut			2.0	253.0
0+84			5.0	250.0
43.5 Lt = F.L. Existing 4" C.I. Sewer Pipe			6.94	248.06
1+0			5.1	249.9
2' Rt			5.1	249.9
4' Rt = Top Cut			+1.6	256.6
1+08			3.9	251.1
2' Rt			3.9	251.1
4' Rt = Top Cut			+2.2	257.2
1+10			0.9	254.1
4' Lt			4.1	250.9
1+20			1.1	253.9
2' Lt			4.9	250.1
2' Rt - Top Cut			+2.0	257.0
4' Rt - Wly Porter Park				

Indexed
LM

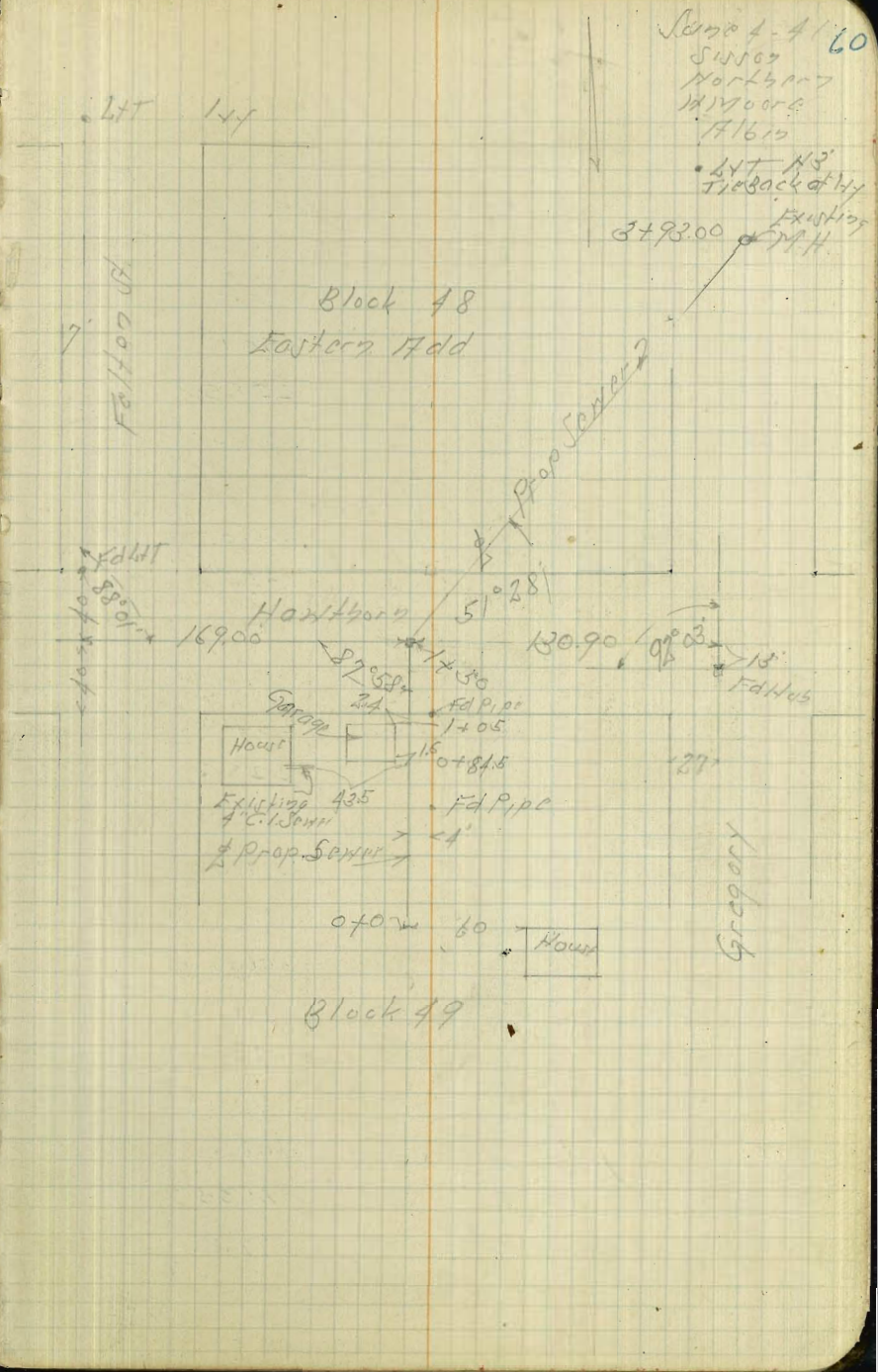
SEBP
Sewer
Fallon
Topsoil
NE 7' Tol
Hartberg
& Fallon

Reduced & Plotted by Mrs. R. G. Cole

June 4-4/60

Sussex
Northway
H.M. Moore
#1612

• 44' N3'
Tieback of 44'
Existing
• 24' H.

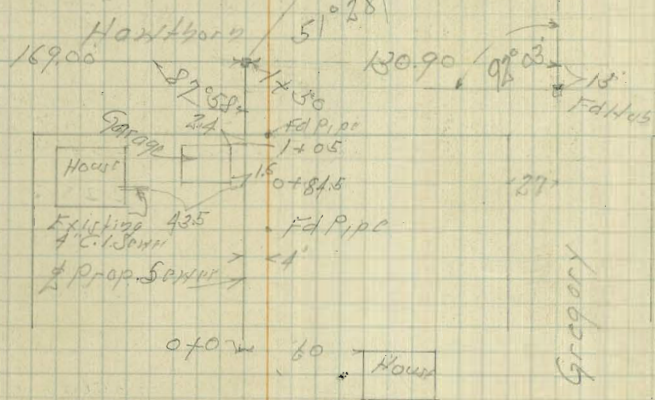


44' 14'

Fallon St

Block 48
Eastern Add

44' Lt
Fallon St



Block 49

Gregory

258.00

1724			1.4	253.6	
1741			4.7	250.3	
5' RT			0.4	254.6	
1727			4.7	250.3	
5' Lt			4.9	250.1	
5' RT			4.5	250.5	
1450 = 1 1/2 Hawthorn			3.7	251.3	
TP	0.78	252.12	3.66	251.84	on 2 stubs 1450
1775			1.3	250.8	
270			6.4	245.7	
+25			12.8	239.3	
TP	0.32	240.59	11.85	240.27	
+50			6.2	234.4	
+75			12.4	228.2	
TP	0.21	229.06	11.74	228.85	
370			9.5	219.6	
TP	0.24	217.12	12.18	216.88	
+30			10.5	206.6	
TP	0.11	205.25	11.98	205.14	
+60			11.4	193.9	
TP	0.09	193.61	11.73	193.52	
+75			5.4	188.2	
3 + 93 = Existing MH			12.28	181.33	07 Rim
Flow Line			20.76	172.85	

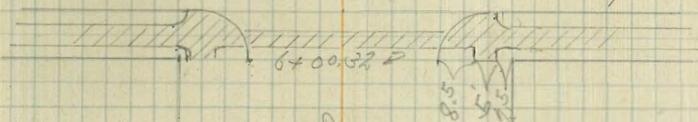
Cross Section Dalbergia St
Vesta St to Hoden

Indexed
LM

July 30 11 62
St. 11
Harden
W. 11/11/11

Hoden

St.



Dalbergia St

2+16 - 334.0

Existing 12" Steel
Pipe

2+137

2+121 - 334.0
2+118 35.9

Shower
Bldg

2+085 - 35.8

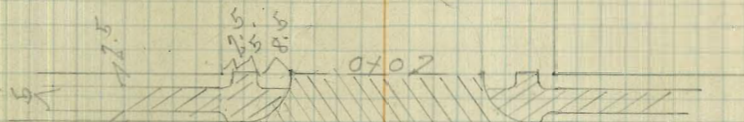
2+07

50 02 50

Existing
12" Cast Iron
Pipe

34 - 0+92

34 - 0+79



Vesta

St.

Cross Section Dalbergia St.
Vesta St. to Hodon St.

0+69

0+50

0+24

0+0 = FL Vesta

0-10 = E Cb Line Vesta

BM

TP

BM

Profile # 229
S.H. - 8-4-41

1606

1607

1609
56 on Wall
36 on Wall

S.H. # 229
Dalbergia St.
Vesta St.

S.F. 8P
1019 +
6770

452

16.21

2.11

26.73

394

18.62

9.10

22.56

13.46

4-N
16.23

4.50
50:20
Walk Con.

8.1	8.1	14.9	17.1	15.1	16.2	15.1	15.3	14.5	16.2	15.0	15.0
4.9 50	4.9 37	6.58 34	5.33 30	5.0 17	4.6	5.2 17	5.1 32	5.1 34	4.5 37	5.7 50	5.7 50
8.1	15.2	14.7	15.5	15.2	15.7	15.3	15.3	14.5	16.2	15.2	15.1
4.9 36	5.5 31	6.0 33	5.2 30	5.0 17	4.8	5.4 17	5.5 31	6.1 34	5.8 37	6.5 50	5.7 50
8.1	15.5	14.7	15.2	14.9	14.9	14.8	14.7	14.7	15.3	15.1	
4.9 50	5.2 37	5.9 34	5.8 17	5.9 17	5.9	5.8	5.9	5.9	5.8	4.9 50	
25.51	15.2	14.8	14.7	14.9	14.9	14.7	14.7	14.7	15.3	15.1	
5.1 50	5.6 34	5.8 34	5.9 17	5.8 17	5.8	6.0 17	5.9 34	5.9	5.7	5.2 50	

20.73

2+0.85

2+0

1+50

1+0

0+92: Ely 12" Cast Iron Pipe 0247

0+79: W/ 12" Cast Iron Pipe 0061

2073

16.1	16.2	14.4	15.8	16.1	16.4	15.8	14.3	15.7	15.7
46/50	45/58	63/57	49/51	46/57	43	49/57	54/52	64/52	65/50
16.4	16.6	14.6	15.1	15.7	16.0	15.6	15.5	14.2	16.2
43/50	41/57	61/54	49/52	48/57	47	51/57	52/52	65/54	48/52
16.1	15.7	14.5	15.8	15.7	16.1	15.6	15.1	14.2	15.9
46/50	48/58	63/57	49/52	50/57	46	45/57	51/52	65/54	48/52

14.40
6.33
31.0 = Ely 12" Cast Iron Pipe

14.53
6.10 = W/ 12" Cast Iron Pipe

2073

27

27

RT

64

16.03
4.70
358.75
50.07506
16.13

Dalbergia St.

2+75 58.3 ft of 2" = 1/4 Board + 1/4 Wire Fence

3+50

3+0

2+75 50 ft of 2" = 1/4 Board Fence
TP 4.56 20.93 4.36 16.37

2+46 = 1/4 12" Steel Pipe on Rt.

2+37 = 1/4 Blk + 3 Conc Walk on Rt.

2+24 = 1/4 12" Steel Pipe on Rt.

2+18

17.1	16.3	14.4	15.9	16.1	16.3	16.1	15.7	14.1	16.1	16.0
3.8 58	4.6 38	6.5 34	5.0 31	4.8 17	4.6	4.8 17	5.2 31	6.8 34	4.8 37	4.0 50
16.6	16.4	14.4	15.8	16.3	16.4	16.1	15.5	14.1	16.2	16.0
4.3 50	4.5 37	6.5 34	5.1 32	4.6 17	4.5	4.8 17	5.4 31	6.8 34	4.7 37	4.9 50
16.3	16.5	14.7	16.0	16.2	16.3	15.9	15.1	13.9	15.9	15.7
4.4 50	4.2 39	6.0 34	4.7 31	4.6 17	4.4	4.8 17	5.2 31	6.7 33	4.8 37	5.0 50
							11.08	16.32		
							4.65	4.41		
							16.8 - 1/4 12" Steel Pipe	4.50 on Walk		
							13.90			
							6.83			
							3.34 = 1/4 12" Steel Pipe			
							15.96			
							4.77	4.52		
							35.7 - 1/4 Conc Slab	15.50 on Conc Slab		

Dalbergia St

BM 446 8.95 ^{11.28.89}
^{17.01.94}
^{07.11.100}
8.98

TP 2.75 13.41 3.91 10.66

TP 3.09 14.57 9.45 11.48

BM 7.87 13.06 ^{5.21.71}
^{Dalbergia}
^{4.11.100}

6+1032 = 1/2 cb Line Nodes

6+095 = 1/2 3 Cone Cross Walk

6+0032 = WL Nodes

5493

20.93

Lt

Lt

Rt

67

13.7	13.57	12.9	12.6	12.79	12.83	12.7	12.1	12.0	13.02
7.7	7.34	8.0	8.3	8.14	8.10	8.2	8.8	8.9	7.91
50	50-03	50-01	34	17		17	34	50-01	50-04
13.7	13.48	12.81	13.0	13.03	13.02	12.51	12.96	13.1	13.1
7.7	7.45	8.08	7.87	7.90	7.91	8.19	7.97	7.8	7.8
50	34-06	34-04	17			34-07	34-06	50	50
13.9	13.50	13.0	13.1	13.1	13.0	12.8	12.4	13.04	13.4
7.9	7.43	7.9	7.8	7.8	7.9	8.1	8.5	7.89	7.5
50	34-06	34-01	17		17	50	34-01	34-06	50
15.4	14.6	13.1	13.2	13.3	13.1	13.1	12.3	14.5	14.7
55	60	80	30	17	7.6	7.8	8.6	6.4	55
50	40	34	30	17	7.6	8.0	34	37	50

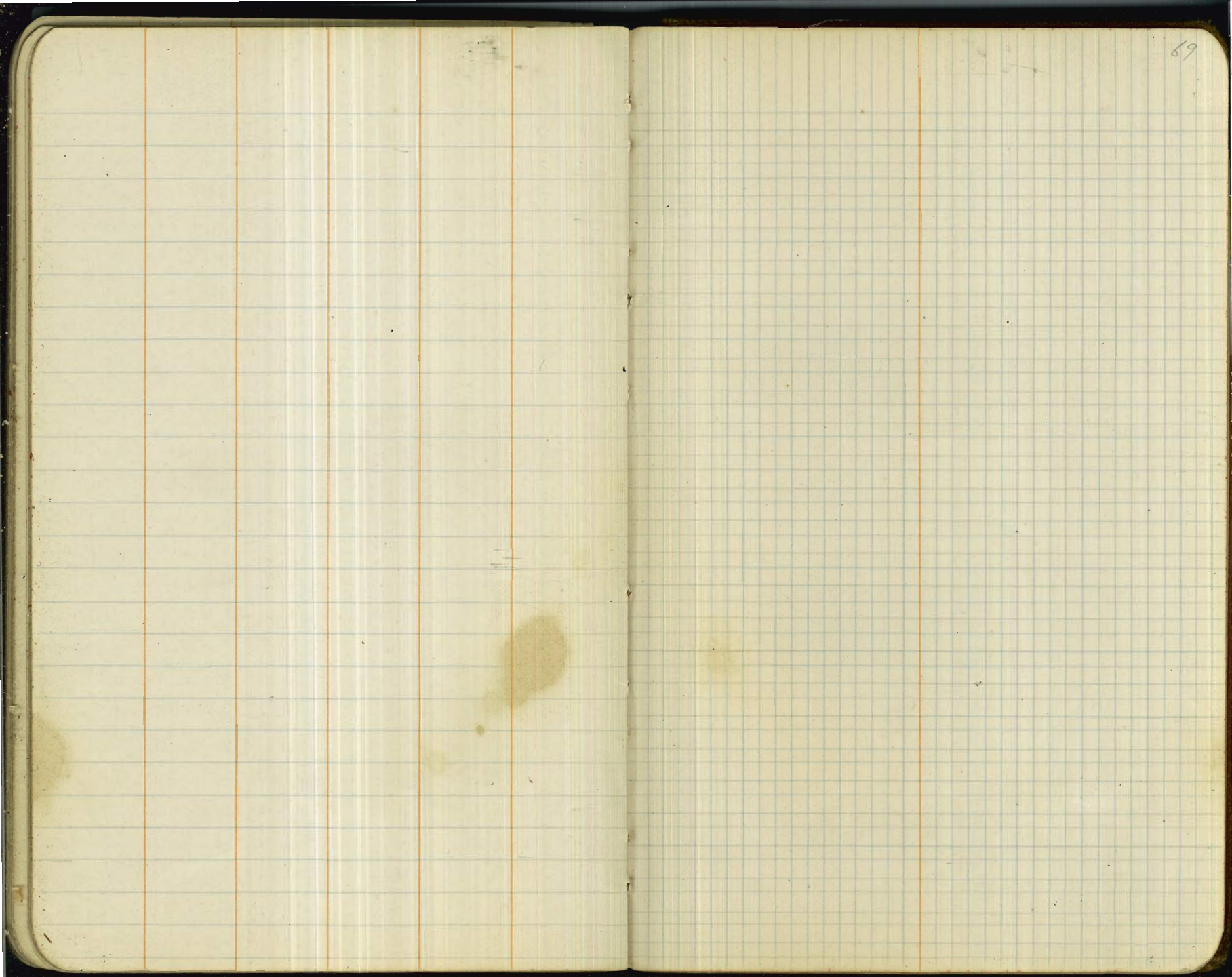
20.93

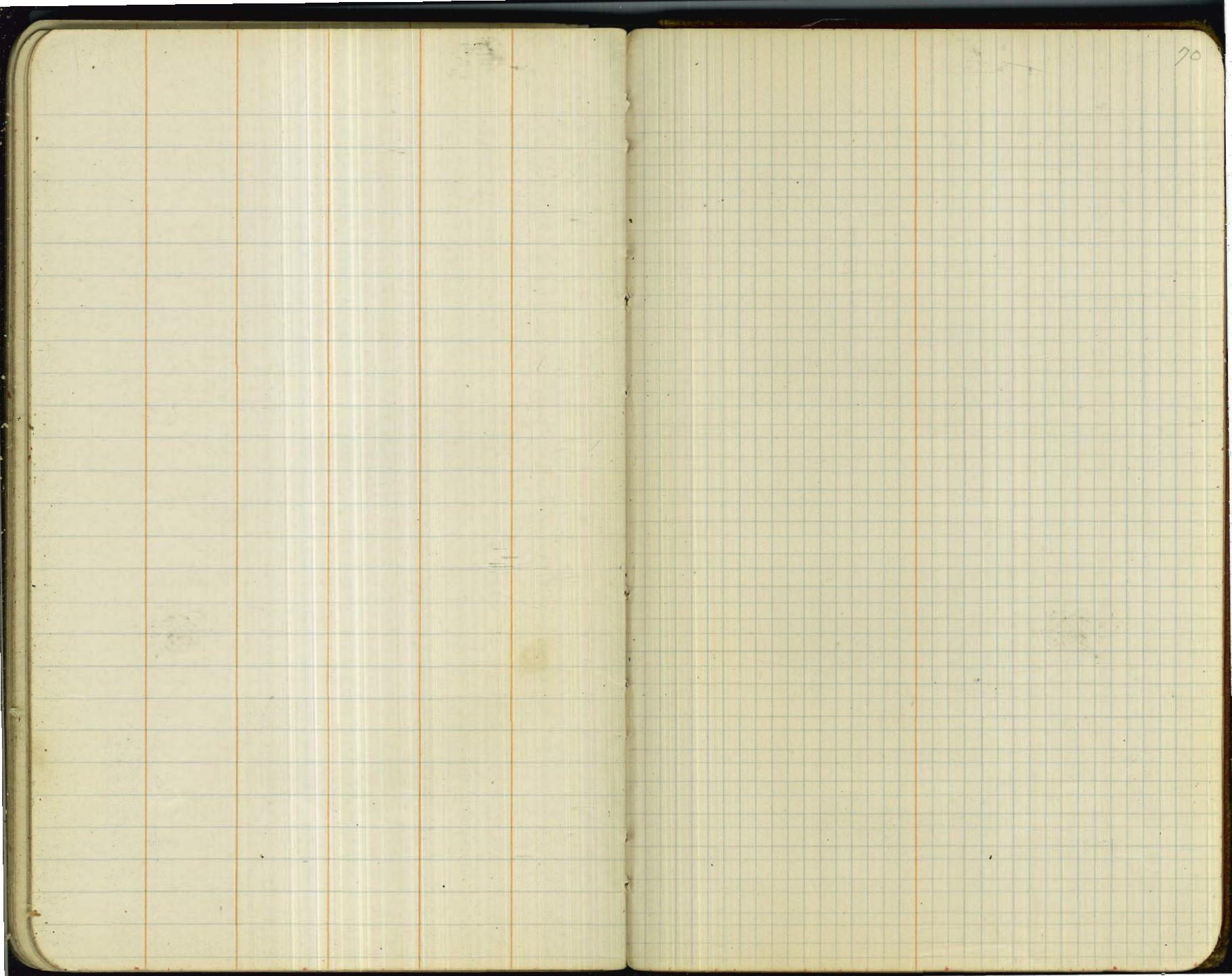
304

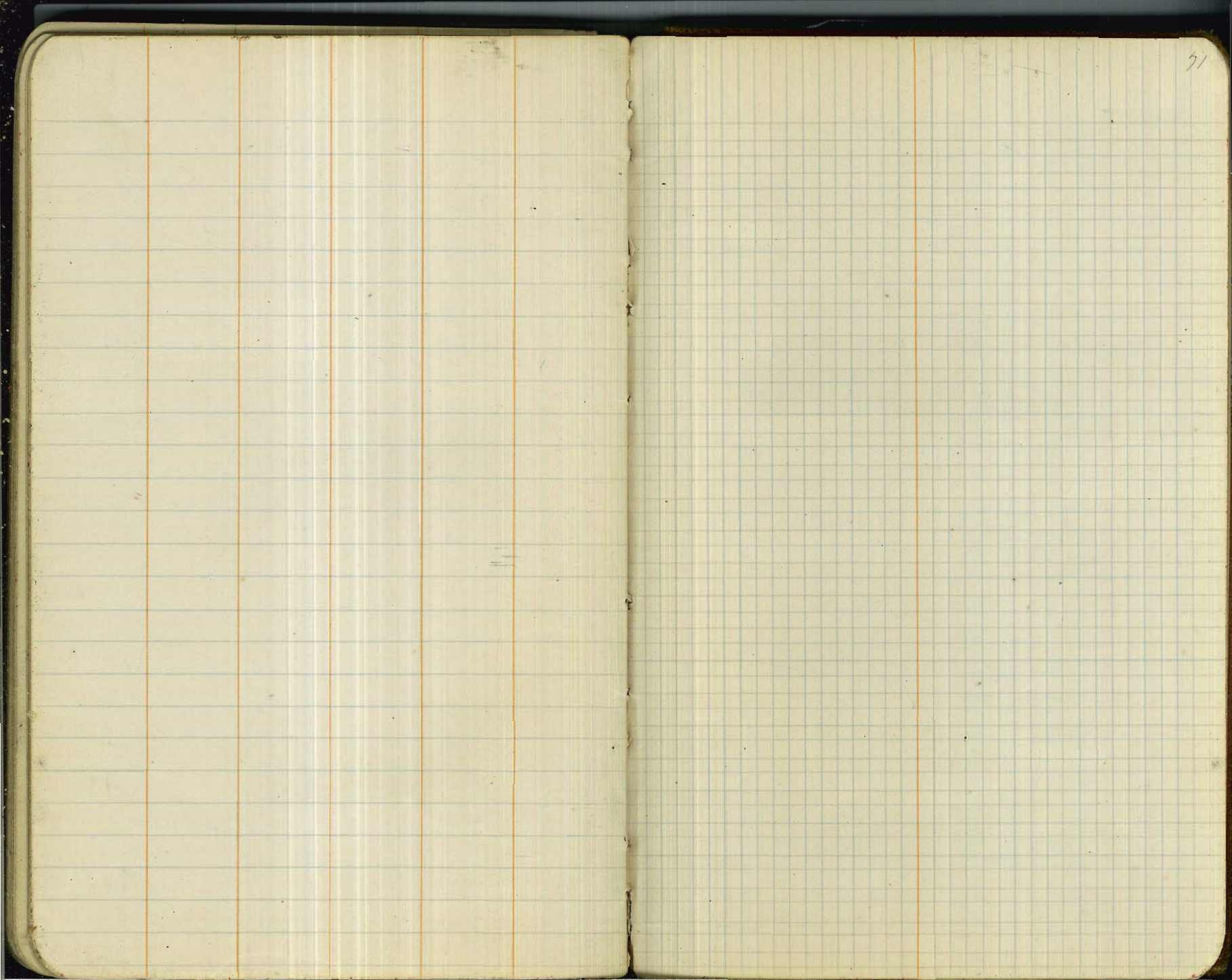
~~394~~

319

68







29 x 5
12.3 06

27 } 9.2