

9

TRANSIT

*F.B. 600*

600

MICROFILMED  
DEC 14 1964

548.865  
76 76  
4884  
7985  
6584

*W. M. Shaw*  
*Dec. 18<sup>th</sup> 1893.*

2979  
1640  
339

Coast Line  
from NW cor Pueblo

Dist	Course	N	S	E	W	Total Southings and Eastings from NW cor.	
						0.0	0.0
435	S 70° 38' E		431.1	57.8		431.1	57.8
1965	S 10° 30' E		1932.1	358.1		2363.2	415.9
3200	S 6° 30' E		3179.4	362.2		5542.6	778.1
2000	S 2° 00' E		1998.8	69.8		7541.4	847.9
1645	S 5° 30' E		1637.4	157.7		9178.8	1005.6
300	S 47° 30' E		202.7	221.2		9381.5	1226.8
2328	S 18° 30' E		2207.7	738.7		11589.2	1965.5
627	S 26° 00' E		608.5	297.0		12197.7	2262.5
2700	S 8° 30' E		2670.5	399.1		14868.2	2661.6
3100	S 20° 15' E		3097.6	121.7		17965.8	2783.3
500	S 0° 45' W		499.9		6.5	18465.7	2776.8
900	S 3° 45' E		898.1	58.8		19363.8	2835.6
923	S 7° 35' E		914.9	121.8		20278.7	2957.4
1200	S 14° 35' E		1161.3	302.1		21440.0	3259.5
1503	S 5° 55' E		1495.0	154.9		22935.0	3414.4
1475	S 14° 05' W		1430.7		358.9	24365.7	3055.5
350	S 52° 05' W		215.1		276.1	24580.8	2779.4
3200	S 9° 45' W		3153.8		541.9	27734.6	2237.5
876	S 18° 35 1/2' E		83.0	27.9		27817.6	2265.4
111.4	S 10° 24 1/2' W		404.6		74.3	28222.2	2191.1
700	S 17° 45 1/2' W		666.6		213.5	28888.8	1977.6
			28888.8	3448.8	1471.2		

Coast Line Route

Dist	Course	N	S	E	W				
			28888.8	3448.8	1471.2				
1900	S 28° 28' W		1671.2		923.8	30560.0	1073.8		
1400	S 35° 09' W		1144.6		806.2	31704.6	267.6	E	
560.5	S 55° 24' W		318.2		461.4	32022.8	193.8	W	3
1283.5	S 48° 47' W		845.7		965.5	32868.5	1159.3	W	4
195	N 66° 06' W	79.0			178.3	32789.5	1337.6	W	5
100	S 54° 53' W		57.5		81.8	32847.0	1419.4	W	6
109.0	S 0° 32' W		109.0		7.0	32956.0	1420.4	W	7
1921.0	S 71° 00' E		625.4	1816.3		33581.4	395.9	E	8
65.0	N 55° 42' W	36.6			53.7	33544.8	342.2		9
2145.0	N 43° 07' E	1565.8		1466.1		31979.0	1808.3		10
3894.0	N 29° 37' E	3385.2		1924.4		28593.8	3732.7		11
1114.0	N 15° 37' E	1072.9		299.9		27520.9	4032.6		12
433.0	N 14° 57' E	4183.4		1117.1		23337.5	5149.7		13
17769.0	N 13° 33' W	17274.5		4163.1		6063.0	986.6		14
4764.0	N 4° 25' W	4749.9		366.9		1313.1	619.7	E	15
1456.0	N 25° 00' W	1319.6		615.3		65	4.4	E	16
		33666.9	33660.4	10072.6	10068.2				
	Error Southing	6.5							
	Westing	4.4							

= Sta 374 + 57 *Hayo Line*

*Closing on Mea Line*

*N.W. cor Pueblo.*

Coast Line from  
Sta 383+00 Hay's line to

Dist	Course	N	S	E	W
340.8	N86°00'W	23.8			340.0
205.2	N22°50'W	189.1			79.6
700.0	N83°30'W	79.2			695.5
340.0	N4°25'E	239.3		18.5	
170	N87°35'W	7.2			169.8 ✓
1644	S40°45'W		1245.4		1073.1 ✓
450	S75°45'W		110.8		436.2 ✓
1050	S0°15'W		1050.0		4.6 ✓
800	S57°45'W		426.9		676.6 ✓
1250	S16°05'W		1201.1		346.3 ✓
1150	S13°15'E		1119.4	263.6	✓
1140	S5°35'W		1134.6		110.9 ✓
400	S13°35'W		388.8		93.9 ✓
460	S34°25'E		379.5	260.0	✓
2065	S14°25'E		2000.0	514.1	✓
735	S16°05'W		706.2		203.6 ✓
455	S5°25'E		453.0	43.0	✓
285	S33°35'W		237.4		157.6 ✓
190	S27°25'E		257.4	133.5	✓
1570	S52°25'E		957.6	1244.2	✓
		538.6	1166.1	2476.9	4387.7 ✓
			4596		

= Sta. 91+40 La Jolla Lennie

S54°25'E 1300, S51°45'E 607.7, N45°23'E 857

Coast Line Cont'd

Dist	Course	N	S	E	W
		538.6	11668.1	2476.9	4387.7
600	S 82° 10' E		81.8	594.4	
700	S 35° 10' E		572.2	403.2	
191.7	S 19° 20' W		180.9		63.5
374.3	S 34° 20' W		309.1		211.1
500	S 17° 25' E		477.1	149.7	✓
300	S 66° 25' E		120.0	274.9	✓
1034	S 41° 35' E		769.4	690.8	✓
1000	S 18° 55' E		946.0	324.2	✓
400	S 34° 25' E		330.0	226.1	✓
300	S 44° 25' E		214.5	210.0	✓
800	N 82° 35' E	1103.3		793.3	✓
600	S 47° 25' E		406.0	441.8	
	S 41° 25' E				

Traverse from Sta. 383 Hays Trm to  
 Sta 449+86 Hays Trm  
 Coast line Sta 0 to Sta 91+40

Dist	Course	N	S	E	W
340.8	N86°00' W	23.8			340.0
205.2	N22°51' W	189.0			79.6
700	N83°32' W	78.8			695.5
240	N40°22½ E	239.3		18.3	
170	N87°57½ W	7.0			169.9
1644	S40°42½ W		1246.2		1072.2
450	S75°42½ W		111.1		436.1
1650	S0°12½ W		1050.0		3.8
800	S57°41½ W		433.1		672.8
1250	S16°01' W		1201.5		344.9
1150	S13°20' E		1119.0	265.2	
1140	S5°29½ W		1134.8		109.1
1200	S54°30½ E		696.7	977.0	
607.7	S51°50½ E		383.7	471.2	
857	N45°19' E	609.3		603.6	
3300	N2°00' W	3298.0			115.2
1729	N26°30' E	1547.3		771.5	
1657	N33°54' E	1375.3		924.2	
		7367.8	7376.0	4030.0	4039.1
			7367.8		4030.0
			8.2		9.1

Traverse Sta 449+86 Hays line to  
 Sta 499 Hays line - Coast line Sta 91+40 to  
 Sta 160+00

Dist.	Course	N	S	E	W
857	S45°19'W		609.5		602.6
607.7	N51°50½'W	383.7			471.2
1200	N54°30½'W	696.7			977.0
400	S73°30'W		388.9		93.4
460	S34°30'E		379.1	260.5	
2065	S14°30'E		1999.2	517.0	
735	S16°00'W		706.5		202.6
455	S5°30'E		452.9	43.6	
285	S33°30'W		237.6		157.3
290	S27°30'E		257.2	133.9	
1570	S52°30'E		955.8	1245.6	
600	S82°15'E		80.9	594.5	
896	N15°31'W	86.3			24.0
624	N9°30'W	615.4			103.0
4290	N2°00'W	4287.4			149.7
		6069.5	6067.4	2795.1	2780.8



Dist.	Course	N	S	E	W
700	S 35° 15' E		571.6	404.0	
191.7	S 19° 15' W		181.0		63.2
374.3	S 34° 15' W		309.4		210.6
500	S 77° 30' E		476.8	150.4	
300	S 66° 30' E		119.6	275.1	
1034	S 42° 00' E		768.4	691.9	
1000	S 19° 00' E		945.5	325.6	
400	S 34° 30' E		329.6	326.6	
300	S 44° 30' E		214.0	210.7	
800	N 82° 30' E	104.4		793.2	
600	S 47° 30' E		405.4	442.4	
1050	S 41° 30' E		786.4	695.8	
2000	S 29° 30' E		1740.7	984.9	
858.7	S 15° 50' E		826.1	234.3	
2091.3	S 17° 41' E		1992.4	635.2	
494.4	S 31° 06' E		414.2	270.0	
1105.6	N 75° 03' E	322.3		1057.5	
234.5	N 69° 53' E	88.3		217.2	
942.1	N 75° 07' E	2736.1		9014.9	
1138	N 75° 32' E	322.6		1091.3	

Dist	Course	N	S	E	W
3949	S89°00'E	68.9		3948.4	
3647.5	N89°33'E	155.9		3644.1	
19.7	S0°10'W		19.6	.6	
3300	S89°40'E	73.6		2298.8	
100	S83°25'E		8.0	99.7	
4800	S89°34'E	131.2		4789.2	
412	N89°16'E	19.6		411.5	
2188	S89°40'E	63.6		2187.1	
436.4	°10'E	6.1		436.3	
2475	°21'E	71.3		2474.0	
910.5	°21'E	73.1		907.5	
2663.5	39'W	2314.7			1317.6
93.6	°17'W		93.5		2.8
4221.4	°24'W	3603.7			2199.4
807.8	°04'W	355.0			725.6
6092.2	°14'W	5316.3			3975.2
236.3	°56'W	204.7			117.9

Traverse from NW cor Pulls.

DIST	COURSE	N	S	E	W
1456	S 25° 00' E		1319.5	615.3	
4763	S 4° 25' E		4748.8	366.8	
17769	S 13° 33' E		17274.4	4163.1	
4330	S 14° 57' W		4183.3		1117.0
1114	S 15° 37' W		1072.9		299.9
3894	S 29° 37' W		3385.2		1924.4
2145	S 43° 07' W		1565.8		1466.1
65	S 55° 42' E		36.6	53.7	
2764	N 71° 00' W	899.8			2613.4
1657	S 33° 54' W		1375.3		924.2
1729	S 26° 30' W		1547.3		771.5
7590	S 2° 00' E		7585.4	264.9	
624	S 9° 30' E		615.4	103.0	
89.6	S 15° 31' E		86.3	23.8	
700	S 35° 15' E		571.6	404.0	
191.7	S 19° 15' W		181.0		63.2
374.3	S 34° 15' W		309.4		210.6
500	S 17° 30' E		476.8	150.4	
300	S 66° 30' E		119.6	275.1	
103.4	S 42° 00' E		768.4	691.9	
		899.8	4223.0	7112.0	9390.3

Dist	Course	N	S	E	W
		899.8	4722.0	7112.0	9390.3
1000	S19°00'E		✓ 945.5	325.6	
400	S34°30'E		✓ 329.6	226.6	
300	S44°30'E		✓ 314.0	210.3	
800	N82°30'E	✓ 104.4		793.2	
600	S47°30'E		✓ 405.4	442.4	
1050	S41°30'E		✓ 766.4	695.8	
2000	S29°30'E		✓ 1740.7	984.9	
858.7	S15°50'E		✓ 826.1	234.3	
2191.3	S17°41'E		✓ 2087.7	665.6	
494.4	S31°06'E		✓ 423.3	255.3	
1105.6	N75°23'E	✓ 285.1		1068.2	
234.5	N69°53'E	✓ 80.6		220.2	
942.1	N75°07'E	✓ 2419.8		9104.9	
1138	N75°32'E	✓ 284.3		1101.9	
394.9	S89°00'E		✓ 68.9	3948.4	
3347.5	N89°33'E	✓ 28.6		3647.4	
19.7	S 0°10'W		✓ 19.7		
2300	S80°50'E		✓ 6.7	2300.0	
100	S83°25'E		✓ 11.5	99.3	
4800	S89°34'E		✓ 36.3	4799.8	
		4102.6	55124.8		9390.3

DIST	COURSE	N	S	E	W
		4102.6	55124.8	38236.1	9390.3
412	N89°16'E	5.3		411.9	
2188	S89°46'E		12.6	2188.0	
436.4	S88°48'E		9.1	436.3	
2475	S89°39'E		15.1	2474.9	
910.5	N87°21'E	42.1		909.5	
2663.5	N27°39'W	2359.3			1236.1
93.6	N89°43'W	0.4			93.6
4224.4	N29°24'W	3677.8			2072.3
1807.8	N24°04'W	737.6			329.4
6092.2	N27°14'W	5416.9			2788.0
236.3	N27°56'W	208.7			110.5
16938.7	N27°15'W	15058.8			7755.8
684	N27°36'W	606.2			316.9
4586	N27°17'W	4075.8			2102.2
92	S10°05'W		20.6		16.1
4152	N26°31'W	3625.7			1809.0
4679	N47°21'W	3170.1			3441.4
17954	N47°33'W	12129.5			13237.1
		55216.8	55251.8	44656.7	44698.7
		55216.8	55216.8	44656.7	44656.7
	Error North		35.0	Error East	42.0

Traverse from Sta 768 + 34 west to Pine  
Canyon, thence N and E through Elms, Yuccas  
to Sta 816 + 35, the East Boundary thence S by.

Dist	Course	N	S	E	W
19050	S89°33'W		149.6		19049.3
1200	N2°43'E	1198.6		56.9	
1500	N74°43'E	395.4		1447.0	
750	N84°13'E	75.6		746.2	
2950	N77°53'E	619.2		2884.2	
1000	N55°23'E	568.1		823.0	
1100	N53°03'E	661.2		879.1	
1400	N61°13'E	674.1		1227.0	
1575	S85°47'E		115.8	1570.7	
825	S84°27'E		84.7	820.6	
1100	S86°52'E		21.7	1099.7	
2300	N85°28'E	181.8		2292.8	
400	S64°32'E		172.0	361.1	
600	N86°28'E	37.0		598.9	
600	N70°28'E	300.6		565.5	
800	N84°26'E	77.1		796.3	
300	S86°33'E		18.1	299.5	
406.4	N68°41'E	157.0		377.3	
4801	S27°15'E		4268.2	2198.2	
		4830.7	4830.1	19044.0	19040.3
		4830.1			19044.0
		9.6			5.3

Traverse from Sta 618+21.5 on East Boundary  
thence along E. Boundary to 768+34, thence West to  
Red Canyon, thence South to S.E. cor 1797, thence  
East to beginning

Dist.	Course	N	S	E	W.
2663.5	N 27° 39' W	2359.3			1236.1
93.6	N 89° 43' W	0.4			93.6
4221.4	N 29° 24' W	3677.8			2072.3
807.8	N 24° 00' W	737.6			329.4
6093.2	N 27° 14' W	5416.9			2788.0
236.3	N 27° 56' W	208.7			110.5
897.7	N 27° 15' W	798.1			411.0
19050.	S 89° 33' W		149.6		19049.3
1300	S 13° 42' E		1263.0	307.8	
1900	S 9° 42' E		1872.8	320.1	
850	S 17° 42' E		809.8	258.4	
2870	S 43° 09' E		2093.8	1962.8	
900	S 33° 09' E		753.5	492.1	
850	S 12° 39' E		829.4	186.1	
200	S 23° 39' E		183.2	80.2	
770	S 30° 39' E		662.4	392.5	
1300	S 3° 39' E		1297.4	82.8	
2445	S 13° 09' E		2380.9	556.2	
840	S 15° 56' E		807.7	230.6	
3949	S 89° 00' E		68.9	3948.4	
		13198.8	18172.4	8818.0	26090.2

				8818.0	
3647.5	N89°33'E	28.6		3647.4	
19.7	S°0°10'W		19.7		
2300	S89°50'E		6.7	2300.0	
100	S83°25'E		11.5	99.3	
4800	S89°34'E		36.3	4799.8	
412	N89°16'E	5.3		411.9	
2188	S89°46'E		12.6	2188.0	
436.4	S88°48'E		9.1	436.3	
2475	S89°39'E		15.1	2474.9	
910.5	N87°21'E	42.1		909.5	
		13274.8	13283.4	26085.1	26090.2
			13274.8		26085.1
			8.6		5.1



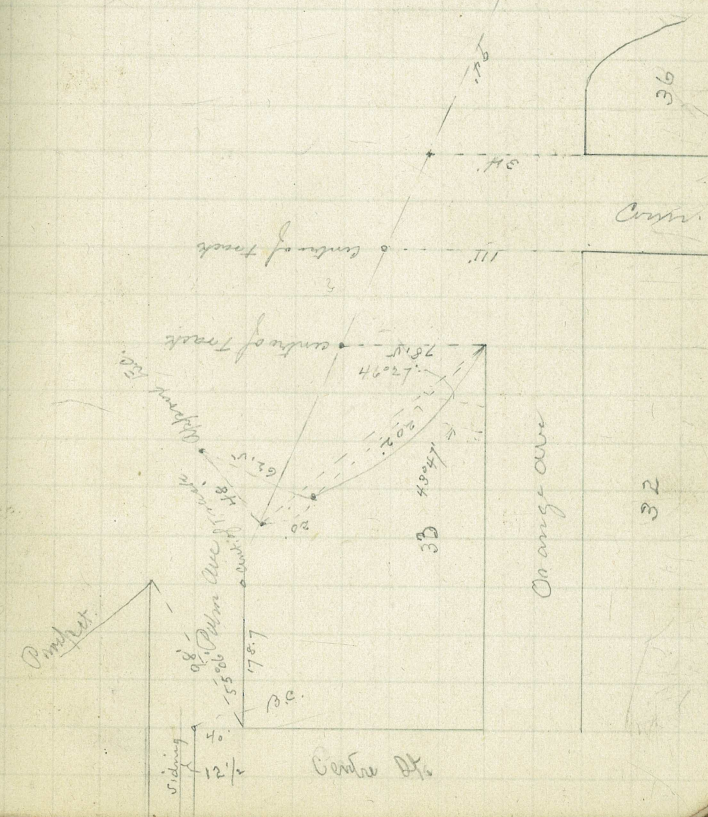
Traverse 768+34 on East Boundary West to  
Sta 190+50 = 0 - North and East through Rose Canyon  
and San Buenaventura to East Boundary, South  
to point of beginning

Dist	Course	N	S	E	W
19050	S89°33'W		149.6		19049.5
3227	N22°17'W	2986.0			1223.6
1863	N15°58'E	1791.1		512.4	
875	N33°33'E	730.6		481.5	
1470	N48°35'E	1082.3		994.7	
2200	N62°15'E	1024.3		1947.0	
1400	N67°55'E	526.3		1297.3	
3565	N62°55'E	1167.8		3283.7	
800	N50°15'E	511.5		615.1	
1430	N61°15'E	687.8		1253.7	
1000	S75°45'E		246.1	969.2	
1040	S86°45'E		59.0	1038.3	
1140	N87°25'E	51.4		1138.8	
1190	N74°45'E	313.0		1148.1	
1092	N59°36'E	552.6		941.9	
12326	S27°15'E		10957.9	5643.7	
		11424.7	11412.6	20265.4	20272.9
		11412.6			20265.4
		12.1			7.5

	20°29'	to Tang.
+68.7	23°15'	
300	19°34'	
700	13°35' R	
100	7°19' R	
250		
0	4°35' R	

4622  
4328  
500  
440

Ball Field June 6, 1894



Sta.

681+36

694+0.11 IP. 12°00' B 2°00' Curve

697+00 E.C.

1449' <sup>8</sup> Bank of NW corner 1208

1209 681+36  
-1449  
1208

Station		Cent. angle	Semi Tang	Dist. bet I.P.
681+36	1449' East of NW cor	1208		Dist bet I.P.
691+00	B.C. 2°00' R		306.1	
	694+01.1 I.P.	12°00'		1265.1
697+00	E.C.			
700+00	B.C. 2°00' L		701.1	
	704+03.3 I.P.	27°30'		1302.1
713+75	E.C.			
755+80	B.C. 2° R	2865' R	56°24'	1349.1
781+00	E.C.			2254.2
786+71.2	B.C. 5°00' L	1146' R	41°54'	438.7
795+092	E.C.			2358.0
796+00 796+00				
797+90	B.C. 6°00' R	955' R	20°30'	173.1
801+31.7	E.C.			897.6
802+10.8 802+00				
812+95.5	B.C. 4°00' L	1432.5 R	16°48'	211.4
817+15.5	E.C.			1559.7
817+83.8 818+00.0				
831+14	B.C. 5°00' R	1146' R	46°48'	495.9
840+50	E.C.			2089.6

Sta		Radius	Cent Angle	Semichord	Dist bet T.P.
851+00	BC. 2°00' R	2865'	26°30'	674.6	
864+25	EC				2220.5
874+86	BC. 3°00' R	1910'	30°25'	519.2	
885+00	EC				2254.8
894+50	BC. 5°00' L	1146'	17°30'	176.4	
898+00	EC				1645.6
902+00	BC. 3°00' R	1910'	13°30'	226.1	
906+50	EC				202.5
915+30	BC. 3°00' L	1910'	9°36'	160.4	
918+50	EC				1266.5
926+97.4	BC. 3°00' R	1910'	9°30'	158.7	
930+14	EC				1166.5
930+90 931+00					
937+25	BC. 4°00' L	1432.5	19°00'	239.7	
942+00	EC				1099.4
951+50	BC. 4°00' R	1432.5	28°00'	357.2	
958+50	EC. 5°00' R	1146'	20°00'	202.1	1546.9
962+50	EC				559.3
965+25	BC. 2°00' L	2865'	7°30'	187.8	
969+00	EC				664.9

Sta.		Radius	Cent Angle	Sim Tang	Dist bet T.P.
980+00	B.C. 1°00' L	5730	15°00'	754.4	
995+00	E.C.				2042.2
1000+75	B.C. 2°00' L	2865	16°30'	415.4	
1009+00	E.C.				1744.8
1014+25					
1018+50	B.C. 2° L	2865	13°00'		

int City Line

	+	26.8	-	ele.	
	0.84	40.84			40.00
			3.65	37.19	2 <sup>nd</sup> and D
			8.15	32.69	1 <sup>st</sup> " D
#	6.33	39.02			
			6.60	32.42	N.W. cor 1 <sup>st</sup> & D
			5.63	33.39	N.E. " " "
			4.64	34.38	E. side
			5.92	33.10	W "
			3.20	35.82	S.E. cor. 1 <sup>st</sup> & C
			3.27	35.75	B.M. S.E. cor. 1 <sup>st</sup> & C. spike in cor. of fence
			2.47	36.55	110' N of N line of C st E side
			11.19	35.14	110' N " " " " " W "
#			1.99	37.03	
	9.30	46.33	9.56	36.77	S.W. cor 1 <sup>st</sup> & B st.
			8.71	37.62	S.E. " " " "
			8.97	37.36	B.M. N.W. cor of 1 <sup>st</sup> & B. Spike in confluence
			5.15	41.18	110' N of N line of B st. W side
			4.41	41.92	" " " " " " E "
#			0.74	45.59	
	8.27	53.86			
			5.88	47.98	S.E. cor of 1 <sup>st</sup> & A st.

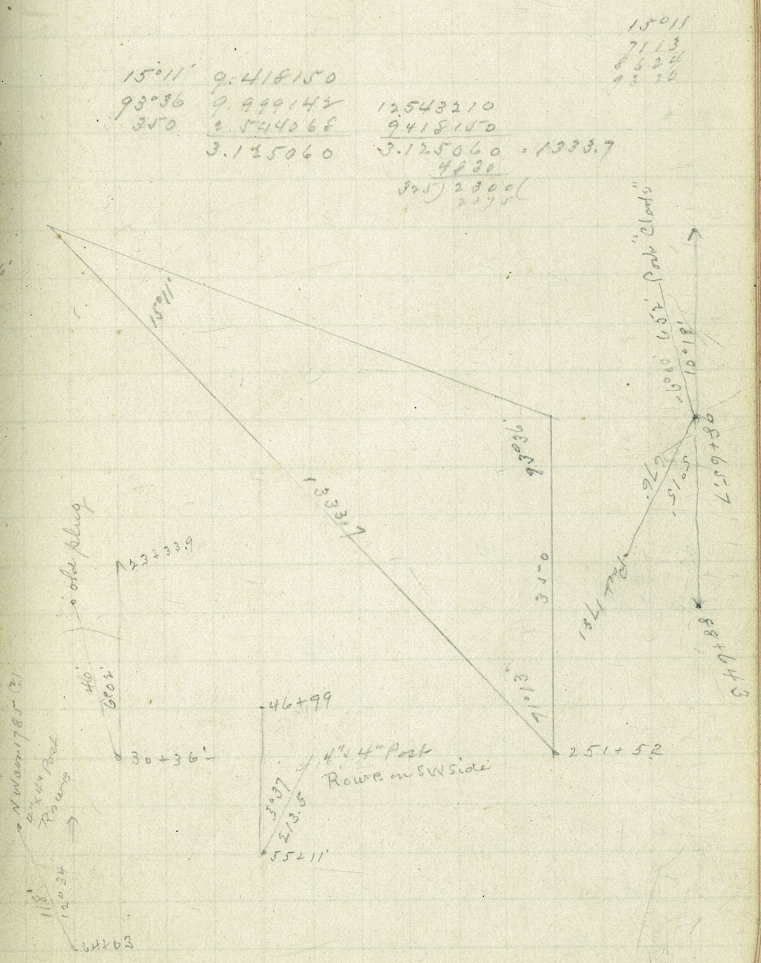
	+	% f	-	Ele	
		53.86	5.85	48.01	
			1.60	52.26	
			0.81	53.05	
			3.76	50.10	B.M.
#	10.39	63.44	0.81	53.05	
			4.95	58.49	
			6.61	56.83	
			4.01	59.43	
			0.79	62.65	
#	9.50	72.53	0.41	63.03	B.M.
#	10.53	82.42	0.64	71.89	B.M.
#	90.13	8.10	0.39	82.03	
			2.12	88.01	B.M.

S.W. cor of 1st & A  
 110' N of N line of A. W side  
 " " " " " " " E side  
 S.E. cor of 1st & A St N. hidge of hydrant  
 S.E. cor 1st & Ash  
 S.W. " " " " "  
 110' N. of N. line of Ash St. W. side  
 S.W. cor of 1st & Ash St.  
 S.E. cor of 1st & Beech St. spike near cor.  
 S.E. " " " " cedar " N hidge of hydrant  
 N.E. cor 1st & DATE ST



West from South line Brick Yard

	4 B	R.d	V.A	Correct
251+52				
0				
13+33.2	Triang.			1333.7
13+48.7	chain			15.0
23+33.9	9.89	-4°06'		985.2
30+36.1	7.01	+0°38'		702.1
41+09	10.76	+3°38'		1072.9
46+99	5.90	-2°38'		590.0
55+11	8.11	-0°54'		812.0
64+04	8.92	-1°15'		893.0
71+78	7.73	+1°00'		774.0
72+88	10.95	-4°35'		110.0
81+51.3	8.67	-4°20'		863.3
87+54.3	6.02	-0°28'		603.0
88+64.3	1.095	-4°24'		110.0
98+65.7	10.04	-3°32'		1001.4
106+68.6	8.02	-3°04'		803.9
114+42.9	7.82	-4°34'		778.3
122+97.6	20°00' R	8.515	-2°50'	850.7
131+53.1		8.545	-1°14'	855.5
135+83.1	3°28' L	4.29	-1°16'	430.0
191+00	111°03' W	5.95	-3°08'	544.5
1/2 201+00				



West from SW corner 1252

HA	Prod	V. Ang.	Correct	
195+05				
=5+86			586	SW 1252
275.4			275.4	
7+37.4	4.71	+8°25'	462.2	
16+48	9.115	-2°00'	912.6	
20+70	chain		422	
26+82	6.115	-2°28'	611.6	
33+26.4	6.54	+7°30'	644	
42+47	9.20	+1°30'	920.6	
45+03	2.55	-0°30'	256	
53+12	8.39	-9°12'	818.8	518.8
62+84.2	9.84	+3°00'	982.6	
68+56	5.715	+2°10'	572	
75+58	7.01	+1°08'	702	
82+48	(6.455)2	-2°30'	1289.8	
101+05.5	(6.29)2	-2°26'	1257	
103+17.1	2.11	-3°26'	211.5	
109+39.8	6.245	-4°00'	622.7	
117+05.4	8°00' R 7.755	-6°54'	765.6	
128+12.8	85°30' L 11.48	-11°00'	1107.4	
=477+86	to Sta 481+86			

Sta	H.A.	Red	V.A.	corr.	
S.W. corner Box 6 La Jolla	0°16' R	6.174		619.0	619
	0°13' L	4.625		464.0	464
		10.762	+8°00'	1056.6	1053.4
		5.422	+2°15'	442.5	443.5
	3°10' L	(6.394)	+6°50'	1262.0	1264.0
	4°22' R	9.13	+13°14'	266.4	271.6
		5.23	-1°28'	524.0	526.0
		7.325	-1°28'	733.2	734.0
				125.0	125.0
		(5.31) L	-6°45'	1048.6	1045.2
					470.0
					105.0
					1064.0
					2083.6
					785.0
					1055.5

Sta 554

1204	1203
1297	1298

112°44' 131.7

Sta. 556+14

1203	1202
1196	1199

113°56'

158.9

Sta 558

Sta 554+36.4

Sta. 609+11

1202	1201
1199	1200

145°25'

Post

Look 14<sup>th</sup> 15 Blk 59 La Jolla Park  
one story frame cost 500<sup>00</sup>

SE cor  
SW cor  
W.  
E

70 30  
8  
53 30

80  
113  
153