

607

360

FIELD

F.B. 607

607

showing the difference of latitude and departure in running 80 chains at any course from 1 to 60 minutes.

MINUTES	LKS.	MINUTES	LKS.	MINUTES	LKS.
1	2 1/3	21	49	41	95 2/3
2	4 2/3	22	51 1/3	42	98
3	7	23	53 2/3	43	100 1/3
4	9 1/3	24	56	44	102 2/3
5	11 2/3	25	58 1/3	45	105
6	14	26	60 2/3	46	107 1/3
7	16 1/3	27	63	47	109 2/3
8	18 2/3	28	65 1/3	48	112
9	21	29	67 2/3	49	114 1/3
10	23 1/3	30	70	50	116 2/3
11	25 2/3	31	72 1/3	51	119
12	28	32	74 2/3	52	121 1/3
13	30 1/3	33	77	53	123 2/3
14	32 2/3	34	79 1/3	54	126
15	35	35	81 2/3	55	128 1/3
16	37 1/3	36	84	56	130 2/3
17	39 2/3	37	86 1/3	57	133
18	42	38	88 2/3	58	135 1/3
19	44 1/3	39	91	59	137 2/3
20	46 2/3	40	93 1/3	60	140

MICROFILMED TABLE FOR RUNNING ON SLOPES.

DEC 14 1964 In the following table the first column shows the angle, the second the number of links to be added to a chain on the slopes, to make one chain, horizontal measurement.

Angle	COR. IN LINKS	Angle	COR. IN LINKS	Angle	COR. IN LINKS	Angle	COR. IN LINKS
0		0		0		0	
4	0.24	11	1.88	18	5.14	25	10.54
5	0.38	12	2.24	19	5.76	26	11.26
6	0.55	13	2.63	20	6.42	27	12.24
7	0.76	14	3.06	21	7.11	28	13.37
8	0.98	15	3.53	22	7.85	29	14.34
9	1.24	16	4.02	23	8.64	30	15.47
10	1.55	17	4.56	24	9.47	35	22.07

P.L. Nos. 1341-1342-1343  
 1344-1345-1347-1348  
 1349 and 1350, are found  
 following No. 1168

937

10

39

937

328

205 812  
 828

10

11

8

7

6

4

3

2

1

20

19

18

15

16

17

14

13

12

14

13

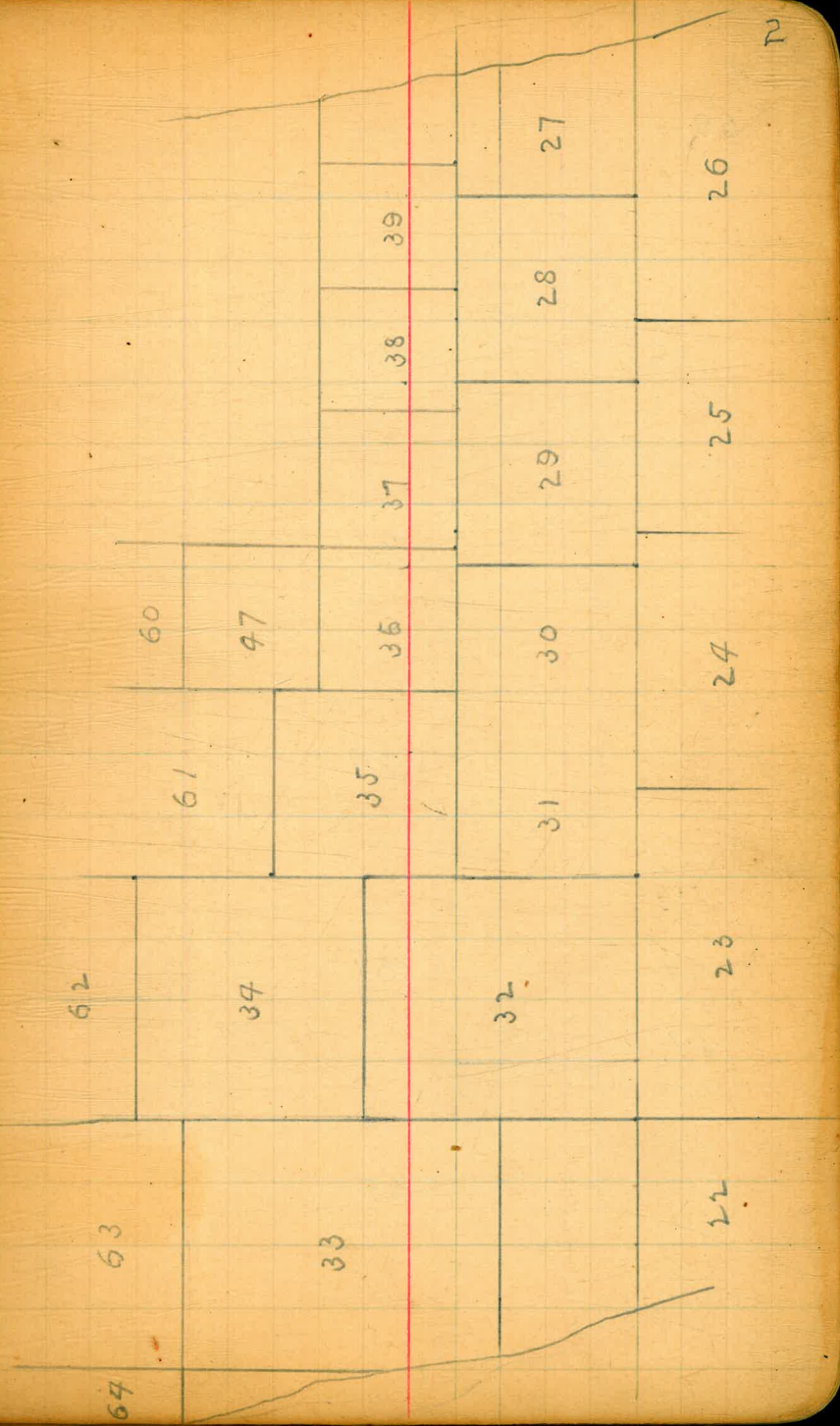
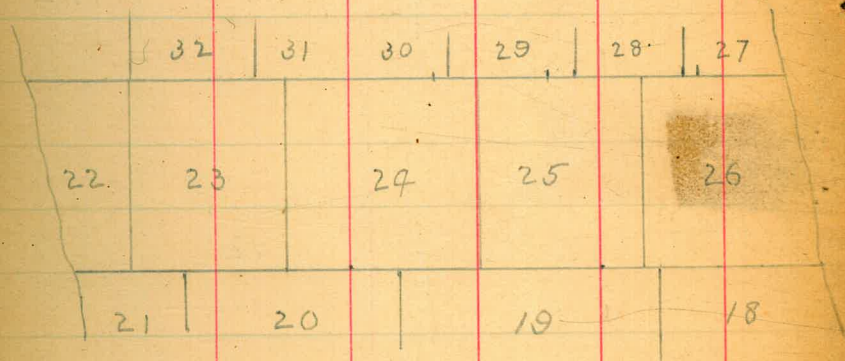
12

9

10

11

1



69

70

61

60

97

69

60

61

34

35

67

63

62

69

34

65

66

64

63

62

33

195

103

65

66

67

103

102

65

66

67

63

4

102

66

101

67

68

62

101

67

86

68

85

62

69

85

69

70

60

86

68

85

69

70

100

101

68

86

85

106

101

100

86

102

105

67

101

100

68

103

104

66

102

105

67

6

149

65

103

104

66

143

142

103

104

129

102



	129	
		117
102	105	106
	101	
	117	
105	106	
101		
	100	

	128
129	
	117
105	
	106
	130
129	128
	117

	142	
109	129	128
	105	
	141	
142	130	
	128	

	149	
148	141	
142	130	
	148	
143	141	
	142	130
109	129	

147

149

143

148

142

109

146

145

144

147

143

103

193

9

146

145

149

65

182

145

146

181

147

144

181

146

171

197

170

199

148

143

170

149

148

143

141

192

169

148

149

191

172

170

169

149

197

171

170

169

198

199

181

180

197

171

169

170

189

180

171

172

170

169

173

174

175

176

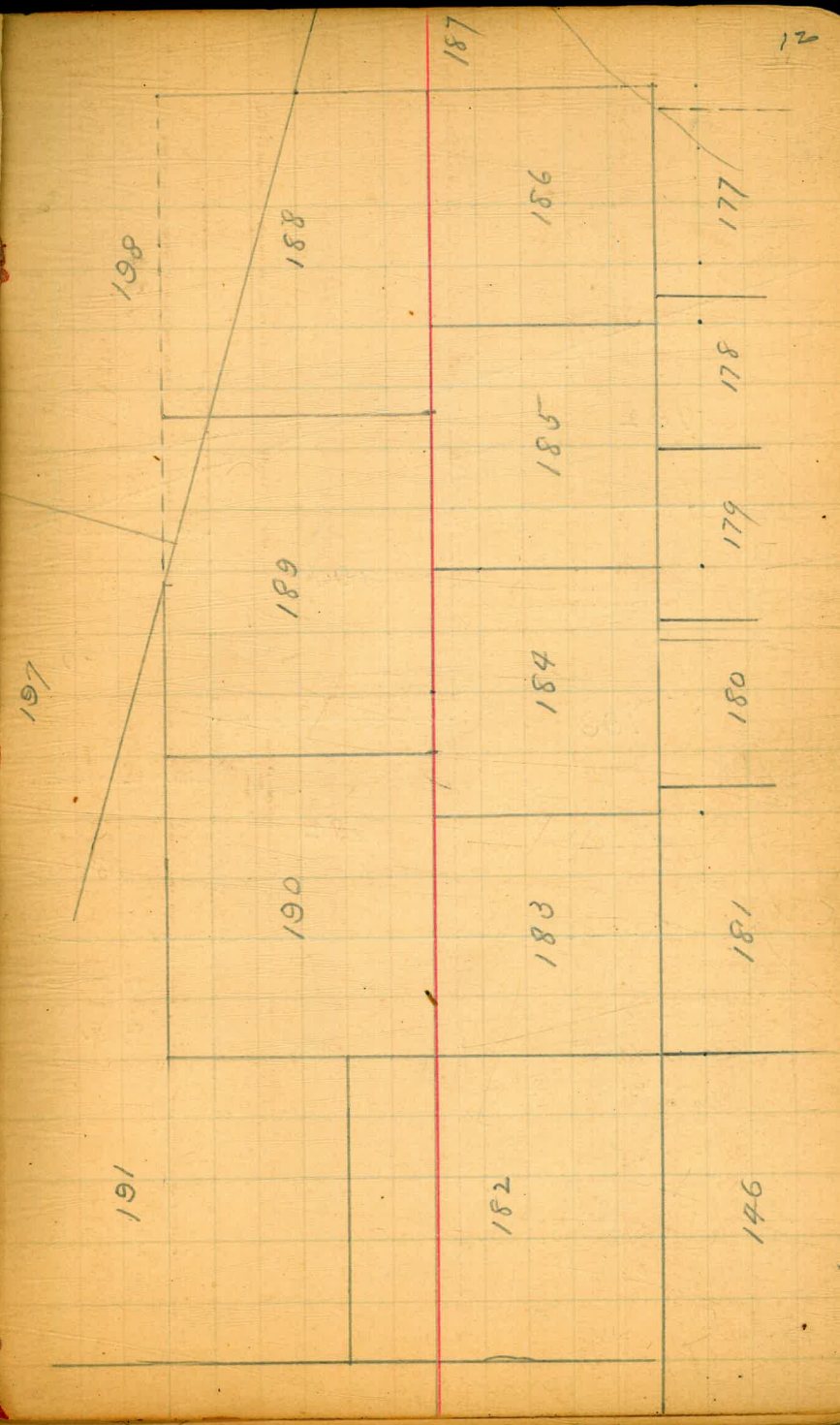
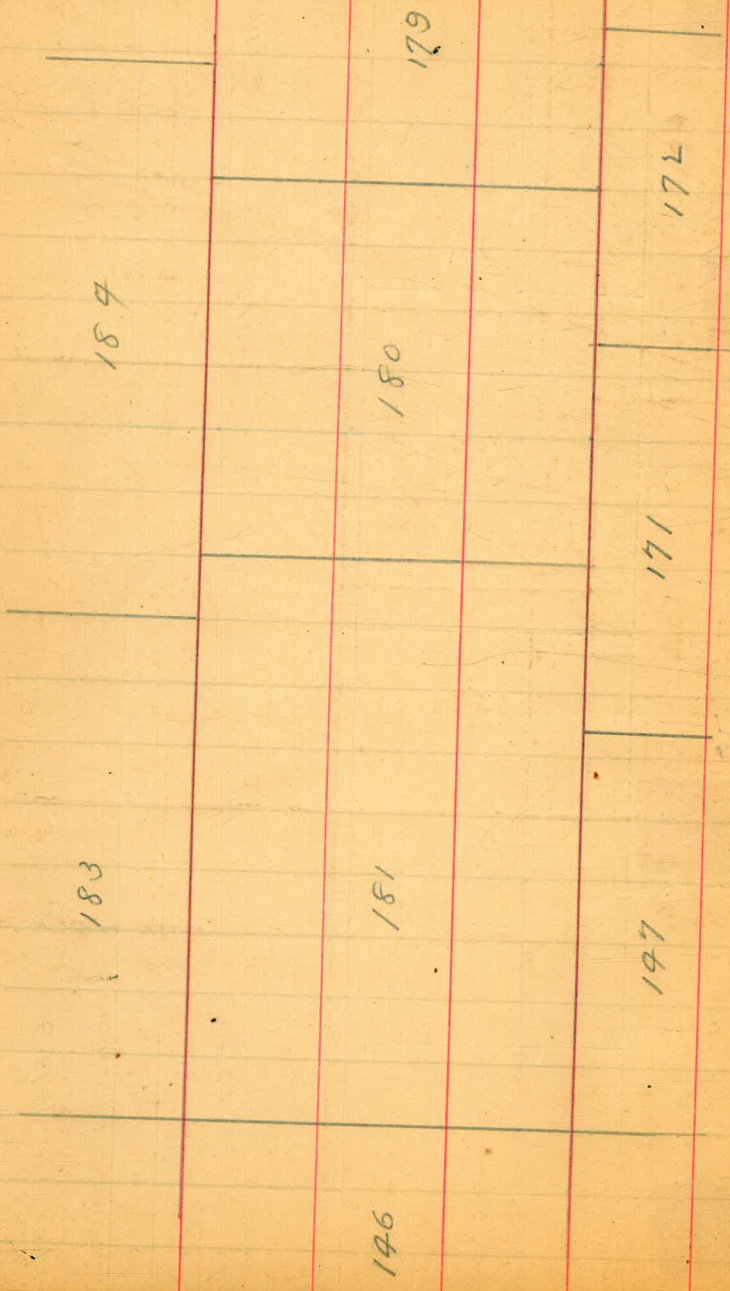
179

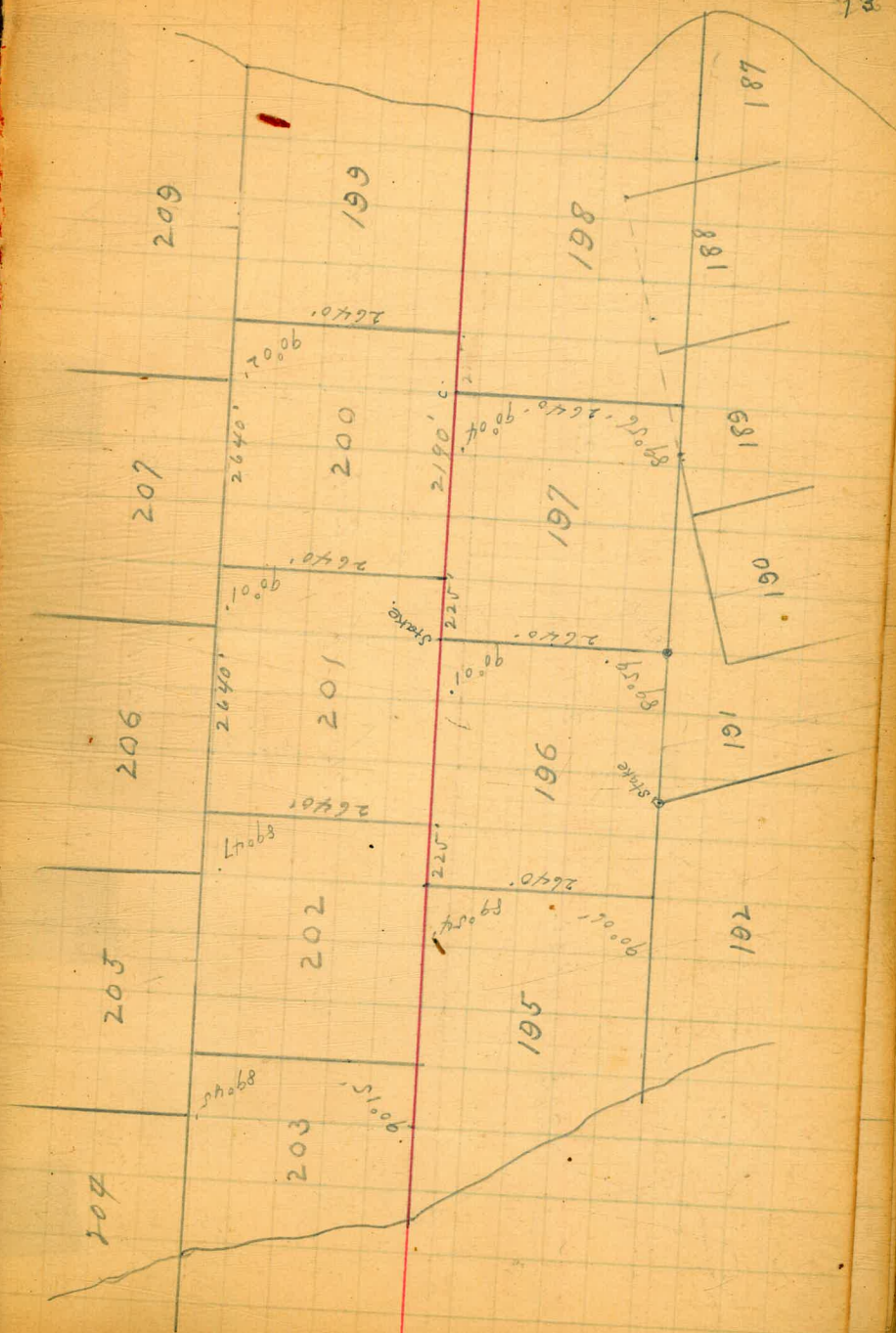
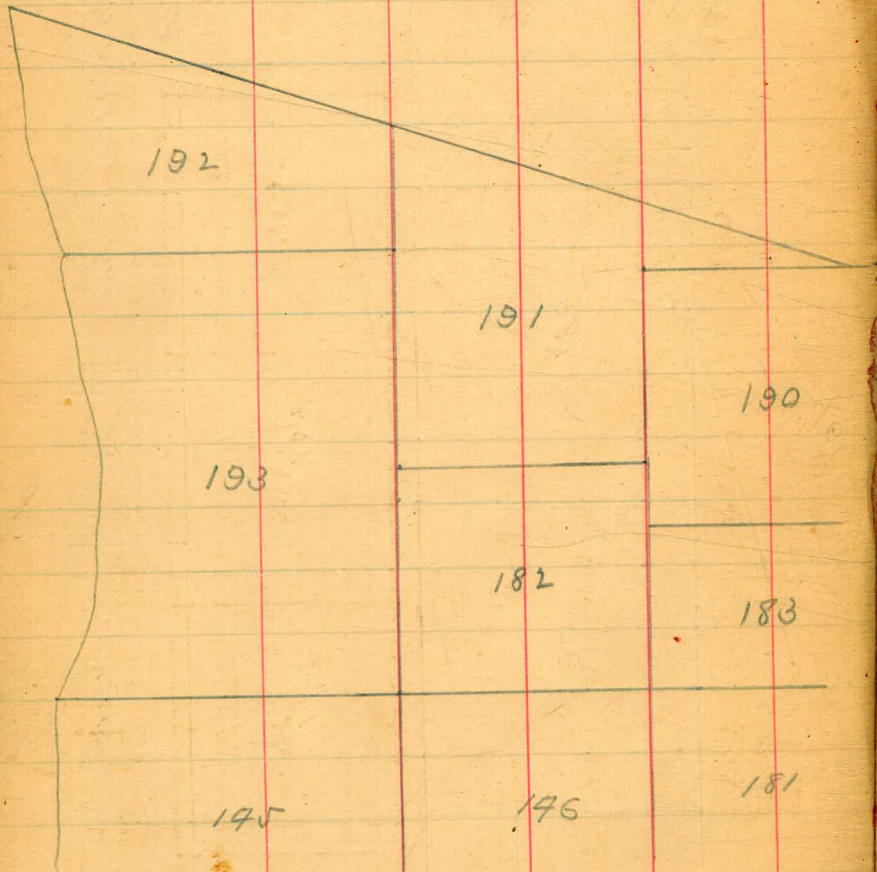
178

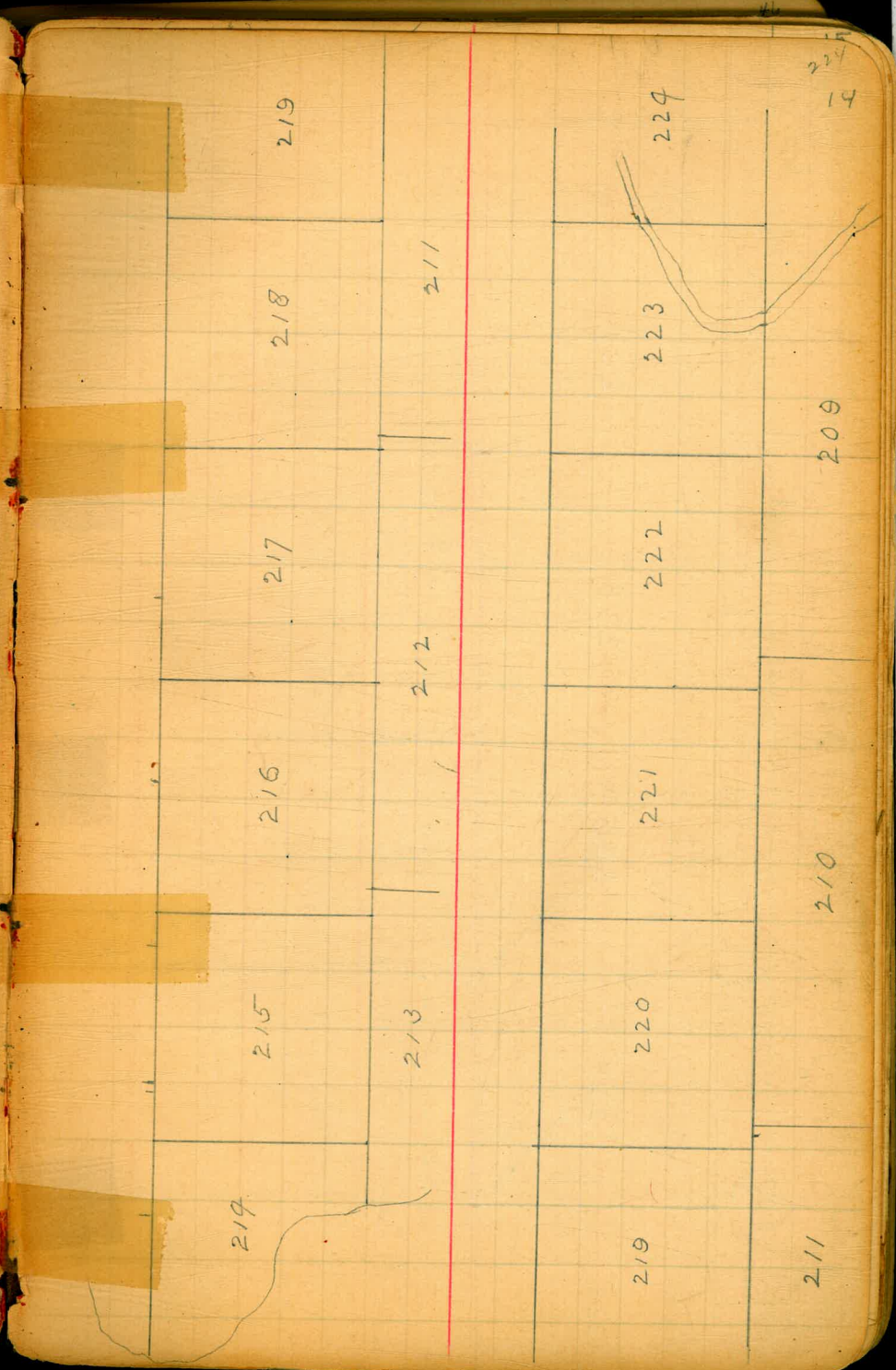
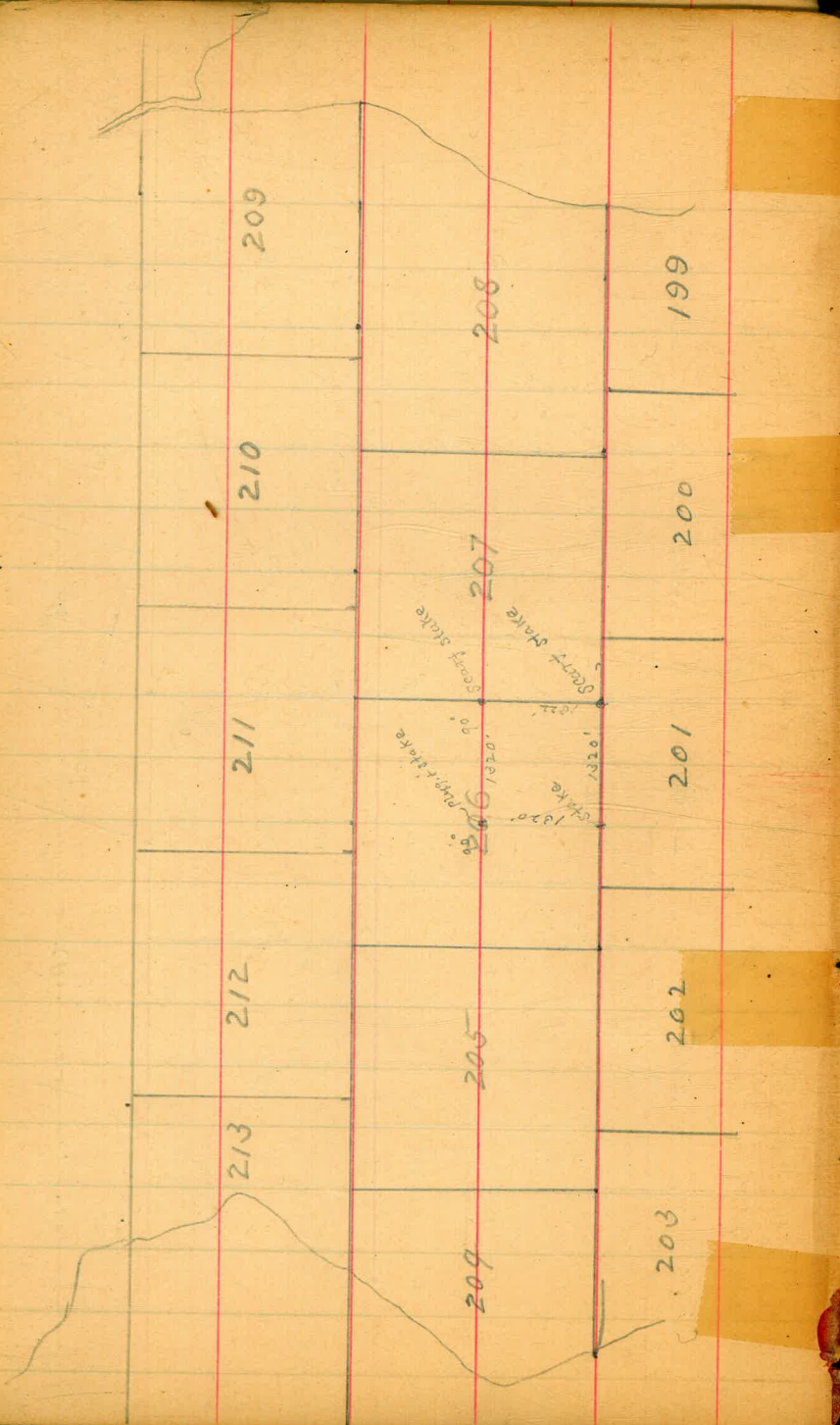
177

185

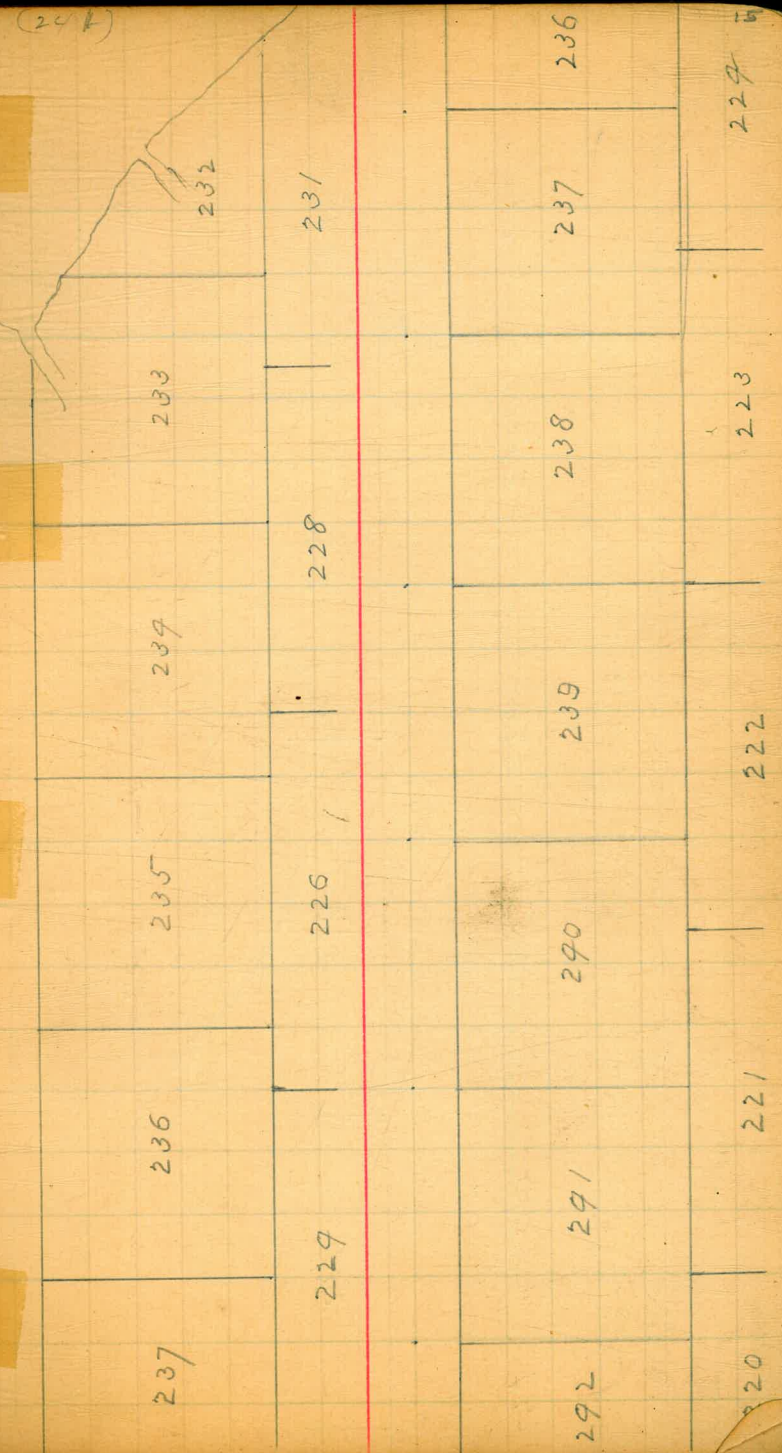
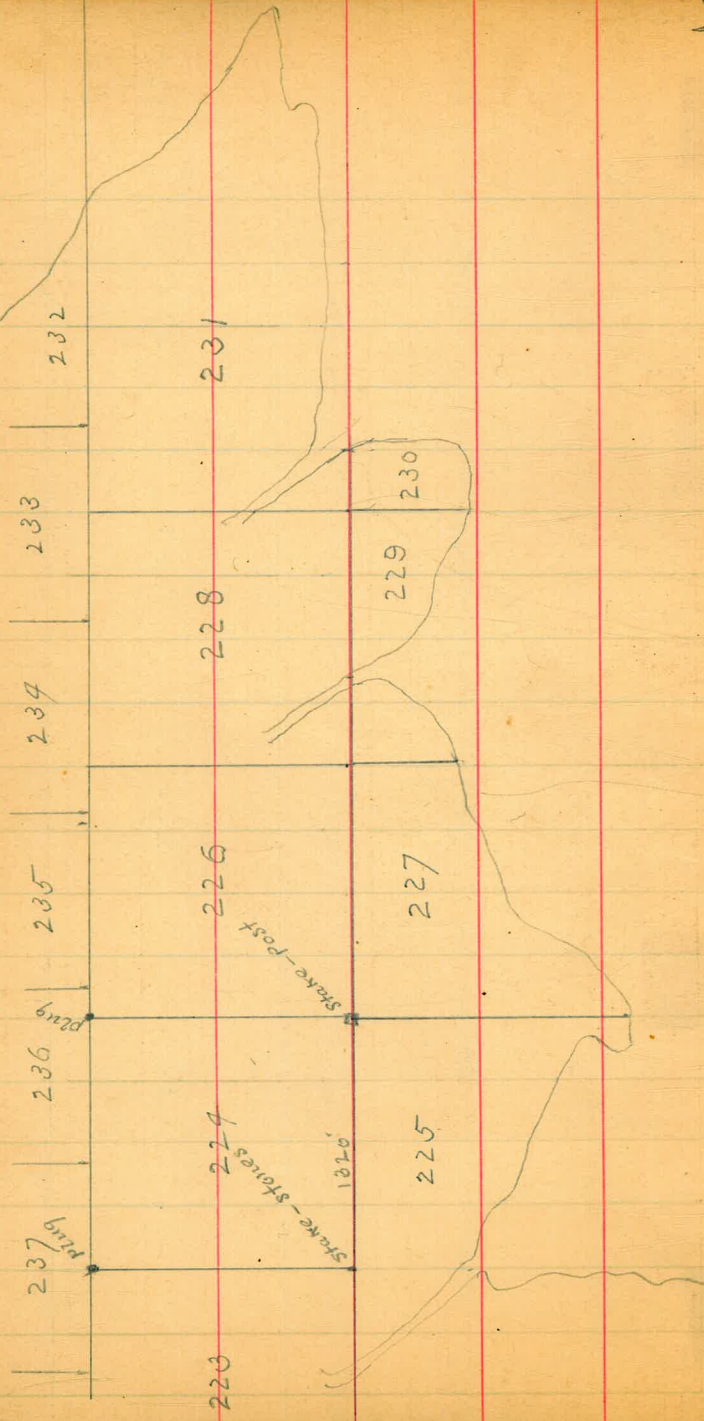
186











297 296 295 294 293 292 291

217

218

219

220

251 250 249 248 247 246

214

215

216

252

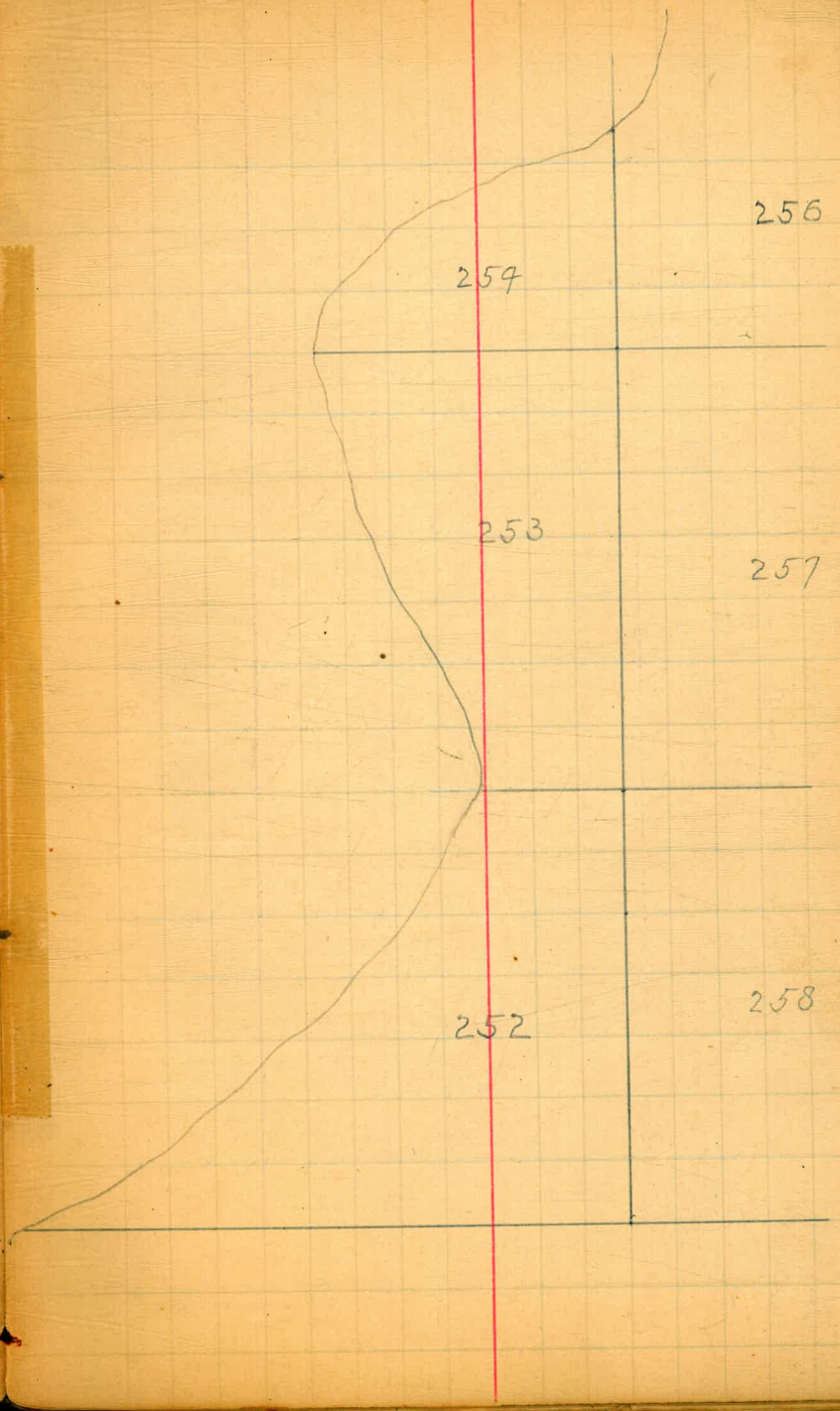
253

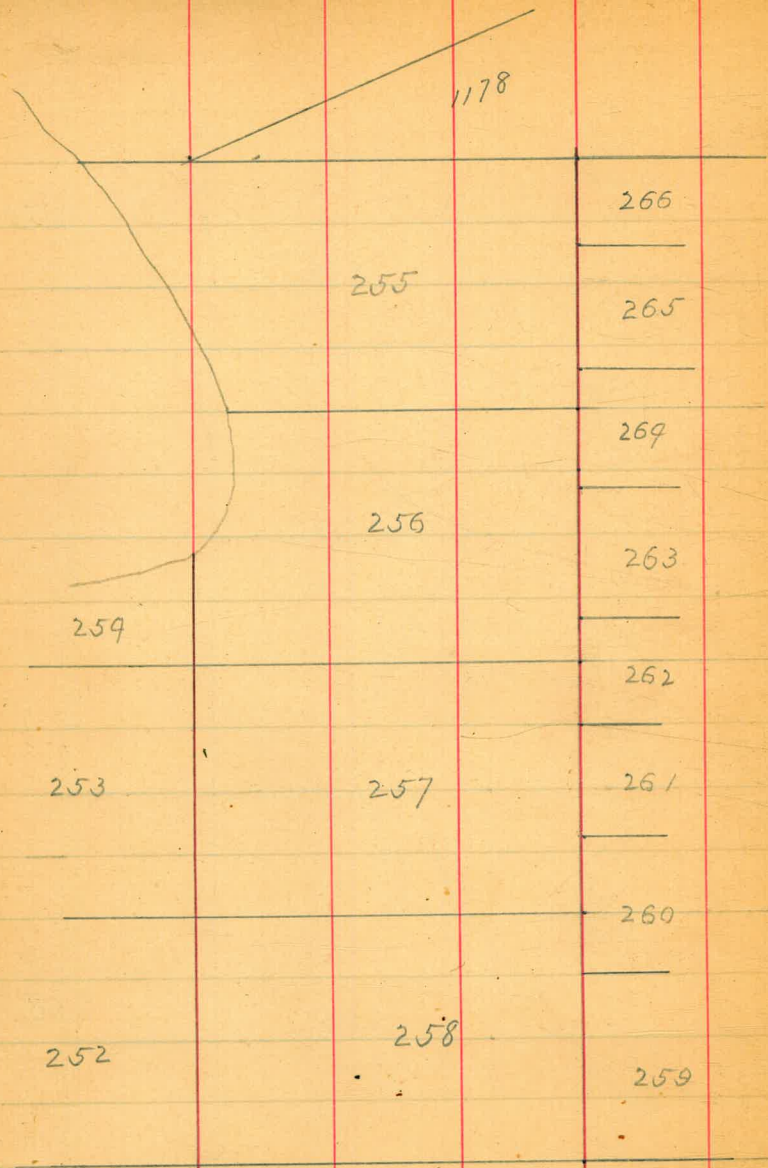
254

258

257

256

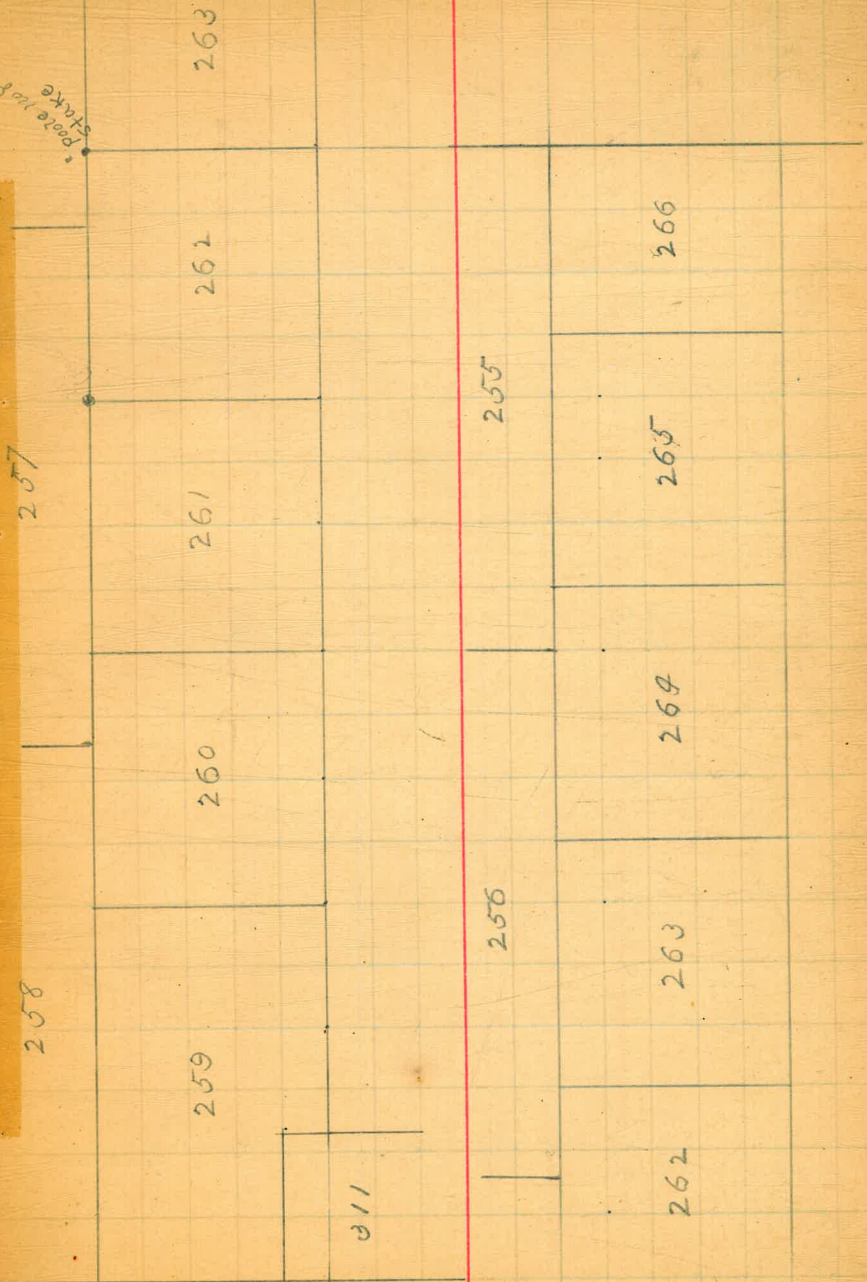




Poste la p  
stake

257

258



262	263	269	265	266
272	270	269	268	267
259	260	261	262	
311	275	279	273	271
312	339			

276	275	279	273	272
339	278	279	280	281
338	277	278	280	282
	272	271	270	269
281	282	283	285	286
				287

269

268

267

286

287

288

289

290

297

296

295

294

293

292

291

283

284

285

286

301

300

299

298

298

297

296

280

281

282

283

306

305

304

303

302

301

300

280

279

278

277

306 305

307

308

309

310

337

316

315

314

313

312

311

259

239

240

241

242

315

316

317

318

239

238

237

317

318

319

320

237

236

319

320

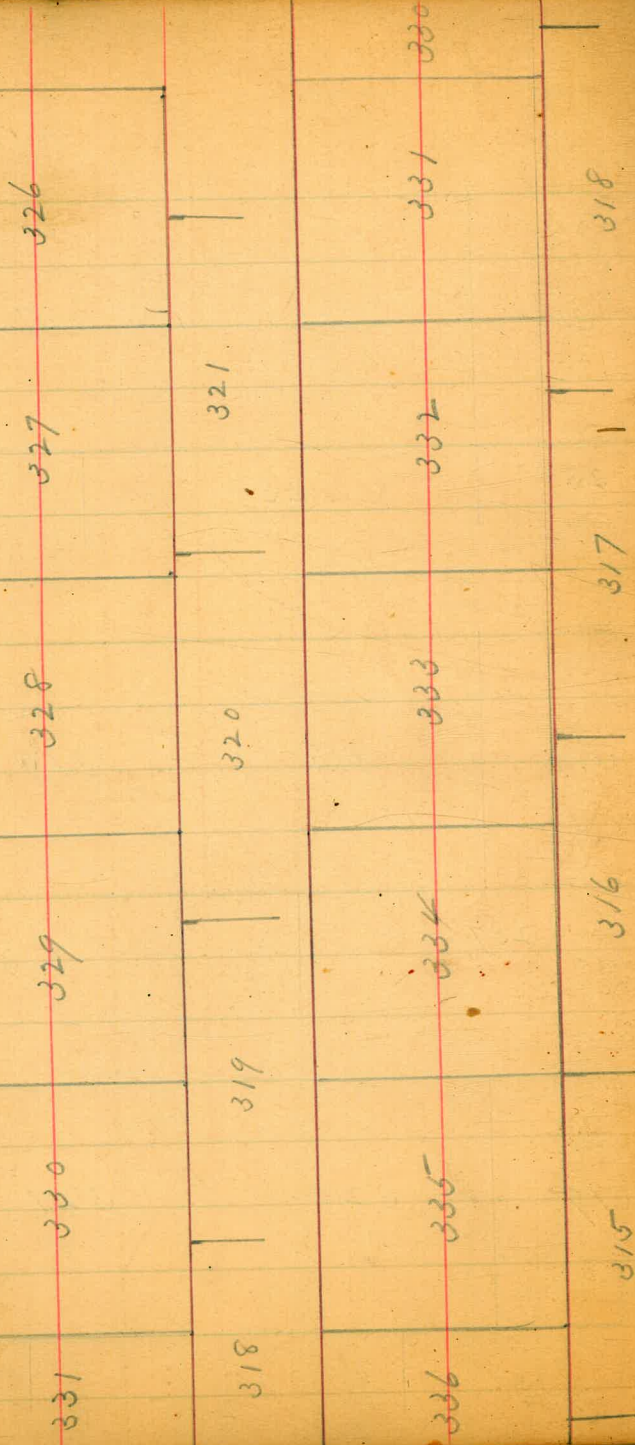
321

236

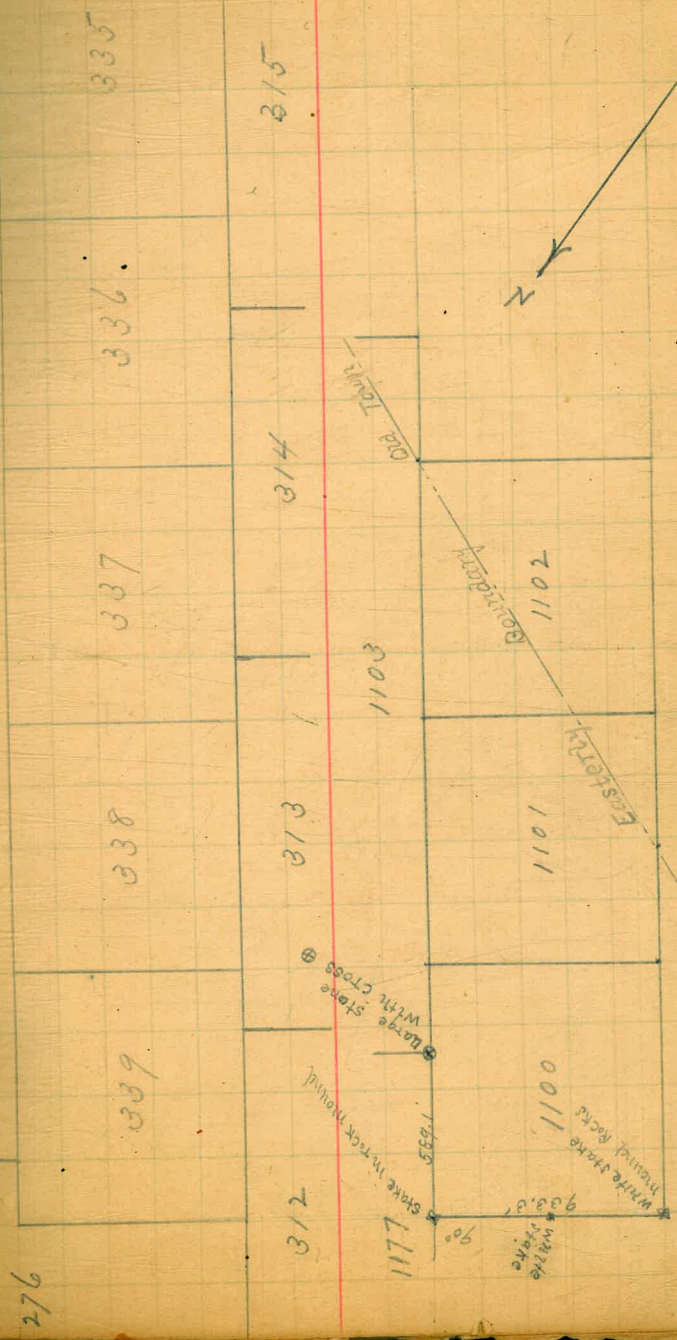
235

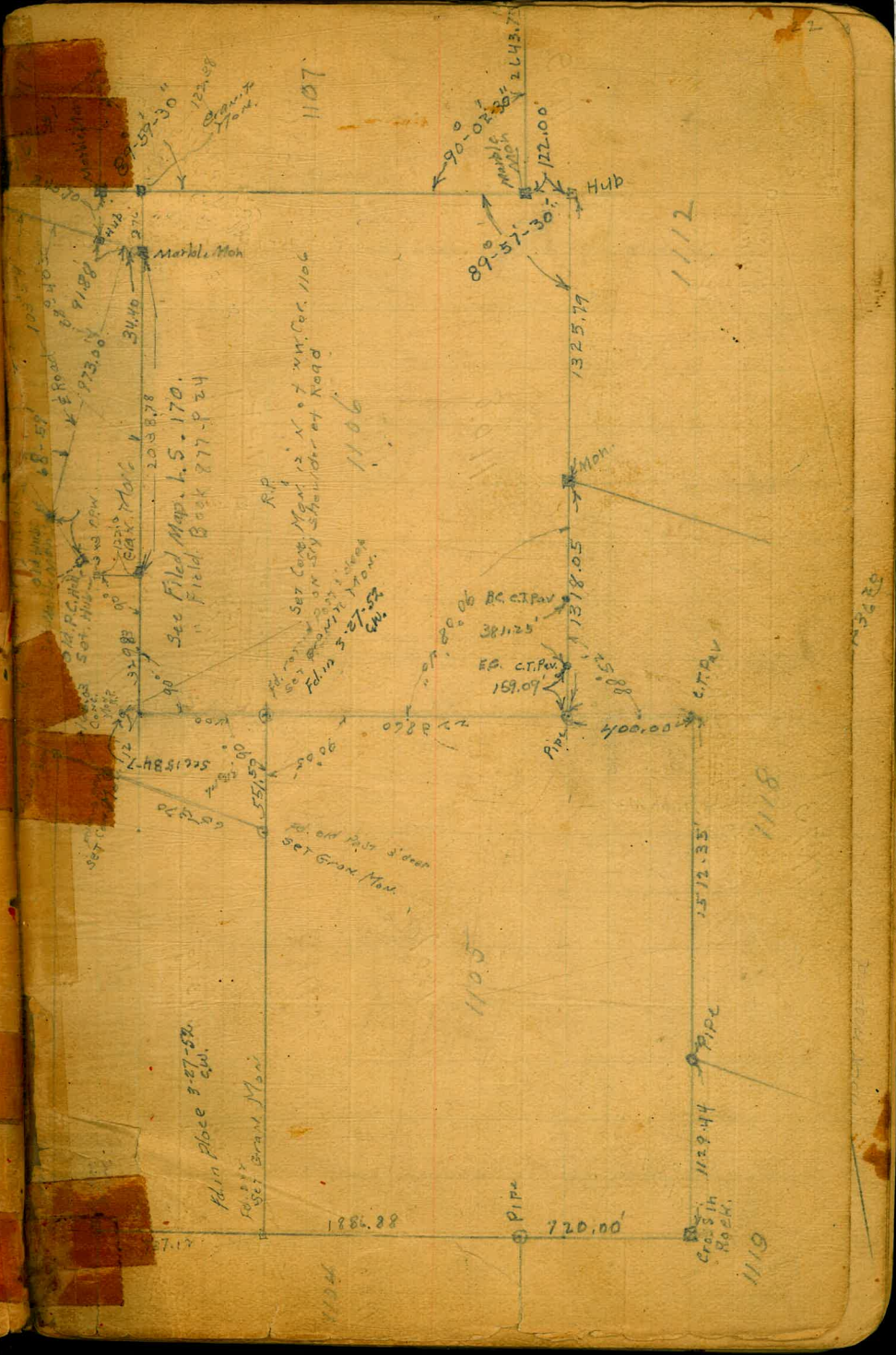
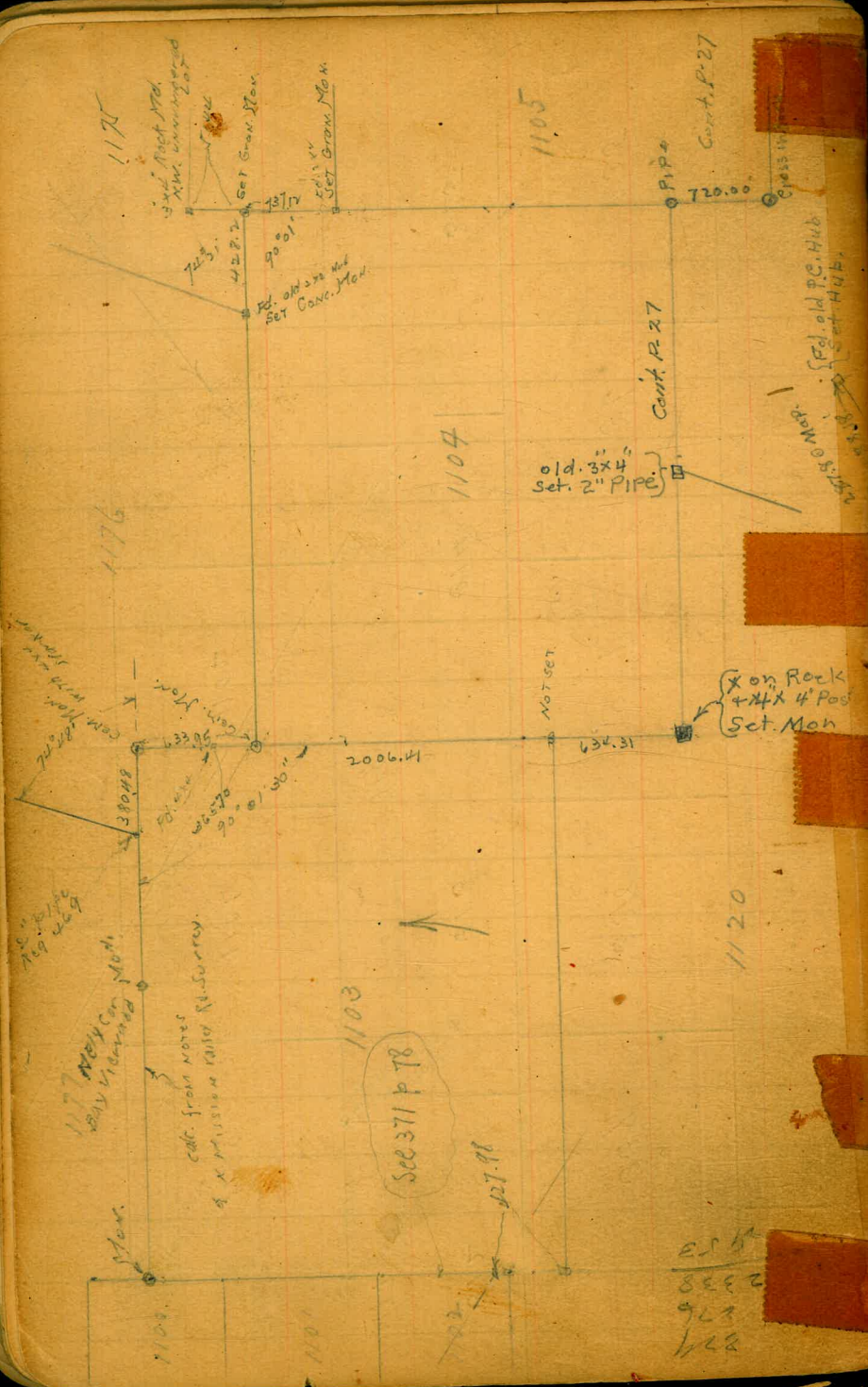
234

Old Town

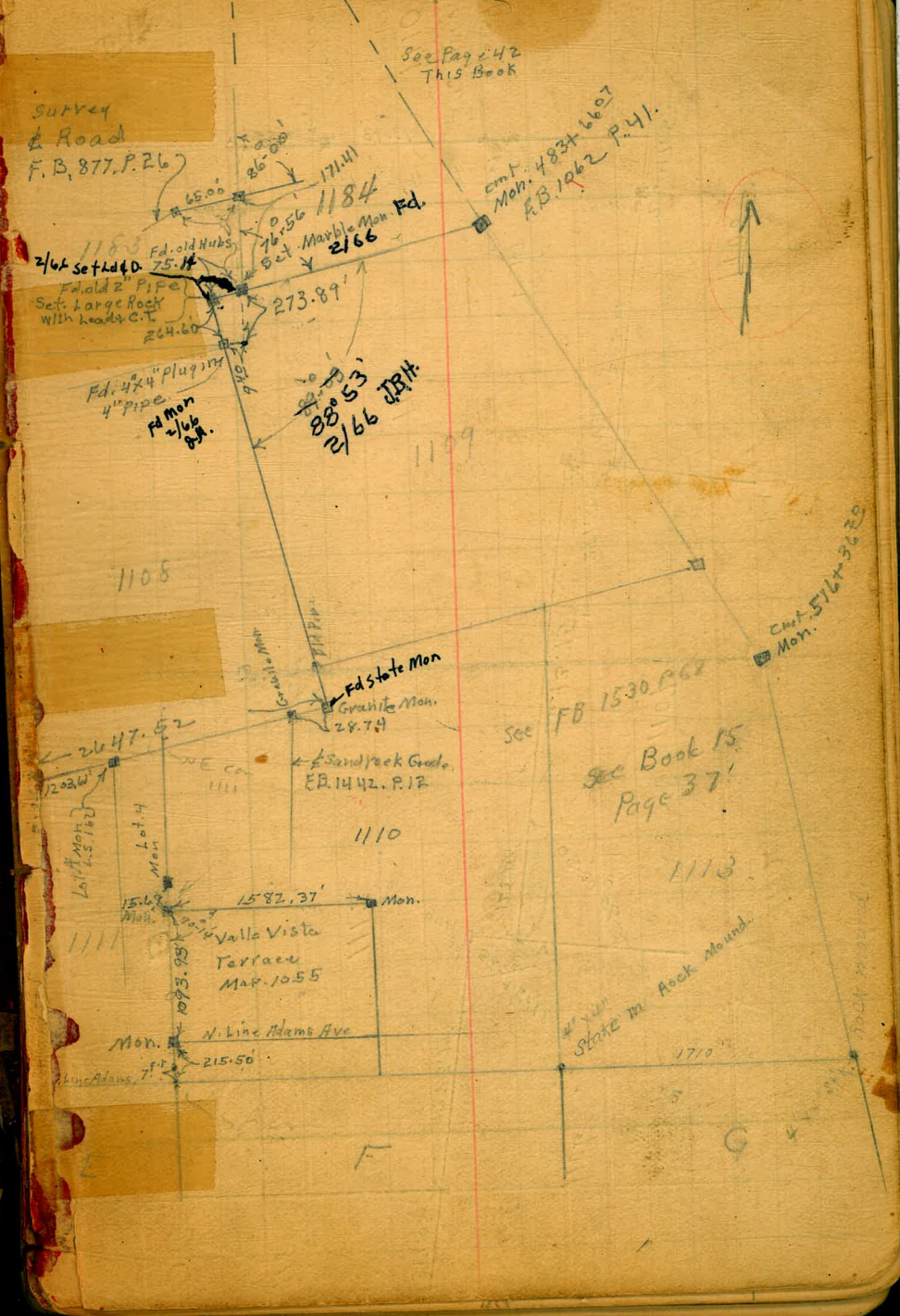
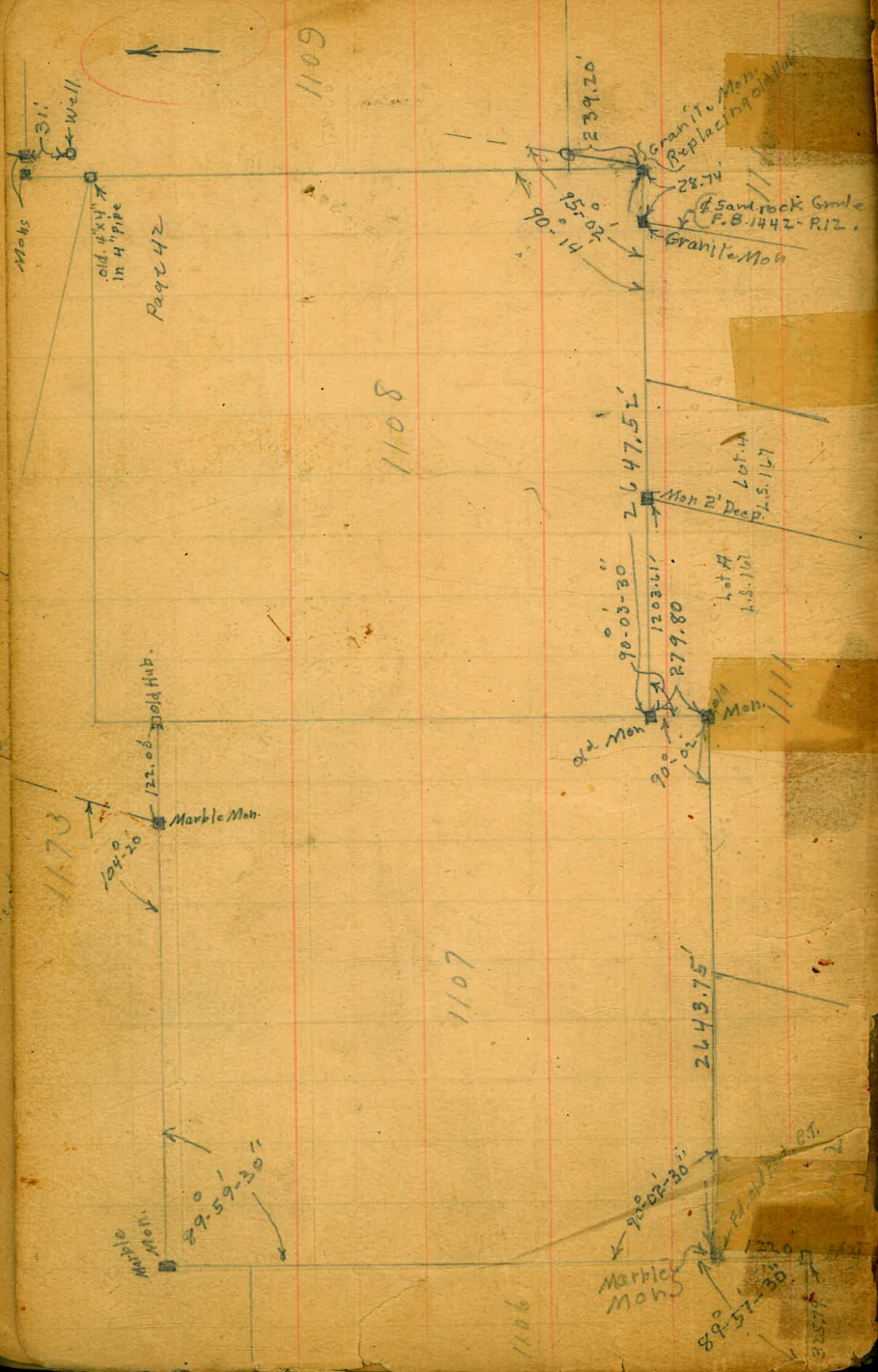


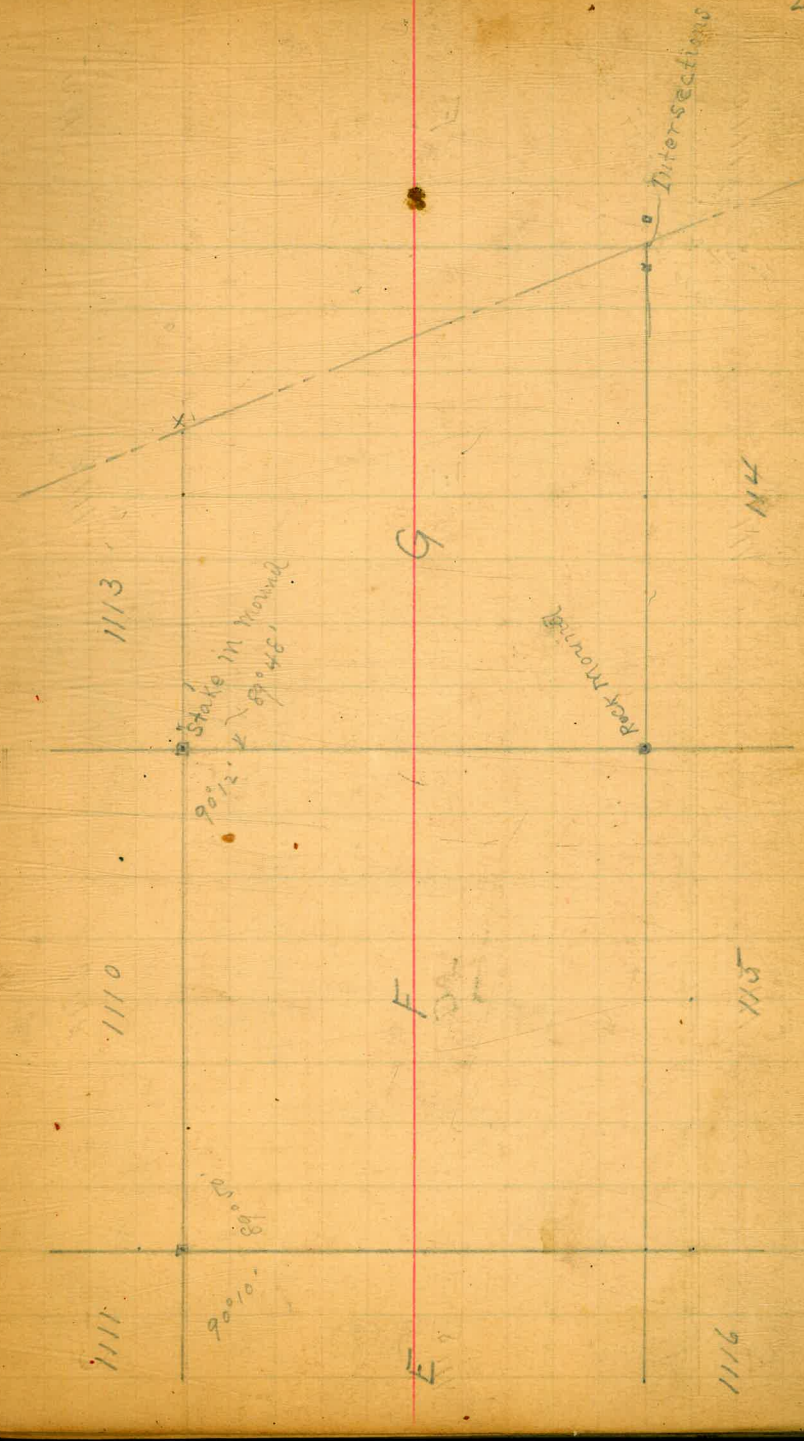
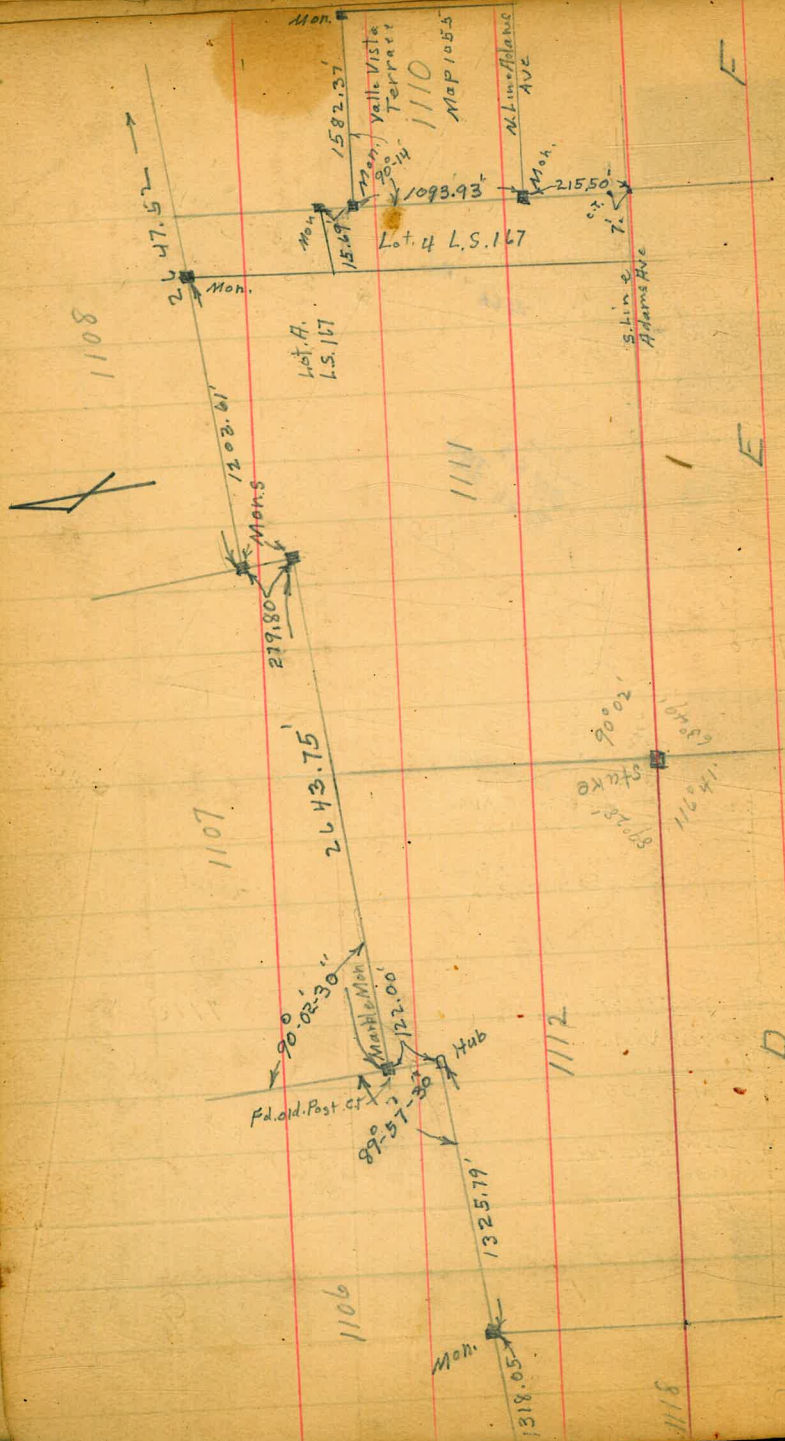
Old Town



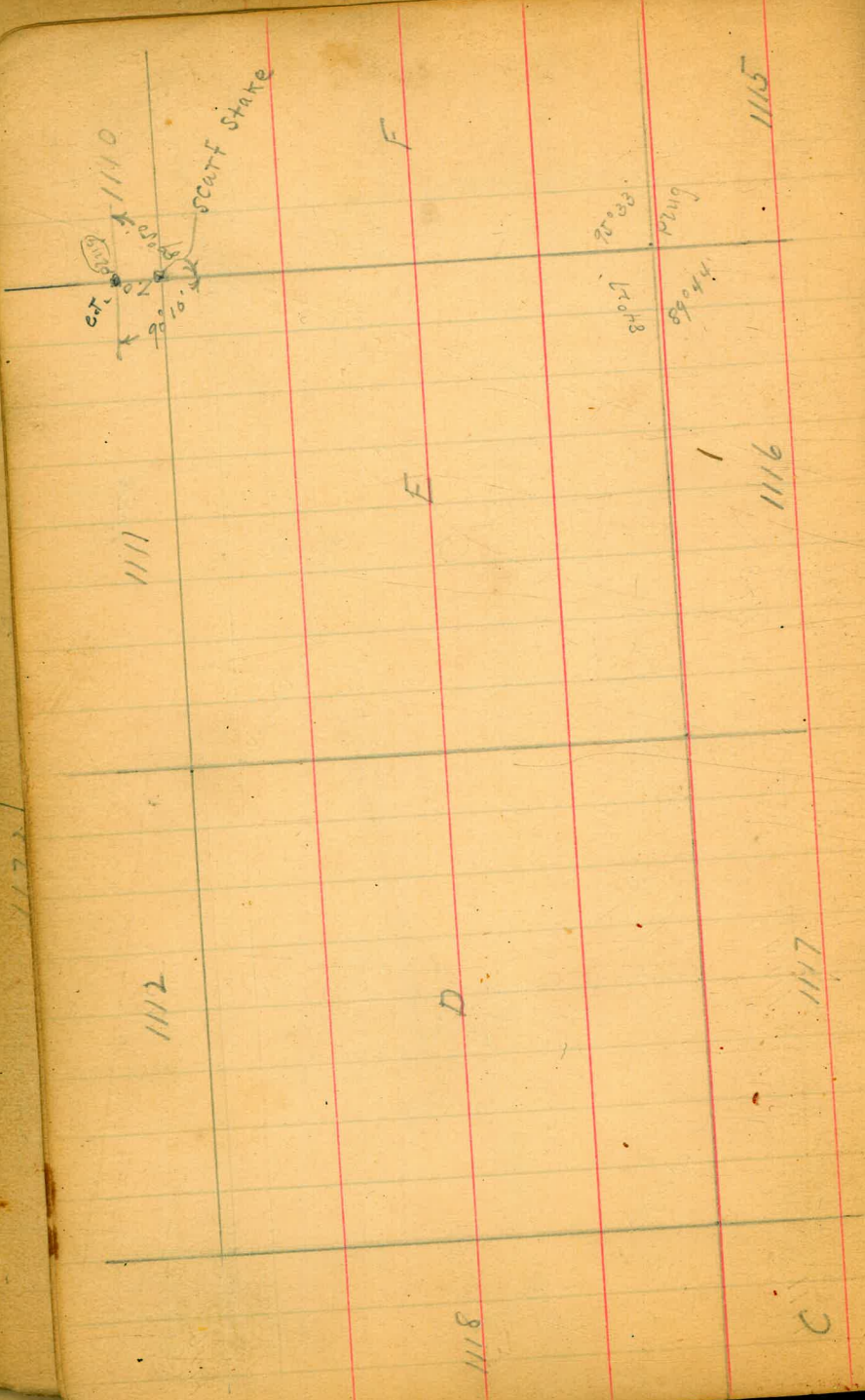








Mobs



1112

D

1118

1111

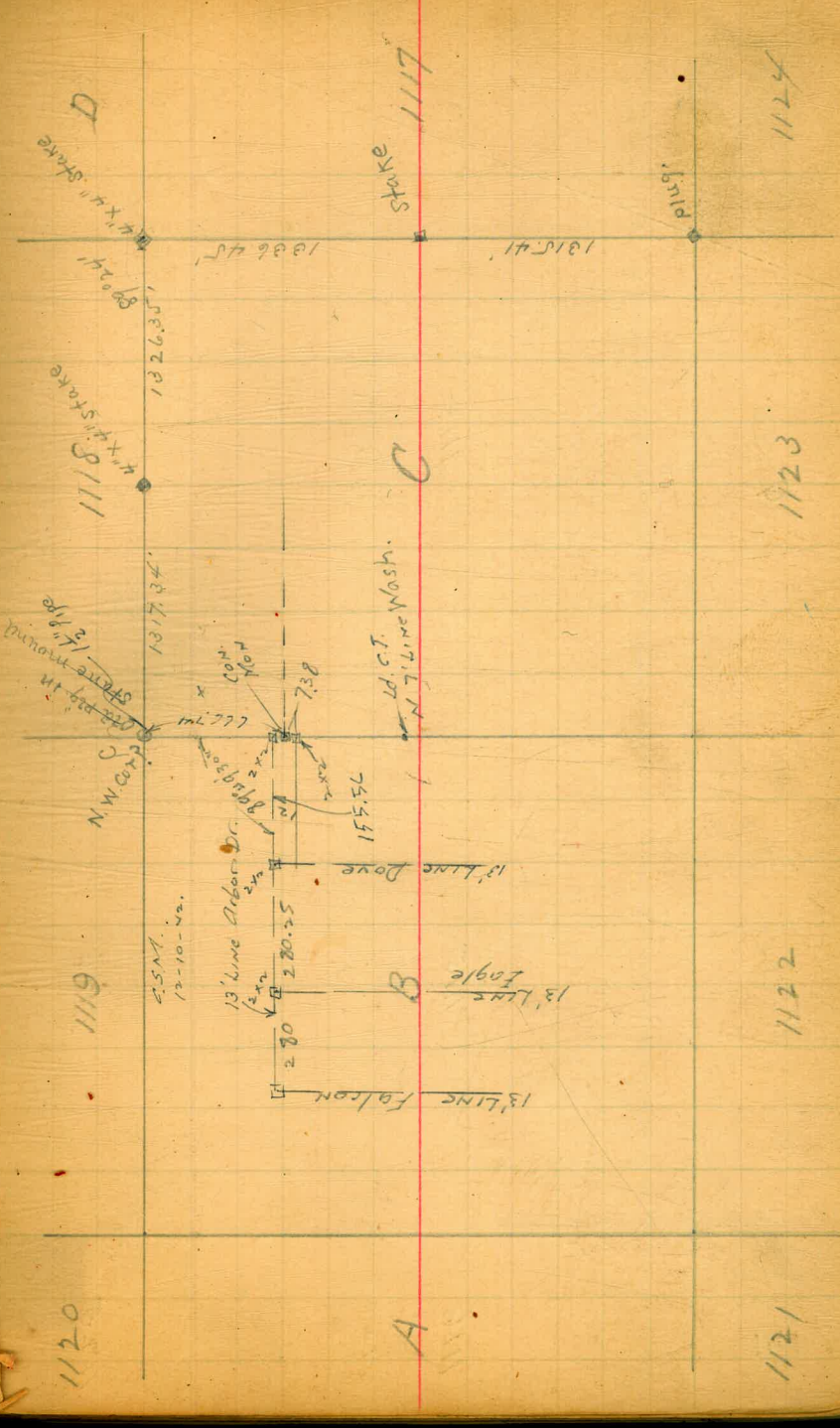
E

1116

1115

1117

C



1120

1119

25M.  
12-10-49.

13' Line Arbor Dr.

2.80

2.80.25

13' Line Dove

13' Line Eagle

13' Line Falcon

155.5L

14. CT.  
N. T. Line Wash.

73.8

66.77

137.34

1326.281

1386.45

1315.41

1386.45

1315.41

1121

1122

1123

1124

A

C

Stake

Piling

D

Stake

1386.45

1326.281

137.34

1386.45

1315.41

1386.45

1315.41

E

F

G

stk in rock mound

1116

1115

1114

1125

1126

1127

1349

89° 26'

89° 26'

1118

D

E

F

83° 19'

87° 41'

89° 26' stk in rock mound

87° 41'

89° 44'

89° 26'

C

1117

1116

1115

1123

1124

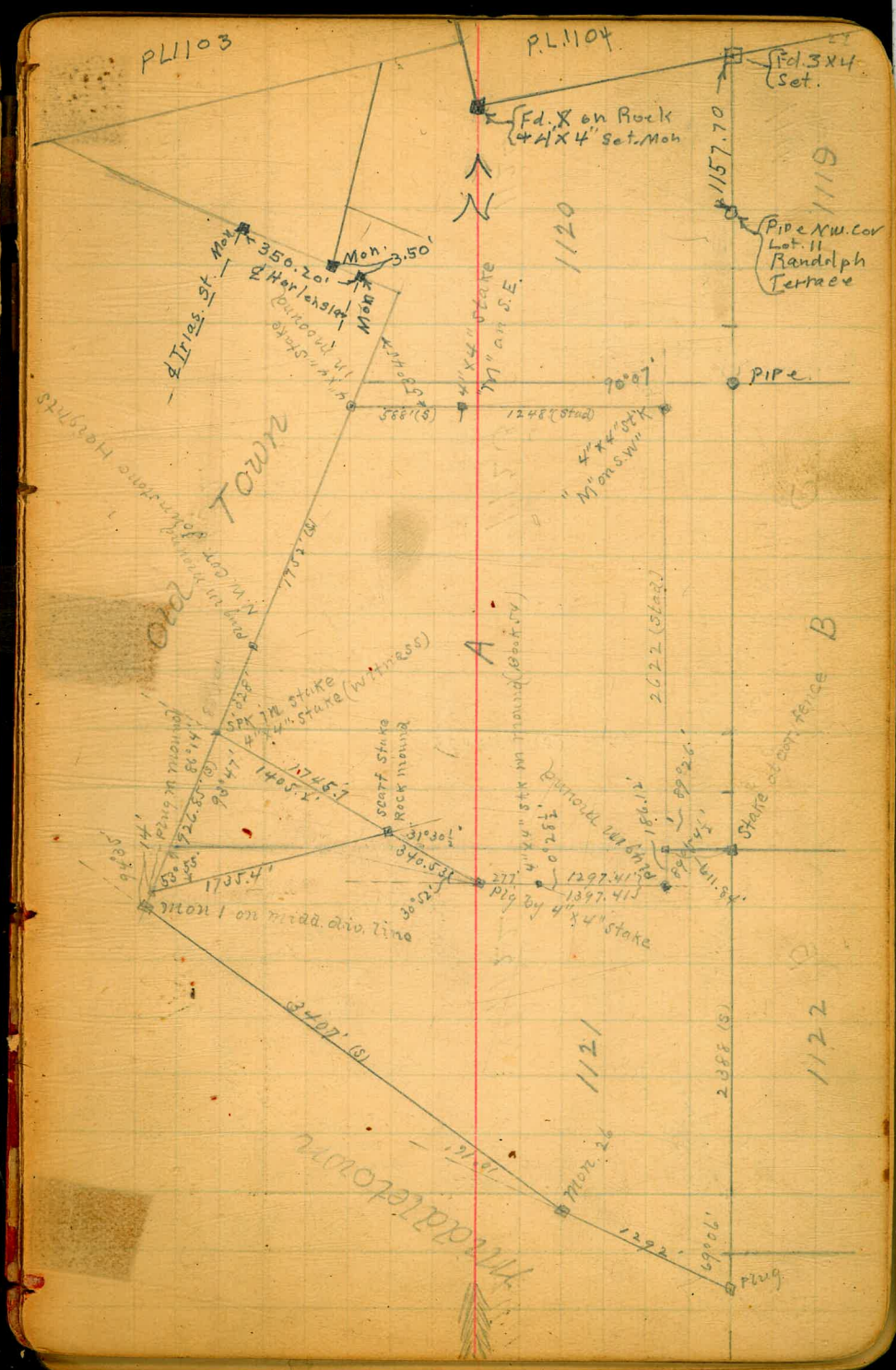
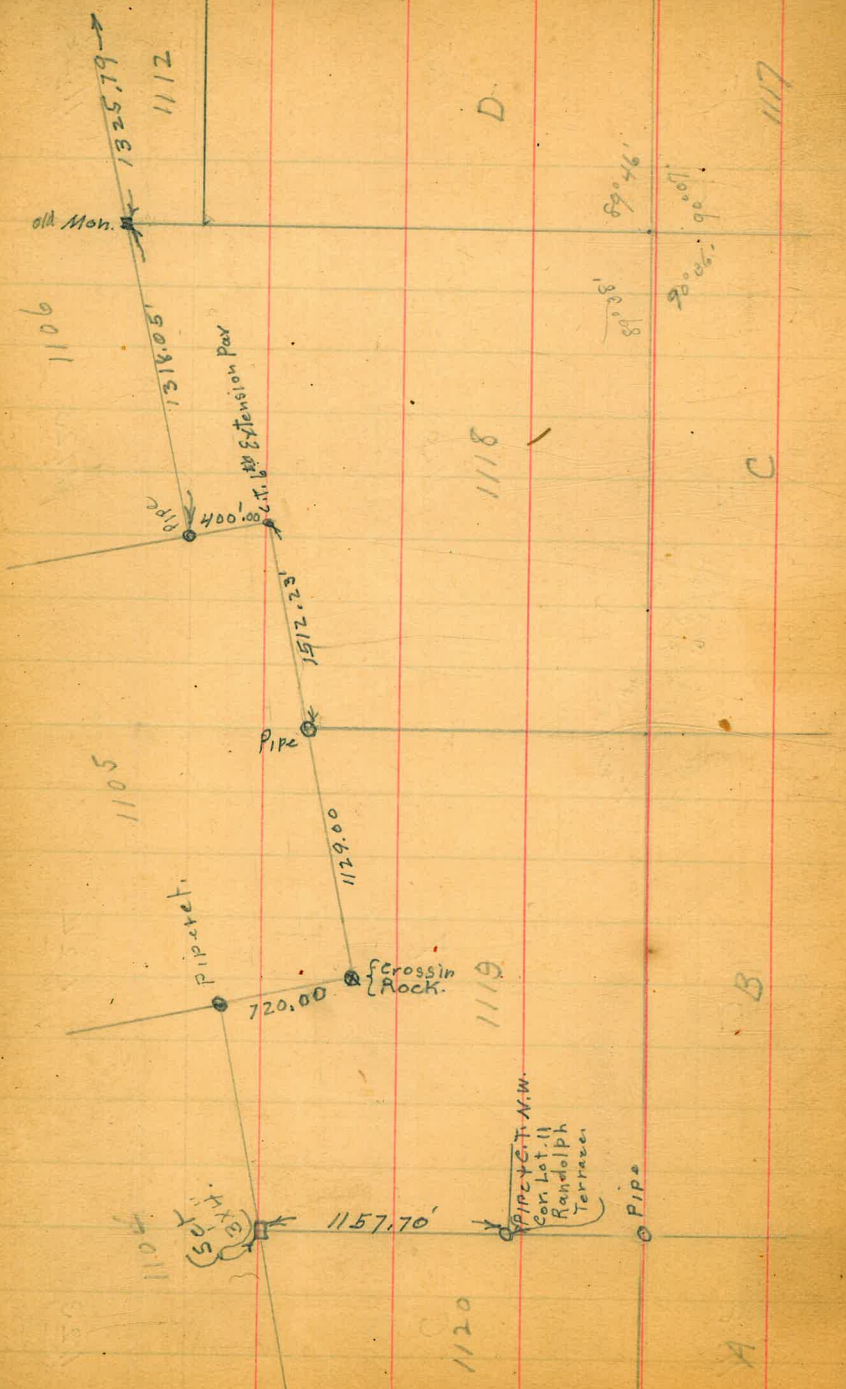
1125

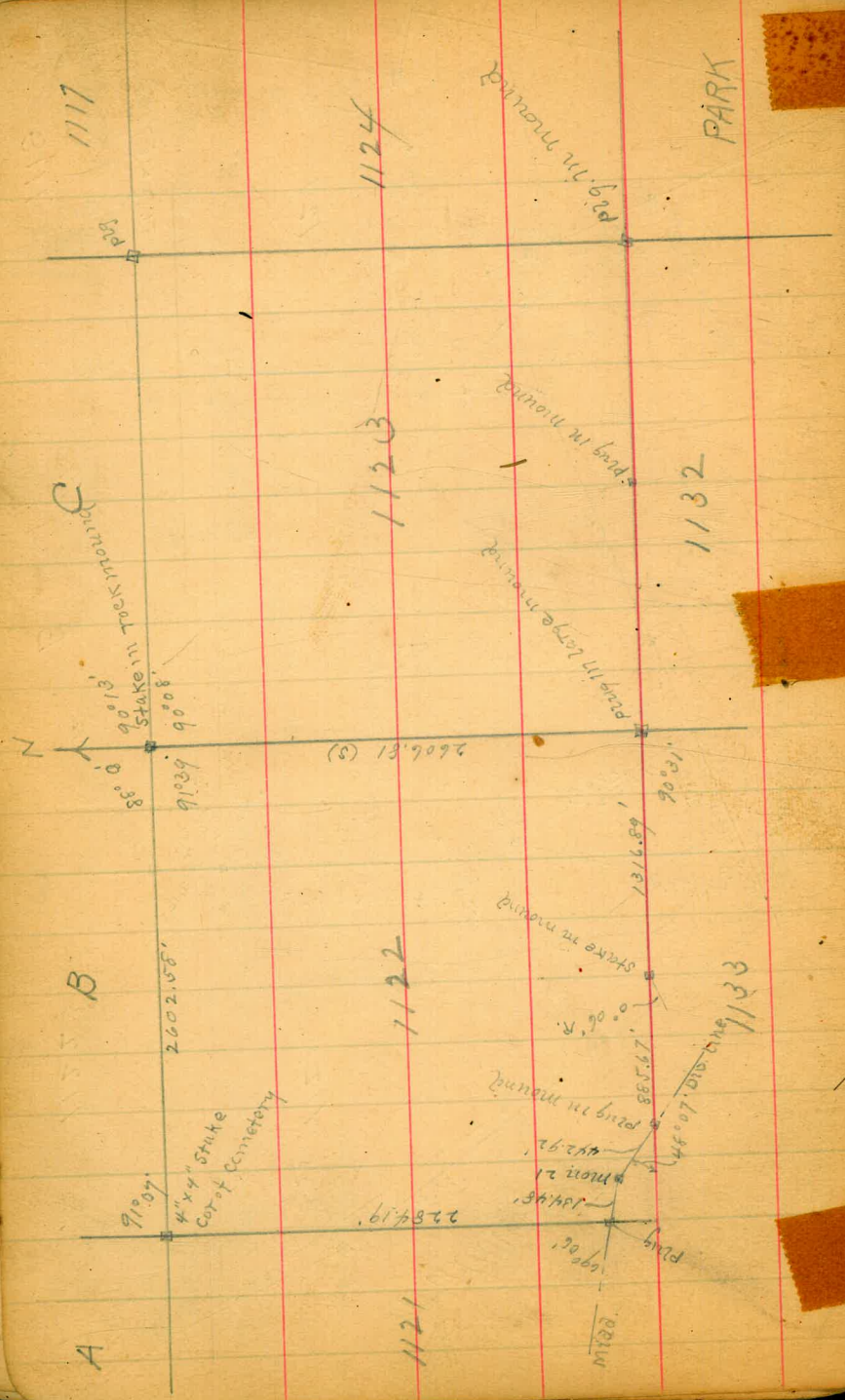
1126

26

Cor

sh





A

B

D

1117

1121

1122

1123

1124

peg in mound

peg in mound

peg in large mound

peg in mound

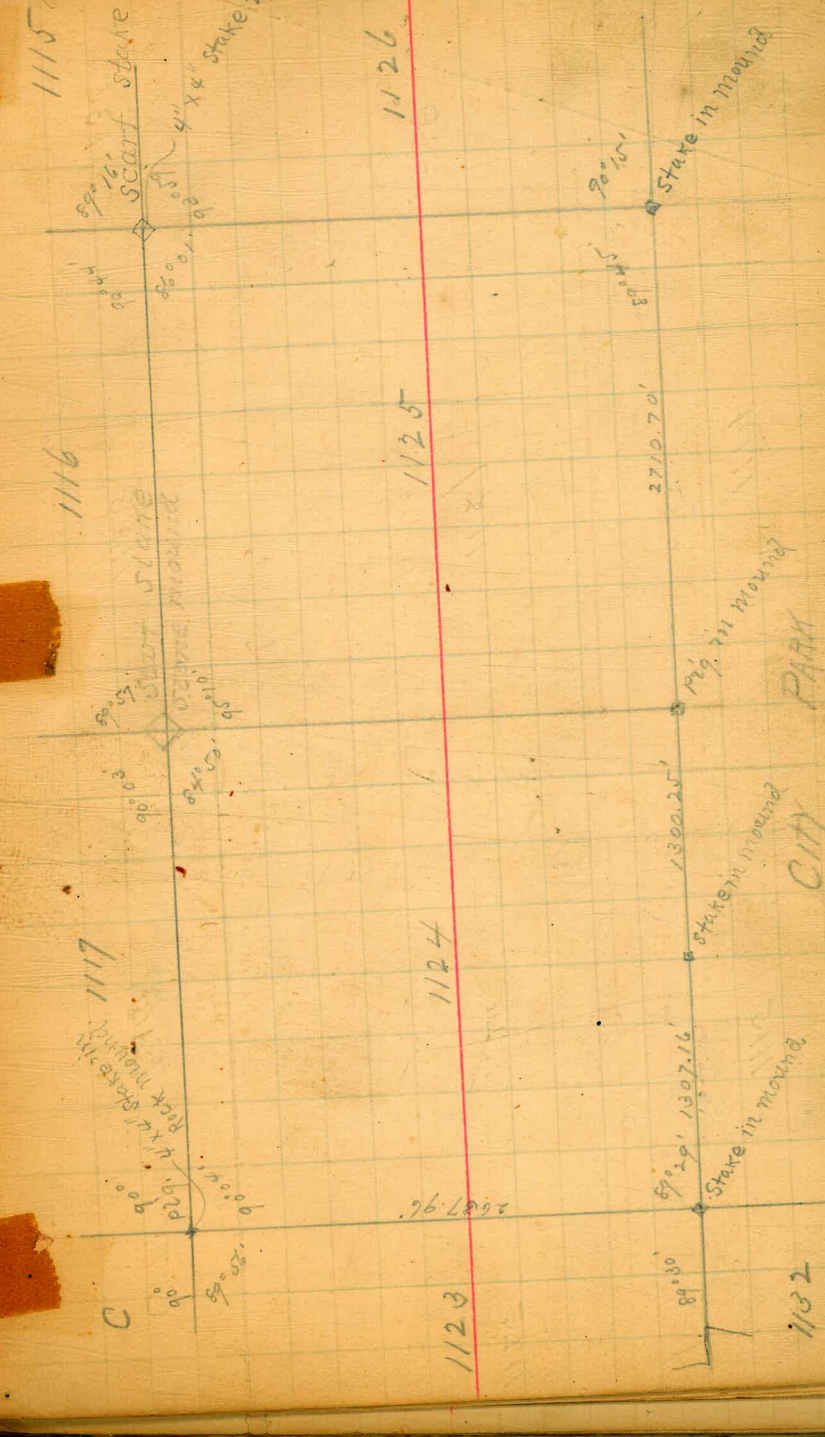
peg in mound

peg in mound

1132

1133

PARK



C

1117

1116

1115

1123

1124

1125

1126

peg in mound

peg in mound

peg in mound

peg in mound

Stake in mound

Stake in mound

Stake in mound

Stake in mound

Stake in mound

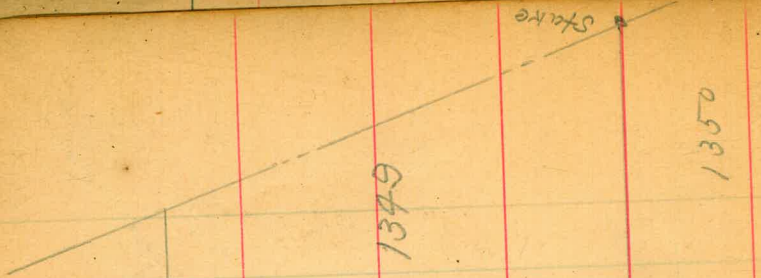
1132

CITY

PARK

Stake in mound

25



1114

1127

1349

1128

1350

Stake



1115

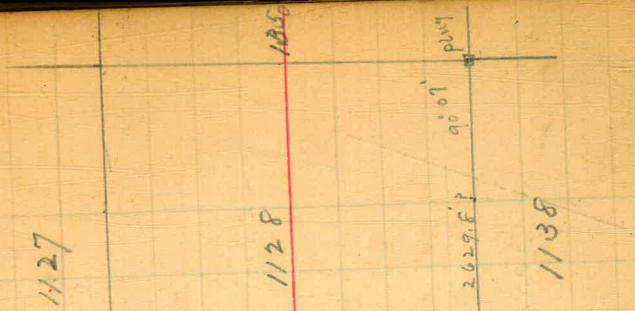
1126

1125

PARK

CITY

89° 40'  
90° 20'



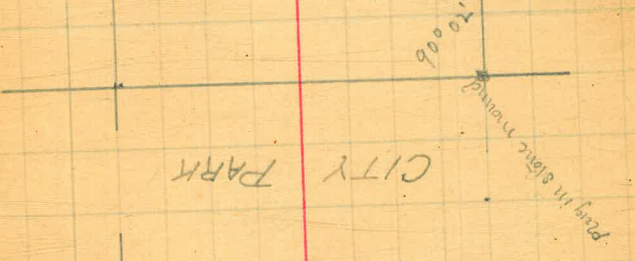
1127

1128

1350

1138

90° 00'  
2629.8'



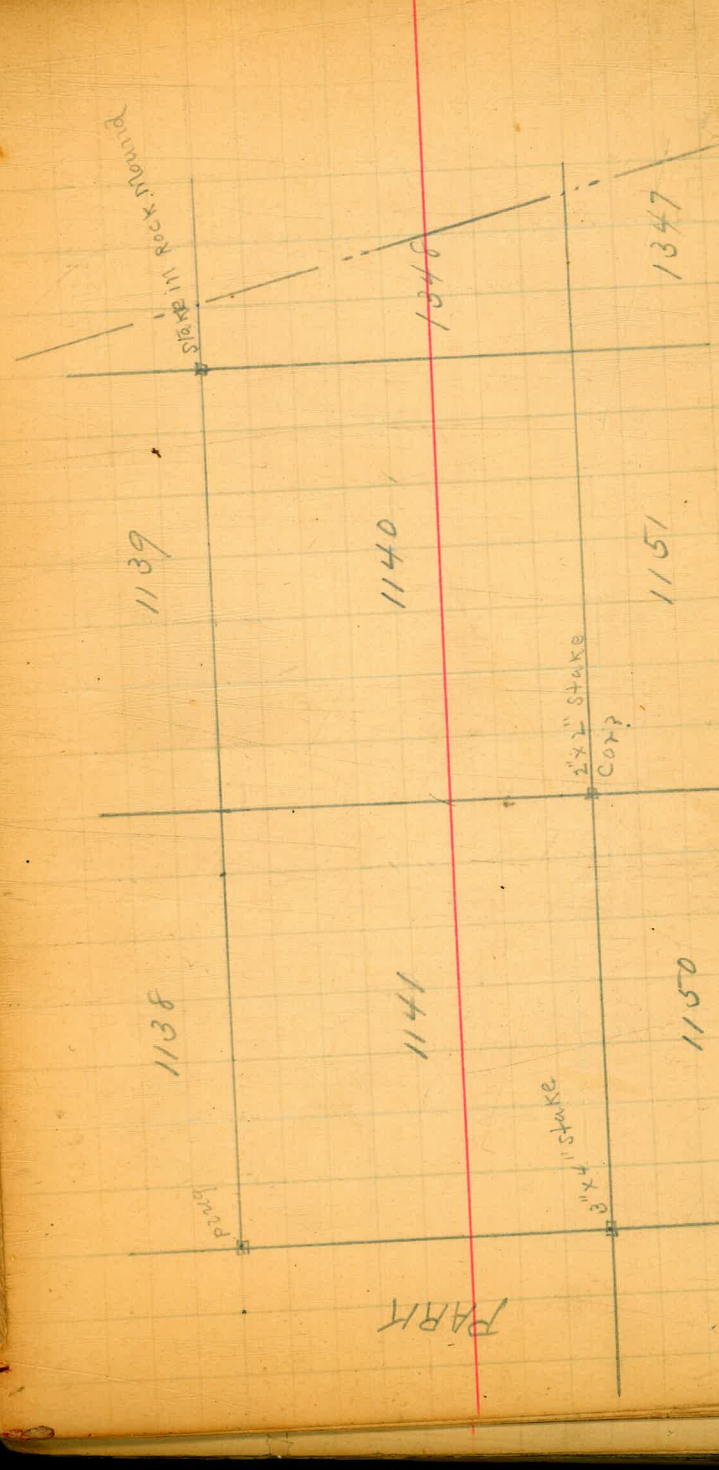
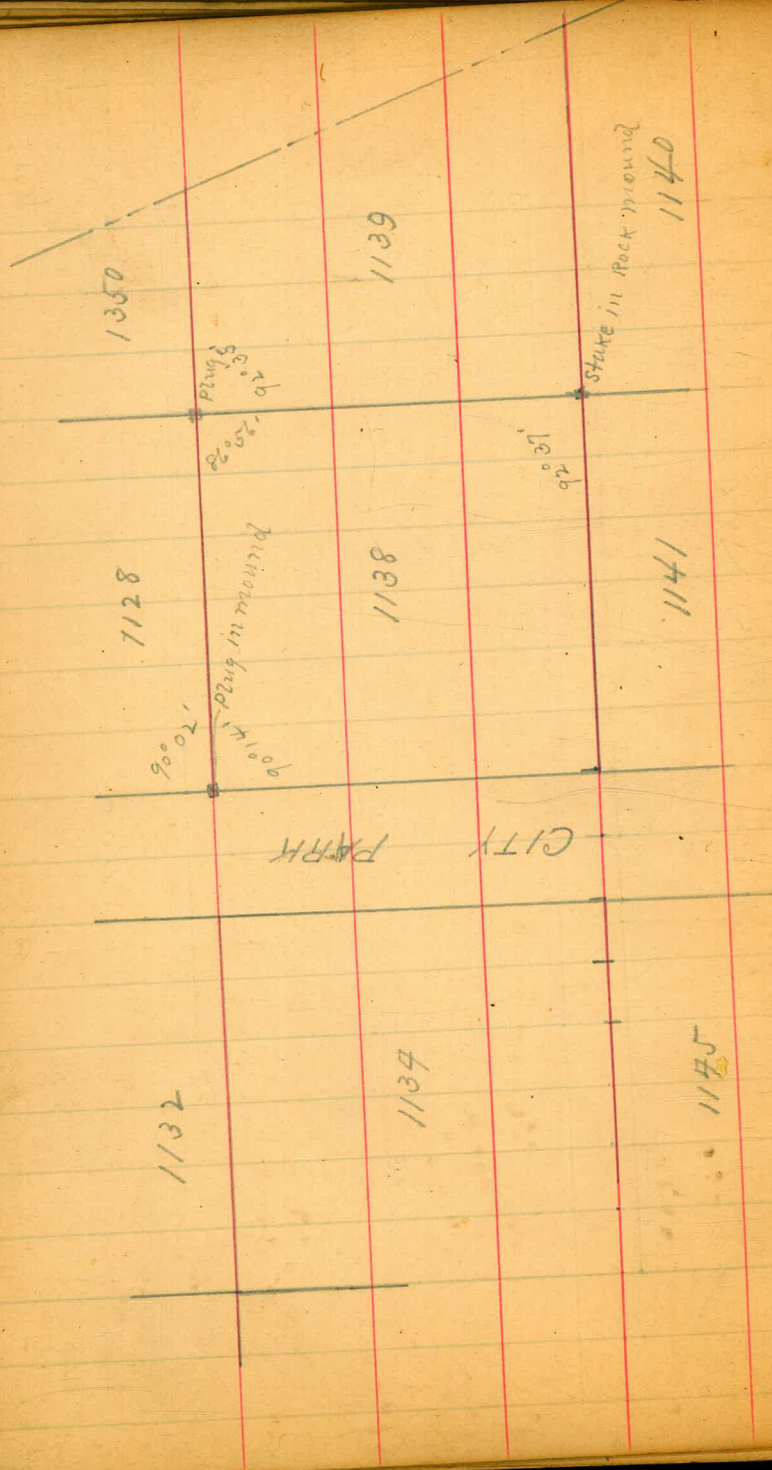
1123

1132

1130

1134

CITY PARK





NEW TOWN

1134

1145

1146

1156

PARK

1147

PARK

1149

1148

1147

1146

1154

1155

1156

31



1570.6  
1383  
1703

1150

1149

1152

1153

1155

1154

1158

1148

1147

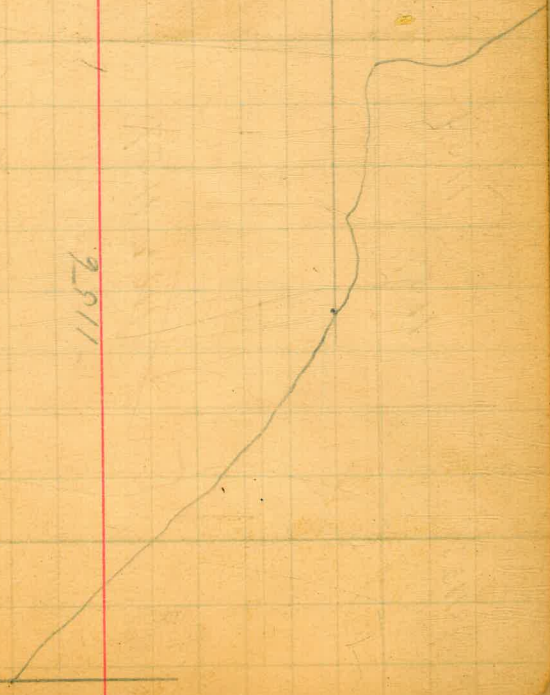
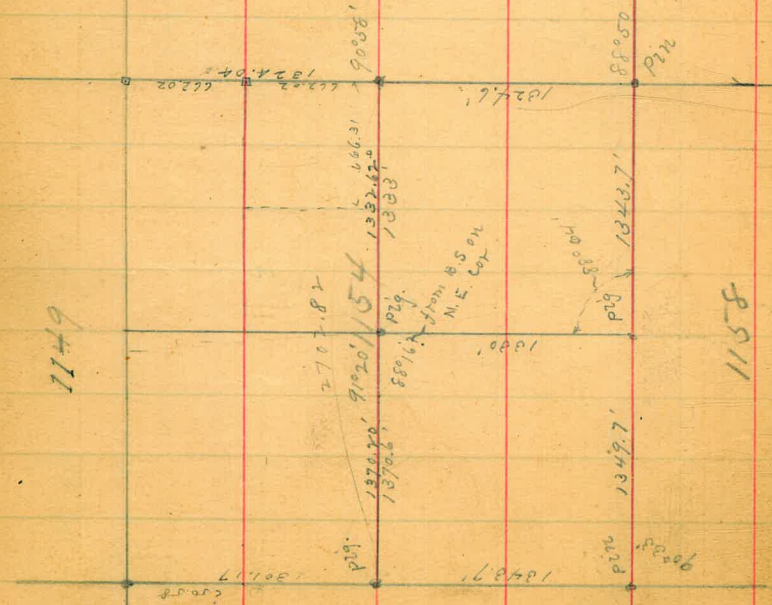
1146

1157

1156

1156

1157



1156

1155

1154

1157

1158

1159

1164

1163

1153

1152

1158

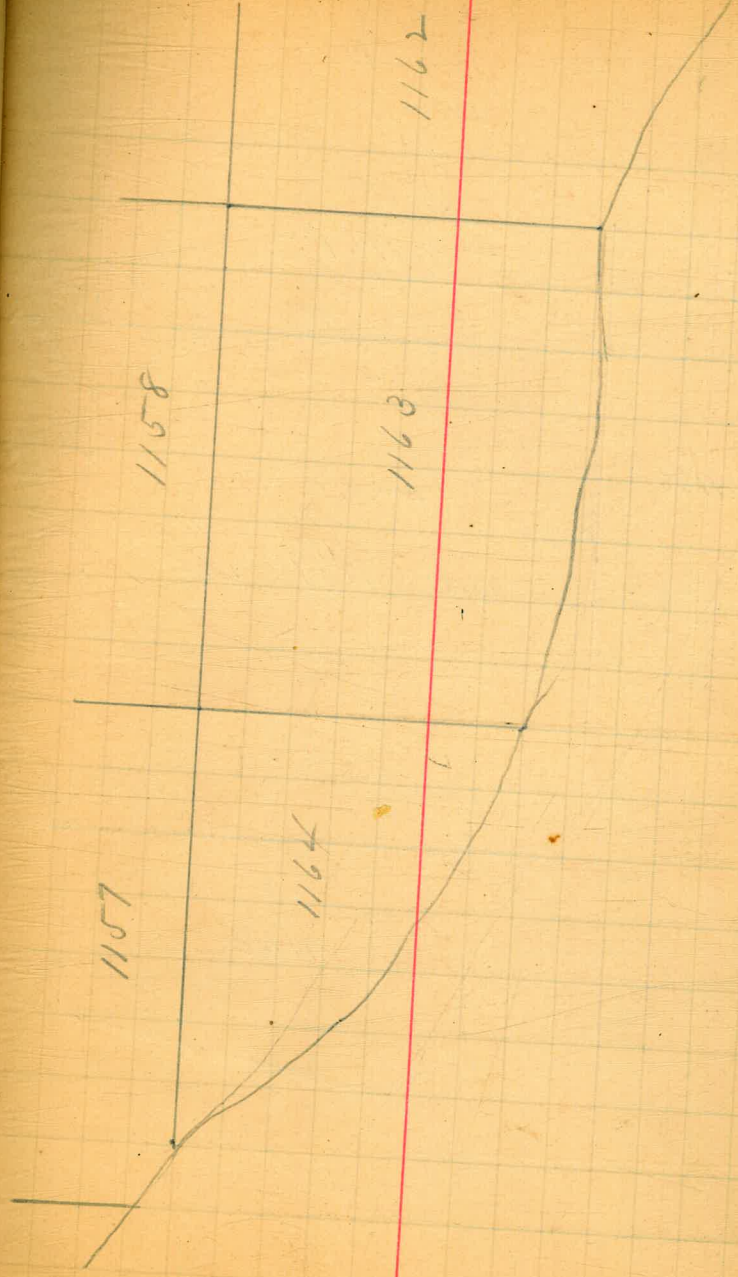
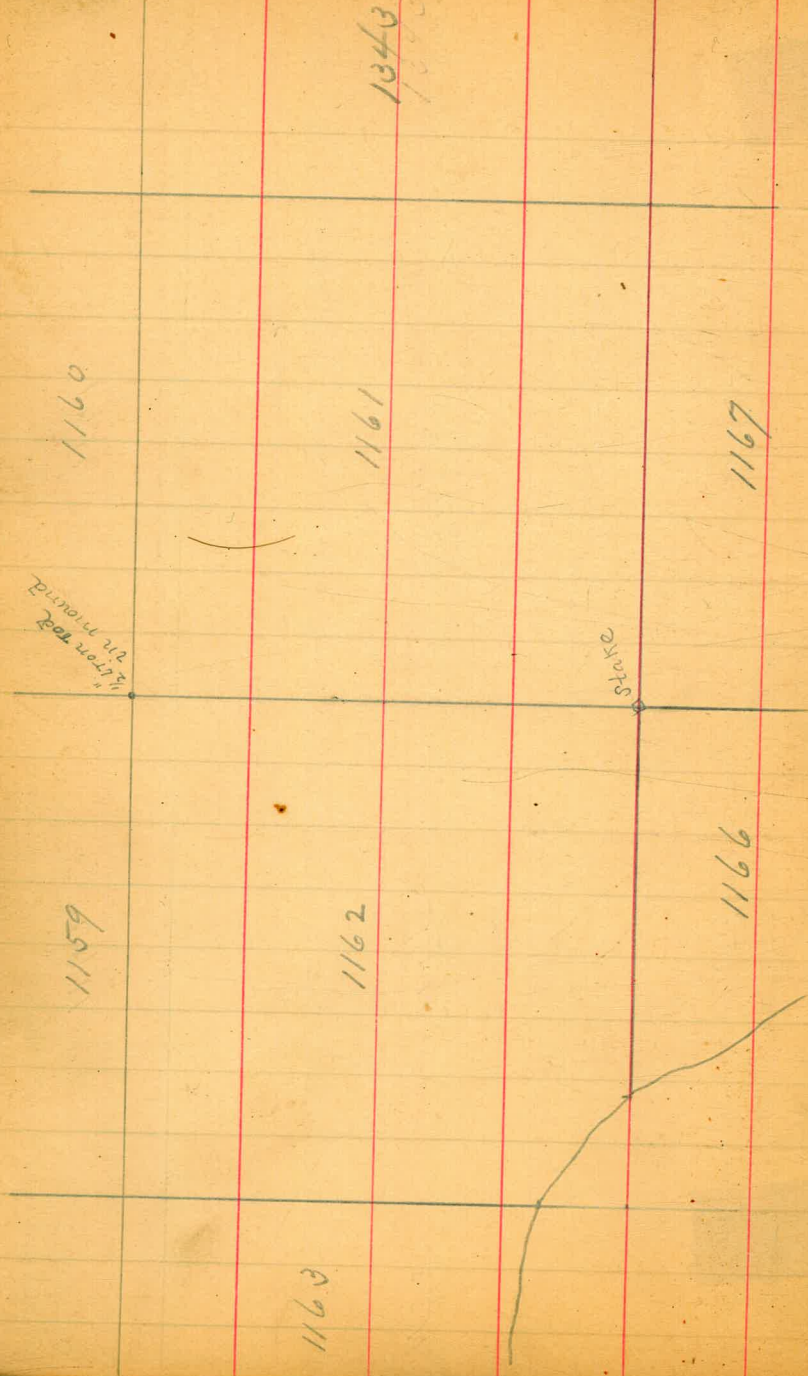
1159

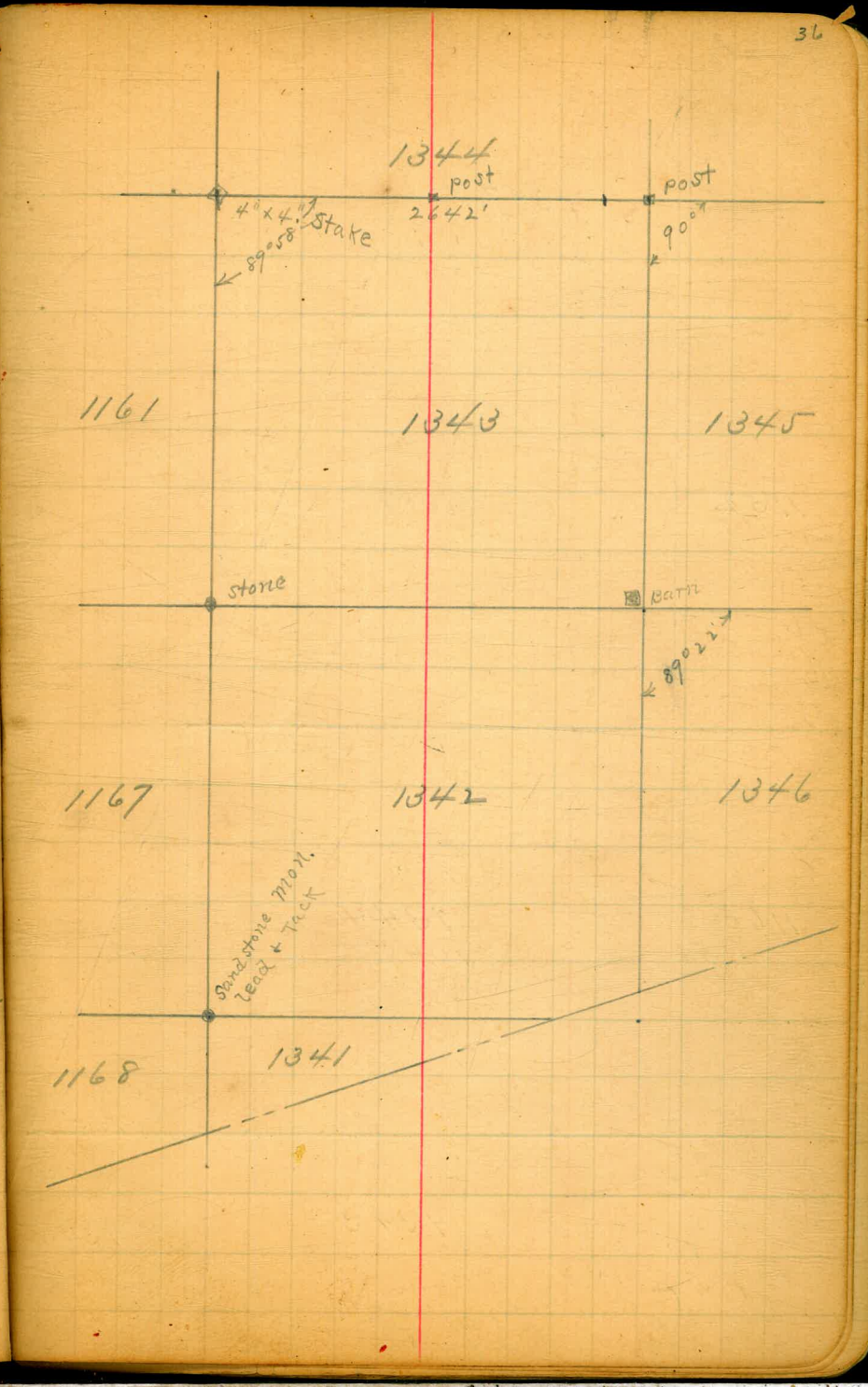
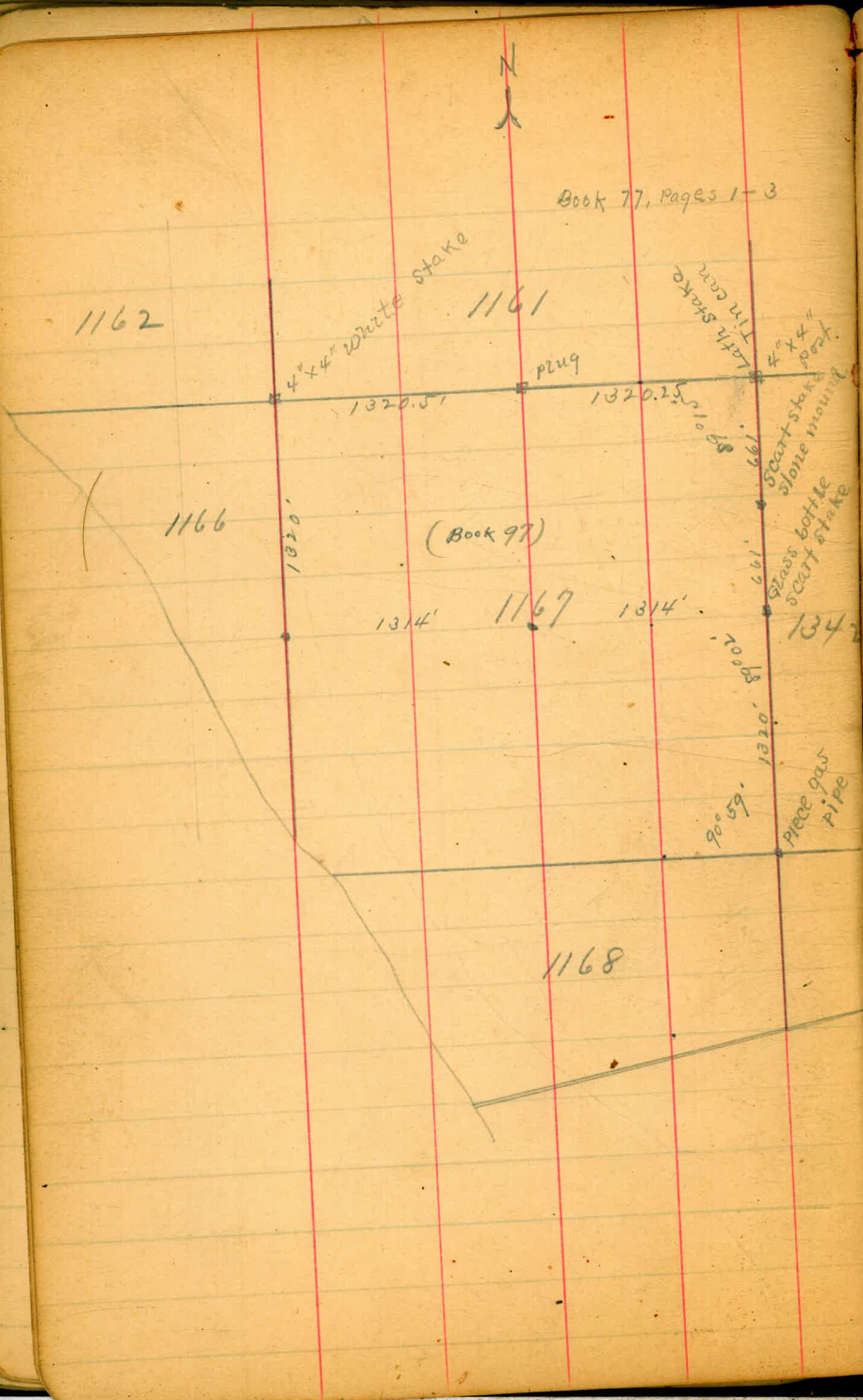
1160

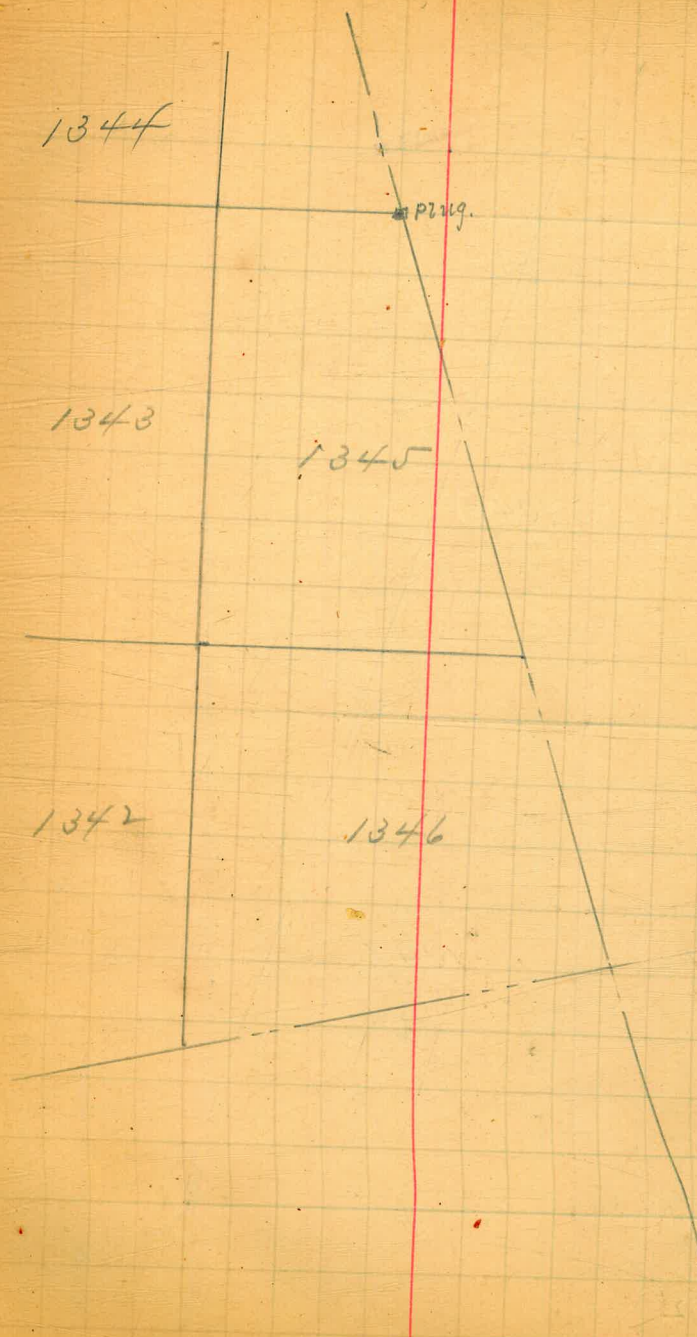
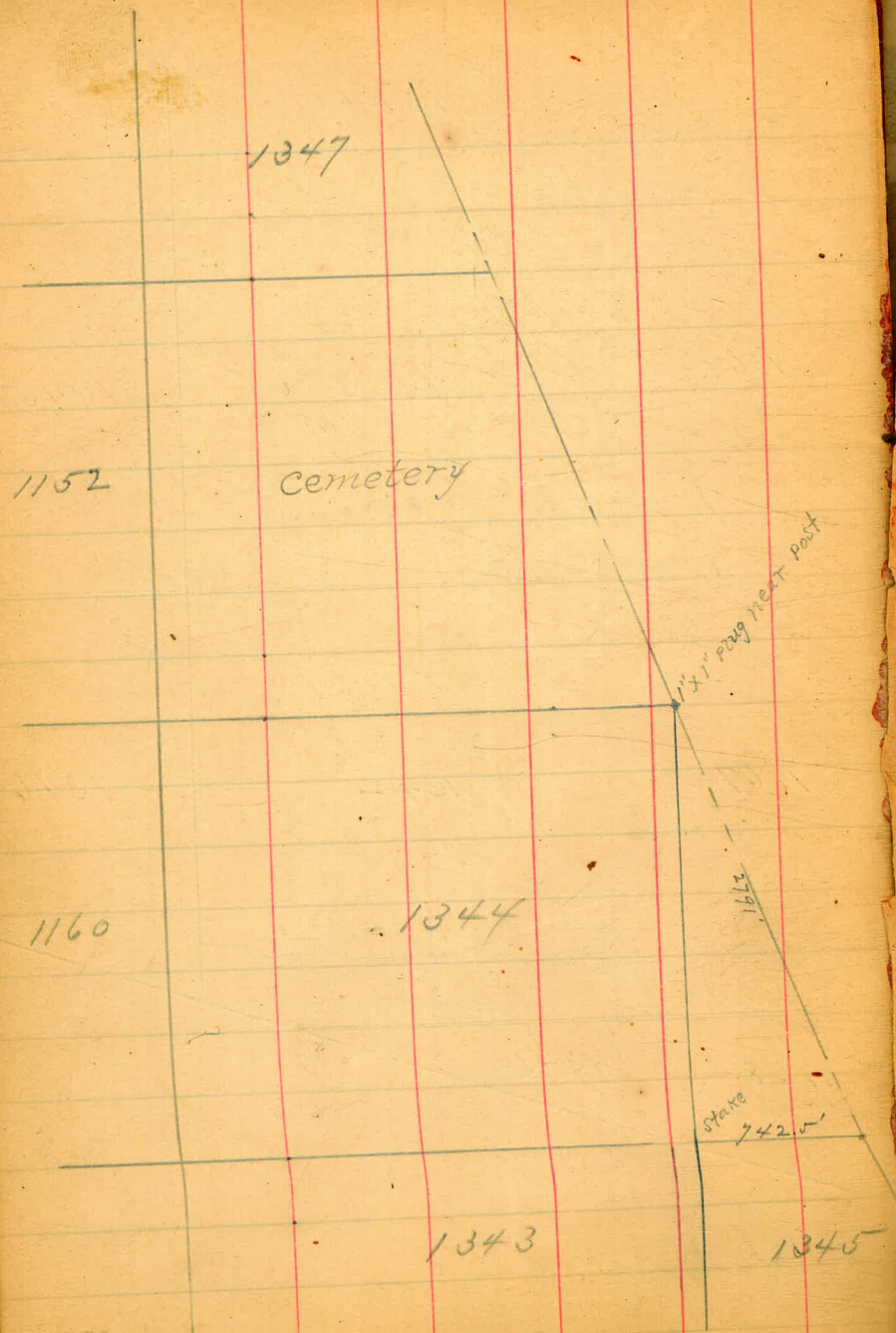
1161

1162

1161







1139

1140

1151

1152

1348

1347

1114

1127

1128

1138

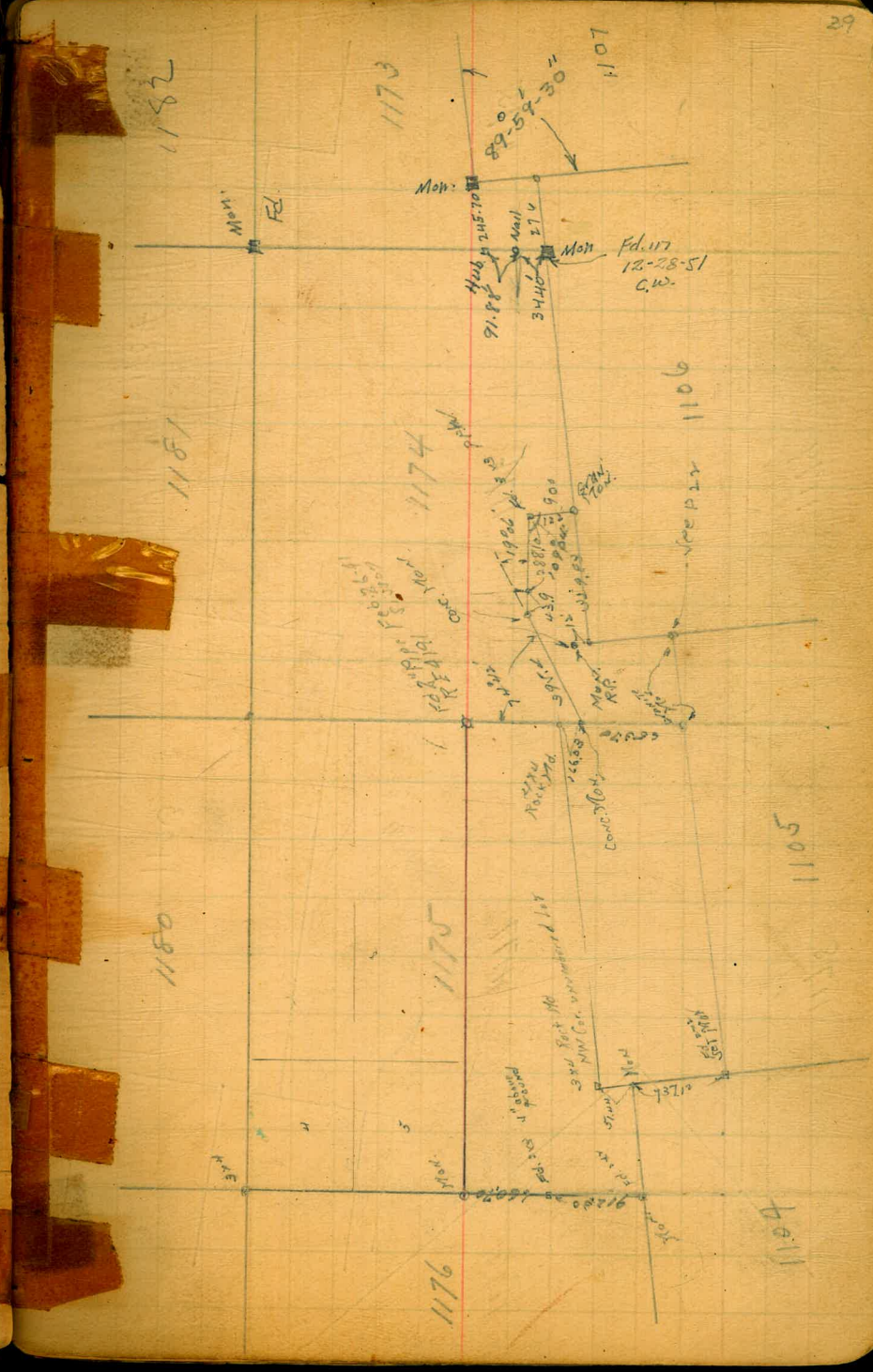
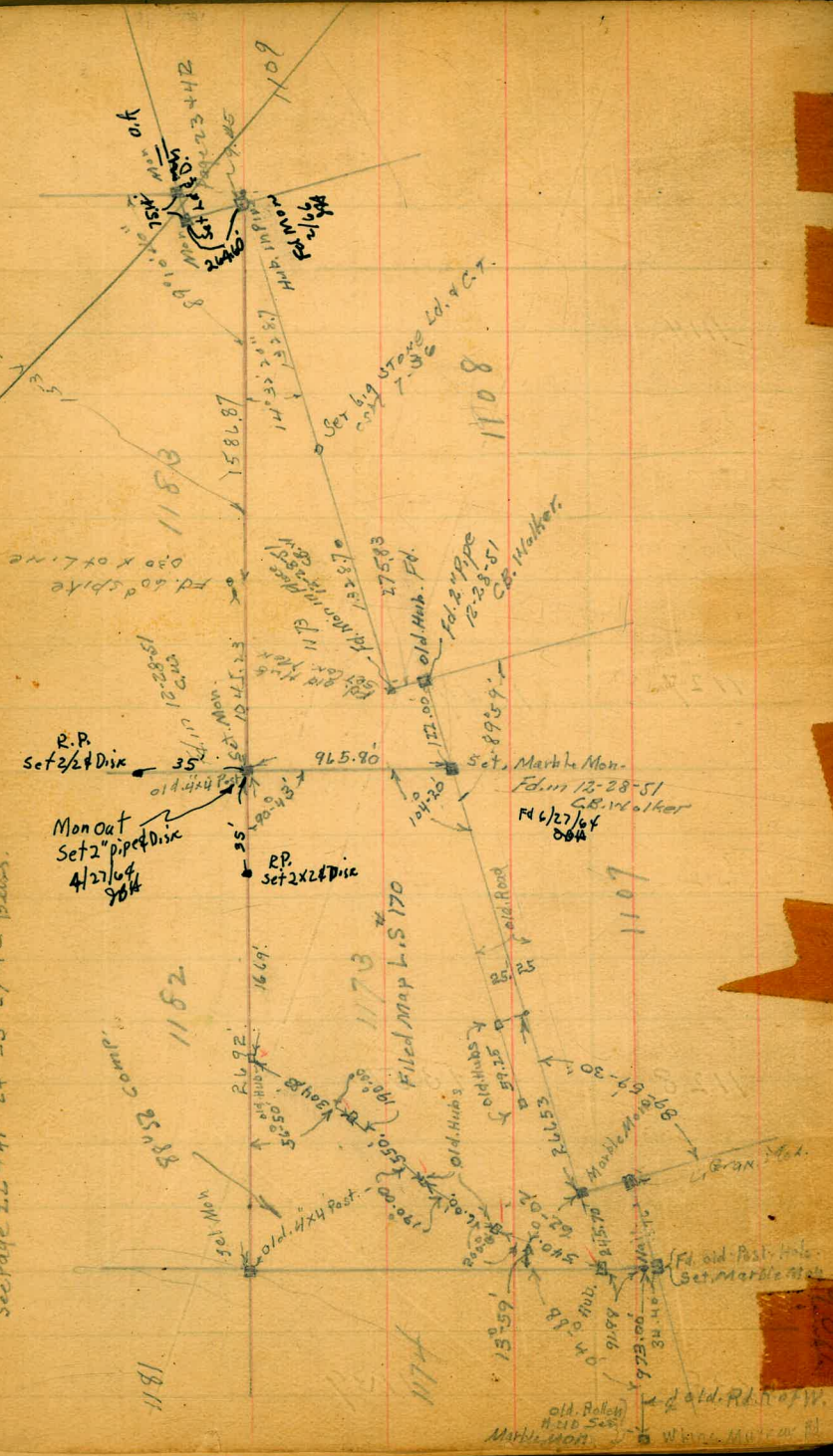
1349

1350

1139



Marble Mons. Set. Dec 1935 with  
Walker  
See Page 22 - 41 - 24 - 23 - 27 - 42 - plus.



1178

1179

1177

1176

1175

1103

1104

1192

1191

1178

1179

1177

1190

1189

1188

1178

1179

1180

1181

1176

1175

1188

1187

1181

1182

1183

1174

1173

old. ex. set Mon.

2692.

1689.

Lot 3

Filed. Map. L.S. 170

Map

Lot 1

old. ex. set Mon.

1186

1183

1182

1184

FB 877-P. 26  
FB 1061-P. 41

Fd old pipe  
Sect. Large Shale  
Lead + C.T.  
20460

sec Page 23

1942. Stadio

Fd. old. Hilb.  
Sect. Marble  
12-28-51  
CB. 44

Fd. 17 Place

Well

Fd. 17 Place  
Mon  
2/6  
264

1109

1108

cont. Mon. 1934 to 1937  
Boundary Survey  
Hilb 1535  
From 1515 to 19-Meyer Road

42

1199

1200

1187

1181

1181

1182

1183

1197

1198

1190

1189

1187

1187

1180

1181

1195

1196

1192

1191

1190

1184

1178

1179

1193

1194

1192

1191

1178

1208

1193

1194

1192

44

1196

1206

1195

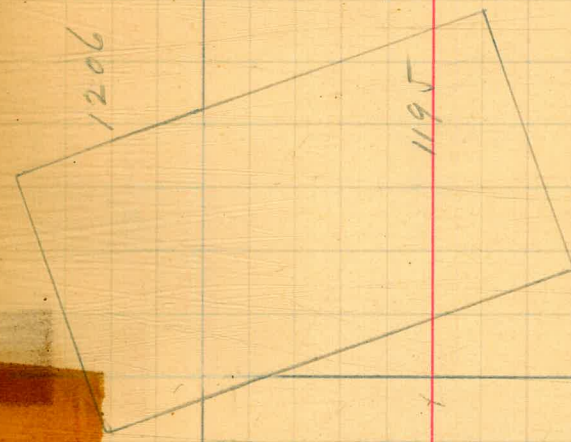
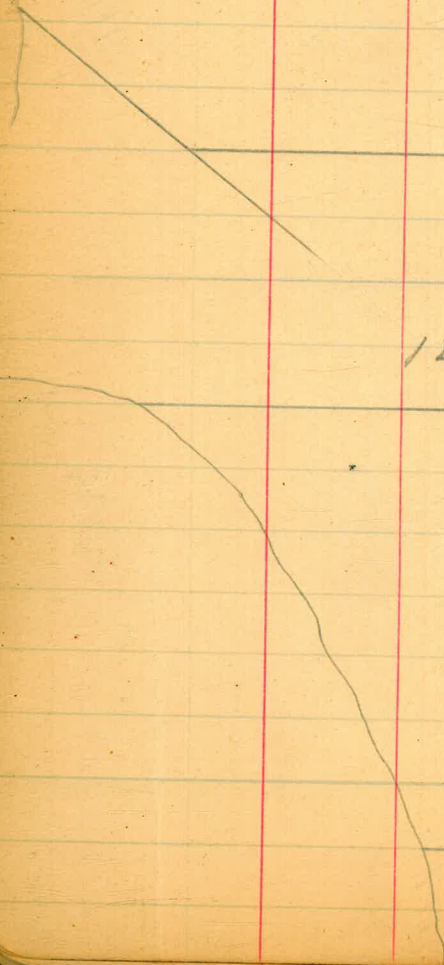
1191

1207

1194

1192

1193



1205

1204

1195

1196

1197

1198

1190

1189

1203

1202

1197

1198

1199

1200

2<sup>nd</sup> IP  
709.49

2981.06  
1127°35'W

FB 1335 P25

FB 1335 P20  
555.28

52°51'

2055.73

FB 1335 P26  
375.31

1188

1187

1186

45

1214

1215

1201

1203

1202

1198

1199

1200



1212

1213

1206

1205

1204

1203

1196

1197



1210

1211

1208

1207

1206

1205

1194

1195

1788

1209

1797

1208

1207

1798

1/675

1193

1214

1224

1223



1211

1210

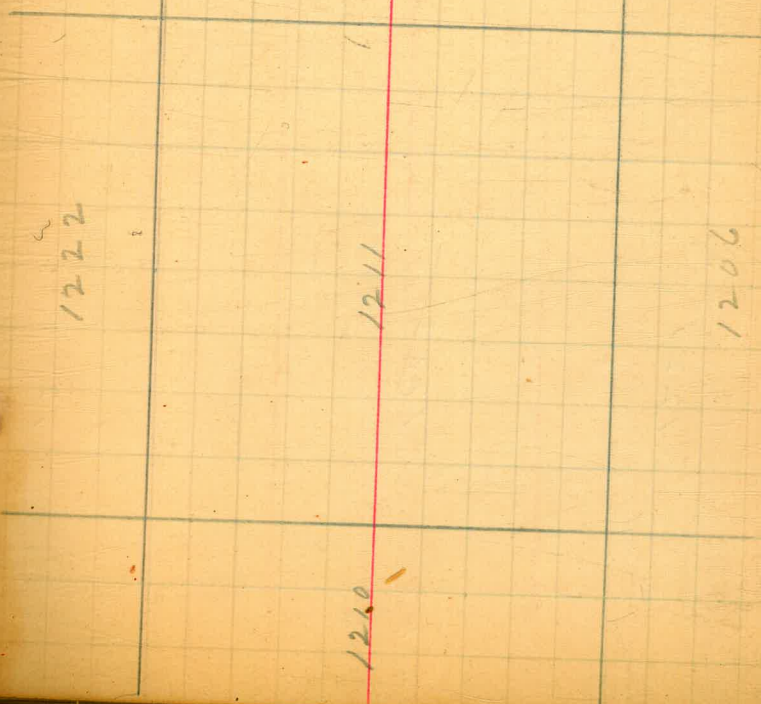
1209

1207

1208

1222

1221



1210

1211

1212

1213

1206

1205

1220

1219

1213

1214

1215

1204

1203

1202

12

1231

1232

1220

1219

1221

1213

1214

1129

1230

1223

1222

1221

1220

1211

1212

1226

1227

1228

1224

1223

1787

1209

1210



1778

1239

1225

1238

1226

1237

1227

1228

1224

1223

1236

1235

1227

1228

1229

1230

1223

1222

1234

1233

1229

1230

1231

1232

1221

1220

1219

1244

1245

1235

1234

1233

1230

1231

1232

52

1242

1243

1236

1235

1234

1237

1228

1229

1236

1240

1241

1238

1237

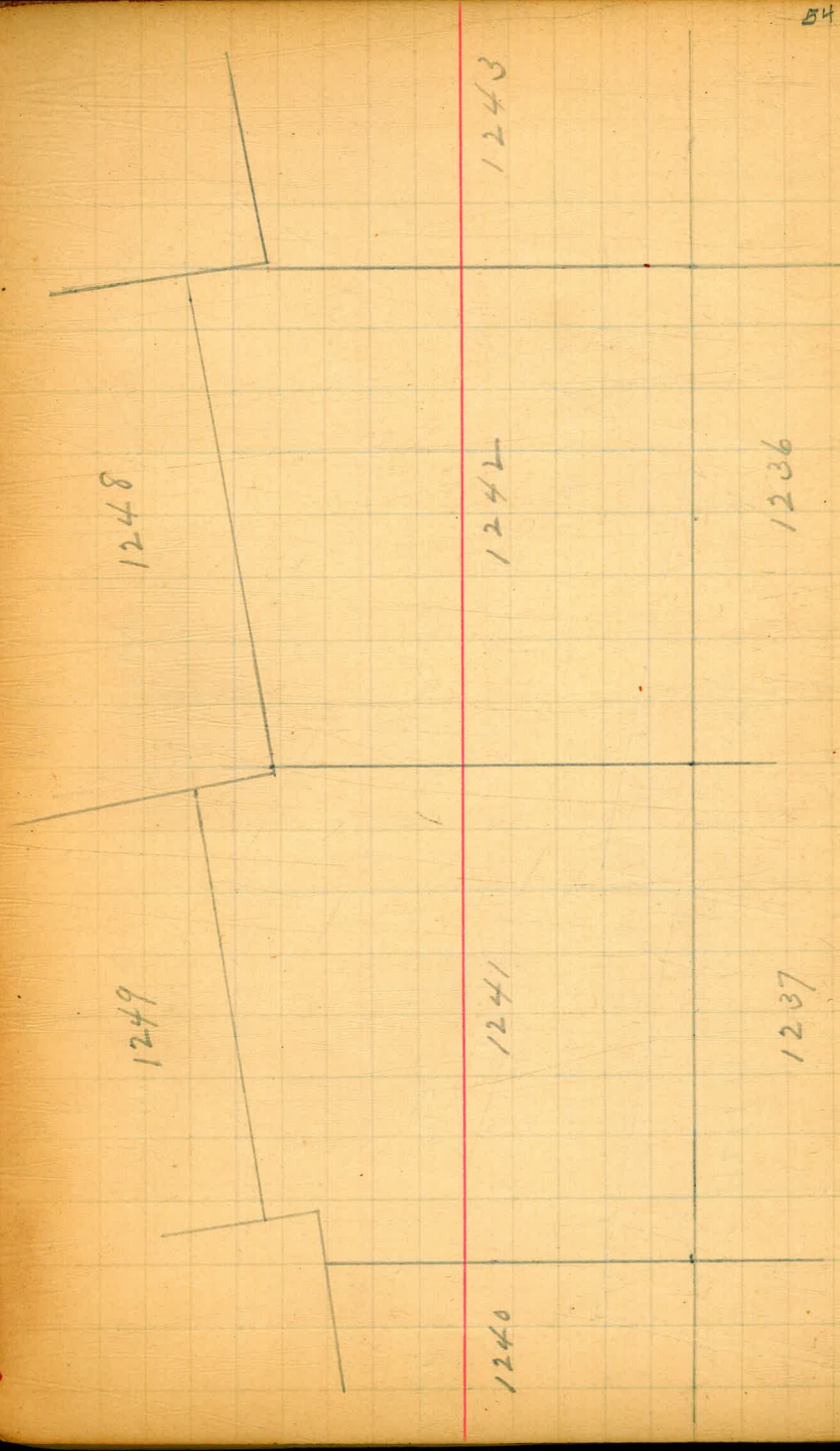
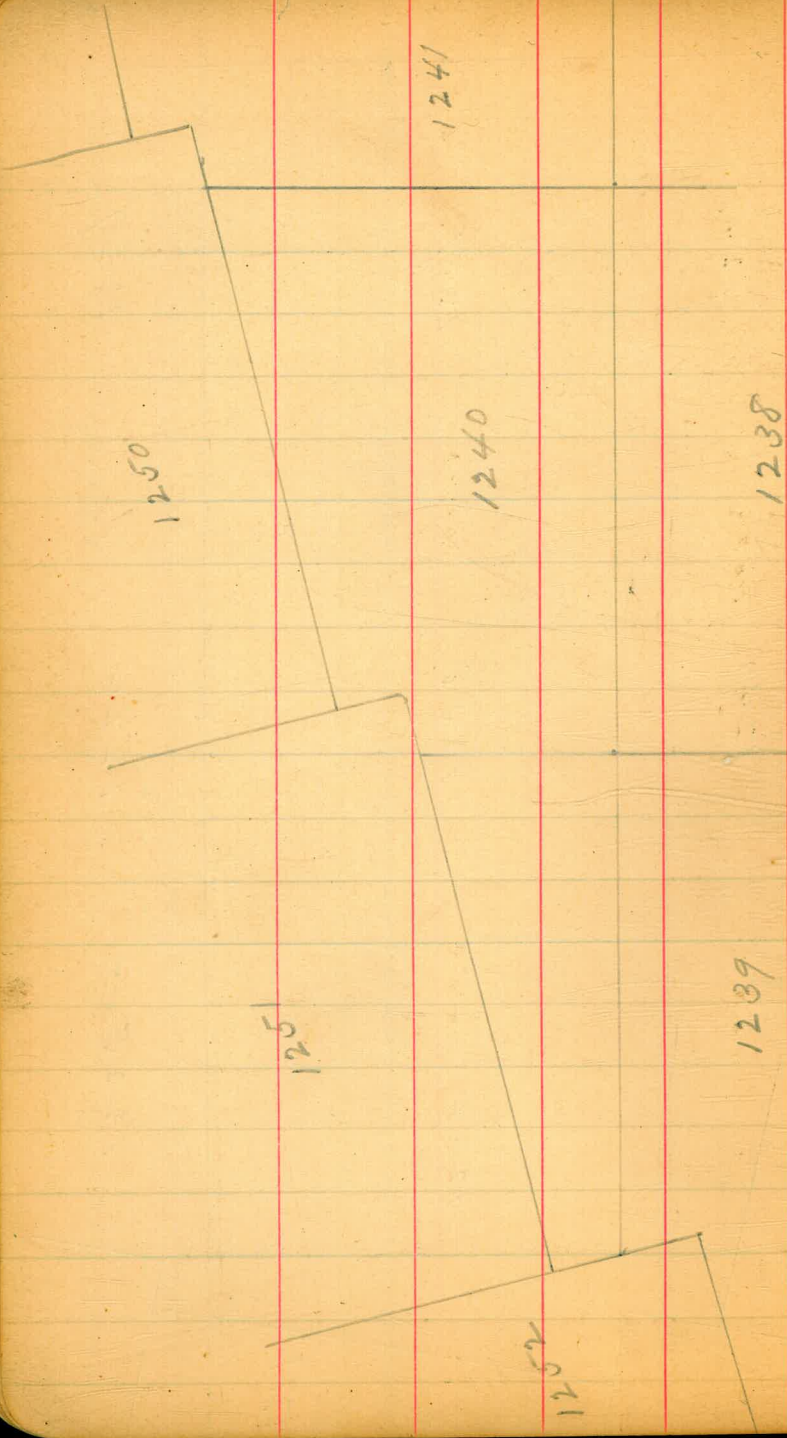
1239

1226

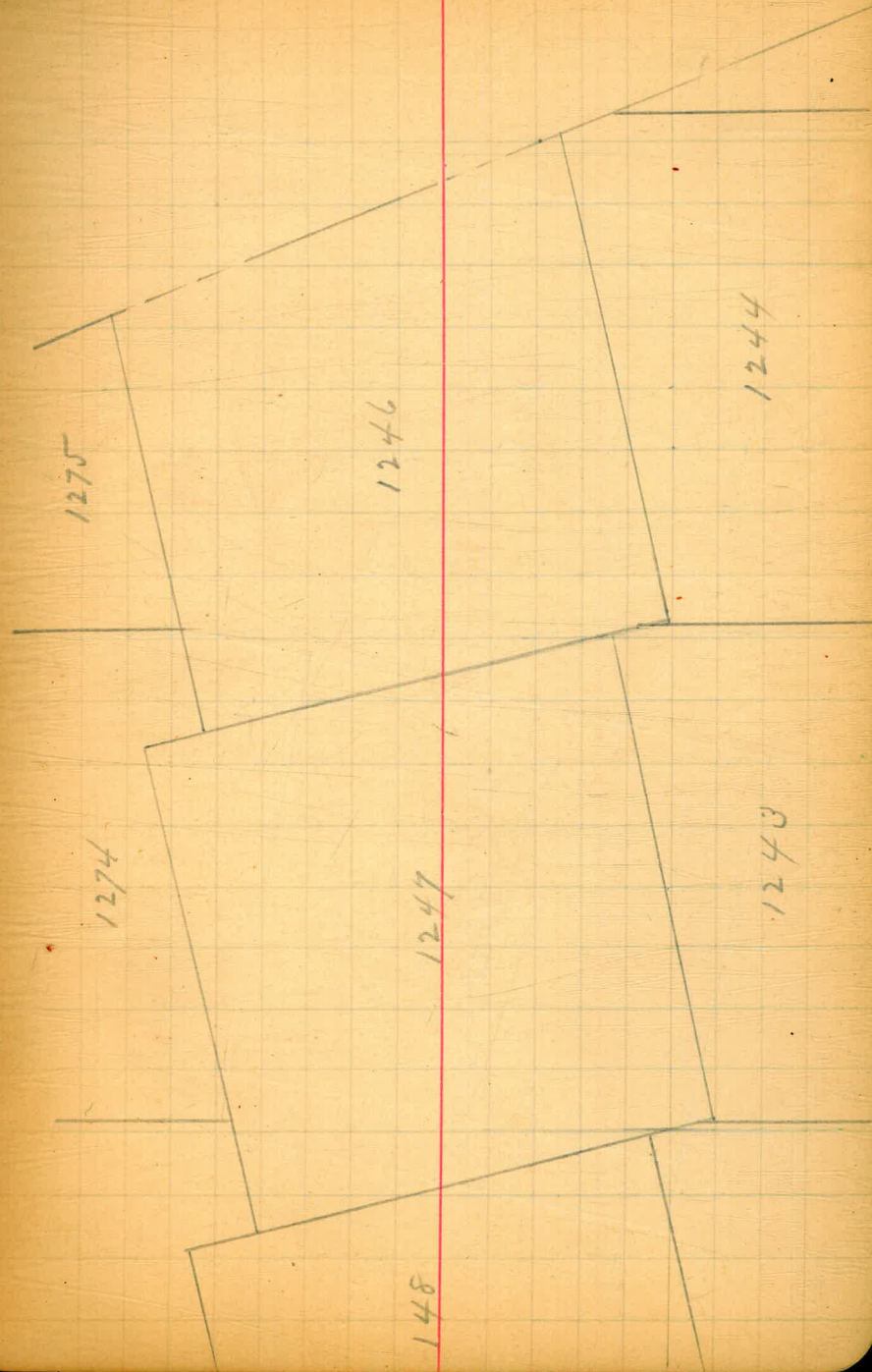
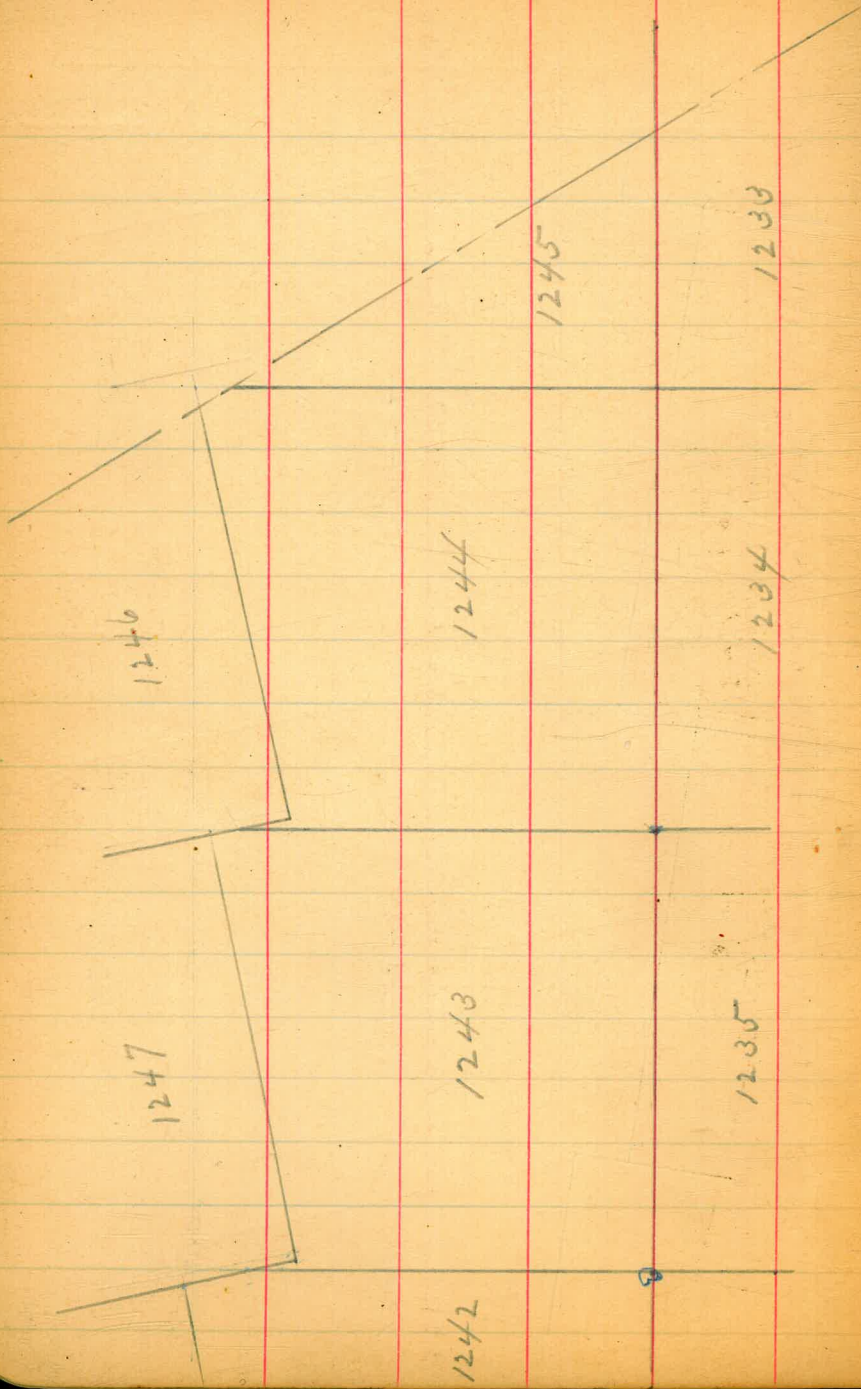
1227

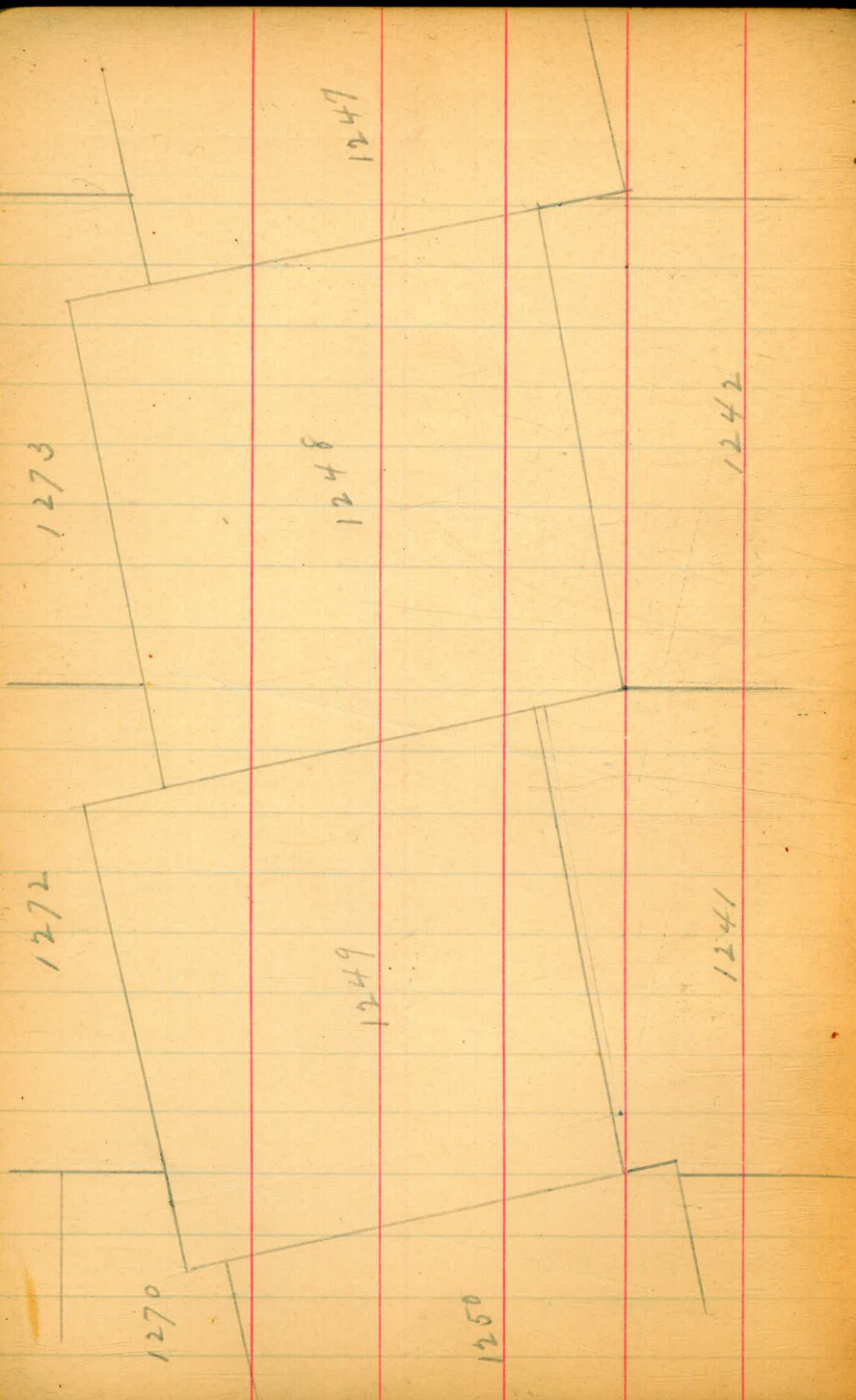
1225

1777









1270

1272

1273

1249

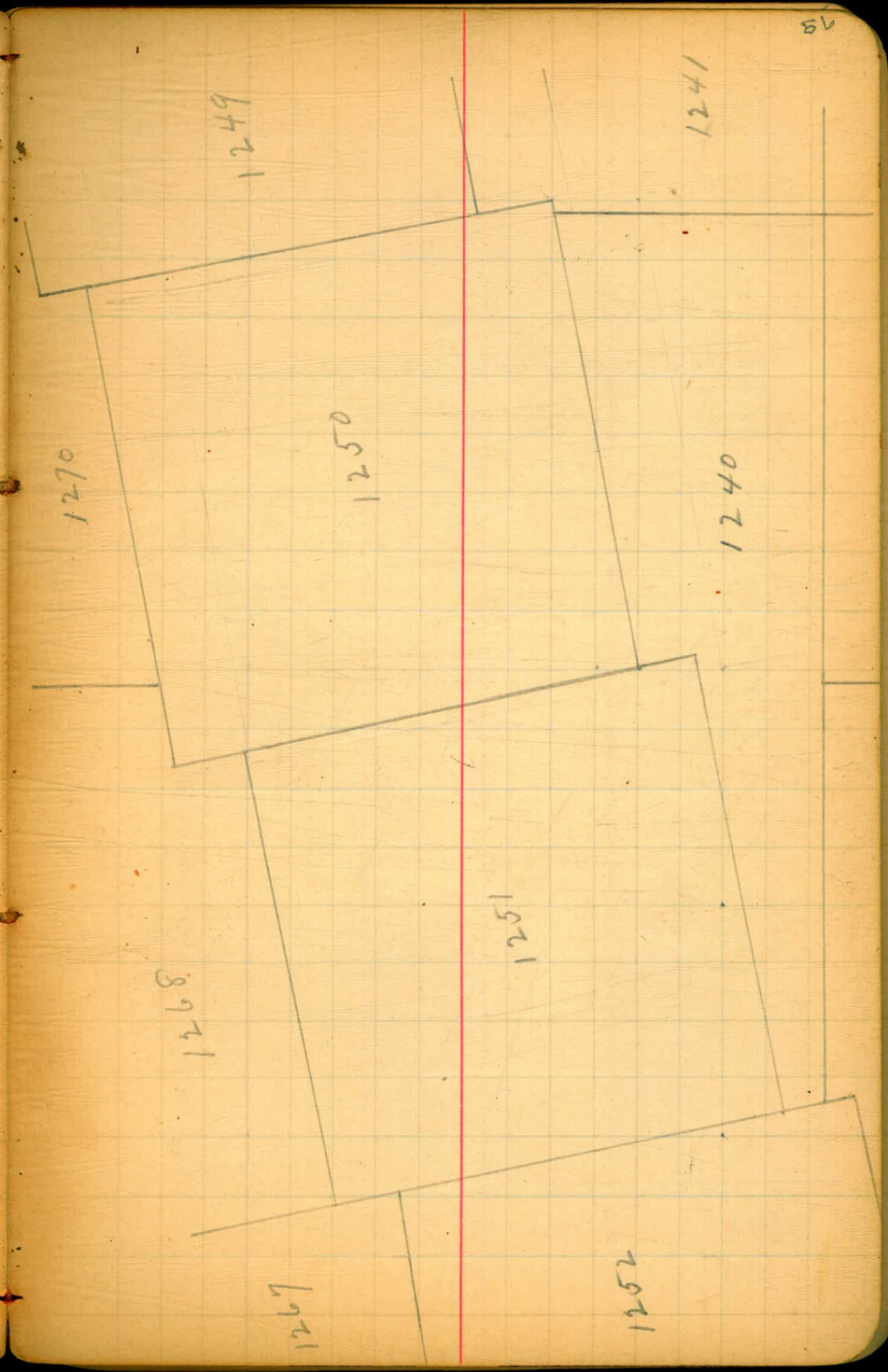
1248

1247

1250

1241

1242



1267

1268

1270

1249

1250

1251

1252

1240

1241

58

1265

1266

1267

1253

1254

1253

1252

1251

1776

1777

1239

1263

1264

1257

1256

1255

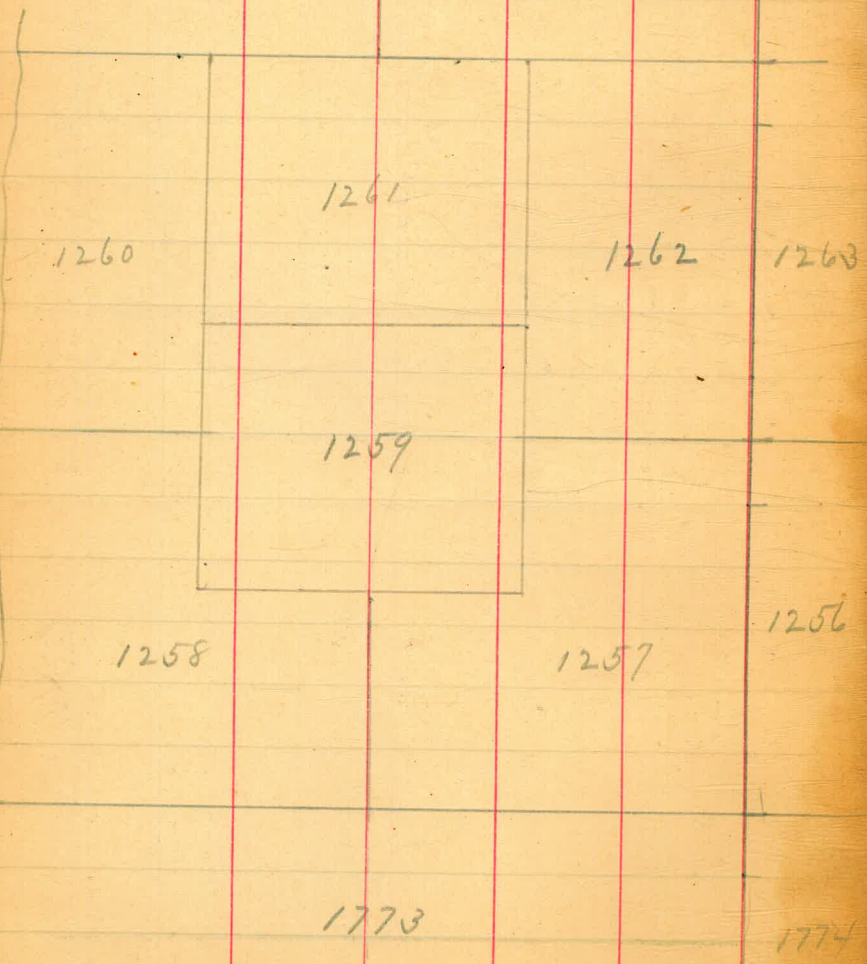
1254

1774

1775

1282

1283



1287

1265

1264

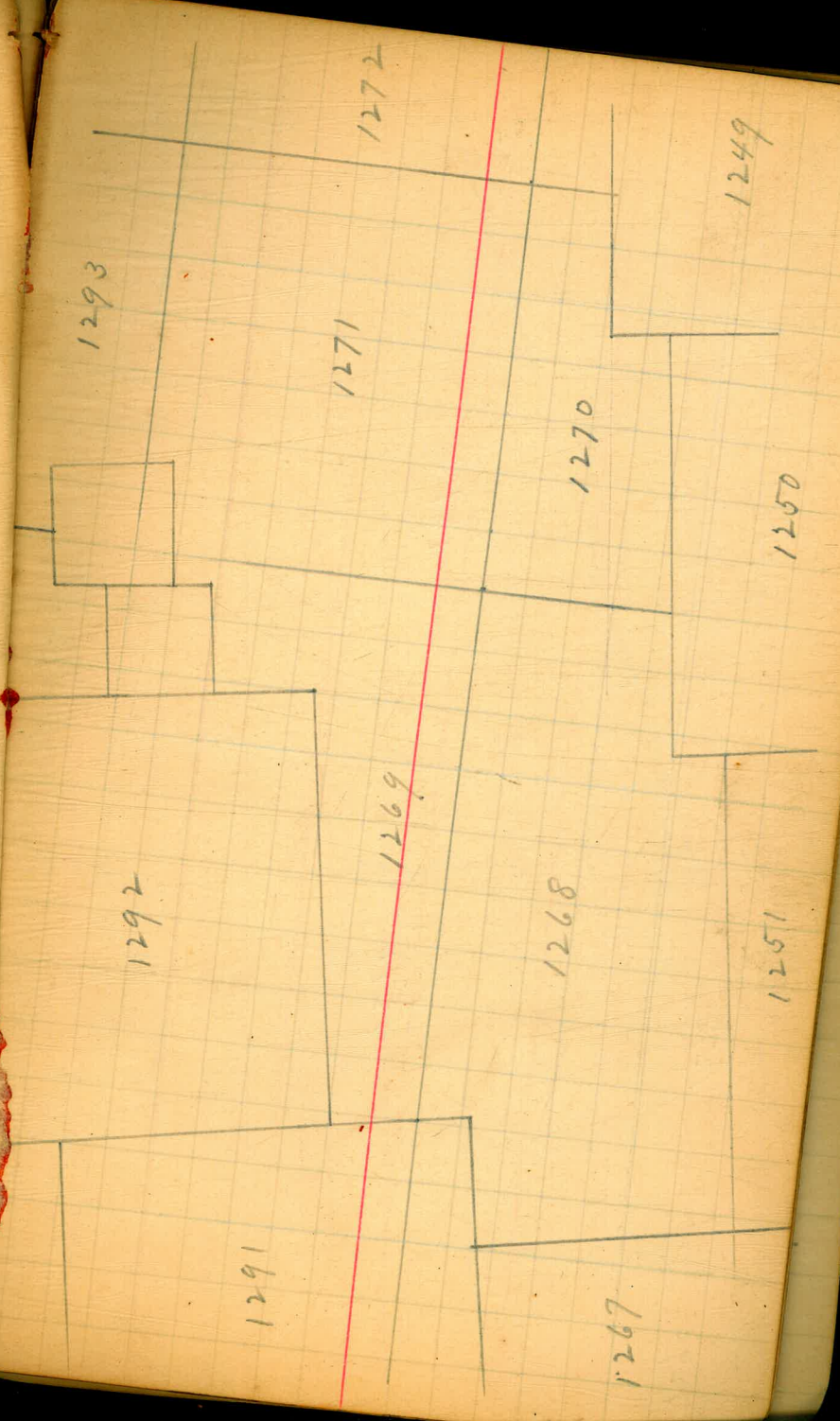
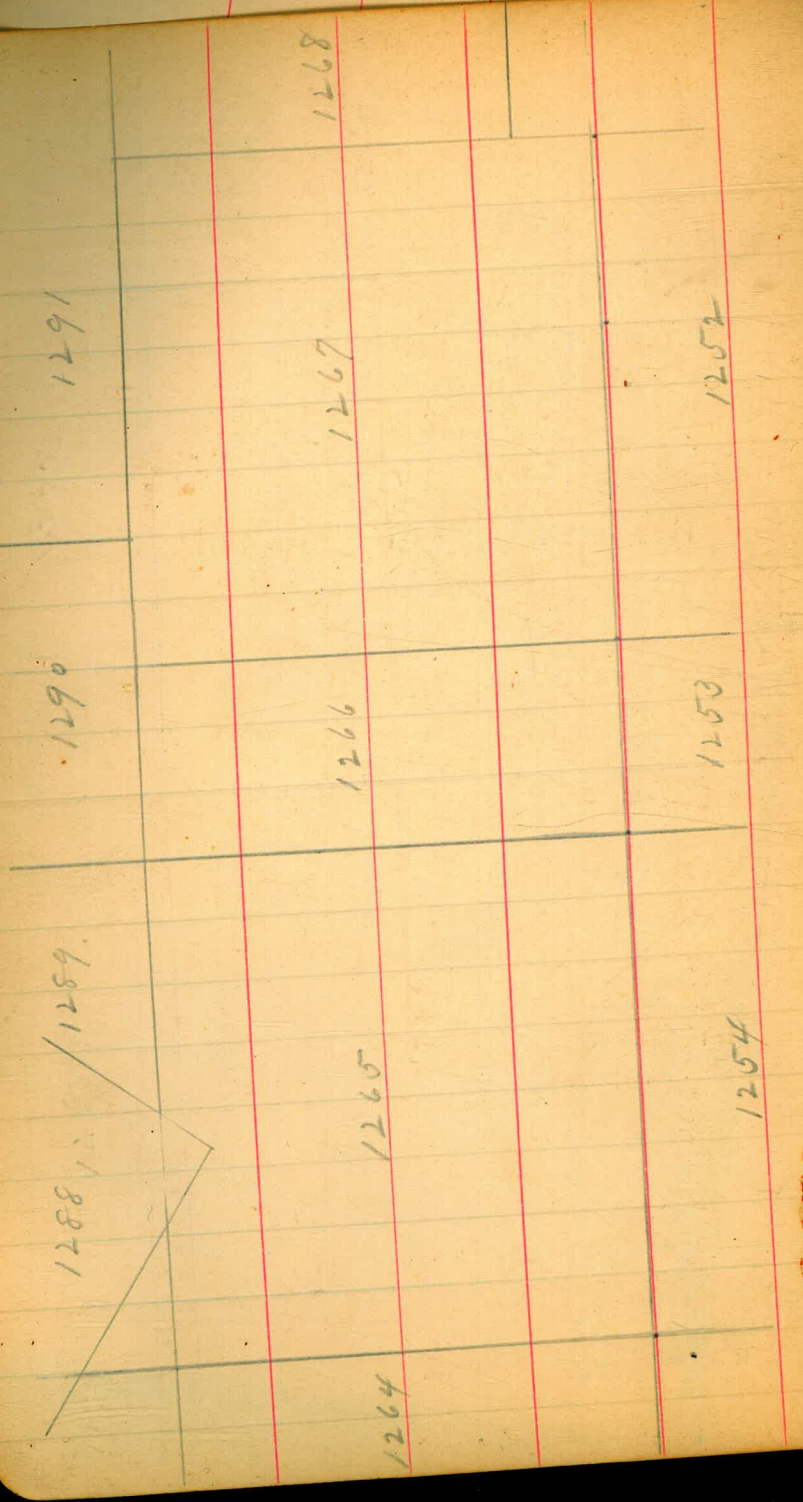
1255

1284

1263

1256

1262



1293

1278

1277

1271

1272

1273

1274

49

1248

1247

1273

1277

1304

1247

1305

1276

1274

1275

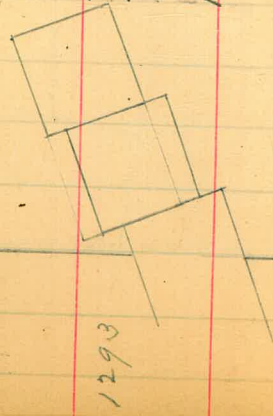
1246

1303

1304

1305

1300



1293

1278

1277

1276

1272

1273

1297

1281

1296

1295

1281

1279

1286

1292

1289

1290

1291

1294

1282

1283

1284

1260

1261

1262

1281

1280

1279

1285

1286

1289

1284

1290

1288

1287

1263

1264

1265

1283

62



1294

1295

1279

1292

1291

1290

1289

1269

1268

1267

1266

1302

1301

1300

1293

1294

1295

1296

1278

1292

1279

1291

1271

1298

1299

1297

1296

1295

1281

1280

1279

1312

1311

1310

1298

1299

1300

1301

1297

1296

1295

24

1308	1303	1278
1309	1302	1293
1310	1301	1294
1300		

65

1318	1319	
1307	1306	
1303	1304	1305
1277		1276

1316

1317

1318

1310

1309

1308

1307

1306

1301

1302

1303

1313

1314

1315

1312

1311

1310

1309

1298

1299

1300

66

1324

1323

1322

1313

1314

1315

1316

1312

1311

1310

1321

1320

1351

1315

1316

1317

1318

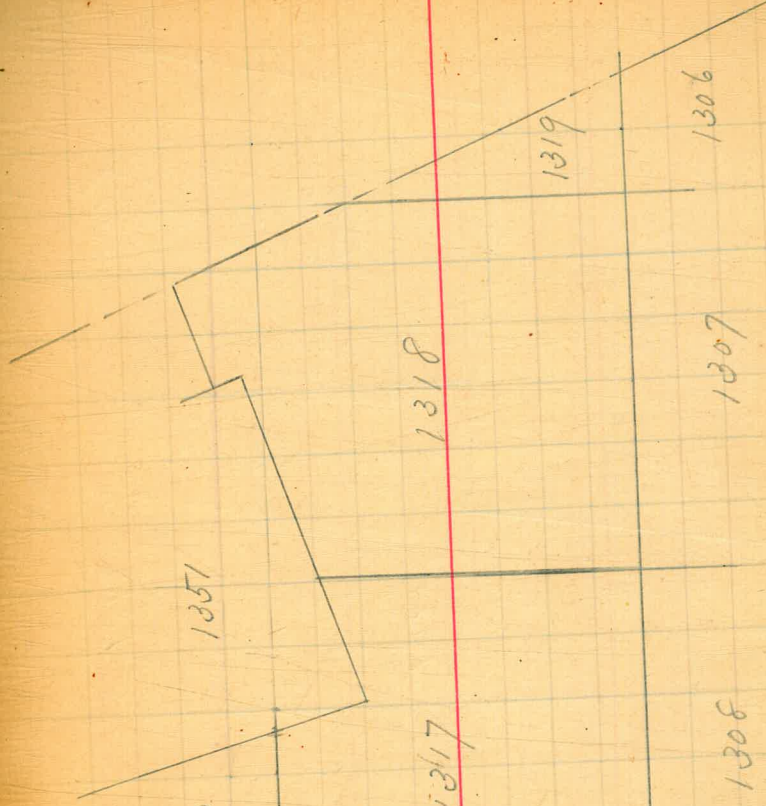
1319

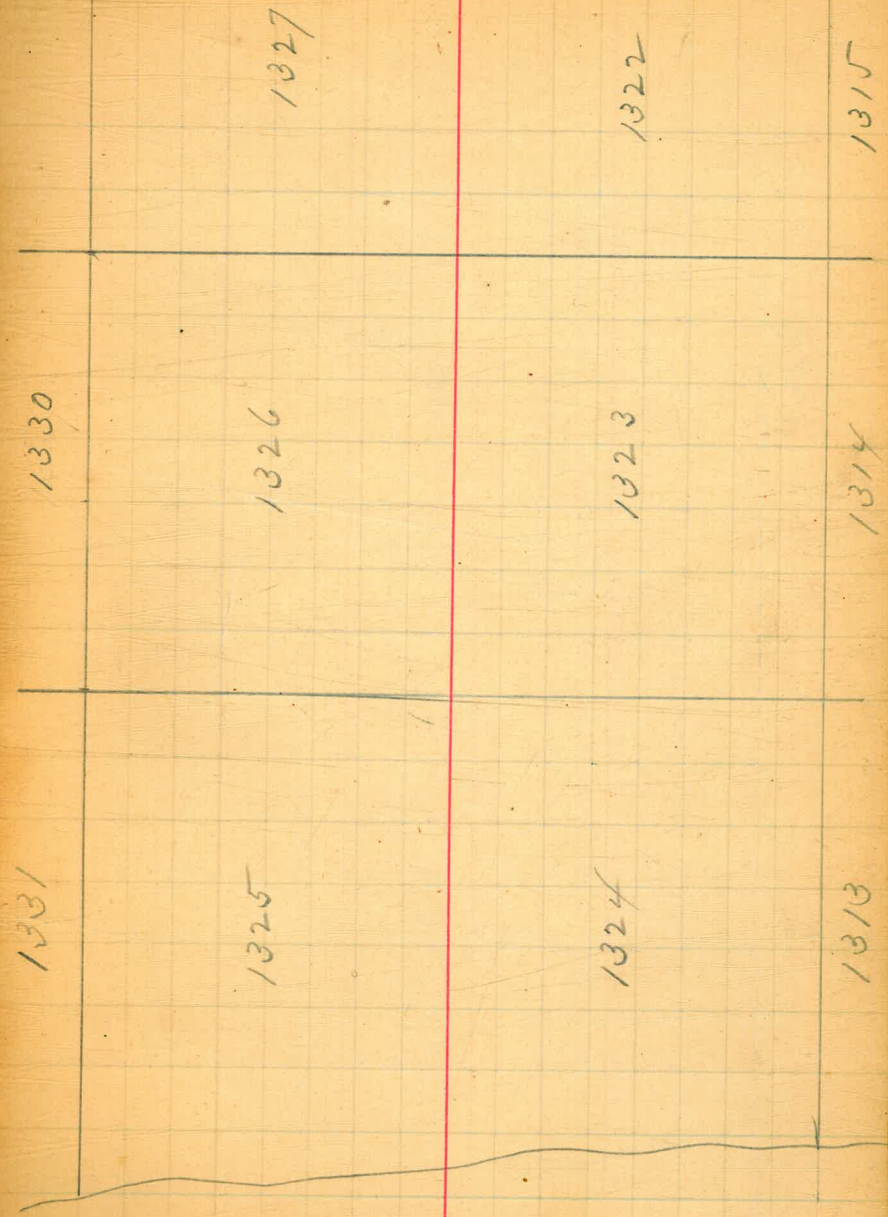
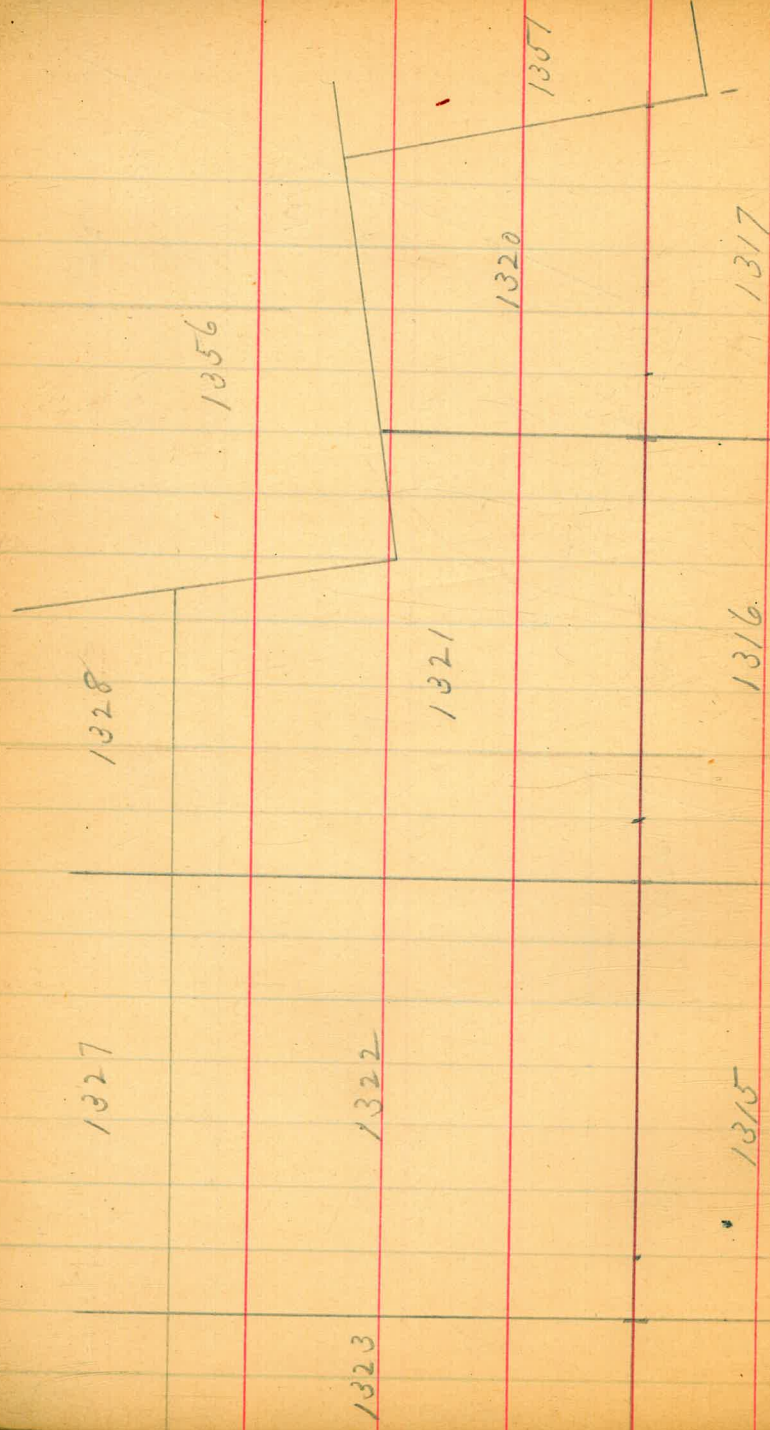
1309

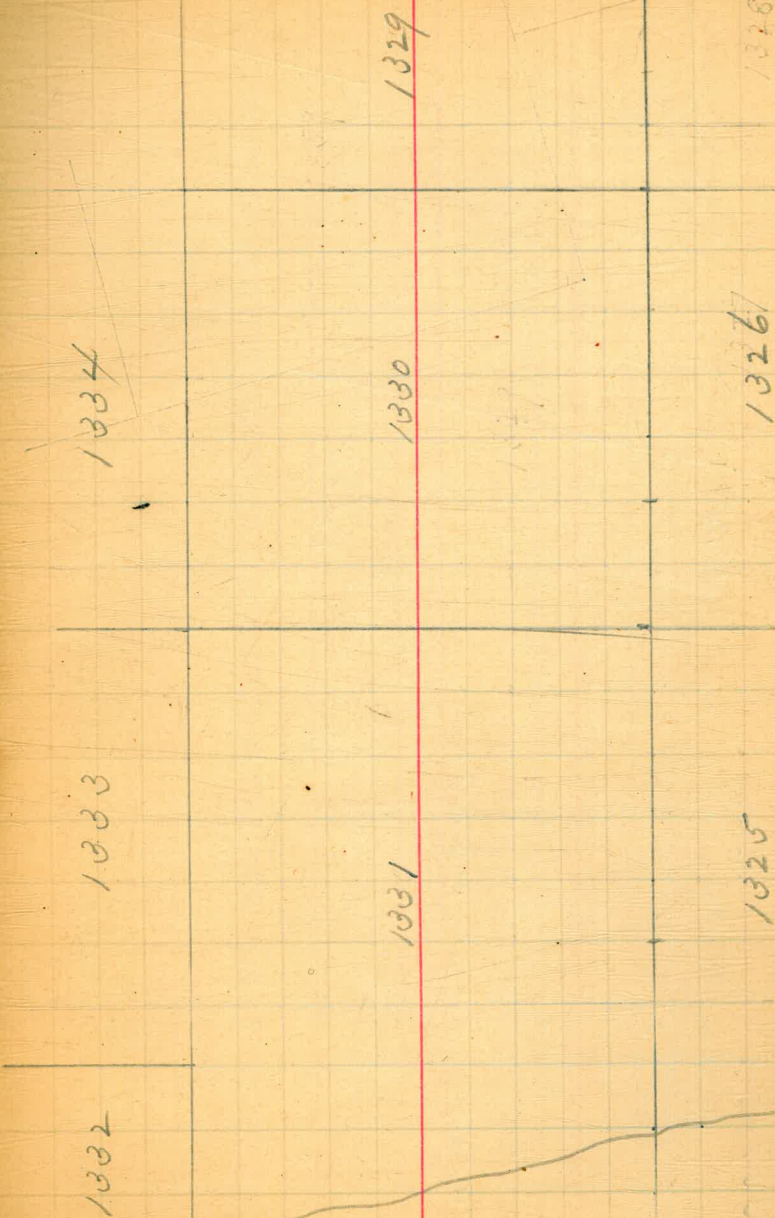
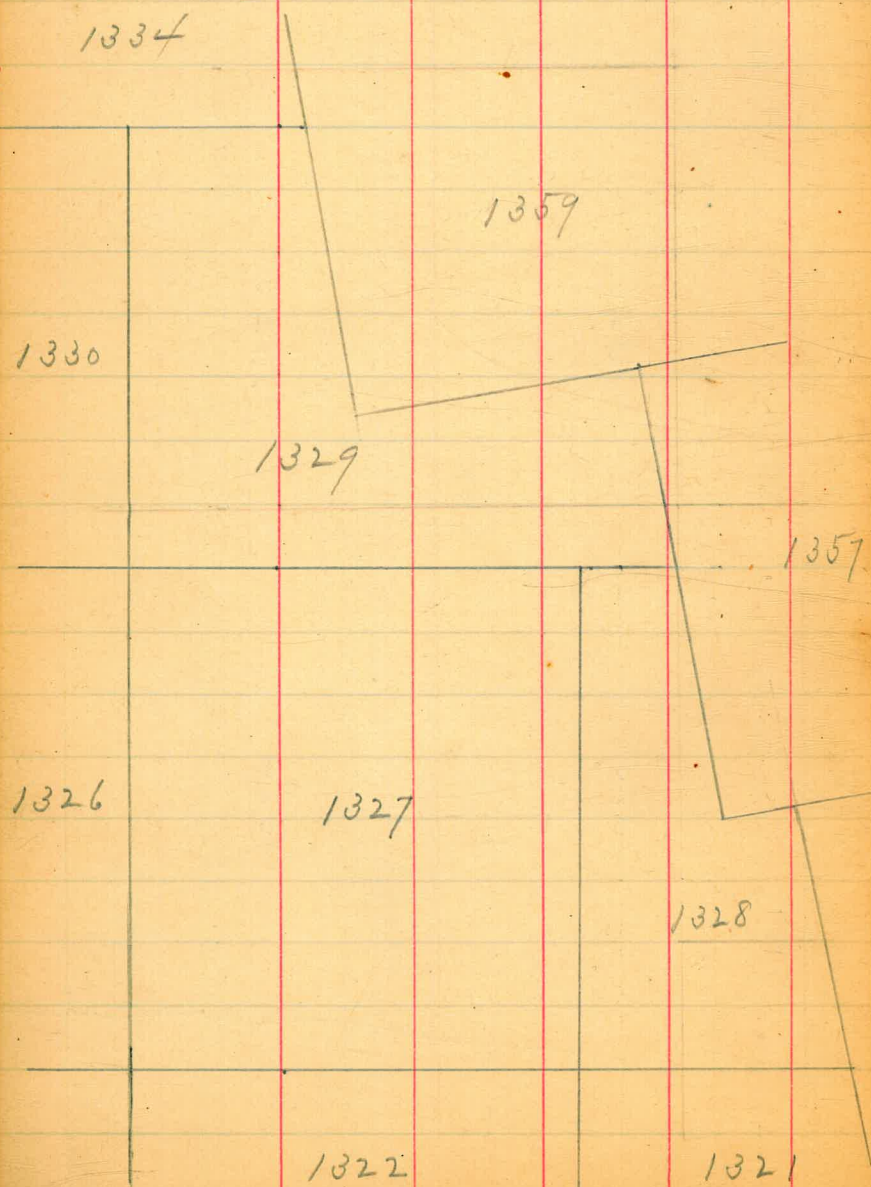
1308

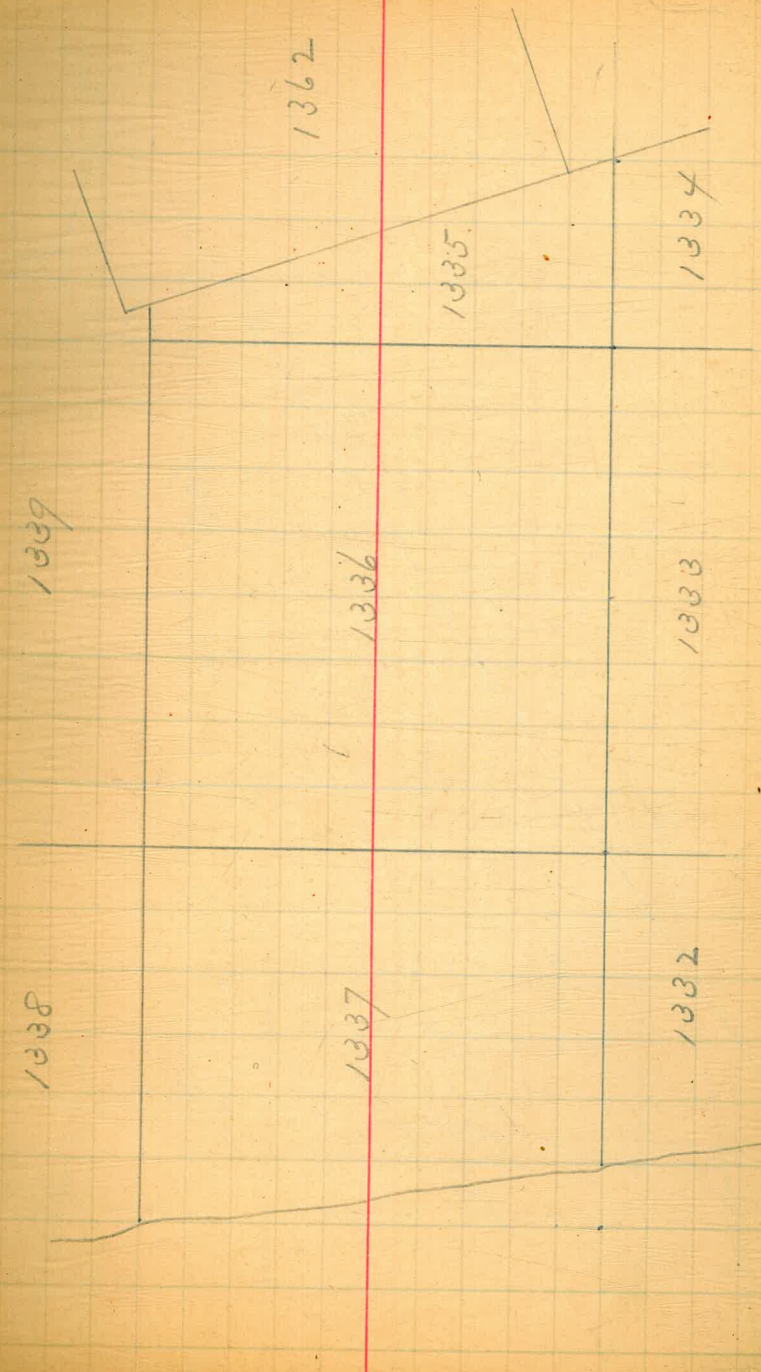
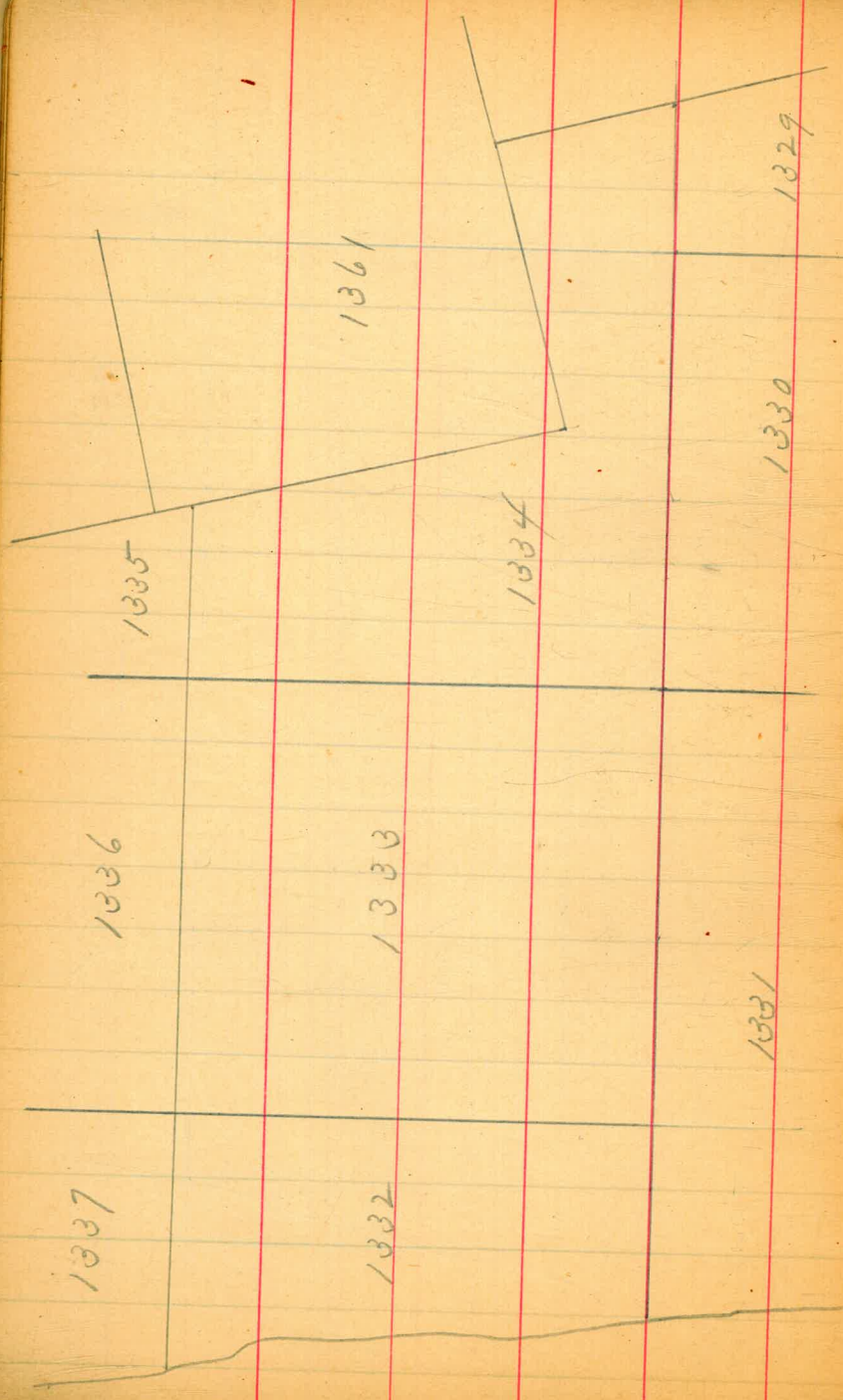
1307

1306

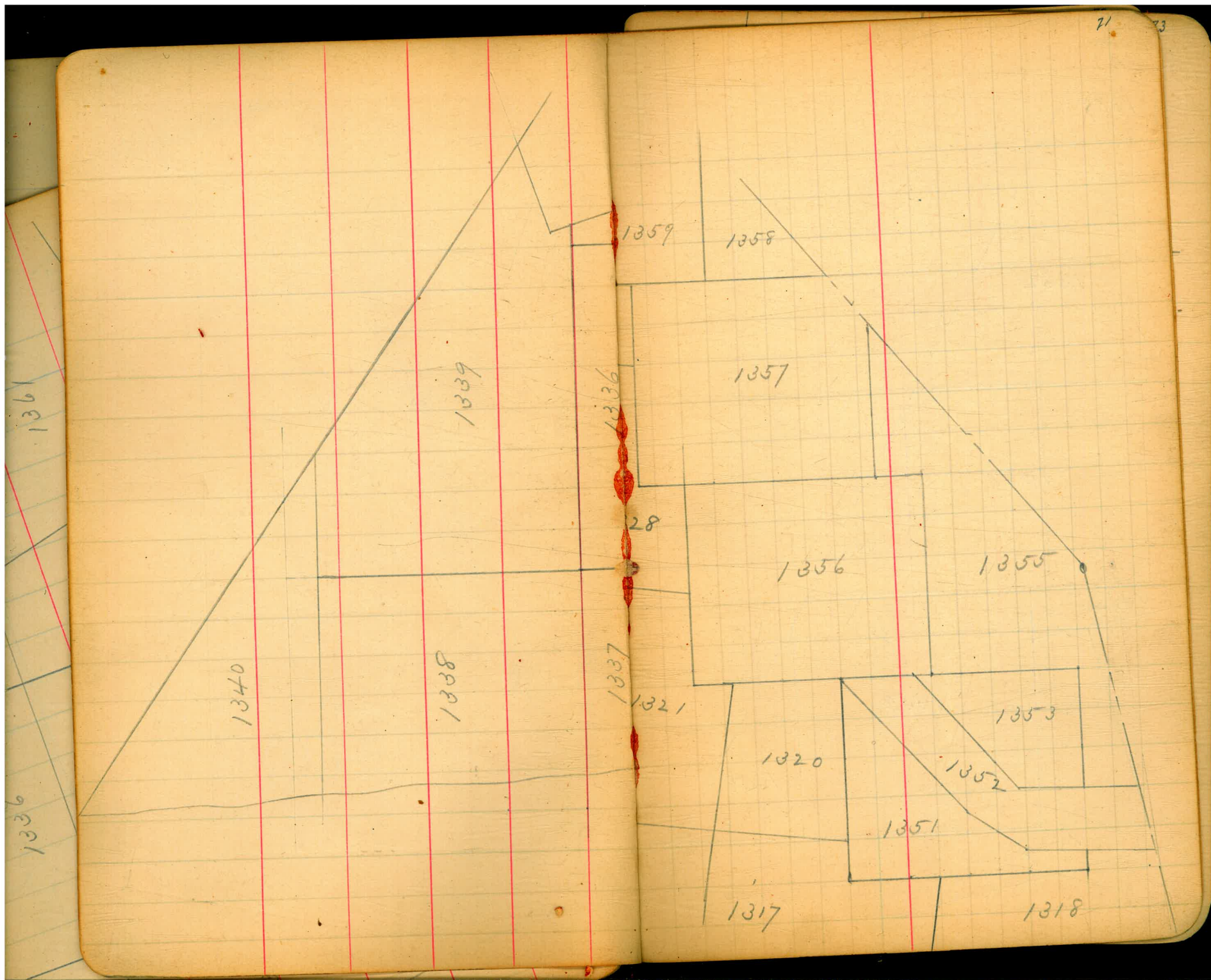


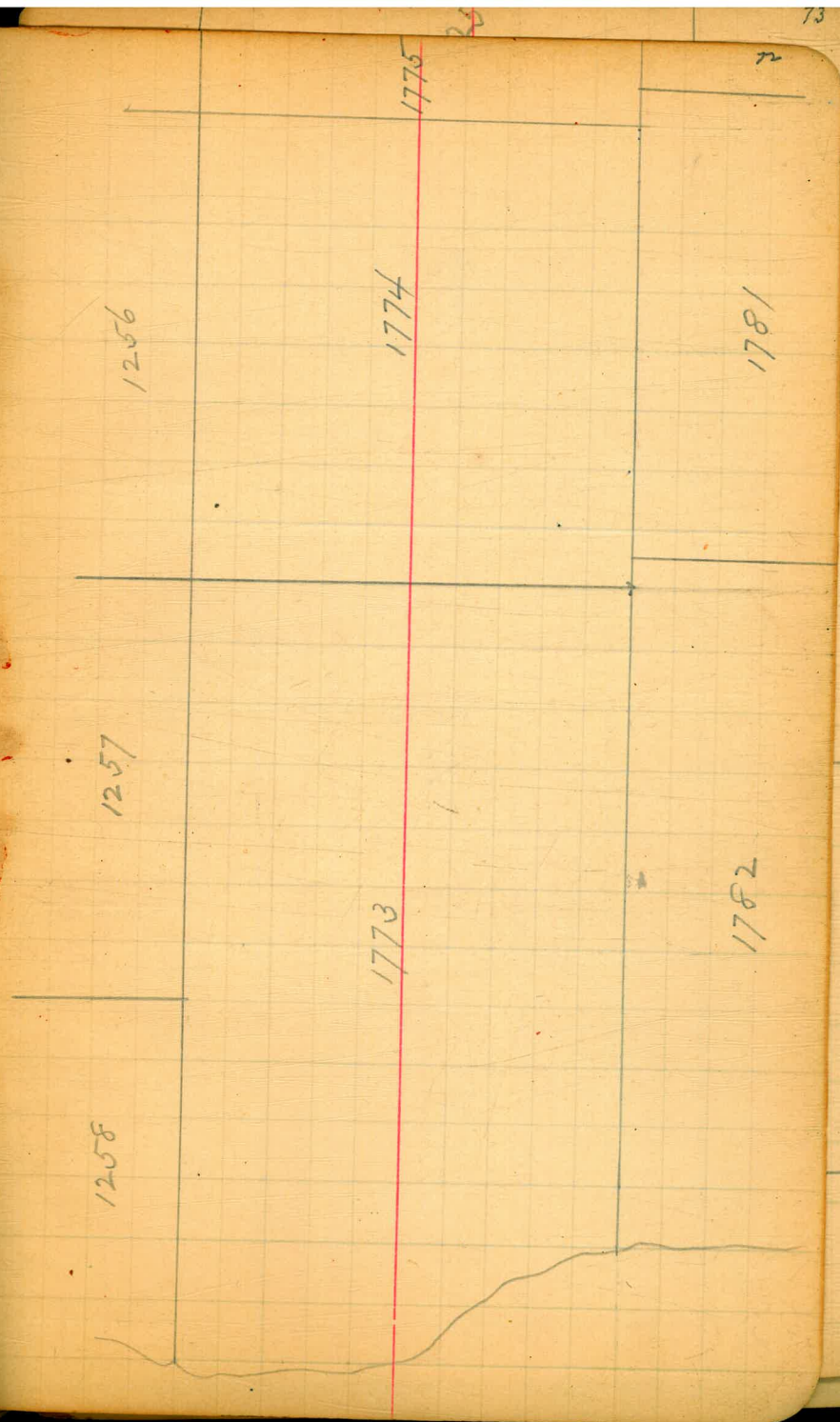
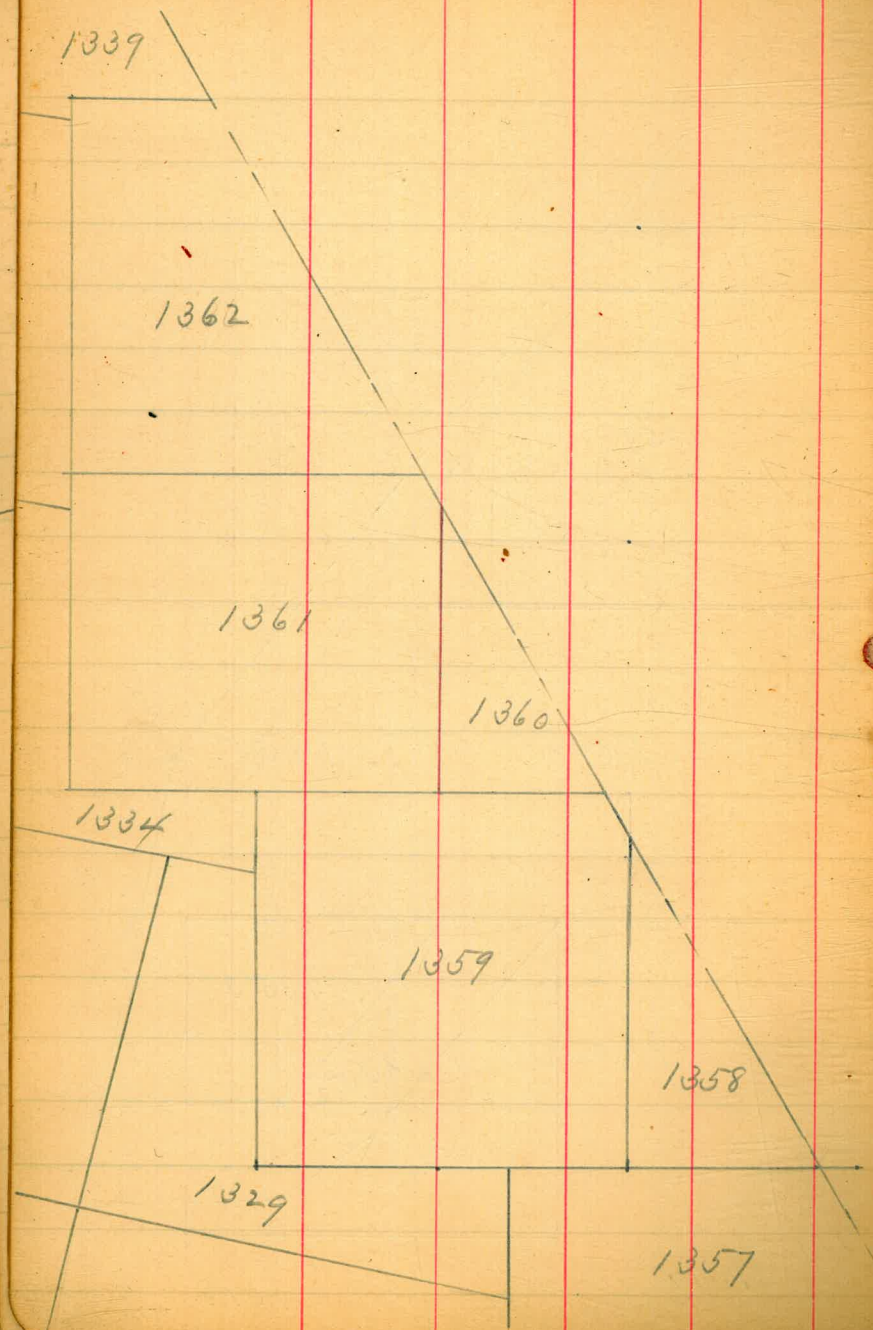












1774

1775

1776

1777

1779

1780

1779

1778

1775

1776

1777

1781

1780

1779

1778

1775

1784

1785

1786

1787

1773

1774

1782

1781

1780

1783

1784

1782

1781

1780

1783

1784

1785

1792

1791

74

1780

1779

1778

1784

1785

1786

1787

1224

1790

1789

1788

1785

1786

1787

1790

1789

1788

1209

1791

1795

1796

1797

1208

75

2" gas pipe

1783

1784

1785

1792

1791

1790

1793

1794

1795

1790

1789

1788

1795

1796

1797

1794

1208

post

1800

1799

1798

76

gas pipe

plug

1796

1799

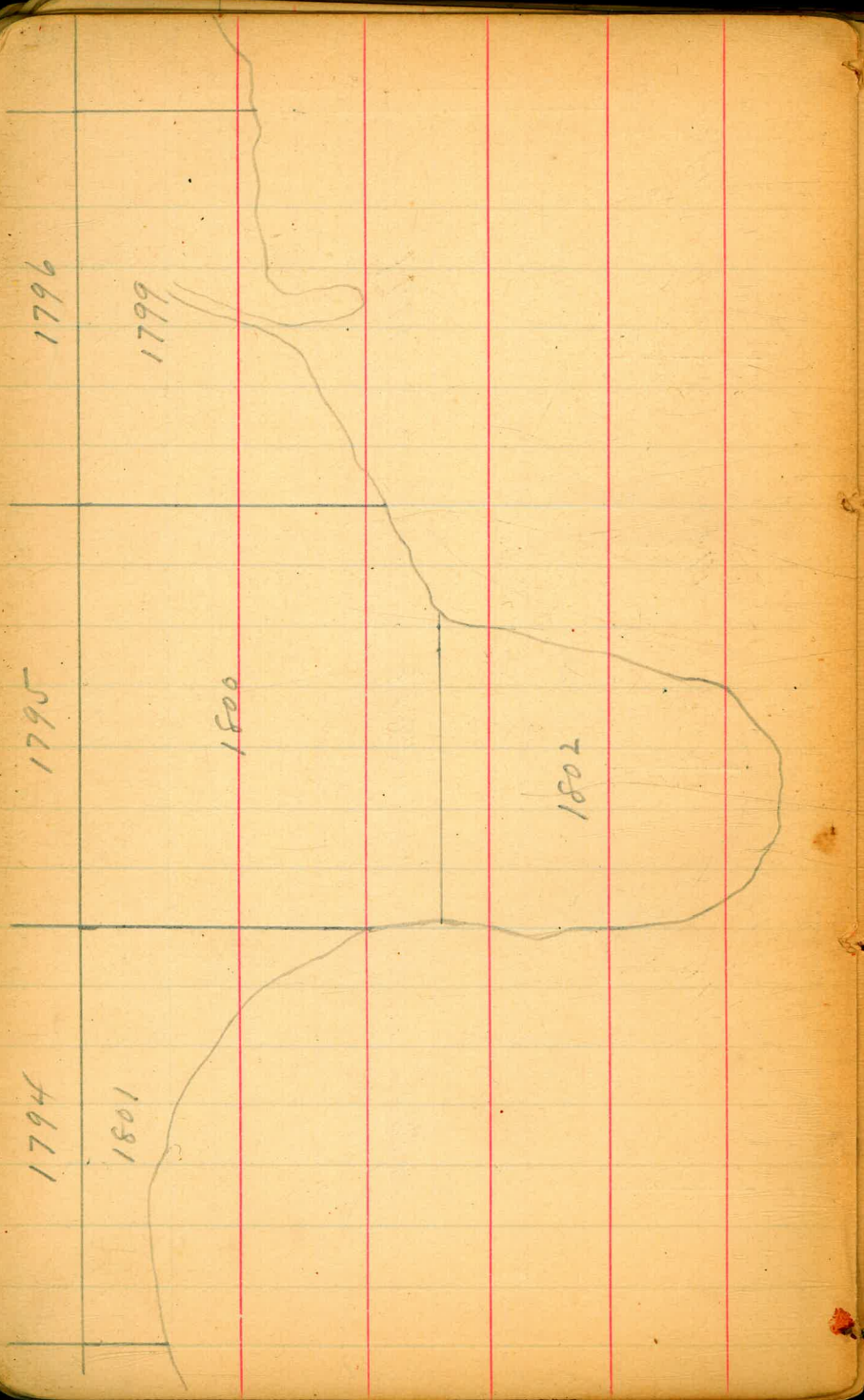
1795

1800

1802

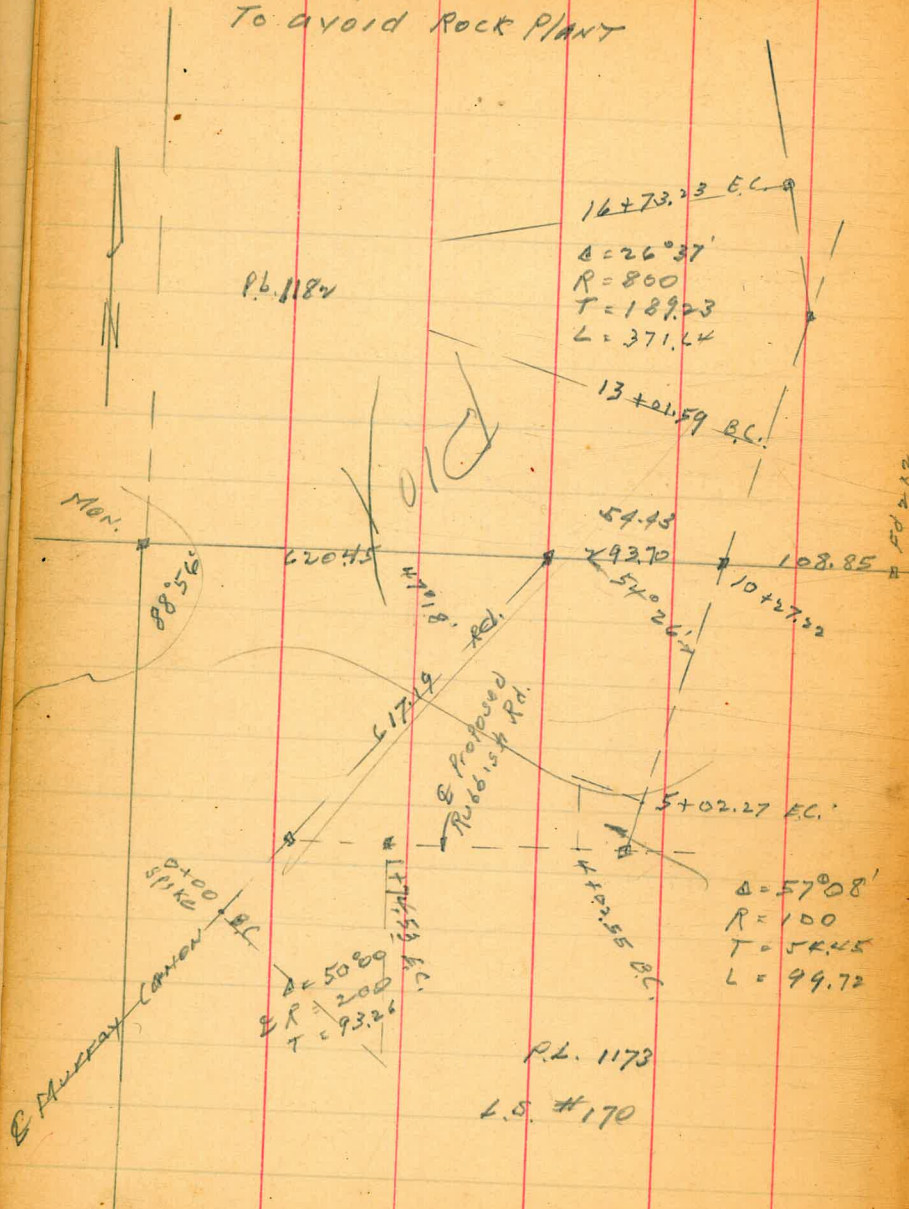
1794

1801



Moore  
1-9-50.

Survey Rubbish Rd.  
Murray Canon.  
To avoid Rock PLANT







*Traverse*  
TRAVERSE TABLE FOR TRANSIT BOOK.

From 1° to 90° for a distance of 100.

Degrees.	DEGREES.		¼ DEGREE		½ DEGREE.		¾ DEGREE.		Degrees.
	Lat.	Dep.	Lat.	Dep.	Lat.	Dep.	Lat.	Dep.	
0			100.00	0.44	100.00	0.87	99.99	1.31	89
1	99.98	1.75	99.98	2.18	99.97	2.62	99.95	3.05	88
2	99.94	3.49	99.92	3.93	99.91	4.36	99.88	4.80	87
3	99.86	5.23	99.84	5.67	99.81	6.10	99.79	6.54	86
4	99.76	6.98	99.73	7.41	99.69	7.55	99.66	8.28	85
5	99.62	8.72	99.58	9.15	99.54	9.58	99.50	10.02	84
6	99.45	10.45	99.41	10.89	99.36	11.32	99.31	11.75	83
7	99.25	12.19	99.20	12.62	99.14	13.05	99.09	13.49	82
8	99.03	13.92	98.97	14.35	98.90	14.78	98.84	15.21	81
9	98.77	15.64	98.70	16.07	98.63	16.50	98.56	16.93	80
10	98.48	17.36	98.40	17.79	98.33	18.22	98.25	18.65	79
11	98.16	19.08	98.08	19.51	97.99	19.94	97.90	20.36	78
12	97.81	20.79	97.72	21.22	97.63	21.61	97.53	22.07	77
13	97.44	22.50	97.34	22.92	97.24	23.34	97.13	23.77	76
14	97.03	24.19	96.92	24.62	96.81	25.04	96.70	25.46	75
15	96.59	25.88	96.48	26.30	96.36	25.72	96.25	27.14	74
16	96.13	27.56	96.00	27.98	95.88	28.40	95.76	28.82	73
17	95.63	29.24	95.50	29.65	95.37	30.07	95.24	30.49	72
18	95.11	30.90	94.97	31.32	94.83	31.73	94.69	32.14	71
19	94.55	32.56	94.41	32.97	94.26	33.38	94.12	33.79	70
20	93.97	34.20	93.82	34.61	93.67	35.02	93.51	35.43	69
21	93.35	35.84	93.20	36.24	93.04	36.65	92.88	37.06	68
22	92.72	37.46	92.55	37.86	92.39	38.27	92.22	38.67	67
23	92.05	39.07	91.88	39.47	91.71	39.87	91.53	40.27	66
24	91.35	40.67	91.18	41.07	91.00	41.47	90.81	41.87	65
25	90.63	42.26	90.45	42.66	90.26	43.05	90.07	43.44	64
26	89.88	43.84	89.69	44.23	89.49	44.62	89.30	45.01	63
27	89.10	45.40	88.90	45.79	88.70	46.17	88.50	46.56	62
28	88.29	46.95	88.09	47.33	87.88	47.72	87.67	48.10	61
29	87.46	48.48	87.25	48.86	87.04	49.24	86.82	49.62	60
30	86.60	50.00	86.38	50.38	86.16	50.75	85.94	51.13	59
31	85.72	51.50	85.49	51.88	85.26	52.25	85.04	52.62	58
32	84.80	52.99	84.57	53.36	84.34	53.73	84.10	54.10	57
33	83.87	54.46	83.63	54.83	83.39	55.19	83.15	55.56	56
34	82.90	55.92	82.66	56.28	82.41	56.64	82.16	57.00	55
35	81.92	57.36	81.65	57.71	81.41	58.07	81.16	58.42	54
36	80.90	58.78	80.64	59.13	80.39	59.48	80.13	59.83	53
37	79.86	60.18	79.60	60.53	79.34	60.88	79.07	61.22	52
38	78.80	61.57	78.53	61.91	78.26	62.25	77.99	62.59	51
39	77.71	62.93	77.44	63.27	77.16	63.61	76.88	63.94	50
40	76.60	64.28	76.32	64.61	76.04	64.94	75.76	65.28	49
41	75.47	65.61	75.18	65.93	74.90	66.26	74.61	66.59	48
42	74.31	66.91	74.02	67.24	73.73	67.56	73.43	67.88	47
43	73.14	68.20	72.84	68.52	72.54	68.84	72.24	69.15	46
44	71.93	69.47	71.63	69.78	71.33	70.09	71.02	70.40	45
45	70.71	70.71							
Degrees.	Dep.	Lat.	Dep.	Lat.	Dep.	Lat.	Dep.	Lat.	Degrees.
	DEGREES.		¼ DEGREE.		½ DEGREE.		¾ DEGREE.		

Published by H. S. CROCKER COMPANY, Stationers, Drawing Materials  
Mathematical Instruments, etc., San Francisco.

*Handwritten notes and calculations on the left page of the notebook, including numbers like 2036.6, 66.31, 337.62, and various other figures and scribbles.*