

609

360

FIELD.

F.B. 609

609

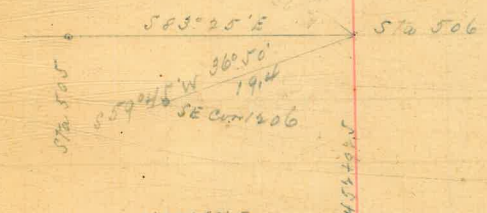
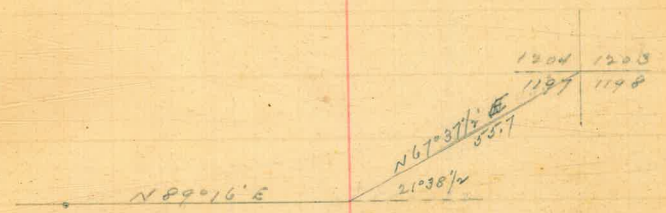
706 55

MICROFILMED

DEC 14 1964

609

FB. 93 and 56 are part of
this set



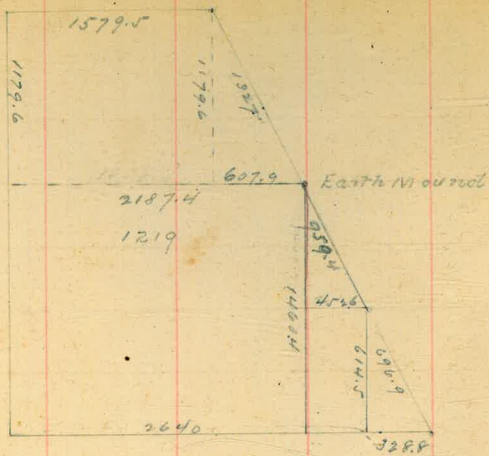
See 610 PA2



Sta 504 + 506

PL. 1908

1208	1208	1207
1193	1193	1194



Int East line 1219 with Eastern Boundary

Sta 688

Sta. 680

S 29° 24' E

122.7
73° 38' E
50° 14'



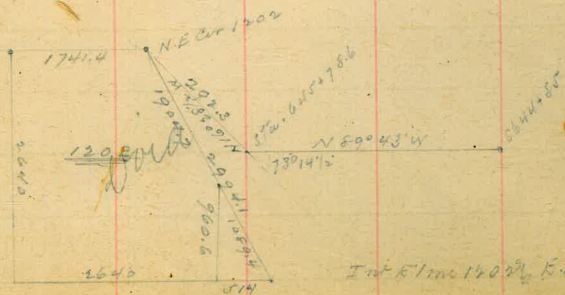
Sta 680+00

Sta 66000

NE Cor 1215

S 29° 24' E

NE Cor 1219



NE Cor 1202

1200

N 80° 43' W

Int E line 1202, E. B. 1219

632+90

641+90



See book 610 P 57

Sta 708+87.5

Sta 646+07.8

688+00

S 14° 36' E

191.2

164.2

Int East Line 1219 with East Boundary

680+00

S 66° 15' E

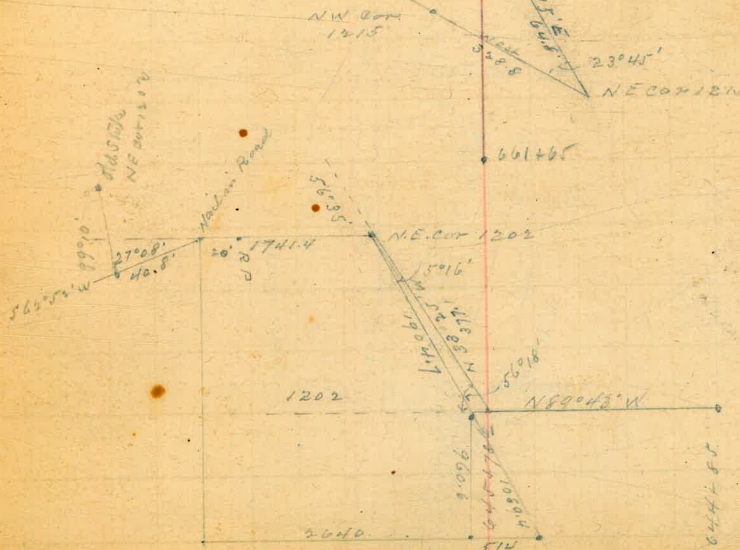
339.1

328.8

230° 45'

NE Cor 1218

661+65



NE Cor 1202

1202

N 80° 43' W

1202

2640

314

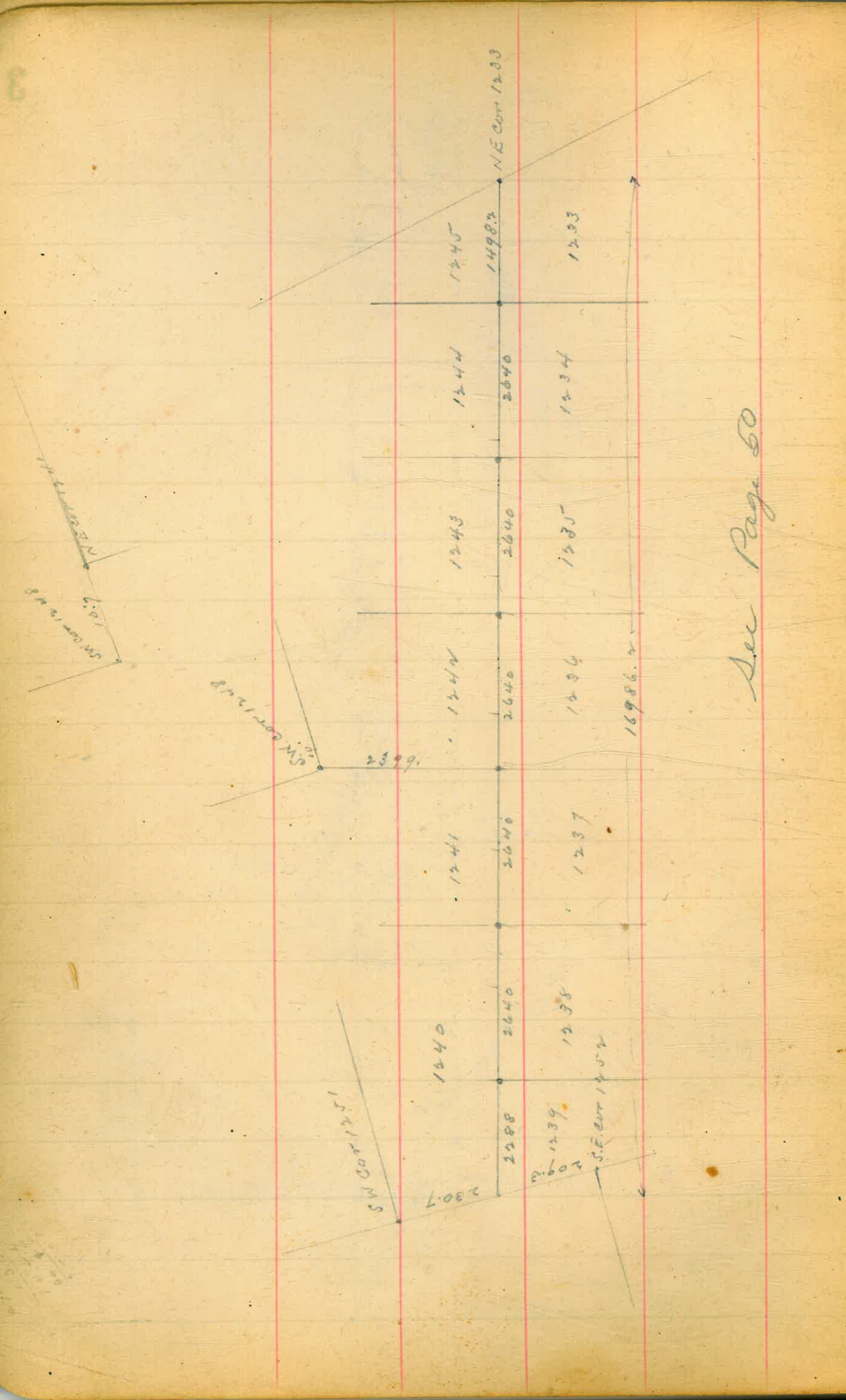


644.5

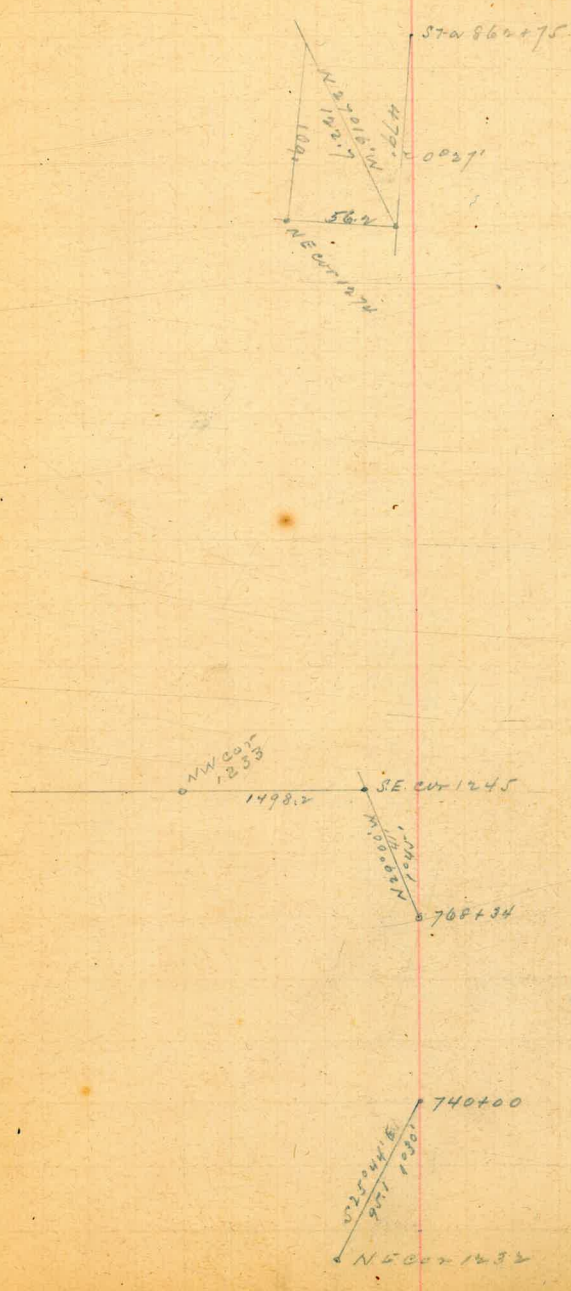
538.5

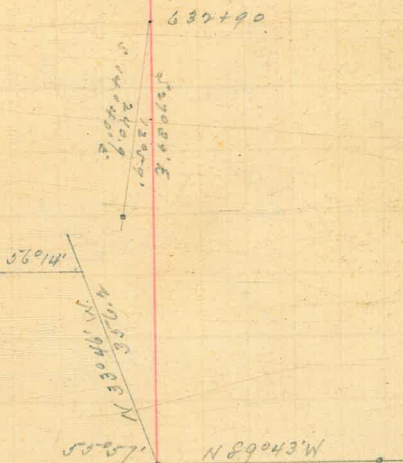
532.5

644.5

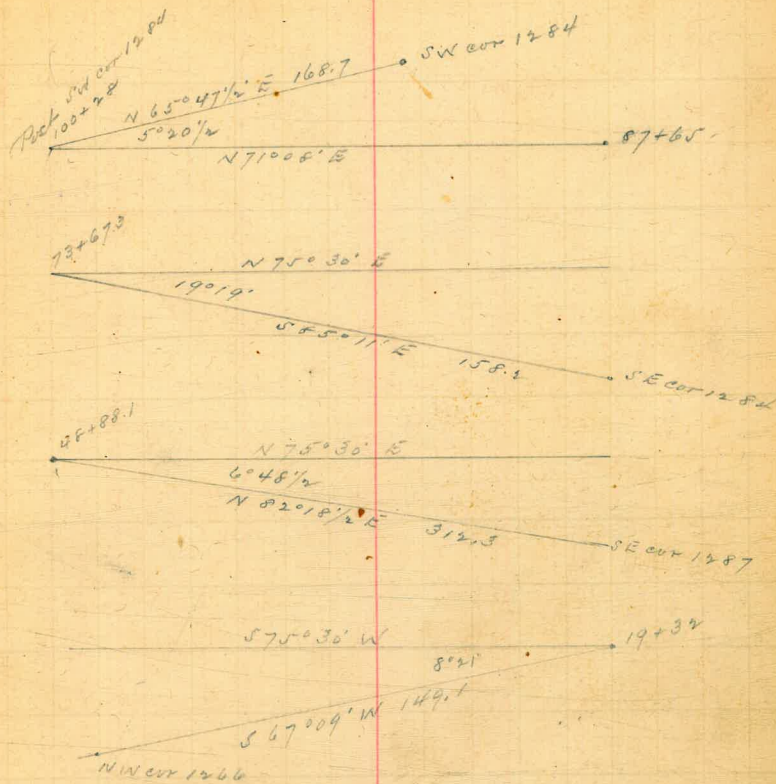
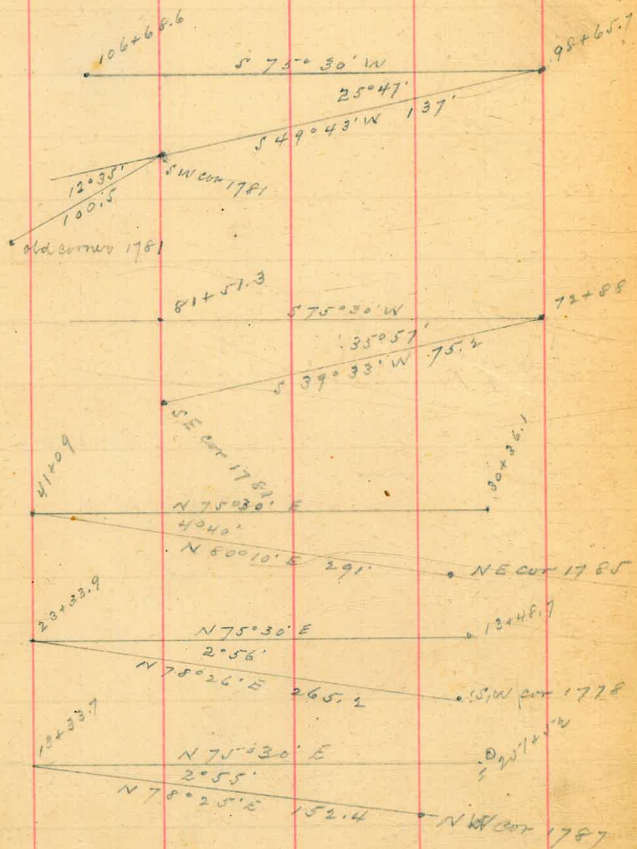


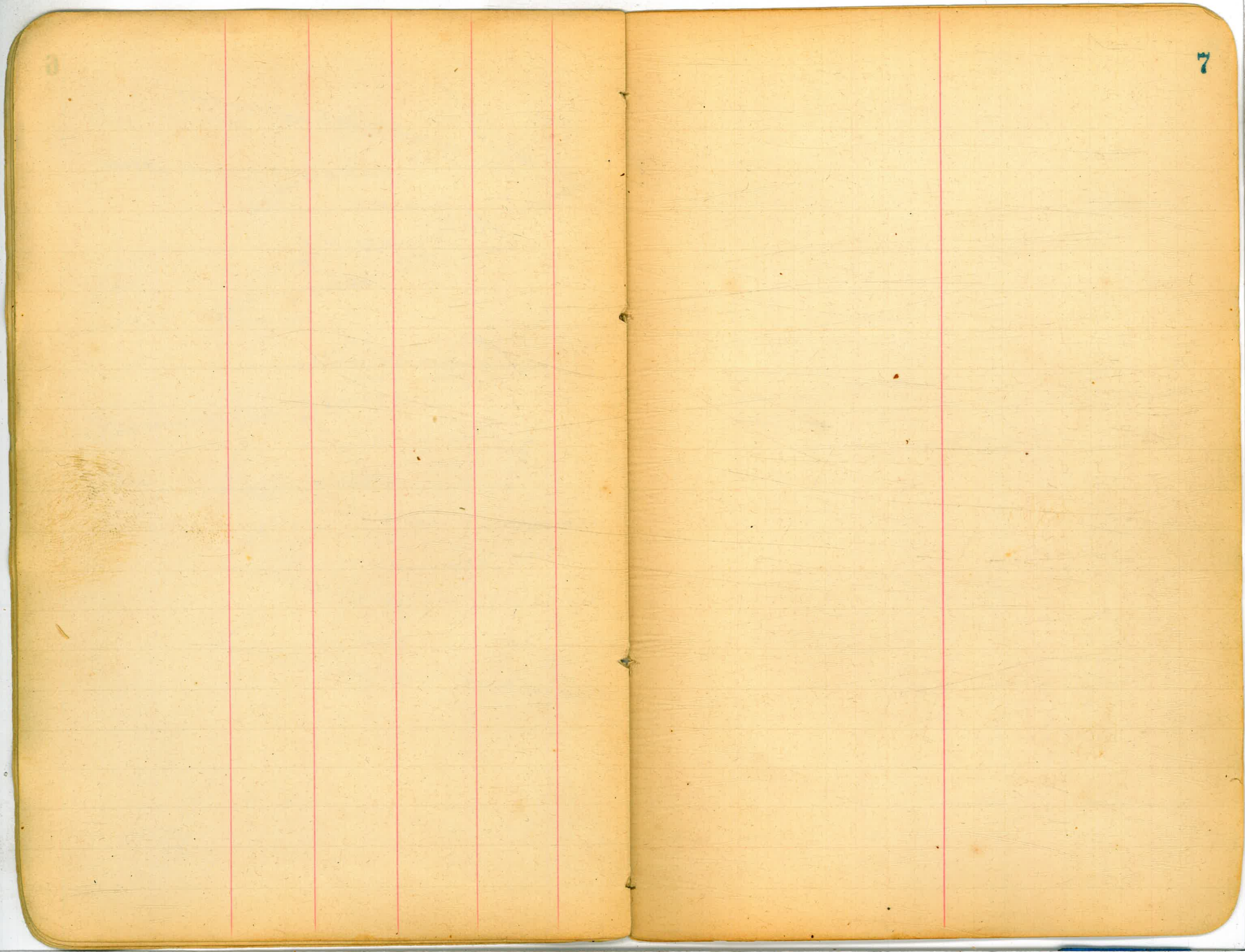
See Page 50

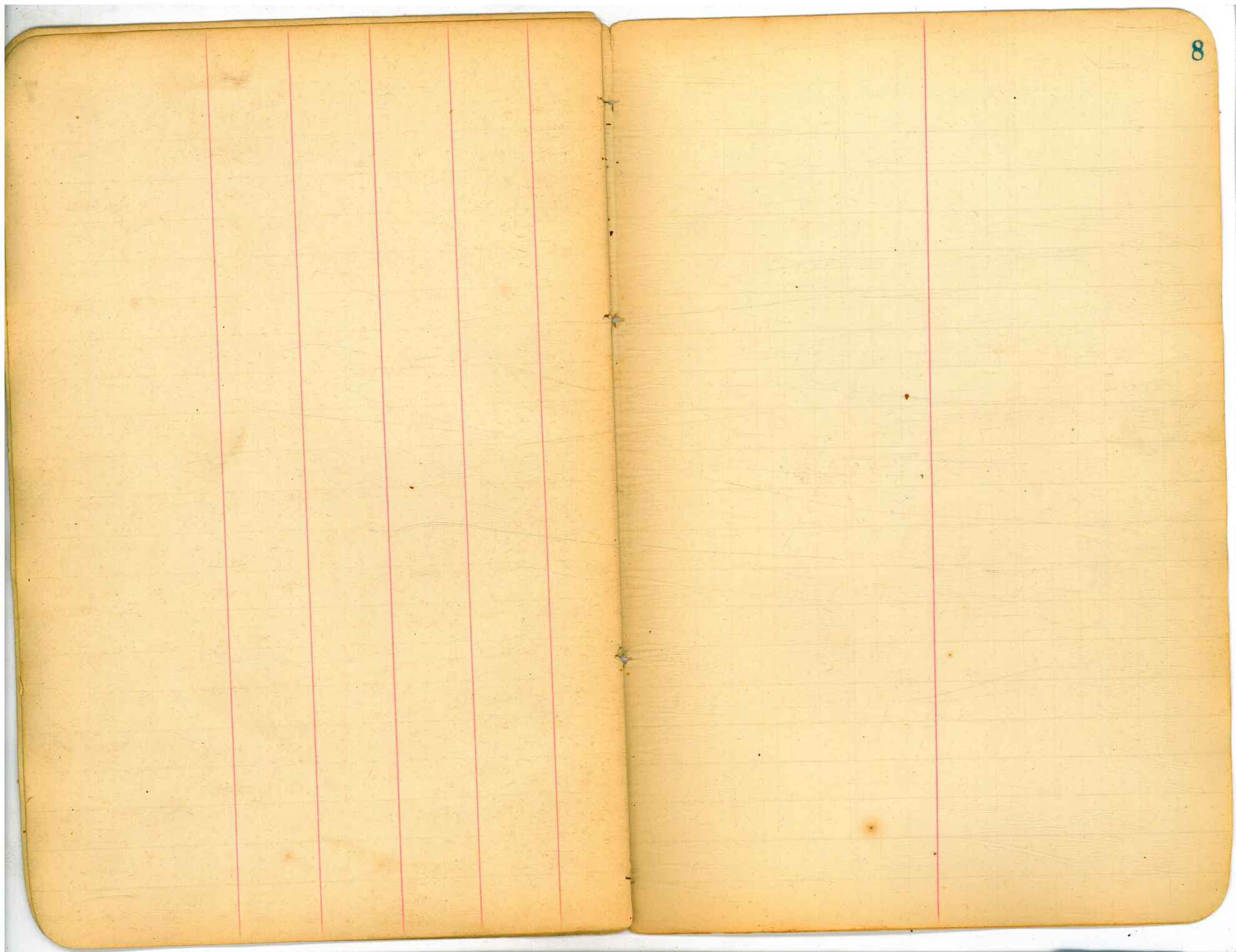


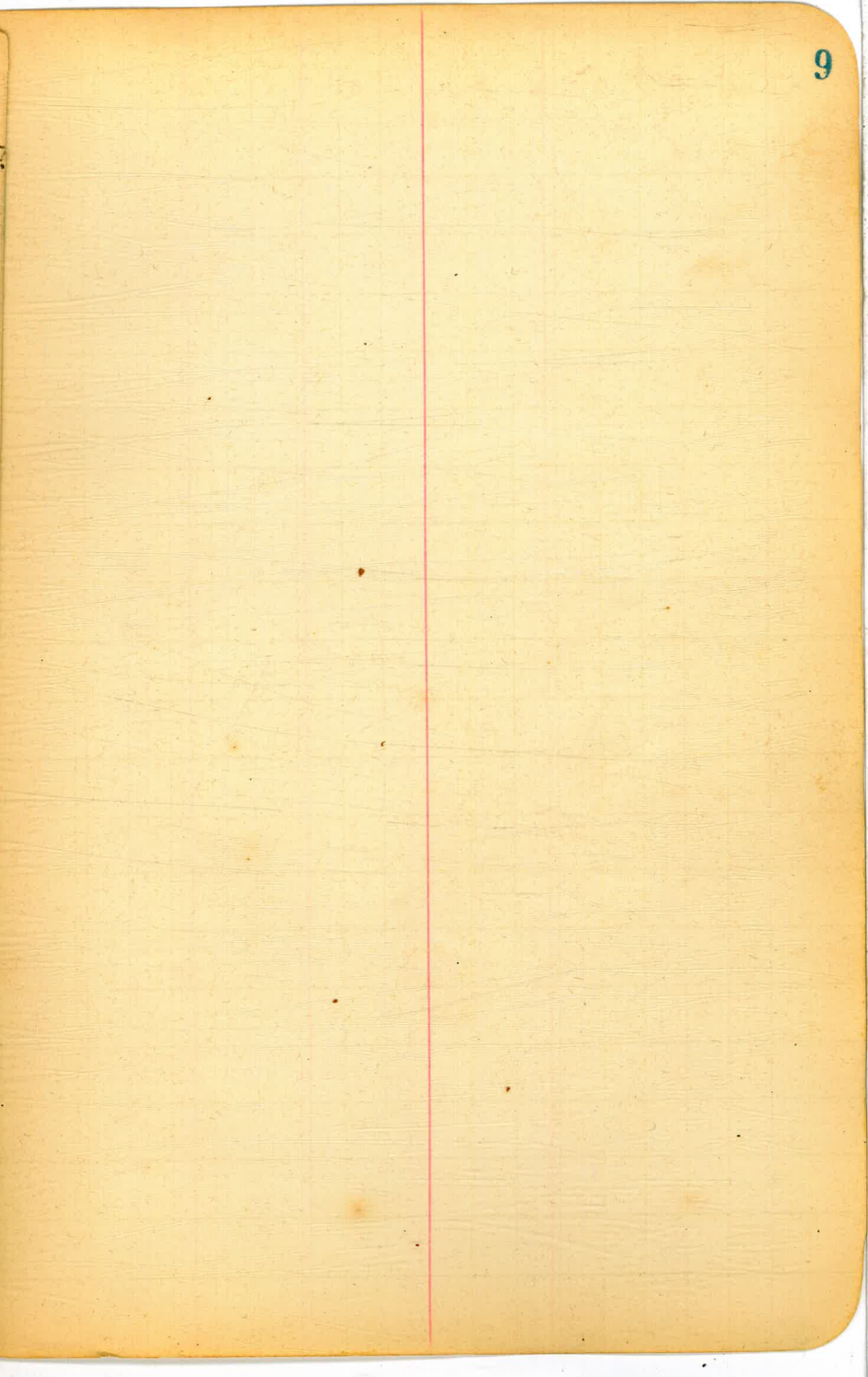
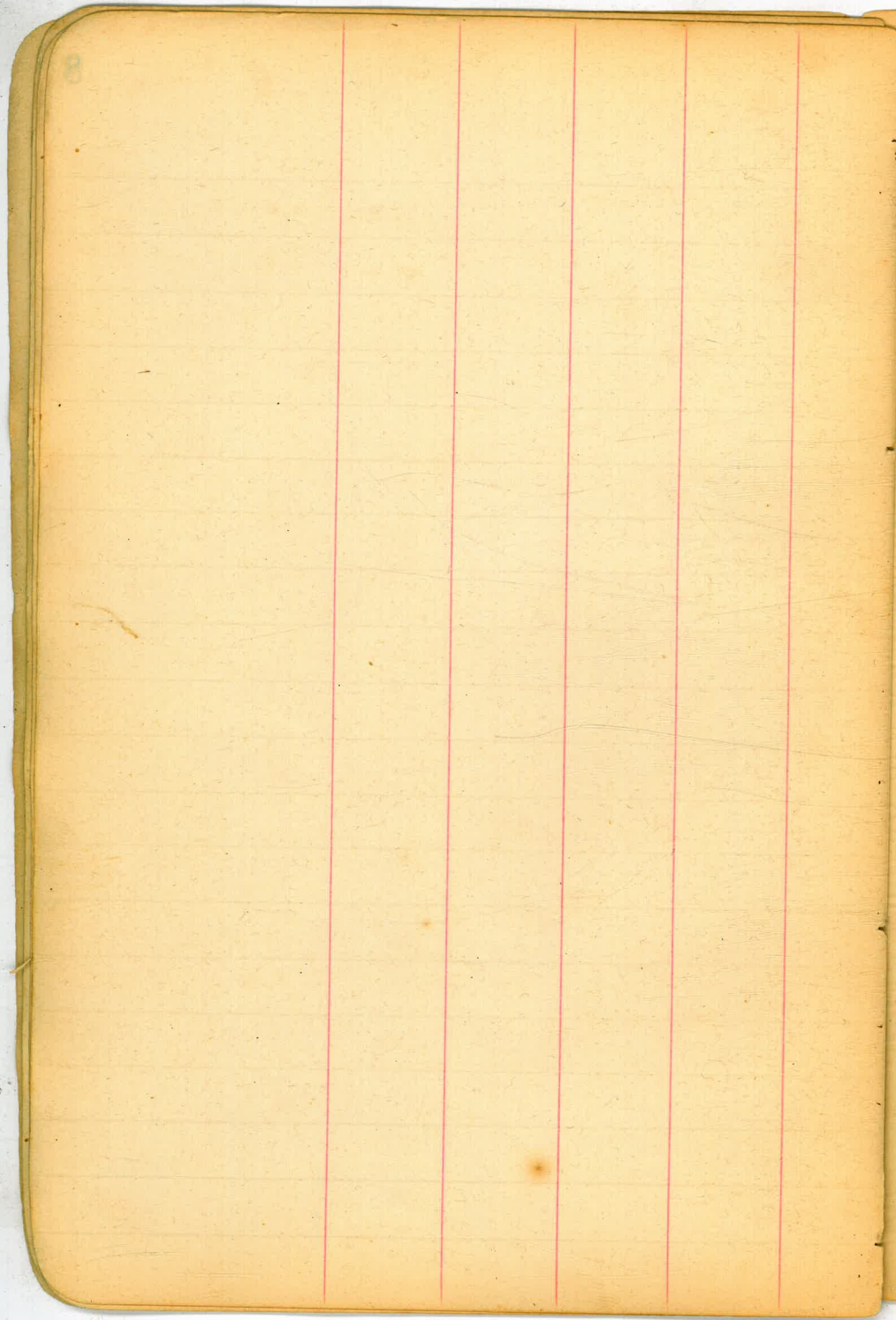


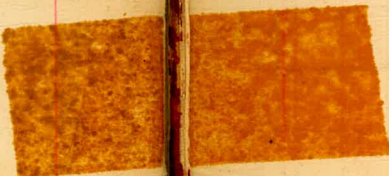
Lime running West from Brisk Yard



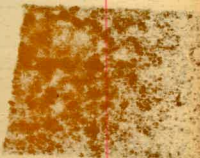
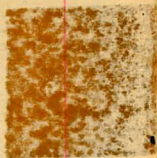








Sta 279+00



08

21

SS

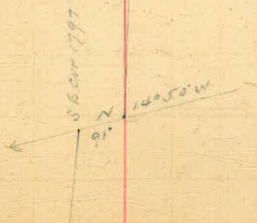
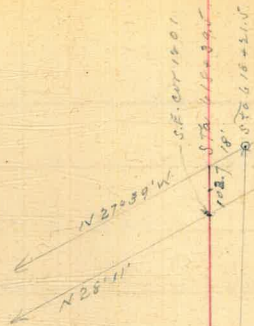
23

25

28

Course	Dist	N	S	E	W
N 14° 50' W	91	88.0			23.3
S 80° 00' E	3949		68.9	3948.4	
N 89° 33' E	3647.5	28.6		3647.4	
S 0° 10' W	197		197		
S 89° 50' E	2300		6.7	2300.0	
S 83° 25' E	100		16.5	99.3	
S 89° 34' E	4800		36.3	4799.8	
N 89° 16' E	412	5.3		411.9	
S 89° 40' E	2188		12.6	2188.0	
S 88° 48' E	436.4		9.1	436.3	
S 89° 39' E	2475.0		15.1	2474.9	
N 87° 21' E	910.5	42.1		909.5	
		164.0	179.9	2125.5	23.3
			164.0	23.3	
N 89° 57' W	21192.2		15.9	21192.2	

Closing



see B10 p 46 to 42

Course	Dist	N	S	E	W
N 14° 50' W	91	88.0			23.0
S 89° 00' E	3949		68.9	3948.4	
N 89° 33' E	750	5.9		750.0	
South	25		25.0		
		93.9	93.9	4698.4	23.3
					4675.1



Per 610
P 42

Locating South line 1207 and 1206

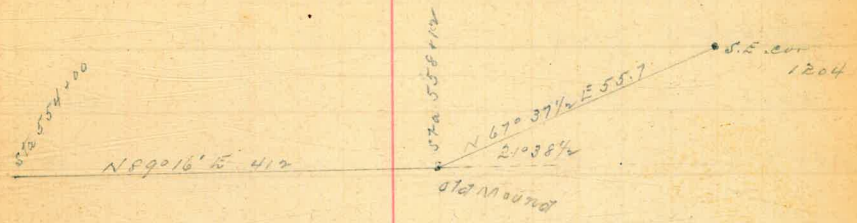
Course	Dist	N	S	E	W
West	9955.0				9955.0
N 14° 50' W	91.0	88.0			23.3
S 89° 00' E	3949.0		68.9	3948.4	
N 89° 33' E	3647.5	28.6		3647.4	
S 0° 10' W	19.7		19.7		
S 89° 50' E	2300.0		6.7	2300.0	
S 83° 25' E	100		11.5	99.3	
		116.6	106.8	9995.1	9978.3
S 59° 45' W	19.4		9.8	16.8	
West	5280				5280
N 07° 12'	25	25.0			
N 89° 33' E	2897.5	22.7		2897.5	
S 0° 10' W	19.7		19.7		
S 89° 50' E	2300		6.7	2300.0	
S 83° 25' E	100		11.5	99.3	
		47.7	37.9	5296.8	5280.0
S 59° 45' W	19.4		9.8		
		47.7	47.7	5296.8	529



Sec 610. P 43.

Locating S.E. corner 1204

Course	Dist	N	S	E	W
West	5280				5280.0
N 59° 45' E	19.4	9.8		16.8	
S 89° 34' E	4800		36.3	4799.8	
N 89° 16' E	412	5.3		411.9	
		15.1	36.3	5228.5	5280.0
N 67° 37 1/2 E	55.7		21.2		51.5
West	15235				15235.0
N 14° 50' W	91	88.0			23.3
S 89° 00' E	3949		68.9	3948.4	
N 89° 33' E	3647.5	28.6		3647.4	
S 0° 10' W	19.7		19.7		
S 89° 50' E	2300		6.7	2300.0	
S 83° 25' E	100		11.5	99.3	
S 89° 34' E	4800		36.3	4799.8	
N 89° 16' E	412	5.3		411.9	
N 67° 37 1/2 E	55.7		21.2		51.5
		143.1	143.1	15258.3	15258.3



Course	Dist	N	S	E	W
West	2640				2640
S 67° 57' W	55.7		21.2		51.5
S 89° 40' E	2188		12.6	2185.0	
S 88° 48' E	436.4		9.1	436.3	
			42.9	2624.3	2691.5
N 57° 27' E	79.7				2624.3
					67.2

Sta. 580400

S 88° 48' E
436.4

Sta. 580436.4

N 57° 27' E 79.7
330.25'S 67° 57' W
55.7

Sta. 580400

Course	Dist	N	S	E	W
West	20515.0				20515.0
N 14° 50' W	91.0	88.0			23.3
S 89° 00' E	3949.0		68.9	3948.4	
N 89° 33' E	3647.5	28.6		3647.4	
S 6° 10' W	19.7		19.7		
S 89° 50' E	2300.0		6.7	2300.0	
S 83° 25' E	100.0		11.5	99.3	
S 89° 34' E	4800		36.3	4799.8	
N 89° 16' E	412	5.3		411.9	
S 89° 46' E	2188.0		12.6	2188.0	
S 88° 48' E	436.4		9.1	436.3	
S 89° 39' E	2475.0		15.1	2474.9	
N 87° 21' E	140.2	6.5		139.9	
		128.4	179.9	20445.9	20538.3
			128.4		20445.9
N 60° 52' E	105.8		51.5		92.4
West	2640				2640.0
S 57° 27' W	79.7		42.9		67.2
S 89° 39' E	2475.0		15.1	2474.9	
N 87° 21' E	140	6.5		139.9	
		6.5	58.0	26148	27072
			6.5		26148
			51.5		92.4

Sta. 609+11

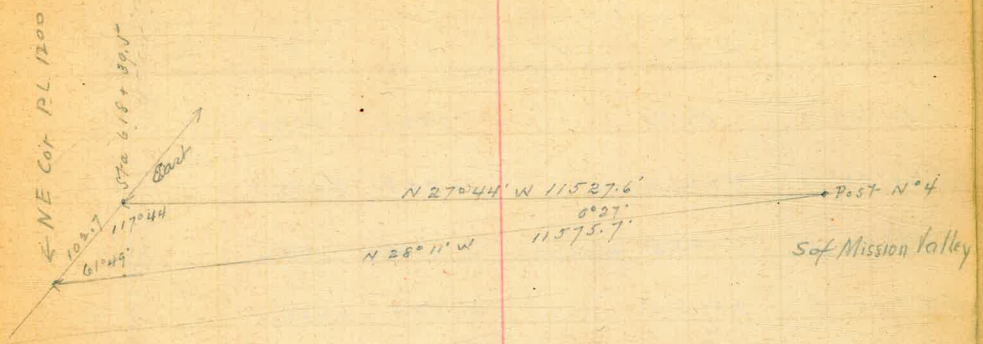
N 87° 21' E 140'

N 60° 52' E 105.8
26° 29'

Sta. 609+12

Traverse from Sta 618+39.5 on East Boundary
to Post No 4

Course	Dist	N	S	E	W
S 27° 39' E	18.0		15.9	8.3	
S 29° 24' E	7080.0		6168.2	3475.6	
S 16° 00' E	132.4		127.3	36.5	
S 22° 15' E	1302.6		1205.6	493.2	
S 27° 15' E	2565.0		2327.0	1147.0	
S 23° 52' E	504.0		460.9	203.9	
N 27° 44' W	11527.6	10204.9		5364.5	



sin 61° 49'	9.945193	sin 61° 49'	9.945193
sin 0° 27'	7.895085	sin 117° 44'	9.947004
Log 11527.6	4.061738	Log 11527.6	4.061738
Log 102.7	2.011630		
		4.063549	-11575.7
		333	
		376) 2160	(57
		1880	
		2800	

See book 610 p 53

Traverse South from Mound at intersection of City line
with line bet T 15th & 16th S to Post N^o 4. (East San Diego River)

Course	Dist	N	S	E	W
S 24° 04' E	807.8		737.6	329.4	
S 29° 24' E	4221.4		3677.8	2072.3	
S 89° 43' E	93.6		.4	93.6	
S 27° 39' E	2663.5		2359.3	1236.1	
S 39° 24' E	7080.0		6168.2	3475.6	
S 16° 00' E	132.4		127.3	36.5	
S 22° 15' E	1302.6		1205.6	493.2	
S 27° 15' E	2505.0		2227.0	1147.0	
S 23° 52' E	504.0		460.9	203.9	
N 28° 11' W	19244.8		16964.1	9087.6	

S 24° 04' E
S 29° 24' E
S 89° 43' E
S 27° 39' E
S 39° 24' E
S 16° 00' E
S 22° 15' E
S 27° 15' E
S 23° 52' E
N 28° 11' W

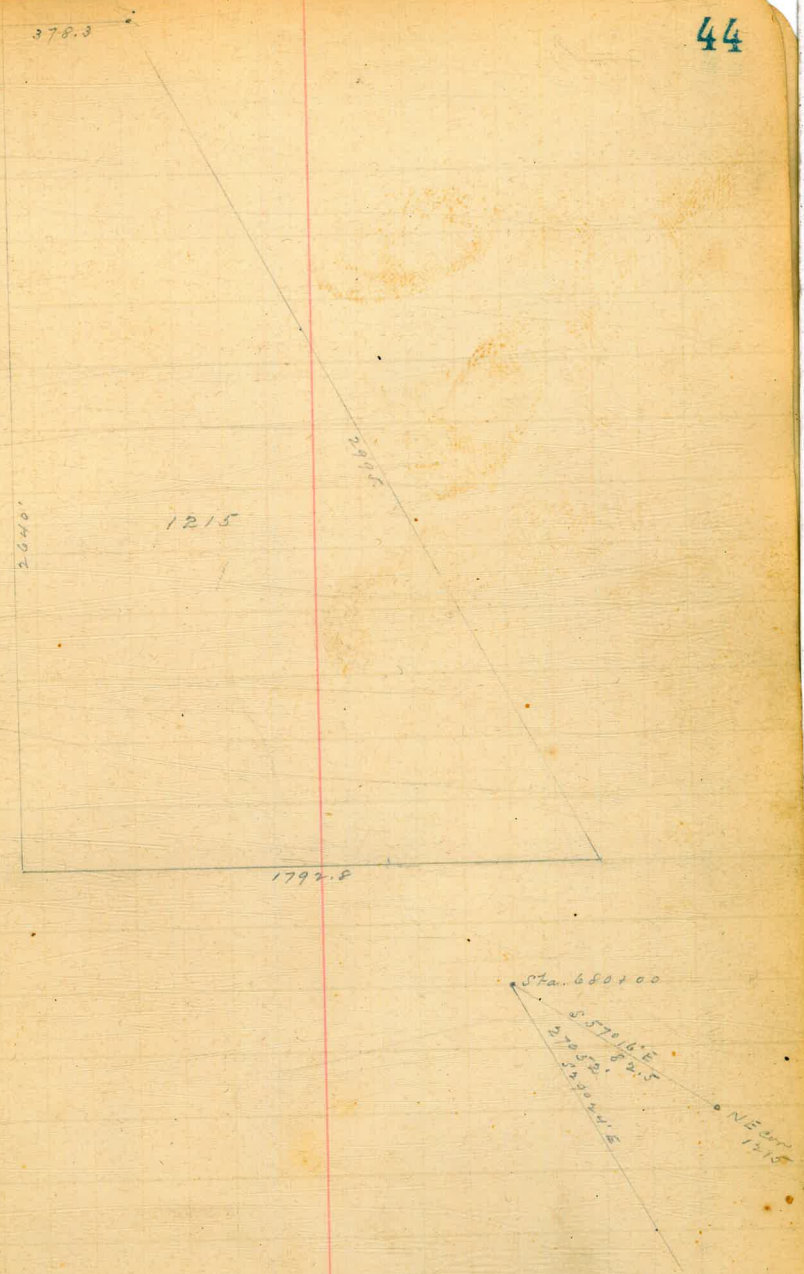
N 28° 11' W 19244.8

Post N^o 4

See page 40

Traverse to establish the N.E. cor 1215

Course	Dist	N	S	E	W
S 28° 11' E	599.0		5280.0	2829.0	
East	102.7			102.7	
N 27° 39' W	2645.5	2343.4			122.77
N 89° 43' W	93.6	.4			93.6
N 29° 24' W	3421.4	2980.8	5280.0	2931.7	1679.8
		5324.6			3001.1
		5280.0			2931.7
S 57° 16' E	84.5	44.6			69.4
S 38° 11' E	299.5		2640.0	1414.5	
S 33° 29' E	355.1		296.2	195.9	
N 29° 24' W	3421.4	2980.8	2936.2	1610.4	1679.8
		2980.8			1679.8
		2936.2			1610.4
S 57° 16' E	84.5	44.6			69.4



Traverse from Mound bet T 15th & 16th on East
Boundary via Post No 3

COURSE	DIST	N	S	E	W
N 27° 14' W	6092.2	5416.9		2788.0	
N 27° 56' W	236.3	208.7		110.5	
N 27° 15' W	16938.7	15058.8		7755.8	
N 27° 36' W	684.0	606.2		316.9	NW cor Estimate
N 27° 17' W	4586.0	4075.8		2102.2	
S 10° 05' W	92.0		90.6		16.1
N 26° 31' W	4052.0	3625.7		1809.0	
		28992.1			
		92.6			
S 27° 14' E	32520.0	28901.5		14898.5	

32520
19244.8
51764.8

Post No 3

4572

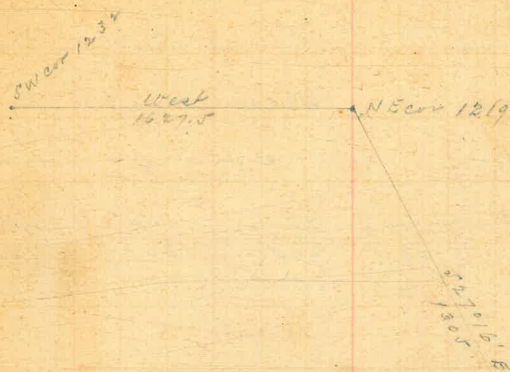
Route Maudslowi N.W. Cor. Ex Mission

N 27° 16' W
3118
32520

Earth Mound T 15.5
T 16.5

19244.8
2nd Post No 42

Course	Dist	N	S	E	W
S 27° 16' E	1305		1160.0	597.8	
N 27° 14' W	1291.7	1148.5			591.1
		1148.5	1160.0	597.8	591.1
N 30° 14' W	13.3		1148.5	591.1	
			11.5	6.7	

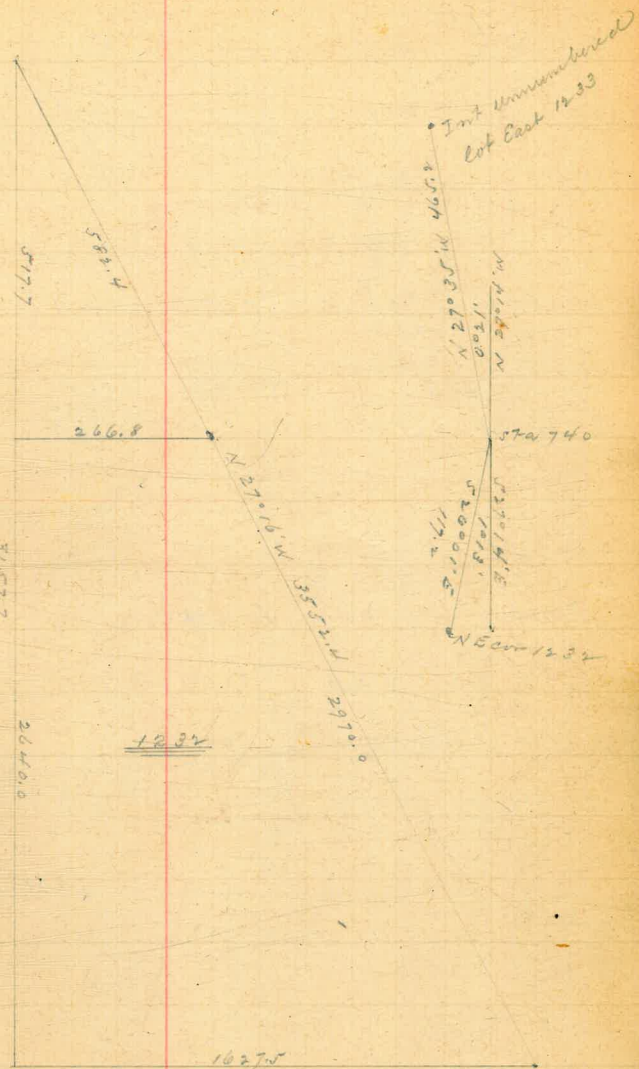


Earth Mound

see book 610 p 57

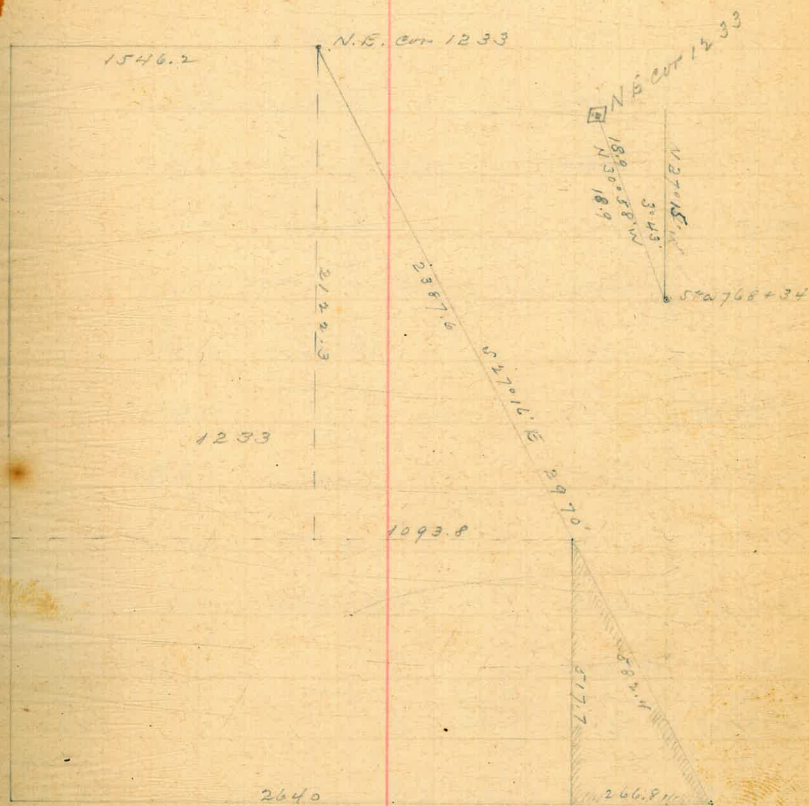
Traverse to Establish N E cor 1232 and intersection
of west line of unnumbered lot North of 1232 with Eastern
Boundary

Course	Dist	N	S	E	W
S 27° 16' E	2970.0		2640.0	1360.7	
S 30° 14' E	18.3		11.5	6.7	
N 27° 14' W	3100.5	2756.8			1418.8
		2756.8	2651.5	1367.4	1418.8
		2651.5			1367.4
S 26° 01' E	117.2	105.3			51.4
		105.3			51.4
S 27° 16' E	582.4		517.7	266.8	
N 26° 01' W	117.2	105.3			51.4
		105.3	517.7	266.8	51.4
			105.3	51.4	
N 27° 35' W	465.2		412.4	215.4	



See Book 610 p. 59.

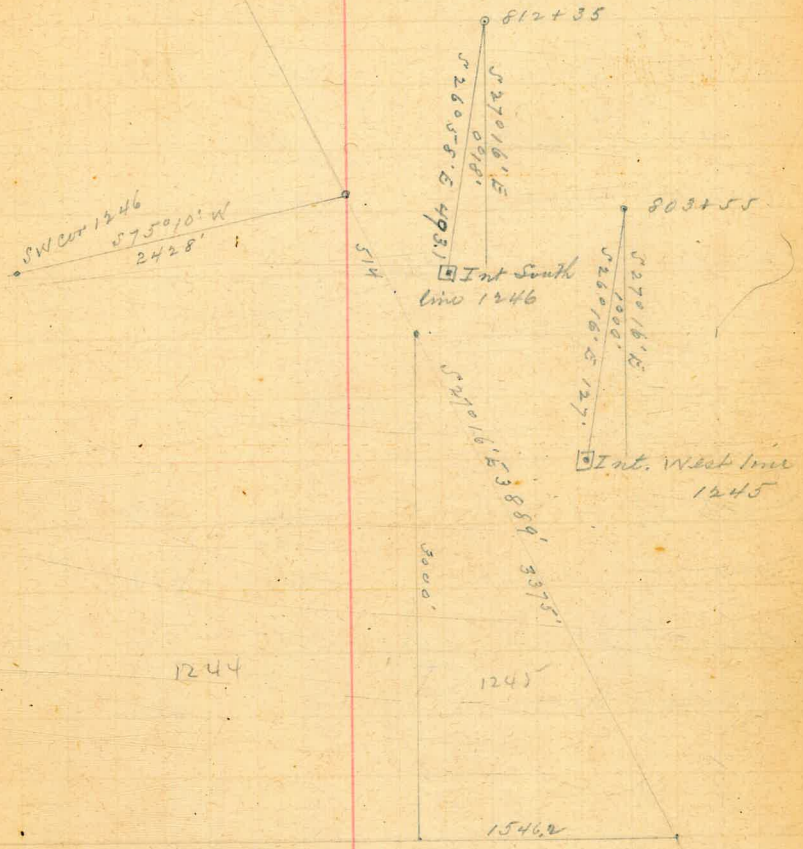
COURSE	DIST	N	S	E	W
S 27° 16' E	2387.6		2122.3	1093.8	
S 27° 35' E	465.2		412.4	215.4	
N 27° 14' W	1700.0	1511.6			777.9
N 27° 56' W	236.3	208.7			110.5
N 27° 15' W	897.7	798.1			411.0
N 30° 58' W	18.9	2518.4	2534.7	1309.2	129.9.4
			2518.4	1294.4	
			16.3	9.8	
S 27° 16' E	7245		6439.9	3319.2	
N 27° 14' W	6092.3	5416.9			2788.0
N 27° 56' W	2363	208.7			110.5
N 27° 15' W	897.7	798.1			411.0
N 30° 58' W	18.9	6423.7	6439.9	3319.2	3309.5
			6423.7	3309.5	
			16.2	9.7	



Traverse to close on Eastern Boundary from
Intersection South line 1246 to Intersection South line
1245 on Eastern Boundary

Course	Dist	N	S	E	W
WBST	17032.8				17032.8
N 14° 50' W	230.5	222.8			59.0
N 75° 10' E	2640.0	675.9		2552.0	
N 14° 50' W	275.0	265.8			70.4
N 75° 10' E	2640.0	675.9		2552.0	
N 14° 30' W	275.0	265.8			70.4
N 75° 10' E	2640.0	675.9		2552.0	
S 14° 30' E	396.0		383.8	101.6	
N 75° 10' E	2640.0	675.9		2552.0	
S 14° 30' E	473.4		457.4	121.1	
N 75° 10' E	2640.0	675.9		2552.0	
S 14° 30' E	473.2		457.4	121.1	
N 75° 10' E	2428.0	621.6		2347.1	
S 27° 16' E	3889.0		3456.9	1781.7	
		4755.5	4755.5	17232.6	17232.6
S 27° 16' E	3375.0		3000.0	1546.2	
S 30° 58' E	18.9		16.3	9.8	
N 27° 15' W	3521.0	3130.2			1612.2
		3130.2	3016.3	1556.0	1612.2
		3016.3			1556.0
S 26° 16' E	127.0		113.9		56.2

Chaining

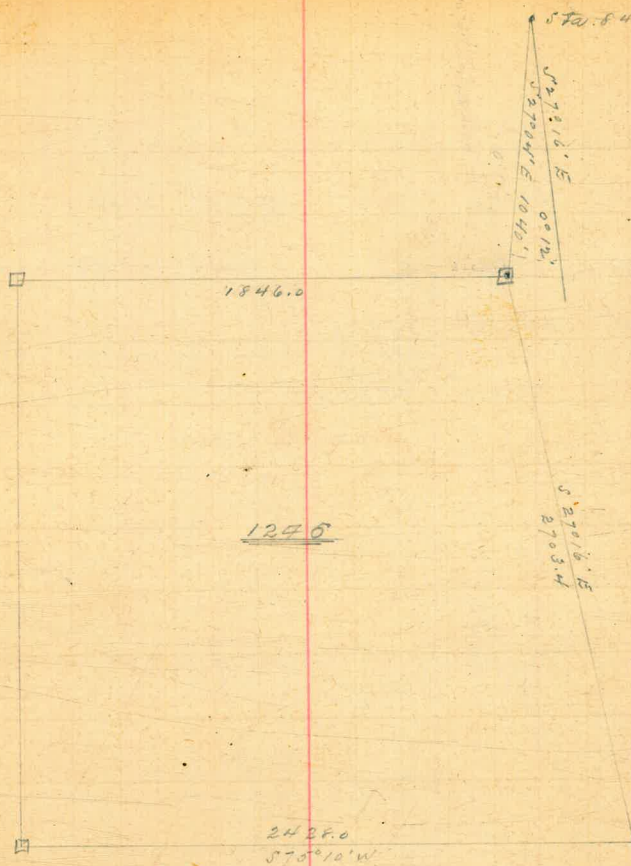


Course	Dist	N	S	E	W
S 27° 16' E	3889		3456.9	1781.7	
S 30° 58' E	18.9		16.3	9.8	
N 27° 15' W	4401	3912.6			2015.1
		3912.6	3473.2	1791.5	2015.1
S 26° 58' E	493.1				1791.5
					223.6
					439.4

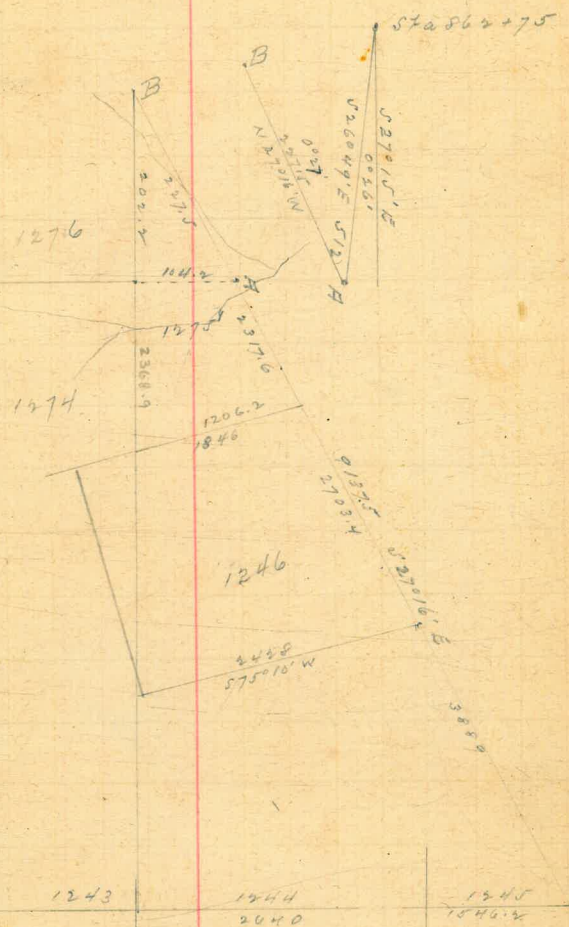
Traverse to close N and S line 1246 with
Eastern Boundary

52

COURSE	DIST	N	S	E	W
S 27° 15' E	3250		2889.3	1488.1	
S 26° 58' E	493.1		439.4	223.6	
S 75° 10' W	2428		621.6		2347.1
N 14° 50' W	2640	2552.0			675.9
N 43° 10' E	1917.0	2552.0	3950.3	1711.7	3023.0
			2552.0		1711.7
			1398.3		1311.3
S 27° 15' E	3250		2889.3	1488.1	
S 26° 58' E	493.1		439.4	223.6	
N 27° 16' W	2703.4	2403.0			1238.5
N 27° 04' W	1040.0	2403.0	3328.7	1711.7	1238.5
			2403.0	1238.5	
			925.7	473.2	

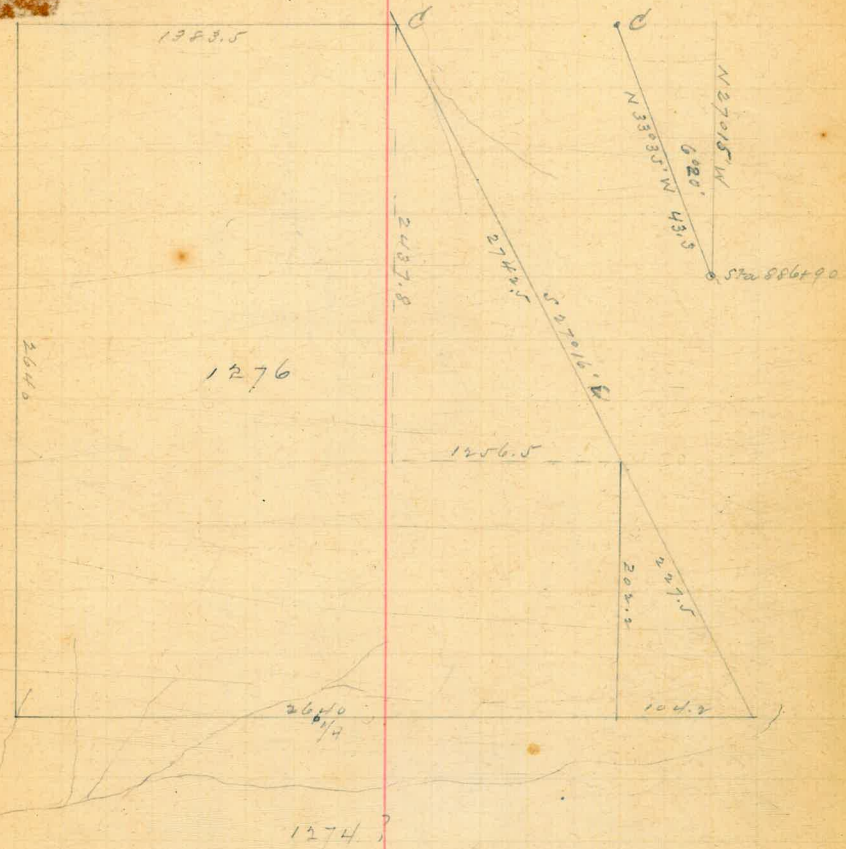


Course	Dist	N	S	E	W
S 27° 16' E	8910.0		7919.9	4082.0	
S 30° 58' E	18.9		16.3	9.8	
N 27° 15' W	9441.0	8393.2			4322.8
		8393.2	7936.2	4091.8	4322.8
		7936.2			4091.8
S 26° 40' E	512.0	457.0			231.0

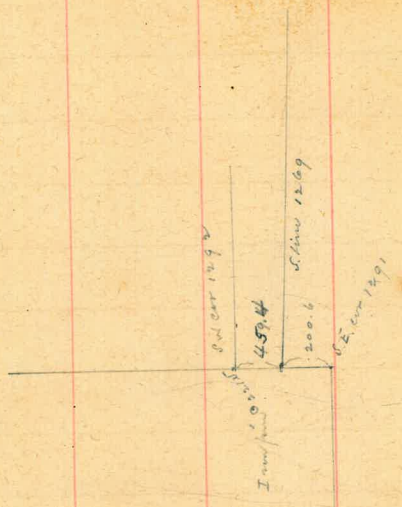


see book 93

Course	Dist	N	S	E	W
S 27° 16' E	2970		2640.0	1360.7	
N 26° 49' W	512	457.0			231.0
N 27° 15' W	2415	2147.0			1105.8
		2604.0	2640.0	1360.7	1336.8
N 33° 35' W	433		2604.0	1336.8	
			36.0	23.9	

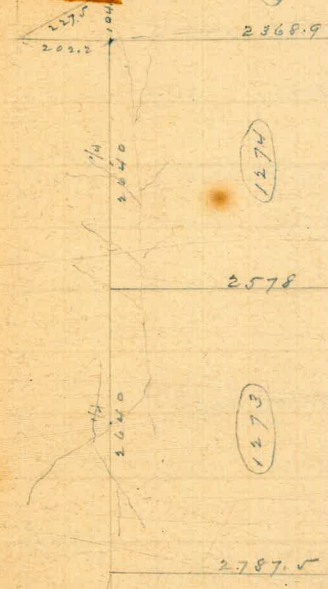
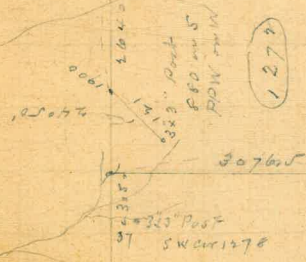


Iron Pan SW corner
27.5
80.3



S.E. corner 1291
W

1271



1271

1272

1273

1274

1275

1270

1279

1275

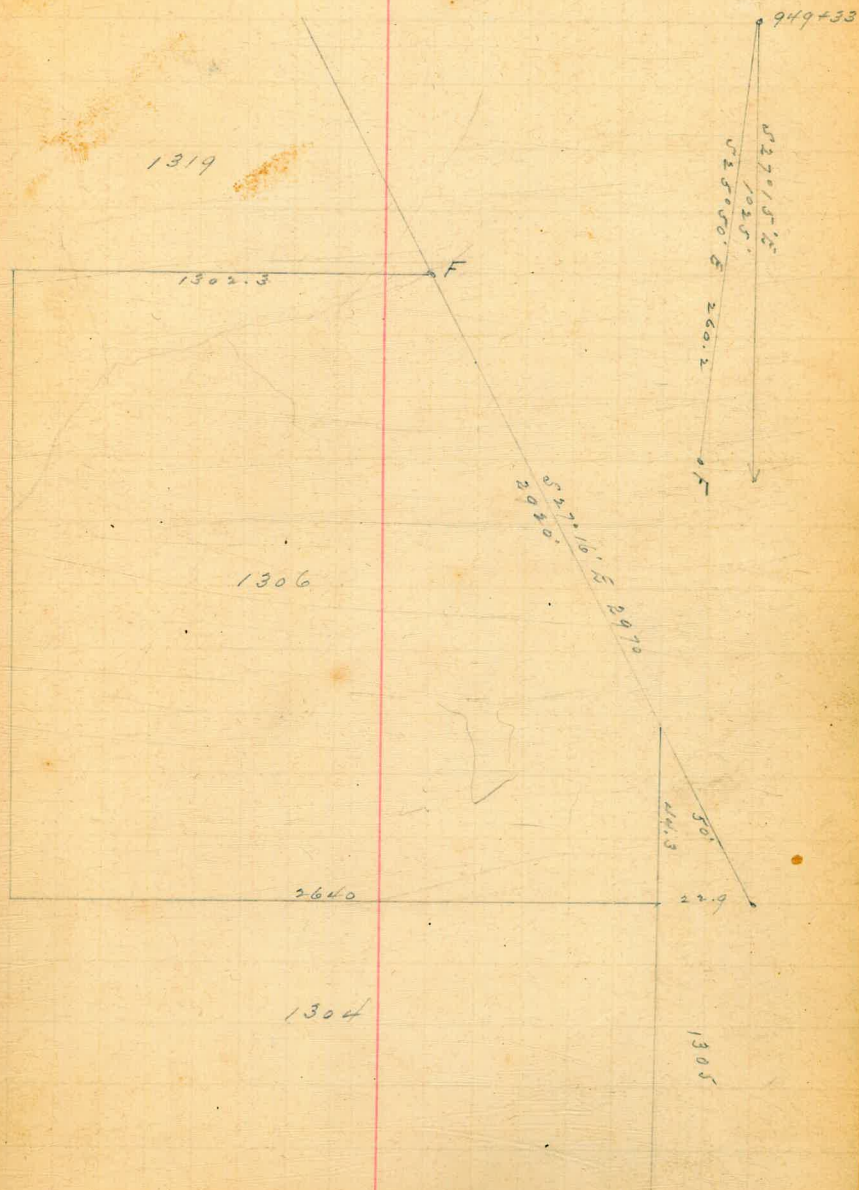
1277

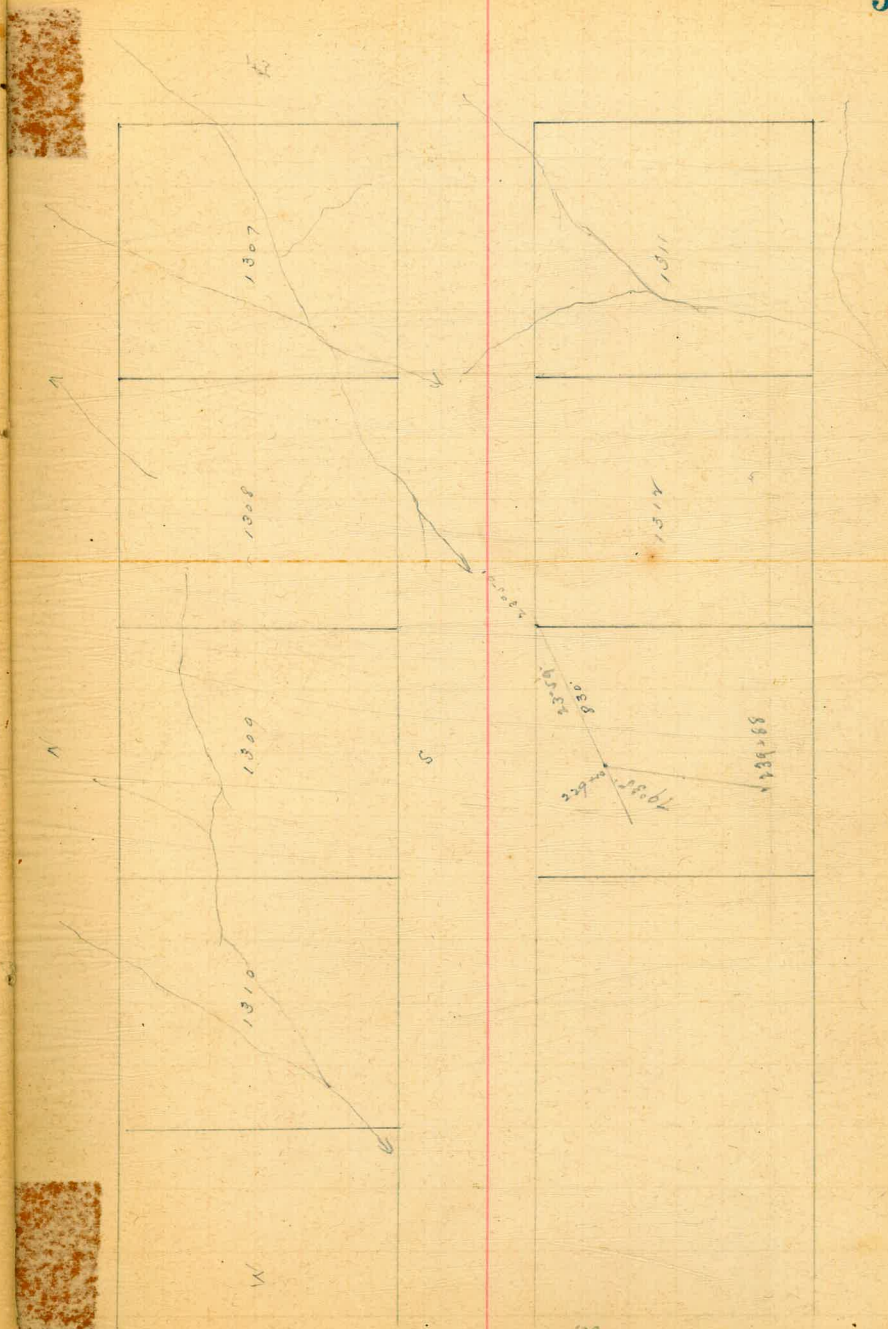
1276

1270

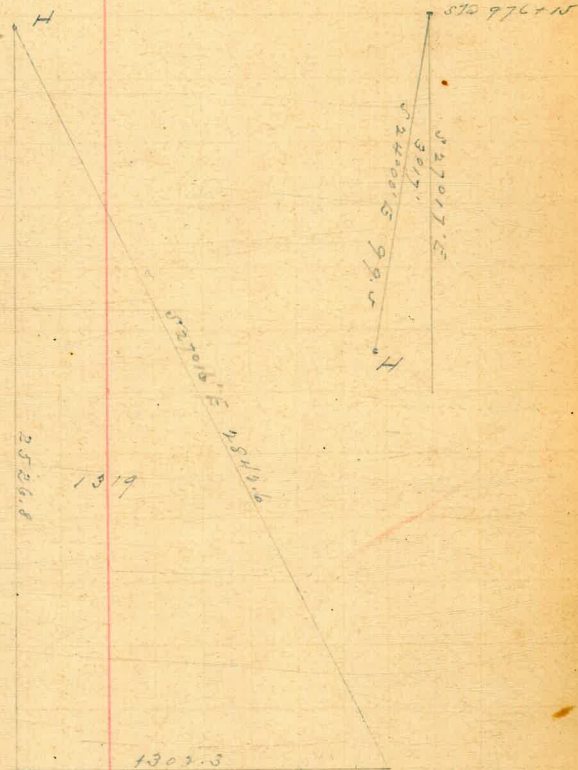
see table 93 p 68

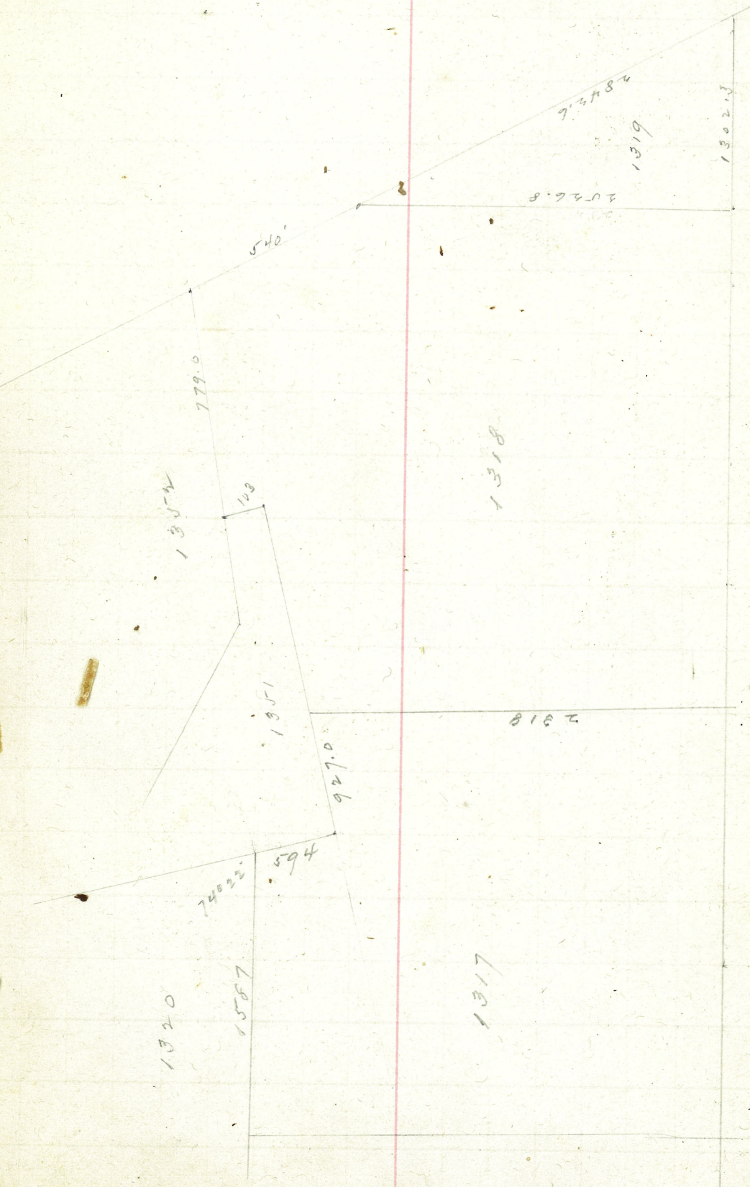
COURSE	Dist.	N	S	E
S 27° 16' E	2920.0		2595.5	1307.7
S 27° 41 1/2' E	733.0		649.0	342.6
N 27° 15' W	5913.0	3478.7		1791.7
		3478.7	3244.5	1678.3
		3244.5		1678.3
S 25° 50' E	260.2	234.2		113.4

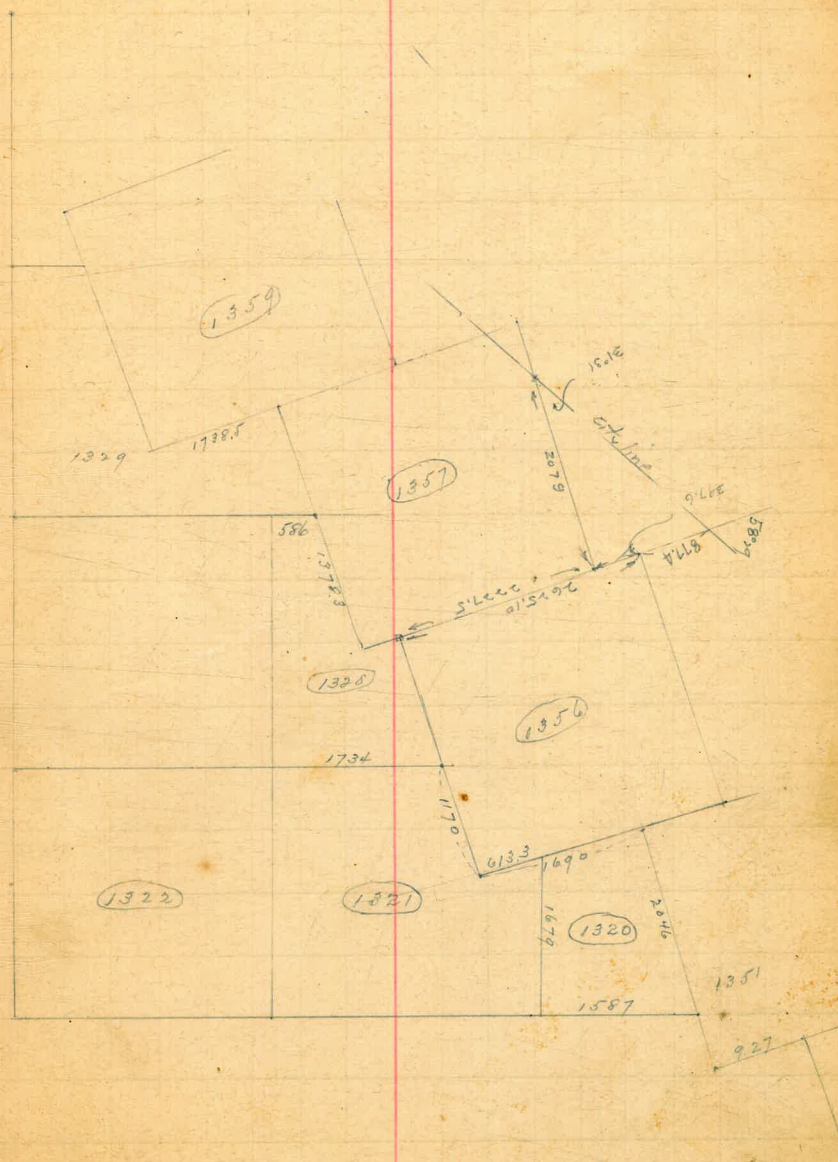




Course	Dist	N	S	E	W
S 27° 16' E	2842.6		2526.8	1302.3	
N 25° 00' W	260.2	234.2			113.4
N 27° 17' W	2682.0	2383.6			1229.4
		2617.8	2526.8	1302.3	1342.8
		2526.8			1302.3
S 24° 00' E	99.5		91.0		40.5







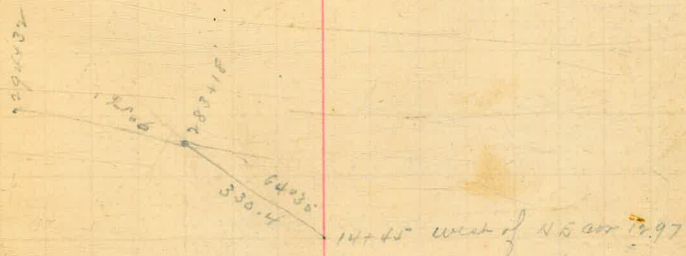
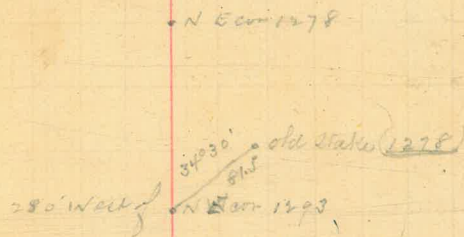
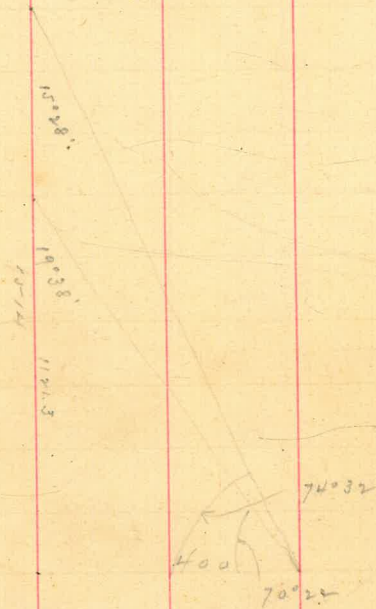
2960
 7400
 1528

2960
 7077
 1938

400 = 2,602,060
 1528 = 9,432,006
 1513.5 = 3,190,054
 2171.5

400 = 2,602,060
 1938 = 9,552,351
 1121.3 = 3,049,709
 626
 115

2,602,060
 9,432,006
 1513.5 = 3,190,054
 1938 = 9,552,351
 1121.3 = 3,049,709
 69



723
270

1787
23.7

49
20
62

32520
23948
8572

1778
14145
376

2640
4769
271

25009 1/2
23.6

Pomelini Aqueduct

32520
23948
8572

19
16