

610

360

F. B. FIELD.

F. B. 610

610

1

Book 93 is one  
of this set also

MICROFILMED

DEC 14 1964

92 32  
90 67  
91 46

October 25<sup>th</sup> 1893

City Land Survey -  
Edwin M. Capps City Engineer  
T. M. Shair. Transitman  
W. M. Rumsey Head Chain  
Manuel A. Ferrer Rear "  
A. J. Randall Flagman

See book 611

Stations	Hor Angle	Ver Angle	Rad	
+56	20°35'R	6	13.54	13.55
14				
13				
12				
11				
10				
9				
8				
7				
6				
+89		-0°10'	9.67	9.68
4				
3				
2				
1				

D-Post B-NW 22°30'R -7'14" 4.96 4.89

At San Diego Foresight on Plug in Rock  
 mound in intersection of  
 Range line with Eastern  
 Boundary Puerto Blanco

Stations	Hor Angle	Vert Angle	Red
----------	--------------	---------------	-----

33

32

31

30

29

+16

28

10.60

10.61

27

26

25

24

23

22

21

20

19

18

17

16

15

Stations      Hor      Ver  
                  Angle    Angle    Rod

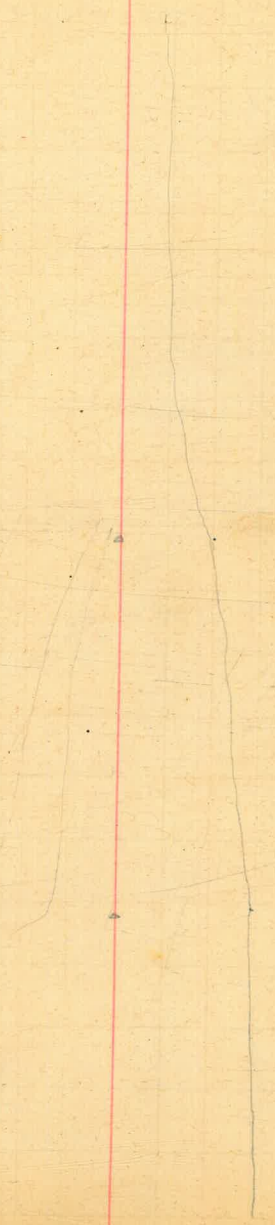
52  
51  
50  
49  
48  
47  
46  
45  
+ 58  
44  
43  
42  
41  
40  
39  
+ 72  
38  
37  
36  
35  
34

S. 1005 2 mag

9.38' +    9.30    9.05

5.85    5.86

027 31 4/93



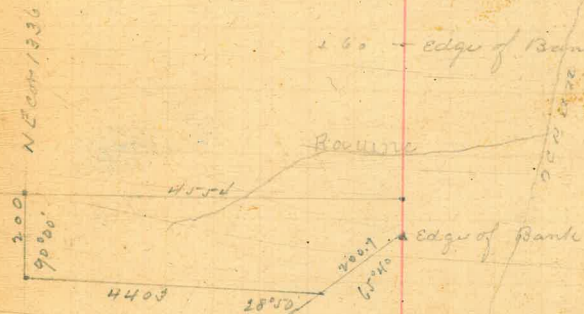
OCT 31<sup>st</sup> 1893

4

Stations	Hor Angle	Vert Angle	Prod	
+ 36			6.17	6.18
70				
69				
68				
67			3.99	4.00
+ 36				
66				
+ 60				
65				
64				
63	+ 25			
+ 19	90° 05'		4.16	4.17
62				
61				
+ 138			1.80	1.81
60				
59				
58				
57			3.94	3.95
+ 43				
56				
55				
+ 63		+ 7° 30'	2.83	2.80
53				

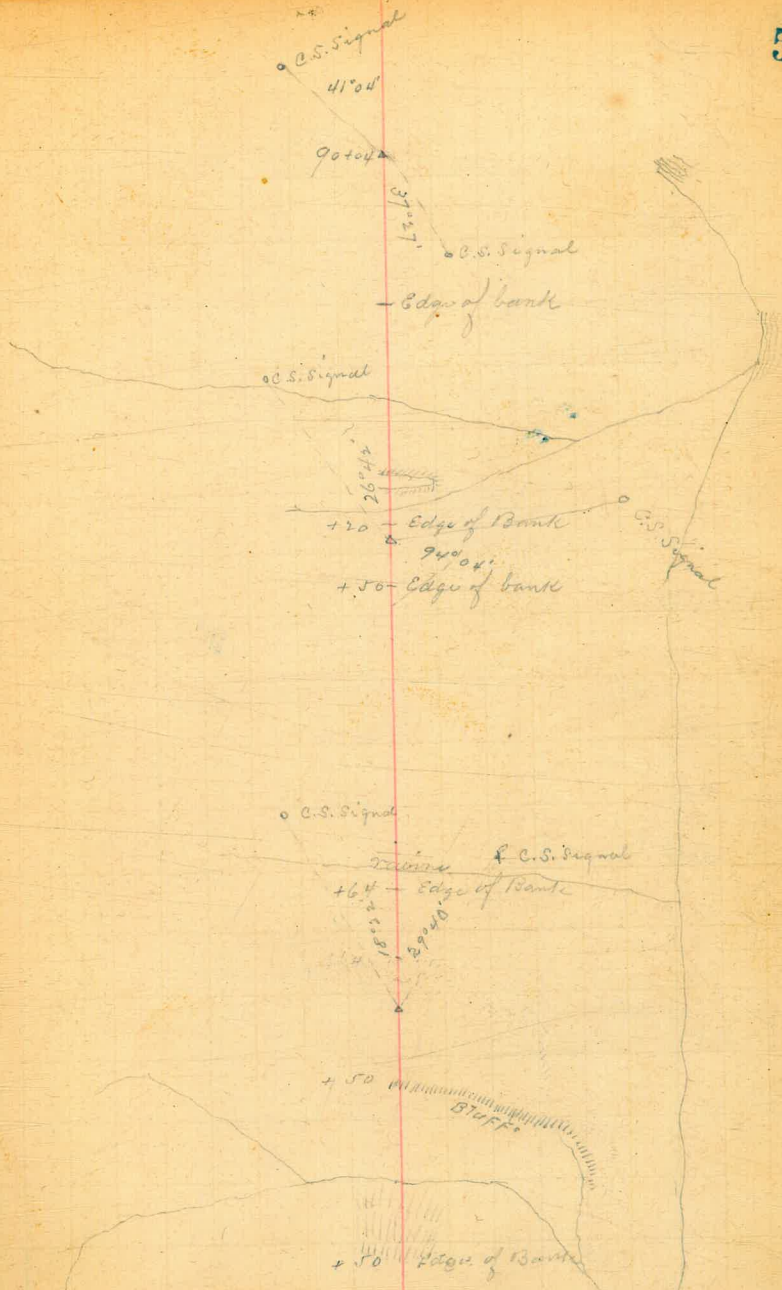
S 27° 10' E

S 16° E (Mag)



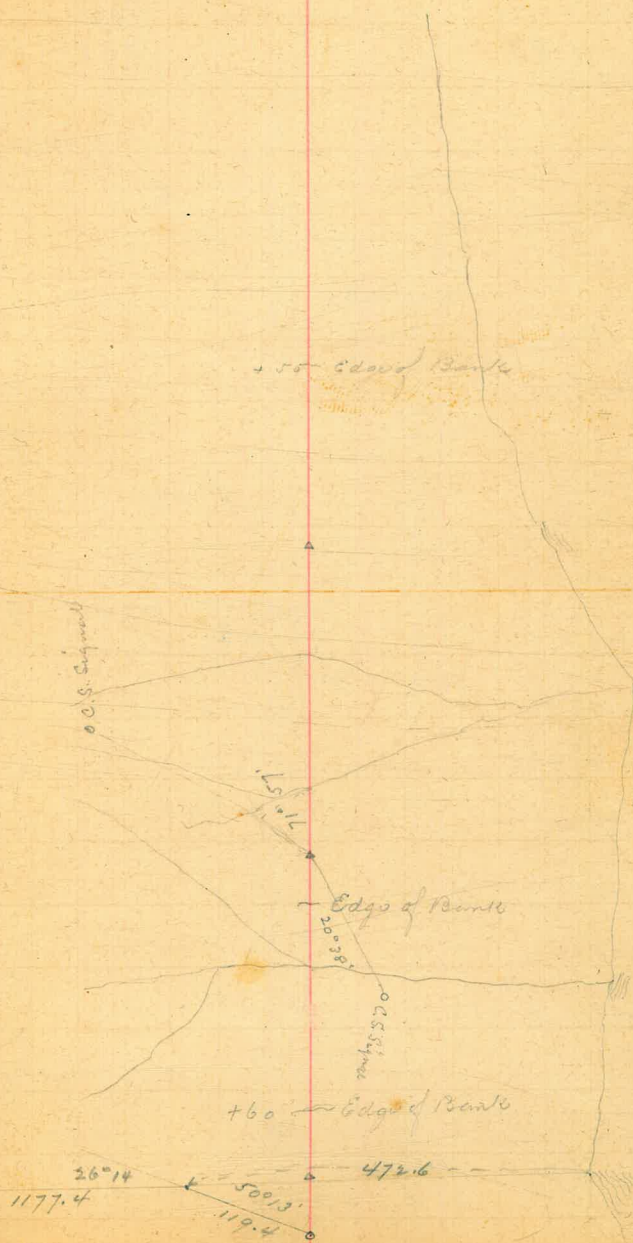
Oct 31<sup>st</sup> 1893

Stations	Hor Angle	Ver Angle	Rod
89			
88			
87			
86			
85			
+ 88			5.99 6.00
85			
82			
81			
80			
79			
78			
77			
+ 54			733 734
76			
+ 5			
74			
73			
72			
71			





Stations	Hor. Angle	Ver. Angle	Pod
108			
107			
106			
105			
104			
103			
102			
101			
+72			9.14 9.15
100			
99			
98			
97			
96			
+75			4.96 4.97
95			
94			
93			
92			
91			
90			
+88			5.87 5.87



Stations

+ 83

Hor  
Angle

Ver  
Angle

Rod

1382 1383

127

126

125

124

123

122

121

120

119

+ 47

118

-1°00'

9.35

9.36

117

116

115

114

113

112

111

110

+ 87

109

8.59

8.60

102°18'

Flagpole to Jella Hotel  
Flagpole to Jella Hotel

7

30°39'

504.3

C.S. Signal

Nov. 1<sup>st</sup> 1893

3128

1892.2

1892.2

1892.2

1892.2

1892.2

1892.2

1892.2

1892.2

1892.2

1892.2

1892.2

1892.2

1892.2

1892.2

1892.2

1892.2

1892.2

1892.2

1892.2

1892.2

1892.2

1892.2

1892.2

1892.2

1892.2

1892.2

1892.2

1892.2

1892.2

1892.2

C.S. Signal

C.S. Signal

2046.50

3128

3128

3128

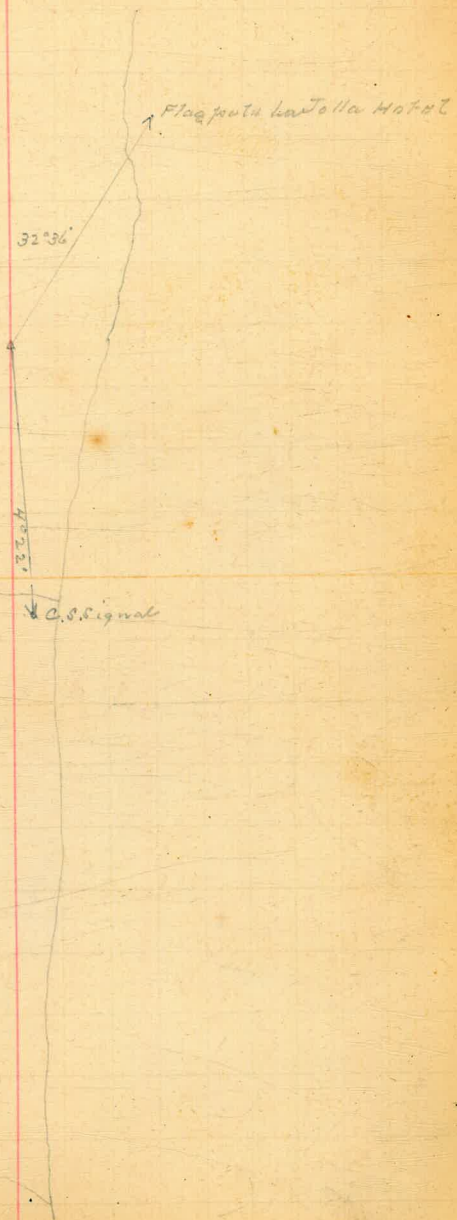
3128

C.S. Signal

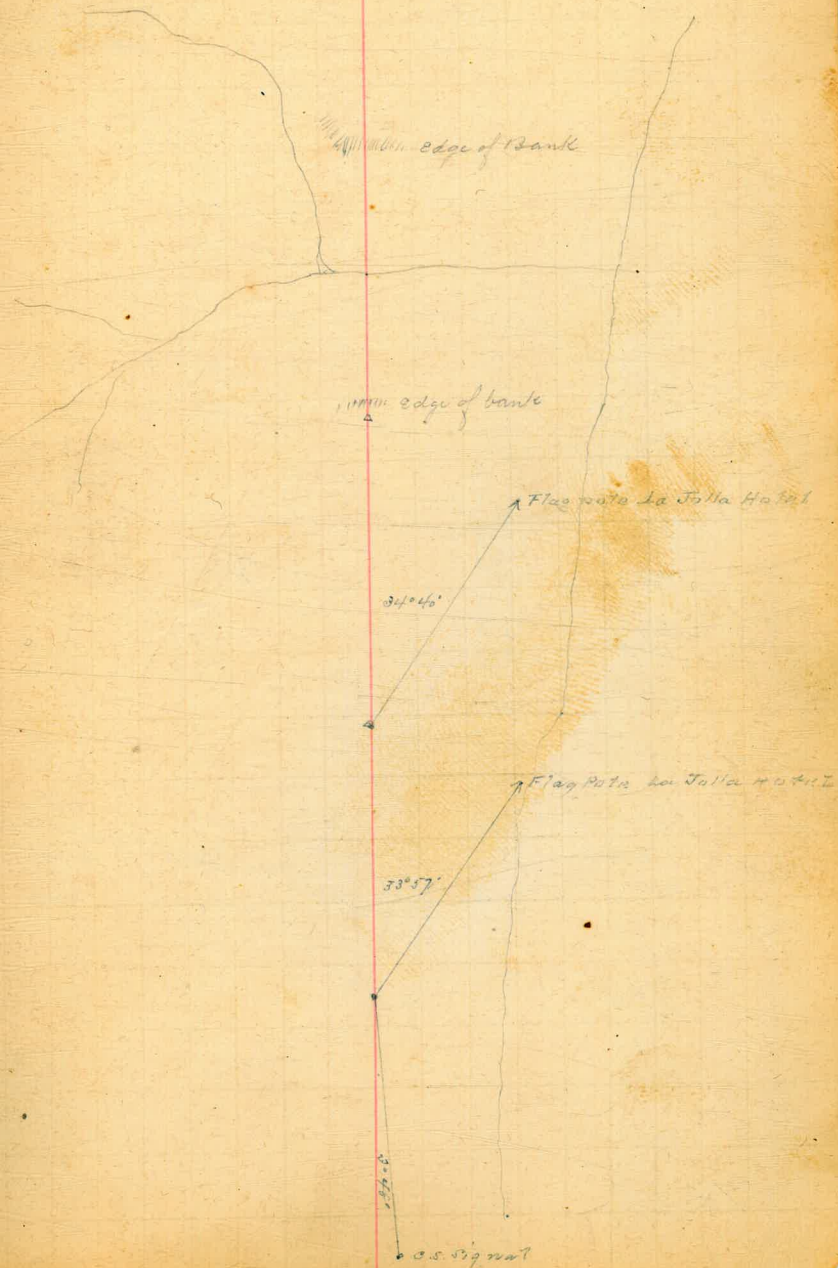
1892 intersect 3 line 1892

Station	HOT Angle	VPT Angle	Rod
146			
145			
144			
143			
142			
+ 66			
141		4°12'±	8.72
140			8.69
139			
138			
137			
136			
135			
134			
133			
132			
131			
130			
129			
128			

S 27° 15' E (Mag)



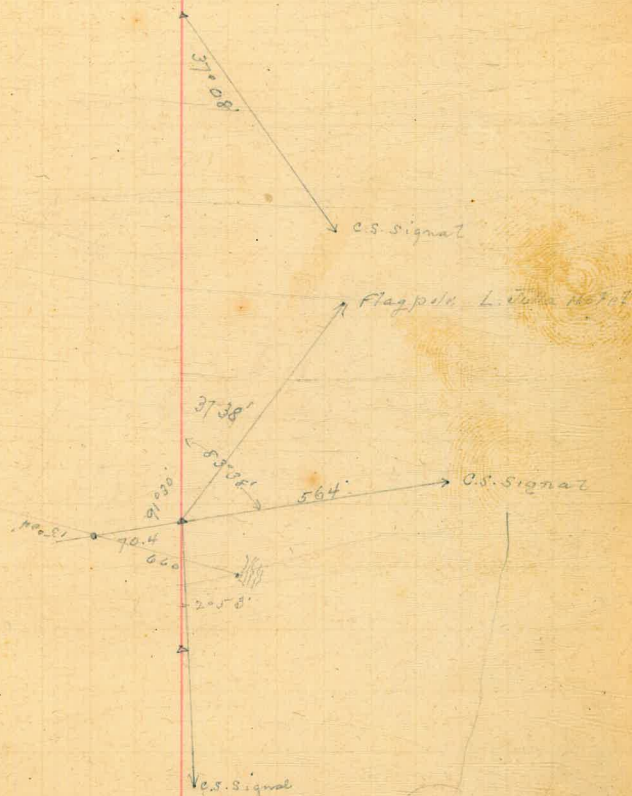
Stations	Hor Angle	Vert Angle	ROD	
165				
164				
163				
162				
161				
160				
+52		+5°45'	9.955	987.0
159				
158				
157				
156				
155				
+79		-4°00'	4.74	4.73
154				
153				
152				
151				
+35			4.43	4.44
150				
149				
148				
147				



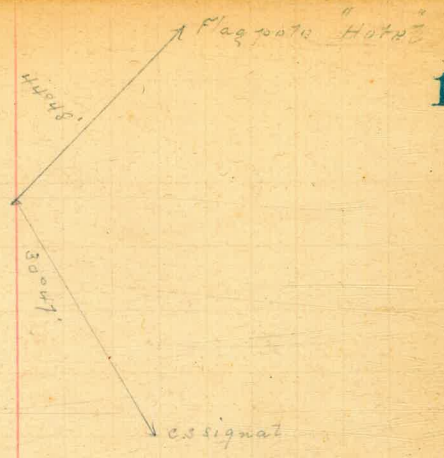
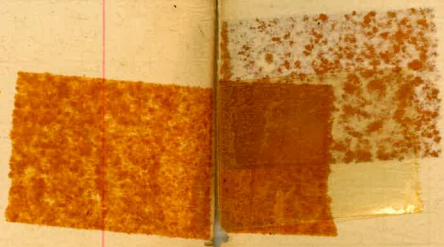
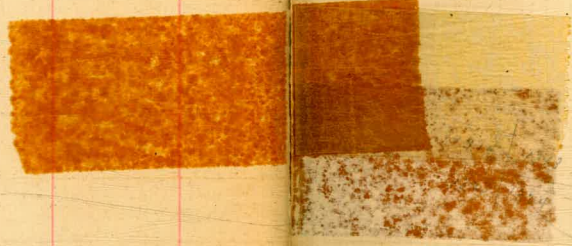
Stations	Hor Angle	Vert Angle	Foot	
184				
183				
182				
181				
180				
+49		+0.3	11.52	11.53
179				
178				
177				
176				
175				
174				
173				
172				
+30			818	819
171				
170				
+39			190	191
169				
168				
167				
166				

S 27° W Elmwood

$\begin{array}{c} 1323 \quad 1324 \\ 1326 \quad 1327 \quad 1340 \end{array}$   
 Nov 7<sup>th</sup> 1893  
 Nov 7<sup>th</sup> 1893



Stations	Hor Angle	Vert Angle
203	+58	1009
202		
201		
200		
199		
198		
197		
196		
195		
194		
193		
192		
191	+02	12.55 12.56
190		
189		
188		
187		
186		
185		



Stations

Hor.  
AngleVer.  
Angle

Road

222

221

220 +13

219

218

217

216

215

214

213 +78

212

211

210

209

208

207

206

205

204

8.955 8.97

6.840

47°22' → Flagpole Hotel

47°22' → Flagpole Hotel

17°22' ← C.S. Signal

Grass Field

Stations	Hor Angle	Vert Angle	Red
----------	-----------	------------	-----

241

240

+ 88

28° 50' R

239

238

237

236

235

234

233

232

231

230

+ 10

10.77

10.78

229

228

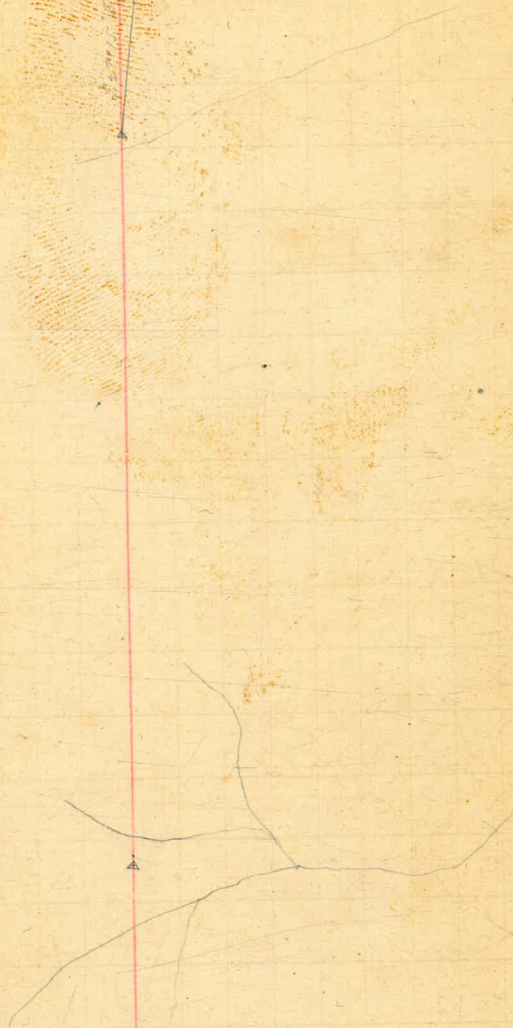
227

226

225

224

223

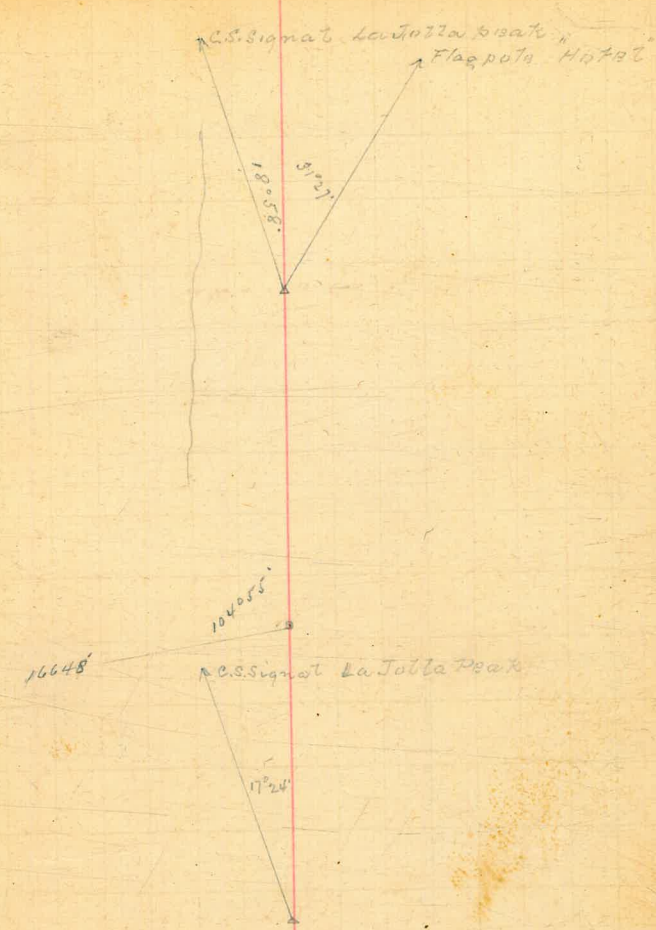




Stations	Hgt Angle	Vert Angle	Dist	Dist
260				
259				
+65		-1°00'	920	929
258				
257				
256				
255				
254				
353	+18.5			
252				
251				
250				
249				
+50			10,137	10,115
248				
247				
246				
245				
244				
243				
242				

51°15' W (true)

1:56 PM 1906



Stations	Hor Angle	Ver Angle	Hod	
279				
278				
277				
276				
275				
274				
273				
272				
+ 47				
271		-7°00'		
270				
269				
268				
+ 94				
267		-7°00'	3.57	3.53
266				
265				
264				
263				
262				
261				

51.15' W (Mag)

U.S. Signal La Jolla Peak

Flagpole Hotel

21°24'

35°04'

C.S. Signal La Jolla Peak

Flagpole Hotel

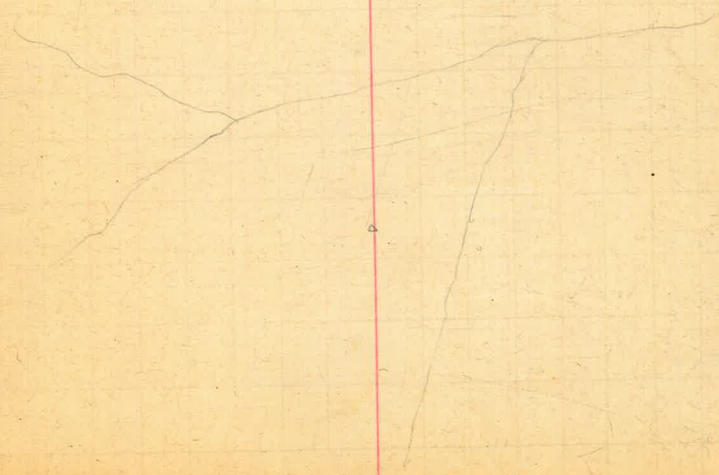
20°40'

33°21'

Stations	Hor Angle	Ver Angle	Red
298			
297			
296			
295			
294	+32	14°00' R	
293			
292			
291			
290			
289			
288			
287			
286			
285			
284			
283	+18	0°40' R	
282			
281			
280			

Stations  
Mag

Stations  
Mag



Stations	Hor Angle	Ver Angle	Dist
----------	--------------	--------------	------

317

316

315

314

313

312

311

310

309

308

307

306

305

304 + 52

303

302

301

300

299

## Stations

336

335

334

333 + 26  $\Delta$  13°30'77

332

331

330

329

328

327

326

325

324

323

322

321

320

319

318 + 32  $\Delta$ 

of 29°01'14"

+36

wager road  
to the Tollu

## Stations

355 + 36  $\triangle 164^{\circ}42'R$ 354 + 71  $\triangle 98^{\circ}49'L$ 

353

352

351

350

349

348

347

346

345 + 53  $\triangle$ 344 + 26  $\triangle$ 

343

342

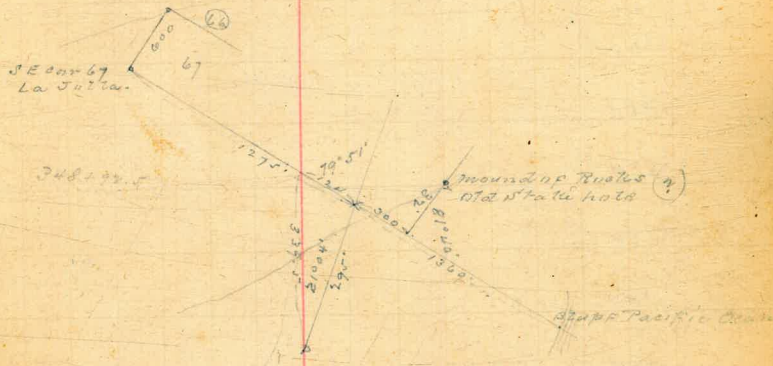
341

340

339

338

337



## Stations

336

335

334

333 + 26 13°30'77"

332

331

330

329

328

327

326

325

324

323

322

321

320

319

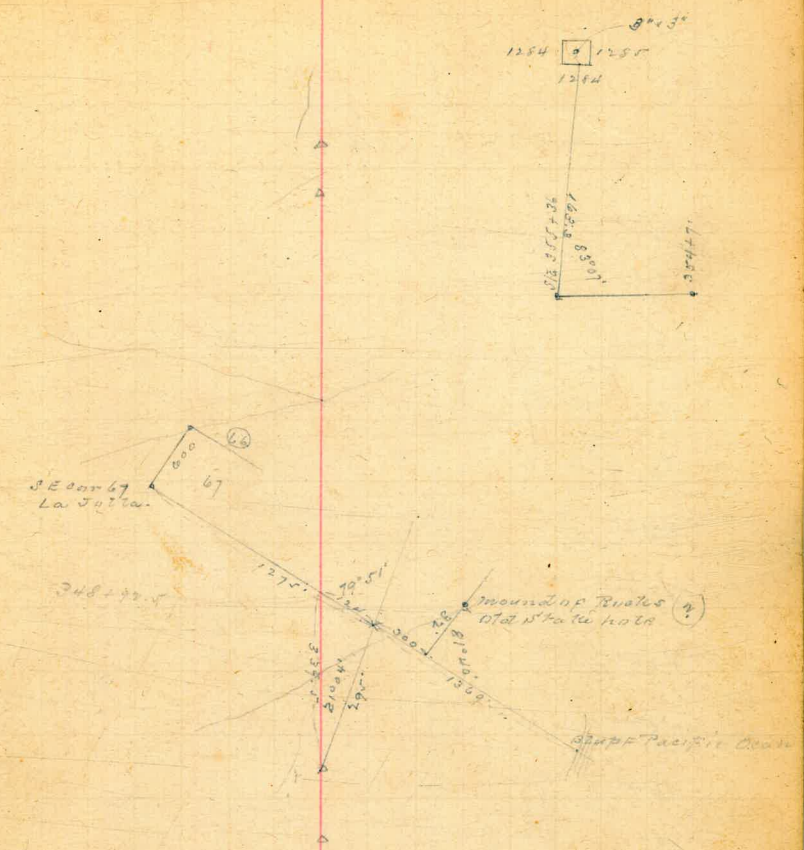
318 + 320

0°29'05" N

+36  
wagon road  
to the Tatta

Stations

- 355 + 36     164° 42' R
- 354 + 71     98° 49' L
- 353
- 352
- 351
- 350
- 349
- 348
- 347
- 346
- 345 + 53
- 344 + 26
- 343
- 342
- 341
- 340
- 339
- 338
- 337





## Stations

374 + 57  
 373 + 90  
 372  
 371  
 370 + 36  
 369  
 368  
 367  
 366  
 365  
 364  
 363  
 362  
 361  
 360 + 36  
 359  
 358  
 357  
 356

N. P. 00. 1  
 map

+ 57



▲

▲

+ 45



▲

## Stations

393

392

391

390

389

388

387

386

385

384

383

382

381

380

379

378

377

376

375

S 20° 00' W  
mag

75° 06' L

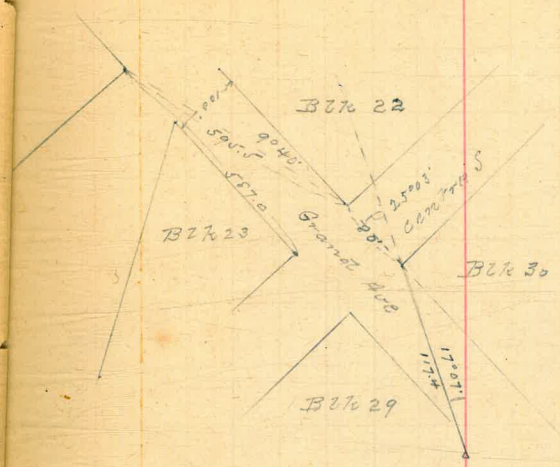
N 85° 00' W  
mag

La Tota Caves

Stations

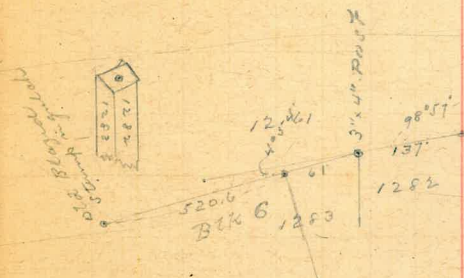
- 412
- 411
- 410
- 409
- 408
- 407
- 406 +57
- 405
- 404
- 403
- 402
- 401
- 400
- 399 +57      + 7°24' L
- 398
- 397
- 396
- 395
- 394

518500 W  
mag.

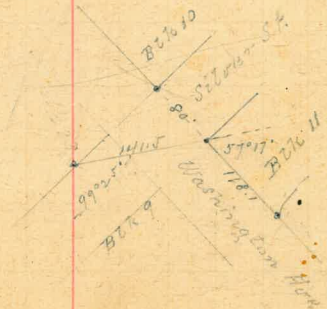


Stations

431  
 430  
 429  
 428  
 427 +86  
 426  
 425  
 424  
 423  
 422 514  
 421  
 420 +86  
 419  
 418  
 417 +86  
 416  
 415  
 414  
 413



SE corner  
 130010



## Stations

450 + 86

449

448

447

446

445

444

443

442

441

440

439 + 86

438

437

436

435 + 86

434

433

432

49010 1/2  
1857

1250

1258

3 1/2" 3" Post

1260

## Stations

469

468

467

466

465

464

463 + 86

462

461

460

459

458

457

456

455

454

453

452

451

## Stations

488

487

486

485

484

483

482

+ 86

481

480

479

478

+ 86

477

476

475

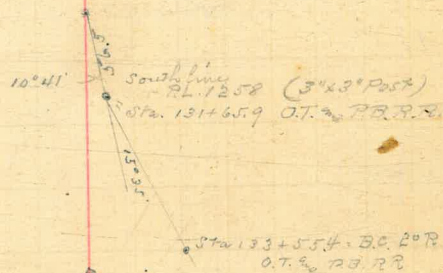
474

473

472

471

470



509.5  
77.25

Stations

507

506

505

504

503

502

501

+ 53

500

499

498

497

496 + 76

495

494

493

+ 76

492

491

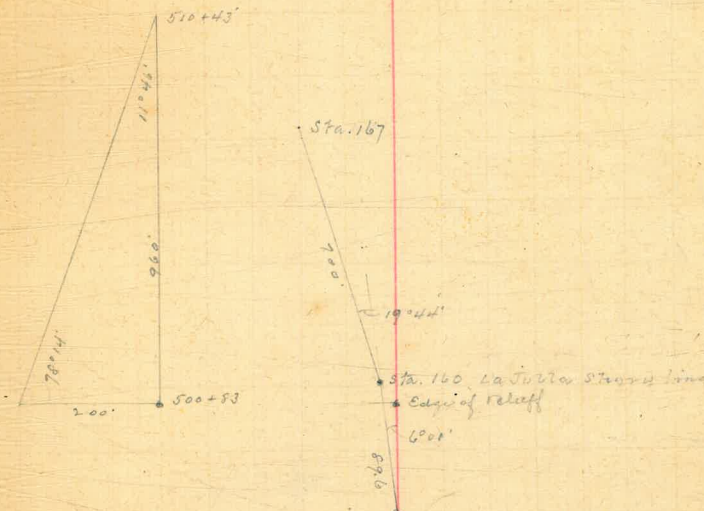
490

489

2° 35' 00" L  
M.A.S.

7° 30' L

5° 15' 00" L  
M.A.S.



• well



## Stations

526

525

524

523

522

521

520

519

518

517

516

515 + 43

514

513

512

511

510 + 43

509

508

Edge Banks Pacific Ocean



Station

176

75

74

73

+66

72

71

170

69

+91.7

68

67

66

65

64

63

62

61

160. Shore line  
499 + 89.6 Haystack

S 31° 00' E  
base

S 70° 00' W  
base

S 82° 00' W  
base

S 46° 00' E  
base

51° 45' L

15000' R

54° 30' R

19° 44' L

32.8° Post <sup>1772</sup>  
1773

## Stations

195		
94		
93		
92		
91		
190		
89		
88		
87		
86		
85		
84		
83		
82		
81		
+66		
180		
79		
78		
+66		
177		

S 22° 30' E  
mag.

23° 00' R

S 53° 30' E  
mag.

24° 30' R

S 80° 30' E  
mag.

49° 00' L

08  
 Stations

214	
13	
12	
11	
210	N 65° 00' E 1 mi
09	
08	53° 00' W
07	
06	55° 00' E 1 mi
05	10° 00' W
04	
03	
02	54° 00' E 1 mi
01	15° 30' W
200	
99	
98	
97	
96	

## stations

233		
32	+50	12°00'R
31		
230		
29		
28	+53	
27		
26		
25		
24		
23		
22		6°00'R
21		
220		
19		
18		
17		
16		50°00'R
15		

0.55  
mag

0.56  
mag

1792  
1783

1.12  
141°33'

## Stations

252 + 50 13° 40' R

51

250

49

48

47

46

45

44

43

42 + 50

41

240

39

38

37

36

35

234

Slope  
map

Stations

- 271
- 270
- 69
- 68
- 67
- 66
- 65
- 64
- 63
- 62
- 61 +08.7
- ~~260~~
- 59
- 58
- 57
- 56
- 55
- 54
- 253

5310E

1051L

3"x3" Post marked 20 ft. on S.E. side  
425'

1793  
1792 2"x2" Post

## Stations

290  
 89  
 88  
 87  
 86 + 94.4      \* 73° 51' L  
 85  
 84  
 83  
 82  
 285      \* 13° 25' L  
 81  
 280  
 79  
 78  
 77  
 76  
 75  
 74  
 73  
 272

Between Sta 261 + 267 and 267 + 268 - correction  
 of 100' is found. Sta 267 should be Sta 260  
 Distance between Stations is 2191.5

5452.5  
 1000

\* Plus on west line of alley on this  
 block 290 Pacific Beach



## Stations

300

05

04

06

05

04

03

02

01

300 + 34.5 = 5°14'12"

99

98

= 5°10'12"

97

96

95

94

93

92

291

1793 1794

1803 1801

4 1/2 4° Post in Mount

## Stations

328

27

26 +74.5

25

24

23

22

21

320

19 +34.5

18

17

16

15

14

13

12 +54.5

11

310

186000.5  
186000.5

1794	1795	
1801	1800	3' 23" Post

## Stations

347

46

45

44

43

42

41

340

39

38

37

36

35

34

33

32

31

330

329

## Stations

366  
 65  
 64  
 63  
 62  
 61  
 360  
 59  
 58  
 57  
 56 + 74.5  
 55  
 54  
 53 + 13  
 52  
 51  
 350  
 49  
 348 + 74.5

1795 1796  
 1500 1799  
 3' x 3' Stump on ground

## Stations

385  
 84  
 83  
 82  
 81  
 380  
 79 + 67  
 78  
 77  
 76 + 55.5  
 75  
 74  
 73  
 72  
 71  
 370  
 69  
 68  
 367 + 74.5

380  
 1914  
 Land

---  
 Fences

## Stations

404

03

04

01

300

99

98

97

96

95

94 + 55.5 0°25'R

93

92

91

390

89

88

87

386 + 55.5

## Stations

423  
 22  
 21  
 420  
 19  
 18  
 17  
 16  
 15  
 14  
 13  
 12  
 11  
 410  
 09  
 08  
 07  
 06  
 +93.5      -15°28'R  
 405

See 609 P. 1. + 35-6-7

1797 1208  
 1799 1193  
 91'  
 514°50'E  
 90°22'  
 • Trut 5 km 1208

## Stations

442  
41  
440  
39 + 87  
38  
37  
36  
35  
34  
33  
32  
31  
430  
29  
28  
27  
26  
25  
423

S. PL 1193 NE 1/4  
4" x 4" Post



## Stations

461  
 460  
 59  
 58  
 57  
 56  
 55  
 54  
 53  
 52 + 92.5  
 51  
 450  
 49  
 48  
 47  
 46  
 45 + 43.5 = 1° 27' 4"  
 44  
 443

see 609 p. 1.



## Stations

480

79

78

77

76

75

74

73

72

71

470

69

68

67

66

65

64

63

462

## Stations

499

98

97

96

95

94

93

92

91

490

89

88

87

86

85

84

83

= 484

+ 60 + 284

+ 90

184

7,000.06

2,163.06

1707  
1194

2,440.199.50

2050

See 609. P. 35-36-37

Stations

518

17

16

15

14

13

12

11

510

09 + 25

08

07

06

05

04

03

02

01 + 60

500

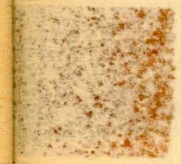
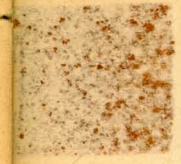
N 11° 15' E

6° 09' L

6° 25' R

N 30° 30' W  
1120

47



SE cut 1206

## Stations

537

36

35

34

33

32

31

530

29

28

27

26

25

24

23

22

21

520

519

83  
 Stations

556

55

54

1010' W

53

52

51

550

49

48

47

46

45

44

43

42

41

540

39

538

Stations

- 575
- 74
- 73
- 72
- 71
- 570
- 69
- 68
- 67
- 66
- 65
- 64
- 63
- 62
- 61 465
- 560
- 59
- 58 112 104 R
- 557

N 17° 05'



## Stations

594 +36.  
 93  
 92  
 91  
 590  
 89  
 88  
 87  
 86  
 85  
 84 +36.4 • 8°51'N  
 83  
 82  
 81  
 580 • 0°52'N  
 79  
 78  
 77  
 576

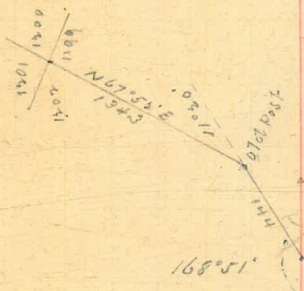




Station 0705

613  
 12  
 11  
 610 + 51  
 09 + 11 3°00' L  
 08  
 07  
 06 + 36  
 05  
 04  
 03  
 02  
 01  
 600  
 99  
 98  
 97  
 96  
 595

N 74° E



## Stations

632 +90  
 31  
 630  
 29  
 28  
 27  
 26  
 25  
 24  
 23  
 22  
 21 +90  
 620 +09.5  
 19  
 18 +21.5 • 115°00' L  
 17  
 16  
 15  
 614

51140.5  
 240.9 120.9  
 527.39.5  
 Int East Zone 1202 with East Boundary

West 1304  
 1199  
 1201  
 1200  
 540.1  
 1201  
 62.21  
 106.7  
 618 + 29.5  
 4x4 Post S.P.L. 1200 (SW Side)

See book 609 p 41-43

## Stations

651

650

49

48

47

46

+ 70.6

60° 19' R

45

93.6

+ 85

62° 04' L

44

43

+ 85

42

41

640

39

38

+ 85

37

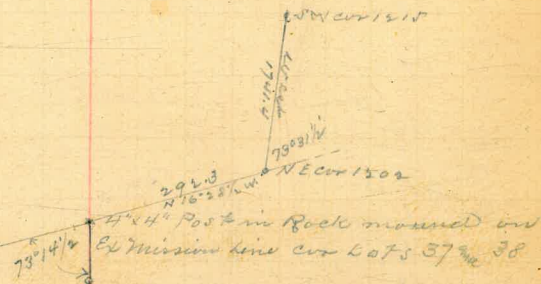
36

35

34

633

See Book 609 P. 43



## Stations

670

69

68

67

66

65

64

63

62

61

-60

660

59

58

57

56

55

54

53

652

705

1000

Station 5

689

88

5°20' E

87

86

85

84

83

82

81

680

79

78

77

76

75

74

73

72

671

Int. East Line 1819 with  
East Boundary

579°38' W  
122.2 109002'

S. E. 1319

West

122.2

348.5

N 14° 14' W

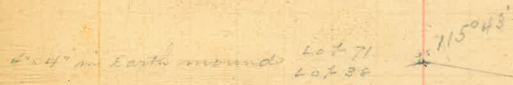
see Book 609 p 44



4" x 4" Post marked S.P.L. 1219

P.L. 1219

See Book 609 p. 45



See Book 609 p. 47

+ 90.5  
 708  
 07  
 06  
 05  
 04  
 03  
 02  
 01  
 700  
 699  
 98  
 97  
 96  
 95  
 94  
 93  
 92  
 91  
 690

N 50° 20' W

+ 07.8 5° 10' L

N 57° 20' W

mag

727

26

25

24

23

22

21

720

19

18

17 - 99.5

16

15

14

13

12

11

710

709





## Stations

765  
 64  
 63  
 62  
 61  
 760  
 59 + 36.3      0°41' R  
 58  
 57      0°42' L  
 56  
 55  
 54  
 53  
 52  
 51  
 750  
 49  
 48  
 47

4" x 4" Post      Lot 78  
                          Lot 71 in Rock Mound  
                          Cor 7  
 Post      2" x 2" Post in Rock Mound (S 26)  
 6" x 6"      12° 03'

## Stations

784

83

82

81

780

79

78

77

76

75

74

73

72

71

770

69

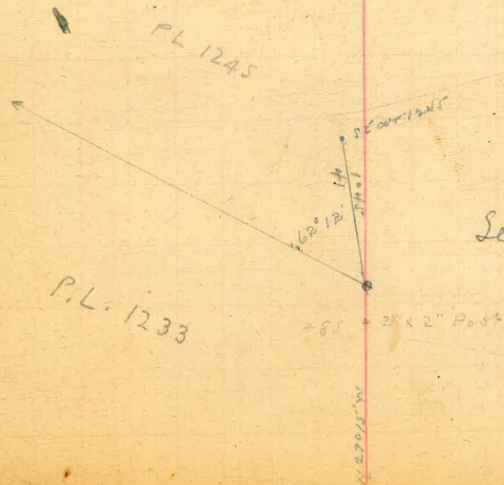
68

67

766

MOUNTAIN

+ 34



See Book 93 Page 1

Stations

- 803 + 55
- 92
- 01
- 800
- 99
- 98
- 97
- 96
- 95
- 94
- 93
- 92 + 75
- 91
- 790
- 89
- 88
- 87 + 50
- 86
- 785

mind of Recha

## Stations

822

21

820

19

18

17

16 + 35

15

14

13

12 + 35

11

810

09

08

07

06

05

804

+ 44 Rock mound  
+ 35 edge of bank

+ 30

+ 25

## Stations

841

840

39

38

37

36

35

34

33

32

31

830

29

28

27

26

25

24

823

## Stations

860

59

58

57

56

55

54

53

52

51

850

+75

49

48

47

46

45

44

+85

43

842

## Stations

879

78

77

76

75

74

73

+30

72

71

870

69

68

67

+75

66

65

64

63

62

+75

861

0 2 1 2 \* 1 1 2 1 4  
2 8'

## Stations

898  
 97  
 96  
 95  
 94  
 93  
 92  
 91 + 60  
 890  
 89  
 88  
 87 + 90  
 86  
 85 + 75  
 84  
 83 + 35  
 82  
 81  
 880

+40  
 8 4 1/4" DIST Lot 79  
 87

26°13' 290.2  
 S.O. Track  
 19M Post  
 15.5' 2°L

+40  
 San Bernardino Ave.



## Statistics

917

16

15

14

13

12

11

910

+20

09

08

07

06

05

04

03

+20

02

01

900

899

## Stations

936

35 + 59

+ 0° 19' R

34

33

32

31

930

29

28

+ 75

+ 0° 21' L

27

26

25

24

23

22

21

920

19

918

654

and Post #8  
+ 61 - Mount of Rocks, N W cor of Mission

Mount of Rocks → # 4 + 61

955

54

53

52

51

950

+ 33

49

48

47

46

45

44

43

+ 59

42

41

940

39

38

937

475° State and grade

974

73

72

71

970

69

68

67

+ 50

66

65

64

63

62

61

960

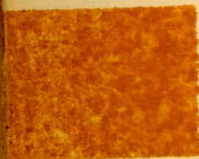
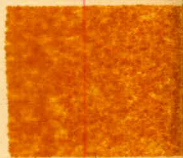
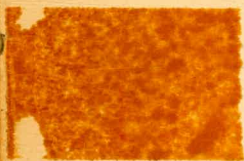
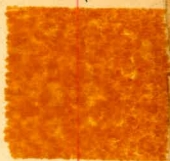
59

58

57

956

Brod



## Stations

993

92

91

990

89

88

87

86

85

84

83

82

81

+45

980

79

78

+20

77

76

+15

975

See Book 608 P. 30



Stations

7460

768+34

N 70° 45' W  
Slope

63° 12' L

Foresight on Sta 770













7667  
460.02  
46007  
1000.73

648786  
82632  
696388

N27015  
6212  
8727  
26  
53

6184004  
6184215  
398

3509  
1440  
1322

N27014  
42  
2632  
41  
2713  
6212  
8723

52739  
30  
7239  
1700  
N81212  
11560  
27374  
8900  
237

1000  
1000  
1000  
1000

75930  
49  
10780

3225  
2500  
2000

17000

803  
220

7000  
1440

7407  
85  
7402  
1000

739  
1440  
16609  
1440

735  
146  
589

16  
15

17360  
2653  
8307

41686  
42657  
229  
706  
1729

50939  
3301  
12240  
17000  
5721  
8946  
3240

6