

611

9

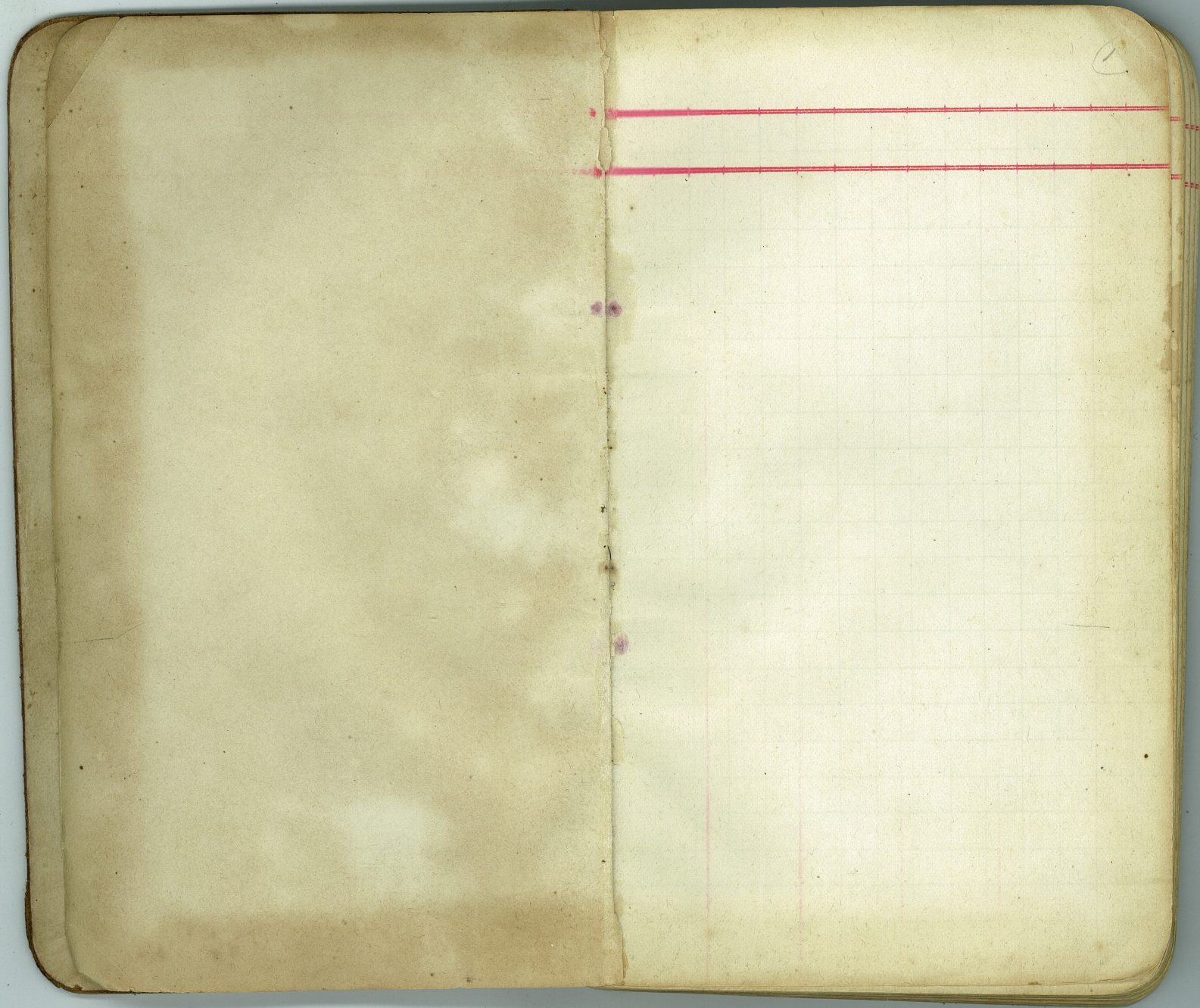
TRANSIT

F. B. 611

611

MICROFILMED

DEC 14 1964

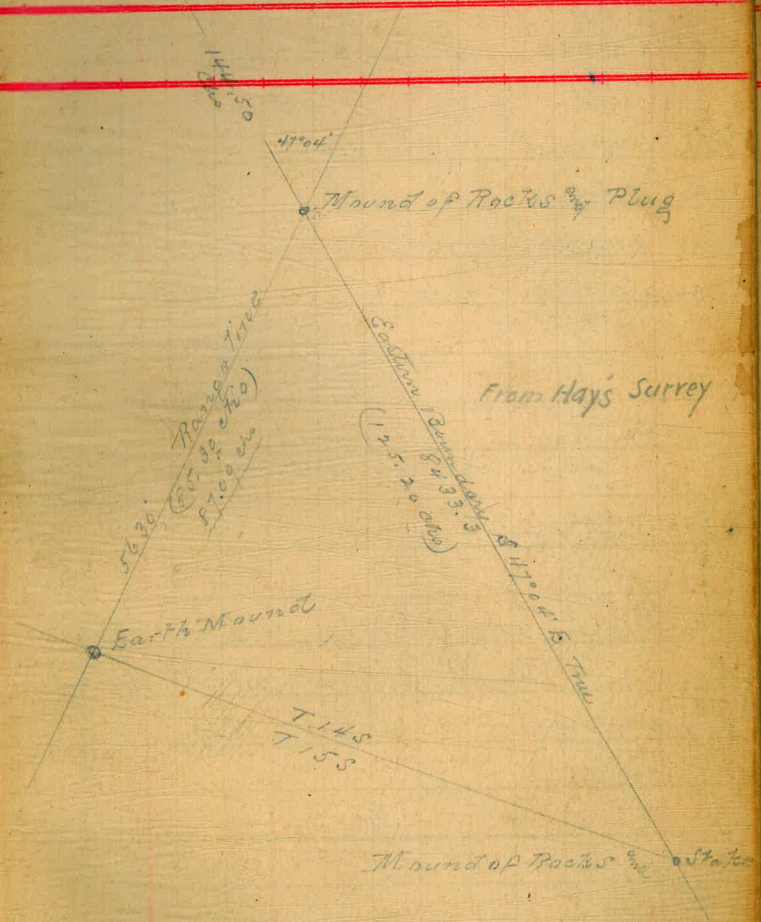


o NW corner Pueblo.

Dist	Course	N	S	E	W
	(enag.)				
614	S 9° 00' W		606.44		96.05
1038	S 37° 45' E		820.73	635.48	
4400	S 51° 45' E		2724.00	3455.41	
1600	S 53° 30' E		951.71	1286.18	
1300	N 62° 30' E	831.15		1596.62	
580	N 65° 00' E	248.92		533.82	
		1080.07	5102.88	7507.51	96.05
			1080.07	96.05	
		4022.81	7411.46		

4022.81 / 7411.86
 7.84236 = Nat Tang 61° 30'
 Nat Sin 61° 30' = .8788 / 7411.46
 8433.3 = Dist

Traverse from Mound of Rocks on Range line at intersection of Eastern Boundary to Mound of Rocks on line between T. 14 and 15 S. "Mounds well defined"

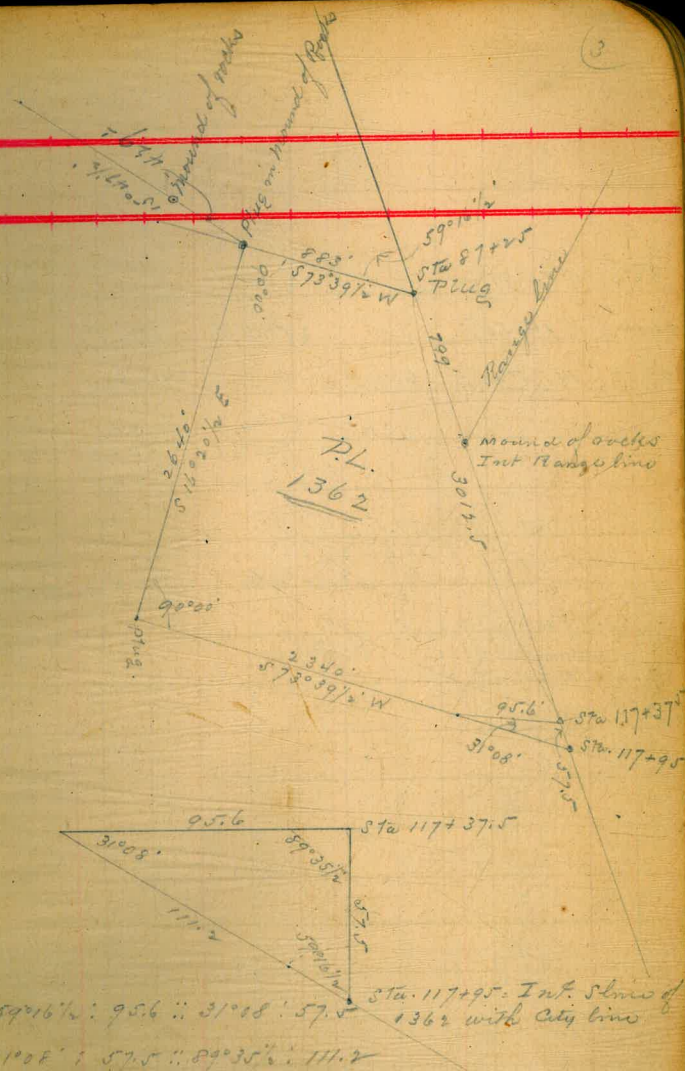
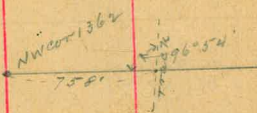


Dist.	COURSE	N	S	E	W
883	S 73° 39' W		248.4		847.3
2640	S 16° 20' E		2533.3	742.8	
2340	N 73° 39' E	658.4		2245.5	
95.6	N 42° 31' E	70.2		64.6	
		728.6	2781.7	3052.9	847.3
			728.6	847.3	
			2053.1	2205.6	

$$2053.1 \overline{) 2205.6} \\ 1.074 \text{ Nat Tang. } 47^{\circ} 04' \text{ Nat Sine } = 732.15$$

$$732.15 \overline{) 2205.6} \\ 3012.5 = \text{Distance}$$

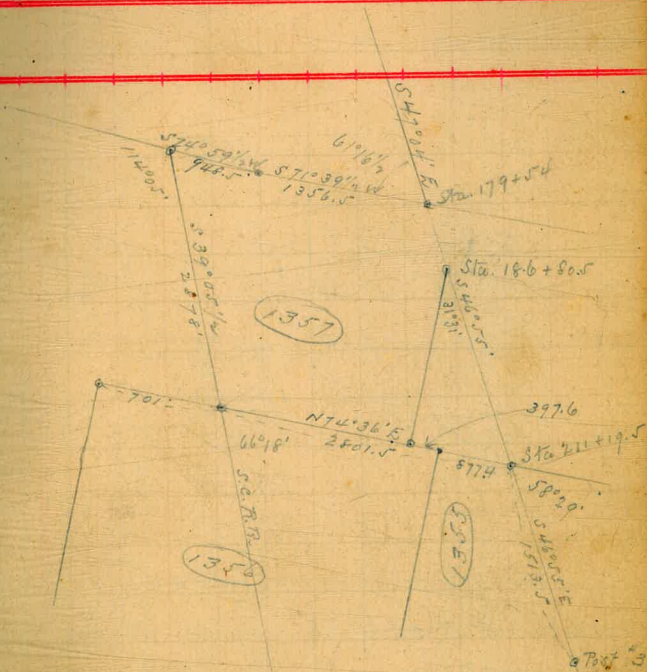
Traverse from Intersection of City line with north line of Puebla Lot 1362 to Sta. 117+37.5 on City line.



59° 16' : 95.6 :: 31° 08' : 57.5
 31° 08' : 57.5 :: 89° 35' : 111.2

Dist	Course	N	S	E	W
1356.5	S71°39'W		426.9		1287.6
948.5	S74°59'W		245.6		916.1
2878	S39°05'E		2233.7	184.8	
2801.5	N74°36'E	744.0		2700.9	
		744.0	2006.2	4515.7	2203.7
			744.0	2203.7	
316.5	N46°55'W		2162.2		2312.0

Traverse from Sta. 179+54 at Township
 bound to Sta 211+19.5 at intersection of line
 between P.L. 1356 and 1357 projected East



397.6
 277.0
 129.0
 2801.5
 1275
 1526.5
 877.0
 2403.9

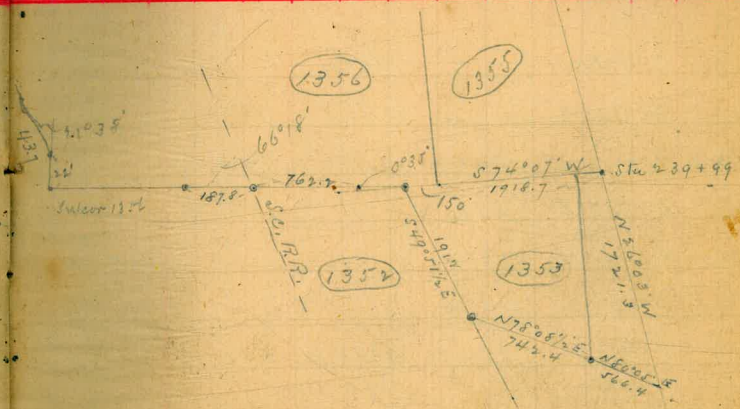
5805.5
 577.0
 193.0
 701
 2203.7

Dist	Course	N	S	E	W
1918.7	S74°07'W		525.1		1845.5
750	S74°42'W		39.6		144.7
1912	S49°51 1/2'E	1232.6		1461.6	
742.4	N78°06 1/2'E	152.6		726.6	
566.4	N80°05'E	97.5		557.9	
		250.1	1797.3	2746.1	1990.2
			250.1	1990.2	
1721.3	N26°03'W	1547.2		755.9	

Traverse from 239+99 (NE cor Lot 34 Sorrento)
to a point 1' north & 1' East of Station 357+213
(NE cor Lot 7 Sorrento)

150
762.2
187.8
1190.0

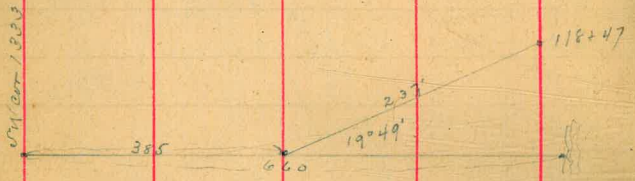
7.



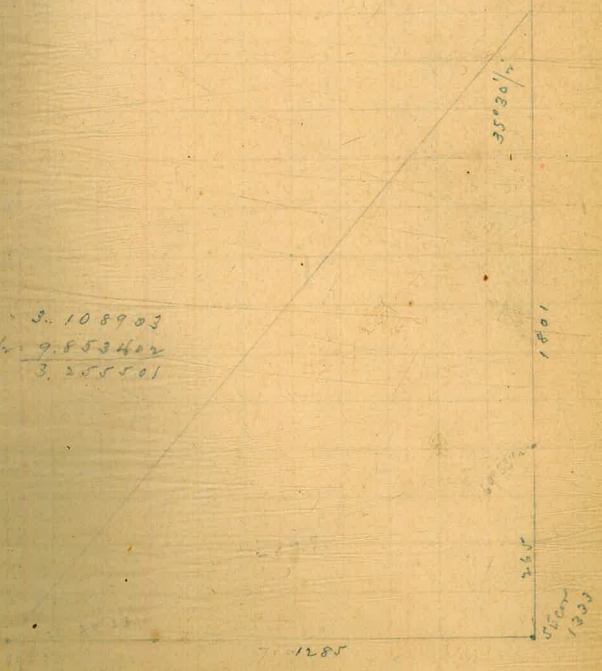
80-3268
80-3535
80-3402

2640
2350
1285

9

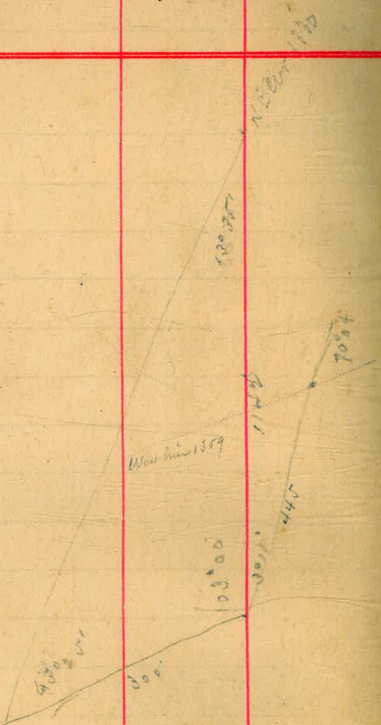


$1285 \cdot 3 = 108903$
 $\tan 35^{\circ}30' = 9.853402$
 $3 \cdot 355501$



1800' 9.970808
 600' 9.901476
 300' 2.477121
 1142.3 3.047789
 370/100

68.25
 103
 766.25
 13.81



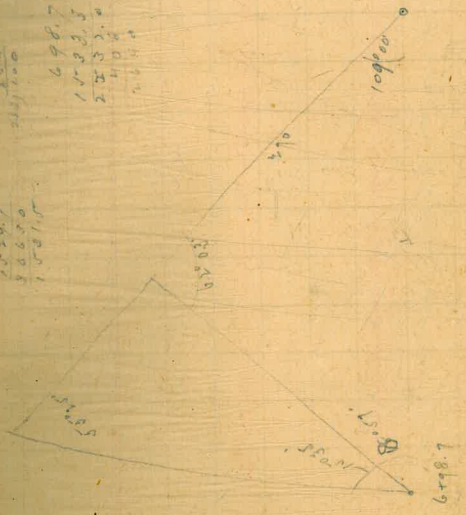
East from S E Cor 1333

6+96.7

8.57 9.191933
 61.03 9.946136
 170 2.481264
 1529.7 3.184563
 2137.0

1503.1 9.429170
 550.25 9.910009
 500 2.698870
 1000 3.126756
 2528.7 3.06
 3880.0
 1.58115

698.7
 1733.5
 2532.2
 4004
 6224



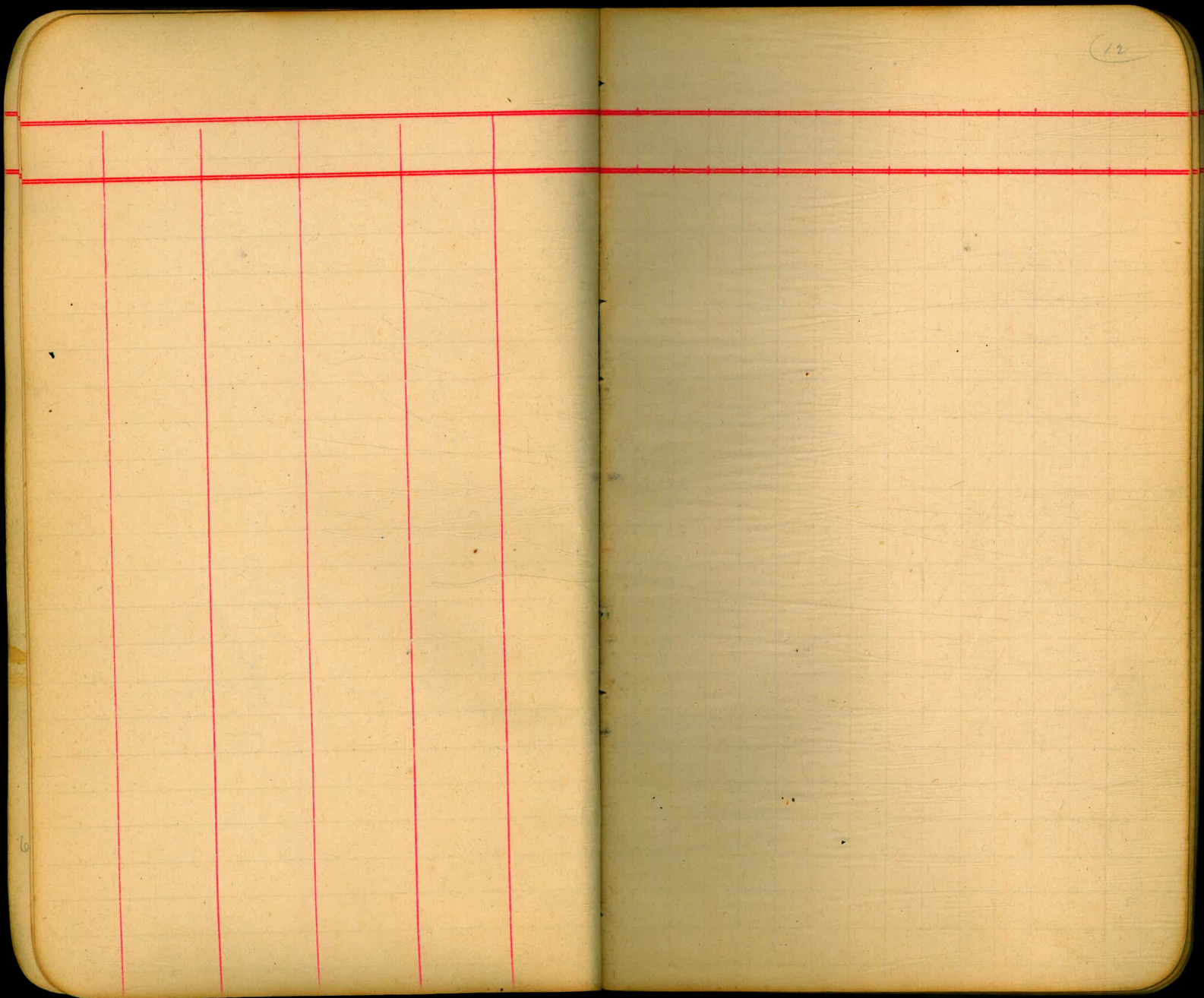
109.83
 83.83
 178.24

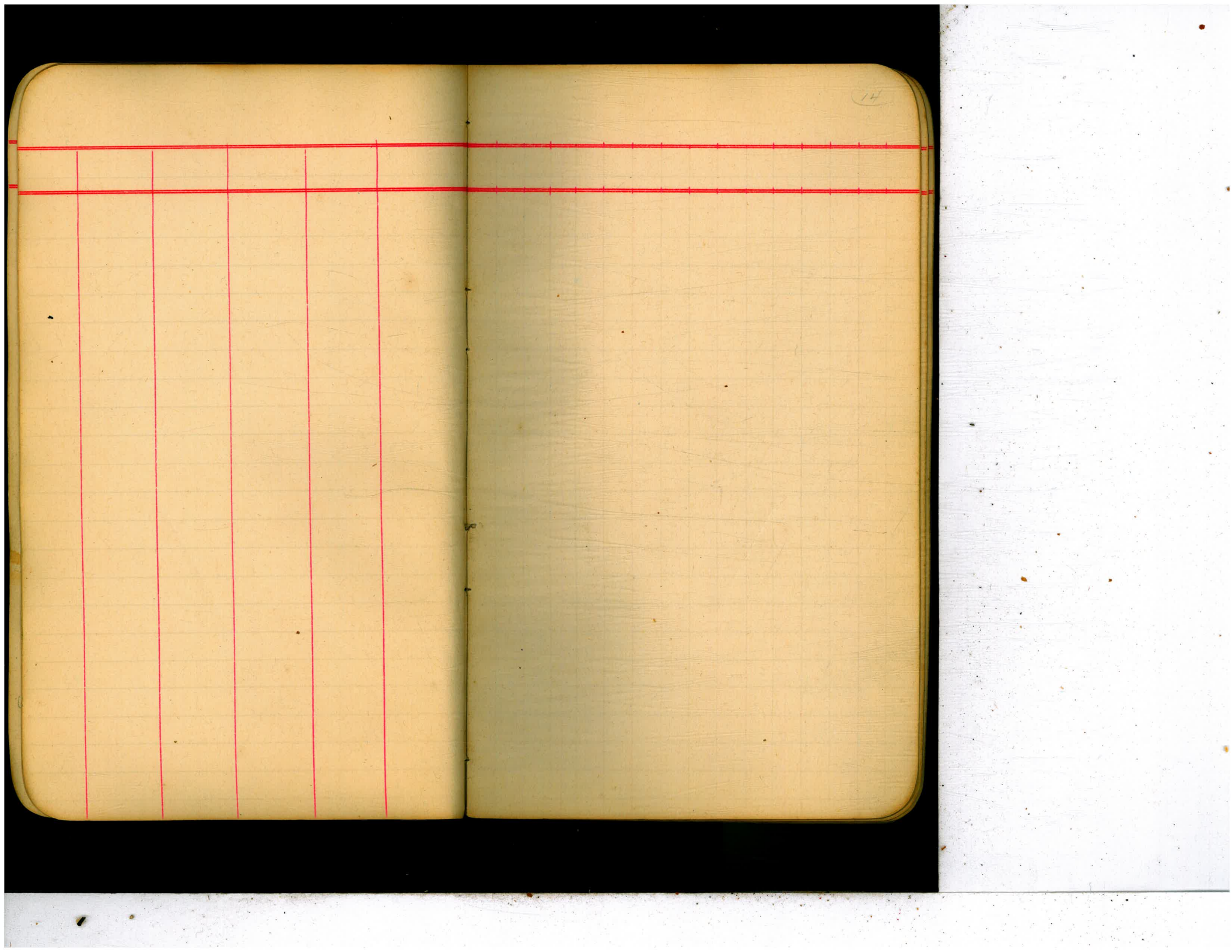
109
 83.83
 178.24

109
 83.83
 178.24

55	1.740363	
57	9.955126	
	1.295409	29.6
	0.680442	23.8
	1.375983	







06 5580' E
 05 10°00' L
 04
 03 5480' E
 02
 01 15°30' L
 200
 99
 98
 97
 96
 95
 94 5380' E
 93 0000' E
 92
 91 23°00' R
 190
 89
 88
 87
 186

227
26
25
24
23
22
21
20
19
18
17
16
15
14
13
12
11
10
09
08
107

5.55
May

6°00' R

8.61
May

50°00' R

N 60° E
May

53°00' L

Dec. 30 1893
Dec. 22 1893



248
47
46
45
44
43
42 +50
41
240
39
38
37
36
35
34
33
32 +50 + 12'00" R
31
230
29
248 +50

30000
10000

1782
1783
141.33

269

68

67

66

65

64

63

62

61

260

59

58

57

56

55

54

53

52

51

250

249

S 31° 00' E
Mag

+08.7 1051' L

+52 13° 40' R

2.8 x 3" Post marked 20 A on
S.E. side

402v

line 1793
1792

290
 89
 88
 87
 86
 85
 84
 83
 82
 81
 280
 79
 78
 77
 76
 75
 74
 73
 72
 71
 270

73°51' L

13°25' L

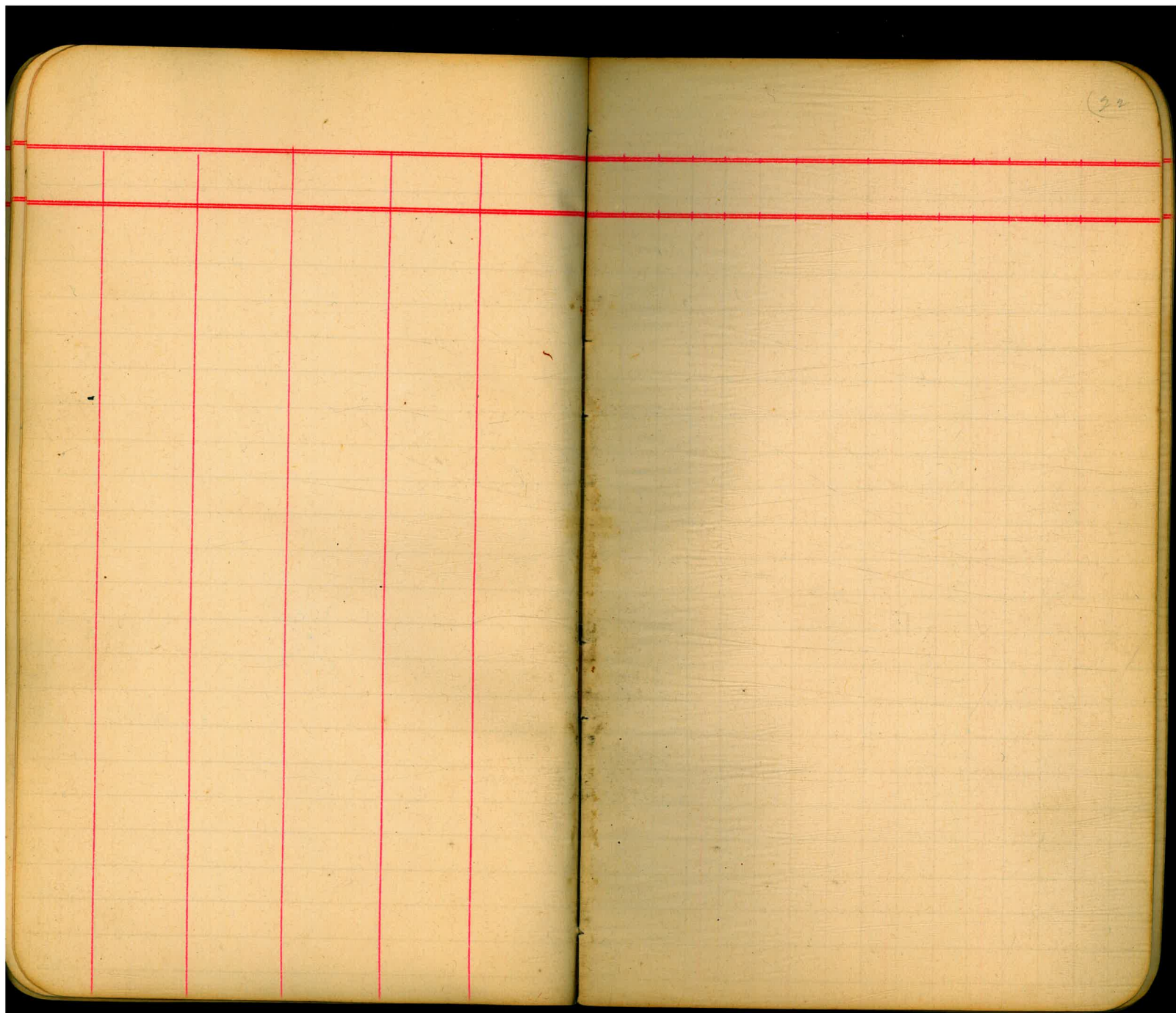
11.11.11

1.1.11

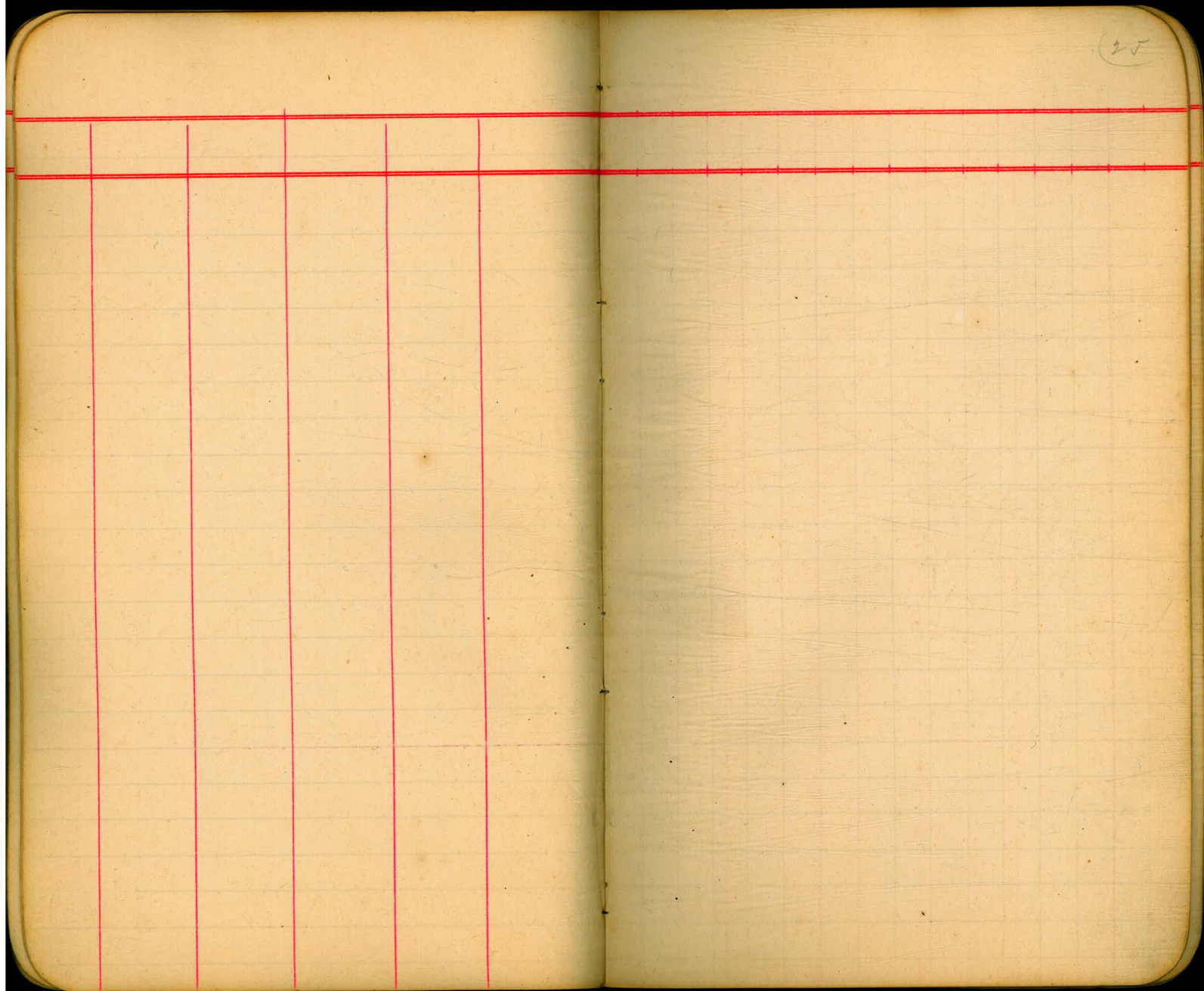
• West line Alley on South
 line 13th 29th Pac Beach

+34.5 5°14' R
 300
 99
 98 5°10' L
 97
 96
 95
 94
 93
 92
 291

1793
 1801
 1803



(25)



The image shows an open notebook with two pages. The left page is a ledger page with a grid of red lines. It features two horizontal lines near the top, creating a header section. Below these, there are six vertical lines that divide the page into seven columns of varying widths. The right page is a standard blank ledger page with a grid of red lines, including horizontal lines and a vertical margin line on the left side. The notebook is placed on a white surface, and the pages are a light cream color.

501+60

484+00
= 501+197 90° 00' L

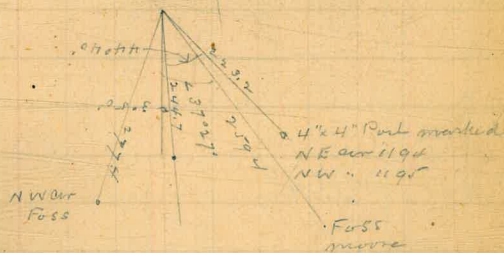
462+00 90° 17' R 19.7'

469+62

456+62

453+00

445+50 102° 1' L



- 14
- 13
- 12
- 11
- 10
- 9
- 8
- 7
- 6
- 5
- 4
- 3
- 2
- 1
- 0

35° 25' 2"

39° 52' R

Foreight or Eastern Boundary line
 meander line along mean high tide
 (Abroad) of Pacific Ocean, southerly from
 N.W. corner Pueblo of San Diego -
 Nov. 14th 1893

along Abbe Road south of
 +
 Dolores Valley

36
35
34
33
32
31
30
29
28
27
26
25
24
23
22
21
20
19
18
17
16
15

4°00' R

58

57

56 4°30' R

55

54

53

52

51

50

49

48

47

46

45

44

43

42

41

40

39

38

37

144+50

134+50

125+50 17°30' R

121+98

118+73 7°30' L

95+45 29°00' R

92+45 42°00' L

76 5°30' L

66



206+73 7°00' L

200+23

197+50 3°50' L

188+50 4°30' L

183+50 3°00' R

174+35

163+35

160+20.7

152+50 6°15' R

along rocky slide at foot of perpendicular
cliffs 200' to 350' high

289+00 7° 30' R

411.4

284+88 29° 00' R

87.6

284+01 28° 20' L

260+01

258+01 42° 20' L

248+51 38° 00' R

284+01 79° 40' L

233+76 20° 00' R

218+73 8° 40' R

Mound of Earth on Bluff
Coast Survey monument

347+34 65°06' R

1273.5

S 100' W

334+60 6°37' L

560.5

S 100' W

331

329+00 20°15' R

325+00 1400'

S 100' W

315+00 6°45' R

1900

S 100' W

305+00

296+00 10°30' R

700'

Sta 341 500 left to Bluffs

10'

50'

50'

350+29 → 54°21' L

100'

349+29 → 59°00' L

195

Stationed
S. 80° W. E.
1900

Bluff line Top Jolla

8

7

6

5

4

3

2

1

583.00 W
mag

205.2
586.20 W
mag

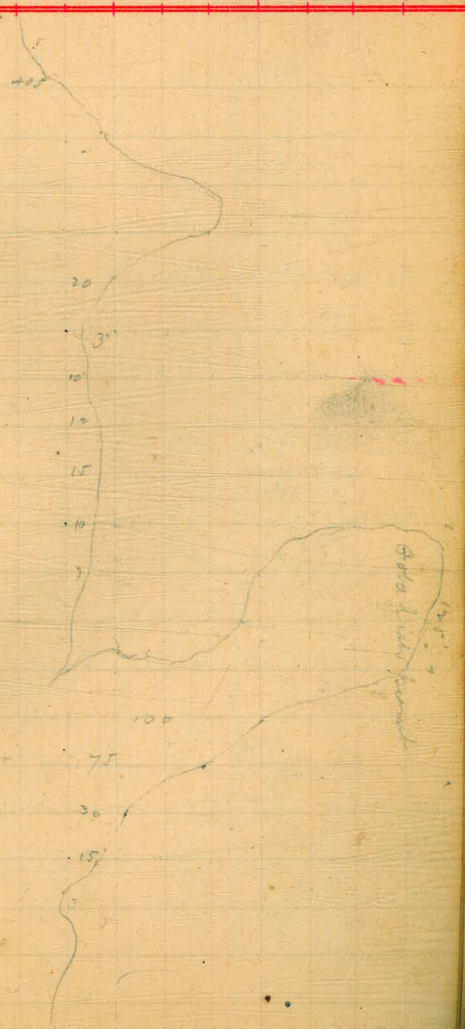
580.80 W
mag

+46 60°41' L 60°41'

+40.8 63°09' R 63°09'

383.00 15°00' L

Back sight on Sta. 372 + 96



18

527°30' W

17

+56 → 57°40' L 57°40' L

16

579°00' W
200 yd

170

15

+56 → 92°00' L 92°00' L

14

49°00' W

240

13

+46 → 87°54' 1/2 B 87°54' 1/2 B

12

11

700

10

9

8+50



29

28

27

26

25

24

23

22

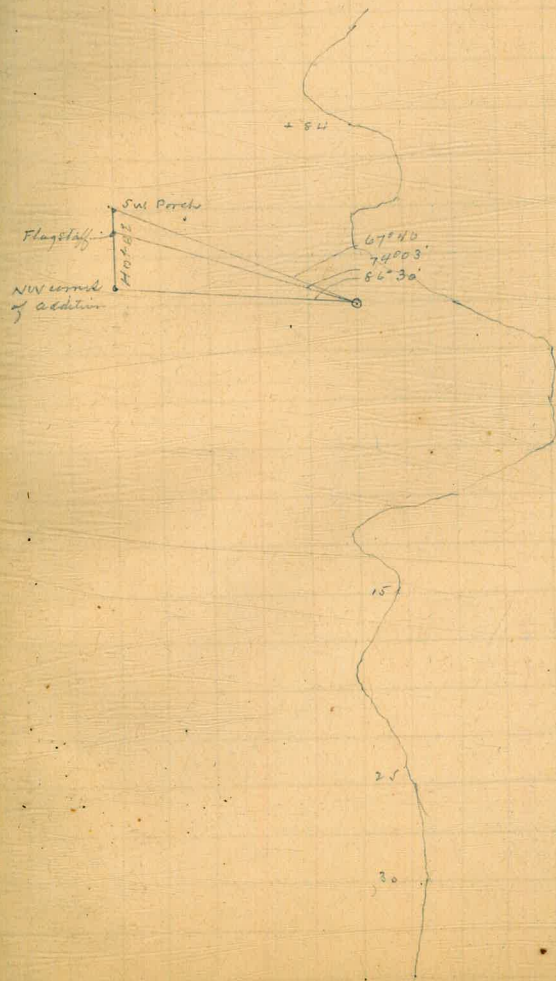
21

20

19 100

Stationing
along

67°40
74°03



50

49

48 Δ 57°29'R. 57°29'R.

47

46

45

44

43

42

41

40

N. 44° 00' W.

base

1050'

S 71° 30' E

Dray

43

Plug and
State Palm Avenue

1578

1740

20

1050

1050

1050

1050

1050

1050

1050

1050

1050

1050

1050

1050

1050

1050

1050

1050

1050

1050

1050

1050

1050

1050

1050

1050

1050

1050

1050

1050

1050

1050

1050

1050

1050

1050

1050

1050

1050

1050

1050

1050

1050

1050

1050

1050

1050

1050

1050

1050

1050

1050

1050

1050

1050

1050

1050

1050

1050

1050

1050

1050

1050

1050

1050

1050

60
59
58
57
56
55
54
53
52
51

52°30' N
111°

41°40' L 41°40' L

800
54°40' N

71

70

S 27° 00' E
Mag

69

+50 29° 21' L 29° 21' L

68

67

66

65

1250

S 20° 20' W
Mag

64

63

62

61



84

58° 10' E

81

80

18° 49' 1/2 R 18° 49' 1/2 R

79

78

77

76

527° 00' E
through

75

74

73

72

B

K

93

92

+40 8000'R

91

90

89

88

87

86

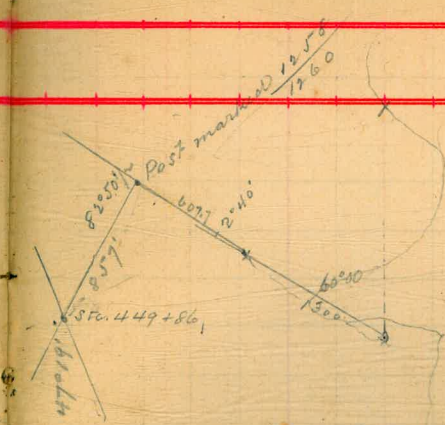
85

84

83

South

W. 50.10. E
on 49



104

103

102

101

100 20° 00' R

99

98 400'

97

96

+ 40 48° 00' L

95

94

5380 F
Mag5460 F
Mag

400



192
 191
 +65 + 30° 30' R
 190
 18
 17
 16
 15
 14 2065'
 13
 12
 11
 10
 09
 108
 +80
 107
 106
 105

2090'

2065'



in earth mound
 19. Old post, with feet well defined



P. L. ...
 37 3/4 ...
 no mark

43					
42					
41					
140	30995	6000			
39					
36	30	25000 L			
37					
38	30	290			
137	40	61000 L			
134		285			
133					
132	55	39000 R			
131					
130	30015	455			
99					
98		21030 L			
97					
96		735			
95					
94					
140					

Continued on 15th page

64
63
62
61
60
59
58
57
56
55
54
53
52
51
50
49
48
47
46
45
44

15 46 46 2
May
15 46 46 2
May

47° 20' R

29° 45' L

1570



old mineral of rocks (3)

old mineral rocks (9)

7400
 1000
 2400
 2040
 3000
 2000

228.5
 120.8
 500.8
 202.9

1815.7
 100
 723
 2780



165
 1200
 1300
 1000

69007
 500
 7400

40000
 10000
 100000

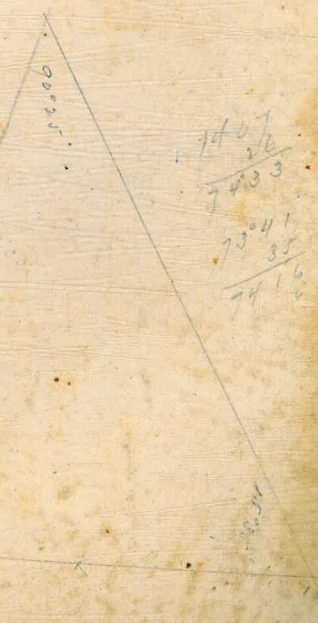
7400
 4700
 12000

7407
 4900
 12000
 5600

9000
 1000
 1000
 1000

1400
 1000
 2000

1500
 9000
 400
 3000



7407
 200
 7000
 7000

1000
 1000
 1000

1000
 1000
 1000