

PARK

#3.

2

F.B. 614

614

Course.

160 A Backyard
 160 C Switzer
 180 C "

15.....35	35.....81½	55.....128½
16.....37½	36.....84	56.....130½
17.....39½	37.....86½	57.....133
18.....42	38.....88½	58.....135½
19.....44½	39.....91	59.....137½
20.....46½	40.....93½	60.....140

MICROFILMED

PUBLISHED BY

EDWARD DENNY & CO.

DRAWING PAPER & MATERIAL, MATHEMATICAL INSTRUMENTS, ETC.,

STATIONERS AND PRINTERS,

SAN FRANCISCO, CAL.

Table for Running on Slopes.

In the following table the first column shows the angle, the second, the number of links to be added to a chain on the slopes, to make one chain, horizontal measurement.

Angle.	Cor. in links	Angle.	Cor. in links.	Angle.	Cor. in links.	Angle.	Cor. in links.
°		°		°		°	
4	0-24	11	1-88	18	5-14	25	10-54
5	0-38	12	2-24	19	5-76	26	11-26
6	0-55	13	2-63	20	6-42	27	12-24
7	0-76	14	3-06	21	7-11	28	13-37
8	0-98	15	3-53	22	7-85	29	14-34
9	1-24	16	4-02	23	8-64	30	15-47
10	1-55	17	4-56	24	9-47	35	22-07

March 17th 1889

City Park Survey

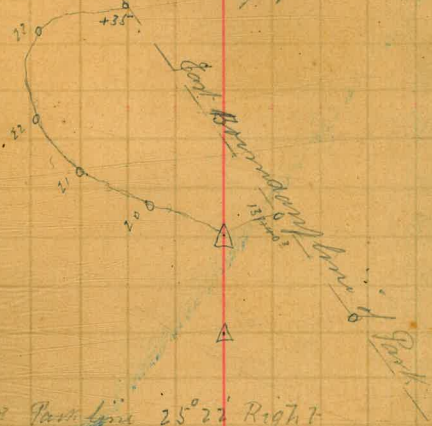
160 ft. Contour line Switzer Carron

Sta	Left	Right
+35		12°46'
23		5°14'
22	17°21'	
21	37°23'	
20	47°35'	
19	46°38'	
18	71°44'	
+45	31°18'	
17	35°34'	
16	51°11'	
+72	11°27'	
15	7°38'	
14	22°03'	
+46	46°02'	
13	28°54'	
+47	15°50'	
12	50°29'	
11	44°15'	
+57	32°27'	
10	39°06'	

Handwritten (transit)

1

23+35 = 136+74 East boundary park line x

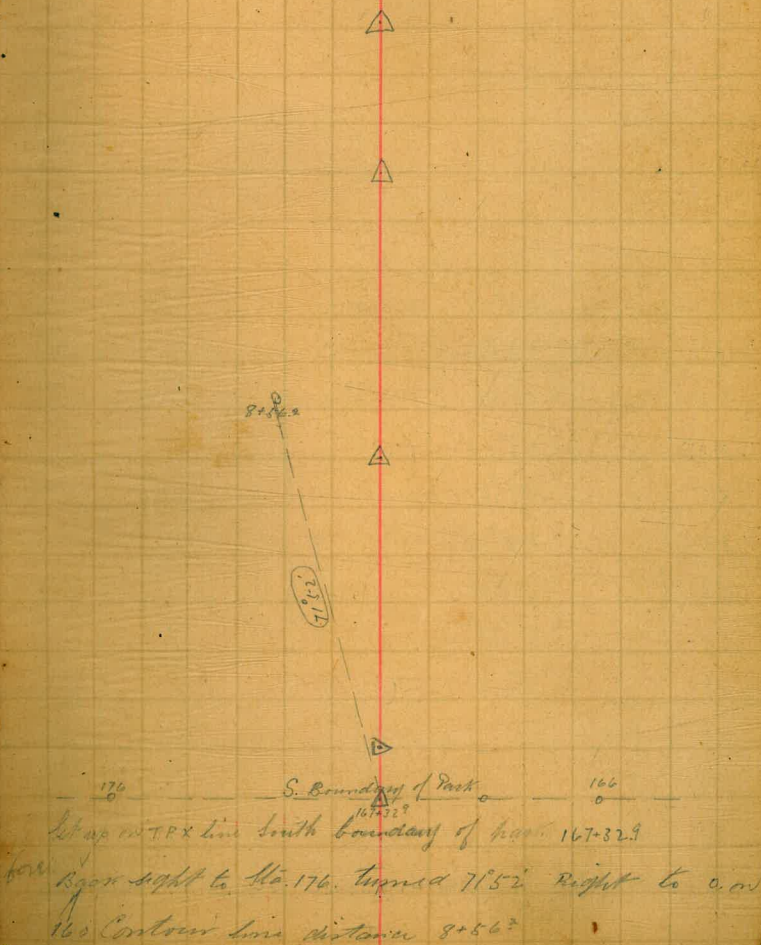


T.P. 137+40? Park line 25°22' Right

160 ft. Contour line in Switzer Canyon

No. Left Right

15	29°39'	
14	124°01'	
13	123°19'	
12	87°50'	
+72	15°14'	
11	11°56'	
10	7°45'	
9	11°27'	
8	17°54'	
7	26°22'	
6		27°10'
5		32°21'
4		29°16'
3		27°29'
2		20°39'
1		27°41'
0 = 8+56'		
167+32°		71°52'



160 ft Contour line Switzer Canon

No. Left Right

+15 = 0	48°49'
27	46°56'
26	32°19'
25	42°03'
24	44°50'
23	48°58'
22	7°24'
21	11°57'
20	7°45'
19	9°51'
18	31°24'
17	48°34'
16	46°35'

27+15 = 8+56². This line commenced and finished here
 Checked level to 140 ft Contour line
 East side of Switzer Canon dif 0.1

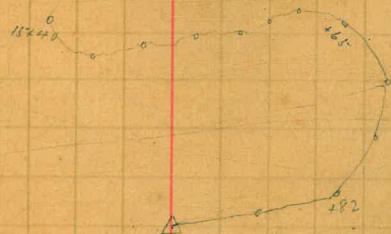


160 ft. Contour line Buckford, Conn.

Sta. Left Right

+65	45°30'
+25	59°28'
11	68°20'
+92	74°24'
10	74°59'
+35	19°24'
9	18°40'
+54	23°38'
8	24°05'
7	35°55'
6	36°30'
+56	26°54'
5	36°18'
+56	11°06'
+16	23°45'
4	23°10'
3	30°04'
2	16°12'
1	54°05'

0 = 26 + 25'



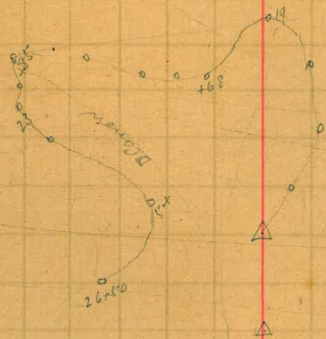
St. up on Sta. a. 160 ft. line Δ 26 + 25' back sight to
Sta. 11133 140 ft. line

160 ft. Colburn line West of Canon

Sta. Left Right

23	57°40'	
22	53°25'	
+85	51°40'	
21	46°10'	
+58	42°10'	
20	32°30'	
+68	26°02'	
19	10°45'	
+42	8°20'	
18		0°10'
17		2°31'
+30		7°52'
16		69°50'
+40	45°40'	
15	48°18'	
+45	40°20'	
14	38°04'	
13		1°22'
+25		25°00'
12		34°50'

Intersections D. Course = 34°49'



160 ft. Contour line back from canon

Sta. Left Right

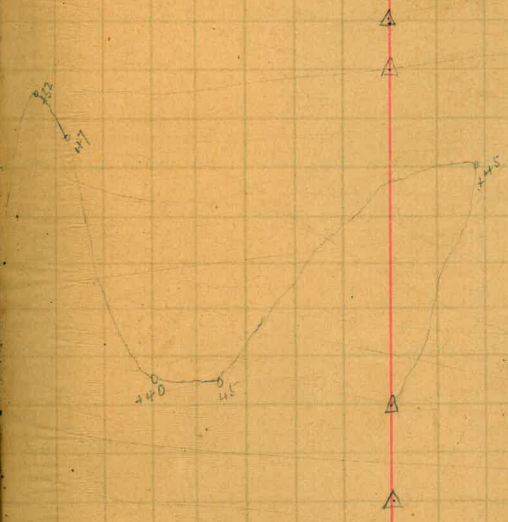
+46	59°40'	
34	51°56'	
+50	46°38'	
33	37°56'	
32	29°30'	
+88	27°55'	
+38	28°50'	
31	26°40'	
30	7°30'	
+82	8°38'	
29	15°32'	
28	14°10'	
+30		10°50'
27		12°00'
+50	104°14'	
26	102°22'	
+75	100°55'	
25	80°19'	
+48	64°09'	
24	52°23'	



160 ft. Contour line

Sta Left Right

47		76°15'
46		73°05'
+81		18°12'
+40	59°23'	
45	54°02'	
44	15°15'	
43		17°40'
+45		33°59'
42		34°10'
41		37°42'
+48		75°42'
40		65°56'
+60	125°01'	
39	124°38'	
38	119°22'	
37	109°15'	
+65	104°59'	
36	100°42'	
+70	97°50'	
35	77°00'	



160 ft. Contour line

Sta. Left Right

57	0°47'	
+67	3°50'	
+32	6°25'	
56	10°37'	
+33	10°10'	
55	10°43'	
54	11°07'	
53	23°05'	
+50	74°28'	
52	84°20'	
494	33°12'	
+64	25°39'	
57	28°03'	
+65	29°36'	
50	24°58'	
+75	22°10'	
49	0°39'	
+76	6°55'	
48	44°15'	
+7+32	71°10'	



160 ft. Contour line

Sta. Left Right

75		104°40'
+50		85°45'
74		83°33'
73		85°01'
72		89°25'
71		39°32'
70		30°01'
69		39°50'
68		48°38'
67		58°40'
66		65°07'
65		67°23'
64		65°21'
63	86°21'	
62	83°32'	
61	64°58'	
60	39°50'	
59	20°10'	
58	11°50'	
57+50	7°+5'	



160 ft. Contour line

Sta. Left Right

+65	17°18'	
92	13°24'	
91	8°38'	
90	6°20'	
89	4°10'	
88		0°37'
87		0°02'
86		10°43'
85		14°24'
84		14°46'
+56		64°04'
83		50°01'
+48		19°10'
82		17°00'
81		11°34'
80		2°21'
79		38°21'
78		48°57'
77		65°58'
76		93°59'

Intersection of K. Canyon



Entrance to K. Canyon

160 ft. Contour line, West of aid Canal

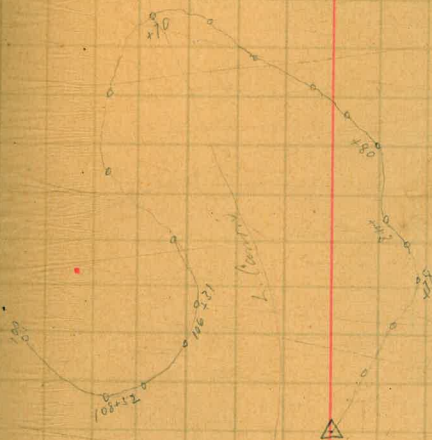
Sta. Left Right

+70		
104		28°38'
+79		22°28'
+56		25°56'
103		30°12'
+80		30°50'
+43		28°36'
102		34°18'
+78		31°30'
101		30°24'
100		17°38'
+78	60°43'	
99	46°01'	
98	30°02'	
97	21°38'	
96	18°10'	
95	16°00'	
+65	14°38'	
94	14°30'	
93	16°15'	

Sanctuary (Sanct)

11

Intersections of Canals 7+10



160 ft. Contour line

Sta. Left Right

+35		42°46'
117		37°30'
+60		18°28'
+25		17°44'
116		18°22'
+73		19°10'
115		18°55'
114		19°25'
113		20°57'
112		44°03'
111		54°50'
110		54°38'
109	23°45'	
+52	25°50'	
108	22°36'	
107	10°37'	
+31	0°55'	
106		1°07'
+84		2°41'
105		13°31'

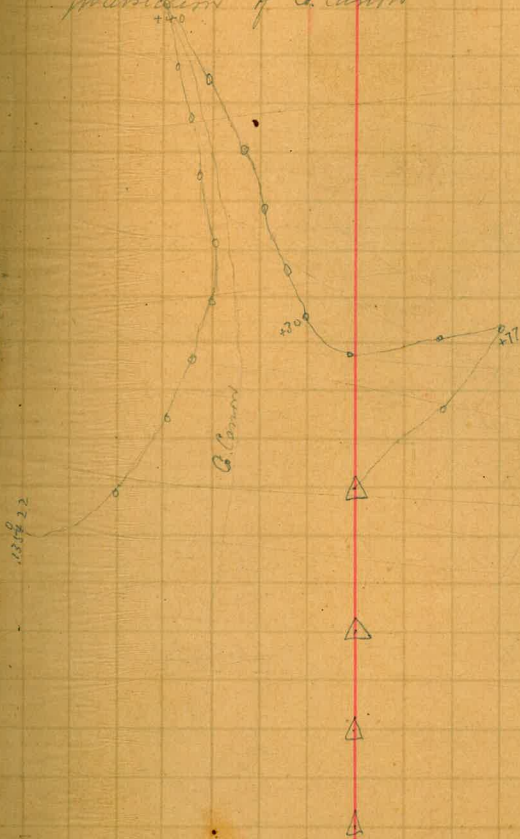
Entrance to N. Canal \triangle \triangle \triangle

460 ft. Contour line

Sta. Left Right

130	64°20'
+40	66°57'
529	62°59'
128	56°57'
127	50°39'
126	47°53'
+30	45°10'
125	36°50'
124	10°03'
+77	18°22'
123	22°50'
+27	-11°04'
122	10°27'
121	18°58'
+42	24°32'
120	20°15'
+35	23°14'
119	10°01'
+75	31°37'
118	32°21'

Intersections of G. Camp



160. H. Contour line

Sta., Left Right

144	49°58'	
+77	46°56'	
143	27°10'	
+42	12°50'	
142	9°08'	
+63	3°18'	
141		16°40'
140		33°05'
139		34°47'
138		43°30'
137		48°03'
136		57°50'
+22	125°47'	
135	121°08'	
+46	125°50'	
134	119°02'	
+50	106°50'	
133	91°38'	
132	74°28'	
131	65°10'	



Hanklin (transit)

15

160 ft. Constant line

Sta. Left Right

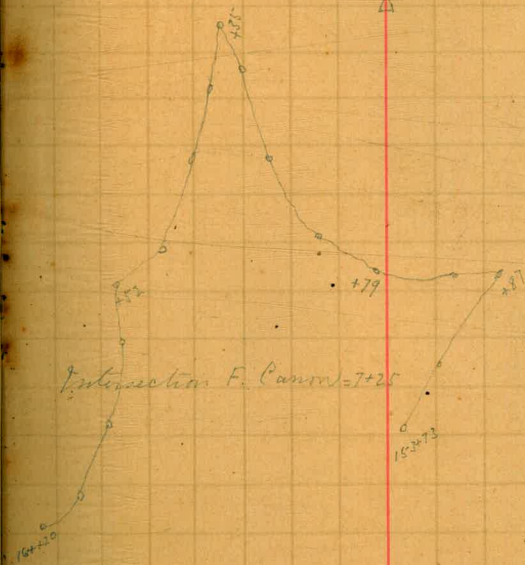
+27		49°00'
154		40°50'
+73		3°33'
153		0°53'
+65		35°45'
152		41°50'
+70		49°50'
151		21°21'
+83		11°58'
150		10°41'
149		17°22'
148		33°50'
+87		42°25'
+17		65°02'
147		62°05'
+15	65°31'	
146	67°18'	
+16	63°50'	
145	60°57'	
144+80	57°10'	



160 ft. Contour line

Sta. Left Right

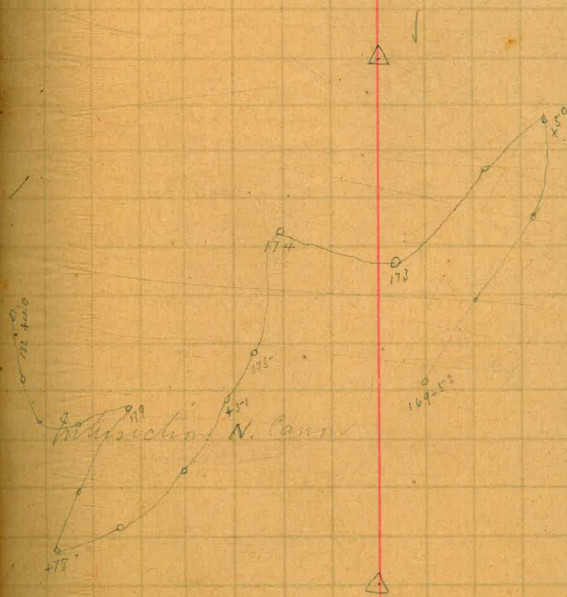
+85	20°46'
167	17°01'
+60	45°57'
166	48°50'
+78	45°10'
165	52°15'
+20	134°18'
164	135°24'
163	128°30'
162	107°18'
+52	91°00'
161	76°19'
160	43°34'
159	33°50'
+25	27°10'
158	27°00'
157	23°56'
156	11°58'
+79	2°04'
155	43°52'



160 ft. Contour line

Sta. Left Right

140	73°36'	
182	73°30'	
181	67°20'	
180	13°20'	
179		44°10'
178		27°08'
178	149°57'	
177	147°55'	
176	127°59'	
151	109°38'	
175	75°18'	
174	57°30'	
173	37°50'	
172		3°19'
150		8°18'
171		13°59'
170		14°19'
152		51°45'
169		54°22'
168		22°38'



160 ft. Contour line

Sta. Left Right

195		33°38'
+40		10°52'
194		9°33'
193		15°04'
192		34°28'
+30		37°30'
191		35°34'
+78		31°10'
190		26°30'
+48		14°46'
189		12°05'
188		6°50'
187		22°11'
186		32°56'
+35	84°10'	
185	84°35'	
184	80°59'	
+70	82°56'	
183	78°47'	
182+70	73°59'	

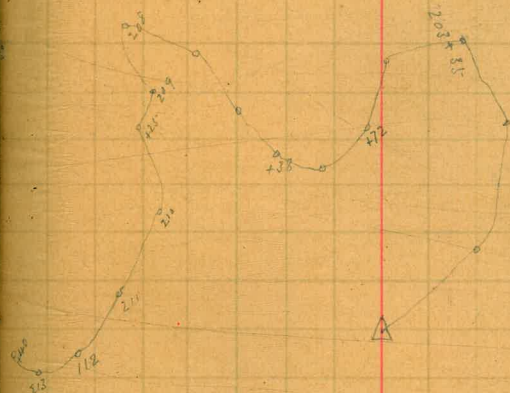


160 ft. Contour line

Sta. Left Right

209	54°30'	
208	48°10'	
207	39°10'	
206	32°18'	
+28	30°28'	
205	29°19'	
+72	11°35'	
204	5°06'	
+35	2°18'	
203	28°38'	
202	24°10'	
201	53°09'	
200	51°25'	
+50	37°49'	
199	27°48'	
198	36°01'	
+74	42°03'	
197	46°43'	
196	45°33'	
195-55	53°27'	

Intersection of Contour 7-25

Cut from N. Cassin Δ

160 ft Contour from back of main canon

Franklin (Franklin)

20

Sta. Left Right

221	4°19'	
+40	1°03'	
220		4°10'
+65		9°45'
+25		4°10'
219		3°42'
+45		15°40'
218		9°47'
+16		2°15'
217		2°59'
216		7°17'
215		41°13'
+16		30°37'
214		25°39'
+40	94°28'	
213	96°03'	
212	92°22'	
211	73°27'	
210	58°00'	
209+25	57°56'	

Entrance to R. Canon

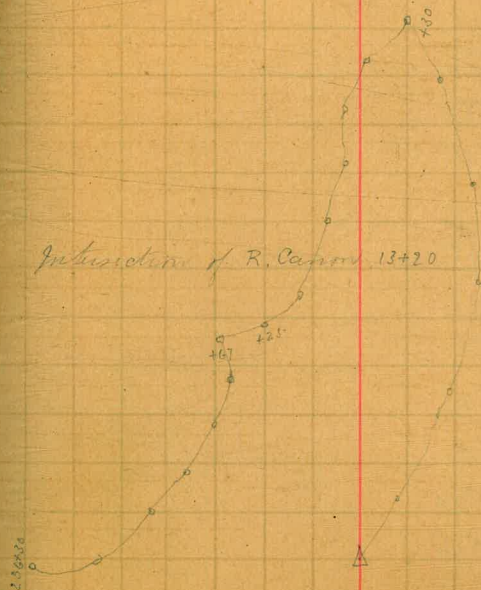


160 ft. Contour line

Sta Left Right

+30	147°45'	
236	148°31'	
235	146°11'	
234	138°10'	
233	127°35'	
232	99°05'	
+67	90°46'	
+25	90°11'	
231	81°10'	
230	41°50'	
229	7°08'	
228	4°28'	
227	1°29'	
+30		0°46'
226		0°56'
225		4°09'
224		7°10'
223		7°09'
222		4°10'
221+68	5°28'	

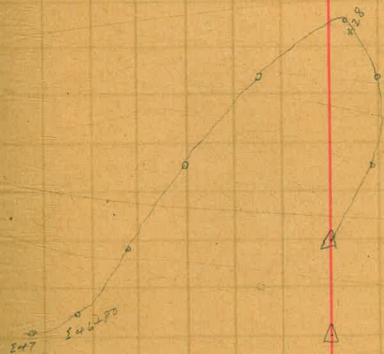
Intersection of R. Canon 13+20



160 ft. Contour line

Sta Left Right

250		28°47'
+70		52°45'
249		28°15'
248		33°03'
247	93°50'	
+80	94°10'	
246	73°09'	
245	37°32'	
244		1°09'
+28		22°51'
243		23°32'
242		25°35'
+41		46°46'
241		32°59'
+88		27°23'
+42		16°11'
240		16°01'
239		18°07'
238		20°46'
237		60°46'



160 ft. Centre line Burrford Canon

Sta. Left Right

0=7+70	41°37'	B.M.
	42°15'	Sta. 7 x line of part
	18+47	Sta. 11 x line part
+10	33°56'	B.M.
261	33°05'	
+62	117°56'	
260	119°16'	
259	95°00'	
258	52°10'	
257	32°50'	
256	21°10'	
+66	17°52'	
255	18°00'	
254	18°10'	
+15	9°18'	
253	14°31'	
+35	48°12'	
252	48°03'	
+15	25°50'	
251	25°00'	

11+56
10+24
132

11+56
10+77
79

10+77
10+24
53
79
132

23

0=7+70 x line of part

North boundary part & line
261+10 = 11+56 North boundary part x line



160 ft. Contour line Bushy field corner

Sta. Left Right

+67 112°06'

13 107°29'

12 100°31'

-11 97°45'

10 98°50'

+40 101°39'

9 102°20'

8 95°30'

+80 93°50'

+20 88°35'

7 86°56'

6 80°01'

+55 79°03'

5 76°21'

4 74°08'

+40 76°45'

3 77°21'

+45 74°24'

2 69°50'

1 56°18'

13+67

of Hawthorn (transit)

24

Old Post house

North boundary of part of X line

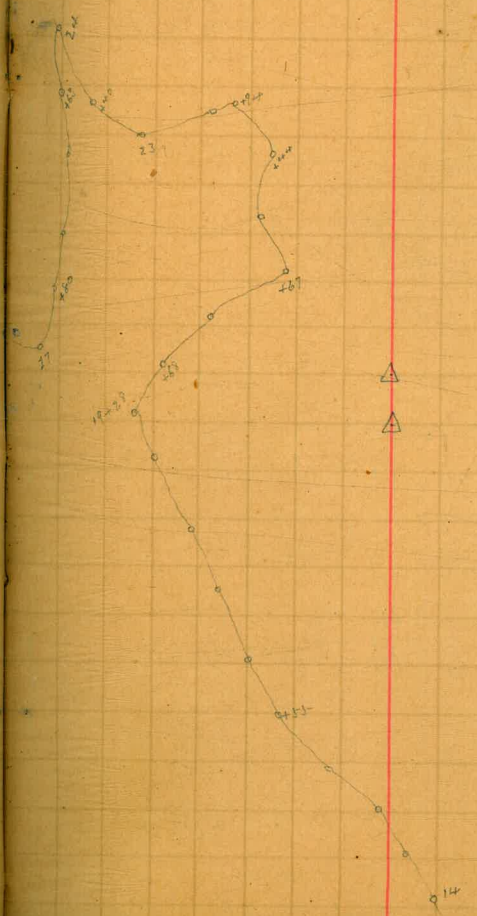
11456

7470

160 ft. Contour line Base of sand canon

Sta. Left Right

24	7°05'	
+40	2°05'	
23		12°46'
22		45°38'
+94		47°08'
+44		59°10'
21		57°43'
+67		74°35'
20		53°23'
+68		28°29'
+28	123°03'	
19	123°03'	
18	122°51'	
+85	122°19'	
17	121°35'	
+55	121°15'	
16	119°55'	
+35	116°08'	
15	116°01'	
14	113°32'	



160 ft. Contour line Barchinard Canyon

No. Left Right

35		44°34'
+48		64°31'
-34		51°06'
+72		7°29'
33		1°25'
+60		5°18'
32		7°29'
31		27°35'
+65		36°35'
30		36°52'
+65		12°05'
29		16°11'
+60		26°05'
28		26°03'
+61		20°19'
27	58°23'	
+80	57°48'	
26	44°45'	
25	23°18'	
24+63	14°59'	



160 ft. Contour line

Sta. Left Right

48 15°48'

47 23°56'

+45 120°17'

46 120°06'

477 119°45'

+37 118°43'

45 110°19'

44 94°30'

43 81°50'

485 80°51'

42 68°31'

41 62°40'

+75 59°5-0'

40 64°30'

39 39°42'

+80 35°20'

38 22°16'

+48 3°39'

37 12°31'

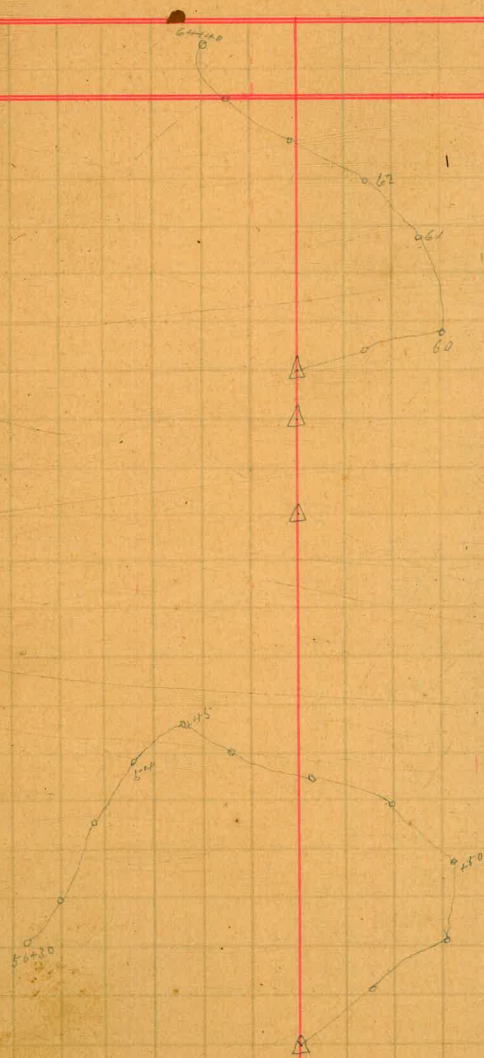
36 51°38'



160 ft. contour line

Sta. Left Right

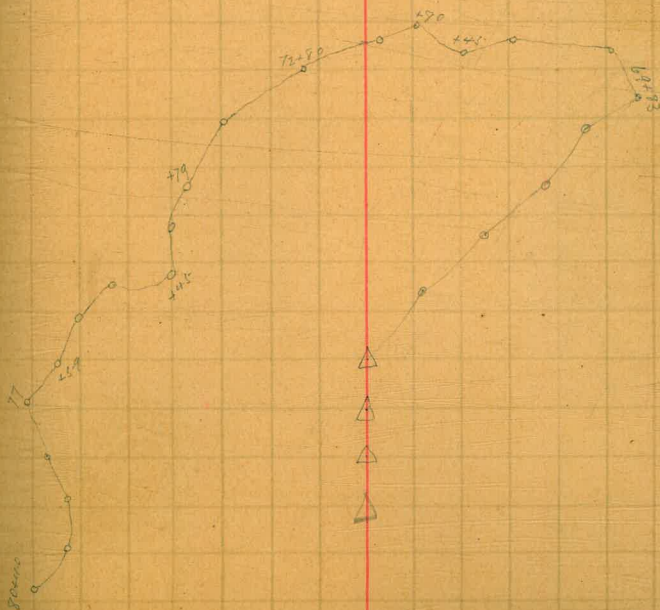
62	26°50'
61	51°16'
60	70°59'
59	61°22'
+55	18°03'
58	19°56'
57	13°59'
+30	2°29'
56	2°40'
55	11°01'
54	25°12'
+45	33°22'
53	38°15'
52	45°18'
+80	69°18'
+50	81°40'
51	84°19'
50	82°50'
+16	14°43'
49	15°10'



160 ft. Contour line, Rainy Mts. (Contour)

No. Left Right

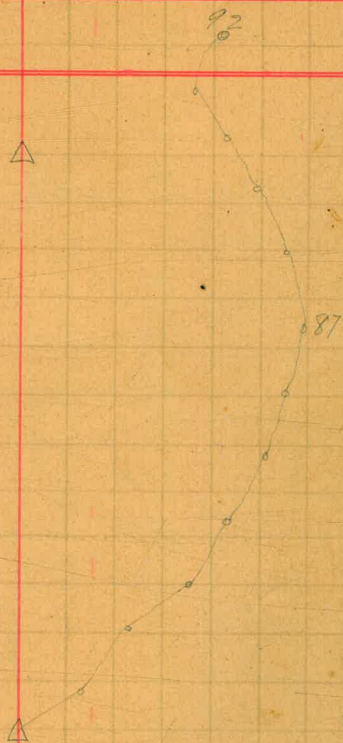
+45	48°05'	
74	39°56'	
+79	37°01'	
73	21°18'	
+80	17°30'	
72	8°05'	
+80	5°50'	
+45	0°05'	
71		5°50'
70		20°19'
+83		21°30'
69		13°38'
68		16°03'
67		12°38'
66		11°56'
+83		43°39'
65		63°50'
+40		24°00' ✓
64	2°10'	
63	8°55'	✓



160 ft. Contour line

Sta. Left Right

92		33°59'
91		28°34'
90		29°19'
89		32°29'
88		37°06'
87		40°32'
86		42°19'
85		48°25'
84		51°16'
83		58°02'
82		50°31'
81		54°15'
+40	127°04'	
80	124°09'	
79	112°31'	
78	96°12'	
77	81°30'	
+59	76°18'	
76	67°15'	
75	55°39'	



160 ft. Contour line

Sta. Left Right

Sta.	Left	Right
	12°15'	Sta. 272 x line of Park
105	18°52'	
104		9°02'
103		16°41'
+64		21°59'
102		23°02'
+44		28°35'
101		42°38'
100		41°46'
+28	18°02'	
99	17°56'	
+65	17°55'	
98	6°18'	
+49		4°46'
97		9°38'
96		16°17'
95		132°01'
94		131°28'
93		136°21'

Sta 105 = 271479

or west boundary of Park x line



180 ft. Center line Lutzger Canon

Franklin (transit)

32

Sta Left Right

16	142°33'	
15	141°56'	
14	143°10'	
13	114°58'	
+56	121°08'	
12	122°10'	
11	122°15'	
10	120°54'	
9	120°18'	
8	119°45'	
7	118°12'	
6	115°30'	
5	113°21'	
4	113°25'	
3	109°39'	
2	106°13'	
+83	106°18'	
1	96°50'	
0 = 5+22"	35°15'	

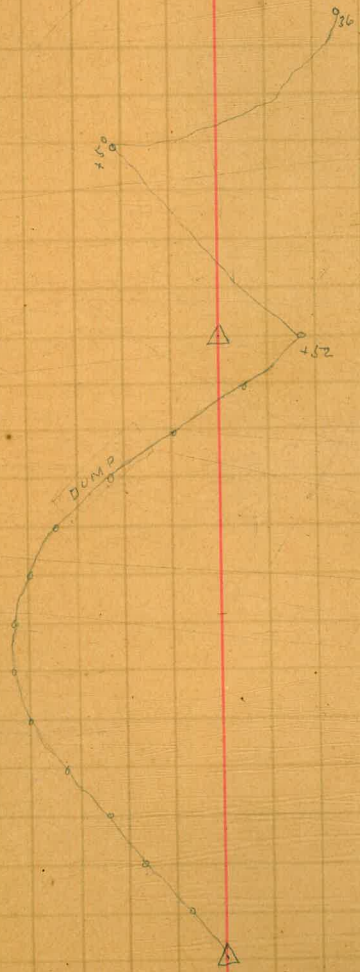
△

Interception of boulevard 36+23
 Set up on Sta. 0. 160 ft. line. Back sight
 to Sta. 0. 140 ft. line. Foresight and turned
 right 35° 15' to Sta. 0. 180 ft. line distance from
 160 ft. line to 180 ft. line = 5+22"

180 ft. Contour line

Sta.	Left	Right
------	------	-------

+50	5-5-4	
32	58°22'	
31	67°26'	
30	74°43'	
+73	81°10'	
29	85°50'	
+52		20°32'
28		19°15'
27		13°07'
26		5°41'
25	1°53'	
24	8°19'	
23	15°46'	
22	18°46'	
21	18°52'	
20	19°01'	
19	19°56'	
18	16°58'	
17	11°03'	
16+37	143°30'	



180 ft Contour line Switzer Canon

Franklin (transit)

34

No. Left Right

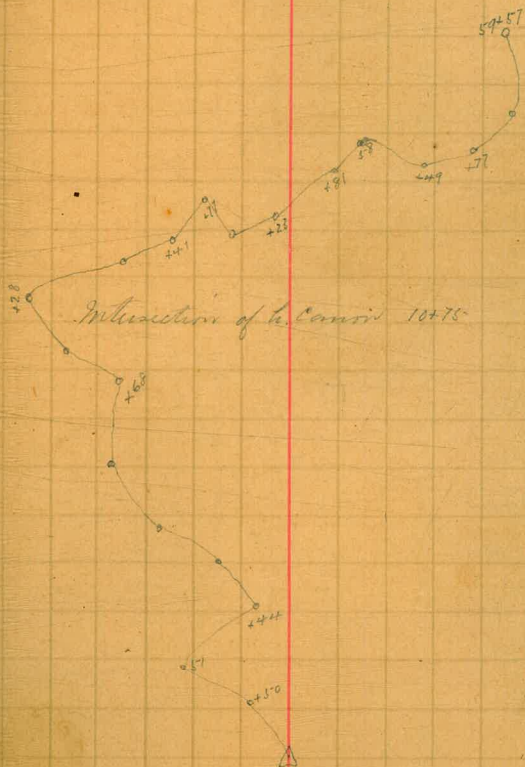
+17	50°50'	
47	51°01'	
46	52°10'	
+58		0°39'
45		1°15'
44	31°06'	
43	28°30'	
+93	8°30'	
42	4°36'	
+71	12°37'	
41	12°06'	
40	13°26'	
39	15°50'	
38	15°10'	
+29	20°22'	
37	20°24'	
36	17°04'	
35	17°28'	
34	38°50'	
33	50°22'	



190 H. Contour line

Sta. Left Right

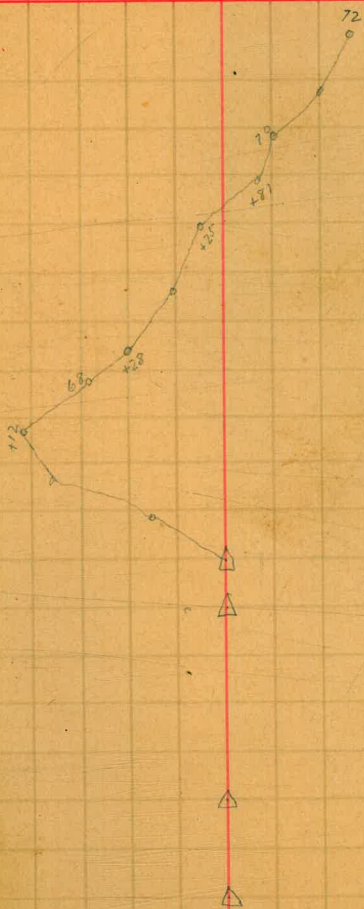
+		
+49		10°41'
58		5°42'
+81		3°15'
123		✓
57	7°43'	
+77	9°40'	
+41	14°25'	
56	18°46'	
+28	27°10'	
55	28°30'	
+68	26°55'	
54	30°10'	
53	39°30'	
52	27°58'	
+44	24°15'	
51	42°35'	
+50	21°35'	
50		16°45'
49		16°32'
48		19°35'



180 ft. Contour line

Sta. Left Right

71		61+1
70		51°20'
+71		51°50'
+26		38°35'
69		36°19'
+28		25°21'
68		14°59'
+12	16°10'	
67	19°00'	
66	12°58'	
+42	33°48'	
65	9°00'	
64	10°14'	
63	14°31'	
62	16°30'	
61	21°36'	
60	21°25'	
+57	13°56'	
59	15°35'	
58+77	14°45'	



180 Contour line Switzer Canon

Franklin (transit)

35

Sta. Left Right

Sta.	Left	Right
85	18°39'	
84	14°52'	
83	43°48'	
+26	47°24'	
82	38°53'	
+43	22°22'	
81	13°50'	
+34		8°08'
80		9°10'
79		7°12'
78	2°10'	
77	13°43'	
76	17°40'	
+70		7°37'
+49		7°15'
75	6°25'	
74	5°10'	
73	5°42'	
+76	14°18'	
72		6°15'

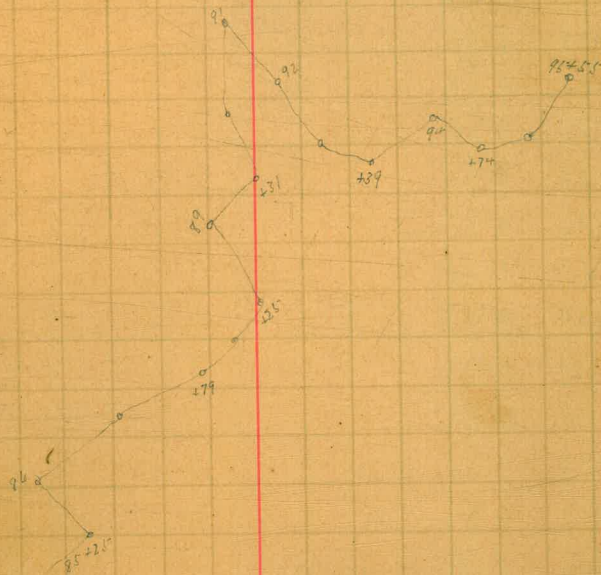
B.M.



180 ft. Contour line

Sta. Left Right

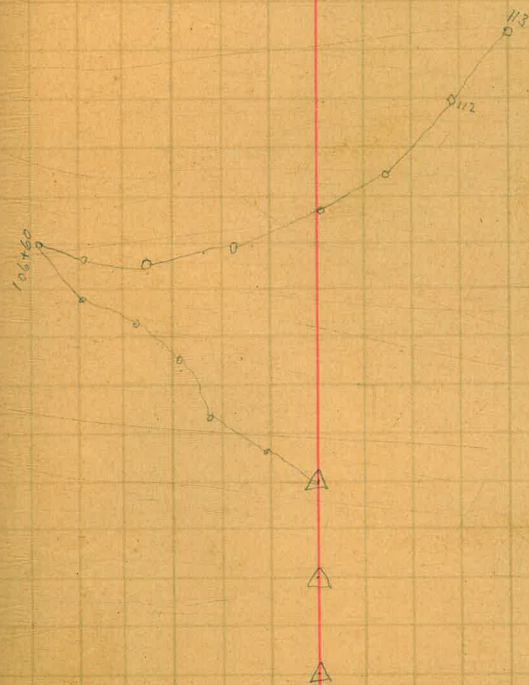
97	27°5'	
+68	16°58'	
96	13°00'	
+55	11°50'	
95	110°14'	
+74	106°41'	
94	93°12'	
+39	83°38'	
93	76°58'	
92	60°02'	
91	53°18'	
90	47°50'	
+31	47°20'	
89	40°50'	
+25	40°55'	
88	32°10'	
+79	25°50'	
87	9°35'	
86	10°45'	
85	9°42'	



180 ft. Contour Line

Sta. Left Right

112		91°44'
111		60°21'
110		27°05'
109		12°56'
108		2°32'
107	4°00'	
+60	4°01 1/2'	
106	7°05'	
105	5°55'	
104	4°25'	
103	19°21'	
102	15°05'	
+80	30°49'	
101	15°44'	
+69	33°28'	
100	32°41'	
+76		10°54'
99		7°25'
98	13°20'	
97+62	31°12'	



180 ft. Contour line

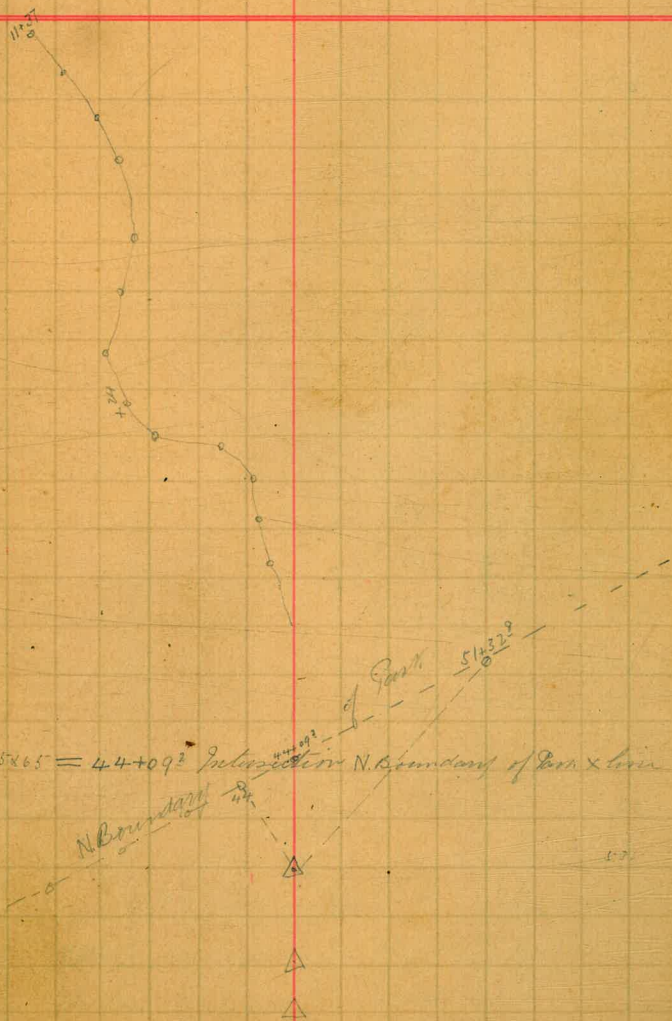
Sta. Left Right

10		144°50'
9		141°50'
8		139°20'
7		134°22'
6		128°00'
+24		123°10'
5		122°55'
4		123°40'
3		117°39'
2		109°50'
1		101°18'
0 = 51+32		92°50'

29°21'	Sta. 44 N. Boundary of Park	
+65	26°12'	B.M.
115	22°04'	
+43	21°18'	
114	30°08'	
+83	26°01'	
113	94°11'	

Traverse (transit)

40

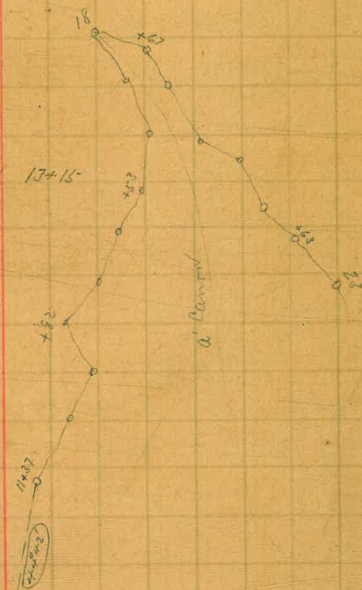


190 ft. Contour line

Sta. Left Right

23		61°11'
+63		59°46'
22		58°32'
21		57°33'
20		56°30'
19		54°38'
+67		54°45'
18		51°45'
17		52°58'
16		53°12'
+53		53°21'
15		52°51'
14		50°08'
+82		49°15'
13		49°58'
12		49°54'
80+34		
+37	147°54'	B.M.
11	146°28'	new post house <input checked="" type="checkbox"/>

Entrance of a Canyon 13+15



Entrance to a Canyon

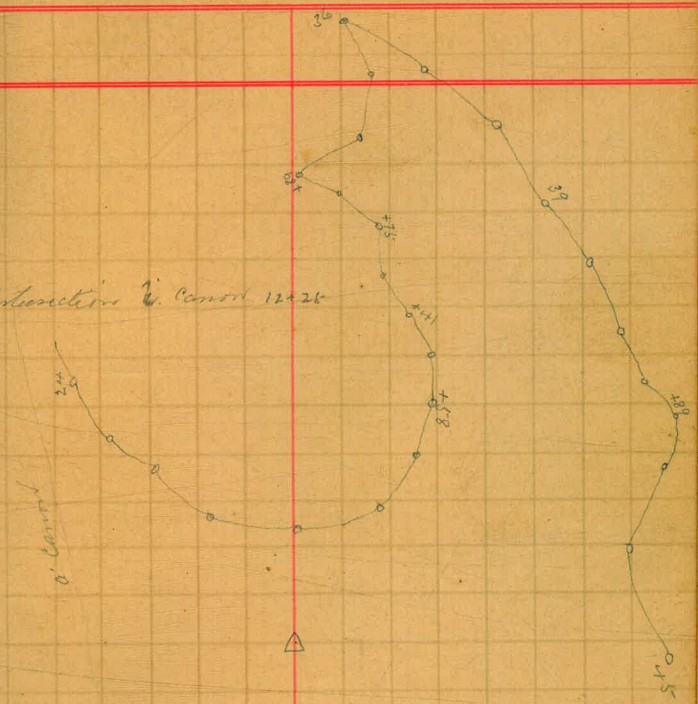
Set up on T.P. 80+34. Run 190 ft line back sight
to T.P. 75+70. Backsight and turned right 49°42'
to Sta. 11+37

180 ft. Contour line

No. Left Right

39		28°55'
38		15°30'
37		4°30'
36	7°20'	
35	2°14'	
34	18°19'	
+39	27°19'	
33	20°28'	
+75	14°44'	
32	19°05'	
+41	5°28'	
31	0°56'	
+58	91°48'	
30	91°02'	
29	87°50'	
28	82°00'	
27	75°51'	
26	69°43'	
25	64°05'	
24	60°45'	

Intersection of Canal 12+26



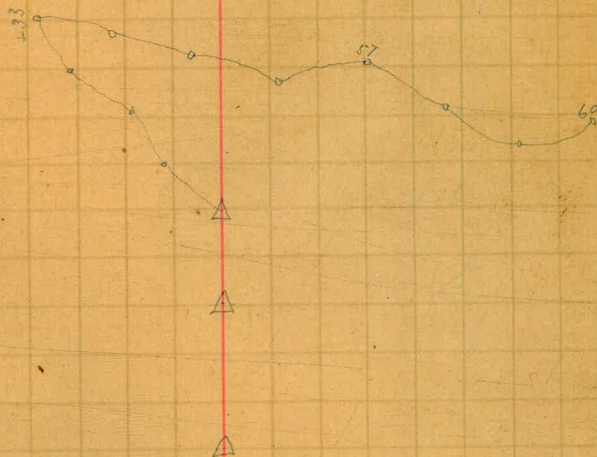
Bact. light on T.R. 80+34

180 ft. Contour lines

No. Left Right

57		26°06'
56		12°22'
55	8°06'	
54	27°15'	
+33	33°17'	
53	37°05'	
52	33°58'	
51	36°46'	
50	45°23'	
49	38°43'	
48	71°02'	
47	75°24'	
46	78°29'	
45		142°19'
44		140°20'
43		124°05'
+39		122°18'
42		119°54'
41		103°44'
40		70°08'

4



180 ft. Contour line & Canal

Sta. Left Right

+86	30°26'	
73	37°56'	
72	45°28'	
71	50°26'	
70	45°39'	
+61	12°29'	
69	11°05'	
68	35°38'	
+23	45°07'	
67	35°30'	
+60	29°21'	
66	29°37'	
65	32°46'	
64	39°35'	
63	38°32'	
62	37°52'	
61	54°55'	
60		45°31'
59		46°02'
58		41°33'

Transit (transit)

44

Intersection of Contour 6+50 72+61

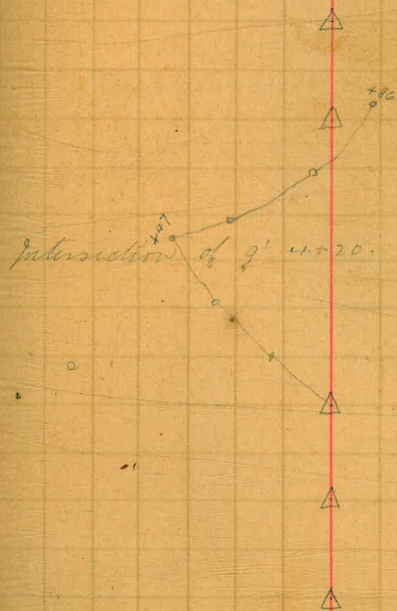
50



180 ft. Contour line

Sta Left Right

89	4°55'	
88	8°52'	
87	6°30'	
+64	16°08'	
86	11°27'	
+86		19°16'
85		12°26'
84	16°33'	
+47	25°37'	
83	26°54'	
82	30°42'	
81	8°17'	
80	7°08'	
79	7°37'	
78	7°24'	
+61		14°33'
77		13°18'
76	8°02'	
75	25°44'	
74	29°55'	



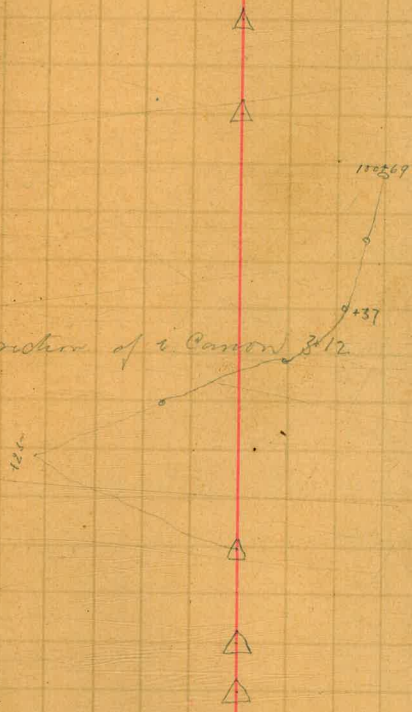
180 ft. Contour line

46

No.	Left	Right
-----	------	-------

102	4°12'	
+41	27°20'	
101	20°24'	
+69		57°04'
100		56°46'
+37		57°50'
99		44°56'
98	20°27'	
+25	36°10'	
97	40°33'	
96	41°13'	
+55	44°09'	
+32	35°22'	
95	28°12'	
+88	10°04'	
94		4°02'
93		2°56'
92		2°15'
91		1°55'
90	2°04'	

Intersection of 2 Contours 3/12



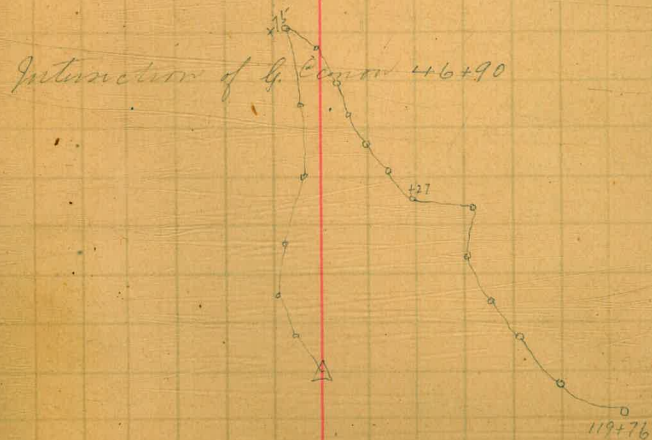
180 ft. Contour line G. Canon

of
transmitter (transit)

47

Sta. Left Right

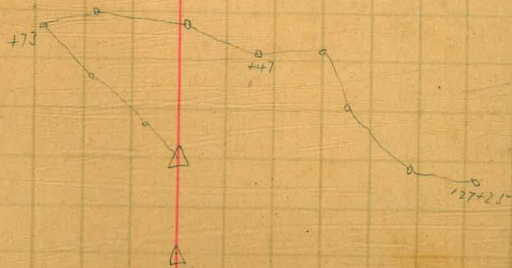
119		14839
118		14243
117		11670
116		7629
115		5136
+24		3619
114		2809
113		1506
112		1107
111		845
110		741
	Sta. 47 G. Canon	611
+75		620
109		445
108		406
107		138
106	226	
105	852	
104		059
103	401	



180. A. Contour line

Sta. Left Right

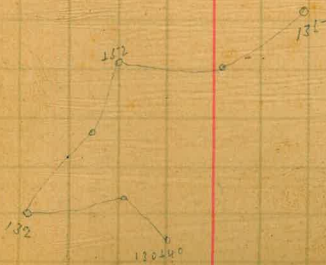
+40	18°19'	
130	14°35'	
+25	28°33'	
129	31°06'	
+39	46°54'	
128	50°32'	
+61	40°55'	
+25	97°06'	
127	99°33'	
126	61°07'	
125	31°31'	
+47	24°54'	
124	5°02'	
123	24°09'	
+73	31°44'	
122	27°27'	
121	18°35'	
+76	30°36'	
120	35°24'	
119+76	149°47'	



180 ft. Contour line

No. Left Right

+77		4°08'
145		2°21'
144		0°06'
+60		1°06'
143	2°55'	
142	15°50'	
141	32°26'	
+48	9°42'	
140	8°06'	
139	22°55'	
+78	9°59'	
138	3°03'	
137	6°24'	
136	4°42'	
135		4°18'
134		1°58'
+52	12°56'	
133	24°35'	
132	63°09'	
131	38°15'	



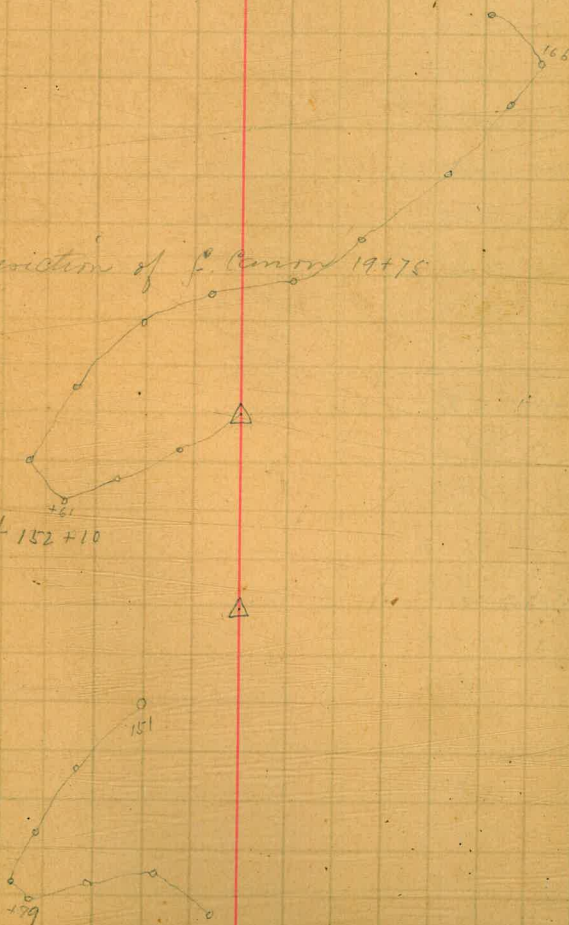
170 ft Contour line

Sta. Left Right

Sta.	Left	Right
163	35°05'	
162	52°08'	
161	71°35'	
160	90°05'	
159	106°50'	
158	129°20'	
157	137°55'	
156	138°16'	
155	24°45'	
154	32°14'	
153	37°55'	
152	38°59'	
151	0°39'	
150	6°48'	
149	31°25'	
148	64°00'	
147	66°50'	
146	41°57'	

Intersection of F. Canyon 19+75

B.M. at 152+10

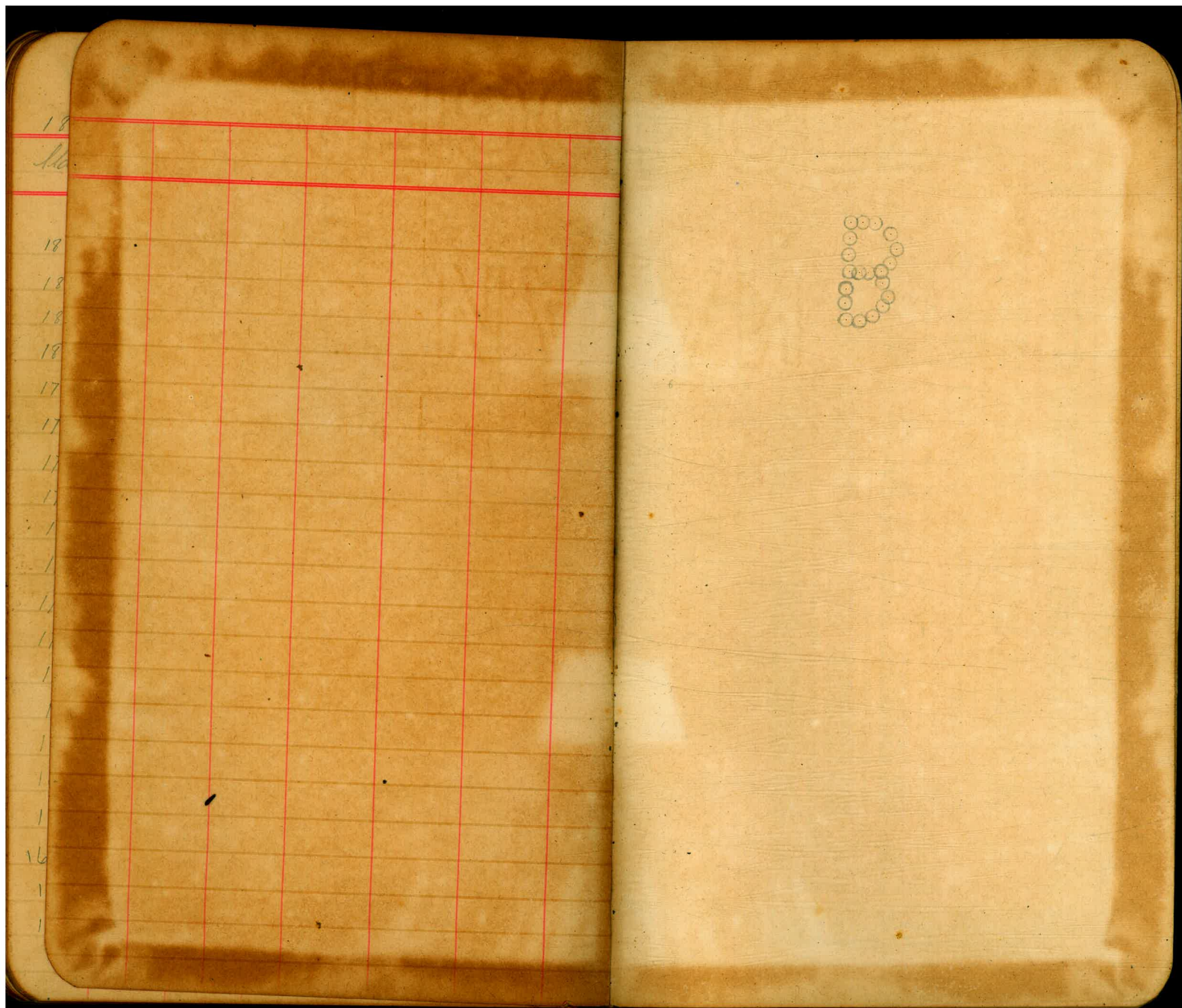


180 ft. Contour line

Sta. Left Right

183	13°08'
182	17°18'
181	19°05'
180	20°14'
179	24°22'
178	31°49'
177	42°36'
176	44°31'
175	78°17'
174	81°37'
173	88°01'
172	93°19'
171	92°04'
170	66°35'
169	51°05'
168	37°53'
167	19°53'
166	16°35'
165	20°55'
164	26°10'

Continued in front ¹⁸³ dated April 3rd 1888



5

S.T.

TRAVERSE TABLE FOR TRANSIT BOOK,
From 1° to 90° for a distance of 100.

Degrees.	DEGREES.		¼ DEGREE.		½ DEGREE.		¾ DEGREE.		Degrees.
	Lat.	Dep.	Lat.	Dep.	Lat.	Dep.	Lat.	Dep.	
0			100.00	0.44	100.00	0.87	99.99	1.31	81
1	99.98	1.75	99.98	2.18	99.97	2.62	99.95	3.05	82
2	99.94	3.49	99.92	3.93	99.91	4.36	99.88	4.80	83
3	99.86	5.23	99.84	5.67	99.81	6.10	99.79	6.54	84
4	99.76	6.98	99.73	7.41	99.69	7.85	99.66	8.28	85
5	99.62	8.72	99.58	9.15	99.54	9.58	99.50	10.02	86
6	99.45	10.45	99.41	10.89	99.36	11.32	99.31	11.75	87
7	99.25	12.19	99.20	12.62	99.14	13.05	99.09	13.49	88
8	99.03	13.92	98.97	14.35	98.90	14.78	98.84	15.21	89
9	98.77	15.64	98.70	16.07	98.63	16.50	98.56	16.93	90
10	98.48	17.36	98.40	17.79	98.33	18.22	98.25	18.65	71
11	98.16	19.08	98.08	19.51	97.99	19.94	97.90	20.36	72
12	97.81	20.79	97.72	21.22	97.63	21.64	97.53	22.07	73
13	97.44	22.50	97.34	22.92	97.24	23.34	97.13	23.77	74
14	97.03	24.19	96.92	24.62	96.81	25.04	96.70	25.46	75
15	96.59	25.88	96.48	26.30	96.36	26.72	96.25	27.14	76
16	96.13	27.56	96.00	27.98	95.88	28.40	95.76	28.82	77
17	95.65	29.24	95.50	29.65	95.37	30.07	95.24	30.49	78
18	95.11	30.90	94.97	31.32	94.83	31.73	94.69	32.14	79
19	94.55	32.56	94.41	32.97	94.26	33.38	94.12	33.79	80
20	93.97	34.20	93.82	34.61	93.67	35.02	93.51	35.43	68
21	93.36	35.84	93.20	36.24	93.04	36.65	92.88	37.06	69
22	92.72	37.46	92.55	37.86	92.39	38.27	92.22	38.67	70
23	92.05	39.07	91.88	39.47	91.71	39.87	91.53	40.27	66
24	91.35	40.67	91.18	41.07	91.00	41.47	90.81	41.87	65
25	90.63	42.26	90.45	42.66	90.26	43.05	90.07	43.44	64
26	89.88	43.84	89.69	44.23	89.49	44.62	89.30	45.01	63
27	89.10	45.40	88.90	45.79	88.70	46.17	88.50	46.56	62
28	88.29	46.95	88.09	47.33	87.88	47.72	87.67	48.10	61
29	87.46	48.48	87.25	48.86	87.04	49.24	86.82	49.62	60
30	86.60	50.00	86.38	50.38	86.16	50.75	85.94	51.13	59
31	85.72	51.50	85.49	51.88	85.26	52.25	85.04	52.62	58
32	84.80	52.99	84.57	53.36	84.34	53.73	84.10	54.10	57
33	83.87	54.46	83.63	54.83	83.39	55.19	83.15	55.56	56
34	82.90	55.92	82.66	56.28	82.41	56.64	82.16	57.00	55
35	81.92	57.36	81.66	57.71	81.41	58.07	81.16	58.42	54
36	80.90	58.78	80.64	59.13	80.39	59.48	80.13	59.83	53
37	79.86	60.18	79.60	60.53	79.34	60.88	79.07	61.22	52
38	78.80	61.57	78.53	61.91	78.26	62.25	77.99	62.59	51
39	77.71	62.93	77.44	63.27	77.16	63.61	76.88	63.94	50
40	76.60	64.28	76.32	64.61	76.04	64.94	75.76	65.28	49
41	75.47	65.61	75.18	65.93	74.90	66.26	74.61	66.59	48
42	74.31	66.91	74.02	67.24	73.73	67.56	73.43	67.88	47
43	73.14	68.20	72.84	68.52	72.54	68.84	72.24	69.15	46
44	71.93	69.47	71.63	69.78	71.33	70.09	71.02	70.40	45
45	70.71	70.71							
Degrees.	Dep.	Lat.	Dep.	Lat.	Dep.	Lat.	Dep.	Lat.	Degrees.
	DEGREES.		¼ DEGREE.		½ DEGREE.		¾ DEGREE.		

of the C. ...