

AVING GRADES OF "D" ST.

9

TRANSIT

F.B. 636

636

Table showing the difference of latitude and departure in running 80 chains at any course from 1 to 60 minutes.

| Minutes. | Lks. | Minutes. | Lks. | Minutes. | Lks. |
|----------|------|----------|------|----------|------|
| 1 | 2½ | 21 | 49 | 41 | 95½ |
| 2 | 4½ | 22 | 51½ | 42 | 98 |
| 3 | 7 | 23 | 53½ | 43 | 100½ |
| 4 | 9½ | 24 | 56 | 44 | 102½ |
| 5 | 11½ | 25 | 58½ | 45 | 105 |
| 6 | 14 | 26 | 60½ | 46 | 107½ |
| 7 | 16½ | 27 | 63 | 47 | 109½ |
| 8 | 18½ | 28 | 65½ | 48 | 112 |
| 9 | 21 | 29 | 67½ | 49 | 114½ |
| 10 | 23½ | 30 | 70 | 50 | 116½ |
| 11 | 25½ | 31 | 72½ | 51 | 119 |
| 12 | 28 | 32 | 74½ | 52 | 121½ |
| 13 | 30½ | 33 | 77 | 53 | 123½ |
| 14 | 32½ | 34 | 79½ | 54 | 126 |
| 15 | 35 | 35 | 81½ | 55 | 128½ |
| 16 | 37½ | 36 | 84 | 56 | 130½ |
| 17 | 39½ | 37 | 86½ | 57 | 133 |
| 18 | 42 | 38 | 88½ | 58 | 135½ |
| 19 | 44½ | 39 | 91 | 59 | 137½ |
| 20 | 46½ | 40 | 93½ | 60 | 140 |

PUBLISHED BY

EDWARD DENNY & CO.

DRAWING PAPER & MATERIAL, MATHEMATICAL INSTRUMENTS, ETC.,
STATIONERS AND PRINTERS,
SAN FRANCISCO, CAL.

Table for Running on Slopes.

In the following table the first column shows the angle, the second, the number of links to be added to a chain on the slopes, to make one chain, horizontal measurement.

| Angle. | Cor. in links | Angle. | Cor. in links. | Angle. | Cor. in links. | Angle. | Cor. in links. |
|--------|---------------|--------|----------------|--------|----------------|--------|----------------|
| ° | | ° | | ° | | ° | |
| 4 | 0-24 | 11 | 1-88 | 18 | 5-14 | 25 | 10-54 |
| 5 | 0-38 | 12 | 2-24 | 19 | 5-76 | 26 | 11-26 |
| 6 | 0-55 | 13 | 2-63 | 20 | 6-42 | 27 | 12-24 |
| 7 | 0-76 | 14 | 3-06 | 21 | 7-11 | 28 | 13-37 |
| 8 | 0-98 | 15 | 3-53 | 22 | 7-85 | 29 | 14-34 |
| 9 | 1-24 | 16 | 4-02 | 23 | 8-64 | 30 | 15-47 |
| 10 | 1-55 | 17 | 4-56 | 24 | 9-47 | 35 | 22-07 |

On S side D bet 3rd & 4th
for gutter Rise of 4"
S side
On other blocks for gutter
rise of 3"

On N side of Street where
length carry gutter level

Carry S track 0.1 lower than
N track throughout length
of contract.

4.67

5.33

2

17.00

MICROFILMED

DEC 14 1964

| North | | South | | | |
|-------|--------|--------|--------|--------|-----|
| Sub | Gutter | Center | Gutter | curb | Sta |
| 0.500 | 29.833 | 30.250 | 29.333 | 30.000 | 0 |
| 0.750 | 30.058 | 30.456 | 29.520 | 30.187 | +25 |
| 0.950 | 30.283 | 30.662 | 29.708 | 30.375 | +50 |
| 1.175 | 30.508 | 30.868 | 29.895 | 30.562 | +75 |
| 1.400 | 30.733 | 31.075 | 30.083 | 30.750 | 1 |
| 1.625 | 30.958 | 31.281 | 30.270 | 30.937 | +25 |
| 1.850 | 31.183 | 31.487 | 30.458 | 31.125 | +50 |
| 2.075 | 31.408 | 31.693 | 30.645 | 31.312 | +75 |
| 2.300 | 31.633 | 31.900 | 30.833 | 31.500 | 2 |
| 2.90 | 32.57 | 32.575 | 31.92 | 32.25 | +40 |
| 33.50 | 32.833 | 33.250 | 32.333 | 33.000 | 0 |

East Line of Front St

31.50
666
30.734

on 1st St. 10 ft from gutter " "

West Line of First Street.

First Street.

East Line of First Street

| North | | | South | | |
|--------|--------|--------|--------|--------|-----|
| Curb | Gutter | Center | Gutter | Curb | Sta |
| 33.75 | 33.083 | 33.500 | 32.583 | 33.25 | +25 |
| 34.00 | 33.333 | 33.750 | 32.833 | 33.5 | +50 |
| 34.25 | 33.583 | 34.000 | 33.083 | 33.75 | +75 |
| 34.50 | 33.833 | 34.250 | 33.333 | 34.00 | 1 |
| 34.75 | 34.083 | 34.500 | 33.583 | 34.25 | +25 |
| 35.00 | 34.333 | 34.750 | 33.833 | 34.50 | +50 |
| 35.25 | 34.583 | 35.000 | 34.083 | 34.75 | +75 |
| 35.500 | 34.833 | 35.250 | 34.333 | 35.000 | 2 |
| | | 35.750 | 34.833 | 35.50 | +40 |
| 36.500 | 35.833 | 36.250 | 35.333 | 36.000 | 0 |

35.50
 67
 34.83

34.53
 33
 34.83
 5
 36.33

West Line of Second Street
 Second Street - Center
 East Line of Second Street

North

South

Curb Sutter Center Sutter Curb Sta

37.125 36.458 36.780 ✓ 35.770 36.427 +.25

37.750 37.083 37.310 ✓ 36.208 36.875 +.50

38.375 37.708 37.841 ✓ 36.645 37.312 +.75

39.000 38.333 38.371 ✓ 37.083 37.750 1

39.625 38.958 38.901 ✓ 37.520 38.187 +.25

40.250 39.583 39.432 ✓ 37.958 38.625 +.50

40.875 40.208 39.962 ✓ 38.395 39.062 +.75

41.500 40.833 40.500 ✓ 38.833 39.500 2

41.125 ✓ +.40

42.500 41.833 41.75 ✓ 40.333 41.000 0

West Line of Third Street

Center of Third Street

East Line of Third St

North

South

| Curb | Gutter | Center | Gutter | Curb | Sta |
|--------|-------------------|--------|--------|--------|-----|
| 42.75 | 42.083 | 42.044 | 40.670 | 41.337 | +25 |
| | | | | 338 | |
| 43.0 | 42.533 | 42.337 | 41.008 | 41.875 | +50 |
| | | | | 337 | |
| 43.25 | 42.583 | 42.631 | 41.345 | 42.012 | +75 |
| 43.5 | 42.833 | 42.925 | 41.683 | 42.350 | 1 |
| | | | | 336 | |
| 43.75 | 43.083 | 43.135 | 42.020 | 42.687 | +25 |
| 44.0 | 43.333 | 43.346 | 42.358 | 43.025 | +50 |
| 44.25 | 43.583 | 43.556 | 42.695 | 43.362 | +75 |
| 44.500 | 43.833 | 43.767 | 43.033 | 43.700 | 2 |
| | Depress gutter 4" | | | | +14 |
| | Depress gutter 4" | | | | +40 |
| | Depress gutter 4" | | | | +66 |
| 44.500 | 43.83 | 43.767 | 43.033 | 43.700 | 0 |

Center grades run from 8" crown at Sta 1 to 4" crown at 4

West line of 4th St

Fourth St

East line of 4th St

North

South

| Curb | Gutter | Center | Gutter | Curb | Sta |
|--------|--------|--------|--------|--------|-----|
| 44.912 | 44.246 | 44.461 | 43.408 | 44.075 | +25 |
| 45.325 | 44.658 | 44.554 | 43.783 | 44.450 | +50 |
| 45.737 | 45.071 | 44.948 | 44.158 | 44.825 | +75 |
| 46.150 | 45.483 | 45.342 | 44.533 | 45.200 | 1 |
| 46.562 | 45.896 | 45.736 | 44.908 | 45.575 | +25 |
| 46.975 | 46.308 | 46.129 | 45.283 | 45.950 | +50 |
| 47.387 | 46.721 | 46.523 | 45.658 | 46.325 | +75 |
| 47.800 | 47.133 | 46.917 | 46.033 | 46.700 | 2 |

West line of Fifth St

East line of Fifth St

North

South

| Level | Gutter | Center | Gutter | Level | Sta |
|--------|--------|--------|--------|--------|-----|
| 47.8 | 47.13 | 46.917 | 46.03 | 46.7 | 0 |
| 48.2 | 47.53 | 47.354 | 46.505 | 47.175 | +25 |
| 48.6 | 47.93 | 47.792 | 46.98 | 47.65 | +50 |
| 49.0 | 48.33 | 48.229 | 47.455 | 48.125 | +75 |
| 49.4 | 48.73 | 48.667 | 47.93 | 48.60 | 1 |
| 49.8 | 49.13 | 49.104 | 48.405 | 49.075 | +25 |
| 50.2 | 49.53 | 49.542 | 48.880 | 49.55 | +50 |
| 50.6 | 49.93 | 49.979 | 49.355 | 50.025 | +75 |
| 51.000 | 50.33 | 50.417 | 49.830 | 50.500 | 2 |
| | | | | | +40 |
| 51.500 | | | | 51.000 | 0 |

West Line of Sixth St

Center of Sixth St

East Line of Sixth St

Under at intersection of

2nd and 58 St

8

0

+40

Apr 1890

Hambur Level
Hensley and
Williams
Cater

| Sta | + | HO | Grade | rod | C.M. |
|------|------|--------|--------|-------|--------|
| B.M. | 6.94 | 46.940 | | | 40.000 |
| | | | 41.000 | 5.940 | |
| | | | 41.337 | 5.603 | |
| | | | 41.675 | 5.265 | |
| | | | 42.012 | 4.928 | |
| | | | 42.350 | 4.590 | |
| | | | 42.687 | 4.253 | |
| | | | 43.025 | 3.915 | |
| | | | 43.362 | 3.578 | |
| | | | 43.700 | 3.240 | |
| B.M. | | | | 0.42 | 46.52 |

End end of 1st St
East line of 1st St

46.94
39.50
7.44

West line of 4th St

4th and 10th St

Dater grades on 10th St bet 1st and 2nd St

| 0 | 32.433 | 6.520 | East line of 1st St | 1 | 7.023 |
|-----|--------|-------|---------------------|--------|-------|
| +25 | 33.083 | 6.273 | 0 | 32.333 | 7.023 |
| +50 | 33.333 | 6.023 | +25 | 32.583 | 6.773 |
| +75 | 33.583 | 5.773 | +50 | 32.833 | 6.523 |
| 1 | 33.833 | 5.523 | +75 | 33.083 | 6.273 |
| +25 | 34.083 | 5.273 | 1 | 33.333 | 6.023 |
| +50 | 34.333 | 5.023 | +25 | 33.583 | 5.773 |
| +75 | 34.583 | 4.773 | +50 | 33.833 | 5.523 |
| 2 | 34.833 | 4.523 | +75 | 34.083 | 5.273 |
| | | | 2 | 34.333 | 5.023 |

| + | HO | Blue |
|-------|--------|--------|
| 2.160 | 39.356 | 37.191 |
| 3.140 | 34.866 | 31.726 |
| 2.73 | | 32.136 |

West line of 2nd St

Butte grades between Front and 1st on 18

| Sta | Grade | Red | Sta | Grade | Red |
|-----|--------|----------|-----|--------|----------|
| | | (36.777) | | | (36.777) |
| 0 | 29.833 | 6.944 | 0 | 29.333 | 7.444 |
| +25 | 30.058 | 6.719 | +25 | 29.520 | 7.257 |
| +50 | 30.283 | 6.494 | +50 | 29.708 | 7.069 |
| +75 | 30.508 | 6.269 | +75 | 29.896 | 6.882 |
| 1 | 30.733 | 6.044 | 1 | 30.083 | 6.694 |
| +25 | 30.958 | 5.819 | +25 | 30.270 | 6.507 |
| +50 | 31.183 | 5.594 | +50 | 30.458 | 6.319 |
| +75 | 31.408 | 5.369 | +75 | 30.645 | 6.132 |
| 2 | 31.633 | 5.144 | 2 | 30.833 | 5.944 |

| Sta | + | HO | - | Elev |
|---------------------------|---------------|--------|---|--------|
| East line of Front Street | | | | |
| Bm | 4.640 | 36.777 | | 32.137 |
| West line of 1st Street | | | | |
| Bm | 2nd and 18 St | 42.616 | | 31.727 |

Butte grades between 2nd and

| Sta | Grade | Red | Sta | Grade | Red |
|-----|--------|----------|-----|--------|----------|
| | | (42.616) | | | (42.616) |
| 0 | 35.833 | 6.783 | 0 | 35.333 | 7.283 |
| +25 | 36.458 | 6.158 | +25 | 35.770 | 6.846 |
| +50 | 37.083 | 5.533 | +50 | 36.208 | 6.408 |
| +75 | 37.708 | 4.908 | +75 | 36.645 | 5.971 |
| 1 | 38.333 | 4.283 | 1 | 37.083 | 5.533 |
| +25 | 38.958 | 3.658 | +25 | 37.520 | 5.096 |
| +50 | 39.583 | 3.033 | +50 | 37.958 | 4.658 |
| +75 | 40.208 | 2.408 | +75 | 38.395 | 4.221 |
| 2 | 40.833 | 1.783 | 2 | 38.833 | 3.783 |

| Sta | + | HO | - | Elev |
|-------------------------|---------------|--------|--------|--------|
| 3rd Sts on 18 St | | | | |
| Bm | 2nd and 18 St | 57.425 | 42.616 | 37.191 |
| East line of 2nd Street | | | | |
| West line of 3rd Street | | | | |
| Bm | 3rd and 18 St | 2.915 | | 40.001 |

Gutter grades in 18 St be-

tween 3rd and 4th St

| North | | | South | | |
|-------|--------|----------------------|-------|--------|-----------------------|
| Sta | Grade | rod | Sta | Grade | rod |
| | | (47.100) | | | (47.100) |
| 0 | 41.833 | 5.267 | 0 | 40.333 | 6.767 |
| +25 | 42.083 | 5.017 ^{.25} | +25 | 40.670 | 6.430 ^{.337} |
| +50 | 42.333 | 4.767 ^{.25} | +50 | 41.008 | 6.092 ^{.338} |
| +75 | 42.583 | 4.517 ^{.25} | +75 | 41.345 | 5.785 ^{.337} |
| 1 | 42.833 | 4.267 ^{.25} | 1 | 41.683 | 5.447 ^{.337} |
| +25 | 43.083 | 4.017 ^{.25} | +25 | 42.020 | 5.180 ^{.337} |
| +50 | 43.333 | 3.767 ^{.25} | +50 | 42.358 | 4.742 ^{.337} |
| +75 | 43.583 | 3.517 ^{.25} | +75 | 42.695 | 4.405 ^{.338} |
| 2 | 43.833 | 3.267 | 2 | 43.033 | 4.067 ^{.338} |
| | | | | 42.93 | 4.17 |
| | | | | 43.51 | 3.69 |

| Sta | + | H ₂ | - | Elev. |
|-------------------------|------|----------------|---|--------|
| B.M. | 7.10 | 47.10 | | 40.000 |
| East line of 3rd Street | | | | |
| | | | | 43.0 |
| | | | | 35.8 |
| West line of 4th St | | | | |
| | | 0.575 | | 46.525 |

Center grades on 188th bet
North South

3rd and 4th

| Sta | Grade | Prod | Sta | Grade | Prod | Sta | + | H ₂ | - | Elev. |
|-----|-----------------------------|---------------|-----------------|---------|------------------|---------------------|------|----------------|---|-------|
| | | <u>46.870</u> | | | | | | | | |
| 0 | 41.750 | 5.120 ✓ | Grade 0.10 down | 5.226 | | B.M. | 6.87 | 46.87 | | 40.00 |
| +25 | 42.044 | 4.826 ✓ | | 4.226 ✓ | | East side of 3rd St | | | | |
| +50 | 42.337 | 4.533 ✓ | | 4.633 ✓ | | | | | | |
| +75 | 42.631 | 4.239 ✓ | | 4.339 ✓ | | | | | | |
| 1 | 42.925 | 3.945 ✓ | | 4.045 ✓ | | | | | | |
| +25 | 43.219 | 3.651 ✓ | | 3.751 ✓ | | | | | | |
| +50 | 43.512 | 3.358 ✓ | | 3.458 ✓ | | | | | | |
| +75 | 43.806 43.906 | 3.164 ✓ | | 3.264 ✓ | | | | 0.35 | | 46.52 |
| 2 | 44.100 43.900 | 2.970 ✓ | | 3.070 ✓ | | West side of 4th St | | | | |
| | | 5.120 | | | | | | | | |
| +40 | 41.125 | 5.745 ✓ | 5.845 ✓ | | | | | | | |
| 2 | 40.500 | 6.370 ✓ | 6.470 ✓ | | West of third St | | | | | |

Center grades on B St from

Front to 3rd St

13

| Sta | + | H2 | Grade | Roll | - | Elev |
|------|------|--------|--------|-------|------|----------------------------|
| B.M. | 3.17 | 35.307 | | | | 32.137 B.M. Front and B St |
| 0 | | | 30.250 | 5.037 | ✓ | East line of Front St |
| +25 | | | 30.456 | 4.831 | ✓ | |
| +50 | | | 30.662 | 4.645 | ✓ | |
| +75 | | | 30.868 | 4.439 | ✓ | |
| 1 | | | 31.075 | 4.232 | ✓ | |
| +25 | | | 31.281 | 6.616 | ✓ | |
| +50 | | | 31.487 | 6.410 | ✓ | |
| +75 | | | 31.693 | 6.204 | ✓ | |
| 2 | | | 31.900 | 5.997 | ✓ | West line of Front St |
| | 6.17 | 37.897 | | 675 | 3.58 | 31.727 |
| +40 | | | 32.575 | 5.322 | ✓ | Front street |
| 0 | | | 33.250 | 4.647 | ✓ | East line of Front St |
| +25 | | | 33.500 | 4.397 | ✓ | |
| +50 | | | 33.750 | 4.147 | ✓ | |
| +75 | | | 34.000 | 3.897 | ✓ | |
| 1 | | | 34.250 | 3.647 | ✓ | |
| +25 | | | 34.500 | 3.397 | ✓ | |
| +50 | | | 34.750 | 3.147 | ✓ | |

Centre grades on 188th
Sta's 1 and 2 change from

from side to 4th bet
8" to 4" crown

15

001

| Sta | x | HQ | Grade | Mod | - |
|-----|------|--------|--------|-------|---|
| 09m | 6.53 | 46.530 | | | |
| 1 | | | 42.925 | 3.605 | V |
| +25 | | | 43.135 | 3.395 | W |
| +50 | | | 43.346 | 3.184 | V |
| +75 | | | 43.556 | 2.974 | V |
| 2 | | | 43.767 | 2.763 | |

blew

40.00 Initial C.M. 3rd and 4th

West of 4th St
3m 4th and 188th

0.01

46.52

Center grades on D St
 Front to 1st

| Sta | + | H.S. | Grade | Rod |
|-------|------|--------|--------|-------------------------------|
| 3711. | 2.60 | 35.290 | | 32.692 1st + D |
| 0 | | | 30.25 | 5.04 ✓ |
| +25 | | | 30.46 | 4.83 ✓ <small>2.06</small> |
| +50 | | | 30.66 | 4.63 ✓ <small>2.06</small> |
| +75 | | | 30.87 | 4.42 ✓ <small>2.06</small> |
| 1 | | | 31.07 | 4.22 ✓ <small>2.06</small> |
| +25 | | | 31.28 | 4.01 ✓ <small>2.06</small> |
| +50 | | | 31.49 | 3.80 ✓ <small>2.06</small> |
| +75 | | | 31.69 | 3.60 ✓ <small>2.06</small> |
| 2 | | | 31.90 | 3.39 ✓ <small>2.06</small> |
| +40 | | | 32.575 | 2.715 <small>.675</small> |
| | | | 33.250 | 2.040 <small>.675</small> |

| Sta | + | H ₀ | Grade | rod | Blu |
|------|------|----------------|-------|------|--------|
| B.M. | 5.81 | 38.50 | | | 32.692 |
| 0 | | | 33.25 | 5.25 | ✓ |
| +25 | | | 33.50 | 5.00 | ✓ |
| +50 | | | 33.75 | 4.75 | ✓ |
| +75 | | | 34.00 | 4.50 | ✓ |
| 1 | | | 34.25 | 4.25 | ✓ |
| +25 | | | 34.50 | 4.00 | ✓ |
| +50 | | | 34.75 | 3.75 | ✓ |
| +75 | | | 35.00 | 3.50 | ✓ |
| 2 | | | 35.25 | 3.25 | ✓ |
| | | | | .50 | |
| +40 | | | 35.75 | 2.75 | |
| | | | | .50 | |
| 0 | | | 36.25 | 2.25 | |
| | | | | 1.32 | 37.18 |

sample to height SW cor.
East of 1st St.

Start of 2nd St

East of 2nd St

center grades on 1st St from 2nd to 3rd

| Sta | + | HO | Grade | Roof | Elev. |
|------|-------|--------|--------|---------|-------|
| B.M. | 4.885 | 42.075 | | | 37.19 |
| 2 | | | 35.250 | 6.825 ✓ | |
| +40 | | | 35.750 | 6.325 ✓ | |
| 0 | | | 36.250 | 5.825 ✓ | |
| +25 | | | 36.780 | 5.295 ✓ | |
| +50 | | | 37.310 | 4.765 ✓ | |
| +75 | | | 37.840 | 4.235 ✓ | |
| 1 | | | 38.370 | 3.705 ✓ | |
| +25 | | | 38.900 | 3.175 ✓ | |
| +50 | | | 39.430 | 2.645 ✓ | |
| +75 | | | 39.960 | 2.115 ✓ | |
| 2 | | | 40.500 | 1.575 ✓ | |
| B.M. | | | 2.075 | | 40.00 |

West of 2nd St

East of 2nd St

West of 3rd St

Grades at intersection of

3rd and 20 St

| Sta | + | HO | Grade | Mid |
|-----|------|-------|--------|--------|
| Bm | 2.63 | 42.63 | | 40.00 |
| 2 | | | 38.85 | 3.80 ✓ |
| " | | | 40.40 | 2.23 ✓ |
| " | | | 40.50 | 2.13 ✓ |
| " | | | 40.83 | 1.80 ✓ |
| +10 | | | 40.25 | 2.38 ✓ |
| " | | | 41.025 | 1.605 |
| " | | .205 | 41.125 | 1.505 |
| " | | | 41.33 | 1.305 |
| " | | | 42.02 | 0.61 |
| 0 | | | 40.33 | 2.30 ✓ |
| " | | | 41.65 | 0.98 ✓ |
| " | | | 41.75 | 0.88 ✓ |
| " | | | 41.83 | 0.80 ✓ |
| " | | | 41.88 | 0.75 ✓ |
| | | | 39.58 | 3.05 |
| | | | 5.44 | 37.19 |

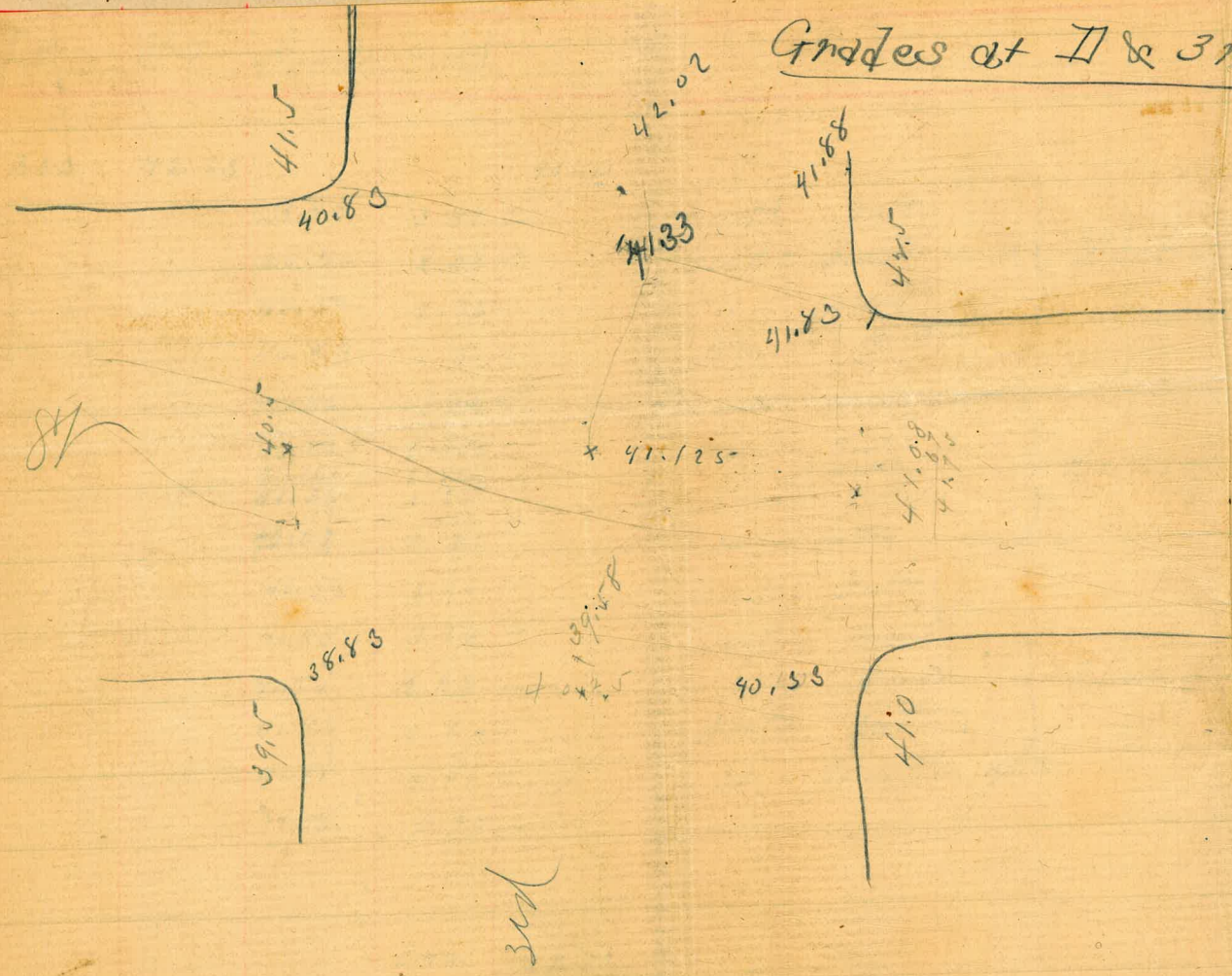
South gutter }
 Center South } West of
 " North }
 North gutter }
 South center }
 Center South } Center of
 North gutter }
 30' North }
 South gutter }
 Center South }
 " North } East of
 North gutter }
 30' North gutter }

2.63
 2.63
 2.63

Grades at intersection of

2nd and 20 St

Grades at 2nd & 3rd.



3rd

42.02

20 St

Center grade at 13th bet
2nd and 4th St

40

| Sta | + | #2 | Grade | Mag |
|-----|---|----|-------|-----|
|-----|---|----|-------|-----|

| | | | | |
|------|-------|--------|--|-------|
| B.M. | 6.725 | 46.725 | | 40.00 |
|------|-------|--------|--|-------|

| | | | | |
|--|--------|-------|--|--|
| | 41.750 | 4.975 | | |
| | .587 | .587 | | |
| | 42.337 | 4.388 | | |

B.M.

| | | | | |
|--|------|--------|--|--|
| | 0.20 | 46.525 | | |
|--|------|--------|--|--|

| | | | | |
|--|-------|------|--|--|
| | 42.93 | 3.79 | | |
|--|-------|------|--|--|

3rd and 10th

4th and 13th

Grades on 2nd from W track
on curve West of 2nd St

| Sta | T | HD | Grade | Prod |
|--------|-------|--------|--------|--------------------------------|
| B.M. | 2.025 | 42.025 | | |
| +80.24 | | | 37.930 | 4.075 ✓ |
| +10 | | | 38.590 | 3.435 ✓ <small>.640</small> |
| +40 | | | 39.230 | 2.795 ✓ <small>.640</small> |
| +70 | | | 39.860 | 2.165 ✓ <small>.630</small> |
| 2+0 | | | 40.500 | 1.525 ✓ <small>.640</small> |
| | | | | 1.625 ✓ <small>.625</small> |
| +40 | | | 41.125 | 0.900 ✓ <small>.625</small> |
| 0 | | | 41.75 | 0.275 0.375 |
| | | | 37.84 | 4.185 |
| B.M. | | | 4.835 | 37.190 |

and intersection of 2nd and 10th

40.00 2nd and 10th
D.C.

P.R.C.

West of 2nd St

center of 2nd St

East of 2nd St

2nd and 10th

Center grade on 1st for
1st to B.C. 50' east of 2nd

North track from
St

20

Sta + HO Grade Rod Elev

| | | | | |
|--------|-----------------|-------|-------|----------------------|
| B.M. | 35.37 | 38.06 | | 32.69 |
| 0 | | | 33.25 | 4.81 ✓ |
| +50 | | | 33.75 | 4.31 ⁵⁰ ✓ |
| 1 | | | 34.25 | 3.81 ⁵⁰ ✓ |
| +50 | | | 34.75 | 3.31 ⁵⁰ ✓ |
| 2 | | | 35.25 | 2.81 ⁵⁰ ✓ |
| +40 | | | 35.75 | 2.31 ⁵⁰ ✓ |
| 0 | | | 36.25 | 1.81 ✓ |
| B.M. | end and 2nd St. | | 0.87 | 37.19 |
| +50 | | | 37.31 | 0.75 |
| # | 4.36 | 41.67 | 0.75 | 37.31 |
| +80 | | | 37.95 | 3.72 ⁶⁴ ✓ |
| 1 + 10 | | | 38.59 | 3.08 ⁶⁴ ✓ |
| +40 | | | 39.23 | 2.44 ⁶³ ✓ |
| +70 | | | 39.86 | 1.81 ⁶⁴ |
| 2 | | | 40.50 | 1.17 |
| B.M. | | | 1.66 | 40.01 |

East line of 1st St

West of 2nd St

Center of 2nd St

East of 2nd St

B.C. 11° 46' curve to Right

P.R.C. 11° 46' curve to Left

West line of 2nd St

Grades at B and - sed

| Sta | + | NO | Grade | rod |
|------|------|-------|-------|--------|
| B.M. | 4.47 | 44.47 | | 40.00 |
| 2+40 | | | 40.25 | 4.22 ✓ |
| | | | 39.58 | 4.89 ✓ |
| | | | 42.00 | 2.47 ✓ |
| | | | 41.33 | 3.14 |

checked in emb.

on south line

39.5
41.0

2/80.5
40.25

41.5
42.5

2/84.0
42.00

5.16
67

7.79

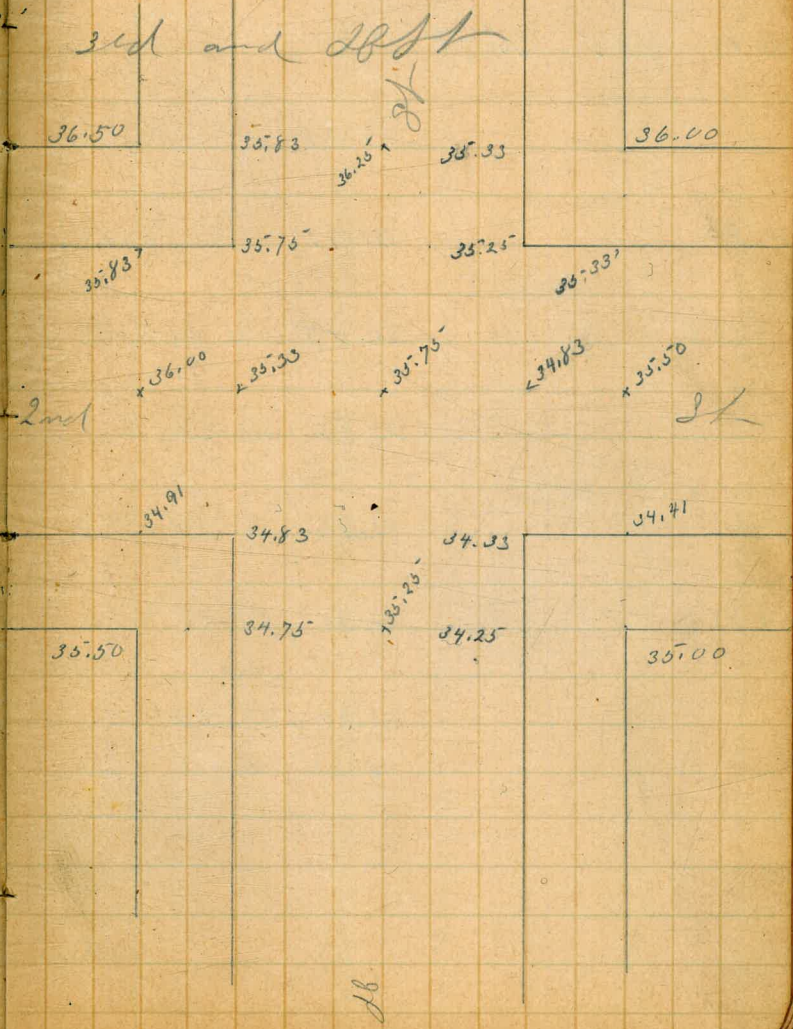
Grades on North side of JB
St at 2nd St

Aug 5 1890.

#4

| Sta | + | HO | Grade | Rock | Elv |
|-----|---|----|-------|------|-----|
|-----|---|----|-------|------|-----|

| | | | | | |
|------|--------------|-------|------|---|-------|
| B.M. | 1.62 | 41.62 | | | 40.00 |
| B.M. | 2nd & JB St. | | 4.43 | | 37.19 |
| | | 36.25 | 5.87 | ✓ | |
| | | 35.83 | 5.79 | ✓ | |
| | | 35.75 | 5.87 | ✓ | |
| | | 36.00 | 5.62 | ✓ | |
| | | 35.33 | 6.29 | ✓ | |
| | | 35.75 | 5.87 | ✓ | |
| | | 35.25 | 6.37 | ✓ | |
| | | 34.75 | 6.87 | ✓ | |
| | | 34.83 | 6.79 | ✓ | |
| | | 34.91 | 6.71 | ✓ | |



Grades for St. Cur Co
at crossing of 1st & H

Sept 8 1890

33.65
31.80
2.85
32.325

Sta + H^o Grade Rod Elev

B.M. 4.05 35.78 31.73

2 32.25

+20 31.92

+57.75 32.47 3.31 ✓

.10

+67.25 32.57 3.21 ✓

.00

3+05 32.57 3.21

.33

+25 32.90 2.88 ✓

3.68 32.15

31.90 3.88

33.25 2.65

0

South of B.M.

cut line

South track

N track

cut line

N of 1st St

31.90
31.63
- .27
8
35
385
4.23

388

321

67

388

321

67

3.21
2.35
.68

Grades for St car track
from Front to 1st St

| Sta | + | H.O | Grade | Prod | Elev |
|------|------|-------|-------|-------|--------|
| B.M. | 4.43 | 36.16 | | | 31.73 |
| 0 | | | 30.25 | 5.91 | ✓ |
| +50 | | | 30.66 | 5.50 | ✓ |
| +75 | | | 30.87 | 5.29 | ✓ |
| 1 | | | 31.08 | 5.08 | ✓ |
| +25 | | | 31.28 | 4.88 | ✓ |
| +50 | | | 31.49 | 4.67 | ✓ |
| 2 | | | 31.90 | 4.26 | ✓ 4.36 |
| +40 | | | 32.58 | 3.58 | ✓ |
| +80 | | | 33.25 | 2.91 | |
| P.M. | | | 4.01 | 31.15 | |

1st & B
East line of Front St

58
33
25

West line 1st St

East line of 1st St
Front & West

Bst grades for South
 track from cent of 1st to W of 2nd

| Sta | + | H ₀ | Guide Rod | Elev |
|-----------------|------|----------------|-----------|--------|
| B _{9m} | 1.50 | 38.69 | | 37.19 |
| +40 | | | 32.57 | 6.12 ✓ |
| 0 | | | 33.15 | 5.54 ✓ |
| +50 | | | 33.65 | 5.04 ✓ |
| 1 | | | 34.15 | 4.54 ✓ |
| +50 | | | 34.65 | 4.04 ✓ |
| 2 | | | 35.15 | 3.54 ✓ |
| B _{9m} | | | 36.97 | 31.72 |
| +40 | | | 35.65 | 3.04 ✓ |
| B _{9m} | 5.65 | 42.84 | | 37.19 |
| 0 | | | 36.15 | 6.69 ✓ |
| +50 | | | 37.21 | 5.63 ✓ |
| 1 | | | 38.27 | 4.57 ✓ |
| +50 | | | 39.33 | 3.51 ✓ |
| 2 | | | 40.40 | 2.44 ✓ |
| B _{9m} | | | 2.84 | 40.00 |

2nd Sbst
 center of 1st St
 East of 1st St
 38.69
 32.33
 6.36
 38.69
 30.83
 7.86

West of 2nd St
 1st Sbst
 center of 2nd St
 30.83
 32.33
 1.50
 6.36
 7.86

2nd Sbst
 East of 2nd St

West of 3rd St
 3rd Sbst

Grade for truck & on
 1st bet 2nd & 3rd

76

| Sta | + | H ₀ | Grade | Prod | Clear |
|-----|--------|----------------|-------|--------|-------|
| 0 | 9m | 1.84 | 41.84 | | 40.00 |
| | 2 | | 35.13 | 6.69 ✓ | |
| | | | | .50 | |
| | +40 | | 35.65 | 6.19 ✓ | |
| | | | | .50 | |
| | 0 | | 36.15 | 5.69 ✓ | |
| | | | | 1.06 | |
| | +50 | | 37.21 | 4.63 ✓ | |
| | | | | .64 | |
| | +80.24 | | 37.85 | 3.99 ✓ | |
| | | | | .64 | |
| | +110 | | 38.49 | 3.35 ✓ | |
| | | | | .64 | |
| | +40 | | 39.13 | 2.71 ✓ | |
| | | | | .63 | |
| | +70 | | 39.76 | 2.08 ✓ | |
| | | | | .64 | |
| | 2+0 | | 40.40 | 1.44 ✓ | |
| | | | | 4.64 | 37.20 |

cell & lost
 W of 2nd St

East of 2nd St 11° 45' Right

B.C. 11° 46' Right cent L 7° 08'

P.R.C. 11° 46' Left cent. Angle 7° 08'

West of 3rd St

Cross Section of 10' Easement

Blk 17 Nordica Hts. #2

Indexed
LM

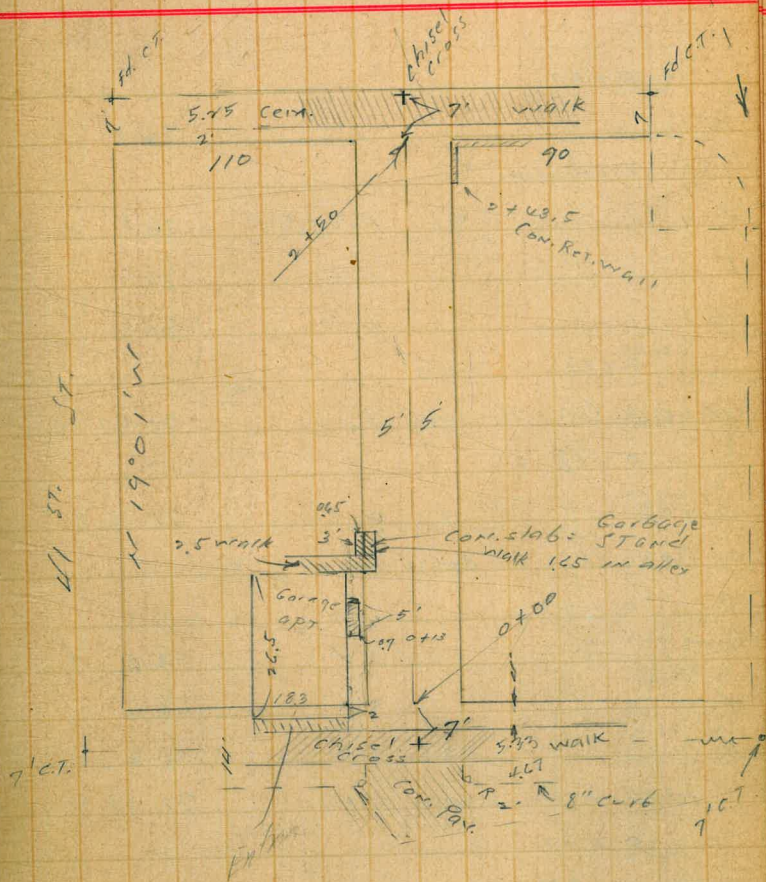
MOORE
SveinDoc 10-24-41.

79

Maine View Ave

| | | | | | |
|----------------------------|-----------------------------|-------|-------|-------------------------|---------------------------------|
| NWBP | 8.83 | 49.25 | 40.44 | DIVISION Anthony Dr. | |
| T.P. | 12.47 | 61.43 | 0.44 | 49.01 | |
| TP | 13.06 | 74.04 | 0.47 | 60.96 | |
| SET BM. M.M. 7' C.T. | Brass Plug Santo Cor. | 90.00 | 0.73 | 78.79 | DIVISION X Maine View Ave |
| 0-14 | | | | | |
| W | PAV. | 7.79 | 66.23 | ✓ | |
| E | " | 7.17 | 66.85 | ✓ | |
| 0-9.33 | Sedge walk + end cb. Return | | | | |
| E | walk | 6.49 | 67.53 | ✓ | |
| W | " | 7.18 | 66.84 | ✓ | |
| 0-04 | N. | | | | |
| W | walk | 7.04 | 67.00 | ✓ | |
| E | " | 6.35 | 67.67 | ✓ | |
| 0+00 | | | | | |
| E | | 5.7 | 68.3 | | |
| C | | 5.7 | 68.3 | | |
| W | | 5.6 | 68.4 | | |

Red. T 1961, 10-28-41
S.B.H.
(Profile 2704)



Division St.

1.65
1.65
1.65

74.02

| | | | |
|-------|---------------------|------|---------|
| | 0+10 | | |
| W | | 3.7 | 70.3 |
| +1 | Dead man ✓ | | |
| C | | 4.0 | 70.0 |
| E | | 3.9 | 70.1 |
| +5 | | 4.3 | 71.7 ✓ |
| | 0+13 | | |
| W-0.7 | Cor. cont. walk | 3.15 | 70.97 ✓ |
| | 0+18 | | |
| W-0.7 | " " " | 4.86 | 71.16 ✓ |
| W-0.7 | beg. 6' Bd. fence ✓ | | |
| | 0+27 | | |
| -5 | | 1.4 | 72.6 ✓ |
| E | | 2.4 | 71.6 |
| C | | 2.4 | 71.6 |
| +3.35 | 9' 2.5' cont. walk | 2.49 | 71.53 ✓ |
| | 0+34 | | |
| W+0.6 | R.P. dr. 1' | | |
| | 0+63 | | |
| W-0.4 | end 6' Bd. fence ✓ | | |
| W | | 1.4 | 72.6 |

74.04

| | | | |
|--------|--|------|--------------------|
| C | | 1.4 | 72.8 |
| E | | 1.4 | 72.8 |
| T.P. | 5.14 7806 | 1.18 | 72.84 |
| | 0+65 | | |
| W+0.10 | Sh. apron + do. gar. | 5.41 | 72.65 cont. A. |
| W-2.8 | " " floor | 5.34 | 72.72 |
| | 0+79 | | |
| W+0.8 | Sh. do. gar. | 5.44 | 72.82 " " |
| W+0.10 | cont. apron | 5.31 | 72.75 |
| | 0+79 | | |
| W-0.3 | beg. 2.7 cont. walk E. edge 0.3 back alley on west. line | 5.27 | 72.79 ✓ |
| | 0+91 | | |
| W-0.2 | Break in grade | 4.87 | 73.19 ✓ above walk |
| C | | 4.8 | 73.3 |
| E | | 4.7 | 73.4 |
| +33 | 9' cont. apron | 4.88 | 75.18 ✓ |
| +35 | E. Sh. gar | 4.75 | 75.31 ✓ |
| | 0+93.5 | | |
| W-0.2 | E. edge walk | 4.80 | 73.26 ✓ + End walk |

78.06

0499

W 1 + 0.4 8" di. P.P. ✓

1401

W 1 - 1.1 8' walk ^{Cent} 5.21 72.85 ✓

1403

W - 1.8 SE Cor. Strucco gar. with N entrance ✓

1405.5

E - 10 St. db. gar. ^{Cent fl.} 3.51 74.55 ✓

- 7.5 " cent apron 3.75 74.31 ✓

E 4.4 73.9

C 4.4 73.7

W 4.5 73.6

T.P. 4.85 78.90 401 74.05

1423

W - 1.65 N.E. Cor. 5th. ^{Cent. fl.} 6.07 72.83 ✓
N entrance

W ground. 4.9 74.0

1431.5

E - 9.9 N end do gar. 4.34 74.56 ✓

E - 7.5 " apron 4.40 74.50 ✓

78.90

E 4.7 74.2

C 4.9 74.0

W 5.0 73.9

+7 5.7 73.2

1456

- 10 S.L. do. gar. fl. ^{Cent.} 4.80 ✓ ^{Now used}
93 Drilling 74.10

W 4.8 74.1

C 4.9 74.0

E 4.8 74.1

+ 10.5 E. S.H. gar. 3.45 75.45 ✓

1471

W - 10 N end do gar. 4.80 74.10

E + 0.6 Beg. Cypress hedge ✓ could be trimmed
Roots are 1.0 back to line

1477

W Beg. Eugenia hedge on line ✓

1499

E 3.8 75.1

C 4.0 74.9

W 4.1 74.8

+ 1 P.P. 1.4 di. ✓

W End hedge ✓

| | | | | |
|------|---------------------|--------------|------|-------------------------------|
| | | 78.90 | | |
| T.P. | 370 | <u>78.50</u> | 4.10 | 74.40 |
| | 2+11 | | | |
| W | 14.5 E. S.W. 900. | | 4.17 | 74.33 cont. xl. |
| | 2+27 | | | |
| -5 | | | 4.5 | 74.0 ✓ |
| -0.4 | 12" dia. R.P. ✓ | | | |
| W | | | 4.22 | 74.3 |
| C | | | 4.3 | 74.2 |
| E | | | 4.22 | 74.3 |
| | 2+41 | | | |
| E | | | 4.7 | 73.8 |
| C | | | 4.9 | 73.6 |
| W | | | 4.7 | 73.8 |
| +5 | | | 5.0 | 73.5 ✓ |
| | 2+43.5 | | | |
| E | beg. Cor. Ret. wall | | 4.0 | 74.5 Top |
| " | " " " " | | 5.8 | 72.7 ground + feet wall |
| | 2+48 | | | |
| W | | | 6.1 | 72.4 |
| C | | | 8.0 | 70.5 |

3rd

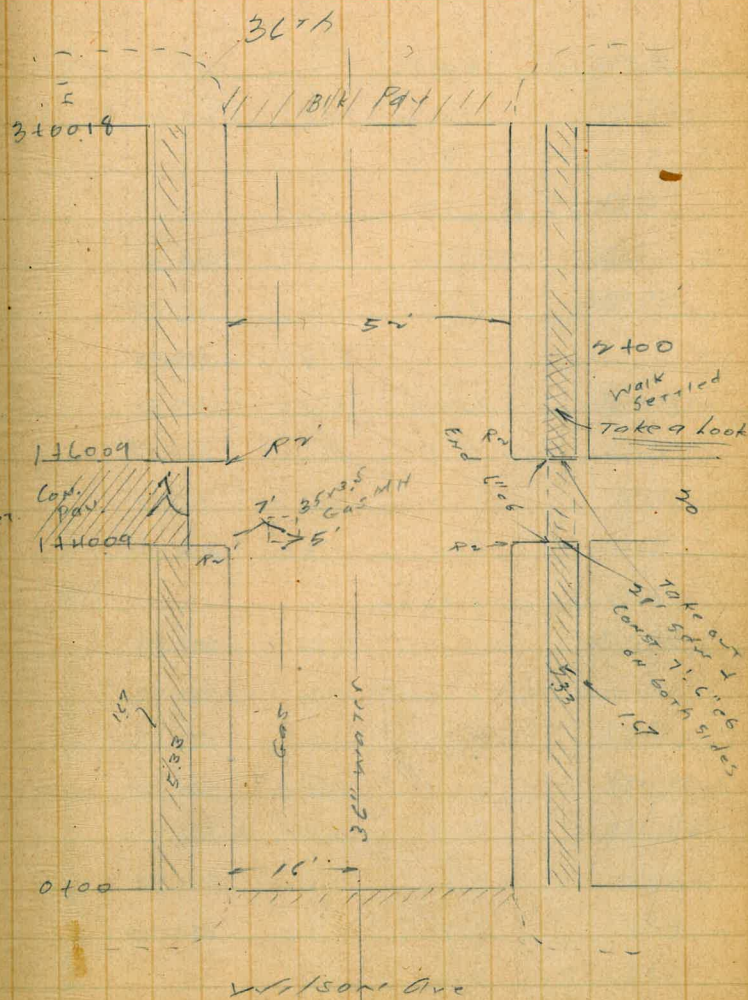
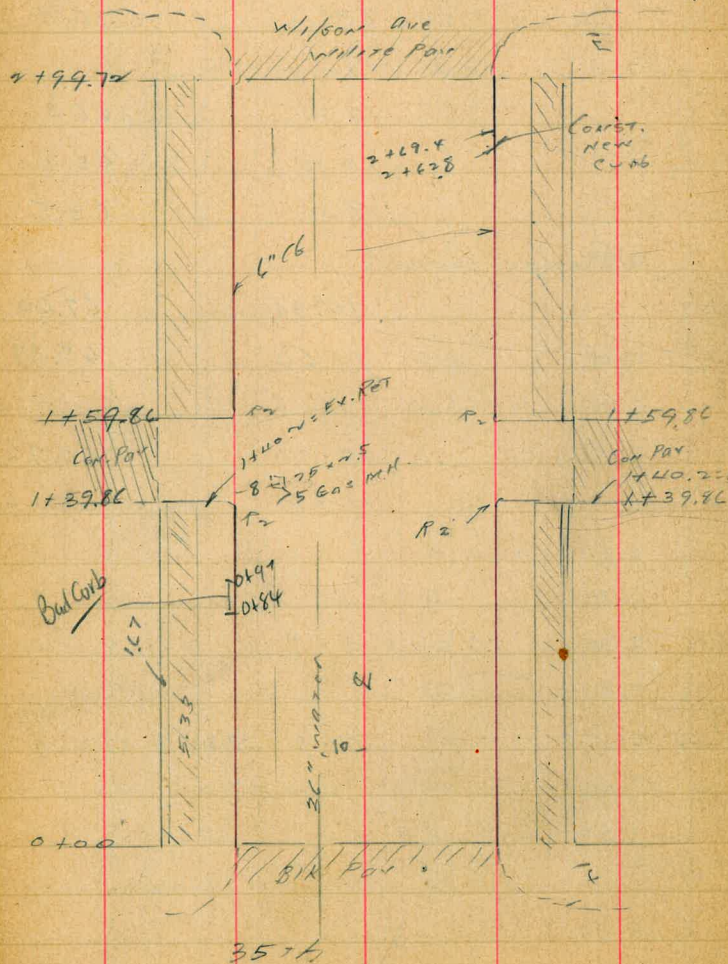
| | | | | |
|------|-----------------------|--------------|-------|-------------|
| | | 78.50 | | |
| E | | | 8.2 | 70.3 |
| | 2+50 S.L. Marino View | | | |
| E | | | 10.2 | 68.3 |
| C | | | 10.2 | 68.3 |
| W | | | 9.0 | 69.5 |
| | S edge walk | | | |
| W | | | 10.90 | 67.60 |
| E | | | 10.63 | 67.87 |
| | " " " | | | |
| E | | | 10.74 | 67.76 |
| W | | | 11.04 | 67.46 |
| | | | | |
| T.P. | 404 | <u>77.04</u> | 5.50 | 73.00 |
| | | | | |
| | check to C.T. | | 325 | 73.79 73.79 |

sec Wright Ave St 80' wide
 14' curbs
 13' 1/4
 35th to 36th

Indexed
 LM

Moore
 Sand
 Sediment
 11-C-41

73



✓ SAC WRIGHTMAN

3574 to Wilson

| | | | | |
|-------------------|------|--------|------|--------|
| NW 3P | 5.18 | 352.84 | | 347.68 |
| T.P. | 6.96 | 355.80 | 3.96 | 348.90 |
| 0-1X E. 907. 3574 | | | | |
| N pav | | | 3.22 | 352.62 |
| 6 | | | 3.27 | 352.59 |
| 1/4 | | | 2.97 | 352.89 |
| C | | | 3.06 | 352.80 |
| 1/4 | | | 3.27 | 352.59 |
| 6 | | | 3.57 | 352.29 |
| 5 | | | 3.86 | 352.00 |
| 0+100 EL 3574 | | | | |
| S 66 | | | 3.30 | 352.56 |
| 9-7 pav | | | 3.70 | 352.16 |
| 1/4 | | | 3.36 | 352.50 |
| C | | | 3.07 | 352.79 |
| 1/4 | | | 3.15 | 352.71 |
| 9-7 | | | 3.41 | 352.95 |
| N 66 | | | 2.76 | 353.10 |
| 0+50 | | | | |
| N 66 | | | 3.37 | 352.99 |

Notes reduced. 11-7-91.

✓
355.86

WRIGHTMAN

3674

| | | | | | |
|------------------------------|--|--|--|------|--------|
| 9-7 | | | | 4.2 | 351.7 |
| 1/4 | | | | 4.0 | 51.9 |
| C | | | | 3.8 | 52.1 |
| 1/4 | | | | 4.0 | 51.9 |
| 9-7 | | | | 4.7 | 51.2 |
| S 66 | | | | 3.89 | 351.97 |
| 17.00 | | | | | |
| S 66 | | | | 4.36 | 351.50 |
| 9-7 | | | | 4.9 | 51.0 |
| 1/4 | | | | 4.5 | 51.4 |
| C | | | | 4.0 | 51.9 |
| 1/4 | | | | 4.4 | 51.5 |
| 9-7 | | | | 4.52 | 351.32 |
| 17410.2 = line of 1" 66 Ret. | | | | | |
| NL pav | | | | 4.9 | 351.67 |
| NL 66 on NL | | | | 4.07 | 351.79 |
| N 66 2' R | | | | 4.36 | 351.50 |
| 9-7 | | | | 5.3 | 50.6 |
| 1/4 | | | | 4.9 | 51.0 |
| C | | | | 4.8 | 51.1 |
| 1/4 | | | | 5.0 | 50.9 |

355.86

| | | |
|------------------|------|--------|
| gvt | 5.4 | 350.5 |
| S cb Rv | 4.85 | 351.01 |
| SL cb | 4.61 | 351.25 |
| SL Pav | 4.70 | 351.16 |
| 1449.86 E alley | | |
| S pav | 4.96 | 350.90 |
| N " | 4.67 | 351.19 |
| 1759.86 EL alley | | |
| NL Pav | 4.48 | 351.38 |
| NL cb | 4.44 | 351.42 |
| N cb Rv | 4.67 | 351.19 |
| gvt | 5.6 | 50.3 |
| 1/4 | 5.7 | 50.7 |
| c | 5.1 | 50.8 |
| 1/4 | 5.3 | 50.6 |
| gvt | 5.8 | 50.1 |
| S cb | 4.98 | 350.88 |
| SL cb | 4.82 | 351.09 |
| SL Pav | 4.82 | 351.09 |
| 2 + 00 | | |
| S cb | 5.59 | 350.27 |

355.86

| | | |
|-----------------------|------|--------|
| gvt | 6.4 | 349.5 |
| 1/4 | 5.8 | 50.1 |
| c | 5.6 | 50.3 |
| 1/4 | 5.7 | 50.2 |
| gvt | 6.0 | 49.9 |
| N cb | 5.13 | 350.73 |
| 2 + 50 | | |
| N cb | 5.62 | 350.29 |
| gvt | 6.4 | 49.5 |
| 1/4 | 6.2 | 49.7 |
| c | 6.0 | 49.9 |
| 1/4 | 6.4 | 49.5 |
| gvt | 6.7 | 49.2 |
| S cb | 6.09 | 349.77 |
| 2 + 99.72 W.L. Wilson | | |
| S cb | 6.70 | 349.16 |
| gvt pav | 7.49 | 348.57 |
| 1/4 " | 6.89 | 348.97 |
| c " | 6.71 | 349.15 |
| 1/4 " | 6.72 | 349.14 |
| gvt " | 6.87 | 348.99 |
| N cb | 6.21 | 349.65 |

✓
355.80

W of Line Wilson
valley cut.

| | | | |
|-----|-----|------|--------|
| N | par | 6.87 | 398.99 |
| cb | " | 6.99 | 398.87 |
| 1/4 | " | 7.23 | 398.63 |
| c | " | 7.25 | 398.61 |
| 1/4 | " | 7.32 | 398.59 |
| cb | " | 7.46 | 398.40 |
| S | " | 7.41 | 398.95 |

✓
T.P. 4.09 357.99 6.96 398.90

XSEC WRIGHTMAN

Wilson to 3674

✓
352.99

0-140 E of Line Wilson valley cut.

| | | | |
|-----|-----|------|--------|
| N | par | 4.53 | 398.96 |
| cb | " | 4.80 | 398.19 |
| 1/4 | " | 4.90 | 398.09 |
| c | " | 4.93 | 398.06 |
| 1/4 | " | 5.04 | 397.97 |
| cb | " | 5.06 | 397.93 |
| S | " | 5.13 | 397.86 |

0+00 = EL Wilson

| | | | |
|---|---------|------|--------|
| S | cb | 4.64 | 398.35 |
| | cut par | 5.09 | 397.90 |
| | 1/4 " | 4.71 | 398.28 |
| | c " | 4.43 | 398.56 |
| | 1/4 " | 4.45 | 398.59 |
| | cut " | 4.62 | 398.37 |
| | N cb | 4.09 | 398.96 |

0+50

| | | | |
|---|-----|------|--------|
| N | cb | 4.23 | 398.76 |
| | cut | 4.7 | 48.3 |

35299 ✓

| | | |
|--------------|------|--------|
| 1/4 | 4.5 | 348.5 |
| c | 4.4 | 48.6 |
| 1/4 | 4.8 | 48.2 |
| gut | 5.0 | 47.6 |
| S c b | 4.6 | 348.37 |
| 1 + 00 | | |
| S c b | 4.87 | 348.17 |
| gut | 5.4 | 47.6 |
| 1/4 | 4.9 | 48.1 |
| c | 4.7 | 48.3 |
| 1/4 | 4.2 | 48.4 |
| gut | 4.8 | 48.7 |
| n c b | 4.36 | 348.63 |
| 1 + 40.09 | | |
| n L par | 4.46 | 348.53 |
| n L c b none | | |
| +7 c b | 4.46 | 348.53 |
| +7 par. edge | 4.6 | 348.37 |
| n c b | 4.59 | 348.40 |
| gut | 4.9 | 348.1 |
| 1/4 | 4.9 | 348.1 |

35299 ✓

| | | |
|---------------------|------|----------------|
| c | 4.9 | 348.1 |
| 1/4 | 5.1 | 47.9 |
| gut | 5.7 | 47.3 |
| S c b | 5.9 | 47.70 |
| +7 c b | 5.06 | 347.93 |
| +12.33 S edge S dur | 5.06 | 347.93 |
| S L Lower | 5.0 | 48.0 |
| 1 + 50.09 | | |
| n L par | 4.74 | 348.25 |
| +7 edge | 4.90 | 348.09 |
| 1 + 60.09 | | |
| n L par | 4.55 | 348.49 no curb |
| +7 " | 4.67 | 348.37 |
| +7 c b | 4.53 | 348.46 |
| S c b | 4.60 | 348.39 |
| gut | 5.1 | 47.9 |
| 1/4 | 4.8 | 48.7 |
| c | 4.8 | 48.4 |
| 1/4 | 5.2 | 47.8 |
| gut | 5.9 | 47.1 |
| S c b | 5.34 | 347.65 |

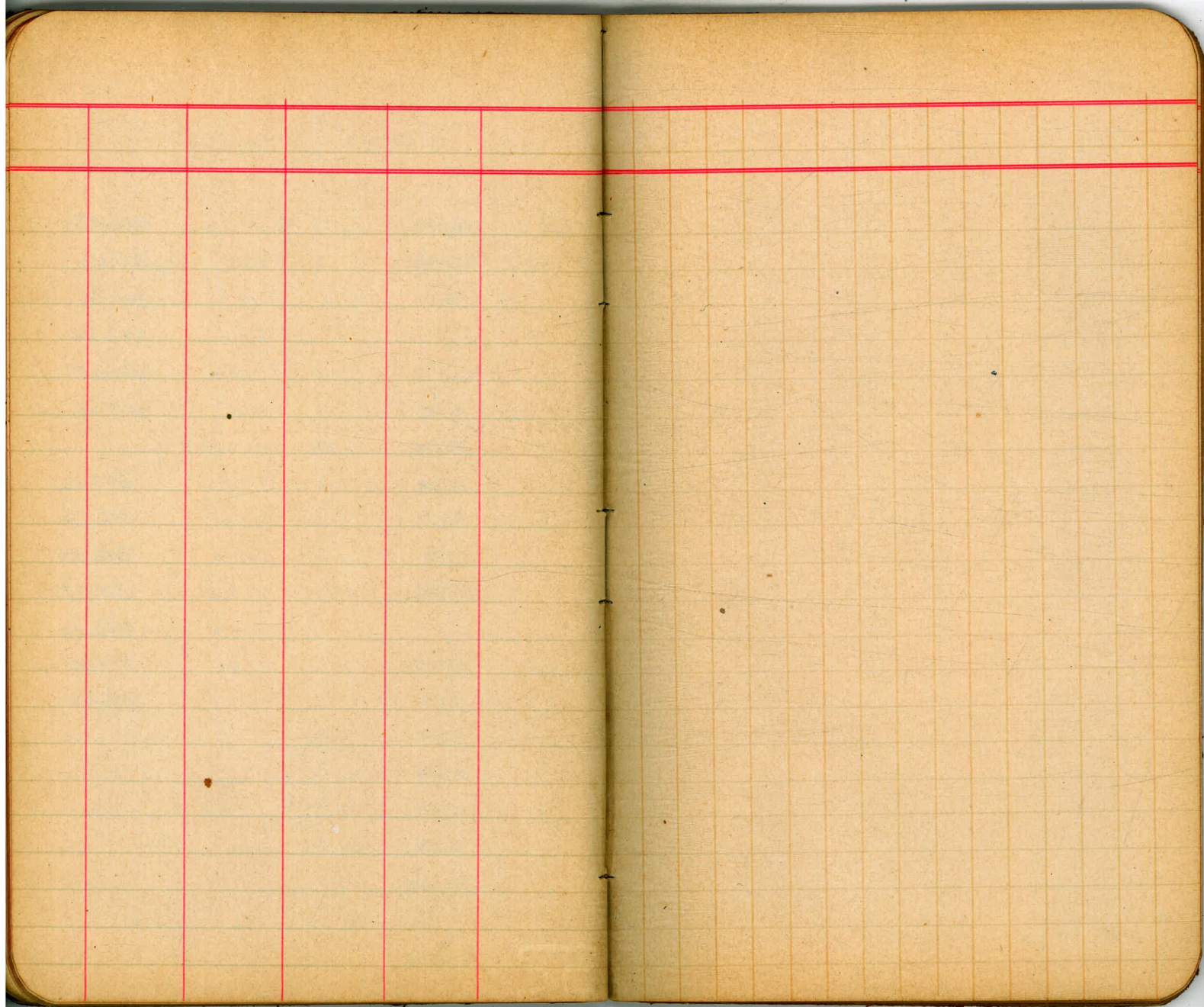
35299

| | | |
|--------------------|------|--------|
| S cb +7 top cb. | 5.41 | 397.58 |
| " + 12.33 sdw | 5.44 | 397.55 |
| S.L. Lamin | 5.5 | 47.5 |
| + 400 | | |
| S cb | 5.45 | 397.59 |
| gut | 6.1 | 46.9 |
| 1/4 | 5.5 | 47.5 |
| c | 5.0 | 98.0 |
| 1/4 | 5.1 | 47.9 |
| gut | 5.3 | 47.7 |
| sl cb | 4.83 | 398.16 |
| + 450 | | |
| sl cb | 5.10 | 397.89 |
| gut | 5.5 | 47.5 |
| 1/4 | 5.4 | 47.6 |
| c | 5.3 | 47.7 |
| 1/4 | 5.8 | 47.2 |
| gut | 6.2 | 46.8 |
| S cb | 5.61 | 397.38 |
| + 400.18 w.k. 3674 | | |
| S cb | 5.84 | 397.15 |

35299

| | | | |
|-------|-----------|------------|--------|
| gut | Pay | 6.41 | 396.58 |
| 1/4 | " | 5.97 | 397.07 |
| c | " | 5.73 | 397.26 |
| 1/4 | " | 5.63 | 397.36 |
| gut | " | 5.92 | 397.07 |
| sl cb | | 5.38 | 397.61 |
| | w cb 3674 | valley gut | |
| sl | pay | 5.83 | 397.16 |
| cb | " | 6.00 | 396.99 |
| 1/4 | " | 6.14 | 396.85 |
| c | " | 6.20 | 396.79 |
| 1/4 | " | 6.29 | 396.70 |
| cb | " | 6.30 | 396.69 |
| S | " | 6.49 | 396.50 |

check to orig. B/M 5.31 347.68



0+79.9 Point of frog

| | | |
|--------|-------|--------|
| 31.726 | 3.560 | 35.286 |
| 32.137 | 3.150 | 35.287 |
| 32.692 | 2.595 | 35.287 |

$$\begin{array}{r} 42.63 \\ 42.02 \\ \hline .61 \\ 41.33 \\ \hline 1.30 \\ 42.63 \\ 41.125 \\ \hline 1.505 \end{array}$$

$$\begin{array}{r} 100 \\ 26.5 \\ \hline 73.5 \\ 26.5 \\ \hline 100.0 \end{array}$$
$$\begin{array}{r} 73.5 \\ 67.5 \\ \hline 6.0 \end{array}$$

4
= II
68
67
66
65
64
63
62
61
60
59
58
57
56
55
54
53
52
51
50
49
48
47
46
45
Degrees

als,

14.63
 3775
 18' 6112
 67 5
 67.42
 125
 80 8
 42.5
 2.075
 42.5
 41.5
 27840
 92.00
 44.58
 42.02
 2.56
 119.76
 57.72
 19
 53.42
 80

TRAVERSE TABLE FOR TRANSIT BOOK.
 From 1° to 90° for a distance of 100.

| Degrees. | DEGREES. | | ¼ DEGREE. | | ½ DEGREE. | | ¾ DEGREE. | | Degrees |
|----------|----------|-------|-----------|-------|-----------|-------|-----------|-------|---------|
| | Lat. | Dep. | Lat. | Dep. | Lat. | Dep. | Lat. | Dep. | |
| 0 | | | 100.00 | | 100.00 | 0.87 | 99.99 | 1.31 | 89 |
| 1 | 99.98 | 1.75 | 99.98 | 2.18 | 99.97 | 2.62 | 99.95 | 3.05 | 88 |
| 2 | 99.94 | 3.49 | 99.92 | 3.93 | 99.91 | 4.36 | 99.88 | 4.80 | 87 |
| 3 | 99.86 | 5.23 | 99.84 | 5.67 | 99.81 | 6.10 | 99.79 | 6.54 | 86 |
| 4 | 99.76 | 6.98 | 99.73 | 7.41 | 99.69 | 7.85 | 99.66 | 8.28 | 85 |
| 5 | 99.62 | 8.72 | 99.58 | 9.15 | 99.54 | 9.58 | 99.50 | 10.02 | 84 |
| 6 | 99.45 | 10.45 | 99.41 | 10.89 | 99.36 | 11.32 | 99.31 | 11.75 | 83 |
| 7 | 99.25 | 12.19 | 99.20 | 12.62 | 99.14 | 13.05 | 99.09 | 13.49 | 82 |
| 8 | 99.03 | 13.92 | 98.97 | 14.35 | 98.90 | 14.78 | 98.84 | 15.21 | 81 |
| 9 | 98.77 | 15.64 | 98.70 | 16.07 | 98.63 | 16.50 | 98.56 | 16.93 | 80 |
| 10 | 98.48 | 17.36 | 98.40 | 17.79 | 98.33 | 18.22 | 98.25 | 18.65 | 79 |
| 11 | 98.16 | 19.08 | 98.08 | 19.51 | 97.99 | 19.94 | 97.90 | 20.36 | 78 |
| 12 | 97.81 | 20.79 | 97.72 | 21.22 | 97.63 | 21.64 | 97.53 | 22.07 | 77 |
| 13 | 97.44 | 22.50 | 97.34 | 22.92 | 97.24 | 23.34 | 97.13 | 23.77 | 76 |
| 14 | 97.03 | 24.19 | 96.92 | 24.62 | 96.81 | 25.04 | 96.70 | 25.46 | 75 |
| 15 | 96.59 | 25.88 | 96.48 | 26.30 | 96.36 | 26.72 | 96.25 | 27.14 | 74 |
| 16 | 96.13 | 27.56 | 96.00 | 27.98 | 95.88 | 28.40 | 95.76 | 28.82 | 73 |
| 17 | 95.63 | 29.24 | 95.50 | 29.65 | 95.37 | 30.07 | 95.24 | 30.49 | 72 |
| 18 | 95.11 | 30.90 | 94.97 | 31.32 | 94.83 | 31.73 | 94.69 | 32.14 | 71 |
| 19 | 94.55 | 32.56 | 94.41 | 32.97 | 94.26 | 33.38 | 94.12 | 33.79 | 70 |
| 20 | 93.97 | 34.20 | 93.82 | 34.61 | 93.67 | 35.02 | 93.51 | 35.43 | 69 |
| 21 | 93.36 | 35.81 | 93.20 | 36.24 | 93.04 | 36.65 | 92.88 | 37.06 | 68 |
| 22 | 92.72 | 37.46 | 92.55 | 37.86 | 92.39 | 38.27 | 92.22 | 38.67 | 67 |
| 23 | 92.05 | 39.07 | 91.88 | 39.47 | 91.71 | 39.87 | 91.53 | 40.27 | 66 |
| 24 | 91.35 | 40.67 | 91.18 | 41.07 | 91.00 | 41.47 | 90.81 | 41.87 | 65 |
| 25 | 90.63 | 42.26 | 90.45 | 42.66 | 90.26 | 43.05 | 90.07 | 43.44 | 64 |
| 26 | 89.88 | 43.84 | 89.69 | 44.23 | 89.49 | 44.62 | 89.30 | 45.01 | 63 |
| 27 | 89.10 | 45.40 | 88.90 | 45.79 | 88.70 | 46.17 | 88.50 | 46.56 | 62 |
| 28 | 88.29 | 46.95 | 88.09 | 47.33 | 87.88 | 47.72 | 87.67 | 48.10 | 61 |
| 29 | 87.46 | 48.48 | 87.25 | 48.86 | 87.04 | 49.24 | 86.82 | 49.62 | 60 |
| 30 | 86.60 | 50.00 | 86.38 | 50.38 | 86.16 | 50.75 | 85.94 | 51.13 | 59 |
| 31 | 85.72 | 51.50 | 85.49 | 51.88 | 85.26 | 52.25 | 85.04 | 52.62 | 58 |
| 32 | 84.80 | 52.99 | 84.57 | 53.36 | 84.34 | 53.73 | 84.10 | 53.10 | 57 |
| 33 | 83.87 | 54.46 | 83.63 | 54.83 | 83.39 | 55.19 | 83.15 | 55.56 | 56 |
| 34 | 82.90 | 55.92 | 82.66 | 56.28 | 82.41 | 56.64 | 82.16 | 57.00 | 55 |
| 35 | 81.92 | 57.36 | 81.66 | 57.71 | 81.41 | 58.07 | 81.16 | 58.42 | 54 |
| 36 | 80.90 | 58.78 | 80.64 | 59.13 | 80.39 | 59.48 | 80.13 | 59.83 | 53 |
| 37 | 79.86 | 60.18 | 79.60 | 60.53 | 79.34 | 60.88 | 79.07 | 61.22 | 52 |
| 38 | 78.80 | 61.57 | 78.53 | 61.91 | 78.26 | 62.23 | 77.99 | 62.59 | 51 |
| 39 | 77.71 | 62.93 | 77.44 | 63.27 | 77.16 | 63.61 | 76.88 | 63.94 | 50 |
| 40 | 76.60 | 64.28 | 76.32 | 64.61 | 76.04 | 64.94 | 75.76 | 65.28 | 49 |
| 41 | 75.47 | 65.61 | 75.18 | 65.93 | 74.90 | 66.26 | 74.61 | 66.59 | 48 |
| 42 | 74.31 | 66.91 | 74.02 | 67.24 | 73.73 | 67.56 | 73.43 | 67.88 | 47 |
| 43 | 73.14 | 68.20 | 72.84 | 68.52 | 72.54 | 68.84 | 72.24 | 69.15 | 46 |
| 44 | 71.93 | 69.47 | 71.63 | 69.78 | 71.33 | 70.09 | 71.02 | 70.40 | 45 |
| 45 | 70.71 | 70.71 | | | | | | | |
| Degrees. | Dep. | Lat. | Dep. | Lat. | Dep. | Lat. | Dep. | Lat. | Degrees |
| | DEGREES. | | ¼ DEGREE. | | ½ DEGREE. | | ¾ DEGREE. | | |

Published by Edward Denny & Co., Stationers, Drawing Materials,
 Mathematical Instruments, Etc., San Francisco.