

Beach Sewer.
on
Coronado Beach.

2

LEVEL

F.B. 639

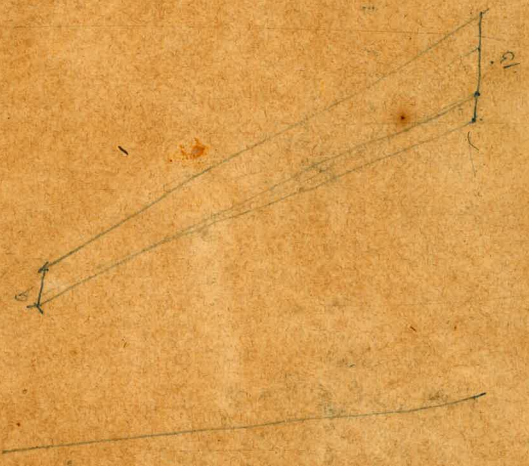
639

MICROFILMED

DEC 14 1964

19.50
20.00
5.00
25.50

4
175
327



1000

82.61
51.25
31.36

Sta	Elev	Grade	Cut	Rod	Board
-(1+56)		12.85			
-(1+44)		12.88			
-(1+32)		12.92			
-(1+20)		12.95			
-(1+08)		12.98			
-(0+96)		13.02			
-(0+84)		13.05			
-(0+72)		13.08			
-(0+60)		13.11			
-(0+48)		13.14			
-(0+36)		13.18			
-(0+24)		13.21			
-(0+12)		13.24			

Grade in Main Sewer on
Coronado Beach

Sta	Elev	Grade	Cut	Board	Bond in mole	
0	18.16	13.27	4.89	6.00	1.11	1' 1 3/8"
+25	18.59	13.34	5.25	6.00	0.75	9"
+50	18.61	13.40	5.21	6.00	0.79	9 1/2"
+75	18.51	13.47	5.04	6.00	0.96	11 1/2"
1	18.51	13.53	4.98	6.00	1.02	1' 1/4"
+25		13.60				
+50		13.66				
+75		13.73				
- 2	19.16	13.79	5.37	7.00	+ 1.63	1' 7 5/8"
- (+25)	19.64	13.85	5.79	7.00	+ 1.21	1' 2 1/2" <i>Break in the grade</i>
- (+50)	19.84	13.88	5.96	7.00	+ 1.04	1' 1/2"
- (+75)	20.16	13.92	6.24	7.00	+ 0.76	9 1/8"
- 3	20.18	13.95	6.23	7.00	+ 0.77	9 1/4"
- (+25)	20.28	13.98	6.30	7.00	+ 0.70	8 3/8" ✓
- (+50)	20.29	14.00	6.29	7.00	+ 0.71	8 1/2" ✓
- (+75)	20.42	14.03	6.39	7.00	+ 0.61	7 3/8" ✓
- 4	20.38	14.06	6.32	7.00	+ 0.68	✓ 8 1/8" <i>Just over ✓</i>
- (+25)	20.58	14.09	6.49	7.00	+ 0.51	✓ 6 1/8"
- (+50)	20.34	14.12	6.22	7.00	+ 0.78	9 3/8"
- (+75)	20.32	14.15	6.17	7.00	+ 0.83	10"
- 5	20.17	14.18	5.99	7.00	+ 1.01	1' 1/8" <i>Drop one foot</i>

Grades on Main Sewer - Coronado Beach

Sta	Elev	Grade	Cut	Rod	Board		
+25	19.68	14.21	5.47	6.00	+0.53	6 3/8"	✓
+50	19.44	14.23	5.21	6.00	+0.79	9 1/2"	✓ Drop one foot
+75	19.24	14.26	4.98	5.00	+0.02	1 1/4"	✓
6	18.99	14.29	4.70	5.00	+0.30	3 5/8"	✓
+25	18.87	14.32	4.55	5.00	+0.45	5 3/8"	✓
+50	18.69	14.35	4.34	5.00	+0.66	7 7/8"	✓
+75	18.75	14.38	4.37	5.00	+0.63	7 7/8"	✓
7	18.79	14.41	4.38	5.00	+0.62	7 1/2"	✓
+25	18.66	14.44	4.22	5.00	+0.78	9 3/8"	✓
+50	18.91	14.46	4.45	5.00	+0.55	6 5/8"	✓ Raise one foot
+75	18.99	14.48	4.51	6.00	+1.49	1' 5 7/8"	✓
8	19.32	14.51	4.81	6.00	+1.19	1' 2 1/4"	✓
+25	19.67	14.54	5.13	6.00	+0.87	10 5/8"	
+33	19.16	14.55	4.61	7.00	2.39	2' 4 3/4"	Second St. Sewer Manhole.
+50	19.74	14.82	4.92	7.00	2.08	2' 1"	X Break in the grade
+75	19.93	14.84	5.09	7.00	+1.01	1' 10 7/8"	
9	20.19	14.86	5.33	7.00	+1.67	1' 8"	
+25	20.36	14.88	5.48	7.00	+1.52	1' 6 1/4"	
+50	21.02	14.90	6.12	7.00	+0.88	0' 10 5/8"	
+75	20.75	14.92	5.83	7.00	+1.17	1' 2"	
10	20.89	14.94	5.95	7.00	+1.05	1' 0 5/8"	

Grade for Main Sewer in Coronado
Beach

Sta.	Elev.	Grade	Cut	Rod	Board	" "
+25	21.14	14.96	6.18	7.00	+0.82	0' 9 7/8"
+50	21.26	14.98	6.28	7.00	+0.72	0' 8 5/8"
+75	21.11	15.00	6.11	7.00	+0.89	0' 10 3/4"
"	21.22	15.02	6.20	7.00	+0.80	0' 9 5/8"
+25	21.19	15.04	6.15	7.00	+0.85	0' 10 1/4"
+50	21.09	15.06	6.03	7.00	+0.97	0' 11 5/8"
+75	20.87	15.08	5.79	6.00	+0.21	0' 2 5/8"
12	20.81	15.11	5.70	6.00	+0.30	0' 3 5/8"
+25	20.58	15.13	5.45	6.00	+0.55	0' 6 5/8"
+50	20.28	15.15	5.13	6.00	+0.87	0' 10 1/2"
+75	20.17	15.17	5.00	6.00	+1.00	1' 0"
13	19.96	15.19	4.77	6.00	+1.23	1' 2 3/4"
+25	19.84	15.21	4.63	6.00	+1.37	1' 4 1/2"
+50	20.04	15.23	4.81	6.00	+1.19	1' 2 1/4"
+75	20.10	15.25	4.85	6.00	+1.15	1' 1 3/4"
14	20.38	15.27	5.11	6.00	+0.89	0' 10 5/8"
+25	20.62	15.29	5.33	6.00	+0.67	0' 8"
+50	20.97	15.31	5.66	6.00	+0.34	0' 4 1/8"
+69	21.07	15.32	5.75	6.00	+0.25	0' 3"
+75	21.12	15.33	5.79	6.00	+0.21	0' 2 1/2"
15	21.08	15.35	5.73	6.00	+0.27	0' 3 1/4"

Drop one foot.

Third St. Sewer Manhole

Sta	Elev	Grade	Cut	Rod	Board	"
15+25	21.34	15.37	5.97	6.00	+0.03	0' 0 ³ / ₈ "
+50	21.19	15.39	5.80	6.00	+0.20	0' 2 ³ / ₈ "
+75	20.95	15.41	5.54	6.00	+0.46	0' 5 ¹ / ₂ "
16	21.00	15.43	5.57	6.00	+0.43	0' 5 ¹ / ₈ "
+25	20.79	15.45	5.34	6.00	+0.66	0' 8"
+50	20.77	15.47	5.30	6.00	+0.70	0' 8 ¹ / ₂ "
+75	20.49	15.49	5.00	6.00	+1.00	1' 0"
17	20.33	15.51	4.82	6.00	+1.18	1' 2 ¹ / ₈ "
+25	20.25	15.53	4.72	6.00	+1.28	1' 3 ³ / ₈ "
+50	20.14	15.55	4.59	6.00	+1.41	1' 4 ⁷ / ₈ "
+56.5	20.06	15.56	4.50	6.00	+1.50	1' 6"
+75	20.50	15.57	4.93	6.00	+1.07	1' 7 ¹ / ₈ "
18	20.76	15.59	5.17	6.00	+0.83	10"
+25	21.43	15.61	5.82	6.00	+0.18	2 ¹ / ₈ "
+50	21.62	15.63	5.99	6.00	+0.01	1 ¹ / ₈ "
+75	21.76	15.65	6.11	7.00	+0.89	10 ³ / ₄ "
19	22.03	15.67	6.36	7.00	+0.64	7 ³ / ₄ "
+25	22.43	15.69	6.74	7.00	+0.26	3 ¹ / ₈ "
+50	22.93	15.71	7.22	8.00	+0.78	9 ³ / ₈ "
+75	22.92	15.73	7.19	8.00	+0.81	9 ³ / ₄ "
20	23.18	15.76	7.42	8.00	+0.58	7"

Sta. 17 + 56.5 Center of Midn hole

Raise one foot

Raise one foot

Sta.	Elev.	Grade	Cut	Board		
+25	23.35	15.78	7.57	8.00	+0.43	5 1/8"
+50	23.60	15.80	7.80	8.00	+0.20	2 3/8"
+75	23.98	15.82	8.16	9.00	+0.84	10 1/8"
21	24.60	15.84	8.76	9.00	+0.24	2 7/8"
+25	24.67	15.86	8.81	9.00	+0.19	2 1/4"
+50	25.30	15.88	9.42	9.00	-0.42	5"
+75	25.59	15.90	9.69	10.00	+0.31	3 3/4"
22	24.14	15.92	8.22	10.00	+1.78	1' 9 3/8"
+25		15.94				
+50	26.21	15.96	10.25	10.00	-0.25	3"
+75	25.76	15.98	9.78	10.00	+0.22	2 5/8"
23	25.46	16.00	9.46	10.00	+0.54	6 1/2"
+25	24.99	16.02	8.97	10.00	+1.03	1' 7/8"
+50	24.96	16.04	8.42	9.00	+0.58	7"
+75	23.79	16.06	7.73	9.00	+0.27	1' 3 1/4"
24	23.43	16.08	7.35	8.00	+0.65	7 5/8"
+25	22.84	16.10	6.74	8.00	+0.26	1' 3 1/8"
+50	22.57	16.12	6.45	7.00	+0.55	5 5/8"
+75	22.11	16.14	5.97	7.00	+1.03	1' 3/8"
25	22.01	16.16	5.85	7.00	+1.15	1' 1 3/4"
+25	22.09	16.18	5.91	7.00	+1.09	1' 1 1/8"

Raise one foot

Raise one foot

Drop one foot

END of 12" pipe at Sta 23+37. +

Drop one foot

Drop one foot.

23.37

24.21

15

Sta	Elev	Grade	Cut	Rod	Board	
✓ +50	22.00	16.20	5.80	7.00	+1.20	1' 2 3/8"
✓ +75	22.12	16.22	5.90	7.00	+1.10	1' 1 1/4"
26 ✓	22.56	16.24	6.32	7.00	+0.63	8 1/8"
+25	22.72	16.26	6.46	7.00	+0.54	6 1/2"
+50	22.87	16.28	6.59	7.00	+0.41	4 7/8"
+75	23.18	16.30	6.88	7.00	+0.12	✓ 1 1/2"
27	23.65	16.33	7.32	8.00	+0.68	8 1/8"
					+0.32	3 7/8"
✓ +25	23.80	16.35	7.45	8.00	+0.55	6 5/8"
✓ +50	23.93	16.37	7.56	8.00	+0.44	5 1/4"
✓ +75	23.94	16.39	7.55	8.00	+0.45	5 3/8"
28	24.07	16.41	7.66	8.00	+0.34	4 1/8"
+25	23.93	16.43	7.50	8.00	+0.50	6"
+50	23.93	16.45	7.48	8.00	+0.52	6 1/4"
+75	23.64	16.47	7.17	8.00	+0.83	10"
29	23.38	16.49	6.89	8.00	+1.11	1' 1 3/8"
+25	23.30	16.51	6.79	7.00	+0.21	2 5/8"
+50	23.24	16.53	6.71	7.00	+0.29	3 1/2"
+75	22.58	16.55	6.03	7.00	+0.97	11 3/8"
30	22.26	16.57	5.69	7.00	+1.31	1' 3 3/4"
+25	22.19	16.59	5.51	7.00	+1.49	1' 5 7/8"

✓ Push Board.

✓ Raise one foot.

4 1/8
3 7/8

✓ Drop one foot

✓ Drop one foot

Sta	Elev	Grade	Cut	Rod	Board		
+50	22.01	16.61	5.400	6.00	+0.60	7 1/4"	✓
+75	21.83	16.63	5.290	6.00	+0.80	9 5/8"	✓
31	22.02	16.65	5.377	6.00	+0.63	7 5/8"	✓
+25	21.96	16.67	5.29	6.00	+0.71	8 1/2"	✓
+50	21.96	16.69	5.27	6.00	+0.73	8 3/4"	✓
+75	21.81	16.71	5.100	6.00	+0.90	10 3/4"	✓
32	21.60	16.73	4.87	6.00	+1.13	1' 1 5/8"	✓
+25	21.69	16.75	4.94	6.00	+1.06	1' 9/4"	✓
+50	21.35	16.77	4.58	6.00	+1.42	1' 5"	✓
+75	21.62	16.79	4.83	6.00	+1.17	1' 2"	✓
33	21.67	16.81	4.86	6.00	+1.14	1' 1 3/4"	✓
+25	21.71	16.83	4.88	6.00	+1.12	1' 1 1/2"	✓
+50	21.79	16.85	4.94	6.00	+1.06	1' 3/4"	✓
+75	21.81	16.87	4.94	6.00	+1.06	1' 3/4"	✓
34	22.11	16.99	5.21	6.00	+0.79	9 1/2"	✓
+25	22.01	16.92	5.09	6.00	+0.91	10 7/8"	✓
+50	22.07	16.94	5.13	6.00	+0.87	10 1/2"	✓
+75	21.74	16.96	4.78	6.00	+1.22	1' 2 5/8"	✓
35	21.78	16.98	4.80	6.00	+1.20	1' 2 3/8"	✓
+25	21.73	17.00	4.73	6.00	+1.27	1' 3 1/4"	✓
+50	21.67	17.02	4.65	6.00	+1.35	1' 4 1/4"	✓

Sta	Elev.	Grade	Cut	Rod	Board	
+75	21.571	17.04	4.47	6.00	+1.53	1' 6 ³ / ₈ "
36	21.55	17.06	4.49	6.00	+1.51	1' 6 ¹ / ₈ "
+25	21.56	17.08	4.48	6.00	+1.52	1' 6 ¹ / ₄ "
+50	21.32	17.10	4.22	6.00	+1.78	1' 9 ³ / ₈ "
+75	21.58	17.12	4.46	6.00	+1.54	1' 6 ¹ / ₂ "
37	21.65	17.14	4.51	6.00	+1.49	1' 5 ⁷ / ₈ "
+25	22.07	17.16	4.91	6.00	+1.09	1' 1 ¹ / ₈ "
+50	21.74	17.18	4.56	6.00	+1.44	1' 5 ¹ / ₄ "
+75	21.477	17.20	4.27	6.00	+1.73	1' 8 ³ / ₄ "
38	21.90	17.22	4.68	6.00	+1.32	1' 3 ⁷ / ₈ "
+25	21.69	17.24	4.45	6.00	+1.55	1' 6 ⁵ / ₈ "
+50	21.27	17.26	4.01	6.00	+1.99	1' 11 ⁷ / ₈ "
+75	21.19	17.28	3.91	6.00	+2.09	2' 1 ¹ / ₈ "
38+98	21.53	17.30	4.23	6.00	+1.77	1' 9 ¹ / ₄ "
39+25	21.65	17.32	4.33	6.00	+1.67	1' 8"
+50	21.83	17.34	4.49	6.00	+1.51	1' 6 ¹ / ₈ "
+75	21.83	17.36	4.47	6.00	+1.53	1' 6 ³ / ₈ "
40	21.98	17.38	4.60	6.00	+1.40	1' 4 ³ / ₄ "
+25	22.35	17.40	4.95	6.00	+1.05	1' 5 ¹ / ₈ "
+50	22.26	17.42	4.84	6.00	+1.16	1' 17 ¹ / ₈ "

May 29 1891

38+98 Seventh St Sewer Manhole

Sta	Elev	Grade	Cut	Rod	Board	
+75	22.44	17.44	5.00	6.00	+1.00	1'
41	22.93	17.46	5.47	6.00	+0.53	6 3/8"
+25	23.02	17.48	5.54	6.00	+0.46	5 1/2"
+50	23.30	17.50	5.80	6.00	+0.20	2 3/8"
+75	23.66	17.52	6.14	7.00	+0.86	10 3/8"
42	24.01	17.54	6.47	7.00	+0.53	6 3/8"
+25	24.10	17.56	6.54	7.00	+0.46	5 1/2"
+50	24.05	17.58	6.47	7.00	+0.53	6 3/8"
+75	24.27	17.60	6.67	7.00	+0.33	4"
43	24.32	17.62	6.70	7.00	+0.30	3 5/8"
+25	24.10	17.64	6.46	7.00	+0.54	6 1/2"
+50	23.94	17.66	6.28	7.00	+0.72	8 5/8"
+75	23.79	17.68	6.11	7.00	+0.89	10 3/4"
44	23.44	17.70	5.74	7.00	+1.26	1' 3 1/8"
+25	23.37	17.72	5.65	7.00	+1.35	1' 4 1/4"
+50	22.75	17.74	5.01	7.00	+1.99	1' 11 7/8"
+75	24.09	17.76	6.33	7.00	+0.67	8"
45	24.31	17.78	6.53	7.00	+0.47	5 5/8"
+25	22.83	17.80	5.03	7.00	+1.97	1' 11 5/8"
+31	22.97	17.82	5.15	7.00	+1.85	1' 10 1/4"
+50	22.87	17.84	5.03	7.00	+1.97	1' 11 5/8"

Raise one foot

57.43
43.36
6.12

5 5/8
6 3/8

Manhole at Eighth St

Sta	Elev	Grade	Cut	Rod	Board	
+75	23.66	17.86	5.20	7.00	+1.40	1' 9 3/8" ✓
46	23.18	17.88	5.30	7.00	+1.70	1' 8 3/8" ✓
+25	23.69	17.90	5.79	7.00	+1.21	1' 2 1/2" ✓
+50	24.02	17.92	6.10	7.00	+0.90	10 3/4" ✓
+75	24.50	17.94	6.56	7.00	+0.44	6 1/4" ✓
47	25.08	17.96	7.122	8.00	+0.88	10 3/4" ✓
+25	25.43	17.98	7.45	8.00	+0.55	6 3/4" ✓
+50	25.59	18.00	7.59	8.00	+0.41	4 7/8" ✓
+75	25.65	18.02	7.63	8.00	+0.37	4 1/2" ✓
48	25.81	18.04	7.77	8.00	+0.23	2 3/4" ✓
+25	26.61	18.06	8.55	8.00	-0.55	6 3/8" ✓
+50	25.85	18.08	7.77	8.00	+0.23	2 3/4" ✓
+75	25.62	18.10	7.52	8.00	+0.48	5 3/4" ✓
49	25.40	18.12	7.28	8.00	+0.72	8 5/8" ✓
+25	25.13	18.14	6.99	7.00	+0.01	1/8" ✓
+50	24.71	18.16	6.55	7.00	+0.45	5 3/8" ✓
+75	24.39	18.18	6.21	7.00	+0.79	9 1/2" ✓
50	24.18	18.20	5.98	6.00	+0.02	1/4" ✓
+25	23.91	18.22	5.69	6.00	+0.31	3 3/4" ✓
+50	23.66	18.24	5.42	6.00	+0.58	7" ✓
+75	23.70	18.26	5.44	6.00	+0.54	6 3/4" ✓

Reverse one foot

Drop one foot

Drop one foot

S	Sta	Elv	Grade	Sub	Rod	Bound	
✓	51	23.63	18.28	5.35	6.00	+0.65	7 3/4" ✓
4	+25	23.40	18.30	5.10	6.00	+0.90	10 3/4" ✓
	+43	23.40	18.315	5.085	6.00	+0.915	10 15/16" ✓
✓	+50	23.27	18.32	4.95	6.00	+1.05	1' 5/8" ✓
	+75	23.22	18.34	4.88	6.00	+1.12	1' 1/2" ✓
✓	52	23.38	18.36	5.02	6.00	+0.98	11 3/4" ✓
	+25	23.25	18.38	4.87	6.00	+1.13	1' 15/8" ✓
✓	+50	23.26	18.40	4.86	6.00	+1.14	1' 1 3/4" ✓
	+75	23.33	18.42	4.91	6.00	+1.09	1' 1 1/8" ✓
✓	53	23.16	18.44	4.72	6.00	+1.28	1' 3 3/8" ✓
	+25	23.34	18.46	4.88	6.00	+1.12	1' 1 1/2" ✓
✓	+50	23.16	18.48	4.68	6.00	+1.32	1' 3 7/8" ✓
	+75	23.03	18.50	4.53	6.00	+1.47	1' 5 5/8" ✓
✓	54	22.90	18.52	4.38	6.00	+1.62	1' 7 1/2" ✓
	+25	22.91	18.54	4.37	6.00	+1.63	1' 7 5/8" ✓
✓	+50	22.89	18.55	4.33	6.00	+1.67	1' 8" ✓
	+75	22.58	18.58	4.00	6.00	+2.00	2' ✓
155	22.75	18.60	4.15	6.00	+1.85	1' 10 3/8" ✓	Keep me
	+25	22.56	18.62	3.94	6.00	+2.06	2' 3/4" ✓
✓	+50	22.55	18.64	3.91	6.00	+2.09	2' 1 1/8" ✓
	+75	22.72	18.66	4.06	6.00	+1.94	1' 11 1/4" ✓

98 81

Sta	Elev.	Grade	Lat	Prod	Band		
50 ✓	22.92	18.68	4.24	6.00	+1.76	1' 9 1/8"	✓
+25	22.71	18.70	4.21	6.00	+1.79	1' 9 1/2"	✓
✓ +50	22.95	18.72	4.23	6.00	+1.77	1' 9 1/4"	✓
+75	23.03	18.74	4.29	6.00	+1.71	1' 8 1/2"	✓
57	23.04	18.76	4.28	6.00	+1.72	1' 8 5/8"	✓
+25	23.03	18.78	4.25	6.00	+1.75	1' 9"	✓
✓ +50	23.09	18.80	4.29	6.00	+1.71	1' 8 1/2"	✓
+75	23.28	18.82	4.46	6.00	+1.54	1' 6 1/2"	✓
58	23.26	18.84	4.42 ✓	6.00	+1.58	1' 7"	✓
+10	23.68	18.85	4.83	6.00	+1.17	1' 2"	✓ 10 81
+25	22.78	18.87	3.91	6.00	+2.09	2' 1 1/8"	✓
+50	22.85	18.89	3.96	6.00	+2.04	2' 1/2"	✓
+75	22.82	18.92	3.90	6.00	+2.10	2' 1 1/4"	✓
59	22.79	18.94	3.85	6.00	+2.15	2' 1 3/4"	✓
+25	22.90	18.96	3.94	6.00	+2.06	2' 2 1/4"	✓
+50	22.89	18.99	3.90	6.00	+2.10	2' 1 1/4"	✓
+75	23.06	19.01	4.05	6.00	+1.95	1' 11 3/8"	✓
60	22.95	19.04	3.91	6.00	+2.09	2' 1 1/8"	✓
+25	23.08	19.06	4.02	6.00	+1.98	1' 11 3/4"	✓
+50	23.19	19.09	4.10	6.00	+1.90	1' 10 3/4"	✓
+75	23.34	19.12	4.12	6.00	+1.88	1' 10 5/8"	✓

3.09
2.93
16

Sta	Blk	Grade	Cut	Prod	Board	
61	23.32	19.15	4.17	6.00	+1.83	1' 10"
+25	23.30	19.18	4.12	6.00	+1.88	1' 10 ⁵ / ₈ "
+50	23.21	19.20	4.04	6.00	+1.97	1' 11 ³ / ₄ "
+75	23.38	19.23	4.15	6.00	+1.85	1' 10 ¹ / ₄ "
62	23.39	19.26	4.13	6.00	+1.87	1' 10 ¹ / ₂ "
+25	23.43	19.28	4.15	6.00	+1.85	1' 10 ¹ / ₄ "
+50	23.48	19.31	4.18	6.00	+1.82	1' 9 ⁷ / ₈ "
+75	23.50	19.33	4.17	6.00	+1.83	1' 10 ¹ / ₂ "
63	23.56	19.36	4.20	6.00	+1.80	1' 9 ⁵ / ₈ "
+25	23.38	19.39	3.99	6.00	+2.01	2' 11 ¹ / ₈ "
+50	23.53	19.41	4.12	6.00	+1.88	1' 10 ⁵ / ₈ "
+75	23.62	19.44	4.18	6.00	+1.82	1' 9 ⁷ / ₈ "
64	23.68	19.47	4.21	6.00	+1.79	1' 9 ¹ / ₂ "
+25	23.70	19.49	4.21	6.00	+1.79	1' 9 ¹ / ₂ "
+50	23.59	19.52	4.07	6.00	+1.93	1' 11 ¹ / ₈ "
+75	23.56	19.54	4.04	6.00	+1.96	1' 11 ¹ / ₂ "
65						
+03	24.36	19.57	4.79	6.00	+1.21	1' 2 ¹ / ₂ "
+25	23.63	19.59	4.04	6.00	+1.96	1' 11 ¹ / ₂ "
+50		19.62				
+76	23.93	19.64	4.29	6.00	+1.71	1' 8 ¹ / ₂ "

2.98
2.97
3.91
3.95
3.96
3.99
3.00
2.97
3.01
3.09
3.11

Manhole on Olive St

S	Sta	Blis	Sub	cut	Rock	Board	
*	66	24.00	19.67	4.33	6.00	+1.67	1' 8"
4	+25	24.09	19.70	4.39	6.00	+1.61	1' 7 ³ / ₈ "
	+50	24.01	19.73	4.28	6.00	+1.72	1' 8 ⁵ / ₈ " ✓
	+75	24.10	19.78	4.35	6.00	+1.65	1' 7 ³ / ₄ " ✓
67		24.03	19.78	4.25	6.00	+1.75	1' 9" ✓
1	+25	24.12	19.80	4.32	6.00	+1.68	1' 8 ¹ / ₈ " ✓
	+50	24.11	19.83	4.28	6.00	+1.72	1' 8 ⁵ / ₈ " ✓
	+75	24.28	19.85	4.43	6.00	+1.57	1' 6 ⁷ / ₈ " ✓
68		24.34	19.88	4.46	6.00	+1.54	1' 6 ¹ / ₂ " ✓
4	+25	24.37	19.91	4.46	6.00	+1.54	1' 6 ¹ / ₂ " ✓
	+50	24.65	19.94	4.71	6.00	+1.29	1' 3 ¹ / ₂ " ✓
	+75	25.07	19.96	5.11	6.00	+0.89	10 ³ / ₄ " ✓
69		25.21	19.99	5.22	6.00	+0.78	9 ³ / ₈ " ✓
	+25	25.27	20.01	5.26	6.00	+0.74	8 ⁷ / ₈ " ✓
	+50	25.65	20.03	5.62	6.00	+0.38	4 ⁵ / ₈ " ✓
	+75	25.89	20.06	5.83	6.00	+0.17	2" ✓
70		26.01	20.09	5.92	6.00	+0.08	1" ✓
	+25	25.98	20.12	5.86	6.00	+0.14	1 ³ / ₄ " ✓
	+50		20.15				
	+75	26.12	20.18	5.94	6.00	+0.06	3 ¹ / ₄ " ✓
71		26.18	20.20	5.98	6.00	+0.02	1 ¹ / ₄ " 1 Raise 1 foot

S	Sta	Blw	Grade	cut	Road	Board	
*	71+11	26.37	20.21	6.16	7.00	+0.84	10 1/8" ✓
4	+25	26.36	20.23	6.13	7.00	+0.87	10 1/2" ✓
	+50	26.10	20.25	5.85	7.00	+1.15	1' 17 1/8" ✓
	+75	25.97	20.28	5.69	7.00	+1.31	1' 3 3/4" ✓
72	25.85	20.31	5.54	7.00	+1.46	1' 5 1/2" ✓	
	+25	25.48	20.34	5.14	7.00	+1.86	1' 10 3/8" ✓
	+50	25.45	20.36	5.09	7.00	+1.91	1' 10 7/8" ✓
	+75	25.59	20.39	5.20	7.00	+1.80	1' 9 5/8" ✓
73	25.70	20.42	5.32	7.00	+1.68	1' 8 1/8" ✓	
	+25	26.12	20.45	5.67	7.00	+1.33	1' 4" ✓
	+50	26.41	20.48	5.93	7.00	+1.07	1' 7 1/8" ✓
	+75	26.85	20.50	6.35	7.00	+0.65	0' 7 3/4" ✓
74	27.14	20.53	6.61	7.00	+0.39	4 3/4" ✓	
	+25	26.79	20.55	6.24	7.00	+0.76	9 1/8" ✓
	+50	26.69	20.57	6.12	7.00	+0.88	10 5/8" ✓
	+68	27.05	20.59	6.46	7.00	+0.54	6 1/2" ✓
	+75	26.99	20.60	6.39	7.00	+0.61	7 3/8" ✓
75	26.92	20.63	6.29	7.00	+0.71	8 1/2" ✓	
	+25	26.89	20.65	6.24	7.00	+0.76	9 1/8" ✓
	+50	26.87	20.68	6.19	7.00	+0.81	9 3/4" ✓

manhole

71+97 manhole

manhole

75
11
86
71+11
71+97

Sta	Elv	Grade	Cut	Rod	Board		
+75	26.64	20.70	5.94	7.00	+1.06	1' 3 $\frac{1}{4}$ "	✓
76	26.44	20.73	5.71	7.00	+1.29	1' 3 $\frac{1}{2}$ "	✓
+25	26.19	20.75	5.44	7.00	+1.56	1' 6 $\frac{3}{4}$ "	✓
+50	26.31	20.77	5.54	7.00	+1.46	1' 5 $\frac{1}{2}$ "	✓
+75	26.73	20.80	5.93	7.00	+1.07	1' 7 $\frac{1}{8}$ "	✓
77	26.47	20.83	5.64	7.00	+1.36	1' 4 $\frac{3}{8}$ "	✓
+25	26.81	20.85	5.96	7.00	+1.04	1' 1 $\frac{1}{2}$ "	✓
+50	27.32	20.87	6.45	7.00	+0.55	6 $\frac{5}{8}$ "	✓
+75	27.75	20.89	6.86	7.00	+0.14	1' 3 $\frac{1}{4}$ "	✓
78	27.82	20.91	6.91	7.00	+0.09	1 $\frac{1}{8}$ "	✓
+25	27.66	20.93	6.73	7.00	+0.27	3 $\frac{1}{4}$ "	✓
+50	27.07	20.96	6.11	7.00	+0.89	10 $\frac{3}{4}$ "	✓
+75	27.14	21.00	6.14	7.00	+0.86	10 $\frac{3}{8}$ "	✓ Manhole

Grades for Sewer on 10th St

Sta	Elev	Grade	cut	Rod	Board		
0	23.70	18.85	4.85	6.00	+1.15	1' 13 ¹ / ₄ "	✓ branch hole on 10th St.
+25	23.08	18.88	4.20	6.00	+1.80	1' 9 ⁵ / ₈ "	✓
+50	23.14	18.90	4.24	6.00	+1.76	1' 9 ¹ / ₈ "	✓
+75	23.19	18.93	4.26	6.00	+1.74	1' 8 ⁷ / ₈ "	✓
1	23.17	18.95	4.22	6.00	+1.78	1' 9 ³ / ₈ "	✓
+25	23.35	18.98	4.37	6.00	+1.63	1' 7 ⁵ / ₈ "	✓
+50	23.25	19.00	4.25	6.00	+1.75	1' 9"	✓
+75	23.44	19.03	4.41	6.00	+1.59	1' 7 ¹ / ₈ "	✓
2	23.47	19.05	4.42	6.00	+1.58	1' 7"	✓
+25	23.56	19.08	4.48	6.00	+1.52	1' 6 ¹ / ₄ "	✓
+50	23.49	19.10	4.39	6.00	+1.61	1' 7 ³ / ₈ "	✓
+75	23.63	19.13	4.50	6.00	+1.50	1' 6"	✓
3	23.69	19.15	4.54	6.00	+1.46	1' 5 ¹ / ₂ "	✓
+25	23.72	19.18	4.54	6.00	+1.46	1' 5 ¹ / ₂ "	✓
+50	23.51	19.20	4.31	6.00	+1.67	1' 8 ¹ / ₄ "	✓
+75	23.69	19.23	4.46	6.00	+1.54	1' 6 ¹ / ₂ "	✓
4	23.74	19.25	4.49	6.00	+1.51	1' 6 ¹ / ₈ "	✓
+25	23.65	19.28	4.37	6.00	+1.63	1' 7 ⁵ / ₈ "	✓
+50	23.72	19.30	4.42	6.00	+1.58	1' 7"	✓
+75	23.60	19.33	4.27	6.00	+1.73	1' 8 ³ / ₄ "	✓
5	23.76	19.35	4.41	6.00	+1.59	1' 7 ¹ / ₄ "	✓

Sta	Elev	Grade	Cut	Prod	Board		
+25	23.87	19.38	4.49	6.00	+1.51	1' 6 1/8"	✓
+50	23.96	19.40	4.56	6.00	+1.44	1' 5 1/4"	✓
+75	24.11	19.43	4.68	6.00	+1.32	1' 3 7/8"	✓
6	24.35	19.45	4.90	6.00	+1.10	1' 1 1/4"	✓
+25	24.35	19.48	4.87	6.00	+1.13	1' 1 5/8"	✓
+50	24.73	19.50	5.23	6.00	+0.77	0' 9 1/4"	
+75	24.74	19.53	5.21	6.00	+0.79	0' 9 1/2"	
7	24.86	19.55					
+25	24.87	19.58					
+50	24.96	19.60					
+75	25.17	19.63					
8	25.18	19.65					

24.86

11.78

8.1

indexed
C.S.K.

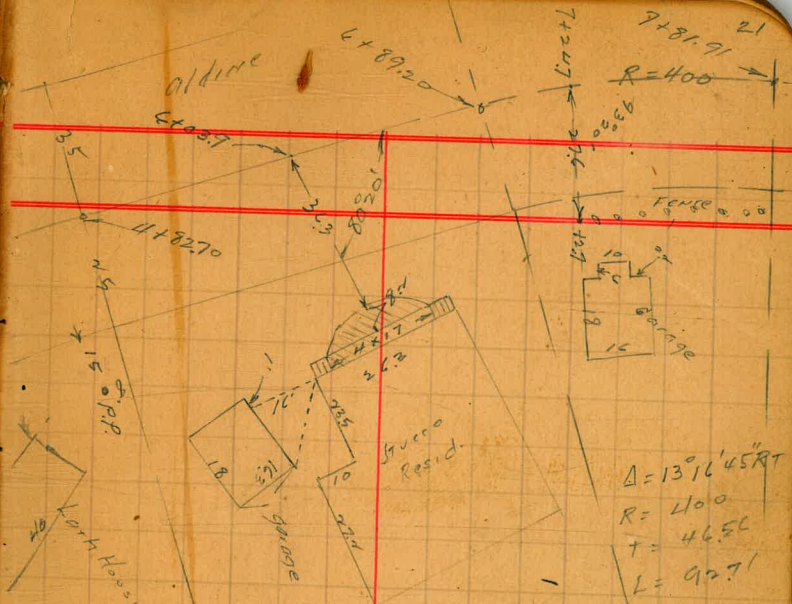
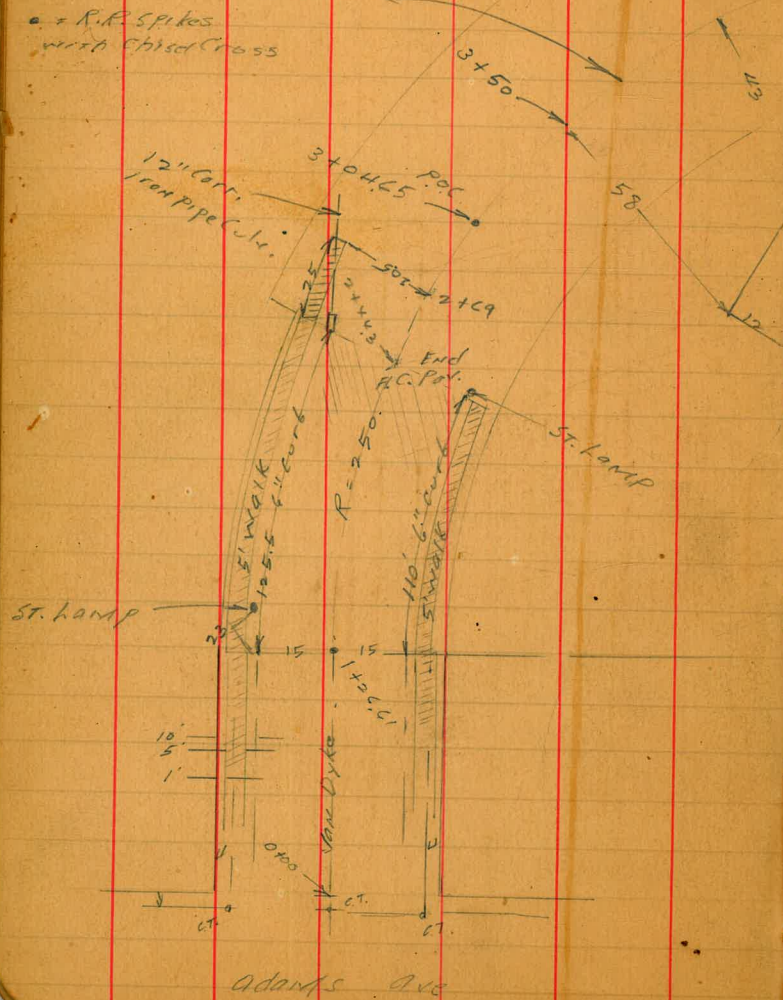
Moore
Rand
SudMoe

10-29-41.

Xsec Van Dyke & Aldine
Adams to Fairmont

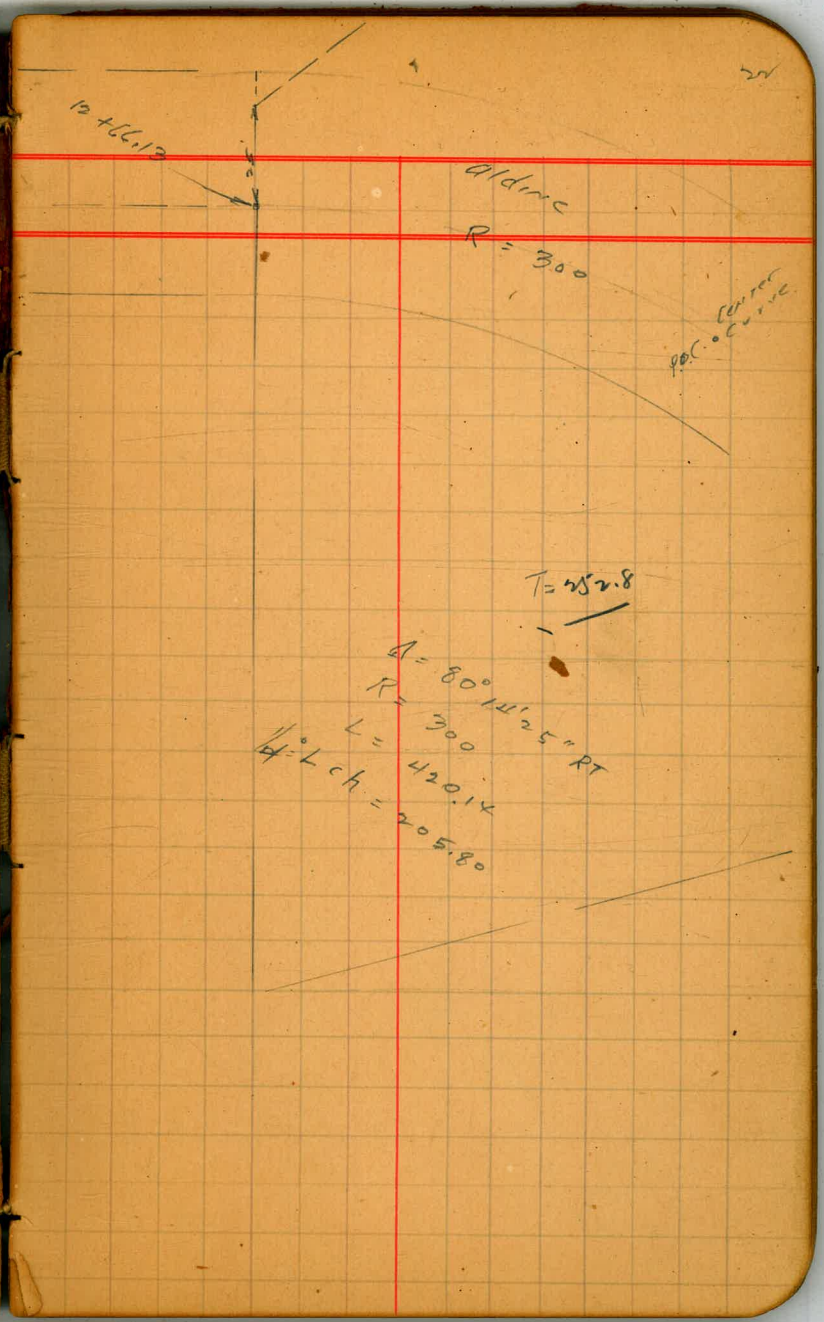
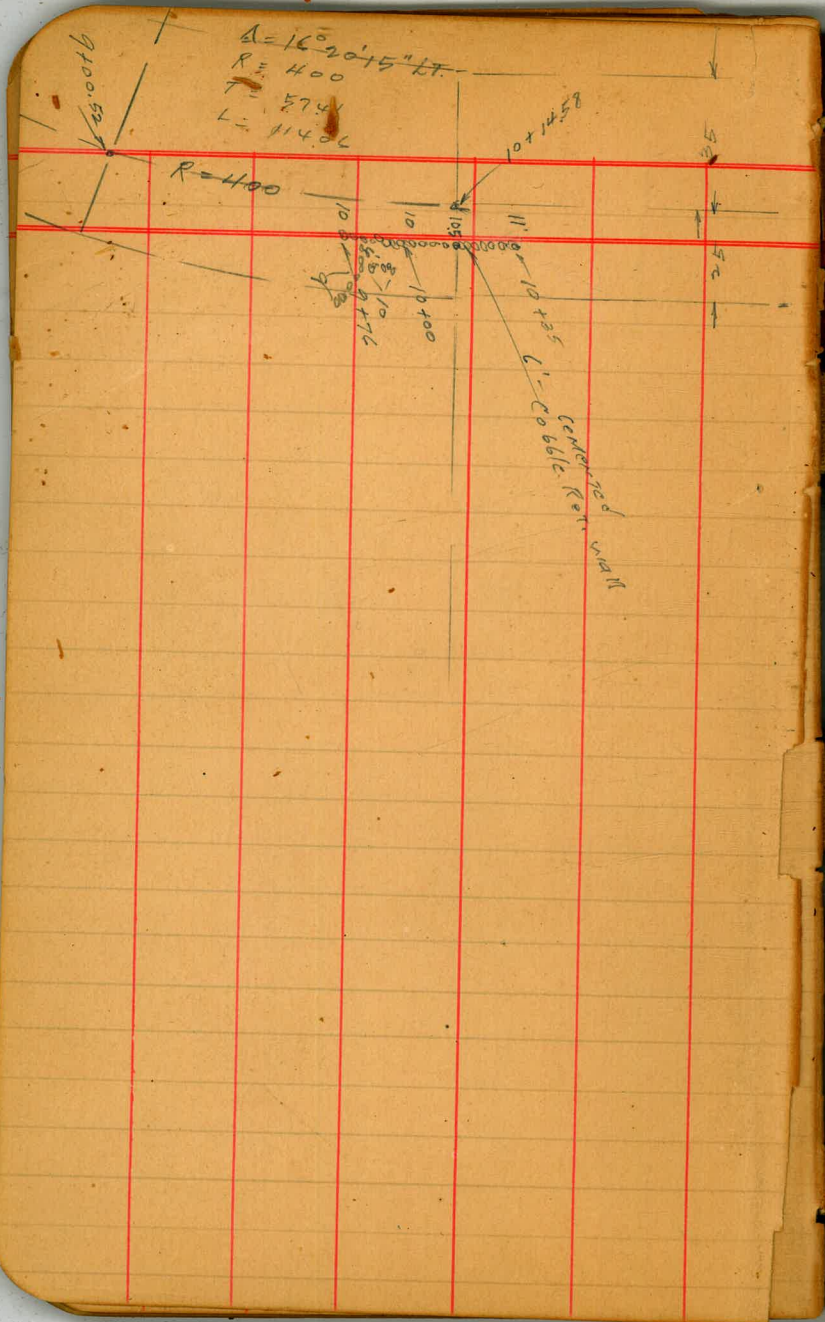
Note! Baseline

• = R.R. Spikes
with Chisel Cross

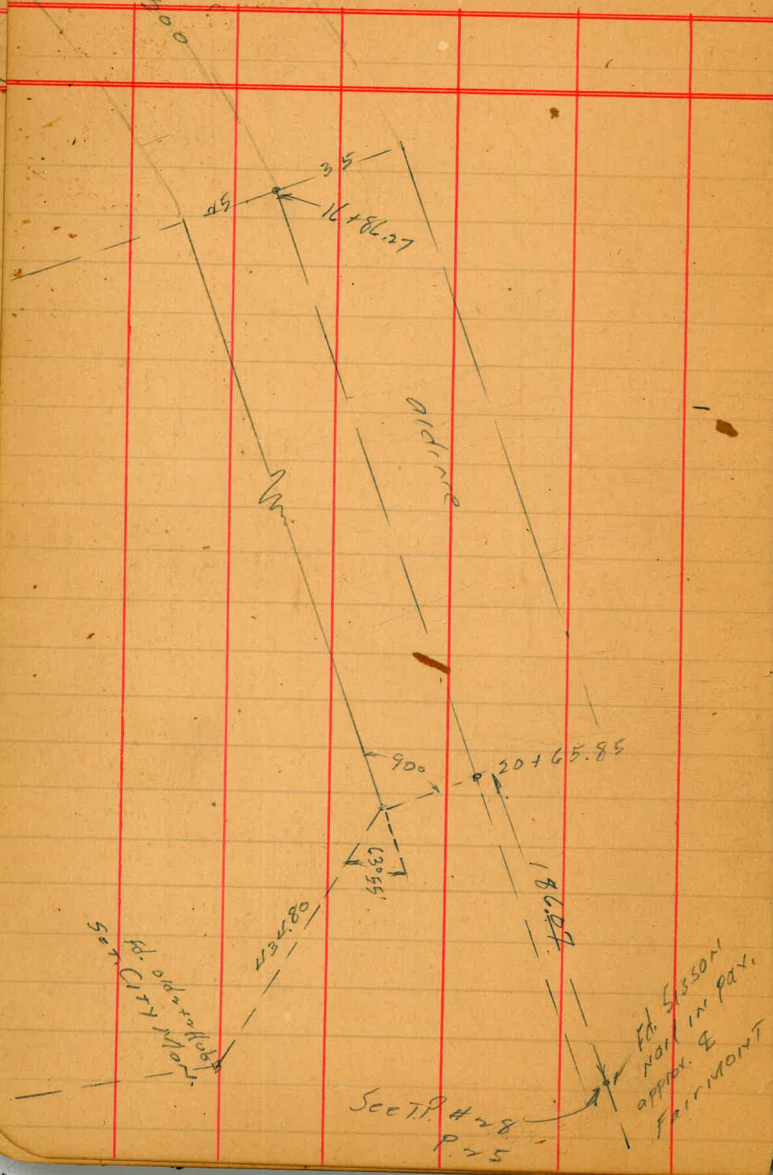


$\Delta = 139' 16'' 45'' RT$
 $R = 400$
 $T = 46.56$
 $L = 927'$

$\Delta = 810' 26' 25'' RT$
 $R = 250$
 $T = 215.88$
 $L = 356.09$



R=300



old line

new

1/2 Sec of Van Dyke
N of Adams Ave.

SE Cor. ✓
C.G.T. 3.33 361.83
T.P. 2.13 361.99 1.97 359.86

N.W. Cor.
C.G.T. 3.57 358.42
adams
Van Dyke

0400 N L Adams

W.C.B. 3.76 358.23
GUT 4.36 357.63
C 4.20 357.79
GUT 4.60 357.39
E.C.B. 4.06 357.93

0478

E.C.B. 6.58 355.41
GUT 7.22 354.77
C 6.76 355.23
GUT 6.89 355.10
W.C.B. 6.33 355.66

361.99

1400

W.C.B. 7.17 354.82
GUT 7.75 354.24
C 7.09 354.30
GUT 8.14 353.85
E.C.B. 7.55 354.44

Red X Plot
to Aldine Dr
11-3-41
E.C.H.

1446.61 BCR

E.C.B. 9.20 352.79
GUT 9.80 352.19
C 9.23 352.76
GUT 9.22 352.77
W.C.B. 8.61 353.38

1450

W.C.B. 10.13 351.86
GUT 10.78 351.21
C 10.23 351.36
GUT 11.42 350.57
E.C.B. 10.82 351.17

T.P. 0.54 ✓ 350.86 11.67 350.32

350.86

	drive	
7 + 00		
w c b		
g u t	3.07	347.84
c	3.03	347.83
g u t	3.57	347.34
E c b	7.88	347.98
7 + 44.3 = End of C16, Sdw. 4 Pav.		
w c b	5.34	345.52
g u t	5.87	344.99
c	5.63	345.23
g u t	6.78	344.58
E c b	5.89	344.97
E L	5.4	345.5
7 + 0	4.6	346.3

Note! Any proposed widening
on the So. should not begin
more than 20' back of 7 + 44.3

LT

RT

0

same slope
at 50' out

319.6	331.9	332.0	331.5	333.5	348.1	351.1	351.6
$\frac{19.5}{40}$	$\frac{7.0}{16}$	$\frac{7.1}{16}$	$\frac{7.6}{20}$	$\frac{5.0}{25}$	$\frac{+9.0}{30}$	$\frac{+12.0}{48}$	$\frac{+12.5}{60}$

311.6	322.8	333.3	333.3	332.5	334.7	347.6	349.8	351.8
$\frac{27.5}{40}$	$\frac{16.3}{22}$	$\frac{5.8}{7}$	$\frac{5.8}{7}$	$\frac{6.6}{20}$	$\frac{4.4}{25}$	$\frac{+8.5}{32}$	$\frac{+10.7}{40}$	$\frac{+12.7}{60}$

same slope
at 50' out

321.7	335.4	335.4	334.1	337.9	345.6	349.6	351.8
$\frac{17.4}{25}$	$\frac{3.7}{5}$	$\frac{3.7}{5}$	$\frac{5.0}{23}$	$\frac{1.2}{29}$	$\frac{+6.5}{32}$	$\frac{+10.5}{39}$	$\frac{+12.7}{60}$

5
4 + 82.70 E.C.

+ 50

T.P. 0.26 339.11 120.1 338.85

4

+ 50

3 + 00

same
slope
at 40' out

329.3	338.2	339.11	337.9	336.1	339.1	349.5	350.9
$\frac{21.5}{20}$	$\frac{12.7}{7}$	$\frac{13.0}{13.0}$	$\frac{14.8}{25}$	$\frac{11.8}{28}$	$\frac{1.2}{31}$	$\frac{0.0}{60}$	

308.2	320.4	340.5	340.0	338.5	339.5	349.5	350.3
$\frac{47.7}{60}$	$\frac{30.5}{35}$	$\frac{10.4}{6}$	$\frac{10.9}{10.9}$	$\frac{12.4}{20}$	$\frac{11.4}{25}$	$\frac{1.4}{50}$	$\frac{0.6}{65}$

326.7	328.8	342.6	342.2	340.9	341.4	344.5	
$\frac{20.4}{55}$	$\frac{12.1}{35}$	$\frac{8.3}{12}$	$\frac{8.7}{8.7}$	$\frac{10.0}{20}$	$\frac{9.5}{25}$	$\frac{5.1}{50}$	

350.86

350.86

7+00

T.P. ON

R.R. spike 1.67 321.85 705 320.18 6+89.20 B.C.

6+89.20 B.C. RT

+50

6

T.P. 0.46 327.23 1234 326.77

5+50

339.11

LT

DARK

RT

319.7	319.3	321.9	336.0	338.9
22	2.6	0.0	+14.1	+17.0
	11	18	25	30

321.85
2

309.8	321.0	320.15	319.2	321.1	340.2	349.2
17.4	5.2	7.05	8.0	5.1	+13.0	+16.0
36	24		12	17	25	30

309.6	323.2	322.2	321.6	325.2	342.2	347.2
17.6	4.0	5.0	5.6	7.0	+15.0	+20.0
45	27	50	12	17	20	29

309.2	326.3	325.4	325.0	327.3	341.3	346.4
18.0	0.9	1.2	2.2	0.9	+14.1	+19.2
42	22	18	13	17	21	30

327.22
5

50 out
same
slope

308.0	328.5	328.3	327.9	329.8	342.1	351.1	351.8
31.1	10.6	10.8	11.2	9.3	+2.0	+12.0	+12.7
30	18	10.8	17	20	27	23	50

339.11
4

		12.25	235.89	236.02	
				error 0.13	
T.P.	0.27	248.14	12.44	247.87	
T.P.	0.29	260.51	12.28	260.22	
T.P.	0.45	273.10	12.98	272.65	
T.P.	0.17	285.43	12.86	285.46	
T.P.	1.16	298.32	12.93	297.16	
T.P.	0.59	310.09	12.35	309.50	RR spike

8+50

8+07

8

7+81.91 E.C.

7+50

321.85
3

B.M. B.P. SW. Cor.

LT.

9+00.50 R.C.H.T.

Fairmont Top Hd. wall 20,
Aldine Culm in lot

Fossiliferous

Front here S.E. 1/4
See Sisson's sec.
which are O.K.

310.8	311.5	310.4	-
11.1	$\frac{10.8}{15}$	$\frac{11.5}{25}$	

313.2	312.9
8.7	$\frac{9.0}{25}$

313.6	313.3	322.5	333.3
8.3	$\frac{8.6}{19}$	$\frac{10.6}{21}$	$\frac{11.4}{25}$

314.5	313.9	329.5	331.0
7.4	$\frac{8.0}{16}$	$\frac{12.4}{20}$	$\frac{19.1}{25}$

316.5	316.2	319.6	325.9	337.6
5.4	$\frac{5.7}{12}$	$\frac{2.3}{18}$	$\frac{14.0}{22}$	$\frac{15.7}{25}$

321.85
3

See F.B. 1555-1C

Re-sec of alley

Blk 7 Terrace

" 19 Bouyers

MWB	433	384.45		378.12	35744 Orange
T.P.	290	378.10	7.45	375.90	

0-6.5 = N gut Polk

W	PAV		7.87	370.23	
C			7.95	370.15	
E			7.95	370.15	
0+00 N L Polk					
E	cb		7.39	370.71	
E	PAV		7.56	370.54	
C	"		7.70	370.90	
W	"		7.59	370.51	
W	"		7.49	370.61	

0+15

-1.7	E edge Ribbon		6.70	371.90	
W			6.9	71.2	
C			6.3	71.8	
+9.5	W. edge 15" d. PINE tree		5.9	72.2	
E			5.5	72.6	

2+9 beg loose Cobble wall
ONE

Notes Reduced, 11-18-51.

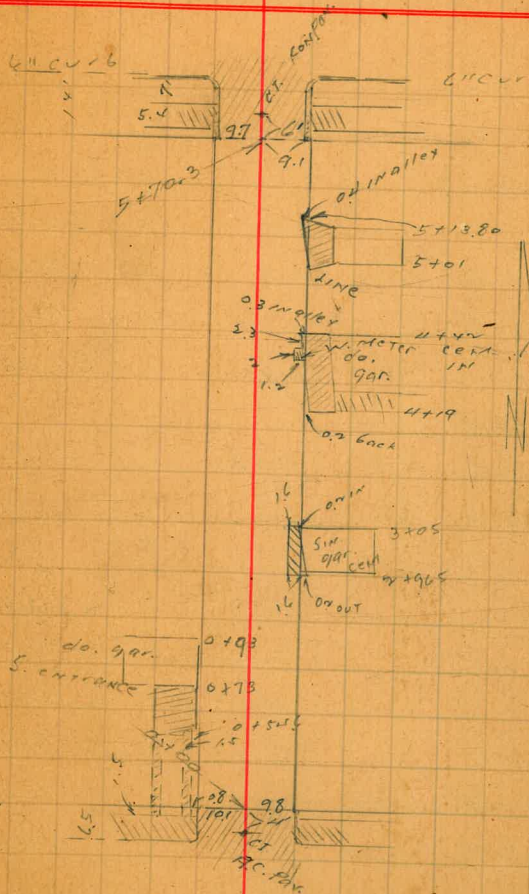
Moore Pond
Svalmoe

INDEX
C.S.K.

79

11-17-41.

Orange Ave



8574

Wilson

Polk Ave.

Note! all line fences and most garages + aprons on East will have to be moved, acct. of Builder's error

378.10 ✓

	0 + 4.6		
	E + 1.0 end cobbler wall		
	0 + 4.9		
E	5.4	372.7	
C	5.8	72.3	
W	6.0	72.1	
+ 1.3	E edge P.P.	5.90	372.20
	0 + 54.6		
E - 5.6	S edge ^{Cor.} apron	5.78	372.87
E - 9.6	SL do ^{Cor.} gar.	5.27	372.83
	0 + 6.8		
- 1.6	E edge ^{Cor.} apron	5.69	372.91
W	5.6	72.5	
C	5.4	72.7	
E	5.2	72.9	
+ 5.8	N.L. ^{do.} apron	5.09	373.01
+ 9.8	N.L. ^{do.} gar.	5.15	372.95
	0 + 69.6		
W - 1.5	E edge ^{Cor.} apron	5.63	372.97

30

378.10 ✓

	0 + 70		
E - 2.7	W. edge of 12" Fence	2.7	Back
W + 3.4	W. edge 14" P. Pale	3.4	in alley
	0 + 73		
W - 1.1	SE Cor do. gar.	5.33	372.77 floor
W - 1.6	E edge ^{Cor.} apron	5.37	372.73
	0 + 76		
- 4.9	SL. ^{Cor.} 4 gar.	4.70	373.90 floor
E		4.7	73.9
C		4.8	73.3
W		5.2	72.9
	0 + 93		
W - 1.4	NE Cor do. gar.		
"	SE " shed		
	1 + 00		
- 1.5	N.W. " "	5.0	73.1
W		4.8	73.3
+ 4	beg. Bd. Fence	5' High	
C		4.6	73.5
+ 5		4.0	74.1
E		3.1	75.0
+ 4.9	gar. floor	4.80	373.20

378.10 ✓

1 + 11.3

- 4.9 NR to 90° cent. fl. 4.80 373.30

E 4.7 73.4

C 4.6 73.5

+ 8 Bd. fence

W 5.0 73.1

+ 10 5.2 72.9

1 + 5.0

E - 10 5.0 73.1

E - 1 5.0 73.1

W 4.7 73.4

+ 1 end Bd fence

+ 1.3 6 eq. good wire fence 4.5 height 12' cent. 5" pipe post. base

C 4.5 73.6

E 4.5 73.6

+ 20 Lake 5.0 73.1

1 + 99.5

- 10 4.2 73.9

E 4.0 74.1

+ 3 in drainage from ditch East 4.3 73.8

C 4.1 74.0

+ 8 3.8 374.3

378.10 ✓

C + 8.9 end good wire fence

C + 9.2 6 eq. picket fence 5' High

W 4.3 373.8

+ 10 4.4 373.7

2 + 0.1

W + 1.5 14" PP.

2 + 1.9

W 3.6 74.5

+ 0.4 E C shed

+ 0.7 picket fence

C 3.8 74.3

+ 8 3.6 74.5

E drainage ditch 4.5 73.6

+ 2 4.0 74.10

+ 10 4.4 73.7 Lake

2 + 3.1

W - 0.3 E 2.3 cent. milk 3.80 374.30

2 + 5.1

- 15 4.0 74.1

E 3.9 74.2

+ 2 3.4 374.7

31

378.10 ✓

c		3.6	374.5
w		3.7	374.9
+ 0.3	END PICKET FENCE		
+ 1.0		3.7	374.9
1			
T.P.	568	380.35	3.43 374.67 ✓
2 + 58			
E + 0.4	beg. Picket fence		
2 + 75			
- 7		5.9	74.5
w		5.7	74.7
c	S.M. H. REM	5.67	374.68
+ 9		5.7	74.7
E		6.1	74.3
+ 1.0	Laminar	6.0	74.9
2 + 81			
w - 33	S.L. COM. APRON	5.54	374.83
w - 5.6	" do. gar.	5.24	375.13
2 + 95			
E + 0.3	end picket fence		

380.35 ✓

2 + 96.5			
E + 1.6	S.L. COM. APRON	5.27	375.08
E - 0.4	" S.M. GAR.	4.80	375.55 COM. H.
2 + 97.3			
w - 3.6	H.L. COM. APRON	5.23	375.12
w - 5.4	" do. gar.	5.13	375.22
2 + 98			
w L	16" P.P.		
3 + 00			
E	gar. floor	4.76	375.59
E + 0.4	on apron	4.76	375.59
E + 1.5	chgo "	5.26	375.09
c		5.4	75.0
w		5.5	74.9
+ 5		5.3	75.1
3 + 05			
E + 1.6	H.L. APRON	5.15	375.20
E + 0.4	" S.M. GAR.	4.80	375.55 COM. H.
3 + 08			
E + 0.3	S.L. COM. WALK	4.85	375.50

34

380.35

	3+10		
E	+0.6 Sw Cor barb house		
	3+34		
E	+0.5 " " " "		
	3+44		
-	4 E Sim. gar 5.7	375.7	dirt floor
W		5.1	75.3
C		5.4	75.7
E		5.1	75.3
+15	Lake	5.4	75.0
	3+49		
E	-3.7 E Sim. gar 4.79	375.86	Cent. floor
	3+66		
E	-0.1 bog. 5' fence		
	H+00		
-15		4.9	75.5
E		4.8	75.6
C		4.9	75.5
W	18" P.P.	4.9	75.5
+15		4.8	75.6

380.35

	H+09		
W	-5' E Sim. gar 4.8	375.6	dirt floor
			now used to store firewood
	H+19		
E	-0.9 end 5' wire fence		
E	-0.2 SL apron ^{cem}	4.50	375.85
E	-4.1 SL 4.6 ^{cem} walk	4.05	376.3
W	+0.6 Bog. 2" iron pipe auto bumper		
	H+24		
-	10	4.4	76.0
-	4 Picket fence	4.4	76.0
W		4.4	76.0
C		4.5	75.9
E		4.5	75.9
E	+0.1 cent apron	4.49	375.86
	+4.1 SL Do. gar.		Cent. fl.
	H+42		
E	-3.7 N.L. do. gar.	3.97	376.38
E	+0.3 " apron ^{cem}	4.21	376.19
	H+42.7		
	Bog.		
E	-1.3 1 Bd. fence		

380.35

4448

W - 0.7 End main pipe bumper

4456

E - 1.4 end Bd. fence

4463

E - 1.1 6-g. wire fence

4459

- 10

4.1

376.3

E

3.9

76.5

C

4.1

76.3

W

4.2

76.2

+ 1.2 6-g. Bd. fence

+ 10

4.2

76.2

4499

W - 0.7 end Bd. fence

W + 0.9 14" P.P.

5401

W

3.6

376.8

C

3.4

77.0

E S.L. cement apron 3.35

377.00

+ 2.2 end wire fence

34

380.35

5407

E - 4.5 2 Sim. gar 3.46 377.09 Cem. Kt

E + 0.7 " cement apron 3.20 377.15

W ^{on} line E " " " 3.23 376.72

W - " Sim. gar. 3.40 376.95

5413

W + 0.3 6-g. wire fence

5413.8

E + 0.4 hedge ^{cem} apron 3.07 377.28

5414

E + 0.4 6-g. Picket fence

T.P. 5.43 382.58 3.20 377.15

5433

W + 0.5 end wire fence

W + 1.3 6-g. and E. edge 5.59 376.99 cem. walk

5449

E 4.2 78.4

+ 0.4 picket fence

C 5.1 77.5

387.58 ✓

+	8.5	N end wk	5.43	377.15
"	9.0	S " "	5.43	377.15
5+57.5				
W	1.0	N end work	5.41	377.17
W	1.4	Bay. & E edge Evergreen hedge		
5+70.3 S.L. Orange				
W	0.3	curb	5.56	377.02
"		pay	5.56	377.02
E		"	5.91	376.67
	49.1	"	5.68	376.90
"		curb	5.61	376.96
S curb Orange in gutter				
E		pay	6.24	376.39
C		"	6.18	376.90
W		"	6.11	376.97

5+70

E +0.4 end picket fence

orig B.M. 446 378.14 378.14 ✓

The image shows an open notebook with two blank pages. The pages are cream-colored and feature light blue horizontal ruling. The left page has a vertical red margin line on the left side, and the right page has a vertical red margin line on the right side. The notebook is bound in the center with three visible staples. The number '36' is written in the top right corner of the right page.

261.100 11 34.75 17

26) 8475 (12
26
81
52
255

150.00

180
50 30
230

180
24
6

90
32 30
122 30

Grades for iron pipe up from Sta 0

0	13.27
+ 12	13.30
+ 24	13.33
+ 36	13.36
+ 48	13.39
+ 60	13.42
+ 72	13.45
+ 84	13.48
+ 96	13.52
+ 108	13.55
+ 120	13.58
+ 132	13.61
+ 144	13.64
+ 156	13.67
+ 168	13.70
+ 180	13.73
+ 192	13.76
+ 204	13.79
+ 16	13.82
+ 235	13.85

Sta: 156 : 1 : X

18
3
54
41
58
53

13.27
0308
13.3008 - 12
0308
13.3316 - 24
0308
13.3624 + 36
0308
13.3932 + 48
0308
13.4240 + 60
0308
13.4548 + 72
0308
13.4856 + 84
0308
13.5164 + 96
0308
13.5472 + 108
0308
13.5780 + 120
0308
13.6088 + 132
0308
13.6396 + 144
0308
13.6704 - 156
0308
13.7012 + 168
0308
13.7320 + 180
0308
13.7628 + 192
0308
13.7936 - 204
0308
13.8244 + 16
0232
13.8476

13.27
0308
13.3008 - 12
0308
13.3316 - 24
0308
13.3624 + 36
0308
13.3932 + 48
0308
13.4240 + 60
0308
13.4548 + 72
0308
13.4856 + 84
0308
13.5164 + 96
0308
13.5472 - 108
0308
13.5780 + 120
0308
13.6088 + 132
0308
13.6396 + 144
0308
13.6704 + 156
0308
13.7012 + 168
0308
13.7320 - 180
0308
13.7628 + 192
0308
13.7936 + 204
0308
13.8244 + 16
0258
13.8602

0
 + 1
 + 2
 + 3
 + 4
 + 6
 + 7
 + 8
 + 9
 1 + 0
 + 2
 + 3
 + 4
 + 5
 + 6
 + 8
 + 9
 2 * 0 4
 + 10
 + 20

5528
 180
 35398
 2679

4175
 200
 3975

4600
 200
 4400

42
 4175

7665
 23+37
 5-528

305
 209
 96

225 / .5807 .2577
 450
 1800
 1125
 1700
 1596
 1700

.002577
 12
 5.154
 2577
 .000829

4.54
 22.39
 24.93
 6.20
 18.73
 4.48
 14.38

14.75 50
 50

Rev. 54

7875
 72
 675

17 54
 15

73
 2) 38
 29

7875
 711
 764

12.30
 12
 8.30

13.0
 8
 21.71
 71.05
 65
 608



24.24
 6.53

18.71
 4.73
 14.33

533

929
 918
 5.10
 19.74

24.84
 5.45
 19.33

4

13.35

156
 222
 378
 36
 18
 160

5.10
 19.16
 24.24
 5.45

18.75
 4
 14.71
 4

14.55

2172

216

4
 220
 180

23
 10.75
 12.25

21
 4173
 200

833
 2720
 600

14.75
 14

90

2337
 180

2519

1756
 1000
 705

1254
 110
 2354

021251

725
 .2
 145.0

1177
 1266
 244.3
 25
 269.3

7865
 58101
 2050

5.59
 23.90
 15.90
 9.69

9 8/4
 100
 69
 .31

43
 15
 18

70.18
 14.86
 53.3

8 3/4

25 : .02 " 18 : 17

25) 0200 .09
 200

14
 14
 0144