

641

Grape Street.

TRANSIT

F.B. 641



# INDEX

Streets	Location	Page
Atlantic	North of H St	2--4
Ash	East of Atlantic	10--12
Calif	N of H St	13--18
Calif	N of Ash St	22--28
Juniper	to Arctic	29
Arctic	S of Juniper	29--30
Grove	S of California	32--33

Atlantic St. Curve

Sta	Elev	Grad	cut-		
0	2.49	-7.48	9.92	9	11
+10	2.90	-7.39	10.29	10	3 1/2
+20	2.25	-7.30	9.55	9	6 5/8
+30	2.05	-7.21	9.26	9	3 1/4
+40	1.70	-7.12	8.82	8	9 7/8
+50	1.55	-7.03	8.38	8	4 3/8
+60	0.88	-6.94	7.82	7	9 7/8

7.98  
50

7.98

1

5.32  
199.80  
205.12

199.80  
5.32  
195.12  
7.02  
188.10

= Sta 1+00 N S H St

Atlantic St. N.H.

Sta	Elev	Grade	cur	
1	1.11	-6.94	8.05	8' 05/8
+25	0.91	-6.91	7.82	7' 9 7/8
+50	0.83	-6.87	7.70	7' 9 3/4
+75	-1.45	-6.84	8.29	8' 3 1/2
2	1.55	-6.81	8.36	8' 4 1/2
+25	1.60	-6.77	8.37	8' 4 1/2
+50	1.78	-6.74	8.52	8' 6 1/4
+75	1.63	-6.71	8.34	8' 4 1/2
3	0.39	-6.67	7.05	7' 0 5/8
+25	0.35	-6.64	7.09	7' 1 1/8
+50	0.27	-6.61	6.88	6' 10 5/8
+75	0.13	-6.57	6.70	6' 8 3/8
4	0.99	-6.54	7.53	7' 6 3/8
+37.5	0.55	-6.49	7.04	7' 1 1/2
+75	0.44	-6.44	6.88	6' 10 5/8
5	1.23	-6.42	6.67	6' 8
+25	0.25	-6.37	6.62	6' 7 1/2

1831  
1108

N.H. 81-

242
134
3196
-0.50
4.46

S. 7 9 21-  
 9 21-  
 N. 2 6 21-

0.0

## Atlantic St - Nov H

3

Sta	Elev	Grade	Cont	
5+50	0.24	6.34	6.54	6'7"
+73	0.18	6.30	6.48	6'5 <sup>3</sup> / <sub>4</sub> "
6	0.25	6.27	6.55	6'6 <sup>3</sup> / <sub>4</sub> "
+23	0.33	6.24	6.57	6'6 <sup>7</sup> / <sub>8</sub> "
+50	0.31	6.21	6.52	6'6 <sup>1</sup> / <sub>4</sub> "
+75	0.39	6.17	5.74	5'9 <sup>3</sup> / <sub>4</sub> "
7	10.07	6.14	6.21	6'2 <sup>1</sup> / <sub>2</sub> "
+23	-0.32	6.11	5.79	5'9 <sup>1</sup> / <sub>2</sub> "
+50	-0.73	6.07	5.34	5'4 <sup>1</sup> / <sub>4</sub> "
+75	-0.61	6.04	6.03	6'0 <sup>3</sup> / <sub>4</sub> "
8+12 <sup>1</sup> / <sub>2</sub>	+0.50	5.99	6.49	6'5 <sup>7</sup> / <sub>8</sub> "
+50	0.31	5.94	6.25	6'3"
+75	0.39	5.91	6.30	6'3 <sup>3</sup> / <sub>4</sub> "
9	0.10	5.88	5.98	5'11 <sup>3</sup> / <sub>4</sub> "
+23	0.38	5.84	6.22	6'2 <sup>5</sup> / <sub>8</sub> "
+50	0.77	5.81	6.58	6'7"
+75	0.74	5.78	6.52	6'6 <sup>1</sup> / <sub>4</sub> "
10	1.01	5.74	6.75	6'9"
+75	0.99	5.71	6.70	6'8 <sup>3</sup> / <sub>8</sub> "
+50	1.05	5.68	6.73	6'8 <sup>3</sup> / <sub>4</sub> "

$$\begin{array}{r} 27125 \\ 44375 \\ \hline 272 \end{array}$$

SJ F 81  
 F 81  
 NJ F 81

Grade 0.5

Atlantic St-Not H

Sta	Elev	Grad	ew-	
10+75	1.13	-5.64	6.77	6' 9/4
11	1.07	-5.61	6.67	6' 8
+25	1.26	-5.58	6.84	6' 10/8
+30	1.15	-5.54	6.69	6' 8/4
+875	0.68	-6.49	6.17	6' 2
12+25	1.67	-5.44	7.11	7' 1 3/8
+37	1.94	-5.41	7.35	7' 4 1/4
+75	0.56	-5.38	5.94	5' 11 1/4
13	0.81	-5.34	5.65	5' 7 3/4
+25	0.20	-5.31	5.51	5' 6 1/8
+50	0.88	-5.28	6.16	6' 1 7/8
+75	1.77	-5.24	7.01	7' 0 1/8
14	0.70	-5.21	5.91	5' 10 1/8
+25	-0.07	-5.18	5.11	5' 1 3/8
+50	+0.02	-5.14	6.16	6' 1 7/8
+75	1.00	-5.11	6.11	6' 1 3/8
15	0.91	-5.08	5.99	5' 11 7/8
+25	1.04	-5.04	6.08	6' 1
+30	-0.39	-5.01	4.62	4' 7 1/2
+75	-0.37	-4.98	4.61	4' 7 3/8
16	-0.63	-4.94	4.41	4' 4 1/8

10.810

S. 2 E St  
E St  
N. 2 E St

Grade 1.0

S. 2 E St

S St

Grade 1.65

Atlantic 21 Nov 77

Sta	Elev	Grade	Cor		
16+25	-1.75	-4.91	3.13	3	1 1/2
+50	-0.53	-4.88	4.35	4	4 1/4
+75	-0.07	-4.84	4.77	4	9 1/4
17	0.35	-4.81	5.16	5	1 7/8
+25	0.45	-4.77	5.22	5	2 3/8
+50	1.46	-4.74	6.20	6	2 3/8
+75	2.46	-4.71	7.17	7	2
18	2.67	-4.68	7.33	7	4 1/4
+25	3.06	-4.64	7.70	7	8 3/8
+50	3.15	-4.61	7.76	7	9 1/8
+75	1.08	-4.58	5.66	5	7 7/8
19	2.77	-4.54	7.31	7	3 3/4
+20	3.36	-4.51	7.87	7	10 1/2
+40	3.86	-4.49	8.35	8	4 1/4
+60	3.66	-4.46	8.12	8	1 1/2
+80	2.91	-4.44	7.35	7	4 1/4
20	2.51	-4.41	6.92	6	11
+25	0.49	-4.38	4.87	4	10 1/2
+50	2.32	-4.35	6.67	6	8
+75	2.53	-4.31	6.84	6	10 1/8

N. S. S. S.

1881  
D. 1

D. C. S.

C. S.

Grade 2.5-

N. S. S. S.



## Atlantic St. No. 4

Sta	Elev	Grade	cus		
21	2.159	-4.28	6.87	6	10 <sup>1</sup> / <sub>2</sub>
+25	2.163	-4.25	6.88	6	10 <sup>5</sup> / <sub>8</sub>
+30	2.28	-4.21	6.49	6	5 <sup>7</sup> / <sub>8</sub>
+75	2.21	-4.18	6.39	6	4 <sup>3</sup> / <sub>4</sub>
22	2.32	-4.15	6.47	6	5 <sup>5</sup> / <sub>8</sub>
+26	-1.92	-4.11	2.19	2	2 <sup>1</sup> / <sub>4</sub>
+50	-1.49	-4.08	2.59	2	7 <sup>1</sup> / <sub>8</sub>
+75	+0.27	-4.04	4.31	4	5 <sup>3</sup> / <sub>4</sub>
23	0.29	-4.01	4.50	4	3 <sup>5</sup> / <sub>8</sub>
+20	2.35	-3.98	6.33	6	4 <sup>1</sup> / <sub>8</sub>
+40	3.13	-3.96	7.09	7	1 <sup>1</sup> / <sub>8</sub>
+60	1.72	-3.93	5.65	5	7 <sup>3</sup> / <sub>4</sub>
+80	2.87	-3.91	6.78	6	9 <sup>3</sup> / <sub>8</sub>
24+05	-0.01	-3.87	3.86	3	10 <sup>3</sup> / <sub>8</sub>
+80	1.01	-3.84	4.85	4	10 <sup>1</sup> / <sub>4</sub>
+55	-0.67	-3.81	3.14	3	1 <sup>3</sup> / <sub>4</sub>
+80	-0.07	-3.77	3.70	3	8 <sup>3</sup> / <sub>8</sub>
25+05	-0.47	-3.74	3.27	3	3 <sup>1</sup> / <sub>4</sub>
+80	-0.57	-3.71	3.20	3	2 <sup>3</sup> / <sub>4</sub>
+55	-0.78	-3.67	2.89	2	10 <sup>3</sup> / <sub>4</sub>

S. L. B. St.

B. St. Grade 3.0

N. L. B. St.

25+60

25+60

Atlantic St. A. H.

Sta.	Elv.	Grade	cu-			
25750	-1.72	-3.64	1.92	1	11	-
28705	-1.37	-3.61	2.24	2	2 7/8	-
430	-2.07	-3.57	1.50	1	6	-
+55	-2.36	-3.54	1.18	1	2 1/8	-
+80	-0.40	-3.51	3.11	3	13/8	-
27	-0.56	-3.48	2.92	2	11	-
+20	-0.93	-3.45	2.52	2	6 1/4	-
+40	-0.66	-3.43	2.77	2	9 1/4	-
+60	-0.96	-3.40	2.44	2	5 1/4	-
+85	-0.77	-3.37	2.60	2	7 1/4	-
28710	-1.16	-3.33	2.17	2	8	-
+35	-1.21	-3.30	2.09	2	1 1/8	-
+60	-0.96	-3.27	2.31	2	3 3/4	-
+85	-1.04	-3.23	2.19	2	2 1/2	-
29710	-1.19	-3.20	2.01	2	1/4	-
+35	-1.83	-3.17	1.34	1	4 1/8	-
+60	-2.02	-3.13	1.11	1	1 3/8	-
+85	-0.98	-3.10	2.12	2	1 1/2	-
30710	-1.16	-3.07	1.91	1	10 7/8	-
+35	-1.18	-3.03	1.85	1	10 1/4	-
+57	-1.10	-3.00	1.90	1	10 7/8	pc.

S. J. A. St.

A. St. - Grade 2.5

N. J. A. St.

30  
22  
57

60

S. J. A. St. - Grade 1.5

## Atlantic St. No. 4

Sta Elev Grad. Cur

30+65	-1.64	-2.94	1.40	1	4 3/4	
+72	-1.23	-2.85	1.65	1	7 7/8	
+80	-0.73	-2.81	2.08	2	1	
+88	+0.55	-2.75	3.30	3	3 5/8	0.115.0
+95	-0.10	-2.69	2.59	2	7 1/8	
31+03	+1.15	-2.63	3.78	3	9 3/4	
+11	1.99	-2.56	4.55	4	6 5/8	
+14	2.36	-2.61	4.87	4	10 1/2	
+26	2.84	-2.44	5.28	5	3 3/8	x PTT

Curve to east 10" Pipe

8

31+13 = 0+26 Man hole East -  
 Line of Atlantic St. End of  
 15" pipe road

Feb 11 - East of Hill

	Cliv	Incl	Sub		
0+26		-2.55			
+293	2.37	-2.54	4.91	4' 10 <sup>1</sup> / <sub>2</sub>	x
+37	2.77	-2.52	5.29	5' 3 <sup>1</sup> / <sub>2</sub>	
+47	2.94	-2.49	5.43	5' 5 <sup>1</sup> / <sub>2</sub>	
+72	4.35	-2.42	6.80	6' 9 <sup>3</sup> / <sub>4</sub>	
+97	5.50	-2.35	7.85	7' 10 <sup>1</sup> / <sub>4</sub>	
1+22	6.57	-2.28	8.79	8' 9 <sup>1</sup> / <sub>2</sub>	
+47	7.52	-2.21	10.03	10' 0 <sup>3</sup> / <sub>8</sub>	
+72	8.63	-2.14	10.77	10' 9 <sup>1</sup> / <sub>2</sub>	
+97	9.50	-2.07	11.57	11' 6 <sup>7</sup> / <sub>8</sub>	
2+22	10.16	-2.00	12.16	12' 1 <sup>1</sup> / <sub>2</sub>	x
+59	10.58	2.84	7.75	7' 9	
+97	9.57	3.73	5.78	5' 9 <sup>3</sup> / <sub>4</sub>	
3+22	11.21	4.84	6.87	6' 10 <sup>1</sup> / <sub>2</sub>	
+47	11.54	4.93	6.61	6' 7 <sup>3</sup> / <sub>4</sub>	
+72	12.06	5.52	6.54	6' 6 <sup>1</sup> / <sub>2</sub>	
+97	12.69	6.12	6.57	6' 6 <sup>3</sup> / <sub>4</sub>	
4+22	13.31	6.72	6.59	6' 7 <sup>1</sup> / <sub>4</sub>	
+47	13.97	7.31	6.66	6' 7 <sup>1</sup> / <sub>4</sub>	
+72	14.62	7.90	6.72	6' 8 <sup>3</sup> / <sub>8</sub>	
+97	15.20	8.50	6.70	6' 8 <sup>3</sup> / <sub>4</sub>	x

545.0

cust. list  
 0+26 = 31+11, Atlantic St, Man-hall  
 #7 11' 8 east of C.L. Atlantic St

of trestle on Hawthorn St  
 refer to Book of X section  
 Lower End of T. bush tanks  
 W.I. California St - Grade 10.8  
 California St  
 C.L. bal

W.I. Arctic St - Grade 16.0

## Atl. N-E of Atlantic

Sta	Elev	Grade	cut		
5+345	17.17	9.55	7.62	7	7 1/2
+72	16.63	10.60	6.03	6	6 3/4
+97	17.73	11.30	6.43	6	5 1/4
6+22	18.19	12.00	6.19	6	2 1/4
+47	14.70	12.70	6.00	6	00
+72	19.27	13.40	5.87	5	10 1/2
+97	19.65	14.10	5.55	5	6 5/8
7+22	20.24	14.80	5.44	5	5 1/4
+47	21.50	15.50	6.00	6	00
+72	23.90	16.20	7.70	7	8 3/4
8+95	24.90	17.25	7.65	7	7 3/4
+47	25.53	18.30	7.23	7	2 3/4
+72	26.20	19.00	7.20	7	2 3/8
+97	26.93	19.70	7.23	7	2 3/4
+94	22.59	20.40	6.19	6	2 1/4
+47	27.23	21.10	6.13	6	1 5/8
+72	28.00	21.80	6.20	6	2 3/8
+97	28.35	22.50	5.85	5	10 1/4
+10+22	29.59	23.20	6.39	6	4 3/4
+47	30.08	23.90	6.14	6	2 1/8

$$\frac{2.50}{1.00}$$

Arctic St-  
E I Arctic St-

$$\begin{array}{r} 26.04 \\ 23.50 \\ \hline 2.54 \end{array}$$

W L Inaria St - Man Hole  
Grade. 24.00  
Inaria St-  
E I Inaria St-

W L Columbia St Grade. 31.8

Ash St - End Atlantic

117  
15  
65

22  
13  
90

Sta Elev Grade end

10+45	29.88	24.95	4.93	4	11 1/4	
11+22	31.08	26.00	5.08	5	1	x
+47	31.79	26.47	5.32	5	3 3/4	
+72	32.39	26.95	5.44	5	5 1/4	
+97	32.67	27.42	5.25	5	3	
12+22	32.75	27.89	4.86	4	10 3/4	
+47	32.68	28.37	4.31	4	3 3/4	
+72	34.00	28.84	5.16	5	1 7/8	
+97	36.19	29.31	6.88	6	10 3/4	
13+22	36.91	29.79	7.12	7	1 1/2	
+595	37.24	30.50	6.78	6	9 3/4	
+97	36.87	31.21	5.66	5	9 7/8	
14+22	34.65	31.68	2.97	2	11 5/8	
+47	35.64	32.16	3.48	3	5 3/4	
+72	38.03	32.63	5.40	5	4 7/8	
+97	38.31	33.10	5.21	5	2 1/2	
15+22	38.43	33.58	4.85	4	10 1/4	
+47	38.91	34.05	4.86	4	10 3/4	
+72	39.56	34.52	5.04	5	0 1/2	
+97	40.24	35.00	5.24	5	3 3/4	x

14651

Total length of pipe 15+97

10+65 11+68 for Columbia St  
Columbia St  
E L Columbia St

13+40 10+68 per Man  
W L State St - Grade 38.00  
State St  
E L State St

15+95 end of Pipe  
W L Union St - Grade 41.00  
Manhole

## California No. 77

Sta	Elev	Grad	Cur		
0	-0.34	-5.74	5.40	5	4 7/8
+10	-0.31	-5.67	5.36	5	4 3/8
+20	-0.18	-5.60	5.42	5	5
+30	-0.73	-5.53	4.80	4	9 5/8
+40	-1.64	-5.47	3.83	3	10
+50	-1.84	-5.39	3.55	3	6 5/8
+56	-2.30	-5.36	3.16	3	9/4
+81	-2.44	-5.24	2.84	2	10 1/8
+106	-1.22	-5.19	3.97	3	11 5/8
+31	-1.56	-5.11	3.55	3	6 5/8
+56	-1.33	-5.03	3.68	3	8
+81	-1.56	-4.94	3.38	3	4 5/8
2+06	-1.45	-4.86	3.41	3	4 7/8
+31	-1.46	-4.74	3.82	3	3 7/8
+56	-1.02	-4.69	3.67	3	8
+81	-0.97	-4.61	3.64	3	7 3/4
3+06	-0.58	-4.53	3.97	3	11 5/8
+31	-0.35	-4.44	4.09	4	1 1/8
+55	-0.32	-4.36	3.84	3	10 1/8
+925	0.74	-4.24	5.02	5	1/4
4+30	0.51	-4.11	4.62	4	7 1/2

F.C. 22 W center bal & H  
Plugs in curve all 4' West  
of center of ditch

F.R. N & H St  
Plugs all of N & H St & C bit

Tack in the

5  
2.10 1/4  
2.1 7/8

S. S. S. St 1.00  
S. St  
N. S. S.

California No. # 11

13

+55	0.62	-4.03	4.65	4 7/8
+80	0.65	-3.94	4.59	4 7/8
57+05	0.88	-3.86	4.74	4 8/8
+30	0.56	-3.78	4.14	4 1 3/4
+55	1.07	-3.69	4.76	4 9/8
+80	1.67	-3.61	5.29	5 3 3/4
67+05	1.80	-3.52	5.32	5 3 7/8
+30	1.66	-3.44	5.10	5 1 1/4
+55	1.89	-3.36	5.25	5 3
+80	2.38	-3.28	5.66	5 7 7/8
77+05	2.15	-3.19	5.34	5 4 1/8
+90	2.82	-3.11	5.93	5 11 1/4
+67.5	3.56	-2.99	6.35	6 4 1/4
87+05	3.36	-2.85	6.21	6 2 1/2
+30	2.91	-2.76	5.67	5 4
+55	2.88	-2.68	5.56	5 6 3/4
+80	3.00	-2.59	5.59	5 7 1/8
97+05	2.88	-2.50	5.39	5 4 5/8
+30	2.81	-2.41	5.22	5 2 5/8
+55	2.95	-2.33	5.29	5 3 3/8
+80	3.54	-2.24	5.79	5 9 3/8

11800

S L Fish 3.50  
 T L  
 N L Fish



California Feb 71

14

10+05	4.16	-2.15	6.31	6 33/4
+30	4.15	-2.06	6.21	6 3 1/2
+55	4.43	-1.98	6.41	6 4 7/8
+80	4.51	-1.89	6.20	6 2 3/8
11+05	4.11	-1.80	5.98	5 11 3/4
+425	4.30	-1.69	5.99	5 11 7/8
+80	4.30	-1.57	5.87	5 10 1/2
12+05	4.21	-1.48	5.69	5 8 1/4
+30	4.31	-1.40	5.71	5 8 1/2
+55	4.43	-1.31	5.74	5 8 7/8
+80	4.47	-1.22	5.69	5 8 1/4
13+05	4.59	-1.13	5.72	5 8 5/8
+30	4.87	-1.05	5.92	5 11
+55	4.98	-0.96	5.94	5 11 1/4
+80	4.96	-0.87	5.83	5 10
14+05	5.21	-0.78	5.99	5 11 7/8
+30	5.39	-0.70	6.09	6 1 1/8
+55	4.78	-0.61	5.39	5 4 3/4
+80	5.28	-0.52	6.30	6 3 5/8
15+05	5.42	-0.43	5.85	5 10 1/4
+30	6.39	-1.35	6.74	6 8 7/8

plug under soil close to tree

S L C str 5.50

N L C str

S L D str 6.50

## California N of 71

Sta	Elev	Grade	ew		
+55	6.32	-0.26	6.58	6	7
+80	5.39	- .17	5.56	5	6 3/4
16+05	6.52	-0.09	6.61	6	7 3/8
+30	6.39	0.0	6.39	6	4 3/4
+55	6.05	+0.09	5.96	5	11 1/2
+80	6.05	0.18	5.87	5	10 1/2
17+05	5.90	0.26	5.64	5	7 3/4
+30	6.13	0.35	5.78	5	9 3/8
+55	6.32	0.44	5.88	5	10 5/8
+80	6.61	0.53	6.08	6	1
18+05	6.62	0.61	6.01	6	1/4
+50	6.76	0.70	6.06	6	3/4
+55	6.74	0.79	5.95	5	11 3/8
+72	6.78	0.84	5.94	5	11 1/4
+92	7.03	0.91	6.12	6	1 1/2
19+12	6.95	0.94	5.97	5	11 5/8
+32	6.73	1.05	5.68	5	8 1/8
+52	6.86	1.12	5.74	5	8 7/4
19+77	7.05	1.21	5.84	5	10 1/4
20+02	6.96	1.30	5.66	5	7 7/8
+27	7.11	1.39	5.72	5	8 5/4

0.86 1.10

N B B St - 4 1/2 from east of  
fruit stand to track in plat-  
form

S B bot 7.5'

B St

S B rail of side track

N B B St

California rd 4

Sta	Elev	Grad	cut	
+52	6.88	1.97	5.41	5' 4 7/8
+77	6.80	1.56	5.24	5' 2 7/8
21+02	7.05	1.65	5.46	5' 4 3/4
+87	7.08	1.73	5.35	5' 4 1/4
+52	7.10	1.82	5.28	5' 3 3/8
+77	7.14	1.91	5.13	5' 1 3/4
22+02	7.49	2.00	5.49	5' 5 7/8
+27	7.53	2.08	5.45	5' 5 9/8
+52	7.17	2.17	5.00	5' 00
+72	7.23	2.24	4.99	4' 11 7/8
+92	7.42	2.31	3.11	5' 1 3/8
23+12	7.53	2.38	5.15	5' 1 3/4
+32	7.44	2.43	4.99	4' 11 7/8
+57	7.29	2.54	4.75	4' 9
+82	7.27	2.63	4.64	4' 7 3/4
24+07	7.36	2.71	4.65	4' 7 7/8
+32	7.43	2.80	4.63	4' 7 5/8
+57	7.45	2.89	4.56	4' 6 3/4
+82	7.60	2.98	4.62	4' 7 1/2
25+07	7.84	3.06	4.78	4' 9 3/8
+32	7.73	3.15	4.58	4' 7

5° 13' R  
 Sewer on center of st from this point

S to B St 48.00  
 L 5 13 left 4' E of center  
 B St

N to B St

## California No. H

Sta	Clev	Grade	Cu-		
+57	7.84	3.24	4.60	4	7 1/4
+82	7.86	3.33	4.53	4	6 3/8
26+07	7.99	3.41	4.54	4	7
+32	8.01	3.50	4.51	4	6 1/4
+32	8.32	3.57	4.75	4	9
+72	8.83	3.64	5.19	5	2 1/4
+92	8.69	3.71	4.98	4	11 3/4
27+12	8.70	3.78	4.92	4	11
+37	8.99	3.89	5.10	5	1 1/4
+62	9.13	4.00	5.13	5	15/8
+87	9.19	4.11	5.04	5	1
28+12	9.40	4.22	5.14	5	2 1/8
+07	9.39	4.33	5.06	5	3/4
+62	9.54	4.45	5.09	5	1 1/8
+87	9.71	4.56	5.15	5	1 7/8
29+12	9.96	4.67	5.29	5	3 1/2
+37	10.14	4.78	5.36	5	4 3/8
+62	10.24	4.89	5.35	5	4 1/4
+87	10.33	5.00	5.33	5	4
30+11	10.52	6.00	4.52	4	6 1/4
Total length of pipe 90+16					

2411.9500

S. L. A. S. 9.00

A. S.

N. S. A. S.

S. L. A. S., Flush Tank 11.00







California Not. Alt. 8"

	Elw	Grade	Curb	Trim
0		3.00		
+10	8.27	3.03	5.24	5 2/4
+20	8.09	3.05	4.99	4 11/4
+30	9.45	3.08	6.37	6 4 1/2
+40	10.78	3.10	7.68	7 4 1/2
+50	10.56	3.73	7.43	7 5 1/4
+57	10.40	3.14	7.26	7 3 1/4
+67	9.94	3.17	6.77	6 9 1/4
+92	8.66	3.23	5.43	5 5 1/4
+117	8.76	3.29	5.47	5 5 3/4
+42	8.37	3.36	5.01	5 0 1/4
+67	8.44	3.42	5.02	5 0 1/4
+92	8.23	3.48	4.75	4 9
+117	8.58	3.54	5.07	5 0 1/2
+42	8.96	3.61	5.35	5 4 1/4
+67	8.85	3.67	5.14	5 2 1/4
+92	9.40	3.73	5.67	5 8
+117	9.24	3.80	5.44	5 5 1/4
+42	5.74	3.86	5.48	5 10 5/16
+62	11.67	3.91	7.76	7 9 1/4
+82	13.53	3.96	8.57	8 6 1/4

1111

Plugs 4 ft E of  
St Centre from P.T. to N. Lo  
of Cedar

P.C.

at 112 N. St

P.T. California St

25 N. St

St. Beat Grade 13.00

Beats



California N of Mt

Sta	Elev	bread	cut	
4162	12.53	4.01	8.52	8 6/11
+22	13.64	4.06	9.58	9 7
+47	12.68	4.12	8.56	8 6 3/4
+72	12.80	4.18	8.62	8 7 3/8
+97	12.92	4.25	8.57	8 6 7/8
5122	12.90	4.31	8.59	8 7 1/8
+47	13.29	4.37	8.87	8 10 1/2
+72	13.34	4.43	8.91	8 10 7/8
+97	13.58	4.50	9.08	9 1
6122	15.84	4.56	9.28	9 3 3/8
+47	13.91	4.62	9.29	9 3 1/2
+72	13.82	4.69	9.13	9 1 3/4
+97	13.82	4.75	9.08	9 6 7/8
7122	14.08	4.81	9.27	9 3 1/4
+42	14.84	4.86	9.98	9 11 3/4
+62	15.41	4.91	10.56	10 6
+82	15.43	4.96	10.47	10 5 5/8
8102	15.28	5.01	10.27	10 3 1/4
+27	14.97	5.07	9.90	9 10 1/4
+52	14.97	5.14	9.83	9 10
+77	15.08	5.20	9.88	9 10 5/8

Plugs 4 ft E of St Centre  
from P.T. to N E of Cedar St  
thence See Transit Book No 4

W. B. B.

11111

Paste 7' 9"  
N Cedar Grade 14.5  
7+595 6" Y. East Pipe Laid Feb 29 1998  
Cedar

N Cedar 8+502

## California L. N. &amp; P.

Sta	Elev	Grade	cut	fill
9+02	14.98	5.26	9.72	9 8 <sup>5</sup> / <sub>8</sub>
+27	15.25	5.32	9.93	9 11 <sup>1</sup> / <sub>8</sub>
+52	15.27	5.39	9.88	9 10 <sup>5</sup> / <sub>8</sub>
+77	15.31	5.45	9.86	9 10 <sup>3</sup> / <sub>8</sub>
10+02	15.32	5.51	10.01	10 1 <sup>1</sup> / <sub>8</sub>
+27	15.51	5.54	9.93	9 11 <sup>1</sup> / <sub>8</sub>
+52	15.66	5.64	10.02	10 1 <sup>1</sup> / <sub>4</sub>
+77	15.72	5.70	10.02	10 1 <sup>1</sup> / <sub>4</sub>
11+05	15.79	5.76	10.03	10 3 <sup>1</sup> / <sub>8</sub>
+25	15.86	5.81	10.05	10 5 <sup>1</sup> / <sub>8</sub>
+45	15.95	5.86	10.09	10 1 <sup>1</sup> / <sub>8</sub>
+65	15.90	5.92	9.98	9 11 <sup>3</sup> / <sub>8</sub>
+85	16.09	5.97	10.12	10 1 <sup>1</sup> / <sub>2</sub>
12+10	16.16	6.03	10.13	10 1 <sup>5</sup> / <sub>8</sub>
+35	16.06	6.10	9.96	9 11 <sup>1</sup> / <sub>2</sub>
+60	16.28	6.17	10.11	10 1 <sup>3</sup> / <sub>8</sub>
+85	16.32	6.23	10.09	10 1 <sup>1</sup> / <sub>8</sub>
13+10	16.55	6.30	10.25	10 3
+35	16.61	6.36	10.25	10 3
+60	16.76	6.43	10.33	10 4
+85	16.83	6.50	10.33	10 4

1142

Posts 5' 10"  
 12 Saw 11 Grade 16.50

Saw

112 Saw

## California St. No. 111

Sta	Elev	Grade	Cur		
14+10	17.26	6.56	10.70	10	8 3/4
+29	17.01	6.61	10.40	10	4 3/4
+49	17.23	6.66	10.57	10	6 1/4
+69	17.34	6.71	10.63	10	7 5/8
+89	17.52	6.76	10.76	10	9 1/4
15+09	17.58	6.82	10.76	10	9 1/8
+34	17.59	6.88	10.71	10	8 1/2
+59	17.62	6.95	10.67	10	9
+84	17.74	7.01	10.73	10	8 3/4
16+09	17.67	7.08	10.59	10	7 1/8
+34	17.76	7.19	10.62	10	7 1/2
+59	17.85	7.21	10.64	10	7 3/4
+84	17.90	7.27	10.63	10	7 5/8
17+09	18.00	7.34	10.66	10	8
+34	18.00	7.41	10.59	10	7 1/4
+59	18.24	7.47	10.77	10	9 1/4
+84	18.31	7.54	10.77	10	9 1/4
18+11	18.10	7.61	10.49	10	5 7/8
+31	17.78	7.66	10.12	10	1 1/2 x

S. L. Fire Grade, 18.00

Fire St.

N. L. Fire

1/1/44  
 Base point is distance of  
 18' N. from S. line slope as the  
 probable location for m.d.  
 to be at 7' in this line  
 N

S. L. Grape Grade, 19.00

19+29 8+8 Y 8 to 6 Reducer for California

## California Ref Act

Sta	Elev	Grade	cut	
18+51	17.60	7.83	9.77	9 9/4
+71	16.77	7.49	8.88	8 10 3/8
+91	16.77	7.96	8.81	8 8 3/4
19+16	17.09	8.04	9.05	9 3/8
+41	17.37	8.13	9.24	9 2 7/8
+76	17.22	8.21	9.01	9 1/8
+91	17.33	8.29	9.04	9 1/2
20+16	17.94	8.37	9.07	9 7/8
+41	17.17	8.46	8.71	8 8 1/2
+76	17.25	8.54	8.71	8 8 1/2
+91	17.10	8.63	8.47	8 5 3/8
21+16	16.98	8.71	8.27	8 3 1/4
+41	16.46	8.79	7.67	7 8
+76	16.29	8.87	7.42	7 5
+91	16.19	8.96	7.23	7 2 3/4
22+11	16.73	9.02	7.71	7 8 1/2
+31	16.59	9.09	7.30	7 3 5/8
+51	16.59	9.16	7.43	7 3 1/8
+71	16.73	9.22	7.51	7 6 1/8
+96	16.26	9.31	6.95	6 11 3/4

11300

Grape

N. L. Grape

N. L. Hawthorne St - Grade 19.00

Hawthorne St -

N. L. Hawthorne

## California N of Ash

Sta	Elev	Grade	cut		
23+21	15.75	9.89	6.36	6	4 3/4
+46	14.99	9.47	5.52	5	6 1/4
+71	15.11	9.56	5.55	5	6 5/8
+96	14.78	9.64	5.14	5	1 3/4
24+21	14.86	9.72	5.14	5	1 3/4
+46	15.59	9.81	5.58	5	7
+71	15.58	9.89	5.49	5	5 7/8
+96	14.40	9.97	4.43	4	5 1/8
25+21	13.86	10.06	3.80	3	9 5/8
+46	14.15	10.14	4.01	4	4 1/2
+71	14.16	10.22	3.99	3	11 1/4
+91	13.59	10.29	3.30	3	3 5/8
26+11	13.56	10.36	3.10	3	10
+81	13.66	10.42	3.24	3	2 7/8
+51	13.83	10.49	3.34	3	4 1/8
+76	13.92	10.57	3.35	3	4 1/4
27+01	13.96	10.63	3.31	3	3 3/4
+26	14.55	10.74	3.41	3	9 3/4
+51	14.35	10.82	3.73	3	8 5/8
+76	14.65	10.90	3.75	3	9
28+01	14.62	10.99	3.63	3	7 5/8

L2 Dry

17.50

Dry M-

N2 Dry

California  
 Sta. Elev. Grade. Elev. -

28+26	14.65	11.07	3.58	3-7	
+51	14.91	11.15	3.86	3 3/8	3 1/2
+76	14.14	11.24	2.90	2 10 7/16	
29+01	14.27	11.32	2.95	2 11 3/8	
+16	14.41	11.37	3.04	3 1/2	x
+27	14.47	11.65	2.85	2 10 3/8	
+38	14.85	11.85	3.00	3 00	
+49	15.54	12.10	3.44	3 5 1/4	x
+60	15.52	12.38	3.14	3 1 3/4	
+71	14.75	12.65	2.09	2 1	
+82	14.64	12.93	1.71	1 8 1/2	
+93	15.07	13.21	4.86	4 10 3/8	
30+04	15.25	13.48	4.75	4 9	
+15	15.68	13.76	4.92	4 11	
+26	19.54	14.04	5.50	5 3 5/8	
+37	20.21	14.31	5.90	5 10 7/16	
+66	20.16	14.39	5.77	5 9 1/4	
+81	21.22	14.79	6.43	6 5 1/8	
31+06	22.50	15.45	7.05	7 4 1/4	
+81	23.87	16.11	7.76	7 9 1/4	
+56	24.76	16.77	7.99	7 11 7/16	

P.C. to Granger St - 35' 1/2 ft  
 L.L. Granger 29+77

30+31 C.S. California Y.Lateral

+56 Y.Lateral - laid on Granger St  
 30+68. old Line by which Pipelines -

P.T. 85' C.S. California  
 Y.Lateral 30+78+5 = 30+73

*Juniper to Arctic Curve*

Sta	Cur	Grade	cut		
31+81	24.91	17.43	7.48	7	5 <sup>3</sup> / <sub>4</sub>
+94	24.66	17.83	6.83	6	10
32.06	24.72	18.11	6.61	6	7 <sup>1</sup> / <sub>4</sub>
+17	24.75	18.39	6.36	6	4 <sup>3</sup> / <sub>4</sub>
+27	25.37	18.68	6.69	6	8 <sup>1</sup> / <sub>4</sub>
+38	25.62	18.93	6.67	6	8
+48	26.18	19.24	6.94	6	11 <sup>1</sup> / <sub>4</sub>
+59	26.39	19.52	6.87	6	10 <sup>1</sup> / <sub>2</sub>
+69	27.07	19.74	7.33	7	4
+80	29.37	20.08	9.29	9	3 <sup>1</sup> / <sub>2</sub>
+90	29.31	20.36	8.95	8	11 <sup>3</sup> / <sub>4</sub>
33	28.14	20.63	7.55	7	6 <sup>1</sup> / <sub>4</sub>
+11					
33+14	27.60	21.00	6.60	6	7 <sup>1</sup> / <sub>4</sub> x
+29	27.65	21.09	6.36	6	6 <sup>3</sup> / <sub>4</sub>
+34	27.87	21.25	6.62	6	7 <sup>1</sup> / <sub>2</sub>
+79	28.68	21.40	7.38	7	3 <sup>3</sup> / <sub>4</sub>
34+04	29.93	21.56	8.37	8	4 <sup>1</sup> / <sub>2</sub>
+29	30.42	21.71	8.71	8	8 <sup>1</sup> / <sub>2</sub>
+54	30.96	21.87	9.09	9	7 <sup>1</sup> / <sub>4</sub>
+79	31.79	22.02	9.67	9	8

2.66-87

Sum of total length of pipe 2+12  
 32+79 *St. Juniper* Y Lateral  
 Y Lateral

PT. Arctic St 35" S of St Juniper  
 Y Lateral

3196  
 2027  
 157  
 27  
 120

## Archie St. S. of ...

Sta	Elev	Grade	Dist	...	...
35+04	31.35	22.18	9.17	9	2
+29	30.95	22.33	8.62	8	7/2
+54	30.21	22.48	7.72	7	8 3/4
+79	30.11	22.64	7.47	7	3 3/4
+99	30.14	22.77	7.37	7	4 1/2
36+19	30.42	22.83	7.39	7	7 1/4
+391	29.17	23.02	6.15	6	1 3/4
+59	28.70	23.14	5.56	5	6 3/4
+84	28.70	23.30	5.40	5	4 3/4
37+09	29.20	23.45	5.75	5	9
+34	29.98	23.61	6.37	6	4 1/2
+59	30.48	23.75	6.78	6	8 3/4
+74	30.77	23.92	6.85	6	10 1/4
38+09	30.87	24.07	6.80	6	9 3/4
+34	30.70	24.23	6.47	6	3 3/4
+59	30.47	24.38	5.99	5	11 1/4
+74	30.15	24.64	5.51	5	6 1/4
39+09	30.43	24.79	5.64	5	7 3/4
+34	29.63	24.94	4.69	4	8 3/4
+59		25.00			

W.L. Dry St. Inspection  
Grade 29.5

Dry St.

W.L. Dry St.

5.23  
27.35  
32.16  
23  
3.67

5.90  
29.89  
35.79  
31.15  
4.63

31.16

Jan 31 1893

W.L. Hawthorne St. ...



Arctic Slope of Amur

Sta.	Elev.	Grad.	Curt.
------	-------	-------	-------

39+89			
-------	--	--	--

40+0.9			
--------	--	--	--

10.66  
California

PC

+42 Y Lateral

P.T. 15' E of C.I. California 56.5

Arctic S1 Grade 37.5  
2+57 Y North 2+59 Y South  
Arctic S1  
C.I. Arctic S1

Sta	Elev.	Grad	cut	
0		8.00		
+10	18.68	8.47	10.21	10 2/2
+20	18.69	8.93	7.76	7 9/8
+30	15.59	9.39	6.20	6 2 3/4
+40	16.08	9.87	6.21	6 2 1/2
+50	15.92	10.33	5.59	5 7 1/8
+57	15.84	10.66	5.18	5 2 1/8
+67	14.92	11.12	3.80	3 9 3/8
+92	16.66	12.29	4.35	4 4 1/4
+17	18.11	13.45	4.66	4 8
+42	20.10	14.62	5.48	5 5 3/4
+67	21.29	15.78	5.57	5 6 1/8
+92	22.65	16.94	5.69	5 8 1/4
2+17	23.78	18.12	5.66	5 8
+42	25.89	19.27	6.62	6 7 1/2
+79 1/2	31.67	21.00	10.67	10 6
3+17	24.58	22.77	1.81	1 9 3/4
+42	25.01	23.95	1.06	1 3/4
+67	26.99	25.14	1.85	1 10 1/4
+92	29.14	26.32	2.82	2 9 1/4

4.669  
10.66

Business

x

Grape St - E of California

Sta	Elev	Grade	cm-		
4+77	31.69	27.50	4.19	4	2 1/4
+ 42	34.06	28.68	5.38	5	4 5/8
+ 67	36.07	29.86	6.21	6	2 1/2
+ 92	36.39	31.04	5.35	5	4 1/4
5+17	44.67	32.22	12.45	12	5 7/8 <sup>Dist</sup>
- 34 1/2	43.62	34.01	11.62	11	7 1/2 <sup>Dist</sup>
+ 92	42.42	34.50	8.92	8	11 x
6+17	39.46	36.45	3.01	3	1/8
+ 42	41.67	38.40	3.27	3	3 1/4
+ 67	44.45	40.35	4.10	4	1 1/4
+ 92	45.41	42.30	3.11	3	1 3/8
7+17	47.55	44.26	3.29	3	3 1/2
+ 42	48.95	46.21	2.74	2	8 7/8
+ 67	50.54	48.16	2.38	2	4 5/8
+ 92	53.86	50.11	3.75	3	9 <sup>Dist</sup>
8+10	End of Pipe			4+07	
8+29	58.41	53.00	5.41	5	4 7/8 <sup>8+09</sup>
Total length of pipe 8+15					

90 L Bndia St - Grade 111.50  
 5+32 8+6 8+57 8+34 8+6 8+6 8+6 8+6

E L Bndia St - A W 30

W L Columbia St -  
 6+6 8 North  
 8+10 - End of pipe Bndia St

Feb 19 1889 33

Front Street from Juniper to Laurel St

Sta	Elev	Grade	Cut		
68+30	186.99	180.00	6.99	6	11 7/8
+ 35	188.04	181.00	7.04	7	0 1/2
+ 80	188.62	182.00	6.62	6	7 3/4
69	188.31	182.46	5.85	5	10 1/4
+ 50	189.07	182.94	4.13	4	7 5/8
+ 40	185.87	183.40	2.47	2	5 3/8
+ 60	188.10	182.56	4.54	4	2 7/8
+ 85	190.26	184.44	5.82	5	9 7/8
70+10	191.10	185.02	6.08	6	1
+ 35	191.33	185.59	5.74	5	9 7/8
+ 60	191.65	186.17	5.48	5	5 3/4
+ 85	192.20	186.75	5.45	5	5 3/4
71+10	192.27	187.33	4.94	4	11 1/4
+ 35	192.93	187.91	5.02	5	0 1/4
+ 60	194.37	188.49	5.88	5	10 5/8
+ 85	195.56	189.06	6.50	6	6
72+10	196.76	189.64	7.12	7	1 1/2
+ 35	197.39	190.22	7.17	7	2
+ 50	198.17	190.74	7.38	7	4 5/8

Average cut 5.73

S line Juniper 187.50  
 Juniper 4.57  
 N line Juniper 189.80  
 193.81  
 187.50  
 6.31  
 5  
 2  
 1.24  
 202.73  
 51.57  
 147.36  
 S line Kalmia St 198.50 M.H.

2.315 - 100

Sta	Clev	Grade	cut		
+80	198.98	191.25	7.73	7	8 3/4
73	199.25	191.72	7.57	7	6 1/4
+80	199.46	192.18	7.28	7	3 3/8
+40	199.64	192.64	7.00	7	00
+65	198.62	193.22	5.40	5	4 3/4
+90	198.14	193.80	4.34	4	4 1/8
74+15	198.59	194.37	4.22	4	2 5/8
+40	198.95	194.95	4.00	4	00
+65	199.59	195.53	4.06	4	0 3/4
+90	200.44	196.11	4.33	4	4'
75+15	201.30	196.69	4.61	4	7 3/8
+40	202.49	197.26	5.23	5	2 3/4
+65	203.69	197.84	5.85	5	10 1/4
+90	204.84	198.42	6.42	6	5"
76+15	204.97	199.00	5.97	5	11 5/8
+40	205.29	200.50	4.79	4'	9 1/2 "

Kalinia St

N line Kalinia.

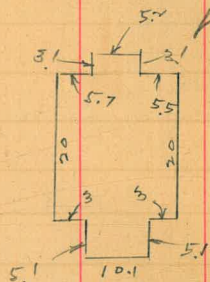
985  
 199.37  
 209.22  
 205.00  
 4.22

South Line Laurel St, 205.00

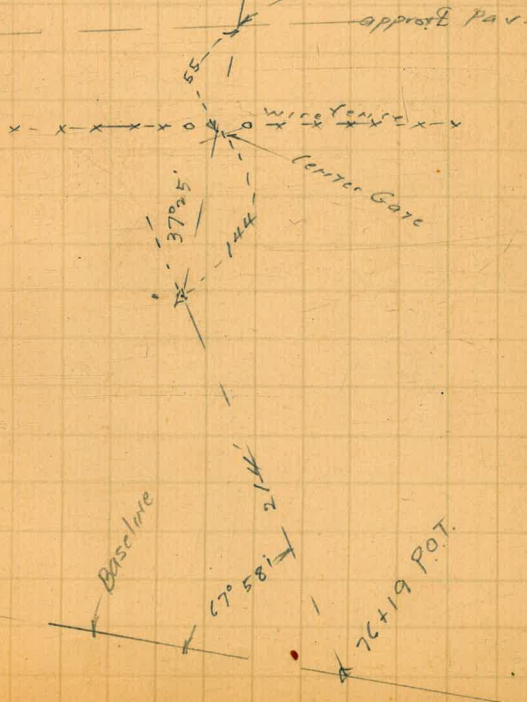
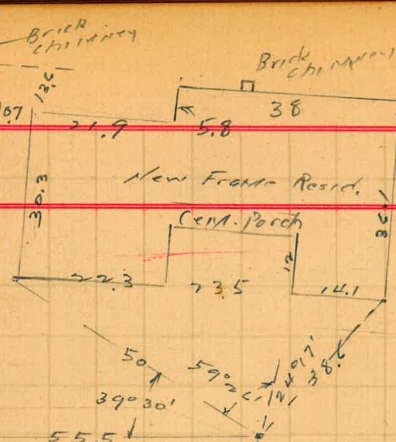


11-26-41

Location of New House  
of Hook Ranch,  
W. of Highway



FRAMING  
DRAWING



Moore

37

Ground Levels at 11-2(-4)

Bldgs on Hook Ranch

8.87 215.34

206.47 Transit PT. = 214' from 76+19 Baseline

Bldg #1 12.5

" #2 11.6

" #3 11.8

" #4 8.8

" #5 <sup>corr</sup> Bldg 9.2

" #6 7.8

" #7 7.5

" water tank 7.8

wind mill 6.7

E Pav. 2.5

215.34

T.P. 11.5 223.9 294 212.40

ground el. <sup>Front</sup> <sup>Next</sup> <sup>House</sup> 0.5

Floor El. of House 2' Higher

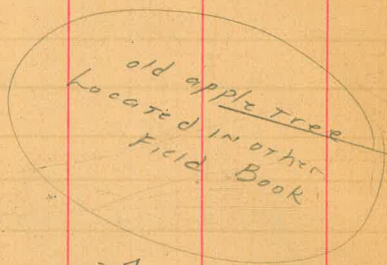
Stock #8 Barn ground approx. 2' higher than #7



Moore

11-26-41

Locations of old fence  
around Hook apple &  
Prune orchard.



above  
Creek

3.7

angle old fence  
at  
Rock  
dam

5.2

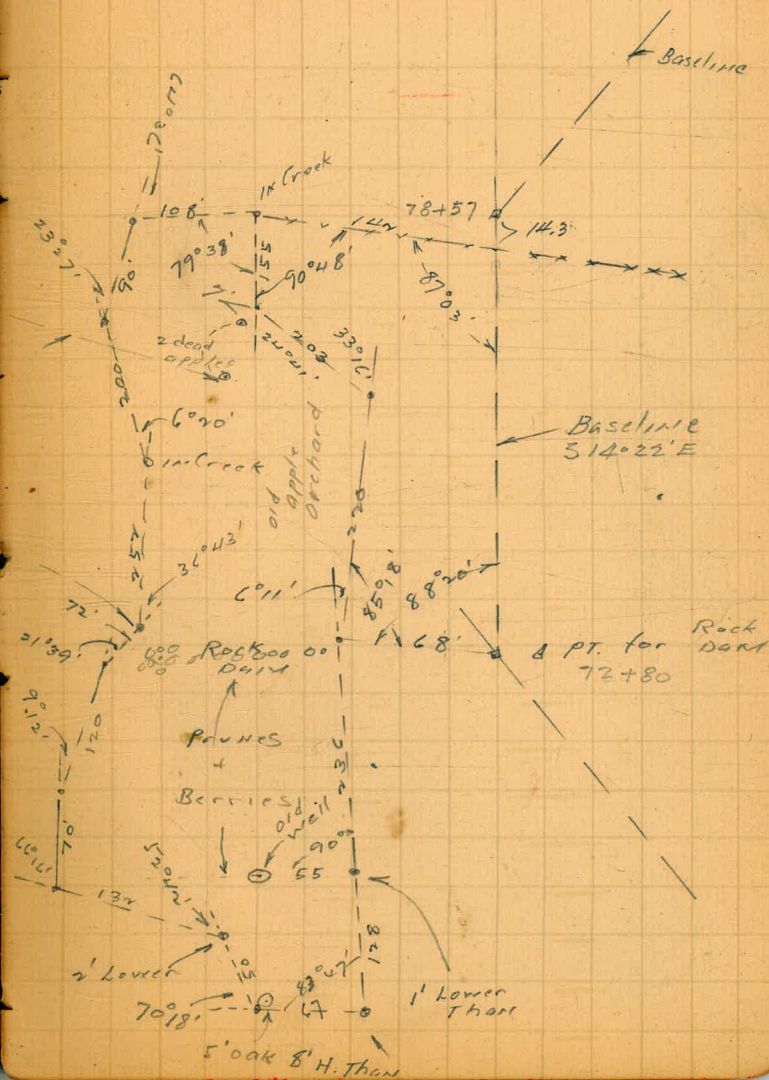
5.70

El. of PT

T.P.

7.1

38



Baseline

Baseline  
514°22'E

Rock  
Dam  
72+80

Lower  
Than

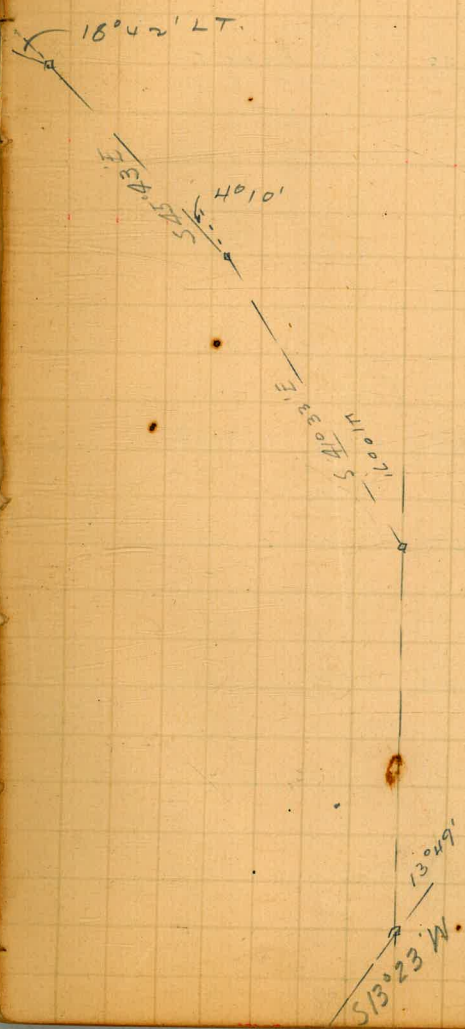
5' oak 8' H. Than

Moore  
11-22-44

39

Cont. Line and Levels  
on La Posta Creek

18°42' LT. 96+52 T.P.	4.75	227.30	2.76	227.55	569.75 E
40°10' LT 94+78 T.P.	4.52	225.31	2.23	220.79	
277°					
47°07' LT 92+46 T.P.	4.84	223.02	2.02	218.18	
340°					
88+61 59+00 Priv. Eng.	13°49' LT. 5.00	220.00		215.20 on Hub	



Δ 25°01' LT.  
119+27

T.P.	6.40	249.73	1.55	243.33
------	------	--------	------	--------

Δ 60°10' RT.  
116+50 T.P. 4.33 244.88 0.60 240.55

Δ 241°48' RT.  
111+31 5.1

47°19' LT  
106+32 T.P. 8.87 241.15 4.95 232.28

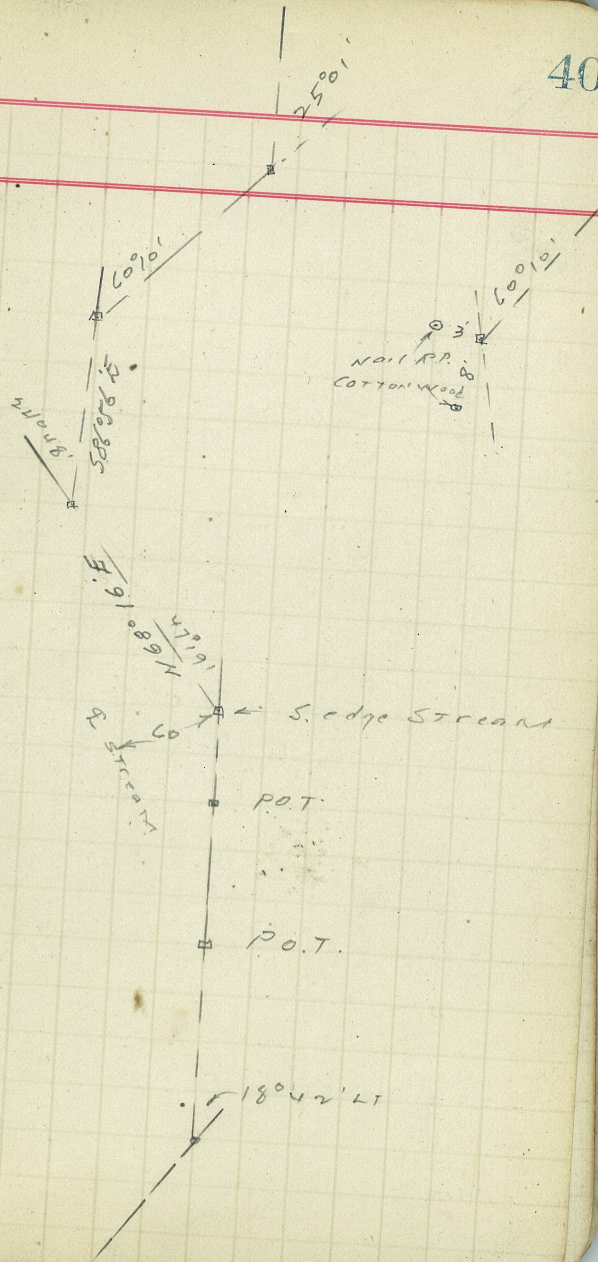
103+52 Sec P. 47 (XSEC at 90°)

100+27 T.P. 10.70 237.23 0.77 226.53

18°42' LT  
96+22 T.P. 11.30 0.7

980.0'

40



126+00 Thence approx. 70° RT.

123+00 Δ LT. 62°20' 0.90 248.83  
T.P.

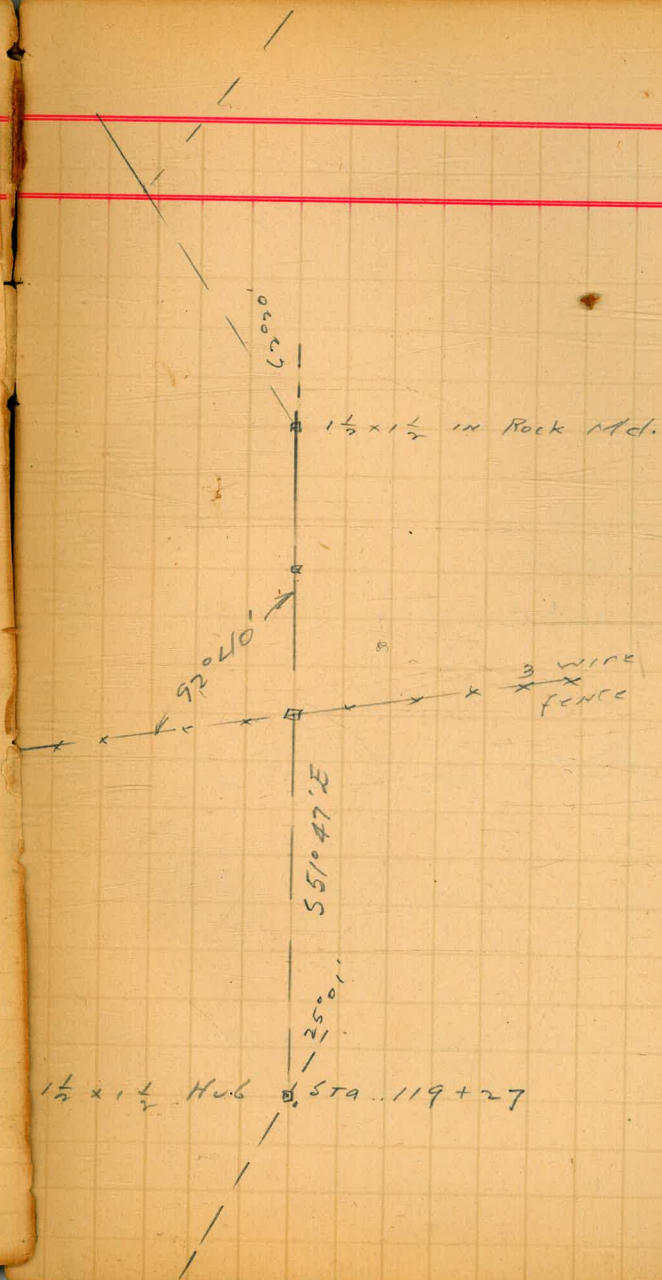
124+60 = Good dam Location

120+86 3 wire fence 5.31 244.44

119+27 Δ = 25°01' LT 4.75 244.98 on

249.73

41



1 sec's RT. & LT. of Baseline  
above Hook Ranch  
on La Posta Creek

Potential DAM SITE

Sec. at 90°

122 + 60 12.05 = 60.88

248.83 + 7.10  
55

116 + 50 Sec on SPLIT  
244.88

+ 40.0  
200

111 + 31 Sec. on SPLIT of A  
241.15

103 + 54 7.30 = 34.58

Sec. at 90° with Baseline  
and Stream

232.28 0.0 5.4  
410 395

LT.

RT 42

Baseline

Granite

Single Stream

Granite

0.0 10.4 14.1 16.0 16.1 15.0 13.0 11.5 0.0 + 15.0  
40 35 14 9 7 4 8 29 45

+ 4.0 1.4 1.0 0.8 2.0 4.3 4.3 2.2 0.0 + 6.0 + 60.0  
157 150 100 10 2 112 21 90 100 150

single stream

1.5 3.8 3.9 5.1 5.1 5.1 3.6 3.1 4.9 4.8 2.9 3.2  
85 67 28 26 10 12 81 86 110 113 164

16. stream

50. stream

4.9 4.7 4.5 4.6 5.0 4.8 4.8 4.6 5.1 5.4 3.9 2.4  
310 240 54 27 25 20 22 125 230 280 325

73 + 4.65 = 77.65  
with Wilcox  
Pri. Eng.

ri. edge flowing  
water

S. edge flowing  
water

Creek from  
50 + 74

10

11

12

13

14

15

126

123

T.

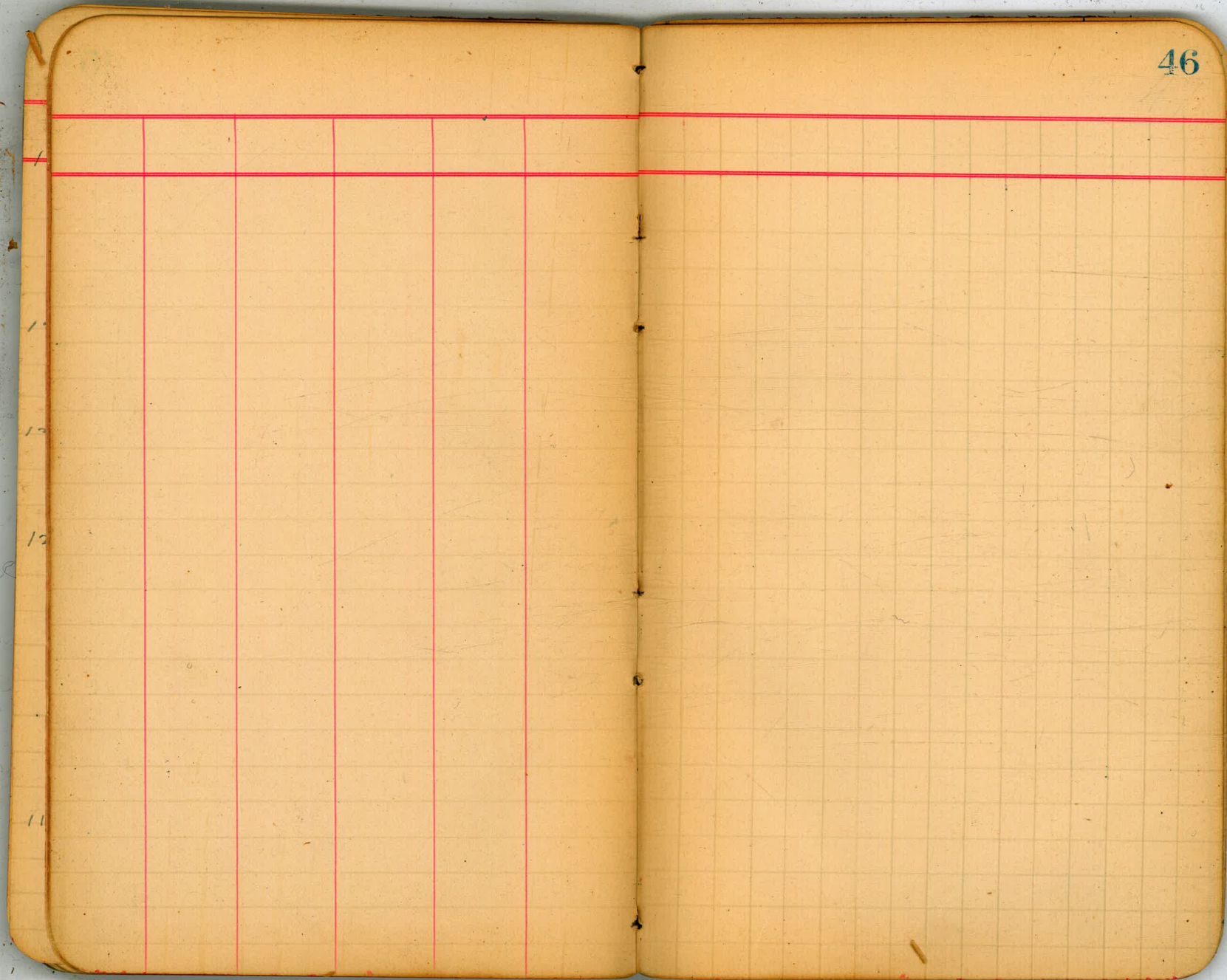
122

120

119







The image shows an open notebook with two pages. The pages are a light tan or yellowish color. The left page is ruled with a grid of light blue lines and has five vertical red lines that divide the page into six columns. The right page is also ruled with a grid of light blue lines and has the number '47' printed in the top right corner. The notebook is bound in the center, and the pages are slightly aged with some minor stains.

an atlantic ...

	0	1	2	3	4	5	6	7	8	9	10	11
3	4	6	4	5	5	4	5	5	5	6	6	6
4	6	4	4	7	2	4	6	7	7	8	2	8
5	6	6	6	9	2	4	6	8	8	8	2	8
6	6	9	8	11	2	4	6	8	9	10	2	10
7	10	6	10	11	2	4	6	11	11	12	2	12
8	12	6	12	13	2	4	6	13	13	14	2	14
9	14	6	14	15	2	4	6	15	15	16	2	16
10	16	6	16	17	2	4	6	17	17	18	2	18
11	18	6	18	19	2	4	6	19	19	20	2	20
12	20	6	20	21	2	4	6	21	21	22	2	22
	22	6	22	23	2	4	6	23	23	24	2	24

M

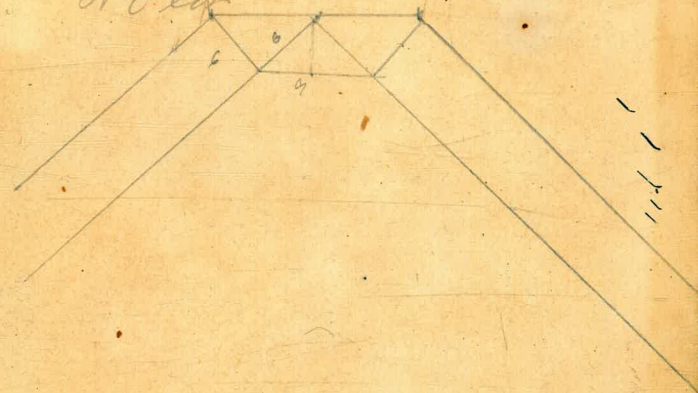
11

Str Rod but Base

Sta	+	HI	-	Elev
Bm	2.04	13.40		11.36
Bm			8.85	4.55

$\frac{9}{2} = 4.5$   
 $9.2 = 4.5$

Ath & Ash rsk high near  
 N.C. Co.

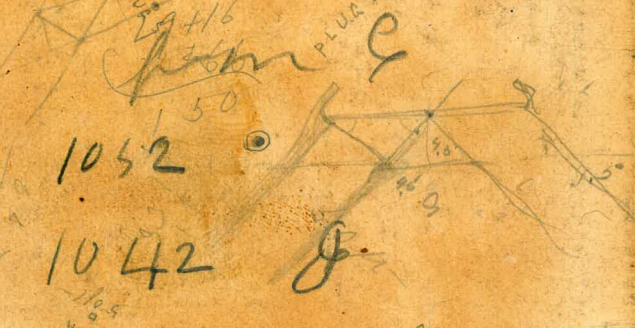


$\frac{1}{2} \times 4 = 2$

Center of Arctic  
 Long straits

111  
 3374  
 3374

3 TKS in  
 corner



36.26  
 17-10  
 10-25.09  
 5408

TRaverse TABLE FOR TRANSIT BOOK,  
 From 1° to 90° for a distance of 100.

Degrees.	DEGREES.		¼ DEGREE.		½ DEGREE.		¾ DEGREE.		Degrees.
	Lat.	Dep.	Lat.	Dep.	Lat.	Dep.	Lat.	Dep.	
0			100.00	0.44	100.00	0.87	99.99	1.31	81
1	99.98	1.75	99.98	2.18	99.97	2.62	99.95	3.05	80
2	99.94	3.49	99.92	3.93	99.91	4.36	99.88	4.80	79
3	99.86	5.23	99.84	5.67	99.81	6.10	99.79	6.54	78
4	99.76	6.98	99.73	7.41	99.69	7.85	99.66	8.28	77
5	99.62	8.72	99.58	9.15	99.54	9.58	99.50	10.02	76
6	99.45	10.45	99.41	10.89	99.36	11.32	99.31	11.75	75
7	99.25	12.19	99.20	12.62	99.14	13.05	99.09	13.49	74
8	99.03	13.92	98.97	14.35	98.90	14.78	98.84	15.21	73
9	98.77	15.64	98.70	16.07	98.63	16.50	98.56	16.93	72
10	98.48	17.36	98.40	17.79	98.33	18.22	98.25	18.65	71
11	98.16	19.08	98.08	19.51	97.99	19.94	97.90	20.36	70
12	97.81	20.79	97.72	20.22	97.63	21.64	97.53	22.07	69
13	97.44	22.50	97.34	22.92	97.24	23.34	97.13	23.77	68
14	97.03	24.19	96.92	24.62	96.81	25.04	96.70	25.46	67
15	96.59	25.88	96.48	26.30	96.36	26.72	96.25	27.14	66
16	96.13	27.56	96.00	27.98	95.88	28.40	95.76	28.82	65
17	95.63	29.24	95.50	29.65	95.37	30.07	95.24	30.49	64
18	95.11	30.90	94.97	31.32	94.83	31.73	94.69	32.14	63
19	94.55	32.56	94.41	32.97	94.26	33.38	94.12	33.79	62
20	93.97	34.20	93.82	34.61	93.67	35.02	93.51	35.43	61
21	93.36	35.84	93.20	36.24	93.04	36.65	92.88	37.06	60
22	92.72	37.46	92.55	37.86	92.39	38.27	92.22	38.67	59
23	92.05	39.07	91.88	39.47	91.71	39.87	91.53	40.27	58
24	91.35	40.67	91.18	41.07	91.00	41.47	90.81	41.87	57
25	90.63	42.26	90.45	42.66	90.26	43.05	90.07	43.44	56
26	89.88	43.84	89.69	44.23	89.49	44.62	89.30	45.01	55
27	89.10	45.40	88.90	45.79	88.70	46.17	88.50	46.56	54
28	88.29	46.95	88.09	47.33	87.88	47.72	87.67	48.10	53
29	87.46	48.48	87.23	48.86	87.04	49.24	86.82	49.62	52
30	86.60	50.00	86.38	50.38	86.16	50.75	85.94	51.13	51
31	85.72	51.50	85.49	51.88	85.26	52.25	85.04	52.62	50
32	84.80	52.99	84.57	53.36	84.34	53.73	84.10	54.10	49
33	83.87	54.46	83.63	54.83	83.39	55.19	83.15	55.56	48
34	82.90	55.92	82.66	56.28	82.41	56.64	82.16	57.00	47
35	81.92	57.36	81.66	57.71	81.41	58.07	81.16	58.42	46
36	80.90	58.78	80.64	59.13	80.39	59.48	80.13	59.83	45
37	79.86	60.18	79.60	60.53	79.34	60.88	79.07	61.22	44
38	78.80	61.57	78.53	61.91	78.26	62.25	77.99	62.59	43
39	77.71	62.93	77.44	63.27	77.16	63.61	76.88	63.94	42
40	76.60	64.28	76.32	64.61	76.04	64.94	75.76	65.28	41
41	75.47	65.61	75.18	65.93	74.90	66.26	74.61	66.59	40
42	74.31	66.91	74.02	67.24	73.73	67.56	73.43	67.88	39
43	73.14	68.20	72.84	68.52	72.54	68.84	72.24	69.15	38
44	71.93	69.47	71.63	69.78	71.33	70.09	71.02	70.40	37
45	70.71	70.71							36
Degrees.	Dep.	Lat.	Dep.	Lat.	Dep.	Lat.	Dep.	Lat.	Degrees.
	DEGREES.		¼ DEGREE.		½ DEGREE.		¾ DEGREE.		

Published by Edward Denny & Co., Stationers, Drawing Materials,  
 Mathematical Instruments, Etc., San Francisco.