

FIFTH STREET
SEWER.

1897

9

TRANSIT

F.B. 662

662

MICROFILMED

DEC 14 1964

175

175

350

175

525

175

700

4/70
35

17 1/2

66

1

Index

Levels on 5th sewer line Page 3
Grades in cuts " " " 26

5th St Sewer
 LEVELS North of Nutmeg St.

W. Shaw Transit & Level
 S. W. Williams Rod & Chain
 F. J. Shaw Chain

July 23rd 1894

Sta.	+	HI	-	Elev	BM
	4.61	283.93			279.32
103+72			5.46	278.47	✓
+80			5.50	78.43	
103+97			5.48	78.45	✓
104+22			5.34	78.59	
+47			5.28	78.65	✓
+72			5.22	78.71	
+97			5.16	78.77	✓
105+22			5.05	78.88	
+47			4.96	78.97	✓
+72			4.91	79.02	
+97			4.81	79.12	✓
106+22			4.74	79.19	
+47			4.62	79.31	
+72			4.52	79.41	
BM			1.84		282.09
+80			4.52	79.41	✓
+97			4.54	79.39	
107+22			4.56	79.37	✓
+52			4.64	79.29	✓
107+60			4.53	279.40	

S.E. cor Quince Pike 6" NW corner

North line of Quince St.

283.93
 4.61
 279.32

3' 5" SE cor Redwood St
 South line of Redwood St

North line of Redwood St.

5th St. Sewer Cont'd

Sta	+	HI	-	Elev.	BM
		283.93			
107+77			4.47	279.46	
108+02			4.37	79.56 ✓	
+27			4.31	79.62	
+52			4.36	79.57 ✓	
+77			4.14	79.79	
109+02			4.07	79.86 ✓	
+27			4.04	79.89	
+52			3.99	79.94 ✓	
+77			3.78	280.15	
110+02			3.78	80.15 ✓	
+27			3.55	80.38	
+52			3.59	80.34 ✓	
+60			3.53	80.40	
+77			3.51	80.42	
111+02			3.55	80.38	
+32			3.59	80.34	
+40			3.55	80.38	
	4.28	Capper 285.71			281.48
check 111+00		check 280.39	5.02	280.39	
+82			5.15	280.56	
112+32			4.90	280.81	

281.48 BM Cor. Thorne
4.28
285.71

South line of Spruce St.

North line of Spruce St.

Cappel Level - Transit
 Williams Rod & Chain July 9th 1894 4
 Fred Shaw. Chain

Stat	Rt	H.I.	±	Elev	B.M.
+82			4.78	280.98	
113+82			4.56	281.15	
+82			4.32	281.39	
114+32			4.10	281.61	
+40			4.06	281.65	
+80			3.77	281.94	
115+12			3.60	282.11	
+62			3.07	282.64	
116+12			2.87	283.14	
+62			2.06	283.65	
117+12			1.50	284.21	
+62	5.06		0.99	284.72	284.72
		(289.78)			
118+12			4.44	285.34	
+82			4.35	285.43	
+60			4.39	285.39	
+92			4.36	285.42	
119+42			4.58	285.20	
+92			4.92	284.86	
120+45			5.37	284.41	
+67			5.45	284.33	

South Line Thomas Manhole
 Center

South Line Alpas Manhole
 Center

South Line Walnut

Aug 30th 1894

Cappel } party
Shaw }
Williams }
Eng. Chair
Prod

5

Stat	+	H.I.	-	Elev	B.M.
	9.32	273.13			263.81
91+60					
92+00			9.04	264.09	
92+32			8.21	264.92	
92+57			7.73	265.40	
+82			7.16	265.97	
93+07			6.73	266.40	
+82			6.28	266.85	
+57			5.83	267.30	
+82			5.35	267.78	
94+07			4.88	268.25	
+82			4.40	268.73	
+57			3.95	269.18	
+82			3.41	269.72	
95+07			2.97	270.16	
+82			2.54	270.59	
+40			2.36	270.77	
+80			2.06	271.07	
96+12			1.90	271.23	
96+37			1.59	271.54	
+62	8.28	(280.22)	1.19	271.94	271.94
+87			7.96	272.26	
97+12			7.62	272.60	

South line returning

Center " "

17 ft north of North line Y

263.81
9.32
273.13
1.19
271.94
8.28
280.22

Mankole, South line Olive
Center line of Olive

Stat	+	H.I.	-	Elv	B.M.
97+37			7.20	273.02	
+62			6.84	273.38	
+87			6.57	273.65	
98+12			6.17	274.05	
+37			5.85	274.37	
+62			5.51	274.71	
+87			5.13	275.09	
99+12			4.79	275.43	
+20			4.64	275.58	
+60			4.13	276.09	
+92			3.70	276.52	
100+17			3.47	276.75	
+42			3.35	276.87	
+67			3.25	276.97	
+92			3.14	277.08	
101+17			3.03	277.19	
+42			2.84	277.38	
+67			2.66	277.56	
+92			2.44	277.78	
102+17			2.36	277.86	
+42			2.23	277.99	

Manhole South-line Palm
 Center-line Palm
 8' ft South property-line

Stat	+	H.I.	-	Car	B.M.
------	---	------	---	-----	------

102+67			2.09	278.13	
+92			1.87	278.35	
103+00			1.85	278.37	
+40			1.80	278.42	
+72			1.82	278.40	
+80					

Manhole, South line Dunes
 Center " "
 North line Dunes

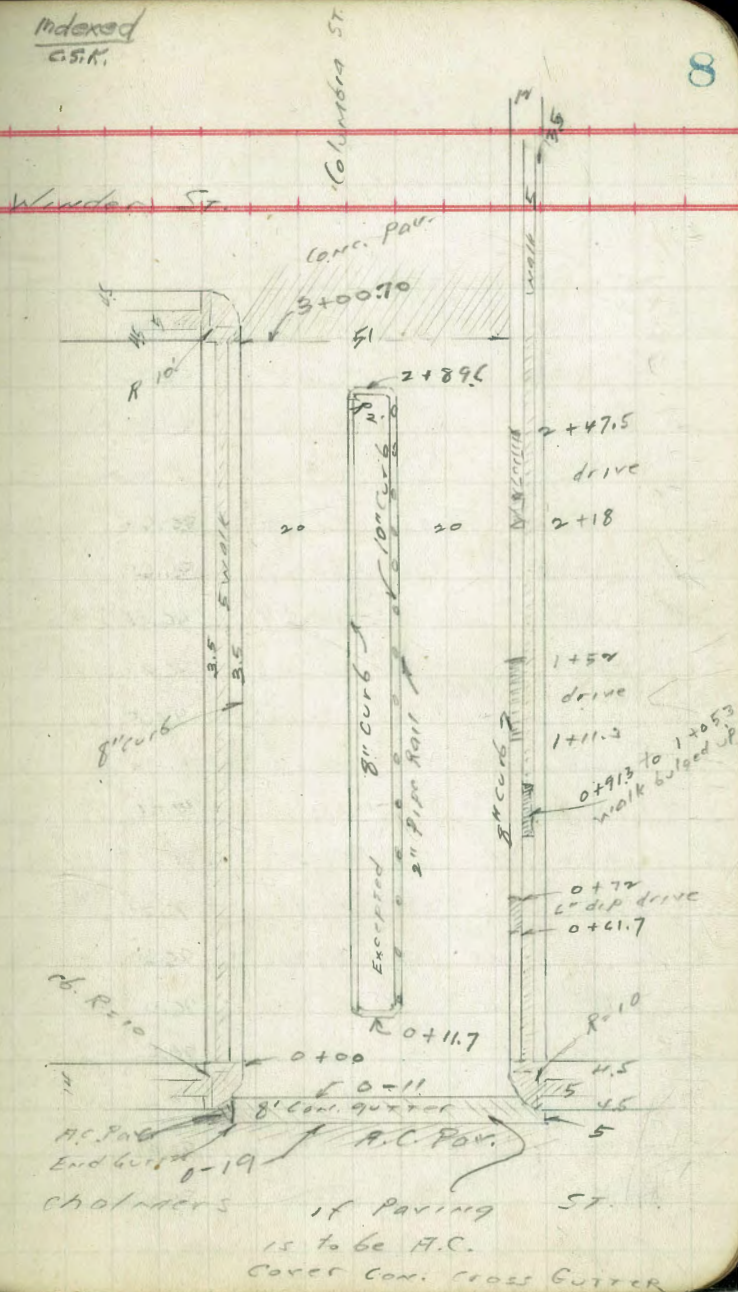
Moore
Rand
Suelmoc

Indexed
G.S.K.

Cross Sec. of Columbia
chalmers to Winder

SEOP.	381	100.94	97.11	chalmers Columbia
	0-19			
W of Col.		7.74	93.16	
cb		7.31	93.61	
1/4		6.65	94.27	
c		6.00	94.92	
1/4		5.25	95.67	
cb		4.55	96.37	
E of Col.		4.37	96.53	
0-14 = N of cb chalmers = 1' N. of 9 gut.				
E	Top cb	3.91	97.01	
E	gut	4.66	96.26	
cb		4.83	96.09	
1/4		5.24	95.30	
c		6.07	94.65	
1/4		6.94	93.96	
cb		7.57	93.35	
W	gut	7.80	93.12	
W	cb	6.84	94.08	

Notes Reduced. 10-17-91



chalmers if paving ST.
is to be A.C.
Cover Conc. cross gutter

100.9v			
0-11	= N.L. gutter		
w cb - 3	Top cb	6.98	93.94
" "	gut	7.46	93.96
w cb		7.35	93.57
1/4		6.66	94.26
c		5.95	94.97
1/4		5.27	95.65
cb		4.57	96.35
+3	gut	4.43	96.89
"	cb	3.88	97.09
0+00 N.L. Chalk marks			
E cb		3.91	97.01
gut		4.4	96.7
1/4		4.7	96.2
+7		5.3	95.6
c		6.9	96.0
+6		6.3	94.6
1/4		6.7	94.2
gut		7.1	93.8
w cb		6.90	94.02

100.9v			
0+11.7			
w cb		6.20	94.72
gut		6.8	94.1
w cb +10		6.5	94.9
+20	gut ydgc	6.1	94.8
+20	"	5.1	95.8
+20	TOP cb	5.08	95.89
+29	ydgc	3.9	97.0
+29	TOP cb	3.56	97.26
+31	" "	3.45	97.97
+31	ydgc	3.7	97.2
+31	gut "	4.3	96.6
+41		3.9	97.0
+51	gut	3.5	97.9
"	cb	4.59	98.33
0+30 Beg. Level on wly 1/4 Col.			
w cb		5.38	95.54
gut		6.2	94.7
+10		5.9	95.0
gut = +20		5.7	95.2
E cb = "		4.42	96.50

		100.92 ✓		
	0 + 50			
w c b		11.40	96.52	
g u t		5.3	95.6	
+ 10		4.9	96.0	
g u t		4.5	96.9	
c b		3.58	97.39	
T.P.	9.10	106.73 ✓	3.29	97.63
	0 + 75			
w c b		9.0	97.72	
g u t		9.8	96.9	
+ 10		9.5	97.2	
g u t		9.3	97.4	
c b		8.31	98.92	
	0 + 90			
w c b		8.21	98.52	
g u t		9.1	97.6	
+ 10		8.9	97.8	
g u t		8.8	97.9	
c b		7.68	99.05	

		100.92 ✓		
	100.73 ✓			
	100			
w c b		7.76	98.97	
g u t		8.7	98.0	
+ 10		8.4	98.3	
g u t		8.3	98.9	
c b		7.25	99.98	
	+ 10			
w c b		7.64	99.09	
g u t		8.4	98.3	
+ 10		8.2	98.5	
g u t		7.9	98.8	
c b		7.15	99.58	
	+ 40			
w c b		7.30	99.93	
g u t		7.7	99.0	
+ 10		7.5	99.2	
g u t		7.2	99.5	
c b		6.73	100.00	
	+ 70			
w c b		7.00	99.73	
g u t		7.4	99.3	

	106.73		
+10	7.0	99.7	
gut	6.8	99.9	
cb	6.36	100.37	
2+00			
wcb	6.70	100.03	
gut	7.0	99.7	
+10	6.6	100.1	
gut	6.3	100.2	
cb	5.95	100.78	
2+35			
wcb	6.37	100.36	
gut	6.6	100.1	
+10	6.4	100.5	
gut	5.9	100.8	
cb	5.48	101.25	
2+70			
wcb	5.91	100.82	
gut	6.4	100.5	
+10	5.9	100.8	
gut	5.7	101.0	
cb	5.06	101.67	

NWBP Winder
COLUMBIA

	106.73		106.73
			5.47
			101.06
			101.07
			0.01
	106.73		
7+89.6			
wcb	5.71	101.02	
gut	6.0	100.7	
+10	5.4	101.3	
gut	5.1	101.6	
2+00=cb	4.57	102.16	
wcb +29	2.99	103.74	
" " gut	3.0	103.1 edge	
" +31 "	3.5	103.2 "	
" " cb	4.87	103.86	
" +41	3.0	103.7	
" +51 gut	3.0	103.7	
" " cb	2.08	109.65	
3+00.7 = St. Winder St			
E cb	2.88	103.85	
gut Pav.	3.56	103.17	
1/4 " Join edge	3.78	102.95	
" " Pav.	4.21	102.54	
1/4 " Pav.	5.01	101.72	
gut "	6.12	100.61	
wcb " Grade will be 0.4	5.59	101.14	

Sec of Ely to Columbia
Chalmers to Winder

SEBP BIT	11.75	✓ 108.86	97.11	Chalmers Columbia
0 + 0 = no Chalmers				
0 + 10				
E cb		7.09	101.77	
gut		8.6	100.3	
+ 10		8.9	100.0	
+ 20 gut		9.3	99.6	
+ 20 Top 10" wall or cb		7.90	100.96	
0 + 61.7				
E cb		4.46	104.90	
gut		5.7	103.2	
+ 10		6.1	102.8	
gut		6.4	102.5	
cb = 10" wall		5.15	103.71	
T.P. 3.55 117.37 0.04 108.87				
0 + 74				
E top cb.		6.71	105.66	

117.37 ✓

gut	7.7	104.7
+ 10	8.4	104.2
gut	8.6	103.8
cb = 10" wall	7.50	104.87
0 + 90		
E cb	4.54	107.83
gut	5.5	106.9
+ 10	5.8	106.6
gut	6.4	106.2
cb = 10" wall	5.19	107.18
1 + 00		
E cb	3.36	109.01
gut	4.4	108.0
+ 10	4.7	107.7
gut	5.0	107.4
cb = 10" wall	3.94	108.95
1 + 11.3		
E cb	4.56	109.81
gut	3.5	108.9
+ 10	3.8	108.6
gut	4.0	108.4
cb = 10" wall	2.95	109.42

117.37			
1720			
E cb - 8.5 walk	1.63	110.79	
" - 3.5 "	1.77	110.60	
E cb in drive	2.56	109.81	
gut	2.2	109.8	
+10	3.1	109.3	
gut	3.4	109.0	
cb = 10" wall	2.31	110.06	
1735			
E cb - 8.5 walk	1.07	111.30	
" - 3.5 "	1.33	111.09	
E cb in drive	2.08	110.29	
gut	2.1	110.3	
+10	2.3	110.1	
gut	2.7	109.7	
cb 10" wall	1.95	110.94	
1752			
E cb	1.30	111.07	
gut	1.7	110.7	
+10	1.9	110.5	
gut	2.2	110.4	
cb = 10" wall	1.84	110.53	

117.37			
1780			
E cb	1.33	111.09	
gut	1.6	110.8	
+10	1.9	110.5	
gut	2.2	110.4	
cb 10" wall	1.80	110.57	
2+100		110.75	
E cb	1.64		
gut	2.2	110.4	
+10	2.4	110.0	
gut	2.8	109.6	
cb 10" wall	2.11	110.26	
2+18			
E cb top	2.27	110.16	
2+20			
E cb in drive	2.95	109.44	
gut	3.2	109.4	
+10	3.3	109.1	
gut	3.8	108.6	
cb 10" wall	2.96	109.91	

	117.37		
7 + 3rd			
E c6 - 8.5 walk	3.0x	109.33	
" - 3.5 "	3.17	109.20	
E c6 in drive	3.87	108.50	
gut	4.1	108.3	
+10	4.2	108.2	
gut	4.7	107.7	
c6 10" wall	3.87	108.55	
2 + 50			
E c6	4.67	107.70	
gut	5.6	106.8	
+10	5.7	106.7	
gut	6.1	106.3	
c6 = wall	5.11	107.26	
2 + 75			
E c6	6.59	105.78	
gut	7.4	105.0	
+10	7.8	104.6	
gut	8.4	104.0	
c6 10" wall	7.34	105.03	

check to R.A.F.

117.37

11.34

101.05

101.07

now wonder
col.

000

Dade Vincent Please Note.

P.O. says he hopes for new
4" water line, says old
2" line is leaking all the
time.

5th St. Sewer
North of Nutmeg Street.

	Sta.	Elev	Grade	Cut.	
S Line Nutmeg	91+60		257.75		
	+80				
	92+00	264.09			
	+82	264.92			
N Line Nutmeg	+40		259.17		
	+57	265.40	259.25	6.15	6' 1 3/4"
	+82	265.97	259.37	6.60	6' 7 1/4"
	93+07	266.40	259.48	6.92	6' 11"
	+82	266.85	259.60	7.25	7' 3"
	+57	267.30	259.72	7.58	7' 7"
	+82	267.78	259.83	7.95	7' 11 1/2"
	94+07	268.25	259.95	8.30	8' 3 1/2"
	+82	268.75	260.07	8.66	8' 8"
	+57	269.18	260.18	9.00	9' 0"
	+82	269.72	260.30	9.42	9' 5"
	95+07	270.16	260.42	9.74	9' 8 3/8"
+82	270.59	260.53	10.06	10' 3 1/4"	
S Line Oliver	+40	270.77	260.57	10.20	10' 2 1/2"
	+57		260.65		
	+80	271.07	260.77	10.30	10' 3 1/2"
	96+12	271.23	260.91	10.32	10' 3 3/4"

North line Nutmeg

Manhole South line Oliver

Center " "
8' ft South of North line Oliver

271.54	061. 2	10.52	10' 6"
271.94	"	10.81	0' 3/4"
272.26	"	11.01	1' 00"
272.60	2'	11.20	11' 2 3/4"
273.02	"	11.54	11' 6 1/2"
273.38	"	11.78	11' 9 1/3"
273.65	"	11.93	11' 11 1/6"
274.04	"	12.21	12' 2 1/2"
274.37	"	12.42	12' 5 1/4"
274.7	"	12.64	12' 3/4"
275.09	"	12.91	12' 10 1/8"
275.48	"	13.13	13' 2"
275.58	"	13.24	13' 7/8"
	"		
0 276.09	"	13.56	13' 6 3/4"
276.52	"	13.85	13' 0 1/4"
	"		
276.75	"	13.96	13' 2"
276.87	"	13.96	13' 11 1/2"
276.97	"	13.95	13'

Mc South-line Palms

Center
8 ft South North-line Palms

	Sta.	Elev	Grade	Cut	
1	100+92	277.08	263.14	13.94	13' 11 1/4"
	101+17	277.19	263.26	13.93	13' 11 1/4"
	+42	277.38	263.37	14.01	14' 00"
	+67	277.56	263.49	14.07	14' 7/8"
	+92	277.78	263.61	14.17	14' 2"
	102+17	277.86	263.72	14.14	14' 13/4"
	+42	277.99	263.84	14.15	14' 13/4"
	+67	278.10	263.96	14.17	14' 2"
	+92	278.35	264.07	14.28	14' 3 1/8"
S Line Quince	103+00	278.37	264.11	14.26	14' 3"
	+17		264.19		
	+40	278.42	264.31	14.11	14' 1 1/3"
	+72	278.40	264.45	14.02	
N Line Quince	+80	78.43	264.49	13.94	
	+97	78.45	264.56	13.89	
	104+22	78.59	264.68	13.91	
	+47	78.65	264.80	13.85	
	+72	78.71	264.91	13.80	
	+97	78.77	265.03	13.74	
	105+22	78.88	265.15	13.73	
	+47	278.97	265.26	13.71	

Manhole South line Quince

Center " "
8' ft South of North line Quince

	Sta.	Elev	Grade	Cut
	105+72	279.02	265.38	13.64
	+97	79.12	265.50	13.62
	106+22	79.19	265.62	13.57
	+47	79.31	265.73	13.58
S Line	+72	79.41	265.85	13.56
Redwood	+80	79.41	265.89	13.52
	+97	79.39	265.97	13.42
	107+22	79.37	266.08	13.29
N Line	+52	79.29	266.22	13.07
Redwood	+60	79.40	266.36	13.14
	+77	79.46	266.34	13.12
	108+02	79.56	266.46	13.10
	+27	79.62	266.57	13.05
	+52	79.57	266.69	12.88
	+77	79.79	266.81	12.98
	109+02	79.86	266.92	12.94
	+27	79.89	267.04	12.85
	+52	79.94	267.16	12.78
	+77	280.15	267.27	12.88
	110+02	80.15	267.39	12.76
	+27	80.38	267.51	12.87

Manhole Southside Redwood
 Center " " "
 8'ft South North line "

	Sta.	ELAV	Grade	Cut	width - ft.	
S. Line	110+52	280.34	267.62	12.72		
Spruce	+60	80.40	267.66	12.74		
	+77	80.42	267.74	12.68		
Center	111+00	80.38	267.86	12.52		
	+32	80.34	268.00	12.34		
N. Line	+40	280.38	268.04	12.34		
Spruce	+57		268.12			
	+82	280.56	268.24	12.02	12' 3/4"	Y
	112+07	280.70	268.35	12.35	12' 4/4"	
	+32	280.81	268.47	12.04	12' 4"	Y
	+57	280.86	268.59	12.27	12' 3/4"	
	+82	280.98	268.70	12.28	12' 3/4"	Y
	113+07	281.08	268.82	12.26	12' 3/4"	
	+32	281.15	268.94	12.21	12' 2 1/2"	X
	+57	281.25	269.05	12.20	12' 2 1/2"	
	+82	281.39	269.17	12.22	12' 2 1/2"	Y
	114+07	281.51	269.29	12.22	12' 2 1/2"	
	+32	281.61	269.40	12.21	12' 2 1/2"	X
S. Line	+40	281.65	269.44	12.21	12' 2 1/2"	⊙ Manhole
Thorn	+57		269.52			
	+80	281.86	269.64	12.22	12' 2 3/4"	△ Center

Manhole South line Spruce

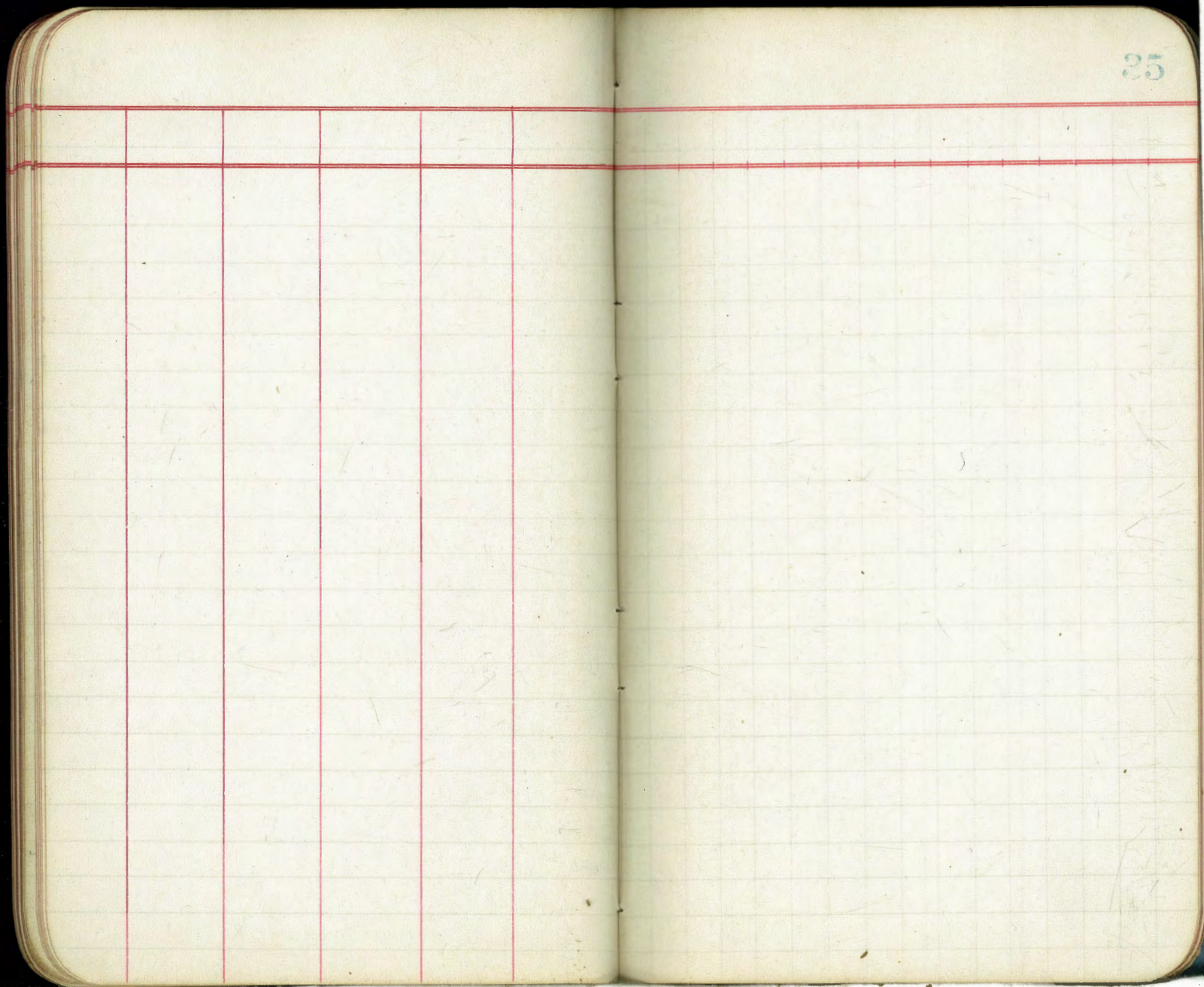
Center " "

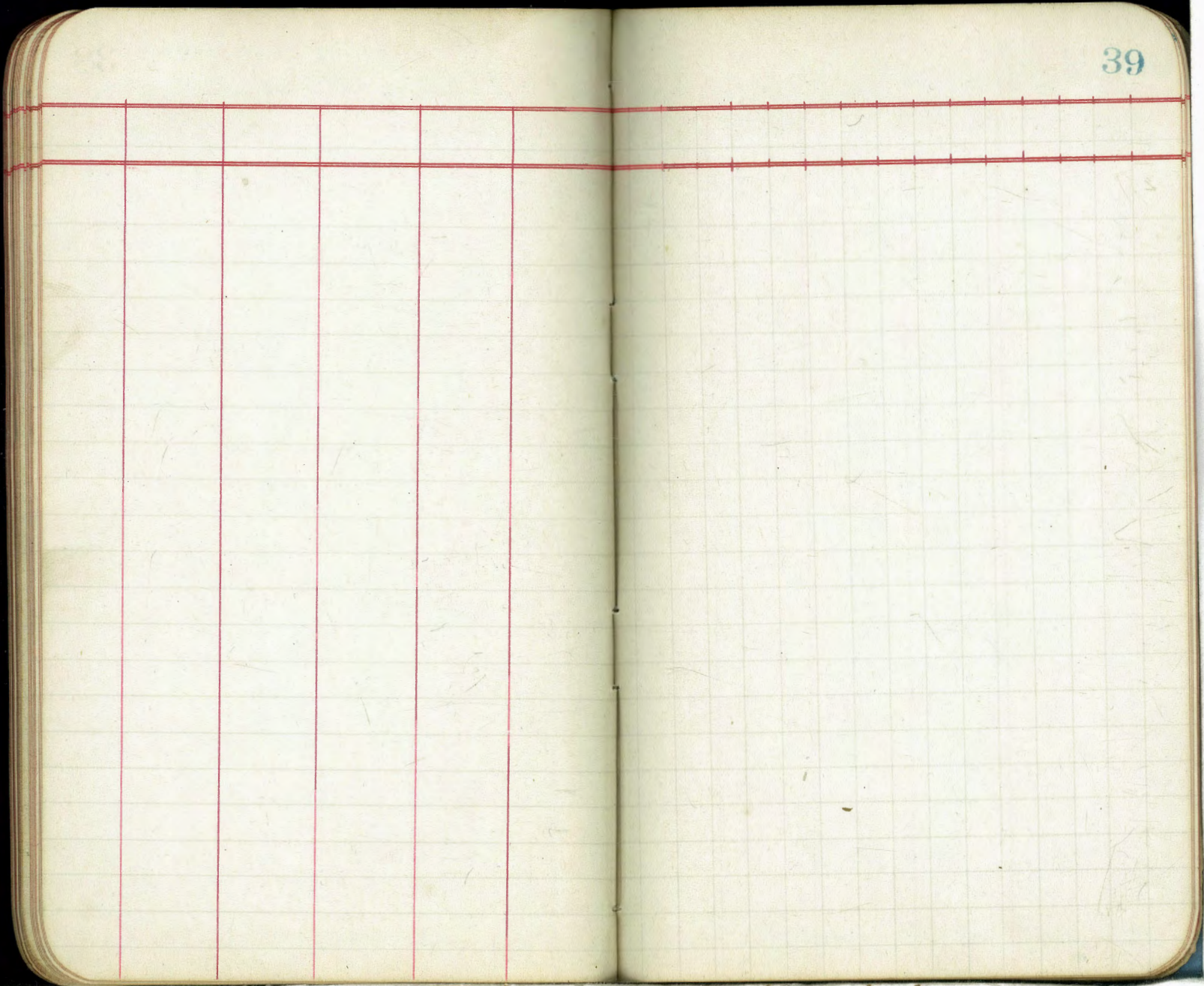
8 ft South North line "

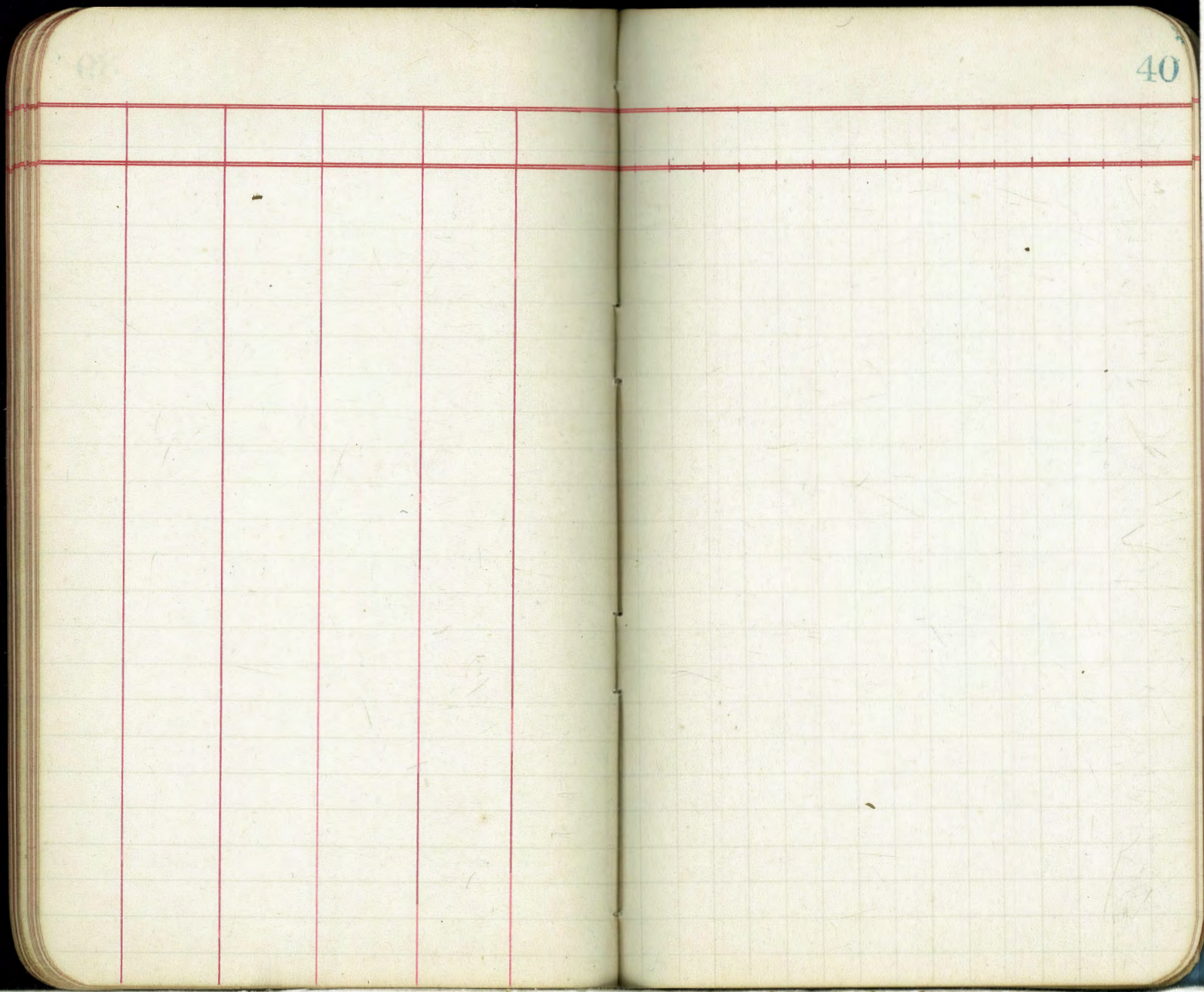
	Sta.	Elev	Grade	Cut	ft-in	
N Line	115+12	282.11	269.78	12.00	12' 4"	X
Thorn	+20	—	269.81	—	—	
	+37	282.32	269.89	12.43	12' 5 $\frac{1}{4}$ "	
	+62	282.64	270.01	12.63	12' 7 $\frac{1}{2}$ "	X
	+87	282.96	270.13	12.83	12' 10"	
	116+12	283.14	270.24	12.90	12' 10 $\frac{3}{4}$ "	X
	+37	283.48	270.36	13.12	13' 1 $\frac{1}{2}$ "	
	+62	283.65	270.48	13.17	13' 2"	Y
	+87	284.00	270.59	13.41	13' 5"	
	117+12	284.21	270.71	13.50	13' 6"	Y
	+37	284.55	270.83	13.72	13' 8 $\frac{3}{4}$ "	
	+62	284.72	270.94	13.78	13' 9 $\frac{1}{4}$ "	Y
	+87	285.09	271.06	14.03	14' 1 $\frac{1}{4}$ "	
S. Line	118+12	285.34	271.18	14.16	14' 2"	X
Upas	+20	285.43	271.21	14.22	14' 2 $\frac{1}{2}$ "	○ Manhole
	+37	—	271.29	—	—	
	+60	285.39	271.41	13.98	14' 0"	Δ center of
	+92	285.42	271.55	13.87	13' 10 $\frac{1}{2}$ "	Y
N Line	119+00	—	271.59	—	—	
Upas	+17	285.42	271.67	13.75	13' 9"	
	+42	285.20	271.78	13.42	13' 5"	X

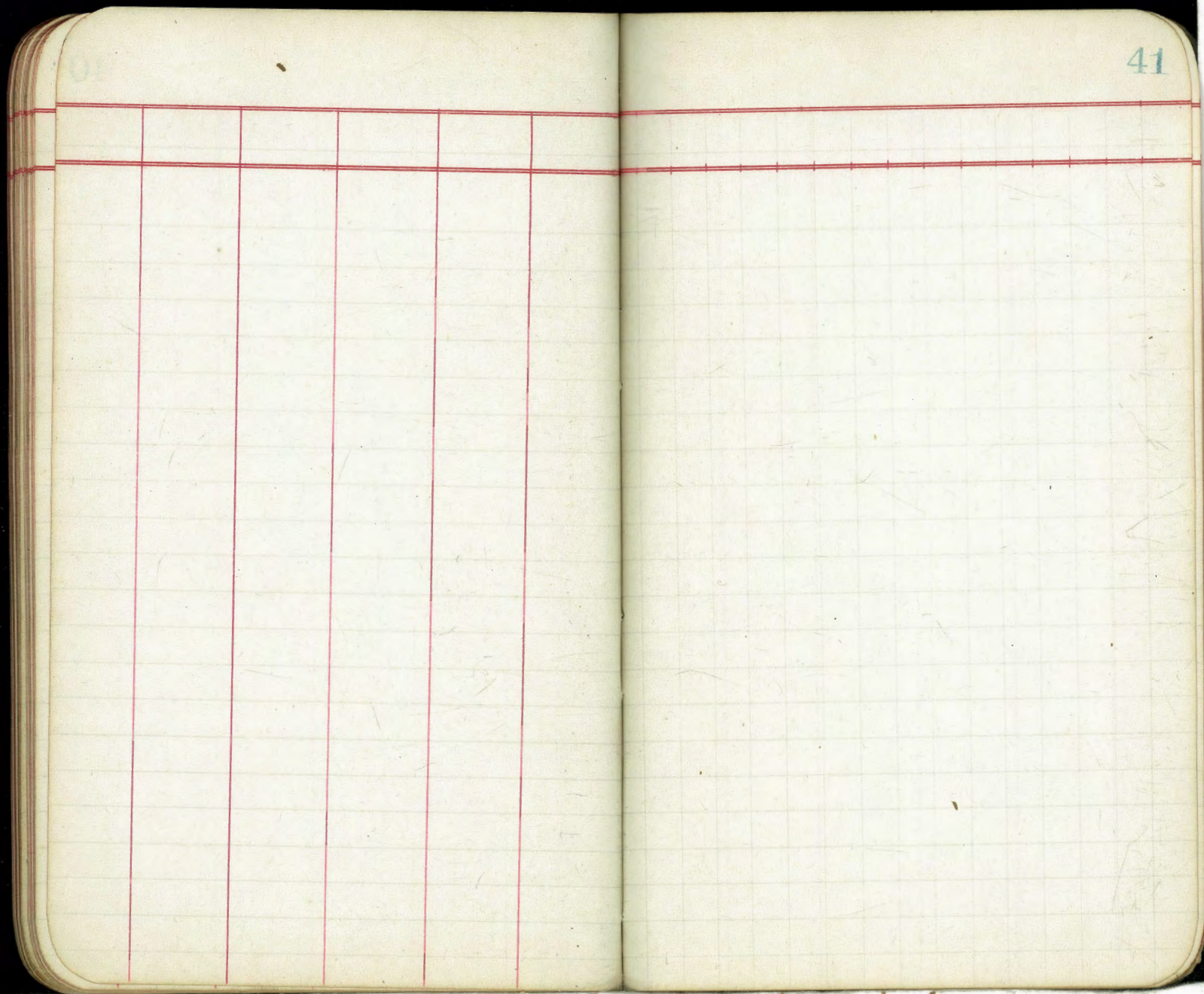
Sta.	Elev	Grade	Cut	
119+67	285.11	271.90	13.21	13' 2 1/2"
+92	284.86	272.02	12.84	12' 10"
120+17	284.73	272.13	12.60	12' 7 1/4"
+45	284.41	272.26	12.15	12' 1 3/4"
S Line Walnut +67 1/2	284.32	272.37	11.95	11' 11 1/2"

X End of San Diego Tapes Co's Contract, Total Dist. 2805'
 Flush Tank 284.50 Elev Center 5' South line Walnut



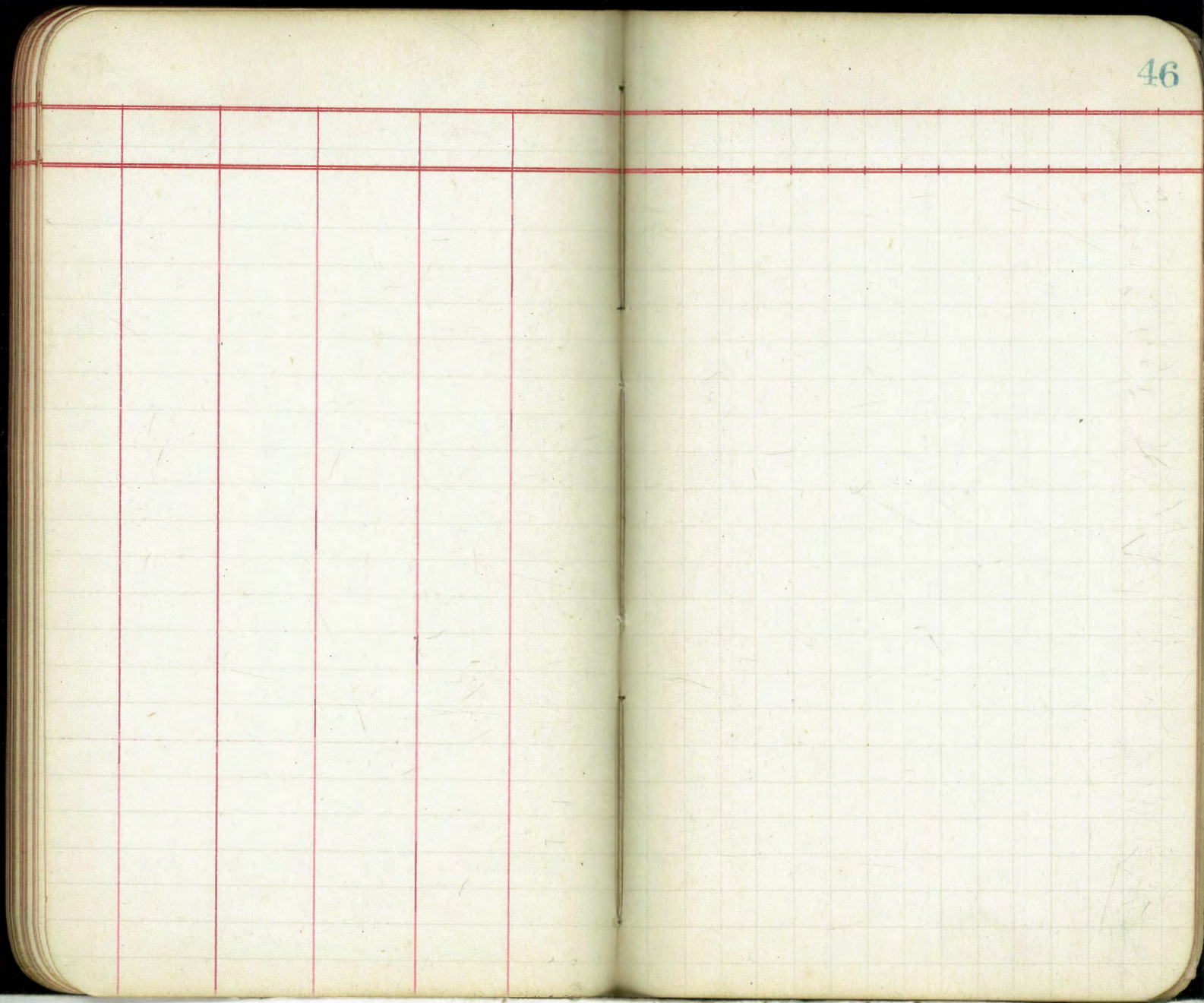


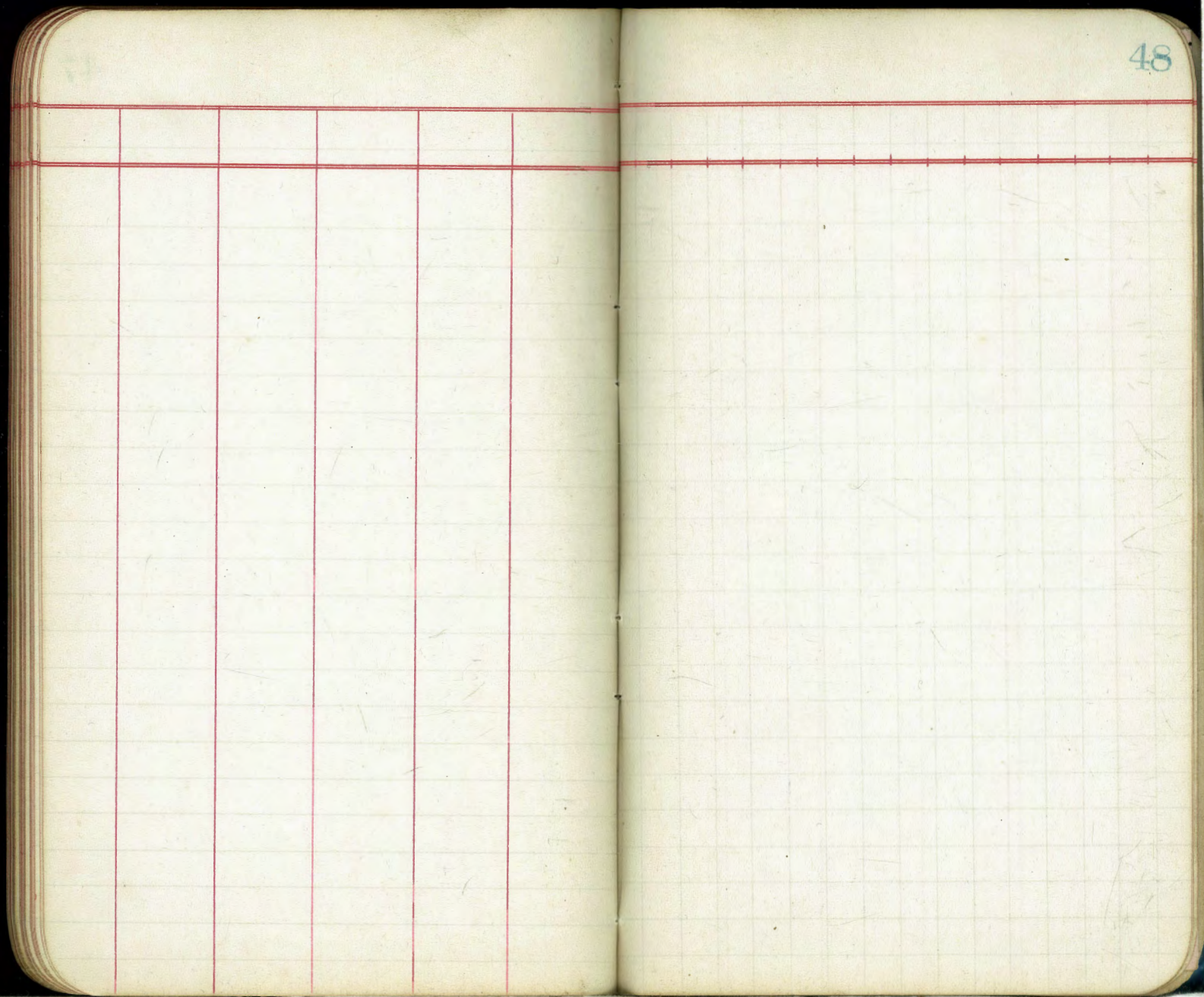


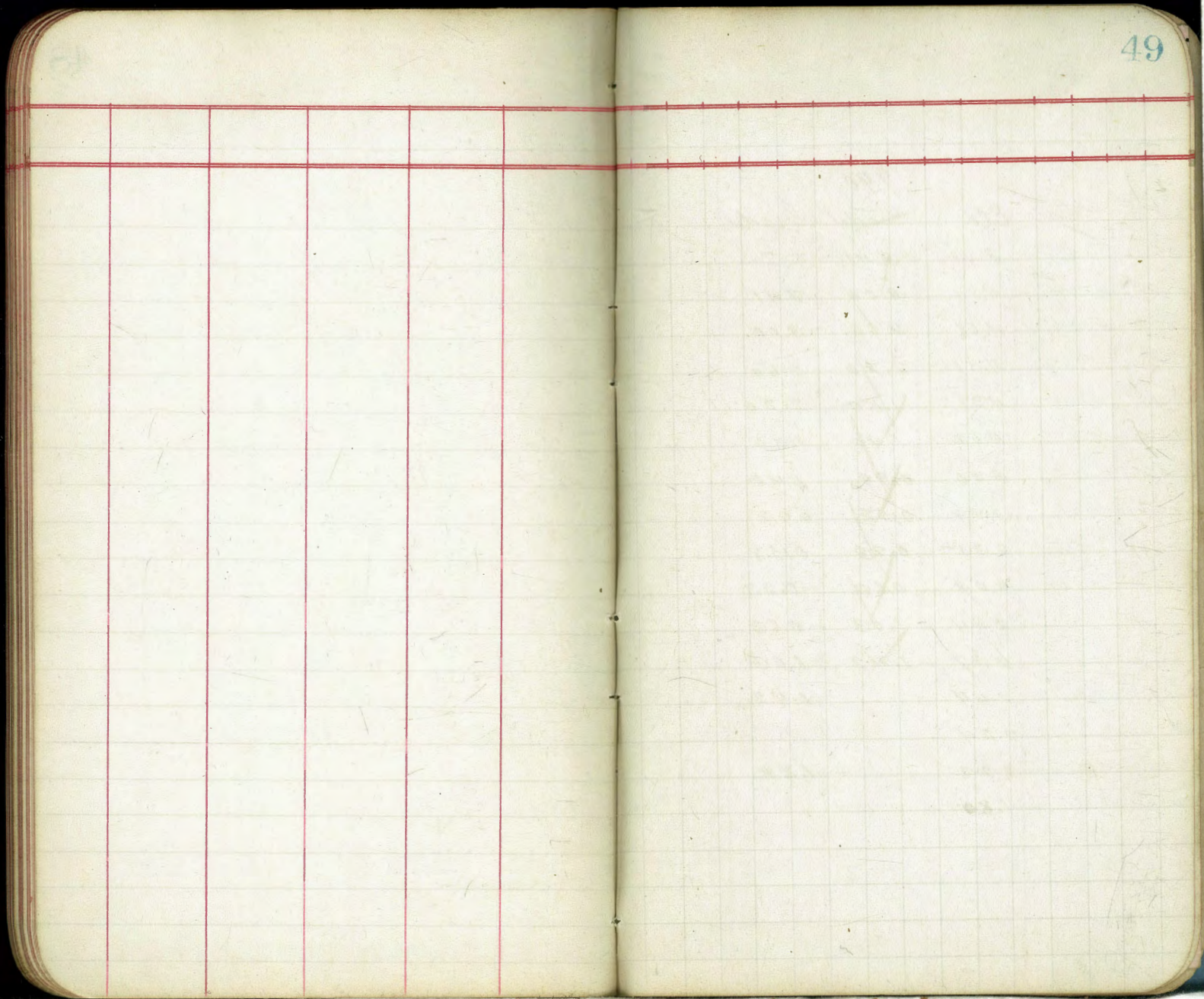


The image shows an open notebook with two pages. The left page is ruled with a grid of red lines, including a header row and six vertical columns. The right page is ruled with a grid of red lines and has the number '44' in the top right corner. The pages are cream-colored and show signs of use, including some faint smudges and a small dark spot on the right page.

The image shows an open notebook with two pages. The left page is ruled with horizontal lines and has six vertical red lines, creating seven columns. The right page is ruled with horizontal lines. The number '45' is written in the top right corner of the right page. The notebook is placed on a white surface against a black background.







Draw Pipe on 5th Bet N & L

50

Stat	Rod	EL	Grade	Grade
			(9.90)	
00	6.49	3.41	3.41	
0+0	5.09	4.81	3.09	3.41
+25	5.24	4.66	2.60	3.00
+50	5.39	4.51	2.20	2.60
+75	5.69	4.21	1.50	2.20
1+00	5.88	4.02	1.40	1.80
+25	6.10	3.80	0.99	1.40
50	6.31	3.59	0.58	0.99
75	6.55	3.35	-0.23	0.58
2+00	6.81	3.09	-0.63	-0.23
25	7.06	2.84	-1.03	-0.63
50	7.33	2.57	-1.42	-1.03
75	7.46	2.44		-1.42
3+00	7.66	2.24		
3+07	7.68	2.22		-1.82
3+22 A A	11.70	-1.80		

$$\begin{array}{r} 7.38 \\ 2.52 \\ \hline 9.90 \end{array}$$
 A flow of Old Box
 0+0 Cor 10 = 5th

$$\begin{array}{r} 8.71 \\ 8.66 \\ \hline .05 \end{array}$$

Notes on 12" pipe ^{DRAIN} Laid on 5th St
Bet Nth and Lth St

Stat	Rod	El.	Grade	cut	-15" top bell	" "	" "	changed to this grade
Δ	6.49	3.41						
0+0	5.09	4.81	3.41	+1.40	+0.15	0' 1 ³ / ₄ "	4"	0.5 ³ / ₄ "
+25	5.24	4.66	3.00	+1.66	+0.41	0.5"	3 ¹ / ₂ "	0.8 ¹ / ₂ "
+50	5.39	4.51	2.60	+1.91	+0.66	0.8"	3"	0.11"
+75	5.69	4.21	2.20	+2.01	+0.76	0.9 ¹ / ₄ "	2 ¹ / ₂ "	0.11 ³ / ₄ " ✓
1+00	5.88	4.02	1.80	+2.22	+0.97	0.11 ³ / ₄ "	2"	1' 1 ³ / ₄ "
1+25	6.10	3.80	1.40	+2.40	+1.15	1' 1 ³ / ₄ "	1 ¹ / ₂ "	1' 3 ¹ / ₄ " ✓
+50	6.31	3.59	0.99	+2.60	+1.35	1' 4 ¹ / ₄ "	1"	1.5 ¹ / ₄ "
+75	6.55	3.35	0.58	+2.77	+1.52	1' 6 ¹ / ₄ "	1 ¹ / ₂ "	1.6 ³ / ₄ "
2+00	6.81	3.09	0.18	+2.91	+1.66	1' 8"		—
+25	7.06	2.84	-0.23	+3.07	+1.82	1' 10"		—
+50	7.33	2.57	-0.63	+3.20	+1.95	1' 11 ¹ / ₂ "		—
+75	7.46	2.44	-1.03	+3.47	+2.22	2' 2 ³ / ₄ "		—
3+00	7.66	2.24	-1.44	+3.68	+2.43	2' 5 ¹ / ₄ "		—
+22Δ	11.70	-1.80	-1.82					same

Capps Feb 28th 1895

Stat	Rod	El	Grade <small>(9.67) Bottom pipe</small>	Cut ft. <small>to Bottom pipe</small>	Cut to <small>top of Res</small>	Cut in ft. Inches
0+0	4.77	4.90	0.08	1.82	0.57	0' 7"
+17.5	4.77	4.90	2.90	2.00	0.75	0' 9"
+35	4.94	4.73	2.71	2.02	0.77	0' 9 1/4"
+52.5	5.02	4.65	2.53	2.12	0.87	0' 10 1/2"
+70	5.14	4.53	2.35	2.18	0.93	0' 11"

Notes Crossing 5th from S.W. Cor "K" to 50ft South
of S.E. Cor "N"

catch basin at SE cor. K

+21

+50

+75

3+00

+220

Full for all City Taxes for the Fiscal Y
 DESCRIPTION.
 Property.

Taxes Due June 6th.
 Delinquent Nov. 28th.
 Received of
 Office

567
 477
 4.90

7.38
 2.29
 9.67

280.19
860

288.83
401

28482

27237

1196

12

190

90

1140

285.71

99

284.72

506

289.78

213

287.65

166

649

285.71.6-17

532

280.39

2805

1140

1665