

F.B. 694

MS. 547
Museum

694

Handwritten notes and calculations on the top page, including numbers like 13, 11, 10, 9, 8, 7, 6, 5, 4, 3, 2, 1, and some illegible scribbles.

MICROFILMED

DE. . + 304



Handwritten notes and calculations on the bottom page, including numbers like 12, 11, 10, 9, 8, 7, 6, 5, 4, 3, 2, 1, and some illegible scribbles.

5th St Extension

Sta.	Elev.	Grade	Cut/F
0+0	284.41	272.22	12.19
+25	284.36	272.31	12.05
+50	284.16	272.40	11.76
+80	283.94	272.51	11.43
1+00	283.82	272.58	11.24
+25	283.73	272.67	11.06
+50	283.43	272.76	10.67
+75	283.29	272.85	10.44
2+00	283.10	272.94	10.16
+25	282.90	273.03	9.87
+50	282.74	273.12	9.62
+75	282.49	273.21	9.28
3+00	282.29	273.30	8.99
+25	282.11	273.39	8.72
+50	281.97	273.48	8.49
+75	281.86	273.57	8.29
4+00	281.60	273.66	7.94
+25	281.37	273.75	7.62
+50	281.17	273.84	7.33
+75	280.98	273.93	7.05
5+00	280.77	274.03	6.74

11.18
11.24

0+0 = South line of Walnut St.

Manhole, North line of Walnut St.

+80 =

+88 =

+126 =

+177 =

+201 =

+225 =

+250 =

+275 =

+300 =

+324 =

+348 =

+421 =

+445 =

+469 =

+493 =

+517 =

+541 =

+565 =

+589 =

+613 =

+637 =

+661 =

+685 =

+709 =

+733 =

+757 =

+781 =

+805 =

Manhole 280.4" Y. E. 3+82.4" Y. W

2+71.4" W

2+71.4" W

1+52 4" Y. E

5th ST. Extension Cont'd

Sta.	Elev	Grade	Cut, Ft
5+25	280.62	274.11	6.51
+50	280.48	274.21	6.27
+75	280.12	274.30	5.82
+100	280.12	274.39	5.73
+125	279.76	274.49	5.47
+150	279.72	274.57	5.15
+170	279.53	274.64	4.89 - Rd.
+16.28	279.55	274.66	4.89 -
+82.56	279.57	274.68	4.89 -
+88.85	279.51	274.71	4.80
+95.13	279.42	274.73	4.69
+101.41	279.34	274.75	4.59
+107.69	279.46	274.78	4.68
+113.98	279.58	274.80	4.78
+20.26	279.72	274.82	4.90
+26.54	279.86	274.84	5.02
+32.83	279.97	274.86	5.11
+50	280.34	274.92	5.42
+75	281.28	275.02	6.26
+100	281.83	275.11	6.72
+125	282.60	275.20	7.40
+150	282.98	275.29	7.69

E.C. @ 280.0

10' 11" 30"
~~5+25~~ 4" T. E. 5+27 4" T. N. 5'
 5+75 4" T. E. 5+77 4" T. N.
 6+25 4" T. E. 6+27 4" T. N.

40' Radius @ 4°30'
 Chorton spikes, 5.655' (72' Rad.)
 6" T. E. " Line 6.283' (80' Rad.)



Grade = 0.3614 : 100

Manhole, centre of Brookes' Ave.
 and West line of 5th St.

8+57 6" T. N. 8+59 6" T. S

11/18

5th St. Extension

Sta.	Elev.	Grade	Dist. Ft.
+37.71	282.18	276.68	5.50
+42.46	282.16	276.70	5.46
+44.20	281.11	276.72	4.39
+72			3.71
+97			3.40
13+22			3.14
+47			2.93
+72			2.74
+97			2.47
14+22			2.40
+47			2.32
+72			2.59
+97			2.66
15+22			2.37
+47	280.30	277.80	2.50
+72			2.22
+97			2.28
16+22			2.64
+47			3.11
+72			3.55
+97			4.29
17+22			4.62

480-30
277.80
1.50

11-81
1.51

Manhole
 15+48 4" Y. E.
 15+78 4" Y. E.
 15+98 4" Y. E.
 16+16 4" Y. W.
 16+46 4" Y. W.
 16+59 4" Y. E.
 16+95 4" Y. W.
 16+97 4" Y. E.

Manhole
 14+96 4" Y. W.
 14+98 4" Y. E.
 14+46 4" Y. W.
 14+48 4" Y. E.
 13+98 4" Y. W.
 14+00 4" Y. E.
 13+48 4" Y. W.
 13+50 4" Y. E.
 12+98 4" Y. W.
 13+08 4" Y. E.

Length of Chord on Line of Sewer = 4.912'
 Centre of Chord, N. side Brooks' = 5.34'

5th St. Extension Cont'd

Sta.	Elev.	Grade	Dist Ft.
23+07			3.64
+31			3.87
+57			4.14
+82			4.02
24+07			4.63
+32			4.56
+57			5.31
+82			5.71
25+07			5.70
+37			6.41
+67 @	287.83	281.49	6.34 @ 286.75
+92			6.76
26+17			6.78
+42			6.93
+67			6.59
+92			6.20
27+17			6.37
+42			5.92
+67 @	288.23	282.21	6.02 @ 287.00
+92			5.99
28+17			5.77
+42			5.37

$\frac{1.10 \times 1.10}{1.10} = 1.10$
 $\frac{1.10 \times 1.10}{1.10} = 1.10$
 $\frac{1.10 \times 1.10}{1.10} = 1.10$
 6

23+07. 4" Y. W
 23+17. 4" Y. E.
 23+57. 4" Y. W.
 $\frac{2594}{2567} = \frac{2643}{76}$

24+07. 4" Y. E. 24+09 4" Y. W

24+57 4" Y. E. 24+59 4" Y. W

South line of Robinson

North
 25+92 " " " " " " " " " " " "
 25+94 4" Y. E. "Manhole"

26+41 4" Y. W. 26+43 4" Y. E

26+91 4" Y. W. 26+94 4" Y. E

27+41 4" Y. W. 27+44 4" Y. E

Manhole 27+72. 4" Y. E. 27+74 4" Y. W

28+00 4" Y. E

28+14 4" Y. W.

28+40 4" Y. W.

5th St Extension, Contd

$\begin{array}{r} 29\ 13 \\ 29\ 10 \\ \hline 3 \\ 13 \\ \hline 6 \end{array}$

300.180

7

Sta	Elev	Grade	Cut, Ft
+67			4.96
+92			4.82
29+17			4.17
+42			4.48
+67			3.74
+83			3.66
			28700

~~$\begin{array}{r} 29\ 13 \\ 29\ 10 \\ \hline 3 \\ 13 \\ \hline 6 \end{array}$~~

28+62. 4" Y E
 29+16 4" Y. N. 29+18 4" Y E
 29+41 4" Y. E
 Flush-tank, University Avenue.

Walnut Ave. Sewer

0.405 per 100

Sta.	Elev.	Grade	Cut	
0+0	279.39	276.00	3.39	West line 2nd St in Horton's Add.
+25			3.90	
+50			4.40	
+75			5.15	+72 4" Y. N. + 74. 6" Y. S.
1+00			5.86	
+25			6.53	
+50			7.03	
+75			7.50	1+78 4" Y. S.
2+00			8.08	
+25			8.86	
+50			9.30	
+75			9.78	4" Y. S.
+80	284.74	274.87	9.87	Manhole at West line 3rd St in Horton's Add.
3+00			10.16	
+15			10.52	
+50			10.89	3+51 6" Y. N. 3+53 6" Y. S.
+75			11.23	
4+00			11.46	
+25			11.82	
+50			12.14	
+75			12.51	Y. H. S. 4+77 4" Y. N.

0.405 per 100

Walnut Ave. Sewer

Sta.	Elev.	Grade	Cct
0+0	279.39	276.00	3.39
+25			3.90
+50			4.40
+75			5.15
1+00			5.86
+25			6.53
+50			7.03
+75			7.50
2+00			8.08
+25			8.86
+50			9.30
+75			9.78
+80	284.74	274.87	9.87
3+00			10.16
+25			10.52
+50			10.89
+75			11.23
4+00			11.46
+25			11.82
+50			12.14
+75			12.51

West line 2nd St in Horton's Add.

+72 4" Y. N. +74. 6" Y. S.

1+78 4" Y. S

4" Y. S

Manhole at West line 3rd St in Horton's Add.

3+51. 6" Y. N. 3+53 6" Y. S

Y. 4" S. 4+77 4" Y. N

Mainut Ave. Extension in Alley

Between 2nd and 3rd Sts "Loma Grande" Afd.

Sta	Elev	Grade	Cut
0+0		279.00	4.05
+25			4.29
+50			4.35
+75			4.27
+100			4.27
+25			4.24
+50			3.99
+75			3.86
+100			3.46
+25			3.77
+50			4.02
+75			3.81
+100			4.31
+25			4.19
+50			4.06
+75			3.36
+100			3.36
BC + 50	279.04	276.26	2.78
+56.28			2.71
+62.56			1.69

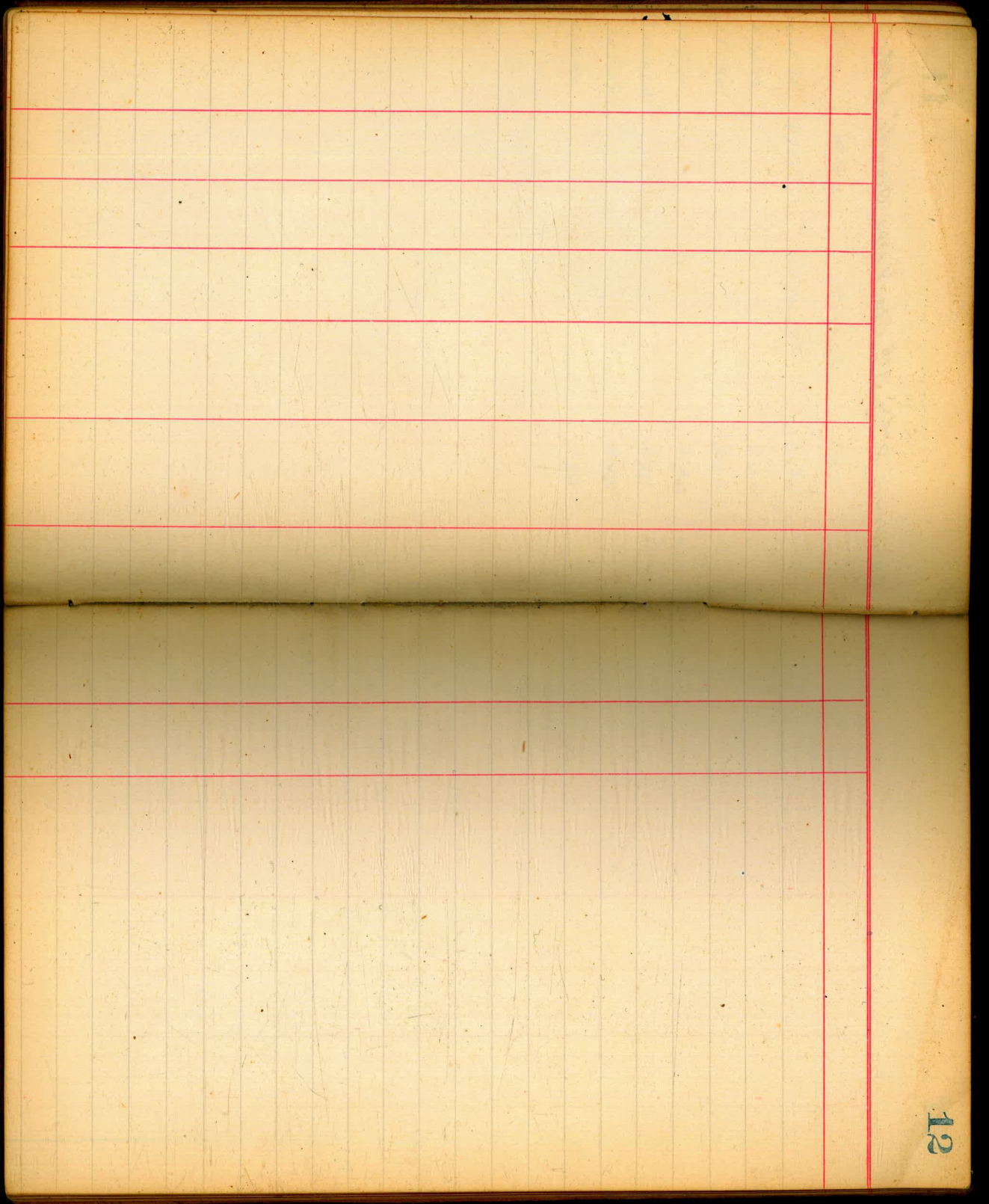
0+04 4" Y E 0+06 4" Y N
 0+50 4" Y W 0+52 4" Y E
 1+00 4" Y W 1+02 4" Y E
 1+50 4" Y W
 1+58 4" N E
 2+00 4" Y W
 2+47 4" Y W 2+49 4" Y E
 3+08 4" Y W 3+09 4" Y E
 3+49 4" Y E 3+47 4" Y W
 3+99 4" Y E 3+97 4" Y W
 4+40 4" Y W 4+44 4" Y E
 BC. 46th Grad. as North Line Mainut^{ly} Alley

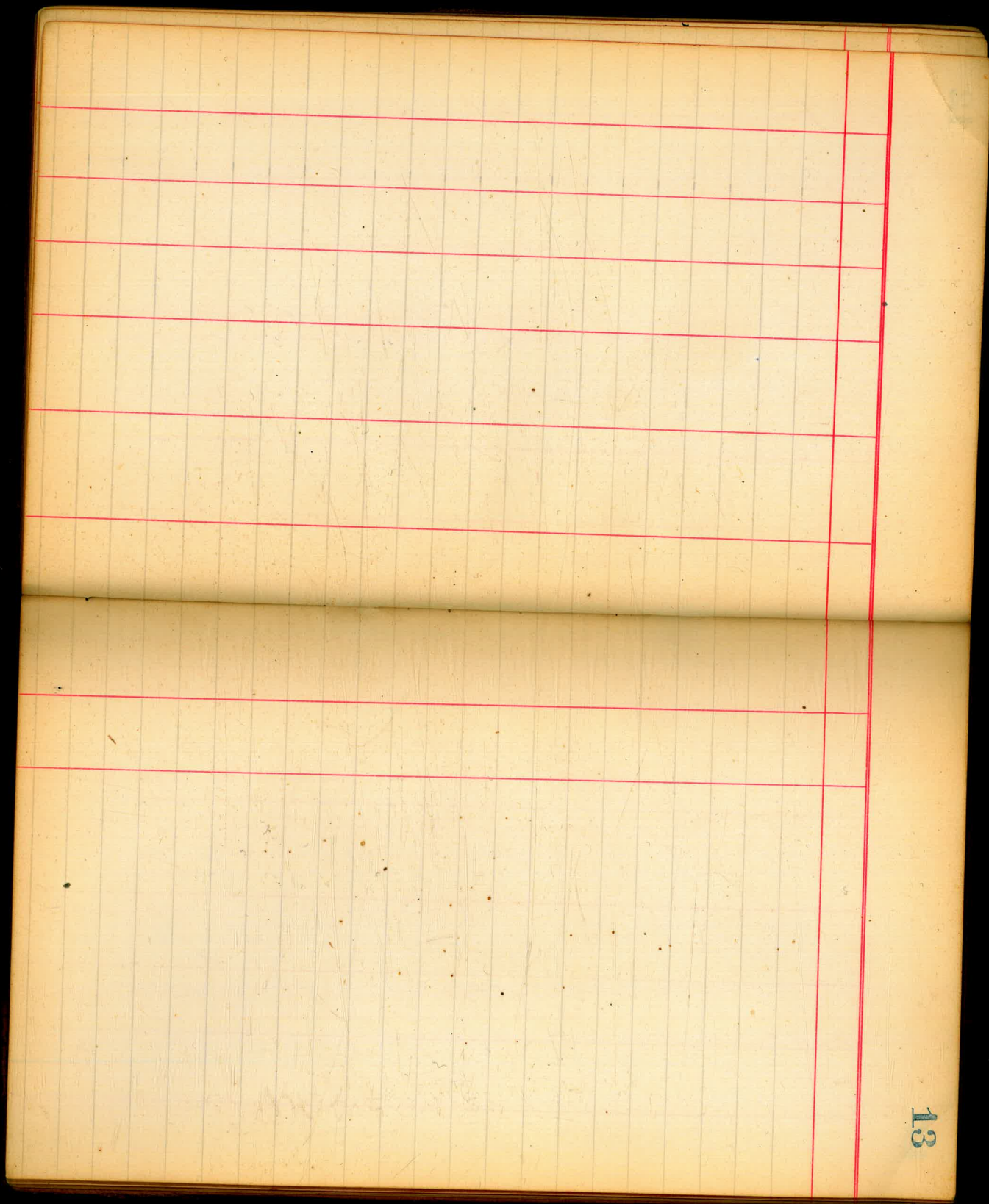
Walnut Ave. Extension, in Alley

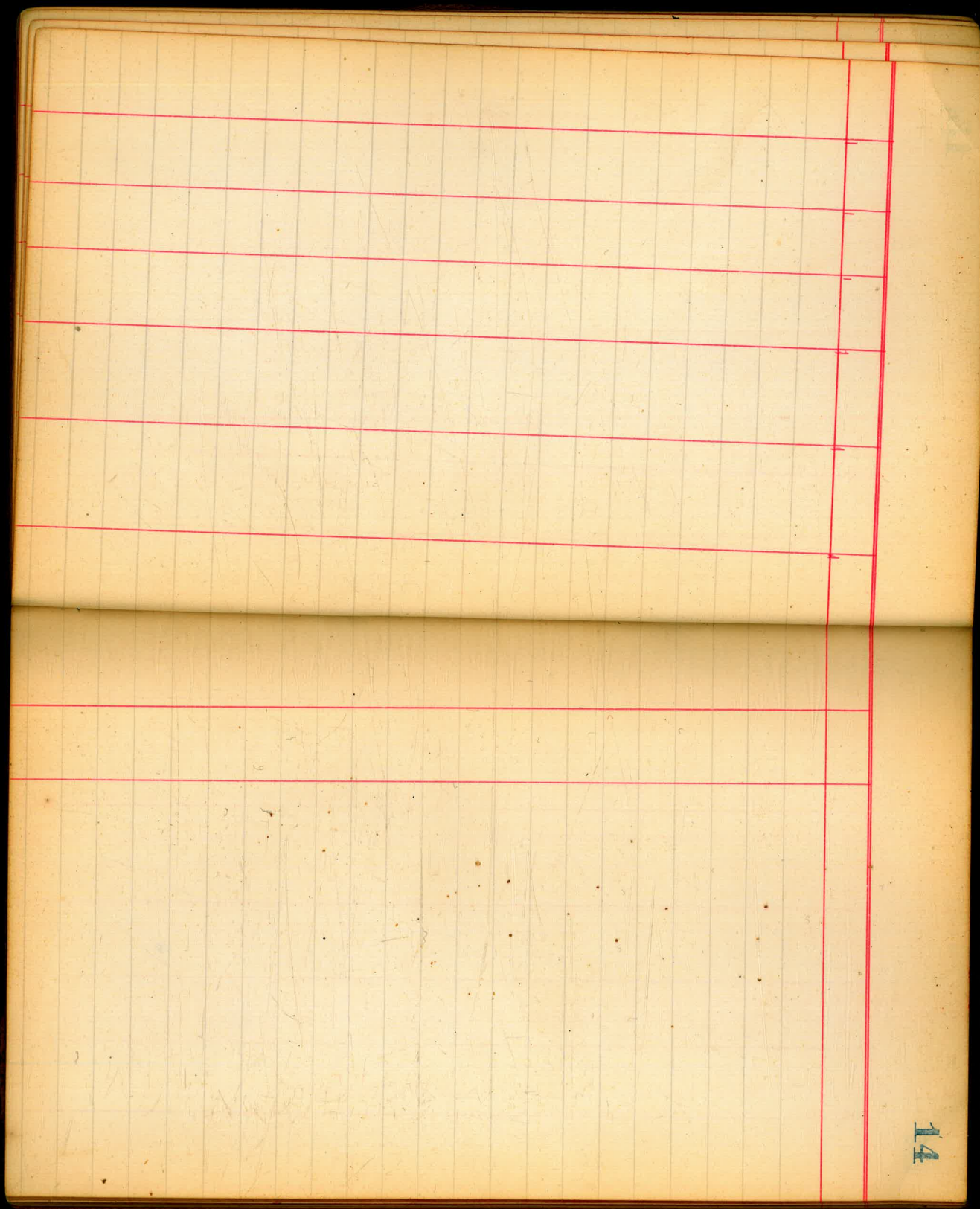
between 2nd & 3rd Sts "Loma Grande" Add.

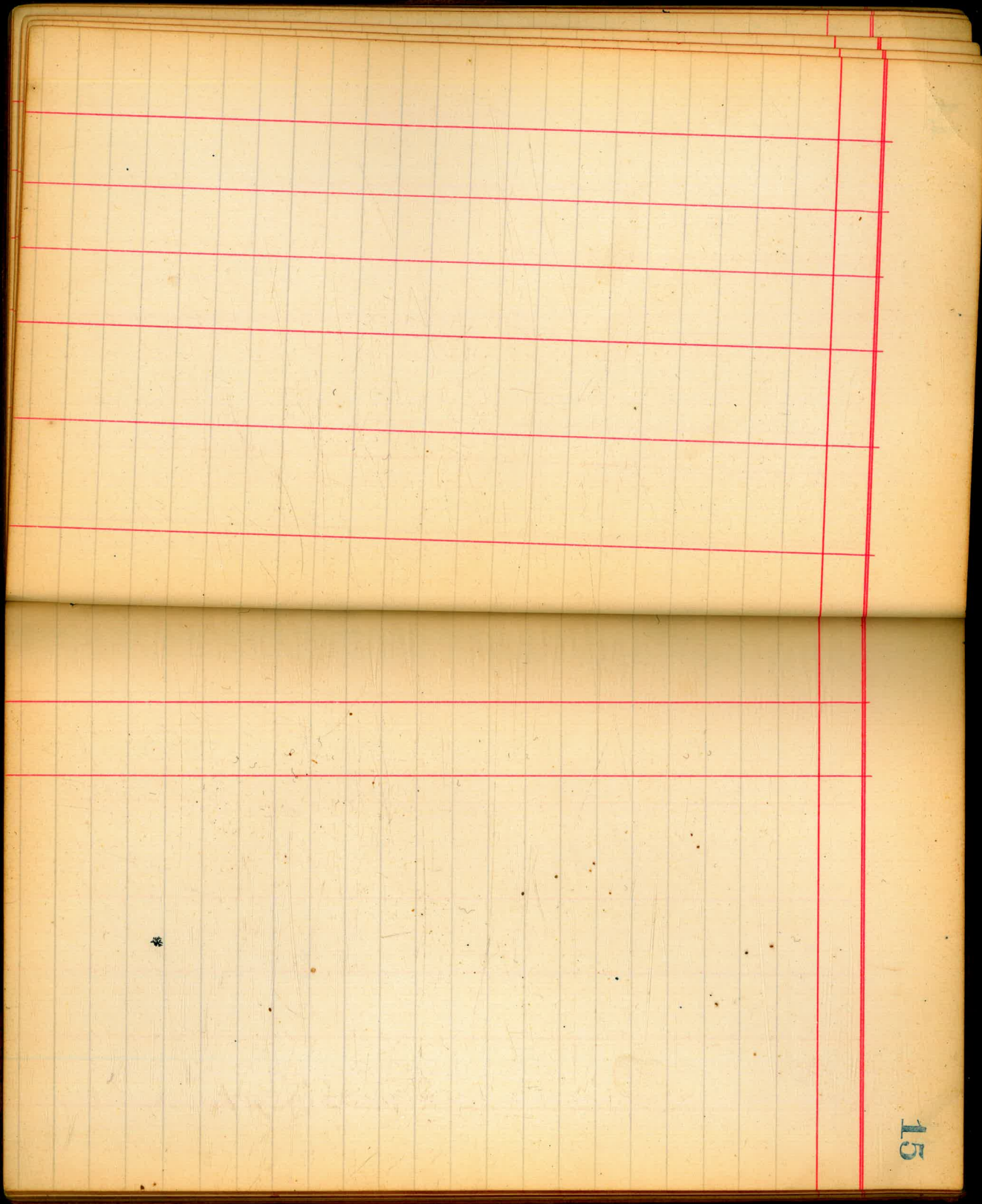
Sta	Elev.	Grade	Cut
+68.84	278.51	276.15	2.36
+75.12			2.80
+81.40			3.13
+87.70			3.50
+500.24			3.74
+06.52			3.82
+12.80			3.93

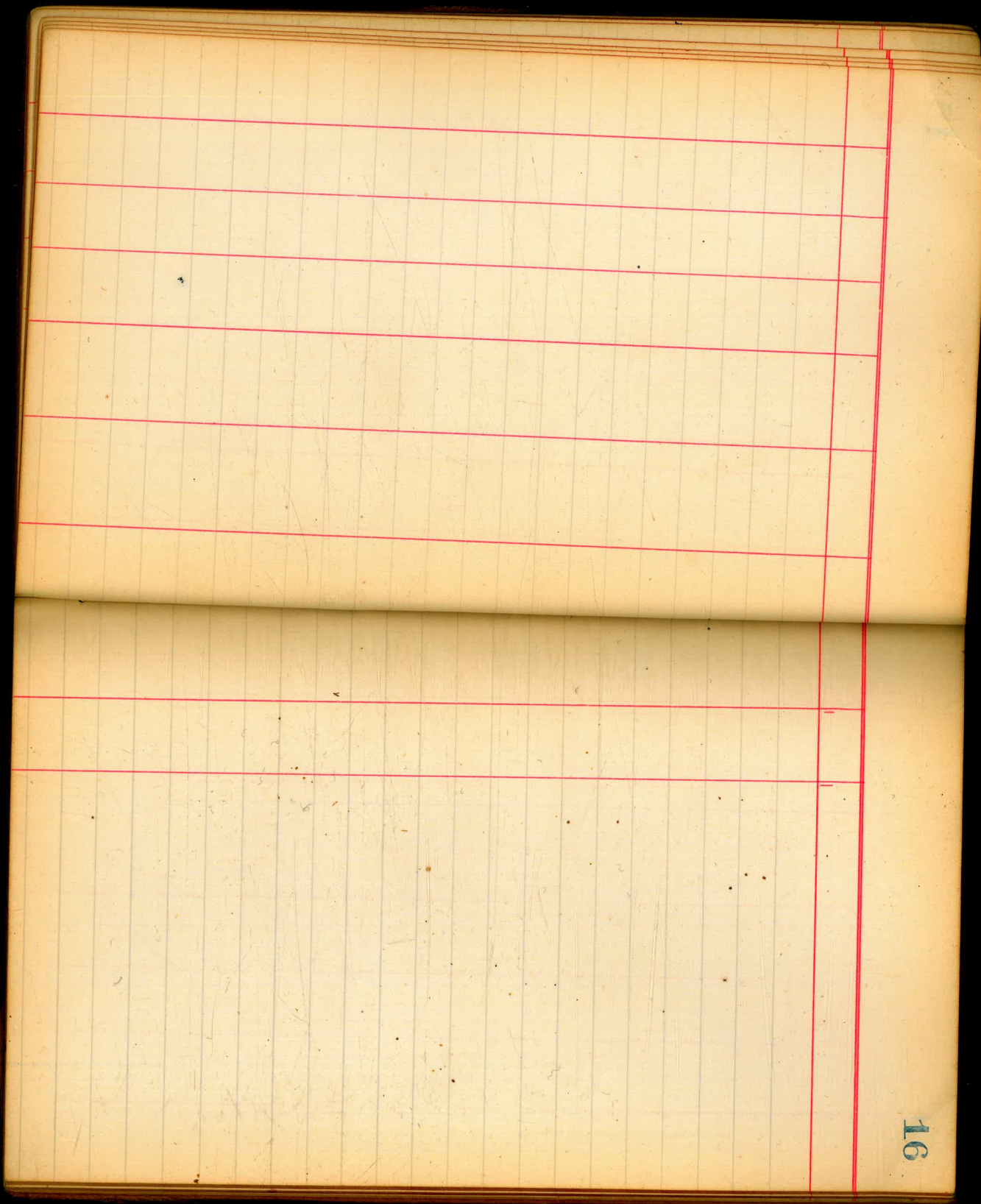
10/1/80

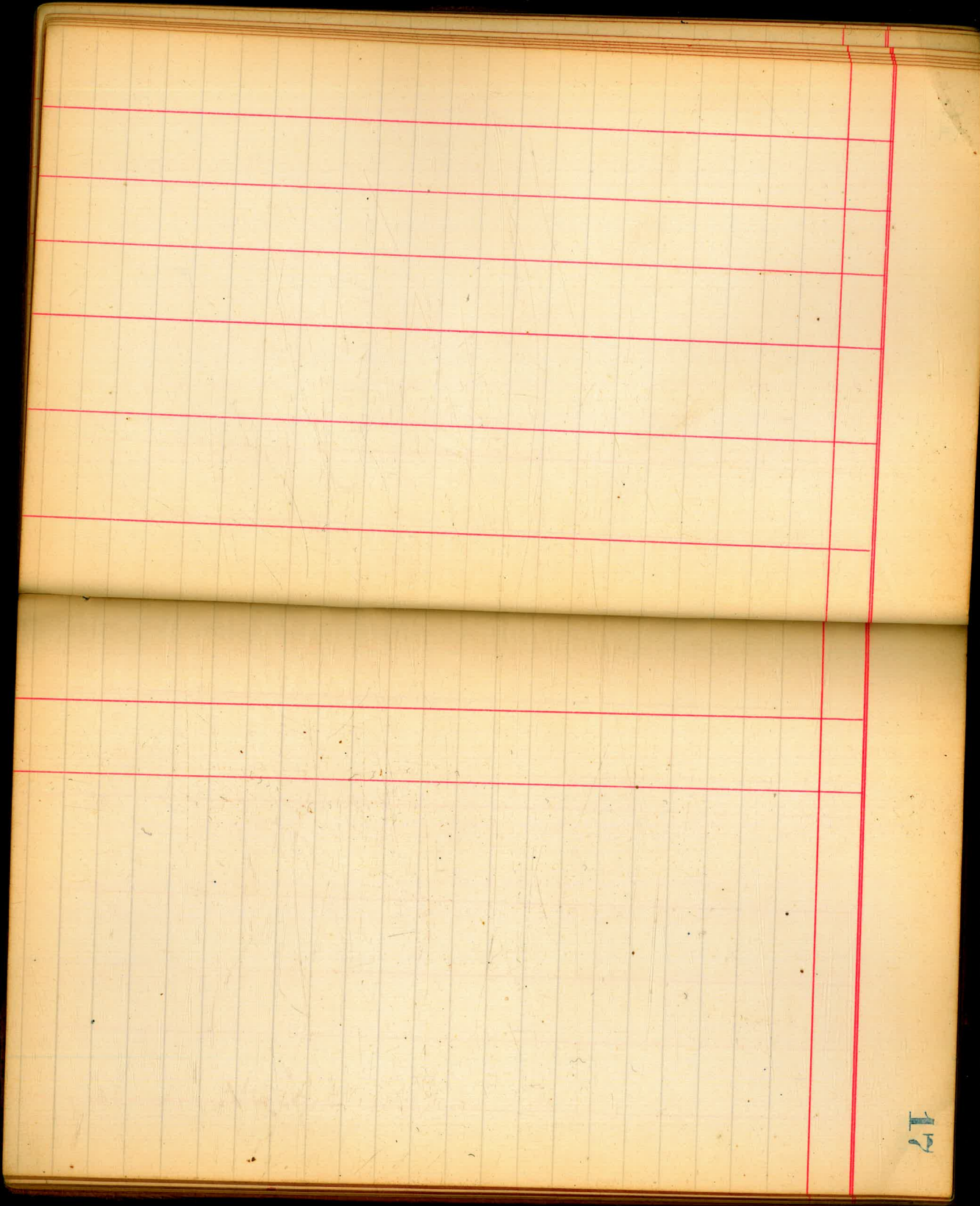


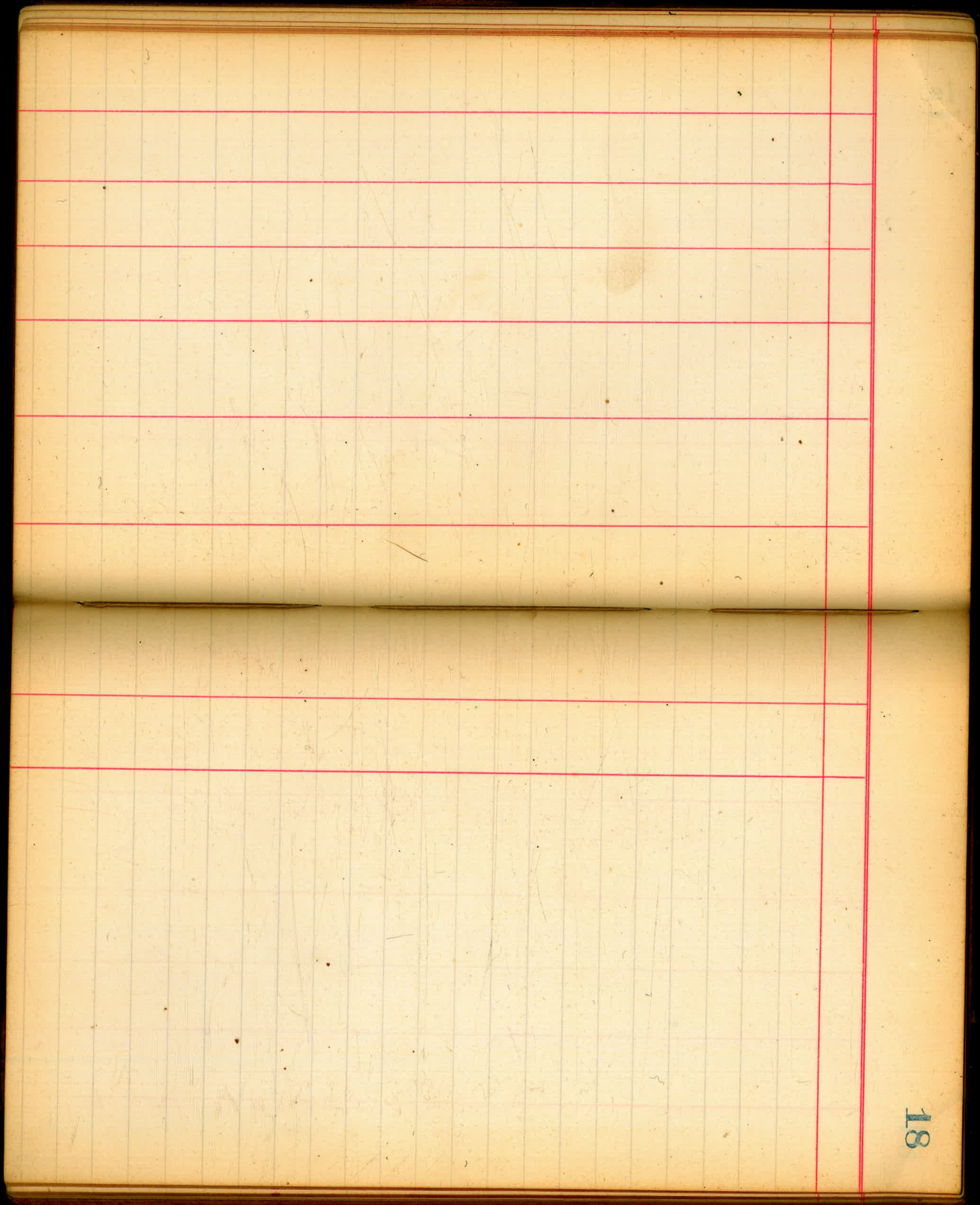


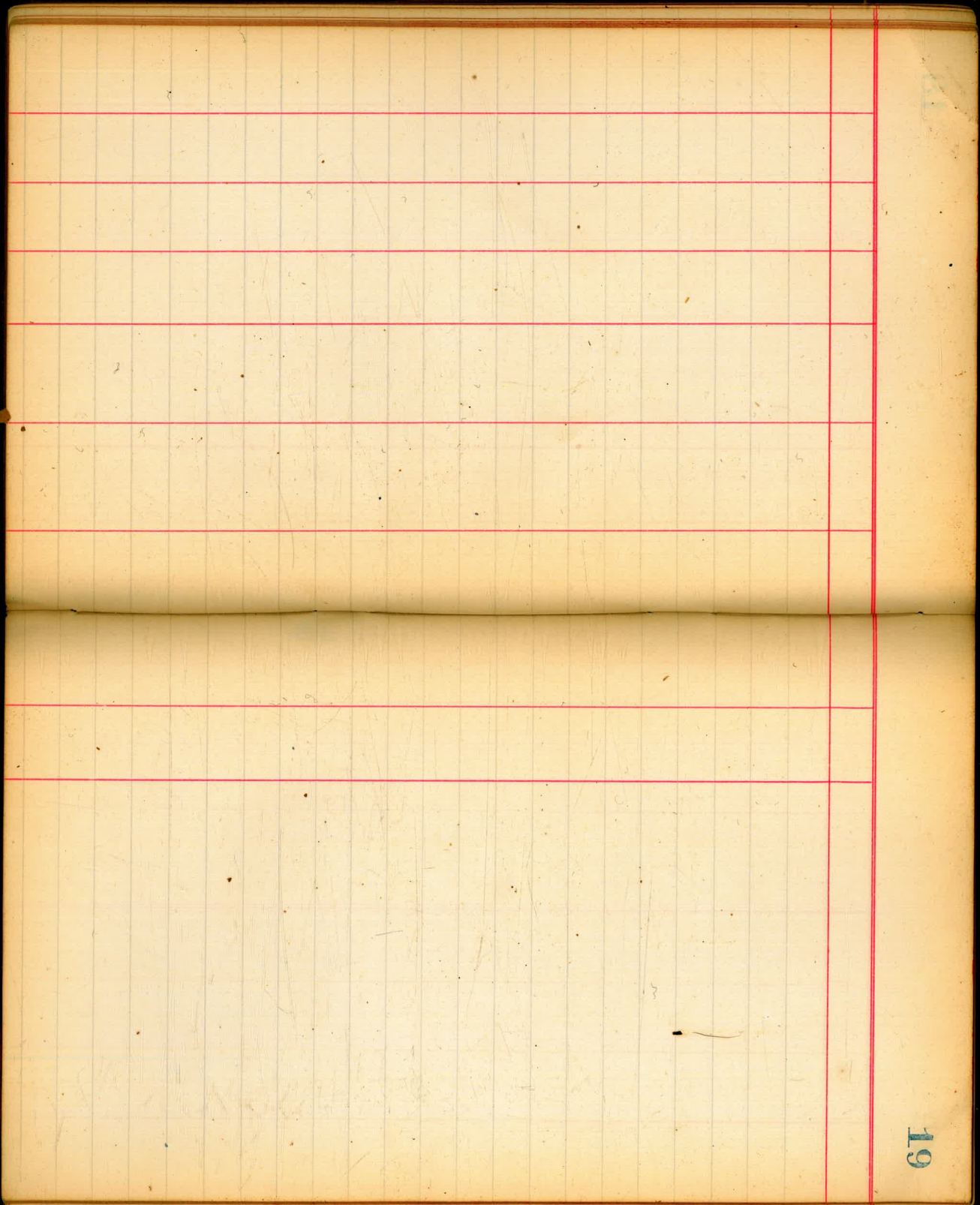


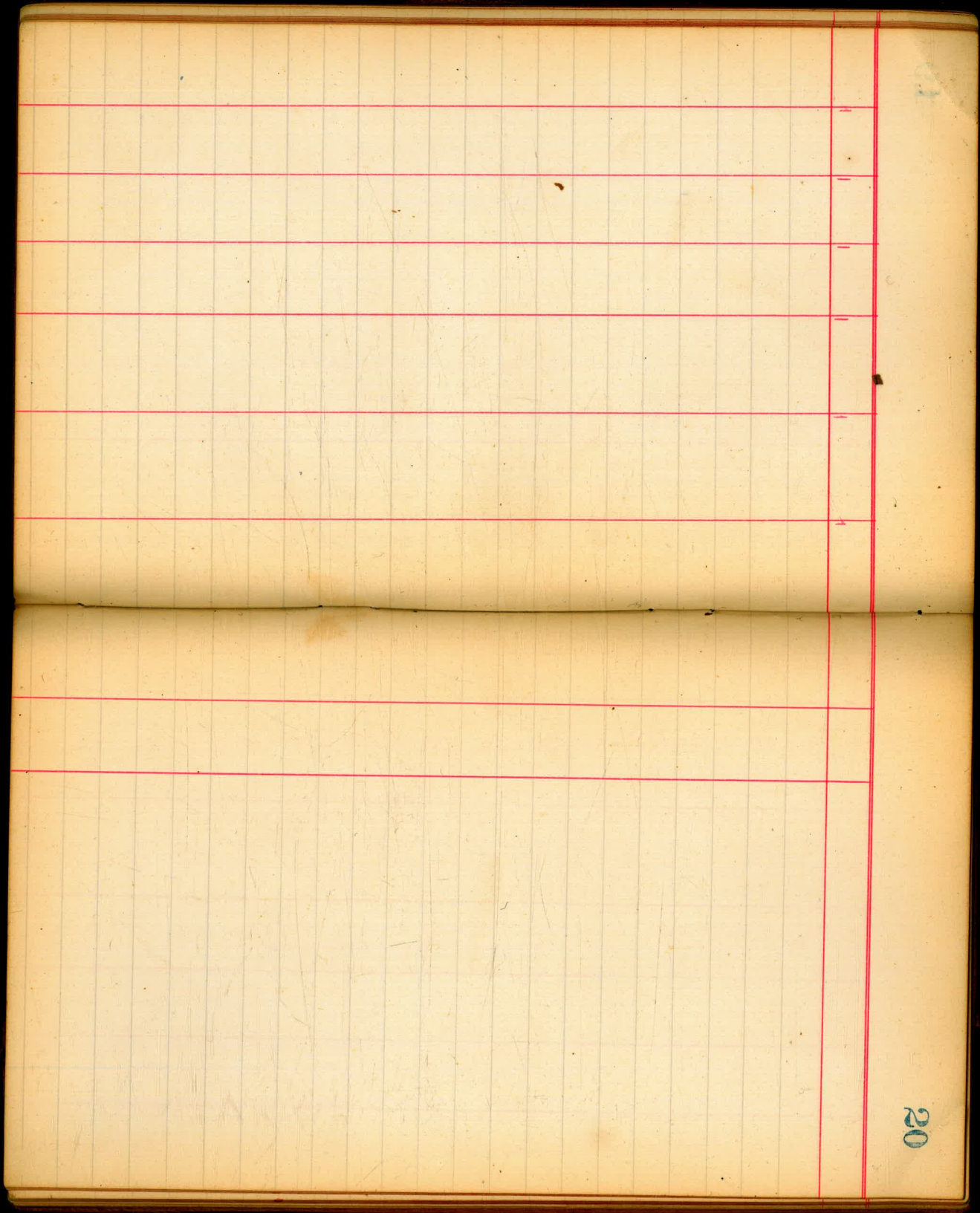


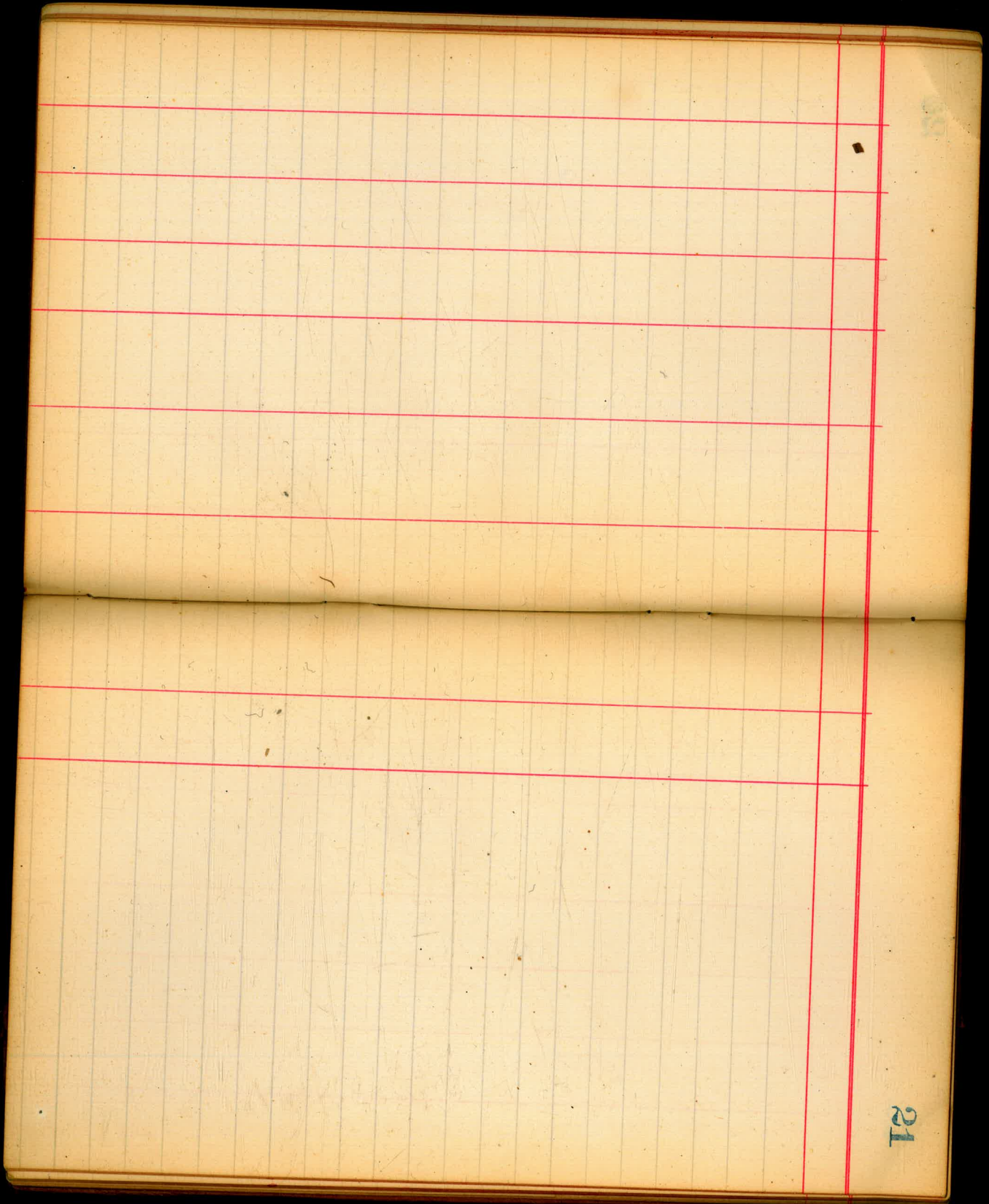


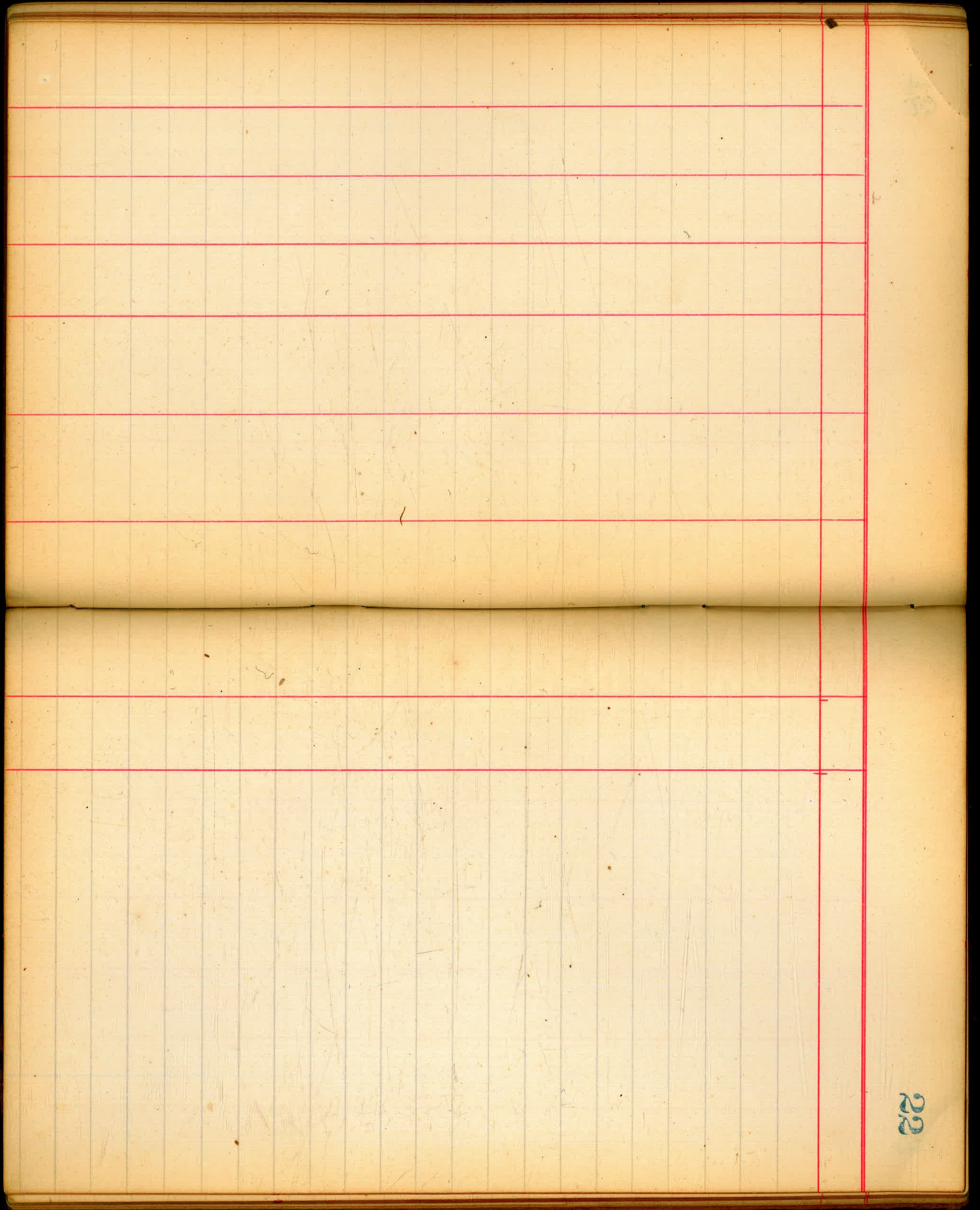


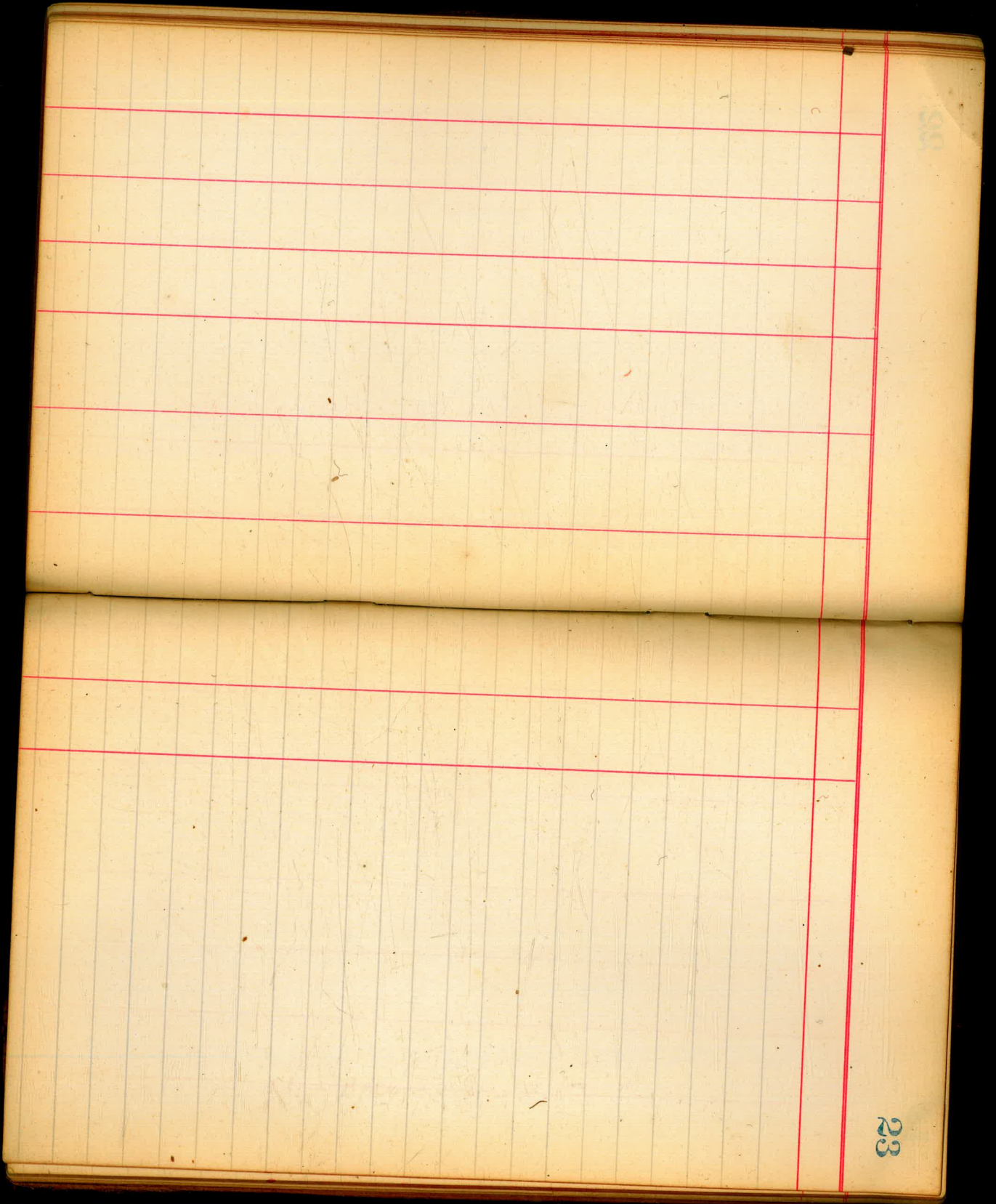


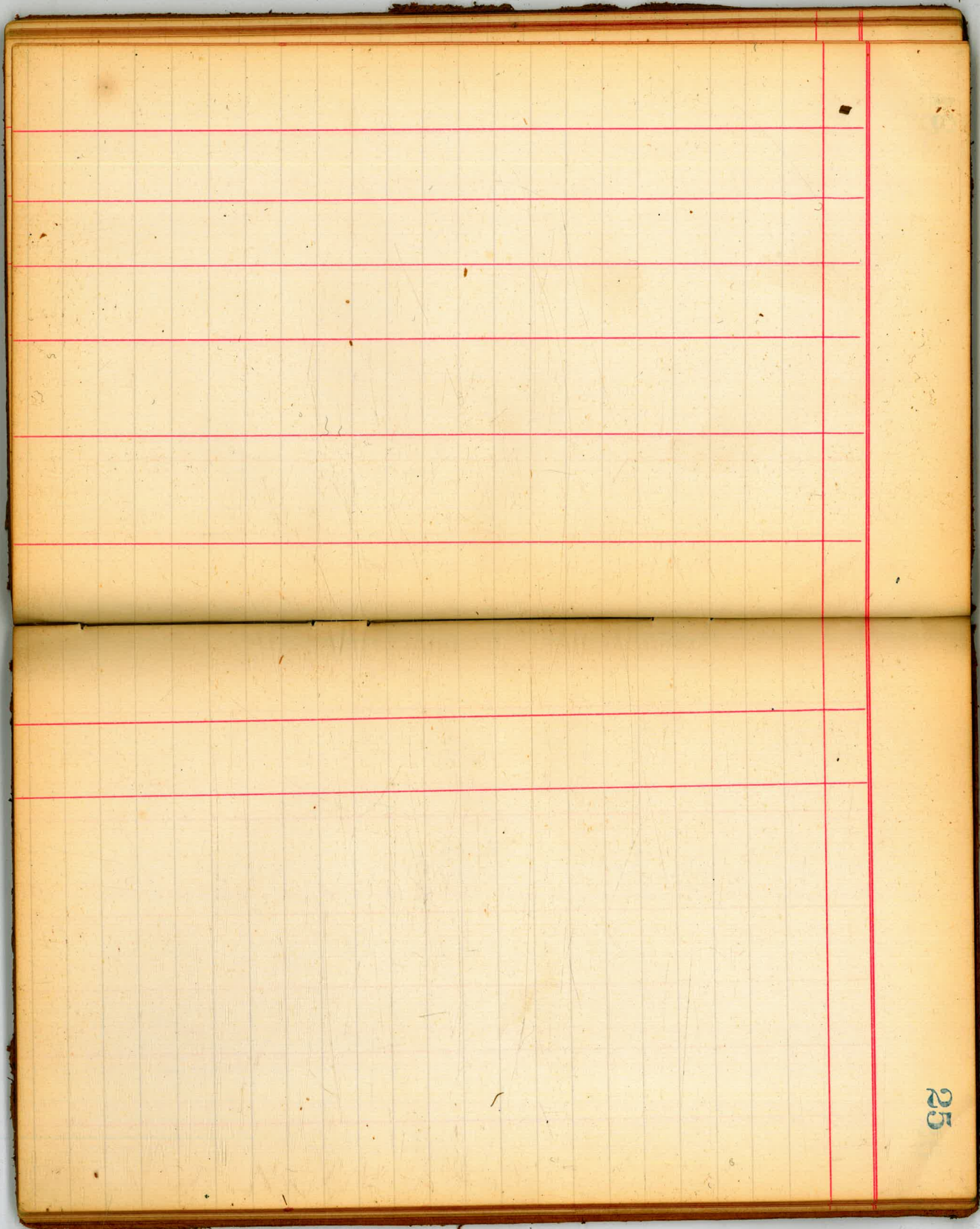


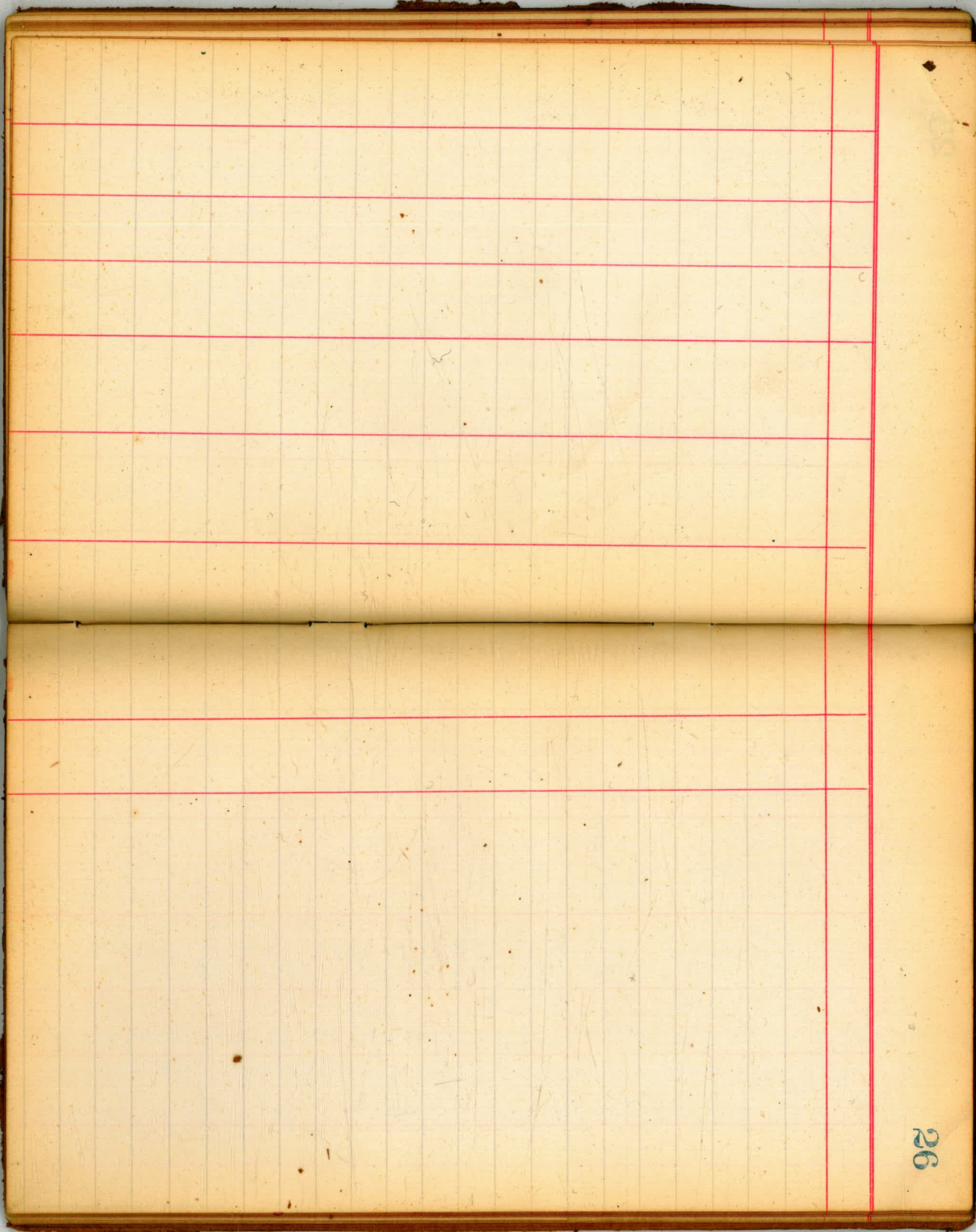


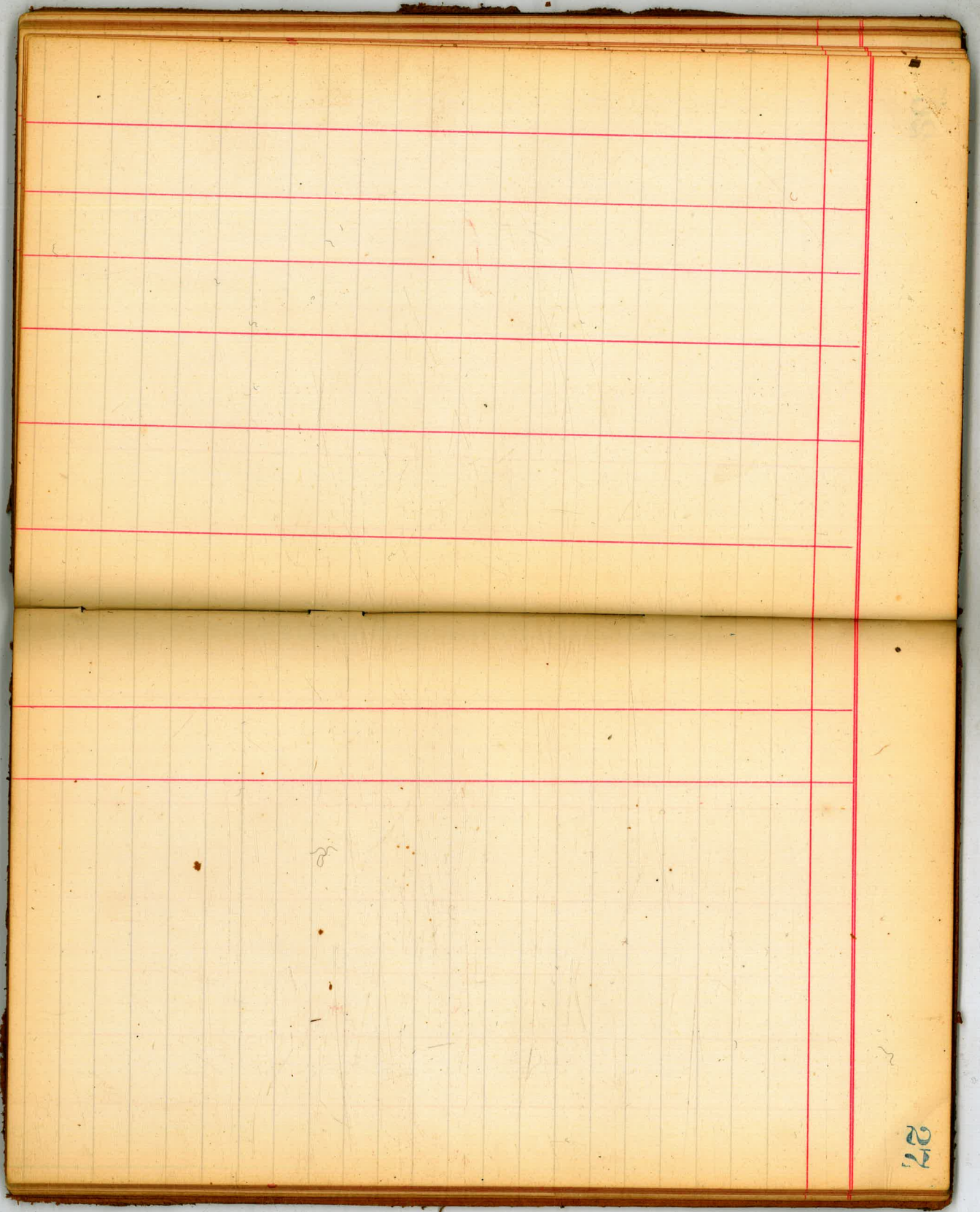




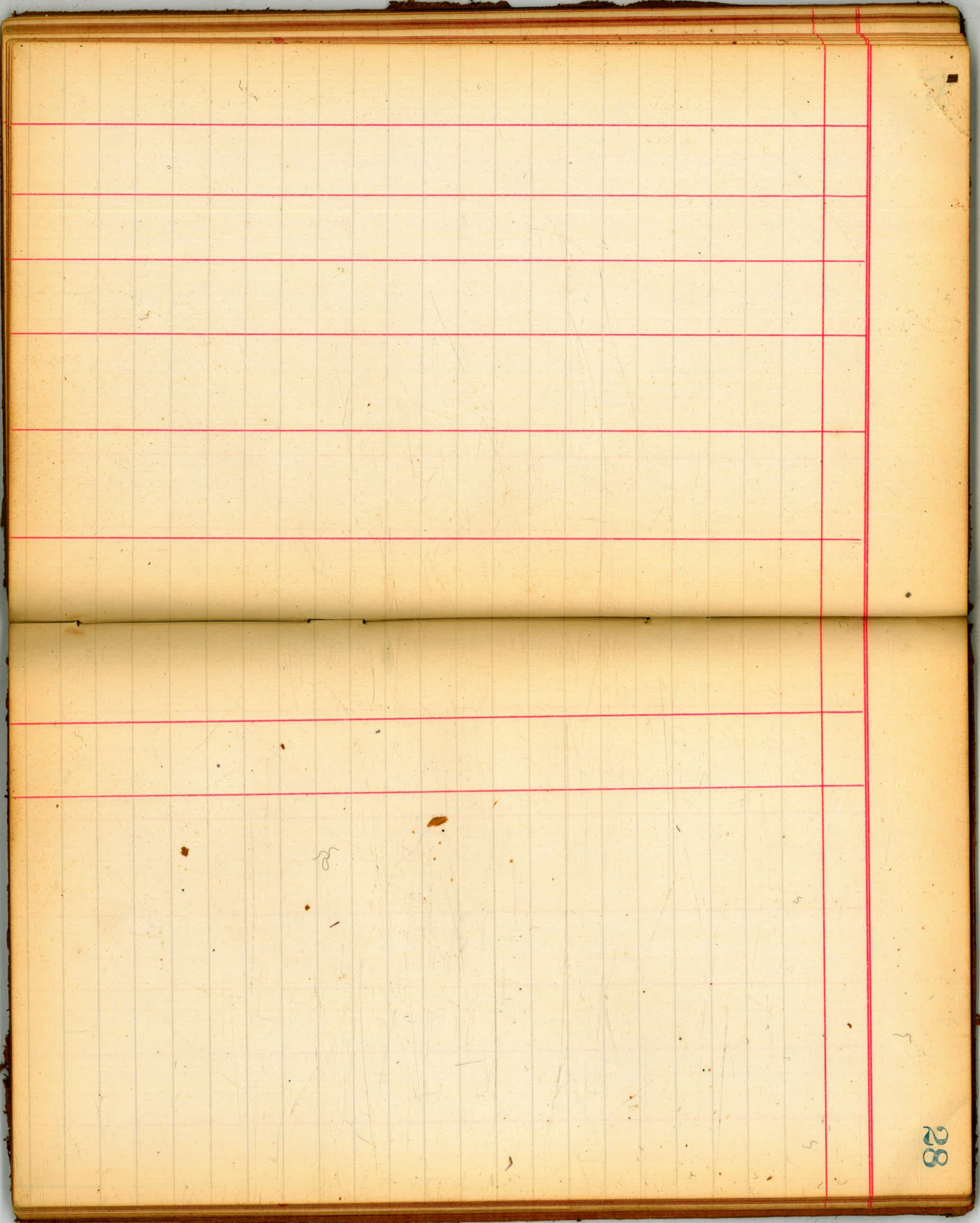


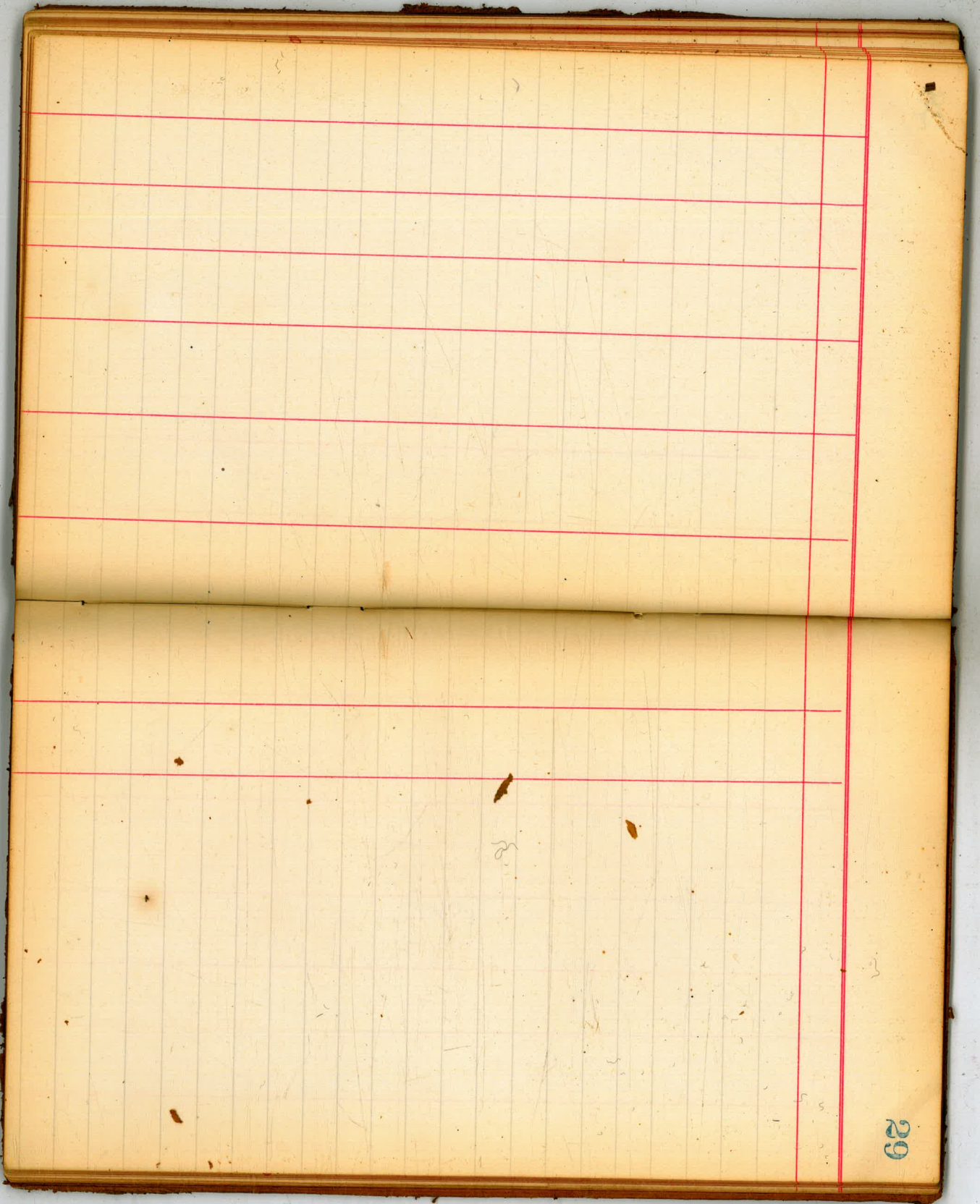


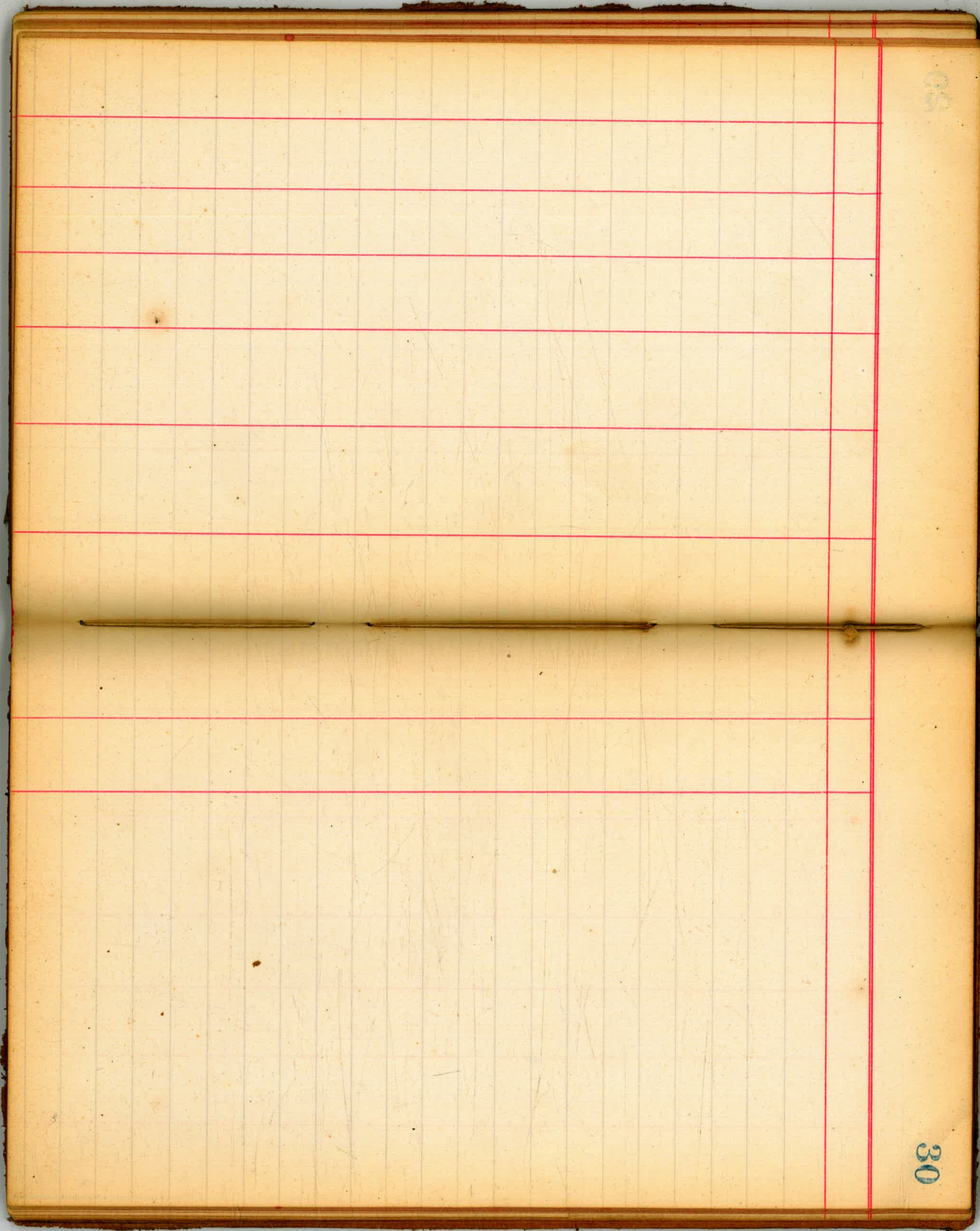




27

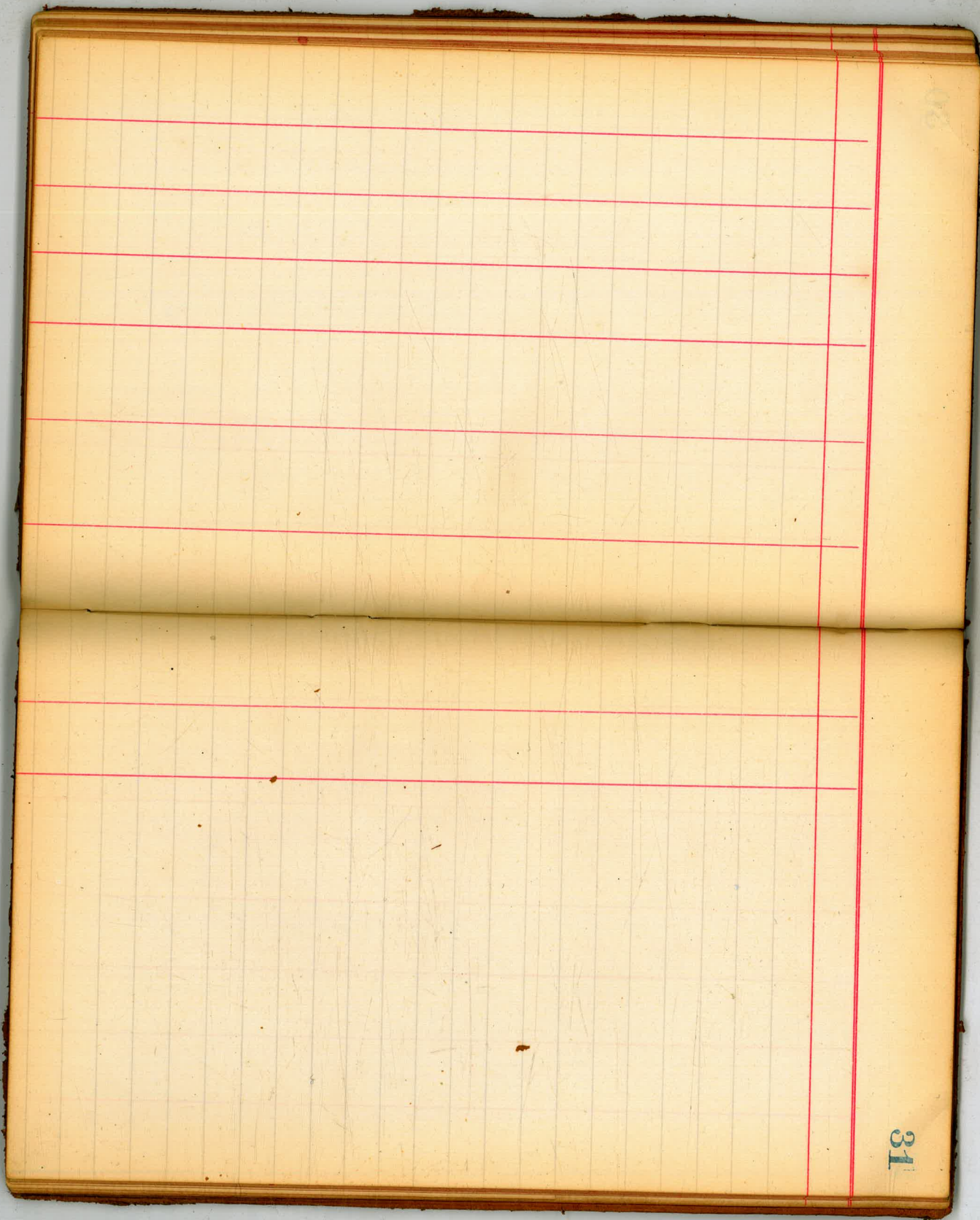


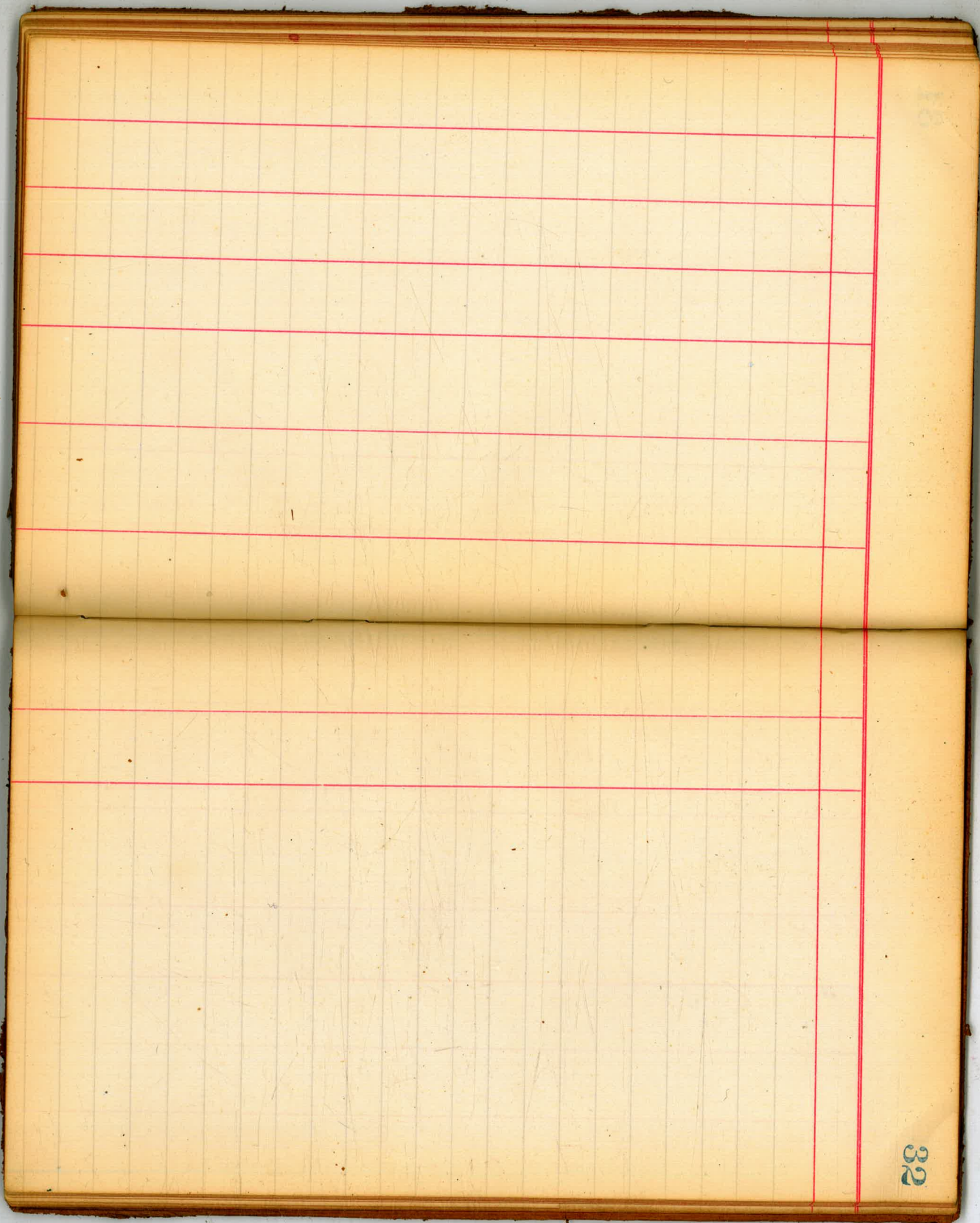


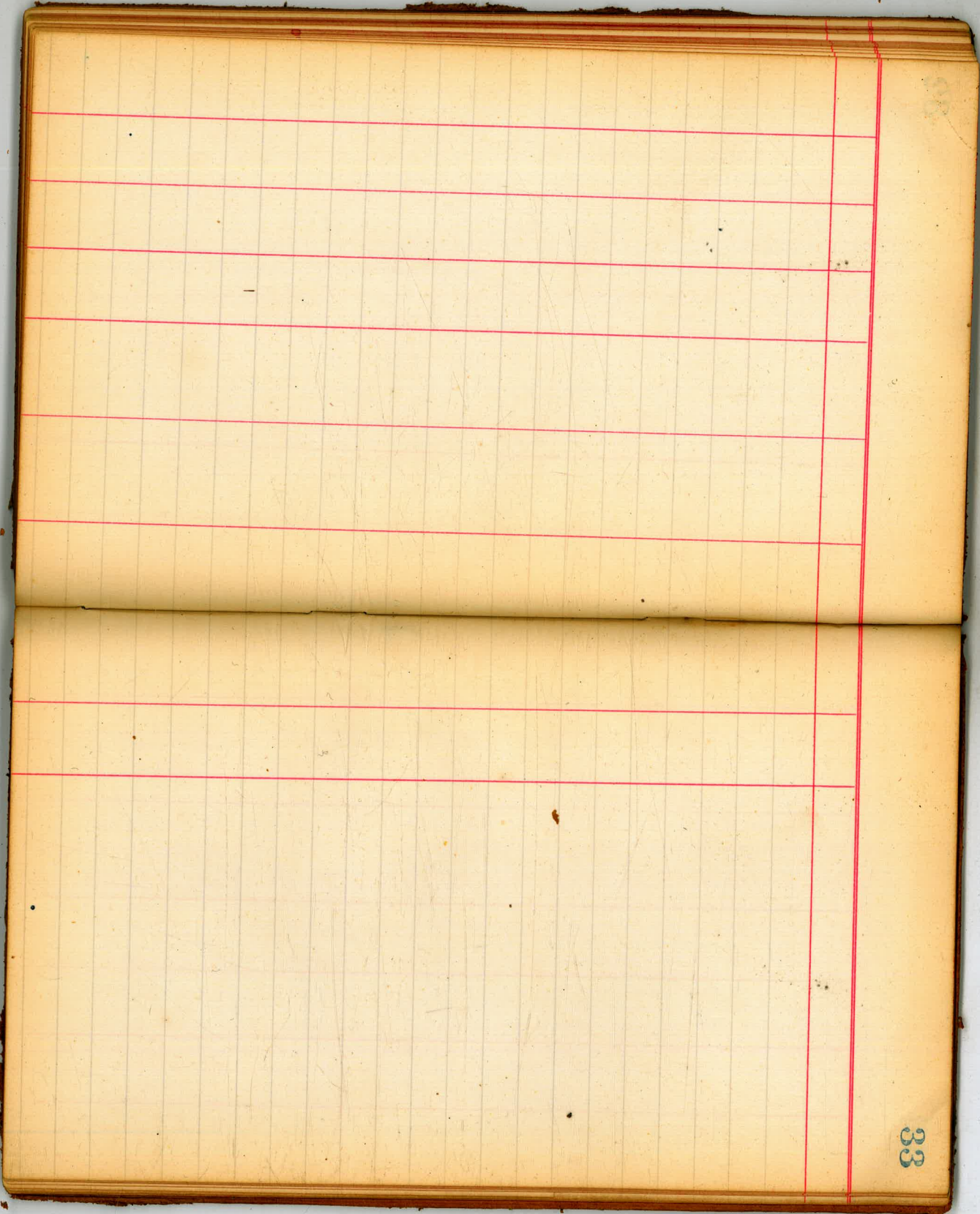


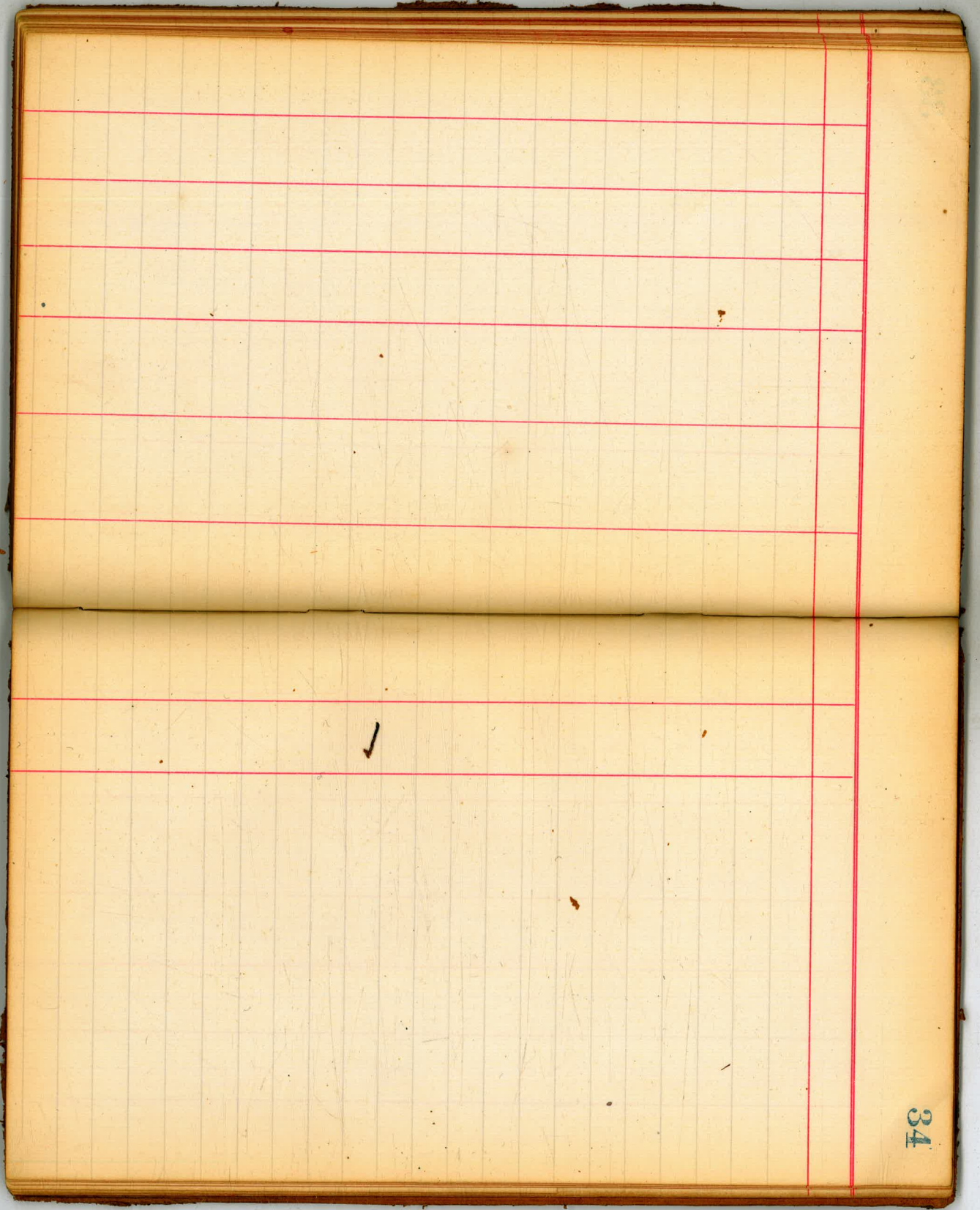
30

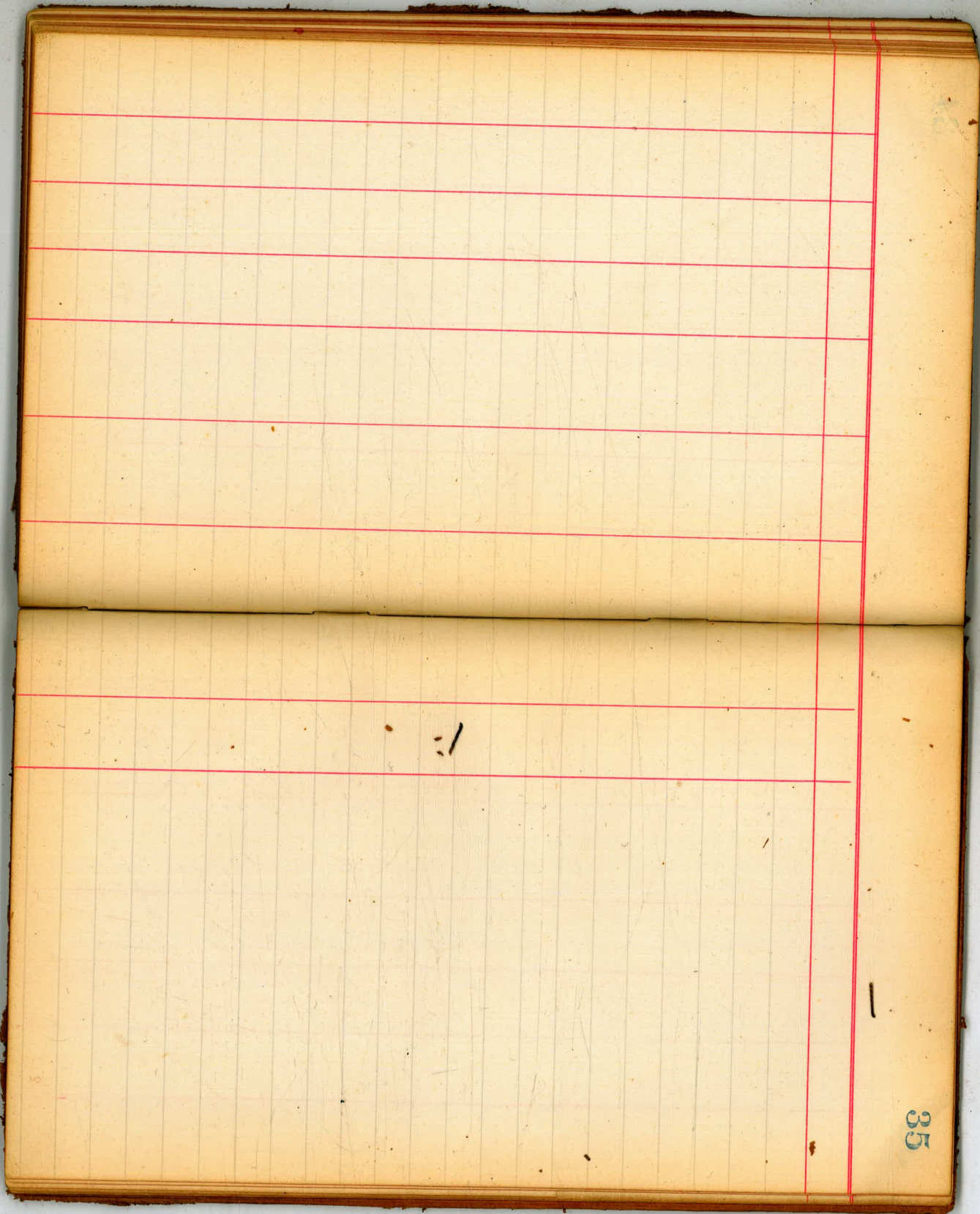
30

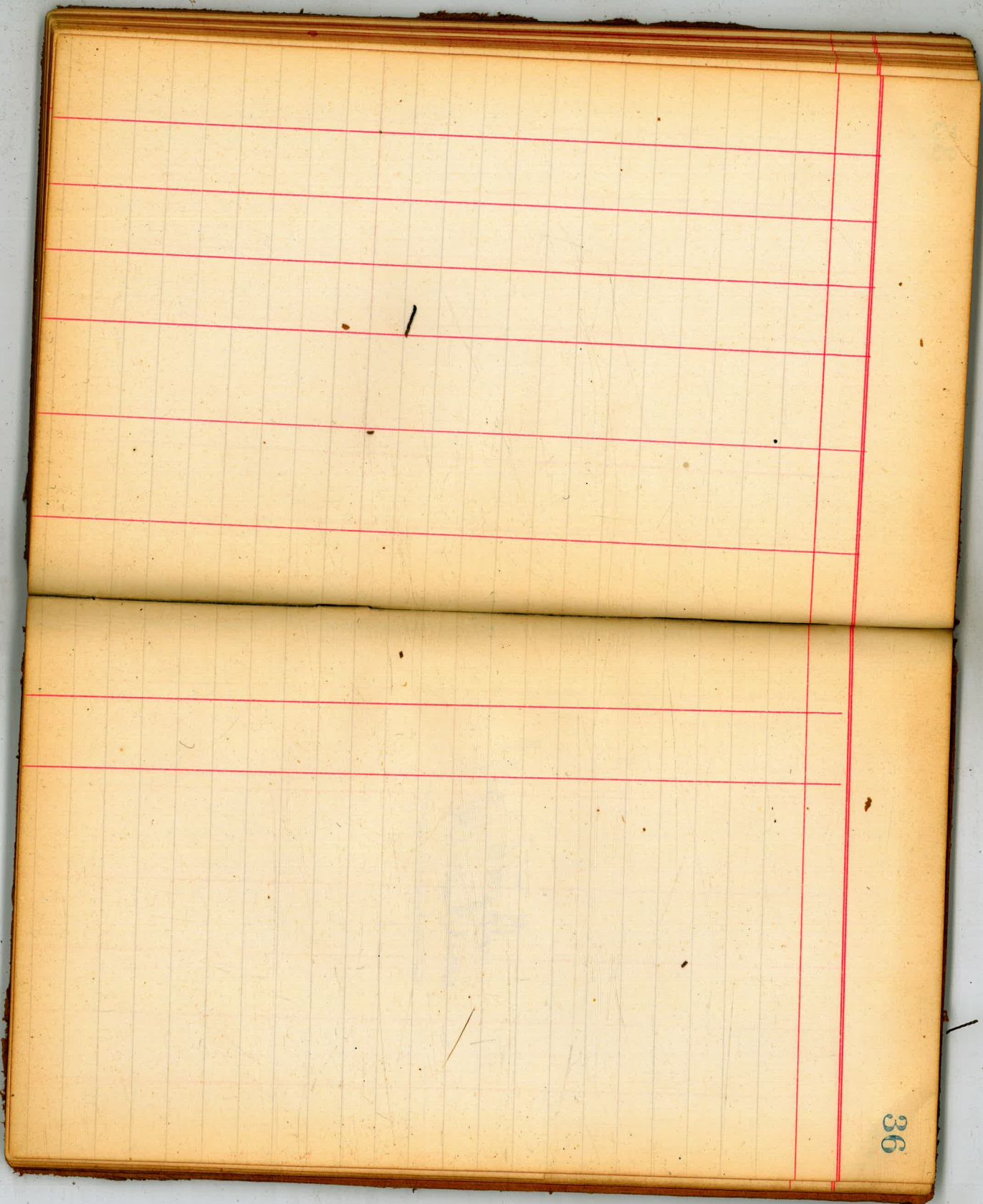




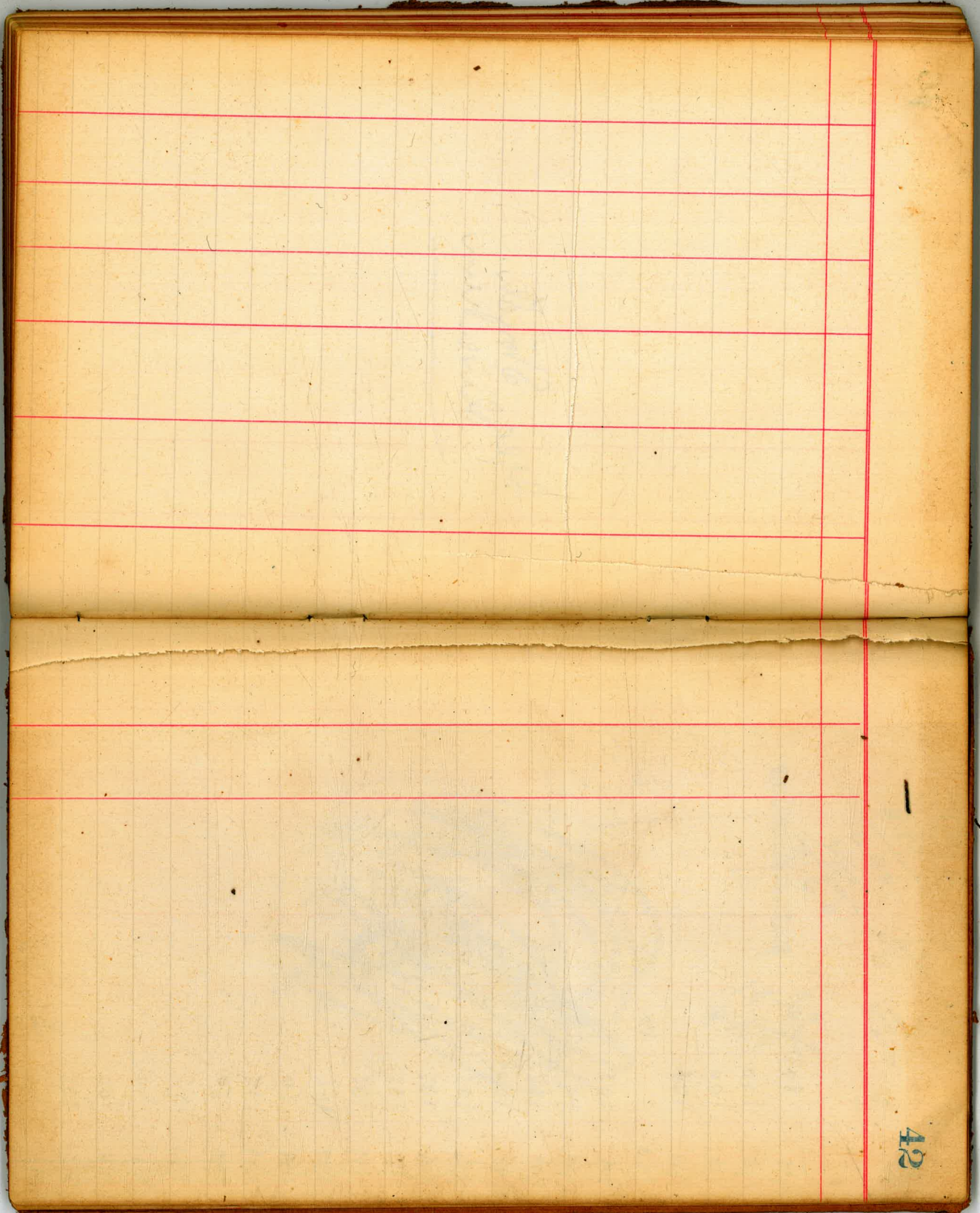








Geo. Stoughton.
Dover, N.H.



Ac. [unclear] 29 - 11 1/2

Wholesale [unclear] 23 1/2

& [unclear] 17 1/2

Wholesale [unclear] 29 1/2

Sum 8.080

11 1/2
13 1/2
15 1/2
17 1/2
19 1/2
21 1/2
23 1/2
25 1/2
27 1/2
29 1/2

14 1/2
16 1/2
18 1/2
20 1/2
22 1/2
24 1/2
26 1/2
28 1/2
30 1/2

12 1/2

12 1/2

13 1/2
15 1/2
17 1/2
19 1/2
21 1/2
23 1/2
25 1/2
27 1/2
29 1/2

150.80
100.80

Aprils

June

f = 1/2
1/2
1/2

15 1/2
17 1/2
19 1/2

15 1/2
17 1/2
19 1/2

Aprils