

807

807

380

FIELD

F.B. 807

W. B. Ewing

Published by H. S. CROCKER COMPANY, Stationers, Drawing Materials, Mathematical Instruments, etc., San Francisco.

TRAVERSE TABLE FOR TRANSIT BOOK.
From 1° to 90° for a distance of 100.

Degrees.	DEGREES.		½ DEGREE.		¼ DEGREE.		¾ DEGREE.		Degrees.
	Lat.	Dep.	Lat.	Dep.	Lat.	Dep.	Lat.	Dep.	
0			100.00	0.44	100.00	0.87	99.99	1.31	89
1	99.98	1.75	99.98	2.18	99.97	2.62	99.95	3.05	88
2	99.94	3.49	99.92	3.93	99.89	4.36	99.88	4.80	87
3	99.86	5.23	99.84	5.67	99.81	6.10	99.79	6.54	86
4	99.76	6.98	99.73	7.41	99.69	7.85	99.66	8.28	85
5	99.62	8.72	99.58	9.15	99.54	9.58	99.50	10.02	84
6	99.45	10.45	99.41	10.89	99.36	11.32	99.31	11.75	83
7	99.25	12.19	99.20	12.62	99.14	13.05	99.09	13.49	82
8	99.03	13.92	98.97	14.35	98.90	14.78	98.84	15.21	81
9	98.77	15.64	98.70	16.07	98.63	16.50	98.56	16.93	80
10	98.48	17.36	98.40	17.79	98.33	18.22	98.25	18.65	79
11	98.16	19.08	98.08	19.51	97.99	19.94	97.90	20.36	78
12	97.81	20.79	97.72	21.22	97.63	21.64	97.53	22.07	77
13	97.44	22.50	97.34	22.92	97.24	23.34	97.13	23.77	76
14	97.03	24.19	96.92	24.62	96.81	25.04	96.70	25.46	75
15	96.59	25.88	96.48	26.30	96.36	26.72	96.25	27.14	74
16	96.13	27.56	96.00	27.98	95.88	28.40	95.76	28.82	73
17	95.63	29.24	95.50	29.65	95.37	30.07	95.24	30.49	72
18	95.11	30.90	94.97	31.32	94.83	31.73	94.69	32.14	71
19	94.55	32.56	94.41	32.97	94.26	33.38	94.12	33.79	70
20	93.97	34.20	93.82	34.61	93.67	35.02	93.51	35.43	69
21	93.36	35.84	93.20	36.24	93.04	36.65	92.88	37.06	68
22	92.72	37.46	92.55	37.86	92.39	38.27	92.22	38.67	67
23	92.05	39.07	91.88	39.47	91.71	39.87	91.53	40.27	66
24	91.35	40.67	91.18	41.07	91.00	41.47	90.81	41.87	65
25	90.63	42.26	90.45	42.66	90.26	43.05	90.07	43.44	64
26	89.88	43.84	89.69	44.23	89.49	44.62	89.30	45.01	63
27	89.10	45.40	88.90	45.79	88.70	46.17	88.50	46.56	62
28	88.29	46.95	88.09	47.33	87.88	47.72	87.67	48.10	61
29	87.46	48.48	87.25	48.86	87.04	49.24	86.82	49.62	60
30	86.60	50.00	86.38	50.38	86.16	50.75	85.94	51.13	59
31	85.72	51.50	85.49	51.88	85.26	52.25	85.04	52.62	58
32	84.80	52.99	84.57	53.36	84.34	53.73	84.10	54.10	57
33	83.87	54.46	83.63	54.83	83.39	55.19	83.15	55.56	56
34	82.90	55.92	82.66	56.28	82.41	56.64	82.16	57.00	55
35	81.92	57.36	81.66	57.71	81.41	58.07	81.16	58.42	54
36	80.90	58.78	80.64	59.13	80.39	59.48	80.13	59.83	53
37	79.86	60.18	79.60	60.53	79.34	60.88	79.07	61.22	52
38	78.80	61.57	78.53	61.91	78.26	62.25	77.99	62.59	51
39	77.71	62.93	77.44	63.27	77.16	63.61	76.88	63.94	50
40	76.60	64.28	76.32	64.61	76.04	64.94	75.76	65.28	49
41	75.47	65.61	75.18	65.93	74.90	66.26	74.61	66.59	48
42	74.31	66.91	74.02	67.24	73.73	67.56	73.43	67.88	47
43	73.14	68.20	72.84	68.52	72.54	68.84	72.24	69.15	46
44	71.93	69.47	71.63	69.78	71.33	70.09	71.02	70.40	45
45	70.71	70.71							

C. J. Sackett
Hotel Arthur

314.2

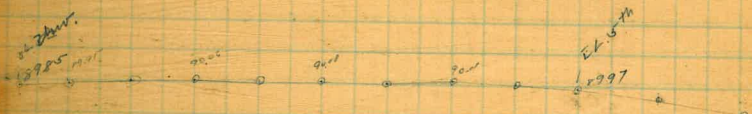
Handwritten calculations and notes on the right page, including numbers like 570.00, 216.00, 353.000, and various small figures.

Where curbs are level 9.67 Brown in str.

2016

9.3.06 1st Level on Station road No. 1

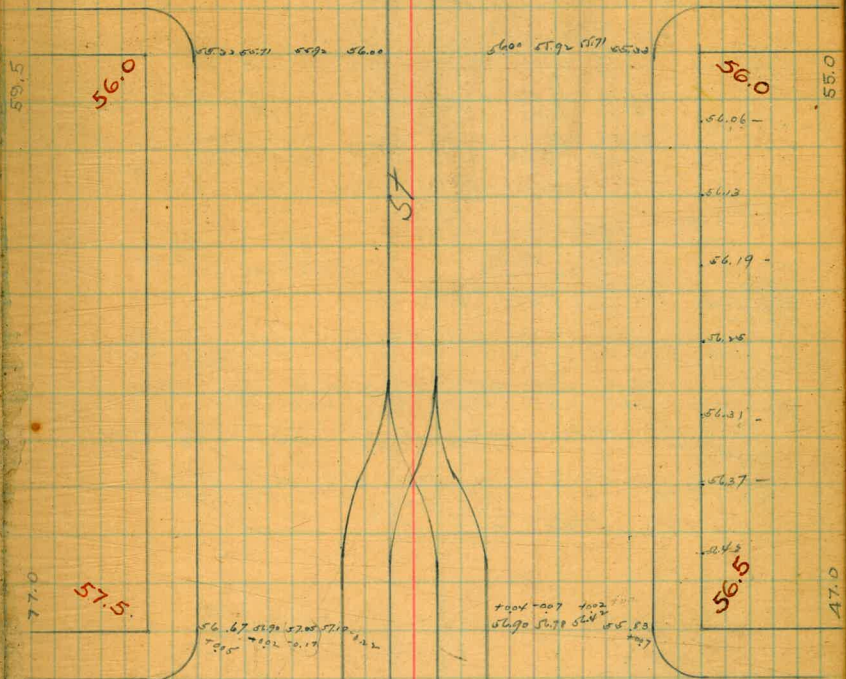
150	3.2.20	3.01	89.8.5
140		2.71	89.8.5
130		2.62	90.0.4
120		2.60	90.0.6
110		2.60	90.0.6
100		2.58	90.0.8
90		2.52	90.0.3
80		2.51	89.1.1
70		2.47	90.0.9
60		2.49	89.9.9
50		2.52	89.6.8
40		2.37	89.2.9



B.M. S.W. cor Brass Plug 55.892

55.89	56.06	56.19	56.31	56.37	56.50	4.22	3.14	3.18
4.72	2.86	4.43	4.31	4.25	4.12	5.58	5.70	6.95
60.62 M	4.78							
55.89	56.19	56.42	56.60	56.73	56.80	5.92	5.71	
4.72	3.19	3.42	2.69	4.23	5.10	4.21	4.42	
60.13 M	56.94	56.71	56.44	55.89				
60.40 M	56.88	56.88	56.73	4.60	4.56			
				4.77	4.98			

16th



15th

B.M. NW. cor. Brass Plug end Return 57.614



2/15

B.M. S.W. cor Brass Plug. 84,196.

63.55	5.29	2.03	2.29	63.55	63.05	65.88
68.744	63.04	65.00	60.33	65.1	65.1	65.0
				65.82 M		
	6.70	6.61	6.27	4.10	5.25	5.91
	1.70	1.85	2.14	4.20	4.59	4.33
				FP. 37 M		
63.05	5.15	6.58	6.90	6.40	6.45	6.20
68.744	63.59	65.4	60.2	6.32	6.25	6.40
				4.97	5.22	5.07
63.05	6.45	6.90	6.72	6.25	6.58	6.50
68.744	4.97	4.48	5.70	5.17	5.88	5.42
					2.84	1.97
63.05	6.52	4.92	6.70	6.61	6.32	
68.744	2.80		1.77	1.86	2.15	4.1
						3.7
63.05	6.52	6.20		5.62	4.46	4.48
68.744	3.71	1.02		4.72	4.63	4.68
				5.06	4.82	4.95
63.05	6.32	6.61	6.70			
68.744	2.67	2.0	2.31			
63.05	6.40	6.29	6.32	6.35	6.35	6.45
68.744	4.44	4.57	4.78	4.96	4.81	4.86, 3.61
63.05	6.30	6.75	6.67	6.75	6.73	6.62
68.744	3.16	2.71	2.79	2.71	2.68	2.84
						2.1
	6.21	6.20				4.85
	5.28	5.05				

B.M. S.W. cor. Brass Plug. 63,548

50.0

84.25

63.58 63.96 64.7 64.33
63.72 63.6 64.4

64.01 63.91 63.75
63.25 64.16 63.88 63.72

84.25

55.0

ST

54.0

66.6

65.83 66.20 66.42 66.85
66.22 66.21 66.70
65.75 65.75 65.75
65.75

66.50 66.72 66.72 66.80
66.70 66.70 66.70
66.70 66.70 66.70

66.5

41.0

17.6

65.30

64.85

64.60

63.95

63.5

63.41 63.40 63.21 63.00 63.56 63.87 64.00

64.00 63.90 63.58 63.05

65.28

64.72

63.94

63.7

55.0

64.0

64.0

55.0

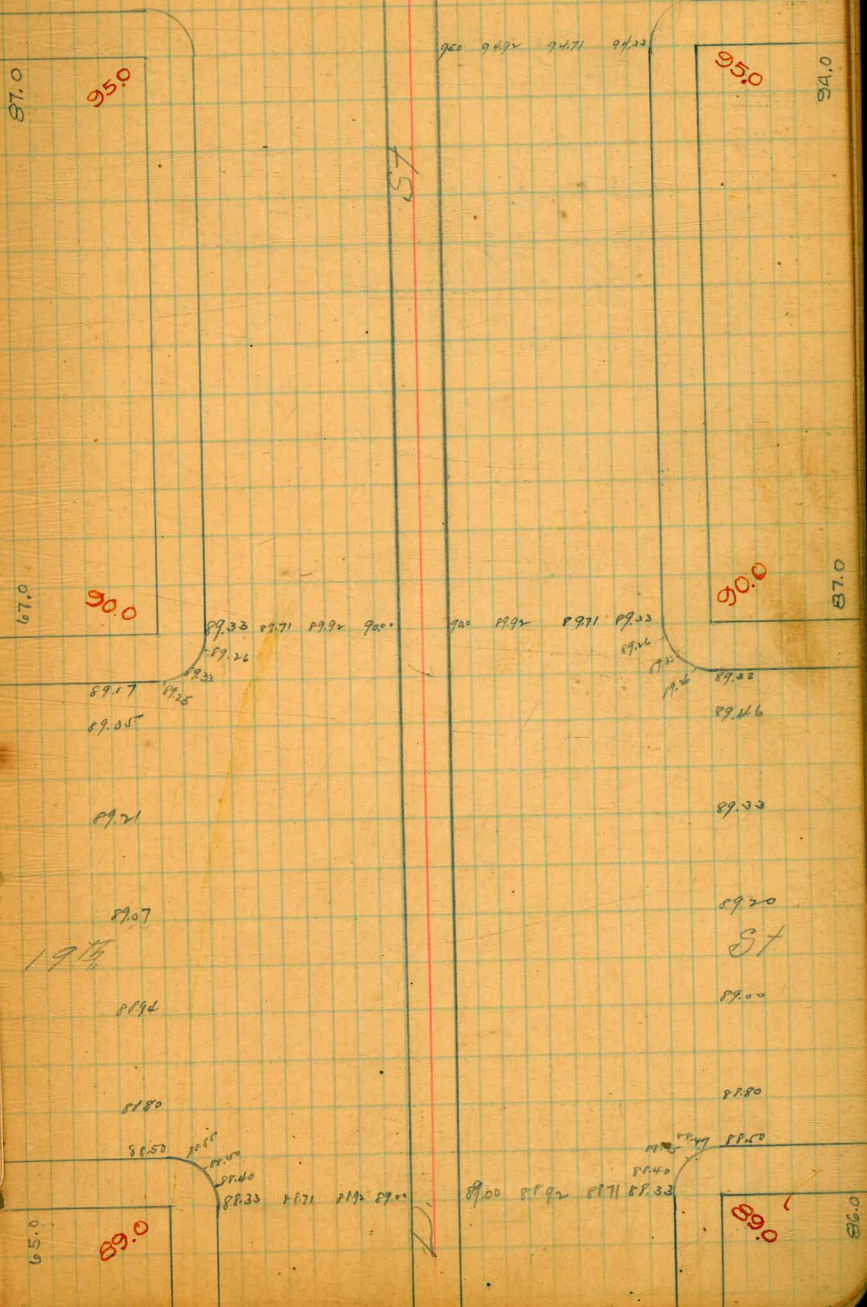
B.M. S.W. cor. Brass Plug

94.839

89.03	89.33	89.03	89.71	89.92	89.00	89.20
4.59	4.28	4.21	4.53	4.32	4.11	4.04
72.44	93.24					
89.03	89.71	89.92	89.00	89.71	89.00	89.33
4.46	4.78	4.57	4.49	4.69	4.49	4.16
93.49						4.3
94.81	11.40	8.15	11.47	8.15	9.33	11.26
4.18	5.09	5.10	5.02	4.99	4.71	4.23
97.02	95.00	94.92	94.71			
	4.02	4.10	4.31			
89.03	89.33	89.71	89.92	90.00	89.20	89.33
4.59	4.28	4.21	4.53	4.32	4.11	4.20
93.73						
89.60	12.17	8.50	12.15	8.10	8.10	11.07
4.42	4.28	4.95	4.90	5.05	4.61	4.30
93.45						4.10

B.M. S.W. cor. Brass Plug

89.035



75.0

5

87.0

95.0

900 9492 9471 9422

95.0

94.0

57

67.0

90.0

89.33 89.71 89.92 90.00

900 9492 9471 9422

90.0

87.0

89.17
89.05

89.00
89.16

89.21

89.33

89.07

89.20

1914

57

89.14

89.00

89.80

89.80

89.50

89.50

65.0

89.0

89.33 89.71 89.92 90.00

900 9492 9471 9422

89.0

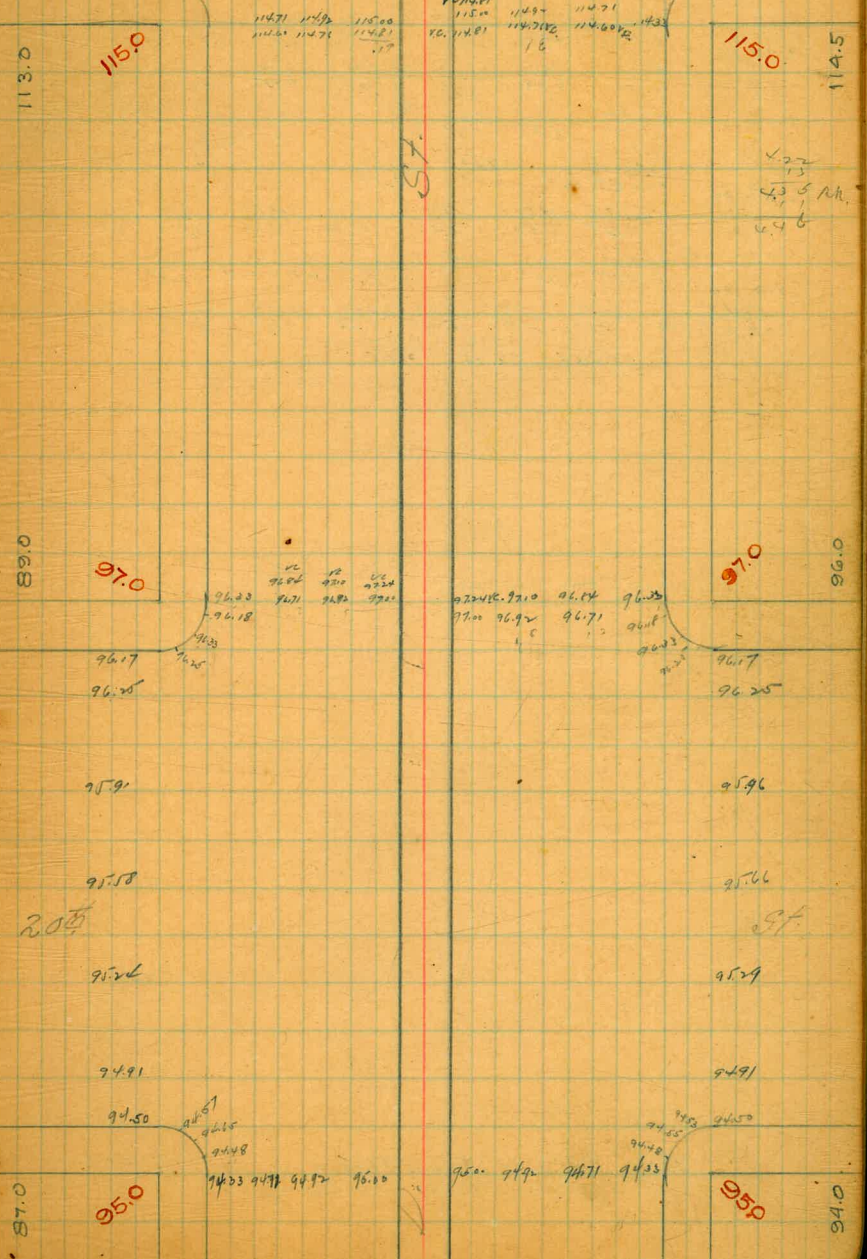
86.0

478 RR.
4.1

B.M. S.W. cor. Brass Plug 114.873

94.00	94.22	94.44	94.66	94.88	95.10	95.32	95.54	95.76	96.18
5.60	5.60	5.60	5.60	5.60	5.60	5.60	5.60	5.60	5.60
99.98	99.98	99.98	99.98	99.98	99.98	99.98	99.98	99.98	99.98
94.84	94.84	94.84	94.84	94.84	94.84	94.84	94.84	94.84	94.84
5.06	5.06	5.06	5.06	5.06	5.06	5.06	5.06	5.06	5.06
99.90	99.90	99.90	99.90	99.90	99.90	99.90	99.90	99.90	99.90
94.16	94.16	94.16	94.16	94.16	94.16	94.16	94.16	94.16	94.16
4.69	4.69	4.69	4.69	4.69	4.69	4.69	4.69	4.69	4.69
99.53	99.53	99.53	99.53	99.53	99.53	99.53	99.53	99.53	99.53

B.M. S.W. cor. Brass Plug 94.833



21st

11R.

11R.
113.0
115.0
117.0
119.0
121.0
123.0
125.0
127.0
129.0
131.0
133.0
135.0
137.0
139.0
141.0
143.0
145.0

114.5

115.0

114.5

113.0
115.0
117.0
119.0
121.0
123.0
125.0
127.0
129.0
131.0
133.0
135.0
137.0
139.0
141.0
143.0
145.0

89.0

97.0

97.0

96.0

90.0

95.0

95.0

94.0

95.0

95.0

114.87 6.37 117.24	114.32 6.91 117.23	114.89 4.13 119.02	114.81 4.19 118.62	114.76 4.24 118.52	114.60 4.40 118.00
114.87 46.6 117.53 M	114.87 4.98 119.85	114.87 4.88 119.75	114.87 4.96 119.83	114.87 5.03 119.90	117.0 2.03 118.97
	115.02 4.50 119.52	115.60 3.73 119.33	116.17 3.36 119.53	116.50 2.91 119.41	117.0 2.46 119.46
	117.82 1.91 119.73	118.12 1.71 119.83	118.24 1.31 119.55	118.24 1.09 119.35	118.24 4.00 122.24
114.87 5.33 120.20 M	114.87 5.30 120.17	117.25 5.29 122.54	117.33 5.29 122.62	117.33 5.29 122.62	117.33 4.16 121.47
	117.82 3.8 121.62	118.01 5.39 123.40	118.76 5.42 124.18	118.60 5.60 124.20	118.70 5.50 124.20
	117.0 5.20 122.20	117.25 5.07 122.32	117.25 2.95 120.30	117.25 3.07 120.32	117.25 2.88 120.13
114.87 5.40 120.27 M	114.87 5.46 120.33	114.76 6.51 121.27	114.60 6.27 120.87	115.03 5.24 120.29	115.58 4.67 120.21
	117.82 2.45 120.27	118.12 5.16 123.28	118.24 2.05 120.29	118.24 3.93 122.22	118.24 4.18 122.42

B.M. SW. cor. Brass Plug

114.873

22

139.1

138.0

138.0

136.5

115.0

118.0

118.0

116.5

113.0

115.0

115.0

114.5

21

116.14

115.58

115.03

114.50

114.00

127.7
127.6
127.5
127.4

127.7
127.6
127.5
127.4

117.2
117.1
117.0
116.9

117.2
117.1
117.0
116.9

114.3
114.2
114.1
114.0

114.3
114.2
114.1
114.0

15

425
415
405

116.17
St.

115.60

115.03

114.50

114.00

B.M. S.W. cor. Brass Plog. 2nd 159.920

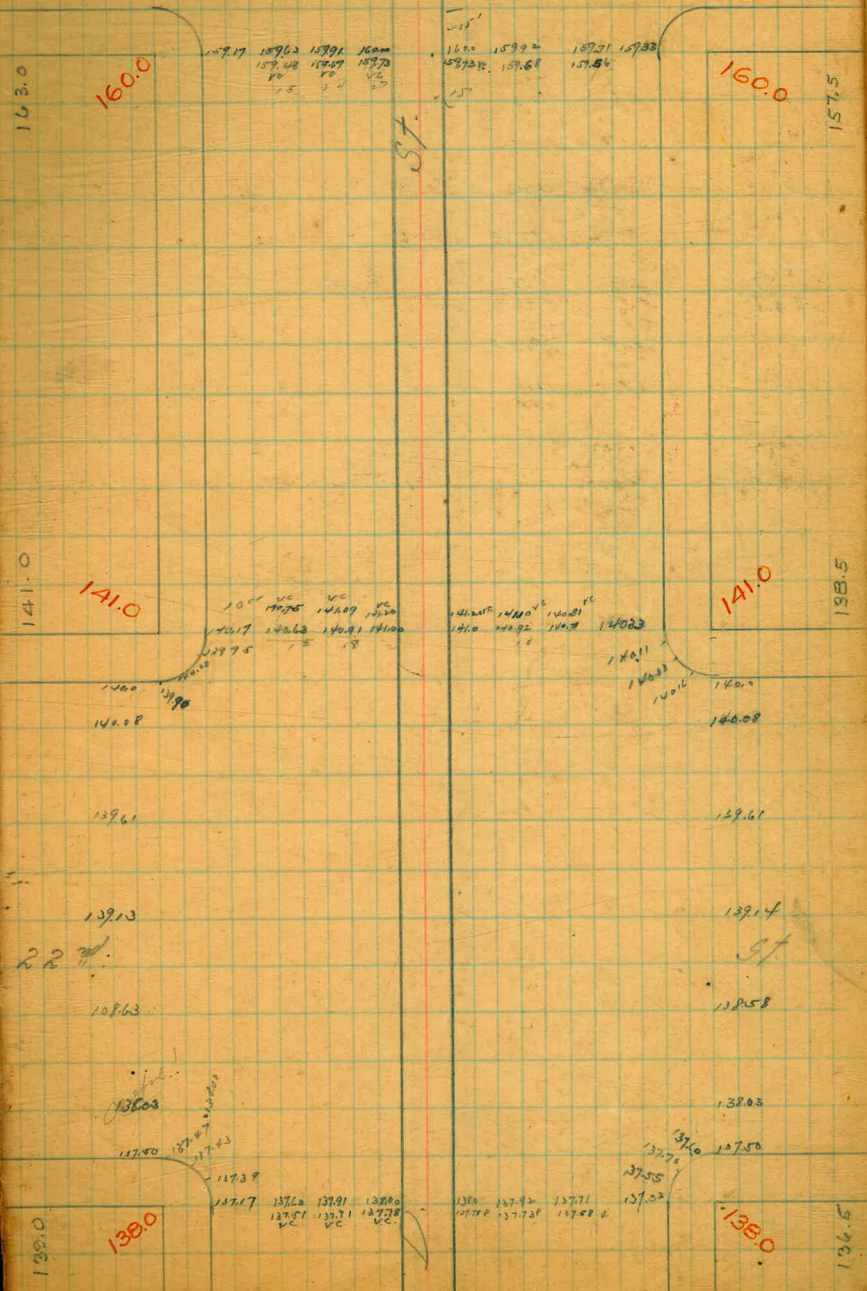
138.02	137.33	140.33							
143.06 M	5.73	2.73							
185.02	137.52	137.73	137.72						
142.27 M	4.71	4.51	4.51						
138.02	138.03	138.85	139.14	39.61	40.05				
4.73	4.72	4.17	3.67	3.12	2.17				
142.75 M	140.81	141.00	141.20	137.11	132.17	37.71	37.60	137.50	
	1.19	1.65	1.65	5.02	6.70	6.05	6.15	5.21	
157.92	140.00	140.11	140.33	140.11	4.4	4.51			
4.43	2.75	2.69	2.82	2.61	4.78	4.71			
160.33 M	117.56	117.69	117.71						
	4.79	4.67	5.02						
158.02	138.15	139.14	138.03						
5.05	4.09	3.93	5.02						
145.07 M	140.02	137.7	137.51	137.71	137.58				
	3.99	4.89	5.50	5.30	5.28				
138.02	138.02	138.02	137.75						
5.14	4.09	5.02	5.02						
143.16 M	143.16 M								
138.02	127.37	127.24	127.27	127.27	4.00	128.05	137.90	140.08	139.91
4.77	5.40	5.38	5.32	5.27	4.79	2.9	2.89	2.71	2.61
142.79 M	140.71	141.09	141.20	137.11	138.03	137.12	137.61	138.02	
	2.04	1.50	1.57	4.77	4.77	4.76	3.66	3.18	2.71

B.M. S.W. cor. D 2nd 138.841

159.92	138.841								
4.93	4.87								
164.85 M	157.72	157.67	157.48						
	5.12	5.18	5.37						

230

80



138.0

138.0

138.0

136.5

46.66	4.77	5.95	5.93	4.87	
<u>5.92</u>	<u>2.95</u>		<u>40.93</u>		
40.74					
43.45	10.74	20.4	39.57	6.21	
<u>5.39</u>	<u>1.49</u>		<u>2.15</u>	<u>26.03</u>	
48.84	42.25				
43.45	2.44	5.19	6.73	40.10	6.46
<u>3.29</u>	<u>43.30</u>	<u>40.50</u>		<u>6.64</u>	<u>40.28</u>
46.74	6.42	4.72	4.70	4.33	40.08
<u>35.13</u>		<u>35.81</u>	<u>39.76</u>	<u>40.10</u>	<u>4.35</u>
5.08					
40.61					
40.74					
<u>3.22</u>					
44.46					

8th			5th
43.50	42.21	42.30	42.00
41.00	40.70	40.00	40.50
7th			5th
40.50	40.08		40.00
36.80	36.00	35.90	36.30
6th			5th

B.M. N.W. cor Brass Plug

49,914

57.53 Ht.	$\frac{44.00}{8.52}$	$\frac{44.17}{8.36}$		
43.45 BM.	$\frac{44.52}{4.21}$	$\frac{44.73}{4.00}$	$\frac{44.20}{3.93}$	$\frac{44.75}{3.98}$
5.28	3.77	3.905	3.905	4.025
48.73 Ht.	$\frac{49.25}{4.07}$	$\frac{49.26}{4.52}$	$\frac{49.07}{4.77}$	$\frac{48.91}{4.06}$
3.87	4.45	4.62	4.87	4.91
53.78 Ht.	$\frac{43.45}{4.02}$	$\frac{43.63}{4.10}$	$\frac{43.47}{4.26}$	48.93
5.28	4.66	4.74	4.99	5.02
48.73 Ht.	$\frac{43.21}{4.66}$			
3.21	4.21			
43.45				
5.28				
48.73 Ht.				
3.21				
43.45				
5.28				
48.73 Ht.				
3.21				
43.45				
5.28				
48.73 Ht.				
3.21				
43.45				
5.28				
48.73 Ht.				
3.21				
43.45				
5.28				
48.73 Ht.				
3.21				
43.45				
5.28				
48.73 Ht.				
3.21				
43.45				
5.28				
48.73 Ht.				
3.21				
43.45				
5.28				
48.73 Ht.				
3.21				
43.45				
5.28				
48.73 Ht.				
3.21				
43.45				
5.28				
48.73 Ht.				
3.21				
43.45				
5.28				
48.73 Ht.				
3.21				
43.45				
5.28				
48.73 Ht.				
3.21				
43.45				
5.28				
48.73 Ht.				
3.21				
43.45				
5.28				
48.73 Ht.				
3.21				
43.45				
5.28				
48.73 Ht.				
3.21				
43.45				
5.28				
48.73 Ht.				
3.21				
43.45				
5.28				
48.73 Ht.				
3.21				
43.45				
5.28				
48.73 Ht.				
3.21				
43.45				
5.28				
48.73 Ht.				
3.21				
43.45				
5.28				
48.73 Ht.				
3.21				
43.45				
5.28				
48.73 Ht.				
3.21				
43.45				
5.28				
48.73 Ht.				
3.21				
43.45				
5.28				
48.73 Ht.				
3.21				
43.45				
5.28				
48.73 Ht.				
3.21				
43.45				
5.28				
48.73 Ht.				
3.21				
43.45				
5.28				
48.73 Ht.				
3.21				
43.45				
5.28				
48.73 Ht.				
3.21				
43.45				
5.28				
48.73 Ht.				
3.21				
43.45				
5.28				
48.73 Ht.				
3.21				
43.45				
5.28				
48.73 Ht.				
3.21				
43.45				
5.28				
48.73 Ht.				
3.21				
43.45				
5.28				
48.73 Ht.				
3.21				
43.45				
5.28				
48.73 Ht.				
3.21				
43.45				
5.28				
48.73 Ht.				
3.21				
43.45				
5.28				
48.73 Ht.				
3.21				
43.45				
5.28				
48.73 Ht.				
3.21				
43.45				
5.28				
48.73 Ht.				
3.21				
43.45				
5.28				
48.73 Ht.				
3.21				
43.45				
5.28				
48.73 Ht.				
3.21				
43.45				
5.28				
48.73 Ht.				
3.21				
43.45				
5.28				
48.73 Ht.				
3.21				
43.45				
5.28				
48.73 Ht.				
3.21				
43.45				
5.28				
48.73 Ht.				
3.21				
43.45				
5.28				
48.73 Ht.				
3.21				
43.45				
5.28				
48.73 Ht.				
3.21				
43.45				
5.28				
48.73 Ht.				
3.21				
43.45				
5.28				
48.73 Ht.				
3.21				
43.45				
5.28				
48.73 Ht.				
3.21				
43.45				
5.28				
48.73 Ht.				
3.21				
43.45				
5.28				
48.73 Ht.				
3.21				
43.45				
5.28				
48.73 Ht.				
3.21				
43.45				
5.28				
48.73 Ht.				
3.21				
43.45				
5.28				
48.73 Ht.				
3.21				
43.45				
5.28				
48.73 Ht.				
3.21				
43.45				
5.28				
48.73 Ht.				
3.21				
43.45				
5.28				
48.73 Ht.				
3.21				
43.45				
5.28				
48.73 Ht.				
3.21				
43.45				
5.28				
48.73 Ht.				
3.21				
43.45				
5.28				
48.73 Ht.				
3.21				
43.45				
5.28				
48.73 Ht.				
3.21				
43.45				
5.28				
48.73 Ht.				
3.21				
43.45				
5.28				
48.73 Ht.				
3.21				
43.45				
5.28				
48.73 Ht.				
3.21				
43.45				
5.28				
48.73 Ht.				
3.21				
43.45				
5.28				
48.73 Ht.				
3.21				
43.45				
5.28				
48.73 Ht.				
3.21				
43.45				
5.28				
48.73 Ht.				
3.21				
43.45				
5.28				
48.73 Ht.				
3.21				
43.45				
5.28				
48.73 Ht.				
3.21				
43.45				
5.28				
48.73 Ht.				
3.21				
43.45				
5.28				
48.73 Ht.				
3.21				
43.45				
5.28				
48.73 Ht.				
3.21				
43.45				
5.28				
48.73 Ht.				
3.21				
43.45				
5.28				
48.73 Ht.				
3.21				
43.45				
5.28				
48.73 Ht.				
3.21				
43.45				
5.28				
48.73 Ht.				
3.21				
43.45				
5.28				

B.M. N.W. cor. Brass Plug.

53.486

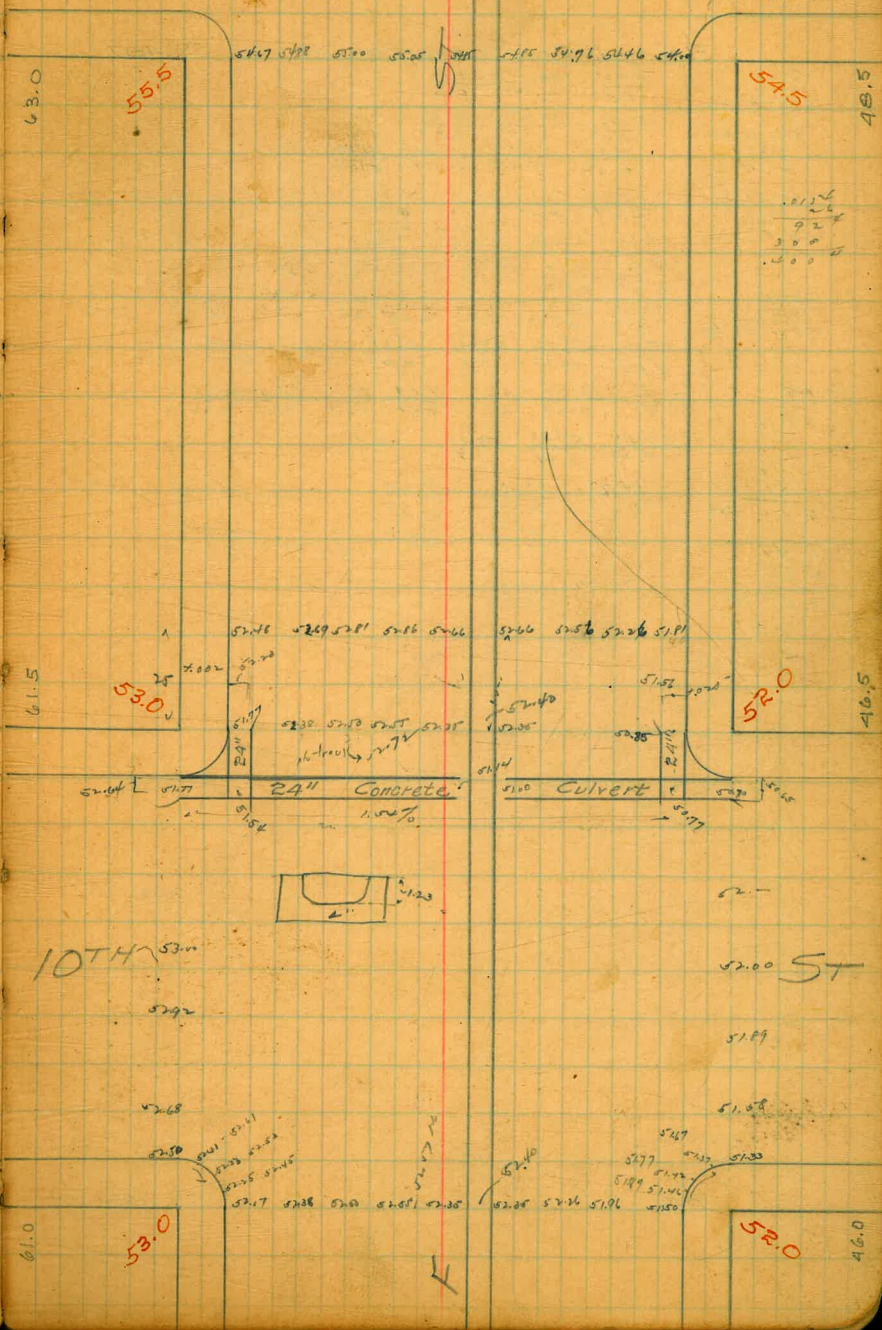
5296 460 57.60 M	5266 4.96	5223 5.27	5177 5.80	5150 6.00	5114 6.22	5114 6.46	5114 6.70
	50.70	50.85	51.50	51.50	51.50	51.50	51.50
5296 422 57.15 M	51.00 6.19	51.00 6.04	50.77 6.41	50.77 6.65	50.77 6.89	50.77 7.13	50.77 7.37
5296 AM 408 57.00 M	52.17 4.87	51.50 5.54	51.10 5.94	50.73 6.31	50.36 6.68	50.00 7.05	49.63 7.42
5296 366	52.69 3.70	52.81 3.81	52.96 3.96	53.11 4.11	53.26 4.26	53.41 4.41	53.56 4.56
5296 408 57.00 M	52.97 4.01	52.00 3.93	51.50 4.43	51.00 4.93	50.50 5.43	50.00 5.93	49.50 6.43
5296 366	52.05 3.81	52.00 4.16	51.89 4.27	51.88 4.58	51.87 4.89	51.86 5.20	51.85 5.51
5296 408 57.00 M	52.26 4.70	52.42 4.74	52.57 4.79	52.72 4.83	52.87 4.88	53.02 4.92	53.17 4.97
5296 366	52.85 3.99	52.76 4.08	52.66 4.38	52.56 4.68	52.46 4.98	52.36 5.28	52.26 5.58
5296 366 57.00 M	52.40 4.21	52.40 4.38	52.40 4.55	52.40 4.72	52.40 4.89	52.40 5.06	52.40 5.23
5296 408 57.00 M	52.96 4.89	52.96 4.92	52.96 4.95	52.96 4.98	52.96 5.01	52.96 5.04	52.96 5.07

B.M. N.W. cor. Brass Plug.

52.963

11TH

ST.
14



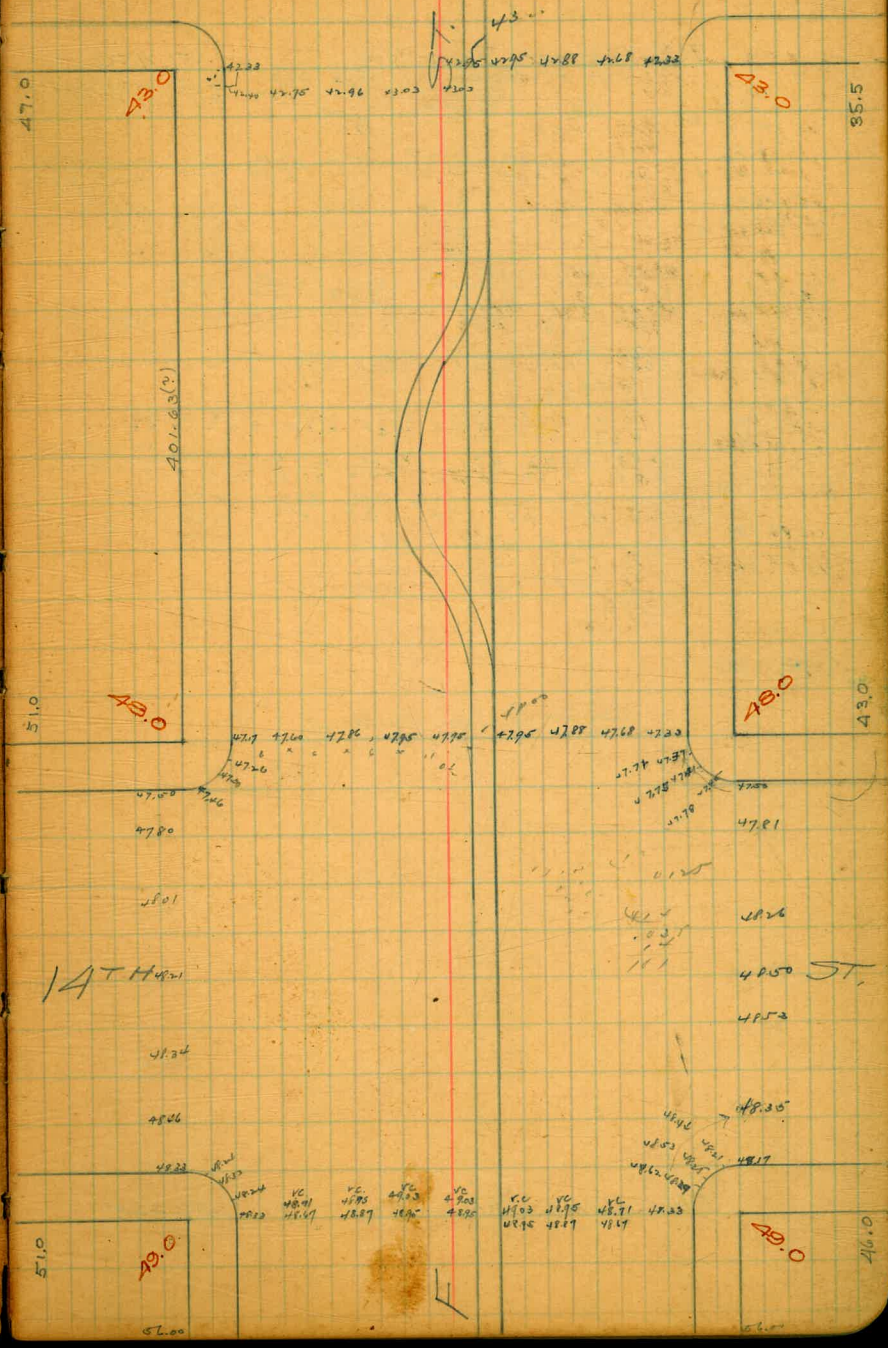
48.98 BM B.M. N.W. cor Brass Plug 48.845

48.98 BM	47.23	47.17	47.33		
52.20 HT	5.87	5.03	4.87	5.167	4.85
48.98	47.60	47.56	47.95		
3.42	4.77	4.53	4.24	4.35	4.22
52.39 HT	5.77	5.96	4.03		
	4.24	4.13	4.06		
42.84	47.60	47.56	47.95	47.95	47.95
42.1	4.09	3.81	3.92	3.87	3.66
42.89 HT	4.04	3.93	3.85	3.71	3.46
51.67 HT	3.21	2.64	2.72	2.86	2.50
	47.33	47.24	47.62	47.50	47.50
48.98	3.3	3.43		3.90	
3.47	4.95	4.81	4.68		
52.40 HT	4.00	4.54	4.37	4.182	
42.84	4.95	4.81	4.68	4.71	
42.1	3.95	4.02	4.2	3.81	4.50
46.90 HT	4.03	4.07	4.21	4.25	4.50
	3.47	3.47	3.47	3.47	3.47
48.98	4.17	4.17	4.17	4.17	4.17
3.51	4.35	4.31	4.27	4.23	4.19
52.52 HT	4.53	4.53	4.53	4.53	4.53
	3.77	4.02	4.26	4.71	4.74
50.03	4.82	4.82	4.82	4.77	4.71
	4.21	4.03	3.7		
42.84	4.21	4.03	3.7		
4.35	4.35	4.35	4.35	4.35	4.35
46.86 HT	4.35	4.35	4.35	4.35	4.35
	4.35	4.35	4.35	4.35	4.35

B.M. N.W. cor Brass Plug 48.982

15TH

518



3741 SW 3rd E
 3591 SW 4th E

4262 4100
 1.14 4.62
 38.22 38.00
 3591 3810 3851
 672 4.53 4.14
 42.63

3141
 831
 37.72

3529
 4.43

3529 3598 3608 2665 3685 3763 3733
 622 3.53 3.43 9.86 4.66 3.88 4.18
 41.8-1

7-11-11 Set 6+7

Blair's Domain 7th to 11th

35.91 B.M.
 5.63
 41.46 141
 3.55
 37.56 T.P.
 1.99
 40.54 141

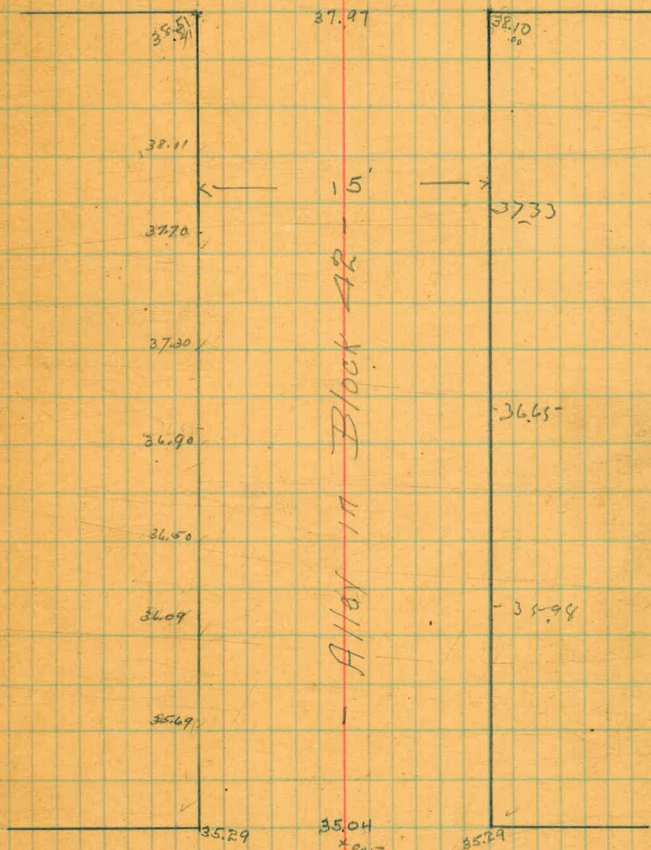
In Paving
 38.10 37.97
 5.34 3.47
 38.51 35.04
 2.03 4.50
 36.09 36.09 36.17 36.90 37.30
 4.86 4.86 4.04 3.84 3.24
 37.70 38.11
 2.84 2.43

3529 4025
 36.69 23
 36.09 50
 36.49 76
 36.90 00
 37.30 23
 37.70 50
 38.10 75
 38.51 00

Paving of Alley Lot Withby & E - 3rd 14th

Fourth

St 21

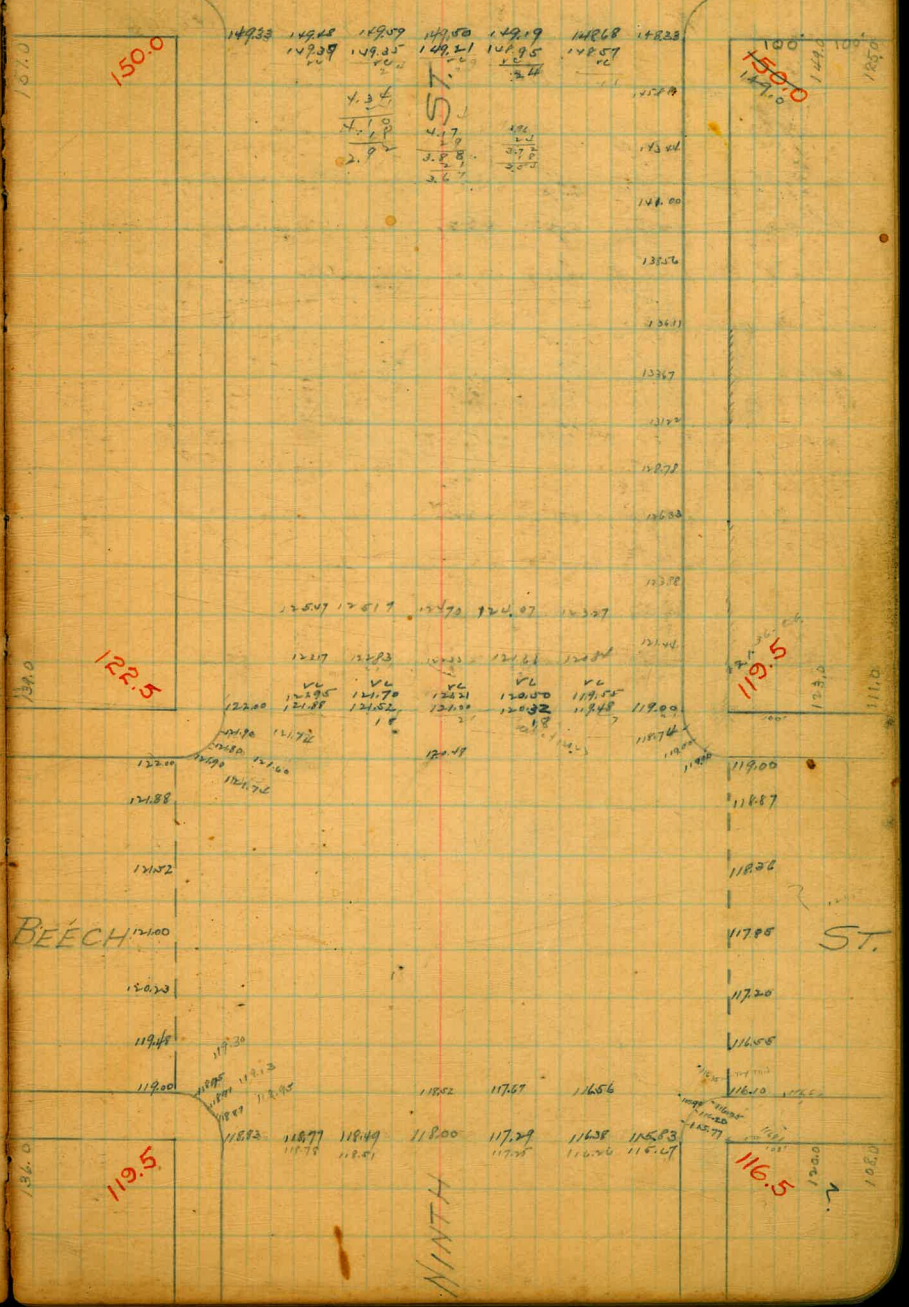


Third

St

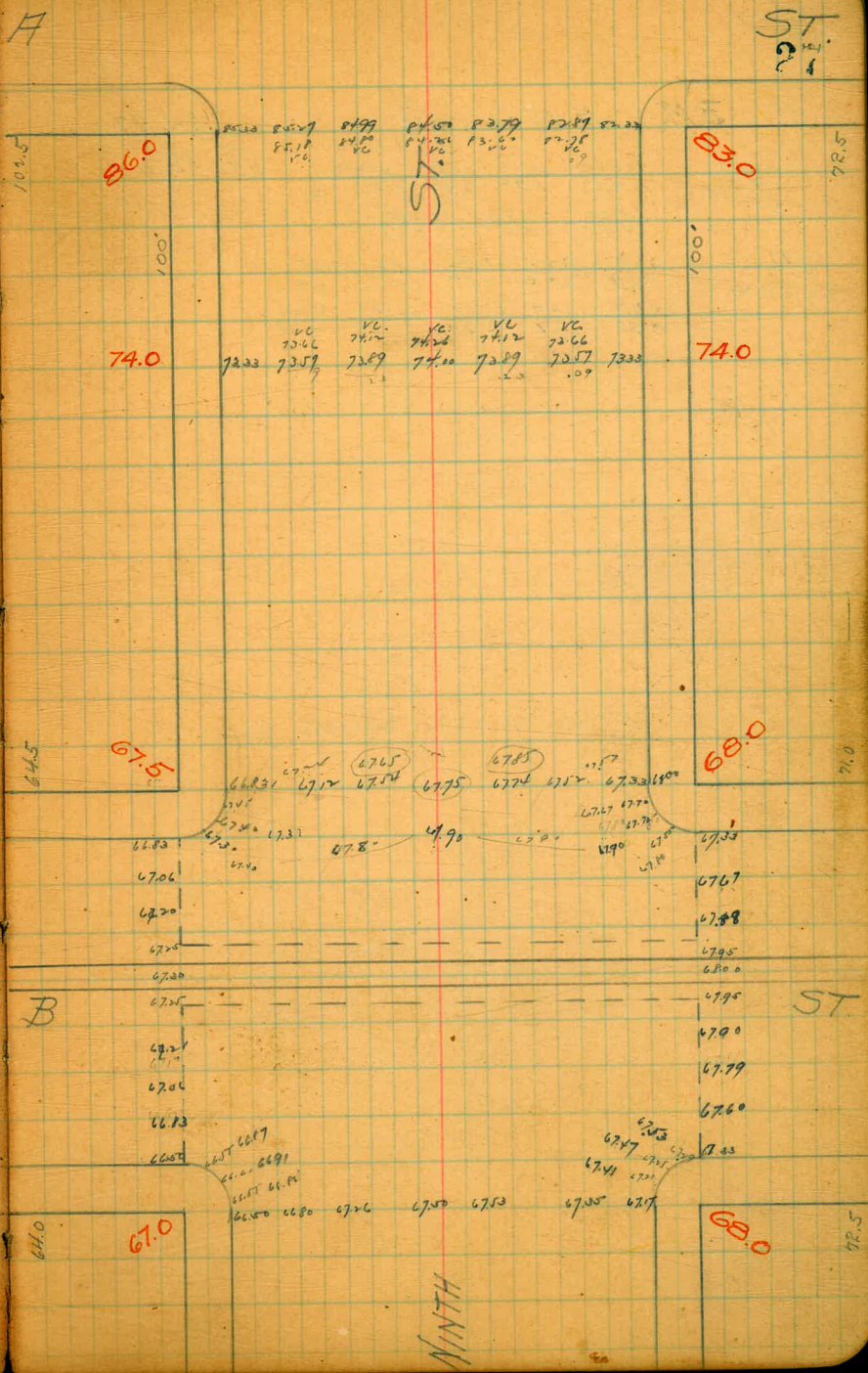
CEDAR

119.46 4.50 123.76 M	B.M. SW BEECH plg	119.46
119.46 4.50	119.46 4.93	119.46 4.93
124.12 129.91 150.31 M	119.46 4.93	119.46 4.93
138.92 140.26 M	119.46 4.93	119.46 4.93
149.46 3.60 150.06 M	119.46 4.93	119.46 4.93
159.41 1.78 151.69 M	119.46 4.93	119.46 4.93
174.6 9.8 178.6 M	119.46 4.93	119.46 4.93
189.41 1.78 151.69 M	119.46 4.93	119.46 4.93



B.M. S.W. B. plg. 66.95

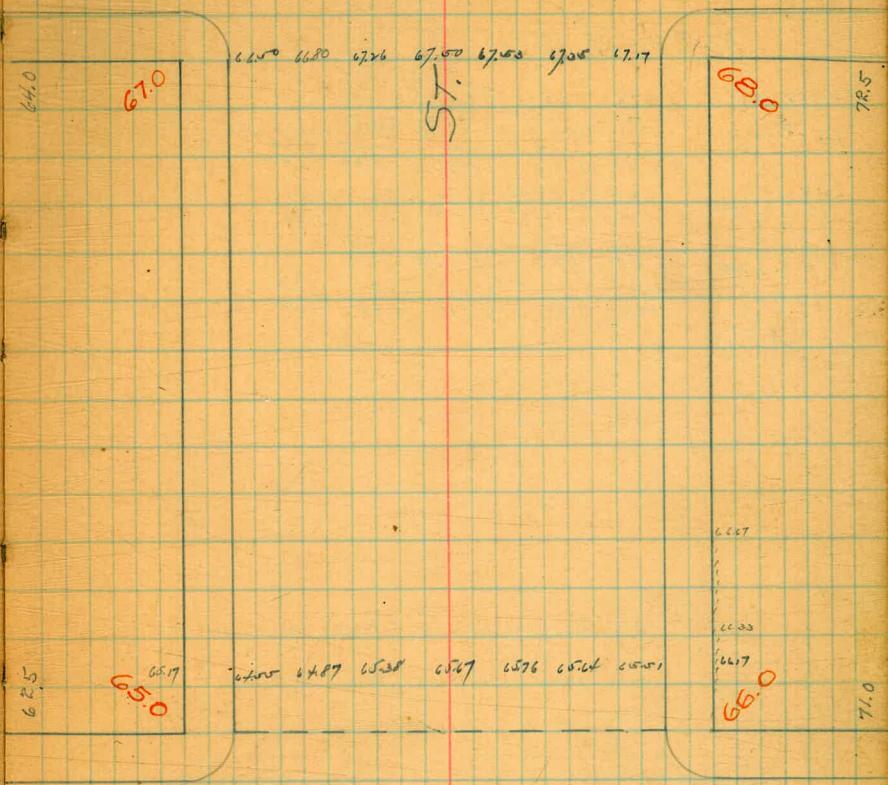
66.95	66.83	66.85	67.00	73.00	4.1	4.1
7.20	7.52	7.50	6.82	0.82	4.35	4.35
74.15 M.	8.01	8.01	8.40	13.79	12.17	4.52
8.16	8.29	4.67	6.16	5.87	6.79	4.51
89.66 M.	66.95	73.57	73.89	73.00	73.59	4.26
	7.39	0.77	0.45	0.53	0.43	4.17
	74.3	67.12	67.22	67.75	67.26	67.52
		7.22	6.80	6.89	6.60	6.82
				4.01	3.16	3.16
				6.76	6.80	17.82
				4.01	4.16	4.16
				17.82	17.50	17.50
				1.86	2.05	6.76
				7.92	7.92	4.09
				7.92	7.92	67.57
				66.83	67.15	67.75
				67.90	4.31	4.21
				4.11	4.11	3.85
				71.98	7.67	17.81
				66.95	66.60	6.06
				4.21	4.45	4.41
				67.25	67.29	4.37
				67.33	4.33	4.11
				67.55	67.70	3.92
				71.66 M.	66.83	67.20
				4.82	4.26	4.21
				66.83	66.87	66.82
				4.15	4.26	4.21
				67.15	67.33	67.67
				4.71	4.79	4.60
				67.40	67.36	67.33
				4.20	4.3	3.99
				67.78	67.95	67.80
				3.98	3.71	3.78
				67.90	67.90	67.00
				3.76	3.96	4.19
				3.76	3.96	4.19



B.M. N.W. C plg 64.97

64.97	66.00	66.33	66.67	66.95	66.50	67.17
5.10	4.07	3.72	3.40	3.26	5.71	5.04
70.07 H				72.21 H		
	5.69	4.73	4.95			
	64.55	65.51	65.27			
64.97	66.00	67.26	67.50	67.53	67.05	
5.27	3.44	2.98	2.74	2.71	2.89	
70.24 H						
	64.87	65.08	65.67	65.76	65.64	
	5.37	4.86	4.57	4.48	4.66	

B



C



NINTH

No B.M. at D. St.

64.97 BM	62.75	62.00	62.25	61.50
2.21	2.23	4.18	4.93	5.68
67.18 HT	3.60	2.62	60.75	60.08
64.97	64.40	65.36	7.25	7.92
2.03	64.40	64.79	65.13	65.16
68.00 HT	2.83	2.37	2.13	2.10
64.97	60.35	60.74	61.02	60.92
2.29	6.88	6.42	6.18	6.15
67.26 HT	6.02	6.21	6.18	6.09
60.92	6.20	4.11	4.16	4.38
65.32 HT				4.26

ST.
29

65.0

ST.

66.0

64.13 64.43 64.89 65.13 65.16 64.97 64.80

65.65

63.75

62.00

60.5

60.88 60.88 60.94 61.08 61.01 61.02 60.85
60.88 60.88 60.84 61.08 61.11 60.92 60.75

60.25

61.5

D

ST.

60.0

NINTH

61.5

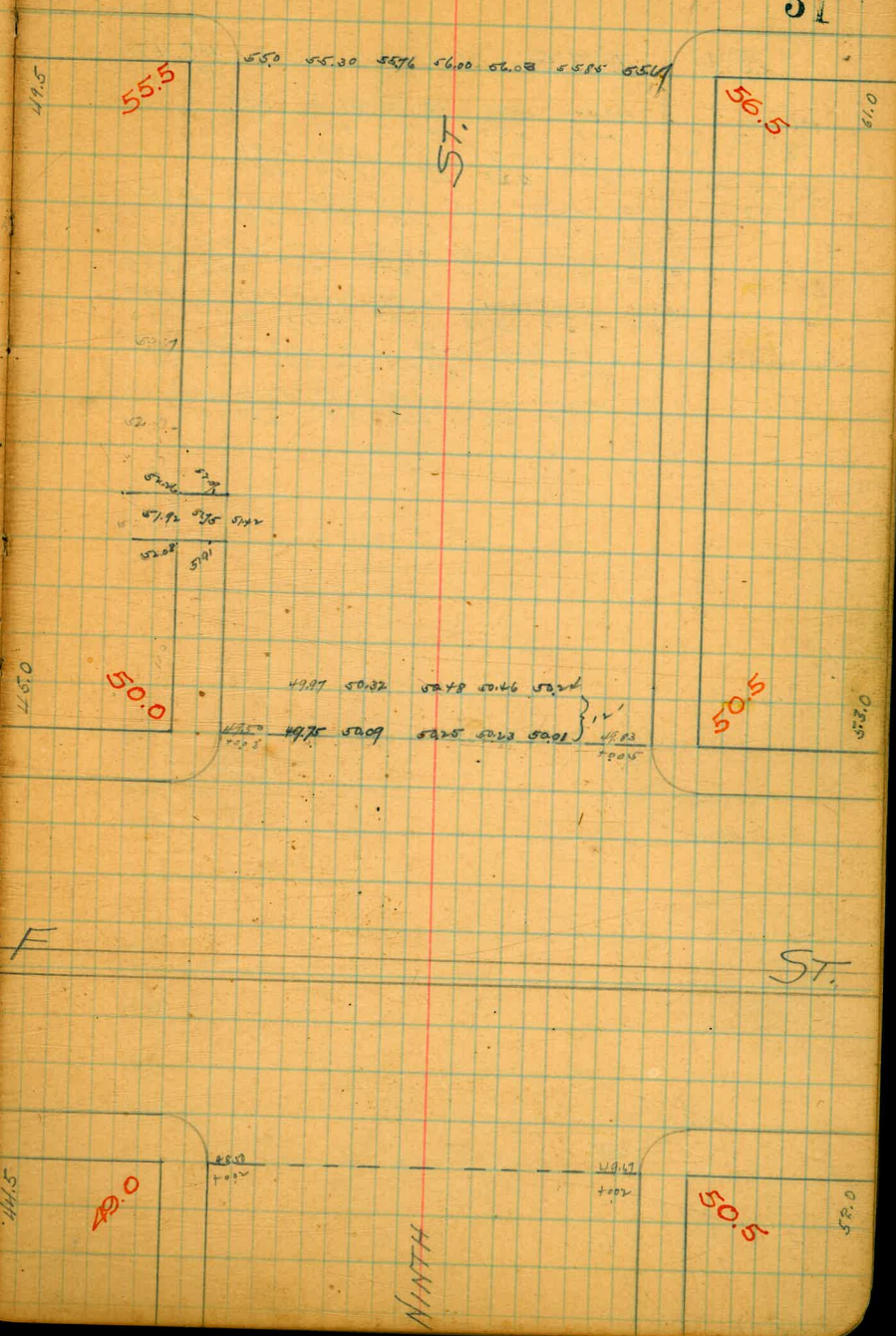
B.M. N.W.F p/q

49.91

49.91	4.47	4.12	4.21	4.48
4.09	49.53	47.88	49.49	48.52
54.00 M.				
49.91 - BM	52.02	52.93	53.67	
7.52	5.41	4.50	3.76	
57.42 H.				
49.91	58.30	55.76	56.00	56.08
7.18	1.97	1.33	1.09	1.06
57.09 H.	49.97	50.32	50.48	50.46
	7.12	6.77	6.61	6.63
49.91	52.08	51.92	52.22	52.9
5.90	3.70	3.89	3.55	3.72
55.81 H.				
				4.00
				3.90
				4.09

E

ST
31



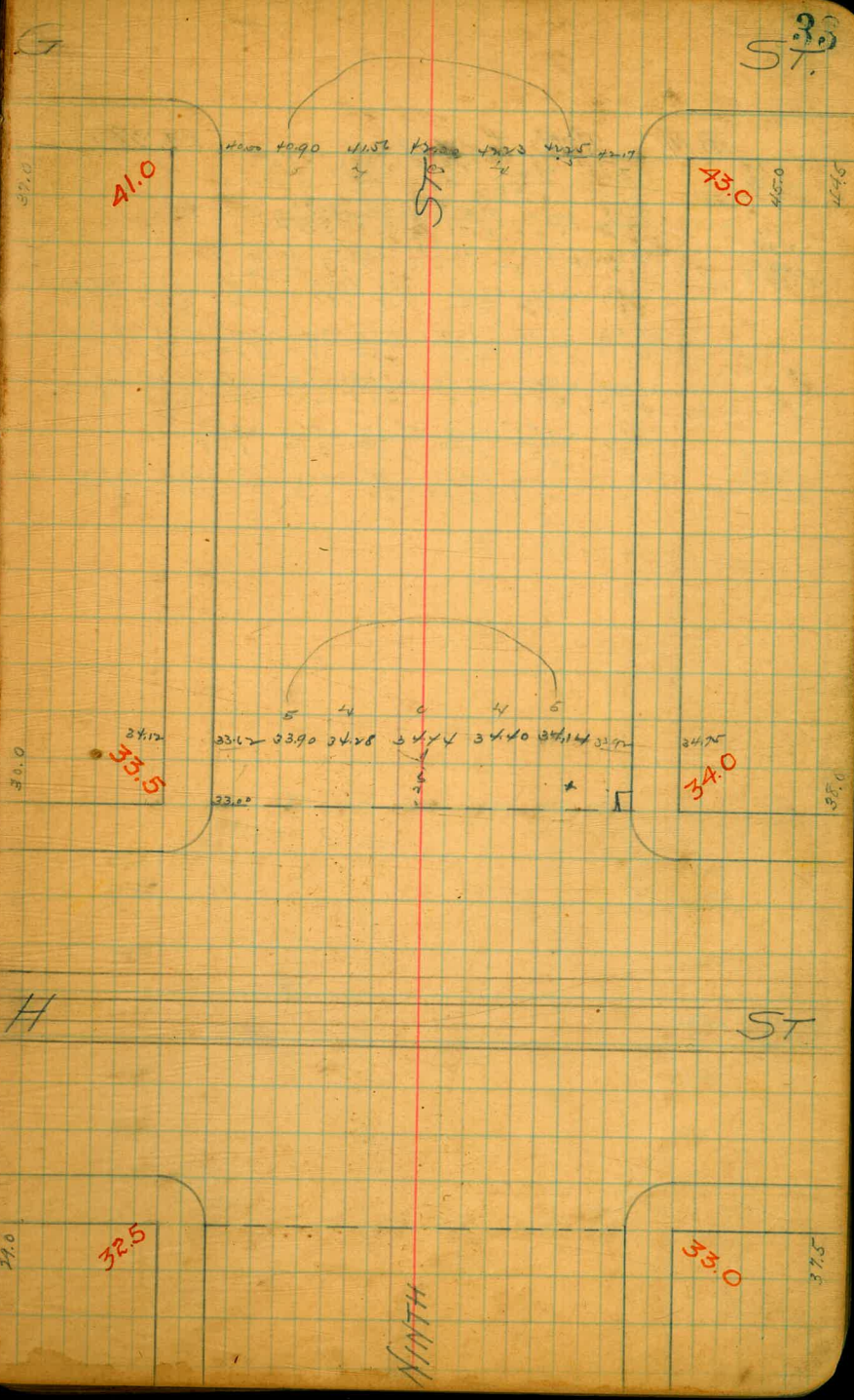
F

ST.

NINTH

33.52 B.M. N.W. H. 19 33.52

6.07	5.67	33.52				
37.59 N1	23.92	5.27				
33.52	12.47	4.46	4.47	4.70	4.12	5.80
6.08	4.22					
39.67	46.90 N1					

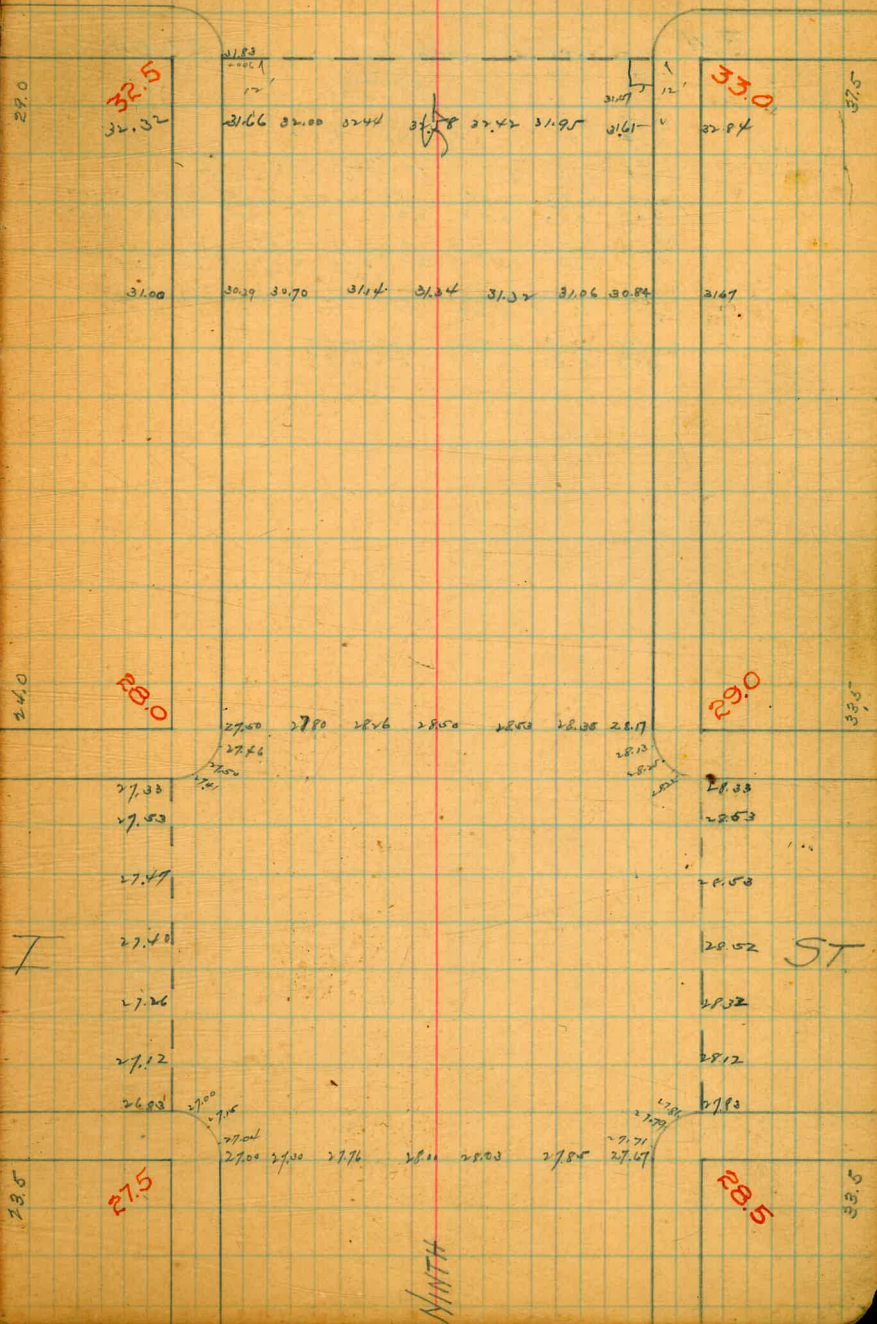


B.M. N.W. I p/9

27.98

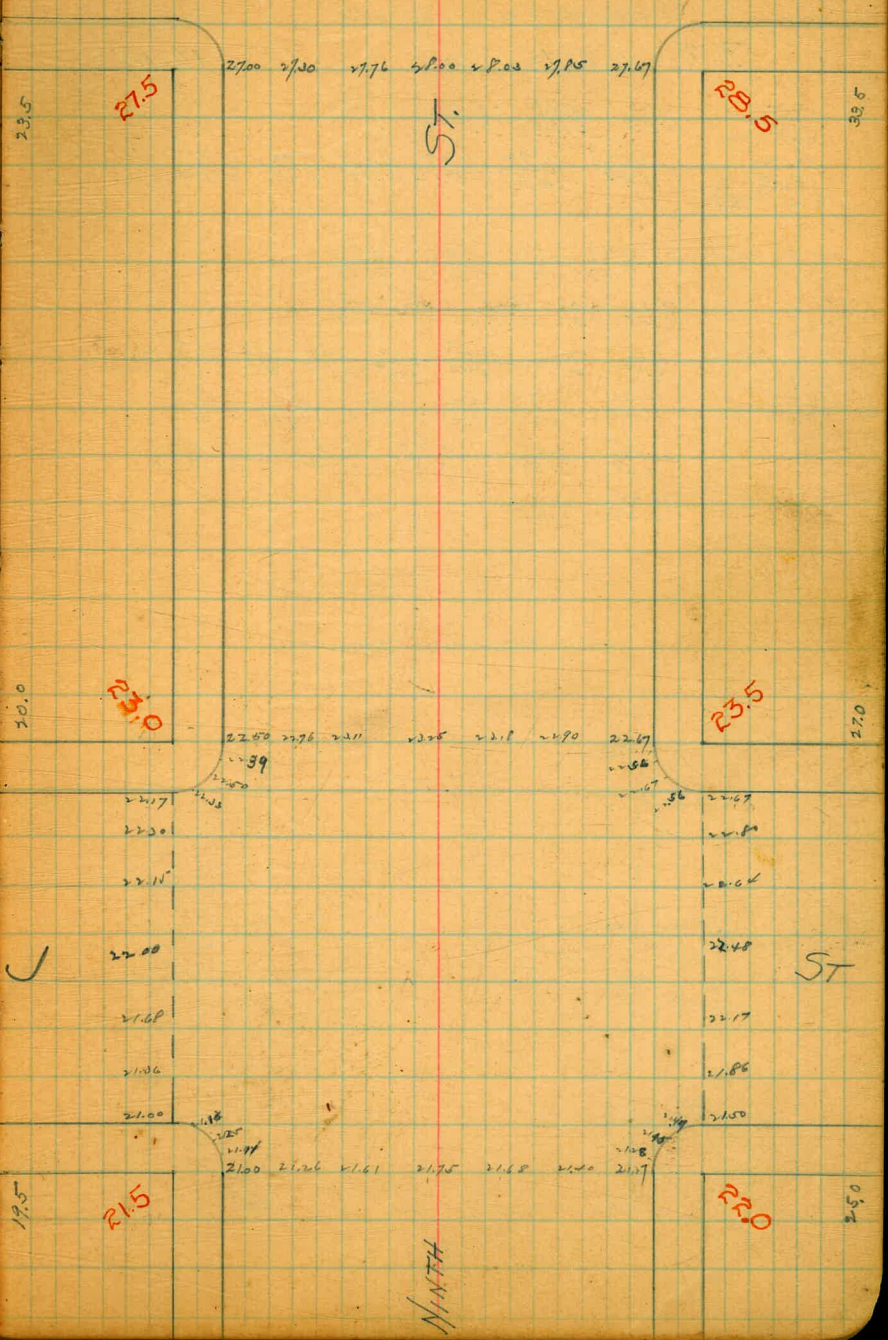
27.98 6.00 34.98	27.98 6.24 34.22	27.98 5.78 31.20	27.98 5.54 31.44	27.98 5.51 31.47	27.98 5.49 31.49
27.98 3.96 31.94	27.98 3.92 31.86	27.98 3.70 31.28	27.98 2.90 30.08	27.98 3.34 31.32	27.98 3.34 31.32
27.98 4.13 32.11	27.98 4.13 32.11	27.98 4.13 32.11	27.98 4.13 32.11	27.98 4.13 32.11	27.98 4.13 32.11
27.98 4.34 32.32	27.98 4.26 32.24	27.98 3.99 31.97	27.98 3.79 31.77	27.98 3.59 31.57	27.98 3.59 31.57
27.98 4.52 32.50	27.98 4.16 32.14	27.98 3.82 31.82	27.98 3.79 31.79	27.98 3.59 31.59	27.98 3.59 31.59

H



B.M. N.W.J plg 23.04

27.98	27.85	28.03	28.00	27.71	27.87	
22.60	4.75	4.57	4.60	4.84	5.01	3.99
23.02	27.76	28.11	28.05	28.18	27.90	4.18
3.55	3.84	3.48	3.34	3.41	3.29	
26.59 N1	21.10	21.02	21.15	21.27	21.00	21.10
	5.59	5.05	5.04	5.38	5.19	5.16
	22.67	22.86	22.67	22.58	22.39	22.50
	3.92	4.03	3.92	4.03	4.20	4.09
	21.12	21.25	21.11	21.29	21.45	21.47
	5.06	5.30	5.48	5.31	5.12	5.17
	21.68	21.50	21.30	21.15	21.00	21.68
	4.97	5.19	4.79	4.40	4.19	4.91
	21.86	22.27	22.48	22.60	22.80	21.86
	4.70	4.42	4.11	3.85	3.79	

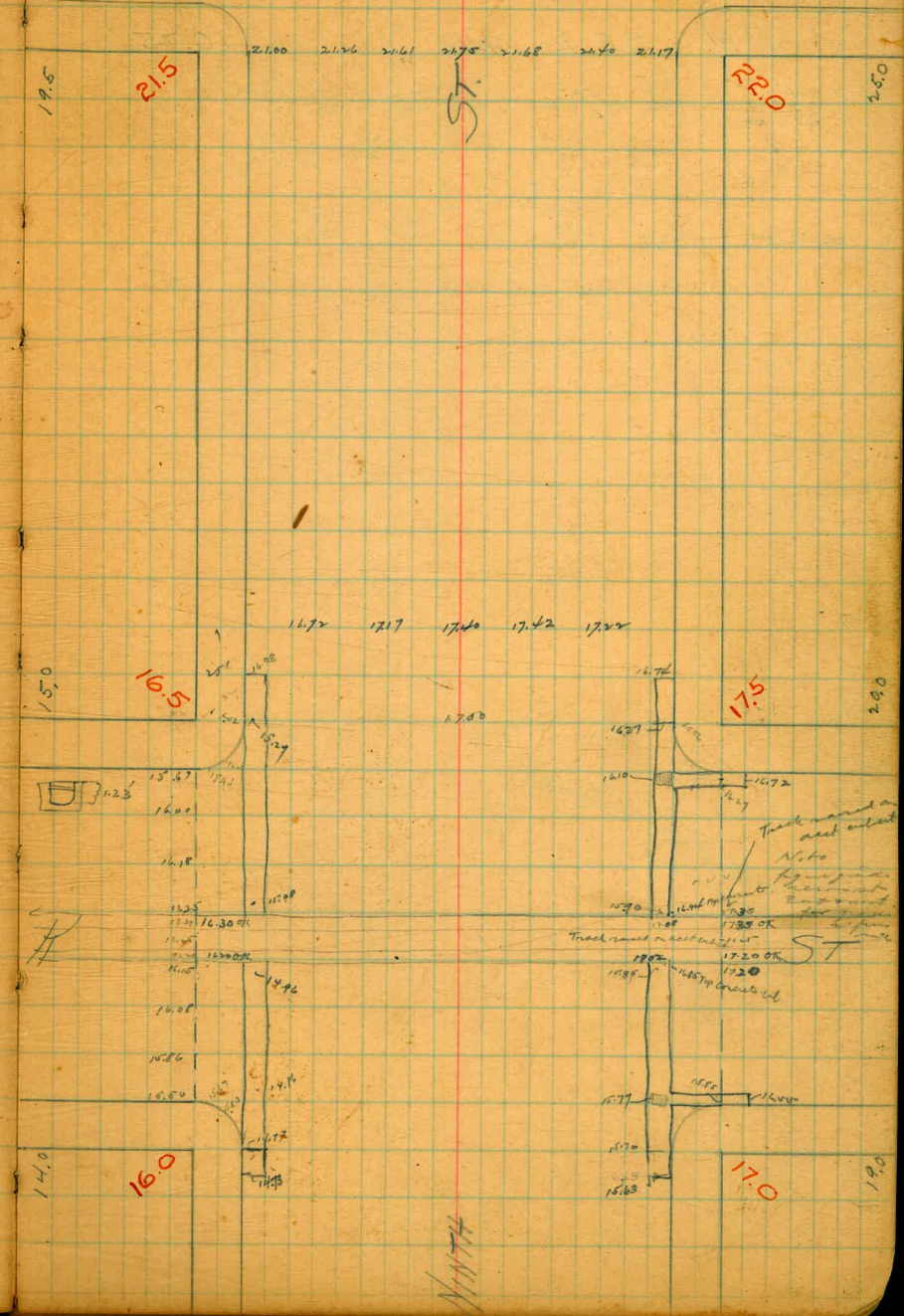


15.94 BM S.W. K. Nail in ch

B.M. N.W.H. plg 16.485

16.08	4.77	15.77	14.96	15.94			
4.65	15.78	6.23	6.52				
16.74	17.50	16.72	16.27	16.10	15.90	15.95	16.11
4.65	3.89	4.67	5.12	5.29	5.49	5.54	6.98
21.39 H.							

14.99 BM S.W.	4.77	4.72	4.86	4.96			
4.05	6.42	6.48	6.33	6.29			
19.075 W.	15.78	15.63	15.85	16.11	15.77		
3.73	5.47	5.50	5.34	4.20	5.42		
15.94	17.15	17.50	16.15	16.08	15.86	16.25	16.11
4.61	3.20	3.57	4.40	4.47	4.69	4.20	4.27
20.56 H.	15.07	15.94	16.11	15.83	15.47	15.70	15.10
	4.88	4.61	4.30	4.72	4.88	5.05	16.05
	17.25	17.00	3.07	5.03	16.11	3.45	
	3.30	3.55	17.56	16.52	17.10		
	17.35	17.22					
	2.20	3.05					



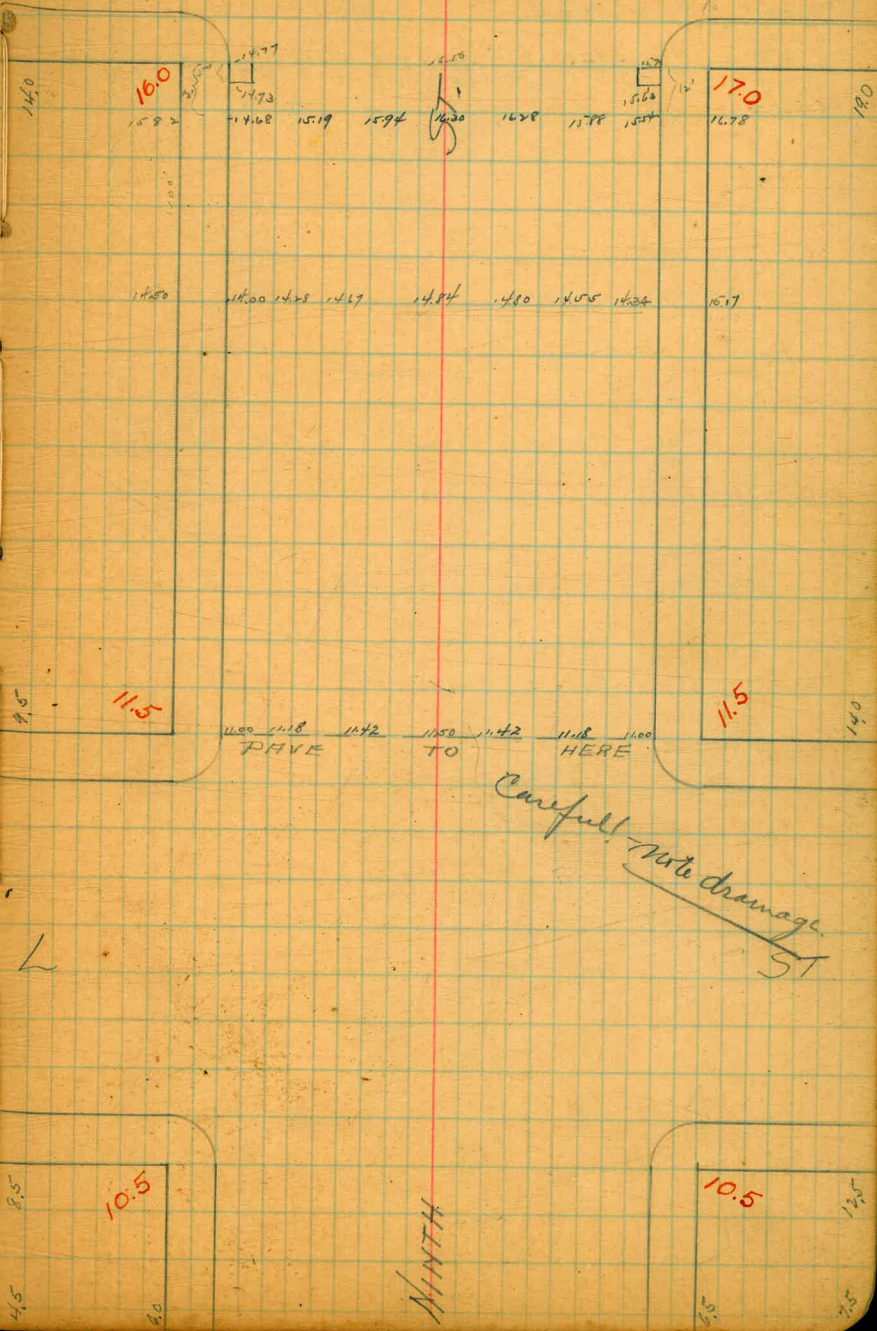
B.M. S.E.L spike

10.75

15.94	15.19	15.94	16.30	16.50	16.28	15.88
<u>1.87</u>	<u>2.72</u>	<u>1.97</u>	<u>1.81</u>	<u>1.41</u>	<u>1.68</u>	<u>2.00</u>
17.81	14.47	15.90	14.84	14.67	14.29	13.88
	<u>3.86</u>	<u>3.17</u>	<u>3.07</u>	<u>3.26</u>	<u>3.63</u>	
	11.19	11.72	11.50			
	<u>6.73</u>	<u>8.47</u>	<u>6.41</u>			
20.55	15.19	15.94	16.30	16.50	16.28	15.88
	<u>5.36</u>	<u>4.61</u>	<u>4.20</u>	<u>4.24</u>	<u>4.60</u>	

K

31
ST



L

B.M. 12' E of Park inside prop. mon. 354.465

55.49	279	257	227	240	266	4.1	25	1.7
396	5276	5498	5423	4.75	3.89	4.24	5.00	3.70
358.56 H	5473	5418	515	4.7	5.90	4.74	2.5	3.67
406								
354.49	5.82	3.87	4.00	4.08	3.65	3.77	4.20	3.81
4.75	5474	5475	5476	5477				
359.37 H	3.71	3.90	3.79	4.58				
	54.54	54.62	54.70	54.77				
354.49	5.34	5.09	4.72	4.54				
496	5476	5470	460	569				
359.45 H	4.69	4.96	4.85	5.46				
54.49	5473	5476	4.75	5440				
4.75	4.7	5.09	4.70	5.05				
59.22 H	4.20	4.62	5.26	5.40	5.40	4.73	5.92	
	4.26	4.6	5.00	5.22	4.76	4.53	5.04	
354.49	5.67	5.15	4.76	4.90				
512	5.67	5.15	4.76	4.90				
354.63 H	5.67	5.15	4.76	4.90	5.67	5.15	4.76	4.77

B.M. S.W. Georgia spt 355.49

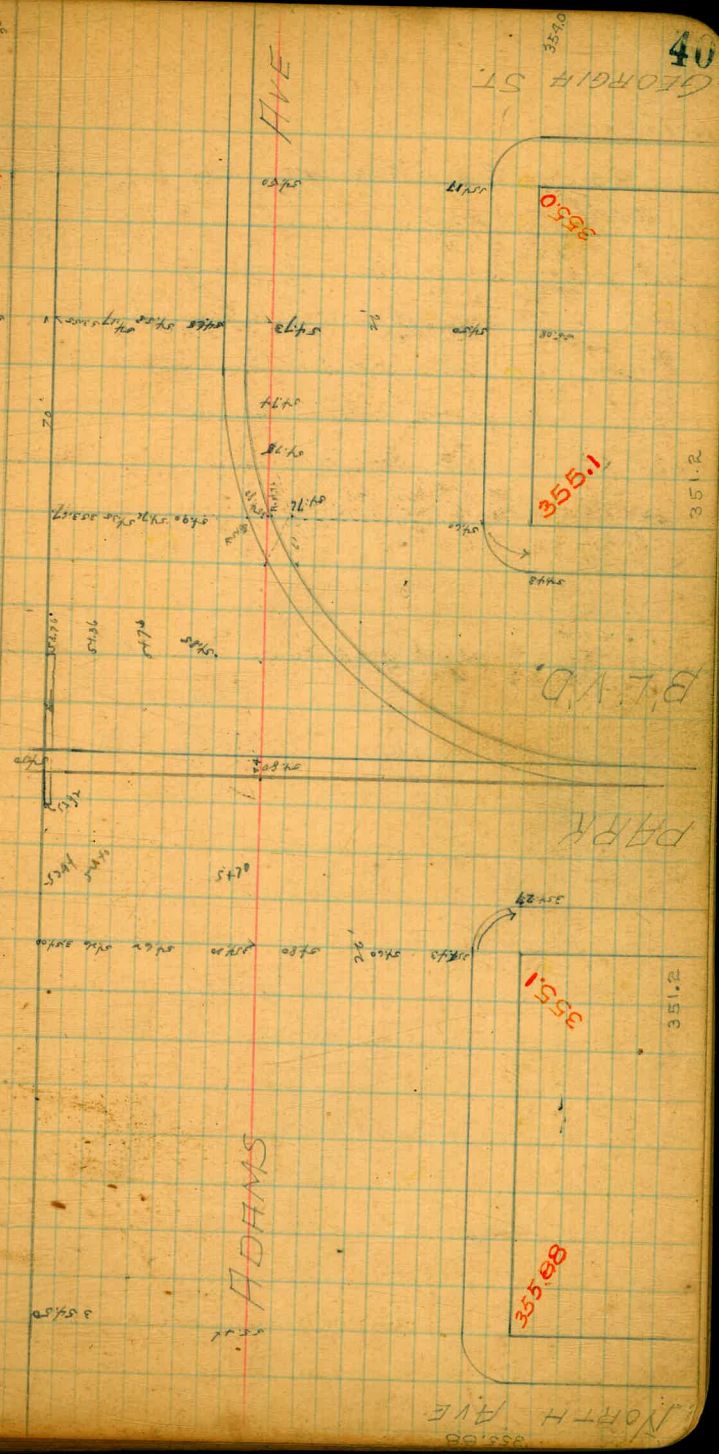
54.49	6.17	5.75	5.47	5.27	5.17	5.17	5.17	5.17
4.85	6.17	5.75	5.47	5.27	5.17	5.17	5.17	5.17
59.37 H	6.17	5.75	5.47	5.27	5.17	5.17	5.17	5.17

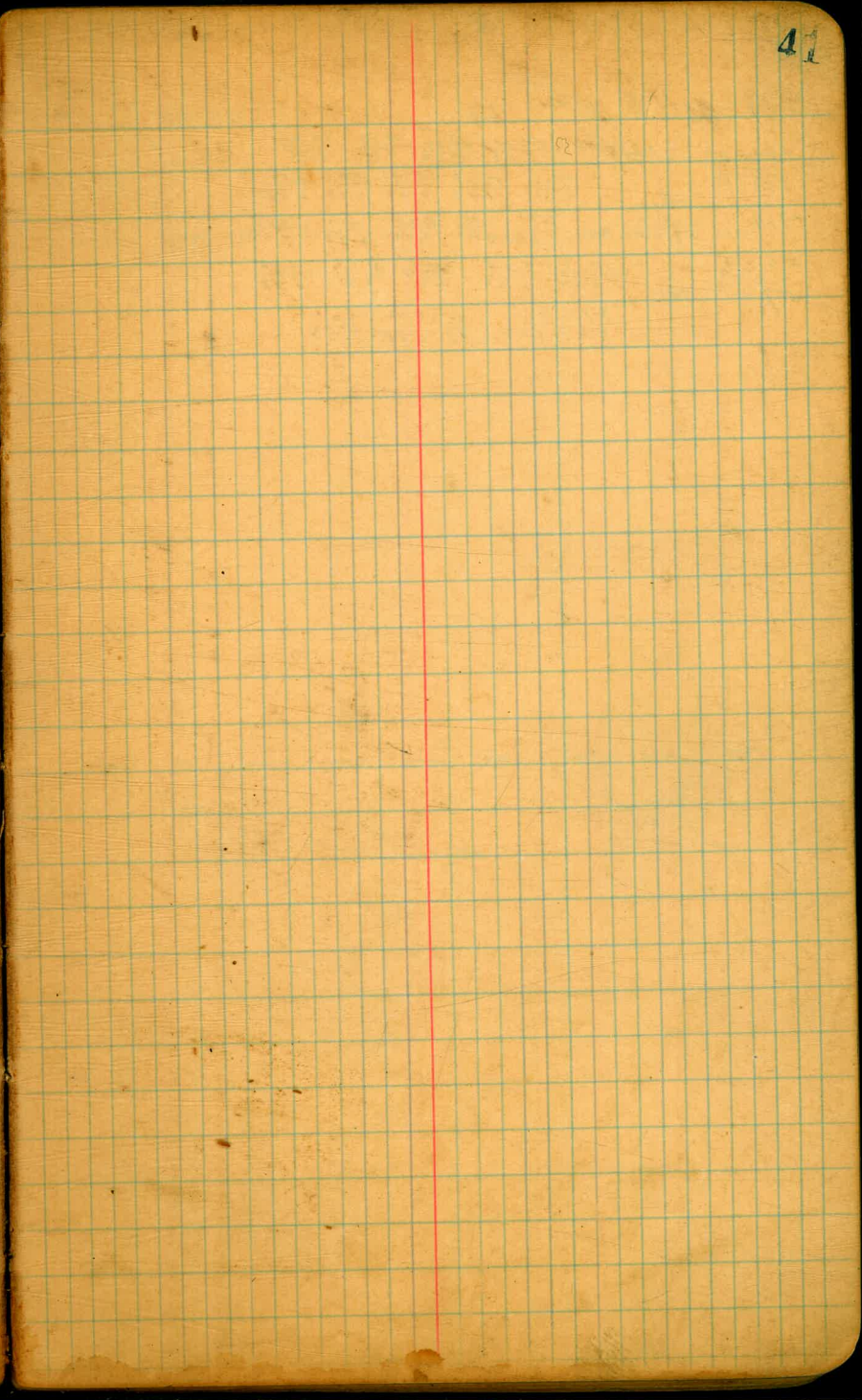
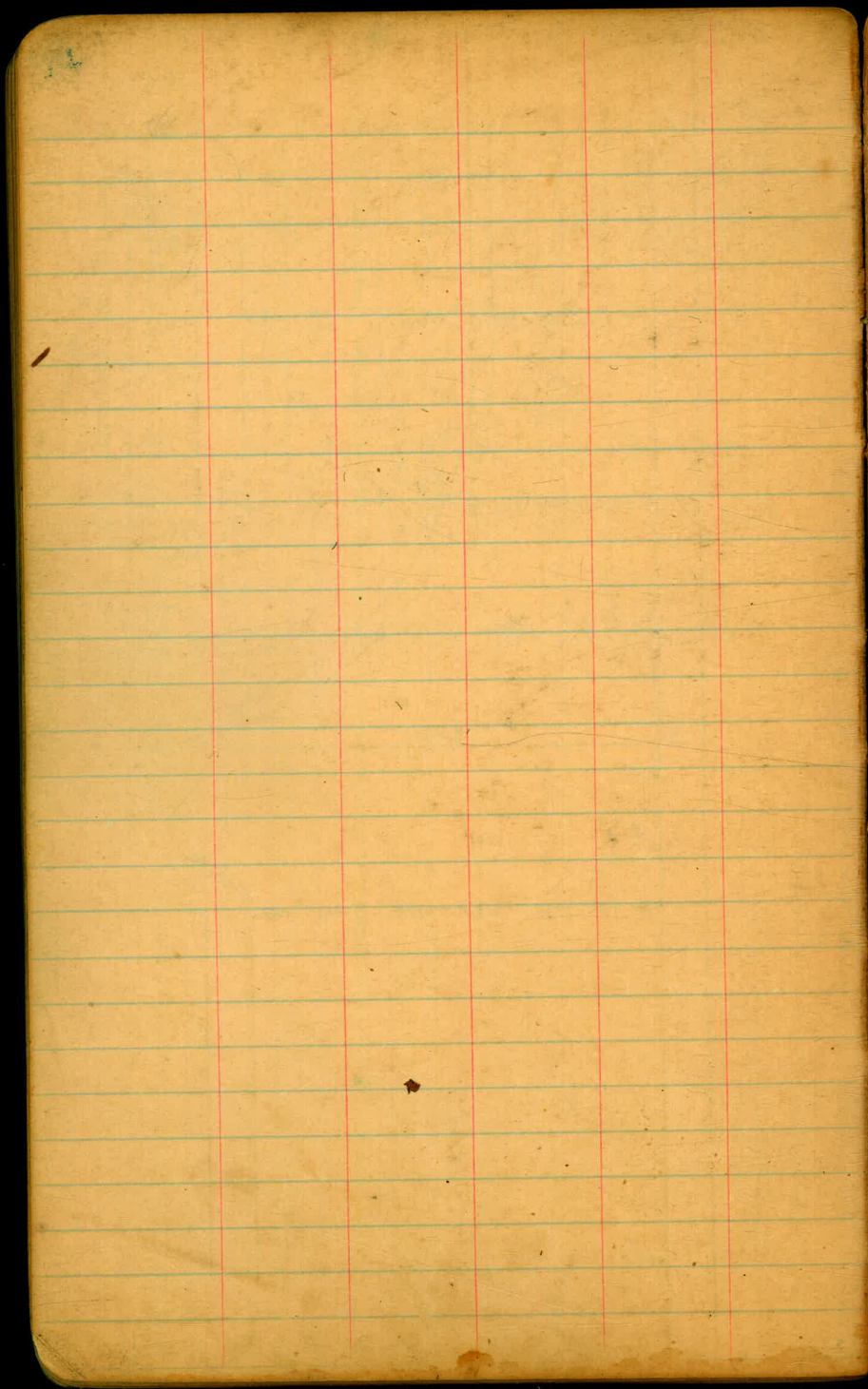
354.0

354.50

354.50

355.0





B.M. N.W. 9TH plg 56.55

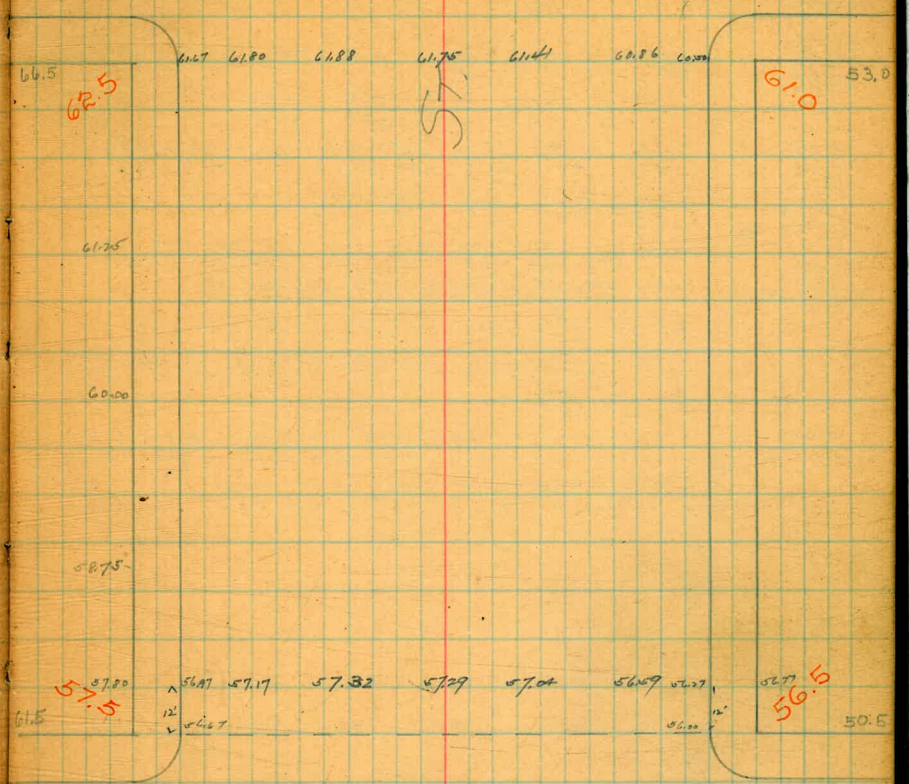
56.05	592	6.56	56.27	56.97	61.67	60.00
5.06	56.69	56.05	6.32	5.62	0.92	2.11

62.61	62.50	61.25	60.00
2.45	2.45	3.70	4.95

64.95 Ht. = -0.02 + 0.02 = 0

62.50	61.81	61.88	61.75	61.41	60.86	60.00
1.63	1.33	1.25	1.38	1.72	0.82	0.89
63.13	1.33	1.25	1.38	1.72	0.82	0.89

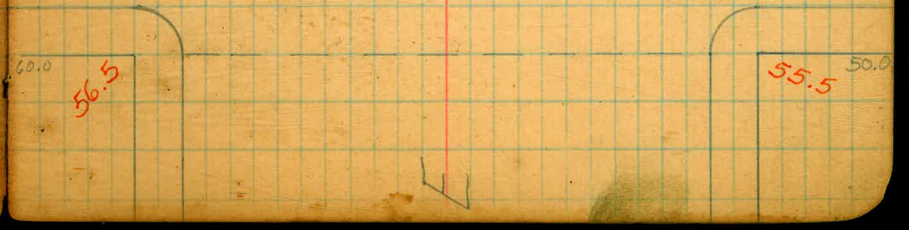
10TH



9TH

PAVED

ST



B.M. N.W. 10th pl 62.50

62.50	62.17	62.22	62.47	62.17
4.97	5.31	6.40	4.97	4.88
67.48 H				
	13.35	6.31	63.59	63.24
62.11	3.11	2.93	2.94	3.20
2.45				3.65
66.46 143	2.30	2.12	1.91	1.55
	4.16	4.24	4.55	4.81
64.01				6.10
2.79	6.35	3.53	3.10	3.73
66.80 H	3.45	3.27	3.00	3.04
				3.99
62.50	1.33	1.15	1.91	2.12
3.27	5.23	5.15	4.89	4.68
65.77 H	1.91	2.23	1.75	1.50
	3.86	3.94	4.02	4.17
	2.05	2.17	1.91	2.03
	3.71	3.60	3.70	3.62
	3.44	3.65	3.86	4.12
				4.41
				4.67
				4.89
				5.12
				5.01
62.50	0.18	1.91	0.76	1.11
3.64	5.28	5.23	5.03	4.88
66.14 H				4.94
	2.68	2.15	2.61	2.20
	3.27	3.24	3.39	3.53
				3.88
				4.26

11th

44

71.0 62.17 63.25 63.53 63.50 63.26 62.81 62.50

64.0 63.0 55.5

63.06 62.23 62.36 62.45 62.33 62.00 61.85 61.09 60.89

63.0 62.17 62.20 62.12 61.91 61.85 61.06 61.00 60.79

62.17 62.40 62.68 62.75 62.61 62.26 62.00 61.85 61.75 61.44 61.26 61.11 60.76 60.50

62.5 62.5 61.0 61.80 61.88 61.75 61.44 61.00 60.50

62.5 61.0 61.80 61.88 61.75 61.44 61.00 60.50

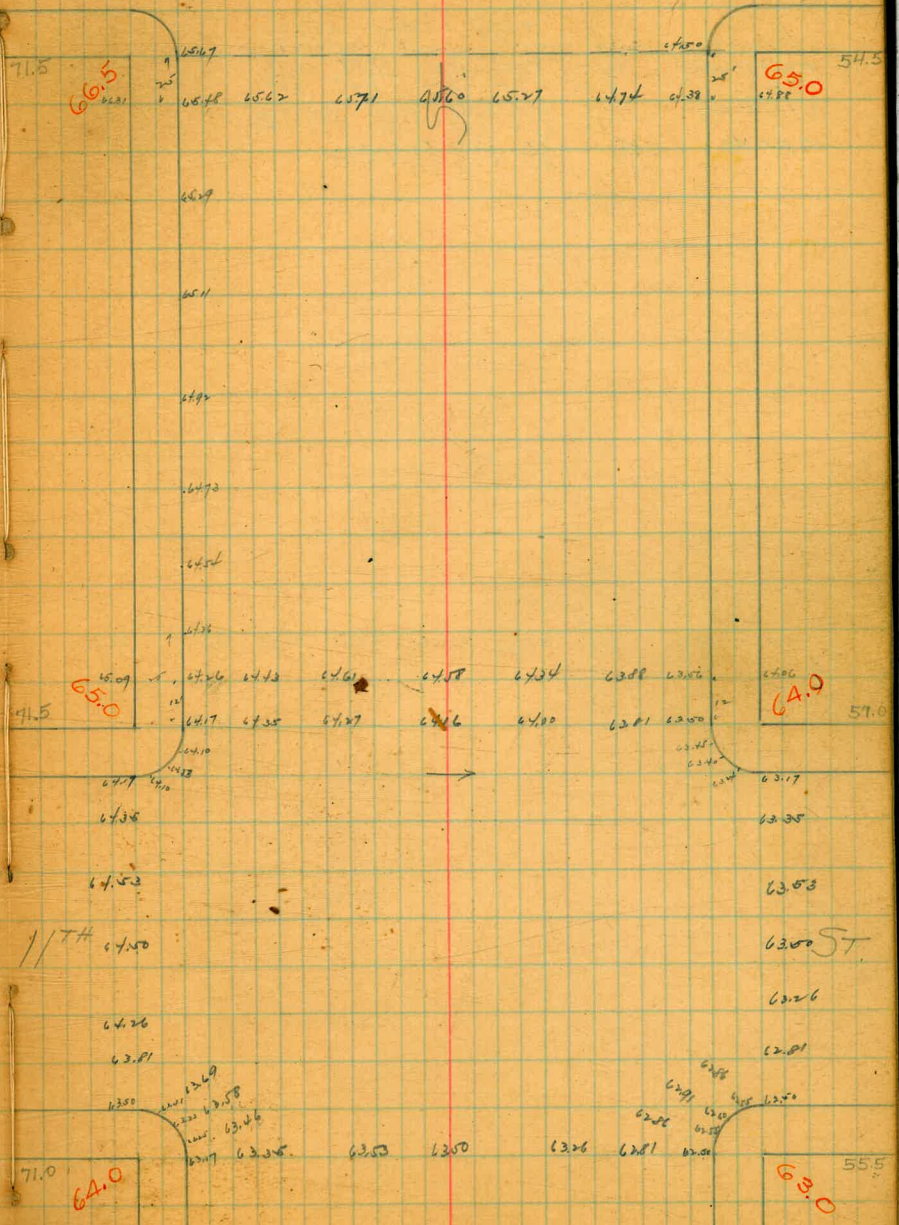
61.0 53.0 61.0 53.0

B.M. N.W. 11TH plg. 64.01

4.98	6.35	6.36	4.54	4.73	4.92	5.11	5.29	5.48	5.67	5.85	6.04
64.01	5.80	4.94	4.76	4.57	4.48	4.19	4.01	3.82	3.63	3.45	3.27
5.29	6.17	5.35	4.71								
69.50 N4	4.22	5.51	4.71	3.81							
64.01 BM	4.25	4.27	4.16	4.00	3.81	3.64	3.47	3.31	3.14	2.97	2.81
5.49	4.15	4.23	4.06	4.00	3.80	3.69					
68.50 N4	4.34	4.47	4.61	4.74	4.87	5.00	5.13	5.26	5.39	5.52	5.65
64.01	4.10	3.92	3.89	3.89	3.88	3.87	3.86	3.85	3.84	3.83	3.82
69.91 N4	4.50	4.41	4.32	4.23	4.14	4.05	3.96	3.87	3.78	3.69	3.60
5.90	4.41	4.58	4.58	4.58	4.58	4.58	4.58	4.58	4.58	4.58	4.58
64.01	4.17	4.21	4.34	4.45	4.55	4.67	4.78	4.89	5.00	5.11	5.22
5.71	4.74	4.67	4.51	4.36	4.21	4.06	3.91	3.76	3.61	3.46	3.31
67.93 N4	4.35	4.27	4.16	4.00	3.81	3.64	3.47	3.31	3.14	2.97	2.81
64.01	3.58	3.66	3.77	3.93	4.12	4.35	4.59	4.83	5.07	5.31	5.55
5.86	4.62	4.57	4.50	4.42	4.34	4.27	4.20	4.12	4.04	3.96	3.88
67.67 N4	4.31	4.24	4.23	4.26	4.29	4.32	4.35	4.38	4.41	4.44	4.47
64.01	3.81	4.26	4.50	4.73	4.95	5.18	5.41	5.64	5.87	6.10	6.33
3.78	4.16	4.61	5.07	5.52	5.97	6.42	6.87	7.32	7.77	8.22	8.67
67.79 N4	3.46	3.58	3.69	3.87	4.11	4.35	4.59	4.83	5.07	5.31	5.55
	4.01	4.29	4.18	4.29	4.98	4.93	4.88	4.83	4.78	4.73	4.68
	3.22	3.59	3.13	3.29	3.81	4.33	4.85	5.37	5.89	6.41	6.93
	4.53	4.24	4.26	4.34	4.38	4.42	4.46	4.50	4.54	4.58	4.62

11TH

45



11TH

45

B.M. N.W. 12th

plg

66.53

66.23 M	6.387	6.7 J	64.31	65.75
	2.36	65.49	1.92	0.48
59.95 BM	59.70	59.84	60.0	59.88
7.20	7.40	7.21	7.15	7.27
67.15 N1	60.19	65.85	65.87	65.19
	96	1.50	1.28	1.42
67.05 N1	5.85	5.77	5.29	4.70
	20	1.98	2.12	1.86
			1.52	2.11

13th

ST
46

58.5 59.33 59.52 57.88 60.00 59.74 57.70 57.50

60.0

60.0 57.0

66.52 65.75 65.85 65.87 65.69 65.29 64.70 64.38 64.81

67.5

65.50

12th

ST

71.5

66.5

65.0

54.5

S.M. N.W. F AND 15TH 10/9 42.845

16TH

4.5
ST

54.0

ST

54.0

S

6.5
50.0

50.0

43.0

15TH

ST

56.5
50.0

50.0

48.0

F

S.W. J

343
3.44

plg

7.40

3.22

2.83

2.12

6.91
3.01
9.926.58
3.31.89
1.981.64
1.533.13
2.63
2.811.67
8.916.58
3.531.89
3.743.75
3.743.13
5.00

3.31

5.00

4.78

4.79

5.00

3.43
6.742.17
2.742.17
2.153.22
3.222.78
2.782.21
2.213.58
3.213.74
3.003.75
2.203.74
3.213.13
3.27

3.43

3.21

3.21

3.04

2.62

2.76

2.95

3.13

3.21

3.74

4.11

3.98

7.38

4.25

2.88

4.75

4.96

4.64

3.34

4.35

4.80

4.75

4.96

4.64

6.77

4.35

4.80

4.75

4.96

4.64

I

ST
54

8.0 6.83 6.58 6.89 7.00 6.89 6.58 6.23 7.0 6.5

7.0 6.5

2.5 4.0 3.33 3.53 3.74 3.95 3.54 3.13 2.83 3.5 2.0

3.23 3.53 3.74 3.95 3.54 3.13 2.83 3.03

3.47 2.97

3.40 3.08 2.90 ST

3.27 2.76

3.12 2.63

2.83 2.83 2.83 2.83 2.83 2.83 2.83 2.83 2.83 2.83

2.5 3.5 3.03 3.24 3.25 3.04 2.63 2.83 3.0 1.5

2ND

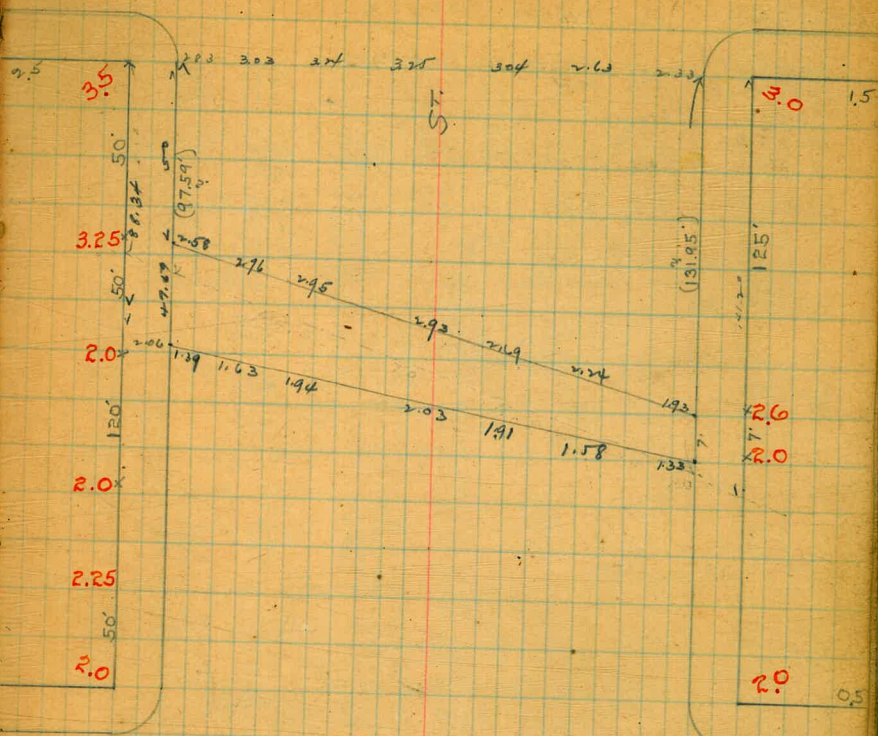
SW.K. 8.51 p/q

3.21	3.25	2.00	2.00	2.76	2.95	2.93	2.69	2.21
6.96	4.70	4.95	5.42	5.28	3.79	3.51	4.05	4.50
3.21	2.60	2.00	2.50	1.58	1.91	2.03	1.91	1.63
4.94	4.28	5.48	4.65	5.16	4.83	4.51	4.88	5.11
6.77	5.48	4.81	5.35	4.10				
6.77	1.58	1.71	1.54	1.63	2.76	2.95	2.93	2.69
	8.19	4.86	4.83	5.14	4.01	3.82	3.8	3.08
								4.53

4.30
1.60
1.9
21.50
30.10
28.70

J

5750



K

ST

P.M.

73.82 B.M. Top of iron bydt.

B.M. NE 220

plg 278.50

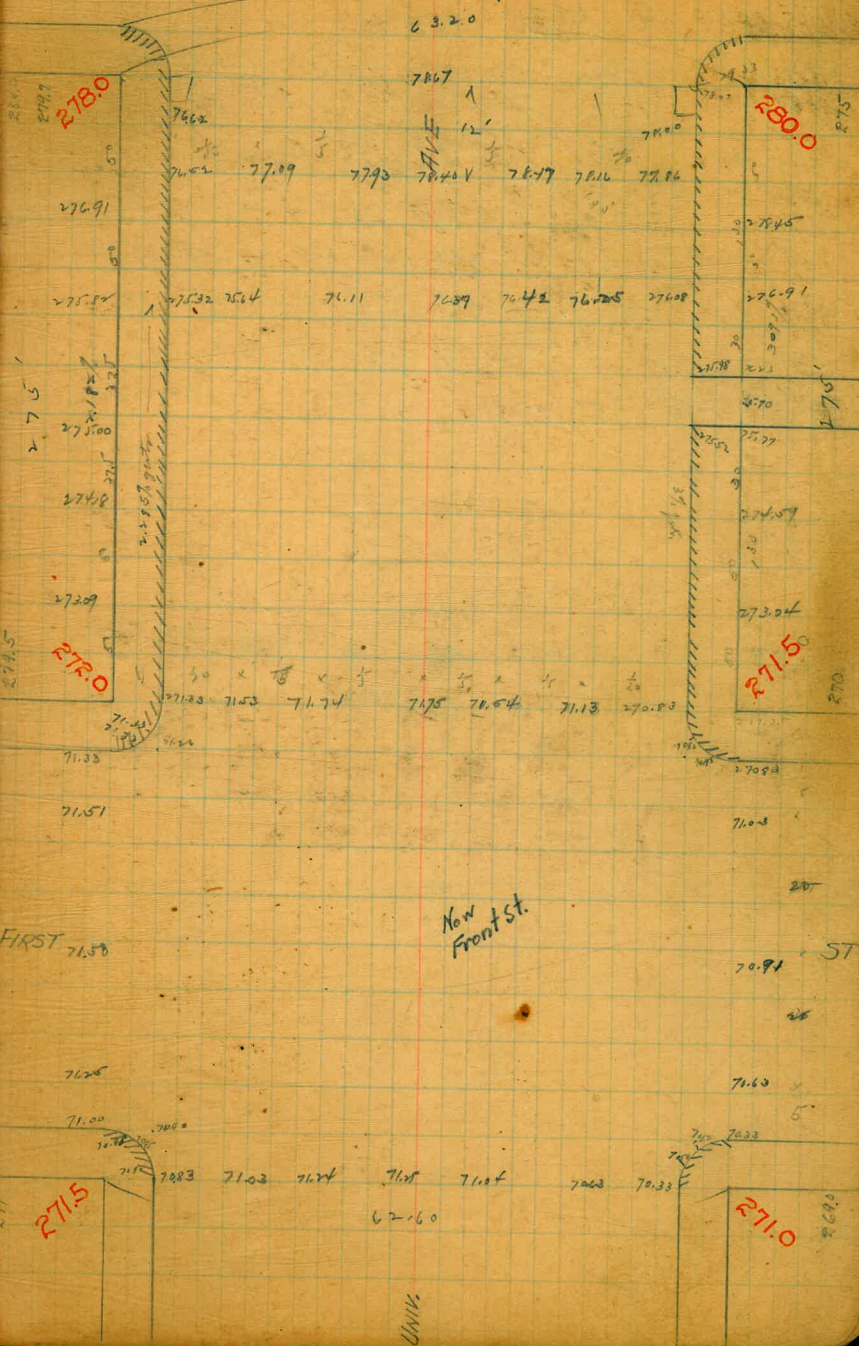
10744 - stakes see last page.

278.50	76.28	76.28	73.82	70.16	20.66	72.94	
4.47	75.81	6.97	75.41	53.17	12.81	12.31	19.03
82.97 M	34.65	78.45	76.91	75.91	25.52	74.59	73.04
78.50	8.52	1.82	3.42	4.29	4.25	5.78	7.33
1.97	22.00	26.53	26.43	2.00	4.35	4.35	8.87
80.37 M	8.27	8.27	8.27	2.00	7.209	7.412	7.50
273.00	5.87	4.77	7.27	2.00	7.27	6.19	5.37
275.64 M	75.82	76.91	76.91	7.27	4.27	6.19	5.37
76.50	4.55	3.06	2.87	2.00	2.00	2.00	2.00
81.85 M	75.00	76.11	76.34	76.42	1.78	2.02	1.07
78.50	75.22	74.12	5.48	5.43	5.60	5.74	5.78
1.97	2.53	7.05	76.07	76.67	5.19	6.12	6.15
80.37 M	77.09	7.93	8.16	8.47	8.23	6.46	8.23
4.06	4.70	3.82	3.67	3.38	3.45	3.90	3.09
73.82	75.04	21.50	2.67	3.38	3.45	3.90	4.76
1.51	7.37	8.88	7.13	7.154	7.175	7.177	2.52
75.33 M	7.50	9.25	8.25	8.25	8.25	8.25	8.25
73.82	7.37	7.209	7.412	7.27	7.512	76.91	7.512
4.98	6.33	7.27	6.20	3.57	4.52	3.47	4.28
78.80 M	7.00	2.51	2.50	4.32	7.150	7.200	4.28
71.50	75.87	2.11	2.29	2.82	3.83	3.83	4.14
6.74	3.07	6.69	16.81	76.83	1.87	11.23	2.72
79.34 M	1.53	7.27	7.06	7.05	7.44	7.52	76.02
73.82	1.34	7.00	7.00	3.82	2.21	7.00	3.54
1.97	5.70	7.093	8.51	2.63	2.12	0.91	7.02
75.77 M	3.04	4.86	4.86	4.86	4.96	4.88	4.76
70.83	7.08	7.063	7.06	7.06	7.06	7.06	7.06
4.96	0.76	0.76	0.76	0.76	0.76	0.76	0.76
0.23	0.50	1.12	1.12	1.12	1.12	1.12	1.12
5.46	5.29	4.26	4.26	4.26	4.26	4.26	4.26

SECOND

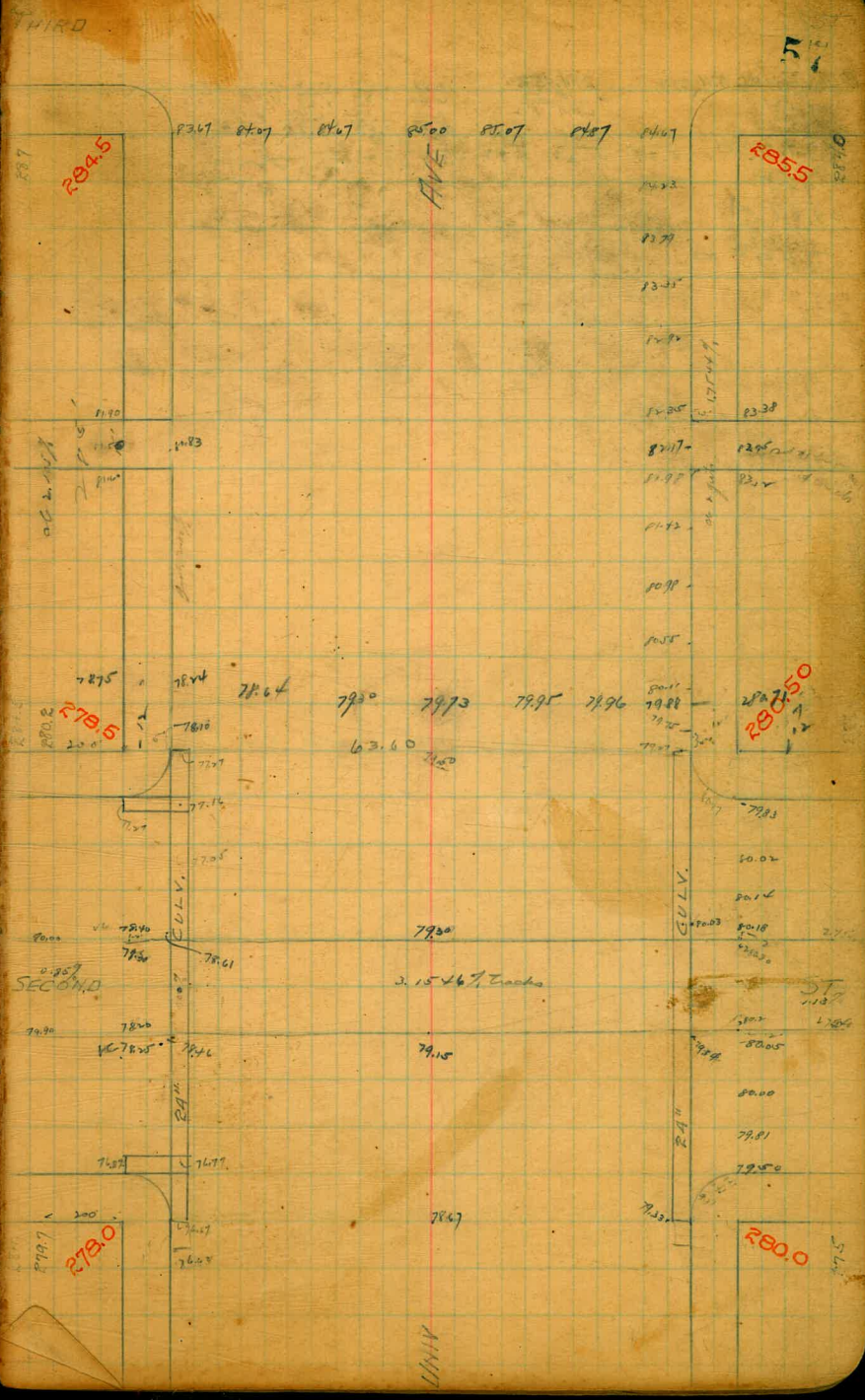
0.0309
10218

Now
First St.



W. N. SECONDA 1/4 278.50

78.00 BM	78.00	78.00	78.00	78.00	78.00	78.00	78.00	78.00	78.00
78.00 H	78.00	78.00	78.00	78.00	78.00	78.00	78.00	78.00	78.00
78.00 M	78.00	78.00	78.00	78.00	78.00	78.00	78.00	78.00	78.00
78.00 N	78.00	78.00	78.00	78.00	78.00	78.00	78.00	78.00	78.00
78.00 O	78.00	78.00	78.00	78.00	78.00	78.00	78.00	78.00	78.00
78.00 P	78.00	78.00	78.00	78.00	78.00	78.00	78.00	78.00	78.00
78.00 Q	78.00	78.00	78.00	78.00	78.00	78.00	78.00	78.00	78.00
78.00 R	78.00	78.00	78.00	78.00	78.00	78.00	78.00	78.00	78.00
78.00 S	78.00	78.00	78.00	78.00	78.00	78.00	78.00	78.00	78.00
78.00 T	78.00	78.00	78.00	78.00	78.00	78.00	78.00	78.00	78.00
78.00 U	78.00	78.00	78.00	78.00	78.00	78.00	78.00	78.00	78.00
78.00 V	78.00	78.00	78.00	78.00	78.00	78.00	78.00	78.00	78.00
78.00 W	78.00	78.00	78.00	78.00	78.00	78.00	78.00	78.00	78.00
78.00 X	78.00	78.00	78.00	78.00	78.00	78.00	78.00	78.00	78.00
78.00 Y	78.00	78.00	78.00	78.00	78.00	78.00	78.00	78.00	78.00
78.00 Z	78.00	78.00	78.00	78.00	78.00	78.00	78.00	78.00	78.00



B.M. THIRD N.W. 1/4

4.50
3.90

90.42 N1.

24.50
4.79

89.81 N1

4.40

88.92 N1

284.52

279.22 N1

5.19

5.78

5.23

4.92

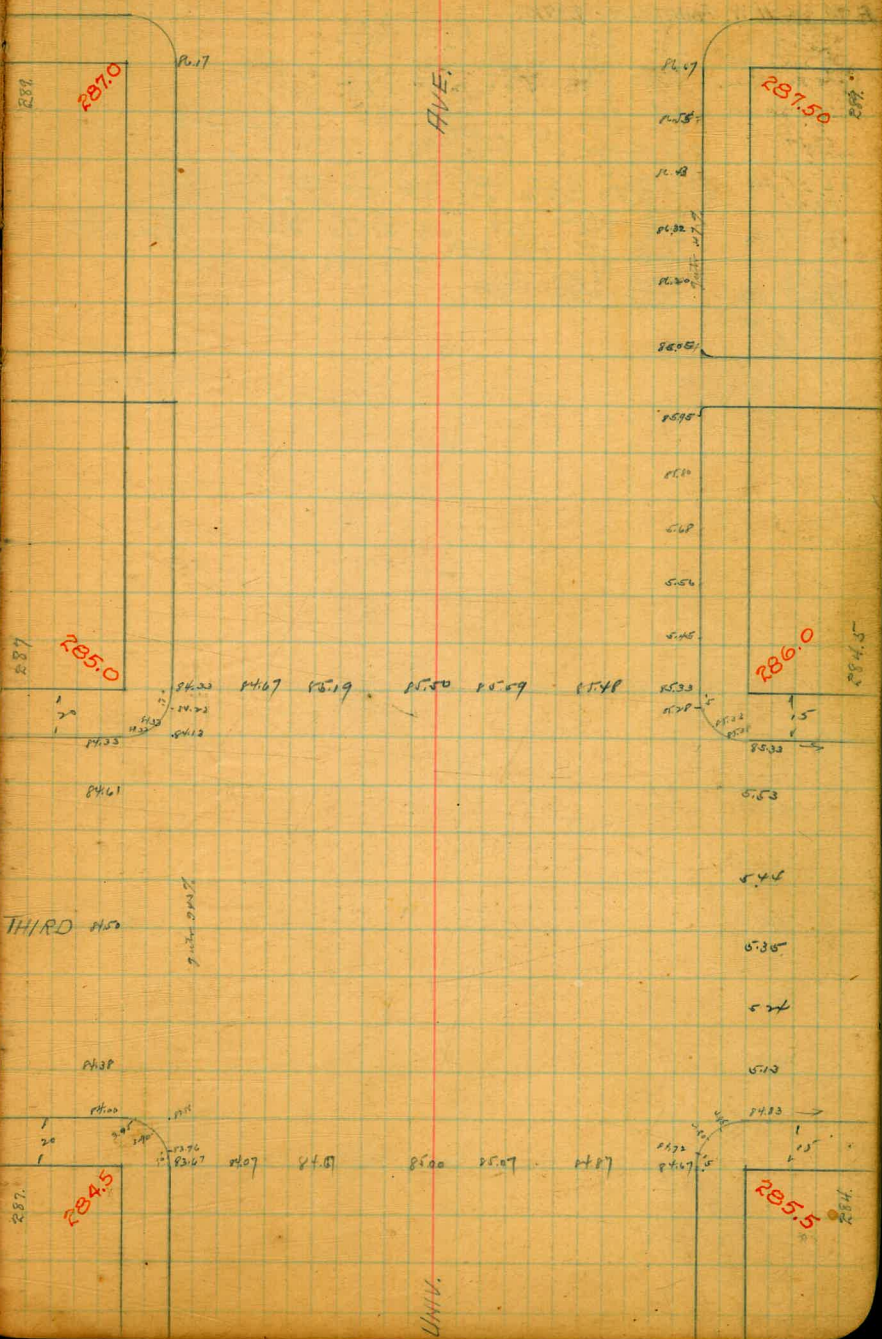
4.80

4.72

5.22	5.17	5.12	5.06	5.00	4.95	4.90
4.85	4.80	4.75	4.70	4.65	4.60	4.55
4.50	4.45	4.40	4.35	4.30	4.25	4.20
4.15	4.10	4.05	4.00	3.95	3.90	3.85
3.70	3.65	3.60	3.55	3.50	3.45	3.40
3.25	3.20	3.15	3.10	3.05	3.00	2.95
2.80	2.75	2.70	2.65	2.60	2.55	2.50
2.15	2.10	2.05	2.00	1.95	1.90	1.85
1.50	1.45	1.40	1.35	1.30	1.25	1.20
0.85	0.80	0.75	0.70	0.65	0.60	0.55
0.20	0.15	0.10	0.05	0.00	0.00	0.00

FOURTH

ST 58

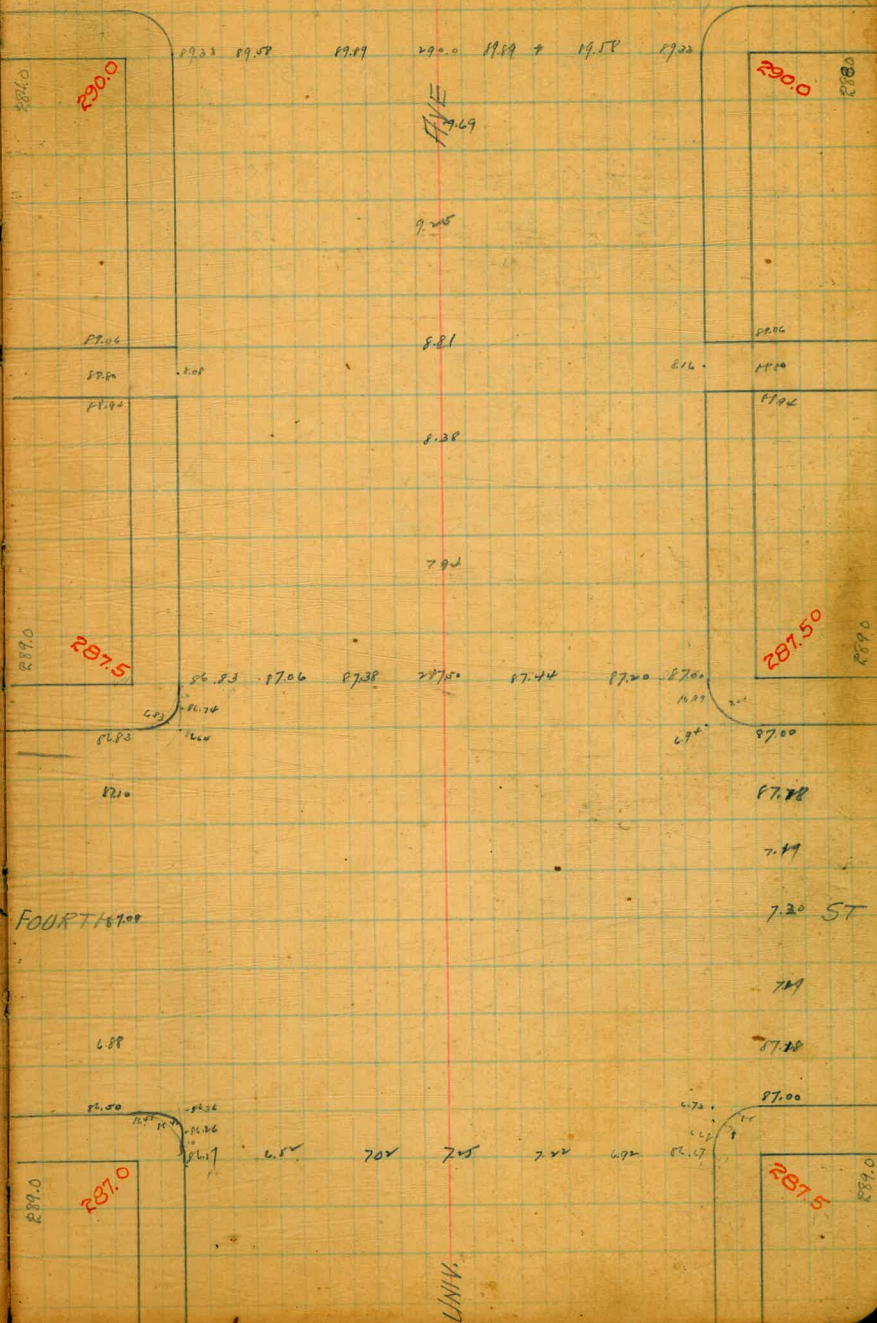


B.M. N.W. FOURTH 287.01

87.01	6.17	16.27	4.27	8.20	14.83
87.23 N1	6.06	6.56	4.1	5.26	5.40
87.01 B.M.	87.01	7.90	6.32	8.81	9.25
74.9	4.20	3.76	3.82	2.69	2.42
91.7	8.58	9.89	3.00	4.20	2.20
2.17	2.53	2.22	3.11	4.91	4.61
89.96	1.10	1.07	1.93	2.06	1.90
92.11 N1	2.31	4.03	3.17	3.98	2.98
87.01	8.07	6.57	7.07	7.21	4.90
4.21	4.20	4.24	4.01	4.24	4.54
91.26 N1	7.10	7.20	6.88	6.67	7.17
87.01	4.16	1.20	6.43	4.58	4.83
3.36	6.71	4.81	7.81	5.03	7.20
90.37 N1	8.57	9.89	3.00	3.17	2.90
89.94 B.M.	4.65	4.52	4.23		
4.29					
92.23 N1					

FIFTH

ST. 59



B.M. S.W. TENTH PL 282.09

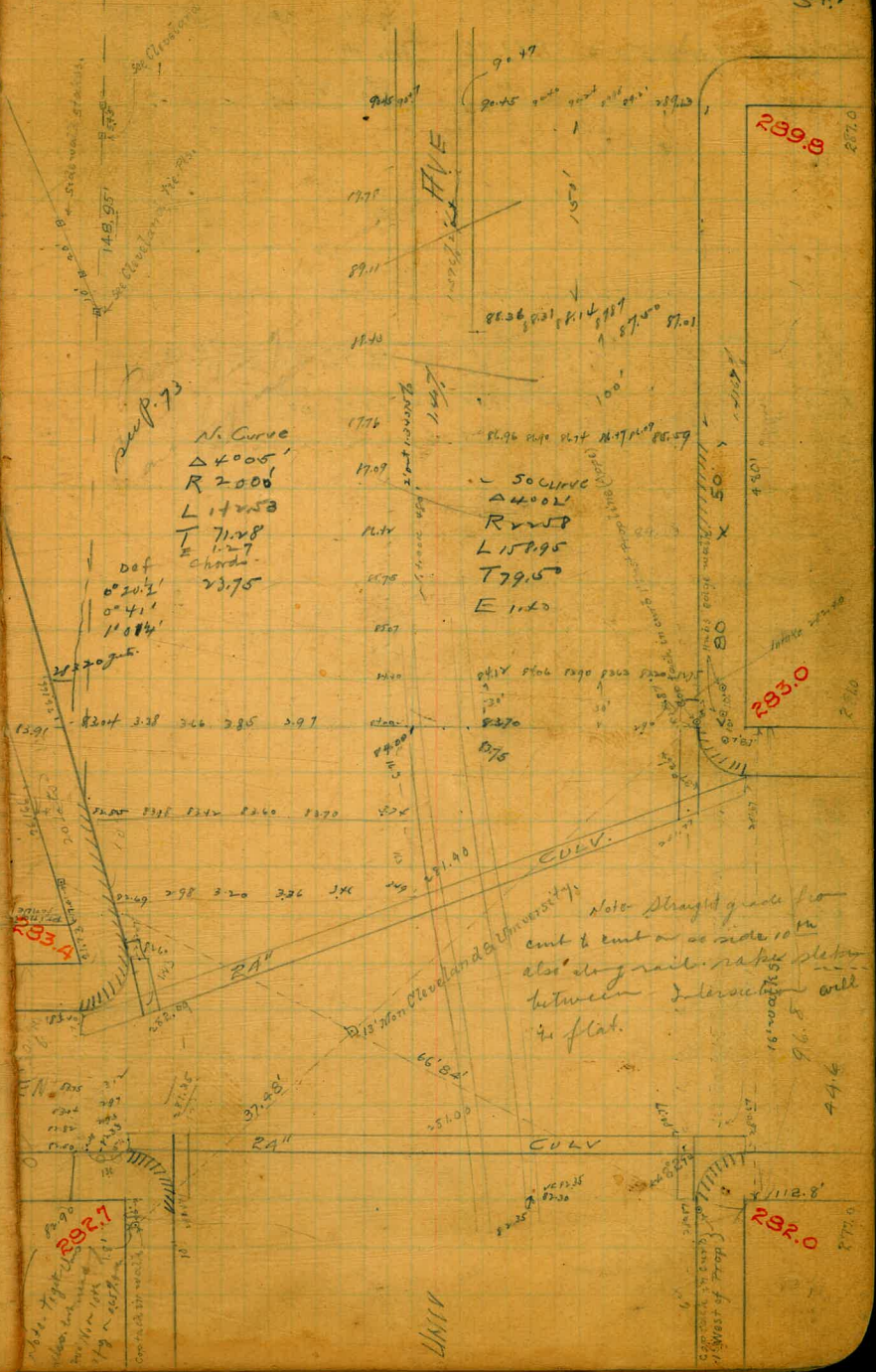
12.00	6.17	4.23	4.23	0.07	1.46
19.76	4.23	4.23	4.23	4.23	4.23
28.72	4.23	4.23	4.23	4.23	4.23
37.68	4.23	4.23	4.23	4.23	4.23
46.64	4.23	4.23	4.23	4.23	4.23
55.60	4.23	4.23	4.23	4.23	4.23
64.56	4.23	4.23	4.23	4.23	4.23
73.52	4.23	4.23	4.23	4.23	4.23
82.48	4.23	4.23	4.23	4.23	4.23
91.44	4.23	4.23	4.23	4.23	4.23
100.40	4.23	4.23	4.23	4.23	4.23
109.36	4.23	4.23	4.23	4.23	4.23
118.32	4.23	4.23	4.23	4.23	4.23
127.28	4.23	4.23	4.23	4.23	4.23
136.24	4.23	4.23	4.23	4.23	4.23
145.20	4.23	4.23	4.23	4.23	4.23
154.16	4.23	4.23	4.23	4.23	4.23
163.12	4.23	4.23	4.23	4.23	4.23
172.08	4.23	4.23	4.23	4.23	4.23
181.04	4.23	4.23	4.23	4.23	4.23
190.00	4.23	4.23	4.23	4.23	4.23
198.96	4.23	4.23	4.23	4.23	4.23

282.09
4.23
286.32

12.00
18.17
24.34
30.51
36.68

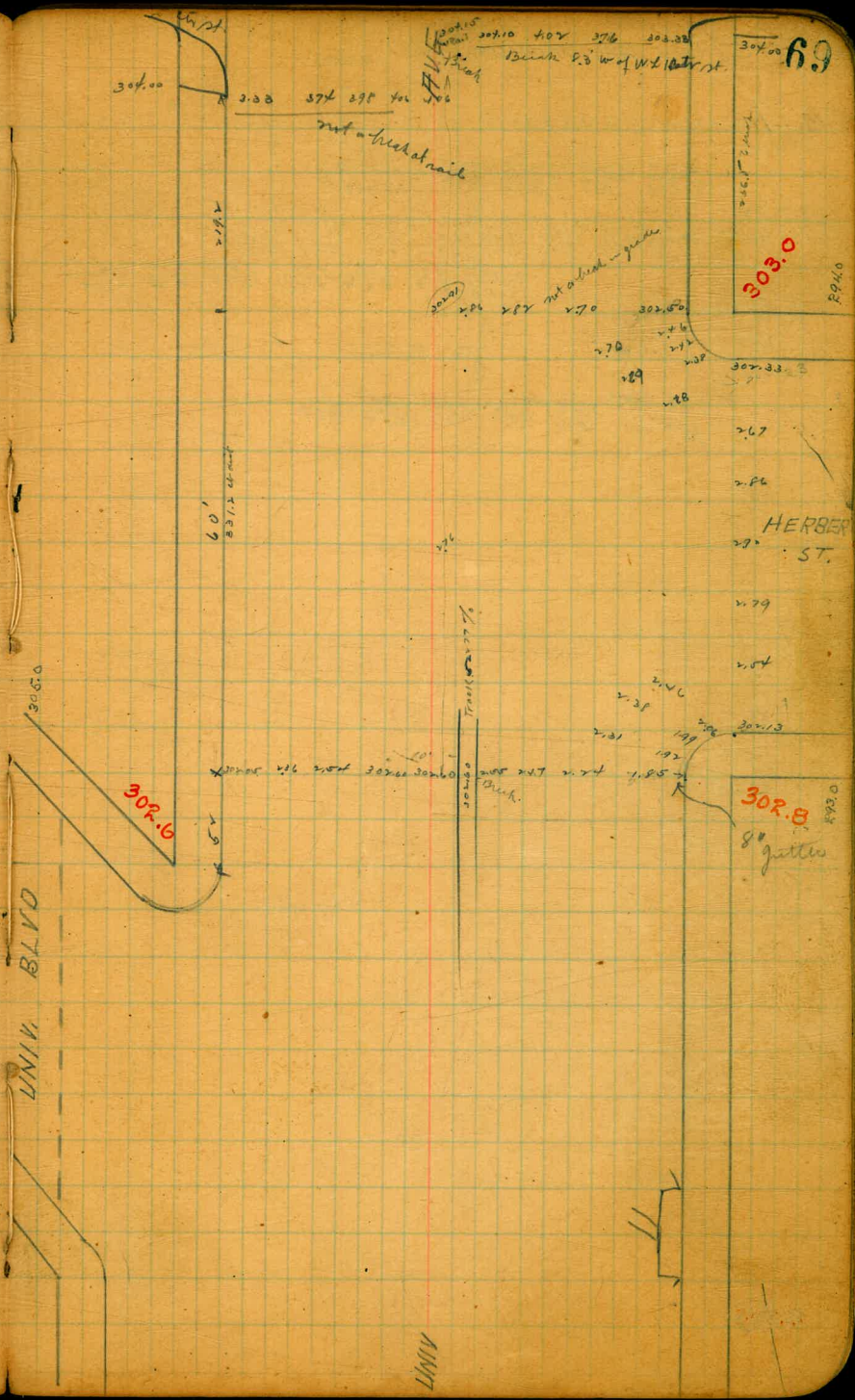
VERMONT

60



B.M. N.W. UNIV. BLVD. 119 301.73

307.07	301.73 B.M.	307
01.30	7.06	
4.87	304.07 M.	303.014 B.M. SE Herbert. Nailin curb.
304.91	4.28	4.29
2.70	4.28	4.29
006.71 M.	4.28	4.29
303.01	4.28	4.29
303.67 M.	4.28	4.29
306.11	4.28	4.29
317	4.28	4.29
37	4.28	4.29
7.12 M.	4.28	4.29
7.50 M.	4.28	4.29
3.96 B.M.	4.28	4.29
4.47	4.28	4.29
8.42 M.	4.28	4.29

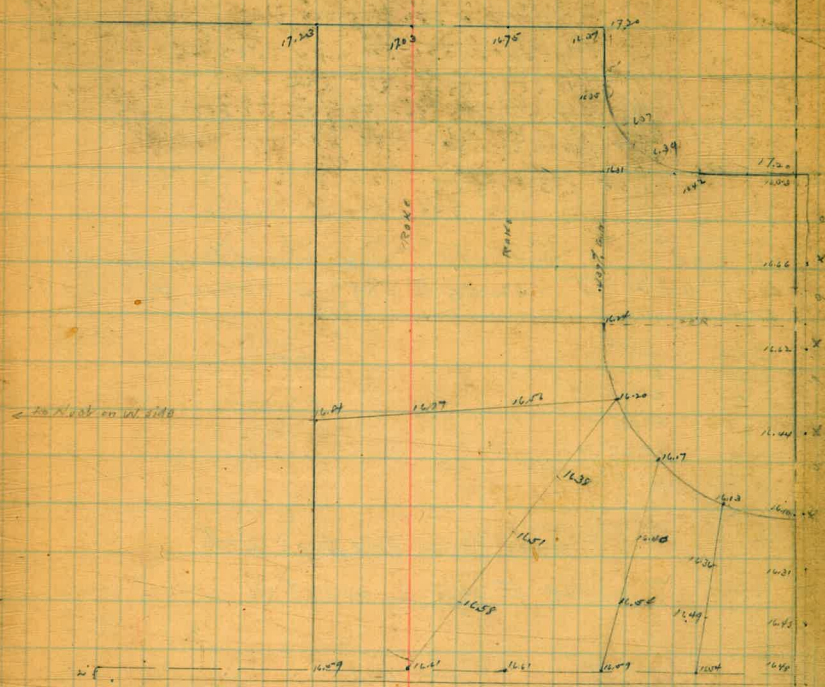


15.85 BM NW P Blvd 4PK in pole

1.21	1.22	1.23	1.24	1.25	1.26	1.27	1.28	1.29	1.30	1.31	1.32	1.33	1.34	1.35	1.36	1.37	1.38	1.39	1.40
1.21	1.22	1.23	1.24	1.25	1.26	1.27	1.28	1.29	1.30	1.31	1.32	1.33	1.34	1.35	1.36	1.37	1.38	1.39	1.40

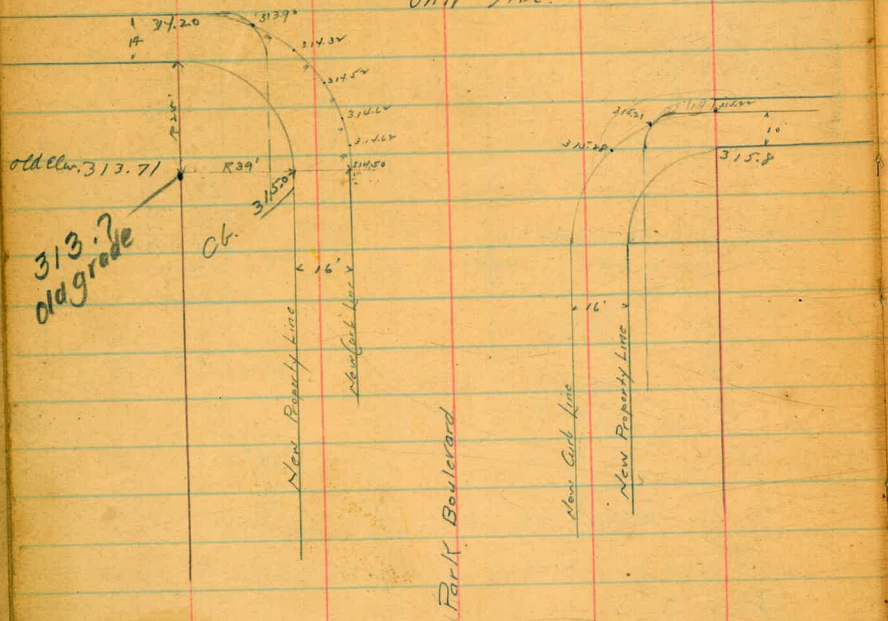
19.02 M

1.21	1.22	1.23	1.24	1.25	1.26	1.27	1.28	1.29	1.30	1.31	1.32	1.33	1.34	1.35	1.36	1.37	1.38	1.39	1.40
1.21	1.22	1.23	1.24	1.25	1.26	1.27	1.28	1.29	1.30	1.31	1.32	1.33	1.34	1.35	1.36	1.37	1.38	1.39	1.40



Levels over Paving along New Curt lines
 at S.E. 95W Cors of Univ Ave & Park Blvd.

Univ Ave.



315.85 BM	5.11	5.15	5.23	5.71	6.01	6.43
4.52	15.22	15.23	14.50	14.62	14.32	13.90
329.33 NT						

77

.01581
8
12649

.01581 70
1,10570
126
1.23

308.73
24.33
3.40

308.73
60
185280

78

236.3) 122500 1.00423
9752
2498
4726
6540

.00423
96.0
2118
2535
3807
408175
43

202 400 10186
204
1960
1836
1240
1224

314.91
3.27
318.18
318.16
315.8

306.81
3.44
303.37
02.60
77
38.0

10196
30
9800

319.19
316.16
3.02

314.0
98
700 314.02
98
1710 313.04
98
1400 312.06
98
311.08

306.81
3.83
302.98

302.14
80

004
10

13.94
 70.0
 20.74 MJ
 4.21
 4.68 TP
 2.13 MJ
 17.34
 4.07
 21.48

17.33
 4.28
 21.61

17
 4.255
 17.35
 21.605 MJ

17.33 17.25
 4.11 4.09
 21.44

294.00
 222.10
 490) 2.400 1.00407
 2360
 400
 4130

638) 116.40 110.225
 1276
 1640
 1276
 3690
 3190
 4500

10226
 20
 1130
 452
 1568
 314.60
 316.16

17.27 17.11
 4.11 4.05
 4.03
 17.27
 4.11
 3.51

17.27
 4.255
 17.27

6.58 11 f. p. Clean
 2.83
 49.12
 44.74
 1147.8
 1.191
 472
 4593

00407
 490
 36630
 2035
 24013

00407
 50
 20350

100 = 282.10
 100 = 282.30
 1400 = 92.07
 1400 = 82.71
 1489 = 82.97

10225
 638
 1800
 670
 1360
 14355

1735
 1425
 50

51-115
 8
 5-97

17.27 4.05
 17.11 17.33
 4.53
 1685

597
 11.94

1.07

5.97
 36
 5.6

9.15
 11.40
 2.023
 10.12

00407
 40
 16280

82.10
 2035
 92.8035
 2035
 92.0070
 2035
 92.7105
 1629
 .87

University Ave.

280.25

2nd St

275	279.25	280.25	275	1.00	0.218
270	277.70	279.48		500	
2400	276.61	277.93		275	
1450	275.52	276.89		2200	
1400	274.43	274.84		2200	
400	273.34	273.30		0.0	
00	272.25	271.75			

1st St

B.D. 272.50

+ 3.89

282.39 H.J.

282.39	82.39	82.39	82.39	82.39	82.39	82.39	82.39
78.20	90.20	79.48	77.70	76.66	77.93	76.32	76.32
4.14	2.14	2.14	4.89	5.78	4.46	6.08	6.08
4	2.14	2.14	4.0	4.4	3.8	4.8	4.8
C0.4	F0.4	C0.1	C0.7	C1.4	C0.7	C1.1	C1.1

82.39	82.39	82.39	82.39	82.39	82.39	82.39	82.39
75.52	74.43	74.84	73.30	73.34	72.20	71.73	71.73
6.88	7.96	7.58	9.09	9.05	10.14	10.64	10.64
4.8	5.2	5.8	7.2	6.3	7.8	10.63	9.1
C0.3	C2.8	C1.8	C1.9	C2.8	C2.3	0.0	C1.5

+4 - June 17-12

(Downman)
Lham,
Berne

82.39
71.20
11.14
11.10
0.0

280.25
71.20
175.05
8.25
20.00
247.05
#380

Handwritten notes and calculations on the right page, including various numbers and diagrams. The text is dense and includes several diagrams with lines and arrows, possibly representing a survey or construction plan. The numbers are scattered across the page, with some appearing in columns and others in rows. There are also some larger numbers like 1797 and 1797, and a list of numbers at the bottom right: 00=27175, +00=273295, 1+00=274340, 1400=276380, 2+00=277930, 2+00=279475, 29 0.25.

00	27175
+00	273295
1+00	274340
1400	276380
2+00	277930
2+00	279475
29	0.25

