

09

**F.B.809**

400  
LEVEL

IND

Published by H. S. CROCKER COMPANY, Stationers, Drawing Materials, and Mathematical Instruments, San Francisco.

Table showing the difference of latitude and departure in running 80 chains at any course from 1 to 60 minutes.

MINUTES.	LKS.	MINUTES.	LKS.	MINUTES.	LKS.
1	21	21	49	41	95½
2	4½	22	51½	42	98
3	7	23	53½	43	100½
4	9½	24	56	44	102½
5	11½	25	58½	45	105
6	14	26	60½	46	107½
7	16½	27	63	47	109½
8	18½	28	65½	48	112
9	21	29	67½	49	114½
10	23½	30	70	50	116½
11	25½	31	72½	51	119
12	28	32	74½	52	121½
13	30½	33	77	53	123½
14	32½	34	79½	54	126
15	35	35	81½	55	128½
16	37½	36	84	56	130½
17	39½	37	86½	57	133
18	42	38	88½	58	135½
19	44½	39	91	59	137½
20	46½	40	93½	60	140

### TABLE FOR RUNNING ON SLOPES.

In the following table the first column shows the angle, the second the number of links to be added to a chain on the slopes, to make one chain, horizontal measurement.

ANGLE	COR. IN LINKS	ANGLE	COR. IN LINKS	ANGLE	COR. IN LINKS	ANGLE	COR. IN LINKS
°		°		°		°	
4	0.24	11	1.88	18	5.14	25	10.54
5	0.38	12	2.24	19	5.76	26	11.26
6	0.55	13	2.63	20	6.42	27	12.24
7	0.76	14	3.06	21	7.11	28	13.37
8	0.98	15	3.53	22	7.85	29	14.34
9	1.24	16	4.02	23	8.64	30	15.47
10	1.55	17	4.56	24	9.47	35	22.07

Crocker Quality

# LEVEL BOOK

No. 400

RETURN TO CITY ENGINEER'S OFFICE  
CITY HALL, SAN DIEGO, CAL.



MANUFACTURED BY

A. S. Crocker Co.

SAN FRANCISCO

and

FROM Loring's Book Store SACRAMENTO

Levels on Lewis st from W.L. 4<sup>th</sup> on N.L. Lewis st  
 Town L. 6<sup>th</sup> st. Lumpkin  
 Evans  
 Johnson

B.M. 181253 Plg S.W. 4<sup>th</sup> Lewis 283.19

B.M. 304 286.18

W.L. 4<sup>th</sup> on N

N 9.8

S 7.1

0+40 = ctr 4<sup>th</sup>

S 4.6

N 25.00

E.L. 4<sup>th</sup>

N 28.3

S 5.0

0+25 E

S 5.2

N 33.9

N 0+36 37.6

0+50

N 32.5

S 4.6

286.18

0+75

S 3.4

N 23.4

1+0

N 17.9

S 3.0

1+25

S 2.7

N 9.0

1+50

N 3.7

S 2.1

1+75

~~S~~ 2.4

N 1.6

2

210.00 N 21+97<sup>2</sup> 21.5 = W.L. 5<sup>th</sup> St

N 1.5

S 2.6

T.P. 5.84 289.62 2.92 283.78

E.L. 5<sup>th</sup> St on S

S 3.6

0+22<sup>3</sup> = E.L. 4<sup>th</sup> St on N

S 3.0

N 4.3

0+47<sup>3</sup>

N 4.3

S 3.6

0+72<sup>3</sup>

S 4.1

N 4.5

0+97<sup>3</sup>

N 4.5

S 4.2

286.18

1+22<sup>3</sup>

S 4.2

N 4.4

1+47<sup>3</sup>

N 4.5

S 4.4

1+72<sup>3</sup>

S 4.6

N 4.6

1+97<sup>3</sup>

N 4.7

S 4.5

3  
1+22<sup>3</sup> on N = 4.6 1+22<sup>3</sup> on S = 4.5

S 4.7

N 4.8

Levels on W.L. 6<sup>th</sup> St. Lewis St N to top of Canyon

286.18 H.T.

Seuka  
Evans  
Nichols

4

0+0 = v.l. Lewis 4.8

25 5.1

50 5.6

75 8.3

85 = Top of Canyon 9.0

Lorelson Stock Ton 5 to 6 72		289.23						
B.M.	R.A. SPK 3.4 4th Stockton	289.93			1+0			5
B.M.	5.64 295.57		S			7.4	288.2	
	K.L. 5th		ctr			7.3	288.3	
S		5.1 290.5	N			7.0	288.6	
ctr		5.0 290.6			1+25			
N		5.1 290.5	N			7.4	288.2	
	0+25 F		ctr			2.9	287.7	
N		5.5 290.1	S			7.9	287.7	
ctr		5.3 290.3	T.P.	3.78	291.89	7.46	288.11	
S		4.8 290.8			1+50			
	0+50		S			5.2	286.1	
S		5.6 290.00	ctr			19.9	272.0	
ctr		5.8 289.8	N			6.2	285.7	
N		6.0 289.6			1+75			
	0+75		N			16.0	275.9	
N		6.8 288.8	ctr			20.6	261.3	
ctr		6.6 289.0	S			12.9	279.0	
S		6.4 288.2						

291.89

210 = W.L. 6<sup>th</sup> St

6

S

29.2 267.7

ctv

38.8 253.1

H

26.0 265.9



Levels n. L. 6th St Stockton S

3291.89 H<sub>1</sub>

$\frac{1}{2}$  Drunk  
 $\frac{3}{4}$  crumpled  
 $\frac{1}{4}$  rich

0+0 = 0.2 Stockton	24.2	267.7
0+25 S	24.0	
0+50	23.5	
0+75	13.3	
1+0	6.1	
1+25	5.1	
1+50	4.9	
1+75	5.5	
2+03 = Top of Canyon	6.0	

Levels on w.L. 6<sup>th</sup> St Stockton St N

291.89 M.

7/6 Dunkle  
11/11 Evans  
Tichenor

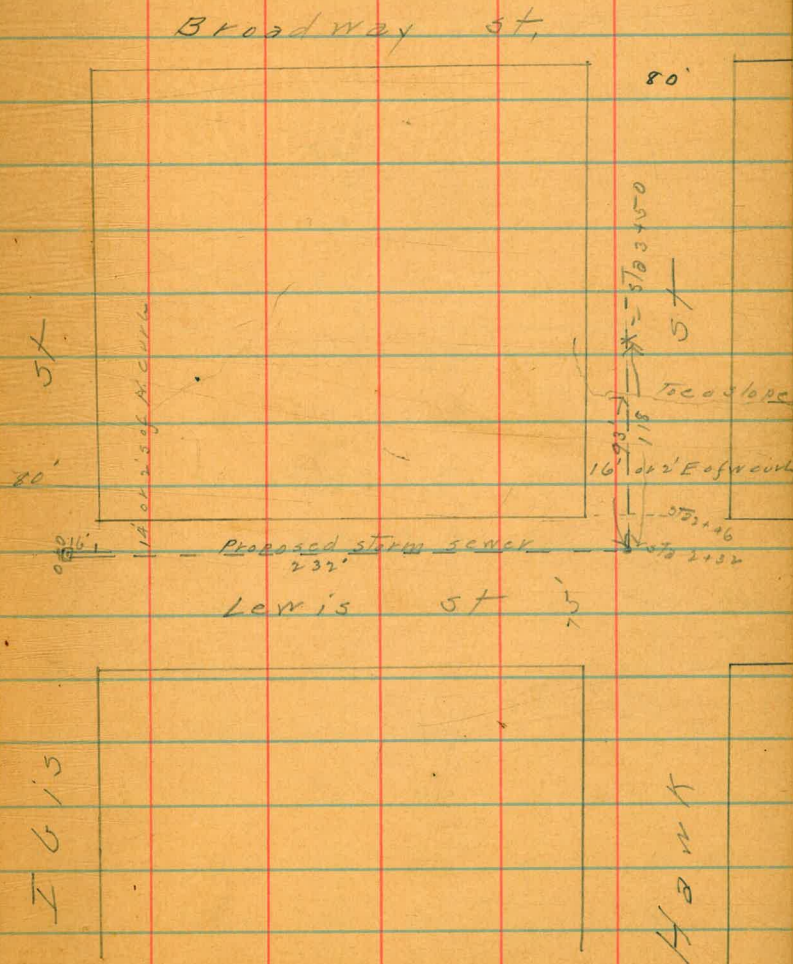
8

0+0 = N.L. Stockton		26.00	265.9
0+25 N		12.3	
0+38		4.8	
0+75		3.8	
1+0		3.7	
1+25		4.1	
T.P.	3.57	289.02	6.40 285.45
1+50		2.8	
1+75		4.1	
2+0		5.3	
2+25		13.3	
2+50		13.9	
2+75		8.5	
3+0		8.2	
3+25		7.6	
3+50		5.7	
3+75		6.1	
4+0 = Top of Canyon		2.9	

Levels for storm sewer from N.E. cor Lewis & Dundee  
 3 I.B.'s to Sta 3+50 see DPP page 197 Evans,  
 B.M. S.W.P.M. J.P.K. HANKS & Lewis 268.35

B.M.	3.17	271.52		
0+0			7.2	
0+25			7.0	
0+50			6.9	
0+75			6.7	
1+0			6.5	
1+25			6.3	
1+50			5.8	
1+75			5.4	
2+0			5.2	
2+32			4.9	
2+46			4.6	
T.P.	1.07	460.21	12.08	289.14
2+75			12.2	
T.P.	0.81	248.26	12.76	297.45
3+0			13.2	
3+25 = Top of slope			23.9	
3+50			34.6	

9



x-section Harathy St. California to Bay

B.M. S.E. Cor Calif Harathy Calif 51.24

B.M. 218 53.42

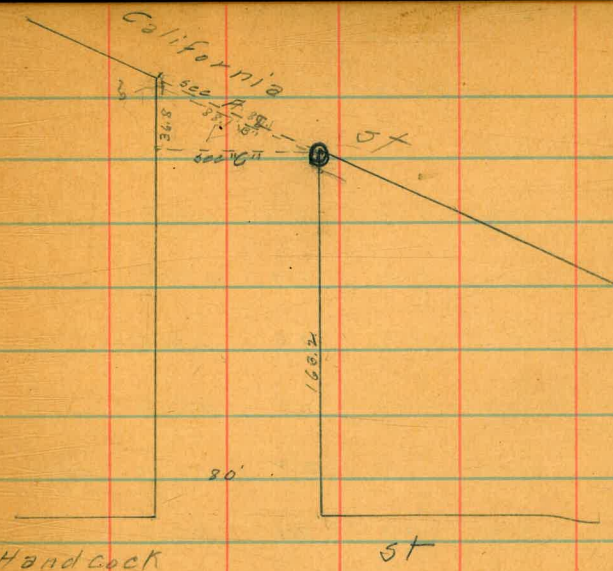
0+0 = x-500 H

E	4.2	49.2
crk	4.5	48.9
"	4.0	49.4
M	3.4	50.0
"	3.3	50.1
crk	2.5	50.9
W	2.5	50.9

0+5 = x-section "B"

N	3.9	49.5
crk	4.5	48.9
"	4.5	48.9
M	5.3	48.1
"	5.6	47.8
crk	5.6	47.8
E, of	5.5	47.9
F	5.9	47.7

Deuka  
Eygous,  
Mehner



x-section "C"

E	53.42	4.2	47.2
crk		5.4	48.0
"		6.4	47.0
M		6.6	46.8
"		7.0	46.4
crk		6.5	46.9
N		6.3	47.1

53.42  
0+75' S of X-3 section C

W	7.8	45.6
crk	8.0	45.4
"A	8.0	45.4
M	7.9	45.5
"A	7.8	45.6
crk	7.2	46.2
E	7.1	46.3

0+50

E	8.2	45.2
crk	7.9	45.5
"A	8.6	44.8
M	8.9	44.5
"A	8.9	44.5
crk	8.9	44.5
W	8.7	44.7

53.42  
0+75'

11

W	10.3	43.1
crk	10.2	43.2
"A	10.0	43.4
M	9.9	43.5
"A	9.7	43.7
crk	9.6	43.8
E	9.8	43.6

1+0

E	13.2	40.2
+7	11.6	41.8
crk	11.2	42.2
"A	10.8	42.6
M	11.1	42.3
"A	11.4	42.0
crk	11.3	42.1
W	11.6	41.8

53.92

1+25.4

W	12.8	40.6
crk	12.5	40.9
"A	12.8	40.6
M	13.0	40.4
"A	13.0	40.4
crk	15.2	38.2
E	16.7	36.7

1+50

E	13.5	39.9
+5	15.2	38.2
+7	17.8	35.6
crk	17.9	35.5
"A	17.8	35.6
+8	15.1	37.0
M	14.7	38.7
"A	14.6	38.8
crk	14.1	39.3
W	14.3	39.1

T.P.	0.35	40.90	12.87	40.55
------	------	-------	-------	-------

40.90

1+63=N.L. Hancock St Graded,

12

W	2.7	38.2
crk	2.8	38.1
"A	2.7	38.2
M	2.6	38.3
"A	2.8	38.1
crk	2.8	38.1
E	2.3	38.6

S.L. Hancock

E	4.3	36.6
crk	4.9	36.0
+1	5.9	35.0
"A	5.0	35.9
M	5.2	35.7
"A	5.4	35.5
+12	6.0	34.9
crk	5.0	35.9
W	4.8	36.1

1090

0+75 of Hancock

W	6.8	34.1
crk	6.9	34.0
1/4	6.3	34.6
M	6.3	34.6
1/4	6.3	34.6
crk	5.9	35.0
E	5.4	35.5

0+50

E	7.0	33.9
crk	7.3	33.6
1/4	7.7	33.2
M	8.2	32.7
1/4	8.5	32.4
crk	8.5	32.4
W	8.9	32.0

409

0+75

13

W	9.1	31.8
crk	9.1	31.8
1/4	8.8	32.1
M	8.6	32.3
1/4	8.2	32.7
crk	8.4	32.5
E	8.0	32.9

1+0

E	8.5	32.4
crk	8.8	32.1
1/4	9.4	31.5
M	9.7	31.2
1/4	9.7	31.2
crk	10.3	30.6
W	10.3	30.6

40.90

1725

W	11.7	29.2
crk	11.3	29.6
"A	11.4	29.5
M	10.8	30.1
"A	10.9	30.5
crk	9.9	31.0
E	9.9	31.0

1750

E	10.8	30.1		
crk	11.4	29.5		
"A	11.7	29.2		
M	12.2	28.7		
"A	12.6	28.3		
crk	12.8	28.1		
W	12.9	28.0		
T. P <sub>1</sub>	2.56	31.15	12.31	28.59

31.15

1775

14

W	4.4	26.7
crk	4.1	27.1
"A	4.0	27.1
M	3.5	27.6
"A	3.1	28.1
crk	2.8	28.4
E	2.7	28.9

2400 = N. L. Kurtz St 75' wide

E	3.1	28.0
crk	3.5	27.7
"A	4.0	29.2
M	4.2	27.0
"A	4.8	26.4
crk	5.1	26.1
W	5.4	25.7



3115

N. CURVE

W	5.9	25.3
CRK	5.5	25.7
"A	5.0	26.2
M	4.6	26.6
"A	4.3	26.9
CRK	3.8	27.4
E	3.3	27.9

N "A

E	3.7	27.5
CRK	4.2	27.0
"A	4.6	26.6
M	4.9	26.3
"A	5.4	25.8
CRK	5.8	25.4
W	6.4	24.8

3115

CENTER

15

W	6.8	24.4
CRK	6.2	25.0
"A	5.6	25.6
M	5.4	25.8
"A	5.0	26.2
CRK	4.7	26.5
E	4.3	26.9

S "A

E	5.0	26.2
CRK	5.1	26.1
"A	5.4	25.8
M	6.0	25.2
"A	6.4	24.8
CRK	6.7	24.5
W	7.0	24.2

31.15  
5 corb

W	7.2	24.0
crb	6.9	24.3
"A	6.4	24.8
M	6.1	23.1
"A	5.7	25.5
crb	5.5	25.7
E	5.2	26.0

S. L. Kurtz

E	4.9	26.3
crb	5.4	25.8
"A	5.7	25.5
M	5.5	25.7
"A	5.7	25.5
crb	6.8	24.4
W	7.3	23.9

31.15  
0+3

16

W	11.8	19.4
crb	11.9	19.3
"A	11.8	19.4
M	11.6	19.6
"A	11.6	19.6
crb	11.6	19.6
E	11.5	19.7

21 N of ~~10~~  
station on E 2008 on W = N. rail Santa Fe

E	10.5	20.7
crb	10.6	20.6
"A	10.6	20.6
M	10.6	20.6
"A	10.8	20.4
crb	10.8	20.4
W	10.9	20.3

station on W 2008 on E = N. rail

W	9.73	21.4
E	9.40	21.8

3115  
arr<sup>3</sup> on E 0+17 on W = v' soft. 12, 17

E	10.7	20.5
orb	10.8	20.4
1/4	10.8	20.4
M	10.8	20.4
1/4	10.9	20.3
orb	11.0	20.2
W	11.1	20.1

0+25

W	11.9	19.3
orb	11.8	19.4
1/4	11.8	19.4
M	11.6	19.6
1/4	11.5	19.7
orb	11.4	19.8
E	11.4	19.8

3115  
0+30

17

E	6.4	24.8
orb	6.6	24.6
1/4	6.7	24.5
M	7.4	23.8
1/4	7.5	23.7
orb	8.0	23.2
W	7.9	23.3

0+50

W	5.7	25.2
orb	4.5	26.7
1/4	4.0	27.2
M	3.8	27.4
1/4	3.3	27.9
orb	2.5	28.7
E	1.8	29.4

31.15

0+75

E	7.6	23.6
crk	7.4	23.8
1/4	7.3	23.9
M	8.5	22.7
1/4	9.1	22.1
crk	9.4	21.8
W	9.9	21.3

1+0

W	10.4	20.8
crk	10.0	21.2
1/4	9.9	21.3
M	9.7	21.5
1/4	9.5	21.7
crk	8.8	22.4
E	8.9	22.3

31.15

1425

18

E	9.9	21.3
crk	10.1	21.1
1/4	10.1	21.1
M	10.4	20.8
1/4	10.5	20.7
crk	10.7	20.5
W	10.8	20.4

1+35

W	11.5	19.7		
crk	11.4	19.8		
1/4	11.2	20.0		
M	10.9	20.3		
1/4	11.0	20.2		
crk	10.9	20.3		
E	10.5	20.7		
T.P.	1.35	22.15	10.35	20.80

22.15

1450

E	7.1	15.1
crk	7.2	15.0
"A	7.2	15.0
M	7.2	15.0
"A	7.2	15.0
crk	7.2	15.0
W	7.2	15.0

1457

W	6.8	15.4
crk	7.0	15.2
"A	6.8	15.4
M	6.9	15.3
"A	6.9	15.3
crk	6.9	15.3
E	7.0	15.2

22.15

1464

19

<del>E</del>	3.2	19.0
crk	3.5	18.7
"A	3.5	18.7
M	3.7	18.5
"A	3.7	18.5
crk	3.6	18.6
W	3.9	18.3

1475

<del>W</del>	3.8	18.4
crk	3.9	18.3
"A	3.6	18.6
M	3.9	18.9
"A	3.8	18.4
crk	3.6	18.6
<del>E</del>	2.6	19.6

2215

2+0

F	3.7	18.5
Crk	4.1	18.1
"4	4.2	18.0
M	3.8	18.4
"4	4.6	17.6
Crk	4.8	17.4
W	5.3	16.9

2+25

W	6.7	15.5
Crk	6.7	15.5
"4	6.5	15.5
M	6.1	16.1
"4	5.7	16.8
Crk	5.7	16.5
F	5.5	16.7

2215

2+50

20

F	6.9	15.3
Crk	7.5	14.7
"4	7.8	14.4
M	7.9	14.3
"4	8.0	14.2
Crk	8.0	14.2
W	8.0	14.2

2+75

W	10.0	12.2
Crk	10.0	12.2
"4	9.8	12.4
M	9.6	12.6
"4	9.5	12.7
Crk	9.4	12.8
F	9.3	12.9

22.15  
3+00=4.6 Atlantic est 75'

E	9.4	12.8
crk	9.6	12.6
"	9.6	12.5
M	9.7	12.5
"	9.8	12.4
crk	9.7	12.5
W	10.0	12.2

N. C. V. K. W.

W	11.7	10.5
crk	11.7	10.5
"	11.5	10.7
M	11.5	10.4
"	11.3	10.9
crk	11.9	10.3
E	11.6	10.6

22.15  
H "9

21

E	11.1	11.1
crk	11.1	11.1
"	10.9	11.3
M	11.3	10.9
"	11.0	11.2
crk	11.3	10.9
W	11.0	11.2

T. P. 3.49 13.36 12.22 9.87

0+04

W	5.4	8.0
crk	5.4	8.0
"	5.3	8.1
M	5.0	8.4
"	4.8	8.6
crk	4.7	8.7
E	4.9	8.5

13.36

center

E	5.0	8.4
crk	5.0	8.4
11A	5.0	8.4
M	5.2	8.2
114	5.4	8.0
crk	5.6	8.8
W	5.8	7.6

0+09

W	5.8	7.6
crk	5.6	7.8
11A	5.5	7.9
M	5.2	8.2
114	5.1	8.3
crk	5.1	8.3
E	5.1	8.3

1336

s. 114

22

E	2.7	10.7
crk	2.6	10.8
11A	3.1	10.3
M	2.7	10.7
114	2.7	10.7
crk	2.6	10.8
W	2.6	10.8

s. crk

W	4.2	9.2
crk	3.6	9.8
11A	3.5	9.9
M	3.5	9.9
114	3.4	10.0
crk	3.3	10.1
E	3.9	10.0



1336

S.L.

E	3.6	9.8
erb	3.6	9.8
1/4	3.7	9.7
M	3.7	9.7
1/4	3.8	9.6
erb	3.5	9.9
W	3.6	9.8

0+255

W	5.2	8.2
erb	5.1	8.3
1/4	5.0	8.4
M	5.0	8.4
1/4	4.8	8.6
erb	4.7	8.7
E	4.6	8.8

1336

0+50

23

E	5.8	7.6
erb	5.6	7.8
1/4	5.6	7.8
M	5.8	7.6
1/4	5.9	7.5
erb	6.1	7.3
W	6.2	7.2

0+75

W	7.8	5.6	
erb	7.3	6.1	
1/4	6.8	6.6	
M	6.7	6.7	
1/4	6.6	6.8	
erb	6.5	6.9	
E	6.7	6.7	
T.P.	<del>0.96</del> 7.77	6.45	6.91

~~77~~  
7.77  
1+0

E	2.0	5.8
crk	2.0	5.8
1/4	2.0	5.5
M	2.0	5.8
1/4	2.3	5.5
crk	2.9	5.4
W	2.5	5.3

1+0.5

W	2.7	5.1
crk	2.5	5.3
1/4	2.2	5.6
M	2.1	5.2
1/4	3.9	3.9
crk	4.4	3.4
E	2.2	5.6

1+12 on E 1+23 on W

24

W	9.8	-2.0
crk	10.1	-2.3
1/4	10.0	-2.2
M	9.9	-2.1
1/4	9.7	-1.9
crk	9.5	-1.7
E	9.2	-1.4

1+44 on E 1+6 on W = Water edge September 5<sup>th</sup> 9:00 A.M.

E	12.2	-4.4
crk	12.2	4.4
1/4	12.2	-4.4
M	12.2	-4.4
1/4	12.2	-4.4
crk	12.2	-4.4
W	12.2	-4.4

25

10th St curb

Prop. Line

13.5  
2 Rad. us.  
14.57

RMG 9/5/11

96.4  
curb

Prop. Line

14.52  
14.0

curb

14.0

ST

E

ST

9/11

simple  
equus  
Tehmor

ST

9th

26

Levels on curb & notes where the curb is not in  
 " Taken only where cement curb is in.

B.M. 12<sup>th</sup> St Brass Pla. 21.45  
 B.M. 1.76 23.21  
 T.P. 0.49 11.54 12.16 11.05

0+0 = E.L. 12<sup>th</sup> St

N. curb 8.0 3.5

0+16 = end of curb

N. curb 2.1 3.4

T.P. 7.62 10.90 8.26 3.28

0+0 = V.L. National - see sketch

0+0 N. curb 7.7 3.2

0+25 " " 7.9 3.0

0+59.9 " " return 7.9 3.0

0+0 = E.L. 13<sup>th</sup> N. curb

0+0 no return 7.9 3.0

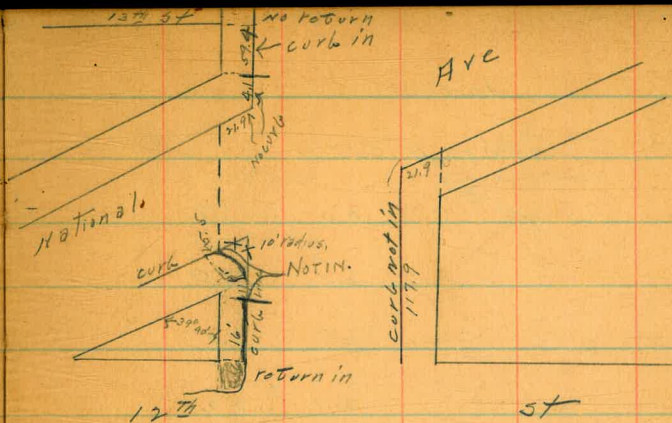
0+25 7.4 3.5

0+50 7.0 3.9

note - 6" broken off top of curb from 0+74 to 0+79 OK

0+75 6.8 4.1

1+0 5.9 5.0



curb not in from sta 0+16 E. of 12<sup>th</sup> St to N.L. of M<sup>1</sup>

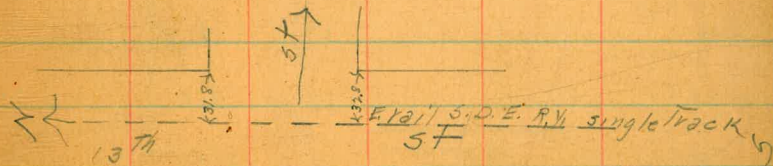
note - No curb in from 12<sup>th</sup> St to E. curb line of 14<sup>th</sup> St on S. side

1+25 5.4 5.5

1+50 4.9 6.0

1+91 end of curb - No Curb to 14<sup>th</sup> St Ret. 4.3 6.6

13<sup>th</sup> St to 14<sup>th</sup> St = 201.2'



10.90

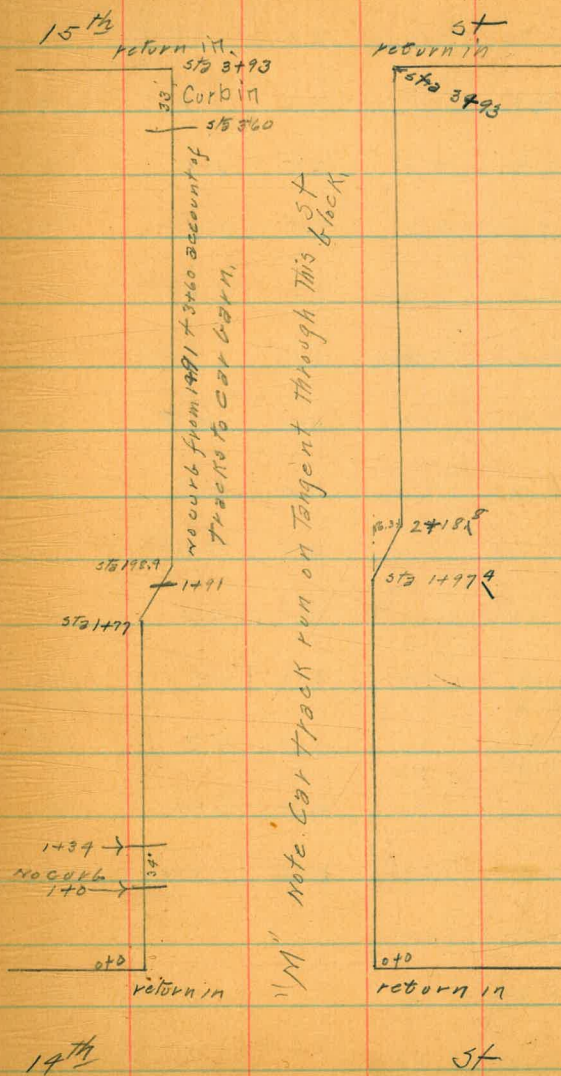
0+0 on N CURB

0+0	4.0	6.9
0+25	3.9	7.0
0+50	3.8	7.1
0+75	3.7	7.2
1+0	3.6	7.3
1+34	3.4	7.5
1+50	3.4	7.5
1+77	3.2	7.7
1+91	3.2	7.7
3+60	2.6	8.3
3+93 = n.l. 15 <sup>th</sup>	2.4	8.5

0+0 on S. CURB

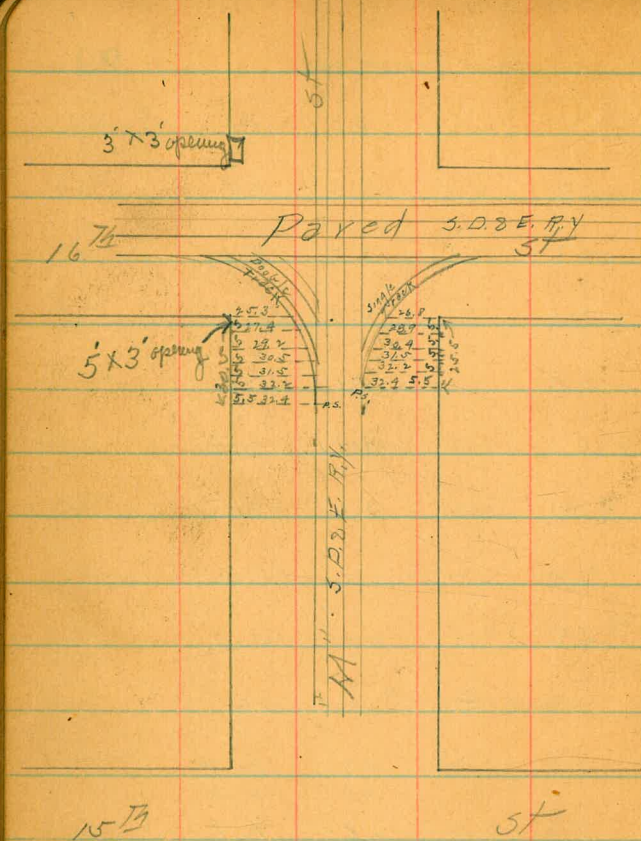
0+0	3.9	7.0
0+25	3.8	7.1
50	3.8	7.1
75	3.8	7.1

28



	10.90			
1+0		3.6	7.3	
25		3.6	7.3	
50		3.5	7.4	
75		3.5	7.4	
1+97 <sup>4</sup>		3.4	7.4	
T.P.	5.02	12.56	3.36	7.54
2+18 <sup>8</sup>		5.0	5.9	7.6
2+50		5.0	5.9	7.6
75		4.9	6.0	7.7
3+0		4.8	6.1	7.8
25		4.8	6.1	7.8
50		4.7	6.2	7.9
3+93 = W.L. 15 <sup>th</sup>		4.5	6.4	8.1
T.P.	8.01	16.11	4.46	8.10

	16.11			
0+0 = E.L. 15 <sup>th</sup> on 3 curb				20
0+0		8.0	8.1	
25		7.3	8.8	
50		6.5	9.6	
75		5.9	10.2	
1+0		5.1	11.0	
25		4.4	11.7	
50		3.6	12.5	
75		2.8	13.3	
2+0 = 16 <sup>th</sup> St		2.1	14.0	
0+0 = E.L. 15 <sup>th</sup> on 4 curb				
0+0		7.7	8.4	
25		6.9	9.2	
50		6.2	9.9	
75		5.4	10.7	
1+0		4.7	11.4	
25		3.9	12.2	
50		3.1	13.0	
75		2.4	13.7	
2+0 = 16 <sup>th</sup> St		1.6	14.5	
T.P.	11.25	6.26	1.60	14.51



26.26471

0+05 E.L. 16th ST

0+0

N. Crk	9.7	16.6
S. Crk	10.0	16.3

0+25

S. Crk	8.0	18.3
N. Crk	7.5	18.8

0+50

N. Crk	5.8	21.0
S. Crk	5.9	20.4

0+75

S. Crk	3.8	22.5
N. Crk	3.2	23.1

+0

N. Crk	0.9	25.4
S. Crk	1.7	24.6

T.P.	12.16	37.89	0.73	25.53
------	-------	-------	------	-------



3789

1+25

S. crk

11.1 26.6

N. crk

10.3 27.4

1+50

N. crk

8.1 29.6

S. crk

9.0 28.7

1+75

S. crk

6.9 30.8

N. crk

5.9 31.8

2+0 W.L. 17<sup>th</sup> ST = 80

N. crk

3.8 33.9

S. crk

4.8 32.9

2+0 = E.L. 17<sup>th</sup>

S. crk

2.7 35.0

N. crk

1.7 36.0

3+25

N. crk

0.9 36.8

S. crk

1.9 35.8

T. P.

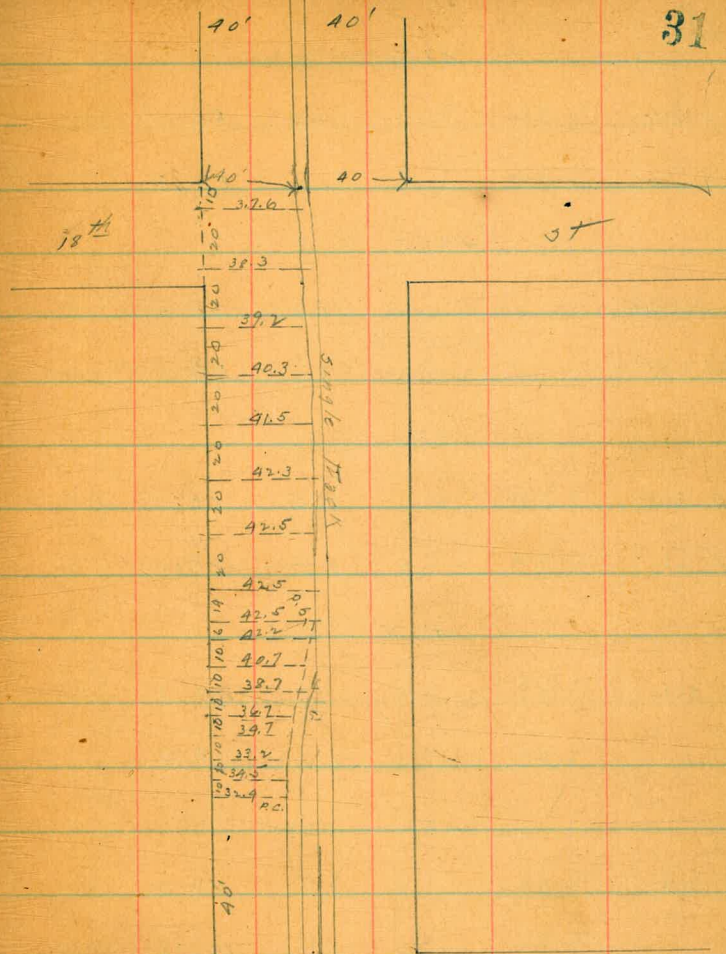
11.16

47.8L

0.99

36.70

31

17<sup>th</sup>

ST

47.86

0+50

S. curb 11.2 36.7

N. curb 10.1 37.8

0+75

N. curb 9.4 38.5

S. " 10.3 37.6

1+0

S. curb 9.4 38.5

N. " 8.5 39.4

1+25

N. curb 7.6 40.3

S. " 8.6 39.3

1+50

S. curb 7.7 40.2

N. " 6.6 41.3

1+75

N. curb 5.8 42.1

S. " 6.8 41.1

47.86

2+0 = W. L. 18<sup>th</sup> St

32

S. curb 5.9 42.0

N. " 4.9 43.0

0+0 = E. L. 18<sup>th</sup> St,

note - curb on N. side should be replaced  
 A low  
 account sunken condition from sta 0+0 to sta 0+41

0+0

N. curb 2.9 45.0

S. " 3.9 44.0

0+25

S. curb 2.6 45.3

N. " 1.9 46.0

0+50

N. curb 0.4 47.5

S. curb 1.9 46.5

T. R. 11.07 58.31 0.62 47.24

0+75

S. curb 10.6 47.7

N. " 9.6 48.7

53.31

140

N. crk 2.3 50.0

S. " 9.3 49.0

1425

S. crk 2.1 50.2

N. " 7.1 51.2

1450

N. crk 5.8 52.5

S. " 6.8 51.5

1475

S. crk 5.2 52.6

N. " 4.7 53.6

1400<sup>3</sup> = N. L. 19<sup>th</sup> ST 26 - 14 walks.

N. crk 3.4 54.9

S. " 4.4 53.9

33

140 = E. L. 19<sup>th</sup>

S. crk 2.3 56.0

N. " 1.4 56.9

1425

N. crk 1.1 57.2

S. " 2.1 56.2

1450

S. crk 1.9 56.4

N. " 0.9 57.4

1475

N. crk 0.6 57.7

S. " 1.6 56.7

140

S. crk 1.4 56.9

N. " 0.9 57.9

1425

N. crk 0.6 57.7

S. crk 1.6 56.7

58.31

1+50

S. Col. 1.8 56.5

N. 11 0.9 57.4

1+75

N. Col. 1.1 57.2

S. 11 2.1 56.2

1+99<sup>7</sup> = W.L. 20<sup>th</sup>

S. Col. 2.3 56.0

N. 11 1.3 57.0

0+0 = E.L. 20<sup>th</sup>

N. Col. 1.5 56.8

S. 11 2.8 56.0

0+25

S. Col. 2.7 55.6

N. 11 1.7 56.6

0+50

N. Col. 1.9 56.4

S. 11 3.0 55.3

T. P. 2.40 57.74 2.91 55.34

57.74

0+75

S. Col. 2.8 54.9

N. 11 1.6 56.1

1+0

N. Col. 1.8 55.9

S. 11 3.2 54.5

1+25

S. Col. 3.8 53.9

N. 11 1.9 55.8

1+50

N. Col. 2.2 55.5

S. Col. 4.0 53.7

1+75

S. Col. 4.4 53.3

N. 11 2.5 55.2

2+00<sup>7</sup> = W.L. 21<sup>st</sup> 5<sup>+</sup>

N. Col. 2.8 54.9

S. 11 4.7 53.0

34

LOOK UP CULV 5779

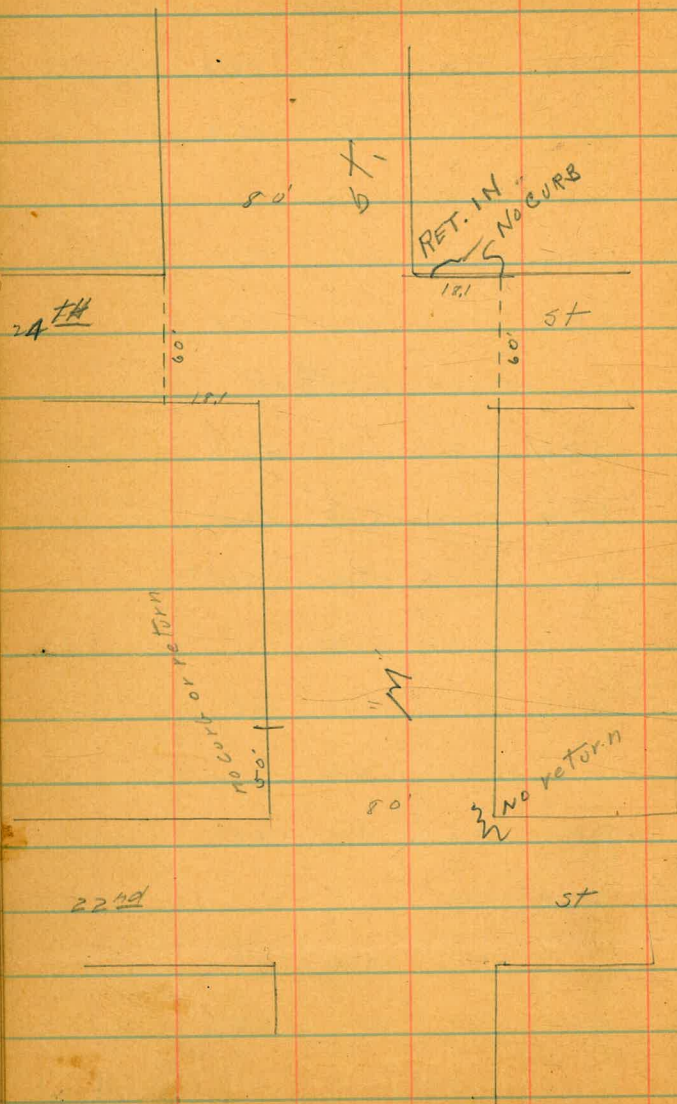
0+0 = E.L. 21<sup>st</sup> ST

S. Crk	4.7	53.0
N "	2.7	55.0
	0+25	
N Crk	2.6	55.1
S "	4.5	53.2
	0+50	
S Crk	4.1	53.6
N "	2.4	55.3
	0+75	
N Crk	2.2	55.5
S "	3.9	53.8
	1+0	
S Crk	3.5	54.2
N "	1.9	55.8
	1+25	
N. Crk	1.7	56.0
S "	3.3	54.4

5774

1+50

S Crk	3.0	54.7
N "	1.5	56.2
	1+75	
N Crk	1.4	56.3
S "	2.6	55.1
	2+01 = N.L. 22 <sup>nd</sup> ST	
S. Crk	2.3	55.4
N "	1.30	56.4
T.P.	4.68	61.12
	1.30	56.44
	0+0 = E.L. 22 <sup>nd</sup> ST	
S. Crk	5.1	56.0
	0+25	
S. Crk	5.0	56.1
	0+50	
S. Crk	4.9	56.2
N. Crk	3.9	57.2



6/12

0+25

N. curb	3.8	57.3
S. curb	4.8	56.3
	1+0	
S. curb	4.6	56.5
N. curb	3.6	57.5
	1+25	
N. curb	3.5	57.6
S. curb	4.5	56.6
	1+50	
S. curb	4.4	56.7
N. curb	3.5	57.6
	1+75	
N. curb	3.5	57.6
S. curb	4.2	56.9
	2+0	
S. curb	4.1	57.0
N. curb	3.3	57.8

0.36

	6,112		
	2725		
N. C. L.	3.5	52.6	
S. 11	4.5	56.6	
	2750		
S. C. L.	4.9	56.2	
N. 11	3.9	52.2	
	2775		
N. C. L.	4.3	56.8	
S. 11	5.2	55.9	
	3+0		
S. C. L.	5.7	55.4	
N. 11	4.7	56.4	
	3+25		
N. C. L.	5.1	56.0	
S. 11	6.0	55.1	
	3+50		
S. C. L.	6.4	54.7	
N. 11	5.4	55.7	

	6,112		
	3775		
N. C. L.	5.8	55.3	
S. 11	6.8	54.3	
	4+09 = N.L. 23 <sup>rd</sup> sec sketch p 36		
S. C. L.	7.3	53.8	
N. 11	6.2	54.9	
T.P.	5.43	60.36	6.19
	0+0 = E.L. 23 <sup>rd</sup> sec		
N. C. L.	5.4	55.0	
S. 11	6.4	54.0	
	0+25		
S. C. L.	6.3	54.1	
N. 11	5.3	55.1	
	0+50		
N. C. L.	5.2	55.2	
S. 11	6.4	54.2	

6036

0725

S. orb 6.1 54.3

N. " 5.1 55.3

1425

N. orb 5.0 55.4

S. " 5.9 54.5

1425

S. orb 5.8 54.6

N. " 4.8 55.6

1450

N. orb 4.7 55.7

S. " 5.7 54.2

1475

S. orb 5.4 55.0

N. " 4.5 55.9

1470

N. orb 4.3 56.1

S. " 5.3 55.1

6036

2725

38

S. orb 5.1 55.3

N. " 4.2 56.2

2750

N. orb 3.9 56.5

S. " 4.9 55.5

2775

S. orb 4.7 55.7

N. " 3.7 56.7

3+0

N. orb 3.5 56.9

S. " 4.6 55.8

3+25

S. orb 4.3 56.1

N. " 3.4 57.0

3+50

N. orb 3.2 57.2

S. " 4.2 56.2



6036

3+75

S orb 4.0 56.4

N " 3.0 57.4

4+0

N orb 2.8 57.6

S " 3.8 56.6

4+25

S orb 3.6 56.8

N " 2.7 57.7

4+50

N orb 2.5 57.9

S " 3.4 57.0

4+75

S orb 3.3 57.1

N " 2.9 58.0

5+0

N orb 2.1 58.3

S " 3.1 57.3

6036

5+25

S orb 3.0 57.4

N " 2.0 58.4

5+50

N orb 1.8 58.6

S " 2.8 57.6

5+75

S orb 2.7 57.7

N " 1.7 58.7

6+00 = W.L. 25<sup>th</sup> St

N orb 1.5 58.9

S " 2.5 57.9

T.P. 517 64.11 1.42 58.94

Notes - 25<sup>th</sup> St 100' - 20' 5dms E. rail single

Track 224 W of E. O.K. 6

0+0 = E.L. 25<sup>th</sup> St.

S 5.2 58.9

N 6.0 57.9

64.11  
0+25

N. side 5.0 59.1  
S. " 6.0 58.1

0+50

S. side 5.7 58.4  
N. " 4.7 59.4

0+75

N. side 4.6 59.5  
S. " 5.5 58.6

1+0

S. side 5.3 58.8  
N. " 4.3 59.8

1+25

N. side 4.1 60.0  
S. " 5.1 59.0

1+40 = W.L. 20' Alley

S. side 4.9 59.2  
N. " 4.0 60.1

64.11  
1+60 = E.L. Alley 10

N. side 3.8 60.3  
S. " 4.8 59.3

1+75

S. " 4.7 59.4  
N. side 3.7 60.4

2+0

N. " 3.5 60.6  
S. " 4.4 59.7

2+25

S. " 4.2 59.9  
N. " 3.2 60.9

2+50

N. " 3.0 61.1  
S. " 3.9 60.2

2+75

S. " 3.8 60.3  
N. " 2.8 61.3

	64.11		
	3+0		
N. Crk		2.5	61.6
S "		3.5	60.6
	3+25		
S "		3.3	60.8
N "		2.3	61.8
	3+50		
N "		2.1	62.0
S "		3.1	61.0
	3+75		
S "		2.9	61.2
N "		1.9	62.2
	4+0		
N "		1.6	62.5
S "		2.6	61.5
	4+25		
S "		2.4	61.7
N "		1.9	62.7

	64.11			41
	4+50			
N Crk		1.2	62.9	
S "		2.2	61.9	
	4+75			
S "		2.0	62.1	
N "		1.0	63.1	
	5+0			
N "		0.8	63.3	
S "		1.8	62.3	
	5+25			
S "		1.5	62.6	
N "		0.5	63.6	
	5+60 = N. 426 <sup>th</sup> St 60' - 10' Walks			
N "		0.2	63.9	
S "		1.2	62.9	
T.P.	3.82	67.74	0.19	63.92

67.74

note - no curb between 26<sup>th</sup> & 27<sup>th</sup> on N. side betweenSts 2+25 2+75 also no curb at N.W. cor 27<sup>th</sup> St0+0 = E.L. 26<sup>th</sup> St

S curb 4.8 62.9

N " 3.7 64.0

0+25

N " 3.7 64.0

S " 4.7 63.0

0+50

S " 4.6 63.1

N " 3.6 64.1

0+75

N " 3.5 64.2

S " 4.5 63.2

1+0

S " 4.4 63.3

N " 3.5 64.2

67.74

1+25

42

N curb 3.5 64.2

S " 4.9 63.3

1+50

S " 4.4 63.3

N " 3.4 64.3

1+75

N " 3.3 64.4

S " 4.3 63.4

2+0

S " 4.2 63.5

N " 3.2 64.5

2+25

N " 3.3 64.4

S " 4.1 63.5

2+50

S " 4.0 63.7

no curb

6774

2+25

N. 11

3.0 64.7

S 11

3.9 63.8

3+0

S 11

3.8 63.9

N 11

3.0 64.7

3+25

N 11

3.0 64.7

S 11

3.8 63.9

3+50

S 11

3.7 64.0

N 11

2.9 64.8

3+75

N 11

2.8 64.9

S 11

3.5 64.2

4+0

S 11

3.5 64.2

N 11

2.7 63.0

6779

4+25

N 11

2.6 65.1

S 11

3.4 64.3

4+50

S 11

3.3 64.4

N 11

2.5 65.2

4+75

N 11

2.6 65.1

S 11

3.2 64.5

5+0

S 11

3.2 64.5

N 11

2.6 65.1

5+25

N 11

2.5 65.2

S 11

3.1 64.6

5+50

S 11

3.0 64.7

N 11

2.9 65.3

43

67.74

5+75

N 11		2.4	65.3
S 11		2.9	64.8
	6+00 <sup>7</sup> =	n.l. 27 <sup>th</sup> st	
S 11		2.6	65.1
N 11		2.3	65.4
T.P	4.26	69.95	2.05 65.69

Note 27<sup>th</sup> st is 45.35' wide on north & 44.77' on S.

Note no curb <sup>or return</sup> on S.L.M. between 27<sup>th</sup> & Evans.

0+0 = E.L. 27<sup>th</sup> st

North curb			
0+0		3.9	66.1
0+25		3.6	66.4
0+50		3.2	66.8
0+75		2.8	67.2
1+0 = n.l. Evans 80' wide		2.4	67.6

return on N.M. car only

Curb on EVANS wide  
4' x 1'

44

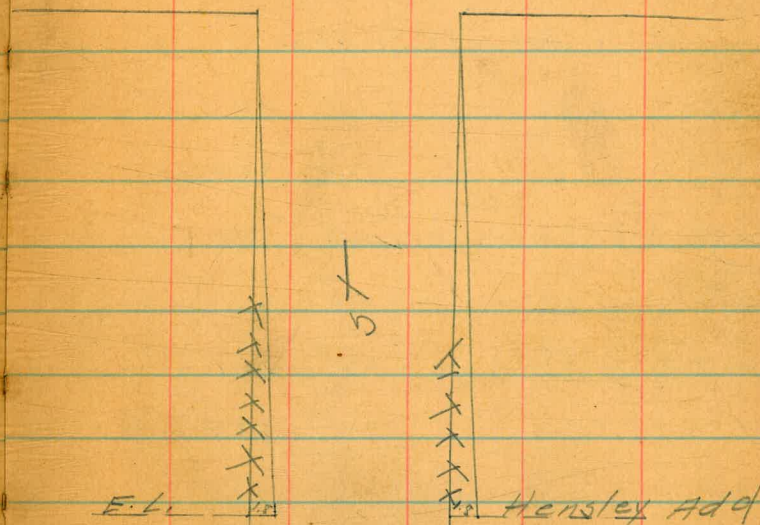
Note no curb in from E.L. EVANS on S.L.M. including

& Hensley (80' wide) to sta 5+51<sup>5</sup>

no curb in from E.L. EVANS ~~to~~ on N.L.M. including

(Hensley 80' wide) to sta

"M" st jags 1.8's at E.L. Hensley's Add. see sketch  
curb on N.L. at sta 6+97 is 0.9' to far N sta 7+47 is 0.77' to far N,

29<sup>th</sup>5<sup>th</sup>

From N.W. P.R.S.P.K. 277<sup>th</sup> 21<sup>st</sup> 265.69

S.L.

B.M. 8.21 73.90

5+59<sup>5</sup>

4.2 73.1

T.P. 9.08 77.32 0.66 73.24

+75

4.2 73.1

note curb in on S. side between sta 5+59<sup>5</sup> & 6+47<sup>5</sup>

6+0

4.4 73.1

and between 7+72<sup>3</sup> & 8+22<sup>1</sup> using E.L. Evans & O.T.O.

6+25

4.2 73.1

curb in on N. side from <sup>not on line</sup> (sta 6+97 to 7+47) & 7+1006+47<sup>5</sup>

4.1 73.2

7+96<sup>5</sup> to 9+71<sup>9</sup> = N.L. 29<sup>th</sup> 60' wide no returns on R9no curb  
7+72<sup>3</sup>

3.9 73.4

~~8~~ N.L. CURB

8+0

4.0 73.3

sta 6+97

3.0 74.3

8+22

3.9 73.4

7+25

3.0 74.3

T.P. 4.50 75.87 5.95 71.37

7+47

2.9 74.4

O.T.O. = E.L. 29<sup>th</sup>note no curb in on S. side from 29<sup>th</sup> to sta 1+11no curb  
7+96<sup>5</sup>

3.0 74.3

and from sta 2+0 to sta 2+50 N.W. & S.W. returns in at 30<sup>th</sup> <sup>60' wide</sup>

8+25

3.2 74.1

No curb in on N. side from E.L. 29<sup>th</sup> to sta 1+29<sup>th</sup> and from

8+50

3.4 73.9

sta 5+0 to 6+29<sup>th</sup>

75

3.6 73.7

9+0

3.8 73.5

## N.L. CURB

25

4.0 73.3

1+29<sup>th</sup>

3.9 72.0

50

4.2 73.1

1+50

3.7 72.2

9+71<sup>9</sup> N.L. 29<sup>th</sup>

4.3 73.0

75.87

1775	3.7	722.2
270	3.5	722.4
25	3.4	722.5
50	3.3	722.6
75	3.2	722.7
340	3.0	722.9
25	2.9	73.0
50	2.7	73.2
75	2.7	73.2
9	2.5	73.4
25	2.4	73.5
50	2.3	73.6
75	2.2	73.7
570	2.0	73.9
↑ N. Crk 67.29.5	1.4	74.5
50	1.3	74.6
75	1.1	74.8

48

75.87

770	1.0	724.9
1724	<sup>wide</sup> 0.9	75.0
S. Crk Line 29 <sup>th</sup> to 30 <sup>th</sup>		
1711	4.9	71.0
25	4.9	71.0
50	4.8	71.1
75	4.6	71.3
270	4.4	71.5
2750	4.1	71.8
75	4.0	71.9
370	3.8	72.1
25	3.6	72.3
50	3.5	72.4
75	3.3	72.6
470	3.1	72.8
25	3.0	72.9
50	2.8	73.1



75.97

4+75	2.7	73.2
5+0	2.5	73.4
25	2.3	73.6
50	2.2	73.7
75	2.0	73.9
6+0	1.9	74.0
75	1.6	74.3
50	1.5	74.4
75	1.2	74.7
7+0	1.0	74.9
7+	0.9	75.0

T.P. 4.76 279.73 0.90 274.97

Note - No curb in between 30<sup>th</sup> & 31<sup>st</sup> except15' on S. side from E.L. 30<sup>th</sup> E

S.L. CURB

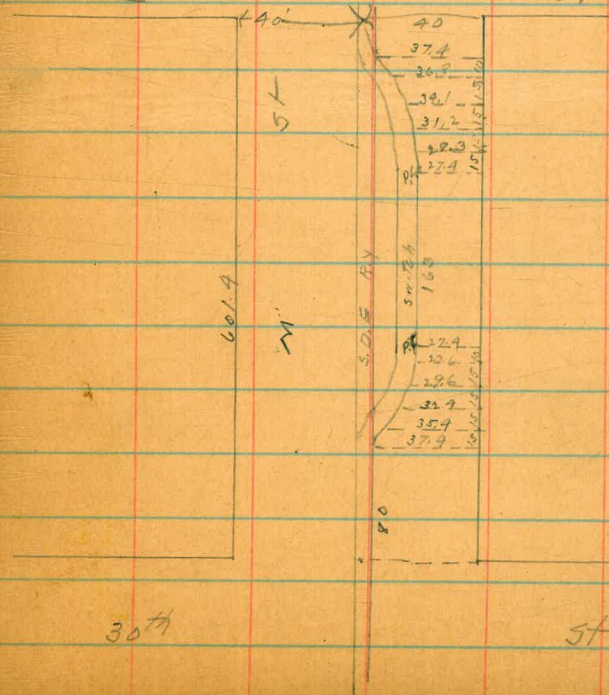
0+0 = E.L. 30 <sup>th</sup> no return	4.3	75.4
25	4.3	75.4

RETURN TO CITY ENGINEER'S OFFICE  
CITY HALL, SAN DIEGO, CAL.

47

279.73

50	4.2	75.5
75	4.2	75.5
1+0	4.1	75.6
25	4.1	75.6
1+50 end of curb	4.0	75.7

Note 31<sup>st</sup> st to 32<sup>nd</sup> st = 600'31<sup>st</sup>5<sup>th</sup>

48

Levels on Curbs & notes where curb is not in on  
B St. from 6<sup>th</sup> St. to 12<sup>th</sup> St.

12/11 Hatch  
no more

		0.0 = E. Line of 6 <sup>th</sup> St.	Grade of Curb
37m	594	69.37	58.230
N		5.87	58.5
S		6.90	57.5
	+25		
S		6.54	57.83
N			58.75
	+50		
N			59.0
S		6.19	58.18
	+75		
S		5.83	58.54
N			59.25
	+100		
N			59.50
S		5.45	58.92
	+125		
S		5.02	59.35
N			59.75

No Curb on North between 6<sup>th</sup> - 7<sup>th</sup> St.

				49 Grade of Curb
		1.450		60.00
N				60.00
S		4.66	59.71	59.75
	+175			
S		4.26	60.11	60.12
N				60.25
	+200 = W. Line of 7 <sup>th</sup> St.			
N		no return		60.5
S		.387		
	return 536	60.50		60.5
	526	66.63	300	61.97
	0.0 = E. Line of 7 <sup>th</sup> St.			
S		5.25	61.38	61.5
N		5.14	61.49	61.5
	+25			
N		5.0	61.63	61.75
S		5.02	61.61	61.69
	+50			
S		4.81	61.82	61.87
N		4.72	61.91	62.00

6663

+75

Grade of Curb

N	4.99	62.14	62.25
S	4.62	62.01	62.06

1+00

S	4.90	62.23	62.25
N	4.17	62.46	62.50

1+25

N	3.98	62.65	
	4.80	62.33	
N	3.78	62.85	62.75
S	4.13	62.50	62.44

1+50

S	3.95	62.68	62.62
N	3.69	62.94	63.0

Curb bank below grade from 1+00 to Cor. on 10-7-71

1+75

N			63.25
S	3.77	62.86	62.81

2+00 = W. Line of 8<sup>th</sup> St.

S	3.67	62.96	63.0
	return 3.69	62.94	
N			63.5

590

69.73

270

63.93

6983

50

0.0 = E. Line of 8<sup>th</sup> St.

Return 534

64.49

Grade of Curb

N	5.26	64.57	64.5
S	5.90	63.93	64.0

+25 =

S	5.53	64.30	64.37
N	4.93	64.90	64.87

+50 =

N	4.57	65.26	65.25
S	5.17	64.66	64.75

+75 =

S	4.71	65.12	65.12
N	4.14	65.69	65.62

1+00

N	3.37	65.96	66.00
S	4.34	65.49	65.50

1+25

S	4.02	65.81	65.87
N	3.95	66.38	66.37

6953

1+50

			Grade of Curb	
N		300	66.83	66.75
S		361	66.22	66.25

1+75

S		325	66.58	66.62
N		270	67.13	67.12

2+00 = W. Line of 9<sup>th</sup> St.

N		228	67.55	67.5
S		285	66.98	67.0

0.0 = E. Line of 9<sup>th</sup> St.

S	837	76.34	1.86	67.97	68.0
N	South of return sink	213		67.70	68.0

+25

N				68.5	
S		782		68.52	68.56

+50

S		728		69.06	69.12
N				69.0	

no curb on North  
from 9<sup>th</sup> to 10<sup>th</sup> East

7634

+75

			Grade of Curb	
N				69.5
S		682	69.52	69.69

1+00

S			621	70.13	70.25
N			624	70.10	70.0

1+25

N			580	70.54	70.5
S			565	70.69	70.81

1+50

S			502	71.32	71.37
N			524	71.10	71.0

1+75

N			496	71.58	71.5
S			420	71.94	71.94

2+00 = W. Line of 10<sup>th</sup> St

S	Return	383			
S		385		72.49	72.5
N	Return	421			
N		423		72.06	72.0

00 = E. Line of 10<sup>th</sup> St.  
Grade of Curb  
10.33 82.67  
Return 9.15  
9.17  
72.4 + 13m  
73.52  
73.50  
73.5

N  
S  
+25  
S  
N

74.5  
75.56  
74.70  
74.69

+50  
N  
S  
+75  
S  
N

6.75  
75.87  
76.62  
77.69  
77.06  
77.06

1+00  
N  
S  
+25  
S  
N

4.97  
3.89  
2.85  
78.20  
78.78  
78.25  
78.75  
79.81  
79.44

no wind on S from 10<sup>th</sup> East  
" " " " 11<sup>th</sup> West  
" return on SE on 10<sup>th</sup> B

32.67  
1+50

N  
S  
1.81  
80.86  
80.87

+75  
S  
N  
0.81  
81.86  
81.94  
81.81

5.49  
87.77  
0.39  
32.28  
2+00 = W. Line of 11<sup>th</sup> St.  
Return 2.52  
2.50  
82.92  
83.0  
Return 4.82  
4.87  
82.95  
82.90  
83.0

00 = E Line of 11<sup>th</sup> St  
Return 2.79  
2.77  
2.82  
84.98  
84.90  
85.00  
84.95  
85.0  
85.0

+25  
N  
S  
86.56  
86.44

+50  
S  
N  
87.87  
88.12

no curbs between 11<sup>th</sup> St and 12<sup>th</sup> St

			Grade of curb
N	+75		89.69
S			89.31
	1+00		
S			90.75
N			91.25
	1+25		
N			92.81
S			92.19
	1+50		
S			93.63
N			94.37
	1+75		
N			95.94
S			95.06
	387	10 1.85	97.48 10m -
			200 = W. Line of 12" St.
S		4.89	96.5
N		3.91	97.5

levels on 2<sup>d</sup> St N to Arizona R. of W  
 13/4 Hatch  
 11/11 Wood

13m	301	1346	10.260	SW 2 <sup>d</sup> H	1+50		
		00 = Sh H		Grade of Curb	W	1+60	4.72
W		306	10.40		E		4.56
E		306	10.40			1+75	
	+25				E		4.80
E		325	10.11		W		4.87
W		335	10.11			2+00	
	+50				W	Runway 1+99	505
W		356	9.90		E		505
E		359	9.87			2+25	
	+75				E	Runway 2+22	530
E		385	9.61		W		534
W		383	9.63			2+50	
	100				W		557
W		405	9.41		E		554
E	95'	401	9.45			2+75	
	1425				E		585
E		442	9.04		W		583
W		433	9.11				

54

Grade of Curb



1346

3400 = Nbr. of I

W	Return	610	7.36
		606	7.40
E	Return	609	7.34
		602	7.44

20 = S.L. of I

E	Rate	657	6.89
		657	6.89
W	Return	654	6.92
		9.83	6.87
			6.89

+25

W		324	6.59
E		325	6.58

+500

E		354	6.29
W		348	6.35

+75

W		375	6.08
E		386	5.97

1400

E		412	5.71
W		396	5.87

983

1+25

W		420	5.63
E		443	5.40

1+50

E		472	5.11
W		448	5.35

1+75

W		473	5.10
E		507	4.76

2+00

E		540	4.63
W		499	4.84

2+25

W		530	4.53
E		558	4.25

2+50

E		586	3.97
W		552	4.31

55

2+75  
Runway  
2+71

W	568	4.15
E	616	3.67

3+00 = N.L. of J  
Return

E	643	3.40
E	643	3.40
W	594	3.89
W	597	3.86

00 = S.L. of J  
Return

W	413	7.57	642	3.41	B.M.
E			690	4.93	
E			690	4.93	

+25

E	473	2.81
---	-----	------

W	428	3.26
---	-----	------

+50

W	436	3.18
---	-----	------

E	480	2.74
---	-----	------

+75

E	488	2.66
---	-----	------

W	452	3.04
---	-----	------

1+00

W	463	2.91
---	-----	------

Runway  
0+94

E	490	2.64
---	-----	------

1+30

E	507	2.47
---	-----	------

1+50

Curbs 100' further  
on both sides of street

W		
E		

1+75

E		
---	--	--

W		
---	--	--

2+00

W		
---	--	--

E		
---	--	--

2+25

E		
---	--	--

W		
---	--	--

56

2+50

W

E

2+75

E

W

3+00 =

W

E

E

W

E

W

E

W

57

Levels over curb from Ivy to Walnut and notes on busted curb.

00 = N. L. Ivy return

B.M. or Curb	July 24	215.12	972	205.49	B.M.
W	9.13		9.65	205.47	205.5
E		Return	8.66	206.16	206.5
			8.62	206.50	
+25					
E			8.13	206.99	207.04
W			9.12	206.00	206.04
+50					
W			8.58	206.54	206.58
E			7.59	207.33	207.58
+75					
E			7.06	208.06	208.12
W			8.03	207.09	207.12
+100					
W			7.50	207.62	207.67
E			6.46	208.66	208.67

	215.12		58
E	1+25	598	209.14 209.21
W		695	208.17 208.21
+50			
W		640	208.72 208.75
E		544	209.68 209.75
+75			
E		491	210.24 210.29
W		590	208.22 209.29
+100			
W		523	208.69 <sup>411 bar</sup> 209.83
E		430	210.82 210.83
+125			
E		352	211.30 211.38
W	2+12	593	(209.69) <sup>411 bar</sup> 210.38
W		502	210.10 210.38
+150			
W		122	210.70 <sup>22 bar</sup> 210.92
E		326	211.36 211.92

215.12  
2+75  
2197 RM NE  
42 Juniper

E		278	210.34	212.16
2+68		426	210.86	214.00
W		381	211.01	211.16

3+00 = S.L. Juniper

W	Return	337	211.85	212.0
		326	211.86	212.0
E	Return	216	214.96	213.0
		219	214.93	213.0

60 = N.L. Juniper

E	Return	120	213.94	214.0
		118	213.94	214.0
W	Return	304	212.08	213.0
		256	212.56	213.0
TP (10m)	943	223.40	213.97	

W		993	213.47	213.83
---	--	-----	--------	--------

E		864	214.76	214.83
---	--	-----	--------	--------

E		783	215.54	215.67
---	--	-----	--------	--------

W		902	214.38	214.67
---	--	-----	--------	--------

+85		791	215.49	215.50
W		820	215.20	215.50

E		705	216.35	216.50
---	--	-----	--------	--------

233.40  
1+00  
59

E		624	217.16	217.33
W		731	216.09	216.33

1+25

W		656	216.84	217.17
E		542	217.98	218.17

1+50

E		461	218.70	219.0
1+35		620	217.20	219.0
W		568	217.72	218.0

1+75

W		484	218.56	218.83
---	--	-----	--------	--------

E		371	219.69	219.83
---	--	-----	--------	--------

2+00

E		281	220.59	220.67
---	--	-----	--------	--------

W		396	219.44	219.67
---	--	-----	--------	--------

2+25

2+35		281	220.59	220.5
W		309	220.31	220.5

E		201	221.39	221.5
---	--	-----	--------	-------

223.90  
224.95 1871  
NW 1/4 Kalmia

2+50  
E 1.12 222.33  
W 2.31 221.33

2+75  
W 1.36 222.17  
E 0.83 223.7

3+00 = S.L. Kalmia

Return 11.33 223.97  
E 11.31 223.99 224.0  
Return 0.42 224.98  
W 0.43 224.97 223  
TP 12.32 235.30 0.42 222.98

00 = N.L. Kalmia

Return 10.40 224.90  
W (1871) 10.36 224.94 225.0  
Return 9.36 225.94  
E 9.34 225.96 226.0

+25  
E 8.02 227.33  
W 9.06 226.33

+50  
W 7.76 227.66  
E 6.73 228.66

235.30  
+75 60

E 5.49 229.31 230.0  
W 6.42 228.88 229.0

1+00  
W 5.07 230.23 230.33  
E 4.10 231.20 231.33

1+25

E 3.78 231.52 232.67  
W 3.78 231.52 231.67

1+50  
W 2.45 232.85 233.0  
E 1.41 233.89 234.0

1+75  
E 0.09 235.21 235.33  
W 1.13 234.19 234.33

TP 11.16 246.37 0.09 235.21  
2+00

W 10.80 235.57 235.67  
E 9.83 236.54 236.67

246.37

242.51 18 m  
NW on + barrel

2+25

E	8.51	237.86	238.0
W	9.48	236.89	237.0

2+50

W	8.73	238.24	238.33
E	7.17	239.20	239.33

2+75

E	5.89	240.48	240.67
W	6.85	239.52	239.67

3+00 = S.L. Laurel

Return

W	5.41	240.26	
	5.45	240.26	241.0
	4.43	241.94	
E	4.47	241.90	242.0

00 = N.L. Laurel

Return

E	2.83	243.54	
	2.85	243.52	243.5
	3.94	242.43	
W	3.91	242.46	242.5
	4.35	241.52	

+25

W	3.13	243.24	243.29
E	2.14	244.23	244.29

246.37

61

+50

E	1.44	244.93	245.08
W	2.32	244.05	244.08

+75

W	1.56	244.81	244.88
E	0.62	245.75	245.88

1+00

E	11.21	246.62	246.67
W	0.67	245.70	245.67
T.P	11.59	257.88	0.13
		246.24	

1+25

W	11.20	246.43	246.46
E	10.48	247.35	247.46

1+50

E	9.66	248.17	248.25
W	10.60	247.33	247.25

1+75

W	9.83	248.00	248.04
E	8.88	249.95	249.04

257.83  
2+00

E 8.08 249.75 249.53

W 9.05 248.78 248.83

2+25

W 8.25 249.58 249.62

E 7.32 250.51 250.62

2+50

E 6.49 251.34 251.42

W 7.49 250.34 250.42

2+75

W 6.70 251.13 251.21

E 5.73 250.10 250.21

3+00 - S.L. Maple

E Return 4.90 252.93  
4.90 252.93 253.0

W Return 5.90 251.93  
5.89 251.94 252.0

BM 7.44 260.89 4.88 253.25

00 = N.L. Maple

W Return 7.44 253.45  
7.44 253.45 253.5

E Return 6.48 254.41  
6.48 254.41 254.5

12  
26  
11

260.89  
+25

62

E 5.88 255.01 255.12

W 6.86 254.23 254.12

+50

W 6.24 254.65 254.75

E 5.24 255.65 255.75

+75

E 4.61 256.28 256.38

W 5.63 255.26 255.38

1+00

W 4.95 255.94 256.0

E 4.00 256.89 257.0

1+25

E 3.34 257.55 257.62

W 4.32 256.57 256.62

1+50

W 3.73 257.16 257.25

E 2.70 258.19 258.25



26089

1+75

E		208	258.81	258.87
W		207	257.82	257.87

2+00

W		245	258.44	258.50
E		142	259.47	259.50

2+25

E		077	260.12	260.12
W		186	259.03	259.12

2+50

W		122	259.67	259.75
E	682	267.59	0.12	260.77
				260.75

2+75

E		628	261.31	261.37
W		731	260.28	260.37

300 = S.L. Nutmeg

	Return	664	260.95	
W		662	260.97	261.0
	Return	558	261.01	
E		558	262.01	262.0

26759

00 = N.L. Nutmeg

	Return	465	262.94	
E		460	262.99	263.0
	Return	566	261.93	
W	1274	563	261.96	262.0

1+25

W		546	262.13	262.21
E		149	263.10	263.21

+50

E		424	263.35	263.42
W		524	262.35	262.42

+75

W		502	262.57	262.62
E		402	263.57	263.62

1+00

E		350	263.79	263.83
W		482	262.77	262.83

1+25

	1+23	260	261.99	
W	Runway			263.04
E		366	263.93	264.04

2619618M  
NW Cor #4  
63

36759  
1+50

E	342	264.17	264.25
W	436	263.23	263.25

1+75

W	422	263.37	263.46
E	328	264.26	264.46

2+00

E	301	264.58	264.67
W	402	263.57	263.67

2+25

W	374	263.85	263.88
E	283	264.76	264.88

2+50

E	160	264.99	265.00
W	360	263.99	264.00

2+75

W	370	264.19	264.22
E	240	265.19	265.22

26759  
3+00 = S.L. Olive  
26520 B 7M NW cor 1st Olive 6+

E	Return 2.17	265.42	
	2.15	265.44	265.5
W	Return 3.17	264.42	
	3.16	264.43	264.5

3+25 = N.L. Olive

W	6.59	Return 2.00	265.09		
		27.79	2.89	265.20	265.0
E		Return 5.60	266.19		
		5.56	266.23	266.0	

+25

E	548	266.31	266.12
W	654	265.25	265.12

+50

W	636	265.43	265.25
E	530	266.49	266.25

+75

E	517	266.62	266.37
W	622	265.57	265.37

1+00

W	609	265.70	265.50
E	510	266.69	266.50

271.79

1+25

E	498	266.81	266.62
W	596	265.83	265.62

1+50

W	586	265.93	265.75
E	486	266.93	266.75

1+75

E	476	267.03	266.87
W	588	265.91	265.87

2+00

W	586	265.93	266.0
E	457	267.03	267.0

2+25

E	448	267.31	267.12
W	573	266.06	266.12

2+50

W	563	266.16	266.25
E	430	267.46	267.25

271.79

2+75

E	427	267.52	267.37
W	548	266.31	266.37

3+00 = S.L Palm

W	<del>no</del> return	542	266.37	266.5
E	return	406	267.73	
		409	267.70	267.5

00 = N.L Palm

E	13M 6.7	Return	487	267.42	
			273.59	4.44	15
					267.5

W	<u>no</u> return			266.5
---	------------------	--	--	-------

+25

W				
E		6.13	267.46	267.62

+50

E		6.07	267.52	267.75
---	--	------	--------	--------

W				
---	--	--	--	--

+75

W				
E		6.00	267.59	267.87

26742 13M  
NE on 4<sup>th</sup> Palm

65

27359

1400

E 583 267.76 268.0 2

W 2

1425

W 5

E 572 267.87 268.12 5

1450

E 547 268.12 268.25

W

1475

W  
E 537 268.32 268.37

2400

E 518 268.41 268.50

W

2425

W

E 508 268.51 268.62

26891 18711 NEON 4<sup>th</sup> Quince

27359

2450

66

E 492 268.67 268.75

W

2475

W

E 482 268.77 268.87

3400 = SL. Quince

E Return 486 268.73 269.0  
486 268.73

W

268.0

00 = N.L. Quince

W

268.0

E Return 472 268.87 269.0  
468 268.91

425

E

458 269.01 269.12

W

450

W

E 443 269.16 269.25

273.59

+75

E 431 269.28 269.37

W

1+00

W

E 416 269.43 269.50

1+25

E 408 269.51 269.62

W

1+50

W

E 395 269.64 269.75

1+75

E 381 269.78 269.87

W

2+00

W

E 268 269.91 270.0

270.88 B7H NE Gr 4<sup>1/2</sup> Redwood

273.59

2+25

67

E 358 270.01 270.12

W

2+50

W

E 342 270.16 270.25

2+75

E 331 270.28 270.37

W

3+00 = S.L Redwood

W

Return 3.23 270.36 269.5

E 317 270.44 270.5

00 = N.L Redwood

E 548 Return 3.10 270.49 270.5  
on 275.86 321 270.38W No return 588 269.98 269.5  
single

+25

W

5.71 270.15 269.75  
High

E 5.30 270.56 270.67

27586

150

E	510	270.76	270.83
W	530	270.36	270.0

175

W	527	270.59	270.25
E	492	270.94	271.0

1400

E	472	271.14	271.17
W	504	270.82	270.5

1+25

W	485	271.01	270.75
E	460	271.26	271.33

1+50

E	440	271.16	271.50
W	464	271.22	271.0

1+75

W	444	271.42	271.25
E	427	271.59	271.67

27288 871 NW Cor 4<sup>th</sup> Spruce

27586

2+00

68

E	408	271.78	271.83
W	424	271.62	271.50

2+25

W	405	271.81	271.75
E	395	271.91	272.0

2+50

E	378	272.08	272.17
W	381	272.05	272.0

2+75

W	360	272.26	272.25
E	360	272.26	272.33

3+00 = S/L Spruce

E	Return	343	272.43
		343	272.43
W	Return	334	272.52
		338	272.48

4+00 = N/L Spruce

W	716	Return	298	272.88
		280.04	716	272.88
E	Return	716	272.88	273.0
		716	272.88	273.0

28001  
+25

E	674	273.30	273.50
W	671	273.33	273.50

+50

W	617	273.87	274.0
E	618	273.86	274.0

+75

E	575	274.29	274.50
W	570	274.34	274.50

1-00

W	513	274.89	275.0
E	524	274.80	275.0

1+25

E	478	275.26	275.50
W	467	275.37	275.5

1+50

W	416	275.88	276.0
E	429	275.75	276.0

27989 13th NW Cor 4<sup>th</sup> Thorry  
28004  
1+75

E	384	276.20	276.50
W	365	276.39	276.50

2+00

W	313	276.91	277.0
E	328	276.76	277.0

2+25

E	274	277.30	277.5
W	268	277.36	277.5

2+50

W	216	277.88	278.0
E	222	277.82	278.0

2+75

E	169	278.35	278.5
W	169	278.35	278.5

3+00 = S.L. Thorry

Return	1.14	278.90	
	1.16	278.88	279.0
Return	1.21	278.93	
	1.22	278.92	279.0

280.04  
00 - N.L. THORN

E Return 069 279.35  
068 279.36 279.5  
W Return 062 279.42  
805 287.27 062 279.42 279.5

+25

W 766 279.81 279.92  
E 772 279.75 279.92

+50

E 723 280.24 280.34  
W 720 280.27 280.34

+75

W 691 280.56 280.75  
E 683 280.64 280.75

+100

E 640 281.07 281.17  
W 645 281.02 281.17

+125

W 603 281.44 281.59  
E 608 281.39 281.59

287.47  
1450

E 570 281.77 282.00  
W 558 281.89 282.00

+175

W 521 282.26 282.42  
E 525 282.22 282.42

+200

E 479 282.68 282.83  
W 473 282.74 282.83

+225

W 437 283.10 283.24  
E 438 283.09 283.24

+250

E 391 283.56 283.66  
W 395 283.52 283.66

+275

W 356 283.91 284.08  
E 353 283.94 284.08

4.30  
10



W	3+00 = S.L. Upas			
E	Return 312	284.35	284.5	
	287.47	284.35	284.5	
	Return 310	284.37		
	310	284.37		
E	Return 255	284.92		
	256	284.91	285.0	
	Return 246	285.01		
W	251	284.96	285.0	
	+25			
W	215	285.32	285.30	
E	232	285.15	285.30	
	+50			
E	191	285.56	285.60	
W	185	285.62	285.60	
	+75			
W	160	285.87	285.90	
E	171	285.76	285.90	
	1+00			
E	141	286.06	286.20	
W	131	286.16	286.20	
	1+25			
W	102	286.45	286.50	
E	114	286.33	286.50	

71

	284.99	1271 NW	Cor 2 <sup>nd</sup> - Upas	
	287.39	1271 NW	" " Walnut	
	1+50	287.47		
E		0.83	286.64	286.79
W		0.77	286.70	286.79
	770	407	296.94	060
			286.87	
	1+67 <sup>3</sup>	= S.L.	Walnut,	
	Ret.	399	286.95	
W		396	286.98	287.0
	Ret	405	286.86	
E		407	286.87	287.0
	1271 chck	350	287.47	

72

E

W

W

E

E

W

W

E

E

W

W

E

E

W

W

E

E

W

W

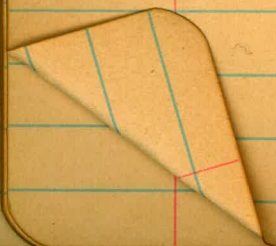
E

E

W

W

E



RETURN TO CITY ENGINEER'S OFFICE  
CITY HALL, SAN DIEGO, CAL.

75

E

W

W

E

E

W

W

E

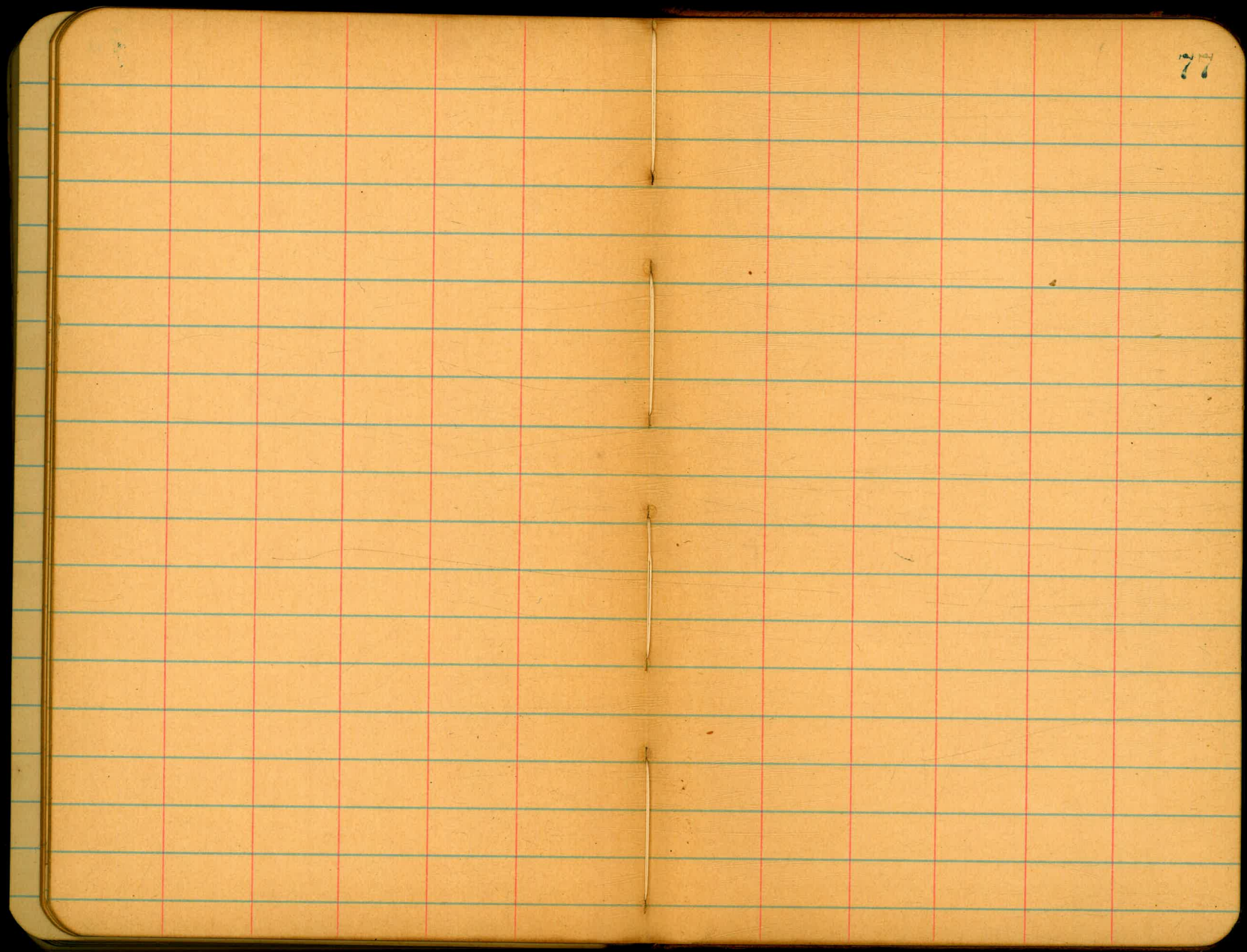
E

W

W

E





77

73



Look up Holbrook's init.

Curb out 30' No of H East side ✓

✓ 100' ✓ West ✓

✓ 150-200' ✓ G ✓

✓ 150-200' ✓ F East ✓

Tree 100' ✓ E ✓

Curb out 30-45' ✓ D ✓

✓ From P.L. at c across to N side ✓

✓ 200-300' No. of C. East side ✓

New piece in 50-100' ✓ Birch ✓

Curb out 200-250' ✓ Cedar ✓

New return SW cor Grape & India. ✓

No ✓ NW ✓

Curb out 150-180' No of ✓ on West. ✓ Tree.

Slight break 50' So of Nam - ✓ Leave in.

Curb out 150-200' No ✓ Ivy ✓

New ret SE cor Juniper ✓

✓ NE ✓

✓ NW ✓

✓ Curb 200' No of Juniper both side.

No ✓ 200' ✓ to Bridges

See about paving to Saline Kalmia, solid ground

stops int of No Curb Line West prop line at Bulkley

BK on east side.

Ret in SW Laurel

Curb in W side 50' So of Laurel

✓ 0-100' No ✓ Quince

✓ 100-150' ✓

Curve B.C. 10' So of S.K. Kinder.



70.0  
21.6  
57.4

73  
40  
200  
913

509  
52.56

100  
80  
200

200  
80  
200  
480

56.44  
59.74  
65.69

47.85  
44.82  
713  
298017.24  
2891

44.82  
48.34

480  
73.5  
509.5

Published by H. S. CROCKER COMPANY, Stationers, Drawing Materials, Mathematical Instruments, etc., San Francisco.

TRAVERSE TABLE FOR TRANSIT BOOK.  
From 1° to 90° for a distance of 100.

Degrees.	DEGREES.		½ DEGREE.		¼ DEGREE.		¼ DEGREE.		Degrees.
	Lat.	Dep.	Lat.	Dep.	Lat.	Dep.	Lat.	Dep.	
0			100.00	0.44	100.00	0.87	99.99	1.31	89
1	99.98	1.75	99.98	2.18	99.97	2.62	99.95	3.05	88
2	99.94	3.49	99.92	3.93	99.91	4.36	99.88	4.80	87
3	99.86	5.23	99.84	5.67	99.81	6.10	99.79	6.54	86
4	99.76	6.98	99.73	7.41	99.69	7.85	99.66	8.28	85
5	99.62	8.72	99.58	9.15	99.54	9.58	99.50	10.02	84
6	99.45	10.45	99.41	10.89	99.36	11.32	99.31	11.75	83
7	99.25	12.19	99.20	12.62	99.14	13.05	99.09	13.49	82
8	99.03	13.92	98.97	14.35	98.90	14.78	98.84	15.21	81
9	98.77	15.64	98.70	16.07	98.63	16.50	98.56	16.93	80
10	98.48	17.36	98.40	17.79	98.33	18.22	98.25	18.65	79
11	98.16	19.08	98.08	19.51	97.99	19.94	97.90	20.36	78
12	97.81	20.79	97.72	21.22	97.63	21.64	97.53	22.07	77
13	97.44	22.50	97.34	22.92	97.24	23.34	97.13	23.77	76
14	97.03	24.19	96.92	24.62	96.81	25.04	96.70	25.46	75
15	96.59	25.88	96.48	26.30	96.36	26.72	96.25	27.14	74
16	96.13	27.56	96.00	27.98	95.88	28.40	95.76	28.82	73
17	95.63	29.24	95.50	29.65	95.37	30.07	95.24	30.49	72
18	95.11	30.90	94.97	31.32	94.83	31.73	94.69	32.14	71
19	94.55	32.56	94.41	32.97	94.26	33.38	94.12	33.79	70
20	93.97	34.20	93.82	34.61	93.67	35.02	93.51	35.43	69
21	93.36	35.84	93.20	36.24	93.04	36.65	92.88	37.06	68
22	92.72	37.46	92.55	37.86	92.39	38.27	92.22	38.67	67
23	92.05	39.07	91.88	39.47	91.71	39.87	91.53	40.27	66
24	91.35	40.67	91.18	41.07	91.00	41.47	90.81	41.87	65
25	90.63	42.26	90.45	42.66	90.26	43.05	90.07	43.44	64
26	89.88	43.84	89.69	44.23	89.49	44.62	89.30	45.01	63
27	89.10	45.40	88.90	45.79	88.70	46.17	88.50	46.56	62
28	88.29	46.95	88.09	47.33	87.88	47.72	87.67	48.10	61
29	87.46	48.48	87.25	48.86	87.04	49.24	86.82	49.62	60
30	86.60	50.00	86.38	50.38	86.16	50.75	85.94	51.13	59
31	85.72	51.50	85.49	51.88	85.26	52.25	85.04	52.62	58
32	84.80	52.99	84.57	53.36	84.34	53.73	84.10	54.10	57
33	83.87	54.46	83.63	54.83	83.39	55.19	83.15	55.56	56
34	82.90	55.92	82.66	56.28	82.41	56.64	82.16	57.00	55
35	81.92	57.36	81.66	57.71	81.41	58.07	81.16	58.42	54
36	80.90	58.78	80.64	59.13	80.39	59.48	80.13	59.83	53
37	79.86	60.18	79.60	60.53	79.34	60.88	79.07	61.22	52
38	78.80	61.57	78.53	61.91	78.26	62.25	77.99	62.59	51
39	77.71	62.93	77.44	63.27	77.16	63.61	76.88	63.94	50
40	76.60	64.28	76.32	64.61	76.04	64.94	75.76	65.28	49
41	75.47	65.61	75.18	65.93	74.90	66.26	74.61	66.59	48
42	74.31	66.91	74.02	67.24	73.73	67.56	73.43	67.88	47
43	73.14	68.20	72.84	68.52	72.54	68.84	72.24	69.15	46
44	71.93	69.47	71.63	69.78	71.33	70.09	71.02	70.40	45
45	70.71	70.71							

177  
414  
18.4