

5
F.B. 815

380

FIELD

© York

TRAVERSE TABLE FOR TRANSIT BOOK.

From 1° to 90° for a distance of 100.

Degrees.	DEGREES.		¼ DEGREE.		½ DEGREE.		¾ DEGREE.		Degrees.
	Lat.	Dep.	Lat.	Dep.	Lat.	Dep.	Lat.	Dep.	
0			100.00	0.44	100.00	0.87	99.99	1.31	89
1	99.98	1.75	99.98	2.18	99.97	2.62	99.95	3.05	88
2	99.94	3.40	99.92	3.93	99.91	4.36	99.88	4.80	87
3	99.86	5.23	99.84	5.67	99.81	6.10	99.79	6.54	86
4	99.76	6.98	99.73	7.41	99.69	7.85	99.66	8.28	85
5	99.62	8.72	99.58	9.15	99.54	9.58	99.50	10.02	84
6	99.45	10.45	99.41	10.89	99.36	11.32	99.31	11.75	83
7	99.25	12.19	99.20	12.62	99.14	13.05	99.09	13.49	82
8	99.03	13.92	98.97	14.35	98.90	14.78	98.84	15.21	81
9	98.77	15.64	98.70	16.07	98.63	16.50	98.56	16.93	80
10	98.48	17.36	98.40	17.79	98.33	18.22	98.25	18.65	79
11	98.16	19.08	98.08	19.51	97.99	19.94	97.90	20.36	78
12	97.81	20.79	97.72	21.22	97.63	21.64	97.53	22.07	77
13	97.44	22.50	97.34	22.92	97.24	23.34	97.13	23.77	76
14	97.03	24.19	96.92	24.62	96.81	25.04	96.70	25.46	75
15	96.59	25.88	96.48	26.30	96.36	26.72	96.25	27.14	74
16	96.13	27.56	96.00	27.98	95.88	28.40	95.76	28.82	73
17	95.63	29.24	95.50	29.65	95.37	30.07	95.24	30.49	72
18	95.11	30.90	94.97	31.32	94.83	31.73	94.69	32.14	71
19	94.55	32.56	94.41	32.97	94.26	33.38	94.12	33.79	70
20	93.97	34.20	93.82	34.61	93.67	35.02	93.51	35.43	69
21	93.36	35.84	93.20	36.24	93.04	36.65	92.88	37.06	68
22	92.72	37.46	92.55	37.86	92.39	38.27	92.22	38.67	67
23	92.05	39.07	91.88	39.47	91.71	39.87	91.53	40.27	66
24	91.35	40.67	91.18	41.07	91.00	41.47	90.81	41.87	65
25	90.63	42.26	90.45	42.66	90.26	43.05	90.07	43.44	64
26	89.88	43.84	89.69	44.23	89.49	44.62	89.30	45.01	63
27	89.10	45.40	88.90	45.79	88.70	46.17	88.50	46.56	62
28	88.29	46.95	88.09	47.33	87.88	47.72	87.67	48.10	61
29	87.46	48.48	87.25	48.86	87.04	49.24	86.82	49.62	60
30	86.60	50.00	86.38	50.38	86.16	50.75	85.94	51.13	59
31	85.72	51.50	85.49	51.88	85.26	52.25	85.04	52.62	58
32	84.80	52.99	84.57	53.36	84.34	53.73	84.10	54.10	57
33	83.87	54.46	83.63	54.83	83.39	55.19	83.15	55.56	56
34	82.90	55.92	82.66	56.28	82.41	56.64	82.16	57.00	55
35	81.92	57.36	81.66	57.71	81.41	58.07	81.16	58.42	54
36	80.90	58.78	80.64	59.13	80.39	59.48	80.13	59.83	53
37	79.86	60.18	79.60	60.53	79.34	60.88	79.07	61.22	52
38	78.80	61.57	78.53	61.91	78.26	62.25	77.99	62.59	51
39	77.71	62.93	77.44	63.27	77.16	63.61	76.88	63.94	50
40	76.60	64.28	76.32	64.61	76.04	64.94	75.76	65.28	49
41	75.47	65.61	75.18	65.93	74.90	66.26	74.61	66.59	48
42	74.81	66.91	74.02	67.24	73.73	67.56	73.43	67.88	47
43	73.14	68.20	72.84	68.52	72.54	68.84	72.24	69.15	46
44	71.93	69.47	71.63	69.78	71.33	70.09	71.02	70.40	45
45	70.71	70.71							
Degrees.	Dep.	Lat.	Dep.	Lat.	Dep.	Lat.	Dep.	Lat.	Degrees.
	DEGREES.		¼ DEGREE.		½ DEGREE.		¾ DEGREE.		

Published by H. S. CROCKER COMPANY, Stationers, Drawing Materials, Mathematical Instruments, etc., San Francisco.



Return to City Engineer's Office

RETURN TO CITY ENGINEER'S OFFICE
CITY HALL, SAN DIEGO, CAL.

Crocker Quality

FIELD BOOK



No. _____

MANUFACTURED BY

H. S. CROCKER CO.

SAN FRANCISCO AND SACRAMENTO
CALIFORNIA

FROM
LORINGS BOOK STORE
San Diego, Cal.

St. August X Sec of Mississippi St (80)

11) Dinner S of El Cajon to N.S. University
 7/10/60

	910	331.24	322.4	mm 2nd
	288	331.52	260	328.64
	658	325.2	1218	319.34

S of El Cajon St

W	6.6	319.3
W	4.9	321.0
Y	3.9	322.0
L	3.9	322.0
Y	3.4	322.5
W	2.4	323.5
E	1.8	324.1

25 S of El Cajon

E	2.5	323.4
W	2.4	323.5
Y	3.1	322.8
L	4.3	321.6
Y	4.0	321.9
W	4.7	321.2
W	6.5	319.4

50 S of El Cajon

W	5.0	320.9
W	5.9	320.0
Y	5.2	320.7
L	4.9	321.0
Y	3.1	322.8
W	2.5	323.4
E	2.4	323.5

32592

Mississippi

1

75 S of El Cajon

E	2.7	323.2
W	3.9	322.9
Y	3.9	322.0
L	5.3	320.6
Y	5.8	320.1
W	6.7	319.2
W	6.5	319.4

100 S of El Cajon

W	6.9	319.0
W	5.5	320.4
Y	4.8	321.1
L	5.0	320.9
Y	4.9	321.0
W	3.0	322.0
E	2.7	323.2

125 S of El Cajon

E	2.3	323.6
W	3.9	322.9
Y	3.7	322.0
L	5.2	320.3
Y	5.3	320.6
W	5.2	320.3
W	7.0	318.9

3

32592

150

S of

El Cajon

W	7.9	318.0
bl	7.4	318.5
Y	6.1	319.8
b	5.2	320.7
Y	3.8	322.1
bl	3.1	322.8
E	2.4	323.6

175

S of

El Cajon

E	2.7	323.2
bl	3.8	322.1
Y	4.6	321.3
b	5.6	320.9
Y	6.2	319.7
bl	7.0	318.9
W	8.4	317.5

200

S of

El Cajon

W	8.0	317.9
bl	7.0	318.9
"	6.5	319.4
b	5.7	320.2
Y	4.8	321.1
bl	4.3	321.6
E	3.3	322.9

32592

Mississippi

2

225

S of

El Cajon

E	4.1	321.8
bl	4.9	321.0
Y	5.6	320.3
b	6.2	319.7
Y	7.0	318.9
bl	8.1	317.8
W	8.2	317.7

250

S of

El Cajon

W	8.5	317.4
bl	8.6	317.3
Y	8.1	317.8
b	7.0	318.9
Y	6.1	319.8
bl	5.5	320.4
E	4.7	321.2

275

S of

El Cajon

E	5.4	320.5
bl	5.5	320.4
Y	6.8	319.1
b	8.1	317.8
Y	7.6	318.3
bl	9.4	316.5
W	9.8	316.1

TP 447

320.97

9.42

316.50

320.97

300

S of El Cayer

W	50	316.0
bl	44	316.6
Y	38	317.2
b	36	317.4
Y	34	317.6
bl	30	318.0
E	24	318.6

337.5 S of = n. l. of Howard St (80)

E	0.5	320.5
bl	1.2	319.8
Y	3.1	318.9
b	2.8	318.2
Y	2.4	318.6
bl	4.8	316.2
W	5.3	315.7

n bl of Howard

W	3.9	315.1
bl	4.0	317.0
Y	2.6	318.4
b	2.5	318.5
Y	3.2	317.8
bl	2.2	318.8
E	1.5	319.5

320.97

Mississippi

33

n 1/4 of

Howard St

E	23	318.7
bl	30	318.0
Y	39	317.1
b	37	317.3
Y	38	317.2
bl	45	316.5
W	57	315.3

center of

Howard St

W	53	315.7
bl	37	317.3
Y	35	317.5
b	42	316.8
Y	41	316.9
bl	29	318.1
E	21	318.9

S 1/4 of

Howard St

E	28	318.2
bl	33	317.7
Y	42	316.8
b	37	316.3
Y	33	317.7
bl	40	317.0
W	55	315.5

320.97

320.97

Mississippi

4

	S side of	Howard	
W		58	315.2
bl		40	317.0
Y		33	317.7
b		37	317.3
Y		43	316.7
bl		38	317.2
E		32	317.8

	S side of	Howard	
E		33	317.7
bl		37	317.3
Y		40	317.0
b		40	317.0
Y		36	317.4
bl		39	317.1
W		34	315.6

	25' S of	Howard	
W		73	313.7
bl		59	315.1
Y		56	315.4
b		59	315.1
Y		50	316.0
bl		49	316.1
E		42	316.8

	50' S of	Howard	
E		41	316.9
bl		52	315.8
Y		47	316.3
b		54	315.6
Y		67	314.3
bl		63	314.7
W		79	313.1

	75' S of	Howard	
W		75	313.5
bl		68	314.2
Y		67	314.8
b		59	315.1
Y		55	315.5
bl		57	315.3
E		43	316.7

	100' S of	Howard	
E		47	316.3
bl		57	315.3
Y		66	314.4
b		75	313.5
Y		75	313.5
bl		70	314.0
W		73	313.7

320.97

	125'	S of	Howard	
W			94	311.6
H			90	312.0
Y			83	312.7
L			75	313.5
Y			70	314.0
H			58	315.2
E			46	316.4

	150'	S of	Howard	
E			49	316.1
H			47	316.1
Y			51	315.9
L			65	314.5
Y			81	312.9
H			78	313.2
W			73	313.7

	175'	S of	Howard	
W			89	312.1
H			84	312.6
Y			72	313.8
L			64	314.6
Y			59	315.1
H			62	314.8
E			68	314.2

TP 155' 316.09 64.3 317.54

316.09

Mississippi

5

	200'	S of	Howard	
E			20	314.1
H			23	313.8
Y			26	313.5
L			30	313.1
Y			29	313.2
H			36	312.5
W			40	312.1

	225'	S of	Howard	
W			40	312.1
H			37	312.4
Y			38	312.3
L			37	312.4
Y			20	314.1
H			10	315.1
E			13	314.8

	250'	S of	Howard	
E			20	314.1
H			14	314.7
Y			25	313.6
L			20	312.6
Y			36	312.5
H			44	311.7
W			44	311.7

	275	S of	Howard	
W			4.7	311.4
bl			4.0	312.1
Y			2.7	313.4
b.			2.5	313.6
Y			2.7	313.4
bl			2.5	313.6
E			2.2	313.7

	300	S of	Howard	
E			2.0	314.1
bl			1.8	314.3
Y			2.4	313.7
b			2.6	313.5
Y			3.0	313.1
bl			4.9	311.2
W			5.7	310.4

	325	S of	Howard	
W			5.4	310.7
bl			4.8	311.3
Y			4.2	311.9
b			4.3	311.8
Y			3.3	312.8
bl			3.1	313.0
E			3.3	312.8

	350	S of	Howard	
E			1.9	314.2
bl			2.1	314.0
Y			3.4	312.7
b			4.8	311.3
Y			4.8	311.3
bl			4.7	311.4
W			6.1	310.0

	375	S of	Howard	
W			5.4	310.7
bl			5.9	310.2
Y			4.5	311.6
b			4.6	311.5
Y			4.3	311.8
bl			2.9	313.2
E			3.0	313.1

	400	S of	Howard	
E			3.0	313.1
bl			2.9	313.2
Y			4.2	311.9
b			3.9	312.2
Y			4.0	312.1
bl			5.8	310.3
W			5.6	310.5

316.09

	425'	S of	Howard	
W			65	309.6
bl			60	310.1
Y			48	311.3
b			49	311.2
Y			43	311.8
bl			57	312.4
E			37	312.4

	450'	S of	Howard	
E			26	313.5
bl			41	312.6
Y			44	311.7
b			54	310.7
Y			58	310.3
bl			60	310.1
W			65	309.6

TP 291 31487 413 311.96

	475'	S of	Howard	
W			52	309.7
bl	19'		45	310.4
Y			27	312.2
b			34	311.5
b			36	311.3
Y			15	313.4
bl			19	313.0
E			27	312.2

31487

Mississippi
7

	500'	S of	Howard	
E			14	313.5
bl			17	313.0
Y			24	311.5
b			42	310.7
Y			45	310.4
bl			45	310.4
W			50	309.9

	525'	S of	Howard	
W			38	311.1
bl			42	310.7
Y			36	311.3
b			39	311.0
Y			41	310.9
bl			34	311.5
E			30	311.9

	550'	S of	Howard	
E			35	311.4
bl			36	311.3
Y			37	311.2
b			42	310.7
Y			50	309.9
bl			57	309.2
W			55	309.4

31487

	575'	S of	Howard	
W			64	308.5
bl			57	309.2
γ			51	309.8
b			32	301.7
γ			33	311.6
bl			44	310.5
E			41	310.8

600' S = N line of Polk st (80)

E			33	311.6
bl			37	311.2
γ			45	310.4
b			55	309.4
γ			54	309.5
bl			53	309.6
W			61	308.8

N 66 of Polk st

W			67	308.2
bl			57	309.2
γ			54	309.5
b			54	309.6
γ			37	311.2
bl			32	311.7
E			36	311.3

31487

Mississippi

8

	N 1/4 of	Polk st	
E			43 314.6
bl			36 311.3
γ			42 310.7
b			51 309.8
γ			48 310.1
bl			59 309.0
W			68 308.1

Center of Polk st

W			67 308.0
bl			64 308.5
γ			57 309.2
b			54 309.5
γ			54 309.5
bl			48 310.1
E			41 310.8

S 1/4 of Polk st

E			47 310.7
bl			52 309.7
γ			52 309.3
b			58 309.1
γ			62 308.7
bl			66 308.3
W			64 308.5

	S of	Palk	st
W		67	308.2
th		65	308.4
γ		62	308.7
h		49	310.0
γ		47	310.2
th		53	309.6
E		47	310.2

	S of	Palk	st
E		42	310.7
th		51	309.8
γ		40	310.9
h		38	311.1
γ		61	308.8
th		66	308.3
W		71	307.8

	25'	S of	Palk	st
W			68	308.1
th			65	308.4
γ			64	308.5
h			60	308.9
γ			57	309.2
th			53	309.6
E			52	309.7

	50	S of	Palk	st
E			55	309.3
th			60	308.9
γ			58	309.1
h			60	308.9
γ			65	308.4
th			66	308.3
W			70	307.9

	75	S of	Palk	st
W			72	307.7
th			68	308.1
γ			67	308.2
h			62	308.7
γ			54	309.5
th			60	308.9
E			60	308.9

	100'	S of	Palk	st
E			62	308.6
th			63	308.6
γ			63	308.6
h			66	308.3
γ			67	308.0
th			72	307.7
W			73	307.6
TP 301			700	307.87

31088

	125'	S of	Palk	
W			39	307.0
th			37	307.2
Y			36	307.3
L			35	307.4
4			30	307.9
th			30	307.9
E			29	308.0

150'

S of

Palk

E			38	307.1
th			35	307.4
Y			40	306.9
L			43	306.6
Y			44	306.5
th			43	306.4
W			45	306.4

175'

S of

Palk

W			50	305.9
th			50	305.9
Y			48	306.1
L			52	305.7
Y			47	306.2
th			46	306.3
E			46	306.3

31088

Mississippi

10

200' S of

Palk

E			50	305.9
th			56	305.3
Y			56	305.3
L			57	305.2
Y			57	305.2
th			55	305.4
W			58	305.1

TP 091

20828

307.87 Palk

250' S of

Palk

W			46	303.7
th			47	303.6
Y			48	303.5
L			46	303.7
Y			48	303.5
th			48	303.5
E			47	303.6

275' S of

Palk

E			56	302.7
th			54	302.9
Y			57	302.6
L			56	302.7
Y			57	302.6
th			52	303.0
W			56	302.7

122.5' line was missed it is straight

	300	S of	Palk	
W			64	301.9
bl			67	301.6
4			67	301.6
4			70	301.3
4			70	301.3
bl			71	301.2
E			77	300.6

	325	S of	Palk	
E			84	299.9
bl			90	299.3
4			86	299.7
6			83	300.0
4			81	300.2
bl			78	300.5
W			77	300.4

	350	S of	Palk	
W			88	299.5
bl			94	298.9
4			95	298.8
6			100	298.3
4			102	298.1
bl			100	298.3
E			96	298.7

	375	S of	Palk	W
E			100	298.3
bl			108	297.5
4			113	297.0
4			103	298.0
4			104	297.9
bl			105	297.8
W			99	298.4

	400	S of	Palk	W
W			109	298.4
bl			116	296.7
4			122	296.1
6			117	297.6
4			123	296.0
bl			119	296.4
E			114	297.1
TP	087		297.43	11,72
				29856

	425	S of	Palk	W
E			10	296.4
bl			20	295.4
4			23	295.1
6			18	296.6
4			22	296.2
bl			23	296.1
W			17	296.7

297.43

	450	Sy	Palk	
W			2.6	294.8
bl			3.3	294.1
7			3.0	294.4
h			3.3	294.1
4			3.2	294.2
ll			2.8	294.6
E			2.3	294.1

	475	Sy	Palk	
E			2.8	294.6
ll			3.8	293.6
7			4.0	293.4
h			4.4	293.0
4			3.6	293.8
ll			4.0 ₅	293.4
W			4.0	293.4

	500	Sy	Palk	
W			5.3	292.1
ll			4.6	292.8
7			4.6	292.8
h			5.4	292.0
4			4.8	292.6
ll			4.7	292.7
E			4.4	293.0

297.43

Mississippi

12

	525	Sy	Palk	
E			5.3	292.1
ll			5.7	291.7
7			5.8	291.6
h			6.3	291.1
4			6.1	291.3
ll			5.9	291.5
W			6.2	291.2

	550	Sy	Palk	
W			7.7	289.7
ll			7.6	289.8
7			7.4	290.0
h			7.3	290.1
4			7.0	290.4
ll			6.8	290.6
E			7.0	290.4

	575	Sy	Palk	
E			8.3	289.1
ll			8.4	289.0
7			8.5	288.9
h			8.8	288.6
4			9.0	288.4
ll			8.7	288.7
W			8.7	288.7

600' sep = 2nd of Lincoln (80)

w	10.2	287.2
h	10.4	287.0
y	10.9	286.5
b	10.6	286.8
y	10.6	286.8
h	10.3	287.1
E	10.2	287.2

N 1/4 of Lincoln

E	11.6	285.8
h	11.4	286.0
y	11.6	285.8
b	11.7	285.7
y	12.0	285.4
h	11.7	285.7
w	11.7	285.7

TP

186

28652

1273

28470

w

1/4 of

Lincoln

w	2.0	284.6
h	2.0	284.6
y	2.0	284.6
b	2.0	284.6
y	1.5	285.1
h	1.8	284.6
E	4.4	282.2
	4.7	282.2
	(80)	

Center of Lincoln

E	12.2	274.4
	11.5	275.1
h	2.1	277.5
y	5.5	287.7
	5.8	280.6
b	2.3	283.3
	2.2	284.4
y	5.8	280.8
	2.7	283.9
h	3.2	283.3
w	3.1	283.5

S 1/4 of

Lincoln

w	4.1	282.4
h	4.8	281.6
y	5.2	281.4
b	5.2	281.4
	6.1	280.5
y	8.3	278.3
	12.0	276.6
h	12.8	273.8
E	11.0	275.6

S 1/4 of

Lincoln

E	7.6	279.0
h	10.0	276.6
y	13.2	273.4
	13.7	273.3
b	10.7	275.9
y	7.9	278.7
h	7.2	279.4
w	6.5	280.1

S line of Lincoln

W	10.2	276.4
th	10.8	275.8
y	12.6	274.0
b	14.0	272.6
	13.6	273.0
7	10.3	276.3
th	7.7	278.9
E	5.2	281.4

18' S of Lincoln

E	0.8	285.8
th	2.0	283.6
y	4.7	281.9
b	6.4	280.2
y	9.5	277.1
th	14.45	272.2
W	14.5	272.1

22' S of Lincoln

W 14.9

25' S of Lincoln

W	13.2	273.4
th	8.2	278.4
y	6.1	280.5
b	4.8	281.8
y	3.1	283.5
th	1.8	284.8
E	+0.5	287.1

35' S of Lincoln

W	8.0	
	5.0	5.0
W	6.8	279.8
th	4.2	272.4
TP	9.47	294.17
4	1.86	284.20
4	10.5	283.7
b	9.2	285.0
y	7.7	286.5
th	6.7	287.5
E	5.3	288.9

75' S of Lincoln

E	4.2	290.0
th	5.5	288.7
y	5.3	288.9
b	7.2	287.0
y	8.5	285.7
th	9.7	284.3
W	11.1	283.1

100' S of Lincoln

W	8.9	285.4
th	8.0	286.2
y	7.0	287.2
b	6.4	287.8
y	5.3	288.9
th	4.5	289.7
E	4.1	290.1

	125'	Sq	Lincoln	
E			32	291.0
W			41	290.1
Y			50	289.2
L			57	288.5
Y			67	287.5
W			75	286.7
E			85	285.9

	150'	Sq	Lincoln	
W			73	286.9
W			70	287.2
Y			61	288.1
L			42	290.0
Y			37	290.5
W			31	291.1
E			26	292.6

	175'	Sq	Lincoln	
E			24	291.7
W			28	291.4
Y			35	290.7
L			44	289.8
Y			50	289.2
W			59	288.3
			74	286.8

675' 29432 655' 287.2

	200'	Sq	Lincoln	
W			66	287.8
W			59	288.5
Y			54	289.0
L			49	289.5
Y			40	290.4
W			33	291.1
E			28	291.6

	225'	Sq	Lincoln	
E			28	291.6
W			35	290.9
Y			42	290.2
L			48	289.6
Y			56	288.8
W			59	288.5
E			67	287.7

	250'	Sq	Lincoln	
W			61	288.3
W			57	288.7
Y			56	288.8
L			47	289.7
Y			44	290.0
W			42	290.2
E			34	291.0

275' S of Lincoln	
E	3.9 290.5
H	4.0 290.4
Y	4.4 290.0
b	5.1 289.3
Y	5.5 288.9
H	5.6 288.6
W	6.4 288.0

300' S of Lincoln	
W	6.7 287.7
H	5.8 288.6
Y	5.8 288.6
b	5.5 289.1
Y	4.6 289.8
H	4.2 290.2
E	4.2 290.2

325' S of Lincoln	
E	4.5 289.9
H	4.8 289.6
Y	5.2 289.2
b	5.5 288.8
Y	5.9 288.5
H	6.4 288.0
W	7.2 287.2

350' S of Lincoln	
W	7.2 287.2
H	6.7 287.7
Y	6.3 288.1
b	5.8 288.6
Y	5.5 288.9
H	5.0 289.4
E	4.8 289.6

375' S of Lincoln	
E	5.1 289.3
H	5.4 289.0
Y	5.7 288.7
b	6.0 288.4
Y	6.6 287.8
H	6.8 287.6
W	7.3 287.1

400' S of Lincoln	
W	7.8 286.6
H	7.2 287.2
Y	6.8 287.6
b	6.6 287.4
Y	5.9 288.5
H	5.6 288.8
E	5.6 288.8

	425	S of	Lincoln	
E			6.1	288.3
th			6.1	288.3
y			6.5	287.7
6			6.7	287.7
y			7.1	287.3
th			8.0	286.4
W			8.5	285.9

	450	S of	Lincoln	
W			8.8	285.6
th			7.8	286.6
y			7.3	287.1
6			6.7	288.0
y			5.8	288.6
th			6.0	288.4
E			6.7	287.7

	475	S of	Lincoln	
E			7.1	287.3
th			6.7	287.7
y			7.4	287.0
6			7.2	287.2
y			7.3	287.1
th			7.8	286.6
W			8.5	285.9

TP 441 29038 8.40 2859.7

	500	S of	Lincoln	
W			4.7	285.7
th			4.6	285.8
y			3.8	286.6
6			3.9	286.5
y			4.5	285.9
th			4.2	286.2
E			3.8	286.6

	525	S of	Lincoln	
E			4.6	285.8
th			4.7	285.7
y			4.7	285.7
6			5.0	285.4
y			5.1	285.3
th			5.5	284.9
W			5.3	285.1

	550	S of	Lincoln	
W			7.2	283.2
th			6.6	283.8
y			6.4	284.0
6			5.6	284.8
y			5.5	284.9
th			5.7	284.7
E			5.0	285.4

575' S of Lincoln

E	54	285.0
SE	65	283.9
S	67	283.7
SW	64	284.0
W	71	283.3
NE	82	282.2
N	86	281.8

596' S of Lincoln (W)

W	103	280.1
NE	100	280.4
S	96	280.8
SW	85	281.9
W	84	282.0
NE	67	283.7
E	55	284.9

600' S = 2 L of University (E. side)

E	72	283.2
SE	80	282.4
S	87	281.9
SW	92	281.2
W	100	280.4
NE	107	279.7
N	104	280.0

7 Blough Check curb El & line
 25-
 71 July 1st/10th St Park to N St

82.96	Bn ² w ² est	80.01	8.16	8.216	97.33	88.33	2.22
2.92		12.89	8.73	5.73	2.56	4.23	2.22
92.89							
0.00							
92.89							
12.22		9.76	2.66	2.66	10.83	20.22	1.92
105.16			5.60	8.01	4.42		

118.01	no Buck	111.0	114.62	116.6	118.0	120.1	122.1
120.1		9.76	5.50	8.00	4.87	6.67	
0.32							
119.80		121.87	118.62	125.50	122.1	125.25	122.1
8.67		6.60	9.60	2.97	4.97	3.22	6.24
128.47							
4.22		125.25	122.1	125.75	122.1	126.90	123.84
124.25		5.71	8.71	4.66	7.66	3.91	6.91
6.16		128.20	125.1	128.71	126.20		
130.41		2.41	4.66	4.66			

10 11 11

129.50		121.50	
128.70	no Retain	120.00	
22.80		125.75	
207.32		125.50	
22.00		124.25	
225.75		123.50	
125.0		122.25	
		122.0	

no Retain

12" no wall or curb

Poor wall + curb is badly settled

no Retain	
125.0	122.0
125.75	122.25
125.5	122.5
121.87	118.87
118.25	115.25
114.85	111.62
111.0	108.0

no Retain

Back

1080	no Retain
103.94	103.0
79.66	101.93
95.60	96.66
91.23	92.50
87.16	88.23
83.0	84.16
	80.0

no Retain

Back

all

7198 not
861
76.59

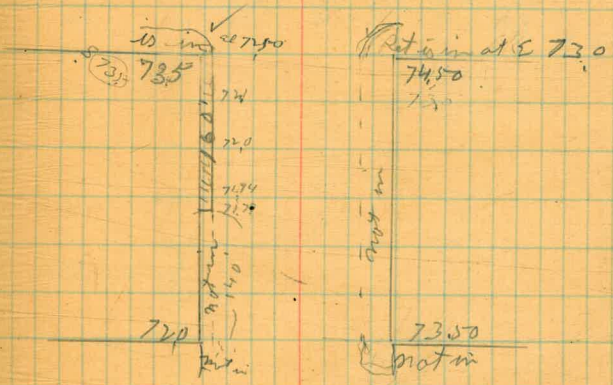
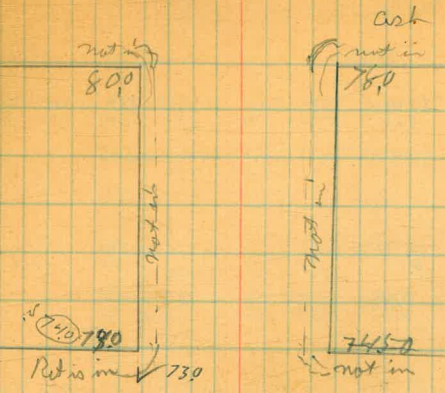
7214 B
5.54
77.25

7210	7225	7240	7268	7284	7175	7190	7234
5.61	5.30	5.71	4.07	4.44	6.00	6.11	4.91
7242	7245						
5.33	6.14						

7299 not
40
77.59

7250	7239	7234	7229
5.89	7.1	5.38	5.60
		72.00	71.74

78296



72.5	74.50
72.0	75.48
71.74	75.22
71.50	74.84
71.25	74.40
71.00	72.00

not in
74.50
no lumber front of
Engine House

b

6 21

6701
699
74.00

6700	6870	6900	6950	6800	6850	6900	6950	7000	6850
7.00	5.70	5.00	6.50	6.00	6.50	6.00	6.50	6.00	6.50

6701
4.30
71.31

6870	6800	6700	6750	6576	6600
9.81	2.31	4.31	5.48	6.15	7.31

6701
1.60
68.10

6500	6450	6383	6400	6316	6300
6.31	6.51	7.58	7.31	8.15	8.31

52.96
6.92
59.88

6000	6100	5966	6085	5866	5833
4.1	4.60	5.44	5.02	6.44	6.77

710	✓	72.0
7033	✓	71.41
6944	✓	70.82
6900	✓	70.25
6833	✓	69.66
6746	✓	69.08
6700	✓	68.50

D

665	✓	68.4
6580	✓	67.81
6510	✓	67.23
6440	✓	66.65
6370	✓	66.06
6300	✓	65.48
6230	✓	64.90

E

6100	✓	60.50
5900	✓	60.94
5800	✓	58.64
5700	✓	57.25
5500	✓	55.83
5400	✓	54.71
5300	✓	53.00

F

Drop
in
bank

5' bank
broken out

10-2-21

Return Dad by
Brother

J

335	✓	325
3241	✓	333
3133	✓	3216
3015	✓	3100
2916	✓	2983
2808	✓	2866
270	✓	275

J

250	✓	264
2416	✓	25
2323	✓	24
2250	✓	23
2166	✓	22
2083	✓	21
200	✓	200

K

Return
Brother

170	✓	190
1816	✓	
1733	✓	
1650	✓	
1566	✓	
1483	✓	
140	✓	140

A

3348 NW J

301								
26,83	✓	275	3241	3333	3133	3216	3015	3100
	3.03	2.03	4.12	3.10	5.20	4.37	6.38	5.35
2916	2983	2866	2804	2700	2750			
7.27	6.70	7.87	8.47	9.33	8.03			

269 NW J

250	200	2416	2323	2250	2166
232	232	4.12	3.10	5.20	5.20
2166	2166	2083	2100	2100	2100
6.26	6.32	7.49	7.20	8.32	

2002

208						
2270	1900	1816	1733	1650	1566	1483
	3.10	2.91	4.77	5.60	6.47	7.27
						8.10

1.411 nwd

180
1591

1250 1160 1853 1000 916 833 750
374 425 5108 571 6325 7058 8441

746
260
1008

600 610 550 600 500 550 450 500
708 358 474 408 1204 418 1314 109
400 450 250 400 200 350
604 528 674 608 764 688

125
1250 ✓
1160 ✓
1082 ✓
1000 ✓
916 ✓
833 ✓
750 ✓

1250 ✓
1250 ✓
1160 ✓
1082 ✓
1000 ✓
916 ✓
833 ✓
750 ✓

11

60 ✓
550 ✓
500 ✓
450 ✓
400 ✓
350 ✓
30 ✓

650 ✓
600 ✓
550 ✓
500 ✓
450 ✓
400 ✓
350 ✓

11

10/ Hatch
123 5 rooms
11/ Hall

X Sec India St. Bridge

BM India-jumper	290	49.77	46.870	SW Cor plug-plate
		25' S. of Bridge		
W		7.6	42.2	
-3' W		{ 7.9 13.9	41.9	
		10' S. of Bridge		
W		{ 6.9 12.7		
		5. end of Bridge - N. of Kalmia		
3' E. of W line		{ 6.8 19.8	43.0 30.0	
W		1.8	30.0	
E		5.5	34.3	
TP	263	39.44	129.6	3631
		25' S. of Bridge		
23' W		6.2		
		10' S. of Bridge		
10' W		9.0		
20' W		15.5		
		5. end Bridge		
25' W		20.3	19.1	
+10		9.6	29.8	
ch		8.2	31.2	
1/4		2.0	37.4	
+6		+1.5	37.9	
		10' N. of Kalmia		
W		16.0	23.4	
ch		11.0	28.4	
1/4		6.1	33.3	
cr		+1.5	40.9	
TP	350	30.96	11.98	27.46

		30.96	
		10' S. of Bridge	
33 W		10.7	213
43 " Level beyond		14.3	177
		5. end of Bridge	
35 W Level beyond		14.1	169
		10' N. of Kalmia	
10 W		12.3	187
26 W		12.9	181
40 W		11.8	192
		25' N. of Kalmia	
W		12.3	187
24 W		12.5	175
40 W		8.5	225
+7		12.5	205
ch		8.2	228
1/4		5.5	25.5
C		0.7	30.3
+10		{ 5.0 5.2	31.0 26.8
1/4		5.2	28.1
+2		2.9	210
		10.0	
		35' N	
W		12.7	183
ch		12.5	185
1/4		13.0	180
C		12.6	184
1/4		10.0	210
ch		12.1	189

		30.96	
		50' N	
34' W		0.5	30.5
30 "		5.8	25.2
17 "		12.1	18.9
W		12.7	18.3
cb		12.4	18.6
1/2		12.4	18.6
c		12.6	18.4
1/2		12.4	18.6
cb		12.7	18.3

		52' N	
10' W		11.8	19.2
		65' N	
W		12.2 70	18.8
cb		12.0 46	19.0
1/2		11.5	19.5
C		9.7	21.3
1/2		8.2	22.8
cb		6.4	24.6

		52' N	
TR	1227	39.73	35.0
30' W		8.5	31.2
		65' N	
25' W Level meet		5.0	34.7
		75' N	
17' W Level meet		4.9	34.8
W		14.5	25.2

		39.73	
cb		16.8	22.9
1/2		14.6	25.1
c		14.0	25.7
1/2		13.1	26.6
cb		10.5	29.2

		90' N	
15' W		3.8	35.9
W		3.6	36.1
cb		7.6	32.1
1/2		6.9	33.3
c		3.6	36.1
1/2		4.0	35.7
cb		5.6	34.1

		100' N	
15' W		3.9	36.3
W		2.6	37.1
cb		1.5	37.9
1/2		+2.0	41.7
c		+3.7	43.4
+8		+3.7	43.4

		108' N	
15' W		3.2	36.5
W		1.5	38.2
cb		0.0	39.7
1/2		+3.0	42.7
cb		+5.2	44.9
+8		+5.0	44.7

		39.73		
TP	1223	51.10	0.86	38.87
		1+20 N		
VV		4.1		47.0
Top of Bridge N. end		2.85		47.8
" " Rail N. end of Bridge		3.50		47.6
E		6.9		44.2
TP	120	40.52	1.78	39.32
		1+08 N		
14 E level east		7.6		32.8
E		4.3		36.2
cb		3.6		36.9
1/2		1.5		39.0
		100 N		
		level east		
20 E		49.0		
		39.2		
E		8.6		31.9
cb		6.2		34.3
1/4		2.9		38.1
TP	201	31.44	1.09	29.43
		90 N		
E		5.4		26.0
20		12.5		18.9
35		11.8		20.1
		75 N		
15		12.2		19.2
25		10.4		21.0
35		4.5		26.9

		31.44		
		65 N		
E		12.1		19.3
15 E		11.8		19.6
25 E		4.0		32.4
		80 N		
E		13.2		18.2
15 E		5.6		25.8
24		0.0		31.4
		35 N		
E		9.1		22.3
15 E		3.6		27.8
21 E		0.0		31.4
		25 N		
E		5.2		26.2
18 E		0.0		31.4

11/2 | through X Sec of Mc Nealey St (80)
 11 | E La Jolla to Pueblo Bin

	125	64.68	63.43	
	9.20	76.63	3.25	61.43
	E side of La Jolla am			
n		54	65.2	
hh		59	64.7	
y		52	65.0	
b		54	65.2	
y		60	64.6	
hh		62	64.4	
S		64	64.2	
TP	1208	78.54	4.17	66.46
	2' E of La J			
S		66	71.9	
hh	+3'	14.0		
		14.2		
y		14.1		
b		133	65.2	
y		134		
hh		134		
n	+8'	13.0		
n	+9'	6.8	71.1	
		7.4		
	25' E of La J			
n		54	73.1	
hh	+7.5'	5.1		
	+10'	12.2		
		12.7		
y		12.3		
b		12.6	65.9	
y		12.6		
hh		130		
S		138	64.7	

Mon SE
 Arctic +
 Harscoitz

78.54

Mc Nealey 98

50' E of La Jolla	
S	11.5
hh	12.2
	11.8
y	11.7
b	11.7
y	12.0
hh	11.9
n	11.6
	2.4
	2.7
	75.8

75' E of La J	
n	6.3
hh	10.5
	11.0
y	11.5
b	11.4
y	11.5
hh	11.6
n	12.0
S	4.5
	74.0

84' E of La J	
S	+0.5
hh	11.7
y	11.4
b	11.7
y	11.2
hh	9.8
n	+0.5
	0.0
TP	12.18
	90.30
	0.42
	78.12

Page

90.30

100	E 8	La Jolla	
n		101	80.2
h		97	
y		93	
b		95	80.8
y		93	
h		87	
S		100	80.3

125	E 8	La Jolla	
S		69	83.4
h		72	
y		73	
b		71	83.2
y		75	
h		77	
n		79	82.4

150	E 8	La Jolla	
n		53	85.0
h		48	
y		45	
b		47	85.6
y		43	
h		40	
S		42	86.1

90.30

The Royal

29

175	E 8	La Jolla	
S		17	88.6
h		14	
y		16	
b		14	88.9
y		17	
h		21	
n		20	88.3

200' E = W d 8 Arctic 21

1300	10304	022	90.04
n		103	92.8
h		106	
y		106	
b		104	92.7
y		103	
h		105	
S		106	92.5
	W 66 6	arctic	
S		89	94.2
h		90	94.1
y		83	94.8
b		81	95.0
y		84	94.7
h		86	94.5
n		85	94.6

10308

	W	1/4 of Arctic	
n		66	96.5
h		61	97.0
y		59	97.2
b		61	97.0
y		67	96.4
h		71	96.0
S		78	95.3

Center of Arctic

S		62	96.9
h		60	97.1
y		50	98.1
b		44	98.7
y		37	99.4
h		40	99.1
n		42	98.9

E 1/4 of Arctic

n		14	101.7
h		16	101.5
y		15	101.6
b		25	100.6
y		33	99.8
h		38	99.3
S		46	98.5

10308

Mc Healey

30

	E	1/4 of Arctic	
S		29	100.2
h		22	100.9
y		17	101.4
b		07	102.4
y		00	103.1
h		00	103.1
n		00	103.1

TP 1270 115.10

E line of

		Arctic	
		0.68	102.40
n		23	105.8
h		9.2	
y		9.8	
b		105	102.6
y		117	
h		123	102.8
S		134	101.7

25 E of

		Arctic	
S		99	105.2
h		94	
y		90	
b		78	107.3
y		65	
h		57	
n		50	110.1

115.10

31

	50'	E of	Archie	
n			3.0	112.1
hh			2.9	
y			4.0	
b			5.3	109.8
y			6.2	
hh			6.4	
S			6.9	108.2
	63'	E =	P. line on north	
S			4.8	110.3
hh			4.7	
y			4.9	
b			3.9	111.2
y			2.8	
hh			2.0	
n			0.8	114.3
	63' E on n	}	= Pueblo line	
	95' E on S			
n			0.8	114.3
hh			1.3	
y			1.7	
b			2.6	112.5
y			2.4	
hh			1.8	
S			7.0	115.2

11 1/2 blight
 3 1/2
 11 E
 X Sec of 16th St (80')
 S of D to 2 of 7

229 58.8 55.89
 S of D St (Paved)

SW 16 D

W	20	56.2
bl	22	56.2
4	24	55.8
b	22	56.0
4	23	55.9
bl	25	55.7
E	22	56.0

25' S of D St

E	24	55.8
bl	24	55.8
4	23	55.9
b	23	55.9
4	25	55.7
bl	30	55.2
W	26	55.6
	24	55.8

50' S of D St

W	26	55.6
bl	28	55.4
4	34	54.8
4	29	55.3
b	26	55.6
4	27	55.5
bl	30	55.2
	25	55.7
E	27	55.5

58.8

16th St

32

75' S of D St

E	29	55.3
bl	30	55.2
4	35	54.7
	30	55.2
4	29	55.3
4	32	55.0
bl	38	54.4
	32	55.0
W	31	55.1

100' S of D St

W	36	54.6
bl	36	54.6
4	43	53.9
	35	54.7
b	32	55.0
4	33	54.9
bl	37	54.5
	33	54.9
E	33	54.9

125' S of D St

E	35	54.7
bl	38	54.4
4	44	53.8
	35	54.7
4	35	54.7
4	39	54.3
bl	47	53.5
	40	54.2
W	41	54.1

5818

150 S of D St

W	45	53.7
H	45	53.7
Y Surt	50	53.2
Y	43	53.9
b	38	54.4
Y	40	54.2
H Surt	43	53.9
	37	54.5
E	36	54.6

175 S of D St

E	40	54.2
H	45	53.7
Y Surt	51	53.1
	44	54.0
b	42	54.0
Y	46	53.6
H Surt	55	52.7
	49	53.3
W	49	53.3

200 S of D St

W	53	52.9
H	53	52.9
Y	59	52.3
Y	50	53.2
b	45	53.7
Y	46	53.6
H	51	53.1
	45	53.7
E	42	54.0

5818

16th

225 S of D St

33

E	46	53.6
H	48	53.4
Y	53	52.9
Y	48	53.4
b	48	53.4
Y	53	52.9
H	62	52.0
	56	52.6
W	56	52.6

250 S of D St

W	60	52.2
H	58	52.4
Y	64	51.8
Y	56	52.6
b	52	53.0
Y	52	53.0
H Surt	54	52.8
	47	53.3
E	47	53.5

275 S of D St

E	46	53.6
H	50	53.2
Y	58	52.4
Y	55	52.7
b	55	52.7
Y Surt	59	52.3
	64	51.8
b	60	52.2
W	62	51.9

	286	S of	D of	
W			6.3	51.9
bl			6.1	52.1
4			5.8	52.4
6			5.8	52.4
4			5.2	53.0
bl			4.5	53.7
E			4.4	53.8

	291	S of	D of	
E			1.1	57.1
bl			2.2	56.0
4			3.6	54.6
6			3.7	54.5
4			4.5	53.7
bl			4.7	53.5
W			5.1	53.1

TP 753 64.81 0.90 57.28
300 S = N 2 of E of (80)

W			6.3	58.5
bl			6.0	58.8
4			5.6	59.2
6			5.3	59.5
4			3.9	60.9
bl			3.2	61.6
E			3.2	61.6

There is only a slight better
on E of

	N 2 + 3' of	E of	
E		2.8	62.0
bl		3.2	61.6
4		3.1	61.7
6		3.2	61.6
4		3.2	61.6
bl		3.2	61.6
4		3.7	59.1

	center of	E of	
W		3.8	61.0
bl		3.4	61.4
4		3.4	61.4
6		3.2	61.6
4		3.2	61.6
bl		3.2	61.6
E		3.0	61.8

	3' N of S line of	E of	
E		2.5	62.3
bl		2.8	62.0
4		3.4	61.4
6		3.2	61.6
4		3.4	61.4
bl		3.3	61.5
W		3.7	61.1

6481

S line of E st

W	6.0	58.8
th	5.2	59.6
7	4.2	60.6
6	4.7	60.1
7	4.4	60.4
th	3.3	61.5
E	2.3	62.5

6' S of E st

E	2.3	62.5
---	-----	------

75' S " " "

E	1.5	63.3
---	-----	------

94' S " " "

E	0.5	64.3
---	-----	------

100 S " "

E	5.0	59.8
---	-----	------

TP 5.70 58.51 12.00 5.281

19' S of E st

E	5.0	53.5
th	7.0	51.5
7	8.8	49.7
6	8.0	50.5
7	9.1	49.4
th	9.5	49.0
W	10.0	48.5

5851

1681 21

35

25' S of E st

W	10.8	47.7
th	10.5	48.0
7	10.1	48.4
6	8.8	49.7
7	9.4	49.1
th	8.7	49.8
E	5.0	53.5

50' S of E st

E	5.4	53.1
th	6.9	51.6
7	9.1	49.4
6	9.8	48.7
7	10.5	47.9
th	10.9	47.6
W	11.0	47.5

75' S of E st

W	10.7	47.8
th	10.5	48.0
7	10.2	48.3
6	9.2	49.3
7	6.4	52.1
th	1.4	57.1
E		63.8

100' S of E st

E			59.8
bb		4.0	54.5
7		8.7	49.8
b		9.2	49.3
4		10.0	48.5
bb		10.3	48.2
W	fv	9.6	48.9
		9.5	49.0

125' S of E st

W		9.2	49.3
bb		9.6	48.9
7		9.7	48.8
b		8.9	49.6
7		8.6	49.9
bb		8.6	49.9
E		5.8	52.7

150' S of E st

E		5.7	52.8
bb		8.2	50.3
7		8.2	50.3
b		8.3	50.4
7		9.0	49.5
bb		9.6	48.9
		9.2	49.3
W		9.0	49.5

175' S of E st

E			4.6	53.9
bb			7.0	51.5
7			7.7	50.8
b			7.8	50.7
FP	666	5737	78.0	50.71
bb			7.4	50.0
bb			8.0	49.4
bb			7.2	50.2
W			7.6	49.8

200' S of E st

W			7.8	49.6
W	fv		7.2	50.2
bb			6.8	50.6
7	70'		7.7	49.7
7			7.3	50.1
b			6.4	51.0
7			6.0	51.4
bb			5.3	52.1
E			3.7	53.7

225' S of E st

E			3.5	53.9
bb	70'		4.7	52.7
bb			6.1	51.3
7			5.7	51.7
b			6.2	51.2
7			7.1	50.3
b	710'		7.5	49.9
b			6.7	50.7
bb	710'		7.0	50.4
bb			8.2	49.2

250 S of E 21

W		8.2	49.2
	+4'	6.7	50.7
h		6.2	51.2
	+2'	7.0	50.4
y		6.5	50.9
b		5.7	51.7
y		5.4	52.0
h		5.8	51.6
	+9'	4.3	53.1
E		3.0	54.4

275 S of E 21

E		3.6	53.8
	+4'	4.6	52.8
h		4.7	52.7
y		5.0	52.4
b		5.4	52.0
y		6.0	51.4
	+11'	6.7	50.7
h		5.7	51.7
	+8'	6.3	
W		8.4	49.0

300 S = 71 2 of 70

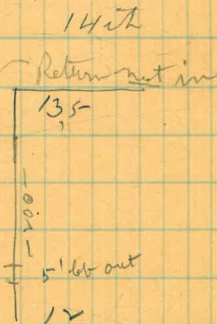
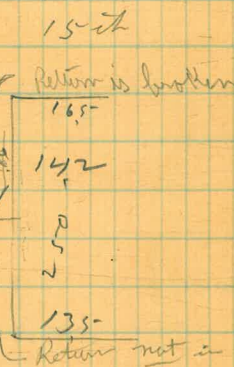
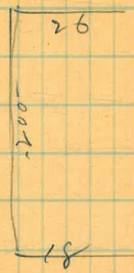
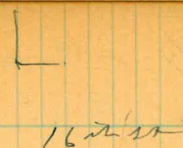
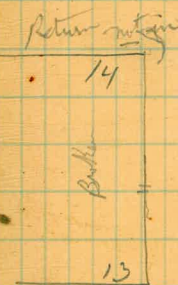
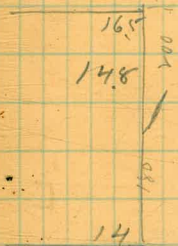
W		5.8	51.6
h		5.8	51.6
y		6.0	51.4
b		5.4	52.0
y		5.7	52.3
h		4.9	52.5
E		4.6	52.8

4
71
3
blough sheet lewks
6th to
K st
16

129		2930		2801		NE 16th R	
2930	2930	2930	2930	2930	2930	2930	2930
170	392	525	50	720	930	1130	1130
2620	259	2705	240	2210	2000	1800	1800
	5	5	2	5	5	2E	2E
384		2026		1648		2215+R	
2036	2036	2036	2036	2036	2036		
590	475	475	475	6	54		
1648	1567	158	158	1436	54		
52	5	2	2	5	2		

80

38



13th

K St

13

12

39

132

130

115

205

185

12

215

205

15 25

22

21

11

22

12

200

190

10

200

180

40

10 sh

20

190

175

170

9

165

160

K

15

14

8

15

14

115

11

7 sh

115

11

7th

11

10

1/2

875

67

6th st

1

1

11 days X Sec of 4th St (80)
 7/17 Dinner Palm to Red Wood. W 1/2

	2226	22264	270.38	NE4RW
		N line of Redwood		
W		65	266.4	
bl	+5	2.1	270.0	
		3.7	268.7	
7		3.1	269.5	
b		2.7	269.9	
RR Pav		2.5		
(+20)		N line of Red Wood		
W		5.1	267.4	
bl	+9	5.0	269.4	
		2.9	269.7	
7		2.8	269.8	
b		2.7	269.9	
(+10)		N 1/2 of Red wood		
W		4.2	268.4	
bl	+4	2.8	269.8	
		2.0	269.6	
7		3.0	269.6	
b		2.8	269.8	
		Center of Red wood		
W		5.6	267.0	
bl		2.2	270.4	
7		3.0	269.6	
b		2.8	269.8	
		S 1/4 of Red wood		
W		5.1	267.5	
bl		3.0	269.6	
7		2.7	269.9	
b		2.7	269.9	

27264

4th St

42

S line of Red wood

W	7.5	265.1
bl	3.2	269.4
7	2.3	270.3
b	2.7	269.9

S line of Red wood

W	14.2	258.4
bl	4.2	268.4
	2.4	270.2
7	2.0	270.6
b	2.7	269.9

12' S of Red wood

W	14.8	257.8
---	------	-------

25' S of Red wood

W	12.2	260.4
bl	6.0	266.6
	5.7	266.9
7	2.6	270.0
b	2.9	269.7

50' S of Red wood

W	9.7	262.7
bl	5.5	267.1
7	4.0	268.6
b	2.9	269.7

75' S of Red wood

W	7.6	265.0
bl	6.7	265.9
7	6.2	266.4
b	3.3	269.3
	3.0	269.9
	3.0	269.6

27264

27124

43

43

	100'	S of	Red wood	
w			160	256.6
hh			140	258.6
y			84	264.2
b	+6'		28	269.8
			3.0	269.6

TP 134 27124 274 269.90

	125'	S of	Red wood	
w			—	247.1
hh			168	257.4
y			80	263.2
b	+8'		10	270.2
			1.8	269.4

	150'	S of	Red wood	
w			—	250.8
hh			104	261.0
y			35	267.9
b	+8'		08	270.4
			1.8	

	175'	S of	Red wood	
w			—	2487
hh			15.9	255.3
y			8.1	263.1
b	+6'		2.5	269.0
			2.0	269.2

	200'	S of	Red wood	
w			—	245.0
hh			18.5	252.7
y			10.2	261.0
			5.9	262.3
			2.8	268.4
			1.5	269.7
b	+10'		2.1	269.1

	225'	S of	Red wood	
w			—	2471
hh			16.7	254.5
y			7.8	263.4
b	+8'		1.6	269.6
			2.3	268.9

	250'	S of	Red wood	
w			—	255.8
hh			12.8	258.4
y			7.4	263.8
b	+6'		2.5	268.7
			2.5	268.7

	275'	S of	Red wood	
w			—	256.9
hh			7.7	263.5
y			2.8	268.4
b			2.8	268.6
			2.4	

	300'	S of	Red wood = A & B (80)	
w			—	247.6
hh			12.8	251.4
y			10.4	250.8
b			2.5	268.5
			2.7	268.5
			2.8	268.4

	325'	S of	Red wood	
w			—	244.6
hh			21.1	250.1
y			11.9	259.3
b	+8'		2.8	268.6
			2.9	268.3

2446
2441

271.24

N 1/4 of Quince

W	Top of well	244.6	(Bottom well) 237.2
th		226 248.6 247.6	
y		125 258.7	
b		34 267.8	

Center of Quince

W	Top well	244.6	(Bottom well) 235.2
th		227 248.5	
y		134 257.8	
b		35 267.7	

S 1/4 of Quince

W	Top of well	244.6	(Bottom well) 234.2
th		226 248.6	
y		127 258.5	
b		42 267.0	

S 1/4 of Quince

W	Top of well	244.6	(Bottom well) 234.0
th		218 249.4	
y		125 258.7	
b		47 266.05	

S 1/4 of Quince

W	Top of well	244.6	(Bottom well) 238.9
th		211 250.1	
y		123 258.9	
b	410'	34 267.8 30 268.2	

44

289

271.80

268.91 Br

NE
442

25' S of Quince

W		247.7
th	194	252.4
y	127	259.1
b	6+10' 36	267.8 268.2

50' S of Quince

W		251.7
th	126	259.2
y	62	265.6
b	46' 37 36	268.1 268.2

75' S of Quince

W		266.7
th	51	252.8 267.7
y	40	267.8
b	39	257.9

100' S of Quince

W		256.5
th	46' 40 50	261.6 265.8 266.8
y	40	267.8
b	39	267.9

125' S of Quince

W		247.3
th	202	251.6
y	130	258.8
b	40	267.8

150 S of Ruine

w		238.4
h	24.6	247.2
y	15.2	256.6
b	27	264.1

175 S of Ruine

w		236.2
h	26.4	245.4
y	16.0	255.8
b	87	263.1

200 S of Ruine

w		234.2
h	27.8	244.0
y	18.0	253.8
b	87	263.1

225 S of Ruine

w		236.3
h	25.3	246.5
y	16.3	255.5
b	81	263.7

250 S of Ruine

w		246.6
h	22.1	249.7
y	15.3	256.5
b	74	263.4

424

27166

275 S of Ruine

w		267.42
h		258.4
h	5.1	266.5
y	4.9	266.7
b	4.8	266.8

300 S of Ruine

w		266.5
h	5.0	266.6
y	4.8	266.8
b	4.9	266.7

(W. Line Property Elevations
taken from B 475- P 1)

11 Change Elevation for Slopes on 4th St 80
 14
 11 July Palm to Red Wind

	129	27167		27038	NE 4th St
TP	167	26026	1298	25869	
TP	211	24770	1277	24759	
	Slope line 40		W of	W line of 4th	
N 2 Red wind			44	243.7	
N 1/4 Red wind			1.8	245.9	
N 1/4 "			2.6	245.1	
West "			5.6	242.1	
S 1/4 "			5.6	242.1	
S 1/2 "			6.3	241.4	
S 1/4 "			8.2	239.5	
25' S of Red wind			8.8	238.9	✓
50' "			8.1	239.6	✓
75' "			5.7	242.5	✓
100' "			6.9	240.8	✓
115' S "			6.8	240.9	
125' S "			10.2	237.4	✓
TP	575	29145	12.2	235.0	
150' S "			15.0	226.4	✓
175' S "			11.8	229.6	✓
200' S "			15.0	226.4	✓
210' "			17.8	223.6	✓
225' "			7.6	233.8	✓
240' "			2.0	239.4	✓
250' "			1.0	240.4	✓
275' "			3.4	232.0	✓
300' S = Red line			11.4	230.0	
TP	147	23007	12.85	228.0	

71 66 f Linn			5.7	224.4
2 1/4 f "			9.8	220.3
bent "			12.7	217.4
5 1/4 f "			13.4	216.7
5 6h "			8.6	221.5
5 1/2 f Linn			4.8	225.3
15' S f "			0.4	229.7
25' S " "			0.2	229.9
50 S "			0.7	229.4
75' S "			1.8	228.3
100 " "			+1.0	231.8
125 " "			2.7	227.4
TP	4.12	221.40	12.80	217.27
150' " "			2.0	219.4
175' " "			9.4	212.0
200' " "			9.4	212.0
225'			2.3	219.1
TP	11.40	232.0	0.20	232.0
	12.55	245.05	0.10	232.50
250' " "			9.0	
264 = 2 d of Home			+8	245.8

4/14	Height	Elevations for Stake on 4th at (80)		
11/11	Summ	Palm to Red wood		
	00	23577		23550 TP
2	TP	0.61	223.31	17.80 22270
	TP	6.50	217.69	12.14 211.17
		Slope line 100' W of W side of 4th		
5	S of Redwood	(Bottom Canyon)	5.7	212.0
	25' S of "	"	7.7	210.0
	50' S "	"	10.7	207.0
		105' W of W side		
	75' S "	Bottom	12.0	205.7
		100' W of W side		
	100' S "	Bottom	12.0	205.7
	125' "	"	13.0	204.7
	TP	12.5	211.43	7.51 210.18
1		112' W of W side		
	150' "	Bottom	7.6	203.8
	175' "	Bottom	8.8	202.6
	200	"	10.6	200.8
		124' W of W side		
	225' "	Bottom	12.8	198.6
		133' W of W side		
	250' S "	Bottom	15.6	195.8
		130' W of W side		
	275' S of 4	Bottom	17.8	193.6
	TP	26.2	201.17	12.88 198.55
	300' S = 2nd Summ	124' W of W side	9.2	191.0
		124' W of W side		
	91 ft		9.6	191.6

	124'	w of	w L		
2 1/4 of Linn's Bottom				10.0	191.2
	124'	w of	w L		
center				10.7	190.8
	120'	w of	w L		
5 1/4 of Linn's				10.7	190.4
	124'	w of	w L		
S bk of 2				12.7	188.4
	126'	w of	w L		
S line of Linn's				13.0	188.2
	120'	w of	w Linn		
25' S of 2 on slope				9.7	191.6
50' S " " Bottom				13.8	187.4
53' " " Bottom				13.8	187.4
75' S " " on slope				6.0	195.2
100' " " "				6.0	195.2
125' " " "				7.7	193.5
150' " " "				9.3	191.9
167' " " "				15.3	185.9
175' " " "				10.9	190.3
200' " " "				4.6	196.6
TP	1230	211.97		15.0	192.5
225' " "				8.8	203.2
250' " "				1.8	209.3
264' S " = rd of Linn's				0.0	212.0

1/1 Hatch
20/11 Moore
Hall

Centres of streets and
benches for construction
of Bridge in 17th across E.

B.M. SW 13-E 2402	88.30	84.898
Elevation of Both benches	83.00	83.00

Note - Distances between hubs
are approximate, also
the property lines of 17th St.

Hubs are on true Centre
lines of both streets

St 50



B.M. @
Elev 83.00 spk.

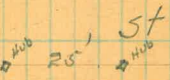
17th



St.



B.M.
Elev 83.00 spike.



D

St

11/20/41 Hatch Moore Hall

Xdec Grape St. from California to Atlantic

1377	1.15	45.17	24019	SW India - Grape
	0.14	52.94	12.37	3280
	1.92	22.21	12.65	20.89
		Eh. Calif.		
N		2.2	20.0	
cb		3.0	19.2	
1/2		4.0	18.2	
0		3.2	19.0	
1/2		2.6	19.6	
cb		2.5	19.7	
S		1.6	20.5	
		8' W		
S		0.7	21.5	
cb		2.5	19.9	
1/2		2.1	20.1	
C		2.8	19.4	
1/2		2.6	19.6	
cb		2.1	19.1	
N		2.1	19.1	
		20' W		
N		3.5	18.7	
S		3.3	18.9	
		10' W		
S		3.6	18.6	
N		4.0	18.2	

	12.21	
	50' W	
N	3.24	19.0
S	3.14	19.1
	60' W	
N	4.7	17.5
cb	5.0	17.2
1/2	4.7	17.5
C	4.7	17.5
1/2	4.6	17.6
cb	4.4	17.8
S	4.2	18.0
	W 1/2	
S	3.0	19.2
cb	4.5	17.7
1/2	5.2	17.0
C	5.7	16.5
1/2	6.4	15.8
cb	6.7	15.5
N	6.5	15.7
	+ 5'	
N	9.3	12.9
cb	9.7	12.6
1/2	7.0	15.2
C	5.6	16.6
1/2	4.3	17.9
cb	3.5	18.7
S	2.3	19.9

2221
W Cb.

S	1.3	20.9
cb	1.7	20.5
1/2	2.6	20.2
c	5.1	17.1
1/2	7.5	14.7
cb	9.3	12.9
N	9.7	12.5

W L.

N	10.4	11.8
cb	8.8	13.4
1/2	6.8	15.4
c	4.4	17.8
1/2	3.4	19.8
cb	2.7	19.5
S	2.5	19.2

25' W

S	3.9	18.3
cb	4.3	17.9
1/2	4.6	17.6
c	5.1	17.1
1/2	6.0	16.2
cb	7.7	14.5
N	9.7	12.5

2221

40' W

N	9.6	12.6
cb	7.2	15.0
1/2	5.8	16.4
c	5.7	16.5
1/2	5.2	17.0
cb	4.8	17.4
S	4.8	17.4

45' W

S	10.7	11.5
cb	11.0	11.2
1/2	10.4	11.8
c	10.3	11.9
1/2	11.8	10.4
cb	11.7	10.5
N	11.9	10.3

50' W

N	12.6	9.6
cb	12.5	9.7
1/2	12.2	10.0
c	12.0	10.2
1/2	11.8	10.4
cb	12.0	10.2
S	12.0	10.2

2221
60' W

s	12.3	9.9
cb	12.0	10.2
1/2	12.0	10.2
c	12.1	10.1
1/4	12.2	10.0
cb	12.5	9.7
N	12.4	9.8

65' W

N	9.1	13.1
cb	8.3	13.9
1/2	8.1	14.1
c	7.7	14.5
1/4	8.0	14.2
cb	8.0	14.2
s	8.1	14.1

75' W

s	7.8	14.4
cb	8.0	14.7
1/2	7.9	14.3
c	8.2	14.0
1/4	8.4	13.8
cb	9.0	13.2
N	9.3	12.9

TP	277	15.02	9.96	13.25
----	-----	-------	------	-------

1502
100' W

N	3.8	11.2
cb	3.7	11.3
1/2	2.9	12.1
c	2.7	12.3
1/4	2.6	12.4
cb	2.5	12.5
s	2.5	12.5

125' W

s	4.5	10.5
cb	4.7	10.3
1/2	4.2	10.8
c	4.0	11.0
1/4	4.7	10.3
cb	5.1	9.9
N	5.4	9.6

100' W

N	6.6	8.4
cb	6.5	8.5
1/2	6.4	8.6
c	6.1	9.9
1/4	5.9	9.1
cb	6.2	8.8
s	6.0	9.0

150° 2'

175° W

s	8.2	6.8
cb	8.3	6.7
1/2c	8.6	6.5
c	8.2	6.8
1/2c	8.2	6.8
cb	7.9	7.1
1/2c	8.1	6.9

195° W

1/2c	10.0	5.0
cb	9.6	5.4
1/2c	9.4	5.6
c	9.3	5.7
1/2c	9.4	5.6
cb	10.0	5.0
c	9.5	5.5

200° W = E of Atlantic

s	10.3	4.7
cb	10.1	4.9
1/2c	10.1	4.9
c	9.9	5.1
1/2c	10.0	5.0
cb	10.7	4.3
1/2c	12.6	2.4

3 Hatch Xsec. North St from
 181 Mary Xsec. North St from
 182 Hall Park Blvd to Indiana

	343	305.98	302.548
B77 SE Cypress - Park Blvd.	94	6.51	299.28
		6.75	299.28
		Fh Park Blvd	
N		7.3	298.4
		7.6	298.1
		7.8	297.9
		7.7	298.0
		7.9	297.6
		8.1	297.6
S		8.0	297.7
	25'	E	
S		7.6	298.1
		7.6	298.1
		7.6	298.1
		7.5	298.2
		7.1	298.6
		6.9	298.6
N		6.9	298.8
	50'	E	
N		6.3	299.4
		6.3	299.4
		6.3	299.4
		6.4	299.3
		6.7	299.0
		6.9	298.6
S		6.8	298.9

	305.74	
S	75' E	6.0
		299.3
		6.2
		299.5
		6.2
		299.5
		6.2
		299.5
		6.0
		299.7
		5.7
		300.0
N		5.7
		300.0
	100' E	
N		5.3
		300.4
		5.5
		300.7
		5.7
		300.0
		5.9
		300.3
		5.5
		300.7
		5.8
		299.9
S		5.9
		299.8
	155' E	
S		5.0
		300.1
		4.3
		301.4
		3.9
		301.6
		4.2
		301.5
		4.4
		301.3
		4.2
		301.5
N		4.2
		301.5
	150' E	
N		3.4
		302.3
		3.4
		302.3
		3.3
		302.4

305.74

	3.3	302.4
	3.8	301.9
	3.6	302.1
S	3.4	302.3

175 E

S	3.1	302.6
	3.0	302.7
	2.5	303.2
	2.3	302.4
	2.3	303.4
	2.3	303.4
N	2.7	302.0

200 E

N	2.6	303.1
	2.4	303.3
	2.4	303.3
	2.4	303.3
	2.5	303.2
	2.4	303.3
S	2.4	303.3

225 E

S	2.1	303.6
	2.4	303.6
	2.3	303.4
	2.4	303.2
	2.6	303.1
	2.5	303.2

300.74

2.7

250 E

N	2.8
	2.9
	2.5
	2.6
	2.5
	2.4
	2.6

275 E

S	3.3
cl	3.3
10	3.3
TP	3.22
c	4.1
10	4.0
cl	4.5
N	4.5

300 E = W.L. Tidana

N	5.6
	5.5
	5.2
c	5.2
	5.5
	5.6
S	5.6

56

3030

	302.9
	302.6
	303.2
	303.1
	303.2
	303.3
	303.1

	302.4
	302.4
	302.4

302.52

	302.3
	302.4
	301.9
	301.9

	300.8
	300.9
	301.2
	301.2
	300.9
	300.8
	300.8

3/11 Hatch
11/1 Moore
1/18 Hall

Sections of Granada from
N. Grape to St. Ivy.
60 Street - 10' intervals.

BM Grape	0.51	277.12	276.61
	0.41	265.48	12.05 265.01
	0.81	253.43	12.86 252.62
	0.78	241.28	12.93 240.50

BM 13' from
Grape - Granada
5.82 237.55 9.55 231.73
N. Grape.

E	0.8	236.8
cb	1.5	236.1
1/2	2.3	235.3
c	2.9	234.7
1/2	3.1	234.5
cb	3.5	234.1
W	4.0	233.6

25' N

W	7.9	229.7
cb	7.6	230.0
1/2	7.4	230.5
c	6.9	230.7
1/2	6.7	230.9
cb	5.9	231.7
E	2.6	233.0

40' N

10' E	3.9	233.7
E	8.1	229.5
cb	8.0	229.6
1/2	8.6	229.0
S	9.0	228.6

237.55

10	10.6	227.0
cb	11.0	226.6
W	11.3	226.3
15' W	11.7	225.9

30' N

15' W	13.6	224.0
W	13.0	224.6
cb	12.6	225.0
1/2	12.3	225.3
S	11.7	225.9
1/2	10.9	226.7
cb	8.6	229.0

RETURN TO CITY ENGINEER'S OFFICE
CITY HALL, SAN DIEGO, CAL.
232.7
235.2

60' N

10' E	1.9	235.7
E	3.9	233.7
cb	6.5	231.1
1/2	7.8	229.8
c	9.5	228.1
1/2	11.5	226.1
cb	13.4	224.2
W	14.6	223.0
15' W	14.8	222.8

75' N

15' W	14.8	222.8
W	12.6	225.0

	237.55		
cb		11.3	226.3
1/4		9.5	228.1
c		7.5	230.1
1/2		6.6	231.0
cb		4.7	232.9
E		2.5	235.1
	100° N		
E		0.1	232.5
cb		1.7	235.9
1/4		3.5	234.1
c		4.5	233.1
1/2		5.6	232.0
cb		7.0	230.6
W		8.6	229.0
15° W		11.1	226.5
	125° N		
15° W		8.7	228.9
W		5.7	231.9
cb		4.1	233.5
1/4		2.8	234.6
c		1.7	235.9
1/2		0.5	237.1
TP	7.13	244.16	8.52
cb			237.13
		6.2	238.0
E		5.1	239.1

	244.16		
	150° N		
E		3.2	241.0
cb		4.6	239.6
1/4		5.9	238.3
c		7.3	236.9
1/2		8.5	235.7
cb		9.5	234.7
W		10.9	233.3
15° W		13.3	230.9
	175° N		
15° W		11.6	232.6
W		9.3	234.9
cb		8.0	236.2
1/2		7.5	236.7
c		6.2	238.0
1/4		4.5	239.7
cb		3.0	241.2
E		1.7	242.5
	200° N		
E		0.5	243.7
cb		1.9	242.3
1/4		3.6	240.6
c		4.9	239.3
1/2		6.4	237.8
cb		7.9	236.3
W		8.6	235.6
10° W		10.1	234.1

244.16

225' N

10' W	9.4	234.8
W	8.0	236.2
cb	7.0	237.2
1/2	5.1	239.1
c	3.8	240.4
1/2	2.4	241.8
cb	1.1	243.1
E	+0.2	244.4
T.P.	4.87	248.69
	0.94	243.82

230' N

E	3.3	245.4
cb	4.9	243.8
1/2	6.2	242.5
c	7.4	241.3
1/2	9.0	239.7
cb	10.6	238.1
W	11.6	237.1
10' W	12.3	236.4

275' N

10' W	11.9	236.8
W	11.2	237.5
cb	10.2	238.5
1/2	8.1	240.6
c	6.8	241.9
1/2	5.1	243.6
cb	3.8	244.9

248.69

300' N = 5th Hawthorn St [80' wide]

E	2.4	246.3
E	1.8	246.9
cb	3.3	245.4
1/2	4.6	244.1
c	6.1	242.4
1/2	7.7	241.0
cb	9.8	238.9
W	10.6	238.1
10' W	11.7	237.0

500' Hawthorn St

10' W	11.5	237.2
W	10.5	238.2
cb	9.1	239.6
1/2	7.5	241.2
c	6.0	242.7
1/2	4.5	244.2
cb	2.9	245.7
E	1.7	247.0

5 1/2

E	1.7	247.0
cb	3.1	245.6
1/2	4.9	243.8
c	6.6	242.1
1/2	7.9	240.8
cb	9.4	239.3
W	10.8	237.9

248.69

10' W		11.7	237.0
	cr Hawthorn		
10' W		12.4	236.3
W		11.2	237.5
cb		10.0	238.7
1/2		8.3	240.4
c		6.6	242.1
1/2		5.3	243.4
cb		3.5	245.2
E		1.9	246.8
	N 1/4		
E		2.4	246.3
cb		4.1	244.6
1/2		5.8	242.9
c		7.5	241.2
1/2		9.5	239.2
cb		10.9	237.8
W		12.2	236.5
10' W		13.3	235.4
	Ncb.c		
10' W		14.7	234.0
XV		13.1	235.6
cb		11.9	236.8
1/2		10.2	238.5
c		8.3	240.4
1/2		6.2	242.5
cb		4.7	244.0

248.69

E		3.1	245.6	
	N Hawthorn			
E		4.2	244.5	
cb		6.3	242.4	
1/2		7.9	240.8	
c		9.8	238.9	
1/2		11.8	236.9	
cb		14.0	234.7	
TP	1.64	242.43	10.90	237.79
W		8.7	233.7	
10' W		10.3	232.1	
	25' N			
25' W		16.2	226.2	
W		12.1	230.3	
cb		10.6	232.8	
1/2		8.5	233.9	
c		6.4	236.0	
1/2		4.4	238.0	
cb		2.6	239.8	
E		0.5	241.9	
	50' N			
E		4.2	238.2	
cb		5.6	236.8	
1/2		7.6	234.8	
c		10.1	232.3	
1/2		12.3	230.1	
TP	2.83	233.77	11.99	230.94

	233.77		
cb	5.4	228.4	
W	6.9	226.9	
25' W	10.3	223.5	
	75' N		
W	12.0	221.8	
cb	10.2	223.6	
1/4	8.0	225.8	
C	5.8	228.0	
1/4	3.8	230.0	
cb	1.6	232.2	
E	0.0	233.8	
	100' N		
15' E	6.0	227.8	
E	10.5	223.3	
cb	12.6	221.2	
T.P.	140	222.57	12.60
1/4		2.8	219.8
C		4.3	218.3
1/4		6.3	216.3
cb		8.7	213.9
W		10.7	211.9
25' W on Sec 75		7.8	214.8
	115' N		
30' E?		0.1	222.5
E		5.8	216.8
cb		8.7	213.9
1/4		10.1	212.5

	222.57		
C	11.7	210.9	
	125' N		
30' E?	25	220.1	
E	10.2	212.4	
T.P.	0.01	214.42	8.16
	115' N		214.41
1/4	5.6	208.8	
cb	8.5	208.9	
W	10.5	203.9	
30' W	12.8	201.6	
30' W on Sec 100	10.5	203.9	
	125' N		
30' W	6.9	207.5	
W	7.1	207.3	
cb	6.5	207.9	
1/4	6.6	207.8	
C	6.5	207.9	
1/4	5.6	208.8	
cb	5.7	208.7	
T.P.	875	223.16	0.01
	135' N		214.41
30' E	5.9	217.3	
E	13.2	210.0	
cb	11.2	212.0	
1/4	10.3	212.9	
C	9.8	213.4	
1/4	10.8	212.4	

	223.16			
cb		10.5	212.7	
w		10.3	212.9	
30' w		9.5	213.7	
	150' N			
30' w		4.1	219.1	
w		3.8	219.4	
cb		3.0	220.2	
1/4		1.5	221.7	
c		0.9	222.3	
1/4		0.8	222.4	
cb		2.5	220.7	
E		3.2	220.9	
25' E		8.7	214.5	
35' E		9.4	213.8	
	160' N			
TP	1224	233.90	150	221.66
25' E		9.5	224.4	
E		6.0	227.9	
cb		6.6	227.3	
1/4		7.4	226.5	
c		7.9	226.0	
1/4		8.9	225.0	
cb		10.0	223.9	
w		10.9	223.0	
15' w		10.9	223.0	
TP	1251	244.19	222	231.68

	244.19			
	175' N			
15' w		19.3	224.9	
w		19.5	224.7	
cb		18.8	223.4	
1/4		17.4	226.8	
c		16.4	227.8	
1/4		16.0	228.2	
cb		14.4	229.8	
E		13.7	230.5	
15' E		12.5	231.7	
	300' N			
10' E		7.2	232.0	
E		9.5	234.7	
cb		10.8	233.4	
1/4		11.7	232.5	
c		12.5	231.7	
1/4		13.5	230.7	
cb		14.2	230.0	
w		15.0	229.2	
10' w		15.5	228.7	
	325' N			
w		12.2	232.0	
cb		11.6	232.6	
1/4		10.7	233.5	
c		9.9	234.3	
1/4		8.7	235.5	
cb		7.7	236.5	

24419

E 6.5 237.7

250' N

F 4.2 240.0

cb 6.1 238.1

1/2 7.8 236.4

c 8.9 235.3

1/2 9.9 234.3

cb 10.8 233.4

W 12.0 232.2

275' N

W 12.3 231.9

cb 11.3 232.9

1/2 10.2 234.0

c 8.9 235.3

1/2 7.6 236.6

T.P. 725 244.91 6.53 237.66

cb 6.5 238.4

E 4.8 240.1

300' NE Sh. Ivy

E 5.5 239.4

cb 7.2 237.7

1/2 9.0 235.9

c 10.9 234.0

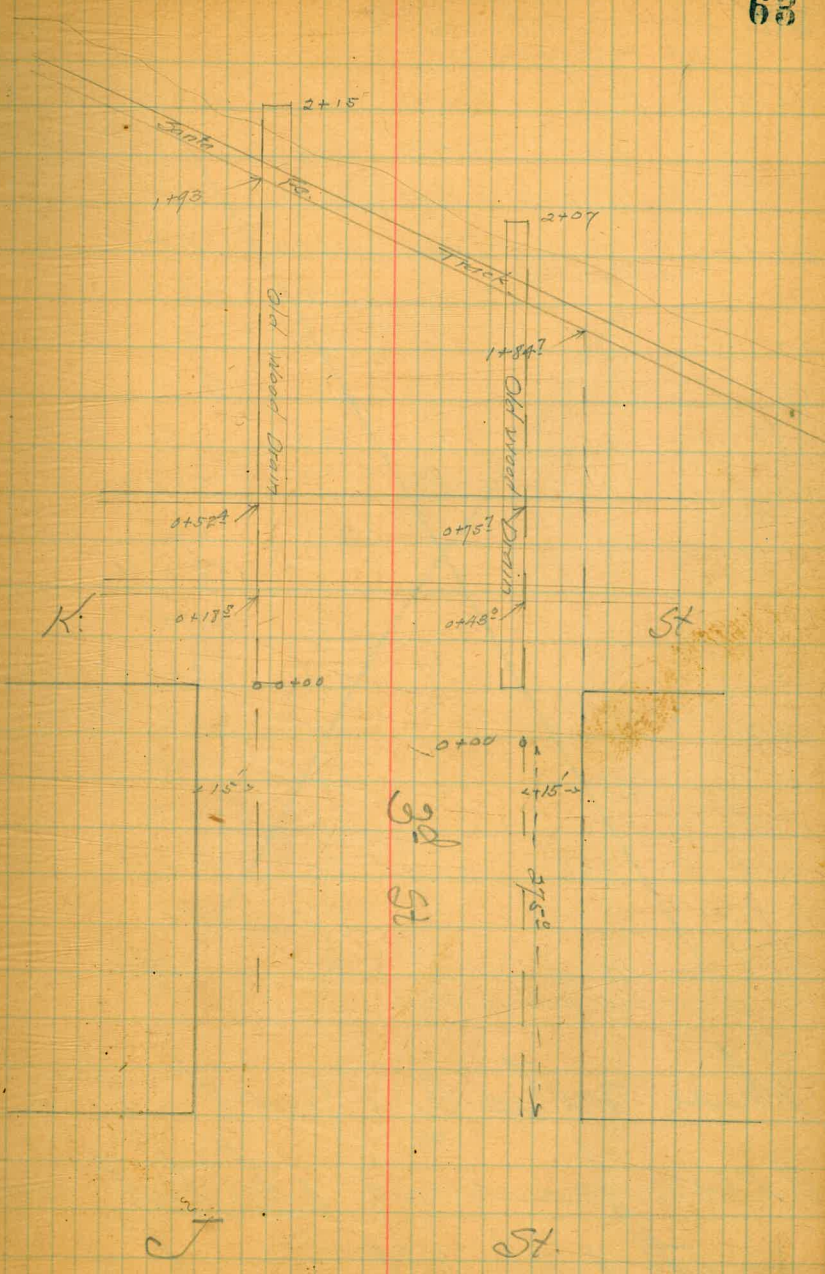
1/2 12.4 232.5

cb 13.8 231.1

W 15.2 229.7

10/8 Hatch T Profile of Gutter Lines on
 1/2" Muro both sides of 3rd St from K St
 Hall to the bay.

B.M.	3 rd J	4.35	5.86	B.M.	1.82	SW Cor.
0+00	5.3	0.6	63	-	0.4	
0+18.5	NR 50	0.36	57		0.2	
1+25			NR 5.83			
0+43						
0+50	5.1	0.8				
TP	259	3.01	544		0.42	
0+52.9	NR 243	0.58				
0+75.7			NR 255			
TP	4.55	5.19	287		0.64	
0+75	5.2	0.0				
1+00	4.9	0.3	47		0.5	
+25	5.0	0.2	49		0.3	
+50	5.0	0.2	5.2		0.0	
+75	4.9	0.3	4.3		0.9	
+84.7			NR 360		1.59	
+95			4.30		0.89	
1+00			5.9		-0.7	
+07			9.7		-4.5	
" Bottom of old drain			7.9		-2.7	
1+93			NR 365		+1.54	
2+00			4.2		+1.0	
+5			5.3		-0.1	
2+15			9.9		-4.7	
" Bottom of old Drain			9.1		-3.9	



10/ Hatch Profile for pipe connection
 15/ from straight line to Culverts under
 15/2 Hall Columbia at Laurel and India
 at Kalmia

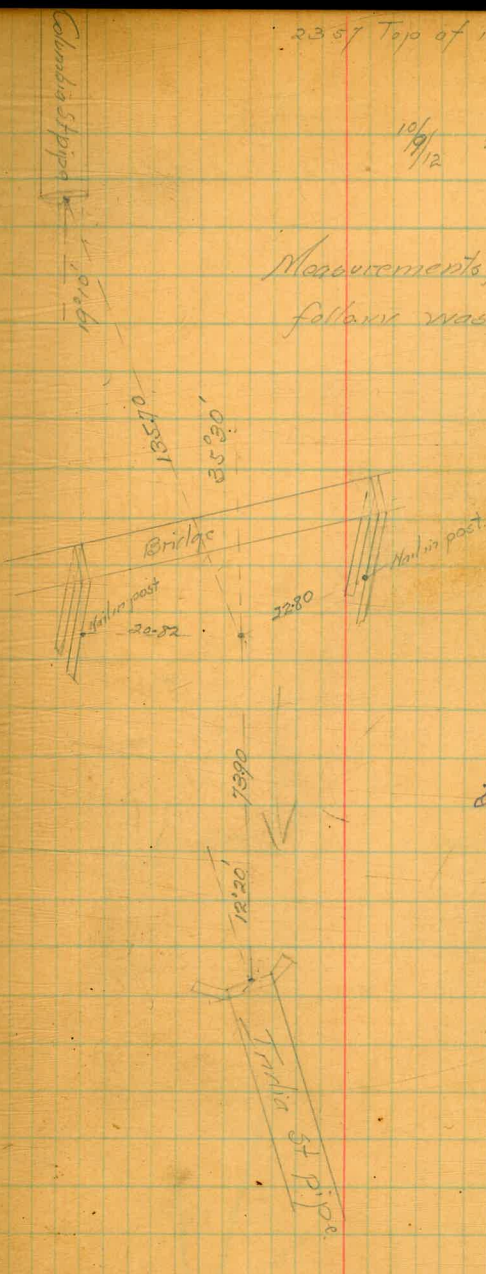
137M NE India Laurel	57.71	56.32
090	45.69	41.79
170	34.52	32.32
East end of Pipe at Trcha in side of Bottom	14.93	19.59
10	13.0	11.2
20	11.2	9.3
37	7.7	6.8
57	6.28	5.90
60	1.5	1.70
75	3.3	3.82
95	5.0	5.6
100	7.9	8.9
130	9.9	11.0
142	5.0	6.0
168	1.0	1.3
175	6.5	7.4
177	1.36	1.74
178	8.6	9.52
200 E East end of Pipe at plumbing inside of Bottom.	86.5	92.4

These notes are not for
 accompanying sketch, but
 first data between pipes.

2357 Top of inlet

10/12 Hatch
 Hall

Measurements for pipe line to
 follow wash.

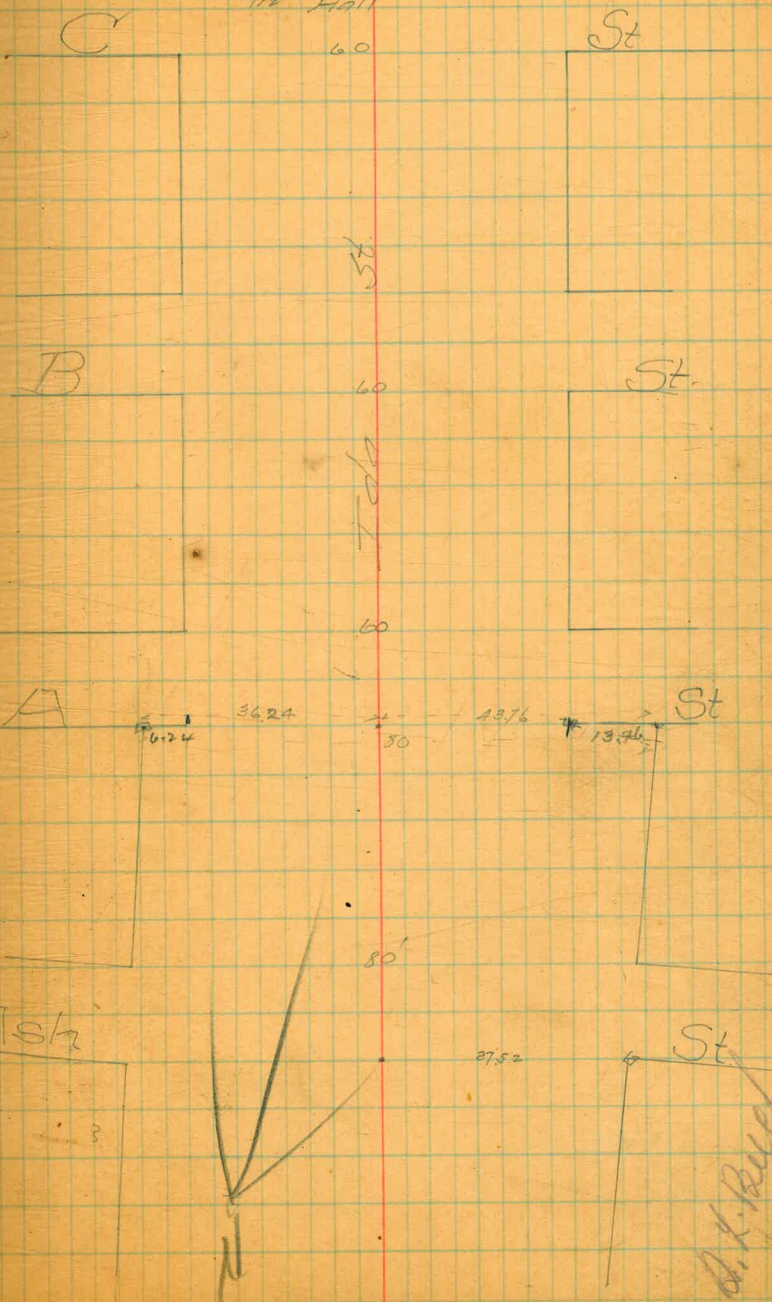


26" D.S. Pipe

Sketch showing offset at A and Ida

65

10/51 Hatch
1/12 Drog
1/12 Hall



68

69

#350

RETURN TO CITY ENGINEER'S OFFICE
CITY HALL, SAN DIEGO, CAL.

466 2446 2446 2446
 32 94 122 32
 2411 235 234 2389

RETURN TO CITY ENGINEER'S OFFICE
 CITY HALL, SAN DIEGO, CAL.

Published by H. S. CROCKER COMPANY, Stationers, Drawing
 Materials, and Mathematical Instruments, San Francisco.

Table showing the difference of latitude and departure in
 running 80 chains at any course from 1 to 60 minutes.

MINUTES.	LKS.	MINUTES.	LKS.	MINUTES.	LKS.
1	2 $\frac{1}{2}$	21	49	41	95 $\frac{1}{2}$
2	4 $\frac{1}{2}$	22	51 $\frac{1}{2}$	42	98
3	7	23	53 $\frac{1}{2}$	43	100 $\frac{1}{2}$
4	9 $\frac{1}{2}$	24	56	44	102 $\frac{1}{2}$
5	11 $\frac{1}{2}$	25	58 $\frac{1}{2}$	45	105
6	14	26	60 $\frac{1}{2}$	46	107 $\frac{1}{2}$
7	16 $\frac{1}{2}$	27	63	47	109 $\frac{1}{2}$
8	18 $\frac{1}{2}$	28	65 $\frac{1}{2}$	48	112
9	21	29	67 $\frac{1}{2}$	49	114 $\frac{1}{2}$
10	23 $\frac{1}{2}$	30	70	50	116 $\frac{1}{2}$
11	25 $\frac{1}{2}$	31	72 $\frac{1}{2}$	51	119
12	28	32	74 $\frac{1}{2}$	52	121 $\frac{1}{2}$
13	30 $\frac{1}{2}$	33	77	53	123 $\frac{1}{2}$
14	32 $\frac{1}{2}$	34	79 $\frac{1}{2}$	54	126
15	35	35	81 $\frac{1}{2}$	55	128 $\frac{1}{2}$
16	37 $\frac{1}{2}$	36	84	56	130 $\frac{1}{2}$
17	39 $\frac{1}{2}$	37	86 $\frac{1}{2}$	57	133
18	42	38	88 $\frac{1}{2}$	58	135 $\frac{1}{2}$
19	44 $\frac{1}{2}$	39	91	59	137 $\frac{1}{2}$
20	46 $\frac{1}{2}$	40	93 $\frac{1}{2}$	60	140

TABLE FOR RUNNING ON SLOPES.

In the following table the first column shows the angle, the second the
 number of links to be added to a chain on the slopes, to make one
 chain, horizontal measurement.

ANGLE	COR. IN LINKS	ANGLE	COR. IN LINKS	ANGLE	COR. IN LINKS	ANGLE	COR. IN LINKS
0		0		0		0	
4	0.24	11	1.88	18	5.14	25	10.54
5	0.38	12	2.24	19	5.76	26	11.26
6	0.55	13	2.63	20	6.42	27	12.24
7	0.76	14	3.06	21	7.11	28	13.37
8	0.98	15	3.53	22	7.85	29	14.34
9	1.24	16	4.02	23	8.64	30	15.47
10	1.55	17	4.56	24	9.47	35	22.07