

F.B.816

FIELD BOOK

No. 410

MICROFILMED  
DEC 15 1964

8)  $\frac{7}{1.50}$   
     $\underline{.1875}$



X-section Landis st E.L. Idaho to w.L. 30<sup>th</sup> *Amkle*  
" " 80 wide 14' sdw 13' 1/4<sup>th</sup> *Evans*  
*Johnson*

1

B.M. 340.29

B.M. 5.33 345.62

0+0 = E.L. Idaho

" 3.2 342.4

Ch 4.1 341.5

" 4.4 341.2

" 4.9 340.7

" 4.7 340.9

Ch 4.9 340.7

S 5.0 340.6

0+25 E

S 4.5 341.1

Ch 4.5 341.1

" 4.5 341.1

" 4.3 341.3

" 4.4 341.2

Ch 4.4 341.2

" 3.6 342.0

345.62

0.750

N	3.8	341.8
crb	3.8	341.8
"A	4.1	341.5
M	5.0	340.6
"A	4.2	341.4
crb	4.6	341.0
S	4.9	341.2

0.775

S	1.5	341.1
crb	4.2	341.0
"A	4.5	341.1
M	4.1	341.5
"A	3.3	342.3
crb	3.3	342.3
N	3.5	342.1

2

1.40

N	4.0	341.6
crb	4.4	341.2
"A	4.4	341.2
M	4.4	341.2
"A	4.5	341.1
crb	4.5	341.1
S	4.4	341.2

1.45

S	4.6	341.0
crb	4.4	341.2
"A	4.5	341.1
M	4.4	341.2
"A	4.9	340.7
crb	4.9	340.7
N	4.3	341.3



345.62

1450

N	5.0	340.6
crk	4.9	340.7
"A	5.3	340.3
M	4.5	341.1
"A	5.0	340.62
crk	5.0	340.6
S	5.1	340.5

1475

S	5.1	340.5
crk	5.2	340.4
"A	5.1	340.5
M	4.2	341.4
"A	4.3	341.3
crk	4.4	341.2
N	4.9	340.7

240 = m.L. Utah graded

N	4.9	340.7
crk	4.8	340.5
"A	4.8	340.8
M	5.0	340.6
"A	4.8	340.8
crk	5.0	340.6
S	5.1	340.5

E.L. Utah

S	5.9	339.7
crk	5.9	339.7
"A	5.5	340.1
M	4.8	340.5
"A	5.6	340.0
crk	5.5	340.1
N	5.4	340.2

345.62

0725 F

N	5.3	340.3
crb	5.4	340.2
"A	6.0	339.6
M	5.5	340.1
"A	6.0	339.6
crb	6.8	338.8
S	6.1	339.5

0750

S	7.3	338.3
crb	6.1	339.5
"A	5.6	340.0
M	6.3	339.3
"A	6.5	339.1
crb	6.3	339.3
N	5.6	340.0

4

0775

N	5.9	339.7
crb	5.6	340.0
"A	5.7	339.9
M	6.5	339.1
"A	5.9	339.7
crb	6.6	339.0
S	7.3	338.3

170

S	6.7	338.9
crb	6.2	339.4
"A	6.0	339.6
M	6.2	339.4
"A	6.5	339.1
crb	6.4	339.2
N	5.5	340.1



345.62

1+25

N	6.3	339.3
erb	6.4	339.2
"A	6.6	339.0
M	6.6	339.0
"A	6.7	338.9
erb	6.8	338.8
S	7.1	338.5

1+50

S	6.7	338.9
erb	5.7	339.9
"A	6.0	339.6
M	6.4	339.2
"A	6.6	339.0
erb	6.4	339.2
N	6.7	338.9

1+75

N	6.7	339.4
erb	6.4	339.2
"A	5.5	340.1
M	5.3	340.3
"A	6.9	338.7
erb	6.5	339.1
S	6.0	339.6

1+10 = Mt. Sherman 80' wide

S	7.5	338.1
erb	6.6	339.0
"A	6.2	339.4
M	6.9	339.2
"A	6.5	339.1
erb	6.0	339.6
N	5.6	340.0

345.62

W. CVK6

N	6.0	339.6
crk	5.9	339.7
"A	6.3	339.3
M	6.2	339.4
"A	5.8	339.8
crk	6.5	339.1
S	6.6	339.0

W "A

S	5.5	340.1
crk	6.0	339.6
"A	6.5	339.1
M	6.1	339.5
"A	5.0	340.6
crk	4.8	340.8
N	5.6	340.0

Center

N	5.7	339.9
crk	5.4	340.2
"A	5.2	340.4
M	6.5	339.1
"A	6.0	339.6
crk	6.7	338.9
S	6.6	339.0

E "A

S	7.0	338.6
crk	6.0	339.6
"A	5.6	340.0
M	6.3	339.3
"A	6.1	339.5
crk	5.5	340.1
N	5.7	339.9



34562

## E. CURK

N	4.8	340.8
Crk	5.9	339.7
"	6.2	339.4
M	6.2	339.4
"	5.8	339.8
Crk	6.1	339.5
S	6.3	339.3

## E. L. Sherman

S	6.4	339.2
Crk	5.2	340.4
"	5.5	340.1
M	6.5	339.1
"	6.2	339.4
Crk	5.7	339.9
N	5.0	340.6

7

## O+25 E

N	5.5	340.1
Crk	5.3	340.3
"	6.1	339.5
M	6.1	339.5
"	5.6	340.6
Crk	6.0	339.6
S	6.7	338.9

## O+50

S	6.6	339.0
Crk	6.1	339.5
"	6.1	339.5
M	6.2	339.4
"	6.1	339.5
Crk	6.0	339.6
N	6.0	339.6

345.62

0475

N		4.6	341.00
crb		4.8	340.8
"A		4.9	340.8
M		5.7	339.8
"A		5.4	340.2
crb		5.9	339.7
S		5.2	340.4

140

S		5.2	340.4
crb		5.7	339.9
"A		6.1	339.5
M		5.9	339.7
"A		5.5	340.1
crb		5.8	340.3
N		5.3	340.3

T.P.	5.89	346.31	5.20	340.42
------	------	--------	------	--------

8

346.31

1425

N		5.8	340.5
crb		5.9	340.9
"A		5.9	340.4
M		5.7	340.6
"A		5.4	340.9
crb		5.2	341.1
S		4.9	341.4

1450

S		4.9	341.4
crb		5.0	341.3
"A		4.8	341.5
M		5.2	341.1
"A		5.3	341.0
crb		5.1	341.2
N		5.0	341.3



346.31

1775-

N	2.9	341.9
crk	4.7	341.6
"A	4.8	341.5
M	3.7	342.6
"A	4.1	342.2
crk	4.9	341.4
S	5.1	341.2

2+0 = N.L. Kansas graded.

S	5.9	340.4
crk	5.6	340.7
"A	5.8	340.5
M	5.2	341.1
"A	5.1	341.2
crk	4.4	341.9
N	4.4	341.9

E.L. Kansas

N	4.6	341.7
crk	4.7	341.6
"A	5.7	340.6
M	5.4	340.9
"A	5.2	341.1
crk	5.6	340.7
S	5.6	340.7

0+25 E

S	5.8	340.5
crk	5.6	340.7
"A	5.1	341.2
M	4.4	341.9
"A	4.4	341.9
crk	5.6	340.7
N	5.1	341.2

346.31

0+50

N	5.2	341.1
orb	5.5	340.8
"4	5.3	341.0
M	5.2	341.1
"4	5.5	340.8
orb	5.5	340.8
S	5.9	340.4

0+75

S	5.8	340.5
orb	5.4	340.9
"4	5.1	341.2
M	5.3	341.0
"4	5.4	340.9
orb	5.6	340.7
N	5.4	340.9

10

1+0

N	5.6	340.7
orb	5.9	340.4
"4	5.8	340.5
M	6.0	340.3
"4	5.8	340.5
orb	5.6	340.7
S	6.0	340.3

1+25

S	6.1	340.2
orb	6.5	339.8
"4	6.0	340.3
M	6.0	340.3
"4	6.1	340.2
orb	6.1	340.2
N	5.7	340.6



346.31

1750

N	5.9	340.4
crk	5.9	340.4
"A	6.2	340.1
M	6.1	340.2
"A	5.9	340.4
crk	6.1	340.2
S	5.9	340.4

1775

S	5.5	340.8
crk	5.7	340.6
"A	6.0	340.3
M	6.1	340.2
"A	6.0	340.3
crk	5.4	340.9
N	4.6	341.7

11

270 = W.A. 30<sup>th</sup> ST

N	5.5	340.8
crk	5.8	340.5
"A	6.3	340.0
M	6.4	339.9
"A	6.9	339.4
crk	6.2	340.1
S	5.6	340.7

X-section, Granada st from N.L. 50 Park Add to S.L. Grape st  
 Granada st 80' wide 20' dnks 10' 1/2 from N.L. 50 Park Add to  
 S.L. Date - From S.L. Date to S.L. Grape 60' wide 10' 3/4 dnks - 10' 1/2

B.M.	B.A. Cedar		219.50
B.M.	0.46	219.96	
T.P.	2.64	213.57	7.03 210.93

N.L. 50 Park Add.

W		1.4	212.2
---	--	-----	-------

Crk		2.0	211.6
-----	--	-----	-------

"		2.4	211.2
---	--	-----	-------

M		2.3	211.3
---	--	-----	-------

"		2.5	211.1
---	--	-----	-------

Crk		2.5	211.1
-----	--	-----	-------

E		1.4	212.2
---	--	-----	-------

0+25 N

E		1.2	212.4
---	--	-----	-------

+5		2.4	211.2
----	--	-----	-------

Crk		2.5	211.1
-----	--	-----	-------

"		2.4	211.2
---	--	-----	-------

M		2.1	211.5
---	--	-----	-------

"		2.5	211.1
---	--	-----	-------

Crk		2.6	211.0
-----	--	-----	-------

W		1.9	211.7
---	--	-----	-------

213.57 0+50

W		1.3	212.3
---	--	-----	-------

Crk		2.2	211.4
-----	--	-----	-------

"		1.7	211.9
---	--	-----	-------

M		1.7	211.9
---	--	-----	-------

"		2.6	211.0
---	--	-----	-------

Crk		3.0	210.6
-----	--	-----	-------

+17		2.8	210.8
-----	--	-----	-------

E		1.8	211.8
---	--	-----	-------

0+75

E		3.6	210.0
---	--	-----	-------

+3		3.6	210.0
----	--	-----	-------

+10		8.4	205.2
-----	--	-----	-------

Crk		8.3	205.3
-----	--	-----	-------

"		7.3	206.3
---	--	-----	-------

M		6.2	207.4
---	--	-----	-------

"		5.1	208.5
---	--	-----	-------

Crk		4.0	209.6
-----	--	-----	-------

+5		2.2	211.4
----	--	-----	-------

✓		1.7	211.9
---	--	-----	-------



21357  
 1705<sup>S</sup> on W 8 1406<sup>S</sup> on E S.L. Date before change

W	5.7	207.9
+6	5.9	207.7
+10	7.9	205.9
crk	9.5	204.1
1/4	11.2	202.4
M	12.6	201.0
+5	13.5	200.1
1/4	15.1	198.5
+5	17.8	195.8
crk	17.2	196.4
E	6.2	207.4

1715<sup>S</sup> on W 8 1416<sup>S</sup> = S.L. Date 60 wide going N 350 wide going S

E = S	9.0	204.6
+10	12.2	201.4
E = N	15.8	197.8
crk	19.1	194.5
1/4	16.5	197.1
+5	16.6	197.0
M	15.7	199.9
+1	13.5	199.8
1/4	11.9	201.7
crk	9.6	204.0
W - going N	8.2	205.4
W - X S		

S. Crk. Date  
 21357

+15	10.2	203.9
W	12.2	201.4
crk	15.3	198.3
1/4	17.0	196.6
M	18.9	195.2
1/4	19.5	194.1
crk	17.1	196.3
E	13.2	200.4
+15	10.6	203.0
	5 1/4	
-25	10.4	203.2
E	16.2	197.4
crk	18.7	194.9
1/4	20.5	193.1
M	21.2	192.4
+8	20.6	193.0
1/4	18.6	195.0
crk	18.2	195.4
W	16.0	197.6
+25	12.9	200.9

Center  
21357

- 25	16.3	197.3
W	19.7	198.9
Crk	21.1	192.5
"A	21.9	191.7
+ 6	21.1	192.5
M	19.0	194.6
"A	17.1	196.5
Crk	17.2	196.4
E	18.9	194.7
+ 10	18.8	194.8
+ 40	9.6	204.0

N "A

- 50	13.8	199.8
- 40	16.7	196.9
E	19.2	199.4
Crk	13.3	200.3
"A	13.7	199.9
M	16.2	192.4
"A	19.0	194.6
Crk	22.1	191.0
W	23.0	190.6
+ 55	18.0	195.6

N. Curk  
21357

- 40	20.5	193.1
- 10	24.8	188.8
W	21.2	192.4
Crk	17.3	196.3
"A	12.8	200.8
M	10.6	203.0
"A	9.6	204.0
Crk	9.9	204.7
E	9.5	204.4
+ 25	10.3	203.3

N. L. Date

- 25	6.7	206.9
E	5.8	207.8
Crk	6.2	207.4
"A	7.2	206.4
M	8.6	205.0
"A	10.6	203.0
Crk	13.2	200.4
W	16.5	197.1
+ 23	25.9	187.7
+ 45	22.8	191.3



213.57

0+25 N

10-15			11.4	202.7
W			8.6	205.0
crk			6.6	207.0
"A			5.3	208.3
M			3.9	209.7
"A			2.6	211.0
crk			1.9	211.7
E			1.2	212.4
T.P.	13.09	226.59	0.07	213.50
		0+50		
E			11.3	213.3
crk			12.2	214.4
"A			12.9	213.7
M			13.5	213.1
"A			15.2	211.4
crk			16.2	210.4
W			17.7	208.9

226.59

0+75

W			14.2	212.4
crk			13.5	213.1
"A			12.8	213.8
M			11.9	214.7
"A			11.3	215.3
crk			10.5	216.1
E			9.4	217.2
		1+0		
E			7.9	218.7
crk			8.7	217.9
"A			9.4	217.2
M			9.9	216.7
"A			10.7	215.9
crk			11.5	215.1
W			12.6	214.0

15

226.58 1475

W	10.0	216.6
crb	9.2	217.4
"4	8.6	218.0
M	8.3	218.3
"4	7.9	218.7
crb	7.3	219.3
E	6.7	219.9

1450

E	5.2	221.4
crb	5.7	220.9
"4	6.3	220.3
M	6.7	219.9
"4	7.0	219.6
crb	7.6	219.0
W	8.1	218.5

226.89 1475

W	6.7	219.9
crb	6.3	220.3
"4	5.6	221.0
M	5.3	221.3
"4	5.1	221.5
crb	4.6	222.0
E	4.3	222.3

240

E	3.6	223.0
crb	3.9	222.7
"4	4.1	222.5
M	4.4	222.2
"4	4.8	221.8
crb	5.5	221.1
W	6.0	220.6



226.59

2+25

W	5.4	221.2
crk	4.8	221.8
"A	4.5	222.1
M	4.1	222.5
"A	3.8	222.8
crk	3.5	223.1
E	3.3	223.3

2+50

E	2.9	223.7
crk	3.2	223.4
"A	3.5	223.1
M	4.1	222.5
"A	4.7	221.9
crk	5.3	221.3
W	5.5	221.1

226.59 2+75

W	5.9	220.7
crk	5.3	221.3
"A	4.7	221.9
M	4.2	222.4
"A	3.5	223.1
crk	3.1	223.5
E	2.6	224.0

3+0

E	3.2	223.4
crk	3.8	222.8
"A	4.5	222.1
M	4.9	221.7
"A	5.2	221.4
crk	6.4	220.2
W	7.1	219.5

226.59

3+20=5.4, E/m 5' 60' wide

W	9.3	217.3
crb	8.3	218.3
"	7.9	219.2
M	6.5	220.1
"	5.7	220.9
crb	5.1	221.5
E	4.5	222.1

5. curb

E	5.9	221.2
crb	6.3	220.3
"	7.5	219.1
M	8.0	218.6
"	8.0	217.6
crb	9.8	216.8
W	10.9	215.7

18

226.59 5"4

-15	15.0	211.6
N	13.3	213.3
crb	11.7	214.9
"	10.6	216.0
M	9.7	216.9
"	8.6	218.0
crb	7.5	219.1
E	6.2	220.4

center

E	7.8	218.8
crb	9.1	217.5
"	10.3	216.3
M	11.5	215.1
"	12.8	213.8
crb	14.5	212.1
W	15.4	211.2
+15	17.3	209.3



226.59

N 1/4

- 15	19.4	2092
W	18.5	208.1
crk	16.8	209.8
1/4	14.9	211.7
M	13.9	212.7
1/4	12.4	214.2
lkr	11.2	215.4
E	9.8	216.8

N. C. CRK

<del>FP</del>		
E	11.0	215.6
Crk	12.9	213.6
T. P.	1.80 2 215.36	13.03 213.56
1/4		3.0 212.4
M		5.1 210.3
1/4		6.6 208.8
crk		8.9 206.5
✓		10.9 204.5
+		13.5 201.9

215.36

N. L. ELM

- 25	17.8	197.6
W	13.6	201.8
crk	11.9	203.5
1/4	9.7	205.7
M	7.0	208.4
1/4	5.4	210.0
crk	3.5	211.9
F	1.5	213.9

0425 N

E	6.3	209.1
crk	9.7	206.3
1/4	12.1	203.4
T. P.	0.28 203.55	12.29 203.07
M		2.3 201.3
1/4		4.7 198.9
crk		7.0 196.6
W		9.0 194.6
+25		13.0 190.6

203.55

	0+50		
- 50	17.1	1865	
- 25	18.8	184.8	
W	15.4	187.2	
crk	13.9	189.7	
"4	12.0	191.6	
M	7.8	193.8	
"4	7.8	196.8	
crk	5.0	198.6	
E	0.7	202.9	

0+75

- 15	0.5	203.1	
E	4.9	198.7	
crk	9.5	194.1	
"4	12.7	190.9	
M	14.4	189.2	
"4	13.2	190.4	
crk	12.1	191.5	
W	11.1	192.5	
+ 25	8.6	195.0	

203.55

1+0

- 25	+ 2.4	206.0	
W	1.0	202.6	
crk	2.5	201.1	
"4	5.3	198.3	
M	8.1	195.5	
"4	10.6	193.0	
crk	10.8	192.8	
E	8.1	195.5	
+ 40	3.5	200.1	

1+25

- 10	4.5	199.1	
E	6.3	197.3	
crk	4.4	199.2	
"4	1.7	201.9	
T.P.	12.66	215.41	0.80
M			10.7
"4			7.0
crk			5.0
W			2.5
T.P.	11.86	226.95	0.22



226,95

1+50

W	9.2	217.8
crh	10.1	216.9
"A	11.6	215.4
M	13.4	213.6
"A	15.6	211.4
crh	16.7	210.3
E	20.8	206.12
+25	23.1	203.9

1+75

-15	9.9	217.1
E	9.2	212.8
crh	8.1	218.9
"A	7.6	219.4
M	7.2	219.8
"A	6.7	220.3
crh	6.2	220.8
W	5.6	221.4

226,95

2+0

W	2.6	224.4
crh	2.7	224.3
"A	2.9	224.1
M	3.4	223.6
"A	3.9	223.1
crh	3.8	223.2
E	4.0	223.0

2+25

E	1.4	225.6		
crh	1.2	225.8		
"A	1.0	226.0		
M	0.7	226.3		
"A	0.7	226.3		
crh	0.7	226.3		
W	0.9	226.1		
T.P	9.77	236.43	0.29	226.66

236.43

2+50

W	9.0	227.4
Crk	8.7	227.7
"A	8.5	227.9
M	8.2	228.2
"A	8.0	228.4
Crk	7.9	228.5
E	7.9	228.5

2+75

E	5.8	230.6
Crk	5.9	230.5
"A	6.1	230.3
M	6.5	229.9
"A	6.7	229.8
Crk	7.1	229.3
W	7.9	229.0

236.43 3+0

W	6.1	230.3
Crk	5.5	230.9
"A	5.1	231.3
M	4.9	231.5
"A	4.7	231.7
Crk	4.4	232.0
E	4.4	232.0

3+20 = 5.4, F, 60' wide

E	3.6	232.8
Crk	3.7	232.7
"A	4.0	232.4
M	4.0	232.4
"A	4.3	232.1
Crk	4.7	231.7
W	4.8	231.6



23643 S. CURVE

W	4.7	231.7
crk	4.3	232.1
"A	4.0	232.4
M	3.8	232.6
"A	3.6	232.8
crk	3.6	232.8
E	3.4	233.0
3 "A		
E	3.2	233.2
crk	3.3	233.1
"A	3.5	232.9
M	3.6	232.8
"A	3.9	232.5
crk	4.0	232.4
W	4.5	231.9

23643 CENTER

W	4.3	232.1
crk	4.0	232.4
"A	4.8	231.6
M	3.6	232.8
"A	3.5	232.9
crk	3.5	232.9
E	3.3	233.1
N "A		
E	3.4	233.0
crk	3.5	232.9
"A	3.4	233.0
M	3.7	232.7
"A	3.8	232.6
crk	4.0	232.4
W	4.3	232.1

236.43

N CUP 6

N	4.3	232.1
erb	4.1	232.3
1/4	4.0	232.4
M	3.8	232.6
1/4	3.7	232.7
erb	3.7	232.7
E	3.5	232.9

FIX ST  
~~ML~~

E	3.8	232.6
erb	3.9	232.5
1/4	3.9	232.5
M	4.0	232.4
1/4	4.3	232.1
erb	4.3	232.1
N	4.6	231.8

24

236.43 0+25 ✓

N	6.3	230.1
erb	5.8	230.6
1/4	5.4	231.0
M	5.1	231.3
1/4	4.9	231.5
erb	4.6	231.8
E	4.4	232.0

0+50

E	6.2	230.2
erb	6.7	229.7
1/4	7.7	228.7
M	8.7	227.7
1/4	9.8	226.6
erb	10.4	226.0
N	11.1	225.3

T.B	3.02	228.52	10.93	225.50
-----	------	--------	-------	--------

top stalle W



228.52

0+75

-25	12.6	218.9
W	10.1	218.4
ck	9.2	219.3
1/4	8.3	220.2
1/4	7.0	221.5
1/4	5.2	223.3
ck	4.6	223.9
<del>1/4</del>		
E	3.8	224.7
+15	2.7	225.8

1+0

-30	5.1	223.4
-15	6.0	222.5
E	11.0	212.5
ck	13.2	215.3
1/4	14.9	213.6
1/4	15.7	212.8
1/4	16.0	212.5
ck	16.5	212.0
W	17.2	211.3
+10	20.8	209.7
<del>1/4</del>		

25

228.52 1+15

-50	23.0	203.5
W	20.9	205.1
ck	19.9	208.6
1/4	19.0	209.5
M	18.4	210.1
1/4	18.3	210.2
ck	17.5	211.0
E	16.9	211.6
+15	5.5	223.0
+30	4.3	224.2

1+25

-30	4.1	224.4
-15	5.4	223.1
E	12.8	215.7
+2	14.3	214.2
ck	12.3	216.2
1/4	12.5	216.0
M	13.6	214.9
1/4	13.9	214.6
ck	16.0	212.5
W	17.7	210.8
+25	14.5	214.0

		228.52		
		1750		
N			4.4	224.1
crk			4.0	224.5
"4			3.4	225.1
M			3.2	225.3
"4			3.2	225.3
crk			3.5	225.0
E			4.0	224.5
+15			3.2	225.3
T. P.	1201	238.70	183	226.69
		1775		
E			9.9	228.8
crk			9.1	229.6
"4			8.5	229.9
M			9.0	229.7
"4			9.3	229.4
crk			9.8	228.9
N			10.3	228.4

		238.70	210	
W			9.2	229.5
crk			8.8	229.9
"4			8.3	230.4
M			8.0	230.7
"4			7.7	231.0
crk			7.7	231.0
E			7.8	230.9
			2+25	
E			7.2	231.5
crk			7.1	231.5
"4			7.2	231.5
M			7.3	231.4
"4			7.7	231.0
crk			8.1	230.5
W			8.4	230.3



238.70 2750

W	7.6	231.1
crk	7.2	231.5
"A	6.9	231.8
M	6.5	232.2
"A	6.1	232.6
crk	5.7	232.8
E	5.8	232.9
2775		
E	4.2	234.0
crk	4.5	234.2
"A	5.0	233.7
M	5.5	233.2
"A	5.8	232.9
crk	6.2	232.5
W	6.6	232.1

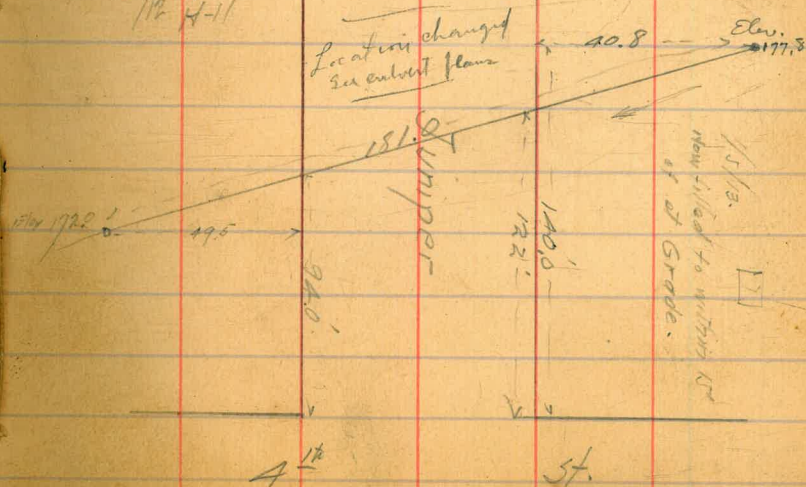
238.70

3+10 = S.L. Grape

W	5.3	233.4
crk	5.0	233.7
"A	4.5	234.2
M	3.9	234.8
"A	3.3	235.4
crk	3.1	235.6
E	3.2	235.5

3<sup>rd</sup>

St.

 $\frac{1}{30}$  H  
 $\frac{1}{12}$  M  
 H-11




1/30 Hatch  
1/2 more  
1/2 Hall

X Sec Juniper from  
3<sup>d</sup> to 4<sup>th</sup> Sts.

B77 Juniper-4<sup>th</sup> 102

214.99

2139.66 NE Cor.

214.99

W L A<sup>th</sup>

S

3.0 212.0

cb

16.3 198.7

cb

4.1 210.9

1/4

13.0 202.0

1/4

4.2 210.8

C

15.0 200.0

C

3.7 211.3

TP

0.65

203.02

12.62 202.37

1/4

3.1 211.9

1/4

5.6 209.4

cb

3.0 212.0

cb

5.8 209.2

N

2.3 212.7

S

7.0 208.0

N

10' W

9.1 205.9

30' N

30' W

9.7 205.3

N

8.8 206.2

N

11.6 203.4

cb

9.1 205.9

cb

10.0 205.0

1/4

6.5 208.5

1/4

9.3 205.9

C

7.0 208.0

C

9.3 205.7

1/4

9.8 205.2

1/4

12.3 202.9

cb

10.7 204.3

cb

11.8 203.2

S

11.8 203.2

S

12.6 202.4

20' N

20' W

16.3 198.7

TP

2.71

193.69

12.09 190.75

N

16.6 198.4

20'  
15'-N

20 191.7

3.5 190.2

5.4 188.3

cb

5.4 188.3

1/4

4.9 188.8

Note: On the SW Cor of 4<sup>th</sup> Juniper there is a wall built on the S. H. Juniper extending 60' West from 4<sup>th</sup>.



193.69			
C		6.9	187.3
1/4		9.5	184.2
cb		8.2	185.5
S		8.4	185.3
50' W			
20' N		+0.2	193.9
20' N		1.8	191.9
N		5.8	182.9
cb		8.1	185.6
1/4		9.9	183.8
C		11.7	182.0
TP	6.77	197.75	2.71
		190.98	
65' W			
30' N		0.3	197.5
30' N		1.7	196.1
N		7.0	190.8
cb		10.6	182.2
75' W			
30' N		1.7	196.1
20' N		2.9	194.9
N		6.9	190.9
cb		10.5	182.3

197.75			
85' W			
30' N		4.7	193.1
20' N		5.3	192.5
N		8.7	182.1
cb		12.2	185.5
100' W			
30' N		10.1	187.7
15' N		11.0	186.8
N		13.4	184.4
TP	1.20	185.99	12.96
		184.79	
50' W			
1/2		6.6	179.4
cb		5.2	180.8
S		5.4	180.6
65' W			
1/2		2.6	183.4
C		6.5	179.5
1/4		9.5	176.5
cb		10.7	175.3
S		11.1	174.9
45' S		13.0	173.0

185.99

75' W

1/4	2.4	183.6
c	6.5	179.5
1/4	9.2	176.5
cb	11.0	175.0
S	11.7	174.3
50' S	12.7	173.3

85' W

1/4	3.8	182.2
c	8.1	178.9
1/4	10.1	176.9
cb	11.5	174.5
S	12.1	173.9
50' S	13.0	173.0

100' W

cb	4.9	181.1
1/4	7.7	178.3
c	9.7	176.3
1/4	11.3	174.7

185.99

cb

11.6 174.4

125' W

50	6.6	179.4
20' N	8.4	177.6
N	9.6	176.4
cb	10.3	175.7
1/2	10.2	175.8
c	9.9	176.1
1/4	9.5	176.5
cb	6.5	179.5

140' W

50	28	183.2
1/4	5.6	180.4
c	6.8	179.2
1/2	8.4	177.6
cb	9.1	176.9
N	9.2	176.8
25' N	8.2	177.8
50' N	7.5	178.5



185.99

150 W

50' N		3.7	182.3
25' N		5.2	180.8
N		6.4	179.6
cb		5.8	180.2
1/4		5.1	180.9
c		2.6	183.4
1/4		2.2	183.8
cb		0.7	185.3

165 W

Same slope for 40 or 50' more

25' N		0.0	186.0	
N		1.7	184.3	
TP	0.64	186.60	0.03	185.96
TP	11.68	187.00	11.28	175.32
		100' W		
S		12.9	174.1	
25 S		7.7	179.6	
35 S		7.1	178.9	
50 S		10.0	177.0	

187.00

125 W

S		2.4	184.6	
TP	120.8	199.00	80.8	186.92
15' S		7.5	191.5	
25 S		5.5	193.5	
		140 W		
S		10.2	188.8	
10' S		4.7	194.3	
20' S		1.9	197.1	

150 W

S		8.4	190.6	
13 S		1.9	192.1	
		165 W		
S		3.9	194.1	
10 S		2nd point	+0.4	199.4
TP	12.64	198.60	130.4	175.96
40' N of NL		11.8	186.8	
N cb		13.4	185.2	
1/4		11.4	187.2	

19860

Cr.	9.2	189.4
1/2	9.5	189.1
cb	7.7	189.9

175 W

30' N	8.2	190.4
15' N	9.2	189.4
N	9.5	189.1
cb	9.0	189.6
1/2	6.3	192.3
c	4.5	194.1
1/2	5.3	193.3
cb	4.3	194.3

190 W

25' N	0.2	198.4
15' N	2.2	196.4
N	2.0	196.6
cb	1.2	197.4
TP	12.23	209.02
1/2	1.81	196.79
1/2	8.5	200.5
c	6.2	202.8
1/2	8.2	200.8

509.02

cb	7.7	201.3
S	4.4	204.6
10's	4.5	204.5

175 W

S	10.6	198.4
10's	7.6	201.4
20's	7.7	201.3

504 W = EL. 3<sup>d</sup> St.

10's	2.3	206.7
S	1.9	207.1
cb	2.6	206.4
1/2	2.4	206.6
c	0.8	208.2
1/2	2.8	206.2
cb	6.0	203.0
N	5.1	203.9
10's	7.2	201.8
20 N	5.2	204.8



3/1 Hatch Dec. Woolman Ave  
 1/2 Moore  
 1/2 Hall  
 Paridge

Monument - 844  
 BM NE Felton Woolman  
 22.30  
 XII Felton

N	87	13.86
10 S	89	13.6
20	90	13.4
30	90	13.3
35	86	13.7
40	82	14.1
50	87	13.6
60	96	12.7
70	97	12.6
80 S	95	12.8
10 W		
5	95	12.8
10	96	12.7
20	93	12.0
30	85	13.8
40	78	14.5
50	84	13.9
60	90	13.3
70	90	13.3
W	88	13.5

2230

20' W

N	89	13.4
10	90	13.3
20	87	13.6
30	81	14.2
40	76	14.7
50	77	14.6
60	92	13.1
70	96	12.7
80	95	12.8

30 W

5	94	12.9
10	94	12.9
20	91	13.2
30	6.8	15.5
40	7.1	15.2
50	7.6	14.7
60	8.8	13.5
70	9.1	13.2
80	8.6	13.7

2230

40' W

X	9.3	13 <sup>0</sup>
10	9.1	13 <sup>2</sup>
20	9.2	13 <sup>1</sup>
30	7.2	15 <sup>-1</sup>
40	6.6	15 <sup>-3</sup>
50	6.3	16 <sup>0</sup>
60	9.0	13 <sup>3</sup>
70	9.3	13 <sup>0</sup>
S	9.4	12 <sup>2</sup>

50' W

S	9.3	13 <sup>0</sup>
10	9.3	13 <sup>0</sup>
20	9.0	13 <sup>3</sup>
30	5.9	16.4
40	6.0	16 <sup>3</sup>
50	6.0	16 <sup>3</sup>
60	9.1	13 <sup>2</sup>
70	10.1	12 <sup>2</sup>
X	10.0	12 <sup>2</sup>

2230

60' W

X	11.1	11 <sup>2</sup>
10	10.6	11 <sup>7</sup>
20	10.0	12 <sup>3</sup>
30	6.5	15 <sup>8</sup>
40	5.4	16 <sup>9</sup>
50	5.6	16 <sup>7</sup>
60	8.8	13 <sup>5</sup>
70	9.4	12.9
S	9.5	12.8

70' W

S	9.5	12 <sup>8</sup>
10	9.5	12 <sup>8</sup>
20	8.3	14 <sup>0</sup>
30	5.4	16 <sup>9</sup>
40	5.0	17 <sup>3</sup>
50	5.8	16 <sup>5</sup>
60	10.0	12 <sup>3</sup>
70	11.5	10 <sup>8</sup>
X	11.2	11 <sup>1</sup>



	22.30			
N	80 W		11.1	11 <sup>2</sup>
10			11.6	10 <sup>7</sup>
20			10.5	11 <sup>8</sup>
30			5.1	17 <sup>2</sup>
40			4.4	17 <sup>9</sup>
50			5.0	17 <sup>3</sup>
60			8.9	13 <sup>4</sup>
70			10.2	12 <sup>1</sup>
8			9.5	12 <sup>8</sup>
		90 W = East End of Bridge		
5			11.0	11 <sup>3</sup>
10			11.4	10 <sup>9</sup>
20			11.5	10 <sup>8</sup>
70	336	13.20	12.46	9.84
30			2.5	10 <sup>7</sup>
40			3.0	10 <sup>2</sup>
50			2.7	10 <sup>5</sup>
60			2.7	10 <sup>5</sup>
70			2.1	11 <sup>2</sup>
N			3.4	9 <sup>8</sup>

	13.20			
N	100 W		6.8	6 <sup>4</sup>
10			3.0	10.2
20			3.1	10 <sup>1</sup>
30			2.9	10 <sup>3</sup>
40			2.3	10 <sup>9</sup>
50			3.1	10 <sup>1</sup>
60			3.3	9 <sup>2</sup>
70			3.1	10 <sup>1</sup>
8			3.0	10 <sup>2</sup>
		110 W		
5			3.6	9 <sup>6</sup>
10			3.7	9 <sup>5</sup>
20			3.0	10 <sup>2</sup>
30			2.9	10 <sup>2</sup>
40			3.9	9 <sup>2</sup>
50			3.8	9 <sup>4</sup>
60			4.6	8 <sup>6</sup>
70			7.5	5 <sup>7</sup>
N			8.5	4 <sup>7</sup>

13.20			
120' W			
N	Approximate "water"	80	5 <sup>2</sup>
10		84	4 <sup>8</sup>
20		79	5 <sup>8</sup>
30		6.8	6 <sup>2</sup>
40		5.5	7 <sup>7</sup>
50		4.8	8 <sup>4</sup>
60		5.0	8 <sup>2</sup>
78		5.0	8 <sup>2</sup>
S		4.7	8 <sup>5</sup>
130' W			
S		6.1	7 <sup>1</sup>
10		6.2	7 <sup>0</sup>
20		6.1	7 <sup>1</sup>
30		7.5	6 <sup>2</sup>
40		7.5	6 <sup>2</sup>
50		8.2	5 <sup>0</sup>
60		7.9	5 <sup>3</sup>
70		7.0	6 <sup>2</sup>
N		5.4	7 <sup>8</sup>

13.20			
140' W			
N		4.0	9 <sup>2</sup>
10		5.3	7 <sup>9</sup>
20		5.6	7 <sup>6</sup>
30		10.1	3 <sup>1</sup> ?
40		7.8	5 <sup>4</sup>
50		7.3	5 <sup>9</sup>
60		10.5	<del>2<sup>1</sup></del> 5 <sup>9</sup> ?
70		7.3	5 <sup>9</sup>
S		7.1	6 <sup>1</sup>
150' W			
S		7.5	5 <sup>2</sup>
10		7.8	5 <sup>4</sup>
20		7.4	5 <sup>8</sup>
30		7.2	6 <sup>0</sup>
40		7.4	5 <sup>8</sup>
50		7.1	6 <sup>1</sup>
60		5.2	8 <sup>0</sup>
70		4.7	8 <sup>5</sup>
N		3.7	9 <sup>5</sup>



13.20

160 W

N	3.9	9 <sup>3</sup>
10	4.2	9 <sup>2</sup>
20	5.0	8 <sup>2</sup>
30	5.3	7 <sup>9</sup>
40	5.9	7 <sup>3</sup>
50	6.0	7 <sup>2</sup>
60	7.3	8 <sup>9</sup>
70	7.1	6 <sup>1</sup>
5	7.9	5 <sup>2</sup>
3	8.1	5 <sup>1</sup>
10	6.8	6 <sup>4</sup>
20	6.5	6 <sup>7</sup>
30	5.7	7 <sup>5</sup>
40	6.6	7 <sup>6</sup>
50	5.1	8 <sup>1</sup>
60	4.9	8 <sup>3</sup>
70	4.2	9 <sup>0</sup>
N	4.0	9 <sup>2</sup>

170 W

13.20

180 W

N	4.0	9 <sup>2</sup>
10	4.1	9 <sup>1</sup>
20	4.3	8 <sup>9</sup>
30	4.6	8 <sup>6</sup>
40	4.6	8 <sup>6</sup>
50	4.9	8 <sup>3</sup>
60	4.9	8 <sup>3</sup>
70	4.9	8 <sup>3</sup>
5	5.2	8 <sup>0</sup>
3		
10	5.0	8 <sup>2</sup>
20	4.9	8 <sup>3</sup>
30	4.8	8 <sup>4</sup>
40	4.0	9 <sup>2</sup>
50	4.0	9 <sup>2</sup>
60	3.6	9 <sup>6</sup>
70	3.9	9 <sup>3</sup>
N	3.7	9 <sup>5</sup>
	3.6	9 <sup>6</sup>

190 W

	13.20		
N	800 W	2.8	100
10		3.2	100
20		3.0	102
30		2.9	103
40		3.3	99
50		3.5	97
60		4.3	89
70		4.3	89
S		5.0	82
	210 W		
S		4.2	90
10		3.9	93
20		3.4	98
30		2.6	107
40		2.7	106
50		2.2	110
60		3.2	112
70	570	1.74	11.76
	17.20	6.1	11.1
N		4.9	123

	17.20		
	200 W	2.7	14.5
	10' 3" N.W.		
20		4.6	12.6
30		4.6	12.4
40		5.4	11.8
50		6.1	11.1
60		6.1	11.1
70		5.9	11.3
S		6.2	11.0
	230 W		
	"Pison oak"		
10		4.0	13.2
20		3.5	13.7
70	12.62	28.74	10.8
30		10.0	16.12
40		7.3	18.7
50		13.0	21.4
60		9.4	15.7
70		7.4	19.3
		7.4	21.3



28.74  
240' N

		24 <sup>L</sup>
30 S of NL	46	22 <sup>L</sup>
30	6.5	22 <sup>2</sup>
40	5.5	23 <sup>2</sup>
50	8.5	20 <sup>2</sup>
60	12.4	16 <sup>3</sup>
76	13.5	15 <sup>2</sup>

Poison Oak

250' W - West of Bridge

Cactus

5		
10	10.7	18 <sup>0</sup>
20	9.1	19 <sup>6</sup>
20	6.5	22 <sup>2</sup>
40	4.0	24 <sup>7</sup>
50	3.8	24 <sup>9</sup>
60	3.7	25 <sup>0</sup>

240' W

20' S of NL	3.2	25 <sup>5</sup>
30	2.9	26 <sup>3</sup>

28.74

40	2.7	26 <sup>0</sup>
50	3.0	25 <sup>7</sup>
60	6.0	22 <sup>2</sup>
70	8.0	20 <sup>7</sup>
5	11.0	17 <sup>4</sup>

~~8~~ 8°-150 W 20 S.

5'	13 <sup>L</sup>	5 <sup>6</sup>	7 <sup>5</sup>	140 W 20 S.
		3 <sup>4</sup>	9 <sup>7</sup>	hay
		2 <sup>6</sup>	10 <sup>5</sup>	
		7 <sup>5</sup>	5 <sup>6</sup>	drain
		6 <sup>0</sup>	7 <sup>1</sup>	130 W 60 S.
		7 <sup>2</sup>	5 <sup>9</sup>	150 W 60 S.

3/17 Hatch Nbc Linniana St.  
 1/2 Hall from Sh Lincoln - St El Cajon

BM	10.46	307.60	297.135	W Linniana ad Linniana	30557 5/4		
TD	1.82	305.57	385	303.75	yy	7.2	298.4
		Sh Lincoln			cb	6.3	299.3
W			6.6	299.0	1/2	5.4	300.2
cb			6.2	299.4	c	5.0	300.6
1/2			6.4	300.2	1/2	4.7	300.9
c			4.7	300.9	cb	3.5	302.1
1/4			4.1	301.5	E	3.2	302.4
cb			3.6	302.0			
E			2.6	303.0	E	3.2	303.4
		5 cb			cb	3.3	303.3
E			3.2	302.4	+5	2.9	303.7
cb			4.0	301.6	+7	1.1	304.5
1/2			5.7	299.9	1/4	1.3	304.3
c			6.3	299.3	c	1.6	304.0
1/2			6.3	299.3	1/2	2.0	303.6
cb			7.0	298.6	cb	2.3	303.3
W			7.6	298.0	W	2.6	303.0



305.57

N 1/4

W	7.0	298.6
cb	6.6	299.0
1/2	6.2	299.4
c	5.2	300.4
1/4	4.0	301.6
cb	3.6	302.0
E	3.1	302.5

Ncb.

E	3.4	302.2
cb	4.1	301.5
1/2	5.6	300.0
c	6.8	299.8
1/4	7.7	297.9
cb	8.1	297.5
W	8.3	297.3

305.57

N. Lincoln

W	8.0	297.6
cb	7.5	298.1
1/2	6.7	298.9
c	5.9	299.7
1/4	4.9	300.7
cb	4.1	301.5
E	3.8	302.3

25' N

E	3.7	301.9
cb	4.7	300.9
1/2	5.1	300.5
c	6.0	299.6
1/4	6.5	299.1
cb	7.1	298.5
W	8.2	297.4

305.57

50' N

W	8.3	297.3
cb	7.4	298.2
1/4	6.7	298.9
c	6.1	299.5
1/4	5.5	300.1
cb	4.7	300.9
E	3.5	302.1

75' N

E	3.6	302.0
cb	4.5	301.1
1/4	5.8	299.8
c	6.4	299.2
1/4	7.3	298.3
cb	8.0	297.6
W	8.7	296.9

305.57

100' N

W	8.5	297.1
cb	7.9	298.2
1/4	7.1	298.5
c	6.7	298.9
1/4	5.9	299.7
cb	5.1	300.5
E	4.1	301.5

125' N

E	4.3	301.3
cb	5.4	300.2
1/4	6.0	299.6
c	6.8	298.8
1/4	7.7	297.9
cb	8.4	297.2
W	8.7	296.9



305.57

150' N

W	9.0	296.6
cb	8.6	297.0
1/2	7.7	297.9
c	7.1	298.5
1/2	5.8	299.8
cb	5.0	300.6
E	4.5	301.1

175' N

E	4.6	301.0
cb	6.0	299.6
1/2	6.7	298.9
c	7.4	298.2
1/2	8.1	297.5
cb	8.7	296.9
E	9.5	296.1

305.57

500' N

W	9.9	295.7
cb	9.0	296.6
1/2	8.1	297.5
c	7.4	298.2
1/2	6.7	298.9
cb	5.6	300.0
E	4.5	301.1

225' N

E	5.0	300.6
cb	6.1	299.5
1/2	6.9	298.7
c	7.5	298.1
1/2	8.7	297.4
cb	9.0	296.6
W	9.8	295.8

30557

250 N

W	10,5	295,1
cb	9,3	296,3
1/4	8,5	297,1
c	7,9	297,7
1/4	7,3	298,3
cb	6,5	299,1
E	5,2	300,4

275 N

E	5,6	300,0
cb	6,6	299,0
1/4	7,7	297,9
c	8,2	297,4
1/4	8,8	296,8
cb	9,5	296,1
W	10,7	294,9

30557

300 N

W	9,2	296,4
cb	8,6	297,0
1/4	8,1	297,5
1/4	7,8	297,8
1/4	7,1	298,5
cb	6,6	299,0
E	5,5	300,1

325 N

E	4,8	300,8
cb	6,0	299,6
1/4	7,0	298,6
c	8,0	297,6
1/4	8,1	297,5
cb	8,2	297,4
W	8,7	296,9



305.57

330 N

W		9.0	296.6
cb		8.2	297.4
1/2		8.3	297.3
c		7.9	297.7
1/2		6.7	298.9
cb		5.6	300.0
E		4.5	301.1
TP	264	304.01	420 301.37

375 N

E		2.9	301.1
cb		3.9	300.1
1/2		5.4	298.6
c		6.5	297.5
1/2		6.6	297.4
cb		7.3	296.7
W		8.3	295.7
15' W		12.4	291.6

304.01

400 N

15' W		13.8	290.2
W		11.1	293.9
cb		7.6	296.4
1/2		6.9	297.1
c		5.8	298.2
1/2		4.8	299.2
cb		3.5	300.5
E		2.3	301.7

425 N

E		2.6	301.4
cb		3.8	300.2
1/2		5.3	298.7
c		6.1	297.9
1/2		7.3	296.7
cb		7.9	296.1
W		10.1	293.9
15' W		13.6	290.4

30401

450' N

15' W	12.5	291.5
W	11.5	292.5
cb	8.6	295.4
1/2	7.2	296.8
c	6.1	297.9
1/2	5.3	298.7
cb	3.5	300.5
E	2.1	301.9

475' N

E	2.5	301.5
cb	3.9	300.1
1/2	4.6	299.4
c	5.3	298.7
1/2	6.6	297.4
cb	8.2	295.8
W	11.8	292.2
15' W	11.3	292.7

30401

500' N

15' W	10.2	293.8
W	10.2	293.8
cb	8.0	296.0
1/2	6.1	297.9
c	5.7	298.3
1/2	4.9	299.1
cb	4.4	299.6
E	2.9	301.1

525' N

E	3.1	300.9
cb	4.0	300.0
1/2	4.8	299.2
c	5.2	298.8
1/2	6.5	297.5
cb	7.9	296.1
W	9.5	294.5
10' W	10.1	293.9
30' W	6.9	297.1



302.01

537 N

20 W	5.8	298.2
W	10.3	293.7
cb	8.3	296.7
1/2	6.7	297.3
c	5.1	298.9
1/6	4.9	299.1
cb	4.1	299.9
E	3.1	300.9

550

E	3.4	300.5
cb	4.4	299.6
1/2	5.4	298.6
c	5.9	298.1
1/4	7.7	296.3
cb	9.3	294.7
W	8.2	295.8
15' W	5.5	298.5

TP 8.70 309.23 3.48 300.53

309.23

575 N

W	9.9	299.3
cb	11.8	297.4
1/2	13.2	296.0
c	13.6	296.6
1/2	12.1	297.1
S	9.9	297.3
E	8.6	300.6

600 N-SH Polk

E	8.6	300.6
S	10.0	299.2
1/2	12.1	297.1
c	13.6	295.6
1/2	10.6	298.6
S	9.8	299.4
W	8.6	300.6

500 Polk

W	8.0	301.2
cb	8.6	300.6

30923

1/2	9.4	299.8
0	12.1	297.1
+1/5	13.8	295.4
1/4	12.6	296.6
cb	10.5	298.7
E	9.0	300.2
	5 1/4	
E	9.3	299.9
cb	11.1	298.1
1/2	12.5	296.7
+3	13.8	295.4
+8	13.4	295.8
c	11.5	297.7
1/4	8.8	300.4
cb	8.0	301.2
w	7.2	302.0
	cr.	
w	6.5	302.7
cb	7.6	301.6

30923

<del>1/2</del>	8.5	300.7
c	11.3	297.9
1/2	13.4	295.8
cb	10.8	298.4
E	9.1	300.1
	N 1/4	
E	9.1	300.1
cb	10.1	299.1
1/2	13.3	295.9
c	10.2	299.0
1/2	7.9	301.3
cb	7.2	302.0
w	6.3	302.9
	ncb	
w	6.2	303.9
cb	7.3	301.9
1/2	7.8	301.4
c	10.6	298.6
1/2	12.7	296.5



309.23

cb	10.9	298.3
E	8.9	300.3
	Nh. Polk,	
E	8.8	300.4
cb	10.7	298.5
1/4	12.4	296.8
0	11.3	297.9
+5	8.7	300.5
1/4	7.3	301.9
cb	6.5	302.7
W	5.2	304.0
	25' N	
W	3.5	305.7
cb	5.2	304.0
1/4	6.9	302.3
C	11.0	298.2
1/4	10.5	298.7
+5	12.1	297.1
cb	10.4	298.8
E	8.8	300.4

309.23

50' N

E	8.6	300.6
+7	9.5	299.7
cb	11.1	298.1
+3	9.4	299.8
1/2	9.5	299.7
C	9.5	299.7
+6	6.7	302.5
1/2	5.3	303.9
cb	3.9	305.3
W	3.0	306.2
	75' N	
W	1.6	307.6
cb	2.7	306.5
1/2	4.3	304.9
C	6.0	303.2
1/4	9.2	300.0
cb	8.5	300.7
+3	10.1	299.1
E	8.5	300.7

309.23

100' N

E	8.5	300.7
cb	8.5	300.7
1/4	6.5	302.7
c	4.1	305.1
1/4	2.2	302.0
cb	1.2	308.0
W	0.4	308.8

T.P. 5.40 314.25 0.38 308.95

125' N

W	4.6	309.7
cb	5.4	308.9
1/5	6.7	307.5
c	7.8	306.5
1/4	8.9	305.4
cb	11.4	302.9
E	13.8	300.5

314.25

150' N

E	11.5	302.8
cb	9.4	304.9
1/4	7.9	306.4
c	6.4	307.9
1/4	4.9	309.4
cb	4.3	310.0
W	2.9	311.4

175' N

W	1.3	313.0
cb	3.4	310.9
1/4	4.1	310.2
c	4.8	309.5
1/4	5.6	308.7
cb	7.2	307.1
E	9.0	305.3

200' N

E	7.1	307.2
cb	5.3	309.0



31425

1/2		4.4	309.9
c		3.5	310.8
1/2		2.6	311.7
cb		1.6	312.7
TP	766 321.20	0.7	313.54
W		5.7	315.5
	225' N		
W		4.4	316.8
cb		5.9	315.3
1/2		8.2	313.0
c		9.9	311.3
1/2		10.9	310.3
b		12.1	309.1
E		12.8	308.4
	250' N		
E		11.5	309.7
cb		10.4	310.8
1/2		9.0	312.2
c		7.9	313.3

32120

1/2		5.6	315.6
cb		4.0	317.2
W		2.8	318.4
	275' N		
W		1.8	319.4
cb		2.7	318.5
1/2		3.7	317.5
c		5.3	315.9
1/2		7.0	314.2
cb		7.8	313.4
E		9.4	311.8
	300' N		
E		7.1	314.1
cb		5.7	315.5
1/2		4.5	316.7
c		2.7	318.5
1/2		1.0	320.2
cb		0.7	320.5
W		0.4	320.8

321.20

T.P. 897 329.88 0.29 320.91

325 N

W	7.0	322.90
cb	7.5	322.4
1/2	8.4	321.5
c	9.5	320.4
1/2	10.8	319.1
cb	12.8	317.1
F	13.6	316.3

350

F	11.6	318.3
cb	10.7	319.2
1/2	8.4	321.5
c	7.3	322.6
1/2	6.3	323.6
cb	5.7	324.2
W	3.6	324.3

329.88

375 N

W	4.2	325.7
cb	4.2	325.7
1/2	4.5	325.4
c	5.2	324.7
1/2	6.4	323.5
cb	8.3	321.6
E	10.1	319.8

400 N

E	7.2	322.7
cb	6.5	323.4
1/2	4.4	325.5
c	3.4	326.5
1/2	2.3	327.6
cb	2.8	327.1
W	2.7	327.2

425 N

W	2.0	327.9
cb	1.6	328.3



329.58

1/2	1.9	328.0
c	2.3	327.6
1/2	3.0	326.9
cb	4.1	325.8
E	5.5	324.4

4.50' N

E	3.2	326.7
cb	2.6	327.3
1/2	1.7	328.2
c	0.8	329.1
1/2	0.5	329.4
cb	0.6	329.3
W	1.4	328.5

T.P. 8.85 337.50 1.23 328.65

4.75' N

W	8.5	329.0
cb	8.0	329.5
1/2	7.6	329.9
c	8.0	329.5

337.50

1/2	8.5	329.0
cb	8.8	328.7
E	9.6	327.9

5.00' N

E	8.5	329.0
cb	7.7	329.8
1/2	7.3	330.2
c	6.4	331.1
1/2	6.7	330.8
cb	7.0	330.5
W	7.5	330.0

5.25' N

W	6.5	331.0
cb	5.8	331.7
1/2	6.7	330.8
c	6.5	331.0
1/2	5.8	331.7
cb	6.2	331.3
E	7.4	330.1

337.50

550 N

E	6.7	330.8
cb	6.1	331.4
1/2	6.0	331.5
C	5.8	331.7
1/2	5.6	331.9
cb	6.3	331.2
W	6.9	330.6

575 N

W	6.2	331.3
cb	6.1	331.4
1/2	5.0	332.5
C	5.7	332.4
1/4	5.0	332.5
cb	4.8	332.7
F	5.9	331.6

600 N = Sh Howard

E	5.5	332.0
B	4.8	332.7

337.50

1/2	4.8	332.7
c	4.8	332.7
1/2	4.3	333.2
cb	4.7	332.8
W	6.2	331.3

sch Howard

W	6.0	331.5
cb	4.8	332.7
1/2	4.2	333.3
c	4.5	333.0
1/2	4.4	333.1
cb	4.0	333.5
E	4.9	332.6

5 1/4

E	5.1	332.4
cb	4.8	332.7
1/2	4.1	333.4
c	4.1	333.4
1/2	4.4	333.1



The NE 1/4 of the intersection of Louisiana by Howard is graded also E 1/2 of Louisiana 50' north -

	337.50	
cb	4.9	332.6
W	5.7	332.1
	CV.	
W	4.5	333.0
cb	4.6	332.9
1/4	4.3	333.2
C	4.1	333.4
1/4	5.0	332.8
cb	5.2	332.3
<del>E</del>	5.6	331.9
	N 1/4	
E	7.3	330.2
cb	7.0	330.5
1/4	6.9	330.6
C	6.5	331.0
1/4 + 5	4.9	332.6
1/4	4.6	332.9
cb	4.1	333.4
W	4.2	333.3

	337.50	
	N cb.	
W	4.5	333.0
cb	4.4	333.1
1/4	4.1	333.4
+ 7	4.5	333.0
0	6.3	331.2
	N. Howard	
C	6.3	331.2
+ 5	4.3	333.2
1/4	4.1	333.4
cb	4.0	333.5
W	4.4	333.1
	25' N	
W	3.6	333.9
cb	3.1	334.4
1/4	3.9	333.6
+ 8	4.1	333.4
C	6.4	331.1
	50' N	
E	6.4	331.1
cb	6.3	331.2

337.50

1/2	57	331.8
e	53	332.2
+5	36	333.9
1/4	33	334.2
cb	35	334.0
W	28	334.7

75' N

W	32	334.3
cb	30	334.5
1/2	26	334.9
c	32	334.3
1/2	37	333.8
cb	30	332.5
E	59	331.6

100' N

F	54	332.1
cb	34	334.1
1/2	31	334.4
c	26	334.9

337.50

1/2	25	335.0
cb	23	335.2
W	28	334.7

125' N

W	25	335.0
cb	22	335.3
1/2	23	335.2
c	28	334.7
1/2	34	334.1
cb	42	333.3
E	62	331.1

150' N

F	67	330.8
cb	52	332.3
1/2	31	334.4
c	22	335.3
1/2	21	335.4
cb	22	335.3
W	24	335.1



337.50

175' N

W	21	335.4
cb	17	335.8
1/4	21	335.4
c	23	335.2
1/4	3.7	333.8
cb	4.9	332.6
E	7.0	330.5

200' N

E	7.4	330.1
cb	5.1	332.4
1/4	4.2	333.3
c	3.2	334.3
1/4	2.3	335.2
cb	1.8	335.7
W	1.8	335.7

337.50

225' N

W	1.6	335.9
cb	2.0	335.5
1/4	2.5	335.0
c	3.8	332.7
1/4	5.1	332.4
cb	6.5	331.0
E	8.3	329.2

250' N

E	9.2	328.3
cb	7.5	330.0
1/4	6.2	332.3
c	3.9	333.6
1/4	2.3	335.2
cb	1.9	335.6
W	1.7	335.8

275' N

W	2.0	335.5
cb	3.0	334.5
1/4	3.8	333.7

337.50

C	4.7	332.8
1/2	6.5	331.0
cb	7.5	330.0
E	8.4	329.1

300' N

E	10.0	327.5
cb	8.9	328.6
1/2	7.3	330.2
c	5.9	331.6
1/2	4.5	333.0
cb	3.8	333.7
W	2.4	335.1

325' N

W	3.2	334.3
cb	4.1	333.4
1/2	5.6	331.9
c	7.1	330.4
1/2	8.2	329.3
cb	9.7	327.8

337.50

E	11.0	326.5
---	------	-------

338' N - sl El Cajon

E	10.8	326.7
cb	9.7	327.8
1/2	8.7	328.8
c	7.2	330.3
1/2	5.8	331.7
cb	4.4	333.1
W	2.9	334.6

7.0	2.21	327.85	11.86	325.64
-----	------	--------	-------	--------

56.8	322.17
------	--------

322.14 BM  
Texas and  
El Cajon  
monument



Levels on Ray St for Profile from Apex North to University Ave

Mon. 30th & Coffe 334.76  
 + 1.100  
 335.76 +  
 335.26

H.I.

2,26

335.52

333.26

00 = North line of Ray St <sup>the West,</sup> Ray Ave 40' wide

N.L.	6.7	328 <sup>8</sup>
c	7.6	27 <sup>9</sup>
E.L. +5.0	6.3	29 <sup>0</sup>
E.L.	6.1	29 <sup>4</sup>
c	5.9	29 <sup>6</sup>
N.L. 1+00	6.6	28 <sup>9</sup>
N.L.	6.2	29 <sup>3</sup>
c	6.0	29 <sup>5</sup>
E.L. 1+00	5.9	29 <sup>6</sup>
E.L.	5.7	29 <sup>8</sup>
c	5.6	29 <sup>9</sup>
N.L. 2+00	6.0	29 <sup>5</sup>
N.L.	5.2	30 <sup>3</sup>
c	5.1	30 <sup>4</sup>
E.L.	5.2	31 <sup>3</sup>
2+50 = South line of Myrtle St on the East, 2+50		
E.L.	4.9	30 <sup>6</sup>
c	4.4	31 <sup>1</sup>

H.I.

333.02

N.L.

3.5

32<sup>0</sup>

Center of East Myrtle St. (60' wide),

N.L.	4.4	31 <sup>1</sup>
c	4.6	30 <sup>9</sup>
E.L.	4.7	30 <sup>8</sup>
North curb line on East Myrtle = South property line on West Myrtle (appe).		
E.L.	4.4	31 <sup>1</sup>
c	4.2	31 <sup>3</sup>
N.L.	4.2	31 <sup>3</sup>

00 = North line of East Myrtle on Myrtle on East side of Ray St.

N.L.	4.0	31 <sup>5</sup>
c	4.0	31 <sup>5</sup>
E.L.	4.2	31 <sup>3</sup>
0+30 on the East = Center line of Myrtle on the West,		
E.L.	4.0	31 <sup>5</sup>
c	3.5	32 <sup>0</sup>
N.L.	3.1	32 <sup>4</sup>
0+70 on the East = North line of Myrtle on the West,		
N.L.	3.0	32 <sup>5</sup>
c	3.1	32 <sup>4</sup>



+ H.I. 3365.2 Ray 31

E.L.			3.7	31 <sup>2</sup>
1400 E.L.			3.0	32 <sup>0</sup>
c			2.3	33 <sup>2</sup>
OK.L.			2.0	33 <sup>0</sup>
1450 OK.L.			2.0	33 <sup>5</sup>
c			2.0	33 <sup>0</sup>
E.L.			3.0	32 <sup>0</sup>
#	6.04	334.48	3.48	332.04
2400 E.L.			7.1	31 <sup>4</sup>
c			5.5	32 <sup>0</sup>
OK.L.			4.9	33 <sup>6</sup>
2450 OK.L.			5.2	33 <sup>3</sup>
c			6.5	32 <sup>0</sup>
E.L.			7.3	31 <sup>2</sup>
3400 E.L.			7.4	31 <sup>1</sup>
c			7.2	31 <sup>3</sup>
OK.L.			6.3	32 <sup>2</sup>
3450 OK.L.			6.4	32 <sup>1</sup>
c			7.5	31 <sup>0</sup>
E.L.			7.9	30 <sup>6</sup>

+ H.I. 338.48 Ray 31

3470 on the East = South line of Caffers on the West,				
3470 E.L.			8.0	30 <sup>5</sup>
c			6.6	31 <sup>2</sup>
OK.L.			6.9	31 <sup>6</sup>
4410 on the East = Center of Caffers on the West,				
4410 OK.L.			6.7	31 <sup>2</sup>
c			7.6	30 <sup>2</sup>
E.L.			9.4	30 <sup>1</sup>
4450 on the East = South line of Caffers on the West,				
E.L.			9.9	29 <sup>6</sup>
c			7.7	30 <sup>8</sup>
OK.L.			7.1	31 <sup>4</sup>
5400 OK.L.			7.5	31 <sup>0</sup>
c			7.8	30 <sup>2</sup>
E.L.			9.1	29 <sup>4</sup>
5450 E.L.			8.5	30 <sup>0</sup>
c			7.0	31 <sup>5</sup>
OK.L.			6.7	31 <sup>8</sup>
6400 = South line of Dwight on the East. (Ray 30 inside here)				
OK.L.			7.4	31 <sup>1</sup>



	+	H.I. 333.48	-	Ray St.
c			7.7	30 <sup>8</sup>
E.L.			9.0	30 <sup>5</sup>
Center line of Dwight (Ray 47' wide here)				
E.L.			7.6	30 <sup>9</sup>
c			7.2	31 <sup>3</sup>
N.L.			7.4	31 <sup>1</sup>
00 = North line of Dwight on the East. (Ray 47' 56' wide here)				
N.L.			7.4	31 <sup>1</sup>
c			7.3	31 <sup>2</sup>
E.L.			7.4	31 <sup>1</sup>
#	11.08	342.12	7.44	331.04
+50				
E.L.			9.4	32 <sup>7</sup>
c			9.8	32 <sup>3</sup>
N.L.			10.5	31 <sup>6</sup>
0+90 on the East = North line of Dwight on the West.				
+90				
N.L.			7.6	32 <sup>5</sup>
c			8.9	33 <sup>3</sup>
E.L.			7.5	34 <sup>6</sup>
1+30 on the East = Center of Dwight on the West.				
E.L.			6.6	35 <sup>5</sup>

	+	H.I. 342.12	-	Ray St.
c			8.3	33 <sup>8</sup>
N.L.			9.3	32 <sup>8</sup>
1+70 on the East = North line of Dwight on the West.				
N.L.			8.0	34 <sup>1</sup>
c			6.5	35 <sup>6</sup>
E.L.			5.4	36 <sup>7</sup>
+200				
E.L.			5.2	36 <sup>9</sup>
c			5.3	38 <sup>8</sup>
N.L.			7.2	34 <sup>8</sup>
+200				
N.L.			5.1	37 <sup>0</sup>
c			4.5	37 <sup>6</sup>
E.L.			4.2	37 <sup>9</sup>
+300				
E.L.			3.9	38 <sup>2</sup>
c			3.6	38 <sup>5</sup>
N.L.			4.3	37 <sup>8</sup>
+350				
N.L.			3.2	38 <sup>9</sup>
c			3.0	39 <sup>1</sup>
E.L.			3.5	38 <sup>6</sup>
+400				
E.L.			3.3	38 <sup>8</sup>
c			2.8	39 <sup>3</sup>



H.I.  
342.12

Ray St.

	+	-	
N.L. 4+00		2.8	39 <sup>3</sup>
N.L.		2.4	39 <sup>2</sup>
c		2.6	39 <sup>5</sup>
S.L.		2.6	39 <sup>5</sup>
4+70 on the East = South line of Landis on the West			
4+70			
S.L.		2.5	39 <sup>8</sup>
c		2.3	39 <sup>8</sup>
N.L.		2.2	39 <sup>9</sup>
5+10 on the East = center of Landis on the West			
5+10			
N.L.		2.2	39 <sup>9</sup>
c		2.1	40 <sup>0</sup>
S.L.		2.4	39 <sup>2</sup>
#	2.40	342.12	1.98
			340.14
5+50 On the East = the North line of Landis on the West			
5+50			
S.L.		3.6	40 <sup>0</sup>
c		3.2	40 <sup>4</sup>
N.L.		3.4	40 <sup>2</sup>
6+00 = South line of Landis on the East			
6+00			
N.L.		3.1	40 <sup>5</sup>
c		2.7	40 <sup>9</sup>

H.I.  
343.08

Ray St.

00

	+	-	
S.L.		3.1	40 <sup>5</sup>
Center of Landis St (60' wide) on the East			
S.L.		2.9	40 <sup>8</sup>
c		2.2	41 <sup>4</sup>
N.L.		2.9	41 <sup>3</sup>
00 = the north line of Landis St on the East			
N.L.		2.0	41 <sup>6</sup>
c		1.8	41 <sup>8</sup>
S.L.		2.2	41 <sup>4</sup>
0+50			
S.L.		1.5	42 <sup>1</sup>
c		1.2	42 <sup>4</sup>
N.L.		1.9	42 <sup>2</sup>
1+00			
N.L.		1.6	43 <sup>0</sup>
c		1.4	43 <sup>2</sup>
S.L.		1.7	42 <sup>9</sup>
1+00			
S.L.		1.0	43 <sup>6</sup>
c		1.7	43 <sup>9</sup>
N.L.		1.0	43 <sup>6</sup>
1+90 on the East = South line of Sunrise on the West			
N.L.		1.3	44 <sup>3</sup>



	+	H.I. 348.58	-	Ray Vt.
c.			4.0	44 <sup>5</sup>
E.L.			4.15	44 <sup>1</sup>
2+30 on the East = Center of <i>Umm</i> on the West.				
E.L.			3.9	44 <sup>7</sup>
c			3.8	44 <sup>8</sup>
N.L.			3.7	44 <sup>9</sup>
12+70 on the East = North line of <i>Umm</i> on the West.				
N.L.			3.0	45 <sup>6</sup>
c			3.2	45 <sup>4</sup>
E.L.			3.1	45 <sup>5</sup>
3+00 E.L.			2.3	46 <sup>3</sup>
c			2.3	46 <sup>3</sup>
N.L.			3.1	45 <sup>5</sup>
# 3+00	9.89	307.02	1.45	347.13
N.L.			10.2	46 <sup>8</sup>
c			9.8	47 <sup>2</sup>
E.L.			9.5	47 <sup>5</sup>
4+00 E.L.			8.2	48 <sup>8</sup>
c			8.5	48 <sup>5</sup>
N.L.			8.9	48 <sup>1</sup>

	+	H.I. 357.02	-	Ray Vt.
4+00 N.L.			7.3	49 <sup>7</sup>
c			6.7	50 <sup>3</sup>
E.L.			6.4	50 <sup>6</sup>
5+00 E.L.			5.5	51 <sup>5</sup>
c			5.6	51 <sup>4</sup>
N.L.			6.1	50 <sup>9</sup>
5+50 N.L.			5.1	51 <sup>9</sup>
c			5.0	52 <sup>0</sup>
E.L.			5.1	51 <sup>9</sup>
5+70 on the East = South line of <i>Ughtman</i> Vt on the West, (80' wide)				
E.L.			5.0	52 <sup>0</sup>
c			4.9	52 <sup>1</sup>
N.L.			5.0	52 <sup>0</sup>
6+00 = South line of <i>Ughtman</i> Vt on the East (80' wide)				
N.L.			4.9	52 <sup>1</sup>
c			4.7	52 <sup>3</sup>
E.L.			4.8	52 <sup>2</sup>
Center of <i>Ughtman</i> Vt on the East.				
E.L.			4.5	52 <sup>5</sup>
c			4.4	52 <sup>6</sup>



	H.I. 357.02		Ray St.
OK. L.		4.6	352 <sup>2</sup>
North line of Rightman St on the West is 10' South of North			
line of			St on the East,
OK. L.		4.5	52 <sup>5</sup>
c		4.4	52 <sup>6</sup>
E. L.		4.2	52 <sup>8</sup>
00 = North line of Rightman St on the East,			
E. L.		4.0	50 <sup>0</sup>
c		4.2	52 <sup>8</sup>
OK. L.		4.2	52 <sup>8</sup>
+ 50 OK. L.		3.2	53 <sup>8</sup>
c		3.3	53 <sup>7</sup>
E. L.		3.5	53 <sup>5</sup>
1400 E. L.		2.8	54 <sup>2</sup>
c		2.8	54 <sup>2</sup>
OK. L.		2.6	54 <sup>4</sup>
#	597	360.26	2.63 354.89
1400 OK. L.		5.4	54 <sup>9</sup>
c		5.5	54 <sup>1</sup>
E. L.		5.3	55 <sup>0</sup>

	H.I. 360.26		Ray St.
2400 E. L.		5.0	55 <sup>2</sup>
c		5.1	55 <sup>2</sup>
OK. L.		4.9	55 <sup>4</sup>
2400 OK. L.		5.3	55 <sup>0</sup>
c		4.9	55 <sup>4</sup>
E. L.		4.6	55 <sup>2</sup>
2489 on the East = North line of Amenity Ave on the West,			
2489 E. L.		4.7	55 <sup>6</sup>
c		5.1	55 <sup>2</sup>
OK. L.		5.3	55 <sup>4</sup>
3+17° on the East = South line of Amenity Ave on the East,			
Diagonal section from 3+17° on East to 2+89 on West,			
OK. L.		5.3	55 <sup>0</sup>
c		5.0	55 <sup>3</sup>
E. L.		4.7	55 <sup>6</sup>

May 10-12  
(Primary  
Domain  
than  
Devil)



Xsection of Trias St (50' wide), from South line of Chestnut St.  
to North line of Boyd St. 10' Curbs, 7 1/2' quarters.

June 5-12 {Donnan  
Shaw.  
Devine.

BM 254.25 Mon Cen Chestnut & Trias.

+	H.I.	-
3.12	257.37	254.25

00 = South line of Chestnut (50' wide).

OK. 1.	3.3	254.1
cl	3.4	254.0
1/4	3.2	254.2
c	3.2	254.2
1/4	3.1	254.3
cl	3.1	254.3
OK. 1. 0+25	3.2	254.2
OK. 1.	3.4	254.0
cl	3.6	253.8
1/4	3.7	253.7
c	3.8	253.6
1/4	3.5	253.9
cl	3.7	253.7
OK. 1. +50	4.0	253.4
OK. 1.	4.2	253.2
cl	4.2	253.2

+	H.I.	-
1/4	4.0	253.4
c	4.0	253.4
1/4	3.9	253.5
cl	3.8	253.6
OK. 1. +75	3.8	253.6
OK. 1.	4.0	253.4
cl	4.1	253.3
1/4	4.3	253.1
c	4.4	253.0
1/4	4.5	252.9
cl	4.5	252.9
OK. 1. +100	4.5	252.9
OK. 1.	4.1	252.3
cl	4.9	252.5
1/4	4.8	252.6
c	4.9	252.5
1/4	4.6	252.8
cl	4.4	253.0
OK. 1. +125	4.1	253.3
OK. 1.	4.1	253.3

	+	H.I. 257.37	-	
cl			4.4	259.0
1/4			4.9	259.5
c			5.3	252.1
1/4			5.2	259.4
cl			5.3	259.1
OK, 2. 1+50			5.5	257.9
OK, 2.			6.2	251.2
cl			5.7	251.7
1/4			5.5	251.9
c			5.4	252.0
1/4			5.2	252.2
cl			4.6	252.8
E, 2. 1+75			4.2	253.2
E, 2.			4.0	253.4
cl			4.2	253.2
1/4			4.8	252.6
c			5.4	252.0
1/4			5.5	251.9
cl			5.9	251.5
OK, 2.			6.4	251.0

Truss H  
(50 wide)

	+	H.I. 257.37	-	
2+00 OK, 2.			6.4	251.0
cl			5.6	251.8
1/4			5.3	252.1
c			5.2	252.2
1/4			4.5	252.9
cl			3.7	253.7
E, 2. 2+50			3.4	254.0
E, 2.			2.9	254.5
cl			3.1	254.3
1/4			3.7	253.7
c			4.3	253.1
1/4			4.7	252.7
cl			5.3	252.1
OK, 2.			6.3	251.1
# 2+50	4.33	255.96	5.74	251.63
OK, 2.			4.4	251.6
cl			3.2	252.8
1/4			2.8	253.2
c			2.5	253.5
1/4			2.1	253.9



	+	H.I. 255.96	-	Brain Vt (50' wide)
cb			1.7	254.3
E.L. 2+75			1.2	254.8
E.L.			1.6	254.4
cb			1.7	254.3
1/4			2.3	253.7
c			2.7	253.3
1/4			2.8	253.2
cb			3.2	252.8
OK. 1.			4.1	251.9
3+00 with line of Whitman Vt (50' wide), 3+00				
OK. 1.			4.5	251.5
cb			3.5	252.5
1/4			2.9	253.1
c			2.9	253.1
1/4			2.7	253.3
cb			2.4	252.6
E.L.			2.4	253.6
Intersection taken with Whitman Vt.				
00 = South line of Whitman Vt. 00				
E.L.			5.1	250.9

	+	H.I. 255.96	-	
cb			5.1	250.9
1/4			5.2	250.8
c			5.0	251.0
1/4			5.2	250.8
cb			5.4	250.6
OK. 1. +2.5			5.9	250.1
OK. 2.			7.7	248.3
cb			7.5	248.5
1/4			7.3	248.7
c			7.2	248.8
1/4			7.1	248.9
cb			7.0	249.0
E.L. +50			6.6	249.4
E.L.			8.6	247.4
cb			9.0	247.0
1/4			9.1	246.9
c			9.2	246.8
1/4			8.6	246.4
cb			8.6	246.4
OK. 1.			9.8	246.2

	+	H.I. 243.38	-	Train Mt (50' wide),
475				
OK.L.			12.1	243.9
cl			12.3	243.7
1/4			12.0	244.0
c			11.8	244.2
1/4			11.4	244.6
cl			11.2	244.8
E.L. 1+00			11.0	245.0
E.L.			13.1	242.9
cl			13.9	242.1
#	0.16	243.38	12.74	243.22
1/4			1.1	242.3
c			1.5	241.9
1/4			1.8	241.6
cl			2.2	241.2
OK.L. 1+25			2.0	241.4
OK.L.			4.7	238.9
cl			4.4	239.0
1/4			4.1	239.3
c			3.9	239.5
1/4			3.7	239.7

	+	H.I. 243.38	-	
				cl
				8.L. 1+50
				8.L.
				cl
				1/4
				c
				1/4
				cl
				OK.L. 1+75
				OK.L.
				cl
				1/4
				c
				1/4
				cl
				8.L. 2+00
				8.L.
				cl
				1/4
				c



	+	H.I. 242.88	-	Trial Ht (50' wide)
1/4			12.1	231.7
ct			13.1	230.7
#	4.70	235.74	12.34	231.04
OK. L. 2+25			6.2	229.5
OK. L.			8.3	227.4
ct			6.8	228.9
1/4			6.4	229.3
c			8.9	227.8
1/4			4.6	231.1
ct			3.7	232.0
E.L. 2+50			2.1	233.6
E.L.			4.7	231.0
ct			5.3	230.4
1/4			6.4	229.3
c			8.2	227.5
1/4			9.2	226.5
ct			10.4	225.3
OK. L. 2+65			11.7	224.0
OK. L.			13.8	221.9
ct			12.0	227.7

	+	H.I. 236.74	-	
1/4			10.6	225.1
c			9.4	226.3
1/4			8.3	227.4
ct			7.3	228.4
E.L.			9.3	226.4
# 2+70	0.46	223.68	12.52	223.22
E.L.			2.0	221.7
ct			0.0	227.7
1/4			0.0	227.7
c			0.9	222.9
1/4			1.1	222.6
ct			1.6	224.1
OK. L.			2.4	221.3
#	1.51	213.51	11.64	212.00
3100 = north line of Bayd Ht. (50' wide).				
3100 OK. L.			3.8	209.7
ct			4.2	209.3
1/4			4.9	208.6
c			4.9	208.6
1/4			5.0	208.5

H.I.  
213.51

Friday St  
(50' wide)

cb	516	207.9
E.L.	61	202.4
#	6.41	207.10 BTL

Section Dove St, narrowed 20' on the East side making it a 60' St from the North line of Washington St, to 2+25 North of Washington, 10' curbs - 10' quarters.

June 11-12 (Donnan, Shazo, Devine)

70

BTC 264.46 Ring N.W. Cor Washington & Dove.

+	H.I.	-	
5.28	269.69		264.46

00 = North line of Washington St.

00

OK.L.	4.7	265.0
cb	5.0	264.7
1/4	5.4	264.3
c	5.5	264.2
1/4	5.9	263.8
cb	5.7	264.0
E.L.	5.5	264.2
+5		
E.L.	5.2	264.5
cb	5.2	264.5
1/4	5.8	263.9
c	5.3	264.4
1/4	5.2	264.5
+4		
	5.1	264.6
+5		
	4.1	265.6
cb	2.8	266.9
OK.L.	2.0	267.7
+25		
OK.L.	2.2	267.5



	+	H.I. 269.69	-	Foul St (60' wide)
cl			2.8	266.9
+5			4.0	265.7
+6			4.7	265.0
1/4			4.9	264.8
c			5.1	264.6
1/4			4.9	264.8
cl			4.8	264.9
E.L. +50			4.6	265.1
E.L.			4.2	265.5
cl			4.2	265.5
1/4			5.0	264.7
c			4.5	265.2
1/4			4.6	265.1
+5			3.7	266.0
+6			2.8	266.9
cl			2.8	266.9
OK.L. +75			2.4	267.3
OK.L.			2.5	267.2
cl			2.9	266.8
+4			3.0	266.7

	+	H.I. 269.69	-	
+5			4.8	265.4
1/4			4.6	265.1
l			4.6	265.1
1/4			4.8	264.9
cl			4.0	265.7
E.L. 1400			4.8	265.4
E.L.			4.8	264.9
cl			4.6	265.1
1/4			4.8	264.9
c			4.2	265.5
1/4			4.8	264.9
+5			4.7	265.0
+6			3.7	266.0
cl			3.5	266.2
OK.L. 1425			3.4	266.3
OK.L.			4.7	265.0
cl			4.3	265.4
1/4			3.8	265.9
c			4.0	265.7
1/4			3.8	265.9

	+	H.I. 257.67	-	Dove St (60' wide).
cl			3.7	266.0
E.L.			3.3	266.4
1450				
E.L.			5.8	263.9
cl			4.4	265.3
1/4			4.3	265.4
c			4.8	264.9
1/4			5.6	264.1
cl			6.4	263.3
OK.L.			6.7	263.0
1475				
OK.L.			11.0	258.7
cl			9.6	260.1
1/4			8.6	261.1
c			8.6	261.1
1/4			7.8	261.9
cl			7.1	262.6
E.L.			7.0	262.7
#	0.42	257.67	12.44	257.25
2400				
E.L.			2.1	255.6
cl			1.7	256.0
1/4			1.6	256.2

	+	H.I. 257.67	-	
c			1.7	256.0
1/4			3.4	254.3
cl			4.1	253.6
OK.L.			4.4	253.3
1425				
OK.L.			11.2	246.5
cl			11.1	246.6
1/4			10.8	246.9
c			9.7	248.0
1/4			9.2	248.5
cl			9.0	248.7
E.L.			9.8	247.9



Section of Whitman St. 50' wide from west line of Harney St.  
to East line of Twigg St. 10' curbs - 7 1/2' quarters.

Continued from page 61 Book 852.

June 11-12  
(Donnan  
Shaw,  
Devine.)

BM = 193.37 Top, Cen of Whitman & Harney Sts.

	+	H.I.	-	
	5.84	199.31	193.37	
00 = West line of Harney St.				
Slope 10' South of South line	13.00		196.3	
V.L.		11.0	188.3	
cl		9.5	89.8	
1/4		8.6	90.7	
c		7.3	192.0	
1/4		6.2	93.1	
cl		4.3	95.0	
M.L.		1.5	197.8	
M.L.		7.7	191.6	
cl		9.9	89.4	
1/4		10.9	88.5	
c		12.2	187.1	
1/4		13.2	86.1	
#	0.13	186.84	12.60	186.71
cl		2.2	84.6	
V.L.		3.5	183.3	
Slope 10' S of S. line		4.2	82.6	

H.I.  
196.84

73

+00	Slope 10' S of S. line	9.2	77.6
+50	V.L.	8.7	178.1
	cl	7.6	79.2
	1/4	6.8	80.0
	c	6.0	180.8
	1/4	4.3	82.5
	cl	3.5	83.3
	M.L.	1.4	185.4
+75	M.L.	9.1	177.7
	cl	10.4	76.4
	1/4	10.9	75.9
	c	12.2	174.6
	1/4	12.6	74.2
	cl	13.1	73.7
	#	0.92	174.79
	12.97	173.87	
	V.L.	1.1	173.7
+75	Slope 10' S of S. line	2.5	72.3
1400	" " " " "	6.2	68.6
1400	V.L.	5.2	169.6
	cl	4.5	70.3



71.2,  
174.79

Whitman St.  
50' wide

174.79

74

1/4	4.1	70.7	M.L.	5.3	169.5
c	3.6	171.2	1475 M.L.	5.6	169.2
1/4	2.9	71.9	cl	6.6	68.2
cl	2.7	72.1	1/4	7.0	67.8
M.L. 1425	1.7	173.1	c	8.9	166.0
M.L.	4.3	170.5	1/4	9.8	65.0
cl	5.1	69.7	cl	10.8	64.0
1/4	5.9	68.9	M.L.	12.1	162.7
c	6.4	168.4	1475 Slope 10' W of V. Line	13.6	61.2
1/4	6.7	68.1	2400 " " " " " "	15.1	59.7
cl	7.1	67.7	2400 M.L.	13.4	161.4
M.L. 1425	8.0	166.8	cl	11.5	63.3
Slope 10' W of V Line 1450	9.5	65.3	1/4	10.2	64.6
" " " " " "	12.6	62.2	c	8.9	165.9
1450 M.L.	11.0	163.8	1/4	6.5	68.3
cl	10.1	64.7	cl	6.3	68.5
1/4	9.8	66.0	M.L.	4.9	169.9
c	7.9	166.9	#	1.73	166.84
1/4	7.0	67.8	2425 M.L.	+ 1.9	169.7
cl	6.3	68.5	cl	0.0	66.8



+ HI  
166.84

Whitman Mt.  
50' wide.

+ HI  
166.84

75

1/4	+ 0.3	167.1
c	1.4	165.4
1/4	3.5	63.5
cb	4.7	62.1
M.T. 2425	6.9	159.9
Slope 10' W. of V. line 2450	8.7	58.1
" " " " "	10.0	56.3
M.T. 2450	8.3	158.3
cb	6.7	60.1
1/4	8.4	61.4
c	4.6	162.2
1/4	3.6	63.2
cb	2.9	63.9
M.T. 2475	0.7	166.1
M.T.	3.4	163.4
cb	5.0	61.8
1/4	6.3	60.5
c	7.4	159.9
1/4	8.2	58.6
cb	9.2	57.6

M.T. 2475	10.9	153.9
Slope 10' W. of V. line 3+00	12.7	54.1176.84 -8.95 170.89
" " " " "	14.2	52.676.02 172.91 12.10 164.81
00 = East line of Twigg Mt. 3400		
M.T.	13.2	153.6
cb	11.8	55.0
1/4	10.8	56.0
c	9.9	156.9
1/4	8.5	58.3
cb	7.5	59.3
M.T.	6.7	160.1
Check		166.84 -8.95 160.89 +6.02 166.91 -12.10 154.81 = 154.82 B.M. Mon Gen Twigg & Chestnut.

Xsection of Boyd St. (50' wide) from Witherbe to Hortensi Sts.  
 10' curbs - 7 1/2' quarters.

BNE 282.90 N.E. Cor - Mon. Ingleside & Sunset Blvd.

+ 1.25  
 284.15  
 - 12.43  
 271.72  
 - 2.01  
 273.27  
 - 1.07  
 272.20

June 12-12 (Doran,  
 Shaw,  
 Devine.)

		H.I.			
				1/4	5.0
				c	5.5
	260	265.16	262.56	1/4	6.5
				cb	6.7
00 = West line of Witherbe St.					
00					
M.L.		0.7	264.6	M.L. +75	7.3
cb		1.4		M.L.	9.3
1/4		1.9		cb	9.4
c		2.5	262.6	1/4	7.7
1/4		3.6		c	7.0
c		4.6		1/4	7.1
M.L. +25		5.6	259.6	cb	6.8
M.L.		6.1	259.1	M.L. +100	6.1
cb		5.1		M.L.	8.5
1/4		4.4		cb	8.5
c		3.3	261.9	1/4	9.0
1/4		2.6		c	9.8
cb		2.3		1/4	10.5
M.L. +50		2.2	263.0	cb	11.0
M.L.		4.3	260.9	M.L. +25	11.3
cb		4.8		M.L.	12.6
					259.7
					255.9
					258.2
					259.1
					256.7
					255.4
					253.9
					252.6

H.I.  
 1607/6



	+	H.I. 265.16	-	
cl			12.4	252.8
1/4			12.1	
c			11.6	253.6
1/4			11.1	
cl			10.7	
M.L. 1450			10.4	254.8
M.L.			12.5	252.7
cl			13.0	
#	0.50	252.93	12.73	252.43
1/4			1.2	
c			1.6	251.3
1/3			2.0	
cl			2.3	
M.L. 1475			2.7	250.2
M.L.			4.5	248.4
cl			4.4	
1/4			4.2	
c			3.9	249.0
1/4			3.4	
cl			2.9	

Bay of Vt.  
(50' wide).

	+	H.I. 252.93	-	
X.L. 2400			2.4	250.5
X.L.			4.2	248.7
cl			4.9	
1/4			5.2	
c			5.6	247.3
1/4			5.7	
cl			5.5	
M.L. 2225			5.2	247.7
M.L.			7.5	245.4
cl			7.3	
1/4			7.0	
c			6.9	246.1
1/3			6.6	
cl			6.5	
M.L. 2150			6.3	246.6
X.L.			7.1	245.8
cl			7.4	
1/4			7.7	
c			8.0	244.9
1/4			8.4	

	+	H.I. 262.93	-	Byrd St. (50' wide).
cl			8.1	
M.L. 2475			8.3	244.6
M.L.			11.3	241.6
cl			10.4	
1/4			9.9	
c			9.0	243.9
1/4			8.8	
cl			8.9	
M.L. 2492			9.0	243.9
M.L.			10.7	242.2
cl			11.2	
1/4			11.6	
c			12.1	240.8
1/4			13.2	
#	0.40	240.63	12.70	240.23
cl			2.2	
M.L.			3.3	237.3
3+00 = East line of Hortensia St.				
M.L.			8.0	232.6
cl			4.8	

	+	H.I. 240.63	-	
			3.7	
			2.6	238.0
			2.0	
			0.6	
			+ 0.9	241.4
				240.63
				- 12.70
				227.93
				+ 0.69
				228.62
				- 12.26
				216.36
				+ 0.21
				216.57
				+ 9.83
				207.74

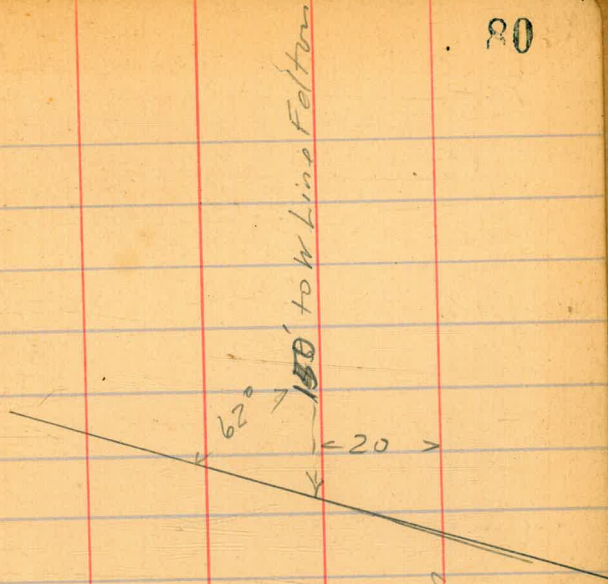


90-205.		10 <sup>2</sup>		8 <sup>6</sup>
180-205.	2 <sup>5</sup>	11 <sup>1</sup>	4 <sup>9</sup>	8 <sup>7</sup>
90-605.			2 <sup>3</sup>	6 <sup>7</sup>
				10 <sup>5</sup>
180-205	2 <sup>5</sup>	13 <sup>0</sup>	4 <sup>4</sup>	8 <sup>6</sup>
90 605.			2 <sup>3</sup>	10 <sup>7</sup>
NEWingotll			4 <sup>1</sup>	8 <sup>9</sup>
+12			5 <sup>6</sup>	7 <sup>4</sup>
+18 <sup>5</sup>			6 <sup>5</sup>	6 <sup>5</sup>

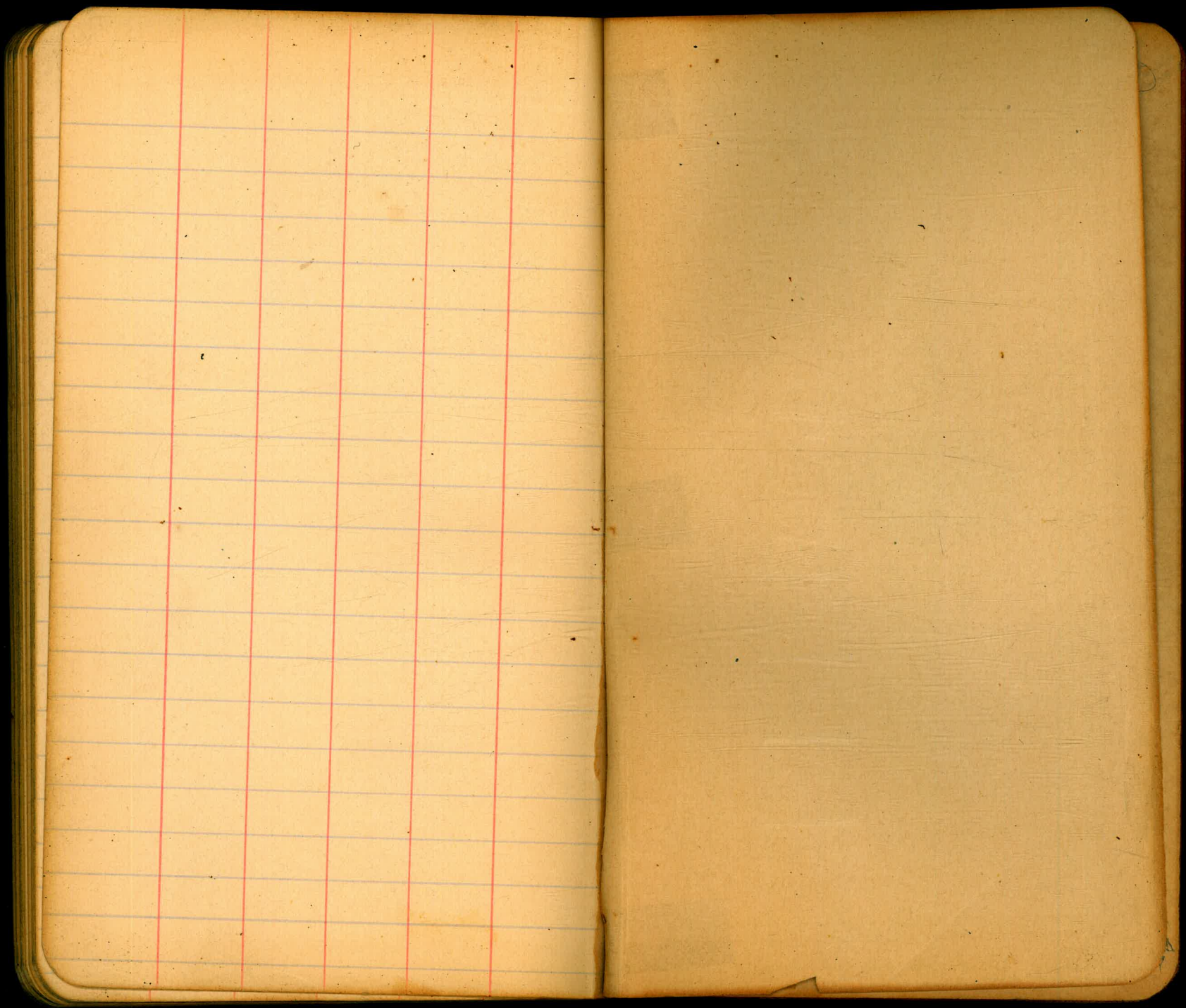
N.L. Woodman

L. Woodman

S. Line Woodman







326.76  
 122  
 338.49  
 232.10  
 6.44

354.42

366.26  
 498  
 355.186  
 367  
 359.13  
 4.78  
 344.48

Chertnut Birch 826

207.10 Hub Bay of Trian

216.52  
 207.10  
 9.42



1910 = 1935  
 177.32  
 177.0  
 205  
 177.8  
 205  
 272  
 134  
 15596  
 1804 708

40.8  
 8.8  
 156.6  
 8

110  
 120  
 500

23.5  
 249  
 317.8

