

817

F.B. 817

LEVEL BOOK

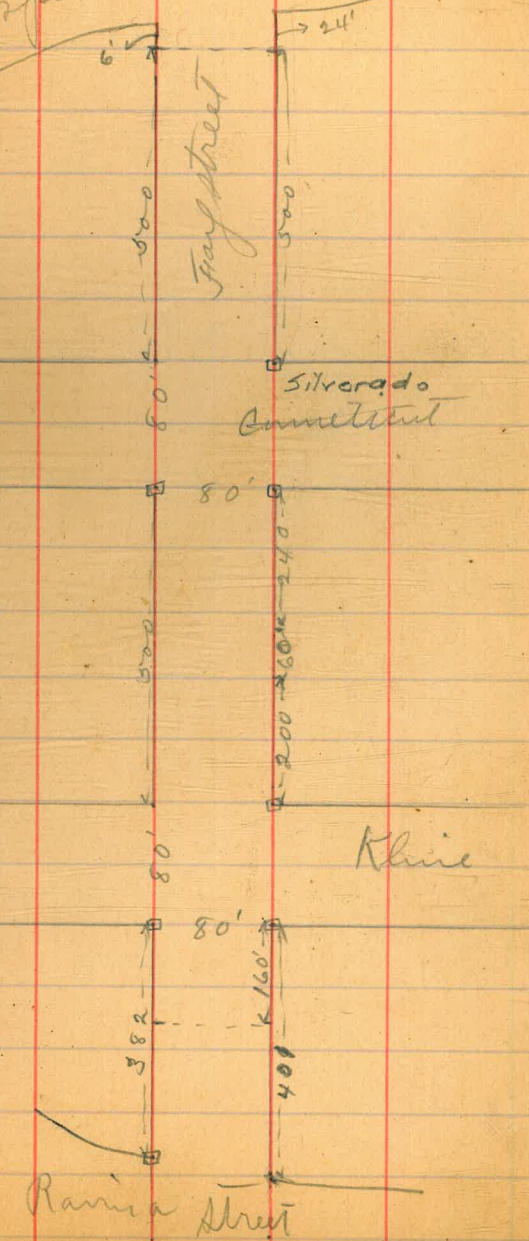
No. 410

817

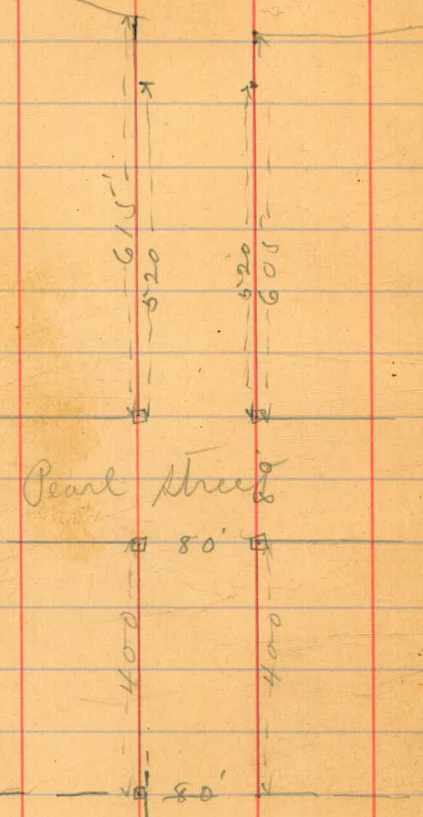
MICROFILMED
DEC 15 1964

81.7

Prospect st. 1



Ranma Street



X Sect. Hay Street
 Tajolla H.I. Feb. 8/2
 12.54 104.54 92.00

So. line prospect

west line	12.8	91.7
	13.0	91.5
	12.8	91.7
c	12.8	91.7
	13.2	91.3
	12.9	91.6
E line	12.7	91.8
	500' no. of Silverado Commitment	
E line	11.9	92.6
	12.0	92.5
	12.3	92.2
c	12.2	92.3
	12.6	91.9
	12.6	91.9
W. line	12.8	91.7

10454

White	450' no.	12.0	92.5
		11.8	92.7
		11.4	93.1
C		10.9	93.6
		11.0	93.5
		10.7	93.8
E line		10.4	94.1
	400' no.		
E line		9.2	95.3
		9.5	95.0
		10.1	94.4
C		10.0	94.5
		10.6	93.9
		10.9	93.6
White		11.0	93.5

10454

3

	350' no.		
White		10.0	94.5
		9.9	94.6
		9.5	95.0
C		9.0	95.5
		8.5	96.0
		8.5	96.0
E line		8.0	96.5
	300' no.		
E line		6.9	97.6
		7.6	96.9
		7.8	96.7
C		8.1	96.4
		8.2	96.3
		8.7	95.8
White		9.0	95.5

10454

250' no.

White

8.4 96.1

7.9 96.6

7.6 96.9

C

7.2 97.3

6.9 97.6

6.6 97.9

Eline

6.2 98.3

200' no.

Eline

5.6 98.9

6.0 98.5

6.2 98.3

C

6.5 98.0

6.9 97.6

7.1 97.4

White

7.4 97.1

10454

4

150' no.

White

6.8 97.7

6.5 98.0

6.3 98.2

C

5.9 98.6

5.5 99.0

5.5 99.0

Eline

4.8 99.7

100' no.

Eline

4.4 100.1

4.7 99.8

5.1 99.4

C

5.6 98.9

5.9 98.6

6.1 98.4

White

6.3 98.2

10454

30 no.

white

6.0 98.5

5.9 98.6

5.5 99.0

C

5.1 99.4

4.8 99.7

4.7 99.8

E line

4.2 100.3

North line Connecticut

E line

4.3 100.2

4.5 100.0

4.7 99.8

C

4.9 99.6

5.1 99.4

5.5 99.0

white

5.7 98.8

10454

5

no. Cb.

white

6.0 98.5

5.4 99.1

5.0 99.5

C

4.9 99.6

4.7 99.8

4.6 99.9

E line

4.4 100.1

no. 14

E line

4.1 100.4

4.4 100.1

4.7 99.8

C

4.9 99.6

5.2 99.3

5.3 99.2

white

5.8 98.7

10454

Center

White	5.1	99.4
	4.8	99.7
	4.7	99.8
C	4.4	100.1
	4.2	100.3
	4.0	100.5
Elms	3.8	100.7
Elms	3.6	100.9
	4.1	100.4
	4.4	100.1
C	4.6	99.9
	5.0	99.5
	5.2	99.3
White	5.6	98.9

So. 1/4

6

104,54

So. Cb.

White	5.2	99.3
	5.0	99.5
	4.8	99.7
C	4.5	100.0
	4.3	100.2
	4.1	100.4
Elms	4.0	100.5
Elms	4.27	100.27
	4.2	100.3
	4.2	100.3
C	4.3	100.3
	4.5	100.0
	4.9	99.6
White	5.43	99.11

South line Connecticut

10454

50' SO.

white

4.9 99.6

4.7 99.8

4.2 100.3

C

4.0 100.5

4.0 100.5

4.0 100.5

Eline

3.8 100.7

100' SO.

Eline

3.3 101.2

3.3 101.2

3.8 100.7

C

4.0 100.5

4.0 100.5

4.1 100.4

white

4.2 100.3

10454

7

150' SO.

white

4.2 100.3

4.1 100.4

3.8 100.7

C

3.5 101.0

3.7 100.8

3.6 100.9

Eline

3.1 101.4

200' SO.

Eline

3.0 101.5

3.0 101.5

2.9 101.6

C

2.7 101.8

3.6 100.9

3.6 100.9

white

3.9 100.6

10453

240' 20.

White

3.6 100.9

3.5 104.0

3.5 101.0

c

2.9 101.6

3.1 101.4

3.0 101.5

Eline

2.5 102.0

250' 20.

Eline

3.3 101.2

3.1 101.4

3.3 101.2

c

2.9 101.6

3.0 101.5

3.5 101.0

White

3.7 100.8

10454

8

300' 20.

White

3.9 100.6

4.0 100.5

3.8 100.7

c

3.5 101.0

3.9 100.6

4.2 100.3

Eline

3.8 100.7

350' 20.

Eline

4.6 99.9

4.9 99.6

5.0 99.5

c

4.6 99.9

5.2 99.3

5.5 99.0

White

5.4 99.1

10454

400' 20.

W. line

6.7 97.8

6.4 98.1

6.3 98.2

C

5.8 98.7

5.7 98.8

5.6 98.9

E line

5.3 99.2

450' 20.

E line

6.4 98.1

6.3 98.2

6.8 97.7

C

6.9 97.6

7.0 97.5

7.4 97.1

W line

7.7 96.8

9

10454

500' 20 (no. line Klind)

W line

9.0 95.5

8.5 96.0

8.0 96.5

C

7.8 96.7

7.7 96.8

7.5 97.0

E line

7.2 97.3

J.P.

4.11

H.I.

98.27

10.38

94.16

Mo. 06.

W line

2.9 95.4

2.5 95.8

2.0 96.3

C

1.6 96.7

1.4 96.9

1.2 97.1

E line

1.1 97.2

98,27

no. 14

E line

1.4 96.9

1.4 96.9

1.7 96.6

c

1.9 96.4

2.3 96.0

2.6 95.7

white

3.0 95.3

center

white

3.2 95.1

3.0 95.3

2.6 95.7

c

2.2 96.1

2.0 96.3

1.8 96.5

E line

1.4 96.9

10

98,27

no. 14

E line

1.5 96.8

1.5 96.8

2.0 96.3

c

2.3 96.0

2.7 95.6

3.1 95.2

white

3.4 94.9

so cb

white

3.6 94.7

3.3 95.0

3.1 95.2

c

2.4 95.9

2.4 95.9

2.2 96.1

E line

1.8 96.5

~~98.27~~ 98.27

South line Kline

E line

2.30 96.0

2.6 96.7

2.7 96.6

C

2.9 ~~95.4~~

3.5 94.8

3.7 94.6

W line

4.11 94.2

50 So.

W line

4.9 93.4

4.8 93.5

4.3 94.0

C

4.1 94.2

3.7 94.6

3.4 94.9

E line

3.0 95.3

98.27

100' 20.

E line

4.0 94.3

4.4 93.9

4.7 93.6

C

5.0 93.3

5.4 92.9

5.6 92.7

W line

5.8 92.5

150' 20.

W line

6.6 91.7

6.4 91.9

6.0 92.3

C

5.7 92.6

5.3 93.0

5.1 93.2

E line

4.6 93.7

10459
9827

169' SO.

Elms

4.8 93.5

5.2 93.1

5.6 92.7

C

6.0 ~~92.5~~
92.3

6.2 92.1

6.5 91.8

White

6.7 91.6

200' SO.

White

6.9 91.4

6.8 91.5

6.5 91.8

C

6.0 92.3

6.1 92.2

5.8 92.5

Elms

5.4 92.9

12

9827

250' SO.

Elms

7.8 90.5

8.2 90.1

8.4 89.9

C

8.3 90.0

8.5 89.8

8.2 90.1

White

8.0 90.3

300' SO.

White

11.5 86.8

11.4 86.9

11.2 87.1

C

11.1 87.2

10.8 87.5

10.4 87.9

Elms

10.1 88.2

98,27

325' 20.

E Elms

11.1 87.2

11.6 86.7

12.1 86.2

C 1

12.6 85.7

13.3 85.0

12.9 85.4

W Elms

13.9 84.4

J.P.

2.91

H.I. ✓
89.58

11.60 86.67

W

350' 20.

Elms

7.2 82.4

6.3 83.3

5.7 83.9

C

5.0 84.6

4.1 85.5

E

3.4 86.2

Elms

2.4 87.2

8958

13

98,27

375' 20.

Elms

1.9 87.7

2.8 86.8

3.6 86.0

C

4.5 85.1

5.8 83.8

7.3 82.3

Elms

8.2 81.4

No. line Ravine Street!

Elms

J.P. 9.67 ~~88.60~~
79.91

7.1 82.5

6.3 83.3

5.3 ~~84.3~~
83.0

C

4.5 85.1

3.4 86.2

Elms

2.8 86.8

Feb. 20/19 Builds
 Taylor
 Boulder H.I. ✓

T.P. 11.90 ~~100.50~~ ^{91.81} ~~79.91~~
~~88.60~~

No curb.

White

13.2 78.6

10.7 81.1

8.1 83.7

C

8.0 83.8

7.5 84.3

7.0 84.8

E line

6.6 85.2

No. 1/4

E line

9.9 81.9

10.6 81.2

9.6 82.2

C

9.3 82.5

9.5 82.3

cb. + 7'
 White

11.0 80.8

14.0 77.8

11.3 80.5

91.81

14

~~100.50~~

6' No. Center

White

8.5 83.3

13.7 78.1

13.1 78.7

C

12.9 78.9

12.9 78.9

11.8 80.0

E line

12.3 79.5

Center

E line

9.5 82.3

10.3 81.5

10.6 81.2

C

11.5 80.3

11.4 80.4

11.2 80.6

White

6.6 85.2

91.81
So. 1/4

W. line

5.7 86.1

6.5 85.3

7.3 84.5

C

7.6 84.2

7.1 84.7

7.0 84.8

E line

6.7 85.1

So. cross

E. line

5.6 86.2

6.6 85.2

6.8 85.0

C

6.6 85.2

6.3 85.5

6.0 85.8

W. line

5.4 86.4

~~100.50~~
91.81

15

So. line Ravina

W. line

5.2

~~86.6~~
85.3

5.1

86.7

5.1

86.7

C

5.6

~~86.2~~
84.9

5.9

85.9

5.7

86.1

E line

5.1

86.7

570' No. Pearl

E line

3.1

88.7

3.4

88.4

3.5

88.3

C

3.3

88.5

3.6

88.2

3.7

88.1

W. line

3.7

88.1

91.81
~~100.50~~

520' no. pearl

White 2.2 89.6

2.1 89.7

2.2 89.6

C 2.1 89.7

2.0 89.8

1.8 90.0

E line 1.3 90.5

500' no. pearl

E line 0.9 90.9

1.2 90.6

1.4 90.4

C 1.2 90.6

0.9 90.9

0.9 90.9

White 1.1 90.7

J.P.

91.81
H.I. ✓
103.39
11.77 ~~112.08~~ 0.19 91.62
100.31 ✓

450' no. pearl

White 10.0 93.4

10.0 93.4

9.7 93.7

C 9.6 93.8

10.0 93.4

10.7 92.7

E line 11.1 92.3

400' no. pearl

E line 7.9 95.5

7.9 95.5

8.2 95.2

C 8.2 95.2

8.3 95.1

8.4 95.0

White 8.7 94.7

103.39

~~112.08~~

350' no. pearl

W. line

7.2 96.2

6.9 96.5

6.5 96.9

C

6.5 96.9

6.8 96.6

7.6 95.8

E line

7.8 95.6

300' no. pearl

E. line

7.9 95.5

7.2 96.2

5.9 97.5

C

5.5 97.9

5.2 98.2

5.2 98.2

W. line

5.7 97.7

103.39

~~112.08~~

250' no. pearl

W. line

3.8 99.6

3.2 100.2

2.7 100.7

C

2.9 100.5

3.0 100.4

2.8 100.6

E line

2.6 100.8.

200' no. pearl.

E line

0.8 102.6

1.2 102.2

1.5 101.8

C

1.8 101.6

2.0 101.4

2.2 101.2

W. line

2.6 100.8

17

102.39

H.T. ✓

✓

J.P.

11.45 ~~113.75~~ 1.09 ~~102.30~~ 110.99

150' no. pearl

W line

12.0 101.8

11.7 102.1

11.5 102.3

C

11.1 102.7

10.8 103.0

10.3 103.5

E line

10.0 103.8

100' no. pearl

E line

8.9 104.9

9.4 104.4

9.5 104.3

C

9.9 103.9

10.4 103.4

10.7 103.1

W line

11.0 102.8

113.75
~~122.44~~

18

50' no. pearl

W line

9.2 104.6

9.2 104.6

9.0 104.8

C

8.7 105.1

8.4 105.4

8.2 105.6

E line

7.7 106.1

no. line pearl.

E line

5.78 107.97

5.9 107.9

6.0 107.8

C

5.9 107.9

6.0 107.8

5.8 108.0

W line

6.05 107.70

113.75

no. curb

w. line	5.8	108.0
	5.5	108.3
	5.3	108.5
c	5.2	108.6
	5.1	108.7
	5.1	108.7
E line	5.1	108.7
E line	4.6	109.2
	4.7	109.1
	4.6	109.2
c	4.6	109.2
	5.1	108.7
	5.6	108.2
w. line	6.0	107.8

no. 1/4

113.75

center

w. line	5.4	108.4
	4.9	108.9
	4.3	109.5
c	4.0	109.8
	3.8	110.0
	3.7	110.1
E line	3.8	110.0
E line	3.8	110.0
	3.9	109.9
	3.9	109.9
c	3.9	109.9
	4.4	109.4
	4.9	108.9
w. line	5.3	108.5

50 1/4

113.75

~~122.44~~

So. cb.

W. line

4.5 109.3

4.2 109.6

3.8 110.0

C

3.3 110.5

3.1 110.7

2.9 110.9

E line

2.8 111.0

So. line Pearl.

E line

2.19 111.56

2.2 111.6

2.2 111.6

C

2.8 111.0

2.7 111.1

3.3 110.5

W. line

3.78 109.97^v113.75^v

20

112.07^v13.03 ^{HT^v} ~~125.10~~ ~~133.79~~ 1.68 ~~120.76~~

J.P.

50' so. pearl

W. line

13.5 111.6

13.0 112.1

12.3 112.8

C

11.8 113.3

11.4 113.7

11.1 114.0

E line

10.6 114.5

100' so.

E line

9.0 116.1

9.6 115.6

10.0 115.1

C

10.5 114.6

10.9 114.2

11.5 113.6

W. line

11.9 113.2

125.10
~~133.79~~

150' 20.

white

10.4 114.7

9.9 115.2

9.6 115.5

c

9.1 116.0

8.7 116.4

7.6 117.5

Elive

6.9 118.2

200' 20.

Elive

5.9 119.2

6.5 118.6

7.0 118.1

c

7.7 117.4

8.1 117.0

8.7 116.4

white

9.0 116.1

21

125.70

250' 20.

white

7.4 117.7

6.8 118.3

6.3 118.8

c

6.1 119.0

5.5 119.6

5.0 120.1

Elive

4.4 120.7

300' 20.

Elive

3.4 121.7

3.7 121.4

4.3 120.8

c

4.9 120.2

5.2 119.9

5.7 119.4

white

6.0 119.1

125.10 ✓
~~133.79~~

350' No.

w. line

4.4 120.7

4.0 121.1

3.7 121.4

c

3.4 121.7

3.0 122.1

2.8 122.3

E line

2.3 122.8

(400' No. (to line La Jolla park)
(675' no. of center)

E line

0.7 124.4

1.2 123.9

1.5 123.6

c

1.8 123³

2.1 123.0

2.2 122.7

w line

2.5 122.6

125.10 ✓

~~137.71~~
13.02 ~~146.10~~

22 ✓
~~124.89~~
~~133.38~~

J.P.

(25)

650' No. Center

w. line

14.4 123.3

14.2 123.5

14.0 123.7

c

13.7 124.0

13.4 124.3

13.0 124.7

E line

12.7 125.0

75 600' No.

E line

10.5 127.2

10.9 126.8

11.2 126.5

c

12.2 125.5

12.6 125.1

12.1 125.6

w line

12.5 125.2

137.72
~~146.40~~

125 550' no.

White

11.4 126.3

10.6 127.1

10.5 127.2

c

10.0 127.7

9.7 128.0

9.2 128.5

Elvis

9.0 128.7

125 500' no.

Elvis

7.8 129.9

8.0 129.7

7.9 129.8

c

8.4 129.3

8.9 128.8

9.5 128.2

White

9.9 129.8

137.71

23

125 450' no.

White

8.4 129.3

7.6 130.1

7.2 130.5

c

6.8 130.9

6.4 131.3

6.0 131.7

Elvis

5.5 132.2

125 400' no.

Elvis

4.2 133.5

4.2 133.5

4.7 133.0

c

5.3 132.4

6.0 131.7

6.2 131.5

White

6.4 131.3

137.77
~~146.40~~

325 350' no.

w. line

4.1 133.6

3.4 134.3

3.2 134.5

c

3.1 134.6

3.0 134.7

2.6 135.1

E line

1.9 135.8

J.P.

300' ^{H.I.} no.

E line

375

12.77

~~159.04~~

0.13

137.58

~~146.27~~

~~150.36~~

11.9

138.5

12.2 138.2

12.4 138.0

c

12.8 137.6

13.3 137.1

13.7 136.7

w. line

14.2 136.2

150,35
~~159.04~~

24

425 250' no.

w. line

12.0 138.4

11.3 139.1

10.7 139.7

c

10.3 140.1

10.1 140.3

9.9 140.5

E line

9.5 140.9

200' no.

E line

475

7.4 142.0

7.9 142.5

8.2 142.2

c

8.5 141.9

9.6 140.8

10.3 140.1

w. line

10.3 140.1

150.35
525 150' no.

w. line	9.2	141.2
	8.9	141.5
	8.2	142.2
c	7.3	143.1
	6.3	144.1
	5.8	144.6
E line	5.3	145.1

100' no.
575

E line	5.3	145.1
	6.1	144.3
	7.0	143.4
c	7.5	142.9
	8.0	142.4
	8.5	141.9
w. line	9.2	141.2

15035
625 50' no.

white	7.6	142.8
	7.3	143.1
	7.0	143.4
c	6.4	144.0
	5.8	144.6
	5.1	145.3
E line	4.6	145.8

no. line Gender Street.
675 (60' wide)

E line	3.9	146.5
	4.2	146.2
	5.0	145.4
c	5.6	144.8
	5.9	144.5
	6.3	144.1
w. line	6.5	143.9

15035
No. Cb.

White	6.6	143.8
	6.0	144.4
	5.5	144.9
C	5.0	145.4
	4.4	146.0
	3.7	146.7
Elio	3.6	146.8
	no 1/4	
Elio	3.1	149.3
	3.7	146.7
	4.2	146.2
C	4.7	145.7
	5.0	145.4
	5.5	144.9
White	6.2	144.2

15035
Denter

White	5.9	149.5
	5.2	145.2
	4.8	145.6
C	4.4	146.0
	4.2	146.2
	3.6	146.8
Elio	2.9	149.5
	no 1/4	
Elio	2.7	147.7
	3.3	147.1
	3.8	146.6
C	4.2	146.2
	4.7	145.7
	5.1	145.3
White	5.5	144.9

150.35
~~159.04~~

20. Cb.

white

5.4 145.0

5.1 145.3

4.7 145.7

C

4.4 146.0

3.7 146.7

3.2 147.2

E line

2.4 148.0

So. line Gender street

C line

15.4 148.81

2.9 149.5

3.6 146.8

C

4.2 146.2

4.9 145.5

5.0 145.4

white

5.09 145.26

3/15/12
Hatch
Moore
Hall

27

TP

11.92

157.15

145.26

SW Hub.

Fay - Genster

25' S of Gentle

W

12.2 145.0

12.8 145.4

11.4 145.8

C

11.0 146.2

9.9 147.3

9.4 147.8

E

8.0 149.2

50' S

E

7.0 150.2

8.4 149.8

9.3 147.9

C

10.4 146.8

10.9 146.3

11.3 145.9

W

11.7 145.5

15718

75 S

W 11.4 145.8

10.7 146.5

10.2 147.0

C 9.1 148.1

7.9 149.3

7.4 149.8

E 6.1 151.1

100 S

E 5.3 151.9

6.2 151.0

6.9 150.3

C 7.8 149.4

8.7 148.5

9.7 147.5

W 10.9 146.8

15718

125 S

W 8.9 148.3

8.2 149.0

7.5 149.7

C 6.9 150.5

5.9 151.3

5.5 151.7

E 4.6 152.6

150 S

E 3.9 153.3

4.8 152.4

5.1 152.1

C 5.9 151.3

6.5 150.7

7.3 149.9

W 7.9 149.3

157.18
175.5

W	7.3	149.9
	6.6	150.6
	5.8	151.4
C	5.4	151.8
	4.3	152.9
	4.2	153.0
E	3.5	153.7
	200.5	
F	3.0	154.2
	3.8	153.4
	4.1	153.1
C	5.0	152.2
	5.4	151.8
	6.2	151.0
W	6.9	150.3

157.18
225.5

W	6.7	150.5
	6.1	151.1
	5.1	152.1
C	4.6	152.6
	3.8	153.4
	3.5	153.7
E	2.9	154.3
	250.5	
F	3.1	154.1
	3.8	153.4
	4.5	152.7
C	5.1	152.1
	5.6	151.6
	6.2	151.0
W	6.9	150.3

15718

275' S

W	7.6	149.6
	6.9	150.3
	6.3	150.9
C	6.0	151.2
	5.1	152.1
	4.7	152.5
E	3.9	153.3

300' S

E	5.1	152.1
	6.1	151.1
	6.7	150.5
C	7.3	149.9
	7.8	149.4
	8.1	149.1
W	8.9	148.3

15718

325' S

W	10.3	146.9
	9.6	147.6
	9.1	148.1
C	8.5	148.7
	7.7	149.5
	7.2	150.0
E	6.2	151.0

350' S

E	6.9	150.3
	7.9	149.3
	8.8	148.4
C	9.7	147.5
	10.4	146.8
	10.6	146.6
W	11.2	146.0

15718

375 S

W	12.5	144.7
	11.7	145.5
	10.7	146.5
C	10.0	147.2
	8.3	148.9
	7.4	149.8
E	6.4	150.8

400 S

F	5.7	152.1
I	6.3	150.9
	7.3	149.9
C	8.8	148.4
	10.2	147.0
	11.5	145.7
W	13.0	144.2

15718

425 S

W	12.1	145.1
	10.5	146.7
	9.3	147.9
C	8.4	148.8
	6.8	150.4
	5.7	151.5
E	4.6	152.6

450 S

E	4.0	153.2
	5.6	151.6
	6.9	150.3
C	8.1	149.1
	9.4	147.8
	10.3	146.9
W	12.1	145.1

157.18

475 's

W	12.2	145.0
	10.6	146.6
	9.5	147.7
C	8.1	149.1
	6.5	150.7
	4.9	152.3
E	2.7	154.5

500's = N.W. Rushville

TP	139	157.35	122	155.96
W			12.31	145.0
cb			10.9	146.5 146.5
1/4			9.8	147.6
C			7.5	149.8
1/2			4.7	152.7
cb			2.4	155.0

157.35

Ncb.

Ecb	1.6	155.8
1/2	4.3	153.1
c	7.1	150.3
1/4	9.4	148.0
cb	11.2	146.7
W	12.8	144.6
	N 1/4	
W	12.8	144.6
cb	11.4	146.0
1/2	9.1	148.3
c	7.0	150.4
1/4	4.4	153.0
cb.	0.9	156.5
	cr.	
E 1/4	3.6	153.8 153.8
c	6.8	150.6
1/4	9.2	148.2
cb	11.0	146.4

	157.35	
W	12.8	144.6
	5 1/2	
W	13.1	144.3
cb	11.2	146.7
1/2	8.7	148.7
c	6.8	151.6
1/4	1.8	155.6
	scb	
E 1/2	1.3	156.1
c	3.2	152.2
1/4	8.5	148.9
cb	10.6	146.8
W	12.4	145.0
	5 h. Rushville	
W	11.53	145.82
cb	10.1	147.3
1/2	8.5	148.9
c	4.6	152.8
1/4	1.0	156.4

	157.35	
	25' s of Rushville	
E 1/2	0.5	156.9
c	3.0	154.4
1/2	5.9	151.5
cb	8.5	148.9
W	9.9	147.5
	50' s	
W	8.1	149.3
cb	6.0	151.4
1/2	3.6	153.8
c	1.9	155.5
	75' s	
c	1.3	156.1
1/2	4.2	153.2
cb	5.8	151.6
W	7.5	149.9
	100' s	
W	7.7	149.7
cb	5.4	152.4

	15735		
1/4		34	154.0
2		1.2	156.2
T.P.	7.82	163.69	1.28 155.87
	N. Rushville		
E		4.6	159.1
	Ncb		
E		3.7	160.0
	N 1/4		
E		2.9	160.8
	Cr.		
F		2.7	161.0
cb		5.6	158.1
	S 1/4		
E		2.4	161.3
cb		3.2	158.5
	scb		
E		1.6	162.1
cb		3.2	158.5

	16369		
		5.2	
E		1.5	162.2
cb		4.7	159.0
	25's		
E		1.4	162.3
cb		4.3	159.4
	50's		
E		0.7	163.0
cb		3.6	160.1
1/4		5.6	158.1
	75's		
E		0.3	163.4
cb		3.2	160.5
1/4		4.8	158.9
	100's		
1/4		4.9	158.8
cb		3.9	159.8
E		1.1	162.6

16369

125's

E 1.5 162.2

4.6 159.1

6.6 157.1

C 8.3 155.4

10.5 153.2

12.4 151.3

W 14.5 149.2

150's

W 1/4 12.2 151.5
~~151.0~~

c 10.3 153.4

1/4 7.5 156.2

cb 5.4 158.3

E 2.6 161.1

175's

E 3.7 160.0

cb 6.7 157.0

1/4 9.3 154.4

c 11.6 152.1

16369

200's

E 7.0 156.7

cb 9.8 153.9

1/4 12.4 151.3

T.P. 4.86 157.10 11.45 152.24

150's

W 9.7 ~~154.0~~ 147.4

cb 7.7 149.4

175's

W 10.6 146.5

cb 8.7 148.4

1/4 7.1 150.0

200's

W 12.9 ~~144.2~~ 144.2

cb 11.4 145.7

1/4 9.7 147.4

c 8.1 149.0

3/15/72

X sec. Genter St
from
Fay st to La Jolla BoulevardHatch
Moore
Hall

SW 1/4

145.54

TPO

0.28

145.54

145.26 Genter-Fay

100 W

W. L. Fay

S

3.6 141.9

S

0.5 145.0

4.3

0.8

4.3

0.7

C

4.5 141.0

C

1.2 144.3

4.8

1.4

5.0

1.8

N

5.1 140.4

N

1.7 143.8

150 W

50' W

N

7.1 138.4

N

3.3 142.2

7.0

2.2

6.7

2.7

C

6.5 139.0

C

2.5 143.0

6.4

2.3

6.1

2.3

S

5.9 139.6

S

1.9 143.6

PLOTTED

14554

200' W

S	7.9	137.6
	8.2	
	8.4	
C	8.7	136.8
	8.9	
	9.1	
N	9.3	136.2
	250 W	
N	11.5	134.0
	11.4	
	11.4	
C	11.1	134.4
	10.9	
	10.8	
S	10.5	135.0
T.P.	0.65	134.41
	11.78	133.76

PLOTTED

13441

300' W = E.L. Ends St.

S	2.2	132.2
	2.5	
	2.4	
C	2.6	131.8
	2.7	
	2.7	
N	2.9	131.5
	W.L. Ends:	
	6.65	127.76
N	6.9	129.5
	7.2	
	7.1	
C	7.1	129.3
	6.9	
	6.7	
S	6.7	129.7

PLOTTED

13441

25' W of Ends.

6 7.7 126.7

8.0

7.7

e 7.9 126.5

8.0

8.0

N 8.1 126.3

50' W

N 8.8 125.6

8.8

8.6

e 8.6 125.8

8.7

8.7

S 8.8 125.6

13441

75' W

5 9.3 125.1

9.3

9.6

c 9.7 124.7

9.6

10.0

N 10.2 124.2

100' W

N 11.1 123.3

11.0

10.7

c 11.1 123.3

10.7

10.4

S 10.2 124.2

PLOTTED

13441

125' W

S 11.6 122.8

11.4

11.6

C 11.8 122.6

11.9

12.0

N 12.0 122.4

150' W

N 12.8 121.6

12.9

12.8

C 12.7 121.7

12.6

12.4

S 12.3 122.1

TP 093 122.48 1236 122.05

PLOTTED

12248

175' W

S 1.4 121.1

1.5

1.6

C 1.7 120.8

1.9

2.1

N 2.2 120.3

200' W

N 3.2 119.3

3.0

3.0

C 2.9 119.6

2.7

2.6

S 2.5 120.0

3.1

12248

225' W

S 3.4 119.1

3.6

3.5

C 3.8 118.7

3.9

4.0

N 4.3 118.2

250' W

N 5.3 117.2

5.2

3.0

C 4.9 117.6

4.8

4.7

S 4.7 117.8

PLOTTED

12248

275' W

S 5.6 116.9

5.8

5.8

C 5.9 116.6

6.1

6.2

N 6.3 116.2

300' W

N 7.3 115.2

7.3

7.2

C 7.0 115.5

6.9

6.8

S 6.7 115.8

PLOTTED

12248

325 W

S 7.9 114.6

8.0

8.1

C 8.2 114.3

8.3

8.5

N 8.4 114.1

350 W

N 9.5 113.0

9.5

9.2

C 9.3 113.2

9.1

9.0

S 8.9 113.6

12249

375 W

S 10.0 112.5

10.2

10.3

C 10.5 112.0

10.6

10.9

N 11.0 111.5

400 W

N 12.0 110.5

11.8

12.0

C 11.4 111.1

11.3

10.8

S 10.6 111.9

TP 0.94 110.21 12.61 109.87

PLOTTED

11021

A32' W = E.L.

S	0.34	109.9	Hub.
	0.6		
	0.6		
C	0.9	109.3	
	1.0		
	1.0		
N	1.2	109.0	
	E.C.		
N	1.8	108.4	
	1.7		
	1.5		
C	1.3	108.9	
	1.2		
	1.2		
S	0.8	109.4	

PLOTTED

11021

E 1/4

S	1.4	108.4
	1.5	
	1.6	
C	1.7	108.5
	1.9	
	2.1	
N	2.3	107.9
	C.V.	
N	2.6	107.6
	2.4	
	2.3	
C	2.2	108.0
	2.0	
	2.0	
S	1.8	108.4

11021

W 1/4

S 24 107.8

27

27

C 27 107.5

29

31

N 33 106.9

W 1/4

N 38 106.4

37

36

C 33 106.9

32

31

S 29 107.3

PLOTTED

11021

W 1/4 - Draper

S 3.3 106.9

CB 3.5 106.7

1/4 3.5 106.7

C 3.6 106.9

1/4 3.8 106.4

CB 4.0 106.2

N 4.2 106.0

25 W

N 5.3 104.9

5.2 105.0

5.0 105.2

C 4.9 105.3

4.7 105.5

4.6 105.6

S 4.5 105.7

11021

50' W

S	5.7	104.5
	5.9	104.3
	6.0	104.2
C	6.2	104.0
	6.3	103.9
	6.5	103.7
N	6.7	103.5
	7.5	
N	8.2	102.0
	7.7	102.5
	7.5	102.7
C	7.4	102.8
	7.1	103.1
	7.0	103.2
S	6.9	103.3

PLOTTED

11021

100' W

S	8.2	102.0
	8.4	101.8
	8.5	101.7
C	8.7	101.5
	8.9	101.3
	9.3	100.9
N	9.4	100.8
	12.5	
N	10.6	99.6
	10.6	99.6
	10.3	99.9
C	10.1	100.1
	9.6	100.6
	9.5	100.7
S	9.3	100.9

11021

130' W

S		10.4	99.8
		10.9	99.5
		11.1	99.1
C		11.4	98.8
		11.4	98.8
		11.8	98.4
N		11.7	98.5
TP	0.48	98.08	12.81
		175' W	97.60
N		1.2	96.9
		0.9	97.2
		0.6	97.5
C		0.4	97.7
		0.2	97.9
		0.0	98.1
S		0.0	98.1

PLOTTED

9508

200' W

S		1.2	96.9
		1.3	96.8
		1.3	96.8
C		1.7	96.4
		2.0	96.1
		2.1	96.0
N		2.3	95.8
		225' W	
N		3.6	94.5
		3.5	94.6
		3.3	94.8
C		3.1	95.0
		2.6	95.5
		2.6	95.5
S		2.4	95.7

98.08
250 W

S	4.1	94.0
	4.2	93.9
	4.2	93.9
C	4.5	93.6
	4.6	93.5
	4.8	93.3
N	4.9	93.2

275 W

N	6.1	92.1
	6.1	92.1
	6.8	92.3
C	5.8	92.3
	5.2	92.9
	5.6	92.5
S	5.4	92.7

PLOTTED

98.08
290 W

S	6.2	91.9
	6.5	91.6
	6.6	91.5
C	6.6	91.5
	7.1	91.0
	9.6	88.5
N	9.8	88.3

300 W
Top East Rail
CN Track

N	8.87	89.31
	9.1	89.0
	9.3	88.8
	9.4	88.7
C	9.4	88.7
	9.4	88.7
	9.4	88.7
S	9.5	88.6

710
310
400

9808
910 W

S	Top East Rail	8.46	89.6
		8.7	89.4
		8.9	89.2
C		9.4	88.4
		9.8	89.3
		10.2	87.9
N		9.7	88.4
	325 W		
N		8.8	89.3
		8.3	89.8
		8.1	90.0
C		8.5	89.6
		8.5	89.6
		8.5	89.6
S		8.6	89.5

PLOTTED

46

9808
350 W

S		9.6	88.5
		9.9	88.2
		9.9	88.2
C		10.0	88.1
		10.4	87.7
		10.7	87.4
N		10.8	87.3
	375 W		
N		11.8	86.3
		11.7	86.4
		11.6	86.5
C		11.5	86.6
		11.4	86.7
		11.1	87.0
S		10.9	87.2

95.08
400 W

S		12.4	85.7
		12.7	85.4
		12.8	85.3
C		13.2	84.9
		13.2	84.9
		13.1	85.0
N		12.9	85.2
TP	115	86.58	12.65 85.43
		425 W	
N		3.2	83.4
		3.1	83.5
		3.0	83.6
C		3.0	83.6
		2.9	83.7
		2.9	83.7
S		2.9	83.7

PLOTTED

47

86.58
450 W

S		4.5	82.1
		4.5	82.1
		4.4	82.2
C		4.4	82.2
		4.4	82.2
		4.5	82.1
N		4.7	81.9
		475 W	
N		5.9	80.7
		6.1	80.5
		6.1	80.5
C		6.1	80.5
		6.0	80.6
		6.2	80.4
S		6.2	80.4

8658

500' W

S	7.9	78.7
	7.8	78.8
	7.8	78.8
C	7.8	78.8
	7.7	78.9
	7.7	78.9
N	7.6	79.0

525' W

N	8.5	78.1
	8.7	77.9
	8.9	77.7
C	9.1	77.5
	9.2	77.4
	9.1	77.5
S	8.6	78.0

PLOTTED

8658

550' W

S	10.2	76.4
	10.0	76.6
	9.7	75.9
C	9.6	77.0
	9.6	77.0
	9.4	77.2
N	9.3	77.3

575' W

N	9.9	76.7
	10.2	76.4
	10.3	76.3
C	10.5	76.1
	10.6	76.0
	10.8	75.8
S	11.0	75.8

86.5-8
600' W

S	11.7	74.9
	11.4	75.2
	11.4	75.2
C	11.2	75.4
	11.0	75.6
	10.9	75.7
N	10.7	75.9
	625' W	
N	11.5	75.1
	11.6	75.0
	11.8	74.8
C	12.0	74.6
	12.2	74.4
	12.2	74.4
S	12.9	74.2

TP 283 77.29 12.12 74.46

PLOTTED

77.29
650' W

S	4.0	73.3
	3.8	73.5
	3.7	73.6
C	3.4	73.9
	3.3	74.0
	3.3	74.0
N	3.3	74.0
	675' W	
N	4.2	73.1
	4.4	72.9
	4.4	72.9
C	4.6	72.7
	4.7	72.6
	4.9	72.4
S	5.1	72.2

7729,
700 W

S

59 71.7

58 71.5

57 71.6

C

56 71.7

56 71.7

57 72.3

N

53 72.0

710 W = E.L. Blvd

N

57 71.6

57 71.6

59 71.4

C

60 71.3

60 71.3

59 71.4

S

62 71.1

528 72.01

TP Nail = pale
S. L. Greiner,

PLOTTED

3/18/12 Hatch
Moore Ends St from-
Hall Pearl St to St. Cooperan 50 ft

TP 186 111.83

TP 900 111.32 9.57

H.L. Pearl

E 117 99.6

12.2

12.8

C

12.7 98.6

12.9

13.5

W

13.4 97.9

Nch.

W

12.7 98.6

12.7

12.4

C

12.5 98.8

12.2

11.5

E

11.5 99.8

Sub.
SW Co. Fay - Pearl
Sub.
SE Co. Ends - Pearl

11132

x 1/4

E 11,0 100.3

11,4

11,6

C 12,1 99.2

12,1

12,5

W 12,7 98.6

cr.

W 12,1 99.2

11,9

11,7

C 11,5 99.8

11,3

10,9

E 10,6 99.6

11132

5 1/4

E 10,4 100.9

10,7

11,1

C 11,4 99.9

11,5

11,4

W 11,5 99.8

scr.

W 11,3 100.0

11,2

11,0

C 10,6 100.7

10,4

10,1

E 9,6 101.7

11132

Sh. Pearl

E 9,0 102.3

S 9,5

9,8

O 10,0 101.3

10,1

10,7

W 10,8 100.5

25'S

W 10,2 101.1

10,1

9,5

O 9,2 102,1

8,9

8,7

E 8,3 103.0

11132

50'S

F 7,5 103.8

8,0

8,1

C 8,3 103.0

9,1

9,3

W 9,3 102.0

TP 9.01 111.33 102.22

75'S

W 8,5 102.8

8,7

8,1

C 7,9 103.4

7,4

7,1

E 6,9 104.4

11133

100's

E 6,3 103.0

6,7

7,0

C 7,3 104.0

7,3

7,6

W 7,8 103.5

125's

W 7,2 104.1

7,1

6,8

C 6,7 104.6

6,5

6,2

E 5,8 105.5

11133

150's

E 4,9 106.4

4,8

5,5

C 5,9 105.4

6,0

6,0

W 6,0 105.3

175's

W 5,2 106.1

5,0

5,2

C 5,1 106.2

4,5

4,2

E 3,8 107.5

11133

500's

E 29 108.4

3,8

3,7

e 4,1 107.2

4,2

4,0

W 4,5 106.8

225's

W 3,5 107.8

3,3

3,3

c 3,1 108.2

2,5

2,5

E 2,2 109.1

11133

250's

E 1,2 100.1

1,4

2,0

e 2,3 109.0

2,2

2,6

W 2,7 108.6

275's

W 1,7 109.6

1,5

1,5

c 1,1 110.2

0,8

0,3

E 0,3 111.0

TR 11.60 122.53 0.40 110.93

12253

300's

E 10.6 111.9

10.8

11.1

S 11.4 111.1

11.7

12.0

W 12.5 110.0

350's

W 11.8 110.7

11.3

10.7

S 10.7 111.8

10.5

10.2

E 9.7 112.8

12253

350's

E 9.1 113.4

9.4

9.6

S 10.0 112.5

10.1

10.6

W 11.0 111.5

375's

W 10.4 112.1

10.0

9.5

S 9.2 113.3

9.0

8.5

E 8.3 114.2

12253

400' = line of South La Jolla

E	7.69	114.8	Hub.
	7.8		
	8.1		
C	8.7	113.8	
	9.1		
	9.2		
W	9.9	112.6	
	25' of line -		
W	9.2	113.3	
	8.6		
	8.1		
C	7.6	114.9	
	7.5		
	7.0		
E	7.0	115.5	

12253

50'

E	5.8	116.7	
	6.9		
	6.9		
C	6.9	115.6	
	7.6		
	8.1		
W	8.6	113.9	
	75'		
W	8.0	114.5	
	7.6		
	7.1		
C	6.6	115.9	
	6.4		
	6.0		
E	5.7	117.3	

12253

100' S

E 5.7 117.4

5.5

5.7

C 6.1 116.4

6.5

6.9

W 7.3 115.2

185' S

W 6.2 116.3

6.1

5.6

C 5.2 119.3

5.0

4.7

E 4.0 118.5

12253

150' S

E 3.0 119.5

3.9

3.9 118.6

C 4.3 118.2

4.8

5.2

W 5.5 117.0

175' S

W 4.9 117.6

4.2

4.1

C 3.3 119.2

2.8

2.7

E 1.9 120.6

12253

200's

E 11 121.4

20

22

C 26 119.9

32

36

W 40 118.5

225's

W 36 118.9

39

21

C 12 121.3

12

11

E 0.1 122.4

T₁ 10.19 | 132.71 0.01 122.52

13271

250's

E 9.7 123.0

10.5

10.7

C 11.5 121.2

12.0

12.4

W 13.0 119.7

275's

W 12.8 119.9

12.4

11.9

C 10.8 121.9

10.5

10.1

E 9.4 123.3

13271

300's

E 9.0 123.7

9.7

10.2

C 10.7 122.0

11.4

11.9

W 12.4 120.3

325's

W 12.0 120.7

11.1

10.6

C 9.9 122.8

9.6

9.0

E 8.3 124.4

13271

350's

E 7.6 125.1

8.2

9.1

C 9.6 123.1

10.3

10.7

W 11.5 121.2

375's

W 10.4 122.3

10.0

9.4

C 8.9 123.8

8.0

7.7

E 7.1 125.6

132.71
400.5

F 6.6 126.1

7.2

8.1

C 8.4 124.3

9.0

9.4

W 10.0 122.7

425.5

W 9.6 123.1

9.1

8.6

C 7.8 124.9

7.6

7.0

E 6.7 126.5

132.71
450.5

F 6.0 126.7

6.7

7.1

C 7.7 125.0

8.1

8.5

W 8.9 123.8

475.5

W 8.2 124.5

7.8

7.4

C 6.8 125.9

6.6

6.9

E 5.6 127.1

132.71

500 s

E 4.9 128.3

5.1

5.8

C 6.5 126.2

7.8

7.2

W 7.8 124.9

525 s

W 6.7 126.9

6.2

5.8

C 5.2 127.5

4.5

4.2

E 3.1 129.6

132.71

550 s

E 2.2 130.5

3.8

4.3

C 4.2 128.5

4.6

5.4

W 5.7 127.0

575 s

W 5.3 127.4

4.6

4.6

C 4.2 128.5

3.7

3.2

E 2.0 130.7

	13271		
	600	'5	
F	1,9		130.8
	3,0		
	3,6		
C	3,6		129.1
	4,5		
	3,0		
W	3,4		127.3
	625	'5	
W	5,3		127.4
	4,9		
	4,0		
O	3,8		128.9
	3,5		
	2,2		
E	1,6		131.1

	13271		
	650	'5	
E	1,3		131.4
	2,0		
	2,6		
C	3,8		128.9
	4,3		
	4,1		
W	5,1		127.6
TP	8,1	7	135.90 498 127.73
	675	'5 = Nk	Gentle - St.
W	8,4		127.5
	8,0		127.9
	7,3		128.5
C	6,7		129.2
	5,7		130.2
	5,0		130.9
E	4,5		131.4

13590

x cb

E 4.3 131.6

4.9

5.8

C 6.3 129.6

7.5

8.1

x 1/ 8.7 127.2

x 1/4

W 8.6 127.3

8.0

7.6

C 6.2 129.7

6.5

4.9

E 4.2 131.7

13590

cr

E 4.1 131.8

4.8 131.1

5.4 130.5

C 6.2 129.7

7.0 128.9

8.0 127.9

W 8.5 127.4

5/4

W 8.4 127.5

8.1

7.0

C 6.2 129.7

5.4

4.7

E 3.9 132.0

13590
S. Cb.

E 40 131.9

4.7

5.7

C 6.2 129.7

6.6

7.9

W 8.2 127.7

Sh.

W 8.2 127.7

7.2 128.7

6.6 129.3

C 6.2 129.7

5.7 130.5

4.5 131.4

E 3.7 132.2

13590
25 S of Center

E 3.4 132.5

4.2

5.5

C 5.6 130.3

6.1

6.9

W 7.2 128.7

30 S

W 7.1 128.8

6.6

6.0

C 5.3 130.4

4.9

4.3

E 3.1 132.8

13590

75 S

F 3.0 132.9

4.0

4.5

e 5.0 130.9

5.7

6.2

W 6.5 129.1

100 S

W 6.5 129.4

5.9

5.2

c 4.8 131.1

4.1

3.5

E 5.8 133.1

13590

125 S

E 2.8 133.1

3.2

3.9

e 4.3 131.6

5.0

5.8

W 6.3 129.6

150 S

W 6.1 129.8

5.3

4.7

c 4.2 131.7

3.5

2.8

E 2.4 133.5

	13590	
	175 S	
E	2.2	133.7
	2.8	
	3.4	
C	4.0	131.9
	4.5	
	5.1	
W	5.7	130.2
	20 d/s	
W	5.4	130.5
	4.7	
	4.3	
C	3.7	132.2
	3.0	
	2.6	
E	1.8	134.1

	13590	
	205 S	
E	1.5	134.9
	2.3	
	2.9	
C	3.4	132.5
	4.1	
	4.6	
W	5.2	130.7
	250 S	
W	4.9	131.0
	4.2	
	3.6	
C	3.0	132.9
	2.3	
	1.7	
E	1.2	134.7

13090

295's

F 0.8 135.1

1.3

1.8

C 2.5 133.4

3.3

3.7

W 4.4 131.5

300's

N 4.1 131.8

3.3

2.6

C 2.0 133.9

1.6

1.0

F 0.4 135.5

T.P. 301 13874 017 13573

13874

325's

F 3.0 135.7

3.6

4.1

C 4.7 134.0

5.1

5.8

W 6.5 132.2

300's

N 6.0 132.7

3.3

3.0

C 4.5 134.2

3.9

3.3

E 2.8 135.9

138,74

375' S

E

2,6 136,1

3,2

3,9

C

4,4 134,3

4,6

5,1

N

5,6 133,1

400' S

W

5,7 133,0

5,0

4,4

O

4,2 134,5

3,5

3,0

V

2,3 136,4

138,74

425' S

F

2,0 136,7

2,9

3,5

C

4,2 134,5

4,5

5,1

Y

5,7 133,0

400' S

W

5,4 133,3

5,1

4,5

C

4,2 134,5

3,6

2,9

E

2,4 136,3

13874

475

E 2.3 136.4

3.0

3.5

P 4.3 134.4

4.8

5.3

W 6.2 132.5

500's = N. Rutledge

W 7.1 131.6

6.3 132.4

5.8 132.9

C 4.8 133.9

3.9 134.8

2.6 136.1

E 1.8 136.9

69

13874

475

E 2.2 136.5

2.8

3.6

P 4.6 134.1

5.8

6.5

W 7.1 131.6

475

W 7.4 131.3

6.9

5.8

C 4.4 134.3

3.6

3.1

E 2.4 136.3

13874

cr

F 28 135.2

32 135.5

38 134.9

C 46 134.1

56 133.1

67 132.0

W 77 131.0

5 1/4

W 76 131.1

65

54

C 46 134.1

41

36

E 33 135.4

13874

sch.

E 42 134.5

44

47

C 51 133.4

55

63

W 73 131.4

5L

W 69 131.8

60 132.7

56 133.1

C 56 133.1

56 133.1

55 133.2

E 513 133.61

13874
25' S of Rushville

E 7.7 131.0

7.7

8.0

C 7.8 130.9

7.2

6.3

W 6.6 132.1

50' S

W 7.3 131.4

8.5

9.3

C 9.6 129.1

9.6

9.7

E 9.7 129.0

13874

75' S

E 11.3 127.4

11.1

10.9

C 10.8 127.9

10.6

10.0

W 9.2 129.0

100' S

W 11.1 127.6

10.9

11.2

C 11.9 126.8

12.3

12.9

W 13.2 125.5

TP 4.70 130.38 13.06 125.58

130.38

125' S

E 7.2 123.2

6.4

5.4

C 4.5 125.9

4.1

3.6

W 4.0 126.4

150' S

W 4.7 125.7

4.7

3.6

C 7.1 123.3

8.6

8.8

E 9.2 121.2

130.38

175' S

E 9.5 120.9

9.8

10.0

C 9.5 120.9

8.6

7.3

W 7.3 123.1

200' S = 5A Tract

W 10.2 120.2

10.4

10.5

C 10.5 119.8

10.1

10.0

E 8.8 121.7

3/18/12 Hatch
 12 Moor
 Hall from Fayette to W.L. of
 Tract.

33

110 0.10 145.92 145.82 SW Hub

145.92

SVL. Fay

50 W

S 0.1 145.8 S 6.3 139.6

1.1

7.8

1.6

8.5

C 1.4 144.5 C 8.6 137.3

1.3

8.6

1.3

8.9

N 1.3 144.6 N 9.1 136.8

25 W

75 W

N 6.4 139.5 N 10.3 135.6

6.2

10.5

3.8

10.7

C 5.4 140.5 C 10.5 135.4

4.5

10.6

4.3

10.7

S 3.1 142.8 S 10.1 135.8

14592

100 W

S 12.6 133.3

12.4

12.1

C 12.2 133.7

11.7

10.9

N 9.9 136.0

125 W

N 10.1 135.8

11.6

12.3

C 12.7 133.2

13.1

13.6

S 13.7 132.2

14592

150 W

S 14.5 131.4

14.4

13.8

C 13.5 132.4

13.1

12.2

N 11.5 134.4

T.P. 473 139.4 11.24 134.68

175 W

N 9.5 134.9

5.2

5.9

C 6.6 132.8

7.1

7.6

S 8.2 131.2

13941

200 W

U 81 131.3

74

66

e 59 133.5

54

47

N 34 136.0

225 W

N 17 137.7

29

40

e 50 134.4

57

65

S 71 132.3

13941

250 W

S 60 133.4

54

47

e 39 135.5

30

22

N 15 137.9

275 W

N 19 138.5

22

26

e 32 136.2

41

50

S 63 133.1

13941
300' W - EL Fads St

S	577	13364
	6.0	133.4
	4.9	
	4.0	
C	3.5	135.9
	3.1	
	2.8	
N	2.5	136.9

W L Fads

N	7.7	131.7
	7.8	
	8.0	
C	8.3	131.1
	8.3	
	7.9	
S	7.6	131.8

13941

25' W of Fads

S	9.5	129.9
	9.6	
	9.5	
C	9.3	130.1
	9.0	
	8.7	
N	8.3	131.1

50' W

N	8.5	130.9
	8.8	
	9.3	
C	9.7	129.7
	10.2	
	10.5	
S	10.8	128.6

1394.1

75' W

S

11.3 128.1

10.9

10.5

C

10.2 129.2

9.9

9.6

N

9.6 129.8

100' W

N

10.7 128.7

11.0

11.1

C

11.2 128.2

11.4

11.6

S

11.9 127.5

T.P

530 133.01 1170 127.71

13301

125' W

S

7.0 126.0

6.7

6.5

C

6.3 126.7

6.1

6.0

N

5.6 127.4

W_h of Tract

N

6.5 126.5

6.9

7.0

C

7.3 125.7

7.6

8.0

S

8.4 124.6

Prel. sewer in alley bet. Eads
 Sewer just So. of Ravine to 21+50

Sta.	HT	Rod	Elev.
J.P. 0+00	0.17 96.14	10.0	95.97 86.1
+25		11.2	85.9
+50		11.3	84.8
+75		10.3	85.8
1+00		8.6	87.5
+25	10770 0.57	4.8	91.3
+50	108.27 12.30 95.97 TP	2.7	93.4
2+00	108.27	13.0	95.3
+50		11.4	96.9
3+00		10.3	98.0
+50		8.9	99.4
4+00		7.9	100.3
+50		6.2	102.1
5+00		5.0	103.3
+50		3.7	104.6
6+00		1.7	106.6
J.P. +50	12.86 120.27	0.86	107.41
+50		11.2	109.1
7+00		10.2	110.1

See 255-51 for
 Const. Notes.

May 10/12
 107.70 B.M. N.W. cor. Fay + ^{Childs} Taylor
 13th Street
 Penn. 8

Sta.	HT	Rod	Elev.
7+50	120.27	9.1	111.2
8+00		7.9	112.4
+50		6.0	114.3
9+00		4.1	116.7
+50		2.1	118.2
J.P. 10+00	1294 132.45	0.76	119.57
+50		12.6	119.8
+50		11.5	120.9
11+00		10.0	122.4
+50		8.4	124.0
12+00		7.2	125.2
+50		6.0	126.4
13+00		3.8	128.6
+50		2.0	130.4
J.P. 14+00	13.07 144.12	1.40	131.05
+50		11.8	132.3
+50		10.0	134.1
15+00		8.7	135.4
+50		8.0	136.1
16+00		6.6	137.5

Cont. from page 78

Sta		H.S. Rod	Elev.
16+48	about north line of center	<u>144.2</u>	
+50		5.6	138.5
17+00		4.5	139.6
+50		4.1	140.0
18+00		3.6	140.5
+50		3.1	141.0
19+00		2.4	141.7
+50		1.7	142.4
20+00		1.2	142.9
+50		0.8	143.3
21+00		2.7	141.4
+25		4.2	139.9
+50		5.2	138.9

120	120	120
0	360	20
48	264	48
38	269	53
66	255	39

120	120	120
152	104	104
113	182	65
101	170	89
177	132	51
152	182	26
106	136	118

120	120	120
83	83	194
55	55	250
143	11	206
139	19	202

120	120	120
136	112	112
123	138	99
115	142	103
63	90	207

120	120	120
140	110	110
185	120	105
121	127	112
16	22	322
60	0	300
66	8	296
83	35	242

1648

13	
<u>13</u>	1.75
39	
<u>13</u>	
1.69	

260
<u>560</u>

1648
<u>560</u>
2208
<u>260</u>
2468

2468

