

F.B.819

---

LEVEL BOOK.

No. 410

---

MICROFILMED  
DEC 15 1964

RETURN TO CITY ENGINEER'S OFFICE  
CITY HALL, SAN DIEGO, CAL.

2 Blough Levels over the old bible bar slot  
31/ Primer on 481 st Jay to Inman 015  
11 75

	8.80	214.29	205.49	Br NW 44 Jay
22 1/2 Jay 6' 256			84	205.9
25' n			78	206.5
50' n			73	207.0
75' n			68	207.5
100' n			62	208.1
125' n			56	208.7
150' n			50	209.3
175'			46	209.7
200' n			41	210.2
225'			36	210.9
250' n			31	211.2
275'			27	211.6
300' = S. jumper			25	211.8

	890	2278	21397	nc 44 July
Nd of Juniper 6' n of 6		96	213.2	
25' n Ground		87	214.1	
50' n "		79	214.9	
75' n "		71	215.7	
100' n "		62	216.6	
125' " "		54	217.4	
150' " "		46	218.2	
175' " "		38	219.0	
200' " "		30	219.8	
225' n Summit		21	220.7	
250' " "		12	221.6	
275' " "		04	222.4	
6m	236.17		22495	Bm 44 Kalmia
300' n = 52 Kalmia		78	223.4	

		231.17		
25' n Kalmia on Ground		54	225.8	
50' n Ground		44	226.5	
75' n "		30	228.2	
100' n "		18	229.4	
125' n Summit		05	230.9	
TP	1010	24086	041	
125' n Summit		89	231.0	
150' n "		74	233.5	
175' n "		60	234.7	
200' " "		47	236.0	
225' " "		34	237.5	
250' " "		22	238.7	
275' " "		08	240.1	
300' n = 52 Sand	905	25152	24101	24257 + 4 nw Sound

	<u>25.56</u>		
2d Sand 6' x 6	8.6	243.0	
25' n	7.9	243.7	
50' n	7.1	244.5	
75' n	6.4	245.2	
100' n	5.6	246.0	
125' n	4.8	246.8	
150' n	4.0	247.6	
175' n	3.2	248.4	
200' n	2.4	249.2	
225' n	1.6	250.0	
250' n	0.8	250.8	
275' n	0.0	251.6	
	8.98		
	<u>262.44</u>	253.46	
300' n = 2d Graph	10.1	252.3	

	<u>26.24</u>		
2d Graph 6' x 6	8.6	253.8	
25' n	8.0	254.4	
50' n	7.3	255.1	
75' n	6.8	255.6	
100' n	6.1	256.3	
125' n	5.4	256.8	
150' n	4.9	257.5	
175' n	4.3	258.1	
200' n	3.6	258.8	
225' n	3.0	259.4	
250' n	2.3	260.1	
275' n	1.7	260.7	
300' n = 2d but may	1.1	261.3	

	647	26843	26196	222 Kutney
2' of Kutney	6'	n of 6	6.1	262.3
25' n			5.8	262.6
50' n			5.7	262.7
75' n			5.4	263.0
100' n			5.2	263.2
125' n			5.0	263.4
150' n			4.8	263.6
175' n			4.7	263.7
200' n			4.4	264.0
225' n			4.1	264.3
250' n			4.0	264.4
275' n			3.8	264.6
300' n = S 2 Alim st			3.6	264.8

	5.97	271.17	265.70	222 Alim
2' of Alim st	6'	n of 6	5.9	265.3
25' n			5.7	265.5
50' n			5.6	265.6
75' n			5.4	265.8
100' n			5.3	265.9
125' n			5.2	266.0
150' n			5.1	266.1
175' n			4.9	266.3
200' n			4.8	266.4
225' n			4.6	266.6
250' n			4.5	266.7
275' n			4.4	266.8
300' n = S 2 Palm st			4.3	266.9

None from  
Palm to  
Red wind

	540	275.78	270.38	75 44 Redwood
Schweif Redwood			5.9	269.9
75' n	" "		5.9	269.9
25' n			5.8	270.0
50' n			5.5	270.3
75' n			5.3	270.5
100' n			5.1	270.7
125' n			4.9	270.9
150' n			4.7	271.1
175' n			4.5	271.3
200' n			4.4	271.4
225' n			4.2	271.6
250' n	Ground		4.0	271.8
275' n	"	Old Pioneer House	3.7	274.1
300' n = sd Spruce			3.5	274.3

	698	279.86	272.88	
Schweif Spruce			7.3	272.6
25' n			6.7	273.2
50' n			6.1	273.8
75' n			5.6	274.3
100' n			5.3	274.6
125' n			4.7	275.2
150' n			4.3	275.6
175' n			3.7	276.2
200' n			3.2	276.7
225' n			2.7	277.2
250' n			2.2	277.7
275' n			1.7	278.2
300' n = sd Thorne			1.1	278.9

	633	<u>285.72</u>	279.39	nw 4 Starna
7 dmif	7 hams		6.6	279.1
25' n			6.2	279.5
50' n			5.7	280.0
75' n			5.3	280.4
100' n			4.8	280.9
125' n			4.4	281.3
150' n			4.1	281.6
175' n			3.6	282.1
200' n			3.2	282.5
225' n			2.7	283.0
250' n			2.3	283.4
275' n			1.9	283.8
300' n = Sd Pupas			1.7	284.0

	510	290.09	284.99	nw 4 Pupas
S dmif of Pupas			5.4	284.7
25' n			5.1	285.0
50' n			4.8	285.3
75' n			4.5	285.6
100' n			4.1	286.0
125' n			3.8	286.3
150'			3.6	286.5
166.5' n = Sd Walnut			3.3	286.8



	505	<u>289.44</u>		
22' of	Walnut	6" x 76	57	284.3
25' n			51	284.3
50' n			50	284.4
75' n			49	284.5
100' n			48	284.6
125' n			48	284.6
150' n			47	284.7
175' n			46	284.8
200' n			45	284.9
225' n			44	285.0
250' n			43	285.1
275' n			42	285.2
300' n	Sl of		41	285.3
		<u>760 290.95</u>		285.35
325'			30	287.9
350' n			34	287.5
375'			38	287.1

290.95

400' n		43	286.6
425' n		47	286.2
450' n		52	285.7
475' n		55	285.4
500' n		60	284.9
525' n		63	284.6
550' n		67	284.2
575' n		72	283.7
600' n	Sl Brooks	76	283.3
	5-15	<u>288.47</u>	283.3
	nding Brooks	51	283.4
25' n		51	283.4
50' n		50	283.5
75' n		49	283.6
100' n		48	283.7
125' n		47	283.8
150' n		46	283.9
175' n		45	284.0

nw Brooks

		<u>28647</u>		
200 n			4.5	284.0
225 n			4.4	284.1
250 n			4.4	284.1
275 n			4.3	284.2
300 n			4.3	284.2
325			4.1	284.4
TP	500	<u>28940</u>	4.07	284.40
350 n			4.9	284.5
375 n			4.9	284.5
400 n			4.7	284.7
425 n			4.7	284.7
450 n			4.5	284.9
475 n			4.5	284.9
500 n			4.4	285.0
525 n			4.3	285.1
550 n			4.2	285.2
575 n			4.2	285.2
600 n			4.2	285.2

600 n 252 Penn am

			5.55	<u>290.70</u>
				285.35
			25' n	5.5
			25' n	5.4
			50 n	5.3
			75 n	5.2
			100 n	5.0
			125 n	4.9
			150 n	4.8
			175 n	4.6
			200 n	4.4
			225 n	4.3
			250 n	4.1
			275 n	4.0
			300 n	3.8
			325 n	3.7
			TP	6.02
				<u>293.24</u>
			350 n	3.68
			375 n	3.9
			400 n	3.8
			425 n	3.8
			450 n	3.7

on 4 Penn

252 Penn am 6 in 6

285.35

285.4

285.5

285.6

285.7

285.9

286.0

286.1

286.3

286.5

286.6

286.8

286.9

287.1

287.2

287.3

287.4

287.6

29324

425' n	5.5	287.7
450' n	5.3	287.9
475' n	5.2	288.0
500' n	5.0	288.2
525' n	4.9	288.3
550' n	4.8	288.4
575' n	4.6	288.6
600' n = Sd Robinson	4.5	288.7

4.35

29322

288.57

n d of Robinson	4.4	288.8
25' n	4.4	288.8
50' n	4.6	288.6
75' n	4.7	288.5
100' n	4.8	288.4
125' n	4.9	288.3
150' n	5.0	288.2
175' n	5.0	288.2
200' n	5.1	288.1

n w Robinson

29322

9

225' n	5.2	288.0
250' n	5.4	287.8
275' n	5.4	287.8
300' n	5.5	287.7
325' n	5.5	287.7
350' n	5.7	287.5
375' n = 6' w of bank	5.8	287.4
410' n = Sd University <sup>7' E of bank</sup>	6.0	287.2

8. Hatch  
 10. mury X sections 27<sup>th</sup> St B to Park.  
 11. Hall

BM	338	215.71	212.384	Sabini Pole NW cor 27 <sup>th</sup> A	50's		
		SL A St				45	211.2
W		5.5	210.12			50	210.7
cb		5.6	210.1			56	210.1
1/4		{ 6.2	209.5				
		{ 6.9	208.8			63	209.4
cs		7.4	208.3			66	209.1
1/4		7.1	208.6			69	208.6
cb		7.2	208.5			73	208.4
E		7.0	208.7			72	208.5
		20's				75's	
E		7.2	208.5			73	208.4
cb		7.2	208.5			76	208.1
1/4		7.6	208.1			70	208.7
c		6.6	209.1			72	208.5
+8		6.8	208.9			72	208.5
1/4		5.5	210.2			60	209.7
cb		5.0	210.7			56	210.1
+8		4.6	211.4			52	210.5
W		3.9	211.8				

215.71

100'S

W	6.1	209.6
cb	6.5	209.2
1/4	7.4	208.3
+3	8.3	207.4
c	8.4	207.3
1/4	7.9	207.8
cb	8.1	207.6
E	7.5	208.2

125'S

E	8.1	207.6
+5	8.3	207.4
cb	9.2	206.5
1/4	9.0	206.7
c	9.4	206.3
1/4	8.7	207.0
cb	7.7	208.0
W	7.5	208.3

11

150'S

W	9.2	206.5
cb	9.2	206.5
1/2	10.0	205.7
c	10.2	205.5
1/2	10.6	205.1
+7	10.3	205.4
cb	9.6	206.1
E	8.8	206.9

175'S

E	9.5	206.2
cb	9.8	205.9
+5	11.7	204.0
1/2	12.2	203.5
c	11.9	203.8
1/4	11.6	204.1
+8	11.2	204.5
	10.5	205.2
cb	10.5	205.2
W	10.2	205.5
T.P.	12.5	206.87
	10.12	205.59

206.87

	200's	
W	24	204.5
cb	24	204.5
+2	28	204.6
+5	38	203.1
1/4	43	202.6
c	45	202.4
1/4	48	202.6
+5	37	203.2
cb	15	205.4
E	13	205.3

225's

E	17	205.2
cb	21	204.8
+6	47	202.2
1/4	50	201.9
c	53	201.6
1/4	51	201.8
+5	46	202.3
+7	32	203.7
cb	33	203.6

12

	200's	
W	3.1	203.8
W	3.7	203.2
cb	35	203.4
+3	4.3	202.6
+5	5.9	201.0
1/4	6.3	200.6
c	65	200.4
1/4	6.3	200.6
+3	5.1	201.8
cb	23	204.6
E	2.1	204.8

275's

E	26	204.3
cb	31	203.8
+3	35	203.4
+8	70	199.9
1/4	75	199.4
c	83	198.6
1/4	8.0	198.9

	+4		74	199.5
W	+8		45	202.4
cb	cb		44	202.5
+2	W		44	202.5
+5		295-LS		
1/4	W		5.0	201.9
C	+5		57	201.2
1/4	cb		7.0	199.9
+5	+2		7.3	199.6
cb	+8		9.1	197.8
E	1/4		9.1	197.8
	e		9.2	197.7
E	1/4		9.0	197.9
C	cb		5.6	201.3
+6	+5		4.1	202.8
1/4	E		3.9	203.0
C		500' S = VL 3 St.		
1/4	TP	593 203.22	9.58	197.29
+7	E		3.9	199.3
cb	cb		5.0	198.2

1/4	6.1	197.1
C	5.8	197.4
1/4	5.9	197.3
cb	5.3	197.9
W	4.7	198.5
	BM check	6.19
BM	307	215.40
	VL - A St.	212.384
W	2.5	211.9
cb	4.9	210.5
1/4	5.7	209.7
C	6.4	209.0
1/4	6.8	208.6
cb	6.5	208.9
E	6.1	209.3
	25' N	
E	8.2	207.2
cb	7.6	207.8
1/4	7.1	208.3
C	6.4	209.0

215.40

1/2	5.7	209.7
cb	5.6	209.8
W	4.9	210.5

50' N

W	5.0	210.4
cb	5.6	209.8
1/2	6.4	209.0
C	7.1	208.3
1/2	7.8	207.6
cb	8.4	207.0
E	9.1	206.3

75' N

E	10.2	205.2
cb	9.2	206.2
1/2	8.2	207.2
C	7.3	208.1
1/4	6.5	209.9
cb	6.3	209.1
W	5.3	210.1

14

104' N = Park line

W	5.7	209.7
cb	6.2	209.2
1/2	7.7	207.7
C	8.9	206.5
1/2	9.8	205.6
cb	11.0	204.4
E	12.0	203.4



8/28 Hatch  
 11 Moor  
 Hall

Crosssections of 32<sup>d</sup> St

Main St - South  
 A Line

B24 Mon	819	46.82	38.635
W		7.6	39.2
cb	1 foot South	3.2	43.5
+3		6.4	40.4
		5.0	39.5
		9.1	37.7
1/2		9.7	37.1
c		9.3	37.5
1/4		9.8	37.0
cb		10.5	36.3
E		10.3	36.5
	B		
W		3.0	43.8
cb		3.6	43.2
+4		3.4	43.4
+9		7.9	38.9
1/2		8.3	38.5
c		7.6	39.2
1/4		8.2	38.6
cb		8.8	38.5
E		10.3	36.5

SW Cor Main St 32<sup>d</sup>

46.82  
 C

W		3.0	43.8
cb		3.2	43.6
1/4		4.2	42.6
		6.4	40.4
c		6.8	40.0
1/2		5.2	41.6
cb		8.3	38.5
E		10.3	36.5
	D		
E		10.3	36.5
cb		7.2	39.6
1/2		5.2	41.6
c		4.7	42.1
1/4		4.1	42.7
cb		3.7	43.1
W		2.9	43.9
	5'S		
W		3.0	43.8
cb		3.8	43.0
1/4		4.3	42.5

	46.82		
c	4.9	41.9	
1/4	5.9	41.4	
cb	6.0	40.8	
E	6.5	40.3	
	25'S		
E	7.0	39.8	
cb	6.8	40.0	
1/4	6.2	40.6	
c	5.8	41.0	
1/2	5.0	41.8	
cb	4.4	42.4	
m	3.6	43.2	
	50'S		
w	3.7	43.1	
cb	5.0	41.8	
1/4	6.0	40.8	
c	7.2	39.6	
1/2	7.6	39.2	
cb	7.9	38.9	
E	8.1	38.7	

	46.82		
	75'S		
E	9.3	37.6	
cb	9.3	37.6	
1/4	9.1	37.9	
c	8.7	38.1	
1/2	7.1	39.7	
cb	6.5	40.3	
w	5.2	41.6	
	100'S		
w	7.6	39.2	
cb	8.6	38.2	
1/2	9.2	37.6	
c	9.6	37.2	
1/4	10.0	36.8	
cb	10.0	36.8	
E	10.2	36.6	
	109.4 S = N. Cotton Ave		
E	10.7	36.1	
cb	10.3	36.5	

4682

1/4	10.3	36.5
c	9.8	37.0
1/4	9.7	37.1
cb	9.1	37.7
W	8.5	38.3
x cb Colton		
W	9.2	37.4
cb	9.5	37.3
1/4	9.9	36.9
c	10.0	36.8
1/2	10.6	36.2
b	10.7	36.1
E	10.6	36.2
N 1/4		
E	10.9	35.9
cb	11.0	35.8
1/2	10.8	36.0
c	10.5	36.3
1/4	10.1	36.7

4682

cb	9.8	37.0
W	9.5	37.3
C		
W	10.1	36.7
cb	10.2	36.6
1/2	10.4	36.4
c	10.8	36.0
1/4	11.3	35.5
cb	11.2	35.6
E	11.3	35.5
5 1/4		
E	11.6	35.2
cb	11.5	35.3
1/4	11.4	35.4
c	11.1	35.7
1/4	10.9	35.9
cb	10.8	36.0
W	10.6	36.2

46.82

5' cl

W	10.9	35.9
cb	11.2	35.6
1/4	11.5	35.3
c	11.7	35.1
1/4	12.0	34.8
cb	12.1	34.7
E	12.1	34.7

St. Colton

E	12.5	34.3
cb	12.5	34.3
1/4	12.5	34.3
c	12.0	34.8
1/4	11.9	34.9
cb	11.8	35.0
W	11.7	35.1

15' s

W	12.5	34.3
cb	12.6	34.2

46.82

1/4

c

1/4

T.P

cb

E

E

cb

1/4

c

1/4

cb

W

W

cb

1/4

c

	12.7	34.1
	12.8	34.0
	13.0	33.8
0.79	35.03	12.58
	1.9	33.6
	1.9	33.6

50' s

2.1 32.9

2.1 32.9

2.1 32.9

1.6 33.4

1.3 33.7

1.2 33.8

1.1 33.9

75' s

1.7 33.3

1.8 33.2

1.8 33.2

2.1 32.9

3503

1/2	2.6	32.4
cb	2.5	32.5
E	2.9	32.1

160' S

E	3.5	31.5
cb	3.1	31.9
1/2	3.1	31.9
c	2.6	32.4
1/4	2.3	32.7
cb	2.3	32.7
w	2.3	32.7

125' S

w	2.7	32.3
cb	3.0	32.0
1/2	3.1	31.9
c	3.5	31.5
1/4	3.8	31.2
cb	3.7	31.3
E	4.1	30.9

3503

160' S

E	4.9	30.1
cb	4.4	30.6
1/2	4.4	30.6
c	4.0	31.0
1/2	3.4	31.6
cb	3.3	31.7
w	3.1	31.9

175' S

w	3.6	31.4
cb	3.7	31.3
1/2	4.0	31.0
c	4.5	30.5
1/2	4.8	30.2
cb	4.8	30.2
E	5.3	29.7

193.8 S = N L J Ave

E	5.7	29.3
cb	5.1	29.9

35.03

1/4	5.0	30.0
c	4.6	30.4
1/4	4.2	30.8
cb	4.1	30.9
w	3.9	31.1

N 1/4 J Ave (Filbert)

w	4.1	30.9
cb	4.3	30.7
1/4	4.4	30.6
c	4.6	30.4
1/4	5.5	29.5
cb	5.5	29.5
E	5.8	29.2

N 1/4

E	6.4	28.6
cb	6.4	28.6
1/4	6.1	28.9
c	5.9	29.1
+6	5.7	29.3

35.03

1/4	4.7	30.3
cb	4.5	30.5
w	4.3	30.7
cr.		
w	4.7	30.3

cb	5.0	30.0
1/4	5.8	29.7
+5	6.7	28.3
c	6.8	28.2
1/4	6.9	28.1
cb	7.1	27.9
+8	7.4	27.6
E	6.6	28.4

S 1/4

E	6.7	28.3
+3	7.8	27.2
cb	7.4	27.6
1/4	7.2	27.8
c	7.5	27.5

3503

+5	7.1	27.9
1/2	5.8	29.2
cb	5.2	29.8
w	5.3	29.7

S cb.

w	5.8	29.2
cb	6.0	29.0
1/4	6.3	28.7
+ A	7.5	27.5
c	7.8	27.2
1/2	7.8	27.2
cb	8.1	26.9
+7	8.0	27.0
F	7.0	28.0

Sk J Ave.

E	6.7	28.3
+5	9.6	25.4
cb	9.2	25.8
1/4	8.8	26.2

3503

c	8.8	26.2
1/2	8.5	26.5
+5	6.5	28.5
cb	6.2	28.8
w	6.3	28.7

A'S = N h Bay Ave.

w	6.2	28.8
cb	6.1	28.9
+5	5.2	29.8
	8.3	26.7
1/2	8.8	26.2
c	9.2	25.8
1/4	9.1	25.9
cb	9.5	25.5
+5	9.5	25.5
F	6.7	28.3

N h Bay Ave.

E	6.5	28.5
+3	9.6	25.4
cb	10.0	25.0

21

3503

1/2	9.6	25.4
c	10.2	24.8
1/2	9.8	25.2
+5	9.3	25.7
cb	7.1	28.9
W	7.1	27.9

N 1/4 Bay Ave.

W	7.3	27.7
cb	7.2	27.8
+6	10.3	24.7
1/2	10.7	24.3
c	10.9	24.1
1/4	10.5	24.5
cb	11.0	24.0
+7	9.9	25.1
E	6.3	28.7

cr

E	6.6	28.4
+3	10.6	24.4

3503

cb	11.3	23.7
1/2	11.2	23.8
c	11.5	23.5
1/2	11.2	23.8
+7	10.8	24.2
cb	7.7	27.3
W	7.5	27.5

S 1/4

W	7.7	27.3
cb	8.0	27.0
+5	11.5	23.5
1/2	12.0	23.0
c	12.0	23.0
1/2	11.7	23.3
cb	11.8	23.2
+6	11.1	23.9
E	8.0	27.0
S cb		
E	8.0	27.0



3503

+4		12.0	23.0
cb		12.4	22.6
1/4		12.2	22.8
c		12.2	22.8
1/4		12.2	22.8
+5		11.3	23.7
cb		8.5	26.5
W		8.1	26.9
	Sh. Bay Ave.		
W		8.4	26.6
cb		8.9	26.1
+2		10.9	24.1
TR	393 27.00	11.96	23.07
1/4		6.8	20.2
c		4.6	22.4
1/4		4.5	22.5
cb		4.9	22.1
+5		3.7	23.3
E		1.1	25.9

23

27.00

16' S. of Bay Ave.

E		2.0	25.0
+4		4.4	22.6
cb		5.5	21.5
1/4		5.2	21.8
+5		5.0	22.0
		26.8	20.2
c		8.0	19.0
1/4		7.9	19.1
+5		6.8	20.2
cb		3.0	24.0
+2		1.1	23.9
W		0.7	26.3
	21' S		
W		0.8	26.2
+8		0.8	26.2
cb		2.6	24.4
		7.2	19.8
1/4		8.2	18.8
c		8.3	18.7
1/4		7.6	19.4

23

	2700		
cb		{ 8.0	19.0
		{ 5.5	21.5
+5		4.5	22.5
E		2.1	24.9
	41'S		
E		2.0	25.0
+5		{ 4.7	22.3
		{ 7.6	19.4
cb		8.8	18.2
1/4		9.1	17.9
o		9.1	17.9
1/4		8.9	18.1
+5		7.7	19.3
cb		2.6	24.4
+3		1.7	25.3
W		2.2	24.8
	66'S		
W		4.0	22.0
+8		3.3	23.7
cb		4.9	22.1
+4		8.3	18.7

24

	5700		
1/4		8.7	18.3
c		9.1	17.9
1/4		9.6	17.4
cb		9.5	17.5
+5		{ 7.8	19.2
		{ 5.3	21.7
E		2.2	24.8
	91'S		
E		4.3	22.7
+6		9.1	17.9
cb		9.6	17.4
1/4		10.4	16.6
c		10.1	16.9
1/4		10.2	16.8
+5		9.6	17.4
cb		{ 8.4	18.6
		{ 6.9	20.6
W		6.7	20.3
	116'S		
W		9.9	17.1
+5		10.5	16.5

	2700			
cb		12.9	14.1	
1/4		13.0	14.0	
c		12.7	14.3	
1/4		12.8	14.2	
cb		12.0	15.0	
+7		11.2	15.8	
E		10.0	17.0	
T.P.	194	17.29	11.65	15.35
10'E level	136 $\equiv$ S =	Rueble line (132 50' monument)		
E		8.7	8.5	
+5		8.2	9.1	
cb		10.2	9.1	
+5		11.5	5.8	
1/4		11.3	6.0	
c		9.3	8.0	
1/4		5.2	12.1	
c		5.4	11.9	
1/4		5.4	11.9	
cb		5.0	12.3	
W		7.6	9.7	
10' W		8.9	8.4	

Note -  
Non. is on Right.  
Rueble line

T.P.	0.24	15.59	15.35
		15.0 S	
15 E		14.4	1.2
E		12.6	3.0
cb		11.1	4.6
+4		9.9	5.7
1/4		7.1	8.5
+3		5.6	10.0
C		5.9	9.7
1/4		5.7	9.9
+5		5.4	10.2
cb		7.5	8.1
W		12.5	3.1
T.P.	249	7.03	11.05
7 W		7.5	-0.5
20 "		8.3	-1.3
		17.5 S	
20 W		10.3	-3.3
W		9.9	-2.9
cb		4.9	+2.6
+7		1.9	+5.1

See Notes 10347P 3 for 32<sup>d</sup> St from Sta 1+75 S. of Bay Ave to 14+25 S. of Bay Ave

BM 1119 top of 4" pipe of Brewery  
west side of street. 20

	703			
1/4		1.5	5.5	
C		1.8	5.2	
+6		2.2	4.8	
1/4		4.5	2.5	
+7		8.5	-1.5	
cb		8.8	-1.8	
E		9.1	-2.1	
TIP	6.00	6.07	6.96	0.07
on 19 rail 50-2	4.57	9.10	1.34	4.73
		14+25		
W	9/11/11	11.4	-5.3	
cb		12.2	-6.1	
		14+40		
W		6.1	0.0	
cb		9.8	-3.7	
1/4		12.0	-5.9	
		14+50		
W		5.6	+0.5	
cb		6.0	+0.1	

	9.10			
1/4		9.4	-0.3	
+50		11.8	-2.7	
C		12.4	-3.3	
		14+75		
W = 2' N of Rail		5.2	3.6	
cb		5.7	3.4	
1/4		5.6	3.5	
C		5.6	3.5	
1/4		5.7	3.4	
+4		6.0	3.1	
cb		8.6	-0.5	
E		12.0	-2.9	
		14+90		
E		5.9	3.2	
cb		5.4	3.7	
1/4		5.4	3.7	
C		5.5	3.6	
1/4		5.3	3.8	
cb		5.4	3.7	

	9.10		
w		5.2	3.9
	15+00		
w		4.9	4.2
cb		4.6	4.5
1/4		5.1	4.0
c		4.9	4.2
1/2		5.4	3.7
cb		5.4	2.7
E		5.3	3.8
	15+25		
E		5.0	4.1
cb		5.0	4.1
1/2		4.3	4.8
c		4.3	4.8
1/4		4.3	4.8
cb		4.2	4.9
w		4.2	4.9
	15+50		
w		3.4	5.7

	9.10		
cb		3.7	5.1
1/2		3.9	5.2
c		4.0	5.1
1/2		3.9	5.2
cb		4.1	5.0
E		4.2	4.9
	15+75		
E		3.4	5.7
cb		3.2	5.9
1/2		2.9	6.2
c		2.8	6.3
1/2		2.7	6.4
cb		2.7	6.4
w		3.0	6.1
	16+00		
w		2.1	7.0
cb		2.3	6.8
1/2		2.4	6.7
c		2.3	6.8

		9.10		
1/2			2.5	6.6
cb			2.7	6.4
F			2.6	6.5
TD	8.87	16.96	10.1	8.09
		16+25		
F			9.8	7.2
cb			9.8	7.2
1/2			9.8	7.2
c			9.7	7.3
1/2			9.6	7.4
cb			9.6	7.4
w			9.4	7.6
		16+50		
1/2			8.6	8.4
cb			8.7	8.3
1/2			8.7	8.3
c			9.2	7.8
1/2			9.4	7.6
cb			9.2	7.8

		16.96		
F			9.3	7.7
		16+75		
F			8.9	8.1
cb			8.8	8.2
1/2			8.6	8.4
c			8.4	8.6
1/2			8.3	8.7
cb			7.7	9.3
w			7.8	9.2
		17+00		
w			7.8	9.2
cb			7.8	9.2
1/2			8.1	8.9
c			8.0	9.0
1/2			8.3	8.7
cb			8.1	8.9
F			8.2	8.8
		17+25		
F			7.4	9.6

	1696		
cb		7.6	9.4
gutter		8.1	8.9
1/2		7.7	9.3
c		7.7	9.3
1/4		7.6	9.4
cb		7.8	9.2
W		7.7	9.3

17+30

W		7.3	9.3
cb		7.4	9.6
1/4		7.4	9.6
c		7.2	9.8
1/4		7.1	9.9
g		7.5	9.5
cb		6.9	10.1
E		6.5	10.5

17+75 = NW Bay Front St

E		5.7	11.3
cb		5.8	11.2

	16.96		
g		6.3	10.7
1/2		6.3	10.7
c		6.4	10.6
1/2		6.8	10.2
cb		6.9	10.1
W		6.7	10.3

18+05 = S.W. Bay Front St

W		6.1	10.9
cb		6.1	10.9
1/2		5.9	11.1
c		5.6	11.4
1/2		5.5	11.5
g		5.9	11.1
cb		5.0	12.0
E		4.5	12.5

18+25

E		3.9	13.1
cb		4.3	12.7
g		5.5	11.5

16.96

1/2	4.8	12.2
c	5.2	11.8
1/4	5.2	11.8
g	5.6	11.4
cb	5.1	11.9
w	5.1	11.9

18.50

w	4.5	12.5
cb	4.5	12.5
g	5.3	11.7
1/4	4.7	12.3
c	4.6	12.4
1/2	4.3	12.7
g	4.4	12.6
cb	3.4	13.6
E	3.2	13.8

18.75

E	2.8	14.2
cb	3.1	13.9

16.96

g	4.2	12.8
1/4	3.9	13.1
c	4.3	12.7
1/2	4.5	12.5
g	4.7	12.3
cb	4.0	13.0
w	4.3	12.7

19.00

w	4.2	12.8
cb	4.1	12.9
g	4.7	12.3
1/2	4.3	12.7
c	4.3	12.7
1/4	4.0	13.0
g	4.2	12.8
cb	3.1	13.9
E	2.8	14.2

19.25

E	2.8	14.2
---	-----	------



1696

cb	3.1	13.9
g	4.3	12.7
1/4	3.9	13.1
c	4.1	12.9
1/4	4.2	12.8
g	4.8	12.2
cb	3.9	13.1
W	4.1	12.9
19+50		
W	4.0	13.0
cb	4.2	12.8
g	5.1	11.9
1/4	4.4	12.6
c	4.2	12.8
1/4	3.9	13.1
g	4.2	12.8
cb	3.6	13.4
F	3.1	13.9

1696

19+75

F	3.0	14.0
cb	3.5	13.5
g	3.9	13.1
1/4	3.8	13.2
c	4.1	12.9
1/4	4.2	12.8
g	4.6	12.4
cb	4.1	12.9
W	4.3	12.7
20+00		
W	4.5	12.5
cb	4.3	12.7
g	4.9	12.1
1/4	4.0	13.0
c	3.9	13.1
1/4	3.7	13.3
g	3.9	13.1
cb	3.3	13.7

	1696		
E		28	14.2
	20+25		
E		3.2	13.8
cb		3.5	13.5
g		3.9	13.1
1/4		3.5	13.5
c		3.6	13.4
1/4		4.0	13.0
g		4.7	12.3
cb		4.2	12.8
W		4.2	12.8
TP	4.61	17.56	4.07 12.89
	20+50		
W		4.4	13.1
cb		4.4	13.1
g		4.9	12.6
1/4		4.3	13.2
c		4.2	13.3
1/4		4.0	13.5

	1750		
g		4.6	12.9
cb		4.0	13.5
E		3.7	13.8
	20+75		
E		4.1	13.4
cb		4.1	13.4
g		4.6	12.9
1/4		4.1	13.4
c		3.9	13.6
1/4		4.1	13.4
g		4.7	12.8
cb		4.4	13.1
W		4.1	13.4
	21+00		
W		4.1	13.4
cb		4.4	13.1
g		4.9	12.6
1/4		4.2	13.3
c		4.1	13.4

26

1750

1/2	4.1	13.4
g	4.4	13.1
cb	4.0	13.5
E	3.9	13.6

21+25

<del>E</del>	3.7	13.8
cb	3.5	14.0
g	4.3	13.2
1/4	4.1	13.4
c	4.1	13.4
1/2	4.4	13.1
g	4.5	12.7
cb	4.3	13.2
W	4.1	13.4

24+50

W	4.2	13.3
cb	4.4	13.1
g	4.9	12.6
1/4	4.4	13.1

33

1750

TR	2.1	15.68	4.23	13.27
C			2.4	13.1
1/2			2.4	13.3
g			2.9	12.8
cb			2.1	13.6
E			2.3	13.4

21+75

E			2.4	13.3
cb			2.3	13.4
g			2.2	12.5
1/2			2.5	13.2
c			2.9	12.8
1/4			2.6	13.1
g			3.3	12.9
cb			2.7	13.0
W			2.6	13.1

22+00

W			2.8	12.9
cb			2.8	12.9
g			3.5	12.2

1568

1/4	30	12.7
c	2.8	12.9
1/4	2.7	13.0
g	3.2	12.5
cb	2.7	13.0
E	2.7	13.0
	22+25	
E	2.9	12.8
cb	3.1	12.6
g	2.4	12.3
1/4	3.1	12.6
c	3.3	12.4
1/4	3.3	12.4
g	3.7	12.0
cb	3.0	12.7
W	3.2	12.5
	22+50	
W	3.3	12.4
cb	3.2	12.5

1568

g	3.8	11.9
1/4	3.5	12.2
c	3.4	12.3
1/4	3.4	12.3
g	3.6	12.1
cb	2.9	12.8
E	3.5	12.2
	22+75	
E	3.4	12.3
cb	3.3	12.4
g	3.9	11.8
1/4	3.7	12.0
c	3.7	12.0
1/4	3.9	11.8
g	4.1	11.6
cb	3.5	12.2
W	3.4	12.3
	23+00	
W	4.0	11.7

4

15.68

cb 3.9  
 g 4.5  
 .14 4.1  
 c 3.8  
 1/2 4.1  
 g 4.2  
 cb 3.7  
 E 3.5

23+25

E 3.7  
 cb 3.6  
 g 4.1  
 1/2 4.4  
 c 4.1  
 1/2 4.5  
 g 4.9  
 cb 4.3  
 W 4.3

35

15.68

23+50

W 4.2  
 cb 4.2  
 g 4.7  
 1/2 4.5  
 c 4.6  
 1/2 4.4  
 g 4.2  
 cb 3.6  
 E 3.7

23+75

E 4.3  
 cb 4.3  
 g 5.0  
 1/2 4.8  
 c 4.7  
 1/2 4.8  
 g 5.1  
 cb 4.6

15-68

W

4.5

24+00

W

5.1

cb

4.9

g

5.5

g

1/2

5.4

c

5.4

c

1/2

5.4

1/2

g

5.7

g

cb

4.8

E

4.7

24+23

E

5.6

cb

5.4

cb

g

6.3

g

1/2

6.0

1/2

c

5.8

c

1/2

5.7

1/2

g

6.1

g

cb

5.3

cb

W

5.7

W

15-68

24+50

W

6.1

cb

6.1

cb

g

6.7

g

1/2

6.2

1/2

c

5.9

c

1/2

5.9

1/2

g

6.4

g

cb

5.6

cb

E

5.8

E

24+75

E

5.9

E

cb

5.7

cb

g

6.6

g

1/2

6.3

1/2

c

6.2

c

1/2

6.4

1/2

g

6.8

g

cb

6.2

cb

E

1568

W

6.5

25+00

W

6.7

cb

6.4

g

7.2

1/2

6.7

c

6.8

1/2

6.7

g

6.9

cb

6.2

E

6.3

25+25

E

6.6

cb

6.5

g

7.3

1/2

7.0

c

6.9

1/2

7.0

g

7.6

1668

cb

6.8

W

6.9

25+50

W

6.6

cb

6.6

g

7.4

1/2

7.1

c

7.2

1/2

7.3

g

7.6

cb

7.1

E

7.2

25+75

E

7.7

cb

7.5

g

8.0

1/2

7.6

c

7.5

1/2

7.5

15.68

g	7.9
cb	7.4
W	7.4
26+03	
W	8.2
cb	7.9
1/4	8.1
s	8.2
1/4	8.2
cb	8.2
E	8.1

26+03

Sec A



15.68

Sec A

E	8.9	
cb	8.7	
1/4	8.6	
c	8.4	
1/4	7.9	
cb	7.9	
W	8.2	
ROM Hub centre	8.40	7.60



9/12 Hatch  
1/2 N. 1/2 S  
1/4 Hall

Xsec. Ash St from 29<sup>th</sup> to 30<sup>th</sup>

39

Time	Lat	Long	Notes	Depth	Temp	Direction	Temp
1327	700	227.27	226.769 NW Cor. Ash St	cb	3.8	223.5	227.27
		W. 6 30 <sup>th</sup>		N	3.2	224.1	
N		1.9	225.4				50 W
cb		2.3	225.0	N	4.3	223.0	
1/2		3.2	224.1	+10	4.1	223.2	
c		2.8	224.5	cb	4.7	222.6	
1/4		3.1	224.2	-7	5.4	221.9	
+5		3.4	223.9	1/2	5.5	221.8	
cb		2.5	224.8	c	5.0	222.3	
s		2.4	224.9	1/2	5.4	221.9	
		25 W		cb	5.5	221.8	
s		3.7	223.6	+10	5.0	222.3	
+3		4.1	223.2	s	4.7	222.6	
cb		3.7	223.6				75 W
+3		4.3	223.0	s	6.0	221.3	
1/4		4.0	223.3	cb	6.6	220.7	
c		3.9	223.4	1/2	6.9	220.9	
1/4		4.1	223.2	c	6.9	220.9	
+8		4.2	223.1	1/4	6.9	220.6	

22727	
cb	64 220.9
+4	58 221.5
N	55 221.8
	100 W
N	60 221.3
+2	68 220.5
+16	70 220.3
cb	72 219.9
1/4	73 220.0
c	73 220.0
1/4	77 219.6
cb	78 219.5
+5	72 220.1
S	69 220.4
	125 W
S	81 219.2
+18	81 219.2
cb	90 218.3
1/4	87 218.6

22727	
Q	85 218.8
1/2	86 218.7
cb	87 218.6
+5	87 219.2
+17	79 219.4
N	67 220.6
	150 W
N	76 219.7
+3	88 218.5
cb	93 218.0
1/2	96 217.7
c	94 217.9
1/2	94 217.9
cb	97 217.6
+5	89 218.4
S	88 218.5
	175 W
S	102 217.1
+15	102 217.1

		227.27	
cb		10.8	216.5
1/2		10.7	216.6
c		10.6	216.7
1/2		10.7	216.6
cb		10.4	216.9
+15		10.0	217.3
N		9.1	218.2
	200' W = E.L. Dale		
N		10.6	216.7
cb		11.6	215.7
1/2		11.9	215.4
c		11.6	215.7
1/4		11.7	215.6
cb		11.9	215.4
S		11.5	215.8
T.P.	169	217.46	11.50 215.77
	AL Dale		
N		3.2	214.3
cb		3.1	214.4

		217.4L	
1/2		3.9	213.7
c		3.5	214.0
1/2		3.9	213.6
cb		3.6	213.9
+15		3.6	213.9
S		4.1	213.4
	25' W		
S		5.1	212.4
cb		5.3	212.2
1/2		5.8	211.7
c		5.6	211.9
1/2		5.3	212.2
cb		4.7	212.8
+8		4.0	213.5
N		4.1	213.4
	50' W		
N		5.6	211.9
+12		5.4	212.1
cb		6.2	211.3
1/2		6.7	210.8

21746

c	6.9	210.6
1/4	6.9	210.6
+8	7.1	210.4
cb	6.4	211.1
S	6.3	211.2

75' W

S	8.1	209.4
cb	7.8	209.7
1/4	8.1	209.4
c	8.2	209.3
1/4	8.1	209.4
cb	7.5	210.0
+10	7.0	210.5
N	7.0	210.5

100' W

N	8.1	209.4
+10	8.1	209.4
cb	9.0	208.5
1/4	9.5	208.0

21746

c	9.7	207.8
1/4	9.4	208.1
cb	9.6	207.9
+5	9.1	208.4
S	9.2	208.3

T.P. 260 210.48 9.58 207.85

125' W

S	3.0	207.5
cb	4.0	206.5
+8	4.5	206.0
1/4	3.9	206.6
c	4.1	206.4
1/4	3.5	207.0
cb	3.5	207.0
	3.8	207.7

+10	2.2	208.3
N	2.4	208.1

150' W

N	3.7	206.8
cb	4.4	206.1
	5.0	205.5

210.48

1/a	5.2	205.3
c	5.5	205.0
1/a	5.4	205.1
cb	{ 5.8	204.3
	{ 5.1	205.4
s	4.7	205.8

175' W

s	5.6	204.9
+10	6.4	204.1
cb	{ 6.5	204.0
	{ 7.4	203.1
1/a	6.8	203.7
c	6.7	203.8
1/a	6.8	204.0
cb	6.5	204.0
+3	5.5	205.0
N	4.9	205.6

200' W = EL 29<sup>th</sup>

N	6.4	204.1
cb	{ 6.6	203.9
	{ 7.4	203.1
1/a	7.1	203.4

210.48

c	7.0	203.5
1/a	7.3	203.2
cb	{ 8.0	202.5
	{ 7.5	203.0
+15	7.3	203.2
s	6.9	203.6

9 Hatch  
10 Moore  
11 Hill

Xsec: Dike St from Beech to PL.

TP	174	217.51	215.77
		N.L. Ash	
E		1.0	216.5
cb		1.7	215.8
1/4		1.7	215.8
c		2.0	215.5
1/4		2.2	215.3
cb		2.4	215.1
+10		3.3	214.2
W		3.3	214.2
		Ncb	
W		2.2	214.3
cb		2.9	214.6
1/4		2.5	215.0
c		2.6	214.9
1/4		2.9	215.1
cb		2.1	215.4
E		1.8	215.7

	217.51		
	X 1/4		
E		2.1	215.4
cb		2.5	215.0
1/4		2.3	215.2
c		2.6	214.9
1/4		2.9	214.6
cb		2.9	214.6
W		3.9	213.6
		cr	
W		3.5	214.0
cb		3.9	214.6
1/4		2.6	214.9
c		2.4	215.1
1/4		2.3	215.2
cb		2.2	215.3
E		1.3	215.7
		3 1/4	
E		1.9	215.6
cb		2.2	215.3

217.51

1/2	24	215.1
c	27	214.8
1/4	28	214.7
cb	27	214.8
+10	31	214.4
w	39	213.6
5 cb.		
w	36	213.9
cb	28	214.7
1/4	29	214.6
c	28	214.7
1/4	26	214.9
cb	22	215.3
E	21	215.4
5L		
E	18	215.7
cb	26	214.9
1/4	31	214.4
o	33	214.2
1/4	36	213.9

217.51

cb	37	213.8
+8	35	214.0
w	42	213.3
25 S		
w	47	212.8
cb	46	212.9
1/4	44	213.1
o	40	213.5
1/4	39	213.6
cb	34	214.1
E	26	214.9
50 S		
E	30	214.5
cb	39	213.6
1/4	41	213.4
c	46	212.9
1/4	51	212.4
+8	57	211.8
cb	49	212.6

217.5'

W 5.3 212.2

7.5'S

W 5.8 211.7

+10 6.0 211.5

cb 5.6 211.9

+5 6.1 211.4

1/4 5.8 211.7

c 5.3 212.2

1/4 4.4 213.1

cb 5.6 212.9  
2.39 213.6

E 3.3 214.2

100'S

E 3.9 213.6

+17 4.4 213.1

cb 4.9 212.6

1/4 4.9 212.6

c 5.8 211.7

1/4 6.1 211.4

+5 6.3 211.2

217.5'

cb 5.9 210.6

W 5.9 211.6

125'S

W 5.6 211.9

cb 5.8 211.7

+5 6.3 211.2

1/4 5.9 211.6

c 5.5 212.0

1/4 5.1 212.4

cb 5.1 212.4

+5 4.6 212.9

E 3.8 213.7

150'S

E 3.8 213.7

+5 4.4 213.1

cb 4.8 212.7

1/4 5.5 212.0

c 5.8 211.7

1/1 6.3 211.2



4

	217.5		
+5		6.4	211.1
cb		5.8	211.7
w		6.0	211.5

175's

w		5.7	211.8
+5		6.3	211.2
cb		6.0	211.5
+5		6.5	211.0
1/4		6.5	211.0
c		5.7	211.8
1/2		5.4	212.1
cb		5.2	212.3
+5		4.9	213.1
E		3.5	214.0

200's

E		4.2	213.3
+5		4.0	213.5
cb		5.3	212.2
1/4		5.7	211.8

47

217.5

2		6.1	211.4
1/4		6.8	210.7
+5		7.0	210.5
cb		6.3	211.2
+15		6.5	211.0
w		6.1	211.4

225's

w		6.7	210.8
cb		6.5	211.0
+5		7.2	210.3
1/2		7.2	210.3
c		6.6	210.9
1/4		6.3	211.2
cb		6.2	211.3
+15		5.1	212.4
E		4.0	213.5

250's

E		5.5	212.0
cb		6.6	210.9

21751

1/2	6.5	211.0
c	6.7	210.8
1/4	7.4	210.1
cb	7.3	210.2
+5	6.9	210.6
W	7.1	210.4

21755

W	7.4	210.1
cb	7.4	210.1
+5	8.0	209.5
1/2	7.7	209.8
c	7.1	210.4
1/4	6.8	210.7
cb	7.0	210.5
+5	6.3	211.2
E	6.1	211.4

300' S = P.H.

E	5.5	212.0
+5	6.4	211.1

21751

cb	7.4	210.1
1/2	7.3	210.2
c	8.0	209.5
1/2	8.3	209.2
cb	8.2	209.3
W	8.0	209.5
TP	26.4	220.41
	1.74	215.77

25' N of HSH

E	3.7	216.7
+10	4.4	216.0
S	4.7	215.7
1/2	4.9	215.5
c	4.7	215.6
1/2	5.1	215.3
cb	5.0	215.4
+10	5.1	215.3
W	5.9	214.5

50' N

W	5.2	215.3
---	-----	-------

	22041		
+15		5.4	215.0
cb		4.8	215.6
1/4		4.7	215.7
c		4.5	215.9
1/4		4.8	215.6
cb		4.9	215.5
+10		4.4	216.0
E		3.4	217.0
	75' N		
E		3.3	212.1
+5		4.4	216.0
cb		4.5	215.6
1/4		4.8	215.6
c		4.8	215.6
1/4		5.0	215.4
cb		5.0	215.4
W		4.9	215.5
	100' N		
W		5.1	215.3

	22041		
cb		5.1	215.3
1/4		5.2	215.2
c		4.7	215.7
1/4		5.0	215.4
cb		4.7	215.7
+15		4.2	216.2
E		3.0	217.4
	125' N		
E		2.4	218.0
+5		4.1	216.3
cb		4.6	215.8
1/4		4.3	216.2
c		4.6	215.8
1/4		4.8	215.6
cb		5.3	215.1
+10		4.7	215.7
W		4.8	215.6
	150' N		
W		4.6	215.8

	22041		
+10		4.6	216.8
cb		5.3	215.1
1/4		4.9	215.5
0		4.3	216.1
1/4		4.1	216.3
cb		3.9	216.5
+10		3.2	217.2
E		2.4	218.0
	175' N		
E		2.4	218.0
+10		3.4	217.0
cb		4.1	216.3
1/4		4.2	216.2
c		4.3	216.1
1/4		5.2	215.2
+5		5.2	215.2
cb		4.5	215.9
+15		5.0	215.4
W		3.6	216.8

	22041		
	200' N		
W		3.4	217.0
+5		5.4	215.0
cb		5.3	215.1
1/4		5.2	215.2
c		4.7	215.7
1/4		4.3	216.1
cb		4.1	216.3
+15		3.5	216.9
E		1.7	218.7
	225' N		
E		2.1	218.3
+3		3.6	216.8
cb		4.7	215.7
1/4		4.9	215.5
c		5.4	215.0
1/4		5.9	214.5
cb		5.9	214.5
+17		6.0	214.4

220.41

W 4.4 216.0

250' N

W 4.2 216.2

+5 5.9 214.5

cb 6.6 213.8

1/2 6.3 214.1

c 5.9 214.5

1/4 6.1 214.3

cb 5.6 214.8

+17 5.0 215.4

E 4.3 216.1

275' N

E 4.3 216.1

+3 5.5 214.9

cb 6.4 214.0

1/4 6.1 214.3

c 6.6 213.8

1/2 6.8 213.6

cb 7.0 213.4

220.41

+15 6.9 213.5

W 5.3 215.1

300' N = SL Beech

W 6.0 214.4

+3 6.7 213.9

cb 7.4 213.0

1/2 6.9 213.5

c 6.8 213.6

1/2 6.7 213.7

cb 6.7 213.9

+17 5.8 214.6

E 4.9 215.5

1/2 Hatch  
20/ Hooper  
11 Hall

Levels on line 60' W. of E. line of 4<sup>th</sup>  
from Palm to Redwood.

52

Station	Height	Level	Level	Height	Level	Level	Level
NE Cor 4 <sup>th</sup> Palm - 285	268.27	267.923		+85	at natural soil	7.0	257.1
N. Palm		266.7		+88		2.6	259.5
+26	edge of fill	266.6		+90		2.6	261.5
+35	↓	259.7		TP	6.6	267.17	213
TP	727	264.14	11.40	256.87			
+45		254.2		+95		2.2	266.0
+50		254.0		2	Hardpan	1.0	267.2
+60		249.6		+15		0.4	267.8
+62		251.1		+25		0.9	267.3
+75		250.4		+40		2.4	265.8
+90		248.7		+50		6.0	262.2
+90		248.7		+60	9.5	258.7	
+100		248.2		+70	7.3	260.9	
+15		249.4		+75	edge of fill	13.7	254.5
+25		249.8		+85	↓	13.7	254.6
+30		250.5		3		13.6	254.6
+40		251.0		+15		13.6	254.6
+50		251.5		+25		14.9	253.3
+60		252.7		+35		14.1	254.1
+75	↑ edge of fill	254.2		+50		14.9	253.2

		26817		
+65		12.9	265.3	
+75	↑ edge of fill	12.6	265.6	
+85		9.9	268.8	
+95		5.0	263.2	
4		3.6	264.6	
+10	Hardpan	1.6	266.6	
+25		5.3	264.9	
TP	5.35	268.52	5.00	264.17
+33	edge fill (coarse) ↓	10.5	268.0	
+41		9.6	268.9	
+50		10.0	268.5	
+60		9.8	269.7	
+75		10.6	267.9	
+85		12.0	266.5	
5		10.7	267.8	
+10	↑ edge fill	9.3	260.2	
+20	↑ Hardpan	5.7	262.8	
+25		4.1	264.4	
+35		2.5	268.0	

		26952		
+45	↓	6.1	262.4	
+50		5.8	269.7	
+60	^	10.0	268.5	
+75	slight fill	9.9	268.6	
+85	↓	8.0	260.5	
+95		5.5	263.0	
6		4.3	264.2	
+10		2.0	266.5	
TP	7.60	274.90	12.2	267.30
+25		7.6	267.3	
+40		6.9	268.0	
+50		7.1	267.8	
+60		5.8	269.1	
+70		5.3	269.6	
+75		4.1	270.2	
+80	= sl. Redwood	4.5	270.4	
7		4.5	270.4	
+15		4.9	270.5	
+30		5.0	269.9	

43

27490

+40

50

269.9

+60 = Nk Redwood

59

269.0

BN

450

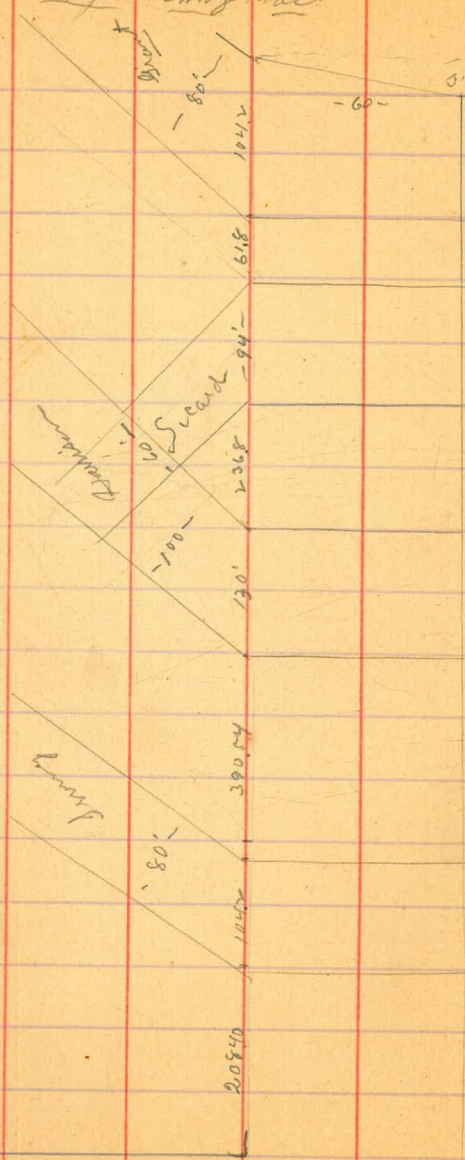
270.10

270.353

54



10 / Belmont  
 27 / Simon  
 11 / 24  
 Locus Sec of 28th St (60)  
 Throgt King Tract



Marney St

926 75.28 6602 B.M. 2 W 28 4/2

S line of Marney St (60)

W	6.0	69.3
bb	m. and S. 2.3	69.0 68.0
4	7.2	68.1
6	6.9	68.4
4	6.9	68.4
11	7.0	68.3
E	6.7	68.9

S line of Marney

E	6.3	69.0
bb	6.6	68.7
4	6.8	68.5
6	6.7	68.9
4	6.9	68.4
11	7.2	68.1
W	6.4	68.9

	S	1/4 of	Marney st
W			63 69.0
th			66 68.7
Y			64 68.9
b			60 69.3
Y			64 68.9
th			60 68.3
E			55 69.8

		center of	Marney
E			54 69.9
th			57 69.6
Y			62 69.1
b			60 69.3
Y			60 69.3
th			62 69.1
W			58 69.5

	N	1/4 of	Marney st
W			57 69.6
th			60 69.3
Y			56 69.7
b			58 69.5
Y			60 69.3
th			50 70.3
E			49 70.4

	N	1/4 of	Marney
E			42 71.1
th			46 70.7
Y			47 70.6
b			54 69.9
Y			54 69.9
th			52 69.7
W			54 69.9

75-28

	n	dir of	Marcey	11
W			55	69.8
W			55	69.8
Y			50	70.3
L			53	70.0
Y			56	69.7
W			46	70.7
E			40	71.3

25' n of Marcey

E			40	71.3
W			46	70.7
Y			53	70.0
L			50	70.3
Y			49	70.4
W			52	70.1
W			48	70.5

75-28

75-28

57

	50'	n of	Marcey	11
W			45	70.8
W			45	70.8
Y			45	70.8
L			43	71.0
Y			39	71.4
W			39	71.4
E			38	71.5

25' n of Marcey

E			35	71.8
W			38	71.5
Y			37	71.6
L			39	71.4
Y			41	71.2
W			40	71.3
W			41	71.7

75-28

	100	n f	Marney	
W			35	71.8
H			35	71.8
Y			38	71.5
L			38	71.5
Y			37	71.9
H			34	71.9
E			33	72.0

125 n f Marney

E			30	72.3
H			29	72.4
Y			31	72.2
L			34	71.9
Y			35	71.8
H			30	72.3
W			28	72.5

75-28

28-28

58

	150	n f	Marney	
W			21	73.2
H			21	73.2
Y			23	72.0
Y			29	72.4
L			28	72.5
Y			27	72.6
H			27	72.6
E			22	73.1

175 n f Marney

E			13	74.0
H			19	73.4
H			22	73.1
Y			22	73.1
L			23	73.0
Y			23	73.0
H			19	72.4
H			17	73.6
W			17	73.6

TP

845

822

151

7377

8222

2084 n = S of Irving (10422)

W	81	74.1
ll	86	73.6
γ	87	73.5
6	85	73.7
γ	87	73.5
ll	87	73.5
E	81	74.1

(+18.2) S of Irving

E	80	74.2
ll	84	73.8
γ	84	73.8
6	82	74.0
γ	83	73.9
ll	86	73.6
W in gutter	87	73.5

82222502 20

59

(17) S 1/4 of Irving

W	85	73.7
ll	84	73.8
γ	80	74.2
6	76	74.6
γ	77	74.5
ll	81	74.1
E	74	74.8

center of Irving

E	75	74.7
ll	78	74.4
γ	75	74.7
6	75	74.7
γ	78	74.4
ll	79	74.3
	78	74.4

822

	N	14 of	Irving
W			78 74.4
H			79 74.3
Y			77 74.5
L			71 75.1
Y			71 75.1
H			73 74.9
E			70 75.2

	N	16 of	Irving
E			70 75.2
H			73 74.9
Y			70 75.2
L			69 75.3
Y			76 74.6
H			77 74.5
W			74 74.8

822282 21

60

	N	15 of	Irving
W			68 75.4
H			73 74.9
Y			72 75.0
L			65 75.7
Y			67 75.5
H			67 75.5
E			66 75.6

	N	25 of	Irving
E			62 76.0
H			64 75.8
Y			64 75.8
L			62 76.0
Y			70 75.2
H			70 75.2
W			60 76.2

822

50 n f Spring

W	57	76.5
U	60	76.2
Y	65	75.7
L	58	76.4
Y	58	76.4
U	62	76.0
E	57	76.5

75' n f Spring

E	48	77.4
U	54	76.8
Y	57	77.1
L	53	76.9
Y	57	76.5
U	56	76.6
W	53	76.9

822

78.4 21

100 n f Spring

W	50	77.2
U	50	77.2
Y	50	77.2
L	48	77.4
Y	46	77.6
U	48	77.4
E	44	77.8

125' n f Spring

E	40	78.2
U	42	78.0
Y	42	78.0
L	42	78.0
Y	44	77.8
U	46	77.6
W	47	77.3

61

8222

	150	n 7	Living	
W			44	77.8
H			43	77.9
Y			40	78.2
L			39	78.3
Y			37	78.5
H			37	78.5
E			36	78.6

	175	n 7	Living	
E			33	78.9
H			33	78.9
Y			32	79.0
L			35	78.7
Y			34	78.6
H			37	78.5
W			40	78.2

8222

29022

62

	200	n 7	Living	
W			38	78.4
H			36	78.6
Y			35	78.7
L			33	78.9
Y			29	79.3
H			28	79.4
E			29	79.3

	225	n 7	Living	
E			30	79.2
H			31	79.1
Y			29	79.3
L			29	79.3
Y			34	78.8
H			32	79.0
W			34	78.6



8222

250 n f Dring

W	30	79.2
U	27	79.5
Y	27	79.5
L	27	79.5
Y	24	79.8
U	27	79.5
E	28	79.4

275' n f Dring

E	28	79.6
U	24	79.8
Y	19	80.3
L	20	80.2
Y	22	80.0
U	22	80.0
W	24	79.8

TP

652

8691

183 80.39

8691

2822

63

300' n f Dring

W	64	80.5
U	64	80.5
Y	66	80.3
L	61	80.8
Y	63	80.6
U	68	80.1
E	70	79.9

325' n f Dring

E	66	80.3
U	63	80.6
Y	60	80.9
L	58	81.1
Y	60	80.9
U	60	80.9
W	60	80.9

8691

350 n 7 Dring

w	5.5	81.4
ll	5.8	81.1
y	5.6	81.3
l	5.2	81.7
y	6.0	80.9
ll	5.8	81.1
E	5.2	81.7

375' n 7 Dring

E	5.3	81.6
ll	5.3	81.6
y	5.2	81.7
l	5.1	81.8
y	5.2	81.7
ll	5.2	81.7
w	5.0	81.9

8691

28.2.21

64

3905 n = 5 sin 6 Harrison St (30')

w	4.4	82.5
ll	5.2	81.7
y	4.8	82.1
l	5.0	81.9
y	4.9	82.0
ll	5.2	81.7
E	5.2	81.7

408 S Blk Harrison

E	4.3	82.6
ll	4.6	82.3
y	4.6	82.3
l	4.4	82.5
y	4.3	82.6
ll	4.5	82.4
v in gutter	5.0	81.9

TP 785 9098 378 82.3 m Blk

9098

(22.1)	S	1/4 of Harrison		
W			78	83,2
bb			78	83,2
7			78	83,2
6			79	83,1
7			78	83,2
ll			83	82,7
E			83	82,7

Center of Harrison

E			78	83,2
ll			79	83,1
7			76	83,4
6			75	83,5
9			76	83,4
ll			74	83,6
W			70	84,0

9098

RETURN TO CITY ENGINEER'S OFFICE  
CITY HALL, SAN DIEGO, CAL.

65

N	1/4 of Harrison			
W			67	84,3
ll			70	84,0
7			70	84,0
6			66	84,4
7			68	84,2
ll			74	83,6
E			75	83,5

N 1/4 of Harrison

E			70	84,0
ll			70	84,0
7			65	84,5
6			67	84,3
7			67	84,3
ll			68	84,2
W			68	84,2

90.98

N line of Harrison

W	60	85.0
U	65	84.5
Y	64	84.6
6	62	84.8
7	64	84.6
U	67	84.3
E	64	84.6

25' N of Harrison

E	60	85.0
U	60	85.0
Y	57	85.3
6	56	85.4
7	59	85.1
U	59	85.1
W	60	85.0

90.98

28.2.22

66

50' N of Harrison

W	53	85.7
U	50	86.0
Y	51	85.9
6	52	85.8
7	50	86.0
U	55	85.5
E	55	85.5

75' N of Harrison

E	48	86.1
U	47	86.3
Y	45	86.5
6	44	86.6
7	47	86.3
U	51	85.9
W	51	85.9

90.98

	100	n f	Harrison
W			5.0 86.0
bl			5.0 86.0
Y			5.0 86.0
b			4.8 86.2
Y			4.5 86.5
bl			4.8 86.2
E			4.9 86.1

125' n f Harrison

E			4.6 86.4
bl			4.6 86.4
Y			4.4 86.6
b			4.5 86.5
Y			4.8 86.2
bl			4.7 86.3
W			4.8 86.2

90.98

28.2.21

67

150 n f Harrison

W			4.3 86.7
bl			4.5 86.5
Y			4.5 86.3
b			4.1 86.9
Y			4.3 86.7
bl			3.9 87.1
E			4.4 86.6

175' n f Harrison

E			4.0 87.0
bl			3.5 87.5
Y			3.8 87.2
b			3.6 87.4
Y			3.9 87.1
bl			4.1 86.9
W			4.3 86.7

90.98

200 n of Harrison st

W	38	87.2
bb	40	87.0
γ	39	87.1
δ	33	87.7
γ	37	87.1
ll	36	87.4
E	30	88.0

2368 n = E side Seward st (94)

E	32	87.8
ll	33	87.7
γ	34	87.6
δ	33	87.7
γ	35	87.5
ll	35	87.5
	37	87.3
W	25	88.5

90.98

28 st

68

(715.66) S bb of Seward st

W	29	88.1
<sup>+</sup> W	34	87.6
bb	34	87.6
γ	34	87.6
δ	32	87.8
γ	31	87.9
ll	30	88.0
E	31	87.9

(715.66) S 1/4 of Seward st

E	29	88.1
ll	29	88.1
γ	30	88.0
δ	31	87.9
γ	31	87.9
ll	31	87.9
W	28	88.2

TP 661

95.28

231

88.67

95.28

## Center of Secord

W	67	88.6
th	70	
7	71	
6	71	88.2
4	69	
th	63	
E	65	88.8

## N 1/4 of Secord

E	67	88.6
th	67	
7	67	
6	65	88.8
4	68	
th	70	
W	70	88.3

95.28

28.22 W

## N 1/4 of Secord

69

W	(7.3) 6.3	88.0
th	7.2	
	6.5	
7	6.2	
6	6.0	89.3
4	6.1	
th	6.1	
E	6.1	89.2

## N 1/4 of Secord

E	6.1	89.2
th	5.8	
7	5.6	
6	5.7	89.6
4	6.2	
th	6.8	
	6.0	
W	6.0	89.3

95-28

	25'	n of	Secord	11
W			50	903
bb			53	
4	+0'		65	
			53	
b			53	900
4			53	
ll			57	
E			51	902

(1042) 60.8' n = S line of Grant of (1042)

E			4.6	907
ll			4.3	
4			4.3	
b			4.6	907
4			5.0	
	+9'		5.8	
ll			4.8	
W			4.8	905

95-28

280

70

(+182)	S	bb of	Grant	11
W			54	899
ll			53	
4			48	
b			46	907
4			43	
ll			38	
E			40	913

(17) S 1/4 of Grant 11

E			37	91.6
ll			38	
4			41	
b			44	909
4			46	
ll			50	
W			51	902



95.28

Center of Grant 11

W	4,8	905
H	4,6	
Y	4,3	
b	4,0	913
q	4,1	
ch	4,0	
E	4,1	912

N 1/4 of Grant 11

E	3,3	920
H	3,4	
Y	4,0	
b	4,4	909
q	5,0	
H	5,1	
W	5,1	902

95.28

28.7

71

N 1/4 of Grant 11

W	5,7	896
H	5,1	
Y	4,9	
b	5,6	
	3,4	919
q	3,3	
H	4,6	
E	2,0	933

+ 5' NNE }  
+ 15' W }

N 1/4 of Grant 11

E	2,0	933
H	2,3	
Y	3,2	
b	3,2	923
	3,5	
q	3,3	
H	5,1	
W	4,8	905
TP	5,26	90,02 <sup>1</sup> but

$\frac{10}{30}$  / blough X sec Arizona St (60)  
 11 / ~~Princeton~~ University to Lincoln  
 City

30736

Arizona

-2

556 30736

301.80 3m N W  
 limit Arizona

50' n of Univ am

N Line of University av

W	63	301.1	W	66	300.8
bl	65	300.9	bl	62	301.2
4	65	300.9	4	57	301.8
6	61	301.3	6	50	302.4
4	59	301.5	4	44	303.0
bl	57	301.2	bl	46	302.8
E	53	302.1	E	42	303.2

75' n of Univ am

25' n of Univ am

E	40	303.4	E	35	303.9
bl	51	302.3	bl	43	303.1
4	57	302.3	4	40	303.4
6	47	302.7	6	44	303.0
4	63	301.1	4	46	302.8
bl	63	301.1	bl	52	302.2
W	66	300.8	W	57	301.9
			W	57	301.7

30736

	100	n f	Amir	am
W			50	302.4
th			48	302.6
y			45	302.9
b			39	303.5
y			37	303.7
ll			36	303.8
E			31	304.3

	125	n f	Amir	am
E			25	304.9
ll			30	304.4
y			29	304.6
b			33	304.1
y			38	303.6
ll			41	303.2
W			44	303.0

30736

Arizona

73

	150	n f	Amir	am
W			37	303.7
th			33	304.1
y			32	304.2
b			28	304.6
y			25	304.9
ll			24	305.0
E			18	305.6

	175	n f	Amir	am
E			07	306.7
th			15	305.9
y			13	306.1
b			18	305.6
y			23	305.1
ll			27	304.7
W			30	304.4
TP	870		277	304.9
		31329		

31329

	200	mg	Amiv	an
W			78	305.5
H			79	305.4
Y			75	305.8
L			68	306.5
Y			66	306.7
H			69	306.4
E			61	307.2

	225'	mg	Amiv	an
E			51	308.2
H			60	307.3
Y			59	307.4
L			61	307.2
Y			65	306.8
H			70	306.3
W			67	306.6

31329

Arizona

74

	250	mg	Amiv	an
W			61	307.2
H			62	307.1
Y			54	307.9
L			53	308.0
Y			53	308.0
H			53	308.0
E			46	308.7

	275'	mg	Amiv	an
E			40	309.3
H			47	308.6
Y			47	308.6
L			45	308.8
Y			46	308.7
H			53	307.8
W			45	308.8

313.29

300 28 Annin an

W	36	309.7
U	410	309.2
Y	38	309.5
L	37	309.6
Y	36	309.7
M	35	309.8
E	32	310.1

325 26 Annin an

E	24	310.9
U	26	310.7
Y	25	310.8
L	27	310.6
Y	27	310.6
U	37	309.9
W	26	310.7

313.29

350 26 Annin an

W	17	311.6
U	25	310.8
Y	21	311.2
L	21	311.2
Y	20	311.3
U	18	311.6
E	14	311.9

375 28 Annin an

E	10	312.3
U	10	312.3
Y	06	312.7
L	10	312.3
Y	09	312.4
U	14	311.9
W	10	312.3

TP 720 32045 004 31225

Angora

75

320.45

400' n of Anis am

W	7.2	313.3
ll	7.9	312.6
Y	7.3	313.2
b	7.6	312.9
Y	7.6	312.9
ll	7.5	313.0
E	7.0	313.5

475' n of Anis am

E	7.0	313.5
ll	6.8	313.9
Y	7.0	313.5
b	6.8	313.7
Y	6.6	313.9
ll	6.9	313.6
W	6.7	313.8

320.45

Arizona

76

450' n of Anis am

W	6.3	314.2
ll	6.6	313.9
Y	6.3	314.2
b	6.1	314.4
Y	6.2	314.3
ll	6.2	314.3
E	6.0	314.5

475' n of Anis am

E	5.4	315.1
ll	5.9	314.6
Y	5.3	315.2
b	5.6	314.9
Y	5.2	314.9
ll	5.9	314.6
W	5.7	314.8

32045

	500	2 f	Amir an	
w			50	315.5
th			56	314.9
y			48	315.7
b			49	315.6
y			45	316.0
th			43	316.2
E			44	316.1

	525	n f	Amir an	
E			34	317.1
th			37	316.8
y			41	316.4
b			42	316.3
y			44	316.1
th			50	315.5
w			46	315.9

32045

Angora

77

	550	n f	Amir an	
w			44	316.1
th			43	316.2
y			37	316.8
b			35	317.0
y			35	317.0
th			37	316.8
E			33	317.2

	575	n f	Amir an	
E			26	317.9
th			31	317.4
y			28	317.7
b			29	317.6
y			29	317.6
th			38	316.7
w			32	317.3

31145-

78

600  $x =$  S div of Lincoln #80

W 29 317.6

th 27 317.8

7 26 312.9

b 22 318.3

7 25 318.0

th 30 317.5

+91 23 318.2

Q 20 318.5



1/5/11 Hatch  
Moort  
Hall

# Culvert at 28<sup>th</sup> B

79

505	202.01	196.963	1371.55 28 <sup>th</sup> B.
0.33	189.43	1291	189.10
0.28	177.34	1237	177.06
292	168.06	1220	165.14
		670	161.36
		975	158.31

Profile

168.06

North end of line	6.7
20' S	6.7
40' S	5.7
55' S	6.3
75' S	6.6
100' S	7.0
120' S	7.0
139' S. line	7.8
160' S	9.2
180	9.2
201' S. end of line	9.75

The slope of ground 1980  
found to be 107.20

62.2  
55.9

169°

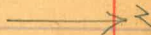
19825

19

19725

195°

28<sup>th</sup> St



Ground 1969  
for 11.06 of ground  
The slope

6 12  
18  
E 11

X-axis of Alley 31 + 4 Cedar & Gate (P)

1030 12077 11047

Bm n w  
Cedar & 4

W line of 4th st

S 55

N 50

25' W of 4th st

S 1.9

N 2.5

TP 1043 13070 100 11977

50' W of 4th st

S = Power Sill 108

+ v

N 92  
8.6

75' W of 4th st

S 4.6

N 5.4

100' W of 4th st

S 4.7

N 5.0

El of Floor at Board Alley 8.1

Alley

80

125' W of 4th st

S at foot of wall above window 9.0

S Ground 6.5

N 6.0

150' W of 4th st

S 9.2

N 8.7

175' W of 4th st

S 12.1

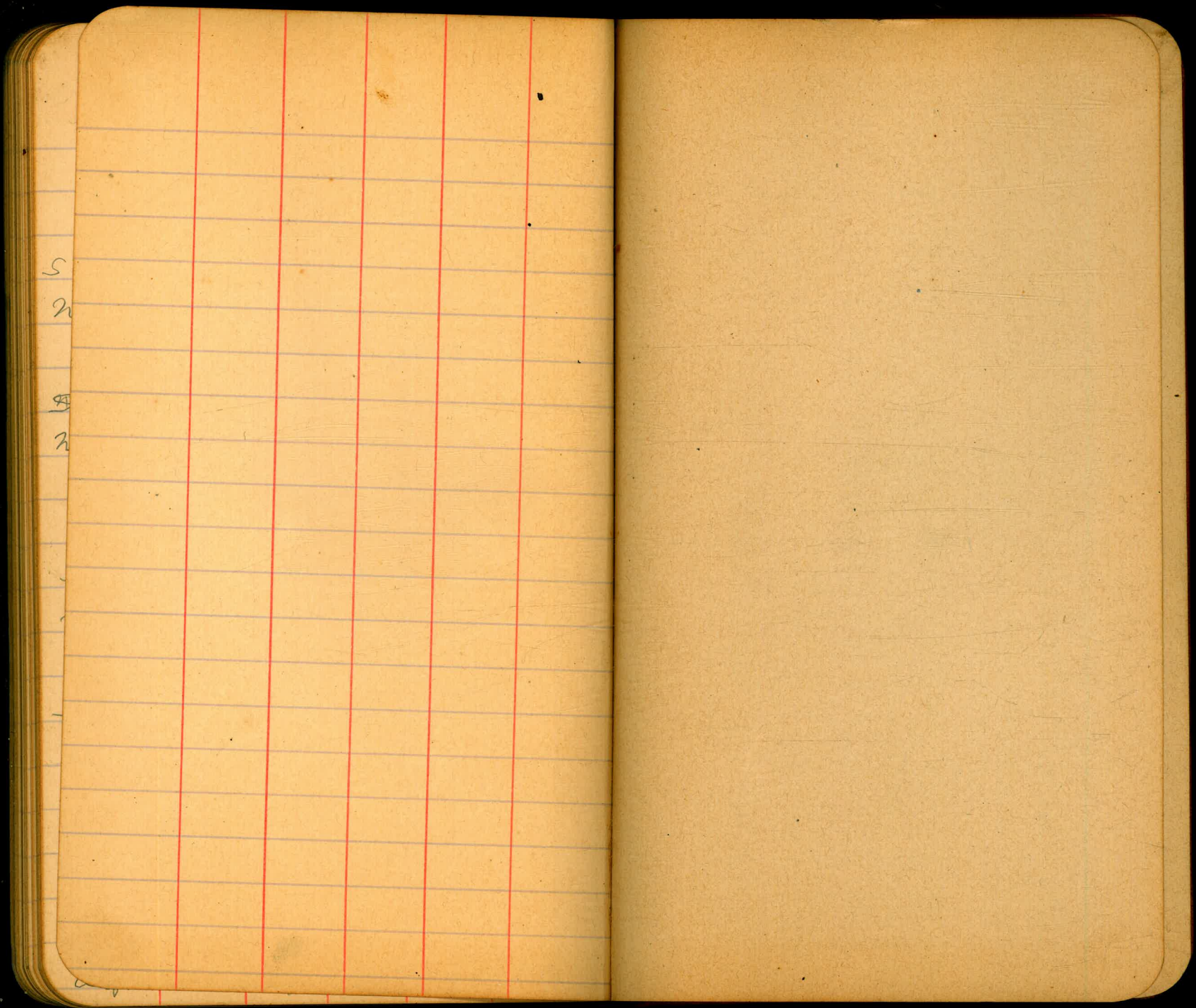
N 12.0

TP 340 13238 1132 12898

200' W - E line of 3rd st

S 7.5

N 7.9



5

2

8

2

1912  
2076

