

F.B. 820

LEVEL BOOK

No. 410

IND

1033 L @ Sta 33+32

BOOK 820

7000

70-47

MICROFILMED
DEC 15 1964

En el espacio de a

From	To	on.	
Logan	DSt.	16 th	1 to 7
18 th C	Switzer		8 to 19
Alley bet Indiana & Georgia	Upper to Sta 93+35		20 to
Myrtle	Univer.	Florida Alley	22 to 24
Alley bet Georgia & Florida	Georgia	Cyprus	25
Cyprus	Myrtle	Georgia	26
"	Un.	Georgia	27-28
London	Dwight	Ariz	29-30
U.S. Cavalary (City Park)			32-34
Sta 54			40-45
Langon Line 0+00			46-49
Alley bet Indiana Georgia	Indiana	Alley bet Louisiana Mississippi	50-51
Monroe	Adams	Alley Florida Alabama	52-54-56
Madison	"	Alley Ariz Arnold	55-56-61-6
Un	Dwight		59-60
B	Beach	6 th	73
San Flejio Ext			75-76
Essex	Richmond	Un	

1

man sewer line on 16th Street 10th
 curb line from Logan ave. to

Sta.		H.F.	Rod	Gravel
I.P.		3.18	15.70	12.52
0+00	M.H. Constructed		5.9	9.8
+25			5.0	10.7
0+75			5.1	10.6
1+35			4.5	11.2
1+75				
1+86.5	M.H. 15' masonry		3.9	11.8
I.P.	Center of street 16.26			12.52
2+00			4.2	12.1
+30			3.9	12.4
3+00	0.790		3.3	13.0
+50			2.8	13.5
4+00			2.2	14.1
+50			1.6	14.7
5+00			1.0	15.3
+5.15	M.H. Centering		0.5	15.8
I.P.	M. Street 10.29	28.30		28.01
6+00			12.1	16.2
+50			11.3	17.0
7+00			10.4	17.9

west of east Sept. 12/11
 10 Street. (Childs Taylor 2)

Grade	cut			
		12.52		6.07
		3.51		4.87
8 M.M.		16.07 H.I.	9.29	15.3
√6.80	3.8	9.64	6.78	8.59
		6.43	8.94	7.48
√6.90	4.6	7.44	7.13	8.24
		8.63	7.23	7.83
			8.81	12.52
			3.27	6.90
			15.79 H.I.	8.89
√7.05	4.1		7.05	6.80
		12.52	8.74	8.99
		11.82		
√7.23	4.4	24.34 H.I.		
		10.89	11.81	
√7.44	4.7	13.45	12.53	12.73
				11.61
√7.54	4.9			
		12.52		
		8.71		
√7.89	4.8	21.23 H.I.		
		10.00		
√8.24	5.0	11.23		
√8.59	5.1			
√8.94	5.3			
√9.29	5.5			
√9.64	5.7			
√10.00	5.8			
√10.89	5.3			
√11.81	5.2			
√12.73	5.2			

cont. from page 2

Star	H.I.	Rod	Ground	Grade	cut
7+50	28.30	9.5	18.8	✓13.65	5.2
8+00		8.7	19.6	✓14.57	5.0
+50		7.7	20.6	✓15.49	5.1
9+00		6.6	21.7	✓16.42	5.3
+31.5	M.H. Center of L. Street	5.8	22.5	✓17.00	5.5
+50		5.37	22.93	✓17.19	5.7
10+00		4.5	23.8	✓17.72	6.1
+50		3.9	24.4	✓18.24	6.2
11+00		3.2	25.1	✓18.77	6.3
+50		2.6	25.7	✓19.29	6.4
12+00		1.9	26.4	✓19.82	6.6
+50		1.3	27.0	✓20.34	6.7
13+00		0.7	27.6	✓20.87	6.7
+12	M.H. Center of K Street	0.6	27.7	✓21.00	6.7
J.P.	4.59	33.52	28.93	B.M. 7.	
+50		6.1	27.4	21.23	6.2
14+00		6.0	27.5	✓21.53	6.0
+50		5.9	27.6	✓21.83	5.8

Sept. 13/11
 Childs
 Taylor 3
 Brunken

24.34 H.I.		
13.65	14.57	15.49
10.69	9.77	8.85
16.42	0.30	
7.92	24.04 J.P.	
6.24		
30.28 H.I.	17.72	
17.19	12.56	
13.09		
28.01		
4.26		
32.27	8.55	
18.24	28.01	
14.08	31.56 H.I.	
18.77	18.24	19.29
12.79	13.32	12.27
19.82	20.34	20.87
11.74	11.22	10.69
21.53	21.83	
10.03	9.73	
24.04	30.88	
4.21	3.90	
28.28 H.I.	34.78 H.I.	
17.00	6.71	
11.28	28.07 J.P.	
	5.21	
	33.28 H.I.	
	21.00	
	12.28	

Cont. from page 3

Sta.	H.I.	Rod	Ground	Grade	cut.
15+00	33.52	5.7	27.8	22.13	5.7
+50		5.5	28.0	22.43	5.6
16+00		5.4	28.1	22.73	5.4
+50		5.2	28.3	23.03	5.3
17+00		4.9	28.6	23.33	5.3
+50		5.1	28.4	23.63	4.8
18+00		4.9	28.6	23.93	4.7
+50		4.7	28.8	24.23	4.6
19+00		4.6	28.9	24.53	4.4
+50		4.4	29.1	24.83	4.3
20+00		4.2	29.3	25.13	4.2
+50		3.7	29.8	25.43	4.4
+72	M.H. center of street	3.3	30.2	25.56	4.6
21+00		2.9	30.6	25.81	4.8
+50		2.6	30.9	26.25	4.7
22+00		1.8	31.7	26.69	5.0
+50		1.1	32.4	27.13	5.3

0.6% grade

0.68% grade

Sept. 14/11 } Shiloh
 } Taylor 4
 } Barber

31.56 H.I.		
22.13	22.43	22.73
9.43	9.13	8.83
23.03		
9.53	30.88	
	36.0	23.63
	34.48 H.I.	10.85
	23.37	23.93
	11.11	10.55
24.23	24.53	24.83
10.25	9.95	9.65
25.13	25.71	26.25
9.35	8.67	8.23
26.69	27.13	30.88
7.79	7.35	3.23
		34.8 H.I.
		25.43
		9.38
30.88		
4.46		
36.34 H.I.		
25.56		
9.78		

cont. from page 4

Sept. 15/11
Childs
Taylor
Bunker

Sta.		HT	Rod	Ground	Grade	cut			
		33.52					34.48 H.I.		
23+00			0.3	33.2	27.57	5.6	27.57 ✓	28.01	16.5
J.P.	2.69	38.14		35.45	BM. H.		6.91 ✓	6.47 ✓	88
+50			4.1	34.1	28.01	6.0	30.88	28.89	1320
							8.90	10.89 ✓	1320
							39.78 H.I.		14520
24+00			3.3	34.8	28.45	6.4	28.45	29.44	30.02
+335	M.H.						11.33 ✓	10.34 ✓	9.76 ✓
+50			2.7	35.4	28.75		28.94	28.95	345
					28.94	6.5	11.17 ✓	11.66	82419
								40.11 H.I.	2433.5
+62.2	M.H. Center of		2.7	35.4	29.00	6.4	29.57	28.75	808.4
	H. about						10.60 ✓	11.36	
25+00			3.0	35.1	29.51	5.6	30.08		
J.P.	8.07	43.52		35.15			10.03 ✓		
+50			8.0	35.5	30.08	5.4		30.65	31.22
								9.46	8.89 ✓
26+00			7.34	36.18	30.65	5.6	39.07	39.07	31.79
							5.11	5.16	8.32 ✓
+50			6.5	37.0	31.22	5.8	44.18 H.I.	44.23 H.I.	33.57
							32.87	32.37	10.72 ✓
							11.81 ✓	11.86 ✓	11.27 ✓
27+00			5.7	37.8	31.79	6.0	35.23	34.08	34.66
+50			4.92	38.60	32.37	6.2	9.00 ✓	8.71 ✓	10.15 ✓
									9.87 ✓
28+00			4.4	39.1	32.94	6.2			
+50			3.3	40.2	33.51	6.7			
29+00			2.6	40.9	34.08	6.8			
+50			1.35	42.17	34.66	7.6			
J.P.	11.24	53.41							
30+00			9.4	44.0	35.23	8.8			
+50			7.6	45.8	35.81	10.0			

Sept. 18/11
 Bleilds
 Taylor
 Bunker

Cont from page 5

Sta.	H.I.	Rod	Ground	Grade	cut			
31+00	53.41	5.71	47.70	36.38	11.3	47.70 B.M.F. 50.15 H.I. 49.01 H.I.	36.38 23.00	
+50		3.7	49.7	36.95	12.8	36.04 12.97	36.38 12.63	
32+00		1.76	51.65	37.52	14.1	167 3 14 5 201	12.25	5.28 51.65
+419. m.H. center		1.4	52.0	38.00	14.0	570 342 320	37.19	58.93 H.I.
J.P. F. Area (4.12)	53.57	3.6	52.0	B.M.F. 38.05	14.0	4.57	51.85 37.52	19.74 6.08
+50		3.2	52.4	38.38	14.0	52.36 38.07 14.29	14.33	18.66
33+00		3.9	51.7	38.72	13.0	50.82 10.5	4.46 52.47 38.38	5.16 51.77 38.73 13.04
+50		4.75	50.82	39.05	11.8	51.87 H.I. 39.05 12.82	14.09	6.3 5 335
34+00		5.7	49.9	39.39	10.5	40.16 11.71	39.41 12.46	39.95 11.92
+50		3.9	51.7	39.72	12.0		50.82 35.3 54.35 H.I. 2.22 52.13	
35+00		6.63	48.94	40.06	8.9	57.65 4.88	39.69	53.00 58.81
+65		5.4	50.2	40.16	10.0	56.53 H.I. 4.42	12.44	58.81 H.I. 5.48
J.P. 9.18	64.19	0.56	53.01			52.11 35.00 14.11	57.5 53.06 41.06 12.00	53.33 40.90 12.43
36+00		2.7	61.5	40.40	21.1			
+50		2.43	61.76	40.73	21.0			
+75		11.19	53.00	40.90	12.1	5.12 53.69 41.40		
37+00		11.3	52.9	41.06	11.8	12.29		
+50		10.7	53.5	41.40	12.1			

Sept. 18/11
 St. Childs
 Taylor
 Bunker

Cont. from page 6.

Sta.	H.I. 64.19	Rod	Ground	Grade cut		
38+00		10.05	54.14	✓ 41.73	12.4	55.81 H.I. 3.51
+50		9.2	55.0	✓ 42.07	12.9	4.63 55.00
39+00		8.8	55.4	✓ 42.41	13.0	54.18 42.07
+50		8.1	56.1	✓ 42.75	13.4	41.73 ✓ 12.93
+60		8.6	55.6	42.82	12.8	12.45 ✓ 3.32
+86.5	M.H. 16 th So. & last of center of 16 th & streets	8.4	55.8	43.00	12.8	2.64 55.49
						56.17 42.41 ✓
						42.75 ✓ 13.08 ✓
						13.42 ✓

see Book 481 page 31
 for line bet. 16th & D to 18th & C

Main sewer from 18th Canyon

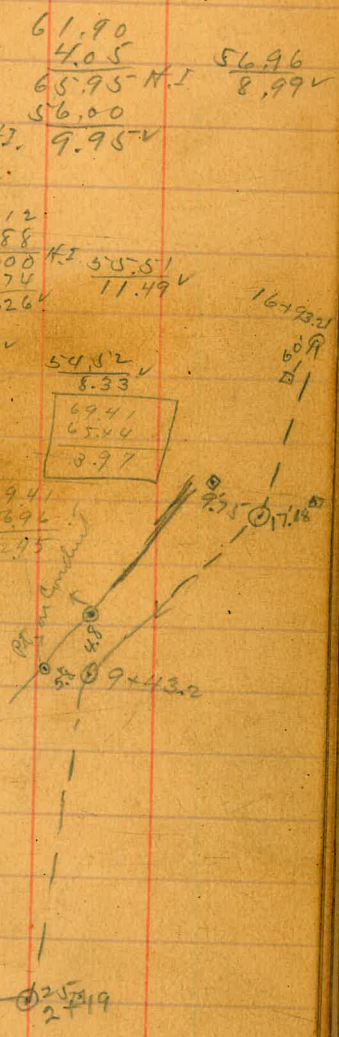
Camp Switzer Sept. 19/11
 Childs
 Taylor
 Blumberg

Sta.		H.I.	Red	Ground	Grade	cut.		H.I.	
J.P.	370	<u>64.24</u>		60.54			60.78	H.I.	
0+00	M.H. 16' 20.4'	209'	7.4	56.8	50.00	6.8	50.00	50.24	50.48
+50	road to west line of 19 th street		5.7	58.5	50.24	8.3	10.78	10.54	10.30
1+00			3.6	60.6	50.48	10.1	62.22	62.22	
J.P.	663	<u>68.85</u>	2.02	62.22	50.72	11.5	1.04	6.11	
2+00			4.5	64.4	50.96	13.4	63.26	68.83	3.05
+19	M.H. 16' 20.4' + 30'		3.9	65.0	51.05	14.0	50.72	3.65	65.28
+50	west. center of 19 th street		3.9	65.0	51.20	13.8	12.64	64.68	51.05
3+00			10.71	58.14	51.44	6.7	50.96	50.96	14.23
+50			11.8	57.1	51.68	5.4	13.72	13.72	
4+00			11.95	56.90	51.92	5.0	58.14	58.14	
+50			12.0	56.9	52.16	4.7	4.35	5.168	51.92
5+00			12.1	56.8	52.40	4.4	62.49	10.81	10.57
+50			11.9	57.0	52.64	4.4	51.44	52.16	52.40
6+00			11.92	56.93	52.88	4.0	11.0	10.33	10.09
J.P.	894	<u>65.87</u>	7.2	58.7	53.11	5.6	52.87	9.62	
+50			6.5	59.4	53.35	6.1	847	60.87	
7+00			6.3	59.6	53.59	6.0	56.75	7.86	
+50							64.67	H.I.	
							53.59		
							11.02		
							53.35		
							11.26		
							52.64		
							8.23		
							52.87		
							8.00		
							53.11		
							7.76		

Sept. 20/11
 Calhoun
 Taylor
 Painter

Cont. from page 8

Sta.	HI	Rod	Ground	Grade	cut	
8+00	65.87	5.9	60.0	53.83	6.2	63.12 4.98
+50		6.1	59.8	54.07	5.7	68.10 H.I. 55.82
9+00		9.12	56.75	54.31	2.5	12.28 63.12 3.88
+43.2 mt. beside of conduit (angle.)		9.05	56.82	54.52	2.3	55.27 11.73
+50		5.2	60.7	54.55	6.2	55.03 11.97
10+00		8.30	57.57	54.79	2.8	57.57 5.28 62.85 H.I. 54.79 8.06
+50	4' 7" J.P.	2.75	63.12	55.03	8.1	61.20 7.51
11+00	8" 11.52	10.9	63.7	53.27	8.4	69.41 59.93 11.43
+50	4' 9"	10.4	64.2	53.51	8.7	69.41 59.20 10.41
12+00	4' 9" +18	9.8	64.8	53.74	9.1	69.41 60.02 9.39
+53.2 mt. top of dam		0.41	74.23	56.00	18.2	69.41 61.05 8.36
13+00		12.74	61.90	56.96	5.0	69.41 62.08 7.33
+50		12.6	62.0	57.98	4.0	
14+00		12.2	62.4	59.00	3.4	
+50		11.3	63.3	60.02	3.3	
15+00		9.20	65.44	61.05	4.4	
+50		9.3	65.3	62.08	3.2	

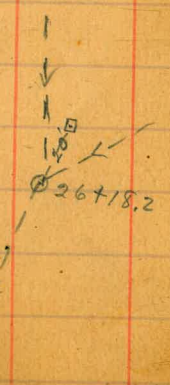


cont. from page 9.

Sta.	H.I.	Rod	Ground	Grade	cut
16+00	74.64	8.4	66.2	63.10	3.1 ✓
+50		6.3	68.3	64.12	4.2 ✓
+93.2 m.H. angle. J.P.	977	4.46	70.18	65.00	5.2 ✓
17+00	79.95	9.9	70.1	65.07	5.0 ✓
+50		9.2	70.8	65.61	5.2 ✓
18+00		7.73	72.22	66.15	6.1 ✓
+50		6.5	73.5	66.69	6.8 ✓
19+00		5.2	74.8	67.23	7.6 ✓
+50		6.08	73.87	67.77	6.1 ✓
20+00		6.1	73.9	68.31	5.6 ✓
+50		5.9	74.1	68.85	5.3 ✓
+75		5.6	74.4	69.12	5.3 ✓
21+00		2.81	77.14	69.39	7.7
+25		4.1	75.9	69.66	6.2 ✓
+50		4.0	76.0	69.93	6.1 ✓
22+00		3.98	75.97	70.47	5.5 ✓
J.P.	7.61	83.58			
+50		7.2	76.4	71.01	5.4 ✓

Sept. 29/11
 6941=41.
 Childs
 Taylor
 Bunker 10

69.41	69.41	69.41	69.41
68.10	64.12	65.00	65.07
6.31 ✓	5.29 ✓	4.1	4.34
69.41	69.41		77.35 P.M.
65.61	66.15		77.14
3.80	3.26		21
72.22			
5.13			
77.35	77.35	77.35	77.35
64.12	65.00	65.07	65.61
13.23	12.85 ✓	12.24 ✓	11.74 ✓
77.35	77.35	77.35	77.35
66.15	66.69	67.23	67.77
11.20 ✓	10.66 ✓	10.12 ✓	9.58 ✓
77.35	77.35	77.35	
68.31	68.85	69.12	8.20
9.04 ✓	8.50 ✓	8.23 ✓	5.20
			25.97
			5.70
77.14			
4.86			
81.70	81.70	81.70	
69.66	69.93	70.47	
12.04 ✓	11.77 ✓	11.23 ✓	
81.70	81.70	81.70	
71.01			
10.69 ✓			



167932/

Oct 25/11
 81.50
 Childs
 Taylor
 Bull 11

cont. from page 10

Sta.	H.I.	Rod	Ground	Grade	cut	81.70 = H.I.			
23+00	83.58	6.1	77.5	71.55	6.0V	81.70 71.55 10.15V	81.70 72.09 9.61V	81.70 72.63 9.07V	81.70 73.17 8.53V
+50		4.93	78.65	72.09	6.5V	81.70 73.71 7.99V	81.70 74.25 7.45V	81.70 74.80 6.90V	81.70 75.34 6.70V
24+00		6.8	76.8	72.69	4.2V	84.82 85.2 89.84-4.1 75.56 14.28V	89.84 76.00 13.84V	M.H. 89.84 75.00 74.84V	89.84 76.88 12.96V
+50		5.9	77.7	73.17	4.5V	89.84 77.32 12.52V	89.84 78.20 11.64V	89.84 79.08 10.76V	89.84 79.96 9.88V
25+00		4.6	79.0	73.71	5.3V	89.84 80.84 9.00V	89.84 81.72 8.12V	89.84 82.60 7.24V	89.84 83.50 6.30V
+50		1.92	81.66	74.25	7.4V				
26+00		1.1	82.5	74.80	7.7V				
+18.2	M.H. 11.79 of Brookline Hts line	0.6	83.0	75.00	8.0V				
+50		10.4	83.0	75.56	7.4V				
+75		7.1	86.4	76.44	10.0V				
27+00		9.13	84.32	77.32	7.0V				
27+25		8.3	85.2	78.20	7.0V				
+50		7.1	86.4	79.08	7.3V				
29+00		6.9	86.6	79.96	6.6V				
+50		5.93	87.52	80.84	6.7V				
30+00		4.9	88.6	81.72	6.9V				
+50		5.1	88.4	82.60	5.8				

cont. from page 11

Sta.	H.I.	Roof	Ground
31+00	93.45	4.54	88.91
+50		3.8	89.7
32+00		2.8	90.7
+50		2.01	91.44
J.P.	10.79	102.23	
33+00	m.H.	9.8	92.4
+50		9.1	93.1
34+00		8.8	93.4
+50		7.87	94.36
35+00		7.4	94.8
+50		7.0	95.2
36+00		6.4	95.8
+50		5.40	96.83
37+00		4.5	97.7
+50		3.4	98.8
38+00		2.8	99.4
+50		2.09	100.14
J.P.	9.21	109.35	
39+00		7.9	101.5

Grade	at	Elevation	Sta.
83.48	5.44	94.79	31+00
84.36	5.3	94.79	
85.24	5.5	94.79	
86.12	5.3	94.79	
87.00	5.4	94.79	
87.61	5.5	94.79	
88.21	5.2	94.79	
88.82	5.6	94.79	
89.43	5.4	94.79	
90.04	5.2	94.79	
90.64	5.2	94.79	
91.25	5.6	94.79	
91.86	5.8	94.79	
92.47	6.3	94.79	
93.07	6.3	94.79	
93.68	6.4	94.79	
94.28	7.2	94.79	

89.84 H.I.
83.48
6.36

Oct. 25/11
Chick
Tape 12
Bunker
Sta. 31+00

88.91 = Elevation
5.88
94.79 H.I.
83.48
11.31 ✓
94.79
84.36
10.43 ✓
94.79
86.12
8.67 ✓
7.79 ✓
94.79
94.79
87.61
9.18 ✓
94.36 - BM
4.51
98.87 = H.I.
87.61
11.26 ✓
98.87
89.43
9.44 ✓
8.83 ✓
8.23 ✓
98.87
91.25
7.62 ✓
91.86
7.01 ✓
92.47
6.90 ✓
98.87
93.07
5.80 ✓
100.14
4.81
104.95 H.I.
93.68
11.27 ✓
104.95
104.95
104.95
74.28
10.67 ✓
104.95
93.07
11.88 blk

cont from page 12

Sta.	Sta.	H.I.	Rod	Ground	Grade	cut	104.95 = H.I. 94.89 10.06 ✓	104.95 95.50 9.45 ✓	104.95 95.80 9.15
31	39+50	109.35	6.84	102.51	94.89	7.6 ✓	104.95 96.30 8.85 ✓	104.95 96.41 8.54	104.95 96.76 8.19 ✓
	40+00 M.H.		8.8	100.6	95.50	5.1 ✓			
32	+25		10.4	99.10	95.80	3.3	104.95 97.37 7.58 ✓	104.95 97.67 7.28 ✓	104.95 97.97 6.98 ✓
	+50		10.7	98.6	96.10	2.5 ✓			
33	+75		7.2	102.2	96.91	5.8 ✓	104.95 95.58 6.37 ✓		104.95 99.19 5.76 ✓
	41+00		6.54	102.81	96.76	6.0 ✓			
34	+50		5.8	103.6	97.37	6.2 ✓	105.28	109.61 = BM. 1.87	
	+75		4.79	104.56	97.67	6.9 ✓	111.48 99.19 12.29 ✓	111.48 99.79 11.69 ✓	111.48 100.40 11.08 ✓
35	42+00 creek bottom		7.5	101.9	97.97	3.9 ✓			111.48 101.00 10.48 ✓
	+25		6.8	102.6	98.25	4.3			
36	+50	9.36	114.64	4.07	103.28	98.58	111.48 101.61 7.87 ✓	111.48 102.21 9.27 ✓	111.48
	43+0		8.9	105.7	99.19	6.5 ✓			
37	+50		7.9	106.7	99.79	6.9 ✓			
	44+0 creek bot		11.2	103.4	100.40	3.0 ✓			
38	+50		7.9	106.7	100.00	5.7 ✓			
	45+0		5.03	109.61	106.61	8.0 ✓			
39	+50		9.3	110.3	102.21	8.1 ✓			

Sta	+R	H.I.	-R	elev top 3 stakes	Grade
46+0		119.64	3.0	116.3	102.82
+50			2.8	111.8	103.42
47+0 M.H.			1.8	112.8	104.00
+50 creek bottom			5.2	109.4	104.78
T.P.	121.50	121.92	5.22	109.42	
48+0			9.3	112.6	105.57
+50			7.6	114.3	106.35
49+0			6.56	115.36	107.14
+50			5.3	116.6	107.92
50+0			4.5	117.4	108.71
50+50			4.7	117.2	109.49
50+85 creek bottom			2.8	113.1	110.04
51+0			6.1	115.8	110.28
+50			3.6	118.3	111.07
52+0			2.8	119.1	111.85
52+15 creek bottom			6.3	115.6	112.08
52+50			3.33	118.59	112.64
T.P.	110.9	127.68	3.33	118.59	
53+0			7.84	121.84	113.41
+50			6.9	122.8	114.21

cut

8.5 ✓

8.4 ✓

8.8 ✓

4.6 ✓

7.0 ✓

7.9

8.3

8.7

8.7

7.7

3.1

5.5

7.2

7.3

3.5

6.0

8.4

8.6

111.48	115.01
102.82	109.42
8.66 ✓	0.59
109.42	109.03
5.57	103.42
115.01	5.14
6.00	5.61
109.01	109.03
4.00	104.00
105.01	5.03
4.04	109.03
109.103	6.90
102.82	115.93
6.27	106.35
	9.58

118.59
9.17
127.7641
119.31
13.55
6.12

		129.68			
5440 M.N.		6.1	123.6	115.00	
+50		5.5	124.2	115.88	
5540		5.2	124.5	116.72	
+50		4.6	125.1	117.58	
5640		4.2	125.5	118.44	
+50		3.04	126.64	119.30	
56470 creek bottom		5.7	124.0	119.64	
5740		4.03	125.65	120.16	
+50		2.1	127.6	121.02	
5840		1.54	128.14	121.90	
T.P.	9.44	137.58	1.54	128.14	
+50		8.8	128.8	122.76	
5940		8.0	129.6	123.62	
+50		7.5	130.1	124.48	
6040		6.1	131.5	125.35	
+50		5.35	132.23	126.21	
6140 = M.H.		4.7	132.9	127.07	
61435 creek bot		6.6	131.0	127.67	
+50		5.6	132.0	127.94	
6240		8.m. 4.07	133.51	128.80	

15

8.6				
8.3				
7.8				
7.5				
7.1				
7.3				
4.4				
5.5				
6.6				
6.2 ✓				
6.0 ✓				
6.0 ✓				
5.6 ✓				
6.2 ✓				
6.0 ✓				
5.8 ✓				
3.3 ✓				
4.1 ✓				
4.7 ✓				

127.76
115.40
12.76
9
127.76

128.14
5.07
133.21
121.90
11.31

128.14
5.97
134.11 K1
121.90
12.21

34.11
22.96
11.35 ✓

34.11
29.62
10.49 ✓

34.11
25.35
8.76 ✓

34.11
26.21
7.90 ✓

34.11
27.07
7.04 ✓

34.11
27.94
6.17

39.91
22.67

133.51
6.40

139.91 H.1
127.94
11.97 ✓

39.91
28.50

39.91
39.91
24.98
9.63 ✓

34.11
27.67
6.44

137.58

62+50			5.4	132.2	129.66
63+0			1.2	136.4	130.52
T.P.	14.06	147.46	1.18	136.40	
+50			10.5	137.0	131.38
64+0			8.9	138.6	132.25
+50			6.44	141.02	133.11
					133.55
65+0			4.9	142.6	133.98
					134.92
+50			3.9	144.1	134.84
					135.28
66+0			1.61	145.85	135.70
T.P.	6.63	152.48	1.61	145.85	136.14
+50			4.7	147.8	136.96
			B.M.		137.00
67+0			5.35	147.13	137.43
+50 creek bottom			11.1	141.4	138.27
68+0 M.H.			7.9	144.6	139.15
+50			8.4	144.1	140.01
69+0 creek bottom			8.2	144.3	140.88
+50			5.27	147.21	141.74
70+0			3.8	149.7	142.60
+50			2.65	149.83	143.46
T.P.	10.45	160.28	2.65	149.83	
71+0			8.9	151.4	144.32
+50			8.2	152.1	145.19

H.I. = 109.96

16

Cut

2.5 ✓	39.91	39.91	39.91	39.91	39.91
	29.66	30.52	31.38	32.25	33.11
5.9 ✓	19.25 ✓	9.39 ✓	8.53 ✓	7.66 ✓	6.80 ✓
		141.02 = B.M.			
		6.58			
5.6 ✓		147.60 = H.I.			
		133.35	47.60	47.60	47.60
6.3 ✓		14.05	33.98	34.42	34.84
			13.62 ✓	13.18	12.76 ✓
7.9 ✓	47.60	47.60	47.60	47.60	
	35.28	35.70	36.52	36.14	
8.6 ✓	12.32	1.19 ✓	11.04	11.46	
9.3 ✓		147.13			
		33.9			
10.2 ✓		150.92 = H.I.	50.92	50.92	
		136.56	37.00	37.43	
		14.32 ✓	13.72	13.47 ✓	
11.2 ✓					
9.7 ✓	50.92	50.92	50.92	50.92	
	38.29	39.15	40.01	40.88	
3.1 ✓	12.63 ✓	11.77 ✓	10.91 ✓	10.04 ✓	
5.4 ✓	50.92	50.92			
	41.74	42.60			
	9.18 ✓	8.32 ✓			
4.1 ✓	149.83				56.89
	7.63				
	157.46 H.I.	157.46	157.46		
3.4 ✓	143.46	144.32	145.19		
	14.00 ✓	13.14 ✓	12.27 ✓		
5.5 ✓	157.46	157.46	157.46		
6.1 ✓					
6.3 ✓					
7.1 ✓					
6.9 ✓					

160.28

72+0		8.2	152.1	146.05
72+40 creek bottom		10.7	149.6	146.74
+50		8.17	152.11	146.91
73+0		6.8	153.5	147.77
+50	B.M. 5.03	5.03	155.25	148.63
74+0		4.5	155.8	149.99
+50		4.8	155.5	150.36
75+0 M.H.		2.2	158.1	151.22
75+10 creek bottom		4.8	155.5	151.39
+50		2.7	157.6	152.08
76+0		2.07	158.21	152.95
T.P.	12.24	170.45	2.07	158.21
+50		12.0	158.5	153.81
77+0		9.0	161.5	154.67
+50	1.73%	8.5	162.0	155.53
78+0 creek bottom		10.9	159.6	156.39
+50		7.57	162.88	157.25
79+0		B.M. 5.62	164.83	158.11
+50		5.0	165.45	158.97
80+0		3.8	166.7	159.83

Cut

17

157.46	157.46	157.46	
146.05	146.74	146.91	
11.41	10.72	10.55	
157.46	157.46	157.46	157.46
147.77	148.63	149.99	150.36
9.69	8.83	7.97	7.10
157.46	157.46		
151.22	151.39		
6.24	6.07		
158.21			
4.93			
163.14	163.14		
151.39	152.08	163.14	163.14
11.75	11.06	152.95	152.95
		10.19	
163.14			
153.81			
9.33			

		170.45			
80+50			2.27	168.18	160.69
T.P.	12.37	180.55	2.27	168.18	
81+0			9.7	170.9	161.55
+50			7.77	172.78	162.41
82+0			5.2	175.4	165.77
+50			3.6	177.0	✓ 169.14
83+0			3.30	177.3	165.00
83+32	Drop = M.H. and angle 1°33' L		1.9	178.7	165.55
+50			1.77	178.56	167.70
84+0			9.4	171.0	168.11
84+50	crest bottom		9.8	170.0	168.52
85+0			8.3	172.2	168.93
+50			6.1	174.5	169.35
86+0			4.25	176.20	170.21
+50			4.1	176.5	171.07
87+0			3.09	177.46	171.94
T.P.	10.09	187.55	3.09	177.46	
+50	crest bottom		11.3	176.3	172.80
88+0			7.0	180.6	173.66
+50			6.6	181.0	174.52
89+0	M.H.		5.9	181.7	175.38
83.54	568				

Cut	7.5	✓	168.18	4.96	173.14	161.55	18
	9.3	✓	173.14	4.1	177.07	167.61	
	10.4	✓	160.69	12.45	80+50 ✓	11.59	81+50
	12.1	✓	120.2	80+50 ✓	11.16	81+25	
	12.9	✓	172.78	7.40	173.14	162.41	
	12.3	✓	180.18	4.7	162.41	10.73	81+50
	13.1		163.27	4.2	169.1	93	
	4.5	✓	16.91	4.3	180.18	164.14	
	3.2	✓	16.48	4.25	16.04	42+50	
	3.9	✓	180.18	4.2	15.61	42+75	
	5.1	✓	16.500	4.2	150.18	175	
	6.0	✓	15.18	4.2	180.18	165.55	
	5.4	✓	178.56	3.44	165.55	114.63	
	5.6	✓	182.01	4.1	16.04	42+50	
	3.5	✓	16.555	8.87	16.96	41.1	
	6.9	✓	16.96	41.1	16.15	83+50	
	6.5	✓	178.56	2.41	180.97	4.1	
	6.3	✓	180.97	4.1	16.55	80.97	
			15.42	15.11	15.11	86	
			177.46	3.35	177.46	84.98	84.98
			180.81	4.1	7.52	72.80	73.66
			171.07	9.74	184.98	41.1	12.18
			171.95	130.4	171.95	11.32	
			80.81	70.21	84.98	84.98	176.20
			70.21	106.0	74.52	75.38	0.87
			10.46	10.46	9.60	9.60	177.07
			80.81	69.35	11.46	169.35	7.74

Sta	+R	187.55 H.T.	-R	elev top stakes	Grade
89+50			4.8	182.8	176.25
89+6.5	cross bottom		7.0	180.6	176.51
90+0			4.94	182.61	177.11
+50	cross bottom		5.0	182.6	177.98
91+0			2.75	184.77	178.84
T.P.	10.84	195.61	2.78	184.77	
+50			10.1	185.5	179.70
92+0			B.M. 9.25	186.36	180.56
+50			7.2	188.4	181.43
93+0			5.4	190.2	182.30
93+43 ⁵	M.H.		6.1	189.5	183.00

19

Cut	M.I. 184.98 Net 176.25 in 8.73	84.98 76.51 8.47 ✓	84.98 77.11 7.87 ✓	84.98 77.98 7.00 ✓
6.5				
4.1 ✓	184.77	186.36 4.44	90.80 22.74 12.82	
5.5 ✓		190.80 = H.T. 178.84		
4.6 ✓		11.96 ✓	90.80 79.70 11.10 ✓	
6.0 ✓		90.80 80.56 10.24 ✓	90.80 81.43 9.37 ✓	90.80 82.30 8.50 ✓
5.8 ✓				
5.8 ✓				
7.0 ✓				
7.9 ✓				
6.5				

93.43
89
4.43

Some line from M.H. in Alley bet Indiana &
 Georgia 260 N of upas to M.H. at sta 93+43 E in
 park

	+ A	H.I.	- R	ele Top Stakes	Grade
B.M.	1.95	237.73		235.78	
0+0 M.H.			2.0	235.7	228.00
+50			8.6	229.1	224.62
1+0				B.M. 226.15	227.23
T.P.	2.31	227.76	11.55	225.95	
+50			5.80	221.96	217.85
+10			8.6	219.2	214.46
+50				B.M. 217.72	211.05
T.P.	0.86	215.63	12.99	214.77	
+10			2.20	B.M. 213.43	207.67
3+21 ⁸⁵ - M.H. & Georgia 90.3 of UPAS			3.9	314.7	206.20
+50			6.2	209.4	204.31
+10			6.7	208.9	200.92
+150 M.H. angle			10.4	205.2	197.54
+10 T.P.	0.57	203.20	13.00	202.60	194.15
+50			5.4	197.8	190.77
+10			9.98	193.22	187.35
6+35 M.H. main line park					185.00

CUT

226.18
 6.13
 220.05
 224.62
 7.67 ✓

3 2.31
 2 8.00
 4.31 ✓

Page 220
 No Pay 67

corner line from M.H. & Florida of Myrtle To E
Cypress thence N on E Cypress to E Alley bet Florida
& Georgia thence N on E Alley to E.T. 49 3 of Univ

	+ R	H.H.	- R	elev	Grade
10. M.	10.45	220.21		209.76	84.50 = 11.55
09 M.H.			11.52	208.69	84.50 = 10.21
04.50			2.7	117.5	209.03
T.R. Rock. Sta. 11.71		231.74	0.15	220.06	
11.00 B.M.			11.21	220.56	213.07
	POSTED				
1.50			6.0	225.8	217.10
2.00 Break	12.20	242.45	1.52	230.25	221.15
2.150				233.0	223.95
3.400 B.M.			8.23	234.22	226.75
3.722.2 M.H. Cypress			13.0	229.5	228.20
3.750 B.M.			7.14	233.31	330.06
4.400			3.9	238.6	333.73
T.P.	8.89	252.09	0.25	242.20	
4.450			8.1	244.0	337.41
5.100 B.M.			2.96	249.13	341.03
5.712 M.H.			1.96	250.13	342.00
T.P.	7.62	256.75	2.76	247.13	
0.40 = M.H. & CYPRESS 4 Alley bet. Sta. 4 & 5					242.00
0.450			10.0	246.7	242.31
1.40			12.5	244.2	242.62
7.50			10.2	246.6	242.93
1.76 Break			8.97	247.78	243.00
2.10			5.0	251.8	245.07

Pages 221-22.5

cut,

2.5 ✓	249.13 = B.M.
2.5 ✓	247.78
2.5 ✓	3.83
2.5 ✓	251.61 H.H.
2.5 ✓	237.41
2.5 ✓	14.20
2.5 ✓	51.61 81.61 51.61
2.5 ✓	4.08 42.00 42.31
2.5 ✓	10.53 9.61 9.30
2.5 ✓	51.61 51.61 51.61
2.5 ✓	4.26 42.93 43.00
2.5 ✓	8.79 8.68 8.61
2.5 ✓	51.61 51.61
2.5 ✓	4.04
2.5 ✓	220.56
2.5 ✓	2.70
2.5 ✓	223.26 H.H.
2.5 ✓	229.03
2.5 ✓	17.23 = 0.25
2.5 ✓	23.24 21.04
2.5 ✓	13.07
2.5 ✓	10.19
2.5 ✓	14.35 8.40
2.5 ✓	220.56
2.5 ✓	10.89
2.5 ✓	231.45 H.H.
2.5 ✓	17.10
2.5 ✓	14.35
2.5 ✓	3.145 2.09
2.5 ✓	21.15
2.5 ✓	11.030
2.5 ✓	234.22
2.5 ✓	37.9
2.5 ✓	238.01 H.H.
2.5 ✓	223.95
2.5 ✓	17.06
2.5 ✓	38.81 14.06
2.5 ✓	26.75 14.0
2.5 ✓	11.26
2.5 ✓	247.78 = B.M.
2.5 ✓	6.88
2.5 ✓	254.66
2.5 ✓	242.00
2.5 ✓	12.66
2.5 ✓	5.12 3.22
2.5 ✓	17.0
2.5 ✓	17.0

22

256.75					
+50			2.7	254.1	247.80
3+0			1.9	254.9	250.53
T.R. Stamp	12.58	268.78	0.55	256.20	
+50			11.9	256.9	253.26
3+82 M.H. break			11.3	257.5	255.00
4+0			7.5	261.3	256.69
				B.M.	
+50			2.31	266.47	261.38
T.R.	12.84	281.07	0.55	268.23	
+50			9.0	272.1	266.07
				B.M.	
+5+42 break			5.28	278.79	270.00
+50			5.2	275.9	270.55
6+0			3.4	277.7	273.99
T.R.	11.72	292.69	0.10	280.77	
+50			11.57	281.12	277.43
				B.M.	
7+0			8.8	283.9	280.87
+50			5.9	286.8	284.31
7+60 M.H. E. Robinson break			9.2	288.5	285.00
T.R.	12.77	305.08	0.38	292.31	
8+0			9.74	290.29	290.78
T.R.	12.94	316.09	0.83	304.25	
+50			7.51	307.08	298.00
				B.M.	
9+0			6.3	310.5	305.22
T.R.	12.19	328.03	0.75	315.84	
+50			11.10	316.93	312.44
T.R.	12.03	339.49	0.57	327.46	
10+05			9.27	330.22	320.38
				B.M.	

10.40
160
25

1.23 92.1 1.23	B.M. = 256.20 9.21 265.41 = A.I. 247.80 17.81 ✓	2.13 2.73 23
6.3 ✓	65.41 53.26 12.15 ✓	65.41 50.53 14.88 ✓
4.4 ✓	65.41 53.26 12.15 ✓	65.41 55.00 10.41 ✓
3.6 ✓	65.41 53.26 12.15 ✓	65.41 56.69 8.72 ✓
2.5 ✓	65.41 61.38 4.03 ✓	65.41 66 4.03 ✓
4.6 ✓	266.47 10.62 277.09 M.I. 266.07 11.02	77.09 77.09 70.00 70.55 7.09 ✓ 6.54 ✓
5.1 ✓ 4.49	77.09 73.99 3.10 ✓	77.09 77.09
6.0 ✓	281.12 8.28 289.40 M.I. 277.43 11.97 ✓	89.40 89.40 80.87 84.31 8.53 ✓ 5.09 ✓
5.8 ✓	89.40 85.00 4.40 ✓	89.40 85.00 4.40 ✓
5.4 ✓	300.74 5.28 305.62 M.I. 290.78 14.84 ✓ 3.61 11.23	305.62 307.08 7.06 314.14 M.I. 298.00 16.14 ✓
3.3 ✓	314.14 305.22 8.92 ✓	314.14 312.94 1.20
3.7 ✓	316.93 11.15 328.08 = A.I. 320.38 7.70 ✓	328.08 328.08
3.0 ✓		
2.5 ✓		
3.5 ✓		
9.6 ✓		
9.1 ✓		
5.1 ✓		
4.5 ✓		
9.8 ✓		

339.49

10+37 M.H. Green 8.9 330.6 325.00

+50 0.1 333.4 325.07

11+0 J.P. 372 343.04 0.37 339.12 325.35

+50 3.3 337.7 325.63

12+0 3.2 339.5 325.91

+50 4.28 338.76 326.19

13+0 6.5 336.51 326.47

+50 11.05 331.99 326.75

13+97 F.T. 49' 5' of Univ 14.8 328.2 327.00

14+46

28
28
14

5.6 ✓

8.3 ✓

13.8 ✓

14.1 ✓

13.5 ✓

12.6 ✓

10.0 ✓

5.2 ✓

1.2 ✓

326.08
325.00
5.08 ✓

339.12
4.52
343.64 = 4.1
325.35 ✓
18.29 ✓

343.64 = 14.7
325.91
17.73 ✓

338.76
0.97
339.73 = 4.1
326.47
13.26 ✓

359.12
4.74
343.86
325.63
18.23 ✓

328.08
325.07
3.01 ✓

343.64
325.68
18.01

343.64
326.19
17.45

39.73
26.75
12.98 ✓

24 1029
28
7.557

18.29
.14
18.43

18.29
.14
18.15

18.01
.14
17.87

17.73
.14
17.59

17.45
.14
17.31

13.26
.14
13.40

13.26
.14
13.12

39.73
27.00
12.73 ✓

140
100
40

1397
760
637
49
686

Journal in Cypress from E. Pier to Georgia & Florida
 To N.H. 37 Georgia's E of W. C. L. Line.

040 = N.H. 573 5+12 on page 224

B.M.	12.87	262.00	3.15	249.13	242.0	8.1
040			11.87	250.13	245.00	5.1
0450			3.95	258.55	254.00	4.6
T.P.	12.46	273.73	0.73	261.27		
140			6.0	267.7	263.00	4.7
T.P.	12.92	286.35	0.30	273.43		
147			12.25	279.10	270.16	3.9
	POSTED					
1462			3.1	283.2	272.75	10.8
2405 = N.H. 5 E of W. C. L. Georgia			2.89	283.46	279.00	4.5

5 Page 221

2.29

25

50 day Line on Georgia St S' E of fr. curb from E.
 510000 to 90' N of N.L. Myrtle D.E.

13 M.	2.99	286.35	283.96	279.22		
0+0 MH			2.9	283.15	279.00	4.5 ✓
450			2.19	283.86	279.40	4.5 ✓
140			2.1	284.3	279.81	4.5 ✓
1450			1.7	284.7	280.21	4.5 ✓
370			1.4	285.0	280.62	4.4 ✓
450			0.23	285.2	281.02	4.5 ✓
340 M.H.			0.4	286.0	281.43	4.6
50 T.P.	2.02	283.29	0.08	286.27	281.83	4.5
440			6.7	286.6	282.29	4.4
450			6.3	287.0	282.64	4.4
540			5.7	287.6	283.05	4.6
450			5.32	287.97	283.45	4.5
640			4.8	288.15	283.86	4.6
450			4.5	288.8	284.26	4.5
6480 = D.E. 40' N of N.L. Myrtle			4.5	288.8	284.50	4.5

Page 221 ✓

POSTED

5

283.86	89.28	89.28	89.28	89.28
542	79.00	89.28	89.28	89.28
289.28 - 41	10.28	89.28	89.28	89.28
279.80		79.81	80.21	80.62
9.88 ✓		9.97 ✓	9.07 ✓	8.66 ✓
		89.28	89.28	89.28
		81.43	81.83	81.02
		7.85	7.45	8.26

sewer line Georgia & Eastm. curb line from M.H. &
 Cypress to 45' S of S. Li University of Sta 13+97.2

27

13+11	10.56	274.02	283.46		
0+0 = M.H.		10.5	283.5	279.00	4.5
+50		10.6	283.4	279.63	3.8 ✓
140		10.3	283.7	280.25	3.5 ✓
+50		9.4	284.6	280.87	3.7 ✓
2+0		6.6	285.4	281.50	3.9 ✓
450		7.8	286.2	282.12	4.1 ✓
3+0		6.7	287.3	282.75	4.6 ✓
+50		5.57	288.45	283.38	5.0 ✓
4+0 M.H.		9.1	289.9	284.00	5.9 ✓
+50		1.6	292.4	287.25	5.4 ✓
T.P.	12.56	306.43	0.15	293.87	
+50		12.2	294.2	290.11	4.1 ✓
+50		7.25	296.98	293.16	3.8 ✓
6+0		5.1	301.3	296.22	5.1 ✓
+50 T.P.	12.20	318.14	0.79	305.44	296.27
7+0		8.7	309.4	302.33	7.1 ✓
+50		6.45	301.69	305.35	6.3 ✓
7+59 M.H. & Robinson		6.1	312.0	306.0	6.0
8+0		5.1	313.0	309.87	3.1
T.P.	12.35	329.70	0.79	317.35	

POSTED

Pages 211-221

5

288.45	294.28	279.63	7.5
288.45	294	279.63	11.76 ✓
91.39	91.39	91.39	91.39
80.87	81.50	82.12	82.75
10.52	9.89	9.27	8.64
91.39	91.39	91.39	91.39
83.38	84.00	87.05	90.11
8.01	7.39	4.34	
305.44 = B.M.			
	288.45		
	12.59		
	301.04 = M.H.		
	290.11		
	10.93	301.04	293.16
			7.88
301.04			
296.22			
4.82			
311.69			
2.19			
313.87 = M.H.		313.87	
299.27		302.33	
14.60		11.54	
313.87			
305.38		313.87	
8.49			
759.5			
400			
357.1			

		327.70				
8+50			10.74	^{S.M.} 318.96	319.65	4.3
9+0	P.C.		4.5	329.2	319.43	4.8
+50 T.P.	10.29	339.85	0.09	^{S.M.} 329.61	329.21	5.4
10+0 M.H.			7.7	332.1	329.00	3.1
+50	P.C.		5.97	^{S.M.} 333.8	329.25	4.6
11+0			5.5	334.4	329.50	4.9
+50			5.3	334.6	329.75	4.9
12+0			5.1	334.8	330.00	4.8
+50			4.7	335.0	330.25	4.8
13+0			4.4	335.5	330.50	5.0
+50			4.3	335.6	330.75	4.9
13+77.9	ET. 95 SAFUNIK ON F		4.0	335.9	331.00	4.9

Center Line from M.H. on Arizona bet Land's 20' Dright
 S. to D.E. 20' N. of N.L. Dright on East

0.32 302.12 301.80
 1.46 290.51 1207 289.05

Sta	+R	H.I.	-R	elev top Sta Nos	Grade	CUT
0+0 = M.H.		290.51	16.50		274.00	
0+50	POSTED		7.1	283.4	274.20	9.2 ✓
1+0			7.1	283.4	274.40	9.0 ✓
1+50 T.P.	6.37	289.50	7.38	283.13	274.60	8.5 ✓
2+0			6.8	282.7	274.80	7.9 ✓
2+50			6.9	282.6	275.01	7.6 ✓
3+00			7.75	281.75	275.21	6.5 ✓
3+27.2 M.H. & Land's			7.8	281.7	275.32	6.4 ✓
3+50			8.5	281.0	275.41	5.6
4+00			7.6	281.9	275.61	6.3 ✓
4+50			5.9	283.6	275.81	7.8 ✓
5+00			4.35	285.15	276.01	9.2 ✓
5+50			1.9	287.6	276.21	11.4 ✓
6+00			1.3	288.2	276.41	11.8 ✓
6+50			1.4	288.1	276.62	11.5 ✓
6+59.8 = M.H.			1.7	287.8	276.66	11.2 ✓
7+00			2.4	287.1	276.82	10.3 ✓

Wightman

290.51 282.07
 16.5 16.5
 274.0

283.13 4.17 287.30 = M.H. 279.20 13.10 ✓	87.30 87.30 74.80 75.01 12.50 ✓ 12.29 ✓	87.30 87.30 75.21 87.30 12.09 ✓ 11.98 ✓
87.30 87.30 75.41 75.61 11.89 11.69		
281.75 6.03 287.78 = M.H. 275.61 12.17 ✓	87.78 87.78 75.81 76.01 11.97 ✓ 11.77 ✓	
285.15 6.97 291.92 = M.H. 276.21 15.71 ✓	91.92 91.92 76.41 76.62 15.51 ✓ 15.30 ✓	
91.92 91.92 76.66 76.82 15.26 ✓ 15.10 ✓		

288
15.1
272.9
300
272.9

	289.50			
7+50	1.14	287.10	3.54	285.96 277.02
8+00			1.9	285.2 277.22
8+50			2.35	284.75 277.42
9+00			3.3	283.8 277.62
9+50			3.6	283.5 277.83
9+92=DE			5.2	281.9 278.00

Cut

8.9 ✓
 8.0 ✓
 7.4 ✓
 6.2 ✓
 5.7 ✓
 3.9 ✓

289.50
 5.06
 284.44

91.92	91.92	91.92	91.92
77.02	77.22	77.42	77.62
14.90	14.70	14.50	14.30

91.92	91.92
77.83	78.00
14.09	13.92

284.75
2.69
287.44 = 14.7
277.02
10.42 ✓

87.44
77.22
10.22 ✓
87.44
77.42
10.02 ✓

87.44	87.44	87.44
77.62 ✓	77.83	78.00
9.82 ✓	9.61 ✓	9.44

284.75

285.96	
1.21	
287.17	87.17
277.83	78.00
9.34	9.17 ✓

30

Secret Line for U.S. Cavalry City Park
 from Sta 89+00 Canyon Line (Page 18) East
 for 579.4' thence northerly to Sta 8+28

B. d. bet M. & J. 33+32.4			165.55			
	20.20	185.75				
				176.83	Top	
0+0			5.53	180.22	176.20	4.0
+20			4.8	181.0		
+30			7.4	178.4		
+40			5.2	180.6		
+50 Hub break			5.32	180.5	177.0	3.5
+65	7		4.0	181.8		
+70 Hub			2.9	182.9	180.22	2.7
+70 Hub break			1.84	183.91	181.50	2.4
T.P.	11.39	196.38	0.76	184.99		
+50 Hub break			3.9	192.5	190.00	2.5
T.P.	12.40	208.56	0.22	196.16		
+75			9.7	198.9		
2 Hub break			5.6	203.0	200.50	2.5
+75			1.5	207.1		
T.P.	12.42	220.35	0.63	207.93		
+50 Hub			7.9	212.5	209.75	2.8
+75			2.8	217.6		
T.P.	16.78	231.57	0.56	219.79		
3+0 Hub break			9.9	221.7	219.00	2.7
+25			7.2	224.4		
+50 Hub			4.6	227.0	224.25	2.8
T.P.	12.26	243.53	0.30	231.27		
4 break			11.4	232.1	229.5	2.6

Cut

		243.53				
4+50			5.07	238.4	235.63	2.8
T.P.	11.79	255.10	0.22	243.31		
5+0			10.4	244.7	241.76	2.9
+50			3.9	251.2	247.89	3.3
+79 ⁴	L 47°34'	break	11.03	254.07	251.50	2.6
6+0			0.5	254.6	252.71	1.9
T.P.	11.04	265.60	0.54	254.56		
+50			7.8	257.8	255.60	2.2
7+0	break		4.30	261.3	258.50	2.8
+50			1.94	263.66	260.85	2.8
T.P.	6.37	270.03	1.94	263.66		
8+0			4.20	265.8	263.19	2.6
+28 Etd.			2.87	267.16	264.50	2.7

~~878
 509
 228.6~~

1	6.2	
✓	4.9	1.4
3	3.3	1.6
4	1.6	1.7
5	0.5	1.1
6 canteen	0.4	0.1

3 4" x 4" y^s

1 6" x 4

1 6 x 6

35

36

5

37

37

38

Canyon Line from sta 54+0 N.H. (see page 15) on Florida St
 Tests on alley bet Arizona & Arnold

Sta	#	Retraced	Gregory	R	ele Top	Grade
13+0	4.19	129.34			125.65	
0+0-N.H. Sta 54+0	Angle 50°34'	R	6.3	123.6	115.00	5.6
	20.22	135.22		122.4	118.00	5.6
+45		61	11.33	123.89	119.35	4.54
+40		61	9.27	125.95	121.00	4.95
+450			8.56	126.66	122.50	4.16
+43			7.87	127.35	124.00	3.35
+93						
2+0			5.90	129.32	125.50	3.82
+50			4.00	131.22	127.00	4.22
3+0	T.P.	11.68	2.74	132.48		
3+50		144.16	10.62	133.54	128.50	5.04
3+60	N.H.	13°38'	9.47	134.69	129.00	5.69
4+0			9.27	134.89	129.50	5.09
+50			10.95	133.21	131.00	2.21
5+0			8.43	135.73	132.20	3.53
+50			9.34	134.82	133.40	1.42
6+0			4.90	139.26	134.00	4.66
+50	T.P.	9.72	1.72	142.44	135.80	6.64
6+75	N.H.	14°16'	8.14	144.02	136.40	7.62
7+0			7.37	144.79	137.0	7.79
+50			8.43	143.73	138.20	5.53
8+0			11.51	140.65	139.00	1.25
+45				144.5		

CUT 11/9/21
 Gregory
 Moore
 Miller
 Shaw

140.95
 2.47
 137.48
 + 2.21
 149.39
 + 2.3
 146.67
 152.22

15216

8+50			9.77	142.39	140.60	1.79
9			4.00	148.16	141.8	6.36
+50			4.60	147.56	143.00	4.56
T.P.	12.87	162.16	287	149.29		
10+0			12.65	149.51	144.20	5.31
+50			10.00	152.16	145.40	6.76
			9.75	on hub	no trunk	
10+75 ⁵ M.N.	16°53' L		9.20	152.96	146.00	6.96
11+0			12.35	149.81	146.60	3.21
+50			8.19	153.97	147.80	6.17
12+0			7.00	155.16	149.00	6.16
+50			7.30	154.86	150.20	4.66
13+0			4.00	157.16	151.40	6.76
+50			6.00	156.16	152.60	3.56
14+0	T.P. 12.73	171.19	1.70	160.46	153.80	6.66
-14+10 ² M.N.	32°23' L		10.91	160.28	154.06	6.22
14+50			11.47	159.72	155.00	+4.72
15+0			9.03	162.16	156.20	5.96
50			8.27	162.92	157.90	5.52
16+0			6.62	164.57	158.60	5.97
+50			5.30	165.89	159.80	6.09
17+0	T.P. 13.30	181.14	3.35	167.84	161.00	6.84

17+25 ⁸ - M.H., 9° 04' L.	14.58	166.56	break 162.00	4.56
+50	14.35	166.79	162.67	4.12
18+0	12.79	168.35	164.07	4.28
+50	13.27	167.87	165.47	2.40
19+0	10.42	170.72	166.87	3.25
+50	8.17	172.27	168.27	4.70
20+0	7.36	173.78	169.67	4.11
+50	7.20	173.94	171.07	2.87
21+0 M.H.	3.25	177.89	172.50	5.42
T.P. 11.53 189.80	2.87	178.27		
+50	9.94	179.86	174.10	5.76
22+0	11.70	178.10	175.69	2.41
+50	7.33	182.47	177.29	5.18
23+0	6.63	183.17	178.88	4.39
+50	5.18	184.62	180.48 ₃₀	4.14
24+0	4.40	185.40	182.07	3.93
T.P. 12.07 201.09	2.78	189.02		
+50	10.77	190.32	183.67	6.65
24+75 ⁸ - M.H., 7° 37' L	10.57	190.52	184.50 break	6.07
25+0	11.75	189.34	185.00	4.34
+50	11.10	189.99	186.05	3.94

190.52
2.20
192.81

183.67
9.14
2.20
192.81

182.07
10.44
7.63
211



Now cuts
3.11

6.44

26+0	10.23	190.86	187.10
+50	7.80	193.29	188.15
27+0	7.30	193.79	189.20
+50	7.15	193.94	190.25
28+0	4.90	196.19	191.30
+50	3.64	197.45	192.35
29+0	3.12	197.97	193.40
+50 T.P. 1407	211.23	1.93	194.45
29+75 ^S M.H. 11016 R	11.50	199.73	195.00
30+0	11.05	200.18	195.48
+50	14.04	199.19	196.48
31+0	9.70	201.53	197.48
+50	7.23	203.30	198.48
32+0	8.07	203.16	199.48
+50	8.83	202.40	200.48
33+0	6.18	205.08	201.48
+50	4.93	206.30	202.48
34+0	3.33	207.90	203.48
+50	4.92	208.31	204.48

CUT.

New cuts
3.56

✓ 5.76	
5.14	4.92
4.59	4.43
3.64	3.97
4.89	4.75
5.10	5.04
4.59	4.50
4.71	4.62
✓ 4.43	4.63
✓ 4.70	4.48
✓ 2.71	
4.06	4.00
✓ 4.82	4.76
3.64	3.61
4.94	3.15
3.54	3.12
3.84	3.92
4.12	4.36
3.83 ✓	

186.95	187.10
8.80	7.75
194.85	
194.45	187.10
12.17	11.69
7.50	8.13
4.62	3.56
196	188.15
11.62	10.24
6.87	5.02
4.72	4.92
195.48	189.20
11.14	9.59
6.66	5.16
4.78	4.43
196.19	190.25
10.78	8.50
7.42	5.77
2.71	3.97
197.45	191.30
9.18	7.49
6.13	4.75
3.37	192.35
4.76	6.44
200.18	193.40
12.89	10.77
8.63	212.25
4.97	4.50
4.70	194.45
4.02	195.00
4.70	195.48
4.76	196.48
4.13	197.48
4.76	198.48
1.76	199.48
211.61	200.48
198.48	11.79
13.77	201.48
4.7	10.77
	7.65
	3.12
	202.48
	9.77
	5.96
	3.81
	4.04
	8.77
	4.35
	7.77
	3.97
	3.80

changed to West side of ditch

3475 ⁸	M.H. 15° 19' L	223.28	0.72	210.51	205.00	5.51	
3570	in check	13.90		209.38	205.82	3.58	
+50			11.25	212.03	207.53	4.50	
3640			5.55	217.73	209.25	8.48	
+26			(10.0)	213.3			
+50			7.10	216.18	210.96	5.22	
3740			2.58	220.70	212.68	8.02	
T.P.	10.70	23356	0.52	222.76			
+50			10.72	222.84	214.39	8.45	
+80			(12.7)	220.7			
+50			(15.9)	217.7			
3870			(12.6)	221.0	216.10	5.10	
			12.26	221.00			
38+25 ⁸	M.H. 15° 10' L		11.92	221.64	217.00	4.64	
+50			11.15	222.41	217.63	4.78	
			(10.2)	223.4			
3940			10.85	222.71	218.93	3.76	
+50			9.55	224.01	220.27	3.74	
+58			(11.1)	222.5			
4040			9.07	224.49	221.59	2.90	
+50			6.60	226.96	222.90	4.06	
4140			4.60	228.96	224.22	4.74	
+11			(6.5)	227.1			
+50			3.87	229.69	225.54	4.15	
T.P.	8.97	24225	0.28	223.28			
4240			(1.50)	9.40	232.85	226.86	5.99
+10			(12.0)	230.1			
+50			9.80	232.85	228.18	4.67	

22164	21895	21202	7.27
1264	1583	0.53	5.08
13428	378	212.02	20.52
			643
			358
22021	22159	1267	
1401	102	376	38
			442
			1.02
			2.85
			6.00
			1.79
			4.32
22271	363	22403	2.46
22766	876	876	12.70
			2.18
			2.61

2/22/25

43+0 M.H. 6°44' R	(19)	8.00	234.25 233.4	229.5
+50		6.66	235.59	230.75
44+0		5.06	237.2	231.99
+50	crack	(5.7) (8.0)	236.6 233.9	
+50	crack	6.38	235.87	233.24
45+0	crack	5.13	237.12	234.49
+50		3.13	239.12	235.93
F.P.	7.70	247.63	232	238.93
46+0		5.60	242.03	236.98
+50		7.03	240.6	238.23
47+0				
+0.2 M.H. 29°49' L			256.95	239.5
+40 break see page 63 for levels		4.57	252.38	244.73 248.0
+50		4.59	252.36	248.15
48+05		3.79	253.16	248.99
+50		3.61	253.34	249.68
49+0	10.47	266.65	0.72	256.73 250.15
+50		9.47	257.18	251.22
50+0		10.91	255.74	251.99
+50		9.19	257.46	252.75
50+85		8.53	258.12	253.28
51+33.2 M.H. 28°09' L To Alky Line				
5.75W 50+00 Book 466 -77		7.34	259.31	254.00
-11.549				
-181-13				
see page 57 for cont.				

53+77.13 cont. 46 & 15

4.75	
4.84	
5.21	5.15
2.63	2.77
2.63	3.21
3.29	3.31
5.05	4.91
4.84	3.67 - changed to W. side
4.73	
4.38	
4.21	
4.17	
3.66	
5.77	
5.96	1.03%
3.75	
4.71	
4.24	
5.31	

234.28	235.59	231.99
	10.10	1375
	245.1	51
		232.6
		1450
		270
		277
		232.49
		1125
		3.21
		235.73
		1007
		670
		331
		236.78
		176
		271
		235.23
		751
		324
		367
		237.1
		624
		173
		231

Senior beginning at M.H. (see sta 0+0 page 20) & Alley between
 Indiana & Georgia thence N. in & Alley to M.H. 19' 50" of N.L.
 Myrtle thence W. in Myrtle to & Indiana thence N. in &
 Indiana

I

Sta	+R	N.A.	-R	Elev	Grade	cut
B.M.	11.53	237.21		226.18	—	
T.P.	12.71	249.44	0.98	236.73	—	
0+0 = M.H.				235.7	228.00	8.7
0+50			11.05	238.39	230.00	3.8
0+75	POSTED					
		5	11.60	237.8	236.96	0.8
1+0			7.0	242.4	239.29	3.1
T.P. Rock	7.90	256.23	0.51	248.93	—	
M.H. 1+39.8			6.7	250.1	243.00	7.1
1+50			12.7	244.1	249.50	-0.4
1+55			13.9	242.9	245.25	-2.3
1+65 1/2 stake			7.9	248.9	246.75	2.2
T.P.	12.38	268.80	0.91	255.92	—	
1+80				256.1	249.00	7.1
1+90			7.7	261.1	254.5	6.6
2+00			3.00	265.8	260.00	5.8
T.P.	12.66	281.30	0.16	268.64	—	
2+25			5.93	272.4	268.00	4.4
2+50 T.P.	10.93	291.75	0.48	280.82	276.00	4.8
2+75			4.06	287.69	284.00	3.7
T.P.	8.86	297.99	0.64	291.11	—	

299.97
6.12
293.85
cable

	H.1				
3+00	299.97	6.74	293.23	286.36	
M.H. 3+28.3	Myrtle + Indiana	4.8	295.2	289.00	
3+50		6.6	293.4	289.18	
4+0		6.0	294.0	289.58	
4+50		5.5	294.5	289.99	
5+00		5.1	294.9	290.39	
5+50		4.6	295.4	290.80	
6+0		4.1	295.9	291.20	
6+50		3.59	296.38	291.61	
M.H. 7+0		3.01	297.00	292.01	
7+50	10.39	307.83	297.4	292.92	
8+0		9.8	298.0	292.82	
8+50		9.3	298.5	293.23	
9+0		8.8	299.0	293.63	
9+50		8.4	299.4	294.04	
10+0		8.0	299.8	294.44	
10+50		7.5	300.3	294.85	
10+66.3	M.H. + Cypress	7.4	300.4	295.00	
T.D	8.89	306.33	297.44		

307.83
5.49
302.34

70
47

293.23	6.20	299.43	99.43	99.43	79.43
299.43	289.00	10.43	89.18	89.58	89.79
99.43	90.38	9.04	10.25	9.85	9.44
297.44	4.98	302.42	290.80	291.20	
302.42	290.39	12.03	116.22	112.22	
302.42	291.61	10.81	302.42	292.01	302.42
302.42	292.82	9.60	10.91	10.00	
302.42	294.04	8.34	7.19	8.79	
302.42	295.00	7.42	302.42	294.44	302.42
			7.98	7.57	

300 8090 57 100 000 1000

306.33

11+0		5.75	300.6	295.15
+50		5.4	300.9	295.37
12+0		5.0	301.3	295.58
+50		4.5	301.8	295.80
13+0		4.2	302.1	296.01
+50		3.8	302.5	296.23
14+0 M.H.		3.4	302.9	296.45
+50	206.44 175.6 308.6	3.1	303.2	296.66
15+0		2.89	303.4	296.88
+50	16.6 175.6 107	2.9	303.4	297.09
16+0		3.3	303.0	297.31
+50		3.6	302.7	297.52
17+0		4.0	302.3	297.74
+50	12.35	4.30	302.33	297.96
+55.6 = M.H. 2°48'R		12.1	302.6	298.00
18+0		5.0	309.7	298.75
+25		4.03	310.65	299.17
+50		4.1	310.6	299.60
18+65 = N.L. Robinson				299.65
+75		3.9	310.8	300.02

303.44
4.35
307.79 = 44.1.
296.45
11.34

48

5.4				
5.5				
5.7				
6.0				
6.1				
6.3				
6.5 ✓				
6.5 ✓				
6.5 ✓				
6.3 ✓				
5.7 ✓				
5.2 ✓				
4.6 ✓				
4.4				
4.6 ✓				
11.0 ✓				
11.5 ✓				
11.10				
10.8 ✓				

307.79
296.66
11.13 ✓

307.79
296.88
10.91 ✓

307.79
297.09
10.70 ✓

307.79
297.31
10.48 ✓

307.79
297.52
10.27 ✓

307.79
297.74
10.05 ✓

307.79
297.96
9.83

307.79
298.00
9.77 ✓

14.40
4.2
14.82

310.45
2.50
313.15 = 14.1
298.75
14.40 ✓

313.15
299.17
13.98 ✓

313.15
300.02
13.13 ✓

313.15
299.60
13.55

314.65

1940		4.3	310.4	300.45
19425		7.6	310.10	300.88
+50		4.65	310.03	301.30
2040		4.3	310.4	302.16
+50		4.5	310.2	303.01
20764 ⁴ MH, 2°48' L		4.4	310.3	303.25
2140		4.8	310.60	303.87
+50		3.4	311.3	304.72
2240		2.7	312.0	305.58
+50		1.8	312.9	306.43
2340 T.P., 522	319.19	1.21	313.47	307.29
+50		5.3	313.9	308.14
2440 = F.T.		4.9	314.3	309.00

2456 = 5.6 Ux'y

$$\begin{array}{r} 310.03 \\ 7.27 \\ \hline 314.30 \\ 4.20 \\ \hline 310.10 \end{array}$$
43
86

49

10.0	313.15	313.15	313.15
9.2	300.45	300.88	301.30
8.7	12.70	12.27	17.85
8.2	313.15	302.16	
7.2	10.99		
7.1	313.15	303.01	11.85
	10.44		43
6.7	310.60	14.34	85
6.6	5.74	3.01	86
6.4	316.34 - H.I.	13.33	85
6.4	303.25	16.84	16.34
6.5	13.09	3.87	4.72
6.2		12.47	11.62
5.8			10.76
5.3	16.34	16.34	
	6.43	7.29	16.34
	9.91	9.05	8.14
			8.20
	316.34		
	302.16		
	14.18		
	43		
	13.75		

Sewer alley between Louisiana
from center Murrol to Adams.

+ Mississippi
Posted

July 10/12
Schields
Taylor 50
Bunker

Sta.		H.I.	Road	Ground	Grade	cut			
0+00	M.H. center of Murrol.	8.17 346.72	8.8	337.9	332.60	5.3	337.75 5.08	333.10 9.73	333.60 9.23
+50			8.97	337.75	332.85	4.9	342.83 H.I. 332.85	333.35 9.48	333.85 8.98
+75			9.0	337.7	332.97	4.7	9.98		334.10 8.73
1+00			9.2	337.5	333.10	4.4	334.35 8.48	.303. madison 334.60 8.23	334.85 7.98
+50	POSTED		9.1	337.6	333.35	4.3	342.58 3.44		25
2+00			9.22	337.50	333.60	3.9	346.02 335.10	46.02 35.35	46.02 35.60
+50			8.3	338.4	333.85	4.6	10.92	10.67	10.42
3+00			7.2	339.5	334.10	5.4	46.02 35.85	46.02 35.00	
+50	M.H.		6.3	340.4	334.35	6.1	10.17	10.02	
4+00			5.62	341.10	334.60	6.5	46.02 36.42	46.02 37.47	
+50			6.0	340.7	334.85	5.9	9.60	8.55	
5+00			6.3	340.4	335.10	5.3			10.5
+50			5.7	341.0	335.35	5.7			
6+00			4.14	342.58	335.60	7.0			
+50			4.6	342.1	335.85	6.3			
+79.6	M.H. center of Madison		4.4	342.3	336.00	6.3			
7+00			3.8	342.9	336.42	6.5			
+50			3.2	343.5	337.47	6.0			

July 11/12

Lehildt 51
Taylor
Bunker

Cont. from page 50

Sta	H.I.	Rod Ground	Grade	cut		
					340.57	105.00
					2.54	
8+00	346.72	2.15	344.57	338.52	6.0	
J.R.					352.11	52.11 52.11
+50	10.59	355.16	9.9	345.3	339.57	5.7 ✓
					338.52	39.57 40.61
					13.59 ✓	12.54 11.50
9+00		8.6	346.6	340.61	6.0 ✓	
					52.11	52.11
+50		7.6	347.6	341.66	5.9 ✓	
					41.66	42.71
10+00 M.H.		6.6	348.6	342.71	5.9 ✓	
					10.45	7.40
+50		5.55	349.61	343.76	5.8 ✓	
					52.11	
11+00 Break		4.9	350.3	344.80	5.5 ✓	
					43.76	52.11
+50		4.5	350.7	345.22	5.5 ✓	
					8.35	44.80
12+00		4.1	351.1	345.65	5.5 ✓	
					356.1	7.31
+50		3.64	351.52	346.08	5.4 ✓	
					349.61	
13+00 F.S. near Adams		1.95	353.21	346.50	6.7 ✓	
					2.87	104
					352.98	1.05
					339.57	1.04
					13.41 ✓	
					52.98	52.98
					40.61	41.66
					12.37 ✓	11.82 ✓
					52.98	52.98
					42.71	43.76
					10.27 ✓	9.22 ✓
					52.98	52.98
					45.22	44.80
					7.76 ✓	8.18 ✓
					351.52	
					4.84	43.42
					356.36	
					345.65	56.36 56.36
					10.71 ✓	46.08 46.50
						10.28 ✓
						9.86

Note for Diagram see Book 456-B, 22

Shower alley bet. Florida +
from center madison to adams

Alabama
+ sup panorama

July 16/12

Childs
Tay 52
Allen


Sta.	H.I.	Rod	Ground	Grade	Cut			
J.P. 0+00	4.23 343.15	14.3	338.92 328.9	325.00	3.9		336.28 6.08 342.31 H. 333.40	42.31 33.30 9.01 ✓
+50		13.6	329.6	325.80	3.8 ✓		9.31 ✓	
1+00	POSTED	12.98	330.17	326.59	3.6 ✓		42.31 33.61 8.70 ✓	42.31 33.92 8.39 42.31 34.00 8.31
+50		11.8	331.4	327.39	4.0 ✓			
2+00		10.5	332.7	328.18	4.5 ✓		42.31 32.16 1.015 ✓	42.31 31.36 10.95 ✓ 42.31 30.57 11.74 ✓
+50 m.H.	b	9.4	333.8	328.98	4.8 ✓	40 70		
3+00		8.05	335.10	329.77	5.3 ✓		42.31 29.78 12.54 ✓	42.31 28.98 13.33 ✓ 42.31 32.75 9.36
+50		8.4	334.8	330.57	4.2 ✓			
4+00		8.2	335.0	331.36	3.6 ✓		335.10 1.84 336.94 = H. 329.77	
+50		6.87	336.28	332.16	4.1 ✓		7.17	
5+00		5.2	338.0	332.95	5.1		36.94 28.19 8.76 ✓	36.94 27.87 9.55 ✓ 36.94 26.57 10.35 ✓
+02.6 m.H. about 1 1/2 +50 so. adams.		5.27	337.88	333.00	4.9 ✓		36.94 25.80 11.14 ✓	36.94 25.00 11.94
6+00	903 55m 240	4.8	338.4	333.61	4.8 ✓			
+50		4.7	338.5	333.92	4.6 ✓		336.28 6.88	43.16 34.00 9.16 ✓
+63 m.H. in		4.74	338.41	334.00	4.4 ✓		343.16 333.92	43.16 33.61
7+05 adams.		4.4	338.8	334.18	4.6 ✓		9.24 ✓	9.55

cont. from page 52

Sta.	K.I.	Rod	Ground	Grade	cut
7+50	343.15	4.67	338.48	334.37	4.1 ✓
8+00		3.8	339.4	334.58	4.8 ✓
+50		3.0	340.2	334.79	5.4 ✓
9+00 T.P.		2.89	340.26	334.99	5.3 ✓
+03 M.H. angle in Paradise		2.8	340.4	335.00	5.4 ✓
T.P.	12.61 352.87	2.89	340.26		
+50		11.6	341.3	336.34	5.0 ✓
10+0		10.4	342.5	337.76	4.7 ✓
10+43 E Hixton M.H. 31° 30' R.		9.2	343.7	339.00	4.7 ✓
+50		8.9	344.0	339.21	4.8 ✓
11+0		7.6	345.3	340.80	4.5 ✓
+50	760 1043.5 220.5	6.13	346.74	342.38	4.3 ✓
12+0		4.3	348.6	343.97	4.6 ✓
+50	1757 1260 1195	2.04	350.83	345.55	5.3 ✓
12769 M.H. 34° 50' L.		1.6	351.3	346.00	5.3 ✓
13+0		1.13	351.74	346.58	5.2 ✓
+50 T.P.	9.76 361.92	0.71	352.16	347.39	4.8 ✓

357.2	21	58
338.48		
6.31		
344.79 H.I.	44.79	44.79 44.79
334.18	34.87	34.58 34.79
10.61 ✓	10.42	10.21 10.00
44.79	44.79	44.79 44.79
34.79	35.00	36.34
9.80	9.79 ✓	8.45
44.79	44.79	
37.26	39.00	
7.03 ✓	5.79	
346.74		
4.17		
350.91 = H.I.		55 57
339.00		50.91 50.91
11.91 ✓		39.21 40.80
		11.70 10.11
50.91	50.91	
42.38	43.97	50.91
8.53 ✓	6.94 ✓	45.55
50.91		50.64 ✓
46.00		
4.91		
351.74		
6.28		
358.02		
346.00		58.02 58.02
12.02 ✓		46.58 47.39
		11.44 10.63
58.02		

	H.T.					
	361.92					
1440	8.7	353.2	348.20	5.0	✓	
150	7.7	354.2	349.00	5.2	✓	
1540	6.8	355.1	349.81	5.3	✓	
150	5.83	356.09	350.61	5.5		
1640	5.0	356.9	351.42	5.5		
150	4.2	357.9	352.23	5.5		
1740	3.35	358.57	353.03	5.5		
150	2.9	359.0	353.84	5.2		
17459 F.T.	2.8	359.1	354.00	5.1		



361.92
2.98
359.14

358.02 H.T.
348.20
9.82 ✓

358.02 358.02
349.00 349.81
9.02 ✓ 8.21 ✓

58.02
50.61
7.41

1760

Survey of Alley between Arizona & Arnold
 from F.T. 35' S of University to M.H. & Dwight

B.M. N.W. R.R. SPK Arizona Survey

B.M. 2.93 304.73

0+0 = F.T.	2.2	302.5	297.50	5.0
2+50	4.1	300.6	295.97	4.6
1+0	5.91	298.82	294.14	4.4
1+50	8.0	296.7	292.91	3.8
2+0	8.6	296.1	291.38	4.7
2+45 M.H. & Dwight	8.5	296.2	290.00	6.2
3+0 T.P. 0.97	9.42	296.28	288.90	6.4
4+50	2.4	293.9	287.90	6.0
4+0	3.7	292.6	286.90	5.7
4+50	4.61	291.67	285.90	5.8
5+0	5.8	290.5	284.90	5.6
5+45 M.H.	7.1	289.2	284.00	5.2
6+0	7.4	288.9	283.79	5.1
7+50	8.11	288.17	283.60	4.6
7+0	7.1	287.2	283.41	3.8
7+50 T.P. 4.54	9.92	290.90	283.22	3.1
8+0	4.8	286.1	283.02	3.1
8+50	5.0	285.9	282.83	3.1

POSTED

55

290.96 H.I.	283.02
282.83	7.94
8.13	283.22
283.41	7.74
288.17	7.55
6.22	
294.39 H.I.	283.79
	10.60
283.60	284.90
10.79	9.49
287.90	286.90
6.49	7.49
295.31	
6.50	
301.81 H.I.	290.00
288.90	11.81
12.91	294.44
	7.37
	291.38
	10.43
	297.50
	5.84
	4.31
	5.80
	83

	290.90				
9+0		5.1	285.8	282.69 ^v	
9+05 ⁶ M.H. & Landis		4.8	286.1	282.62	
+50		4.54	286.36	282.45 ^v	
10+0		4.8	286.1	282.26 ^v	
+50		4.8	286.1	282.06 ^v	
11+0		4.4	286.5	281.87 ^v	
+50		4.0	286.9	281.68 ^v	
12+0		3.2	287.7	281.49 ^v	
12+35 ⁶ M.H.		1.8	289.1	281.35 ^v	
+50	5.14	294.67	1.37	289.53	281.30 ^v
13+0			4.1	290.6	281.10 ^v
+50			4.3	290.4	280.91 ^v
14+0			4.97	289.70	280.72 ^v
+50			6.6	288.1	280.53 ^v
15+0			8.2	286.5	280.34 ^v
15+50			9.7	285.0	280.14 ^v
15+66 M.H. & Dwight				280.08	30

8.58
4.32
12.90 ✓ **56**

279.01

11.60

289.70
2.21
291.91 H.I.
280.14^v
11.77^v
280.66^v
11.25^v

280.80 280.50
280.34^v 11.41^v
11.57^v

280.82 208.98^v
11.09^v 10.93^v

289.53
4.68
294.21 H.I.
281.14^v
13.07^v
281.68^v
12.33^v

281.30
12.91^v
281.35^v 281.49^v
12.86^v 12.72^v

286.36
4.60
290.96 H.I.
282.26^v
8.70^v

282.45^v 282.64^v
8.51^v 8.32^v

12/10/21
 Grapes
 Moore
 Miller
 Sewer Line 575' Work at Alle
 bet Arizona - Arnold
 from 5' S of NE of Park
 N. to 217' r

51+33.2	from page 45	266.65		254.0
+50			6.22	260.43
52			5.27	261.38
TP	832	272.36	2.61	264.04
+50			7.97	264.39
53			5.45	266.91
+50 =	End of Old Pipe		3.12	269.24
				263.20

4.25%

57

5.31
5.71
4.54
5.43
5.83
6.04

scorer of Alex between Alabama & Mississippi from
 N.H. & Madison to Ft. 35's of Adams.

		1.91		350.37	
	B.M. S.W.R.A. 504	Miss. B. 11/20	352.28		
51	T.P.	3.82	347.88	344.06	
	0+0 = N.H. & Madison		12.8	335.1	329.00
	0+50		11.86	336.02	329.91
52	7+0		11.1	336.8	330.82
		POSTED			
	1+50		10.4	237.5	331.73
	2+0		9.6	238.3	332.64
53	1+50		8.5	339.4	333.55
	3+0 N.H.		7.5	340.4	334.46
	7+50		6.38	341.50	335.37
	4+0		5.5	342.4	336.28
	7+50		4.8	343.1	337.19
	5+0		4.3	343.6	338.10
	7+50		3.82	344.06	339.01
	6+0		3.1	344.8	339.92
	6+09 = Ft. 35's of Adams		3.1	344.8	340.00

091

58

		336.02			
		4.30			
		340.82			
		329.91			
		10.41	✓		
6.1	✓	336.02			
		7.24			
6.0	✓	343.26 = 14.1			
		30.82			
5.8	✓	12.44	✓	43.26	43.26
				31.73	32.64
5.7	✓	43.26			
		33.55			
5.9	✓	9.71	✓	43.26	43.26
				34.46	35.37
5.9	✓			8.80	7.99
					36.28
					6.98
5.9	✓	341.50			
		7.75			
6.1	✓	349.25 = 14.1			
		334.46			
6.1	✓	14.79			
				49.25	49.25
5.9	✓	49.25			
		37.17			
5.5	✓	12.06	✓	49.25	49.25
				38.10	39.01
5.1	✓			11.15	10.24
					39.92
4.9	✓				9.33
				49.25	
4.8				40.00	
				9.25	

Survey Line on 6th St from N.L. 'B' St to 7th Sample
 N.H. & Beech St - stakes set **VE** of 6th St
 13th Shaw
 Turn

Sta	+R	H.I.	-R	elev	Grade	Cut
B.M. of N.M. 6 th & 'B' St				58.43	V	
B.M.	10.19	68.62				
0+0 = N.L. 'B' St			10.12	58.50	51.50	7.0 V
0+50			9.7	52.9	54.51	4.4 V
1+0			6.2	62.4	57.53	4.9 V
1+50			2.8	65.8	60.54	5.3 V
T.P.	11.35	79.69	0.75	67.84		
2+0			10.8	68.9	63.56 V	5.3 V
2+50			7.2	72.5	66.57 V	5.9 V
3+0			4.0	75.7	69.59 V	6.1 V
3+50 = N.H. & 'A' St			2.2	77.5	72.00 V	5.5 V
3+90			0.17	79.52	74.63 V	4.9 V
T.P.	4.59	84.11	0.17	79.52		
4+40			2.02	82.09	77.26 V	4.8 V
T.P.	12.01	94.10	2.02	82.09		
4+90			9.2	84.9	79.89 V	5.0 V
5+40			6.7	87.4	82.53 V	4.9 V
5+90			3.6	90.5	85.16 V	5.3 V
6+40			1.06	93.04	87.79 V	5.2 V
T.P.	11.14	104.18	1.06	93.04		
6+90			8.2	96.0	90.42 V	5.6 V
7+20 N.H. & 'A' St			7.2	97.0	92.00 V	5.0 V
7+50			5.9	98.3	93.51 V	4.8 V

NOTE - New Survey Line 10' W of 6th St

58.43	65.92	65.92	65.92	65.92	66.5
7.29	54.51	57.53	60.54	63.56	102.87
65.92	11.91	8.39	5.33	2.36	5.42
6.53					96.95
65.39	77.96	77.96	77.96	93.04	95.32
12.57	66.57	69.59	72.00	2.28	82.53
77.96	11.39	3.37	5.96	95.32	85.16
				72.79	70.16
79.52					
6.63	86.17	86.17	86.17	95.32	95.32
96.17	72.26	77.26	79.89	82.53	90.42
	17.84	8.91	6.28	7.53	4.90
				73.04	102.37
				9.83	102.37
				102.37	93.51
				102.37	2.86

		104.18			
870			4.19	99.99	96.03
8750			2.0	102.2	98.54
T.P.	10.76	114.93	0.01	104.17	
970			10.2	104.7	101.06
9750			2.5	106.4	103.57
1070			6.1	108.8	106.09
150			2.17	112.76	108.61
T.P.	6.05	118.81	2.17	112.76	
1170 = Mt. & Beech St			2.1	116.7	111.13

102.37	99.99	110.14	110.14	110.14
96.03	10.15	98.54	101.06	103.57
6.34	110.14	1.60	9.08	6.57
		110.14	110.14	
		106.09	108.61	
		4.05	1.53	

Gregory - Retracement of Sewer Line
 from M.H 54+00 to Alley
 between Arnold + Arizona
 N. of Myrtle

61

See Pages 15 + 40

5	0+00	M.H Sta 54+00	50°34'R	115.0	
				123.6	
	+20			10.7	122.4
5	+50			9.0	124.1
1				7.0	126.1
	+50			6.1	127.0
5	+73			5.9	127.2
	+93			8.1	125.0
2				6.0	127.1
	+50			3.9	129.2
3	TP	8.95	100.95	1.9	131.2
	+50			1.10	132.0
				7.4	133.6
	+65.7	M.H	18°38'R	7.06	133.89
4				6.5	134.5
	+30			6.4	134.6
	+50			7.8	133.2
	+62			8.2	132.8
	+70			6.0	135.0
5				5.0	136.0
	+26			4.9	136.1

+40				6.9	134.1
+50				6.4	134.6
+70				5.5	135.5
6	TP	9.91	147.39	2.0	139.0
	+15			3.47	137.48
	+50			6.0	141.4
	+50			5.0	142.4
	+75.8	M.H	14°16'R	4.30	143.1
7				2.9	144.5
	+25			4.3	143.1
	+50			4.7	142.7
	+70			7.0	140.4
8				6.2	141.2
	+45			2.9	144.5
	TP	7.32	152.32	2.89	145.0
	+50		(155.32)?	10.7	
	+52			12.6	
	+67			12.1	
	+75			10.1	
	+95			7.6	
9				8.0	144.3
	+10			10.7	147.3

M. G.

144.3
147.3

15532

+30

83

+55

73

+58

10.0

10

59

+50

3.3

T.P.

10.54

163.01

285

152.17

4/23/31 Gregory
Moore
Miller
Shaw

Revision of Sewer Line from
Sta. 47+00.8 (page 45) to
6 Alley bet. Arnold +
Arizona + 5' S. of N.L. of Park

2087
198.

63

4738

5		8.61	253.30		
	47+01.2 M.H. (page 45) Δ	29°09' L	8.61	244.69	on hub
	T.P.	11.55	261.68	3.17	250.13
5	47+25			12.30	49.4
	+45			9.4	57.3
	48			8.8	57.9
	+85			8.0	53.7
5	+50			8.5	53.2
	49			5.8	55.9
	+50			4.8	56.9
	+80			7.0	54.7
	50			6.3	54.4
	+85			4.1	55.6
	+90			5.2	56.5
51				4.00	57.7
				2.65	

+30.45 = hub on 6' Alley bet. Ariz. + Arnold
+ 5' S. of N.L. of Balboa Park 259.03

= 0+00 book 466 + 77
also 481 - 20 - 65 62°05' L to hub at Arizona
079 line 5' S. of N.L. of Balboa Park.

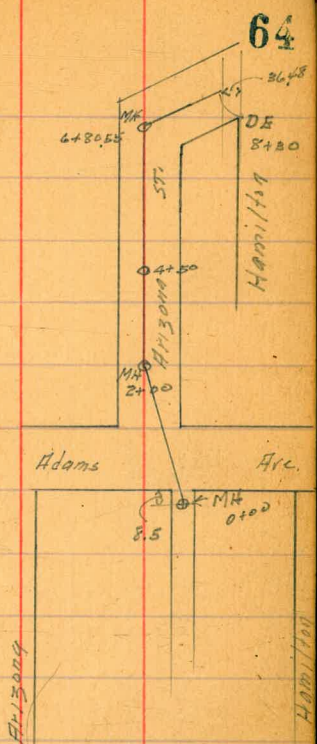
51 + 30.15
17 + 01.25
+ 29.25

9/12/20
Gregory
Moore
Ellis
Shaw

Sewer Construction Co. of Arizona
& Collier from Existing M.H. in
Files bet Arizona & Hamilton
to 30.45 W of W.L. Hamilton
(see sketch)

1306
372.50

	4.13	385.56	381.43	4pk SE Adams & Hamilton		
M.H. 0+00			372.5	372.5		
+50		8.65	376.91	372.83	+4.08	
1		9.23	376.33	373.16	+3.17	
+50		8.47	377.09	373.49	+3.60	
2 = Δ 8°34' R M.H.		8.25	377.31	373.82	+3.49	
+50		7.75	377.81	374.15	+3.66	
3		7.05	378.51	374.48	+4.03	
+50		6.33	379.23	374.81	+4.42	
4		5.80	379.76	375.14	+4.62	
+50 M.H.		5.33	380.23	375.48	+4.75	
5		4.83	380.73	375.81	+4.92	
+50	6.26	387.72	4.10	381.46	376.14	+5.32
6		5.68	382.04	376.47	+5.59	
+50		5.21	382.51	376.80	+5.71	
+80.55 Δ 73°48' R M.H.		4.99	382.93	377.0	+5.93	
7		4.85	382.89	377.33	+5.54	
+50		4.14	383.58	378.17	+5.41	
8		3.17	384.55	379.00	+5.55	
+30 DE		2.61	385.11	379.5	+5.61	



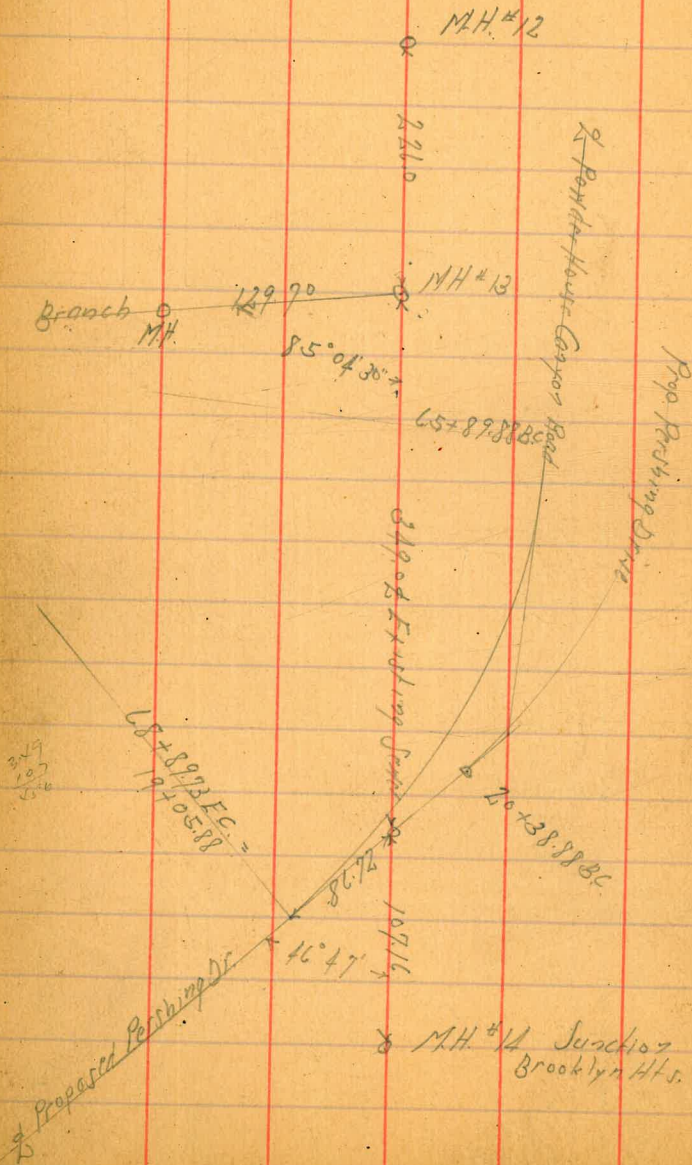
66
20
1980
1675
5526
50190

Existing Survey

Ind. C.S.K.

Porter House Canyon
From Pershing Dr to Florida St

March 13-31
Sisson 65
McHugh
Hartman



8 Fringing Cove

o M.H. #8

699.65

o M.H. #9

458.95

o M.H. #10

o 241.49

o M.H. #11

700.30

o M.H. #12

8 Fringing Cove

o M.H. #5

700.0

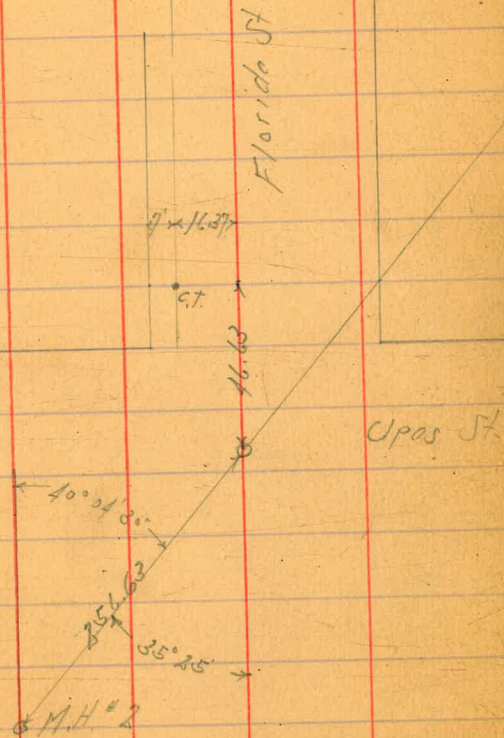
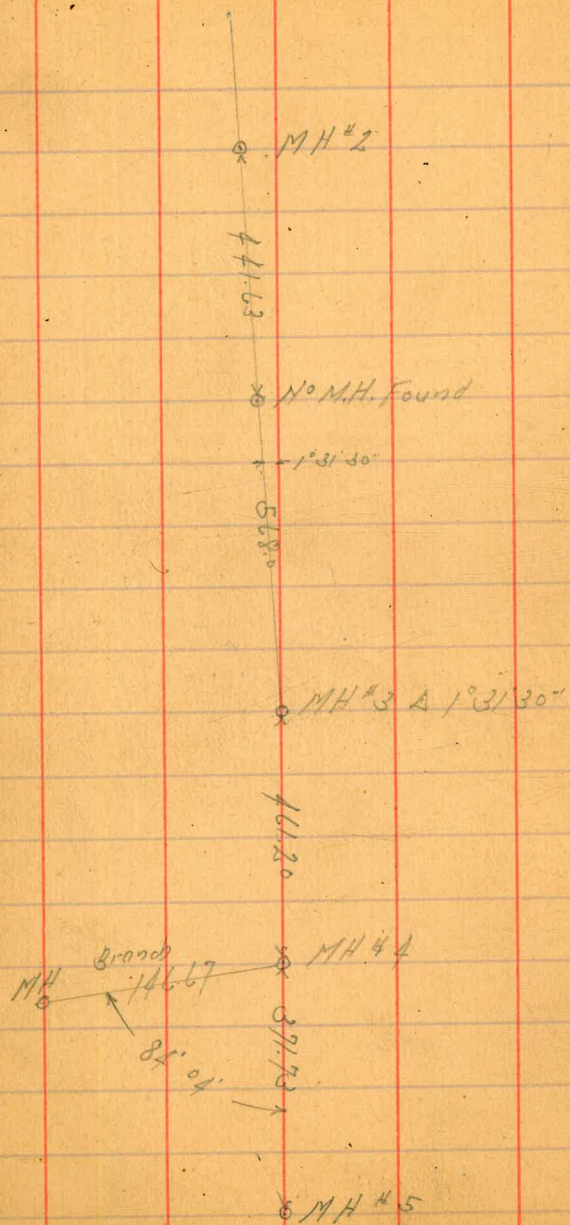
o M.H. #6

699.95

o M.H. #7

699.95

o M.H. #8



Cross Section Between M.H. #3 and #4
Existing Sewer East of Recreational Area

BM	0.25	257.02		256.77	Stub 50 ft. 44+50 1979 Page 42
TP	0.83	245.45	12.40	244.62	
TP	5.24	238.98	11.71	233.74	

0+0 = M.H. #3

1/2 on Piers Existing M.H. 4.70

Flow Line 9.60 229.98

10' RT 6.8

20' RT 4.8

5' Lt 4.8

10' Lt 2.8

0+25

20' RT - West 5.1

10' RT 7.3

1/2 5.8

10' Lt 4.8

25' Lt - East 3.8

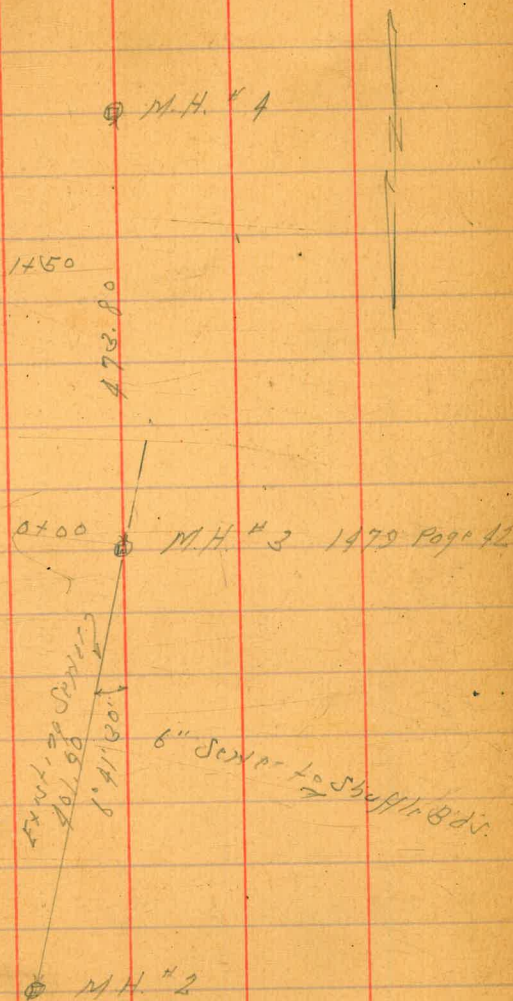
0+50

50' Lt 4.0

25' Lt 5.4

Indexed
C.S.K.

Aug 19 34 68
SINCE
B.L.W.
Hort 6/1/22



238.98

2		6.3
---	--	-----

5	Rt. Bot Creek	7.8
---	---------------	-----

10	Rt	6.3
----	----	-----

20	Rt	5.0
----	----	-----

0+75

10	Rt	5.8
----	----	-----

2	Bot Creek	7.9
---	-----------	-----

5	Lt	6.8
---	----	-----

20	Lt	7.1
----	----	-----

50	Lt	5.8
----	----	-----

60	Lt	3.0
----	----	-----

1+0

50	Lt	4.8
----	----	-----

40	Lt	7.2
----	----	-----

15	Lt	7.6
----	----	-----

10	Lt = Bot. Creek	8.7
----	-----------------	-----

5	Lt	7.1
---	----	-----

2		6.2
---	--	-----

10	Rt	1.9
----	----	-----

69

1+25

10	Rt	2.8
----	----	-----

2		6.7
---	--	-----

20	Lt	7.7
----	----	-----

25	Lt = Bot Creek	9.1
----	----------------	-----

22	Lt	8.2
----	----	-----

42	Lt	7.4
----	----	-----

50	Lt	5.9
----	----	-----

1+50

30	Lt	8.1
----	----	-----

15	Lt	8.5
----	----	-----

2		9.2
---	--	-----

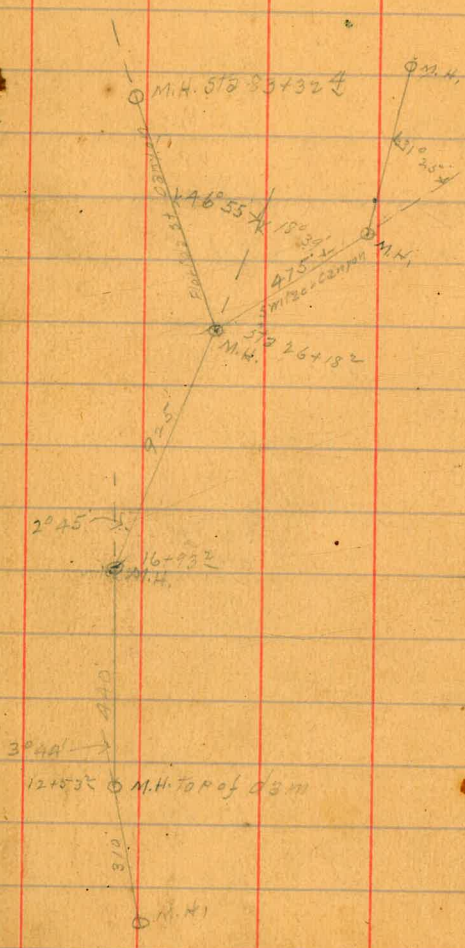
10	Rt	7.7
----	----	-----

M.H. #4

on Cover	221.79
----------	--------

Flood Line	217.04
------------	--------

From
1879 Bgt. 12



1/4/24 Gregor Sewer Construction
 Line 5' 5" x H.L. of
 Balboa Park from M.H.
 5.75' N. of d. of Alley bet
 Arizona + Arnold to d Alley
 Arizona + Oregon 35' Ariz + Myrtle

sec page 57	120	274.58	12.34	273.38	35' Ariz + Myrtle
M.H. of Alley bet Ariz + Arnold = 0 + 50	6.23	268.47	14.45	262.24	254.0
0 + 50		678	261.69	254.61	+ 7.08
1		5.09	263.38	255.22	+ 8.16
+ 50		6.14	262.33	255.83	+ 6.50
2 + 04.92		10.75	257.72	256.5	+ 1.22
+ 50		6.55	261.92	257.71	+ 4.21
3		3.44	265.03	259.06	+ 5.97
+ 34.92 d Alley bet Arnold + Oregon		1.82	266.63	260.0	+ 6.63

San Elijo Sewer Extension from
 E Kellog to 115' S. of San Elijo & Kellog.
 for proposed school house.

	+ HI	-	El	Grade. 8' to 6'	
BM. NW. Kellog & San Antonio. Mon.			14.50		
T.P.	12.65	27.05	0.24	26.81	
T.P.	12.56	39.37	0.81	38.56	
T.P.	12.79	51.35	0.45	50.90	
	12.77	63.67			
0+00 bot pipe & Kellog lot & San Elijo - surface			0.82	54.85	54.00
			4.4	39.3	
0+50			3.88	59.79	54.40
1+00			3.72	59.95	54.80
1+15 DE.			3.47	60.20	54.92

10/9/14
 West
 Evans
 Devine
 cuts

78

sketch showing Mon. floods.



2. Sewer on San Fernando
center of Kellogg to Govt.

Sta.		H.I.	Rod	Ground	Grade	cut
2400	12.73 north of Kellogg.	89.67	1.16	76.94 88.51	80.00	8.5
1450			2.30	87.37	78.75	8.6
1400			3.88	85.79	77.50	8.3
0450			6.11	83.56	76.75	6.8
0400	M.H. center		8.3	81.4	75.00	6.4
+50	of Kellogg.		8.48	81.19	75.25	5.9
1400			8.80	80.82	75.50	5.4
+50			9.00	80.67	75.75	4.9
2400			9.83	79.84	76.00	3.8
+50			8.46	81.21	76.25	5.0
3400			6.39	83.28	76.50	6.8
+50			4.9	84.8	76.75	8.0
4400	dead end.		4.93	84.74	77.00	7.7

June 10/13
from 200' north of
reservations
Bluffs
letter 74
Bunker

Was this line built?
Drops down stairs don't descend

Extension south of
Kellogg put in in 1926
cut #335
North of Kellogg - cut #354

UNIVERSITY PLACE SEWERS,
 Sewer Line E Essex from F.T. 25' W of W.L. Herbert,
 to E of Richmond Thence N on Richmond to Alley
 Thence W on Alley to 20' W of W.L. Richmond,

B.M. B.P. UNIV Arc UNIV B/VB	301.73		
B.M. 3.13 304.86			
0+0 = F.T. on Essex 85' W of Herbert	7.8	297.1	297.1
1+50	8.25	296.61	291.95
1+0	8.7	296.2	291.80
1+50	9.2	295.7	291.65
1+65 M.H. Let Line Cr 135	7.3	295.6	291.60
2+0	9.8	295.1	291.50
2+5	9.9	295.0	291.45
2+50	10.3	294.6	291.35
3+0	10.7	294.2	291.20
4+50	11.3	293.6	291.05
4+0	11.1	293.8	290.90
4+50	9.8	295.1	290.75
4+84 M.H. E. Richmond	9.59	295.3	290.65
T.P. 5.58 300.95	9.59	295.27	
5+0	5.3	295.6	290.60
5+50	5.6	295.3	290.45
6+0	5.2	295.7	290.30
6+38 = M.H. E. Alley Richmond	4.8	296.1	290.19
7+03 = connection with old sewer			290.0

Im

POSTED

See Book 195 Pg 68

7.310
 6.386
 1.54

297.15			
8.49			
300.64 H.	300.64		
290.09			
10.55			
300.64	300.64	300.64	300.64
290.19	290.30	290.45	290.60
10.45	10.34	10.19	10.04
300.64	300.64	290.75	
290.85	290.75	8.64	
9.99	9.89	299.39 H.	
		290.90	
		8.49	
99.39	99.39	99.39	99.39
91.05	91.20	91.35	91.50
8.34	8.19	8.04	7.89
99.39			
91.65			
7.74			
296.61			
296			
299.57 H.			
291.65			
7.7	99.57		
99.57	99.57		
91.80	7.77		
7.77	99.57		
	91.95		
	7.62		
99.57			
291	99.57		
	9.10		
	7.97		
99.57			

Senior E Alley B/K 2 University Place from
 F.T. 85' W of Herbert for 165 W thence N on
 Lot Line bet 485 To M.H. & Essex

B.M.	5.74	302.35	296.61		
0+0 = F.T.	Q	4.6	297.8	292.80	5.0 ✓
0+50		5.3	297.1	292.63	4.5 ✓
1+0	POSTED	6.4	296.0	292.46	3.5 ✓
1+50		7.2	295.2	292.29	2.9 ✓
1+65 M.H. Lot Line bet 485		7.9	294.5	292.24	2.3 ✓
2+0		6.9	295.5	292.12	3.4 ✓
2+50	b	5.4	297.0	291.95	5.0 ✓
3+0		5.3	297.1	291.78	5.3 ✓
3+50 = M.H. Essex		6.8	295.6	291.60	4.0

296.61

In

99.57

91.78

7.79 ✓

76

99.57

91.75

7.62

99.57

92.12

99.57

7.45

296.61

4.43

301.04

292.24

8.80 ✓

301.04

292.29

8.75 ✓

301.04

301.04

301.04

292.46

292.63

292.80

8.58 ✓

8.41 ✓

8.29

sewer line - Φ Kellogg St from Bay to 170' W of Φ of San Fernando

Sta 2 Δ +R HI -R Elev top Grade
 B.M. Man in M. Kellogg San Antonio 14.50

B.M., 1.28 15.78
 15.80
 +0 for Line E = Man Φ Kellogg & San Antonio

Station	HI	-R	Elev top	Grade	Cut	
0+0			4.90	10.9	4.00	6.9
0+50 E			7.10	8.7	1.15	7.6
1+0 E			10.7	5.1	-1.70	6.8
1+50 E			15.5	3.3	-4.55	4.8

+0 for Line Y = Man Φ Kellogg & San Antonio

Station	HI	-R	Elev top	Grade	Cut	
0+0			4.9	10.9	4.00	6.9
0+50			1.5	14.3	7.20	7.1
T.R.	12.76	27.95	0.09	15.69		
1+0			11.0	17.4	10.40	7.0
1+50			7.4	21.0	13.60	7.4
2+0			4.5	24.0	16.80	7.2
2+50			1.29	27.16	20.00	7.2
T.R.	12.68	39.84	1.29	27.16		
3+0			9.7	30.1	23.20	6.9
3+50			6.7	33.1	26.40	6.7
3+75 = M.H. Φ San Dionice			5.0	34.8	28.00	6.8

Sta 1/3
 Sample
 Shaw
 Kerr
 Moore

Cut

77

		39.54				
4+0			2.6	37.12	29.86	
T.P.	12.69	52.46	0.07	39.77		
7+50			12.3	40.2	33.57	
5+0			9.0	43.5	32.29	
5+50			5.16	47.30	41.00	
6+0			2.2	50.3	44.72	
T.P.	12.46	64.49	0.43	52.03		
6+50			10.4	54.1	48.43	
7+0			7.1	57.4	52.15	
7+25 = M.H. San Elijo			5.9	58.6	54.00	
10+0			4.07	60.42	55.50	
8+0	12.66	76.62	0.53	63.96	58.50	
50			0.53	63.96		
			9.5	67.1	61.50	
9+0			5.9	70.7	64.50	
50			2.9	73.7	67.50	
T.P.	12.43	88.73	0.32	76.30		
10+0			11.79	76.94	70.50	
1+50			9.0	79.7	73.50	
10+75 = M.H. San Fernando			7.7	81.0	75.00	
7+0			5.1	83.6	77.12	
1+50			2.6	86.1	81.37	
T.P.	11.71	100.23	0.21	83.52		
12+0			10.8	89.4	85.62	
12+75 = 176 m of San Fernando			5.44	94.79	89.44	

850%

360	39.88	
43	37.88	3
393	17.00	
78	94.76	39.88
15	7	79.76
	380	15
393	87.76	96
13		
380	40.06	
	38.06	
393	78.12	
	10.00	
350	82.12	
30		
380		
17	378	
19		
	760	
	382	
	378	
	382	
	760	

Sewer in San Leonico
 I. north 200'

Sta.		K.I. 37.92	Rod	Grimed	Grade cut
0+00	M.H. centering		2.8	35.1	\$28.00 7.1
+50	Kellig.		4.26	33.66	\$29.25 5.4
1+00			4.88	33.04	\$28.50 4.5
+50			4.88	33.04	\$28.75 4.3
2+00	dead end.		3.82	34.10	\$29.00 5.1

B.M.	1.05	199.06		198.01	Myrtle Florida SW
T.P.	0.06	190.39	8.73	190.33	
			13.4	177.0	
Lath.	9.27	190.16	8.70	181.69	
			2.9	187.1	

from Kellogg June 10/13

Childs
 Allen
 Bunker 79

00403

	10.00	
	100.37	
	190.37	
	40.00	
	100.37	
	351.11	
	10.00	153.37
		100.37
		40.00
		100.37
		394.11
	100.37	100.37
	17	40.00
	96.16	100.37
		341.11
		53.00
		394.11
	200.74	
	20.00	
	200.74	
	60.37	
	200.74	
	10.00	
	210.74	
	20.00	
	230.74	

1339.75
131.11
326.74
1.30
28.04
12.23
15.81

03424
12.00
10.50
1.50
14.20
8.00
7.00

03424
13696
6848
82176

350 | 10.00
10.00
5.00
26
21
26
03192

03424
20544
6848
89024

376 | 12.00
11
7.20
3.20
34.40
33.84
56

401 | 10.00
8.00
2.00
3760
3609
1510

02637
10528
5214
63288
03192
18852
6354
82692
102637
1596

77.26
4.00
19.26
2.63
55.16
2.63
57.79
2.03
59.82

318 | 43
38
74
12.10
3.42
30.20
28.44
176
14.22
33.80

401 | 12.10
12.03
470
401
2890

520
142
207
162
23
200

6.90
380
398
7.78

365
7.00
380
340
7.20

51304
4940
370.5

01537
7685
4611
1379.5

401900
580
2000

2.045
468
12.00
87.0
1457060

600000.7
50128
98720
87724
109960

1725.8
100
975.8



19
48
15.2
76
97.2
7685
2085
8450
51
1527
4611
464
20

13.2
146

26
45
428
340
3,225