

F. B.  
822

---

LEVEL BOOK.

No. 410

---

Harusity

McKee

Pringle

Ross

Clark

Henry

Mooney

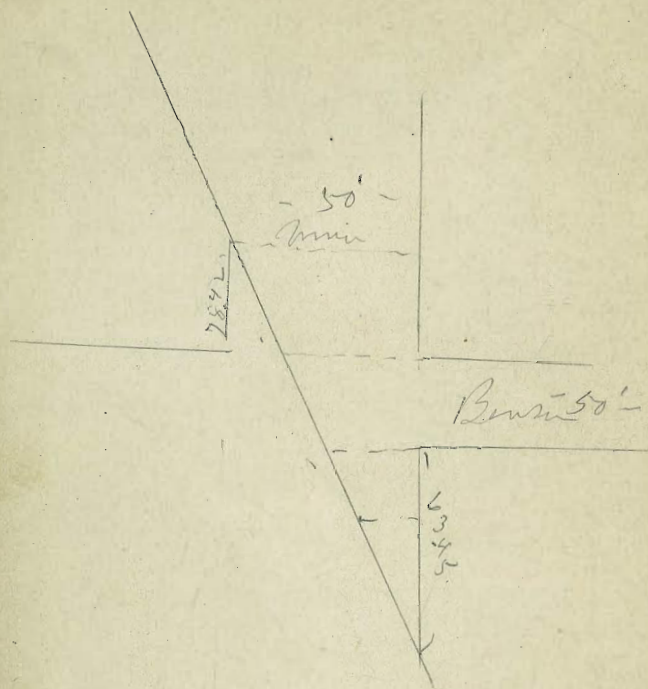
Miller

Bandini

Coutts

Wubly

MICROFILMED  
DEC 15 1964



9-blanch X Sec of Armin St (50) W  
 25  
 11/24/20  
 Middleton Addition 1

948 16813 15865  
 63.45' S of Benson = Intersect of Public Line

Benson Post  
 E 1/4 Sec 100' n  
 Benson

E 2 142 153.9

25' S of Benson

E 2 69 161.2

1/4 = Public Line Opp 80 160.1

S 1/2 of Benson at (50)

E 25 165.6

1/4 29 165.2

1/4 Public Line Opp 36 164.5

S 1/4 of Benson

E 14 166.7

1/4 24 165.7

1/4 31 165.0

+ 15' Public Line 32 164.9

S 1/4 of Benson

E 08 167.3

1/4 1.9 166.2

1/4 25 165.6

+ 35' Public Line 31 165.0

16813

Center of Benson			
E	07	162.4	
bb	20	166.1	
1/4	27	165.4	
+6' = Pd of	36	164.5	

N 1/4 of Benson

E	08	162.3	
bb	21	166.0	
1/4	31	165.0	
+last = Pd	42	163.9	

N 1/2 of Ben

E	12	166.9	
bb	30	165.1	
1/4	41	164.0	
b	50	163.1	
+1' = Pd	53	162.8	

16812

Nelson

N. line of Benson			
E	20	166.1	
bb	35	164.6	
1/4	47	163.4	
b	57	162.4	
+45' = Pd	65	161.6	

25' n of Benson

E	43	163.8	
bb	58	162.3	
1/4	71	161.1	
b	84	159.7	
1/4	96	157.5	
+11' = Pd	100	158.1	

50' n of Benson

E	74	160.7	
bb	97	158.4	
1/4	104	157.7	
b	110	157.1	
1/4	119	156.2	
+13' = Pd	132	154.9	

16813

78.42 28 = Interval of PA

E		102	157.9
h		123	155.8
TP	0.17	<u>155.55</u>	<u>1270</u> 155.43
4		12	154.4
l		22	153.4
4		34	152.2
h		43	151.3
w		53	150.1

100 n of Benson

w		120	143.6
h		108	144.8
4		93	146.3
l		75	147.1
4		50	150.6
h		21	153.5
E		15	154.1

15355

Union

10003

125 n of Benson

E		97	145.9
h		116	144.0
4		129	142.7
TP	0.30	<u>142.80</u>	<u>1305</u> 142.50
l		16	141.2
4		33	139.5
h		45	138.3
w		62	136.4

150 n of Benson

w		88	134.0
h		70	135.8
4		57	137.1
l		42	138.6
4		29	139.9
h		15	141.3
E		7.4	143.2

14280

175' n of Benson

E	26	140.2
fr'	41	138.7
bl	57	137.1
y	73	135.5
b	86	134.2
y	100	132.8
bl	112	131.6
w	122	130.6

TP

0.07

129.90

129.7

129.83

200

200

Benson

w	6.6	123.6
bl	6.3	123.6
y	4.4	125.5
b	3.7	126.2
y	2.5	127.4
bl	1.5	128.4
E	0.0	129.9

12990

217' n of Benson

E	55	124.4
bl	72	122.7
y	91	120.8
b	107	119.2
y	118	118.1
bl	132	116.7
w	154	114.5

225' n of

Benson st

w	156	114.3
bl	148	116.7
y	138	116.1
b	132	116.7
y	128	117.1
bl	114	118.5
E	95	120.4

Ammonite

4

12990

250 n of Benson st

E	10.3	119.6
lh	10.0	119.9
7	9.4	120.5
b	7.9	122.0
4	7.7	122.2
lh	8.8	121.1
w	11.9	118.0

275 n of Benson

w	4.2	125.7
lh	2.4	127.5
4	1.0	128.9
b	0.7	129.2
4	1.5	128.4
lh	1.2	128.7
E	1.0	128.9

1250

14213

007

1298314213Amount

1000

300 n = S of Fremont st (50)

E	18	140.3
lh	31	139.0
4	44	137.7
b	50	137.1
4	62	135.9
lh	69	135.2
w	85	133.6

S of Fremont st

w	39	138.2
lh	35	138.6
4	24	139.7
b	14	140.7
4	00	142.1
TP	11.70	<u>15383</u>
lh	10.6	143.2
E	9.3	144.5

15383

S.	1/4 of	Freemont
E		68 147.0
SE		85 145.3
S		97 144.1
SW		107 143.1
W		116 142.2
WNW		128 141.5
W		136 140.2

Center of Freemont

W	114	142.6
SW	105	143.3
S	92	144.6
SE	83	144.5
E	71	146.7
ENE	62	147.6
E	43	149.5

15383

Union

6

N.	1/4 of	Freemont
E		21 151.7
SE		33 150.5
S		45 149.3
SW		57 148.1
W		70 146.8
WNW		78 146.0
W		85 145.3

N. 1/4 of Freemont

W	58	148.0
SW	55	148.3
S	48	149.0
SE	35	150.3
E	26	151.2
ENE	11	152.7
E	0.3	154.1



15383

n of Fragment W

W	29	150.9
bl	25	151.3
Y	20	151.8
b	0.3	153.5
Y	0.0	153.8
TP	0.0	153.8
bl	11.8	155.1
E	10.3	156.6

2.5 n of Fragment

E	4.8	162.0
bl	6.3	160.6
Y	7.6	159.3
b	8.5	158.4
Y	8.6	158.3
bl	10.0	156.9
W	10.4	156.5

16687

Union 24

50 n of Fragment

W	80	158.9
bl	66	160.3
Y	53	161.6
b	47	162.0
Y	40	162.9
bl	22	164.7
E	10	165.9

75 n of Fragment

TP	63	171.59	141	165.46
E			37	167.9
bl			50	166.6
Y			62	165.4
b			70	164.6
Y			80	163.6
bl			9.6	162.0
W			10.3	161.3

171.59

100' n of Fremont

W		10.1	161.5
	7.0		162.6
W		8.4	163.2
7		7.6	164.9
6		6.3	165.3
4		5.0	166.6
W		4.2	167.4
E		3.0	168.6

125' n of Fremont

E		3.6	168.0
W		5.3	166.3
4		6.5	165.1
6		7.4	164.2
4		8.7	162.9
W		9.7	161.9
W		11.5	160.1

171.59

Fremont st

8

150' n of Fremont

W		14.3	157.3
W		12.3	159.6
7		11.0	160.6
6		10.0	161.6
7		9.1	162.5
W		7.4	164.2
E		6.0	165.6

175' n of Fremont

E		8.9	162.7
W		10.4	161.5
7		11.9	159.7
6		13.2	158.4
TP	0.51	161.21	10.89 160.70
4		3.5	157.7
W		4.8	156.4
W		6.4	154.8

161.21

200 n f Framont

W	84	152.8
bl	65	154.7
y	59	155.3
b	55	155.7
y	44	156.8
bl	37	157.5
bl	17	159.5
E	95	160.7

225 n f Framont

E	21	152.1
bl	38	157.4
y	40	157.2
y	53	158.9
y	66	152.6
b	76	153.6
y	86	152.6
bl	91	153.1
W	110	150.2

161.21

Union

250 n f Framont

W	135	147.7
bl	123	148.9
y	114	149.8
b	101	151.1
y	94	151.8
bl	83	152.9
bl	80	153.2
bl	60	155.2
E	39	152.3

275 n f Framont

E	48	156.4
bl	55	152.7
bl	91	152.1
y	105	150.7
y	118	149.4
b	128	148.4

300 n = 5 dm of W. Union (50)

E	108	150.4
bl	120	149.2
TP	024	148.99
		12.46
		148.75

14899

275' n of Summit

N 3.4 145.6

bl 25 146.5

4 1.2 147.8

300' n = S 27 Winder 2750

W 5.7 143.3

bl 5.7 143.3

7 4.3 144.7

6 3.0 146.0

7 1.7 147.3

+6'

1.0 148.0

S bl. of Winder st

E 2.0 147.9

bl 3.2 145.8

7 4.3 144.7

6 5.3 143.7

7 6.3 142.7

bl 7.4 141.6

W 8.8 140.2

14899

Union

10

S 14 of Winder st

W 10.3 138.7

bl 8.6 140.4

7 7.8 141.2

6 6.9 142.1

7 5.4 143.2

bl 4.7 144.3

E 3.5 145.5

center of Winder

E 5.0 144.0

bl 6.3 142.7

7 7.2 141.8

6 8.7 140.3

7 9.3 139.7

bl 10.1 138.9

W 11.4 138.6

14899

N 1/4 of Winder

W	130	136.0
bb	118	137.2
y	106	138.4
b	184	138.6
y	94	139.6
H	82	140.8
E	68	142.2

N bb b Winder

E	84	140.6
bb	100	139.0
y	108	139.2
b	117	137.3
y	123	136.7
bb	132	135.8
W	140	134.4

TP 152 137.95 1252 136.43

A bb + 2 E 00 138.0

7th Part  
was in m  
winder

127.95

Union

11

N Side of Winder

W	48	133.2
bb	37	134.3
y	28	135.2
b	21	135.9
y	14	136.6
bb	09	137.1
E	00	138.0

25' N of Winder St

E	21	135.9
bb	23	
	24	
	25	
y	44	
b	48	133.2
y	55	
bb	67	
W	92	128.8

13795

50 n of Winder

W 12<sup>v</sup> 125.8bb 11<sup>v</sup>

y 8.8

b 74 6.7  
6.1 131.9

y 5.6

bb 7.1

E 7.5 130.5

75 n of Winder

E 4.8 133.2

bb 4.2

y 5.1

b 5.7 132.3

y 6.0

bb 7.2

W 9<sup>v</sup> 128.8

E 71 n of Winder

E 7.0 131.0

13795

Kamin

12

80 n of Winder

W 7.3 130.7

bb 6.4

y 5.8

b 5.6 132.4

y 4.8

bb 76 3.1

b 4.0

y 73 2.8

E 1.6 136.4

94 n of Winder

E 10 132.0

100 n of Winder

JP 11.0 141.03 15<sup>v</sup> 130.45

E 1.1 139.9

bb 4.5

y 7.0

b 8.0 133.0

y 8.4

bb 8.9

W 9.6 137.4

14103

125 n of Winder St

W		84	132.6
bl		76	
7		70	
b		69	134.6
7		56	
bl	+5'	48	
	+3'	39	
		24	
E		16	140.0

150 n of Winder

E		07	140.8
bl		29	
7		46	
b		54	135.6
7		64	
bl		70	
W		76	133.4

14103

14103

Korn

13

175 n of Winder St

W		70	134.0
bl		65	
7		58	
b		50	136.0
7		46	
		45	
bl	72	27	
E		10	140.0

200 n of Winder St

E		05	140.5
bl		20	
	73	47	
7		46	
b		50	136.0
7		54	
bl		63	
W		65	134.5

14/03

	225'	n of	Winder St	
W			7.6	133.4
hh			2.3	
y			6.2	
b			5.3	135.7
y			4.8	
hh			2.7	
E	75'		1.0	
			0.7	140.3

	250'	n of	Winder St	
E			1.0	140.0
hh			2.2	
y	75'		4.2	
y			5.0	
b			6.0	138.0
y			6.7	
hh			8.0	
W			8.9	132.1

14/03

Union

14

	275'	n of	Winder St	
W			11.5	129.5
hh			9.7	
y			9.0	
b			7.5	133.5
y			7.3	
hh			7.2	
hh			4.9	
E			3.1	137.9

	300'	n of	S of	Harusky St (50)	
E				7.4	133.6
hh				9.6	
y				10.7	
b				11.8	129.2
y				13.0	
7P	126			11.34	129.69
hh				3.5	127.5
W				4.8	126.2



12095

## S. 1/4 of Haraschy

W	6.8	124.2
th	5.3	
y	4.3	
h	3.3	127.7
y	2.7	
th	1.1	
E	403	131.4

## S. 1/4 of Haraschy

E	0.9	130.1
th	2.5	
y	3.4	
h	4.7	126.8
y	4.9	
th	6.2	
W	7.8	123.2

13095

Union  
15

## Center of Haraschy

W	8.7	122.8
th	6.3	
y	5.7	
h	4.8	126.2
y	4.1	
th	3.4	
E	2.7	128.8

## N. 1/4 of Haraschy

E	3.0	128.0
th	4.7	
y	4.6	
y	4.9	
h	5.7	125.8
y	6.0	
th	6.9	
W	8.4	122.6

130.95

21 lb of Karaschy

W	103	120.7
lb	88	
4	70	
b	65	124.5
4	59	
lb	57	
E	50	126.0

22 lbs of Karaschy

E	70	124.0
lb	74	
4	78	
b	88	122.2
4	100	
lb	111	
W	127	118.3

TP	063	118.69	1289	118.00
----	-----	--------	------	--------

118.69

Amount

16

25 lb of Karaschy

W	93	109.4
lb	85	
4	74	
b	65	112.5
4	50	
lb	33	
E	17	119.5

50 lb of Karaschy

E	121	106.6		
lb	130			
TP	009	105.78	130	105.69
4	13	100.5		
E	26	103.2		
4	34			
lb	44			
W	57	100.1		

10578

75' n of Harasity

W 127 93.1

bl 114

4 106

6 103 95.5

4 98

bl 89

E 84 97.4

TP 082 2321 1289 9289

100' n of Harasity

E 69 86.8

bl 77

4 104

6 114 82.3

4 120

bl 114

W 80

67 89.0

9371

110' n of Harasity

W 128 81.9

bl 105

4 97

6 92 84.5

4 89

bl 89

bl 110

E 81 85.6

125' n of Harasity

E 106 83.1

bl 83

4 80

6 85 85.2

4 91

bl 97

W 107 83.0

Union

9371

150 n 6 Karaschy

W		65	87.2
bl		5.8	
H		5.7	
b		55	88.2
Y		5.2	
	73	3.0	
bl		7.1	
	75	9.5	
E		7.9	85.8

162 n 6 Karaschy

E		88	84.9
	71	3.3	
bl		3.3	
Y		6.3	
b		37	90.0
Y		4.0	
bl		4.1	
W		4.3	89.4

170 n 6 H

E		24	91.3
---	--	----	------

9371

Münster

18

175 n 6 Karaschy st

W		0.0	93.7
bl		0.7	
Y		1.0	
b		0.7	93.0
Y		0.7	
bl		0.7	
E		1.0	92.7

7P 13.07 108.78 50 93.71

200 n 6 Karaschy

W		5.0	101.8
bl		5.1	
Y		5.4	
b		5.5	101.3
Y		5.5	
bl		5.6	
E		5.9	100.9

10678

225' n of Hardisty

E		0.8	106.0
bl		0.8	
γ		0.6	
b		0.7	106.1
γ		0.4	
bl		0.0	
W		7.0	107.0

TP 1293 11971 00 10678

250' n of Hardisty

W		5.4	114.3
bl		5.5	
γ		5.9	
b		6.4	113.3
γ		7.5	
bl		8.0	
E		8.2	111.5

TP 1266 13237 00 11971

13237

275' n of Hardisty

E		1.3	119.4
bl		1.2	
γ		1.2	
b		1.1	120.5
γ		1.1	
bl		1.1	
W		11.0	121.4

300' n = S of Mc Kee (50)

W		5.0	122.4
bl		5.8	
γ		6.3	
b		6.4	126.0
γ		6.6	
bl		6.4	
E		6.3	128.07

n SE of Kee

Union  
19

13237 ✓

S bl of Mc Kee W

E 35 128.9

bl 35

y 34

b 32 129.2

y 30

bl 27

W 21 130.2

TP 1160 14177 220 13017

Bm or 13'  
+ Mc Kee

S bl of Mc Kee W

W 98 32°

bl 104

y 105

b 108 31°

y 108

bl 108

E 108 31°

14177

center of Mc Kee

E 91 132°

bl 90

y 90

b 88 133°

y 84

bl 84

W 81 132°

N 1/4 of Mc Kee

W 65 35°

bl 74

y 73

b 75 34°

y 76

bl 80

E 75 34°

Union  
20

14177

N bl of the Ke

E	62	35 <sup>6</sup>
bl	61	
Y	60	
b	58	36 <sup>0</sup>
Y	56	
bl	54	
W	48	37 <sup>0</sup>

N dist of the Ke

W	23	39 <sup>5</sup>
bl	30	
Y	29	
b	34	38 <sup>4</sup>
Y	40	
bl	40	
E	42	37 <sup>6</sup>

TP

1247

14358

066

141.11

15358

Amor 20

21

25' N of the Ke W

E	116	42 <sup>0</sup>
bl	110	
Y	105	
b	98	43 <sup>8</sup>
Y	92	
bl	83	
W	74	46 <sup>2</sup>

50' N of the Ke

W	22	51 <sup>4</sup>
bl	28	
Y	30	
b	32	50 <sup>4</sup>
Y	34	
bl	38	
E	45	49 <sup>1</sup>

TP

1231

16537

052

15306

165.37

75' n f Mc Kee

E 10.3 55<sup>2</sup>

hh 10.0

y 9.8

b 9.6 55<sup>2</sup>

y 9.5

hh 9.4

w 8.8 57<sup>2</sup>

100' n f Mc Kee

w 4.6 60<sup>2</sup>

hh 4.4

y 4.3

b 4.1 61<sup>2</sup>

y 4.0

hh 3.8

E 4.0 61<sup>2</sup>165.37

125' n f Mc Kee

E 7.0 165<sup>2</sup>

hh 0.0

y 0.0

b 0.0 65<sup>2</sup>

y 0.2

hh 0.6

w 1.3 64<sup>2</sup>TP 7.71 172.96 0.1 165<sup>2</sup>

150' n f Mc Kee

w 8.3 164<sup>2</sup>hh 7.4 166<sup>2</sup>

y 6.9

b 6.3 166<sup>2</sup>

y 5.7

hh 5.3

E 4.3 68<sup>2</sup>

Ames

22



17296

175 mg Me Ke

E		3.2	169 <sup>8</sup>
ll		4.0	
γ		4.5	
b		4.9	68 <sup>1</sup>
γ		5.3	
ll		6.0	
w		6.7	66 <sup>3</sup>

200 mg Me Ke

w		6.4	66 <sup>4</sup>
ll		5.4	
γ		4.6	
b		3.8	69 <sup>2</sup>
γ		3.0	
ll		2.2	
E		1.0	72 <sup>0</sup>

17296

Amion

23

225 mg Me Ke

E		0.4	72 <sup>6</sup>
ll		1.8	
γ		2.8	
b		3.7	69 <sup>3</sup>
γ		4.3	
ll		5.4	
w		7.0	66 <sup>0</sup>

250 mg Me Ke

w		7.7	65 <sup>8</sup>
ll		5.8	
γ		4.8	
b		4.0	69 <sup>0</sup>
γ		3.3	
ll		2.3	
E		0.7	72 <sup>3</sup>

17296

275 n 7 Mc Ku

E	0.9	172.1
ll	2.1	170.9
γ	3.6	
b	4.5	68.5
γ	4.9	
ll	6.0	162.0
W	7.5	65.5

301 n = S 2 1 Pringle W (50)

W	8.3	64.5
ll	7.1	165.9
γ	6.2	166.8
b	5.5	67.5
γ	4.7	168.3
ll	3.7	162.3
E	2.1	170.9

17296

Pringle

24

S 1/2 of Pringle W

E	2.6	70.4
ll	4.4	
γ	5.2	
b	6.0	67.0
γ	7.0	
ll	7.8	
W	9.0	64.0

S 1/2 of Pringle

W	9.6	63.4
ll	8.3	
γ	7.4	
b	6.4	66.6
γ	5.2	
ll	4.3	
E	3.0	70.0

17296

Center of Pringle

E	33	69 <sup>2</sup>
bl	46	
4	58	
b	69	66 <sup>1</sup>
7	76	
bl	87	
w	101	62 <sup>9</sup>

N 1/4 of Pringle

w	107	62 <sup>3</sup>
bl	91	
4	83	
b	72	65 <sup>8</sup>
4	60	
bl	49	
E	35	69 <sup>5</sup>

17296

Amir

25

N 1/4 of Pringle

E	38	169 <sup>2</sup>
bl	53	167.7
4	61	
b	75	165 <sup>5</sup>
4	83	
bl	95	163 <sup>5</sup>
w	107	162 <sup>3</sup>

N 1/2 of Pringle

w	113	161 <sup>7</sup>
bl	98	163.2
4	85	
b	77	165 <sup>3</sup>
4	67	
bl	55	167.5
E	43	168 <sup>7</sup>

25' n f Ring 11

E		50	168°
th		64	166.6
4		74	
6		85	164.5
4		91	
th		100	163.0
W		118	61.2

30' n f Ring 11

W		128	60.2
th		109	
4		99	
6		91	63.9
4		80	
th		67	
E		51	67.9

TP

0.35

168.41

4.88

168.08

2.0

166.41

in Rock  
Prod

283.525 B.M. NW Butt Light mast S.E. cor 6th & Univ

282.09 B.M. SW 10th & Univ Plght.

283.90 N.W. 17th & Univ Plght.

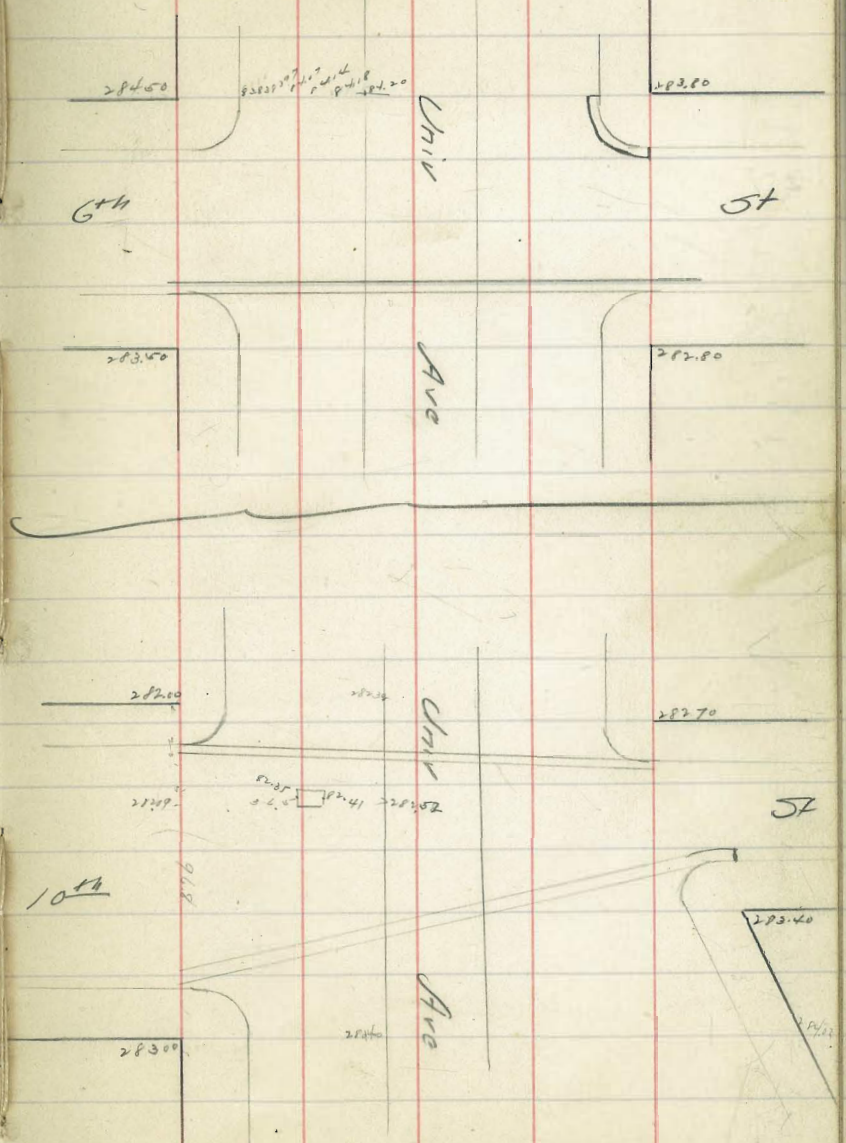
282.09	1.42	3.15	Pr. 15.2
4.71	282.34	280.14	4.27
286.79			

282.91	2.41	2.35	
4.55	4.38	4.22	
289.45	5.39	24.8	
	284.06	5.27	

282.91	2.41	2.35	
4.55	4.38	4.22	
289.45	5.39	24.8	
	284.06	5.27	

# Grades for Water Gate Covers on Univ Ave at 6th & 10th.

27



Lark 60' Street  
 X sect. Hooker from South  
 Pueblo south of Douglas.

line Washington to  
 Dec. 18/11

Childs  
 Jay  
 Bender

H.I.  
 9.52 276.90 267.38

25' 20.

			E line	3.6	273.3
	6' line Washington			3.3	73.6
East line	4.6	272.3		3.2	73.7
4' NW	4.8	72.1			
5' W	5.5	71.4	C	3.1	73.8
	4.9	72.0			
	4.5	72.4		3.3	73.6
C	4.3	72.6		3.1	73.8
	4.9	72.0	W. line	2.1	74.8
	4.8	72.1			
08 + 4'	5.1	71.8			
W. line	4.3	72.6	W. line	2.6	74.3
	4.1	72.8			
	1' 20' Washington			3.0	73.9
W. line	2.1	74.8		3.2	73.7
	3.2	73.7	C	2.8	74.1
	3.4	73.5		3.0	73.9
C	3.7	73.2		3.2	73.7
	4.0	72.9	E. line	3.3	73.6
	4.0	72.9			
E line	3.5	73.4			

Lark

75' so.

E line	3.0	73.9
	3.0	73.9
	2.8	74.1
C	2.6	74.3
	3.1	73.8
	3.0	73.9
W. line	2.9	74.0

100' so.

W. line	3.2	73.7
	3.2	73.7
	3.2	73.7
C	3.1	73.8
	3.2	73.7
	3.3	73.6
E line	3.3	73.6

Hoove 29

125' so.

E line	4.0	72.9
	4.0	72.9
	4.0	72.9
C	4.4	72.5
	3.9	73.0
	3.8	73.1
white	3.7	73.2

150' so.

W. line	4.5	72.4
	4.5	72.4
	4.9	72.0
C	4.9	72.0
	5.0	71.9
	5.1	71.8
E line	5.1	71.8

Lark

175' So.

E line	6.1	70.2
	6.1	70.8
	6.1	70.8
C	5.8	71.1
	5.7	71.2
	5.6	71.3
W. line	5.5	71.4

200' So.

W. line	6.5	70.4
	6.7	70.2
	6.9	70.0
C	6.8	70.1
	7.1	69.8
	7.3	69.6
E line	7.5	69.4

Hooker 30

225' So.

E line	8.7	68.2
	8.3	68.6
	8.1	68.8
C	7.8	69.1
	7.4	69.5
	7.6	69.3
W line	7.5	69.4

250' So.

W. line	8.3	68.6
	8.4	68.5
	8.6	68.3
C	9.0	67.9
	9.4	67.5
	9.6	67.3
E line	10.0	66.9



Lark

275' SO.

E line	10.7	266.2
	10.4	66.5
	10.1	66.8
C	9.8	67.1
	9.5	67.4
	9.3	67.6
W. line	9.5	67.4

300' SO. (North line & line plus)

W line	9.7	67.2
	10.0	66.9
	10.1	66.8
C	10.2	66.7
	10.7	66.2
	11.3	65.6
E line	12.1	64.8

Hooker

31

No. 1/6

E line	12.9	264.0
	11.7	65.2
	11.0	65.9
C	10.4	66.5
	10.2	66.7
	10.2	66.7
W. line	10.1	66.8

No. 1/4

W line	10.1	66.8
	10.3	66.6
	10.3	66.4
C	10.6	66.3
	11.3	65.6
	12.2	64.7
E line	13.7	63.2

Lark

Center Douglas

E line

14.6 262.3

12.9 64.0

11.9 65.0

C

11.1 65.8

10.6 66.3

10.4 66.5

w. line

10.3 66.6

So. 1/4

w. line

10.5 66.4

10.3 66.4

10.6 66.3

C

11.1 65.8

12.3 64.6

13.3 63.6

E line

14.9 62.0

Hooker

276,90

32

So. Eb.

E line

15.3 261.6

14.0 62.9

12.5 64.4

C

11.5 65.4

10.6 66.3

10.4 66.5

w. line

10.6 66.3

So. line Douglas

w. line

10.7 66.2

10.6 66.3

11.1 65.8

C

12.1 64.8

13.3 63.6

14.3 62.6

E line

15.9 61.0

Lark

H.I.

J.P.	2.12	266.46	12.56	264.34
	25' No. Douglas.			
E line			6.4	260.1
			5.3	61.2
			3.7	62.8
C			2.8	63.7
			1.5	65.0
			0.8	64.7
w. line			0.2	66.3
	50' No.			
w. line			1.3	65.2
			1.6	64.9
			1.9	64.6
C			3.2	63.3
			4.4	62.1
			6.0	60.5
E line			7.3	59.2

Hooker

33

	75' No.	
E line	8.3	58.2
	6.8	59.7
	5.5	61.0
C	4.9	61.6
	3.1	63.2
	2.4	64.1
w. line	2.3	64.2
	97' No.	
w. line	3.9	62.6
	4.2	62.3
	5.2	61.3
	6.1	60.4
	6.8	59.7
	7.8	58.7
E line	10.2	56.3

Lark

266.46

100' SO.

E line

10.4 56.1

8.1 58.4

7.1 59.4

c

7.0 59.5

6.2 60.3

5.5 61.0

w. line

5.4 61.1

J.P.

0.40 <sup>H.I.</sup> 253.92 12.94 253.52

125' SO.

w. line

4.0 49.9

3.5 50.4

2.7 51.2

c

3.5 50.4

4.2 49.7

4.6 49.3

E line

5.8 48.1

Hook 17

34

H.I.

J.P.

1.86 243.07 12.71 241.21

150' SO.

E line

4.7 38.4

4.2 38.9

4.1 39.0

c

4.3 38.8

4.8 38.3

5.4 37.7

w. line

6.1 37.0

(at west) 171.2 SO. Pueblo line

172.6 SO. at east. 13.8 29.3

w. line

13.0 30.1

12.0 31.1

c

11.0 32.1

10.9 32.2

11.0 32.1

E line

11.8 31.3

X Sect. 1st Street So. line  
to So. line of University av.

of Washington  
Dec. 18/11

H Childs  
Tay 35  
Bunker

J.P. 1.70 <sup>H.I.</sup> 280.68 278.98

25' So.

So. line <sup>Washington?</sup> University

W. line

9.1 71.6

W. line

7.8 78.9

3.3 77.4

2.3 78.4

3.0 77.7

1.9 78.8

C

2.8 77.9

C

1.6 79.1

2.5 78.2

1.7 79.0

1.7 79.0

1.3 79.4

E. line

1.0 79.7

E. line

0.9 79.8

50' So.

15' So.

E. line

1.6 79.1

E. line

0.9 79.8

2.4 78.3

1.3 79.4

2.7 78.0

2.1 78.6

C

3.3 77.4

C

2.6 78.1

3.6 77.1

2.8 77.9

3.4 77.3

2.9 77.8

W. line

10.1 70.6

W. line

8.6 72.2

	75' 20.		
W. line		10.1	70.6
		4.7	76.0
		3.4	77.3
		3.3	
C		3.3	77.4
		2.8	77.9
		2.4	78.3
E line		2.1	78.6
	100' 20.		
E line		2.4	78.3
		3.0	77.7
		3.4	77.3
C		3.7	77.0
		8.7	72.0
		10.7	70.0
W. line		14.5	66.2

	125' 20.		
W. 1/4.		12.7	68.0
C		9.3	71.4
		3.5	77.2
		3.4	77.3
E line		3.0	77.7
	150' 20.		
E line		2.9	77.8
		3.4	77.3
		6.7	74.0
C		13.3	67.4
	175' 20.		
E 1/4		11.2	69.5
		5.3	75.4
E line		3.3	77.4
	195' 20.		
E line		4.0	76.7
E. C. b.		7.6	73.1

280.68

300' RO.

E. cb	8.4	72.3
E line	5.6	75.1
J.P.	0.32	268.98
	12.02	268.66
125' RO.		
W. line	9.0	260.0
W. cb.	6.0	63.0

150' RO.

W. line	16.7	52.3
	11.1	57.9
W 1/4	6.1	62.9

175' RO.

C	5.1	63.9
W. 1/4	10.7	58.3

195' RO.

E 1/4	4.1	64.9
C	7.9	61.1
W 1/4	12.4	56.6

268.98

200' RO.

W 1/4	13.4	255.6
C	9.0	60.0
E 1/4	4.3	64.7

225' RO.

C	13.0	56.0
	8.8	60.2
	6.4	62.6
E line	5.7	63.3

0.23 256.83 1238 256.60

175' RO.

W. line	6.0	250.8
W. cb.	4.6	52.2

195' RO.

W. line	6.4	50.4
+9	6.6	50.2
W cb	4.7	52.1

200' RO.

W. line	6.8	50.0
W. cb.	6.2	50.6

225' 20.

w. line	6.0	250.8
+3'	8.9	47.9
	9.1	47.7

w 1/4.	6.0.	50.8
--------	------	------

250' 20.

w. line	4.5	52.3
	8.5	49.3
cb+1'	10.4	46.4
	11.1	45.7

c	7.3	49.5
---	-----	------

	5.3	51.5
--	-----	------

	5.2	51.6
--	-----	------

Elise	5.0	51.8
-------	-----	------

269' 20.

Elise	12.0	44.8
-------	------	------

	12.4	44.4
--	------	------

	11.8	45.0
--	------	------

c	12.6	44.2
---	------	------

c+5'	18.9	42.9
------	------	------

	12.1	44.7
--	------	------

	9.4	47.4
--	-----	------

w line	6.2	50.6
--------	-----	------

275' 20.

w. line	6.1	50.7
---------	-----	------

	9.7	47.1
--	-----	------

	12.4	44.4
--	------	------

	14.1	42.7
--	------	------

	13.2	43.6
--	------	------

	13.1	
--	------	--

	13.1	41.7
--	------	------

	14.2	42.6
--	------	------

Elise	14.3	42.5
-------	------	------

281' 20.

Elise	12.2	44.6
-------	------	------

	12.9	43.9
--	------	------

	13.7	43.1
--	------	------

	15.4	41.4
--	------	------

	12.6	44.2
--	------	------

	9.4	47.4
--	-----	------

	6.1	50.7
--	-----	------

w line		
--------	--	--



Dec. 19/11

 Childs  
 Taylor 39  
 Barber

H.J.

256.83

300' So.

8.38 252.22

248.84

W. line

7.5 49.3

350' So.

10.3 46.5

W. line

12.4 239.8

+6'

13.0 239.2

1/4 + 8'

14.0 42.8

13.9 238.3

C

16.5 42.3

15.3 41.5

6.9 45.3

11.6 45.2

C

2.2 50.0

7.8 49.0

361' So.

E line

7.0 49.8

C

0.6 51.6

325' So.

4.2 48.0

E line

-0.2 257.0

9.2 43.0

4.0 52.8

W. line

11.9 50.3

0.3

+6'

14.8 38.1

8.1 48.7

371' So.

37.4

C

12.5 44.3

W. line

12.5 39.7

17.5 39.3

1/4 + 5'

8.0 44.2

15.5 41.3

14.4 42.4

W 1/4

3.8 48.4

W. line

12.3 44.5

375' So.

L.J.P.

12.99 243.84

W 1/4

3.1 49.1

H.J.P.

0.21 256.62

8.0 44.2

W. line

12.2 40.0

	25-2,22				264.11		
	400' RD.				371' RD.		
w. line		11.7	240.5	E 1/4		3.5	260.6
		6.9	45.3	C		9.0	55.1
w 1/4		2.6	49.6		375' RD.		
	425' RD.			C		9.0	55.1
w 1/4		0.5	51.7	E 1/4		3.8	60.3
		5.5	46.7		400' RD.		
w. line		10.2	42.0	C		8.3	55.8
	450' RD.			E 1/4		2.0	62.1
w. line		3.5	48.7		425' RD.		
J.P.	H.I. 13.06 264.11	11.7	251.05	C		6.1	58.0
	350' RD.			E 1/4		0.0	64.1
E 1/4		9.3	54.2		450' RD.		
E cb.		3.8	60.3	w 1/4		5.5	58.6
	361' RD.			w cb.		10.9	53.2
E cb.		0.7	63.4		467' RD.		
E 1/4		6.3	57.8	w line +9 w cb		8.4 6.1 4.7	255.7 58.0 59.4

	264.11						
	475' Ro.					450' So.	
White		1.8	62.3	Elise		1.1	75.5
J.P.	12.98 276.60	0.49	263.62			1.3	75.3
	350' Ro.					5.1	71.5
E. line		12.3	64.3	C		10.4	66.2
	361' Ro.					467' Ro.	
Elise		8.5	68.1	Elise		1.2	75.4
	371' Ro.					1.6	75.0
Elise		6.3	71.3			2.3	74.3
E. cb		10.3	66.3	C		3.3	73.3
	375' Ro.			w 1/4		7.9	68.7
E. cb.		10.1	66.5	1/4+8		12.5	64.1
Elise		4.2	72.4			475' Ro.	
	400' Ro.			w. cb.		10.5	66.1
Elise		2.3	74.3	1/4		6.8	69.8
E. cb.		7.9	68.7	1/4+4'		4.3	72.3
	425' Ro.			C		3.0	73.6
E. line		1.4	75.2			2.1	74.5
E. cb.		5.8	70.8	E. line		1.6	75.0
						1.1	75.5

500' 20.

E line	1.0	275.6
	1.6	75.0
	2.3	74.3
c	2.8	73.8
	3.2	73.4
	3.4	73.2
w. line	4.1	72.5

525' 20.

w. line	3.1	73.5
	3.4	73.2
	3.3	73.3
c	2.8	73.8
	2.3	74.3
	1.8	74.8
E line	1.3	75.3

550' 20.

E line	1.8	74.8
	2.3	74.3
	2.6	74.0
c	3.0	73.6
	3.1	73.5
	3.3	73.3
w. line	3.2	73.4

560' 20. (w. line University ave)

w. line	3.3	73.3
	3.6	73.0
	3.3	73.3
c	3.0	73.6
	2.5	74.1
	2.2	74.4
E line	2.0	74.6

	No. of			Center		
E line		2.2	274.4	E line	24	274.2
		2.6	74.0		2.6	74.0
		3.0	73.6		2.9	73.7
c		3.2	73.4	c	3.1	73.5
		3.3	73.3		3.4	73.2
		3.8	72.8		3.6	73.0
w. line		3.8	72.8	w. line	3.6	73.0
	No 1/4				So 1/4	
w. line		4.0	72.6	w. line	4.0	72.6
		3.7	72.9		3.7	72.9
		3.3	73.3		3.6	73.0
c		2.9	73.7	c	3.4	73.2
		2.8	73.8		2.3	74.3
		2.5	74.1		2.1	74.5
E line		2.3	74.3	E line	2.0	74.6

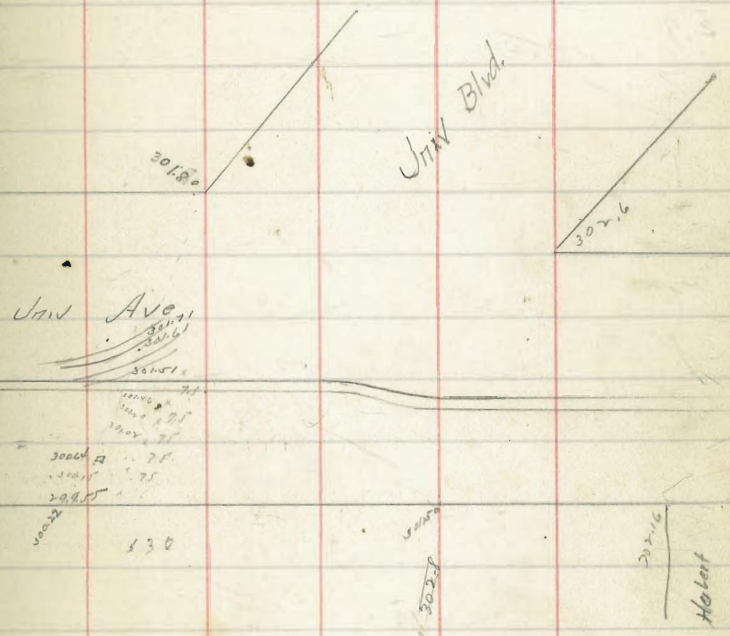
	So. cb.		
E line		2.5	74.1
		2.6	74.0
		2.9	73.7
C		3.4	73.2
		4.2	72.4
		4.1	72.5
W line		4.3	72.3
	1' No. of So. line		
W line		4.8	71.8
		4.9	71.7
		4.8	71.8
C		4.0	72.6
		4.1	72.5
		3.8	72.8
E line		2.6	74.0

	So. line University ave.		
E line		4.4	272.2
		4.9	71.7
		4.8	71.8
C		5.0	71.6
		5.3	71.3
		5.4	71.2
W line		5.4	71.2

301.73	379	301.60	302.6	301.47	302.16	300.21	300.64	301.4
308.52	44.						4.88	4.23

Univ Ave & Univ Blvd right.

Grade for Gate Cover Univ Ave & Univ Blvd



E line Univ Blvd and Univ Ave 302.9

Water

$\frac{1}{2}$  /  $\frac{1}{2}$  /  $\frac{1}{2}$  X Sec of E rd of 20' rd (80')  
 rd of C to rd of B

	303	97.87		94.84	Bm SW DT 20
	9.69	<del>96.75</del>	88.1	89.06	
	N	Line	f.	C ST	
E			88	90.0	
ll			100	88.8	
7			103	88.5	
6			108	88.0	
	6'	n of	BT		
E			93	89.5	
ll			116	87.2	
7			117	87.1	
6			112	87.6	
	25'	n of	BT		
E			85	90.3	
ll			120	86.8	
7			112	87.6	
6			116	87.2	

98.75

20' rd

	50'	n of	BT	
			4.7	94.1
			8.5	90.3
			11.2	87.6
			12.3	86.5
	63'	n of	BT	
			3.5	95.3
			7.0	91.8
			11.3	87.5
			12.5	86.3
	75'	n of	BT	
			2.8	96.0
			4.7	94.7
			9.4	89.4
			11.2	87.6
			11.8	87.0
			13.0	85.8
	100'	n of	BT	
			1.8	97.0
			4.0	94.8
			9.5	89.3
			11.7	87.1
			13.8	85.0



9875

125' n of 61

E		0.5	78.3
h	+8'	2.0	96.8
	+11'	8.1	90.7
		9.6	89.2
4		11.0	87.8
	+2'	11.2	87.6
1	+3'	12.3	86.7
		15.6	83.2

150' n of 61

E		2.7	96.1
h	+6'	4.7	94.4
	+8'	8.8	90.0
		11.2	87.6
4		12.2	86.6
	+1'	13.5	85.5
6	+9'	17.4	84.4
			81.1

175' n of 61

E		8.6	90.2
h		13.0	85.8

TP

131

8791

1215 86.60

4		6.5	81.4
	+6'	7.4	80.5
6		8.8	79.1

150' n of 61

1/4 + 10		6.1	81.8
6		6.8	81.1

8791

205' n of 61

E		5.1	84.8
h		8.7	79.2
	+3'	9.7	78.2
4		10.9	77.9
6		11.1	76.8

225' n of 61

E		8.7	79.2
	+3'	9.7	78.2
h		11.0	76.9
4		12.5	75.4
6		13.0	74.9

250' n of 61

E		9.9	78.0
	+8'	12.4	75.5
h		13.0	74.9
4		14.3	73.6
6		15.0	72.9

265' n of 61

E		11.0	76.9
h		15.0	72.9
4		15.4	72.6
6		16.2	71.7

47

87.91

275' n of B st

E	152	72.7
bl	182	69.7
y	162	71.7
b	162	71.7
b	164	71.5

7P 030 76.75 1146 76.45 74-1 842m

282' n = City State Fence

285' n of B st

E	46	72.1
bl	72	69.5
y	78	68.9
b	78	69.0

300' n = S end of B st (80)

E	55	71.2
bl	82	68.5
y	80	68.7
b	72	69.5

76.75

2022 st

48

S end of B st

E	67
bl	82
y	84
b	82

S 1/4 of B st

E	71
bl	83
y	89
b	87

center of B st

E	73
bl	83
y	90
b	88

n 1/4 of B st

E	73
bl	83
y	89
b	91

76.75

2 1/4 of B.W.

E 70

ll 80

y 90

t 93

2. Sum of B.W.

E 65

ll 65

y 71.25

t 85

t 94

15/12  
Blough  
Dunbar  
July

Elevations for Slopes on Palm St  
at Dale St

			28075	Br End of Bridge
305	317.86		314.81	20' Elev Palm St
252	<u>307.53</u>	12.85	305.01	
20' S of Palm St				
Leant of Dale St		57	302.5	
TP	050	<u>295.23</u>	12.80	294.73
E 2 of Dale		64		288.8
90' E of Dale		73		287.9
100 E	Jurassic Prop			-59
TP	090	<u>283.53</u>	12.60	282.63
40' S of Palm St				
36' E of Dale		95		274.0
72' E of Dale		91		274.4
55' S of Dale St				
60' E of Dale		180		265.5

Slope on N side of Palm is regular  
on the East Side  
west side is being graded

Dale St



Total Slope  
= 1602.6

X Sec. of Janitor St (80')

Fern to 600' E of 31st (32nd St)

277 28850

285.73

mm n w  
pulp + Fern

E line of Fern st

n	5.2	83.3
bb	5.2	83.3
4	5.7	82.8
6	5.6	82.9
4	5.7	82.8
bb	5.7	82.8
S	5.3	83.2
25' E of Fern st		
S.	5.5	83.0
bb	6.0	82.5
4	5.7	82.8
6	5.6	82.9
4	5.4	83.1
H	5.0	83.5
n	4.4	84.1

288.50

Janitor

51

50 E of Fern st

n	4.4	84.1
H	4.8	83.7
4	4.9	83.6
6	5.3	83.0
4	5.7	82.8
H	5.8	82.7
S	5.3	83.2

75 E of Fern st

S	5.0	83.5
H	5.6	82.9
4	5.4	83.1
4	5.0	83.5
4	4.7	83.8
H	4.5	84.0
n	4.3	84.2

28850

100<sup>c</sup>

E of

Zerru

n	40	84.5
th	43	84.2
y	45	84.0
b	45	84.0
4	49	83.6
th	53	83.2
S	50	83.5

125<sup>c</sup>

E of

Zerru

S	51	83.4
th	51	83.4
y	50	83.5
b	47	83.8
9	43	84.2
th	45	84.0
n	43	84.2

28850

Zerru

52

150<sup>c</sup>

E of

Zerru

n	41	84.4
th	43	84.2
y	44	84.1
b	46	83.9
4	49	83.6
th	49	83.6
S	48	83.7

175<sup>c</sup>

E of

Zerru

S	44	84.1
th	40	84.5
y	40	84.5
b	38	84.7
9	36	84.9
th	38	84.7
n	33	85.2

28850

200

E of

Zermatt

n	33	852
th	35	850
y	37	848
b	41	844
y	43	842
th	44	841
S	46	839

225

E of

Zermatt

S	51	834
th	51	834
y	51	834
h	48	837
y	46	839
th	45	840
n	40	845

7P

408

28893

355

28495

28993

250

E of Zermatt

n	58	841
th	62	837
y	65	834
b	68	831
y	67	830
th	67	830
S	71	828

275

E of

Zermatt

S	65	834
th	63	836
y	70	829
b	67	832
y	66	833
th	62	837
n	60	839

53

28923

300 E of Fern

n	58	84.1
ll	63	83.6
y	65	83.4
b	66	83.3
4	65	83.4
ll	65	83.4
S	65	83.4

325 E of Fern

S	61	83.8
ll	60	83.9
y	60	83.9
b	60	83.9
y	58	84.1
ll	56	84.3
n	52	84.7

28923

350 E of Fern

n	45	85.9
ll	47	85.2
y	50	84.9
b	52	84.7
4	52	84.7
ll	49	85.0
S	52	84.7

375 E of Fern

S	53	84.6
ll	50	84.9
y	47	85.2
b	45	85.4
y	44	85.5
ll	42	85.7
n	39	86.0

54



28993

	400	E 7	Temp	
2			33	86.6
th			37	86.2
7			39	86.0
6			40	85.9
4			43	85.6
th			47	85.2
5			49	85.0

	425	E 7	Temp	
5			46	85.3
th			45	85.4
7			43	85.6
6			40	85.9
7			38	86.1
th			34	86.5
n			32	86.7

28993

 number 4  
 55

	450	E 7	Temp	
2			30	86.9
th			30	86.9
7			33	86.6
6			35	86.4
4			39	86.0
th			41	85.8
5			41	85.8

	475	E 7	Temp	
5			38	86.1
th			37	86.2
7			38	86.1
6			35	86.4
7			32	86.7
th			30	86.9
n			27	87.2

28993

STN	E of	Fern	W
n		27	87.2
th		27	87.2
y		32	86.7
b		33	86.6
y		36	86.3
H		37	86.2
S		37	86.2

STN	E of	Fern	W
S		36	86.3
th		34	86.5
y		34	86.5
b		31	86.8
y		29	87.0
th		27	87.2
n		25	87.4

28993

Juniper

56

STN	E of	Fern	W
n		23	87.6
th		24	87.5
y		26	87.3
b		29	87.0
y		34	86.5
H		36	86.3
S		37	86.2

STN	E of	Fern	W
S		37	86.2
th		33	86.6
y		34	86.5
b		31	86.8
y		28	87.1
th		26	87.3
n		24	87.5

TP 158 28993 240 28753

SW 312x  
+  
Juniper

29211

596 E = W 2 of 31 st st (60)

n	46	87.5
u	47	87.4
y	50	87.1
b	50	87.1
7	50	87.1
u	48	87.3
S	56	86.5

W 66 y 31 st st

S	54	86.7
u	54	86.7
y	53	86.8
b	52	86.9
7	50	87.1
u	47	87.4
n	45	87.6

29211

W 1/4 y 31 st st

n	44	87.7
u	46	87.5
y	49	87.2
b	52	86.9
7	54	86.7
u	53	86.8
S	54	86.7

center of 31 st

S	54	86.7
u	54	86.7
y	53	86.5
b	52	86.9
7	48	87.3
u	44	87.7
n	42	87.9

Jumbo  
57

29211

	E	1/4 of	31	at
n			43	87.8
h			45	87.6
4			48	87.3
6			50	87.1
7			50	87.1
h			53	86.8
5			57	86.9

	E	1/4 of	31	at
5			52	86.9
h			52	86.9
7			48	87.3
6			48	87.3
4			48	87.3
h			45	87.6
n			42	87.9

29211

January 58

	E	1/4 of	31	at
n			43	87.8
h			46	87.5
4			47	87.4
6			47	87.4
7			46	87.5
h			50	87.1
5			50	87.1

	E	1/4 of	31	at
4.80			29243	28753
25			E of	31
n			46	87.8
h			46	87.8
4			46	87.8
6			50	87.4
7			50	87.4
h			53	87.1
5			53	87.1

July 31 1949  
January

292.43

50' E of 31 st W

S	55	86.9
ll	52	87.2
4	48	87.6
b	50	87.4
4	48	87.6
ll	46	87.8
n	47	87.7

75' E of 31 st W

n	41	88.3
ll	43	88.1
4	46	87.8
b	49	87.5
4	50	87.4
ll	52	87.2
S	53	86.9

292.43

Janitor

59

100' E of 31 st W

S	54	87.0
ll	52	87.2
4	49	87.5
b	48	87.6
4	48	87.6
ll	44	88.0
n	42	88.2

125' E of 31 st W

n	40	88.4
ll	43	88.1
4	45	87.9
b	45	87.9
4	49	87.5
ll	50	87.4
S	48	87.6

29243

150 E 8 31 11

S 5.2 87.2

h 5.0 87.4

7 4.8 87.6

6 4.7 87.7

4 4.4 88.0

h 4.1 88.3

h 3.6 88.8

175 E 9 31 11

h 3.6 88.8

h 4.0 88.4

4 4.2 88.2

6 4.5 87.9

4 4.7 87.7

h 4.9 87.5

5 5.1 87.8

29243

200 E 4 31 11

S 4.2 87.5

h 4.2 88.2

4 4.0 88.4

6 4.3 88.1

4 4.2 88.2

h 3.8 88.6

h 3.6 88.8

200 E 4 31 11

h 3.2 89.2

h 3.7 88.7

4 4.1 88.3

6 4.1 88.3

4 4.3 88.1

h 4.8 87.6

5 5.0 87.4

60

29243

	250	E 7	31	11
S			52	87.2
bb			51	87.3
4			47	87.7
6			44	88.0
4			42	88.2
ll			37	88.7
n			29	89.5
	275	E 7	31	21
n			24	90.0
ll			33	89.1
4			39	88.5
6			42	88.2
4			49	87.5
ll			51	87.3
S			53	87.1

29243

June 1904

61

	300	E 7	31	11
S			52	87.2
ll			50	87.4
4			49	87.5
6			43	88.1
4			40	88.4
ll			28	89.6
n			22	90.2
	320	29258	305	289.38
	325	E 7	31	21
n			37	88.9
ll			44	88.2
4			61	86.5
6			69	85.7
4			67	85.9
ll			64	86.2
S			66	86.0

29258

350 E of 31 st st

S		105	82.1
bb		112	81.4
4		132	79.4
b		124	80.2
	+8'	122	80.4
4		90	83.6
	+7'	89	83.7
bu	+9'	101	82.6
		93	82.9
n		72	85.4

355 E of 31 st st

n		95	83.1
bb		110	81.6
	+3'	110	81.6
	+5'	90	83.6
4		90	83.6
	+5'	114	81.2
b		130	79.6
4		160	76.6
h		136	79.0
S		121	80.5

367 E of 31 st

S sin		192	73.4
-------	--	-----	------

29258

Juniper st

62

375 E of 31 st

S		167	75.9
h		115	81.1
4		90	83.6
b		66	86.0
4		62	86.4
h		52	87.4
2		50	87.6

400 E of 31 st st

2		30	89.6
h		36	89.0
4		47	87.9
b		59	86.7
4		75	85.1
h		81	84.5
S		103	82.3



29258

425'	E of	31 M	W
S		67	85.9
bl		55	87.1
4		44	88.2
b		40	88.6
4		34	89.2
bl		29	89.7
n		24	90.2

450'	E of	31	W
n		15	91.1
bl		20	90.6
4		24	90.2
b		28	89.8
4		33	89.3
bl		39	88.7
S		58	86.8

29258

Juniper

63

475'	E of	31	W
S		45	88.1
bl		34	89.2
4		28	89.8
b		23	90.3
4		18	90.8
bl		14	91.2
n		12	91.4

TP	336	294.90	104	291.54
500'	E of	26	31 W	
n		30	91.9	
bl		35	91.4	
4		38	91.1	
b		41	90.8	
4		45	90.4	
bl		50	89.9	
S		57	89.2	

29490

	525	E of	31 N N	
S			51	99.8
th			46	90.3
4			41	90.8
6			37	91.2
4			35	91.4
th			32	91.8
n			27	92.2

550 E of 31 W

n			24	92.5
th			27	92.2
4			32	91.7
6			36	91.3
4			38	91.1
th			43	90.6
S			46	90.3

29490

Janiter

64

575 E of 31 W

S			46	90.3
th			39	91.0
4			33	91.6
6			31	91.8
4			28	92.1
th			24	92.5
n			19	93.0

600 E = W line 32 W

n			15	93.4
th			20	92.9
4			25	92.6
6			28	94.1
4			30	91.9
th			35	91.4
S			39	91.0
TP			390	291.0

SW 4th 32

B.M. 267.96 Mon SW. Cor Madrona & Trias.

267.96  
+1.67  
269.63  
-8.85  
260.78  
+0.23  
261.01  
-10.19  
250.82

May 6-1912 {  
Dunn  
Shan  
Derrill

250.82 Hub N.E. Cor Hickory & Hortensia

HI

252.52

Hickory St (50)

6

Connection of Hickory St (50), Witherby St - 10' under 7 1/2' entrance

+ HI -  
1.65 252.52 250.87

00 = West line of Witherby St.

00

M.L.

1.1 257.4

M.L.

3.0 249.5

Ch

1.1 251.4

M.L.

6.2 246.3

1/4

1.4 251.1

Ch

6.8 246.2

C

1.3 257.2

1/4

6.2 246.3

1/4

1.2 251.3

C -

7.0 245.5

Ch

1.5 251.0

1/4

8.6 248.9

V.L.  
+20

1.9 250.6

+75

M.L.

11.0 241.5

1/2

3.7 248.8

+5

12.8 239.7

+3

3.8 247.7

Ch

16.0 236.0

+7

7.4 245.1

+3

13.3 239.2

Ch

7.1 245.4

1/4

11.6 240.9

+3

4.5 248.0

C

9.4 244.1

1/4

4.0 248.5

1/4

8.6 243.9

C

3.9 248.6

Ch

9.0 243.5

1/4

3.6 248.9

M.L.

10.5 242.0

Ch

3.2 249.3

at +75 slope 12' north of line

13.3

	+	H.I. 202.52	-	Hickory St 50' - 10' cl 7 1/2' 2h
#	0.24	240.09	12.68	239.84
+100 M.L.			5.8	239.3
cl			5.6	234.5
1/4			5.4	234.7
c			6.6	233.5
1/4			7.8	232.8
+5			8.5	231.6
cl			10.5	229.6
+5			6.4	233.7
D.L.			5.1	235.0
+120 D.L.			12.4	227.7
cl			11.9	228.3
1/4			11.8	228.8
c			12.0	228.1
1/4			9.5	230.6
cl			6.2	233.9
M.L.			2.9	237.2
+150 M.L.			6.6	233.5
cl			6.6	233.5
1/4			5.7	234.5

	+	H.I. 240.09	-	Hickory St (50')
c			5.2	234.9
1/4			5.8	234.3
cl			6.6	233.5
D.L.			8.6	231.5
at 1450 slope 20' N. with of line			14.5	225.6
" " " 30' " " "			14.5	225.6
at 1475 slope 30' " " "			10.6	229.5
+170 D.L.			3.4	236.7
#	11.94	251.40	6.58	239.50
cl			12.9	238.5
1/4			11.7	239.7
c			11.2	240.2
1/4			16.8	240.6
cl			11.2	240.2
M.L.			12.2	239.2
at 1475 slope 15' N. of M.L.			15.0	236.4
+150 M.L.			6.6	244.8
cl			6.1	245.3
1/4			6.3	245.1
c			7.0	244.4

	H.I. 251.44		Hickory <sup>st</sup> (oz)
1/4		7.7	243.7
cl		9.5	242.9
S.L. 2+20		9.5	241.9
S.L.		7.4	244.0
cl		6.5	244.9
1/4		6.0	245.4
c		5.8	245.6
1/4		5.7	245.7
cl		5.6	245.8
M.L. 2+50		5.4	246.0
M.L.		3.8	247.6
cl		4.0	247.4
1/4		4.1	247.3
c		4.2	247.2
1/4		4.6	246.8
cl		5.0	246.4
S.L.		5.4	246.0
2+75		4.0	247.4
S.L.		3.3	248.1
cl		2.8	248.7

	H.I. 251.44			
c		2.3	249.1	
1/4		2.3	249.1	
cl		2.2	249.2	
M.L.		2.1	249.3	
3+00 = East line of Hortensia St. (50)				
3+00				
M.L.		0.3	251.1	
cl		0.6	250.8	
1/4		0.7	250.7	
c		0.8	250.6	
1/4		1.0	250.4	
cl		1.1	250.3	
S.L.		1.6	249.8	
East curb of Hortensia St.				
S.L.		0.9	250.5	
cl		0.5	250.9	
1/4		0.4	251.0	
c		0.1	251.3	
1/4		0.0	251.4	
#	9.64	260.51	0.53	250.87
cl			9.9	251.7

	+	H.I. 260.51	-	Hikory <sup>st</sup> <sup>10' under</sup> (00) 7 1/2' under
M.L.			8.7	251.8
East 1/4 of Hortensia St.				
M.L.			8.6	251.9
c.b.			8.7	251.8
1/4			8.8	251.7
c			8.9	251.6
1/4			9.0	251.5
c.b.			9.0	251.5
N.L.			9.3	251.2
Center of Hortensia St.				
N.L.			8.7	251.8
c.b.			8.5	252.0
1/4			8.6	251.9
c			8.2	252.3
1/4			8.1	252.4
c.b.			8.0	252.5
M.L.			7.8	252.7
West 1/4 of Hortensia St.				
M.L.			7.5	253.0
c.b.			7.3	253.2

	+	H.I. 260.51	-	
1/4			7.5	253.0
c			7.9	252.6
1/4			8.1	252.4
c.b.			8.1	252.4
N.L.			8.3	252.2
West end of Hortensia St.				
N.L.			7.7	252.8
c.b.			7.6	252.9
1/4			7.6	252.9
c			7.8	253.2
1/4			7.1	253.4
c.b.			7.2	253.3
M.L.			6.7	253.8
00 = West line of Hortensia St.				
M.L.			6.3	254.2
c.b.			6.4	254.1
1/4			6.8	253.7
c			6.7	253.8
1/4			6.8	253.7
c.b.			7.0	253.5

	+	H.I. 260.51	-	Hickory St (60)
V.L.			7.1	253.4
+25				
V.L.			5.6	254.9
cl			5.4	255.1
1/4			5.4	255.1
c			5.8	253.2
1/4			5.0	255.5
cl			4.9	255.6
M.L.			4.8	255.7
+50				
M.L.			3.0	257.5
cl			3.2	257.3
1/4			3.4	257.1
c			3.6	256.9
1/4			4.0	256.5
cl			3.8	256.7
V.L.			4.2	256.3
+75				
V.L.			2.4	258.1
cl			2.1	258.4
1/4			2.3	258.2
c			1.7	258.8
1/4			1.5	259.0

	+	H.I. 260.50	-	
cl			1.3	259.2
M.L.			1.2	259.3
#	8.22	268.29	0.43	260.07
1400				
M.L.			7.1	261.2
cl			7.3	261.0
1/4			7.6	260.7
c			7.9	260.4
1/4			8.2	260.1
cl			8.2	260.1
V.L.			8.4	259.9
+125				
V.L.			6.5	261.8
cl			6.5	261.8
1/4			6.5	261.8
c			6.1	262.2
1/4			6.0	262.3
cl			5.8	262.5
M.L.			5.5	262.8
+50				
M.L.			4.4	263.9
cl			4.7	263.6
1/4			5.0	263.3

	H.I. 263.29	Highway Vt 50 7 1/2 meters 10' curbs	
c		5.0	263.3
1/4		5.3	263.0
ct		5.3	263.0
N.L. 1475		4.9	263.4
N.L.		4.8	263.5
ct		4.7	263.6
1/4		4.7	263.6
c		4.4	263.9
1/4		4.5	263.8
ct		4.2	264.1
N.L. 2400		4.0	264.3
N.L.		4.0	264.3
ct		4.1	264.2
1/4		4.3	264.0
c		4.5	263.8
1/4		4.6	263.7
ct		4.7	263.6
N.L. 2420		4.8	263.6
N.L.		5.1	263.2
ct		4.8	263.5

	H.I. 264.29		
1/4		4.7	263.6
c		4.5	263.8
1/4		4.3	264.0
ct		4.2	264.1
N.L. 2400		3.9	264.4
N.L.		4.0	264.3
ct		4.3	264.0
1/4		4.5	263.8
c		4.7	263.6
1/4		5.0	263.3
ct		5.0	263.3
N.L. 2475		5.2	263.1
N.L.		5.2	263.1
ct		5.0	263.3
1/4		5.0	263.3
c		4.9	263.4
1/4		4.6	263.7
ct		4.4	263.9
N.L.		4.1	264.2
3400 = East line of Fair St. (50)			



	+	H.I. 269.29	-	Hickory (00) St.
st 100 M.L.			4.0	264.3
ct.			4.5	263.6
1/4			4.8	263.5
c			4.9	263.3
1/4			4.9	263.3
ct			5.2	263.1
V.L.			5.4	262.9
00 = West line of Fair St.				
00				
V.L.			5.8	262.5
ct			5.6	262.7
1/4			5.3	262.0
c			5.3	263.0
1/4			5.2	262.1
ct			5.2	262.1
M.L.			4.7	263.6
+25				
M.L.			5.3	263.0
ct			5.8	262.4
1/4			5.5	262.8
c			5.5	262.8
1/4			5.6	262.7

	+	H.I. 269.29	-	
			5.9	262.4
			6.0	262.3
			6.5	261.8
			6.2	262.1
			5.9	262.4
			5.8	262.5
			6.1	262.7
			6.2	262.1
			5.5	262.8
	165	264.38	5.39	262.50 mon Cen Trids & Hickory.
			2.3	262.3
			3.0	261.6
			2.8	261.8
			2.7	261.9
			2.7	261.9
			3.0	261.6
			3.3	261.3
			3.9	260.7
			3.6	261.0
			3.4	261.7

	+	H.I. 264.55	-	Hickory Mt (50)
c			3.3	261.3
1/4			3.6	261.0
ct			3.5	261.1
M.I. 1+20			3.2	261.4
M.I.			3.6	260.8
ct			4.15	260.1
1/4			4.4	260.7
c			4.2	260.4
1/4			4.3	260.3
ct			4.4	260.7
M.I. 1+50			4.7	259.7
M.I.			5.8	258.8
ct			5.3	259.3
1/4			5.4	259.7
c			5.2	259.4
1/4			5.1	259.6
ct			5.2	259.6
M.I. 1+75			4.6	260.0
M.I.			5.6	259.0
ct			6.3	258.7

	+	H.I. 264.55	-	
			6.3	258.7
			6.3	258.3
			6.4	258.7
			6.6	258.0
			7.0	257.6
			9.3	256.3
			8.0	256.6
			7.7	256.9
			7.7	256.9
			7.7	256.9
			7.9	256.7
			7.4	256.2
			8.7	255.9
			9.2	255.4
			9.2	255.4
			9.0	255.6
			9.0	255.6
			9.2	255.4
			9.5	255.1
			10.9	253.7

	+	H.I. 264.55	-	History Ht. (50)
ct			10.7	2537.9
1/2			10.5	2536.1
c			10.5	2541.1
1/4			10.8	2537.8
ct			10.8	2537.8
M.L. 2+75			10.1	2544.5
M.L.			11.3	2533.3
ct			12.1	2544.5
1/4			11.9	2544.7
c			11.8	2522.8
1/4			11.9	2544.7
ct			12.2	2544.6
M.L.			12.2	2524.4
3400 = East line of Ampudia Ht (50)				
M.L.			13.4	2511.2
ct			13.4	2511.2
1/4			13.3	2511.3
c			13.2	2511.4
1/4			13.1	2511.5
ct			13.1	2511.6

	+	H.I. 264.55	-	
M.L.			13.1	2511.5
#	0.32	252.82	12.05	252.80
00 = West line of Ampudia Ht.				
M.L.			3.1	2498
ct			3.4	2496.6
1/4			3.7	2499.1
c			3.6	2499.2
1/4			3.8	2499.0
ct			3.9	2488.9
M.L. 125			3.9	2488.9
M.L.			4.3	2488.0
ct			4.7	2488.1
1/4			4.5	2488.3
c			4.5	2488.3
1/4			4.4	2488.4
ct			4.1	2488.7
M.L.			4.1	2488.7
M.L. 150			5.0	2487.8
ct			5.3	2487.6
1/4			5.5	2487.3

	+	H.I. 252.82	-	Highway (H 150)
c			5.5	247.3
1/4			5.4	247.4
ct			5.6	247.7
1/2 + 75			5.7	247.1
1/2			6.6	246.2
ct			6.5	246.7
1/4			6.5	246.7
c			6.5	246.3
1/4			6.3	246.5
ct			6.2	246.6
1/2 1400			5.9	246.9
1/2			6.8	246.0
ct			6.9	245.9
1/4			6.9	245.9
c			7.0	245.8
1/4			7.0	245.8
ct			7.1	245.7
1/2 1425			7.3	245.5
1/2			8.0	244.8
ct			7.8	245.0

	+	H.I. 252.82	-	
			7.6	245.7
			7.5	245.3
			7.5	245.3
			7.5	245.7
			7.4	245.4
			8.0	244.8
			8.0	244.8
			8.1	244.7
			8.4	244.4
			8.5	244.7
			8.7	244.1
			8.9	243.9
			10.4	242.4
			10.2	242.6
			10.0	242.8
			9.8	243.0
			9.7	243.1
			9.3	243.5
			9.2	243.6
			10.6	242.2

	+	HI 242.62	-	Hickey Vt (50')
ct			11.1	241.7
1/4			11.4	241.4
c			11.6	241.2
1/4			11.9	240.9
ct			12.1	240.7
V.L.			12.6	240.2
#	0.62	240.62	12.92	240.00
2420				
V.L.			4.5	236.1
ct			3.1	237.5
1/4			2.3	238.3
c			2.0	238.6
1/4			1.9	238.7
ct			1.9	238.7
M.L.			1.5	239.1
2450				
M.L.			3.3	238.3
ct			6.0	237.6
1/4			7.0	237.6
c			7.5	233.1
1/4			8.0	232.6
ct			10.9	229.7

	+	HI 240.62	-	
V.L.			16.4	224.2
at 450 slope 15' south of south line			22.9	217.7
" " " 30' " " " "			8.2	222.4
" 2+75 20' " " " "			13.0	227.6
2470				
V.L.			29.6	211.0
ct			20.3	220.3
1/4			21.9	218.7
c			14.7	225.9
1/4			11.9	229.7
ct			9.9	230.7
M.L.			8.9	231.7
3+00 = East line of Arista street (50').				
#	-0.02	229.04	12.56	229.06
3+00				
M.L.			5.7	224.3
ct			8.8	219.7
1/4			10.9	217.1
c			13.3	214.7
1/4			16.0	212.0
ct			21.5	206.5
V.L.			12.0	214.0

+ F.I.  
229.04

- Henry St (30) wide  
10' curb  
7 1/2' quarters

At 3400 slope 15' south of south line 1:3

East line of Airta St

BK 33676 Main St Capps & 30<sup>th</sup>.

337.19	338.46	338.46	338.46	338.46	338.46	338.46	338.46	338.46
339.46	339.46	339.46	339.46	339.46	339.46	339.46	339.46	339.46
341.25	341.25	341.25	341.25	341.25	341.25	341.25	341.25	341.25
342.00	342.00	342.00	342.00	342.00	342.00	342.00	342.00	342.00
340.40	340.40	340.40	340.40	340.40	340.40	340.40	340.40	340.40
345.74	345.74	345.74	345.74	345.74	345.74	345.74	345.74	345.74
350.14	350.14	350.14	350.14	350.14	350.14	350.14	350.14	350.14

338.46	338.46	338.46	338.46	338.46	342.00	342.00	342.00
338.46	338.46	338.46	338.46	338.46	342.00	342.00	342.00
338.46	338.46	338.46	338.46	338.46	342.00	342.00	342.00
338.46	338.46	338.46	338.46	338.46	342.00	342.00	342.00
338.46	338.46	338.46	338.46	338.46	342.00	342.00	342.00
338.46	338.46	338.46	338.46	338.46	342.00	342.00	342.00
338.46	338.46	338.46	338.46	338.46	342.00	342.00	342.00
338.46	338.46	338.46	338.46	338.46	342.00	342.00	342.00

342.00	342.00	342.00	342.00
342.00	342.00	342.00	342.00
342.00	342.00	342.00	342.00
342.00	342.00	342.00	342.00
342.00	342.00	342.00	342.00
342.00	342.00	342.00	342.00
342.00	342.00	342.00	342.00
342.00	342.00	342.00	342.00

outs for water main on Ray St from Upas to Wightman.  
True Line 20' East of West line Ray. Pory Plugs on 5' West offset  
from true line. Grades taken from profile, Less 3' for earth  
covering & 2.7' for diameter of pipe. May 21-12  
Donnan  
Shaw,  
Devine.

00 = North line Upas on the West	328.09	322.38
1+00	329.59	322.89
2+00	329.09	323.38
3+00 = South line Myrtle on East,	329.53	323.63
North line of Myrtle on East	329.50	323.80
00 = North bank of Myrtle on West	329.92	324.22
1+00	330.37	324.67
2+00	330.79	325.09
3+00 = South line of Capps on West	331.23	325.53
North line of Capps on West	331.12	325.92
1+00	332.17	326.34
1+50 = South line Dwight on East	332.25	326.55
2+10 = North line Dwight on East,	332.60	326.90
3+00 = South line Dwight on West,	333.40	327.70
00 = North line of Dwight on West,	334.00	328.70
1+00	336.13	330.43
2+00	337.87	332.17
3+00 = South line of Landis on West,	338.60	333.80
00 = North line of Landis on West,	340.60	337.80
+50 North line of Landis on East,	341.27	338.57

1+10=North line of Landis on East	341.53	336.23
2+00	348.27	337.57
3+00=South line of Linn on West	344.60	338.90
00=North line of Linn on West	340.60	339.90
1+00	347.43	341.73
2+00	348.27	343.57
3+00=North line of Knightman on West	357.10	345.40
North line of Knightman on West	352.10	346.40

350.14 HI. See Page 71

-1.64  
 348.50  
 +7.82  
 356.32 HI.

350.14	350.14	352.14	352.14	352.14	352.32	352.32	352.32
36.23	37.57	38.92	39.22	41.73	43.57	44.00	46.00
13.51	12.57	11.44	10.24	8.41	12.76	10.92	9.92
4.2	7.2	5.8	4.6	2.5	5.5	4.2	2.8
25.7	25.4	25.4	25.6	25.7	27.8	26.7	26.1









1.1  
 2.6  
 3.2  
 4.8  
 7.2  
 25.6  
 8.12  
 10.26  
 20.52  
 40.96  
 81.92  
 163.84  
 327.68

15  
 361  
 377  
 467

195  
 269  
 281

$$\begin{array}{r} 202.02 \\ 12.68 \\ \hline 214.70 \end{array}$$

$$\begin{array}{r} 241.44 \\ 0.55 \\ \hline 241.99 \end{array}$$

$$\begin{array}{r} 215 \\ 27 \\ \hline 242 \end{array}$$

$$\begin{array}{r} 201.44 \\ 8.55 \\ \hline 210.00 \end{array}$$

$$\begin{array}{r} 201.44 \\ 5.56 \\ \hline 207.00 \end{array}$$

$$\begin{array}{r} 3.2 \\ 2.7 \\ \hline 5.9 \end{array}$$

2

67.96

$$\begin{array}{r} 262.40 \\ + 9.23 \\ \hline 271.63 \\ 3.17 \\ \hline 274.80 \end{array}$$

$$\begin{array}{r} 6.3 \\ 2.7 \\ \hline 9.0 \end{array}$$

$$\begin{array}{r} 306.82 \\ - 4.77 \\ \hline 302.05 \end{array}$$

$$\begin{array}{r} 2.1 \\ 2.7 \\ \hline 4.8 \end{array}$$

