

F. B.
823

LEVEL BOOK

No. 410

MICROFILMED
DEC 15 1964

28.9
48.0
65.9

Levels on curb & location of broken curb $\frac{11}{8}$
 on 8th st paving from "B" to Cedar

sumple
 Evans
 Fisher

B.M. Brass 19 8th & "B" 63.91

B.M. 11.01 74.92

0+0 = N. 6.1/8" st

E 10.5 64.4

W 11.4 63.5

0+25 N

W 8.2 66.7

E 7.4 67.5

0+50

E 9.2 70.7

W 9.9 70.0

0+75

W 1.6 73.3

F 1.1 73.8

T.P. 12.90 87.70 0.12 74.80

1+0

E 10.7 77.0

W 11.1 76.6

1+25

W 7.8 79.9

E 2.5 80.2

1+50

F 4.4 83.3

W 4.5 83.2

1+75

W 1.2 86.5

E 1.2 86.5

T.P. 12.23 89.71 0.22 87.48

2+0

E 10.1 89.6

W 2.9 89.8

2+25

W 6.5 93.2

E 6.9 93.8

2+50

E 3.7 96.0

W 3.1 96.6

T.P. 12.81 112.25 0.27 99.44

1

	112.25			
	2775			
W		12.3	100.0	
E		13.2	99.1	

3701 = O.L. "A" ST

E		9.8	102.4	
W		8.8	103.5	

N.L. "A" ST

W		6.8	105.5	
E		7.8	104.5	

0725

E		5.0	107.3	
W		4.0	108.3	

0750

W		1.1	111.2	
E		2.3	110.0	
T.R.	12.90	124.06	0.59	111.66

0775

E		11.3	112.8	
W		10.1	114.0	

12406

2

170

W		7.2	116.9	
E		8.5	115.6	

1725

E		5.8	118.3	
W		4.4	119.7	

1750

W		1.9	122.7	
E		3.0	121.1	

N. curb lowered for garage from 1759⁵/6/71

	154 ⁵		1.2	122.9
--	------------------	--	-----	-------

	162 ⁷⁵		1.6	122.5
--	-------------------	--	-----	-------

	171		0.2	123.9
--	-----	--	-----	-------

1775

W		0.0	124.1	
E		1.5	122.6	

T.R.	12.33	135.89	0.50	123.56
------	-------	--------	------	--------

13589

E. curb. Lowered for garage entrance 1+90 to 2+0

1+90 12.3 123.6

1+95 12.6 123.3

2+0 11.7 124.2

2+0

E 11.7 124.2

W 10.7 125.8

2+25

W 8.4 127.5

E 10.2 125.7

2+50

E 8.6 129.3

W 6.8 129.1

2+75

W 5.1 130.8

E 7.0 128.9

3+00^A = S.L. Ash

E 5.9 130.5

W 3.9 132.5

N.L. Ash St

W 2.9 132.0

E 4.9 131.0

0+25 W

E 4.5 131.4

W 2.4 132.5

0+50

W 1.9 134.0

E 4.1 131.8

0+75

E 3.7 132.2

W 1.9 134.5

1+0

W 0.9 135.0

E 3.2 132.7

m. curb. Lowered for garage entrance from sta 1+06 to 1+19

1+06 0.8 135.1

1+12^E 1.3 134.6

1+19 0.5 135.4

T.P 8.66 144.02 0.53 135.36

144.02

1725

W	8.6	135.4
E	11.7	132.3

curb lowered on E for garage entrance from 112 to 1728

1712	11.2	132.8
1720	11.8	132.2
1728	10.9	133.1

1750

E	10.5	133.5
W	8.0	136.0

1775

W	7.6	136.4
E	10.1	133.9

270

E	9.6	134.4
W	7.0	132.0

2725

W	6.6	137.4
E	9.3	134.7

144.02

2750

E	8.9	135.1
W	6.1	137.9

2775

W	5.6	138.4
E	8.5	135.5

3400⁵ - 5. L. Beech 5'

E	8.2	135.8
W	5.1	138.9

M. L. Beech

W	4.1	141.9
E	5.0	139.0

0725 N

E	3.6	140.4
W	0.6	143.4

T.P. 12.40 155.52 0.90 143.12

0750

W	10.6	144.9
E	13.7	141.9

	155.52		
	0775		
E		12.1	143.4
W		9.1	146.4
	170		
W		7.5	148.0
E		10.6	144.9
	1725		
E		9.2	146.3
W		6.1	149.4
	1750		
W		4.6	150.9
E		7.6	147.8
m. curb lowered for garage entrance from 3 to 1752 ⁵ to 1762 ⁵ .			
	1752 ¹⁴	4.5	151.0
	1757 ¹⁹	4.7	150.8
	1762 ⁵	3.8	151.7
	1775		
W		3.1	154.1
E		6.2	149.3

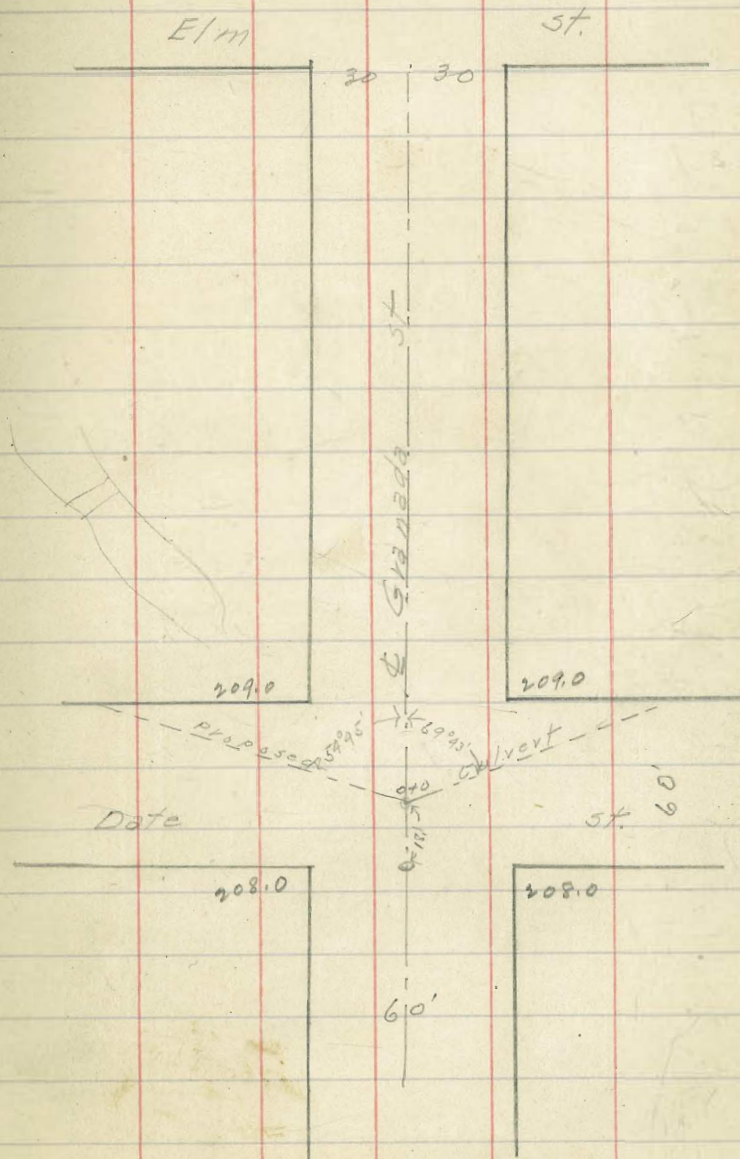
	155.52		
	270		
E		9.6	150.9
W		1.6	159.9
	2725		
W		0.2	155.3
E		3.1	152.4
T.P.	9.91	162.88	2.55 152.97
	2750		
E		9.0	153.9
W		6.0	156.9
	2775		
W		4.5	158.4
E		7.9	155.5
	280 = S.L. Cedar.		
E		6.0	156.9
W		3.0	159.9

Levels for Colvart see opp. page

1/11 DeWitt
1/11 Evans
Nehrus

6

B.M. Brass 219 25 th Cedar			219.49
B.M.	1.62	221.11	
T.P.	1.79	212.66	10.19 210.22
T.P.	0.0	204.34	12.34 200.32
9+0		7.7	192.6
20' E		6.0	194.3
40' E		4.1	196.2
60' E		3.6	196.7
775' E		3.9	196.4
9+0		7.7	192.6
20' W		8.4	191.9
40' W		9.8	190.5
60' W		11.5	188.8
80' W		13.0	187.3



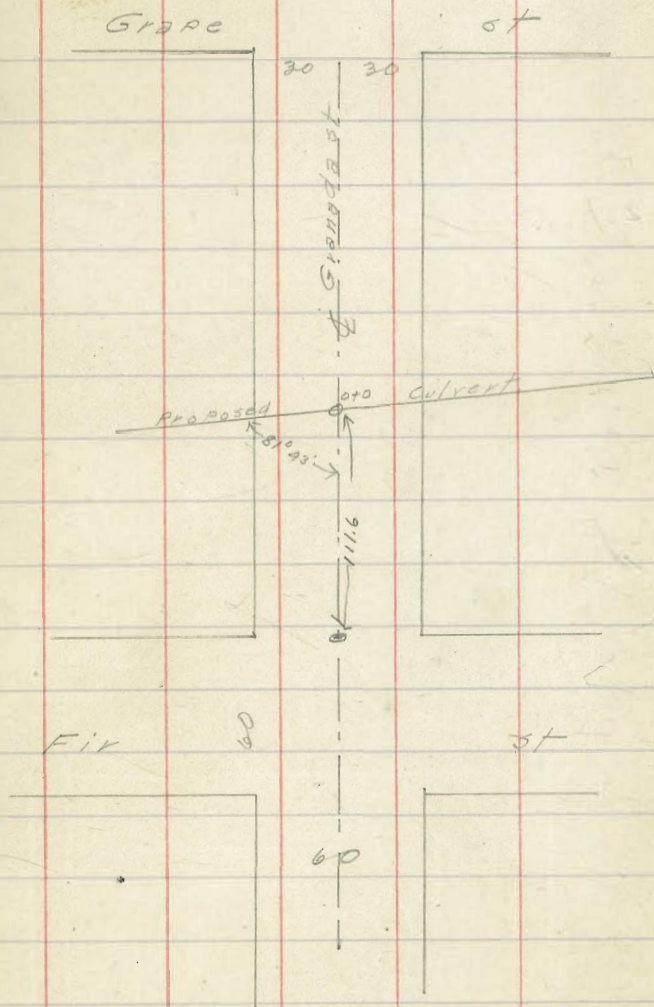
Date

St. 60'

Levels for culvert see opp page
 note head of canyon has been filled in.

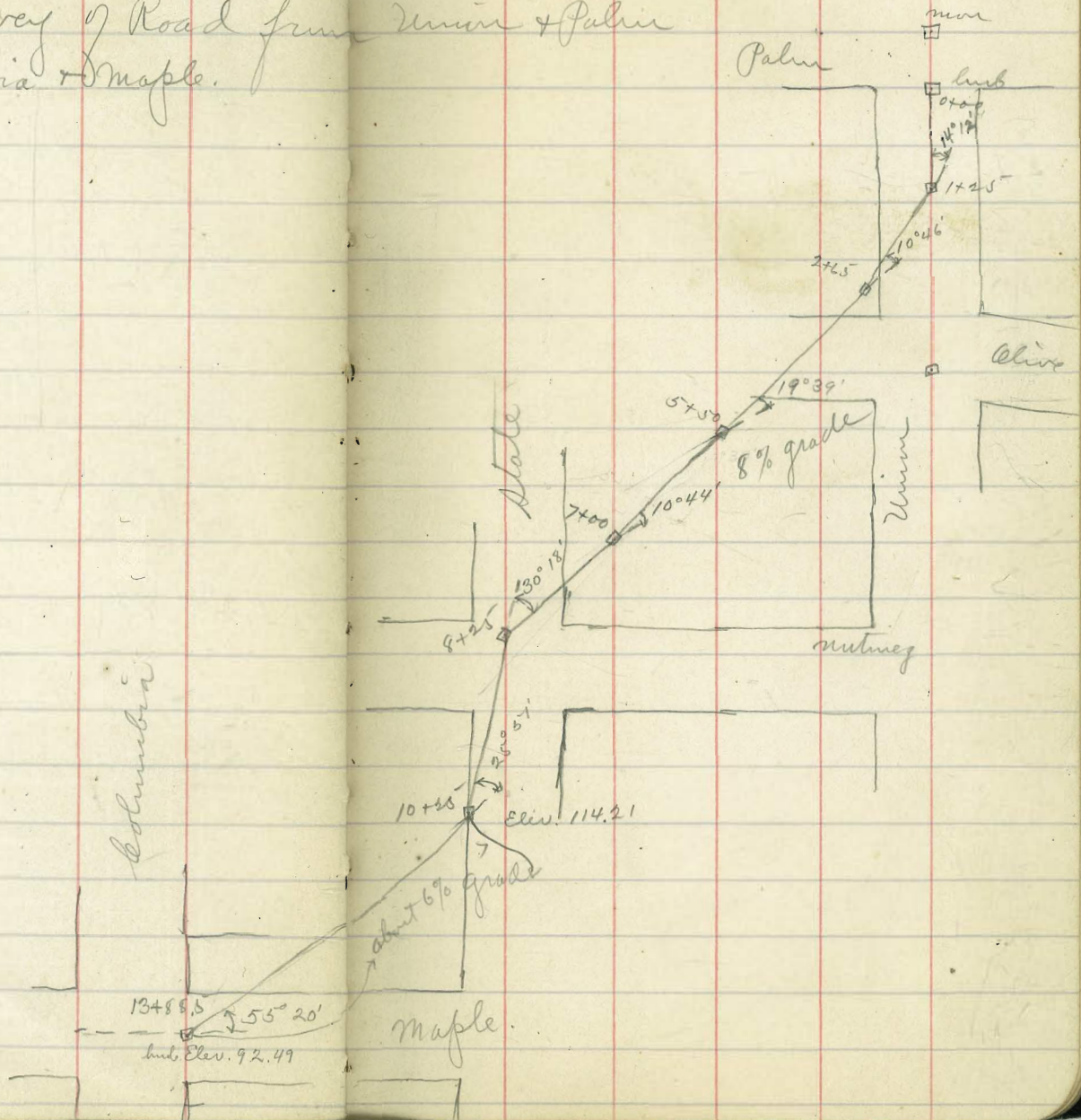
W Smith
 W Evans
 W Johnson

B.M.				222.78
B.M.	12108	234.86		
T.P.	0.89	224.11	11.59	223.27
0+0			14.2	209.9
20'E			12.2	211.9
25'E = Top of slope where head of canyon has been filled.			12.0	212.1
40'E = Top of slope			1.2	222.9
60'E		+ 0.3		224.4
0+0			14.2	209.9
0+20 W			14.6	209.5
40 W			15.2	208.9
60 W			17.7	206.4
80 W			17.9	206.2



Jan 3/12
Schields
Taylor
Evans

Survey of Road from Union + Palm to Columbia + Maple.

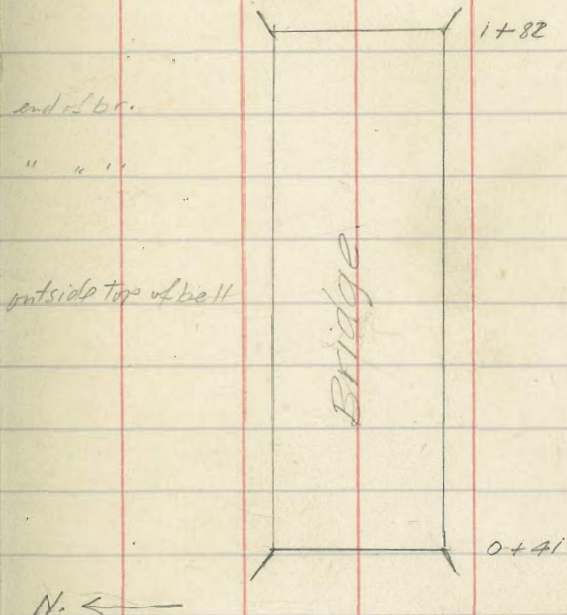
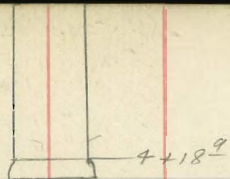


Profile for 3/6" water-main on
University Ave bet. Florida &
Alabama

{ J.R. Comly
Frank Barber

				265 ⁴²
2	3.44	268.86	0 ¹	268 ⁸
T.P.			12 ⁵	267 ¹¹
T.P.			12 ⁹⁸	255 ⁸⁸
1+82	13 ⁰³	280 ¹⁴	10 ¹	270 ⁰
0+41			0 ³	279 ⁸
T.P.			0 ⁰⁹	280 ⁰⁵
0+00	5 ⁰⁹	285 ¹⁴	6 ⁰¹	279 ¹³
TP				255 ⁸⁸
	11 ²⁴	267 ⁶²	+	
0+60			4 ⁴	263 ²
0+80			14 ³	253 ³
1+60			12 ⁰	255 ⁶
T.P.			11 ²⁰	255 ⁷²
1+40	1 ⁸³	257 ⁵⁵	9 ⁸	247 ⁷
1+20			13 ³	244 ²
+08			13 ⁵	244 ⁰
1+00			10 ³	247 ³

11



	1+0		
E	3.4	310 ¹	
crk	4.2	283.15	
"A	4.8		
M	5.5	8 ⁰	
"A	6.1		
crk	6.9		
W	8.5	5 ⁰	

	1+25		
-15	14.2	299 ²	
W	11.6	01 ⁹	
crk	9.3		
"A	8.6		
M	7.5	06 ⁰	
"A	6.9		
crk	5.6		
E	4.3	09 ⁰	

	1+50		
-10		5.6	
E		8.4	5 ¹
crk		11.3	
"A		13.5	
M		15.0	298 ⁵
"A		17.2	
crk		19.3	
W		20.9	293 ¹

	1+65		
-30		32.2	
W		30.9	93 ¹
crk		27.8	
"A		25.6	
M		23.1	90 ²
"A		20.9	
crk		18.5	
E		14.1	99 ²
+10		11.2	

313.53

1775

- 10	12.8	
E	16.7	298 ⁸
Crk	20.0	
"A	22.9	
M	26.0	87 ⁵
"A	28.1	
Crk	29.7	
W	27.6	85 ⁹
+ 30	29.1	

2+0

- 20	17.8	
W	17.5	96 ⁰
Crk	18.9	
"A	20.7	
M	22.1	91 ⁴
"A	24.4	
Crk	26.5	
E	24.0	89 ⁵
+ 25	12.5	

2+25

- 20	13.5	
E	23.1	290 ⁴
Crk	19.4	
"A	15.9	
M	13.0	300 ⁵
"A	10.8	
Crk	9.8	
W	8.2	5 ³
T.P	889	316.98
	5.44	308.09

2+50

W	8.8	8 ²
Crk	8.5	
"A	8.8	
M	10.5	6 ⁵
"A	13.1	
Crk	16.0	
E	24.5	92 ⁵
+10	13.1	
+25	19.1	

	275		
- 30		24.2	
- 25		25.9	
E		16.1	300 ²
crk		11.8	
"4		9.4	
M		7.0	10 ²
"4		6.9	
crk		6.9	
W		7.2	9 ²
	370		
W		6.3	10 ²
crk		6.2	
"4		6.0	
M		5.7	11 ³
"4		5.9	
crk		2.9	
E		11.1	5 ²
+ 25		23.0	
+ 30		20.9	

			15
	375		
- 30		18.4	
- 25		20.1	
E		6.5	10 ⁵
crk		5.0	
"4		4.9	
M		5.1	17 ²
"4		5.2	
crk		4.8	
W		5.0	12 ⁰
	375		
W		4.7	12 ³
crk		4.2	
"4		4.2	
M		4.1	12 ⁹
"4		4.1	
crk		3.8	
E		3.8	13 ²

316.98

3475

E	3.1	13 ⁹
crk	2.8	
"A	2.9	
M	2.8	14 ²
"A	3.1	
crk	3.3	
W	3.5	13 ²

440

W	3.1	13 ⁹
crk	3.1	
"A	2.8	
M	2.5	14 ⁵
"A	2.9	
crk	2.2	
E	2.0	15 ⁰

16

9425

E	1.1	15 ²
crk	1.3	
"A	1.3	
M	1.3	15 ⁷
"A	1.7	
crk	2.2	
W	2.6	14 ⁴

T.P. 11.55 326.99 1.59 315.44

9450

W	11.6	15 ⁴
crk	11.2	
"A	10.8	
M	10.4	16 ⁶
"A	10.3	
crk	10.9	
E	10.0	17 ⁰

475

E	9.2	317 ⁸
crk	9.5	
"A	9.7	
M	10.2	16 ⁸
"A	10.6	
crk	10.9	
W	10.9	16 ¹

540

W	10.5	16 ⁵
crk	9.9	
"A	9.7	
M	9.3	17 ²
"A	9.0	
crk	9.0	
E	8.8	18 ²

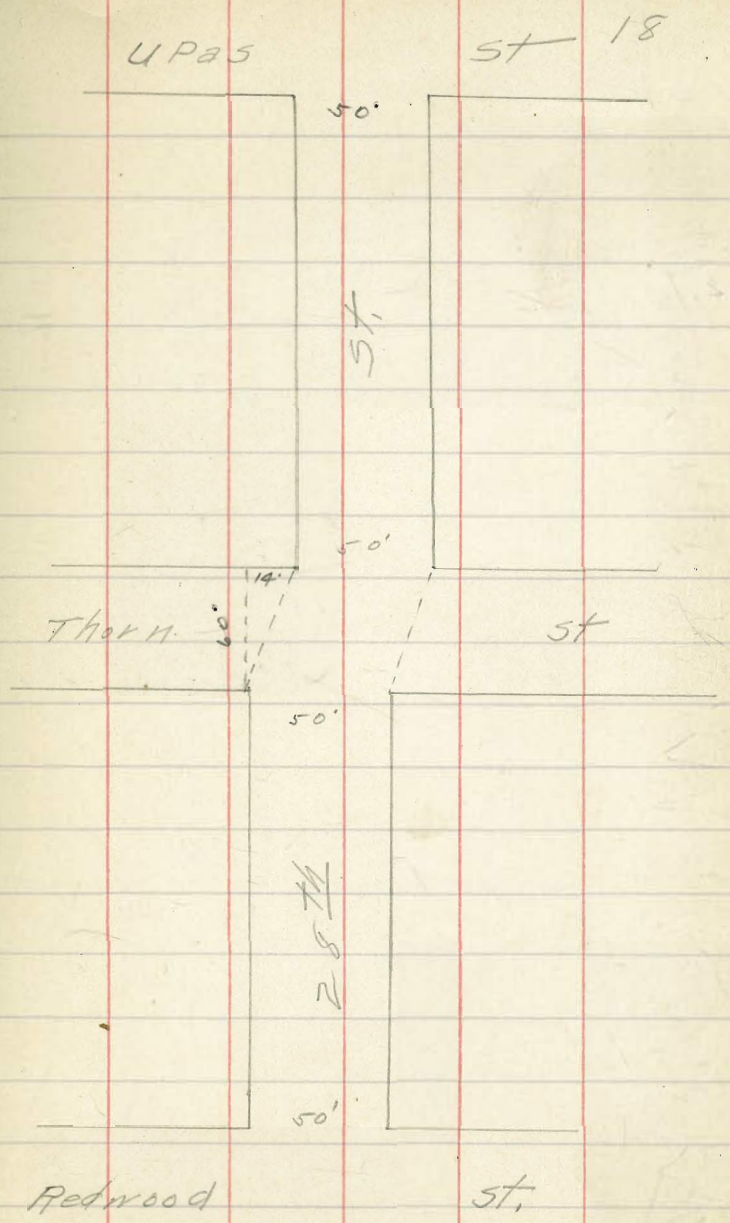
5425

E	7.6	19 ⁴
crk	8.0	
"A	8.8	
M	9.0	18 ⁰
"A	9.3	
crk	9.1	
W	9.1	17 ²

5450

W	8.9	18 ¹
crk	8.3	
"A	8.2	
M	8.0	19 ⁰
"A	7.9	
crk	7.9	
E	7.3	19 ²

	5770		
E	6.9	20 ^L	
erb	7.3	19 ⁷	
1/4	6.5		
M	6.5	20 ⁵	
1/4	6.9		
erb	7.6		
W	8.2	18 ⁸	
	6703 S.L. Thorm	ST	
W	7.9	19 ⁶	
erb	7.3		
1/4	7.3		
M	6.8	20 ³	
1/4	6.8		
erb	6.7		
E	6.9	20 ⁶	



S CURVE THORN

E	5.7	21 ³
crb	6.4	
"	6.6	
N	6.5	20 ⁵
"	6.7	
crb	7.0	
W	7.2	19 ⁸
	5/19	
W	6.9	20 ¹
crb	6.6	
"	6.3	
N	6.0	21 ⁰
"	6.1	
crb	6.0	
E	5.6	21 ⁴

19

Center

E	5.6	21 ⁴
crb	5.7	
"	5.8	
N	5.9	21 ¹
"	5.8	
crb	5.9	
W	6.0	21 ⁰
	N 1/4	
W	5.4	21 ⁶
crb	5.5	
"	5.5	
N	5.6	21 ⁴
"	5.6	
crb	5.9	
E	5.0	22 ⁴

N. Corke

E	4.7	22 ³
Crk	5.0	
"A	5.1	
M	5.0	21 ³
"A	5.4	
Crk	5.4	
W	5.1	21 ⁹

N. L. Thorn

W	4.9	22 ¹
Crk	5.4	
"A	5.1	
M	5.0	22 ⁰
"A	4.8	
Crk	4.6	
E	4.4	22 ⁶

2.0

0+25 W

E	4.2	22 ⁸
Crk	4.2	
"A	4.1	
M	4.0	23 ⁶
"A	4.3	
Crk	4.8	
W	5.1	21 ⁹

0+50

W	4.5	22 ⁵
Crk	4.0	
"A	3.9	
M	3.4	23 ⁶
"A	3.6	
Crk	3.6	
E	3.7	23 ³

326.99

0775

E	3.0	24 ⁰
Crk	3.2	
"A	3.3	
M	3.4	23 ⁶
"A	3.4	
Crk	2.9	
W	2.8	24 ³

170

W	2.5	24 ⁵
Crk	2.6	
"A	2.9	
M	3.0	24 ⁰
"A	3.0	
Crk	2.9	
E	2.7	24 ³

21

1725

E	2.2	24 ⁸
Crk	1.7	
"A	1.6	
M	1.9	25 ¹
"A	2.3	
Crk	2.2	
W	2.3	24 ⁷

1750

W	1.8	25 ²
Crk	1.7	
"A	1.9	
M	1.8	25 ²
"A	1.8	
Crk	2.1	
E	2.2	24 ⁸
T.P.	6.19	331.35 1.83 325.16

1775

E	6.6	25 ⁷
crb	6.5	
"	6.5	
M	6.3	25 ⁸
"	6.2	
crb	6.0	
W	6.3	25 ⁹

270

W	5.7	25 ⁶
crb	5.9	
"	5.9	
M	5.8	25 ⁵
"	5.8	
crb	6.1	
E	6.3	25 ⁰

2725

E	6.6	24 ²
crb	6.5	
"	6.2	
M	6.1	25 ³
"	6.0	
crb	5.7	
W	5.4	25 ⁹

2750

W	4.7	26 ⁶
crb	5.2	
"	5.8	
AA	6.0	25 ³
"	6.1	
crb	5.8	
E	5.0	26 ³

2+75

E	5.5	25 ⁸
erb	5.7	
"A	5.8	
M	5.8	25 ⁵
"A	6.0	
erb	6.0	
W	6.0	25 ³

3+0

W	5.4	25 ⁹
erb	4.5	
"A	4.5	
M	4.6	26 ⁷
"A	5.2	
erb	5.7	
E	6.5	24 ⁷

3+25

E	6.4	24 ⁹
erb	6.2	
"A	6.1	
M	6.0	25 ³
"A	5.6	
erb	5.2	
W	5.1	26 ²

3+50

W	5.6	25 ⁷
erb	5.6	
"A	5.3	
M	5.3	26 ⁰
"A	5.9	
erb	6.0	
E	5.1	26 ²

3775

E	6.1	25 ²
crk	6.1	
"A	5.8	
M	5.6	25 ⁷
"A	5.5	
crk	5.4	
W	5.8	25 ⁵

470

W	5.1	26 ²
crk	4.3	
"A	4.2	
M	4.8	26 ¹⁹
"A	5.5	
crk	6.0	
E	5.5	25 ⁸

4725

E	4.9	26 ⁴
crk	5.7	
"A	5.7	
M	5.4	25 ⁹
"A	5.4	
crk	5.6	
W	5.4	25 ⁹

4750

W	5.0	26 ³
crk	4.4	
"A	4.1	
M	4.1	27 ²
"A	5.0	
crk	5.3	
E	5.2	26 ¹

4+75

E	4.3	27 ⁰
crk	4.8	
"A	5.0	
M	5.0	26 ³
"A	5.0	
crk	4.3	
W	4.0	27 ³

5+0

W	3.1	28 ³
crk	3.6	
"A	4.2	
M	3.9	27 ⁴
"A	4.0	
crk	4.0	
E	4.3	27 ²

5+25

E	2.7	28 ⁶
crk	3.1	
"A	3.5	
M	3.4	27 ⁹
"A	3.8	
crk	4.2	
W	3.7	27 ⁶

6+50

W	3.1	28 ²
crk	3.2	
"A	3.4	
M	3.2	28 ¹
"A	3.2	
crk	2.9	
E	2.6	28 ⁷

331.35

5775

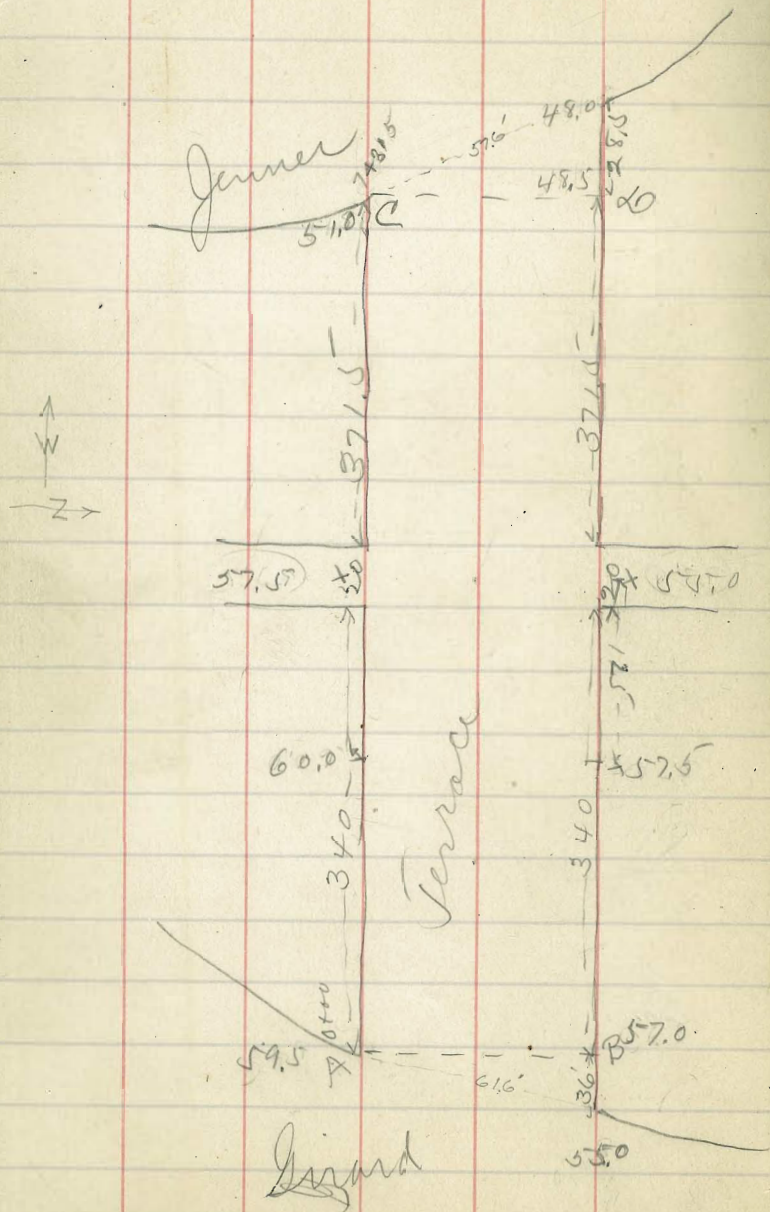
E	2.2	29 ¹
crk	2.7	
"A	2.8	
M	2.7	28 ⁶
"A	2.4	
crk	2.4	
W	2.7	28 ⁶

640 = 5.4. UPAS

W	1.3	30 ⁶
crk	2.0	
"A	2.7	
M	2.8	28 ⁵
"A	2.9	
crk	2.0	
E	1.8	29 ⁵

X sect. Terrace from
(Coast Boulevard South)

Gerard to Jenner (27) bluffs
Saylor
atten
aug 7/12



Coast Boulevard South

61.48

H.T.
2.60 61.48 58.88

B.M.

25' West Sect A.B.

West line Girard

No. line

1.9 59.6

No. line

(59.5)

1.7 59.8

2.6 58.9

2.7 58.8

3.2 57.3

3.8 57.7

c

3.8 57.7

c

5.1 56.4

4.7 56.8

PLOTTED

5.9 55.4

5.2 56.3

6.8 54.7

No. line

5.9 55.6

No. line

(55.0)

6.4 55.1

50' west

Sect. A.B.

No. line

6.1 55.4

No. line

(57.0)

5.6 55.9

PLOTTED

5.7 55.8

5.1 56.4

5.0 56.5

4.8 56.7

c

3.7 57.8

c

4.1 57.4

3.3 58.2

3.5 57.0

2.5 59.0

3.0 58.5

No. line

1.9 59.6

No. line

(59.5)

1.7 59.8

61.48
75' west

No. line	1.3	60.2
	2.4	59.1
	3.1	58.4
c	4.0	57.5
	5.3	56.7
	5.8	55.7
No. line	6.2	55.3
	PLOTTED	
	100' west	
No. line	6.5	55.0
	5.5	56.0
	4.7	56.8
c	3.6	57.9
	2.7	58.8
	1.5	60.0
No. line	-0.1	61.6

H.I.

7.90 67.12 2.26 59.22

125' west

J.P.	7.90	67.12	2.26	59.22
No. line		1.6		65.5
		3.1		64.0
cb+1		5.9		61.7
		7.0		60.1
c		7.7		59.4
		9.4		57.7
		10.2		56.9
No. line		11.5		55.6
		PLOTTED		
		150' west		
No. line		11.0		57.1
		9.8		57.5
		8.9		58.7
c		7.5		59.6
		5.9		61.7
		4.4		62.7
		1.7		65.4
cb+2		-1.0		68.1
No. line				

67.12

175' west

no. line	-0.7	67.8
whis + 7	0.9	66.7
	3.8	63.3
	5.7	61.4
d	6.7	60.4
	8.5	58.6
	8.7	58.4

PLOTTED

200' west

no. line	10.5	56.6
no. line	10.7	56.4
	9.1	58.0
	8.4	58.7
c	6.8	60.3
	5.5	61.6
	4.0	63.1
cb + 4	2.2	64.9
no. line	0.1	67.0

67.12

(break grade) 220' west

no. line	1.3	65.8
	(60.0)	3.8
		63.3
	5.5	61.6
e	6.8	60.3
	8.6	58.5
	8.9	58.2

(57.5)

PLOTTED

225' west

no. line	10.4	56.7
no. line	10.4	56.7
	8.6	58.5
	8.5	58.6
c	7.2	59.9
	5.5	61.6
	3.7	63.4
no. line	2.1	65.0

67.12

275' west

As line	2.8	64.3
	4.3	67.8
	5.6	61.5
d	7.5	59.6
	9.2	57.9
	9.5	57.6
Pro. line	11.0	56.1
	PLOTTED	
	500' west	
no. line	11.3	55.8
	9.8	57.3
	9.2	57.9
c	7.8	59.3
	6.2	60.9
	5.1	67.0
20. line	3.6	63.5

67.12

31

325' west

soline	4.7	62.4
	6.2	60.9
	7.4	59.7
e	9.0	58.1
	10.0	57.1
	10.3	56.8
no. line	12.1	55.0
	PLOTTED	
	500' west (last line alley)	
no. line	12.3	54.8
	10.7	56.4
	10.1	57.0
c	8.5	58.6
	7.6	59.5
	6.7	60.4
soline	4.6	62.5

67.12

break. grade 350' west center alley.

no line

5.6 61.5

(57.5)

7.3 59.8

8.0 59.1

c

8.8 58.3

10.0 57.1

(55.0)

10.7 56.4

no line

12.4 54.7

PLOTTED

360' west (west alley)

no line

12.3 54.8

10.9 56.4

10.4 56.7

c

8.7 58.4

7.8 59.3

7.5 59.6

no line

5.37 61.75

67.12

37

3

375' west

no line

5.8 61.3

8.4 58.7

8.3 58.8

c

9.1 58.0

10.7 56.4

11.0 56.1

no line

12.0 55.1

PLOTTED

360' west

no line

12.27 54.85

10.9 56.4

10.9 56.2

c

9.8 57.3

9.3 57.8

9.2 57.9

6.1 61.0

67.12

425' west

soline	7.7	59.4
	9.6	57.5
	9.9	57.2
C	10.4	56.7
	11.2	55.9
	11.4	55.7
no. line	12.7	54.4
	12.8	54.3
	11.8	55.3
	11.5	55.6
C	10.7	56.4
	10.4	56.7
	10.4	56.7
no. line	7.9	59.2

PLOTTED

450' west

soline	8.5	58.6
	10.1	57.0
	10.5	56.6
C	11.5	55.6
	12.1	55.0
	12.3	54.7
no. line	13.2	53.9
J.P.	12.36	57.95
	11.53	55.59
	500' west	
no. line	4.5	53.5
	3.6	54.4
	3.2	54.8
C	2.7	55.3
	2.1	55.9
	2.0	56.0
no. line	-0.2	59.1

67.12

475' west

33

57.95

525' west

no line

0.2 57.8

2.0 56.0

2.6 55.4

c

3.4 54.6

3.8 54.2

4.1 53.9

no line

6.1 51.9

PLOTTED

550' west

no line

6.3 51.7

4.5 53.5

4.3 53.7

c

3.8 54.2

3.4 54.6

2.9 55.1

no line

0.4 57.6

57.95

34

575' west

no line

1.8 56.2

2.8 55.2

3.4 54.6

c

3.9 54.1

5.0 53.0

5.5 52.5

no line

7.0 51.0

PLOTTED

600' west

no line

7.5 50.5

6.4 51.6

6.0 52.0

c

5.2 52.8

4.5 53.5

3.9 54.1

no line

3.1 54.9

57.95

625' west

soline	3.2	52.8
	4.8	53.2
	5.2	52.8
C	5.9	52.1
	6.6	51.4
	6.7	51.3
no. line	8.0	50.0

PLOTTED

650' west

no. line	8.6	49.4
	7.8	50.2
	7.3	50.7
C	6.4	51.6
	6.1	51.9
	5.7	52.3
no. line	3.5	54.5

35

675' west

soline	5.2	52.8
	6.4	51.6
	6.6	51.4
C	6.8	51.2
	7.7	50.3
	8.3	49.7
soline	9.4	48.6

PLOTTED

700' west

no. line	9.6	48.4
	8.6	49.4
	8.2	49.8
C	7.5	50.5
	7.3	50.7
	7.1	50.9
no. line	5.6	52.4

57.95

731.5 (sect. C. 10.)

so. line		6.60	51.35
	(51.0)	7.8	50.1
		8.5	49.5
c		8.8	49.2
		9.1	48.9
	(48.5)	9.3	48.6
no. line		10.2	47.7
	east line junction		
no. line		11.2	46.7
		10.5	47.4
		9.7	48.3
c		9.0	49.0
		8.4	49.6
	(51.0)	8.3	49.6
so. line		6.60	51.35

PLOTTED

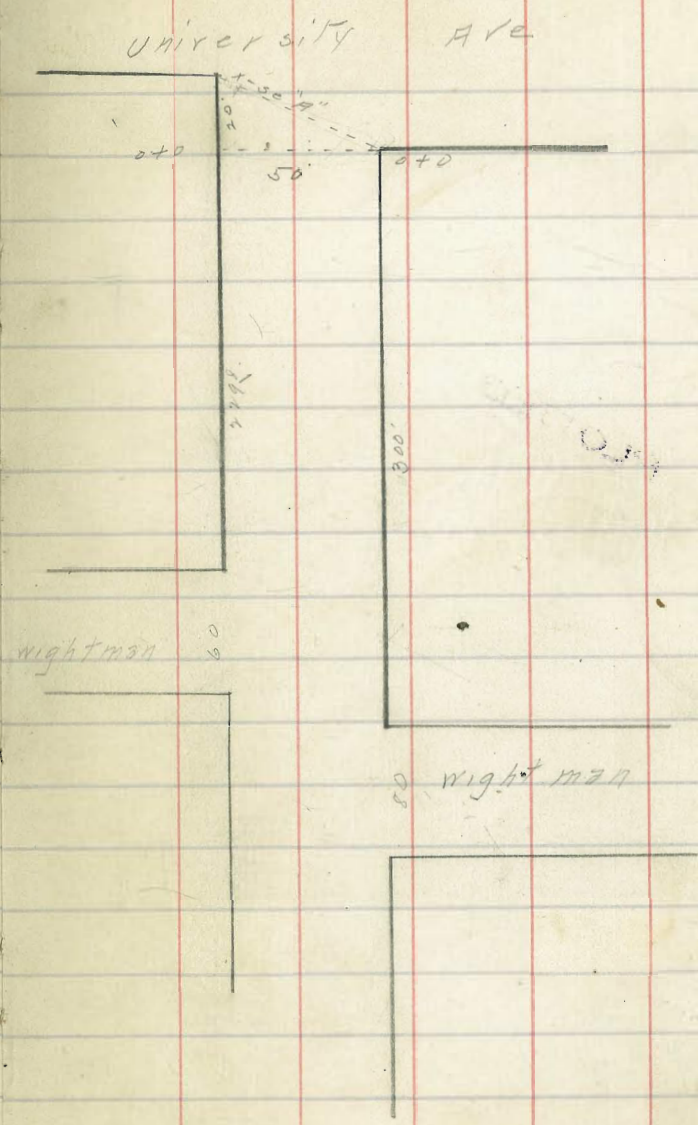
X-section Idaho st for 50' wide widening from 30'
 10' on E & W side from University to UPAS.
 10' walks 7 1/2 quarters
 9/20/14
 Evans
 Kerr

B.M. F.F. SPR X.E. UNIV 2 Idaho 347.37
 B.M. 190 349.27

X-section "A"

N		3.8	345.5
+7		2.7	345.6
+8		2.5	346.8
Crk		2.5	346.8
"A		3.1	346.2
M		4.4	344.9
"A		4.4	345.1
Crk		4.0	345.3
F	bottom	3.3	346.0
	↑		
	O+D		
	↓		
F	Top	2.0	347.3
Crk		2.6	346.7
"A		3.0	346.3
A		2.7	346.6
"A		2.6	346.7
Crk		2.5	346.8
+3		2.4	346.9
+4		3.6	345.7
W		3.7	345.6

PLOTTED



349.27

04255

W	3.6	345.7
+6	3.6	345.7
+7	2.8	346.5
crb	2.6	346.7
1/4	2.6	346.7
M	2.4	346.9
1/4	2.5	346.8
crb	2.5	346.8
E	2.6	346.7

PLOTTED

0450

E	2.7	346.6
crb	2.3	347.0
1/4	2.7	346.6
M	3.1	346.2
1/4	2.8	346.5
crb	3.4	345.9
1/4		
W	3.6	345.7

349.27

0475

W	3.2	346.1
crb	3.3	346.0
1/4	2.9	346.4
M	3.0	346.3
1/4	2.9	346.4
crb	1.7	347.6
E	2.3	347.0

PLOTTED

120

E	3.2	346.1
crb	3.6	345.7
1/4	3.1	346.2
M	3.2	346.1
1/4	3.5	345.8
crb	3.7	346.1
W	4.0	345.3

349.27

1425

W	4.2	345.1
crk	3.7	345.6
1/9	3.4	345.9
M	3.6	345.7
1/9	3.4	345.9
crk	3.4	345.9
F	3.3	346.0

PLOTTED

1450

F	3.1	346.2
crk	3.6	345.7
1/9	3.6	345.7
M	3.4	345.9
1/9	3.7	345.6
crk	3.9	345.9
W	4.0	345.3

39

1475

W	4.0	345.3
crk	4.0	345.3
1/9	3.7	345.6
M	4.1	345.2
1/9	3.5	345.8
crk	3.5	345.8
F	3.3	346.0

PLOTTED

240

F	4.4	344.9
crk	3.7	345.6
1/9	3.2	346.1
M	3.6	345.7
1/9	4.0	345.3
crk	4.3	345.0
W	4.1	345.2

349.27

2+29² - N.L. Wightman on West 60' Wds

W	4.4	344.9
crk	4.3	345.0
"A	4.6	344.7
M	4.6	344.7
"A	4.5	344.8
crk	4.6	344.7
E	4.5	344.8

PLOTTED

N center

E	4.3	345.0
crk	4.2	345.1
"A	4.3	345.0
M	4.5	344.8
"A	4.2	345.1
crk	4.5	344.8
W	4.3	345.0

349.27

N "A

W	4.5	344.8
crk	4.4	344.9
"A	4.4	344.9
M	4.6	344.7
"A	4.1	345.2
crk	4.0	345.3
E	4.0	345.3

PLOTTED

center

E	4.3	345.0
crk	4.0	345.3
"A	4.1	345.2
M	4.7	344.6
"A	4.7	344.6
crk	4.6	344.7
W	4.5	344.8

349.27

6 1/4

W	4.4	344.9
erb	4.6	344.7
1/4	4.6	344.7
M	4.6	344.7
1/4	4.6	344.7
erb	4.4	344.9
F	4.4	344.9

PLOTTED

5 curb

F	4.5	344.8
erb	4.8	344.5
1/4	4.5	344.8
M	4.5	344.8
1/4	4.4	344.9
erb	4.5	344.8
W	4.5	344.8

41

2489⁸ = S.L. Wightman on W.

W	4.3	345.0
erb	4.5	344.8
1/4	4.5	344.8
M	4.5	344.8
1/4	4.6	344.7
erb	4.7	344.6
F	4.6	344.7

PLOTTED

310 = N.L. Wightman on E. 80' wide

F	4.7	344.6
erb	4.9	344.4
1/4	4.7	344.6
M	4.6	344.7
1/4	4.6	344.7
erb	4.8	344.5
W	4.6	344.7

349.27

N. GUVK

W	4.7	344.6
crk	4.8	344.5
"q	4.7	344.6
M	4.7	344.6
"q	4.8	344.5
crk	4.7	344.6
E	4.8	345.0

PLOTTED

N "q

E	4.5	344.8
crk	4.6	344.7
"q	4.8	344.5
M	4.8	344.5
"q	4.8	344.5
crk	4.8	344.5
W	4.9	344.4

42

Center

W	4.8	344.5
crk	4.9	344.4
"q	4.9	344.4
M	4.6	344.7
"q	4.5	344.8
crk	4.7	344.6
E-	5.0	344.3

PLOTTED

S "q

E	5.0	344.3
crk	5.1	344.2
"q	4.9	344.4
M	4.8	344.5
"q	4.8	344.5
crk	4.9	344.4
W	5.0	344.3

349.27

5 CORK

W	4.9	344.4
crk	4.9	344.4
"4	5.0	344.3
M	5.0	344.3
"4	5.0	344.3
crk	5.0	344.3
E	5.1	344.2

PLOTTED

3+80 = 3.1 right man on E

E	4.8	344.5
crk	4.9	344.4
"4	5.2	344.1
M	5.2	344.1
"4	5.1	344.2
crk	5.1	344.2
W	4.9	344.4

43

4+0

W	5.2	344.1
crk	5.0	344.3
"4	5.0	344.3
M	5.1	344.2
"4	5.1	344.2
crk	4.9	344.4
E	5.1	344.2

PLOTTED

4+28

E	4.9	344.4
crk	4.8	344.5
"4	4.8	345.0
M	4.9	344.9
"4	4.5	344.8
crk	4.7	344.6
W	5.0	344.3

349.27

4750

W	4.7	344.6
Crk	4.9	344.4
"A	4.9	344.4
M	5.2	344.1
"A	5.1	344.2
Crk	5.0	344.3
E	4.8	344.5

PLOTTED

4475

E	5.1	344.2
Crk	5.0	344.3
"A	5.2	344.1
M	4.7	344.6
"A	4.6	344.7
Crk	4.5	344.8
W	4.6	344.7

44

570

W	4.7	344.6
Crk	4.6	344.7
"A	5.3	344.0
M	5.2	344.1
"A	5.2	344.1
Crk	5.0	344.3
E	5.0	344.3

PLOTTED

5725

E	5.2	344.1
Crk	5.1	344.2
"A	5.2	344.1
M	5.2	344.1
"A	5.3	344.0
Crk	4.4	344.9
W	4.6	344.7

349.27

5750

W.	4.6	344.7
crk	4.7	344.6
1/4	4.6	344.7
M	5.0	344.3
1/4	5.0	344.3
crk	5.0	344.3
E	5.0	344.3

PLOTTED

5775

E	5.1	344.2
crk	5.1	344.2
1/4	4.8	344.5
M	4.9	344.4
1/4	4.7	344.6
crk	4.7	344.6
W	4.8	344.5

45

670

W	4.8	344.5
crk	4.8	344.5
1/4	4.9	344.4
M	5.0	344.3
1/4	4.7	344.6
crk	5.0	344.3
E	5.1	344.2

PLOTTED

6725

E	5.0	344.3
crk	5.0	344.3
1/4	4.8	344.5
M	4.8	344.5
1/4	4.7	344.6
crk	4.9	344.4
W	4.9	344.4
T.P	4.14	345.49
	4.92	344.35

348.49

6450

W	4.0	344.5
crk	4.1	344.4
"A	4.0	344.5
M	3.8	344.7
"A	4.1	344.4
crk	4.2	344.3
E	4.3	344.2

PLOTTED

6480 = N.L. GUNN on F 80' wide

E	4.2	344.3
crk	4.1	344.4
"A	4.7	343.8
M	4.1	344.4
"A	3.8	344.7
crk	4.2	344.3
W	4.2	344.3

46

N corb

W	3.7	344.8
crk	3.6	344.9
"A	3.7	344.8
M	4.4	344.1
"A	4.7	343.8
crk	5.0	343.5
E	5.1	343.4

PLOTTED

N "A

E	5.8	342.7
crk	5.3	343.2
"A	4.9	343.6
M	4.5	343.7
"A	3.4	345.1
crk	2.7	345.8
W	2.5	346.0

348.119

Center

W	3.3	345.2
Crk	3.5	345.0
"A	4.1	344.4
M	4.7	343.8
"A	4.8	345.7
Crk	5.3	349.2
E	5.4	343.1

PLOTTED

5 "A

E	5.8	342.7
Crk	5.9	342.6
"A	5.4	343.1
M	4.1	344.4
"A	4.0	344.5
Crk	4.2	344.3
W	3.4	345.1

47

5 curbs

W	4.5	346.0
Crk	4.3	344.2
"A	4.6	343.9
M	5.0	343.5
"A	4.9	343.6
Crk	5.5	343.0
E	5.6	342.9

PLOTTED

7166 = S.L. GUMM

200 E	4.8	343.7
Crk	4.7	343.8
"A	4.9	343.6
M	4.7	343.8
"A	4.7	343.8
Crk	4.6	343.9
W	4.7	343.8

343.49

8+0

W	4.7	343.8
Crk	4.9	343.6
"A	5.0	343.5
M	4.9	343.6
"A	4.9	343.6
Crk	4.6	343.9
F	4.2	344.3

PLOTTED

8+20

F	5.1	343.4
Crk	5.2	343.3
"A	5.4	343.1
M	5.4	343.1
"A	5.1	343.4
Crk	4.7	343.8
W	4.8	343.7

48

8+50

W	4.9	343.6
Crk	5.3	343.2
"A	5.2	343.3
M	5.0	343.5
"A	4.9	343.6
Crk	5.1	343.4
F	5.1	343.4

PLOTTED

8+89⁵ N. L. Landis on W 60 wide

F	5.4	343.1
Crk	5.5	343.0
"A	5.1	343.4
M	5.3	343.2
"A	5.0	343.5
Crk	5.1	343.4
W	5.4	343.1

348.49

N Curve

N	5.8	342.7
Crk	5.9	343.1
"A	5.4	343.1
M	5.6	342.9
"A	5.8	343.2
Crk	5.6	342.9
E	5.3	343.2

PLOTTED

N "A

E	5.5	343.0
Crk	5.5	343.0
"A	5.9	342.6
M	5.8	342.7
"A	5.7	342.8
Crk	5.8	342.7
N	5.5	343.0

19

Center

N	5.4	343.1
Crk	5.9	342.6
"A	5.9	342.6
M	6.1	342.4
"A	6.1	342.4
Crk	5.8	342.7
E	5.4	343.1

PLOTTED

S "A

E	5.6	342.9
Crk	5.9	342.8
"A	5.9	342.6
M	6.0	342.5
"A	5.9	342.6
Crk	5.8	342.7
N	5.7	342.8

348.49

10725

W	6.5	342.0
crb	6.5	342.0
1/4	6.6	341.9
M	6.6	341.9
1/4	6.4	342.1
crb	6.2	342.3
E	6.0	342.5

PLOTTED

10+60 = N.L. Ländis on E 80 wide

E	6.3	342.2
crb	6.2	342.3
1/4	6.4	342.1
M	6.5	342.0
1/4	6.9	341.6
crb	6.9	341.6
W	6.9	341.6

51

N, curb

W	7.3	341.2
crb	7.2	341.3
1/4	7.5	341.0
M	7.3	341.2
1/4	7.3	341.2
crb	7.1	341.4
E	7.2	341.3

PLOTTED

N 1/4

E	7.6	340.9
crb	7.6	340.9
1/4	7.6	340.9
M	7.9	341.1
1/4	6.6	341.9
crb	6.6	341.9
W	6.8	341.7

348.49

Center

W	6.8	341.7
erb	6.6	341.9
1/4	7.3	341.2
M	7.3	341.2
1/4	7.6	340.9
erb	7.2	341.3
E	7.2	341.3
	5 1/4	
E	7.6	340.9
erb	7.6	340.9
1/4	7.5	341.0
M	7.5	341.0
1/4	7.0	341.5
erb	7.5	341.0
W	7.2	341.3

PLOTTED

57

S. curb

W	7.2	341.3
erb	7.4	341.1
1/4	7.5	341.0
M	7.0	340.5
1/4	7.9	340.6
erb	7.3	341.2
F	7.3	341.2
	11+10=S.L. Landis on E	
E	7.5	341.0
erb	7.9	341.1
1/4	7.4	341.1
M	8.1	340.4
1/4	8.1	340.4
erb	7.6	340.9
W	7.7	340.8

PLOTTED

348.49

11775

W	8.3	340.2
crk	9.0	339.5
"A	9.1	339.4
M	9.1	339.4
"A	8.2	340.3
crk	8.1	340.4
E	8.0	340.5

PLOTTED

1270

E	8.0	340.5
crk	8.5	340.0
"A	8.8	340.2
M	9.1	339.4
"A	9.3	339.2
crk	9.3	339.2
W	9.9	339.1

53

12725

W	8.8	339.7
crk	9.5	339.0
"A	9.5	339.0
M	9.6	338.9
"A	9.1	339.4
crk	8.9	339.6
E	8.4	340.1

PLOTTED

12750

E	9.2	339.3
crk	9.4	339.1
"A	9.4	339.1
M	9.9	338.6
"A	10.0	338.5
crk	10.1	338.4
W	9.8	338.7
T.P	1.61	341.22
	8.88	339.61

391.22

12725

W	1.9	339.3
Crk	3.0	338.2
1/4	3.0	338.2
M	3.1	338.1
1/4	2.5	338.7
Crk	3.4	338.8
F	2.6	338.7

PLOTTED

1370

E	3.0	338.2
Crk	3.1	338.1
1/4	2.9	338.3
M	3.7	337.5
1/4	3.5	337.7
Crk	3.4	337.8
W	3.1	338.1

54

13726

W	3.6	337.6
Crk	3.6	337.6
1/4	3.9	337.3
M	4.0	337.2
1/4	3.4	337.8
Crk	3.3	337.9
F	3.2	338.0

PLOTTED

13750

E	3.7	337.5
Crk	3.7	337.5
1/4	3.7	337.5
M	4.6	336.6
1/4	4.5	336.7
Crk	4.4	336.8
W	4.5	336.7

341.22

1375

N	4.8	336.4
erb	5.1	336.1
"	5.2	336.0
M	5.0	336.2
"	4.2	337.0
erb	3.9	337.3
F	4.0	337.2

PLOTTED

14+0

F	4.3	336.9
erb	4.4	336.8
"	4.3	336.9
M	5.4	335.8
"	5.4	335.8
erb	5.4	335.8
N	5.1	336.1

55

14+40 = M.L. Dwighton E 80' wide

N	5.4	335.8
erb	5.8	335.4
"	5.9	335.3
M	5.8	335.4
"	5.7	336.1
erb	4.8	336.4
F	4.7	336.5

PLOTTED

N. curb

F	4.7	336.5
erb	4.7	336.5
"	5.2	336.0
M	5.4	335.3
"	5.7	335.5
erb	5.7	335.5
N	4.8	336.4

341.22

N 1/4

W	5.3	335.9
crk	5.7	335.5
1/4	5.7	335.5
M	5.7	335.9
1/4	5.4	335.8
crk	5.3	335.9
E	5.2	336.0

PLOTTED

center

E	5.0	336.2
crk	5.1	336.1
1/4	5.1	336.1
M	5.6	335.6
1/4	6.2	335.0
crk	6.2	335.0
W	5.9	335.3

56

S 1/4

W	6.4	334.8
crk	6.4	334.8
1/4	6.2	335.0
M	5.6	335.6
1/4	5.6	335.6
crk	5.6	335.6
E	5.6	335.6

PLOTTED

S. curb

E	5.6	335.6
crk	5.3	335.9
1/4	5.4	335.8
M	6.0	335.2
1/4	6.5	335.7
crk	6.7	335.7
W	6.9	334.3

341.22

15720 = S.L. Dright on E

W	7.1	334.1
crb	6.9	334.3
"	6.5	334.7
M	6.5	334.7
"	6.3	334.9
crb	5.0	335.2
E	5.4	335.8

PLOTTED

15749 = N.L. Dright on W. 60 wide

E	6.8	334.9
crb	6.2	335.0
"	6.5	334.7
M	6.5	334.7
"	6.8	334.9
crb	5.7	335.5
W	5.7	335.5

57

N. curb

W	6.3	334.9
crb	6.3	334.9
"	7.0	334.2
M	7.0	334.2
"	6.9	334.3
crb	6.5	334.7
E	6.3	334.9

PLOTTED

N "A

E	6.4	334.8
crb	6.8	334.4
"	7.0	334.2
M	6.8	334.4
"	6.4	334.8
crb	6.5	334.7
W	6.7	334.5

341.22

Center

W	6.3	334.9
crk	6.0	335.2
"A	6.2	335.0
M	6.2	335.0
"A	6.8	334.4
crk	6.5	334.7
F	6.6	334.6
"A		
F	6.7	334.5
crk	6.9	334.3
"A	6.9	334.3
M	6.2	335.0
"A	6.1	335.1
crk	6.8	334.4
W	6.5	334.7

PLOTTED

58

SCORL

W	6.8	334.4
crk	6.4	334.8
"A	6.7	334.5
M	6.8	334.4
"A	7.3	333.9
crk	6.7	334.5
E	6.7	334.5
"A		
E	6.5	334.7
crk	7.2	334.0
"A	7.7	333.5
M	7.6	333.6
"A	7.6	333.6
crk	7.0	334.2
W	6.6	334.6

PLOTTED

16409K - S.L. Drought on W

341.22

16+25

W	8.7	332.5
Crk	8.5	332.7
"A	8.2	333.0
M	8.0	333.2
"A	8.0	333.2
Crk	7.7	333.5
E	7.0	334.2

PLOTTED

16+50

E	7.6	334.6
Crk	7.9	333.3
"A	7.6	333.6
M	6.9	334.3
"A	6.9	334.3
Crk	7.4	333.9
W	8.5	332.7

59

16+75

W	8.8	332.4
Crk	8.8	332.9
"A	7.8	333.4
M	7.1	334.1
"A	7.0	334.2
Crk	7.5	333.7
E	7.5	333.7

PLOTTED

17+0

E	7.3	333.9
Crk	7.6	333.6
"A	8.1	333.1
M	8.5	332.7
"A	8.5	332.7
Crk	8.2	333.0
W	9.9	332.8

341.22

17425

W	7.8	333.4
crk	7.7	333.3
"A	8.0	333.2
M	8.2	333.0
"A	7.7	333.5
crk	6.8	334.4
E	6.5	334.7

PLOTTED

17450

E	7.4	333.8
crk	8.1	333.1
"A	8.0	333.2
M	8.0	333.2
"A	7.2	333.0
crk	8.5	332.7
W	8.7	332.5

60

17475

W	8.3	332.9
crk	7.6	333.6
"A	7.4	333.8
M	7.4	333.8
"A	7.3	333.9
crk	7.7	333.5
E	7.5	333.7

PLOTTED

1840

E	7.3	333.9
crk	7.0	334.2
"A	7.7	333.5
M	7.3	333.9
"A	7.6	333.6
crk	8.0	333.2
W	8.2	333.0

341.22

18420 = N.L. CAPRON F 80' wide

N	8.2	333.0
erb	7.4	333.9
"A	7.8	333.4
M	7.9	333.3
"A	7.0	334.2
erb	6.7	334.5
F	6.5	334.7

PLOTTED

N. CURVE

E	6.8	334.4
erb	6.8	334.4
"A	6.8	334.4
M	7.0	334.2
"A	7.5	333.7
erb	8.0	333.2
N	8.4	332.8

61

N "A

N	8.3	332.9
erb	8.1	333.1
"A	7.9	333.3
M	7.2	334.0
"A	7.1	334.1
erb	7.3	333.9
F	7.3	333.9

PLOTTED

Center

E	7.1	334.1
erb	7.3	333.9
"A	7.7	333.5
M	7.7	333.5
"A	7.6	333.6
erb	7.6	333.6
N	8.2	333.0

341.22

5 1/4

W	8.0	333.2
Crk	7.3	333.9
1/4	7.3	333.9
M	7.6	333.6
1/4	7.6	333.6
Crk	7.5	333.7
E	7.5	333.7

PLOTTED

5 Crk

E	7.1	334.1
Crk	7.3	333.9
1/4	7.9	333.3
M	8.1	333.1
1/4	8.1	333.1
Crk	8.0	333.2
W	8.2	333.0

62

1940 - 3:41 CAPPS on E

W	8.2	333.0
Crk	8.2	333.0
1/4	8.0	333.2
M	7.9	333.3
1/4	7.6	333.6
Crk	7.1	334.1
E	6.7	334.5

PLOTTED

19425

E	7.5	333.7
Crk	7.5	333.7
1/4	7.0	334.2
M	7.0	334.2
1/4	7.1	334.1
Crk	7.6	333.6
W	8.3	332.9

T.P.	4.78	338.46	7.54	333.68
------	------	--------	------	--------

338.46

19450

W	5.5	333.0
erb	5.2	333.3
"A	5.1	333.4
M	5.1	333.4
"A	5.0	333.5
erb	4.9	333.6
F	4.6	333.9

PLOTTED

19475

F	4.6	333.9
erb	4.5	334.0
"A	4.4	334.1
M	4.5	334.0
"A	4.7	333.8
erb	4.8	333.7
W	5.4	333.1

63

2040

W	5.4	333.1
erb	5.6	332.9
"A	5.3	333.2
M	5.1	333.4
"A	4.9	333.6
erb	4.7	333.8
F	4.6	333.9

PLOTTED

20425

F	4.7	333.8
erb	5.0	333.5
"A	4.8	333.7
M	5.0	333.5
"A	5.0	333.2
erb	5.4	333.1
W	5.3	333.2

338.46

20+50

W.	5.2	333.3
crk	5.4	333.1
"A	5.5	333.0
M	5.0	333.5
"A	4.9	333.6
crk.	4.6	333.9
E	4.5	334.0

PLOTTED

20+75

E	4.3	334.2
crk	4.7	333.8
"A	4.8	333.7
M	4.9	333.6
"A	5.1	333.4
crk	4.9	333.6
W	4.9	333.6

64

21+0

W	3.8	334.7
crk	4.2	334.3
"A	4.6	333.9
M	4.6	333.9
"A	4.4	334.1
crk	4.2	334.3
E	4.4	334.1

PLOTTED

21+25

E	4.1	334.4
crk	3.9	334.8
"A	3.4	335.1
M	3.6	334.9
"A	4.4	334.1
crk	4.6	333.9
W	4.7	333.8

338.46

21450

W	3.5	335.0
erb	3.7	334.8
"A	4.4	334.1
M	4.2	334.3
"A	4.3	334.2
erb	4.3	334.2
E	3.7	334.6

PLOTTED

21475

E	3.9	334.6
erb	3.8	334.7
"A	4.2	334.3
M	4.7	333.8
"A	5.0	333.5
erb	5.1	333.4
W	5.2	333.3

65

2220 on E 22247 on W = Mt. Myrtle seen E 260 on W *Plotted*

W	5.2	333.3
erb	4.4	334.1
"A	4.6	333.9
M	5.0	333.5
"A	5.0	333.5
erb	3.9	334.6
E	4.0	334.5

PLOTTED

2220 on E 22247 on W = S.L. Myrtle

E	5.4	333.3
erb	5.0	333.5
"A	5.5	333.0
M	6.1	332.4
"A	5.5	333.0
erb	5.7	332.8
W	5.9	332.6

338.44

2340

W	5.7	332.8
erb	6.0	332.5
1/4	6.0	332.5
M	5.9	332.6
1/4	5.8	332.7
erb	5.4	333.1
E	5.2	333.3

PLOTTED

23425

E	5.5	333.0
erb	5.8	332.7
1/4	6.0	332.5
M	6.1	332.4
1/4	6.0	332.5
erb	6.1	332.4
W	6.0	332.5

66

23450

W	6.0	332.5
erb	5.7	332.8
1/4	5.9	332.6
M	5.3	333.2
1/4	5.6	332.9
erb	5.8	332.7
E	5.7	332.8

PLOTTED

23475

E	5.9	332.6
erb	6.0	332.5
1/4	6.0	332.5
M	6.2	332.3
1/4	5.7	332.8
erb	5.9	332.6
W	5.9	332.6

338.46

2440

W	6.1	332.4
Crk	5.8	332.7
"A	6.0	332.5
M	6.4	332.1
"A	6.3	332.2
Crk	6.0	332.5
E	6.1	332.4

PLOTTED

24428

E	6.1	332.4
Crk	5.7	332.8
"A	5.1	333.4
M	5.4	333.1
"A	6.3	332.2
Crk	6.2	332.3
W	6.3	332.2

67

24450

W	6.5	332.0
Crk	6.2	332.3
"A	5.6	332.9
M	6.0	332.5
"A	6.2	332.3
Crk	6.5	332.0
E	6.4	332.1

PLOTTED

24475

E	6.8	331.7
Crk	6.7	331.8
"A	6.3	332.2
M	6.3	332.2
"A	6.3	332.2
Crk	6.8	331.7
W	7.1	331.4

332.46

25+10

N	7.2	331.3
crk	6.7	331.8
"	6.7	331.8
M	6.5	331.7
"	6.6	331.9
crk	6.9	331.6
E	7.2	331.3

PLOTTED

25+15

E	7.4	331.1
crk	7.6	330.9
"	7.7	330.8
"	7.8	330.7
"	7.7	330.8
crk	7.5	331.0
N	7.3	331.2

68

25+50

N	7.2	331.3
crk	7.0	331.5
"	7.5	331.0
M	7.9	330.6
"	7.8	330.7
crk	7.6	330.9
E	7.4	330.9

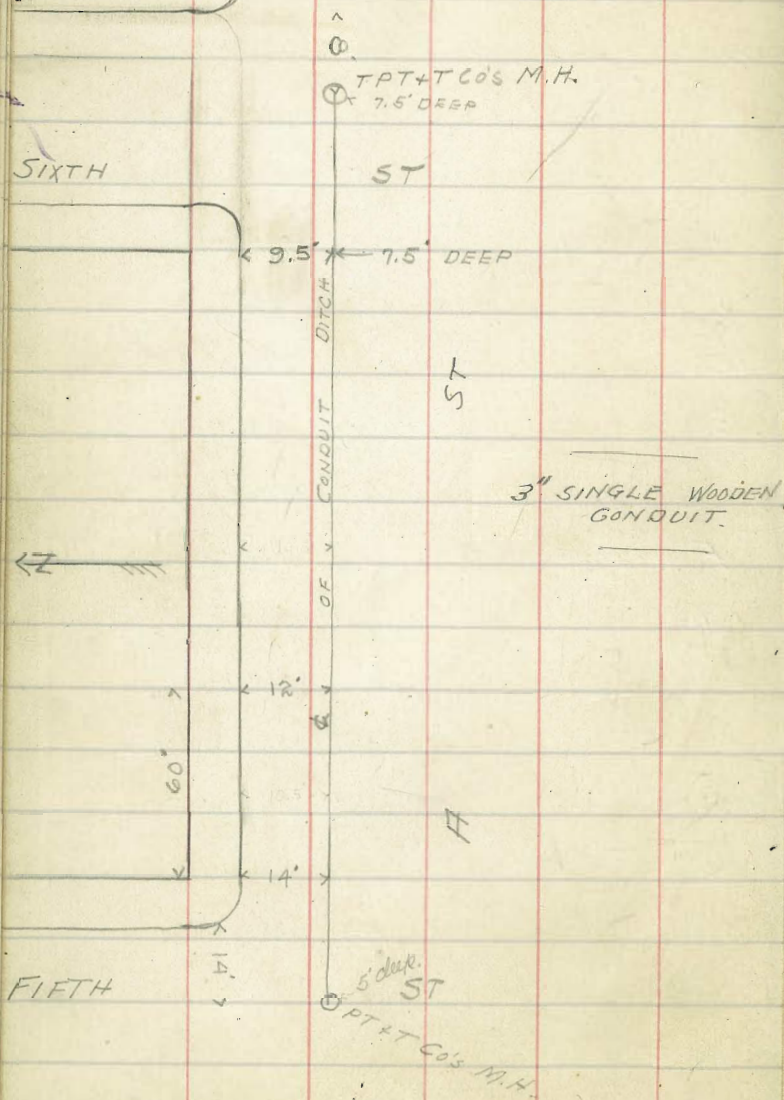
PLOTTED

25+30 = N.L. UP 25 ST

E	8.1	330.4
crk	8.0	330.5
"	8.6	329.9
M	8.2	330.3
"	8.3	330.2
crk	8.4	330.1
N	8.3	330.2

NOTES ON POLICE TELEGRAPH SYSTEM
CONDUIT "A" ST

SEPT 24th 1912
GREGORY



12/14/12 Hatch & Dec Fern St,
12/12/12 from grape to Fern

69

Fir 2680.82
grape 276.614

(8' Curbs) (11' 1/2")

B.M. grape 313 280.04 276.614

1.14 271.65 9.53 270.51

St. grape

W 0.9 270.7

+2 1.2 270.4

cb. 0.6 270.0

+4 1.5 270.1

1/2 1.8 269.8

c 1.8 269.8

1/2 1.8 269.8

cb. 1.7 269.9

+4 2.3 269.3

E 2.3 269.4

25' 6"

E 2.7 268.9

cb. 2.5 269.1

1/2 2.5 269.1

c 2.6 269.0

1/2 2.6 269.0

271.65

+6	2.0	269.6
cb	1.6	270.0
+5	1.4	270.2
W	0.5	271.1

50's

W	1.8	269.8
+5	2.5	269.1
cb	2.5	269.1
+7	2.7	268.9
1/4	2.9	268.7
c	3.1	268.5
1/4	3.0	268.6
cb	2.9	268.7
E	2.9	268.7

75's

E	4.0	267.6
cb	3.9	267.7
1/4	3.9	267.7
c	4.0	267.6

271.65

+4	3.2	268.4
1/4	3.3	268.3
cb	3.2	268.4
+6	2.7	268.9
W	3.0	269.6

100's

W	2.5	269.1
+2	3.2	268.4
cb	3.7	267.9
1/2	3.8	267.8
+6	3.9	267.7
c	4.6	267.0
1/4	4.4	267.2
cb	4.7	266.9
E	4.6	267.0

125's

E	5.3	266.3
cb	5.6	266.0
1/4	5.1	266.5

70

27165

c	53	266.3
+5	{ 51 44	266.5 267.2
1/4	48	266.8
+7	57	267.9
cb	39	267.7
+4	{ 42 37	267.4 267.9
W	34	268.2

150's

W	39	267.7
+2	53	266.3
cb	55	266.1
+3	49	266.7
1/4	53	266.3
+6	{ 53 49	266.3 265.7
c	60	265.6
1/2	61	265.5
cb	63	265.3
E	62	265.4

27165

175's

E	69	264.7
cb	73	264.3
1/2	73	264.3
c	{ 70 66	264.6 265.0
1/2	63	265.3
cb	64	265.2
+6	60	265.6
W	48	266.8

200's

W	56	266.0
+2	67	264.9
cb	74	264.2
+5	{ 74 70	264.2 264.6
1/2	72	264.4
c	75	264.1
1/4	80	263.6
cb	80	263.6
E	78	263.8

2765

225's

E	8.7	262.9
cb	8.8	262.8
1/4	8.7	262.9
c	8.4 7.8	263.2 263.8
+6	8.0	263.6
1/4	7.8	263.8
cb	7.5	264.1
W	6.8	264.8

250's

W	7.6	264.0
cb	7.9	263.7
+3	7.5	264.1
1/4	8.5	263.1
+4	8.8	262.8
c	8.5	263.1
1/4	9.1	262.5
cb	9.3	262.3
E	9.4	262.2

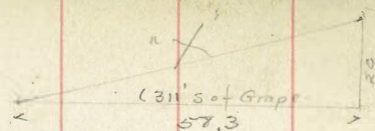
2765

275's

E	10.1	261.5
cb	10.2	261.4
1/4	10.1	261.5
c	9.4	262.2
1/4	9.5	262.1
+6	9.1	262.5
cb	8.6	263.0
+4	8.9	262.7
W	8.5	263.1

300's

W	9.5	262.1
cb	10.0	261.6
1/4	10.3	261.3
c	10.5	261.1
1/4	11.0	260.6
cb	11.0	260.6
E	11.1	260.5



Profile on W. line of Vermont
 from 100' N of Hendricks across the
 Cañon for Foot bridge. 12/29/12 73
Nat. Scale

Station	Dist	Elev	Notes	Dist	Elev	Notes
571.65				288107		NW Spain 206
311 '5				078	289.89	5.15
			Sta 0+00			
			= 100' N of Hendricks (cont. work)			2.3
E	11.5	260.1				
cb	11.4	260.2		0+25		5.5
1/2	11.2	260.4		12' W		5.7
c	11.1	260.5		E		5.0
1/2	10.6	261.0		0+40		8.8
cb	10.2	261.4		13' W		10.5
W	9.5	262.1		E		7.4
"X"				0+50		13.5
				12' W		10.4
				E		11.3
				T.P.	021	277.19
W	9.5	262.1				12.91
cb	10.7	260.9				276.98
+4.	11.3	260.3		0+70		5.1
1/2	11.5	260.1		12' W		7.4
c	11.7	259.9		E		3.5
1/2	12.1	259.5		0+85		11.3
cb	12.4	259.2		E		12.1
E	12.7	258.8		12' W		12.3
				T.P.	052	264.64
						12.87
				0+100		6.3
				E		7.9
				12' W		8.3
				T.P.	010	252.41
						12.30
				1+15		1.4
				12' E		2.0
				W		1.3

252A1

24466

1+30			9.6	242.8 [✓]
12 E			9.5	242.9 [✓]
12 W			8.8	243.6 [✓]
T.P	472	244.19 [✓]	12.94	239.4 [✓]
1+45			9.9	234.3 [✓]
12 E			11.0	233.2 [✓]
12 W			8.2	236.0 [✓]
T.P	0.89	232.01 [✓]	13.07	231.12 [✓]
1+60			5.2	226.8 [✓]
12 W			6.2	225.8 [✓]
12 E			5.0	227.0 [✓]
1+75			12.0	220.0 [✓]
12 W			13.6	218.4 [✓]
12 E			10.1	221.9 [✓]
1+80			12.4	219.6 [✓]
12 W			12.6	219.4 [✓]
12 E			11.4	220.6 [✓]
1+95			10.8	221.2 [✓]
12 W			11.4	220.6 [✓]
12 E			10.5	221.5 [✓]
2+00			9.6	222.4 [✓]
12 W			9.9	222.1 [✓]
12 E			9.6	222.4 [✓]
2+15			4.1	227.9 [✓]
12 W			5.9	226.1 [✓]
12 E			3.5	228.5 [✓]
T.P	12.77	244.66 [✓]	0.12	231.89 [✓]

2+30			11.3	233.4 [✓]
12 W			10.5	230.9 [✓]
12 E			10.9	233.8 [✓]
2+45			5.1	239.6 [✓]
12 W			7.4	237.3 [✓]
12 E			5.8	238.9 [✓]
T.P	11.94	255.77 [✓]	0.83	243.53 [✓]
2+60			10.1	245.7 [✓]
12 E			12.1	243.7 [✓]
12 W			11.9	243.9 [✓]
2+75			5.5	250.3 [✓]
12 E			8.9	246.9 [✓]
12 W			4.7	251.1 [✓]
2+90			0.8	255.0 [✓]
12 E			8.7	247.1 [✓]
12 E of 3+00			9.3	246.5 [✓]
12 E of 3+15			6.3	249.5 [✓]
T.P	11.57	267.35 [✓]	+0.01	255.78 [✓]
12 W of 2+90			10.9	256.5 [✓]
3+00			11.9	255.5 [✓]
12 W			7.5	259.9 [✓]
3+15			13.5	253.9 [✓]
12 W			4.2	263.2 [✓]

267.35 ✓

3+20 10.5 256.9 ✓
 1' E 12.5 254.9 ✓
 12' W 4.2 263.2 ✓

3+50 4.6 262.8 ✓
 15' E 5.4 262.0 ✓
 12' W

7.0 12.00 275.22 ✓ 1.13 266.22 ✓

12' W of 3+50 8.0 270.2 ✓

3+60 11.6 266.6 ✓
 1' E 9.4 268.8 ✓
 12' W 4.8 273.4 ✓

3+75 3.2 275.0 ✓

7.0 13.07 289.99 ✓ 13.0 276.2 ✓
 1' E 13.3 276.7 ✓
 12' W 14.2 275.6 ✓

3+85 7.8 282.2 ✓
 1' E 8.2 281.8 ✓
 12' W 8.7 281.3 ✓

3+95 2.3 287.7 ✓
 1' E 2.9 287.1 ✓
 12' W 2.1 287.9 ✓

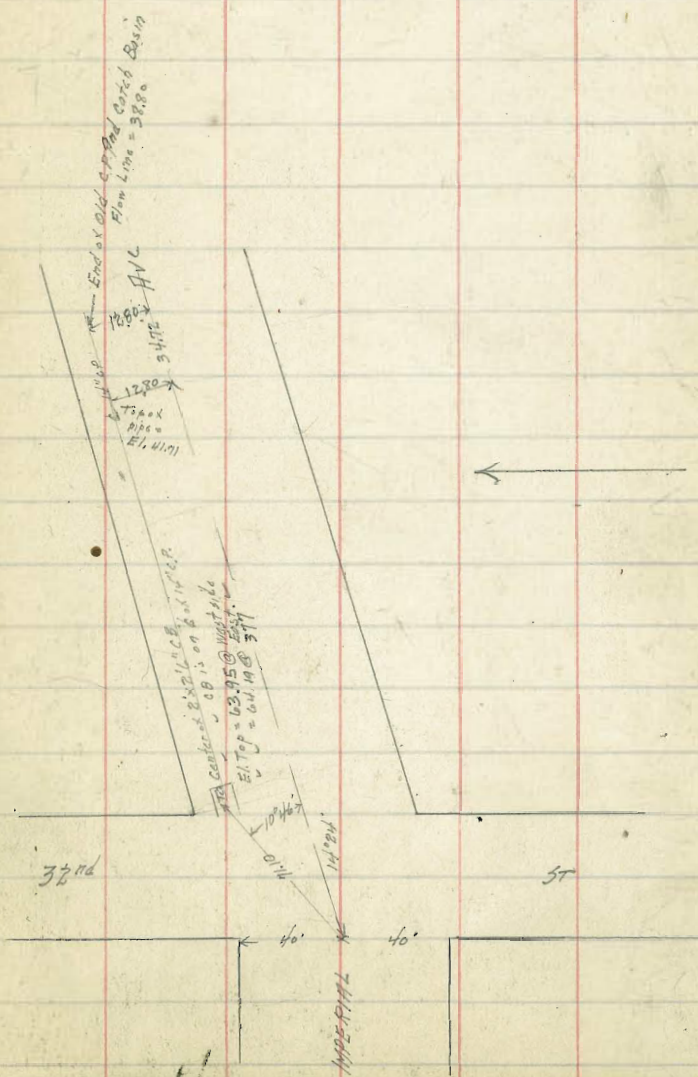
4+00 0.8 289.2 ✓
 1' E 1.1 288.9 ✓
 12' W 1.1 288.9 ✓

check on turn 1299 247.00 276.98 ✓

7/5/23

Notes on Drainage Imperial Ave
E. of 32nd

1.31	68.34	67.93	BP NW 31 st + 1 st Imp.
002	55.68	12.68	55.66
155	45.76	11.47	44.21
Top of 14" pipe under bridge		4.05	41.71
Flow Line inlet of pipe @ S. Side		5.19	
✓	14" c.p. at CB N side	6.96	38.80 - Outlet of original pipe
✓	14" " " " " "	7.10	38.66 - Inlet of new pipe
Elev. N. rail opp. Top of 14" cp.		3.63	42.13

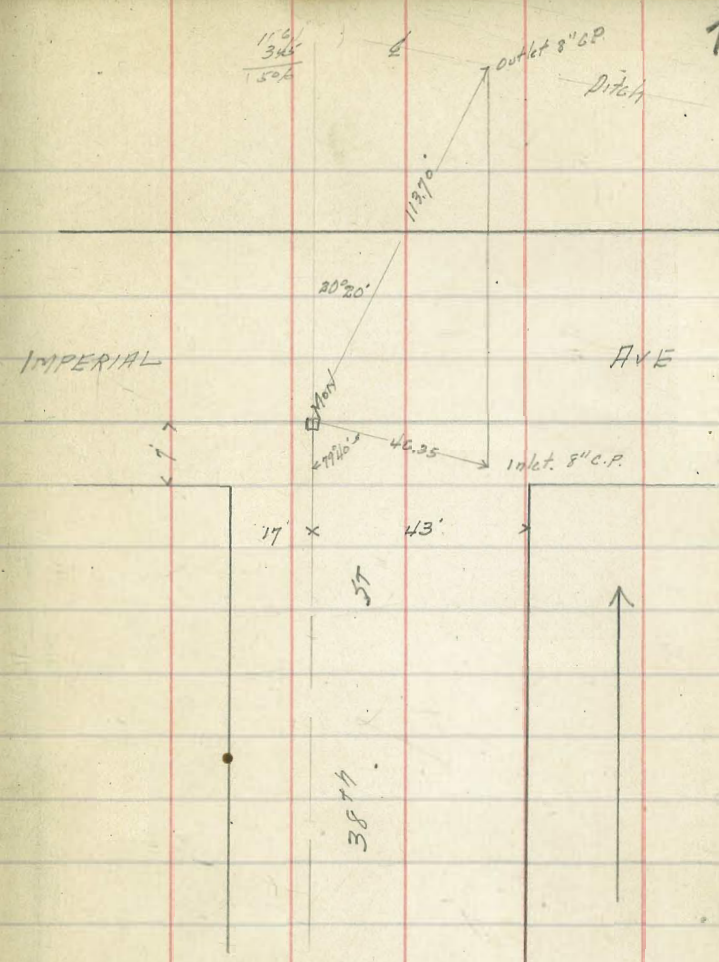


325
 8787
 23434
 41237
 3531
 397
 3931
 34
 41237
 41172
 327
 3472
 41172
 77

7/5/73

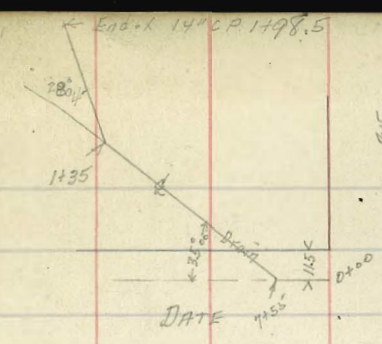
Present Cement pipe at
38th = Imperial
Levels on 2" of pipe

	2.20	100.78	98.58	Top of 2" of 38 th Imp. pipe
00 = Inlet 8" C.P.	7.01	93.77		
+ 2.0	5.6	95.2		
+ 12.0	5.0	95.8		
+ 30 = 3. rail	4.85	95.93		
+ 40	4.8	96.0		
+ 44	8.0	92.8		
+ 51 = hole in pipe here	8.7	92.1		
+ 51 Flow Line	9.88	90.90		
1+00	13.1	87.7		
+ 13 = Outlet c.p.	13.9	86.9		
+ 14 ³ = Flow line @ outlet	15.06	85.72		



8/14/23 Gregory. Levels & Drain DATE GRANADA

Station	Level	Distance	Height	Remarks
2.14	210.09	407.95		BP SW Duck - Ground
0+00		2.0	208.1	
0+7.55	Δ 35°00R	2.4	207.7	
0+15		1.6	208.5	
0+16		7.7	207.4	
0+25		10.6	199.5	
0+42		13.4	196.7	
TP	1.99	199.56	125.2	197.57
1+00		7.9	191.7	
+10		10.3	189.3	664
+35	Δ 28°00R 4.51	192.92	11.15	188.41
+45		6.7	186.8	
+75		7.3	185.6	
+88		7.9	185.0	
+98.5	= End of 14° CR	9.77	183.15	



ME

GRANADA

ST

9.86
9.99
9.74

.13
.25

275
755
1033
1467
2500



6.06 111. 1.33
6.97 6.06 5.35
6.31 - 2.22 6.00
6.5 12.15

40
33/35
33.123

338.46
7.29
35 1.17

75
151
25

1817
1683
2600

16
1817
7

1683
1817
755
3500

1683
1817
7
2800

35
50
4245
755
10500

