

F. B.
825

LEVEL BOOK

No. 410

MICROFILMED

DEC 15 1964

100.69 5 Ht at Base

29.705

North side top center parapet,

31-4 NE RR 83.225

RETURN TO CITY ENGINEER'S OFFICE
CITY HALL, SAN DIEGO, CAL.

825-

m.

125

20

25

60

125

20

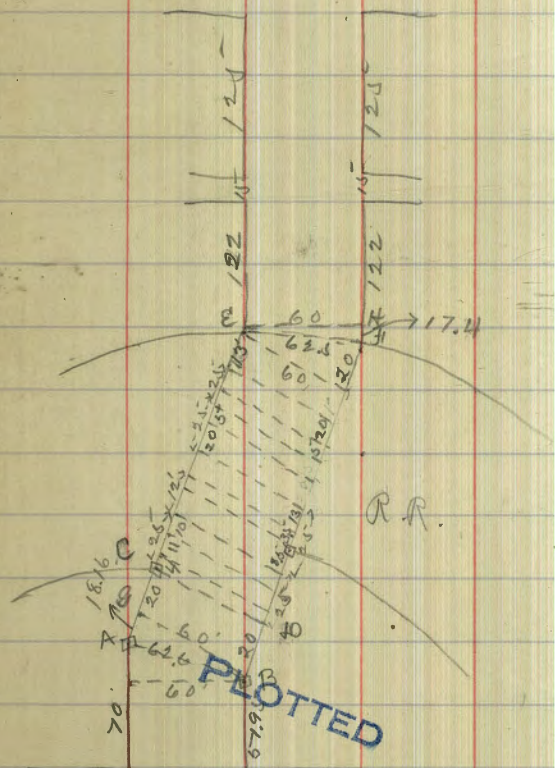
125

60

K

11

X sect. 33, m. st. north



Dec. 1/11

Childs
Taylor
Bunker

H.I.

343

33.14

2971

no. line m.

E line	7.1	26.0
	7.1	26.0
	7.0	26.1
C	6.6	26.5
	6.5	26.6
	6.9	26.2
W. line	7.5	25.6
W. line	8.9	24.2
	7.7	25.4
	7.0	26.1
C	7.1	26.0
	7.4	25.7
	8.0	25.1
E. line	8.5	24.6

5' No. of 74.

25' no.

Elms	8.5	24.6
	8.6	24.5
	8.4	24.7
c	8.4	24.7
	8.6	24.5
	9.0	24.1
White	9.1	24.0

50' no.

Elms	8.7	24.4
	9.1	24.0
	8.8	24.3
c	8.5	24.6
	8.6	24.5
	8.8	24.3
Elms ^v	8.4	24.7

PLOTTED

75' no.

Elms	8.4	24.7
	8.8	24.3
	8.5	24.6
c	8.4	24.7
	8.4	24.7
	9.1	24.0
white	8.5	24.3

100' no.

white	8.9	24.2
	9.2	23.9
	8.4	24.7
c	8.4	24.7
	8.5	24.6
	8.7	24.4
Elms	8.6	24.5

125' no. (side alley)

E line	8.3	24.8
	8.7	24.4
	8.3	24.8
C	8.4	24.7
	8.4	24.7
	8.9	24.2
white	8.5	24.6

745 no. (no side alley)

white	8.4	24.7
	8.9	24.2
	8.1	25.0
C	8.0	25.1
	8.0	25.1
	8.6	24.5
E line	8.3	24.8

PLOTTED

25' no. of alley.

E line	8.0	25.1
	8.3	24.8
	7.8	25.3
C	7.7	25.4
	7.9	25.2
	8.4	24.7
white	8.1	25.0

50' no.

white	8.1	25.0
	8.2	24.9
	7.7	25.4
	7.5	25.6
	7.7	25.4
	8.1	25.0
E line	7.9	25.2

75' no.

Elise

7.7 25.4

8.0 25.1

7.7 25.4

C

7.6 25.5

7.7 25.4

8.3 24.8

white

8.1 25.0

100' no.

white

7.9 25.2

8.2 24.9

7.6 25.5

C

7.5 25.6

7.5 25.6

7.9 25.2

Elise

7.8 25.3

PLOTTED

125' no. (20 line L)

Elise

7.4 25.7

7.6 25.5

7.2 25.9

C

7.1 26.0

7.4 25.7

7.9 25.2

white

7.7 25.4

10. cb.

white

8.0 25.1

7.8 25.3

7.3 25.8

C

7.0 26.1

7.2 25.9

7.5 25.6

Elise

7.7 25.4

So. 1/4

Eline	7.2	25.9
	7.1	26.0
	6.9	26.2
c	6.9	26.2
	7.1	26.0
	7.5	25.6
White	7.6	25.5
Center L.		
White	7.4	25.7
	7.3	25.8
	7.0	26.1
c	6.8	26.3
	6.8	26.3
	7.1	26.0
Eline	7.0	26.1

PLOTTED

No. 1/4

Eline	7.3	25.8
	7.2	25.9
	6.9	26.2
c	6.9	26.2
	7.1	26.0
	7.2	25.9
White	7.3	25.8
No. Cb.		
White	7.7	25.4
	7.3	25.8
	7.0	26.1
c	6.8	26.3
	6.9	26.2
	7.3	25.8
Eline	7.4	25.7

33.14

North line L.

E line

6.8 26.3

7.2 25.9

6.8 26.3

C

6.7 26.4

6.9 26.2

7.4 25.7

W line

7.28 25.86

J.P.

8.30 34.16

25' no.

W. line

8.0 26.2

J.P.

8.30

8.2 26.0

7.7 26.5

C

7.6 26.6

7.7 26.5

7.9 26.3

E line

7.5 26.7

PLOTTED

34.16

50' no.

E line

7.2 27.0

7.7 26.5

7.4 26.8

C

7.3 26.9

7.6 26.6

8.0 26.2

W. line

7.7 26.5

75' no.

W line

7.5 26.7

7.9 26.3

7.2 27.0

C

6.9 27.3

7.3 26.9

E line

7.5 26.7

E line

7.1 27.1

100' no.

Eline

6.9 27.3

7.2 27.0

7.0 27.2

c

6.6 27.6

7.0 27.2

7.6 26.6

white

7.0 27.2

125' no. (20. line alley)

white

6.9 27.3

7.5 27.7

6.4 27.8

c

6.3 27.9

6.8 27.4

6.9 27.3

Eline

6.7 27.5

PLOTTED

145' no. (20. line alley)

Eline

6.5 27.7

6.6 27.6

6.7 27.5

c

6.0 28.2

6.4 27.8

7.0 27.2

w. line

6.7 27.5

25' no. of alley.

w. line

6.4 27.8

6.6 27.6

6.2 28.0

c

6.0 28.2

6.3 27.9

6.8 27.4

6.3 27.9

50' no.

E line

6.0 28.2

6.1 28.1

6.1 28.1

C

5.7 28.5

5.8 28.4

6.6 27.6

white

6.5 27.7

75' no.

white

6.2 28.0

6.0 28.2

5.8 28.4

C

5.3 28.9

5.8 28.4

5.7 28.5

E line

5.7 28.5

PLOTTED

100' no.

E line

5.7 28.5

5.7 28.5

5.6 28.6

C

5.2 29.0

5.6 28.6

white

6.1 28.1

white

75' no. (60' line) 5.9 28.3

white

125' no. (20' line KAT)

white

5.9 28.3

5.4 28.8

C

5.2 29.0

C

5.0 29.2

5.6 28.6

E line

5.8 28.4

E line

5.6 28.6

SO Cb.

Eline 5.9 28.3

5.9 28.3

5.4 28.8

C 5.0 29.2

5.4 28.8

5.6 28.6

White 5.9 28.3

SO 1/4

White 5.7 28.5

5.7 28.5

5.3 28.9

C 5.1 29.1

5.1 29.1

5.8 28.4

Eline 5.4 28.8

Center

5.4 28.8

5.6 28.6

5.2 29.0

4.9 29.3

5.1 29.1

5.5 28.7

5.4 28.8

MO. 1/4

5.4 28.8

5.3 28.9

5.2 29.0

5.1 29.1

5.0 29.2

5.7 28.5

5.4 28.8

PLOTTED

no. cb.

Elvis	5.7	28.5
	5.7	28.5
	5.0	29.2
C	5.1	29.1
	5.2	29.0
	5.7	28.5
White	5.8	28.4

no. line K St.

White	5.43 B.M.	28.73
	5.3	28.9
	5.1	29.1
C	4.8	29.4
	4.9	29.2
	5.5	28.7
Elvis	5.4	28.8

PLOTTED

25' no.

Elvis	5.0	29.2
	4.9	29.3
	4.7	29.5
C	4.8	29.4
	5.2	29.0
	5.1	29.1
White	4.9	29.3

5' 95' no.

White	4.8	29.4
	4.8	29.4
	4.6	29.6
C	4.7	29.5
	4.6	29.6
	4.6	29.6
Elvis	5.2	29.0

X sect. on A-B radiogram

Elms	5.2	290
	4.6	296
	4.5	297
c	4.8	294
	4.6	296
	4.5	297
White	4.6	296

X sect. on G.B.

White	4.6	296
	4.6	296
	4.2	20.0
c	4.6	296
	4.3	299
	4.4	298
Elms	5.2	290

PLOTTED

X sect. on C 10.

Elms	4.7	29.5
	4.7	29.5
	4.3	29.9
c	4.4	29.8
	4.3	29.9
	3.9	30.3
White	3.9	30.3

4' no. sect C.D

White	4.0	30.2
	4.2	30.0
	4.3	29.9
c	4.3	29.9
	4.5	29.7
	4.8	29.4
Elms	4.5	29.7

15' no. C 10

Elvis	4.6	29.6
	4.9	29.3
	4.7	29.5
c	4.4	29.8
	4.2	30.0
	9.1	25.1
White	10.8	23.4

25' no. C 10

White	8.5	25.7
	9.2	25.0
	10.8	23.4
c	7.9	26.3
	4.6	29.6
	4.6	29.6
Elvis	4.6	29.6

PLOTTED

33.5 no. C 10

Elvis	4.6	29.6
	7.4	26.8
	9.7	24.5
c	10.9	23.3
	8.2	26.0
	5.4	28.8
White	2.9	31.3

37' no. C 10

White	0.4	33.8
	4.0	30.2
	6.3	27.9
c	9.1	25.1
	11.3	22.9
	9.9	24.3
Elvis	4.6	29.6

34.16

50 no. C 10

Eline		11.1	23.1
		10.2	24.0
		8.9	25.3
C		7.1	27.1
W ^{1/2}		3.8	32.4
T.P.	10.83	41.41	30.58
cb		7.2	34.2
white		3.0	38.4
	70' no. C 10		
		1.3	38.1
white		3.3	38.1
		2.6	38.8
	2 below rail	1.8	39.6
C	3 below rail	2.3	39.1
		3.4	38.0
		6.2	35.2
Eline		8.8	32.6

PLOTTED

41.41

14

75' no. C 10

Eline		6.3	35.1
		4.5	36.9
		2.9	38.5
C		1.8	39.6
		2.5	38.9
		3.3	38.1
white		6.2	35.2
	80' no. C 10		
		9.5	31.9
		7.1	34.3
		4.0	37.4
		2.5	38.9
	3 below rail	2.0	39.4
		2.6	38.8
		3.2	38.2

4141

100' no. c. 20

E line

3.7 27.7

5.9 28.5

8.0 29.4

c

9.6 31.8

w 1/4

11.0 30.4

J.P.

4.85-35.82 10.44 30.97

cb

8.7 27.1

w line

10.3 28.5

113' no. c. 20

w line

5.3 30.5

8.2 27.6

10.0 28.8

c

9.7 26.1

7.8 28.0

6.7 29.1

E line

5.4 30.4

PLOTTED

3582

15

X sect. on E.F.

E line

10.6 28.2

10.2 28.6

9.1 26.7

c

8.4 27.4

8.9 26.9

8.0 27.8

w line

5.3 30.5

X sect. on E.H.

w line

5.3 30.5

5.3 30.5

6.1 29.7

6.7 29.1

6.2 29.6

5.4 30.4

E line

5.3 30.5

22' no. of sect. E.H.

E line 4.9 30.9

4.8 31.0

5.2 30.6

C 4.8 31.0

4.9 30.9

5.0 30.8

W line 5.1 30.7

47' no.

W line 4.9 30.9

4.7 31.1

4.8 31.0

C 4.7 31.1

5.1 30.7

4.9 30.9

E line 4.7 31.1

72' no.

E line 4.8 31.0

4.8 31.0

4.8 31.0

C 4.4 31.4

4.8 31.0

4.6 31.2

W line 4.7 31.1

97' no.

W line 4.4 31.4

C 4.5 31.3

4.2 31.6

C 4.0 31.8

4.7 31.1

4.9 30.9

E line 4.8 31.0

PLOTTED

16 1/2

122' no. (So. line alley)

Elms 4.9 309

4.7 311

4.5 312

c 3.8 320

4.1 317

4.6 312

white 4.5 313

137' no. (no line alley)

white 4.7 317

4.0 318

4.0 318

c 3.6 322

4.5 313

4.5 313

Elms 4.3 315

25' no. alley

Elms 3.9 319

4.1 317

3.9 319

c 3.4 334

3.6 322

4.2 316

white 3.9 319

50' no. alley

white 3.6 322

3.6 322

3.3 325

c 3.1 327

3.9 319

3.6 322

Elms 3.9 319

PLOTTED

35.82

75' no.

E line 3.6 322

3.4 324

3.5 323

C 3.0 328

3.3 325

4.0 318

W line 3.4 324

100' no.

W line 3.4 324

3.2 326

3.1 327

C 2.8 330

3.5 323

3.3 325

E line 3.3 325

PLOTTED

125' no. (So. line of St.)

E line 3.2 326

3.0 328

3.0 328

C 2.8 330

3.1 327

3.7 321

W line 3.2 326

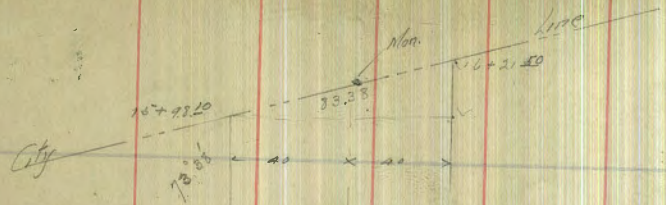
J.P. N.E. Blk Cor. BM 280 33.02

W line

C

E line

PLOTTED

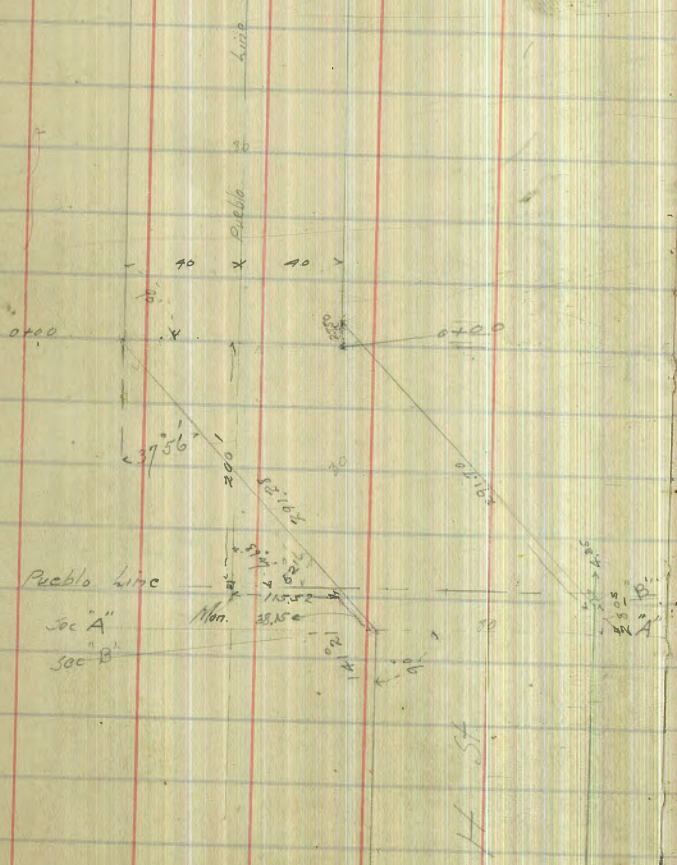


12 Hatch
21 Moore
11 Hall

Profile Levels on H St from
Pascoe St. to Clyburne

18

BM	043	141.12	140.69	341/Hub Pascoe
Sec A				
J		04	129.7	
C		4.9	36.2	
N		6.3	34.8	
Sec B				
A		6.3	34.8	
C		6.3	34.8	
S		2.5	38.6	
25' E				
S		6.5	34.6	
C		10.4	30.7	
N		9.8	31.3	
50' E				
N		12.6	28.5	
C		15.4	25.7	
S		11.8	29.3	
TL	127	129.99	127.0	128.43
75' E				
S		5.6	124.4	
C		6.0	24.0	
N		7.0	26.0	



17.9

129.99

100°E

N 6.5 123.5

Cr 8.6 21.4

S 9.3 20.7

135°E

S 12.8 16.2

Cr 10.8 19.2

N 9.9 20.1

150°E

N 10.2 19.6

Cr 12.3 17.7

TP 0.00 117.26 127.3 117.26

S 3.2 14.1

175°E

S 4.2 13.1

Cr 3.8 13.5

N 1.1 16.2

200°E

N 4.3 13.0

Cr 6.8 10.5

S 8.2 09.1

117.24

225°E

S 12.7 05.1

Cr 9.7 07.6

N 5.8 11.5

250°E

N 7.6 09.7

Cr 7.2 10.1

S 9.4 07.9

275°E

S 7.8 12.5

Cr 5.0 12.3

N 4.6 12.7

291.28 - North = 0+00
291.70 - South = 0+27E

N 2.0 15.3

Cr 2.3 15.0

S 4.5 12.8

TP 11.66 128.36 0.56 116.70

25°E

N 9.9 118.5

Cr 12.1 16.3

50°E

N 8.7 19.7

Cr 10.3 18.1

S 15.5 12.9

	12836		
S	75°E	12.1	16.3
Cr		8.4	20.0
N		5.9	22.5
N	100°E	1.6	26.8
Cr		4.9	23.5
S		9.4	19.0
S	125°E	6.6	21.8
Cr		1.6	26.8
S		3.0	25.4
TPO	1278	190.69	0.45
		127.97	
Cr		9.7	31.0
N		4.0	36.7
N	125°E	9.1	31.6
N	175°E	4.0	14.0
Cr		5.3	35.4
S		12.4	28.3
S	200°E	11.3	29.4
Cr		5.5	35.2

	14069		
Cr	225°E	6.0	34.7
S		11.4	29.3
TPO	6.65	144.99	23.5
		200°E	138.34
N		2.6	142.4
N	225°E	1.9	43.1
N	250°E	1.8	43.2
Cr		9.8	35.2
Cr	275°E	11.5	33.5
N		1.7	43.3
N	300°E	1.9	43.1
Cr		13.5	31.5
N	325°E	5.1	39.9
N	350°E	8.7	36.3
N	375°E	12.2	32.8
TPO	3.40	135.87	12.52
S		250°E	132.47
S		275°E	10.0
S		300°E	11.1
S		325°E	13.1
S		350°E	15.7
S		375°E	20.2

	13587					13587		
cr		6.9	129.7	S		525'E	10.5	25.4
	350'E							
cr		9.3	26.6	S			13.8	22.1
S		17.6	18.3	cr			8.5	27.4
	375'E							
S		18.2	17.7	N		550'E	5.2	30.7
cr		12.3	23.6	N			6.8	29.1
	400'E							
N		6.7	29.2	cr			10.8	25.1
cr		12.5	23.1	N		575'E	8.2	27.7
S		16.9	19.0	cr			15.3	20.6
	425'E							
S		12.2	21.7	N		600'E	70.1	25.8
cr		12.0	23.9	TP	059	129.10	1246	123.1
N		7.0	28.9	S		550'E	6.7	17.3
	450'E							
N		6.0	29.9	S		575'E	12.0	12.0
cr		10.0	25.9	cr		600'E	7.5	15.5
S		12.1	23.8	cr		625'	12.7	11.3
	475'E							
S		10.1	25.8	N			5.9	18.1
cr		7.7	28.2	TP	157	115.31	10.56	113.44
N		4.0	31.9	S		600	10.4	04.9
	500'E							
N		3.9	32.0	S		625	13.4	01.9
cr		7.8	28.1	S		650	12.7	02.6

	11581					127.20		
G		9.0	106.3			800	3.8	23.4
N		4.9	10.4				3.9	23.3
N	675	9.6	05.7				6.4	20.8
cr		10.8	14.5			825	3.2	24.0
S		10.6	04.7				3.5	23.7
S	700	1.5	13.8				4.5	22.7
cr		6.0	9.3			850	7.0	20.2
N		8.3	7.0				3.8	23.4
N	725	3.4	11.9				1.5	25.7
TP	12.38	127.20	249	114.82		875	4.5	22.7
cr		10.0	17.2				8.5	18.7
S		5.0	22.2			900	6.9	20.3
S	750	4.0	23.2				4.1	23.1
cr		6.1	21.1			925	3.0	24.2
N		11.2	16.0				3.1	24.1
N	775	8.9	18.3			1166	138.16	070
cr		3.9	23.5			950	9.0	29.2
S		4.1	23.1				12.1	26.1
							8.6	29.6

	138.16			
	875			
N		9.7	28.5	
	900			
N		9.4	28.8	
	925			
N		9.2	29.0	
	975			
N		8.2	30.0	
cr		9.7	29.5	
S		5.7	32.5	
	10+00			
S		2.6	35.6	
C		5.1	33.1	
N		7.8	30.4	
	10+25			
N		5.4	32.8	
	10+50			
N		1.9	36.3	
TP	11.91	149.12	0.95	137.21
		10+25		
cr		12.3	35.8	
S		12.3	35.8	
	10+50			
S		10.3	37.8	
cr		9.8	38.3	
	10+75			
N		9.0	39.1	
cr		7.8	41.3	
S		7.5	40.6	

	148.12			
	11+00			
S		4.8	143.3	
cr		5.4	42.7	
N		5.3	42.8	
	11+25			
N		2.3	45.8	
cr		3.0	45.1	
S		2.3	45.8	
	11+50			
S		1.2	47.9	
TP	6.97	154.31	1.78	149.34
cr		5.6	47.7	
N		5.8	47.5	
	11+75			
N		5.4	47.9	
cr		4.9	48.4	
S		4.9	48.4	
	12+00			
S		4.8	48.5	
cr		4.7	48.6	
N		4.9	48.4	
	12+25			
N		3.9	49.4	
cr		4.4	48.9	
S		5.1	48.2	

	154-31		
S	12+50	5.1	48.2
cr		3.9	49.4
N		4.0	49.3
N	12+75	4.2	49.1
cr		4.5	48.8
S		5.5	47.8
S	13+00	5.5	47.8
cr		3.9	49.4
S		4.6	48.7
N	12+25	3.4	49.9
cr		4.9	48.4
S		4.9	48.4
S	13+50	5.4	47.9
cr		4.8	48.5
N		3.6	49.5
N	13+75	4.9	48.4
cr		5.3	48.0
S		6.0	47.3

	154-31		
S	12+00	6.7	46.6
cr		5.9	47.4
N		5.5	47.8
N	14+25	7.3	46.0
cr		8.0	45.3
S		8.2	45.1
S	14+50	10.7	41.6
cr		10.6	41.7
N		4.6	43.7
N	14+75	11.9	42.4
cr		12.1	41.2
S		12.1	41.2
S	15+00	13.1	40.2
cr		12.8	40.5
N		12.2	41.1
TP	370	146.10	142.40
N	15+25	5.0	40.1
cr		6.3	38.8
S		6.1	39.0

1 Hatch
3/12 more
12 Hall

X sec Florida
Univ Ave to Ugas

	14610 15+50	6.2	138.9	Bm	848	279.90	2654.19	NE Univ Ave
cr		7.9	37.2		11.91	285.60	0.21	273.69
N	15+75	6.0	39.1					SL Univ Ave
N		7.6	37.5	E		17	283.2	
cr		9.6	35.5	S		2.5	283.1	
S	15+98.2	7.8	37.3	W		1.1	284.5	
S		8.9	36.2	cr		5.00	285.6	
cr		11.2	33.9			5.0		
N		9.5	35.6	E 1/2		4.0	284.6	
cr	City line			S		2.5	283.1	
N		9.5	35.6	E		5.5	280.1	
cr (mon)		11.92	134.18			25.5		
S		10.5	134.6	E		6.2	279.4	
				S		2.1	283.5	
				W		0.3	285.3	
						50.5		
				W		1.1	284.5	
				S		4.7	280.9	
				E		7.2	278.4	

Florida

26

285.60

75's

E	7.6	280.0
cb	5.2	280.4
1/4	2.9	282.7
cr	0.8	84.5

100's

cr	0.7	284.9
1/4	2.5	283.1
cb	5.3	280.3
7.8	8.0	277.6

125's

E	7.3	278.3
cb	4.2	281.4
E 1/4	1.5	284.1

150's

E 1/4	1.1	284.5
cb	3.5	282.1
E	6.1	279.5

285.60

175's

E	6.1	79.2
cb	2.9	283.2
1/4	0.0	285.6

200's

cb	2.6	283.0
E	6.4	29.2

225's

E	7.9	272.3
cb	5.3	282.3

281.1
278.3
28

TR	12.72	297.73	0.59	285.01
----	-------	--------	------	--------

Sh. Univ. Acc.

wife	11.6	286.1
cb	8.6	289.1
w	6.2	291.5

25's

cr	12.0	295.2
w/o	11.5	286.2
cb	9.0	288.7
w	7.2	290.5

Florida

27

29773

50's

w	7.1	290 ⁶
cb	9.6	288.1
1/4	10.5	286.2
cr	12.6	285 ⁵

75's

w 1/4	10.4	287.3
cb	8.5	289.2
w	6.1	291 ⁶

100's

w	6.0	291 ³
cb	8.1	289.6
1/4	10.8	287.4

125's

cr	11.4	286 ³
1/4	8.9	288.8
cb	6.7	291.0
w	4.2	293 ⁵

29773

150's

w	1.9	295 ⁸
cb	5.1	292.6
1/4	8.2	289.5
cr	10.7	287 ⁰

175's

cr	9.4	288 ³
1/4	6.5	291.2
cb	4.3	293.4
w	1.4	296 ³

200's

w	40.2	297.9
cb	3.1	294.6
1/4	5.7	292.0
cr	8.2	289 ⁵
1/4	11.4	286.3

225's

E 1/4	11.8	285.9
cr	8.5	289 ²

Florida

28

		29773	
W 1/4	55	2922	
cb	2.8	295.4	
	250's		
W cb.	2.0	295.7	
1/4	4.9	2928	
cr	5.3	2894	
1/4	11.3	2864	
	275's		
R 1/4	11.7	286.0	
cb	8.1	289 ⁶	
W 1/4	4.8	2929	
cb	2.0	295.7	
TP	648	301.26	295 29471
	225's		
W	3.3	298 ⁰	
	250's		
W	2.5	298 ⁸	
	275's		
W	2.5	298 ³	

		301.26	
		300's	
W	24	298 ⁹	
cb	52	296.1	
1/4	8.6	292.7	
cr	11.7	289 ⁶	
	385's		
cr	12.2	289 ¹	
1/4	8.6	292.7	
cb	6.1	295.2	
W	3.0	298 ³	
	350's		
W	3.1	298 ²	
cb	6.3	295.0	
1/4	9.0	292.3	
cr	11.3	290 ⁰	
	375's		
cr	11.1	290 ²	
1/4	8.8	292.5	
cb	6.6	294.7	

Florida

29

30126

W 4.3 297²
 400's
 W 5.7 295⁵
 cb 7.5 293.8
 1/4 9.7 291.6
 cv 11.6 289⁷

425's

cv 12.1 287³
 1/4 10.1 291.2
 cb 7.8 293.5
 W 6.2 295¹

450's

W 6.8 294⁵
 cb 8.9 292.4
 1/4 10.6 290.7
 cv 12.7 288⁶

475's

cv 13.0 288³
 1/4 11.0 290.3

30126

cb 9.5 291.8
 W 7.1 294³
 500's
 W 8.0 293³
 cb 9.8 291.5
 1/4 11.4 289.9

cv 12.9 288⁴

TR 543 293.78 12.91 288.25

1/4 6.9 286.9
 cb 7.9 285.9
 E 9.8 ~~284.0~~
~~85-~~

475's

E 9.9 283⁹
 cb 8.4 285.4
 1/4 6.4 287.4

450's

1/4 6.5 287.3
 cb 8.8 285.0
 E 10.4 283⁵

Florida

00

293.78

425'S

E 11.3 282.5

cb 9.0 284.8

1/4 6.9 286.9

400'S

1/4 6.9 286.9

cb 9.2 284.6

E 12.2 281.6

375'S

E 12.1 281.7

cb 9.0 284.8

1/4 6.5 287.3

350'S

1/4 6.5 287.3

cb 9.0 284.8

E 12.8 281.0

325'S

E 14.6 279.3

cb 11.1 282.7

293.78

1/4

7.6 286.2

300'S

1/4

7.3 286.5

cb

10.1 283.7

E

13.6 280.2

275'S

E

14.0 279.8

cb

10.9 282.9

250'S

E

13.7 280.1

cb

10.2 283.6

627

294.62

277.85

525'S

w

3.3 91.3

cb

4.2 290.4

1/4

5.6 289.0

e

6.6 288.0

1/4

8.4 286.2

cb

9.8 284.8

Florida

31

294.62

E		11.6	282.9	
	550 S			
E		12.7	281.9	
cb		11.9	282.7	
1/2		10.9	284.2	
c		8.9	285.2	
1/2		7.3	287.3	
cb		6.3	288.3	
W		5.7	288.9	
	575 S			
W		7.7	286.9	
cb		8.8	285.8	
1/2		9.9	284.7	
c		11.5	283.1	
1/2		12.4	282.2	
T.P.	1.34	289.77	11.19	283.95
cb		3.7	281.1	
E		4.7	280.1	

284.87

	600 S		
E		6.1	278.7
cb		5.5	279.3
1/2		4.7	280.1
c		4.0	280.5
1/2		3.0	281.8
cb		2.2	282.6
W		0.7	284.1
	625 S		
W		1.6	280.3
cb		5.2	279.6
1/2		5.6	279.2
c		5.2	279.6
1/2		6.9	277.9
cb		7.1	277.7
E		7.6	277.2
	649 S = N. Robinson		80' wide
E		8.9	275.9
cb		8.4	276.4

Florida

32

284.87⁷

1/2	8.1	276.7
c	7.7	277.1
1/2	7.6	277.2
ab	7.1	277.2
w	6.7	278.1
N. Ch. Robinson		
w	7.9	276.9
cb	8.3	276.5
1/2	8.8	276.0
1/2	9.1	275.7
1/2	9.1	275.7
cb	9.2	275.6
E	9.5	275.3
N 1/2		
E	9.9	274.9
cb	9.9	274.9
1/2	10.1	274.7
c	9.9	274.9
1/2	9.8	275.0

284.87⁷

cb	9.5	275.3
w	9.0	275.9
CN		
w	10.2	274.6
cb	10.8	274.0
1/2	10.5	274.3
c	10.9	273.9
1/2	10.7	274.1
cb	10.7	274.1
E	10.6	274.2
S 1/2		
E	11.2	273.6
cb	11.5	273.3
1/2	11.7	273.1
c	11.6	273.2
1/2	11.6	273.2
cb	12.0	272.8
w	11.7	273.1

Florida

7
284.87
5 Ch.

1A	12.6	272.3
cb	13.0	271.8
1c	12.8	272.0
C	12.4	272.4
1d	12.3	272.5
cb	12.1	272.7
E	12.1	272.2

Sh Robinson

20	12.8	271.5	272.3	
cb	12.9	271.9		
TP	0.9	272.27	12.69	272.08
1/4	0.8	271.5		
c	1.1	271.3		
1/4	1.1	271.2		
cb	1.3	271.0		
W	1.5	270.8		
+20				

2
272.87
25.3

20 W	3.7	269.2
W	3.4	268.6
cb	3.2	268.9
1c	3.2	269.1
c	3.2	269.4
1c	2.7	269.6
cb	2.1	270.2
E	2.1	270.2
+20		69.5
-20		68.3
E	1.0	268.3
cb	1.1	268.2
cb	4.8	267.5
c	5.3	267.0
1c	5.5	266.8
cb	5.7	266.6
W	5.7	266.6
20 W		267.3
20 W		267.2
W	8.5	263.8
cb	8.7	263.6

S. E. of Robinson
Take levels 75' E from
for 400 feet

Florida

²
272.57

⁷
261.82

1/4		8.2	264.1
c		7.8	264.5
1/4		6.7	265.6
b		6.4	265.9
E		6.1	266.2
+20.			266.1
-20.	100'S		262.9
E		9.2	263.1
b		9.5	262.8
1/4		9.9	262.4
1/4		10.5	261.8
1/4		11.1	261.2
b		11.4	260.9
W		11.4	60.9
+20			61.3
TR	0.28	⁷ 261.82	10.83
			261.84
	125'S		50.7
30 W		4.0	257.2
W		4.5	257.2
b		4.0	257.7
1/4		2.9	258.8
c			

1/4		2.2	259.5
b		1.9	259.8
E		2.2	259.5
+30			259.3
	135'S		251.7
30 E		7.4	254.3
E		6.7	255.0
b		6.8	254.9
1/4		7.4	254.3
c		8.0	253.7
1/4		8.5	253.2
b		7.3	254.4
W		7.1	254.2
30 W			251.9
	150'S		249.1
W		12.6	249.1
TR	0.93	⁸ 249.87	12.78
			249.74
8.94			
b		2.0	247.9
1/4		2.6	247.3
c		1.9	249.0
1/4		0.8	249.1
b		1.2	248.7

Florida

8
249.87

F	1.9	248.0
+40		243.8
-40	160's	240.8
E	6.1	243.8
cb	5.7	244.2
1/8	5.2	244.7
c	5.6	244.3
1/8	5.0	244.9
cb	4.5	245.4
W	3.6	246.3
+30 W		250.4
30 W	175's	255.7
W	+0.2	250.2
cb	2.8	247.1
1/8	5.0	244.9
c	6.9	243.8
1/8	9.2	240.7
cb	9.0	240.9
E	9.8	240.1
20 E	11.0	238.9
50 E		236.1

8
249.87

50 E	200's	15.0	233.4
25 E		9.7	234.8
cb		7.0	240.2
1/8		4.9	242.9
c		2.2	245.0
50 E	225's	12.7	247.7
15 E		9.6	232.0
E		3.7	237.1
cb		3.7	242.3
50 E	250's	13.8	246.2
15 E		8.1	230.7
E		8.1	236.0
TP	254.35	4.45	241.8
cb		7.3	245.52
1/8		3.4	246.0
c		0.1	250.9
	225's	4.2	254.1
E 1/8		4.2	250.1
TP	1.08	10.44	244.89
50 E	275's	11.6	243.81
15 E		6.6	227.8
E		6.6	233.2
			238.3

Florida

36

⁹
~~244.87~~

⁷
~~258.82~~

50'E
15 E

200'S

12.8 227.0
8.8 232.0
236.0

225'S

E

c

5.1 253.6

cb,

5.4 239.5

w/0

4.1 254.6

50'E
15 E

~~325'S~~

13.6 226.6
9.5 231.2
235.3

d

2.9 255.8

E

w

2.0 256.2
258.3

cb,

5.5 239.3

20W

250'S

1/4

0.6 244.2

20W

0.6 259.8
258.1

50'E
15 E

~~350'S~~

13.1 225.4
7.2 231.7
237.2

cb

1.3 257.4

E

1/2

2.0 256.7

10'S

2.3 242.6

c

4.2 254.5

50'E
15 E

375'S

9.9 244.2
3.4 234.9
241.5

1/2

7.8 250.9

E

275'S

TP

12.4 256.7⁶ 10.5 243.9⁸

Ecb

13.7 245.0

3.27 258.82 1.20 255.5⁴

E 1/2

9.6 249.1

200'S

c

6.4 252.3

30W

257.4

1/2

3.9 254.8

w

4.1 254.6

cb

5.3 253.4

b

1.5 257.2

1/4

7.5 251.2

w

0.0 58.2

2
2
12

Florida

259.049

37

259.0

258.98

T.P.

343

258.98

258.55

376'S

500'S

cl

12.5

246.5

W

0.7

258.3

cl

8.2

250.8

cb

3.3

255.7

c

4.7

254.3

1/4

6.4

252.6

1/4

3.6

255.4

c

10.3

248.7

cb

3.3

255.7

1/4

14.5

244.5

W

2.9

256.1

525'S

400'S

W

1.2

257.8

W

4.2

254.8

cb

3.0

256.0

cb

0.3

254.7

1/4

5.8

253.2

1/4

1.4

254.6

c

10.2

248.8

c

4.6

254.4

350'S

1/2

5.1

253.9

W

1.8

257.3

cb

6.9

252.1

cb

2.5

256.5

E

10.1

248.9

1/4

3.6

255.4

15'E

16.0

243.0

c

6.2

252.8

50'E

65'E

425'S

16.0

222.9

1/4

10.1

248.9

15'E

9.2

249.8

E

5.8

253.3

Florida

259.0

25898

259.0

38

25898

cb	5.6	253.4
1/2	5.6	253.4
c	5.5	253.5
1/2	5.4	253.6
cb	5.3	253.7
w	5.4	253.6

450's

w	6.8	252.2
cb	6.5	252.5
1/2	6.7	252.5
c	6.8	252.2
1/2	7.1	251.9
cb	7.2	251.8
E	7.3	251.7

475's

E	8.3	250.2
cb	8.5	250.5
1/2	8.6	250.4
c	8.2	250.2

1/2	7.9	251.1
cb	7.7	251.3
w	7.8	251.2

500's

w	9.0	250.0
cb	8.9	250.1
1/2	9.0	250.0
c	9.2	249.8
1/2	9.6	249.4
cb	10.0	249.0
E	10.1	248.9

525's

E	11.1	247.9
cb	10.8	248.2
1/2	10.2	248.8
c	10.0	249.0
1/2	9.8	249.2
cb	9.6	249.4
w	10.0	249.0

Florida

259.019

25898

550'S

W	10.8	248 ²
cb	10.9	248.1
1/4	11.0	248.0
c	11.2	47 ^e
1/2	11.5	247.5
d	11.7	247.3
E	12.0	47 ^e

TL 0.23 297.17 12.04 246.94

575'S

E	1.5	245 ³
cb	1.0	246.2
1/2	1.0	246.2
c	0.9	246 ³
1/2	0.7	246.5
cb	0.8	246.4
W	1.0	246 ²

247.7

600'S

W	3.7	243 ⁵
cb	3.5	243.7
1/4	3.2	244.0
c	3.1	244 ¹
1/2	3.0	244.2
d	2.8	244.4
E	2.8	244 ⁴

625'S

F	5.1	242 ¹
cb	5.1	242.1
1/4	5.1	242.1
c	5.7	241 ⁵
k	6.0	241.2
cb	6.4	240.8
W	6.8	240 ⁴

650'S

15' W	11.2	236.0
W	9.9	237 ³

Florida

40

247.17

235.95

cb	9.8	237.4
1/4	9.7	237.5
c	9.4	237.8
1/4	9.1	238.1
cb	8.9	238.3
E	8.1	239.4
10 E	8.2	239.0
TR	1.53	235.95
	13.05	234.12
	680'S = Nk Cypress	
20 E	3.7	232.2
	4.6	231.3
cb	4.3	231.6
1/4	4.2	231.7
c	4.1	231.8
1/4	3.9	232.0
cb	4.6	231.3
W	4.7	231.3
20 W	4.7	231.2

10'S of Nk Cypress

25 W	7.7	228.2
W	9.2	226.8
cb	8.7	227.2
1/4	7.4	228.5
c	6.7	229.2
1/4	6.5	229.4
cb	6.8	229.1
E	6.5	229.3
25 E	6.8	229.1
Nk		
25 E	7.4	228.5
E	7.5	228.4
cb	7.3	228.6
1/4	7.5	228.4
c	7.9	228.0
1/4	9.6	226.3
cb	9.6	226.3
W	7.5	228.5
	7.5	228.4

Florida
Cypress Intersection

23595

20 W	5.0	230.9
N 1/4		
20 W	2.8	233.1
W	4.3	231.7
cb	5.6	230.3
1/2	7.2	228.7
c	8.4	227.5
1/2	12.5	223.4
cb	13.5	222.4
1 E	14.0	227.2
10 E	14.3	221.6
15 E	9.8	226.1
25 E	8.7	227.2
cr.		
35 E	12.7	223.2
30 E	15.0	220.9
E	10.7	225.2
cb	8.9	227.0
1/4	7.7	228.2

41

23595

d	6.3	229.6
1/2	5.4	230.5
cb	3.9	232.0
W	2.8	232.1
20 W	1.1	233.1
S 1/4		
35 E	12.0	223.9
E	8.6	227.3
cb	4.0	228.9
1/2	5.3	230.6
c	3.8	232.4
1/2	2.3	233.7
cb	1.1	234.8
T.P.	6.50	238.70
3.75	232.20	
W	2.3	236.4
scb		
W	0.7	238.0
cb	1.3	237.4
1/2	2.7	236.0

Florida

42

23870

C	4.4	234 ³
1/2	6.1	232.6
cb	7.8	230.9
E	10.2	228 ⁵
25'E	13.5	225.2
Sh. Cypress		
35'E	12.9	225.8
E	9.2	229 ⁵
cb	6.8	231.9
1/2	6.0	233.7
C	3.9	234 ⁸
1/2	1.8	236.9
cb	0.8	237.9
W	0.1	238 ⁶
25's of Cypress		
W	1.7	237 ⁰
cb	3.1	235.6
1/2	4.2	234.5
C	5.2	233 ⁵

23870

1/2	6.5	232.2
cb	7.1	231.6
E	8.7	230 ⁰
30'E	11.8	226.9
50'S		
30'E	12.8	225.9
E	9.6	229 ¹
cb	9.4	229.3
1/2	8.9	229.8
C	7.5	231 ²
1/2	6.0	232.7
cb	5.0	233.7
W	3.9	234 ⁸
75'S		
W	4.5	234 ²
cb	5.7	233.0
1/2	7.0	231.7
C	9.2	229 ⁵
1/2	10.9	227.8

Florida

23870

cb		11.8	226.9
F		13.1	225.6
50 E	526	16.6	222.1
	232.16	11.80	226.90
	100 S		
50 F		12.0	220.2
F		9.6	222.8
cb		8.1	224.2
1/4		5.9	226.3
c		3.3	228.9
1/4		1.8	230.4
cb		1.3	230.9
W		0.2	232.0
	125 S		
W		0.7	231.5
cb		2.6	229.6
1/4		4.7	227.5
c		6.9	225.3
1/4		8.1	224.1
cb		9.5	222.7

43

23216

F		11.5	220.2
20' F		14.9	217.3
	150' S		
20' F		16.3	215.9
F		14.0	218.3
cb		11.0	221.2
1/4		9.1	223.1
c		6.7	225.5
1/4		5.3	226.9
cb		4.2	228.0
W		3.7	229.5
	175' S		
W		5.5	226.2
cb		5.1	224.1
1/4		9.5	222.7
c		10.5	221.2
1/4		13.1	219.1

Florida

232.16

200 S

cr. 13.5 218.7

w/q. 11.3 220.9

cb 9.3 222.9

W 7.2 225.9^r

225 S

W 9.5 222.7

cb 11.5 220.7

1/4 12.6 219.6

T.P. 124 221.58 11.82 220.34

175 S

cb 4.2 217.4

E 5.2 216.4

15 E 6.0 215.6

200 S

N E 8.1 213.5

E 6.6 215.2

cb 5.6 216.0

1/4 4.4 217.2

221.58

226 S

cr 4.1 217.5

1/4 6.9 219.7

cb 7.5 214.1

E 7.3 213.3

N E 10.5 211.1

240 S

N E 10.2 218.4

E 9.8 211.8

cb 8.6 213.0

1/4 7.5 214.1

e 4.8 216.8

1/4 2.7 218.9

cb 2.1 219.5

W 0.3 220.3

200 S

W 1.2 20.4

cb 3.2 218.4

1/4 4.5 217.1

Florida

45

22158

C	6.1	215.5
1/4	8.8	212.8
cb	10.3	211.3
E	13.5	208.1
15 E	12.1	209.5

275' S

15 E	12.6	209.0
E	12.9	208.2
cb	13.3	208.3
1/4	13.1	208.5
C	11.4	210.2
1/4	9.2	212.4
cb	6.9	214.7
W	4.8	216.8

300' S

W	9.1	212.5
cb	10.6	211.0
1/4	13.0	208.6
C	13.9	207.7

22158

1/4	13.8	207.8
cb	13.9	207.7
E	13.7	207.9
15 E	13.2	208.4
TP.	7.33	216.86
	12.05	209.53

325' S

15 E	9.2	207.7
E	9.1	207.5
cb	9.9	207.0
1/4	9.5	207.4
C	9.9	207.2
1/4	9.7	207.2
cb	7.1	209.8
W	5.3	211.6

350' S

W	2.7	214.2
cb	6.4	210.5
1/4	10.5	206.4
C	10.2	206.7

Florida

216.86

1/4	10.7	206.2
cb	9.8	207.1
E	10.5	206.2
15 E	9.4	207.5
375 S		
20 F	12.3	204.6
F	10.3	206.6
S	10.1	206.8
1/4	9.8	207.1
1/4	10.8	206.1
1/4	9.4	207.5
cb	3.8	213.1
X1	1.7	215.2
100 S		
W	4.9	212.2
S	8.5	208.4
1/4	11.9	205.0
c	11.3	205.6
1/4	10.7	206.2

46

216.86

cb	10.0	206.9
F	10.0	206.9
15 E	9.6	207.3
425 S		
15 F	10.2	206.7
F	10.6	206.3
cb	10.6	206.3
1/4	10.6	206.3
c	10.6	206.3
1/4	11.2	205.7
cb	12.8	204.1
W	6.5	210.4
450 S		
W	11.2	205.7
cb	514.5	202.4
	510.9	206.0
1/4	11.3	205.6
c	11.0	205.9
1/4	10.8	206.1
cb	11.0	205.9

Florida

216.86

E	11.0	205.2
15' E	10.9	206.0

475'S

15' E	10.7	206.2
-------	------	-------

E	11.6	205.3
---	------	-------

cb	11.3	205.6
----	------	-------

1/2	11.4	205.5
-----	------	-------

c	11.5	205.2
---	------	-------

1/4	11.8	205.1
-----	------	-------

cb	11.5	205.4
----	------	-------

+5	11.4	205.5
----	------	-------

W	12.9	204.2
---	------	-------

10' W	11.9	205.0
-------	------	-------

500'S

10' W	12.9	204.0
-------	------	-------

W	12.0	204.2
---	------	-------

cb	12.1	204.8
----	------	-------

1/2	12.2	204.7
-----	------	-------

c	12.2	204.2
---	------	-------

1/4	12.0	204.9
-----	------	-------

47

216.86

cb	12.3	204.6
----	------	-------

E	11.8	205.1
---	------	-------

10' E	11.9	205.5
-------	------	-------

525'S

10' E	10.8	206.1
-------	------	-------

E	11.6	205.3
---	------	-------

cb	12.6	204.3
----	------	-------

1/2	12.5	204.4
-----	------	-------

c	12.5	204.4
---	------	-------

1/4	12.8	204.1
-----	------	-------

cb	12.8	204.1
----	------	-------

W	12.4	204.5
---	------	-------

10' W	12.6	204.3
-------	------	-------

530'S

10' W	14.0	202.9
-------	------	-------

W	13.3	203.6
---	------	-------

cb	13.3	203.6
----	------	-------

1/2	13.2	203.7
-----	------	-------

c	12.8	204.1
---	------	-------

Florida

216.86

20910

1/4		13.3	203.6
cb		12.2	204.7
E		11.3	205.6
10 E		11.2	205.7
T.P	320	20910	10.96
	575 S		205.99
10 1/2 E		3.2	205.9
E		3.4	205.2
cb		4.6	204.5
1/4		5.5	203.6
c		5.9	203.2
1/4		5.9	203.2
cb		6.0	203.1
W		6.1	203.0
10 W		6.6	202.5
	600 S		
10 - W		7.1	202.0
W		7.3	201.8
cb		6.6	202.5

1/4		6.2	202.9
0		6.5	202.6
1/4		5.9	203.7
cb		4.3	204.8
E		3.4	205.2
10' E		3.0	206.1
	625 S		
10 1/2 E		3.2	205.9
E		3.4	205.2
cb		3.8	205.3
1/4		4.6	204.5
0		7.0	202.4
1/4		6.7	202.4
cb		7.3	201.8
W		8.1	201.0
10 W		7.9	201.2
	650		
10 W		7.7	201.4
W		7.7	199.4

Florida

	20910	
+5	11.3	197.8 207.8
cb	7.8	201.3
1/2	6.8	202.3
c	7.4	201.3
1/2	5.5	203.6
d	4.9	204.2
E	4.3	204.8
10 E	4.1	205.0
680 J = 16		<u>Myrtle</u>
10 E	5.6	203.5
E	5.9	203.3
cb	6.8	202.7
1/2	6.6	202.5
c	7.3	201.8
1/2	7.8	201.3
cb	8.5	200.6
W	9.9	199.2
10 W	9.4	199.7

	20910	
	10 W	9.8 199.3
	W	10.4 198.2
	cb	9.1 200.0
	1/2	8.2 200.9
	c	8.0 201.2
	1/2	9.0 202.1
	W	6.7 202.4
	E	6.7 202.4
	10 E	6.5 202.6
	1/2	
	10 E	7.3 201.8
	E	7.2 201.9
	cb	7.1 202.0
	1/2	7.2 201.9
	c	8.5 200.6
	1/2	8.6 200.5
	cb	9.4 199.7
	W	10.3 198.8
	10 W	10.5 198.6

Florida

20910

cr

10 W	11.1	198.0
W	10.6	198.5
cb	9.9	199.2
1/4	8.7	200.4
c	8.6	200.5
1/4	7.3	201.8
cb	7.2	201.9
E	7.3	201.8
10 E	7.6	201.5

5 1/4

10 E	7.8	201.3
E	7.7	201.4
cb	7.6	201.5
1/4	7.7	201.4
c	9.3	199.8 200.8
1/4	9.3	199.8
cb	10.1	199.0
W	11.3	197.8

20910

7 W

10 W

8 W

W

cb

1/4

c

1/4

cb

E

10 E

10 E

E

cb

1/4

c

1/4

10.5 198.3

7.9 201.2

5 cb

7.9 201.2

11.0 198.1

11.5 197.6

9.7 199.4

9.8 199.3

8.2 200.9

7.6 201.5

8.0 201.4

7.9 201.2

Sh Myrtle

8.0 201.1

8.2 200.2

8.2 200.9

9.8 199.3

9.6 199.5

10.3 198.8

2/13/12

Florida

51

209.10				206.49				
cb		11.8	197.3	+3		9.7	196.8	
W		10.8	198.3	1/2		10.2	196.3	
S-W		8.1	201.0	c		7.1	199.5	
T.P.	5.29	206.49	7.90	201.20	Mid SE	1/2	6.7	199.8
		25.5			cb		7.6	198.9
10'E		5.8	200.7	E		9.9	197.1	
E		5.9	200.6	S E		6.4	200.1	
+5		6.2	200.3					
cb		8.1	198.4					
			201.0	10'E		6.7	199.8	
1/4		7.2	199.3	E		9.2	197.3	
c		6.4	200.1	cb		7.4	199.1	
+5		6.5	200.0	1/2		7.1	199.4	
1/2		8.0	198.1	c		8.6	197.9	
+5		10.1	196.4	1/2		10.8	195.7	
cb		9.6	196.9	+5		7.3	199.2	
W		5.7	200.8	cb		7.5	199.0	
	50'S		200.0	W		7.5	199.0	
W		6.5	202.6					
cb		6.7	199.8					
				W		3.0	203.5	

Florida

206.49

206.49

125.5

cb	6.9	199.6
1/4	7.8	198.7
	9.5	197.0
c	10.6	195.9
1/4	7.4	199.1
cb	7.4	199.1
+5	8.1	198.4
E	9.1	197.5
10 E	8.3	198.2
	100.5	
10 E	10.0	196.5
E	9.4	197.1
cb.	7.3	199.2
1/4	8.7	197.8
cr	11.0	195.5
	10.0	196.5
+5	7.6	198.9
1/4	6.4	200.5
cb	3.9	203.1
W	1.1	205.5

10 E

F

cb

+5

1/4

c

1/4

cb

W

W

cb

1/4

c

1/4

d

+5

E

9.8 196.7

8.2 198.3

8.5
10.2 196.3

11.5 195.0

12.0 194.5

4.3 202.2

3.8 202.7

3.1 203.4

2.4 204.1

150.5

3.1 203.5

4.5 202.0

3.5 201.0

6.1 200.5

8.1 198.4

11.7 194.8

12.0 194.5

5.0
8.7 198.1

Florida

53

20699

175'S

10 E	10.9	195.6
E	12.3	194.2
	511.2	195.3
+5	299	196.6
cb	8.3	198.2
1/c	8.0	198.5
c	7.5	199.2
1/a	6.2	200.3
cb	5.6	200.9
1/a	4.5	202.2
	500'S	
W	7.4	199.1
cb	8.9	197.6
1/c	9.4	197.1
c	9.5	197.2
1/a	9.0	197.5
cb	8.6	197.9
E	9.1	197.4
10 E	13.0	193.5

20699

225'S

10 E	9.7	196.8
E	9.1	197.2
cb	8.7	197.8
1/c	9.1	197.4
c	9.6	196.2
1/c	10.1	196.4
cb	10.3	196.2
W	10.6	195.2
	500'S	
W	10.7	195.2
cb	10.6	195.9
1/c	10.2	196.3
c	10.1	196.4
1/c	9.5	197.0
cb	9.4	197.1
E	9.4	197.1

Florida

20649

275' S

E	10.8	195 ⁷
cb	10.2	196.3
1/2	10.7	196.3
c	10.1	196 ⁴
1/2	10.7	195.8
cb	11.0	195.5
W	11.3	195 ²
10 W	11.60	194.89
1/2	11.4	195 ¹
cb	11.3	195.4
1/2	10.9	195.6
c	10.6	195 ²
1/2	10.9	195.6
cb	11.2	195.3
E	10.8	195 ⁷

2975 = N. L. Upas

→ D. Hemmings map shows 300' to 400' wide & then the width of Upas Street also before coming to W. E. Park. How about it?

Continued B 861 P 77

2 Hatch H St Profile on lines
 15/100 80 and 100 5 of 1/2 of H St
 12 from 32 to 35

311	12	32-4	2.81	86.03	33.22
			2.14	75.22	12.95
			2.36	62.60	12.98
				Red 80's elev	Red 100's elev
			575 W of 33 ¹	11.5	51.1
				12.5	50.4
			500	13.4	49.2
				13.5	49.1
			465	14.0	48.6
				15.4	47.2
			450	16.0	46.6
				15.4	49.2
			400	12.7	49.2
				13.4	49.2
			375	10.4	52.2
				11.1	51.5
			350	3.4	59.2
				5.3	57.3
			340	1.2	61.4
				3.3	59.3
			325	4.7	57.9
				6.6	56.0
			275	8.5	52.3
				11.2	51.4
			300	3.9	48.4
				4.6	47.2
			275	6.8	45.5
				7.6	44.2
			250	8.9	43.4
				9.3	43.0
			200	8.9	43.4
				9.0	43.3
			175	9.6	42.2
				10.9	41.4
			254	42.90	11.97
				40.36	
			160	3.8	39.4
				6.1	36.8

because of deep
 bottom on 10-20
 20' from street line

House 50' from street 30' x 34'
between slaters 108-132

	4290	30'	100'		4285				
150 W	6.0	36.9	6.4	36.5	450	9.0	33.3	4.0	38.3
100	5.5	37.4	5.5	37.4	460	4.0	38.3	4.2	38.0
50	5.4	37.5	5.6	37.3	500	3.6	38.7	3.5	38.8
Wk 33 rd St	5.6	37.3	5.7	37.2	71 ⁰	12.83	57.87	33.1	39.04
137 th	4.16	42.35	4.71	38.19	550	12.7	39 ²	12.6	39 ³
Cr	5.8	36.5	6.0	36.3	580	11.4	40 ⁵	12.0	39 ⁴
EL	6.4	35.9	7.2	35.1	590	10.3	41 ⁶	8.1	43 ⁸
50 E	4.8	37.5	4.7	37.6	600	7.0	44 ⁹	7.8	44 ¹
100 "	5.1	37.1	5.1	37.2	630 angle	5.0	46 ⁹	5.4	46 ⁵
150 "	6.0	36.3	6.3	36.0	650	3.2	48 ²	3.7	48 ²
200 "	4.7	37.6	4.5	37.8	675	0.8	51 ¹	1.6	50 ³
250 "	5.1	37.2	5.4	36.9	700	12.20	63.70	0.37	51.50
300 "	4.6	37.7	4.8	37.5	700	7.3	56.4	9.0	54.7
330 "	6.0	36.3	7.0	35.3	725	0.0	63.7	0.0	63.7
350 "	7.7	34 ²	6.9	35.4	74 ⁰	12.66	76.14	0.22	63.48
375 "	7.6	34 ²	5.2	37.1	750	7.0	69.1	0.0	76.1
400 "	8.7	33 ⁶	9.1	33 ²	775	3.3	72.8		
415 "	9.0	33 ³	8.4	33 ²		12.83	88.74	0.23	75.91
435	7.7	34 ⁶	9.2	33 ⁴	775			8.60	80.1

House between 68th & 70th } Front is 15 ft from line
" " 10th & 12th } 24' deep
" " 16th & 19th } Front is 39'

		88.74					119.11		
800		12.2	76.5	1.8	88.9	75 E		8.1	111.2
825		9.2	79.5	1.4	87.3	100 E		10.4	08.7
850		6.7	82.0			125		13.0	06.1
875	10.56	99.10	0.20	88.54		150		16.6	02.5
900				87	90.4	175		12.9	06.2
925		15.7	83.4	7.3	97.8	200		9.4	09.7
950		14.5	84.6	4.4	94.7	225		3.8	15.3
975		11.3	87.9	3.4	95.7	250	12.88	131.82	0.17
1000		10.1	89.0	0.9	98.2	275		10.6	21.2
1025		8.4	90.7	2.7	98.4	300		9.5	24.3
1050		7.8	91.3			325		5.7	26.1
1075	12.61	111.18	0.53	98.51		350		3.4	28.4
1100				11.2	100.0	375		1.9	29.9
1125		20.0	91.2	11.8	99.4	400	12.94	144.16	0.60
1150		19.4	91.8	10.7	100.5	425		12.2	32.0
1175		18.0	93.2	9.6	101.6	450		11.2	33.0
1200		6.4	104.8			475		10.7	33.5
1225		4.4	106.8			500		8.7	35.5
1250		0.1	111.2			525		7.1	37.1
1275	9.58	119.11	16.5	109.53		550		5.9	38.3

14416

11473

525		2.6	140.6
550		2.2	42°
575		1.4	42°
TP	392	144.61	140.69
600		1.6	43°
634	Angle = 0+00	3.1	41°
650		6.9	37°
700		11.9	32°
TP	122	133.39	132.17
750		7.0	26°
800		11.6	21°
TP	069	121.91	121.22
825		4.2	18°
850		7.2	14°
875		12.5	19°
TP	471	114.73	110.02
900		6.8	17°
925		10.3	14°
950		7.6	17°

275
From this point the profile of a line 50' S of Pueblo Line is taken
309° = 0+47 angle.

TP	1303	126.96	0.80	113.93
75			12.1	112°
100			8.8	118°
125			7.0	120°
150			3.9	124°
175			1.0	126°
TP	352	129.68	0.80	126.16
200			1.8	127°
225			3.2	26°
250			5.5	24°
275			7.6	22°
300			9.3	20°
325			10.9	18°
350			12.5	17°
375			12.7	17°
400			10.6	19°
425			8.6	21°

3/1/12

129.68

125.43

450		6.5	123 ²
475		4.9	24 ⁸
500		5.5	24 ²
525		8.8	20 ⁴
TP	030	118.73	112.5
550		4.6	14.1
575		8.7	19 ⁰
600		15.3	03 ⁴
625		17.1	01 ⁶
650		14.7	04 ⁰
675		11.9	06 ⁸
700		2.6	16 ¹
TP	712	125.43	04.2
725		3.3	22 ¹
750		3.2	22 ²
775		3.0	22 ⁴
800		3.3	22 ¹
825		4.6	20 ⁸
850		6.7	18 ²

875		8.5	16 ⁹
900		5.1	20 ³
925		1.3	25 ¹
TP	12.77	137.63	0.57
950		7.9	29 ²
975		5.0	32 ⁶
1000		2.4	35 ²
1025		0.9	36 ²
TP	12.05	149.54	0.74
1050		10.5	39 ⁰
1075		7.9	41 ⁶
1100		5.0	44 ⁵
1125		2.4	47 ¹
1150		1.8	47 ⁷
TP	500	1.5336	11.8
1175		4.4	49 ⁰
1200		4.4	49 ⁰
1225		4.1	49 ³
1250		4.6	48 ⁸

75336

1275	4.8	48 ⁶
1300	4.9	48 ⁵
1325	2.9	50 ⁵
1350	4.6	48 ⁷
1375	5.0	48 ⁴
1400	5.7	47 ⁷
1425	7.1	46 ³
1450	9.6	43 ⁸
1475	10.9	42 ⁵
1500	11.7	41 ⁷
1525	11.9	41 ⁵
1550	12.3	41 ¹
TP	6.7	14750/260 140.76
1575	8.5	39 ⁰
1600	10.3	37 ²
1621 ⁵	line of City	11.7 35 ⁸

14750
50' N. of Pueblo line

1598 ¹⁰ - EL City	10.3	37 ²
1575	8.6	38 ⁹
1550	17.2	30 ³
1525	6.0	41 ⁵
1500	5.3	42 ²
1475	3.4	44 ¹
1450	2.4	45 ¹
1425	0.2	47 ⁴
TP	8.00 154.91	0.59 146.91
1400	6.2	48 ⁷
1375	5.5	49 ⁴
1350	4.1	50 ³
1325	4.1	50 ⁰
1300	5.0	49 ²
1275	3.8	51 ¹
1250	4.5	50 ⁴
1225	4.9	50 ⁰
1200	6.3	48 ⁶
1175	6.8	48 ¹

15491

1150		7.6	47 ³
1125		9.4	45 ⁵
1100		12.9	42 ⁰
TP	216	14453	142.37
1075		5.7	38 ¹
1050		8.4	36 ¹
1025		12.0	32 ⁵
1000		13.00	31 ⁵
975		13.4	31 ¹
TP	082	13309	132.27
950		2.5	30 ⁶
925		2.2	30 ⁹
900		2.8	30 ³
875		3.6	29 ⁵
850		7.4	25 ⁷
825		10.0	23 ¹
TP	112	12295	121.83
800		3.8	19 ¹
775		7.0	15 ²

12395

750		9.4	111 ⁵
725		12.0	10 ⁹
700		15.7	07 ²
675		17.0	05 ⁹
650		12.1	10 ⁸
625		5.5	17 ⁴
TP	1297	135.27	06.5
600		8.5	26 ⁸
575		6.8	28 ⁵
550		5.3	30 ⁰
525		3.5	31 ⁸
500		1.9	33 ⁴
475		2.5	32 ⁸
450		3.9	31 ⁴
425		4.7	30 ⁶
400		4.3	31 ⁰
375		0.9	34 ⁴
TP	1272	147.27	07.2
350		8.6	38 ²

14727				22358			
325		5-1	142 ²			100' North of Cedar Street	
300		1.9	45 ⁴	E		3.6	225.0
275		1.2	46 ¹	ch		5.4	223.2
250		2.1	45 ²	1/2		6.3	222.3
225		2.3	45 ²	c		7.6	221.0
200		2.6	44 ⁷	1/2		10.4	218.2
175		5.2	42 ¹	ch		11.9	216.7
150		9.5	37 ⁸	1/2 W		15.3	213.3
TP	0.49	13561	121.5	13512	10 W	13.7	214.9
125		3.5	732 ¹			10.2	218.4
100		8.8	26 ⁸	10 W		10.2	218.4
75		12.9	23 ²	W		14.0	214.6
TP	0.0	12285	1276	12285	+10	17.7	210.9
50		2.9	19 ⁹	ch		17.6	211.0
25		4.1	18 ⁷	1/2		12.5	216.1
3+07 ⁵ Angle-		5.2	17 ⁹	c		9.7	215.9
27912 ⁵		7.6	11525	1/2		8.1	220.5
				ch		6.8	221.8
				E		5.0	223.6

228.58

150' N

E 7.6 221.0

cb 10.5 218.1

1/4 12.4 216.2

C 14.7 213.9

+10 11.0 220.28 12.40 216.18

1/2 8.7 211.6

+5 11.8 208.5

cb 12.0 208.3

+5 9.6 210.7

W 3.8 216.5

32.5' N = N^h South Park

W 0.0 220.3

cb 4.3 216.0

1/4 8.0 212.3

C 12.1 208.2

+5 15.8 204.5

1/4 15.6 204.7

cb 12.1 208.2

220.28

E

9.7 210.6

15 E

8.5 211.8

690 231.72

224.82

BM 30" Cedar

7.65 224.07 224.07

X-Section Ash St from E.L. Fern to E.L. Grove

Ash St 80' wide 20' walk & 10' 1/2

63

B.M. 3PN S.E. 30th 2 Beech 223.29

2450

B.M. 11.75 235.04

N

2.8 236.0

T.P. 5.82 238.80 L.06 232.98

+1

3.4 235.4

E.L. Fern

eph

4.0 234.8

N

3.0 235.8

1/4

3.8 235.0

+1

3.6 234.2

M

4.0 234.8

erb

3.8 235.0

1/4

3.6 235.2

1/4

4.0 234.8

erb

3.8 235.0

M

4.2 234.6

S

3.3 235.5

1/4

3.9 234.9

0+75

erb

3.9 234.9

S

4.0 234.8

erb

3.1 235.7

0+25 E

1/4

3.6 235.2

S

3.7 235.1

M

3.7 235.1

erb

4.0 234.8

1/4

4.0 234.8

1/4

3.9 234.9

erb

3.9 234.9

M

4.0 234.8

3.7 235.1

1/4

3.9 234.9

N

2.6 236.2

erb

3.9 234.9

+1.9

3.2 235.6

N

2.8 236.0

438.80

1+0

N	2.7	236.1
erb	3.8	235.0
"	3.8	235.0
M	4.4	234.4
"	4.2	234.6
erb	3.8	235.0
S	3.9	234.9

1+25

S	3.7	235.1
erb	4.0	234.8
"	3.5	235.3
M	3.9	234.9
"	3.8	235.0
erb	3.6	235.2
N	2.8	236.0

64

1+50

N	3.0	235.8
+1	3.5	235.3
erb	3.8	235.0
"	3.8	235.0
M	4.6	234.2
"	4.2	234.6
erb	4.5	234.3
S	4.0	234.8

1+75

S	5.9	232.9
erb	5.6	233.2
"	5.7	233.1
M	6.0	232.8
"	5.0	233.8
erb	4.7	234.1
+19	4.3	234.5
N	3.3	235.5

238.80

65

2+0 = M. Li. Grove sönide sö walts 10 1/4¹⁰

W 1/4

N	7.9	233.9
+4	6.3	232.5
Crk	6.7	232.1
1/4	6.7	232.1
M	6.8	232.0
1/4	7.2	231.6
Crk	7.3	231.5
S	7.7	231.4
W. CURB		
S	9.2	229.6
Crk	8.2	230.6
1/4	8.2	230.6
M	8.0	230.8
1/4	7.8	231.0
Crk	7.6	231.2
N	7.0	231.8

N	7.5	231.3
Crk	8.0	230.8
1/4	8.4	230.4
M	8.4	230.4
1/4	8.7	230.1
Crk	8.8	230.0
S	9.5	229.3

Center

S	9.5	229.3
Crk	9.1	229.7
1/4	9.1	229.7
M	8.7	230.1
1/4	8.6	230.2
Crk	8.1	230.7
N	7.5	231.3

E "A

N	7.6	231.2
crk	8.1	230.7
"A	8.3	230.5
M	8.9	229.9
"A	9.1	229.7
crk	9.4	229.4
S	9.5	229.3

E. curb

S	9.6	229.2
crk	9.3	229.5
"A	9.0	229.8
M	8.9	229.9
"A	8.6	230.2
crk	8.5	230.3
N	8.0	230.8

E. L. Grove

N	8.3	230.5
crk	8.6	230.2
"A	8.6	230.2
M	9.0	229.8
"A	8.9	229.9
crk	9.4	229.4
S	9.9	228.9

x-section Beech st from E.L. Fern to E.L. of Grays
 Beech st 80' wide 16' walk 12' 195

67

B.M. SPK S.E. 30th & Beech

273.29

0+50

B.M. 11.75 235.04

T.P. 6.91 238.94 3.01 232.03

E.L. Fern

N 5.3 733.6

crk 5.4 733.5

1/4 5.1 733.8

M 5.1 733.8

1/4 5.0 733.9

crk 4.8 734.1

5 9.6 734.3

0+75 E

5 4.3 734.6

crk 4.3 234.6

1/4 4.8 734.1

M 4.9 734.0

1/4 5.4 233.5

crk 4.9 234.0

N 4.8 234.1

N 4.8 734.1

crk 4.8 234.1

1/4 4.6 234.3

M 4.5 234.4

1/4 4.5 234.4

crk 4.2 234.7

5 4.0 234.9

0+75

5 3.7 235.2

crk 4.4 234.5

1/4 4.4 234.5

M 4.5 234.4

1/4 4.6 234.3

crk 4.5 234.4

N 4.7 234.2

170

N	5.1	233.8
Crk	4.5	234.4
"A	4.4	234.5
M	4.4	234.5
"A	4.4	234.5
Crk	4.4	234.5
S	4.2	234.7

1725

S	5.3	233.6
Crk	5.5	233.4
"A	5.5	233.4
M	5.9	233.0
"A	6.3	232.6
Crk	6.5	232.4
N	7.0	231.9

1750

N	8.9	230.0
Crk	8.5	230.4
"A	8.3	230.6
M	7.9	231.0
"A	7.7	231.2
Crk	7.4	231.5
S	6.7	232.2

1775

S	7.5	231.4
Crk	7.9	231.0
"A	8.2	230.7
M	8.6	230.3
"A	8.8	230.1
Crk	9.0	229.9
N	8.5	230.4

2+0 = H. L. Grove 50 - 20 walks 10' 1/4

N	9.0	229.9
crk	6.7	230.2
1/4	6.6	230.3
M	8.2	230.7
1/4	7.9	231.0
crk	7.4	231.5
S	6.7	232.2

W curb

3	5.6	233.3
crk	6.1	232.8
1/4	6.8	232.1
M	7.2	231.7
1/4	7.3	231.6
crk	7.5	231.4
N	7.7	231.2

W 1/4

N	7.1	231.8
crk	6.8	232.1
1/4	6.7	232.2
M	6.2	232.7
1/4	6.0	232.9
crk	5.6	233.3
S	4.8	234.1

Center

S	3.8	235.1
crk	4.7	234.2
1/4	5.3	233.6
M	5.6	233.3
1/4	5.9	233.0
crk	6.0	232.9
N	6.5	232.4

E 1A

N	5.9	233.0
crb	5.3	233.6
1/4	5.0	233.9
M	4.6	234.3
1/4	4.0	234.9
crb	3.4	235.5
S	2.7	236.2

E curk

S	1.9	237.0
crb	2.3	236.6
1/4	2.8	236.1
M	3.4	235.5
1/4	3.9	235.0
crb	4.2	234.7
N	5.1	233.8

E. L. GRYC

N	3.3	235.6
crb	2.8	236.1
1/4	2.3	236.6
M	1.9	237.0
1/4	1.3	237.6
crb	1.0	237.9
S	0.9	238.0

4/ Hatches
12 1/2 Moore
12 Hall

sec. Grove St. } 80' Street }
20' Curbs }
10' 1/2 }
from- }
South line of South Park. To }
North line of South Park. }
232.07

B.M. 1285 237.86 22501 Rough NW cor of 80' ch.
092 232.07 671 221.15

S.L.S.P

50' N

W		6.7	225.4
cb		7.0	225.1
1/2		7.2	224.9
c		7.5	224.6
1/2		8.1	224.0
cb		8.5	223.6
+10		12.7	219.4
E		15.0	217.1
15' E		15.2	216.9
	20' N		
15' E		12.1	219.0
E		13.3	218.8
+10		12.0	220.1
cb		9.3	222.8
1/2		7.6	224.5
c		7.3	224.8
1/2		7.0	225.4

cb		6.5	225.6
1/2		6.9	226.2
1/2		6.7	226.4
cb		6.4	225.7
1/2		6.3	225.8
c		6.6	225.5
1/2		7.6	224.5
cb		7.0	222.1
E		11.7	220.4
15' E		12.9	219.2
	75' N		
15' E		11.6	220.5
E		11.3	220.8
cb		9.5	222.6
1/2		8.3	223.8
c		6.1	226.0
1/2		6.0	226.1
1/2		6.0	225.7
cb		6.8	226.3

23207

W	52	226.9
100' N		
W	47	227.4
cb	51	227.0
gutter	59	226.2
1/4	56	226.5
C	55	226.6
1/4	80	224.1
cb	86	223.5
E	104	221.1
10 E	105	221.6
125' N		
10 E	95	222.6
E	93	222.8
cb	78	224.3
1/4	71	225.0
C	52	226.9
1/4	53	226.8
gutter	55	226.6
cb	48	227.3

23207

W	44	227.7
150' N		
W	42	227.9
cb	46	227.5
gutter	52	226.9
1/4	49	227.2
C	46	227.5
1/4	66	225.5
cb	70	225.1
E	75	224.6
175' N		
E	64	225.7
cb	63	225.8
1/4	60	226.1
C	51	227.0
1/4	46	227.5
gutter	49	227.2
cb	42	227.9
W	39	228.2

23207

200' N

W	3.7	228.4
cb	3.8	228.3
gutter	4.6	227.5
1/4	4.4	227.7
c	4.0	228.1
+5	5.1	227.0
1/2	5.3	226.8
cb	5.6	226.5
E	5.8	226.3

225' N

F	5.1	227.0
cb	4.8	227.3
1/4	4.4	227.7
c	3.8	228.3
1/4	3.9	228.2
gutter	4.1	228.0
curb	3.0	228.7
W	3.3	228.8

23207

250' N

W	2.6	229.5
curb	3.1	228.0
gutter	3.7	228.4
1/4	3.5	228.6
c	3.6	228.5
1/2	4.0	229.1
cb	4.2	227.9
F	4.4	227.7

275' N

E	3.9	228.2
cb	3.6	228.5
1/4	3.6	228.5
c	3.2	228.9
1/4	3.3	228.8
gutter	3.3	228.8
cb	2.8	228.3
W	2.4	229.7

232.07

300' N = 5th Ave. St.

W	1.9	230.2
curb	2.4	229.7
gutter	2.7	229.4
1/4	2.7	229.4
c	2.7	229.4
1/4	2.8	229.3
cb	2.8	229.3
E	3.1	229.0

IP 1024 241.39 092 231.15

1/2 Ave. St.

W	7.5	233.9
cb	9.6	231.8
1/4	9.9	231.5
c	10.2	231.2
1/4	10.1	231.3
cb	10.5	230.9
E	10.9	230.5

241.39

25' N

E	10.0	231.4
cb	9.7	231.7
1/4	9.3	232.1
c	9.1	232.3
1/4	9.1	232.3
cb	8.8	232.6
+10	7.9	233.5
W	6.5	234.9

50' N

W	6.1	235.3
+10	6.6	234.8
cb	8.0	233.4
1/4	7.3	233.1
c	8.2	233.2
1/4	8.5	232.9
cb	7.9	232.5
E	9.2	232.2

241.39

75' N

E	8.2	233.2
cb	8.0	233.4
1/2	7.7	233.7
c	7.3	234.1
1/2	7.4	234.0
cb	7.0	234.4
w	5.7	235.7

100' N

w	5.2	236.2
cb	6.0	235.4
1/2	6.3	235.1
c	6.5	234.9
H.	6.7	234.7
cb	7.0	234.4
E	7.0	234.4

125' N

E	6.8	234.6
cb	6.1	235.3
1/4	5.9	235.5

241.39

c	5.4	236.0
1/2	5.3	236.1
cb	5.1	236.3
w	4.8	236.6

150' N

w	4.4	237.0
cb	5.1	236.3
1/2	5.4	236.0
c	5.8	235.6
1/2	5.9	235.5
cb	6.1	235.3
E	6.1	235.3

175' N

E	5.9	235.5
cb	5.9	235.5
1/2	5.5	235.9
c	5.7	236.3
1/2	4.9	236.5
cb	4.7	236.7

241.39

w/ 4.7 236.7

200' W

w/ 4.7 236.7

cb 4.9 236.5

1/2 5.1 236.3

i 5.2 236.2

1/2 5.4 236.0

cb 5.1 236.8

E 5.4 236.0

225' W

F 4.7 236.7

cb 4.3 237.1

1/2 4.3 237.1

L 4.5 236.9

1/2 5.0 236.4

cb 5.3 236.1

w/ 5.5 235.9

250' W

w/ 6.4 235.0

241.39

cb 5.5 235.9

1/2 4.9 236.5

c 4.4 237.0

1/2 4.1 237.3

cb 3.9 237.5

E 3.7 237.7

275' W

E 3.5 237.9

cb 4.1 237.3

1/2 4.6 236.8

c 5.4 236.0

1/2 6.2 235.2

cb 6.8 234.6

w/ 7.9 233.5

300' W SL Beech

w/ 9.1 232.3

cb 8.1 232.3

1/2 7.2 234.2

c 6.2 235.2

24139

1/4 5.1 236.3

cb 4.3 237.1

E 3.3 238.1

N 1 Beech

E 5.7 235.7

cb 7.5 233.9

1/2 8.4 233.0

c 8.9 232.5

1/2 9.5 231.9

cb 10.1 231.3

W 11.4 230.0

TP 284 235.92 1131 230.08

25' N

W 6.4 229.5

cb 5.2 230.7

1/2 4.6 231.3

c 4.2 231.7

1/2 3.6 232.3

cb 3.1 232.8

23592

0.9 235.0

50' N

1.7 234.2

3.5 232.4

4.7 231.2

5.5 230.4

5.6 230.3

5.9 230.0

6.8 229.1

75' N

7.0 228.9

6.6 229.3

6.2 229.7

5.7 230.2

4.9 231.0

4.1 231.8

2.7 233.2

23592

100' N

F	3.5	232.4
cb	4.6	231.3
1/4	5.5	230.4
0	6.2	229.7
1/4	6.5	229.4
cb	6.9	229.0
W	7.5	228.4

135' N

W	7.2	228.7
cb	7.0	228.9
1/4	6.9	229.0
C	6.5	229.4
1/4	6.1	229.8
cb	5.5	230.4
E	4.2	231.7

150' N

F	5.1	230.8
cb	6.0	229.9

23592

1/4

0

1/4

cb

W

W

cb

1/4

C

1/4

cb

E

500' N

F

cb

1/4

C

1/4

6.4 229.5

6.4 229.5

6.9 229.0

7.4 228.5

7.8 228.1

8.2 227.7

7.6 229.3

7.4 228.5

6.8 229.1

6.6 229.3

6.3 229.6

5.6 230.3

6.1 229.8

6.6 229.3

6.9 229.0

7.2 229.7

7.7 228.2

cb.	23592	81	227.8
w/		85	227.4
	225' N		
W		88	227.1
cb		80	227.5
1/2		82	227.7
c		77	228.2
1/4		76	228.3
cb		72	228.7
E		66	229.3
	250' N		
E		69	229.0
cb		76	228.3
1/2		83	227.6
c		85	227.4
1/4		86	227.3
cb		88	227.1
W		91	226.8
	275' N		
W		10.3	225.6
cb		9.7	226.2
1/2		8.6	226.3
c		9.1	226.8
1/4		8.8	227.1
cb		8.4	227.5
E		7.5	228.4
	300' N = 5k Cedar 5k		
E		7.9	228.0
cb		8.8	227.1
1/2		9.2	226.7
c		10.0	225.9
1/4		10.2	225.7
cb		10.6	225.3
W		11.0	224.0
TT	3.76	228.55	11.10
			224.82

	22858		
	5 cb. Cedar		
W		3.5	225.0
cb		3.6	224.9
1/2		3.1	225.4
c		2.6	225.9
1/4		2.1	226.4
cb		1.6	226.9
E		0.8	227.7
	5 1/2		
E		0.8	227.7
cb		1.7	226.6
1/2		2.0	226.1
c		2.6	225.9
1/4		3.1	225.4
cb		3.6	224.9
E		3.6	224.9
	cr		
W		3.6	224.9
cb		3.9	224.6
1/2		3.3	225.2
c		2.7	225.8
1/4		2.0	226.1
cb		2.1	226.4
E		1.1	227.4
	N 1/2		
E		1.2	227.3
cb		2.2	226.3
1/2		3.6	225.9
c		2.9	225.6
1/4		3.5	225.0
cb		4.1	224.4
E		4.1	224.4
	N cb.		
W		4.4	224.1
cb		4.2	224.3
1/2		3.6	224.9
c		3.1	225.4
1/4		2.7	225.8

cb	22758	2.2	226.4
E		1.3	227.3
	Nh. Cedar		
E		1.4	227.2
cb		2.4	226.2
1/2		2.8	225.8
c		3.4	225.2
1/2		4.2	224.4
cb		4.7	223.9
W		5.3	223.3
	25' N		
W		7.1	221.5
cb		5.2	223.4
1/2		4.6	224.0
c		4.1	224.5
1/2		3.3	225.3
cb		3.4	225.2
E		2.0	226.6
	50' N		
E		2.2	226.4
cb		3.8	224.8
1/2		4.5	224.1
c		5.0	223.6
1/2		5.6	223.0
cb		6.5	222.1
+10		7.3	221.3
W		10.0	219.6
	75' N		
W		12.5	216.1
+5		13.0	215.2
cb		8.7	219.9
1/2		7.1	221.5
c		6.0	222.6
1/2		5.5	223.1
cb		4.5	224.1
E		2.9	225.7

Continued on P 61

206.98 NW 2 1/2 A P. 13.
 219.50 N.E. 2 1/2 Cedar p/g.
 207.21 S.E. 2 1/2 Bush Spk. pole
 220.86 SE 3 1/2 Cedar in p/g

206.98	219.50	207.21	220.86	17.22	38.89	27	2147
7.00	1.00	1.00	1.00	1.00	1.00	1.00	1.00
237.48	28.36	229.5					1.69
3.00		218.50					33.58
126.16							
		238.80					
		5.54					
		233.26					

RETURN TO CITY ENGINEER'S OFFICE
 CITY HALL, SAN DIEGO, CAL.

235.04
 3.01
 232.03 S.E. Bush,

40
 35
 48

