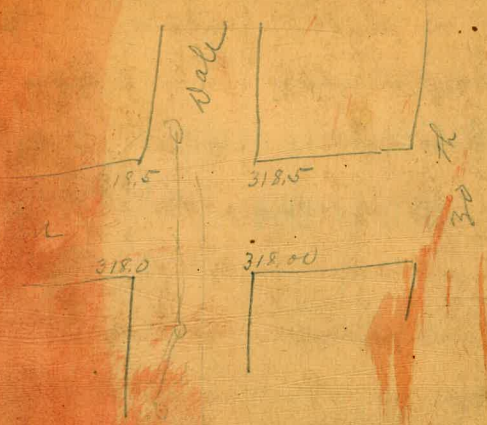


827

F.B. 827

1910

RETURN TO CITY ENGINEER'S OFFICE  
CITY HALL, SAN DIEGO, CAL.



- 12 1
- 20
- 24
- 27
- 31
- 35 ✓
- 40 ✓
- 48 ✓
- 51 ✓
- 53 ✓
- 61 ✓
- 63 ✓
- 68 ✓

MICROFILMED

DEC 15 1964

Center Line (Switzer Canyon)	2-12	1
" " (Dale St.)	14-20	
" " (Utah)	21-24	
" " (Sherman)	25-27	
" " (Upas)	28	
" (Kansas)	29-31	
" (30 <sup>th</sup> )	33-35	✓
" (Alley bet 28 <sup>th</sup> & Granada)	37-40	✓
" (Alley bet. Olive Palm)	42	✓
" (Alley bet. 30 <sup>th</sup> Grim)	44	
" (Alley bet. 29 <sup>th</sup> & Granada)	46-48	
" (Alley bet. 29 <sup>th</sup> & Dale)	49-51	
" (Redwood to Nitmeg bet. 30 <sup>th</sup> & Dale)	52-53	
" (Neal St.)	56	
" (Alley bet. Juniper & Kalmia)	57	✓
" (31 <sup>st</sup> & A & Grove)	60-61	✓
" (30 <sup>th</sup> & Cedar & Fern)	62-63	✓
" (31 <sup>st</sup> & Cedar & Fern East)	64	✓
" (Bet. Grim & 31 <sup>st</sup> )	65-68	
" Ray St.	69	
" (4 <sup>th</sup> E to C.)	70	

Survey line up Switzer Canyon from Sta  
 30-152 on Florida St Canyon line book 870 P1

Sta	+R	M.H.	-R	ele atop Stake
30-152	11.45	93.19		81.66
4+0				
5+0			8.6	89.4
6+0			8.0	85.1
7+0			6.9	86.2
8+0			4.7	88.4
9+0			2.1	91.0
10+0 T.P. 8.4	99.65	1.63	71.51	
11+0			6.3	93.4
12+0				
13+0			8.9	89.8
14+0			9.6	90.1
14+75 = M.H. 8.4	11.4	85.3		
15+0			9.5	90.2
16+0			7.35	91.27
17+0			6.4	93.3
18+0			9.0	90.7
19+0			3.6	96.0
20+0			2.5	97.1

99.75  
 80.22  
 92.27 = BM  
 6.72  
 98.99 = H.1  
 44.75  
 14.24 ✓

98.99  
 84.00  
 17.99 = M.H.

98.99  
 86.25  
 12.74 ✓

75.00  
 98.99  
 87.75  
 11.24 ✓

75.95  
 2.9 ✓

76.90  
 8.2 ✓

77.85  
 8.1 ✓

78.80  
 9.6 ✓

79.75  
 11.2 ✓

80.70  
 10.5 ✓

81.17  
 12.5 ✓

81.66

82.60  
 7.2 ✓

83.55  
 6.6 ✓

84.00  
 4.3 ✓

84.75  
 5.5 ✓

86.25  
 6.0 ✓

87.75  
 5.6 ✓

89.25  
 1.5 ✓

90.75  
 5.3 ✓

92.25  
 4.9 ✓

98.99  
 98.99  
 98.99  
 98.99

87.75  
 89.25  
 90.75  
 92.25

9.74 ✓  
 8.24 ✓  
 6.74 ✓

98.99  
 81.66 BM  
 84.32  
 2.68  
 87.00 = H.1  
 75.95  
 11.05 ✓

87.00  
 71.85  
 9.15 ✓

87.00  
 78.80  
 8.20 ✓

87.00  
 76.90  
 10.10 ✓

4.9

91.51  
 1.99  
 93.50 = H.1  
 79.75  
 13.75 ✓

87.00  
 78.80  
 8.20 ✓

93.50  
 81.17  
 12.33 ✓

92.27  
 0.94  
 93.21 = H.1  
 83.55  
 9.66 ✓

93.21  
 82.60  
 10.61 ✓

Sta	HT + R	HT 99.65	- R	Elev Top of box
8+0			B.M. 1.61	98.04
8+42 = M.H. Angle cut 4.6			0.0	99.6
T.P	5.12	105.16	1.61	98.04
8+50			5.5	99.7
9+0			4.6	100.6
9+50 B.M.			4.73	100.43
10+0			4.6	100.6
9+50			4.2	101.0
11+0			4.9	100.3
9+50			4.8	100.4
11+92 M.H. Angle 5.1			1.7	103.5
12+0 T.P. 7.75	110.98		1.93	103.23
9+50			6.6	104.4
13+0			5.7	105.3
9+50 B.M.			4.74	106.20
14+0			3.9	107.1
9+50			2.9	108.1
15+0 T.P. 7.42	116.95		1.45	109.53
9+50			6.2	110.5
15+57 M.H. 5.0			5.9	111.1

Grade	cut			
93.75	4.3 ✓	98.9941 9375 5.24 ✓	98.99 95.00 3.99	104.96 120.43 7.53
95.00	4.6 ✓	98.04 6.92	95.50 9.96 ✓	104.96 95.50 9.96 ✓
95.07	4.6 ✓	104.96 = M. 95.07	104.96 95.50 9.46 ✓	104.96 95.93 9.03 ✓
95.50	5.1 ✓	9.89 ✓		
95.93	4.5 ✓	104.96 96.36 8.60 ✓	104.96 96.79 8.17 ✓	104.96 97.22 7.74 ✓
96.36	4.2 ✓	104.96 97.65 7.31 ✓	104.96 98.00 6.96	
96.79	4.2 ✓			
97.22	3.1 ✓	103.23 110.69 107.63 7.15	110.69 7.46 110.69 = M. 96.18 12.51 ✓	13.04 110.69 12.69 ✓ 11.4 ✓
97.65	2.8 ✓			
98.00	5.5 ✓	110.69 100.87 10.32 ✓	110.69 101.46 9.23	110.69 102.56 8.13 ✓ 7.04 ✓
98.18	5.0 ✓			
99.27	5.1 ✓	110.69 104.75 5.94 ✓	110.69 105.84 4.85	110.69 106.00 4.69
100.37	4.9 ✓			
101.46	4.7 ✓	109.53 7.90	119.43 = M. 106.20	
101.56	4.5 ✓			13.43 ✓
103.65	4.5 ✓			
104.75	4.8 ✓			
105.84	5.0 ✓			
106.0	5.1 ✓			

Sta	T.P.	Elev	R	Elev top	Grade	Cut	119.43	119.43	119.43	119.43
16+0	7.9	112.1		106.77	5.3	✓	119.43	119.43	119.43	119.43
+50	6.6	113.4		107.66	5.7	✓	106.77	107.66	108.56	109.45
17+0	5.2	114.8		108.56	6.2	✓	126.66	117.77	108.77	9.98
+50	4.57	115.7		109.45	6.0	✓	119.43	119.43	119.43	
18+0	5.1	114.7		110.35	4.4	✓	110.35	110.88	111.25	
18+30	7.3	112.7		110.88	1.8		9.04	8.55	8.18	✓
+50	5.0	115.0		111.25	3.7	✓	119.43	119.43	119.43	
18+92	3.2	116.5	M.H. Angle 97	112.00	4.8	✓	112.00	112.17	113.22	6.21
19+0	2.93	117.11	T.P. T 6.94 124.05	112.17	4.9	✓	7.43	7.26	6.21	
+50	5.7	118.4		113.22	5.2	✓	119.06	2.18		
20+00	2.9	121.2		114.27	6.9	✓	121.24 - H.I.	121.24	21.24	
+50	4.99	119.06	B.M.	115.32	3.8	✓	112.17	9.07	113.22	14.27
21+0	6.3	117.6		116.88	1.4	✓	21.24	21.24	21.24	21.24
+50	2.95	121.10	T.P. 8.34 129.44	117.43	3.7	✓	15.32	16.38	17.43	18.48
22+0	5.9	123.5		118.48	5.0	✓	5.92	4.86	3.81	2.76
+50	5.0	124.4		119.53	4.9	✓	21.24	19.53	20.58	101.10
23+0	4.3	125.1		120.58	4.5	✓	1.71	1.71	0.66	119.06
+50	2.78	126.66	B.M.	121.64	5.0	✓	126.66	4.4	131.81	127.0
24+0	3.1	126.3		122.69	3.6	✓	131.81	31.0	129.08	127.0
24+50	1.2	128.2		123.75	4.4	✓	118.4	12.62	4.95	11.57
24+62	0.3	129.7	M.H. Angle 5.2	124.00	5.1	✓	126.66	5.15	131.81	120.58
	2.78	126.66	1104 137.70				131.81 - H.I.	120.58	119.53	11.23

119.43 = H.I.

~~126.66~~  
~~4.4~~  
~~131.81~~  
~~118.4~~  
~~12.62~~  
~~4.95~~  
~~11.57~~

126.66  
 5.15  
 131.81 - H.I.  
 119.53  
 12.28  
 131.81  
 121.64  
 10.17 ✓  
 131.81  
 120.75  
 8.06 ✓

Sta	+ R	N.T.	- R	ele-top 5/3K
25+0			7.8	129.9
+50			6.8	130.9
26+0			7.4	130.3
+50			4.90	<sup>3M</sup> 132.80
27+0			4.4	133.3
+50			2.7	135.0
28+0			1.5	136.2
T.P.	11.34	148.32	0.72	136.98
+50			10.2	138.1
29+0			7.81	140.57
29+42	M.H. Angle 9.6		6.7	141.6
+50			6.9	141.4
30+0			6.6	141.7
+50			5.4	142.9
31+0			4.43	143.89
+50			5.4	142.9
32+0			5.8	142.5
+50			2.83	145.99
32+92	M.H. 5.9		2.8	145.5
33+0			2.7	145.6

137.70

## Grade cut

Grade	Cut	132.80 - B.M.		
125.03	9.9 ✓	126 135.06 - H.I. 123.75 11.31	3506 29.00 11.06 ✓	3506 25.03 10.09 ✓
126.38	4.5 ✓			
127.74	2.6 ✓	3506 26.38 8.68 ✓	85.06 27.74 7.32 ✓	3506 29.09 5.97 ✓
129.09	3.7 ✓	3506 31.80 3.26 ✓	3506 33.15 1.91	3506 34.51 35.86
130.44	2.9 ✓	140.51 3.42 143.93 = H.I. 31.80 12.13		
131.80	3.2 ✓		43.93 33.15 10.78 ✓	43.93 34.51 9.42 ✓
133.15	3.1 ✓		43.93 35.86 8.07 ✓	43.93 37.00 6.93
134.51	3.6 ✓			
135.86	4.7 ✓	143.89 3.20 147.09 = H.I. 137.00 10.09		47.09 37.07 10.02 ✓
137.00	4.6 ✓			47.09 37.50 9.59 ✓
337.07	4.3 ✓			
337.50	4.2 ✓	47.09 37.93 9.16 ✓	47.09 38.33 8.76 ✓	47.09 38.76 8.33 ✓
337.93	5.0 ✓			47.09 39.19 7.90 ✓
338.33	5.6 ✓	47.09 39.62 7.47 ✓	47.09 40.00 7.09 ✓	47.09 40.20 6.89 ✓
338.76	4.1 ✓			
339.19	3.3 ✓			
339.62	5.7 ✓			
140.00	5.5 ✓			
140.20	5.4 ✓			

5

33+50		1.8	146.5
34+00		B.M.	0.40
T.P.	1158	159.50	0.40
+50		11.6	147.9
35+0		9.9	149.6
+50		8.4	151.1
36+0		6.15	B.M.
36+42 M.H.		4.9	154.6
36+50		5.1	154.4
37+0		5.8	153.2
+50		3.75	155.75
T.P.	922	164.87	3.75
38+0		7.5	157.5
38+50 = M.H.		6.6	158.4
39+0		6.0	159.0
+50		4.57	B.M.
40+0		4.04	160.93
+50		3.3	161.7
40+92 M.H.		1.2	163.8
T.P.		404	160.93
50+00			

141.48	✓ 5.0	47.09	47.09	47.09
		41.48	42.77	44.05
142.77	5.22 ✓	5.61	4.32	3.04
144.05	3.9 ✓	<del>153.25</del>	147.92	155
145.34	4.3 ✓	152.47	141.48	52.47
146.62	4.5 ✓	141.48	42.07	44.05
147.91	5.4 ✓	10.99 ✓	9.70 ✓	8.42 ✓
149.00	5.6 ✓	52.47	52.47	52.47
149.18	5.2 ✓	45.34	46.62	47.91
150.29	3.4 ✓	7.13 ✓	5.85 ✓	4.56 ✓
151.40	4.3 ✓	153.38	155.75	5.60
152.51	5.0 ✓	161.35	161.35 = M.H.	149.18
153.62	4.8 ✓	149.00	12.35 ✓	12.17 ✓
154.73	4.3 ✓	61.35	61.35	61.35
155.84	4.6 ✓	50.29	51.40	61.35
156.95	4.0 ✓	11.06 ✓	9.95 ✓	8.84 ✓
158.06	3.6 ✓	61.35	61.35	61.35
159.00	4.8 ✓	53.62	54.73	55.84
		7.73 ✓	6.22 ✓	5.51
		160.93	167.96	167.96
		7.03	154.73	13.22
		167.96 M.H.		
		155.84		
		12.12 ✓		
		67.96	67.96	67.96
		56.95	58.06	59.00
		11.01 ✓	9.90 ✓	8.96 ✓



169.96 = M.H.

	M.H.		Grade	Out
0+0.0 = M.H. Sta 20+9 11.19	172.12	160.73	159.00	
+50 = B.M.		6.97 165.25	159.87	5.4 ✓
1+00		6.8 165.3	160.79	4.6 ✓
1+50		8.5 163.6	161.61	2.0 ✓
2+00	5	6.5 165.6	162.48	3.1 ✓
2+50		5.2 166.9	163.35	3.5 ✓
3+00		4.0 168.1	164.22	3.9 ✓
3+50 B.M.		3.76 168.36	165.09	3.3 ✓
4+02.5 = M.H.		0.7 171.4	166.00	5.4
	12.32 280.68	168.38		
4+50		8.7 272.0	167.07	4.9 ✓
5+00		7.2 273.5	168.19	5.3 ✓
5+50 B.M.		6.19 274.49	169.31	5.2 ✓
6+00		5.0 275.7	170.43	5.3 ✓
6+25.2 M.H.		4.5 276.2	171.00	5.2 ✓
6+50		3.9 276.8	171.29	5.5 ✓
7+00		3.0 277.7	171.89	5.8 ✓
7+50 T.P.	5.41 283.99	2.10 278.58	172.48	6.1 ✓
8+00		4.6 279.4	173.07	6.3 ✓
8+50 B.M.		7.22 276.77	173.67	3.1 ✓
9+77.6 = M.H.		4.1 279.9	174.00	5.9 ✓
	11.66 288.43	7.22 176.77		

67.96	67.96	67.96
59.87	60.74	61.61
8.09 ✓	7.22 ✓	6.35 ✓
67.96	67.96	67.96
62.48	63.35	64.22
5.48 ✓	4.61 ✓	3.74 ✓
168.36		78.18
7.82		64.22
178.18 M.H.		13.96
165.09		
13.09 ✓	78.18	78.18
	67.07	68.17
	11.11 ✓	9.99 ✓
78.18		
69.37	78.18	78.18
8.87 ✓	70.43	71.00
	7.75 ✓	7.18
278.54		
4.37		
182.77	82.97	82.97
170.43	71.00	71.29
12.54	18.97	11.68 ✓
82.97	82.97	82.97
71.89	72.48	73.07
11.08 ✓	10.49	9.90
82.97		
71.00		
11.97 ✓	0	5.9
82.97	82.97	
73.67	71.00	
9.30	8.97	
276.77		
7.88		
284.65 M.H.	84.65	
273.67	74.00	
10.98 ✓	10.65 ✓	

Sta	+	Ht.	- R	clever top of	Grade	Cut
575	T.P.	188.43		177.4	174.70	2.7 ✓
9+0			11.00	177.4	174.70	
9+50			7.5	180.9	176.25	4.7 ✓
10+0			8.3	180.1	177.81	2.3 ✓
10+50			4.5	183.9	179.36	4.5 ✓
11+02 <sup>6</sup>	M.H. 20+0	289.22	3.4	285.8	181.00	4.8 ✓
0+50	B.M.		3.47	285.73	181.68	4.0 ✓
1+0	B.M. T.B. 766	196.19	0.69	288.53	182.37	6.2 ✓
1+50			5.5	190.7	183.05	7.7
2+0			5.14	191.05	183.74	7.3 "
2+50			6.4	189.8	184.92	5.4
2+91 <sup>3</sup>	M.H. <u>Mane St</u>		5.2	191.0	185.00 ✓	6.0
3+0			5.2	191.0	185.29	5.7
3+50	B.M.		5.21	190.98	186.90	4.1
4+0			2.1	191.1	188.52	5.6
4+50	T.P. 1252	208.16	0.55	195.64	190.13	5.5
5+0			13.6	<del>194.6</del> 191.6	191.75	2.9
4+50			10.9	197.3	193.37	3.9
6+0	M.H.		8.0	200.2	195.00	5.2

184.65 Ht.  
174.70  
9.95 ✓

84.65	84.65
76.25	77.81
8.40 ✓	6.84 ✓
84.65	84.65
51.00	
3.65 ✓	

185.73  
2.36  
188.09 Ht.  
181.68  
6.41 ✓

88.09
52.37
5.72 ✓

6+50	H.T. 208.16	3.9	209.3	195.78	8.5	
7+0 T.P.	7.23 214.37	1.62	206.54	196.57	10.0	
7+50		9.9	204.5	197.35	7.2	
8+0		10.35	<sup>B.M.</sup> 204.02	198.14	5.9	
8+59 M.H.		9.7	209.7	199.00	5.7	#2
T.P.	12.97 216.99	10.35	209.02*			
9+0		14.0	203.0	199.93	3.1	
+50		11.8	205.2	200.94	4.3	
10+0		10.9	206.1	201.96	4.1	
+50		9.1	207.9	202.97	4.9	
11+00 Drop M.H.		6.9	210.1	206.00 209.00	4.1 6.1	#1
+50		3.41	213.58	207.08	6.5	
12+0 T.P.	8.61 223.79	1.81	215.18	208.17	7.0	
+50		6.7	217.1	209.25	7.9	
13+0		5.1	218.7	210.34	8.4	
13+50		4.09	<sup>B.M.</sup> 219.70	211.42	8.3	
14+0		4.2	219.6	212.51	7.1	
+50		5.8	218.0	213.60	4.4	
14+69 <sup>3</sup> M.H.		5.1	218.7	214.0	4.7	Alley bet Mulmear & Olive Sts.

1460  
120  
1369

		223.79				
15+0			3.9	219.9	214.98	✓ 4.9
+50			2.8	220.90	216.58	✓ 4.3
T.P.	10.11	231.01	2.9	220.90		
16+0			7.4	223.6	218.18	✓ 5.4 ✓
+50			6.77	B.M. 224.24	219.78	4.5
17+0			7.1	226.6	221.38	5.2 ✓
+50			2.9	228.1	222.98	5.1 ✓
18+0			2.3	228.7	224.58	4.1
T.P.	7.41	236.90	2.0	228.99		
+50			7.2	229.2	226.18	3.0
19+0			4.90	B.M. 231.50	227.78	3.7
19+37 <sup>8</sup>	pipe to left, M.H. Alley bet Olive & Palm		2.3	234.1	229.0	5.1
T.P.	8.50	240.00	4.90	231.50		
Branch line of Switzer Canyon sewer from M.H. Sta 19+37 <sup>8</sup> on E Alley bet Olive & Palm. to E Dale St & Alley bet Spruce & Thorn						
		240.00				
0+50	POSTED		7.1	232.9	230.39	2.5
1+0			5.5	234.5	231.78	2.7
+50			2.4	237.6	233.77	4.1
7.5	11.05	250.92	0.13	339.87		
2+0			11.1	239.8	234.56	5.2
2+50			10.6	240.3	235.95	4.4
3+0			10.9	240.0	237.34	2.7 ✓

220.90 = B.M.

10

7.07	29.97	29.97	24.97
227.97	16.58	18.18	
214.98	12.99 ✓	18.39 ✓	9.79
27.97	21.38	29.97	27.97
6.59 ✓	22.98	4.99 ✓	

244.55 = Sta 4+0  
4.00

248.55 B.M.  
237.34 ✓ 48.55  
11.21 ✓

250.94

3+50		7.2	243.7	238.71
3+6 <sup>S</sup> M.H. Alley bet Palm & Duinac	7.1	243.8	239.00	
4+0 T.P. 13.06	257.64	6.37	244.55	240.77
450		11.00	246.6	243.07
5+0		6.05	251.56	245.38
450		3.7	253.9	247.68
6+0 M.H.		4.3	253.3	250.00
	11.59	266.62	255.03	
450		8.9	256.7	251.61
7+0		5.8	260.8	253.23
450		4.55	262.07	254.84
8+0		4.2	262.9	256.45
8+47 <sup>S</sup> M.H. Alley bet 30 <sup>th</sup> & Date	31st	2.7	263.9	258.00
	10.70	274.59	263.89	
9+0		10.0	264.6	260.41
450		7.3	265.3	262.75
9+98 <sup>S</sup> M.H. Alley bet 30 <sup>th</sup> & 231st	Angle 90° 27' R	3.77	270.60	265.00
T.P.	13.30	289.90	270.60	
10+50		8.5	275.9	269.06
	110 10 A			269.61
10+57 angle No M.H.		8.25	275.65	270.00
11+0		8.22	275.68	272.96

248.55 = 14.1	11.21	29	200
238.71	9.24		
9.84	1.37		11
48.55		48.55	
39.00		40.77	
9.55		7.78	
48.55		366	
43.07		6.2	
5.48		9.86	

5.0 ✓  
 4.8 ✓  
 3.8 <sup>4</sup> high  
 3.5 <sup>12</sup> high  
 6.2 .5 high  
 6.2

3.3  
 5.1  
 7.6  
 7.2  
 6.0  
 5.9  
 4.2  
 2.6  
 5.6  
 6.3  
 6.0  
 2.7

	H.T.	Rod	E.le.	
11+50	283.90	4.2	279.7	<del>276.89</del> 276.89
11+57.5 M.H. Angle 15° 50' L		1.8	282.1	277.4
11+79.2 E. end culvert 30' x 6' +		4.1	279.8	277.8
T.P. 9.62	<del>290.91</del>	0.61	283.29	
12+0	290.91			
+50				
13+0				
13+41.2 N. end culvert		8.2	282.7	280.7
13+55.2 Angle 10° 49' L to		7.20	280.71	280.76
14+0		5.5	285.4	281.37
+50		3.54	287.37	281.82
14+69.4 = M.H. 14+63 Original Line		3.5	287.4	282.0
T.P. 10.16	297.53	3.54	287.37	
15+0		7.3	290.2	283.30
+50		5.51	292.02	285.52
16+0		5.0	272.5	287.70
+50 T.P. 10.79	305.39	2.93	284.60	288.87
17+0		8.5	296.9	292.84
17+0.7 angle. M.H.		7.3	295.1	292.30
17+50		5.45	299.94	294.51
17+68 L.M.N. & Dale Alley lot sewer turn		5.0	290.4	295.00
T.P.		5.45	299.94	

Culvert

2.7
4.7
2.0
2.0
2.0
2.0
2.0
2.7
4.0
5.6
5.4
6.2
6.5
4.8
4.7
4.9
5.8
5.7
5.4

11

11

11+

12

+

13

13+

13+

14

+

14+

T. A

15+

+

16

+

17

17+

17+

17+

T. P.

Section E Dale St from M.H. & UPas to M.H. & Alley  
between Thorns proce

Sta	Dist	M.H.	- P	elev top 5/8 ins	Grade
B.M. 20th & Capps				886.76	
B.M.	0.37	337.13			
T.P.	1.79	328.05	8.84	328.29	
0+0 = M.H. & UPas			6.0	329.1	317.00
0+50			6.6	323.5	316.85
1+0		B.M.	6.98	323.15	316.70
1+50			7.6	322.5	316.55
2+0 T.P.	3.02	325.05	8.05	322.03	316.40
2+50	5		3.4	321.6	316.25
3+0			3.9	321.1	316.10
3+34 M.H.			4.0	321.0	316.00
3+50			4.1	320.9	315.75
4+0			4.5	320.5	315.41
4+50		B.M.	5.39	319.96	314.76
5+0			5.6	319.4	314.54
5+50			5.9	319.1	313.41
5+88.4 - Elevation top pipe				314.34	312.57
6+0			6.4	318.6	312.31
7+50 T.P.	2.74	321.00	6.79	318.26	311.21
6+68 M.H. & Thorns			2.7	318.3	310.80 308.50
7+0			2.9	318.1	308.35
7+60 break			4.8	316.2	308.00
8+22 M.H. & Alley bet Thorns proce					297.0

318.25 M.H.  
318.00 S.W. cor.

240.0  
11.6  
588.4

14

319.96  
4.48  
324.44  
318.25  
6.19 ✓

24.44  
24.44  
24.44  
24.44  
24.44  
10.80  
13.64 ✓

24.44  
14.96  
24.44  
317.96 = 8.M.  
4.15  
324.11  
313.41  
10.70 ✓

24.11  
15.41  
8.70 ✓

322.08  
26.36  
15.85  
10.5

26.36  
16.20  
10.26 ✓

26.36  
16.25  
10.11 ✓

26.36  
16.40  
8.96 ✓

26.36  
16.20  
9.66 ✓

26.36  
15.85  
9.51 ✓

26.36  
16.36  
26.36  
26.36  
16.40  
16.55  
9.81 ✓

26.36  
16.20  
15.85  
17.00  
9.36 ✓

319.83  
1.93  
321.76 M.H.  
308.00  
13.76 ✓

319.96  
3.46  
323.42  
9.08  
314.34

24.11  
24.11  
14.51  
9.60 ✓  
9.15 ✓

24.11  
24.11  
15.85  
16.00  
8.26 ✓  
8.11 ✓

322.03  
4.33  
326.36 M.H.  
316.00  
10.36 M.H.

329.76  
308.23  
13.53

7.1 ✓  
6.7 ✓  
6.4 ✓  
6.0 ✓  
5.6 ✓  
5.4 ✓  
5.0 ✓  
5.0 ✓  
5.1 ✓  
5.1 ✓  
5.0 ✓  
4.9 ✓  
5.7 ✓  
6.3 ✓  
7.0 ✓  
7.5 ✓  
9.8 ✓  
9.9 ✓  
8.2 ✓  
3.4



sewer & alley between Thorn & Spruce; from  
E Dale to 20' E of Granada

Grade

13.M.	8.99	308.83	299.94		
0+0 = M.H., T.P.		1.46	<del>307.07</del>	297.00	
+50 T.P.	12.09	319.46	1.46	307.37	304.08
+100			2.6	316.9	311.16
+120 Break	POSTED		2.1	317.4	314.00
+450 T.P.	9.77	328.64	0.59	318.87	314.50
+500			8.9	319.7	310.33
+550	b		7.4	321.2	316.17
+600 M.H.			5.5	323.1	317.00
+650			4.27	324.37	317.22
+700			3.1	325.5	317.40
+750			3.91	325.29	317.67
+800			3.7	324.9	317.90
+850			4.0	324.6	318.10
+900			5.1	323.5	318.35
+910 = F.T.			5.3	323.3	318.40

Posted

245-6

15

318.87					
3.70					
<u>322.57</u>	-4.1				
311.16					
<u>11.41</u> ✓					
	22.57	22.57	22.57	22.57	
	14.00	14.50	15.33	16.17	
	8.57 ✓	8.07 ✓	7.24 ✓	6.40 ✓	
	<u>22.57</u>				
<u>17.00</u>	22.57				
5.57 ✓	17.22				
	5.35 ✓				
325.23					
4.72					
<u>329.95</u>	29.95	29.95	29.95	29.95	
317.45	17.67	17.90	18.12		
12.50 ✓	12.28 ✓	12.05 ✓	11.83		
	29.95	29.95			
18.35	18.40				
1.60 ✓	1.55 ✓				

Sewer Line of Thorn from E Dale W to E Line Alley  
bet 29th & Granada thence N in E Alley to Ft. 251

S of UPAS STA	+ R	M.H.	- R	elevation starts	Grade
B.M. 1	6.70	324.96		319.26	
0+0 = M.H. center Thorn & Dale			6.7	318.3	308.5
50			6.6	318.4	308.80
140			6.3	318.7	309.11
1450			5.6	319.4	309.41
1465 M.H. E Alley bet Dale & 29th Drop				119.6	309.50
2+0 B.M.			5.13	319.83	315.44
450			4.5	320.5	316.05
3+0			4.1	320.9	316.66
4+0 T.P.	9.16	330.49	3.63	321.33	317.27
4+0 B.M.			5.50	324.99	317.88
450			5.4	325.1	318.49
4933 = M.H. E Alley bet Dale & Granada			5.2	325.3	319.00
5+0			5.1	325.4	319.08
450			5.2	325.3	319.66
6+0 B.M.			5.25	325.24	320.24
450			4.4	326.1	320.82
7+0			3.4	327.1	321.40
450 T.P.	7.15	335.30	2.34	328.15	321.97
7+93 B.M. 1			7.0	328.3	322.47

POSTED

245-6

cut	25.71	25.71	25.71
	319.83	25.71	25.71
	5.88	1.50	10.71
	325.71 = H.I.	25.71	25.71
	315.44	16.65	16.66
	10.27 ✓	9.66 ✓	9.05 ✓
			8.44 ✓
9.8 ✓	25.71	25.71	25.71
	17.88	18.49	19.00
	7.83 ✓	7.22 ✓	6.71 ✓
9.6 ✓			
9.6 ( )			
10.0 ✓			
10.1 ✓			
4.6 ✓			
4.4 ✓			
4.5 ✓			
4.2 ✓			
4.1 ✓			
7.1 ✓			
6.6 ✓			
6.3 ✓			
6.3 ✓			
5.6 ✓			
5.0 ✓			
5.3 ✓			
5.7 ✓			
6.2 ✓			
5.8 ✓			

325.24			
5.43			
330.67 H.I.			
319.08	30.67	30.67	30.67
11.59 ✓	19.66	20.24	20.82
	11.01 ✓	10.43 ✓	9.85 ✓
30.67	30.67		
21.42	21.97	30.67	30.67
7.27 ✓	8.70 ✓	22.47	22.55
		8.20 ✓	8.12 ✓
319.83	20.37	20.37	20.37
0.54	8.25	8.95	9.26
	11.72 ✓	11.42	11.11 ✓
320.37 H.I.			
308.50	20.37	20.37	20.37
11.87 ✓	88.80	9.1	9.01
	77.57 ✓	11.26	10.94 ✓
	20.37		
	9.50		
	10.87		
319.83			
2.67			
322.50			
307.50			
15.02 ✓			

	+ Rod	H.I.	- Rod	Ele. Grd.	Grade
8+0		335.30	6.9	328.4	322.55
+50			6.3	329.0	323.13
9+0			4.8	330.5	323.71
750			5.4	329.9	324.28
10+0			4.9	330.4	324.86
+50 B.M.			3.63	331.67	325.44
10+97.5 = F.T. 5' 5" up 25'			4.2	331.1	326.00

Cut

5.9 ✓	333.96 141		328.15
	331.67		5.81
	2.29		333.96 = 41
5.9 ✓	33.96	33.96	322.55
	23.13	23.71	11.41
6.8 ✓	10.83 ✓	10.25 ✓	33.96
5.6 ✓			24.28
			9.68 ✓
5.5 ✓	33.96	33.96	33.96
	25.44	26.80	24.86
	8.52 ✓	7.96 ✓	9.10 ✓
6.2 ✓			
5.1 ✓			

335.30  
6.25  
331.25

11.34  
1.01  
10.33

sewer & Dale from N.H. & Alley bet Spruce & Thorn to  
 & Alley bet Redwood & Spruce Thence ~~East~~ west in Alley  
 To F.T. 20' E of Granada

B.M.	120	321.86	319.96	Grade
0+0 = N.H.				297.00
0+58			B.M. 314.85	309.00
1+0		POSTED		
1+50			6.2	315.7
2+0			6.0	315.9
2+50			5.6	316.3
3+0			5.2	316.7
3+38 N.E. Alley			5.8	316.1
4+0			6.1	315.8
4+50			6.1	315.8
5+0			6.9	315.0
5+50			6.6	315.3
T.P.	260	326.60	3.86	318.00
6+0			9.72	316.88
6+50			7.0	319.6
7+0			5.2	321.4
7+38 N.H.			3.9	322.7
7+50			3.2	323.4
8+0			3.9	322.7
8+50			4.6	322.0

245

cut

314.85				
5.49				
320.34 H.I.				
309.00				
11.34 ✓				
20.34	20.34			
1.002	10.37			
10.32 ✓	9.97 ✓			
		20.34	20.34	
		10.73	9.66	
		9.61 ✓	11.00	
			9.34 ✓	
316.88				
3.83				
320.71 H.I.				
311.10				
9.61 ✓				
20.71	20.71	20.71	20.71	
12.26	11.51	11.93	12.34	
7.95 ✓	9.20 ✓	8.78 ✓	8.37 ✓	
316.88				
9.53				
326.41 H.I.				
313.17				
13.24 ✓				
26.41	26.41	26.41		
	13.50			
	12.91 H.I.			
			26.41	
			13.56	
			12.85 ✓	
26.41	26.41	26.41		
13.80	14.04			
12.62 ✓	12.37			
313.79	313.79			
	11.72			
	325.51 H.I.			
	314.04			
	11.47			
25.51	25.51			
316.88				
8.95				
325.83 H.I.				
314.04				
11.79 ✓				

18

326.60

8+0	5.5	321.1	314.28
+50	6.1	320.5	314.52
9+0	6.5	320.1	314.76
9448 = FT. 20 E. of Granada	6.7	319.9	315.00

6.8 ✓  
6.0 ✓  
5.3 ✓  
4.9

$$\begin{array}{r} 325.51 \\ 314.76 \\ \hline 107.5 \end{array}$$
$$\begin{array}{r} 325.51 \\ 31.500 \\ \hline 1051 \end{array}$$
$$\begin{array}{r} 325.83 = H7 \\ 314.28 \\ \hline 11.55 \end{array}$$
$$\begin{array}{r} 25.43 \\ 14.76 \\ \hline 11.07 \end{array}$$

19

Sewer line & Alley Alley bet Daled 29B from M.H. Q  
 Thorn 2X for 80' To M.H. thence E for 45' To M.H.

B.M.	5.08	324.71	319.80
0+0 = M.H. & Thorn 1/3 1/4 on Thorn line 5.3		319.6	309.50
0+20	5.6	319.3	309.62
0+40	5.0	319.9	309.75
0+60	5.0	319.9	309.87
0+80 = M.H.	4.6	320.3	310.00
1+0	4.8	320.1	310.27
1+W = M.H.	4.8	320.1	310.60

319.83  
 3.32  
 323.15 H.1  
 309.62  
 13.53 ✓

20

10.1

9.7 ✓

10.2 ✓

10.0 ✓

10.3

9.8

9.5

23.15 23.15  
 9.75 9.87  
 13.40 ✓ 13.28 ✓

Senior & Utah from E Upas to Ft. 305. University

B.M.	6.83	338.06	332.23
0+0=M.H. & Upas			325.00
150		7.20	330.76 325.39
140	POSTED	7.0	331.1 325.79
150		6.7	331.4 326.18
270		6.18	331.88 326.58
150		5.7	332.4 326.97
340	5	5.3	332.8 327.37
150		5.0	333.1 327.76
3+80=M.H. & Myrtle		4.9	333.2 328.00
140		4.9	333.2 328.10
150		4.6	333.5 328.36
540		4.3	333.8 328.62
150		4.03	334.03 328.87
610		4.00	334.1 329.13
150		3.8	334.3 329.39
740		3.6	334.5 329.65
150		3.43	334.63 329.91
7+60=M.H. & Carrs		3.2	334.9 330.00
T.P.	7.02	341.65	343 334.63

Posted

330.76			
5.76			
336.52 H.I.			
328.39			
11.13	36.52	36.52	36.52 36.52
	25.79	26.18	26.58 26.97
	10.73V	10.34V	9.94V 9.55V
36.52	36.52	36.52	
27.37	27.76	28.00	
9.15V	8.76V	8.52V	
334.03			
4.54			
338.47 H.I.			
328.00			
10.47	38.47	38.47	38.47
	28.10	28.36	28.62
	10.37V	10.11V	9.85V
38.47	38.47		
29.57	29.13	38.47	
9.60V	9.34V	29.39	
		9.08V	38.47
38.47	38.47	38.47	29.57
29.91	30.00		8.52
8.56V	8.47V		
330.76			
4.23			
334.99			
325.00			
7.99V			

341.65

13	870	6.8	334.9	330.21
0	750	6.4	335.3	330.47
	970	6.1	335.6	330.73
	750	6.0	335.7	330.99
	1070	5.56	336.09	331.25
	750	5.3	336.4	331.52
	1170	5.0	336.7	331.78
	311+40 = M. B. & Dwight	4.9	336.8	332.00
	750	4.7	337.0	332.08
	31270	4.20	337.45	332.47
	750	3.8	337.9	332.87
	1370	3.4	338.3	333.26
	750	3.1	338.6	333.66
	1470	2.68	338.97	334.05
	750	2.2	339.5	334.45
	1570	1.9	339.8	334.84
	215+70 = M. H. Landis 622	1.82	339.83	335.00
	750	6.1	340.0	335.16
	16700	5.7	340.4	335.42
	716+50	5.2	340.9	335.68

334.63

5.38

340.01 = H.1

330.21

9.80 ✓

4.7 ✓

340.51 = H.1

332.00

8.51 ✓

4.9 ✓

4.7 ✓

4.8 ✓

4.9 ✓

4.9 ✓

4.8 ✓

4.9 ✓

5.0 ✓

5.0 ✓

5.0 ✓

4.9 ✓

4.9 ✓

5.0 ✓

5.0 ✓

4.8 ✓

4.8 ✓

5.0 ✓

5.2 ✓

40.01

30.00

10.01

22

40.01 40.01 40.01

30.47 30.73 30.99

9.54 ✓ 9.28 ✓ 9.02 ✓

9.26 ✓ 8.99 ✓ 8.73 ✓

40.51 40.51 40.51 40.51

32.08 32.47 32.87 33.26

8.43 ✓ 8.04 ✓ 7.64 ✓ 7.25 ✓

337.45

6.18

343.63 = H.1

32.87

10.76

43.63 43.63 43.63

33.26 33.66 34.05

10.37 ✓ 9.97 ✓ 9.58 ✓

43.63

34.45

9.18 ✓

338.97

6.29

345.26 = H.1

334.45

10.81

45.26 45.26 45.26 45.26 45.26

34.84 35.00 35.16 35.42 35.68

10.42 ✓ 10.26 ✓ 10.10 ✓ 9.84 ✓ 9.58 ✓



R	17+00 B.M.	346.05	4.70	341.35	335.94
	17+50		4.3	341.8	336.21
	18+00		4.0	342.1	336.47
	18+50		3.6	342.5	336.73
	19+00 = M.H. ♀ Gunn		3.4	342.7	337.00
	19+50 B.M.		3.13	342.92	337.39
	20+00		2.7	343.4	337.79
	20+50		2.2	343.9	338.18
	21+00 T.R.	6.74	350.91	1.88	344.17
	21+50		6.5	344.4	338.97
	22+00		6.3	344.6	339.36
	22+50		6.1	344.8	339.76
	22+80 = M.H. ♀ Wightman		5.7	345.2	340.0
	23+00		5.8	345.1	340.19
	23+50		5.3	345.6	340.67
	24+00		4.7	346.2	341.16
	24+50		4.3	346.6	341.64
	25+00		3.9	347.0	342.13
	25+50 B.M.		3.14	347.77	342.61
T	25+90 = F.T. 305 S.Mix.		2.8	348.1	343.00

350.91  
0.57  
350.34 = RM

23

5.4 ✓	345.26	45.26	45.26	45.26	45.26
5.6 ✓	35.94	36.21	36.47	36.73	37.00
5.6 ✓	9.32	7.05	8.79	8.53	8.26
5.8 ✓	342.92	341.35	6.03		
5.7 ✓	347.95 = R.I.	336.47	11.51		26
5.5 ✓	47.98	47.98	47.98		
5.6 ✓	36.73	37.00	37.39	47.98	
5.7 ✓	11.25	10.98	10.59	37.79	10.19
5.6 ✓	342.92	6.26	349.18	337.79	11.39
5.4 ✓	49.18	49.18	49.18	49.18	
5.2 ✓	38.19	38.58	38.97	39.36	
5.0 ✓	11.00	10.60	10.21	9.82	
5.2 ✓	49.18	49.18	49.18	49.18	
4.9 ✓	39.76	40.00	40.17	40.67	46
4.9 ✓	9.42	7.18	8.99	8.51	
4.9 ✓	347.97	417	51.94	51.94	
5.0 ✓	351.94	340.67	41.16	41.64	
5.0 ✓	11.27	10.78	10.30		
4.9 ✓	51.94	51.94	51.94		
5.2 ✓	42.13	42.61	43.00		
5.1 ✓	9.81	9.33	8.94		

5 sewer Line # UT23 st from E Utah st to 16' E of E 30th St

B.M.	+ R	M.F.I	- R	elev top of 331.23	Grade
B.M. Utah	3.99	335.22	4.8	330.4	325.00
0+0			4.78	330.4	329.56
1+0			4.6	330.6	324.11
2+0			4.5	330.4	323.67
3+0			5.3	329.9	323.22
4+0			5.9	329.3	322.78
5+0			6.3	328.9	322.50
6+0			6.68	328.54	322.32
7+0			7.5	327.7	321.87
8+0			8.0	327.2	321.43
9+0			8.7	326.5	320.98
10+0			9.3	325.9	320.54
11+0			9.8	325.4	320.09
12+0			9.9	325.3	320.00
13+0			10.3	324.9	319.79
14+0			10.6	324.6	319.53
15+0			11.0	324.2	319.26
16+0			11.2	324.0	319.05
17+0					319.00
18+0					317.00

POSTED

7+49 <sup>35</sup> M.H. & Dale

See page 28

cut

5.4
5.9 ✓
6.5 ✓
6.6 ✓
6.7 ✓
6.5 ✓
6.4 ✓
6.2 ✓
5.8 ✓
5.8 ✓
5.5 ✓
5.4 ✓
5.3 ✓
5.3 ✓
5.1 ✓
5.1 ✓
4.9 ✓
5.0 ✓
Drop

330.44
4.30
334.74 H.I.
324.56
10.18 ✓
34.74
24.11
10.63 ✓
34.74
23.67
11.07 ✓
34.74
29.22
11.52 ✓
34.74
22.98
11.96 ✓
34.74
22.50
12.24 ✓
34.74
22.32
12.42 ✓
34.74
21.87
12.87
328.54
2.20
330.54
321.87
8.67
30.54
20.54
10.00 ✓
30.54
20.09
10.45
30.54
20.54
10.54 ✓
30.54
19.77
10.75 ✓
30.54
19.53
11.01 ✓
30.54
19.26
11.28 ✓
30.54
19.05
11.49 ✓

24

12  
17

Senior: Q Sherman St from 4 Upas to F.T. 35's  
of University

B.M. 3.99 335.22 331.23  
5/2 +R H.T. -R elev for stakes Grade cut

0+0 M.H.Q. Upas 6.3 328.9 322.50 6.4

0+50 3.20 332.02 322.83 9.2 ✓

1+0 3.1 332.1 323.16 9.9 ✓

POSTED

1+50 3.0 332.2 323.49 8.7 ✓

2+0 3.1 332.1 323.82 8.3 ✓

2+50 3.1 332.1 324.15 8.0 ✓

3+0 T.P. 5.52 337.57 317 332.05 -324.48 7.5 ✓

3+50 6.0 331.8 327.81 6.9 ✓

3+80 M.H.Q. Myrtle 6.0 331.8 325.00 6.6 ✓

4+0 6.4 331.2 328.16 6.0 ✓

4+50 6.03 331.54 325.55 6.0 ✓

5+0 6.2 331.4 325.95 5.4 ✓

5+50 6.3 331.3 326.34 5.0 ✓

6+0 6.8 330.8 326.74 4.1 ✓

6+50 6.3 331.3 327.13 4.2 ✓

7+0 6.4 331.2 327.53 3.7 ✓

7+50 5.7 331.9 327.92 4.0 ✓

7+60 M.H.Q. Carrs, 5.4 332.2 328.20 4.2

T.P. 7.81 339.35 6.03 331.54

12.73  
12.57  
332.05  
3.71  
335.76 = H.I.  
324.48  
11.28 ✓

35.76 35.76 35.76 35.76 35.76  
24.81 25.00 25.16 25.35 25.95  
10.95 ✓ 10.76 ✓ 10.60 ✓ 10.21 ✓ 9.81 ✓

35.76 35.76 35.76 35.76 35.76  
26.34 ✓ 26.74 ✓ 27.13 ✓ 27.53 ✓ 27.92 ✓  
9.42 ✓ 9.02 ✓ 8.63 ✓ 8.23 ✓ 7.84 ✓

35.76 35.76  
28.20 28.32  
7.76 7.44 ✓

40.46 40.46  
25.00 25.33  
12.46 9.0 16  
33

332.02  
3.87  
335.89  
322.83  
13.06 ✓

35.89 35.89 35.89  
23.16 23.49 23.82  
12.73 ✓ 12.40 ✓ 12.07 ✓

35.89  
24.15  
11.74 ✓

Postul

35.89  
24.48  
11.41

33  
3.9  
12.07  
1.16  
11.91

25

339.35

8+0		6.3	333.1	328.82
+50		5.5	333.9	328.71
9+0		5.4	334.0	329.11
9+50		4.9	334.5	329.50
10+0		4.6	334.8	329.90
+50		4.2	335.2	330.29
11+0		3.8	335.6	330.69
11+40	M.H. Dwight	3.4	336.0	331.00
+50		3.4	336.0	331.08
12+0		0.5	338.9	331.47
+50	T.P.	6.82	345.66	0.51 338.84 331.87
13+0		7.3	338.4	332.26
+50		7.2	338.5	332.66
14+0		6.5	339.2	333.05
+50		6.7	339.10	333.45
15+0		6.5	339.2	333.84
15+20	M.H. Landis	6.2	339.5	334.00
+50		5.16	340.50	334.24
16+0		5.4	340.3	334.64

340.46 = K.S.

39

39

26

4.8 ✓	40.46	40.46	40.46	40.46	40.46
5.2 ✓	28.71	29.11	29.50	29.90	30.29
4.9 ✓	11.75 ✓	11.35 ✓	10.96 ✓	10.56 ✓	10.16 ✓
5.0 ✓	40.46	40.46	40.46	40.46	
4.9 ✓	30.69	31.00	31.08	31.47	
4.9 ✓	9.77 ✓	9.46 ✓	9.38 ✓	8.99 ✓	
4.9 ✓	40.46	40.46	40.46	40.46	
4.9 ✓	31.87	32.26	32.66	33.05	
4.9 ✓	8.59	8.20	7.80	7.41	
4.9 ✓	331.47				
5.0 ✓	11.18				
4.9 ✓	342.65				
	331.80				
	10.85 ✓				
7.4 ✓					
7.0 ✓					
6.1					
5.8					
6.2					
5.6					
5.4					
5.5					
6.3					
5.7					

500

345.66

B.M.	16+50		5.4	340.3	335.03	5.3
250	17+0		4.1	341.6	335.43	6.2
110	7+50		4.40	341.26	335.83	5.5
150	18+0		3.8	341.9	336.22	5.7
270	450 T.P.	8.07	3.06	342.60	336.67	6.0
150	19+0 = M.H. 4 GUNN		7.2	343.5	337.00 <sup>6</sup>	6.5 ✓
370	7+50		6.1	344.6	337.52	7.1 ✓
150	20+0		6.0	344.7	338.05	6.7 ✓
370	7+50		5.8	344.7	338.57	6.3 ✓
170	21+0		6.09	344.88	339.10	5.5 ✓
150	7+50		5.5	345.2	339.62	5.6 ✓
570	22+0		4.7	346.0	340.15	5.9 ✓
150	7+50		3.4	347.3	340.67	6.6 ✓
670	22+50 M.H. 4 mgatman		3.9	346.8	341.00	5.8 ✓
150	23+0 T.P.	7.22	2.66	348.01	341.27	6.7 ✓
770	7+50		8.1	347.1	341.95	5.1 ✓
150	24+0		7.0	348.2	342.68	5.6 ✓
770	24+50		7.4	347.8	343.31	4.5 ✓
770	25+0		6.2	349.0	343.99	5.0 ✓
770	25+50		6.2	349.0	344.66	4.3 ✓
T.P.	25+90 F.T. 30's of University		4.6	350.6	345.20	5.4 ✓

341.26			
7.71			
348.97	48.97		
336.61	37.00	48.97	
12.36	11.97 ✓	37.52	
		11.45 ✓	
48.97	48.97	48.97	48.97
38.05 ✓	38.57	39.10	39.62
10.92 ✓	10.40 ✓	9.87 ✓	9.35 ✓
48.97	48.97	48.97	
40.15	40.67	41.00	
8.82 ✓	8.30 ✓	7.97 ✓	
348.01			
5.26			
353.27	53.27	53.27	53.27
341.00	41.27	41.95	42.63
12.27 ✓	12.00 ✓	11.82 ✓	10.64 ✓
53.27	53.27	53.27	53.27
43.31	43.99	44.66	45.20
9.96 ✓	9.28 ✓	8.61 ✓	8.07 ✓

27

52  
50

25 68  
48



Search line UPAS ST from Date to 16  
 E of ~~the~~ <sup>Ray</sup>. Continued from page 29

B.M.	Dist	M.H. & Date	325	331.79	7.14	328.54
			5.74	330.39		319.65
0100	+50					317.00
0200	+50		5.30	325.09		317.28
0300	+89.7	M.H. & 30 <sup>H</sup>	4.5	325.7		317.50
0400	+70					317.54
0500	+50		4.1	326.3		317.71
0600	+40		3.7	326.7		317.89
0700	+50		3.2	327.2		318.06
0800	+75		3.1	317.3		318.15
0900	+70		2.7	327.7		318.24
1000	+75		2.8	327.6		318.32
1100	+16 <sup>3</sup>	M.H. RAY	3.6	326.8		318.40

POSTED

318.4	1204	05 152	1/2, 22
325.09	4.93		28 11
330.02	2.41		9
317.11			
12.91		30.02	30.02
		17.28	17.50
		12.74	12.52 ✓
30.02	30.02	30.02	30.02
17.54	17.71	17.89	18.06
12.48 ✓	12.31 ✓	12.13	11.96 ✓
30.02	30.02		
16.15	18.24		30.02
11.87			18.32
			11.70
30.02			
18.40			
11.62 (2)			
325.09	4.64	29.73	29.73
329.78	4.1	17.23	17.29
		12.75	11.84
		11.33	11.33
		18.40	18.32
		12.15	11.84
		11.84	11.84
525.09	5.85		
330.94			
318.15			
12.79 ✓			

Sewer & Kansas from M.H. & Upas to F.T.  
30.5 of University

236-7-8

B.M.	B.M.	7.67	333.70	326.03 of M.H. & Upas		
0+0=M.H. & Upas				320.00		
0+50		7.7	326.0	320.52	5.5 ✓	
1+0	POSTED	7.2	326.5	321.05	5.5 ✓	
1+50		6.8	326.9	321.57	5.3 ✓	
2+0		6.4	327.3	322.10	5.2 ✓	
2+50		5.8	327.7	322.62	5.3 ✓	
3+0		5.2	328.5	323.15	5.3 ✓	
3+50		4.6	329.1	323.67	5.4 ✓	
3+80=M.H. & Myrtle		4.3	329.4	324.00	5.4 ✓	
4+0		4.06	329.64	324.24	5.4 ✓	
4+50		3.3	330.4	324.83	5.6 ✓	
5+0		2.8	330.9	325.72	5.5 ✓	
5+50		2.1	331.6	326.01	5.6 ✓	
6+0		1.6	332.1	326.60	5.5 ✓	
6+50		1.0	332.7	327.19	5.5 ✓	
7+0 T.P.	7.78	341.16	0.32	333.38	327.78	5.6 ✓
7+50			7.4	333.8	328.37	5.4 ✓
7+60=M.H. & Carps			7.4	333.8	328.59	5.3 ✓
T.P.			7.1	334.1	328.86	5.2 ✓

326.03	33205	3205	3205	3205
6.02	32000	21.05	21.57	22.10
33205.4	12.05	11.00	10.78	9.95
320.52		33.19	33.19	33.19
11.53 ✓		22.62	23.15	23.67
		10.57 ✓	10.04 ✓	9.52 ✓
326.03		33.19	33.19	33.19
7.16		24.00	24.24	24.83
333.19 M		9.19 ✓	8.95 ✓	8.36 ✓
322.10				25.42
11.09 ✓				26.01
				7.77 ✓
				7.18 ✓
33.19				
26.60				
6.59 ✓				
333.36				
.438				
337.76		37.76	37.76	
326.60		27.19	27.78	
11.16 ✓		10.57 ✓	9.98 ✓	
37.76				
28.37 ✓		37.76		
9.39		28.50		
		9.26 ✓		

29

Present

	341.16			
8+50		6.8	339.4	329.32
9+0		6.3	339.9	329.77
+50		6.1	335.1	330.23
10+0		5.7	335.5	330.69
750		5.4	335.9	331.14
11+0		5.0	336.2	331.60
11+40 M.N. & Dwight		4.6	336.6	331.96
+50		4.5	336.7	332.00
12+0		4.01	337.15	332.51
+50		3.6	337.6	332.96
13+0		2.8	338.4	333.42
+50		2.4	338.8	333.87
14+0		2.0	339.2	334.33
+50		1.4	339.8	334.79
15+0 T.P.	7.62	0.87	340.29	335.24
15+20 = M.H. & Landis		7.4	340.5	335.42
+50		7.0	340.9	335.69
16+0		6.5	341.4	336.15
+50		6.2	341.7	336.60

30

46  
45  
46

337.15				
2.69				
339.84 = 4.1				
331.60	5.1 ✓	39.84	39.84	39.84
8.24		31.96	31.14	30.69
		7.88	8.70	9.15
		39.84	39.84	39.84
30.23	4.9 ✓	29.77	29.32	29.82
9.61		10.07	10.52	10.98
			46	45 46 ✓
337.15				
6.34				
343.49 = 4.1				
332.05	5.1 ✓	43.49	43.49	43.49
11.44		32.51	32.96	33.42
		10.98	10.53	10.07
		43.49	43.49	43.49
33.87	4.7 ✓	34.33	34.79	35.24
9.62		9.16	8.70	8.25
		43.49		46.68
35.42				35.42
8.07				11.26
				46
340.29				
6.39				
346.68		46.68	46.68	46.68
335.69	5.0 ✓	36.15	36.60	
10.99		10.53	10.08	



347.91

17+0	5.9	342.0	337.06
+50	5.7	342.2	337.51
18+0	5.4	342.5	337.97
+50	4.8	343.1	338.73
19+0 M.H. & Gunn	4.3	343.6	338.90
+50	3.8	344.1	339.35
20+0	3.3	344.6	339.81
20+50	2.9	345.0	340.27
21+0	2.3	345.6	340.72
+50	1.9	346.0	341.18
22+0	1.3	346.6	341.63
+50 T.R. 10.91	0.67	347.24	342.09
22+80 = M.N. & Wrightman	10.6	347.6	342.40
23+0	10.9	347.9	342.76
+50	9.5	348.7	343.66
24+0	8.7	349.5	344.57
+50	7.90	350.25	345.47
25+0	6.9	351.3	346.38
+50	5.9	352.3	347.28
25+90 F.T. 200 of Univ	5.1	353.1	348.00

31

46.68	46.68	46.68	46.68
37.06	37.51	37.97	38.43
9.62 ✓	9.17 ✓	8.71 ✓	8.25 ✓
46.68			
38.90			
7.78 ✓			
45			
41			
347.24			
3.92			
351.16			
338.90			
12.26			
51.16		51.16	
40.27		39.35	
10.89 ✓		11.81 ✓	
51.16		51.16	
40.27		41.18	
10.89 ✓		9.98 ✓	
51.16		51.16	
42.09		42.76	
9.07 ✓		8.40 ✓	
51.16		51.16	
44.57		45.47	
6.59 ✓		5.69	
350.25			
5.74			
355.99 = H.1			
348.00			
7.99 = F.T. ✓			

32

corner of 30th St from M.H. & UPas to F.T.  
30's of S.L. University

B.M. corner 20th St		336.76		
B.M. 0.66	337.42			
3+0 = M.H. & UPas	11.5	325.9	317.5 up and 319.58	
0+20	11.6	325.8	319.77	
+65	11.6	325.8	320.44	
1+0	11.0	326.4	320.95	
+50	10.24	327.18	321.67	
2+0	9.5	327.9	322.40	
+50	8.6	328.8	323.12	
3+0	7.8	329.6	323.85	
+50	7.1	330.3	324.57	
3+50 M.H. & Myrtle	6.7	330.7	325.00	
4+0	6.5	330.9	325.29	
+50	5.8	331.6	326.01	
5+0	5.07	332.35	326.74	
+50	4.4	333.0	327.46	
6+0	3.6	333.8	328.19	
+50	2.9	334.5	328.91	
7+0	2.2	335.2	329.64	
+50	1.8	<del>335.6</del> 335.6	330.36	
+60 = M.H. & Capps	1.7	335.7	330.50	

POSTED

236-7-8

RETURN TO CITY ENGINEER'S OFFICE  
CITY HALL, SAN DIEGO, CAL.

33

2.4	327.18 6.36	33.54 19.79	33.54 20.99	33.54 20.95	33.54 21.67	33.54 22.40	33.54 23.12	33.54 23.85
6.9 ✓	333.54 M. 13.75	19.79	20.99	20.95	21.67	22.40	23.12	23.85
6.0 ✓		33.54 24.57	33.54 25.00					
		9.97	9.54					
5.4 ✓	332.35 2.15	39.53 25.29	34.53 24.57	34.53 24.57	34.53 24.57			
5.4 ✓	334.53 M. 25.00 9.53	25.29	24.57	24.57	24.57			
5.5 ✓	332.35 5.00	37.35 26.71	37.35 27.46	37.35 27.46	37.35 28.19			
5.5 ✓	337.35 M. 26.01 11.34	26.71	27.46	27.46	28.19			
5.7 ✓	332.35 5.30					37.65 27.46	7 7	
5.7 ✓	337.65 328.19	9.46 ✓				37.65 28.91	37.65 29.44	37.65 30.36
5.7 ✓						8.14 ✓	8.01 ✓	7.29 ✓
5.7 ✓	37.65 30.50	7.15 = M.H. ✓						
5.6 ✓								
5.6 ✓								
5.6 ✓								
5.5 ✓								
5.6 ✓								
5.6 ✓								
5.6 ✓								
5.2 ✓								
5.2 ✓								

Posted

		337.42			
840			1.4	336.0	330.68
840					330.73
+50			1.2	336.2	330.91
940			1.0	336.4	331.14
+50			0.7	336.7	331.37
1040 T.P.	6.86	343.75	0.53	336.89	331.60
+50			6.6	337.2	331.83
1140			6.6	337.2	332.06
1140 M.H. & Dwight			6.5	337.3	332.25
+50			6.5	337.3	332.20
1240			6.3	337.5	332.53
+50			6.0	337.8	332.76
1340			5.75	337.97	332.99
+50			5.5	338.13	333.22
1440			5.3	338.5	333.45
+50			4.9	338.9	333.68
1540			4.6	339.2	333.91
+20 = M.H. & Landis			4.3	339.5	334.00
+50			3.9	339.9	334.39
1640			3.2	340.6	335.05

			5.3						
			5.3						
			5.0						
			5.3						
			5.3						
			5.4						
			5.1						
			5.1						
			5.0						
			5.0						
			5.0						
			5.1						
			5.0						
			5.2						
			5.3						
			5.5						
			5.5						
			5.6						

337.97  
 9.58  
 343.55  
 34.00  
 9.55

45.9112 45.91 45.91  
 35.05 34.39 34.00  
 10.86 11.52 11.91

336.89  
 4.84  
 341.25  
 330.50  
 10.73 - MH

336.89  
 9.24

341.13 MH  
 330.73  
 10.40

41.13  
 30.91  
 10.22

41.23 41.23 41.23  
 30.68 30.71 31.14  
 10.55 10.32 10.09

41.13 41.13  
 31.14 31.37  
 9.99 9.76

41.13  
 31.60  
 9.53

41.13  
 31.83  
 9.30

41.13  
 32.06  
 9.07

		343.75		
16+50	2.5	341.3	335.71	
17+0	1.9	341.7	336.36	
+50	1.2	342.6	337.02	
18+0 T.P.	11.89	355.01	337.68	
+50	11.1	343.9	338.33	
19+0 M.H. & Gurn	10.5	344.5	338.00	
+50	9.8	345.2	339.79	
20+0	9.06	345.95	340.58	
+50	8.4	346.6	341.37	
21+0	7.6	347.4	342.16	
+50	6.8	348.2	342.95	
22+0	6.0	349.0	343.74	
+50	5.3	349.7	344.53	
+ 80 M.H. & Wightman	4.8	350.2	345.00	
23+0	4.58	350.43	345.26	
+50	3.8	351.2	345.90	
24+0	3.1	351.9	346.55	
+50	2.3	352.7	347.19	
25+0	1.8	353.2	347.84	
+50	1.05	353.96	348.48	
25+90 F.T. 30's of University	0.3	354.7	349.00	

0.06 = 5'  
0.13 = 10'

56.21  
57.19  
9.02  
8.89

354.43							
4.34							
358.77 = H.I.							
349.00							
9.77							
58.77	58.77	58.77	58.77	58.77	58.77	58.77	58.77
48.48	47.84	47.19	46.55	45.90	45.26	44.61	43.97
10.29	10.93	11.58	12.22	12.87	13.51	14.16	14.81
58.77	56.21	56.21	56.21	56.21	56.21	56.21	56.21
6.12	45.60	45.26	44.90	44.55	44.19	43.84	43.49
52.65 B.M.	71.51	10.95	10.31	9.66	9.02	8.37	7.73
3.56							
56.21 M.I.	56.21	56.21	56.21	56.21	56.21	56.21	56.21
47.84	49.45	49.00	48.55	48.10	47.65	47.20	46.75
8.37	7.73	7.21	6.67	6.14	5.61	5.08	4.55
345.95	51.03	51.03	51.03	51.03	51.03	51.03	51.03
51.03	39.00	39.79	40.58	41.37	42.16	42.95	43.74
351.03 M.I.	12.03	11.29	10.55	9.81	9.07	8.33	7.59
51.03	51.03	51.03	51.03	51.03	51.03	51.03	51.03
44.53							
6.50							
343.13	45.91	45.91	45.91	45.91	45.91	45.91	45.91
2.72	38.33	37.68	37.02	36.36	35.71	35.05	34.40
345.91 M.I.	7.58	8.23	8.89	9.55	10.20	10.85	11.50

36

Senior beginning at F.T. 25's of upas st in E alley  
 between 28th & Granada thence S. in alley N.H. 16's of  
 N.L. of Nutmeg thence by notes as recorded below

B.M. I			331.23		
B.M.	2.44	333.67			
F.T. = 0+0		3.6	330.1	329.60	
0+50		4.81	328.86	323.88	
1+0	<b>POSTED</b>	5.8	327.9	323.17	
+50		7.1	326.6	322.96	
2+0		8.3	325.4	321.75	
+50		8.7	325.0	321.04	
3+0 = M.H. 1° 18' R		8.8	324.9	320.33	
+50		10.1	323.6	319.62	
4+0		10.3	323.4	318.91	
+50 T.P.	4.09	327.70	10.06	323.61	318.20
5+0		3.7	324.0	317.49	
+50		4.29	323.41	316.78	
6+0		4.8	322.9	316.07	
6+05 = M.H. f. Thorn		4.7	323.0	316.00	
+50		6.0	321.7	315.59	
7+0		10.2	317.5	315.03	
+50		9.03	318.67	314.52	
8+0		10.5	317.12	314.01	

Posted

328.86					
2.02					
330.88 = M.H.					
324.60					
6.28 ✓	30.88	30.88	30.88	30.88	
	23.88	23.17	22.46		
	7.00 ✓	7.71 ✓	8.42 ✓		
30.88	30.88	90.88			
21.75	21.04	20.33	30.88		
9.13 ✓	9.84 ✓	10.55 ✓	19.62		
			11.26 ✓		
30.88					
18.91	30.88				
19.97 ✓	18.20				
	12.68				
323.61					
4.74					
328.35 = M.H.					
318.20					
10.15 ✓	28.35	28.35	28.35		
	17.47	16.78	16.07		
	10.86	11.57	12.28 ✓		
28.35					
16.00	28.35				
12.35 ✓	7.54				
	12.81				
318.67					
6.41					
325.08 = M.H.					
317.49	25.08				
7.59 ✓	16.28				
	8.30 ✓				
25.08	25.08	25.08	25.08		
15.54	15.03	14.52	14.01		
9.54 ✓	10.05 ✓	10.56 ✓	11.09 ✓		
25.08	25.08				

327.70

8+50		11.3	316.4	313.50
9+0 T.P.	4.56	320.99	11.27	316.13
9+50 = M.H.		4.0	317.0	312.42
10+0		4.8	316.2	311.97
150		4.7	316.3	310.46
11+0		4.53	316.46	309.95
150		4.8	316.2	309.44
12+0		5.0	316.0	308.93
150 T.P.	1.80	317.49	5.30	315.69
19.5 = M.H. 51 Redwood		2.4	315.1	308.00
13+0		2.6	314.9	307.92
150		3.0	314.5	307.44
14+0		2.74	314.75	306.95
150		3.4	314.1	306.47
15+0		4.4	313.1	305.98
150		6.1	311.4	305.50
16+0 = M.H.		7.4	310.1	305.00
150		9.7	307.8	300.16
17+0		11.25	306.24	299.34
17+50 T.P. 5.11	309.50	13.10	304.29	298.47

38

2.9 ✓	14.01	14.01	14.01
3.4 ✓	25.08	25.08	25.08
	13.50	12.99	12.48
	11.58 ✓	12.09	12.60
4.5 ✓	316.43		20.79
5.5 ✓	4.36		13.50
5.2 ✓	320.77		7.27
4.2 ✓	312.99		
5.8 ✓	7.80		20.79
4.7 ✓			12.48
6.5 ✓			8.31
			20.79
			11.48
			9.31 ✓
6.8 ✓	316.43		
5.2 ✓	4.41		
7.1 ✓	320.84		306.24
6.1 ✓	312.99		51 7.78
7.3 ✓	9.85 ✓		51 314.02
6.3 ✓			51 301.00
			51 13.02
7.1 ✓	316.46		
4.1 ✓	4.12		
7.0 ✓	320.58 - 41	20.58	20.58
	310.97	14.96	9.95
	9.61 ✓	10.12	18.63
7.1 ✓			11.14 ✓
7.8 ✓	20.58	20.58	
8.93 ✓	8.42		20.58
11.65 ✓	12.16 ✓		8.00
			1.02
7.1 ✓			12.58
5.9 ✓	306.95	314.25	
	3.93	3.93	
	316.2	318.68 - 41	18.68
		306.95	7.92
		11.78 ✓	8.00
5.1 ✓	18.68		10.76
9.1 ✓	7.44		10.68
7.6 ✓	11.24 ✓	18.68	18.68
		6.47 ✓	5.98
		12.21 ✓	13.18
6.9 ✓			12.90
5.9 ✓	306.24		
4.7 ✓	7.85		
	314.09 ✓	14.09	14.09
	305.50	5.00	1.00
	8.59 ✓	9.09	13.09



309.50

17+90 7.0 302.5 ~~297.80~~ ~~298.45~~

18+50 6.6 302.8 ~~296.78~~ ~~297.78~~

19+0 6.9 302.6 ~~295.94~~ ~~296.94~~

19+19 = M.H. & Palm 6.8 302.7 ~~295.60~~

19+50 6.5 303.0 ~~295.48~~

20+0 4.1 305.4 ~~295.28~~

+50 3.67 305.83 ~~295.07~~

21+0 3.6 305.9 294.87

+50 4.2 305.3 294.66

22+0 5.20 309.20 299.45

22+50 = M.H. 6.5 303.0 294.23

23+0 7.5 302.0 293.88

+50 7.7 301.8 293.52

24+0 9.0x 300.5 293.16

+50 9.9 299.6 292.81

25+0 11.0 298.5 292.45

T.P. 3.29 302.65 10.14 299.36

25+50 6.68 295.97 292.10

90° L  
25+64 = M.H. 16 S of N.L. Net neg 7.3 295.4 292.00 ~~290.00~~

25+64 = 0+0 7.3 295.4 290.00

0+40 T.P. 118 295.38 8.45 294.20 ~~296.70~~

305.83  
1.72  
307.55 M.T.  
295.28  
12.27  
307.55  
295.07  
12.48  
307.55  
294.87  
12.68

307.55  
295.48  
12.07

306.24  
2.07  
308.31 M.T.  
308.31 308.31  
299.32 299.32  
8.15 = 16.00 8.99 9.94

308.31 308.31 308.31 308.31  
299.45 299.74 295.74 295.60  
10.86 11.58 12.37 12.71

305.83  
2.52  
308.35 = M.T.  
295.48  
12.87

305.83  
1.97  
307.80 = M.T.  
294.87  
12.93

304.20  
1.98  
306.18  
294.45  
11.73

306.18  
293.52  
12.66  
295.97  
2.37  
299.34

307.80  
294.66  
13.14

306.18  
294.23  
11.95

306.18  
293.16  
13.02  
99.34 99.34  
92.45 92.10  
6.89 7.24

99.34  
90.20  
9.34

39

T. P.	0.45	295.38	12.70	282.68		
0+60 <del>break</del> R.M.		283.13	2.73	280.40	278.2	2.2
0+80 <del>break</del> T. P. 1.30		271.33	13.10	270.03	269.7	0.3
0+91 M.H. 77° 00' R			12.2	270.9	265.00	5.9
1+0			4.7	266.6	263.93	2.7
450			6.9	264.4	258.00	6.4
T. P.	0.89	259.94	12.28	259.05		
2+0			6.1	253.8	247.67	6.1
T. P.	0.86	247.71	13.09	246.85		
450 = B.M.			7.75	239.96	237.34	2.6
4+56.5 = M.H. 10° 46' R			7.5	240.2	236.00	4.2
3+0			9.6	238.1	234.00	4.1
T. P.	2.93	238.56	12.08	235.63		
4+0			10.8	231.6	228.50	3.1
450			12.39	227.8	225.75	2.0
T. P.	0.33	226.50		226.17		
4+0 <del>break</del> R.M.			11.20	215.3	212.00	3.3
T. P.	3.06	216.46	13.10	213.40		
4+46.5 = M.H. 9° 20' R			6.9	209.6	205.00	4.6
450 R.M.			6.98	209.48	204.61	4.9
5+0			13.2	203.3	199.00	4.3
450 R.M.			9.32	207.14	197.13	10.00
T. P.	0.24	203.59	13.11	203.35		
5+80 <del>break</del>			0.9	202.7	196.00	6.7
6+0			9.2	196.4	188.18	8.2
T. P.	0.26	194.11	9.74	193.85		
6+36.5 = M.H. 59° 50' on alley line between M3010 & 3011			14.05	180.06	174.00	

280.06  
57.5  
274.31

237  
238.1  
2.6  
240.7  
236.7  
4.7

40

41

Sewer & Alley between Olive & Palm from D.E. 25' E  
 of alley between 30th & 31st To Sta 6+00 M.H. on Switzer  
 Cannon Line

B.M. Men X.E. end of Switz Cannon bridge 280.75  
 B.M. 12.89 293.84  
 T.P. 12.42 306.02 0.24 292.60

**POSTED**

- 0+0 = 25' additional 2.3 303.7 298.73  
 0+0 D.E. 2.6 303.4 298.00  
 0+50 2.55 303.47 296.54  
 1+0 5 3.11 302.91 295.08  
 1+50 4.47 304.53 293.62  
 2+0 7.2 298.8 292.17  
 2+40 10.4 295.6 291.00  
 2+50 T.P. 1.20 295.26 11.36 294.66 289.50  
 3+0 7.19 288.67 282.00  
 T.P. 0.35 283.26 12.95 282.91  
 3+40 M.H. 1.6 281.7 276.00  
 4+50 2.98 280.28 272.92  
 T.P. 0.41 270.81 12.96 270.40  
 4+0 11.54 259.27 257.50  
 T.P. 0.08 258.44 12.45 258.36  
 4+50 10.60 247.84 242.09  
 T.P. 0.19 245.59 13.04 245.40  
 4+60 0.94 244.65 239.00  
 5+0 7.42 238.17 233.67  
 4+20 10.5 235.1 231.00  
 4+50 13.3 232.3 229.00  
 6+0 = M.H. 229.00

5.0 ✓  
 5.4 ✓  
 6.7 ✓  
 7.8 ✓  
 7.9 ✓  
 6.6 ✓  
 4.6 ✓  
 5.2 ✓  
 6.7 ✓  
 5.7 ✓  
 7.4 ✓  
 11.5 ✓  
 5.7 ✓  
 5.7 ✓  
 4.5 ✓  
 4.1 ✓  
 2.0 ✓

42

238.17		
2.31		
<u>240.48 = 187</u>		
230.25	40.48	40.48
10.23 ✓	31.00	33.67
	<u>9.48</u>	6.81 ✓

301.53	40.48	
3.10	39.00	
<u>304.63</u>	1.48 ✓	1.46
293.62		73
11.00		
11.71	280.25	
<u>303.47</u>	3.33	
3.99	283.66	
<u>307.46</u>	26.00	
3.75	7.66	1.46
<u>308.71</u>	243.66	4.146
	10.74	.73
		12.28
		.73
301.53		11.55
4.37		3.3
<u>305.90</u>		10.82
292.17	305.90	
13.73 ✓	293.62	
	<u>12.28</u>	
305.90		
<u>295.08</u>	305.90	305.90
10.82 ✓	296.54	298.00
	9.36 ✓	7.90
305.90		
<u>298.73</u>		
7.17 ✓		

43

Sewer & Alley between 3025th Grimm from  
M.H. 98' of N.L. Redwood to M.H. & Thorn

B.M.				275.65	
B.M.	10.89	286.54			
T.P.	16.47	297.36	0.65	285.89	
0+0 N.H.				265.00	5.5
<b>POSTED</b>					
+50			7.08	290.28	281.66
T.P.	12.29	308.94	0.71	296.65	
+10 T.P.	10.16	318.55	0.55	308.39	298.32
+20 Break			8.6	309.9	305.00
+50			7.12	311.43	305.59
+70			5.9	312.6	306.57
+50			4.9	313.6	307.56
+30			4.6	313.9	308.55
+50			4.3	314.2	309.53
+65 = M.H.			4.3	314.2	309.83
+40			4.42	314.13	310.52
+50 T.P.	8.46	320.94	3.07	315.48	311.51
+50			7.4	316.5	312.49
+50			6.0	317.9	313.48
+60			4.41	317.53	314.46
+50			3.5	320.4	315.40
+70			2.67	321.27	316.45
+77 M.H. & Thorn			2.3	321.6	317.00

100  
3  
7  
21

318.55  
5.81  
312.74

44

16.66  
8.33  
8.10  
76.43

98  
99  
99

311.43  
6.82

318.25  
305.59  
12.66

18.25  
6.57  
11.68

18.25  
9.53  
8.72

315.48  
5.34  
320.82  
311.51  
9.31

20.42  
10.52  
10.30

20.82  
12.49  
8.33

319.53  
6.12

325.65  
313.48  
12.17

25.65  
14.46  
11.19

25.65  
16.45  
9.20

25.65  
17.00  
8.65



corner of Alley bet 29<sup>th</sup> & Granada from E.T. 25 s. of  
 Redwood to N.H. 16' s of N.L. Nutmeg thence to N.H. 51<sup>st</sup>  
 7+25 on Alley between Laurel & Maple

B.M.  $\delta$  319.75

7.02 321.77

0+0 = E.T. 25 s. of Redwood 2.2 319.6 315.00

+50 2.42 319.35 314.50

100 **POSTED** 3.2 319.6 314.00

+50  $\delta$  3.9 317.9 313.50

270 4.7 317.1 313.00

+50 4.8 317.0 312.50

3+0 = N.H. 5.2 316.6 312.00

+50 5.18 316.59 311.34

470 5.9 315.9 310.68

+50 6.5 315.3 310.02

570 7.5 314.3 309.36

+50 T.P. 2.29 316.85 7.91 313.86 308.70

6+03<sup>3</sup> M.H. & Palm 4.0 312.9 308.00

+50 3.08 313.77 307.56

7+0 4.00 312.9 307.10

+50 4.6 312.3 306.63

8+0 5.3 311.6 306.17

319.35  
 2.58  
 321.93 = 141  
 319.35  
 7.43 ✓

21.93 21.93 21.93  
 14.00 13.50 13.00  
 7.93 ✓ 8.43 ✓ 8.93 ✓

21.93 21.93 21.93  
 12.50 12.00 11.34 ✓  
 9.43 ✓ 9.93 ✓ 10.59 ✓

4.6 ✓

4.9 ✓

4.6 ✓

4.9 ✓

4.1 ✓

4.5 ✓

4.6 ✓

5.3 ✓

5.2 ✓

5.3 ✓

4.9 ✓

5.2 ✓

4.9 ✓

6.2 ✓

5.8 ✓

5.7 ✓

5.4 ✓

316.59  
 3.94

316.59  
 4.04

320.53  
 310.68

320.63  
 310.68

7.85

9.95 ✓

313.86  
 4.22

6.6

318.08 = 141  
 310.68

6.6

7.40

7.0

8.4 46

18.08 18.08 18.08 18.08 18.08  
 10.02 9.36 8.70 8.00 7.56  
 8.06 ✓ 8.72 ✓ 9.38 ✓ 10.08 ✓ 10.52 ✓

18.08  
 6.710  
 10.98 ✓

18.08  
 6.63  
 11.45 ✓

18.08 18.08  
 6.17  
 11.91 ✓



		316.85			
8+50			5.78	311.07	305.70
9+0			6.9	310.0	305.24
9+25 M.H.			7.2	309.7	305.00
+50			8.3	308.6	304.18
10+0			9.8	307.1	302.57
+50 T.P.	1.95	307.35	10.95	305.90	300.96
+80 break			2.5	304.9	300.00
11+0			3.9	303.5	298.22
+50			7.6	299.8	293.76
12+0 T.P.	1.06	296.90	11.51	295.84	289.30
12+48 M.H. 16.5 of N.L. Nutmeg			6.6	290.3	285.00
12+68 break			11.03	285.87	280.00
T.P.	0.05	284.19	12.76	284.14	
T.P.	0.12	271.74	12.07	271.62	
13+0			1.7	270.0	264.79
T.P.	0.60	259.57	12.77	258.97	
13+33 break			4.51	255.06	249.00
+50			11.38	248.19	244.11
T.P.	0.36	247.14	12.77	246.78	
14+0 T.P.	0.54	234.96	12.72	234.42	229.72
14+36 M.H.			3.6	231.4	225.80
+50			10.32	224.64	221.24
T.P.	0.68	222.80	12.54	222.12	
15+0			2.8	219.0	214.78

				18.04		47
				5.70		
				12.38		
5 A ✓				311.07		301.84
				3.49		289.30
4.8 ✓				314.56		1254
				305.24		
4.7 ✓				9.32	814.56	
					305.00	
					9.56	
4.4 ✓				311.07		
				1.13		
4.5 ✓				312.20		31220
				305.24		305.00
				6.96		304.18
4.9 ✓				312.20		7.20
				302.57		6.02
4.9 W				9.63		31220
						300.96
						12.20 L
5.3				295.84		
				6.00		
6.0 ✓				301.84		301.84
				298.22		289.30
				3.62		1254
6.5 ✓						
5.3				301.84		224.64
				285.00		9.60
				16.84		234.96
5.9				285.87		15.5
				8.40		2.4
5.3				294.27		
				258		
				9.27		
6.1						
4.1						
4.7						
5.6						
3.4						
5.0						

212.31  
- 10.3  
-----

222.80

15+50			10.49	212.31	208.72	3.6
16+03 <sup>9</sup> M.H.			16.8	206.0	202.00	4.0
T.P.	1.29	211.11	12.98	209.82		
+50			2.4	208.7	195.82	12.9
T.P.	0.54	198.57	13.08	198.03		
17+0			3.76	194.81	289.12	5.7
17+53 <sup>1</sup> break			11.80	186.77	182.00	4.8
17+93 <sup>1</sup> M.H. EST 7425 Alley bet Tower 2/21/20					181.00	

3000 & Alley lot 2928 Dale from F.T. 25"

5' of S.L. Redwood thence S to N. 53° 12' 45" or 16' S of N. 1/2  
 1/4 sec thence E on 16' line for 44' thence S to N. 1/4. Sta  
 8+54 Main line 3 1/2" corner see page 9

B.M.				319.35		
B.M.	533	324.68				
0+0 = F.T.		2.5	317.2	312.00 ✓	5.2	
0+50	POSTED	2.3	317.7	311.75 ✓	5.7	
1+0		2.4	317.13	311.50 ✓	5.8	
1+50		2.4	317.3	311.25 ✓	6.1	
2+0 T.P.	259	319.78	2.49	317.19	311.00 ✓	6.2
2+50			2.6	317.2	310.76 ✓	6.4
3+0 = M.	b		4.0	315.8	310.51 ✓	5.3
4+0			4.32	315.46	310.26 ✓	5.2
4+0			5.5	314.3	310.07 ✓	4.3
4+50 break			4.8	315.10	309.77 ✓	5.2
5+0 break			4.8	315.0	307.10 ✓	7.6
5+50			5.39	314.39	307.20 ✓	7.2
<del>5+50</del>			<del>2.5</del>			
6+03 = N.H. & Palm			2.3	312.5	307.00 ✓	5.5
6+50			6.2	313.6	306.49 ✓	7.1
7+0			6.87	312.91	305.95 ✓	7.0
7+50			2.7	312.1	305.41 ✓	6.7

45

312.91				
3.72				
316.63 H.I.		312.08 H.I.		
305.95		305.41		
10.68 ✓	306.49	6.67 ✓	307.20	307.40
	10.14 ✓	307.00 ✓	9.43 ✓	9.23
		9.63	309.77	310.01 ✓
			6.86 ✓	6.62
310.26 ✓	310.57 ✓	310.76		
6.37	6.12	5.87 ✓		
317.19				
4.90				
322.09 H.I.	311.25	311.50	311.75	312.00
311.00	10.84 ✓	10.59 ✓	10.34 ✓	10.09 ✓
11.09 ✓				
		11.30		
		7.90		11.7
		3.5		7.1
				2.6

840	0.92	311.74	8.96	310.82	304.87	✓	6.0
+50			11.8	309.9	304.33	✓	5.6
8+80 break			2.9	308.8	304.00	✓	4.8
940			3.51	308.23	303.27	✓	5.0
9+25 M.H.			4.3	307.9	302.31	✓	5.1
+50			5.5	306.2	301.90	✓	4.8
1040			7.4	304.03	299.57	✓	4.7
+50			8.9	302.8	297.73	✓	5.6
1140			10.90	300.84	295.90	✓	4.9
+50	T.P. 184	300.81	12.77	298.97	294.07	✓	4.9
1140 break			3.2	297.6	293.00	✓	4.6
1240			4.6	296.2	290.23	✓	6.0
1245 M.H. 115 T.P.		290.29	11.67	289.14	284.00	✓	5.1
+50			1.5	288.8	283.10	✓	5.6
1340 B.M.			8.93	281.86	274.65	✓	6.7
T.P.	0.5	277.59	12.85	277.44			
+50			3.9	273.7	266.15	✓	7.5
T.P.	1.11	265.73	12.97	264.62			
1440 B.M.			1.94	263.79	257.65	✓	6.1
1445 break B.M.			10.35	255.38	250.00	✓	5.4
T.P.	0.09	253.02	12.80	252.93			
1445 break			7.7	245.3	240.00	✓	5.3
T.P.	7.13	247.11	13.04	239.94			
1540			10.9	236.2	238.38	✓	F. 2.2

247.69	K.I.						
238.38		240.00					367
9.31	✓	7.69	✓				15
255.38		257.65	✓				
6.96		4.69	✓				
262.34	K.I.	263.79	✓				
250.00		12.88					
12.84	✓	276.67	K.I.				
		266.15	✓				
274.65		10.52	✓				
298.97	2.02	281.36	✓				
5.62		10.85					
304.59	K.I.	292.21	K.I.	284.00			
295.00	✓	283.15	✓	8.21			
11.59	✓	9.06	✓	290.23			
		10.52		1.98			
295.90	✓	297.73	✓	301.40	✓		
8.69	✓	6.86	✓	10.68			
308.23	308.23			302.31			
5.67	5.85	K.I.		9.77	✓		
313.90	312.08			303.27	✓		
299.57	299.57			8.81	✓		
	12.57	✓					
304.00	✓	304.33	✓	304.87	✓		
8.08		7.75	✓	7.21	✓		

15+50=BM.	247.11	0.64	246.47	236.06 <sup>✓</sup>	10.4	
15+72 <sup>Z</sup> M.H.		1.30	245.8	235.00 <sup>✓</sup>	10.8	
16+00		3.40	243.71	231.98 <sup>✓</sup>	11.7	
T.P. 0.20	235.00	12.31	234.80			
16+45 break		1.70	233.30	227.00 <sup>✓</sup>	6.3	
T.P. 0.38	222.57	12.81	222.19			
16+91 M.H.		4.3	218.3	213.00 <sup>✓</sup>	5.3	
17+0		5.24	217.33	212.26	5.0	
+50		8.5	214.1	208.15	6.0 <sup>✓</sup>	
18+0=T.P.	2.92	213.35	12.04	210.53	204.04 <sup>✓</sup>	6.5 <sup>✓</sup>
+50		7.4	206.0	199.93	6.1	
761 <sup>Z</sup> M.H. Mark 4.50				199.00		

51

11.6	213.95	5.20
14.1	14.10	5.9
199.25		14.1
11.6		
6.1		
5.6		4.11

210.53	
7.45	
217.98 = H.I.	217.98
208.15	204.04
9.83	13.94 <sup>✓</sup>
233.30	233.30
7.20	6.69
240.50 H.I.	239.99
227.00	227.00
	12.99 <sup>✓</sup>
243.71	
0.57	246.47
244.28	2.68
231.98 <sup>✓</sup>	249.15 <sup>H.I.</sup>
12.30	235
	246.47
	1.22
	247.69 <sup>H.I.</sup>
	235.00
	12.69 <sup>✓</sup>

236.06	
11.63 <sup>✓</sup>	
248.3	
236.96	
11.32	
460	
13	
2320	
464	
6960	

Survey Line for Description page 53

Sta	+R	H.I.	-R	elev	Grade	Cut
B.M.	2.20	319.39		317.19		
0402 FT. 25 S. of Redwood,			6.1	313.3	308.30 ✓	5.0
0450			6.38	313.01	307.75 ✓	5.3
140	POSTED		7.1	312.3	307.20	5.1
1450			7.7	311.7	306.65 ✓	5.1
240			8.60	310.79	306.10 ✓	4.7
3450			9.5	309.9	305.55 ✓	4.4
<del>3450</del>			<del>7.22</del>	<del>310.15</del>		
340 M.H.	1.26	310.35	10.30	309.09	305.00 ✓	4.1
450			3.0	307.4	303.10 ✓	4.3
410			5.33	305.02	301.20 ✓	3.8
0450			7.2	303.2	299.31 ✓	3.9
540			9.2	301.2	297.42 ✓	3.8
5413 M.H. 5° 25' L.			9.0	301.4	297.00 ✓	4.4
5450			8.4	302.0	296.65 ✓	5.4
640			7.6	302.8	296.19 ✓	6.6
6420 break				301.7	296.00 ✓	5.7
6450 T.P.	0.66	300.92	10.09	300.26	293.66 ✓	6.6
740			6.7	299.2	289.76 ✓	4.4
7415 M.H. 12° 35' L.			8.5	292.4	288.60 ✓	3.8

287.15  
 12.62  
 299.77 H.I.  
 288.60  
 11.17 ✓

289.76  
 10.01 ✓

52

5.00  
 300.26 H.I.  
 305.26  
 293.66  
 11.60 ✓

296.00  
 9.26 ✓

296.65  
 8.61 ✓

296.19  
 9.07 ✓

297.00  
 8.26 ✓

305.02

5.73  
 310.75 H.I.  
 301.20 ✓

9.55 ✓

299.31  
 11.44 ✓

303.10  
 7.65 ✓

305.00  
 5.78 ✓

305.75  
 5.20 ✓

306.10  
 4.65 ✓

310.79

6.63

317.42 H.I.

306.65 ✓

307.20

10.22 ✓

308.30 ✓

307.75 ✓

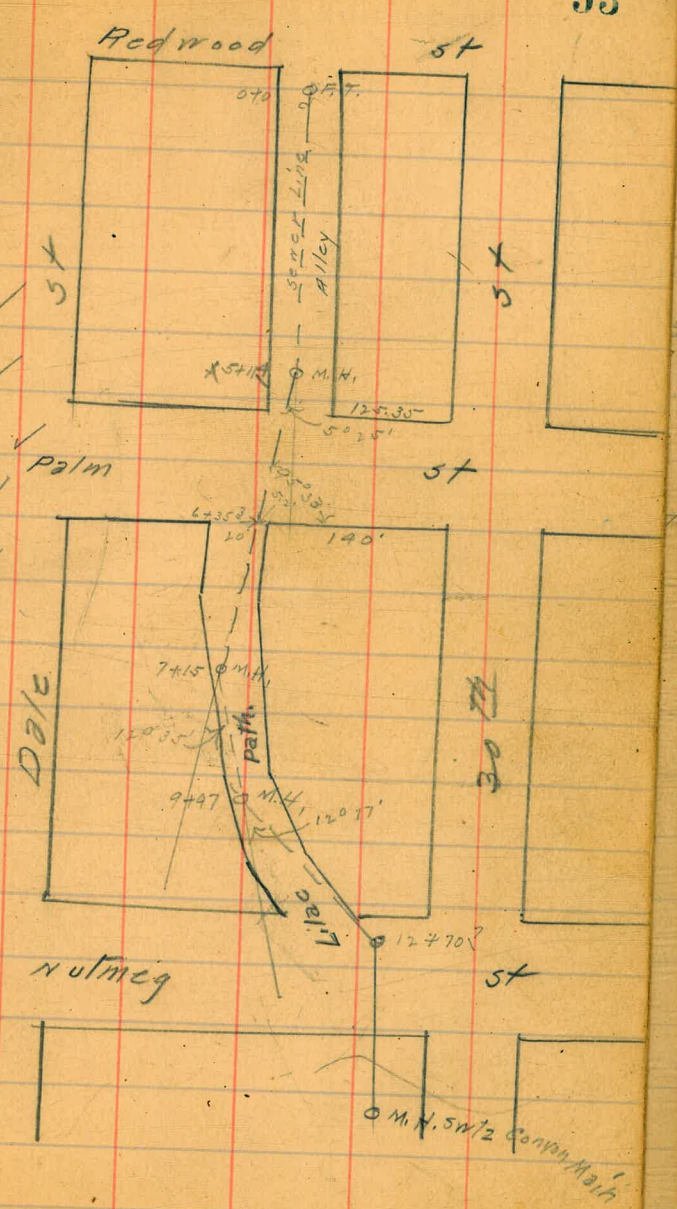
9.67 ✓

9.12

		H.I.			
		300.92			
T.P.	0.87	289.40	12.39	288.53	
7+50			2.25	287.15	281.87 <sup>v</sup>
8+0					
T.P.	0.57	276.87	11.30	278.10	272.26 <sup>v</sup>
			13.10	276.30	
750					
T.P.	0.39	264.71	8.8	268.1	262.65 <sup>v</sup>
			12.85	264.02	
9+0					
T.P.	0.27	252.02	9.07	255.34	253.04 <sup>v</sup>
			12.66	251.75	
9+47 M.H. 12077 L.			4.9	247.1	244.00
10+0					
10+30 BTK.			8.7	243.3	240.81
			<del>10.2</del>	<del>241.8</del>	<del>239.00</del>
750					
T.P.	0.93	239.82	10.84	241.78	236.84
			13.13	238.89	
11+0					
			4.6	235.2	231.44
11+50 B.A.					
T.P.	1.46	228.51	10.00	229.82	226.04
			12.97	227.05	
12+0					
			6.2	222.3	220.64
450					
			9.48	217.03	215.24
12+70 M.H. = 3536491 Page			10.26	218.25	213.00

241.18  
 6.97  
 248.15  
 239.00  
 9.15  
 255.34  
 12.11 H.I.  
 267.45  
 262.65<sup>v</sup>  
 4.80<sup>v</sup>  
 48.15  
 40.81  
 7.34<sup>v</sup>  
 278.10  
 7.16 H.I.  
 285.26  
 272.26<sup>v</sup>  
 13.00  
 38.87  
 38.87  
 31.48  
 7.43<sup>v</sup>  
 36.84  
 2.03  
 229.82  
 9.25  
 238.87 H.I.  
 226.24  
 12.83<sup>v</sup>  
 281.87  
 3.39<sup>v</sup>

- 5.3
- 5.8
- 5.5<sup>v</sup>
- 2.3
- 3.1<sup>v</sup>
- 2.5<sup>v</sup>
- 2.7
- 4.4<sup>v</sup>
- 3.8<sup>v</sup>
- 3.8<sup>v</sup>
- 1.7
- 3.8
- 5.3



354.43

54



55

6/14/21 Grapex Sewer Construction  
 to Maple St  
 from Ho. W. Pringle  
 to 165

Ho. W. Pringle	10.94	252.65	241.71	Maple St Pringle
0+00				
+50			0.87	251.78
			4.00	248.65
			7.26	245.39
+75			9.29	243.36

249.0  
 + 2.78  
 + 3.15  
 + 3.39  
 + 3.11

1186  
 240.79

56

19  
 19  
 18  
 8  
 7  
 12

Sewer Alley bet Juniper & Kalmia from 30' W of 30th to M.H. in City Park

Sta	+9	H.I.	-9	elev top of pipe	Grade
B.M.				285.73	
B.M.	0.92	294.65			
0+0 = F.T. 30W of 30th St.			5.4	289.3	289.00
+50			4.5	290.2	283.63
+100			3.5	291.2	253.26
+150	POSTED		3.1	291.6	282.89
+200			3.3	291.4	282.52
+250 T.P. 156	292.42		3.79	290.86	282.15
+300			1.8	290.6	281.78
+325 M.H.				281.60	
+350			1.9	290.5	281.41
+400			2.1	290.3	281.04
+450			3.2	289.2	280.67
+500			5.3	287.1	280.30
+540 break			8.1	284.3	280.00
+550 T.P. 0.13	283.93		8.62	283.90	278.73
+600			7.1	276.8	272.37
+650 M.H. # 29th			14.8	269.1	266.00
B.M.	0.90	284.70			
+700			9.8	274.1	265.56
+750			8.5	275.4	265.11
+800			8.7	275.2	264.67
F.P.					

241.78  
1.15  
240.63

37  
37

RETURN TO CITY ENGINEER'S OFFICE  
CITY HALL, SAN DIEGO, CAL.

cut				
	290.86			
	3.73			
5.3 ✓	294.59	94.59	94.59	94.59
	284.00	83.63	83.26	82.89
6.6 ✓	10.59 ✓	10.96 ✓	11.33 ✓	11.70 ✓
7.9 ✓		94.59	94.59	94.59
		82.52	82.15	81.78
8.7 ✓		12.07 ✓	12.44 ✓	12.81 ✓
9.9 ✓	290.86	294.28	294.28	294.28
	3.42	281.41	281.41	281.41
8.7 ✓		12.87 ✓	13.24 ✓	13.61 ✓
7.8 ✓		94.28	81.04	94.28
9.1 ✓		80.30	80.00	80.67
9.3 ✓	94.28	94.28	94.28	94.28
	80.30	80.00	80.00	80.00
7.5 ✓	13.98 ✓	14.23		
6.8 ✓				
4.3				
5.1				
4.4				
3.1				
<del>2.5</del>				
<del>7.0</del>				
<del>10.5</del>				

2) 375.1  
1.18  
281.78  
1.18  
281.60

H.1

283.98

8+34 T.P. 1.04 272.55

8+50

8+74 M.H.G. 21 going to Jupiter

9+0  
7+25 No stake

9+50

10+0 T.P. 1.91 241.44

10+50 - B.M.

11+0 T.P. 1.68 251.10

150

12+0

12+15

12+50

13+0  
13+20 No stake

13+40

13+60

14+0

150

14+85

10.0 273.9  
12.42 271.51  
7.0

5.3

5.8

5.8

6.5

8.8

13.00 259.55

3.16

8.3

12.04 249.42

172.60

5.7

155.77

3.0

156.00

4.2

154.25

4.8

153.62

4.8

114.25  
 3.46  
 167.71 41  
 160.56  
 7.15

Sta		R H.I.	R	elev Top	Grade	cut
				284.70		
8	T.P.	0.70	273.20	12.20	272.50	
8	740 T.P.	0.27	261.81	11.66	261.54	259.80
	+50			5.8	256.0	253.60
8+0						
8+0	T.P.	0.70	249.96	10.43	251.37	247.40
9+0	+50			12.55	249.16	
9+0				3.8	246.2	241.20
9+0						
10	T.P.	0.57	238.32	11.45	238.51	235.00
	+50			12.21	237.75	
10	T.P.	0.41	226.02	8.8	229.5	226.0
				12.71	225.61	
10+0 M.H.						
11	T.P.	0.91	213.98	4.1	221.9	217.0
	+50			12.95	213.07	
				2.91	217.57	208.00
11+0						
11	T.P.	0.55	201.78	11.5	202.5	199.00
	+50			12.75	201.23	
11+50				7.11	194.67	190.00
11+60						
12	T.P.	0.58	189.47	9.0	192.8	187.00
	+50			12.89	188.89	
12+0 T.P.		0.15	178.32	11.30	178.17	175.00
12+30						
13				7.5	170.8	166.00
12+50						
13	T.P.	1.50	169.01	9.3	169.0	164.45
	+50			10.81	167.51	
13+0						
14				4.76	164.25	160.56
13+20 - M.H. surty canyon 22nd						159.00

M.H.

5

Senior Line beginning at M.H. 31<sup>st</sup> 30<sup>th</sup> Hence  
 W. on & A to & Grove Thence N on Grove to  
 35's of S.L. Beech

	B.M		0.02	233.28		233.26	
8+	M.H. 31 <sup>st</sup> 30 <sup>th</sup>	Bottom	13.20	220.1			
8+	0+50	Top	10.10	223.2	220.10	3.1	
8+	1+0		9.7	223.6	220.30	3.3	
8+14	1+50		7.41	223.87	220.50	3.4	
9+0	2+0		9.2	224.1	220.70	3.4	
9+5	2+50		8.9	224.4	220.90	3.5	
10+	2+80 <sup>5</sup> M.H. & Grove		8.48	224.80	221.10	3.7	
10+	3+0		8.2	225.1	221.20	3.9	
11+	3+20		8.24	225.24	221.30	3.7	
11+	3+30		7.5	225.8	221.38	4.4	
12	3+50 break		12.6	220.7	221.42	F. 0.7	
12	3+67		12.5	220.8	221.50	F. 0.7	
12	3+85		12.6	220.7	221.66	F. 1.0	
12	4+0		8.5	224.8	221.83	3.0	
13	4+50		7.7	225.6	221.97	3.6	
13	5+0		6.72	226.36	222.45	3.9	
13	5+50		6.1	227.2	222.92	4.3	
14	6+0		5.6	227.7	223.39	4.3	
14	6+50		5.0	228.3	223.87	4.4	
14	7+0		8.64	237.69	224.34	4.7	

224.80		220.50	
4.81		9.11	
229.61 H.I.		220.70	
220.30		8.91	
9.31		220.90	221.10
		8.71	8.31
221.22		221.30	221.10
8.39		8.31	8.11
221.42		221.83	
8.19		7.78	
221.97		222.41	
7.64		7.16	
222.92		223.39	
6.69		6.22	
229.05			
4.85 H.I.			
233.90		224.34	
223.87		9.56	
10.03			

7+0		237.69	8.0	229.7	229.82 ✓	4.9
7+27 <sup>S</sup>	M.H. & Ash		7.7	230.0	225.08 ✓	4.9
8+	7+50		7.52	230.17	225.29 ✓	4.9
8+	8+0		6.9	230.8	225.77 ✓	5.0
8+74	+50		6.4	231.3	226.24 ✓	5.1
9+0	9+0		6.07	231.62	226.72 ✓	4.9
9+5	+50		5.6	232.1	227.17 ✓	4.9
10+	10+0		5.2	232.5	227.67 ✓	4.8
10+	10+33 <sup>D.E.</sup> 35' spf SLIME Beech		5.0	232.7	228.0 ✓	4.7

237.69  
 10.53  
 227.16  
 220  
 229.86  
 6.72  
 223.24

233.90 N.J.  
 227.08 ✓ 61  
 8.82 ✓  
 224.82  
 9.08 ✓

231.62  
 4.84  
 236.46 N.J. 226.24  
 10.22 ✓  
 225.77 226.72  
 10.69 ✓ 9.74 ✓  
 227.19 ✓ 227.67 228.0  
 9.27 8.79 ✓ 8.46 ✓

Center from N.H. E 30th Cedar E to Fern  
 Hence 5 on Fern to D.E. 35' w of N.L. Beech

Cedar St.

B.M. N.E. 30th Cedar R.R. SPR.

229.07

POSTED

5

8	B.M.	8.18	232.25		
	0.10 top M.H.		9.6	223.6	
8	0.40 bottom M.H.		13.2	219.00	
8+7	0.450		8.1	224.2	219.45
9+0	1.20		7.7	227.6	219.90
9+35			7.1	225.2	220.35
9+5	1.250		6.8	225.5	220.80
10+7	2.40		6.3	226.0	221.25
10+7	+50		5.5	226.8	221.50
11+	2+80 M.H. E Fern		5.9	226.4	221.79
11	3+0		5.5	226.8	222.52
12	+50		4.8	227.5	223.26
12+7	4+0		3.7	228.6	224.99
12+	+50		2.9	229.4	225.73
13+	5+0		2.1	230.2	226.45
13+	+50		1.3	231.0	228.00
13+6	5+86 D.E.				
14+4					
14+5					
14+8					

263-4

62

224.07  
 5.06  
 229.13 = H.I.  
 219.45  
 9.68 ✓

9.64  
 24  
 7.92

4.6

4.8 ✓

4.7 ✓

4.8 ✓

4.7 ✓

4.8 ✓

5.0 ✓

4.6 ✓

4.3 ✓

4.2 ✓

4.6 ✓

4.7 ✓

4.5 ✓

5.0 ✓

29.13 29.13 29.13  
 19.90 20.35 20.30  
 9.23 ✓ 8.78 ✓ 8.33 ✓

29.13 29.13 29.13  
 21.25 21.50 22.79  
 7.88 ✓ 7.63 ✓

224.07  
 7.98  
 232.05 H.I.  
 222.79  
 10.26 ✓

32.05 32.05 32.05  
 23.52 23.26 23.99  
 9.53 ✓ 8.79 ✓ 8.06 ✓

32.05 32.05 32.05  
 24.73 25.45 26.00  
 7.32 ✓ 6.60 ✓ 6.05 ✓



Sever & Fern from M.H. & Cedar to M.H. M.L. of  
 Sou. Park Add

	B.M.	30	Cedar	M.E.P.P.	229.07	
	B.M.	2.18		232.25		
8	0+0	M.H.		5.5	226.8	221.5 222.0
8	0+50		<b>POSTED</b>	6.0	226.3	221.83 222.83
8	1+0			5.5	226.8	222.16 223.76
9	+50			5.5	226.8	222.50 222.50
9	2+0			5.0	227.3	222.83 <del>223.83</del>
10	2+29	M.H. M.L.	Sou. park Add.	4.2	228.1	223.0

263

33  
34  
65

	232.05	232.05	232.05
	221.83	222.16	222.50
	10.22 ✓	9.89 ✓	9.55 ✓
	232.05	232.05	
	222.83	223.00	
	9.22	9.05	

5.3  
4.5 ✓  
4.6 ✓  
4.3 ✓  
4.5  
5.1

Sever from M.H. & Cedar & Fern E on Cedar  
 To M.H. & Grove thence on Grove to D.F.  
 30' N of M.L. Beech

B.M. 20<sup>th</sup> Cedar S.P.K.  
 O.M. 1004 234.11

M.H. 2010 Fern & Cedar

eleven  
 to  
 22407

Grade

8				221.50
8	+50	7.2	226.9	221.68
8+	140	7.8	226.3	221.86
9+	+50	8.6	225.5	221.04
9+	240	8.5	225.3	221.22
10	+50	7.9	229.2	222.40
10	180 M.H. Cedar & Grove	8.3	225.8	221.50
11	340	8.3	225.7	222.60
	+50	7.3	226.8	222.95
	180			223.00
	440	6.1	228.0	223.38
12	+50	5.0	229.1	224.33
12	570	4.7	229.4	225.78
13	+50	3.9	330.2	226.23
13	547 B.E. 30' N of Beech	2.5	231.6	227.00

POSTED

Shuttle  
 E. van  
 Michener

224.07 263  
 7.17  
 2 31.24 = H.I.  
 2 21.68  
 9.56 ✓

Cut  
 5.3  
 5.2 ✓  
 4.9 ✓  
 3.5  
 3.1 ✓  
 1.8 ✓  
 3.3 ✓  
 3.0 ✓  
 3.1 ✓  
 4.0 ✓  
 3.2 ✓  
 4.1 ✓  
 4.2 ✓  
 3.1 ✓  
 3.1 ✓

31.24 31.24 31.24  
 21.86 22.04 22.22  
 9.38 9.20 9.02 ✓  
 31.24 31.24  
 22.40 22.50  
 8.84 ✓ 8.74 ✓  
 221.68 15  
 9.60  
 23 1.28 = H.I.  
 221.88  
 9.42 ✓ 31.28  
 22.04  
 7.24  
 224.07  
 9.10  
 2 31.17 = H.I.  
 222.50  
 10.67 = H.I.  
 33.17 33.17 33.17 33.17  
 22.60 22.85 23.00 23.88 24.33  
 10.59 ✓ 10.59 ✓ 12.17 ✓ 9.79 ✓ 8.84  
 33.17 33.17 33.17  
 25.28 26.23 27.00  
 7.89 ✓ 6.94 ✓ 6.17 ✓  
 344  
 9"

61

Sewer alley between Grin  
of South drive & Dupas. to

Sta.	H.I.	Rod	Ground
J.P.	1.80	330.83	329.03
0+00 m.H. 30' north		4.48	326.35
+50 70' line of Dupas.		6.05	324.78
1+00		7.3	323.5
+50		8.7	322.1
2+00		9.54	321.29
+50		10.7	320.1
3+00		11.85	318.98
J.P.	3.07	322.05	317.98
+50 m.H.		3.4	317.6
4+00		3.92	317.13
+50		5.8	315.2
5+00		5.32	313.73
+50 break		14.1	306.9
J.P.	5.21	313.60	309.39
6+00		5.97	307.63
+50		4.9	308.7
+59.9 center of		5.4	308.2
6+75 Thru		11.6	302.0
7+00		12.7	300.9
+19 m.H. center alley.	40° 00'	10.2	300.9

\* 31<sup>st</sup> from 30' north  
July 12/12

Grade cut	015.73		
321.00	5.4	315.73	
319.71	5.1	320.74	320.74
318.42	5.1	306.00	307.00
317.14	5.0	14.74	13.74
315.85	5.4	329.78	
314.57	5.5	4.20	14.74
313.28	4.7	339.08	13.0
312.00	5.6	321	18.0
310.00	7.1	5.08	
308.00	7.2	308.70	6.45
306.00	9.7	8.92	
304.00	2.9	312.62	312.62
301.63	6.0	299.50	299.50
299.26	9.4	13.12	13.12
298.79	9.4	312.62	312.62
298.08	3.9	299.50	299.50
296.90	4.0	13.12	13.12
296.0	4.9	312.62	312.62

Cont. from page 65

Sta.	H.T.	Red	Green
7+50	311.11	11.78	299.33
8+00		10.19	300.92
+20.8 M.H.		10.4	300.7
+50		10.93	300.18
J.P.	15.1	301.69	
9+00		3.38	299.31
J.P.	3.03	292.28	12.44
+50		4.4	287.9
10+00		6.4	285.7
+50		7.98	284.30
11+00		8.91	283.37
+04.7 M.H.	18°40' L.	9.87	282.11
11+50		2.42	281.54
12+00		6.0	276.76
+50		3.8	280.16
13+00		8.23	275.23
J.P.	0.0	271.99	11.1
13+50		11.97	271.29
14+00		2.26	269.73
		3.58	268.11
14+13.3 M.H.	13°08' L.	4.8	267.11
14+50		6.7	265.79

Grade	cut
294.78	4.5 ✓
292.92	8.1 ✓
292.0	8.7 ✓
290.76	9.7
287.92	10.5 ✓
285.18	2.7 ✓
282.54	3.4
280.90	4.4
277.26	6.1
277.0	5.4
275.89	5.7 ✓
273.55	6.6 ✓
271.21	4.1 ✓
268.27	4.0 ✓
266.53	3.2 ✓
264.19	5.2 ✓
263.57	3.6 ✓
261.25	3.7 ✓

255.6 = ally of *Conium maculatum*

66

10.85		318.13	
4.7		1.75	
10.38		320.08	
		311.20	
		9.08	
20.08	20.08	20.08	
9.00	7.00	5.00	
11.08	13.08	15.08	
308.63	2.78	2.37	
311.11	305.00	311.11	311.11
16.7.14	6.11	302.63	300.26
		8.48	108.52
311.11	299.79	311.11	
11.32		299.18	
		12.03	
311.11	297.90	311.11	
13.21		297.00	
		14.11	
299.33	5.10	12.2	
304.43	296.00	304.43	304.43
8.43		294.78	292.82
		9.65	11.61
304.43	292.00	304.43	
12.43		290.46	
		13.97	
298.31	3.30	301.61	
301.61	287.14	287.82	
12.47		13.79	
280.16	2.04	287.51	287.51
287.51		283.55	87.51
13.96		75.87	78.00
		11.62	9.51
284.30		292.50	
8.20		285.18	
292.50		7.32	

5	15+0		276.79	9.56	262.43	259.51
8	+50			10.3	261.67	257.17
8	+59.5	No Angle				
		M.H. Alley line bet Quince & Redwood	10.8	261.2	256.70	
	T.P.	3.0	262.0	12.69	259.30	
8	16+0			4.5	257.8	259.83
9	+50			5.47	256.83	252.49
9	17+0			7.3	255.0	250.85
10	17+46	M.H. 27° 39' R	255.22	7.04	253.26	248.00
10	+50			2.87	253.01	248.12
11	18+0			6.4	247.5	245.12
	+50			7.73	245.10	242.45
1	19+0			2.5	247.4	239.79
1	19+28.2	M.H. 23° 12' E	248.10	11.72	244.16	235.30
		8" line begins				
1	19+45.5			6.46	244.69	237.73
1	19+95.5			3.8	241.3	236.10
1	20+45.5			6.3	238.8	239.47
1	20+90.5	M.H. 43° 43' L		6.3	238.8	233.00
1	20+95.5			6.4	238.7	232.90
1	21+45.5	T.P. 3.20	240.68	8.32	235.78	231.93
1	21+95.5			3.7	237.0	231.06

67

2.9 ✓	236.78 6.27	43.05	43.05	43.05
4.5 ✓	243.05	43.05	43.05	43.05
7.5 ✓	229.22	32.90	33.00	33.00
3.0 ✓	13.84	10.15	10.05	10.05
4.3 ✓	43.05	43.05	43.05	43.05
4.9 ✓	31.98	32.90	33.00	33.00
5.3 ✓	11.07	10.15	10.05	10.05
5.12	43.05	43.05	43.05	43.05
4.4 ✓	34.47	36.10	37.23	38.30
5.7 ✓	8.58	6.95	5.32	4.75
7.6 ✓	244.64			
5.9 ✓	5.95			
6.9 ✓	250.59 - H1	50.59	50.59	50.59
7.3 ✓	238.30	39.79	42.45	42.45
5.2 ✓	12.29	10.80	8.14	8.14
5.8 ✓	50.59	50.59	50.59	50.59
7.1 ✓	45.12	47.78	48.00	48.00
5.2 ✓	5.47	3.81	2.97	2.97
5.9 ✓	256.83			
6.7 ✓	6.09			
7.6 ✓	262.92	62.92	62.92	62.92
5.9 ✓	250.15	52.49	54.83	54.83
6.9 ✓	12.77	10.43	8.09	8.09
5.2 ✓	62.92	62.92	62.92	62.92
7.3 ✓	56.70	57.17	59.51	59.51
5.8 ✓	6.22	5.75	3.41	3.41
5.2 ✓	261.69			
5.8 ✓	11.49			
5.8 ✓	273.18 - H1	73.18	73.18	73.18
4.8 ✓	259.51	61.85	63.58	63.58
5.9 ✓	13.67	11.33	9.60	9.60
5.9 ✓	73.18	73.18	73.18	73.18
	64.9	66.53	68.87	71.2
	8.99	6.65	4.34	4.97

240.68

22+45<sup>5</sup>

5.52

235.16

23 014

5.0 ✓

22+95<sup>5</sup>

6.6

234.1

229.22

4.9 ✓

23+07<sup>5</sup> = 2/3 19+37<sup>5</sup> main canyon line  
= M.H. Alley bet Oliver & Palm

229.00

68

Sewer Line Ray st from M.H. & UP 35816'  
 E of W.L. Ray to M.H. & Myrtle on W. & Ray

B.M. Capps 230

336.76

8	T.P.	8.65	339.41			
		2.10	335.85	5.66	333.75	319.40
8	0+0 = M.H. Drop				327.1	320.00
8	0+50	↓		7.6	328.3	320.39
8+	1+0			6.35	329.50	320.79
9+	1+50	POSTED		5.9	330.0	321.18
9+	2+0			5.7	330.2	321.58
10	2+50			5.2	330.7	321.97
10	3+0			4.9	331.0	322.37
11	3+50			4.25	331.60	322.76
	at 80 M.H. & Myrtle only			3.9	332.0	323.00

continued on page 73

cut

7.1

7.9 ✓

8.7 ✓

8.8 ✓

8.6 ✓

8.7 ✓

8.6 ✓

8.8 ✓

9.0 ✓

329.50

4.55

334.05 H.I.

320.39

13.66 ✓

34.05

20.79

13.26 ✓

34.05

34.05

21.58

21.77

12.47 ✓

12.08 ✓

34.05

22.37

11.68 ✓

34.05

23.00

11.05 ✓

69

34.05

21.18

12.87 ✓

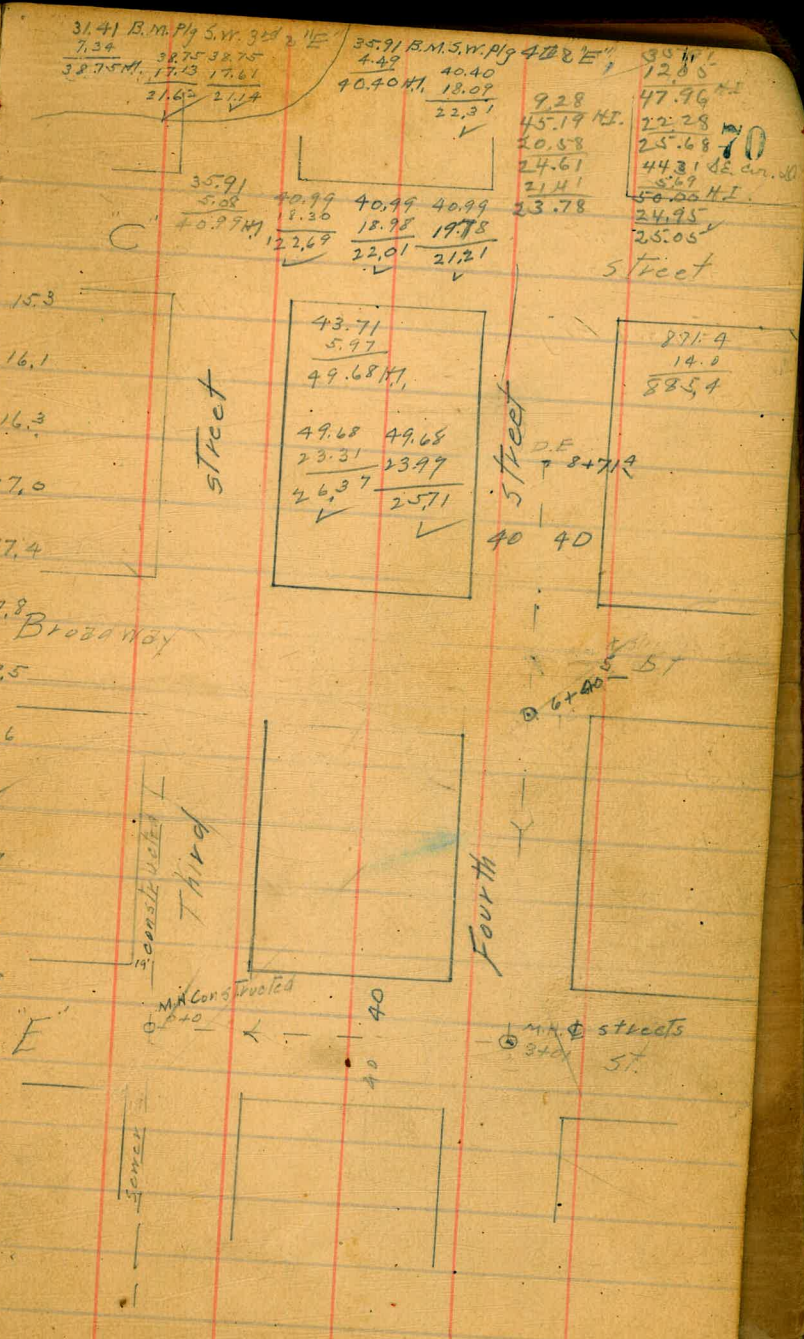
34.05

22.76

11.29 ✓

Survey "E" 3 Fourth streets according to  
 sketch opp page  
 Note: Top line pks set 2 SW of E st 2 East of 4th st

8	B.M. Brass plg	0.95	44.66	13.71		
8	T.P.	5.03	40.98	2.71		
8	Top of M.H.				Top of floor M.H.	
8	+67 bottom stk			8.9	32.1	16.80
8	+70			7.8	33.1	17.13 ✓
9	1			7.4	33.6	17.15
9	+50					17.30
9	+61 bottom stk			6.5	34.5	17.30
10	2			5.8	35.2	17.55
10	+55					17.61 ✓
10	+58 bottom stk			f.1	35.9	17.80
11	340 M.H. 2 + 2 E			5.2	35.8	18.07
11	+50					18.09 ✓
11	+59 bottom stk			4.5	36.5	18.30 ✓
11	4					18.88
11	+76 bottom stk			3.4	37.6	18.98 ✓
11	+50					19.47
11	+95 bottom stk			2.3	37.7	19.78 ✓
11	5					20.05
11	T.P.	468	49.21	1.2	40.53	20.58
11	+50					20.64
11	+65 bottom stk			8.2	41.0	19.8
11	6					21.23
11	+40.5 = M.N. S.L. Broadway on E			7.1	42.1	21.41 ✓
11	340					21.81
11	+28 bottom stk			5.6	43.6	22.28
11	+30					32.76
11	+50			5.2	44.0	23.31 ✓
11	+85 bottom stk					23.33
11	5.0			4.4	44.2	23.56
11	+50					24.13
11	+69.4 bottom stk			8.9	45.3	24.74 ✓
11	+47.5 = 150 ft. N of sidewalk on E 4th			3.7	45.5	24.82 ✓





Sewer according to sketch opp page <sup>of Dunkle</sup>  
 Continued from 829-43 <sup>by Bunker</sup>

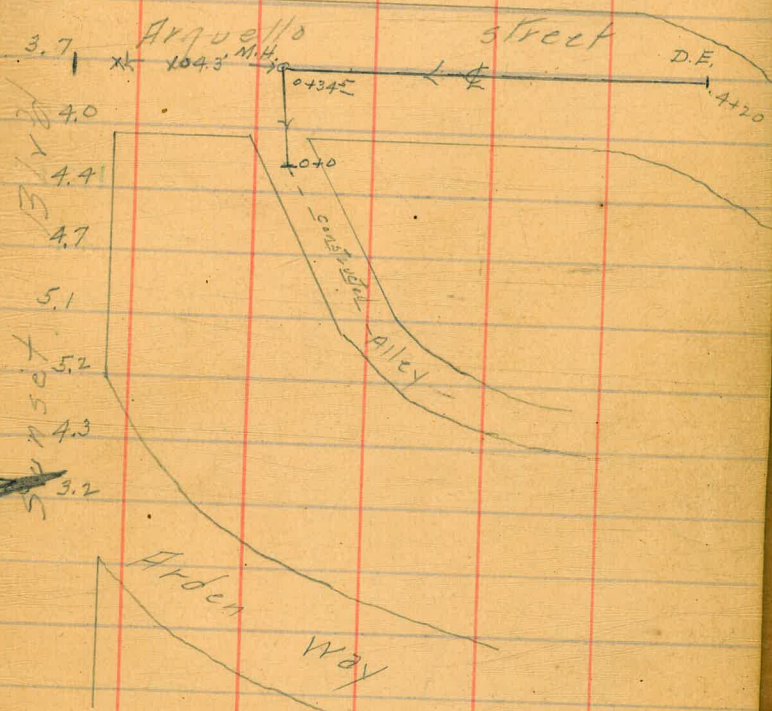
5	B.M. n.v. Brass pty Sunset & Arguella		268.44	
	7.75	276.19		
8	0+0 = end of present sewer bottom	10.2	266.0	266.00
8	0+34 <sup>5</sup> M.H. & Arguella	6.5	269.7	266.41
8+	+50	6.29	269.90	266.60
9+	1	5.28	270.81	267.19
9+	+50	4.4	271.8	267.79
10	2	3.45	272.74	268.39
10	+50	2.5	273.7	268.98
11	3	1.5	274.7	269.57
	+50	0.8	275.4	270.17
1	4	1.1	275.1	270.76
12	+20 D.E.	2.0	274.2	270.00

220  
 345  
 585

Ingleside Ave

21

269.90	0.50	270
5.5	75.45	75.45
275.45	75.45	75.45
66.41	8.85	67.77
	8.85	67.77
9.05 M.H.	8.85	7.07
	8.85	7.07
	75.45	75.45



Sewer E' of 8 4<sup>th</sup> St - sketch opp. page

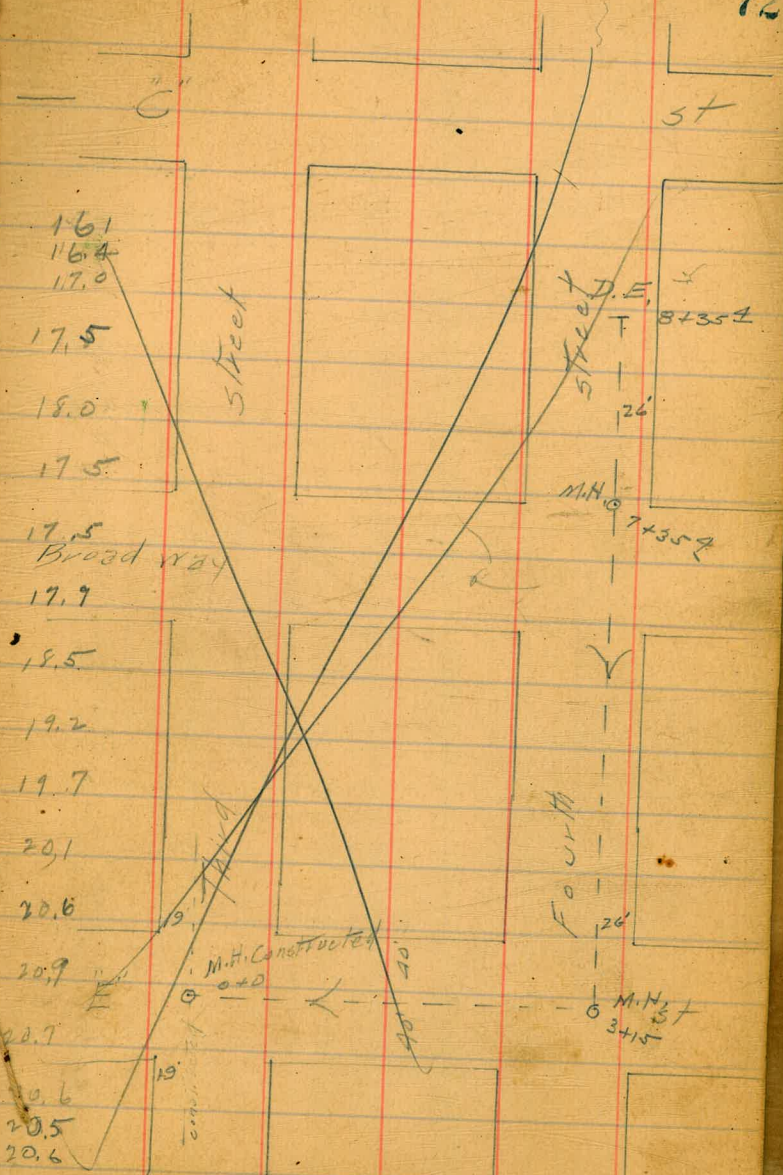
1/11  
31/11  
Bunker

B.M. Brass plg s.w. 4<sup>th</sup> Broadway 43.71

Top of floor M.H.  
16.80

8+	T.P.	0.18	49.89	8.14	36.45			
8+	oto M.H.	57.00	41.45					
8+	+50							
8+7	+70			8.3	33.2	17.14		
	1			7.8	33.7	17.28	16.1	
9+0	+50			7.0	34.5	17.52	16.4	
9+25						17.7	17.0	
9+5	2			6.4	35.3	17.76	17.5	
10+	+55			5.5	36.0	18.00	18.0	
10+	3 + 15 M.H. 26 W of E.L. 42.51			5.7	35.8	18.30	17.5	
11+	+50			5.3	36.2	18.71	17.5	
	4			4.3	37.2	19.29	17.9	
12	+50			3.1	38.4	19.88	18.5	
12	5			1.9	39.4	20.46	19.2	
12	150			0.8	40.7	21.05	19.7	
	T.P.	8.55	49.21	0.79	40.66			
13	6			7.5	41.7	21.64	20.1	
13	+50			6.4	42.8	22.22	20.6	
13	7			5.5	43.7	22.79	20.9	
14	+35 <sup>A</sup> - M.H. N.L. Broadway			5.3	43.7	23.41	20.7	
	+50			5.2	44.0	23.38	20.6	
	8			4.7	44.5	23.96	20.5	
14+	+50			4.1	45.1	24.54	20.6	
	+85 <sup>A</sup>			3.7	45.5	25.00	20.5	

528



3/10/21

Gregory Miller Shaw

Run St. Sewer Line from M.H. center of Myrtle (to the west) to D.E. & Dwight St. (to the east)

Dwight on W 329.0  
Landis 335.0  
Gunn 340.0

rd from W Line 294.0  
Landis 335.0  
Gunn 340.0

78

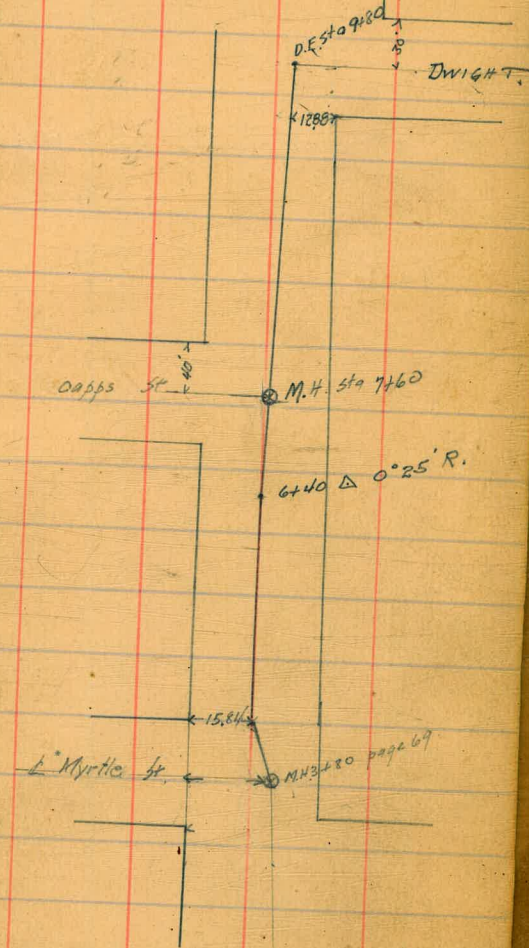
8+	BM NE Dwight 397	336.43		332.46	
8+	3+80 = M.H. & Myrtle to the west			323.0	
8+7	4+20		6.60	329.53	323.32 ✓
9+0	4+40		6.61	329.82	323.47 ✓
9+25	4+90		6.34	330.09	323.86 ✓
9+5	5+40		6.31	330.12	324.26 ✓
10+	5+90		6.04	330.39	324.65
10+	6+40		6.17	330.26	325.05
11+	6+90	956	336.04	329.77	325.46
12	7+40		5.42	330.60	325.44
12	7+60 = M.H. & Capps St.		5.36	330.66	325.84
12	8+90		5.45	330.57	326.0
12	9+40		5.03	330.99	326.74
13	8+40		4.84	331.18	326.64
13	8+90		4.64	331.38	327.03
13	9+40		4.41	331.61	327.43
14	9+80 = D.E. & Dwight St. (to the east)		3.60	332.42	327.74
4	BM NE Dwight 8.40	341.36		332.72	327.89
4	10+30		7.02	332.34	328.24
14	10+80		7.95	333.38	328.58
11+39.52	M.H. & Dwight (west)		6.92	334.44	329.0

329.83  
4.41  
334.24

323.32  
11.42

329.47  
11.27

323.86  
10.88



15.05  
12.88

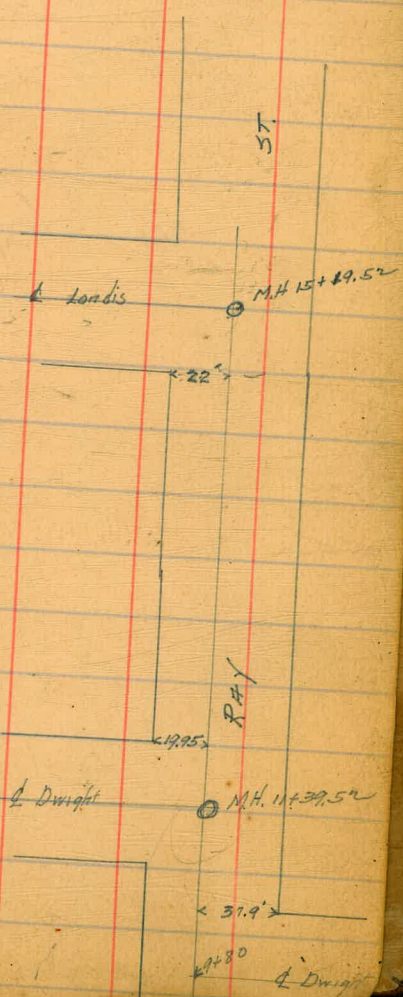
341.36

8+	11+80	6.24	335.12	329.63	
8+	12+30	5.54	335.82	330.42	
8+	12+80	5.00	336.36	331.21	
8+7	13+30	4.24	337.12	332.00	
9+0	13+80	3.49	337.87	332.79	
9+5	14+30	2.83	338.53	333.58	
10+	14+80	2.14	339.22	334.37	
10+	15+19.52 M.H. & Landis	1.39	339.97	335.0	
11+	on B.M. 5 E. Landis + Proj. 578	346.69	340.91		
11+	15+69.52	6.09	340.6	335.72	
12	16+19.52	5.50	341.19	336.45	
12	16+69.52	4.73	341.96	337.17	
12	17+19.52	4.02	342.67	337.90	
13	17+69.52	3.25	343.44	338.62	
13	18+19.52	2.56	344.14	339.35	
13	18+69.52	1.95	344.74	340.07	
14	18+99.52 E. of Gunn	1.40	345.24	340.50	

5.19  
5.40  
5.15  
5.12  
5.08  
4.95  
4.85  
4.77  
4.88  
4.74  
4.79  
4.77  
4.82  
4.79  
4.67  
+ 4.79

300  
1500  
380  
1700  
1800  
350  
1000  
700  
2700  
452  
0.0145  
50  
7200

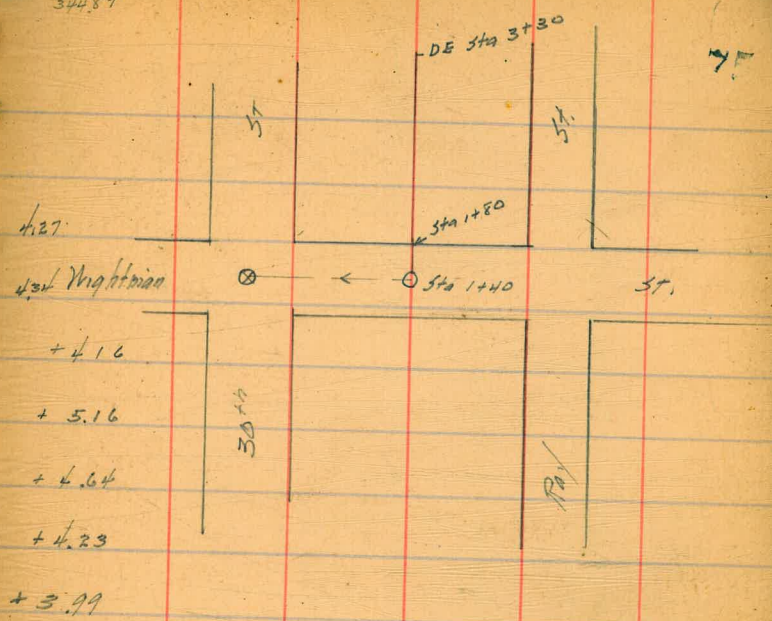
74



11/2/21 layout  
 Moore from M.H. & ex 30+4 to 140' E of M.H.  
 Miller show thence N on d. of BIK to apt  
 150' N. of Wrightman

BM SW 30' of Wrightman	836	358.29	349.43
0+00 = Sta 22+80 page 35			345.00
0+50	8.52	349.77	345.50
1+00	7.95	350.34	346.0
1+40 = M.H.	7.73	350.56	346.4
2	5.47	352.82	347.66
+50	4.94	353.35	348.71
3	4.30	353.99	349.76
+30 = DE	3.90	354.39	350.4

850  
 470  
 1340  
 34489



8  
8  
8  
8+  
9+  
9+  
10-  
10  
11-  
12  
12  
13  
13  
13  
13  
14-  
4  
144

"E" 840

4H at E

M.H. — H.T.Co = 8' W of E curb

" 11 50 W of E SA 8 + Co

4H at 'D'

M.H. H.T.T. Co 7.8 W of E curb

M.H. S.T.T. Co = 5.8" W of E curb

4H at 'C'

M.H. H.T.T. Co 8.4

117  
32  
334  
357  
3744

~~6.33~~

5.67

7.27

12.94

6.47

77

Se quitó el restaurante en que  
comimos anoche mas que el Leon  
de Oro. No se. El Leon de Oro es me  
no me recuerdo es un restaurante  
stupido.

0.0736  
117  
32  
334  
1753  
117  
32  
334  
2356  
41  
2397  
340  
2.100  
2380  
1020  
180  
1000  
3525  
24125

257  
135  
2056  
3525  
117  
32  
334  
357  
3744  
663  
117  
32  
334  
357  
3744

Flex Water Pipe  
Piec 2al over all  
50' 25' 9' below grade at

11475 4' 11"  
11475 9.3' 11"

150		
211	400	118
211		
1590		120
1058		350
2220		
730.0		
681.4		
7.86		
4003		

$\Delta = 2^{\circ} 48' \text{ Left}$

$\Delta = 2^{\circ} 48' \text{ Left}$

57
9
26
11
16
20

117  
0468

CITY OF SAN DIEGO, CALIF.

2042 970

117
117
175.5
100
25

120	200	238	83
20			75
			7.0
			6.2
			2.4
			1.14
			26

3.15

735

714

2750  
Own  
made



1650	350	2000	625
420			
735			
1300	2		
2670			
00			
315	14	1500	45
		1760	100
			120
			150
			250
			250
			250
			250
			250
5815			
3			
117			
32			
834			
351			
3744			