

F.B.  
832

330

FIELD

Cooker  
Quality

Published by H. S. CROCKER COMPANY, Stationers, Drawing  
Materials, Mathematical Instruments, etc., San Francisco.

**MICROFILMED FOR TRANSIT BOOK.**

From 1° to 90° for a distance of 100.

DEC 19 1964

Degrees.	DEGREES.								Degrees.
	1 DEGREE.		1 DEGREE.		1 DEGREE.		1 DEGREE.		
	Lat.	Dep.	Lat.	Dep.	Lat.	Dep.	Lat.	Dep.	
0	99.98	1.75	100.00	0.44	100.00	0.87	99.99	1.31	89
1	99.94	3.49	99.98	2.18	99.97	2.62	99.95	3.05	88
2	99.86	5.23	99.92	3.93	99.91	4.36	99.88	4.80	87
3	99.76	6.98	99.84	5.67	99.81	6.10	99.79	6.54	86
4	99.62	8.72	99.73	7.41	99.69	7.85	99.66	8.28	85
5	99.45	10.45	99.58	9.15	99.54	9.58	99.50	10.02	84
6	99.25	12.19	99.41	10.89	99.36	11.32	99.31	11.75	83
7	99.03	13.92	99.20	12.62	99.14	13.05	99.09	13.49	82
8	98.77	15.64	98.97	14.35	98.90	14.78	98.84	15.21	81
9	98.48	17.36	98.70	16.07	98.63	16.50	98.56	16.93	80
10	98.16	19.08	98.40	17.79	98.33	18.22	98.25	18.65	79
11	97.81	20.79	98.08	19.51	97.99	19.94	97.90	20.36	78
12	97.44	22.50	97.72	21.22	97.63	21.64	97.53	22.07	77
13	97.03	24.19	97.34	22.92	97.24	23.34	97.13	23.77	76
14	96.59	25.88	96.92	24.62	96.81	25.04	96.70	25.46	75
15	96.13	27.56	96.48	26.30	96.36	26.72	96.25	27.14	74
16	95.63	29.24	96.00	27.98	95.88	28.40	95.76	28.82	73
17	95.11	30.90	95.50	29.65	95.37	30.07	95.24	30.49	72
18	94.55	32.56	94.97	31.32	94.83	31.73	94.69	32.14	71
19	93.97	34.20	94.41	32.97	94.26	33.38	94.12	33.79	70
20	93.36	35.84	93.82	34.61	93.67	35.02	93.51	35.43	69
21	92.72	37.46	93.20	36.24	93.04	36.65	92.88	37.06	68
22	92.05	39.07	92.55	37.86	92.39	38.27	92.22	38.67	67
23	91.35	40.67	91.88	39.47	91.71	39.87	91.53	40.27	66
24	90.63	42.26	91.18	41.07	91.00	41.47	90.81	41.87	65
25	89.88	43.84	90.45	42.66	90.26	43.05	90.07	43.44	64
26	89.10	45.40	89.69	44.23	89.49	44.62	89.30	45.01	63
27	88.29	46.95	88.90	45.79	88.70	46.17	88.50	46.56	62
28	87.46	48.48	88.09	47.33	87.88	47.72	87.67	48.10	61
29	86.60	50.00	87.25	48.86	87.04	49.24	86.82	49.62	60
30	85.72	51.50	86.38	50.38	86.16	50.75	85.94	51.13	59
31	84.80	52.99	85.49	51.88	85.26	52.25	85.04	52.62	58
32	83.87	54.46	84.57	53.36	84.34	53.73	84.10	54.10	57
33	82.90	55.92	83.63	54.83	83.39	55.19	83.15	55.56	56
34	81.92	57.36	82.66	56.28	82.41	56.64	82.16	57.00	55
35	80.90	58.78	81.66	57.71	81.41	58.07	81.16	58.42	54
36	79.86	60.18	80.64	59.13	80.39	59.48	80.13	59.83	53
37	78.80	61.57	79.60	60.53	79.34	60.88	79.07	61.22	52
38	77.71	62.93	78.53	61.91	78.26	62.25	77.99	62.59	51
39	76.60	64.28	77.44	63.27	77.16	63.61	76.88	63.94	50
40	75.47	65.61	76.32	64.61	76.04	64.94	75.76	65.28	49
41	74.31	66.91	75.18	65.93	74.90	66.26	74.61	66.59	48
42	73.14	68.20	74.02	67.24	73.73	67.56	73.43	67.88	47
43	71.93	69.47	72.84	68.52	72.54	68.84	72.24	69.15	46
44	70.71	70.71	71.63	69.78	71.33	70.09	71.02	70.40	45
45									

FROM  
Loring's Book Store

GRADES FOR PURCELL RY.

B.M. S.E. Arctic plg.

7.46

1080 SE D+ante

127  
 11.77  
 3.87  
 3.90  
 4.02  
 9.93  
 3.76  
 6.17 B.M. S. Cal + E  
 2nd B.M.

1.54  
 5.13

993 450  
 61 38  
 383 38  
 993  
 24 50

Track centers & grades for S Track  
 Atlantic to Arctic & S F R of my  
 layout

B.M. N.E. California spt.

6.31

9.93  
 1.00  
 8.93  
 7.00

8.6  
 8.9  
 8.9  
 8.5

8.33  
 8.6  
 8.6  
 8.0

ARCTIC

ST.

1.0

7.0

ST.

5.5

5.5

CALIFORNIA

ST

4.5

4.5

F

1.0

1.0

1.00

ATLANTIC

ST

1.0

1.0

B.M. SW. STATE plg

18.47

20.5

20.0

2

STATE

ST

19.0

ST

19.5

16.0

15.5

B.M. SW. COLUMBIA plg

14.46

COLUMBIA

ST

15.0

14.5

10.0

E

10.0

B.M. SW. INDIA plg 8.98

INDIA

ST

9.5

9.0

B.M. S.W. FIRST R/9

24.54

B.M. SW. FRONT R/9

27.01

B.M. SW. UNION R/9

23.97

FIRST

ST.

FRONT

ST

UNION

ST

26.5

25.5

25.5

24.5

28.0

27.0

28.0

27.0

25.0

25.0

24.0

24.0

ST

E

20

B.M. SW. FOURTH p/q 35.91

B.M. SW. THIRD p/q 31.41

B.M. SW. SECOND p/q 28.90

4

37.0  
FOURTH

36.0

ST

36.5

ST

36.0

33.5

32.5

THIRD

ST

32.5

31.5

F

31.5

30.0

SECOND

ST

30.5

29.0

B.M. N.W. 7<sup>TH</sup> p/q 45.44

B.M. N.E. SIXTH p/q 43.44

B.M. S.W. FIFTH p/q 39.49

46.0  
SEVENTH

45.5

43.4

SIXTH

43.4

40.8

FIFTH

39.6

45.0

ST

44.5

42.4

ST

42.4

40.8

ST

39.6

5

B.M. N.W. TENTH p/q 62.50

B.M. N.W. NINTH p/q 56.55

B.M. N.W. EIGHTH. p/q 49.49

63.0

61.5

6

TENTH

ST

62.5

61.0

ST

57.5

56.5

NINTH

ST

56.5

55.5

ST

50.5

49.5

EIGHTH

ST

49.5

48.5



B.M. S.W. 13<sup>TH</sup> plq. 59.95

B.M. N.W. 12<sup>TH</sup> plq. 66.53

B.M. N.W. 11<sup>TH</sup> plq. 64.01

58.0

58.0

7

THIRTEENTH

ST.

60.0

60.0

ST

67.5

65.0

TWELFTH

ST

66.5

65.0

ST

65.0

64.0

ELEVENTH

ST

64.0

63.0

No B.M.

No B.M.

B.M. N.W. 14<sup>th</sup> Plg.

50.95

8

SIXTEENTH

ST

54.0

54.0

ST

50.0

50.0

FIFTEENTH

ST

50.0

50.0

F

51.0

51.0

FOURTEENTH

ST.

51.0

51.0

B.M. N.W. C. p/q 60.54

B.M. S.W. D. p/q 55.89

60.5

60.5

9

C

ST.

59.5

59.5

ST

56.0

56.0

D

ST.

56.0

56.0

SIXTEENTH

54.0

55.0

E

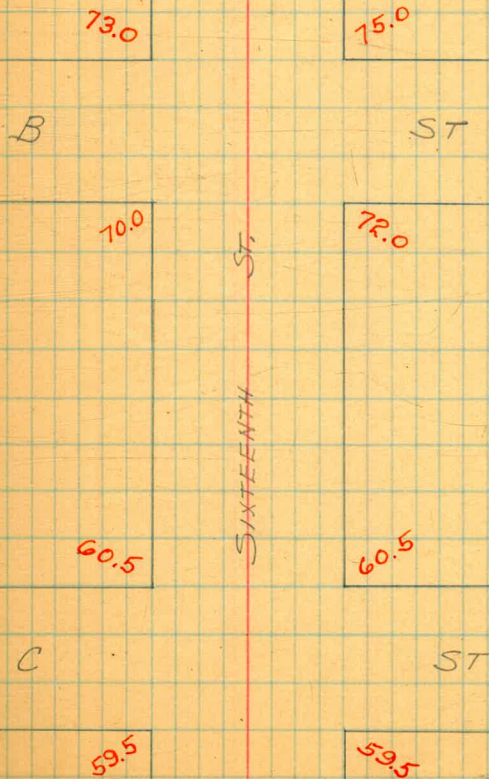
ST.

54.0

55.0

No BM.

B.M. N.W. C p14 60.5H



BARN

LOT.

65.0

64.0

ST

68.0

66.0

18<sup>TH</sup>

ST

68.0

66.0

B

72.0

70.0

17<sup>TH</sup>

ST

72.0

70.0

No B.M

No B.M -

Cross section of  
 L 37  
 from E. L. Francis to  
 E. L. 36.44

80' wide from Francis  
 to Pardee  
 60' wide from Pardee  
 to 36.44

09 BM	520	86.07	80.87	Hub SE Francis + L
		E. L. Francis	86.07	
5		5.2	80.9	5
+ 21.5		30	83.1	+ 20.5
+ 22.5		33		+ 21.5
+ 27.5		3.1	83.0	+ 27.5
+ 33.75		3.0		+ 33.75
+ 40		2.7	83.4	+ 40
+ 46.25		2.5		+ 46.25
+ 52.5		2.5	83.6	+ 52.5
+ 55.5		2.3		+ 58.5
+ 58.5		1.8	84.3	+ 61.5
+ 80 = N		1.5	84.6	+ 80 = N
		20' E		
N		1.1	85.0	N
+ 18		1.8		+ 19
+ 21.5		2.4	83.7	+ 21.5
+ 27.5		2.5		+ 27.5
+ 33.75		2.5		+ 33.75
+ 40		2.6	83.5	+ 40
+ 46.25		2.9		+ 46.25
+ 52.5		3.1		+ 52.5
+ 58.5		3.1	83.0	+ 58.5
+ 59.5		2.6		+ 80 = 5
+ 80 = 5		5.2	80.9	5

40' E

6.0	80.1
3.5	
4.1	82.0
4.1	
4.4	
4.3	81.8
4.0	
4.2	
4.2	81.9
3.4	
1.5	84.6

60' E

3.3	82.8
5.3	
6.3	79.8
6.5	
6.9	
7.1	79.0
6.8	
6.7	
6.3	79.8
9.2	76.9

70' E

10.1	76.0
9.4	76.7
9.5	
9.2	

+ 21.5  
 + 27.5  
 + 33.75

86.07

+40	8.4	77.7
+46.25	8.0	
+52.5	7.7	
+58.5 = same as garage floor	7.3	78.8
+80 = N	3.3	82.8

87° E

N	7.8	78.8
+21.5	9.2	76.6
+27.5	10.2	
+33.75	10.0	
+40	10.3	75.8
+46.25	11.1	
+52.5	11.8	
+58.5	12.7	73.4
+80 = S	14.3	71.8
TP	6.30	79.52
	12.85	73.22

(pipe is to be laid at 90°) 110° E = Location for 16" pipe

-15	11.0	79.52
S	10.3	69.2
+21.5	8.1	71.4
+27.5	7.5	72.0
+33.75	5.9	73.6
+37	4.6	74.9
+40	4.7	74.8
+46.25	4.5	75.0
+52.5	5.2	74.3
+56.5	7.0	72.5
+58.5	7.0	72.5

L 575

79.52

13

+80 = N	6.0	73.5
+15	5.1	

123° E

N	4.1	75.4
+21.5	5.3	74.2
+27.5	4.5	
+33.75	4.2	
+40	4.2	75.3
+46.25	6.1	
+52.5	8.3	
+58.5	9.2	70.3
+80 = S	10.5	69.0
TP	6.30	73.22

12.85 86.07

145° E

S	11.1	75.0
+21.5	10.1	76.0
+27.5	9.7	
+33.75	9.3	
+40	9.2	76.9
+46.25	9.4	
+52.5	8.9	
+58.5	8.8	77.3
+80 = N	7.6	78.5

160° E

N	3.6	83.5
+17	5.6	
+21.5	6.8	79.3
+27.5	7.0	
+33.75	7.7	

86.07

+40	8.0	78.1
+46.25	8.1	
+52.5	8.7	
+58.6	8.8	77.3
+80 = S	9.2	76.9

185 E

S	8.9	77.2
+21.5	7.2	78.9
+27.5	6.8	
+33.75	6.3	
+40	5.8	80.3
+46.25	5.6	
+52.5	5.1	
+58.6	4.6	81.5
+62.5	3.9	
+80 = N	1.9	84.2

200 E = W.L. 35<sup>th</sup> ST 80' wide

N	1.1	85.0
+19	2.4	
+21.2	3.4	82.7
+27.5	4.2	
+33.75	4.6	
+40	4.9	81.2
+46.25	5.4	
+52.5	5.9	
+58.6	6.2	79.9
+60.5	5.6	
+80 = S	8.6	77.5

L ST

86.07

14

E.L. 35<sup>th</sup> ST

S	5.8	80.3
+21.5	4.0	82.1
+27.5	3.2	
+33.75	2.6	
+40	1.9	84.2
+46.25	1.6	
+52.5	1.4	
+58.5	1.2	84.9
+62.5	1.0	
+64.5	0.0	
T.P.	4.94	89.89
+80	2.0	87.9

50 E

N	0.6	89.3
+16	2.0	
+21.5	3.6	86.3
+27.5	3.9	
+33.75	4.3	
+40	4.8	85.1
+46.25	5.3	
+52.5	6.1	
+58.6	6.4	83.5
+80 = S	8.0	81.9

65 E

S	9.2	80.7
+21.5	6.4	83.5
+27.5	5.7	



89.89

89.9

+33.75	4.8	
+40	4.7	85.2
+46.25	4.2	
+52.5	4.8	
+58.5	3.3	86.6
+62.5	1.0	
+80 = N	0.5	89.4

100° E

N	2.0	87.9
+16	3.6	
+21.5	5.0	84.9
+27.5	5.4	
+33.75	5.8	
+40	6.2	83.7
+46.25	6.4	
+52.5	6.6	
+58.5	10.0	79.9
+80 = S	13.1	76.8

110° E

5	15.2	78.7
+20	11.9	
+21.5	10.6	79.3
+27.5	7.6	
+33.75	7.2	
+40	7.4	82.5
+46.25	7.3	
+52.5	6.5	

+58.5	6.2	83.7
+61.5	5.6	
+63.5	4.7	
+80 = N	3.5	86.4

120° E

N	5.4	82.5
+18	6.4	
+21.5	7.6	82.3
+27.5	7.9	
+33.75	8.6	
+40	8.7	81.2
+46.25	8.6	
+52.5	11.4	
+58.5	13.0	76.9
+80 = S	18.2	71.7

5T

L

Levels on Culvert  
NS 89.89

0+00	11.3	78.6
+10 = N/L	12.6	77.4
+25	12.9	77.0
+30	11.2	78.7
+50	11.2	78.7
+60	15.2	74.5
+95	18.2	71.7
+10	18.7	71.2

35+6

Parade

0+00  
see plan  
side  
of  
culvert  
for  
0+50

85°

89.9

11.3	78.6
12.6	77.4
12.9	77.0
11.2	78.7
11.2	78.7
15.2	74.5
18.2	71.7
18.7	71.2

15

89.89

130° E

S	18.3	71.6
+ 21.5	14.9	75.0
+ 27.5	13.5	
+ 33.75	11.7	
+ 40	10.0	79.9
+ 46.25	10.0	
+ 52.5	9.3	
+ 58.5	9.2	80.7
+ 80 = N	7.0	82.9

140° E

N	8.0	81.9
+ 21.5	10.3	79.6
+ 27.5	10.6	
+ 33.75	10.8	
+ 40	10.8	79.1
+ 46.25	13.0	
+ 52.5	15.7	
+ 58.5	16.2	73.7
+ 65	16.3	
+ 80 = S	13.3	76.6

155° E

S	11.9	74.0
+ 15	12.4	
+ 21.5	13.8	76.1
+ 27.5	15.1	
+ 33.75	14.8	
+ 40	11.3	78.6

89.9

2.55

89.9

16

+ 46.25	11.0	
+ 52.5	11.4	
+ 58.5	10.9	79.0
+ 80 = N	8.7	81.2

160° E

N	9.2	80.7
+ 21.5	12.0	77.9
+ 27.5	11.7	
+ 33.75	11.2	
+ 40	11.2	78.5
+ 46.25	13.0	
+ 52.5	13.8	
+ 58.5	12.9	77.0
+ 80 = S	11.8	78.1

175° E

S	8.1	81.8
+ 21.5	11.5	78.4
+ 27.5	11.4	
+ 33.75	11.6	
+ 40	11.1	78.8
+ 46.25	11.0	
+ 52.5	11.3	
+ 58.5	12.3	77.6
+ 80 = N	12.3	77.6

183° E

N	9.5	80.1
+ 21.5	10.4	79.5
+ 27.5	10.7	

8989

(89.9)

+ 33.75	10.6	
+ 40	10.9	79.0
+ 46.25	11.1	
+ 52.5	11.0	
+ 58.5	10.6	79.3
+ 80 = S	7.5	87.4

210' E on S  
200' - N } = N.L. Pardee.

S	6.9	83.0
+ 41.5	8.2	81.7
+ 27.5	8.6	
+ 33.75	8.9	
+ 40	9.1	80.8
+ 46.25	8.8	
+ 52.5	8.8	
+ 58.5	8.5	81.4
+ 80 = N	7.4	82.5

L ST 13 60' wide from Here

E.L. Pardee =

TP	9.15	96.72	7.32	87.57
N			8.1	88.6
+ 11.5			9.8	86.9
+ 17.5			10.7	
+ 23.75			11.2	
+ 30			11.9	84.8
+ 36.25			12.5	
+ 42.5			12.2	
+ 48.5			12.3	84.4
+ 60 = S			12.1	84.6

40' E on N  
50' - S

L ST

(96.7)

17

S	11.2	85.5
+ 11.5	11.3	85.4
+ 17.5	11.1	
+ 23.75	10.9	
+ 30	9.9	86.8
+ 36.25	8.7	
+ 42.5	8.3	
+ 48.5	7.9	88.8
+ 60 = N	6.6	90.1

100' E on N  
110' - S

N	5.7	91.0
+ 11.5	6.9	89.8
+ 17.5	7.4	
+ 23.75	7.8	
+ 30	8.2	87.5
+ 36.25	8.7	
+ 42.5	8.8	
+ 48.5	9.5	87.2
+ 60 = S	9.2	87.5

125' E on N  
135' - S

S	8.3	88.4
+ 11.5	8.2	88.5
+ 17.5	7.8	
+ 23.75	7.5	
+ 30	7.3	89.4
+ 36.25	6.8	
+ 42.5	6.8	

96.72

+ 48.5	6.5	90.2
+ 60 = N	5.8	90.9
N	3.5	93.2
+ 11.5	4.7	92.0
+ 17.5	5.6	
+ 23.75	5.5	
+ 30	6.1	90.6
+ 36.25	6.3	
+ 42.5	7.0	
+ 48.5	7.6	89.1
+ 60 = S	7.6	89.1
considered as 60 wide on E.L. of 36" high	36 <sup>th</sup> 54	60" = S
S	5.6	91.1
+ 11.5 =	5.5	91.2
+ 17.5 =	5.4	
+ 23.75	4.7	
+ 30	4.3	92.4
+ 36.25	3.8	
+ 42.5	3.5	
+ 48.5	3.5	93.2
+ 60 = N	3.3	93.4
N	3.8	92.9
+ 11.5	3.6	92.1
+ 17.5	3.7	
+ 23.75	3.6	
+ 30	4.1	92.6

150' on N  
160' = S200' E on N  
220' = S } = W.L.  
36<sup>th</sup> 54 80' wide on N  
60" = S10' E on S  
14' = } W curbL 5T  
96.7 13

+ 36.25	50	
+ 42.5	53	
+ 48.5	54	91.3
+ 60 = S	57	91.0
10' E on S 13' = S = N W 1/2	57	91.0
S	57	91.0
+ 11.5	55	91.2
+ 17.5	56	
+ 23.75	55	
+ 30	53	91.4
+ 36.25	47	
+ 42.5	46	
+ 48.5	42	92.5
+ 60 = N	46	92.1
10' E on S 13' = S = N E 3/4	61	90.6
N	54	91.3
+ 11.5	53	
+ 17.5	54	
+ 23.75	57	91.0
+ 30	55	
+ 36.25	57	
+ 42.5	58	90.9
+ 48.5	60	90.7
+ 60 = S	66	90.1
10' E on S 13' = S = N E 1/2	63	90.4
S	64	
+ 11.5		
+ 17.5		

+ 23.75	6.5	
+ 30	6.5	90.2
+ 36.25	7.0	
+ 42.5	7.2	
+ 48.5	7.8	88.9
+ 60 = N 10' E of 4000s 13' - - - N E. Corb	8.8	87.9
N	11.8	84.9
+ 11.5	10.0	86.7
+ 17.5	8.9	
+ 23.75	8.5	
+ 30	8.5	88.2
+ 36.25	8.4	
+ 42.5	8.1	
+ 48.5	7.5	89.2
+ 60 = S 10' E of 6000s 14' - - - N E. L. of 36 <sup>th</sup> St	7.8	88.9
S	9.5	87.2
+ 11.5	10.3	86.4
+ 17.5	11.0	
+ 23.75	10.9	
+ 30	10.5	86.2
+ 36.25	10.9	
+ 42.5	11.8	
+ 48.5	13.2	86.5
+ 60 = N	14.5	82.2
set B.M.	5.67	91.05 on 13' N. n

9/15/22 Gregory  
 Alley  
 Alley in Block 5  
 Mission Hills

CROSS SECTION OF  
 ALLEY IN BLOCK 5  
 MISSION HILLS

15' wide

See 864-39

on B.M.	6.78	273.72	266.94	80 NE H Stock + 3V	N	1450	
					C	1.0	✓72.7
					S	1.2	72.5
S		8.93	264.79	on paving	S	0.9	72.8
C		9.11	262.61	✓ ✓	T.P.	4.64	277.13
N		9.06	264.66	✓ ✓		1.23	272.49
	20' E					166' E	
N		5.0	268.7		N-3 = front of garage (cement)	4.20	✓72.93
C		5.3	68.0			200' E	
S		5.1	68.6		N	5.0	72.1
	50' E				C	5.0	72.1
S		2.9	270.8		S	4.8	72.3
C		2.9	270.8			250' E	
N		2.7	271.0		S	4.8	72.3
	78' E = center of garage (cement)				C	5.1	72.0
N-5' = (cement floor)		1.35	✓72.37		N	5.0	72.1
	88' E = center of garage (dirt)					286' E	
-5' = dirt		1.4	✓72.3		N = edge of cement apron	5.1	✓71.7
N		1.7	72.0			300' E	
C		1.9	71.8		N	5.1	72.0
S		1.7	72.0		C	5.3	71.8
	142' E = center garage (cement)				S	5.0	72.1
S		1.0	72.7		T.P.	4.37	276.19
C		1.2	72.5			5.31	271.82
N		1.0	72.7			350' E	
+3.5' = edge of apron		0.65	72.07		S	4.1	✓72.1
					C	4.4	✓71.8
					N	4.5	✓71.7

						1450	
						1.0	✓72.7
						1.2	72.5
						0.9	72.8
						1.23	272.49
						166' E	
						4.20	✓72.93
						200' E	
						5.0	72.1
						5.0	72.1
						4.8	72.3
						250' E	
						4.8	72.3
						5.1	72.0
						5.0	72.1
						286' E	
						5.1	✓71.7
						300' E	
						5.1	72.0
						5.3	71.8
						5.0	72.1
						5.31	271.82
						350' E	
						4.1	✓72.1
						4.4	✓71.8
						4.5	✓71.7
						388' E	
						4.16	✓72.03

5' edge cement apron

276.19

400' E

N	4.6	✓ 71.6
C	4.8	✓ 71.4
S	4.4	✓ 71.8

433' E

S = edge cement apron	4.65	✓ 71.64
-----------------------	------	---------

460' E

S = front of garage (dirt)	4.6	✓ 71.6
----------------------------	-----	--------

465' E

S	4.7	71.5
C	5.3	70.7
N	5.4	70.8

469' E

S = front of garage (cement)	4.65	✓ 71.54
------------------------------	------	---------

485' E

N	5.0	71.2
C	4.7	71.5
S	4.4	71.8

Section across 20' N+S alley.

E	5.0	71.2
C	5.5	70.7
W	5.4	70.8

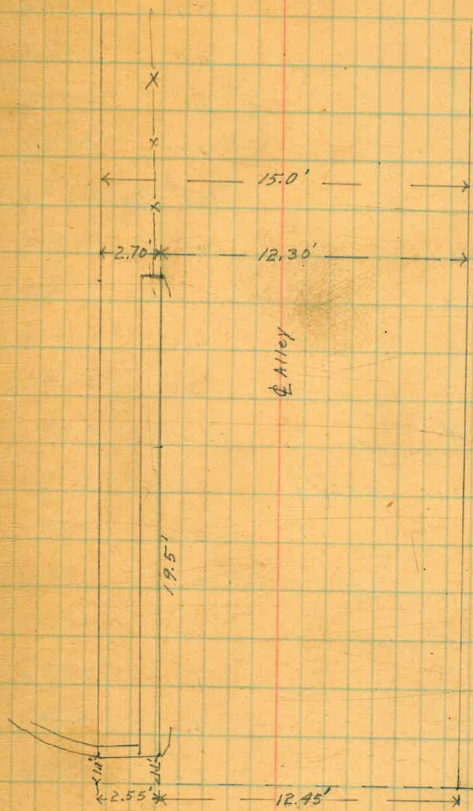
S. L. Hermosa Way

W	6.80	✓ 69.39	on paving
C	6.85	69.34	✓ ✓
E	6.42	69.74	✓ ✓

28

21

Survey of wall in Alley in BIR 5, Mission Hills

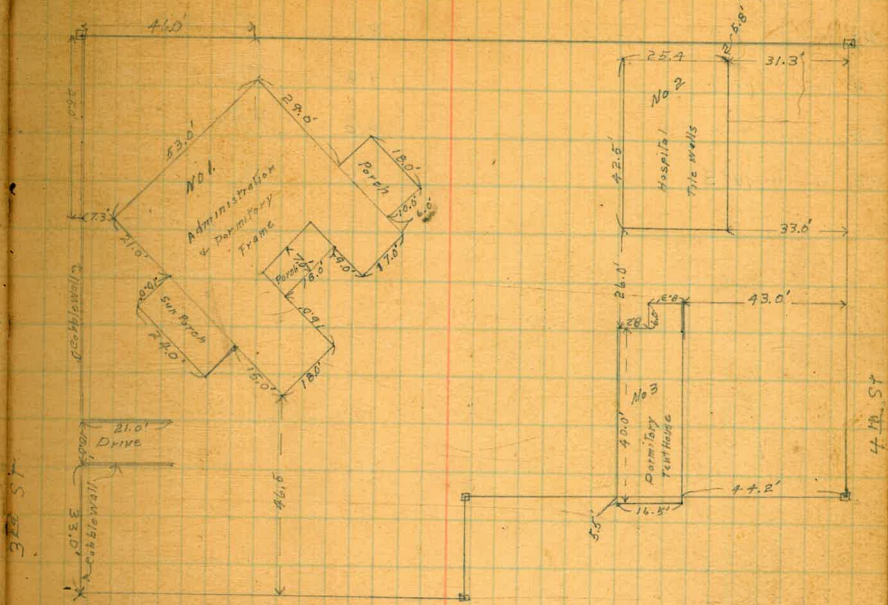


Location of Improvements at Boys Girls School on Lots 2 to 7 and 4 to 6 E  
 Bk 7 Fifth St. Addition 8/31/22 Miller  
 SKAM

PL. 1118.

B.M.	6.74	292.71		285.97	SE. CH. 154.4 SW 3rd and Arbor Drive
N.W. Cor. Lot 2			4.9	287.8	on wall
7' E of N.W. Cor. Lot 2			3.9	288.8	" Lawn
4.5' S of N.W. Cor. Lot 2			4.9	287.9	" wall
West side Co. Building No 1			3.1	289.6	" Lawn
43' N of S.W. Cor. Lot 7			4.7	288.0	" wall N. Side drive
21' E of last above			3.1	289.6	" E. End Wall
33' N of S.W. Cor. Lot 7			4.5	288.2	" wall S. Side drive
21' E of last above			3.4	289.3	" E. End Wall
S.W. Cor. Lot 7			4.5	288.2	on wall
5' E of S.W. Cor. Lot 7			3.5	289.2	
28' N of last above			3.6	289.1	
T.P.	3.78	292.71	3.78	288.13	
10' E of S.W. Cor. Lot 7			3.8	289.1	
95' " " " "			4.7	288.2	
S.E. Cor. Lot 7			6.0	286.9	
N.E. Cor. " "			4.7	288.2	
South side Cor. Bldg. No 1			3.6	289.3	
Easterly " " "			3.2	289.7	
S.W. Cor. Bldg. No 3			8.8	284.1	
S.E. Cor. " " "			12.0	280.9	
N.W. Cor. " " "			5.0	287.9	
N.E. Cor. Lot 6			4.1	288.8	
" " " " 5			3.8	289.1	
" " " " 4			3.8	289.1	
" " " " 2			3.7	289.2	
Northerly Cor. Bldg. No 1			3.4	289.5	

Turns next Page



For Survey of Lots see Book 1060. P. 79



292.91

N.W. Cr. Bldg, No 2	5.1	287.8
N.E. " " " "	8.1	284.8
S.W. " " " "	4.8	288.1
S.E. " " " "	6.8	286.1
N.E. " " No 3	7.6	285.3

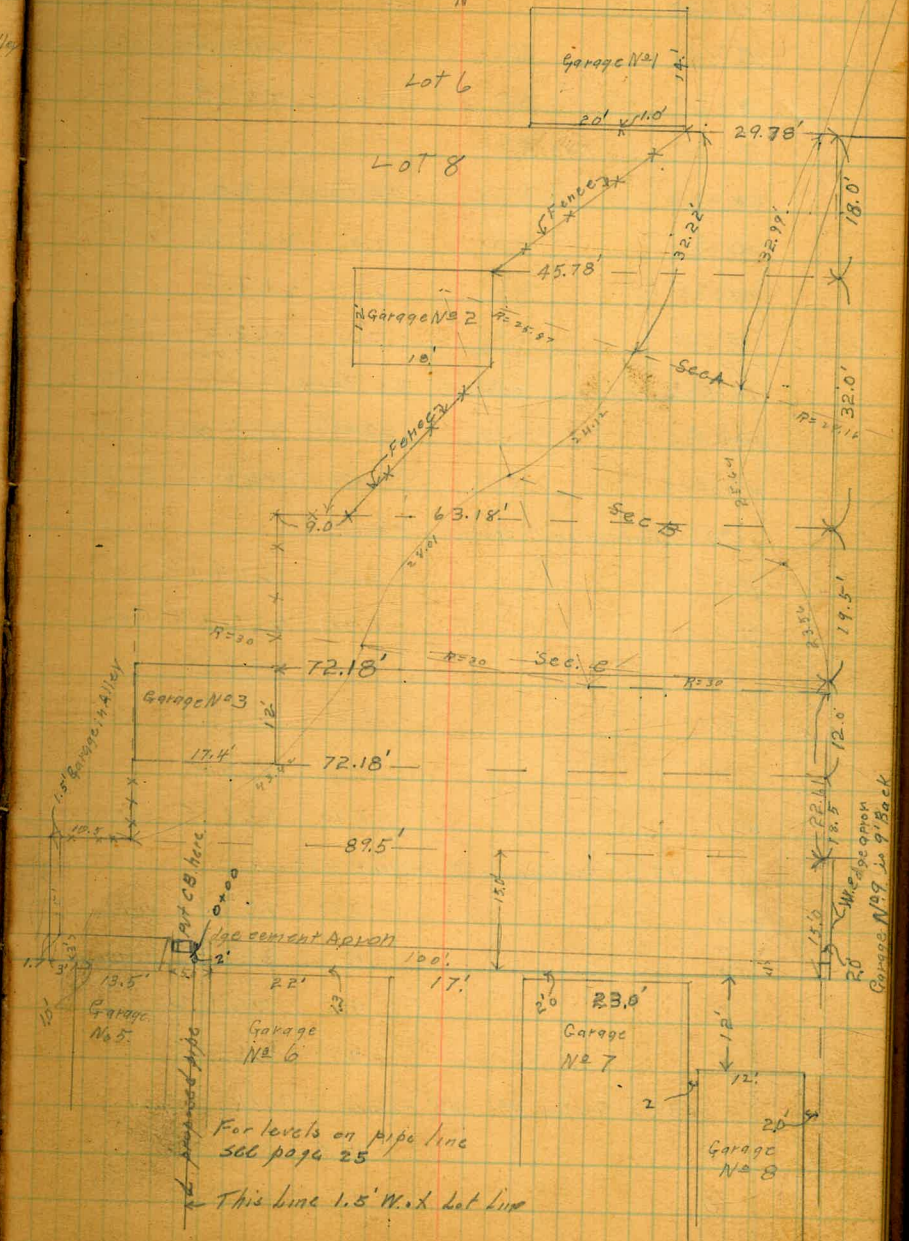
23

B.M.	6.67	265.71'		259.04	Alameda & Sheridan
T.P.	8.08	271.53'	2.26	263.45'	

2' N. of S. Line Sheridan Ave = S. Line Walk on Sheridan No. 4 Returns in Alley

W		8.68	262.85	on sidewalk
C		8.1	263.4	
E		7.48	264.05	on sidewalk
00	=	1.03' S. of S. Line of Sheridan Ave or E. Line Alley		
E		7.0	264.5	
C		7.7	263.8	
W		8.1	263.4	
15' S.				
N		6.5	265.0	
E		6.7	264.8	
+7.0		6.3	265.2	
E		4.8	266.7	
50' S.				
E		4.7	266.8	
+3		5.7	265.8	
C		5.9	265.6	
W		5.8	265.7	
91' S. = Garage on W Cement Floor 3' Back				
W-3		3.71	267.82	on floor
W		4.02	267.51	edge apron
C		4.4	267.1	
E		4.2	267.3	

12' Garage No. 4  
16.8



271.53

105 S = Garage on E. Cement Floor on line			
E	3.24	268.29	on floor
+25	3.91	267.62	" apron
C	4.1	267.4	
W	3.6	267.9	
140'S.			
W	3.5	268.0	
C	3.8	267.7	
+7	3.7	267.8	
E	3.2	268.3	
T.P.	3.71	271.67	
	3.57	267.96	
177.5 = Garage on W. cement 3.5 Back			
W-3.5	3.41	268.26	
W-1.0	3.50	268.17	on floor
190'S = { Garage on E. cement 7.0 Back " apron			
	" " W " 1.0 "		
E-7	2.55	269.12	on floor
E-3	2.98	268.69	" apron
E	3.4	268.3	
C	3.9	267.8	
W	3.5	268.2	
W+1	3.20	268.5	on floor
245'S = Garage on W. cement 3.0 Back			
W-3	3.81	267.86	on floor
W	4.12	267.55	" apron
C	4.5	267.2	
E	4.2	267.5	
295'S = Garage No 1 on W. cement 3.0 Back see Pg 24			
E	4.8	266.9	
C	4.7	267.0	
W	4.62	267.05	on cement apron
W+3	4.54	267.13	

9/29/23 Gregory. Levels on a proposed pipe  
from #164 to Alameda  
see sketch page 2

152.5

25

516	271.16	266.0	Edge of apron Garage #6
2' N. - 152.4' / 6' = 20100		265.9	
0+50		263.9	
1+00		261.5	
T.P.	1.25	260.85	11.56
1+20		259.10	1.9
+28		256.0	4.9
+33		255.3	5.6
+43 = edge of walk		250.8	10.1
+52.5' = N. curb Alameda		250.44	10.41
+52.5' = gutter (dirt)		249.7	11.2

271.67

337.59' S Sec. A P.C. see Page 24

W	5.1	266.6
E	3.0	266.7
E	5.1	266.6

OH Floor Garage No 2 see Page 24

	5.30	266.4
--	------	-------

See B from P.R.C. on W to P.R.C. on E see Page 24

E	4.8	266.9
E	5.0	266.7
W	5.6	266.1

See C, From P.R.C. on W to E.C. on E. see Page 24

W	5.5	266.2
C	4.9	266.8
E	5.2	266.5

Garage No 3 5.67 266.00 OH Floor

" " 4 6.05 265.62 OH Floor

N.E. Cor Lot 11 6.1 265.6

16.5 E. Cor N.E. Cor Lot 11 6.1 265.6

25' " " " " " 5.6 266.1

50' " " " " " 5.4 266.3

75' " " " " " 5.4 266.3

100' " " " " " 5.6 266.1

W. Line Garage No 9 5.59 266.08 on apron

S.E. Cor Alley 6.10 265.57 " "

E Garage No 8 6.00 265.67 " "

E " " 7 5.80 265.87 " "

E Line Garage No 6 5.65 266.02 " "

W " " " " 5.67 266.00 " "

271.67

E. Line Garage No 5

6.19 265.48 on ground

W " " "

6.19 265.48 " "

S.W. Cor of Alley

6.1 265.6 " Dirt

27

2 sec Dickenson St From W. Line Front to West End 630' West  
50' wide.

9/7/23/  
Mellin  
Shor  
S.E. Front Dickenson  
Top Hydrant

B.M. 4.32 294.08 289.76

00 = W. Line Front ST

S	5.8	288.3
C	6.0	288.1
+1	6.7	287.4
1/4	5.4	288.3
1/2	5.3	288.8
1/4	5.6	288.5
+6.5	5.7	288.4
C	4.9	289.2
+7	4.7	289.4
N	2.8	291.3

on bank  
"

100' W

N	2.6	291.5
+3	4.5	289.6
C	4.8	289.3
+1	5.4	288.7
1/4	5.2	288.9
1/2	5.1	289.0
1/4	5.5	288.6
+6.5	6.1	288.0
C	5.6	288.5
S	5.3	288.8

200' W Graded to here

S	4.8	289.3
C	5.1	289.0
+1	5.6	288.5
1/4	5.2	288.9

294.08  
200 W (con)

1/2	4.7	289.4	
1/4	4.9	289.2	
+6.5	5.0	289.1	
C	4.4	289.7	
+7	4.3	289.8	on lawn
N	3.0	291.1	

235' W = E Drive to County Hospital

N	3.3	290.8	
E	3.6	290.5	
1/4	4.4	289.7	
1/2	4.6	289.5	
1/4	5.0	289.1	
+6.5	5.5	288.6	
C	4.9	289.2	
S	4.7	289.4	

250'S

S	4.6	289.5	
C	4.7	289.4	
+1	5.4	288.7	
1/4	5.1	289.0	
1/2	4.6	289.5	
1/4	4.5	289.6	
C	4.4	289.7	
N	4.0	290.1	

360' W

N	3.3	290.8	
C	4.2	289.9	
1/4	4.8	289.3	

294.08  
300 W (Coh)

1/2	4.6	289.5
1/4	4.8	289.3
C	5.1	289.0
S	4.8	289.3

350. W

S	5.2	288.9
C	5.2	288.9
1/4	5.6	288.5
1/2	5.7	288.4
1/4	5.5	288.6
1/4	5.2	288.9
+6	4.0	290.1
C	3.9	290.2
N	3.6	290.5

400. W

N	4.4	289.7
+8	5.0	289.1
C	6.0	288.1
1/4	6.2	287.9
1/2	6.2	287.9
1/4	6.0	288.1
C	5.2	288.9
S	4.8	289.3

412. W

S	4.2	289.9
C	4.8	289.3
1/4	5.5	288.6
1/2	6.2	287.9



294.08  
412' W (con)

1/4		6.5	287.6
C		6.7	287.4
1/2		6.7	287.4
N		5.2	288.9

415' W

N		6.8	287.3
C		6.6	287.5

450' W

N		6.7	287.4
C		6.2	287.9
1/4		5.9	288.2
1/2		5.8	288.3
1/4		4.9	289.2
C		4.9	289.2
S		4.3	289.8

500' W

S		1.5	292.6	
C		2.7	291.4	
1/4		3.5	290.6	
1/2		4.3	289.8	
1/4		5.3	288.8	
C		5.6	288.5	
N		5.9	288.2	
I.P.	8.74	298.75	4.07	290.01

550' W

N		9.4	289.4
C		8.8	290.0
1/4		8.6	290.2

298.75  
550' W (con)

1/2	7.3	291.5
1/4	6.3	292.5
C	5.3	293.5
S	4.6	294.2

600' W

S	3.3	295.5
C	4.0	294.8
1/4	4.7	294.1
1/2	5.3	293.5
1/4	6.0	292.8
C	6.0	292.8
N	7.6	291.2

630' W End of ST

N	6.0	292.8
C	5.5	293.3
1/4	5.0	293.8
1/2	4.6	294.2
1/4	4.3	294.5
C	3.6	295.2
S	3.0	295.8

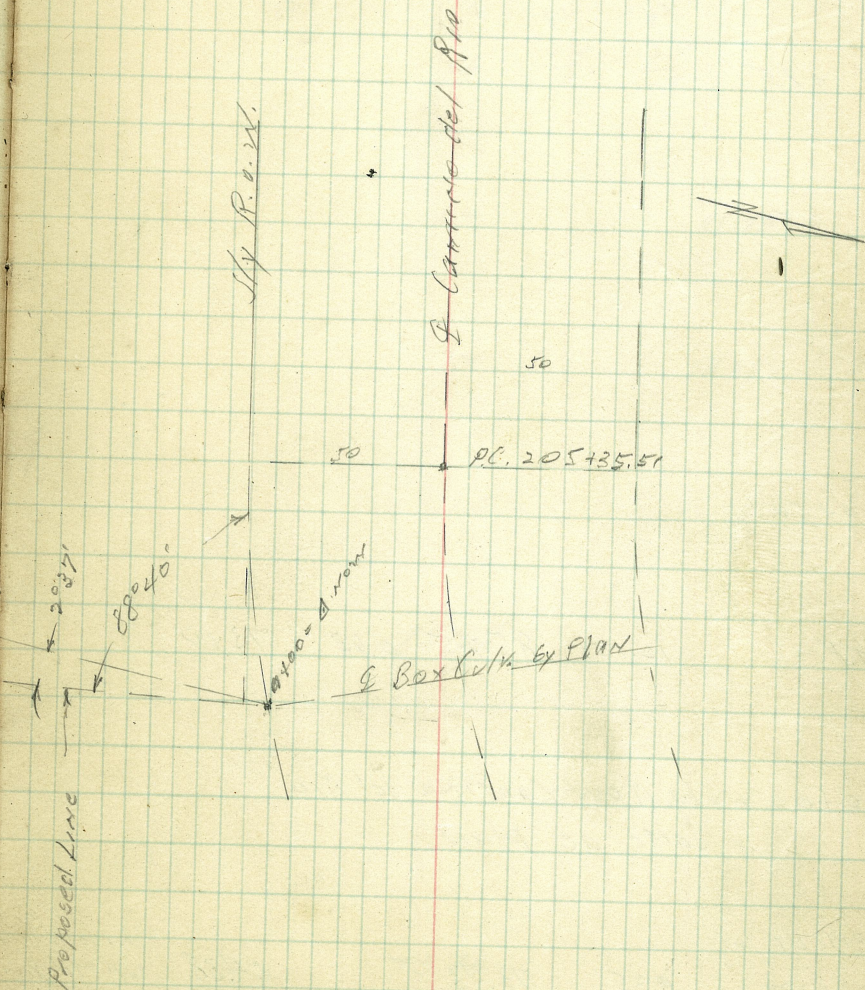
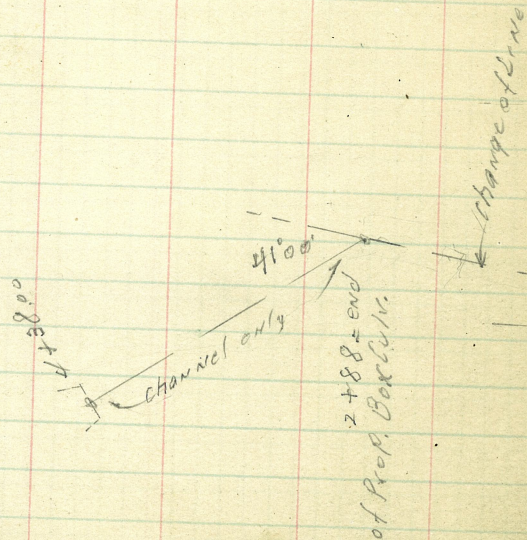


indexed  
c.s.K.

Change of Line of Box Culv.  
THRU LOT 7 P.L. 1113, H.M. Videaux

0400 = Sly ROW, Line of Camino del Rio  
99 2270 B

x sec on P. 85



Moore  
12-16-38

34

2

+90

+85

+50

1

0+50

T.P. 12.15 85.25 0.63 73.10

0+00 = Sky Row Camino del Rio  
= same as plan

B.M. LT. of

206+30

9.35

73.73

Camino  
del Rio.

64.38

chisel cross  
top M.M. Riv.

47

85.2

$$\frac{0.1}{10}$$

84.5

$$\frac{0.8}{10}$$

85.2

$$\frac{1.0}{5}$$

84.5

$$\frac{0.8}{5}$$

83.7

$$\frac{1.8}{10}$$

Z

Culv.

$$\frac{83.6}{1.7}$$

82.9

$$\frac{2.4}{10}$$

83.7

$$\frac{1.6}{10}$$

RT

82.6

$$\frac{1.7}{10}$$

82.9

$$\frac{2.4}{10}$$

82.7

$$\frac{2.6}{5}$$

82.7

$$\frac{2.0}{10}$$

8.4

81.85

7.2

78.05

11.5

73.75

85.25

3.59 on stub 70.14

73.73

2496

2495

2488 on 3/7 of  $\Delta$  end box  
beg. channel

2465

2450

2443

2415

2410

TP

12.55 97.67 0.18 85.07  
85.25

89.0  
86.91.3  
63

88.8

90.7

91.2

91.2

8.8  
66.9  
2

6.4

6.4  
10

87.1

88.2

88.6

89.2

10.5  
69.6  
11

9.0

8.4  
10

89.0

86.7

86.6

87.0

8.6  
510.9  
3

11.0

10.6  
10

88.5

88.5

86.3

86.3

91.

9.1  
211.5  
211.3  
10

86.2

11.4

5.7

84.4

84.4

84.4

11.9  
1013.2  
3

13.2

13.2  
1097.67  
3

4737 end channel

432

430

4400

T.P. 8.03 105.20 0.45 97.17

450

435

420

3415

97.62

97.7

75

97.7

75

100.0

5.2

97.9

73

105.20  
2

95.5

2.1

94.7

2.9

92.2

5.4

90.0

7.0

97.62  
4

37

↑  
10' out same  
as center

Camino Del Rio  
Box Culvert. #28 61'X60" Outside

33































Levels on Mud Sills Officers  
 Barn N. side Camino Del Rio

42.8  
 Floor of  
 Raised portion

BM.	4.54	47.34	47.00	47.34
S.E. Cor Barn bottom 3" Sill			5.57	41.77
s. side Barn 16.2. of W. side	"	"	5.80	41.54
S.W. Cor Barn Bottom 3" Sill			6.25	41.09
E. Side of Barn				
S.E. Cor Raised Floor Bottom E. End 3" Sill			6.18	41.16
6.4 N of above	"	"	6.28	41.06
6.7 N of "	"	"	6.58	40.76
{ 6.43 " " "	"	"	6.88	40.46
{ N.E. Cor Raised floor	"	"	7.80	39.54
N.E. Cor Barn	"	"		
T.P.				
	3.12	42.93	7.53	39.81
25. E. of N.W. Cor., bottom of 3" Sill			3.50	39.43
N.W. Cor			4.15	38.78
N.W. Cor Raised floor - bottom of 3" Sill			3.57	39.36
6.3 S. of above	"	"	3.16	39.77
6.75 " " " " " "	"	"	3.00	39.93
6.45 " " " " " "	"	"	2.83	40.10
{ S.W. Cor Raised floor				

ctr to ctr

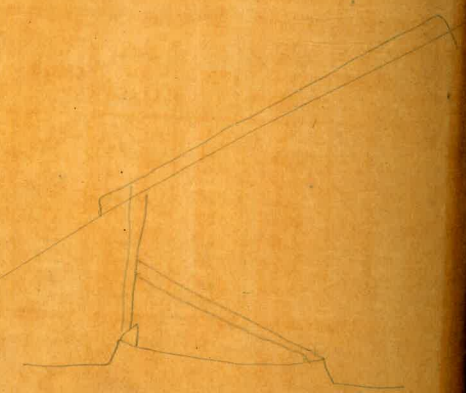
ctr to ctr

W. H. Boland 3945 Alameda Drive W. 20' lot 20  
Easement for Drain Easterly 2.0 of the West 20' of Lot 10

$289.03$   $295.97$   
 $3.87$   $292.90$   $14$   
 $292.90$   $6.93$   $17$   
 $291$   $20 = \frac{4}{15}$   $\frac{77}{14}$   
 $1.6$   $13.5$   $5.5$   $1.03$   
 $12$   $381$   $321$   $22.7$   
 $89.0$   $709$   $39.78$   $30.38$   
 $45.78$   $64.5$   $7.214$   
 $89.5$   $72.18$   $79.14$   
 $17.32$   $63.14$   
 $72.14$   $15.$   $14.5$   
 $16.$   $22.1$   $12.0$   
 $10.5$   $19.5$   $32.0$   
 $100.68$   $18.0$   $100.0$   
 $5.15$   $18.0$   $100.0$   
 $107.11$   $14.$   $100.0$   
 $64$   $663$   $340$   
 $67$   $25$   $25$   
 $71$   $684$   $214$

Sheridan & Lyndon Alameda 259.04  
 Dickenson & Front SE Top Hydrant 289.76

$298.75$   
 $289.76$   
 $9.00$   
 $75.4$   
 $25$   
 $80$



Published by H. S. CROCKER COMPANY, Stationers, Drawing Materials, and Mathematical Instruments, San Francisco.

Table showing the difference of latitude and departure in running 80 chains at any course from 1 to 60 minutes.

MINUTES.	LKS.	MINUTES.	LKS.	MINUTES.	LKS.
1	21 1/2	21	49	41	95 1/2
2	4 1/2	22	51 1/2	42	98
3	7	23	53 1/2	43	100 1/2
4	9 1/2	24	56	44	102 1/2
5	11 1/2	25	58 1/2	45	105
6	14	26	60 1/2	46	107 1/2
7	16 1/2	27	63	47	109 1/2
8	18 1/2	28	65 1/2	48	112
9	21	29	67 1/2	49	114 1/2
10	23 1/2	30	70	50	116 1/2
11	25 1/2	31	72 1/2	51	119
12	28	32	74 1/2	52	121 1/2
13	30 1/2	33	77	53	123 1/2
14	32 1/2	34	79 1/2	54	126
15	35	35	81 1/2	55	128 1/2
16	37 1/2	36	84	56	130 1/2
17	39 1/2	37	86 1/2	57	133
18	42	38	88 1/2	58	135 1/2
19	44 1/2	39	91	59	137 1/2
20	46 1/2	40	93 1/2	60	140

TABLE FOR RUNNING ON SLOPES.

In the following table the first column shows the angle, the second the number of links to be added to a chain on the slopes, to make one chain, horizontal measurement.

ANGLE	COR. IN LINKS	ANGLE	COR. IN LINKS	ANGLE	COR. IN LINKS	ANGLE	COR. IN LINKS
0		0		0		0	
4	0.24	11	1.88	18	5.14	25	10.54
5	0.33	12	2.24	19	5.76	26	11.26
6	0.55	13	2.63	20	6.42	27	12.24
7	0.76	14	3.06	21	7.11	28	13.37
8	0.98	15	3.53	22	7.85	29	14.34
9	1.24	16	4.02	23	8.64	30	15.47
10	1.55	17	4.56	24	9.47	35	22.07