

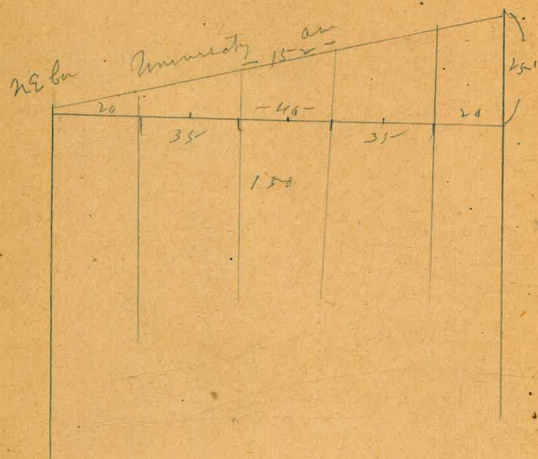
F.B.
834

LEVEL BOOK.

No. 410

MICROFILMED

DEC 15 1964



along X sec of Park Blvd (150)
 7th N 1/2 of University to N 1/2 of El Cajon
 show with 40' Parking in center
 6-26-14

00 I

.675 322.86 315.91 Bm Shil N N Univ & P.B

Original	N 1/2 of University	(152)
W 2	74	315.5
bb	87	314.2
bb	87	314.2
W 6	83	314.6
bb	72	315.7
b	64	316.5
bb	55	317.4
eb	54	317.5
bb	52	317.3
eb	(48)	318.1
	(30)	319.9

32286

25' on W NE corner S

EL		48.0 3.2	318.1
lh		4.8	318.1
EL		5.3	317.6
lh		5.2	317.7
l		6.4	316.5
lh		7.4	315.5
WL		8.1	314.8
lh		9.0	313.9
WL	+18'	8.2	314.7
WL		9.3	313.6

50' on W NW corner

WL		9.2	313.7
lh	+1'	8.4	314.5
lh		8.9	314.2
WL		8.4	315.5
lh		6.7	316.2
l		5.7	317.2
lh		4.5	318.4
EL		4.5	318.4
lh		5.0	317.9
EL		2.6	320.3

32286

Park Blvd

2

75' on W NW corner

EL		1.8	321.1
lh		3.5	319.4
EL	+2'	4.7	318.2
EL		4.2	318.7
lh		3.9	319.0
l		4.7	318.0
lh		6.1	316.8
WL		7.1	315.8
lh		8.3	314.6
WL		8.6	314.3

100' on W NW corner

WL		8.6	314.3
lh	+1'	7.4	315.5
lh		8.0	314.9
WL		6.7	316.2
lh		5.5	317.4
l		4.4	318.5
lh		3.4	319.5
EL		3.8	319.1
lh		3.2	319.7
EL		1.2	321.6

322.86

	125'	n of	Univ	an
E L			07	322.2
ll			23	320.6
			3.2	319.7
E b			31	319.8
ll			27	320.2
b			37	319.2
ll			51	317.8
W b			62	316.7
ll			73	315.6
W L			70	315.9
	150'	n of	Univ	an
W			65	316.4
ll			65	316.4
W b			56	317.3
ll			4.5	318.4
b			31	319.8
ll			20	320.9
E b			24	320.5
	+15		26	320.3
ll			20	320.9
			08	322.1
			05	322.4
E			+17	324.5

322.86

Park Island

	175'	n of	Univ	an
E			00	322.29
ll			06	322.3
			2.5	320.4
E b			16	321.3
ll			11	321.8
b			23	320.6
ll			35	319.4
W b			51	317.8
ll			56	317.3
W			58	317.1
	200'	n of	Univ	an
W			51	317.8
ll			48	318.1
W b			44	318.5
ll			29	320.0
b			15	321.4
			1.22	321.44
ll			55	322.5
E b			60	322.0
			60	322.0
			20	321.0
ll			48	322.2
E			28	325.2

69

327.99

	225'	n f	Ann	an
E			27	325.3
h			36	324.4
			57	322.3
cb			53	322.7
h			47	323.3
l			61	321.9
h			76	320.4
wb			84	319.2
h			96	318.4
W			92	318.8

	250	n f	Ann	an
W			84	319.6
h			87	319.3
wb			78	320.2
h			71	320.9
l			55	322.5
h			40	324.0
cb			42	323.8
			49	323.1
h			44	323.6
E			23	325.7

327.99

Paul Blum

4

	275'	n f	Ann	an
E			14	326.6
			26	325.4
h			28	325.2
			40	323.5
cb			37	324.3
h			35	324.5
l			47	323.3
h			63	321.7
wb			72	320.8
h			78	320.2
W			74	320.6

	300'	n f	Ann	an
W			72	320.8
h			69	321.1
wb			67	321.1
h			59	322.1
l			43	323.7
h			31	324.9
cb			34	324.6
			27	324.3
h			22	325.8
			19	326.1
E			05	327.5

327.99

325' n 6' Wmi am

E		0.0	328.0
	+3'	1.3	326.7
H		2.9	325.1
El		3.3	324.7
hh		4.7	325.3
b		4.0	324.0
th		5.4	325.6
Wb		6.3	321.7
th		7.0	321.0
W		6.5	321.5

350' n 6' Wmi am

W		7.0	321.0
	+5'	5.8	322.2
th		6.2	321.8
Wb		5.5	322.5
th		4.7	323.3
b		3.3	324.7
th		2.3	325.7
El		2.8	325.2
	+15'	2.6	325.4
th		1.5	326.5
	+17'	1.0	327.0
E		+0.2	328.2

327.99

Park Blvd

5

375' n 6' Wmi am

E		0.0	328.0
H		2.0	326.0
El		2.4	325.6
hh		1.8	326.2
b		2.7	325.3
th		4.0	324.0
Wb		4.9	323.1
th		5.5	322.5
	+17'	5.2	322.8
W		6.1	321.9

400' n 6' Wmi am

W		4.5	323.5
th		4.7	323.3
Wb		4.2	323.6
th		3.5	324.5
b		2.2	325.8
th		1.3	326.7
El		1.8	326.2
	+15'	2.2	325.8
th		1.3	326.7
E		0.0	328.0

327.99

	425'	mg	Ami	an
E			+03	328.8
			03	327.7
ll			14	326.6
Elb			16	326.4
ll			08	327.2
b			15	326.5
ll			27	325.1
ml			36	326.4
ll			44	323.6
w			44	323.8

	450'	mg	Ami	an
w			37	324.9
ll			34	326.6
ml			32	326.8
ll			20	326.0
b			09	327.1
	TP	636	083	327.6
ll			59	327.6
Elb			65	327.0
ll			67	326.8
E			48	328.7

333.52

Part 6

6

	475'	mg	Ami	an
E			45	329.5
ll			61	327.4
Elb			63	327.2
ll			55	328.0
b			60	327.5
ll			70	326.5
ml			81	325.4
ll			82	325.3
w			79	325.6

	500'	mg	Ami	an
w			74	326.1
ll			74	326.1
ml			77	325.8
ll			66	326.9
b			55	328.0
ll			52	328.3
Elb			58	327.7
			63	327.2
ll			57	328.4
			46	328.9
E			36	329.9

33352

525' n of Univ an

E	33	330.2
+3'	42	329.3
h	51	328.3
eb	56	327.9
hh	47	328.8
b	49	328.6
h	61	327.4
wb	68	326.7
h	70	326.5
w	69	326.6

550' n of Univ an

w	59	327.6
h	59	327.6
wb	64	327.1
h	56	327.9
c	45	329.0
h	44	329.1
eb	49	328.6
h	48	328.7
e	34	330.1

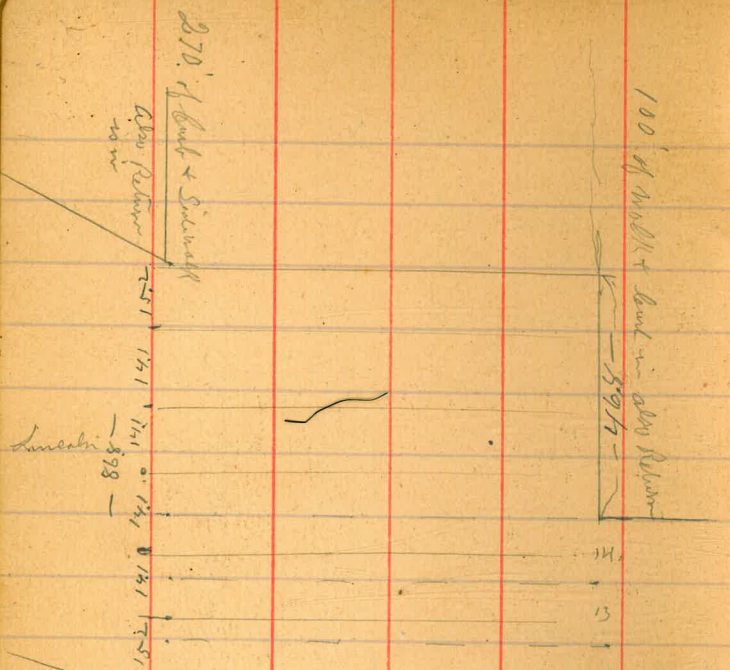
33352

Park Blvd

575' n of Univ an	E	30	330.5
	h	46	328.9
	eb	45	329.0
	h	40	329.5
	b	39	329.6
	h	50	328.5
	wb	56	327.9
	h	55	328.0
	w	55	328.0

600' n = S 2' of Lincoln an (50')

w	47	328.8
h	47	328.8
wb	50	328.5
h	45	329.0
b	33	330.2
h	33	330.2
eb	38	329.7
h	32	330.3
e	21	331.4
	133	330.2



S. side of Lincoln St

	4.81	332.01	332.00	33m Lincoln
E			55	331.5
H			66	330.4
E6			70	330.0
H			67	330.3
L			66	330.4
H			77	329.1
M6			82	328.8
H			87	328.3
x			78	329.2
	S	1/4 of	Lincoln St	
w			75	329.5
M6			82	328.8
M6			80	329.0
H			76	329.4
L			64	330.6
H			65	330.5
E6			67	330.3
H			63	330.7
E			57	331.3

114
13
13
13
14

337.01

Center of Lincoln = 52 Lincoln W

E	53	331.7
hh	59	331.1
eb	63	330.7
hh	62	330.8
b	61	330.9
hh	74	329.6
wh	77	329.3
hh	75	329.5
W	72	329.8

W 146 Lincoln on E

W	70	330.0
hh	72	329.8
wh	73	329.7
hh	68	330.2
b	58	331.2
hh	61	330.9
eb	59	331.1
hh	56	331.4
E	53	331.7

337.01

Park 132a

Sbb of Lincoln on W

9

W	80	329.0
hh	72	329.8
wh	73	329.7
hh	68	330.2
b	58	331.2
hh	61	330.9
eb	59	331.1
hh	56	331.4
E	53	331.7

Nbb of Lincoln on E (on level 6h)

E	49	332.1
hh	54	331.6
eb	56	331.4
hh	58	331.2
l	56	331.4
hh	65	330.5
wh	67	330.3
hh	67	330.3
W	73	329.7

33701

5 1/4 of Lincoln on W

E	49	332.1
bl	54	331.6
EB	52	331.4
ll	58	331.2
l	56	331.4
tl	65	330.5
wt	67	330.3
bl	67	330.3
w	73	329.7

2/3 of Lincoln on E

w	65	330.5
tl	63	330.7
wt	65	330.5
bl	63	330.7
l	53	331.7
tl	54	331.6
EB	53	331.7
bl	on bank	48 332.2
l	on sidewalk	45 332.5

33701

Parker

center of Lincoln on W

10

w	65	330.5
tl	63	330.7
wt	65	330.5
bl	63	330.7
l	53	331.7
tl	54	331.6
EB	53	331.7
tl	48	332.2
E	45	332.5

2 1/4 of Lincoln on W

E	37	333.3
tl	on bank	47 332.3
wt	on bank	54 331.3
EB	50	332.0
tl	48	332.2
l	48	332.2
tl	59	331.1
wt	60	331.0
tl	59	331.1
w	59	331.1

	N	bl of Lincoln or W	
	Butter	56	331.4
W	on bank	50	332.0
H		54	331.6
W6		57	331.3
H		56	331.4
L		46	332.4
H		48	332.2
E6		48	332.2
H	Butter on bank	52	331.8
		45	332.5
E	on walk	38	333.2

N line of Lincoln on W
= 46.8' n of Lincoln on E

E		32	333.8
H	on bank	43	332.7
	Butter	49	332.1
E6		45	332.5
H		45	332.5
L		44	332.6
H6		52	331.6
W6		54	331.6
H	on bank	50	332.0
W	on walk	47	332.3

25' n of Lincoln on W L

655

33875

33210

Bm

E		51	333.7
H	on bank	59	332.9
	Butter	64	332.4
E6		60	332.8
H		58	333.0
L		56	333.2
H		65	332.3
W6		68	332.0
H	Butter on bank	71	331.7
		64	332.4

W side walk

50'

n of

Lincoln

W	side walk	60	332.8
H	on bank	60	332.8
	Butter	67	332.1
W6		66	332.2
H		59	332.9
L		52	333.6
H		55	333.3
E6		58	333.0
H	Butter on bank	61	332.7
		52	333.2
L	End of bank is 3' n of this line		

33875

	25'	n of	Lincoln	
E			47	334.1
lh			55	333.3
El			56	333.2
lh			53	333.5
b			47	334.1
lh			55	333.3
wb			59	332.9
lh	Butte or lh		62 57	332.6 333.1
W	Sid walk			

100' n of Lincoln

W				
lh	with Butte		54 58	333.4 333.0
wb			56	333.2
lh			48	334.0
b			42	334.6
lh			50	333.8
El			52	333.6
lh			52	333.6
E			45	334.3

33875

Pink Blvd

125' n of Lincoln on 12

E			44	334.4
lh			51	333.7
El			50	333.8
lh			47	334.1
b			37	335.1
lh			43	334.5
W			50	333.8
lh	Butte on bank		54 50	333.4 333.8
W	S-W			

150' n of Lincoln

W				
lh	on bank Butte is full		46	334.2
wb			43	334.5
lh			39	334.9
b			33	335.5
lh			42	334.6
El			50	333.8
lh			49	333.9
E			40	334.8

33875

175' n of Lincoln

E	E		38	335.0
lh	lh		50	333.8
El	El		47	334.1
lh	lh		40	334.8
b	b		30	335.8
lh	lh		37	335.1
Wb	Wb		40	334.8
lh	lh	on bush	44	334.6
W	W	S-W		

200' n of Lincoln

W	W	SW	28	
lh	lh	on bush	38	335.0
Wb	Wb		37	335.1
lh	lh		34	335.4
b	b		28	336.0
lh	lh		38	335.0
El	El		45	334.3
lh	lh		45	334.3
E	E		38	335.0

33875

Park Blvd

225' n of Lincoln 13

E			38	335.0
lh			45	334.3
El			42	334.6
lh			37	335.1
b			26	336.2
lh			33	335.5
Wb			36	335.2
lh		on bush	35	335.3

W S-W

250' n of Lincoln

W		SW	bush ends 270	n of Lincoln
lh		on bush	32	335.6
Wb			35	335.3
lh			31	335.7
b			23	336.5
lh			35	335.3
El			40	334.8
lh			40	334.8
E			34	335.4

33875

	275	n f	Lincoln	
E			31	335.7
hh			36	335.2
Eb			36	335.2
hh			32	335.6
b			21	336.7
hh			18	336.0
Wb			32	335.6
hh			32	335.6
W			28	336.3
	300	n f	Lincoln	
W			23	336.5
hh			30	335.8
Wb			30	335.8
hh			27	336.1
b			19	336.9
hh	TP	610	180	334.75
			22	335.8
Eb			24	335.6
hh			28	335.2
E			22	335.8

34305

Paul Blvd

	325	n f	Lincoln	14
E			67	336.3
hh			73	335.7
Eb			73	335.7
hh			70	336.0
b			60	337.0
hh			64	336.6
Wb			69	336.1
hh			70	336.0
W			62	336.8
	350	n f	Lincoln	
W			59	337.1
hh			64	336.6
Wb			64	336.6
hh			60	337.0
b			58	337.2
hh			67	336.3
Eb			22	335.8
hh			22	335.8
E			70	336.0

34305

375 n f Lincoln W

E	65	336.5
H	72	335.8
El	72	335.8
H	65	336.5
L	56	337.4
El	57	337.3
W	62	336.8
El	64	336.6
W	54	337.6

400 n f Lincoln W

W	49	338.1
El	60	337.0
W	60	337.0
H	53	337.7
L	53	337.7
H	62	336.8
El	68	336.2
H	70	336.0
E	63	336.7

34305

425 n f Lincoln

E	62	336.8
H	70	336.0
El	66	336.4
H	59	337.1
L	50	338.0
H	50	338.0
W	54	337.6
H	57	337.3
W	48	338.2

453 n = Ed Center St on W S

W	45	338.5
El	50	338.0
W	50	338.0
El	46	338.4
L	45	338.5
H	55	337.5
El	64	336.6
H	65	336.5
E	60	337.0

225

34080

a full plate

Pair B. Bird

15

34541

100 n f = 826 Park - E

E	70	338.4
H	74	338.0
El	72	338.2
H	67	338.7
b	55	339.9
H	52	340.2
Wb	55	339.9
H	56	339.8
W	53	340.1

24 m. n. s. m. center of center

E	70	338.4
H	74	338.0
El	72	338.2
H	67	338.7
b	55	339.9
H	52	340.2
Wb	55	339.9
H	56	339.8
W	53	340.1

34541

Park Blvd

366 f Park v

11

W	51	340.3
H	53	340.1
Wb	53	340.1
H	50	340.4
b	50	340.4
H	65	338.9
El	72	338.2
H	73	338.1
E	67	338.7

5 14 f Park v

E	72	338.2
H	73	338.1
El	70	338.4
H	64	339.0
b	52	340.2
H	48	340.6
Wb	57	340.3
H	50	340.4
W	54	340.0

34541

Center of Park

W	5.2	340.2
W	5.0	340.4
Wb	5.0	340.6
W	4.7	340.7
b	5.2	340.2
W	6.2	339.2
El	6.7	338.7
W	7.0	338.4
E	6.7	338.7

W 1/4 of Center

W	5.2	340.2
W	5.0	340.4
Wb	5.0	340.6
W	4.7	340.7
E	5.2	340.2
W	6.2	339.2
El	6.7	338.7
W	7.0	338.4
E	6.7	338.7

34541

Park Band

18

N 1/4 of Park

E	7.0	338.4
W	7.0	338.4
El	6.6	338.8
W	5.9	339.5
b	5.0	340.4
W	4.5	340.9
Wb	4.9	340.5
W	4.9	340.5
W	5.2	340.2

N 1/4 of Park

W	5.4	340.0
W	4.7	340.7
Wb	4.6	340.8
W	4.4	341.0
b	4.8	340.6
W	5.7	339.7
El	6.5	338.9
W	7.0	338.4
E	6.3	339.1

345.41

W side of Center St

W	54	340.0
H	47	340.7
W	46	340.8
H	44	341.0
L	48	340.6
H	57	339.7
El	65	338.9
H	70	338.4
E	63	339.1

N side of Park

E	58	339.6
H	66	338.8
El	62	339.2
H	58	339.6
L	47	340.7
H	42	341.2
W	316	341.8
H	45	340.9
W	53	340.1
W	45	340.9

+15 - 200

Park Blvd

17.7' x 1 2 1/2 Park =
S side of Campus (86.8)

615

3415.03

338.88 Bm Park + Park Bl

19

E	58	339.2
H	58	339.2
El	57	339.3
H	52	339.8
L	42	340.8
H	37	341.3
W	41	340.9
H	45	340.5
W	48	340.2
H	40	341.0
W	37	341.3

+15 = 11.0' on bank

W side of Center St 6' top of S side of campus
elevation same as above

(13.2)	S	1/2 of	bam pins
W			4.0 341.0
			4.5 340.5
H			4.5 340.5
Wb			4.0 341.0
bl			3.4 341.6
l			3.8 341.2
ll			4.1 339.9
El			5.6 339.4
ll			5.8 339.2
E			5.4 339.6

14.1	S	1/4 of	bam pins
E			5.0 340.0
ll			5.7 339.3
El			5.6 339.4
ll			5.0 340.0
l			3.7 341.3
ll			3.3 341.7
Wb			3.8 341.2
ll			4.2 340.7
			4.3 340.7

		center of	bam pins
W		3.7	341.3
ll		4.2	340.8
Wb		3.7	341.3
ll		3.1	341.9
l		3.5	341.5
ll		4.6	340.4
El		5.5	339.5
ll	7.6	6.0	339.0
		5.0	340.0
E		5.0	340.0

		N	1/4 of	bam pins
E		5.0	340.0	
ll		5.5	339.5	
El		5.4	339.6	
ll		4.4	340.6	
l		3.8	341.5	
ll		3.9	341.0	
Wb		3.7	341.3	
ll		4.4	340.6	
W		4.0	341.0	

	N	lb of	Campus	
				42
				34
				36
				42
				34
				29
				33
				42
				53
				54
				50

	N	lb of	Campus	
				47
				54
				51
				41
				31
				24
				31
				40
				22
				32
				315

596

34784

341.8

341.88

	N	lb of	Campus	
				55
				57
				65
				58
				54
				57
				66
				76
				81
				79

	N	lb of	Campus	
				67
				80
				74
				61
				53
				53
				56
				62
				53
				57

34784

75 n f campus

W		4.9	342.9
lh		5.2	342.6
Wb	Sub	5.2	342.2
		5.3	342.5
lh		5.0	342.8
b		5.3	342.5
H		5.7	342.1
El		6.6	341.2
H		7.9	339.9
E		7.5	340.3

100 n f campus

E		7.3	340.5
H		7.6	340.2
El		7.1	340.7
lh		5.8	342.0
b		5.3	342.5
lh		4.8	343.0
Wb		5.7	343.7
H		5.2	342.6
W		4.5	343.3

34784

Park Blvd

22

125 n f campus

W		4.4	342.4
lh		5.4	342.4
W		5.3	342.5
lh		4.7	343.1
b		5.1	342.7
H		5.8	342.0
El		7.0	340.8
H		7.5	340.3
E		7.2	340.6

150 n f campus

E		7.0	340.8
lh		7.3	340.5
El		7.0	340.8
H		6.0	341.8
b		5.7	342.7
lh		4.8	343.0
Wb		5.2	342.6
H		5.4	342.4
W		4.1	343.7

34784

175' n f Campers

W		40	343.8
bl		52	342.6
bl	Enter	58	342.0
Wb		53	342.5
bl		49	342.9
b		52	342.6
bl		60	341.8
cl		69	340.9
bl		71	340.7
E		70	340.8

200' n f Campers

E		71	340.7
bl		69	340.9
El		67	341.1
bl		58	342.0
b		53	342.5
bl		50	342.8
Wb		55	342.3
bl	Enter	58	342.0
bl		51	342.7
W		46	343.2

34784

Park Drive

225' n f Campers

W		38	344.0
bl	+2	45	343.3
bl	Enter	49	342.9
Wb		56	342.2
bl		55	342.3
bl		51	342.7
b		54	342.4
bl		59	341.9
El		66	341.2
bl		69	340.9
E		70	340.8

250' n f Campers

E		68	341.0
bl		69	340.9
El		65	341.3
bl		58	342.0
b		54	342.4
bl		51	342.7
Wb		52	342.6
bl	Enter	57	342.3
bl		48	343.0
bl	197	44	343.4
W		36	344.2

23

34784

275' n f Campus

W	41	343.7
lh	54	342.4
Wb	55	342.3
lh	50	342.8
b	53	342.5
lh	57	342.1
el	65	341.3
lh	72	340.6
E	70	340.8

300' n f Campus

E	73	340.5
lh	72	340.6
el	66	341.2
lh	58	342.0
b	54	342.4
lh	52	342.6
Wb	56	342.2
lh	52	342.2
W	47	342.9
W	40	343.8

+17'

34784

Park Blvd

24

325' n f Campus

W	38	344.0
W	48	342.0
lh	54	342.4
Wb	62	341.6
Wb	60	341.8
lh	52	342.6
b	54	342.4
lh	59	341.9
el	66	341.2
lh	74	340.4
E	75	340.3

350' n f Campus

E	75	340.3
lh	77	340.1
el	70	340.8
lh	61	341.7
b	53	342.5
lh	52	342.6
Wb	58	342.0
Wb	62	341.6
lh	55	342.3
W	47	343.1
W	33	344.5
TP	324	346.93
TP	324	346.93
TP	324	346.93

-entire

+17'

34693

375 n f Campus

W		40	342.9
ll		47	342.2
ll	tr	55	341.4
ll		50	341.9
ll		44	342.5
l		44	342.5
ll		52	341.7
el		62	340.7
ll		70	339.9
E		70	339.9

400 n f Campus

E		70	339.0
ll		70	339.0
ll	tr	77	339.2
el		65	340.4
ll		53	341.6
l		44	342.5
ll		44	342.5
ll		50	341.9
ll	Sub	55	341.4
ll		50	341.9
W		39	343.0

34693

Paul Blau

425 n f Campus

25

W		40	342.9
ll		47	342.2
ll		50	341.9
ll		43	342.6
l		44	342.5
ll		54	341.5
ll		67	340.2
ll	Sub	72	339.3
ll		71	339.8
E		75	339.4

450 n f Campus

E		81	338.8
ll	tr	73	339.6
ll		77	339.2
el		70	339.9
ll		55	341.4
l		45	342.4
ll		45	342.4
ll		57	341.8
ll	Sub	53	341.6
ll		44	342.5
W		40	342.9

34693

475 n of Campus

W	43	342.6
lh	50	341.9
Wb	52	341.7
lh	47	342.2
b	46	342.3
lh	57	341.2
El	70	339.9
lh	80	338.9
E	75	339.4
E	75	339.4

4945 n = S of Howard St on E (80)

E	90	337.9
lh	77	339.0
lh	78	339.1
El	70	339.9
lh	58	341.1
b	47	342.2
lh	46	342.3
Wb	54	341.5
lh	52	341.7
lh	46	342.3
W	42	342.7

34693

Park Blvd

S of Howard

20

W	43	342.6
lh	48	342.1
Wb	56	341.3
lh	54	341.5
lh	47	342.2
b	47	342.2
lh	58	341.1
El	71	339.8
lh	82	338.7
E	80	338.9

10' S of Park

E	82	338.7
lh	82	338.7

34693

S 1/4 of Howard

E	96	337.3
lh	93	337.6
El	72	339.7
lh	58	341.1
l	47	342.2
lh	47	342.2
wb	53	341.6
sh	54	341.5
sh	47	342.2
W	43	342.6

114'

center of Howard

W	42	342.7
lh	48	342.1
wb	56	341.3
wb	53	341.6
lh	47	342.2
l	47	342.2
lh	59	341.0
El	73	339.6
lh	88	338.1
E	97	337.2

73'

34693

N 1/4 of Howard

E	96	337.3
lh	87	338.2
El	76	339.3
lh	60	340.9
l	47	342.2
lh	47	342.2
M	53	341.6
sh	54	341.5
sh	48	342.1
W	42	342.7

center

H' of N 1/4

E	82	338.7
lh	83	338.6

P. R. Silva

27

34693

N lb of Howard

W	48	342.1
ll	48	342.1
Wb	56	341.3
ll	59	341.9
ll	47	342.2
l	46	342.3
ll	61	340.8
El	74	339.5
ll	80	338.9
E	84	338.5

N line of Howard

E	83	338.6
ll	81	338.8
El	75	339.4
ll	60	340.9
l	48	342.1
ll	47	342.2
Wb	52	341.7
ll	52	341.7
W	45	342.4

428

34693

425

342.8

End of bank

34696

Park Blvd

End of bank 100 500 University Blvd 34268

25 n of

Howard

28

W	Side wall		
ll	on bank	42	342.8
Wb	cut	50	342.0
ll		51	341.9
ll		47	342.3
l		48	342.2
ll		60	341.0
El		76	339.4
ll		80	339.0
E		80	339.0

50 n of

Howard

E	74	339.4	
ll	79	339.1	
El	75	339.5	
ll	62	340.8	
l	48	342.2	
ll	45	342.5	
Wb	50	342.0	
ll	cut	49	342.1
ll	on bank	42	342.8
W	Side wall		

34696

75' n of Harvard

W		41	342.9
bl	cut	51	341.9
		49	342.1
Wb		44	342.6
bl		47	342.3
b		60	341.0
bl		72	339.8
bl		98	339.2
bl		80	339.0
E		80	339.0

100' n of Harvard

E	Ground	76	339.4
	Top of wall	60	341.0
bl	Ground	76	339.4
	top of bank	64	340.6

25' of wall & bank

34696

Paul Biron

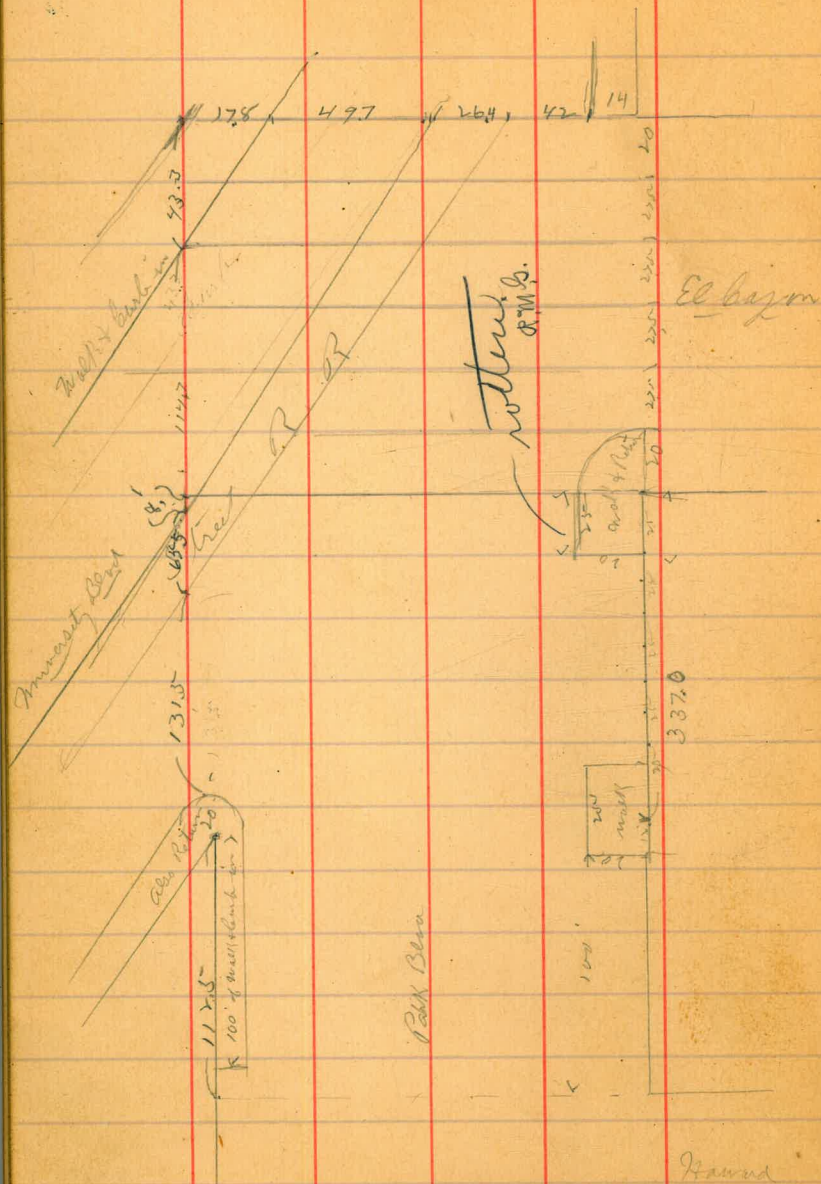
112.5 n of Harvard = Ed of Lower Blk

29

E	Side wall		
bl	a bank	64	340.6
	cut	76	339.4
bl		71	339.9
bl		58	341.2
bl		46	342.4
b		41	342.9
bl		45	342.5
Wb	cut	48	342.2
	on bl	40	342.0
bl			

132.5' n = bank on rd' side

W	on bank		343.00
	cut		342.5



Park Blvd

25' n of University Blvd on W = 1315' **30**

4.14 34682 342.68 TP End of bank

W	4.3	342.5
H	4.4	342.4
M	4.0	342.8
H	4.0	342.8
b	4.5	342.3
H	5.8	341.0
El	7.0	339.8
H	7.3	339.5
C	7.0	339.8
50' n of University Blvd on W		
E	6.7	340.1
H	7.2	339.6
El	6.8	340.0
H	5.6	341.2
b	4.5	342.3
H	4.1	342.7
M	3.8	343.0
H	3.7	343.1
W	3.6	343.2

Round

3468v

	75	n 6	Wms Blind
W			33 343.5
W			37 343.1
Wb			40 342.8
W			41 342.7
b			44 342.4
W			56 341.2
Eb			67 340.1
W			71 339.6
E			71 339.7

100 n 8 Wms Blind

E			70 339.8
W			71 339.7
Eb			64 340.4
W			57 341.6
b			43 342.5
W			41 342.7
Wb			39 342.9
W			34 343.4
W			32 343.6

3468v

Park Blind

31

	125	n 7	Wms Blind
W			31 343.7
W			36 343.2
Wb			37 343.1
W			40 342.8
b			42 342.6
W			50 341.8
Eb			67 340.6
W			67 340.1
E			64 340.4

150 n = 2 E of RR Rail on W

E			61 340.7
W			65 340.3
Eb			60 340.8
W			49 341.9
b			40 342.8
W			37 343.1
Wb			37 343.1
Wb			33 343.5
W			28 344.0

34680

	175'	n of	Wm's	Blvd
W			29	343.9
	+26' = v. E of Road		30	344.1
W		E of Road	31	343.6
W6			36	343.2
W			36	343.2
W			40	342.8
W			47	342.1
W			60	340.8
W			64	340.4
E			66	340.2
	200'	n of	Wm's	Blvd
E			63	340.5
W			66	340.2
W			59	340.9
W			47	342.1
W			38	343.0
W			35	343.3
W6			33	343.5
W	+16.5' = v. S of Road		30	343.8
W			34	343.8
W			28	344.0

34682

Park Blvd

	217' n of Wm's	Blvd	n =
	2' n of Road		
W		29	343.9
	225' n of Wm's	Blvd = S of El Cajon (150)	
W		29	343.9
	+38' = v. n of Road	29	343.9
W	+7' = v. E of Road	30	343.8
W		31	343.7
W		33	343.5
W		38	343.0
W		49	341.9
W		60	340.8
W	on bank	68	340.0
E		64	340.4

25' of well + bank in also Return

34682

	S	ht	El	Bayon (150)
E			68	340.0
h			6.6	340.2
El			5.9	340.9
h			5.1	341.7
b			3.6	343.2
h			3.1	343.7
W	+15.3 = v' E of Rail		3.1	343.7
h				
W	+8.5 = v' W of Rail		3.1	343.7

TP . 5.28 34815 395 342.87 Bm

34815

Park Bm

30

	S	ht of	El	Bayon
W			4.8	343.4
h			4.5	343.7
	+4.2 = v' W of Rail		4.5	343.7
W				
	+13.8 = v' E of Rail		4.4	343.8
h			4.4	343.8
b			4.8	343.4
h			6.5	341.7
El			7.2	341.0
h			8.4	339.8
E			8.2	340.0

center of El Bayon am

E			9.9	338.3
h			8.5	339.7
El			8.3	340.9
h			6.3	341.9
b			4.9	343.3
	+11.4 = v' E of Rail		4.7	343.5
h				
W	+7.1 = v' W of Rail		4.7	343.5
h			4.9	343.3
W			5.4	342.8

348.15

N 1/4 of El Cajon an

W		57	342.3
bl		53	342.9
wb		51	343.1
bl	+98 = 2' w of Rail	51	343.1
b	+195 = 2' E of Rail	58	342.4
b		58	342.4
bl		67	341.5
El		78	340.4
bl		87	339.5
E		100	338.2

N 1/4 + 4.2' = 10' curb of University

W	on curb	57	343.0
wb	in gutter	59	342.3

348.15

Park Blvd

N 1/4 of El Cajon an

34

E		90	338.9
bl		90	339.2
El		81	340.1
bl		70	341.2
b	+9 = 2' E of Rail	66	341.6
bl	+161 = 2' w of Row	58	342.4
bl		55	342.7
wb		55	342.7
bl		58	342.4
W	10' curb on curb = curb on W 2' of University	63	341.9
W	on wall	53	342.9

N 1/4 of El Cajon

W		50	343.2
	+178 = curb on curb	52	342.9
bl	in gutter	58	342.4
bl		58	342.4
wb		59	342.3
bl		59	342.3
b	+125 = 2' w of Rail		
b		72	341.0
bl	+191 = 2' E of Rail	72	341.0
bl		81	340.0
bl		92	339.0
E	20' bl gutter 14' curb in on University on Park Blvd	103	339.9
		91	339.1
		88	339.4

255
 X sect. Spruce from west
 140' west Front

J.P. 1.88 ^{H.I.} 233.83 231.95

West line Front

So. line 1.7 232.1

gutter 1.91 231.92

2.7
 2.4

C 2.2 231.6

2.8

3.0 230.8

cb + 2' 2.3 231.5

no. line 1.7 232.1

25' west

no. line 3.8 230.0

+ 17' 4.1

cb 4.5 229.3

4.4

C 4.1 229.7

4.6

gutter 5.4

4.48 229.35

So line 4.5 229.3

line Front to Aug. 26/12 (leholds Taylor
 note 18' sidewalk on north + 12' gutter
 sidewalk on south 60' street. 35

(break) 41' west

So line 6.1 227.7

gutter 6.12 227.71

6.7

5.7

C 5.4 228.4

5.8

5.9 227.9

5.8

4.8 229.0

cb + 9
 no. line

50' west

no. line 5.3 228.5

no. line 8' 6.7 229.1

6.6 229.2

6.1

C 5.8 228.0

5.8

gutter 7.7

6.67 229.16

So. line 6.7 229.1

75' west

So line	8.2	225.6
gutter	8.12	225.1
	9.1	
	8.1	
C	7.6	226.2
	8.1	
cb.	8.3	225.5
cb + 5'	9.1	
cb + 10'	9.1	
No. line	7.1	226.7

100' west

No line	9.0	224.8
+ 9'	11.4	222.2
+ 14'	11.4	222.1
cb.	9.7	224.1
	10.4	223.6
C	9.3	224.5
	9.6	224.2
gutter	10.1	223.7
cb	9.53	224.30
So line	9.5	224.3

125' west

So line	11.4	222.4
	11.7	222.1
	11.5	222.3
C	11.7	222.1
	12.0	221.8
	13.0	220.8
cb + 3'	14.0	219.8
cb + 9'	14.2	219.6
No line	14.1	219.7

J.P.

0.35 221.56 12.62 221.21

136' west

No. line	4.4	219.2
	3.6	218.0
	1.7	219.7
C	0.8	220.8
	0.9	220.7
	0.9	220.7
So line	0.0	221.6
grade end of bridge	15.2	220.94

221.56

150' west

So line		8.9	212.7
		6.5	215.1
		4.8	216.8
C		5.9	215.7
		6.3	215.3
cb.	top concrete	6.5	215.1
no line	pier	12.6	209.0

160' west

no line		18.0	203.6
		13.1	209.5
		11.7	209.9
C		11.0	210.6
		9.6	212.0
		10.3	211.3
So line		12.8	208.8

37

150' No. 71.

White	4.6	2.9
	5.2	2.3
	4.8	2.7
C	4.6	2.9
	4.7	2.8
	4.6	2.9
Elvis	4.7	2.8

125' No. 71.

Elvis	4.5	3.0
	4.6	2.9
	4.7	2.8
C	4.6	2.9
	4.7	2.8
	5.1	2.4
White	5.0	2.5

100' No. 71.

White	5.2	2.3
	4.7	2.8
	4.7	2.8
C	4.5	3.0
	4.6	2.9
	4.6	2.9
Elvis	4.3	3.2

75' No. 71.

Elvis	4.7	2.8
	4.5	3.0
	4.6	2.9
C	4.5	3.0
	4.6	2.9
	4.5	3.0
White	4.7	2.8

50' No. N.

White
+2'6.8 0.7
4.9 2.6
4.9 2.6

C

4.9 2.6
4.4 3.1
4.9 2.6
4.5 3.0

Elvis

4.0 3.5

25' No. N.

Elvis

3.0 4.5
4.4 3.1
4.8 2.7

C

C+11

4.3 3.2
5.0 2.5
6.4 1.1

White

5.3 2.2
7.1 0.4

North line N Street

White

6.1 1.4

6.3 1.2

6.0 1.5

1/4 + 2'

5.2 2.3
4.2 2.3

4.6 2.9

4.2 3.3

Elvis

4.3 2.2

No. Curb.

Elvis

4.2 3.3

4.5 2.0

4.5 2.0

C

4.3 3.2

5.2 2.3

5.8 1.7

White

6.3 1.2

No. 1/4				No. 1/4		
White		4.9	2.6	White	4.5	3.0
		4.4	3.1		4.2	3.3
		4.6	2.9		3.8	2.7
C		3.9	3.6	C	3.9	3.6
		4.3	3.2		4.4	3.1
		4.0	3.5		4.2	3.3
E line		4.0	3.5	E line	4.3	3.2
	Center				So curb.	
E line		4.3	3.2	E line	4.7	2.8
		4.3	3.2		4.6	2.9
		4.4	3.1		4.4	3.1
C		3.9	3.6	C	4.3	3.2
		4.4	3.1		4.0	3.5
		4.7	2.8		4.8	2.7
White		4.7	2.8	White	4.7	2.8

20. line N. Street

White	4.4	3.1
	4.7	2.8
	4.2	3.3
C	4.3	3.2
	4.7	2.5
1/4+5	4.3	3.2
	6.8	0.7
Elvis	5.5	2.0

25' 20. N.

Elvis	6.1	1.4
	6.7	0.8
	6.4	1.1
1/4+6	4.8	2.7
	4.5	3.0
	6.0	1.5
	6.6	0.9
White	6.1	1.4

50' 20.

White	6.4	1.1
	7.7	-0.2
	6.2	1.3
1/4+7'	4.6	2.9
C	4.5	3.0
C+8'	4.7	2.8
	6.4	1.1
	6.7	0.8
Elvis	5.9	1.6

75' 20.

Elvis	6.1	1.4
	6.5	1.0
	6.2	1.3
1/4+6	4.8	2.7
	4.5	3.0
C+5'	4.4	3.1
	6.5	1.0
1/4+3'	6.5	1.0
	6.9	0.6
White	7.1	0.4

100' 20.

White

6.8 0.7

7.4 0.1

1/4 + 10

8.4 -0.9

6.4 1.1

5.2 2.3

C

5.3 2.2

6.1 1.4

E line

6.0 1.5

125' 20.

E line

6.0 1.5

6.6 + 7

6.0 1.5

4.6 2.9

4.6 2.9

1/4 + 5'

5.0 2.5

6.2 1.3

1/4 + 5'

7.3 0.2

7.4 0.1

White

6.2 1.3

43

1388 40 (Pueblo line)

White

5.6 1.9

5.8 1.7

5.7 1.8

C

5.65 1.9

5.3 2.2

5.1 2.4

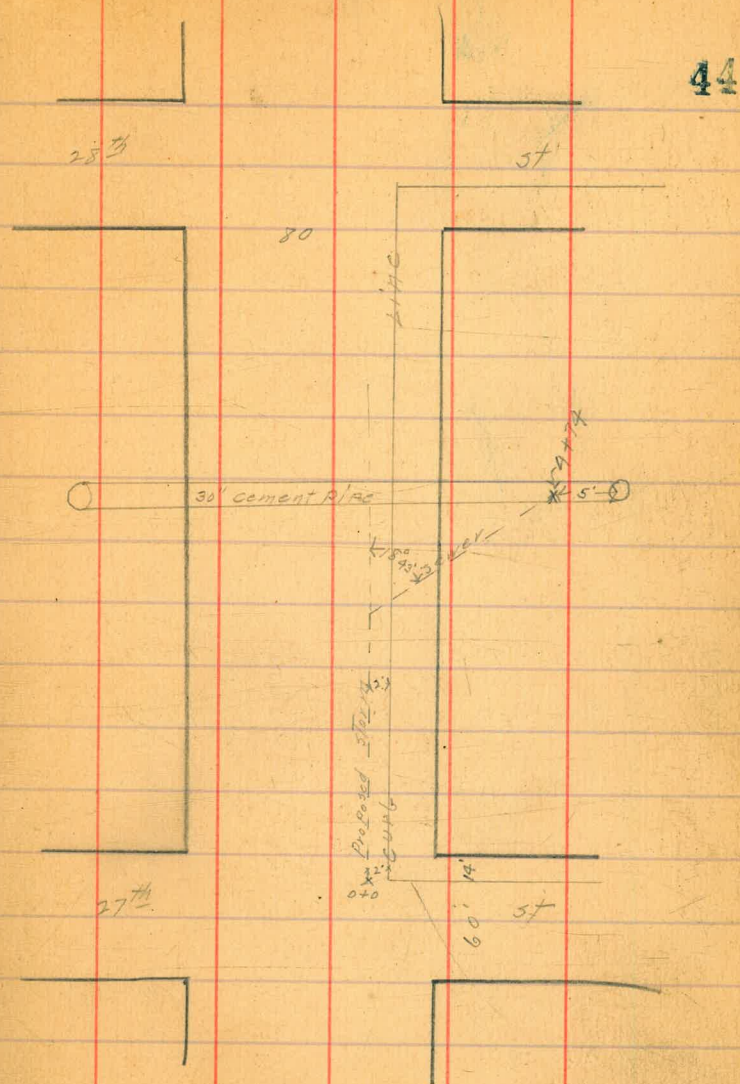
E line

6.1 1.4

Levels for storm sewer see opp page $\frac{3}{4}$ $\frac{1}{15}$ *Summit Evans Run*

B.M. N.W. Brass ply 27 th St			196.97
B.M. 4.53		201.50	
0+0 = E. curb line 27 th St		5.6	195.9
115		5.9	195.6
150		6.0	195.5
225		5.9	195.6
140		5.8	195.7
1425		6.0	195.5
1450		6.0	195.5
1470		5.9	195.6
240		5.9	195.6
2425		5.5	196.0
2450		4.8	196.7
2476 = 209/2 18° 43' R		4.8	196.7
340		5.0	196.5
3425		5.0	196.5
3450		11.3	190.2
3465 ^{IF}	0.53	199.18	12.84
			186.5
			4.1
			185.1
3475		9.0	180.2
3490	0.27	176.68	12.77
			176.91
			3.5
			173.2
440		3.3	173.4
4425		10.3	166.4
4443	0.97	168.75	2.90
			167.78
4450		9.5	159.3
4470		9.6	159.2
		9.9	158.9
4474 = ϕ 30" pipe Top of pipe		6.85	161.90

174
176
178



X-section E 1/2 of Front St (40') from N.L. Palm for
 260' N 14' walk 13' 1/2"

B.M. N.W. B.P. 2nd Quince 263.03

B.M.	2.13	265.16		
T.P.	0.25	252.41	13.00	252.16
T.P.	0.78	241.06	12.13	240.28
T.P.	1.09	229.17	12.98	228.08

0+0 = N.L. Palm

E		2.9	226.3
crb		4.0	225.2
1/4		5.8	223.9
M		6.0	223.2

0+25 N

M		6.1	223.1
1/4		5.6	224.6
crb		4.5	224.7
E		3.5	225.7

0+50

E		4.0	225.2
crb		5.0	224.2
1/4		6.0	223.2
M		7.1	222.1

Page 46

46

0+75

M		8.0	221.2
1/4		6.7	222.5
crb		5.0	224.2
E		3.9	225.3
		1+0	
F		4.6	224.6
crb		7.1	222.1
1/4		7.1	221.2
M		10.2	219.0
+20		13.2	216.0
		1+25	
-20		16.9	212.3
M		13.2	216.0
1/4		11.7	217.5
crb		8.2	221.0
E		6.1	223.1
T.P.	0.42	221.17	8.42 220.75

221.17

1450

E	0.4	220.8
crb	4.2	217.0
1/4	6.8	214.4
M	8.2	213.0
+ 30	15.9	205.3

1475

- 30	20.1	201.1
M	11.5	209.7
1/4	9.0	212.2
crb	6.8	214.6
E	4.1	217.1

240

E	3.9	217.3
crb	8.1	213.1
1/4	11.2	210.0
T.P.	1.82	211.86
M	4.9	207.0
+ 30	16.2	195.7
+ 50	23.8	188.1

211.86

2425

-50	32.0	179.9
-25	22.7	189.2
M	13.5	198.4
1/4	8.2	203.7
crb	3.8	208.6
E	0.1	211.8

2460

E	4.8	207.1
crb	11.2	200.7
T.P.	0.29	199.43
1/4	4.4	195.0
M	10.7	188.7
+25	21.3	178.1
+50	31.8	167.6
T.P.	2.06	197.04
	4.45	194.98

197.04

3+10 to locate toe of slope from 2+60

48

E			3.3	193.7
Crk			2.2	188.8
1/4			13.2	183.8
T. P.	2.06	184.16	12.94	184.10
M			5.5	178.7
+ 40			20.6	163.6
+ 60			17.2	167.0

Section of 31st St, 60' wide, 10' curbs, 10' 1/2's, from No line of Hawthorn
to So line of Juniper.

31st 280.10 Sp4 S.E. Cor 31st & Hawthorn.

+2.16
282.28
-1.19
281.09
-1.10
279.99
-1.10
278.89
-1.10
277.79
+1.10
278.89
+1.10
280.00
+2.16
282.16

Sept 27-12 (Danner,
Starr,
Davine.

	+	HI	-
		280.70	
00= North line of Hawthorn St.			
00 E.L.	6.7	279.1	
cl	6.8	279.0	
1/4	7.5	278.3	
c	7.7	278.1	
1/4	8.3	277.5	
cl	8.3	277.5	
OK L.	7.8	278.0	
+1			
OK L.	7.4	278.4	
cl	7.3	278.5	
1/4	8.2	277.6	
c	7.7	278.1	
1/4	7.5	278.3	
cl	6.1	279.7	
E.L.	6.2	279.6	
+20			
E.L.	5.9	279.9	
cl	6.0	279.8	
1/4	7.0	278.8	

PLOTTED

	+	HI	-
		280.70	
c	6.8	279.0	
1/4	7.2	278.6	
cl	6.8	279.0	
OK L.	7.0	278.8	
+100			
OK L.	6.4	279.4	
cl	6.4	279.4	
1/4	6.1	279.7	
c	6.1	279.7	
1/4	6.0	279.8	
cl	5.6	280.2	
E.L.	5.5	280.3	
+70			
E.L.	5.0	280.8	
cl	5.2	280.6	
1/4	5.5	280.3	
c	5.5	280.3	
1/4	5.7	280.1	
cl	6.0	279.8	
OK L.	6.1	279.7	
+100			
OK L.	5.9	279.9	
cl	5.6	280.2	

PLOTTED

40

	H.I. 280705		31st (60' wide)
1/4		5.4	280.4
c		5.2	280.6
1/4		5.1	280.7
cb		4.9	280.9
B.L. 1+20		4.6	281.2
B.L.		4.5	281.3
cb		4.8	281.0
1/4		4.7	281.1
c		4.9	280.9
1/4		5.0	280.8
cb		5.4	280.4
OK.L. 1+50		5.3	280.5
OK.L.		5.1	280.7
cb		4.7	281.1
1/4		4.6	281.2
c		4.6	281.2
1/4		4.6	281.2
cb		4.4	281.4
B.L. 1+75		4.2	281.6
B.L.		4.0	281.8

PLOTTED

	H.I. 280705		
cb		4.1	281.7
1/4		4.2	281.6
c		4.4	281.4
1/4		4.5	281.3
cb		4.8	281.0
OK.L. 1+50		4.9	280.9
OK.L.		4.2	281.4
cb		4.2	281.6
1/4		3.9	281.9
c		3.8	282.0
1/4		3.7	282.1
cb		3.7	282.1
B.L. 2+20		3.5	282.3
B.L.		3.4	282.4
cb		3.5	282.3
1/4		3.6	282.2
c		3.8	282.0
1/4		3.9	281.9
cb		4.1	281.7
OK.L.		4.4	281.4

PLOTTED

2400

	+	H.I. 280570	-	31st 60 (wide)
OK. 2.			3.9	281.9
cb			4.0	281.8
1/4			3.7	282.1
c			3.5	282.3
1/4			2.9	282.9
cb			2.5	283.3
B.L. 2475			2.8	283.0
B.L.			2.8	283.0
cb			2.9	282.9
1/4			3.0	282.8
c			3.2	282.6
1/4			3.6	282.2
cb			3.5	282.3
OK. 2. 2498			3.5	282.3
OK. 2.			3.3	282.5
cb			3.2	282.6
1/4			3.2	282.6
c			2.6	283.2
1/4			2.4	282.4
cb			2.2	283.6

PLOTTED

H.I.
280575

	+	H.I. 280575	-	
B.L.			2.7	283.1
3+00 = South line of Jay St. 3+00				
B.L.			3.4	282.4
cb			3.8	282.0
1/4			3.8	282.0
c			3.7	282.1
1/4			3.6	282.2
cb			3.8	282.0
OK. 1.			3.7	282.1
#	2.34	290.35	3.74	282.01
00 = North line of Jay St.				
OK. 2.			7.2	283.2
cb			7.3	283.1
1/4			7.4	283.0
c			7.4	283.0
1/4			7.3	283.1
cb			7.3	283.1
B.L. +1			7.1	283.3
B.L.			6.2	282.2
cb			1.5	283.9

PLOTTED

31

HI
290.35

31st (60' wide)

1/4	6.7	283.7
c	6.4	284.0
1/4	6.5	283.9
cb	6.7	283.7
OK. 2. +25	6.6	283.8
OK. 2.	6.5	283.9
cb	6.4	284.0
1/4	6.2	284.2
c	6.2	284.2
1/4	6.1	284.3
cb	6.2	284.2
E.L. +50	5.8	284.6
E.L.	5.8	284.6
cb	5.6	284.8
1/4	5.6	284.8
c	5.8	284.6
1/4	5.9	284.5
cb	6.0	284.4
OK. 2. +70	6.2	284.2
OK. 2.	6.1	284.3

PLOTTED

HI
290.35

52

cb	5.8	284.6
1/4	5.7	284.7
c	5.7	284.7
1/4	5.4	285.0
cb	5.1	285.3
E.L. +100	5.3	285.1
E.L.	5.4	285.0
cb	5.4	285.0
1/4	5.2	285.2
c	5.3	285.1
1/4	5.4	285.0
cb	5.5	284.9
OK. 2. +25	5.7	284.7
OK. 2.	5.4	285.0
cb	5.3	285.1
1/4	5.2	285.2
c	5.2	285.2
1/4	5.1	285.3
cb	5.1	285.3
E.L.	5.2	285.2

PLOTTED

1400

E.L.

cb

1/4

c

1/4

cb

OK. L.

1470

OK. L.

cb

1/4

c

1/4

cb

E.L.

2400

E.L.

cb

1/4

c

1/4

cb

71.2
290.35

3157 (60' wide)

4.6

285.8

4.2

286.2

4.5

285.9

4.8

285.6

5.1

285.3

5.0

285.2

5.1

285.3

4.9

285.5

4.8

285.6

4.6

285.8

4.5

285.9

4.3

286.1

4.5

285.9

4.5

285.9

4.2

286.2

4.2

286.2

4.2

286.2

4.3

286.1

4.5

285.9

4.4

286.0

71.2
290.35

OK. L.

2420

OK. L.

cb

1/4

c

1/4

cb

E.L.

2500

E.L.

cb

1/4

c

1/4

cb

OK. L.

2475

OK. L.

cb

1/4

c

1/4

4.6

285.8

4.5

285.9

4.2

286.2

4.3

286.1

4.0

286.4

3.8

286.6

4.2

286.2

4.1

286.3

4.3

286.1

3.7

286.7

3.6

286.8

4.0

286.4

4.0

286.4

3.9

286.5

3.9

286.5

4.2

286.2

4.0

286.4

3.8

286.6

3.8

286.6

3.7

286.7

PLOTTED

PLOTTED

H.I.
290.35

31st (60' wide)

Section of Kite St, 80' wide, 14' curb, 13' 1/2", from North line of Mainline View, to 160' North of North line of Market St.

By Wm 156.99 Mon NW Cor Sutter & Goldfinch.

Sept 27-12 (Donnot. Share. Devine.)

23.34
- 10.52
249.94
+ 13.97
262.61
+ 0.40
262.81
+ 10.80
273.11 + 112

H.I.
273.14

cl	4.0	286.4
E.L. 2+96	3.9	286.5
E.L.	3.5	286.9
cl	3.5	286.9
1/4	4.3	286.1
c	4.0	286.4
1/4	4.0	286.4
cl	3.8	286.6
M.L. 2+98 = South line of Juniper St.	4.0	286.4
2+98 =		
M.L.	4.1	286.3
cl	4.3	286.1
1/4	4.4	286.0
c	4.3	286.1
1/4	4.6	285.8
cl	4.0	286.4
E.L.	4.1	286.3
#	4.11	286.29

PLOTTED

01 = North line of Mainline View

E.L.	9.6	264.5
cl	8.9	
1/4	8.4	
c	8.1	265.0
1/4	8.1	
cl	8.6	
M.L. 120	7.9	265.2
M.L.	5.5	267.6
cl	6.4	
1/4	6.6	
c	7.0	266.1
1/4	7.2	
cl	7.1	
E.L. +50	6.5	266.6
E.L.	6.1	267.0
cl	5.9	
1/4	6.2	

PLOTTED

H.I.
273.10

Site (80' wide)

c	6.0	267.1
1/4	5.5	
cb	5.1	
Or. L. +75	4.2	268.9
Or. L.	3.6	269.5
cb	4.0	
1/4	4.4	
c	4.9	268.2
1/4	5.2	
cb	4.9	
E.L. +00	5.5	267.6
E.L.	5.3	267.8
cb	5.0	
1/4	4.9	
c	4.5	268.6
1/4	4.0	
cb	3.9	
Or. L. +20	3.5	269.6
Or. L.	3.5	269.6
cb	3.8	

PLOTTED

H.I.
272.14

55

1/2	4.1	
c	4.7	268.4
1/4	4.9	
cb	4.5	
E.L.	5.1	268.0
+40 = South line of Market St. (80' wide)		
1+0		
E.L.	5.1	268.0
cb	4.9	
1/2	4.7	
c	4.8	268.3
1/4	4.2	
cb	3.9	
Or. L.	3.7	269.4
South curb of Market St (80')		
Or. L.	3.5	269.6
cb	4.0	
1/4	4.2	
c	4.7	268.4
1/4	4.9	
cb	5.1	

PLOTTED

	+	H.I. 273.14	-	Site (80' wide)
E.L.			6.1	267.0
North 1/4 of Market St.				
E.L.			6.4	266.7
cb			5.0	
1/4			5.1	
c			4.8	268.3
1/4			4.2	
cb			3.9	
W.L.			3.5	269.6
Center of Market St.				
W.L.			3.3	269.8
cb			3.7	
1/4			4.3	
c			5.0	268.1
1/4			5.3	
cb			6.0	
E.L.			6.3	266.8
North 1/4 of Market St.				
E.L.			7.0	266.1
cb			6.0	

PLOTTED

	+	H.I. 273.14	-	
1/4			5.5	
c			5.2	267.9
1/4			4.2	
cb			3.6	
W.L.			3.2	269.9
North end of Market St.				
W.L.			3.3	269.8
cb			4.0	
1/4			4.5	
c			5.3	267.8
1/4			5.8	
cb			6.2	
E.L.			6.9	266.2
00 = North line of Market St.				
00				
E.L.			6.4	266.7
cb			6.2	
1/4			5.9	
c			5.4	267.7
1/4			4.7	
cb			4.2	

PLOTTED

+ H.I.
273.14

- Site (80' wide)

6			
OK. L.	3.6	269.5	
+25			
OK. L.	3.4	269.7	
cb	4.1		
1/4	5.0		
c	6.0	267.1	
1/4	6.8		
cb	7.4		
E. L.	7.7	265.4	
+30			
E. L.	8.8	264.3	
cb	8.2		
1/4	7.4		
c	6.2	266.9	
1/4	5.0		
cb	4.3		
OK. L.	3.5	269.6	
+75			
OK. L.	3.9	269.2	
cb	4.7		
1/4	5.5		
c	6.9	266.2	
1/4	7.9		

PLOTTED

+ H.I.
273.14

cb	8.5		
E. L.	9.2	263.9	
1400			
E. L.	9.9	263.3	
cb	8.8		
1/4	8.1		
c	7.1	266.0	
1/4	5.8		
cb	4.9		
OK. L.	4.2	268.9	
1720			
OK. L.	3.6	269.5	
cb	4.4		
1/4	5.2		
c	6.5	266.6	
1/4	7.8		
cb	9.1		
E. L.	9.8	263.3	
1440 = South line of alley (20' wide),			
E. L.	9.5	263.6	
cb	8.6		
1/4	7.4		

PLOTTED

HZ
273.14

Site (80' wide)

c	6.1	267.0
1/4	4.8	
cb	4.0	
N.L.	3.2	269.9

1460 = North line of alley.

1460 N.L.	2.9	270.2
-----------	-----	-------

cb	3.5	
1/4	4.4	

PLOTTED

c	5.8	267.8
---	-----	-------

1/4	6.4	
-----	-----	--

cb	7.9	
----	-----	--

E.L.	9.2	263.9
------	-----	-------

#	3.50	269.59 N.W. Cor. of Site & Plot.
---	------	-------------------------------------

58

X-section - showing R.R. cut Harasthy & Kurtz

Harasthy 80' 14' walks 13' 1/2" Kurtz 75' 12' walks 12.75' 1/2"

19' Double
by Ennes
Kerr

B.M. R.R. 3PK N.Y. Hancock & Harasthy

37.68 by Kerr

B.M. 1.36 39.09

T.P. 0.46 29.26 9.69 29.40

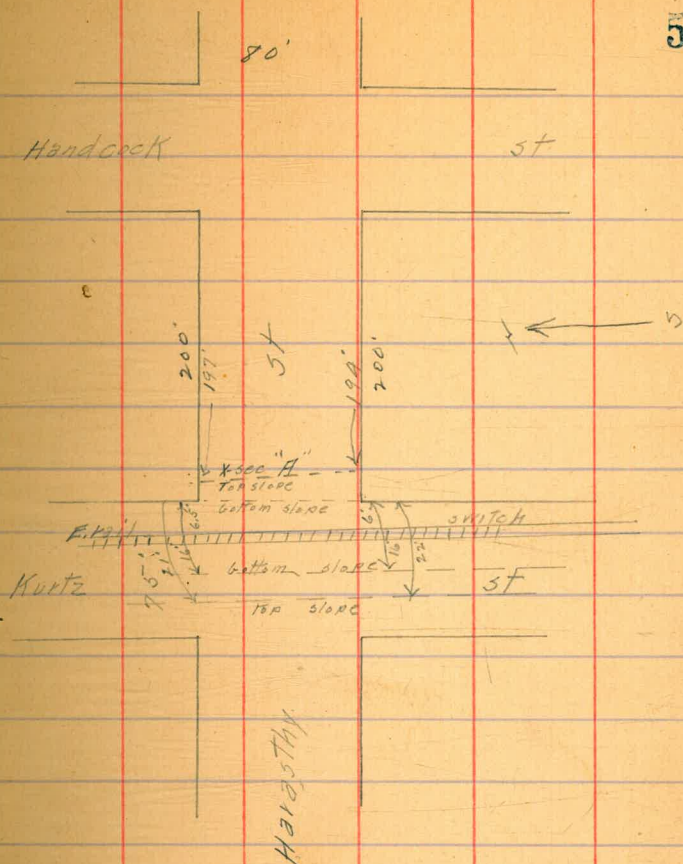
X-sec "A" = 1199 on S 81197 on N from Hancock

S	1.4
crb	1.8
"4	3.3
M	3.3
"4	3.2
crb	3.5
N	3.5

E.L. Kurtz 5F - bottom slope

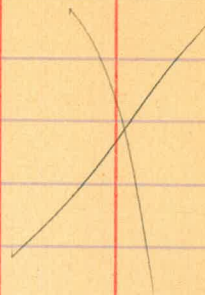
N	7.7
crb	8.1
"4	8.6
M	8.7
"4	8.6
crb	8.7
S	8.8

59



29.86

~~S~~
~~crb~~
~~1/4~~
~~M~~
~~1/4~~
~~crb~~
~~N~~



0+9^S on N & 0+9 on S = 2' E of E. rail

S	8.3
crb	8.4
1/4	8.3
M	8.4
1/4	8.3
crb	8.2
N	8.1

0+6 on S & 0+6^S on N = E. rail

N	
X.L.	7.34
S	
X.L.	7.43

60

E. curb

S	8.3
crb	8.3
1/4	8.4
M	8.3
1/4	8.2
crb	8.2
N	8.2

0+13 on S & 0+13^S on N = 2' W of W rail

N	8.2
crb	8.3
1/4	8.3
M	8.3
1/4	8.3
crb	8.4
S	8.4

0+16 = bottom slope w of Track

5	8.7
erb	8.4
"	8.6
M	8.6
"	8.6
erb	8.5
N	8.4

0+22 on S 8 0+21 on N = top slope w of Track

N	5.0
erb	4.9
"	4.8
M	4.8
"	4.3
erb	4.0
S	3.6

E "A

5	2.2
erb	2.6
"	3.3
M	3.4
"	3.7
erb	4.2
N	4.9

Sec x-section of Harasthy

10 | Along E side of Iowa St (80)
 17 | 7th Univ to N End
 12 | Shaw

361.30

Iowa

62

	678	362.86	356.08	NE @ Univ	50'	n of	Univ	an
	338	361.30	494	357.92			5.4	355.9
				N of University an			5.1	356.2
E			5.4	355.9			5.1	356.2
ll			5.6	355.7			4.5	356.8
4			5.7	355.6			5.4	355.9
l			5.1	356.2		+3'	4.5	356.8
							4.6	356.7
4			5.9	355.4			4.2	357.1
+3			5.0	356.3				
ll			4.6	356.7		75'	n of	Univ an
w			4.6	356.7			4.4	356.9
	25'	n of	Univ an				4.4	356.9
w			4.4	356.9			5.2	356.1
ll			4.9	356.4			4.3	357.0
4			5.4	355.9			5.1	356.2
6			4.5	356.8			4.9	356.4
4			5.2	356.1			5.1	356.2
ll			5.1	356.2				
			5.4	355.9				

361.30

100' n of Univ av

E		4.8	356.5
bl		4.7	356.6
y		5.0	356.3
b		4.4	356.9
y		5.1	356.2
bl	72	4.5	356.8
		4.1	357.2
w		4.0	357.3

125' n of Univ av

w		4.0	357.3
bl	71	4.3	357.0
		4.3	357.0
y		5.0	356.3
b		4.0	357.3
y		4.8	356.5
bl		4.6	356.7
E		4.6	356.7

361.30Dorra

68

150' n of Univ av

E		4.6	356.7
bl		4.4	356.9
y		4.5	356.8
b		3.8	357.5
y		4.6	356.7
bl		3.6	357.7
w		4.0	357.3

175' n of Univ av

w		3.3	358.0
bl		3.7	357.6
y		3.9	357.4
b		3.6	357.7
y		4.4	356.9
bl		4.2	357.1
E		4.0	357.3

36130

	280	n f	Univ	aw
E			4.1	357.2
th			4.1	357.2
			3.6	357.7
7			4.3	357.0
6			2.6	357.7
7			4.2	357.1
th			3.3	358.0
W			2.9	358.4

TP 602 36390 342 35768

	225	n f	Univ	aw
W			5.8	358.1
th			5.8	358.1
7			6.6	357.9
6			5.9	358.0
7			6.6	357.3
th			6.3	357.6
E			6.6	357.3

36390

Iowa

64

	250	n f	Univ	aw
E			6.3	357.6
th			5.8	358.1
			5.8	358.1
7			6.5	357.4
			6.2	357.6
6			5.6	358.3
7			6.3	357.6
th			5.2	358.6
			5.4	357.5
W			5.8	358.1

275 n f Univ aw

			Univ	aw
W			5.3	358.6
th			5.2	358.7
			5.4	358.5
7			6.0	357.9
6			5.1	358.8
7			5.9	358.0
th			5.5	358.4
E			5.6	358.3

36390

300

n b

Wmiv an

E	5,7	358.2
H	5,3	358.6
4	6,0	359.9
6	5,1	358.8
7	5,8	358.1
H	5,3	358.6
W	4,8	359.1

325

n b

Wmiv an

W	4,6	359.3
H	4,5	359.4
4	5,2	358.7
6	5,0	358.9
4	5,5	358.4
H	5,3	358.6
	5,7	358.2

36390

Jowa

65

350

n b

Wmiv an

E	4,9	359.0
4	5,1	358.8
4	4,4	359.5
4	5,3	358.6
6	4,6	359.3
4	5,3	358.6
H	4,5	359.4
H	4,3	359.6
W	4,4	359.5

375

n b

Wmiv an

W	3,8	360.1
H	4,1	359.8
4	4,5	359.4
6	4,2	359.7
4	5,0	358.9
H	5,0	358.9
E	5,3	358.6

36390

	460	n f	Diriv	am
E			48	359.1
bl			45	359.4
y			51	358.8
b			42	359.7
y			48	359.1
bl			42	359.7
W			40	359.9

	425	n f	Diriv	am
W			33	360.6
bl			36	360.3
y			42	359.7
b			37	360.2
y			45	359.4
bl			44	359.5
E			42	359.7

36390

Iowa

56

	450	n f	Diriv	am
E			42	359.7
bl			40	359.9
y			42	359.7
b			36	360.3
y			42	359.7
bl		70'	35	360.4
			33	360.6
W			30	360.9

	475	n f	Diriv	am
W			31	360.8
bl			36	360.3
y			40	359.9
b			34	360.5
y			41	359.8
bl			35	360.4
E			39	360.0

36390

	500	n f	min	av
E			32	360.7
H			34	360.5
Y			39	360.0
L			31	360.8
Y			37	360.2
H			32	360.7
W			27	361.2

525 n f min av

W			26	361.3
H			28	361.1
H	+10'		24	361.5
H			33	360.6
B			26	361.3
Y			34	360.5
H			33	360.6
E			34	360.5

36390

Inva

67

	550	n f	min	av
E			34	360.5
H			32	360.7
Y			32	360.7
L			25	361.4
Y			32	360.7
H		TV	25	361.4
H			26	361.3
W			21	361.8

TP 488 36658 220 361.70

575 n f min av

W			50	361.6
H			50	361.6
H	+10'		53	361.3
Y			58	360.8
L			51	361.5
Y			57	360.9
H			56	361.0
E			58	360.8

36658

600' n = Sd of Lincoln St (80)

E	54	361.2
H	51	361.5
Y	58	360.8
b	53	361.3
4	58	360.8
H	46	362.0
H	46	362.0
W	44	362.2

74'

S of Lincoln

W	43	362.3
H	43	362.3
Y	47	361.9
Y	60	360.6
b	56	361.0
4	63	360.3
H	50	361.6
E	31	363.5

710'

36658

Sowa

68

S 148 Lincoln St

E	48	361.8
H	49	361.7
Y	47	361.9
Y	63	360.3
b	56	361.0
4	60	360.6
H	42	362.4
H	43	362.3
W	40	362.6

76'

75'

center of Lincoln

W	58	360.8
H	59	360.7
Y	62	360.4
b	52	361.4
4	63	360.3
H	66	360.0
E	71	359.5

Cent +6' on E

E

46

36658

N 1/4 of Lincoln

E	5.4	361.2
th	5.2	361.4
y	5.7	361.9
h	5.5	361.1
y	5.4	361.2
th	5.1	361.5
w	5.0	361.6

N 1/4 of Lincoln

w	4.1	362.5
th	4.0	362.6
y	4.8	361.8
h	5.0	361.6
y	5.0	361.6
th	4.3	362.3
77'	4.4	362.2
E	2.8	363.8

36658

Iowa

69

N line of Lincoln

E	4.9	361.7
th	4.6	362.0
y	5.3	361.3
h	4.9	361.7
y	5.2	361.4
th	4.3	362.3
h	4.3	362.3
w	3.9	362.7

25' N of Lincoln

w	4.0	362.6
th	4.5	362.1
y	4.7	361.9
h	4.3	362.3
y	4.9	361.7
th	4.6	362.0
E	4.8	361.8

36658

50' n of Lincoln

E	49	361.9
hh	43	362.3
y	49	361.7
b	42	362.4
y	47	361.9
hh	41	362.5
W	41	362.5

75' n of Lincoln

W	37	362.9
hh	38	362.8
y	48	361.8
b	40	362.6
y	48	361.8
hh	47	361.9
E	47	361.9

36658

Iowa

70

100' n of Lincoln

E	46	362.0
hh	46	362.0
y	48	361.8
b	39	362.7
y	48	361.8
hh	40	362.6
W	37	362.9

125' n of Lincoln

W	39	362.7
hh	41	362.5
y	45	362.1
hh	39	362.7
y	46	362.0
hh	43	362.3
E	43	362.3

36658

150

n f

Lincoln

E	44	362.2
th	42	362.4
7	45	362.1
6	41	362.5
7	44	362.2
th	40	362.6
W	38	362.8

175

n f

Lincoln

W	34	363.2
th	40	362.6
7	44	362.2
6	39	362.7
7	45	362.1
th	45	362.1
E	48	361.8

36658

200

n f

Lincoln

E	47	361.9
th	48	361.8
7	47	361.9
6	39	362.7
7	44	362.2
th	46	363.0
th	38	362.8
W	37	362.9

225

n f

Lincoln

W	38	362.8
th	41	362.5
7	43	362.3
6	40	362.6
7	46	362.0
th	48	361.8
E	50	361.6

Jowa

1

366.58

250' n of Lincoln

E	3.0	361.6
h	4.7	361.9
y	4.5	362.1
l	4.0	362.6
y	4.3	362.3
h	3.3	362.3
w	3.7	362.9

TP 270' 364.93 4.35' 362.23

275' n of Lincoln

w	2.2	362.7
h	2.0	362.9
y	2.6	362.3
l	2.5	362.4
y	2.9	362.0
h	3.1	361.8
E	3.3	361.6

364.93

Towa

72

300' n of Lincoln

E	3.5	361.4
h	3.5	361.4
y	2.9	362.0
l	2.1	362.8
y	2.8	362.1
h	2.0	362.9
h	1.7	363.2
w	2.0	362.9

43'

325' n of Lincoln

w	1.5	363.4
h	1.8	363.1
y	2.6	362.3
l	2.1	362.8
y	3.0	361.9
h	3.5	361.4
E	4.0	360.9

36493

350' n of Lincoln

E	45	360.4
th	36	361.3
γ	31	361.8
h	24	362.7
γ	28	362.1
th	21	362.8
W	20	362.9

375' n of Lincoln

W	18	363.1
th	20	362.9
γ	28	362.1
h	25	362.4
γ	33	361.6
th	37	361.0
h	49	360.0

36493

Iowa

3

400' n of Lincoln

E	54	359.5
th	44	360.5
γ	38	361.1
h	29	362.0
γ	32	361.7
th	24	362.5
W	19	363.0

425' n of Lincoln

W	22	362.7
th	25	362.4
γ	30	361.9
h	40	360.9
h	39	361.5
γ	43	360.6
th	57	359.8
E	60	358.9

36493

450 n f Lincoln

E	6.6	358.3
h	5.7	359.2
y	4.8	360.1
l	4.0	360.9
y	4.4	360.7
h	2.7	362.2
w	2.5	362.4

475 n f Lincoln

w	2.4	362.5
h	3.4	361.5
y	3.9	361.0
l	5.0	359.9
l	4.5	360.4
y	5.4	359.5
h	6.1	358.8
E	7.1	357.8

36493

Ina

74

510 n f Lincoln

E	7.3	357.6
h	6.7	358.2
y	5.9	359.0
l	5.3	359.6
y	5.6	359.3
h	4.0	360.9
w	3.0	361.9

525 n f Lincoln

w	3.0	361.9
h	4.5	360.4
y	5.3	359.6
l	6.1	358.8
l	5.5	359.4
y	6.3	358.6
h	6.9	358.0
E	7.5	357.4

36493

550 n of Lincoln

E	78	357.1
bl	71	357.8
4	69	358.0
6	63	358.6
9	66	358.3
bl	52	359.7
W	40	360.9

575' n of Lincoln

W	50	359.9
bl	57	359.2
7	67	358.2
6	67	358.2
7	72	357.9
bl	73	357.6
E	79	357.0

4,60 361.29

824 356.69

altim
SE of Park
+
Jawa

36129

Jawa

75

600 n = S of Park 11(80)

E	46	356.7
bl	41	357.2
4	39	357.4
6	32	358.1
4	35	357.8
bl	26	358.7
W	21	359.2

S bl of Park

W	25	358.8
bl	31	358.2
4	33	358.0
6	33	358.0
4	42	357.1
bl	44	356.9
E	48	356.5

36129

	S	1/4 of	Palkat	
E			50	356.3
h			46	356.7
y			37	357.6
h			37	357.6
y			30	358.3
h			29	358.4
w			26	358.7

center of Palkat

w			27	358.6
h			31	358.2
y			34	357.9
h			35	357.8
y			43	357.0
h			45	356.8
E			47	356.6

36129

Jura

76

	n	1/4 of	Palkat	
E			54	355.9
h			48	356.5
y			45	356.8
h			38	357.5
y			35	357.8
h			32	358.1
w			28	358.5

N 1/4 of Palkat

w			29	358.4
h			34	357.9
y			35	357.8
h			37	357.4
y			44	356.9
h			50	356.3
E			46	356.7

36129

N Side of Park st

E	48	356.5
hh	49	356.4
y	45	356.8
h	42	357.1
y	36	357.7
hh	34	357.9
w	30	358.3

25' n of Park st

w	33	358.0
hh	37	357.6
y	38	357.5
h.	39	357.4
y	44	356.9
hh	46	356.7
o	49	356.4

36129

Jawa

7

50' n of Park

E	50	356.3
hh	47	356.6
y	46	356.7
h	42	357.1
y	40	357.3
hh	37	357.6
w	35	357.8

75' n of Park

w	37	357.6
hh	40	357.3
y	42	357.1
h	46	357.7
y	49	356.4
hh	52	356.1
e	55	355.8

36129

	100'	n f	Palk	W
E			59	355.4
hh			56	355.7
y			55	355.8
b			52	356.1
y			49	356.4
hh			43	357.0
W			37	357.6

125' n f Palk W

W			45	356.8
hh			47	356.6
y			52	356.1
b			58	355.5
y			65	354.8
hh			61	355.2
E			58	355.5

36129

Dona

'8

	150'	n f	Palk	W
E			50	356.3
hh			56	355.7
y			59	355.4
b			60	355.3
y			56	355.7
hh			52	356.1
W			47	356.6

175' n f Palk

W			47	356.6
hh			50	356.3
y			53	356.0
b			54	355.9
y			59	355.4
hh			59	355.4
E			46	356.7

361.29

	200'	n of	Palk H	
E			4.7	356.6
H			5.4	355.9
Y			5.9	355.4
L			5.4	355.9
Y			5.1	356.2
H			5.2	356.1
W			5.0	356.3

	225'	n of	Palk	
W			5.1	356.2
H			5.2	356.1
Y			5.2	356.1
L			5.2	356.1
Y			5.0	356.3
H			4.9	356.4
E			4.0	357.3

361.29

Jawa

9

	250'	n of	Palk	
E			4.0	357.3
H			4.5	356.8
Y			4.4	356.9
L			4.5	356.8
Y			4.6	356.7
H			4.7	356.6
W			4.8	356.5

	275'	n of	Palk	
W			4.2	357.1
H			4.2	357.1
Y			4.2	357.1
L			3.9	357.4
Y			3.6	357.7
H			3.5	357.8
E			3.8	357.5

TP. 632 364.13 3.48 357.81

36413

300' n f Paek st

E	63	357.8
ll	64	357.7
y	67	357.4
b	64	357.7
y	64	357.7
ll	64	357.7
W	66	357.5

325' n f Paek st

W	61	358.0
ll	62	357.9
y	60	358.1
b	63	357.8
y	61	358.0
ll	56	358.5
E	58	358.3

36413

Jowa

80

350' n f Paek st

E	56	358.5
ll	63	357.8
y	60	358.1
b	56	358.5
y	60	358.1
ll	59	358.2
W	59	358.2

375' n f Paek st

W	57	358.4
ll	56	358.5
y	57	358.5
b	53	358.8
y	54	358.7
ll	54	358.7
E	55	358.6

36413

400 n f Palk n

E	E	52	358.9
h	h	47	359.4
y	y	51	359.0
t	t	50	359.1
y	y	53	358.8
h	h	54	358.7
w	w	55	358.8

425 n f Palk n

w	w	52	358.9
h	h	52	358.9
y	y	50	359.1
t	t	50	359.1
y	y	50	359.1
h	h	49	359.2
E	E	47	359.4

continued in B 835-P69

220
 7.1
 327.1
 5.6
 321.7

20.4
 259.63
 8.23
 251.40
 13
 238.40
 20.00
 218.40
 228.17 H.S.
 637.00 CB.
 221.5

220
 324.1 to top of
 1.7
 325.8

16.4 to center cable 23
 15
 111.5 to CB
 114 - wide CB
 120 - ENT.
 20 to CB from NPROP.

73
 139
 212

Hancock
 more
 Jefferson
 Congress

250.32 mon market & Jan

73	73	161	166
66	71	6	61
139	144	227	227
300	73	73	73
139	17	227	300
61			
			956.50
			276.00
			180.5

