

F.B.
835

LEVEL BOOK

No. 410

835

MICROFILMED

DEC 15 1964

P 13,44 Park Addt Pl. 1138 1914

Grades for Water Pipe on
32nd ST
Landis to DWIGHT.
Stakes set 7' East of ϕ .

Station	Dist	HI	Grade	Grade bottom of Ditch	3.25' below	32 nd ST	31. DWIGHT
ON BM	1.62	353.53				351.91	31. DWIGHT + Miss
TP	1.30	345.36				344.06	
Stations			ST Grade on E. 1/4	Grade bottom of Ditch			
S.L. Landis	237.22	338.97		241.23	7.09		
				7.09	+4.3		
50 So		333.75		11.61	7.81		
				3.80			
100 So		333.53		11.53	7.6		
				4.2			
150 v		333.31		12.05	7.75		
				4.3			
200 v		333.09		12.27	7.4		
				4.8			
250 v		332.87		12.47	7.1		
				5.3			
300 v		332.65		12.71	7.8		
				5.4			
350 v		332.44		12.92	7.1		
				5.8			
400		332.22		13.14	7.2		
				5.6			
450		332.00		13.36	7.2		
				5.9			
500		331.79		13.57	7.6		
				5.9			
550		331.57		13.77	8.0		
				5.7			
600 = N. DWIGHT	331.6	331.35		14.01	8.4		
				5.6			

Levels on Cont. Line of Kendall's Pascoadora
 STS from S.L. Grand to N.L. La Playa.

B.M. B.P. N.W. Kendall's Grand 51.51

B.M. 2.05 59.56

0+0 = S.L. Grand cul

W 9.0

E 9.0

0+25 S

E 8.7

W 8.8

0+50

W 8.4

E 8.4

0+75

E 8.0

W 7.8

1+0

W 7.4

E 7.8

1+25

E 7.5

W 6.9

1

1+50

W 6.6

E 7.0

1+75

E 6.8

W 6.3

2+0

W 6.0

E 6.6

2+25

E 6.4

W 5.6

2+50

W 5.3

E 6.2

2+70 = N.L. Thomas st

E 6.0

W 5.0

0+0 = S.L. Thomas

W 5.0

E 6.0

0+25

E 6.2

W 5.4

0+50

W 5.7

E 6.4

0+75

E 6.5

W 5.7

1+0

W 6.0

E 6.7

1+25

E 7.0

W 6.4

1+50

W 6.6

E 7.3

1+75

E 7.6

W 6.7

2+0

W 7.0

E 8.0

2+25

E 8.4

W 7.3

2+50

W 7.8

E 8.5

2+70 = N.L. Reed ST

E 8.9

W 8.0

T.P.

59.56

0+0 = S.L. Reed St

W		8.7	50.9
E		9.7	49.9
T.P.	3.02	52.90	9.68 49.88
	0+25		
E		3.3	49.6
W		2.3	50.6
	0+50		
W		2.8	50.1
E		3.3	49.6
	0+75		
E		3.9	49.5
W		3.2	49.7
	1+0		
W		3.3	49.6
E		3.5	49.1
	1+25		
E		4.0	48.9
W		3.5	49.4

2

1+50

W		3.9
E		3.9
	1+75	
E		4.1
W		4.1
	2+0	
W		4.3
E		4.3
	2+25	
E		4.6
W		4.7
	2+50	
W		4.8
E		4.8
	2+75	
E		4.9
W		4.9

52.90
3+0

W 5.2
E 4.9

3725

E 4.9
W 5.1

3750

W 5.1
E 5.1

3775

E 5.3
W 5.4

4+0

W 5.5
E 5.5

4725

E 5.6
W 5.6

44-28

4+50

W 5.9
E 5.9

475

E 6.2
W 6.3

5+0

W 6.6
E 6.5

5725

E 6.8
W 6.9

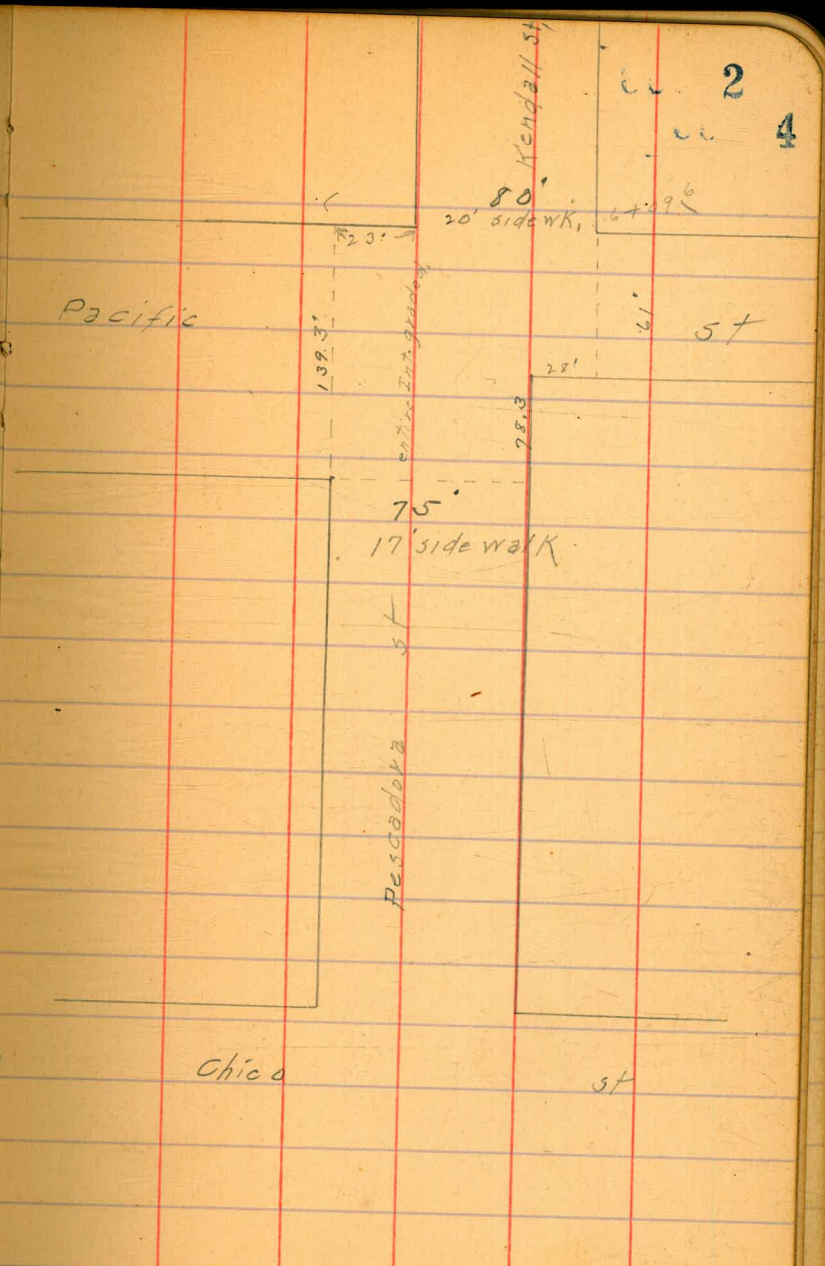
5750

W 7.1
E 7.1

T.P. 2.77 49.20 6.47 46.93
5775

E 3.6 45.6
W 3.6 45.6

	49.20		
	670		
N	3.8		
E	3.8		
	6709 ⁶ = N.L. Pacific St.		
E	3.9	453	
W	3.9	453	
	070 = S.L. of Pacific on E.L. of Pescadero		
E	3.9	453	
	07255		
E	4.1	454	
	0750		
E	4.2	450	
	0778 ³ = S.L. Pacific on W		
E	4.3		
W	4.0		
	170		
W	4.4	448	
E	4.5		



2
4

49.20

1+25

E

5.0

W

5.0

1+50

W

5.4

E

5.4

1+75

E

6.1

W

6.0

2+0

W

6.6

E

6.7

2+25

E

7.5

W

7.3

2+50

W

7.8

E

8.2

J

2+75

E

8.5

W

8.5

3+0

W

9.1

40.1

E

9.0

40.2

3+33² = N.L. Chico 5T 70'

E

9.8

39.4

W

9.7

39.5

0+0 = S.L. Chico

W

10.2

E

10.2

0+255

E

10.7

W

10.6

0+50

W

11.3

E

11.3

T.P.

7.16

39.52

10.84

38.36

39.52

0725

E	2.1
W	2.4

170

W	3.2
E	2.9

1725

E	3.6
W	3.8

1750

W	4.4
E	4.4

1775

E	5.0
W	5.1

270 = N.L. SUNSET

W	5.3
E	5.6

6

070 = S.L. SUNSET

E	5.9
W	5.7

0725

W	6.1
E	6.2

0750

E	6.5
W	6.6

0775

W	7.0
E	6.8

170

E	7.2
W	7.4

1725

W	7.7
E	7.6

39.52

1+50

E

8.0

W

8.1

1+75

W

8.3

E

8.3

2+0

E

8.5

W

8.8

2+25

W

9.0

E
TIP

1.25

32.19

9.0

8.58

30.94

2+50

E

2.0

W

2.0

2+75

W

2.3

E

2.3

7

3+0

E

2.6

W

2.7

3+25

W

3.0

E

3.0

3+50

E

3.1

W

3.3

3+75

W

3.6

E

3.5

4+0

E

3.7

W

4.0

4+25

W

4.3

E

4.1

4+50

E 4.5

W 4.7

4+75

W 4.7

E 4.6

5+0

E 4.8

W 5.0

5+25

W 5.1

E 4.9

5+50

E 4.9

W 5.2

5+75

W 5.2

E 5.0

6+0 = N.L. Roosevelt

E 5.1

W 5.3

0+0 = S.L. Roosevelt

W 5.2

E 5.2

0+25

E 5.3

W 5.3

0+50

W 5.3

E 5.3

0+75

E 5.4

W 5.4

1+0

W 5.4

E 5.4

		32.19		
		1+25		
E			5.5	
W			5.6	
T. P.	4.38	31.00	5.57	26.62
		1+50		
W			9.2	
E			4.3	
		1+75		
E			4.0	
W			4.3	
		2+0		
W			4.4	
E			4.5	
		2+25		
E			4.6	
W			4.7	
		2+50		
W			4.7	
E			4.5	

31.00

9

2+75

E				4.6
W				4.9
			3+0	
W				4.5
E				4.8
			3+25	
E				4.8
W				4.8
			3+50	
W				4.9
E				4.9
			3+75	
E				4.9
W				4.9
			4+0	
W				5.0
E				5.1

31.00

4+25

E

5.2

W

5.1

4+50

W

5.2

E

5.2

4+70

E

5.3

W

5.2

5+0

W

5.3

E

5.3

5+25

W
E
E
W

5.4

5.5

5+50

W

5.5

E

5.7

10

5+75

E

5.7

W

5.6

6+0 = N.L. La Playa

W

5.7

E

5.7

Locations of improvements in North Park Addl.

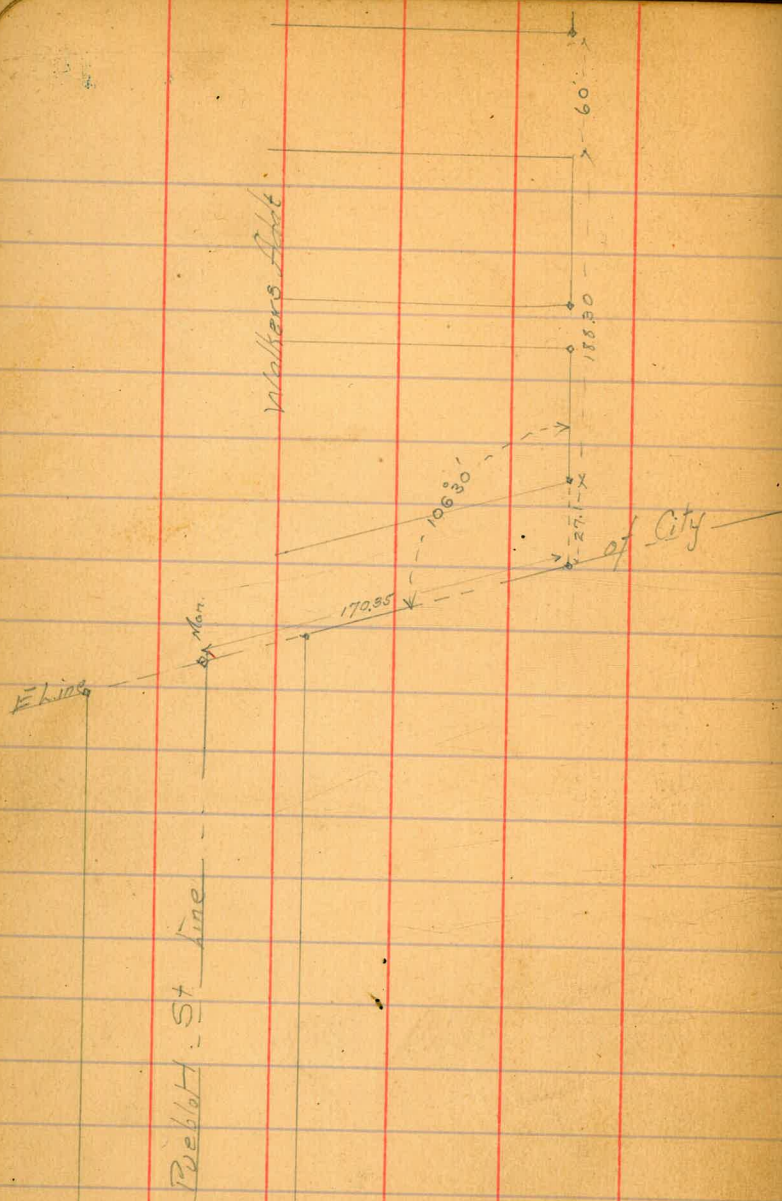
Map 11

11



Pavement line 10

NE Cor Kalmia in Burlington



8/19/12 H. M. H. Xsec Upas at Park Boulevard.

79.7

78.90

Park line determined from Mon. on Richmond and Alabama

B.M.	3.16	305.71	302.547	IR Spk in Pole SE of Cypress and Park Blvd.
	4.38	302.42	7.67	298.04

North line Upas

F		69.5	295.47
5		6.3	296.1
1/2		5.6	296.8
+6	edge of Road	5.7	296.7
+10		5.2	297.2
C	edge of Road	5.1	297.3
+17		6.1	296.3
1/2		6.2	296.2
+30		5.8	296.6
5		6.2	296.2
W		6.5	295.9

30242

25' S.

V	66	295.8
cb	64	296.0
1/4	64	296.0
+5	63	296.1
C	55	296.9
+17	59	296.5
1/4	56	296.8
cb	70	295.4
E	76	294.8
	50' S.	
E	82	294.2
cb	72	295.2
1/4	58	296.6
+13	62	296.2
C	56	296.8
+25	64	296.0
1/4	65	295.9

30242

cb

W.

W

cb

1/4 edge of Road

+20 cr " "

C

+12 edge of Road

1/4

+15

cb

E

67 295.7

69 295.5

Park Line (7917 on W, 7890 on E)

68 295.6

66 295.8

68 295.6

59 296.5

59 296.5

66 295.8

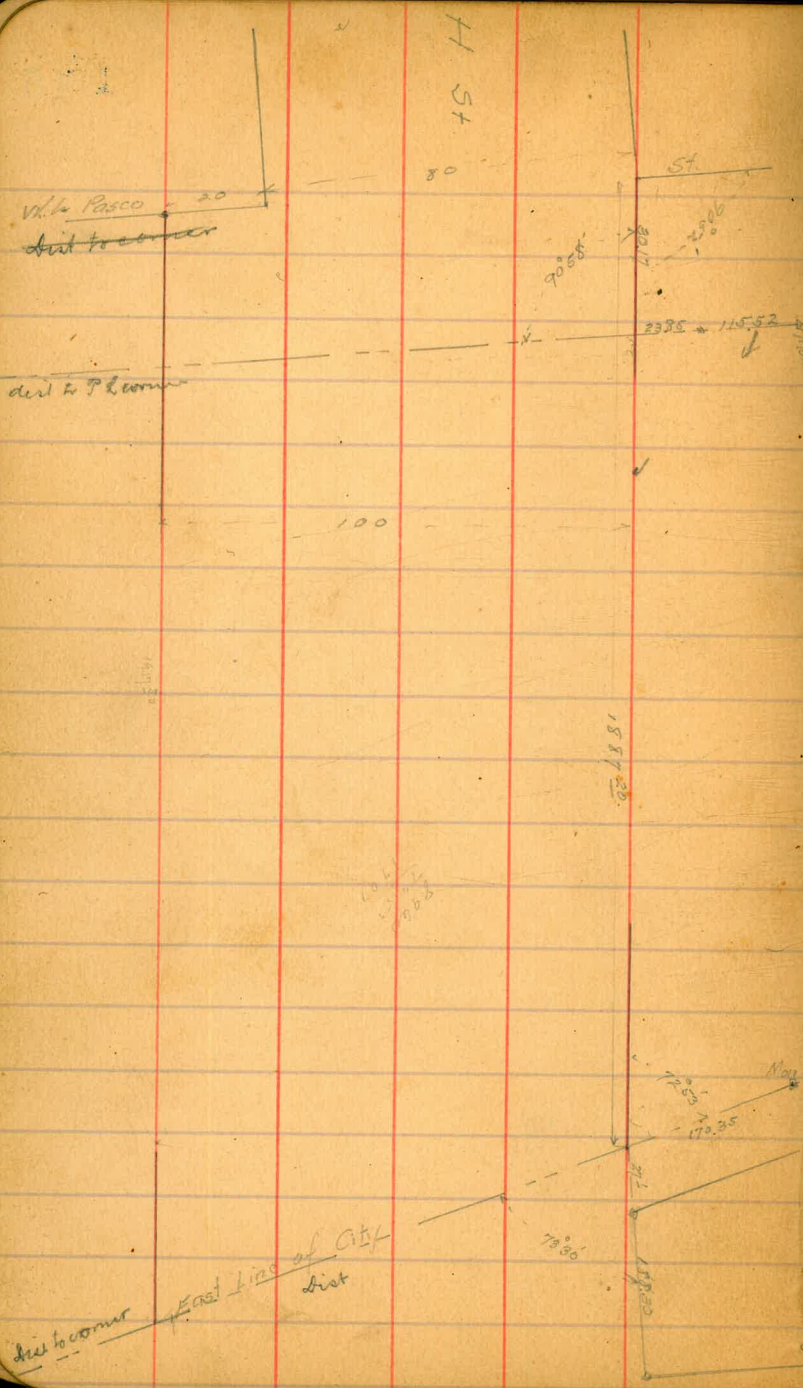
68 295.6

75 294.9

79 294.5

89 293.5

Profile levels on H St Extension



Station	Profile Level	North Line	Elevation	Notes
130	126	142.05	140.69	Subst. Pasco-H.
135				
140				
145				
150				
155				
160				
165				
170				
175				
180				
185				
190				
195				
200				
205				
210				
215				
220				
225				
230				
235				
240				
245				
250				
255				
260				
265				
270				
275				
280				
285				
290				
295				
300				
305				
310				
315				
320				
325				
330				
335				
340				
345				
350				
355				
360				
365				
370				
375				
380				
385				
390				
395				
400				
405				
410				
415				
420				
425				
430				
435				
440				
445				
450				
455				
460				
465				
470				
475				
480				
485				
490				
495				
500				
505				
510				
515				
520				
525				
530				
535				
540				
545				
550				
555				
560				
565				
570				
575				
580				
585				
590				
595				
600				
605				
610				
615				
620				
625				
630				
635				
640				
645				
650				
655				
660				
665				
670				
675				
680				
685				
690				
695				
700				
705				
710				
715				
720				
725				
730				
735				
740				
745				
750				
755				
760				
765				
770				
775				
780				
785				
790				
795				
800				
805				
810				
815				
820				
825				
830				
835				
840				
845				
850				
855				
860				
865				
870				
875				
880				
885				
890				
895				
900				
905				
910				
915				
920				
925				
930				
935				
940				
945				
950				
955				
960				
965				
970				
975				
980				
985				
990				
995				
1000				

		11772		
350			2.8	113.9
375			2.3	115.4
400			3.2	114.4
425			4.5	113.2
450			4.7	113.0
TP	196	114.09	5.0	112.63
475			1.1	113.0
5			4.3	109.7
25			6.2	107.9
50			7.2	106.9
75			6.6	107.5
6			5.0	109.1
25			3.0	111.1
50			0.4	113.7
75			+0.6	114.7
7			2.1	112.0
25			5.8	108.3
50			12.0	102.1
TP	244	104.75	11.75	102.34

		104.78		
75			6.4	98.4
8			10.1	94.7
25			1.1	103.7
TP	1294	117.64	0.8	104.70
50			8.6	109.0
75			2.9	112.7
9			2.2	115.4
25			0.5	117.1
50			0.6	117.0
75			3.0	114.6
10			6.7	110.9
10			9.4	108.2
25			10.4	107.2
50			8.8	108.8
75			2.0	115.6
TP	1264	130.00	1.28	117.36
11			9.9	120.6
25			6.4	123.6

		130.00		
50			2.9	127.1
TP	12.85	142.85	0.0	120.00
75			11.9	130.9
12			8.2	134.6 ✓
25			6.5	136.3
50			3.7	139.1
75			0.90	141.9
TP	9.02	150.97 151.0	0.90	141.95
13			7.7	143.3
25			6.3	144.7
50			5.3	145.7
75			5.0	146.0
14			4.5	146.5
25			4.1	146.9
50			4.4	146.6
75			4.3	146.7
15			4.1	146.9
25			4.0	147.0

		150.97		
50			3.5	147.5
75			4.0	147.0
16			3.9	147.1
25			4.1	146.9
50			2.9	148.1
75			3.9	147.1
17			4.0	147.0
25			4.3	146.7
50			3.7	147.3
75			3.8	147.2
18			4.5	146.5
25			5.4	145.6
50			6.9	144.1
75			9.5	141.5
87 ²			10.27	140.70
				Sub.
				South line
19+17 ⁵			8.7	142.3
19			8.2	142.8

	150.97 151.0		
75		71	143.9
50		56	145.4
25		51	145.9
18		54	145.6
75		37	147.3
50		40	147.0
25		45	146.5
17		44	146.6
75		45	146.5
50		51	145.9
25		55	145.5
16		48	146.2
75		55	145.5
50		63	144.7
25		44	146.6
15		56	145.4 ✓
75		51	145.9
50		63	144.7

	150.97 151.0		
25		64	144.6
14		66	144.4
75		72	143.8
50		78	143.2
25		84	142.6
18		97	141.3
75		107	140.3
T.P.	099	189.10	12.86
50		2.2	136.9
25		5.4	133.7
12		8.8	130.3
75		12.2	126.9
T.P.	058	126.79	12.89
50		4.2	122.6
25		9.8	117.0
T.P.	008	114.34	12.53
11		2.8	111.5
75		5.4	108.9

11434

50		47	109.6
25		55	108.8
10		86	105.7
TP	575	108.65	100.4
75		126	95.4
65		85	99.5
50		86	99.4
25		85	99.5
9		48	103.2
75		34	104.6
50		32	104.8
25		61	101.9
8		9.2	98.8
75		140	94.0
50		20.0	88.0
25		10.2	97.8
7		23	103.7
75		18	106.2

10805

50		2.1	105.9
25		4.3	103.7
6		6.5	101.5
75		9.3	98.7
50		8.0	100.0
25		3.9	104.1
TP	1222	117.34	293
5		10.2	107.1
75		10.1	107.2
50		9.1	108.2
25		7.0	110.3
4		6.5	110.8
75		4.5	112.8
50		3.7	113.6
25		6.0	111.3
3		10.6	106.7
TP	714	112.57	11.91
75		11.2	101.4

		11257		
60			14.3	98.3
50			19.8	92.8
45			14.3	98.3
25			9.4	103.2
2			4.2	108.4
TP	1255	125.05	0.0	112.17
75			10.0	115.0
60			3.3	121.7
TP	1307	137.70	0.2	124.63
25			9.8	127.9
1			4.8	132.9
75			0.3	137.4
TP	827	145.40	0.57	137.13
56			5.1	140.3
25			2.1	142.3
0			2.3	143.1
Check			47.0	140.70

			145.40	
			Ⓟ	
W/L Pasco			7.9	136.5
25			10.3	135.1
TP	118	133.58	13.00	132.40
50			2.1	131.5
75			5.2	128.4
1			8.5	125.1
25			11.8	121.7
TP	0.17	120.75	13.00	120.58
50			1.9	118.9
75			6.0	114.8
2			12.5	108.3
TP	0.75	109.34	12.16	103.59
25			5.1	104.2
40			8.5	100.8
50			12.6	96.7
55			8.8	100.15
75			5.4	103.9

	10934			
3		0.2	109.1	
75	7.33	116.30	0.7	105.97
25		3.5	113.8	
50		3.5	112.8	
75		4.5	111.8	
4		4.6	111.7	
25		5.4	110.9	
50		5.9	110.4	
75		6.7	109.6	
5		9.0	107.3	
25		11.4	105.9	
50		13.6	102.7	
75		12.7	103.6	
6		11.4	104.9	
25		9.1	107.2	
50		7.7	108.6	
75		7.2	109.1	
7		9.5	106.8	

	11630			
75	0.99	106.88	10.41	105.89
25		3.6	102.3	
50		8.9	98.0	
75		14.8	92.4	
8		9.5	97.4	
25		4.6	102.3	
75	9.46	116.05	0.29	106.59
50		7.7	108.3	
75		4.6	111.4	
9		3.0	113.0	
25		2.5	111.5	
50		6.5	109.5	
75		3.4	97.6	
10		11.1	104.9	
10		1.9	101.1	
25		11.3	104.7	
50		7.3	102.7	
75		4.1	111.9	

		116.05							
11			0.1	115.9	75		2.9	146.0	
TP	1302	128.99 1290	008	115.97	15		2.6	146.3	
25			67	122.3	25		2.5	146.4	
50			23	126.7	50		2.9	146.0	
TP	1387	141.47	039	128.60	75		2.6	146.3	
75			10.3	131.2	16		2.6	146.3	
12			3.5	136.0	25		2.5	145.4	
25			3.0	138.5	50		2.3	146.6	
50			0.0	141.5	TP	473	151.42	232	146.69
TP	752	148.91	005	141.39	75		4.6	147.8	
75			64	142.5	17		4.2	147.2	
13			3.9	143.0	25		4.1	147.3	
25			3.4	143.5	50		4.1	147.3	
50			4.8	144.1	75		3.7	147.7	
75			3.9	145.0	15		4.5	145.9	
14			3.5	145.4	25		5.6	145.8	
25			3.1	145.8	50		7.3	144.1	
50			3.2	145.7	75		9.5	143.9	
					19 + 02 check		11.3	140.1	
							10.61	140.81	14070 Hub

X Sec of Juan st (50) Old Town
 Continues from last Page of B 836

	989	197.19	187.30	7 th Book 836
	S	bl of	Trias	st
W	add	10'	93	186.9
bl			93	
y			96	
b			97	186.5
y			100	
bl			102	
E			105	185.7
	Sd of Trias st			
E			96	186.6
bl			94	
y			92	
b			91	187.1
y			89	
bl			89	
W			88	187.4

PLOTTED

197.19

Juan

24

25' Sd Trias st

W	73	188.9
bl	73	
y	67	
b	65	189.7
y	70	
bl	75	
E	77	188.5

PLOTTED

30' Sd Trias st

E	60	190.2
bl	60	
y	60	
b	60	190.2
y	60	
bl	59	
W	54	190.8

19719

	75'	Sy	Trias	st
W			4.8	191.4
Ch			4.7	
Y			4.7	
b			4.7	191.5
Y			4.5	
Ch			4.2	
E			4.2	192.0

PLOTTED

	100'	Sy	Trias	st
E			2.1	192.1
Ch			2.8	
Y			3.1	
b			3.2	193.0
Y			3.1	
Ch			2.9	
W			3.2	193.0

TP. 1299 20879 139 195.80

20879

Juan

25

	125'	Sy	Trias	st
W			13.8	194.5
Ch			13.2	
Y			13.2	
b			13.0	194.8
Y			12.6	
Ch			12.3	
E			11.6	196.2

PLOTTED

	150'	Sy	Trias	st
E			9.7	198.1
Ch			10.3	
Y			10.3	
b			10.6	197.2
Y			11.1	
Ch			11.3	
W			11.4	196.4

20879

175' Sg Trias W

W	89	198.9
bb	86	
y	80	
b	76	200.2
y	71	
bb	70	
E	60	201.8

PLOTTED

200' Sg Trias W

E	05	207.3
bb	26	
y	36	
b	40	203.8
y	45	
bb	54	
W	57	202.1

TP 1303 22076 006 20873

22076

Juan

26

225' Sg Trias W

W	155	205.3
bb	138	
y	120	
b	111	209.7
y	100	
bb	91	
E	73	213.6

PLOTTED

250' Sg Trias W

E	44	216.4
bb	57	
y	63	
b	70	213.8
y	81	
bb	94	
W	114	209.4

22076

275' S of Trus st

W	8.0	212.8
bl	6.8	
y	5.9	
b	5.4	215.4
y	4.5	
bl	3.3	
E	1.0	219.8

PLOTTED

TP 601 22072 005 22071

300' S = N of Hortentia st (50)

E	4.2	222.5
bl	6.1	
y	7.5	
b	8.8	219.9
y	9.8	
bl	10.7	
W	11.6	215.1

22072

N of Hortentia

W	10.7	216.0
bl	9.4	
y	8.0	
b	7.0	219.9
y	6.2	
bl	5.0	
E	3.4	213.3

PLOTTED

N of Hortentia

E	2.7	224.0
bl	4.2	
y	4.8	
b	5.6	221.1
y	7.2	
bl	8.4	
W	10.0	216.7

Juan

27

Center of Hortensia

W	9.2	219.5
bl	7.0	
y	5.8	
b	5.1	221.6
y	3.8	
bl	3.0	
E	2.2	224.5

PLOTTED

S 1/4 of Hortensia

E	2.0	224.7
bl	3.0	
y	3.5	
b	4.3	222.4
y	5.0	
bl	6.0	
W	8.1	218.6

S bb of Hortensia

w	7.0	219.7
bl	4.8	
y	3.7	
b	3.1	223.6
y	2.7	
bl	2.2	
E	1.4	225.3

PLOTTED

S Line of Hortensia

E	0.0	226.7
bl	6.7	
y	1.4	
b	2.3	222.4
y	3.3	
bl	4.2	
w	5.6	221.1

TIP 1275 2210.07 0.40 222.32

240.07

25' S of Hortensia

W	141	225.0
bb	130	
y	122	
b	118	227.3
y	113	
bb	106	
E	101	229.0

PLOTTED

50' S of Hortensia

E	60	233.1
bb	77	
y	90	
b	96	229.5
y	100	
bb	109	
W	120	227.1

240.07

Jan 29

75' S of Hortensia

W	84	230.7
bb	61	
y	48	
b	42	234.9
y	32	
bb	20	
E	00	239.1

PLOTTED

TP 1030 2500L 031 239.76

100' S of Hortensia

E	60	243.1
bb	72	
y	79	
b	89	240.2
y	97	
bb	106	
W	124	236.7

250.02

125 58 Hartentia

W	9.1	240.0
bl	7.7	
4	6.7	
6	6.2	242.9
7	5.8	
bl	5.1	
E	4.7	244.4

PLOTTED

130 58 Hartentia

E	3.2	245.9
bl	4.0	
4	4.6	
6	5.4	243.7
7	6.0	
bl	6.4	
W	7.5	241.8

250.06

Juan 30

175 58 Hartentia

W	7.3	241.8
bl	6.2	
4	5.3	
6	4.5	244.6
7	3.8	
bl	3.1	
E	2.5	246.6

PLOTTED

200 58 Hartentia

E	2.1	247.0
bl	3.0	
4	3.6	
6	4.3	244.8
7	5.0	
bl	5.8	
W	7.3	241.8

7P 1044 254.06 644 243.62

254.06

225' S of Hartentia

w	10.9	244.2
bl	9.8	
y	8.8	
b	8.0	245.1
y	7.5	
bl	6.9	
E	5.9	247.2

PLOTTED

250' S of Hartentia

E	5.7	247.4
bl	6.5	
y	7.0	
b	7.7	245.4
y	8.4	
bl	9.0	
w	9.4	243.7

254.06

Juan

31

275' S of Hartentia

w	8.5	244.6
bl	7.6	
y	7.2	
b	6.6	246.5
y	5.7	
bl	5.2	
E	4.2	248.9

PLOTTED

300' S = λ 2 of Mubertly at (80⁵)

E	2.2	250.9
bl	3.2	
y	4.0	
b	4.91	249.15
y	5.6	
bl	5.9	
w	7.2	245.9
	2.74	251.32

or more cent of Juan's d

on more for El

8/26/12
 Hetch
 Hume
 Hall

X Sec 33^d N. from
 The Dells to F St.

BM	291	87.13	83225	NE H - 23°
	159	76.81	1291	75.22
	259	66.48	1292	63.89
			202' S. of G St = Parallel line	
W		5.7		60.8
cb		9.1		
1/2		11.7		
c		14.1		59.4
1/2		15.8		
cb		16.7		
E		16.9		49.6
			175' S	
E		12.9		53.6
cb		13.7		
1/2		10.6		
c		7.9		58.6
1/2		5.7		
cb		4.1		
W		2.9		63.6

PLOTTED

				6648
				150 5
W			1.9	64.6
+5			{ 2.3	
			{ 3.4	
cb			4.0	
1/2			4.9	
c			5.8	60.7
1/2			7.3	
cb			9.3	
E			10.0	56.5
				125' S
E			7.0	59.5
cb			5.7	
1/2			5.1	
c			4.2	62.3
1/2			3.7	
cb			3.2	
+5			{ 2.6	
			{ 1.5	
W			1.3	65.2

PLOTTED

6648

100' S

W	0.3	66.2
+5	3.0	
cb	3.5	
1/4	3.4	
C	3.7	62.8
1/4	3.9	
cb	4.8	
E	5.3	61.2

PLOTTED

76' S

E	3.8	62.7
cb	3.5	
1/4	3.1	
C	3.0	63.5
1/4	2.6	
cb	2.0	
+5	1.0	
W	0.1	66.4

6648

77

997

76.40 00.5 66.43

50' S

W	9.5	66.9
+8	10.0	
cb	11.1	
1/4	11.8	
C	12.1	64.3
1/4	12.8	
cb	13.0	
E	13.3	63.1
	55' S	
E	12.7	63.7
cb	12.5	
1/4	12.1	
C	11.7	64.7
1/4	10.8	
cb	10.3	
+3	9.3	
W	8.5	67.9

PLOTTED

7640
 Sh. G St.

W	7.5	68.9
cb	8.4	
1/4	9.9	
c	10.9	65.5
1/4	11.6	
cb	11.7	
E	11.8	64.6
	sub	
E	11.4	65.0
cb	11.1	
1/4	10.8	
c	10.4	66.0
1/4	9.4	
+ 8	8.3	
cb	7.4	
W	6.5	69.9

PLOTTED

7640
 S 1/4

W	5.5	70.9
cb	6.6	
	7.4	
1/4	8.5	
c	9.9	66.5
1/4	10.1	
cb	10.7	
E	10.9	65.5
	cr	
E	10.1	66.3
cb	10.0	
1/4	9.8	
c	9.3	67.1
1/4	7.8	
	6.2	
	5.5	
cb	4.6	71.8
W		

PLOTTED

7640

N 1/4

N	3.2	73.2
cb	5.3	
+2	5.4	
1/4	6.2	
1/4	7.1	
c	8.2	68.2
1/2	8.7	
cb	9.2	
E	9.3	67.1

PLOTTED

Ncb

E	8.5	67.9
cb	8.5	
1/4	8.3	
c	7.5	68.9
1/4	6.0	
cb	4.6	
N	1.3	75.1

7640

N.L. G 54

N	1.0	75.4
cb	4.1	
1/4	6.1	
+5	7.1	
c	7.2	69.2
1/4	7.3	
cb	7.7	
E	7.7	68.7

PLOTTED

25 N

E	6.3	70.1
cb	6.3	
1/4	5.9	
c	6.1	70.3
+5	6.0	
1/4	4.5	
cb	1.5	
N	0.7	75.7

	6.68	76.40 82.70	0.38	76.02
		50' N		
W			6.8	75.9
cb			6.6	
1/4			7.0	
+4			10.2	
c			10.9	71.8
1/4			10.8	
cb			11.0	
E			11.0	71.7
		70' N		
E			9.2	73.5
cb			9.3	
1/4			9.1	
c			9.0	73.7
+3			8.8	
+6			7.1	
1/4			6.7	
cb			5.5	

PLOTTED

		82.70		
		100' N		
W			5.6	77.1
W			5.0	77.7
cb			4.9	
+4			5.8	
1/4			9.7	
c			7.6	75.1
1/4			7.3	
cb			7.5	
E			7.1	75.6
		125' N		
E			5.9	76.8
cb			6.2	
1/4			6.0	
c			6.2	76.5
+5			6.1	
1/4			5.0	
cb			4.3	
W			4.4	78.3

PLOTTED

8270

150' N

W	39	78.8
cb	39	
1/2	4.0	
+4	5.3	
C	5.0	79.7
1/2	5.0	
cb	5.0	
E	5.1	79.6

PLOTTED

175' N

E	4.1	78.6
cb	3.9	
1/2	3.8	
C	3.4	79.3
+6	3.3	
1/4	2.5	
cb	2.7	
W	3.9	78.8

8270

200' N

W	4.1	78.6
+5	3.9	
cb	2.9	
1/2	2.3	
C	2.8	79.9
1/2	2.5	
cb	2.5	
E	2.7	80.0

PLOTTED

225' N

E	1.4	81.3
cb	1.7	
1/2	2.0	
C	2.3	80.4
1/2	2.5	
cb	3.2	
W	3.6	79.1

8270

250' N

W 2.1 79.6

cb 2.8

1/4 2.0

c 1.9 80.8

1/4 1.6

cb 0.8

E 0.1 84.6

T.P. 6.67 88.72 0.65 82.05

275' N

E 4.8 83.9

cb 5.3

1/4 6.1

c 7.2 81.5

1/4 7.5

cb 7.7

W 8.1 80.6

PLOTTED

8872

300' N - 54. F St

W 6.9 81.8

cb 6.3

1/4 5.6

c 4.4 84.3

1/4 4.1

cb 3.4

E 3.3 85.4

B.M. N.W. Corner Lower-Step 420 84.52
H.J. Hall's place

PLOTTED

8/26/12 Hatch of Sec. Fish St.
 More
 Hall?

Bm	+	H I	-	Elev.
	2.58	122.40		119.820
IP	0.68	110.53	12.55	109.85
"	4.17	102.05	12.59	99.94
"	4.53	103.58	5.00	99.05
St. Sigol (M)				
W		4.4		99.2 ✓
cb		4.5		99.1 ✓
ya		4.7		98.9 ✓
c		4.8		98.8 ✓
1/0		4.8		98.8 ✓
cb		4.8		98.8 ✓
F		5.3		98.3 ✓
25's				
E		5.3		98.3 ✓
cb		5.3		98.3 ✓
1/0		5.5		98.1 ✓
c		5.6		98.0 ✓
1/0		5.5		98.1 ✓
cb		5.5		98.1 ✓
W		5.6		98.0 ✓

PLOTTED

103.58

50's

W	6.1	97.5 ✓
cb	6.5	97.1 ✓
b	6.6	97.0 ✓
c	6.4	97.2 ✓
k	6.4	97.2 ✓
cb	6.5	97.1 ✓
F	6.2	97.4 ✓
75's		
E	7.2	96.4 ✓
cb	7.2	96.4 ✓
1/0	7.4	96.2 ✓
c	7.4	96.2 ✓
1/0	7.2	96.4 ✓
cb	6.8	96.8 ✓
W	6.6	97.0 ✓
100's		
W	7.4	96.2 ✓
cb	8.1	95.5 ✓

PLOTTED

103.58

Fisca. Ar

1/4	83	95.3	✓
c	82	95.4	✓
1/4	80	95.6	✓
cb	83	95.3	✓
E	81	95.5	✓
125's			
E	94	94.2	✓
cb	92	94.4	✓
1/4	89	94.7	✓
c	90	94.6	✓
1/4	89	94.7	✓
cb	89	95.2	✓
W	75	96.1	✓
150's			
W	94	94.2	✓
cb	96	94.0	✓
1/4	99	93.7	✓
c	100	93.6	✓
1/4	102	93.4	✓

PLOTTED

40

cb	10.3	93.3	✓
E	10.8	92.8	✓
175's			
E	11.3	92.3	✓
cb	11.0	92.6	✓
1/4	11.0	92.6	✓
c	11.0	92.6	✓
1/4	10.8	92.8	✓
cb	10.3	93.3	✓
W	10.3	93.3	✓
200's			
W	11.2	92.4	✓
cb	11.4	92.2	✓
1/4	11.5	92.1	✓
c	11.6	92.0	✓
1/4	11.7	91.9	✓
cb	11.8	91.8	✓
E	11.9	91.7	✓

PLOTTED

103.58

Justice St.

41

220's

E	12.3	91.3	✓
cb	12.0	91.6	✓
1/4	11.9	91.7	✓
c	11.7	91.9	✓
1/4	11.7	91.9	✓
cb	11.5	92.1	✓
W	11.4	92.2	✓

PLOTTED

250's

W	10.4	93.2	✓
cb	11.0	92.6	✓
1/4	11.1	92.5	✓
c	11.2	92.4	✓
1/4	11.0	92.6	✓
cb	11.1	92.5	✓
E	11.6	92.0	✓

275's

E	12.0	91.6	✓
cb	11.8	91.8	✓
1/4	11.3	92.3	✓
c	11.1	92.5	✓
1/4	10.3	93.3	✓
cb	9.6	94.0	✓
W	9.3	94.3	✓

PLOTTED

300's

W	9.1	94.5	✓
cb	9.9	93.7	✓
1/4	10.4	93.2	✓
c	11.1	92.5	✓
1/4	11.6	92.0	✓
cb	11.8	91.8	✓
E	11.7	91.9	✓

325's

E	12.4	91.2	✓
cb	11.9	91.7	✓

103.55

Justice St.

1/4	11.4	92.2 ✓
c	10.8	92.5 ✓
1/4	10.3	93.3 ✓
cb	10.1	93.5 ✓ 93.4 ✓
W	8.7	94.9 ✓
300's		
W	8.1	95.5 ✓
cb	8.8	94.8 ✓
1/4	9.3	94.3 ✓
c	9.8	93.8 ✓
1/4	10.6	93.0 ✓
cb	11.3	92.3 ✓
E	12.0	91.6 ✓
1375's		
E	10.9	92.7 ✓
cb	9.6	94.0 ✓
1/4	8.7	94.9 ✓
c	7.8	95.5 ✓
1/4	7.2	96.4 ✓

PLOTTED

103.6 ~~45~~

42

cb	7.1	96.5 ✓
W	6.9	96.7 ✓
TP	0.45	97.53 ✓ 6.50 ✓ 97.08 ✓
400's		
W	0.9	96.6 ✓
cb	2.8	96.7 ✓
1/4	1.3	96.2 ✓
c	1.6	95.9 ✓
1/4	2.1	95.4 ✓
cb	2.8	94.7 ✓
E	3.9	93.6 ✓
425's		
E	4.7	92.8 ✓
cb	3.4	94.1 ✓
1/4	2.6	94.9 ✓
c	1.9	95.6 ✓
1/4	1.6	95.9 ✓
cb	1.5	96.0 ✓
W	1.8	95.7 ✓

PLOTTED

97.53

Fiske St.

450's

W	36	94.9
cb	26	94.9
1/2	27	94.8
C	32	94.3
1/4	38	93.7
cb	45	93.0
E	49	92.6

PLOTTED

475's

E	53	92.2
cb	45	93.0
1/2	42	93.3
C	35	94.0
1/4	34	94.1
cb	32	94.3
W	33	94.2

43

97.5

500's

W	39	93.6
cb	37	93.7
1/2	36	93.9
C	39	93.6
1/4	41	93.4
cb	44	93.1
E	51	92.4

PLOTTED

525's

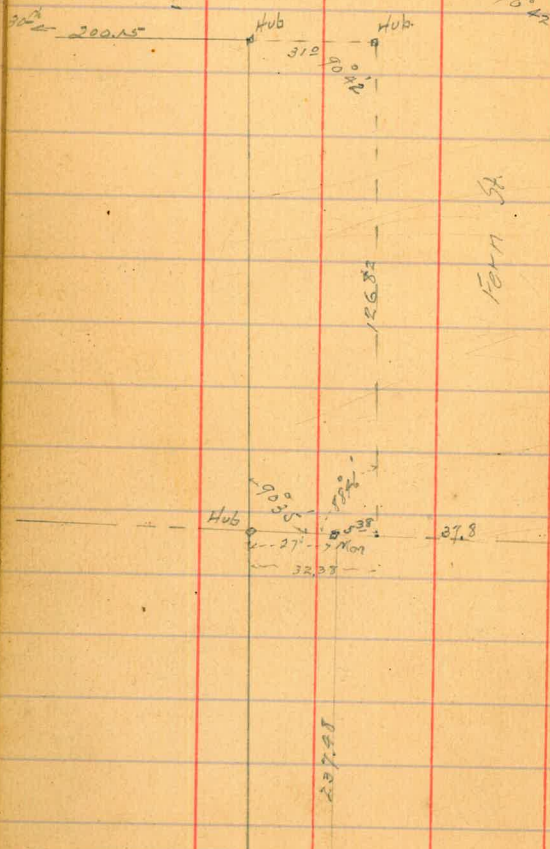
E	46	92.9
cb	41	93.4
1/2	38	93.7
C	36	93.9
1/4	37	93.8
cb	37	93.8
W	40	93.5

St. George St

373

9/6/12 Watch
of core
H. all

18 Line of Date St



Survey of land
To be taken to make
Fenn 30' wide from
Cedar to Date
or rather to make
the West line of
Fenn straight from
the south line of
South Park to Date.

Fenn St

13 Line Cedar

Mon

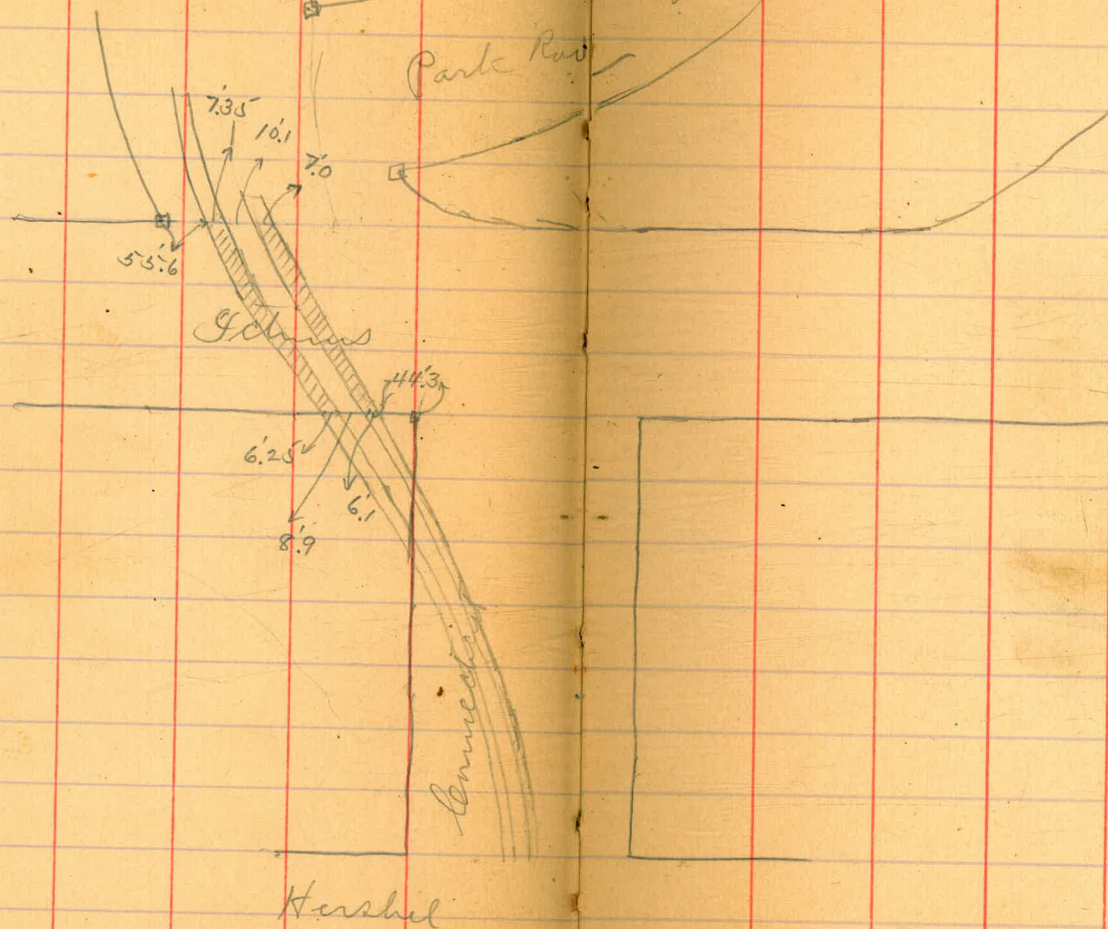
measurements for tracks across
Gethins street

all measurements are to outside of rail

Sept. 11/12

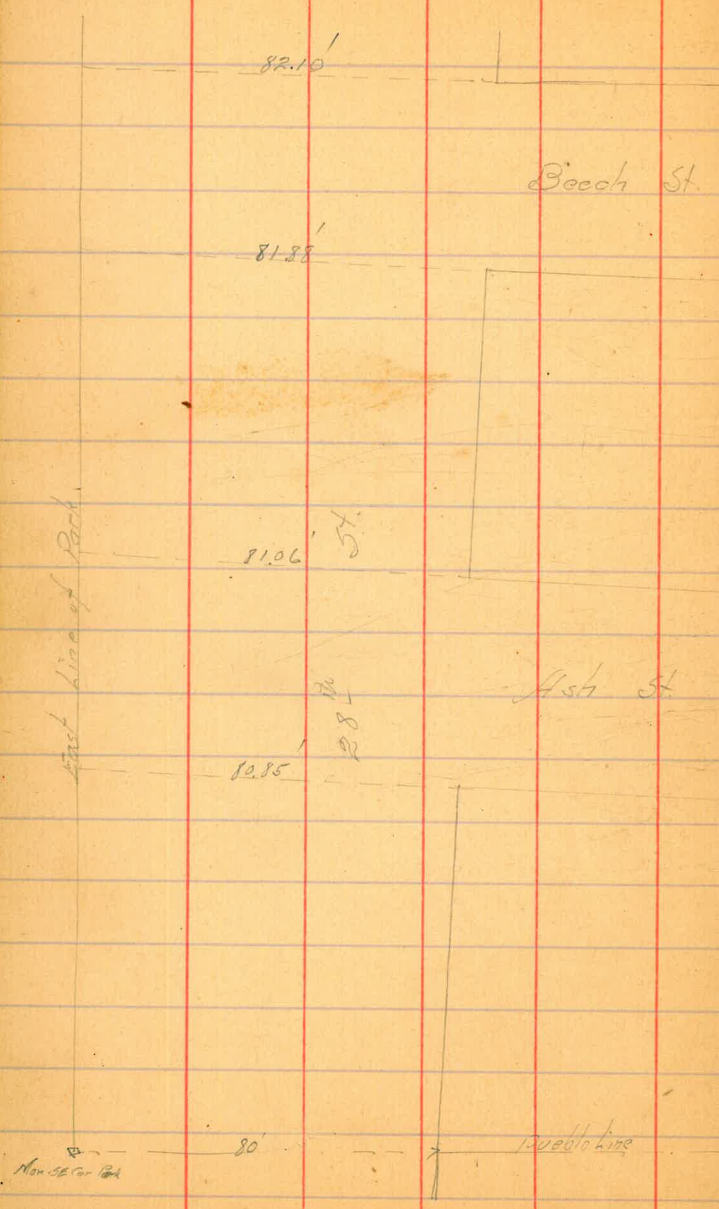
Child 46
Tayler
Bitter

54.3
7.6
58.9



54.3
7.6
58.9

2 1/2 H. Widths of 28th St at Ash and Beech
12 H.



House on Park

9 bluffs
 27 7th
 12 Show
 Levels for Profile Hortentia St (50)
 Chestnut to Juan St

2324

Hortentia 48

				Ben St Stn + Washby Rock Hortentia				
	0.33	265.46		265.10	W			11.1 221.1
	0.25	255.41	10.30	255.16	TP	069	225.10	1083 2244.1
	1.68	215.04	12.05	243.26	b			9.0 216.1
					TP	402	216.09	1270 212.37
W			2.5	242.5	E			11.1 205.3
b			6.7	238.3		150	54	Hickory
E			15.1	229.9	E			19.2 197.2
					b			12.4 202.0
					W			8.1 205.3
						200	54	Chestnut
TP	0.20	235.24	10.00	235.04	W			5.2 211.1
E			9.8	225.4	b			17.1 199.3
					E			27.5 188.9
						250	54	Chestnut
E			15.3	219.9	E			38.0 183.4
b			8.3	226.9	b			19.2 197.2
W			4.8	230.4	W			5.2 211.2
					TP	0.10	209.19	7.0 209.09

PLOTTED

PLOTTED

PLOTTED

20919

300 S = 2 S of Whitman #50

W		2.3	206.9
b		15.4	193.8
E		26.9	183.2

S 2 of Whitman #

E		3.0	206.2	179.2
b		13.3	195.9	
W		22	207.0	

PLOTTED

TP 186 19825 1280 19639

50' S of Whitman

W		1.2	197.1
b		14.0	184.3
E		19.4	178.7

65' S of Whitman

E		23.0	176.3
---	--	------	-------

75' S of Whitman

E		16.4	181.9
b		23.3	175.0
W		15.0	183.3

19825

Hertent 49

100 S of Whitman

W		26.5	171.8
b		19.0	179.3
E		7.4	190.9

130' S of Whitman

E		+8.0	206.1
b		8.2	190.1
W		21.0	177.1

PLOTTED

TP 1274 20724 395 19430

200 S of Whitman

E		+5.6	212.7
b		12.0	195.2
W		24.7	184.5

250' S of Whitman

W		15.2	192.0
---	--	------	-------

b		1.6	205.6
---	--	-----	-------

TP 1176 21827 0.73 206.31

E		+3.2	221.4
---	--	------	-------

21827

300 S = n 2 Boyd st (50)

W 93 209.0

S 27 Boyd st

W 40 214.3

TP 1270 23084 023 218.04

200 S = n 2 of Boyd

b 66 224.1

S 2 of Boyd

b **PLOTTED** 18 228.9

TP 1240 241.01 113 229.57

n 21 Boyd

E 94 232.6

S. end of Boyd

E 0.0 242.0

TP 402 245.25 075 241.26

50 S of Boyd st

E 15 243.8

b 38 241.5

W 63 239.0

24528

Hartman
50

100 S of Boyd st

W 40 241.3

b 19 243.4

E 0.8 244.5

100 S of Boyd

E 31 242.2

b **PLOTTED** 31 242.2

W 70 238.3

200 S of Boyd

W 126 232.7

b 102 235.1

E 78 237.5

TP 023 234.4 1110 234.18

250 S of Boyd

E 20 232.4

b 38 230.6

W 57 228.7

20441

300 S = n d f Juan St (50)

w	107	223.7
b	88	225.6
E	68	227.6

S d f Juan

E	121	222.3
---	-----	-------

TP

PLOTTED

1143

blough Levels check Juan St
10-14-12

51

1307	4633		3326
1223	5835	0.21	4612
1251	7084	0.06	5829
		8.36	6248
			9700 Cent Juan + Henry
1270	8352	+0.2	7086
1224	9570	0.20	8336
1305	10657	0.08	9552
		10.10	9842
			Perp. 150' E Henry S line
1300	12134	0.23	10824
		6.90	11444
			50' bar ju border
1274	13378	0.30	12104
		3.30	13048
			150' E border S line
1297	14611	0.64	13214
1228	15821	0.28	14583
			old T.P. SE ambigu
1240	16071	0.10	15811
1245	18278	0.18	17023
		5.40	17727
891	19167	.02	18276
		5.52	18874
			SE H. Ambigu Juan

	19167			
1288	20231	224	18943	
1290	21519	.05	20226	
1266	22785	00	21519	
		1190	21600	SW part
		44	2228	nw part
		60	2274	ne part
1288	24072	100	22784	
1210	25264	018	24054	main part June & Michael
		353		
1302	26430	136	25128	main part
537	26916	081	26349	
		662		

10 blount
15 7th
121 Shaw
X Sec of Pringle St 50'
Throught Middle Town Add.

13416

Pringle 53

	931	129.20	129.89	Bm McKie
	500	134.16	129.16	Columbian SE # Pringle Columbian
W 54.6' S of Columbia E 55.0'	S-S Pueblo line of Middle Town Add.			
E		137	121.0	
bb		144	119.8	
7		150	119.2	
6		149	119.3	
9		150	119.2	
bb		147	119.5	
W		151	119.1	
	25'	S of Columbia St		
W		118	122.6	
bb		116	122.6	
4	2.761	117	123.0	
6		107	123.5	
9		103	123.9	
bb		97	124.5	
E		88	125.0	

S line of Columbia St (50)

	50	129.2	
	57	128.5	
	58	128.4	
	63	127.9	
	68	127.4	
	75	126.7	
	83	125.9	
	TP	1245	14601
	060	13356	north Pringle Columbian
	2	26	Columbian
	125	133.5	
	118	134.2	
	113	134.7	
	112	134.8	
	101	135.9 135.9	
	93	136.7	
	88	137.2	

14601

25 n f Columbia

E	52	140.8
th	54	140.6
y	61	139.9
b	65	139.5
y	73	138.7
th	83	137.7
W	92	136.8

50 n f Columbia

w	53	140.7
th	40	142.0
y	32	142.8
b	30	143.0
y	26	143.4
th	21	143.9
E	10	145.0

TP 1224 13804 021 14580

15804

Pringle

54

75 n f Columbia

E	97	148.3
th	110	147.0
y	113	146.7
b	120	146.0
y	125	145.5
th	129	145.1
W	133	144.7

100 n f Columbia

w	100	148.0
th	94	148.6
y	87	149.3
b	84	149.6
y	79	150.1
th	74	150.6
E	70	151.0

15804

	125'	n f	Calumbia	
E			39	154.1
H			45	153.5
Y			46	153.4
b			50	153.0
g			55	152.5
h			59	152.1
W			62	151.8

	150	n f	Calumbia	
W			28	155.2
H			24	155.6
Y			22	155.8
b			18	156.2
Y			14	156.6
H			10	157.0
E			00	158.0

TP

1279

170.56027157.77

17056

Puzzle 53

	175	n f	Calumbia	
E			89	161.7
H			95	160.8
Y			103	160.3
b			109	159.7
Y			116	159.0
H			120	158.6
W			125	158.1

200' n = 52 f of Ammion 25 (50)

W			90	161.6
H			83	162.3
Y			77	162.9
b			72	163.4
Y			70	163.6
H			68	163.8
E			59	164.7

N line of Union st

E		0.0	170.6
H		0.2	170.4
Y		0.6	170.0
L		0.8	169.8
Y		1.1	169.5
H		1.4	169.2
W		1.8	168.7
TP	1305	18321	0.30
	25	n of	Union
W		11.7	171.6
H		11.1	172.2
Y		10.5	172.8
L		10.1	173.2
Y		9.7	173.6
H		9.5	173.8
E		9.0	174.2

50' n of Union st

E		5.4	177.9
H		5.9	177.4
Y		6.2	177.1
L		6.4	176.9
Y		6.7	176.6
H		7.1	176.2
W		7.7	175.6

75' n of Union st

W		3.9	179.4
H		3.7	179.6
Y		3.3	180.0
L		3.0	180.3
Y		2.5	180.8
H		2.2	181.1
E		1.7	181.6

TP

1234

19527

0.58

18303

195-37

100' n of Union st

E	111	184.3
H	114	184.0
7	113	184.1
6	114	184.0
4	121	183.3
H	125	182.9
W	130	182.2

125' n of Union st

W	90	186.4
H	88	186.6
4	89	186.5
6	88	186.6
4	89	186.5
H	89	186.5
E	89	187.2

195-37

Pung
57

150' n of Union st

E	58	189.6
H	60	189.4
4	57	189.7
6	57	189.7
4	58	189.6
H	55	189.9
W	55	189.9

175' n of Union st

W	30	192.4
H	31	192.3
7	30	192.4
6	27	192.7
4	27	192.7
H	30	192.4
E	26	192.8

7A

1262

20811

207.911

100

185.28

$$\begin{array}{r} 195.28 \\ 12.23 \\ \hline 207.51 \end{array}$$

208.11

207.91

200 n = 5 of Harton (50)

E	127	195.2
H	125	195.4
Y	124	195.5
L	122	195.7
Y	123	195.6
H	122	195.7
W	121	195.8

W Lin of Harton

W	58	202.1
H	60	201.9
Y	59	202.0
L	61	201.8
Y	61	201.8
H	61	201.8
E	59	202.0

208.11

207.91

25 n of Harton

E	25	205.7
H	27	205.2
Y	28	205.1
L	28	205.1
Y	28	205.1
H	27	205.2
W	28	205.1
TP	1265	22053
	50	22033
		825
		207.88
		Harton

Pringle

58

W	115	208.8
H	115	208.8
Y	118	208.5
L	119	208.4
Y	117	208.6
L	115	208.8
E	114	208.9

~~21053~~
220.33

12

75' n of Horton

E	84	211.9
bl	80	212.3
Y	80	212.3
b	82	212.1
Y	82	212.1
bl	80	212.3
w	77	212.6

100' n of Horton

w	39	216.4
bl	43	216.0
Y	44	215.9
b	45	215.8
Y	47	215.6
bl	48	215.5
E	54	214.9

~~22053~~
220.33

Pringle

59

125' n of Horton St

E	32	217.1
bl	26	217.7
Y	24	217.9
b	20	218.3
Y	20	218.3
bl	15	218.8
w	13	219.0

TP. 1303 ~~23350~~ 006 220.47
233.30

150' n of Horton

w	120	221.3
bl	121	221.2
Y	123	221.0
b	124	220.9
Y	129	220.4
bl	131	220.2
E	132	220.1

23250

232.30

175 N of Horton

E	10.8	222.5
th	10.2	223.1
4	10.1	223.2
6	9.9	223.4
7	9.6	223.7
th	9.3	224.0
W	9.1	224.2

200 N = S of Puterbaugh 1750

W	7.4	225.9
th	7.1	226.2
4	7.3	226.0
6	7.7	225.6
7	8.1	225.2
th	8.3	225.0
E	8.8	224.5

23350

Pringle

60

N line of Puterbaugh 17

E	5.5	227.8
th	4.3	229.0
4	3.8	229.5
6	3.3	230.0
7	2.5	230.8
th	2.0	231.3
W	1.5	231.8

TP

777

240.24

103

232.47

25

240.04

N of

Puterbaugh

W	6.8	233.2
th	7.1	232.9
4	7.7	232.3
6	8.5	231.5
7	7.1	230.9
th	10.0	230.0
E	11.3	229.7

240.24
240.04

50° n of Pentabucht

E	104	229.6
SE	90	231.0
S	80	232.0
SE	74	232.6
S	61	233.9
SE	58	234.2
W	55	234.5

75° n of Pentabucht

W	45	235.5
SE	50	235.0
S	58	234.2
SE	68	233.2
S	73	232.7
SE	84	231.6
E	95	230.5

240.24
240.04

Pungt
61

100° n of Pentabucht

E	90	231.0
SE	78	232.2
S	69	233.1
SE	66	233.4
S	55	234.5
SE	44	235.6
W	36	236.4

125° n of Pentabucht

W	29	237.1
SE	37	236.3
S	40	236.0
SE	59	234.1
S	63	233.7
SE	76	232.4
E	88	231.2

TP 671 238.72 823 234.01
238.52 231.81

23872
23852

150 n of Patertongh

E	67	231.8
W	52	233.3
Y	45	234.0
L	44	234.4
7	30	235.5
W	20	236.5
W	06	237.9

175 n of Patertongh

W	40	238.7 238.9
W	06	237.9
Y	20	236.5
L	31	235.4
Y	36	234.9
W	45	234.0
E	58	232.7

23872

Pringh
62

200 n = S of Torrence

E	47	233.8
W	35	235.0
Y	28	235.7
L	21	236.4
Y	09	237.6
TP	1243	25052 25032
W	063	237.8 238.8
W	115	238.8
W	104	239.7

W

W of Torrence

W	86	241.7
W	100	240.3
Y	107	239.4
L	118	238.5
Y	126	237.7
W	133	237.0
E	144	235.9

To.M.
241.76
241.66 check .05

25052
250.32

25' n of Torrence

E	123	238.0
bl	121	239.2
y	114	239.1
l	106	239.7
y	97	240.6
bl	88	241.5
W	75	242.8

50' n of Torrence

W	60	244.3
bl	70	243.3
y	78	242.5
l	85	241.8
y	94	241.1
bl	101	240.2
E	107	239.6

25052
250.32

Pringle
63

75' n of Torrence II

E	88	241.5
bl	80	242.3
y	73	243.0
l	65	243.8
y	58	244.5
bl	50	245.3
W	38	246.5

100' n of Torrence II

W	23	248.0
bl	32	247.1
y	40	246.3
l	47	245.6
y	52	245.1
bl	59	244.4
E	64	243.9

25052
25052

	125'	n of	Tonnes
E			45 245.8
H			38 246.5
Y			33 247.0
b			28 247.5
Y			25 247.8
H			17 248.6
W			08 249.5

TP 1070 260.97 025 250.07
260.77 250.07

	135'	n of	Tonnes
W			100 250.8
H			106 250.2
Y			112 249.6
b			115 249.3
Y			117 249.1
H			121 248.7
E			127 248.1

26077
260.77

Pringle

64

	175'	n of	Tonnes
E			105 250.3
H			100 250.8
Y			97 251.1
b			96 251.2
Y			94 251.4
H			92 251.6
W			86 252.2

200' n = 52 Neale St (50)

W			70 253.8
H			77 253.1
Y			78 253.0
b			80 252.8
Y			82 252.6
H			84 252.4
E			91 251.7

260.97

260.77

S side of Peak St

E	85	252.3
SE	78	253.0
N	75	253.3
S	74	253.4
W	73	253.5
SW	73	253.5
W	66	254.2

S 1/4 of Peak

W	64	254.4
SE	70	253.8
N	68	254.0
S	70	253.8
W	70	253.8
SW	75	253.3
E	80	252.8

260.97

260.77

Pringle

65

Center of Peak

E	77	253.1
SE	70	253.8
N	69	254.1
S	66	254.2
W	65	254.3
SW	65	254.3
W	60	254.8

N 1/4 of Peak

W	57	255.2
SE	60	254.8
N	61	254.7
S	62	254.6
W	63	254.5
SW	64	254.4
E	68	254.0

26097
260.77

n lb of heels

E	62	254.6
h	58	255.0
y	57	255.1
b	57	255.1
y	58	255.0
h	56	255.2
w	52	255.6
b	n line of heels	
w	46	256.2
h	50	255.8
y	52	255.6
b	52	255.6
y	50	255.8
h	50	255.8
E	54	255.4

26097
260.77

Pringle

66

25 n of heels

E	34	257.4
h	31	257.7
y	33	257.5
h	36	257.2
y	37	257.1
h	36	257.2
w	35	257.3

50 n of heels

w	21	258.7
h	22	258.6
y	23	258.5
b	21	258.7
y	19	258.9
h	18	259.0
E	18	259.0

TP

820

267.96
267.76

121 259.76

26796

267.76

75' n of Reel

E	71	260.8
bl	70	260.8
y	75	260.2
l	76	260.2
y	78	260.0
bl	80	259.8
w	77	260.1

100' n of Reel

w	62	261.6
bl	66	261.2
y	64	261.4
l	61	261.7
y	57	262.1
bl	55	262.3
E	53	262.5

26796

267.76

Purple 67

125' n of Reel

E	40	263.8
bl	39	263.9
y	44	263.4
l	45	263.3
y	50	262.8
bl	51	262.7
w	50	262.8

150' n of Reel

w	35	264.3
bl	38	264.0
y	35	264.3
l	32	264.6
y	33	264.5
bl	30	264.8
E	29	264.9

1715' n = Pueblo line on W

E	21	265.7
hh	23	265.5
y	22	265.6
b	27	265.4
y	26	265.2
hh	21	^{265.2} 265.2
W	27	265.1

1715' n = W Pueblo line
201' 4' E

W	27	265.1
hh	26	265.3
y	25	265.2
b	23	265.5
y	25	265.3
hh	26	265.2
E	25	265.3

X sec of Iowa St. (80)
Continued from B 834

364.13

450' n of Park St

E	45	359.6
hh	46	359.5
y	46	359.5
b	48	359.3
y	49	359.2
hh	50	359.1
w	50	359.1

475' n of Park

w	47	359.4
hh	47	359.4
y	47	359.4
b	44	359.7
y	41	360.0
hh	41.5	359.9
E	41	360.0

364.13

Iowa

69

500' n of Park St

E	44	359.7
hh	41	360.0
y	41	360.0
b	40	360.1
y	42	359.9
hh	43	359.8
w	43	359.8

525' n of Park St

w	40	360.1
hh	40	360.1
y	38	360.3
b	37	360.4
y	35	360.6
hh	33	360.8
E	39	360.2

36413

550' n of Paekst

E	34	360.7
bl	36	360.5
y	36	360.5
b	35	360.6
y	37	360.4
bl	39	360.2
w	38	360.3

5-75' n of Paekst

w	36	360.5
bl	34	360.7
y	34	360.7
b	30	361.1
y	33	360.8
bl	30	361.1
E	31	361.0

36413

Dawa

70

600' n = S of Howard St (80)

E	27	361.4
bl	30	361.1
y	31	361.0
bl	30	361.1
y	31	361.0
bl	31	361.0
w	31	360.9

S bl of Howard St

w	30	361.1
bl	31	361.0
y	31	361.0
b	26	361.5
y	27	361.4
bl	27	361.4
E	26	361.5

36413

S 1/4 of Howard st

E	24	361.7
bl	1.6	362.5
y	1.2	362.9
b	2.4	361.7
y	2.7	361.4
bl	2.7	361.4
W	2.7	361.4

TP 597 368.14 1.96 362.17

Center of Howard

W	6.4	361.7
bl	6.7	361.4
y	6.6	361.5
b	6.3	361.8
y	5.1	363.0
bl	5.9	362.2
E	6.7	361.4

3681471

N 1/4 of Howard

E	6.2	361.9
bl	6.3	361.8
y	5.8	362.3
b	6.2	361.9
y	6.3	361.8
bl	6.5	361.6
W	6.5	361.6

N bl of Howard

W	6.2	361.9
bl	6.4	361.7
y	6.2	361.9
b	6.1	362.0
y	6.2	361.9
bl	5.9	362.2
E	6.0	362.1

36814

N of Howard

E	5.7	362.4
bl	5.3	362.8
y	5.0	363.1
b	5.8	362.2
y	6.0	362.1
bl	6.0	362.1
W	5.9	362.2

25' n of Howard

W	5.6	362.5
bl	5.7	362.4
y	5.6	362.5
b	5.5	362.6
y	5.2	362.9
bl	5.5	362.6
E	5.4	362.7

36814

Jowa

72

50' n of Howard

E	4.1	361.0
bl	5.1	363.0
y	5.4	362.7
b	5.2	362.9
y	5.4	362.7
bl	4.4	363.7
W	5.2	362.9

75' n of Howard

W	4.9	363.2
bl	4.7	363.4
y	4.4	363.7
b	4.0	364.1
y	4.7	363.4
bl	4.9	363.2
E	4.6	363.5

36814

100' n of Howard

E	32	364.9
SE	23	365.8
S	32	364.9
SW	40	364.1
W	23	363.8
W	45	363.6
W	43	363.8

125' n of Howard

N	37	364.4
NE	38	364.3
E	36	364.5
SE	32	364.9
S	30	365.1
SW	28	365.3
W	26	365.5

36814

Iowa

78

150' n of Howard

E	11	367.0
SE	07	367.4
S	11	367.0
SW	18	366.3
W	25	365.6
W	28	365.3
W	30	365.1

TP 8.35 37473 176 36638

175' n of Howard

W	88	365.9
SE	86	366.1
S	86	366.1
SW	82	366.5
W	73	367.4
W	68	367.9
E	65	368.2

37473

220 n of Howard

E	54	369.3
ll	72	369.5
y	72	367.5
b	71	367.6
y	67	368.0
ll	75	367.2
W	79	366.8

225' n of Howard

W	70	367.7
ll	65	368.2
y	64	368.3
b	53	369.4
y	56	369.1
ll	58	368.9
E	42	370.5

37473

Jawa
74

250 n of Howard

E	33	371.4
ll	42	370.5
y	40	370.7
b	46	370.1
y	57	369.0
ll	61	368.6
W	63	368.4

275' n of Howard

W	59	368.8
ll	54	369.3
y	52	369.5
b	48	369.9
y	39	370.8
ll	37	371.0
E	26	372.1

37473

300' n of Howard

E	20	372.8
th	23	372.4
y	30	371.7
b	37	371.0
y	40	370.7
th	45	370.2
w	51	369.6

338' n = S of El Cajon ave (350)

w	37	371.0
th	32	372.5
y	31	372.6
b	27	372.0
y	21	372.6
th	16	373.1
E	10	373.7

TP 822 38266 029 37444

38266

Jona

75

n of El Cajon ave

E	49	377.8
th	57	377.0
y	60	376.7
b	52	377.1
y	62	376.5
th	70	375.7
w	72	375.5

25' n of El Cajon

w	68	375.9
th	67	376.0
y	57	377.0
b	51	377.6
y	51	377.6
th	48	377.9
E	45	378.2

38266

50' n of El Cajon

E	47	378.0
h	51	377.6
y	45	378.2
h	52	377.5
y	59	376.8
h	55	377.2
W	65	376.2

75' n of El Cajon

W	56	377.1
h	55	377.2
y	42	378.5
h	37	379.0
y	42	378.5
h	51	377.6
E	41	378.6

38266

Jawa

70

100' n of El Cajon

E	36	379.1
h	43	378.4
y	34	379.3
h	31	379.6
y	36	379.1
h	50	377.7
W	45	378.2

125' n of El Cajon

W	38	378.8
h	49	377.8
y	37	379.0
h	31	379.6
y	37	379.0
h	35	379.2
E	32	379.5

38266

150' n of El Cajon

E	22	380.5
th	34	379.3
y	34	379.3
b	32	379.5
y	25	380.2
th	34	379.3
w	34	379.3

175' n of El Cajon

w	19	380.8
th	27	380.3
y	34	379.3
b	35	379.2
y	27	380.0
th	18	380.9
E	30	379.7

38266

Zone

77

200' n of El Cajon

E	10	381.7
th	15	381.2
y	24	380.3
b	10	381.7
y	20	380.7
th	30	379.7
w	30	379.7

TP 700 386.68 298 379.68

225' n of El Cajon

w	56	381.1
th	69	379.8
y	66	380.1
b	65	380.2
y	63	380.4
th	56	381.1
E	61	380.6

38668

250 n b El bajon

E	6,2	380.5
ll	6,5	380.2
7	5,0	381.7
6	5,2	381.5
4	6,6	380.1
ll	6,5	380.2
w	6,6	380.1

275 n b El bajon

w	6,3	380.4
ll	6,6	380.1
4	5,8	380.9
6	4,0	382.7
4	5,2	381.5
ll	6,4	380.3
E	5,8	380.9

38668

Jawa

78

300 n b El bajon

E	4,2	4,3	382.4
ll		5,2	381.5
4		6,0	380.7
6		6,0	380.7
4		6,1	380.6
ll		4,6	382.1
w		5,4	381.3

325 n b El bajon

w		3,8	382.9
ll		5,2	381.5
4		4,0	382.7
6		3,6	383.1
4		5,2	381.5
ll		5,2	381.1
E		5,6	381.1

386.68

350' m of El Cajon

E	5.3	381.4
th	5.7	381.0
7	5.7	381.0
6	5.3	381.4
9	4.7	382.0
th	5.3	381.2
W	5.1	381.6

375' m of El Cajon

W	3.9	382.8
th	3.6	382.1
7	5.6	381.1
6	5.5	381.2
7	5.6	381.1
th	5.0	381.7
E	4.6	382.1
TP	4.70	382.28

5-45-14-14

Continued in B 837

P 75

100 - 87
11.5
148
15
87
02

179.60'
93° 32' 30"
86 27' 30"

875

29.000
075

386.

77.3
180.6
257.9 70 feet

350 m

140.69 Sub Sat Passco

E

8908 Passco $\frac{1257}{70.37}$

U

7252 Pl

7

18+872 l of 125 Passco Pl
7055 SW

6

3017

Jan
Boyd

U

$\frac{442.10}{275.60}$
166.50
a jala
Chestnut

120
48
168

McRoy

32.8

37

32.34

37.8

70.18

37.8

7

44.8

Madrona

80.29 Streets

315.16 Det 7 lines

from NE Cor Park Add
To Turner - on W

5-20
3 - Laurel
N - Kalmia

179.60'
93° 32' 30"
86 27' 30"

