

F.B.
836

LEVEL BOOK.

No. 410

MICROFILMED

DEC 15 1964

Henry
Ford
Oscar
Amphibian
Zion
Henderson

30.5-0 Juke

5326 mm 2E

7
3
12

X sec of Oregon st (80) 14' width 1
13' 14'

2 L of El Bajar to S of Adams

Totten in Book 818

448 38017 375.69 men 10 days 1/2

TP 492 37956 553 37464

2 L of El Bajar

e 50

66 50

7 50

6 47

7 49

66 52

7 58

2' n of El Bajar

22 52

66 36

75' 31

76' 50

37956

25' n of El Cajon

W	4.5
N	5.0
Y	5.1
S	4.7
Y	4.7
N	4.6
E	4.8

50' n of El Cajon

E	4.0
N	5.0
Y	4.9
S	4.8
Y	5.4
N	5.0
W	5.1

37956

Oregon

75' n of El Cajon

W	4.4
N	4.1
Y	4.6
Y	5.5
Y	5.3
S	4.8
Y	4.9
N	4.8
E	4.3

100' n of El Cajon

E	4.6
N	4.5
Y	5.0
S	4.8
Y	5.5
N	5.4
W	5.5

37950

125' n of El bajon

w	56
ll	54
y	55
l	50
4	46
ll	47
E	49

150' n of E. l. bajon

E	48
ll	50
y	50
l	46
4	52
ll	56
w	58

37952

Oregon 3

175' n of El bajon

w	56
ll	52
y	55
l	45
7	50
ll	47
E	46

200' n of El bajon

E	51
ll	52
y	51
l	45
7	53
ll	52
w	52

37956

225' n of El baje

w	5.7
lt	5.6
y	5.4
b	4.5
y	5.0
lt	5.4
E	5.6

250' n of El baje

E	5.2
lt	5.3
y	4.7
b	4.8
y	5.5
lt	5.6
w	5.6

37956

Oregon 4

275' n of El baje

w	5.6
lt	5.6
y	5.3
b	4.6
y	4.7
lt	5.0
E	5.4

300' n of El baje

E	4.1
lt	5.3
y	4.6
b	4.5
y	5.1
lt	5.3
w	5.7

37956

325' n of El Cajon

w	57
h	55
γ	50
h	43
γ	44
h	54
E	52

350' n of El Cajon

E	52
h	49
γ	45
h	42
γ	50
h	55
w	46

JP

658

38074

570

37416

38074

begin 5

375' n of El Cajon

w	63
h	64
γ	57
h	64
h	53
γ	56
h	59
E	59

401' n of El Cajon

E	56
h	57
γ	53
h	54
γ	60
h	61
w	62

38074

425' n of El Cajon

W	4.6
ll	5.7
y	5.9
b	5.1
y	5.1
ll	4.8
E	5.1

450' n of El Cajon

E	5.4
ll	4.8
y	5.0
b	5.0
y	5.7
ll	4.6
ll	5.2
W	5.8

74

38074

Oregon

475' n of El Cajon

W	4.0
ll	4.7
y	5.5
b	5.0
y	4.8
ll	4.8
E	5.1

500' n of El Cajon

E	4.4
ll	5.0
y	4.5
b	4.8
y	5.1
ll	4.2
ll	4.8
W	5.0

73

38074

525 n.f. El Cajon

W	48
bb	50
y	50
b	47
y	48
H	37
E	47

550 n.f. El Cajon

E	33
H	45
y	42
b	44
y	50
H	37
	38
W	43

73'

38074

Cajon

525 n.f. El Cajon

W	46
H	46
y	48
b	44
y	59
H	46
E	44

600 n-S of Meade am (80')

E	46
H	43
	48
y	40
b	43
y	48
H	46
W	45

38074

(12)

S 1/4 of Meade

W	37
bl	46
y	50
b	43
y	40
bl	45
E	45

S 1/4 of Meade

E	46
bl	46
y	45
b	43
y	48
bl	46
W	44

38074

Gregor

Center of Meade

W	37
bl	41
y	48
b	41
y	38
bl	47
E	47

N 1/4 of Meade

E	34
bl	35
y	42
b	40
y	48
bl	40
W	36

38074

	N	lb of Meade
W		46
H		46
Y		47
L		40
Y		41
H		30
E		28

N, line of Meade

E	45
H	45
Y	47
L	41
Y	48
H	40
W	43

38074

Oregon

	25'	n of Meade
W		33
H		34
Y		47
L		38
Y		40
H		46
E		42

50' n of Meade

E	44
H	44
Y	45
L	40
Y	48
H	47
W	45

TP

470

38077

467

37607

38077

75' n of Meade

W	28
bl	36
4	49
6	42
4	44
bl	38
E	46

100' n of Meade

E	46
bl	47
4	41
6	42
4	48
bl	50
W	48

38077

Oregon 11

125' n of Meade

W	39
bl	33
4	48
6	43
4	39
bl	48
E	40

150' n of Meade

E	45
bl	46
4	41
6	41
4	48
bl	50
W	49

38077

175' n of Meade

w		3.0
bl		4.0
y	+8'	3.0
		4.7
b		4.0
y		4.0
bl		4.2
E		4.5

200' n of Meade

E		4.0
bl		4.6
y		4.0
b		4.0
y		3.0
bl		4.5
w		3.1

38077

Argo

225' n of Meade

w		3.7
bl		4.9
y		4.8
b		4.0
y		4.0
bl		4.3
E		4.0

250' n of Meade

E		4.8
bl		4.9
y		4.2
b		4.3
y		4.9
bl		4.2
w		4.3

38077

275' n of Meade

w	41
ll	44
y	49
b	44
y	41
ll	39
E	46

300' n of Meade

E	46
ll	44
y	40
b	41
y	50
ll	44
w	41

38077

Cuger

320' n of Meade

w	42
ll	45
y	48
b	41
y	44
ll	33
E	36

350' n of Meade

E	46
ll	49
y	42
b	41
y	48
ll	48
w	44

38077

375' n f Meade

w	w		40
ll	ll		27
y	y	79' 40'	33 47 47
b	b		40
y	y		40
ll	ll		38
E	E		46

410' n f Meade

E	E		30
ll	ll		44
y	y		47
b	b		38
y	y		46
ll	ll		50
w	w		45

38077

Oregon

425' n f Meade

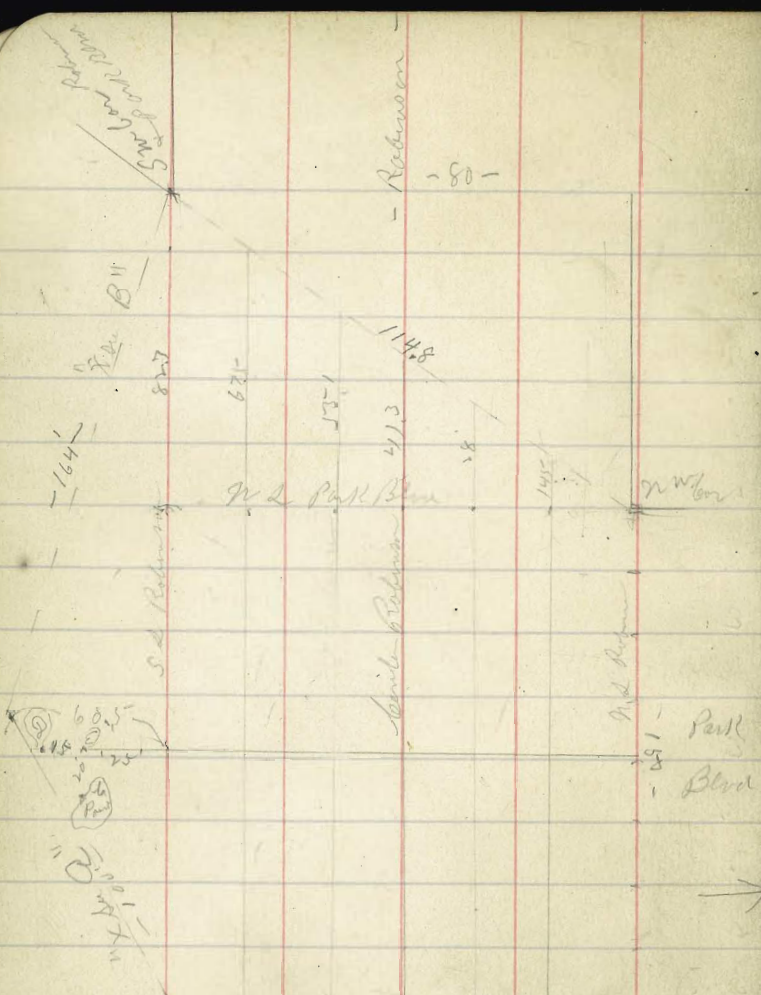
w			34
ll			49
y			43
b			35
y			39
ll			35
E			27

450' n f Meade

E			38
ll			39
y			39
b			35
y			41
ll			45
w			45

TP

450
7th Street has been
taken in another Bud



7 - 1/2 X dec of Intersection of Robinson ¹⁴ (80)
 + Park Blvd (150)
 Show

155	317.46	315.91	2.28 Minus
725	312.71	800	30.946

N 2 of Robinson

w	13.5
th	12.7
vs	11.6
th	10.1
l	9.6
th	9.0
th	8.0
26	6.0
th	3.2
2	1.0

Park
 Blvd



31671

(+14) N. 1/4 of Robinson

E	08
bb	32
eb	59
bb	86
e	100
bb	100
wb	114
bb	128
w	130
145' W of Post Office	141

31671

Post Office

N. 1/4 of Robinson

28' W of PPS	158
w	140
bb	132
wb	117
bb	102
e	101
bb	83
eb	58
bb	38
e	14

31671

Center of Robinson

E	16
bb	44
El	58
bb	83
b	104
bb	106
wb	113
bb	130
W	142
+20' w	154
41.3' w = wa	162

31671

Pink Blue 14

S 1/4 of Robinson

55.1 w = wa PB	167
40' w	162
20' w	150
w	132
ll	127
wb	112
ll	106
b	104
ll	83
El	65
ll	53
E	16

TP 485 31211 945 207.26 Top of Hill
n Burn

31x11

S side of Robinson

E	5.2
h	4.2
eb	2.2
bb	4.2
b	5.7
bb	6.8
Wb	6.9
h	8.0
W	8.7
20' w	9.2
22' w	11.0
40' w	11.5
67.5' w = W side	13.0

31x11

17

S side of Robinson

84.7' w = SW corner of Plot + PB	13.3
41' w	11.5
36' w	10.3
20' w	9.3
W	8.5
h	7.8
W	7.5
h	7.5
b	5.2
h	4.2
bl ^{71'}	3.2
bl	4.6
h	7.1
E	8.8

"X see line A" (200') End of Indianas Jr

E 2	88
bl	9.1
b	9.6
th	10.1
W 2	9.9
Point C D + E	
620' E of b 25' S of Pt	4.2
E 26' S of Sd Robinson	5.8
840' S of Sd of Robinson	6.2

(64) X see line B

SW to Indianas	9.9
Point 2' 2'	6.8
Ebb of Pt	7.8
E 6	9.2
bl	8.8
b	9.3
bl	9.6
W 1	11.2
th	12.6
W	13.3

7 Aug 1874 X Sec of Alabama (60) Am
 12. 1/2 S of University to Park

S of University Am (Grade)
 Bm N.E. Univ + Alabama

3.95 269.37

265.42

~~E 4.7
 bl 4.5
 y 5.5
 b 5.3
 y 5.2
 bl 5.5
 W 5.4
 25' S of Univ am
 W 6.2
 bl 6.0
 y 5.7
 b 6.2
 y 5.8
 bl 5.5
 E 4.9~~

Wrong
 Location

26937

Alabama

50' S of Univ am

~~E 5.5
 bl 6.0
 y 6.2
 b 6.5
 y 6.1
 77' 7.0
 bl 8.8
 W 15.5~~

75' S of Univ am

~~W 13.2
 bl 8.6
 73' 7.2
 y 7.0
 b 6.4
 y 6.5
 bl 5.5
 E 4.0~~

269.37

100 S of Amis

E	34
bl	41.7
y	5.9
b	6.6
y	7.0
bl	7.3
w	7.8
w	11.0

125 S of Amis

w	91
bl	78
y	69
b	59
y	50
bl	44
E	34

269.37

Alabama

150 S of Amis

E	35
bl	46
y	54
b	62
y	70
bl	80
w	87

175 S of Amis

w	98
bl	88
y	78
b	68
y	57
bl	51
E	46

26937

200 S of Univ

E	4.9
bl	5.7
y	6.3
b	7.4
y	7.8
bl	9.1
w	10.4

225 S of Univ

w	10.9
bl	9.5
y	8.3
b	7.5
y	6.4
bl	5.3
E	4.4

TP 0.73 265.95 4.15 265.22

26595

Watson

250 S of Univ av

E	1.4
bl	2.6
y	3.5
b	4.1
y	5.2
bl	7.0
w	8.3

275 S of Univ av

w	9.0
bl	7.7
y	6.6
b	5.2
y	4.4
bl	3.4
E	2.5

26595

300 S = 2 1/2 of st Nightmar (60)

e	3.6
th	4.6
y	5.5
b	6.3
y	7.5
h	8.7
w	9.7

22 1/2 of Nightmar

w	9.7
th	8.6
y	7.7
b	6.8
y	5.8
th	5.0
e	4.1

26595

Alabama

22 1/4 of Nightmar

e	4.8
th	5.6
y	6.0
b	7.4
y	8.0
h	9.0
w	10.0

center of Nightmar

w	10.4
th	9.3
y	8.5
b	7.2
y	7.9
h	7.8
e	7.6

265-95

S 74 of Wightman

E	57
H	83
104	104
16	108
14	99
11	105
W	117

S 66 of Wightman

W	167
H	138
7	134
1	105
7	82
H	62
E	46

S 66 + 5' S'

W 2

190

265-95

Alabama

S line of Wightman

E	41
H	55
4	70
6	89
7	108
11	127
W	148

S 25 58 Wightman

W	109
H	88
7	77
1	66
7	57
H	48
E	35

265-95

50 S of Wightman

E	32
bl	42
y	49
b	59
y	71
bl	81
w	90

75 S of Wightman

w	95
bl	76
y	61
b	54
y	44
bl	37
E	30

265-95

Alabama

100 S of Wightman

E	26
bl	34
y	46
b	54
y	66
bl	77
w	130

125 S of Wightman

w	70
bl	69
y	54
b	47
y	35
bl	27
E	18

26595

150 S of Wightman

E	1.3
SE	2.3
S	3.3
SW	4.3
W	4.9
W	5.8
W	7.3

175 S of Wightman

W	6.6
SE	5.3
S	4.1
SW	3.7
W	2.7
SE	1.9
E	0.7

TP

067

26635

017

26568

26635

Alabama

200 S of Wightman

E	1.3
SE	2.2
S	2.9
SW	3.6
W	4.6
W	5.5
W	6.4

225 S of Wightman

W	6.0
SE	4.8
S	4.2
SW	3.2
W	2.4
SE	2.1
E	1.5

26635

250 S of Myrtles

E	1.2
SE	2.0
S	2.5
SW	3.2
W	3.8
W	4.4
W	5.1
W	5.3
SE	4.2
S	3.2
SW	2.8
W	2.4
SE	1.9
E	1.4

287' S = N of Robinson (80)

26635

Alabama

N of Robinson

E	1.4
SE	2.0
S	2.3
SW	2.7
W	3.5
W	4.2
W	5.0
W	5.3
SE	4.4
S	3.4
SW	2.7
W	2.3
SE	2.0
E	1.6

N of Robinson

26635

Center of Robinson

E	1.5
H	1.9
Y	2.3
L	2.5
Y	2.6
H	4.2
W	3.5

S 1/4 of Robinson

W	6.0
H	4.6
Y	3.5
L	2.8
Y	2.4
H	2.0
E	1.6

26635

Alabama

S 1/4 of Robinson

E	1.9
H	2.2
Y	2.5
L	3.0
Y	3.8
H	4.8
W	6.1

S 2/4 of Robinson

W	6.3
H	5.3
Y	3.9
L	3.2
Y	2.7
H	2.6
E	2.3

26635

25' S of Robinson

E	35
A	36
Y	39
L	44
Y	51
H	61
W	72

50' S of Robinson

W	83
H	76
Y	69
L	62
Y	57
H	56
E	54

26635

Alabama

75' S of Robinson

E	84
H	82
Y	81
L	87
Y	88
H	95
W	102

100' S of Robinson

W	126
H	122
Y	115
L	116
Y	113
H	112
E	110

TP

1111

255.24

Top of Main hole

7/ Chryl X Sec of Alabama St (60)
 22 7th
 14 Shen S line of Univ an to the Park

on lines 40' E + 20' W of Parallel with Pueblo line
 in E Alabama

262 26804 ✓ 265.42 263.0
 S of Univ an

E		27	265.3	
Sh		38	264.2	
y		43	263.7	
h		42	263.8	
y		43	263.7	
Sh		40	264.0	
W		41	263.9	
	25	S of Univ an		
W		59	262.1	
Sh		50	263.0	
y		42	263.8	
h		46	263.4	
4		47	263.3	
h		46	263.4	
E		40	264.0	

PLOTTED

26804

Alabama 28

50	S of	Univ an	
50			263.0
45			263.5
51			262.9
50			263.0
58			262.2
113			256.7
150			263.0

75 S of Univ an

PLOTTED

45.4			
100			258.0
58			262.2
54			262.6
53			262.7
50			263.0
36			264.4

268.04

	100	S of	Univ av	
E			28	265.2
ll			40	264.0
Y			50	263.0
b			54	262.6
Y			59	262.1
ll			70	263.0
	+5'		97	258.3
W			116	256.4

125

S of Univ av

W			87	259.3
ll			73	260.7
Y			60	262.0
b			54	262.6
Y			47	263.8
ll			34	264.6
E			26	265.4

PLOTTED

268.04

Alabama 29

	150	S of	Univ av	
E			28	265.2
ll			37	264.3
Y			44	263.6
b			54	262.6
Y			64	261.6
ll			72	260.8
W			82	259.8

175

S of Univ av

W			90	259.0
ll			82	259.8
Y			72	260.8
b			63	261.7
Y			49	263.1
ll			41	263.9
E			37	264.3

PLOTTED

26804

200 S of Union av

E	4.1	263.1
H	4.7	263.3
Y	5.7	262.3
L	6.2	261.8
Y	7.4	260.6
H	8.5	259.5
W	9.7	258.3

225 S of Union av

PLOTTED

W	10.6	257.4
H	9.1	258.9
Y	7.8	260.2
L	6.5	261.5
Y	5.4	262.6
H	4.6	263.3
E	3.7	264.3

TP 0.80 26603 281 26523 ✓

26603

Alabama 30

250 S of Union av

E	2.3	263.7
H	3.3	262.9
Y	4.1	261.9
L	4.7	261.3
Y	6.6	259.4
H	7.8	258.2
W	9.3	256.7

275 S of Union av

PLOTTED

W	9.9	256.1
H	8.6	257.4
Y	7.5	258.5
L	6.4	259.6
Y	4.9	261.1
H	4.2	261.8
E	3.7	262.8

26603

300 S = Hd of Wrightman St (60)

E	4.4	261.6
U	5.3	260.7
Y	6.0	260.0
L	7.2	258.8
Y	8.5	257.5
U	9.5	256.5
W	10.7	255.3

N Hd of Wrightman

W	10.6	255.4
U	9.5	256.5
Y	8.4	257.6
L	7.5	258.5
Y	6.5	259.5
U	5.6	260.4
E	4.9	261.1

PLOTTED

26603

Alabama 31

N 1/4 of Wrightman

E	5.4	260.6
U	6.2	259.8
Y	6.7	259.3
L	7.9	258.1
Y	8.8	257.2
U	9.7	256.3
W	10.8	255.2

Center of Wrightman

W	10.3	254.7
U	10.2	255.8
Y	9.2	256.8
L	8.4	257.6
Y	7.2	258.8
U	7.7	258.3
E	7.5	258.5

PLOTTED

Sect + 5'

E	9.5	256.5
---	-----	-------

26613

S 1/4 of Wightman

E	76	258.4
ll	106	255.4
7	114	254.6
6	114	254.6
9	106	255.4
H	117	254.3
W	124	253.6

S 66 6 Wightman

PLOTTED

W	168	249.2
H	158	250.2
7	140	252.0
6	124	253.6
4	100	256.0
H	77	258.3
E	58	260.2

S 66 6 + 5'

W 2	190	249.0
-----	-----	-------

26603

Wafama 528

S line of Wightman

E	52	260.8
H	66	259.4
7	83	257.7
4	104	255.6
7	122	253.8
H	143	251.7
W	162	249.8

S 25' Wightman

PLOTTED

W	146	253.4
H	102	255.8
7	86	257.2
6	74	258.6
7	67	259.3
H	55	260.5
E	47	261.3

26603

50 S of Wightman

E	41	261.9
H	47	261.3
Y	54	260.6
L	65	259.5
Y	79	258.1
H	89	257.1
W	105	255.5

75

S of Wightman

W	135	252.5
H	90	257.0
Y	76	258.6
L	54	260.6
Y	52	260.8
H	43	261.7
E	37	262.3

PLOTTED

26603

100 S of Wightman

E	35	262.5
H	43	261.7
Y	51	260.9
L	57	260.3
Y	71	258.9
H	116	254.4
W	170	249.0

125

S of Wightman

W	134	252.6
H	87	257.3
Y	68	259.2
L	52	260.8
Y	45	261.5
H	33	262.7
E	26	263.4

PLOTTED

TP

249

26632

200

264.03

Alabama

33

26652

250 S of Wrightline

E	26	263.9
H	37	262.8
Y	47	261.8
L	53	261.2
9	64	260.1
H	71	259.9
W	91	259.4

175

S of Wrightline

W	85	258.0
H	70	259.5
Y	58	260.7
L	46	261.9
9	42	262.3
H	31	263.4
E	23	264.2

PLOTTED

26652

Alabama 34

200 S of Wrightline

E	21	264.2
H	29	263.6
Y	35	263.0
L	41	261.9
9	53	261.2
H	64	260.1
W	77	258.8

225

S of Wrightline

W	70	259.5
H	62	260.3
Y	48	261.7
L	42	262.3
9	33	263.2
H	25	264.0
E	22	264.3

PLOTTED

26652

250

S of

Myrtle

E	20	264.5
H	26	263.9
Y	33	263.2
L	39	262.6
Y	45	262.0
H	52	261.3
W	61	260.4

287

PLOTTED

S of

Robinson (80)

W	66	259.9
H	54	261.1
Y	42	262.3
L	34	263.1
Y	29	263.6
H	25	264.0
E	20	264.5

26652

Alabama
35

N of Robinson

E	20	264.5
H	23	264.2
Y	29	263.6
L	35	263.0
Y	44	262.1
H	54	261.1
W	65	260.0

N 1/4 of Robinson

PLOTTED

W	65	260.0
H	53	261.2
Y	42	262.2
L	36	262.8
Y	28	263.7
H	23	264.2
E	20	264.5

26652

Center of Robinson

E	20	264.5
H	24	264.1
4	28	263.7
6	26	263.9
9	44	262.1
H	56	260.9
W	72	259.3

S

1/4 of Robinson

W	72	259.3
H	60	260.5
4	48	261.7
6	36	262.9
9	29	263.6
H	25	264.0
E	21	264.4

PLOTTED

26652

Alabama 31

S 1/4 of Robinson

E	23	264.2
H	26	263.9
4	31	263.4
6	38	262.7
9	49	261.6
H	62	260.3
W	74	259.1

S 1/4 of Robinson

W	74	259.1
H	64	260.1
4	53	261.2
6	45	262.0
9	35	263.0
H	29	263.6
E	27	263.8

PLOTTED

266.54

25' S of Robinson

E	38	262.7
bb	40	262.5
γ	45	262.0
δ	53	261.2
γ	61	260.4
bb	75	259.0
W	83	258.2

50

5' S of Robinson

W	92	257.3
ll	84	258.1
γ	77	258.8
δ	70	259.5
γ	64	260.1
ll	60	260.5
E	57	260.8

PLOTTED

266.52

75' S of Robinson

E	84	258.1
ll	82	258.3
γ	87	257.8
δ	91	257.4
γ	96	256.9
ll	101	256.4
W	106	255.9

79

956 255.81

100'

5' S of Robinson

W	112	255.25
ll	26	253.2
ll	21	253.7
γ	19	253.9
δ	10	254.8
γ	12	254.6
ll	08	255.0
E	07	255.1

PLOTTED

Alabama

37

25581

125 S of Robinson

E	47	251.1
SE	48	251.0
Y	47	251.1
S	45	251.3
Y	47	251.4
SE	48	251.0
W	58	250.0

150 S of Robinson

PLOTTED

W	88	247.0
SE	85	247.1
Y	82	247.6
S	80	247.8
Y	79	247.9
SE	80	247.8
E	86	247.2

165 S of Robinson

E	125	243.3
---	-----	-------

TP 1.03 24402 12.75 24306

24409

Alabama 58

175 S of Robinson

E	74	236.7
SE	34	240.7
Y	34	240.7
Y	26	242.5
S	20	242.1
Y	22	241.9
SE	10	243.1
W	06	243.5

180 S of Robinson

PLOTTED

E	100	234.1
W	91	235.0
SE	94	234.7
Y	92	234.9
S	94	234.7
Y	99	234.2
SE	106	233.5
E	105	233.6

244.09

237 S = N of Sandis (60)

E	82	235.9
bb	89	235.2
y	91	235.0
b	95	234.6
g	104	233.7
bl	114	232.7
w	118	232.3

N of Sandis

w	88	235.3
bl	71	237.0
y	65	237.6
b	58	238.3
g	60	238.1
bl	58	238.3
E	50	239.1
y		
w	115	232.6

PLOTTED

Publ 47
Publ 47

244.09

Alabama 59

N of Sandis

E	31	241.0
bl	38	240.3
y	43	239.8
b	47	239.4
g	51	239.0
bl	57	238.6
w	65	237.6

Center of Sandis

w	57	238.4
bl	50	239.1
y	45	239.6
b	40	240.1
g	35	240.6
bl	24	241.7
E	13	242.8

PLOTTED

TP 1300 25209 ✓ 100 243.09

25609

S 1/4 of Sandis

E	11.6	244.5
ll	12.6	243.5
y	13.6	242.5
l	14.0	242.1
y	14.5	241.6
ll	14.9	241.2
W	15.7	240.4

S 1/4 of Sandis

PLOTTED

W	14.2	241.9
ll	13.9	242.2
y	13.7	242.9
l	13.0	243.1
y	12.0	244.1
ll	11.0	245.1
E	9.8	246.3

25609

Alabama

S 1/4 of Sandis

E	7.9	248.2
ll	8.8	247.3
y	9.6	246.5
l	10.7	245.4
y	11.2	244.9
ll	11.6	244.5
W	12.0	244.1

S 1/4 of Sandis

PLOTTED

W	14.2	241.9
ll	7.5	248.6
y	6.8	249.3
l	6.6	249.5
y	6.0	250.1
ll	5.3	250.8
E	4.6	251.5

25609

50' 5 y Landis

E	28	253.3
66	34	252.7
7	43	251.8
6	50	251.1
4	57	250.4
66	61	250.0
W	67	249.4

75' 5 y Landis

W	62	249.9
66	56	250.5
4	48	251.3
6	42	251.9
4	35	252.6
66	26	253.5
E	18	254.3

PLOTTED

25609

Alabama 41

100' 5 y Landis

E2	17	251.2
66	26	253.5
7	33	252.8
6	41	252.0
4	46	251.5
66	52	250.8
W	60	250.1

125' 5 y Landis

W	66	249.5
66	53	250.6
4	48	251.3
6	40	252.1
4	34	252.7
66	27	253.4
E	20	254.1

PLOTTED

TP 392 25853 148 25461

25853

150 S of Landis

E	36	254.9
H	46	253.9
Y	55	253.0
b	62	252.3
Y	66	251.9
H	76	250.9
W	89	249.6

175 S of Landis

W	89	249.6
H	81	250.4
Y	70	251.5
b	61	252.4
Y	50	253.5
H	36	254.9
E	29	255.6

PLOTTED

25853

Alabama

200 S of Landis

E	17	256.8
H	30	255.5
Y	45	254.0
b	54	253.1
Y	65	252.0
H	81	250.4
W	95	249.0

225 S of Landis

W	100	248.5
H	86	249.9
Y	70	251.5
b	55	253.0
Y	42	254.3
H	27	255.8
E	12	257.3

PLOTTED

25853

250 S of Landis

E	22	250.3
H	37	254.8
Y	52	253.2
b	68	251.7
y	82	250.3
H	99	248.6
W	110	247.5

275 S of Landis

W	121	246.4
H	110	247.5
Y	94	249.1
b	80	250.5
y	68	251.7
H	54	253.1
E	39	254.6

PLOTTED

25853

Alabama

42

300 S of Landis

E	62	251.3
H	75	251.0
Y	86	249.9
b	99	248.6
y	113	247.2
H	128	245.7
W	143	244.2

325 S of Landis

W	155	243.0
H	144	244.1
Y	134	245.1
b	124	246.1
y	113	247.2
H	100	248.5
E	87	249.8

PLOTTED

TP 087 246.47 1293 245.60 ✓

24647

350 57 Landis v

E	0.5	246.0
ll	1.6	244.9
y	2.1	244.4
b	3.0	243.5
y	4.3	242.2
ll	5.2	241.3
n	6.8	239.7

TP. 34

pmg.

386.5

S = 7.2 Cypress st (80)

n	16.8	229.7
ll	16.5	230.0
y	16.0	230.5
b	15.6	230.9
y	15.2	231.3
ll	15.6	230.9
E	14.7	231.8

PLOTTED

24647

alabama 44

n 46 Cypress

E	140	232.5
ll	159	230.6
y	154	231.1
b	170	229.5
y	190	227.5
ll	192	227.3
n	193	227.2

n 44 Cypress

n	152	231.3
ll	133	233.2
y	128	233.7
b	120	234.5
y	113	235.2
ll	101	236.4
E	87	237.8

PLOTTED

246.47

Center of by pass W

E	3.3	243.2
th	4.2	242.3
y	5.4	241.1
b	6.7	239.8
y	7.9	238.6
th	8.8	237.7
W	9.7	236.8

S 1/4 of by pass

W	6.3	240.2
th	5.4	241.1
y	4.2	242.4
b	3.0	243.5
y	2.0	244.5
th	1.0	245.5
E	0.0	246.5

PLOTTED

TP 10.20 256.37 0.33 246.14

256.37

Alabama 45

S 1/4 of by pass

E	2.9	249.4
th	8.1	248.2
y	9.2	247.1
b	10.3	246.0
y	11.0	245.3
th	12.5	243.8
W	13.7	242.6

S 1/4 of by pass

W	10.2	246.1
th	9.5	246.8
y	8.4	247.9
b	6.7	249.6
y	5.4	250.9
th	4.1	252.2
E	2.8	253.5

PLOTTED

TP 9.26 263.27 2.83 253.57

263.27

25

S 8

By hand

E	54	257.9
SE	67	256.6
S	78	255.5
SW	92	254.1
W	104	253.9
WNW	122	251.1
W	125	250.8

50 S 6

By hand

W	108	252.5
WNW	89	254.4
W	74	255.9
WNW	56	257.7
W	44	258.9
WNW	34	259.9
E	26	260.7

PLOTTED

T.P.

876

263.27 ✓

306

260.21 ✓

264.37

75

S 7

By hand

E	60	262.4
SE	70	261.4
S	80	260.4
SW	89	259.5
W	100	258.4
WNW	112	257.2
W	118	256.6

100 S 6

By hand

W	100	258.4
WNW	88	259.6
W	81	260.3
WNW	74	261.0
W	64	262.0
WNW	55	262.9
E	46	263.8

PLOTTED

Alabama
42

26837

1365 S = n of Dwight St (60)

E	35	264.9
SE	42	264.2
Y	52	263.2
S	56	262.8
SW	67	261.7
W	75	260.9
W	85	259.9

n of Dwight

N	82	260.2
NE	72	261.2
Y	64	262.0
S	55	262.9
SE	48	263.6
W	41	264.3
E	33	265.1

PLOTTED

TD

360

269.83

114

266.23

n of Dwight

26983

Dabawa

47

n of Dwight St

E	47	265.1
SE	56	264.2
Y	60	263.8
S	68	263.0
SW	76	262.2
W	83	261.5
W	93	260.5

Center of Dwight

N	90	260.8
NE	81	261.7
Y	75	262.3
S	67	263.1
SE	59	262.9
W	54	264.4
E	46	265.2

PLOTTED

26983

S 1/4 of Dwight

E	48	265.0
h	54	264.4
y	56	264.2
b	66	263.2
y	74	262.4
h	81	261.7
W	89	260.9

PLOTTED

S 1/4 of Dwight

W	85	261.3
h	79	262.9
y	71	262.7
b	66	263.2
y	53	264.3
h	53	264.5
E	47	265.1

26983

Alabama

48

S 1/4 of Dwight

E	48	265.0
h	53	264.5
y	59	263.9
b	64	263.4
y	69	262.9
h	77	262.1
W	83	261.5

PLOTTED

S 1/4 of Dwight

W	80	261.8
h	74	262.4
y	71	262.8
b	65	263.3
y	58	264.0
h	55	264.3
E	50	264.8

26983

	50	sq	Dwight	
E			54	264.4
H			60	263.8
Y			65	263.3
L			68	263.0
Y			72	262.6
H			76	262.2
W			80	261.8

PLOTTED

	75	sq	Dwight	
W			87	261.1
H			84	261.4
Y			81	261.7
L			78	262.0
Y			74	262.4
H			69	262.9
E			64	263.4

26983

Alabama
49

	100	sq	Dwight	
E			77	262.1
H			83	261.5
Y			86	261.2
L			89	260.9
Y			94	260.4
H			98	260.0
W			102	259.6

PLOTTED

	125	sq	Dwight	
W			119	257.9
H			115	258.3
Y			108	259.0
L			106	259.2
Y			103	259.5
H			96	260.2
E			92	260.6
TP	160		<u>260.8</u>	<u>2585.8</u>

26018

150 S of Dwight

E	21	258.1
ll	26	259.6
7	36	258.6
6	40	256.2
7	41	256.1
ll	45	255.7
W	48	255.4

175 S of Dwight

W	92	251.0
ll	87	251.5
7	83	251.9
6	79	252.3
7	73	252.9
ll	67	253.4
E	59	254.3

PLOTTED

26018

Alabama
50

200 S of Dwight

E	85	251.7
ll	97	250.4
7	105	249.7
6	113	248.9
7	120	248.2
ll	124	247.7
W	129	247.3

TP 582 25390 1210 24808 ✓

215 S of Dwight

W	121	241.8
ll	111	242.8
7	100	243.9
1	85	245.4
7	71	246.8
ll	65	247.4
E	53	248.6

PLOTTED

25090

240 54 Dwygk

a	105	243.4
u	112	242.7
y	124	241.5
b	132	240.7
g	142	239.7
h	153	238.6
w	161	237.8

250 54 Dwygk

w	139	240.0
u	122	241.2
y	113	242.6
b	98	244.1
g	88	245.1
h	78	246.1
e	74	246.5

PLOTTED

25390

Alabama 59

275 54 Dwygk

e	12	252.7
u	21	251.8
y	32	250.7
b	44	249.5
g	56	248.3
h	70	247.9
w	82	245.7

7p 1250 265.8 122 252.68

300 54 Dwygk

w	145	250.7
u	138	251.7
y	128	252.7
b	113	253.9
g	106	254.6
h	119	255.3
e	93	255.9

PLOTTED

26518

325' Sq Dwight

E	70	258.2
H	72	258.0
Y	79	257.3
L	85	256.7
Y	95	255.7
H	103	254.9
W	112	254.0

350' Sq Dwight

W	89	256.3
H	80	257.2
Y	73	257.9
L	65	258.7
Y	60	259.2
H	55	259.7
E	52	260.0

PLOTTED

26518

Alabama
52

375' Sq Dwight

C	40	261.2
H	46	260.6
Y	52	260.0
L	56	259.6
Y	61	259.1
H	68	258.4
W	77	257.5

TP 814 26730 602 259.6

1100 Sq Dwight

W	70	259.3
H	84	258.9
Y	77	259.4
L	70	260.3
Y	65	260.8
H	61	261.2
C	57	261.6

PLOTTED

267.30

425 S of Dwight

E	53	260.0
H	57	261.6
Y	62	261.1
L	66	260.7
7	71	260.2
H	77	259.6
W	83	259.0

450 S of Dwight

W	81	259.2
H	75	259.8
Y	71	260.2
L	65	260.8
7	60	261.3
H	55	261.8
E	51	262.2

PLOTTED

267.30

196
487
680

Alabama 30

21840 S = N S of Myrtle St (80) on W

E	59	261.4
H	66	260.7
Y	69	260.4
L	75	259.8
7	79	259.4
H	84	258.9
W	92	258.1

N St 6 Myrtle

W	104	256.9
H	96	257.7
Y	90	258.3
L	84	258.9
7	81	259.2
H	76	259.7
E	74	259.9

PLOTTED

267.30

N 1/4 of Myrtle a w

E	8.9	258.4
bl	9.2	258.1
7	10.0	257.3
6	10.4	256.9
4	10.9	256.4
ll	11.8	255.5
W	12.7	254.6

Center of Myrtle a w

W	14.5	252.8
bl	14.0	253.3
7	13.1	254.2
6	12.4	254.9
4	11.6	255.7
ll	11.0	256.3
E	10.6	256.7

PLOTTED

TP 161

256.05

256.7

254.4

256.05

Alabama 54

S 1/4 of Myrtle a w

E	0.4	255.6
bl	1.5	254.6
7	2.5	253.6
6	2.6	253.4
4	3.7	252.4
ll	4.9	251.2
W	5.7	250.3

S bl of Myrtle a w

W	9.2	246.8
bl	7.9	248.2
7	7.1	249.0
6	5.6	250.4
4	4.6	251.5
ll	3.6	252.5
E	2.7	253.3

PLOTTED

25605

S line of Myrtle on W

E	70	2490
h	77	248.4
y	84	247.7
t	106	245.4
y	124	243.7
h	135	242.6
w	160	240.0
TP	0.45	24355 ✓ 1295 <u>24310</u> ✓
TP	4.36	23690 ✓ 1101 <u>23754</u> ✓
33'-S = N of Myrtle St (60) on E		
w	118	225.1
h	107	226.2
y	99	227.0
t	88	228.1
y	86	228.3
h	80	228.9
E	77	229.2

PLOTTED

23690

Alabama 55

N line of Myrtle on E

E	100	226.9
h	105	226.4
y	115	225.7
t	118	225.1
y	122	224.7
h	128	224.1
w	130	223.9

N 1/4 of Myrtle

w	107	226.2
h	104	226.5
y	98	227.1
t	97	227.2
y	88	228.1
h	77	229.2
E	68	230.1

PLOTTED

No Slopes required
Culvert can be located at
N gutter line square across

236.90

Center of Myrtle on E

E	51	231.5
ll	53	231.6
4	55	231.4
6	59	231.0
7	61	230.8
ll	63	230.6
W	66	230.3

S Side of Myrtle on E

W	17	235.0
ll	19	235.0
4	18	235.1
6	18	235.1
7	18	235.1
ll	22	234.7
E	16	235.3

PLOTTED

TP 1170 247.25 105 235.85 ✓

247.25

Alabama 56

S Side of Myrtle

E	63	241.0
ll	57	241.6
4	69	240.4
6	70	240.3
7	64	240.9
ll	71	240.2
W	64	240.9

S Side of Myrtle

W	18	245.5
ll	19	245.4
4	13	246.0
6	12	246.1
7	17	245.6
ll	14	245.9
E	11	246.2

PLOTTED

TP 1231 258.42 114 246.11TP 994 267.70 066 257.76 ✓

26770

	25'	S of	Myrtle	
E			10.7	257.0
h			9.6	258.1
y			11.2	256.5
b			11.4	256.3
y			11.7	256.0
h			12.0	255.7
w			12.1	255.6

30

S of

Myrtle

w			9.0	258.9
h			8.4	259.3
y			8.0	259.7
b			7.5	260.2
y			7.1	260.6
h			6.6	261.1
w			6.3	261.4

PLOTTED

26770Alabama
9.

	75'	S of	Myrtle	
E			4.9	262.8
h			5.5	262.2
y			6.0	261.7
b			6.6	261.1
y			7.1	260.6
h			7.4	260.1
w			8.8	258.9

100

S of

Myrtle

w			8.2	259.5
h			7.5	260.2
y			6.7	261.0
b			6.2	261.5
y			5.5	262.2
h			5.0	262.7
E			4.2	263.5

PLOTTED

267.70

	125	S of	Myrtle	
E			40	263.7
ll			46	263.1
y			54	262.3
b			62	261.5
y			69	260.8
ll			74	260.3
w			83	259.4

	150	S of	Myrtle	
w			85	259.2
ll			78	259.9
y			70	260.7
b			62	261.5
y			55	262.2
ll			45	263.2
E			40	263.7

PLOTTED

267.70

Alabama

58

	175	S of	Myrtle	
E			40	263.7
ll			45	263.2
y			54	262.3
b			64	261.3
y			71	260.6
ll			77	260.0
w			85	259.2

710 1146 ✓ 77071 ✓ 845 25925 ✓

203 S = N of 2 of Pines on W (75.6)

w			128	259.9
ll			114	259.3
y			100	260.7
b			92	261.5
y			82	262.5
ll			74	263.3
E			69	263.8

PLOTTEL

270.71

N 1/4 of P/pos

E	67	264.0
H	73	263.4
f	84	262.3
l	93	261.4
y	104	260.3
M	119	258.8
W	135	257.2

N 1/4 of P/pos

W	136	257.1
H	125	258.3
y	107	260.0
l	95	261.2
y	87	262.0
H	75	263.2
E	68	263.9

PLOTTED

270.11Alabama
59

Center of P/pos

E	72	263.5
H	76	263.1
y	89	261.8
l	99	260.8
y	110	259.7
H	125	258.2
W	136	257.1

S 1/4 of P/pos

W	140	256.7
H	128	257.9
y	114	259.3
l	102	260.5
y	87	262.0
H	79	262.8
E	72	263.5

PLOTTED

S lat of Repus

E	75	263.2
U	81	262.6
V	93	261.4
W	103	260.4
X	118	259.9
Y	130	257.7
Z	147	256.5

B. Am = 2d Park

W	138	256.9
U	129	257.8
V	116	259.1
W	104	260.5
X	96	261.1
Y	85	262.2
Z	78	262.9
	64	264.2

PLOTTED

8
18
12

along X dec 8 Jan 1850
7th 2nd of Harney to Wintbury ss
Shaw

1249 45.25 3326

7P 1260 58.27 008 45.67

7P 1320 70.48 079 57.48

7P 1062 75.15 5.95 64.80

NW 1/4 of Harney st

W 125 62.7

6 43' 124 136

4 131

6 128 62.4

7 127

W 124

E 44 63

5.0 70.2

4' S of N 2

W 125 62.7

5' S of N 2

W 142 61.0

75.15

Jan 61

N 1/2 of Harney

E 42 71.0
120 45

W 11.0

7th of Harney
Jan 1850

4 126

PLOTTED

6 127 62.5

7 128

W 133

W 142 61.0

N 1/4 of Harney

W 140 61.2

W 132

4 130

6 126 62.6

7 122 40'
117

W 5.0

E 37 71.5

75.15

Center of Harney

E	31	72.1
H	4.4	
Y	6.0	
b	11.4	
	12.7	62.5 on man
Y	12.8	
H	13.1	
W	13.8	61.4

PLOTTED

S 1/4 of Harney

W	13.5	61.7
H	13.2	
Y	12.4	
b	5.8	62.4
Y	4.6	
H	3.5	
E	1.8	73.4

S 1/4 + 3'

W	13.4	61.8
---	------	------

75.15

Juan

S 1/4 of Harney

E	8.3	74.9
H	2.0	
Y	3.0	
b	4.3	70.9
Y	5.4	
H	7.0	
W	8.7	66.5

PLOTTED

S line of Harney

W	7.3	67.9
H	5.4	
Y	4.0	
b	3.2	72.0
Y	1.3	
H	0.0	
TP	12.91	8807 +001 75.16
E		10.7 77.4

8807

25' S of Harney

E	50	83.1
bl	68	
y	84	
b	96	78.5
y	111	
bl	132	
W	165	71.6

PLOTTED

50' S of Harney

W	113	76.8
bl	84	
y	68	
b	56	82.5
y	40	
W	22	
E	07	77.7

TP

1292

10100

+001

8808

10100

Jaar

75' S of Harney

E	98	91.2
bl	111	
y	118	
b	132	87.8
y	152	
bl	170	
W	195	81.5

PLOTTED

100' S of Harney

W	134	87.6
bl	112	
"	95	
b	91	91.9
y	83	
bl	70	
E	56	95.4

101.00

125' S of Harney

E	17	99.3
th	27	
y	37	
b	47	96.3
y	60	
th	59	
w	82	92.8

PLOTTED

150' S of Harney

w	26	98.4
th	26	
y	26	
b	13	99.7
y	05	
TP	1303	11337
th	120	100.34
E	115	101.9

11337

Juan

125' S of Harney

E	91	104.3
th	93	
y	99	
b	106	102.8
y	115	
th	116	
w	121	100.3

PLOTTED

200' S of Harney

w	82	105.2
th	80	
y	77	
b	74	106.0
y	66	
th	64	
E	64	107.0

11337

225 S of Harry

E	4.1	109.3
hh	4.2	
y	4.5	
b	4.7	108.7
g	5.0	
hl	5.0	
W	5.0	108.4

PLOTTED

250 S of Harry

W	2.7	110.7
hl	2.7	
y	2.7	
b	2.7	110.7
g	2.4	
hl	2.5	
E	1.8	111.6

TP 1296 12526 1.07 112.30

12526

Juan

275 S of Harry

E	1.04	114.9
hh	1.11	
y	1.16	
b	1.19	113.4
g	1.22	
hl	1.23	
W	1.24	112.9

PLOTTED

300 S = 2 S of border 50

W	1.09	114.4
hl	1.06	
y	1.02	
b	0.98	115.5
g	0.95	
hl	0.87	
E	0.81	117.2

125.26

N lb of Conds

E	7.0	118.3
SE	8.0	
S	8.4	
SW	9.0	116.3
W	9.4	
WNW	9.8	
W	10.0	115.3

PLOTTED

N 1/4 of Conds

W	9.4	115.9
SE	9.2	
S	8.8	
SW	8.5	116.8
W	7.8	
WNW	7.4	
E	6.5	118.8

125.26

Juan

Center of Conds

E	6.0	119.3
SE	6.7	
S	7.4	
SW	8.2	117.1
W	8.2	
WNW	8.6	
W	8.9	116.4

PLOTTED

S 1/4 of Conds

W	8.4	116.9
SE	8.0	
S	7.7	
SW	7.7	117.6
W	7.0	
WNW	6.4	
E	5.7	119.6

12526

S 60' of bands

E	50	120.3
H	61	
7	67	
6	70	118.3
7	72	
H	74	
W	79	117.4

PLOTTED

S 12' of bands

W	73	118.0
H	68	
4	66	
6	62	119.1
4	57	
H	52	
E	42	121.1

12526

S 5' of bands

E	25	122.8
H	28	
4	38	
6	42	121.3
7	47	
H	50	
W	54	119.9

PLOTTED

S 5' of bands

W	38	121.5
H	32	
4	25	
6	19	123.4
4	15	
H	13	
TP	1219	13790
E	0.05	125.31
	121	124.2

13780

75' S of Conde

E	124	124.9
SE	114	
N	114	
S	120	125.3
SE	126	
SE	132	
W	145	122.8

PLOTTED

100' S of Conde

W	120	125.3
SE	105	
N	92	
S	83	129.0
N	83	
SE	87	
E	104	126.9

13780

125' S of Conde H

E	81	129.2
SE	58	
N	54	
S	54	131.9
N	57	
SE	67	
W	80	129.3

PLOTTED

150' S of Conde

W	68	130.5
SE	54	
N	46	
S	40	133.3
N	38	
SE	42	
E	62	131.1

Mar

137.30

	175	S of	border	
E			41	133.2
H			28	
Y			29	
b			30	134.3
Y			36	
H			42	
W			54	131.9

PLOTTED

	200	S of	border	
W			39	133.4
H			27	
Y			20	
b			13	136.0
Y			12	
H			09	
E			14	135.9

TP 1293 14993 030 137.00

149.93

Juan

	225	S of	border	
E			120	137.9
H			111	
Y			113	
b			116	138.3
Y			120	
H			127	
W			142	135.7

PLOTTED

	250	S of	border	
W			116	138.3
H			103	
Y			96	
b			93	140.6
Y			89	
H			90	
E			100	139.9

14993

225	S 4	Perde	
E		7.9	142.0
H		7.3	
Y		7.1	
b		7.1	142.8
Y		8.0	
H		8.5	
W		9.3	140.6

PLOTTED

300 S = N 2 of Arista (50)

W		6.4	143.5
H		5.2	
Y		5.1	
b		4.5	145.4
Y		4.8	
H		5.3	
E		5.2	144.7

14993

Juan

N	64	Arista 11	
E		4.2	145.7
H		3.8	
Y		3.6	
b		3.5	146.4
Y		4.0	
H		4.0	
W		5.2	144.7

PLOTTED

N 1/4 of Arista 11

W		3.8	146.1
H		3.0	
Y		3.2	
b		3.4	146.5
Y		3.1	
H		2.7	
E		3.0	146.9

149.93

Center of Anata st

E	14	148.5
SE	11	
4	10	
6	12	148.7
7	18	
11	15	
W	28	147.1

PLOTTED

TP 980 159.56 0.5 149.88

S 149 Anata

W	114	148.2
H	98	
	100	
7	100	
6	93	150.3
7	91	
11	90	
E	94	150.2

159.56

juan

S of Anata

E	79	151.7
H	70	
9	75	
6	84	151.7
7	90	
11	84	
W	100	149.6

PLOTTED

S 149 Anata st

W	70	152.6
H	85	
	69	
9	69	
6	62	153.4
7	57	
11	58	
E	64	153.2

TP 977 167.86 141 158.77

Point

167.96

25' S of Ansta

W		13.9	154.1
bl	75'	11.9	
4		12.0	
4		11.9	
b		12.4	155.6
4		11.7	
bl		11.2	
E		11.4	156.6

PLOTTED

50' S of Ansta

E		6.2	161.8
bl		6.2	
4		6.0	
b		6.6	161.2
4	75'	6.9	
4		7.9	
bl		7.9	
W		7.7	160.3

167.96

Juan

75' S of Ansta St

W	76'	3.1	164.9
bl		3.5	
4		1.9	
4		1.5	
b		0.9	167.1
4		1.0	
bl		0.7	
E		0.4	167.6

PLOTTED

70' 1290 180.63 0.23 167.73

100' S of Ansta St

E		9.3	171.3
bl		9.8	
4		10.1	
b		10.8	169.8
4		11.7	
bl		12.3	
W		13.3	167.3

180.62

125' S of Anst. st

W	97	170.9
bl	87	
y	75	
b	64	174.2
7	53	
bl	48	
E	45	176.1

PLOTTED

150' S of Anst. st

E	10	179.0
bl	15	
y	25	
b	13	179.3
y	41	
bl	50	
W	64	174.5

180.63

Juan

175' S of Anst. st

W	33	177.3
bl	20	
y	17	
b	05	180.3
TP	1058	18994
4		127
bl		91
E		79
E		71

PLOTTED

210' S of Anst. st

E	48	184.1
bl	51	
y	56	
y	60	182.9
y	70	
bl	78	
W	95	179.4

add 1.0 from here

17936

18894

225 S of Ansta H

W	5.9	183.0
H	4.6	
Y	3.6	
L	2.7	186.2
Y	2.3	
H	1.9	
E	1.0	187.9

PLOTTED

250 S of Ansta

E	0.5	188.4
H	0.8	
Y	1.0	
L	1.7	187.2
Y	2.2	
H	3.0	
W	4.7	184.2

18894

Juan

275 S of Ansta

W	4.7	184.2
H	3.7	
Y	2.8	
L	2.0	186.9
Y	1.4	
H	1.0	
E	1.1	187.8

PLOTTED

300 S = 2 L Ampudia (50)

E	1.6	187.3
H	2.1	
Y	2.4	
L	3.2	185.7
Y	3.8	
H	4.4	
W	4.5	184.4

18994

N 1/4 of Armpudia

W 4.6 184.3

h 4.3

y 4.0

b 3.9 185.0

y 3.1

h 2.5

E 1.8 187.1

PLOTTED

N 1/4 of Armpudia

E 1.7 187.2

h 2.6

y 3.3

b 3.9 185.0

y 4.1

h 4.2

W 4.9 184.0

18994

Jan

Center of Armpudia

W 4.6 184.3

h 4.1

y 4.1

b 3.8 185.1

y 3.3

h 3.0

E 1.9 187.0

PLOTTED

S 1/4 of Armpudia

E 2.4 186.5

h 3.1

y 3.3

b 3.7 185.2

y 3.8

h 4.1

W 4.4 184.5

18894

S bb of Ampudia

W	45	184.4
bb	40	
y	38	
b	36	185.3
y	33	
bb	32	
E	28	186.1

PLOTTED

S 2 of Ampudia

E	30	186.9
bb	31	
y	31	
b	36	185.3
y	36	
bb	36	
W	40	187.9

TP

6.95

19273

416

185.78

+ SW Juan
ampudia

19273

Juan

25' S of Ampudia

W	46	187.1
bb	43	
y	48	
b	54	186.3
y	53	
bb	54	
E	55	186.2

PLOTTED

50' S of Ampudia

E	46	187.1
bb	36	
y	31	
b	31	188.6
y	38	
bb	48	
W	49	186.8

19273

75' S of Ampudia

W	4.3	189.4
bl	3.8	
y	3.6	
b	3.6	188.1
y	3.6	
bl	4.0	
E	4.7	189.0

PLOTTED

100' S of Ampudia

E	4.1	189.6
bl	3.5	
y	3.6	
b	3.7	188.0
y	3.1	
bl	2.7	
W	2.6	189.1

19273

Juan

125' S of Ampudia

W	3.3	188.4
bl	3.1	
y	3.3	
b	3.5	188.2
y	3.6	
bl	3.9	
E	4.3	189.4

PLOTTED

150' S of Ampudia

E	5.3	186.4
bl	5.2	
y	4.9	
b	4.6	189.1
y	4.3	
bl	4.1	
W	4.2	189.5

19873

175' S of Ampudia

W	60	185.7
bl	61	
7	66	
6	72	184.5
4	74	
bl	77	
E	82	183.5

PLOTTED

200' S of Ampudia

E	115	180.2
bl	104	
7	100	
6	97	182.0
7	93	
bl	90	
W	85	183.2

7P 397 18844 826 18477

18844

Juan

225' S of Ampudia

W	115	182.9
bl	54	
7	63	
6	70	180.4
7	75	
bl	81	
E	94	178.0

PLOTTED

250' S of Ampudia

E	113	176.1
bl	94	
7	82	
6	70	180.4
7	62	
bl	53	
W	41	183.3

256' S of Ampudia

E	147	172.7
bl	96	

262' S of Ampudia

E	120	175.4
bl	95	

18844

275 S of Ampudia

W		44	183.0
bl		53	
y		58	
l		69	180.5
y		75	
bl	+3	77	
		100	
E		148	172.6

PLOTTED

283' S of Ampudia

E 280 9.0 178.4

300 S of = Rd of Trias st (50')

E		61	181.3
bl		76	
y		51	
l		46	182.8
y		40	
bl		33	
W		29	184.5

18844

Juan

N bl of Trias st

W		23	183.1
bl		28	
y		33	
l		37	183.7
y		41	
bl		44	
E		50	182.4

PLOTTED

N 1/4 of Trias st

E		39	183.5
bl		34	
y		30	
l		30	184.4
y		26	
bl		22	
W		16	185.8

18844

center of Tras 25

w		1.3	186.1
ll		1.7	
y		2.2	
b		2.7	185.2
y		2.3	
ll		2.6	
E		3.1	184.9

PLOTTED

S. 1/4 of Tras 25

E		2.4	185.0
ll		2.0	
y		1.8	
b		1.6	185.8
y		1.5	
ll		1.3	
w		1.2	185.2
TP		1.4	187.30

Continued in Book 835

Page 24

