

F.B.
837

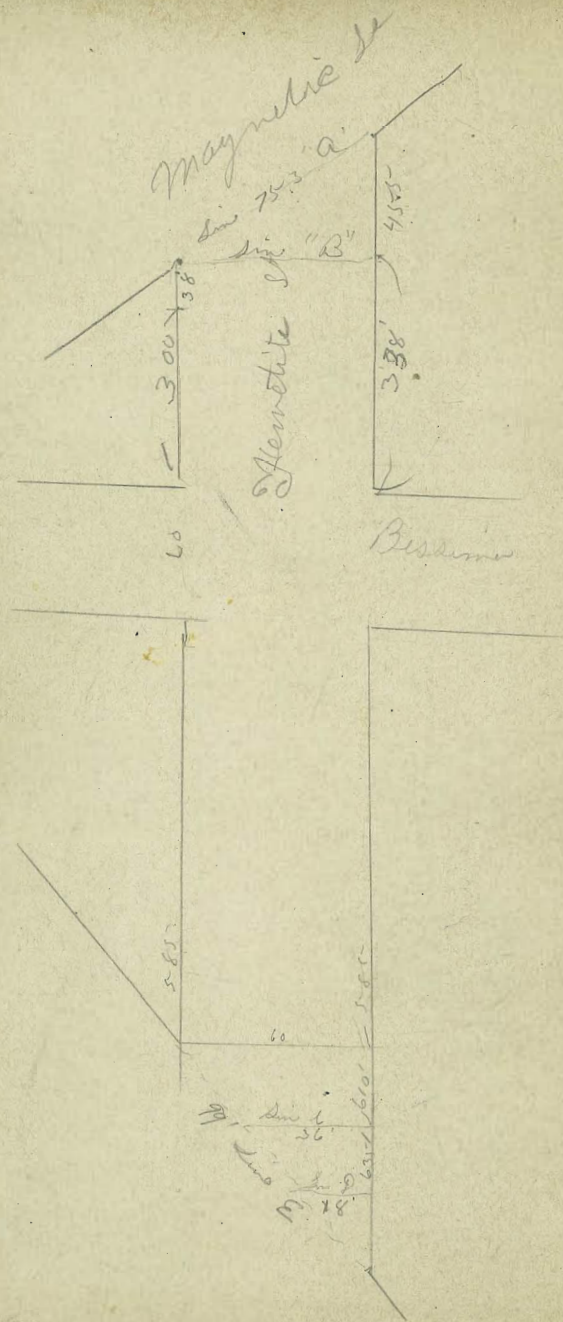
LEVEL BOOK.

No. 410

Redwood & India
9581 M VI Spoke Pole

MICROFILMED

DEC 15 1964



7 blong X Sec of Hametite St 60
 24 24
 74 ham S of Magnetic St to E of S. Patten

11.82	33.14	2132	man n E
12.10	45.24	00	Baseline Y
		33.14	7albut

(line A) S line of Magnetic St

E		72	38.0
H		66	
Y		58	
L		51	40.2
Y		47	
H		38	
W		28	42.4
(line B)		455' S of Magnetic St on E = 338' n of	
60'		Baseline St = Magnetic St on W	
W		28	42.4
H		33	
Y		49	
L		46	40.7
Y		50	
H		56	
E		63	38.9

PLOTTED
F.A.B.

4524

300 n of Bassina St

E	58	39.4
H	53	
y	43	
b	37	41.6
y	30	
H	25	
w	19	43.3

PLOTTED
FAB

TP 460 4860 124 4400

275 n of Bassina St

w	50	43.6
H	54	
y	59	
b	71	41.5
y	79	
H	85	
E	90	39.6

4860

250 n of Bassina St

E	94	39.2
H	87	
y	80	
b	74	41.2
y	63	
H	61	
w	54	43.2

PLOTTED
FAB

225 n of Bassina St

w	54	43.2
H	60	
y	65	
b	74	41.2
y	79	
H	90	
E	94	39.2

Remitt
2

4860

200 n f Bessmer

E	96	39.0
th	90	
y	83	
l	77	40.9
y	71	
ll	64	
w	59	42.7

PLOTTED
F.F.B

175 n f Bessmer

w	65	42.1
th	70	
y	72	
l	80	40.6
y	88	
ll	91	
E	96	39.0

4860

Hemite

3

150 n f Bessmer

E	99	38.7
th	93	
y	87	
l	84	40.2
y	77	
ll	68	
w	55	43.1

PLOTTED
F.F.B

125 n f Bessmer

w	18	46.8
th	40	
y	72	
l	85	40.1
y	93	
ll	98	
E	105	38.1

4860

100 mg Bessmer

E		10.8	37.8
bl		9.5	39.1
y		7.6	
l		5.7	42.9
9		3.7	
bl		2.2	46.4
IP	11.38	<u>58.46</u>	<u>152</u> <u>470.8</u>
W		8.2	50.3

PLOTTED
F.A.B.

75 mg Bessmer

w		4.6	53.9
bl		7.0	
y		10.2	
l		12.8	48.7
9		15.1	
bl		16.8	
E		18.1	40.4

5846

50 mg Bessmer

E		16.8	41.7
bl		14.6	
y		13.6	
y		11.7	
l		8.1	50.4
9		6.0	
bl		3.3	
W		1.5	57.0

PLOTTED
F.A.B.

25 mg Bessmer

w		+0.3	58.7
bl		1.0	
y		2.4	
l		4.2	54.3
9		6.3	
bl		9.3	
E		10.0	
E		12.8	
E		14.1	44.5

Remette

4

5846

N line of Bassina

E		68	51.7
bl		50	
y		34	
l		16	56.9
y		03	
TP	1203	<u>1778</u>	2.71 53.75
bl		83	
w		69	60.9

PLOTTED
F.A.B.

N line of Bassina

w		62	61.6
bl		74	
y		88	
l		101	57.7
y		116	
bl		133	
E		150	52.8

6778

Remetate

5

N line of Bassina

E		143	53.5
bl		125	
y		108	
l		96	58.2
y		80	
bl		68	
w		54	62.4

PLOTTED
F.A.B.

Center of Bassina

w		48	63.0
bl		62	
y		76	
l		86	59.2
y		100	
bl		115	
E		130	54.8

6778

S 1/4 of Beesman

E	123	55.5
SE	107	
4	98	
S	84	59.5
4	71	
SE	57	
W	42	63.6

PLOTTED
F.A.B.

S 1/4 of Beesman

W	38	64.0
SE	54	
4	67	
S	85	59.4
4	97	
SE	106	
E	123	55.5

6778

Ametata

6

S 1/4 of Beesman

E	116	56.2
SE	105	
4	102	
S	90	58.8
4	64	
SE	50	
W	33	64.5

PLOTTED
F.A.B.

TP	1281	6855	1203	5525
W	25	5	28	65.4

W	28	65.4
SE	43	
4	56	
S	74	61.2
4	92	
SE	107	
E	117	56.9

6855

50 S of Bassin

E	104	58.2
H	9.2	
4	7.8	
6	6.3	62.3
4	4.8	
H	2.9	
W	1.0	67.6

PLOTTED
F.A.B

75 S of Bassin

E	84	60.2
H	7.2	
4	5.6	
6	4.0	64.6
4	2.4	
H	0.5	68.1

77.48

W	7.5	70.0
---	-----	------

6855

100 S of Bassin

E	68	61.8
H	5.2	
4	3.7	
6	1.8	66.8
4	0.0	

PLOTTED
F.A.B

TP 1044 77.48 1.51 67.04

H	6.7	
W	4.2	73.3

125 S of Bassin

W	18	75.7
H	4.0	
4	6.4	
6	8.2	69.3
4	10.3	
H	12.1	
E	13.6	63.9

Rematch

7

7748

150 S of Bessmer

E	118	68.7
bl	97	
y	78	
b	58	71.7
y	34	
bl	17	

PLOTTED
F.F.B.

TP 233 8528 153 7595

w 69 78.4

175 S of Bessmer

w	34	81.9
bl	56	
y	79	
b	106	74.7
y	127	
bl	152	
E	171	68.2

8528

200 S of Bessmer

E	157	71.6
bl	139	
y	112	
b	90	76.3
y	61	
bl	31	

PLOTTED
F.F.B.

w 95 84.8

225 S of Bessmer

w	705	85.8
bl	32	
y	58	
b	80	77.3
y	102	
bl	126	
E	148	70.5

Asmetite

8

8528

	250'	Sy	Bessum
W			1.0 84.3
U			3.8
Y			6.2
L			8.8 76.5
Y			10.8
U			13.4
E			15.7 69.6

PLOTTED
F.A.B.

	275'	Sy	Bessum
E			17.6 67.7
U			16.1
Y			15.3
L			13.5 71.8
Y			11.5
U			9.6
W			6.9 78.4

	285'	Sy	Bessum
W 1			8.6 76.7

8528

Hemite
9

	300'	Sy	Bessum
E			7.0 78.3
U			5.5 79.8
Y			3.8 81.5
L			2.0 83.3
Y			0.3 85.0
TP	1308	98.14	0.2 85.06
U			11.6 86.5

PLOTTED
F.A.B.

	325'	Sy	Bessum
W			10.0 88.1
W			2.8 95.3 ✓
U			4.9 93.2 ✓
Y			6.6 91.5
L			8.0 89.8
Y			10.6 87.5
U			12.7 85.4
E			14.5 83.6

9814

350 sf Pressure

E	110	87.1
ll	94	88.7
y	74	90.7
b	50	93.1
y	26	95.5
ll	02	97.9

PLOTTED
F.A.B.

TP 1040 10694 160 96.54

w 64 100.5

375 sf Pressure

w	44	102.5
ll	63	100.6
y	81	98.8
b	100	96.9
y	120	94.9
ll	140	92.9
e	157	91.2

10694

400 sf Pressure

E	120	94.9
ll	100	96.9
y	78	99.1
b	56	101.3
y	35	103.4
ll	13	105.6
w	45	107.4

PLOTTED
F.A.B.

TP 1191 118.63 022 106.72

425 sf Pressure

w	70	111.6
ll	95	109.1
y	119	106.7
b	138	105.8
y	163	102.3
ll	182	100.4
e	210	97.6

Anemeter

10

118.63

450 S of Bassman

E	176	101.0
H	154	103.2
Y	131	105.5
L	107	107.9
U	84	110.7
G	53	113.3
W	35	115.1

PLOTTED
F.A.B.

475 S of Bassman

W	130	117.3
H	36	115.0
Y	58	112.8
L	85	110.1
U	106	108.0
H	128	105.8
E	149	103.7

118.63

500 S of Bassman

E	142	104.4
H	114	107.7
Y	88	109.8
L	63	112.3
U	38	114.8
H	17	116.9
W	402	118.8

PLOTTED
F.A.B.

525 S of Bassman

W	11	117.5
H	36	115.0
Y	60	114.6
L	84	110.2
U	114	107.7
H	143	104.3
E	166	102.0

TP 444 11185 1120 107.41

Reminute

11

1185

550 S 9 111.9
 Bassina

E	140	97.8
SE	107	101.2
S	76	104.3
SW	54	106.4
W	37	108.7
NE	13	110.6
N	0.0	111.8

PLOTTED
F.A.B.

575 S 9 Bassina

W	54	106.4
SE	76	106.3
S	100	101.9
SW	110	100.8
W	122	99.7
NE	140	97.9
E	160	95.8

1185

585 S=ES 111.9 State St on West

E	108	109.0
SE	103	101.6
S	103	101.6
SW	93	102.5
W	72	104.7
NE	50	106.9
N	34	108.4

PLOTTED
F.A.B.

"Line 6" 610 S 9 Bassina
(34')

STP 598 117.68 117.7
 014 111.71

E	89	106.6	108.9
SE	73	110.2	
S	58	111.9	
SW	44	113.3	
W	44	107.4	
NE	35	114.2	

12

			117 ⁷	
	"Sun D" (18')	635	S of Beacon	
E	E		70	110.7
bl	bl		54	111.3
7	+8 = E 2 spots		31	114.6
l	to	664	S = E 2 spots on E	
4	E		63	111.4
bl	Sun E (99')		E line of Spatio S	
W	S 2		63	111.4
	H		45	113.4
w	7		28	112.9
H	l		21	115.6
9	7		44	113.2
l	bl		60	111.2
7	2 2 =		92	108.5
bl				
E				

PLOTTED
FAB.

1/31
1/28

Along X Sec of Beesman St (60')
W of Rosemans to end

6.26 27.68 21.52
2.70 29.60 27.8 26.90
12.54 36.21 5.93 23.67

W of Rosemans St (Graded)

2 132 29.0

6 135

4 133

6 130 23.2

4 130

6 125

5 121 24.1

S of Rosemans

5 108 25.4

6 110

7 115

6 122 26.0

7 113

6 118

2 120 24.2

Rosemans
Bm &
Tablet

N

6

4

6

4

6

5

5

4

4

6

7

6

N

36.21

Beesman

14

2.5 54 Rosemans St

95 26.7

99

96

97 26.5

96

95

92 27.0

50 54 Rosemans

69 29.3

72

75

79 28.3

81

74

80 28.2

PLOTTED

PLOTTED

36.21

75 W of Russians

n 61 30.9

tl 55

y 58

l 52 30.6

y 51

tl 44

s 44 31.8

PLOTTED

100 W of Russians

s 15 34.7

tl 19

y 24

l 27 33.5

y 34

tl 34

n 37 32.5

TP 1250 48.04 0.67 3534

48.04

125 W of Russians

n 131 34.9

tl 125

y 116

l 112 36.8

y 107

tl 100

s 68 41.2

PLOTTED

150 W of Russians

s 18 47.0

tl 20

y 40

l 70 41.0

y 95

tl 10.1

n 102 37.8

Bessmer

15

4804

175 W of Rosecrans

2		51	42.9
6		1.6	

TP	1310	6114	00	4804
----	------	------	----	------

4		127	
---	--	-----	--

6		11.6	49.5
---	--	------	------

4		10.3	
---	--	------	--

6		9.4	
---	--	-----	--

5		8.5	52.6
---	--	-----	------

200 W = S.S. of Hermitate st. (60)

5		5.1	58.0
---	--	-----	------

6		5.5	
---	--	-----	--

7		5.7	
---	--	-----	--

6		6.3	52.8
---	--	-----	------

7		7.5	
---	--	-----	--

6		8.4	
---	--	-----	--

2		9.4	57.7
---	--	-----	------

TP	1228	7342	00	6114
----	------	------	----	------

7342

Bessina

16

W side of Hermitate st

2		12.5	60.9
---	--	------	------

6		11.8	
---	--	------	--

4		11.0	
---	--	------	--

6		10.4	63.0
---	--	------	------

4		9.9	
---	--	-----	--

6		9.4	
---	--	-----	--

5		9.0	64.4
---	--	-----	------

25' W of Hermitate st

5		5.5	67.9
---	--	-----	------

6		6.2	
---	--	-----	--

7		6.6	
---	--	-----	--

6		7.3	66.1
---	--	-----	------

7		7.9	
---	--	-----	--

6		8.9	
---	--	-----	--

2		9.8	63.6
---	--	-----	------

PLOTTED

PLOTTED

7342

50' w of Hemetite

2	66	66.8
H	59	
4	50	
6	41	69.3
9	32	
H	23	
S	15	71.9

PLOTTED

TP 1248 8484 106 7236

25' w of Hemetite

S	88	76.0
H	98	
7	110	
6	115	73.9
7	120	
H	130	
H	143	70.5

8484

100' w of Hemetite

H	99	74.9
H	90	
4	85	
6	72	77.6
4	62	
H	51	
S	43	80.5

PLOTTED

125' w of Hemetite

S		86.6
H	00	8
7	06	
6	20	82.8
7	30	
H	43	
H	57	79.1
TP 1213	<u>9697</u>	00 <u>8484</u>

Bessmer

17

9697

150' w of Hermitage

n	126	87.4
bl	115	
y	100	
b	92	87.8
y	80	
bl	63	
S	52	91.8

PLOTTED

175' w of Hermitage

S	02	96.8
bl	16	
y	29	
b	38	93.2
y	50	
bl	68	
n	80	89.0

9697

200' w = E of Station (60')

n	34	93.6
bl	18	
y	03	
TP	1225	109.22
b	00	96.97
b	113	97.9
y	100	
bl	87	
S	74	101.8

PLOTTED

E of Station W

S	54	103.8
bl	66	
y	81	
b	94	99.8
y	108	
bl	125	
n	136	95.6

18

10922

E 1/4 of Spatic

2	124	96.8
6h	110	
7	93	
6	76	101.6
7	66	
4h	50	
5	37	105.5

PLOTTED

Center of Spatic

5	20	107.2
4h	35	
7	50	
6	64	102.8
4	77	
4h	95	
2	108	98.4

10922

W 1/4 of Spatic

2	95	99.7
4h	81	
7	66	
6	51	104.1
7	36	
4h	20	
5	05	108.7

PLOTTED

W 1/4 of Spatic

5		110.0
4h	06	
7	22	
6	38	105.4
7	51	
4h	67	
2	79	101.9

Bessinger
19

109.22

W line of Static

n	7.2	102.0
hl	5.7	
4	4.3	
6	2.6	106.6
4	1.2	

PLOTTED

TP 1233 12155 00 109.22

hl	11.8	
S	10.2	111.4

25' W of Static

S	7.4	114.2
hl	9.3	
7	10.8	
6	12.0	109.6
4	13.3	
hl	14.9	
n	16.1	105.5

121.55

Bessemer

20

50' W of Static

n	13.0	108.6
hl	11.7	
4	10.0	
6	8.6	113.0
4	7.1	
hl	5.7	

PLOTTED

S 40 117.6

75' W of Static

S	7.0	120.6
hl	2.4	
4	3.9	
6	5.4	116.2
4	7.4	
hl	9.8	
n	11.7	109.9

12153

160 w f Spatic

n 14.8 106.8

ll 10.1

7 7.2

6 4.8 116.8

4 2.3

ll TP 2.26 124.09 0.42 124.13

ll 2.7

S 0.2 123.9

125 w f Spatic

S 0.3 123.8

ll 3.6

7 7.6

6 11.7 112.4

4 16.4

150 w f Spatic

S 5.6 118.5

ll 9.2

4 12.8

TP 0.75 111.75 13.09 111.00

PLOTTED

111.75

125 w f Spatic

ll 13.0 98.8

ll 9.0

150 w f Spatic

ll —

ll 15.0

PLOTTED

7 10.2

6 5.4 106.4

184 w f Spatic = Possible line on S

S 2.7 109.1

ll 4.4

7 11.2

6 15.3 96.5

4 18.0

TP 2.75 101.40 13.10 98.65

150 w f Basin

ll 8.9 92.5

Basin

21

10140

184' $n =$ Public line n S

n h 148 86.6

h 123

191' $n =$ Pub n n

n h 158 85.6

PLOTTED

Intersect of Public line & Sd Magneto

Appt 140

22

2) Change X die of S path 44 (60)
 3) Feb Sd Bessum
 4) Sku

898 118.20 109.22 TP
 S die of Bessum 25

N		69.	111.3
SE		81	
Y		95	
E		110	107.2
Y		126	
SE		135	
E		164	101.8
	25	S of Bessum	
E		132	105.0
SE		114	
Y		95	
E		76	110.6
Y		56	
SE		41	
N		29	115.3

PLOTTED

118.20

S path
 23

50 S of Bessum

N		705	114.7
SE		10	
Y		28	
E		45	113.7
Y		64	
SE		85	
E		105	107.7
	75	S of Bessum	
E		77	110.5
SE		59	
Y		41	
E		24	115.8
Y		03	
	TP	12.26	130.56
SE		00	118.20
SE		108	
N		87	121.9

PLOTTED

13052

100 S of Bessima

W	58	124.8
bl	78	
y	99	
l	117	118.9
y	136	
ll	159	
E	168	113.8

PLOTTED

125 S of Bessima

E	130	117.6
ll	112	
y	97	
l	76	123.0
y	57	
bl	36	
W	13	129.3

13056

150 S of Bessima

E	85	122.1
bl	64	
y	42	
l	28	127.8
y	10	
TP	1196	<u>14252</u>
ll	00	<u>13056</u>
ll	11,0	
W	92	133.3

PLOTTED

175 S of Bessima

W	54	137.1
bl	70	
y	89	
l	110	131.5
y	126	
bl	143	
E	156	126.9

Station

24

14252

200 S of Beema

E	11.3	131.2
W	9.5	
Y	8.0	
L	6.1	136.4
Y	5.0	
W	3.7	
W	2.2	140.3

PLOTTED

248' S = Public Sec in W

WTP	329	14581	0.0	14252
W			0.5	145.3
W			1.7	
Y			3.1	
L			4.5	141.3
Y			6.0	
W			7.8	
E			9.3	136.5

14581

State

25

(36') 268' S on E

E	7.9	137.9
W	6.0	
Y	4.4	
L	2.4	143.4
+6' = Public Sec	1.4	

PLOTTED

(18') 293' S on E

E L	8.7	139.1
W	6.7	
+8' =	4.6	141.2

321' S on E = Public Sec on E

E	12.1	133.7
---	------	-------

14581

26

(99.2)

Point Line

S

12.1

133.7

ll

8.1

4

4.8

l

2.2

143.6

7

0.6

ll

0.3

n

0.5

145.3

PLOTTED

X-section - 31st St N.L. Thorn to S.L. Dwight
 31st St 65' wide 10' walks 11.25' quarters 53

8/12
 1/2
 Bunker
 Harriet
 Kerr.

Page 53

27

331.8

0450

B.M.

6.97

331.75

324.78

N.L. Thorn

E

9.9

321.9

+7

10.7

321.1

crk

10.7

321.1

"A

10.8

321.0

M

11.5

320.3

"A

11.8

320.0

crk

12.6

319.2

W

13.0

318.8

0725'

N

W

11.9

319.9

crk

11.7

320.1

"A

11.3

320.5

M

11.1

320.7

"A

10.4

321.4

crk

10.6

321.2

+3

10.0

321.8

E

9.5

322.3

E

9.2

322.6

+7

9.4

322.4

crk

10.4

321.4

"A

10.0

321.8

M

10.7

321.1

"A

11.0

320.8

crk

11.4

320.4

W

11.5

320.3

0475

W

11.4

320.4

crk

11.2

320.6

"A

10.8

321.0

M

10.2

321.6

"A

9.5

322.3

crk

9.8

322.0

+3

9.5

322.5

E

9.0

322.8

PLOTTED

PLOTTED

331.75

31²

170

F	8.5	323.3
+7	8.9	322.9
crk	9.4	322.4
"A	9.2	322.6
M	9.7	322.1
"A	10.4	321.4
crk	10.9	320.9
W	11.1	320.7

PLOTTED

1725

W	10.8	321.0
crk	10.5	321.3
"A	10.1	321.7
M	9.3	322.5
"A	9.1	322.9
crk	9.2	322.6
+3	8.3	323.5
E	8.2	323.6

331.8

28

1750

E	7.9	323.9
+7	8.3	323.5
crk	8.8	323.0
"A	8.7	323.1
M	9.0	322.8
"A	9.8	322.0
crk	10.5	321.3
W	10.7	321.1

PLOTTED

1775

W	10.0	321.8
crk	9.5	322.3
"A	9.2	322.6
M	8.7	323.1
"A	8.3	323.5
crk	8.5	323.3
+3	7.9	323.9
E	7.6	324.2

331.75

3125

270

E	7.2	324.6
+7	7.2	324.6
crb	8.0	323.8
1/4	7.7	324.1
M	8.1	323.7
1/4	8.6	323.7
crb	9.1	322.7
W	9.6	322.4

PLOTTED

2725

W	9.1	322.7
crb	8.7	323.1
1/4	8.2	323.6
M	7.6	324.2
1/4	7.2	324.6
crb	7.3	324.5
+3	6.8	325.0
E	6.6	325.2

331.8

29

2750

E	6.3	325.5
+7	6.3	325.5
crb	6.9	324.9
1/4	6.7	325.1
M	7.1	324.7
1/4	7.8	324.0
crb	8.4	323.4
W	8.7	323.1

PLOTTED

2775

W	7.8	324.0
crb	7.5	324.3
1/4	7.3	324.5
crb	6.8	325.0
1/4	6.4	325.4
crb	6.7	325.1
+3	6.4	325.4
E	5.9	325.9

331.75

31st

340

F	5.9	325.9
#7	5.9	325.9
crk	6.4	325.4
1/4	6.1	325.7
M	6.6	325.2
1/4	7.0	324.8
crk	7.5	324.3
W	7.6	324.2

PLOTTED

3425

W	7.0	324.8
crk	7.0	324.8
1/4	6.6	325.2
M	6.1	325.7
1/4	5.7	326.1
crk	5.9	325.9
+3	5.4	326.4
E	5.5	326.3

331.8

30

3450

F	5.2	326.6
crk	5.5	326.3
1/4	5.4	326.4
M	5.7	326.1
1/4	6.1	325.7
crk	6.5	325.3
W	6.9	324.9 325.9

PLOTTED

3475

W	6.1	325.7
crk	6.0	325.8
1/4	5.8	326.0
M	5.3	326.5
1/4	4.9	326.9
crk	5.0	326.8
E	4.7	327.1

331.75

3124

4+0

E	4.3	327.5
erb	4.8	327.0
1/4	4.5	327.3
M	5.0	326.8
1/4	5.3	326.5
erb	5.4	326.4
W	5.6	326.2

PLOTTED

4+25

W	5.5	326.9
erb	5.3	326.5
1/4	5.1	326.7
M	4.6	327.2
1/4	4.2	327.6
erb	4.5	327.3
E	4.0	327.8

331.8

31

4+50

E	3.8	328.0
erb	4.3	327.5
1/4	4.0	327.8
M	4.4	327.4
1/4	4.7	327.1
erb	5.0	326.8
W	5.0	326.8

PLOTTED

4+75

W	4.7	327.1
erb	4.6	327.2
1/4	4.5	327.3
M	4.1	327.7
1/4	3.7	328.1
erb	3.9	327.9
E	3.5	328.3

3104

331.75

540

E	3.3	328.6
erb	3.6	328.2
"A	3.4	328.4
M	3.8	328.0
"A	4.0	327.8
erb	4.2	327.6
W	4.0	327.8

PLOTTED

5425

W	3.7	328.1
erb	3.6	328.2
"A	3.3	328.5
M	3.3	328.5
"A	3.1	328.7
erb	3.5	328.3
E	3.1	328.7

T.P. 6.65 335.77 2.93 328.82 ✓

335.47

5450

32

E	6.9	328.6
erb	7.0	328.5
"A	6.6	328.9
M	6.8	328.7
"A	6.8	328.7
erb	7.0	328.5
W	7.2	328.3

PLOTTED

5475

W	7.2	328.3
erb	6.7	328.8
"A	6.5	329.0
M	6.6	328.9
"A	6.5	329.0
erb	6.8	328.7
E	6.7	328.8

33547

3105

640 = S.L. UP25 ST 30' wide

F	6.6	328.9
crk	6.7	328.8
"	6.8	329.2
"	6.9	329.1
"	6.6	328.9
crk	6.7	328.8
"	6.7	328.8

PLOTTED

⊕ UP25

"	6.4	329.1
crk	6.4	329.1
"	6.4	329.1
"	5.8	329.7
"	6.1	329.4
crk	6.4	329.1
F	6.7	328.8

33547

33

N.L. UP25

F	6.4	329.1
crk	6.6	328.9
"	6.1	329.4
"	6.2	329.3
"	6.0	329.5
crk	5.9	329.6
"	5.6	329.9

PLOTTED

0+25' N

"	6.0	329.5
crk	5.9	329.6
"	5.9	329.6
"	6.1	329.4
"	5.9	329.6
crk	6.4	329.1
F	6.4	329.1

335.47

31.24

0750

E	6.0	319.5
crk	5.9	319.6
"	5.6	319.9
M	5.7	319.8
"	5.6	319.9
crk	5.1	330.4
W	5.2	330.3

PLOTTED

0775

W	5.1	330.4
crk	5.2	330.3
"	5.3	330.2
M	5.6	319.9
"	5.4	330.1
crk	5.7	319.8
E	5.8	319.7

335.5

34

170

F	5.5	330.0
crk	5.5	330.0
"	5.3	330.2
M	5.5	330.0
"	5.2	330.3
crk	5.0	330.5
W	5.0	330.5

PLOTTED

1725

W	4.9	330.6
crk	5.1	330.4
"	5.1	330.4
M	5.4	330.1
"	5.1	330.4
crk	5.5	330.0
E	5.4	330.1

335.47

3124

1750

E	5.4	330.1
crk	5.4	330.1
1/4	5.0	330.5
M	5.3	330.2
1/4	5.1	330.4
crk	5.1	330.4
W	4.9	330.6

PLOTTED

1775

W	4.7	330.8
crk	4.8	330.7
1/4	4.9	330.6
M	5.0	330.5
1/4	4.7	330.8
crk	5.1	330.4
E	5.3	330.2

335.47

35

270

E	5.4	330.1
crk	5.2	330.3
1/4	4.9	330.6
M	5.1	330.4
1/4	4.8	330.7
crk	4.7	330.8
W	4.7	330.8

PLOTTED

2725

W	4.5	331.0
crk	4.8	330.7
1/4	4.6	330.9
M	5.0	330.5
1/4	5.0	330.5
crk	5.4	330.1
E	5.5	329.7

335.47
31.4

2+50

E	6.3	329.2
erb	5.6	329.9
1/4	5.2	330.3
1/4	5.2	330.3
1/4	4.7	330.8
erb	4.5	331.0
W	4.6	330.9

PLOTTED

2+75

W	4.9	331.1
erb	4.6	330.9
1/4	4.8	330.7
1/4	5.3	330.2
1/4	5.6	329.9
erb	5.9	329.6
E	6.5	329.0

335.47

36

3+0 = 3 L Myrtle 60' wide 10' walk 10' 1/4'S.

E	6.7	328.8
erb	6.5	329.0
1/4	5.7	329.8
1/4	5.3	330.2
1/4	4.9	330.6
erb	4.5	331.0
W	4.3	331.2

PLOTTED

3.6216

W	4.3	331.2
erb	4.5	331.0
1/4	4.8	330.7
1/4	5.0	330.2
1/4	5.8	329.7
erb	6.4	329.1
E	6.6	328.9

335.47

312st

5 1/4

E	7.5	328.0
crk	6.8	328.7
1/4	6.2	329.3
N	5.5	330.0
1/4	5.0	330.5
crk	4.8	330.7
W	4.6	330.9

PLOTTED

center

N	4.8	330.7
crk	5.1	330.4
1/4	5.4	330.1
N	5.9	329.6
1/4	6.5	329.0
crk	7.1	328.4
E	7.7	327.8

335.47

37

N 1/4

E	7.5	328.0
crk	7.0	328.5
1/4	6.0	329.5
N	5.3	330.2
1/4	5.1	330.4
crk	4.9	330.6
W	4.5	331.0

PLOTTED

N curb

W	4.6	330.9
crk	4.9	330.6
1/4	5.0	330.5
N	5.5	330.0
1/4	6.1	329.4
crk	7.0	328.2
E	8.0	327.5

335.47

31st

N. L. Myrtle

E	8.1	327.4
crk	7.3	328.2
"	6.4	329.1
M	5.7	329.8
"	5.3	330.2
crk	5.1	330.4
W	4.7	330.8

PLOTTED

0+25 W

W	4.5	331.0
crk	4.9	330.6
"	5.3	330.2
M	6.1	329.4
"	6.9	328.6
crk	7.9	327.6
E	8.7	326.8

335.47

38

0+50

E	8.7	326.8
crk	8.1	327.4
"	7.2	328.3
M	6.5	329.0
"	5.7	329.8
crk	5.4	330.1
W	4.9	330.6

PLOTTED

0+75

W	5.3	330.2
crk	5.7	329.8
"	6.2	329.3
M	7.0	328.5
"	7.6	327.9
crk	8.4	327.1
E	8.8	326.7

335.47

310th

170

E	9.4	326.1
crb	8.6	326.9
"A	8.0	327.5
M	7.2	328.3
"A	6.5	329.0
crb	5.8	329.7
W	5.5	330.0

PLOTTED

1725

W	6.5	329.0
crb	6.8	328.7
"A	7.3	328.2
M	7.8	327.7
"A	8.3	327.2
crb	9.1	326.4
E	9.4	326.1

335.47

39

1750

F	8.5	327.0
crb	9.0	326.5
"A	8.6	326.9
M	8.0	327.5
"A	7.7	327.8
crb	7.3	328.2
W	6.5	329.0

PLOTTED

1775

W	6.9	328.6
crb	7.0	328.5
"A	7.5	328.0
M	8.1	327.4
"A	8.6	326.9
crb	8.1	327.4
E	8.0	327.5

335.47

31.2

2+0

E	7.8	327.7
erb	8.0	327.5
"A	8.0	327.2
M	8.1	327.4
"A	7.8	327.7
erb	7.5	328.0
W	7.3	328.2

PLOTTED

2+25

W	7.5	328.0
erb	7.8	327.7
"A	7.8	327.7
M	7.8	327.7
"A	7.7	327.8
erb	7.1	328.4
E	6.8	328.7

335.47

40

2+50

E	7.3	328.2
erb	7.1	328.4
"A	7.2	328.3
M	7.2	328.3
"A	7.4	328.1
erb	7.4	328.1
W	7.5	328.0

PLOTTED

2+75

W	7.2	328.3
erb	7.2	328.3
"A	7.2	328.3
M	7.1	328.4
"A	7.0	328.5
erb	7.0	328.5
E	7.0	328.5
T.P.	7.54	336.21
	6.80	328.67

312^t

336.21

370

E	7.4	328.8
erb	7.5	328.7
1/4	7.6	328.6
M	7.5	328.7
1/4	7.7	328.5
erb	7.6	328.6
W	7.5	328.7

PLOTTED

372.5

W	7.3	328.9
erb	7.2	329.0
1/4	7.4	328.8
M	7.3	328.9
1/4	7.2	329.0
erb	7.1	329.1
E	7.1	329.1

336.21

3750

41

E	6.8	329.4
erb	6.8	329.4
1/4	6.9	329.3
M	6.9	329.3
1/4	6.9	329.3
erb	6.7	329.5
W	6.7	329.5

PLOTTED

377.5

W	6.6	329.6
erb	6.5	329.7
1/4	6.7	329.5
M	6.5	329.7
1/4	6.9	329.8
erb	6.3	329.9
E	6.3	329.9

336.21

312

4+0

E	5.8	330.4
erb	5.9	330.3
"A	6.1	330.1
M	6.0	330.2
"A	6.2	330.0
erb	6.3	329.9
W	6.5	329.7

PLOTTED

4+25

W	6.1	330.1
erb	6.1	330.1
"A	5.9	330.3
M	5.8	330.4
"A	5.6	330.6
erb	5.3	330.9
E	5.0	331.2

33621

42

4+50

E	4.9	331.3
erb	5.0	331.2
"A	4.8	331.4
M	5.0	331.2
"A	5.4	330.8
erb	5.6	330.6
W	5.7	330.5

PLOTTED

4+75

W	5.2	331.0
erb	5.2	331.0
"A	5.2	331.0
M	5.0	331.2
"A	4.9	331.3
erb	4.8	331.4
E	4.6	331.6

336.21

312⁴

570

E	4.3	331.9
crk	4.5	331.7
"A	4.4	331.8
M	4.4	331.8
"A	4.5	331.7
crk	4.8	331.4
W	5.1	331.1

PLOTTED

5725

W	4.7	331.5
crk	4.5	331.7
"A	4.4	331.8
A	4.1	331.1
"A	4.1	331.1
crk	4.1	331.1
E	3.9	332.3

32621

48

5750

E	3.6	332.6
crk	3.5	332.7
"A	3.7	332.5
M	3.6	332.6
"A	4.0	332.2
crk	4.2	332.0
W	4.3	331.9

PLOTTED

5775

W	3.9	332.3
crk	3.6	332.6
"A	3.6	332.6
M	3.6	332.6
"A	3.1	333.1
crk	3.1	333.1
E	3.0	333.2

336.21

31st

640 = S. L. Dwight St

E 2.8 333.4

Crk 2.8 333.4

NA 2.9 333.3

M 3.0 333.2

NA 3.3 332.9

Crk 3.2 333.0

W 3.4 332.8

PLOTTED

Wk 18th 74

80 W 82.3

100 82.9

120 82.4

140 81.8

160 81.1

180 80.3

200 79.4

220 78.4

240 77.1

260 75.4

280 Wk 17 73.57

Fl 16th 54.0

8.4

82.3

82.9

82.4

81.8

81.1

80.3

79.4

78.4

77.1

75.4

73.57

54.0

Plotter Grades
S L Dwight from 16th to 18th

44

8/12
Ketch
Moore
Hall

8/19/112
E St Walls
grade stakes

	1229	6629	540	
13 E of 16 th	1230	76.10	2.99	63.3
50'			9.12	66.98
100'	1273	84.65	4.15	71.95
150'			7.76	76.92
200'			26.8	82.0
Cr. 17 th			2.18	82.5
3' W of E.L. 17 th			1.81	82.87
W.L. 17 th			8.11	76.57
57' W	875	72.35	13.08	71.60
101'			5.62	66.73
151'	1.08	62.94	10.49	61.86
189.5'			4.72	57.22

El. 16th (231')

From 16th to end of Curves at 17th the stakes are set for top wall, 2' outside of face, and for bottom wall, 5' inside of face, and at grade, viz. top of wall.

On the curves, stakes ^{at ends and Cr. of Curves} are set for line only, and are 2' inside of face.

11/10/112

71
45

	315	86.02		82.87
260				76.4
W end of footing			8.77	77.25
240				78.1
E end of footing			7.27	75.75
220				79.4
523	85.20			82.77
200			7.80	80.4
180			6.90	81.3
160			6.10	82.1
140			5.40	82.8
120			4.80	83.4
100			4.30	83.9
80			3.90	84.3
60			3.55	84.65
W.L. 18 th			3.20	85.0

Top of curb

From 17th to 18th stakes are set at grade and 2' inside of face of curb

8/10/12

Levels on Cot Curbs

12th - 16th

NW Ret	9.56	70.10	69.54	NW 16-C
NW	Plank face	9.58		
SW		10.58		
Ret	Plank face	10.60		
100 E ON	March 9.66	78.97	0.79	69.31
125 "	"	7.44	71.53	
140		6.18	72.29	
NE 15 th		0.89	78.08	
Ret		0.90	78.07	
SE	Plank face	1.96	77.01	
Ret		2.10	76.87	
SW		1.94		
Ret		2.0		
NW		0.99		
Ret		0.86		
TP	1.04	78.56	1.45	77.52
Enter block 13 th - 14 th Plank Curbs				
TP	1.63	79.30	10.89	77.67

Balance of block Plank Curbs

726
46

7930

SE 14 th	4.24			
Ret	4.31			
Prop line	4.52			
NE	3.27			
Ret	3.30			
NW	3.41			
Ret	3.38			
SW	4.38	74.85		
Ret	4.43	74.87		
25' W on	5.46	73.84		
60 "	6.28	73.02		
SE 13 th	11.35	67.95		
Ret	11.51	67.79		
NE 12 th	10.36			
Ret	10.32			
NW 13 th	10.38			
Ret	10.30			
SW 13 th	11.44			
Ret	11.34			

Brab is on sk. of walk instead of at Prof line

Centre of return

B.M. SW 14th C

all returns on 13th on plank faced
 all returns on 14th are plank faced
 plank SW Cur
 50' W of block
 balance of block plank
 no plank

7930

B2M NW 18" C 935 78.42 1026 169.04 6296

TP 775 86.12 005 78.37

B2M NW 12" C 156 84.56 54978

NE 12" 160

SE 267

8. Along
14. City
12. Shaw

X Sec of Colchester (60) through
Glenartney from Macaulay St South
Corrected to 87.52 from 85.52

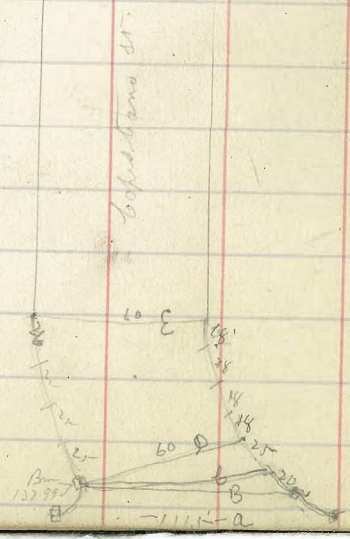
Change these

7.11	92.52		87.52	Mon SW
6.35	97.41	1.46	91.06	Tomson + Warrington
6.83	102.99	1.75	95.86	
6.62	108.21	0.90	101.99	
11.67	119.36	0.52	107.69	
8.44	127.94	0.76	118.60	
4.84	128.66	3.22	125.82	SW + EE Macaulay St Mendota
12.83	138.84	2.61	126.05	
8.80	143.52	6.16	137.72	
		8.22	135.8 =	SE bar on line
		3.53	139.9	on the line

143.52

Colchester
48

(11.5)	S. line of Macaulay as graded	128	130.7	130.7
W L				
ll		114		
9		10.1		
1		85	135.0	
4		72		
ll		57		
E		45	139.0	139.0
(11.5)	1.3 of old line			
E		17	141.8	
ll		30		
4		40		
1		35	139.0	
4		74		
ll		97		
7		118	131.2	



14352

(Line A)

10.5 = S. line of Macaulay in Glenartney
(11134)

W	123	131.2
H	25	
Y	74	
L	60	132.5
7	46	
H	32	
E	20	141.5

Line B (78')

E	36	139.9
H	40	
H	53	
B	62	132.3
H	70	
H	79	
W	90	134.5

14352

Capistrano

49

(66.5) Line C

W	78	135.77
H	70	
Y	64	
L	59	137.6
Y	50	
H	39	
E	26	139.9

(60) Line D

E	36	139.9
H	40	
Y	46	
L	57	138.4
Y	58	
H	62	
W	65	137.0

14352

(60) 18' Sa W } of dm D
25' Sa E

W	59	137.6
H	53	
Y	45	
L	41	139.4
Y	34	
H	32	
E	28	140.7

36' Sa W } of 29
50' Sa E

E	22	141.3
H	26	
Y	29	
L	31	140.4
Y	40	
H	48	
W	55	138.0

14352

50

54' Sa W } of 2
75' Sa E

W	53	138.2
H	44	
Y	35	
L	28	140.7
Y	27	
H	23	
E	17	141.5

SE = End of beam 101' Sa E

E	14	142.11
H	23	
Y	27	
L	28	140.7
Y	30	
H	40	
W	50	138.5

14352

25' S of End of Run

W	51	138.4
H	44	
Y	37	
b	29	140.6
Y	25	
H	22	
E	15	142.0

TP 191 144.35 1,08 14244

50' S of End of Run

E	23	142.11
H	29	
Y	33	
b	34	140.9
Y	30	
H	44	
W	58	138.5

14235

51

75' S of E b

W	61	138.3
H	51	
Y	38	
b	27	140.7
Y	35	
H	31	
E	26	141.8

100' S of E b

E	34	141.0
H	39	
Y	42	
b	44	140.0
Y	56	
H	65	
W	75	136.7

14x35

125 S 9 E 6

W	93	135.1
H	81	
Y	70	
L	58	138.4
Y	53	
H	51	
E	47	139.7

150 S 9 E 6

E	60	138.4
H	63	
Y	70	
L	77	136.7
Y	90	
H	106	
W	117	132.7

14x35

175 S 9 E 6

W	142	130.2
H	128	
Y	116	
L	96	134.8
Y	87	
H	75	
E	66	137.8

200 S 9 E 6

E	94	135.0
H	106	
Y	118	
L	128	131.6
Y	0.66	134.93
H	1078	124.07
Y	43	
H	57	
W	69	127.8

13473

	225	S of	E of	
W			9.0	125.0
ll			9.2	
4			7.4	
6			6.4	127.3
7			5.2	
ll			4.0	
E			3.0	131.0
	250	S of	E of	
E			5.8	128.9
ll			6.8	
4			7.9	
6			8.6	126.1
7			9.4	
ll			9.8	
W			10.4	124.3

13473

58

	275	S of	E of	
W			11.8	122.9
ll			10.7	
4			10.5	
6			9.9	124.8
7			9.4	
ll			9.1	
E			8.4	126.3
	300	S of	E of	
E			9.8	124.9 ✓
ll			10.2	
4			10.5	
6			10.9	123.8
7			11.1	
ll			11.8	
W			12.8	121.9
7. P	154		123.94	123.3 122.40

12394

	325'	Sy	E 6	
W			32	120.7 118.7
U			26	
Y			23	
L			22	121.7
7			19	
U			15	
E			0.7	123.2 121.2

	348	Sy	E 6	
W			47	119.2 117.2

	350'	Sy	E 6	
E			28	121.1 119.1
U			30	
7			30	
L			38	120.1
Y			45	
U			48	
			6.7	116.8
W			7.1	114.8

	357'	Sy	E 6	
W			47	119.2 117.2

12394

54

	375	Sy	E 6	
W			46	119.3 117.3
U			54	
Y		+7'	9.3	
U			6.8	
L		+7'	7.3	
L			6.0	117.9
Y			54	
U			45	119.6
E			43	117.6

	400	Sy	E 6	
E			65	117.4 115.4

			74	
U			83	
Y		+5'	11.0	
L			74	116.5
Y			64	
U			55	
W			52	118.7 116.7

123.94

	425	Scf	E6	
w			60	117.9
				115.9
bl			63	
y			72	
b			83	115.6
y			98	
	+5'		120	
bl			96	
E			82	115.7
				113.7

4589' S = End of Glen at top

				111.7
E			122	109.7
	+5'		138	
bl			120	
y			106	
b			91	114.8
y			80	
w			72	
				117.6
w			63	115.6

TP 1081 13325 130 12244 *Spring 1921*

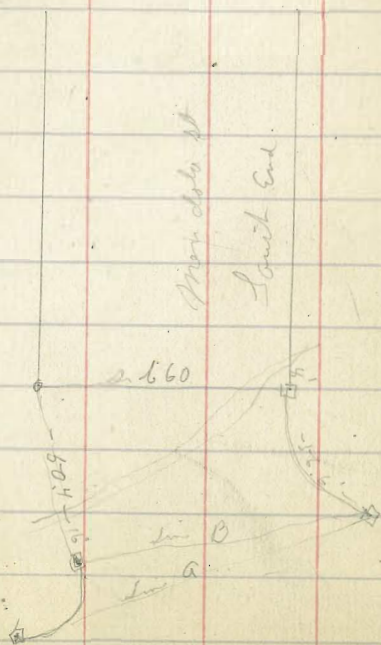
448 13740 033 10222

1072.83
 400.8
 50.2
 588.13

8 Along X Sec of Mendota St 60'
 15725 Through
 2) Bank Glen artery - Malady St Saint

13740 H.S. from Berkeley St.

Line a (103)	Point	End of	Glen artery
W	0.3	137.1	
H	2.0	135.4	
4	3.9		
b.	5.4	132.0	
4	6.9		
H	8.8		
E	10.7	126.7	



13740

50

(84) Line B

E	10.7	126.7
H	9.2	
4	7.8	
1	6.2	131.2
4	5.5	
H	4.6	
W	3.8	133.6
16' n of Line B - W.L.		
W.L.	5.7	131.5
18' n of Line B		
W.L.	8.5	128.9
20' n of Line B		
W.L.	6.1	131.3

137.40

(60) sin b = End of beam

W	60	131.4
H	66	
"	74	
L	79	129.5
"	88	
H	10.0	
"	11.5	
E	97	127.7
	8' n of E 6	
E 2	109	126.5
	10' n of E 6	
E 2	125	124.9
	12' n of E 6	
E 2	106	126.8

137.40

57

31' n of E 6

E	101	127.3
H	89	
"	84	
L	77	129.7
"	70	
H	60	
W	51	132.3
	56' n of E 2 = 325' S of E 6 at base	
W	71	133.3
H	52	
"	60	
L	67	130.7
"	72	
H	78	
E	86	128.8

13740

81' N = 300' S of EB at Macanley

E	83	129.1
H	78	
Y	72	
L	62	131.2
Y	52	
H	42	
W	34	134.0
275' S of EB		
W	39	133.5
H	47	
Y	55	
L	61	131.3
Y	66	
H	72	
E	78	129.6

13740

58

250' S of EB

E	77	129.7
H	74	
Y	72	
L	66	130.8
Y	58	
H	47	
W	41	133.3
225' S of EB		
W	49	132.5
H	46	
Y	62	
L	68	130.6
Y	72	
H	79	
E	81	129.3
TP	648	13816
	772	129.58

13816

	200	54	E6	
E			66	129.6
bl			62	
y			59	
h			55	130.7
y			52	
bl			48	
w			45	131.7
	175	54	E6	
w			46	131.6
bl			51	
y			55	
h			57	130.5
y			61	
bl			67	
E			70	129.2

13816

59

	150	54	E6	
E			69	129.3
bl			65	
y			62	
h			57	130.5
y			53	
bl			50	
w			45	131.7
	125	54	E6	
w			46	131.6
bl			49	
y			53	
h			57	130.5
y			65	
bl			73	
E			81	128.1

136/6

	100	S of	E6	
E			80	128.2
H			74	
Y			66	
L			60	130.2
Y			58	
H			54	
W			51	131.1
	75	S of	E6	
W			51	131.1
H			54	
Y			56	
L			62	130.0
Y			67	
H			70	
E			72	129.0

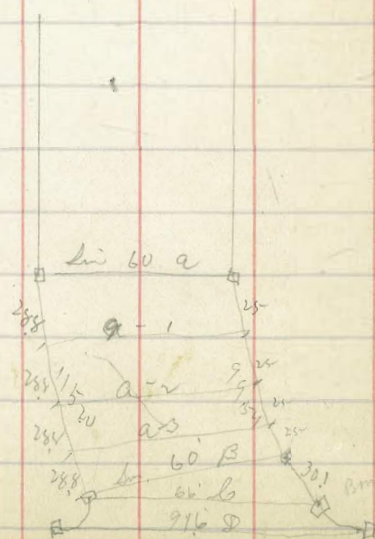
136/6

60

	50	S of	E6	
E			60	130.2
H			62	
Y			57	
L			49	131.3
Y			49	
H			50	
W			52	131.0
	75	S of	E6	
W			52	130.6
H			55	
Y			55	
L			52	130.6
Y			52	
H			53	
E			52	131.0

13616

Line	(60)	End of Course		
E			50	131.2
H			49	
Y			53	
L			58	130.4
W			60	
H			62	
W			65	129.7



13616

61

Line	a-1	25' 28" W 288" E		
W			75	128.9
H			66	
Y			63	
L			62	130.0
W			61	
H			57	
E			55	130.7

Line a-2 = 50' on W 2

E			70	129.2
H			67	
Y			70	
L			72	129.0
Y			73	
H			76	
W			80	128.2

13616

Lin	A-3 = 75'	n	a	w	
w		84			127.8
h		78			
y		88			
b		81			
y		84			127.8
h		85			
e		85			127.7

(60)	Lin B = 99.5'	n	a	w	B.6
e		101			126.1
h		97			
y		93			
b		91			127.1
y		90			
h		91			
w		89			127.3

13616

62

(66)	Lin b = 30'	n	a	w	
w		102			126.0
h		102			
y		102			
b		101			126.1
y		99			
h		99			
e		101			126.1

9.6	Lin	"D"	=	Lin 10'	Seq old	Manually	sin
e		108					125.4
h		112					
y		113					
b		112					125.0
y		109					
h		108					
w		110					125.2
		1034					125.8

Xsection of Redwood St from the East line of India St, to the East line of Union St, 80' wide, 14' curbs, 13' quarters.

Sept 30-12 (Dunnan,
Devine,
Shaw.)

BM 7081 Spk Pole NW Cor of India & Redwood (Davis)

H.I.
120.79

63

	+	H.I.	-				
	12.54	128.35	95.81			10.1	110.7
00= East line of India St				M.L. ✓ +10		6.4	114.4
00				M.L.			
M.L.			8.7	199.7	+5	7.1	113.7
cb			9.2	99.2	+8	12.1	108.7
1/4			8.8	99.6	cb	12.9	108.0
e			8.8	99.6	1/2	13.0	107.8
1/4			9.4	99.0	c	14.1	106.7
cb			9.3	99.1	1/4	13.0	107.8
M.L. ✓ +25			9.0	99.4	+6	12.5	108.3
M.L.			2.3	104.1	cb	12.7	108.1
+4			3.7	104.7	+8	12.1	108.7
cb			4.5	103.9	+11	11.4	109.4
1/4			3.2	105.2	M.L. +6	11.8	109.0
+8			4.7	103.7	M.L.	9.5	111.3
e			6.5	102.9	cb	10.5	110.3
1/4			5.8	102.6	+9	10.6	110.2
cb			5.1	103.3	1/2	11.6	109.2
+6			4.0	104.4	c	12.2	108.6
#	12.83	120.79	0.39	107.96	+4	9.8	111.0
79			11.2	109.6	1/4	10.0	110.8

+ 71.5
120.79

(Redwood 80' wide)

+8	8.6	112.2
+10	6.0	114.8
cl	5.9	115.0
N.L. +66 ✓	4.4	116.4
N.L.	3.4	117.4
cl	5.1	115.7
+7	5.4	115.4
+9	7.0	113.8
1/4	8.6	112.2
+9	8.7	112.1
c	9.3	111.5
1/4	10.4	110.0
+3	9.6	111.2
cl	10.5	110.8
N.L. +71 ✓	9.4	111.4
N.L.	9.1	111.7
cl	9.1	111.7
+10	8.8	112.0
1/4	9.4	111.4
+5	5.4	115.4

+ 71.5
120.79

64

c	5.2	115.6
1/4	4.8	116.0
cl	4.1	116.7
+7	3.3	117.5
N.L. +75 ✓	2.0	118.8
N.L.	1.4	119.4
+8	2.7	118.1
cl	3.6	117.2
1/4	4.0	116.8
c	4.9	115.9
1/4	5.9	114.9
+4	8.1	112.7
cl	8.5	112.2
N.L. +80 ✓	9.5	112.0
N.L.	5.1	115.7
cl	4.4	116.4
+7	4.3	116.5
1/4	2.4	118.4
c	1.3	119.5
1/4	0.2	120.6

+ H.I.
120.79

(Redwood St 30' wide)

#	12.38	133.17	0.50	120.29
cl			11.6	121.6
V.L. 1+25 ✓			10.6	122.6
M.L.			6.2	127.0
cl			7.6	125.6
1/4			8.4	124.8
c			9.9	123.3
+10			10.7	122.5
1/4			12.0	121.2
cl			12.8	120.4
M.L. 1+50 ✓			12.5	119.7
M.L.			9.6	123.6
cl			8.4	124.8
+10			7.9	125.3
1/4			6.5	126.7
c			5.4	127.8
1/4			4.1	129.1
cl			3.1	130.1
V.L. 1+75 ✓			2.4	130.8
M.L.			+1.8	135.00

+ H.I.
138.17

65

cl			+1.8	134.5
1/4			+0.4	133.6
c			0.7	132.5
1/4			2.2	131.0
cl			3.8	129.4
M.L.			5.4	127.8
2+00 = West line of Columbia St (75' wide)				
2+00				
M.L.			1.4	131.8
#	12.69	145.58	0.29	132.89
+11			12.6	133.0
cl			11.1	134.5
1/4			10.4	135.2
c			9.9	136.7
1/4			6.9	138.7
cl			6.2	139.4
V.L.			6.0	139.6
West end of Columbia St (12' wide)				
V.L.			4.0	141.6
cl			4.3	141.3
1/4			4.8	140.8

+

71.1
145.58

- (Buckwood Mt 80' wide)

c	5.9	139.7
1/4	7.2	138.4
cb	8.3	137.3
M.L.	9.1	136.5

West 1/2 of Columbia Mt (12.70' wide)

M.L.	7.0	138.6
cb	6.2	139.4
+10	6.0	139.6
+11	4.7	140.9
1/4	4.5	141.1
c	3.9	141.7
1/2	3.5	142.1
cb	3.2	142.4
D.S.	2.4	143.2

Center of Columbia Mt.

D.S.	0.1	145.5
cb	1.0	144.6
1/4	1.6	144.0
c	2.1	143.5
1/4	2.2	143.4

+

71.1
145.58

66

+2	2.4	143.2
+3	3.8	141.8
cb	4.1	141.5
M.L.	5.6	140.0

East 1/2 of Columbia Mt.

M.L.	3.5	142.1
cb	1.7	143.9
+10	1.5	144.1
+11	0.6	145.0
1/4	0.5	145.1
c	0.1	145.5

12.22 158.22

#	0.28	145.30
1/2	12.0	146.2
cb	11.5	146.7
D.S.	10.9	147.3

East end of Columbia Mt.

D.S.	8.5	149.7
cb	9.3	148.9
1/4	9.9	148.3
c	10.9	147.3

+

H.I.
158.22

(Redwood Mt 80' wide)

1/4	11.5	146.7
cl	12.2	146.0
M.L.	14.2	144.0
00 = East line of Columbia Mt		
10		
M.L.	12.0	146.2
cl	10.2	148.0
1/4	9.5	148.7
c	9.0	149.2
1/4	7.7	150.5
cl	6.8	157.4
V.L. +25 ✓	5.9	152.3
V.L.	0.4	157.8
cl	2.0	156.2
1/4	3.2	155.0
c	4.8	153.4
1/4	5.9	152.3
cl	6.5	157.7
M.L. +50 ✓	7.7	150.5
M.L.	3.7	154.5
cl	2.6	155.6

+

H.I.
158.42

67

1/4	1.6	156.6
#	12.92	170.93
c	12.2	158.7
1/4	10.0	160.9
cl	9.5	161.4
V.L. +75 ✓	9.5	162.4
V.L.	2.7	168.2
cl	4.3	166.6
1/4	5.6	165.3
c	7.2	163.7
1/4	8.8	162.1
cl	10.6	160.3
M.L. +100 ✓	12.3	158.6
M.L.	8.0	162.9
cl	6.1	164.8
1/4	3.7	167.2
c	0.9	170.0
#	12.86	183.39
1/4	12.6	170.8
cl	10.7	172.7

V.L. 1725 ✓	9.2	174.2
V.L.	3.9	179.5
cl	5.3	178.1
1/4	6.8	176.6
c	8.1	175.3
1/4	10.4	173.0
cl	13.5	169.9
M.L. 1750 ✓	16.3	167.1
M.L.	10.8	172.6
cl	9.9	174.6
1/4	7.2	176.2
c	4.4	179.0
1/4	2.3	181.1
cl	0.5	182.9
V.L. 1775 ✓	+0.5	182.9
V.L.	+2.8	187.2
cl	+3.0	186.4
1/4	+2.1	185.5
c	0.3	183.1
1/4	2.8	180.6

cl	5.2	178.2
M.L.	7.4	176.0
2+00 = West line of State St (75' wide),		
2+00		
M.L.	3.1	180.3
cl	4.9	182.5
H	12.96	196.32
1/4	0.03	183.36
1/4	11.3	185.0
c	8.9	187.4
1/4	7.7	188.6
cl	6.9	189.4
V.L.	5.6	190.7
West curb of State St. (12' wide)		
V.L.	3.7	192.6
cl	4.6	191.7
1/4	5.7	190.6
c	7.0	189.3
1/4	3.9	187.4
cl	11.7	184.6
M.L.	14.0	182.3
West 1/4 of State St (12.75' wide)		

	+	H.I. 196.32	(Redwood 80' wide)
M.L.			11.6 184.7
cb			10.1 186.2
1/4			7.6 188.7
c			5.8 190.5
1/4			3.8 192.5
cb			2.7 193.6
M.L.			1.8 194.5
Center of State St.			
M.L.			0.6 195.7
cb			1.1 195.2
1/4			2.1 194.2
c			4.4 191.9
1/4			6.4 189.9
cb			8.6 187.7
M.L.			10.7 185.6
East 1/2 of State St.			
M.L.			8.8 187.5
cb			6.9 189.4
1/4			4.9 191.4
c			2.6 193.7

	+	H.I. 196.32	
1/4			1.1 195.2
cb			0.2 196.1
M.L.			+0.4 196.7
East curb of State St.			
M.L.			+1.4 197.7
cb			+0.7 197.0
1/4			0.2 196.1
c			1.2 195.1
1/4			3.1 193.2
cb			5.6 190.7
M.L.			7.1 189.2
00 = East line of State St.			
M.L.			5.3 191.0
cb			3.6 192.7
1/4			1.4 194.9
c			0.0 196.3
#	12.86	209.00	0.18 196.14
1/4			12.2 196.8
cb			11.2 197.8
M.L.			9.9 199.1

	H.I. 209.00	(Ordnance 48 80 wide)
+20 ✓ M.L.	7.7	201.3
cl	9.2	199.8
1/4	10.1	198.9
c	11.1	197.9
1/4	12.0	196.0
cl	13.3	195.7
M.L. +50 ✓	15.3	195.7
M.L.	11.9	197.1
cl	10.5	198.2
1/4	10.0	199.0
c	9.8	200.2
1/4	7.5	201.5
cl	6.6	202.4
M.L. +75 ✓	6.9	202.1
M.L.	4.3	204.7
cl	4.8	204.2
1/4	5.2	203.8
c	6.2	202.8
1/4	7.3	201.7
cl	8.7	200.3

	H.I. 209.00	
M.L. +100 ✓	10.0	199.0
M.L.	8.1	200.9
cl	6.7	202.3
1/4	6.0	203.0
c	5.1	203.9
1/4	4.4	204.6
cl	3.5	205.5
M.L. +125 ✓	3.0	206.0
M.L.	3.0	206.0
cl	3.5	205.5
1/4	4.0	205.0
c	4.8	204.2
1/4	5.6	203.4
cl	6.1	202.9
M.L. +150 ✓	7.1	201.9
M.L.	7.9	201.1
cl	6.6	202.4
1/4	5.7	203.3
c	5.2	203.8
1/4	4.0	204.5

	+	HI	-	
		209.00	(Reduced 80' wide)	
cb			4.0	205.0
D.L.			3.4	205.6
1+75 ✓				
D.L.			3.7	205.3
cb			4.4	204.6
1/4			4.9	204.1
c			6.1	202.9
1/2			6.9	202.1
cb			7.6	201.4
1/4			9.3	199.7
2+00 = West line of Union St (20' wide)				
2+00 ✓				
D.L.			10.1	198.9
cb			8.4	200.6
1/4			7.2	201.8
c			8.7	203.3
1/2			4.8	204.2
cb			4.5	204.5
D.L.			3.7	205.3
West curb of Union St (12' wide)				
D.L.			4.0	205.0
cb			4.6	204.4

	+	HI	-	
		209.00		
1/2			4.6	204.4
c			6.2	202.8
1/2			6.7	202.3
cb			8.3	200.7
M.L.			9.7	199.3
West 1/2 of Union St (12.70' wide)				
M.L.			8.4	200.6
cb			7.4	201.6
1/4			5.9	202.1
c			4.7	204.3
1/2			3.9	205.1
cb			3.8	205.2
D.L.			5.7	205.3
Center of Union St				
D.L.			2.9	206.1
cb			3.1	205.9
1/4			3.3	205.7
c			4.2	204.8
1/4			5.3	203.7
cb			6.9	202.1

+

H.I.
209.00

- (Orchard Mt 80' wide)

m. 2.	8.8	200.7
East 1/2 of Union Mt.		
m. 2.	7.6	201.4
cl	5.5	203.5
1/4	4.2	204.8
c	3.3	205.7
1/2	2.8	206.2
cl	2.7	206.3
V.L.	2.7	206.3
East end of Union Mt.		
V.L.	2.0	207.0
cl	2.0	207.0
1/4	2.2	205.8
c	2.0	206.5
1/2	3.2	205.8
cl	4.5	204.5
m. 2.	6.0	203.0
East line of Union Mt.		
V.L.	5.0	204.0
cl	3.4	205.6

+

H.I.
209.00

-

72

1/4	2.4	206.6
c	1.9	207.1
1/4	1.4	207.6
cl	1.1	207.9
V.L.	1.7	207.3
H	1.95	207.05

blough Levels on center + S limb of Macaulay st
 8 Chatsworth Blvd E

129.33

Macaulay

73

	35'	129.33	129.82	13m Return H 5w Mendota in blough	b	100	E of Mendota	35	125.8	
					S bl			35	125.8	
	b in bl		5.3			TP	1025	128.42	31.6	128.17
	S bl		4.6			200	E of Mendota			
	100	E of Chat Blvd			b			7.3	129.1	
	b		5.5		S bl			7.3	129.1	
	S bl		5.2			220'	E of Mendota = E. 6 in blough			
	200	E of Chat Blvd			b			5.8	130.6	
	b		4.9		S bl			5.9	130.5	
	S bl		4.6			230'	E of Mendota = W. 2 in blough			
	230'	E = W of Mendota st (60) in bl = End of blough in blough			b			5.7	130.7	
	b		4.8		S bl			5.7	130.7	
	S bl = E. 6 in blough		4.8				E of Copseburn in bl			
		E. 2 in of Mendota st 2 in			b			1.6	132.8	
	b		4.8		S bl			1.2	133.2	
	S bl		4.6			TP	1226	129.08	0.0	128.32
	31.6	E of Mendota = E. 6 in blough				418.5	E of Copseburn = E. 6 in blough			
	b		4.5		b			10.5	138.6	
	S bl		4.3		S bl			10.2	138.9	

14808

74

	100	Σ f	Bepreken	
b			70	148.1
SH			66	148.5
	200	Σ f	Bepreken	
b			12	148.9
SH			0.7	148.4
	230	Σ f	Bepreken	
b			0.5	148.6
SH			0.0	149.0
	1	Σ f	AV 2 f Jansen u- 2 sites	
b			100	148.1
SH			0.5	148.9

Levels for Slopes on San Fernando St.

50' n of Nichols St

15450

EL 13000 7.3 122.3

3'E 9.4 120.6

100 n of Nichols St

EL 5.75 124.25

18'E = 17.0 113.0

125 n of Nichols St

EL 5.0 125.0

18'E 17.5 112.5

150 n of Nichols St

EL 4.0 125.8

5.5'E 7.0 123.0

160 n = 0.0

225' n to 300 n

Regular Slopes Toes 6 to 8' out

Owens Intersection + Fill n

have been filled in

not over 10' out

150' n of Owens St

Ed = up as grade
originally a cut 8.3 146.2

175' n of Owens St

EL 5.8 148.7

16'E 15.4 139.1

200 n of Owens St

EL 3.3 151.2

5.5'E 39.6 114.9

250 n of Owens St

EL 7.7 156.25

10'E 4.9 149.6

255 = 5.0

10 (blow) X Sec Iowa st continued from
 16
 12 B 835-

38704

Iowa

76

	476	38704	38228	Tip on 545 Hub	450	n of El Cajon		
				W			31	383.9
	400	n of	El Cajon	W			35	383.5
W			4.3	382.7			54	381.6
W			5.0	382.0			55	381.5
Y			5.6	381.4			54	381.6
L			5.7	381.3			57	381.4
Y			5.3	381.7			55	381.5
W			4.9	382.1				
E			5.4	381.6			57	381.9
	425	n of	El Cajon	W	475	n of	El Cajon	
E			5.4	381.6			44	382.6
W			4.3	382.7			36	383.4
Y			3.5	383.5			52	381.8
L			5.3	381.7			50	382.0
Y			5.6	381.4			47	382.1
W			5.4	381.6				
W			5.5	381.5				

38704

500 n f El Cajon

W	47	382.3
H	54	381.6
Y	40	382.0
L	31	383.9
7	48	382.2
H	52	381.8
E	49	382.1

525 n f El Cajon

E	48	382.2
H	42	382.8
Y	48	382.2
L	49	382.1
7	50	382.0
H	49	382.1
W	37	383.3

38704

Jona

219

545 n = Brandy Station

W	50	382.0
H	49	382.1
Y	50	382.0
L	48	382.2
9	45	382.5
H	46	382.4
E	48	382.2

575 n f El Cajon

W	48	382.5
H	36	383.4
Y	37	383.3
L	47	382.3
7	46	382.4
H	48	382.2
+ 6 = Brandy	48	382.2

38704

600 $\alpha =$ Sd Meade St (80)

W	45	382.5
bl	48	382.2
y	45	382.5
b	40	383.0
y	43	382.7
+ 10' = Boundary	39	383.1

S bl of Meade St

W	45	382.5
bl	44	382.6
y	40	383.0
b	37	383.6
y	46	382.4
+ 7.5' = Boundary	46	382.4

S 1/2 of Meade

W	45	382.5
bl	45	382.5
y	40	383.0
b	43	382.7
y	42	382.8
+ 4' Boundary	42	382.8

38704

Jma

78

Center of Meade

W	45	382.5
bl	36	383.4
y	30	384.0
b	42	382.8
+ 1/2 Boundary	42	382.8

N 1/2 of Meade

W	44	382.6
bl	30	384.0
y	22	384.8
b	40	383.0
+ 10' = Boundary	41	382.9

N bl of Meade

W	42	382.8
bl	39	383.1
y	40	383.0
b	40	383.0
+ 6' = Boundary	41	382.9

38704

n of Meade

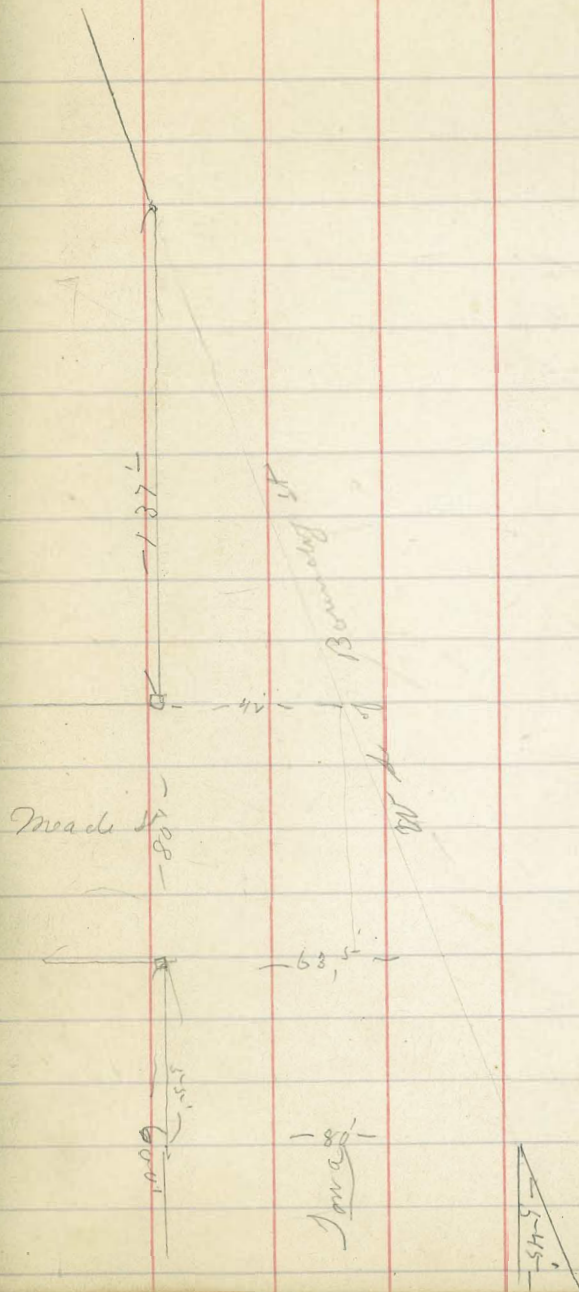
w	43	382.7
h	43	382.7
4	38	383.2
6 + 2 = Boundary	40	383.0

50' n of Meade

w	35	383.5
h	36	383.4
4	34	383.6

137 n = Boundary Sta W

w	34	383.6
---	----	-------



10 Change Levels for Drain 7 to K U
 19/75 at 30th
 14/24

240	75.65	73.65	38 L+30
710	650	775	460 71.05

S.E. Cor. R.R.
 of 30th

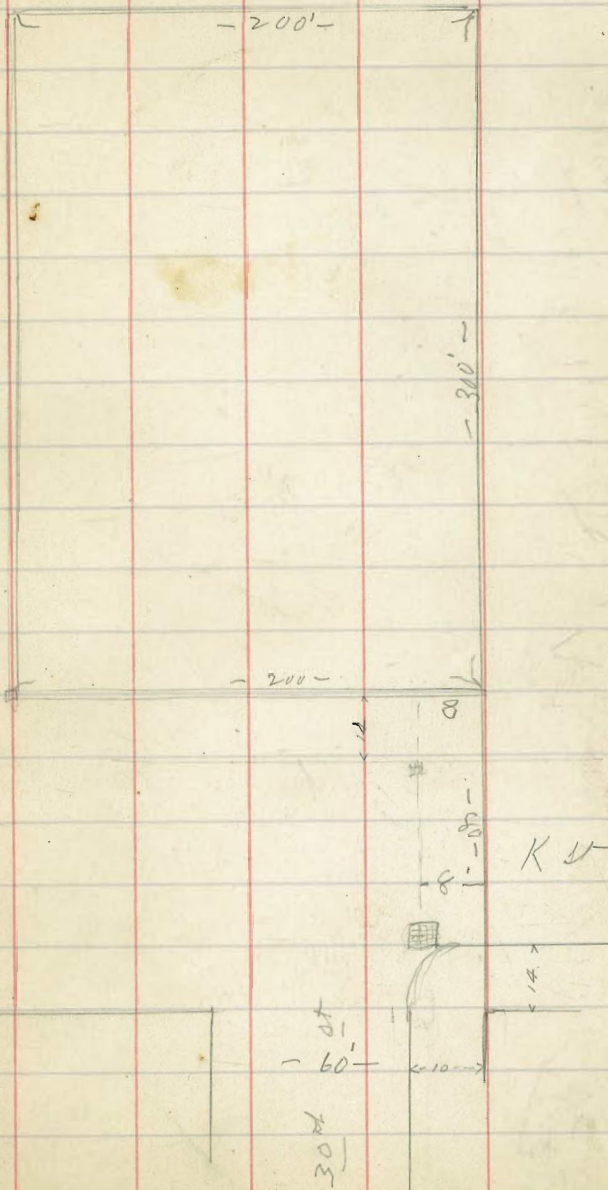
Sp. Ke in
 S.E. Cor 30th K } 70.01
 NE Cor Land 30 = 73.65 -

Just SW.

Bottom of Drain Pk SE corner of

K+30 at it	10.0	67.55
bank at NE for K+30	6.50	71.05
Prop " " " K+30	6.0	71.5
50' n of K at	5.0	72.55
100' n " " "	4.7	72.8
150' n " " "	4.5	73.0
200' n " " "	4.1	73.4
250' n " " "	3.4	74.1
300' n = { S.E. of } { 30' E of 30 }	3.4	74.15

see book 869 - P-57



12 NW 84.475
 13 " 68.960
 14 SW 74.851
 15 " 76.983
 16 NW 60.541
 17 NW 54.855

995-4

11570
 28.8

50.4
 77.25
 16.5
 8.5
 77.0
 83
 77.25
 77.50
 750
 77.25

11.15
 69
 4
 60
 11751

15.27
 30.14
 38.20
 50.30
 11.00
 39.00
 30.137
 8.23
 42.32
 32.8
 608.73

120
 122.5
 75
 110
 70
 621
 77.25

30.55
 55.45
 50.27
 9.45
 40.52
 300.00
 40.35
 56.58
 58317



7
 42
 2.8
 1.4
 4.2
 146
 154.100

49
 17
 6.4

90
 120
 2.10
 610.5
 35
 675