

EB.  
840

LEVEL BOOK

No. 410

MICROFILMED

DEC 15 1964

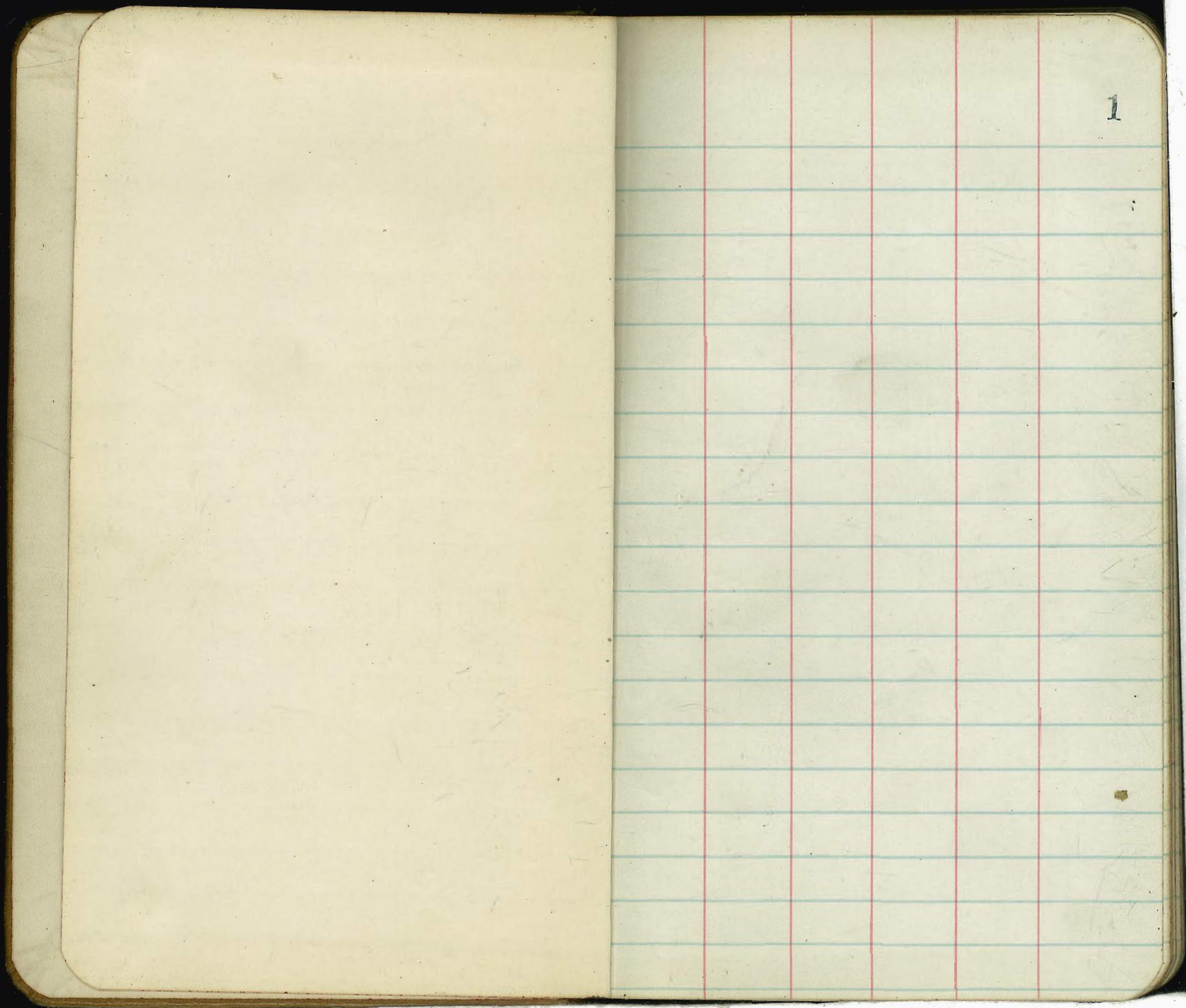
34  
Mar 13

19  
6  
174

25  
50  
1250  
25

2000  
12500





1

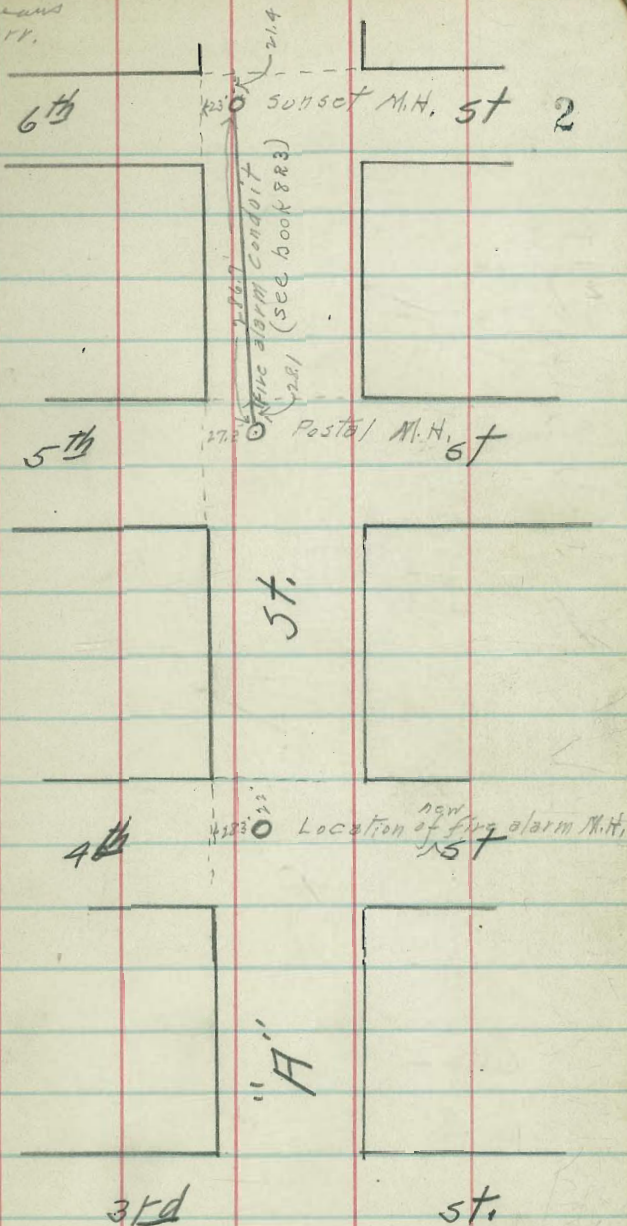


Levels for conduit fire alarm system from  
Sunset M.H. 6th St to Postal M.H. 5th St

Sta	+R	H.I.	-R	ground elevation	grade
B.M. B.P. N.W. 6th St				81.14	
B.M.	1.65	82.79			
0+0 = Top M.H. 6th St			1.00	81.79	73.8
0+50 W			1.90	80.89	73.2
1+0			4.60	78.19	70.81
2+00			11.29	71.50	66.04
T.P.	2.08	73.58	11.29	71.50	
2+60			6.56	67.02	62.88
2+86.2 = Top M.H. 5th St			6.66	66.92	61.92

9/16/14  
C. W. Le  
E. W. Harris  
Harr.

Cut









5/10/16

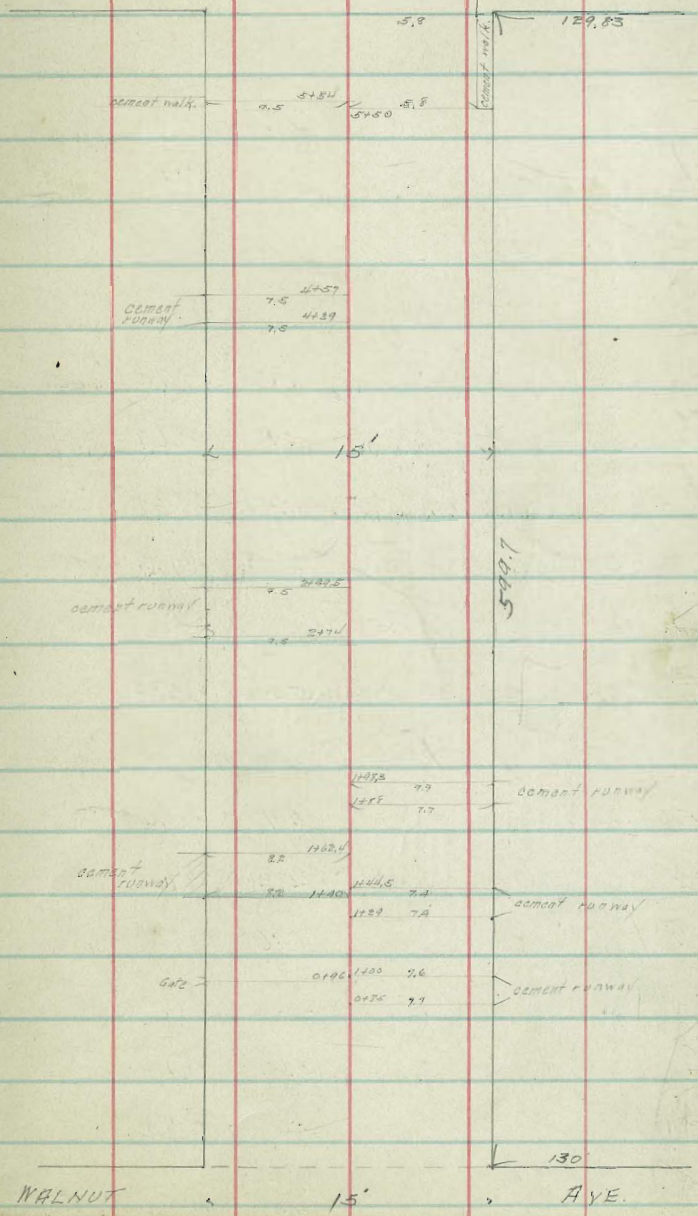
Gregory  
Moore  
Miller

Location of Improvements in,  
and Cross Section of,  
ALLEY BET. WALNUT  
and BROOKES  
bet 3rd + 4th Sts

BROOKES

Ave 4

BM	3.01	290.40	289.39	N.W. 4th + Walnut
		N.L. WALNUT.		
E		4.55	285.85	on pavement
C		4.92	285.48	✓ ✓
W		4.83	285.57	✓ ✓
		50' No.		
W		4.6	285.8	
C		4.4	286.0	
E		4.1	286.3	
		85' No.		
(2)° E		3.15	286.95	south of runway
5 E of E.L.		2.6	287.8	= str of door
C		3.9	286.5	
W		4.1	286.3	
W		3.6	286.8	= step of gate
		96' No.		
		100' No.		
W		3.8	286.6	
C		3.8	286.6	
(1)° E		3.6	286.8	on No. and Runway



WALNUT 15' AVE







292.16

350' No.

E 3.6 288.6

C 3.9 288.3

W 4.1 288.1

T.P. 4.35 289.66 2.85 289.31

389' No.

E 5.0 288.7

1.5 E of EL 4.35 289.31

400' No.

E 4.9 288.8

C 5.1 288.6

W 5.2 288.5

428' No.

E 4.3 289.4

5' E of EL 4.2 289.5

4439' No.

W 4.83 288.83

4.7 W of W.L. 4.7 289.0

C 4.7 289.0

E 4.3 289.4

floor of garage  
or door  
no runway

at door  
floor of garage  
no runway

on so. end runway

at door

6

442' No.

E 4.3 289.4

5' E of EL 4.3 289.4

457' No.

E 4.7 289.0

C 4.6 289.1

W 4.8 288.9

500' No.

W 5.5 288.2

C 5.4 288.3

E 5.1 288.6

535' No.

E 6.1 287.6

C 6.4 289.3

W 5.7 288.0

T.P. 1.63 288.01 7.28 286.38

at door  
floor of gar.  
without ren.

floor of  
garage on  
dirt line no  
runway dirt  
floor

no end run.



28801

550 No.

3 E of E.L.	1.2	286.8	next to bldg on cement walk
1.7 W ✓ ✓ ✓	1.2	286.8	on outside edge of cement walk
C	1.6	286.4	
W	1.8	286.2	

553.4 No. = break in cement walk.

W	2.4	285.6	= alleys end of walk to house
1.7 W of E.L.	1.23	286.78	on outside edge of cement walk
3 E of E.L.	1.23	286.78	next to bldg on cement walk.

599.7 = So Line Brookes

E	6.37	281.64	on cement walk.
1.7 W of E.L.	6.36	281.65	on edge cement walk.
C	6.6	281.4	
W.	6.6	281.4	

12.5 No of S.L. Brookes

on curb line entrance to alley	7.04	280.97	= west line
✓ ✓ ✓ ✓ ✓	6.83	281.18	east ✓
T.P.	5.34	286.51	6.84
B.M.	3.19	283.32	NW. 1/4 + Brookes



3.29

290.68

287.89

4.47

292.78

257

287.11 = No end

4.7

285.1

$\frac{287.15}{4.80} = \text{grade of } 60$

$\frac{288.15}{4.63} = \text{v v } 110$



11/1/24

Gregory  
Moore  
Ellis  
Shaw

## CROSS SECTION OF

FELTON ST

50' wide

from N.L. Redwood to

7 1/2' 1/4's

N.L. or Nutmeg

312.63

9

	0.62	313.63		313.01	BP NW Felton & Redwood	cb	1.0	312.6	✓
		N.L. Redwood	(60' wide)			1/4	1.0	312.6	✓
E		0.4	312.2	✓		c	1.1	312.5	✓
cb		0.7	312.9	✓		1/4	1.1	312.5	✓
1/4		0.9	312.7	✓		cb	1.2	312.4	✓
c		0.6	313.0	✓		W	1.2	312.4	✓
1/4		1.1	312.5	✓					
cb		1.1	312.5	✓		W	1.5	312.1	✓
cb		0.6	313.0	on cement		cb	1.4	312.2	✓
W		0.7	312.9	✓		1/4	1.3	312.3	✓
	cb					c	1.3	312.3	✓
W		0.65	312.98	on cement		1/4	1.3	312.3	✓
cb		1.2	312.4	✓		cb	1.4	312.2	✓
1/4		1.2	312.4	✓		E	1.3	312.3	✓
c		1.0	312.6	✓					
1/4		1.1	312.5	✓					
cb		1.0	312.6	✓		E	0.9	312.7	✓
E		0.7	312.9	✓		cb	1.1	312.5	✓
	N. 1/4					1/4	1.4	312.2	✓
E		0.9	312.7	✓		c	1.3	312.3	✓
						1/4	1.5	312.1	✓

center Redwood

5 1/4



313.63 ✓

cb 1.6 312.0 ✓

W 1.7 311.9 ✓

5. cb

W 1.5 312.1 ✓

cb 1.4 312.2 ✓

1/2 1.6 312.0 ✓

c 1.4 312.2 ✓

1/4 1.5 312.1 ✓

cb 1.3 312.3 ✓

E 1.1 312.5 ✓

5L Redwood

E 1.4 312.2 ✓

cb 1.4 312.2 ✓

1/2 1.7 311.9 ✓

c 1.4 312.2 ✓

1/4 1.6 312.0 ✓

cb 1.6 312.0 ✓

W 1.6 312.0 ✓

50' 5

W 2.0 311.6 ✓

313.63

FELTON

10

cb 2.0 311.6 ✓

1/2 2.2 311.4 ✓

c 1.9 311.7 ✓

1/4 2.2 311.4 ✓

cb 2.0 311.6 ✓

E 2.0 311.6 ✓

100' 5

E 2.5 311.1 ✓

cb 2.4 311.2 ✓

1/2 2.7 310.9 ✓

c 2.6 311.0 ✓

1/4 2.8 310.8 ✓

cb 2.6 311.0 ✓

W 2.6 311.0 ✓

150' 5

W 3.1 310.5 ✓

cb 3.0 310.6 ✓

1/4 3.3 310.3 ✓

c 3.0 310.6 ✓

1/4 3.1 310.5 ✓



313.63 ✓

cb 30 310.6 ✓

F 38 310.8 ✓

200' S

F 35 310.1 ✓

cb 36 310.0 ✓

1/2 37 309.9 ✓

C 35 10.1 ✓

1/2 36 310.0 ✓

cb 37 309.9 ✓

W 36 310.0 ✓

250' S

W 39 309.7 ✓

cb 40 309.6 ✓

1/2 41 309.5 ✓

C 41 309.5 ✓

1/2 42 309.4 ✓

cb 41 309.5 ✓

F 42 309.4 ✓

300' S

E 58 307.6 ✓

313.63

FELTON

11

cb 57 307.9 ✓

1/2 56 308.1 ✓

C 54 308.2 ✓

1/2 55 308.1 ✓

cb 54 308.2 ✓

W 55 308.1 ✓

350' S

W 67 306.9 ✓

cb 65 307.1 ✓

1/2 68 306.8 ✓

C 69 306.7 ✓

1/2 71 306.5 ✓

cb 68 306.8 ✓

F 66 307.0 ✓

385' S

F 82 305.4 ✓

cb 81 305.5 ✓

1/2 84 305.2 ✓

C 84 305.2 ✓

1/2 84 305.2 ✓



3/13.63 ✓

cb		8.3	305.3	✓
W		8.1	305.5	✓
	408' 5			
- 10		10.6	303.0	✓
W		12.1	301.5	✓
cb		11.8	301.8	✓
+ 5		9.6	304.0	✓
1/4		9.6	304.1	✓
C		9.6	304.0	✓
1/4		9.5	304.1	✓
cb		9.8	303.8	✓
E		9.5	304.1	✓
	418' 5			
E		11.1	302.5	✓
cb		12.2	301.9	✓
1/4		11.4	302.2	✓
+ 2		9.7	303.9	✓
C		9.7	303.9	✓
1/4		9.8	303.8	✓
cb		10.6	303.0	✓
W		9.6	304.0	✓

3/13.63

FELTON

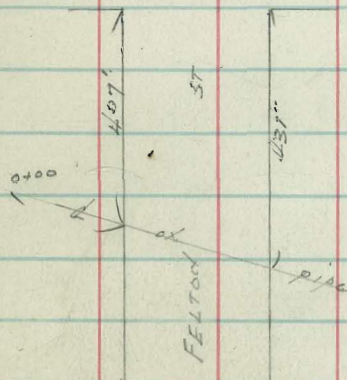
12

432' 5

W		8.6	305.1	✓
cb		8.9	304.7	✓
1/4		9.5	304.1	✓
C		9.7	303.9	✓
1/4		9.9	303.7	✓
cb		12.9	300.7	✓
E		14.7	298.9	✓
+ 10		15.9	297.7	✓

Redwood

ST



Palm

ST

Levels on Drain  
M.S. 3/13.63

0+00	11.3	
0+10	11.9	
0+22.5 End of present 12" CP.	12.8	= Flow
0+22	11.5	
0+30	9.8	
0+38	9.6	
0+46	9.9	
0+50	11.7	
0+54.5 End of present 12" CP.	14.0	= Flow
0+85	16.0	



313.63 ✓

450' S

E	10.8	302.8 ✓
cb	9.6	304.0 ✓
1/4	9.5	304.1 ✓
c	9.3	304.3 ✓
1/4	9.0	304.6 ✓
cb	8.1	305.5 ✓
W	7.7	305.9 ✓

560' S

W	7.4	306.2 ✓
cb	7.3	306.3 ✓
1/4	7.6	306.0 ✓
c	7.9	305.7 ✓
1/4	8.1	305.5 ✓
cb	8.2	305.4 ✓
F	8.3	305.3

550' S

E	7.8	305.8 ✓
cb	7.7	305.9 ✓
1/4	7.8	305.8 ✓

313.63

FELTON.

18

c	7.6	306.0 ✓
1/4	7.4	306.2 ✓
cb	7.0	306.6 ✓
W	6.8	306.8 ✓

598.6' S = N.L. Palm St (60' wide)

W	6.6	307.0 ✓
cb	7.0	306.6 ✓
1/4	7.3	306.3 ✓
c	7.3	306.3 ✓
1/4	7.5	306.1 ✓
cb	7.6	306.0 ✓
F	7.7	305.9 ✓

N. Curb.

F	7.8	305.8 ✓
cb	7.6	306.0 ✓
1/4	7.4	306.2 ✓
c	7.1	306.5 ✓
1/4	7.2	306.4 ✓
cb	7.0	306.6 ✓
W	6.6	307.0 ✓



31363 ✓

N. 1/4

W	7.1	306.5	✓
cb	7.2	306.4	✓
1/4	7.2	306.4	✓
c	7.2	306.4	✓
1/4	7.4	306.7	✓
cb	7.6	306.0	✓
E	7.9	305.7	✓

Center Palm

E	7.9	305.7	✓
cb	7.7	305.9	✓
1/4	7.6	306.0	✓
c	7.3	306.3	✓
1/4	7.1	306.5	✓
cb	7.0	306.6	✓
W	6.9	306.7	✓

S 1/4

W	7.1	306.5	✓
cb	7.1	306.5	✓
1/4	7.2	306.4	✓

313.63

FELTON

14

c	7.3	306.3	✓
1/4	7.7	305.9	✓
cb	7.6	306.0	✓
E	7.9	305.7	✓

S. Curb

E	7.8	305.8	✓
cb	7.7	305.9	✓
1/4	7.7	305.9	✓
c	7.3	306.3	✓
1/4	7.5	306.1	✓
cb	7.1	306.5	✓
W	7.1	306.5	✓

S L Palm St

W	7.37	306.26	✓ on hub.
cb	7.3	306.3	✓
1/4	7.6	306.0	✓
c	7.4	306.2	✓
1/4	7.9	305.7	✓
cb	7.7	305.9	✓
E	7.9	305.7	✓



31363

T.P.

0.39

306.65

7.37

306.26

50' 5

E

1.5

305.2

cb

1.5

305.2

1/4

1.5

305.2

c

1.0

305.7

1/4

1.3

305.4

cb

1.0

5.7

W

0.9

5.8

100' 5

W

2.0

4.7

cb

1.9

4.8

1/4

2.2

4.3

c

2.0

4.7

1/4

2.6

4.1

cb

2.5

4.2

E

2.4

4.3

150' 5

E

3.4

3.3

cb

3.4

3.3

306.65

FELTON

15

1/4

3.5

303.2

c

3.2

303.5

1/4

3.5

303.2

cb

3.4

303.3

W

3.4

303.3

200' 5

W

4.8

301.9

cb

4.8

301.9

1/4

5.1

301.6

c

4.8

301.9

1/4

5.0

301.7

cb

4.9

301.8

E

4.8

301.9

250' 5

E

6.2

300.5

cb

6.3

300.4

1/4

6.5

300.2

c

6.1

300.6

1/4

6.5

300.2

cb

6.4

300.3



306.65 ✓

W 6.5 300.2

300' S

W 8.5 298.2

cb 8.5 298.2

1/4 8.4 298.3

c 8.0 298.7

1/4 8.3 298.4

cb 8.1 298.6

E 7.8 298.9

350' S

E 9.9 296.8

cb 9.9 296.8

1/4 10.1 296.6

c 10.1 296.6

1/4 10.5 296.2

cb 10.8 295.9

W 11.1 295.6

400' S

W 13.6 293.1

cb 13.1 293.6

306.66

FELTON

16

1/4 13.0 293.7

c 12.3 294.4

1/4 12.5 294.2

cb 12.1 294.6

E 11.7 295.0

T.P. 0.87 294.56 12.96 293.69 ✓

450' S

E 1.8 292.8

cb 2.0 2.6

1/4 4.1 2.2

c 2.6 92.0

1/4 3.1 91.2

cb 3.7 90.9

W 4.5 90.1

500' S

W 9.3 85.3

cb 8.3 86.3

1/4 7.7 86.9

c 7.1 87.5

1/4 6.5 88.1



294.56 ✓

cb 5.7 88.9

E 4.8 89.8

550.5

E 9.3 85.3

cb 10.3 84.3

1/2 11.3 83.3

c 12.3 82.3

1/4 13.3 81.3

cb 14.3 80.3

W 15.7 78.9

T.P. 1.43 283.83 12.16 282.40 ✓

595.523 = NL Nutmeg.

W 8.90 274.93 on Hub.

cb 7.4 76.4

1/4 6.8 77.0

c 5.7 78.1

1/4 5.2 78.6

cb 4.1 79.7

E 2.5 81.3

13.00 296.77 0.06 283.77 ✓

FELTON

17



11/1/22  
 bregan  
 Moore  
 Ellis  
 Shaw

CROSS SECTION OF  
 33rd St 50' wide 10' cbs  
 from N.L. of Nutmeg  
 To N.L. of Redwood

299.69

18

H.S. from page 17 296.77

100' N

T.P.	7.29	299.69	4.37	292.40	Hub NE Nutmeg + 33rd	E	12.5	87.2
					N.L. Nutmeg	cb	11.8	
E			7.5	292.2		1/4	10.7	
cb			6.0			c	10.4	289.3
1/4			5.1			1/4	10.1	
c			4.7	295.0		+2.5	9.6	
1/4			4.3			cb	9.0	
+3			3.4			W	8.2	91.5
cb			3.0					
W			2.3	297.4		W	9.6	90.1
						cb	10.4	
W			4.5	293.2		+5	10.9	
cb			5.2			1/4	11.5	
+4			5.8			c	11.8	287.9
1/4			7.5			<del>1/4</del> +3	11.5	
c			7.7	292.0		1/4	11.9	
1/4			7.8			cb	13.4	
cb			8.5			E	14.5	85.2
E			10.2	89.5		+12	16.2	

150' N







299.69 ✓

cb			3.7	
E			4.4	95.3
+10			5.1	

400' N.

E			1.1	98.6
cb			0.7	
1/4			0.1	

T.P.	11.72	311.16 ✓	0.25	299.44 ✓
------	-------	----------	------	----------

c			11.4	299.8
1/4			11.5	

+2.5			10.9	
------	--	--	------	--

cb			10.6	
----	--	--	------	--

W			9.9	301.3
---	--	--	-----	-------

450' N.

W			8.7	2.5
---	--	--	-----	-----

cb			9.2	
----	--	--	-----	--

+5.0			9.5	
------	--	--	-----	--

1/4			10.0	
-----	--	--	------	--

c			9.7	301.5
---	--	--	-----	-------

1/4			9.8	
-----	--	--	-----	--

311.16 ✓

33rd.

cb			10.3	
E			10.7	300.5
+5			10.9	

500' N.

E			7.7	3.5
---	--	--	-----	-----

cb			7.7	
----	--	--	-----	--

1/4			7.7	
-----	--	--	-----	--

c			7.6	303.6
---	--	--	-----	-------

1/4			8.0	
-----	--	--	-----	--

cb			7.9	
----	--	--	-----	--

W			7.9	3.3
---	--	--	-----	-----

550' N.

W			6.5	4.7
---	--	--	-----	-----

cb			6.3	
----	--	--	-----	--

1/4			6.4	
-----	--	--	-----	--

c			5.9	305.3
---	--	--	-----	-------

1/4			6.1	
-----	--	--	-----	--

cb			6.2	
----	--	--	-----	--

E			6.0	5.2
---	--	--	-----	-----

20



311.16 ✓

595' N = 5L Palm. 60' wide

E	4.79	306.37	on hub
cb	5.1	306.1	✓
1/4	5.1	306.1	✓
C	5.1	306.1	✓
1/4	5.5	305.7	✓
cb	5.4	305.8	✓
W	5.4	305.8	✓

5 Curb

W	5.2	306.0	✓
cb	5.1	306.1	✓
1/4	5.1	306.1	✓
C	4.9	306.3	✓
1/4	5.0	306.2	✓
cb	4.8	306.4	✓
E	4.7	306.5	✓

3. 1/4

E	4.5	306.7	✓
cb	4.6	306.6	✓
1/4	4.7	306.5	✓

311.16 ✓

33rd St

21

C	4.6	306.6	✓
1/4	4.8	306.4	✓
cb	5.0	306.2	✓
W	5.1	306.1	✓

Center Palm St

W	4.6	306.6	✓
cb	4.5	306.7	✓
1/4	4.4	306.8	✓
C	4.3	306.9	✓
1/4	4.2	307.0	✓
cb	4.0	307.2	✓
E	3.9	307.3	✓

N 1/4

E	4.1	307.1	✓
cb	4.3	306.9	✓
1/4	4.4	306.8	✓
C	4.3	306.9	✓
1/4	4.5	306.7	✓
cb	4.7	306.5	✓
W	4.9	306.3	✓



311.16 ✓

N. Curb

W	4.6	306.6 ✓
cb	4.5	306.7 ✓
1/4	4.5	306.7 ✓
c	4.3	306.9 ✓
1/2	4.5	306.7 ✓
cb	4.0	307.2 ✓
E	3.9	307.3 ✓

N.L. Palm St

E	3.7	307.5 ✓
cb	3.9	307.3 ✓
1/2	4.4	306.8 ✓
c	4.1	307.1 ✓
1/2	4.4	306.8 ✓
cb	4.3	306.9 ✓
W	4.6	306.6 ✓

50' N

W	4.1	307.1 ✓
cb	4.0	307.2 ✓
1/4	4.0	307.2 ✓

311.16

33rd St.

22

c	3.8	307.4 ✓
1/2	4.1	307.1 ✓
cb	3.6	307.6 ✓
E	3.4	307.8 ✓

100' N

E	2.8	308.4 ✓
cb	3.0	308.4 ✓
1/4	3.4	307.8 ✓

c	3.0	308.2 ✓
1/2	3.4	307.8 ✓
cb	3.3	307.9 ✓
W	3.4	307.8 ✓

150' N

W	3.5	307.7 ✓
cb	3.1	308.1 ✓
1/2	3.0	308.4 ✓
c	2.5	308.7 ✓
1/2	3.1	308.1 ✓
cb	2.7	308.5 ✓
E	2.5	308.7 ✓



311.16

200' N

E	2.2	309.0	✓
cb	2.3	308.9	✓
1/4	2.8	308.4	✓
c	2.7	308.5	✓
1/4	2.8	308.4	✓
cb	2.6	308.6	✓
W	2.2	309.0	✓

250' N

W	1.5	309.7	✓
cb	1.9	309.3	✓
1/4	2.1	309.1	✓
c	2.1	309.1	✓
1/4	2.4	308.8	✓
cb	2.2	309.0	✓
E	2.2	309.0	✓

300' N

E	2.0	309.2	✓
cb	2.0	309.2	✓
1/4	2.3	308.9	✓

311.16

331.0

23

c	1.8	309.4	✓
1/4	2.0	309.4	✓
cb	2.0	309.4	✓
W	1.6	309.6	✓

350' N

W	1.2	310.0	✓
cb	1.9	309.3	✓
1/4	2.0	309.2	✓
c	1.8	309.4	✓
1/4	2.2	309.0	✓
cb	2.0	309.2	✓
E	2.2	309.0	✓
T.P.	5.96	315.25	1.87 309.29 ✓

400' N

E	6.0	309.3	✓
cb	6.0	309.3	✓
1/4	6.1	309.2	✓
c	5.8	309.5	✓
1/4	6.1	309.2	✓
cb	5.8	309.5	✓



315.25

W	5.3	310.0 ✓
	150' N	
W	4.8	310.5 ✓
cb	5.0	310.3 ✓
1/4	5.7	309.6 ✓
c	5.4	309.9 ✓
1/4	5.9	309.4 ✓
cb	5.5	309.8 ✓
E	5.6	309.7 ✓
	500' N	
E	5.0	310.3 ✓
cb	5.3	310.0 ✓
1/4	5.3	310.0 ✓
c	5.0	310.3 ✓
1/4	5.2	310.1 ✓
cb	4.8	310.5 ✓
W	4.6	310.8 ✓
	550' N	
W	3.8	311.5 ✓
cb	4.1	311.2 ✓

315.25

53 rd

24

1/4	4.8	310.5 ✓
c	4.7	310.6 ✓
1/4	5.1	310.2 ✓
cb	4.9	310.4 ✓
E	4.6	310.7 ✓
	598.6' N = 5L Redwood 60' wide	
E	4.1	311.2 ✓
cb	4.5	310.8 ✓
1/4	4.7	310.6 ✓
c	4.7	310.6 ✓
1/4	4.7	310.6 ✓
cb	4.0	311.3 ✓
W	3.9	311.4 ✓
	5. Curb	
W	4.1	311.2 ✓
cb	4.2	311.1 ✓
1/4	4.6	310.7 ✓
c	4.6	310.7 ✓
1/4	4.7	310.6 ✓
cb	4.2	311.1 ✓



315.25 ✓

E 41 311.2 ✓

S 1/4

E 44 310.9 ✓

cb 43 311.0 ✓

1/4 45 310.8 ✓

c 44 310.9 ✓

1/4 45 310.8 ✓

cb 44 310.9 ✓

W 43 311.0 ✓

Center Redwood

W 41 311.2 ✓

cb 43 311.0 ✓

1/4 42 311.1 ✓

c 42 311.1 ✓

1/4 42 311.1 ✓

cb 42 311.1 ✓

E 42 311.1 ✓

N. 1/4

E 40 311.3 ✓

cb 43 311.0 ✓

315.25 ✓

33rd St

1/4 41 311.2 ✓ 25

c 40 311.3 ✓

1/4 41 311.2 ✓

cb 42 311.1 ✓

W 40 311.3 ✓

N. Curb

W 3.70 311.6 ✓ on cement

cb 42 311.1 ✓

1/4 40 311.3 ✓

c 3.9 311.4 ✓

1/4 41 311.4 ✓

cb 41 311.2 ✓

E 3.30 312.00 ✓ on cement

N.L. Redwood

E 3.25 312.00 ✓

cb 3.26 312.0 ✓ on cement

cb 3.9 311.4 ✓

1/4 40 311.3 ✓

c 3.9 311.4 ✓

1/4 41 311.2 ✓



315.25

cb

41 311.2 ✓

cb

3.70 311.6 ✓ on cement

W

3.8 311.5 ✓

on B.M.

3.66 311.59<sub>.61</sub> ✓ BP NW  
33rd + Rd

26



11/3/22  
Gregory  
Moore  
Ellis  
Shaw

CROSS SECTION OF  
BANCROFT ST 50' wide  
from N.L. Redwood to  
S.L. ex Palm St

316.78

27

	467	316.28 ✓	311.61	E	1.5	314.8 ✓
			N.L. Redwood St 60' wide	cb	1.5	314.8 ✓
E		1.4	312.9 ✓	1/4	1.5	314.8 ✓
cb		1.33	314.95 on cement.	c	1.5	314.8 ✓
cb		2.0	314.3 ✓	1/4	1.6	314.7 ✓
1/4		2.0	314.3 ✓	cb	1.7	314.6 ✓
c		1.7	314.6 ✓	W	1.8	314.5 ✓
1/2		2.2	314.1 ✓			
cb		2.0	314.3 ✓	W	2.2	314.1 ✓
W		1.8	314.5 ✓	cb	2.0	314.3 ✓
			N. Curb	1/4	1.7	314.6 ✓
W		2.1	314.2 ✓	c	1.5	314.8 ✓
cb		4.2	314.1 ✓	1/4	1.6	314.7 ✓
1/4		4.0	314.3 ✓	cb	1.7	314.6 ✓
c		1.7	314.6 ✓	E	1.6	314.7 ✓
1/4		1.8	314.5 ✓			
cb		4.0	314.3 ✓	E	1.8	314.5 ✓
E		1.8	314.5 ✓	cb	1.8	314.5 ✓
				1/4	1.5	314.8 ✓

N. 1/4

Center

S. 1/4



3/6.28 ✓

c	1.4	314.9 ✓
1/2	1.7	314.6 ✓
cb	1.9	314.4 ✓
W	2.2	314.1 ✓

5 Curb

W	1.8	310.5 ✓
cb	1.6	314.7 ✓
1/2	1.7	314.6 ✓
c	1.5	314.8 ✓
1/4	1.5	314.8 ✓
cb	1.4	314.9 ✓
E	1.4	314.9 ✓

5 L. Redwood

E	1.6	314.8 ✓
cb	1.4	314.9 ✓
1/2	1.6	314.7 ✓
c	1.6	314.7 ✓
1/2	1.8	314.5 ✓
cb	1.7	314.6 ✓
W	1.6	314.7 ✓

3/6.28 ✓

50' S

W	1.9	310.4 ✓
cb	1.9	314.4 ✓
1/4	2.1	314.1 ✓
c	1.8	314.5 ✓
1/4	1.8	314.5 ✓
cb	1.6	314.7 ✓
E	1.5	314.8 ✓

100' S

E	2.1	310.2 ✓
cb	2.3	314.0 ✓
1/2	2.5	313.8 ✓
c	2.3	314.0 ✓
1/4	2.4	313.9 ✓
cb	2.3	314.0 ✓
W	2.3	313.8 ✓

150' S

W	3.4	312.9 ✓
cb	3.6	314.8 ✓
1/4	3.5	312.8 ✓
c	3.3	313.0 ✓

Bancroft.

28



316.28 ✓

1/4		33	313.0 ✓
cb		30	313.3 ✓
E		31	313.2 ✓
	200' S		
E		44	311.9 ✓
cb		44	311.9 ✓
1/4		49	311.4 ✓
C		48	311.5 ✓
1/4		50	311.3 ✓
cb		49	311.4 ✓
W		49	311.4 ✓
	250' S		
W		63	310.0 ✓
cb		63	310.0 ✓
1/4		64	309.9 ✓
C		62	310.1 ✓
1/4		64	309.9 ✓
cb		60	310.3 ✓
E		60	310.3 ✓

316.78 ✓

Bancroft

29

	300' S		
E		70	309.3 ✓
cb		71	309.4 ✓
1/4		72	309.1 ✓
C		72	309.1 ✓
1/4		74	308.9 ✓
cb		72	309.1 ✓
W		73	309.0 ✓
	350' S		
W		77	308.6 ✓
cb		76	308.7 ✓
1/4		76	308.7 ✓
C		77	308.6 ✓
1/4		80	308.3 ✓
cb		79	308.4 ✓
E		80	308.3 ✓
	400' S		
E		88	307.5 ✓
cb		84	307.9 ✓
1/4		80	308.3 ✓



316.28 ✓

c	8.3	308.0 ✓
1/4	8.5	307.8 ✓
cb	8.5	307.8 ✓
W	8.6	307.7 ✓
450' S		
W	8.8	307.5 ✓
cb	9.0	307.3 ✓
1/4	9.4	306.9 ✓
c	9.0	307.3 ✓
1/4	9.2	307.1 ✓
cb	8.8	307.5 ✓
E	9.1	307.2 ✓
500' S		
E	9.1	307.2 ✓
cb	9.2	307.1 ✓
1/4	9.4	306.9 ✓
c	9.3	307.0 ✓
1/4	9.4	306.9 ✓
cb	9.1	307.2 ✓
W	9.0	307.3 ✓

316.28 ✓

Bancroft

50

550' S

W	9.6	306.7 ✓
cb	9.7	306.6 ✓
1/4	10.2	306.1 ✓
c	9.9	306.4 ✓
1/4	10.1	306.4 ✓
cb	9.7	306.6 ✓
E	10.0	306.3 ✓
598.6' S = N.L. Palm St 60' wide 10' cbs		
E	10.6	305.7 ✓
cb	10.6	305.7 ✓
1/4	10.9	305.4 ✓
c	10.5	305.8 ✓
1/4	10.8	305.5 ✓
cb	10.4	305.9 ✓
W	10.5	305.8 ✓
H. Curb.		
W	10.7	305.6 ✓
cb	10.4	305.9 ✓
1/4	10.7	305.6 ✓



316.28

c	10.6	305.7 ✓
1/4	11.0	305.3 ✓
cb	10.8	305.5 ✓
E	10.9	305.4 ✓
N. 1/4		
E	11.2	305.1 ✓
cb	11.1	305.2 ✓
1/4	11.0	305.3 ✓
c	10.9	305.4 ✓
1/4	10.9	305.4 ✓
cb	10.9	305.4 ✓
W	11.0	305.3 ✓
center Palm		
W	11.0	305.3 ✓
cb	11.0	305.3 ✓
1/4	11.0	305.3 ✓
c	10.9	305.4 ✓
1/4	10.9	305.4 ✓
cb	10.9	305.4 ✓
E	10.9	305.4 ✓

316.78

Bancroft

31

S 1/4		
E	11.1	305.2 ✓
cb	11.3	305.0 ✓
1/4	11.1	305.2 ✓
c	11.1	305.2 ✓
1/4	11.3	305.0 ✓
cb	11.4	304.9 ✓
W	11.4	304.9 ✓
S Curb		
W	11.1	305.2 ✓
cb	11.3	305.0 ✓
1/4	11.6	304.7 ✓
c	11.3	305.0 ✓
1/4	11.4	304.9 ✓
cb	10.8	305.5 ✓
E	10.8	305.5 ✓
S.L. Palm		
E	11.0	305.3 ✓
cb	11.1	305.2 ✓
1/4	11.7	304.6 ✓



316.28 ✓

Bancroft

32

c	11.6	304.1 ✓
1/5	11.6	304.7 ✓
cb	11.6	304.7 ✓
W	11.6	305.12 on hub

continued on page 54 Book 1083



11/6/11  
Gregor  
Mora  
Ellis  
Shaw

CROSS SECTION OF  
32nd St  
40' wide  
10' cbs  
5' 1/4's  
from the N.L. of Redwood to  
the N.L. of Palm

2.87 307.99 ✓ - 305.12 SW hub  
Bancroft  
of Palm  
0.22 299.91 ✓ 8.30 299.69 ✓ on hub SE.  
32nd St Redwood

(Redwood = 60' wide) N.L. Redwood sect. = 50' wide

E	0.0	299.9	✓
+10 = cb	0.6	299.3	✓
+7.5 = 1/4	1.4	298.5	✓
+7.5 = C	1.6	298.3	✓
+7.5 = 1/4	3.5	296.4	✓
+7.5 = cb	5.6	294.3	✓
+10 = W	8.7	291.2	✓
+15	13.5	286.4	✓
H. Curb sect. = 48.33' wide			
-15	14.7	287.2	✓
W	8.6	291.4	✓
+10 = cb	5.0	292.9	✓
+7.08 = 1/4	2.5	297.4	✓
+7.08 = C	1.3	299.6	✓
+7.08 = 1/4	1.0	298.9	✓
+7.08 = cb	0.7	299.2	✓
+10 = E	+0.1	300.0	✓

6/10 1.67  
40  
48.33  
7) 25.20  
1.08

48.33  
1.67  
46.66  
20.00  
6.67

33

Redwood

St.

N. 1/4 (sect = 46.67' wide)

E	-0.2	299.7	✓
+10 = cb	0.4	299.5	✓
+6.67 = 1/4	1.0	298.9	✓
+6.67 = C	1.4	298.5	✓
+6.67 = 1/4	2.1	297.8	✓
+6.67 = cb	4.6	295.3	✓
+10 = W	8.1	291.8	✓
+15	12.5	287.4	✓
center Redwood (section = 45' wide)			
-15	14.3	285.6	✓
W	8.2	291.7	✓
+10 = cb	4.6	295.4	✓



299.91

+6.25 = 1/4	2.5	297.4	✓
+6.25 = c	1.2	98.7	✓
+6.25 = 1/4	0.8	299.1	✓
+6.25 = cb	0.5	299.4	✓
+10 = E	0.0	299.9	✓
	5 1/4	(sect = 43.33 wide)	
E	0.2	299.7	✓
+10 = cb	0.8	299.1	✓
+5.84 = 1/4	1.0	298.9	✓
+5.84 = c	1.1	298.8	✓
+3	1.5	298.4	✓
+5.84 = 1/4	2.2	297.7	✓
+5.83 = cb	5.6	294.3	✓
+10 = W	9.4	290.5	✓
+15	15.3	284.6	✓
	3 Curb	(Sect. = 41.67 wide)	
-15	16.7	283.2	✓
W	11.5	288.4	✓
+10 = cb	6.1	293.8	✓
+5.42 = 1/4	2.5	297.4	✓
+3	1.4	298.5	✓
+5.42 = c	1.3	98.6	✓

40  
41.67  
4000  
216  
425333  
58  
32 no  
57

+5.41 = 1/4	299.91	1.0	298.9	✓	34
+5.41 = cb		0.9	299.0	✓	
+10 = E		0.2	299.5	✓	
	5 L Redwood (40 wide)				10' cbs 5 1/4's
E		0.2	299.7	✓	
cb		1.1	298.8	✓	
1/4		1.2	298.7	✓	
c		1.4	98.5	✓	
1/4		4.2	295.7	✓	
cb		6.9	293.0	✓	
W		12.1	289.8	✓	
+15		17.4	282.5	✓	
	15' 5				
-15		22.1	277.8	✓	
W		15.5	284.4	✓	
cb		10.4	289.5	✓	
1/4		7.8	292.1	✓	
c		4.2	295.7	✓	
1/4		1.2	298.7	✓	
cb		1.3	298.0	✓	



499.91

E	1.0	298.9	✓
	50' 5		
E	1.0	298.9	
cb	1.5	298.4	
1/4	4.3	295.6	
c	7.6	292.3	
1/4	11.2	288.7	
cb	14.2	285.7	
W	18.5	281.4	
+15	26.0	273.9	
	75' 5		
-15	29.0	270.9	
W	41.0	278.9	
cb	44.3	285.6	
1/4	11.8	288.1	
c	8.2	291.7	
1/4	4.4	295.5	
cb	1.7	298.2	
E	1.3	298.4	

32<sup>nd</sup> St

299.9

85

	100' 5		
E	0.1	299.8	
+1	1.1	298.8	
cb	1.5	298.4	
1/4	2.0	297.9	
c	4.0	295.9	
1/4	7.0	292.9	
cb	10.2	289.7	
W	17.1	282.8	
+15	25.6	274.4	
	128' 5		
-10	16.8	283.1	
W	10.0	289.9	
cb	5.4	294.5	
1/4	4.2	295.7	
c	3.0	296.9	
1/4	1.7	298.2	
cb	1.4	298.5	
	1.2	298.7	
	0.6	299.3	
+5 = double			
E	0.3	299.6	



299.91

150'S

E	0.1	299.5
+9	1.3	298.6
cb	2.0	297.9
1/4	1.9	298.0
c	2.1	297.8
1/4	3.5	296.4
cb	4.6	295.3
W	6.4	293.5
+10	10.7	289.2

175'S

-10	10.7	289.2
W	6.3	293.6
cb	3.9	296.0
1/4	2.8	297.1
c	2.1	297.8
1/4	1.9	298.0
cb	{ 2.0 1.2	{ 297.9 298.7
E	+0.3	300.2

TP.

8.54

308.31

0.14

299.77

308.31

200'S

E	7.5	300.8
cb	8.9	299.4
+1	9.8	298.5
1/4	9.6	298.7
c	9.6	298.7
1/4	10.1	298.2
cb	10.6	297.7
W	12.8	295.5
+10	15.3	293.0

250'S

-10	13.5	294.8
W	12.0	296.3
cb	10.1	297.9
1/4	9.6	298.7
c	8.7	299.6
1/4	8.1	299.9
cb	{ 8.3 7.1	{ 300.0 300.9
E	6.0	302.3

32nd.

36



308.31

275' S

E	5.3	303.0
cb	{6.5	301.8
	{7.5	300.8
1/4	7.4	300.9
c	7.6	300.7
1/4	8.6	299.7
cb	9.5	298.8
W	11.0	297.3
+10	12.5	295.8

300' S

-10	11.4	296.9
W	10.0	298.3
cb	8.7	299.6
1/4	7.8	300.5
c	7.2	301.1
1/4	7.0	301.3
cb	{6.9	301.4
	{6.3	302.0
E	5.1	303.2

32 NO 37

350' S

E	4.7	303.6
cb	{5.4	302.9
	{6.1	302.8
1/4	6.0	302.3
c	6.0	302.3
1/4	6.4	301.9
cb	7.1	301.2
W	7.9	300.4
+5	8.7	299.6

400' S

-5	8.5	299.8
W	7.9	300.4
cb	6.7	301.6
1/4	6.1	302.2
c	5.8	302.5
1/4	5.6	302.7
cb	5.1	303.2
E	4.4	303.9



308.31

450' S

E	4.4	303.9
cb	4.9	303.4
1/4	5.4	302.9
c	5.5	302.8
1/4	5.7	302.6
cb	6.1	302.2
W	6.7	301.4
+5	7.2	301.1

500' S

-5	5.0	303.3
W	4.8	303.5
cb	4.5	303.8
1/4	4.3	304.0
c	4.2	304.1
1/4	4.2	304.1
cb	4.0	304.3
E	3.6	304.7

550' S

38

E	3.7	304.6
cb	4.0	304.3
1/4	3.7	304.6
c	3.7	304.6
1/4	4.2	304.1
cb	4.3	304.0
W	4.5	303.8

598.6' S = N.L. Palm St

W	4.0	304.3
cb	3.8	304.5
1/4	3.8	304.5
c	3.6	304.7
1/4	3.8	304.5
cb	3.7	304.6
E	3.41	304.90 on hub



11/6/22  
Gregory  
Moore  
Ellis  
Shaw

CROSS SECTION OF  
PALM ST 60' ST.  
From EL. 32<sup>nd</sup> 10' CBS  
To W.L. Felton

310.27

39

5.37 310.27 304.90  
E.L. 32<sup>nd</sup>

			1/4	4.6	305.7 ✓
			c	4.4	305.9 ✓
N		5.4	1/4	4.5	305.8 ✓
cb		5.1	cb	4.6	305.7 ✓
1/4		5.2	s	4.7	305.6 ✓
c		4.6			
1/4		4.6	s	5.1	305.2 ✓
cb		4.2	cb	5.0	305.3 ✓
s		4.0	1/4	5.0	305.3 ✓
	50' E		c	4.7	305.6 ✓
s		4.2	1/4	4.7	305.6 ✓
cb		4.3	cb	4.5	305.8 ✓
1/4		4.5	N	4.4	305.9 ✓
c		4.4			
1/4		4.7	N	4.2	306.1 ✓
cb		4.7	cb	4.5	305.8 ✓
N		4.8	1/2	4.8	305.5 ✓
	100' E		c	4.8	305.5 ✓
N		4.2	1/4	5.2	305.1 ✓
cb		4.3	cb.	5.1	305.2 ✓

150' E

200' E



310.27

S	5.1	305.2 ✓
250' E = W.L. Bancroft.		
S	5.1	305.2 ✓
cb	5.1	305.2 ✓
1/4	5.4	304.9 ✓
c	5.0	305.3 ✓
1/4	5.0	305.3 ✓
cb	4.7	305.6 ✓
N	4.4	305.9 ✓
E.L. Bancroft.		
N	4.6	305.7 ✓
cb	4.9	305.4 ✓
1/4	5.2	305.1 ✓
c	4.9	305.4 ✓
1/4	5.1	305.2 ✓
cb	4.8	305.5 ✓
S	5.0	305.3 ✓
50' E		
S	5.6	304.7 ✓
cb	5.4	304.9 ✓

PALM.

40

1/4	5.5	304.8 ✓
c	5.0	305.3 ✓
1/4	5.2	305.1 ✓
cb	5.0	305.3 ✓
N	4.9	305.4 ✓
100' E		
N	5.1	305.2 ✓
cb	5.3	305.0 ✓
1/4	5.1	305.4 ✓
c	4.7	305.6 ✓
1/4	4.8	305.5 ✓
cb	4.5	305.8 ✓
S	5.0	305.3 ✓
150' E		
S	5.0	305.3 ✓
cb	4.9	305.9 ✓
1/4	4.9	305.4 ✓
c	4.6	305.7 ✓
1/4	4.6	305.7 ✓
cb	4.3	306.0 ✓



310.27

N	41	306.2 ✓
	200' E	
N	41	306.2 ✓
cb	42	306.1 ✓
1/4	43	306.0 ✓
c	40	306.3 ✓
1/4	44	305.9 ✓
cb	43	306.0 ✓
S	45	305.8 ✓
	250' E = W.L. 33 <sup>rd</sup> St	
S	45	305.8 ✓
cb	43	306.0 ✓
1/4	43	306.0 ✓
c	36	306.7 ✓
1/4	40	306.3 ✓
cb	37	306.6 ✓
N	37	306.5 ✓
	E.L. 33 <sup>rd</sup> St	
N	28	307.5 ✓
cb	29	307.4 ✓

310.27

PALM.

1/4	3.2	307.1 ✓	41
c	3.0	307.3 ✓	
1/4	3.6	306.7 ✓	
cb	3.7	306.6 ✓	
S	3.9	306.4 ✓	
	50' E		
S	3.3	307.0 ✓	
cb	3.2	307.1 ✓	
1/4	3.1	307.2 ✓	
c	2.6	307.7 ✓	
1/4	2.7	307.6 ✓	
cb	2.4	307.9 ✓	
N	2.3	308.0 ✓	
	100' E		
N	2.3	308.0 ✓	
cb	2.4	307.9 ✓	
1/4	2.7	307.6 ✓	
c	2.5	307.8 ✓	
1/4	2.9	307.4 ✓	
cb	2.9	307.4 ✓	



310.27

S

3.2 307.1 ✓

150 E

S

3.2 307.1 ✓

cb

3.0 307.3 ✓

1/2

2.9 307.4 ✓

C

2.6 307.7 ✓

1/2

2.6 307.7 ✓

cb

2.4 307.9 ✓

N

2.3 308.0 ✓

200 E

N

2.6 307.7 ✓

cb

2.8 307.5 ✓

1/2

2.9 307.4 ✓

C

2.8 307.5 ✓

1/2

3.1 307.2 ✓

cb

3.0 307.3 ✓

S

3.2 307.1 ✓

250 E = 146 Felton St

S

3.0 306.3 ✓

cb

3.7 306.6 ✓

PALM.

42

1/2

3.8 306.5

C

3.5 306.8 ✓

1/2

3.6 306.7 ✓

cb

3.2 307.1 ✓

N

3.2 307.1 ✓



11/3/22 Gregory Levels on Univ Ave Track

48

Stations	0.17	316.99	316.88	BP NE Park	S. Track Elev.	S. Paring Elev.		
100' E. x Park Blvd on N			1.55	315.44	1.66	315.33	1.66	315.33
115' ✓ ✓ ✓ ✓ ✓			1.74	315.27	1.70	315.29	1.80	315.19
135' ✓ ✓ ✓ ✓ ✓			1.94	315.05	1.90	315.09	2.03	314.96
160' ✓ ✓ ✓ ✓ ✓			2.26	314.73	2.24	314.75	2.28	314.71
180' ✓ ✓ ✓ ✓ ✓			2.63	314.36	2.63	314.36	2.72	314.27
200' ✓ ✓ ✓ ✓ ✓			3.11	313.78	3.09	313.90	3.15	313.84
220' ✓ ✓ ✓ ✓ ✓			3.67	313.32	3.61	313.38	3.75	313.24
240' ✓			4.34	312.65	4.25	312.74	4.37	312.62
260' ✓			5.14	311.85	5.11	311.88	5.19	311.80
276.4' ✓			5.90	311.09	5.85	311.14	5.89	311.10
300' ✓			7.02	309.97	7.06	309.93	7.02	309.95
327' ✓			8.49	308.50	8.47	308.52	8.52	308.42
377' ✓			11.38	305.61	11.37	305.62	11.51	305.48
400' ✓			12.80	304.19	12.72	304.27	12.86	304.13
T.P.	0.00	304.09	12.90	304.09				
450' E			2.87	301.22	2.81	301.26	3.00	301.09
500' ✓			5.79	298.30	5.79	298.30	6.03	298.06
550' ✓			8.78	295.31	8.75	295.34	8.97	295.12



304.09

			N. Track Elev	
600 E			11.78	292.31
T.P.	0.01	291.38	12.72	291.37
660 E			2.66	288.72
680 v			3.76	287.62
700 v			4.69	286.69
740 v			6.42	284.96
760 v			7.55	283.83
780 v			8.92	282.46
800 v			10.29	281.09
T.P.	0.02	278.70	12.70	278.68
850			1.05	277.65
900			4.58	274.12
950			7.88	270.82
1000 E			11.31	267.39
1020 E			12.23	266.47
T.P.	9.56	275.32	12.91	265.76
1040 -	Chang 9.41	275.37	9.47	265.90
1100 v			10.29	265.08
1138.5 = EL. Ala. on H.			10.50	264.87
1166.5 = W. - 5			10.28	265.09
1200 E			9.94	265.43

20696  
941  
26537

			S. Track Elev		S. Paring Elev.	
			11.73	292.36	12.00	292.09
					291.35	1"
			2.64	288.74	2.86	288.52
			3.75	287.63	4.05	287.33
			4.68	286.70	4.97	286.41
			6.43	285.95	6.69	284.69
			7.59	283.79	7.80	283.58
			8.94	282.44	9.25	282.13
			10.32	281.06	10.65	280.73
			1.02	277.68	1.22	277.48
			4.39	274.31	4.69	274.01
			7.76	270.94	8.15	270.55
			11.11	267.59	11.56	267.14
			12.15	266.55	12.48	266.22
			9.73	265.64	9.56	265.81
			No rails in		10.30	265.07
			10.51	264.86	10.54	264.83
			10.31	265.06	10.50	264.87
			10.11	265.26	10.28	265.09

44



275.37

281.99

	N. Track	Elev
6 1276.5 = EL. Ala. on S.	9.53	265.84
- 1450 E'	8.38	266.99
6 1300 ✓	5.31	270.06
6 1350 ✓	2.45	272.92
7 TP.		
from BP 1178 286.88	0.27	275.10
488 286.87		
7 1400	10.83	276.04
1450	8.10	278.27
1493.5 = W. Miss. on S.	6.17	280.70
1523.5 E	4.72	282.15
1553.5 = EL. Miss. on S.	3.47	283.40
1600'	1.25	285.62
7 TP.		
12.82 298.97	0.73	286.15
1650'	10.86	288.11
1700 E	8.44	290.53
1750 ✓	6.02	292.95
1800 ✓	3.56	295.41
1825 = W. Louis. on S.	4.55	296.42
1845	1.65	297.32
1885 = EL. Louis. on S.	0.13	298.84
TP. 12.83 311.55	0.25	298.92
1950	9.88	301.67

S. Track	Elev	S. Paving	Elev
9.76	265.61	10.10	265.27
8.64	266.73	8.87	266.50
5.55	269.82	5.87	269.50
2.53	272.84	2.89	272.48
		286.87	
11.11	275.96	11.40	275.47
8.34	278.53	8.58	278.29
6.44	280.43	6.60	280.27
4.14	281.93	5.22	281.65
3.70	283.17	4.00	282.87
1.42	285.45	1.75	285.12
	298.97		
11.11	287.86	11.43	287.54
8.57	290.40	8.95	290.02
6.16	292.86	6.52	292.45
3.80	295.17	4.09	294.88
4.77	296.20	4.98	295.99
1.85	297.12	4.07	296.90
0.27	298.70	0.50	298.47
10.03	301.52	10.43	301.32

45



311.55

## N. Track Elev

4000 E	7.71	303.84
4050 -	5.49	306.06
4100 -	3.30	308.25
4154.5 - WL Texas on S	0.93	310.62
T.P. 6.37 317.85	0.07	311.48
4196.5 E	5.54	312.31
4264 -	4.83	313.02
4280.2 - EL Texas on N	5.12	312.73
4300 -	5.93	311.92
chk BM NW Texas	4.89	312.96 = 93

312.93

## S Track Elev

## S Paving Elev

46

7.83	303.72	8.03	303.52
5.64	305.91	5.81	305.74
3.53	308.02	3.71	307.84
1.12	310.42	1.21	310.24
5.54	312.31	5.59	312.26
4.80	313.05	4.87	312.98
5.10	312.75	5.06	312.29
5.94	311.91		



Dover St

Dec 1922

Dorron  
Millet  
Walbreck

T.P. see sections of Jennings St &amp; Silver Gate Ave 1056

0.78 266.49<sup>v</sup> 265.71 T.P. Book 1056 Page 74

Note sectioned this st 60' wide - i.e. 30' Each side of P.L. as S.D.G.E. Files,

road &amp; fences show it to be: 10' cbs 10' 1/2's (Actually this a 30' st)

Jennings level 58.7 10' Cbs 9.7' Q's

S.L. Jennings E.L. 3.6 262.9<sup>v</sup>cb 3.0 263.5<sup>v</sup>1/2 2.6 263.9<sup>v</sup>± 2.2 264.3<sup>v</sup>1/4 1.4 265.1<sup>v</sup>cb 1.0 265.5<sup>v</sup>W.L. 0.5 266.0<sup>v</sup>S cb of Jennings W.L. 1.0 265.5<sup>v</sup>cb 1.3 265.2<sup>v</sup>1/2 1.5 265.0<sup>v</sup>E 2.1 264.4<sup>v</sup>1/4 2.5 264.0<sup>v</sup>cb 2.7 263.8<sup>v</sup>E.L. 3.4 263.1<sup>v</sup>266.49<sup>v</sup>

47

S'W of Jennings St.

E.L. 3.4 263.1<sup>v</sup>cb 2.7 263.8<sup>v</sup>1/2 2.5 264.0<sup>v</sup>± 2.0 264.5<sup>v</sup>1/4 1.6 264.9<sup>v</sup>cb 1.2 265.3<sup>v</sup>W.L. 0.9 265.6<sup>v</sup>

± Jennings St

W.L. 1.3 265.7<sup>v</sup>cb 1.6 264.9<sup>v</sup>1/2 2.0 264.5<sup>v</sup>± 2.2 264.3<sup>v</sup>1/4 2.3 264.2<sup>v</sup>cb 2.9 263.6<sup>v</sup>E.L. 3.2 263.3<sup>v</sup>



266.90 ✓

Dovey St.

N 1/2 Jennings St

E.L.	4.3	262.2 ✓
cb	3.7	262.8 ✓
1/2	3.4	263.1 ✓
±	2.6	263.9 ✓
1/2	2.4	264.3 ✓
cb	1.7	264.6 ✓
W.L.	1.6	264.9 ✓

N Cb Jennings St

W.L.	1.6	264.9 ✓
cb	2.2	264.3 ✓
1/2	2.6	263.9 ✓
±	2.8	263.7 ✓
1/2	3.6	262.9 ✓
cb	4.2	262.3 ✓
E.L.	4.4	262.1 ✓

266.90 ✓

00 = N.L. Jennings E.L.

4.7	261.8 ✓
4.3	262.2 ✓
3.8	262.7 ✓
3.3	263.2 ✓
2.9	263.6 ✓
2.3	264.2 ✓
2.3	264.2 ✓
3.7	262.8 ✓
3.6	262.9 ✓
3.5	263.0 ✓
3.8	262.7 ✓
4.5	262.0 ✓
4.7	261.8 ✓
5.4	261.1 ✓
5.9	260.6 ✓
5.5	261.0 ✓
5.2	261.3 ✓
4.8	261.7 ✓
4.8	261.7 ✓
4.8	261.7 ✓

48



	+	266.45	-	Dover St.
cb+3			3.7	262.8 ✓
W.L.			3.1	263.4 ✓
1400 W.L.			4.5	262.0 ✓
cb			5.7	260.8 ✓
+2			6.8	259.7 ✓
1/2			6.4	260.1 ✓
±			6.4	260.1 ✓
1/2			6.8	259.7 ✓
cb			6.8	259.7 ✓
E.L.			7.1	259.4 ✓
1400 E.L.			9.0	257.5 ✓
cb			8.7	257.8 ✓
1/2			8.5	258.0 ✓
±			8.2	258.3 ✓
1/2			8.2	258.3 ✓
+8			8.4	258.1 ✓
cb			7.6	258.9 ✓
W.L.			6.4	260.1 ✓

	+	266.45	-	
2400 W.L.			8.5	258.0 ✓
cb			9.3	257.2 ✓
+2			10.5	256.0 ✓
1/4			10.1	256.4 ✓
±			10.1	256.4 ✓
1/4			10.3	256.2 ✓
cb			10.4	256.1 ✓
E.L.			10.5	256.0 ✓
2450 = S.L. John St (60 wide)			12.1	254.4 ✓
cb			11.9	254.6 ✓
1/2			11.9	254.6 ✓
±			11.7	254.8 ✓
1/2			11.8	254.7 ✓
+9			12.2	254.3 ✓
cb			11.2	255.3 ✓
W.L.			10.4	256.1 ✓
S. Cb John St W.L.			10.7	255.8 ✓
+8			10.5	255.7 ✓
cb			11.5	255.0 ✓
+1			12.0	254.1 ✓



	+	T 26645 <sup>v</sup>	-	Dover St.
1/4			12.2	254.3 ✓
±			12.1	254.4 ✓
1/2			12.3	254.2 ✓
cb			12.5	254.0 ✓
E.U			12.6	253.9 ✓
3/4 John St E.U			12.9	253.7 ✓
cb			12.7	253.8 ✓
1/2			12.6	253.9 ✓
±			12.5	254.0 ✓
1/2			12.5	254.0 ✓
+9			12.9	253.7 ✓
cb			11.9	254.6 ✓
W.L			11.1	255.4 ✓
5/8 + 3 WSL			11.1	255.4 ✓
± W.L			11.4	255.1 ✓
+7			11.4	255.1 ✓
cb			12.4	254.1 ✓
+1			13.4	253.1 ✓
1/2			12.9	253.6 ✓
±			12.7	253.8 ✓

	+	T 26645 <sup>v</sup>	-	10.16
1/4			12.9	253.6 ✓
cb			13.0	253.5 ✓
E.U			13.2	252.3 ✓
#	0.12	256.45 <sup>v</sup>	10.16	256.33 B.N. 3 rails:
* Gas & Electric Pipe 240 S.W. Cor Johns & Dover St				
N 1/4 John St E.U			3.3	253.2 ✓
cb			3.1	253.4 ✓
1/2			3.3	253.2 ✓
±			3.1	253.4 ✓
1/2			3.2	253.3 ✓
+9			3.8	252.7 ✓
cb			2.5	254.0 ✓
+7			1.8	254.7 ✓
W.L			1.6	254.9 ✓
N cb John St W.L			1.8	254.7 ✓
+8			2.3	254.2 ✓
cb			3.3	253.2 ✓
+1			4.6	252.5 ✓
1/2			3.5	253.0 ✓
±			3.4	253.1 ✓



Dover St.

	+	π	-		+	π	-	
		256.45 ✓				256.45 ✓		
1/4			3.7	252.8 ✓	E.L.		4.5	252.0 ✓
cb			3.5	253.0 ✓	400 E.L.		5.2	251.3 ✓
E.L.			3.6	252.9 ✓	cb		5.4	251.1 ✓
oo = North Line Johns Sf: E.L.			3.7	252.8 ✓	+3		8.3	248.2 ✓
cb			3.8	252.7 ✓	1/4		7.8	248.7 ✓
1/2			4.0	252.5 ✓	±		7.4	249.1 ✓
±			3.8	252.7 ✓	1/4		7.7	248.8 ✓
1/4			3.9	252.6 ✓	cb		8.1	248.4 ✓
+9			4.3	252.2 ✓	+2		6.3	250.2 ✓
cb			3.4	253.1 ✓	N.L.		6.2	250.3 ✓
cb			2.6	253.9 ✓	1435 N.L.		8.2	248.3 ✓
W.L.			2.1	254.4 ✓	+6		8.3	248.2 ✓
+50 W.L.			4.1	252.4 ✓	cb		9.3	247.2 ✓
+7			4.2	252.3 ✓	+3		10.9	245.6 ✓
cb			6.4	250.1 ✓	1/4		9.7	246.8 ✓
1/2			5.6	250.9 ✓	±		9.3	247.2 ✓
±			5.6	250.9 ✓	1/2		9.5	247.0 ✓
1/2			5.9	250.6 ✓	+9		9.7	246.8 ✓
+9			5.9	250.6 ✓	cb		6.8	249.7 ✓
cb			4.4	252.1 ✓	E.L.		6.5	250.0 ✓



	+	H1 206.45 <sup>v</sup>	-	Dover St		+	T 244.65 <sup>v</sup>	-	
1475			9.7	247.3 ✓	2450 = S.L. of Inez St 60 wide 10' cds				
+9			9.6	246.9 ✓	E.L.		6.1	238.6 ✓	
cb			11.9	244.6 ✓	cb		6.8	237.9 ✓	
+2			12.6	243.9 ✓	+2		7.0	237.2 ✓	
1/4			12.4	244.1 ✓	1/4		6.9	237.8 ✓	
±			12.3	244.2 ✓	±		6.7	238.0 ✓	
1/4			12.6	243.9 ✓	1/4		6.9	237.8 ✓	
+6			13.6	242.9 ✓	+8		7.4	237.3 ✓	
cb			12.0	244.5 ✓	cb		6.5	238.2 ✓	
W.L.			12.0	244.5 ✓	+2		6.1	239.6 ✓	
#	0.97	244.65 <sup>v</sup>	12.77	243.68 ✓	W.L.		6.9	237.8 ✓	
2400 W.L.			1.9	244.8 ✓	S cb of Inez St W.L.		7.6	237.1 ✓	
cb			2.0	242.7 ✓	cb		7.2	237.5 ✓	
+2			3.2	241.5 ✓	+2		8.2	236.5 ✓	
1/4			2.6	242.1 ✓	1/4		7.7	237.0 ✓	
±			2.4	242.3 ✓	±		7.6	237.1 ✓	
1/4			2.8	241.9 ✓	1/4		7.8	236.9 ✓	
+8			3.1	241.6 ✓	+8		8.3	236.4 ✓	
cb			1.1	243.6 ✓	cb		7.3	237.4 ✓	
E.L.			0.4	244.3 ✓	E.L.		6.7	238.0 ✓	



	+	244.65 <sup>v</sup>	-	Dover St.
South 1/2 of Inez St. E.U.	8.0	236.7	✓	
cb	8.3	236.4	✓	
+3	9.0	235.2	✓	
1/2	8.5	236.2	✓	
±	8.4	236.3	✓	
1/2	8.5	236.2	✓	
+9	9.1	235.6	✓	
cb	8.1	236.6	✓	
W.L.	8.7	236.5	✓	
E of Inez St. W.L.	9.1	235.6	✓	
cb	9.0	235.7	✓	
+1	9.8	234.9	✓	
1/2	9.3	235.4	✓	
±	9.2	235.5	✓	
1/2	9.4	235.3	✓	
+9	10.2	234.5	✓	
cb	9.1	235.6	✓	
E.L.	9.2	235.5	✓	

	+	244.65 <sup>v</sup>	-	
N 1/2 of Inez St. E.U.	10.1	234.6	✓	
cb	10.7	234.5	✓	
+1	11.1	233.6	✓	
1/2	10.5	234.2	✓	
±	10.1	234.6	✓	
1/2	10.2	234.5	✓	
cb	10.6	234.1	✓	
+3	9.6	235.1	✓	
W.L.	10.6	234.1	✓	
N. Curb of Inez St. W.L.	11.2	233.4	✓	
+9	10.6	234.1	✓	
cb	11.7	233.0	✓	
1/2	11.0	233.7	✓	
±	10.9	233.9	✓	
1/2	11.2	233.5	✓	
+9	11.6	233.1	✓	
cb	11.1	233.6	✓	
E.L.	10.7	234.0	✓	



	+	$\pi$ 244.65 <sup>✓</sup>	-	Dover St.
00 = N.L. of Terez St E.L.			11.4	233.3 ✓
Cb			11.8	234.9 ✓
+1			12.2	234.4 ✓
1/2			12.0	234.7 ✓
±			11.7	233.0 ✓
1/2			11.8	234.9 ✓
Cb			12.4	234.3 ✓
+2			11.7	233.5 ✓
W.L.			12.4	234.3 ✓
#	008	231.77 <sup>✓</sup>	12.96	231.69 <sup>✓</sup>
0+50 W.L.			3.4	228.4 ✓
Cb			2.5	229.3 ✓
+1			3.6	228.2 ✓
1/2			2.7	229.1 ✓
±			2.6	229.2 ✓
1/2			3.0	228.8 ✓
+9			3.2	228.6 ✓
Cb			2.4	229.4 ✓
E.L.			1.4	230.4 ✓

	+	$\pi$ 231.77 <sup>✓</sup>	-	
EU 1400			4.6	227.7 ✓
±9			5.3	226.5 ✓
Cb			6.2	225.6 ✓
1/2			6.6	225.2 ✓
±			6.3	225.5 ✓
1/2			6.6	225.2 ✓
±9			6.5	225.3 ✓
Cb			6.4	225.4 ✓
W.L.			7.4	224.4 ✓
1+50 W.L.			10.8	221.0 ✓
±8			10.0	221.8 ✓
Cb			10.9	220.9 ✓
1/2			9.8	222.0 ✓
±			9.5	222.3 ✓
1/2			9.5	222.3 ✓
Cb			10.5	221.3 ✓
+1			9.5	223.3 ✓
E.L.			7.3	224.5 ✓



	+	π	-	
		231.77		Dovey St.
2+00 E.U.			10.7	221.1 ✓
cb			11.4	220.4 ✓
1/4			11.8	220.0 ✓
±			11.6	220.2 ✓
1/4			12.3	219.0 ✓
cb			12.8	219.0 ✓
W.L.			13.0	218.8 ✓

2+50 = South Line of Talbot St on the East

W.L.			14.7	217.1 ✓	±		86	218.0 ✓
cb			14.3	217.5 ✓	1/4		90	217.2 ✓
1/2			14.4	217.4 ✓	cb		96	217.0 ✓
±			13.6	218.3 ✓	W.L.		97	216.9 ✓
1/4			13.4	218.4 ✓				
cb			13.0	218.8 ✓				
E.L.			12.8	219.0 ✓				
±	6.12	226.59	11.30	220.47 = 220.45 ✓				

S.E. Cor of Talbot & Silver Gate Ave Tel. Pole 3 miles see next Page

2+50 2+60 Diagonal = S.E. Talbot St:	E.L.		7.6	219.0
cb			7.8	218.8
1/4			8.1	218.5

New Canyon Road & Catalina

261.63
- 00.10
261.78 ✓
- 12.87
248.91 ✓
+ 0.63
249.54 ✓
- 12.98
236.56 ✓
- 0.05
236.61 ✓
- 12.98
223.63 ✓
- 0.07
223.70 ✓
- 11.90
211.80 ✓
- 9.14
220.94 ✓
- 0.40
220.45 ✓



	+	π	-	Charles St. 60 Wards; 10 obs. Dec 1922 (Donnan Miller Shaw)		+	π	-
N. & Charles St. in E. Cb Silver Gate; B.P. See book 1056 Page 69					at 50 S.L.			6.3 299.3 ✓
17.85		30.5.55"	292.70		+6			6.4 299.2 ✓
00 = W.L. Silver Gate Ave N.L.			12.4 293.2 ✓		cb			8.1 297.85 ✓
cb			11.6 294.0 ✓		1/4			8.4 297.2 ✓
1/2			11.2 294.4 ✓		E			8.4 297.2 ✓
E			11.1 294.5 ✓		1/4			8.4 297.4 ✓
1/4			11.0 294.6 ✓		cb			8.6 297.0 ✓
cb			10.8 294.8 ✓		+7			8.9 296.7 ✓
S.L.			10.8 294.8 ✓		N.L.			8.2 297.4 ✓
0+17 S.L.			10.3 295.3 ✓		1400 N.L.			6.2 299.4 ✓
cb.			10.4 295.2 ✓		cb			6.2 299.4 ✓
0+25 S.L.			7.5 298.1 ✓		1/4			5.9 299.7 ✓
+6			10.0 295.6 ✓		E			6.0 299.6 ✓
S.cb			10.0 295.6 ✓		1/4			6.9 299.5 ✓
10+25 S.L.			7.2 298.4 ✓		cb			6.1 299.5 ✓
+5			7.7 298.4 ✓		+3			4.2 301.4 ✓
S.cb			9.5 296.1 ✓		S.L.			3.9 301.7 ✓
					1450 S.L.			2.4 303.2 ✓
					+8			2.5 303.1 ✓
					cb			4.1 301.5 ✓



π  
305.55 ✓

Charles St

1/2	4.2	301.4	✓
2	4.2	301.4	✓
1/2	4.4	301.4	✓
cb	4.6	301.0	✓
N.L	4.7	300.9	✓
2+100 N.L	4.1	301.5	✓
cb	3.7	301.7	✓
1/2	3.6	302.0	✓
t	3.6	302.0	✓
cb	3.6	302.0	✓
cb	3.2	302.4	✓
+2	1.9	303.7	✓
S.L	1.7	303.9	✓
2+50 S.L	2.7	302.9	✓
cb	3.0	302.6	✓
+2	4.3	301.3	✓
1/2	4.5	301.1	✓
t	4.5	301.1	✓
1/4	4.4	301.2	✓
cb	4.8	300.8	✓

π  
305.55 ✓

57

N.L	4.8	300.8	✓
2+100 N.L	6.5	299.1	✓
cb	6.1	299.5	✓
1/2	5.8	299.8	✓
t	6.6	299.6	✓
1/2	6.1	299.5	✓
cb	6.2	299.4	✓
+2	5.0	300.6	✓
S.L	4.6	301.0	✓
2+50 S.L	6.5	299.1	✓
cb	2.5	298.1	✓
1/4	8.0	297.6	✓
t	7.9	297.7	✓
1/2	7.8	297.8	✓
cb	8.2	297.4	✓
N.L	8.2	297.2	✓
2+100 N.L	10.4	295.2	✓
cb	10.4	295.2	✓
1/2	10.3	295.3	✓
t	10.2	295.4	✓



305.55 ✓

Charles St.

292.95 ✓

58

1/4	10.7	295.4	✓
+9	9.9	295.7	✓
cb	8.9	296.7	✓
S.C	8.6	297.0	✓
4+50 S.C	11.4	294.2	✓
cb	11.8	293.8	✓
+2	12.9	292.7	✓
1/4	12.9	292.7	✓
±	12.9	292.7	✓
1/2	12.9	292.7	✓
cb	13.1	292.5	✓
N.C	13.1	292.5	✓
#	0.32	292.95	✓
5+00 N.C	4.0	289.0	✓
cb	3.6	289.3	✓
1/2	3.3	289.6	✓
±	3.4	289.7	✓
1/4	3.3	289.6	✓
+8	3.1	289.8	✓
cb	2.8	290.5	✓

S.C	2.2	290.7	✓
1.50 S.C	5.3	287.6	✓
cb	5.8	287.1	✓
+2	6.4	286.5	✓
1/4	6.4	286.5	✓
±	6.4	286.5	✓
1/4	6.4	286.5	✓
cb	6.7	286.2	✓
N.C	7.1	285.8	✓
6+00 N.C	10.3	284.6	✓
cb	9.9	283.0	✓
1/4	9.6	283.3	✓
±	9.4	283.5	✓
1/4	9.5	283.4	✓
cb	9.0	283.9	✓
S.C	8.5	284.4	✓
6+50 S.C	11.6	281.3	✓
cb	11.9	281.0	✓
+1	12.6	280.3	✓
1/4	12.7	280.2	✓



29.2.95 ✓

Charles St.

±		12.8	280.1 ✓
1/4		10.5	280.1 ✓
cb		13.4	279.5 ✓
N.U		13.5	279.4 ✓
#	0.23	13.01	279.94 ✓
7+50 N.U		4.7	275.7 ✓
cb		4.1	276.3 ✓
1/2		3.6	276.8 ✓
±		3.6	276.8 ✓
1/2		3.5	276.9 ✓
cb		3.7	276.7 ✓
+1		3.1	277.3 ✓
S.U		2.6	277.8 ✓
7+50 S.U		6.5	273.9 ✓
cb		6.7	273.7 ✓
+0		7.3	273.1 ✓
1/2		7.2	273.2 ✓
±		7.2	273.2 ✓
1/2		7.0	273.0 ✓
cb		7.7	272.7 ✓

280.37 ✓

59

N.L		7.8	272.6 ✓
7+50 N.L		11.1	269.3 ✓
cb		10.8	269.6 ✓
1/4		10.5	269.9 ✓
±		10.5	269.9 ✓
1/2		10.5	269.9 ✓
cb		10.0	270.4 ✓
S.U		10.1	270.3 ✓
8+50 S.U		12.0	268.4 ✓
cb		13.2	267.8 ✓
1/2		13.2	267.2 ✓
±		13.4	267.0 ✓
1/4		13.6	266.8 ✓
cb		13.9	266.6 ✓
N.L		13.6	266.8 See check next page
#	1.48	269.14	12.68 267.69 = 267.59
SE Cor Charles St & Catalina Blvd North bolt in top of Hydrant			
8+77 = E.W Catalina Blvd - N.L		4.2	264.9 ✓
cb		3.6	265.5 ✓
1/2		3.2	265.9 ✓



+  
π  
269.14

Charles St.

d

3.1

266.0 ✓

1/6

3.3

265.8 ✓

cb

3.2

266.9 ✓

s.c

3.0

266.6 ✓

E.N. 261.01 West's R.R. Sp. 121 16" x 10" Post opposite main entrance  
to homestead

60  
261.01  
+ 4.58  
265.59  
- 3.20  
262.39  
+ 5.28  
267.67  
- 11.08  
256.59 = 267.69



Talbot St.

Dec 22 { Donnan Miller Walbreck

2.09 260.72 261.3 Miss Catalina 2 Canon Road

oo - Ev Catalina Blvd. Note: Took these sections from Catalina to Dover for a 40' St with 5' Cb, 2 1/2' G, 20' Each side of P.L.

oo N.L.	2.6	261.1	✓
cb	2.8	261.2	✓
1/4	2.5	261.2	✓
±	2.2	261.3	✓
1/4	2.4	261.3	✓
cb	2.6	261.1	✓
s.c	2.7	261.0	✓
o+s.c	4.0	259.7	✓
cb	4.2	259.5	✓
1/4	3.8	259.9	✓
±	3.7	260.0	✓
1/4	3.7	260.0	✓
cb,	3.6	260.1	✓
N.L.	3.7	260.0	✓
1+00 N.L.	5.1	258.6	✓

cb	5.1	258.6	✓
1/4	5.0	258.7	✓
±	5.0	258.7	✓
1/4	5.3	259.4	✓
cb,	5.7	258.0	✓
s.c	5.4	259.3	✓
1+00 S.L.	6.7	257.0	✓
cb	7.3	256.4	✓
1/4	6.9	256.8	✓
±	6.7	257.0	✓
1/4	6.9	256.9	✓
cb	6.8	256.9	✓
N.L.	6.8	256.9	✓
2+00 N.L.	7.3	256.4	✓
cb	8.6	255.1	✓
1/4	8.6	255.1	✓
±	8.6	255.1	✓
1/4	8.8	254.9	✓
cb	9.2	254.5	✓
S.L.	8.7	255.0	✓



	+	π	-	Talbot St.
2400 S.L.		263.72	10.6	253.1 ✓
cb			11.2	254.5 ✓
1/4			10.9	252.8 ✓
±			10.7	253.0 ✓
1/4			10.8	254.9 ✓
cb.			10.9	254.8 ✓
N.L.			10.1	253.6 ✓
3400 N.L.			12.6	251.1 ✓
cb			13.5	250.2 ✓
1/4			13.4	250.3 ✓
±			13.4	250.3 ✓
1/4			13.4	250.3 ✓
cb.			13.5	250.2 ✓
S.L.			12.9	250.8 ✓
±	2.06	250.88	12.90	250.82
3450 S.L.			3.0	247.9 ✓
cb			3.4	247.5 ✓
1/4			3.4	247.5 ✓
±			3.3	247.6 ✓
1/4			3.5	247.4 ✓

	+	π	-	
		250.88		
				62
				3.8
cb.				247.1 ✓
				3.0
				247.9 ✓
				5.9
				245.0 ✓
				6.8
				254.1 ✓
				6.7
				254.2 ✓
				6.5
				254.4 ✓
				6.6
				254.3 ✓
				7.0
				243.9 ✓
				5.9
				245.0 ✓
				9.1
				241.8 ✓
				10.1
				240.8 ✓
				9.9
				241.0 ✓
				9.9
				241.0 ✓
				10.0
				240.9 ✓
				10.3
				240.6 ✓
				9.4
				241.5 ✓
				12.8
				238.1 ✓
				13.6
				237.3 ✓
				13.0
				237.4 ✓
				13.3
				237.6 ✓



250.88 ✓

Talbot St.

238.74

63

cb		12.4	237.5
1/2		13.4	237.5 ✓
S.U		12.3	238.6 ✓
#	0.76	12.90	237.98
550 S.U		4.2	234.5 ✓
cb		5.2	233.5 ✓
1/2		4.8	233.9 ✓
±		4.6	234.1 ✓
1/2		4.9	233.8 ✓
cb.		5.0	233.7 ✓
N.U		4.0	234.7 ✓
6000 N.U		7.8	230.9 ✓
cb		9.0	229.7 ✓
1/2		8.6	230.1 ✓
±		9.3	230.4 ✓
1/4		8.3	230.4 ✓
cb		8.9	229.8 ✓
S.U		7.9	230.8 ✓
6050 S.U		11.3	227.4 ✓
cb.		12.1	226.6 ✓

1/2		11.8	226.9 ✓
±		11.9	226.8 ✓
1/2		12.3	226.4 ✓
cb		12.7	226.0 ✓
N.U		11.2	227.5 ✓
#	0.51	226.28	12.97
700 N.U		2.6	223.7 ✓
cb		4.3	222.0 ✓
±		5.9	220.4 ✓
±		9.0	222.3 ✓
1/2		3.8	222.5 ✓
±		3.4	222.9 ✓
1/4		3.0	223.3 ✓
cb		2.8	223.5 ✓
S.U		2.4	223.9 ✓
750 S.U		6.3	220.0 ✓
cb		6.3	220.0 ✓
1/2		7.0	219.3 ✓
±		7.4	218.9 ✓
1/2		8.4	218.1 ✓



	+	π	-	Talbot St.
		226.28		
cb			9.0	217.3 ✓
N.L.			9.4	216.9 ✓
N.L.			10.4	215.9 ✓
7+74 <sup>12</sup> = Sta 59+74 <sup>56</sup> EC				Boals 1065 Page 3A
cb			9.9	216.4 ✓
1/4			9.2	217.1 ✓
t			8.7	217.6 ✓
1/4			8.0	218.3 ✓
cb.			7.5	218.8 ✓
S.L. on hub			7.22	218.95 = Boals 218.73
8+00 S.L.			9.0	217.3 ✓
cb			9.0	217.3 ✓
1/4			8.8	217.5 ✓
t			9.2	215.1 ✓
1/4			9.6	216.7 ✓
cb.			10.4	216.1 ✓
N.L.			10.9	215.9 ✓
8+25 N.L.			10.6	215.7 ✓
cb			10.3	216.0 ✓
1/4			10.6	216.3 ✓
t			10.1	216.2 ✓

	+	π	-	
		226.28		
1/4			10.6	215.7 ✓
cb.			10.6	215.7 ✓
S.L.			11.0	215.3 ✓
8+50 S.L.			10.3	213.0 ✓
cb			12.1	213.4 ✓
1/4			12.1	213.2 ✓
t			12.9	213.4 ✓
1/4			12.8	213.5 ✓
cb.			12.6	213.7 ✓
N.L.			12.9	213.4 ✓
#	217.3	216.07	12.94	213.34
N.L. 8+75			4.3	211.8 ✓
cb			4.0	212.1 ✓
1/4			4.1	212.0 ✓
t			3.9	212.2 ✓
1/4			4.1	212.0 ✓
cb.			4.4	211.7 ✓
S.L.			4.6	211.5 ✓



Talbot St.

	+	π	-
		21607	
9200 S.L.			5.0 211.1 ✓
cb			4.7 211.4 ✓
1/4			4.3 211.8 ✓
±			4.4 211.7 ✓
1/4			4.7 211.4 ✓
cb			7.7 209.4 ✓
N.L.			10.3 205.8 ✓
N.L. + 10			11.8 204.3 ✓
9250			
N.L. - 10			12.5 203.6 ✓
N.L.			11.0 205.1 ✓
cb			8.1 208.0 ✓
1/4			4.6 211.5 ✓
±			4.3 211.8 ✓
1/4			4.2 211.9 ✓
cb.			4.3 211.8 ✓
S.L.			4.2 211.9 ✓
1170 S.L.			3.8 212.3 ✓
cb			3.8 212.3 ✓
1/4			3.9 212.2 ✓

	+	π	-
		21607	
±			4.0 212.1 ✓
1/4			4.2 211.9 ✓
cb.			4.4 211.7 ✓
N.L.			4.5 211.6 ✓
10+20 N.L.			3.8 212.3 ✓
cb			3.7 212.4 ✓
1/4			3.4 212.7 ✓
±			3.4 212.7 ✓
1/4			3.2 212.9 ✓
cb.			3.2 212.9 ✓
S.L.			3.0 213.1 ✓
10+50 S.L.			1.7 214.4 ✓
cb			1.5 214.6 ✓
1/4			1.4 214.7 ✓
±			1.4 214.7 ✓
1/4			2.1 214.0 ✓
cb.			2.1 214.0 ✓
N.L.			1.7 214.4 ✓
#	10.98	226.61	0.44 215.63

10+97<sup>00</sup> - W. L. Silver Gate Ave. or DOVER.



	+	$\pi$ 226.61	-	Talbot St.
N.L.			9.9	216.7 ✓
cb			10.2	216.4 ✓
$\frac{1}{4}$			10.2	216.4 ✓
$\pm$			10.6	216.0 ✓
$\frac{1}{4}$			11.0	215.6 ✓
cb.			10.0	216.6 ✓
S.W.			9.7	216.9 ✓

	+	H.1	-	
	2.77	225.24 ✓	226.47 B.N. See page 55 of this book	68
W. Cb. Silver Gate s.w. Dover			8.3	216.9 ✓
cb			9.0	216.2 ✓
$\frac{1}{4}$			9.0	216.2 ✓
$\pm$			8.6	216.6 ✓
$\frac{1}{4}$			8.2	217.0 ✓
cb			8.5	216.7 ✓
N.L.			8.0	217.2 ✓
W $\frac{1}{4}$ of Silver gate Ave N.L. Dover			7.7	217.5 ✓
cb			8.4	216.8 ✓
$\frac{1}{4}$			7.9	217.4 ✓
$\pm$			8.1	217.1 ✓
$\frac{1}{4}$			8.6	216.6 ✓
cb			8.6	216.6 ✓
S.W.			8.1	217.1 ✓
$\frac{1}{4}$ Silver Gate s.w. Dover.			7.3	217.9 ✓
cb			7.7	217.5 ✓
$\pm$			8.5	216.7 ✓
$\frac{1}{4}$			7.7	217.5 ✓
$\pm$			7.6	217.6 ✓
$\frac{1}{4}$			7.5	217.7 ✓
cb			7.9	217.3 ✓



	+	$\pi$ 225.24	-	Talbot St.
N.U.			7.5	217.7 ✓
E 1/4 Silver Gate Ave N.U. Dover.			7.1	218.1 ✓
cb			7.4	217.8 ✓
1/2			6.9	218.3 ✓
$\frac{1}{4}$			7.0	218.2 ✓
cb			7.4	217.8 ✓
S.U.			7.0	218.2 ✓
			6.8	218.4 ✓
E. Curb Silver Gate Ave S.U. Dover.			6.8	218.7 ✓
cb			6.9	218.3 ✓
1/2			7.5	217.7 ✓
$\frac{1}{4}$			6.7	218.5 ✓
cb			6.4	218.8 ✓
			7.0	218.2 ✓
N.U.			6.4	218.8 ✓
(Xsection for 50' wide)				
E.L. Silver Gate Ave = 00 N.U. Dover.			6.4	218.8 ✓
cb			6.7	218.5 ✓
1/2			6.1	219.1 ✓
$\frac{1}{4}$			6.4	219.0 ✓
cb			6.6	218.6 ✓

	+	$\pi$ 270.72	-	
cb.			6.5	218.7 ✓
S.U.			6.3	218.9 ✓
0+50 S.U.			3.9	221.3 ✓
cb			4.0	221.2 ✓
1/2			4.6	220.6 ✓
$\frac{1}{4}$			4.3	220.9 ✓
cb.			4.7	221.0 ✓
			4.3	220.9 ✓
V.U.			3.5	221.7 ✓
1000 N.U.			1.0	224.2 ✓
cb			1.0	224.2 ✓
1/2			1.5	223.7 ✓
$\frac{1}{4}$			2.2	223.0 ✓
cb.			1.9	223.3 ✓
			1.7	223.3 ✓
S.U.			1.8	223.4 ✓
(Xsection for 50' St)				
1+208 <sup>2</sup> = E.L. P.L. 190 S.U.			1.0	224.2 ✓
cb			0.9	224.3 ✓
1/2			1.3	223.9 ✓
$\frac{1}{4}$			1.3	223.9 ✓



225.24 ✓

Talbot St.

1/2		0.7	224.5 ✓
cb.		0.1	225.1 ✓
N.L.		+0.4	225.4 ✓
#	7.70	232.19	0.75 224.99 ✓
(xsection for 60' wide)			
1+2083 = E.L. PL. 190 N.L.			
		7.0	225.2 ✓
cb		6.7	225.5 ✓
1/4		7.0	225.2 ✓
±		8.1	224.1 ✓
1/2		8.1	224.1 ✓
cb.		7.8	224.4 ✓
S.L.		8.0	224.2 ✓
1+50 S.L.		6.5	225.7 ✓
cb		5.6	226.6 ✓
1/4		5.8	226.4 ✓
±		5.8	226.4 ✓
+1		6.6	226.6 ✓
+7		6.8	225.4 ✓
1/4		5.9	226.2 ✓
cb		6.4	225.8 ✓
N.L.		6.0	226.2 ✓

232.19 ✓

68

1+00 N.L.		3.2	229.0 ✓
cb		3.5	228.7 ✓
+5		4.2	228.0 ✓
1/4		3.0	229.2 ✓
±		4.0	228.2 ✓
1/2		4.6	227.6 ✓
cb.		4.9	227.3 ✓
S.L.		4.6	227.6 ✓
2+2083 = N.L. of Concord St 60' wide 10' cbs 10' 1/2			
S.L.		5.2	227.0 ✓
cb.		4.3	227.9 ✓
1/2		3.8	228.4 ✓
±		3.3	228.9 ✓
1/4		2.6	229.6 ✓
cb.		2.3	229.9 ✓
+5		5.3	226.9 ✓
N.L.		5.3	226.9 ✓
W. Curb of Concord St N.L.			
cb.		6.9	225.3 ✓
cb.		4.4	227.8 ✓
1/2		3.5	228.7 ✓



+  
π  
232.19 ✓

Talbot St.

±		3.8	228.4 ✓
1/4		4.4	227.8 ✓
cb		5.0	227.2 ✓
+5		6.4	226.0 ✓
S.U		9.6	224.6 ✓
N 1/2 of Concord St S.U		12.4	219.0 ✓
cb		9.3	224.9 ✓
1/4		9.5	224.7 ✓
±		10.5	221.7 ✓
1/4		9.6	224.6 ✓
cb.		9.5	224.7 ✓
+6		7.4	224.8 ✓
N.U		7.8	224.4 ✓
± Concord St. N.U		8.5	223.7 ✓
cb		10.7	221.5 ✓
1/4		12.1	220.1 ✓
#	1.20	220.47	12.92 219.27 ✓
±		21.3	218.2 ✓
1/4		3.2	217.3 ✓
cb		4.0	216.5 ✓

+  
π  
220.97 ✓

S.U		5.7	214.8 ✓
+10		8.9	211.6 ✓
E 1/2 of Concord St.			
S.L.-10		9.7	210.8 ✓
S.U		7.7	212.8 ✓
cb		6.4	214.3 ✓
1/4		4.7	215.8 ✓
±		3.0	217.5 ✓
1/4		1.2	219.3 ✓
cb.		0.0	220.5 ✓
N.U		+2.0	222.5 ✓
E. Curb Concord St N.U		+1.3	221.8 ✓
cb		4.8	221.3 ✓
1/4		2.1	218.4 ✓
±		3.5	217.0 ✓
1/4		5.2	215.3 ✓
cb		6.7	213.8 ✓
S.U		8.3	212.2 ✓
S.L.+10		10.0	210.5 ✓



220.47 ✓

Talbot St.

oo = E.L. Concord St

S.L. -10	10.0	210.0	✓
S.L.	9.1	211.4	✓
cb	7.7	212.8	✓
1/2	6.1	214.4	✓
±	4.0	216.5	✓
1/2	2.2	218.3	✓
cb	1.3	219.4	✓
N.V.	+ 0.4	220.9	✓
o+s N.V.	0.5	220.0	✓
cb	1.2	219.3	✓
1/2	2.1	218.4	✓
±	3.8	216.7	✓
1/2	5.4	215.1	✓
cb	7.0	213.5	✓
S.L.	9.1	211.4	✓
S.L. +10	11.4	209.3	✓
o+20 S.L. -10	12.7	207.8	✓
S.L.	10.7	209.8	✓
cb	9.0	211.5	✓

220.47 ✓

1/4	6.8	213.7	✓
±	5.3	215.2	✓
1/4	4.2	216.3	✓
cb.	4.5	216.0	✓
N.V.	4.7	215.8	✓
o+s N.V.	10.0	210.5	✓
cb	9.4	211.3	✓
1/2	9.5	211.0	✓
±	10.6	209.9	✓
1/2	12.3	209.2	✓
cb	12.1	206.4	✓
S.L.	15.8	204.7	✓
o+s S.L.	17.9	202.6	✓
cb	16.9	203.6	✓
1/4	10.2	205.0	✓
±	14.3	206.2	✓
1/4	13.9	206.6	✓
cb	12.9	207.6	✓
N.V.	13.1	207.4	✓
#	0.48	208.37	✓
	12.58	207.89	✓

10



+

π  
208.37 ✓

Talbot St

e+77 N.L.-10	7.1	201.3 ✓
N.C.	9.0	199.4 ✓
cb	10.4	198.0 ✓
1/2	10.8	197.6 ✓
±	10.4	198.2 ✓
1/4	9.1	199.3 ✓
cb	9.4	199.0 ✓
S.L.	10.5	197.9 ✓
S.L.+N	12.3	196.1 ✓
0+88 S.L.-N	14.9	193.5 ✓
S.L.	10.1	194.3 ✓
cb	13.5	194.9 ✓
1/4	14.0	194.4 ✓
±	14.3	194.1 ✓
1/4	13.1	195.3 ✓
cb	11.5	196.9 ✓
N.L.	9.5	198.9 ✓
1+00 N.L.	4.2	204.2 ✓
cb	8.2	200.0 ✓
+5	11.7	196.7 ✓

+

π  
208.37 ✓

71

1/4	10.1	194.3 ✓
±	10.8	192.6 ✓
1/4	16.8	191.6 ✓
cb	17.0	191.4 ✓
S.L.	17.3	191.1 ✓
S.L.-15	17.9	190.5 ✓
1+13 S.L.-15	20.7	187.7 ✓
S.L.	19.7	188.7 ✓
cb	18.6	189.8 ✓
1/2	18.0	190.4 ✓
±	17.0	191.4 ✓
1/4	13.7	194.7 ✓
cb	9.6	198.8 ✓
N.L.	2.2	206.2 ✓
1+25 N.L.	5.1	203.3 ✓
cb	10.2	198.2 ✓
#	1.89	197.78 ✓
12.48	198.89	
1/4	4.0	193.8 ✓
±	7.5	190.3 ✓
1/4	9.1	188.7 ✓



	+	π	-	Talbot St.
		197.78 ✓		
cb.			10.1	187.7 ✓
S.L.			11.0	186.8 ✓
S.L. + 20			10.6	184.2 ✓
1+20 S.L.-20			10.0	181.8 ✓
S.L.			10.1	183.7 ✓
cb.			10.2	184.6 ✓
1/4			12.7	185.1 ✓
±			11.1	186.7 ✓
1/2			8.4	189.4 ✓
cb.			5.8	192.0 ✓
N.L.			2.0	195.3 ✓
1+20 N.L.			9.5	188.3 ✓
cb.			11.6	186.2 ✓
1/4			13.4	184.4 ✓
±			14.9	182.9 ✓
1/4			16.1	181.7 ✓
#	0.06	185.10 ✓	12.74	185.09 ✓
cb.			4.0	181.1 ✓
S.L.			4.4	180.7 ✓
S.L. + 20			5.7	179.4 ✓

	+	π	-	
		185.10 ✓		
2+00 S.L. - 15			8.6	176.5 ✓
S.L.			7.3	177.8 ✓
cb.			7.1	178.0 ✓
1/4			6.0	178.6 ✓
±			5.2	179.9 ✓
1/4			3.8	181.3 ✓
cb.			2.3	182.8 ✓
N.L.			0.4	184.7 ✓
2+15 N.L.			1.9	183.2 ✓
cb.			3.2	181.8 ✓
1/4			4.8	180.3 ✓
±			6.6	178.5 ✓
1/4			7.9	177.2 ✓
cb.			8.9	176.2 ✓
S.L.			9.2	175.9 ✓
S.L. + 10			10.3	174.8 ✓
2+50 S.L.-10			19.2	170.9 ✓
S.L.			13.6	171.5 ✓
cb.			12.8	172.3 ✓
1/4			11.7	173.4 ✓



	+	$\pi$ 185.10 ✓	-	Talbot St.
±			10.6	174.5 ✓
1/4			9.3	175.8 ✓
cb.			8.4	176.9 ✓
N.L.			7.4	177.9 ✓
#	0.14	172.06 ✓	12.68	174.92 ✓
3+00 N.L.			11.5	171.1 ✓
cb.			2.0	170.1 ✓
1/4			4.0	168.6 ✓
±			3.9	168.7 ✓
1/4			5.7	166.9 ✓
cb.			6.4	166.2 ✓
S.L.			7.4	165.2 ✓
S.L.+10			7.9	164.7 ✓
3+00 S.L.-10'			18.0	159.1 ✓
S.L.			12.0	160.6 ✓
cb.			12.0	160.6 ✓
1/2			10.3	162.3 ✓
±			9.5	163.1 ✓
1/2			9.0	163.1 ✓
cb.			8.4	164.4 ✓

	+	$\pi$ 172.06 ✓	-	
N.L.			7.3	165.3 ✓
#	0.23	160.04 ✓	12.85	159.71 ✓
4+00 N.L.			0.0	160.0 ✓
cb.			1.1	158.9 ✓
1/2			3.3	156.7 ✓
±			3.1	156.9 ✓
1/4			2.0	156.0 ✓
cb.			4.4	155.6 ✓
S.L.			4.5	155.5 ✓
S.L.+10			6.0	154.0 ✓
4+00 cb. = N.L. of Bow Ave 92.41' between diagonal corner hubs.				
15.41' Curbs & Quarters:				
4+39.96 S.L.-10'			9.0	151.0 ✓
S.L.			8.7	151.3 ✓
cb.			7.3	150.7 ✓
1/4			7.1	150.9 ✓
±			7.7	152.3 ✓
1/4			7.7	152.3 ✓
cb.			5.9	154.1 ✓
N.L.			4.2	155.6 ✓



7  
160.04 ✓

Talbot St.

4+50 <sup>27</sup> = W. Carb Bow Ave N.L.	6.7	153.8 ✓
cb.	7.5	152.5 ✓
1/4	9.0	151.0 ✓
1/2	10.0	150.0 ✓
3/4	10.3	149.7 ✓
cb	9.7	150.3 ✓
S.L.	11.0	149.0 ✓
S.L. - 10'	12.5	147.5 ✓
4+70 <sup>28</sup> = N. 1/4 of Bow Ave:		
S.L. - 10'	14.2	145.7 ✓
S.L.	12.4	147.6 ✓
cb	10.9	149.1 ✓
1/4	10.9	149.1 ✓
1/2	11.3	148.7 ✓
3/4	10.8	149.2 ✓
#	0.24	154.79 ✓
cb	5.49	154.55 On sph 727 poles
N.L.	4.3	150.5 ✓
	2.3	152.5 ✓
4+95 <sup>29</sup> = 1/4 of Bow Ave		
N.L.	5.0	149.8 ✓

7  
154.79 ✓

74

cb	6.3	148.5 ✓
1/4	6.9	147.9 ✓
1/2	7.0	147.8 ✓
3/4	7.3	147.5 ✓
cb	8.0	146.8 ✓
S.L.	8.4	146.4 ✓
5+00 = N.L. Bangor St 60 wide 10 Cb's 10 G's: On the North.		
S.L.	12.2	144.6 ✓
cb	9.4	145.4 ✓
1/2	8.8	146.0 ✓
1/4	8.3	146.5 ✓
3/4	8.4	146.4 ✓
cb	8.1	146.7 ✓
+5	7.1	147.7 ✓
N.L.	6.7	148.1 ✓
5+01 <sup>30</sup> = S 1/4 of Bow Ave		
N.L.	6.8	148.0 ✓
+5	7.5	147.6 ✓
cb	8.2	146.6 ✓
1/2	8.5	146.3 ✓



+  
154.79 ✓

Tabbot St.

±	8.4	146.4 ✓
1/4	8.9	145.9 ✓
cb	9.5	145.3 ✓
S.L.	10.3	144.5 ✓

5+10 = W Cb of Bangor St.

S.L.	11.2	143.6 ✓
cb	10.7	144.1 ✓
1/4	10.1	144.7 ✓
±	9.3	145.5 ✓
1/4	9.2	145.6 ✓
cb.	9.1	145.7 ✓
M.L.	7.8	147.0 ✓

5+16 1/2 = S Curb of Bond Ave

M.L.	8.5	146.8 ✓
cb	9.7	145.1 ✓
1/4	10.1	144.7 ✓
±	9.9	144.9 ✓
1/4	10.9	143.9 ✓
cb	10.9	143.9 ✓
S.L.	11.2	142.6 ✓

+  
154.79 ✓

5+20 = W 1/4 of Bangor St S.L.

11.0	143.8 ✓	
cb	11.0	143.8 ✓
1/4	11.0	143.8 ✓
±	10.1	142.7 ✓
1/4	10.3	144.5 ✓
cb.	10.0	144.8 ✓
M.L.	8.9	145.9 ✓

5+30 = ± of Bangor St. N.L.

10.2	144.6 ✓	
cb.	11.2	143.6 ✓
1/4	11.4	143.4 ✓
±	11.2	143.6 ✓
1/4	12.4	142.4 ✓
cb.	11.6	143.2 ✓

5+32 1/2 = E.L. of Bond Ave.

S.L.	10.3	144.5 ✓
cb	11.5	143.8 ✓
1/4	12.7	142.1 ✓
±	11.4	143.4 ✓
1/4	11.7	143.1 ✓

11



	+	π	152.79 ✓	Talbot St.
cb.			11.6	143.2 ✓
N.L.			10.5	144.3 ✓
5+40 = E. 1/4 of Bangor St.				
N.L.			11.5	143.3 ✓
cb			12.6	142.2 ✓
1/4			12.7	142.1 ✓
±			12.7	142.1 ✓
1/2			13.8	141.0 ✓
cb.			14.5	140.3 ✓
+7			12.4	142.4 ✓
S.L.			16.7	138.1 ✓
S.L.+5			21.2	133.6 ✓
S.L.+10			14.0	140.8 ✓
5+50 = E. Cb of Bangor St				
S.L. -5			13.4	141.4 ✓
S.L.			21.4	133.4 ✓
+5			21.4	133.4 ✓
+7			14.7	140.1 ✓
cb			14.7	140.1 ✓
1/2			14.7	140.1 ✓

	+	π	152.79 ✓	
				14.5
				140.3 ✓
				13.8
				141.0 ✓
				13.6
				141.2 ✓
				12.9
				141.9 ✓
				0.09
				142.05 ✓
				12.93
				141.96 ✓
				3.64
				139.41 B.M. RR. Spk. 100. Pole
5+60 = E.L. of Bangor St on North.				
				N.L.
				1.6
				140.2 ✓
				cb
				2.0
				140.0 ✓
				1/4
				2.4
				139.6 ✓
				±
				3.2
				139.8 ✓
				1/4
				3.5
				139.5 ✓
				+5
				8.3
				133.7 ✓
				cb
				9.4
				132.6 ✓
				+5
				3.7
				138.3 ✓
				S.L.
				1.8
				140.2 ✓
5+68 <sup>84</sup> = W.L. of Bangor St on the South. 57.02 wide 10 Cbs 225 Qts.				
(Note this St width fixed by both B.M. Corners)				
				S.L.
				1.9
				140.1 ✓
				+7
				3.8
				138.7 ✓



	+	$\pi$ 142.05 ✓	-	Talbot St
Cb			10.0	132.0 ✓
+7			9.3	132.7 ✓
1/8			4.0	138.0 ✓
±			3.9	138.1 ✓
1/4			3.3	138.7 ✓
Cb			3.0	139.0 ✓
N.L.			3.0	139.0 ✓
5-78 <sup>00</sup> = West curb of Bangor St on the South.				
N.L.			9.0	138.0 ✓
			4.0	138.0 ✓
			4.3	137.7 ✓
±			4.9	137.1 ✓
+7			4.5	137.5 ✓
1/8			10.5	131.5 ✓
+8			10.3	131.7 ✓
+6			4.5	137.5 ✓
Cb			3.9	138.1 ✓
+7			3.1	138.9 ✓
S.L.			1.1	140.9 ✓

5-88<sup>00</sup> = West 1/8 of Bangor St on the South.

	+	$\pi$ 142.05 ✓	-	
			10.4	142.4 ✓
			3.8	138.2 ✓
			4.6	137.4 ✓
			10.8	131.2 ✓
			10.8	131.2 ✓
			6.6	136.6 ✓
			5.1	135.9 ✓
			5.2	136.8 ✓
			5.2	136.8 ✓
(Note) 5-95 <sup>96</sup> out of Talbot St = Pueblo Cor Monument;				
5-97 <sup>05</sup> = ± of Bangor St on the South;				
			5.9	136.1 ✓
			6.0	136.0 ✓
			5.9	136.1 ✓
			5.6	136.4 ✓
			11.3	130.7 ✓
			11.3	130.7 ✓
			8.1	133.9 ✓
			5.2	136.8 ✓



+

X  
142.05 ✓

Talbot St.

cb	2.4	139.8 ✓
S.L.	+ 3.1	145.1 ✓
6+06 <sup>60</sup> = E 1/4 of Bangor St on the South		
S.L.	+ 4.6	146.6 ✓
cb	0.6	141.4 ✓
1/2	5.7	136.3 ✓
+2	5.9	136.2 ✓
+4	11.6	130.4 ✓
+9	11.3	130.7 ✓
E	6.5	135.5 ✓
1/2	6.5	135.5 ✓
cb	6.7	135.3 ✓
N.L.	6.5	135.5 ✓
6+158 <sup>60</sup> = East Curb of Bangor St on the South		
N.L.	6.8	135.2 ✓
cb	7.5	134.5 ✓
1/2	7.5	134.5 ✓
+8	7.0	135.0 ✓
E	12.0	130.0 ✓
+2	12.0	130.0 ✓

+

π  
142.05 ✓

+6	5.3	136.7 ✓
1/2	3.8	138.2 ✓
cb.	+ 9.7	142.7 ✓
S.L.	+ 4.9	146.9 ✓
6+258 <sup>60</sup> = East Line of Bangor St on the South		
S.L.	+ 5.0	147.0 ✓
cb	+ 1.1	143.1 ✓
1/2	3.3	138.7 ✓
+5	5.6	136.4 ✓
+9	12.2	129.8 ✓
E	12.2	129.8 ✓
+4	10.9	131.1 ✓
+5	7.7	134.8 ✓
1/2	7.6	134.4 ✓
cb.	7.9	134.1 ✓
N.L.	7.4	134.6 ✓
0+25 N.L.	9.2	132.8 ✓
cb	8.8	132.7 ✓
+2	8.8	132.7 ✓
+4	10.8	129.2 ✓



	+	π 102.05 ✓	-	Talbot St.
1/2			13.0	129.0 ✓
+8			6.5	135.5 ✓
E			6.5	135.5 ✓
+6			5.4	136.6 ✓
1/2			3.5	138.5 ✓
cb			+1.7	143.7 ✓
S.L.			+5.2	147.2 ✓
0+50 S.L.			+6.1	148.1 ✓
cb			+1.5	143.5 ✓
1/2			3.5	138.5 ✓
E			6.2	135.6 ✓
+4			7.2	134.8 ✓
1/4			13.5	128.5 ✓
+0			13.6	128.4 ✓
+6			10.2	131.8 ✓
cb			10.8	131.2 ✓
N.L.			10.9	131.3 ✓
N.L. #10			10.0	132.0 ✓

	+	π 102.05 ✓	-	
+72 N.L. -10			11.4	130.6 ✓
N.L.			12.2	129.8 ✓
#	12.54	102.38 ✓	11.71	120.34 ✓
+7			12.6	130.3 ✓
cb			17.0	125.9 ✓
+4			16.1	126.8 ✓
1/2			10.0	132.9 ✓
E			6.6	136.1 ✓
1/2			3.7	139.2 ✓
cb			4.3	144.2 ✓
S.L.			4.3	148.2 ✓
{ 0+75 N.L. -11			17.4	130.6 ✓
{ 0+75 N.L. -8			15.2	127.8 ✓
{ N.L.			19.5	123.4 ✓
{ cb			12.1	125.8 ✓
{ 1+00 S.L.			+4.1	147.0 ✓
cb			0.2	142.7 ✓
1/4			4.6	138.3 ✓
E			8.0	134.9 ✓
1/2			13.0	129.9 ✓



	+	π	-	Talbot St.
		142.88 ✓		
+5			14.1	128.8 ✓
cb.			14.1	123.8 ✓
N.L.			21.6	121.3 ✓
N.L + 2'			14.3	128.6 ✓
N.L + 10'			13.3	129.6 ✓
(+06 N.L - 10')			13.6	129.3 ✓
N.L.			14.6	128.3 ✓
+2			19.1	123.8 ✓
+7			18.5	124.4 ✓
cb.			14.3	128.6 ✓
+25 N.L - 10'			14.5	128.4 ✓
N.L - 2'			15.4	127.5 ✓
N.L.			23.9	119.0 ✓
+6			23.9	119.0 ✓
+7			15.2	127.7 ✓
cb.			15.3	127.6 ✓
1/4			15.1	127.8 ✓
⊕			12.3	130.6 ✓
1/4			7.6	135.3 ✓
cb.			2.5	140.4 ✓

	+	π	-	
		142.88 ✓		
S.L.			1.5	141.4 ✓
1450 S.L.			3.3	139.6 ✓
cb.			6.6	136.3 ✓
1/4			10.9	132.0 ✓
#	6.22	136.51 ✓	12.09	130.29 ✓
⊕			9.5	127.3 ✓
1/4			10.0	126.5 ✓
cb.			10.0	126.5 ✓
+5			10.2	126.3 ✓
+8			13.2	118.3 ✓
N.L.			13.2	118.3 ✓
N.L + 3			13.2	118.3 ✓
N.L + 6.			9.8	126.7 ✓
N.L + 10			9.3	127.3 ✓
1475 N.L - 10			10.9	125.6 ✓
N.L - 2			11.6	124.9 ✓
N.L.			14.6	116.9 ✓
+8			14.6	116.9 ✓
cb.			11.4	125.1 ✓
1/4			11.4	125.1 ✓

87



136.51 ✓

Talbot St.

±	10.0	126.5	✓
1/2	7.1	129.4	✓
cb	2.9	133.6	✓
S.L.	+0.4	136.9	✓
2700 S.L.	0.8	135.7	✓
cb	2.9	132.7	✓
1/2	8.2	128.3	✓
±	12.0	124.5	✓
1/2	12.6	123.9	✓
cb	12.9	123.6	✓
+3	13.2	123.3	✓
+4	20.2	116.1	✓
+8	20.4	116.1	✓
N.L.	17.0	119.5	✓
N.L. +2	12.0	123.5	✓
M.L. +10	12.3	124.2	✓

Continued Book 1094 Page 16:



31301  
+ 074  
31375  
- 17.5  
30623 Hub SW Palms Felton.

30674  
12.47  
29397  
29438  
11.31  
28307  
394

287.01  
0.21  
28680  
12.85  
29936  
6.70  
29865  
30933

309.33

9934  
+ 1172  
311.11  
- 157  
309.24  
375.20  
3.66  
311.56

306.33

30512  
890  
31402

994  
299.44

0.71  
29327

3.35  
75.63

696  
29239

994  
29939

980  
99.5

119  
97.4

777

242  
311.60

11. 12.4  
11.4  
238

579745  
149  
579596

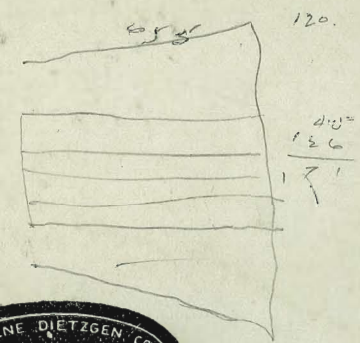
579596  
149  
579745

15.4  
8.5  
23.9

14.4  
11.4  
116.268  
70  
19.1

227.61  
6.12  
221.49

226.61  
6.12  
220.49



6122.91  
104

6122.45  
1541  
44.6

**RODNEY STOKES COMPANY**  
INCORPORATED  
858 THIRD STREET, FRYE & SMITH BUILDING  
SAN DIEGO, CALIFORNIA