

841  
F.B.  
841

841

MICROFILMED

DEC 15 1964



1-section Myrtle St from Ray (using Ray as 32 1/2 st)  
To east boundary line of City  
Myrtle 60 wide 10' walks 10' 1/25

10/  
11/  
12

Dunkle  
Evans  
Kerr

B.M. R.P. 585 N.E. Ray to Myrtle

331.90

B.M. 2.32 331.22

0+0 = E.L. Ray

N 2.8 331.4

cut 2.9 331.3

1/4 3.2 331.0

M 3.3 330.9

1/4 3.2 331.0

cut 3.4 330.8

S 3.7 330.5

0+25

S 3.7 330.5

cut 3.4 330.8

1/4 3.2 331.0

M 3.3 330.9

1/4 3.1 331.1

cut 3.1 331.1

N 3.0 331.2

PLOTTED



334.22

0+50

N	3.5	330.7
erb	3.4	330.8
1/4	3.7	330.5
M	3.7	330.5
1/4	3.6	330.6
erb	3.5	330.7
S	3.4	330.8

PLOTTED

0+75

S	4.2	330.0
erb	4.0	330.2
1/4	3.6	330.6
M	4.0	330.2
1/4	4.2	330.0
erb	4.2	330.0
N	4.3	329.9

2

1+0

N	5.5	328.7
erb	5.3	328.9
1/4	5.4	328.8
M	5.2	329.0
1/4	4.7	329.5
erb	5.1	329.1
S	5.1	329.1

PLOTTED

1+25

S	6.7	327.5
erb	6.7	327.5
1/4	6.8	327.4
M	6.6	327.6
1/4	6.7	327.5
erb	6.7	327.5
N	6.8	327.4



334.22

1450

N	7.8	326.4
erb	7.6	326.6
1/4	7.7	326.3
M	8.1	326.1
1/4	7.7	326.5
erb	7.3	326.9
S	7.1	327.1

PLOTTED

1475

S	7.9	326.3
erb	8.0	326.2
1/4	8.7	325.5
M	8.8	325.4
1/4	8.8	325.4
erb	9.0	325.2
N	8.1	326.1

3

240

N	9.2	325.0
erb	9.2	325.0
1/4	9.1	325.1
M	9.1	325.1
1/4	9.1	325.1
erb	9.3	324.9
O	9.5	324.7

PLOTTED

2425

S	9.8	324.4
erb	9.6	324.6
1/4	9.2	325.0
M	9.1	325.1
1/4	9.1	325.1
erb	9.0	325.2
N	7.8	326.4



334.22

2+50

N	7.5	326.7
erb	8.9	325.3
1/4	9.0	325.2
M	9.0	325.2
1/4	9.3	324.9
erb	9.7	324.5
S	10.1	324.1

PLOTTED

2762<sup>15</sup> - W.L. Grimm st graded

S	10.1	324.1
erb	9.6	324.6
1/4	8.9	325.3
M	8.8	325.9
1/4	8.9	325.3
erb	8.0	326.2
N	7.4	326.8

E.L. Grimm

4

N	7.0	327.2
erb	7.2	327.0
1/4	7.6	326.6
M	7.5	326.7
1/4	7.7	326.5
erb	7.6	326.6
S	7.4	326.8

PLOTTED

0+25

S	7.0	327.2
erb	6.8	327.4
1/4	6.6	327.6
M	6.6	327.6
1/4	6.7	327.5
erb	6.1	328.1
N	5.6	328.6



334.22

0+50

N			4.8	329.4
crk			5.6	328.6
"A			5.8	328.4
M			5.7	328.5
"A			5.7	328.5
crk			5.7	328.5
S			5.8	328.4
T.P	6.08	334.67	5.63	328.59

PLOTTED

5+75

S			5.2	329.5
crk			5.0	329.7
"A			4.7	330.0
M			5.0	329.7
"A			4.8	329.9
crk			4.4	330.3
N			3.5	331.2

334.67

1+0

5

N			3.4	331.3
crk			3.4	331.3
"A			4.1	330.6
M			4.1	330.6
"A			4.0	330.7
crk			4.1	330.6
S			4.0	330.7

PLOTTED

1+25

S			3.6	331.1
crk			3.5	331.2
"A			3.6	331.1
M			3.6	331.1
"A			3.7	331.0
crk			3.3	331.4
N			3.2	331.5



334.67

1750

N	2.9	331.8
erb	3.3	331.4
"a	3.3	331.4
M	3.6	331.1
"a	3.5	331.2
erb	3.5	331.2
S	3.4	331.3

PLOTTED

1775

S	3.3	331.4
erb	3.3	331.4
"a	3.4	331.3
M	3.4	331.3
"a	3.4	331.3
erb	3.1	331.6
N	3.0	331.7

6

210

N	3.0	331.7
erb	3.1	331.6
"a	3.4	331.3
M	3.4	331.3
"a	3.3	331.4
erb	3.2	331.5
S	3.4	331.3

PLOTTED

2125

S	3.2	331.5
erb	3.0	331.7
"a	3.2	331.5
M	3.4	331.3
"a	3.5	331.2
erb	3.1	331.6
N	3.2	331.5



33467

4+50

N	3.5	331.2
crk	3.6	331.1
"4	3.6	331.1
M	3.5	331.2
"4	3.3	331.4
crk	3.2	331.5
S	3.2	331.5

PLOTTED

2+65=W.L. 31<sup>st</sup> 5' 65' wide sec x-section for 31<sup>st</sup>

S	3.4	331.3
crk	3.6	331.1
"4	3.6	331.1
M	3.9	330.9
"4	3.8	330.9
crk	3.5	331.2
N	3.3	331.4

E.L. 31<sup>st</sup>

N	7.4	327.3
crk	7.1	327.6
"4	6.7	328.0
M	6.8	327.9
"4	6.7	328.0
crk	6.0	328.7
S	5.9	328.8

PLOTTED

0+25

S	6.9	327.8
crk	7.3	327.4
"4	7.9	326.8
M	7.9	326.8
"4	8.2	326.5
crk	8.5	326.2
N	8.4	326.3



334.67

0+50

N	10.4	324.3
crk	9.1	325.6
"A	8.5	326.2
M	9.2	325.5
"A	9.6	325.1
crk	8.9	325.8
S	8.3	326.4

PLOTTED

0+75

S	9.5	325.2
crk	10.9	323.8
"A	10.5	329.2
M	9.9	324.8
"A	9.6	325.1
crk	9.9	324.8
N	9.5	325.2

8

1+0

N	9.2	325.5
crk	9.8	324.9
"A	10.0	324.7
M	10.3	324.4
"A	11.0	323.7
crk	11.5	323.2
S	11.6	323.1

PLOTTED

1+25

S	11.5	323.2
crk	10.7	324.0
"A	10.3	324.4
M	9.8	324.9
"A	9.7	325.0
crk	9.0	325.7
N	8.8	325.9



334.67

1+50

N	8.6	326.1
erb	8.8	325.9
1/4	9.2	325.4
N	9.2	325.5
1/4	9.6	325.1
erb	9.7	325.0
S	10.2	324.5

PLOTTED

1+75

S	9.6	325.1
erb	9.3	325.4
1/4	9.3	325.4
N	9.0	325.7
1/4	9.1	325.6
erb	8.8	325.9
N	8.5	326.2

9

2+0

N	8.0	326.7
erb	8.4	326.3
1/4	8.9	325.8
N	8.9	325.8
1/4	8.9	325.8
erb	9.1	325.6
S	9.5	325.2

PLOTTED

2+25

S	9.1	325.6
erb	8.6	326.1
1/4	8.8	325.9
N	8.8	325.9
1/4	8.5	326.2
erb	8.0	326.7
N	7.7	327.0



334.67

2+50

N	7.5	327.2
erb	7.5	327.2
1/4	8.0	326.7
M	8.2	326.5
1/4	8.4	326.3
erb	8.2	326.7
S	8.5	326.2

PLOTTED

(Graded)

2+65 = W.L. Hertman 45' sec 1 section for Hertman

S	8.1	326.6
erb	7.8	326.9
1/4	8.1	326.6
M	8.0	326.7
1/4	7.9	326.8
erb	7.3	327.4
N	7.0	327.7

10

E.L. Hertman

N	6.8	327.9
erb	6.7	328.0
1/4	6.6	328.1
M	7.2	327.5
1/4	7.2	327.5
erb	7.2	327.5
S	7.1	327.6

PLOTTED

2+25

S	6.8	327.9
erb	6.9	328.3
1/4	6.5	328.2
M	6.8	327.9
1/4	6.5	328.2
erb	6.4	328.3
N	6.2	328.5



339.67

0450

N	6.0	328.7
crk	6.1	328.6
1/4	6.2	328.5
N	6.5	328.2
1/4	6.7	328.0
crk	6.2	328.5
S	6.3	328.4

PLOTTED

0475

S	6.2	328.5
crk	6.2	328.5
1/4	6.2	328.5
N	6.2	328.5
1/4	6.0	328.7
crk	5.7	329.0
N	5.7	329.0

11

140

N	5.2	329.5
crk	5.3	329.4
1/4	5.7	329.0
N	5.9	328.8
1/4	6.0	328.7
crk	6.0	328.7
S	6.0	328.7

PLOTTED

1425

S	5.6	329.1
crk	5.4	329.3
1/4	5.6	329.1
N	5.3	329.4
1/4	5.3	329.4
crk	4.8	329.9
N	4.7	330.0
T.P.	4.7	334.17
	5.28	329.39



334.17

1150

N	4.4	329.8
erb	4.2	330.0
"A	4.6	329.6
M	4.7	329.5
"A	4.9	329.3
erb	4.8	329.9
S	4.9	329.3

PLOTTED

1175

S	4.6	329.6
erb	4.4	329.8
"A	4.4	329.8
M	4.5	329.7
"A	4.4	329.8
erb	4.2	330.0
N	4.2	330.0

12

210

N	3.8	330.4
erb	4.0	330.2
"A	4.4	329.8
M	4.2	330.0
"A	4.2	330.0
erb	4.1	330.1
S	4.4	329.8

PLOTTED

2125

S	4.3	329.9
erb	4.2	330.0
"A	4.2	330.0
M	4.3	329.9
"A	4.5	329.7
erb	3.8	330.4
N	3.8	330.4



334.17

2-150

N	4.0	330.2
crk	3.9	330.3
"A	4.3	329.9
M	4.3	329.9
"A	4.3	329.9
crk	4.1	330.1
S	4.2	330.0

PLOTTED

2+65 - N.L. Nash of 65' 10' walk 11.25' 19's

S	4.4	329.8
crk	4.3	329.9
"A	4.5	329.7
M	4.3	329.9
"A	4.3	329.9
crk	3.6	330.6
N	3.9	330.3

13

N. curb

N	3.6	330.6
crk	3.8	330.4
"A	4.1	330.1
M	4.2	330.0
"A	4.3	329.9
crk	4.4	329.8
S	4.6	329.6

PLOTTED

N "A

S	4.5	329.7
crk	4.4	329.8
"A	4.4	329.8
M	4.2	330.0
"A	4.0	330.2
crk	3.9	330.3
N	3.9	330.8



334.17

Center

N	3.7	330.5
crk	3.8	330.9
"A	4.1	330.1
M	4.2	330.0
"A	4.4	329.8
crk	4.4	329.8
S	4.5	329.7

PLOTTED

F "A

S	4.5	329.7
crk	4.1	330.1
"A	4.3	329.9
M	4.2	330.0
"A	4.0	330.2
crk	3.6	330.6
N	3.2	331.0

14

E. Curve

N	3.0	331.2
crk	3.3	330.9
"A	3.8	330.4
M	3.9	330.3
"A	4.0	329.9
crk	4.4	329.8
S	4.4	329.8

PLOTTED

E. L. N 207

S	4.5	329.2
crk	4.0	330.2
"A	4.1	330.1
M	3.8	330.4
"A	3.6	330.6
crk	3.2	331.0
N	2.7	331.5



33417

0+25

N	2.7	331.0
crk	3.2	331.0
1/4	3.6	330.6
M	3.7	330.5
1/4	3.9	330.3
crk	4.0	330.2
S	4.3	329.9

PLOTTED

0+50

S	4.1	330.1
crk	3.6	330.6
1/4	3.7	330.5
M	3.6	330.6
1/4	3.9	330.8
crk	3.7	331.1
N	2.7	331.5

15

0+75

N	2.8	331.4
crk	3.4	330.8
1/4	3.5	330.7
M	3.6	330.6
1/4	3.5	330.7
crk	3.6	330.6
S	3.9	330.3

PLOTTED

1+0

S	4.0	330.2
crk	3.9	330.3
1/4	4.0	330.2
M	4.0	330.2
1/4	3.6	330.6
crk	3.6	330.6
N	3.4	330.8



334.17

1725

X	3.1	331.1
erb	3.8	330.4
"A	4.0	330.2
M	4.3	329.9
"A	4.2	330.0
erb	4.3	329.9
S	4.4	329.9

PLOTTED

1750

S	4.4	329.8
erb	4.1	330.1
"A	4.3	329.9
M	4.2	330.0
"A	4.0	330.2
erb	3.4	330.8
N	3.2	331.0

16

1775

N	3.2	331.0
erb	3.5	330.7
"A	3.9	330.3
M	4.1	330.1
"A	4.1	330.1
erb	4.1	330.1
S	4.3	329.9

PLOTTED

1750

S	4.2	330.0
erb	4.2	330.0
"A	4.1	330.1
M	4.1	330.1
"A	3.9	330.3
erb	3.1	331.1
N	2.9	331.3



334.17

2125

N	2.7	331.5
crk	3.5	330.7
1/4	3.7	330.5
M	3.9	330.3
1/4	3.9	330.3
crk	4.1	330.1
S	4.0	329.7

PLOTTED

2150

S	4.1	330.1
crk	4.1	330.1
1/4	3.8	330.9
M	3.8	330.4
1/4	3.5	330.7
crk	3.2	331.0
N	2.7	331.5

17

2165 W. L. Washington 65 wide 10' walk 1/2 1/2 1/2 1/2

N	2.8	331.4
crk	3.3	330.9
1/4	3.4	330.8
M	4.0	330.2
1/4	3.8	330.4
crk	3.9	330.3
S	3.9	330.3

PLOTTED

W. crk

S	4.0	330.2
crk	4.0	330.2
1/4	3.8	330.4
M	3.9	330.3
1/4	3.3	330.9
crk	3.3	330.9
N	2.8	331.4



334.17

N 1/4

N	2.6	331.6
Crk	3.1	331.1
1/4	3.3	330.9
N	3.7	330.5
1/4	4.0	330.2
Crk	3.9	330.3
S	4.2	330.0

PLOTTED

center

S	4.1	330.1
Crk	4.1	330.1
1/4	4.1	330.1
N	3.7	330.5
1/4	3.4	330.8
Crk	3.2	331.0
N	2.8	331.4

18

E 1/4

N	3.0	331.2
Crk	3.1	331.1
1/4	3.3	330.9
N	3.9	330.
1/4	4.1	330.1
Crk	4.3	329.9
S	4.5	329.7

PLOTTED

E CRK

S	4.5	329.7
Crk	4.1	330.1
1/4	3.7	330.5
N	3.6	330.6
1/4	3.6	330.6
Crk	3.2	331.0
N	3.2	331.0



334.17

E.L. Washington

N	3.2	331.0
crk	3.3	330.9
"	3.7	330.5
N	3.9	330.3
"	4.0	330.2
crk	4.3	329.9
S	4.3	329.9

PLOTTED

0+25 E

S	4.7	329.5
crk	4.2	330.0
"	4.1	330.1
N	4.0	330.2
"	3.6	330.6
crk	3.3	330.9
N	3.4	330.8

19

0+50

N	3.5	330.7
crk	3.7	330.5
"	3.9	330.3
N	4.4	329.8
"	4.3	329.9
crk	4.7	329.5
S	4.7	329.5

PLOTTED

0+75

S	5.2	329.0
crk	4.8	329.4
"	4.6	329.6
N	4.6	329.6
"	4.4	329.8
crk	3.7	330.5
N	3.8	330.4



334.17

170

N	4.2	330.0
erb	3.8	330.4
1/4	4.6	329.6
N	4.9	329.3
1/4	5.0	329.2
erb	5.1	329.1
S	5.3	328.9

PLOTTED

1725

S	5.7	328.5
erb	4.8	329.4
1/4	5.0	329.2
N	4.5	329.7
1/4	4.4	329.8
erb	4.2	330.0
N	4.4	329.8

20

1750

N	4.8	329.4
erb	4.9	329.3
1/4	5.2	329.0
N	5.3	328.9
1/4	5.5	328.7
erb	5.5	328.7
S	5.6	328.6

PLOTTED

1775

S	6.2	328.0
erb	6.0	328.2
1/4	5.9	328.3
N	5.8	328.4
1/4	5.6	328.6
erb	5.7	329.1
N	5.5	328.9



339.17

270

N	6.1	328.1
Cbk	5.9	328.3
1/4	6.3	327.9
1/4	6.3	327.9
1/4	6.5	327.7
Cbk	6.5	327.7
S	6.8	327.4

PLOTTED

2725

S	7.3	326.9
Cbk	7.4	327.0
1/4	6.9	327.3
M	6.8	327.4
1/4	7.0	327.2
Cbk	6.9	327.8
N	6.9	327.3
T.P.	1.0	328.57
	6.70	327.47

328.57

250

N	2.3	326.3
Cbk	1.9	326.7
1/4	2.4	326.2
M	2.4	326.2
1/4	2.4	326.2
Cbk	2.4	326.2
S	2.6	326.0

PLOTTED

2965 = W.L. Webster 65' 10" Walks 11.25' 1/4'S

S	3.1	325.5
Cbk	3.1	325.5
1/4	3.0	325.6
M	3.0	325.6
1/4	3.0	325.6
Cbk	2.6	326.0
N	3.0	325.6

21



328.57

Y.C. 16

N	3.5	325.1
W	3.2	325.4
1/4	3.5	325.1
N	3.4	325.2
1/4	3.5	325.1
W	3.5	325.1
S	3.6	325.0

PLOTTED

Y.C. 14

S	4.1	324.5
W	4.1	324.5
1/4	4.0	324.6
N	4.0	324.6
1/4	3.9	324.7
W	3.5	325.1
N	4.0	324.6

22

Center

N	4.2	324.4
W	4.5	324.1
1/4	4.3	324.3
N	4.4	324.2
1/4	4.4	324.2
W	4.5	324.1
S	4.5	324.1

PLOTTED

E 1/4

S	4.9	323.7
W	4.8	323.8
1/4	4.6	324.0
N	5.0	323.6
1/4	4.8	323.8
W	5.1	323.5
N	5.3	323.3



328.57

E curb

N	6.0	322.6
erh	5.7	322.9
1/4	5.5	323.1
M	5.6	323.0
1/4	5.3	323.3
erh	5.4	323.2
S	5.1	323.5

PLOTTED

E. L. Webster

S	5.9	322.7
erh	6.0	322.6
1/4	5.7	322.9
M	6.2	322.9
1/4	6.3	322.3
erh	6.5	322.1
N	6.6	322.0

23

0+25 E

N	8.8	319.8
erh	8.3	320.3
1/4	7.8	320.8
M	7.8	320.8
1/4	7.5	321.1
erh	7.3	321.3
S	7.2	321.4

PLOTTED

0+50

S	8.8	319.8
erh	9.1	319.5
1/4	9.3	319.3
M	10.0	318.6
1/4	10.3	318.3
erh	10.6	318.0
N	10.6	318.0



328.57

0+75

N		12.5	316.11	
Crk		12.0	316.3	
"A		12.4	316.2	
M		12.0	316.6	
"A		11.6	317.0	
Crk		11.1	317.5	
S		10.6	318.0	
T.P.	5.23	321.36	12.44	316.13
		1+0		
S		5.4	316.0	
Crk		5.8	315.6	
"A		6.0	315.4	
M		6.6	314.8	
"A		7.0	314.4	
Crk		7.0	314.4	
N		7.3	314.1	

PLOTTED

321.36

1+25

24

N		10.2	311.2
Crk		9.5	311.9
"A		9.4	312.0
M		9.1	312.3
"A		8.7	312.7
Crk		8.6	312.8
S		8.1	313.3
		1+50	
S		11.1	310.3
Crk		10.0	311.4
"A		9.5	311.9
M		9.5	311.9
"A		10.4	311.0
Crk		10.8	310.6
N		10.5	310.9

PLOTTED



321.36

1+95

N	8.2	313.2
crk	9.0	312.4
"A	8.8	312.6
M	9.2	312.2
"A	9.3	312.1
crk	9.9	311.5
S	13.0	308.4

PLOTTED

2+0

S	11.0	310.4
crk	9.9	311.5
"A	9.1	312.3
M	8.5	312.9
"A	7.9	313.5
crk	7.4	314.0
N	6.8	315.1

25

2+25

H	5.6	315.8
crk	6.5	314.9
"A	7.0	314.4
M	6.7	314.7
"A	6.8	314.6
crk	7.8	313.6
S	8.7	312.7

PLOTTED

2+50

S	7.5	313.6
crk	7.3	314.1
"A	6.7	314.7
M	6.2	315.2
"A	6.3	315.1
crk	5.5	315.9
N	5.0	316.4



321.36

2+65-101 E 204 117 65' 10" 214 11.25' 235

N	4.9	316.5
crk	5.9	315.5
1/4	5.9	315.5
M	6.4	315.0
1/4	6.5	314.9
crk	7.2	314.2
S	7.6	313.8

PLOTTED

N. crk

S	7.4	314.0
crk	7.1	314.3
1/4	6.6	314.8
M	6.4	315.0
1/4	5.9	315.5
crk	5.5	315.9
N	5.3	316.1

26

N 1/4

N	5.1	316.3
crk	5.6	315.8
1/4	5.9	315.5
M	6.3	315.1
1/4	6.7	314.7
crk	6.9	314.5
S	7.3	314.1

PLOTTED

Center

S	7.4	314.0
crk	7.0	314.4
1/4	6.6	314.8
M	6.2	315.2
1/4	5.8	315.6
crk	5.4	316.0
N	5.1	316.3



321.36

E 1/4

N	5.1	316.3
crk	5.3	316.1
1/4	5.9	315.5
M	6.3	315.1
1/4	6.7	314.7
crk	7.2	314.2
S	7.4	314.0

PLOTTED

E crk

S	7.5	313.9
crk	7.2	314.2
1/4	6.6	314.8
M	6.4	315.0
1/4	5.8	315.6
crk	5.5	315.9
N	5.3	316.1

27

E. L. Franklin

N	5.2	316.2
crk	5.4	316.0
1/4	5.9	315.5
M	6.3	315.1
1/4	6.7	314.7
crk	6.9	314.5
S	7.5	313.9

PLOTTED

D + 25

S	7.6	313.8
crk	7.0	314.4
1/4	6.7	314.7
M	6.4	315.0
1/4	6.1	315.3
crk	5.7	315.7
N	5.4	316.0



321.36

0+50

N	5.3	316.1
erb	5.5	315.9
1/4	6.6	314.8
M	6.5	314.9
1/4	6.7	314.7
erb	6.9	314.5
S	7.1	314.3

PLOTTED

0+75

S	6.5	314.9
erb	6.5	314.9
1/4	6.1	315.3
M	6.2	315.2
1/4	6.1	315.3
erb	5.7	315.7
N	5.4	316.0

28

1+0

N	5.6	315.8
erb	5.9	315.5
1/4	5.6	315.8
M	5.6	315.8
1/4	5.5	315.9
erb	5.9	315.5
S	6.0	315.4

PLOTTED

1+25

S	5.8	315.6
erb	5.0	316.4
1/4	4.8	316.6
M	5.0	316.4
1/4	5.3	316.1
erb	5.4	316.0
N	5.4	316.0



321.36

1750

N	5.0	316.4
erb	5.1	316.3
1/4	5.0	316.4
M	5.0	316.4
1/4	5.2	316.2
erb	5.3	316.1
S	5.0	316.4

PLOTTED

1775

S	4.9	316.5
erb	5.0	316.4
1/4	4.6	316.8
M	4.4	317.0
1/4	4.6	316.8
erb	4.6	316.8
N	4.4	317.0
T.P.	4.65	321.84
	4.17	317.19

321.84

210

29

N	4.3	317.5
erb	4.5	317.3
1/4	4.9	316.9
M	4.8	317.0
1/4	4.5	317.3
erb	5.0	316.8
S	5.2	316.6

PLOTTED

2109 on N. 87 + 26 on S = E. boundary line of City

S	4.8	317.0
erb	4.7	317.1
1/4	5.0	316.8
M	4.7	317.1
1/4	4.7	317.1
erb	4.5	317.3
N	4.7	317.1



30



X-section Oregon St University to El Cajon  
 " 80 wide 14 walks 13 1/2

343.19

343.19

31

B.M. Near N.E. University to Oregon 338.85

0+50

B.M. 4.34 343.19

F

3.6 339.6

0+0 = N.E. University

Crk

5.1 338.1

E 4.8 338.4

+2

6.3 336.9

Crk 6.0 337.2

1/4

6.3 336.9

1/4 6.5 336.7

M

6.7 336.5

M 7.2 336.0

1/4

7.7 335.5

1/4 7.9 335.3

Crk

8.4 334.8

Crk 8.3 334.9

W

8.5 334.7

W 8.1 335.1

0+75

0+75 N

W

9.0 334.2

W 8.2 335.0

Crk

8.6 334.6

Crk 8.0 335.2

1/4

7.9 335.3

1/4 7.8 335.9

M

7.0 336.2

M 6.7 336.5

1/4

6.5 336.7

1/4 6.2 337.0

Crk

6.4 336.8

Crk 6.0 337.2

F

4.0 339.2

+2 4.6 338.6

E 4.0 339.2



343.19

1+0

E	4.4	338.8
+4	4.9	338.3
erb	6.2	337.0
"4	6.6	336.6
N	7.1	336.1
"4	8.0	335.2
erb	8.5	334.7
W	7.1	334.1

1+25

W	8.6	334.6
erb	8.5	334.7
"4	7.6	335.6
N	6.7	336.5
"4	6.2	337.0
erb	6.6	336.6
E	5.5	337.4

343.19

32

1+50

E	4.9	338.3
erb	5.5	337.7
"4	5.6	337.6
N	5.7	337.5
"4	6.8	336.4
erb	7.8	335.4
+5	8.0	335.2
+7	7.4	335.8
W	7.7	335.5

1+75

W	6.5	336.4
+7	6.6	336.6
+9	7.1	336.1
erb	6.8	336.4
"4	5.6	337.6
N	5.0	338.2
"4	4.6	338.6
erb	3.7	339.5
+5	2.9	340.3
E	2.6	340.6



343.19

210

E	1.6	341.6
+9	2.1	341.1
erb	3.0	340.2
1/4	2.9	340.3
M	4.1	339.1
1/4	4.6	338.6
erb	5.9	337.3
+5	6.2	337.0
+7	5.7	337.5
W	6.2	337.0

2125

W	5.6	337.6
+7	5.2	338.0
+9	5.7	337.5
erb	5.4	337.8
1/4	4.0	339.2
M	3.4	339.8
1/4	2.4	340.8
erb	1.8	341.4
E	0.8	342.4

343.19

33

2150

E	0.0	343.2
+7	0.2	343.0
+9	1.0	342.2
erb	1.3	341.9
1/4	1.5	341.7
M	2.6	340.6
1/4	3.2	340.0
erb	4.6	338.4
+5	4.9	338.3
+7	4.6	338.6
W	5.0	338.2

T.P	12.06	351.47	3.27	339.41
-----	-------	--------	------	--------

2175

EV	12.9	338.6
+7	12.4	339.3
+9	12.7	338.8
erb	12.4	339.1
1/4	11.0	340.5
M	10.2	341.3
1/4	9.0	342.5
erb	9.1	342.4
E	7.5	344.0



351.47

3+0

E	7.0	344.5
Crk	8.3	343.2
1/4	8.4	343.1
M	9.3	342.2
1/4	10.2	341.5
Crk	11.7	339.8
+5	12.3	339.2
+7	11.6	339.9
W	12.0	339.5

3+25

W	10.9	340.6
+7	11.0	340.5
+7	11.5	340.0
Crk	11.1	350.4
1/4	9.4	342.1
M	8.7	342.8
1/4	7.9	343.6
Crk	7.7	343.8
E	6.8	345.2

351.47

3+50

34

E	6.0	345.5
Crk	7.2	344.3
1/4	7.4	344.1
M	8.3	343.2
1/4	8.8	342.7
Crk	10.8	340.7
+5	11.0	340.5
+7	10.5	341.0
W	10.8	340.7

3+75

W	10.3	341.2
+7	10.0	341.5
+7	10.4	341.1
Crk	10.0	341.5
1/4	8.5	343.0
M	7.5	344.0
1/4	6.9	344.6
Crk	6.7	344.8
+10	5.6	345.9
E	5.7	345.8



351.47

4+0

E	4.6	346.9
+ 7	4.8	346.7
crk	6.0	346.5
1/4	6.3	345.2
M	7.0	344.5
1/4	7.7	343.8
crk	9.3	342.2
+ 5	9.6	341.9
+ 7	8.9	342.6
W	9.2	342.3

4+25

W	8.2	343.3
+ 7	8.1	343.4
+ 9	8.5	343.0
crk	8.4	343.1
1/4	6.8	344.7
M	6.0	345.5
1/4	5.6	345.9
crk	5.3	346.2
+ 7	4.4	347.1
E	4.4	347.1

35

4+50

E	1.2	348.3
+ 7	3.6	347.9
crk	4.5	347.0
1/4	4.6	346.9
M	5.2	346.3
+ 5	4.3	347.2
1/4	6.3	345.2
crk	7.5	344.0
+ 3	7.7	343.8
+ 5	7.2	344.3
W	7.5	344.0

4+75

W	6.9	344.6
+ 7	6.4	345.1
+ 11	7.7	344.4
crk	6.9	344.6
1/4	5.2	346.3
+ 6	3.4	348.1
+ 11	4.6	346.9
M	4.6	346.9
1/4	3.7	347.8
crk	3.5	348.0
+ 5	3.1	348.4
E	2.5	349.0



351.47

570

E	2.0	349.5
erb	2.7	348.8
1/4	2.8	348.7
M	3.6	347.9
+6	2.7	348.8
+12	4.6	346.9
1/4	4.8	346.7
erb	5.9	345.6
+3	6.0	345.5
+5	5.5	346.0
W	5.9	345.6

5725

W	5.3	346.2
+9	4.9	346.6
+11	5.3	346.2
erb	5.2	346.3
1/4	3.8	347.7
+5	2.0	349.5
M	3.1	348.4
1/4	2.2	349.3
erb	2.3	349.2
+5	1.9	349.8
E	1.1	350.4

36

5750

E	0.6	350.9
+9	1.4	350.1
erb	2.1	349.4
1/4	2.2	349.3
M	2.9	348.6
+5	2.9	348.6
+10	2.3	349.2
1/4	3.7	347.8
erb	4.7	346.8
+3	4.9	346.6
+5	4.3	347.2
W	4.8	346.7

5775

W	4.2	347.1
+9	4.1	347.4
+11	4.6	346.9
erb	4.3	347.2
1/4	3.3	348.2
M	2.8	348.7
1/4	2.3	349.1
erb	2.1	349.4
+3	1.2	350.3
E	0.5	351.0



357.47

6+0 = S.L. Lincoln 80' 14' 12/13s 13' 12.5

E	0.8	350.7
+11	1.1	350.4
Crk	1.8	349.7
1/2	1.9	349.6
M	2.7	348.8
1/4	2.8	348.7
Crk	3.7	347.8
W	4.2	347.3

S. CORNER

W	4.4	347.1
Crk	3.8	347.7
1/4 <sup>S</sup>	3.3	348.2
M	2.8	348.7
1/4	1.8	349.7
Crk	1.7	349.8
E	1.0	350.5

5 1/4

37

E	0.8	350.7
Crk	1.3	350.2
1/2	2.2	349.3
M	3.2	348.3
1/4	3.0	348.5
Crk	4.1	347.4
W	4.1	347.4

+10

W	10.1	341.4
Crk	9.1	342.4
1/4	7.4	344.1
M	3.8	347.7
1/4	3.0	348.5
Crk	2.5	349.0
+5	2.5	349.0
+10	4.7	346.8
E	4.9	346.6



351.47

Center

E	3.7	347.8
+9	4.0	347.5
+9	2.4	349.1
erb	2.2	349.3
1/4	2.8	348.7
M	3.5	348.0
1/4	6.1	345.4
erb	9.0	342.5
W	10.0	341.5
	+10	
W	2.4	343.1
erb	5.8	345.7
1/4	2.8	348.7
M	2.7	348.8
1/4	2.4	349.1
erb	2.9	349.1
E	2.7	348.8

351.47

N 1/4

38

E	2.0	349.7
erb	2.9	349.1
1/4	2.6	348.9
N	2.9	349.1
1/4	2.7	348.8
erb	5.5	346.0
+10	6.1	345.9
W	4.2	347.3
	N curb	
W	3.3	348.2
erb	2.8	348.7
1/4	1.8	349.7
M	1.7	349.8
1/4	0.9	350.6
erb	0.0	351.5
+6	9.8	350.7
E	+0.5	352.0
T.P.	10.60	361.81
	0.26	351.21



361.81

N. L. Lincoln

E	9.2	352.6
+ 9	9.4	352.4
crk	7.7	354.1
+ 4	10.0	351.8
"4	10.4	351.4
M	10.9	350.9
"4	11.4	350.4
crk	12.2	349.6
+ 3	11.5	350.3
N	11.8	350.0

0 + 25

N	11.1	350.7
+ 10	10.4	351.4
crk	10.9	350.9
"4	9.9	351.9
5		
M	9.4	352.4
"4	8.8	353.0
+ 9	9.0	352.8
crk	5.9	355.9
+ 6	7.8	354.0
E	7.8	354.0

361.81

39

0 + 50

E	7.2	354.6
+ 8	7.4	354.4
+ 12	5.5	356.3
crk	6.8	355.0
+ 3	8.3	353.5
"4	8.3	353.5
M	8.7	353.1
"4	9.5	352.3
crk	10.2	351.6
+ 3	9.7	352.1
N	10.0	351.8

0 + 75

N	7.4	352.4
+ 10	9.3	352.5
crk	9.7	352.1
"4	8.6	353.2
M	7.8	354.0
"4	7.5	354.3
+ 10	7.6	354.2
crk	4.3	357.5
+ 6	6.3	355.5
E	6.4	355.4



361.81

1+0

F	5.8	356.0
+8	5.6	356.2
crk	3.0	358.8
+5	6.5	355.3
"A	6.1	355.7
M	6.7	355.1
"A	7.1	354.7
crk	8.6	353.2
+5	8.1	353.7
N	8.2	353.6

1+25

N	7.4	354.4
+10	7.2	354.6
crk	7.6	354.2
"A	6.1	355.7
M	5.7	356.1
"A	5.7	356.1
+8	5.6	356.2
crk	1.5	362.3
+6	4.8	357.0
F	5.1	356.7

361.81

1+50

F	4.2	357.6
+10	4.7	357.1
crk	3.2	358.6
+5	5.1	356.7
"A	4.8	357.0
M	5.4	356.4
"A	5.8	356.0
crk	7.6	354.2
+A	6.4	355.4
N	6.8	355.0

1+75

N	6.2	355.6
+10	6.0	355.8
crk	6.4	355.4
"A	5.6	356.2
M	5.2	356.6
"A	4.7	357.1
+10	5.1	356.7
crk	4.0	357.8
+A	4.4	357.4
F	4.1	357.7

40



361.81

2+0

E	3.4	358.4
+10	3.6	358.2
crk	1.1	360.7
+6	4.6	357.2
"4	4.7	357.1
M	4.8	357.0
"A	4.8	357.0
crk	6.1	355.7
+5	5.6	356.2
"	5.7	356.1

2+25

"	5.4	356.4
+10	5.1	356.7
crk	5.8	356.0
"4	4.7	357.1
M	4.5	357.3
"4	4.4	357.4
+8	4.3	357.5
crk	1.2	360.6
+6	3.0	358.8
E	3.0	358.8

361.81

2+50

E	2.3	359.5
+8	2.2	359.7
crk	0.7	361.1
+5	3.9	357.9
"4	3.4	358.4
M	3.8	358.0
"4	4.3	357.5
crk	5.1	356.7
+4	4.6	357.2
"	4.9	356.9

2+75

"	4.2	357.6
+10	3.8	358.0
crk	4.4	357.4
"4	3.6	358.2
M	3.1	358.7
"A	2.9	358.9
+9	3.1	358.7
crk	0.0	361.8
+6	1.6	360.2
E	1.5	360.3
T.P.	8.12	368.55
	1.38	360.43

41



368.55

3+0

E	7.3	361.3
+ 9	7.1	361.5
erb	5.4	363.2
+ 3	8.3	360.3
1/4	8.5	360.1
M	9.0	359.6
1/4	9.3	359.3
erb	10.9	357.9
+ 4	9.4	359.2
1/4	9.6	359.0

3+25

1/4	8.9	359.7
+ 10	8.7	359.9
erb	9.3	359.2
1/4	8.2	360.4
M	8.1	360.5
1/4	7.8	361.0
+ 8	7.9	360.7
erb	4.0	364.6
+ 7	6.7	361.9
E	6.5	362.1

368.55

3+50

42

E	5.9	362.7
+ 8	5.9	362.7
erb	4.0	364.6
+ 9	7.0	361.6
1/4	7.1	361.5
M	7.2	361.4
1/4	7.7	360.9
erb	8.5	360.1
+ 3	8.0	360.6
1/4	8.1	360.5

3+75

1/4	7.6	361.0
+ 11	7.5	361.1
erb	8.0	360.6
1/4	6.9	361.9
M	6.6	362.0
1/4	6.6	362.0
+ 8	6.6	362.0
erb	2.9	366.2
+ 6	5.3	363.3
E	5.4	363.2



368.55

4+0

E	5.3	363.3
+8	5.0	363.6
crk	3.2	365.4
+1	6.1	362.5
1/4	6.0	362.6
M	6.6	362.0
1/4	7.2	361.4
crk	7.3	361.3
+3	6.9	361.7
N	7.0	361.6

4+25

W <sub>2</sub>	6.4	362.2
+11	6.6	362.0
crk	7.3	361.3
1/4	6.5	362.1
M	6.2	362.4
1/4	5.9	362.9
crk	5.7	362.9
+3	3.9	364.7
+7	5.0	363.6
E	5.1	363.5

368.55

4+50

48

E	5.0	363.6
+8	4.8	363.8
crk	2.9	365.7
+3	5.5	363.1
1/4	5.7	362.9
M	5.7	362.9
1/4	6.0	362.6
crk	6.8	361.8
+4	6.2	362.4
N	6.2	362.4

4+75

W	6.1	362.5
+10	6.0	362.6
crk	6.5	362.1
1/4	6.0	362.6
M	5.6	363.0
1/4	5.0	363.6
+12	5.2	363.4
crk	3.5	365.1
+6	4.7	363.9
E	4.8	363.8



368.55

5+0

E	4.4	364.2
+10	4.4	364.2
erb	5.2	363.4
1/4	5.2	363.4
M	5.5	363.1
1/4	5.9	362.7
erb	6.3	362.3
+4	5.8	362.8
W	5.9	362.7

5+25

W	5.7	362.9
+10	5.5	363.1
erb	6.2	362.4
1/4	5.3	363.3
M	4.9	363.7
1/4	4.8	363.8
erb	4.7	363.9
+2	3.0	365.6
+4	3.6	365.0
E	3.9	364.7

369.55

5+50

44

E	3.3	365.3
+10	3.3	365.3
erb	1.7	366.9
+3	4.6	364.0
1/4	4.6	364.0
M	4.5	364.1
1/4	4.8	363.8
erb	5.6	363.0
+4	5.1	363.5
W	5.3	363.3

T.P.	9.85	373.69	4.71	363.89
------	------	--------	------	--------

5+75

W	10.3	363.4
+10	9.8	363.9
erb	10.3	363.4
1/4	9.6	364.1
M	9.5	364.2
1/4	9.1	364.6
+7	9.3	364.4
erb	7.0	366.7
+4	7.9	365.8
E	7.9	365.8



373.69

6+0 = 3.L.P./X 20' 14" 11/16 13' 14" 35

E	6.6	367.1
crk	6.2	367.5
+6	8.5	365.2
"A	8.1	365.6
M	8.9	364.8
"A	9.3	364.4
crk	9.8	363.9
+4	9.0	364.7
W	9.1	364.6
S. curb		
W	9.9	363.8
crk	9.0	364.7
"A	8.6	365.1
M	8.3	365.4
"A	7.5	366.2
crk	7.2	366.5
E	7.0	366.7

373.69

5 "A

45

E	5.7	368.0
crk	6.0	367.7
"A	6.5	367.2
M	7.3	366.4
"A	8.0	365.7
crk	8.6	365.1
W	9.4	364.3
Center		
W	9.3	364.4
crk	7.8	365.8
"A	7.3	366.4
M	6.0	367.7
"A	5.9	367.8
crk	5.0	368.7
E	5.1	368.6



373.69

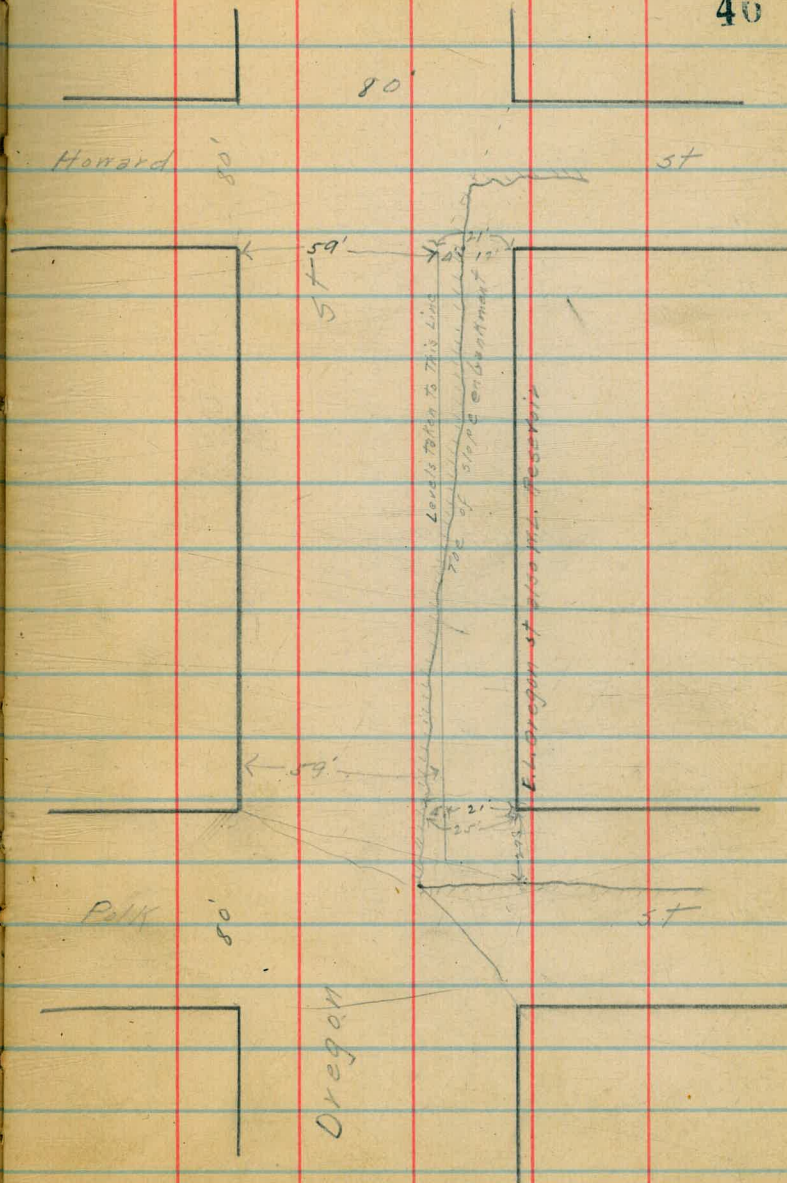
N<sup>1</sup>A

E	3.2	369.9
erb	4.2	369.5
1/4	5.0	368.7
M	5.7	368.0
1/4	7.0	366.7
erb	7.4	366.3
W	7.8	365.9

N. curb see sketch opp page

W	8.0	365.7
erb	7.4	366.3
1/4	6.1	367.6
M	5.4	368.3
1/4	4.4	369.3
+6-El.	1.7	372.0

46





373.69

N.L.

E	1.5	372.6
+4	3.7	370.0
"A	4.2	369.5
M	5.1	368.6
NA	6.2	367.5
crk	7.5	366.2
W	8.5	365.2

0+25' N

W	7.8
crk	7.5
"A	6.9
M	5.3
"A	4.5
+4	3.5
E	2.1

373.69

0+50

47

E	2.3
+2	3.5
"A	4.3
M	5.4
"A	6.9
crk	7.0
W	7.5

0+75

W	6.9
crk	6.9
"A	7.0
+8	6.9
M	5.0
"A	4.0
+4	2.9
E	2.1



373.69

140

E	2.2
1/4	3.7
+12	4.6
M	5.4
+2	6.6
1/4	6.1
crk	6.4
W	7.0
1725	
W	6.2
crk	6.0
1/4	6.1
+8	6.2
M	4.0
1/4	3.4
E	2.3

1450

48

E	1.3
+3	2.7
1/4	2.9
M	2.6
1/4	4.1
crk	6.4
W	6.2
1775	
W	5.9
crk	6.1
1/4	2.3
+2	3.3
M	3.1
1/4	2.7
E	1.9



373.69

2+0

E	1.4
1/4	2.3
M	3.2
+8	3.5
1/4	5.0
Crk	5.0
W	4.2
2+25	
W	4.4
+10	3.0
Crk	3.7
1/4	3.9
+10	4.1
M	2.6
1/4	1.9
E	1.1

373.69

2+50

49

E	1.0
1/4	1.7
M	2.1
1/4	2.0
Crk	2.7
W	3.6
2+75	
W	4.1
+5	3.1
Crk	2.7
1/4	2.0
M	1.4
1/4	1.2
E	0.2

T.P.

6.20

378.97

0.92

372.27



375.97

310

E	5.2
"	5.8
M	6.0
"	6.6
Col	7.5
"	8.1

3125

"	8.0
Col	6.7
"	6.4
M	5.9
"	5.6
E	5.0

378.97

3150

E	5.0
"	5.4
M	6.1
"	7.1
Col	6.9
"	7.1

2125

"	7.7
Col	7.2
"	7.5
M	7.3
"	5.3
E	5.0

50



378.97

A+D

E	4.8
1/4	5.1
M	7.4
1/4	7.8
erle	8.0
W	8.4

A+75

W	8.1
erle	7.9
1/4	6.7
M	6.3
1/4	4.8
E	4.7

378.97

A+50

E	4.3
1/4	4.8
M	5.4
1/4	6.4
erle	7.2
W	8.1

A+75

W	7.2
erle	6.9
1/4	5.8
M	4.5
1/4	4.4
E	4.0

51



37897

510

E	3.9
"A	4.0
M	3.8
"A	4.7
Crk	6.2
W	7.5

5125

W	5.9
Crk	5.9
"A	4.3
M	3.2
"A	4.0
E	3.9

37897

5150

E	3.8
"A	4.0
M	5.1
"A	5.0
Crk	4.9
W	5.4

5175

W	6.2
Crk	4.8
"A	5.4
M	5.5
"A	3.7
E	3.4

52



378.97

640 = S.L. Howard 5730 10/10/1935

E			3.7	
"A			3.6	
M			4.5	
"A			4.8	
crk			5.2	
W			6.1	
T.P.	5.09	379.47	4.59	379.38
		3. crk		
W			5.9	
crk			5.2	
"A			5.2	
M			4.8	
"A			3.8	
crk			3.5	
E			3.1	

379.47

5 "A

58

E			4.5	
crk			4.4	
"A			4.0	
M			4.5	
"A			5.4	
crk			4.9	
W			6.3	
		Center		
W			5.3	
crk			5.2	
"A			5.0	
M			4.3	
"A			4.4	
crk			4.4	
E			4.5	



N<sup>14</sup> 379.47

E	5.0
orb	5.0
"4	4.9
M	4.2
"4	4.7
orb	5.8
W	4.9

N curbs

W	5.4
orb	5.4
"4	5.3
M	4.5
"4	5.0
orb	4.9
E	4.9

<sup>5</sup>  
379.47  
MLI Howard

54

E	4.2	375.3
orb	4.8	374.7
"4	5.1	374.4
M	4.5	375.0
"4	5.4	374.1
orb	5.2	374.3
W	5.6	373.9

2+25 W

W	5.6	373.9
orb	5.7	373.8
"4	4.8	374.7
M	4.8	374.8
"4	5.2	374.3
orb	4.9	374.6
E	2.5	377.0



379.47  
0450

E	2.4	377.1
erb	4.9	374.6
"A	4.9	374.6
M	4.7	374.8
"A	4.9	374.6
erb	5.9	373.6
W	5.9	373.6

0475

W	5.8	373.7
erb	6.0	373.5
"A	4.8	374.7
M	4.8	374.7
"A	5.1	374.4
erb	4.3	375.2
E	2.4	377.1

379.47  
170

E	1.9	377.6
erb	4.4	375.1
"A	4.8	374.7
M	4.7	374.8
"A	4.9	374.6
erb	5.9	373.6
W	5.4	374.1

1725

W	5.3	374.2
erb	5.9	373.6
"A	4.9	374.6
M	4.8	374.7
"A	5.6	373.9
erb	4.0	375.5
E	1.2	377.3

55



379.47

1450

E	2.2	377.3
erb	4.8	374.7
1/4	5.3	374.2
M	4.6	374.9
1/4	5.1	374.4
erb	5.8	373.7
W	5.3	374.2

1775

W	5.2	374.3
erb	5.8	373.7
1/4	5.1	374.4
M	4.6	374.9
1/4	5.5	374.0
erb	5.0	374.5
E	2.4	377.1

379.47

210

56

E	2.9	377.1
erb	5.0	374.5
1/4	5.4	374.1
M	4.6	374.9
1/4	5.0	374.5
erb	5.4	374.1
W	4.8	374.7

2125

W	5.1	374.4
erb	5.3	374.2
1/4	5.2	374.3
M	4.6	374.9
1/4	5.5	374.0
erb	5.0	374.5
E	2.8	376.7



- 379.47

2150

E	2.6	376.9
erb	4.4	375.1
"A	4.7	374.8
M	4.5	375.0
"A	5.1	374.4
erb	5.1	374.4
W	4.7	374.6

2175

W	5.0	374.5
erb	5.4	374.1
"A	5.2	374.3
M	4.7	374.8
"A	4.8	374.7
erb	4.1	375.4
E	2.4	377.1

379.47

3+0

57

E	2.7	376.8
erb	3.8	375.7
"A	4.3	375.2
M	4.5	375.0
"A	5.3	374.2
erb	5.1	374.4
W	5.2	374.3

3+38-5.1 El Cajon Blvd.

W	5.0	374.5
erb	5.1	374.4
"A	5.0	374.5
M	4.6	374.9
"A	3.7	375.8
erb	3.7	375.8
E	3.3	376.2



58



59



Levels for water line El Cajon Blvd from E.L. Park  
 Blvd to E. boundary line of City. Levels taken 14' S of  
 center.

322.67

60

10' double  
 11' Errows  
 11-err

B.M. brass fly curb front driveway to Normal	342.53			3+25	3.8	318.9	
B.M. 1.67	345.25			+50	4.5	318.2	
0+0 = E.L. Park Blvd		6.2	339.1	+75	4.9	317.6	
125		7.5	337.8	+80	5.4	317.3	
50		9.4	335.9	+90	10.7	312.0	
75		10.5	334.8	+10	11.6	311.1	
1+0		11.5	333.8	+25	12.2	310.5	
T.P. 0.58	323.28	12.55	332.70	+50	13.5	309.2	
+25		3.0	330.3	T.P. 4.48	319.29	12.86	309.51
+50		6.0	327.3	+75	7.0	307.3	
+75		10.1	323.2	+10	8.6	305.7	
2+0		13.4	319.9	+25	7.0	307.3	
2+15		12.5	315.8	+50	4.8	309.5	
+25		15.2	318.1	+75	5.1	309.2	
+50		15.4	317.9	+10	6.5	307.8	
+75		15.8	317.5	+25	8.8	305.5	
2+93		16.0	319.3	+50	10.7	303.6	
3+01 - <sup>W</sup> L. Georgia		14.2	321.1	+75	11.9	302.4	
T.P. 2.00	322.67	12.61	320.67	6+89.6 - <sup>W</sup> L. Florida 80'	12.7	301.6	
				T.P. 4.16	306.27	12.18	302.11



306.27

318.67

61

7+0	5.3	301.0
25	5.7	300.6
50	7.7	298.6
75	8.2	298.1
8+0	12.6	293.7
125	10.8	295.5
50	10.6	295.7
75	9.8	296.5
9+0	8.8	297.3
+25	8.3	298.0
+50	8.3	298.0
+75	5.6	300.7
10+0	5.0	301.3
+25	5.0	301.3
10+58 <sup>5</sup> = <sup>W</sup> X.L. 9/26/2012	4.1	302.2
75	3.5	302.5
11+0	2.6	303.7
T.P.	12.84	318.67
+25	13.5	305.2

11+50	14.3	304.4
75	11.6	307.1
12+0	12.2	306.5
25	10.7	308.0
50	8.9	307.8
75	7.4	311.3
13+0	5.2	313.5
125	3.6	315.1
150	1.2	317.5
T.P.	12.06	330.52
75	11.7	318.8
14+0	10.7	319.8
25	9.2	321.3
14+40 <sup>5</sup> = <sup>W</sup> X.L. 7/16/2012	8.7	321.8
50	8.9	321.6
75	7.6	323.0
15+0	7.9	322.6
+25	5.4	325.1
+50	2.6	327.9
+75	1.8	328.7
16+0	0.4	330.1



330.52

T.P.	8.06	332.10	0.98	330.09
16+25			6.5	331.6
50			5.5	332.6
75			4.2	333.8
17+0			5.0	333.1
+25			2.5	335.6
750			1.8	336.2
+75			2.3	335.8
18+0			4.0	334.1
18+19 <sup>or</sup> <del>X</del> Louisiana St			4.8	333.3
+50			7.4	328.7
+75			10.7	327.4
19+0			12.2	325.9
T.P.	6.95	333.84	11.21	326.89
+25			9.0	324.8
+50			9.1	324.7
75			10.6	323.2
20+0			10.8	323.0
+25			10.2	323.6

333.84

62

+50			10.6	323.2
75			11.4	322.4
21+0			12.5	321.3
25			12.3	321.5
50			12.7	321.1
75			11.5	322.3
22+0 W. L. Texas			11.0	322.8
+25			9.6	324.2
50			9.5	324.3
75			9.3	324.5
23+0			8.7	325.1
+25			7.8	326.0
+50			7.6	326.2
75			7.0	328.8
24+0			6.3	327.5
75			5.7	328.1
50			5.3	328.5
75			4.6	329.2
25+0			3.8	330.0



333.84

25+25			3.0	330.8
+50			1.6	332.2
+75			0.3	333.5
T.P.	13.01	346.07	0.78	333.06
25+79 = W.L. Arizona			12.3	333.8
26+0			11.5	334.6
25			9.9	336.2
50			7.9	338.2
75			5.3	340.8
77+0			3.9	342.2
+25			1.2	344.9
T.P.	12.58	358.27	0.38	345.69
50			11.3	347.0
75			7.5	350.8
28+0			4.9	353.4
+25			1.4	356.9
T.P.	11.94	370.13	0.08	358.19
50			11.2	358.9
75			8.2	361.9
29+0			5.6	364.7

370.13

63

29+25			4.0	366.1
+50			2.8	367.3
29+60 = W.L. Hamilton			2.2	367.9
75			1.8	368.3
30+0			1.1	369.0
T.P.	9.28	379.10	0.26	369.87
25			8.3	370.8
50			7.7	371.4
75			8.3	370.8
31+0			8.0	371.1
25			7.2	371.9
50			6.2	372.9
75			6.3	372.8
32+0			5.5	373.6
12+0			5.9	373.2
50			5.8	373.3
75			5.6	373.5
33+0			5.5	373.6
+25			5.3	373.8



379.10

64

33+40 = W.L. Oregon

5.0	374.1	
+50	4.5	374.6
75	4.0	375.1
34+0	4.2	374.9
25	3.9	375.2
50	4.0	375.1
75	3.7	375.4
35+0	3.7	375.4
+75	3.2	375.9
+50	3.3	375.8
75	3.1	376.0
36+0	3.1	376.0
75	3.3	375.8
50	3.4	375.7
75	3.2	375.9
37+0	3.5	375.6
37+19 = W.L. Idaho	3.6	375.5
25	3.5	375.6
50	3.4	375.7

75	3.8	375.3
38+0	4.4	374.7
25	4.6	374.5
50	4.6	374.5
75	5.1	374.0
39+0	5.4	373.7
25	5.7	373.4
50	5.6	373.5
75	5.9	373.2
40+0	6.0	373.1
T.R.	3.33	375.94
25	6.49	372.61
50	3.2	372.7
75	3.3	372.6
25	3.7	372.2
41+0 n.L. Utah	4.3	371.6
25	3.6	372.3
50	3.7	372.3
75	3.3	372.6
42+0	4.4	371.5



375.94

~~427~~

42+25	4.8	371.1
50	5.4	370.5
75	6.3	369.6
43+0	6.0	369.9
25	7.0	368.9
50	7.5	368.4
75	6.6	369.3
44+0	7.1	368.8
25	7.2	368.7
50	7.0	368.9
75	6.4	369.5
44+80 W.L. Kansas	6.3	369.6
45+0	7.4	368.5
25	7.4	368.5
50	7.4	368.5
75	6.7	369.2
46+0	7.2	368.7
25	8.3	367.6
T.P.	2.34	370.91
	2.87	368.07

370.41

65

46+50	3.4	367.0
75	3.6	365.8
47+0	3.2	367.2
25	3.4	367.0
50	3.9	366.5
75	3.9	366.5
48+0	4.3	366.1
25	5.7	364.7
50	6.3	364.1
48+60 W.L. 30 <sup>th</sup> St	6.5	363.9
75	6.4	364.0
49+0	5.3	365.1
25	6.0	364.4
50	6.4	364.0
75	6.9	363.5
50+0	7.2	363.2
25	6.6	363.8
50	6.7	363.7
75	6.8	363.6
51+0	6.0	364.4

357.6



370.91

51+25			6.6	363.8
50			6.7	363.7
75			6.4	364.0
52+0			6.4	364.0
T.P.	6.23	370.76	5.88	364.53
25			6.8	363.9
52+40 = m. h. Ohio			6.7	364.1
50			6.9	363.9
75			6.7	364.1
53+0			5.9	364.9
25			6.5	364.3
50			6.3	364.5
75			6.4	364.4
54+0			5.9	364.9
25			5.2	365.6
50			6.0	364.8
75			5.6	365.2
55+0			4.9	365.9
25			5.1	365.7

370.76

50			5.6	365.2
75			5.0	365.8
56+0			5.1	365.7
56+20 m. h. Illinois			5.8	365.0
25			5.8	365.0
50			5.6	365.2
75			5.5	365.3
57+0			5.4	365.4
25			4.8	366.0
50			4.4	366.4
75			4.3	366.5
58+0			3.5	367.3
T.P.	11.20	379.86	2.10	368.66
25			11.9	368.0
50			10.7	369.2
75			11.1	368.8
59+0			10.9	369.0
25			12.2	369.7
50			9.4	370.5

66



	379.86		
59175	2.5	371.4	
60+0 = W. 1/2 Iowa St	7.5	372.4	
25	6.4	373.5	
50	5.9	374.0	
75	4.3	375.6	
61+0	3.8	376.1	
25	3.6	376.3	
50	3.6	376.3	
75	2.8	377.1	
62+0	2.5	377.4	
25	1.8	378.1	
50	3.1	376.8	
75	2.5	377.4	
63+0	2.3	377.6	
63+37 = E. Boundary Line City	2.3	377.6	



10 along X sec of cedar st (80)  
 24 7/8 E of line to st 32  
 12/12 from (20' banks)

	701	23108	22407	Bm NE 30 + Cedar
	441	23035	574	22594
	E of	Line st		
2		59	2245	
20	ll	63	224.1	
	75'	63	224.1	
		4.2	226.2	
4	77'	4.1	226.3	
		4.2	226.2	
6		5.8	224.6	
4		5.8	224.6	
ll		5.5	224.9	
5		5.1	225.3	
	E of	Line (on top)		
5		2.3	228.1	
ll		2.5	227.9	
4		2.5	227.9	
6		2.9	227.5	
4		2.8	227.6	
ll		3.1	227.3	
2		3.1	227.3	

23035

Cedar

68

25	E of	Line st		
		1.9	228.5	
		1.8	228.6	
		1.7	228.7	
		1.6	228.8	
		1.3	229.1	
		1.2	229.2	
		1.0	229.4	
TP	438	23365	108	229.27
	50'	E of	Line st	
		2.7	230.8	
		3.2	230.5	
		3.4	230.3	
		3.7	230.0	
		4.1	229.6	
		4.3	229.4	
		4.5	229.2	



23365-

	75'	Eg	Grove	St
n			45	229.2
hh			42	229.5
y			41	229.6
b			38	229.9
y			35	230.2
hh			32	230.5
S			27	231.0

	100'	Eg	Grove	St
S			32	230.5
hh			40	229.7
y			42	229.5
b			45	229.2
y			48	228.9
hh			48	228.9
n			48	228.9

23365

bedar

69

	125'	Eg	Grove	St
n			60	227.7
hh			60	227.7
y			61	227.6
b			55	228.2
y			49	228.8
hh			43	229.4
S			34	230.3

	150'	Eg	Grove	St
S			40	229.7
hh			53	228.4
y			66	227.1
b			71	226.6
y			79	225.8
hh			83	225.4
n			92	224.5



23365

175' E of Green st

n	142	219.5
bl	132	220.5
y	121	221.6
f	11.3	222.4
y	10.0	223.7
bl	8.5	225.2
S	6.6	227.1

TP

0.45  
200' E = 222.901120 222.45  
31st st (80)SWH 31  
bedan

S	0.5	222.2
bl	3.6	219.3
y	4.4	218.5
f	5.0	217.9
y	5.8	217.1
bl	7.1	215.8
n	8.6	214.3

TP

0.11 209.98

1303 209.89

TP

0.28 200.31

1295 1970.3

200.31

bedan

E of 31st st

n	8.8	191.5
bl	6.5	193.8
y	6.2	194.1
f	5.9	194.4
y	5.1	195.2
bl	4.0	196.3
S	1.0	199.3

TP

-0.09

187.41

12.89

187.41

2.5

E of

31st

S	1.6	185.8
bl	3.9	183.5
y	4.4	183.0
f	4.8	182.6
y	5.2	182.2
bl	5.3	182.1
n	7.7	179.7



18740

	50'	E of	31	41'
2			159	171.5
bl			158	171.6
4			154	172.0
6			146	172.5
7			152	172.2
h			133	174.1
S			112	176.2

TP 136 176.26 7250 174.90

	75'	E of	31	41'
S			69	169.4
h			75	168.8
4			76	169.7
6			75	168.8
7			77	168.6
h			82	168.1
h			83	168.0

80' E of 31

nd			116	164.7
----	--	--	-----	-------

19627

lead on

71

	100'	E of	31	41'
2			95	166.8
+ 10			96	166.7
h			120	164.3
4			102	166.1
6			100	166.3
7			103	166.0
h			105	165.8
S			102	166.1

125' E of 31

S			119	164.4
h			117	164.6
+ 5			126	163.7
4			119	164.4
6			105	165.8
7			101	166.2
h			96	166.7
h			80	168.3



17626

130	E of	31st St	
n		7.0	176.5
hh		4.9	171.4
y		6.4	169.9
l		7.6	168.7
y		8.3	168.0
hh		9.5	166.8
S		13.3	163.0

175	E of	31st	
-----	------	------	--

S		7.8	168.5
hh		1.3	175.0

TP	1246	18842	0.30	175.96
----	------	-------	------	--------

y		10.5	177.9
l		8.3	180.1
y		6.1	182.3
hh		3.5	184.9
n			191.8

TP

18842

Edin

72

200'	E =	W line of Ida St	
------	-----	------------------	--

S		1.2	176.2	
hh		3.9	184.5	
y		1.0	187.4	
TP	1271	20110	0.03	188.39
l		10.0	191.1	
y		7.2	193.9	
hh		5.3	195.8	
n		1.3	199.8	

175'	E of	31st	
------	------	------	--

n		9.3	191.8
---	--	-----	-------

TP	1601	20974	1.33	199.77
----	------	-------	------	--------

E line of	Ida St		
-----------	--------	--	--

S		13.4	196.4	
hh		3.5	206.3	
TP	1256	22200	0.34	209.44

NE W Ida  
Edin



22200

E Sin of Ida st

54 140 2100

b 96 2124

4 67 2153

ll 39 2181

n 00 2200 ✓

25' E of Ida

S 179 2011

ll 92 2128

4 66 2154

b 40 2180

4 22 2198

WTP 8/2 22998 014 22186

ll 76 2224

n 35 2275

22988

Cedar

73

50' E of Ida st

n 00 2200

ll 31 2279

4 54 2246

b 74 2226

4 100 2200

ll 121 2179

S 179 2191

75' E of Ida

S 138 2162

ll 80 2220

4 55 2245

b 33 2267

4 15 2285

ll 04 2296

WTP 258 23220 026 22962

n 04 2218



23220

	100'	E of	Ida	W
h			0.0	222.2
bb			1.2	221.0
y			2.2	220.0
b			3.4	228.8
y			5.0	227.2
bb			7.2	225.0
S			13.0	219.2

	125'	E of	Ida	
S			11.9	220.3
bb			6.4	225.8
y			4.6	227.6
b			3.4	228.8
y			2.6	229.6
bb			2.0	230.0
h			0.8	231.4

23210

	150'	E of	Ida	
h			3.2	219.0
bb			4.6	227.6
y			5.6	226.6
b			6.4	225.8
y			7.9	224.3
bb			9.8	222.2
S			12.8	219.2
			13.3	218.9

	175'	E of	Ida	
S			17.7	214.5
bb			15.1	217.1
y			14.5	217.7
b			14.5	217.7
			10.8	221.8
y			9.5	222.7
bb			8.2	224.0
h			5.4	226.8

bedar

74



23220

	200'	E of	Ida	
n			63	225.9
bl			112	221.0
y			133	218.9
l			138	218.4
y			195	212.7
bl			225	209.7
S			250	207.2

	215'	E of	Ida	
S			320	201.2
bl			240	203.2
y			202	212.0
l			154	216.8
y			121	220.1
bl			105	221.7
n			58	226.1

23220

cedar

75

	225'	E of	Ida	
n			49	227.3
bl			90	222.2
y			107	221.5
l			147	217.5
y			170	215.2
bl			200	212.2
			235	208.7
S			280	204.2

	233'	E of	Ida	
S			260	206.2

	234'	E of	Ida	
S			228	209.4

	250'	E of	Ida	
S			206	211.6

			185	213.7
			132	219.0

			117	220.5

			96	222.6

			77	224.5

			53	226.9

			20	230.2



23220

TP	416	<u>23590</u>	046	23174
	290 <sup>1</sup>	E	= W	32 W
2			07	235.2
11			27	233.2
7			47	231.2
6			67	229.2
4			88	227.1
hh <sup>+</sup>			100	225.9
S			25.2	210.7

76



10  
28  
w/

Blayth X Sec of Spruce St (60)  
W2 of Front to Budge

23345

77

(14' lumber)

	2.62	257.62	257.00	Bm SW Thurs 4 1/2	S	41	w of Front	56	227.9
	0.18	215.03	1277	24465	on curb (Break)			56	228.0
	1.39	<u>233.45</u>	1297	23206	Front + Spruce curb SW corner			64	227.1
					Gutter				
					1/4			51	228.4
S			1.2	232.3	curb			49	228.6
ll			1.4	232.1	1/4			52	228.3
gutter			2.2	231.3	ll			51	228.4
bter			1.7	231.8					
ll			2.2	231.3	Side walk			52.5	228.20
Sd Side walk			1.35	232.00	2			44	229.1
2			1.3	232.2		75	w of Front st		

25' w of

Front

2			3.4	230.1	2			67	226.8
ll	Side walk		3.7	229.8	4			81.5	225.0
ll			3.5	230.0	Sd Side walk			8.5	225.0
	Gutter		4.2	229.3	ll			7.5	226.0
	curb		3.7	229.8				7.7	225.8
	Gutter		4.8	228.7	4			7.0	226.5
	on curb		4.0	229.5	4			6.7	226.8
S			11.0	229.5	Gutter			8.2	224.9
					on curb			7.6	225.9
					S			7.6	225.9

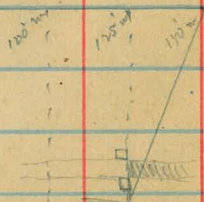


23275-

100' w of Front St

S	9.2	224.3
n bank (End of bank)	9.0	224.5-
Gutter	9.5	224.0
y	9.0	224.5-
b	8.7	224.8
y	9.6	233.9
ll	8.8	224.7
S Side walk	10.8	222.7
n Side walk	10.8	222.7
n	8.5	225.0

JP 420 225-84 118.1 221.64



22584

125' w of Front = End of Bridge

78

n	5.6	220.2
Side walk at End of Bridge w Side of Photo	5.6	220.2
ll	5.1	220.7
y	3.8	222.8
b	3.5	222.3
y	3.4	222.4
Gutter	4.5	221.5
ll	3.5	222.3
S	3.2	222.6
125' w on n side 150' w on S side		
S	160.5	209.8
ll	10.6	215.2
y	7.7	218.1
b	6.7	219.1
y	6.7	219.1
ll	6.7	219.1
n	5.6	220.2



12/8/19 Grapoc  
Miller  
Shaw

Lords on Curb + Side Walk  
Spruce St  
West of Front

0.265 255.265 255.00 NW 1<sup>st</sup> Thru

0.565 242.835 12.415 242.87

4.145 239.610 7.35 235.485

Original W. Line Front

Cb on So. 7.67 231.92

Walk on No. 7.65 231.96

41' West of Front = break in curb grade on So.

Cb on So. 305 230.76 11.90 227.71

99.6' W = End of Cb on So.

Cb on So. 6.45 224.31

125' W of Front. End of Walk on No.

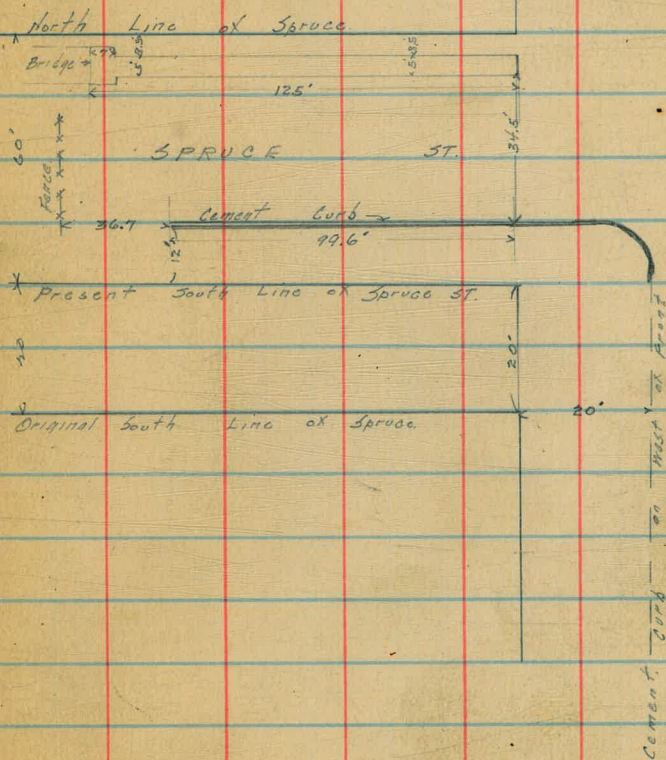
Walk on No. 10.70 220.06

2396  
46  
23496

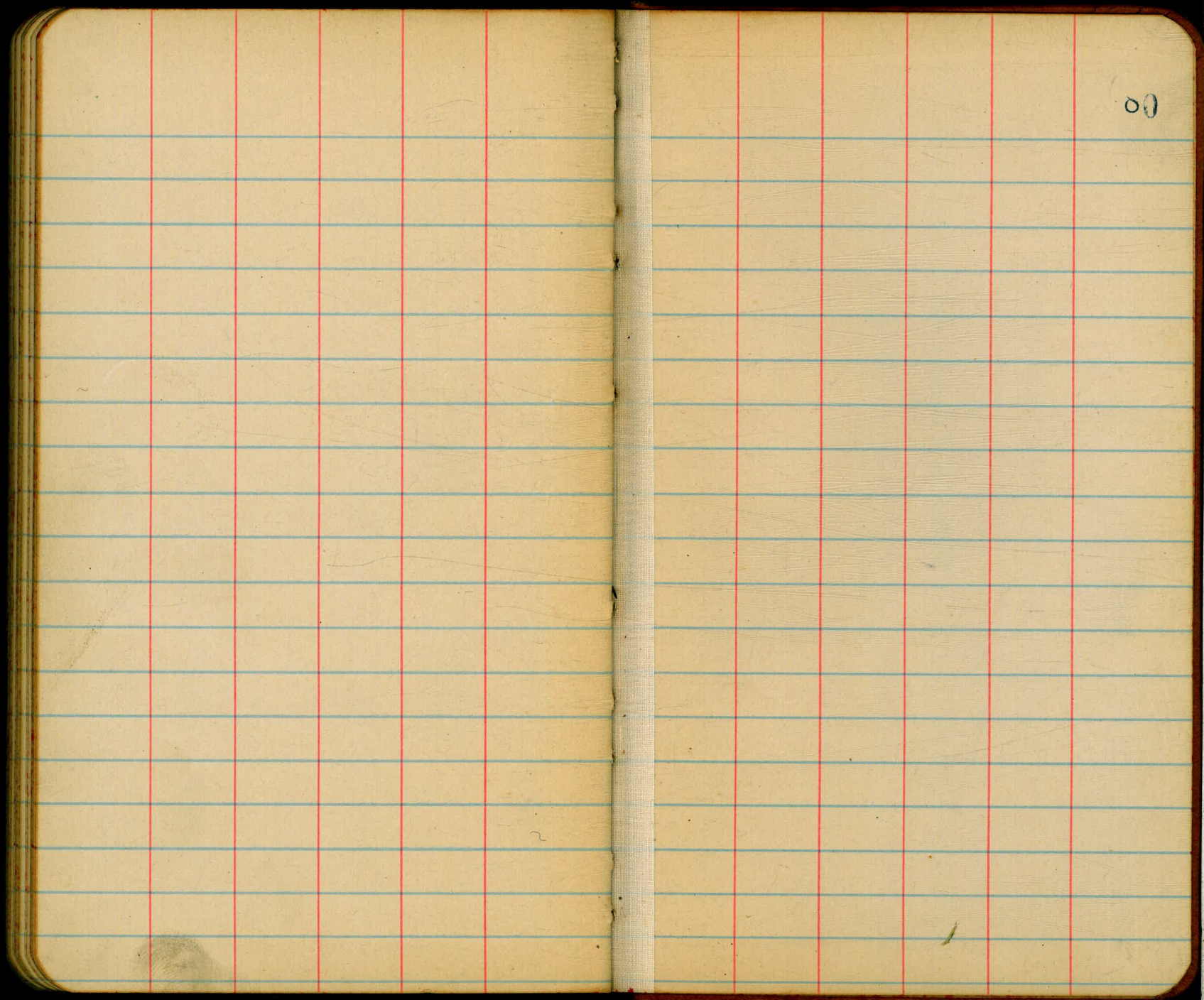
2396  
46  
23496

13  
2396  
46  
23496

79







00



232.00  
6.15  
 238.15 S.W.  
7.1  
 231.05 150 S

208.15  
3.20  
 234.35

229.5  
232  
461.5  
 230.75

20345 4955  
495  
1537  
 42961

374.1

374.07  
5.37  
 378.44  
 374.10

N.W. 229.5  
 S.W. 231.5

371.52  
8.00  
 363.52

379.10  
8.00  
 371.10

232  
210.75  
 150 / 21.25 (1.14)  
150 105  
 625 70  
600  
 25  
14.7  
 217.3



**RODNEY STOKES  
 COMPANY**

INCORPORATED  
 858 THIRD STREET, FRYE & SMITH BUILDING  
 SAN DIEGO, CALIFORNIA