

F.B.
842

LEVEL BOOK.

No. 410

MICROFILMED

DEC 15 1964

504

X See Curlew paper & Annex 65¹/₂
X " Triumph of m^o of Nat 74

68.29

Section of India St 75' wide, from North line of Harasthy
to West line of McKee on North, for road from Harasthy &
India to top of hill.

B.M. 63.43 N.W. cor Harasthy & Arctic.

12' Curbs 12 1/2' quarters.

Aug 29-12 {Dennan:
Shaw,
Hevine.

1

	+	H.I.	-	
	13.01	76.44	0.36	63.40
	4.40	80.48		76.08

00 = North line of Harasthy St.

OK.L.00		2.5
cb		2.6
1/4		2.2
c		1.7
1/4		1.4
cb		0.9
EL		0.3
EL + 12		1.3
cb		1.1
1/4		1.2
c		2.4
1/4		2.7
cb		2.4
OK.L.		3.0
OK.L. + 25		3.3
+ 9		0.1

H.I.
90.48

cl	3.9
1/4	6.4
c	6.5
1/4	5.3
cl	3.0
g.l.	2.3
g.l.+50	4.8

Next in at home & found this had been sectioned

See book 341 Page 19.

Xsections for road continued to next Page.

Xsection of Mc Kee St 50' wide from North line of India St to South line of Columbia.

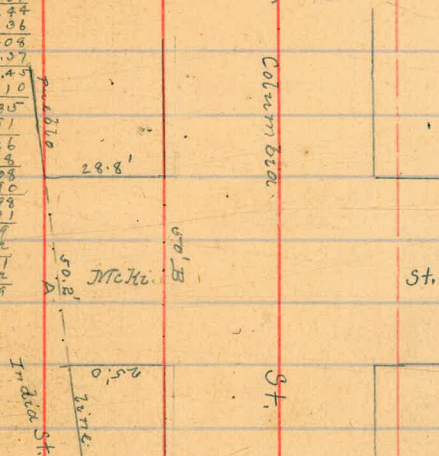
B.M. 63.43 Mon S.W. Cor Harasthy & Arctic

Aug 28-12
Donnan,
Shaw,
Zepline.

2

B.M. 63.43 Mon S.W. Cor Harasthy & Arctic.

110.01
76.77
-0.36
76.03
+12.57
88.45
-0.10
88.35
+12.51
101.26
-0.13
101.03
+12.90
113.93
7.01
113.97
+12.85
126.82
0.72
T.P. 125.99



Mc Kee 10 curbs, 7 1/2 quarters,

H.I.
11.85 137.74 125.39

Section A North line of India

g.l.	13.0
cl	12.3
1/4	11.7
c	12.0
1/4	11.8
cl	11.8
g.l.	11.8

Section B, South line of Columbia

+ H.I.
137.74

	H.I.
OK L.	7.1
cl	7.3
1/2	7.7
c	8.1
1/2	8.3
cl	8.8
E.L.	9.8

Xsections for road continued to next page.

Xsection of Columbia St 50' wide, from East line of McKee St
to West line of Pringle St.
H.I. 137.74 See page 2.

Aug 29-12
(Donnan,
Shaw,
Devine)

3

	H.I.	
+	11.85	132.74
-		125.89

00 = East line of McKee

	H.I.	
W ^h 1/2	9.8	127.9
cl	9.0	28.7
1/4	9.3	29.4
c	9.2	29.5
1/2	7.8	29.9
cl	6.7	31.0
E ^h 1/2	5.9	31.8

East end of McKee (re-entrant)

m ^h	4.3	33.4
cl	4.6	33.1
1/4	5.3	32.4
c	6.0	31.7
1/2	6.8	30.9
cl	7.6	30.1
E.L.	8.8	28.9

#	9.60	139.49	7.85	129.89
---	------	--------	------	--------

30th Pole McKee
& Columbia

PLOTTED

	H.I. 139.49	Columbia St (50' wide)
	139.5	
East 1/2 of McShee St.		
V.L.	10.1	129.4
cb	9.9	30.7
1/4	7.7	31.8
e	7.1	32.4
1/2	6.0	33.5
cb	5.2	34.3
M.L.	4.4	35.1
Center of McShee St.		
M.L.	3.2	36.3
cb	4.3	35.3
1/4	5.3	34.2
e	6.2	33.3
1/2	7.3	32.2
cb	8.5	31.0
V.L.	10.0	29.5
West 1/2 of McShee St.		
V.L.	9.4	30.1
cb	8.2	31.3
1/4	7.1	32.4

PLOTTED

	H.I. 139.49	
	139.5	
		133.8
		34.9
		35.9
		37.2
West end of McShee St.		
M.L.	1.9	37.5
cb	3.4	36.1
1/4	4.7	34.8
e	5.9	33.6
1/2	7.2	32.3
cb	8.2	31.3
V.L.	9.0	30.5
West line of McShee St.		
V.L.	8.3	30.7
cb	7.6	31.9
1/4	6.8	32.7
e	5.5	34.0
1/2	4.4	35.1
cb	3.4	36.1
M.L.	1.6	37.9

139.5
8.8
130.7

4

+

H.I.
139.49

Columbia St (50' wide)

139.5

+20' n. l.	1.8	137.7
cl.	3.0	36.5
1/2	3.9	35.6
e	4.6	34.9
1/4	5.8	33.7
cl	6.7	32.8
n. l. +50	8.6	30.9
n. l.	7.8	31.7
cl	6.4	33.1
1/4	5.2	34.3
e	4.3	35.2
1/4	3.5	36.0
cl	2.6	36.9
n. l. +70	1.2	38.3
n. l.	0.5	39.0
cl	2.0	37.5
1/4	3.0	36.5
e	3.8	35.7
1/4	4.8	34.7
cl	6.2	33.3

PLOTTED

+

H.I.
139.49

139.5

5

n. l. +00	7.3	137.3
n. l.	7.1	37.4
cl	6.0	38.5
1/4	4.5	35.0
e	3.7	35.8
1/4	2.7	36.8
cl	1.7	37.8
n. l. +20	0.3	39.3
n. l.	0.3	39.3
cl	1.7	37.8
1/4	2.5	37.0
e	3.5	36.0
1/4	4.4	35.1
cl	6.1	33.4
n. l.	7.0	32.5

HI
139.99

Columbia St. (50' wide)

1+50 D.L.	6.9	132.5
ck	5.9	133.5
1/2	4.2	35.3
c	3.4	34.1
1/2	2.5	37.0
ck	1.5	38.0
M.L. 1+75	0.7	38.8
M.L.	+0.1	139.60
ck	1.3	38.2
1/2	2.5	37.0
c	3.5	36.0
1/2	4.2	35.3
ck	5.4	34.1
D.L. 2+00	6.6	32.9
D.L.	6.6	32.9
ck	5.5	34.0
1/2	4.5	35.0
c	3.0	36.5
1/2	2.0	37.5
ck	1.0	38.5

PLOTTED

HI
139.99

#	1.57	1.40.41	0.65	138.89
M.L. 2+25			0.4	140.0
M.L.			0.6	39.8
ck			1.9	38.6
1/2			2.8	37.5
i			3.7	36.7
1/2			5.0	35.4
ck			6.5	33.9
D.L. 2+50			8.0	37.4
D.L.			8.4	37.0
ck			7.0	33.4
1/2			5.5	34.9
c			4.2	36.3
1/2			2.6	37.9
ck			1.8	38.6
M.L.			0.8	39.6

H.I.
140.41

Columbia St (50' wide).

H.I.
140.41

7

2475 M.L.	1.7	138.7
cb	3.6	34.8
1/4	5.0	35.4
c	6.3	34.1
1/4	7.6	32.8
cb	8.9	31.5
V.L.	10.2	30.0
3+00 = East line of Pringle St. (50' wide)		
3+00 V.L.	11.2	29.3
cb	9.9	30.5
1/4	8.4	32.0
c	7.1	33.3
1/4	5.6	34.8
cb	4.4	36.0
M.L.	3.1	37.3
East end of Pringle St (10' wide).		
M.L.	3.6	34.8
cb	5.0	35.4
1/4	6.2	34.3
c	7.7	32.7

PLOTTED

1/4	9.1	131.3
cb	70.5	29.9
V.L.	11.9	28.5
East 1/4 of Pringle St (1/2 quarter).		
V.L.	12.0	28.4
cb	10.7	29.7
1/4	9.6	30.8
c	8.3	32.1
1/4	6.9	33.5
cb	6.0	34.4
M.L.	4.5	35.9
Center of Pringle St.		
M.L.	5.5	34.9
cb	7.0	33.4
1/4	8.0	32.4
c	9.0	31.4
1/4	10.2	30.2
cb	11.2	29.2
V.L.	12.6	27.8

+ H.I.
140.41

Columbia (41 50' wide)

West 1/4 of Pringle St.

M.L.	13.1	127.3
cb	11.5	28.9
1/4	10.6	29.9
c	9.5	30.9
1/4	8.4	32.0
cb	7.3	33.1
M.L.	5.6	34.8

West end of Pringle St.

M.L.	6.1	34.3
cb	7.8	32.6
1/4	9.0	31.4
c	10.3	30.1
1/4	11.3	29.1
cb	12.4	28.0
M.L.	13.8	26.6

West line of Pringle St.

M.L. SW line	14.5	25.9
cb	13.2	27.7
1/4	12.0	28.4

PLOTTED

+ H.I.
140.41

c	10.6	129.8
1/4	9.2	31.7
cb	8.2	32.7
M.L. E. line	6.9	33.5
#	6.83	133.58 H. & NW Cor. of Columbia & Pringle.

PLOTTED

Section of Arizona St, 80' wide, 13' quarters, 14' curbs, from the South line of Lincoln to the South line of El Cajon.

BM 319.89 H₂O NE Cor Arizona & Lincoln.
+10.46
329.35 H₂O

Oct 1912.

Donnan,
Shaw,
Devine.

H.I.
329.35

		H.I.	
		329.35	
00= South line of Lincoln St (80' wide).			
E.L.	10.1	319.3	
cb	10.8	319.1	
1/4	11.0	318.4	
c	10.9	318.5	
1/4	11.4	318.0	
cb	11.4	318.0	
N.L.	11.1	318.3	

South curb of Lincoln St (14' curb).

N.L.	11.5	317.9	
cb	11.2	318.2	
1/4	11.0	318.4	
c	10.9	318.6	
1/4	10.8	318.6	
cb	11.1	318.3	
E.L.	10.8	318.6	

South 1/2 of Lincoln St (13' quarters)

E.L.	10.5	318.9	
cb	11.0	318.4	

1/4	10.6	318.9	
c	10.5	318.9	
1/4	10.6	318.8	
cb	11.1	318.3	
N.L.	11.0	318.4	
Center of Lincoln St.			
N.L.	10.1	319.3	
cb	10.8	318.6	
1/4	10.4	319.0	
c	10.4	319.0	
1/4	10.2	319.2	
cb	10.6	318.8	
E.L.	10.5	318.9	
North 1/2 of Lincoln St.			
E.L.	10.3	319.1	
cb	10.4	319.0	
1/4	10.2	319.2	
c	10.4	319.0	
1/4	10.6	318.8	
cb	10.7	318.7	
N.L.	10.6	318.8	

	+	H.I. 329.35	Angina St (80' wide)
North curb of Lincoln St			
OK L.	10.6	318.8	✓
cb	10.5	318.9	✓
1/4	10.4	319.0	✓
c	10.3	319.1	✓
1/4	10.2	319.2	✓
cb	10.4	319.0	✓
B.L.	10.3	319.1	✓
00 = North line of Lincoln St.			
B.L.	10.5	318.9	✓
cb	10.0	319.4	✓
1/4	10.0	319.4	✓
c	10.3	319.1	✓
1/4	10.6	318.8	✓
cb	10.3	319.1	✓
OK L.	10.3	319.1	✓
+25 OK L.	9.9	319.5	✓
cb	9.7	319.7	✓
1/4	10.2	319.2	✓
c	9.8	319.6	✓

	+	H.I. 329.35	
1/4	9.7	319.7	✓
cb	9.9	319.5	✓
B.L. +50	9.3	320.1	✓
B.L.	8.9	320.6	✓
+12	8.8	320.6	✓
cb	9.3	320.1	✓
1/4	9.3	320.1	✓
c	9.3	320.1	✓
1/4	9.9	319.5	✓
+11	9.7	319.7	✓
cb	9.1	320.3	✓
OK L. +75	9.1	320.3	✓
OK L.	9.2	320.2	✓
cb	8.7	320.7	✓
+2	9.3	320.1	✓
1/4	9.1	320.3	✓
c	8.6	320.8	✓
1/4	8.4	321.0	✓
cb	8.6	320.8	✓
+2	8.0	321.4	✓
B.L.	8.1	321.3	✓

	+	H.I. 329.30	-	Angora #4 (80' wide)
1400 B.L.			7.0	321.9 ✓
+12			7.3	322.1 ✓
cb			8.6	321.4 ✓
1/4			8.0	321.4 ✓
c			8.0	321.4 ✓
1/4			8.3	321.1 ✓
+11			8.5	320.9 ✓
cb			8.0	321.4 ✓
OV. L. +25			7.8	321.6 ✓
OV. L.			7.2	322.2 ✓
cb			7.0	322.4 ✓
+2			7.6	321.8 ✓
1/4			7.8	321.6 ✓
c			7.1	322.3 ✓
1/4			7.5	321.9 ✓
cb			7.3	322.1 ✓
+2			6.6	322.8 ✓
B.L.			6.4	323.0 ✓

	+	H.I. 329.35	-	
1450 B.L.			6.1	323.3 ✓
+12			6.3	323.1 ✓
cb			6.6	322.8 ✓
1/4			6.7	322.7 ✓
c			6.6	322.8 ✓
1/4			6.9	322.5 ✓
+12			6.9	322.5 ✓
cb			6.2	323.2 ✓
OV. L. +75			6.8	322.6 ✓
OV. L.			5.9	323.5 ✓
cb			5.5	323.9 ✓
+2			6.2	323.2 ✓
1/4			6.0	323.4 ✓
c			5.7	323.7 ✓
1/4			5.9	323.5 ✓
cb			6.4	323.0 ✓
+1			6.0	323.4 ✓
B.L.			5.8	323.6 ✓

	H.I. 329.35	Original 47 (80' wide)
2400 E.L.	5.4	324.0 ✓
+12	5.3	324.1 ✓
cl	5.7	323.7 ✓
1/4	5.5	323.9 ✓
c	5.4	324.0 ✓
1/4	5.7	323.7 ✓
+12	5.7	323.7 ✓
cl	5.0	324.4 ✓
OK L. 2-125	5.2	324.2 ✓
OK L.	4.3	325.1 ✓
cl	4.6	324.8 ✓
+2	5.1	324.3 ✓
1/4	5.2	324.2 ✓
c	4.9	324.6 ✓
1/4	4.7	324.7 ✓
cl	5.1	324.3 ✓
+2	4.6	324.8 ✓
E.L.	4.7	324.7 ✓

	H.I. 329.35	
2450 E.L.	4.0	325.4 ✓
+12	4.0	325.4 ✓
cl	5.0	324.4 ✓
1/4	4.5	324.9 ✓
c	4.3	325.1 ✓
1/4	4.6	324.8 ✓
+12	4.6	324.8 ✓
cl	4.1	325.3 ✓
OK L. 2-175	4.4	325.0 ✓
OK L.	3.7	325.7 ✓
cl	3.5	325.9 ✓
+2	4.0	325.4 ✓
1/4	4.0	325.4 ✓
c	3.6	325.8 ✓
1/4	3.9	325.5 ✓
cl	4.3	325.1 ✓
+1	4.0	325.4 ✓
E.L.	4.2	325.2 ✓

	H.I. 329.00	Arizona (87 80 wide)
3+00 B.L.	3.2	326.2 ✓
cl	3.5	325.9 ✓
+2	3.9	325.5 ✓
1/4	3.8	325.6 ✓
c	3.0	326.4 ✓
1/2	3.4	326.0 ✓
cl	3.5	325.9 ✓
+2	3.0	326.4 ✓
OK.L.	3.1	326.3 ✓
3+25 OK.L.	2.5	326.9 ✓
cl	2.8	326.6 ✓
+2	3.4	326.0 ✓
1/4	3.4	326.0 ✓
c	2.9	326.5 ✓
1/2	3.5	325.7 ✓
cl	3.7	325.7 ✓
+2	3.3	326.1 ✓
B.L.	3.4	326.0 ✓

	H.I. 329.00	
3+50 B.L.	3.0	326.4 ✓
+12	2.8	326.6 ✓
cl	3.4	326.0 ✓
1/4	3.1	326.3 ✓
c	2.9	326.5 ✓
1/4	3.3	326.1 ✓
+12	3.1	326.3 ✓
cl	2.7	326.7 ✓
OK.L.	2.5	326.9 ✓
3+75 OK.L.	2.4	327.0 ✓
+12	2.2	327.2 ✓
cl	2.8	326.6 ✓
1/4	2.9	326.5 ✓
c	2.6	326.8 ✓
1/4	3.1	326.3 ✓
cl	3.4	326.0 ✓
+2	2.7	326.7 ✓
B.L.	3.1	326.5 ✓

+ 7.I.
329.35

Arizona Vt (80 wide)

400' B.L.	2.7	326.7 ✓
+12	2.4	327.0 ✓
cl	2.9	326.5 ✓
1/4	2.3	327.1 ✓
c	2.5	326.9 ✓
1/2	2.8	326.6 ✓
+11	2.9	326.5 ✓
cl	2.2	327.2 ✓
OK L. +12.5	2.2	327.2 ✓
OK L.	2.0	327.4 ✓
cl	2.0	327.4 ✓
+2	2.6	326.8 ✓
1/2	2.7	326.7 ✓
c	2.2	327.2 ✓
1/2	2.3	327.1 ✓
cl	2.6	326.8 ✓
+2	1.9	327.5 ✓
B.L.	2.0	327.4 ✓

+ 7.I.
329.35

14

400' B.L.	1.3	328.1 ✓
+12	1.6	327.8 ✓
cl	2.3	327.1 ✓
1/4	2.2	327.2 ✓
c	1.9	327.5 ✓
1/2	2.3	327.1 ✓
cl	1.9	327.5 ✓
OK L. 4.75	1.8	327.6 ✓
OK L.	1.8	327.6 ✓
cl	2.0	327.4 ✓
1/2	2.0	327.4 ✓
c	1.7	327.7 ✓
1/2	1.8	327.6 ✓
cl	2.0	327.4 ✓
+12	1.5	327.9 ✓
B.L.	1.5	327.9 ✓

	7.I. 329.35	Arizona Vt (30' wide)	
5+00 E.L.		1.2	328.2 [✓]
+8		1.3	328.1 [✓]
+9		1.9	327.5 [✓]
cl		1.9	327.5 [✓]
1/4		1.7	327.7 [✓]
c		1.4	328.0 [✓]
1/4		1.6	327.8 [✓]
cl		1.9	327.5 [✓]
OK L.		1.4	328.0 [✓]
5+25 OK L.		1.5	327.9 [✓]
cl		1.7	327.7 [✓]
1/4		1.4	328.0 [✓]
c		1.1	328.3 [✓]
1/4		1.8	328.1 [✓]
cl		1.8	327.6 [✓]
+3		1.5	327.7 [✓]
+5		1.0	328.4 [✓]
E.L.		0.5	328.6 [✓]

	7.I. 329.35		
5+50 E.L.		0.6	328.8 [✓]
cl		1.0	327.9 [✓]
1/4		1.1	328.3 [✓]
c		0.9	328.5 [✓]
1/4		1.2	328.2 [✓]
cl		1.2	328.2 [✓]
OK L. 5+75		1.0	328.4 [✓]
OK L.		0.8	328.6 [✓]
cl		1.2	328.2 [✓]
1/4		0.9	328.5 [✓]
c		0.6	328.8 [✓]
1/4		0.7	328.7 [✓]
cl		1.0	328.4 [✓]
E.L.		0.1	329.3 [✓]

H.I.
329.30

Arizona Mt (30' wide)

6200 = South line of Polk Mt (50' wide)

6200 E.L.	0.1	329.3
cl	0.5	328.9
1/4	0.6	328.8
c	0.5	328.9
1/2	0.6	328.8
cl	1.0	328.4
M.L.	0.7	328.7
#	5.16	333.73

324 .57
SW Cor 7122 B
Arizona

South curb of Polk Mt (14' curb)

M.L.	5.2	328.5
cl	5.2	328.5
1/4	5.2	328.5
c	5.0	328.7
1/2	4.8	328.7
cl	4.5	329.2
E.L.	4.4	329.3

H.I.
333.73

16

South 1/4 of Polk Mt (1/3' quarter)

E.L.	4.6	329.1
cl	4.6	329.1
1/4	5.0	328.7
c	5.0	328.7
1/2	5.1	328.6
cl	5.2	328.5
M.L.	5.3	328.4

Center of Polk Mt.

M.L.	5.0	328.7
cl	4.8	328.9
1/4	4.8	328.9
c	4.8	328.9
1/2	4.4	329.3
cl	4.3	329.4
E.L.	4.1	329.6

71.2.
333.73

Arizona (34' 30" wide)

71.2.
333.73

17

North 1/4 of Palh St.

E.L.	4.3	329.4 [✓]
cb	4.5	329.2 [✓]
1/2	4.6	329.1 [✓]
c	4.7	329.0 [✓]
1/2	5.0	328.7 [✓]
cb	5.1	328.6 [✓]
W.L.	5.1	328.6 [✓]
North curb of Palh St.		
OK.L.	5.2	328.5 [✓]
cb	5.2	328.5 [✓]
1/2	5.0	328.7 [✓]
c	4.9	328.9
1/2	4.4	329.3 [✓]
cb	4.3	329.4 [✓]
E.L.	4.0	329.7 [✓]

00 = North line of Palh St.

E.L.	3.9	329.8 [✓]
cb	4.2	329.5 [✓]
1/2	4.6	329.1 [✓]
c	4.8	328.9 [✓]
1/2	4.8	328.9 [✓]
cb	4.9	328.8 [✓]
OK.L.	5.0	328.7 [✓]
+25 OK.L.	5.2	328.5 [✓]
cb	4.9	328.8 [✓]
1/2	4.7	329.0 [✓]
c	4.4	329.3 [✓]
1/2	4.4	329.3 [✓]
cb	4.4	329.3 [✓]
E.L.	4.3	329.4 [✓]

71.2
333.73

Original Mt (80' wide)

+50 E.L.	3.9	329.8 ✓
cl	4.5	329.2 ✓
1/2	4.3	329.4 ✓
c	4.6	329.1 ✓
1/2	4.9	328.9
cl	5.0	328.7 ✓
OR. L.	5.2	328.5 ✓
+75 OR. L.	5.0	328.7
cl	4.9	328.8 ✓
1/4	5.1	328.6 ✓
c	5.1	328.6 ✓
1/2	4.7	329.0 ✓
cl	4.2	329.5 ✓
E.L.	4.8	329.4 ✓
+100 E.L.	4.2	329.5 ✓
cl	4.1	329.6 ✓
1/4	4.5	329.2 ✓
c	4.8	328.9 ✓
1/4	4.6	328.9 ✓
cl	4.7	329.0 ✓

71.1
333.73

18

OR. L.	5.0	328.7 ✓
+125 OR. L.	5.1	328.6 ✓
cl	5.0	328.7 ✓
1/4	5.0	328.7 ✓
c	4.6	329.1 ✓
1/4	4.8	329.4 ✓
cl	4.0	329.7 ✓
E.L.	4.3	329.4 ✓
+150 E.L.	4.4	329.3 ✓
cl	3.8	329.9 ✓
1/2	4.4	329.3 ✓
c	4.6	329.1 ✓
1/4	4.9	328.8 ✓
cl	5.0	328.7 ✓
OR. L.	5.3	328.4 ✓

+ HI
333.73

Arizona St. (80' wide)

1475 OK L.	5.3	328.4 [✓]
cb	5.0	328.7 [✓]
1/4	4.7	329.0 [✓]
c	4.6	329.1 [✓]
1/4	4.2	329.5 [✓]
cb	3.9	329.8 [✓]
B.L. 2+00	4.1	329.6 [✓]
B.L.	3.7	330.0 [✓]
cb	3.6	330.1 [✓]
1/4	4.2	329.5 [✓]
c	4.5	329.2 [✓]
1/4	4.8	328.9 [✓]
cb	5.0	328.7 [✓]
OK L. 2+25	5.2	328.5 [✓]
OK L.	3.9	329.8 [✓]
cb	4.8	328.9 [✓]
1/4	4.6	329.1 [✓]
c	4.1	329.6 [✓]
1/4	3.9	329.8 [✓]
cb	3.5	330.2 [✓]

+ HI
333.73

19

B.L. 2+00	3.6	330.1 [✓]
B.L.	3.0	330.7 [✓]
cb	3.5	330.2 [✓]
1/4	3.9	329.8 [✓]
c	3.9	329.8 [✓]
1/4	4.2	329.5 [✓]
cb	4.5	329.2 [✓]
OK L. 2+75	4.8	328.9 [✓]
OK L.	4.8	328.9 [✓]
cb	4.6	329.1 [✓]
1/4	4.8	329.4 [✓]
c	3.9	329.8 [✓]
1/4	3.8	329.9 [✓]
cb	3.4	330.3 [✓]
B.L.	3.1	330.6 [✓]

H.I.
333.73

Angona H (80' wide)

3+00 E.L.	3.0	330.4
cb	3.1	330.6
1/2	3.2	330.5
c	3.7	330.0
1/2	3.9	329.8
cb	4.2	329.5
OK.L. 3+25	4.4	329.3
OK.L.	4.3	329.4
cb	4.0	329.7
1/2	3.7	330.0
c	3.7	330.0
1/2	3.5	330.2
cb	3.0	330.7
E.L. 3+50	3.2	330.5
E.L.	3.4	330.3
cb	3.4	330.3
1/2	3.8	329.9
c	3.9	329.8
1/2	4.0	329.7
cb	4.2	329.5

H.I.
333.73

20

OK.L. 3+75	4.4	329.3
OK.L.	4.9	328.8
cb	4.6	329.1
1/2	4.1	329.6
c	4.0	329.7
1/2	3.7	330.0
cb	3.4	330.3
E.L. 4+00	3.6	330.1
E.L.	3.0	330.7
cb	3.4	330.3
1/2	3.8	329.9
c	4.0	329.7
1/2	4.1	329.6
cb	4.5	329.2
OK.L.	4.7	329.0

HI
333.73

Angina 47 50 miles

4+25 OK.L.	4.7	329.0'
cl	4.5	329.2'
1/2	4.2	329.5'
c	3.9	329.8'
1/2	3.9	329.8'
cl	3.3	330.4'
E.L. 4+50	2.7	331.0'
E.L.	3.2	330.5'
cl	3.4	330.3'
1/4	3.6	330.1'
c	3.8	329.9'
1/4	4.2	329.5'
cl	4.5	329.2'
OK.L. 4+75	4.7	329.0'
OK.L.	4.7	329.0'
cl	4.4	329.3'
1/2	4.0	329.7'
c	3.6	330.1'
1/2	3.6	330.1'
cl	3.1	330.6'

HI
333.73

21

E.L. 5+00	2.8	330.9'
E.L.	2.8	330.9'
cl	3.1	330.6'
1/2	3.6	330.1'
c	3.9	329.8'
1/4	4.1	329.6'
cl	4.6	329.1'
OK.L.	5.0	328.7'
# 5+25	7.17	335.94
OK.L.	7.4	328.1'
cl	6.9	329.0'
1/2	6.4	329.5'
c	5.9	330.0'
1/4	5.4	330.5'
cl	4.6	331.3'
E.L.	4.5	331.4'

+

H.I.
330.94

Arizona Mt (80' wide)

5750 E.L.	4.9	331.01
cl	5.0	330.91
1/4	5.6	330.31
c	6.0	329.91
1/4	6.6	329.31
cl	7.0	328.91
OK.L.	7.2	328.71
5775 OK.L.	7.2	328.71
cl	7.0	328.91
1/4	6.5	329.41
c	5.8	330.11
1/4	5.8	330.61
cl	4.9	331.01
E.L.	4.4	331.51
6400 = South line of Howard Mt (80' wide)		
6400 E.L.	4.2	331.71
cl	4.7	331.21
1/4	5.3	330.61
c	5.8	330.11
1/4	6.4	329.51

+

H.I.
330.94

22

cl	7.0	328.91
OK.L.	7.4	328.51
South side of Howard Mt (14' curbs)		
OK.L.	7.0	328.91
cl	6.6	329.31
1/4	6.1	329.81
c	5.8	330.11
1/4	5.8	330.61
cl	4.7	331.21
E.L.	4.4	331.51
South 1/2 of Howard Mt (13' quarters)		
E.L.	3.9	332.01
cl	4.4	331.51
1/4	5.7	330.21
c	6.2	329.71
1/4	6.5	329.41
cl	6.8	329.11
OK.L.	7.4	328.51

H.I.
330.94

Arizona St (60' wide)

Center of Howard St

OK.L.	6.9	329.1'
cl	6.2	329.7'
1/2	5.7	330.2'
c	5.4	330.5'
1/2	4.9	331.0'
cl	4.3	331.6'
E.L.	3.6	332.4'

North 1/2 of Howard St.

E.L.	4.0	331.9'
cl	4.5	331.4'
1/2	5.3	330.6'
c	5.9	330.0'
1/2	6.5	329.4'
cl	6.9	329.0'
OK.L.	7.4	328.5'

North curb of Howard St.

OK.L.	6.8	329.1'
cl	6.2	329.7'
1/2	6.0	329.9'

H.I.
330.94

23

c	5.6	330.3'
1/2	5.0	330.9'
cl	4.2	331.7'
E.L.	3.7	332.2'
oo = North line of Howard St.		
E.L.	3.0	332.6'
cl	3.9	332.0'
1/2	4.7	331.2'
c	5.4	330.5'
1/2	5.9	330.0'
cl	6.2	329.7'
OK.L.	6.4	329.5'
OK.L.	6.3	329.6'
cl	6.1	329.8'
1/2	5.8	330.1'
c	5.2	330.7'
1/2	4.4	331.5'
cl	3.6	332.3'
E.L.	3.3	332.6'

+

H.I.
335.94

Angora St (30' wide)

+50 E.L.	2.9	333.0'
cb	3.1	332.8'
1/2	4.0	331.9'
c	4.8	331.1'
1/2	5.4	330.5'
cb	5.9	330.0'
OK L. +75	6.5	329.4'
OK L.	6.3	329.6'
cb	5.6	330.3'
1/2	4.9	331.0'
c	4.5	331.4'
1/2	3.9	332.0'
cb	2.9	333.0'
E.L. +100	2.1	333.8'
E.L.	2.2	333.7'
cb	2.9	333.0'
1/2	3.7	332.2'
c	4.4	331.5'
1/2	5.0	330.9'
cb	5.5	330.4'

+

H.I.
335.94

OK L. +125	6.0	329.9'
OK L.	5.0	330.9'
cb	5.0	330.9'
1/2	4.4	331.5'
c	3.8	332.1'
1/2	3.2	332.7'
cb	2.4	333.5'
E.L. +150	1.7	334.2'
E.L.	0.9	335.0'
cb	1.7	334.2'
1/2	2.8	333.1'
c	3.4	332.5'
1/2	4.1	331.8'
cb	4.7	331.2'
OK L.	5.1	330.8'

24

+

H.I.
30692

Arizona (N 30' wide)

1-70

OK.L.

4.9 331.0'

cl

4.2 331.7'

1/2

3.5 332.4'

c

3.0 332.9'

1/4

2.3 333.6'

cl

1.7 334.2'

E.L.

0.6 335.3'

2-100

E.L.

0.4 335.5'

cl

1.5 334.4'

1/4

2.1 333.8'

c

2.7 333.2'

1/2

3.5 332.4'

cl

4.1 331.8'

OK.L.

4.6 331.3'

2+20

OK.L.

4.2 331.7'

cl

3.6 332.3'

1/2

3.0 332.9'

c

2.5 333.4'

1/4

1.9 334.0'

cl

1.1 334.8'

+

H.I.
30694

25

E.L.

2+50

0.0

335.9'

E.L.

+0.0

336.4'

cl

0.6

335.3'

1/4

1.3

334.6'

c

2.0

333.9'

1/4

2.6

333.3'

cl

3.4

332.5'

OK.L.

2+70

4.1

331.8'

OK.L.

3.3

332.1'

cl

3.1

332.8'

1/2

2.4

333.5'

c

1.0

334.4'

1/4

0.8

335.1'

cl

0.2

335.7'

E.L.

+0.7

336.6'

+

H.I.
335.94

Arizona St (80' wide)

st 00 E 2		+1.1	337.0'
cl		+0.1	336.0'
1/2		0.6	335.3'
c		1.2	334.7'
1/2		2.0	333.9'
cl		2.7	333.2'
OK 2.		3.4	332.5'
st 25		3.2	332.7'
OK 2.		2.7	333.2'
cl		2.7	333.2'
1/2		1.8	334.1'
c		1.0	334.9'
1/4		0.1	335.8'
#	398	0.17	335.77'
cl		3.2	336.6'
E 2.		2.2	337.6'
st 33 = South line of El Cajon Ave			
st 33			
E 2		1.8	338.0'
cl		2.0	336.8'
1/4		3.7	336.1'
c		4.7	335.1'

+

H.I.
339.75

28

1/2		5.5	334.3'
cl		6.4	333.4'
OK 2.		7.0	332.8'
#		0.60	339.15 = 339.08 237 SE Cor El Cajon & Arizona.

68

67.98

	0+75			
- 25		10.3	57.7	
W		8.8	59.2	
crb		8.2	59.8	
"4		7.7	60.3	
M		7.2	60.8	
"4		6.8	61.2	
crb		6.1	61.9	
E		5.8	62.2	
+ 25		5.4	62.6	
	1+0			
- 25		1.5	66.5	
E		1.1	66.9	
crb		1.5	66.5	
"4		2.1	65.9	
M		2.4	65.6	
"4		2.2	65.8	
crb		2.6	65.4	
W		3.0	65.0	
+ 25		5.2	62.8	
T.P.	12.97	80.88	0.08	67.91

80.88

29

	1+25			
- 20		14.9	66.0	
W		12.0	68.8	
crb		10.9	70.0	
"4		9.4	71.5	
M		8.5	72.4	
"4		7.9	73.0	
crb		6.9	74.0	
E		5.3	75.6	
	1+50			
E		0.7	80.3	
crb		2.2	78.7	
"4		3.7	77.2	
M		4.7	76.2	
"4		6.1	74.8	
crb		7.3	73.6	
W		9.2	71.7	
+ 20		12.1	68.8	
T.P.	11.84	90.71	2.01	78.87

90.71

1475

-20	19.5	71.2
W	16.5	74.2
crb	15.2	75.5
"4	13.9	76.8
M	11.9	78.8
"4	10.5	80.2
crb	9.0	81.7
E	7.9	82.8

240

E	5.8	84.9
crb	6.8	83.9
"4	7.8	82.9
M	8.8	81.9
"4	10.2	80.5
crb	12.4	78.3
W	15.7	75.0
+20	16.7	74.0

90.71

2425

-20	14.8	75.9
W	11.8	78.9
crb	10.5	80.2
"4	8.6	82.1
M	7.1	83.6
"4	6.0	84.7
crb	4.6	86.1
E	3.2	87.5

2450

E	0.9	89.8
crb	2.0	88.7
"4	3.6	87.1
M	4.7	86.0
"4	5.9	83.8
crb	7.3	83.4
W	9.2	81.5
+20	12.6	78.1
T.P.	12.91	99.38
	424	86.47

30

99.38

2175

-20	19.8	78.6
W	15.7	83.7
Crk	14.1	85.3
"9	13.0	86.4
M	11.5	87.9
"10	10.5	88.9
Crk	9.1	90.3
E	7.7	91.7

3+0 = 5.4 McFee 80' wide

E	5.6	93.8
Crk	6.8	92.6
"9	8.0	91.4
M	10.2	89.2
"14	11.4	88.0
Crk	12.7	86.7
W	14.7	84.7
+20	17.7	81.7

99.38

5 cut 6

31

W	13.6	85.8
Crk	12.7	86.7
"14	10.8	88.6
M	8.8	90.6
"9	6.5	92.9
Crk	5.2	94.2
E	3.8	95.6

5 "14

E	2.5	96.9
Crk	4.1	95.3
"14	5.9	93.5
M	7.9	91.5
"14	10.0	89.4
Crk	12.0	87.4
W	13.3	86.1

99.38

Center

W	12.7	86.7
crk	10.7	88.7
"4	8.8	90.6
M	6.5	92.9
"4	5.1	94.3
crk	3.8	96.1
E	1.9	97.5
	N "A	
E	1.3	98.1
crk	3.1	96.3
"4	4.7	94.7
M	6.2	93.2
"4	8.0	91.4
crk	9.9	89.5
W	12.2	87.2

99.38

32

N CURB

W	11.8	87.6
crk	9.8	89.6
"4	7.8	91.6
M	5.8	93.6
"4	4.0	95.4
crk	2.3	97.1
E	0.5	98.9
	N. L. M ^c / c	
E	0.1	99.3
crk	1.8	97.6
"4	3.4	96.0
M	5.1	94.3
"4	7.6	91.8
crk	10.0	89.4
W	11.6	87.8
+20	14.3	85.1

X-section McKee St E.L. Arctic to W.L. Columbia
 McKee 80 mids from Arctic to India 3 50 mids from India to Columbia
 1/11 Double
 Evans
 Kirk

99.38

E.L. Arctic

S		5.6	93.8
erb		3.8	95.6
"A		2.5	96.9
M		1.9	98.5
"A		1.3	98.1
erb		0.5	98.9
N		0.1	99.3
T.P.	1217	110.89	0.66 98.72
		0+25 E	
N		6.9	104.0
erb		8.1	102.8
"A		9.1	101.8
M		10.4	100.5
"A		11.5	99.4
erb		12.8	98.1
S		14.4	96.5

110.89

0+50

33

S		11.7	99.2
erb		10.3	100.6
"A		9.0	101.9
M		7.9	103.5
"A		6.3	104.6
erb		5.2	105.7
N		4.1	106.8
		0+75	
N		0.9	110.0
erb		1.9	109.0
"A		3.2	107.7
M		4.7	106.2
"A		5.7	105.2
erb		7.5	103.4
S		8.6	102.3
T.P.	1219	121.03	2.55 108.34

121.03

140

S	15.2	105.8
erb	14.3	106.7
"4	12.6	108.4
M	11.4	109.6
"4	10.1	110.9
erb	9.1	111.9
N	8.1	102.9

1425

N	5.1	115.9
erb	5.8	115.2
"4	6.6	114.4
M	7.4	113.6
"4	8.5	112.5
erb	9.8	111.2
S	11.8	109.2

121.03

1450

S	7.6	113.4
erb	6.5	114.5
"4	5.7	115.3
M	4.7	116.3
"4	3.6	117.4
erb	2.6	118.4
N	1.6	119.4
T.P	6.79	127.01
		0.81

7475

N	4.7	122.3
erb	5.5	121.5
"4	6.6	120.4
M	7.5	119.5
"4	8.8	118.2
erb	9.3	117.7
S	11.2	115.8

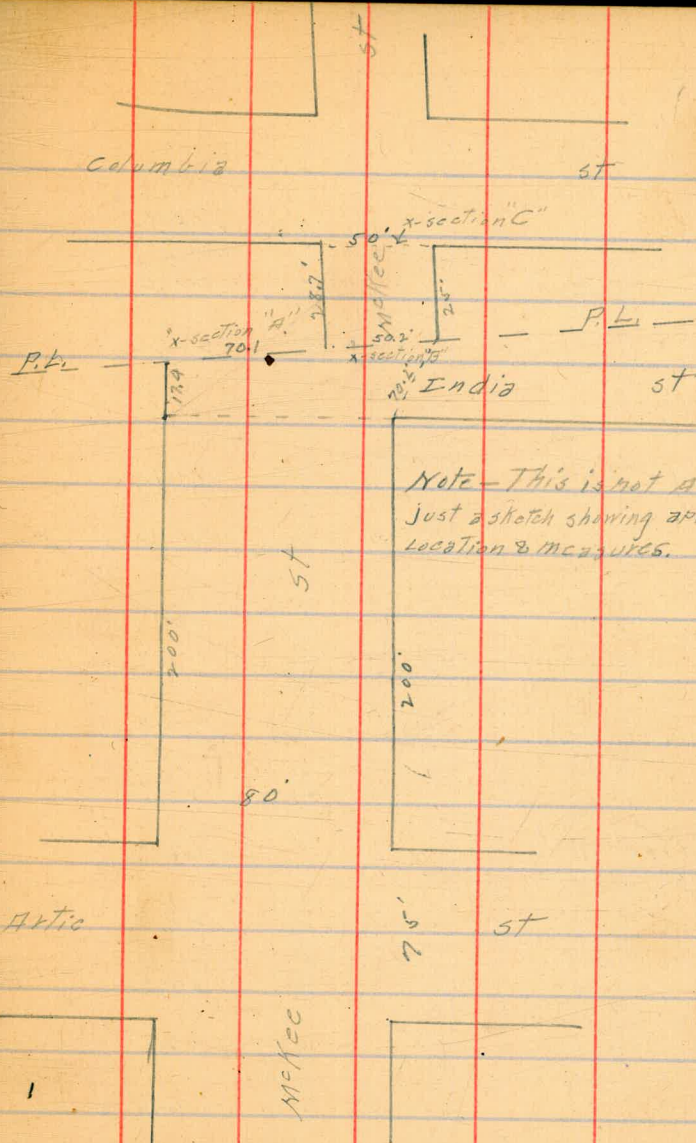
34

12701

240 - m.l. India

S			8.2	118.8
erb			7.3	119.7
"A			6.0	121.0
M			4.8	122.2
"A			3.9	123.1
erb			2.7	124.3
N			1.6	125.4
T.P.	8.38	133.25	2.14	124.87
X-section "A"				
N			5.5	127.7
+10			5.9	127.3
+20			6.0	127.2
+30			6.2	127.0
+40			6.6	126.6
+50			7.1	126.1
+60			6.9	126.3
+70.1-S			7.3	125.9

35



133.25

X-section B. 10' walk 7/2/1925

N	7.3	125.9
erb	7.2	126.0
1/4	7.1	126.1
N	7.5	125.7
1/4	7.3	125.9
erb	7.7	125.5
S	8.4	124.8

X-section "C"

S	5.2	128.0
erb	4.3	128.9
1/4	3.8	129.4
N	3.6	129.6
1/4	3.1	130.1
erb	2.7	130.5
N	2.6	130.6

36

Cont. from page 79 Book 843. See diagram } Builds
 Book 843 page 70. } Taylor
 H.I. ✓ } alt 37
 135.51 Nov. 4/12

J.P.	0.25	135.51	135.26	75' south
A	25' south sect. S.L. page 70	White		2.1 133.4
	Book 843	1/4		4.8 130.7
W. line	0.3	135.2	C	6.0 129.5
1/4	2.3	133.2	1/4	7.7 127.8
C	2.5	133.0	E line	8.9 126.6
1/4	4.0	131.5	15' east slope	11.5 124.0
E line	4.8	130.7		100' south
15' east slope	6.8	128.7	15' east slope	14.1 121.4
	50' 20.		E line	10.5 125.0
15' east slope	8.8	126.7	1/4	8.5 127.0
E line	6.9	128.6	C	5.9 129.6
1/4	6.2	129.3	1/4	4.8 130.7
C	4.5	131.0	White	1.9 133.6
1/4	4.1	131.4		125' south
White	1.5	134.0	White	

13551

125' south

Wline	3.8	131.7
1/4	6.5	129.0
C	7.7	127.8
1/4	9.1	126.4
E line	10.6	124.9
15' east slope	13.0	120.5

150' south

15' east slope	13.3	122.2
E line	10.6	124.9
1/4	9.4	126.1
C	7.7	127.8
1/4	7.3	128.2
Wline	5.1	130.4

13551

175' south

Wline	6.4	129.1
1/4	8.4	127.1
C	8.9	126.6
1/4	10.2	125.3
E line	11.2	124.3
15' east slope	13.0	122.5

200' south

15' east slope	14.1	121.4
E line	12.3	123.2
1/4	11.3	124.2
C	10.2	125.3
1/4	9.9	125.6
Wline	8.1	127.4

38

135,51

225' south

White		9.8	125.7
1/4		11.7	123.8
c		12.1	123.4
E 1/4		13.3	122.2

250' south

White		12.2	123.3
J.P.	0.18 ^{H.I.} / 22.66	13.03	122.48

225' south

E line		1.9	120.8
15' east slope		4.4	118.3

250' south

15' east slope		8.8	113.9
E line		7.1	115.6
1/4		6.1	116.6
c		3.1	119.6
W 1/4		0.7	122.0

WR

12266

275' south

White		1.9	120.8
1/4		2.7	120.0
c		5.0	117.7
1/4		9.2	113.5
E line		11.4	111.3
15' east slope		13.8	108.9
19' "	bottom of draw.	15.4	107.3

300 south

15' east slope		15.3	107.4
11' east	bottom of draw.	16.8	105.9
E line		12.7	110.0
1/4		8.8	113.9
c		6.4	116.3
1/4		4.8	117.9
White		4.7	118.0

12266
325' South

White	6.3	116.4
1/4	6.8	115.9
C	7.7	115.0
1/4	9.2	113.5
E line	12.5	110.2
14' east. bottom of draw.	17.7	105.0
15' east slope	16.1	106.6
Sect. N.M. page 70 Book 843		
19' east bottom of draw	17.9	104.8
15' east slope	16.5	106.2
E line	12.0	110.7
1/4	9.5	113.2
C	8.3	114.4
1/4	7.2	115.5
White	6.8	115.9

Nov. 4/12
12266

Childs
Taylors
#40
Allen

Sect. 70 ~~70~~

White	6.8	115.9
1/4	7.4	115.3
C	8.46	114.20
1/4	9.8	112.9
E line	11.8	110.9
15' east slope	15.7	107.0
25' N. bottom of draw.	18.0	104.7
Sect. N.P.		
28' east bottom of draw.	18.6	104.1
15' slope	15.4	107.3
E line	11.9	110.8
1/4	9.8	112.9
C	8.6	114.1
1/4	7.6	115.1
White	6.8	115.9

12266

25' south of sect. N.P.

W. line	8.1	114.6
1/4	8.6	114.1
C	9.6	113.1
1/4	10.5	112.2
E line	11.4	111.3
15' east	15.6	107.1
33' " bottom of draw.	19.5	103.2
50' south		
31' east, bottom of draw	20.0	102.7
15' " slope	14.8	107.9
E line	12.3	110.4
1/4	11.2	111.5
C	10.7	112.0
1/4	9.4	113.3
W line	8.0	114.7

NW. 6/12
122,66Celinda
Taylor
Allen

41

75' south

W line	9.1	113.6
1/4	10.0	111.7
C	12.0	110.7

100' south

C	13.0	109.7
1/4	12.7	110.0
W line	10.3	112.4

125' south

W line	12.3	110.4
J.P.	3.76	113.89
	125.3	110.13

75' south

E 1/4	3.9	110.0
E line	5.0	108.9
15' east	7.7	106.2
30' " bottom of draw.	11.8	102.1

113.89

100' South

24' east bottom of draw	13.5	100.4
15' east slope	70.7	103.2
E line	6.3	107.6
E 1/4	5.3	108.6

135' South

W 1/4	5.8	108.1
C	6.4	107.5
1/4	7.2	106.7
E line	8.6	105.3
15' east slope. bottom of draw	13.7	100.2

150' South

15' east slope	13.0	100.9
11' " bottom of draw.	13.9	100.0
E line	11.5	102.4
1/4	10.4	103.5
C	9.9	104.0
1/4	8.3	105.6
W line	5.7	108.2

42

113.89

175' South

W line	8.2	105.7
1/4	10.8	103.1
C	12.7	101.2
1/4	13.8	100.1
E line bottom of draw.	14.0	99.9
15' east slope	10.2	103.7

200' South

15' east slope	9.0	104.9
E line	12.5	101.4
1/4	14.6	99.3
1/4 + 6'	15.3	98.6
C	14.7	99.2
1/4	12.9	101.0
W line	10.0	103.9

113.89

225' south

wline 11.3 102.6

250' south

wline 12.2 101.7

260' south

wline 12.0 101.9

J.P. 0.99 ^{H.I. ✓} 102.42 12.46 101.43

225' south

w 1/4 2.6 99.8

C 3.4 99.0

1/4 bottom of draw. 3.9 98.5

E line 1.9 100.5

5' east slope 0.0 102.4

250' south

15' east slope 5.4 99.0

E line 4.5 97.9

1/4 bottom of draw. 4.6 97.8

C 4.4 98.0

w 1/4 3.3 99.1

48

102.42

260' south

w 1/4 3.2 99.2

C 4.5 97.9

1/4 4.7 97.7

E line bottom of draw. 4.8 97.6

15' east slope 5.4 97.0

275' south

15' east slope 5.7 96.7

E line 5.3 97.1

1/4 5.2 97.2

C 4.4 98.0

1/4 2.2 100.2

1/4 + 7' 1.2 101.2

wline 7.9 94.5

102.42

sect. 2, R

w line	8.7	93.7
w line + 4'	1.2	101.2
w 1/4	3.7	98.7
c	4.9	97.5
1/4	6.3	96.1
E line bottom of draw	7.1	95.3
15' east slope	6.2	96.2

sect 2, S

15' east slope	6.3	96.1
E line bottom of draw	7.3	95.1
1/4	6.2	96.2
c	5.02	97.40
w 1/4	2.0	100.4
1/4 + 6'	1.2	101.2

44

102.42

sect. 2, S

w line + 4'	1.2	101.2
w 1/4	2.0	100.4
c	4.8	97.6
1/4	6.3	96.1
E line bottom of draw	7.4	95.0
15' east slope	7.3	95.1

25' north sect. 2, S

15' east slope	7.7	94.7
E line bottom of draw	7.9	94.5
1/4	7.8	94.6
c	6.2	96.2
1/4	3.3	99.1
1/4 + 3'	9.2	93.2
w line	10.6	91.8

102,42

50' south

White		10.7	91.7
White + 5'		10.4	92.0
W 1/4		4.6	97.8
C		7.2	95.2
1/4		8.5	93.9
E line		8.1	94.3
6' east.		7.4	95.0
8' east slope		4.4	98.0
J.P.	H.I. ✓	4.62	97.56
		9.48	92.94
	75' south		
15' east slope		4.0	93.6
E line		4.1	93.5
1/4	bottom of draw.	4.4	93.2
C		4.3	93.3
1/4		4.8	92.8
W line		4.8	92.8

45

97.56

100' south

White		5.4	92.2
1/4	bottom of draw.	5.1	92.5
C		4.9	92.7
1/4		5.0	92.6
E line		4.8	92.8
15' east slope		4.0	93.6
	125' south		
15' east slope		4.4	93.2
E line		5.4	92.2
1/4		5.5	92.1
C		5.9	91.7
1/4	bottom of draw	6.1	91.5
W line		5.9	91.7

72
Nov. 6/12
9756

Helville
Taylor
Allen

46

150' south

W line		6.5	91.1
1/4		6.6	91.0
C	bottom of draw	6.8	90.8
1/4		6.2	91.4
E line		5.9	91.7
15' east slope		5.1	92.5

158' south

15' east slope		4.8	92.8
E line		6.1	91.5
1/4		6.5	91.1
C	bottom of draw	7.1	90.5
1/4		6.8	90.8
W line		6.5	91.1

9756

162' South

White		6.7	90.9
1/4		7.0	90.6
C	bottom of draw	6.9	90.7
1/4		6.6	91.0
1/4+9'		6.5	91.1
E line		10.0	87.6
15' east slope		13.0	84.6

173' South

15' east slope		13.2	84.4
E line		13.5	84.1
1/4	bottom of draw	13.5	84.1
1/4+2'		6.8	90.8
C		7.4	90.2
1/4		7.7	89.9
W. line		5.7	91.9

9756

47

176' South

White		1.9	95.7
1/4		7.2	90.4
C		7.3	90.3
1/4		6.9	90.7
1/4+2'		13.7	83.9
E line	bottom of draw	13.7	83.9
15' east slope		13.2	84.4

200' South

15' east slope		13.9	83.7
E line	bottom of draw	14.1	83.5
E line + 3'		14.1	83.5
E line + 4'		7.9	89.6
1/4		7.5	90.1
C		7.5	90.1
1/4		5.7	91.9
W line		0.9	96.7

	97.56		
	H.I. J		
J.R.	2.53	90.62	9.47 88.09
	225' south		
W 1/4		1.3	89.3 ^{96.3}
C		1.5	89.1
E 1/4		1.7	88.9
1/4 + 3'		6.4	84.2
E line		6.4	84.2
15' east slope bottom of draw,	7.5		83.1
	250' south		
15' east slope bottom of draw,	7.7		82.9
E line	7.9		82.7
E line + 9'	6.6		84.0
1/4	2.7		87.9
C	2.0		88.6
C + 7'	1.8		88.8
W 1/4	0.0		90.6
			94.3

	90.62	48
	275' south	
W 1/4	2.9	87.7 ^{92.4}
C	2.8	87.8
1/4	3.8	86.8
1/4 + 1'	8.1	82.5
E line	8.1	82.5
15' east slope bottom of draw,	8.1	82.5
	300' south	
15' east slope bottom of draw	8.3	82.3
E line	8.7	81.9
E line + 1'	5.1	85.5
1/4	4.4	86.2
C	3.7	86.9
W 1/4	0.8	89.8
		92.6

90.62

325' south

w 1/4	2.2	^{92.1} 88.4
C	4.5	86.1
1/4	5.1	85.5
E line	5.8	84.8
2' east.	9.1	81.5
15' east slope bottom of draw.	8.9	81.7

350' south

15' east slope bottom of draw.	9.6	81.0
E line	9.0	81.6
E line + 5'	9.0	81.6
E line + 6'	6.8	83.8
1/4	6.0	84.6
C	4.4	86.2
w 1/4	2.0	88.6
		91.7

49

90.62

375' south

w 1/4	1.6	91.6
C	4.0	89.0
1/4	5.4	86.6
E line	7.1	85.2
15' east slope bottom of draw.	10.1	83.5
		80.5

400' south

17' east slope bottom of draw.	10.6	80.0
E line	9.7	80.9
E line + 1'	6.7	83.9
1/4	6.0	84.6
C	4.5	86.1
w 1/4	2.3	88.3
		90.3

9062

425' South

W 1/4	2.8	89.7 87.8
C	5.0	85.6
1/4	5.7	84.9
E line	7.6	83.0
15' east slope bottom of draw	11.0	79.6

430' South

15' east slope bottom of draw	11.5	79.1
E line	9.3	81.3
1/4	7.2	83.4
C	5.7	84.9
W 1/4	3.8	86.8
		89.1

9062

475' South

W line	2.1	88.5
1/4	4.3	86.3
C	6.2	84.4
1/4	8.7	81.9
E line	10.3	80.3
6' east bottom of draw	11.8	78.8
15' east slope	9.9	80.7

500' South

15' east slope	10.9	79.7
6' east bottom of draw	12.3	78.3
E line	11.5	79.1
1/4	9.2	81.4
C	6.4	84.2
1/4	5.1	85.5
W line	2.7	87.9

90.62
525' south

White	3.2	87.4
1/4	6.1	84.5
C	6.7	83.9
1/4	9.7	80.9
E line	12.0	78.6
8' east bottom of draw	12.8	77.8
15' east slope	12.2	78.4

550' south

15' east slope	12.6	78.0
10' east bottom of draw	13.0	77.6
E line	11.3	79.3
1/4	9.1	81.5
C	7.1	83.5
1/4	6.3	84.3
White	4.2	86.4

90.62

51

575' south

White	5.4	85.2
1/4	8.2	82.4
C	8.4	82.2
1/4	10.3	80.3
E line	12.5	78.1
15' east slope bottom of draw	13.3	77.3

600' south

15' east slope bottom of draw	13.9	76.7
E line bottom of draw	14.4	76.2
1/4	12.1	78.5
C	9.1	81.5
1/4	8.5	82.1
White	6.3	84.3

9062

625' south

White	6.6	84.0
1/4	9.5	81.1
C	10.8	79.8
E 1/4	13.5	77.1

650' south

E 1/4	13.5	77.1
C	11.6	79.0
1/4	9.8	80.8
White	6.5	84.1

675' south

White	4.9	85.7
1/4	9.0	81.6
C	12.0	78.6

700' south

C	11.6	79.0
1/4	8.5	82.1
White	4.4	86.2

9062

725' south

White	4.4	86.2
1/4	9.0	81.6
C	11.9	78.7

750' south

C	12.6	78.0
1/4	9.8	80.8
White	6.8	84.8

775' south

White	6.3	84.3
W 1/4	11.3	79.3

800' south

W 1/4	11.7	78.9
White	8.1	82.5

825' south

White	8.1	82.5
W 1/4	12.1	78.5

90.62

	850' South		
W 1/4		12.5	78.1
White		10.0	80.6
	875' South		
White		12.0	78.6
W 1/4		13.2	77.4
J.P.		13.05	77.57
J.P.	9.66 ^{HI.} 97.75		88.89
	225' South		
White		1.5	96.3
	250' South		
White		3.5	94.3
	275' South		
White		5.4	92.4
	300' South		
White		5.2	92.6
	325' South		
White		5.7	92.1

97.75

	350' South		
White		6.1	91.7
	375' South		
White		6.7	91.1
	400' South		
White		7.5	90.3
	425' South		
White		8.1	89.7
	450' South		
White		8.7	89.1
	J.P.	2.34 ^{HI.} 79.91	77.57
	625' South		
E line bottom of draw		4.8	75.1
15' east slope.		4.2	75.7
	650' South		
15' east slope		5.1	74.8
7' east bottom of draw		6.5	73.4
E line		5.9	74.0

79.91

675' south

E 1/4 3.2 76.7

E line 5.6 74.3

15' east slope bottom of draw 6.5 73.4

700' south

15' east slope bottom of draw 7.4 72.5

7' east 7.3 72.6

E line 5.3 74.6

1/4 2.3 77.6

725' south

E 1/4 3.3 76.6

E line 5.0 74.9

15' east slope bottom of draw 8.4 71.5

750' south

20' east bottom of draw 9.0 70.9

15' east slope 8.2 71.7

E line 5.1 74.8

E 1/4 4.3 75.6

79.91

775' south

C 2.8 77.1

1/4 5.6 74.3

E line 5.8 74.1

15' east slope bottom of draw 9.6 70.3

800' south

15' east slope bottom of draw 9.8 70.1

7' east 9.7 70.2

E line 6.8 73.1

1/4 6.8 73.1

C 3.7 76.2

825' south

C 3.6 76.3

1/4 6.5 73.4

E line 7.5 72.4

6 east 10.1 69.8

15' east slope bottom of draw 10.2 69.7

54

22

79.91

850' south

15° east slope bottom of draw	10.6	69.3
E line	8.4	71.5
1/4	7.2	72.7
C	4.0	75.9

875' south

C	9.1	70.8
1/4	8.6	71.3
E line	8.5	71.4
15° east slope	8.5	71.4

900' south

15° east slope	8.0	71.9
E line	8.4	71.5
1/4	8.8	71.1
C	9.9	70.0
W 1/4	8.2	71.7

NW. 6/12
79.91

913' south

white	3.6	76.3
white + 1'	8.7	71.2
1/4	9.5	70.4
C	9.6	70.3
1/4	9.0	70.9
E line	8.7	71.2
15° east slope	8.8	71.1

915' south

15° east slope	8.8	71.1
E line	8.7	71.2
1/4	9.0	70.9
C	9.5	70.4
1/4	9.1	70.8
white	8.4	71.5

Childs
Layer 55
Allen

79.91

925' south

White	8.2	71.7
1/4	8.5	71.4
C	9.2	70.7
1/4	9.1	70.8
E line	9.8	70.1
J.P.	5.77	^{H.I.} 75.40 1028 69.63
15' east slope bottom of draw	6.2	69.2
Sect. UV Book 843 page 71		
15' east. slope bottom of draw	6.8	68.6
E line	5.77	69.63
1/4	5.5	69.9
C	4.5	70.9
W 1/4	4.3	71.1
White	3.5	71.9

NW. 7/12

75.40

Chulda
Taylor
Otter

sect. 2W

White	4.3	71.1
1/4	4.3	71.1
C	4.23	71.17
1/4	5.7	69.7
E line	5.77	69.63
15' east slope bottom of draw	6.8	68.6

sect. 2X

15' east. slope bottom of draw	6.8	68.6
E line	5.77	69.63
J.P.	2.58	^{H.I.} 72.21
1/4	2.8	69.4
C	1.3	70.9
1/4	1.3	70.9
White	1.1	71.1

72.21

10' south sect UX

White	0.9	71.3
1/4	2.5	69.7
C	3.5	68.7
1/4	3.3	68.9
Elise	2.7	69.5
15' east slope bottom of draw.	3.9	68.3
16' south		
15' east slope bottom of draw	3.9	68.3
Elise	2.7	69.5
1/4	3.4	68.8
C	3.4	68.8
1/4	3.6	68.6
White	3.1	69.1

72.21

25' south

White	4.2	68.0
1/4	3.8	68.4
C	3.5	68.7
1/4	3.7	68.5
Elise	3.0	69.2
15' east slope bottom of draw.	3.9	68.3
50' south		
15' east slope bottom of draw	3.9	68.3
Elise	3.6	68.6
1/4	4.0	68.2
C	4.3	67.9
1/4	4.6	67.6
White	4.8	67.4

58

72.21

75' south

White	4.8	67.4
1/4	4.8	67.4
C	4.7	67.5
1/4	4.5	67.7
E line	4.2	68.0
10' east slope bottom of draw	4.2	68.0
15' east slope	3.5	68.7

100' south

15' east slope	3.6	68.6
13' " bottom of draw	4.4	67.8
E line	4.0	68.2
1/4	4.5	67.7
C	4.8	67.4
1/4	5.0	67.2
White	5.2	67.0

59

72.21

135' south

White	5.4	66.8
1/4	5.0	67.2
C	4.6	67.6
1/4	4.5	67.7
E line	4.2	68.0
10' east bottom of draw	4.6	67.6
15' east slope	3.1	69.1

sect. AB page 57

15' east slope bottom of draw	4.6	67.6
E line	3.8	68.4
1/4	4.2	68.0
C	4.6	67.6
1/4	5.1	67.1
White	5.5	66.7

7221

Sect. A C

W line	5.5	66.7
1/4	5.1	67.1
C	4.57	67.64
1/4	4.3	67.9
E line	4.0	68.2
15' east slope	3.3	68.9

Sect. A D

15' east slope	3.6	68.6
E line	4.2	68.0
1/4	4.6	67.6
C	4.8	67.4
1/4	5.2	67.0
W line	5.5	66.7

60

72.21

25' south Sect A 10

W line	5.9	66.3
1/4	5.6	66.6
C	5.1	67.1
1/4	4.7	67.5
E line	4.4	67.8
15' east slope	4.0	68.2

50' south

15' east slope	4.4	67.8
E line	4.9	67.3
1/4	5.4	66.8
C	5.7	66.5
1/4	5.9	66.3
W line	6.2	66.0

~~W line~~

72.21

75' south

White	6.2	66.0
1/4	6.0	66.2
C	5.6	66.6
1/4	5.5	66.7
E line	5.2	67.0
15' east slope.	4.9	67.3

100' south

15' east slope.	7.3	64.9
E line	6.6	65.6
1/4	6.0	66.2
C	5.9	66.3
1/4	6.2	66.0
White	6.7	65.5

72.21

119' south

White	7.3	64.9
1/4	7.4	64.8
1/4+5	7.5	64.7
C	10.2	62.0
1/4	11.9	60.3
E line bottom of draw.	13.7	58.5
15' east " " "	13.4	58.8

125' south

15' east bottom of draw.	13.6	58.6
E line " " "	14.2	58.0
1/4 " " "	15.0	57.2
C	9.1	63.1
1/4	7.5	64.7
White	7.7	64.5

72,21

133' south

15' west slope	13.4	58.8
W line	9.8	62.4
1/4	7.5	64.7
C	7.2	65.0
1/4 bottom of draw	15.7	56.5
E line	14.1	58.1
15' east	13.6	58.6

138' east

15' east slope	10.6	61.6
E line	12.8	59.4
1/4	9.9	62.3
C	7.5	64.7
W 1/4	8.0	64.2

72,21

149' south

W 1/4	8.6	63.6
C	7.4	64.8
1/4	8.2	64.0
E line	9.3	62.9

156' south

E line	8.7	63.5
1/4	7.4	64.8
C	7.5	64.7
1/4	8.3	63.9
W line	12.8	59.4

175' south

15' west slope	12.2	60.0
W line	7.9	64.3
1/4	7.3	64.9
C	7.2	65.0
1/4	7.1	65.1
E line	5.5	66.7

0.56

72.21

68

72.21

200' south

Elise	0.8	71.4
1/4	2.5	69.7
C	4.6	67.6
1/4	6.5	65.7
White	7.2	65.0
15' west slope.	9.1	63.1

225' south

15' west slope	7.9	64.3
White	5.6	66.6
white + 7'	4.8	67.4
W 1/4	2.6	69.6

250' south

15' west slope	5.4	66.8
7' "	3.5	68.7
White	4.2	68.0
White + 2'	4.2	68.0
White + 3'	1.6	70.6

275' south

15' west slope	4.8	67.4
7' "	2.4	69.8
White	1.8	70.4
J.P.	1.72	61.26
	12.17	60.04
	138' south	

White	7.3	54.5
15' west slope.	4.5	57.3

149' south

15' west slope bottom of draw	9.4	52.4
White	8.0	53.8

156' south

15' west slope.	5.0	56.8
J.P.	6.43	78.08
	0.56	71.65
	225' south	

Elise	2.1	76.0
1/4	3.5	74.6
C	6.4	71.7

7808

250' north

w 1/4	6.6	71.5
c	3.7	74.4
1/4	1.7	76.4
E line	1.5	76.6

275' north

E line	4.0	74.1
1/4	5.1	73.0
c	6.4	71.7
w 1/4	7.2	70.9

sect E.H. page 57

15' west slope.	10.1	68.0
8' "	7.9	70.2
W line	7.4	70.7
1/4	6.8	71.3
c	6.2	71.9
1/4	5.3	72.8
E line	3.5	74.6

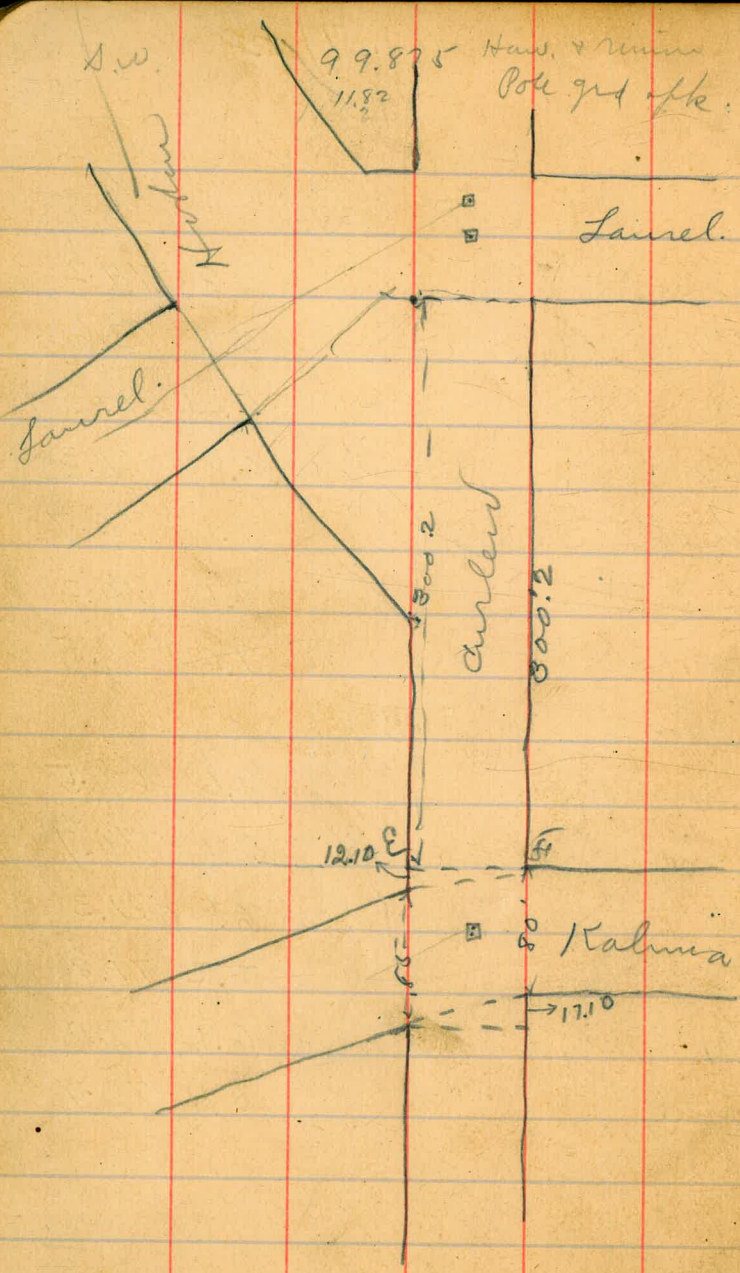
 Nov. 7/12
 78,08
 Leibold's
 Taylor 65
 Allen

sect. E.G.

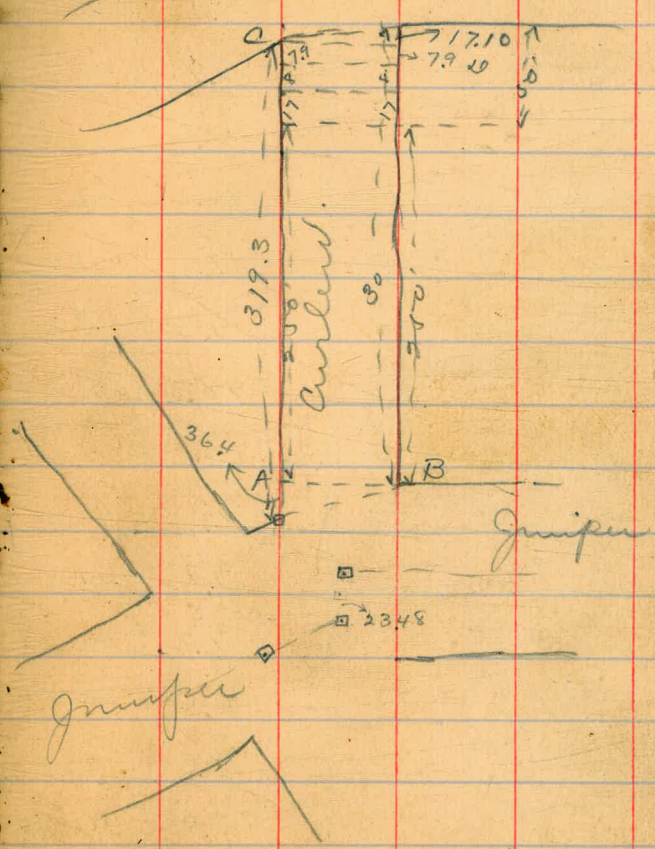
E line	3.9	74.2
1/4	5.5	72.6
c	6.2	71.87
1/4	6.8	71.3
W line	7.4	70.7
11' west.	7.9	70.2
15' u slope.	9.6	68.5

sect. E.H.

15' west slope.	9.6	68.5
W line	7.4	70.7
1/4	6.8	71.3
c	6.2	71.9
1/4	6.1	72.0
E line	5.4	72.7



(65%) X sect. Curled from
Juniper to Laural. of bluffs
of attic
May. 14/13
Kalmia



319.3
208
500

8.53 108.41

99.88

no. line of juniper

E line

2.1 106.3

3.7 104.7

5.5 102.9

C

6.7 101.7

7.1 101.3

9.3 99.1

White

10.3 98.1

sect. on A.B.

White

8.8 99.6

7.5 100.9

7.2 101.2

C

6.5 101.9

5.2 103.2

3.8 104.6

E line

2.1 106.3

108.21

25' north sect A.B.

E line

1.3 107.1

2.4 106.0

3.8 104.6

C

5.0 103.4

5.7 102.7

7.8 100.6

White

8.5 99.9

50' north.

White

6.8 101.6

6.0 102.4

5.1 103.3

C

4.1 104.3

2.7 105.7

1.6 106.8

E line

0.1 108.3

52

H.I

11460

J.P. 6.48 114.60 0.29 108.12

125' no.

75' north

Elio

4.0 110.6

Elio

5.5 109.1

6.1 108.5

6.9 107.7

7.8 106.8

8.1 106.5

c

6.6 108.0

c

8.6 106.0

7.4 107.2

9.8 104.8

7.8 106.8

10.3 104.3

white

7.9 106.7

white

10.6 104.0

150' no.

100' no.

white

7.0 107.6

white

9.1 105.5

7.0 107.6

8.8 105.8

7.0 109.6

8.6 106.0

c

7.9 106.7

c

7.3 107.3

8.2 106.4

7.4 107.2

8.5 106.1

5.9 108.7

Elio

6.4 108.2

Elio

4.5 110.1

114.60

175' no.

Elms	11.4	103.2
	9.6	105.0
	11.4	103.2
e	16.0	98.6
	13.0	101.6
	5.3	109.3
White	6.2	108.4

200' no.

White	6.2	108.4
	5.1	109.5
	7.6	107.0
e	12.6	102.0
	12.4	102.2
	10.2	104.4
Elms	10.9	103.7

Current

68

114.60

225' no.

Elms	6.1	108.5
	6.4	108.2
	7.5	107.1
e	3.0	111.6
	4.8	109.8
	5.2	109.4
White	5.6	109.0

250' no.

White	4.3	110.3
	2.8	111.8
	3.4	111.2
e	2.9	111.7
	3.0	111.6
	4.2	110.4
Elms	0.6	114.0

H.I.

J.P.	10.74	123.23	2.11	112.49
	2.67	910.		
Eline			7.7	115.5
			9.0	114.2
			10.5	112.7
c			12.4	110.8
			13.0	110.2
			11.9	111.3
White			13.6	109.6
	275	no.		
White			10.1	113.2
			11.8	111.4
			12.6	110.6
c			12.1	111.1
			10.8	112.4
			10.6	112.6
Eline			8.2	115.0

Calcutt

123.23

282.9 Sect. C 10

Eline	8.3	114.9
	11.8	111.4
	12.0	111.2
c	11.1	112.1
	9.8	113.4
	6.4	116.8
White	4.3	118.9
	So. line Kalmia	
White	4.3	118.9
	4.2	119.0
	4.3	118.9
c	3.6	119.6
	4.0	119.2
	2.9	120.3
Eline	2.7	120.5

H.I.

J.P. 1203 133.86 140 121.83

No. line Kalunia

E line 11.4 122.5

12.3 121.6

12.5 121.4

c 12.5 121.5

12.7 121.2

12.3 121.6

White 12.5 121.4

sect E F

White 11.1 122.8

11.9 122.0

12.5 121.4

c 12.2 121.7

12.5 121.4

12.3 121.6

E line 11.4 122.5

Quadrat

70

133.86

25' north Sect E F

E line 9.8 124.1

10.6 123.3

10.9 123.0

c 10.8 123.1

10.8 123.1

9.9 124.0

White 9.8 124.1

50' no.

White 7.1 126.8

7.5 126.4

7.9 126.0

c 8.4 125.5

8.8 125.1

8.9 125.0

E line 7.8 126.1

133.86

75' no.

Elvis

6.2 127.7

6.8 127.1

6.8 127.1

e

6.4 127.5

5.7 128.2

5.2 128.2

Whio

5.1 128.8

100' no.

Whio

3.6 130.3

3.6 130.3

3.9 130.0

e

3.8 130.1

4.4 129.5

3.9 130.0

Elvis

3.2 130.7

Cusler

71

133.86

125' no.

Elvis

1.9 132.0

2.4 131.5

2.4 131.5

e

2.2 131.7

2.3 131.6

2.1 131.8

Whio

2.6 131.3

150' no.

Whio

1.0 132.9

0.8 133.1

0.5 133.4

e

0.5 133.4

0.7 133.2

0.1 133.8

Elvis

0.0 133.9

55

H.I.

145.97

Census

72

J.P.

12.86 145.97 0.75 133.11

225' no.

E line

5.7 140.3

E

175' no.

7.1 138.9

E line

9.6 136.4

7.1 138.9

10.1 135.9

C

7.2 138.8

10.6 135.4

7.3 138.7

C

10.1 135.9

7.5 138.5

10.4 135.6

W line

8.0 138.0

11.0 135.0

250' no.

W line

11.5 134.5

W line

5.2 140.8

200' no.

5.5 140.5

W line

10.0 136.0

5.9 140.1

9.2 136.8

C

5.2 140.8

8.7 137.3

5.4 140.6

C

8.8 137.2

5.2 140.8

8.9 137.1

E line

4.2 141.8

8.4 137.6

E line

7.5 138.5

145,97

275⁺ no.

E line

2.5 143.5

3.4 142.6

3.2 142.8

C

3.4 142.6

3.0 143.0

3.2 142.8

W line

2.7 143.3

[300' no.] 20. line Fanned

W line

-0.6 146.6

-0.4 146.4

+0.3 145.7

C

0.7 145.3

1.4 144.6

1.4 144.6

E line

0.5 145.5

X. Sec. Triangle Piece at
Int. Horton, Laurel + Curlew

9/23/13
West
Evans

Sections taken at ^{approx} rt angles to the
W.L. of Curlew street. all distances
are approximate + widths at
each section taken, to be figured
as if at rt angle to W.L. Curlew.

W.L. Curlew. 50' S. Cor of Laurel. 140.8
See P 72. Gr E1. 7.4 148.2

Sec A.

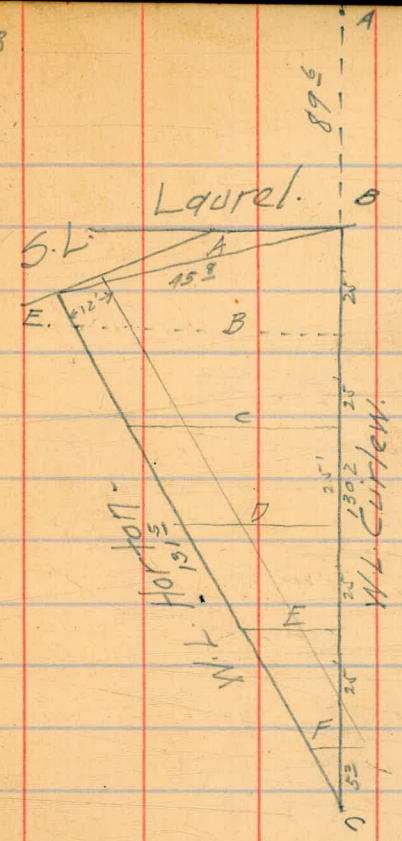
W.L. Curlew.	1.8	146.4	✓
W.Curb. Horton.	2.3	145.9	
W.L. Horton.	2.4	145.8	

Sec B.

W.L. Curlew.	5.0	143.2	✓
W.C. Horton.	4.5	143.7	
W.L. Horton.	4.0	144.2	

Sec C.

W.L. Horton.	7.2	141.0	
W.C. "	7.7	140.5	
W.L. Curlew.	7.4	140.8	✓



148.2

Sec D.

WL. Curlew. 10.2 138.0 ✓

WC. Horton. 10.0 138.2

WL. " 10.1 138.1

Sec E.

WL. Curlew. 12.3 135.9 ✓

" " Horton. 13.0 135.2

~~Sec F.~~

Pf. C

14.2 134.0

LEVELS OVER
CURBS ON FRONT ST
FROM FRONT ST
TO SIXTH ST

2/27/11 Gregory
Stodometer
Moon

150
140
135.7

76

SECOND

ST. FOURTH

ST.

SIXTH

ST.

230.0	229.94	229.92	229.0	242.5	240.95	240.95	240	252.0	251.82	252.0	251.0
FROM 135' E OF 1ST ST TO 160.6' E ON 227.15 NO. SIDE CURB OUT OF LINE BY TREE	229.92	229.92	228.25	241.88	240.54	240.54	240.44	251.82	251.71	250.71	250.82
227.38	227.80	227.45	227.30	241.25	241.15	239.90	239.88	251.69	251.57	250.64	250.69
226.5	226.47	225.92	226.0	240.63	240.43	239.15	239.31	251.53	251.57	250.64	250.55
225.88	225.75	225.20	225.25	239.88	239.29	238.10	238.19	251.41	251.34	250.31	250.41
225.25	225.0	224.47	224.50	238.94	238.61	237.66	237.63	251.28	251.21	250.15	250.28
224.63	224.45	223.70	223.75	238.43	238.43	236.90	236.90	251.13	251.04	249.88	250.13
224.0	223.97	223.92	223.0	237.6	237.49	236.55	236.5	251.0	250.94	249.86	250.0

PAVED

FROM E.L. 3RD ST TO 11' E OF 2ND TO 62' E OF 2ND - PUSHED OUT OF LINE BY TREES ON SO. SIDE

LOG IN CURB HERE OF 2 INCHES. RETURN CURB OUT OF LINE

ON NO. SIDE CURB IS OUT OF LINE FROM E.L. 2ND TO 105' E. NO ONE PLACE IS OVER BUT IT IS RATHER HEAVY

FIRST

ST. THIRD

ST.

FIFTH

ST.

222.0	221.95	220.92	221.0	237.5	236.43	236.43	236.5	250.0	249.74	248.75	249
220.07	220.0	219.11	219.18	236.67	236.60	235.62	235.69	249.19	249.06	247.98	249.13
218.13	218.07	217.82	217.37	235.81	235.81	234.83	234.88	248.38	248.22	247.13	247.25
216.37	216.15	215.52	215.56	235.06	235.05	233.97	234.06	247.56	247.39	246.29	246.38
214.15	214.18	213.65	213.24	234.25	234.25	233.24	233.25	246.95	246.60	245.41	245.50
212.32	212.23	211.86	211.93	233.44	233.44	232.43	232.44	245.74	245.51	244.56	244.63
210.38	210.38	210.05	210.12	232.63	232.63	231.62	231.63	245.13	245.01	243.64	243.75
208.44	208.35	208.25	208.31	231.79	231.79	230.77	230.81	244.31	244.22	243.22	243.08
206.5	206.41	206.42	206.5	231.51	231.29	230.01	230.0	243.5	243.51	241.16	242

FROM 23' E OF 4TH TO 32' E OF 4TH ON SO. SIDE BROKEN OUT BY TREE.

FRONT

ST. SECOND

ST.

FOURTH

ST.

PAVED

PAVED

27

68

69

Center + B - on Albatross for 200' South of South Line of Uoas.
 Sep 28-12 { Zannan. Plans by Irving J. Gill.
 (Shoaro.
 Devine

H.I. 250.80 Plug NW Cor 1st & Walnut.

+1.10
 252.12
 -1.58

245.14 Man Cen Albatross & Uoas.

+1.10
 246.27 H.I.

246.27	246.27	246.27	246.27	246.27	246.27	246.27	246.27
249.00	43.00	43.00	41.00	40.00	38.00	38.00	38.00
2.3	3.3	4.3	5.3	6.3	7.3	8.3	
0.8	3.4	4.1	5.9	7.0	8.2	9.4	
C1.5	F 0.1	C 0.2	F 0.6	F 0.7	F 0.9	F 1.1	

246.27	246.27	246.27	246.27	246.27	246.27
38.00	38.00	37.00	36.00	35.00	35.00
8.3	8.3	9.8	10.3	10.3	11.3
11.2	13.0	13.0	13.4	13.7	14.9
F 2.9	F 4.7	F 3.7	F 3.1	F 3.9	F 3.6

6
24
16
16
17
33
25
1.5
5.
6.0
9.
1.0
1.0

193.0
7

200

275
7.86
282.86
48.7

331.68

2.12

51.15

99.875 B.N. phg. S.W. Kant min



**RODNEY STOKES
COMPANY**
INCORPORATED
858 THIRD STREET, FRYE & SMITH BUILDING
SAN DIEGO, CALIFORNIA