

F.B.
843

LEVEL BOOK

7640

MICROFILMED

DEC 15 1964

~~10-10~~ 9/10 TP near bridge

E 1/2 take

50' E spot takes

Continued from Book 833

Xbee Main St.

10/2/12

1

630

550' E

10N	75	
N	76	-1.3
cb	75	
+7	45	
1/0	44	
5	37	2.6
1/1	43	
1/5	48	
cb	79	
5	79	-1.6
10's	77	

575' E

10's	71	
5	80	-1.7
cb	79	
+5	49	
1/0	44	
5	38	2.5

	630	
1/c	44	
+8	52	
cb	62	
+4	74	
N	76	-1.3
10 N	75	
600' F = Wk Sieve St		
10' N	76	
N	74	-1.1
cb	67	
+5-	44	
1/c	41	
c	35	2.8
1/c	43	
+7	47	
cb	75	
5	76	-1.3
10's	67	

PLOTTED

	630	
	W cb.	
10's	70	
5	75	-1.2
cb	76	
+7	47	
1/c	42	
c	35	2.8
1/c	40	
+9	46	
cb	69	
N	73	-1.0
10' N	75	
	W 1/4	
10' N	76	
N	75	-1.2
cb	73	
+11	42	
1/c	39	
c	33	3.0

PLOTTED

630

1/4		4.1	
+5		4.6	
cb	PLOTTED	7.5	
S		7.1	-0.8
10's		6.7	
	CR		
10's		6.5	
S		7.0	-0.7
cb		7.4	
+7		4.7	
1/4		4.2	
c		3.3	3.0
1/4		3.7	
+8		4.1	
b		7.3	
N		7.6	-1.3
10' N		7.4	
TRP	896	781	745 -1.15

23

781

E 1/4

10' N	PLOTTED	87	
N		89	-1.1
cb		86	
+5		54	
1/4		52	
c		49	2.9
1/4		56	
+7		62	
cb		88	
S		87	-0.9
10's		82	
	E cb		
10's		84	
S		86	-0.8
cb		88	
+9		60	
1/4		56	
c		48	3.0

7.51

PLOTTED

1/0	53	
+ 8	53	
cb	85	
N	89	-1.1
10' N	89	
El. Sieve		
10' N	88	
N	89	-1.1
cb	85	
+ 5	55	
1/0	52	
c	47	3.1
1/0	56	
+ 8	63	
cb	86	
+ 7	91	
5	79	-0.1
10' S	82	

7.51

25' E

PLOTTED

10' S	78	
S	84	-0.6
+ 7	90	
cb	84	
+ 7	63	
1/0	56	
c	47	3.1
1/0	52	
+ 8	54	
cb	83	
N	88	-1.0
10' N	87	
50' E		
10' N	86	
N	85	-0.7
cb	78	
+ 5	53	
1/4	50	

7.81

cr	4.7	3.1
1/6	5.5	
+8	6.6	
cb	8.0	
+10	8.3	
S	7.3	0.5
10'S	7.4	

PLOTTED

7.5'E

10'S	7.4	
S	7.6	0.2
cb	6.8	
+10	5.6	
1/4	5.3	
c	4.6	3.2
1/4	4.9	
+8	5.1	
cb	7.4	
N	8.4	-0.6
10+N	8.5	

7.81
100'E

10'N	8.6	
N	8.2	-0.4
+2	7.0	
cb	7.1	
+5	4.9	
1/6	4.8	
c	4.3	3.5
1/6	5.2	
+5	5.8	
cb	7.4	
+7	7.7	
S	7.1	0.7
10'S	6.7	

PLOTTED

125'E

10'S	7.9	
S	8.2	-0.4
cb	7.7	
+7	5.5	

7.5'

1/2	5.0	
c	4.2	3.6
1/2	4.6	
+9	4.8	
cb	6.5	
N	6.7	1.1
10'N	7.0	

PLOTTED

150' E

10'N	6.4	
N	6.5	1.3
cb	6.2	
+4	4.7	
1/2	4.6	
c	4.1	3.7
1/2	5.0	
+7	5.7	
cb	7.4	
s	8.1	-0.3
10'5	8.2	

7.8'

75' E

10'5	7.2	
s	6.5	1.3
cb	7.0	
+9	5.2	
1/2	4.8	
c	4.1	3.7
1/2	4.4	
+8	4.4	
cb	6.1	
N	6.3	1.5
10'N	6.4	

PLOTTED

200' E

10'N	7.5	
N	7.8	0.0
cb	6.7	
+6	4.4	
1/2	4.2	
c	3.8	4.0

781

1/4	44	
+8	51	
cb	65	
5	64	1.4
10's	69	
	225'E	
10's	71	
5	65	1.3
cb	66	
+6	49	
1/6	42	
c	35	4.3
1/4	41	
+8	44	
cb	62	
N	62	1.6
10' N	63	

PLOTTED

781
250'E

10' N	63	
N	63	1.5
cb	62	1.0
+7	40	
1/6	38	
c	36	4.2
1/6	42	
+7	45	
cb	65	
5	67	1.1
10's	72	
	275'E	
10's	72	
6	69	0.9
cb	67	
+5	47	
1/6	41	
c	33	4.5

PLOTTED

7.81

1/4	36	
+8	40	
cb	6.5	
N	6.5	1.3
10'N	6.5	
300' E		
10'N	6.4	
N	6.4	1.4
cb	6.2	
+6	35	
1/4	34	
c	30	4.8
1/4	38	
+9	46	
cb	6.6	
s	6.9	0.9
10'S	7.0	

PLOTTED

8

7.81

325' E		
10'S	7.0	
s	7.0	0.8
cb	6.6	
+7	42	
1/4	39	
c	30	4.8
1/4	33	
+8	37	
cb	6.4	
N	6.4	1.4
10'N	6.1	
350' E		
10'N	6.6	
N	6.4	1.4
cb	6.4	
+6	32	
1/4	31	
c	27	5.1

PLOTTED

781

1/4	3.7	
+5	4.3	
cb	6.7	
S	7.1	0.7
10's	7.3	
375' E		
10's	7.2	
S	7.1	0.7
cb	6.6	
+5-	4.0	
1/4	3.3	
c	2.5	5.3
1/4	2.9	
+7	3.2	
cb	6.2	
N	6.5	1.3
10' N	6.6	

PLOTTED

781

100' E

10' N	5.9	
N	5.7	2.1
cb	5.4	
+7	3.0	
1/4	2.8	
c	2.4	5.4
1/4	3.2	
+8	3.8	
cb	6.7	
S	7.0	0.8
10's	6.8	
425' E		
10's	6.6	
S	6.5	1.3
cb	6.1	
+6	3.5	
1/4	2.8	
c	2.1	5.7

PLOTTED

		781	
1/4		25	
-7		26	
cb		43	
N		43	3.5
10' N		45	
TD	1010 1468	323	458
	150' E		
A		93	5.4
cb		101	
1/4		91	
c		87	6.0
1/4		97	
+6		105	
cb		118	
S		124	2.3
10' S		124	
	475' E		
10' S		122	
S		11.2	3.5

PLOTTED

		1468	
cb		102	
+11		93	
1/4		90	
c		83	6.4
1/2		90	
cb		95	
N		88	5.9
	500' E		
N		68	7.9
cb		88	
1/2		85	
c		81	6.6
1/2		90	
cb		93	
S		94	5.3
	525' E		
S		81	6.6
cb		76	
		79	
+4		78	

PLOTTED

1468

1/2	88	
c	7.9	6.8
1/4	8.4	
cb	8.7	
+6	8.8	
+8	6.1	
N	6.3	9.4

PLOTTED

650 E

N	4.0	10.7
+6	6.0	
+9	8.0	
cb	8.7	
1/4	8.0	
o	7.7	7.0
1/4	8.5	
+6	8.6	
+8	4.9	
cb	5.0	
5	6.1	8.6

1468

575 E

5	6.8	8.9
cb	4.6	
+3	4.6	
+6	8.5	
1/4	8.6	
c	7.4	7.3

PLOTTED

1/4	7.7	
cb	8.3	
+5	7.4	
+9	4.5	
N	3.9	10.8

600 E = W. Thor St

N	8.1	11.6
+5	4.1	
+9	7.4	
cb	8.2	
1/4	7.4	
c	7.2	7.5

10/31/12

1A68

1/4			80	
+7			83	
+10			4.5	
cb			4.5	
S			6.8	8.9
T.P.	519	17.58	229	12.39
		Wcb		
S			8.6	9.0
cb			7.5	
+4			7.3	
+7			11.1	
1/4			10.9	
c			9.9	7.7
1/4			10.1	
cb			10.9	
+6			10.2	
+11			6.2	
N			5.4	12.2

PLOTTED

1758

N			5.3	12.3
+3			5.7	
+8			9.8	
cb			10.8	
1/4			10.4	
c			9.8	7.8
1/2			10.7	
+7			10.9	
+9			7.5	
cb			7.6	
S			8.5	9.1
S			8.2	9.4
cb			7.2	
+4			7.2	
+6			10.8	
1/4			10.6	
c			9.6	8.0

PLOTTED

1958

1/4	10.0	
+ cb.	10.6	
+ +6	9.7	
cb +10	6.3	
S N	5.2	12.4
T.T		
N	5.2	12.4
S +5	6.3	
cb +9	9.7	
+ cb	10.7	
+ 1/2	9.9	
1/2 c	9.6	8.0
c 1/2	10.4	
1/2 +7	10.8	
cb +9	7.3	
+6 cb	7.2	
+11 S	7.9	9.7
N		
S	7.6	10.0

PLOTTED

E 1/4

Ecb.

13

1958

cb	7.1	
+2	7.1	
+6	10.6	
1/2	10.4	
c	9.6	8.0
1/2	9.8	
cb	10.6	
+5	9.5	
+9	6.3	
N	5.5	12.1
N	6.0	11.6
+5	6.1	
+9	9.6	
cb	10.1	
1/2	9.7	
c	9.5	8.1
1/2	10.3	
+7	10.6	

PLOTTED

Eh. Thor.

1758

+9	7.1	
cb	7.0	
S	7.2	10.4

28 E

S	6.5	11.1
cb	6.0	
+4	5.8	

PLOTTED

+7	10.1	
1/2	10.0	
C	9.0	8.6

1/2	9.4	
cb	9.9	
+6	9.4	

+10	6.2	
N	5.9	11.7

50 E

N	5.6	12.0
+5	6.0	
+8	9.0	

17.58

cb	9.8	
1/2	9.1	
C	8.9	8.7

1/2

+6	9.9	
+9	5.2	
cb	5.2	

PLOTTED

S	5.4	12.2
---	-----	------

75 E

S	5.1	12.5
cb	4.7	
+3	4.8	

+7	9.7	
1/2	9.1	
C	8.6	9.0

1/2	9.0	
cb	9.6	
+5	9.1	
+10	5.1	

	17.58	
N	4.4	13.2
	100'E	
W	2.9	14.7
+4	4.1	
+9	9.2	
cb	9.1	
1/0	8.5	
c	8.2	9.4
1/4	8.8	
+7	9.3	
+10	3.0	
cb	2.8	
S	4.1	13.5
	125'E	
S	3.5	14.1
cb	3.0	
+3	3.2	
+7	9.0	
1/4	8.4	

PLOTTED

	17.58	
C	9.0	9.6
1/0	8.4	
cb	8.8	
+8	8.2	
+10	4.6	
N	3.2	14.4
	150'E	
N	3.1	14.5
+5	4.1	
+9	7.6	
cb	8.8	
1/0	8.2	
c	7.7	9.9
1/0	8.3	
+6	8.4	
+9	2.0	
cb	1.8	
S	2.5	15.1

PLOTTED

1758
175'E

s	2.2	15.4
cb	15	
+3	15	
+7	81	
1/4	78	
c	74	10.2
1/4	78	
cb	78	
+5	73	
+10	32	
N	28	12.8
200'E		
N	27	14.9
+5	29	
+9	70	
cb	77	
1/4	74	
c	71	10.5

PLOTTED

1758

1/4	75	
+6	75	
+10	16	
cb	12	
s	2.1	15.5
225'E		
s	2.3	15.3
cb	17	
110	5.63	21.20
+5	20.1	15.57
	6.9	
+10	11.1	
1/4	10.9	
c	10.4	10.8
1/4	10.8	
cb	11.3	
+8	10.6	
+10	7.0	
N	6.5	14.7

PLOTTED

21.20

250' E

N	5.5	15.7
+4	6.4	
+9	10.5	
cb	11.1	
1/2	10.5	
c	10.1	11.1
1/4	10.6	
+6	10.8	
+10	5.2	
cb	4.9	
S	5.7	15.5

PLOTTED

275' E

S	5.1	16.1
cb	4.2	
+6	4.9	
+10	10.5	
1/4	10.4	
c	9.9	11.3

21.20

1/4

cb

+5

+9

N

N

+5

+7

cb

1/4

c

1/4

+5

+

cb

S

S

10.3

10.6

10.5

6.5

5.7

15.5

5.6

15.6

6.7

9.9

10.6

9.9

9.8

11.4

10.3

10.2

4.7

4.1

5.0

16.2

4.9

16.3

PLOTTED

300' E

325' E

21.20

cb	4.3	
+6	5.0	
+10	10.1	
1/4	10.1	
c	9.6	11.6
1/4	9.9	
cb	10.3	
+6	9.9	
+10	6.3	
N	5.7	13.5
350' E		
N	5.8	15.4
+5	6.3	
+8	9.7	
cb	9.9	
1/4	9.6	
c	9.4	11.8
1/4	9.9	
+5	9.7	

PLOTTED

21.20

+8	5.0	
cb	4.9	
s	5.1	16.1
375' E		
s	4.7	16.5
cb	4.9	
+5	4.9	
+9	9.7	
1/4	9.7	
c	9.2	13.0
1/4	9.4	
cb	9.7	
+6	8.8	
+9	5.9	
N	5.8	15.4
400' E		
N	5.2	16.0
+6	6.1	
+10	9.1	

PLOTTED

2120

cb	9.4	
1/2	9.3	
c	8.9	12.3
1/4	9.7	
+4	9.7	
+9	4.9	
cb	4.9	
s	3.6	17.6

PLOTTED

425'E

s	5.0	16.2
cb	5.9	
+4	5.7	
+8	9.6	
1/4	9.5	
c	8.8	12.4
1/2	9.0	
cb	9.3	
+6	8.9	
+8	7.5	

2120

N	6.9	14.5
	450'E	
N	7.1	14.1
+7	8.0	
+9	8.9	
cb	9.3	
1/2	8.8	
c	8.9	12.3

PLOTTED

1/2	9.5	
+5	9.4	
+7	6.6	
cb	6.4	
s	5.8	15.4

475'E

s	7.1	14.1
cb	7.4	
+6	7.3	
+9	9.5	
1/4	9.2	

2120

c	8.5	12.7
1/2	8.8	
cb	9.1	
+5	9.0	
+9	7.4	
N	7.3	13.9
500' E		
N	7.3	13.9
+9	8.1	
+11	8.9	
cb	9.0	
1/2	8.8	
c	8.5	12.7
1/2	9.3	
+6	9.6	
+7	7.3	
cb	7.7	
s	7.9	13.3

PLOTTED

20

2120

525' E		
s	7.8	13.4
cb	7.9	
+6	7.9	
+7	9.4	
1/2	9.1	
c	8.3	12.9
1/2	8.8	
cb	8.7	
+4	8.5	
+6	7.4	2
N	7.4	13.8
550' E		
N	6.9	14.3
+9	7.3	
+11	8.1	
cb	8.5	
1/2	8.4	
c	8.3	12.9

PLOTTED

2120

1/4	9.1	
+6	9.4	
+8	8.4	
cb	8.4	
S	8.0	13.2
575' E		
S	8.3	12.9
cb	8.7	
+5	8.5	
+8	8.5	
1/4	9.4	
c	8.6	12.6
1/4	7.9	
cb	8.4	
+3	7.5	
N	6.7	14.5
600' E = W 1/2 Ulma St		
N	6.7	14.5
cb	8.0	

PLOTTED

21

2120

1/4	8.1	
c	7.8	13.4
1/4	8.6	
+5	8.2	
cb	8.6	
S	8.3	12.9
W 1/2 cb		
S	8.2	13.0
cb	8.7	
1/4	8.5	
c	7.6	13.6
1/4	8.0	
cb	7.9	
N	6.6	14.6
W 1/4		
N	7.5	13.7
cb	7.8	
1/4	7.9	
c	7.7	13.5

PLOTTED

2120

1/2	86	
cb	86	
S	84	128
	cr	
S	85	127
cb	85	
1/2	83	
c	76	136
1/2	80	
cb	76	
r	71	141
	E 1/4	
N	68	144
cb	76	
1/2	78	
c	78	134
1/2	83	
cb	85	
S	84	128

PLOTTED

22

2120

Ecb.

S	82	130
cb	85	
1/2	84	
c	76	136
1/2	80	
cb	80	
N	67	145
	Eh. W. on St	
N	64	148
45	73	
cb	78	R
1/2	79	
c	76	136
1/2	83	
cb	85	
S	80	132

PLOTTED

	2120			
TP	379	1837	662	14.58 14.60
		25'E		
N			4.5	13.9
cb			5.1	
1/2			5.1	
c			4.7	13.7
1/2			5.4	
+5			5.5	
cb			4.9	
S			5.5	12.9
		50'E		
S			5.9	12.5
cb			5.6	
1/2			5.5	
c			4.7	13.7
1/2			4.9	
cb			5.1	
N			4.7	13.7

PLOTTED

	1827		
		75'E	
N			4.8 13.6
cb			5.1
1/2			5.0
c			4.7 13.7
1/2			5.4
cb			5.8
S			6.0 12.4
		100'E	
S			6.0 12.4
cb			5.3
+5			4.5 8
+7			5.4
1/2			5.4
c			4.6 13.8
1/2			5.0
cb			5.2
+12			4.9
N			4.2 14.2

PLOTTED

1837

125' E

N	4.9	13.5
cb	5.0	
1/2	5.1	
c	4.6	13.8
1/2	5.3	
+6	5.2	
cb	5.2	
S	5.9	12.5
150' E		
S	5.9	12.5
cb	5.4	
1/2	5.3	
c	4.6	13.8
1/2	5.0	
cb	4.9	
N	4.7	13.7

PLOTTED

1837

175' E

N	4.5	13.9
cb	4.9	
1/2	4.9	
c	4.5	13.9
1/2	5.2	
b	5.4	
s	5.7	12.7
200' E		
S	5.5	12.9
cb	5.2	
1/2	5.4	
c	4.5	13.9
1/2	4.9	
cb	4.7	
N	4.1	14.3
225' E		
N	3.6	14.8
cb	4.6	

PLOTTED

24

1837

1/4	4.9	
c	4.4	14.0
1/4	5.2	
cb	4.9	
s	4.5	13.9
250' E		
s	4.6	13.8
cb	4.0	
+3	4.3	
+5	5.3	
1/4	5.1	
c	4.5	13.9
1/4	4.7	
+9	4.5	
cb	4.2	
+10	3.6	
+12	2.9	
N	3.0	15.4

PLOTTED

1837

275' E		
N	3.3	15.1
+7	3.6	
cb	4.4	
1/4	4.7	
c	4.5	13.9
1/4	4.9	
+8	4.5	
+10	3.5	
cb	3.1	
s	5.0	13.4
300' E		
s	5.9	12.5
cb	5.4	
1/4	5.0	
c	4.3	14.1
1/4	4.6	
cb	4.3	
+6	3.6	

PLOTTED

1837

+8	26	
N	26	158
325' E		
N	3.3	15.1
+8	3.2	
+10	4.0	
cb	4.3	
1/2	4.6	
c	4.4	14.0
1/2	5.1	
cb	5.6	
S	5.8	12.6
350' E		
S	5.1	13.9
cb	5.4	
1/2	5.1	
c	4.4	14.0
1/2	9.7	
cb	4.6	
+7	4.4	

PLOTTED

1837

+11	39	
N	39	14.5
375' E		
N	4.1	14.3
cb	4.6	
1/2	4.5	
c	4.4	14.0
1/2	5.1	
cb ⁶	4.8	
S	4.5	13.9
400' E		
S	5.1	13.3
cb	5.3	
1/2	4.9	
c	4.1	14.3
1/2	4.9	
cb	4.2	
N	4.0	14.4

PLOTTED

26

1937

425 E

N	4.1	14.3
cb	3.9	
1/4	4.3	
c	4.0	14.4
1/4	3.9	
cb	4.8	
S	4.7	13.7

PLOTTED

450 E

S	4.9	13.5
cb	4.8	
1/4	4.6	
c	4.0	14.4
1/4	4.2	
+5	3.4	
cb	3.3	

N	3.7	14.7
---	-----	------

475 E

N	3.7	14.7
cb	3.6	

1937

1/4

c

1/4

cb

S

S

cb

1/4

c

1/4

+9

cb

N

N

cb

+3

1/4

40

39

46

47

48

46

45

44

3.7

4.1

3.9

3.4

3.5

3.4

3.3

3.8

4.0

14.5

13.6

13.8

14.7

14.9

15.0

500 E

525 E

27

1837

c	36	14.8
1/4	43	
+7	46	
cb	39	
s	42	14.2
550' E		
s	37	15.3
cb	27	
+3	28	
+5	45	
1/4	42	
c	35	14.9
1/4	39	
+6	40	
+8	35	
cb	34	
N	31	15.3

PLOTTED

1837

575' E

N	25	15.9
+12	24	
cb	31	
+3	37	
1/4	38	
c	35	14.9
1/4	41	
+6	42	
+8	23	
cb	22	
s	19	16.5
600' E = W. Vosta St.		
s	20	16.4
cb	19	
+5	41	
1/4	42	
c	34	15.0
1/4	38	

PLOTTED

18.37

cb		35		
+3		26		
N		1.7	16.7	
TP	498	2209	126	17.11
	WCB			
N		5.4	16.7	
cb		70		
+4		76		
.14		76		
C		7.1	15.0	
1/4		7.8		
+7		7.8		
+10		5.4		
cb		5.4		
S		5.4	16.7	
	W 1/4			
S		5.3	16.8	
cb		5.1		
+5		7.9		

PLOTTED

2209

29

1/2		7.8	
c		7.2	14.9
1/2		7.4	
cb		7.0	
N		5.3	16.8
	cr		
N		4.8	17.3
cb		7.0	
1/2		7.5	
c		7.1	15.0
1/2		7.7	
+7		7.9	
cb		5.1	
S		5.2	16.9
	E 1/4		
S		5.0	17.1
cb		5.1	
+5		7.7	
1/4		7.8	

PLOTTED

2209

c	7.2	14.9
1/2	7.4	
cb	7.2	
N	4.7	17.4
H cb		
N	4.2	17.9
+7	5.1	
cb	7.3	
1/2	7.5	
c	7.2	14.9
1/2	7.7	
+8	7.5	
cb	4.8	
S	4.8	17.3
	EH	
S	4.8	17.3
cb	4.6	
+6	7.6	
1/4	7.6	

PLOTTED

30

2209

c	7.2	14.9
1/2	7.4	
cb	7.1	
+7	4.9	
N	4.3	17.8
	25' E	
N	2.9	19.2
cb	6.1	
+3	7.3	
1/2	7.5	
c	7.1	15.0
1/2	7.7	
+7	7.4	
cb	4.4	
S	4.4	17.7
	2	
	30' E	
S	4.3	17.8
cb	4.1	
+5	5.3	

PLOTTED

2209

+7	7.3	
1/8	7.5	
c	7.0	15.1
1/4	7.4	
+9	6.8	
cb	4.7	
N	3.2	18.9

PLOTTED

75'E

N	2.9	19.2
cb	4.8	
+4	6.9	
1/8	7.3	
c	6.9	15.2
1/2	7.6	
+6	7.3	
cb	4.1	
S	3.9	18.2

100'E

S	3.9	18.2
---	-----	------

2209

cb	2.9	
+7	7.4	
1/4	7.4	
c	6.8	15.3
1/8	7.2	
+L	7.0	
cb	4.5	
N	2.6	19.5

PLOTTED

125'E

N	2.7	19.4
cb	4.2	
+4	6.7	
1/8	7.1	
c	6.8	15.3
1/2	7.5	
+5	7.6	
cb	3.7	
S	4.0	18.1

31

2209

150° E

S	3.7	18.4
cb	3.3	
+8	7.6	
1/4	7.5	
c	6.8	15.3
1/4	7.1	
+7	7.0	
cb	4.1	
+3	1.2	
+5	2.5	
N	2.4	19.7

175° E

N	2.6	19.5
+7	2.9	
+9	4.2	
cb	4.2	
+5	7.3	
1/4	7.5	

2209

c	7.1	15.0
1/4	7.7	
+5	7.8	
cb	3.7	
S	4.0	18.1

PLOTTED

200° E

S	4.5	17.6
cb	4.5	
+8	8.0	
1/4	7.9	
c	7.3	14.8
1/4	7.7	
+9	7.7	
cb	5.3	
+6	4.7	
+8	3.4	
N	3.3	18.8

32

2209

225' E

N	4.5	17.6
+4	4.9	
+6	6.4	
cb	6.7	
+3	8.0	
1/2	8.1	
c	7.7	14.4
1/4	8.3	
+5	8.2	
+9	5.5	
cb	5.3	
S	5.5	16.8
250' E		
S	6.5	15.6
cb	6.4	
+4	6.8	
+6	8.6	
1/2	8.6	

PLOTTED

33

c	8.0	14.1
1/4	8.3	
+11	8.4	
cb	7.6	
+9	7.6	
+11	6.7	
N	6.0	16.1
275' E		
N	7.8	14.3
1		
+4	8.6	
cb	8.6	
1/2	8.5	
c	8.2	13.9
1/4	8.8	
+5	8.7	
+8	7.5	
cb	7.2	
S	7.2	14.9

PLOTTED

2209
300' F

S	7.5	14.6
cb	7.1	
+5	7.1	
+7	9.0	
1/2	9.0	
c	8.4	13.7
1/4	8.8	
cb	8.7	
x	8.8	13.3

PLOTTED

325' F

x	8.6	13.5
cb	9.1	
1/2	8.8	
c	8.7	13.4
1/2	9.2	
+3	9.4	
+7	6.4	
cb	6.3	

34

S 7.1 15.0
350' F

S	7.6	14.5
cb	7.4	
+5	7.3	
+8	9.7	
1/2	9.2	
c	8.8	13.3
1/4	9.1	
cb	9.1	
N	8.6	13.5

PLOTTED

375' F

N &	8.7	13.4
cb	8.9	
1/2	9.2	
c	9.0	13.1
1/2	9.7	
cb	9.8	
S	9.5	12.6

2209
 TPO 2.35 15.04 9.40 12.69
 400 E

S 2.9 12.1
 cb 24
 +7 27
 1/2 26
 c 22 12.8
 1/2 24
 cb 2.1
 N 15.1 13.5

PLOTTED

425 E
 N 1.2 13.8
 cb 2.3
 1/2 2.5
 c 2.5 12.5
 1/2 3.0
 +5 { 2.9
 2.0
 cb 2.3
 S 2.4 12.6

1504

450 E

S 26 12.4
 cb 2.3
 +6 { 2.3
 3.1
 1/2 3.1
 c 26 12.4
 1/2 2.8
 cb 2.6
 +8 2.9
 N 1.6 14.0

PLOTTED

475 E
 N 0.7 14.3
 +5-4 2.1
 cb 2.7
 1/2 3.0
 c 2.9 12.1
 1/2 3.4
 +6 { 3.0
 2.6
 2.6
 2.1
 S 2.1 12.2

1504

500 E

S	3.1	11.9
cb	2.8	
+6	{ 2.9	
	{ 3.6	
1/4	3.6	
C	3.0	12.0
1/2	3.3	
cb	3.1	
+7	2.0	
N	1.1	13.9

PLOTTED

525 E

N	1.8	13.7
cb	3.3	
1/2	3.5	
C	3.3	11.7
1/2	4.0	
+6	{ 3.7	
	{ 3.1	
cb	3.2	
S	3.2	11.8

550 E

S	3.6	11.4
cb	3.2	
+7	3.3	
+8	4.0	
1/2	4.0	
C	3.6	11.4
1/2	3.9	
+9	4.0	
cb	3.2	
N	1.9	13.1

PLOTTED

575 E

N R	2.5	12.5
+4	3.4	
cb	3.3	
+1	4.4	
1/2	4.3	
C	4.0	11.0
1/4	4.5	

1504

+6	{ 44	
	{ 28	
cb	31	
S	36	11.4
600'E = Wh. Modern St		
S	30	12.0
cb	31	
+6	{ 30	
	{ 47	
1/2	49	
C	44	10.6
1/2	49	
+8	47	
+10	40	
cb	39	
+10	36	
N	18	13.2
w cb.		
N	23	12.7
+4	38	
cb	42	

PLOTTED

37

+3		48
1/4		48
C		44
		10.6
1/2		52
+9	{ 48	
	{ 31	
cb		32
S		28
		12.2
W 1/4		
S		31
		11.9
cb		32
+2		31
+0		5.0
1/2		5.1
C		4.5
		10.5
1/2		49
+8		49
cb		43
+9		42
N		25
		12.5

PLOTTED

1504

cr.

N	1.7	13.3
+4	4.1	
cb	4.4	
+5	5.2	
1/2	5.0	
c	4.7	10.3
4+	5.1	
+9	5.1	
+11	3.1	
cb	3.2	
s	3.1	11.9
	E 1/2	
s	3.2	11.8
cb	3.1	
+2	3.1	
+5	5.2	
1/2	5.2	
c	4.8	10.2

PLOTTED

1/2

	5.1	
+6	5.1	
cb	4.5	
+8	4.2	
N	1.9	13.1
	Fcb.	
N	2.2	12.8
+5	4.2	
cb	4.6	
+5	5.4	
1/2	5.3	
c	4.9	10.1
1/2	5.4	
+9	5.3	
+11	3.0	
cb	3.1	
s	3.1	11.9

PLOTTED

15.04

E.L.

S	3.0	1.40
cb	2.9	
+4	5.5	
1/2	5.6	
c	5.1	9.9
1/2	5.3	
+7	5.4	
cb	4.9	
+10	4.0	
N	2.6	12.4

PLOTTED

25'E

N	2.7	12.3
+7	4.6	
cb	5.1	
+4	5.7	
1/2	5.7	
c	5.3	9.7
1/2	5.8	

+5

cb

S

S

cb

+5

1/2

c

1/2

+5

cb

+6

N

N

+7

cb

+5

5.9

2.9

2.9

3.2

2.4

6.3

6.0

5.5

5.9

5.8

4.8

3.8

1.8

2.3

1.7

5.5

6.5

12.1

11.8

9.5

13.2

12.7

PLOTTED

75'E

1504

1/4	64	
c	58	9.2
1/4	65	
+6	65	
cb	26	
s	28	12.2
100' E		
s	25	12.5
cb	28	
+5	65	
1/4	68	
c	63	8.7
1/4	67	
+5	67	
cb	39	
X	40	11.0
125' E		
N	62	8.8
cb	73	

PLOTTED

1504

1/4	70	
c	66	8.4
1/4	70	
+7	69	
+11	44	
cb	42	
s	37	11.3
150' E		
s	61	8.9
cb	65	
+3	65	
+5	76	
1/4	73	
c	68	8.2
1/4	73	
cb	80	
X	83	6.7
TP	4.38	11.29
	813	6.91

PLOTTED

1129

175' F

N	3.8	5.5
cb	4.5	
1/4	3.8	
c	3.3	8.0
1/4	4.1	
cb	3.8	
s	3.6	7.7

PLOTTED

200' F

s	4.3	7.0
cb	4.4	
1/4	4.3	
c	3.5	7.8
1/4	4.0	
cb	5.2	
N	6.0	5.3
10 N	6.5	

41

225' F

10 N	7.0	
N	6.5	4.8
cb	6.0	
+0	4.7	
1/4	4.3	
c	3.8	7.5
1/4	4.5	
cb	4.5	
s	3.2	8.1

PLOTTED

250' F

s	3.0	8.3
cb	4.1	
+6	5.0	
1/4	4.6	
c	4.1	7.2
1/4	4.3	
+7	4.7	
+10	6.3	

1129

cb	6.6	
N	7.0	4.3
10'N	7.4	
10'N	7.3	
N	7.2	4.1
cb	6.6	
+3	6.2	
+7	4.6	
1/2	4.6	
c	4.2	7.1
1/2	5.0	
+4	5.4	
cb	4.8	
s	3.8	7.5
s	5.7	5.6
cb	5.9	
1/9	5.1	

PLOTTED

275 E

300 E

42

c	4.5	6.8
1/2	4.7	
+7	5.1	
+10	6.4	
cb	6.5	
N	6.7	4.6
10'N	7.1	
10'N	7.5	
N	7.5	3.8
cb	7.8	
+7	5.0	
1/2	4.9	
c	4.6	6.7
1/2	5.2	
+6	5.6	
cb	7.6	
s	7.2	4.1
10's	7.5	

PLOTTED

320'N

1129
350 E

10's	85	
S	84	2.9
cb	81	
+8	57	
1/4	53	
c	45	6.8
1/4	4.7	
+8	56	
cb	79	
N	77	3.6
10'N	7.71	

PLOTTED

375 E

10'N	7.9	
N	7.9	3.4
cb	7.8	
+7	6.1	
1/4	4.8	
c	4.5	6.8

1/c	6.2	
+7	5.7	
+10	8.2	
cb	8.5	
S	8.7	2.6
10's	8.7	

PLOTTED

400 E

10's	8.9	
c	8.9	2.4
cb	8.5	
+8	8.1	
+8.5	5.5	
1/4	5.3	
Φ	4.5	6.8
1/4	4.8	
+8	5.4	
cb	7.7	
N	7.8	9.5
10'N	7.5	

1129

125 F

10' N	7.7	
N	7.7	3.6
cb	7.5	
+6	5.2	
1/4	5.0	
c	4.4	6.9
1/2	5.2	
+7	5.8	
+11	8.3	
cb	8.6	
S	8.8	2.5
10'S	8.8	

PLOTTED

150 F

10'S	8.9	
S	8.7	2.6
cb	8.3	
+2	7.7	
+6	5.4	

44

1/2	5.2	
c	4.5	6.8
1/2	4.8	
+7	5.2	
cb	7.2	
N	7.5	3.8
10' N	7.4	

PLOTTED

175 F

10' N	7.4	
N	7.5	3.8
cb	7.1	
+7	5.0	
1/4	4.9	
c	4.5	6.8
1/2	5.1	
+6	5.3	
+10	7.8	
cb	8.5	
S	8.6	2.7
10'S	8.8	

1129

500 F

105	86	2.7
5	85	2.8
cb	81	
+3	75	
+9	53	
1/2	51	
r	45	6.8
1/4	48	
+6	50	
cb	68	
N	74	3.9
10' N	74	
TP	534	595

Continued on P. 46

45

10/4/12

113	922	910
300	-034	12.57 - 3.34

E CB Photo St

20 S	46	
c	4.5	-4.8
cb	4.5	
1/2	4.4	
c	4.2	-4.5
1/2	4.1	
cb	4.0	
N	3.4	-3.7
20' N	2.0	
20' N	4.3	-4.6
N	4.6	-4.9
cb	4.5	
1/2	4.4	
c	4.3	-4.6
1/4	4.2	

-0.34

cb	45
S	49 -5 ²
20'S	49

27'E Bulkhead line

20'S	50
S	50 -5 ³
cb	55

PLOTTED

1/2	6.3
c	5.7 -6 ⁰
1/2	6.3
cb	6.5

N	7.0 -7 ³
20'N	7.2

30'E

20'S	19
S	17 -2 ⁰
cb	23

TP	9.63	18.24	1.05	-1.39
+10			3.9	

8.24

46

1/4	37
c	37 +4 ⁵
1/2	39
+8	9.0
cb	13.0
N	13.5 -5 ²
20'N	12.5

TP	574	11.69	595
		525'E	

10'N	7.4	4.3
N	7.7	4.0
cb	7.9	3.5

PLOTTED

+4	7.6	4.1
+7	5.1	6.6
1/4	5.1	6.6
c	5.0	6.7
1/2	5.5	6.2
+7	6.1	5.6

1169

+10	89	2.8
cb	92	2.5
S	93	2.4
10's	91	
550 E		
10's	85	
S	81	3.6
cb	77	
+6	59	
1/4	55	
c	49	6.8
1/4	55	
+8	57	
cb	71	
N	71	4.6
10' N	73	
575 E		
10' N	70	4.7
N	70	4.7

PLOTTED

47

1169

cb	70	
+6	52	
1/4	52	
c	48	6.9
1/4	54	
+7	58	
+10	77	
cb	80	
S	80	3.7
10's	85	
600 E = Whi		
10's	80	
S	80	3.7
+7	77	
cb	70	
+9	54	
1/4	52	
c	47	7.0
1/4	51	
+7	54	

PLOTTED

11.69

cb	6.5	
N	6.6	5.1
10' N	6.8	
W cb.		
10' N	6.7	
N	6.6	5.1
cb	6.6	
+6	4.9	
1/4	5.0	
c	4.7	7.0
1/4	5.2	
+6	5.7	
+10	7.3	
cb	7.7	
S	7.9	3.8
10' S	7.9	
W 1/4		
10 S	7.9	
S	8.1	3.6

PLOTTED

11.69

48

cb	7.5	
+3	7.1	
+7	5.4	
1/4	5.2	
c	4.7	7.0
1/4	4.9	
+8	5.2	
cb	6.5	
N	6.6	5.1
10' N	6.8	
cr		
10' N	6.6	
N	6.6	5.1
cb	6.6	
+7	5.3	
1/4	5.0	
c	4.8	6.9
1/4	5.3	
+5	5.7	

PLOTTED

1169

+10	74	
cb	77	
S	79	3.8
10'S	81	

E 1/4

10'S	79	
S	78	3.9
cb	77	
+3	76	
+9	56	
1/4	53	
C	48	6.9
1/4	50	
+7	52	
cb	68	
N	66	5.1
10'N	65	

Ecb

PLOTTED

Main pt

49

1169

10'N	65	
N	67	5.0
cb	67	
+7	51	
1/4	50	
C	48	6.9
1/4	53	
+6	56	
+11	75	
cb	77	
S	78	3.9
10'S	77	

PLOTTED

Ecb

10'S	78	
S	79	3.8
cb	77	
+3	73	
+8	55	
1/4	54	

1169

c	47	7.0
1/4	50	
+7	52	
cb	66	
N	66	5.1
10' N	65	
25' E		
10' N	60	
N	63	5.2
cb	67	
+7	49	
1/4	49	
c	4.8	6.9
1/4	55	
+6	57	
+10	72	
cb	75	
S	76	4.1
10' S	78	

PLOTTED

Main St

50

1169

50' E		
10' S	7.5	
S	7.5	4.2
cb	7.6	
+2	7.3	
+7	6.7	
1/4	5.5	
PLOTTED		
c	4.9	6.8
1/4	4.9	
+7	5.1	
+10	6.0	
cb	6.2	
N	6.6	5.1
10' N	6.6	
75' E		
10' N	6.6	
N	6.6	5.1
cb	6.7	
+3	6.5	

1169

+8	5.1	
1/4	5.0	
c	4.9	6.8
1/4	5.6	
+6	5.8	
+10	7.3	
cb	7.4	
s	7.7	4.0
10's	8.1	
100'E		
10's	8.0	
s	7.8	3.9
cb	7.6	
+3	7.2	
+7	5.8	
1/4	5.6	
c	4.9	6.8
1/4	5.1	
+6	5.3	

PLOTTED

1169

+10	6.7	
cb	6.9	
N	6.7	5.0
10' N	6.8	
125'E		
10' N	7.0	
N	7.1	4.6
cb	6.9	
+6	6.9	
+8	5.4	
1/4	5.3	
c	4.9	6.8
1/4	5.6	
+7	6.0	
+11	7.4	
cb	7.7	
s	8.1	3.6
11.3	8.0	

PLOTTED

1169

150' F

10'S	83	
S	82	3.5
cb	81	
+2	72	
+6	68	
1/4	65	
c	50	6.7
1/4	51	
+5	54	
+9	69	
cb	72	
N	71	4.6
10' N	70	

PLOTTED

175' F

10' N	72	
N	74	4.3
cb	74	
+5	69	

1169

+10

1/4

c

1/4

+9

cb

S

10'S

10'S

S

cb

+3

+9

1/4

S

1/4

+4

+8

52

52

52

59

60

82

85

85

86

87

84

80

62

59

52

54

54

71

6.5

3.2

3.0

6.5

200 F

PLOTTED

	1169	
cb	7.5	
N	7.3	4.4
10' N	7.4	
	225' E	
10' N	7.2	
N	7.3	4.4
cb	7.3	
+4	7.1	
+9	5.4	
1/4	5.4	
c	5.3	6.4
1/4	5.9	
+7	6.5	
+11	7.9	
cb	8.3	
3	8.6	3.1
10' S	8.7	
	250' E	
10' S	7.7	

PLOTTED

	1169	
S	8.8	2.9
cb	8.5	
+3	7.8	
+6	6.2	
1/4	5.6	
c	5.1	6.6
1/4	5.1	
+4	5.3	
+8	6.8	
cb	7.3	
N	7.0	4.7
10' N	6.9	
70	4.70	13.51
	275' E	2.86
10' N	8.9	
N	9.2	4.3
cb	9.1	
+3	8.3	
+8	7.0	

PLOTTED

10/4/12

1351

1/0	69	
c	6.8	6.7
1/0	75	
+4	76	
+10	96	
cb	10.1	
3	10.7	2.8
10's	10.8	
	300 E	
10's	10.7	
s	10.5	3.0
cb	10.3	
+3	9.8	
+7	7.6	
1/0	7.2	
c	6.6	6.9
1/0	6.6	
+9	6.9	
cb	9.5	

PLOTTED

54

1351

N.	94	4.1
10's	9.2	
	225 E	
10's	8.7	
N	9.1	4.4
cb	9.7	
+7	6.6	
1/0	6.5	
c	6.4	7.1
1/0	7.0	
+7	7.5	
+10	10.0	
cb	10.2	
s	10.5	3.0
10's	10.6	
	350 E	
10's	10.2	
s	9.7	3.8
cb	9.2	

PLOTTED

1351

+3	8.8	
+7	7.1	
1/0	6.8	
c	6.3	7.2
1/4	6.2	
+7	6.3	
+10	7.1	
cb	7.2	
N	7.3	6.2
	370° E	
N	5.8	7.7
cb	5.9	
1/0	5.8	
c	5.9	7.6
1/0	6.5	
+8	6.8	
+10	7.7	
cb	8.1	
3	8.6	4.9
6.5	9.2	

PLOTTED

55

1351

	100° E	
S	7.6	5.9
cb	6.7	
1/0	5.8	
c	5.2	8.3
1/2	5.2	
+8	5.1	
+10	4.3	
cb	4.1	
N	3.6	7.9
	416° E = N. National City on S.	
N	2.6	10.9
cb	2.9	
+4	3.4	
+6	4.5	
1/4	4.6	
c	4.7	8.8
1/0	5.4	
cb	5.6	

PLOTTED

1351

s 6.7 6.8

Sec A

s 6.7 6.8

cb 5.3

1/2 5.1

c 4.4 9.1

1/2 4.2

+7 3.7

+10 4.8

cb 1.3

N 1.0 12.5

Sec B.

N 0.6 12.9

cb 0.7

+5 0.9

+8 2.9

1/2 3.6

c 4.1 9.4

1/2 4.9

PLOTTED

Main St

56

1351

cb

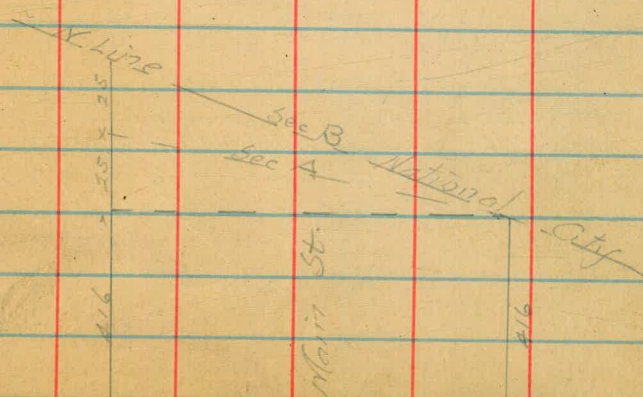
PLOTTED

5.3

6.7 6.8

BM Mon. N side of
Division St

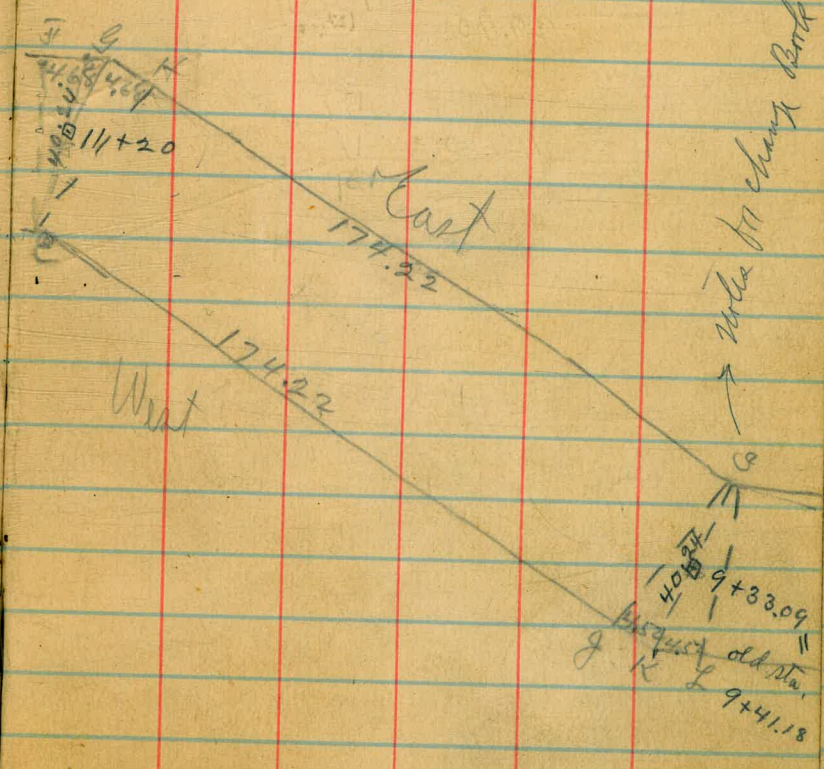
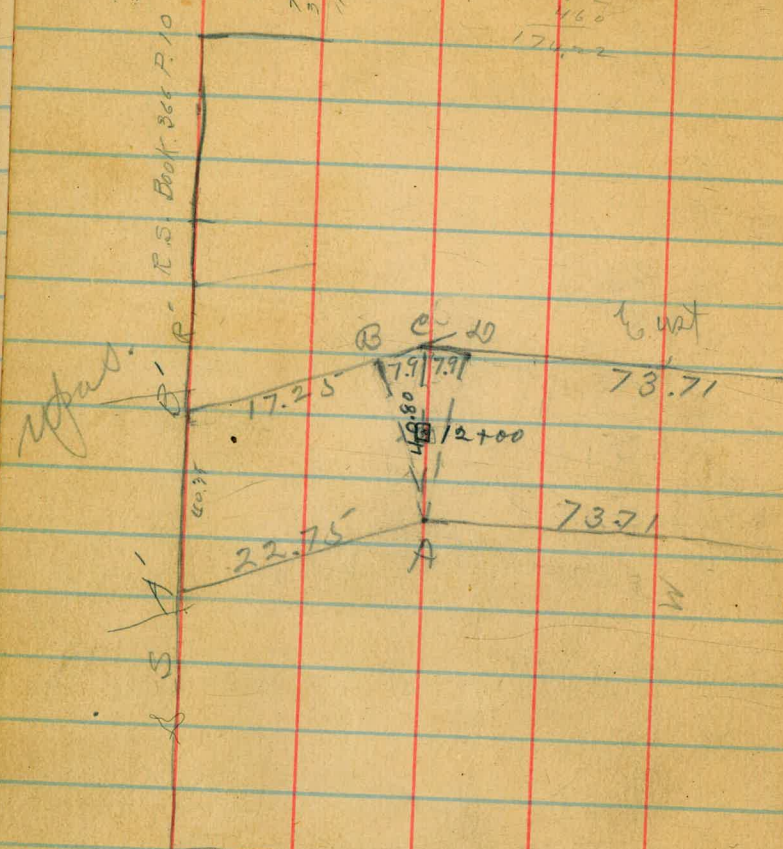
025 13.26 13.18



290
 391
 155
 45
 468
 920
 460
 174.22
 174.22

Oct. 29/12
 Lehigh
 Taylor
 57

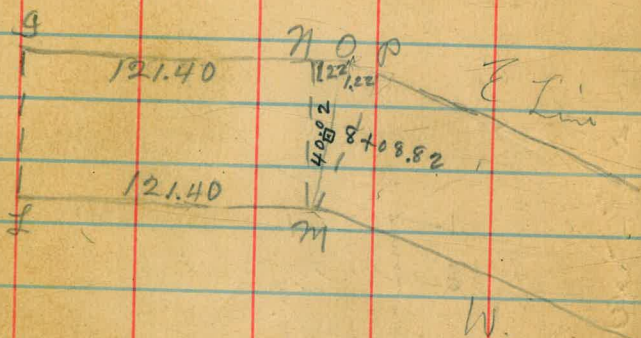
468
 790
 1238
 629



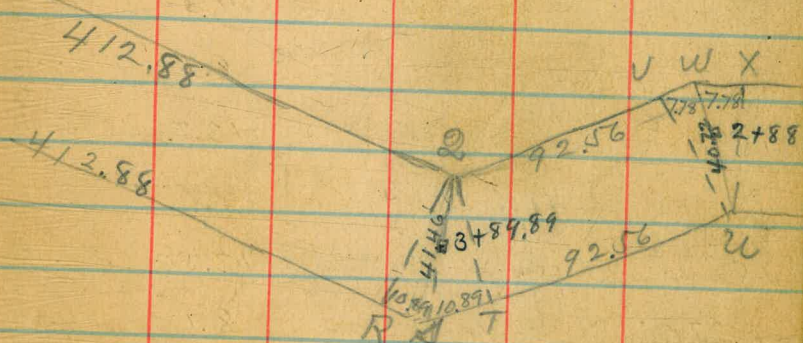
Complete Alignment Notes
 Page 80.
 11/29/12.

→ note for change bench 35, 173.
 40.24
 9+33.09
 9+41.18

Oct. 29/12 }
 Lehigh
 Taylor
 Alt. 58



10.15
 122



778
 389
 67

See Page 10 Bk 366
from here to front

Sect. ¹⁰ AB page 5-7
17.1

	12.53	218.18	215.65	15' east slope	16.4	201.8
14' east slope	12.3	205.9		east line	11.1	207.1
East line	7.6	210.6	1/4		7.5	210.7
E. 1/4	3.4	214.8	C		2.9	215.3

Sect. AC

E 1/4	4.3	213.9				
east line	8.3	209.9	1/4			
15' east slope	13.2	205.0	east line			

Sect. AD

15' east slope	13.5	204.7				
east line	8.1	210.1	15' east slope			
E 1/4	4.4	213.8	east line			

25 so. AD

C	1.5	216.7				
E 1/4	5.5	212.7				
east line	9.5	208.7				
15' east slope	15.4	202.8				

Oct. 30 / 12
Tchilids
Tayler
59

50' south

Sect. EF

C	5.8	212.4				
1/4	10.1	208.1				
east line	13.2	205.0				
15' east slope	17.9	200.3				

Sect. EG

Sect.

218.18

Sect E H

C	5.1	213.1
1/4	9.0	209.2
East line	13.5	204.7
15' east slope.	17.6	200.6

25' south

E 1/4	10.1	208.1
C	5.4	212.8

50' south

C	8.0	210.2
E 1/4	12.5	205.7
J.P.	10.10	227.30
J.P.	0.98	217.20

Sect A B

C	7.4	219.9
w 1/4	3.7	223.6
west line	0.3	227.0

227.30

60

Sect A C

west line	0.3	227.0
1/4	4.2	223.1
C	8.16	219.14

Sect A 10

C	8.2	219.1
1/4	4.4	222.9
west line	0.3	227.0

25' south

west line	2.2	225.1
w 1/4	6.4	220.9

50' south

w 1/4	7.8	219.5
west line	3.3	224.0

Sect E F

west line	5.2	222.1
w. 1/4	9.6	217.7

22730

sect E.G.

w 1/4	97	217.6
west line	5.2	222.1

sect E.H.

w line	5.2	222.1
w 1/4	9.6	217.7

25' south

w 1/4	10.3	217.0
w, line	6.2	221.1

50' south

w. line	6.6	220.7
w 1/4	11.3	216.0

61' south

w 1/4	12.7	214.6
w. line	8.1	219.2

75' south

w line	11.0	216.3
--------	------	-------

22730

61

100' south

w. line	13.4	213.9
---------	------	-------

125' south

w line	11.4	215.9
--------	------	-------

150' south

w line	7.17	213.01
		11.8
		215.5
		205.84

sect 50' south E.H.

east line	10.6	202.4
-----------	------	-------

15 east slope	14.0	199.0
---------------	------	-------

61' south

15' east slope	14.3	198.7
----------------	------	-------

east line	10.6	202.4
-----------	------	-------

1/4	7.1	205.9
-----	-----	-------

c	2.9	210.1
---	-----	-------

213.01

75' south

W 1/4	0.9	212.1	w. line
C	5.3	207.7	1/4
1/4	9.3	203.7	C
east line	12.7	200.3	

15' east slope	17.5	195.5	C
----------------	------	-------	---

100' south

E 1/4	11.8	201.2	w. line
C	8.0	205.0	
W 1/4	3.6	219.4	w. line

125' south

W 1/4	1.6	211.4	C
C	5.8	207.2	
E 1/4	11.0	202.0	w. line

150' south

E 1/4	11.1	201.9	1/4
C	5.5	207.5	w. line
W 1/4	1.0	212.0	w. line

213.01

62

sect. 9g.

1.6	211.4
7.0	206.0
9.5	203.5

sect 9.K.

9.3	203.7
7.2	205.8
1.7	211.3

sect 9.L.

2.4	210.6
7.3	205.7
9.6	203.4

25' south.

4.9	208.1
9.8	203.2

50' south

12.4	200.6
------	-------

21301

63

J.P. 0.28 ^{H.I.} 200.60 12.69 200.32.

sect. 9 L

100' south sect E.H

15' east slope

10.1 190.5

east line 2.7 197.9

east line 6.0 194.6

15' east slope 7.3 193.3

1/4 4.0 196.6

125' south

25' south 9 L

15' east slope 8.3 192.3

15' east slope 13.5 187.1

east line 3.1 197.5

east line 9.8 190.8

150' south

1/4

6.4 194.2

east line 3.7 196.9

c

2.6 198.0

15' east slope 8.9 191.7

50' south

sect. 9 g.

w 1/4

3.2 197.4

15' east slope 10.3 190.3

c

6.5 194.1

east line 6.0 194.6

E 1/4

9.8 190.8

1/4 2.9 197.7

east line

12.2 188.4

sect. 9 K

15' east slope

16.3 184.3

1/4 3.5 197.1

east line 6.0 194.6

15' east slope 10.4 190.2

200.60

75' south

E 1/4 12.5 188.1

C 9.5 191.1

W 1/4 5.5 195.1

W line 1.1 199.5

100' south

W line 6.1 194.5

W 1/4 8.9 191.7

C 12.2 188.4

sect. 71m

W 1/4 10.7 189.9

W line 7.1 193.5

sect. 71o

W line 7.1 193.5

W 1/4 10.7 189.9

sect 71p

W 1/4 10.6 190.0

W line 7.1 193.5

200.60

64

25' south

white 11.2 189.4

J.P. 0.28 188.16 12.72 187.88

75' south sect 88

east line 2.7 185.5

15' east slope 7.5 180.7

100' south

15' east slope 10.0 178.2

east line 5.0 183.2

E 1/4 2.0 186.2

sect. 71m

C 2.5 185.7

1/4 5.2 183.0

east line 7.3 180.9

15' east slope 11.6 176.6

18816

sect m 0

15' east slope	11.6	176.6	w line
E line	7.5	180.7	1/4
1/4	5.2	183.0	c
c	26.8	185.48	E 1/4

sect mp.

c	2.8	185.4	E 1/4
1/4	5.2	183.0	c
E line	7.6	180.6	1/4
15' east slope	11.9	176.3	w line

25' south

15' east slope	15.0	173.2	w line
E line	11.5	176.7	1/4
1/4	9.2	179.0	c
c	6.4	181.8	
w 1/4	3.3	184.9	

18816

65

50' south

1.9	186.3
6.2	182.0
9.1	179.1
12.5	175.7

75' south

13.5	174.7
11.1	177.1
7.8	180.4
3.1	185.1

100' south

5.2	183.0
9.6	178.6
12.4	175.8

125' south

11.0	177.2
7.2	181.0

188,16

	150' south		
w line	8.5	179.7	
w 1/4	11.3	176.9	
	175' south		
w 1/4	11.7	176.5	
w line	9.4	178.8	
	200' south		
w line	9.9	178.3	
w 1/4	12.6	175.6	
	225' south		
w line	10.7	177.5	
	250' south		
w line	11.0	177.2	
	275' south		
w line	11.4	176.8	
	300' south		
w line	12.8	175.4	

J.P.

	E line		
	15' east slope in bottom	6.7	170.0
	75' south		
	15' east slope in bottom	7.6	169.1
	E line	6.8	169.9
	100' south		
	E 1/4	4.1	172.6
	E line	7.2	169.5
	15' east slope in bottom	9.6	167.1
	125' south		
	15' east slope in bottom	11.1	165.6
	E line	7.5	169.2
	1/4	5.7	171.0
	C	3.0	173.7

188/6

66

HI.
0.30 176.66 11.80 176.36

50' south Sect. 21/2.

176.66

150' South

C	3.3	173.4
1/4	7.0	169.7
E line	10.5	166.2
15' east slope in bottom	12.0	164.7

175' South

15' east slope in bottom	13.4	163.3
E line	9.8	166.9
1/4	5.9	170.8
C	3.1	173.6

200' South

C	3.2	173.5
1/4	6.7	170.0
E line	9.3	167.4
15' east slope in bottom	15.8	160.9

176.66

67

225' South

15' east slope	15.2	161.5
E line	10.1	166.6
1/4	6.9	169.8
C	4.8	171.9

W 1/4

23 174.4

250' South

W 1/4	4.3	172.4
C	6.8	169.9
E 1/4	9.4	167.3
E line	12.2	164.5
15' east slope	15.4	161.3

275' South

E 1/4	10.2	166.5
C	6.9	169.8
W 1/4	3.9	172.8

176.8

176.66

300' South

W 1/4	5.5	171.2
C	8.5	168.2
E 1/4	11.5	165.2

325' South

E 1/4	12.2	164.5
C	9.6	167.1
W 1/4	6.5	170.2
White	1.7	175.0

350' South

White	2.7	174.0
1/4	6.7	170.0
C	9.9	166.8

375' South

C	12.6	164.1
1/4	9.7	167.0
White	6.1	170.6

176.66

68

394' South

White	9.9	166.8
1/4	12.1	164.6
C	13.8	162.9

400' South

C	13.5	163.2
1/4	11.9	164.8
White	10.1	166.6

sect. R 2

White	7.1	169.6
1/4	8.5	168.2
C	10.4	166.3

sect. 2 S

C	8.99	167.67
1/4	6.2	170.5
White	3.0	173.7

176.66

J.P.

235 ^{H.I. 1} 167.13 11.88 164.78

275' south rect m.p.

E line 4.4 162.7

15' east slope in bottom 8.7 158.4

300' south

15' east slope in bottom 10.1 157.0

E line ^{6 1/4} 6.4 160.7

325' south ^{6 1/4} 6.4 161.5

E line 5.1 162.0

15' east slope 10.3 156.8

350' south

15' east slope 8.8 158.3

E line 5.2 161.9

E 1/4 2.9 164.2

375' south

E 1/4 5.6 161.5

E line 7.5 159.6

15' east slope 9.6 157.5

Oct 30/12 } Lehighs
Taylor
69
Allen

167.13

394' south

15' east slope 9.8 157.3

E line 7.3 159.8

E 1/4 5.3 161.8

400' south

E 1/4 5.1 162.0

E line 6.7 160.4

15' east slope 9.3 157.8

Rect R 2

15' east slope 6.9 160.2

E line 4.8 162.3

E 1/4 2.7 164.4

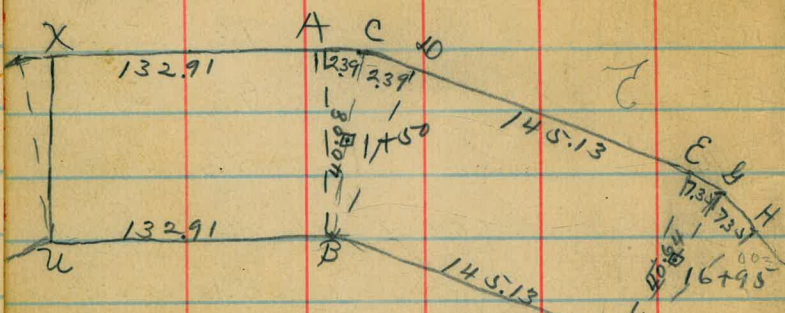
Rect. 2 A,

E 1/4 2.2 164.9

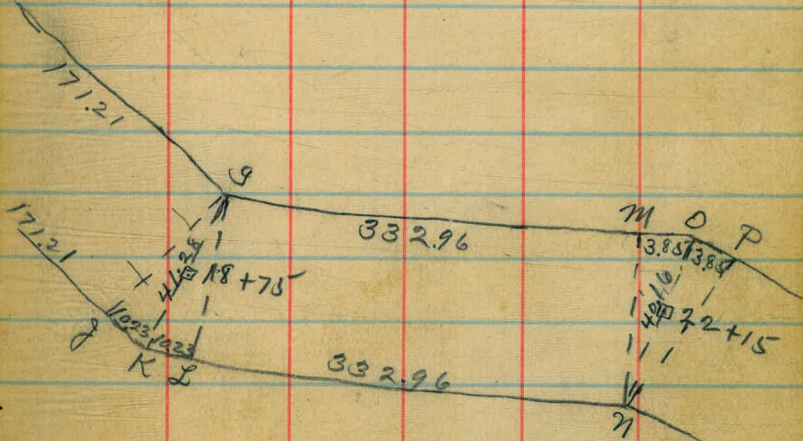
E line 4.8 162.3

15' east slope 7.5 159.6

Oct 31/12 } Childs
 Taylor
 70
 after



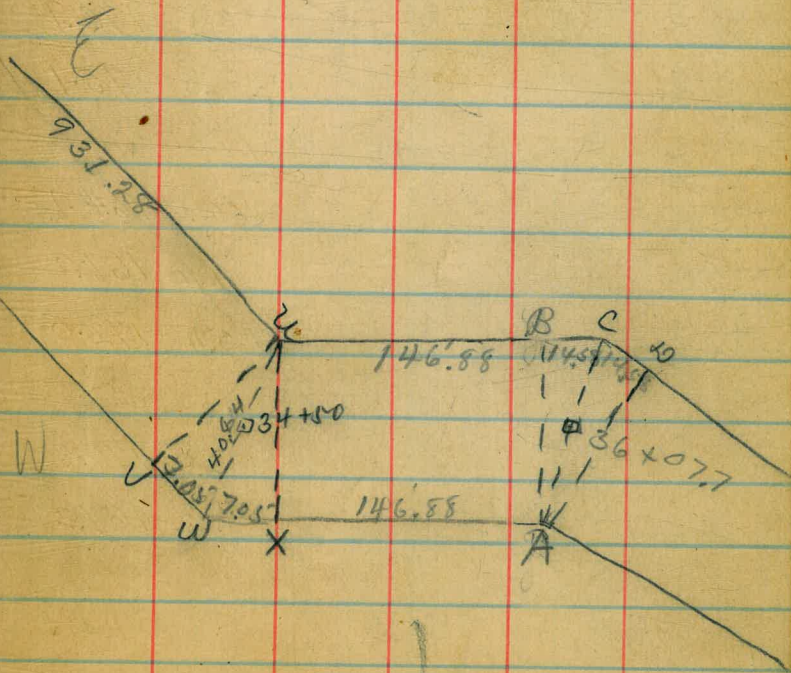
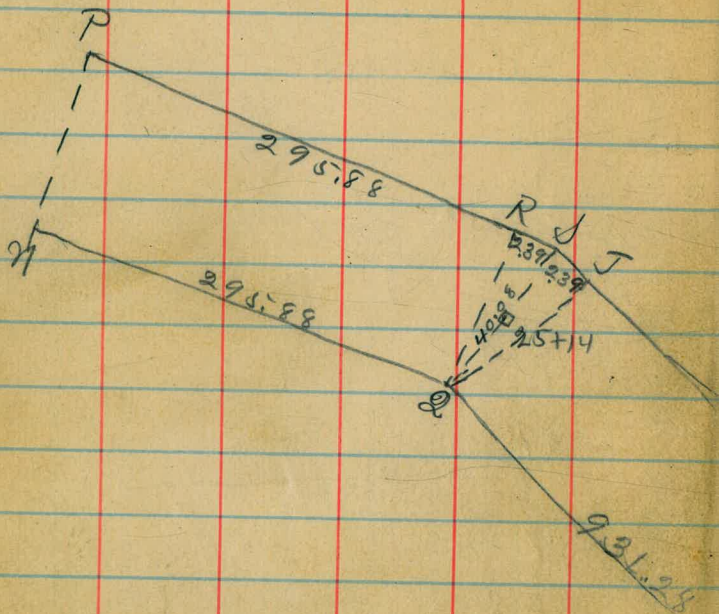
= 0100 Book 301 page 36



239
 119
 358

735
 360
 03

375
 210
 585



$$\begin{array}{r} 239 \\ -119 \\ \hline 358 \end{array}$$

$$\begin{array}{r} 1454 \\ -229 \\ \hline 2225 \end{array}$$

$$\begin{array}{r} 4574 \\ -2287 \\ \hline 2287 \end{array}$$

167.13

H.I. ✓

J.P. 9.71 177.38 167.67

Sect. 2.5.

w. line 1.9 175.5

1/4 5.2 172.2

C 9.3 168.1

25' south Sect 2.5.

C 10.5 166.9

1/4 6.5 170.9

w. line 2.3 175.1

50' south

C 12.6 164.8

1/4 9.4 168.0

w. line 5.4 172.0

75' south

w. line 3.1 174.3

w 1/4 8.2 169.2

177.38

12

Sect. V U.

9.4 168.0

w 1/4
w. line 5.2 172.2

Sect. U W

w. line 5.2 172.2

w 1/4 9.6 167.8

Sect. U X

w 1/4 9.9 167.5

w. line 5.2 172.2

25' south Sect U X

w. line 7.7 169.7

w 1/4 11.9 165.5

J.P. 2.29 167.31 12.36 165.02

H.I. ✓

Sect. 2.5.

E 1/4 2.6 164.7 ✓

E line 4.9 162.4

15' east slope 8.3 159.0

16731

25' south Sect. 2 J.

15' east slope	8.1	159.2	E 1/4
E line	5.9	161.4	C
E 1/4	3.6	163.7	

50' south

E 1/4	4.5	162.8	E 1/4
E line	6.5	160.8	
15' east slope	11.5	155.8	E 1/4

75' south

15' east slope	18.0	149.3	
E line	12.9	154.4	W line
E 1/4	8.2	159.1	1/4
C	3.2	164.1	C

Sect. 2 U.

C	4.6	162.7	E 1/4
E 1/4	10.8	156.5	E 1/4
			C
			1/4
			W line

167.31

73

Sect. 2 W

	11.4	155.9
	5.6	161.7

Sect. 2 X

	6.6	161.2
	10.2	157.1

25' south Sect. 2 X

	10.5	156.8
	6.4	160.9

50' south

	1.9	165.4
	5.5	161.8
	8.5	158.8
	12.5	154.8

75' south

	13.7	153.6
	10.1	157.2
	7.2	160.1
	4.4	162.9

167.31

100' South

W line	4.2	163.1	SW 1/4
1/4	8.5	158.8	W line
C	12.3	155.0	

125' South

C	13.3	154.0	W line
1/4	9.4	157.9	J.P.
W line	5.3	162.0	E line

sect. A B page 70.

W line	6.8	160.5	15' east slope (bottom)
W 1/4	9.8	157.5	sect. U W

sect B C Sta 1+50

W 1/4	9.8	157.5	15' east slope (bottom)
W line	6.8	160.5	E line

sect B D

W line	6.8	160.5	E line
W 1/4	10.0	157.3	15' east slope (bottom)

167.31

74

25' south Sect B D

	11.9	155.4
	9.5	157.8

50' South

	11.6	155.7
H.I. ✓	29.5	157.43
	12.83	154.48

sect. U V

5.4 152.0

10.2 147.2

sect U W

10.5 146.9

5.9 151.5

sect U X

5.6 151.8

10.7 146.7

25' south sect U X

7.9 149.5

3.8 153.6

15743

50' south

E line	5.8	151.6
15' east slope	9.9	147.5

75' south

15' east slope	11.5	145.9
E line	7.2	150.2

100' south

E 1/4	5.6	151.8
E line	8.2	149.2
15' east slope	12.2	145.2

125' south

15' east slope	12.8	144.6
E line	10.0	147.4
E 1/4	7.4	150.0

sect AB page 70

C	3.7	153.7
E 1/4'	7.4	150.0
E line	10.4	147.0
15' east slope	13.2	144.2

15743

sect. BC pta 1+50

15' east slope	13.6	143.8
----------------	------	-------

E line	10.4	147.0
--------	------	-------

E 1/4	7.4	150.0
-------	-----	-------

C	3.9	153.5
---	-----	-------

sect. B 20

C	3.6	153.8
---	-----	-------

E 1/4	7.5	149.9
-------	-----	-------

E line	10.6	146.8
--------	------	-------

15' east slope	13.8	143.6
----------------	------	-------

25' south sect B 20

C	4.9	152.5
---	-----	-------

E 1/4	7.8	149.6
-------	-----	-------

E line	11.1	146.3
--------	------	-------

15' east slope	14.8	142.6
----------------	------	-------

75

157.43

50' south

15' east slope	18.1	142.3
E line	11.8	145.6
1/4	9.7	147.7
C	7.9	149.5
W 1/4	4.9	152.5

75' south

white	3.5	153.9
1/4	6.7	150.7
C	9.5	147.9
E 1/4	12.3	145.1
E line	14.4	143.0
15' east slope.	17.0	140.4

100' south

E 1/4	13.4	144.0
C	11.7	145.7
1/4	9.7	147.7
white	6.2	151.2

157.43

76

111' south

8.3	149.1
10.2	147.2
11.8	145.6

125' south

13.4	144.0
10.2	147.2
8.6	148.8

sect. FE

9.5	147.9
11.7	145.7

sect. FG

11.9	145.5
9.5	147.9

sect. FH

9.5	147.9
11.7	145.7

157.43

25' south sect F14

W 1/4 11.7 145.7

W line 8.6 148.8

50' south

W line 10.3 147.1

W 1/4 12.7 144.7

75' south

W line 13.2 144.2

I.P. 0.89 ^{KT} 145.54 12.78 144.65

100' south sect B 10 page 70

E line 3.1 142.4

15' east slope 4.8 140.7

110' south

15' east slope 6.6 138.9

E line 3.9 141.6

E 1/4 1.0 144.5

145.54

77

125' south

E 1/4 4.2 141.3

E line 6.1 139.4

15' east slope 7.8 137.7

sect F1E

15' east slope 9.3 136.2

E line 6.9 138.6

E 1/4 4.2 141.3

C 1.6 143.9

sect F1g sta 16+95

C 1.44 144.10

E 1/4 4.3 141.2

E line 7.7 137.8

15' east slope 10.6 134.9

sect F1H

15' east slope 11.4 134.1

E line 7.9 137.6

E 1/4 4.2 141.3

C 1.7 143.8

14554

25' south Sect F.H

C	1.7	143.8
1/4	4.4	141.1
E line	7.8	137.7
15' east slope	13.0	132.5

50' south

15' east slope	14.3	131.2
E line	8.7	136.8
1/4	4.9	140.6
C	2.9	142.6

75' south

w 1/4	3.0	142.5
C	6.2	139.3
1/4	8.4	137.1
E line	10.6	134.9
15' east slope	13.8	131.7

14554

78

100' south

15' east slope	13.0	132.5
E line	10.6	134.9
1/4	9.2	136.3
C	7.6	137.9
1/4	5.9	139.6
w line	4.1	141.4

125' south

w line	3.9	141.6
1/4	5.9	139.6
C	8.3	137.2
1/4	10.5	135.0
E line	12.1	133.4
15' east slope	13.8	131.7

~~150'~~

145.54

150' South

15' east slope	14.7	130.8
E line	12.6	132.9
1/4	10.8	134.7
C	9.0	136.5
1/4	6.6	138.9
W line	5.9	139.6

sect. 9g

W line	6.7	138.8
1/4	9.1	136.4
C	9.8	135.7
1/4	11.8	133.7
E line	13.0	132.5
15' east slope	15.2	130.3

Oct. 3
145.541/12 } Childs
Taylor
79
Atter

sect 9K.

15' east slope	15.3	130.2
E line	13.0	132.5
1/4	11.7	133.8
C	10.28	135.26
1/4	9.0	136.5
W line	7.1	138.4

sect 9L

W line	8.0	137.5
1/4	9.9	135.6
C	10.5	135.0
1/4	12.1	133.4
E line	13.0	132.5
15' east slope	15.3	130.2
J.P.	10.28	135.26

See Book 842 Page 37

BRICK YARD CANON & Alignment Notes.

Reduced from 10 Books, sketches, plots etc.

11/20/12.

00

W.L. Front <small>50' St.</small>	L.	R.
0+00	90° to Front.	
+95	79° 08'	
1+31.56	36° 22'	
+81.56	20° 00'	
2+31.56	12° 30'	
+81.56		22° 20'
3+61.56		13° 20'
5+40.38	12° 53'	
6+64.65		3° 29'
10+83.58	30° 29'	
11+85.47		22° 00'
13+23.47		6° 50'
14+73.47		20° 10'
16+53.47	28° 42'	
19+93.47		11° 00'
22+92.47		6° 50'
32+28.47	20° 00'	
33+86.17		40° 03'
35+96.81	Int Union Produced.	
36+78.67		24° 43'
38+78.87	46° 46'	

9

187.7

210.64

5 1/2

2 2/5
3 1/2

401
216
25
266

1876
913
921.7



36+78.62 35+96.87
35+96.87 35+86.17
81.87 5+106X