

F.B.
844

LEVEL BOOK

No. 420

City Engineers Office

MICROFILMED

DEC 15 1964

504

x-section Nebraska St El Cajon to Adams
" " 80' wide 14' high 13' 1/2
10' 1/2
1/2 E. Evans, 1
Kerr, 1

B.M. Main S.E. El Cajon Nebraska 365.60

B.M. 3.85 369.45

N.E. El Cajon

W 5.4 364.05

SW 5.5 363.95

W 5.6 363.85

W 5.5 363.95

W 5.4 364.05

SW 5.6 363.85

E 4.9 364.55

0+25 N

E 5.2 364.25

SW 5.4 364.05

W 5.0 364.45

W 5.2 364.25

W 5.5 363.95

SW 5.6 363.85

W 5.4 364.05

369.45

0250

W	5.3	364.15
erb	5.3	364.15
"	5.5	363.95
M	4.3	365.15
"	4.6	364.85
erb	5.7	363.75
F	5.5	363.95

0275

F	5.3	364.15
erb	5.6	363.85
"	5.4	364.05
M	5.3	364.15
"	5.3	364.15
erb	5.5	363.95
W	5.1	364.35

369.45

140

W	5.2	364.25
erb	5.2	364.25
"	5.0	364.45
erb	5.2	364.25
"	5.2	364.25
erb	5.3	364.15
F	5.3	364.15

1425

F	3.8	365.65
erb	5.3	364.15
"	5.3	364.15
M	5.3	364.15
"	5.3	364.15
erb	5.2	364.25
W	5.4	364.05

2

369.45

1450

W	5.3	364.15
Crk	5.2	364.25
"A	5.3	364.15
M	5.3	364.15
"A	3.5	365.95
Crk	3.9	365.55
E	4.5	364.95

1475

E	4.7	364.75
Crk	4.7	364.75
"A	4.7	364.75
M	5.2	364.25
"A	5.1	364.35
Crk	5.0	364.45
W	5.0	364.45

369.45

240

8

W	5.2	364.25
Crk	4.8	364.65
"A	4.3	365.15
M	4.8	364.65
"A	4.6	364.85
Crk	4.8	364.65
E	4.7	364.75

2425

E	4.7	364.75
Crk	4.7	364.75
"A	4.4	365.05
M	4.5	364.95
"A	4.9	364.55
Crk	4.9	364.55
W	4.9	364.55

369.45

2+50

W	4.8	364.65
erb	4.6	364.85
"A	4.9	364.55
M	4.8	364.65
"A	4.8	364.65
erb	4.8	364.65
E	4.8	364.65

2+75

E	4.8	364.65
erb	4.8	364.65
"A	4.6	364.85
M	4.8	364.65
"A	5.0	364.45
erb	4.7	364.75
W	4.6	364.85

369.45

3+0

W	4.9	364.55
erb	4.9	364.55
"A	4.9	364.55
M	4.7	364.75
"A	4.7	364.75
erb	4.8	364.65
E	4.8	364.65

3+25

E	4.6	364.85
erb	4.6	364.85
"A	4.6	364.85
M	4.7	364.75
"A	4.9	364.55
erb	4.8	364.65
W	4.9	364.55

4

369.45

3+50

W	4.7	364.75
Crk	4.7	364.75
"A	4.9	364.55
M	4.7	364.75
"A	4.7	364.75
Crk	4.8	364.65
F	4.6	364.85

3+75

F	4.4	365.05
Crk	4.7	364.75
"A	4.6	364.85
M	4.7	364.75
"A	4.8	364.65
Crk	4.8	364.65
W	5.0	364.45

369.45

4+0

W	4.9	364.55
Crk	4.8	364.65
"A	5.0	364.45
M	4.7	364.75
"A	4.4	365.05
Crk	4.3	365.15
F	4.2	365.25

4+25

F	4.2	365.25
Crk	4.5	364.95
"A	4.6	364.85
M	4.6	364.85
"A	4.5	364.95
Crk	4.7	364.75
W	4.7	364.75

5

369.45

4+50

W	4.6	364.85
Crk	4.5	364.95
"A	4.0	365.45
M	4.2	365.25
"A	4.4	365.05
Crk	4.5	364.95
E	4.1	365.35

4+75

E	4.1	365.35
Crk	4.3	365.15
"A	3.7	365.75
M	4.0	365.15
"A	4.5	364.95
Crk	4.5	364.95
W	4.6	364.85

369.45

5+0

W	4.2	365.25
Crk	4.3	365.15
"A	4.5	364.95
M	4.3	365.15
"A	3.8	365.65
Crk	4.0	365.45
F	3.6	365.85

5+25

E	3.2	366.25
Crk	3.8	365.65
"A	4.0	365.45
M	4.3	365.15
"A	4.3	365.15
Crk	4.5	364.95
W	4.4	365.05

6

369.45

5750

W	4.0	365.45
erb	3.8	365.65
"A	3.7	365.75
M	3.6	365.85
"A	3.7	365.75
erb	2.9	366.55
E	2.9	366.55

5775

E	2.7	366.75
erb	2.9	366.55
"A	3.2	366.25
M	3.1	366.05
"A	3.5	365.95
erb	2.5	366.95
W	4.0	365.45

369.45

40 = S.L Meade 80' 14' WAs 13' 14'S

7

W	3.7	365.75
erb	3.6	365.85
"A	3.3	366.15
M	2.9	366.55
"A	2.6	366.85
erb	2.7	366.75
E	2.5	366.95

S. curve

E	2.3	367.15
erb	2.1	367.35
"A	2.1	367.35
M	2.2	367.25
"A	3.0	366.45
erb	3.3	366.15
W	3.5	365.95

369.45

S¹¹⁴

W	3.3	366.15
erb	3.3	366.15
"A	3.1	366.35
M	2.5	366.95
"A	2.1	367.35
erb	2.2	367.25
E	2.0	367.45

Center

F	1.3	368.15
erb	1.4	368.05
"A	1.7	367.75
M	1.9	367.55
"A	2.0	367.45
erb	2.4	367.05
W	2.7	366.75

369.45

N¹¹⁴

8

W	3.7	365.75
erb	3.2	366.25
"A	3.1	366.35
M	2.3	367.15
"A	2.1	367.35
erb	2.0	367.45
F	1.9	367.55

N CURVE

F	0.7	368.75
erb	0.7	368.75
"A	1.3	368.15
M	2.3	367.15
"A	2.3	367.15
erb	2.8	366.65
W	3.3	366.15

369.45

M. L. Meade

W		2.8	366.65
erb		2.6	366.85
"		2.6	366.85
M		2.1	367.35
"		0.8	368.65
erb		11.3	368.15
E		0.0	369.45
T.P.	10.48	379.15	0.78 368.67
		0+25	
E		10.7	368.45
erb		9.3	369.85
"		8.3	370.85
M		10.7	368.45
"		11.7	367.45
erb		11.5	367.65
W		10.1	369.05

379.15

0+50

9

W		11.5	367.65
erb		11.6	367.55
"		10.3	368.85
M		9.4	369.75
"		10.5	368.65
erb		10.6	368.55
E		9.4	369.25
		0+75	
E		8.6	370.55
erb		9.6	369.55
"		10.5	368.65
M		10.4	368.75
"		10.7	368.45
erb		10.7	368.45
W		10.5	368.65

379.15

140

W	10.7	368.45
erb	10.5	368.65
"A	10.1	369.05
M	8.9	370.85
"A	8.7	370.45
erb	9.7	369.45
E	9.3	369.85

1425

E	8.9	370.25
erb	8.8	370.35
"A	9.2	369.95
M	9.5	369.65
"A	9.8	369.35
erb	9.0	370.15
W	8.8	370.35

379.15

1450

W	9.0	370.15
erb	10.0	369.15
"A	9.8	369.35
M	9.5	369.65
"A	7.4	371.75
erb	6.6	372.55
E	8.6	370.65

1475

E	7.9	371.25
erb	7.7	371.45
"A	8.7	370.45
M	9.3	369.85
"A	8.1	371.05
erb	8.8	370.35
W	9.4	369.75

10

379.15

2+0

w	6.9	372.25
Crk	9.0	370.15
"A	2.9	370.25
M	2.8	370.35
"A	2.0	371.15
Crk	7.8	371.35
F	7.5	371.65

2+25

F	7.0	372.15
Crk	6.3	372.85
"A	5.8	373.35
M	2.2	370.95
"A	8.2	370.95
Crk	8.8	370.35
w	8.6	370.55

379.15

2+50

w	8.3	370.85
Crk	7.8	371.35
"A	6.8	372.35
M	2.8	370.35
"A	7.6	371.55
Crk	5.9	373.25
F	6.5	372.65

2+75

F	6.6	372.55
Crk	6.7	372.45
"A	5.6	372.85
M	6.9	372.25
"A	7.8	371.35
Crk	8.0	371.15
w	7.8	371.35

11

379.15

3+0

W	7.0	372.15
erb	6.7	372.45
"A	6.2	372.95
M	5.4	373.75
"A	6.4	372.75
erb	6.6	372.55
F	5.7	373.45

372.5

F	4.3	374.85
erb	5.3	373.85
"A	6.1	373.05
M	5.4	373.75
"A	5.2	373.95
erb	6.8	372.85
W	6.9	372.25

379.15

3+50

12

W	6.4	372.75
erb	6.1	373.05
"A	4.2	374.95
M	5.0	374.15
"A	4.5	374.65
erb	4.9	374.25
F	4.9	374.25

377.5

E	4.8	374.85
erb	5.0	374.15
"A	4.1	375.05
M	4.3	374.85
"A	5.7	373.45
erb	6.3	372.85
W	6.3	372.85

379.15

4+0

N	3.2	376.35
Crk	4.8	374.35
"A	5.6	373.55
M	3.7	376.65
"A	4.0	375.15
Crk	4.6	374.55
E	3.9	376.25

4+25

E	3.7	376.45
Crk	4.7	374.45
"A	4.2	374.95
M	4.4	374.75
"A	3.7	375.45
Crk	4.6	374.55
N	5.1	374.05

379.15

4+50

N	4.4	374.75
Crk	3.8	375.35
"A	3.9	375.25
M	4.6	374.55
"A	4.5	374.65
Crk	3.4	375.75
E	1.6	377.55

4+75

E	2.3	376.85
Crk	2.8	376.35
"A	1.7	377.45
M	2.7	376.45
"A	4.5	374.65
Crk	4.6	374.55
N	4.6	374.55

18

379.15

510

W	3.7	376.45
crb	2.2	376.95
"A	2.8	376.35
M	2.8	376.35
"A	2.3	376.85
crb	3.1	376.05
F	1.4	377.75

5125

F	2.3	376.85
crb	3.2	376.95
"A	3.2	375.95
M	1.9	377.25
"A	1.2	377.95
crb	3.1	376.05
W	3.4	376.75

379.15

5150

W	3.1	376.05
crb	3.5	375.65
"A	2.7	376.45
M	2.4	376.75
"A	2.3	376.85
crb	1.8	377.35
F	0.0	379.15
T.P	8.27	386.75
	1.27	377.25

5170

F	9.1	377.65
crb	9.3	377.45
"A	8.3	378.45
M	8.0	378.75
"A	9.8	377.75
wh	10.1	376.65
W	9.6	377.85

14

396.75

6+0 = 5.1. Monks 80' 14' Wks. 13 1/2'

W	8.4	378.35
erb	9.0	377.75
1/4	9.8	376.95
M	9.9	376.85
1/4	8.7	378.05
erb	8.3	378.45
F	9.5	377.25

5 curb

E	8.9	377.85
erb	7.5	379.25
1/4	7.7	379.05
M	9.7	377.05
1/4	9.7	377.05
erb	8.9	378.35
W	7.7	379.05

396.75

5 1/4

15

W	9.8	376.95
erb	9.6	377.15
1/4	9.8	376.95
M	9.3	377.45
1/4	8.7	378.05
erb	8.6	378.15
F	8.3	376.45

Center

E	7.5	379.25
erb	7.7	379.05
1/4	8.0	378.75
M	8.3	378.45
1/4	8.5	378.25
erb	8.7	378.05
W	8.9	377.85

386.75

N 1/4

N	9.7	377.05
Corb	9.6	377.15
1/4	9.4	377.35
M	9.1	377.65
1/4	8.8	377.95
Corb	8.7	378.05
E	8.3	378.45

N Corb

E	8.4	378.45
Corb	7.6	379.15
1/4	7.4	379.35
M	7.1	377.65
1/4	8.7	378.05
Corb	7.6	379.15
N	9.0	377.75

386.75

N.L. Mansur 5'

16

N	9.2	377.55
Corb	7.8	378.95
1/4	8.8	377.95
M	9.0	377.75
1/4	8.4	378.35
Corb	8.2	378.35
E	6.3	380.45

D+25 N

E	7.3	379.45
Corb	6.8	379.95
1/4	6.2	380.55
1/4	8.2	378.55
1/4	8.2	378.55
Corb	7.8	378.95
N	8.7	378.05

386.75

0+50

W	7.4	379.35
Crk	6.0	380.75
"A	6.9	379.85
M	8.2	378.55
"A	8.0	378.75
Crk	6.6	380.15
F	6.0	380.75

0+75

F	6.4	380.35
Crk	7.5	379.25
"A	6.5	380.25
M	6.5	380.25
"A	8.0	378.75
Crk	8.2	378.55
W	8.4	378.35

386.75

1+0

W	7.5	379.25
Crk	8.0	378.75
"A	8.0	376.75
M	6.5	380.25
"A	7.0	379.75
Crk	6.7	380.05
F	5.7	381.05

1+25

F	6.5	380.25
Crk	4.5	382.25
"A	5.4	387.35
M	7.1	379.65
"A	7.4	379.35
Crk	7.8	378.95
W	7.9	378.85

17

386.75

1450

W	7.5	379.25
Crk	7.4	379.35
"A	4.9	381.85
M	5.3	381.45
"A	6.5	380.25
Crk	6.7	380.05
F	6.4	380.35

1475

F	5.0	381.75
Crk	6.0	380.75
"A	6.6	380.15
M	6.8	379.95
"A	6.6	380.15
Crk	6.5	380.25
W	5.7	381.05

386.75

240

W	6.8	379.95
Crk	6.9	379.85
"A	6.9	379.85
M	5.8	380.95
"A	5.5	381.25
Crk	4.9	381.85
F	6.0	380.85

2425

F	5.8	380.95
Crk	4.7	382.05
"A	5.7	381.05
M	6.7	380.05
"A	6.7	380.05
Crk	6.1	380.65
W	4.8	381.95

18

386.75

3+50

W	6.8	379.95
erb	6.6	380.15
"	6.3	380.45
M	6.2	380.55
"	5.0	381.75
erb	4.6	382.15
E	4.8	381.95

4+75

E	4.6	382.15
erb	5.5	381.25
"	4.8	382.45
M	3.5	383.25
"	5.6	381.15
erb	6.7	380.05
W	6.9	379.85

386.75

3+0

19

W	4.2	382.55
erb	4.1	382.65
"	5.6	381.15
M	5.5	381.25
"	5.4	381.35
erb	5.3	381.45
E	4.0	382.75

3+25

E	4.0	382.75
erb	2.8	383.95
"	4.5	382.25
M	5.5	381.25
"	5.2	381.55
erb	5.7	381.05
W	5.6	381.15

386.75

3450

W	6.2	380.55
Orb	5.3	381.45
W	3.9	383.35
M	4.4	382.35
W	5.1	381.65
Orb	4.7	382.05
E	4.5	382.25

3475

E	4.5	382.25
Orb	2.7	383.85
W	4.0	382.75
M	5.2	381.55
W	5.4	381.35
Orb	5.7	381.05
W	5.4	381.35

386.75

440

20

W	5.5	381.25
Orb	3.1	383.65
W	3.5	383.25
M	5.1	381.65
W	4.6	382.15
Orb	4.5	382.25
E	3.9	382.85

4425

E	3.8	382.95
Orb	4.2	382.55
W	2.5	384.25
M	2.8	383.95
W	4.9	381.85
Orb	5.2	381.55
W	5.5	381.25

386.75

4750

W	5.0	381.75
crk	2.8	383.95
"A	4.0	382.75
M	4.5	381.95
"A	4.2	382.55
crk	3.5	383.25
E	3.4	383.35

4775

E	3.2	383.55
crk	3.5	383.25
"A	3.8	382.95
M	4.2	382.55
"A	4.5	382.25
crk	4.6	382.15
W	3.7	383.05

386.75

540

W	3.0	383.75
crk	4.5	382.25
"A	3.5	383.25
M	3.3	383.45
"A	3.2	383.55
crk	3.1	383.65
E	3.0	383.75

5425

E	2.7	384.05
crk	2.8	383.95
"A	2.9	383.85
M	2.8	383.95
"A	2.7	384.05
crk	4.2	382.55
W	4.1	382.65

21

386.75

5450

N	2.4	384.35
Crk	4.1	382.65
"	3.2	383.55
M	2.9	383.85
"	2.7	384.05
Crk	2.5	384.25
F	2.3	384.45

5475

F	2.0	384.75
Crk	2.3	384.45
"	2.6	384.15
M	2.7	384.05
"	3.0	383.75
Crk	3.7	383.05
N	3.1	383.65

386.75

640 = S.L. Madison 80' 14' NKS 13' 1125

22

N	2.1	384.65
Crk	3.5	383.25
"	3.3	383.45
M	2.9	383.85
"	2.8	384.55
Crk	1.8	384.95
F	1.9	384.85

5 CURLE

F	1.7	385.05
Crk	1.8	384.95
"	2.1	384.65
M	2.4	384.35
"	2.8	383.95
Crk	2.4	384.35
N	3.2	383.55

386.75

S "A

N	3.0	383.75
Wb	2.8	383.95
"A	2.5	384.25
M	2.3	384.45
"A	2.1	384.65
Wb	1.9	384.85
F	1.6	385.15

Center

F	1.1	385.65
Wb	1.2	385.55
"A	1.4	385.35
M	1.5	385.25
"A	1.9	384.85
Wb	2.1	384.65
N	2.2	384.55

386.75

N "A

28

N	2.8	383.95
Wb	2.6	384.15
"A	2.6	384.15
M	2.9	384.35
"A	2.4	384.55
Wb	2.1	384.65
F	1.9	384.85

N Wb

F	0.8	385.95
Wb	0.6	386.15
"A	2.1	384.65
M	2.6	384.15
"A	2.4	384.35
Wb	1.6	385.15
N	1.9	385.05

386.75

N.L. Madison

W	2.6	384.15
wh	1.1	385.65
"	0.3	386.45
M	2.0	384.25
"	2.1	384.65
wh	0.4	386.35
E	0.5	386.25

T.P. 522 390.63 1.39 385.41

0+25 N

F	5.3	386.3
wh	4.9	386.7
"	5.8	384.8
M	5.7	384.9
"	5.9	384.7
wh	5.5	385.1
W	6.3	384.3

390.63

24

0+50

W	5.8	384.8
wh	5.7	384.9
"	5.4	385.2
M	5.1	385.5
"	5.0	385.6
wh	4.8	385.8
E	4.5	386.1

0+75

F	4.1	386.5
wh	4.5	386.1
"	4.8	385.8
M	5.2	385.4
"	5.4	385.2
wh	5.6	385.0
W	5.6	385.0

390.6

140

W	5.7	384.9
Wh	5.4	385.2
"	5.2	385.4
M	5.0	385.6
"	4.6	386.0
Wh	4.5	386.1
F	4.1	386.5

1425

F	3.9	386.7
Wh	4.2	386.4
"	4.4	386.2
M	4.7	385.9
"	4.9	385.7
Wh	5.1	385.5
W	5.4	385.2

390.6

1450

25

W	5.1	385.5
Wh	4.9	385.7
"	4.8	385.8
M	4.5	386.1
"	4.2	386.4
Wh	3.8	386.8
F	4.1	386.5

1475

F	3.5	387.1
Wh	3.9	386.7
"	3.9	386.7
M	4.3	386.3
"	4.6	386.0
Wh	4.9	385.7
W	4.9	385.7

390.6

210

W	4.9	385.7
Crk	4.6	386.0
"A	4.4	386.2
M	4.1	386.5
"A	3.9	386.7
Crk	4.0	386.6
E	3.7	386.9

2125

E	3.5	387.1
Crk	3.8	386.8
"A	3.9	386.7
M	4.1	386.5
"A	4.4	386.2
Crk	4.6	386.0
W	4.8	385.8

390.6

2150

26

W	4.8	385.8
Crk	4.8	385.8
"A	4.9	386.2
M	4.3	386.3
"A	4.0	386.6
Crk	3.9	386.8
E	3.5	387.1

2175

E	3.6	387.0
Crk	3.8	386.8
"A	3.9	386.7
M	4.1	386.5
"A	4.4	386.2
Crk	4.6	386.1
W	4.8	385.8

390.4

310

W	4.6	386.0
wh	4.3	386.3
"	4.2	386.4
M	4.1	386.5
"	4.0	386.6
wh	3.8	386.8
E	3.9	386.7

3125

E	3.9	386.7
wh	3.9	386.7
"	4.1	386.5
M	4.1	386.5
"	4.1	386.5
wh	4.1	386.2
W	4.6	386.0

390.6

3150

W	4.5	386.1
wh	4.3	386.3
"	4.2	386.4
M	4.1	386.5
"	4.0	386.6
wh	3.8	386.8
E	3.5	387.1

3175

E	3.7	386.9
wh	3.8	386.8
"	3.8	386.8
M	4.0	386.6
"	4.2	386.4
wh	4.3	386.3
W	4.3	386.3

27

390.5

4+0

W	4.3	386.3
wh	4.2	386.4
"	4.2	386.4
M	3.9	386.7
"	3.8	386.8
wh	3.8	386.8
E	3.5	387.1

4+25

F	3.4	387.2
wh	3.7	386.9
"	3.9	386.7
M	3.9	386.7
"	4.1	386.5
wh	4.1	386.5
W	4.3	386.3

390.6

4+50

28

W	3.9	386.7
wh	4.1	386.5
"	3.8	386.8
M	3.7	386.9
"	3.6	387.0
wh	3.5	387.1
E	3.3	387.3

4+75

F	2.8	387.8
wh	3.0	387.6
"	3.2	387.4
M	3.4	387.2
"	3.6	387.0
wh	3.5	387.1
W	3.5	387.1

390.6

510

W	3.3	387.3
crk	3.3	387.3
"A	3.2	387.4
M	3.2	387.4
"A	3.0	387.6
crk	2.8	387.8
E	2.6	388.0

5125

F	2.4	388.2
crk	2.6	388.0
"A	2.4	388.2
M	2.7	387.9
"A	2.8	387.8
crk	2.9	387.7
W	3.1	387.5

390.6

5150

29

W	2.7	387.9
crk	2.2	388.4
"A	2.3	388.3
M	2.2	388.4
"A	1.9	389.2
crk	1.6	389.0
E	1.7	388.9

5175

E	1.4	389.2
crk	1.3	389.3
"A	1.7	388.9
M	1.9	388.7
"A	2.2	388.4
crk	2.3	388.3
W	2.3	388.3

390.6

640 = S. L. Adams ST

W	1.5	389.1
est	1.8	388.8
1/4	2.3	388.3
M	1.7	388.9
1/4	1.7	388.9
est	1.5	389.1
E	1.5	389.1

50

X sec. Kansas st. El Cajon to Adams
80' Wide 14 Walks 19'14"

10/18/12 Evans
Kerr
Shawler

31

B.M. Mon SE Cor El Cajon & Nebraska 365.60

B.M. 6.08 371.68

N. L. El Cajon

W 4.0 367.7

cb 3.8 367.9

1/4 4.3 367.4

M 3.9 367.8

1/4 4.5 367.2

cb 4.3 367.4

E 4.7 367.0

0+25

E 4.6 367.1

cb 4.3 367.4

1/4 4.0 367.7

M 3.8 367.9

1/4 4.6 367.1

cb 3.8 367.9

W 4.1 367.6

37/100

0 + 50

W	4.3	367.4
cb	4.2	367.5
1/4	4.7	367.0
M	3.6	368.1
1/4	4.1	367.6
cb	4.5	367.2
E	4.7	367.0

0 + 75

E	4.6	367.1
cb	4.6	367.1
1/4	4.6	367.1
M	4.0	367.7
1/4	4.8	366.9
+7	4.9	366.8
+3	3.8	367.9
cb	4.2	367.5
W	4.4	367.3

37/100

1 + 0

W	4.5	367.2
cb	4.6	367.1
1/4	5.1	366.6
M	4.2	367.5
1/4	4.6	367.1
cb	4.6	367.1
E	4.6	367.1

1 + 25

E	4.7	367.0
cb	4.6	367.1
1/4	5.1	366.6
M	4.3	367.4
1/4	5.0	366.7
cb	4.5	367.2
W	4.5	367.2

32

37/68

1+50

W	4.5	367.2
cb	4.7	367.0
+1.0	4.8	366.9
1/4	5.2	366.6
M	4.3	367.4
1/4	4.9	366.8
cb	4.7	367.0
E	4.8	366.9

1+95

E	5.3	366.4
cb	5.2	366.6
1/4	5.2	366.5
M	4.5	367.2
1/4	5.6	366.1
cb	5.1	366.6
W	4.9	366.8

38

2+0

W	5.2	366.5
cb	5.3	366.4
+1.0	5.3	366.4
1/4	5.8	365.9
M	4.8	366.9
1/4	5.4	366.3
cb	5.4	366.3
E	5.7	366.0

2+25

E	5.9	366.8
cb	5.1	366.6
1/4	5.2	366.5
M	5.0	366.7
1/4	6.1	366.6
cb	5.3	366.4
W	5.4	366.3

37/64

2+50

W	5.7	366.0
cb	5.5	366.2
1/4	5.3	366.4
+2	5.7	366.0
M	5.2	366.5
1/4	6.2	365.5
cb	6.5	365.2
E	6.6	365.1

2+75

E	6.4	365.3
cb	6.4	365.3
1/4	5.6	366.1
M	5.3	366.4
1/4	6.5	365.2
+2	6.0	365.7
cb	5.6	366.1
W	5.6	366.1

3+0

34

W	5.7	366.0
cb	6.0	365.7
+11	6.6	365.1
1/4	7.0	364.7
M	5.5	366.2
1/4	6.3	365.4
cb	6.7	365.0
E	6.3	365.4

3+25

E	6.6	365.1
cb	7.0	364.7
1/4	6.2	365.5
M	5.7	366.0
1/4	6.9	364.8
+2	6.4	365.3
cb	6.2	365.5
W	5.8	365.9

37/08

3+50

W	6.1	365.6
cb	6.3	365.4
+11	6.5	365.2
1/4	6.9	364.8
M	5.6	365.1
1/4	6.5	365.2
+2	6.0	365.7
cb	7.1	364.6
E	6.8	364.9

3+75

E	6.7	365.0
cb	6.7	365.0
1/4	7.0	364.7
M	5.7	366.0
1/4	6.5	365.2
+2	5.8	365.9
cb	6.2	365.5
W	6.3	365.6

4+0

35

W	6.3	365.4
cb	6.4	365.3
+11	6.5	365.2
1/4	6.9	364.8
M	5.7	366.0
1/4	6.9	364.8
+2	6.4	365.3
cb	6.7	365.0
E	6.7	365.0

4+25

E	6.0	365.7
cb	6.5	365.2
1/4	7.0	364.7
+2	6.4	365.3
M	5.9	365.8
1/4	7.0	364.7
+2	6.4	365.3
cb	6.2	365.5
W	6.4	365.3

371.68

+ + 50

W	5.8	365.9
cb	6.4	365.3
+11	5.9	365.8
1/4	6.9	364.8
M	5.7	366.0
1/4	6.7	365.0
+2	6.2	365.8
cb	6.5	365.2
E	6.5	365.2

+ + 75

E	6.3	365.4
cb	5.4	366.3
1/4	6.2	365.6
M	5.9	365.8
1/4	6.8	364.9
+2	6.4	365.3
cb	6.5	365.2
W	6.5	365.2

371.68 - 4.1.

540

36

W	6.0	365.7
cb	6.3	365.4
+11	4.9	366.8
1/4	6.4	365.3
M	5.8	365.9
1/4	6.3	365.4
cb	6.4	365.3
E	6.6	365.1

T.P.	6.37	372.11	5.94	365.74
		5+25		

E	7.0	365.1
cb	6.3	365.8
+11	5.6	366.5
1/4	6.3	365.8
M	6.3	365.8
1/4	7.1	365.0
+2	6.3	365.8
cb	6.8	365.3
W	6.9	365.2

372.11

5+50

W	5.8	366.3
cb	5.6	366.5
+11	6.9	365.2
1/4	7.2	364.9
M	6.3	365.8
1/4	7.1	365.0
cb	7.1	365.0
E	6.9	365.2

5+75

E	6.9	365.2
cb	6.6	365.5
1/4	7.3	364.8
M	6.4	367.7
1/4	7.1	365.0
+2	7.4	367.7
+3	7.0	365.1
cb	7.0	365.1
W	6.9	365.2

670 = S.L. Meade St. 80' wide 13-1/2

87

W	6.8	365.3
cb	4.5	367.6
+11	4.6	367.5
1/4	6.8	365.3
M	6.5	365.6
1/4	7.2	364.9
cb	7.0	365.1
E	7.2	364.9

S cb

E	7.1	365.0
cb	7.1	365.0
1/4	7.4	364.7
M	6.8	365.3
1/4	7.1	365.0
+13	5.3	366.8
cb	4.9	367.2
W	6.8	365.3

372.11

S 1/4

W	6.8	365.3
ct	7.2	364.9
1/4	7.2	364.9
M	7.3	364.8
1/4	7.3	364.8
ct	7.5	364.6
E	7.3	364.8

N1

E	7.1	365.0
ct	6.8	365.3
1/4	6.8	365.3
M	6.9	365.2
1/4	6.8	365.3
ct	6.7	365.4
W	6.4	366.7

372.11

N. 1/4

38

W	7.0	365.1
ct	7.1	365.0
1/4	6.9	365.2
M	6.9	365.2
1/4	7.2	364.9
ct	7.3	364.8
E	7.3	364.8

N. ct

E	7.2	364.9
ct	7.7	365.0
1/4	7.0	365.1
M	6.8	365.3
1/4	7.1	365.0
ct	7.0	365.1
W	7.0	365.1

14. L Meade St

50' North

39

w	7.2	364.9
cb	6.7	365.4
+11	5.4	366.7
1/4	7.1	365.0
M	6.5	365.6
1/4	6.9	365.2
cb	7.0	365.1
E	6.9	365.2

w	6.8	365.3
cb	6.8	365.3
1/4	7.2	364.9
M	6.5	365.6
1/4	6.9	365.2
+5	7.2	364.9
cb	6.7	365.4
E	6.9	365.2
E	6.6	365.5

25' North

75'

E	6.8	365.3
cb	7.0	365.1
1/4	7.2	364.9
M	6.7	365.4
1/4	7.3	364.8
+2	6.7	365.4
cb	6.9	365.2
w	6.7	365.4

E	7.0	365.1
cb	6.6	365.5
+70	5.9	366.2
1/4	7.0	365.1
M	6.7	365.4
M	6.3	365.8
1/4	7.1	365.0
+2	6.0	366.1
cb	6.8	365.3
w	6.4	365.7

100'

W	6.7	365.4
ct	6.8	365.3
+10	6.3	365.8
1/4	6.8	365.3
M	6.3	365.8
1/4	7.0	365.1
+2	7.2	364.9
+4	6.6	365.6
ct	6.9	365.2
E	6.9	365.2

125'

E	6.7	365.4
ct	6.8	365.3
1/4	7.0	365.1
M	6.3	365.8
1/4	6.7	365.4
+2	5.2	366.9
ct	5.8	366.3
W	6.9	365.2

150'

W	6.5	365.6
ct	6.6	365.5
+10	6.6	365.5
+11	7.1	365.0
1/4	6.7	365.4
1/4	6.4	365.7
1/4	7.1	365.0
ct	6.6	365.5
E	5.3	366.8

175'

E	6.5	365.6
ct	6.6	365.5
1/4	6.8	365.3
M	6.0	366.1
1/4	6.7	365.4
+3	6.3	365.8
ct	6.6	365.5
W	6.6	365.5

40

200' North

W	6.5	365.6
ct	6.5	365.6
+11	6.4	365.7
1/4	6.7	365.4
M	6.3	365.8
1/4	6.4	365.7
+3	6.6	365.5
+4	5.8	366.3
ct	5.5	366.6
E	6.1	366.0

225'

E	6.2	365.9
ct	6.1	366.0
+8	6.3	365.8
+9	6.8	365.3
1/4	6.6	365.5
M	6.0	366.1
1/4	6.7	365.4
+3	6.9	365.2
ct	6.2	365.9
	5.5	366.6
W	6.3	365.8

250' N

W	6.2	365.9
ct	4.9	367.2
+10	5.5	366.6
+11	6.8	365.3
1/4	6.7	365.4
M	5.8	366.3
1/4	6.3	366.8
ct	6.4	366.7
E	6.0	366.1

275'

E	6.0	366.1
ct	6.3	365.8
+10	5.0	367.1
+11	6.0	366.1
1/4	6.3	365.8
M	5.6	366.5
1/4	6.6	365.5
ct	6.6	365.5
W	6.4	366.7

300' N

W	5.8	366.3
ct	5.6	366.5
1/4	6.7	365.4
M	5.4	366.7
1/4	6.2	365.9
ct	6.1	366.0
E	6.0	366.1

325'

E	6.2	365.9
ct	5.1	366.0
^{2.8} 1/4	4.5	367.0
	6.1	366.0
	6.0	366.1
M	5.1	367.0
1/4	6.0	366.1
ct	5.2	366.9
W	5.0	367.1

350'

42

W	5.5	366.6
ct	5.5	366.6
1/4	5.7	366.4
M	4.7	367.4
1/4	5.6	366.5
ct	6.0	366.1
E	5.1	367.0

375'

E	5.2	366.9
ct	5.7	366.4
^{4.10} ^{4.11} 1/4	5.1	367.0
	5.7	366.4
	5.3	366.8
M	4.2	367.9
1/4	5.7	366.4
ct	5.5	366.6
W	4.8	367.3

400' N

W	5.1	367.0
cb	5.2	366.9
1/4	5.3	366.8
M	3.8	368.3
1/4	4.9	367.2
+2	5.3	366.8
+4	4.0	368.1
cb	4.4	367.7
E	3.5	368.6

425'

E	2.7	369.2
cb	3.9	368.2
1/4	4.8	367.3
M	2.5	368.6
1/4	4.9	367.2
cb	4.6	367.5
W	4.5	367.6

450'

W	4.0	368.1
cb	3.6	368.5
+10	3.3	368.8
+11	4.2	367.9
1/4	4.0	368.1
M	3.3	368.8
1/4	4.4	367.7
cb	4.2	367.9
E	3.4	368.7

475'

E	1.9	370.2
cb	1.7	370.4
+10	3.0	369.1
+11	3.7	368.4
1/4	3.5	368.6
M	2.7	369.4
1/4	3.9	368.2
cb	3.4	368.7
W	2.9	368.2

48

H.I.
372.11

500' N

W	3.1	369.0
ct	3.3	368.8
1/4	3.9	368.2
M	2.2	369.9
1/4	3.0	369.1
+4	1.3	370.8
ct	2.0	370.1
E	2.4	369.7

525'

E	1.7	370.4
ct	1.9	370.2
+10	0.9	371.2
+11	2.5	369.6
1/4	2.3	369.8
M	1.8	370.3
1/4	2.9	369.2
ct	2.6	369.5
W	2.9	369.2

T. P. 10.47 380.96 1.62 370.49

H.I.
380.96

550'

44

W	10.9	370.1
ct	11.0	370.0
+10	10.9	370.1
+11	11.7	369.3
1/4	11.5	369.6
M	10.1	370.9
1/4	11.0	370.0
ct	10.9	370.1
E	10.4	370.6

575' N.

E	9.4	371.6
ct	9.5	371.5
+11	8.4	372.6
+12	10.6	370.4
1/4	10.4	370.6
M	9.7	371.3
1/4	10.8	370.2
ct	10.4	370.6
W	11.2	369.8

600' = S.L. Monroe St 80' Wide

W	10.7	370.3
cb	10.3	370.7
1/4	10.5	370.5
M	9.2	371.8
1/4	10.2	370.8
cb	10.0	371.0
E	9.7	371.3

S. cb

E	8.8	372.2
cb	9.7	371.3
1/4	9.9	371.1
M	9.0	372.0
1/4	9.6	371.4
cb	10.3	370.7
W	10.5	370.5

13' 1/4 S

5' 1/4

W	10.1	370.9
cb	10.0	371.0
1/4	9.4	371.6
M	8.9	372.1
1/4	9.2	371.4
cb	9.2	371.8
E	8.9	372.1

φ

E	8.1	372.9
cb	8.5	372.5
1/4	8.7	372.3
M	8.7	372.3
1/4	9.0	372.0
cb	9.3	371.4
W	9.3	371.7

N 14

W	10.1	370.9
cb	9.9	371.1
1/4	9.5	371.5
M	8.5	372.5
1/4	8.9	372.1
cb	8.9	372.1
E	8.8	372.2

N cb

E	9.0	372.0
cb	9.0	372.0
1/4	8.9	372.1
M	8.3	372.7
1/4	9.4	371.6
+3	8.5	372.5
cb	7.7	373.3
W	8.5	372.5

North line Monroe

W	9.3	371.7
cb	8.5	372.5
1/4	9.3	371.7
M	8.2	372.8
1/4	8.6	372.4
cb	8.9	372.1
E	7.6	373.4

25' North

E	7.5	373.5
cb	8.5	372.5
7.6	373.4	
8.1	372.9	
8.1	372.9	
M	7.5	373.5
1/4	8.7	372.3
cb	9.3	371.7
W	9.1	371.9

50' North

W	8.7	372.3
cb	7.2	373.8
± 9,	6.5	374.5
1/4	8.5	372.5
	8.1	372.9
M	7.6	373.4
1/4	8.3	372.7
cb	8.3	372.7
E	7.6	373.4

75'

E	7.2	373.8
cb	8.0	373.0
1/4	8.1	372.9
M	7.3	373.8
1/4	8.1	372.9
cb	8.3	372.7
W	8.4	372.6

100'

W	7.7	373.3
cb	7.6	373.4
1/4	7.7	373.3
M	6.8	374.2
1/4	7.6	373.4
cb	6.9	374.1
E	6.5	374.5

125'

E	6.4	374.6
cb	6.7	374.3
1/4	7.3	373.7
M	6.6	374.4
1/4	7.5	373.5
cb	7.2	373.8
W	7.3	373.7

150'

W	7.2	373.8
cb	7.1	373.9
1/4	7.0	374.0
M	6.3	374.7
1/4	7.2	373.8
cb	6.9	374.1
E	6.3	374.7

175'

E	4.7	376.3
cb	5.0	376.0
1/4	7.2	373.8
M	6.3	374.7
1/4	6.9	374.1
cb	6.8	374.2
W	6.7	374.1

200'

W	7.1	373.9
cb	7.0	374.0
1/4	6.9	374.1
M	5.8	375.2
1/4	6.7	374.4
cb	6.4	374.6
E	6.2	374.8

225'

E	5.7	375.3
cb	5.3	375.7
1/4	6.8	374.2
M	6.0	375.0
1/4	6.6	374.4
+2	6.8	374.2
+3	5.6	375.6
cb	4.9	376.1
W	6.9	374.1

250

w	6.7	374.3
ct	6.6	374.4
1/4	6.7	374.3
M	5.7	375.3
1/4	5.9	375.1
ct	6.4	374.6
E	4.5	376.5

275

F	4.2	376.8
ct	5.4	375.6
+1/2	5.3	375.7
1/4	6.0	375.0
1/4	5.8	375.2
M	5.4	375.6
1/4	6.6	374.4
ct	6.7	374.3
w	5.4	375.6

300

w	5.5	375.5
ct	4.8	376.2
1/4	6.4	374.6
M	5.2	375.8
1/4	5.8	375.2
ct	5.8	375.2
E	5.1	375.9

325

E	4.5	376.5
ct	3.8	377.2
1/4	5.4	375.6
M	4.7	376.3
1/4	6.3	374.7
ct	5.9	375.1
w	5.6	375.4

49

350'

W	5.4	375.1
cb	6.2	374.8
1/4	6.0	375.0
M	4.6	376.4
1/4	5.2	375.8
cb	5.4	375.6
E	5.5	375.5

375'

E	5.4	375.6
cb	5.3	375.7
1/4	5.1	375.9
↓	4.3	376.7
1/4	5.5	375.5
cb	4.2	376.8
W	4.5	376.5

400

W	4.9	376.1
cb	5.7	375.3
1/4	5.5	375.5
M	4.1	376.9
1/4	4.6	376.5
+2	5.0	376.0
+3	4.0	377.0
cb	5.1	375.9
E	3.8	377.2

425'

E	4.6	376.4
cb	4.8	376.2
1/4	4.9	376.1
M	4.0	377.0
1/4	4.9	376.1
+2	5.2	375.8
cb	4.0	377.0
	4.3	376.7
W	5.2	375.8

50

141.
380.96

51

450'

500

W	5.0	376.0
cb	5.5	375.5
'/4	5.3	375.8
M	4.1	376.9
'/4	4.7	376.3
cb	3.9	377.1
E	3.9	377.1

W	4.5	376.5
cb	5.0	376.0
'/4	5.1	375.9
M	3.9	377.1
'/4	4.4	376.4
cb	3.8	377.2
E	3.5	377.5

475'

525'

E	2.5	377.5
cb	3.7	377.3
'/4	4.6	376.4
M	3.9	377.1
'/4	4.9	376.1
cb	5.2	375.8
W	4.8	376.2

E	4.1	376.9
cb	4.5	376.6
'/4	3.3	377.7
'/4	4.5	376.6
'/4	4.3	376.7
M	3.6	377.4
'/4	4.5	376.5
cb	4.9	376.1
W	4.3	376.7

T.P.	9.62	386.97	3.61	377.35
------	------	--------	------	--------

N.T.
386.97

550'

W	10.5	376.6
cb	10.8	376.2
1/4	10.4	376.6
M	9.6	379.4
1/4	10.6	376.4
cb	10.2	376.8
E	9.5	377.5

575'

E	8.6	378.4
cb	10.1	376.9
1/4	10.3	376.7
M	9.4	377.6
1/4	10.4	376.6
cb	9.7	377.3
W	8.0	379

600' = S.L. Madison St. 80' wide 13' 1/4"

52

W	10.3	376.7
cb	10.2	376.8
1/4	10.1	376.9
M	9.3	377.9
1/4	10.0	377.0
cb	9.9	377.1
E	8.2	378.8

S cb

E	9.1	377.9
cb	9.8	377.2
1/4	9.7	377.3
M	9.0	378.0
1/4	9.6	377.4
1/4	9.6	377.4
1/4	9.7	377.3
cb	9.1	377.9
W	9.9	377.1

South 1/4

W	9.8	377.2
cb	9.7	377.3
1/4	9.1	377.9
M	8.6	378.4
1/4	9.1	377.9
cb	9.4	377.6
E	9.0	378.0

φ

E	8.2	378.8
cb	8.4	378.6
1/4	8.6	378.4
M	8.7	378.3
1/4	8.7	378.3
cb	9.0	378.0
W	9.0	378.0

N 1/4

W	9.5	377.5
cb	9.5	377.5
1/4	9.4	377.6
M	9.2	377.8
1/4	9.2	377.8
cb	9.0	378.0
E	8.9	378.1

N cb.

E	8.9	378.1
cb	8.3	378.7
1/4	8.9	378.1
M	9.5	377.5
1/4	9.5	377.5
cb	9.5	377.5
W	9.4	377.6

North line Madison

W	9.1	377.9
cb	9.0	378.0
1/4	9.6	377.4
M	9.5	377.5
1/4	9.3	377.7
cb	9.3	377.7
E	8.8	378.2

25' North

E	8.6	378.4
cb	9.1	377.9
1/4	8.5	378.2
M	8.7	378.3
1/4	9.5	377.5
cb	8.1	378.1
W	9.0	378.0

50'

W	8.6	378.4
cb	9.3	377.7
1/4	8.7	378.3
M	7.0	380.0
1/4	7.5	379.5
cb	8.9	378.1
E	7.1	379.9

75'

E	7.3	379.7
cb	8.7	378.3
1/4	7.3	379.7
M	6.7	380.3
1/4	8.2	378.8
cb	8.1	378.9
W	8.2	378.8

100' N.

W	8.0	379.0
cb	8.6	378.4
1/4	8.3	378.7
M	7.6	379.4
1/4	8.3	378.7
cb	8.0	379.0
E	6.7	380.3

125' N.

E	6.7	380.3
cb	6.1	380.9
1/4	7.4	379.6
M	5.8	381.2
1/4	5.4	381.6
cb	7.9	379.1
W	7.2	379.8

150' N.

W	6.8	380.2
cb	6.8	380.2
1/4	7.1	379.9
M	7.3	379.7
1/4	6.5	380.5
cb	6.0	381.0
E	6.9	380.1

175'

E	5.9	381.1
cb	4.7	382.3
1/4	4.9	382.1
M	6.4	380.6
1/4	6.2	380.8
cb	5.0	382.0
±10	5.3	381.7
±11	6.0	381.0
W	6.3	380.7

200' N

W	5.1	381.3
cb	6.1	380.9
1/4	4.5	382.5
M	5.4	381.6
1/4	5.6	381.4
cb	4.2	382.8
E	4.3	382.7

225' N

E	4.8	382.2
cb	4.9	382.1
1/4	4.6	382.4
M	5.1	381.9
1/4	5.6	381.4
cb	5.7	381.3
W	5.2	382.8

250'

W	4.6	382.4
cb	3.1	383.9
1/4	3.8	383.2
M	4.3	382.7
1/4	4.3	382.7
cb	4.7	382.3
E	4.9	382.1

275'

E	2.1	384.9
cb	4.2	382.8
1/4	3.1	383.9
M	3.1	383.9
1/4	4.6	382.4
cb	4.8	382.2
W	4.3	382.7

N.I.
386.97

300'

W	4.1	382.9
cb	4.5	382.5
1/4	4.2	382.8
M	2.8	384.2
1/4	3.5	382.5
cb	3.7	383.3
E	3.1	383.9

325'

E	2.9	384.1
cb	1.5	385.5
1/4	3.0	384.0
M	2.5	384.5
1/4	2.5	384.5
cb	2.9	383.1
W	2.3	384.7

T.P. 7.26 391.01 3.22 383.75

N.I.
391.01

350'

W	7.1	383.9
cb	7.5	383.5
1/4	7.6	383.4
M	6.6	384.4
1/4	6.3	384.7
cb	6.2	384.8
E	5.6	385.4

375'

E	4.9	386.1
cb	6.0	385.0
1/4	5.6	385.4
M	6.4	384.6
1/4	7.3	383.7
cb	6.7	384.3
W	5.9	385.1

400' N

W	6.3	384.7
cb	4.5	386.5
1/4	4.3	386.7
M.	5.8	385.2
1/4	5.8	385.2
cb	5.6	385.4
E	4.3	386.7

425' N

E	4.4	386.6
cb	4.9	386.1
1/4	4.1	386.8
M	5.0	386.0
1/4	5.7	385.3
cb	5.6	385.4
W	5.9	385.1

450' N

W.	5.2	385.8
cb	4.9	386.1
1/4	5.1	385.9
M.	4.8	386.2
1/4	4.1	386.9
cb	4.5	386.5
E	3.7	387.3

475'

E	4.0	387.0
cb	3.0	388.0
1/4	2.9	388.1
M.	4.5	386.5
1/4	4.7	386.3
cb	4.5	386.5
W	5.0	386.0

58

58

500'

W	4.4	386.6
cb	4.3	386.7
1/4	4.2	386.8
M	4.1	386.9
1/4	4.0	387.0
cb	4.0	387.0
E	3.7	387.3

525'

E	3.5	387.5
cb	3.5	387.5
1/4	3.6	387.4
M	3.6	387.4
1/4	3.8	387.2
cb	3.8	387.2
W	4.1	386.9

59

550'

W	3.5	387.5
cb	3.5	387.5
1/4	3.4	387.6
M	3.4	387.6
1/4	3.4	387.6
cb	3.3	387.7
E	3.3	387.7

575'

E	2.8	388.2
cb	2.7	388.3
1/4	2.5	388.5
M	2.8	388.2
1/4	3.3	387.7
cb	3.4	387.6
W	3.4	387.6

391.01

600' = S.L. Adams Ave

W	3.2	387.8
Cl	3.1	387.9
1/4	3.7	387.3
M	3.6	387.4
1/4	3.3	387.7
Cl	2.4	388.6
E	3.0	388.0

69

Levels for Slopes on C St.

B.M. S.F. Cor 28 & B Sts. 196.96

H.I.

1.62 198.58

T.P. 0.16 185.62 13.12 185.96

T.P. 0.95 173.54 13.03 172.59

Center 28th St

North line 5.4 168.1

10' north 4.2 169.3

S. Line 9.8 163.7

15' south 10.2 163.3

West 1/4 28th St

South line 12.9 160.6

20' south 13.3 160.2

North line 8.9 164.6

15' north 7.7 165.8

T.P. 2.34 163.75 12.13 161.41

H.I.

163.75

West Curb 28th St.

N.L. 1.7 162.0

20' North 0.2 163.5

South line 5.9 157.8

25' south 6.0 157.7

West line 28th St

S.L. 9.1 154.7

15' south 8.7 155.0

30' south 9.0

North line 4.9 158.9

20' north 3.8 159.9

T.P. 4.94 158.34 10.35 153.40

61

H.I.
158.34

15' West of west line 28th St.

N.L.	2.8	155.5
30' North	0.3	158.0
S.L.	11.7	146.6
10' South	12.1	146.2
20' South	9.6	148.7
40' South	8.2	150.1

25' West

S.L.	10.9	147.4
20' S	11.7	146.6
40' S	11.5	146.8
N.L.	5.5	152.8
30' N.	3.9	154.4
55' N.	2.2	156.1

62

158.34

50' West

N.L.	8.8	149.5
20' N	8.5	149.8
40' N.	8.0	150.3
S.L.	9.3	149.0
20' S	10.0	148.3
40' S	10.9	147.4

80' West

S.L.	2.4	155.9
20' S	2.8	155.5
30' S	3.3	155.0
N.L.	2.6	155.7
20' N.	5.0	153.3
30' N	5.4	152.9

T.P.

10.28 165.61 3.01 155.33

141.
165.61

100' West 28th

N.L. 5.1 160.5

25' North 6.0 159.6

S.L. 3.1 162.5

20' South 3.7 161.9

T.T. 4.85 168.93 15.3 164.08

120' West 28th

S.L. 0.9 168.0

15' South 0.0 168.9

N.L. 3.7 165.2

20' North 4.3 164.6

Slope levels on C St.

B.M. S.E. Cor 29th St 196.96

M.I.
7.26 204.22

T.P. 1.15 195.88 9.49 194.73

T.P. 0.51 184.69 11.70 184.18

0.79 172.88 12.60 172.09

Center of 29th St

N. line 3.7 169.2

10' North 4.9 168.0

East 1/4

N.L. 5.7 167.2

15' N. 7.4 165.5

East Curb

N.L. 7.7 165.2

15' N. 9.0 163.9

20' N. 10.5 162.4

East line 29th

N.L. 9.8 163.1

10' 11.9 161.0

20' 14.1 158.8

66

H.I.

172.88

25' East of East line 29th

South line 7.6 165.3

15' South 6.0 166.9

50' East

South line 11.8 161.1

20' South 10.9 162.0

T.P. 3.61 164.35 12.14 160.74

25' East 29th St

N.L. 8.9 155.5

15' North 9.8 154.6

30' " " 10.3 154.1

50' East

N.L. 11.3 153.0

15' 10.8 153.6

30' 10.3 154.1

H.I.

164.35

64

65' East

N.L. Bottom of Creek bed 13.0 151.3

20' N. 11.0 153.4

40' N. 9.5 155.8

S.L. 7.7 156.7

25' South 6.1 158.3

75' East

S.L. 10.6 153.8

10' 9.0 155.4

30' 6.9 157.5

N.L. 9.7 154.7

10' 9.3 155.1

30' 5.9 158.5

164.35

100' East of 29th St

N.L. 6.2 158.2

25' North 4.4 160.0

S.L. 13.8 150.6

15' S 13.6 150.8

35' S 11.3 153.1

120' East

S.L. 13.6 150.8

15' south 14.0 150.4

35' " 14.1 150.3

N.L. 2.3 162.0

20' N. 2.4 162.0

140' East

S.L. 11.3 153.0

30' South 14.6 149.7

164.35

160' East

S.L. 7.4 157.0

30' South 14.0 150.4

180' East

S.L. 3.3 141.0

30 South 11.9 152.5

T.P. 12.84 173.64 3.55 160.80

200' East

S.L. 7.0 166.6

20' South 11.9 161.7

220' East

15 south of S.L. 3.8 169.8

140' East

N.L. 8.4 165.2

15' North 7.4 166.2

160' East

N.L. 3.4 170.2

10' North 2.9 170.7

63

66

17929

1+0 = N. L. 31st 60' wide

N	8.3	171.0
+ 4	7.7	171.6
+ 5	8.6	173.7
erb	4.9	174.4
"A	4.1	175.2
M	2.8	176.8
"A	2.9	176.4
erb	3.8	175.5
S	12.0	167.3
+ 20	24.1	155.2
+ 40	26.5	152.8
M. erb	25.2	154.1
- 50	29.3	150.0
- 20	13.0	166.3
S	3.6	175.7
erb	2.5	176.8
"A	2.4	176.9
M	6.4	172.9
"A	7.3	172.0
erb	9.0	170.3
N.	9.5	169.5
+ 20		

68

N "A

- 30	25.1	154.2
N	7.0	172.3
erb	8.5	170.8
"A	8.0	171.3
M	3.7	175.6
+ 3	2.6	176.7
"A	2.3	177.0
erb	3.0	176.3
+ 5	4.0	175.3
S	13.8	165.5
+ 25	26.9	152.4
+ 50	31.2	148.1

Center

- 40	25.9	153.4
- 20	23.1	177.2
S	10.7	168.6
erb	3.2	176.3
"A	2.4	176.9
+ 5	2.7	176.6
M	4.6	174.7
"A	7.7	171.6
erb	8.4	170.9
N	18.5	160.8
+ 30	25.1	154.2

E "4"

-30	25.8	153.5
N	20.2	159.1
erb	12.3	167.0
"4	2.1	171.2
+5	7.4	171.9
M	4.3	175.0
+5	2.6	176.7
"4	2.4	176.9
erb	2.3	177.0
S	9.0	170.3
+20	20.1	159.2
+40	22.2	157.1

E curb

-30	18.0	161.3
-20	18.0	161.3
S	2.9	171.4
erb	2.1	177.2
"4	1.9	178.4
+7	2.8	176.5
M	4.3	175.0
"4	6.9	172.4
erb	4.5	174.8
N	17.8	161.5
+30	29.2	155.1

E curb + 7'

N	4.5	174.8
erb	5.2	174.1
"4	6.2	173.1
M	2.9	176.4
"4	1.8	177.5
erb	1.9	177.4
+4	2.4	176.9
S	7.8	171.5
+15	12.8	166.5

E.L.1

-15	11.6	167.7
S	7.6	171.7
+9	2.1	177.2
erb	2.0	177.3
"4	1.8	177.5
M	2.7	176.6
"4	6.0	173.3
erb	4.9	174.4
N	5.3	174.0

17929

0225 E

S		4.2	175.1
+7		0.4	178.9
erb		0.5	178.8
"4		0.3	179.0
M		1.2	178.1
"4		2.3	177.0
erb		3.2	176.1
N		3.1	176.2
T.P.	12.22	191.51	0.00 179.29

0450

N		9.5	182.0
erb		11.0	180.5
"4		11.1	180.4
M		11.0	180.5
"4		11.0	180.5
erb		11.9	179.6
S		11.6	179.9

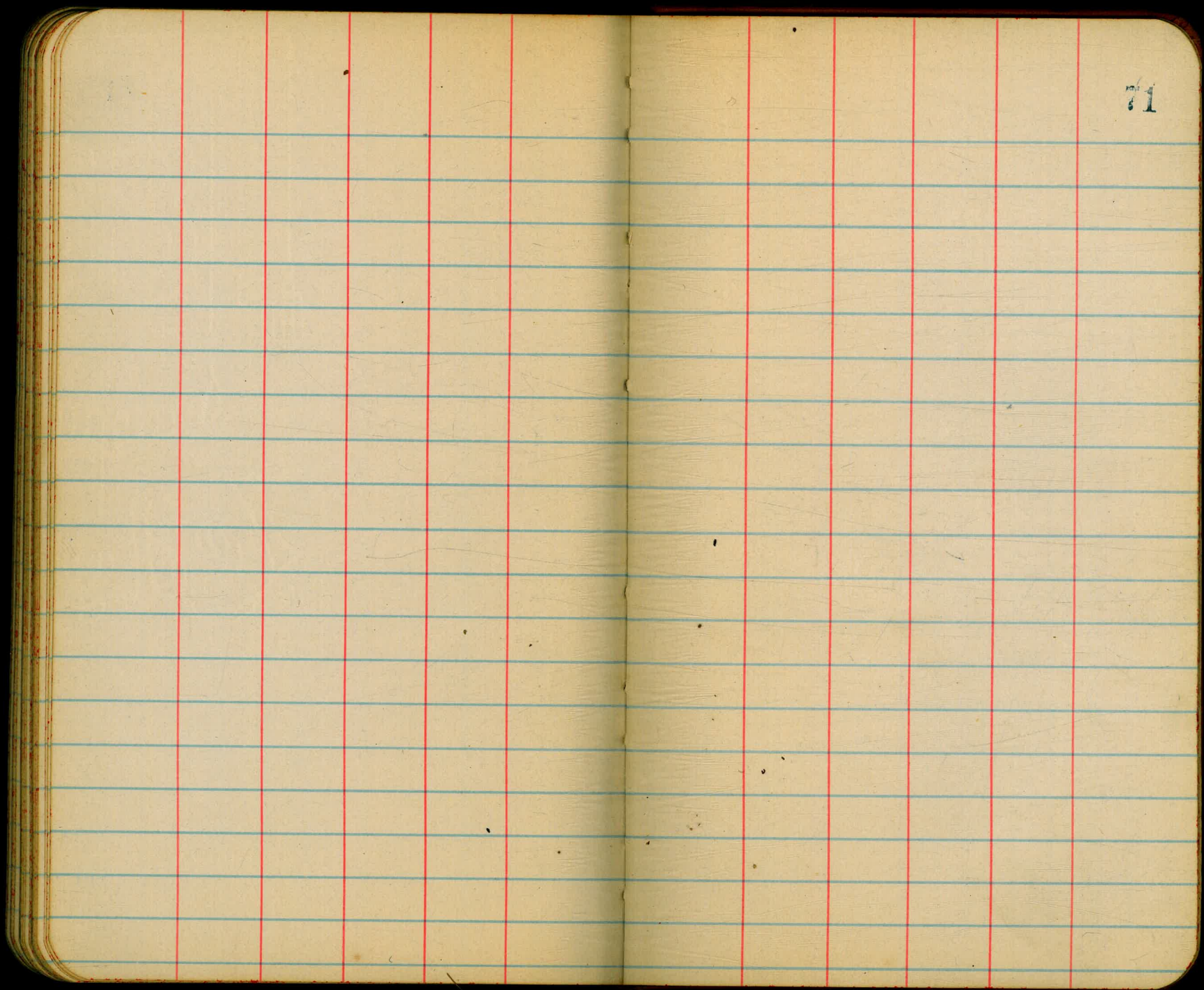
70

0475

S		6.5	185.0
erb		7.0	184.5
+1		8.4	183.1
"4		7.0	184.5
M		6.5	185.0
"4		6.6	184.9
+12		6.8	184.7
erb		5.8	185.7
N		5.6	185.9

140 E of 31st

✓		0.3	191.2
erb		1.1	190.4
+4		2.8	188.7
"4		1.9	189.6
M		1.3	190.2
"4		2.2	189.3
+11		3.8	182.7
erb		2.0	189.5
S		1.3	190.2



71

x-section 16th St from P.L. N.L. Manasse & Schiller's Add
 To X.L. National Arc 10' walks 10' up // Double
 // Evans
 // Kern

B.M. N.E. B.P. 16th 2nd Nth Sts, 12.52

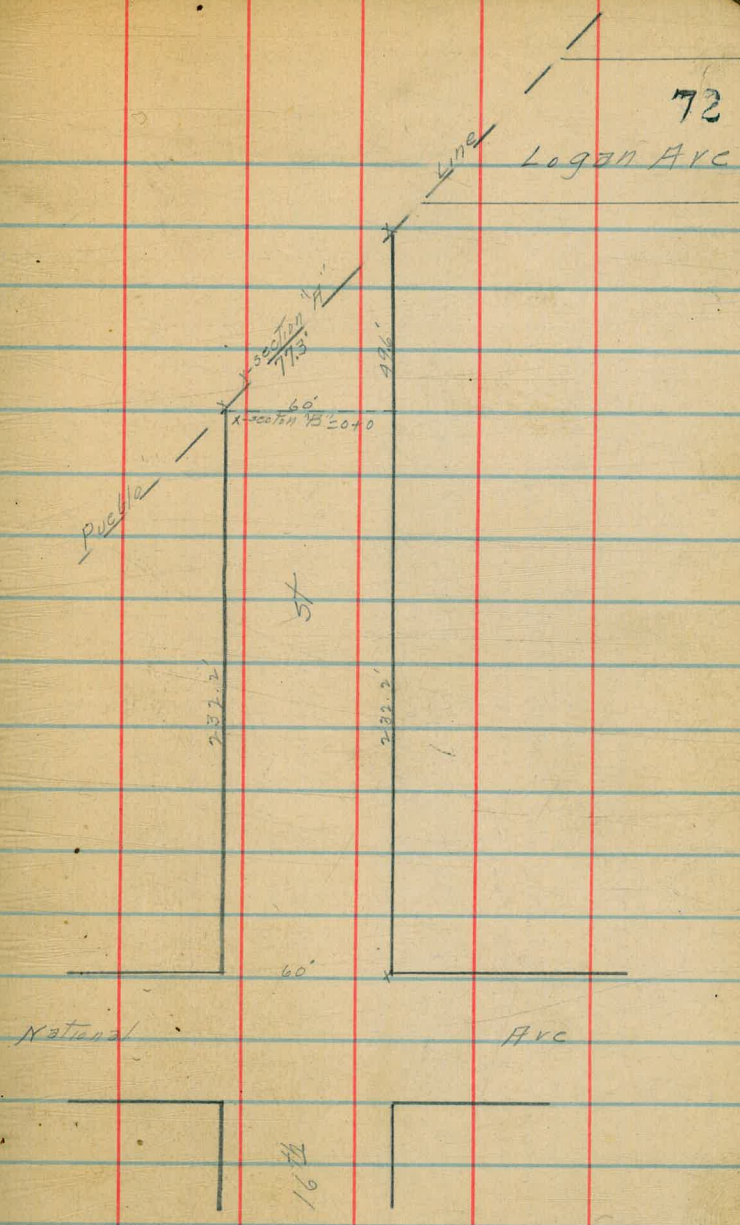
B.M. 0.52 13.04

x-section "A"

EL	4.4	8.6
Crk	4.8	8.2
+1	8.8	4.2
1/4	8.8	4.2
+1	4.8	8.2
M	4.6	8.4
1/4	5.2	7.8
Crk	4.7	8.3
N.L.	5.2	7.8

0+0 = x-section "B"

N.L.	5.2	7.8
Crk	4.6	8.4
1/4	4.9	8.1
M	4.5	8.2
+9	4.7	8.3
1/4	6.7	6.3
+3	8.9	4.1
Crk	8.7	4.3
+3	8.7	4.3
+4	5.3	7.7
E	5.2	7.8



0+25

E	130d	6.0	7.0
+6		5.5	7.5
+7		6.5	6.2
erb		7.1	5.9
+3		8.6	4.4
+7		8.7	4.3
14		7.2	5.8
+2		7.1	5.9
+3		5.1	7.9
M		5.0	8.0
"4		5.0	8.0
+7		4.0	9.0
erb		5.2	7.8
+3		6.1	6.9
N		6.4	6.6

0+40

N		6.7	6.3
erb		7.6	5.4
"4		9.6	3.4
M		9.9	3.1
14		9.4	3.6
erb		7.3	5.7
E		6.3	6.7

73

0+50

E	130d	6.4	6.6
+4		6.3	6.7
+5		7.8	5.2
erb		7.7	5.3
14		6.0	7.0
+1		5.0	8.0
M		5.4	7.6
14		5.8	7.2
+2		8.3	4.7
erb		8.8	4.2
+6		6.4	6.6
N		6.8	6.2

0+75

N		9.1	3.9
+6		9.2	3.8
erb		8.0	5.0
+6		6.5	6.5
"4		6.4	6.8
M		6.0	7.0
14		6.3	6.7
erb		6.3	6.7
E		6.3	6.7

140

E	1304	6.3	6.7
erb		6.2	6.8
"A		6.6	6.4
M		6.4	6.6
"A		6.7	6.3
erb		6.9	6.1
W		6.9	6.1

1425

W		6.9	6.1
erb		7.3	5.7
"A		6.9	6.1
M		6.8	6.2
"A		6.9	6.1
erb		6.5	6.5
E		6.3	6.7

1450

E	1304	8.0	5.0
erb		7.8	5.2
"A		7.7	5.3
M		7.8	5.7
"A		7.3	5.7
erb		7.8	5.2
W		7.5	5.5

1475

W		8.0	5.0
erb		8.3	4.7
"A		7.9	5.1
M		7.7	5.3
"A		7.2	4.8
erb		8.7	4.3
E		8.7	4.3

	210		
E	1304	8.7	4.3
erb		9.1	3.9
14		8.9	4.6
M		8.1	4.9
14		8.3	4.7
erb		8.5	4.5
W		8.3	4.7

2132² = M4 National

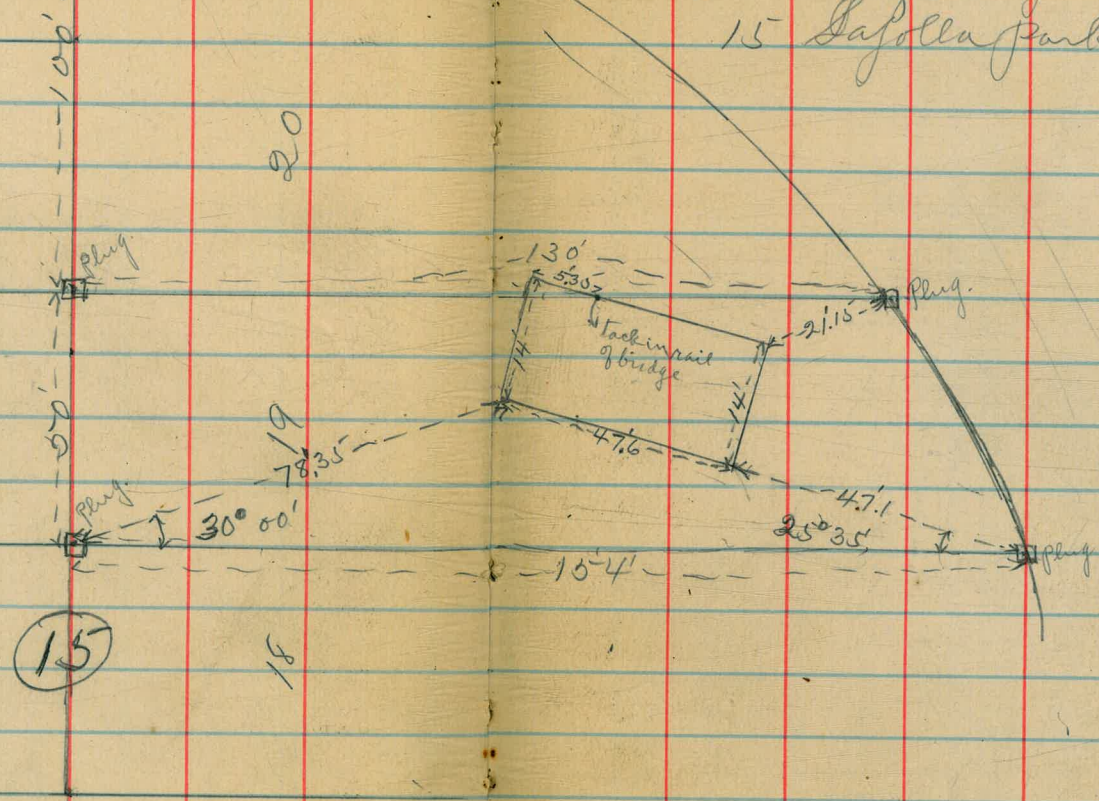
W		8.8	4.2
erb		9.1	3.9
14		8.9	4.1
M		8.5	4.5
14		8.5	4.5
erb		8.1	4.9
E		7.7	5.3

plug
14
Border St.

Dec. 10/12 } Childs
Taylor 3
Allen

Survey of Bridge in Blk.
15 Lafayette Park.

Sketch



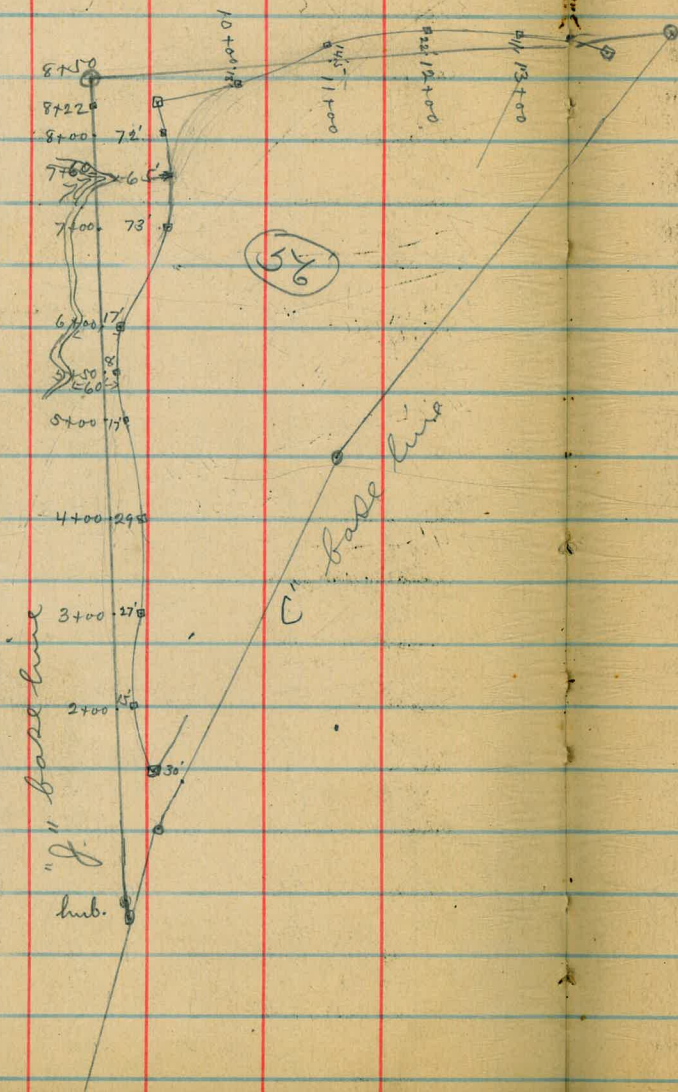
15

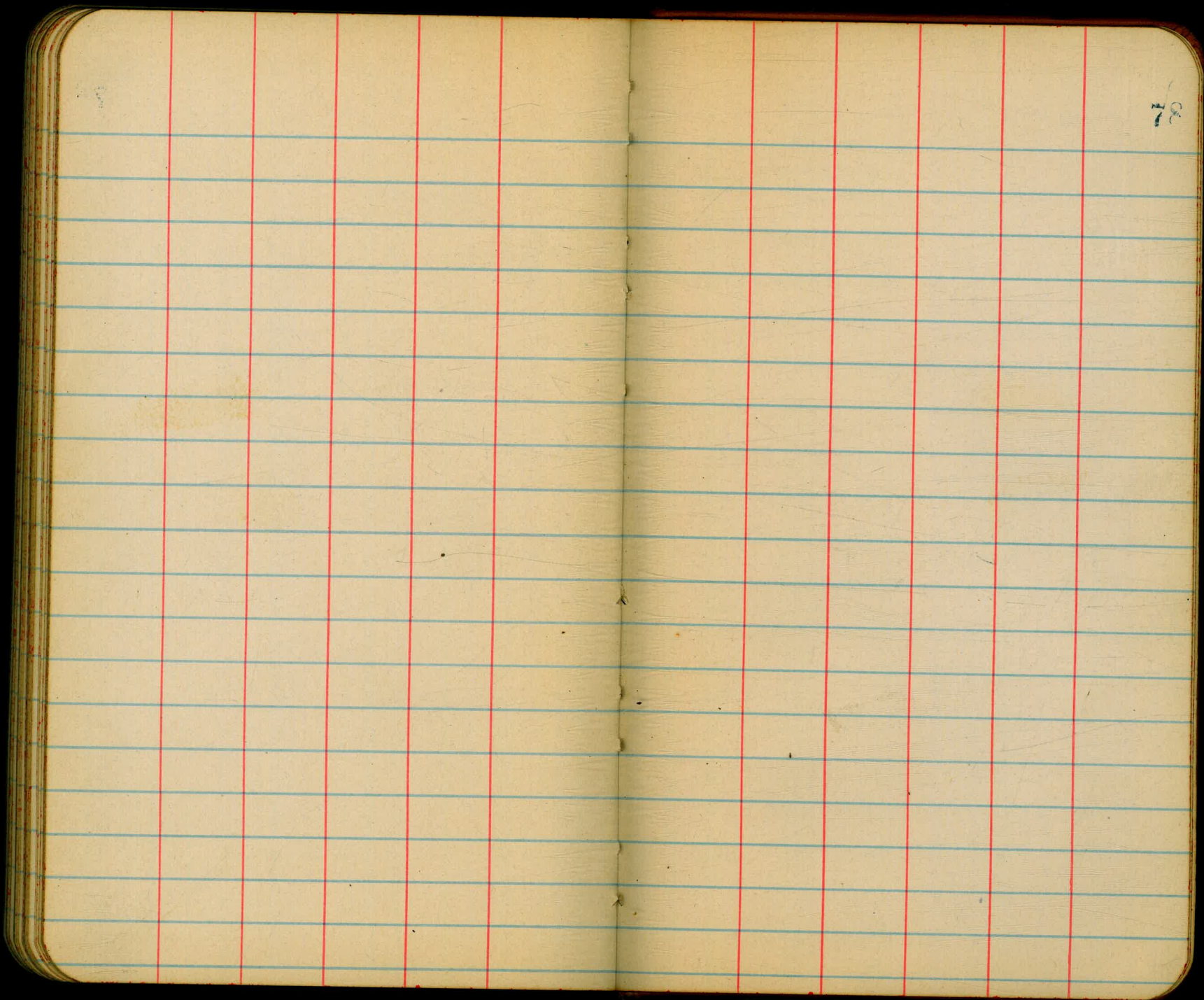
18

Dec 18/12

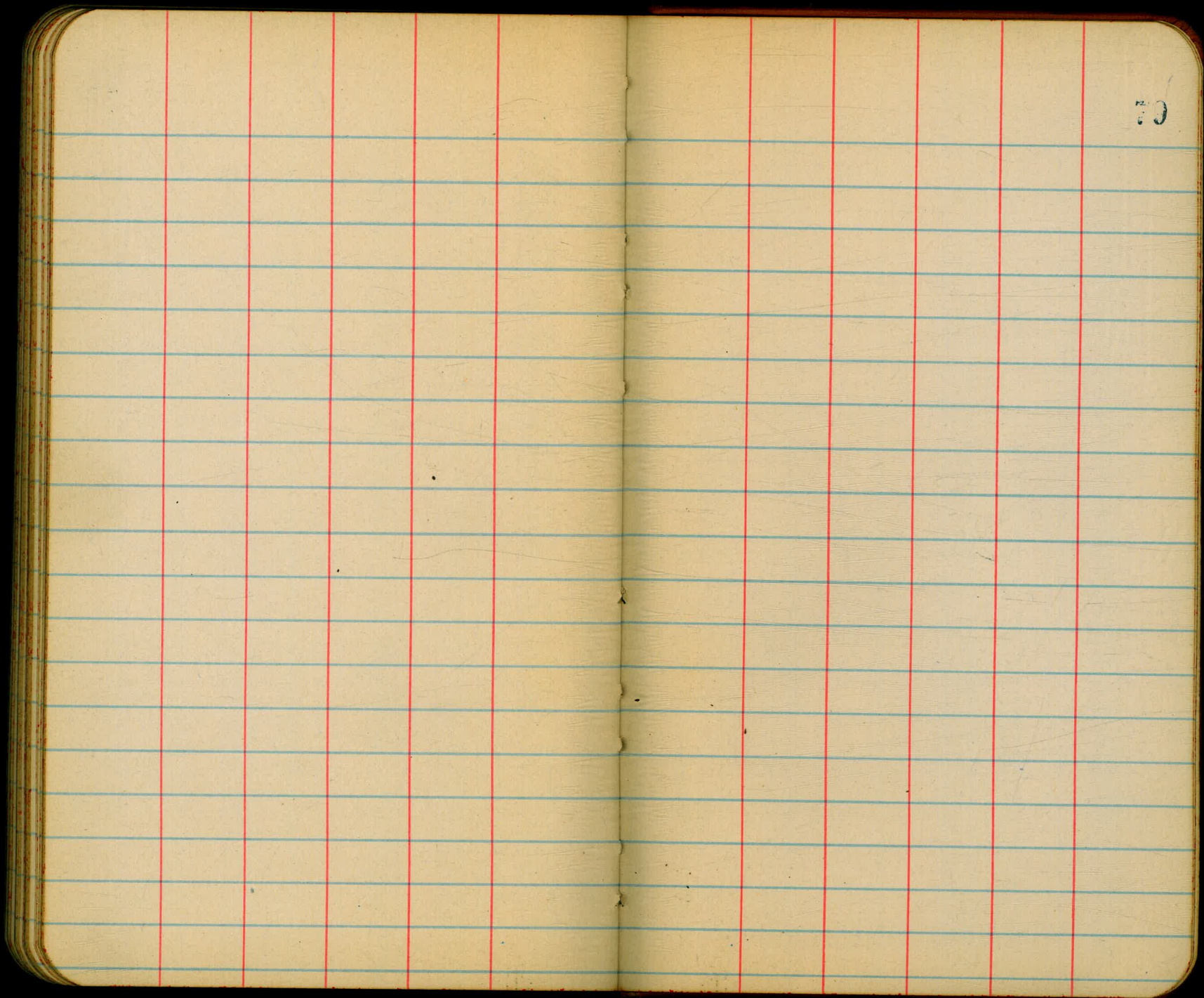
Chields
Taylor
Allen

Survey of Blk 56 Lapolla.

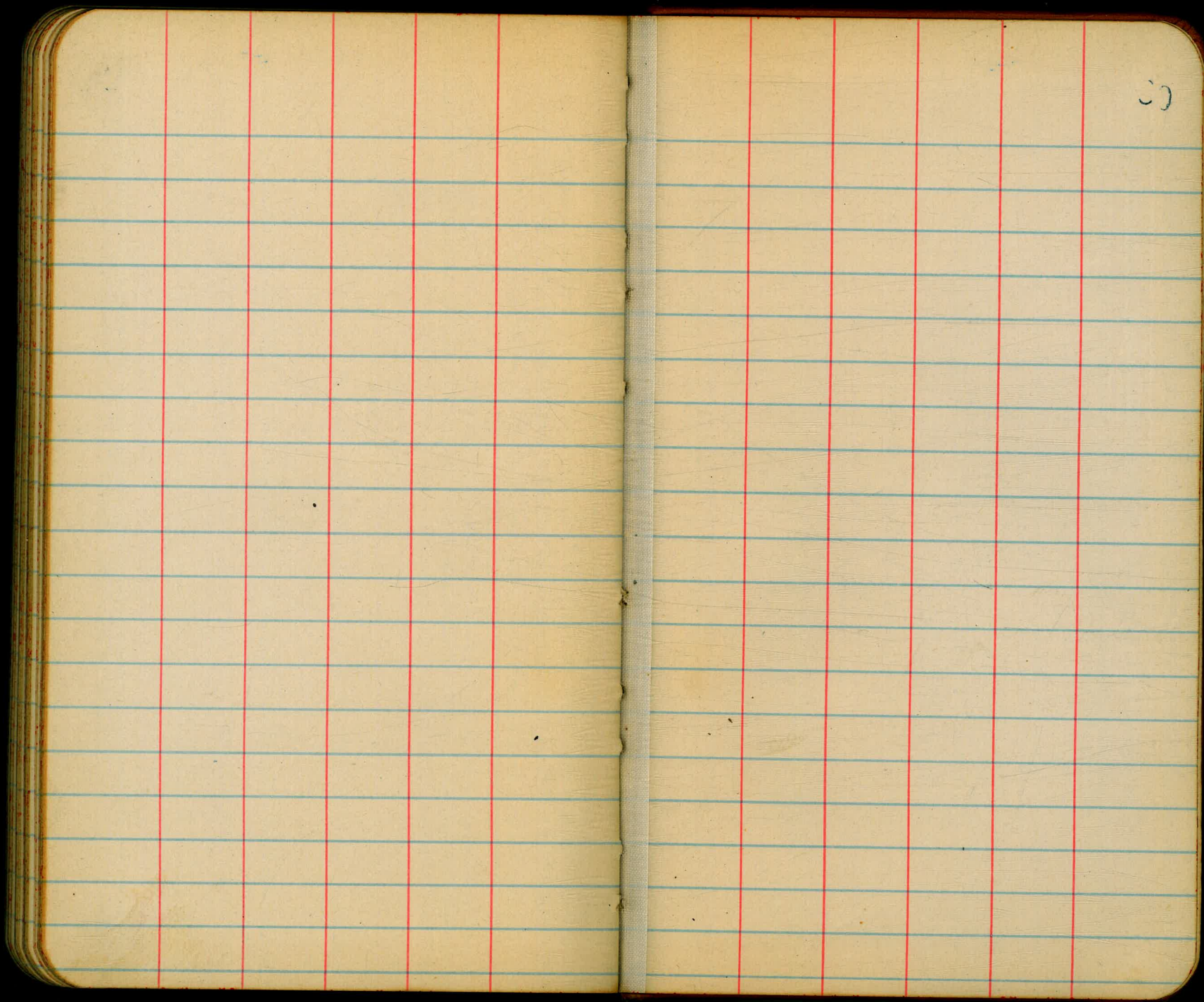




82



20



30

153.40
1.38
154.78
9.94
144.82

161.41
1.38
162.79
9.94
152.83

74 251
etc 17.5 251.
4 20.2 251.
etc 17.5 24.2

152.8

162.79
13.56
149.23

600
800
600
80
600
80
600
2640

5.00

356
14.0
496
4.11 B.M.

6) 77.3
12.9
12.9
25.8
13.2
38.7
12.2
56.6
12.2
69.0
12.2
77.4

