

846

F.B.

846

FIELD BOOK

No. 410

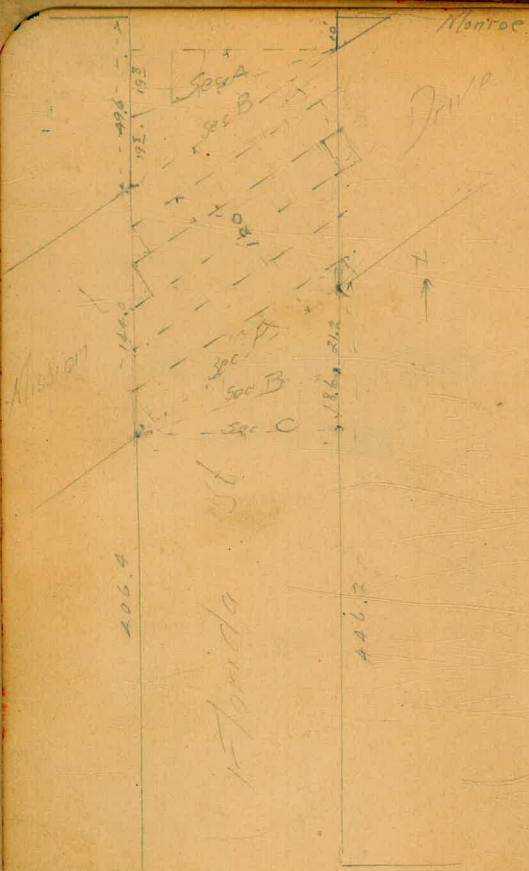
No. 846

MICROFILMED

DEC 10 1964

389.539 - *St. Louis* - *St. Louis* SE RM
389.530 " *St. Louis* NW RM

509



10/15/12 Hatch Moore Hall
 Sec Florida St -
 from El Cajon to Adams 1

	BM 101	32585	324.839
			Plan NW Cor. Florida St and Mission Drive
			Sec A (72' wide) (12' 1/204' Ch)
W		32	322.7
cb		22	321.7
+7		66	319.3
1/2		65	319.4
c		59	320.0
1/4		64	319.5
+8		63	319.6
cb		73	318.6
+2		80	317.9
E. level out		86	317.3
			Sec B (63' wide)
E. level out		90	316.9
cb		71	318.8
+2		62	319.7
1/4		66	319.3
c		64	319.5
1/4		67	319.2

325.85

+0	6.6	319.3
cb	4.4	321.5
w	3.3	322.6

sec 'C' = 1064 N of Meade.

w	3.3	322.6
cb	4.6	321.3
+5	6.7	319.2
1/4	6.8	319.1
c	6.4	319.5
1/2	7.0	318.9
+7	6.8	319.1
cb	7.9	318.0
E level out	9.6	316.3

100 N

10'E	10.7	315.2
E	9.8	316.1
cb	8.0	317.9
+2	7.0	318.9
1/2	7.2	318.7
c	6.6	319.3

325.85

1/2	7.0	318.9
+4	7.0	318.9
cb	4.8	321.1
w	3.4	322.5

375 N

w	3.2	322.7
cb	5.1	320.8
+6	7.7	318.2
1/4	7.7	318.2
c	7.7	318.2
1/2	8.1	317.8
+7	5.4	317.5
cb	9.3	316.6
E	9.9	316.0
10'E	10.3	315.6

350 N

10'E	11.7	314.2
E	11.0	314.9
+8	10.5	315.4
cb	9.9	316.0

325.85

+2	90	316.9
1/2	89	317.0
c	84	317.5
1/4	87	317.2
+3	86	317.3
+8	68	320.1
cb	65	319.4
W	43	321.6

325' N

W	5.9	320.0
cb	7.2	318.7
+2	7.4	318.5
+5	9.4	316.5
1/4	9.5	316.4
c	8.9	317.0
1/2	9.5	316.4
cb	11.1	314.8
E	11.7	314.2
10'E	11.8	314.1

325.85

300' N

10'E	13.5	312.4
E	12.9	313.0
+8	12.2	313.7
cb	11.4	314.5
+4	10.5	315.4
1/4	10.2	315.7
c	9.7	316.2
1/2	9.7	316.2
+5	10.0	315.9
+8	8.5	317.4
cb	8.2	317.7
W	6.4	319.5

275' N

W	7.5	318.4
cb	8.7	317.2
+2	9.1	316.8
+6	11.1	314.8
1/4	11.1	314.8
c	10.4	315.5

325.85

1/2	11.0	314.9
+7	10.8	315.1
cb	11.6	314.3
E	12.9	313.0
10'E	12.5	311.4
250 N		
10'E	13.0	310.9
E	13.4	312.5
cb	12.1	313.8
+2	11.3	314.6
1/4	11.7	314.2
c	11.2	314.7
1/2	11.6	314.3
+6	11.6	314.3
+9	9.5	316.4
cb	9.6	316.3
W	8.3	317.6
225' N		
W	9.1	316.8
cb	10.1	315.8

325.85

+4	11.9	314.0
1/4	11.9	314.0
c	11.5	314.4
1/2	12.3	313.6
+7	12.1	313.8
cb	12.8	313.1
E	14.5	311.4
10'E	15.5	310.4
TP	246 318.28 / 20.3	313.82
200' N		
10'E	7.7	310.6
E	6.7	311.6
+8	6.1	312.2
cb	5.6	312.7
+3	5.0	313.3
1/2	5.1	313.2
c	4.3	314.0
1/4	4.9	313.4
+6	5.0	313.3
cb	2.8	315.5

31828

W	16	316.7
	175' N	
W	21	316.2
cb	30	315.3
+4	55	314.8
1/4	52	313.1
c	48	313.5
1/4	56	312.7
+7	52	313.1
cb	61	314.2
E	77	310.6
10'E	93	309.0
	150' N	
10'E	90	309.3
E	81	310.4
cb	73	311.0
+6	64	314.9
+2	56	314.7
1/4	61	312.2
c	52	313.1

5

31828

1/4	57	312.6
+6	55	312.8
cb	40	314.3
W	24	315.9
	125' N	
W	33	315.0
cb	44	313.9
+5	64	311.9
1/4	65	311.8
c	58	312.5
1/4	66	311.7
+7	64	311.9
cb	71	311.2
+2	76	310.7
F	82	310.1
10'E	89	309.4
	100' N	
10'E	95	308.8
E	87	309.6
+	83	310.0

31828

cb	74	310.9
+4	6.6	311.7
1/4	6.9	311.4
c	6.1	312.2
1/2	6.8	311.5
+6	6.8	311.5
cb	6.4	312.9
W	4.4	313.9
	75'N	
W	4.9	313.4
cb	6.1	312.1
+4	7.1	311.2
1/4	7.1	311.2
c	6.5	311.8
1/2	7.4	310.9
+6	7.0	311.3
cb	7.9	310.4
E	8.8	309.5
10'E	9.4	308.9

31828

	50'N	
10'E	10.5	307.8
E	9.3	309.0
S	7.8	310.5
+3	7.3	311.0
1/2	7.6	310.7
c	6.8	311.5
1/4	7.5	310.8
+5	7.6	310.7
cb	6.3	312.0
W	5.5	312.8
	55'N	
W	6.1	312.2
cb	6.4	311.9
+5	8.3	310.0
1/2	7.1	310.2
c	7.4	310.9
1/4	8.2	310.1
+6	7.8	310.5
cb	8.6	309.7

318,28

E	10.0	308.3
10E	10.6	307.7
N.W. Meade Ave		
12E	11.2	307.1
E	10.3	308.0
cb	9.2	309.1
+3	8.5	309.8
1/2	8.6	309.7
c	7.7	310.6
1/4	8.5	309.8
+5	8.8	309.5
cb	7.3	311.0
W	6.4	311.9
N.C.B. Meade		
W	6.5	311.8
cb	7.9	310.9
+4	9.0	309.3
1/2	8.8	309.5
c	8.3	310.0

318,28

1/2	9.1	309.2
+6	9.1	309.2
cb	9.8	308.5
E	10.8	307.5
10E	11.5	308.8
10's of cb		
10E	11.7	306.6
E	10.6	307.7
cb	10.0	308.3
+4	9.2	309.1
1/2	9.1	309.2
c	8.6	309.7
1/2	8.9	309.4
+4	9.1	309.2
cb	7.5	310.8
W	6.5	311.8
N 1/2		
W	8.2	310.1
cb	8.9	309.4

31828

1/2	89	309.4
c	87	309.6
1/2	93	309.0
+4	93	309.0
cb	10.0	308.3
E	10.7	307.6
10'E	11.6	306.7

cr

10'E	11.4	306.9
E	10.6	307.7
cb	9.8	308.5
1/2	9.2	309.1
c	8.9	309.4
1/2	9.1	309.2
cb	9.0	309.3
W	8.0	310.3

5/2

W	8.4	309.9
cb	9.1	309.2

8

31828

1/2	9.4	308.9
c	8.9	309.4
1/2	9.8	308.5
cb	10.2	308.1
E	10.8	307.5
10'E	11.5	306.5

5cb

10'E	11.9	306.4
E	11.2	307.1
cb	10.8	307.5
1/2	9.9	308.4
c	10.0	308.3
1/2	9.3	309.0
+6	9.9	308.4
cb	9.0	309.3
W	8.2	310.1

5L Meade

W	8.4	309.9
cb	9.0	309.3

31828

+4	10.3	308.0
1/2	10.2	308.1
c	9.7	308.6
1/2	10.2	308.1
+6	9.8	308.5
cb	10.7	307.6
E	11.1	307.2
10'E	11.6	307.7

25' S of Meade = 575' N. of E.L.C.

10'F	13.2	305.1
E	12.5	305.8
cb	11.8	306.5
+4	10.5	307.5
1/2	10.7	307.6
c	10.2	308.1
1/4	11.0	307.3
+5	11.2	307.1
cb	9.3	309.0
W	8.7	309.6

31828

50 S of Meade

W	9.4	308.9
cb	10.0	308.3
+5	11.6	306.7
1/2	11.3	307.0
c	10.9	307.4
1/2	11.3	307.0
+5	11.3	307.0
d	12.3	306.0
F	13.2	305.1
10'E	13.8	304.5

137 311.22 11.43 306.85

75'S

10'E	6.4	306.8
E	6.2	305.0
+6	6.4	304.8
cb	5.6	305.6
+4	4.8	306.4
1/4	4.9	306.3

311.22

C	4.1	307.1
1/4	5.1	306.1
+5	5.5	305.7
cb	5.2	308.0
W	1.9	309.4
100's		
W	3.6	307.6
cb	3.9	307.3
+4	5.7	305.5
1/4	5.4	305.8
c	4.7	306.5
1/2	5.3	305.9
+6	5.7	305.5
cb	7.1	307.1
E	8.3	307.9
10'E	8.4	307.8
125's		
10'E	9.2	307.0
E	9.0	307.2

311.22

cb	6.5	306.7
+4	5.9	305.3
1/2	6.0	305.2
c	5.3	305.9
1/4	6.1	305.1
+7	5.9	305.3
cb	4.9	306.3
W	3.7	307.5
150's		
W	3.1	308.1
cb	4.9	306.3
+2	6.0	305.2
1/4	6.4	304.8
c	6.4	304.8
1/4	6.7	304.5
+5	7.1	304.1
cb	8.5	302.7
E	9.5	301.7
10'E	8.4	302.8

31122

175° S

10' E	9.4	301.8
E	10.0	301.2
cb	8.7	301.5
+5	7.7	303.5
1/4	7.2	304.0
c	6.9	304.3
1/4	6.7	304.5
+9	6.4	304.8
cb	5.0	306.2
W	4.7	306.5

200° S

W	5.4	305.8
cb	5.1	306.1
+2	6.9	304.3
1/4	6.9	304.3
c	7.5	303.7
1/4	8.0	303.2
cb	8.8	302.4

31122

E	9.2	301.0
10' E	9.4	301.8
	225° S	
10' E	9.4	301.8
E	9.3	301.9
cb	9.0	302.2
1/4	8.0	303.2
c	7.2	304.0
1/4	7.1	304.1
cb	7.1	304.1
W	5.9	305.9

250° S

W	6.6	304.6
cb	6.8	304.4
+2	7.3	303.9
1/4	7.5	303.7
c	7.4	303.8
1/4	8.0	303.2
+6	8.2	303.0

311.22

cb	94	301.8
E	96	301.6
10'E	95	301.7

275.5

10'E	95	301.7
E	93	301.9
cb	90	302.2
+4	77	303.5
1/4	78	303.14
c	7.1	304.1
1/4	7.1	304.1
+6	80	303.2
cb	65	304.7
W	6.6	305.6

300.5

W	4.3	306.9
cb	6.1	305.1
+5-	82	303.0
1/4	7.7	303.5

311.22

c	7.2	304.0
1/4	7.6	303.6
+7	74	303.8
cb	8.1	303.1
E	10.3	300.9
10'E	10.3	300.9

325.5

10'E	10.6	300.6
E	9.9	301.3
+7	96	301.6
cb	81	303.1
+4	75	303.7
1/4	7.2	304.0
c	7.2	304.0
1/4	7.5	303.7
+6	88	302.4
cb	6.7	304.5
W	5.8	305.4

31122

350's

15	W	60	306.2
10	cb	60	306.2
	+2	71	304.1
10	1/2	73	303.9
E	c	70	304.2
cb	1/4	74	303.8
+	cb	78	303.4
1/2	+7	86	302.6
c	E	82	303.0
1/2	10'E	75	303.7
+			
		3750	
c	10'E	10.4	300.8
N	E	89	301.3
	cb	76	303.6
N	1/4	72	304.0
c	c	69	301.3
+	1/9	72	304.0
1/4	T5	72	304.0

31122

cb		66	305.6
W		41	307.1
		400	5
W		31	308.1
cb		47	306.5
+4		65	304.7
1/2		67	304.5
c		64	304.8
1/2		67	304.5
+6		72	304.0
cb		84	302.8
E		89	302.3
10'E		94	301.8
		425's	
10'E		107	300.5
E		84	302.8
cb		75	303.7
+4		62	305.0
1/4		64	304.8

311.22

c	6.1	305.1
1/4	5.9	305.3
+5	5.8	305.4
cb	4.0	307.2
W	2.5	308.1
450' S		
W	2.7	305.5
cb	3.9	307.3
+6	5.8	305.4
1/2	6.2	305.0
c	6.0	305.2
1/c	6.6	304.6
+7	6.1	305.1
cb	7.1	304.1
E	9.6	301.6
10'E	10.9	301.3
475' S		
10'E	10.5	300.7
E	7.7	303.5

311.22

cb	6.9	304.3
+3	5.7	305.5
1/c	6.0	305.2
c	6.0	305.2
1/c	6.2	305.0
+5	6.5	304.7
cb	3.7	307.5
W	2.4	308.8
500' S		
W	3.5	307.7
cb	4.2	307.0
+6	6.6	304.6
1/c	6.4	304.8
c	6.0	305.2
1/c	6.0	305.2
+7	6.0	305.2
cb	7.1	304.1
E	9.5	301.7
10'E	10.8	300.4

311.22

525 'S

10 E	10.2	301.0
E	9.1	302.1
+5	8.4	302.8
cb	6.6	304.6
+3	5.9	305.3
1/2	4.0	305.2
c	5.9	306.3
1/4	6.5	307.1
+4	6.4	307.8
cb	4.7	306.5
W	3.2	308.0

550 'S

W	3.5	307.7
cb	5.3	305.9
+5	6.7	304.5
1/4	6.5	304.7
c	6.1	305.1
1/4	6.4	304.8
+7	6.9	304.5

311.22

cb	7.5	303.7
E	9.9	301.3
10 E	11.8	300.4

595 'S

10 E	11.4	299.8
E	10.3	300.9
cb	7.9	303.3
+3	7.1	304.1
1/2	7.0	304.2
c	6.6	304.6
1/4	6.8	304.4
+5	7.1	304.1
cb	4.8	306.4
W	3.4	307.8

600 'S = N^h F Canyon Ave

W	5.1	306.1
cb	5.7	305.5
+5	7.5	303.7
1/4	7.1	304.1

10/16/12

11

31122

C	69	304.3
1/4	7.2	304.0
+7	73	308.1
cb	8.2	303.0
F	10.0	301.2
10'E	11.3	309.9

13271

553

34506

339.53

RR Spk. SE Cor
Florida St. - Adams

465.4 N. of Madison = 5th Adams Ave

W	5.0	340.1
cb	5.7	339.4
1/4	5.6	339.5
C	5.9	339.2
1/4	6.0	339.1
cb	6.6	338.5
+4	6.6	338.5
F	6.0	339.1

450' N

E	6.1	339.0
---	-----	-------

16

34506

+5	6.8	338.3
cb	6.5	338.6
1/4	5.9	339.2
C	5.2	339.9
1/4	5.4	339.7
cb	5.0	340.1
W	3.9	341.2

435' N

W	3.4	341.7
cb	4.2	340.9
1/4	4.9	340.2
C	4.9	340.2
1/4	5.5	339.6
+2	5.7	339.4
+6	7.5	339.6
cb	8.3	336.8
E	8.7	336.4
6'E	6.7	338.4

34506

100' N

10'E	7.5	337.6
E	7.6	337.5
cb	7.3	337.8
1/4	5.1	340.0
c	4.6	340.5
1/4	4.7	340.4
cb	4.3	340.8
W	3.2	341.9

375' N

W	3.4	341.7
cb	4.2	340.9
1/4	4.3	340.8
o	4.6	340.5
1/4	5.0	340.1
+4	5.3	339.8
cb	6.5	338.6
E	7.3	337.8
10'E	7.3	337.8

34506

350' N

10'E	7.6	337.5
E	6.7	338.4
cb	5.4	339.7
+6	5.0	340.1
1/4	4.7	340.4
c	4.7	340.4
1/4	4.7	340.4
cb	4.3	340.8
W	3.5	341.6

325' N

W	4.4	340.7
cb	4.8	340.3
1/4	5.1	340.0
c	4.9	340.2
1/4	5.1	340.0
+4	5.2	339.9
cb	6.4	338.7
E	7.0	338.1
10'E	7.9	337.7

17

34506

300' N

10 E	7.9	337.2
E	7.4	337.7
cb	6.3	338.8
+ 5	5.5	339.6
1/4	5.5	339.6
c	5.3	339.8
1/2	5.5	339.6
cb	5.0	340.1
W	4.6	340.5

275' N

W	5.0	340.1
cb	5.4	339.7
1/4	5.8	339.3
c	5.7	339.4
1/4	5.8	339.3
+ 4	6.2	338.9
cb	7.4	337.7
E	8.4	336.7
10 E	8.9	336.2

34506

250' N

10 E	9.1	336.0
E	8.7	336.4
cb	7.9	337.2
+ 6	6.6	338.5
1/4	6.1	339.0
c	6.1	339.0
1/4	6.1	339.0
cb	5.8	339.3
W	5.3	339.8

225' N

W	5.8	339.3
cb	6.2	338.9
+6	6.6	338.5
1/4	6.3	338.8
c	6.6	338.5
1/4	6.5	338.6
+ 6	6.4	338.7
cb	7.9	337.2
E	9.1	336.0
10 E	9.7	335.4

34506

200' N

10'E	10.0	335.1
E	10.1	335.0
cb	8.9	336.2
+5	7.5	337.6
1/2	7.2	337.9
c	7.0	338.1
1/4	7.1	338.0
cb	6.8	338.3
W	6.6	338.5

175' N

W	6.9	338.2
cb	7.2	337.9
1/2	7.6	337.5
c	7.7	337.4
1/4	7.7	337.4
+6	8.1	337.0
cb	9.5	335.6
E	10.3	334.8
10'E	10.3	334.8

34506

150' N

10'E	11.0	334.1
E	11.2	333.9
+6	10.5	334.6
cb	9.6	335.5
+4	8.7	336.4
1/2	8.6	336.5
c	8.6	336.5
1/4	8.3	336.8
cb	7.8	337.3
W	7.3	337.8

125' N

W	7.7	337.4
cb	8.6	336.5
1/2	9.2	335.9
c	9.4	335.7
1/4	9.1	336.0
+6	9.1	336.0
cb	10.6	334.5
E	11.3	333.8
10'E	11.9	333.3

34506

100' N

10'E	12.0	333.1
1'E	11.9	333.2
+8	11.6	333.5
cb	10.9	334.2
+4	9.9	335.2
1/4	9.9	335.2
c	9.9	335.2
1/2	9.8	335.3
cb	9.6	335.5
W	8.3	336.8

75' N

W	9.1	336.0
cb	9.8	335.3
+4	10.6	334.5
1/4	10.8	334.3
c	10.6	334.5
1/4	10.6	334.5
+6	10.4	334.7

20

34506

cb	11.5	333.6
+4	12.7	332.4
E	13.2	331.9
10'E	13.4	331.7
TP	14.2	335.78
	10.70	334.36
	50' N	
A.E	4.6	331.2
E	4.0	331.8
cb	2.1	333.7
+4	1.6	334.2
1/4	2.0	333.8
c	2.0	333.8
1/2	2.3	333.5
+5	2.3	333.5
cb	1.4	334.4
W	0.5	335.3
	25' N	
W	1.0	334.8
cb	2.3	333.5

33578

+6	34	332.4
1/4	33	332.5
c	27	333.1
1/2	27	333.1
+7	27	333.1
cb	34	332.4
E	5-1	330.7
A'E	5-0	330.8

N. Madison

10'E	59	329.9
E	56	330.2
+7	56	330.2
cb	44	331.4
+4	36	334.2
1/4	36	332.2
c	35	332.3
1/4	40	331.8
+6	37	332.1
cb	29	332.9
W	20	333.8

21

33578

S. Madison

W	41	331.7
cb	45	331.3
+4	56	330.2
1/4	55	330.3
c	46	331.2
1/4	55	330.3
cb	59	329.9
+3	66	329.2
E	67	329.1
10'E	65	329.3

25 S

10'E	69	328.9
E	71	328.7
cb	64	329.4
+1	59	329.9
1/4	58	330.0
c	53	330.5
1/4	64	329.4

33578

+5	6.6	329.2
cb	5.0	330.8
W	4.2	331.6
50'S		
W	4.7	331.1
cb	5.6	330.2
+5	7.2	328.6
1/4	7.2	328.6
c	6.2	329.6
1/4	6.7	329.1
cb	7.0	328.8
+2	7.8	328.0
E	7.9	327.9
10'E	8.0	327.8
75'S		
10'E	8.3	327.5
E	8.6	327.2
+8	8.5	327.3
cb	7.9	327.9

22

33578

1/4	7.5	328.3
c	6.6	329.2
1/4	7.6	328.2
+5	7.8	328.0
cb	6.1	329.7
W	5.5	330.3
100'S		
W	6.4	329.4
cb	7.1	328.7
+5	8.5	327.3
1/4	8.2	327.6
c	7.2	328.6
1/4	8.3	327.5
cb	8.0	327.8
E	8.8	327.0
10'E	9.1	326.7
125'S		
10'E	9.6	326.2
E	9.7	326.1

33578

cb	95	326.3
+ 4	86	327.2
1/2	86	327.2
c	80	327.5
1/4	87	327.1
+ 5	9.1	326.7
cb	7.8	328.0
W	68	329.0
160's		
W	7.2	328.6
cb	7.9	327.9
+ 4	9.4	326.4
1/4	9.0	326.5
c	85	327.3
1/4	9.0	326.8
cb	9.4	326.4
E	10.1	325.7
10' E	10.9	324.9

33578

175's		
10' E	10.7	325.1
E	10.5	325.3
cb	10.2	325.6
1/4	9.7	326.1
o	8.8	327.0
1/4	9.6	326.2
+ 5	9.5	326.3
cb	8.5	327.3
W	7.3	328.5
200's		
W	8.1	327.7
cb	9.0	326.5
+ 4	10.1	325.7
1/4	9.8	326.0
o	9.5	326.3
1/4	10.0	325.8
cb	10.5	325.3
E	10.8	325.0
10' E	11.1	324.7

33578

225'S

10'E	11.1	324.7
E	11.8	324.0
cb	11.2	324.6
1/4	10.4	325.4
c	9.4	326.4
1/4	10.2	325.6
+5-	10.3	325.5
cb	7.4	328.4
W	7.4	328.4

250'S

W	8.6	327.2
cb	9.5	326.3
+4	10.7	325.1
1/4	10.6	325.2
c	9.9	325.9
1/4	10.7	325.1
cb	11.8	324.0
E	12.2	323.6
10'E	11.8	324.0

33578

275'S

10'E	13.2	322.6
E	12.6	323.2
+5	12.4	323.4
cb	11.2	324.6
1/4	10.7	325.1
c	10.2	325.6
1/4	10.8	325.0
+6	11.0	324.8
cb	8.7	327.1
W	7.9	327.9
T.P.	472	329.78
	1072	325.06
	300'S	
W	3.3	326.5
cb	3.9	325.9
+6	5.1	324.7
1/4	5.0	324.8
c	4.5	325.3
1/4	5.1	324.7
cb	6.2	323.6

32978

E	6.7	323.1
10'E	7.1	322.7
10'E	7.5	322.3
E	7.2	322.6
cb	6.4	323.4
1/4	5.4	324.4
c	5.1	324.7
1/4	5.7	324.1
+6	5.6	324.2
cb	3.8	326.0
W	3.2	326.6

330's

W	3.4	326.4
cb	3.4	326.4
+4	5.8	324.0
1/4	6.0	323.8
c	5.3	324.5
1/4	6.0	323.8

25

32978

cb	7.1	322.7
F	8.0	322.8
10'E	8.5	321.8
10'E	8.9	320.9
E	8.8	321.0
cb	7.7	322.1
1/4	6.5	323.3
c	6.1	323.7
1/4	6.1	323.7
+7	6.0	323.8
cb	4.7	325.1
W	4.1	325.7

200's

W	4.4	325.4
cb	4.7	325.1
+4	6.3	323.5
1/4	6.2	323.6
c	6.3	323.5

329.78

1/4	71	322.7
cb	83	321.5
E	90	320.8
10'E	97	320.7
425'S		
10'E	96	320.2
E	94	320.4
cb	82	321.6
1/4	71	322.7
0	67	323.1
1/4	67	323.1
+8	65	323.3
cb	54	324.4
W	45	325.3
450'S		
W	51	324.7
cb	59	323.9
+2	67	323.1
1/4	67	323.1

26

329.78

C	69	322.9
1/4	74	322.4
cb	80	321.8
E	89	320.9
10'E	95	320.3
475'S		
10'E	97	320.1
E	90	320.8
cb	81	321.7
1/4	73	322.5
0	69	322.9
1/4	69	322.9
+7	65	323.0
cb	57	324.1
W	41	325.7
500'S		
W	55	324.3
cb	61	323.7
+2	70	322.5

32978

1/4	7.0	322.8
c	6.8	323.0
1/4	7.4	322.4
cb	8.1	321.7
E	8.2	321.6
10 E	9.4	320.4

525's

10 1/2 E	9.5	320.3
E	8.4	321.4
cb	8.2	321.6
1/4	7.5	322.3
c	6.7	323.1
1/4	6.9	322.9
+6	7.1	322.7
cb	6.0	323.8
W	5.2	324.6

550's

W	5.3	324.5
cb	5.6	324.2

27

32978

+ +	7.1	322.7
1/4	7.2	322.6
c	6.9	322.9
1/4	7.5	322.3
cb	8.8	321.0
E	9.5	320.3
10 E	10.3	319.5

575's

3 E	9.6	320.2
E	9.4	320.4
cb	8.9	320.9
1/4	7.6	322.2
a	6.9	322.9
1/4	7.2	322.6
+7	7.2	322.6
cb	5.5	324.3
W	5.0	324.8

32978

600' S of NW corner

W	5.1	324.7
cb	5.7	324.1
+ 4	7.1	322.7
1/2	7.2	322.6
c	6.6	323.2
1/4	7.6	322.2
cb	9.1	320.7
E	9.9	319.9
10'E	10.3	319.5
	Ncb	
10'E	10.1	319.7
cb	9.8	320.0
cb	7.8	322.0
1/4	7.5	322.3
c	6.3	323.5
1/4	7.2	322.6
+ 6	7.2	322.6
cb	4.9	324.9

32978

W	5.0	324.8
	8' S of Ncb.	
W	6.0	323.8
cb	5.9	323.9
+ 4	7.0	322.8
1/2	7.1	322.7
c	6.7	323.1
1/4	7.6	322.8
d	8.7	321.1
E	9.6	320.2
10'E	10.2	319.6
	N 1/4	
10'E	10.5	319.3
E	10.1	319.7
cb	8.7	321.1
1/4	7.3	322.5
c	6.7	323.1
1/4	7.2	322.6
cb	7.4	322.4

32978

W	6.5	323.5
cr.		
W	6.1	323.7
cb	6.8	323.0
1/2	7.0	322.5
c	6.9	322.9
1/2	7.6	322.2
cb	8.5	321.3
E	9.1	320.7
10'E	9.8	320.0
	5 1/4	
10'E	10.0	319.8
E	9.2	320.6
cb	8.4	321.4
1/2	7.6	322.2
c	6.6	323.2
1/2	7.1	322.7
cb	6.5	323.3
W	6.1	323.7

32978

	5-cb	
W	6.5	324.3
cb	6.1	323.7
+3	7.4	322.4
1/2	7.4	322.4
c	6.9	322.9
1/2	7.7	322.1
cb	8.5	321.3
E	9.4	320.4
10'E	10.0	319.8
	5h. Monroe	
10'E	9.9	319.9
E	9.9	319.9
cb	9.2	320.6
1/2	8.0	321.8
c	7.1	322.7
1/2	7.6	322.2
+6	7.5	322.3
cb	6.5	323.3

32978

W	5.9	323.9
10' S of Monroe		
W	6.0	323.8
cb	6.7	323.1
+3	7.5	322.3
1/4	7.7	322.1
c	7.2	322.6
1/4	8.0	321.8
cb	9.2	320.6
E	9.9	319.9
10'E	10.4	319.4

Sec A (6.3' wide)

E	9.9	319.9
cb	9.3	320.5
1/4	8.1	321.7
c	7.4	322.4
1/4	7.6	322.2
+8	7.8	322.0
cb	6.8	323.0

32978

W	6.2	323.6
---	-----	-------

Sec B (7.2' wide) = N of Mission Drive

E	9.9	319.9
cb	9.2	320.6
1/4	8.0	321.8
c	7.5	322.3
1/4	7.9	321.9
+7	7.8	322.0
cb	6.8	323.0
W	6.3	323.5

N of Mission Drive

B of check

19.4	322.84	322.839
W	6.3	323.5
cb	7.3	322.5
+5	8.0	321.8
1/4	8.0	321.8
c	7.8	322.0
1/4	8.7	321.1
cb	9.4	320.4

32978

E	9.7	320.1
	N ¹ / ₄	
E	10.1	319.7
	9.4	320.4
	8.5	321.3
o	7.8	322.0
	7.6	322.2
	7.1	322.7
W	6.4	323.4
	cr	
W	5.3	324.5
	6.1	323.7
	7.0	322.8
o	7.5	322.3
	8.2	321.6
	8.7	321.1
E	9.2	320.6

32978

	S ¹ / ₄	
E	10.4	319.4
	9.7	320.1
	9.1	320.7
o	8.1	321.7
	8.3	321.5
	8.0	321.8
W	6.2	323.6
	scb	
W	6.4	323.4
o	8.0	321.8
+5	9.4	320.4
1/2	9.6	320.2
o	9.2	320.6
1/4	9.8	320.0
o	10.9	318.9
E	11.3	318.5

Measurements for Culvert on
Florida St

32

NE RR 3rd
from Alabama

920 274.62 265.42

213 262.67 1205 262.54

620 271.62 265.42

TP 12.57 259.05

6.67 271.37 6.92 264.70

A 9.0 262.4

50' NE
7' E of former pt. 65 264.9
88 262.6

100' " 7.8 263.6

130' " 7.6 263.7

10' S. of A' on N. line of street 7.6 263.8

TP 2.10 261.15 259.05

B 87 252.5

12/12
L.M.H.



A

60

200

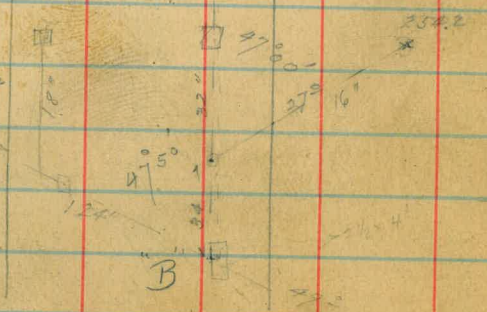
Lincoln

ARC

elev. 255.2

B

36' elev 251.2



33

γ section A' st 5th st to 7th st. for change of
grade 14' walk 13' 1/2

1/8
1/2
Bunkle
Evans
N.W.

B.M. 3.8 4th 2" A' N.W. 60.44

71.96 0+50

B.M. 4.52 71.96

0+0 = E.L. 5th st

N	4.0	68.0
cb	4.2	67.8
gtr	4.9	67.1
1/4	4.9	67.1
M	5.3	66.7
1/4	5.7	66.1
gtr	6.7	65.3
erb	6.3	65.7
S	6.0	66.0
0+25		
S	4.2	67.8
erb	4.6	67.4
gtr	5.2	66.8
1/4	4.2	67.8
M	3.4	68.6
1/4	2.7	69.3
gtr	3.3	68.7
erb	2.5	69.5
N	2.4	69.6

N	0.4	71.6
erb	0.7	71.3
gtr	1.4	70.6
1/4	1.2	70.8
M	1.7	70.3
1/4	2.5	69.5
gtr	3.4	68.6
erb	2.9	69.1
S	2.6	69.4
T.P.	12.06	82.15
		1.87
		70.09
0+75		
S	11.3	70.9
erb	11.5	70.7
gtr	12.1	70.1
1/4	11.2	71.0
M	10.2	72.0
1/4	9.5	72.4
gtr	10.7	72.1
erb	9.2	73.0
N	9.0	73.2

82.15

1+0

✓	7.4	74.8
erb	7.4	74.8
gte	8.3	73.9
"	8.1	74.1
M	8.6	73.6
"	9.5	72.7
gte	10.8	71.4
erb	9.9	72.3
S	9.7	72.5

1+25

S	7.9	74.3
erb	8.3	73.9
gte	8.8	73.4
"	7.9	74.3
M	6.9	75.3
"	6.5	75.7
gte	6.4	75.8
erb	6.1	76.1
✓	5.7	76.5

82.15

1+50

✓	3.9	78.3
erb	4.4	77.8
gte	5.3	76.9
"	4.8	77.4
M	5.4	76.8
"	6.3	75.9
gte	6.8	75.4
erb	6.6	75.6
S	6.3	75.9

1+75

S	4.7	77.5
erb	4.8	77.4
gte	5.3	76.9
"	4.6	77.6
M	3.9	78.3
"	3.2	79.0
gte	3.2	79.0
erb	2.7	79.5
M	2.3	79.9

82.15
2+0 - 11/4 6th St for Int. see Page 42

N	0.7	81.5
crk	1.0	81.2
gte	2.0	80.2
1/2	1.8	80.4
M	2.4	79.8
1/4	3.1	79.1
gte	3.9	78.3
crk	3.2	79.0
3	3.0	79.2

T.P. 11.37 91.86 166 80.99 11.3

2+0 - E. 1/4 6th St

3	11.7	80.2
crk	12.2	79.7
gte	12.2	79.7
1/2	11.6	80.3
M	10.3	81.6
1/4	9.9	82.0
gte	9.4	82.5
crk	9.0	82.9
N	8.6	83.3

91.86
0+25 F

N	6.9	85.0
crk	7.2	84.7
gte	7.5	84.4
1/2	8.2	83.7
M	8.8	83.1
1/4	9.8	82.1
gte	11.0	80.9
crk	10.4	81.5
3	10.2	81.7

0+50

3	8.2	83.7
crk	8.5	83.4
gte	9.1	82.8
1/2	8.0	83.9
M	7.1	84.8
1/4	6.4	85.5
gte	6.0	85.9
crk	5.6	86.3
N	5.3	86.6

91.86

0475

N	3.1	88.8
+3	3.8	88.1
erb	4.0	87.9
gtw	4.6	87.3
"	4.6	87.3
M	5.2	86.7
"	6.1	85.8
gtw	7.1	84.8
erb	6.7	85.2
S	6.5	85.4
S	6.7	85.2
+4	4.7	87.2
erb	5.0	86.9
gtw	5.4	86.5
"	4.5	87.4
M	3.4	88.5
"	2.7	89.2
gtw	2.6	89.3
erb	2.3	89.6
+10	1.9	90.0
N	1.8	90.6

1+0

91.86

1425

N	0.0	91.9
+3	0.5	91.4
erb	0.7	91.2
gtw	1.4	90.5
"	1.1	90.8
M	1.6	90.3
"	2.7	89.2
gtw	4.0	87.9
erb	3.3	88.6
+10	3.1	88.8
S	5.3	86.6
+5	8.6	83.3
+15	9.3	82.6
T.P.	7.21	97.59
	1.48	90.38
	1450	
-15	13.3	84.3
-5	12.7	84.9
S	8.8	88.8
+4	6.7	90.9
erb	7.2	90.4
gtw	7.9	89.7
"	6.7	90.9
M	5.6	92.0
"	5.2	92.4
gtw	5.4	92.2
erb	4.7	92.9
+10		
N	4.4	93.2

97.6

97.59

1475

N	2.9	94.7
erb	3.1	94.5
gtc	3.7	93.9
"	3.4	94.2
M	3.8	93.8
"	4.6	93.0
gtc	5.7	91.9
erb	5.2	92.4
+10	5.0	92.6
5	7.1	90.5
+5	7.2	88.4
+15	10.3	87.3

270 = m / 7th st

5	3.2	94.4
erb	3.4	94.2
gtc	4.1	93.5
"	3.0	94.6
M	2.2	95.4
"	1.8	95.8
gtc	2.0	95.6
erb	1.4	96.2
N	1.1	96.5

38

x-section 6th St from N.L. "B" St to Park
 80' wide 14' walks 13' 1/2's

B.M. S.P.N. 46 2.5

58.93 71.6

71.55

0+50

39

71.6

B.M.	13.12	71.55		
-		19.4	57.2	
N		19.4	57.2	
+4		12.8	58.8	
erb		13.1	58.5	
gtc		13.6	58.0	
N		13.2	58.4	
		13.1	58.5	
"A		13.1	58.5	
gtc		13.3	58.3	
erb		13.1	58.5	
E		12.8	58.8	

0+25 N

E		11.2	60.4
erb		11.3	60.3
gtc		12.1	59.5
"A		11.7	59.9
N		11.4	60.2
"A		11.9	59.7
gtc		12.4	59.2
erb		11.4	60.2
+10		11.3	60.3
N		14.3	57.3
+10		14.3	57.3

-10		14.3	57.3
N		14.1	57.5
+4		9.8	61.8
erb		9.9	61.7
gtc		10.9	60.7
"A		10.3	61.3
N		10.2	61.4
"A		10.0	61.6
gtc		11.1	60.5
erb		9.7	61.9
E		9.6	62.0

0+75

E		7.8	63.8
erb		7.7	63.9
gtc		7.7	63.9
"A		8.4	63.2
N		8.1	63.5
"A		8.7	62.9
gtc		9.2	62.4
erb		8.2	63.4
+10		8.1	63.5
N		9.3	62.3
+10		9.5	62.1

71.55

1+0

-10			
W	8.0	63.6	
+4	7.9	63.7	
crb	6.4	65.2	
gtu	6.4	65.2	
"A	7.4	64.2	
	6.9	64.7	
M			
"A	6.7	64.9	
gtu	6.7	64.9	
crb	7.4	64.2	
gtu	5.9	65.7	
E	6.1	65.5	

1+25

E	4.4	67.2	
crb	4.1	67.5	
gtu	5.1	66.5	
"A			
	5.0	66.6	
M			
"A	4.8	66.8	
gtu	5.3	66.3	
crb	5.8	65.8	
	4.7	66.9	
+10			
W	4.4	67.2	
+10	4.7	66.9	
	7.7	63.9	

40

71.55

1+50

W			2.7	68.9
crb			2.9	68.7
gtu			3.8	67.8
"A			3.4	68.2
M			3.1	68.5
"A			3.2	68.4
gtu			3.3	68.3
crb			2.4	69.2
E			2.3	69.3

1+75

E			0.4	71.2
crb			0.6	71.0
gtu			1.7	69.9
"A			1.4	70.2
M			1.1	70.5
"A			1.5	70.1
gtu			2.1	69.5
crb			1.2	70.4
W			1.1	70.5
T.P.	11.4	82.51	0.18	71.37 ✓

82.51

18

2+0

W	10.3	72.2
erb	10.5	72.0
gte	11.3	71.2
"	10.8	71.7
M	10.1	72.4
"	10.3	72.2
gte	10.5	72.0
erb	9.9	72.6
F	9.6	72.9

2+25

E	7.5	75.0
erb	8.1	74.4
gte	8.5	74.0
"	8.3	74.2
M	8.4	74.1
"	8.9	73.6
gte	9.6	72.9
erb	8.8	73.7
W	8.6	73.9

82.51

41

2+50

W	6.6	75.9
erb	7.0	75.5
gte	7.6	74.9
"	7.1	75.4
M	6.7	75.8
"	6.5	76.0
gte	6.9	75.6
erb	6.2	76.3
F	6.4	76.1

2+75

E	4.2	78.3
erb	4.6	77.9
gte	5.2	77.3
"	5.0	77.5
"	5.0	77.5
"	5.3	77.2
gte	5.8	76.7
erb	5.3	77.2
W	5.0	77.5

8251

50

340 = S.L. "A" 5' 80' 14' N 13' 45

N	3.4	79.1
erb	3.5	79.0
gte	4.7	77.8
"A	3.9	78.6
N	3.2	79.3
"A	3.4	79.1
gte	3.4	79.1
erb	2.8	79.7
F	2.4	80.1
S. CUR 6		
F	2.8	79.7
erb	3.2	79.3
"A	2.7	79.8
N	2.7	79.8
"A	3.2	79.3
erb	4.0	78.5
N	4.2	78.3

8251

42

5 "A

N	3.4	79.1
erb	3.0	79.5
"A	2.5	80.0
N	2.1	80.4
"A	2.1	80.4
erb	2.1	80.4
E	2.2	80.3
Center		
F	0.9	81.6
erb	1.4	81.1
"A	1.3	81.2
N	1.4	81.1
"A	2.0	80.5
erb	2.4	80.1
N	2.7	79.8

61

82.51

N¹¹A

W		2.0	80.5
crb		2.0	80.5
"		1.2	81.3
M		0.7	81.8
"		0.7	81.8
crb		1.0	81.5
E		0.5	82.0
	N.CUPL		
E		+0.2	82.3
crb		0.6	81.9
"		0.1	82.4
M		0.2	82.3
"		0.9	81.6
crb		1.7	80.8
W		2.3	80.2
T.P	941	90.35	1.57 80.94 ^v

90.35

904

43

N.L. ¹¹A

W		8.9	81.5
crb		9.2	81.7
gtu		7.5	80.9
"		8.1	82.3
M		7.3	83.1
"		7.4	83.0
gtu		7.8	82.6
crb		7.4	83.0
E		7.2	83.2
	0+25 N		
E		5.6	84.8
crb		6.0	84.4
gtu		6.8	83.6
"		6.2	84.2
M		6.4	84.0
"		7.1	83.3
gtu		8.5	81.9
crb		8.0	82.4
W		7.8	82.6

43

90.35

0450

W	6.2	84.2
erb	6.4	84.0
gtc	7.4	83.0
"	6.0	84.4
M	5.2	85.2
"	5.1	85.3
gtc	5.1	85.3
erb	4.5	85.9
E	4.2	86.2

0475

E	2.9	87.5
erb	3.1	87.3
gtc	3.7	86.7
"	3.6	86.8
M	3.9	86.5
"	4.8	85.6
gtc	5.8	84.6
erb	5.0	85.4
W	4.9	85.5

44

90.35

140

W	3.6	86.8
erb	3.2	87.2
gtc	4.2	86.2
"	3.5	86.9
M	2.5	87.9
"	2.2	88.2
gtc	2.7	87.7
erb	1.6	88.8
E	1.1	89.3

1425

E	0.1	90.3
erb	0.2	90.2
gtc	1.3	89.1
"	0.8	89.6
M	1.0	89.4
"	2.0	88.4
gtc	3.0	87.4
erb	1.9	88.5
T10	1.7	88.7
W	2.7	87.7
T.P.	12.48	101.67
	11.6	89.19

101.67 ✓

1750

101.7

45

W		
+4	13.0	88.7
erb	11.7	90.0
	12.0	89.7
gte	12.6	89.1
"		
	12.0	89.7
M	10.9	90.8
"		
	10.7	91.0
gte		
erb	11.2	90.5
	10.0	91.7
E		
	10.0	91.7

1775

F		
erb	8.5	93.2
	8.5	93.2
gte	9.7	92.0
"		
	9.3	92.4
M		
"	9.5	92.2
	10.6	91.1
gte		
erb	11.5	90.2
	10.8	90.9
+10	10.6	91.1
W	12.0	89.7

101.7

1740

W		
+10	10.4	91.3
erb	9.6	92.1
	9.4	92.3
gte		
"	10.0	91.7
"	9.0	92.7
M		
	8.0	93.7
"		
	7.9	93.8
gte	8.3	93.4
erb	7.0	94.7
E	6.4	95.3

1725

E		
	5.1	96.6
erb		
	5.6	96.1
gte		
"	6.7	95.0
"	6.4	95.3
M		
	6.4	93.3
"		
	7.8	93.9
gte		
	8.9	92.8
erb		
	8.0	93.7
W		
	8.0	93.7

10167

370 = S.L. Flash St 80'

W	4.2	97.5
erb	4.2	97.5
gte	4.7	97.0
W	3.8	97.9
M	2.8	98.9
W	2.5	99.2
gte	2.6	99.1
erb	1.2	100.5
E	1.0	100.7

5 CORN

E	1.4	100.3
erb	2.2	99.5
W	1.8	99.9
M	2.2	99.5
W	3.2	98.5
erb	4.4	97.3
W	4.9	96.8

10167

2750

W	7.0	94.7
erb	6.8	94.9
gte	7.7	94.0
W	6.4	95.3
M	5.2	96.5
W	5.1	96.6
gte	5.2	96.5
erb	4.1	97.6
E	3.6	98.1

2775

E	2.4	99.3
erb	2.7	99.0
gte	2.9	97.8
W	3.8	97.9
M	3.8	97.9
W	5.0	96.7
gte	6.3	95.4
erb	5.5	96.2
W	5.6	96.1

101.67

5" A

W		4.5	97.2	
crk		4.0	97.7	
"A		2.4	99.3	
M		1.4	100.3	
"A		1.2	100.5	
crk		1.3	100.4	
E		2.6	101.1	111.9
T.P.	13.01	111.88	2.80	98.87
	Center			
E		9.5	102.4	
crk		10.6	101.3	
"A		10.7	101.2	
M		11.0	100.9	
"A		12.1	99.8	
crk		13.5	98.1	
W		14.1	97.8	

111.88

N" A

111.9 47

W		13.0	98.9
crk		13.3	98.6
"A		11.7	100.2
M		10.4	101.5
"A		10.1	101.8
crk		9.9	102.0
E		9.0	102.9

N. Crk

E		8.4	103.5
crk		9.5	102.4
"A		9.4	102.5
M		9.8	102.1
"A		11.0	100.9
crk		12.8	99.1
W		12.5	99.4

111.88

M. L. Fish St.

W	11.3	100.6
erb	11.4	100.5
gtr	11.8	100.1
"A	10.4	101.5
"A	9.0	102.9
"A	8.9	103.0
gtr	8.9	103.0
erb	8.4	103.5
E	8.1	103.8

0+25

E	5.4	106.5
+A	7.0	104.9
erb	7.3	104.6
gtr	7.9	104.0
"A	7.8	104.1
"A	8.1	103.8
"A	9.3	102.6
gtr	10.7	101.2
erb	10.8	101.6
W	10.2	101.7

111.82

0+50

W	9.1	102.8
erb	9.2	102.7
gtr	9.5	102.4
"A	8.3	103.6
"A	6.8	105.1
"A	6.6	105.3
gtr	6.8	105.1
erb	6.2	105.7
+10	5.9	106.0
E	4.6	107.3

0+75

E	3.8	108.1
+A	4.9	107.0
erb	5.2	106.7
gtr	5.8	106.1
"A	5.6	106.3
"A	5.7	106.2
"A	7.1	104.8
gtr	8.5	103.4
erb	8.0	103.9
W	8.2	103.7

111.88

1+0

W	7.2	104.7
erb	7.0	104.9
gtc	7.6	104.3
"	6.1	105.8
M	4.6	107.3
"	4.6	107.3
gtc	4.9	107.0
erb	4.0	107.9
E	3.5	108.4

1+25

F	2.8	109.7
erb	3.0	108.9
gtc	3.6	108.3
"	3.3	108.6
"	3.6	108.3
"	5.1	106.8
gtc	6.5	105.4
erb	5.8	106.1
"	5.7	106.2
W	6.5	105.4

111.88

1+50

49

W	5.2	106.7
+4	4.4	107.5
erb	4.6	107.3
gtc	5.2	106.7
"	3.8	108.1
M	2.5	109.4
"	3.4	109.5
gtc	2.4	109.5
erb	1.9	110.0
+10	1.6	110.3
E	0.2	111.6

1+75

F	+3.4	108.5
+4	0.6	111.3
erb	0.8	111.1
gtc	1.4	110.5
"	1.4	110.5
M	1.7	110.2
"	2.8	109.1
gtc	4.0	107.9
erb	3.6	108.3
W	3.5	108.4
T.P.	12.20	122.76
	1.92	109.96

100

122.16

2+0

N	12.8	109.4
erb	12.8	109.4
gte	13.3	108.9
"	12.4	109.8
M	10.9	111.3
"	10.7	111.5
gte	10.5	111.7
erb	9.9	112.3
E	9.6	112.6

2+25

E	8.7	113.5
erb	8.9	113.3
gte	9.8	112.4
"	9.5	112.7
M	9.9	112.3
"	11.2	111.0
erb	12.3	109.9
	12.7	110.5
N	11.4	110.8

122.2

122.6

2+50

N	10.5	111.7
erb	10.5	111.7
gte	11.1	111.1
"	9.8	112.4
M	8.7	113.5
"	8.5	113.7
gte	8.7	113.5
erb	7.9	114.3
E	7.7	114.5

2+75

E	6.2	116.0
erb	6.9	115.3
gte	7.7	114.5
"	7.4	114.8
M	7.7	114.5
"	8.8	113.4
gte	10.2	112.0
erb	9.4	112.8
+10	9.2	113.0
N	10.5	111.7

122.2 50

12216

3 to = S.L. Beech 80'

W	7.9	114.3
erb	8.2	114.0
gtu	8.9	113.3
"A	7.9	114.3
M	6.7	115.5
"A	6.4	115.8
gtu	6.7	115.5
erb	5.7	116.5
F	5.4	116.8

S. curb

F	5.2	117.0
erb	6.3	115.9
"A	6.0	116.2
M	6.2	116.0
"A	7.4	114.8
erb	8.6	113.6
W	9.0	113.2

12216

5 "A

W	8.5	113.7
erb	8.3	113.9
"A	7.1	115.1
M	5.9	116.3
"A	5.6	116.6
erb	5.9	116.3
F	4.1	118.1

Center

F	3.5	118.7
erb	5.3	116.9
"A	5.2	117.0
M	5.5	116.7
"A	6.7	115.5
erb	8.0	114.2
W	7.8	114.4

N "A

W	7.4	114.8
erb	7.6	114.6
"A	6.4	115.8
M	5.3	116.9
"A	4.8	117.4
erb	4.8	117.4
E	3.4	118.8
N. curb		
E	3.5	118.7
erb	4.4	117.8
"A	4.5	117.7
M	4.9	117.3
"A	6.0	116.2
erb	7.2	115.0
W	7.3	114.9

N. L. Beech

W	6.0	116.2
erb	6.3	115.9
gte	6.5	115.7
"A	5.8	116.4
M	4.7	117.5
"A	4.3	117.9
gte	4.0	118.2
erb	3.7	118.5
E	3.2	119.0
0.775 N		
E	2.2	120.0
"A	2.5	119.4
erb	2.8	119.4
gte	3.4	118.8
"A	3.4	118.8
M	3.9	118.3
"A	4.9	117.3
gte	6.2	116.0
erb	5.5	116.7
W	5.6	116.6

12216

0+50

W	4.8	117.4
erb	4.7	117.5
gte	5.3	116.9
"A	4.2	118.0
N	3.2	119.0
"A	2.6	119.6
gte	2.8	119.4
erb	2.1	120.1
+10	1.7	120.5
E	1.0	121.2

0+75

E	1.0	121.2
erb	1.4	120.8
gte	2.2	120.0
"A	1.8	120.4
N	2.2	120.0
"A	3.2	119.0
gte	2.4	117.8
erb	4.1	118.1
W	4.0	118.2

12216

1+0

W	3.5	118.7
erb	3.5	118.7
gte	3.9	118.3
"A	2.6	119.6
N	1.4	120.8
"A	1.0	121.2
gte	1.3	120.9
erb	0.9	121.3
+10	0.7	121.5
E	0.0	122.2

1+25

E	+0.9	121.3
+4	+0.1	122.1
erb	0.2	122.0
gte	0.7	121.5
"A	0.3	121.9
N	0.7	121.5
"A	1.9	120.3
gte	3.1	119.1
erb	2.8	119.4
W	2.7	119.5
T.P.	2.22	119.94 ✓

1236

132.30

132.20

1450

W	12.0	120.3
crb	12.3	120.0
gte	12.5	119.8
1/4	11.5	120.8
M	10.2	122.1
1/4	9.7	122.6
gte	10.0	122.3
crb	9.6	122.7
E	9.1	123.2

1475

F	8.4	123.9
crb	8.9	123.4
gte	9.5	122.7
1/4	9.1	123.2
M	9.4	122.9
1/4	10.9	121.4
gte	12.0	120.3
crb	11.6	120.7
W	11.5	120.8

132.30

210

#4

W	10.8	121.5
crb	11.0	121.3
gte	11.4	120.9
1/4	10.2	122.1
M	8.8	123.5
1/4	8.5	123.8
gte	8.7	123.6
crb	8.3	124.0
E	8.5	123.8

2+25

F	7.1	125.2
crb	7.5	124.8
gte	7.9	124.4
1/4	7.8	124.5
M	8.1	124.2
1/4	9.1	123.2
gte	10.8	121.5
crb	10.3	122.0
W	10.1	122.2

56

132 20

2+50

W	9.5	122.8
crk	9.6	122.7
gte	10.0	122.3
"	8.6	123.7
M	7.5	124.8
"	7.1	125.2
gte	7.2	125.1
crk	6.8	125.5
F	6.3	126.0
2+75		
F	5.8	126.7
crk	6.1	126.2
gte	6.7	125.6
"	6.4	125.9
M	6.9	125.4
"	7.8	124.5
gte	9.2	123.1
crk	8.9	123.4
W	9.0	123.3

132 30

55

3+0 = 5.4 Cedar St 80'

W	8.0	124.3
crk	8.2	124.1
gte	8.6	123.7
"	7.2	125.1
M	6.2	126.1
"	5.8	126.5
gte	6.1	126.2
crk	5.4	126.9
F	5.1	127.2
3 CURB		
F	5.1	127.2
crk	5.6	126.7
"	5.5	126.8
M	5.9	126.4
"	6.8	125.5
crk	8.3	124.0
W	8.7	123.6

55

18220

5 1/4

W	8.1	124.2
orb	7.6	124.7
"	6.5	125.8
M	5.6	126.7
"	5.1	127.2
orb	5.1	127.2
E	3.9	128.4

Center

E	3.5	128.8
orb	4.6	127.7
"	4.8	127.5
M	5.2	127.1
"	6.0	126.2
orb	7.3	125.0
W	7.2	125.1

18230

N 1/4

56

W	6.6	125.7
orb	6.6	125.7
"	5.8	126.5
M	4.9	127.4
"	4.5	127.8
orb	4.4	127.9
E	3.3	129.0

N curb

E	3.4	128.9
orb	4.2	128.1
"	4.1	128.2
M	4.6	127.7
"	5.4	126.9
orb	6.2	126.1
W	6.4	125.9

132.30

N. Cedar St

N		
crb	5.3	127.0
gte	5.4	126.9
"	5.5	126.8
"	4.8	127.5
N	4.2	128.1
"	3.7	128.6
gte	3.7	128.6
crb	3.4	128.9
E	3.1	129.2

0+25 N

E		
crb	1.9	130.4
gte	2.3	130.0
"	3.0	129.3
"	2.8	129.5
N	3.1	129.2
"	3.8	128.5
gte	4.7	127.6
crb	4.1	128.2
+10	3.9	128.4
W	7.3	125.0

132.20

0+50

57

N	3.4	128.9
+4	2.7	129.6
crb	2.8	129.5
gte	3.4	128.9
"	2.7	129.6
N	2.0	130.3
"	1.8	130.5
gte	2.1	130.2
crb	1.1	131.2
E	0.9	131.4

0+75

E	70.2	132.1
crb	0.2	132.1
gte	1.1	131.2
"	0.8	131.5
N	0.8	131.5
"	1.5	130.9
gte	2.2	130.1
crb	1.5	130.8
+10	1.4	130.9
N	0.5	131.8

T.P.

11.84

143.16

0.98

131.32 ✓

14316 ✓

170

W	9.9	133.3
+A	11.0	132.2
crk	11.1	132.1
gtu	12.1	131.1
"	11.9	131.8
M	10.6	132.6
"	10.5	132.7
gtu	10.7	132.5
crk	9.8	133.4
F	9.8	133.4

1725

F	8.8	134.4
crk	8.9	134.3
gtu	9.8	133.4
"	9.5	133.7
M	9.4	133.8
"	10.1	133.1
gtu	11.0	132.2
crk	9.9	133.3
+A	9.8	133.4
W	8.6	134.6

1432

14314

1750

W	7.7	135.5
+A	8.5	134.7
crk	8.7	134.5
gtu	9.5	133.7
"	8.8	134.4
M	8.4	134.8
"	8.4	134.8
gtu	9.0	134.2
crk	7.7	135.5
F	7.6	135.6

1775

F	6.9	136.8
crk	6.7	136.5
gtu	7.7	135.5
"	7.2	136.0
M	7.2	136.0
"	7.7	135.5
gtu	8.5	134.7
crk	7.5	135.7
W	6.9	136.3

58

143.16

2+0

W	5.8	137.4
crk	6.2	137.0
gtc	7.3	135.9
"	6.4	136.8
M	6.0	137.2
"	6.8	136.4
gtc	6.6	136.6
crk	5.6	137.6
E	5.5	137.7

2+25

F	4.2	139.0
crk	4.5	138.7
gtc	5.4	137.8
"	4.8	138.4
M	4.6	138.6
"	5.0	138.2
gtc	5.7	137.5
crk	4.9	138.3
W	4.6	138.6

143.16

2+50

W	3.6	139.6
crk	3.7	139.5
gtc	4.5	138.7
"	3.8	139.4
M	3.4	139.8
"	3.5	139.7
gtc	4.1	139.1
crk	3.3	139.9
E	3.0	140.2

2+83 = S. of Park 6th st graded & curbed to \nearrow Sta 3+0

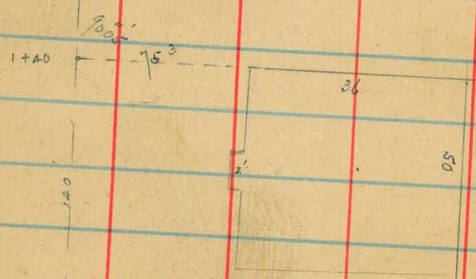
E	1.4	141.8
crk	1.9	141.3
gtc	2.6	140.6
"	2.4	140.8
M	1.9	141.3
"	2.4	140.8
gtc	2.8	140.4
crk	2.0	141.2
W	1.7	141.5

143.16

3+0 = S.L. Date

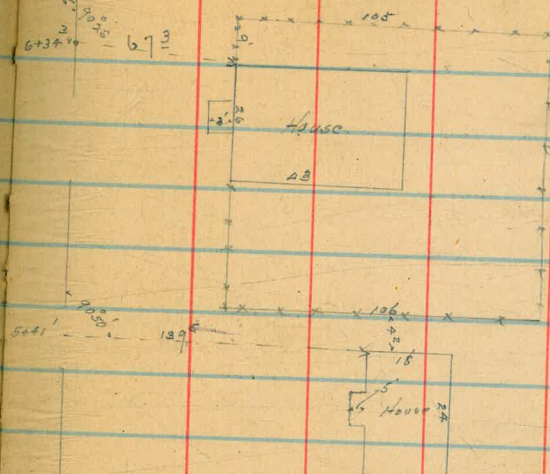
N	0.8	142.4
Crk	1.0	142.2
gtr	1.2	141.4
W	1.6	141.6
N	1.3	141.9
W	1.6	141.6
gtr	1.6	141.6
Crk	1.1	142.1
F	0.2	143.0

11/15/12
H
M
H

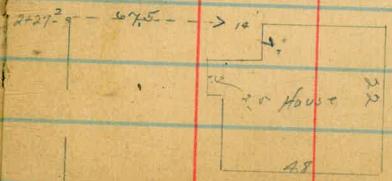
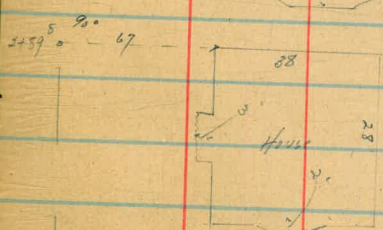


0+0 ← 15' ← Dwight Missouri

11/15/12
H
M
H

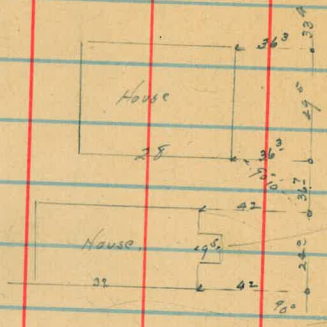


3137° 39' 67° Lot line as shown by survey at time of Building

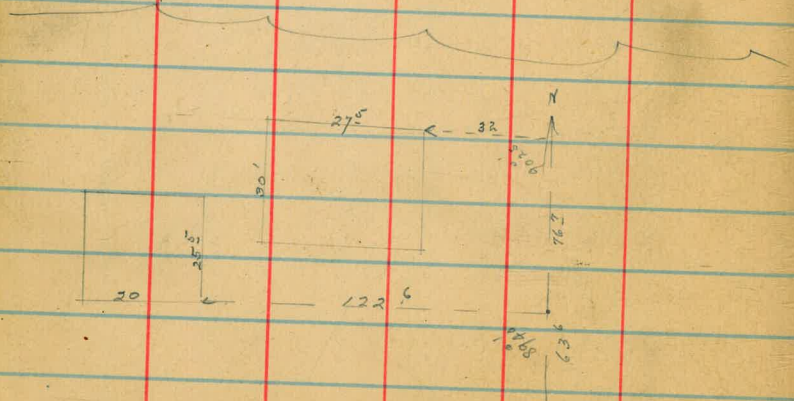


11/15/12
H
M
H

13th Plg. Myrtle Webster



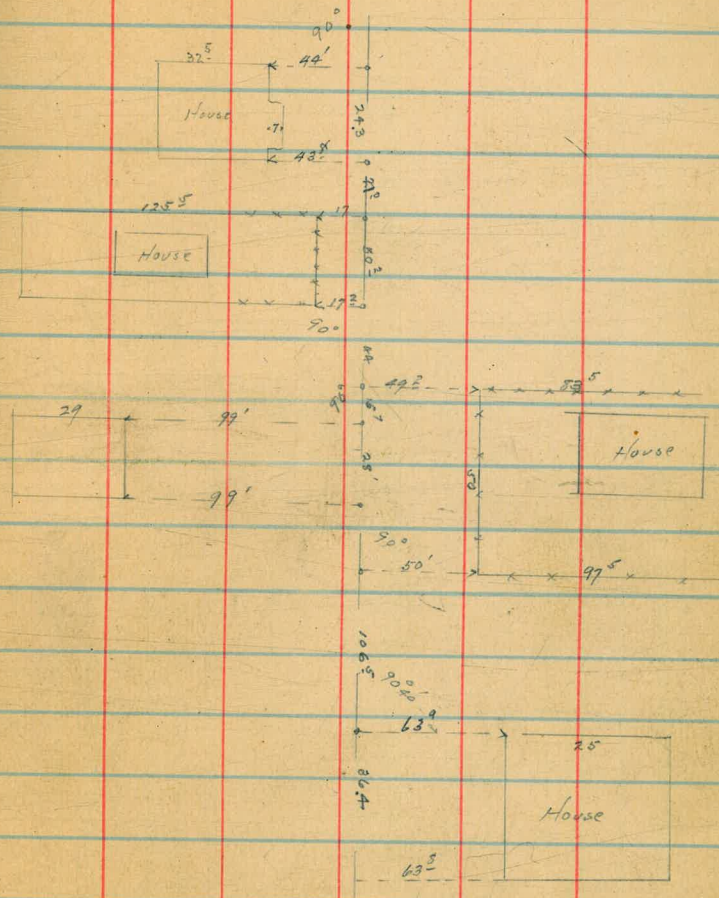
end of slope



18th Plg. Myrtle - Washington

11/15/12
H
M
H

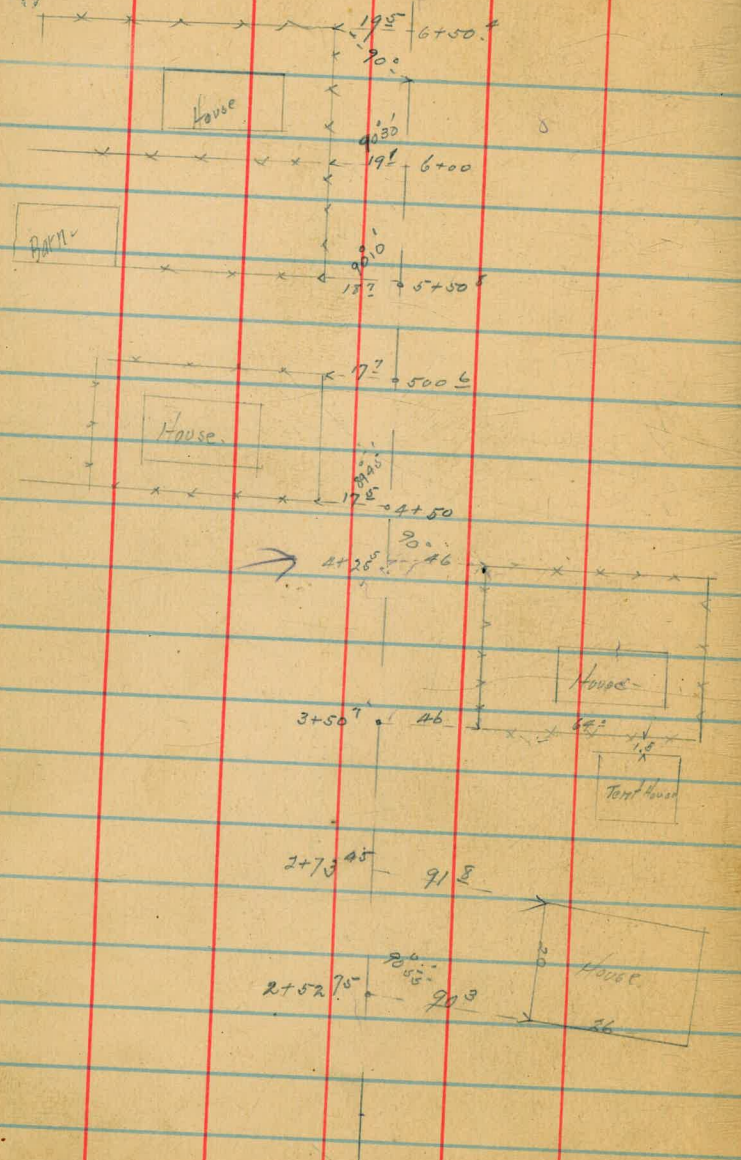
13th Plg. Dwight - Franklin



3

1/15/12 H

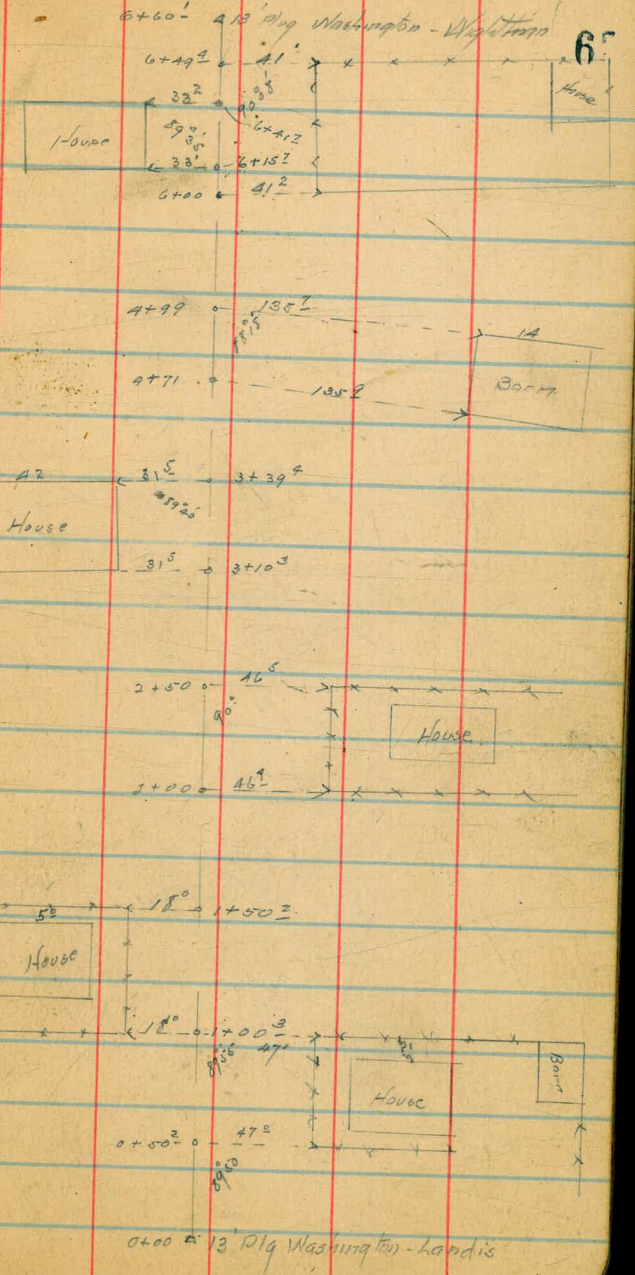
6+60 0.13 Ply Webster - Wightman



0+00 0.13 Ply Webster - Landis

1/15/12 H

225 60 375

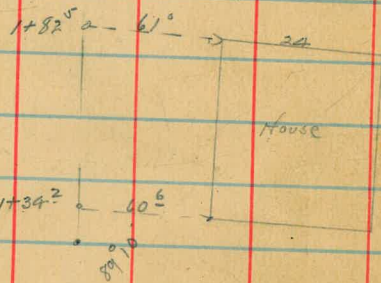


0+00 0.13 Ply Washington - Landis

11/15/13
H
H
H

30

3+95³⁵ 13 Plg Washington - Univ.

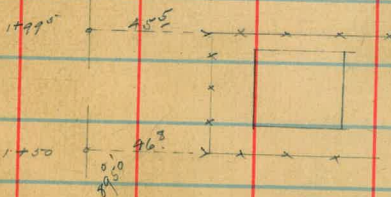
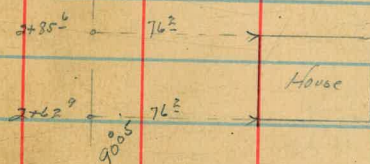
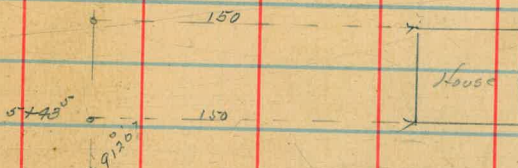


0+00 13 Plg Wrightman - Washington

11/11/10
H
H
H

63

4.18 Plg Wrightman - Missouri

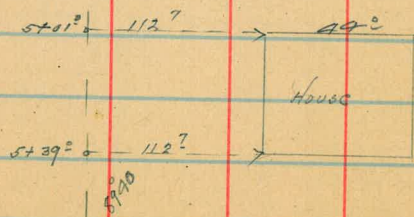


0+00 13 Plg lands - Missouri

11/6/12
H
M
57

0000 + 13' Plg Landis Missouri

64



13' Plg Dwight Missouri

For 11 St

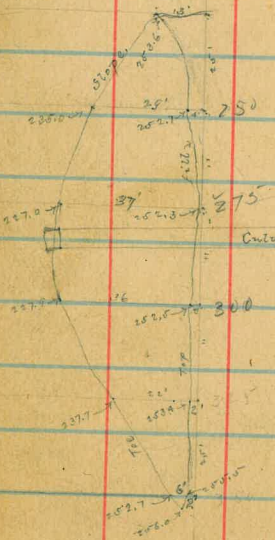
S

N

265.94 HI
 +2.97
 268.91 HI
 268.91
 267.86 HI

CO

272.32 See next page
 271.60
 271.54
 269.94 HI
 274.97 HI
 272.73
 270.24
 270.77
 267.07 HI



15 ft

Gravel

A = 2981 Sq Ft

A = 2366 Sq Ft

Slopes in Gravel St Between Term 2 St as left by 1st grading

Jan 28-13
 270707
 270220
 270676

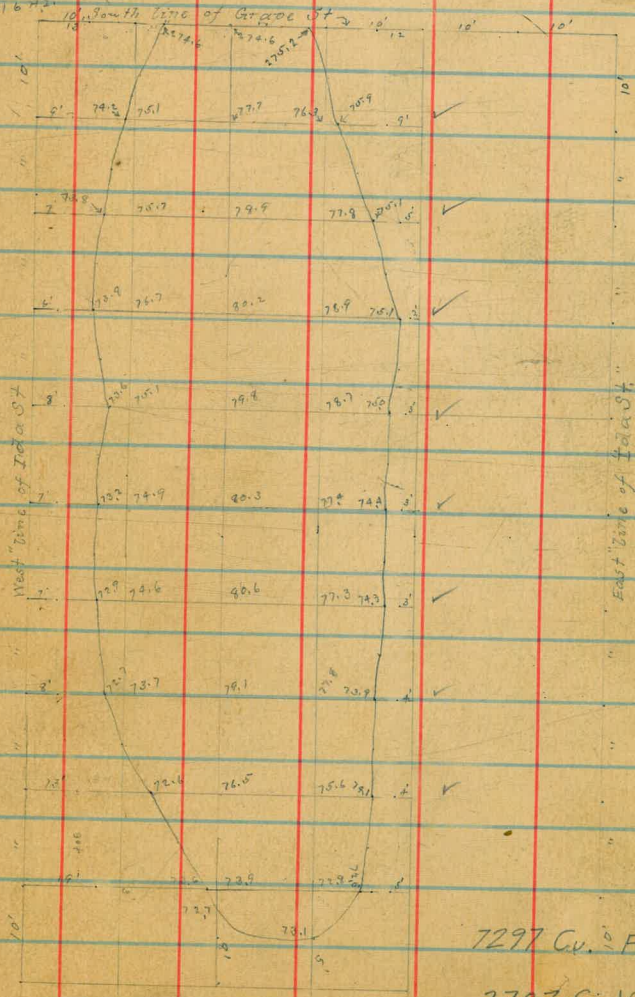
31 st

St.

HI
 Section of File of 21st at Ivy St

65

BM 29365 S.W. pole N.E. Cor Ivy St
 263.70
 263.83
 272.52 HI
 263.34
 274.07
 271.84
 272.23 HI
 270.90
 263.16 HI



7297 Cu. Ft.

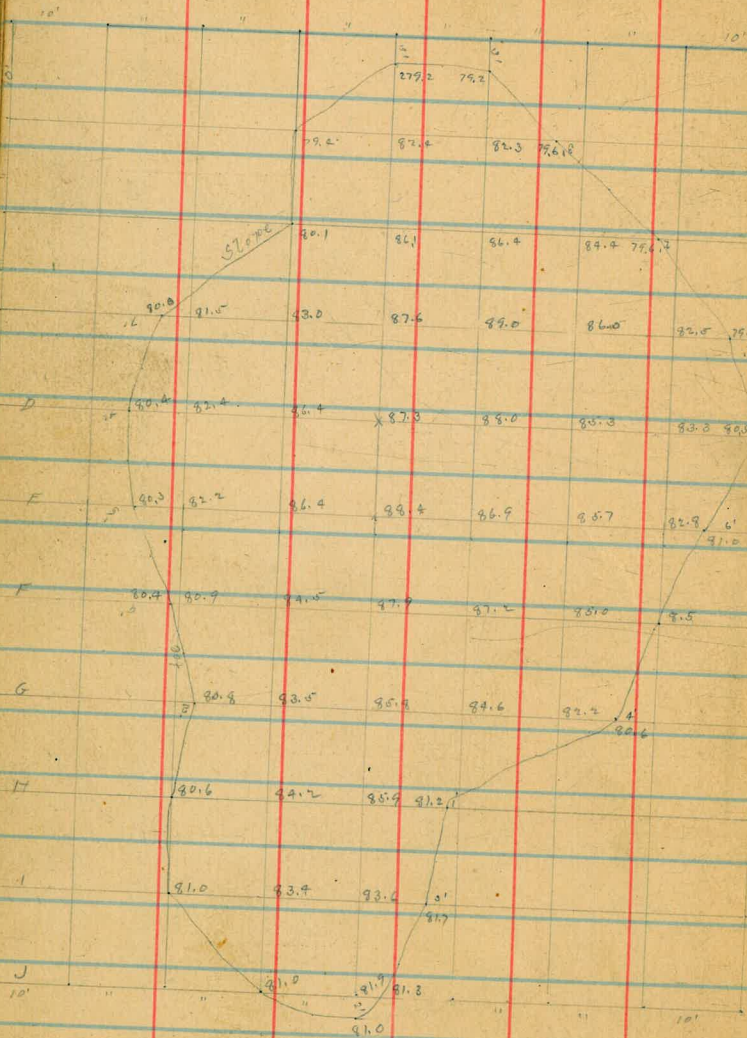
270.3 Cu. Yds.

77272.53 grad. stone SW trap Grape & Ida.

1.2.91
295.00
- 1.98
293.02
29 3.106
77.54
209 26.6 HI.

Section of pile of dirt at Grape & 32nd

Jan 27-13 (Norman
Shaw,
Devine.)



15345.8 Cu Ft

569.8 " Yds

I estimate that there is approx 800 Cu Yds in the Blk North of Grape & West of 32nd including the spread dirt.
That there is 1500 Cu Yds spread in the Blk North of Grape East of 31st.
That " " 360 " " " " " " " West " "
" " " 124 " " in pile " " " South " " East of 32nd FF

Jan 27-13 (Norman
Shaw,
Devine.)

X sect. 24th from So. line

A St. to City Park

Childs
Tayler
Allen
ET

Mar. 6/13

J.P.

H.I.

B.M.

So 1/4

5.42 180.33

174.91

So. line A.

White

White
2' east
cb.

6.2 174.1

5.2 175.1

4.7 175.6

5.4 174.9

4.7 175.6

5.0 175.3

c

4.7 175.6

C

4.3 176.0

4.4 175.9

4.0 176.3

4.0 176.3

3.4 176.9

E line

3.6 176.7

E line

3.2 177.1

3.2 177.1

No. cb.

Center

E line

E line

3.2 177.1

3.3 177.0

3.7 176.6

3.8 176.5

4.1 176.2

3.9 176.4

c

4.5 175.8

C

4.5 175.8

4.5 175.8

5.0 175.3

cb + 7'

4.6 175.7

5.3 175.0

White

5.4 174.9

White

5.5 174.8

8.2 172.1

47

no. 1/4

white
4' east
cb.

7.5 172.8

4.8 175.5

4.1 176.2

4.5 175.8

4.4 175.9

4.1 176.2

3.7 176.6

3.4 176.9

E line

no. cb.

E line

3.1 177.2

4.0 176.3

4.3 176.0

4.5 175.8

4.5 175.8

4.6 175.7

3.0 175.3

7.0 173.3

cb + 6'
white

48

no. line

White

5.2 175.1

4.5 175.8

4.6 175.7

4.5 175.8

4.4 175.9

3.5 176.8

2.8 177.5

c

E line

25' no.

E line

2.4 177.9

2.5 177.9

3.5 176.8

4.4 175.9

4.9 175.4

4.9 175.4

4.7 175.6

c

white

50' no.

White

5.3 175.0

5.1 175.2

4.5 175.8

c

3.8 176.5

3.0 177.3

2.2 178.1

E line

2.2 178.1

75' no.

E line

1.8 178.5

2.2 178.1

3.3 177.0

c

4.0 176.3

5.0 175.3

6.0 174.3

White

6.9 177.4

180,33

100' no.

White

9.1 171.2

8.2 172.1

6.7 173.6

c

5.4 174.9

4.4 175.9

3.7 176.6

E line

3.3 177.0

(117.4 on west 117.1 on east park line)

E line

3.0 177.3

3.9 176.4

5.1 175.2

c

6.2 174.1

7.5 172.8

8.9 171.6

White

10.1 170.2

Slopes.

H.T

J.P.

4.99 176.83 8.49 171.84

no. cb,

5' west of west line

5.7 171.1

no 1/4

10' west of west line

10.1 166.7

center

15' west of west line

14.4 162.4

so 1/4

10' west of west line

8.1 168.7

so. cb.

10' west of west line

6.1 170.7

x-section Grape St. from 150 E of Fern to 400'
E of Fern
to figure yardage of second fill
12 nails 12.75' 14's

3/18
13
Dunkley
Evans
Nerr.

see Page 65

B.M. Prop grade st. E. Grape & Fern 269.75

B.M. 1.38 271.13

P.P. 1.17 261.13 1.17 259.96

1+50 E. of E. Fern st on South

S			
cb	2.9	258.2	
+1	3.4	257.7	
1/4	3.9	257.2	
	3.2	257.9	
M	2.6	258.5	
1/4			
gt	2.7	258.4	
cb	3.2	257.9	
	2.2	258.9	
N			
	1.9	259.2	

1+75

N			
cb	3.2	257.9	
gt	3.7	257.4	
1/4	4.3	256.8	
	3.6	257.5	
M			
	3.4	257.7	
1/4			
gt	4.0	257.1	
cb	5.0	256.1	
	4.3	256.8	
S			
	4.0	257.1	

261.13

2+0

S	4.3	256.8
cb	4.5	256.6
+1	4.5	256.6
+2	5.2	255.9
1/4	4.4	256.7
M		
	3.9	257.2
1/4		
+10	4.0	257.1
cb	4.6	256.5
	3.8	257.3
N		
	3.9	257.2
+4		
	5.4	255.7

2+25

-4	6.7	254.4
N		
cb	4.2	256.9
+1	4.3	256.8
+2	4.3	256.8
1/4	5.2	255.9
	4.4	256.7
M		
	4.2	256.9
1/4		
	4.7	256.4
gt		
	5.7	255.4
cb		
	5.0	256.1
S		
	5.0	256.1
+4		
	7.3	253.8

261.13

- 30	2+50	25.1	236.0
5		4.9	256.2
crb		5.1	256.0
gtc		5.9	255.2
"4		5.0	256.1
M		4.4	256.7
"4		4.6	256.5
gtc		5.1	256.0
crb		4.4	256.7
N		4.3	256.8
+ 26		22.5	238.6
- 36	2+75	28.2	232.9
N		4.9	256.2
+ 1		4.0	257.1
crb		4.7	256.4
gtc		5.4	255.7
"4		4.6	256.5
M		4.5	256.6
"4		5.3	255.8
crb		6.4	259.7
+ 2		5.2	255.9
+ 11		5.0	256.1
5		6.0	255.1
+ 45		34.8	226.3

261.13

- 38	3+0	32.1	229.0
5		5.4	255.7
+ 1		4.8	256.3
+ 11		4.7	256.4
crb		5.5	255.6
"4		4.7	256.4
M		4.2	256.9
"4		4.3	256.8
gtc		4.9	256.2
crb		4.2	256.9
+ 11		3.6	257.5
N		4.7	256.4
+ 33		26.3	234.8
- 20	3+25	15.0	246.1
N		3.0	258.1
crb		3.7	257.4
gtc		4.3	256.8
"4		3.6	257.5
M		3.4	257.9
"4		4.1	257.0
crb		5.0	256.1
+ 2		4.1	257.1
5		4.4	256.7
+ 30		24.4	236.7

	3+37		
-15		15.3	245.8
S		4.3	256.8
+11		3.9	257.2
cul		4.8	256.3
1/4			
		3.9	257.2
M		3.0	258.1
1/4			
		3.1	258.0
gtr		4.1	257.0
cul		3.5	257.6
N			
		2.9	258.2
+8		7.9	253.2
	3+50		
N		2.2	258.9
cul		3.4	257.7
gtr		3.6	257.5
1/4		2.8	258.3
M		2.6	258.5
1/4			
		3.4	257.7
cul		4.4	256.7
+2		3.7	257.4
S		3.8	257.3
+7		7.8	253.3

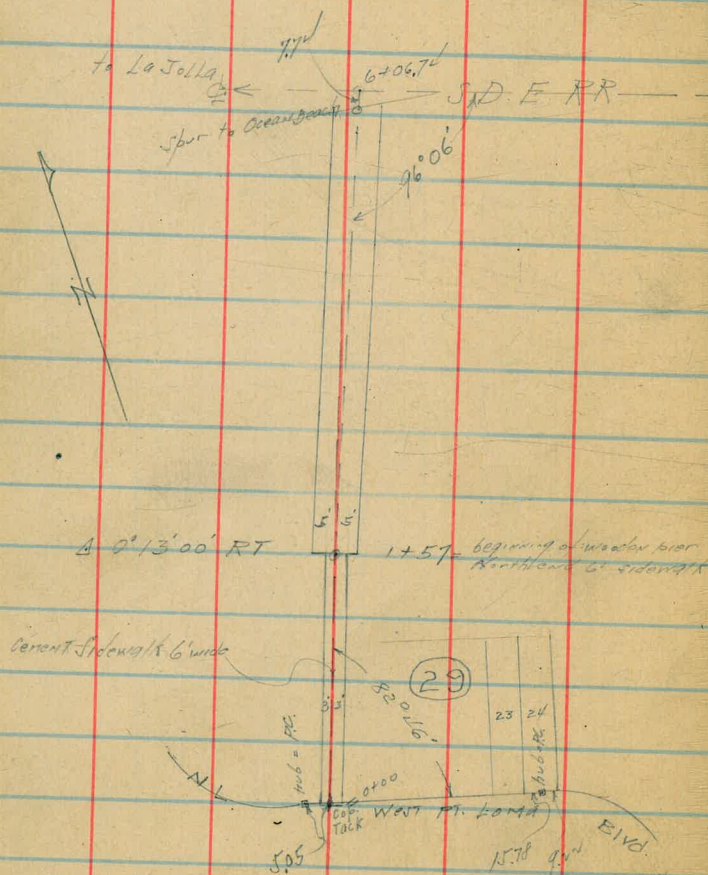
	3+75		
S			
+11		2.1	259.0
cul		2.6	258.5
		3.0	258.1
1/4			
		2.2	258.9
M			
		1.6	259.5
1/4			
		1.8	259.3
cul		2.7	258.4
+1		2.0	259.1
N			
		1.8	259.3
	4+0		
N		0.4	260.7
cul		0.5	260.6
gtr		1.1	260.0
1/4		0.2	260.9
M			
		0.1	261.0
1/4			
		0.9	260.2
cul		1.5	259.6
+1		1.1	260.0
S			
		1.0	260.1

Location of 6' Cement Sidewalk
 + 10' Wooden Pier thru BIK 29
 Ocean Beach Park

Moore
 1/15/17

76

0+00 = N.W. West Pt. Loma Blvd beginning of 6' Sidewalk



Walker
23-27

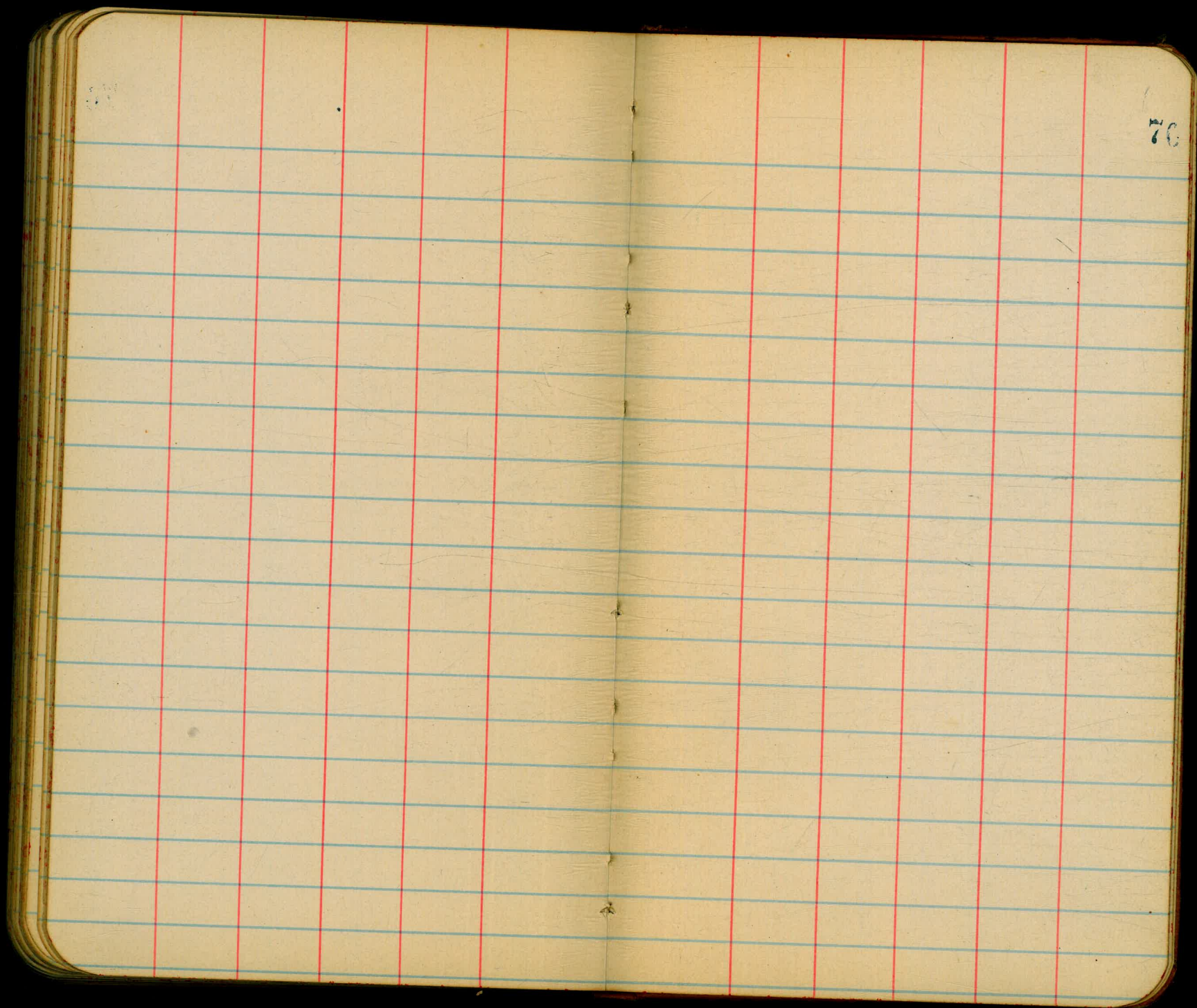
Order Const 117 Bk II FRARY HEIGHTS
Bet. QUINCE + PARK ST.
FROM Existing M.H. to D.E. 40' ~~max~~ 32' rd
D.E. to Existing M.H.

75

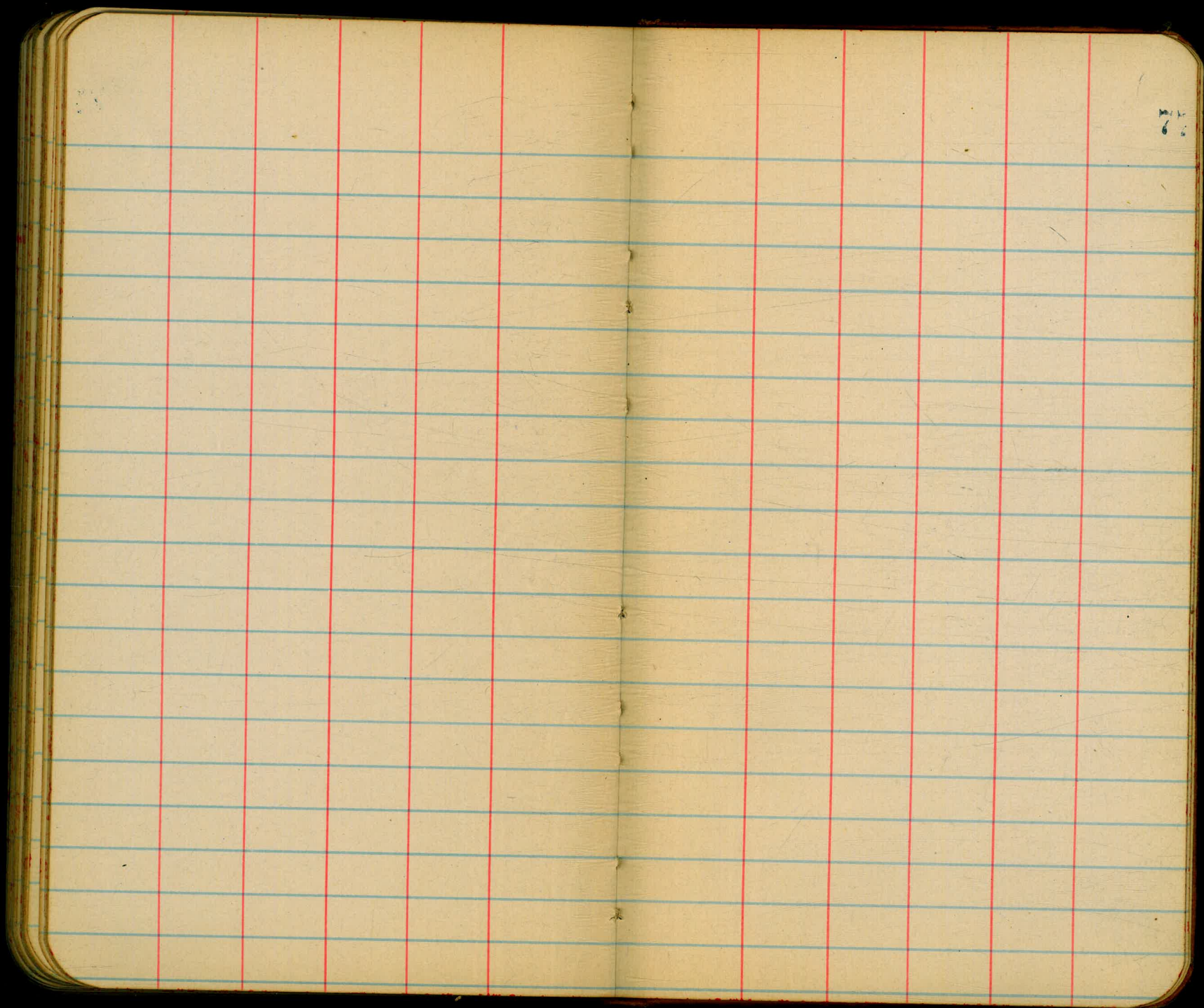
Existing M.H.				238.26 = Flowline		
= 0+00				299.00		
+ 26' ⁸				237.50		
+ 53' = Bk				240.00		
1+03' = Bk				267.00		
1+43'				270.00		
+ 83' = Bk				273.00		
2+10'				279.50		
2+43' = Bk				286.00		
2+83'				290.00		
0+00 = D.E.	305.73	5.06	300.67	294.00	+ 6.67	
0+40						
TR 0.05	292.77	8.58	297.15	290.00	+ 7.15	
		13.01	294.14			
+ 80 = Bk		1.13	291.64	286.00	+ 5.64	
1+10						
		7.63	283.14	279.50	+ 3.64	
1+40 = Bk		13.28	279.49	273.00	+ 6.49	
1+80						
TR 0.00	279.80	3.98	288.79	270.00	+ 18.79	
		12.97	277.80			
2+80 = Bk						
TR 0.12	266.53	8.20	271.60	267.00	+ 4.60	
TR 0.09	253.79	13.09	266.71			
+ 70 = Bk		10.13	253.70			
		7.27	244.54	240.00	+ 4.54	
+ 9.6						
		9.55	238.74	239.50	+ 4.44	
		13.48	238.31			
3+23' = Existing M.H.	9.74	238.31	238.26 = Flowline	239.00	+ 5.05	

NEBR. PA. 11 132' rd

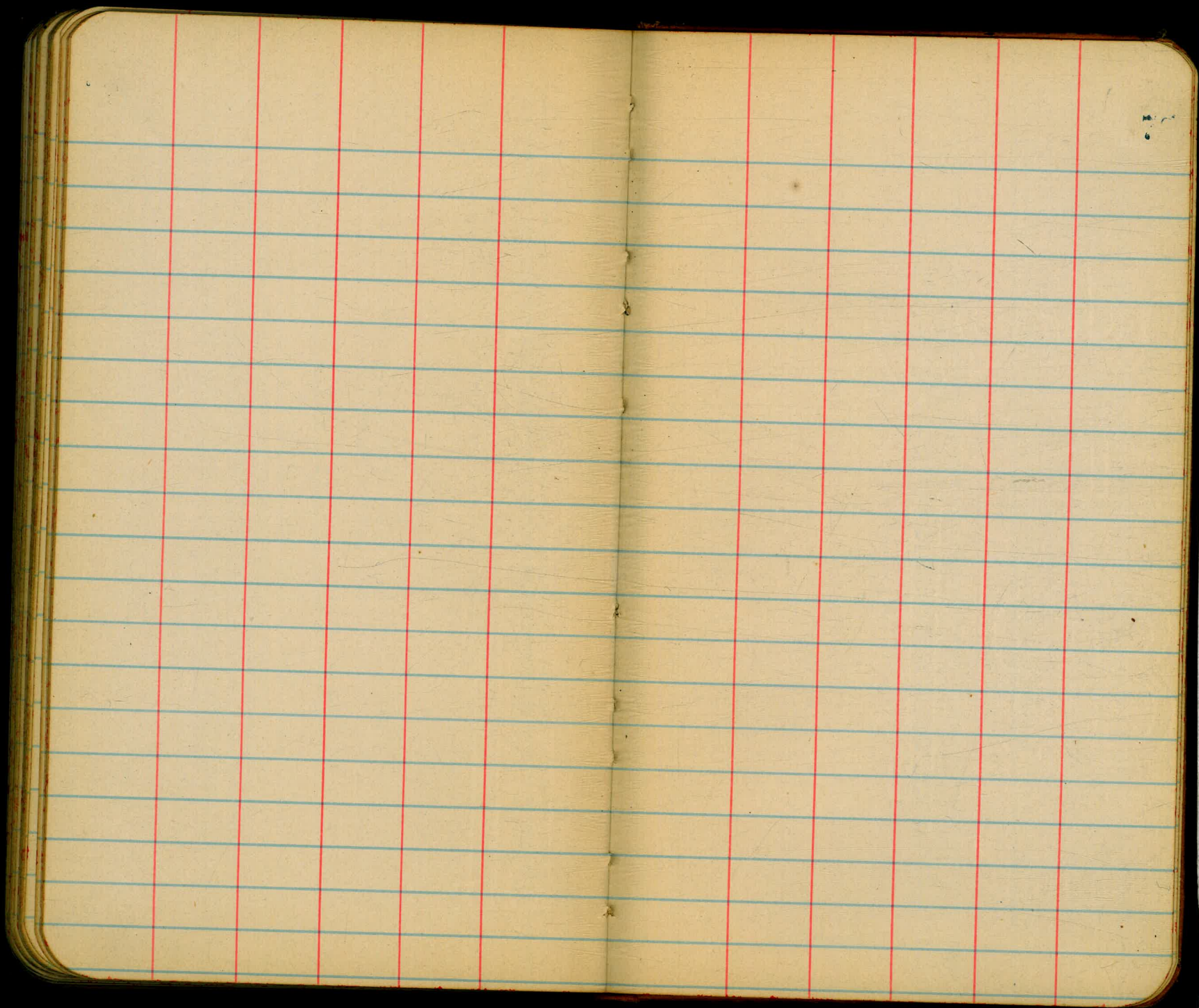
304.03
1.70+
305.73 = T
13.01-
292.72 = TR
0.05+
292.77 = T
12.97-
279.80 = TR
0.00+
279.80 = T
13.09-
266.71 = TR
0.12+
266.83 = T
10.13-
253.70 = TR
0.09
253.79 = T

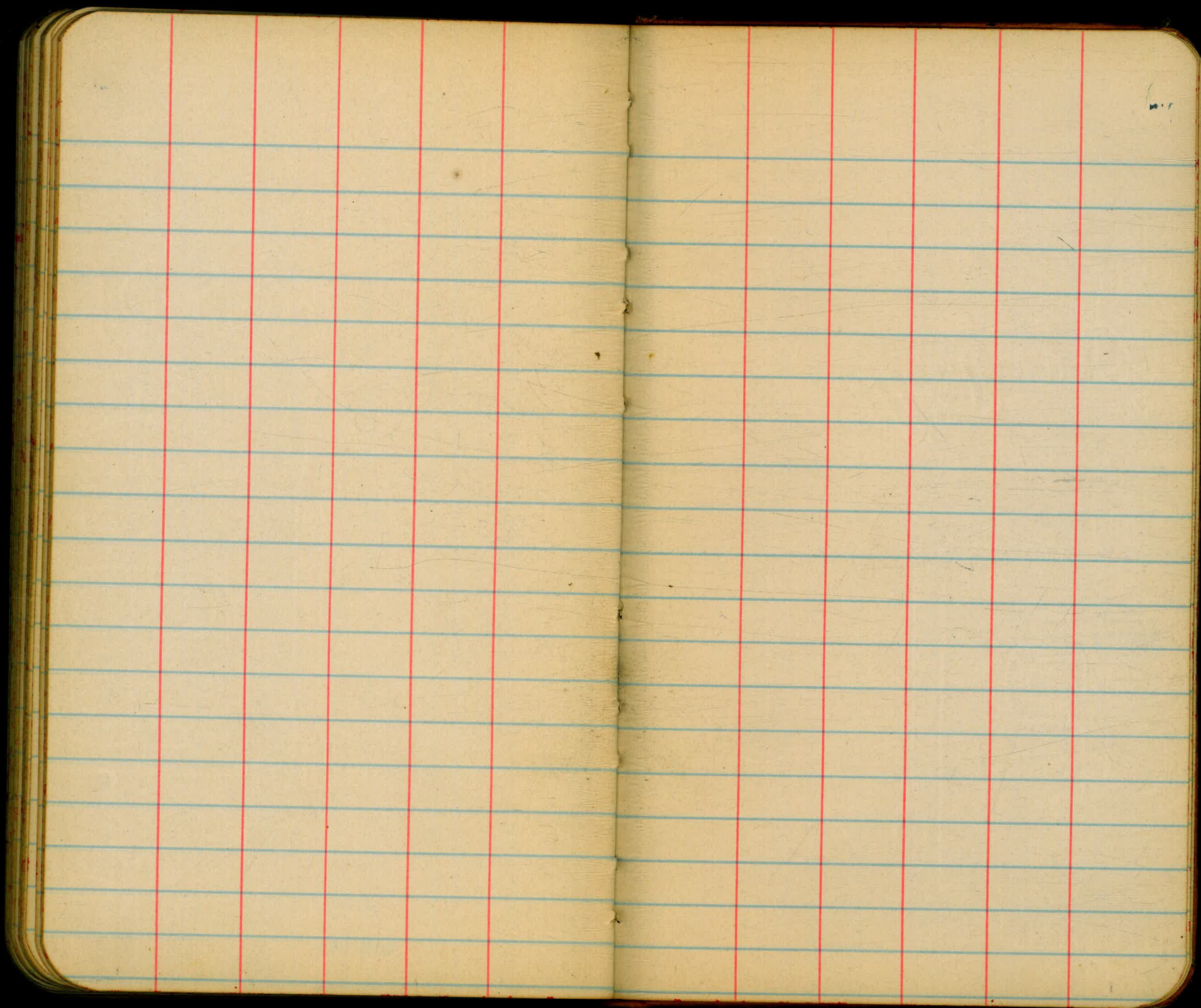


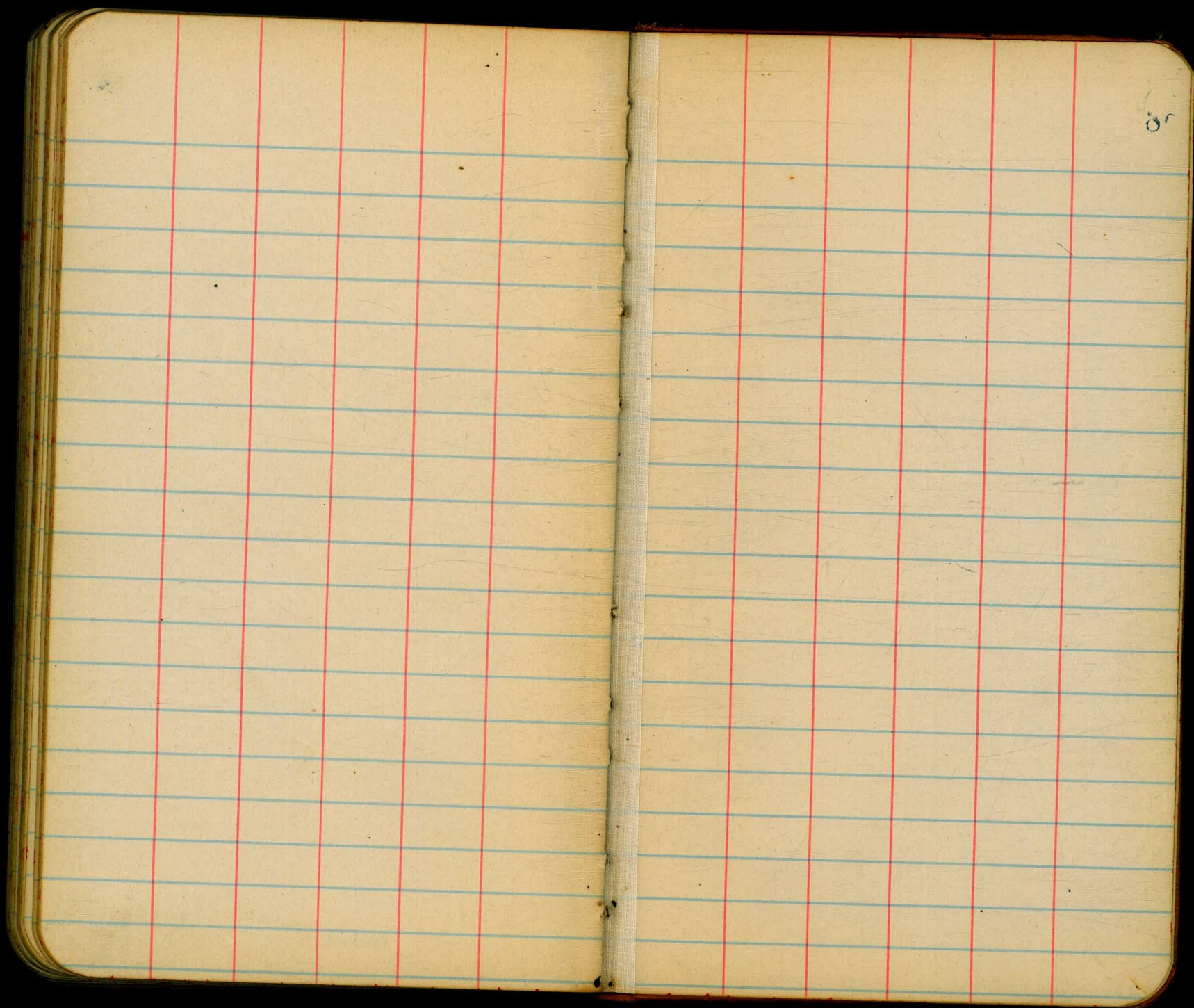
70



72







8r

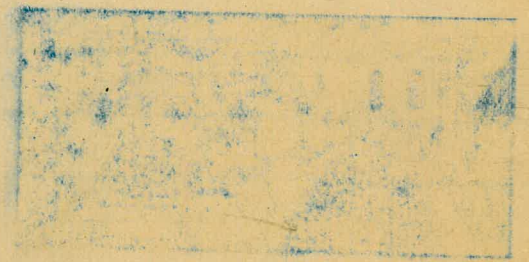
8119
 Feb 13.25
 Busk 113.94
 Cash 12.11
 Date 12.17

274.57
 4.10
 270.47 = 271.50 1/2 TOL SW Cr Grace 20197

183.2
 30
 213.2
 30
 243.2
 283.2
 40
 323.2

25379
 1481
 23898

442
 157
 599.00
 77
 606.70



65
 32.5
 13

474

64
 156
 180

20
 100
 500

1907
 1908
 1909
 1910
 1911
 1912
 1913
 1914
 1915
 1916
 1917
 1918
 1919
 1920

800
 320
 360
 104
 400
 2214

250
 225-222+76
 300-263+33
 325-150+20
 337-77+8

320
 337
 350

1266
 62
 1328
 985
 496
 1481
 985
 507
 25379
 1532
 847
 985
 560
 1548

250-251+30
 225-348+45
 300-321+38
 325-274+30
 337-153+15
 350-75+7



25379
 1548
 23831

