

F.B.  
847

---

LEVEL BOOK.

No. 410

---

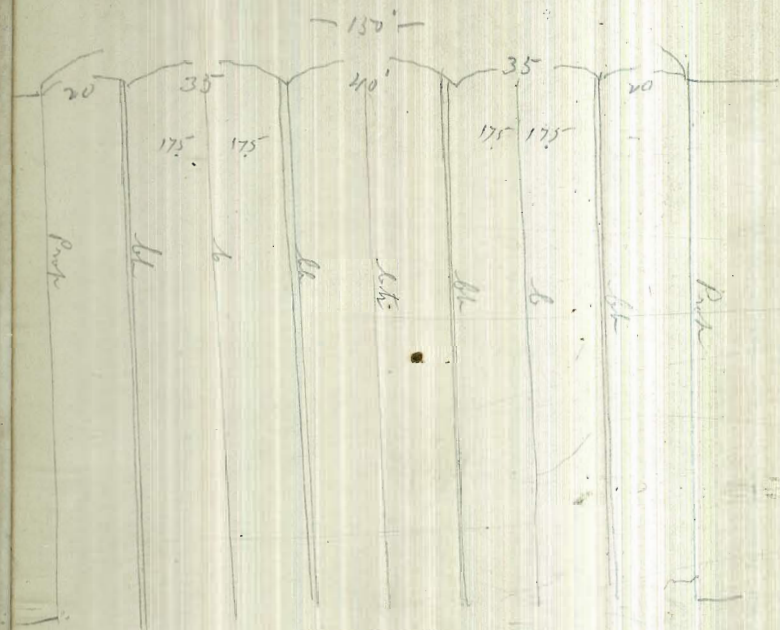


504

MICROFILMED

DEC 15 1964





11 - Blough X Sec of Elwyn am (150)  
 7 - Fitzg Park Blvd to City limits  
 12 - Shaw

01  
 Normal School

193 34480 34287 87m

Edin of Park Blvd

n	55	339.3
20 ft	58	339.0
375 lb	67	338.1
275 lb	66	338.2
20 lb	65	338.3
40'	66	338.2
20 lb	53	339.5
375 lb	45	340.3
575 lb on bank	47	340.1
20 S on track	44	340.4
25' E of Park Blvd		
S	59	338.9
ll	73	337.5
b	73	337.5
ll	70	337.8
b	84	336.4
ll	82	336.6
b	84	336.4
ll	87	336.1
n	68	338.0



34480

50' E of Park Blvd

N		97	335.1
h		98	335.0
b		99	334.9
h		97	335.1
?	+15'	101	334.7
		88	336.0
h		92	335.6
b		88	336.0
h		83	336.5
S		74	337.4

75' E of Park Blvd

S		82	336.6
h		93	335.5
b		94	335.4
h		96	335.2
b		98	335.0
	+5'	116	333.2
h		113	333.5
b		116	333.2
h	+4'	103	334.5
		103	334.5
N		113	333.5

34480

El Cajon

02

100' E of Park Blvd

N		149	329.9
h		133	331.5
	+10'	122	332.6
b		146	330.2
h		132	331.6
	+13'	144	330.4
b		108	334.0
h		109	333.9
b		101	334.7
h		98	335.0
S		89	335.9

125' E of Park Blvd

S		97	335.1
h		114	333.4
b		128	332.0
h		133	331.5
		128	331.92
b	TP +13'	16	331.2
		40	328.8
h		27	330.1
	+15'	29	329.9
b		53	327.5
h		55	327.3
N		63	326.5

0.92

332.84

108



33284

	150	E of	Partl. Blud	
n			88 324.0	
hh			7.8 325.0	
t			7.2 325.6	
	+4'		5.3 327.5	
h			4.2 328.6	
	+10'		4.8 328.0	
	+11'		5.8 327.0	
			6.0 326.8	
h			5.7 327.1	
b			4.7 328.1	
h			3.0 329.8	
S			+2.0 334.8	

175 E of Partl. Blud

S			5.8 327.0	
h			8.5 324.3	
b			9.3 323.5	
h			8.5 324.3	
	+5'		9.7 323.1	
b			9.5 323.3	
	+6'		9.3 323.5	
	+10'		6.3 326.5	
h			6.0 326.8	
	+11'		6.3 326.5	
b			11.1 321.7	
hh			12.5 320.3	
n			13.3 319.5	

33284

El Cajon

82

	200	E of	PK Blud	
n			11.7 321.1	
h			12.2 320.6	
b			11.9 320.9	
	+6'		7.5 325.3	
h			7.5 325.3	
	+10'		7.8 325.0	
b			13.4 319.2	
h			13.0 319.8	
b			12.0 320.8	
h			11.4 321.4	
S			8.9 323.9	

TP 220

332.74

11.70 321.74

225 E of PK Blud

S			2.5 321.4	
h			4.8 319.1	
b			9.0 314.9	
h			6.9 317.0	
b			5.6 318.3	
	+5'		4.3 319.6	
	+11'		0.2 323.7	
h			0.0 323.9	
	+12'		0.2 323.7	
b			3.8 320.1	
h			4.5 319.4	
n			4.9 321.0	



32394

32394

El Cajon

4

250 E of Park Blvd				293 E of Park Blvd				
n			27	321.2	n		34	320.5
bl			38	320.1	bl		42	319.7
b			38	320.1	b		41	319.8
	+3'		33	320.6				
bl	+5'		1.9	322.0	bl		38	320.1
			1.5	322.4			40	319.9
	+7'		1.7	322.2	b	+8'	5.4	318.5
b	+14'		5.4	318.5			6.2	317.7
			6.2	317.7				
bl			62	317.7	bl		82	315.7
b			-		b		95	314.4
			7.6	316.3				
	+12'		8.2	315.7	bl		101	313.8
bl			10.7	313.2				
S			60	317.9	S		109	313.0
275 E of Park Blvd				300 E = W of Georgia St (80) (Graded)				
S			92	314.7	S		50	318.9
	+7'	(creek)	11.3	312.6	bl		54	318.5
bl			94	314.5	b		57	318.2
b			83	315.6	bl		50	318.9
bl			72	316.7	b		43	319.6
b			59	318.0	bl		40	319.9
	+8'		5.5	318.4				
bl	+13'		3.2	320.7	b		42	319.7
			3.0	320.9	bl		36	320.3
b			36	320.3	b		31	320.8
bl			41	319.8				
n			33	320.6	n			



323.94

E 2 of Georgia

n	49	319.0
hh	58	318.1
b	70	316.9
hh	66	317.3
b	62	317.7
hh	67	317.2
b	71	316.8
hh	76	316.3
S	70	316.9

70 303 320.36 661 317.20

10 E of

Georgia

S	98	310.6
hh	102	310.2
b	114	309.0
hh	95	310.9
b	83	312.1
hh	63	314.1
	45	316.1
	38	316.6
b	40	316.4
hh	42	316.2
n	36	316.8

+9'

+10'

320.36

25' E of Georgia

n	41	316.3
hh	48	315.6
b	50	315.4
hh	48	315.6
b	47	315.5
	70	313.4
	84	312.0
hh	100	310.4
b	118	308.6
hh	116	308.8
hh	96	310.8
S	96	310.8

+8'

+11'

+2'

50' E of Georgia

S	96	310.8
hh	117	308.7
b	128	307.6
hh	128	307.6
b	102	310.2
b	83	312.1
hh	76	312.8
	62	314.2
	59	314.5
b	63	314.1
hh	60	314.4
n	54	315.0

+9'

+10'

+11'

El Cajon

5



37036

75' E of Georgia

n	57	314.7
hh	64	314.0
b	80	312.4
hh	65	313.9
b	95	310.9
hh	134	307.0
b	137	306.7
hh	114	308.8
S	95	310.9

100' E of Georgia

S	108	309.6
hh	130	307.4
b	150	305.4
hh	156	304.8
b	107	309.7
hh	81	312.3
b	82	312.2
hh	67	310.7
hh	66	313.8
n	59	314.5

37036

125' E of Georgia

n	56	314.8
hh	67	313.7
b	72	313.2
hh	74	311.0
hh	87	311.7
b	101	310.3
hh	875	311.11
hh	93	304.8
b	102	303.9
hh	85	305.6
S	78	306.3

150' E of Georgia

S	105	303.6
hh	114	302.7
b	113	302.8
hh	83	305.8
b	37	310.4
hh	34	310.7
b	39	310.2
hh	06	313.5
hh	04	313.7
n	705	314.6

E of Georgia

6



31411

175 E of Georgia

n		+04	314.5
hh		0.5	313.6
b		0.6	313.5
	+4'	5.4	308.7
h		4.3	309.8
	+9'	4.8	309.5
	+13'	3.8	310.9
		3.7	310.4
h		5.3	308.8
b		6.7	307.4
h		9.3	304.8
S		13.2	300.9

200 E of Georgia

S		14.8	299.5
	+2'	12.3	302.8
h		9.4	304.7
b		8.0	306.1
h		6.0	308.1
b		5.1	309.0
h		5.6	308.5
	+13'	6.1	308.0
b		1.4	312.7
h		1.1	313.0
n		0.0	314.1

31411

225 E of Georgia

n		1.6	312.5
h		2.7	311.4
b		2.6	311.5
	+4'	7.3	306.8
h		6.7	307.4
b		6.6	307.5
h		8.3	305.8
b		9.0	305.1
h		11.4	302.7
	+8'	13.6	300.5
S		15.6	298.5

250 E of Georgia

S		15.9	298.2
h		12.8	301.3
b		10.9	303.2
h		9.7	304.4
b		8.7	305.4
h		7.9	306.2
b		8.3	305.8
h		9.0	305.1
	+13'	8.9	305.2
	+14'	4.4	309.7
n		2.9	311.2

El Cajon

7



31411

30576

Edgerton

8

275

E of Georgia

W of Florida

n		5.5	308.6
	45'	7.3	306.8
th		8.0	306.1
b		7.5	306.6
	43'	9.5	304.6
th		9.0	305.1
b		10.2	303.9
th		11.2	302.9
b		12.0	302.1
th		14.0	300.1
S		18.2	295.9

n		0.2	305.6
		0.5	305.3
		1.7	304.1
th		2.4	303.4
b		2.8	303.0
th		2.6	303.2
b		4.0	301.8
th		3.5	300.3
b		5.7	300.1
th		7.5	298.3
S		8.0	297.8

310

E of

Georgia = W of Florida

(60)

W

1/2 of

Florida

S		16.1	298.0
th		14.9	299.2
b		13.4	300.7
th		12.0	302.1
b		11.7	302.4
th		10.6	303.5
b		9.7	304.2
th		10.6	303.5
		10.2	303.9
n		8.1	306.0
		10.5	303.9

S		8.7	297.1
th		7.8	298.0
b		6.8	299.0
th		5.8	300.0
b		4.3	301.5
th		2.8	303.0
b		3.2	302.6
th		2.8	303.0
n		1.8	304.0

TP

217

30576

Reed in sheet



30576

## Center of Florida

n	16	304.2
hh	26	303.2
b	36	302.2
hh	37	302.6
b	45	301.3
hh	57	300.1
hh	68	299.0
b	77	298.1
S	87	297.1

## E 1/2 of Florida

S	89	296.9
hh	78	298.0
b	70	298.8
hh	53	300.5
b	46	301.2
hh	35	302.2
b	38	302.0
hh	25	303.3
n	19	300.9

30576

## E 1/2 of Florida

n	26	303.2
hh	33	302.5
b	41	301.7
hh	37	302.1
b	59	299.9
hh	64	299.4
b	76	298.2
hh	87	297.1
S	98	296.0

## E 2/2 of Florida

S	104	295.4
hh	97	296.1
b	88	297.0
hh	66	299.2
b	60	299.8
hh	39	301.9
b	43	301.5
hh	52	300.6
n	46	301.2

El Cajon

9



305.76

25' E of Florida

n		80	297.8	
hh		80	297.8	
b	+13'	77	298.1	
		57	300.1	
hh	+3'	43	301.5	
		42	301.6	
b	+10'	59	300.8	
		70	298.8	
hh		94	296.4	
b		108	295.0	
hh		117	293.9	
S		122	293.6	

50' E of Florida

S		144	291.4	
hh		132	292.6	+70
b		125	293.2	+37.5
hh		121	293.7	+55
b	+10'	122	293.6	+65
		72	298.2	+75
hh	+10'	49	300.9	+85
		44	301.4	+95
b	+14'	47	301.1	+109
		65	299.3	+125
hh	+1'	88	297.0	+135
		110	294.8	+130
n		110	294.8	+150

305.76

75' E of Florida

n		85	297.3	
hh		92	296.6	
b		90	296.8	
	+4'	53	300.5	
hh		47	301.1	
	+10'	54	300.4	
b		82	297.6	
hh		110	294.8	
b		117	294.1	
hh		116	294.2	
S		130	292.8	

100' E of Florida

S		118	294.0	
hh		112	294.6	
b		106	295.2	
hh		103	295.5	
b		89	296.9	
	+15'	54	300.2	
hh		48	301.0	
	+13'	53	300.5	
b		87	297.1	
hh		86	297.2	
n		83	297.5	

8

10



30576

125

E f

Florida

n		7.0	298.8
bl		8.2	297.6
b		7.7	298.1
	+3	5.4	300.4
bl		4.9	300.9
	+11	7.6	298.2
b		8.6	297.2
bl		9.4	296.4
b		10.2	295.6
bl		10.6	295.2
S		10.0	295.9

150

E f

Florida

S		8.9	296.9
bl		9.8	296.0
b		10.0	295.8
bl		8.4	297.4
b		8.2	297.6
	+6	7.8	298.0
bl	+10	8.8	300.4
		8.4	301.0
		5.3	300.5
b		7.1	298.7
bl		7.1	298.7
n		6.0	299.8

T P

7.07

307.43

5.40  
304.36

30743

175

E f

Florida

n		7.8	299.6
bl		8.1	299.3
b		8.5	298.9
	+3	6.8	300.6
bl		6.3	301.1
	+10	6.8	300.6
	+12	8.9	298.5
b		9.1	298.3
bl		9.8	297.6
b		10.9	296.5
bl		10.8	296.6
S		11.4	296.0

200

E f

Florida

S		11.8	295.6
bl		11.4	296.0
b		10.8	296.6
bl		10.4	297.0
bl		8.6	298.8
	+7	8.3	299.1
bl	+9	8.8	300.6
	+14	5.8	301.6
		6.3	301.1
b		7.7	299.7
bl		7.6	299.8
n		5.9	301.5

El Cajon

11



30743

225'

E of Florida

n	56	301.8
th	67	300.7
b	73	300.1
u	61	301.3
u	57	301.7
b	67	300.7
u	67	300.7
b	87	298.7
th	96	297.8
S	95	297.9

250'

E of Florida

S	76	299.8
th	83	299.1
b	80	299.4
th	63	301.1
b	68	300.6
th	53	302.1
b	60	301.4
th	53	302.1
n	52	302.2

30743

275'

E of Florida

n	51	302.3
th	45	302.9
b	47	302.7
th	47	302.7
b	64	301.0
th	61	301.3
b	73	300.1
th	79	299.5
S	77	299.7

310'

E = W of Alabama (80)

S	73	300.1
th	70	300.4
b	67	300.7
th	54	302.0
b	56	301.8
th	35	303.9
b	35	303.9
th	36	303.8
n	23	305.1
	72	306.57

E of Cape

12

Bm



30743

30743

El Bajon

18

14' banded SS  
(20' H)

W 1/4 of Alabama

68

N	N	24	305.0
bl	bl	27	304.7
b	b	29	305.5
bl	bl	25	304.9
b	b	46	302.8
bl	bl	51	302.3
b	b	62	301.2
bl	bl	60	301.4
S	S	66	300.8

10' 1/4

W 1/4 of Alabama

S	S	62	301.2
bl	bl	54	302.0
b	b	57	301.7
bl	bl	48	302.6
b	b	40	303.4
bl	bl	27	305.3
b	b	24	305.0
b	bl	24	305.0
N	N	24	305.0

Center of Alabama

N	17	305.7
bl	23	305.1
b	21	305.3
bl	17	305.7
b	40	303.4
bl	44	303.6
b	52	302.2
bl	51	302.3
S	65	300.9

E 1/4 of Alabama

S	60	301.4
bl	41	303.3
b	49	302.5
bl	40	302.4
b	36	303.8
bl	14	306.0
b	19	305.5
bl	19	305.5
N	17	305.7



	20' bl	E	ft of Alabama	TP	106v	31714	091	306.52
n	n		0.9					306.5
bl	bl		1.4		25'	27	Alabama 41	
l	l		1.5	n			85	308.6
ll	ll		0.9	ll			105	306.6
l	l	+10'	1.1	b			109	306.2
		+15'	2.7	ll	+2'		91	308.0
			3.1				88	308.2
ll	ll		3.3	l			100	307.1
l	l		4.7	ll			111	306.0
ll	ll		3.8	b			112	305.9
S	S		5.8	ll			114	305.7
		E of Alabama						
	14' bl on rd		5.7	S			134	303.7
S	20' bl	E of Alabama			50'	28	Alabama 41	
ll	S		4.8	S			122	304.9
l	ll		4.9	ll			120	305.1
bl	l		4.2	b			118	305.3
l	ll		1.4	ll			99	307.2
ll	l		2.0	b			97	307.4
l	ll		0.0	ll			78	309.3
l	l		0.6	b			81	309.0
	ll		1.0	ll			95	307.6
	ll		0.7	ll			97	307.4
	ll		0.7	n			95	307.6



31714

75' E of Alabama

n	88	308.3
h	84	308.7
b	75	309.6
h	70	310.1
±	74 74 84 91	309.7 308.7 308.1
h	97	307.4
b	104	306.7
h	108	306.3
S	105	306.6

100' E of Alabama

S	94	307.7
h	82	308.9
b	88	308.3
h	84	308.7
b	82	308.7
h	78 76 61	309.3 310.5 311.0
b	64	310.7
h	68	310.3
n	60	311.1

31714

125' E of Alabama

n	43	312.8
h	56	311.5
b	55	311.6
h	51	312.0
b	62	310.9
h	66	310.5
b	76	309.5
h	82	308.9
S	90	308.1

150' E of Alabama

S	61	311.0
h	72	309.9
b	57	311.4
h	57	312.0
b	50	312.1
h	40	312.1
b	46	312.5
h	51	312.0
n	48	312.2

El Cajon

15



31714

175° E of Alabama

n	35	313.6
ll	26	314.5
b	38	313.3
ll	31	314.0
b	40	313.1
ll	48	313.1
b	47	312.4
ll	46	312.5
S	51	312.0

TP

9.64

32471

207 315.07

200

E of

Alabama

S	93	315.4
ll	92	315.5
b	100	314.7
ll	96	315.1
b	100	314.7
ll	93	315.4
b	96	315.1
ll	91	315.6
n	85	316.2

32471

Alabama

16

225° E of Alabama

n	60	318.7
ll	67	318.0
b	80	316.7
ll	80	316.7
b	80	316.7
ll	77	317.0
b	79	316.8
ll	82	316.5
S	72	317.5

250

E of

Alabama

S	60	318.7
ll	64	318.3
b	57	319.0
ll	65	318.2
b	67	318.0
ll	67	318.0
b	67	318.0
ll	57	319.0
n	42	320.5



32471

275'	E of	Alabama	(14 lbs)
n		38 320.9	n
ll		45 320.2	ll
b		58 318.9	b
ll		56 319.1	ll
b		56 319.1	b
ll		48 319.9	ll
b		50 319.7	b
ll		46 320.1	ll
S		51 319.6	S

300' E = W 1/4 of Mississippi (80)

S		53 319.4	S
ll		45 320.2	ll
b		38 320.9	b
ll		42 320.5	ll
b		47 320.0	b
ll		47 320.0	ll
b		47 320.0	b
ll		42 320.5	ll
n		34 321.3	n

802

32994

279

321.92

32994

De Beyer

W. 1/4 of Mississippi (80)

17

81 321.8	n
86 321.3	ll
96 320.3	b
94 320.5	ll
95 320.4	b
88 321.1	ll
83 321.6	b
91 320.8	ll
90 320.9	S

W 1/4 of Mississippi

79 322.0	S
80 321.9	ll
79 322.0	b
86 321.3	ll
92 320.7	b
90 320.9	ll
92 320.7	b
81 321.8	ll
76 322.3	n



32994

Center of Mississippi

n	74	322.5
lh	80	321.9
b	86	321.0
lh	83	321.6
b	83	321.6
lh	84	321.5
b	75	322.4
lh	75	322.4
S	80	321.9

E 1/4 of Misso st

S	75	322.4
lh	74	322.5
b	72	322.7
lh	76	322.3
b	78	322.1
lh	77	322.2
b	82	321.7
lh	75	322.4
n	68	322.1

32994

El Cajon

18

E 1/4 of Mississippi

n	70	322.9
lh	72	322.7
b	77	322.2
lh	72	322.7
b	74	322.5
lh	63	323.6
b	61	323.8
lh	63	323.6
S	65	323.4

E 1/4 of Misso st

S	59	324.0
lh	57	324.2
b	56	324.3
lh	62	323.7
b	70	322.9
lh	64	323.5
b	67	323.2
lh	65	323.7
n	56	324.3



32994

32994

El Cajon

19

	25'	E of	Miss St	
h			32	326.7
hh			42	325.7
b			48	325.1
hh			5.0	325.9
b			4.8	325.1
hh			4.0	325.9
b			5.2	324.7
hh			4.7	325.2
S			4.6	325.3

	75'	E of	Miss St	
h			0.1	329.8
hh			0.7	329.2
b			0.8	329.1
hh			3.3	326.6
b			3.3	326.6
hh			3.5	326.4
b			1.0	328.7
hh			1.2	328.7
hh			1.1	328.8
b			0.9	329.0
hh			0.9	329.0
S			0.8	329.1

	50'	E of	Miss St	
S			2.7	327.2
hh			3.3	326.6
b			3.4	326.7
hh			2.3	327.6
b			2.7	327.2
hh	+10'		4.7	327.2
hh	+13'		4.4	325.5
b	+15'		4.1	325.8
b			4.3	325.6
b			2.4	326.5
b			2.6	327.3
b			2.5	327.4
b			1.8	328.1

	TP	853	337.78	0.67	329.25
		100	E of	Miss St	
S			7.6	330.2	
hh			7.5	330.3	
b			7.4	330.2	
hh			7.3	330.5	
b			7.6	330.2	
hh			7.1	330.7	
b			10.2	327.5	
hh			10.4	327.4	
b			10.5	327.3	
b			7.3	330.5	
hh			6.9	330.9	
n			6.9	330.9	



33778

125

E of

Mississippi

n 5.0 332.8

hh 5.7 332.1

b 6.2 331.6

h +4'  
+6' 7.0 330.8

h 18.1 327.7

b +9'  
+11' 9.7 327.8

b 5.0 328.1

h 6.2 332.8

h 6.3 331.5

b 6.0 331.8

hh 6.5 331.3

S 5.3 332.5

150

E of

Mississippi

S 4.6 333.2

h 5.6 332.2

b 5.0 332.8

h 5.0 332.8

b 4.8 330.0

h +13' 7.7 328.1

h 7.5 328.2

b 7.13'  
7.14' 9.4 328.4

b 5.0 332.8

h 4.8 333.0

h 5.3 332.5

h 4.5 333.3

33779

175

E of

Mississippi

n 4.0 333.8

hh 4.3 333.5

b 4.3 333.5

h +5' 7.8 328.8

h 9.2 328.6

b +18' 7.3 328.5

b 4.0 333.8

h 2.8 335.0

b 3.8 334.0

h 3.4 334.4

S 3.3 334.5

200

E of

Mississippi

S 2.8 335.0

h 2.8 335.0

b 3.6 334.8

h 2.4 335.4

b 3.4 334.4

h +7'  
+11' 3.1 334.7

h 5.9 328.9

b 8.5 329.3

h +14' 8.3 329.5

b 4.1 333.7

h 3.7 334.1

n 4.1 333.7

El Cajon

20



225' E of Mississippi

n		39	333.9
bl		43	333.5
b		35	334.3
bl	+4'	81.5	329.3
bl		84	329.4
b	+9'	87	329.1
b	+11'	3.1	334.6
		3.1	334.7
bl		26	335.2
b		25	335.3
bl		23	335.5
S		28	335.0
	250'	E of Miss.	
S		26	335.2
bl		26	335.2
b		29	334.9
bl		15	336.3
b		37	334.1
bl	+9'	33	334.5
bl	+10'	89	328.9
b	+15'	87	328.9
b		87	329.1
bl		44	333.4
bl	+15'	81	
bl		50	332.8
n		57	332.1

275' E of Mu

n		58	332.0
bl		68	331.0
b		58	332.0
b	+5'	90	328.8
bl		90	328.8
bl	+9'	92	328.6
b	+11'	4.5	333.0
b		5.0	332.8
bl		03	334.5
b		37	334.1
bl		26	335.2
S		24	335.4
	7P	110	335.72
		36	334.62
	300'	E = W L of Louisiana St	(80)
S		11	334.6
bl		25	333.2
b		34	332.3
bl		23	333.4
b		47	331.0
bl	+9'	43	331.4
bl	+11'	76	328.1
bl		73	328.4
bl	+15'	73	328.4
b		61	329.6
bl		63	329.4
n		(59)	329.8
		(84)	327.3



14' above S W bb of Louisiana 28

(21) H W bb of Louisiana

N on bb	88	326.9
bb	76	328.1
b	77	328.0
H	75	328.2
L	6.0	328.0
	6.7	329.7
	6.6	329.1
H	53	330.4
b	48	330.9
bb	40	331.7
S	35	332.2

W 1/4 of Louisiana

S	51	330.6
H	58	329.9
b	62	329.5
H	68	328.9
b	75	328.2
H	77	328.0
b	80	327.7
H	82	327.5
N	95	326.2

El Cajo

22

Center of Louisiana

N	93	326.4
H	82	327.5
b	83	327.4
H	79	327.8
b	76	328.1
bb	74	328.3
b	69	328.8
H	69	328.8
S	62	329.5

E 1/4 of Louisiana

S	72	328.5
H	75	328.2
b	79	327.8
H	77	328.0
b	82	327.5
H	81	327.6
b	86	327.1
H	84	327.3
N	96	326.1



## E Lab of Louisiana

N	98	325.9
H	89	326.8
b	89	326.8
H	87	327.3
b	84	327.3
H	82	327.5
b	82	327.5
H	81	327.6
S	77	328.0

14: H. A. Schin

83

## E Lab of Louisiana

S	91	326.6
H	85	327.2
b	92	326.5
H	91	326.6
b	93	326.4
H	87	327.0
b	91	326.6
H	91	326.5
N	92	326.5

## 25 E of Louisiana

N	99	325.8
H	105	325.2
b	99	325.8
H	91	326.6
b	99	325.8
H	100	325.7
b	95	326.2
H	107	325.0
S	112	324.5

## 50 E of Louisiana

S	113	324.4
H	111	324.6
b	110	324.7
H	107	325.0
b	105	325.2
H	95	326.2
b	105	325.2
H	109	324.8
N	103	325.4



33572

75 E of Louisiana

A	108	324.9
bl	114	324.3
b	99	325.8
H	96	326.1
b	98	325.9
b	113	324.4
b	117	324.0
bl	122	323.5
b	122	323.5
bl	121	323.6
bl	104	325.3
S	110	324.7

100 E of Louisiana

S	115	324.2
bl	108	324.9
bl	127	322.0
b	130	322.7
bl	128	322.9
b	127	323.0
bl	119	323.8
bl	101	325.6
bl	9.8	325.9
b	101	325.6
b	115	326.2
bl	120	323.7
n	111	324.6
TP	1181	323.91

32849

125 E of Louisiana

n	42	324.3
bl	50	323.5
b	49	323.6
b	39	325.5
H	27	325.8
b	30	325.5
b	55	323.0
b	57	322.8
bl	50	323.5
b	65	322.0
bl	70	321.5
S	74	321.1

150 E of Louisiana

S	76	320.9
bl	70	321.5
b	74	321.1
H	56	322.9
b	57	322.8
bl	50	323.5
bl	31	325.4
bl	28	325.7
bl	31	325.4
b	43	324.2
bl	53	323.2
n	48	323.7

El Capitan

24



32849

175 E of Louisiana

n		5.9	322.6
ll		5.5	323.0
b	+12	4.7	323.8
		3.0	325.5
ll		2.7	325.8
b	+7 +12	3.1	325.4
		6.8	320.4
			221.7
ll		5.8	322.7
b		7.7	320.8
ll		6.3	322.2
S		6.8	321.7

200 E of Louisiana

S		9.1	319.4
ll		8.2	320.3
b		8.5	320.0
ll		7.2	321.3
b		7.5	321.0
	+5	7.2	321.3
ll	+13	3.0	325.5
		2.6	325.9
b	+15	2.6	325.9
		0.8	324.7
ll	+14	5.4	323.1
		6.2	322.3
n		6.1	322.4

32849

225 E of Louisiana

n		6.3	322.2
ll		6.7	321.8
b	+13	6.0	322.5
		3.1	325.4
ll		2.4	326.1
b	+7 +15	2.7	325.8
		7.0	321.5
		7.6	320.9
ll		7.2	321.3
b		8.4	320.1
ll		8.5	320.0
S		7.4	321.1

250 E of Louisiana

S		7.4	321.1
ll		7.6	320.9
b		7.7	320.8
ll		7.4	321.1
b		6.6	321.9
	+11	2.7	326.1
ll		2.2	326.3
	+13	2.7	325.8
b		6.5	322.0
ll		6.7	321.8
n		5.9	322.6

El Cajon

25



11-15-12

32849

32913

El Cajon

26

275

E of

Louisiana

(14')

W of

Texas

n		58	322.7	5		71	322.0
ll		60	322.5	ll		69	322.2
b		58	322.7	b		63	322.8
ll	+5'	26	325.9	ll		61	323.0
ll		24	326.1	ll		61	323.0
l	+9'	28	325.7	b		60	323.1
	+10'	60	322.5	b		55	323.6
		65	322.0	b		43	324.8
ll		56	322.9	ll	+6'	33	325.8
					+8'	37	325.4
b		71	321.4	b	+10'	58	323.3
ll		73	321.2	ll		61	323.0
S		59	322.6	n		56	323.5

300 E = W of Texas St (80)

W

140'

Texas

S		67	321.8	n		51	324.0
ll		66	321.9	ll		48	324.3
l		56	322.9	b		43	324.8
ll		56	322.9	ll		33	325.8
b		55	322.0	b		47	324.4
ll	+4'	50	323.5	ll		48	324.3
	+9'	30	325.5	ll		48	324.3
		26	325.9	b		55	323.6
	+13'	28	325.7	b		55	323.6
		48	323.7	b		55	323.6
ll		57	322.8	ll		58	323.3
n		54	323.1	S		63	322.8

TP

699

32913

638

322.1

14'



32913

## Center of Texas W

S	56	323.5
ll	52	323.8
b	49	324.2
ll	47	324.4
l	43	324.8
ll	30	326.1
b	28	325.3
ll	44	324.7
ll	48	324.3
E of Texas		
ll	48	324.3
ll	42	324.9
b	37	325.4
ll	28	326.3
l	41	325.0
ll	48	324.3
b	53	323.8
ll	56	323.5
S	60	323.1

32913

El Cajon

27

## E of Texas W

S	60	323.1
ll	56	323.5
b	53	323.8
ll	48	324.2
l	40	325.1
ll	27	326.4
l	37	325.4
ll	48	324.2
ll	52	323.9
E of Texas		
ll	43	324.8
ll	49	324.2
b	40	325.1
ll	26	326.5
l	42	324.9
ll	47	324.4
l	51	324.0
ll	54	323.7
S	57	323.4



32913

25' E 7 Texas at

S		50	324.1
H		45	324.6
b		43	324.8
H		40	325.1
b		37	325.4
	78	35	325.6
H		22	326.9
b		32	325.9
H		30	326.1
H		43	324.8
	50	E 7	Texas
H		45	324.6
H		36	325.5
	+15	31	326.0
b		23	326.8
H		16	327.5
b	+10	<del>23</del>	
		32	325.9
H		34	325.7
b		38	325.3
H		40	325.1
S		41	325.0

32713

75 E 7 Texas

S		35	325.6
H		33	325.8
b		31	326.0
H		29	326.2
b		27	326.4
		26	326.5
		26	327.5
		10	328.1
		15	327.6
H		30	326.1
H		35	325.6
	100	E 7	Texas
H		23	326.8
H		06	328.5
	+15	14	327.7
b		07	328.4
H		04	328.7
		10	328.1
		18	327.3
		21	327.0
H		24	326.7
b		25	326.6
H		28	326.3
S		30	326.1

El Bayo

28



32913

	125	E f	Texas	
S			24 326.7	
ll			21 327.0	
b			1.8 327.3	
ll			1.6 327.5	
b			1.5 327.6	
			1.2 327.9	
			0.0 329.1	
TP	824	<u>33718</u>	019 329.94	
ll			7.5 329.7	
b			7.9 329.3	
ll			9.6 329.6	
ll			10.5 326.7	
ll			10.6 326.6	
ll	150	E f	Texas	
ll			8.7 328.5	
ll			8.6 328.6	
b			8.7 328.5	
b			6.7 330.5	
ll			6.6 330.6	
b			7.1 330.1	
			8.6 328.6	
			9.0 328.2	
ll			9.0 328.2	
b			9.4 327.8	
ll			9.5 327.7	
8			9.8 327.4	

33718

El. 6. 6. 6. 6.

29

	175	E f	Texas	
S			9.3 327.9	
ll			9.0 328.2	
b			8.9 328.3	
ll			8.6 328.6	
b			8.4 328.8	
			7.7 329.5	
			5.3 331.7	
ll			5.1 322.1	
b			5.4 301.8	
ll			8.3 328.9	
			8.8 328.4	
ll			9.0 328.2	
ll	200	E f	Texas	
ll			7.4 329.8	
ll			7.5 329.7	
			6.4 330.6	
b			4.5 332.7	
ll			4.1 333.1	
b			4.5 332.7	
			3.2 330.0	
			7.5 329.7	
ll			7.9 329.3	
b			8.1 329.1	
ll			8.5 328.7	
S			8.7 328.5	



33718

El Cajon

30

225 E of Texas

S		78	329.4
ll		78	329.4
l		75	329.7
ll		72	330.0
l		67	330.5
ll	+6' +11'	63 56 31	330.9 330.6 334.1
l		31	334.1
ll	+6	61	331.1
ll		72	330.0
ll		66	330.6

250 E of Texas

ll		54	331.8
ll		40	333.2
l	+14'	40	333.2
ll		22	335.0
ll		20	335.2
l	+9' +14'	26 50 32	334.6 332.2 331.6
ll		63	330.9
l		61	331.1
ll		64	330.8
S		66	330.6

275 E of Texas

S		54	331.8
ll		54	331.8
l		54	331.8
ll		51	332.1
l		48	332.4
ll	+6' +11'	45 42 11	332.7 335.6 336.1
l		14	331.8
ll	+3'	39	333.3
ll		47	332.5
ll		50	332.2

300 E-W of Arizona St (80)

ll		33	333.9
ll		28	334.4
l	+13'	28	334.4
l		00	337.2
ll		+01	337.3
l	+9' +13'	05 28 33	336.7 334.4 333.9
ll		37	333.5
l		40	333.2
ll		41	333.1
S		45	332.7
TP	11.58	34624	250 334.68



34624

W 1/4 of Arizona

S		129	333.3
ll		125	333.7
b		121	334.1
ll		121	334.1
b		115	334.7
ll	+7' +11'	108	335.4
		83	337.9
b		106	335.6
ll	+5'	112	335.0
ll		110	335.2

W 1/4 of Arizona

ll		106	335.6
ll		110	335.2
b	+13'	106	335.6
b		75	338.7
ll		73	338.9
b	+9' +13'	76	338.6
		102	336.0
		110	335.2
ll		114	334.8
b		118	334.4
ll		120	334.2
S		120	334.2

34624

Center of Arizona

S		112	335.0
ll		112	335.0
b		111	335.1
ll		108	335.4
b		100	336.2
ll	+6' +11'	96	336.6
		69	339.3
		66	339.6
b		69	339.3
ll	+4'	90	337.2
ll		89	337.3
ll		95	336.7

E 1/4 of Arizona

ll		81	338.1
ll		80	338.2
b	+14'	80	338.2
b		60	340.2
ll		58	340.4
b	+9' +14'	62	340.0
		85	337.7
		93	336.9
ll		95	336.7
b		100	336.2
ll		103	335.9
S		102	336.0

El Cajon

31



34624

## E. bb of Arizona

S		95	336.7
bb		92	337.0
b		88	337.4
bb		95	336.7
b		80	338.2
ll	77 711	73	339.9
		53	340.9
		50	341.2
b		52	341.0
bb	+5	73	338.9
		78	338.4
h		75	338.9

## E. d of Arizona

h		6.1	340.1
ll		5.9	340.2
b	+13	5.8	340.4
		4.3	341.9
ll		4.2	342.0
b	+9 +10	4.6	341.6
		6.7	339.5
		6.8	339.4
ll		7.0	339.2
b		7.7	338.5
ll		8.2	338.0
S		8.4	337.8

34624

E. bb of Arizona

32

## 25 E of Arizona

S		5.8	340.4
bb		6.1	340.1
b		6.3	339.9
ll		5.1	341.1
b		5.3	340.9
		5.2	341.0
		2.6	343.6
		2.2	344.0
b		2.5	343.7
		4.3	341.9
ll		4.5	341.7
h		4.8	341.4

## 50 E of Arizona

h		2.2	344.0
ll		2.2	344.0
b		1.5	344.7
ll		0.5	345.7
		1.0	345.2
		5.1	343.1
		3.4	342.8
ll		3.3	342.5
b		3.6	342.6
ll		3.7	342.5
S		4.7	341.8



346.24

75' E of Arizona

S			2.9	343.3
bb			1.9	344.3
b			1.2	345.0
H			0.8	345.4
b			0.8	345.4
	TP	1247	0.05	346.19
	+ 7'		1.26	346.7
bb	+ 10'		1.15	347.2
			1.22	347.5
b			1.16	347.1
	+ 10		1.26	346.1
H			1.14	347.3
H			1.10	347.7
	100	E of Arizona		
H			8.3	346.4
H			9.0	349.7
b	+ 13		8.9	349.8
			10.0	348.7
H	+ 22		9.2	349.5
b			9.4	349.0
			10.8	347.9
H			10.8	347.9
b			12.0	346.7
bb			12.3	346.6
S			11.3	347.4

358.66

125' E of Arizona

S			8.2	350.5
bb			8.0	350.7
b			8.1	350.6
H			7.2	351.5
b			6.9	351.8
H			7.0	351.7
b			7.2	351.3
	+ 8'		5.9	350.7
H			4.5	354.2
H			5.2	353.5
	150	E of Arizona		
H			1.6	357.1
H			2.1	356.6
b			2.6	356.1
	+ 3'		5.3	350.4
H			5.3	353.4
b	+ 10'		5.3	353.4
	+ 12		4.0	354.7
			4.0	354.7
H			4.2	354.5
b			4.6	354.1
H			5.0	353.7
S			5.1	353.6
	1290	36863	2.96	355.70

El Cajon

33



36863

	175'	E of	Arizona	
S			113	357.3
ll			123	356.3
b			104	358.2
ll			94	359.2
b			103	358.3
ll	+10'		102	358.4
	+12'		138	352.8
			134	355.2
b	+15'		133	355.3
			100	358.6
ll			106	358.0
n			93	359.3
	200	E of	Arizona	
n			55	363.1
ll			70	361.6
b			68	361.8
ll	+2'		73	361.3
	+4'		115	357.1
			115	357.1
	+9'		113	357.3
	+11'		79	360.7
b			78	360.8
			76	361.0
ll	+9'		67	361.9
			86	360.0
ll			94	359.2
S			90	359.6

36863

El Cajon

34

	225'	E of	Arizona	
S			67	361.9
ll			63	362.3
b			56	363.0
ll			51	363.5
b			57	362.9
			60	362.6
ll	+10'		77	360.9
	+11'		96	359.0
b	+13'		95	359.1
	+15'		51	363.5
ll			51	363.5
			38	364.8
n			46	366.0
	250	E of	Arizona	
n			13	367.3
ll			21	366.5
b			32	365.4
			38	364.8
ll	+2'		23	361.3
	+4'		77	360.9
b	+8'		76	361.0
	+10'		58	364.8
ll			34	365.2
			28	365.8
b			42	364.4
ll			39	364.7
S			42	364.4
			367	364.96
TP	806		37300	



275' E of

Angora

S		7.2	365.8
H		7.1	366.0
b		7.4	365.6
H		5.5	367.5
b		6.1	366.9
	+9'	6.6	366.8
	+12'	10.6	362.0
		10.4	362.6
	+12'	10.0	362.0
	+15'	5.5	367.5
		5.5	367.5
H		5.5	367.5
H		5.2	367.8

300' E = W of

		(44)	368.6
		(44)	367.6
H		4.9	368.1
	+12'	4.7	368.3
b		3.8	369.2
	+4'	8.2	364.5
H		9.0	364.0
		9.0	364.0
	+8'	5.9	367.1
	+10'	5.8	367.2
H		5.7	367.3
b		5.1	367.9
H		5.0	368.0
S		6.0	367.0
	TP	1.94	371.081

Bm

14' W of W bl of Hamuli

5.4

(20) W bl of Hamuli

S		5.4	367.6
H		4.7	368.3
b		4.2	368.8
H		4.4	368.0
b		5.2	367.8
	+9'	5.3	367.7
	+12'	8.1	364.9
		8.1	364.9
b		8.0	365.0
H		6.0	367.0
H		6.0	367.0

W 100' of Hamuli

n		5.9	367.1
H		5.8	367.2
b		7.3	365.7
H		7.5	365.3
		7.5	365.5
	+9'	5.1	367.9
	+11'	5.0	368.0
b		3.5	369.5
b		3.9	369.1
H		4.0	369.0
S		5.0	368.0



## Center of Hamilton

S		46	368.4
ll		37	369.3
b		38	369.2
ll		35	369.5
b		45	368.5
ll	+10 +12	44	368.6
ll		71	365.9
b		71	365.9
b		69	366.1
ll		61	366.9
n		59	367.1
	E 1/4 of Hamilton		
n		55	367.5
ll	+16	49	368.1
ll	+12	37	369.3
b		37	369.6
b	+5'	50	368.0
ll		64	366.6
b	+8 +11'	67	366.3
b		65	366.5
b		35	369.5
ll		39	369.1
ll		32	369.8
b	+12'	30	370.0
b		41	368.9
ll		43	368.7
S		45	368.5

## E of Hamilton

S		41	368.9
ll		39	369.1
b		34	369.6
ll		22	370.8
b		34	369.6
ll	+10 +13	27	370.3
ll		64	366.6
ll	+15	63	366.7
b		65	366.8
b		50	368.0
ll	+11'	33	369.7
ll		30	370.0
n		47	368.3
	(14') E 1/4 of Hamilton		
	S 2	33	369.7
	W 1/2 of Hamilton		
n		38	369.2
ll		33	369.7
b	+14'	32	369.8
b		49	368.1
ll		53	367.7
b	+7 +11'	57	367.3
b		24	369.2
ll		29	370.1
ll		19	371.1
b		22	370.8
ll		13	371.7
S		21	370.9



TP 550

37382  
376.62

194

371.82 Bm

25' E of Hamilton

S		56	371.0
h		60	370.6
b		56	371.0
h		57	370.9
b		56	371.0
		65	370.1
h	78' +11'	88	367.8
		80	368.6
b		78	368.8
		66	370.0
h	+2	70	369.6
h		68	369.8

50' E of Hamilton

R		62	370.4
h		64	370.2
	+15	64	370.2
b		72	369.4
h		71	369.5
		78	368.8
b	+10 +11'	88	369.8
		64	370.5
h		62	370.4
b		53	371.3
h		55	371.1
S		48	371.8

37662

El Gage

75' E of Hamilton

S		48	371.8
		53	371.3
h	70	55	371.1
b		54	371.2
h		49	371.7
b		57	370.9
		58	370.8
h	79' +10	69	369.7
		65	370.1
b		67	369.9
		65	370.1
h	73' +5	57	370.9
		57	370.9

100' E of Hamilton

n		52	371.4
h		57	370.9
		53	371.3
	+14 +15	60	370.6
		62	370.3
h		58	370.8
		64	370.2
b	+10 +11'	52	371.4
		47	371.7
h		43	372.3
b		50	371.6
h		52	371.3
		45	372.1
S	+17	29	373.7

81



37662

125' E of Hamilton

S		37	372.9
	+2	46	372.0
h		47	371.9
b		47	371.9
h		43	372.3
b		46	372.0
h	78 97	46	372.0
		58	370.8
		50	371.6
b		56	371.0
h		54	371.2
n		47	371.9

150' E of Hamilton

n		39	372.7
h		50	371.6
b		47	371.7
h		44	372.2
	+9'	52	371.4
b	+10	43	372.3
		35	373.1
h		35	373.1
b		44	372.2
h		41	372.5
	+18	42	372.4
S		31	373.5

37662

175' E of Hamilton

S		15	375.1
	+	36	373.0
h		35	373.1
b		40	372.6
h		39	372.7
b		40	372.6
h		39	372.7
b		44	372.2
h		44	372.2
h		42	372.4

200' E of Hamilton

n		44	372.2
h		41	372.5
b		38	372.8
h		34	373.2
b		40	372.6
h		32	373.6
b		35	373.1
h		37	372.9
	+18	32	
S		26	374.0

El Bayer

38



37662

225' E of Hamilton

S		16	375.0
	73"	32	375.2
bl		35	375.1
b		36	373.0
bl		35	373.1
b		36	373.0
bl		37	372.5
b		36	373.0
bl		37	372.9
n		39	372.7

250' E of Hamilton

n		38	372.8
bl		37	372.9
b		32	373.4
bl		26	374.0
b		29	373.7
bl		29	373.7
b		32	373.4
bl		33	373.3
	718	34	373.2
S		23	374.8

37662

El Cajon

39

275' E of Hamilton

S		22	374.4
	72"	27	373.9
bl		29	373.7
b		30	373.6
bl		28	373.8
b		28	373.8
bl		24	374.2
b		28	373.8
bl		34	373.2
n		33	373.3

300' E = W of Oregon St (80)

n		30	373.6
bl		26	374.0
b		27	373.9
bl		22	374.4
b		24	374.2
bl		25	374.1
b		24	374.2
bl		25	374.1
S		21	374.5
	719	26	374.6

719 599 38045



38045

(14)	W bl f	Oregon
S		6.1 374.4
ll		6.1 374.4
l		6.3 374.2
ll		6.0 374.5
l		6.2 374.3
ll		5.9 374.6
l		6.3 374.2
ll		6.3 374.2
n		6.3 374.2

W	1/4 of Oregon
n	5.9 374.6
ll	6.0 374.5
l	6.1 374.4
ll	5.7 374.8
l	5.5 375.0
ll	5.8 374.7
l	5.7 374.8
ll	5.9 374.6
S	6.1 374.4

38045

El Cajon

40

Center of Oregon	
S	5.5 375.0
ll	5.2 374.9
l	5.8 374.7
ll	5.5 375.0
l	5.5 375.0
ll	5.6 374.9
l	5.2 374.9
ll	5.6 374.9
n	5.5 375.0

E	1/4 of Oregon
n	5.8 374.7
ll	5.7 374.8
l	5.4 375.1
ll	5.2 375.3
l	5.4 375.1
ll	5.8 374.7
l	6.0 374.5
ll	5.4 375.1
S	4.6 375.9



38045

E of Oregon

S	47	375.8
ll	54	375.1
b	56	374.9
ll	50	375.5
b	53	375.2
ll	52	375.3
b	56	374.9
ll	63	374.2
m	60	374.5

E of Oregon

m	60	374.5
ll	64	374.1
b	54	375.1
ll	52	375.3
b	51	375.4
ll	55	375.0
b	55	375.0
ll	45	376.0
S	44	376.1

38045

El Cajon

41

25 E of Oregon

S	45	376.0
ll	44	376.1
b	48	375.7
ll	53	375.2
b	47	375.8
ll	52	375.3
b	54	375.1
ll	64	374.1
n	59	374.6

50 E of Oregon

n	58	374.7
ll	63	374.2
b	63	374.2
b	55	375.0
b	54	375.1
ll	51	375.4
b	58	374.7
b	50	375.5
ll	49	375.6
b	48	375.7
ll	44	376.1
S	45	376.0



380.45

75' E of Oregon

S		4.2	376.3
bl		4.2	376.3
b		4.4	376.1
bl		4.7	375.8
b		5.6	374.9
bl	710	5.8	374.7
		5.0	375.5
b		5.3	375.2
bl	73	5.5	375.0
	75	6.3	374.2
		6.1	374.4
9c		5.6	374.9

100' E of Oregon

n		5.8	374.7
bl		6.0	374.5
b	710	6.3	374.2
	73	5.6	374.9
		5.3	375.2
bl		4.9	375.6
b	710	5.6	374.7
		4.9	375.6
bl		4.7	375.8
b		4.2	376.3
bl		3.6	376.9
S		3.4	377.1

380.45

El Cajon

42

125' E of Oregon

S		2.9	377.6
bl		3.7	376.8
b		4.4	376.1
bl		4.9	375.6
b		5.4	375.1
bl		5.0	375.5
b		5.6	374.9
bl		6.5	374.0
9c		5.7	376.8

150' E of Oregon

n		6.1	374.4
bl		6.2	374.3
b		6.3	374.2
b		5.4	375.1
bl		5.0	375.5
b		4.8	375.7
bl		4.5	376.0
b		4.0	376.4
bl		3.4	377.1
S		2.6	377.9
TP	379	38162	262 277.83



38162

	175	E f	Oregon	
S			3.9	377.7
U			4.4	377.2
t			4.8	376.8
U			5.3	376.3
t			5.9	375.7
U			6.0	375.6
t			6.5	375.1
U	+11'		7.2	374.4
U			7.1	374.5
n			7.1	374.5

	200	E f	Oregon	
n			7.0	374.6
U			7.1	374.5
U	+11'		7.2	374.4
t			6.5	375.1
U			6.0	375.6
t			6.3	375.3
U			5.7	375.9
U			5.2	376.4
U			4.6	377.0
S			4.0	377.6

38162

El Cajon

43

	225	E f	Oregon	
S			4.3	377.3
U			5.0	376.6
t			5.5	376.1
U			5.9	375.7
t			6.2	375.4
U			5.9	375.7
t			6.3	375.3
U	+11'		7.2	374.3
U			7.0	374.6
n			6.9	374.7

	250	E f	Oregon	
n			7.0	374.6
U			7.2	374.4
U	+11'		7.2	374.3
t			6.5	375.1
U			6.0	375.6
t			6.3	375.3
U			5.7	375.9
t			5.8	375.8
U			5.5	376.1
S			5.1	376.5



38162

275

E of

Oregon

S	6.0	375.6
ll	6.1	375.5
b	6.5	375.1
ll	6.0	375.6
l	6.4	375.2
ll	6.0	375.6
b	6.5	375.1
ll	7.2	374.2
n	6.8	374.8

288

E of

Oregon

n	6.7	374.9
ll	7.2	374.1

38162

300

E - W of Alaska 44

9	5.6	376.0
ll	7.2	374.4
l	7.3	374.3
b	6.5	375.1
ll	5.9	375.7
l	6.3	375.3
ll	6.2	375.4
l	6.2	375.4
ll	6.3	375.3
S	6.2	375.6

TP

425

37994

593

375.69

mean n in Alaska 74000

(14th to 5) W ll of I date 11

S 1

4.1 375.8



37994

(20' bl)	W 1/4 of	Idato	st
		anch (40)	375.9
		butt (32)	374.7
		3-4	374.5
	+10	5.7	374.2
		4.8	375.1
		4.2	375.7
		4.1	375.8
		4.0	375.9
		4.1	375.8
		4.1	375.8
		4.8	375.9
	W 1/4 of	Idato	
		4.8	375.7
		3.9	376.0
		4.7	375.2
		4.4	375.5
		4.5	375.4
		4.2	375.7
		4.9	375.0
	+8	5.6	374.3
		5.3	374.6
		4.8	375.1

37994

El Cajon

45

	center of	Idato	
		4.7	375.2
		5.2	374.7
	+9	5.6	374.3
		4.9	375.0
		4.3	375.6
	+10	4.9	375.0
		4.4	375.5
		4.3	375.6
		4.9	375.0
		4.5	375.4
		4.5	375.4
	E 1/4 of	Idato	
		4.6	375.3
		5.0	374.9
		4.7	375.2
		4.7	375.2
		4.6	375.3
	+10	4.9	375.0
		4.3	375.6
		5.0	374.9
	+10	5.9	374.0
		5.5	374.4
		5.1	374.8



(20' U)	E	bl of	Idata
n		Enter on bl.	(6.0) 373.9 (5.0) 374.9
ll			6.0 373.9
b			5.2 374.7
ll			4.4 375.5
l			4.8 375.1
ll			4.7 375.2
b			4.8 375.1
ll			4.9 375.0
S			4.2 375.7

14 bl in S	E	bl of	Idata
S			4.2 375.7

	3'	E of	Idata
n l			5.7 374.2

E	bl of	Idata
S		3.4 376.5
ll	76' +11'	3.8 376.4 3.2 374.7 5.4 374.5
b		5.6 374.3
ll		5.3 374.6
b		5.0 374.9
ll		4.6 375.3
b		5.3 374.6
ll	710'	6.2 373.7 6.2 372.7
n		4.6 375.3

	25'	E of	Idata
n			6.1 373.8
ll			6.5 372.4
b			5.5 374.4
ll			4.7 375.2
b			5.4 374.5
ll			5.8 374.1
b			5.5 374.4
ll			5.6 374.2
S	710'		5.8 374.1 5.0 374.9



37994

	50'	E of	Idaho	
S			4.9	375.0
			4.6	375.3
ll	+6'		5.2	374.0
			5.8	374.1
b			6.0	373.9
ll			5.9	374.0
b			5.6	374.3
ll			4.8	375.1
l			5.4	374.5
	+3'		6.1	373.8
ll			6.5	373.4
n			6.5	373.4

	75'	E of	Idaho	
n			6.5	373.4
ll			6.7	373.2
	+15'		6.1	373.8
b			5.5	374.4
ll			4.9	375.0
b			5.6	374.3
ll			6.2	373.7
b			6.4	373.5
ll			6.2	373.7
	+12'		6.4	373.5
	+15'		5.0	374.9
S			4.5	375.4

37994

Elbayon

47

	100'	E of	Idaho	
S			5.3	374.6
			5.2	374.6
ll	+5'		6.9	373.0
	+7'		6.4	373.5
b			6.6	373.3
ll			6.4	373.5
b			6.6	373.9
ll			5.2	374.7
b			5.8	374.1
	+3'		6.5	373.4
ll			6.5	373.4
n			6.4	373.5

	125'	E of	Idaho	
n			6.8	373.1
			6.7	373.2
			5.9	374.0
			5.4	374.5
			6.1	373.8
ll			6.6	373.3
b			6.6	373.3
ll			6.3	373.6
	+15'		6.5	373.4
	+16'		5.2	374.7
S			5.0	374.9
	1.45		4.6	375.34
	1.43	376.79		



37679

150 E f Idaho W

S		22	374.6
	43'	22	374.6
	45'	33	370.5
ll		31	373.7
t		39	372.9
ll		36	373.2
t		32	373.6
ll		22	374.6
t		28	374.0
ll		36	373.2
n		36	373.2
	175'		
n		40	372.8
ll		38	373.0
t		30	373.8
ll		25	374.3
t		34	373.4
ll		37	373.1
t		40	372.8
ll		35	373.3
	414'	33	373.5
	417'	10	375.8
		12	375.5

37679

El Cajon

48

200 E f Idaho

S		26	374.2
	25'	26	374.2
	45'	45	372.3
ll		38	373.0
t		42	372.6
ll		39	372.9
t		35	373.3
ll		28	374.0
t		31	373.7
	44'	40	372.8
ll		40	372.8
n		41	372.7
	225'		
n		45	372.3
ll		47	372.1
t		36	373.2
ll		20	373.8
t		35	372.3
ll		42	372.6
t		45	372.3
ll		45	372.3
	415'	44	372.4
	417'	25	374.3
S		21	374.7



37679

250 E of Idaho

S		1.2	375.6
	+4'	1.1	375.7
ll	+5	4.0	372.8
		4.5	372.3
h		5.1	371.7
ll		4.4	372.4
h		3.8	373.0
ll		3.3	373.5
h		3.8	373.0
ll		4.9	371.9
n		4.8	372.0

275 E of Idaho

n		5.2	371.6
ll		5.3	371.5
h		4.3	372.5
ll		3.7	373.1
h		4.2	372.6
		4.6	372.2
		5.2	371.6
ll		4.8	372.0
	+14'	4.0	372.2
S		3.5	373.3

38679

El Cajon

300 E = west of Utah (80) 49

S		4.0	372.8
ll		5.0	371.8
h		4.8	372.0
ll		4.8	372.0
h		4.7	372.1
ll		4.1	372.7
h		4.5	372.3
ll		5.5	371.3
n		5.2	371.2

(144) W of Utah

n		5.8	371.0
ll		5.5	371.3
h	711	5.7	371.1
h		4.8	372.0
ll		4.3	372.5
h		4.8	372.0
h		4.1	372.7
ll		4.3	372.5
S		4.2	372.6



37679

	W	1/4 of	Total
S			4.3 372.5
U			4.2 372.6
b			4.0 372.8
U			4.2 372.6
b			4.7 372.1
U			4.6 372.2
b			5.1 371.7
U			5.5 371.3
n			5.1 371.7
	center of		Total =
n			5.5 371.3
U			5.4 371.4
b			5.6 371.2
U			5.0 371.8
b			4.7 372.1
U			4.3 372.5
b			4.0 372.8
U			3.9 372.9
S			3.9 372.9

37679

El Cajon

50

	E	1/4 of	Total
S			4.4 372.4
U			4.5 372.3
b			4.6 372.2
U			4.7 372.1
b			5.2 371.6
U			5.4 371.4
b			6.0 370.8
U			5.3 371.5
n			5.5 371.3
	E	6.6	Total
n			5.8 371.0
U			5.4 371.4
b			6.2 370.6
U			5.6 371.2
b			5.4 371.4
U			4.0 372.8
b			5.3 371.5
U			3.9 372.9
S			5.0 371.8



376.79

E side of Outlet

S		5.0	371.8	
H		5.0	371.8	
b		5.5	371.3	
H		11.5	372.3	
b	+13. +16.	4.8 5.9	372.9 370.9	
H		5.9	370.9	
b		6.5	370.3	
H		6.2	370.6	
H		6.0	370.8	
	25' E of Outlet			
H		6.6	370.2	
H		6.8	370.0	
b		6.6	370.2	
H		6.3	370.5	
b	+10. +11.	6.5 5.7 6.0	370.3 371.1 370.8	
H		5.7	371.1	
b		5.2	371.6	
H		5.3	371.5	
S		6.4	370.4	
TP	356	374.23	61.2	370.67

374.23

Elk Lake

51

38' E of Outlet

S		3.5	370.7
		5.0	E of Outlet
S		2.3	371.9
H	+8'	3.4	370.8
		3.8	370.4
b		3.4	370.8
H		3.5	370.7
b		4.3	369.9
H		4.2	370.0
b		4.5	369.7
H		4.6	369.6
H		4.2	370.0



37423

75

E of

Pitak

n	51	369.1
h	51	369.1
b	45	369.7
h	45	369.7
b	47	369.5
h	37	370.5
b	45	369.7
h	42	370.0
h	41	370.1
S	32	371.0

100

E of

Pitak

S	47	369.5
h	37	370.5
t	52	369.0
h	45	369.7
b	53	368.9
h	48	369.4
b	54	368.8
h	57	368.5
n	62	368.0

37423

125

E of

Pitak

n	63	367.9
h	61	368.1
b	59	368.5
h	50	369.2
b	53	368.9
h	46	369.6
b	53	368.9
h	49	369.3
h	33	370.7
S	41	370.1

150

E of

Pitak

S	50	369.2
h	52	369.0
b	54	368.8
h	52	369.0
b	58	368.4
h	53	368.9
b	60	368.2
h	60	368.2
n	63	367.9

70

280

37278

325

37098

on P. 11

El Cajon

52



37378

175	EJ	Total
h	6.0	367.8
h	5.2	368.6
h	5.3	368.5
h	5.0	368.8
h	5.0	368.8
h	5.0	368.8
h	4.8	369.0
h	5.2	368.6
S	4.8	369.0

185	EJ	Total
S	4.8	369.0

37378

El Bayr

58

200	EJ	Total
	2.0	371.8
h	4.9	368.9
h	4.9	368.9
h	4.8	369.0
h	5.4	368.4
h	5.2	368.6
h	5.7	368.1
h	5.6	368.2
h	6.1	367.7

220	EJ	Total
h	6.1	367.7
h	5.8	368.0
h	5.6	368.2
h	5.3	368.5
h	5.5	368.3
h	5.2	368.6
h	5.0	368.8
h	5.5	368.3
S	4.0	369.8



250	E of	Ulat	
S		30	370.8
U		5.3	368.5
b		5.2	368.6
U		5.1	368.7
b		5.6	368.2
U		5.5	368.3
b		5.8	368.0
U		5.8	368.0
U		6.0	367.8

275	E of	Ulat	
n		6.3	367.5
U		6.1	367.7
b		5.8	368.0
U		5.5	368.3
b	+10 +11	5.2 5.3 5.4 5.1	368.6 368.4 368.7
U		5.5	368.3
b		5.2	368.6
U		4.4	369.4
S		5.7	368.8

300	E-W of	Kansas st (80)	
S		4.8	369.0
U		5.2	368.6
b		5.4	368.4
U		5.0	368.8
b		4.8	369.0
U	+8 +9	5.2 6.1 5.6	368.6 367.7 368.3
b		6.4	367.4
U		5.9	367.9
U		6.0	367.8

W	bl of	Kansas st	
n		5.9	367.9
U		6.0	367.8
b		6.3	367.5
U		5.7	368.1
b		5.7 6.3 5.3 5.2	368.1 367.5 368.5 368.5
U	+10 +11	5.8	368.0
U		5.1	368.6
S		5.0	368.8



373.78

W 1/4 of Kansas

S		5,3	368.5
U		5,4	368.4
b		5,6	368.2
U		6,0	367.8
b		5,6	368.2
U	+8, +9	5,5 5,6 5,8	368.3 367.6 368.0
b		6,3	367.5
U		6,3	367.5
B		6,5	367.3
	center of		Kansas
n		6,0	367.8
U		5,8	368.0
b		5,9	367.9
U		5,8	368.0
b	+11, +12	6,4 5,6 5,7	367.4 368.2 368.1
U		5,8	368.0
b		5,1	368.7
U		5,5	368.3
S		5,4	368.4

373.78

E 1/4 of Kansas

S		5,7	368.1
U		5,4	368.4
b		4,3	368.5
U		5,7	368.1
b		5,7	368.1
U	+7, +9	5,8 5,9	368.4 367.9
b		6,5	367.2
U		6,7	367.1
q		6,7	367.1
	E		center of Kansas
n		6,6	367.2
U		6,3	367.5
b		6,3	367.5
U		6,0	367.8
b		6,1	367.7
U		6,0	367.8
b		5,5	368.2
U		5,7	368.1
S		5,9	367.9

El Cajon

55



37578

8371.04

El Bajon

56

S	E	Dir	f	Kansas
S			59	367.9
U			60	367.8
b			62	367.6
U			56	368.2
b			63	367.5
U			61	367.7
b			62	367.6
U			60	367.8
U			68	367.0

S	50	E f	Kansas
S		35	367.5
U		35	367.5
b		28	367.2
U		34	367.6
b		29	368.1
U		51	367.9
		43	366.7
		38	367.2
b		42	366.8
U		37	367.3
U		37	367.3

+8  
-10

25 E f Kansas

75 E f Kansas

U	25	E f	Kansas
U		67	367.1
U		64	367.4
b		67	367.1
U		64	367.4
b	++ +12	70	366.8
		64	367.4
		62	367.6
U		55	368.3
b		48	369.0
U		57	368.7
S		62	367.6

U	75	E f	Kansas
U		42	366.8
U		39	367.1
b		44	366.6
U		41	366.9
b	++ +12	45	366.5
		33	367.7
		30	368.0
U		37	367.3
b		21	368.9
U		30	368.0
S		36	367.4

TP

395

371.04

619

367.59



371.04

100 E of Kansas

S	31	367.9
H	37	367.3
L	42	366.8
H	40	367.0
L	34	367.6
H	36	367.4
	48	366.2
	42	366.8
	47	366.8
H	43	366.7
R	38	367.2

47  
49

125 E of Kansas

R	49	366.1
H	48	366.2
L	50	366.0
H	46	366.4
L	39	367.1
H	42	366.8
L	42	366.8
H	44	366.6
S	44	366.6

371.04

150 E of Kansas

S	42	366.8
H	39	367.1
L	43	366.7
H	39	367.1
L	37	367.3
H	41	366.9
	41	365.9
	49	366.1
L	50	366.0
H	46	366.4
R	53	365.7

46  
49

175 E of Kansas

R	54	365.6
H	52	365.8
L	54	365.8
H	50	366.0
L	53	365.7
	38	367.2
	38	367.2
H	46	366.4
L	46	366.4
H	42	366.8
S	45	366.5

46  
49

El Cajon

57



371.04

200' Eg Kansas

S		35	367.5
ll		30	368.0
b		48	366.2
ll		44	366.6
b		50	366.0
ll	77 78	47 47 52	366.3 365.3 365.8
b		56	365.4
ll		52	365.8
n		58	365.2

225' Eg Kansas

n		61	364.9
ll		61	364.9
b		60	365.0
ll		56	365.4
b		57	365.3
ll	77	44	366.6
ll		47	366.3
b		53	365.7
n		56	365.4
S		48	366.2

371.04

El Lago

58

250' Eg Kansas

S		47	366.3
ll		54	365.6
b		60	365.0
ll		53	365.7
b		58	365.2
ll		57	365.3
b		57	365.3
ll		63	364.7
n		55	365.5

275' Eg Kansas

n		70	364.0
ll		70	364.0
b		69	364.1
ll		57	365.3
b		61	364.9
ll		61	364.9
b		65	364.5
ll		55	365.5
S		43	366.7



371.04

300 E = W of (Graded on S) 30<sup>th</sup> St (80)

S 5.7 365.3

u 6.2 364.8

b 6.3 364.7

u 5.8 365.2

b 6.3 364.7

bb 5.7 365.0

b 7.0 364.0

u 7.2 363.8

u 7.0 364.0 ✓

T P

3.94

369.54

5.44

365.60

More 30<sup>th</sup> St

W bk of

30<sup>th</sup> St

u 5.6 363.9

u 5.5 364.0

b 4.9 364.6

u 4.3 365.2

b 4.6 364.9

u 5.4 364.1

b 5.6 363.9

u 5.6 363.9

S 5.5 364.0

369.5

371

El Cajon

59

W 1/4 of 30<sup>th</sup> St

5.2 364.3

5.0 364.5

4.9 364.6

4.5 365.0

4.3 365.2

4.3 365.2

4.7 364.8

5.6 363.9

5.8 363.7

Center of

30<sup>th</sup> St

5.6 363.9

5.6 363.9

5.4 364.1

4.3 365.2

4.2 365.3

4.5 365.0

4.6 364.9

4.8 364.7

3.0 364.5



36954

E 14 of 30 11 21

S	55	364.0
U	5.0	364.5
L	4.9	364.6
U	4.7	364.8
L	4.4	365.1
U	4.3	365.2
L	5.3	364.2
U	5.5	364.0
n	5.5	364.0

E 66 of 30 11 21

n	5.8	363.7
U	5.8	363.7
L	5.4	364.1
U	4.3	365.2
L	5.0	364.5
U	5.0	364.5
L	5.0	364.5
U	5.3	364.2
S	5.4	364.1

36954

E 27 30 11 21

S	5.4	364.1
L	5.1	364.4
L	5.3	364.2
U	5.4	364.1
L	5.2	364.3
U	4.2	365.3
L	5.5	364.0
U	6.0	363.5
n	5.0	364.5

25' E 7 30 11 21

n	4.7	364.8
U	5.8	363.6
L	5.5	364.0
U	4.5	365.0
L	4.2	365.3
U	5.4	364.1
L	5.5	364.0
U	6.0	363.5
S	4.9	364.6

Elkayon

60



36954

50 E of 30 m W

S	56	363.9
bl	60	363.50
b	59	363.6
H	59	363.6
b	57	364.4
H	41	365.4
b	44	365.1
b	56	363.9
H	58	363.7
H	44	365.1
H	75	E of 30 m W
H	57	363.8
H	55	364.0
b	54	364.1
H	45	365.0
H	42	365.3
b	54	364.1
H	56	363.9
b	60	363.5
H	56	363.9
S	55	364.0

36954

El Baym

61

100 E of 30 m W

S	57	363.8
bl	60	363.5
b	60	363.5
H	54	364.1
b	58	363.7
H	40	365.5
b	46	364.9
b	52	363.9
H	58	363.7
H	55	364.0
H	175	E of 30 m W
H	47	364.8
H	56	363.9
b	54	364.1
H	58	363.7
H	45	365.0
b	41	365.4
b	56	363.9
H	48	364.7
b	44	365.1
H	60	363.5
S	60	363.5



36954

	150	E of	30 m	IT
S			5.8	363.7
H			6.0	363.5
b			6.0	363.5
H			5.7	363.8
b			5.4	364.1
H			4.2	365.3
b	71.5		4.5	365.0
			5.5	364.0
			5.3	364.2
H			5.2	364.3
n			5.3	364.2

	175	E of	30 m	
n			5.2	364.3
H			4.8	369.7
b			4.7	364.8
H			4.2	365.3
b			5.3	364.2
H			5.6	363.9
b			6.0	363.5
H			5.7	363.8
S			5.9	363.6
TP	460		5.5	364.0

36862

E. C. Gayer

62

	200	E of	30 m	
S			4.7	363.9
H			4.9	363.7
b			4.7	363.9
H			4.5	364.1
b			4.1	364.5
H			3.3	365.3
b			4.4	364.2
H			4.5	364.1
n			4.1	364.5

	225	E of	30 m	
n			4.1	364.5
H			4.4	364.2
b			4.3	364.3
H			3.3	365.3
b			3.9	364.7
H			4.2	364.4
b			4.6	364.0
H			5.1	363.5
S			4.9	363.7



36862

250 E of 30 rd 41

S	51	363.5
H	45	364.1
b	47	363.9
H	43	364.3
b	40	364.6
H	33	365.3
b	42	364.4
H	41	364.5
H	33	365.3
H	30	365.6
H	38	364.8
b	38	364.8
b	35	365.1
H	33	365.3
b	42	364.4
H	46	364.0
b	50	363.6
H	34	365.2
S	44	364.2

275 E of 30 rd 35

710

36862

297 E of 30 rd 41

300 E = W of Ohio rd (80)

El Cajon

Grade 68 W

S	52	363.4
H	50	363.6
b	47	363.9
H	49	363.7
b	45	364.1
H	31	365.5
b	35	365.1
H	42	364.4
H	46	364.0
H	49	363.8
H	51	363.5
H	44	364.2
b	35	365.1
H	30	365.6
b	44	364.2
H	47	363.9
b	49	363.7
H	52	363.4
S	50	363.6

14th S rd  
20th W rd of Ohio rd

(concrete)



36862

(10')	W	1/4 of Ohio	1
S		5,3	363.3
bl		3,8	364.8
b		4,2	364.4
bl		4,6	364.0
b		4,1	364.5
bl		2,9	365.7
b		3,4	365.2
bl		4,3	364.3
n		5,4	363.2
	Center of Ohio	=	
n		5,2	363.4
bl		4,4	364.2
b		3,4	365.2
bl		2,9	365.7
b		3,8	364.8
bl		4,5	364.1
b		3,9	364.7
bl		2,8	365.8
		5,0	363.6

36862

El Cajon

64

E	1/4 of Ohio	2	
S	5,4	363.2	
bl	3,8	364.8	
b	4,1	364.5	
bl	4,0	364.6	
b	3,5	365.1	
bl	2,8	365.8	
b	3,7	364.9	
bl	4,5	364.1	
n	4,4	364.2	
with	E	bl of Ohio	
n	or bl	4,7	363.9
bl		4,5	364.1
b		3,7	364.9
bl		2,7	365.9
b		3,5	365.1
bl		3,5	365.1
b		4,0	364.6
bl		2,8	365.8
S		4,0	364.6
		5,0	363.6

with on S



36862

E of Ohio

S	44	364.2
ll	45	364.1
b	44	364.2
ll	43	364.3
b	36	365.0
ll	28	365.8
b	36	365.0
ll	37	364.9
ll	(42) (248)	364.4 365.8
25' E of Ohio		
2	29	365.7
ll	30	365.6
b	35	365.1
ll	28	365.8
b	34	365.2
ll	42	364.4
b	43	364.3
ll	42	364.4
S	43	364.3

36862

El Cajon

65

50 E of Ohio

S	42	364.4
ll	43	364.3
b	43	364.3
ll	42	364.4
b	37	364.9
ll	27	365.9
l	33	365.3
ll	29	364.7
ll	29	365.7
ll	62' 64' am 75' E of Ohio	367.1
ll	38	365.1
ll	26	365.0
b	33	365.3
ll	26	366.0
b	37	364.9
ll	29	364.7
b	43	364.3
ll	42	364.4
S	40	364.6
70' 4.69	369.26	425- 364.57



36929

100 E of Ohio W

S	51	364.2
H	49	364.4
L	48	364.5
H	42	365.1
L	43	365.0
H	31	366.2
L	38	365.5
H	29	366.4
H	25	366.8

125 E of Ohio

H	38	365.5
H	36	365.7
L	33	366.0
H	30	366.3
L	42	365.1
H	44	364.9
L	47	364.6
H	48	364.5
S	51	364.2

36929

150 E of Ohio

S	48	364.5
H	48	364.3
L	47	364.6
H	42	365.1
L	42	365.1
H	27	366.6
L	30	366.3
H	35	365.8
H	28	366.5

175 E of Ohio

H	26	366.7
H	24	365.9
L	29	366.4
H	25	366.8
L	36	365.7
H	45	364.8
L	44	364.9
H	46	364.7
S	47	364.6

El Cajon

66



36920

200 E of Ohio

S	4.8	364.5
ll	4.6	364.7
l	4.6	364.7
ll	4.2	365.1
l	3.3	366.0
ll	2.4	366.9
l	2.8	366.5
ll	2.7	366.6
ll	2.7	366.6
n	1.9	367.4
ll	2.4	366.9
l	3.5	365.8
ll	2.3	367.0
l	3.6	365.7
ll	4.2	365.1
l	4.3	365.0
ll	4.4	364.9
l	4.8	364.5

36920

El Cajon

67

250 E of Ohio

S	4.8	364.5
ll	4.3	365.0
l	4.2	365.1
ll	4.0	365.3
l	3.5	365.8
ll	2.2	367.1
l	2.4	366.9
ll	2.4	366.9
ll	2.7	366.6
ll	1.8	367.5
n	1.9	367.4
ll	2.8	366.5
l	2.9	366.4
ll	2.3	367.0
ll	3.1	365.7
l	3.5	365.8
ll	3.6	365.7
ll	4.2	365.1
ll	4.4	364.9
S	4.8	364.5



36926

300 E = W of Illinois st (80)

S	4.6	364.7
U	4.3	365.0
L	3.8	365.5
U	4.3	365.0
L	3.8	365.5
U	2.3	367.0
L	2.6	366.7
U	2.9	366.4
U	2.6	366.7
W	66.6	Illinois =
U	1.5	367.8
U	2.6	366.7
L	2.9	366.4
U	2.2	367.1
L	3.3	365.0
U	4.3	365.0
L	3.9	365.4
U	4.4	364.9
S	4.6	364.7

36926

E. Bay

68

W W of Illinois

S	4.4	364.9
U	4.0	365.3
L	3.9	365.4
U	4.1	365.2
L	3.5	365.8
U	3.5	365.8
U	2.1	367.2
L	2.6	366.7
U	2.1	367.2
U	1.8	367.5
W	Center of	Illinois
U	2.2	367.1
U	2.3	367.0
L	2.3	367.0
U	2.0	367.3
L	2.4	365.9
L	3.5	365.8
U	4.2	365.1
L	3.7	365.6
U	4.0	365.3
S	4.1	365.2



36926

E 1/4 of Illinois

S	39	365.4
U	41	365.2
b	37	365.6
U	40	365.3
b	31	366.2
U	18	367.5
b	22	367.1
U	26	366.7
R	22	367.1

E 1/4 of Illinois

7	19	367.4
U	26	366.7
b	23	367.0
U	17	367.6
b	29	366.4
U	38	365.5
b	36	365.7
U	38	365.5
S	42	365.1

36926

El Cajon

69

E 1/4 of Illinois

S	40	365.3
U	37	365.6
b	36	365.7
U	37	365.6
U	34	365.9
b	23	367.0
U	16	367.7
b	24	366.9
U	23	367.0
R	10	368.3

E 1/4 of Illinois

U	10	368.3
U	21	367.2
b	21	367.2
U	15	367.8
b	25	366.8
U	34	365.9
b	36	365.7
U	36	365.7
S	37	365.6

TP 707 37299 334 365.72



37299

50 E of Illinois

S	7.3	365.7
H	7.2	365.8
L	7.2	365.8
H	6.8	366.2
L	5.5	367.5
H	5.1	367.9
L	5.3	367.7
H	4.3	368.7
H	3.7	369.2

75 E of Illinois

H	4.4	368.6
H	4.5	368.5
L	4.5	368.5
H	4.7	368.3
L	5.5	367.5
H	6.9	366.1
L	7.1	365.9
H	6.9	366.1
S	7.2	365.8

37299

El Cajon

70

100 E of Illinois

S	7.2	365.8
H	6.7	366.3
L	6.4	366.6
H	6.1	366.9
L	5.4	367.6
H	4.3	368.7
L	4.3	368.7
H	3.3	369.7
H	3.4	369.6

125 E of Illinois

H	5.5	370.5
H	3.5	369.5
L	4.3	368.7
H	4.0	369.0
L	5.2	367.8
L	5.2	367.8
L	5.7	367.3
H	6.3	366.7
S	6.8	366.2



37299

150 E of Illinois

S	6.1	366.9
h	5.8	367.2
b	5.2	367.8
h	4.3	368.7
b	4.1	368.9
h	3.5	369.5
b	3.5	369.5
h	3.6	369.4
h	2.0	371.0

175 E of Illinois

h	0.9	372.1
h	2.1	370.9
b	2.7	370.8
b	3.0	370.0
h	2.9	370.1
b	3.8	369.2
h	5.0	368.0
b	5.5	367.5
h	5.0	368.0
S	5.5	367.5

37299

E of

71

200 E of Illinois

S	5.3	367.7
h	5.0	368.0
b	5.0	368.0
h	4.1	368.9
b	3.1	369.9
h	2.4	370.6
b	2.1	370.9
h	1.2	371.8
h	1.2	371.8
h	0.1	372.9

225 E of Illinois

h	0.0	373.0
h	0.0	373.0
b	0.2	372.8
b	1.3	371.7
h	1.7	371.3
b	2.2	370.8
b	3.0	370.0
h	3.2	369.8
b	3.6	369.4
h	4.0	369.0
S	4.3	368.7
T P	9.16	378.40
		3.75 368.24



378.40

250 E of Illinois

S	94	369.0
U	87	369.7
L	86	369.8
U	79	370.5
L	72	371.2
U	63	372.1
L	58	372.6
U	50	373.4
L	49	373.5
n	42	374.2

275 E of Illinois

n	36	374.8
U	44	374.0
L	41	374.3
L	52	373.2
U	54	373.0
L	65	371.9
U	73	371.1
L	76	370.8
U	80	370.4
S	88	369.6

378.40

El Cajon

72

300 E - W of Iowa St (80)

S	75	370.9
U	72	371.2
L	62	372.2
U	60	372.4
L	55	372.9
U	47	373.7
L	44	374.0
U	38	374.6
L	39	374.5
n	30	375.4

W of Iowa

n	28	375.6
U	34	375.0
L	33	375.1
L	41	374.3
U	43	374.1
L	48	373.6
U	55	372.9
L	59	372.5
U	66	371.8
S	71	371.3



378.40

W 1/4 of Iowa

S 6.8 371.6

W 6.3 372.1

b 5.8 372.6

u 5.0 373.4

b 4.6 373.8

u 3.9 374.5

b 3.9 374.5

u 2.9 375.5

u 3.0 375.6

n 2.0 376.4

Center of Iowa =

n 1.1 377.0

u 2.9 375.5

b 2.7 375.7

b 3.1 375.0

u 3.5 374.9

b 4.2 374.2

u 5.2 373.2

u 4.4 374.0

b 5.3 373.1

u 5.8 372.6

S 6.5 371.9

378.40

E 1/4 of Iowa

S 5.7 372.7

u 5.2 373.2

b 4.8 373.6

u 4.5 373.9

b 3.9 374.5

u 3.1 375.3

b 2.9 375.5

u 2.9 377.5

u 2.5 376.1

u 2.8 375.6

n 1.6 376.8

E 1/4 of Iowa

n 1.5 376.9

u 2.5 375.9

b 2.5 375.9

b 0.8 377.6

u 2.7 375.7

u 2.8 375.6

b 3.4 375.0

u 3.6 374.8

b 4.1 374.3

u 4.8 373.6

S 5.4 373.0

Albany

73



	E	S of	Point		50'			
S			4.7	373.7	S.	6.2	375.2	
ll			4.7	373.7	bb	5.5	375.9	
b			4.2	374.2	b	5.7	375.7	
ll			2.5	375.9	bb	5.6	375.8	
b	19'		3.4	375.0	b	4.9	376.5	
			3.0	375.4				
ll			2.4	376.0	bb	4.5	376.9	
b			2.4	376.0	b	4.2	377.2	
ll			1.7	376.7	bb	3.3	378.1	
ll			1.6	377.8	N.	3.3	378.1	
JP	4.10	381.4	1.10	377.3	Bm 70' to 6' Post SE	N. 75'	3.1	378.3
	25 E				bb	2.3	378.1	
ll			3.5	377.9	b	3.6	378.0	
bb			3.5	377.9	bb	4.2	377.2	
b			4.2	377.2	C	4.6	376.8	
bb			4.8	376.6	bb	4.9	376.5	
ll			4.2	377.2	b	4.9	376.5	
bb			4.3	377.1	bb	4.9	376.5	
b			6.3	375.1	S	5.6	375.8	
bb			6.6	374.8				
ll			7.1	374.3				



100' E

156.3 = T<sub>0</sub> on North

S	5.2	376.2
Ht	5.3	376.1
G	3.7	377.7
Ht	4.2	377.2
G	4.2	377.2
Ht	4.2	377.2
G	4.5	376.9
Ht	3.8	377.6
Ht	3.2	378.2
N.	3.1	378.3

S.	4.5	376.9
Ht	4.1	377.3
G	4.6	376.8
Ht	4.0	377.4
G	4.0	377.4
Ht	3.7	377.7
G	4.1	377.3
Ht	3.7	377.7
Ht	2.9	378.5
N	3.3	378.1

125' E

199.2 = T<sub>0</sub> on South

N.	3.2	378.2
Ht	3.4	378.0
G	3.5	377.9
Ht	4.3	377.1
G	3.9	377.5
G	4.0	377.4
Ht	3.2	378.2
G	3.5	377.9
Ht	4.9	376.5
S	5.1	376.3
S	4.9	376.5

N.	3.3	378.1
Ht	3.0	378.4
G	3.1	378.3
G	4.0	377.4
Ht	4.2	377.2
Ht	3.7	377.7
G	4.1	377.3
Ht	4.4	377.0
G	4.5	376.9
Ht	4.7	376.7
S	4.2	377.1
S		(over)



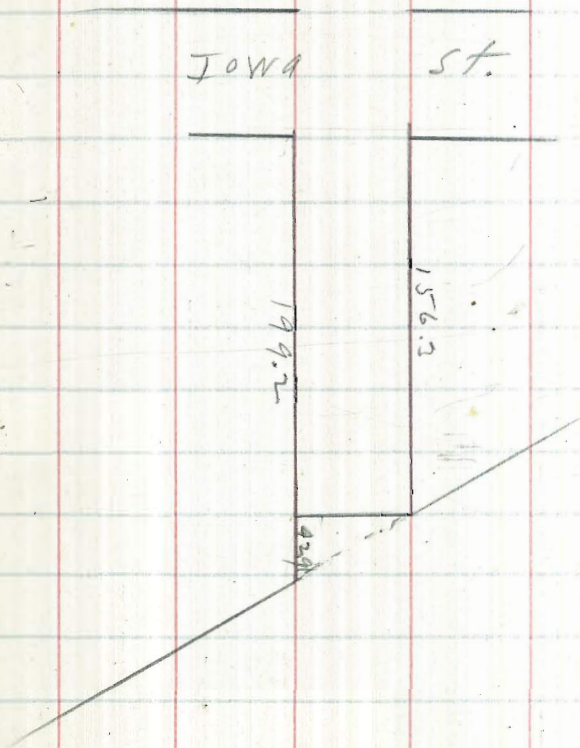
JOWA

ST.

199.2

156.3

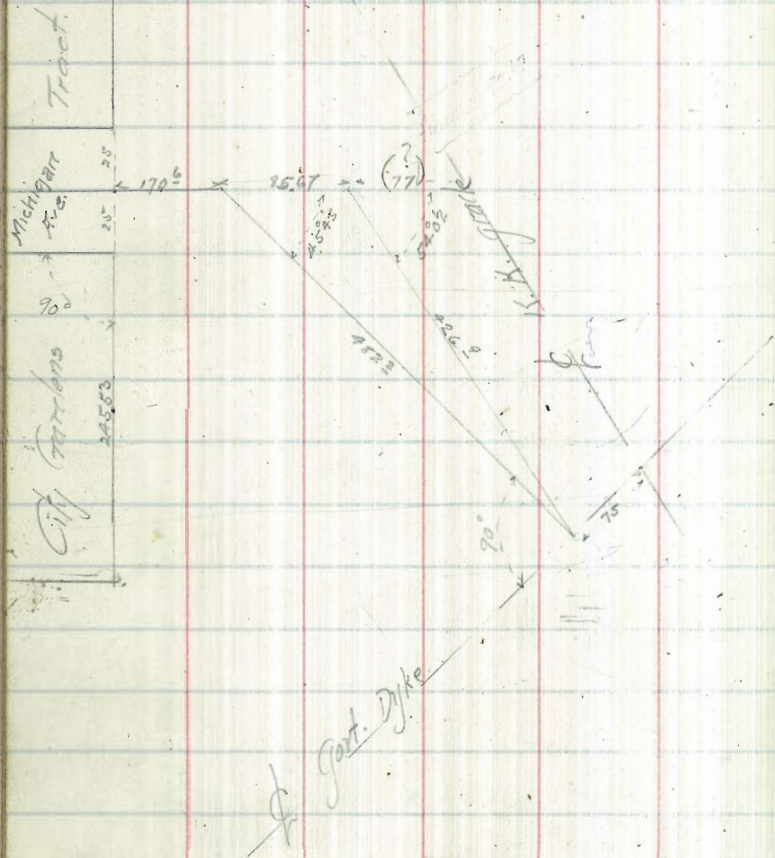
42.9





1/24/13 Hatch  
Moore  
Hall

Survey for Bridge at  
City Gardens tract.



1/25/13 Hatch  
Moore  
Hall Profile on lines shown  
on opposite page

119  
88

696	1896	1200	Top of Pier
545	17.08	533	SW Cor Bridge at Old Town
440	15.65	533	
117	11.79	503	
6+52.8	West line	1.3	10.49
6+42		16	
6+36		60	
6+25		61	
6+00		60	
5+79		58	
5+70		11.8	
5+50		11.2	
5+20		11.5	
5+00		11.4	
4+75		12.2	
4+60		11.8	
4+30		12.1	
4+19		12.7	
4+14		13.7	



11.79

4+00	13.7	
3+78	14.3	
3+63	12.4	
3+40	10.6	
3+25	5.6	
3+00	5.9	
2+75	5.9	
2+50	6.0	
2+25	5.9	
2+00	6.3	
1+70 <sup>6</sup> angle	6.7	5.09
1+50	6.7	5.09
1+25	6.8	4.99
1+00	7.3	4.49
0+75	6.8	4.99
0+50	7.0	4.79
0+25	7.2	4.59
0+00 = End of Michigan Street.	7.6	4.19

11.79

East line

2+00	6.5	5.29
2+25	6.1	5.69
3+56 <sup>3</sup> angle	6.2	5.59
2+75	5.8	5.99
3+00	5.5	6.29
3+25	5.3	6.49
+45	5.8	5.99
+55	8.9	2.89
+75	11.1	0.69
+80	14.1	-2.31
4+00	14.0	-2.21
+25	13.8	-2.01
+30	12.2	-0.41
+75	11.8	-0.01
5	12.2	-0.41
+25	11.7	0.09
+50	11.4	0.39
+75	10.9	0.89



mar. 13/13

Helvido  
Taylor  
6000

X sect. for septic tank  
see next page.  
Sajolla.

sect. G.H.  
H.I.  
8.75

11.79

6+00	11.8	-0.01
+07	5.5	6.29
+25	6.1	5.69
+50	6.0	5.79
+66	6.0	5.79
+73	1.6	10.19
+83.2	1.3	10.49

Top of Rail at Xing of Dyke with La Jolla track  
about 12.3

G.	11.6	-2 <sup>9</sup>
10' east. <del>ca</del>	11.3	-2 <sup>4</sup>
39' "	9.0	-0 <sup>2</sup> -
60' "	6.4	+2 <sup>2</sup>
62' "	4.9	+3 <sup>8</sup>
74' "	4.2	+4 <sup>5</sup>
93' "	2.8	+5 <sup>9</sup>
110' "	1.1	+7 <sup>6</sup>
	6.04	
	8.6	+9 <sup>2</sup>
	5.8	+12 <sup>0</sup>
	4.6	+13 <sup>2</sup>
	2.8	+15 <sup>0</sup>
	1.3	+16 <sup>5</sup>

H.I.  
11.76 - 17.80



X sect. for Septic tank at

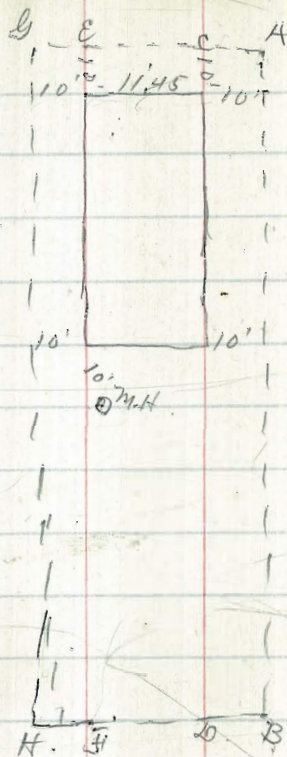
Jafolla.

Mar. 13/13

L. Childs  
Taylor  
Alman  
80

H.I.  
2.71 8.75 6.04  
Sect. A B

A	11.8	- 3 <sup>o</sup>
10' East	11.2	- 2 <sup>5</sup>
45 "	9.0	- 0 <sup>2</sup>
63 "	6.4	+ 2 <sup>3</sup>
77 "	3.8	+ 5 <sup>o</sup>
84 "	2.8	+ 6 <sup>o</sup>
	H.I. 17.80	
113 "	7.7	10 <sup>1</sup>
125 "	7.3	10 <sup>5</sup>
133 "	5.4	12 <sup>4</sup>
143 "	1.9	15 <sup>4</sup>
173 "	1.4	16 <sup>4</sup>



See Book 403 page 55778



8,75  
Sect. C. 20

C	11.7	-30
10' East. circ tank	11.1	-24
45' "	8.7	±0.0
55' "	7.2	+15
73' "	4.8	+40
79' "	3.3	+54
110' "	1.2	+76
	H.I. 17.80	
125' "	9.0	+88
133' "	5.8	+120
142' "	2.3	+155
173' "	1.9	+159

8,75  
Sect. E. 4.

E	11.4	-22
10' east. circ tank	11.1	-24
39' "	9.1	-04
51' "	8.0	+07
62' "	6.3	+24
76' "	4.2	+45
105' "	1.5	+72
110' "	2.5	+60
	H.I. 17.80	
122' "	9.5	+83
130' "	6.6	+112
146' "	3.1	+147
173' "	1.6	+162

See page 79 for Balance



355.90 Bm Dima

$\begin{array}{r} 258.136 \\ 257.91 \\ 2.12 \\ \hline 338.06 \\ 6.93 \\ \hline 348.13 \\ 2.92 \\ \hline 35-1.03 \\ 8.14 \\ \hline 342.89 \\ 1.81 \\ \hline 344.70 \end{array}$

352.00

$\begin{array}{r} 3.14 \\ 3.66 \end{array}$ 
 $\begin{array}{r} 3.25 \\ 3.31 \end{array}$ 
 $\begin{array}{r} 3.23 \\ 3.80 \end{array}$

Univ

357.5

347.

$\begin{array}{r} 46.40 \\ 4.65 \end{array}$ 
 $\begin{array}{r} 46.35 \\ 4.28 \end{array}$ 
 $\begin{array}{r} 46.34 \\ 4.20 \end{array}$

346.50

Wright

346.50

$\begin{array}{r} 45.90 \\ 4.13 \end{array}$ 
 $\begin{array}{r} 46.24 \\ 4.28 \end{array}$ 
 $\begin{array}{r} 46.23 \\ 4.30 \end{array}$

346.0

3385

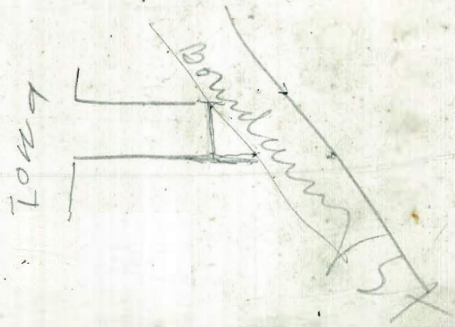
$\begin{array}{r} 37.90 \\ 6.80 \end{array}$ 
 $\begin{array}{r} 38.15 \\ 6.45 \end{array}$ 
 $\begin{array}{r} 37.73 \\ 6.57 \end{array}$

33801

33804

337.5

Dima 1563  
 50.40  
 19.20



**RODNEY STOKES COMPANY**  
INCORPORATED  
 858 THIRD STREET, FRYE & SMITH BUILDING  
 SAN DIEGO, CALIFORNIA