

343

F.B.

848

343



TRAVERSE TABLE FOR TRANSIT BOOK.

From 1° to 90° for a distance of 100.

Degrees.	DEGREES.		¼ DEGREE.		½ DEGREE.		¾ DEGREE.		Degrees.
	Lat.	Dep.	Lat.	Dep.	Lat.	Dep.	Lat.	Dep.	
0			100.00	0.44	100.00	0.87	99.99	1.31	89
1	99.98	1.75	99.98	2.18	99.97	2.62	99.95	3.05	88
2	99.94	3.49	99.92	3.93	99.91	4.36	99.88	4.80	87
3	99.86	5.23	99.84	5.67	99.81	6.10	99.79	6.54	86
4	99.76	6.98	99.73	7.41	99.69	7.85	99.66	8.28	85
5	99.62	8.72	99.58	9.15	99.54	9.58	99.50	10.02	84
6	99.45	10.45	99.41	10.89	99.36	11.32	99.31	11.75	83
7	99.25	12.19	99.20	12.62	99.14	13.05	99.09	13.49	82
8	99.03	13.92	98.97	14.35	98.90	14.78	98.84	15.21	81
9	98.77	15.84	98.70	16.07	98.63	16.50	98.56	16.93	80
10	98.48	17.36	98.40	17.79	98.33	18.22	98.25	18.65	79
11	98.16	19.08	98.08	19.51	97.99	19.94	97.90	20.36	78
12	97.81	20.79	97.72	21.22	97.63	21.64	97.53	22.07	77
13	97.44	22.50	97.34	22.92	97.24	23.34	97.13	23.77	76
14	97.03	24.19	96.92	24.62	96.81	25.04	96.70	25.46	75
15	96.59	25.88	96.48	26.30	96.36	26.72	96.25	27.14	74
16	96.13	27.56	96.00	27.98	95.88	28.40	95.76	28.82	73
17	95.63	29.24	95.50	29.65	95.37	30.07	95.24	30.49	72
18	95.11	30.90	94.97	31.32	94.83	31.73	94.69	32.14	71
19	94.55	32.56	94.41	32.97	94.26	33.38	94.12	33.79	70
20	93.97	34.20	93.82	34.61	93.67	35.02	93.51	35.43	69
21	93.36	35.84	93.20	35.04	93.04	36.65	92.88	37.06	68
22	92.73	37.06	92.55	36.47	92.39	38.27	92.22	38.67	67
23	92.08	38.07	91.88	39.47	91.71	39.87	91.53	40.27	66
24	91.35	40.67	91.18	41.07	91.00	41.47	90.81	41.87	65
25	90.63	42.26	90.45	42.66	90.26	43.05	90.07	43.44	64
26	89.86	43.84	89.70	44.23	89.49	44.62	89.30	45.01	63
27	89.06	45.16	88.90	45.79	88.70	46.17	88.50	46.56	62
28	88.23	46.95	88.09	47.33	87.88	47.72	87.67	48.10	61
29	87.46	48.48	87.25	48.86	87.04	49.24	86.82	49.62	60
30	86.60	50.00	86.38	50.38	86.16	50.75	85.94	51.13	59
31	85.72	51.50	85.49	51.88	85.26	52.25	85.04	52.62	58
32	84.80	52.99	84.57	53.36	84.34	53.73	84.10	54.10	57
33	83.87	54.46	83.63	54.83	83.39	55.19	83.15	55.56	56
34	82.90	55.92	82.66	56.28	82.41	56.64	82.16	57.00	55
35	81.92	57.36	81.66	57.71	81.41	58.07	81.16	58.42	54
36	80.90	58.78	80.64	59.13	80.39	59.48	80.13	59.83	53
37	79.86	60.18	79.60	60.53	79.34	60.83	79.07	61.22	52
38	78.80	61.57	78.53	61.91	78.26	62.25	77.99	62.59	51
39	77.71	62.93	77.44	63.27	77.16	63.61	76.88	63.94	50
40	76.60	64.28	76.32	64.61	76.04	64.94	75.76	65.28	49
41	75.47	65.61	75.18	65.93	74.90	66.26	74.61	66.59	48
42	74.31	66.91	74.02	67.24	73.73	67.56	73.43	67.88	47
43	73.14	68.20	72.84	68.52	72.54	68.84	72.24	69.15	46
44	71.93	69.47	71.63	69.78	71.33	70.09	71.02	70.40	45
45	70.71	70.71							

Published by H. S. CROCKER COMPANY, Stationers, Drawing Materials, Mathematical Instruments, etc., San Francisco.

848

Crocker Quality

TRANSIT BOOK



No. \_\_\_\_\_

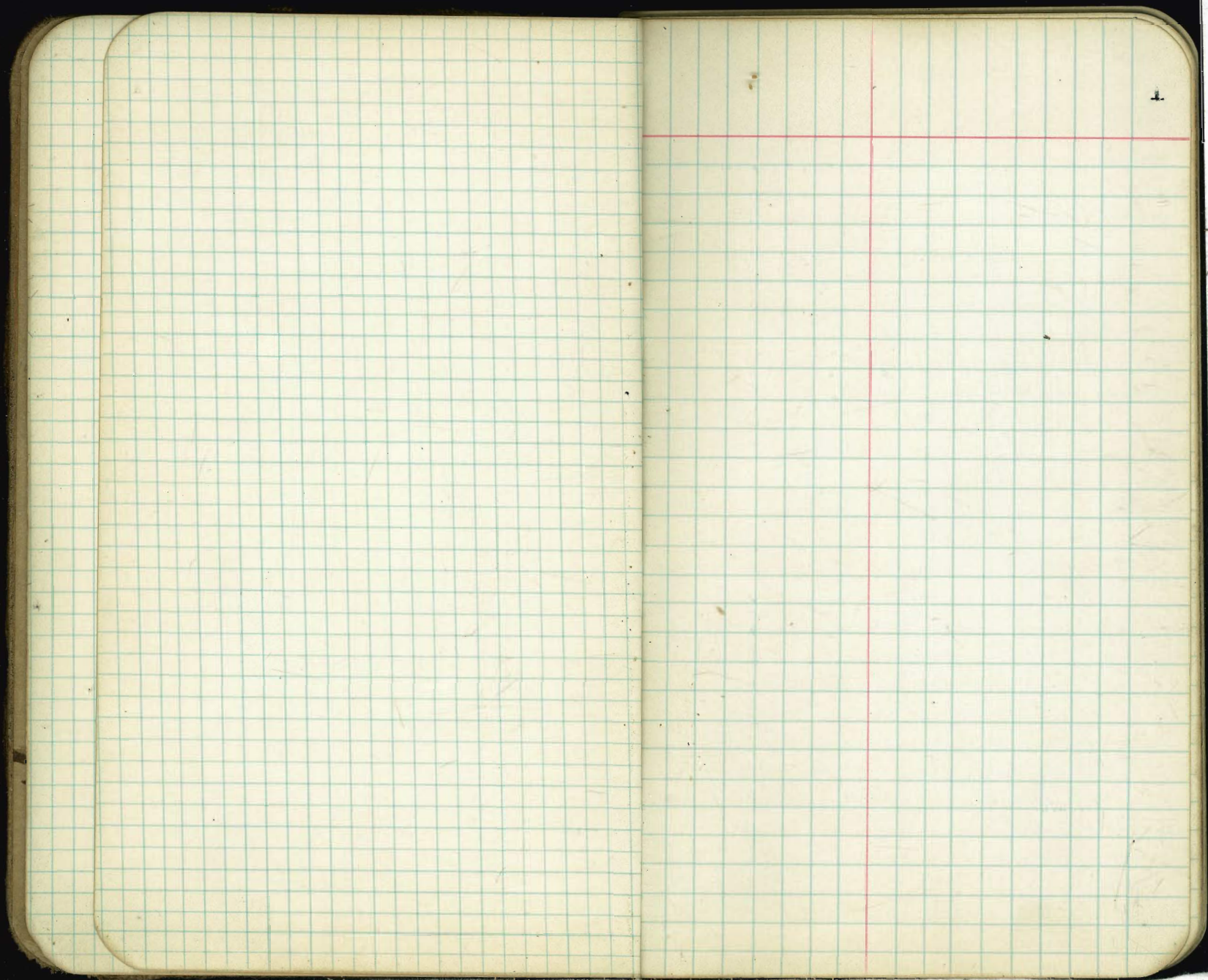
MANUFACTURED BY

H. S. CROCKER CO.

SAN FRANCISCO AND SACRAMENTO CALIFORNIA

FROM Loring's Book Store





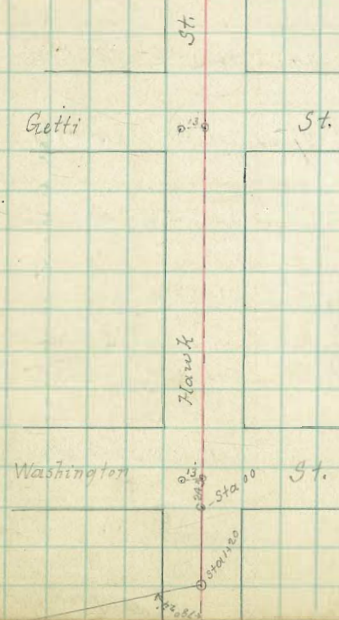


Alcine, Preliminary for road from Washington & Haruk to Harasthy & India

June 13-12  
 (Dannan.  
 Shaw.  
 Davene,

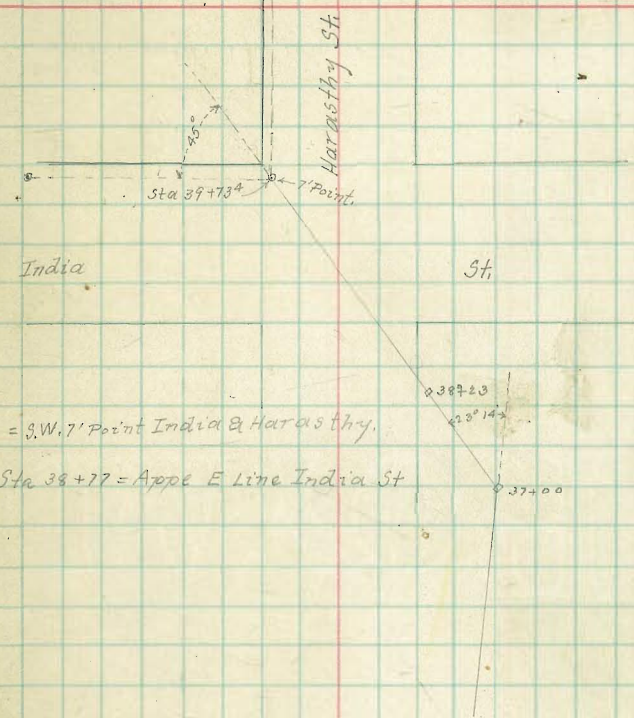
Sta	Δ E	Δ L	Mag B.	Cal B.
18+58°	36° 47'		368° W	367° 57' W
17+58°		22° 5'	331° W	331° 10' W
15+26°	24° 11'		353° W.	353° 10' W
13+00°		17° 52'	326° 50' W	329° 04' W
10+00°	23° 5'		346° 50' W.	346° 56' W
8+70°		21° 3'	328° 40' W	328° 51' W
7+07°	31° 21'		344° 40' W	344° 52' W.
6+25°		6° 53'	313° 10' W	313° 02' W
5+42°		28° 4'	320° 20' W	320° 26' W
4+48°		32° 29'	345° 30' W.	345° 30' W
4+20 POT			380° 40' W	380° 59' W.
2+70°	17° 25°		380° 45' W	380° 54' W
1+20°	78° 24'		363° 40' W	363° 34' W
00			314° 50' E	

140  
138  
120  
100  
80  
60  
40  
20  
0





Sta	$\Delta R$	$\Delta L$	Mag B.	Cal B.
39+73.4		45° 00'	S 51° 15' E	S 1° 17' E
38+23.75	2.33			
37+00°		23° 14'	S 6° 20' E	S 6° 17' E
28+23°	872	21° 11'	S 17° W	S 16° 57' W
26+11°	817	11° 50'	S 35° 10' W	S 38° 04' W
24+26°	185	17° 24'	S 26° 15' W	S 26° 18' W
22+72°	154	24° 42'	S 43° 40' W	S 43° 43' W
21+46°	126	33° 32'	S 65° 20' W	S 65° 24' W
20+50°	96	33° 5'	S 35° W	S 34° 52' W
	142			

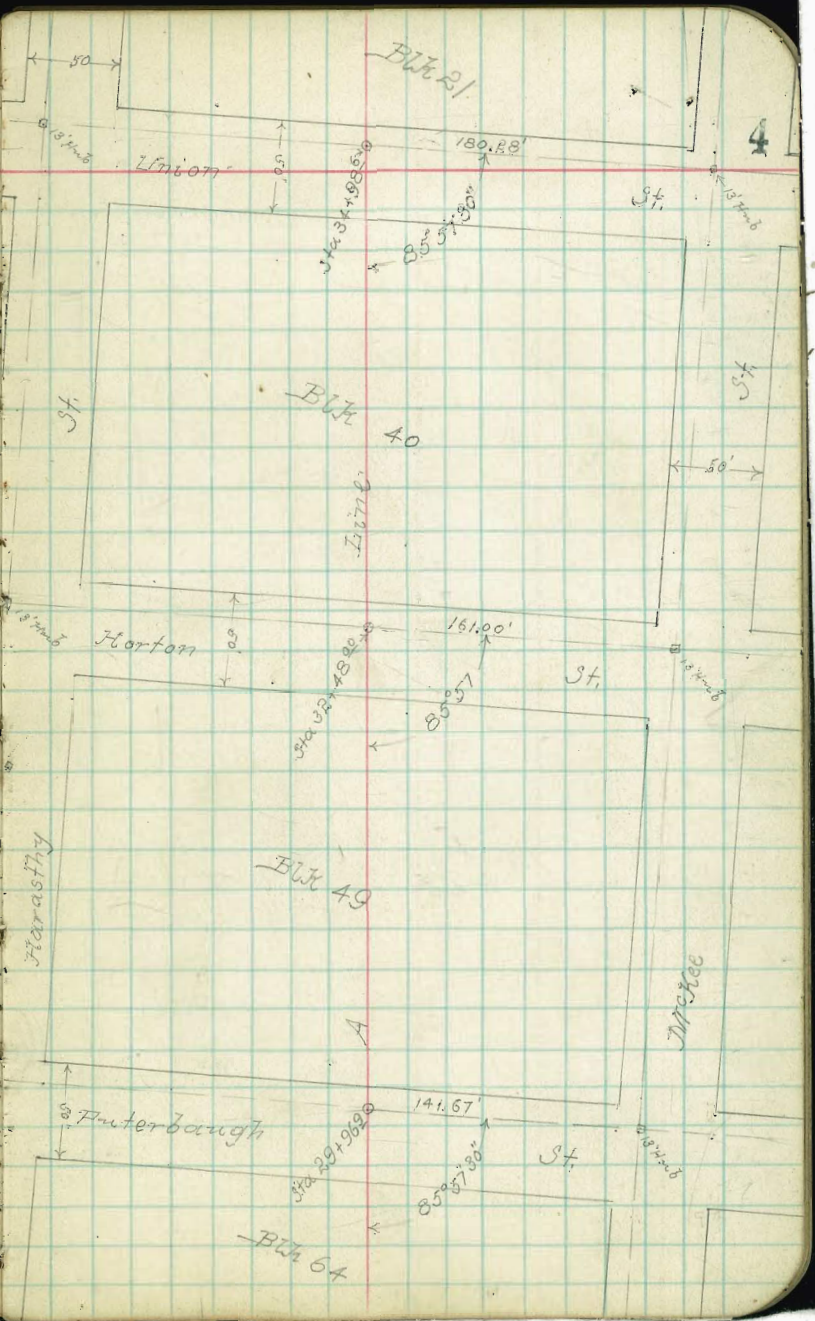
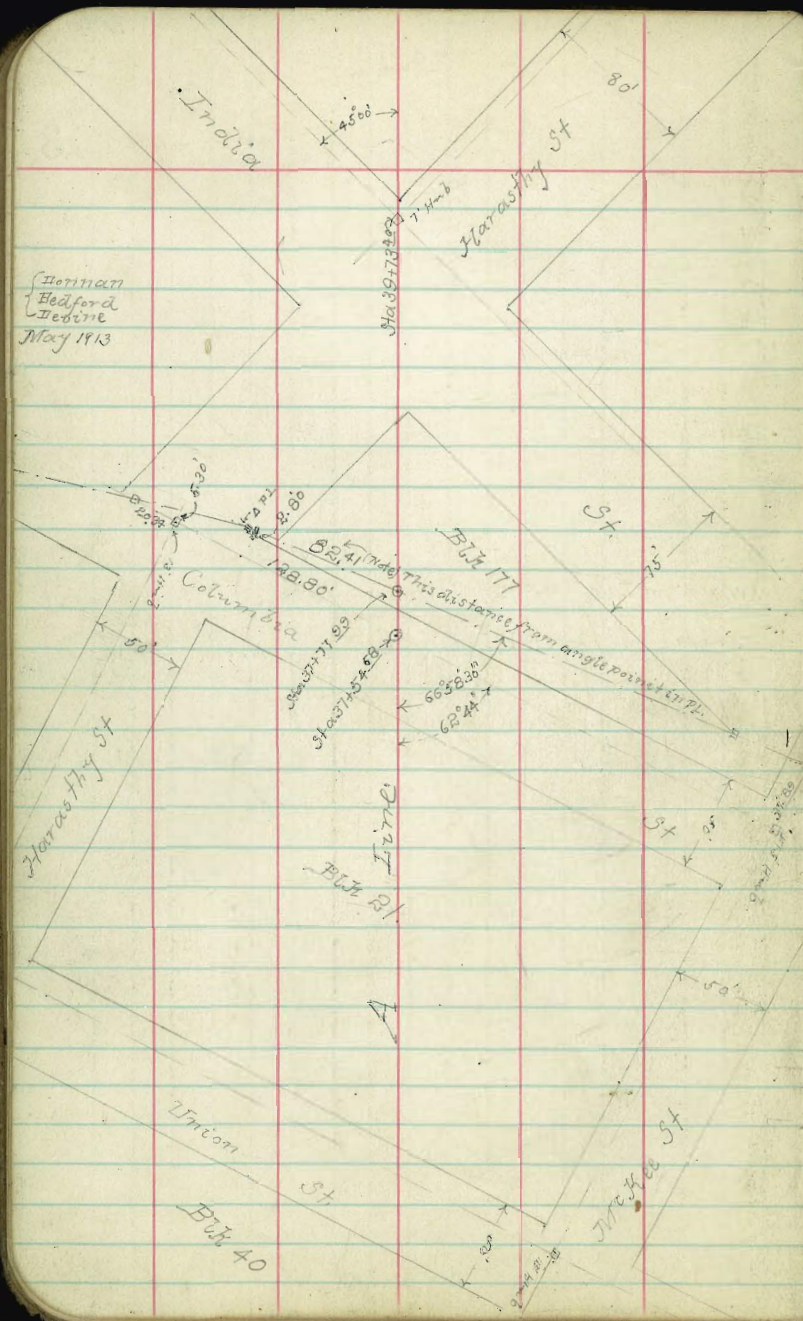


= S.W. 7' Point India & Harashty.  
 Sta 38+27 = Appx E Line India St

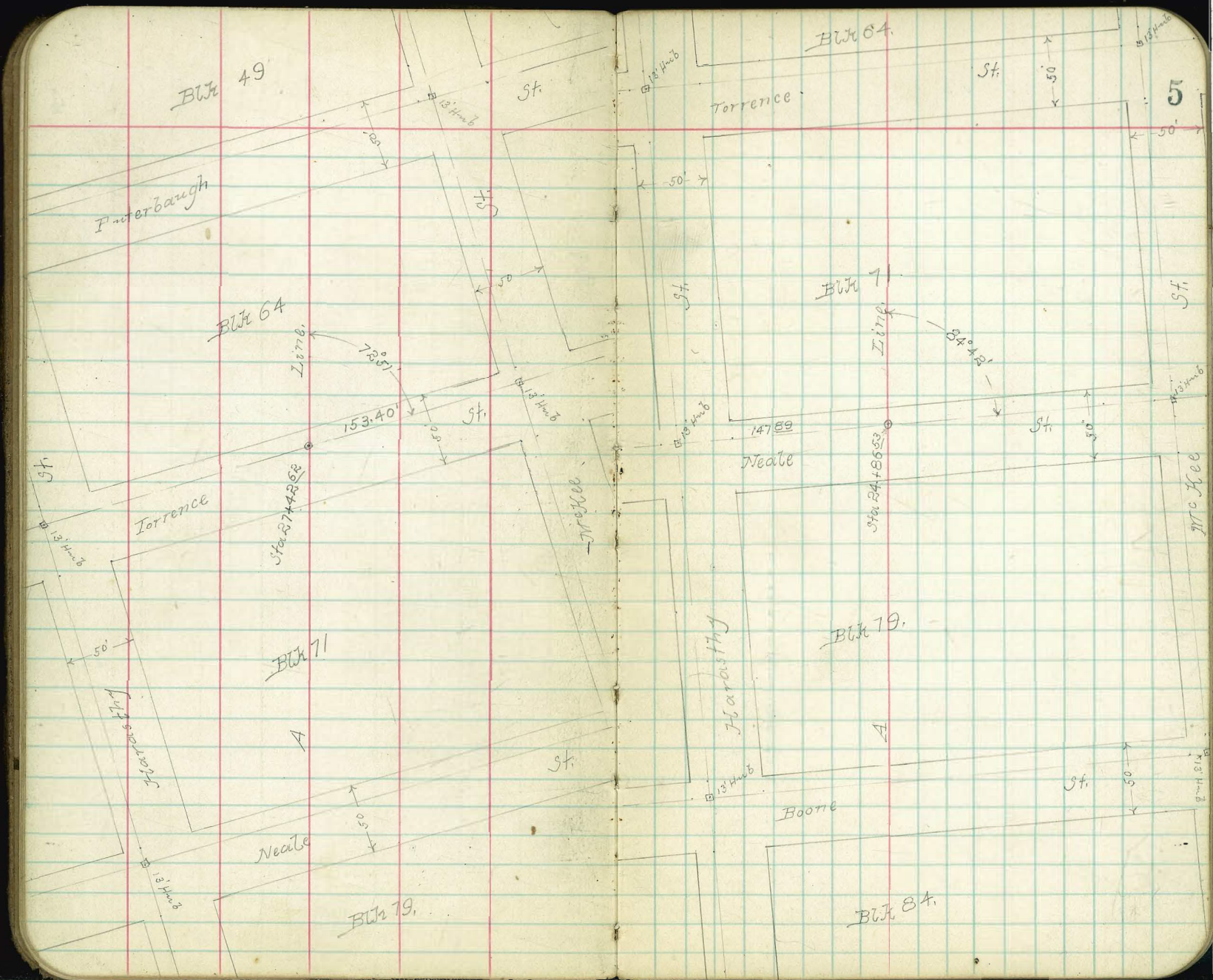
It might be to cross to other side at 20+36



Herman  
Bedford  
Tenn  
May 11/13



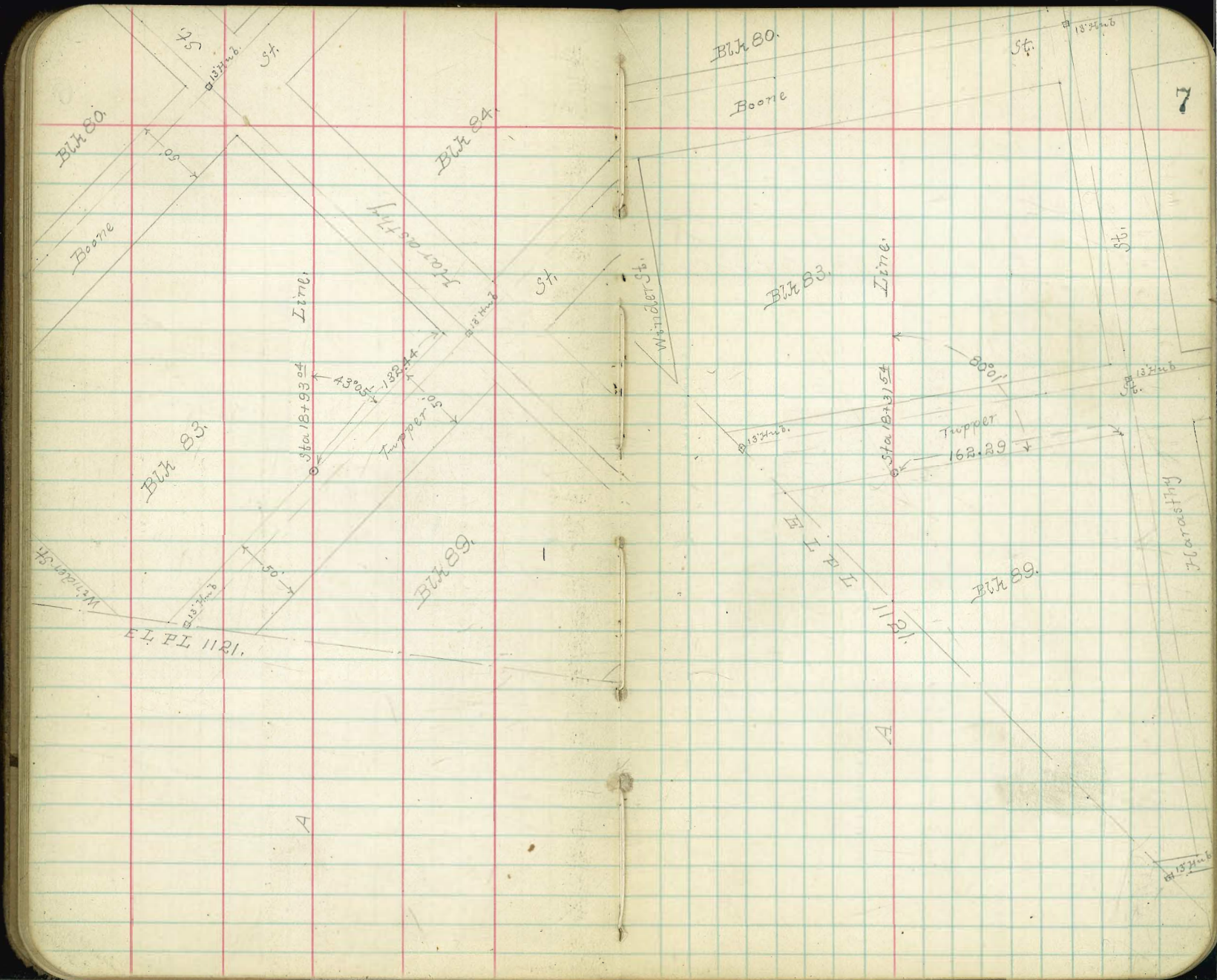












Blk 80

Boone

Blk 83

Winniet St.

EL. PL 1121.

A

Lime

Sta 18+93.04

430.5

Tupper

Blk 89

Marasthy

Blk 84

St.

Winniet St.

Blk 80

Boone

Blk 83

Winniet St.

A

Lime

Sta 18+93.54

Tupper

8001

Blk 89

St.

7

13746

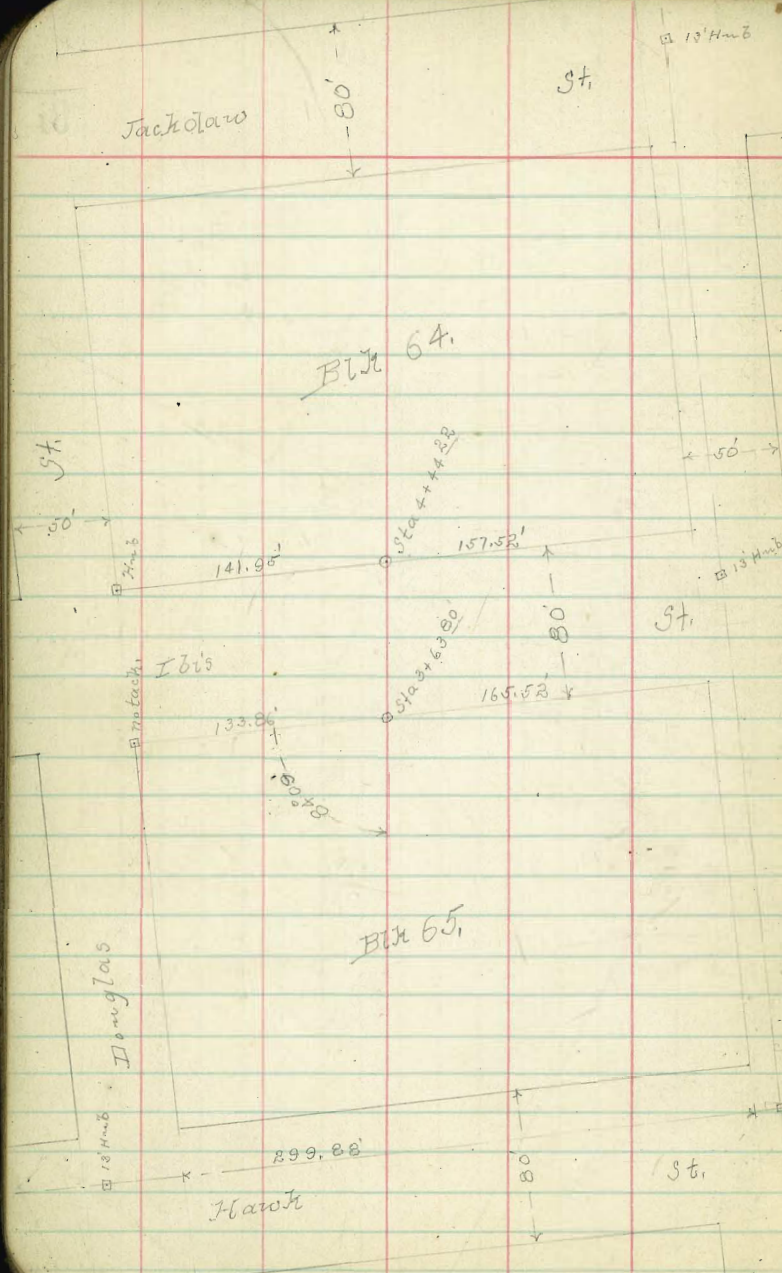














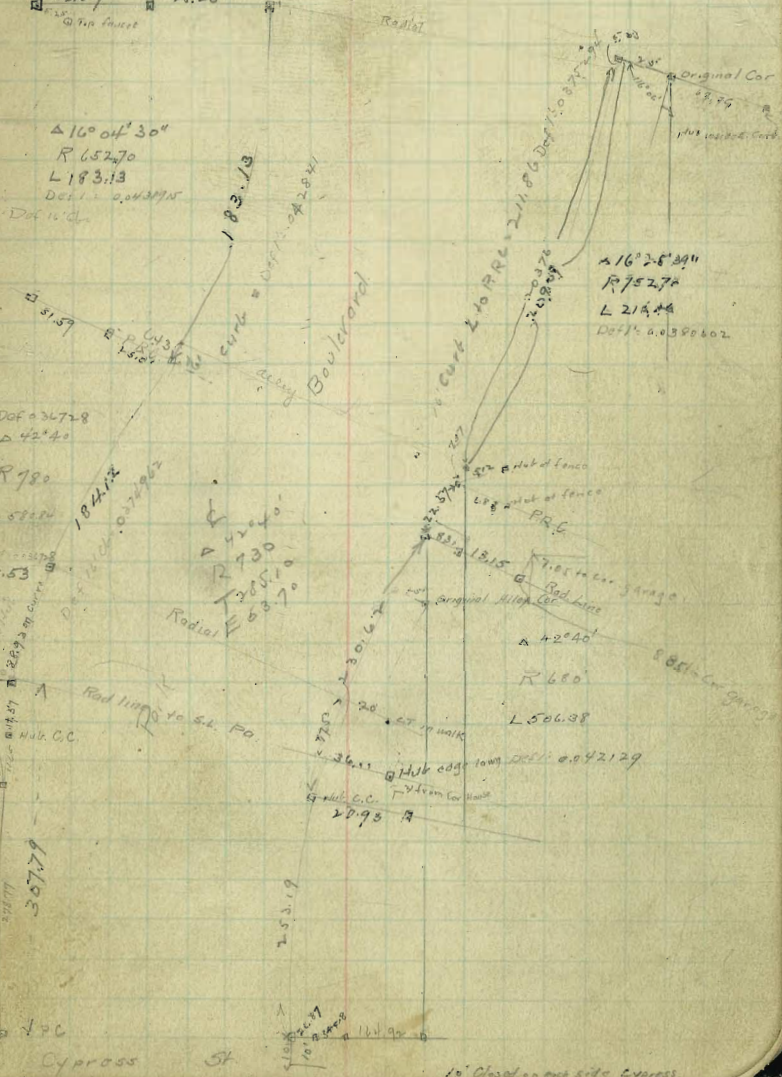
Davis  
Hansen  
Harris

Survey for Closing 25' on Each Side Park Blvd Cypress to Robinson St

Robinson St  
33.59 28.20

$\Delta 16^{\circ} 04' 30''$   
R 652.70  
L 183.13  
Def = 2.044718  
Def 10.0

1451  
2310  
2310  
5





































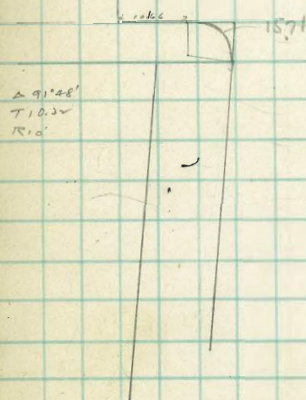




Proposed returns at N1 Park & Park Blvd.

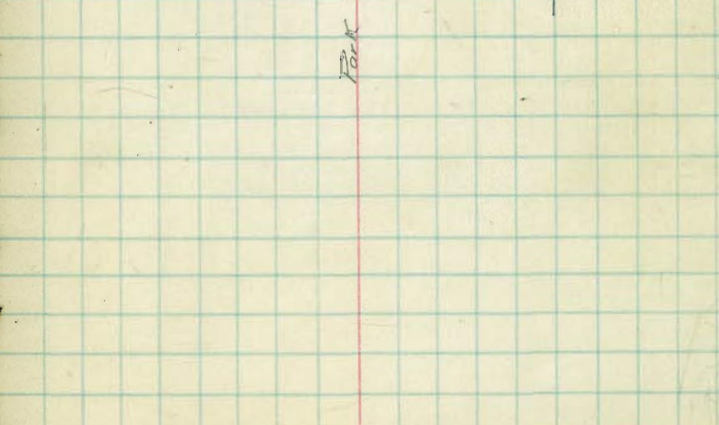
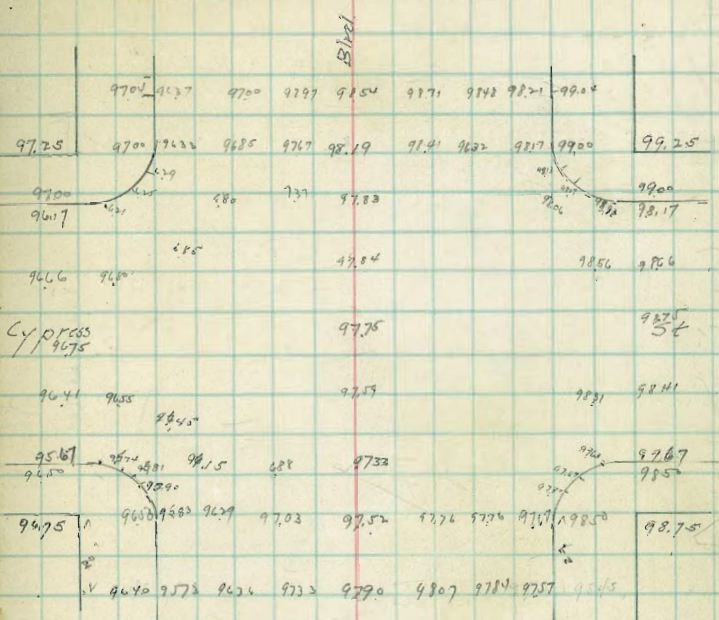


Upas





9964	479	685	267	819	411	632	826	875	141
310	9795	589	207	455	433	402	408	399	433
30274 MI	276	352	703	129	815	645	655	641	525
	498	522	571	645	659	629	619	633	599
	615	620	646	722	724	775	759	733	688
	589	594	426	491	490	499	515	541	530
675	227	770	767	763	267	813	817	813	817
590	507	508	507	511	507	461	457	461	457
1265 MI	637	629	625	621	617	562	524	511	513
9964	637	629	625	621	617	562	524	511	513
294	641	645	645	646	641	675	666	675	666
30258 MI	624	610	620	592	617	583	592	593	572









9/18/19 Beggs

CROSS SECTION OF  
PENNSYLVANIA AVE  
from W.L. PARK BND  
to 350 WOK

80' wide  
14' cbs

302.0

24

	173	301.98	300.25	spt rate 514 PENT
		W.L. Park Blvd		
S		1.8	300.2	
db		2.3	299.71	
1/4		1.6		
C		1.4	300.6	
1/2		1.2		
db		1.1	300.9	
N		0.6	301.4	
		38.91 from N. } = 0+000 rd L to 514.000 00 - 5		
N		2.0	300.0	
db		2.3	299.71	
1/4		1.9		
C		1.8	300.21	
1/4		1.8		
db		2.0	300.0	
S		1.8	300.2	
	0+16			
S		2.2	299.8	
db		1.8	300.21	
1/4		2.1		
C		2.9	299.71	
1/2		2.3		
db		2.7	299.31	
N		2.4	299.6	
	0+30			
N		3.4	298.6	
db		3.2	298.81	

1/4	21	
C	23	299.71
1/4	21	
db	21	299.61
S	1.9	300.1
	0+50	
S	27	299.3
db	23	299.71
1/4	26	
C	28	299.21
1/4	32	
1/2	37	
db	40	298.01
N	43	
	0+75	
N	49	297.1
1/5	49	
1/10	41	
db	41	297.91
1/4	41	
1/2	41	
C	34	298.61
1/4	31	
db	30	299.01
S	36	299.21
	1+00	
S	36	
db	36	298.41
1/4	39	



301.98

c		49	297.1	S
1/4		51		
dr		48	297.2	S
+7		46		dr
N		55	296.4	1/2
	1+07.0			+8
N		54	296.5	C
dr		48	297.2	1/4
1/4		50		dr
C		46	297.4	N
1/2		52		
dr		49	297.1	N
S		39	298.0	dr
	1+25			1/2
S		31	298.8	C
dr		48	297.2	1/4
1/4		47		+6
C		48	297.2	dr
1/4		52		S
dr		52	296.8	
+7		50		S
N		54	296.5	dr
	1+42			1/2
N		51	296.8	C
dr		48	297.2	1/4
1/4		45		dr
C		40	298.0	N
1/2		47		
dr		48	297.2	

301.98

PENNSYLVANIA

25

		45	299.4	
	1+55			
		34	298.5	
		32	298.8	
		35		
		46		
		45	297.5	
		39		
		43	297.7	
		49	297.0	
	1+70			
		49	297.0	
		43	297.7	
		42		
		47	297.8	
		36		
		25		
		29	299.1	
		39	298.0	
	1+75			
		45	297.4	
		39	298.1	
		47		
		47	297.3	
		44		
		44	297.6	
		44	297.6	



301.98

302.0

2+00

d	4.4	297.6
ch	4.2	297.81
1/4	4.3	
c	3.5	298.51
1/4	4.3	
+5	4.9	
d	5.1	296.91
S	5.5	296.5

2+20

S	4.8	297.2
ch	5.3	296.55
1/4	5.2	
c	5.3	296.71
1/4	5.1	
ch	4.8	297.21
N	4.1	297.9

2+35

N	4.3	297.7
d	5.1	296.91
1/4	4.4	
c	4.6	297.41
1/4	5.5	
d	6.1	295.91
S	6.4	295.6

2+45

S	6.3	295.7
ch	6.1	295.91
1/4	5.9	

PENNSYLVANIA

302.0

26

C	4.7	297.31
+8	4.3	
1/4	4.7	
ch	5.3	296.71
N	5.3	296.7

2+60

N	5.4	296.6
ch	5.5	296.51
1/4	5.8	
c	6.0	296.01
1/4	6.4	
ch	6.4	295.61
S	7.2	294.8

2+80

S	8.1	293.6
ch	7.3	294.71
1/4	7.2	
c	6.5	295.51
1/4	6.6	
ch	6.4	295.61
N	6.2	295.8

3+00

N	6.7	295.3
ch	7.0	295.01
1/4	7.1	
c	7.7	294.31
1/4	8.3	
ch	8.7	293.31
S	9.3	292.7



302.0

3+22

S	11.1	290.9
cb	10.4	291.61
1/4	10.5	
C	9.7	292.31
1/4	9.5	
cb	8.7	293.31
N	9.1	292.9

3+36

N	10.5	291.5
cb	10.0	292.01
1/4	10.1	
C	11.1	290.91
1/4	14.2	287.8
cb	17.3	284.71
S	19.9	282.1
+45	22.1	279.9

3+50

-30	29.6	
S	26.6	275.11
cb	23.4	278.61
1/4	19.7	
C	15.2	286.81
+8	12.3	
1/4	11.6	
cb	11.3	290.71
N	12.3	289.7

3+60

N	14.1	287.9
---	------	-------

PENNSYLVANIA

302.0

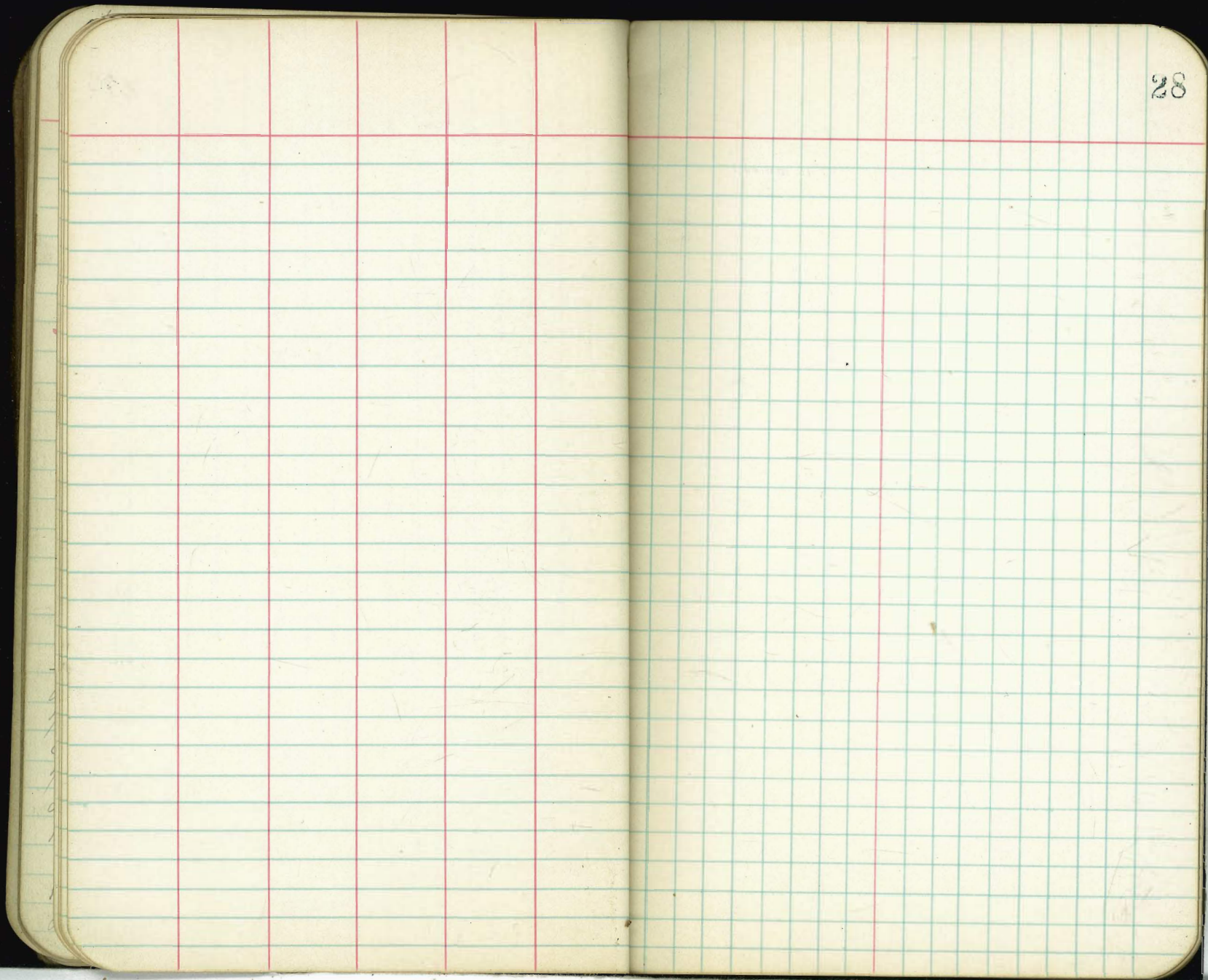
27

375' Knot

16.7

285.3

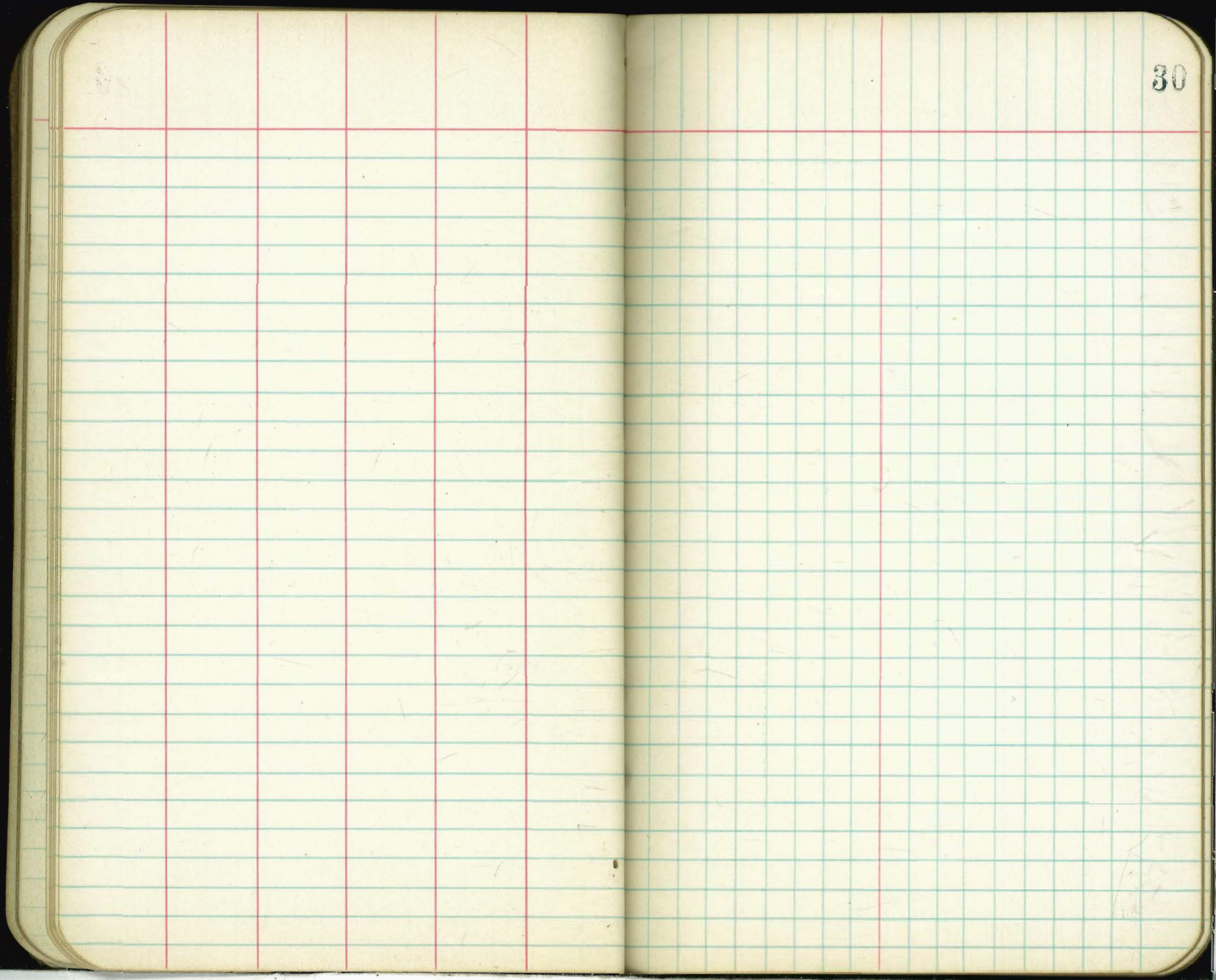
















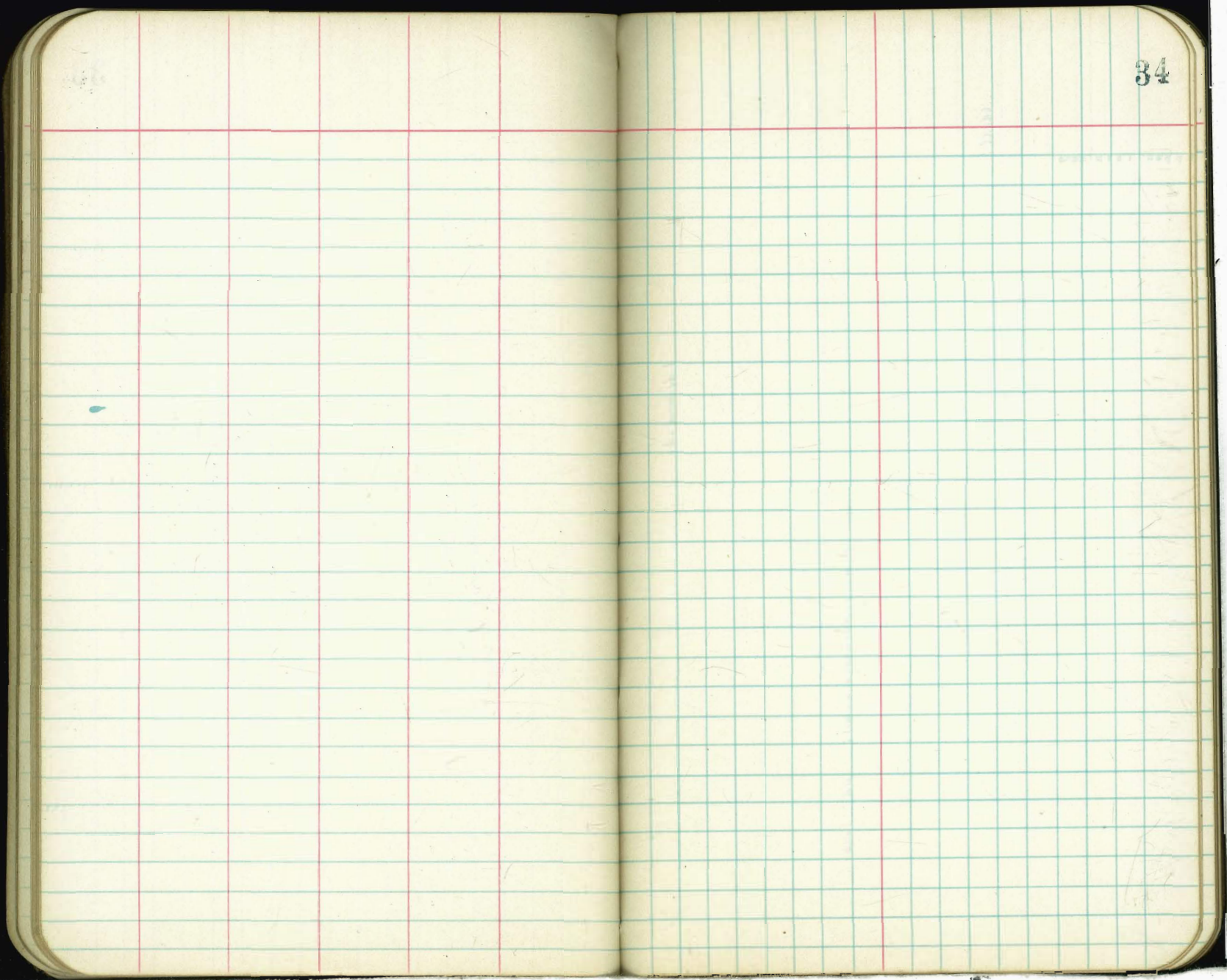


32





















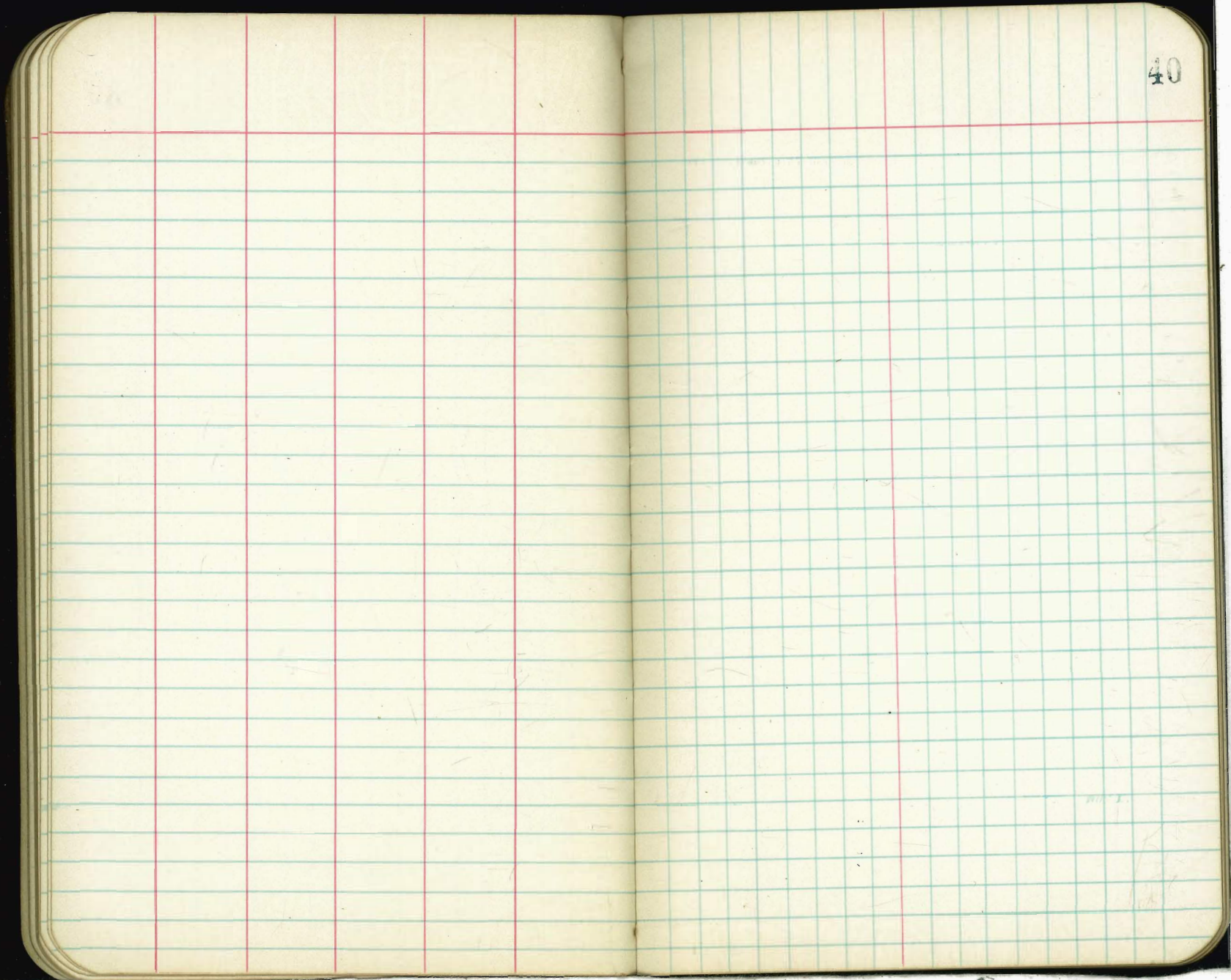






















43









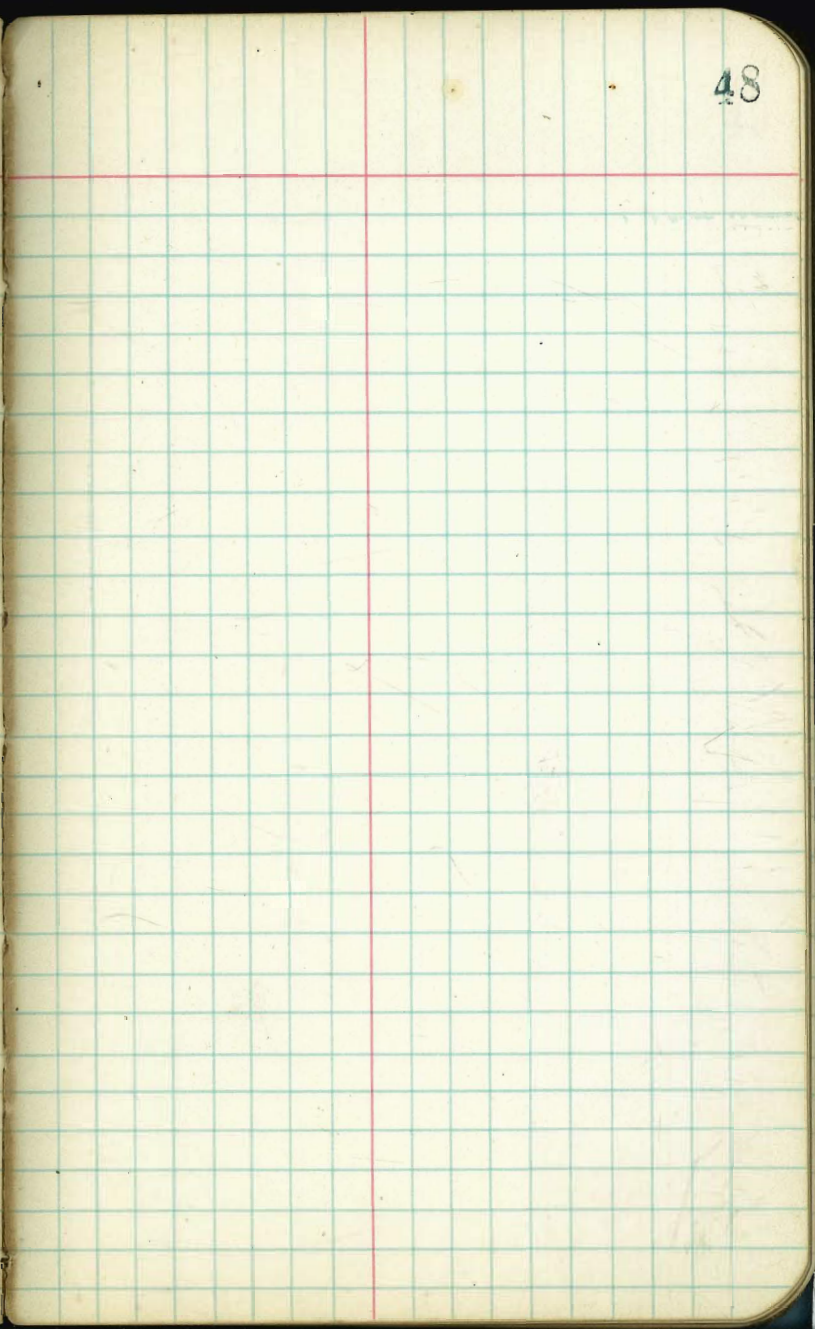
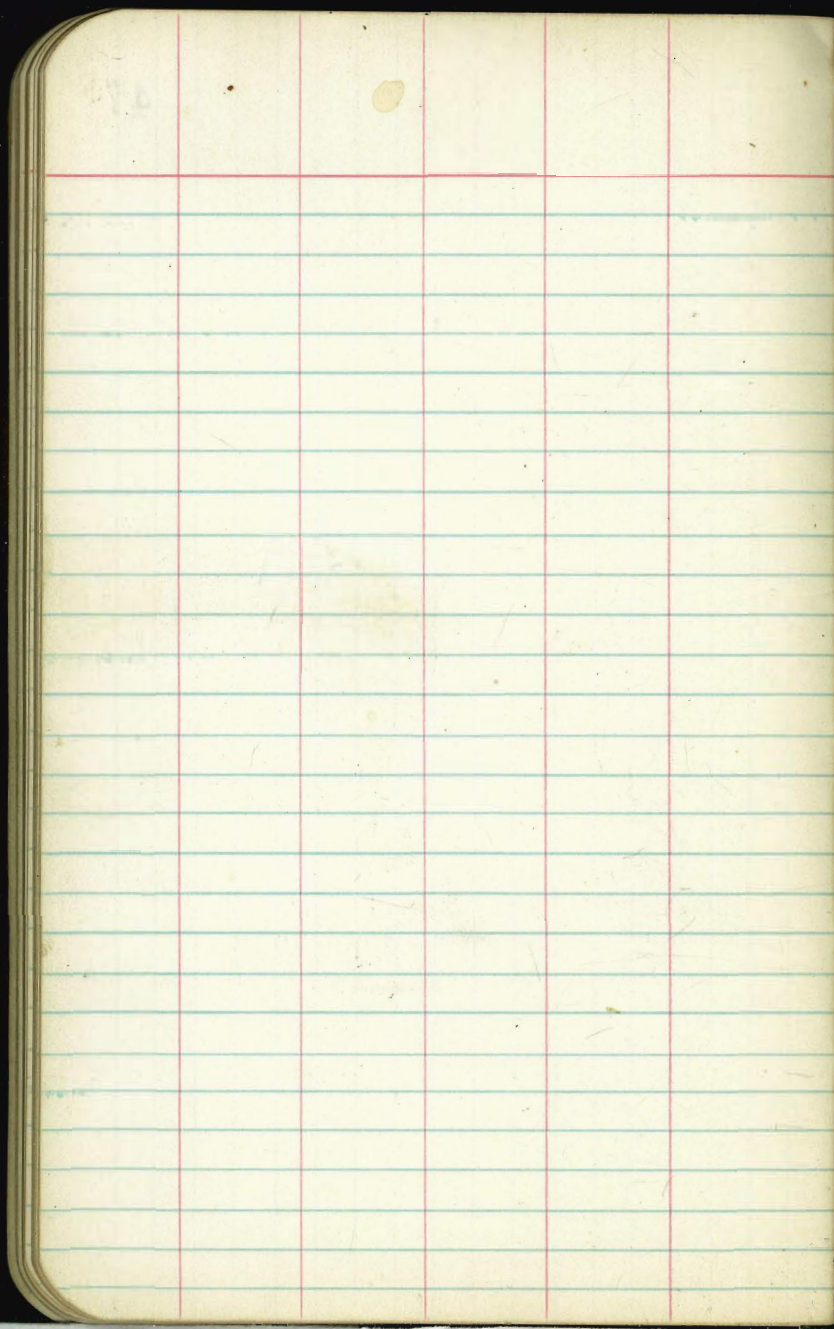


46





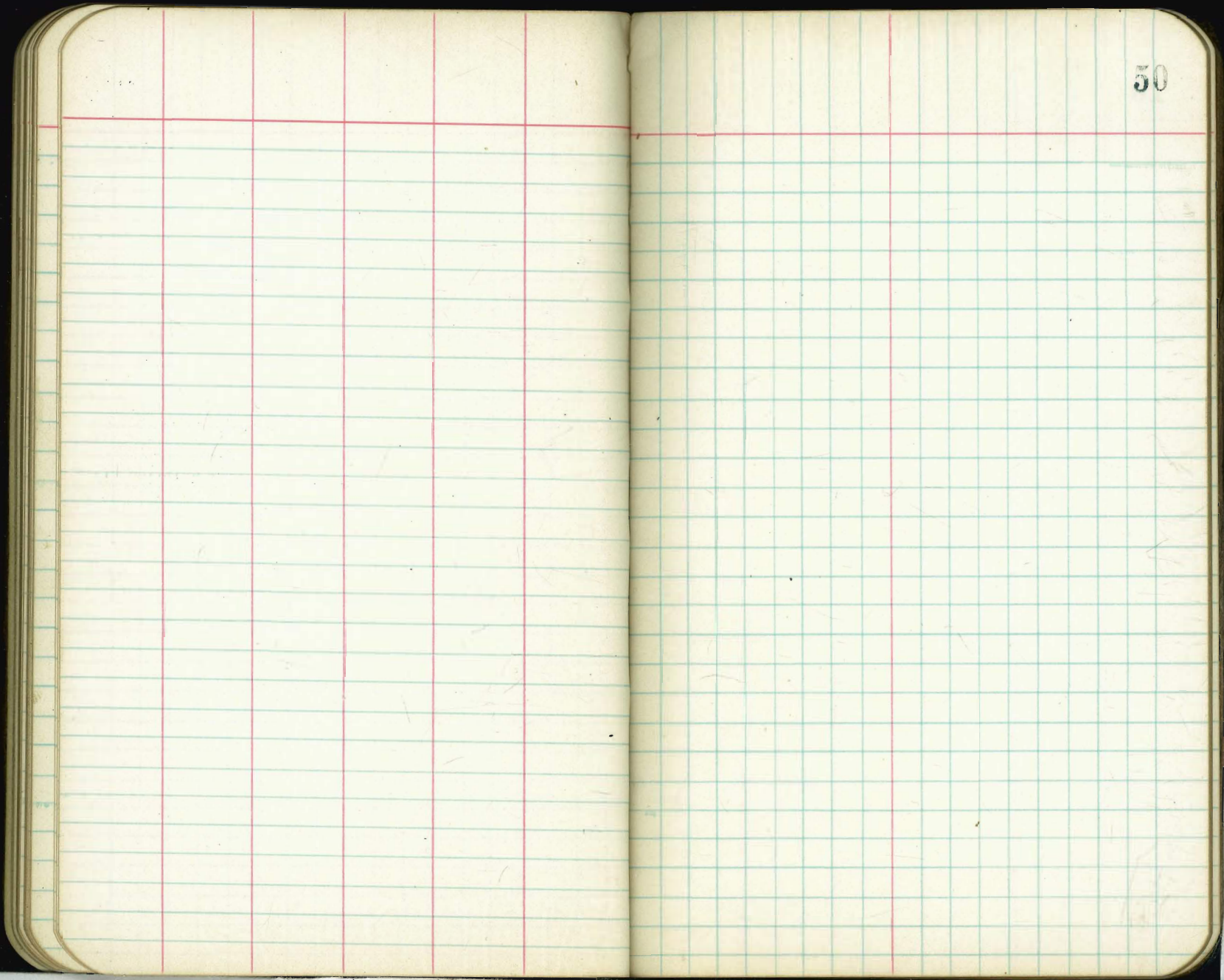












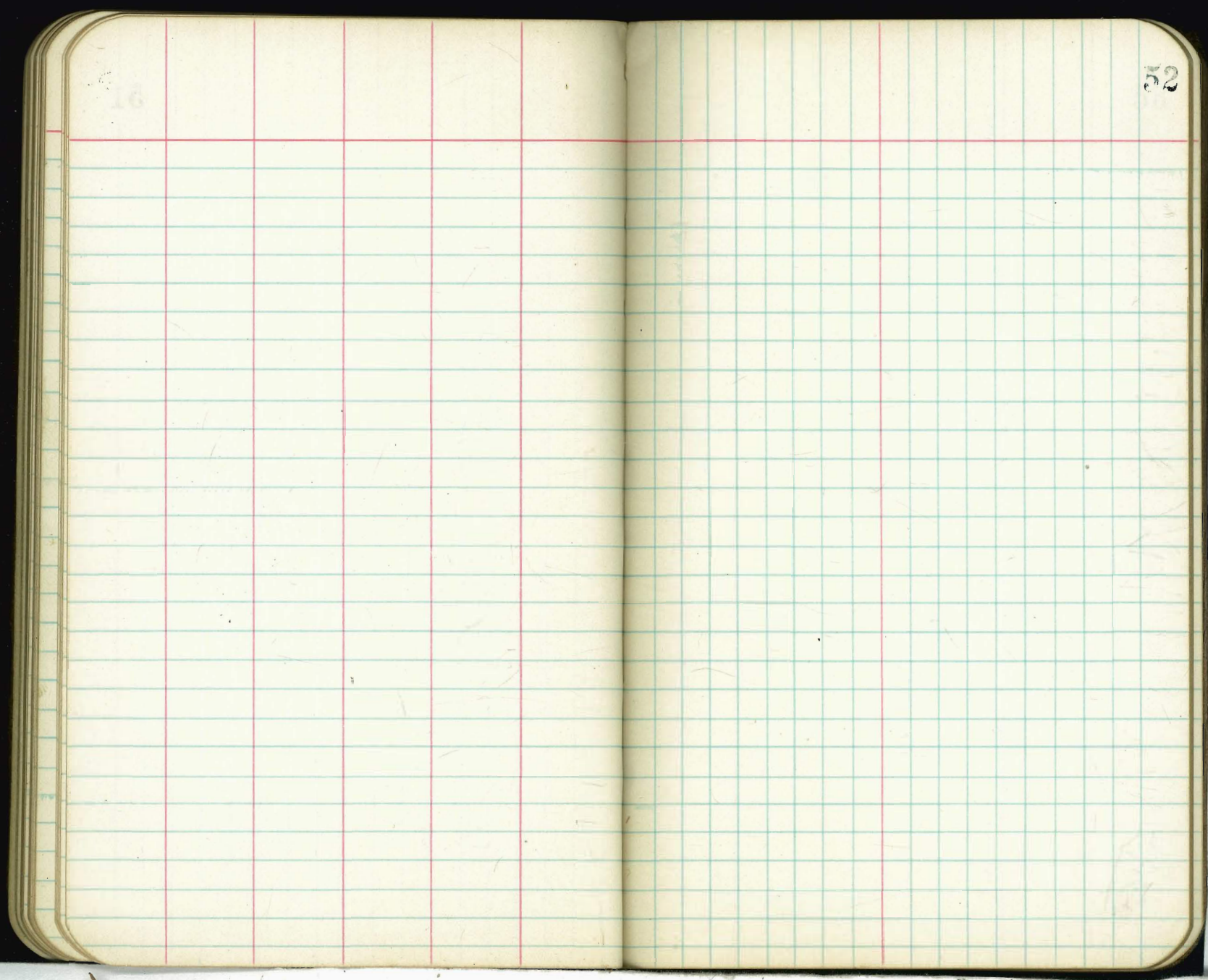






16

52





52

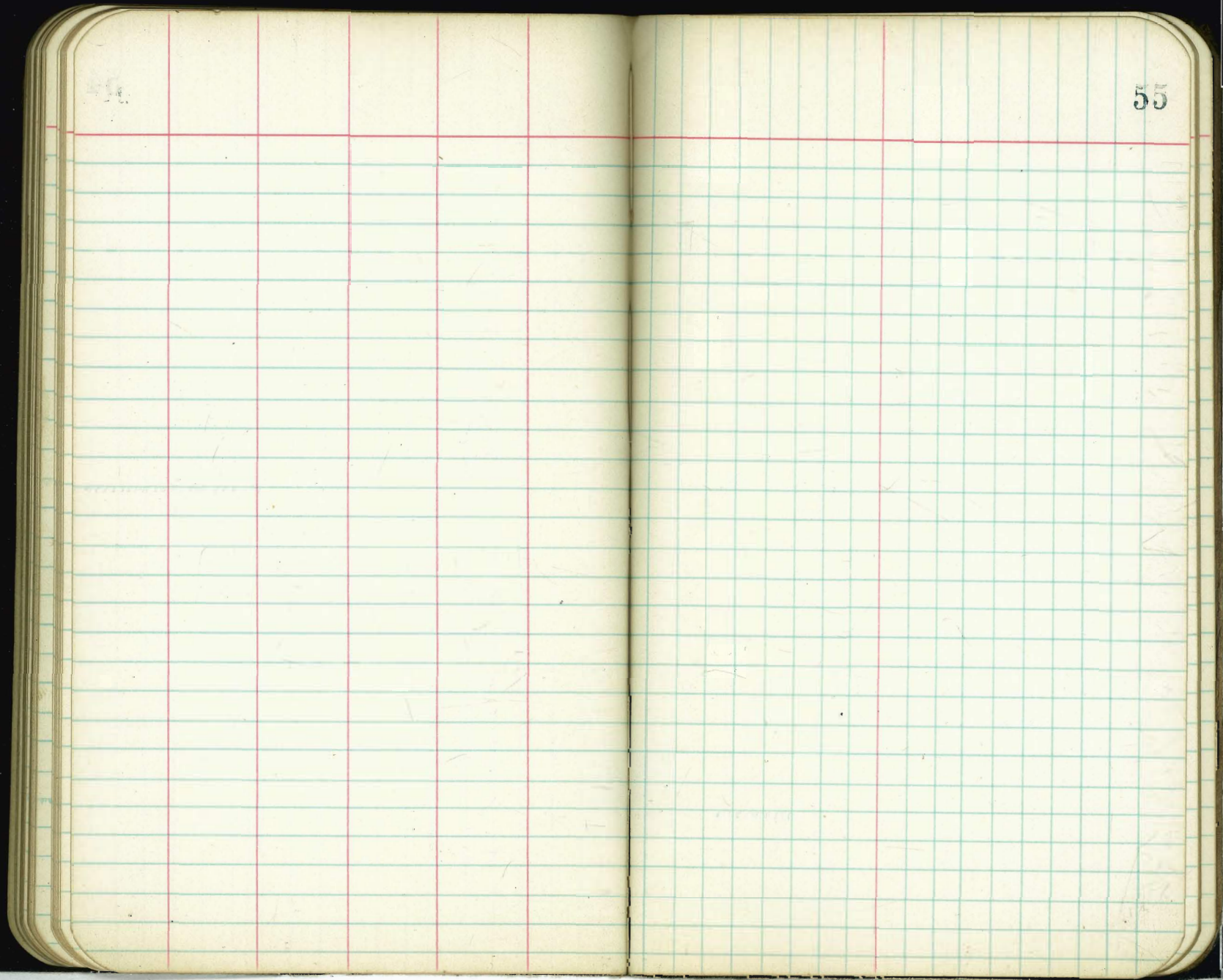
53



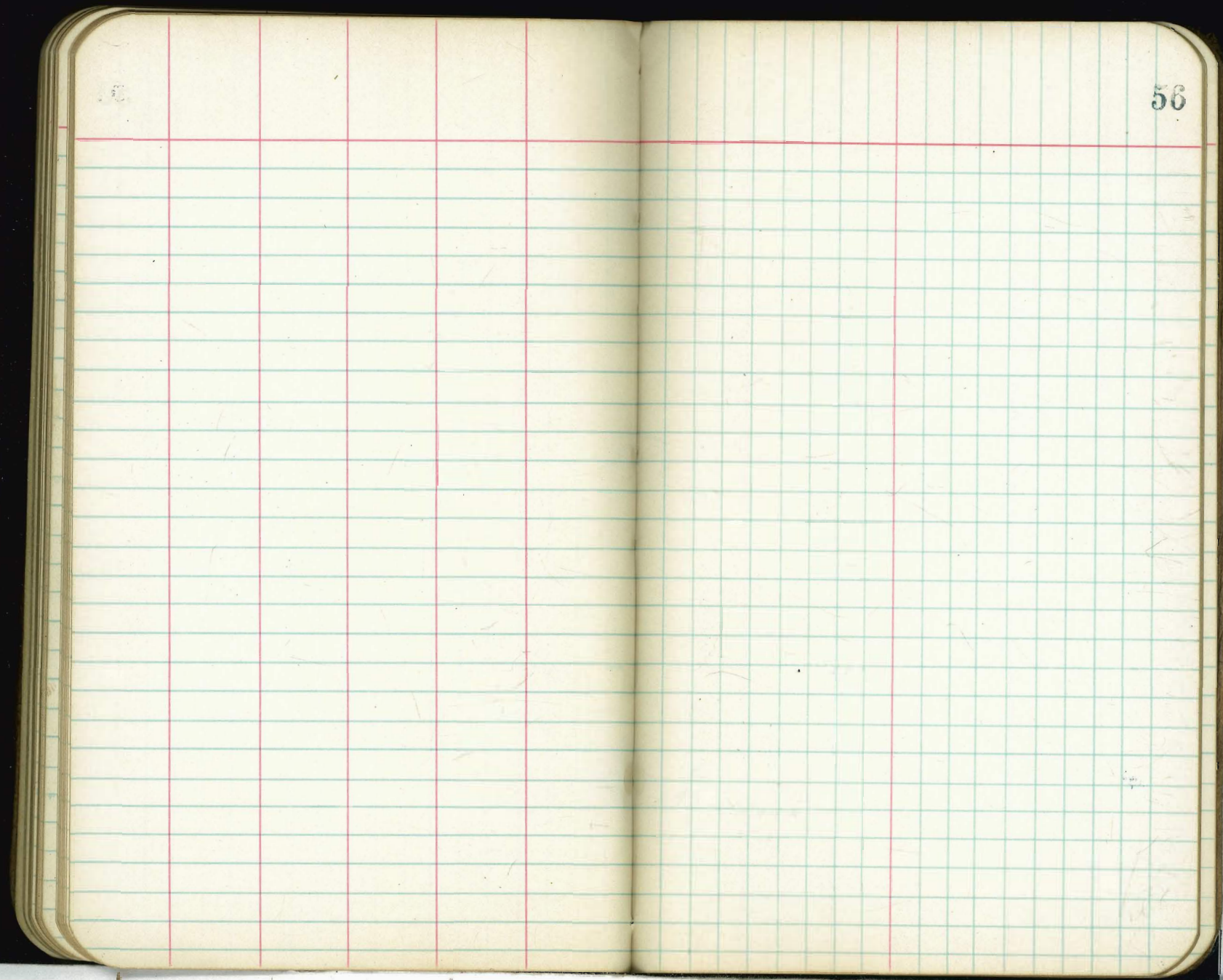
53

54





















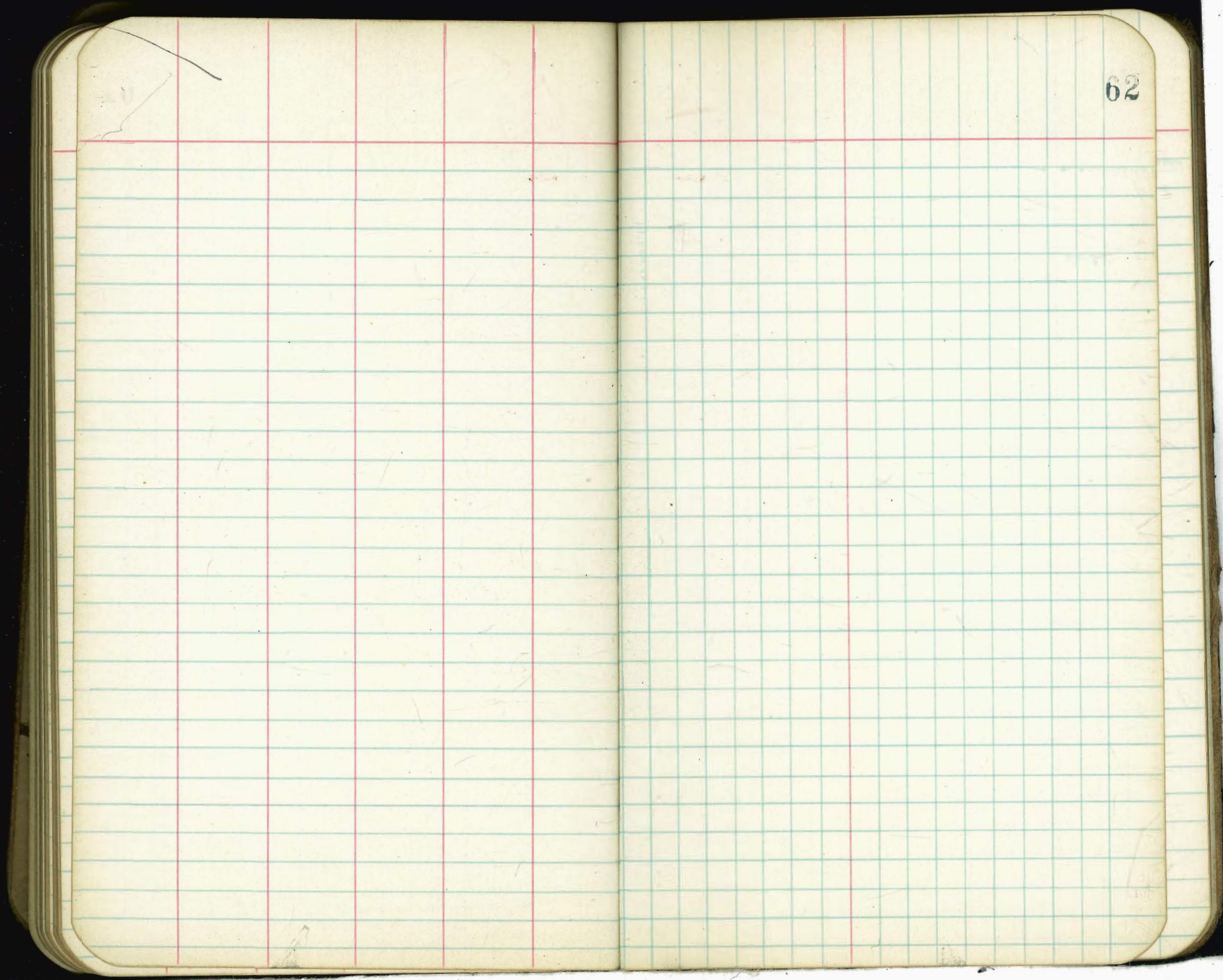














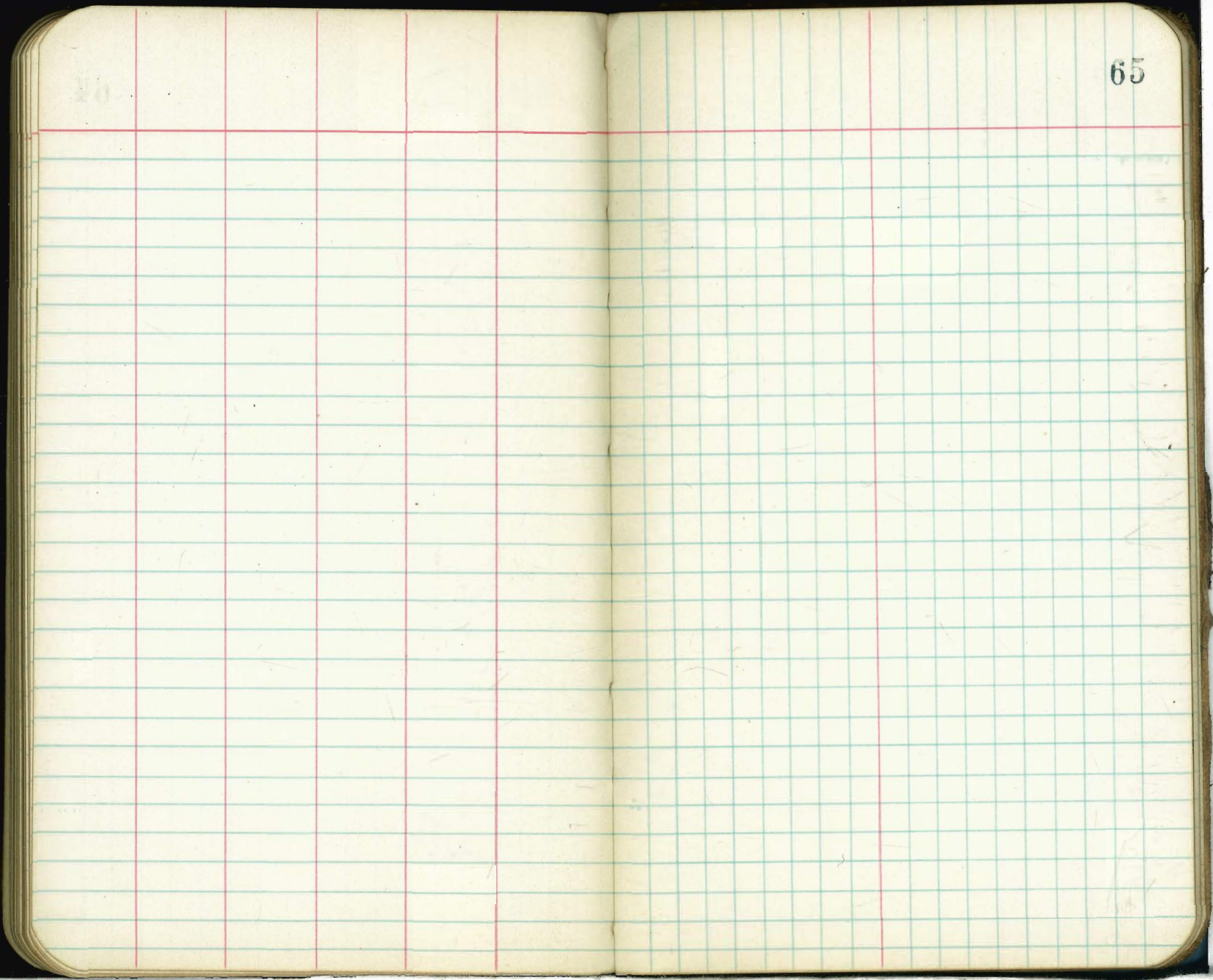
50

63





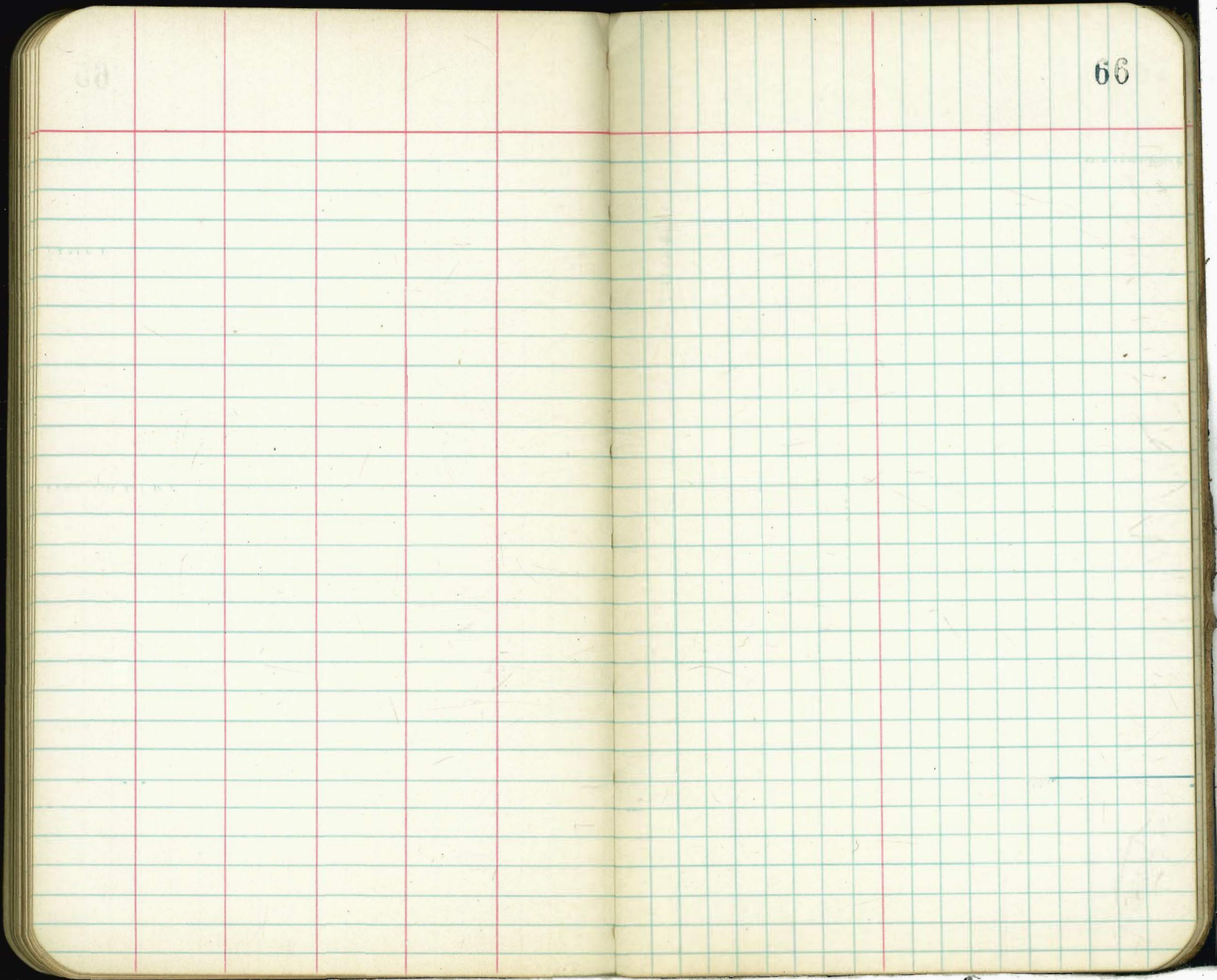




64

65





65

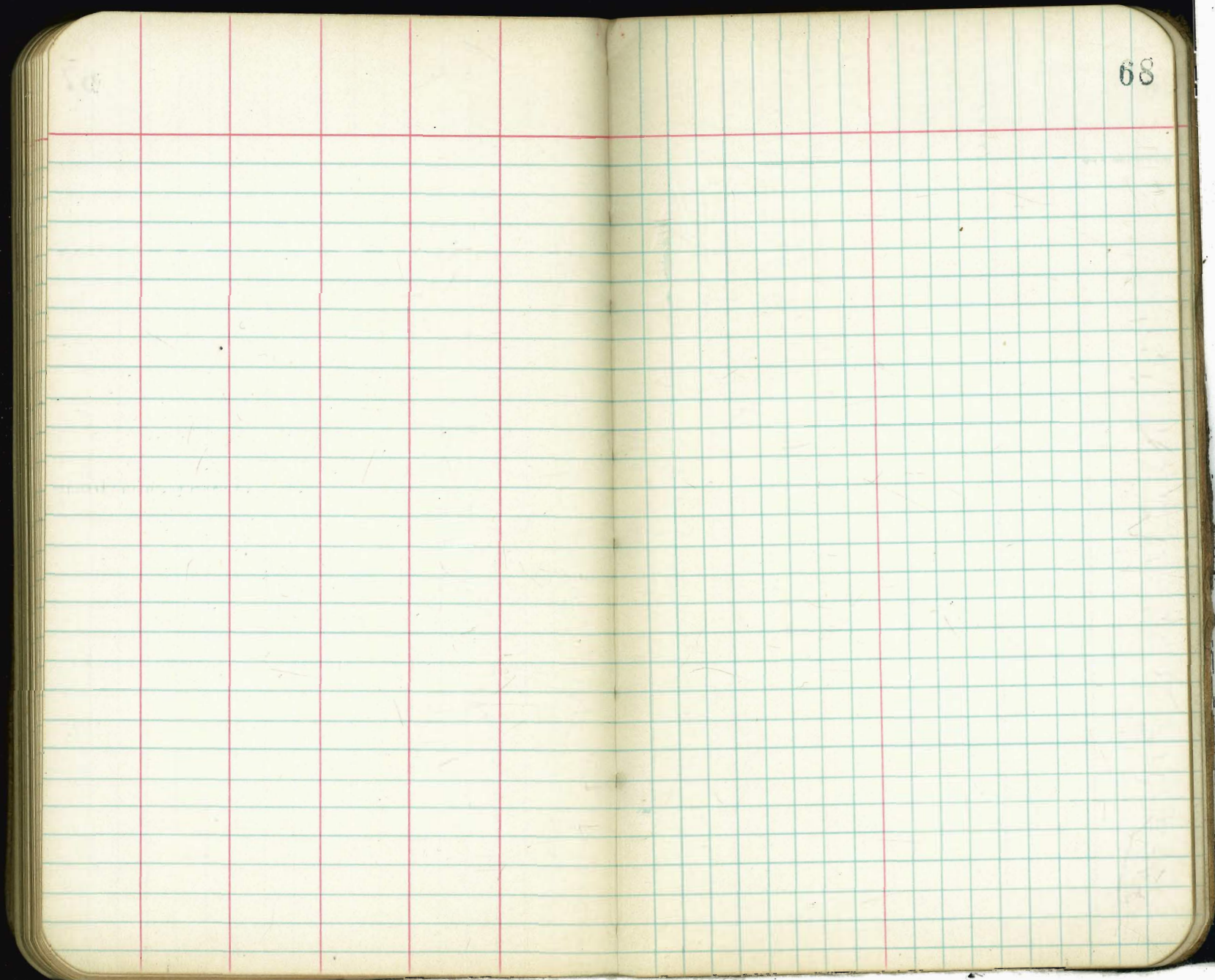
66



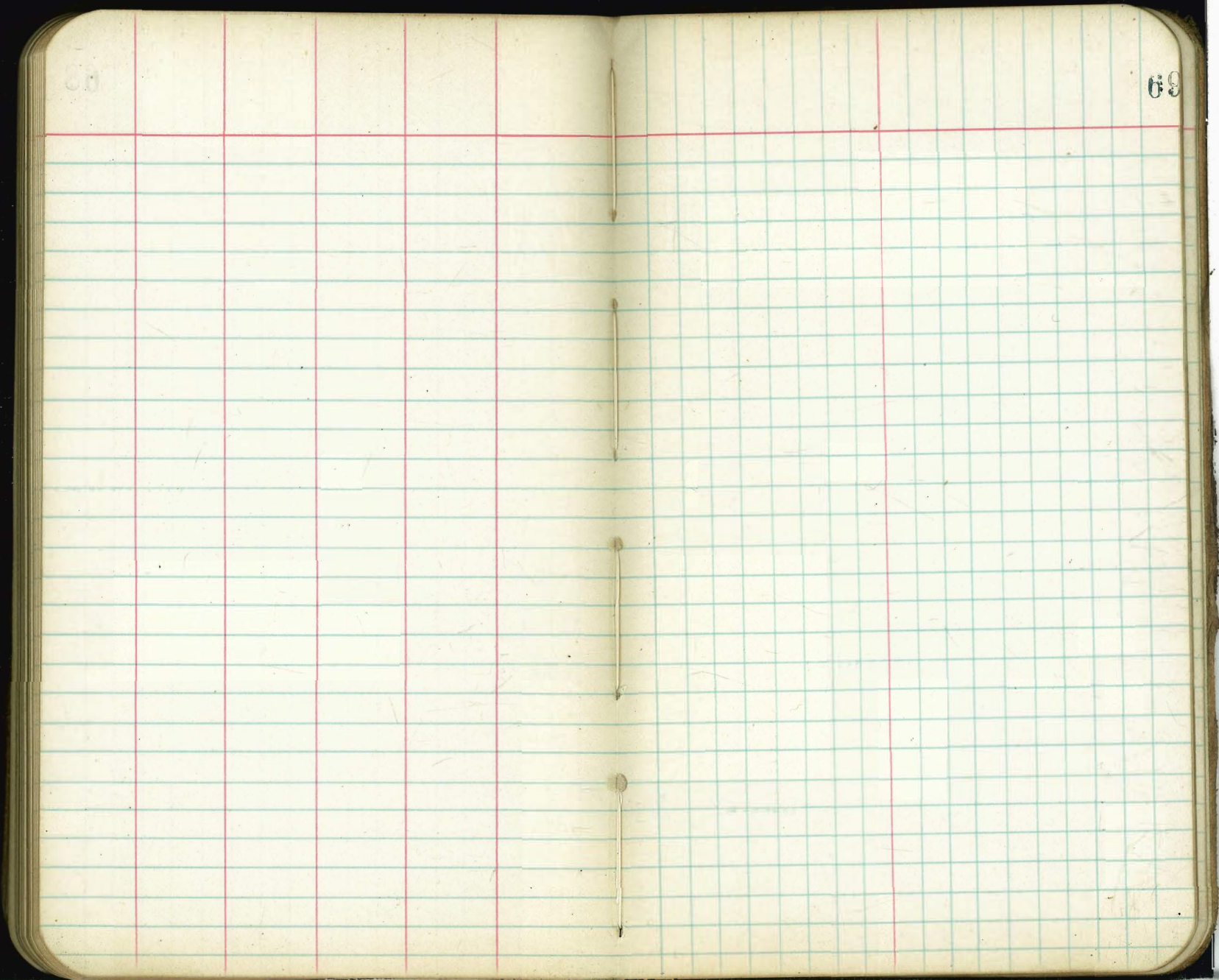
66

67





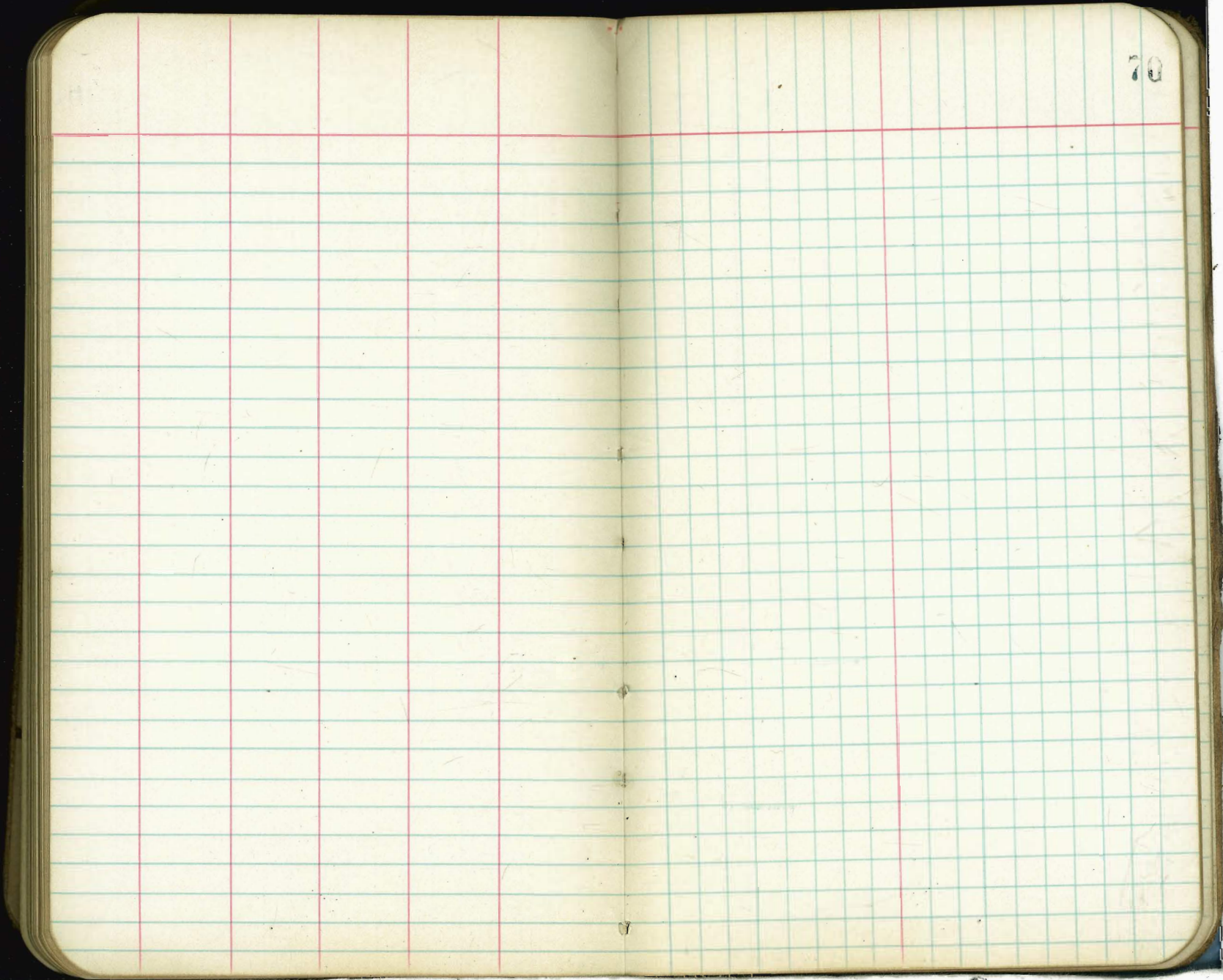




68

69











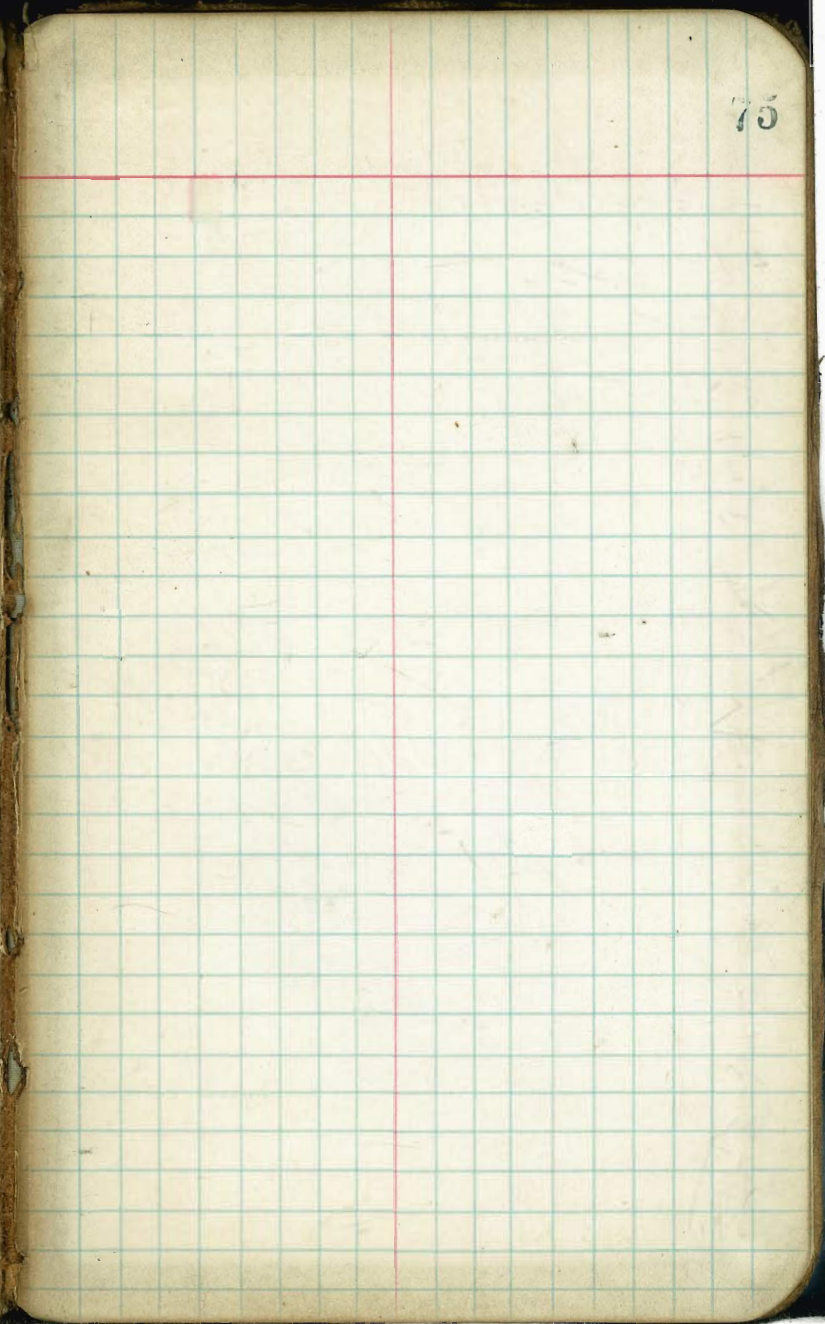
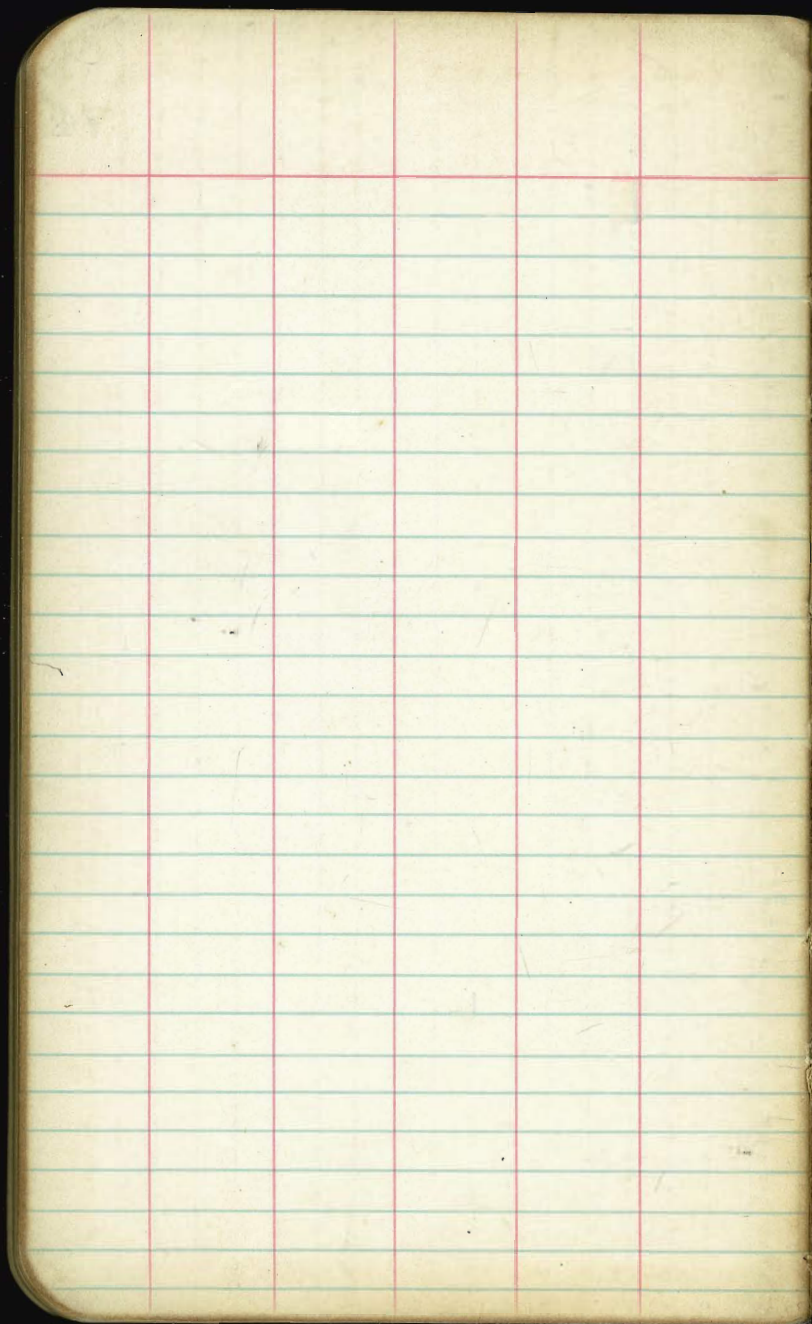




78

74





28871 Herbert & Uyas - 155' N. of N. L. Uyas  
W 15' line Herbert.

BMs Park Bird

303.18 Plg SE Rot & Ind.



