

F.B.
850

LIBRARY

170. 420

Old section of 29th hole 87 c.

7' 57"
10' 54"

MICROFILMED
DEC 15 1964

2' 30' L } angle 28th
7' 57' R }

	+	H.I. 90.33	-	88 st
+25 B.L.			4.9	85 ⁴
+3			6.2	84.1
cb			7.0	83.3
1/2			7.4	82.9
c			7.1	83 ²
1/4			7.5	82.8
cb			7.7	82.6
OK.L.			7.8	82 ⁵
+50 OK.L.			9.0	81 ³
cb			8.7	81.6
1/4			8.4	81.9
c			7.9	82 ⁴
1/4			7.8	82.5
cb			7.3	83.0
+5			6.3	84.0
B.L.			4.6	85 ⁷
+75 B.L.			4.2	86 ¹
+5			5.3	85.0
cb			6.5	83.8
1/4			7.7	82.6

	+	H.I. 90.33	-	
c			7.8	82 ⁵
1/4			9.2	82.1
cb			9.2	82.1
77			9.0	82.3
OK.L.			6.7	83 ⁶
1400 OK.L.			7.1	83 ²
cb			7.7	82.6
1/4			7.4	82.9
c			7.0	83 ³
1/4			7.2	83.1
cb			7.6	82.7
+5			7.1	83.2
B.L.			6.2	84 ¹
1425 B.L.			8.7	81 ⁶
cb			7.9	82.4
1/4			6.6	83.7
c			6.6	83 ⁷
1/4			7.0	83.3
+6			7.5	82.8
cb			6.3	84.0
OK.L.			9.7	82.6

	+	H.I. 88.09	-	28 st
2+00 OK 2.			2.3	85 ²
cb			3.7	84.4
1/4			4.2	83.9
+3			3.3	84.8
c			3.3	84.8
1/2			3.2	84.9
+6			3.4	84.7
+7			2.5	85.4
cb			2.6	85.5
OK 2.			3.4	84.7
2+75 OK 2.			2.9	85.7
cb			2.6	85.5
+3			2.9	85.7
1/2			2.8	85.3
c			2.7	85.4
1/2			2.6	85.5
cb			4.4	83.7
OK 2.			1.8	86.3
3+00 = North line of Jct. 14' curb, 10 1/4'				
3+00 OK 2.			2.1	86.2

	+	H.I. 88.09	-	4
cb			4.1	84.0
1/4			2.3	85.8
c			1.9	86.2
1/4			2.2	85.9
			2.1	86.0
cb			2.3	85.8
+5			2.0	86.1
OK 2.			1.2	86.9
North curb of Jct.				
OK 2.			1.5	86.6
cb			1.8	86.3
1/4			1.9	86.3
c			2.0	86.1
1/4			2.3	85.8
cb			3.8	84.3
OK 2.			2.2	85.9

	+	H.I. 88.09	-	28 st
South 1/4 of J. D. 28 th here 57.84' wide				
OK 2.			3.2	84.9
cb			3.7	84.4
+3			2.6	85.5
1/4			1.9	86.3
c			1.7	86.4
1/4			1.5	86.6
+6			2.2	85.9
cb			1.8	86.8
E 2.			1.8	86.8
Center of J. D.				
E 2.			1.1	87.0
cb			1.2	86.9
+2			1.8	86.3
1/2			1.2	86.9
c			1.2	86.9
1/4			1.5	86.6
cb			2.6	85.5
+3			3.5	84.6
OK 2.			2.2	85.9

	+	H.I. 88.09	-	5
North 1/4 of J. D.				
OK 2.			2.1	86.0
+5			3.2	84.9
cb			2.3	85.8
1/4			1.5	86.6
c			1.0	87.1
1/4			1.0	87.1
+7			1.6	86.5
cb			0.9	87.2
E 2.			0.9	87.3
North end of J. D.				
E 2.			0.3	87.8
cb			0.2	87.9
+2			0.9	87.2
1/2			0.4	87.7
c			0.6	87.5
1/4			1.1	87.0
cb			1.7	86.4
OK 2.			2.2	85.9

	+	H.I. 99.63	-	RB ⁵⁴
1200 OK 2.			11.0	88 ⁶
cb			10.0	89 ⁶
+2			9.5	90.1
1/4			9.3	90.3
c			9.5	91 ¹
1/4			9.6	91.0
+3			9.5	91.1
cb			7.7	91.9
8.2.			7.7	91 ⁹
1425 8.2.			7.0	92 ⁶
cb			7.0	92.5
+2			8.0	91.6
1/4			8.0	91.6
c			7.8	91 ⁸
1/4			8.2	91.4
cb			8.6	91.0
+2			7.9	91.7
OK 2.			8.4	91 ²

	+	H.I. 99.63	-	
1450 OK 2.			7.5	92 ¹
cb			7.7	91.9
1/4			7.2	92.4
c			7.1	92 ⁵
1/4			7.0	92.6
+c			7.2	92.4
+3			6.2	93.4
cb			6.2	93.4
8.2.			6.4	93 ²
1475 8.2.			5.4	94 ²
cb			5.6	93.8
+5			6.4	93.3
1/4			6.0	93.6
c			6.0	93 ⁶
1/4			6.4	93.3
cb			6.9	92.7
+3			6.2	93.4
OK 2.			6.3	93 ⁶

	+	HI. 99.63	-	28 ⁵⁴
1700				
OK. 2.			5.1	94 ⁵
+7			5.2	94.4
cb			5.3	93.8
1/4			5.1	94.5
c			4.8	94 ⁸
1/4			5.1	94.5
+5			5.2	94.4
cb			4.4	95.3
8.2.			4.0	95.6
2425			2.6	97.0
8.2.			3.0	96.4
cb			3.5	96.1
+5			3.5	96.1
1/4			3.5	96.1
c			3.5	96.1
1/4			3.9	95.7
cb			4.3	94.8
+5			4.3	95.3
OK. 2.			4.4	95 ³
#	11.89	109.20	-2.42	97.21 Old Hub SW Cor.

	+	HI. 109.20	-	
2450				
OK. 2.			12.9	96 ³
cb			12.9	96.3
1/4			12.0	96.9
c			11.9	97 ³
1/4			11.8	97.4
+4			12.2	97.0
+5			11.1	98.1
cb			11.0	98.3
8.2.			10.7	98 ⁵
2464 = public line, South 28 th St is line 62.22, North 25 th St (62.22 + 4.8) = 67.02' wide.				
2464 from South 28 th St. 10' under 10 1/2' marker				
8.2.			9.7	99 ⁵
cb			10.4	98.8
+5			10.8	98.4
+6			11.5	97.7
1/4			11.3	97.9
c			11.3	97 ⁹
1/4			11.7	97.5
cb			12.3	96.9
OK. 2.			12.5	96 ⁷

	+	H.I. 109.20	-	28 st
2164 for South 28 th , 10' curb 11.70' quarter				
OK.L.			13.0	96 ²
cb			12.4	96.8
1/2			12.0	97.2
c			11.3	97 ⁹
1/2			11.2	98.0
+4			11.0	97.7
+5			10.7	98 ⁵
cb			10.4	98.8
8 ⁷			9.7	99 ⁵

3+00 = South line of I St. (14' curb 13' quarter)

	+	H.I.	-	I ST
3+00 = South line of I St. (14' curb 13' quarter)				
OK.L.			6.8	102.4
cb			9.1	101.1
+6			9.0	100.2
+7			9.5	99.7
1/2			9.6	99.6
c			9.4	99.8
1/2			9.9	99.4
cb			10.6	98.6
OK.L.			11.5	97 ⁷

	+	H.I. 109.20	-	9
South end of I St.				
OK.L.			11.1	98 ¹
cb			10.2	99.0
1/2			9.3	99.9
c			8.9	100 ³
1/2			8.8	100.4
+4			8.6	100.6
+5			8.0	101.2
cb			6.8	102.4
8 ⁷			5.2	104 ⁰

South 1/2 of I St. 29th is 67.88' wide here.

OK.L.			4.7	105 ¹
cb			5.7	103.5
+8			7.3	101.9
+9			8.0	101.2
1/2			8.1	101.1
c			8.3	100 ⁸
1/2			9.1	100.1
cb			9.8	99.4
OK.L.			10.8	98 ³

+ H.I.
109.20

28st

Center of I St.

OK.L.	10.4	98 ²	
cb	10.0	99.7	58
1/4	9.9	100.3	46
c	7.7	101 ⁵	34
1/2	7.4	101.8	22
+4	7.4	101.8	14 18
+5	6.0	103.3	15 17
cb	4.0	104.9	10
E.L.	2.7	106 ⁵	

North 1/4 of I St.

E.L.	1.6	107 ⁶	
cb	3.3	105.9	10
+6	4.1	105.1	16
+9	6.8	103.4	19
1/4	7.0	103.3	22
c	7.2	102 ⁰	34
1/2	9.0	100.2	46
cb	10.8	98.4	58
OK.L.	11.4	97 ²	68

+ H.I.
109.20

10

North end of I St.

OK.L.	11.9	97 ³	68
cb	10.9	98.3	58
1/4	8.6	100.6	46
+6	7.3	101.9	30
c	6.8	102 ⁹	34
1/2	6.6	103.6	22
+2	6.6	103.6	20
+5	3.5	105.7	17
cb	2.7	106 ⁵	10
E.L.	0.9	108 ³	

00 = North line of I St.

E.L.	0.6	108 ⁶	
cb	2.1	107.1	10
+9	3.4	105.8	14
1/4	6.4	103.8	22
c	6.5	102 ⁷	34
+6	6.8	103.4	40
1/2	8.2	101.0	46
cb	11.6	97.4	68

H.I. 28th
109.20

I to H

OK. L.	12.6	96 ⁶	
+25			
OK. L.	12.7	96 ⁵	
cb	11.9	97.3	59
1/2	10.2	99.0	47
+4	9.3	99.9	43
+9	6.8	102.4	38
c	6.6	102 ⁶	34
1/2	6.5	102.7	22
+3	3.0	104.2	19
cb	1.1	108.1	10
8 L.	0.1	109 ¹	
+50			
8 L.	0.0	109 ²	
cb	2.5	106.7	10
+9	5.1	104.1	19
+11	6.8	102.3	21
1/2	6.9	102.3	22
c	7.1	102 ¹	34
+2	7.6	101.6	36
1/2	11.1	98.1	47
cb	13.5	95.7	59

H.I. 11
109.20

OK. L.	13.0	96 ²	
-75			
OK. L.	12.0	95 ²	-97.3
cb	12.1	97.1	59
1/2	13.5	95.7	47
+3	11.6	97.4	42
c	7.3	101 ²	35
1/2	7.0	102.3	22
+3	6.9	102.3	19
+5	5.0	104.2	17
-26	2.5	106.4	10
8 L.	1.3	107 ²	
1000			
8 L.	1.1	108 ¹	
cb	2.8	106.4	10
+8	5.2	104.0	18
+10	6.9	102.3	20
1/2	7.0	102.3	22
c	7.3	101 ²	35
+1	8.9	100.3	
1/2	10.3	98.9	47
cb	11.5	97.7	59
OK. L.	13.0	96 ²	

		+ 7.I. 109.20		- 28.05		+ 7.I. 110.45		- 12		
		I to H								
OK	1425		12.5	96 ²		+8		10.2	1003	55
+	+4		12.9	96.4		cb		11.3	992	60
0	+6		10.7	98.5		+5		13.4	97.1	
c	cb		10.4	98.8	60	OK		11.6	98 ²	
+	1/4		9.5	99.7	47	1470		11.0	99 ²	
+	+7		8.5	100.7	40	OK				
c	c		6.8	102.4	35	+3		13.6	97.5	
1/2	1/2		6.3	102.9	20	+6		12.4	98.1	
+	+3		6.2	103.0	19	+8		10.6	99.9	
+	+5		4.2	105.0	17	cb		10.6	99.9	60
c	cb		1.7	107.5	10	1/2		9.9	100.4	48
8						+10		7.1	103.4	38
+5						c		6.8	103.6	35
8	8.2		+0.1	109 ³				6.4	104.1	23
c	#	2.26	110.45	1.03	109.17	1/2				
+	8.2		1.0	109 ⁴		+3		4.2	106.3	20
+1	-cb		2.9	107.4	10	cb		2.6	107.9	10
1/2	+10		4.4	104.1	20	8.2		0.4	110 ¹	
c	1/4		7.0	103.5	20					
+	c		7.4	103.0	35					
1/2	+6		9.2	101.3	41					
c	1/4		10.0	102.5	47					

7.I.
110.95
I to H

2854

2400 B.L.	0.2	110 ²	
cl	2.1	108.4	10
+11	4.6	105.9	21
1/2	6.1	104.4	23
c	6.5	103 ⁹	36
+5	6.8	103.7	41
1/4	7.9	102.6	48
cl	9.6	100.9	60
+3	9.9	100.6	
+6	12.4	99.1	
+8	10.0	100.5	
OV. L. 2425	9.9	100 ⁵	
OV. L.	9.2	101 ²	
+3	9.1	101.4	
+6	11.3	99.2	
+9	10.7	99.8	
cl	9.5	102.0	61
1/2	7.4	103.1	48
c	6.2	104 ²	36
1/4	5.8	104.7	23

7.I.
110.95

13

+2	4.0	104.5	21
cl	1.7	108.8	10
B.L. 2450	0.8	110 ^L	
B.L.	0.2	110 ²	
cl	1.6	108 ⁸	10
+12	3.6	106 ⁸	22
1/4	5.6	104 ⁸	23
c	5.8	104 ⁶	36
1/4	6.5	103 ⁹	48
+5	7.1	103 ¹⁰	53
cl	9.2	101 ²	61
+4	11.3	99 ¹	
OV. L.	9.3	101 ^L	

	+	H.I. 110.45	-	28 st	
2+75					
OK.L.			9.6	101 ⁸	
+4			9.2	101 ²	
cb			10.4	100 ⁰	62
+3			9.0	101 ⁰	59
1/4			9.2	101 ⁸	49
+4			7.6	102 ⁸	45
+9			6.0	104 ²	40
c			5.8	104 ⁶	36
1/4			5.8	104 ⁶	23
+2			4.8	105 ⁶	21
cb			2.8	107 ⁶	10
E.L.			1.1	109 ²	
3+00 = South line of H St, 100' wide corner 10' quarter					
3+00					
E.L.			1.5	109.0	
cb			4.1	106.3	10
+9			5.3	105.1	19
+10			6.0	104.4	20
1/4			5.9	104 ²	23
c			6.3	104 ¹	36
+4			6.6	103 ⁸	40

	+	H.I. 110.45	-		
					14
			9.5	101 ⁹	49
			8.6	101 ⁸	52
			10.2	100 ²	54
			8.9	101 ⁵	62
			7.6	102 ⁸	
South curb of H St.					
			6.5	103 ²	
			7.9	102 ⁵	
			8.5	101 ⁹	
			6.6	103 ⁸	
			6.1	104 ²	
			4.7	105 ²	
			3.0	107 ⁴	

+ H.I. 110.95
- 2864

H st. Inters.

North 1/2 of H St.

E.L.	3.2	107 ²
cl	5.1	105 ³
1/4	6.0	104 ⁴
c	6.6	103 ⁸
1/2	7.8	102 ⁶
cl	8.3	102 ¹
+5	8.3	102 ¹
+6	6.8	103 ²
N.L.	6.2	104 ²
- Center of H St.		
N.L.	7.5	102 ⁹
+5	8.6	101 ⁸
cl	7.5	102 ⁹
1/2	6.8	103 ⁶
c	6.3	104 ¹
1/2	6.0	104 ⁴
cl	4.8	105 ⁶
E.L.	3.2	107 ²

+ H.I. 110.95
- 15

North 1/2 of H St.

E.L.	3.2	107 ²
cl	4.8	105 ⁶
1/4	5.8	104 ⁶
c	6.0	104 ⁴
1/2	6.7	103 ⁷
cl	7.0	103 ⁴
+3	8.2	102 ²
N.L.	8.1	102 ³

North east of H St.

N.L.	6.7	103 ⁷
+5	8.3	102 ¹
cl	7.3	103 ¹
+3	6.6	103 ⁸
1/2	6.3	104 ¹
c	5.8	104 ⁶
1/2	5.9	104 ⁵
cl	4.8	105 ⁶
E.L.	3.7	106 ⁷

HI. 110.45
 28 St
 H ST Inters.

00 = North line of H St.

8.2		2.6	107.8	
+2		3.5	106.9	
cl		4.6	105.8	10
1/2		5.4	105.0	24
c		5.5	104.9	38
1/2		6.0	104.4	51.7
+5		6.7	103.7	56.7
+8		7.6	102.6	59.7
cl		8.7	104.7	65.6
W.L.		5.3	105.1	
#	3.89	111.06	3.28	107.17
+25				107.17
W.L.			4.4	106.7
cl			5.4	105.7
+5			5.7	105.4
+6			6.8	104.3
1/2			6.3	104.8
c			5.8	105.3
1/2			5.7	105.4
cl			5.0	106.1

107.17 and 18 line H St
 line of 1870.

HI. 111.06
 16

+8		4.3	106.4	
8.2		3.3	107.8	
+50				
8.2		3.3	107.8	
cl		4.6	106.5	10
1/2		5.5	105.6	24
c		5.5	105.6	38
1/2		6.0	105.1	52
+9		6.8	104.8	61
+10		4.8	106.3	62
cl		4.4	106.7	66
W.L.		3.6	107.5	
+75				
W.L.		3.8	107.8	
cl		4.3	106.8	66
+3		4.5	106.6	63
+4		5.8	105.2	64
1/2		5.2	105.9	52
c		5.1	106.0	38
1/2		5.0	106.1	24
cl		3.9	107.2	10
8.2		3.3	107.8	

H.I.
111.06

28 st.

H to G

1000 E.L.	2.2	108.9	
cl	2.9	108.3	10
1/4	4.0	106.5	24
c	4.5	106.6	38
1/4	5.0	106.1	52
+11	5.9	105.2	63
+12	4.5	106.6	
cl	4.2	106.9	
N.L.	3.6	107.5	
1000			
N.L.	2.5	108.6	
cl	3.5	107.6	66
+3	5.6	105.5	63
1/4	4.8	106.3	52
c	4.1	107.0	38
1/4	3.2	107.9	24
cl	1.8	109.3	10
E.L.	3.9	110.2	
1496 = rubble line			
E.L.	0.2	110.9	
cl	1.4	109.7	
1/4	2.8	108.3	

H.I.
111.06

17

c	3.7	107.4	
1/4	4.3	106.8	
+10	5.1	106.0	
+11	3.3	107.8	
cl	3.1	108.0	
N.L.	2.9	108.2	
#	6.15	110.91	Open Pa. Line

1496 = north of rubble line see sketch next page 60' st, 10' amb, 10' quarters

Omitted on Estimate sheets

H.I.
119.04

28th St (60' wide)

H to G

+25 E.L.	12.1	106.9
cb	11.2	106.8
1/2	10.1	108.9
c	9.6	109.4
1/4	9.7	109.3
cb	7.1	111.9
E.L.	5.5	113.5
+50 E.L.	4.1	114.9
cb	6.0	113.0
1/4	7.4	111.6
c	8.4	110.6
1/4	8.6	110.4
cb	9.7	109.3
OK.L.	11.3	107.7
+75 OK.L.	9.1	109.9
cb	8.4	110.6
1/4	7.9	111.1
c	7.2	111.4
1/4	5.9	113.2
cb	4.3	114.7

H.I.
119.04

19

E.L. 14.0	2.2	116.8
E.L.	+1.2	120.2
cb	2.0	117.0
1/4	4.0	114.7
c	5.7	113.3
1/4	6.8	112.7
cb	7.5	111.6
OK.L. 14.20	9.2	110.8
OK.L.	7.8	111.2
cb	6.6	112.4
1/2	5.9	113.2
c	4.5	114.5
1/4	2.3	116.7
cb	0.6	118.4
E.L.	+1.1	120.1
<p>14.565 on the East = } = South line of 28th St 14.562 on the West</p>		
E.L.	+3.9	122.9
cb	+1.0	120.0
1/4	1.5	117.5
c	3.0	116.0

+ H.I.
119.04

28th St (60' wide)

1/2		4.9	114.2
cl		6.7	112.3
W.L.		7.2	111.8
North curb of 28th St, 90' wide, 14' curbs, 13' gutters			
W.L.		9.2	109.8
+ 5		7.3	111.7
cl		7.0	112.0
1/4		6.4	113.6
c		3.3	116.7
1/4		0.9	117.1
#	13.04	123.85	8.13
			110.91
cl		3.3	120.7
E.L.		0.5	123.5
North 1/2 of 28th St.			
E.L.		0.0	124.0
cl		2.5	121.5
1/4		5.1	118.9
c		7.7	116.3
1/4		10.3	113.7
cl		12.1	111.9

+ H.I.
123.95

20

W.L. 12.8 111.1

Center line of 28th St

W.L. 12.1 111.8

cl 11.8 112.1

1/2 10.4 113.5

c 8.4 115.5

1/2 5.4 118.5

cl 2.4 121.5

E.L. 10.3 124.2

North 1/2 of 28th St.

E.L. 10.4 129.3

cl 3.3 120.6

1/2 5.9 118.0

c 7.7 116.2

1/2 9.3 114.6

cl 11.0 112.9

W.L. 12.0 111.9

H.I.
123.95

28th St. (60' wide)

North curb of 28th St.

W.L.	11.6	112.4
cl	10.6	113.4
1/2	9.1	114.9
c	7.8	116.2
1/2	6.0	118.0
cl	2.4	121.6
E.L.	+ 0.8	124.8

oo North line of 28th St.

oo		
E.L.	+ 1.8	125.8
cl	1.0	123.0
1/2	4.2	119.8
c	7.2	116.8
1/2	6.9	118.2
cl	10.3	113.7
OK L.	11.3	112.7
+20'		
OK L.	9.8	114.2
cl	9.1	114.9
1/2	7.5	116.5
c	4.1	119.9

H.I.
123.95

21

1/4		1.0	123.0
H	12.92	13 6.87	123.95 ✓
cl		10.9	126.0
E.L.		9.6	124.3
+50			
E.L.		5.9	134.0
cl		8.2	128.7
1/4		10.5	126.4
c		12.7	124.2
1/2		16.8	120.1
cl		20.8	116.6
OK L.		21.4	115.5
+75			
OK L.		19.9	117.0
cl		17.5	119.5
1/2		14.1	122.8
c		11.1	125.8
1/4		8.9	128.0
cl		6.3	130.6
E.L.		3.5	133.4

+ H.I.
136.87

28th St (60' wide)

¹⁺⁰⁰ E.L.	1.0	135.4
cl	4.3	132.6
1/4	6.4	130.5
c	9.1	127.8
1/4	11.8	125.1
cl	14.2	123.7
OK L.	17.8	119.1
¹⁺²⁵ OK L.	14.4	122.5
cl	11.5	125.4
1/4	9.2	127.7
c	6.7	130.2
1/4	3.3	133.6
cl	1.7	135.2
E.L.	0.4	136.5
¹⁺⁵⁰ E.L.	+1.7	133.6
cl	0.6	136.3
1/4	2.7	134.2
c	5.4	131.3
1/4	8.3	128.6
cl	10.8	126.1

+ H.I.
136.87

23

OK L.	12.2	124.7
¹⁺⁷⁵ OK L.	9.7	127.2
cl	9.0	128.9
1/4	7.3	129.6
c	4.6	132.3
1/4	1.5	135.4
#	5.21	142.09
cl	4.9	137.2
E.L.	2.2	139.9
²⁺⁰⁰ E.L.	1.0	141.1
cl	3.3	138.8
1/4	5.3	136.8
c	9.9	133.2
1/4	11.3	130.8
cl	12.6	129.5
OK L.	14.5	127.6

H.I.
142.09

28th St. (60' wide)

2+25 OK.L.	14.3	127.8
cl	12.3	129.8
1/4	10.1	132.0
c	7.5	134.5
1/4	5.7	136.4
cl	3.4	138.7
2.L.	0.5	141.4
2+55 2.L.	2.8	139.3
cl	3.8	138.3
1/4	5.4	136.7
c	8.5	133.6
1/4	10.3	131.8
cl	12.1	130.0
OK.L.	13.5	128.6
2+75 OK.L.	15.7	126.4
cl	14.7	127.4
1/4	13.6	128.5
c	10.3	131.8
1/4	8.2	133.9
cl	7.6	134.5

H.I.
142.09

23

8.L.	6.3	135.8		
#	0.35	136.05	5.89	136.20
3+00 = South line of East St. 90' wide 14' curb 10' quarter				
3+00				
8.L.			5.6	131.0
cl			4.5	130.9
1/4			6.9	129.7
c			8.6	128.0
1/4			10.2	126.4
cl			11.4	125.2
OK.L.			12.5	124.0
South curb of East F St.				
OK.L.			12.8	123.8
cl			11.2	125.4
1/4			10.5	126.1
c			9.7	126.9
1/4			8.9	127.7
cl			7.7	128.9
8.L.			6.0	130.6

+

H.I.
136.50

29th St (60' wide).

South 1/2 of East F St.

E.L.	7.3	132.3
cb	5.4	131.2
1/4	7.7	128.9
c	8.9	127.7
1/4	9.2	127.4
cb	9.1	127.5
OK L.	10.4	126.2

Center line of East F St.

OK L.	8.1	128.5
cb	6.3	130.3
1/4	6.2	130.4
c	5.6	131.0
1/4	4.2	132.4
cb	3.0	133.6
E.L.	2.1	134.5

North 1/2 of E, F St.

E.L.	+2.2	138.9
cb	+1.0	137.6
1/4	1.0	135.6

+

H.I.
136.00

24

c	2.6	134.0
1/4	4.1	132.5
cb	4.7	131.9
OK L.	6.2	130.4

North end of East F St.

OK L.	5.7	130.9
cb	3.8	133.3
1/4	1.6	135.0

12.53 | 149.05

#	0.00	136.05
c	12.1	137.0
1/4	10.1	139.0
cb	7.7	141.4
E.L.	6.2	142.9

00 = North line of East F St.

E.L.	2.5	146.6
cb	4.2	144.9
1/4	6.1	143.0
c	8.8	140.3
1/4	11.0	138.1
cb	13.5	135.6

+ 4.2
149.09

29th St (10' wide)

OK.L.			16.2	132.9
+20				
OK.L.			11.7	137.4
cb			8.7	140.4
1/2			6.3	142.8
c			2.2	144.9
1/2			2.0	147.1
cb			0.0	149.1
8.L.			+1.6	150.7
+50				
8.L.			+6.2	155.3
cb			+4.8	153.9
1/4			+2.4	151.5
c			0.4	148.9
1/2			3.0	146.1
cb			6.2	142.9
OK.L.			9.0	140.1
+25				
OK.L.			6.3	142.8
J			2.9	146.2
#	12.81	161.88	0.00	148.08 TP
1/2			12.9	147.0
c			9.7	152.2

+ 7.1
161.89

25

1/2			7.2	154.7
cb			5.0	156.9
8.L.			2.7	159.2
1400				
8.L.			0.3	161.6
cb			3.0	158.9
1/2			5.1	156.8
c			7.7	154.2
1/2			11.1	150.8
cb			12.7	149.2
OK.L.			16.8	145.6
1485				
OK.L.			14.4	147.5
cb			10.6	151.3
1/2			9.0	153.9
c			7.0	154.9
1/2			4.5	157.4
cb			1.5	160.4
8.L.			+1.4	163.3

H.I.
166.13

28th Mt (60' wide)

South 1/2 of Tract Mt.

E.L.	0.5	165.6
cl	3.1	163.0
1/4	6.6	159.5
c	9.5	156.6
1/2	12.8	153.3
c	16.3	149.8
OV. L.	20.1	146.0

Center of Tract Mt.

OV. L.	20.2	145.9
cl	16.2	149.9
1/2	13.6	152.5
c	9.6	156.5
1/2	6.3	159.8
cl	2.5	163.6
E.L.	0.1	166.0

North 1/2 of Tract Mt.

E.L.	0.1	166.0
cl	3.0	163.1
1/2	6.7	159.4

H.I.
166.13

27

c	10.0	156.1
1/2	13.5	152.6
cl	16.1	150.0
OV. L.	20.2	145.9

North end of Tract Mt.

OV. L.	20.2	145.9
cl	16.8	149.3
1/2	13.8	152.3
c	10.3	155.8
1/4	7.0	159.1
cl	3.6	162.5
E.L.	0.0	165.8

00. South line of Tract Mt.

00		
E.L.	1.3	164.8
cl	4.3	161.8
1/2	7.7	158.4
c	10.7	155.4
1/2	14.4	151.7
cl	16.3	149.8
W E.L.	20.7	145.4

H.I.
166.13

28th Vt (60' wide)

+25
OK L.

cl

1/4

c

1/2

2b

8 L.

+50

8 L.

cl

1/4

c

1/2

cl

OK L.

+75

OK L.

cl

1/4

c

1/2

cl

22.1 144.0

19.2 147.9

16.2 150.9

11.7 154.4

8.3 157.8

5.3 160.8

2.6 163.5

5.6 166.5

8.0 158.1

10.8 155.3

13.4 152.7

16.9 149.2

20.6 145.5

23.7 142.4

23.7 142.4

21.4 144.7

18.4 147.7

14.9 151.2

12.6 153.5

10.1 156.0

8 L.

1000 South line of East 8 Vt. 80' wide, 14' curb, 15' gutter

1100

8 L.

cl

#

1/2

c

1/4

cl

OK L.

South end of East 8 Vt.

OK L.

cl

1/2

c

1/2

cl

8 L.

2.91

156.13

8.6

9.9

12.3

12.91

4.5

7.8

10.2

13.0

15.3

14.9

12.9

11.3

9.3

5.7

3.5

1.3

157.5

156.2

153.8

153.22

151.6

148.8

145.9

142.1

140.8

141.2

143.2

145.8

147.8

150.4

152.6

154.8

28

H.I.
156.13

28th Vt (60' wide)

South 1/2 of East E.Vt.		
E.L.	1.1	155.0
cl	3.3	152.8
1/4	5.6	150.5
c	7.4	148.7
1/2	9.1	147.0
cl	11.0	145.1
W.L.	12.6	143.5

Center of East E.Vt.

W.L.	9.8	146.3
cl	8.6	147.5
1/2	7.3	148.8
c	5.8	150.0
1/4	3.1	153.0
cl	1.1	155.0
E.L.	+1.1	157.1

North 1/2 of East E.Vt.

E.L.	+1.26	158.7
cl	+1.2	157.1
1/4	1.2	154.9

H.I.
156.13

29

c	3.6	152.5
1/2	5.8	150.3
cl	7.3	148.8
W.L.	8.7	147.4

North End of East E.Vt.

W.L.	7.4	148.7
cl	5.5	150.6
1/4	3.9	152.2
c	1.9	154.2
1/2	+0.5	156.6
cl	+2.7	158.8
E.L.	+4.8	160.9

00 = North line of East E.Vt.

E.L.	+6.8	162.9
cl	+4.9	161.0
1/2	+2.7	158.8
c	+0.4	156.5
1/4	2.0	154.1
cl	3.9	152.2
W.L.	5.9	150.3

H.I.
156.13

28th St (60' wide)

+28 = South line of West E St. 60' wide 10' curbs, 10' gutters.

129

OK L.		2.6	153.5
H	13.07	169.20	0.00
cb		12.9	156.3
1/4		10.7	158.5
c		7.6	161.6
1/4		5.3	163.9
cb		3.3	165.9
E.L.		1.7	167.5

South curb of West E St.

E.L.		+0.1	169.3
cb		1.5	167.7
1/4		4.0	165.2
c		6.3	162.9
1/4		8.9	160.3
cb		11.7	157.5
OK L.		14.1	155.1

South 1/2 of West E St.

OK L.		13.0	156.2
cb		10.8	158.4

H.I.
169.20

30

1/2		7.2	162.0
c		4.7	164.5
1/2		2.7	166.5
cb		0.3	168.9
E.L.		+1.4	170.6
Center of West E St.			
E.L.		+3.0	172.2
cb		+0.9	170.1
1/4		1.6	167.6
c		3.9	165.3
1/4		6.5	162.7
cb		10.2	159.0
OK L.		12.4	156.8
North 1/2 of West E St.			
OK L.		11.4	157.8
cb		9.1	160.1
1/4		5.7	163.5
c		3.3	165.9
1/4		0.6	168.6
cb		+1.4	170.6

HI
169.20

29th Mt (60' wide)

E.L.		+ 3.6	172.8
North end of West E Mt.			
E.L.		+ 4.0	173.2
cb		+ 2.0	171.2
1/4		0.3	168.9
c		2.9	166.3
1/4		5.1	164.1
cb		8.5	160.7
Or. L.		11.3	157.9
100' North line of West E Mt.			
100'			
Or. L.		11.1	158.1
cb		8.1	161.1
1/4		4.6	164.5
c		2.4	166.8
1/4		0.2	169.0
#	5.37	173.77	6.80 169.90
cb		2.4	171.4
E.L.		0.3	173.5
+25 E.L.		0.3	173.5
cd		1.8	172.0
1/4		4.2	169.6

HI
173.77

c		7.2	166.6
1/4		9.2	164.6
cb		12.3	161.5
Or. L.		14.5	159.3
+50			
Or. L.		14.9	158.9
cb		12.7	161.1
1/4		9.2	164.6
c		6.6	167.2
1/4		4.5	169.3
cb		2.1	171.7
E.L.		0.0	173.8
+75			
E.L.		0.8	173.0
cb		2.6	171.2
1/4		4.9	169.0
c		7.1	166.7
1/4		10.0	163.8
cb		13.7	160.1
Or. L.		15.9	158.3

H.I.
173.77

28th Vt (60' wide)

1400 N.L.	16.8	157.0
cl	14.5	159.3
1/2	11.9	161.9
c	9.1	164.8
1/2	6.7	167.1
cl	4.0	169.8
E.L.	1.5	172.3
1+25		
E.L.	3.9	170.0
cl	6.2	167.6
1/2	9.0	164.8
c	11.3	162.5
1/2	13.3	160.5
cl	16.2	157.6
N.L.	18.4	155.4
1+50		
N.L.	22.4	151.4
cl	19.8	154.0
1/2	17.4	156.4
c	15.1	157.7
1/2	12.6	161.2
cl	10.7	163.1

H.I.
173.77

E.L.	7.9	166.0
1+75		
E.L.	12.5	161.3
#	0.05	160.94
12.88		160.89
cl	1.9	159.0
1/2	4.4	156.5
c	6.2	154.7
1/2	7.8	153.1
cl	10.6	150.3
N.L.	19.2	146.7
2+12 = North line of 4 Vt. 80' wide, 14' center, 10' 1/2		
2+12		
OK 2:	17.4	143.5
cl	15.1	145.8
1/2	13.6	147.3
c	11.7	149.2
1/2	10.3	150.6
cl	8.4	152.5
E.L.	6.4	154.5

H.I.
160.94

- 28th Mt (60' wide)

South end of Φ Mt.

E.L. 3.9 157.0

cl 5.9 155.0

$\frac{1}{2}$ 7.8 153.1

c 9.4 151.5

$\frac{1}{2}$ 11.6 149.3

cl 13.6 147.1

W.L. 16.1 144.8

East $\frac{1}{2}$ of Φ Mt.

W.L. 14.9 146.1

cl 12.2 148.7

$\frac{1}{2}$ 10.4 150.5

c 9.3 152.6

$\frac{1}{2}$ 6.2 154.7

cl 3.8 157.1

E.L. 1.5 159.4

Center of Φ Mt.

E.L. 0.4 160.5

cl 3.2 157.7

$\frac{1}{2}$ 5.6 155.3

H.I.
160.94

c 9.0 152.9

$\frac{1}{2}$ 9.8 151.1

cl 11.8 149.1

W.L. 14.2 146.7

North $\frac{1}{2}$ of Φ Mt.

W.L. 13.6 147.3

cl 11.2 149.7

$\frac{1}{2}$ 9.6 151.3

c 7.5 153.4

$\frac{1}{2}$ 5.0 155.4

cl 2.7 158.2

E.L. + 0.4 161.3

North end of Φ Mt.

E.L. + 0.5 161.4

cl 2.3 158.6

$\frac{1}{2}$ 5.2 156.7

c 7.5 153.4

$\frac{1}{2}$ 9.0 151.9

cl 11.0 149.9

W.L. 13.6 147.3

H.I.
160.94

28th St (60' wide)

00 = north line of St.

00			
OK L.	13.0	147.9	
cb	10.6	150.3	
1/4	9.7	152.2	
c	7.0	153.9	
1/2	5.6	155.3	
cb	2.6	158.3	
B.L.	0.0	160.9	
<u>+25</u>			
B.L.	0.3	160.6	
cb	3.2	157.7	
1/4	6.0	154.9	
c	7.7	153.2	
1/2	9.5	151.4	
cb	11.0	149.9	
OK L.	12.7	148.2	
<u>+50</u>			
OK L.	12.7	148.2	
cb	11.6	149.3	
1/4	10.3	150.6	
c	8.1	152.8	
H	7.65	160.72	7.87 153.07

H.I.
160.72

1/2	7.0	153.7
cb	5.1	155.6
B.L.	3.1	157.6
<u>+75</u>		
B.L.	7.8	152.9
cb	9.9	150.9
1/4	10.9	149.8
c	12.4	148.3
1/2	13.9	146.8
cb	15.0	145.7
OK L.	16.3	144.4
<u>+100</u>		
OK L.	16.0	144.7
cb	11.8	148.9
1/4	10.3	150.4
c	8.6	152.1
1/2	7.0	153.7
cb	5.8	154.9
B.L.	4.4	156.3

H.I.
160.72

29th H (60' wide)

$\frac{1+20}{8.5}$	0.6	160.1
cb	2.7	158.0
$\frac{1}{4}$	4.5	156.2
c	6.0	154.7
$\frac{1}{2}$	7.3	153.4
cb	9.3	151.4
OK.L. $\frac{14.00}{14.00}$	12.9	147.8
OK.L.	9.3	151.4
cb	7.2	153.5
$\frac{1}{4}$	5.1	155.6
c	2.0	156.7
$\frac{1}{4}$	1.8	158.9
cb	+0.9	161.6
E.L. $\frac{1+75}{14.00}$	+4.0	164.7
E.L.	+8.2	168.9
cb	+5.3	166.0
$\frac{1}{4}$	+2.2	162.9
c	0.1	160.6
$\frac{1}{4}$	2.3	158.4
cb.	4.1	156.6

H.I.
160.72

OK.L. $\frac{2+00}{2+00}$	6.6	154.1
OK.L.	3.0	157.7
cb	1.1	159.6
#	12.54	173.26
$\frac{1}{4}$	11.2	162.1
c	9.4	163.9
$\frac{1}{2}$	6.8	166.3
cb	3.3	170.0
E.L.	1.4	171.9
$\frac{2+25}{2+25}$	+1.4	175.2
cb	1.1	172.2
$\frac{1}{4}$	3.7	169.6
c	6.0	167.3
$\frac{1}{4}$	8.8	164.5
cb	11.6	161.7
OK.L.	13.7	159.6

H.I.
173.26

29th St (60' wide)

2+70 OK 2.		12.9	160.5	
cl		10.3	163.0	
1/2		7.4	165.9	
c		4.6	168.7	
1/4		1.7	171.6	
cl		+1.2	174.5	
6.2		+4.0	177.3	
2+75 6.2		+5.3	178.6	
cl		+2.1	175.4	
1/2		1.1	172.2	
c		4.1	169.2	
1/2		7.2	166.1	
cl		10.1	163.2	
OK 2		12.2	161.1	
#	10.03	179.35	3.94	169.33
3+00 = South line of CVT 60' wide 10' curb, 13' gutters				
OK 2		17.7	161.7	
cl		15.1	164.3	
1/2		11.9	167.7	
c		9.3	170.1	

Subdivision

C

old road for 28th 100' wide

H.M. Higgins

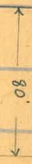
D

old road for 28th 100' wide



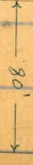
St.

St.



28th

St.



H.I.
179.35

29th (60 wide)

1/2	6.0	173.4
cb	2.9	176.5
E.L.	0.2	179.2
Southwest of C.V.H.		
E.L.	0.3	179.1
cb	2.9	176.5
1/4	6.3	173.6
c	9.4	170.0
1/2	13.0	166.4
cb	15.1	164.3
M.L.	17.6	161.8
South 1/2 of C.V.H.		
M.L.	18.0	161.4
cb	15.5	163.8
1/4	13.0	166.3
c	9.9	169.5
1/2	6.7	172.7
cb	3.2	176.2
E.L.	0.9	178.5

H.I.
179.35

Center of C.V.H.

E.L.	1.7	177.7
cb	4.3	175.1
1/4	7.5	171.9
c	10.2	169.2
1/4	13.3	166.1
cb	15.4	164.0
M.L.	19.3	161.1
North 1/2 of C.V.H.		
M.L.	16.5	162.9
cb	14.7	164.7
1/4	12.9	166.5
c	10.3	169.1
1/4	9.1	171.3
cb	5.0	174.4
E.L.	1.9	177.6

H.I.
179.35

28° (60 wide)

North end of C St.

E.L.	0.7	178.7
cl	2.8	176.6
1/2	5.6	173.8
c	8.1	171.3
1/2	11.0	168.4
cl	13.2	166.2
OK L.	15.0	164.4

00 = North line of C St.

OK L.	13.7	165.4	
cl	11.2	168.2	
1/2	8.5	170.9	
c	5.7	173.7	
1/2	3.2	176.2	
cl	0.7	178.7	
E.L.	+1.6	175.0	181.0
+25 E.L.	+4.6	178.0	184.0
cl	+2.6	176.0	182.0
1/2	+0.2	173.0	179.6
c	3.0	176.4	

H.I.
179.35

1/4	6.4	173.0		
cl	9.2	170.2		
OK L.	11.5	167.9		
+50 OK L.	8.9	170.5		
cl	6.2	173.2		
1/2	3.2	176.2		
c	0.0	179.4		
=	13.04	192.04	0.35	179.00

1/2	9.7	183.3
cl	7.3	184.7
E.L.	5.1	186.9
+70 E.L.	2.8	189.2
cl	5.1	186.9
1/2	7.6	184.4
c	9.9	182.2
1/4	13.0	179.0
cl	15.9	176.1
OK L.	19.1	173.9

	+	HI 192.04	28 th St (60' wide)	
$\frac{1+00}{OK.L.}$			14.9	177.1
cl			13.1	178.9
$\frac{1}{2}$			10.0	182.0
c			7.6	184.4
$\frac{1}{2}$			5.3	186.7
cl			2.4	189.6
E.L.			0.5	191.5
$\frac{1+20}{E.L.}$			+ 0.5	192.5
cl			0.9	191.1
$\frac{1}{2}$			3.1	188.9
c			5.5	186.5
$\frac{1}{2}$			8.3	183.7
cl			9.6	182.4
OK.L.			11.9	180.2
$\frac{1+50}{OK.L.}$			9.6	182.4
cl			8.4	183.6
$\frac{1}{2}$			6.5	185.5
c			3.6	188.4
$\frac{1}{2}$			1.3	190.7
#	7.42	198.13	1.33	190.71

	+	HI 198.13		
			5.5	192.6
			4.9	193.2
			$\frac{1+70}{E.L.}$	3.9
			4.6	193.5
			5.9	192.2
			9.4	189.7
			11.2	186.9
			12.9	185.2
			13.3	184.8
			$\frac{2+20}{OK.L.}$	11.0
			11.0	187.1
			11.0	187.1
			9.3	188.8
			7.0	191.1
			5.1	193.0
			3.9	194.2
			3.1	195.0

H.I.
198.13

28st (60' wide)

$\frac{2+20}{8}$ E.L.

2.7 195.4

cl

3.4 194.7

$\frac{1}{2}$

4.4 193.7

c

5.8 192.3

$\frac{1}{2}$

6.9 191.2

cl

8.2 189.9

OK L.

8.6 189.5

$\frac{2+50}{8}$

OK L.

5.9 192.2

cl

6.3 191.8

$\frac{1}{4}$

5.3 192.8

c

4.3 193.8

$\frac{1}{4}$

3.5 194.6

cl

2.5 195.6

E.L.

2.0 196.1

$\frac{2+70}{8}$

E.L.

1.3 196.8

cl

1.7 196.4

$\frac{1}{4}$

2.5 195.6

c

2.8 195.3

$\frac{1}{4}$

2.4 195.7

cl

2.3 195.8

H.I.
198.13

28th ST

OK L.

2.5 195.6

3+00 = South line of B.W.T.

3+00

OK L.

1.3 196.8

cl

1.5 196.6

$\frac{1}{4}$

1.5 196.6

c

1.6 196.5

$\frac{1}{4}$

1.9 196.2

cl

1.1 197.0

B.L.

1.0 197.1

H

1.6 196.97 = 196.96 7th of SEC cor
28th & B STS.

Section of Kansas St - 80' wide, 14 curbs, 13' quarters, from South line of
 El Cajon to the South line of Pubk.
 B.M. 368.52 NW cor. El Cajon & Kansas R.R., Spk. Plc. Jan 7-13 (Zimmerman
 Shows
 Devine.

	+	H.I.	-			
	1.77	375.29		368.52	1/4	6.7 368.6
oo = South line of El Cajon Ave					cb	7.2 368.1
00					8 ft.	6.9 368.4
Or. L.			6.4	368.9	+70"	
cb			6.5	368.8	8 ft.	7.0 368.3
1/4			6.8	368.5	cb	5.8 369.5
c			7.0	368.3	1/4	4.9 370.4
1/4			7.3	368.0	c	6.1 369.2
cb			7.5	367.8	1/4	6.3 369.0
8 ft.			7.5	367.8	cb	6.2 369.1
+20"					Or. L.	6.3 369.0
8 ft.			6.0	369.3	1+00	
cb			5.6	369.7	Or. L.	6.1 369.2
1/4			5.6	369.7	cb	6.0 369.3
c			6.6	368.7	1/4	6.1 369.2
1/4			6.6	368.7	c	5.9 369.4
cb			6.5	368.8	1/4	6.3 369.0
Or. L.			6.5	368.8	cb	6.8 368.5
+100"					8 ft.	6.8 368.5
Or. L.			6.2	369.1		
cb			6.3	369.0		
1/4			6.5	368.8		
c			6.7	368.6		

H.I.
375.29

Shanar St (80' wide)

1+20 8.L.	6.4	368.9
cb	6.5	368.8
1/2	6.5	368.8
c	6.4	368.9
1/2	6.1	369.2
cb	6.1	369.2
OK.L. 1+50	6.1	369.2
OK.L.	6.1	369.2
cb	6.2	369.1
1/2	6.0	369.3
c	6.2	369.1
1/2	6.2	369.1
cb	6.5	368.8
8.L. 1+75	6.0	369.3
8.L.	6.8	368.4
cb	6.8	368.5
1/2	5.3	369.0
c	4.6	370.7
1/2	5.8	369.5
cb	6.2	369.1

H.I.
375.29

OK.L. 2+00	6.0	369.3
OK.L.	5.9	369.4
cb	6.0	369.3
1/2	6.3	369.0
c	6.5	368.8
1/2	6.6	368.7
cb	6.9	368.4
8.L. 2+20	6.9	368.4
8.L.	4.8	370.5
cb	6.1	369.2
1/2	5.4	369.9
c	6.2	369.1
1/2	6.3	369.0
cb	6.1	369.2
OK.L.	5.9	369.4

+

H.I.
370.29

Hanson St (80' wide)

2+00
O.K.

5.8 369.5

cb

5.4 369.9

1/4

6.2 369.1

c

6.3 369.0

1/4

6.6 368.7

cb

6.9 368.5

E.L.

6.8 368.5

2+75

E.L.

4.5 370.8

cb

4.1 371.2

1/4

5.6 369.7

c

5.9 369.4

1/4

6.0 369.3

cb

5.5 369.8

O.K.

5.9 369.4

3+00

O.K.

4.4 370.9

cb

5.4 369.9

1/4

5.9 369.4

c

5.8 369.5

1/4

6.3 369.0

cb

6.5 368.8

+

H.I.
370.29

E.L.

6.3 369.0

3+37 = north line of Howard St 80' wide, 14' curb, 10' quarters

3+07

E.L.

6.5 368.8

cb

6.3 369.0

1/4

6.2 369.1

c

5.7 369.6

1/2

5.6 369.7

cb

6.2 369.1

O.K.

5.8 369.5

North curb of Howard St.

O.K.

5.5 369.8

cb

5.7 369.6

1/4

5.5 369.8

c

5.4 369.9

1/4

5.2 370.1

cb

4.1 371.2

E.L.

4.4 370.9

H.I.
370.29

Howard St (80' wide)

North 1/2 of Howard St

E.L. 4.9 370.4

cl 4.5 370.8

1/2 6.1 369.2

c 6.0 369.3

1/2 4.7 370.6

cl 4.4 370.9

N.L. 4.7 370.6

Center of Howard St

N.L. 4.5 370.8

cl 5.7 369.6

1/2 5.1 370.2

c 6.0 369.3

1/2 6.4 368.9

cl 6.3 369.0

E.L. 6.3 369.0

South 1/2 of Howard St

E.L. 6.6 368.7

cl 6.4 368.9

1/2 6.5 368.8

H.I.
370.29

c 6.5 368.8

1/2 6.2 369.1

cl 6.2 369.1

N.L. 6.0 369.3

South end of Howard St

N.L. 5.9 369.4

cl 5.2 370.1

1/2 4.7 370.6

c 6.0 369.3

1/2 6.6 368.7

cl 6.3 369.0

E.L. 6.7 368.6

6.21 370.90 6.57 368.72 TP HOUSE HQ X

oo = South line of Howard St

E.L. 6.2 368.7

cl 5.5 369.4

1/2 5.5 369.4

c 4.6 370.3

1/2 3.6 371.3

cl 4.3 370.6

H.I.
374.93

Manzan St (80' wide)

M.L. +25	5.5	369.4
M.L.	3.7	371.2
cl	4.8	370.1
1/4	5.8	369.1
c	5.9	369.0
1/2	5.6	369.3
cl	5.8	369.1
E.L. +50	6.0	368.9
E.L.	5.7	369.2
cl	6.0	368.9
1/4	5.7	369.2
c	5.6	369.3
1/2	5.8	369.1
cl	5.7	369.2
M.L. +75	5.3	369.6
M.L.	3.5	371.4
cl	4.4	370.5
1/2	3.6	371.3
c	4.2	370.7
1/2	6.0	368.9

H.I.
374.93

cl	6.0	368.9
E.L. 1400	5.8	369.1
E.L.	6.1	368.8
cl	6.0	368.9
1/2	5.0	369.9
c	4.5	370.4
1/4	5.0	369.9
cl	5.3	369.6
M.L. +25	5.4	369.5
M.L.	4.4	370.5
cl	4.3	370.6
1/2	5.4	369.5
c	5.1	369.8
1/2	5.3	369.6
cl	6.1	368.8
E.L.	5.9	369.0

H.I.
374.93

Manzan St (80' wide)

1450 E.L.	5.6	369.3
cl	4.1	370.8
1/2	3.7	371.2
c	5.4	369.5
1/2	5.1	369.8
cl	9.5	370.4
OK L. 1470	5.1	369.8
OK L.	5.2	369.7
cl	5.4	369.5
1/2	5.1	369.8
c	5.6	369.3
1/2	5.5	369.4
cl	4.9	370.0
B.L. 2100	5.9	369.0
E.L.	5.8	369.1
cl	5.3	369.6
1/2	6.0	368.9
c	5.7	369.2
1/2	5.2	369.7
cl	5.5	369.4

H.I.
374.93

OK L. 2425	5.2	369.7
OK L.	5.0	369.9
cl	4.7	370.2
1/2	3.8	371.1
c	4.6	370.3
1/2	5.7	369.2
cl	5.3	369.6
B.L. 2450	5.6	369.3
B.L.	5.5	369.4
cl	4.9	370.1
1/2	4.4	370.5
c	4.6	370.3
1/2	5.0	369.9
cl	4.0	370.9
OK L.	4.3	370.6

+ H.I.
374.93

- Kaman St (30' wide)

2+70⁻
OK L.

5.3 269.6

cb

5.6 269.3

1/2

5.4 269.5

c

5.6 269.3

1/2

5.6 269.3

cb

5.8 269.1

E.L.

5.7 269.2

3+00

E.L.

5.3 269.6

cb

5.8 269.1

1/2

5.9 269.0

c

5.3 269.6

1/2

5.3 269.6

cb

5.3 269.6

OK L.

3.9 271.0

3+25

OK L.

5.5 269.4

cb

5.4 269.5

1/2

5.3 269.6

c

4.0 270.9

1/2

4.5 270.4

cb

5.8 269.1

+ H.I.
374.93

E.L.

5.7 269.2

3+50

E.L.

6.5 268.4

cb

5.9 269.0

1/2

5.1 269.8

c

5.3 269.6

1/2

5.6 269.3

cb

5.5 269.4

OK L.

5.0 269.9

3+75

OK L.

5.3 269.6

cb

4.2 270.7

1/2

4.3 270.6

c

5.8 269.1

1/2

5.7 269.2

cb

5.2 269.7

E.L.

6.3 268.6

H.I.
374.93

Manna Mt (80' wide)

4+00
8L.

5.8 369.1

cb

4.8 370.1

1/2

5.6 369.2

c

5.6 369.2

1/4

5.6 369.3

cb

5.6 369.2

OK.L.

5.4 369.5

4+25

OK.L.

5.3 369.6

cb

5.4 369.5

1/4

4.4 370.5

c

5.2 369.7

1/4

5.8 369.1

cb

6.0 368.9

8.L.

6.6 368.2

4+50

8.L.

6.2 368.7

cb

6.2 368.7

1/4

5.9 369.0

c

6.0 368.9

1/4

6.0 368.9

cb

5.8 369.1

H.I.
374.93

OK.L.
4+75

5.2 369.7

OK.L.

4.6 370.3

cb

4.6 370.3

1/2

5.3 369.6

c

5.3 369.6

1/4

5.5 369.4

cb

6.1 368.8

8.L.

6.2 368.7

5+00

8.L.

6.4 368.5

cb

6.3 368.6

1/2

6.2 368.7

c

5.8 369.1

1/4

6.1 368.8

cb

6.0 368.9

OK.L.

5.0 369.9

M.I.
374.93

Manas Mt (50' wide)

5+25 ok. L.	6.0	368.9
cl	5.8	369.1
1/2	7.8	370.6
c	5.3	369.6
1/2	5.9	369.0
cl	9.8	370.1
8.L. 5+50	5.4	369.5
8.L.	6.7	368.2
cl	6.2	368.7
1/2	6.1	368.8
c	6.1	368.8
1/2	6.2	368.7
cl	5.5	369.4
ok. L. 5+75	4.3	370.6
ok. L.	5.7	369.2
cl	5.9	369.0
1/2	5.9	369.0
c	6.0	368.9
1/2	6.1	368.8
cl	6.1	368.8

M.I.
374.93

8.L.	6.5	368.4
6+00 = north line of Pells Mt 80' wide 10' curb, 18' diameter		
6+00 8.L.	6.2	368.7
cl	6.5	368.4
1/2	6.4	368.5
c	5.5	369.4
1/2	6.0	368.9
cl	6.2	368.7
ok. L.	5.4	369.5
North end of Pells Mt.		
ok. L.	5.6	369.3
cl	6.1	368.8
1/2	5.8	369.1
c	6.2	368.7
1/2	6.5	368.4
cl	6.7	368.2
8.L.	6.6	368.3

H.I.
374.93

Manac Mt (80' wide)

North 1/2 of Palis Mt		
E.L.	6.7	368.2
cb	6.5	368.4
1/2	6.5	368.4
c	5.0	369.9
1/2	5.1	369.8
cb	5.6	369.3
N.L.	5.0	369.9
Center of Palis Mt.		
N.L.	5.5	369.4
cb	5.9	369.1
1/2	5.7	369.2
c	6.1	368.8
1/2	6.3	368.6
cb	6.3	368.6
E.L.	6.3	368.6
South 1/2 of Palis Mt.		
E.L.	5.9	369.0
cb	5.8	369.1
1/2	5.8	369.1

H.I.
374.93

c	5.8	369.1
1/2	5.7	369.2
cb	5.6	369.3
N.L.	5.4	369.5
South end of Palis Mt.		
N.L.	5.9	369.0
cb	5.9	369.0
1/2	5.9	369.0
c	6.0	368.6
1/2	6.3	368.6
cb	6.6	368.3
E.L.	6.1	368.8
South line of Palis Mt.		
E.L.	6.7	368.2
cb	6.6	368.3
1/2	6.0	368.9
c	5.9	369.0
1/2	6.3	368.6
cb	6.1	368.8
N.L.	5.9	369.0

H.I.
374.93

Flanigan St (80' wide)

H

5.99

368.94 *7 1/2" finish slab near
and wooden curb 8" SW
Cot Kansas B 217.*

Please check these elevations with previous notes as I had no
BM on which to tie in.

H.M.I.

X-section of Hawthorn St, from the West line of Dale St to the East
line of 29th St, 60' wide, 10' curbs, 10' quarters,

Feb 3-1913

Dianna M.
Shaw.
Levitic.

H.M. 280.10 Sp. 2 Table S.E. Cor. 30th B. Hawthorn.

+

H.I.

-

1.58

291.63

280.10

00 = West line of Dale St.

00
11.2

5.6

276.0

cb

6.1

275.5

1/4

6.1

275.5

c

6.1

275.5

1/4

6.7

274.9

cb

7.1

274.5

1/2

7.0

274.6

+20

1/2

7.5

274.1

cb

7.2

274.7

1/2

7.2

274.7

c

7.0

274.6

1/4

6.7

274.9

cb

6.4

275.7

1/2

6.3

275.3

H.I.
291.63

Hawthorn St (60-wide).

+50
N.L.

7.4 274.2

cl

1.5 271.7

cl

7.5 274.1

N.L.
1+20

1.6 271.6

1/2

7.6 274.0

N.L.

2.8 270.9

c

7.8 273.8

cl

2.6 270.6

1/4

7.7 273.9

1/4

3.5 270.7

cl

8.3 273.3

c

2.4 270.8

N.L.
+75

9.4 273.2

1/2

2.3 270.9

N.L.

9.3 272.3

cl

2.0 271.2

cl

9.1 272.5

N.L.
1+50

2.1 271.1

1/2

9.0 272.6

N.L.

3.4 269.8

c

8.7 272.9

cl

3.4 269.8

1/2

9.5 273.1

1/4

3.4 269.8

#

0.34

273.15

8.2 272.81

c

3.7 269.5

cl

0.0 273.24

1/2

3.8 269.4

N.L.

+0.2 273.4

cl

3.9 269.3

1+00

N.L.

0.9 272.4

N.L.

4.1 269.1

cl

0.9 272.3

1/4

1.1 272.1

c

1.3 271.9

1/4

1.3 271.9

HI.
278.15

Hawthorn St (60' wide)

1-75	cl.	5.2	268.0
	cl	4.9	268.4
	1/4	5.0	268.2
	c	4.7	268.5
	1/4	4.6	268.6
	cl	4.5	268.7
2+00	M.L.	4.5	268.7
	M.L.	5.2	268.0
	cl	5.3	267.9
	1/4	5.4	267.8
	c	5.7	267.5
	1/4	5.8	267.4
	cl	5.8	267.4
	M.L.	6.0	267.2
2+10 = East line of 29 th St. (Being graded)			
2+10	M.L.	6.0	267.2
	cl	6.1	267.1
	1/4	6.0	267.2
	c	5.9	267.4
	1/4	5.7	267.5

HI.
278.15

	cl	5.6	267.6
	M.L.	5.6	267.6
cc = Old line of 29 th St.			
	M.L.	7.6	265.6
	cl	7.5	
	1/4	7.9	
	c	7.9	265.3
	1/4	7.9	
	cl	8.1	
	M.L.	8.1	265.1
	M.L.	9.0	264.2
	cl	8.9	
	1/4	8.7	
	c	8.6	264.6
	1/4	8.6	
	cl	8.4	
	M.L.	8.5	264.7

H.I.
273.10

Hawthorn Vt (60' wide)

+50 V.L.	9.6	263.6
cl	9.6	
1/4	9.6	
c	9.5	263.7
1/4	9.4	
cl	9.9	
V.L. +75	9.9	263.3
V.L.	11.0	262.2
cl	11.1	
1/4	10.9	262.3
c	11.0	262.2
1/4	11.1	
cl	11.0	262.2
V.L. +100	11.1	262.1
V.L.	12.2	261.0
cl	12.1	
1/4	12.2	
c	12.3	260.9
1/4	12.3	
cl	12.4	

H.I.
273.10

V.L.			12.6	260.6
# +25	2.45	260.89	12.71	260.94
V.L.			2.8	258.6
cl			2.3	
1/4			2.1	
c			2.1	258.8
1/4			2.1	
cl			2.0	
V.L. +50			2.1	258.8
V.L.			3.1	255.8
cl			2.9	
1/4			4.8	
c			4.9	256.0
1/4			4.8	
cl			5.0	
V.L.			5.2	255.7

	H.I.		H.I.
	260.99	Hawthorn Wt (60' wide)	
1475 N.L.		7.5	253.4
cl		7.5	
1/4		7.8	
c		8.0	252.9
1/2		8.1	
cl		8.3	
N.L.		8.7	252.7
2100 N.L.		12.1	248.8
cl		11.8	
1/4		11.5	
c		11.2	249.7
1/2		11.1	
cl		11.2	
N.L.		11.0	249.9
#	213	248.00	12.72
			248.17
2120 = East line of Granada St (60' wide) (10' curb 10' gutters)			
2120 N.L.		1.4	246.9
cl		1.3	
1/4		1.3	
c		1.6	246.7

	H.I.		H.I.
	248.00		
1/2		1.8	
cl		2.3	
N.L.		3.0	245.8
East curb of Granada St.			
N.L.		4.7	243.6
cl		4.0	
1/4		3.4	
c		3.1	245.2
1/2		2.8	
cl		2.4	
N.L.		2.6	245.7
East 1/2 of Granada St.			
N.L.		4.2	249.1
cl		4.2	
1/2		4.5	
c		4.9	243.4
1/4		5.2	
cl		5.7	
N.L.		6.6	241.7

	+	7.I. 249.30	-	Hawthorn St (60' wide)
Center of Granada St.				
M.L.			8.3	240.0
cb			7.4	
1/4			6.6	
c			6.2	242.1
1/4			6.1	
cb			5.9	
1/2			5.7	242.6
West 1/4 of Granada St.				
1/2			7.1	241.2
cb			7.2	
1/4			7.6	
c			9.0	240.3
1/4			9.9	
cb			9.9	
M.L.			11.0	237.3
West end of Granada St.				
M.L.			12.2	236.1
cb			11.1	
1/4			10.2	

	+	7.I. 249.30	-	
c			9.7	238.6
1/4			9.0	
cb			9.9	
1/2			9.9	239.5
00 = West line of Granada St				
1/2			10.1	238.2
cb			10.2	
1/4			10.4	
c			10.9	237.5
1/4			11.6	
cb			12.1	236.2
M.L.			13.2	235.1
Slope 12' north of M.L. station	00		14.9	
#	0.22	235.41	12.23	235.37
+25' Slope 10' north of north line			5.9	
+20'				
1/2			4.0	231.4
cb			2.5	
1/4			1.5	
c			0.9	231.5
1/4			0.2	

H.I.
235.91

Hawthorn St (60' wide)

cl	+0.5	
N.L.	+0.5	234.9
+25° Slope 10' South of South line	+0.2	
+50 " 10' " " " "	3.0	
+50 N.L.	3.1	232.3
cl	3.1	
1/4	3.4	
c	4.0	231.4
1/4	9.8	
cl	6.1	
N.L.	7.4	228.0
+50 Slope 12' north of North line	9.2	
+75 " 10' " " " "	13.7	
+75 N.L.	12.8	224.6
cl	9.1	
1/4	7.9	
c	7.1	228.3
1/4	6.8	
cl	6.6	
N.L.	6.6	228.7

H.I.
235.91

+75° Slope 10' South of South line	6.8	
+100 " 10' " " " "	9.6	
+100 N.L.	9.5	225.9
cl	9.2	
1/2	9.3	
c	10.0	225.4
1/4	10.7	
cl	12.0	
N.L.	13.3	222.1
+100 Slope 20' north of North line	17.4	
#	5.42	227.79
+125 Slope 20' north of North line	11.2	
N.L.	7.3	220.5
cl	5.6	222.2
1/2	5.0	
c	4.7	223.1
1/4	4.9	
cl	5.3	
N.L.	5.9	221.9
+25 Slope 10' South of South line	6.3	

H.I.
227.99

Hawthorn V (60' wide)

1435 Slope 10' South of North line	3.3		
1435 V.L.	7.3	219.5	
cl	7.1		
1/4	6.4		
c	6.1	221.7	
1/4	6.1		
cl	6.4		
N.L.	7.9	220.9	
1435 Slope 20' South of North line	12.0		
1450 " 20' " " " "	13.8		
1450 V.L.	9.6	218.2	
cl	8.9		
1/4	8.6		
c	9.0	218.8	
1/4	9.9		
cl	12.4		
V.L.	16.0	211.8	
#	0.12	215.38	12.53 215.26
150 Slope 20' South of North line	6.8	208.4	
1475 " 40' " " " "	19.7		

H.I.
215.39

1470 V.L.			17.6	197.8
cl			14.3	
1/4			10.6	
c			8.1	207.3
1/4			6.6	
cl			5.0	
N.L.			3.5	211.9
1470 Slope 20' North of North line			5.2	
#	0.44	203.44	12.39	203.100
1497 V.L.			12.6	190.8
1497 Slope 30' South of North line			13.1	down slope 20' further South
1400 " 30' " " " "			11.0	
1400 " 5' " " " "			13.7	
1400 V.L.			17.0	186.1
cl			13.2	
1/4			10.4	
c			9.3	195.1
1/4			7.0	
cl			5.6	
N.L.			4.6	198.8

H.I.
203.44

Hanathon St (60' wide)

Section of Ivy St from the West line of 29th to the East line of 28th St 60' wide - 10' curbs, 10' quarters.
200' 69' 92' Sp. Fence post SEC on Ivy @ 29th.
Feb 10-13 {Donnan,
Shaw,
Urvine.

2+00 Slope 20' North of North line	1.9	
2+10 = East line 29th St		
2+10 Slope 20' North of North line	6.0	
2+10 M.L.	9.7	194.7
cb	10.0	
1/4	11.7	
c	13.6	189.8
1/4	14.3	
cb	17.4	
M.L.	17.1	186.3
2+10 Slope 4' South of North line	18.9	
" " 20' " " " "	6.7	
H	6.76	186.9 TP

	H.I. 270.22		268.92
cc = West line of 29th St (being graded).			
00 St.		3.6	266.7
cb		4.2	
1/4		4.2	
c		4.9	265.5
1/2		4.6	
cb		5.1	
M.L.		6.5	263.8
M.L.		5.4	264.9
cb		4.9	
1/4		4.2	
c		4.0	266.8
1/4		3.9	
cb		3.9	
M.L.		3.6	266.7

HI
270.29

July 24 (60' inside)

+50 S.L.	5.8	269.5
cb	5.9	
1/2	5.9	
c	5.9	264.5
1/2	6.0	
cb	6.5	
M.L.	6.9	263.4
+75 M.L.	8.9	261.4
cb	8.5	
1/2	9.4	
c	7.9	262.5
1/2	7.6	
cb	8.2	
S.L.	8.5	261.8
1400 S.L.	11.3	259.0
cb	11.3	
1/2	11.1	
c	11.1	259.2
1/2	11.1	
cb	11.1	

HI
270.29

M.L.	11.2	258.9
#	3.06	260.32
1125 M.L.	4.7	255.6
cb	4.5	
1/2	4.3	
c	4.1	256.2
1/2	4.2	
cb	4.4	
S.L. 1450 S.L.	4.6	255.7
cb	9.2	251.1
cb	9.4	
1/2	9.5	
c	9.7	250.6
1/2	9.6	
cb	9.9	
M.L.	10.3	250.0

	71.I. 260.32	July 14 (60' wide)	
1+75 1/2		15.2	245.1
cb		15.0	
1/4		14.8	
c		14.4	245.9
1/4		14.2	
cb		13.8	
1/2		14.1	246.2
# 2+00	0.16	297.75	12.78
1/2		5.0	242.7
cb		4.9	
1/4		5.3	
c		6.2	241.5
1/4		6.7	
cb		7.2	
1/2		7.6	240.1
2+20 = East line of Granada St. (60' wide, 10' curb, 10' gutter)			
2+20 1/2		11.5	236.2
cb		11.1	
1/4		10.6	
c		10.0	237.7

	72 227.70		
1/4		9.4	
cb		9.9	
1/2		9.5	239.2
East curb of Granada St.			
1/2		10.2	237.5
cb		10.6	
1/4		11.3	
c		11.8	235.9
1/4		12.4	
cb		13.1	
1/2		13.2	234.5
East 1/2 of Granada St.			
1/2		16.0	231.7
cb		15.2	
1/4		15.1	
c		14.5	233.2
1/4		14.0	
cb		13.4	
1/2		12.6	235.1
#	0.25	235.95	12.70
			235.00

+ F.I.
235.90

Long H (60' wide)

Center line of Granada Mt.			
D.L.	2.1	233.4	
cb	3.1		
1/4	3.8		
c	4.6	231.4	
1/2	5.0		
cb	5.9		
M.L.	6.7	229.3	

West half of Granada Mt.

M.L.	9.4	226.6	
cb	8.5		
1/4	7.4		
c	6.6	229.4	
1/2	5.9		
cb	4.9		
D.L.	4.3	231.7	

West end of Granada Mt.

D.L.	5.9	230.1	
cb	6.8		
1/4	7.7		

+ F.I.
235.95

c			8.6	227.4
1/2			10.1	
cb			11.0	
M.L.			12.3	223.7
00 = West line of Granada Mt.				
00 M.L.			14.8	221.2
cb			13.4	
1/4			12.1	
c			11.0	225.0
1/2			9.7	
cb			8.4	
D.L.			7.3	228.7
00 D.L.			9.7	226.3
cb			11.3	
1/2			13.0	
H	3.83	227.95	12.93	228.52
c			6.0	221.4
1/4			7.8	
cb			9.5	
M.L.			11.2	216.2

H.I.
227.35

July 24 (60' inside)

+25 Slope 20' North of North line	18.9	
+50 " 20' " " " "	19.6	
+50 M.L.	15.1	212.3
cb	12.7	
1/4	10.5	
c	8.0	219.4
1/4	5.6	
cb	3.7	
D.L. +75	1.9	225.5
D.L.	2.6	224.8
cb	4.0	
1/4	6.0	
c	9.4	219.0
1/2	11.1	
cb	14.2	
M.L.	14.9	210.6
+75 Slope 20' North of North line	22.2	
+100 " " " " " "	24.6	
+100 M.L.	19.1	209.3
cb	15.1	

H.I.
227.35

1/2	12.7	
c	10.4	217.0
1/4	7.7	
cb	5.9	
D.L. +25	3.9	223.5
D.L.	5.2	222.2
cb	7.1	
1/2	9.6	
c	11.4	216.0
1/4	13.5	
cb	17.0	
M.L.	19.5	207.9
+25 Slope 20' North of North line	26.6	
+50 " " " " " "	28.2	
+50 M.L.	21.5	205.9
cb	18.3	
1/2	15.2	
c	12.4	215.0
1/4	10.2	
cb	8.3	

H.I.
227.35

(2nd Mt 60' wide)

N.L.		6.1	221.3
1+75			
S.L.		7.4	220.0
cl		9.4	
1/4		11.4	
F	2.59	219.55	12.4 214.94
c		6.0	213.5
1/4		9.6	
cl		12.0	
N.L.		15.6	202.9
1+75	1/4 mile south of North line		21.1
2+00	" " " " " "		25.2
2+00	" " " " " "		
N.L.		13.4	200.1
cl		15.2	
1/4		12.3	
c		9.4	209.1
1/4		6.6	
cl		3.7	
S.L.		0.8	217.7
2+10	East line of 25th Mt		
2+10			
N.L.		2.7	215.8

H.I.
218.53

cl		5.4	
1/4		9.2	
c		11.4	207.1
1/4		14.1	
cl		16.7	
N.L.		19.3	199.2
	1/4 mile south of North line		26.0
		0.92	217.71

Section of Granada St from South line of Juniper, to North line of
 Ivy St, 60' wide 16' curbs, 16' gutters,
 Box 265, 66 1/2' N. - 2 20th St Juniper.
 February 11-13 (Dennett,
 Shaver,
 Devine)

	HI		
	0.38	266.03	265.64
	0.01	253.07	253.06
	6.03	246.20	240.17
50' North line of Juniper St (graded)			
OK.L.		6.1	240.1
cl		6.3	
1/4		5.6	
c		4.7	241.5
1/4		4.4	
cl		4.2	
E.L. +2.0		3.3	242.9
E.L.		3.7	242.5
cl		4.1	
1/4		3.3	
c		3.3	242.9
1/4		3.7	
cl		4.1	
OK.L. +5.0		6.0	240.2
OK.L.		3.8	242.4
cl		2.0	

	HI		
	246.10		
1/4			1.0
c			2.0
			249.2
1/4			2.3
cl			3.5
E.L. +6.0			4.3
			241.9
E.L.			4.7
			241.5
cl			4.3
1/4			3.6
c			3.0
			243.2
1/4			1.8
cl			2.2
OK.L.			5.3
			240.9
+75' Slope 11' offset of West line			18.8
" " 25' " " "			19.4
+75'			12.0
OK.L.			233.2
cl			10.0
1/4			9.4
c			10.9
			235.4
1/4			11.7
cl			13.0

	+	71.1 246.20	-	Alameda Mt (60' wide)
E.L.			14.5	231.7
175 Slope 20' East of East line			21.9	
#	0.26	233.63	12.93	233.37
1400 Slope 20' West of West line			12.2	
1400 O.L.			12.1	221.5
cb			12.4	
#	0.22	221.05	12.80	220.83
1/4			5.6	220.5
c			1.8	219.8
1/2			2.3	
cb			3.1	
E.L.			3.9	217.3
1400 Slope 25' East of East line			6.5	
" " 50' " " " "			9.7	
1425 " " " " " "			14.1	
" " 32' " " " "			18.7	
1425 E.L.			17.3	203.8
cb			13.4	
1/2			10.0	
c			8.7	212.4

	+	71.1 241.05	-	
1/2				7.8
cb				7.4
O.L.			6.6	214.5
1425 Slope 30' West of West line				6.0
1430 East line only				20.4
1450 Slope 40' West of West line				13.9
" " 20' " " " "				15.3
#	1.18	209.61	12.62	208.93
1450 O.L.			5.0	209.6
cb				6.1
1/2				7.8
c				8.9
1/4				9.1
cb				10.8
E.L.				8.0
1450 Slope 20' East of East line				2.3
" " 40' " " " "				2.0
1475 " 26' " " " "			7.8	217.4
1475 E.L.			0.6	209.0
cb				3.2

HI
209.61

Manada Vt (60' wide)

1/4	7.1	
c	10.3	199.3
1/4	12.4	
cl	16.5	
OK L	14.9	194.7
+75 slope 20' West of West line	14.0	
" " 50' " " " "	11.4	
148 OK L only	17.6	
+100 slope 60' West of West line	21.5	
" " 30' " " " "	17.1	
2100		
OK L	10.1	199.5
cl	7.1	
1/4	3.6	
c	2.7	208.9
1/4	+2.9	212.5
cl	+6.5	216.1
OK L	+8.9	218.5
+200 slope 20' East of East line	+13.0	222.6
+225 " 10' " " " "	+17.0	226.6
+250		
OK L	+14.6	224.2

HI
209.61

cl	+12.4	222.0
1/4	+10.0	219.6
c	+7.4	217.0
1/4	+4.2	213.8
cl	+1.0	210.6
OK L	2.0	207.6
+225 slope 20' West of West line	9.8	
" " 60' " " " "	15.4	
+200 " 40' " " " "	6.0	
+250 " 20' " " " "	1.7	
#	12.87	222.43
+250		
OK L	8.9	213.5
cl	6.6	
1/4	4.3	
#	13.01	235.25
c	0.19	222.24
1/4	12.8	220.4
1/4	11.2	
cl	9.3	
OK L	6.1	229.2

	+	F.I. 110.96	Date at (30' wide)
+50 1/2			6.9 104.1
cl			7.1 103.9
g			7.9 103.1
1/4			7.6 103.4
c			9.4 102.6
1/4			9.3 101.7
g			10.5 100.5
cl			9.6 101.4
V.L.			10.5 100.5
+75			9.2 100.8
V.L.		wait	9.5 102.5
cl			9.5 102.5
g			9.5 101.5
1/2			9.3 102.7
c			7.4 103.6
1/4			6.7 104.3
g			7.1 103.9
cl			6.2 104.8
1/2			6.0 105.0

	+	F.I. 110.96	-
+50 1/2			4.9 106.2
cl			5.6 105.4
g			6.2 104.8
1/4			5.9 105.2
c			6.3 104.7
1/4			7.0 103.7
g			8.8 102.7
cl			7.4 103.6
V.L.			7.3 103.7
+75			5.9 105.2
V.L.			6.2 104.8
cl			7.2 103.8
g			6.0 145.0
1/2			5.2 105.8
c			5.0 106.0
1/4			5.5 105.5
g			4.9 106.2
cl			3.8 107.2
1/2			

H.I.
110.96

Date 24 (80' wide)

1450 M.L.	2.0	108.0
cl	3.2	107.8
g	4.3	106.7
1/4	3.8	107.2
c	4.2	106.8
1/4	4.6	106.4
g	6.0	105.0
cl	4.9	106.1
V.L.	4.7	106.3
1470 V.L.	3.2	107.8
cl	3.9	107.6
g	4.4	106.6
1/2	3.4	107.6
c	3.0	108.0
1/2	2.7	108.3
g	3.2	107.8
cl	2.3	108.7
M.L.	1.8	109.2

H.I.
110.96.

2410 = (Start line of 3rd Mt. (80' wide, 14 curbs, 13' quarters))

2400 M.L.	1.4	109.6
cl	1.6	109.4
g	2.9	108.1
1/4	2.0	109.0
c	2.2	108.8
1/4	2.5	108.5
g	3.0	108.0
cl	2.1	108.9
V.L.	1.9	109.1
Mid curb of 3rd Mt.		
V.L.	2.0	109.0
cl	2.4	108.6
g	2.5	108.5
1/4	2.0	109.0
c	1.7	109.3
1/4	1.5	109.5
g	1.7	109.3
cl	1.2	109.8
V.L.	1.8	109.2

+ H.I.
110.96

Date of (90' wide)

West 1/4 of 3rd Vt

M.L.	1.0	110.0
cl	0.9	110.1
1/2	1.2	109.8
c	1.3	109.7
1/2	1.6	109.4
cl	1.9	109.2
M.L.	1.6	109.4

West 1/4 + 3/4 = 2' West of West street, east rail

1/4 + 3/4		
M.L.	1.3	109.7
cl	1.5	109.5
1/2	1.3	109.7
c	1.2	109.8
1/2	1.0	110.0
cl	0.9	110.2
M.L.	0.6	110.1

West rail at North line

	0.68	110.28
" " South "	1.19	109.77
East " " "	1.28	109.67
" " North "	0.72	110.24

+ H.I.
110.96

Center + 9' = 2' East of East rail

M.L.	0.6	110.1
cl	0.9	110.2
1/2	1.0	110.0
c	1.1	109.9
1/2	1.3	109.7
cl	1.3	109.7
M.L.	1.4	109.6

East 1/4 of 3rd Vt

M.L.	1.5	109.5
cl	1.1	109.9
1/2	1.1	109.9
c	1.0	110.0
1/2	0.9	110.1
cl	0.6	110.1
M.L.	0.3	110.7

9.25

119.50

1.66

109.50

E

West end of 3rd St.

	7.2. 118.50	Date St (90' wide)	
11.2.	6.6	112.0	
cl	7.0	111.6	
1/4	7.7	110.9	
c	8.7	109.9	
1/2	8.7	109.9	
g	8.8	109.8	
cl	9.0	109.6	
d.l.	8.7	109.9	
oo = East line of 3rd St.			
d.l.	8.0	110.6	
d.l.	8.6	110.0	
quarter	8.5	110.1	
1/4	8.3	110.3	
c	4.6	114.0	
+5	3.1	115.5	
1/4	3.7	114.9	
cl	3.4	115.7	
11.2.	3.4	115.7	
#	13.14	122.74	9.25 109.30

7.1.
122.94+25
M.L.

	7.0	115.4	
cl	6.7	115.7	
1/2	6.7	115.7	
c	6.6	115.8	
1/4	11.0	111.4	
g	12.0	110.4	
cl	11.3	111.1	
v.l.	10.6	111.8	
+50	9.2	113.2	
v.l.			
-cl	10.0	112.4	
g	10.7	111.7	
1/4	10.0	112.4	
+8	6.4	116.0	
c	6.5	115.9	
1/4	6.3	116.1	
cl	6.3	116.1	
11.2.	6.7	115.7	
1			

+

71.2
122.99

Date Mt (90' wide)

+75 m.l.	6.7	115.7
cb	6.1	116.3
1/2	6.0	116.4
c	6.4	116.0
+6	8.3	114.1
1/2	9.7	113.7
g	9.6	112.8
cb	9.9	113.6
S.L.	7.9	114.6
1400		
V.L.	6.9	115.6
cb	7.5	114.9
g	8.3	114.1
1/2	7.3	115.1
c	6.4	116.0
1/2	6.0	116.4
cb	5.8	116.6
m.l.	6.7	115.7

+

71.2
122.99

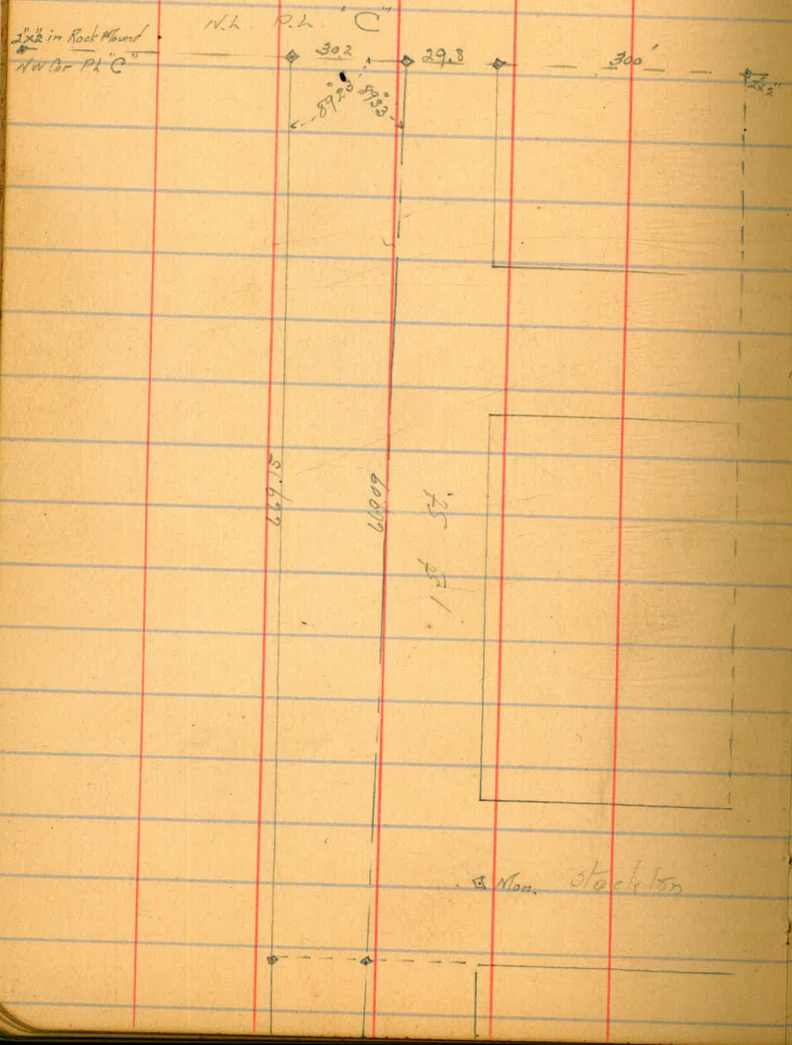
1205 m.l.	4.8	117.6
cb	5.0	117.4
g	5.9	116.6
1/2	5.5	116.9
c	5.7	116.7
1/2	6.0	116.0
g	7.1	115.3
cb	6.2	116.2
V.L.	6.2	116.2
1400		
V.L.	4.9	117.5
cb	5.0	117.4
g	5.9	116.5
1/2	4.9	117.6
c	4.3	118.1
1/2	4.1	118.3
g	4.5	117.9
cb	3.6	118.8
m.l.	3.1	119.3
#	5.54	126.60
	1.38	121.06

1267	+	H.I. 126.60	Date	WT (30' wide)
1475				
M.L.			4.2	122.2
+4			6.1	120.5
cl			6.0	120.6
1/2			2.4	124.2
+6			2.5	124.1
c			5.7	120.9
+3			7.2	119.4
1/4			7.6	119.0
g			8.6	118.0
cl			7.9	118.7
M.L.			7.9	118.8
2000 = West line of 4th St.				
2000				
M.L.			6.3	120.3
cl			6.7	119.9
g			7.1	119.5
1/2			6.5	120.1
c			5.6	121.0
+8			4.8	122.6
1/4			4.0	122.6
cl			5.0	121.6

+	H.I. 126.60	
		4.7
		121.9
		4.96
		121.64 = 121.67 - 3.03 Plug NW Cor + 7' & Date.

6/3/13
Hatch
Norp
Hall

Survey for opening 1st St from Jackson St. North

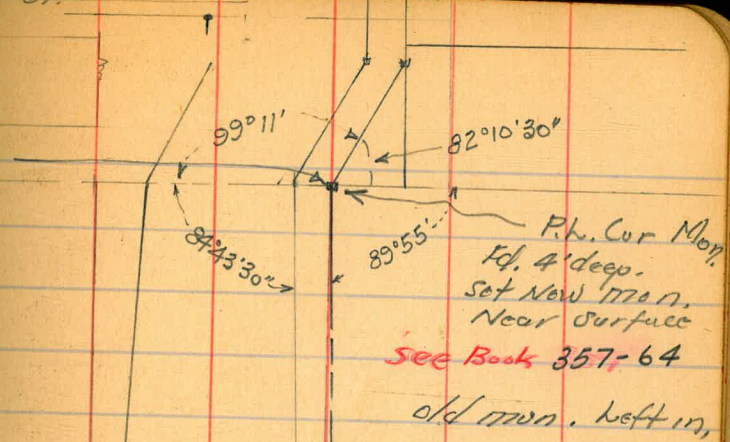


G-st.



719.36'

13' wire G-st.



99°11'

82°10'30''

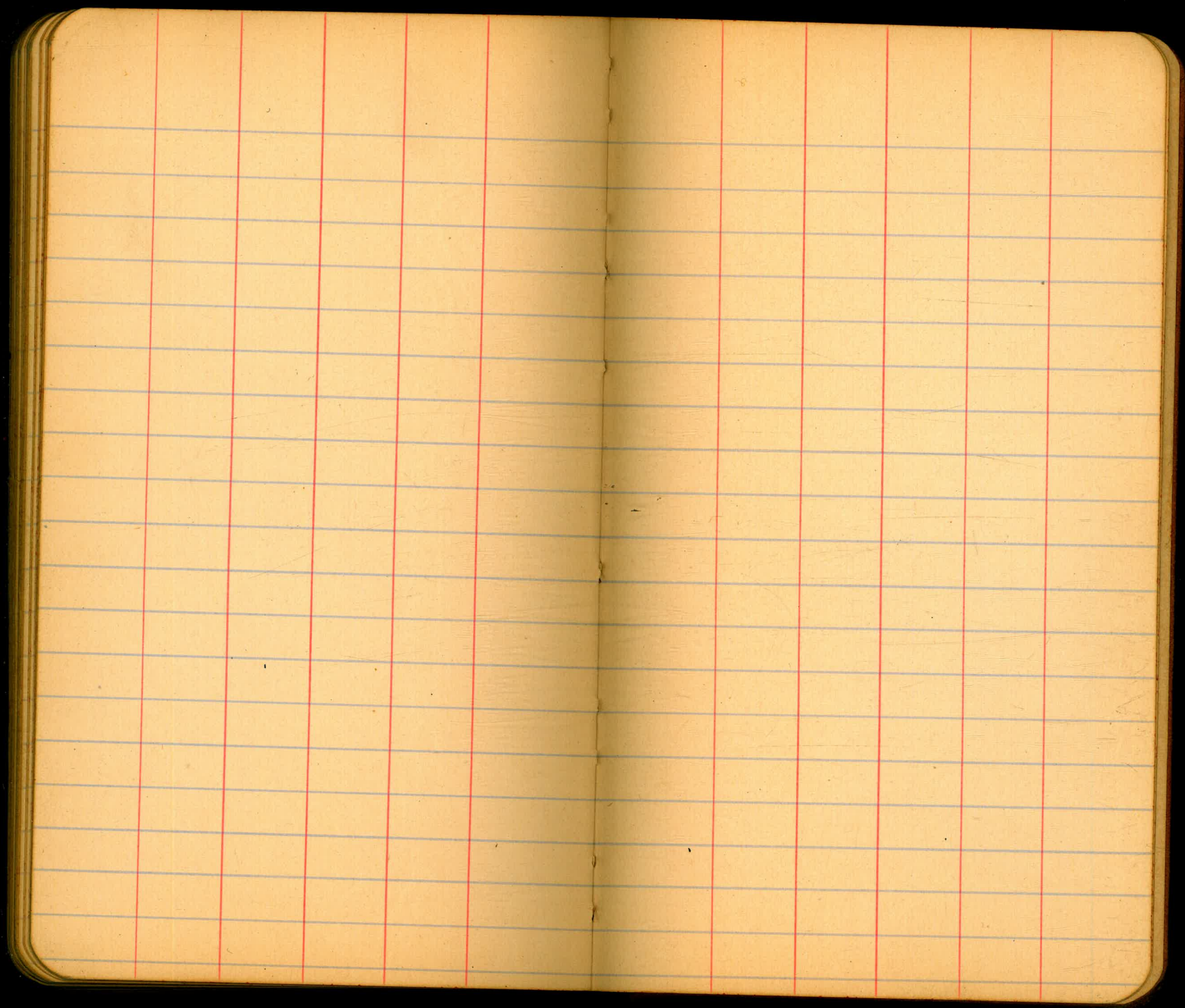
84°43'30''

89°55''

P.L. Cur Mon.
 Ed. 4' deep.
 Set New Mon.
 Near surface

See Book 357-64

old mon. left in,



248.00 - 248.00

Juniper

240		248.
288.71	25	241.71
287.42	50	240.42
286.13	75	239.13
284.84	100	237.84
283.55	125	236.55
282.26	150	235.26
280.97	175	233.97
279.68	200	232.68
278.39	225	231.39
277.10	250	230.10
225.81	275	228.81
224.52	300	227.52
223	310	227

July

196.96
192.40
4.56

16920 @ 173.77

41.0
4.7
1.6

80.84

4.73
15.3
20.0

300
95
212

Grandview map 449
Pacific Star Homestead lot map 271

184.69 B.M.
- 1.39
186.18 H.F.
- 15.80
170.38
- 42.48
127.90 H.F.
- 12.96
114.94
- 1.47
113.47 H.F.
- 12.27
101.20

261
16.3
244.9

156.5
16.0
172.5
- 4.4
167.1

36.3
1.38
2904
1089
363
50094
18.44
110.20
9
132.19

241.63
- 9.72
272.91
273.10
- 5.72
267.38

156.5
2.4
165.9
- 4.4
161.5

327
1.38
2616
981
327
45126
5332
5783

249.20
- 7.72
240.51

300
80
220

644 18.90 1382

644
2460
1932
5280
5152
1280

7399
1.90
75.90

27
1014
108
27
378

14596
13788
13596
189748
19596
1911

53) 73 014
53
200
200

6798
138
6750
48
627

17.6
3.0
+ 4.6

279.23
36.22
13
5

18.51
48
27.7

13.0
4.6
9.4

26.62
13
42.62

101.5
8.7
110.2

300.8
36.0
264.8

247
12
11.70

226.53
1.9
228.43

64.45
12
112

300
88
212

157.84
28.92

36.25
18.40
16.80

76.1
60.8
15.3

0.96
9.9
2 19.15

260.20
280.03
600.0
608.23

49
10.34
181.9



32.6
19.0
14
67.95
1.07
67.51

67.88
73
69.61

230.95
6.49
224.47

15 point Grandview map

209.61
1320
296.21

231.20
296.61
34.40

1013.72
13.90
1234.90
4116

14
14
56
14936
67.99
5.05

17
57.4

209.6
21.0
48.11
184.0
41.0

229.0
194.0
41.0

209.99
10.40
229.99

1013.72
27
960.9
2749.9
3704.4

39
535
89
145
117
250
278
70

1013.72

1013.72
53
4116
6860
72716