

F. B.
851

LEVEL BOOK.

No. 410

MICROFILMED

DEC 15 1964

From Box 85-1 P1

11/11/60 X Sec Myrtle St (60)
30/75 Ed Messenia to Boundary
TV Station Park Villas

584 335.33

329.49
584
335.33

13 Pt
Messenia
Myrtle

1

E 2 of Messenia

S 58 329.5

66 56 329.7

4 54 329.9

6 51 330.2

7 49 330.4

66 46 330.7

n 39 331.4

25' E of Messenia

n 41 331.2

66 45 330.8

4 49 330.4

4 49 330.4

4 52 330.1

66 54 330.9

S 56 329.7

335-33

50' E of Missouri

S	54	330.9
H	52	330.1
Y	51	330.2
L	49	330.4
Y	47	330.4
H	44	330.9
N	40	331.3

75' E of Missouri

N	40	331.3
H	47	330.6
Y	47	330.6
L	49	330.4
Y	49	330.4
H	51	330.2
S	52	330.1

335-33

Myrtle

2

100' E of Missouri

S	52	330.1
H	54	329.9
Y	53	330.0
L	53	330.0
Y	48	331.5
H	49	330.4
N	46	330.7

125' E of Missouri

N	46	330.7
H	51	330.2
Y	53	330.0
L	55	329.8
Y	56	329.7
H	57	329.6
S	57	329.6

335.33

	135'	E of	Missionia
S			57 329.6
W			57 329.6
Y			56 329.7
b			55 329.8
y			53 330.0
W			48 330.5
N			45 330.8

	175'	E of	Missionia
n			46 330.7
W			50 330.3
Y			52 330.1
b			54 329.9
y			55 329.8
W			54 329.9
S			57 329.6

335.33

Myrtle

5

	200'	E of	Missionia
S			57 329.6
W			57 329.6
Y			55 329.8
b			53 330.0
y			52 330.1
W			47 330.6
N			41 331.2

	225'	E of	Missionia
n			41 331.2
W			47 330.6
Y			50 330.3
b			52 330.1
y			53 330.0
W			54 329.9
S			57 329.6

TP

400'

334.26

509 330.26

SW of Myrtle
+ Washburn

335.33

509

330.26

400'

334.26

334.26

225' E = W of Washington (65')

S	43	330.0
ll	43	330.0
y	42	330.1
b	41	330.2
4	38	330.5
ll	36	330.7
n	32	331.1

E of Washington

n	35	330.8
ll	37	330.6
y	39	330.4
b	40	330.3
y	42	330.1
ll	44	329.9
S	46	329.7

334.26

Oryzopsis

4

25' E of Washington

S	48	329.5
ll	45	329.8
y	44	329.9
l	40	330.3
y	40	330.3
ll	36	330.7
n	35	330.8

50' E of Wash

n	35	330.8
ll	41	330.2
y	41	330.2
l	44	329.9
y	45	329.8
ll	47	329.6
S	49	329.4

334.26

75 E of Washington

S	54	328.9
ll	53	329.0
4	48	329.5
4	48	329.5
4	45	329.8
ll	41	330.2
2	41	330.2

100 E of Washington

2	44	329.9
ll	48	329.5
4	50	329.3
6	52	329.1
4	57	329.1
ll	50	329.3
S	55	328.8

334.24

125 E of Washington

S	61	328.2
ll	55	328.8
4	49	329.4
6	51	329.2
4	51	329.2
ll	48	329.5
2	47	329.6

150 E of Wash

2	50	
ll	51	
4	54	
6	53	
4	54	
ll	59	
S	60	

Myrtle

5

334.26

175' E of Wash

S	63
H	63
Y	60
L	60
9	58
H	53
N	54

200' E of Wash

N	63
H	61
Y	65
L	64
Y	67
H	68
S	69

334.26

225' E of Washington

S	76
L	74
Y	71
L	70
Y	70
H	69
N	70

265' E = W of Webster St (65')

N	87
H	85
Y	87
N	87
Y	88
H	87
S	88

TP 090

325.26

990

324.36

13 H

Webster

Myrtle

6

334.26
 990
 324.36
 90
 325.26

325.26

E line of Webster

S	22
U	24
4	26
6	28
4	29
U	30
W	32

25 E of Webster

2	32
U	38
7	44
6	41
7	40
U	38
S	39

325.26

Mystic

7

50 E of Webster

S	54
U	55
4	59
6	63
4	66
U	69
W	72

75 E of Webster

W	92
U	90
4	87
6	85
4	78
U	74
S	70

32526

100 E of Webster

S	91
H	95
y	98
b	103
y	108
H	110
n	114

TP 444 318.88 1100 314.24

125 E of Webster

n	73
H	66
y	65
b	58
y	58
H	57
S	48

31888

Mid

8

150 E of Webster

S	78
H	81
y	67
b	70
y	82
H	84
n	83

175 E of Webster

n	65
H	66
y	64
b	66
y	69
H	71
S	106
	104

318.68

200 E of Webster

S	89
H	79
W	73
b	64
W	60
H	50
N	43

225 E of Webster

N	34
H	42
W	49
b	43
W	49
H	59
S	67

318.68

265 E = W of Franklin (65)

S	53
H	49
W	44
b	38
W	35
H	36
N	28

509 319.39 438 31430

E of Franklin

H	35
H	37
W	43
b	46
W	51
H	52
S	58

Myth

9

318.68
6.51
314.30
5.09
319.39

15' H
Franklin

31939

25' E of Franklin

S	58
H	53
7	57
6	47
7	44
H	40
n	36

50' E of Franklin

n	37
H	40
7	45
6	50
7	54
H	53
S	55

31939

75' E of Franklin

S	46
H	50
7	46

TP 676 32190 425 31514

6	66
7	68
H	63
n	61

100' E of Franklin

n	65
H	65
7	63
6	63
7	63
H	67
S	70

Myrtle

10

31939
525
31514
676
32190

32190

125' E of Franklin

S	65
H	62
Y	57
L	58
9	61
H	62
n	65

150' E of Franklin

n	55
H	62
Y	59
L	58
9	60
H	60
S	57

32190

Myrtle

11

175' E of Franklin

S	57
H	60
Y	58
L	52
9	53
H	54
n	50

2134 E = Boundary on N

n	49
H	45
Y	50
L	53
9	52
H	52
S	49

32190

12

(625)

2134 E on N S } - Boundary
2307 E on S d }

S 49

W 49

Y 51

6 53

7 48

W 49

N 49

12
48
12

blanch
Zeh
Shaw

X Sec of ^{Felton} (Franklin) W (65')
through Park Hall as

315.70

(Franklin)
Felton 15

		Pueblo line	300' S of Ingot	18' 4"		50'	n of Pueblo l	
S		140	315.70	314.30	Ingot	W	30	312.70
66	W		0.5	315.20	314.34	N	38	311.90
7	N		11	314.60	315.70	Y	46	311.10
6	Y		19	313.80		L	58	309.90
4	L		29	312.80		Y	70	308.70
11	Y		40	311.70		N	83	307.40
22	N		48	310.90		E	93	306.40
	E		63	309.40			75	n of P - L -
		25'	By	Pueblo line		E	111	304.60
	E		85	307.20		N	93	306.40
	N		72	308.50		Y	80	307.70
	Y		62	309.50		L	70	308.70
	L		52	310.50		Y	60	309.70
	Y		40	311.70		N	51	310.60
	N		26	313.10		W	46	311.1
	W		16	314.10				

315.70

100' n of Pueblo Line

w	65	309.20
ll	75	308.20
y	86	307.10
l	100	305.70
y	113	304.40
ll	129	302.80
E	137	302.00

115' n of P-2

E	118	303.90
ll	119	303.80
y	130	302.70
l	130	302.70
l	78	307.90
y	36	310.10
ll	37	312.00
w	13	314.40

315.70

(Franklin)
Felton

14

125' n of P-2

w	36	312.10
ll	24	313.30
y	38	311.90
l	62	309.50
l	122	303.00
l	120	303.70
y	93	306.40
l	65	309.20
ll	66	309.10
E	67	309.0

w-d 135' n of

0-2-9.5 306.2

140' n of

P-2

E	67	309.0
ll	34	312.30
y	34	312.30
l	150	n of P-2
E	23	313.40
ll	29	312.80
y	58	309.90
l	93	306.40
y	110	304.70
ll	123	303.40
w	114	304.30
E	26	313.10

150' n of P-2

315.70

315.70

165'

n of

Puebla
66

E 2

175'

n of

Puebla Sin

W

11.6 304.10

U

11.3 304.40

Y

10.1 305.60

L

9.4 306.30

Y

7.8 307.90

U

6.8 308.90

E

6.3 309.40

200'

n of

P-2

E

5.6 310.10

U

6.5 309.20

Y

8.2 307.50

L

8.5 307.20

Y

9.2 306.80

U

9.9 305.80

W

11.8 303.90

225'

n of Puebla Sin

W

9.1 306.60

U

7.3 308.40

Y

6.0 309.70

L

6.1 309.60

Y

6.2 309.50

U

6.7 309.00

E

5.8 309.90

250'

n of

P-2

E

4.4 311.30

U

4.5 311.20

Y

4.5 311.20

L

4.0 311.70

Y

4.2 311.50

U

5.0 310.70

W

6.1 309.60

315.70

275	n 1	Pd		315.70
W		40	311.70	315.70 1.00 314.70
U		34	312.30	8.20 322.53
Y		30	312.70	
L		30	312.70	
Y		30	312.70	
U		32	312.50	
E		34	311.30	

320 n = S 2 f *Pygmy* (6)

E		21	313.60
U		22	313.50
Y		20	313.70
L		19	313.80
Y		19	313.80
U		22	313.50
W		23	313.40

TP 823 3213 140 314.30

322.53 ✓

(Zanillo)
Feltor

16

S	n 1	<i>Pygmy</i>	
		87	313.63
		86	313.93
		84	314.13
		85	314.03
		85	314.03
		86	313.93
		88	313.73

S 44 f *Pygmy*

E		83	314.23
U		82	314.33
Y		82	314.33
L		82	314.33
Y		81	314.43
U		82	314.33
W		82	314.33

32253

Center of Myrtle

W	79	314.63
U	77	314.83
Y	79	314.63
L	78	314.73
4	77	314.83
U	78	314.73
E	77	314.83

N 1/4 of Myrtle

E	75	315.03
U	75	315.03
Y	74	315.13
L	73	315.23
9	74	315.13
U	75	315.03
W	73	315.23

32253

N 1/4 of Myrtle

W	73	315.23
U	70	315.53
Y	70	315.53
L	70	315.53
4	69	315.63
U	69	315.63
E	68	315.73

N 1/4 of Myrtle

E	66	315.93
U	67	315.83
Y	64	316.13
L	66	315.93
9	66	315.93
U	67	315.83
W	67	315.83

(Franklin)
Feltong
17

32253

25' n of Myrtle

W	60	316.53
N	57	316.83
Y	60	316.53
L	61	316.43
9	57	316.83
N	57	316.83
E	57	316.83

50' n of Myrtle

E	52	317.23
N	51	317.43
Y	54	317.13
L	52	317.33
9	53	317.23
N	54	317.13
W	57	316.83

32253

(Franklin)
Felton 18

75' n of Myrtle

W	49	317.63
N	48	317.73
Y	49	317.63
L	46	319.93
9	49	317.63
N	43	318.23
E	44	318.33

100' n of Myrtle

E	36	318.93
N	38	318.73
Y	40	318.53
L	37	318.83
9	38	318.73
N	39	318.63
W	40	318.53

32253

	125	n. of Myrtle	
w		37	318.83
ll		36	318.93
y		35	319.03
l		32	319.33
y		34	319.13
ll		32	319.33
E		30	319.53

TP 800 327.78 275 319.78

150 n y Myrtle

E		76	320.18
ll		80	319.78
y		77	320.08
l		79	319.88
y		82	319.58
ll		82	319.58
w		82	319.58

32778

(Franklin)

Feltor

19

	175	n	y	Myrtle
w			76	320.18
ll			77	320.08
y			75	320.28
l			74	320.30
y			76	320.18
ll			75	320.28
E			70	320.78

200 n of Myrtle

E		67	321.08
ll		64	321.38
y		64	321.38
l		65	321.28
y		67	321.08
ll		66	321.18
w		67	321.08

32778

225 n of Myrtle

W	64	321.38	321.38
W	62	321.58	
Y	64	321.38	
L	62	321.58	
Y	57	322.08	
H	60	321.78	
E	58	321.98	

250 n of Myrtle

E	52	322.58	
H	52	322.58	
Y	53	322.48	
L	57	322.08	
Y	58	321.98	
H	60	321.78	
W	59	321.88	

32778

275 n of Myrtle

W	52	322.58	
H	54	322.38	
Y	52	322.58	
L	47	323.08	
Y	47	323.08	
H	44	323.18	
E	45	323.28	

300 n of Myrtle

SP	70	<u>330.81</u>	391	323.81
E			67	323.91
H			70	323.81
Y			70	323.81
L			79	322.91
Y			77	323.11
H			79	322.91
W			79	322.91

(Franklin)
Folton

20

32778
5.27
323.81
7.64
330.81

33081

325' n of Myrtle

W	74	323.41
W	70	323.81
Y	70	323.81
L	72	323.61
Y	72	323.61
W	76	323.21
E	72	323.61

350' n of Myrtle

E	61	323.71
W	65	323.31
Y	65	323.31
L	64	323.41
Y	66	323.21
W	68	323.01
W	67	323.11

33081

375' n of Myrtle

W	55	325.31
W	61	324.71
Y	62	324.61
L	59	324.91
Y	60	324.81
W	58	325.01
E	58	325.01

400' n of Myrtle

E	52	325.61
W	54	325.41
Y	55	325.31
L	55	325.31
Y	55	325.31
W	53	325.51
W	55	325.31

(Franklin)
Feltor

21

33081

425 n of Myrtle

W	51	325.71
H	50	325.81
y	54	325.41
L	52	325.61
y	49	325.91
H	49	325.91
E	51	325.71

450 n of Myrtle

E	45	326.31
H	46	326.21
y	47	326.11
L	46	326.21
y	46	326.21
H	47	326.11
W	47	326.11

33081

(Franklin)
Felton

22

475 n of Myrtle

W	42	326.61
H	42	326.61
y	41	326.71
L	41	326.71
y	44	326.41
H	44	326.41
E	41	326.71

T.P. 565 33237 409 326.71

500 n of Myrtle

E	56	326.77
H	57	326.67
y	56	326.77
L	57	326.67
y	55	326.87
H	55	326.87
W	53	327.07

33081
409
326.71
326.61
326.57

33237

525' n of Myrtle

W	52	327.17
U	52	327.17
Y	52	327.17
b	50	327.37
y	49	327.47
U	52	327.17
E	54	326.97

550' n of Myrtle

E	51	327.27
U	50	327.37
y	50	327.37
b	49	327.47
y	57	327.27
U	46	327.77
W	45	327.87

33237

575' n of Myrtle

W	43	328.07
U	46	327.77
y	47	327.67
b	48	327.57
y	45	327.87
U	49	327.47
E	48	327.57

600' n = S of Dwyll (60)

E	45	327.87
U	44	327.97
y	45	327.87
b	42	328.17
y	43	328.07
U	43	328.07
W	43	328.07

TP

583

33415

405

32832

13' N

Dwyll

(Franklin)

Feltor

23

33237

4.08

229.32

583

33415

33415

S 1/4 of Dwight

W	58	328.35
N	60	328.15
E	60	328.15
S	59	328.25
N	62	327.95
E	62	327.95
E	61	328.05

S 1/4 of Dwight

E	61	328.05
N	61	328.05
E	60	328.15
S	59	328.25
N	59	328.25
N	59	328.25
W	57	328.45

33415-

(Franklin)
Fenton 24

center of Dwight

N	53	328.85
N	55	328.65
E	55	328.65
S	56	328.55
N	58	328.35
N	60	328.15
E	59	328.15

N 1/4 of Dwight

E	59	328.25
N	58	328.35
E	56	328.55
S	55	328.65
N	54	328.75
N	53	328.85
W	53	328.85

33415

N. line of Dwight

W	50	329.15
U	52	328.95
Y	53	328.85
6	54	328.75
7	52	328.55
U	57	328.45
E	59	328.25

N. line of Dwight

E	58	328.35
U	56	328.55
Y	54	328.75
6	53	328.85
7	52	328.95
U	50	329.15
W	50	329.15

33415

Franklin
Feltor
25

25 N. of Dwight

W	47	329.45
U	49	329.25
Y	48	329.35
6	50	329.15
7	52	328.95
U	53	328.85
E	56	328.55

50 N. of Dwight

E	52	328.95
U	53	328.85
Y	51	329.05
6	48	329.35
7	48	329.35
U	47	329.45
W	46	329.65

33415

	775	n = Boundary on E line	
W		44	329.75
U		46	329.55
4		46	329.55
6		48	329.35
4		50	329.15
H		50	329.15
E		52	328.95
	100	n of Dwight	
W 2		41	330.05
	125	n of Dwight	
W 2		40	330.15
	150	n of Dwight	
W 2		38	330.35
	175	n of Dwight	
W 2		41	330.05
	200	n of Dwight	
W 2		43	329.85
	225	n of Dwight	
W 2		42	329.95

33415

(Franklin)

Felton

26

	250	n of Dwight	
W 2		46	329.55
	275	n of Dwight	
W 2		45	329.65
	302.8'	n = Boundary on W 2	
W 2		51	329.05
(23415)	775'	n on E = Boundary	
	302.8'	n on W =	
W 2		51	329.05
U		49	329.25
4		49	329.25
6		49	329.25
4		47	329.25
U		50	329.15
E		52	328.95

12/12
12/12
12/12

X Sec of El Cajon am (150)

Jona st to Boundary

Continued from B 847

410 5814 3773

Ben Top of
part Jona

3814

El Cajon
27

25 E of Jona

	W	S of Jona	N	35
S:		77	H	35
H		77	b	42
C		73	H	51
H		54		48
		66	1	52
A		59	H	53
H		54	b	63
b		54	H	66
H		47	S	71
N		36		

50 E of Jona

S	62
H	55
b	57
H	56
b	49
H	45
	49
b	42
H	33
N	33

381.4

75' E of Iowa

n	31
h	33
h	34
b	42
h	43
b	46
h	49
b	49
h	49
S	56

100' E of Iowa

S	52
h	53
b	37
h	42
b	42
h	45
b	38
h	32
n	31

381.4

125' E of Iowa

n	32
h	34
b	35
h	42
h	39
b	40
h	37
h	35
b	49
h	51
S	49

156.3' E E Boundary on n

S	45
h	41
b	46
h	40
b	40
h	37
h	41
b	37
h	29
n	33

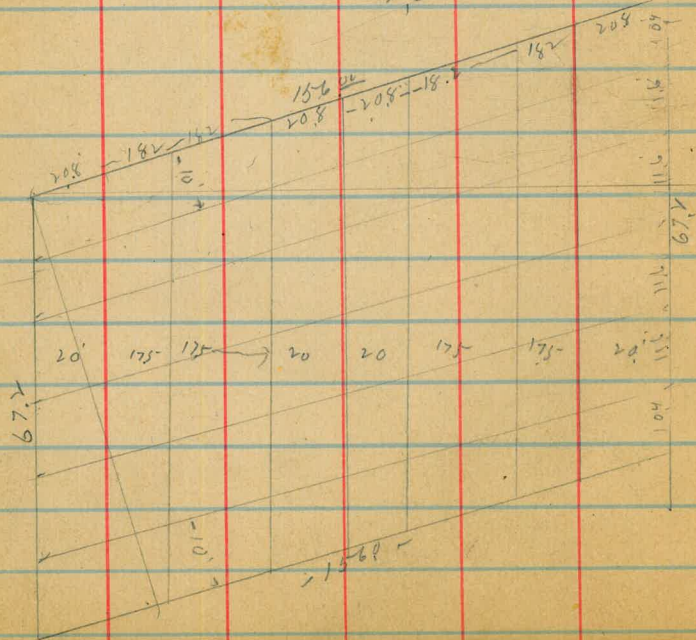
El Cajon

28

381.4

(156') 156.3' E on N } Boundary
199.2' E on S }

N		33
N	41.2	30
		3.1
L	41.0	4.0
		4.2
N		37
L		4.1
N		4.4
L		4.5
N		4.7
S		4.3

X Sec of Intersection of
Boundary + El Cajon an

29

402 381.32 377.30 Bm

(67.2) S line of El Cajon

N	4.2	377.1
N	4.3	377.0
N	4.7	376.6
L	4.5	376.8
N	5.0	376.3
N	5.0	376.3
E	5.1	376.2

S bl of El Cajon

E	4.6	376.7
N	5.0	376.3
N	4.5	376.8
L	4.4	376.9
N	5.0	376.3
N	5.0	376.3
N	4.5	376.8

3813v

S center of Elbajar

2	45	376.8
4	47	376.6
7	45	376.8
11	42	377.1
7	42	377.1
11	44	376.9
E	47	376.6

S center bank

E	38	377.5
11	38	377.5
7	37	377.6
11	38	377.5
7	38	377.5
11	38	377.5
W	43	377.0
	43	

3813v

30

center of Elbajar

2	40	377.3
11	38	377.5
7	37	377.6
1	36	377.7
7	36	377.7
11	37	377.6
E	38	377.5

N center bank

a	40	377.5
11	40	377.3
7	39	377.4
1	40	377.3
7	38	377.5
11	36	377.7
W	36	377.7

381.3v

N line of El Cajon

W	39	377.4
U	37	377.6
"	38	377.5
L	41	377.2
"	40	377.3
U	38	377.5
E	39	377.4

N line of El Cajon

E	38	377.5
U	41	377.2
"	40	377.3
L	42	377.1
"	40	377.3
U	33	378.0
W	29	378.4

381.3r

31

(672)

N line of El Cajon

W	32	378.1
U	36	377.7
"	41	377.2
L	38	377.5
"	37	377.6
U	39	377.4
E	36	377.7

(Alameda)
 X sect. Kearney from
 to west line of Union, 50'

J.P.	0.05	250.45	250.40
So. line		8.3	242.2
"		9.0	241.5
"		8.7	241.8
C		8.6	241.9
		8.7	241.8
		8.8	241.7
No. line		9.1	241.4
		7.3	243.2
		8.0	242.5
		7.9	242.6
C		7.3	243.2
		5.7	244.8
		0.5	245.0
So. line		4.5	246.0

Dec 27/12
 26.268 B.M.
 West line of Puterbaugh
 streets both ways. 250.45
 25' west

No. line	4.0	246.5
	4.8	245.7
	6.2	244.3
C	6.6	243.9
	6.8	243.7
	7.1	243.4
No. line	6.9	243.6
	50' west	
No. line	6.4	244.1
	6.9	243.6
	6.9	243.6
C	6.5	244.0
	6.2	244.3
	5.2	245.3
No. line	4.5	246.0

Dec 27/12
 26.268 B.M.
 West line of Puterbaugh
 streets both ways. 250.45
 25' west

Childs
 Taylor
 33
 Allen

250.45
75' west

Saline	5.2	245.3
	6.2	244.5
	6.6	243.9
c	6.8	243.7
	6.7	243.8
	6.9	243.6
no. line	7.0	243.5

100' west

no. line	8.4	242.1
	8.0	242.5
	7.7	242.8
c	7.5	243.0
	7.4	243.1
	7.3	243.2
Saline	6.4	244.1

250.45

33

125' west

Saline	8.0	242.5
	8.7	241.8
	8.9	241.6
c	8.9	241.6
	9.5	241.0
	9.5	241.0
no. line	10.1	240.4

150' west

no. line	12.5	238.0
	12.1	238.4
	11.4	239.1
c	11.0	239.5
	10.7	239.8
	10.5	240.0
Saline	9.9	240.6

250.45

175 west

no line

12.6 237.9

J.P.

0.08 ^{H.T.} 237.43 13.10 237.35

0.1 237.3

0.2 237.2

C

0.4 237.0

0.8 236.6

1.3 236.1

no line

1.8 235.6

East line Horton

no line

4.1 233.3

8.3 234.1

2.9 234.5

C

3.3 234.1

3.0 234.4

2.3 235.1

no line

2.0 235.4

34

237.43

East ch.

no line

3.3 234.1

3.5 233.9

4.1 233.3

C

4.1 233.3

4.3 233.1

4.4 233.0

no line

5.4 232.0

East 1/4

no line

6.3 231.1

5.7 231.8

5.4 232.0

C

4.9 232.5

4.7 232.7

4.6 232.8

no line

4.2 233.2

237.43

Center

Noline 5.0 232.4

5.2 232.2

5.6 231.8

C 5.8 231.6

6.2 231.2

6.6 230.8

Noline 7.0 230.4

west 1/4

Noline 7.9 229.5

7.3 230.1

7.0 230.4

C 6.4 231.0

6.1 231.3

5.7 231.7

Noline 5.3 232.1

237.43

west cb.

Noline 5.8 231.6

6.6 230.8

7.0 230.4

C 7.5 229.9

7.7 229.7

8.2 229.2

Noline 9.0 228.4

west line Horton

Noline 11.4 226.0

9.2 228.2

8.7 228.7

8.6 228.8

8.3 229.1

7.7 229.7

Noline 6.83 230.60

237.43

25' west

soline	8.8	228.6
	9.6	227.8
	10.3	227.1
c	11.0	226.4
	12.1	225.3
J.P.	2.80 ^{H.I.} 227.46	12.77 224.66
no. eb	3.5	224.0
no. line	5.7	221.8
	50' west	
no line	10.8	216.7
	7.1	220.4
	5.2	222.3
c	4.1	223.4
	2.8	224.7
	1.5	226.0
soline	0.3	227.2

227.46

75' west

soline.	1.7	225.8
	2.8	224.7
	3.4	224.1
c	4.5	223.0
	6.6	220.9
	9.1	218.4
soline	13.2	214.3
	100' west	
no. line	12.6	214.9
	8.9	218.6
	6.6	220.9
c	4.9	222.6
	4.3	223.2
	3.8	223.7
soline	3.0	224.5

227.46

125' west

No line 3.8 223.7

4.8 222.7

5.3 222.2

C 6.1 221.4

8.0 219.5

10.6 216.9

No line 14.0 213.5

150' west

No line 14.9 212.6

11.4 216.1

8.5 219.0

C 6.7 220.8

6.1 221.4

5.3 222.2

No line 4.2 223.3

227.46

175' west

No line 5.6 221.9

6.4 221.1

7.1 220.4

C 7.6 219.9

8.9 218.6

11.4 216.1

J.P. 5.87 ^{H.I.} 223.34 9.99 217.47

No line 10.1 213.2

East line Union.

No line 10.8 212.5

7.2 216.1

6.1 217.2

C 4.8 218.5

4.0 219.3

3.7 219.6

No line 3.07 220.3

223.34

East 1/4

Soline

4.1 219.2

4.5 218.8

4.9 218.4

c

5.6 217.7

7.1 216.2

8.9 214.4

no line

12.1 211.2

East 1/4

no line

12.9 210.4

9.9 213.4

7.9 215.4

c

6.5 216.8

6.8 217.5

5.2 218.1

soline

4.7 218.6

223.34

Center

Soline

5.3 218.0

5.7 217.6

6.5 216.8

c

7.3 216.0

8.9 214.4

10.9 212.4

no line

15.1 208.2

west 1/4

no line

17.0 206.3

11.5 211.8

9.7 213.6

c

8.2 215.1

7.7 215.6

6.5 216.8

Soline

6.1 217.2

22334

west cb.

So line

6.9 216.4

E line

3.07 220.2

7.7 215.6

4.1 219.2

8.5 214.8

4.7 218.6

c

9.4 213.9

c

5.3 218.0

10.7 212.6

6.1 217.2

12.3 211.0

6.9 216.4

no line

17.1 206.2

W line

8.2 215.1

west line of Union

no line

17.4 205.9

W line

8.1 215.2

13.6 209.7

6.9 216.4

11.7 211.6

5.8 217.5

c

10.3 213.0

c

4.9 218.4

9.6 213.7

4.0 219.3

9.4 213.9

3.2 220.1

So line

8.2 215.1

E line

1.8 221.5

22334

X sect. Union St. from 39
So. line Nearney to So. line of
Henry So. line Nearney.

25 south

PLOTTED

223.34
50' 20.

E line	1.0	222.3
	2.3	221.0
	3.7	219.6
C	4.8	218.5
	5.5	217.8
	6.3	217.0
w line	7.3	216.0

75' South

w line	7.8	215.5
	6.3	217.0
	5.7	217.6
C	4.8	218.5
	3.7	219.6
	2.4	220.9
E line	1.0	222.3

PLOTTED

223.34
100' 20.

E line	2.4	220.9
	4.0	219.3
	4.6	218.7
C	5.2	218.1
	5.9	217.4
	6.7	216.6
w line	8.2	215.1

125' So.

w line	9.4	213.9
	8.1	215.2
	7.0	216.3
C	6.5	216.8
	6.1	217.2
	5.6	217.7
E line	4.1	219.2

223.34

150' 20.

Elvis 5.2 218.1

6.3 217.0

6.7 216.6

c 7.9 215.4

8.5 214.8

10.0 213.3

White 11.3 212.0

175' 20.

White 13.6 209.7

12.1 211.2

10.0 213.3

c 8.7 214.6

8.0 215.3

7.2 216.1

Elvis 6.4 216.9

223.34

200' 20.

Elvis 6.7 216.6

8.1 215.2

9.5 213.8

c 11.4 211.9

1/4 13.0 210.3

T.P. 3.52 ^{H.I.} 216.03 10.83 212.51 ✓

cb 7.3 208.7

White 9.0 207.0

225' 20.

White 10.9 205.1

9.2 206.8

7.4 208.6

c 5.8 210.2

3.7 212.3

1.8 214.2

Elvis 0.2 215.8

PLOTTED

216.03

250' 20.

Eline	1.6	214.4
	2.6	213.4
	4.0	212.0
c	6.6	209.4
	8.4	207.6
	10.3	205.7
White	12.1	203.9

275' 20. North line of Henry.

White	12.4	203.6
	10.3	205.7
	8.8	207.2
c	7.3	208.7
	5.2	210.8
	4.1	211.9
Eline	3.0	213.0

PLOTTED

216.03

910. c6.

Eline	3.6	212.4
	4.8	211.2
	5.5	210.5
c	7.1	208.9
	8.4	207.6
	10.1	205.9
White	11.8	204.2

710. 1/4

White	11.3	204.7
	9.9	206.1
	8.5	207.5
c	6.9	209.1
	5.9	210.7
	5.3	210.7
Eline	4.3	211.7

21603

center

Eline

4.9 211.1

5.8 210.2

6.4 209.6

c

7.4 208.6

8.4 207.6

9.6 206.4

white

11.1 204.9

so 1/4

white

10.8 205.2

9.6 206.4

8.5 207.5

c

7.6 208.4

6.7 209.3

6.3 209.7

Eline

5.4 210.6

PLOTTED

216.03

So. cb.

Eline

6.0 210.0

7.0 209.0

7.6 208.4

c

8.4 207.6

9.3 206.7

10.1 205.9

white

11.0 205.0

So. line of Henry

white

12.0 204.0

10.8 205.2

9.7 206.3

c

9.2 206.8

8.2 207.8

7.6 208.4

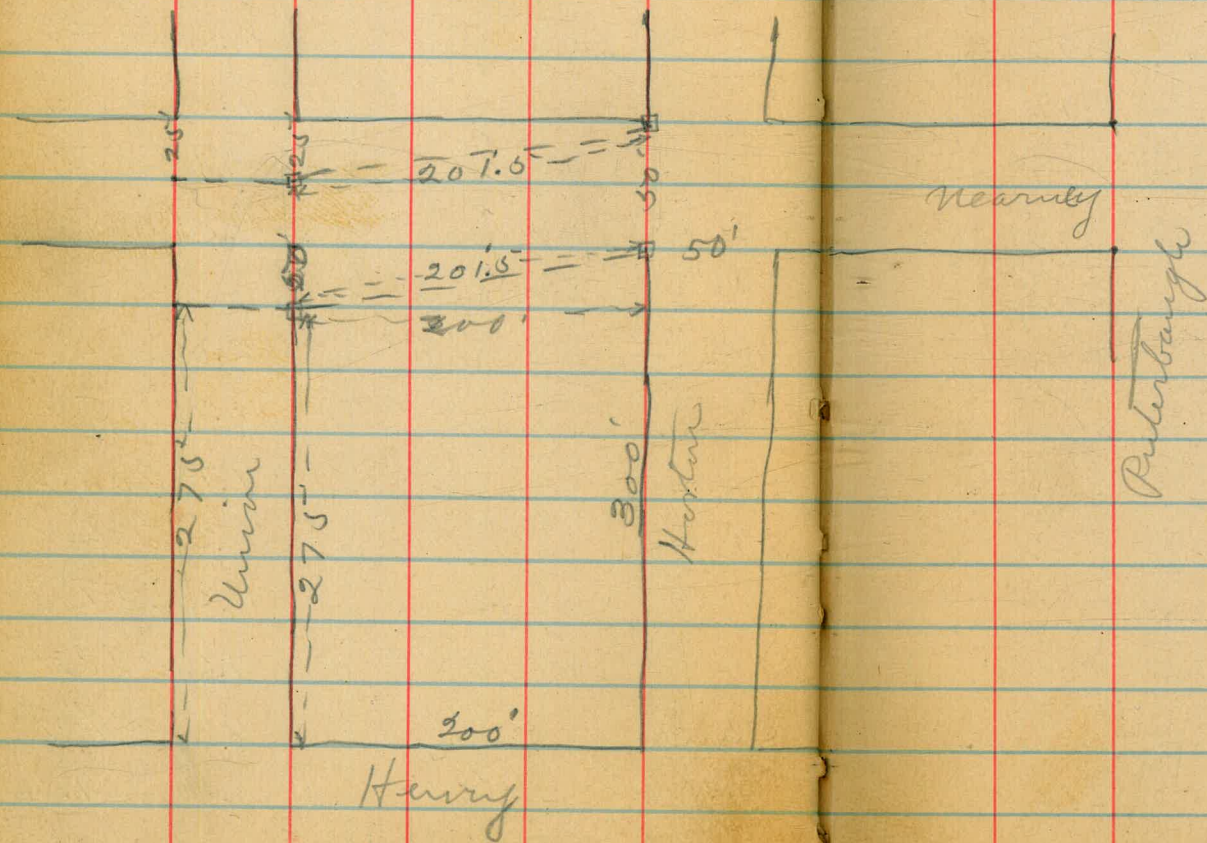
6.3 209.7

Eline

6.17 209.86

B.M.

Helldts
Dec. 27/12 Taylor 44
Allen



PLOTTED

PLOTTED

$\frac{1}{14}$ | $\frac{7}{12}$ | $\frac{5}{12}$ | X Sec of Sigsgard St (60')
 W of Main St to Sherman Ave

580 34.2 28.4 to NW corner
 Sigsgard

W of Sigsgard
 W 54 28.8
 N 56 28.6
 S 55 28.7
 E 52 29.0
 W 50 29.2
 N 45 29.7
 E 40 30.2

6' N of Sigsgard
 E 0.0 34.2

25' N of Sigsgard
 E 0.0 34.2
 N 0.2 34.0
 S 1.0 32.2
 W 3.0 31.2
 E 35 30.7
 N 40 30.2
 S 46 29.6
 W 57 28.5
 E 60 28.2

34.2

Sigsgard

45

50 N of Sigsgard

W 75 26.7
 N 68 27.4
 S 59 28.3
 E 55 28.7
 W 50 29.2
 N 28 31.4
 E 04 33.8

75 N of Sigsgard

E 36 30.6
 N 60 28.2
 S 64 27.8
 E 66 27.6
 W 77 26.5
 N 87 25.5
 E 92 25.0

3422

100' n f Logau

W	106	23.6
U	85	25.7
S	74	26.8
V	69	27.3
H	57	28.3
E	52	29.0

125' n f Logau

E	62	28.0
H	73	26.9
Y	80	26.2
b	86	25.6
Y	98	24.4
H	107	23.3
W	112	23.0

3422

Sigsby

46

150' n f Logau

W	153	18.9
H	126	21.6
Y	117	22.5
b	108	23.4
Y	95	24.7
H	80	26.2
E	63	27.9

7P 101 25.52 1071 23.57

175' n f Logau

E	07	24.8
H	15	24.0
Y	38	22.0
b	43	21.2
Y	42	21.3
H	54	20.1
W	75	18.0

3422
1071
23.57
1071
23.57

2552

200' N of Loga

W	75	18.0
H	54	20.1
U	57	19.8
b	66	18.9
U	63	19.2
H	40	21.5
E	30	22.5

225' N of Loga

E	48	20.7
H	60	19.5
U	66	18.9
b	74	18.1
U	75	18.0
H	76	17.9
W	84	17.1

2552

Sageby

47

250' N of Loga

W	80	17.5
H	80	17.5
U	78	17.7
b	75	18.0
U	71	18.4
H	66	18.9
E	57	19.8

275' N of Loga

E	52	20.3
H	56	19.9
U	69	18.6
b	67	18.8
U	60	19.5
H	67	18.8
E	78	17.7

295' N of Loga

W	66	18.9
H	66	18.9
E	47	20.8

25.52

300' N-S Kearney St (80' Grade)

W	37	21.8
U	39	21.6
U	35	22.0
L	36	21.9
U	35	22.0
U	27	22.8
E	24	23.1

N2 Kearney

E	13	24.0
U	21	23.4
U	22	23.3
L	19	23.6
U	24	23.1
U	24	23.1
W	20	23.5

25.52

Supply

48

8' N7 Kearney

W	28	17.7
U	26	17.9
U	64	19.1
L	62	19.3
U	57	19.8
U	57	19.8
E	52	20.3

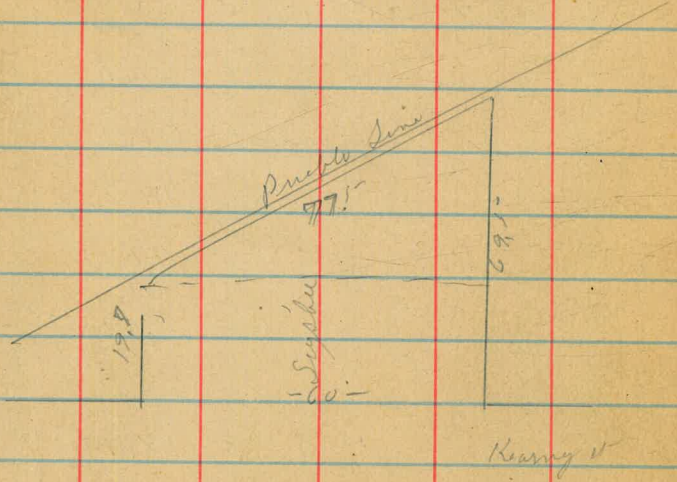
19.5 N - Pd on W

E	56	19.9
U	61	19.4
U	62	19.3
L	60	19.5
U	65	19.0
U	70	18.5
W	68	18.7

(77.5)

19.7' on W } = Pt Sherman Ada
69.2' on E }

N	68	18.7
86	70	18.5
1/2	63	19.2
c	60	19.5
y	54	20.1
H	45	21.0
E	31	22.4



410 32.95 2842 Ben NW Logan

S 2 1 Logan

W	31	29.9
U	28	30.2
+3'	40	29.0
y	48	28.7
h	38	29.2
"	37	29.3
U	35	29.5
E	31	29.9
-		
25'	37	Logan
E	02	32.8
+3'	18	31.2
U	13	30.7
+3'	32	29.7
y	33	29.7
h	35	29.5
y	38	29.2
+5'	37	29.3
+6'	27	30.8
U	25	30.5
W	27	30.3

32.95

50 S of Logar

N		26	30.4
H		27	30.3
4		38	29.2
6		34	29.6
4		35	29.5
H		31	29.9
E	46'	21	30.9
		05	32.5

75 S of Logar

E	15'	14	31.6
H		24	30.6
		32	29.8
4		39	29.1
6		35	29.5
4		40	29.0
H		36	29.4
N		33	29.7

32.95

Sigsby

50

100 S of Logar

N		40	29.0
H		42	28.8
4		44	28.6
6		39	29.1
4		41	28.9
H		35	29.5
E	76'	29	30.1
		17	31.3

125 S of Logar

E	10'	24	30.6
H		32	29.8
		38	29.2
4		43	28.7
6		44	28.6
4		47	28.3
H		45	28.5
N		42	28.8

3295

	150	S f	Logan	
W			50	28.0
H			50	28.0
Y			53	27.7
b			49	28.1
y			49	28.1
H			45	28.5
E			37	29.3

	175	S f	Logan	
E			44	28.6
H			50	28.0
y			57	27.3
t			56	27.4
h			60	27.0
H			56	26.4
W			54	27.6

3295

Sigsbee

51

	200	S f	Logan	
W			66	26.4
H			62	26.8
Y			70	26.0
y			67	26.3
b			63	26.7
y			64	26.6
H			57	27.3
E			51	27.9

	225	S f	Logan	
E			60	27.0
H			64	26.6
y			71	25.9
b			69	26.1
y			73	25.7
H			70	26.0
W			73	25.7

3295-

250 S of Logar

W		78	25.2
N		75	25.5
	74	76	25.4
		85	24.5
Y		80	25.0
b		77	25.3
Y		78	25.2
N		72	25.8
E		67	26.3
	275		
E		74	25.6
N		79	25.1
Y		83	24.7
L		83	24.7
Y		88	24.2
	25	91	24.0
N	76	85	24.5
		87	24.3
N		89	24.1

3295-

Says M

52

297 S of Logar

W		87	24.3
N		80	25.0
	74	81	24.9
	75	85	23.5

300 S = 2nd Natural ⁽⁸⁰⁾ on (Grade)

W		96	23.4
N		96	23.4
Y		93	23.7

b

Y

N

E

TD	0.95	1	2640	750	25.45	750
----	------	---	------	-----	-------	-----

22.90
750
25.45
95
26.40

750

S 27 National An

E		27	23.7
H	47'	30	23.4
		33	23.1
y		40	22.4
b		40	22.4
y		43	22.1
H		43	22.1
W		42	22.2

25' S of National

W		46	21.8
H		46	21.8
y		47	21.7
b		46	21.8
y		46	21.8
	42'	35	22.9
H		31	23.3
E		31	23.3

50' S 7 National

E		35	22.9
H		37	22.7
y	48'	41	22.3
y		49	21.5
b		48	21.6
y		50	21.4
H		50	21.4
W		50	21.4

75' S 7 National

W		55	20.9
H		54	21.0
y		54	21.0
b		51	21.3
y		54	21.0
	41'	41	22.3
H		35	22.9
E		33	23.1

2640

3

	100'	S of	Natural an	
E			34 23.0	
H			40 22.4	
7	71		45 21.9	
b			57 20.5	
			56 20.8	
7			59 20.5	
H			60 20.4	
W			64 20.0	

	125'	S of	Natural	
W			67 19.7	
H			66 19.8	
7			66 19.8	
b			63 20.1	
7			61 20.3	
H	71		51 21.3	
			41 22.3	
E			89 22.5	
E			57	

2640

Sigsbee

54

	150'	S of	Natural	
E			41 22.3	
H			46 21.8	
7	79		51 21.3	
			65 19.9	
b			66 19.8	
7			68 19.6	
H			70 19.4	
W			69 19.5	

	7P	220	2250	619	20.1	
						2640 619 20.1 2250 2250 2640
						2640 619 20.1 2250 2250 2640
	175'	S of	Natural an			
W			44 18.1			
H			35 19.0			
7			34 19.1			
b			32 19.3			
7			29 19.6			
H			15 21.0			
E			0.6 21.9			

2250

200 S. of National

E		11	21.4
H		17	20.8
	78'	25	20.0
Y		34	19.1
6		36	18.9
7		38	18.7
H		42	18.3
W		43	18.2

225' S. of National

W		51	17.4
H		45	18.0
Y		42	18.3
6		40	18.5
4		38	18.7
	73'	25	20.3
H		17	20.8
E		14	21.1

2250

Sigsbee
55

250 S. of National

E		16	20.9
H		20	20.5
Y		27	19.8
	71'	45	18.0
6		44	18.1
7		47	17.8
H		47	17.8
W		49	17.6

275' S. of National

W		51	17.4
H		49	17.6
	70'	59	16.7
Y		55	17.0
8		52	17.3
4		53	17.2
	73'	28	19.7
H		24	20.1
E		13	21.2

2250

300' S = N S of Newton an (80) Grade

E	(5.0) 5.0	17.5 20.5
H	(5.4) 3.0	17.1 19.5
y	5.4	17.1
b	6.0	16.5
y	6.0	16.5
H	6.1	16.4
W	5.9	16.6

2250
360
1890
1.01
20.91

TP

201 ⁽²⁰⁸⁷⁾
2091364 ⁽¹⁸⁸⁶⁾
1890

S of Newton

E	4.3	16.6
H	5.0	15.9
y	5.1	15.8
b	4.9	16.0
y	5.1	15.8
H	5.8	15.1
W	5.7	15.2

2091

5' S of Newton

W		43	16.6
H		41	16.8
	+1'	50	15.9
y		49	16.0
b		47	16.2
y		47	16.2
H	+2'	32	17.7
		22	18.7
E		22	18.7

25' S of Newton

E		27	18.2
H		33	17.6
	+1'	41	16.8
y		48	16.1
b		44	16.5
y		46	16.3
	+8'	49	16.0
H		43	16.6
W		47	16.2

Sigsha

56

2091

50 S of Newton

W		48	16.1
H		47	16.2
Y		44	16.7
N		42	16.7
Y	+1'	47	16.2
H		35	17.4
H		31	17.8
E		26	18.3

75 S of Newton

E		22	18.7
H		29	18.0
Y	+9'	33	17.6
Y		50	15.9
L		43	16.6
Y		43	16.6
H		49	16.0
W		47	16.2

2091

100 S of Newton

W		53	15.6
H		47	16.2
Y		44	16.5
L		44	16.5
Y	+9'	49	16.1
Y		33	17.6
H		24	18.5
E		26	18.3

125 S of Newton

E		22	18.7
H		22	18.7
Y		27	18.2
L	+1'	50	15.9
L		46	16.3
Y		46	16.3
H		49	16.0
W		53	15.6

Siyahui

57

2091

	150'	S of	Newton
W			54 15.5
U			54 14.5
Y			50 15.9
L			50 15.9
Y			48 16.1
U	+9'		48 16.1
			36 17.3
E			32 17.7

	175'	S of	Newton
E			20 18.9
U			22 18.7
Y			28 18.1
	+1'		34 15.5
L			31 15.8
Y			53 15.6
U			54 15.5
W			64 14.5

2091

(2087)

Seymour

58

	200'	S of	Newton
W			66 14.3
U			44 16.1
Y	+3'		56 15.3
Y			55 15.4
L			53 15.6
Y	+4'		58 15.1
Y			26 18.3
U			25 18.4
E			21 18.8

TP

045

(921)

1975

	225'	S of	Newton
			161 19.30
E			08 18.9
U			09 18.8
Y			19 17.8
L	+1'		46 15.1
			45 15.2
Y			48 14.9
U			44 15.3
W			43 15.4

2091
161
19.30
45
19.75

1975

250 S of Newton

W		49	14.8
H	+31	46	15.1
		43	15.4
4		53	14.4
L		57	14.6
	+9	54	14.3
4		27	17.0
H		17	18.0
E		15	18.2

275 S of Newton

E		16	18.1
H		23	17.4
4		32	16.5
	+11	60	13.7
L		60	13.7
4		60	13.7
	+51	53	14.4
H		53	14.4
W		54	14.3

1975

Seymour

59

300 S = 2 S of Main St (80') (Graded)

W		(58)	13.9
		(72)	12.5
H		(50)	14.7
	+1	(25)	12.2
	+8	52	14.5
		65	13.2
4		69	12.8
L		70	12.7
	+9	67	13.0
4		(31)	16.6
		(67)	13.0
H		(24)	17.3
		(67)	13.0
E		(67)	17.8
		(67)	12.0

50' street
 X sect. near by from
 to west line Union

J.P. H.L.
 0.46 231.06 230.60

West line Horton

No. line 0.46 230.6

1.1 230.0

1.5 229.6

c

1.7 229.4

2.3 228.8

2.7 228.4

No line

5.62 225.5

25' west

No line

10.1 221.0

7.5 223.6

5.9 225.2

c

4.6 226.5

3.7 227.4

3.5 227.6

solino

2.5 228.6

West line Horton

Feb. 6/13

231.00

50' west

solino

4.6 226.5

6.0 225.1

7.4 223.7

8.5 222.6

No 1/4

10.4 220.7

75' west

13.6 217.5

10.3 220.8

8.3 222.8

7.1 224.0

solino

6.3 224.8

100' west

7.5 223.6

8.2 222.9

9.4 221.7

11.5 219.6

c

Childs
 60
 Taylor
 Allen

231.06

61

				H.T. ✓
	125' west			1.06 <u>220.04</u>
C		13.8	217.3	50' west Horton
		11.6	219.5	5.3 214.7
		9.8	221.3	no. line
so line		8.8	222.3	no. cb.
	150' west			15 218.5
so line		9.8	221.3	75' west
		11.0	220.1	5.9 214.1
so 1/4		13.7	217.4	no. line
	175' west			10.4 209.6
so cb.		12.3	218.8	100' west
so line		11.0	220.1	11.0 209.0
	East line main			6.4 213.6
so line		12.7	218.4	3.7 216.3
J.P.	1	12.08	218.98	125' west
				6.1 213.9
				9.0 211.0
				14.7 205.3
				150' west
				11.7 208.3
				7.9 212.1
				5.3 214.7

220,04

175' west

So. 1/4 3.8 216.2

C 6.0 214.0

no. 1/4 8.6 211.4

East line Union

no 1/4 10.0 210.0

C 7.4 212.6

1/4 5.5 214.5

So cb. 3.3 216.7

East cb.

So line 2.2 217.8

4.4 215.6

7.5 212.5

C 8.9 211.1

East 1/4

C 9.7 210.3

8.0 212.0

5.2 214.8

So line 3.2 216.8

220,04

82

Center

3.9 216.1

6.1 213.9

8.3 211.7

11.6 208.4

West 1/4

13.3 206.7

9.3 210.7

7.0 213.0

5.0 215.0

west cb

6.0 214.0

8.2 211.8

10.0 210.0

14.2 205.8

220.04

207.10

west line

last cb.

C		14.2	205.8	no line		10.5	196.6
		11.1	208.9			4.3	202.8
		9.1	210.9	no 1/4		-0.4	207.5
Behind		7.2	212.8		east 1/4		
J.P.	0.16 207.10	13.10	206.94	no 1/4		1.1	206.0
	150' west Horizon					5.6	201.5
no line		4.0	203.1	no line		13.3	193.8
	175' west				center		
no line		5.0	202.1	no line		14.8	192.3
no cb		-0.4	207.5			8.3	198.8
	last line minus			no 1/4		3.5	203.6
no cb		2.0	205.1		west 1/4		
no line		7.8	199.3	no 1/4		5.6	201.5
						9.6	197.5
				no line		16.2	190.9

207,10

west eb.

no line 17.0 190.1

11.2 195.9

no 1/4 6.7 200.4

west line

no 1/4 5.8 201.3

9.9 197.2

no line 16.3 190.8

3/6 Aug 1
1/7 July
12/12 Shan

Xace of 3d st (80')

Juniper to Kalmia

200

226.95

224.95

B.M. NW on
Kalmia + 3d st

226.95

3d st

65

S line of Kalmia

20' 84.81

19.5 207.5

E

5.6 221.4

2'

19.5 207.5

SE

5.1 221.9

E 2

13.5 213.5

Y

5.1 221.9

H

4.3 222.7

b

4.6 222.4

Y

3.8 223.2

Y

4.5 222.5

b

3.6 223.4

H

4.5 222.5

Y

2.6 224.4

W

4.5 222.5

H

3.6 223.4

5' S of Kalmia

W

3.0 224.0

W

2.0 225.0

50

Sy

Kalmia

H

3.3 223.7

2

3.6 223.4

Y

3.7 223.6

H

4.6 222.4

b

4.1 222.9

Y

4.0 223.0

Y

4.0 223.0

b

4.7 222.8

H

5.0 222.0

Y

4.1 222.9

S

11.0 216.0

H

10.5 216.5

Y 84.81

19.0 208.0

E

18.2 208.8

20' 84.81

19.0 208.0

2' 84.81

22.2 204.8

20' 84.81

22.2 204.8

22695

75' Sg Kalmia
 20' E' of L 230 204.0
 E L 230 204.0
 H 131 213.9
 Y 64 220.6
 L 45 222.5
 Y 50 222.0
 H 50 222.0
 W 42 222.8

100 Sg Kalmia
 W 33 223.7
 H 59 221.1
 Y 53 221.7
 L 102 216.8

TP 745 2266 1174 215-21
 Y 106 212.1

22695
 1174
 215-21
 745
 2266

2266

3001

66

125' Sg Kalmia
 W L 402 222.9
 H 19 220.8
 Y 90 213.7
 L 147 208.0

150 Sg Kalmia
 W L 65 222.2
 H +1 20 220.7
 Y 32 219.5
 Y 78 214.9
 L 128 209.9

175 Sg Kalmia
 W 30 219.7
 H 30 219.7
 Y 60 216.7
 L 90 213.7
 Y 103 212.4
 H 115 211.2
 E 153 207.4
 34 E 2047
 20 E 2035

222.66 ✓

TP 120 11:3.51 10.35 112.31 ✓

100 S of Kalm

E bank 75 206.0

75 201.9

E bank 116 201.9

20' E of 143 203.2

125 S of Kalm

E 1/4 102 203.0

136 199.9

137 198.5

E bank 132 200.3

20' E of 120 201.5

150 S of Kalm

E 1/4 97 203.8

127 200.8

170 195.5

20 130 200.5

TP 869 230.05 120 214.6

221.00 ✓ 112.31 ✓

2266
120
221.46
869
2301.05

~~23005~~

221.00

322

67

200 S of Kalm

W 11 219.9

H 19 219.1

4 4.2 216.8

6 6.1 214.9

4 6.6 214.4

H 9.3 211.7

E 12.1 208.9

20' E of 205 200.5

20' E of 220 199.0

225 S of Kalm

W 19 219.1

H 10 220.0

3 15 219.5

6 4.8 216.2

9 7.5 213.5

H 9.0 212.0

9 16.3 204.7

4' E of 20.2 200.8

20' E of 23.3 197.7

3/3/13
 X sec of Woolman Am (80)
 Continued from B 866
 28th to 30th 27

10354

	425	E of	28th 27	
2			1.8	101.7
u			2.5	101.0
y			3.4	100.1
	+3	= 2' n Row	3.4	100.1
	+12	= 2' S Row	3.4	100.1
b			3.4	100.1
y			2.1	101.4
u			2.5	101.0
S			3.2	100.3
	450	E of	28th	
S			3.2	100.3
u			2.8	100.7
y			2.9	100.6
b			3.8	99.7
	+11	= 2' S Row	3.8	99.7
	+10	= 2' "	3.8	99.7
y			3.8	99.7
u			3.3	100.2
n			2.8	100.7

10354

Woolman

89

475 E of 28th

n			3.6	99.9
u			4.0	99.5
y			4.3	99.2
	+3	= 2' n Row	4.2	99.3
	+12	= 2' S "	4.0	99.5
b			4.0	99.5
y			4.0	99.5
u			3.8	99.7
S			4.4	99.1
	500	E of	28th	
S			5.5	98.0
u			5.1	98.4
y			4.4	99.1
b			4.5	99.0
	+11	= 2' S Row	4.5	99.0
	+10	= 2' "	4.6	98.9
y			4.8	98.7
u			4.6	98.9
n			4.5	99.0

525 E of 28th

n		48	98.7
W		47	98.8
y		50	98.5
	+3 = 2' n Row	49	98.6
	+12 = 2' S "	49	98.6
l		49	98.6
y		57	97.8
W		58	97.7
S		56	97.9

550 E of 28th

S		58	97.7
W		57	97.8
y		59	97.6
l		57	98.3
	+11 = 2' S Row	57	98.3
	+10 = 2' n "	54	98.1
y		54	98.1
W		54	98.1
n		49	98.6

575 E of 28th

n		49	98.5
W		47	98.8
y		56	97.9
	+3 = 2' n Row	56	97.9
	+12 = 2' S "	56	97.9
l		56	97.9
y		58	97.7
W		61	97.4
S		61	97.4

600 E = W of 29th (60')

S		58	97.7
W		52	98.3
y		53	98.2
l		59	97.6
	+11 = 2' S Row	59	97.6
	+10 = 2' n "	59	97.6
y		58	97.7
W		50	98.5
n		48	98.7

TP 244

10028

478

987.6

nw 4

El Rail

97

97.65

10254
478
987.6
244
Total 20

10120

	W	bb y	29 th	
n			25	98.7
bl			26	98.6
y	+3' = 2' n Row		34	97.8
	+12' = 2' S "		36	97.6
			35	97.7
b			35	97.7
y			31	98.1
bl			30	98.2
S			37	97.5
	W	1/4 y	29 th	
S			41	97.1
H			39	97.3
y			36	97.6
b	+1' = 2' S Row		37	97.5
	+10' = 2' n "		37	97.5
			37	97.5
y			34	97.8
H			28	98.4
n			26	98.6

10120

Waples

71

	center of	29 th	
n		23	98.9
bl		28	98.4
y	+3' = 2' n Row	34	97.8
	+12' = 2' S "	37	97.5
		36	97.6
b		36	97.6
y		34	97.8
bl		38	97.4
S		35	97.7
	E	1/4 y	29 th
S		39	97.3
H		39	97.3
y		36	97.6
b	+1' = 2' S Row	37	97.5
	+10' = 2' n Row	37	97.5
		38	97.4
y		34	97.8
H		30	98.2
n		21	99.1

106.20

	E	bl f	29	u
n			23	98.9
h			28	98.4
y			37	97.5
	+3	=v n Row	38	97.4
	+12	=v S Row	38	97.4
b			38	97.4
y			35	97.7
h			35	97.7
S			39	97.3
	E	Line of 29	u	
S			45	96.7
h			40	97.2
y			36	97.6
b			41	97.1
	+11	=v S Row	41	97.1
	+10	=v n Row	41	97.1
y			40	97.2
h			33	97.9
n			28	98.4

A Rail

97.1

107.20

Woolman

72

	25	E	of	29	u
n			30	98.2	
h			37	97.5	
y			40	97.2	
	+3	=v n Row	41	97.1	
	+2	=v S Row	42	97.0	
b			42	97.0	
y			33	97.9	
h			37	97.5	
S			39	97.3	
	50	E	f	29	u
S			50	96.2	
h			44	96.8	
y			45	96.7	
b			45	96.7	
	+1	=v S Row	45	96.7	
	+3	=v n Row	45	96.7	
y			45	96.7	
h			40	98.2	
n			33	98.9	

101.20

	75'	E	of	394
n			40	97.2
h			44	96.8
4			50	96.2
	43'	EV n Rail	48	96.4
	42'	EV S Rail	47	96.5
b			47	96.5
4			48	96.4
h			55	95.7
S			55	95.7

101 E 8 294

S			61	95.1
h			60	95.2
4			55	96.7
h			49	96.3
	41'	EV S Rail	49	96.3
	40'	EV n Rail	50	96.2
4			52	96.0
h			49	96.3
n			45	96.7

101.20

Wolverine

73

	125'	E	of	294
n			50	96.2
h			50	96.2
4			54	95.8
	43'	EV n R	52	96.0
	42'	EV S R	51	96.1
b			51	96.1
4			60	95.2
h			65	94.7
S			66	94.6

150 E 6 294

S			70	94.2
h			66	94.6
4			63	94.9
h			53	95.9
	41'	EV S R	50	95.9
	40'	EV n R	53	95.9
4			54	95.8
h			42	97.0
n			43	96.9

101.20

	175	E of 292		
n			44	96.8
u			49	96.3
y	+3 = 21 n Row		5.3	95.9
	+12 = 2 S "		5.4	95.8
			5.4	95.8
6			5.4	95.8
y			5.9	95.3
u			6.3	94.9
S			6.3	94.9
	200	E of 292		
S			6.7	94.5
u			6.7	95.0
y			5.7	95.5
6	+11 = 2 S Row		5.6	95.6
	+10 = 2 n "		5.6	95.6
			5.5	95.7
y			5.3	95.9
u			4.5	96.7
n			4.3	96.9
TP	442	101.09	453	96.67

101.20
4.53
96.67
4.42
100.09

101.09

Wolva

74

	225	E of 292		
n			4.3	96.8
u			4.8	96.3
y	+3 = 21 n Row		5.3	95.8
	+12 = 2 S "		5.6	95.5
			5.7	95.4
6			5.7	95.4
y			5.5	95.6
u			5.8	95.3
S			5.7	95.4
	250	E of 292		
S			6.2	94.9
u			5.9	95.2
y			5.3	95.8
6	+12		5.2	95.9
	+11 = 2 S Row		5.8	95.3
	+10 = 2 n Row		5.8	95.3
y			5.4	95.7
u			4.7	96.4
n			4.3	96.8

10009

275 E 8 29 A

n		40	97.21
h		43	96.88
"		50	96.21
	+3' = 2' n Row	60	95.21
	+12' = 5' "	60	95.21
b		60	95.21
	+2'	46	96.85
"		51	96.0
h		57	95.84
S		60	95.21

300 E 8 29 A 10

S		60	95.21
h		57	95.84
"		54	95.87
	+12' = 2' S Row	48	96.23
b		61	95.20
	+11' = 2' S Row	61	95.0
	+10' = 2' n Row	62	94.9
"		50	96.21
h		45	96.6
n		40	97.21

10009

325 E 8 29 A

n		41	97.0
h		47	96.84
"		50	96.21
	+3' = 2' n Row	64	94.87
	+12' = 2' S Row	64	94.87
b		64	94.87
	+8'	48	96.23
"		56	95.86
h		59	95.32
S		57	95.84

350 E 8 29 A

S		57	95.84
h		62	94.9
"		57	95.84
	+11'	53	95.8
b		69	94.32
	+11' = 2' S Row	69	94.32
	+10' = 2' n "	67	94.34
"		52	96.9
h		46	96.85
n		42	97.69

Woodman

75

100.09

	375	E of	2900	
n			4.1	97.0
bl			4.8	96.3
y			5.2	95.9
	+3'	= 2' N Row	7.1	94.0
	+12'	= 2' S "	7.2	93.9
l			7.2	93.9
	+3'		5.3	95.8
y			5.5	95.6
bl			5.3	95.8
S			5.4	95.7
	400	E of	2900	25
S			5.2	95.9
bl			5.4	95.7
y			5.3	95.8
l	+10'	-	4.7	96.4
	+11'	= 2' S Row	8.0	93.1
	+10'	= 2' N Row	8.0	93.1
			7.8	93.3
y			4.8	96.3
bl			4.0	97.1
n			3.8	97.3

100.09

Newman

10

	425	E of	2900	
n			3.5	97.6
bl			3.9	97.2
bl			4.4	96.7
	+3'	= 2' N Row	8.2	92.9
	+12'	= 2' S Row	8.4	92.7
			8.4	92.7
l			8.4	92.7
	+4'		4.7	96.4
y			5.1	96.0
bl			5.5	95.6
S			6.0	95.0
	450	E of	2900	
S			6.4	94.7
bl			5.7	95.4
y			5.6	95.5
	+9'		5.3	95.8
l			9.2	91.9
	+11'	= 2' S Row	9.2	91.9
	+10'	= 2' N Row	9.0	92.1
y			5.0	96.1
bl			4.3	96.8
n			3.7	97.4

10909

	1175	E	g	292
n			34	977
h			47	96.4
y			53	95.8
	+3 = 2' n Row		9.8	91.3
	+2 = 2.5 "		10.0	91.1
b			10.0	91.1
	+4		5.9	95.2
y			6.3	94.8
h			5.9	95.2
S			6.8	94.3
	500	E g	292	
S			6.1	95.0
h			6.0	95.1
y			6.1	95.0
			6.1	95.0
b			10.5	90.6
	+1 = 2' S Row		10.5	90.6
	+10 = 2' n Row		10.3	90.8
y			5.6	95.5
h			4.7	96.3
n			3.6	97.5

10909

Wolwa

17

	525	E g	292	
n			40	97.1
h			5.0	96.1
y			6.0	95.1
	+3		11.0	90.1
	+10		11.0	90.1
b			11.0	90.1
	+5		6.9	94.2
h			7.2	93.9
h			7.5	93.6
S			7.5	93.6
	TP	378	96.89	79.8
		550	E g	292
S			11.4	92.5
h			4.1	92.8
y			3.8	93.1
			3.8	93.1
b			7.6	89.3
	+1		2.6	89.3
	+10		7.6	89.3
y			2.7	94.2
	+10		3.0	93.9
h			1.6	95.3
n			0.6	96.3

10909
 2.98
 93.11
 378
 96.89

9689

	575	E 8	29m	
n			35	93.4
u			40	92.9
y			46	92.3
	+3 = 2' n R		82	88.7
	+12 = 2' S R		82	88.7
b			82	88.7
	+4		50	91.9
y			52	91.9
u			51	91.8
S			47	92.2
	600'	E = wd	30' at St (80')	
S			66	91.3
u			60	90.9
y			65	90.4
	+7		63	90.6
	+8		87	88.2
b			90	87.9
	+1 = 2' S R		90	87.9
	+10 = 2' n R		92	87.7
			90	87.9
y			(60)	90.9
	7R	521	853	88.26
u			29	90.7
	+2		1.1	92.5
n			1.4	92.2
	A Rail		560	88.00

9357

Wulma

78

	W	66 y	30 at	St
n			26	91.0
	+10		26	91.0
u			40	89.6
	+11		36	88.0
y			56	88.0
	+3 = 2' n R		57	87.7
	+12 = 2' S		59	87.7
b			59	87.7
	+6		40	89.6
y			40	89.6
u			34	90.2
S			41	89.5
	W	14	30 at	St
S			57	87.9
u			55	88.1
y			51	88.5
b			62	87.4
	+11 = 2' S R		62	87.4
	+10 = 2' n R		59	87.7
y			55	88.1
u			50	88.6
n			38	89.8

9689
 953
 88.36
 9.3.50

9357

	Center of	cont	21-
n		5.2	88.4
h		5.7	87.9
y		5.9	87.7
	+3' = 2' n Rail	6.3	87.3
	+12' = 2' S Rail	6.4	87.2
b		6.4	87.2
y		6.0	87.6
h		6.1	87.5
S		6.3	87.3
	E 1/4 of	30 ft	1/4
S		7.0	86.6
h		6.8	86.8
y		6.5	87.1
b		7.0	86.6
	+1' = 2' S R	7.0	86.6
	+10' = 2' n R	6.9	86.7
y		6.8	86.8
h		6.4	87.2
n		5.9	87.7

9357

Wagon

79

	E	bb of	30 ft	1/4
n			6.1	87.5
h			7.1	86.5
y			7.0	86.6
	+3' = 2' n Rail		7.0	86.6
	+12' = 2' S R		7.3	86.3
b			7.3	86.3
y			7.6	86.0
h			7.6	86.0
S			7.7	85.9
		E line of	30 ft	1/4
S			9.0	84.6
h			8.4	85.2
y			8.3	85.3
b			7.6	86.0
	+1' = 2' S R		7.6	86.0
	+10' = 2' n R		7.6	86.0
y			7.5	86.1
h			7.9	85.7
n			6.6	87.0
	El Rail		7.75	85.82

80

507

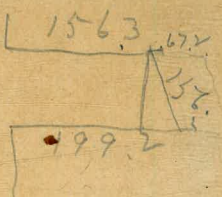
36557

$$\begin{array}{r} 377.30 \\ 377.40 \\ 859 \\ \hline 368.83 \\ 1.54 \\ \hline 370.37 \\ 67.27 \\ \hline 4.8 \end{array}$$

Dangle



$$\begin{array}{r} 262.68 \\ 10.40 \\ \hline 273.08 \text{ H.I.} \\ 10.26 \\ \hline 262.82 \text{ J.P.} \\ 0.70 \\ \hline 263.52 \text{ H.L.} \\ 13.10 \\ \hline 250.40 \text{ J.P.} \\ 0.05 \end{array}$$



20.8 182

