

F.B.
855

LEVEL BOOK

No. 420

MICROFILMED

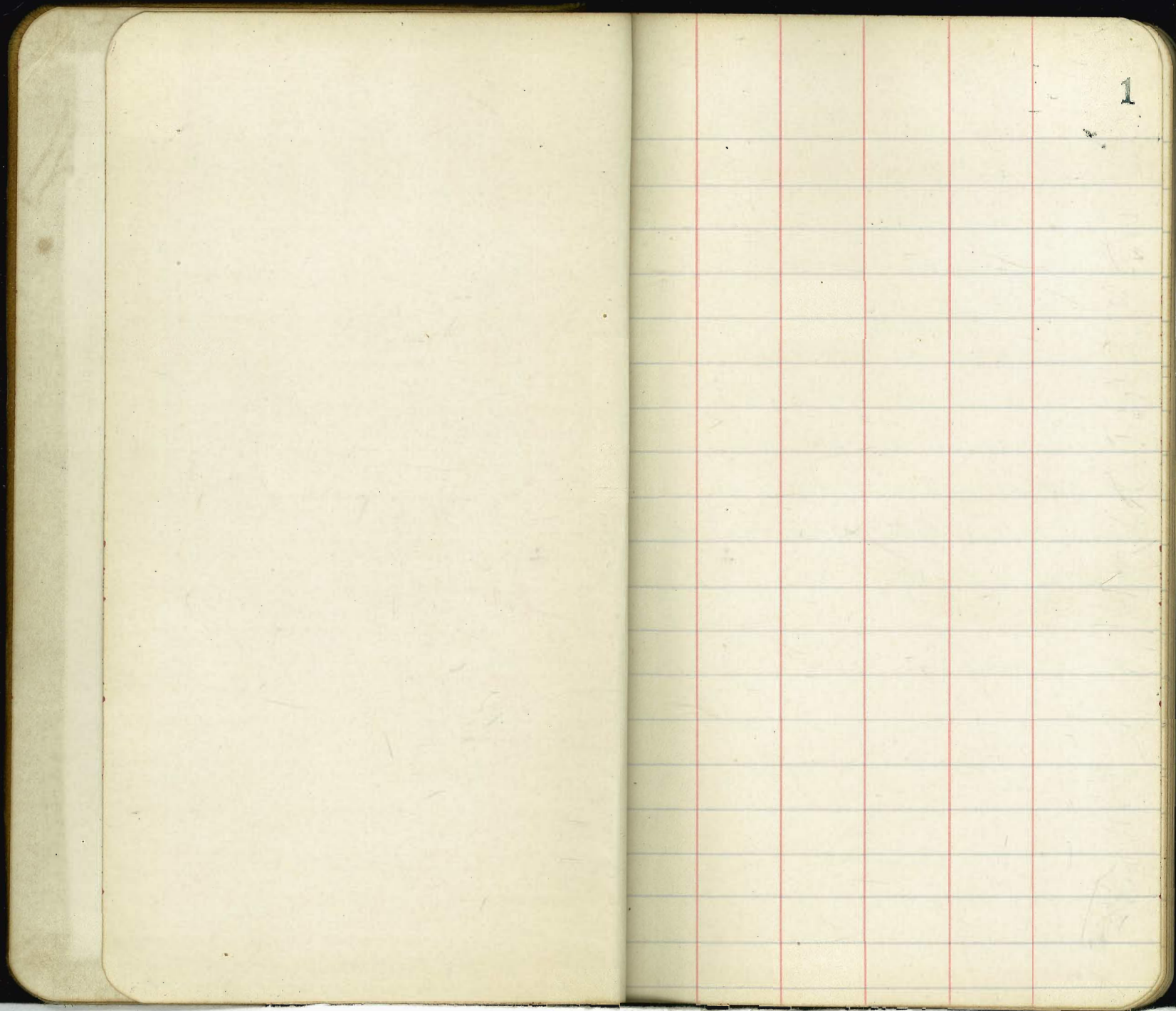
DEC 15 1964

35-2

415' from Cholla

36-2

1100'



1

x-section Curlew Union to Laurel
 " 80' wide 14' walls 13' 1/2" 1/2 2 1/2
 4/29 Dumble
 Evans
 12 Km.

B.M. s.m. B.P. Union & Hartman 99.87
 S.M. 5.55 105.42
 T.P. 8.48 106.68 7.22 98.20

" A "

5.4

x-sec " B "

E.
 +3
 +9

6.5
 8.1
 8.2

x-sec " C "

E
 +3
 crk
 +2
 +4

6.4
 7.8
 8.3
 8.9
 9.1

x-sec D

E
 +3
 crk

6.8
 7.5
 7.9

1/4

7.9

x-sec E

E
 +3
 crk

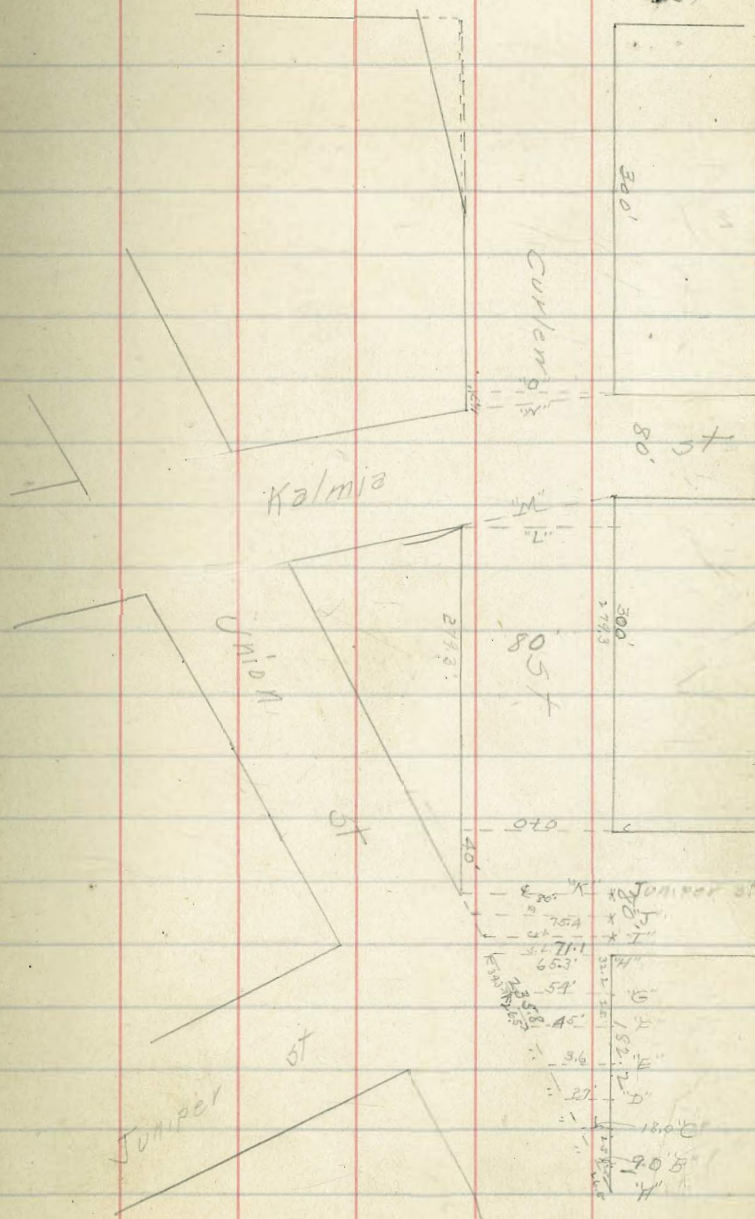
5.7
 6.9
 7.4

1/4

7.6
 8.4
 8.9

+8
 +9

Laurel



x-sec F

E	6.0
+1	6.8
crk	7.5
1/4	8.1
M	8.5
+5	9.4

x-sec G

E	4.5
+3	6.2
crk	7.0
1/4	7.7
M	8.2
1/4	9.0
+1	9.4

x-sec H = sk. Juniper

E	4.8
+2	6.0
crk	6.4
1/4	6.7
M	7.2
1/4	8.1
+11	9.2
+12-3	10.0

x-sec I = sk. Juniper

E	5.2
crk	6.3
1/4	6.6
M	6.6
1/4	8.4
crk	9.3
+4	9.4
+5.1	10.5

x-sec J = sk. Juniper

E	4.6
crk	5.7
1/4	6.5
M	7.2
1/4	8.0
crk	8.6
+7	9.1
+9.4	11.0

X-sec N^o 10 - C. Juniper

N	10.2
+3	8.8
crk	8.4
"	7.5
M	6.8
"	5.9
crk	5.0
E	3.2

N^o 11A

E	2.7
crk	2.0
"	5.0
M	5.5
"	6.3
crk	7.6
N	8.6

N. curb

N	7.6
crk	7.0
"	6.1
M	4.9
"	4.0
crk	3.1
E	1.6

N. L. Juniper

E	2.7
crk	2.5
"	4.0
M	5.0
"	5.9
crk	7.2
N	8.0

106.65

0175 N

W			7.0	
crk			6.1	
"			4.7	
M			3.5	
"			2.9	
crk			1.0	
E			0.0	
F.P.	5.20	111.71	0.17	106.51
		0150		
E			3.6	
crk			5.0	
"			6.2	
M			7.4	
"			9.1	
crk			10.2	
W			9.9	

111.71

0175

W			9.2
crk			10.6
"			8.9
"			7.2
M			6.9
"			5.4
crk			4.2
E			3.0
		110	
E			2.8
crk			3.5
"			5.0
M			7.0
"			7.0
crk			9.0
W			8.5

5

1425

-15	6.3
N	6.6
crk	9.8
"A	8.3
M	7.7
"A	6.0
crk	4.3
E	1.9

1450

E	4.6
crk	7.2
"A	8.6
M	8.9
"A	9.2
crk	9.4
N	8.1
+8	5.0
+15	5.0

1475

-20	2.8
-10	3.1
N	5.1
crk	10.5
"A	14.8
M	14.2
"A	9.8
crk	10.3
E	5.7

210

+20	4.2
-20	7.7
E	7.2
crk	9.4
"A	10.2
M	11.1
"A	12.0
crk	11.2
+8	10.5
N	7.2
+13	1.1
+20	0.9

11671

2+25

-	
-16	0.4
W	7.9
+6	11.3
Crk	11.5
1/2	10.9
M	9.1
1/2	7.1
Crk	5.3
E	3.5
+10	2.8

2+50

-10	+2.0
E	+0.5
W	
Crk	2.3
+6	3.3
1/2	7.4
M	10.4
1/2	10.9
Crk	10.9
+6	9.4
W	5.7
+12	1.8

T.P	5.31	115.55	1.47	110.24
-----	------	--------	------	--------

11555

2+65

-15	4.8			
W	7.6			
Crk	12.4			
1/2	13.4			
M	12.9			
1/2	10.8			
Crk	5.2			
E	1.3			
T.P	8.43	122.54	1.44	114.11
2+79 ³ - X-SEC L				

E	8.4
Crk	12.9
1/2	13.5
M	11.2
1/2	10.3
Crk	6.8
W	3.5

7

12254

x-sec "M" = s.l. Kalmia st. graded

W	3.5
Crk	3.7
"A	3.4
M	2.9
"A	2.7
Crk	2.0
E	1.7

x-sec "N" = N.L. Kalmia

E	0.9
Crk	1.1
"A	1.3
M	1.3
"A	1.7
Crk	1.6
W	1.2

8

x-sec "O" = 040

W	0.0
Crk	0.8
"A	1.3
M	1.0
"A	1.3
Crk	1.1
E	0.9

T.P. 12.37 139.20 0.71 121.83

0.25 W

E	10.9
Crk	11.1
"A	11.5
M	11.2
"A	10.9
Crk	10.4
W	10.1

13920

0450

W	7.4
Crk	8.0
"A	8.4
M	9.2
"A	9.2
Crk	9.2
F	8.2

0475

E	6.8
Crk	7.3
"A	7.2
M	6.8
"A	6.2
Crk	5.7
W	5.5

9

140

W	4.0
Crk	4.1
"A	4.3
M	4.2
"A	4.9
Crk	4.3
F	3.2

1425

E	2.4
Crk	2.7
"A	2.8
M	2.5
"A	2.8
Crk	2.5
W	2.9

134.20

1450

W			1.5	
erb			1.3	
"A			1.0	
M			1.0	
"A			1.1	
erb			0.4	
E			0.0	
T.P.	11.99	145.72	0.27	133.93
		147.5		
E			9.3	
erb			10.1	
"A			10.7	
M			10.3	
"A			10.3	
erb			10.8	
W			11.3	

145.72

270

10

W				9.9
erb				9.1
"A				8.6
M				8.8
"A				8.8
erb				8.3
E				7.5
E				6.0
erb				7.1
"A				2.0
M				6.9
"A				7.2
erb				7.7
W				7.8

2725

14572

2150

W	5.0
orb	5.3
1/4	5.5
1/4	5.0
1/4	5.3
orb	5.2
E	4.0

2175

E	2.6
orb	3.3
1/4	3.2
M	3.4
1/4	3.0
orb	3.0
W	2.4

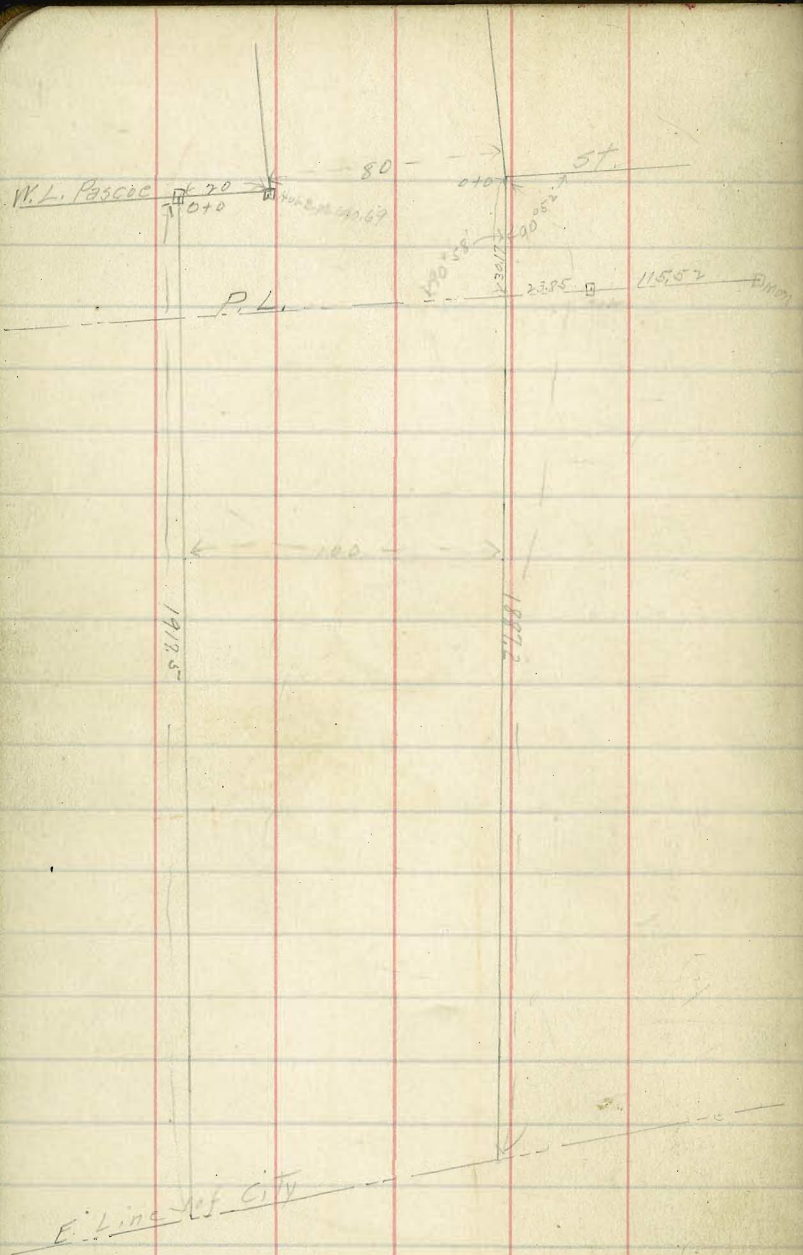
T.P.	4.31	148.60	1.43	147.29
------	------	--------	------	--------

148.60

3107 Site Laurel st

11

W	2.1
orb	2.9
1/4	3.1
M	3.5
1/4	4.2
orb	4.2
E	3.4



Y-sec H W.L. Pascoe to E. Line of City
 " 100 wide 16 marks 17 13

17/1/19
 H. W. L. Pascoe
 12

0+0	3.79	144.48	140.69
W.L. Pascoe, 0+0			
S		1.5	143.0
cut		3.1	141.4
"		5.8	138.7
"		7.1	137.4
"		8.9	135.6
cut		9.8	134.7
"		9.6	134.9
0+15			
"		13.7	132.1
cut		17.2	132.3
"		10.9	133.6
"		2.0	136.5
"		7.1	137.3
cut		4.5	140.0
S		1.8	142.7

144.45

0+30² = P.L.

W.L.

S	2.8	141.7
erb	5.5	139.0
"	7.6	136.9
M	10.7	133.8
"	13.0	131.5
erb	14.1	130.4
N	14.6	129.9

0+50

N	17.9	126.6
erb	17.1	127.4
"	15.3	129.2
M	13.0	131.5
"	10.3	134.2
erb	6.5	138.0
S	4.3	140.2

144.48

0+75

13

S	7.2	137.3
erb	9.3	135.2
"	12.9	132.1
M	15.8	128.7
"	18.1	126.4
erb	19.9	124.6
N	20.4	124.1

170

N	23.5	121.0
erb	22.2	122.3
"	21.2	123.3
M	18.8	125.7
"	16.7	128.1
erb	14.2	130.5
S	11.5	132.0

T.P. 0.36 131.75 130.9 131.39

131.75

1425

S	3.8	128.0
Crk	6.3	125.5
"	8.6	123.2
M	9.9	121.9
"	12.6	119.2
Crk	13.2	118.6
N	16.3	115.5
+20	13.9	118.4

1450

-20	16.1	115.7
N	18.2	113.5
Crk	15.7	116.1
"	15.4	116.4
M	13.3	118.5
"	12.9	118.9
Crk	14.5	120.3
S	10.0	121.8
T.P.	0.40	119.11
		13.04
		118.71

119.11

1475

-20	3.8	115.8
S	4.0	115.1
Crk	4.9	114.2
"	5.1	114.0
M	4.7	114.4
"	6.6	112.5
Crk	6.9	112.7
N	9.7	109.4
+30	8.4	110.7

240

-30	11.8	107.3
N	13.1	106.0
Crk	12.1	107.0
"	11.7	107.4
M	11.7	107.4
"	11.0	108.1
Crk	11.6	107.5
S	10.7	108.4
+30	9.5	109.6

14

119.11

2725

-30	15.4	103.7
5	16.0	103.1
orb	16.4	102.7
14	16.1	103.0
11	16.0	103.1
14	16.8	102.3
orb	17.0	102.1
N	16.3	102.8
+30	16.2	102.9

2750

-30	13.9	105.2
14	15.8	103.3
orb	16.2	102.9
14	17.4	101.7
11	22.0	96.8
14	23.7	95.4
orb	24.5	94.6
5	21.0	98.1
+30	19.9	99.2

15

119.11

2775

-30	22.1	97.0
5	18.1	101.0
orb	16.3	102.8
14	15.3	103.8
11	14.0	105.1
14	13.2	105.9
orb	12.0	107.1
N	10.57	108.57

+30

10.57

10.3

108.8

370

-15	7.1	112.0
N	6.7	112.4
orb	7.4	111.7
14	8.8	110.3
11	9.5	109.6
14	9.9	109.2
orb	10.7	108.4
5	12.5	106.6
+20	14.5	104.6

119.11

3+25

3	7.8	111.3
Crk	6.6	112.5
"	6.5	112.6
"	6.2	112.9
"	6.4	112.7
Crk	6.0	113.1
N.	6.0	113.1

3+50

N	5.1	114.0
Crk	6.0	113.1
"	6.5	112.6
"	6.4	112.7
"	5.9	113.2
Crk	5.4	113.7
3	5.5	113.6

119.11

3+75

5	6.1	113.0
Crk	6.2	112.9
"	6.9	112.2
"	7.2	111.9
"	7.1	112.0
Crk	5.5	113.6
N	3.6	115.5

4+0

N	4.6	114.5
Crk	6.3	112.8
"	7.4	111.7
"	7.5	111.6
"	7.1	112.0
Crk	7.8	111.3
5	8.2	110.9

16

119.11

4+25

S	8.8	110.3
Col	8.7	110.4
"	8.5	110.6
M	8.3	110.8
"	7.9	111.2
Col	7.2	111.9
N	5.8	113.3

4-150

N	5.9	113.2
Col	7.6	111.5
"	8.2	110.9
M	8.8	110.3
"	9.6	109.5
Col	12.1	109.0
S	10.9	108.2

119.11

4+75

17

S	11.9	107.2
Col	11.5	107.6
"	10.9	108.2
M	10.1	109.0
"	9.0	110.1
Col	7.5	111.6
N	6.2	112.9

T.P. 7.77 114.95 11.90 107.21

5+0

N		
N	5.0	110.0
Col	6.1	108.9
"	7.7	107.3
M	8.4	106.6
"	9.2	105.8
Col	8.3	106.7
S	7.9	107.1
T.P.	9.0	106.0

114.98

5+25

-20	17.2	102.8
5	11.2	103.8
erb	11.7	103.3
14	11.3	103.7
M	10.7	104.3
14	9.5	105.5
erb	8.8	106.7
N	7.1	107.9
+15	5.5	109.5

5+50

-15	6.8	108.2
N	8.0	107.0
erb	8.3	105.7
14	10.6	104.4
M	12.5	102.5
14	13.7	101.3
erb	14.6	100.4
5	14.9	100.1
+20	14.8	100.2

114.98

5+75

-20	18.0	97.0
5	16.1	98.9
erb	14.2	100.8
14	12.3	102.7
M	11.4	103.6
14	10.3	104.7
erb	8.6	106.4
N	7.5	107.5
+15	6.0	109.0

6+0

-15	4.6	110.4
N	5.3	109.2
erb	2.5	107.5
14	8.5	106.2
M	10.0	105.0
14	11.3	103.7
erb	12.4	102.6
5	13.4	101.6
+20	14.9	100.1

18

114.98

6275

-20	12.7	102.3
3	11.2	103.8
erb	10.2	104.8
"	9.0	106.0
M	7.8	107.2
"	6.6	108.4
erb	5.1	109.9
N	3.8	111.2

6250

N	1.3	113.7
erb	3.3	111.7
"	5.1	109.9
M	6.4	108.6
"	7.8	107.7
erb	8.2	106.8
3	9.1	105.9

114.98

6275

5	8.7	106.3
erb	7.8	107.2
"	6.8	108.2
M	6.0	109.0
"	4.7	110.3
erb	2.7	112.3
N	0.2	114.8

720

N	3.0	112.0
erb	4.8	110.2
"	6.6	108.4
M	8.4	106.6
"	9.4	105.6
erb	10.6	104.4
3	11.1	103.9

19

119.98

7+25

-20	17.0	98.0
S	17.0	98.0
Crk	16.4	98.6
1/4	14.2	100.8
M	13.2	101.8
1/4	12.1	102.9
Crk	9.3	105.7
N	6.7	108.3

T.P.	0.96	103.77	121.9	102.81
------	------	--------	-------	--------

7+50

-20	+2.2	106.0
N	1.52 (30)	102.25
Crk	4.2	99.6
1/4	5.9	97.9
M	8.1	95.7
1/4	10.9	93.4
Crk	11.2	92.6
S	13.4	90.4
+20	11.5	92.3

103.77

7+75

-20	16.4	87.4
S	9.7	94.1
Crk	9.4	94.4
1/4	8.7	95.1
M	12.8	91.0
1/4	11.9	91.9
Crk	7.1	96.7
N	5.3	98.5

+20	2.8	101.0
-----	-----	-------

8+0

-20	6.4	97.4
N	7.2	96.6
Crk	4.4	99.4
1/4	3.8	100.0
M	3.4	100.4
1/4	3.4	100.4
Crk	3.9	99.9
S	4.5	99.0
+20	7.3	96.5

T.P.	11.52	115.00	0.29	103.48
------	-------	--------	------	--------

20

115.00

8425

- 20

5

cub

1/4

M

1/4

cub

✓

+ 15

15.9 99.1

13.0 102.0

11.6 103.4

10.9 104.1

9.9 105.1

9.8 105.2

10.1 104.9

10.3 104.7

11.9 103.1

8450

N

cub

1/4

M

1/4

cub

5

+ 15

5.9 109.1

5.9 109.6

5.4 109.6

5.7 109.3

6.9 108.1

8.1 106.9

10.1 104.9

12.6 102.4

115.00

8475

- 15

5

cub

1/4

M

1/4

cub

✓

T.P.

5.22

118.94

1.78

113.22

940

N

cub

1/4

M

1/4

cub

6

+ 20

13.9 101.1

10.3 104.7

7.7 107.3

5.2 109.8

3.2 111.8

1.9 113.1

0.8 114.2

2.3 112.7

✓

3.5 115.4

3.1 115.8

4.6 114.3

6.2 112.7

8.9 110.0

12.1 106.8

14.8 104.1

21.2 97.7

21

118.94

9+25

- 25	21.0	97.9
- 15	25.9	93.0
S	19.4	99.5
erb	14.1	104.8
1/4	10.3	108.6
M	8.0	110.9
1/4	5.8	113.1
erb	2.6	116.3
N	1.7	117.2

9+50

N	1.9	117.0
erb	4.6	114.3
1/4	2.1	111.8
M	9.7	109.2
1/4	12.5	106.4
erb	15.8	103.1
S	18.8	100.1
+ 10	24.1	94.8
+ 20	18.2	100.7

118.94

9+75

- 20	13.3	105.6
- 5	17.9	101.0
S	23.0	95.9
erb	17.2	101.7
1/4	13.8	105.1
M	11.5	107.4
1/4	8.9	110.0
erb	6.5	112.4
N	4.3	114.6

10+0

- 15	5.7	113.0
N	8.0	110.9
erb	10.8	108.1
1/4	13.3	105.6
M	14.6	104.3
1/4	21.1	97.8
+ 13	21.9	97.0
erb	16.6	102.3
S	13.0	105.9
+ 15	8.0	110.9

22

118.94

10+25

3	10.8	108.1
erb	14.1	104.8
+5	19.6	99.3
+13	14.4	104.5
"4	14.4	104.5
M	13.7	105.2
"4	13.2	105.7
erb	12.3	106.6
N	B.M.	
	10.79	108.15 ✓
+15	8.4	110.5
-20	10.4	108.5
N	10.0	108.9
erb	8.2	110.7
"4	9.0	109.9
M	9.9	109.0
"4	11.7	107.2
erb	17.7	101.2
5	9.3	109.6
+10	6.3	112.6

10+50

118.94

10+75

-15	5.9	113.0
3	9.9	109.0
erb	10.2	108.7
"4	5.2	110.7
M	6.6	112.3
"4	4.8	114.1
erb	3.9	115.0
N	3.3	115.6
+20	9.9	114.0
T.P.	12.08	125.82 ✓
	2.20	116.74
	11+0	
N	8.2	120.6
erb	7.6	121.2
"4	9.5	119.3
M	11.7	117.1
"4	14.1	114.7
erb	15.5	113.3
5	17.3	111.5
+20	17.0	111.8

23

128.82

11425

- 20

5

crb

"4

N

"4

crb

N

14.2	114.6
11.7	117.1
10.4	118.4
8.7	120.1
5.4	123.4
3.1	125.7
3.3	125.5
5.2	123.6

11450

N

crb

"4

N

"4

crb

5

+ 15

T.P.

125.9	140.31	135	127.47
-------	--------	-----	--------

120.31

11475

5

crb

"4

N

"4

crb

N

13.4	126.9
10.0	130.3
8.4	131.9
7.9	132.4
8.6	131.7
8.5	131.8
9.4	130.9

1240

N

crb

"4

N

"4

crb

5

5.6	134.7
6.0	134.3
4.6	135.7
3.9	136.4
4.5	135.8
6.6	133.7
10.1	130.7

140.31

12+25

S		6.6	133.7
crb		9.1	136.7
90		2.5	137.8
M		1.7	138.6
119		2.0	138.3
crb		2.8	137.9
N		4.0	136.3
T.P.	11.28	150.98	0.71
		12+50	
N		11.8	139.2
crb		11.3	139.7
9		10.0	141.0
M		9.2	141.8
119		10.1	140.9
crb		12.3	138.7
S		14.2	136.8

150.98

12+15

25

S		10.7	140.3
crb		10.3	140.7
119		9.5	141.5
M		8.8	142.2
119		8.5	142.5
crb		8.9	142.1
N		9.0	142.0
		13+00	
N		7.9	143.1
crb		7.4	143.6
9		7.3	143.7
M		7.7	143.1
9		8.6	142.4
crb		8.7	142.3
S		9.7	141.3

150.95

13725

S	8.4	142.6
orb	7.3	143.7
"	7.9	143.1
M	7.4	143.6
"	6.1	144.9
orb	6.1	144.9
N	6.3	144.7

13750

N	5.3	145.7
orb	6.2	144.8
"	6.5	144.5
M	6.5	144.2
"	9.9	141.1
orb	7.3	143.7
S	7.8	143.2

150.98

13775

26

S	7.3	143.7
orb	6.0	145.0
"	6.4	144.6
M	6.0	145.0
"	5.6	145.4
orb	5.6	145.4
N	5.1	145.9

13770

N	4.5	146.5
orb	4.9	146.1
"	5.1	145.9
M	5.3	145.7
"	5.0	146.0
orb	5.9	145.1
S	6.7	144.3

150.98

14725

S	6.4	144.6
orb	6.2	144.8
"	4.8	146.2
M	5.4	145.6
"	4.7	146.3
orb	3.1	147.9
N	4.1	146.9

14750

N	4.4	146.6
orb	4.8	146.2
"	5.1	145.9
M	5.4	145.6
"	5.5	145.5
orb	6.0	145.0
S	6.3	144.7

150.98

14775

S	5.1	145.9
orb	4.3	146.7
"	5.1	145.9
M	5.1	145.9
"	4.6	146.4
orb	4.4	146.6
N	4.4	146.6

1510

N	4.2	146.8
orb	4.3	146.7
"	4.2	146.8
M	4.7	146.3
"	5.3	145.7
orb	5.5	145.5
S	5.6	145.4

27

150.98

15725

5	4.4	146.6
colb	5.2	145.8
2	5.3	145.7
4	4.6	146.4
4	3.6	147.4
colb	4.5	146.5
4	4.1	146.9

15450

4	3.5	147.5
colb	4.3	146.7
2	4.5	146.5
4	5.1	145.9
4	5.3	145.7
colb	5.7	145.3
5	6.1	144.9

150.98

15775

5	5.5	145.5
colb	4.9	146.1
2	5.1	145.9
4	4.7	146.3
2	4.5	146.5
colb	4.3	146.7
4	4.0	147.0

1630

4	3.9	147.1
colb	3.9	147.1
4	3.9	147.1
4	4.8	146.2
4	5.3	145.7
colb	5.3	145.7
5	4.8	146.2

28

150.98

16+25

S	5.5	145.5
cb	5.4	145.6
"	5.0	146.0
N	4.7	146.3
"	4.4	146.6
cb	4.1	146.9
N	4.1	146.9

16+50

N	2.9	148.1
cb	4.1	146.9
"	3.8	146.7
N	4.6	146.4
"	3.0	148.0
cb	3.7	147.3
S	5.1	145.9

150.98

16+75

S	4.5	146.5
cb	4.7	146.3
"	4.4	146.6
N	4.2	146.8
"	4.1	146.9
cb	3.9	147.1
N	4.0	147.0

17+0

N	3.9	147.1
cb	2.9	148.6
"	3.4	147.6
N	3.9	147.1
"	4.2	146.8
cb	4.2	146.8
S	4.4	146.6

29

150.98

17225

S	4.6	146.4
Crk	4.4	146.6
1/2	4.0	147.0
M	3.9	147.1
1/2	4.1	146.9
Crk	4.1	146.9
N	4.4	146.6

17250

N	3.8	147.2
Crk	4.2	146.8
1/2	4.0	147.0
M	3.8	147.2
1/2	3.8	147.2
Crk	4.6	146.4
S	4.0	147.0

30

17475

S	3.7	147.3
Crk	4.3	146.7
1/2	4.3	146.7
M	3.5	147.5
1/2	3.7	147.3
Crk	4.1	146.9
N	3.8	147.2

1570

N	4.6	146.4
Crk	4.4	146.6
1/2	4.0	147.0
M	4.3	146.7
1/2	3.8	147.2
Crk	4.7	146.3
S	5.4	145.6

150.98

15225

S	5.2	145.8
col	5.6	145.4
"	5.2	145.8
M	5.6	145.4
"	4.5	146.5
col	5.2	145.8
N	5.4	145.6

15250

N	6.9	144.1
col	7.4	143.6
"	7.2	143.8
M	7.1	143.9
"	6.9	144.1
col	5.6	145.4
S	6.1	144.9

150.98

18175

31

S	7.2	143.8
col	6.5	144.5
"	7.9	143.1
M	8.1	142.9
"	8.5	142.5
col	9.1	141.9
N	9.5	141.5

18257²

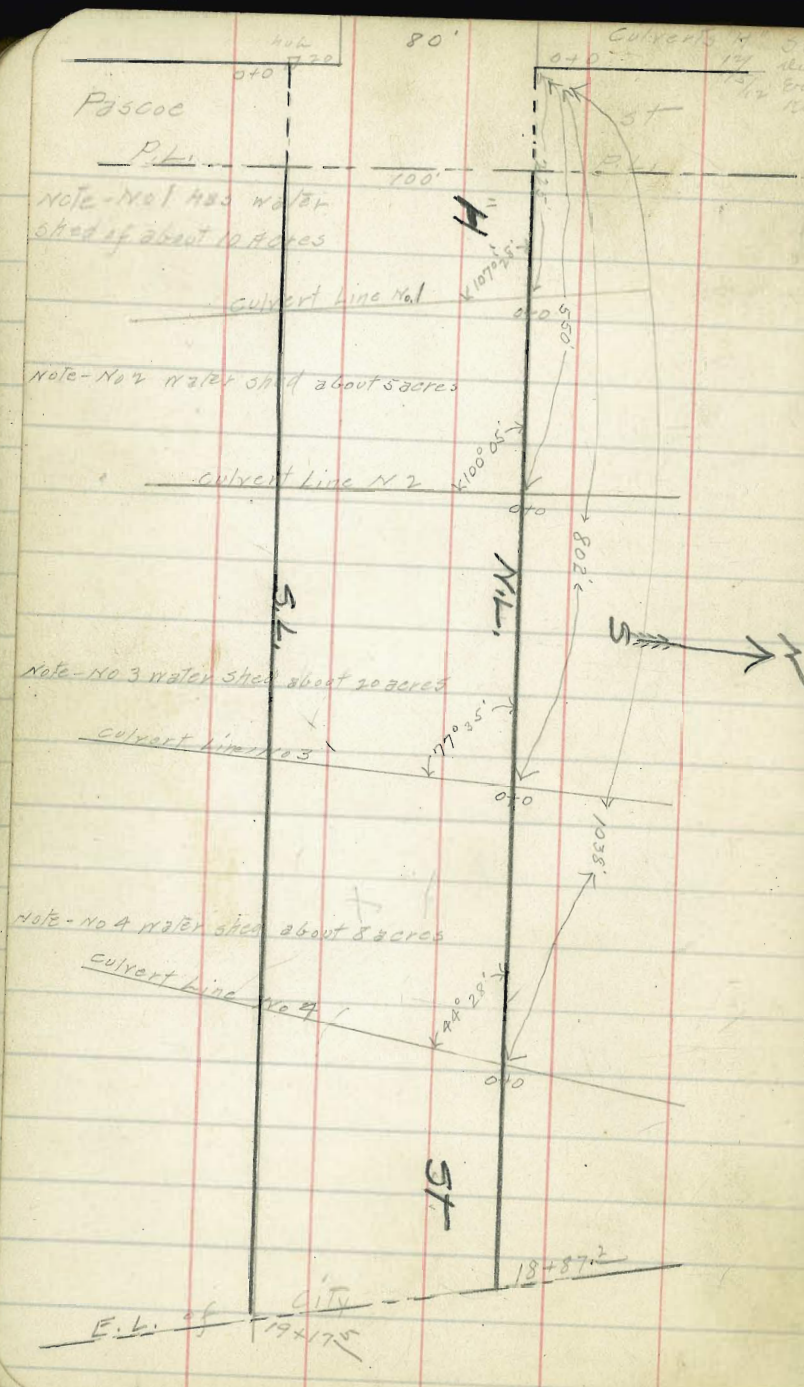
N	10.3	140.7
col	10.0	141.0
"	9.3	141.2
M	9.6	141.4
"	9.1	141.9
col	8.3	142.7
S	7.9	143.1

150.98

18457 N 319417 04 52 E.L.C. Ty

S	8.8	142.7
crk	8.8	142.7
N	10.7	140.7
N	11.0	140.0
N	11.0	140.0
crk	10.4	140.6
N	10.3	140.76

32



Levels for culverts N 1 ST

NO 1
0.40 108.97 108.57

0+0 = N.E.H. ST

0+0	5.8	103.7
0+15 N	5.8	103.7
0+30 N	5.2	103.8
0+40 N	4.9	104.1
0+20 S	6.8	102.7
0+40 S	8.7	100.3
0+60 S	12.3	96.7
0+80 S	13.9	95.1
1+0 S	15.1	93.9
1+20 S	15.1	93.9
1+40 S	16.9	92.1
1+60 S		
1+80 S	17.3	91.7

Culvert No 2

B.M. 5.22 112.20 106.98

0+0 = N.E.H. ST

0+0	5.2	107.0
0+15 N	4.0	108.7
0+30 N	2.6	109.6
0+40 S	6.7	105.5
0+60 S	8.4	103.8
0+80 S	10.6	101.6
1+0 S	12.3	99.9
1+20 S	14.1	98.1
1+40 S	15.5	96.7
1+60 S	17.1	95.1

E.L. of CITY
19+175

culvert No 3

B.M. 2.74 101.21 98.47

0+0 = N.L. "H" 5'

0+0	4.4	96.8
0+15 N	5.4	95.8
0+30 N	6.0	95.2
0+40 N	5.9	95.3
0+20 S	3.1	98.1
0+40 S	3.9	97.3
0+60 S	4.5	96.7
0+80 S	4.9	96.3
1+0 S	6.4	94.8
1+20 S	8.7	92.5
1+35	10.4	90.8
1+50	14.4	86.8

culvert No 4

B.M. 3.32 112.26 108.94

0+0 = N.L. "H" 5'

0+0	4.8	107.5
0+20 N	3.7	108.6
0+40 N	1.6	110.7
0+20 S	5.5	106.8
0+40 S	6.4	105.9
0+60 S	6.5	105.8
0+80 S	5.8	106.5
1+0 S	7.6	104.7
1+20	10.0	102.3
1+40	12.5	99.8
1+60	14.2	98.1
1+80	20.3	92.0
2+0	21.4	90.9

36

Levels Columbia St from 240 N of Henry to S.L.
of Clark St top of Canyon
Columbia St 50 wide

1984

38

B.M. Van S. E. Henry & Union 209.92

2790

B.M. 1.02 210.94
T.P. 0.24 198.44 12.20 198.20

E

9.1 189.3

0102 240 N of S. E. Henry top of Canyon 60 feet across

Φ

11.5 186.6

E 8.4 190.4

W

15.3 183.1

Φ 13.7 184.5

T.P.

153 187.45 12.49 185.95

W 20.1 178.3

W

5.2 182.3

0715

Φ

2.6 184.9

W 17.4 181.0

E

0.1 187.4

Φ 11.4 187.0

1740

E 6.2 192.7

E

7.4 186.1

0740

Φ

4.1 183.4

E 6.6 191.8

W

6.9 180.6

Φ 10.3 188.1

1765

W 15.2 183.7

W

7.9 179.6

0765

Φ

5.0 182.5

W 14.5 183.9

E

2.4 185.1

Φ 10.7 187.7

1790

E 7.7 190.7

E

3.7 183.8

Φ

6.4 181.1

W

9.1 178.4

157.48

2+15

W	9.9	177.6
♀	7.6	179.9
E	5.4	182.1

2+40 = N.L. Henry 50 wide

E	7.0	180.5
♀	8.4	179.1
W	10.5	177.0

♀ Henry

W	12.0	175.5
E	10.0	177.5
E	7.9	179.6

S.L. Henry

E	9.0	178.5
♀	11.6	175.9
W	12.5	175.0

0+25 S

W	16.6	170.9
♀	13.2	174.3
E	10.0	177.5
T.P.	0.30	177.59
		10.19
		177.29

177.59

0+50

E	0.9	176.7
♀	4.4	173.2
W	27.9	169.7

0+75

W	9.2	168.4
♀	5.8	171.8
E	2.0	175.6

1+0

E	4.2	173.4
♀	7.2	170.4
W	11.0	166.6

1+25

W	13.3	164.3
♀	9.4	168.2
E	5.9	171.7

1+50

E	2.4	170.2
♀	10.9	166.7
W	15.8	161.8

177.59

1775

W		16.3	161.3
E		13.0	164.6
E		9.7	167.9
T.P.	0.11	12.12	165.47

270

E		+0.5	166.1
E		3.1	162.5
W		6.5	159.1

2725

W		9.1	156.5
E		4.5	161.1
E		1.2	164.4

2750

E		2.9	162.7
E		6.4	159.2
W		10.5	155.1

2775

W		11.7	153.9
E		8.0	157.6
E		4.3	161.3

165.58

370 = N.L. Clark of summit

E		6.6	159.0
E		10.0	155.6
W		13.2	151.8

E Clark

W		14.5	151.1
E		11.4	154.2
E		8.7	156.9

375 Clark = top of Canyon

E		10.5	155.1
E		13.9	151.7
W		16.9	148.7

10.36

1. Along X Sec of Brighton St (60) (10 blks)
 31 78
 13 show 450' W of Bacon St to W of Flanders St

965

Brighton 41

	465	265	500	Leink Cl	
(10 bls)	Wd of Bacon St				S
S		50	4.7	H	
ll		50	4.7	4	
4		50	4.7	4	
6		48	4.9	4	
4		52	4.5	H	75
ll		48	4.9	2	
n		45	5.2		
	25'	W of Bacon St		n	
n		50	4.7	ll	
ll		49	4.8	4	75
4	75'	55	4.5	4	
6		50	4.7	4	
4		50	4.7	ll	
ll		50	4.7	S	
S		50	4.7		

	50'	W of Bacon	
		47	5.0
		48	4.9
		52	4.5
		48	4.9
		53	4.4
		55	4.7
		50	4.7
	75'	W of Bacon	
		53	4.4
		50	4.7
		57	4.8
		54	4.8
		49	4.8
		55	4.2
		50	4.7
		42	4.5

9.65

100' w of Bacon st

S		44	5.5
H		53	4.4
Y		57	4.0
L		51	4.6
Y		54	4.3
H	75'	58	4.5
		52	4.5
S		53	4.4

125' w of Bacon

W		58	3.9
H		56	4.1
Y	75'	60	3.7
		57	4.0
L		52	4.5
Y		59	3.8
H		56	4.1
S		49	4.8

2.65

Brighton

42

150' w of Bacon

S		45	5.2
H		56	4.1
Y		62	3.5
L		56	4.1
Y		60	3.7
H		59	3.8
H		58	3.9

175' w of Bacon

n		62	3.5
H		60	3.7
Y		63	3.6
L		58	3.9
Y		63	3.6
H		56	4.1
S		41	5.6

TP 210 785 371 5.74

9.65
5.91
5.74
5.11
7.81

785

200 w/ Bacon

S	36	4.3
H	42	3.7
Y	45	3.4
L	40	3.9
7	46	3.3
H	44	3.5
n	43	3.6

225 w/ Bacon

n	44	3.5
H	44	3.5
Y	47	3.2
L	43	3.6
7	36	2.3
H	48	3.1
S	45	3.4

785

Brighton

48

250 w/ Bacon

S	45	3.4
H	49	3.0
Y	47	3.2
L	43	3.6
7	48	3.1
H	51	2.8
H	44	3.5
n	46	3.3

275 w/ Bacon

n	46	3.3
H	49	3.0
Y	50	2.9
L	45	3.4
7	50	2.9
H	48	3.1
S	46	3.3

785

300 w f Bacon

S	47	3.2
H	48	3.1
Y	50	2.9
L	49	3.0
Y	51	2.8
H	46	3.3
n	49	3.0

325 w f Bacon

n	50	2.9
H	51	2.8
Y	53	2.6
L	47	3.2
Y	51	2.8
H	51	2.8
S	50	2.9

785

350 w f Bacon

S	50	2.9
H	50	2.9
Y	51	2.8
L	48	3.1
Y	55	2.4
H	50	2.9
n	49	3.0

375 w f Bacon

n	50	2.9
H	50	2.9
Y	53	2.6
L	47	3.2
Y	51	2.8
H	51	2.8
S	50	2.9

Bright

44

785

	460	W1	Bar	
S			45	3.4
H			45	3.2
4			57	2.8
6			47	3.2
4			51	2.8
H			48	3.1
n			48	3.1

	435	W1	Bar	
n			48	3.1
H			47	3.0
4			51	2.8
6			47	3.2
4			50	2.9
H			47	3.2
S			49	3.0

785

Brighton

45

	450	W1	Bar	
S			48	3.1
H			50	2.9
4			48	3.1
6			45	3.4
4			47	3.0
H			49	3.0
n			46	3.3

X 200 ... Road - 100K for Bright

	712	1212	500	bank of
(12' Hts)	W bank of B. Riv			
S		76	4.5	
H		74	4.7	
4		74	4.7	
6		70	5.1	
4		75	4.6	
H		75	4.6	
2		74	4.9	
	W 1/2 of B. Riv			
2		74	4.7	
H		74	4.7	
4		70	5.1	
6		70	5.1	
4		74	4.7	
H		75	4.6	
S		74	4.7	

	bank of	2' N of R.R. Rail	Rail is 5' E of center
S		70	5.1
H		71	5.0
4		73	4.8
6		70	5.1
4		68	5.3
H		67	5.4
2		66	5.5
	2' E of R.R. Rail = 1' E of center		
2		68	5.3
H		68	5.3
4		68	5.3
6		68	5.3
4		68	5.3
H		67	5.2
S		68	5.3

12/12

E curb of Bacon

S	71	5.1
H	72	4.9
4	68	5.3
6	69	5.2
H	72	4.9
H	72	4.9
H	72	4.9

E of Bacon st

H	65	5.6
H	65	5.6
4	70	5.7
4	67	5.6
6	67	5.6
4	68	5.3
H	68	5.3
S	68	5.3

12/12

Brylter
47

25' E of Bacon st

S	66	5.5
H	64	5.7
4	70	5.1
4	67	5.4
6	63	5.8
4	66	5.5
H	68	5.3
H	63	5.8
H	64	5.7

50' E of Bacon

H	59	6.2
H	60	6.1
4	65	5.6
4	63	5.8
6	60	6.1
4	61	6.0
H	66	5.5
H	69	5.9
S	62	5.9

120

75' E of Bacon st

S		5.8	6.3
H		5.8	6.3
4		5.8	6.3
L		5.5	6.6
4		5.6	6.5
H		5.6	6.5
n		5.4	6.7

100' E of Bacon st

n		4.8	7.3
H		4.9	7.2
4	+3'	5.3	6.8
4		5.0	7.1
L		4.6	7.5
4		4.8	7.3
H		5.3	6.8
4	+2'	5.0	7.1
S		5.4	6.7

120

Brighton

48

125' E of Bacon

S		4.5	7.6
H	+8'	4.4	7.7
H		5.1	7.0
4		4.4	7.7
L		4.2	7.9
4		4.1	8.0
H	+9'	5.0	7.1
H		4.4	7.7
n		4.3	7.8

150' E of Bacon

n		4.1	8.0
H	+9'	4.1	8.0
H		4.7	7.4
4		4.0	8.1
L		4.8	7.6
4		4.0	8.1
H		4.7	7.4
4	+1'	4.0	8.1
S		4.2	7.9

175' E of Bacon

S		37	8.4
H	+9'	34	8.7
		40	8.1
y		35	8.6
b		35	8.6
y		33	8.8
H	+9'	43	7.8
		37	8.4
n		35	8.6

200' E of Bacon

n		33	8.8
H		36	8.5
y		31	9.0
b		32	8.9
y		33	8.8
H		35	8.6
S		31	9.0

225' E of Bacon

S		27	9.4
H		30	9.1
y		28	9.3
b		28	9.3
y		27	9.4
H		32	8.9
		27	9.4
n	+9'	28	9.3

250' E of Bacon

n		24	9.7
H	+9'	24	9.2
y		29	9.2
y		24	9.7
b		24	9.7
y		25	9.6
H		30	9.1
		25	9.6
S		25	9.6

1212

	275	Eg	Bacon	
S			23	9.8
H			25	9.6
4			21	10.0
b			20	10.1
4			20	10.1
H			27	9.4
n	41'		21	10.0
n			21	10.0

	300	Eg	Bacon	
n			19	10.2
n	49'		19	10.2
H			24	9.7
4			17	10.4
b			18	10.3
4			20	10.1
4	49'		20	10.1
H			17	10.4
S			20	10.1

TP 672 1764 170 1092

1212
 170
 10.92
 6.52
 1764

1764

Brighton

50

	325	Eg	Bacon	
S			70	10.6
H			67	10.9
4	41'		73	10.3
4			70	10.6
b			70	10.6
4			69	10.7
H			76	10.0
n	41'		70	10.6
n			69	10.7

	350	Eg	Bacon	
n			66	11.0
n	49'		68	10.8
H			73	10.3
4			66	11.0
b			66	11.0
4			66	11.0
4	49'		69	10.7
n			64	11.2
S			68	10.8

a

1764

375 E of Bacon

S		61	11.5
H	7"	62	11.0
		70	10.6
4		65	11.1
6		61	11.5
4		62	11.4
H		70	10.6
n	7"	63	11.3
		63	11.3

410 E of Bacon

n		60	11.6
	7"	60	11.6
H		67	10.9
4		60	11.6
6		60	11.6
4		61	11.5
	7"	67	10.9
H		57	11.9
S		62	11.4

1764

425 E of Bacon

S		56	12.0
H		59	11.7
4		57	11.9
6		55	12.1
4		56	12.0
H		59	11.7
n		55	12.1

450 E of Bacon

n		53	12.3
H		54	12.2
4		54	12.2
6		50	12.6
4		52	12.4
H		59	11.7
		51	12.5
S	7"	54	12.2

Brighton

51

1764

1175' E of Bacon

S		51	12.5
H	+9'	50	12.6
		58	11.8
4		49	12.7
6		46	12.0
4		49	12.7
H		51	12.5
n		49	12.7

500' E of Bacon

n		46	12.0
H		46	12.0
	+1'	52	12.4
4		45	12.1
6		44	13.2
4		47	12.9
H		52	12.4
	+1'	48	12.1
S		45	12.1

1764

Brighton
52

525' E of Bacon

S		42	13.4
H		40	12.6
	+1'	48	12.8
4		43	13.3
6		40	12.6
4		42	13.4
H		49	12.7
	+1'	43	12.3
n		43	12.3

550' E of Bacon

n		40	12.6
	+9'	40	12.6
H		45	12.1
4		38	12.8
6		37	13.9
4		39	13.7
	+9'	42	13.2
H		35	14.1
S		36	14.0

1764

575' ET Bacon

S		33	14.3
H		34	14.2
	"	4.2	13.6
V		37	13.9
L		34	14.2
V		36	14.0
H		4.0	13.6
	"	3.5	14.1
H		3.5	14.1

600' E = W of babb st (60') (200)

H		31	14.5
H		33	14.3
	"	37	13.9
V		34	14.2
L		32	14.4
V		34	14.2
H		3.5	14.1
S		37	13.9

1764

Brighton

53

W of babb st

S		36	14.0
H		38	12.8
V		34	14.2
L		31	14.5
V		32	14.4
H		3.5	14.1
H		3.5	14.1

W of babb st

H		32	14.4
H		33	14.3
V		32	14.4
V		32	14.4
V		34	14.2
H		3.6	14.0
S		38	12.8

1764

center of bubble

S	33	14.3
H	34	14.2
4	33	14.3
b	29	14.7
4	29	14.7
hh	30	14.6
n	29	14.7

E 1/4 of bubble

n	29	14.7
hh	31	14.5
7	27	14.9
b	26	15.0
4	29	14.7
hh	32	14.4
S	34	14.0

1764

Bright

54

E 1/4 of bubble

S	26	15.0
H	35	14.1
4	29	14.7
b	25	15.1
4	28	14.8
hh	31	14.5
n	31	14.5

E 1/4 of bubble

n	21	15.5
hh	22	15.4
4	29	14.7
4	29	14.7
b	27	15.4
4	27	14.9
hh	29	14.7
S	25	15.1

TP

640

2140

264

1500

bank

21.40

25' E of cable

S		54	16.0
H		63	15.1
H		61	15.3
L		58	15.6
Y		62	15.2
H		66	14.8
	+1'	60	15.4
N		59	15.5

30' E of cable

N	+9'	55	15.9
H		55	15.7
		63	15.1
Y		59	15.6
L		56	15.8
Y		61	15.3
H		56	15.8
S		57	16.2

21.40

Brighton
55

75' E of cable

S		53	16.1
H		55	15.9
Y		58	15.6
L		54	16.0
Y		56	15.8
H		60	15.4
	+1'	51	16.3
N		54	16.0

100' E of cable

N		49	16.5
H		50	16.4
	+1'	56	15.8
Y		52	16.2
L		49	16.5
Y		50	16.1
H		54	16.0
S		52	16.2

2140

125' E of ball

S		49	16.5
H		50	16.6
"		50	16.6
b		47	16.7
"		50	16.4
"	79'	50	16.4
H		45	16.9
n		45	16.9

150' E of ball

n		42	17.2
H		41	17.3
"	7"	49	16.5
"		47	16.7
b		44	17.0
"		47	16.7
H		47	16.7
S		44	17.0

2140

175' E of ball

S		41	17.3
H		43	17.1
"		42	17.2
b		36	17.8
"		40	17.4
H		44	17.0
"		40	17.4
n		40	17.4

200' E of ball

n		34	18.0
H		33	18.1
"	7"	38	17.6
"		35	17.9
b		32	18.2
"		36	17.8
H		40	17.4
"		34	18.0
S		36	17.8

Brighton
56

2140

225 E of ball st

S		32	18.2
H		33	18.1
Y		32	18.2
L		25	18.9
Y		29	18.5
H	79'	33	18.1
H		28	18.6
R		25	18.9

250 E of ball

R		20	19.4
H		21	19.3
Y	7''	28	18.6
Y		25	18.9
L		20	19.4
Y		26	18.8
H		33	18.1
H	7''	26	18.8
S		28	18.6

2140

Brighton

57

225 E of ball st

S		21	19.3
H	79'	16	19.8
H		27	18.7
Y		19	19.5
L		17	20.0
Y		18	19.6
H	79'	22	19.2
H		16	19.8
R		16	19.8

300 E of ball

R		08	20.6
H		10	20.6
Y	7''	16	19.8
Y		13	20.1
L		08	20.6
Y		10	20.4
H		20	19.6
H	7''	13	20.1
S		12	20.2

711

28.21

0.20 21.10

2821

325' E of Cable st

S		75	20.7
bl	79'	76	20.6
		82	20.0
y		75	20.7
b		72	21.0
y		73	20.9
bl		80	20.2
n		71	21.1

330' E of Cable

n		65	21.7
bl		65	21.7
	71'	72	21.0
y		69	21.3
b		64	21.8
y		69	21.3
bl		78	20.4
	71'	70	21.2
S		69	21.3
S		69	

2821

Brighton

58

375' E of Cable

S		65	21.7
	79'	63	21.9
H		72	21.0
y		65	21.7
b		58	22.4
y		61	22.1
H		67	21.5
		60	22.2
n	71'	60	22.2

400' E of Cable

n		57	22.5
	79'	56	22.6
H		65	22.0
y		58	22.4
b		54	22.8
y		58	22.4
bl		64	21.8
	71'	57	22.5
S		57	22.5
S		57	

2821

475 E of Cobb

S		55	22.7
	79'	54	22.8
H		61	22.1
y		53	22.8
b		50	23.2
y		51	23.1
H		55	22.7
n		50	23.2

450 E of Cobb

n		46	23.6
	79'	47	23.5
H		53	22.9
y		48	23.4
b		45	23.7
y		47	23.5
H		47	23.5
	71'	50	23.2
S		50	23.2

2821

Brighton

59

475 E of Cobb

S		45	23.7
	79'	45	23.7
H		52	23.0
y		43	23.9
b		42	24.0
y		43	23.9
	79'	49	23.3
H		45	23.7
n		43	23.9

500 E of Cobb

n		38	24.4
	79'	39	24.3
H		44	23.8
y		40	24.2
b		38	24.6
y		41	24.1
H		50	23.2
	71'	42	24.0
S		42	24.0

2821

	525	Eg	ball
S			38 24.6
	79'		38 24.6
bl			45 23.7
"			37 24.5
b			33 24.9
"			35 24.7
bl			40 24.2
	71'		34 24.6
n			37 24.5

	350	Eg	ball
n			31 25.1
bl			32 25.0
"	71'		38 24.6
			33 24.9
b			29 25.3
"			32 25.0
bl			41 24.1
	71'		32 25.0
S			32 25.0

2821

Brighton
60

	575	Eg	ball
S			29 25.3
	79'		27 25.1
bl			34 24.8
"			30 25.2
b			26 25.6
"			30 25.2
	79'		33 24.9
bl			27 25.5
n			28 25.4

600 E-W of Pacific St (60) (12' dia)

n			24 25.8
bl			27 25.5
"			26 25.6
b			21 26.1
"			26 25.6
bl			27 25.5
S			31 25.1

2821

W 1/2 of De Zu st

S	33	24.9
H	30	25.2
Y	22	26.0
L	20	26.2
Y	21	26.1
H	24	25.8
N	24	25.8

W 1/2 of De Zu st

N	21	26.1
H	20	26.2
Y	20	26.2
L	20	26.2
Y	23	25.9
H	29	25.3
S	32	25.0

2821

Brighton

61

Center of De Zu st

S	31	25.1
H	28	25.4
Y	21	26.1
L	17	26.5
Y	17	26.5
H	17	26.5
N	16	26.6

E 1/2 of De Zu st

N	16	26.6
H	15	26.7
Y	15	26.7
L	15	26.7
Y	20	26.2
H	28	25.4
S	30	25.2

2821

E lb of D₂F₂

S	27	25.5
H	22	26.0
4	17	26.5
6	14	26.8
4	15	26.7
H	17	26.5
R	18	26.4

E lb of D₂F₂

n	14	26.8
H	14	26.8
4	14	26.8
6	13	26.9
4	15	26.7
H	15	26.7
S	(15) (25)	26.7

TP 772 23.22 271 2550 bush

2822

25' E of D₂F₂

S	60	27.2
H	61	27.1
4	61	27.1
6	58	27.4
4	59	27.3
H	64	26.8
	57	27.5
R	54	27.8

50' E of D₂F₂

n	53	27.9
H	60	27.2
4	57	27.5
6	56	27.6
4	57	27.5
H	63	26.9
	50	28.2
S	55	27.7

Bright
62

3322

75' E of De 7m

S		55	27.7
H		58	27.4
4		53	27.9
6		51	28.1
"		54	27.8
"	79'	55	27.7
H		50	28.2
N		51	28.1

100.1' E of De 7m 51

N		48	28.4
H		46	28.6
4	71'	51	28.1
6		51	28.1
6		47	28.5
4		51	28.1
H		56	27.6
"	71'	49	28.3
S		50	28.2

3322

Brighton
63

125' E of De 7m

S		50	28.2
"	79'	50	28.2
H		55	27.9
4		48	28.4
6		46	28.6
4		48	28.4
H		48	28.4
N		48	28.4

150' E of De 7m

N		46	28.6
H		49	28.3
4		48	28.4
6		44	28.8
4		47	28.5
H		52	28.0
"	71'	47	28.5
S		48	28.4

3322

775 E of D. J. M.

S		47	28.5
	+9'	47	28.5
H		35	27.7
7		46	28.6
6		43	28.9
4		47	28.5
H		46	28.6
n		45	28.7

200.1 E of D. J. M.

S		43	28.9
H		47	28.5
4		48	28.4
6		41	29.1
4		44	28.8
H		30	28.2
n		46	28.6

3322

Bright

64

285 E of D. J. M.

S		44	28.8
H		46	28.6
	11	52	28.0
7		45	28.5
6		42	29.0
4		45	28.7
H		47	28.5
n		39	29.3

250 E of D. J. M.

n		40	29.2
	19'	43	28.9
H		48	28.4
4		45	28.7
6		41	29.1
4		43	28.9
	42'	49	28.3
H		45	28.7
S		45	28.7

3322

275 Ey Q. 7m

S		44	28.8
H		43	28.9
	71"	51	28.1
y		44	28.8
b		41	29.1
y		45	28.7
H		47	28.5
n		40	29.2

300 Ey Q. 7m

n		42	29.0
	71"	43	28.9
H		49	28.3
y		45	28.7
b		40	29.2
y		46	28.6
H		53	27.9
	71"	47	28.5
S		49	28.3

3322

Brighton

65

325 Ey Q. 7m

S		48	28.4
	71"	46	28.6
H		52	28.0
y		46	28.6
b		40	29.2
y		44	28.8
	71"	49	28.3
H		48	28.8
n		40	29.2

330 Ey Q. 7m

n		42	29.0
H		44	28.8
	71"	51	28.1
y		47	28.8
b		42	29.0
y		47	28.5
H		50	28.2
S		46	28.6

3322

	375	Ey	De 7m
S			43 28.9
H			48 28.4
"			47 28.5
b			42 29.0
y			44 28.8
h			50 28.2
		+	42 29.0
n			43 28.9

	400	Ey	De 7m
n			43 28.9
		+	43 28.9
H			47 28.5
y			42 29.0
b			40 29.2
y			45 28.7
H			45 28.7
S			44 28.5

3322

Bright

66

	425	Ey	De 7m
S			40 29.2
H			42 29.0
"			38 29.4
b			34 29.8
y			38 29.4
H			44 28.8
		+	38 29.4
n			39 29.3

	450	Ey	De 7m
S			31 30.1
		+	39 29.3
H			35 29.7
y			32 30.0
b			30 30.2
y			32 30.0
H			38 29.4
n			32 30.0

TP 993 4130 185-531.37

3322
185
51.37
993
41.37

4130

	Ey	De	Fur
S	475	102	31.1
49		104	30.9
H		112	30.1
y		105	20.8
b		102	31.1
y		106	30.7
H		107	30.6
71		102	31.1
n		102	31.1

500

Ey De Fur

n		96	31.7
H		100	31.2
y		100	31.3
b		93	32.0
y		97	31.6
H		104	30.9
71		97	31.6
S		93	32.0

4130

Brighton

67

525 Ey De Fur

S		87	32.6
49		89	32.4
H		95	31.8
y		90	32.3
b		84	32.9
y		91	32.2
H		93	32.0
n		87	32.6

550

Ey De Fur

n		80	33.3
H		82	33.1
y		82	33.1
b		77	33.6
y		82	33.1
H		85	32.8
71		79	33.4
S		80	33.3

4/30

S	575	E of	D 7m	
S				69 34.4
	79'			70 34.3
W				76 33.7
Y				73 34.0
6				68 34.5
Y				75 33.8
W				79 33.4
N	71'			72 34.1
				73 34.0

600' E = W of Eber St (60')

N				63 35.0
W				68 34.5
Y				68 34.5
6				63 35.0
Y				65 34.8
W				68 34.5
	71'			60 35.3
S				61 35.2

4/30

Brighton

68

W. side of Eber St

S				57 35.6
W				57 35.6
	71'			63 35.0
Y				62 35.1
6				59 35.4
Y				62 35.1
W				66 34.7
N				65 34.8

W. side of Eber

N				63 35.0
W				61 35.2
Y				59 35.4
6				56 34.7
Y				59 35.4
W				60 35.3
S				54 35.9

4/30

Location of Eber W

S	55	35.8
M	62	35.1
"	57	35.6
W	55	35.8
"	56	35.7
H	56	35.7
R	57	35.6

Eber W of

N	54	35.7
H	55	35.8
"	53	36.0
W	50	36.3
"	53	36.0
H	55	35.8
S	50	36.3

4/30

Bing W

69

Eber W

S	47	36.6
"	50	36.3
"	56	35.7
"	52	36.1
"	48	36.5
"	53	36.0
"	55	35.8
"	56	35.7

Eber W of

N	47	36.6
"	50	36.3
H	54	35.9
"	52	36.1
"	45	36.8
"	48	36.5
H	53	36.0
"	47	36.6
S	44	36.9

4/30

	75'	E of	Eber	
S			40	37.3
H	79'		41	37.2
			46	36.7
			42	37.1
6			40	37.3
			40	37.3
H	79'		30	36.0
			44	36.9
N			45	36.8

	50'	E of	Eber	
N			38	37.5
H			37	37.6
	71'		43	37.0
			36	37.7
6			33	38.6
			35	37.8
H			39	37.4
	71'		34	37.9
S			34	37.9

4/30

Bright

70

	75'	E of	Eber	
S			24	38.9
H	79'		25	38.8
			33	38.0
			27	38.6
6			27	38.6
			29	38.4
H			34	37.9
			28	38.5
N			30	38.3

TP 794 - 46.57 267 38.63

	100'	E of	Eber	
N			76	39.0
H	79'		76	39.0
			82	38.0
			76	39.0
			74	39.2
			74	39.2
			78	38.7
			70	39.6
S			69	39.7

4/30
267
38.63
794
46.57

with 100'

4657

	125'	Eg	Elev	W
S			64	40.2
	49'		64	40.2
W			71	39.5
4			67	39.9
6			68	39.8
7			70	39.6
W			75	39.1
N			74	39.2

	150'	Eg	Elev	W
N			67	39.9
W			67	39.9
4			63	40.3
6			60	40.6
7			59	40.7
W			63	40.3
	71'		57	40.9
S			55	41.1

4657

Brighton

71

	175'	Eg	Elev	W
S			48	41.8
W			52	41.6
4			53	41.3
6			54	41.2
7			55	41.1
W			59	40.7
N			56	41.0

	200'	Eg	Elev	W
N			46	42.0
W			49	41.7
4			45	42.1
6			43	42.3
7			44	42.2
4			45	42.1
	71'		41	42.5
W			39	42.7
S				

46.57

	225'	E of	Elev	
S			29	42.7
	+9'		32	43.4
H			37	42.9
V			32	43.4
b			32	43.4
y			34	43.2
H			38	42.8
	+11'		34	43.2
n			36	43.0

	225'	E of	Elev	
n			24	44.2
	+9'		24	44.2
H			28	43.8
y			22	44.0
b			19	44.7
y			20	44.6
H			27	44.9
	+11'		20	44.6
S			19	44.7

TP 1172 56.67 162 44.95

46.57
62
49.95
11.32
56.67

56.67

Bright

72

	225'	E of	Elev	
S			107	46.0
	+9'		108	45.9
H			117	45.0
V			110	45.7
b			107	46.0
y			111	45.6
H			116	45.1
	+11'		109	45.8
n			110	45.7

	300'	E of	Elev	
n			96	47.1
	+9'		95	47.2
H			100	46.7
y			96	47.1
b			91	47.6
y			97	47.0
H			102	46.5
	+11'		93	47.4
S			92	47.5

56.67

325 E f Eben

S	79	48.8
ll	78	48.9
	88	47.9
4	81	48.6
6	80	48.7
7	82	48.5
ll	85	48.2
n	82	48.5

350 E f Eben

n	68	49.9
ll	70	49.7
4	68	49.9
6	62	50.5
7	65	50.2
ll	69	49.8
8	64	50.3

56.67

375 E f Eben

S	51	51.6
ll	48	51.8
	60	50.7
4	54	51.3
6	52	51.5
7	56	51.1
ll	57	51.0
n	57	51.0

400 E f Eben

n	44	52.3
ll	44	52.3
4	44	52.3
6	34	52.3
7	37	53.0
ll	41	52.6
S	35	53.2

Bryklo

73

56.67

	Hrs	E 6	Elev	
S			18	54.9
			19	54.8
lt			29	53.8
y			24	54.3
h			20	54.7
			27	54.0
			32	53.5
lt			27	54.0
n			26	54.1
TP	892	6399	160	55.17
	450	E 6	Elev	
n			93	54.7
			89	55.1
lt			95	54.5
y			90	55.0
h			83	55.9
y			85	55.5
lt			86	55.4
			79	56.1
S			76	56.4

6399

Bright

74

	Hrs	E 7	Elev	
S			67	57.3
lt			68	57.2
			86	56.4
y			74	56.6
h			71	56.9
y			77	56.3
lt			83	55.7
n			83	55.7
	500	E 8	Elev	
n			74	56.6
lt			73	56.7
y			67	57.3
h			60	58.0
y			62	57.8
			64	57.5
lt			57	58.4
S			54	56.6

6399

525' E of Eber

S		43	59.7
H	41	41	59.9
		50	59.0
V		51	58.9
b		50	59.0
v		54	58.6
H		58	58.2
n		59	58.1

530' E of Eber

n		52	58.8
H		53	58.7
v		48	59.2
b		42	59.8
7		42	59.8
H	79	34	60.6
S		32	60.8

6399

575' E of Eber

S		22	61.8
H		28	61.2
		34	60.6
v		33	60.7
b		33	60.7
v		38	60.2
H		45	59.5
n		47	59.3

600' E-W of Frank (60')

n		42	59.8
H		38	60.2
v		30	61.0
b		26	61.4
7		26	61.4
H	49	28	61.2
		20	62.0
S		19	62.1

00 523

11.62 5-237

757 45.0

45.0
Bm. 7.000

Bright

75

1974

	250	E J	33 d	
Q			9.8	9.9
h			9.1	10.6
y			8.4	11.3
+v			2.9	16.8
b			1.8	17.9
+11'			2.4	17.3
y			8.6	11.1
h			8.8	10.9
+9'			8.7	11.0
Q			6.8	12.9

	248	E J	33 d	
S			6.9	12.8
+3			8.6	11.1
h			8.8	10.9
y			8.7	11.0
b			8.8	10.9
y			9.0	10.7
h			8.9	10.8
+16			9.2	10.5
Q			10.4	9.3

1974

Woolman

77

	238	E J	33 d	W	
n			14.3	5.4	19.74
			12.8	6.9	9.28
			10.8	8.9	9.88
			10.0	9.7	10.18
y			7.0	9.7	
b			9.8	9.9	
y			9.3	10.4	
h			9.8	9.9	
S			9.8	9.9	

	TP	085	1081	9.78	9.96
S		225	E J	33 d	
S				1.1	9.7
h				1.1	9.7
y				0.8	10.0
h				1.5	9.3
y				2.0	8.8
				2.5	8.3
				3.8	7.0
				5.0	5.8
n				5.6	5.2
		215	E J	33 d	
n				2.8	8.2

1081

	200	Σg	33 ^d	Σ
n			13	9.5
ht			30	7.8
g			39	6.9
l			46	6.2
y			56	6.2
y			50	6.8
ht			49	6.9
S			44	6.1

175 Σg 33^d Σ

S			56	5.2
ht			44	6.4
y			34	7.4
l			33	7.5
y			27	8.1
ht			22	8.6
n			14	9.3

1081

Woodman

78

	150	Σg	33 ^d	Σ
n			12	9.6
ht			14	9.4
g			16	9.2
l			20	8.8
y			22	8.6
ht			25	8.3
S			43	6.5

149 Σ

S			25	8.8
---	--	--	----	-----

125 Σg 33^d

S			18	9.2
ht			07	10.1
y			00	10.8
TP	678	1685	074	1007
l			60	10.9
y			54	11.5
ht			57	11.2

1081
75
10.07
6.75
16.85

1685

	110	E y	33d	
S			60	10.9
ll			4.6	12.3
y			4.2	13.7
b			4.8	12.1
y			3.0	13.9

1685
15
16.70
12.83
29.53

	100	E y	33d	
S			60	10.9
ll			2.6	14.3
+5'			2.0	14.9

1283 2953 0.15 16.70

	135	E y	33d	
n			18.2	11.3

	125	E y	33d	
n			14.7	14.8

2953

valve

79

	110	E y	33d	
n			69	22.4
ll			99	19.6
	100	E y	33d	
n			00	29.5
ll			30	26.5
y			90	20.5
b			72	22.3
y			104	19.1

80

11.7

50

7.2	25	222.2	18.7	27	235.5	12
		200			175	
182.2	7.6	222			578	
26.5	7.8	225			534	
180.0		10.5		26.5	440	
		1.1		150.0	470	
	1.5	26.5		196.6	266	
	6.0	1.5			10.5	
	13	39.3			419	

16-24-23

1386
 588
 1974 25
 12
 38

