

856

F.B.

856

---

LEVEL BOOK

No. 410

---

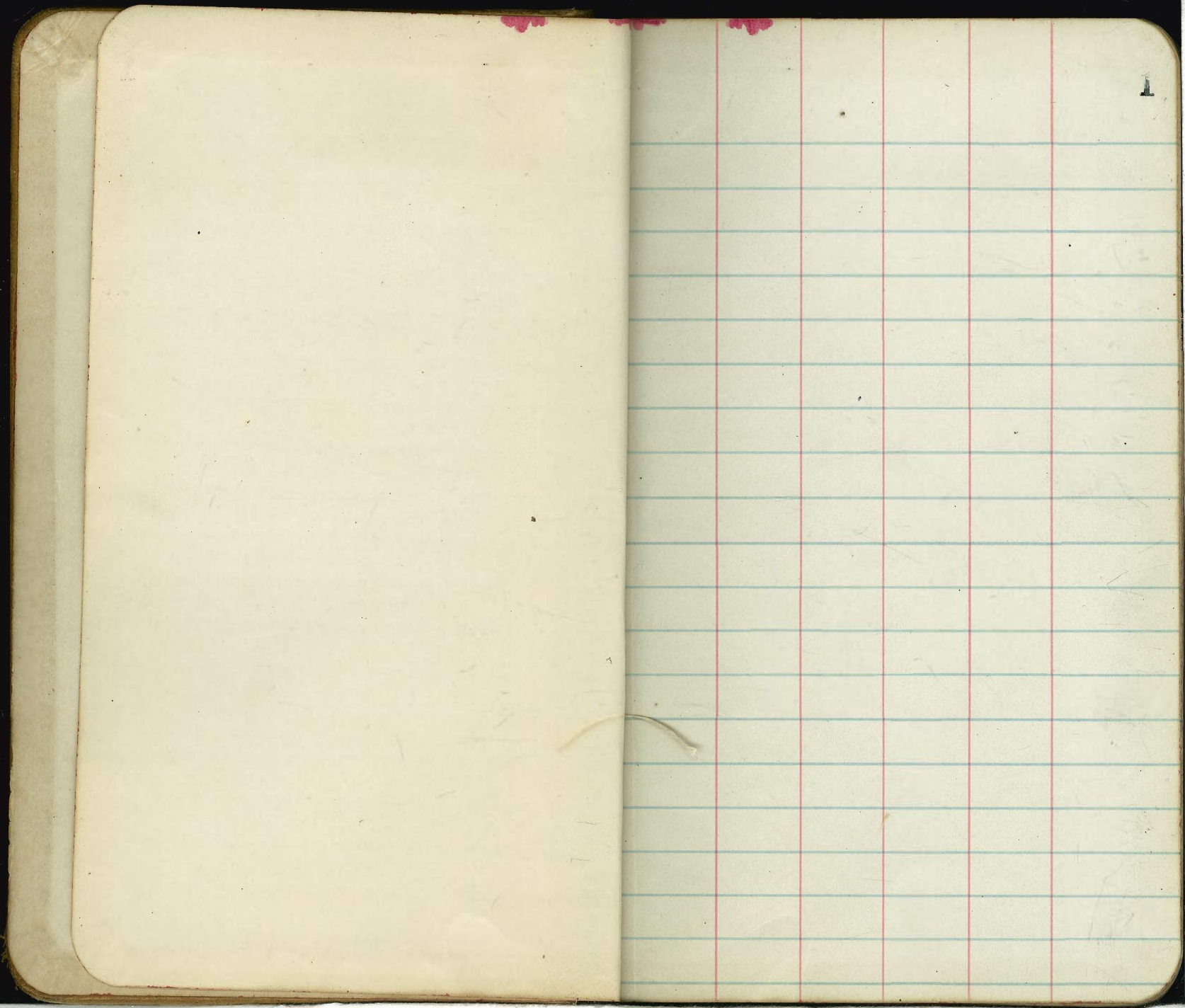
8

MICROFILMED  
DEC 15 1964



Pages

18-47<sup>?</sup> Robinson, 10<sup>th</sup> to Florida





x-section Barr Rce E.L. Hank To W.L. Goldfinch 17/3  
 " 50' wide 10' walk 7 1/2' 1/2" 5' <sup>1/2</sup> <sub>1/2</sub> <sup>1/2</sup> <sub>1/2</sub>  
 Evans  
 Kerr

B.M. grade Sta S.E. Hank to Ball 249.25

B.M. 3.75 253.00

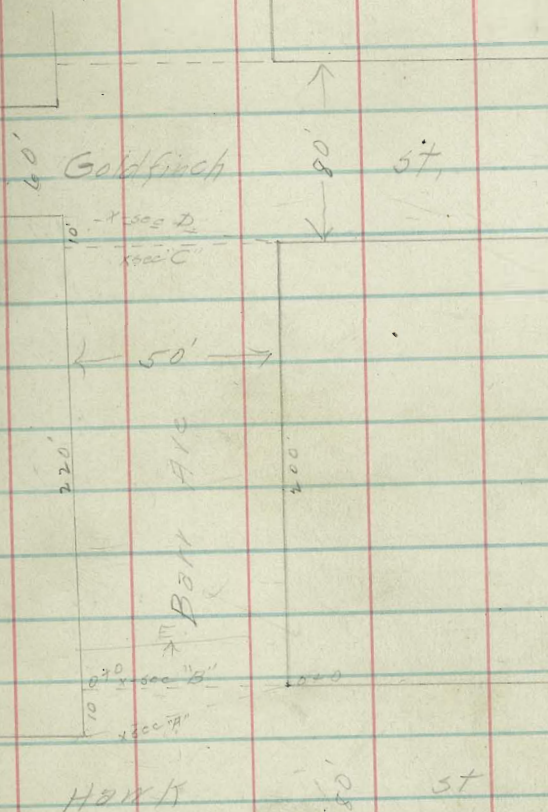
x-section "H"

S	1.6	251.4
cut	4.1	248.9
"	4.4	248.6
"	4.5	248.5
"	4.9	248.1
cut	5.1	247.9
N	4.9	248.6

x-section "B" 0-0

V	4.7	248.3
cut	5.1	247.9
"	4.8	248.2
"	4.5	248.5
"	3.6	249.4
cut	2.4	250.6
S	1.6	251.4

2





253.00

0.25 E of sec "B"

S	1.2	251.8
Crk	1.6	251.4
1/4	3.3	249.7
N	5.0	248.0
1/4	6.4	246.6
Crk	6.9	246.1
N	6.3	246.7

0+50

N	7.6	245.4
Crk	7.4	245.6
1/2	6.4	246.6
N	5.4	247.6
1/4	4.7	248.3
Crk	3.8	249.2
S	2.9	250.1

253.00

0+75

S	3.2	249.8
Crk	4.2	248.8
1/2	5.2	247.8
N	6.0	247.0
1/4	6.6	246.4
Crk	7.4	245.6
N	8.2	244.8

1+0

N	8.7	244.3
Crk	7.7	245.3
1/4	7.0	246.0
N	6.4	246.6
1/4	5.4	247.6
Crk	4.5	248.5
S	3.8	249.2



253.00

1425

S	4.3	248.7
crb	5.1	247.9
"A	5.7	247.3
M	6.9	246.1
"A	7.3	245.7
crb	8.0	245.0
N	9.1	243.9

1450

N	9.5	243.2
crb	8.6	244.4
"A	7.8	245.2
M	6.9	246.1
"A	6.2	246.8
crb	5.6	247.4
S	4.2	248.8

253.00

1475

4

S	4.3	248.7
crb	5.6	247.4
"A	6.5	246.5
M	7.4	245.6
"A	8.1	244.9
crb	9.0	244.0
N	10.1	242.9

240 = 1-sec C

N	9.3	243.7
crb	8.9	244.1
"A	7.6	245.4
M	6.3	246.7
"A	5.4	247.6
crb	4.6	248.4
S	3.9	249.1



253.00

x-300 "D"

0	3.9	249.1
Orb	4.6	248.4
1/4	5.2	247.8
1/2	6.3	246.7
3/4	7.1	245.9
Orb	8.2	244.8
N:	9.9	243.1



x-section Hawk St from N.L. Barr Ave to N.L. <sup>12-3-5-16</sup> ~~Street~~  
 Florence Heights Add No 2  
 Hawk St 50' wide at N.L. Barr 3 45.4' wide at N.L.  
 Florence Hgts 10' walk & regulation 1/4's  
 B.M. grade at N.L. Barr Hawk 249.75

253.00

6

B.M., 3.75 253.00

N.L. BARR

E 4.4 248.6  
 +7 4.1 248.9  
 crk 4.8 248.2  
 1/4 4.7 248.3  
 M 4.5 248.5  
 1/4 4.4 248.6  
 crk 3.9 249.1  
 +9 3.7 249.3  
 W 2.8 250.2

0+75 W

W 2.6 250.4  
 +4 4.0 249.0  
 +5 4.3 248.7  
 +6 5.0 248.0  
 crk 4.8 248.2  
 1/4 4.6 248.4  
 M 4.6 248.4  
 1/4 4.9 248.1  
 crk 5.2 247.8  
 +3 5.4 247.6  
 +4 5.0 248.0  
 E 5.1 247.9

F 6.2 246.8  
 crk 6.6 246.4  
 1/4 6.2 246.8  
 M 5.8 247.2  
 1/4 5.9 247.1  
 crk 6.1 246.9  
 +3 5.8 247.2  
 +4 5.3 247.7  
 +9 5.0 248.0  
 W 3.3 249.7

0+75

W 6.7 246.3  
 crk 7.1 245.9  
 1/4 7.2 245.8  
 M 7.2 245.8  
 1/4 7.5 245.5  
 crk 8.0 245.0  
 +3 8.1 244.9  
 +4 7.6 245.4  
 E 7.5 245.5



253.00

1+0

E	8.6	244.4
+6	8.8	244.2
Crk	9.5	243.5
1/4	8.7	244.3
M	8.4	244.6
1/4	8.5	244.5
Crk	8.9	244.1
+3	8.9	244.6
+5	5.9	247.1
W	5.2	247.8

1+25

W	5.7	247.3
+5	6.4	246.6
+6	10.1	242.9
Crk	10.0	243.0
1/4	9.8	243.2
M	9.6	243.4
1/4	9.9	243.1
Crk	10.9	242.1
+2	10.0	243.0
E	9.6	243.4

1+50

E	11.2	241.8
+7	11.4	241.6
Crk	12.1	240.9
1/4	11.4	241.6
M	11.2	241.8
1/4	11.6	241.4
Crk	11.8	241.2
+4	11.5	241.5
+5	7.7	245.3
W	6.7	246.3

1+75

W	8.5	244.5
+2	8.8	244.2
+4	13.5	239.5
Crk	13.8	239.2
1/4	13.8	239.2
1/4	13.2	239.8
1/4	13.5	239.5
Crk	14.3	238.7
+4	13.4	239.6
E	13.4	239.6

T.P 2.82 2427.6 13.06 239.94



242.76

240

E	5.0	237.8
+6	5.2	237.6
crk	6.0	236.8
"	5.3	237.5
M	5.0	237.8
"	5.2	237.6
crk	5.6	237.2
+5	5.6	237.2
+6	1.4	241.4
W	0.6	242.2

242.5

W	3.2	239.6
+2	3.8	239.5
+3	7.5	235.3
crk	7.3	235.5
"	7.1	235.7
M	7.0	235.8
"	7.4	235.4
crk	8.1	234.7
+2	7.9	235.4
5	7.2	235.6

8

245.0

E	9.3	233.5
+6	9.4	233.4
crk	9.9	232.9
"	9.3	233.5
M	9.1	233.7
"	9.2	233.6
crk	9.4	233.4
+8	9.8	233.0
W	6.7	236.1

247.5

W	9.9	232.9
+2	12.1	230.7
crk	11.5	231.3
"	11.4	231.4
M	11.3	231.5
"	11.5	231.3
crk	11.7	231.1
E	11.5	231.3
T.P.	1.20	230.97
	12.99	229.77



23097

3+0

E	2.0	229.0
crk	2.0	229.0
1/2	1.8	229.2
M	1.7	229.3
1/4	1.7	229.3
crk	1.8	229.2
+7	2.2	229.8
W	0.9	230.1

3+25

W	3.3	227.7
+2	4.0	227.0
crk	3.7	227.3
1/4	3.6	227.4
M	3.6	227.4
1/4	3.7	227.3
crk	4.2	226.8
F	4.1	226.9

9

3+50

E	6.3	224.7
crk	6.3	224.7
1/2	5.7	225.3
M	5.5	225.5
1/4	5.5	225.5
crk	5.6	225.4
+9	5.8	225.2
W	4.8	226.2

3+52<sup>2</sup> = N.L. Florence Hghts Add No 2

W	7.1	223.9
+2	7.9	223.1
crk	8.0	223.0
1/4	8.0	223.0
M	8.2	222.8
1/4	8.5	222.5
crk	9.1	221.9
E	9.3	221.7







1/2 section W 40' Dale 25 40' 5" Palmta Nutmeg

10' walks 5' 1/2"

12 1/2  
12 1/2  
12 1/2

Quarrel  
Evards  
Kerr

305.35

11

B.M. W. Dale 2 Palm

0+50

B.M. 0.35 305.35 305.00

S. L. Palm

W 0.2 305.2

+2 1.0 304.4

crk 1.6 303.8

1/4 1.8 303.6

M 1.7 303.7

1/4 1.5 303.9

crk 1.6 303.8

E 1.6 303.8

-30 19.0 286.4

-15 13.2 292.2

E 7.1 298.3

crk 2.5 302.9

1/4 2.6 302.8

M 2.7 302.7

1/4 2.6 302.8

crk 2.1 303.3

+9 0.8 304.6

W +0.2 305.6

PLOTTED

W 0.0 305.4

+1 1.2 304.2

crk 2.0 303.4

1/4 2.7 302.7

M 2.8 302.4

1/4 2.6 302.8

crk 3.0 302.4

+5 3.1 302.3

E 6.1 299.3

+15 13.4 292.0

+45 28.5 276.9

-45 29.4 276.0

-15 13.8 291.6

E 6.1 299.3

+5 2.7 302.7

crk 3.0 302.4

1/4 2.8 302.6

M 2.6 302.8

1/4 2.7 302.7

crk 2.3 303.1

+9 1.7 303.7

W 0.8 304.6

0+75



305.35

1+0

W	1.3	304.1
cb	2.3	303.1
1/4	2.6	302.8
M	3.0	302.4
1/4	3.1	302.3
cb	3.2	302.2
+5	3.9	301.5
E	4.6	300.8
+15	12.3	293.1
+45	27.9	277.5

1+25

-45	28.4	277.0
-15	15.5	289.9
E	9.2	296.2
+5	4.5	300.9
cb	3.0	302.4
1/4	3.3	302.1
M	3.6	301.9
1/4	3.4	302.0
cb	3.2	302.2
+9	2.3	303.1
W	0.9	304.5

PLOTTED

12

1+50

W	1.4	304.0
+1	1.4	304.0
+2	2.4	303.0
cb	3.5	301.9
1/4	3.7	301.7
M	3.8	301.6
1/4	3.9	301.5
cb	3.4	302.0
+2	3.6	301.8
E	9.6	295.8
+15	17.4	288.0
+45	32.6	272.8

1+75

-45	31.7	273.7
-20	14.2	291.2
-5	5.3	300.1
E	4.3	301.1
cb	3.8	301.6
1/4	4.5	300.9
M	4.4	301.0
1/4	4.2	301.2
cb	3.8	301.6
+8	2.9	302.5
+9	1.9	303.5
W	1.8	303.6



305.35

2+0

W			
+1	2.2	303.2	
+2	2.2	303.2	
Crk	3.4	302.0	
"	4.0	301.4	
"	4.5	300.9	
M			
"	5.0	300.4	
"			
"	5.2	300.2	
Crk			
"	5.3	300.1	
E			
+5	4.2	301.2	
+20	5.9	300.0	
	19.7	290.7	
+45			
	31.7	273.7	

2+25

-45			
-20	33.0	272.4	
-5	15.3	290.1	
E	5.3	300.1	
Crk	4.7	300.7	
"	5.5	299.9	
"			
"	5.3	300.1	
M			
"	5.4	300.0	
"			
"	5.1	300.3	
Crk			
+5	4.5	300.9	
+9	3.4	302.0	
	2.6	302.8	
W			
	2.5	302.9	

PLOTTED

13

2+50

W			
+1	2.8	302.6	
+2	2.8	302.6	
Crk	4.2	301.2	
"			
"	4.8	300.6	
M			
"	5.1	300.3	
"			
"	5.5	299.9	
"			
"	5.5	299.9	
Crk			
+7	5.6	299.8	
E	5.6	299.8	
	8.4	297.0	
+15	16.0	289.4	
+45	32.8	272.6	

2+75

-10			
E	5.9	299.5	
Crk	6.6	298.5	
"	6.0	299.4	
"			
"	5.5	299.6	
M			
"	5.7	299.7	
"			
"	5.5	299.9	
Crk			
+5	5.0	300.5	
+9	4.2	301.2	
	3.2	302.2	
W			
	3.2	302.2	



305.4

3+0

W	3.5	301.9
+2	4.3	301.1
erb	5.2	300.2
"	5.2	300.2
"	5.1	300.3
"	5.5	299.6
erb	6.3	299.1
E	6.4	299.0

3+25

E	6.0	299.4
erb	5.3	300.1
"	5.2	300.3
M	5.2	300.2
"	5.5	299.9
erb	5.2	300.2
W	4.1	301.3

PLOTTED

305.4

14

3+50

W	4.5	300.6
erb	5.7	299.7
"	5.7	299.7
M	5.7	299.7
"	5.5	299.6
erb	6.2	299.2
E	6.3	299.1

3+75

E	7.2	298.2
erb	7.3	298.1
"	7.0	298.4
M	6.8	298.6
"	6.6	298.8
erb	6.5	298.9
W	5.7	299.7



305.35

4+0

W		7.4	298.0
crk		8.6	298.8
"		8.7	296.7
M		8.9	296.5
"		9.0	296.4
crk		9.7	295.7
E		10.2	295.2
T.P.	3.60	296.15	12.50 292.58
		4+2.5	
E		5.3	290.9
crk		3.7	292.5
"		3.9	292.3
M		4.0	292.2
"		3.8	292.4
crk		2.9	293.3
+5		2.2	294.0
W		0.6	295.6

PLOTTED

15

294.2

4+50

W		3.7	292.5
+5		5.6	290.6
crk		6.3	289.9
"		6.8	289.4
M		7.0	289.2
"		7.3	288.9
crk		7.7	288.5
E		8.6	287.6
		4+7.5	
E		12.7	283.5
crk		11.7	284.5
"		11.2	285.0
M		10.7	285.5
"		10.6	285.6
crk		9.7	286.5
+5		8.8	287.4
W		6.9	289.3
T.P.	0.11	285.00	11.26 284.89



285.00

510

W	0.1	2849
Crk	2.0	2830
"A	2.9	2821
M	3.8	2813
"A	4.1	2809
W	5.0	2800
P	5.6	2794
+15	7.4	2776
	5725	J
-20	16.7	2683
E	11.6	2734
Crk	9.5	2755
"A	8.5	2745
M	7.2	2778
"A	6.5	2785
Crk	5.5	2795
W	4.1	2809

PLOTTED

16

285.0

5750

W	7.2	277.8
Crk	8.0	277.0
"A	8.7	276.3
M	11.3	273.7
"A	12.8	272.2
Crk	14.8	270.2
E	21.0	264.0
+25	23.00	257.0
+40	23.0	257.0
	5775	
-45	39.0	244.0
-25	32.2	252.8
E	20.9	264.1
Crk	17.3	267.7
"A	16.0	269.0
M	14.7	270.3
"A	13.4	271.6
Crk	11.3	273.7
W	10.4	274.6
T.P.	0.42	27140
	13.02	27198



272.40

5199 - N. 1/4 Nutmeg St

W	1.2	271.2
crk	2.1	270.3
"A	4.2	268.2
M	5.3	267.1
"A	6.4	266.0
crk	7.6	264.8
E	10.3	262.1
+25	19.9	252.5
+40	26.2	246.2

0+25 5 of S. Line Nutmeg for slope

-40	25.8	246.6
-25	18.2	254.2
E	13.5	258.9
crk	12.6	259.8
"A	11.7	260.7
M	10.8	261.9
"A	9.3	263.1
crk	8.7	263.7
W	6.5	265.9
+15	2.6	269.8

PLOTTED



x-section Robinson Ave from E.L. 10<sup>th</sup> St to Florida St  
 80' wide 14' MKS 13' 1/2' from 10<sup>th</sup> to Centre  
 70' " 10' " 12' 1/2' " Centre to Park Blvd <sup>1/2</sup> by Dewar  
 80' " 14' " 13' 1/2' " Park " Florida <sup>1/2</sup> by Evans  
 Run

18

B.M. S.E.R.R. SPIT Robinson & Vermont. 287.78

13.M. 3.07 270.87  
 E.L. 10<sup>th</sup> St

0+50

N	8.1	282.8
orb	8.6	282.3
"	8.7	282.2
M	8.7	282.2
"	8.8	282.1
orb	8.7	282.2
S	8.7	282.2

0+25 F

S	8.3	282.6
orb	8.3	282.6
"	8.9	282.0
"	8.2	282.7
M	8.3	282.6
"	8.0	282.9
orb	7.8	283.1
N	7.9	283.4

0+75

N	7.1	283.8
orb	7.7	283.2
"	7.7	283.2
M	7.8	283.1
"	7.8	283.1
orb	8.0	282.9
S	8.0	282.9
S	7.6	283.3
orb	7.4	283.5
"	6.9	284.0
M	7.0	283.9
"	7.5	283.4
orb	7.2	283.7
N	6.8	284.1



290.87

170

N	6.2	284.7
Crk	7.0	283.9
"A	7.1	283.8
M	7.2	283.7
"A	7.2	283.7
Crk	7.2	283.7
S	7.1	283.8

1725

S	6.3	284.6
Crk	6.5	284.4
"A	6.6	284.3
M	6.0	284.9
"A	5.8	285.1
Crk	6.5	284.4
N	6.1	284.8

19

1750

N	5.5	285.4
Crk	5.8	285.1
"A	5.2	285.7
M	5.9	285.5
"A	6.2	284.7
Crk	6.2	284.7
S	6.1	284.8

1775

S	5.9	285.0
Crk	6.0	284.9
"A	5.9	285.0
M	5.7	285.2
"A	5.6	285.3
Crk	5.0	285.9
N	4.8	286.1



290.87

210

N	6.0	284.9
erb	5.8	285.1
"A	6.0	284.9
M	5.4	285.5
"A	5.6	285.3
erb	5.8	285.1
S	5.9	285.0

212.5

S	5.8	285.1
erb	5.9	285.0
"A	6.0	284.9
M	6.0	284.9
"A	6.0	284.9
erb	5.9	285.0
N	5.3	285.6

20

2150

N	5.5	285.4
erb	5.8	285.1
"A	5.7	285.2
M	6.1	284.8
"A	6.2	284.7
erb	5.8	285.1
S	5.7	285.2

2175

S	5.7	285.2
erb	6.0	284.9
"A	6.0	284.9
M	6.0	284.9
"A	5.7	285.2
erb	5.5	285.4
N	5.4	285.5



290.87

340

N	5.2	285.7
erb	5.3	285.6
1/4	5.2	285.7
M	5.8	285.1
1/4	6.0	284.9
erb	5.9	285.0
S	5.8	285.1

3425

S	5.2	285.7
erb	5.4	285.5
1/4	5.7	285.2
M	5.6	285.3
1/4	5.4	285.5
erb	5.2	285.7
N	4.7	286.2

21

3450

N	4.4	286.5
erb	4.5	286.4
1/4	4.4	286.5
M	5.2	285.7
1/4	5.5	285.4
erb	5.3	285.6
S	5.1	285.8

3475

S	4.9	286.0
erb	5.3	285.6
1/4	5.4	285.5
M	5.0	285.9
1/4	4.7	286.2
erb	4.2	286.7
N	4.4	286.5



290.87

A+0

N	4.1	286.8
Crk	4.3	286.6
"A	4.4	286.5
M	4.7	286.2
"A	5.1	285.8
Crk	5.0	285.9
S	4.6	286.3

A+25

S	4.4	286.5
Crk	4.4	286.5
"A	4.6	286.3
M	4.2	286.7
"A	3.9	287.0
Crk	3.9	287.0
N	3.3	287.6

22

A+50

N	3.3	287.6
Crk	3.6	287.3
"A	3.7	287.2
M	4.2	286.7
"A	4.4	286.5
Crk	4.2	286.7
S	4.1	286.8

A+81 = N.L. Vermont st graded

S	4.0	286.9
Crk	4.0	286.9
"A	4.2	286.7
M	4.3	286.6
"A	3.2	287.7
Crk	3.0	287.9
N	2.9	288.0



## E.L. Vermont 57

N	1.4	289.5
Crk	2.0	288.9
"	2.6	288.3
M	3.2	287.7
"	3.6	287.3
Crk	3.0	287.9
S	3.4	287.5

## 0+25 E

S	2.9	288.0
Crk	2.7	288.2
"	2.6	288.3
M	2.1	288.8
"	2.0	288.9
Crk	1.8	289.1
N	1.5	289.9

## 0+50

N	1.6	289.3
Crk	1.7	289.2
"	1.5	289.4
M	2.1	288.8
"	2.3	288.6
Crk	2.3	288.6
S	2.9	288.5

## 0+75

S	2.0	288.9
Crk	2.0	288.9
"	2.0	288.9
M	1.8	289.1
"	1.9	289.0
Crk	1.5	289.9
N	1.1	289.8



290.87

170

N	0.5	290.4
erb	1.1	289.8
"4	1.6	289.3
M	1.8	289.1
"4	1.9	289.0
erb	1.6	289.3
S	1.8	289.1
T.P.	8.29	297.32
		1.54
		289.03
		1225

S	7.4	289.9
erb	6.5	290.8
"4	7.8	289.5
M	7.2	290.1
"4	7.2	290.1
erb	7.0	290.3
N	6.9	290.9

297.32

1250

N	5.3	291.5
erb	6.0	291.3
"4	6.4	290.9
M	6.3	290.5
"4	6.3	290.5
erb	6.2	291.1
S	7.0	290.3

1225

S	6.5	290.8
erb	6.2	291.1
"4	6.0	291.3
M	6.2	291.1
"4	6.3	291.0
erb	6.0	291.3
N	6.0	291.3

24



297.82

298

N	6.1	291.2
Ork	5.9	291.4
"A	6.1	291.2
M	6.4	290.9
"A	6.2	291.1
Ork	6.2	291.1
S	6.1	291.2

298

S	6.0	291.3
Ork	6.0	291.3
"A	6.1	291.2
M	6.1	291.2
"A	5.9	291.4
Ork	5.9	291.4
N	5.9	291.4

25

298

N	5.5	291.8
Ork	5.5	291.8
"A	5.8	291.5
M	6.0	291.3
"A	5.9	291.4
Ork	5.5	291.8
S	5.6	291.7

298

S	5.7	291.6
Ork	5.8	291.5
"A	5.9	291.4
M	5.6	291.7
"A	5.6	291.7
Ork	5.6	291.7
N	5.8	292.0



297.32

370

N	4.9	292.4
Crk	5.0	292.3
1/4	5.5	291.8
M	5.3	292.0
1/4	5.3	292.0
Crk	5.6	291.7
S	5.7	291.6

3725

S	5.9	291.4
Crk	5.6	291.7
1/4	5.6	291.7
M	5.4	291.9
1/4	5.3	292.0
Crk	5.0	292.3
N	4.7	292.6

26

3750

N	4.6	292.7
Crk	4.6	292.7
1/4	5.3	292.0
M	5.4	291.9
1/4	5.5	291.8
Crk	5.6	291.7
S	5.8	291.5

3775

S	5.9	291.4
Crk	5.5	291.8
1/4	5.7	291.6
M	5.4	291.9
1/4	5.1	292.2
Crk	4.5	292.8
N	4.5	292.8



297.32

4+0

N	4.1	293.2
wh	4.5	292.8
1/4	5.2	292.1
M	5.5	291.8
1/4	5.8	291.5
wh	5.6	291.7
S	5.5	291.8

4+25

S	5.3	292.0
wh	5.4	291.9
1/4	5.7	291.6
M	5.7	291.6
1/4	5.2	292.1
wh	4.8	292.5
N	4.4	292.9

27

4+50

N	4.4	292.9
wh	5.0	292.3
1/4	5.3	292.0
M	5.4	291.9
1/4	5.4	291.9
wh	4.8	292.5
S	5.1	292.2

4+75

S	4.6	292.7
wh	4.5	292.8
1/4	4.8	292.5
M	5.0	292.3
1/4	4.8	292.5
wh	4.7	292.6
N	4.4	292.9



297.32

570

N	3.7	293.6
crk	4.4	292.9
"4	4.3	293.0
M	4.4	292.9
"4	4.5	292.8
crk	4.5	292.8
S	4.4	292.9

5725

S	4.4	292.9
crk	4.4	292.9
"4	4.3	293.0
M	4.1	293.2
"4	4.0	293.3
crk	3.6	293.7
N	3.5	293.8

28

5750

N	3.1	294.2
crk	3.2	294.1
"4	3.5	293.8
M	3.8	293.5
"4	3.8	293.5
crk	4.2	293.1
S	4.0	293.3

5775

S	3.7	293.6
crk	3.8	293.5
"4	3.5	293.8
M	3.1	294.2
"4	2.9	294.4
crk	2.9	294.4
N	2.4	294.9



297.32

6+0 = N. L. Richmond St to wide 100 ft

N	2.3	295.0
Corb	2.4	294.9
"A	2.4	294.9
M	2.6	294.7
"A	2.6	294.7
Corb	3.4	293.9
S	3.3	294.0

N. Corb

S	2.9	294.4
Corb	2.8	294.5
"A	2.4	294.9
M	2.5	294.8
"A	2.0	295.3
Corb	1.8	295.5
N	2.0	295.3

29

W "A

N	1.9	295.4
Corb	2.1	295.2
"A	2.1	295.2
M	2.4	294.9
"A	2.4	294.9
Corb	2.5	294.8
S	2.8	294.5

Center

S	2.5	294.8
Corb	2.2	295.1
"A	2.1	295.2
M	2.2	295.1
"A	2.2	295.1
Corb	2.1	295.2
N	2.0	295.3



297.32

E "A"

N	1.7	295.6
crk	1.9	295.4
"4	1.8	295.5
M	1.9	295.4
"4	1.9	295.4
crk	2.2	295.1
S	2.2	295.1

F curk

S	1.8	295.5
crk	1.9	295.4
"4	2.0	295.3
M	2.0	295.3
"4	1.8	295.5
crk	2.0	295.3
N	2.0	295.3

30

Richmond St  
E. L. Vermont St

N	2.2	295.1
crk	2.1	295.2
"4	2.1	295.2
M	2.1	295.2
"4	2.2	295.1
crk	1.9	295.4
S	2.1	295.2

0+25 F

S	2.1	295.2
crk	2.4	294.9
"4	2.6	294.7
M	2.4	294.9
"4	2.1	295.2
crk	2.3	295.0
N	2.2	295.1



297.32

0450

H	3.0	294.3
Crk	2.8	294.5
"A	2.5	294.8
M	2.6	294.7
"A	2.8	294.5
Crk	2.5	294.8
S	2.5	294.8

10495

S	3.2	294.1
Crk	3.6	293.7
"A	3.8	293.5
M	3.6	293.7
"A	3.7	293.6
Crk	3.5	293.8
N	3.0	294.3

31

140

N	3.4	293.9
Crk	3.6	293.7
"A	3.8	293.5
M	4.1	293.2
"A	4.2	293.1
Crk	3.9	293.4
S	3.8	293.5

1425

S	4.3	293.0
Crk	5.1	292.2
"A	6.0	291.3
M	6.5	291.0
"A	5.9	291.4
Crk	5.3	292.0
N	5.0	292.3



297.32

1+50

N		10.2	287.1
erb		9.6	287.7
"4		10.9	286.4
M		10.9	286.4
"4		9.8	287.5
wh		8.9	288.9
S		7.8	286.5
T.P.	047	286.31	11.48 285.84
		1475	
-20		3.7	282.6
S		4.7	281.6
erb		6.3	280.0
"4		7.1	279.2
M		8.4	277.9
"4		8.2	278.1
wh		7.9	278.4
N		7.7	278.6
+20		8.4	277.9

286.31

2+0

-30		16.7	269.6
N		18.2	268.1
erb		17.0	269.3
"4		17.7	268.6
M		17.0	269.3
"4		16.0	270.3
erb		15.2	271.1
S		14.7	271.6
+30		15.0	271.3
		2+25	
-30		22.9	263.4
S		21.0	265.3
erb		21.0	265.3
"4		20.5	265.8
M		19.6	266.7
"4		16.1	270.2
erb		13.6	272.7
N		11.2	275.1
+30		8.7	277.6

32



286.31

on south

2+50 = N.L. Albert st 20' 14" N 13' 14"

-20	2.4	283.9
N	4.1	282.2
crk	5.9	280.4
"	8.9	277.4
M	11.1	275.2
"	11.2	275.1
crk	12.7	273.6
S	14.7	271.6
130	22.2	264.1

N curb

-30	16.9	269.4
S	9.3	277.0
crk	7.4	278.9
"	6.2	280.1
M	5.4	280.9
"	4.5	281.8
crk	2.0	284.3
N	0.6	285.7
+18	0.0	286.3

T.P.

12.55

297.44

1.42

284.89

297.44

33

W "A

N	7.5	289.9
crk	8.6	288.8
"	11.3	286.1
M	12.4	285.0
"	12.3	285.1
crk	14.0	283.4
S	15.9	281.5
-120	21.0	276.4

center

-20	17.1	280.3
S	12.7	284.7
crk	10.5	286.9
"	8.0	289.4
M	7.0	290.4
"	7.1	290.3
crk	6.5	290.9
N	5.1	292.3



29244

E 1/4

N	3.7	293.5
W	5.3	292.1
1/4	5.6	291.8
N	6.1	291.3
1/4	6.2	291.2
W	6.9	290.5
S	8.3	289.1
+15	10.8	286.6

E. CURVE

S	5.8	291.6
W	4.4	293.0
1/4	4.0	293.4
N	5.0	292.4
1/4	4.5	292.9
W	4.4	293.0
N	3.0	294.4

34

E. L. Albert st

N	2.8	294.6
W	4.1	293.3
1/4	3.7	293.7
N	3.2	294.2
1/4	2.8	294.6
W	3.4	294.0
S	4.2	293.2

0+25 F

S	4.0	293.4
W	3.7	293.7
1/4	3.8	293.6
N	3.9	293.5
1/4	1.7	295.7
W	0.8	296.6
N	1.8	295.6



29744

0+50

N	2.3	295.1
Crk	1.9	295.5
"A	2.6	294.8
M	2.3	295.1
"A	1.3	296.1
Crk	1.8	295.6
S	3.3	294.1

0+75

S	2.8	294.5
Crk	2.9	294.5
"A	2.6	294.8
M	1.9	295.5
"A	1.1	296.3
Crk	1.5	295.9
N	1.2	296.2

35

1+0

N	1.1	296.3
Crk	1.7	295.7
"A	1.7	295.7
M	2.7	294.7
"A	2.5	294.9
Crk	2.5	294.9
S	3.0	294.4

1+25

S	2.6	294.8
Crk	2.9	294.5
"A	3.3	294.1
M	2.6	294.8
"A	2.5	294.9
Crk	2.6	294.8
N	1.8	295.6



297.94

1250

N	1.3	296.1
Orb	1.8	295.6
"	1.9	295.5
M	2.0	295.4
"	2.3	295.1
Orb	3.2	294.2
S	3.7	293.7
S	5.0	292.4
Orb	4.1	293.3
"	3.9	293.5
M	3.8	293.6
"	2.9	294.5
Orb	2.3	295.1
N	1.2	296.2

1255

2102 W. Herbert St 20' mid cen. S. 860' mid cen N

210' 1/2 S

210' 1/2 N

14' 1/2 S 10' 1/2 N

N	0.8	296.6
Orb	2.4	295.0
"	2.5	294.9
"	2.7	294.7
"	3.3	294.1
Orb	3.3	294.1
S	3.3	294.1
T.P.	10.37	304.51
T.P.	3.30	294.14

14' Orb

400 S.W. Cor

Herbert St

S	10.1	293.4
Orb	10.9	293.6
"	10.5	294.0
"	9.3	295.2
"	9.0	295.5
Orb	9.9	294.6
N	10.1	294.4



30451

17 '4

N	11.3	293.2
ck	9.5	295.0
"	8.9	295.6
M	9.6	294.9
"	10.7	293.8
ck	11.3	293.2
S	11.3	293.2

Center

S	9.7	294.8
ck	10.3	294.2
"	10.3	294.2
M	10.0	294.5
"	9.2	295.3
ck	9.8	294.7
N	11.2	293.8

30451

17 '4

N	11.4	293.1
ck	9.7	294.8
"	8.9	295.6
M	9.1	295.4
"	9.3	295.2
ck	9.7	294.8
S	10.2	294.3

E. cork

S	10.0	294.5
ck	9.9	294.6
"	9.4	295.1
M	8.9	295.6
"	8.3	296.2
ck	9.3	294.2
N	10.7	293.8

37

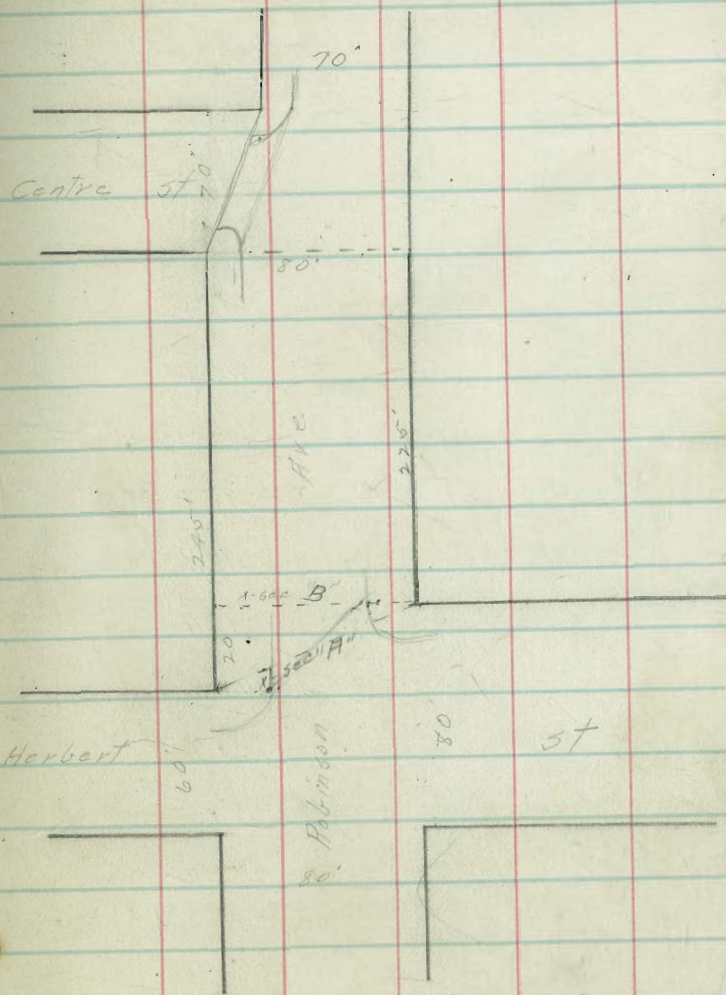


x-sec "A" = E. L. Herbert

N	8.6	296.9
crk	8.1	296.4
"A	8.4	296.1
M	9.2	295.3
"A	9.0	295.5
crk	9.2	295.3
S	9.3	295.2

x-section "B"

S	9.3	295.2
crk	8.8	295.7
"A	8.8	295.7
M	8.9	295.6
"A	8.8	295.7
crk	8.2	296.3
N	8.1	296.4





30451

0+25' E of 1-500 "B"

N	6.5	298.0
erb	7.0	297.5
"4	7.9	296.6
M	8.0	296.5
"4	8.4	296.1
erb	8.5	296.0
S	8.5	296.0

1-0750

S	7.5	296.7
erb	7.6	296.9
"4	7.1	297.4
M	6.6	297.9
"4	6.8	297.7
erb	7.0	297.5
N	6.3	298.2

30451

39

0+75

N	5.8	298.7
erb	5.5	299.0
"4	4.8	299.7
M	5.4	299.1
"4	5.8	298.7
erb	7.0	297.5
S	7.1	297.4

170

S	5.7	298.8
erb	5.5	299.0
"4	5.5	299.0
M	4.5	300.0
"4	4.2	300.3
erb	4.8	299.7
N	4.9	299.6



30451

1425

N	4.3	300.2
erb	4.6	299.9
"A	4.0	300.5
M	4.9	299.6
"A	4.7	299.8
erb	4.6	299.9
S	5.4	299.1

1450

S	5.7	298.8
erb	5.5	299.0
"A	5.1	299.4
M	4.7	299.8
"A	4.1	300.4
erb	4.0	300.5
N	3.9	300.6

40

1475

N	4.1	300.4
erb	4.2	300.3
"A	4.4	300.1
M	4.6	299.9
"A	5.2	299.3
erb	5.4	299.1
S	5.6	298.9

240

S	5.7	298.8
erb	5.8	298.7
"A	5.5	299.0
M	5.2	299.3
"A	4.9	299.6
erb	4.5	300.0
N	4.4	300.1



304.51

2175 = N. L. Centre of 70' wide  
10 corals 1-1/2 ft. H<sub>4</sub>

N	5.0	299.5
crb	5.9	298.6
"	6.2	298.3
N	5.9	298.6
"	5.9	298.6
crb	6.2	298.3
S	7.0	297.5

N. corals

S	7.4	297.1
crb	6.4	298.1
"	6.4	298.1
N	6.5	298.0
"	6.9	297.6
crb	6.9	297.6
N	8.0	296.5

41

N "A

N	8.7	295.8
crb	8.3	296.2
"	8.0	296.5
N	7.7	296.8
"	7.3	297.2
crb	7.2	297.3
S	7.7	296.8

Center

S	8.4	296.1
crb	7.6	296.9
"	9.1	295.4
N	9.2	295.3
"	9.0	295.5
crb	9.2	295.3
N	8.8	295.7



304.51

E 14

N	9.5	295.0
erb	9.8	294.7
"	10.1	294.4
M	10.4	294.1
"	10.5	294.0
erb	10.4	294.1
S	10.3	294.2

E curb

S	12.7	291.8
erb	11.9	292.6
"	11.9	292.6
M	11.9	292.6
"	11.4	293.1
erb	10.6	293.9
N	9.6	294.9

42

F.L. Centre

N	9.8	294.7
erb	13.5	290.7
"	13.4	291.1
M	13.7	290.8
"	12.9	291.6
erb	13.3	291.2
S	14.2	290.3

T.P. 0.91 292.80 12.62 291.89

0+25 E

-20	13.2	279.0
S	2.6	283.2
erb	2.1	284.7
"	7.0	285.8
M	9.0	283.8
"	9.9	282.9
erb	8.5	284.3
N	5.5	287.3
+10	2.9	289.9



292.80

0+50

-10	2.1	290.7
N	4.9	287.9
Crk	8.0	284.8
1/4	11.3	281.5
M	15.0	277.8
1/4	17.4	275.4
Crk	19.0	273.8
S	20.7	272.1
+30	23.3	269.5

0+75

-30	32.2	260.6
S	23.1	269.7
Crk	20.2	272.6
1/4	17.3	275.5
M	14.4	278.4
1/4	11.2	281.6
Crk	8.4	284.4
N	6.5	286.3
+10	4.9	287.9

T.P. 104 282.04 11.80 281.00

282.04

1+0

-20	0.2	281.8
N	2.8	279.2
Crk	4.4	277.6
1/4	6.8	275.2
M	9.7	272.3
1/4	11.8	270.2
Crk	13.2	268.8
S	16.1	265.9
+15	21.0	261.0
+30	16.6	265.4

1+25

-30	12.3	269.7
S	17.6	264.4
Crk	19.2	262.8
1/4	18.9	263.3
M	19.0	263.0
1/4	16.2	265.8
Crk	12.6	269.4
N	11.0	271.0
+20	7.1	274.9



282.04

1+50

-30	11.7	270.3
N	16.6	265.4
Crk	15.5	266.5
"	15.2	266.8
M	15.0	267.0
"	19.0	265.0
Crk	15.5	266.5
S	13.3	268.7
+20	7.8	274.2

1495

-20	2.1	279.9
S	9.6	272.4
Crk	13.4	268.6
"	16.4	265.6
M	12.5	269.5
"	11.5	270.5
Crk	11.6	270.4
N	12.2	269.8
+30	13.0	269.0

44

2+0

-30	10.5	271.5
N	4.0	278.0
Crk	5.2	276.8
"	6.7	275.3
M	8.5	273.5
"	11.4	270.6
Crk	12.7	269.3
S	9.5	272.5
+20	1.9	280.1

T.P. 8.45 287.84 2.65 279.39

2+25

-20	10.8	277.0
S	17.6	270.2
Crk	16.2	271.6
"	13.4	274.4
M	11.6	276.2
"	9.5	278.3
Crk	7.0	280.8
N	5.2	282.6
+20	5.7	282.1



287.84

2+50

- 15	+ 1.0	288.8
N	1.0	286.8
crk.	4.0	283.8
"4	6.8	281.0
M	10.4	277.4
"4	11.4	276.4
crk.	12.4	275.4
S	12.9	274.9
+ 30	13.8	274.0

2+75

- 25	8.1	279.7
S	6.6	281.2
crk.	5.2	282.6
"4	4.5	283.3
M	4.4	283.4
"4	3.3	284.5
crk.	0.9	286.9
T.P.	0.33	287.51
N	8.6	289.5

10.58

298.09

298.09

3+0

N	5.6	292.5
crk.	5.8	292.3
"4	7.3	290.8
M	7.7	290.4
"4	7.2	290.9
crk.	8.3	289.8
S	9.5	288.6
+ 20	11.0	287.1

3+25

S	2.9	295.2
crk.	3.3	294.8
"4	4.5	293.6
M	3.9	294.2
"4	3.9	294.2
crk.	3.5	294.6
N	3.2	294.9

45



298.09.

3+50

N			1.9	296.2
erb			1.8	296.3
"4			2.1	296.0
M			2.0	296.1
"4			1.8	296.3
erb			2.6	295.5
S			2.4	295.7
T.P.	10.46	307.48	1.07	297.02
		3+75		
S			9.5	298.0
erb			10.2	297.3
"4			10.2	297.3
M			10.2	297.3
"A			10.1	297.4
erb			10.1	297.4
N			10.3	297.2

307.48

4+0

46

N			9.3	298.2
erb			8.9	298.6
"4			9.2	298.3
N			9.1	298.4
"4			9.3	298.2
erb			9.3	298.2
S			8.8	298.7
				4+18 = ML. PARK BLDG on S.
S			8.6	298.9
erb			8.7	298.8
"4			8.8	298.7
M			8.8	298.7
"A			7.9	299.6
erb			7.9	299.3
N			8.2	299.3



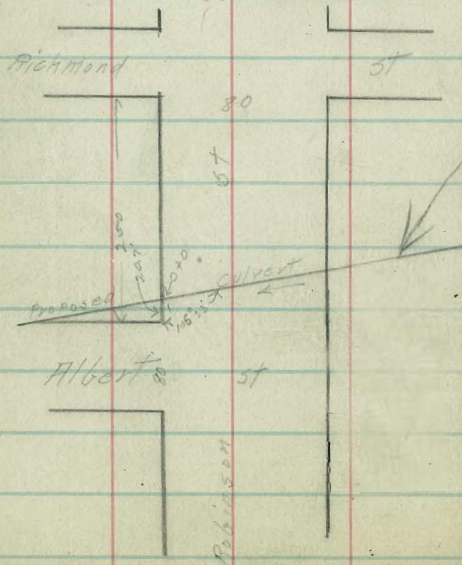
307.25

4+18 on S & 4+90 on N = W. L. Park Blvd.

X	4.0	303.5
Orla	5.3	302.2
"A	6.0	301.5
"B	6.9	300.6
"C	7.6	299.9
Orla	8.1	299.4
S	8.6	298.8

Note - for X-section from Park Blvd. to Florida see Book 821 Page 10

For intersection Park Blvd see X-sec Park Blvd

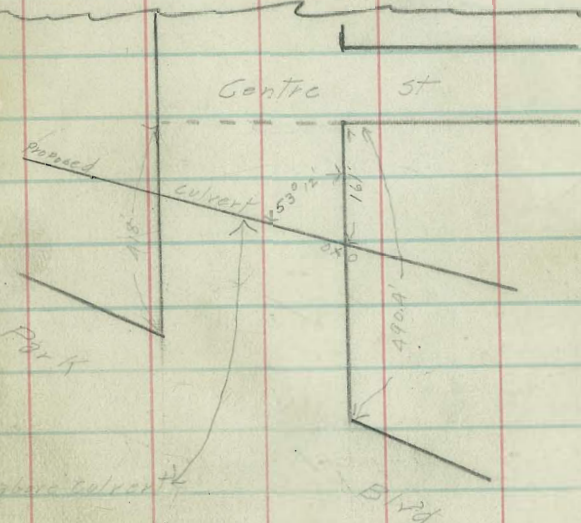


7/1/13 Double  
Survey  
Run.

47

Levels for Culvert on opposite Page

B.M.	0.70	272.50	#	271.60
0+20.4 Robinson			7.6	264.7
0+30.4			7.0	265.5
0+40.4			6.3	266.2
0+50.4			5.1	267.4
0+60.4			4.6	267.9
0+70.4			2.9	267.6
1+00.4			2.0	270.2
0+0 = S.L. Robinson			7.6	264.7
0+20.5			8.4	264.1
0+40.4			9.2	263.3
0+50.4			10.0	262.5



Levels for above Culvert

B.M.	0.34	271.48	#	270.4
0+20.4 Robinson			4.3	267.2
0+30.4			5.7	265.4
0+40.4			4.1	267.4
0+50.4			4.0	267.0
0+60.4 Robinson			4.3	267.2
0+70.5			4.4	266.6
0+80.4			6.0	265.5
0+90.4			8.5	263.0
0+100.4			6.7	264.8
1+00.4			8.4	263.1
1+20.4			10.2	261.3
1+40.4			11.0	260.5
1+50.4			11.3	260.2



X-section Dwight St El. Alabama to El. Walker St  
 " 60' wide 10' walls 10' 45  
 5 1/2 of Dwight graded from Arizona to Walker

1/2 sample  
 1/3 Evans  
 Kern

B.M. grade at N.W. corner of Dwight

0+50

B.M. 5.49 280.49 2.75.00

El. Alabama

N 15.7

orb 15.6

" 15.5

M 15.4

" 15.5

orb 15.4

S 15.6

0+75 E

S 13.4

orb 13.5

" 13.5

M 13.4

" 13.3

orb 13.5

N 13.8

N 11.6

orb 11.7

" 11.6

M 11.7

" 11.7

orb 11.9

S 11.9

0+75

S 10.3

orb 10.0

" 9.9

M 9.8

" 10.0

orb 10.1

N 10.2



170

N	8.6
Crk	8.6
"	8.7
M	8.6
"	8.6
Crk	8.9
S	8.9

1725

S	7.8
Crk	7.5
"	7.5
M	7.9
"	7.2
Crk	7.0
N	7.0

1750

N	6.0
Crk	6.0
"	6.0
M	6.2
"	6.4
Crk	6.3
S	6.6

1775

S	5.3
Crk	5.1
"	5.0
M	4.9
"	4.9
Crk	4.9
N	5.0



230.49

210

N	4.1
crk	4.6
1/4	4.2
M	4.0
1/4	3.9
crk	4.0
S	4.3

2125

S	3.3
crk	3.3
1/4	3.2
M	3.2
1/4	3.8
crk	3.8
N	3.2

50

2150

N	2.7
crk	3.0
1/4	3.1
M	3.0
1/4	2.7
crk	2.6
S	2.5

2175 = W.L. Mississippi graded

S	2.0
crk	2.0
1/4	2.1
M	2.5
1/4	2.4
crk	2.6
N	2.0
T.P.	8.72
	283.72
	5.49
	275.00



28372

F.L. Miss. St

N	8.0	275.7
Crk	8.3	275.2
1/4	8.6	275.1
1/4	7.7	276.0
1/4	8.2	275.5
Crk	7.6	276.1
S	6.7	277.0

0425 E

S	7.6	276.1
Crk	8.3	275.4
1/4	8.7	275.0
1/4	9.5	274.2
1/4	10.4	273.3
Crk	11.7	272.0
N	12.5	271.2
1/10	11.8	271.9

51

0450

-10	10.8	272.9
N	11.1	272.6
Crk	11.6	272.1
1/4	12.3	271.4
1/4	11.5	274.2
1/4	10.2	273.5
Crk	9.4	274.3
S	8.5	275.2

0475

S	8.6	275.1
Crk	9.6	274.1
1/4	9.9	272.8
1/4	9.4	274.3
1/4	9.1	274.6
Crk	8.8	274.9
N	8.2	275.5
1/10	8.0	275.7



170

N	6.4	277.3	✓
erb	6.6	277.1	✓
"	6.9	276.8	✓
M	7.2	276.5	✓
"	8.0	275.7	✓
erb	8.2	275.5	✓
S	8.2	275.5	✓

1725

S	7.1	276.6	✓
erb	7.0	276.7	✓
"	6.5	277.2	✓
M	5.9	277.8	✓
"	5.5	278.2	✓
erb	5.3	278.4	✓
N	5.1	278.5	✓

1750

N	3.6	280.1	✓
erb	4.1	279.6	✓
"	4.6	279.1	✓
M	5.1	278.6	✓
"	5.2	278.5	✓
erb	5.4	278.3	✓
S	5.8	277.9	✓

1775

S	5.0	278.7	✓
erb	4.5	279.2	✓
"	4.4	279.3	✓
M	4.2	279.5	✓
"	3.3	280.4	✓
erb	2.7	281.0	✓
N	2.1	281.6	✓



283.72

210

N	1.5	282.2 ✓
Crk	2.0	281.7 ✓
1/4	2.8	280.9 ✓
M	3.1	280.6 ✓
1/4	3.5	280.2 ✓
Crk	3.8	279.9 ✓
S	3.9	279.8 ✓

2120

S	3.1	280.6 ✓
Crk	3.1	280.6 ✓
1/4	3.2	280.5 ✓
M	2.7	281.0 ✓
1/4	2.5	281.2 ✓
Crk	2.1	281.6 ✓
N	1.9	281.8 ✓

53

2150

N	2.3	281.4 ✓
Crk	2.5	281.2 ✓
1/4	2.3	281.4 ✓
M	2.3	281.4 ✓
1/4	2.5	281.2 ✓
Crk	2.7	281.0 ✓
S	2.7	281.0 ✓

2172 = W.L. Louisiana st graded.

S	2.9	280.8 ✓
Crk	2.7	281.0 ✓
1/4	2.8	280.9 ✓
M	2.4	281.3 ✓
1/4	2.6	281.1 ✓
Crk	2.6	281.1 ✓
N	2.1	281.6 ✓
T.P	8.98	291.98
	0.67	283.05 ✓



## E. Louisiana St

N	8.9
Col	9.2
1/4	9.5
M	9.9
1/4	10.5
Col	10.2
S	10.3

## 0725 E

S	9.5
Col	9.2
1/4	9.4
M	9.5
1/4	8.9
Col	8.6
N	8.6

## 0750

N	8.9
Col	8.7
1/4	9.2
M	9.3
1/4	8.9
Col	8.8
S	9.3

## 0725

S	8.3
Col	8.4
1/4	8.9
M	8.9
1/4	8.9
Col	8.4
N	8.0



170

N	8.2
crk	8.6
"	8.6
M	8.5
"	8.4
crk	8.3
S	8.0

1725

S	7.4
crk	7.9
"	8.1
M	7.8
"	7.5
crk	7.4
N	7.8

1750

H	6.6
crk	6.7
"	6.8
M	6.6
"	6.8
crk	6.8
S	6.8

1775

S	6.9
crk	5.7
"	6.0
M	5.8
"	5.6
crk	6.4
N	6.4



291.98

240

N	5.7
Crk	5.6
14	5.1
M	5.2
14	5.2
Crk	5.1
S	5.3

242.5

S	4.6
Crk	4.6
14	4.3
M	4.2
14	4.1
Crk	4.2
N	4.4

245.0

N	3.0
Crk	3.0
14	3.2
M	2.8
14	2.9
Crk	3.1
S	3.2

242.2 = M. Texas st graded

S	2.0
Crk	1.8
14	1.9
M	1.9
14	2.3
Crk	1.8
N	1.8

T.P.	5.88	296.57	129	290.69
------	------	--------	-----	--------



E.L. Texas ST

N	1.1
crk	1.1
1/4	1.2
M	1.2
1/4	1.1
crk	1.2
S	1.2

0+25 E

S	2.6
crk	2.7
1/4	2.7
M	2.7
1/4	2.6
crk	2.5
H	2.3

0+50

N	4.2
crk	4.3
1/4	4.3
M	4.4
1/4	4.7
crk	4.5
S	4.3

0+75

S	6.7
crk	6.9
1/4	6.9
M	7.1
1/4	6.9
crk	7.0
N	6.8



296.57

170

N	8.4
Crk	8.6
"A	8.7
M	8.7
"A	8.7
Crk	8.7
S	8.6

1425

S	10.0
Crk	10.0
"A	10.1
M	10.3
"A	10.4
Crk	10.2
N	10.1

1750

N	11.0
Crk	11.3
"A	11.3
M	11.3
"A	11.0
Crk	11.0
S	11.3

1775

S	12.1
Crk	12.1
"A	12.2
M	12.5
"A	12.6
Crk	12.2
N	11.9

T.P.	2.75	287.29	12.03	284.54
------	------	--------	-------	--------



287.29

2+0

N	3.6
crk	3.8
1/4	4.1
M	4.0
1/4	3.9
crk	3.7
S	3.6

2+25

S	4.5
crk	4.6
1/4	4.6
M	4.6
1/4	4.6
crk	4.2
N	4.0

59

2+50

N	4.3
crk	4.7
1/4	4.9
M	4.9
1/4	4.7
crk	4.9
S	5.2

2+74 = ML Arizona st graded

S	5.3
crk	5.4
1/4	4.9
M	4.5
1/4	4.5
crk	4.5
N	4.7



Note - 5 1/2 of Dwight graded from Arizona to Walker

E. Arizona

N	4.0
Crk	4.2
1/4	4.3
M	4.0

0+25 E

M	3.3
1/4	3.5
Crk	3.6
N	3.4

0+50

N	3.1
Crk	3.2
1/4	3.2
M	2.8

0+75

M	2.7
Crk	2.6
1/4	2.6
N	2.5

1+0

N	2.8
Crk	2.5
1/4	2.6
M	2.6

1+25

M	2.7
1/4	2.7
Crk	2.4
N	2.2

1+50

N	1.9
Crk	2.4
1/4	2.5
M	2.6

1+75

M	2.6
1/4 Crk	2.4
Crk #	2.3
N	1.7



287.29

2+10

N	
#	1.8
7/8 curb	2.2
1/4	2.3
M	2.5

2+25

M	2.1
1/4	2.0
7/8 curb	1.9
N	1.6

2+50

N	
#	1.3
7/8 curb	1.7
1/4	1.8
M	1.8

2+76<sup>5</sup> = W.L. Arnold St 65' wide

M	1.4
1/4	1.5
curb	1.3
N	0.9

W. curb

N	0.8
curb	1.1
1/4	1.1
M	1.3

W 1/4

M	1.7
1/4	1.6
curb	1.5
N	1.1

Center

N	0.4
curb	0.9
1/4	1.2
M	1.4

E 1/4

M	0.6
1/4	0.8
curb	0.7
N	0.2

T.P. 11.72 297.94 1.07 286.22



29794

E. Corle

N	10.9
Corle	11.1
"A	11.1
M	11.2

E. L. Arnold

M	11.0
"A	10.5
Corle	10.6
N	10.8

0425 E

N	10.3
Corle	10.4
"A	10.4
M	10.4

0450

M	9.4
"A	9.8
Corle	9.8
N	9.2

62

0475

N	8.9
Corle	9.1
"A	8.7
M	8.7

140

M	8.1
"A	8.2
Corle	8.3
N	7.9

1425

N	7.1
Corle	7.2
"A	7.3
M	7.3

1450

M	6.7
"A	6.6
Corle	6.2
N	6.2



29794

175

N	5.5
erb	5.3
1/4	5.0
M	5.2

210

M	4.6
1/4	4.4
erb	4.5
N	4.7

2125

N	3.0
erb	3.7
1/4	3.8
M	3.7

n+65 = W.1. Walker 65'

M	1.2
1/4	1.5
erb	1.9
N	1.8

63

W. curb

N	0.9
erb	1.5
1/4	1.1
M	0.9

N 1/4

M	0.7
1/4	1.1
+8	1.4
erb	0.8
N	3.5

Center

N	0.0
erb	0.6
+2	1.3
1/4	0.8
M	0.5

E 1/4

M	0.4
1/4	0.8
+8	1.5
erb	0.4
N	4.8



297.94

E. Curle

N +0.2

Crle 0.6

+2 1.1

1/4 0.6

M 0.3

E. L. Walker

M 0.0

1/4 0.1

+8 0.7

Crle +0.2

N +0.5

64



x-section Pennsylvania 70 to 80 ft

10' marks

3/13

Smith  
Evans  
Kerr

65

B.M. 2.21 289.07 ✓ 286.86  
T.R. 1.54 279.88 ✓ 10.73 278.34 ✓

E.L. 7th St

S 1.7 278.2

Col 1.9 278.0

" 2.6 277.3

M 2.4 277.5

" 2.3 277.6

Col 2.2 277.7

N 1.8 278.1

0+25' E

N 5.2 274.7

Col 5.2 274.7

" 4.9 275.0

M 4.8 275.1

" 5.0 274.9

Col 5.1 274.8

+5 4.0 275.9

S 4.6 275.3

279.88

0.150

-1.5 5.6 274.3

+9 6.0 273.9

Col 6.6 273.3

" 6.1 273.8

M 6.0 273.9

" 6.2 273.7

Col 6.3 273.6

N 6.0 273.9

0.475

N 6.8 273.1

Col 7.1 272.8

" 7.1 272.8

M 7.0 272.9

" 7.3 272.6

Col 7.9 272.0

+1 7.1 272.8

S 7.2 272.7



279.88

1+0

S	7.8	272.1
+4	8.0	271.9
+5	9.1	270.8
erb	8.8	271.1
1/4	8.0	271.6
M	8.0	271.9
1/4	8.0	271.9
erb	8.4	271.5
+1	7.8	272.1
N	7.4	272.5
1+40 = R.L. Alley		
N	8.4	271.5
erb	9.0	270.9
1/4	9.7	270.2
M	9.5	270.4
1/4	9.7	270.2
erb	9.8	270.1
S	10.4	269.5 <sup>v</sup>
T.P.	0.30	272.45 <sup>v</sup>
	7.73	272.45 <sup>v</sup>

272.45

x-section "A" see page 67

S	3.6	268.9 <sup>v</sup>
+2	4.7	267.8
erb	4.3	268.2
1/4	3.8	268.7
M	3.4	269.1
1/4	2.9	268.6
erb	2.2	270.3
N	1.9	270.6
see "B"		
-10	2.9	269.6
-9	9.1	263.4
N	12.3	260.2
+6	12.3	260.2
erb	10.5	262.0
1/4	8.8	263.7
M	3.4	269.1
1/4	3.7	268.8
erb	4.3	268.2
+8	4.7	267.8
S	3.6	268.9







272.45

x-sec "E"

3	4.2	268.3
crk	4.3	268.2
1/4	4.1	268.4
-1	4.1	268.4
+2	9.7	262.8
M	11.4	261.1
1/4	19.3	253.2
+3	22.6	249.9
crk	22.5	250.0
N	18.2	254.3
+15	12.1	260.4

x-sec "F"

-15	13.2	259.3
N	18.2	254.3
crk	22.7	249.8
+4	22.7	249.8
1/4	19.7	252.8
M	12.1	260.4
+6	8.2	264.3
1/4	3.6	268.9
crk	4.2	268.3
5	4.2	268.3

272.45

x-section "G"

3	2.9	269.6
+2	4.0	268.2
crk	4.1	268.4
+5	3.6	268.9
1/4	5.0	267.5
M	9.4	263.1
1/4	14.4	258.1
+6	17.3	255.2
crk	23.2	249.3
+5	26.4	246.1
N	26.6	245.9
+5	26.5	245.7
+30	19.1	253.4

x-section "H" - E.L. 8th St

-55	29.5	247.7
-25	30.9	241.6
N	22.2	250.3
crk	17.5	255.0
1/4	15.5	257.0
+4	14.2	258.3
M	10.1	262.4
+2	5.2	267.3
1/4	3.8	268.7
crk	4.0	268.5
5	4.2	268.3

68



4  
16  
15  
Taylor  
City

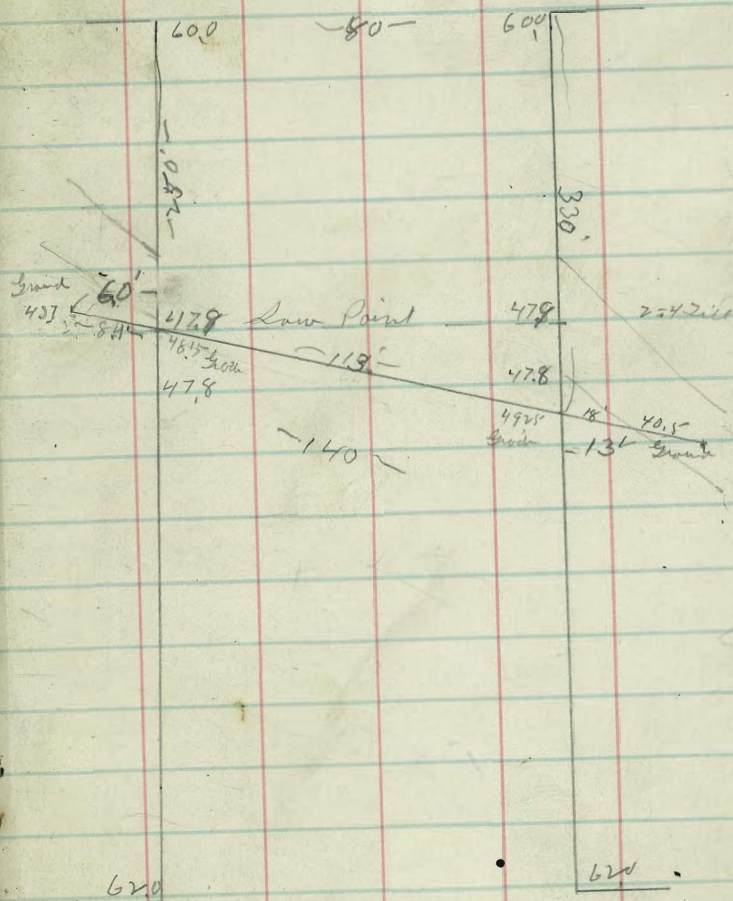
blought Levels for Culvert on  
Woolman near 37th

				men 28
	140		57.26	374
	303	52.14	953	49.11
5.5 sq ft		8.4	43.7	57.26 1.40 58.66 9.54 49.11 49.303 52.14
n 2		8.4	43.7	
n 2 1/2		9.2	42.9	
" 7 3/5'		3.4	48.8	
leert		3.6	48.6	
" 15'		9.0	43.1	
S 2		10.4	41.6	
13.0 sq ft		11.6	40.6	

10' Culvert

69

37th



{ the X is graded so  
that no culvert is  
necessary }

36th

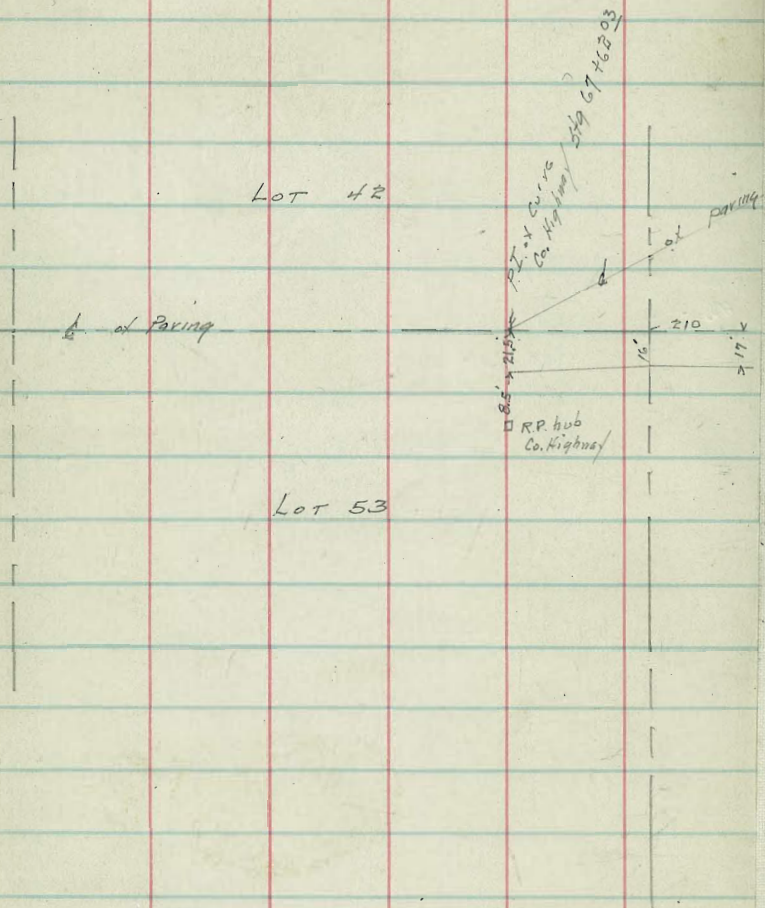


11/9/21

Gregory  
Moore  
Miller  
Shaw

Location of Benita P. Co  
Line Through Horton's  
Purchase Lot 53

70









269.86

80'W

N	7.1	262.8
+1	6.9	263.0
B	7.3	262.6
S	7.5	262.4

100'W

S	6.6	263.3
E	6.2	263.7
N	5.8	264.1

108'W Garages on N+S. Ent Floors

N-7	4.80	265.06	on ent floor
N	5.19	264.67	" " apron
E	6.0	263.9	
S	6.3	263.6	

+4

6.14 263.72 on ent apron

+6

6.04 263.82 " " floor

125'W

S	5.6	264.3
E	5.3	264.6
N	4.9	265.0

269.86

151.8'W = Sec A

N	4.4	265.5
E	4.6	265.3
S	5.0	264.9

11.45'W of A = Sec B

27.7' S. of 6 = Front of garage #4	4.75	265.11	some on floor
27' - - -	5.2	264.9	
20' - - -	4.7	265.2	
10' - - -	4.8	265.1	

6' of Alley

7' of Alley	3.9	266.0
10' - - -	4.1	265.8
19.4' = Front of Garage #5	3.8	266.1

Elev. of Cement floor above

3.46 266.40

11.45'W of B = Sec. C

25' N. of 6 = H. 4/10/6	3.5	266.4
15' - - -	3.8	266.1
10' - - -	2.6	266.3
5' - - -	3.2	266.5
6'	3.7	266.2
10' S. of 6	4.2	265.7

72



15' S. of G 4.5 265.4  
 20' - - - 4.3 265.6  
 25' - - - = S.L. Alley 4.4 265.5

25' N. of C = West end of Alley

44' 14" S. of G = S.L. Alley 3.9 266.0  
 32' - - - = centre of garage #1 3.6 266.3  
 17' - - - = - - - #2 3.3 266.6  
 10' - - - 3.2 266.7

garage = 4' west of section floor = 266.61

garage = 2.8 west. Elev. floor = 266.86

4 4.7 267.0  
 10' N. of G 2.8 267.1  
 20' - - - 2.8 267.1

32' - - - = centre of garage #3 2.5 267.4  
 Edge of Apron = on line 2.46 267.40

Apron = 1.6 wide Elev. N. of garage = 267.50

45' N. of G of Alley 2.4 267.5



See Hwy BIK & La Jolla Beach 8/20/24 <sup>74.20</sup>

73.35

100' W

74

BM	119	73.35	71.86	Sealage No. on N.E. La Jolla Blvd	S	8.0	65.4
					C	8.3	65.1
					N	8.3	65.1
					T.P.	2.94	67.57
						8.72	64.63
							113' W = t. walk to House 1' alley
					N+1	2.80	64.77
							on emb walk
							75' W
							130' W
					N	3.6	64.0
					C	3.7	63.9
					S	3.8	63.8
							25' W
					S	5.0	68.4
					C	5.4	68.0
					N	5.2	68.2
							60' W
							150' W = walk to house at 14' alley
					N+04	4.20	63.37
							on emb walk
							170' W
					N	5.1	62.5
					C	5.3	62.3
					S	5.2	62.4



6757

200' W = E. Line Olivetas Ave.

S

6.3 61.3

6.8 60.8

6.4 61.2

75



Cross Section Barr Ave.  
From E. Hawk to E. Goldfinch

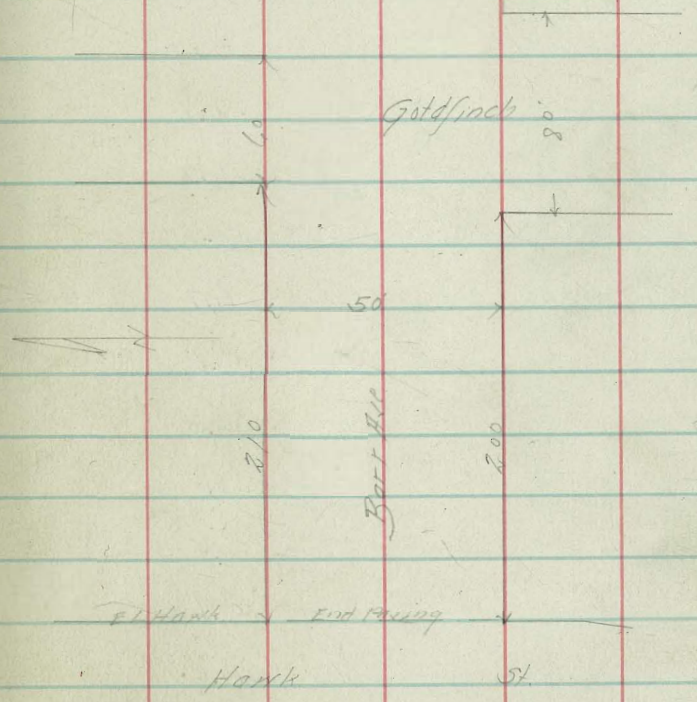
50' wide  
10' Cbs  
7 1/2' Gts

78  
3-18-76  
5:20 AM  
Bliss  
Hirshon

BM	6.03	275.05	↓	269.02	BPOH Hunter Pond Lockdam
TP	1.88	268.31	↓	8.62	266.43
TP	0.85	256.22	↓	12.94	255.13

0+0 - E. Hawk End Facing

H		81		48.1
Cb Top		825		47.97
Gutter Top Facing		857		47.65
1/4		802		47.18
1/4		765		48.57
1/4		757		48.65
Gutter		717		48.55
Cb Top		718		48.04
72		60		49.1
5		63		49.9
		35		
5		47		51.5
18		54		50.8
Cb		64		49.8
1/4		75		48.7





256.22

z	77	48.5
1/4	80	48.4
cb	82	48.0
H	83	47.9
15' E		
H	82	47.5
+4	90	46.4
cb	85	47.7
1/4	85	47.7
z	82	48.0
+5	82	48.0
1/4	73	48.9
+5	57	50.5
cb	56	50.6
s	46	51.6
25' E		
s	43	51.9
cb	44	51.8
+2	50	51.4
+5	68	49.4

256.22

77

1/4	77	48.5
+4	87	47.5
z	86	47.6
1/4	87	47.5
cb	89	47.3
+5	76	46.6
H	95	46.7
45' E		
H	102	45.9
+4	105	45.7
cb	91	46.8
1/4	90	47.4
z	90	47.4
1/4	85	47.7
+2	73	48.9
cb	60	50.4
s	52	51.0
65' E		
s	64	49.8
cb	70	49.2

5400 ft  
Conc. 10/18  
1074  
45.48



25622

+4	76	48.6
1/4	87	47.5
+2	91	47.1
2	90	47.4
1/4	94	46.8
Cb	10.0	46.4
+5	10.8	45.4
11	11.3	44.9
	105E	
11	11.8	44.4
+5	11.3	44.9
Cb	10.8	45.4
1/4	99	46.3
2	96	46.6
1/4	96	46.6
+3	80	48.4
Cb	75	48.7
5	70	49.4
	125E	
5	75	48.7

93' E on N1  
Cooc. Drive11.67  
44.55

25622

8

Cb	8.3	47.9
+5	8.7	47.5
1/4	10.2	46.0
2	10.4	45.8
1/4	10.5	45.7
Cb	11.0	45.4
+6	11.5	44.7
+7	12.3	43.9
11	12.6	43.6
	150E	
11	13.0	43.4
+3	12.7	43.5
+5	12.2	44.0
Cb	11.9	44.3
1/4	10.8	45.4
2	10.6	45.6
1/4	10.5	45.7
+3	9.8	47.0
Cb	8.5	47.7
5	7.4	48.8

137' E on N1  
Conc. Walk  
43.76



Barr Hill

256.22

175'E

S	7.6	48.6
Cb	8.7	47.5
+5	9.3	46.9
1/4	10.7	45.5
2	10.9	45.3
3/4	11.2	45.0
Cb	11.9	44.3
+5	12.6	43.6
+7	13.1	43.1
N	13.2	43.0
N	13.1	43.1
+5	12.2	44.0
Cb	12.0	44.2
1/4	11.5	44.7
2	10.5	45.7
+2	11.3	44.9
+4	8.7	47.5
1/2	8.4	47.8

188'E on N.P.  
Cone 1/2 1/4

122°

43.3<sup>v</sup>

200'E = N.L. Goldfinch 005

256.22

73

Cb	7.9	48.3
S	7.1	49.1
S	7.5	48.7
Cb	8.0	48.4
1/4	8.4	47.8
+2	9.2	47.0
+5	11.3	44.9
2	11.0	45.4
1/4	11.4	44.8
Cb	12.2	44.0
N	13.0	43.4
N	13.2	43.0
Cb	11.8	44.4
1/4	11.4	44.8
2	11.3	44.9
+1	11.2	45.0
+5	9.1	47.1
1/4	9.1	47.1

210' = N.L. Goldfinch 007

220'E



Borrer

256.22

Cb 8.5 47.7

S 7.7 48.5

230'E

S 8.8 47.4

+4 7.9 48.3

Cb 8.8 47.4

TP 240 248.69 ✓ 993 246.29

74 1.8 46.9

+5 2.5 46.4

Z 4.0 44.7

+3 3.3 45.4

74 3.6 45.1

Cb 4.2 44.5

N 5.5 43.7

240'E

N 4.8 43.9

Cb 3.8 44.9

74 3.3 45.4

+5 3.0 45.7

Z 4.2 44.5

248.69

80

+2 2.5 46.4

74 2.2 46.5

Cb 2.4 46.3

S 2.2 46.5

250'E

S 3.3 43.4

Cb 3.5 45.7

74 3.2 45.5

+4 3.5 45.7

Z 4.6 44.1

+1 3.8 44.9

74 4.1 44.6

Cb 4.4 44.3

N 4.9 43.8

260'E

N 5.5 43.7

Cb 5.1 43.6

74 4.7 44.0

S 4.9 43.8

74 5.0 43.7



Barrage

278.69

Cb 5.3 43.4

S 5.5 43.7

270'E - E.L. Goldfischer N

S 8.1 40.6

Cb 7.3 41.4

1/4 6.8 41.9

2 6.2 41.5

1/4 6.0 41.7

Cb 5.7 43.0

H 5.8 41.9

280'E - E.L. Goldfischer S

H 6.3 41.4

Cb 6.5 41.4

1/4 7.1 41.6

2 7.8 40.9

1/4 8.6 40.1

Cb 9.5 39.7

S 10.5 38.7

1/10 11.5 37.7



