

859

**F.B. 859**

LEVEL BOOK

No. 410



MICROFILMED

DEC 10 1964



Reynard Way

1

X sect. West  
branch of Boulevard  
through brick yard  
corner from Goldfish  
& Market to State &  
Maple.

80' Street

14' Sidewalks

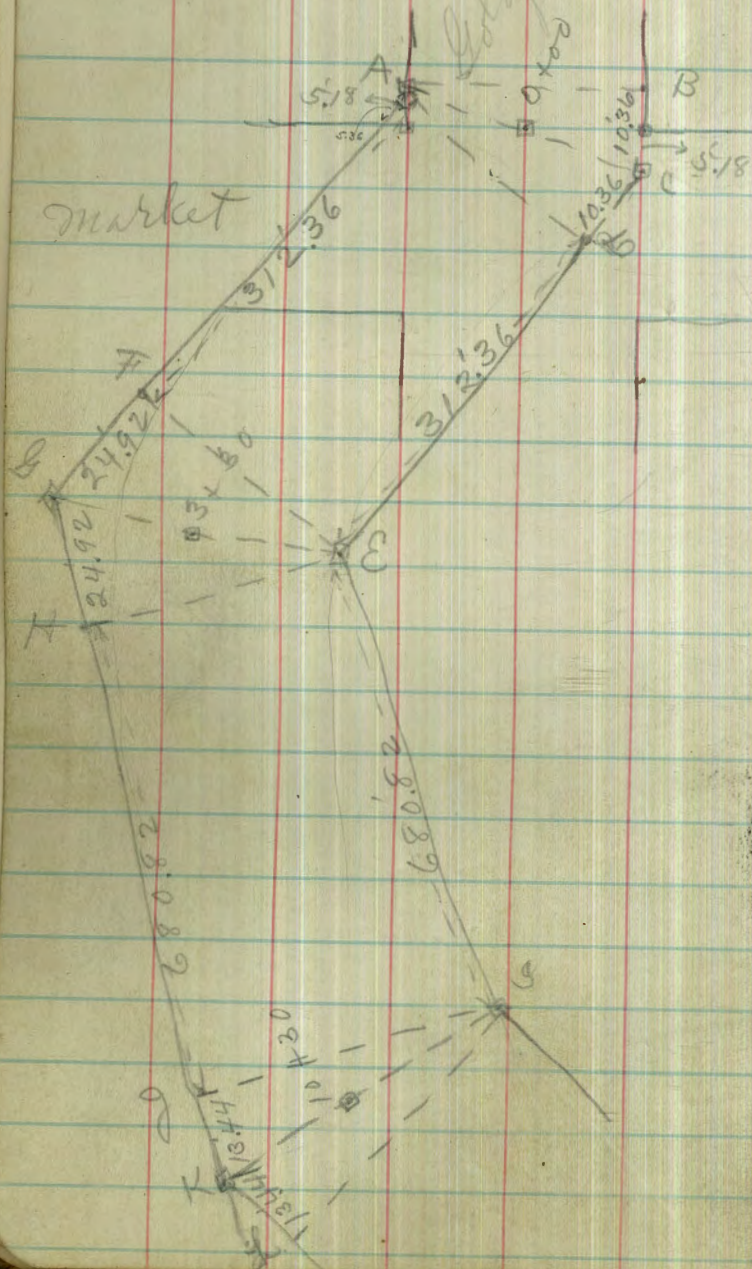
13'  $\frac{1}{4}$ .



market

Box 100

Jan 2/13 } Childs  
                  } Taylor  
                  } other 2





80 ft. Street Raymond way  
 14 ft. walks  
 13 1/4 Quarters H.I.

Jan 6/13 } Childs  
 Taylor 3  
 Allen

200.37'

J.P.

12.18 241.20

229.02'

Sect A B

Sect. A B

E line

4.4 246.0 ✓

C

11.2 230.0 ✓

E cb.

8.9 241.5 ✓

E 1/4 ?

5.4 235.8'

Sect A C

E cb.

9.6 240.8 ✓

Sect. A C

E line

5.66 244.61 ✓

C

12.18 229.02 ✓

Sect A D

E 1/4

6.9 234.3 ✓

E line

8.7 241.7 ✓

J.P.

0.01 229.03 (H.I.) (?) 229.02

Sect. A D

Sect A B.

C

13.4 227.8 ✓

W 1/4

3.9 225.1 ✓

E 1/4

9.2 237.0 ✓

W cb.

8.9 220.1 ✓

E cb.

4.6 236.6 ✓

25' 20. A D

Sect A C

E line

8.7 237.5 ✓

W 1/4

4.4 224.6 ✓

E cb.

12.2 229.0 ✓

W cb.

9.1 219.9 ✓

J.P.

11.02 250.37

1.85 239.35 ✓



# Reynard Way

4

229.03

sect. A.D

W 1/4

4.9 224.1 ✓

W line

web.

9.2 219.8 ✓

W line

217.69 ✓

sect. A.B.

2.18

216.5 ✗

217.5 ✓

sect AC

2.18

215.5 ✗

217.5 ✓

25' South sect A.D

W cb.

13.5 215.5 ✓

W line

W 1/4

10.5 218.5 ✓

25' So. A.D.

2.18

215.5 ✗

217.5 ✓

C

7.8 221.2 ✓

W line

E 1/4

4.0 225.0 ✓

50' So.

6.1

211.6 ✓

50' So.

W line

9.9

207.8 ✓

E line

5.6 223.4 ✓

cb

7.4

210.3 ✓

E cb.

7.8 221.2 ✓

W 1/4

4.9

212.8 ✓

1/4

9.5 219.5 ✓

75' So.

C

13.2 215.8 ✓

W cb.

12.2

205.5 ✓

J.P.

155 217.69 1289 216.14 ✓

1/4

10.2

207.5 ✓

C

8.0

209.7 ✓

1/4

5.4

212.3 ✓

cb

4.3

213.4 ✓

E line

2.9

214.8 ✓



# Reynard May

2046

5

20576 ✓

103' 20.

J.P.

024 <sup>H.I. ✓</sup> 205.76 12.17 205.52 ✓

~~40~~

sect AB

E line

1.8 204.0 ✓

40' west

slope bottom 7.5 198.3 ✓

cb

2.8 203.0 ✓

25' 20. A 40

1/4

4.6 201.2 ✓

37' west

slope bottom 9.2 196.6 ✓

c

6.2 199.6 ✓

of draw

1/4

7.1 198.7 ✓

50' south

cb

9.1 196.7 ✓

37' west

slope bottom of draw 12.0 193.8 ✓

white

10.0 195.8 ✓

75' 20.

111' 20.

35' west

slope bottom of draw 14.3 191.5 ✓

white

11.5 194.3 ✓

white

2.1 203.7 ✓

cb

9.7 196.1 ✓

100' 20.

1/4

7.8 198.0 ✓

white

9.1 196.7 ✓

c

6.2 199.6 ✓

cb

8.1 197.7 ✓

1/4

4.6 201.2 ✓

1/4

5.6 <sup>200.2</sup> 199.7 ✓

E cb

-0.3 206.1 ✓

c

4.3 201.5 ✓

1/4

3.1 202.7 ✓

cb

1.9 203.9 ✓

E line

1.2 204.6 ✓



Reynard Mary

205.76 ✓

122' 20.

E 1/4

-0.6 206.4 ✓

white

C

2.4 203.4 ✓

cb

1/4

5.4 200.4 ✓

1/4

cb

9.2 196.6 ✓

white

10.8 195.0 ✓

1/4

125' 20.

cb

white

9.4 196.4 ✓

white

cb

7.3 198.5 ✓

1/4

4.8 201.0 ✓

white

C

1.2 201.6 ✓

cb

131' 20.

1/4

C

-0.4 206.2 ✓

1/4

2.1 203.7 ✓

1/4

cb

5.4 200.4 ✓

cb

white

7.6 198.2 ✓

white

205.76 ✓

6

150' 20.

7.1 198.7 ✓

3.6 202.2 ✓

-0.2 206.0 ✓

175' 20

2.1 203.7 ✓

6.1 199.7 ✓

9.6 196.2 ✓

200' 20.

12.6 193.2 ✓

9.8 196.0 ✓

5.6 200.2 ✓

225' 20.

3.7 202.1 ✓

8.3 197.5 ✓

11.4 194.4 ✓



Reynard May

205.76

250' 20.

White  
ab.

7.1 198.7

2.7 203.1

275' 20.

White

3.0 202.8

J.P.

0.83 193.28 13.31 192.45

100' 20. Rest ASD

32' w slope bottom of draw. 2.9 190.4

103' 20.

32' w slope bottom of draw. 3.1 190.2

111' 20.

32' w slope bottom of draw. 3.4 189.9

122' 20.

34' w slope bottom of draw. 3.9 189.4

125' 20.

35' w slope bottom of draw. 4.2 189.1

131' 20.

37' w slope bottom of draw. 4.4 188.9

193.28

150' 20.

35' w slope bottom of draw. 7.2 186.1

175' 20.

35' w slope bottom of draw. 8.0 185.3

200' 20.

41' w slope bottom of draw. 10.0 183.3

225' 20.

43' w slope bottom of draw. 12.7 180.6

250' 20.

50' w slope bottom of draw. 14.4 178.9

275' 20.

40' w slope. 8.1 185.2

300' 20.

40' w slope. 4.9 188.4

312.36 (sect E F)

40' w slope. 3.8 189.5

7

0.78

204.98



# Reynard way

193.28 ✓

218.06 ✓

8

sect. E. G.

175' 20.

50' w slope.

0.7 192.6 ✓

C

9.2 208.9 ✓

sect. E. H.

E 1/4

4.6 213.5 ✓

55' w slope.

0.3 193.0  
190.0 ✓

"

200' 20.

JP

13.08 218.06 ✓

(1)

20498

E 1/4

6.1 212.0 ✓

111' 20. sect A 20.

C

12.3 205.8 ✓

E line

10.7 207.4 ✓

225' 20.

122' 20.

C

11.6 206.5 ✓

E cb.

7.3 210.8 ✓

E 1/4

5.1 213.0 ✓

120' 20

250' 20.

E cb

6.3 211.8 ✓

~~E 1/4~~

4

E 1/4

9.7 208.4 ✓

C

5.8 212.3 ✓

131' 20

W 1/4

10.0 208.1 ✓

E 1/4

7.5 210.6 ✓

275' 20.

E cb.

3.7 214.4 ✓

W cb

11.4 206.7 ✓

150' 20.

1/4

6.6 211.5 ✓

E cb

0.0 218.1 ✓

C

2.8 215.3 ✓

E 1/4

4.5 213.6 ✓

8.0 210.7 ✓



Reynard Way

218.06 ✓

300' 20.

9

218.06 ✓

sect. E H

C	2.6	215.5 ✓	White
1/4	6.1	212.0 ✓	cb.
cb	9.8	208.3 ✓	1/4
White	13.3	204.8 ✓	C

sect E H

E 1/4

White	12.6	205.5 ✓
cb.	9.6	208.5 ✓
1/4	6.5	211.6 ✓
C	4.0	214.1 ✓
E 1/4	0.9	217.2 ✓

sect. E G.

E 1/4	2.2	215.9 ✓
C	5.24	212.82 ✓
1/4	7.7	210.4 ✓
cb	9.4	208.7 ✓
White	10.69	207.37 ✓

10.2	207.9 ✓
9.4	208.7 ✓
8.0	210.1 ✓
5.4	212.7 ✓
2.2	215.9 ✓

25' 20. E H

2.5	215.6 ✓
8.6	209.5 ✓
11.6	206.5 ✓
12.9	205.2 ✓
12.7	205.4 ✓

50' 20.

10.7	207.4 ✓
5.8	212.3 ✓
11.99	229.62 ✓
0.43	217.63 ✓



Reynard Way

229.62

122' 20. sect A.D.

E line 16.6 213.0 ✓ E 1/4

125' 20. E 1/4

E line 15.0 214.6 ✓ E line

131' 20.

E line 13.0 216.6 ✓ E line

150' 20.

cb

E line 9.0 220.6 ✓ E 1/4

175' 20.

E line 6.7 222.9 ✓ E 1/4

E cb. 10.8 218.8 ✓ cb

200' 20.

E line

E cb. 11.7 217.9 ✓

E line 7.7 221.9 ✓ E line

225' 20.

cb

E line 5.7 223.9 ✓

E cb. 10.1 219.5 ✓

E line

Jan 6/13

229.62

250' 20.

10.8 218.8 ✓

5.2 224.4

0.6 229.0 ✓

275' 20.

-0.5 230.1 ✓

4.0 225.6 ✓

8.8 220.8 ✓

300' 20.

10.2 219.4 ✓

5.8 223.8 ✓

1.5 228.1  
227.4 x

sect. E F.

2.94 226.68 ✓

7.3 222.3 ✓

sect E G.

7.3 222.3 ✓

2.94 226.68 ✓



Reynard Hwy  
229.62

Sect E.H.

Ecb

7.5 222.1

C

14.5 200.4

Eline

2.94 226.68

12.0 202.9

25' 20. Sect E.H.

Eline

9.5 205.4

7.1 207.8

Ecb.

7.1 222.5

12.5 201

Eline

2.7 226.9

Eline

8.0 206.9

50' 20.

11.1 203.8

Eline

7.7 221.9

E 1/4

13.8 201.1

Ecb.

11.6 218.0

150' 20.

TP

2.06 214.86 (?) 212.80

C

11.1 203.8

75' 20.

7.6 207.3

Eline

1.9 213.0

6.5 208.4

5.0 209.9

Eline

6.4 208.5

7.8 207.1

1.75' 20.

C

11.3 203.6

Eline

9.9 205.0

100' 20.

7.8 207.1

7.9 207.0

8.8 206.1

C

W 1/4

13.6 201.3

214.86

May 15/13

100' 20.

Calisto  
attn  
Bunker



# Reynard way

H.I.

J.P. 0.29 202.47 12.68 202.18  
 25' 20. Dist E.H.  
 30' w. slope. 1.9 200.6  
 50' 20.  
 30' w slope 5.7 196.8  
 White 2.8 199.7  
 1.9 200.6  
 w 1/4 0.0 202.5  
 75'  
 w 1/4 2.8 199.7  
 6.1 196.4  
 White 8.3 194.2  
 30' w slope. 10.9 191.6  
 100' 20.  
 30' w slope. 14.9 187.6  
 White 10.5 192.0  
 7.0 195.5  
 w 1/4 4.7 197.8

12

202.47

1.25' 20.

C 4.4 198.1  
 6.7 195.8  
 9.3 193.2  
 White 11.8 190.7  
 30' w slope. 17.2 185.3  
 150' 20.  
 30' w slope. 18.6 183.9  
 White 12.8 189.7  
 w 1/4 9.3 193.2  
 192.2 x  
 w 1/4 4.7 197.8  
 196.8 x  
 175' 20.  
 White 7.3 195.2  
 White 11.2 191.3  
 200' 20.  
 White 9.4 193.1  
 3.6 198.9  
 1.5 201.0  
 1.6 200.9  
 C



Reynard Way  
20 247

200' 20.

E 1/4

1.5 201.0

1.9 200.6

E line

2.7 199.8

225' 20.

30' E slope

12.2 190.3

E line

11.5 191.0

11.5 191.0

10.4 192.1

C

8.5 194.0

8.1 194.4

9.0 193.5

White

12.8 189.7

J.P.

0.35 190.12 12.70 189.77

200' 20.

30' w slope.

7.8 182.3

225' 20.

30 w. slope.

10.4 179.7

13

190.12  
200' 250' 20.

30' W. slope.

14.5 175.6

White

5.2 184.9

3.3 186.8

3.0 187.1

C

5.1 185.0

6.8 183.3

7.6 182.5

E line

9.0 181.1

20' E. slope.

4.5 10.1 180.0

TP

0.14 177.56 12.70 177.42

30' E slope

275' 20. 3.4 174.2

E line

4.6 173.0

3.7 173.9

2.8 174.8

2.2 175.4

C

1.3 176.3

1.1 176.5

1.7 175.7

6.6 171.0

White

30' W slope.



Reynard way  
177.56

282' SO.

30' W' slope.	7.8	169.8 ✓
W line	4.0	173.5 ✓
	3.9	173.7 ✓
	4.5	173.1 ✓
C	4.4	173.2 ✓
	5.3	172.3 ✓
	5.7	171.9 ✓
E line	8.1	169.5 ✓
20' E slope.	2.9	174.7 ✓
300' SO.		
20' E slope.	-1.0	178.6 ✓
E line	4.5	173.1 ✓
cb + 1'	8.3	169.3 ✓
	10.5	167.1 ✓
	9.9	167.7 ✓
C	8.7	168.9 ✓
	8.1	169.5 ✓
	7.9	169.7 ✓
W line	8.7	168.9 ✓
30' W slope.	12.5	165.1 ✓ <del>164.1</del> X

177.56

14

325' SO.

30' W. slope	16.1	161.5 ✓
W line	14.4	163.2 ✓
	13.6	164.0 ✓
	13.3	164.3 ✓
1/4 + 7'	15.3	162.3 ✓
C	11.6	<del>160.0</del> 166.0 ✓
	6.1	171.5 ✓
E sb.	1.8	175.8 ✓

337' SO.

E 1/4	3.1	174.5 ✓
C		
	7.8	169.8 ✓
	12.1	165.5 ✓
	16.0	161.6 ✓
W line	18.3	159.3 ✓
30' W slope.	15.8	158.8 ✓



Reynard May

177.56

350' 20.

30' w slope.

20.0 157.6

w 1/4

W line

15.3 162.3

12.4 165.2

W line

8.3 169.3

J.P

C

3.5 174.1

375' 20.

x

E line

w 1/4

3.2 174.4

7.6 170.0

E line

W line

12.2 165.4

E lb.

30' w slope.

19.3 158.3

400' 20.

W line

10.6 167.0

5.9 171.7

E line

w 1/4

8.9 174.7

E line

C

177.56

15

425' 20.

7.5 170.1

9.5 168.1

12.8 164.8

10.60 187.36 0.80 176.76

325' 20.

7.0 180.4

337' 20.

3.5 183.9

8.2 179.2

350' 20.

8.2 179.2

4.8 182.6

0.2 187.2

375' 20.

2.2 185.2

3.0 184.4

5.2 182.2

9.0 178.4



# Reynard Way

187.36 ✓

16

400' 20.

J.R.

0.57 175.21 ✓ 12.72 174.64 ✓

C

9.0 178.4 ✓

450' 20.

7.4 180.0 ✓

W cb.

11.6 163.6 ✓

7.2 180.2 ✓

10.0 165.2 ✓

E line

6.6 180.8 ✓

C

7.7 167.5 ✓

425' 20.

20' E slope.

7.1 180.3 ✓

E cb.

5.8 169.4 ✓

2.6 172.6 ✓

E line

10.5 176.9 ✓

475' 20.

12.8 174.6 ✓

E 1/4

4.4 170.8 ✓

14.2 173.2 ✓

C

9.3 165.9 ✓

C

16.2 171.2 ✓

W 1/4

12.3 162.9 ✓

450' 20.

500' 20.

E line

11.5 175.9 ✓

W 1/4

12.1 163.1 ✓

475' 20.

C

8.4 166.8 ✓

E line

7.6 179.8 ✓

E 1/4

4.0 171.2 ✓

E cb.

10.6 176.8 ✓

500' 20.

E cb

11.8 175.6 ✓

E line

10.2 177.2 ✓



Reynard Way

175.21

5'25"20.

20' E. slope.

E line

5.0 170.2 ✓

6.5 168.7 ✓

6.9 168.3 ✓

8.0 167.2 ✓

C

10.8 164.4 ✓

5'37"20.

C

13.0 162.2 ✓

11.1 164.1 ✓

Curb

10.1 165.1 ✓

E line

8.5 166.7 ✓

20' E. slope.

4.6 170.6 ✓

5'50"20.

E line

6.2 169.0 ✓

10.3 164.9 ✓

13.1 162.1 ✓

C

14.1 161.1 ✓

C

E line

E cb.

C

C

E cb.

E 1/4

C

175.21

17

5'75"20.

13.3 161.9 ✓

10.0 165.2 ✓

6.4 168.8 ✓

1.6 173.6 ✓

6'00"20.

4.1 171.1 ✓

8.8 166.4 ✓

11.9 163.3 ✓

6'25"20.

11.0 164.2 ✓

6.1 169.1 ✓

2.0 173.2 ✓

6'50"20.

5.2 170.0 ✓

10.1 165.1 ✓



Reynard way  
175,21

18

162.76

680.8220. Sect. I. G.

C  
E 1/4

9.9 165.3

w cb.  
white

5.0 170.2

30' w slope.

Sect. I. K.

500' 20.

2.4 160.4  
4.8 158.0

11.5 151.3

525' 20.

E 1/4

5.2 170.0

30' w slope.

12.4 150.4

C

11.38 163.83

white

7.3 155.5

T.P.

High turn

0.07 175.14

4.9 157.9

T.P.

Low. 0.29 162.76 12.73 162.48

W 1/4

1.7 161.1

400' 20. (6.3)

537' 20.

30' w slope.

7.1 155.7

W 1/4

3.5 159.3

425' 20.

5.9 156.9

50' w slope. creek.

15.7 147.1

white

7.9 154.9

white

450' 20.

30' w slope.

11.8 151.0  
153.0

white

1.7 163.1

550' 20.

33' w slope. creek

16.4 146.4

30' w slope.

11.0 151.8

475' 20.

white

7.2 155.6

38' w slope creek

17.7 145.1

5.5 157.3

white

5.8 157.0

W 1/4

4.2 158.6

w cb.

2.6 160.2



# Reynard Way

162.76

575' 20.

w 1/4

3.4 159.4'

30' w slope

5.6 157.2'

white

white

6.6 156.2'

30' w. slope.

10.0 152.8'

w 1/4

600' 20.

30' w slope.

10.6 152.2'

w 1/4

white

6.7 156.1'

4.7 158.1'

white

w 1/4

2.8 160.0'

30' w. slope.

625' 20.

w 1/4

3.1 159.7'

white

5.6 157.2'

white

7.1 155.7'

w 1/4

30' w slope.

10.6 152.2'

J.P.

19

162.76

650' 20.

12.6 150.2'

8.7 154.1'

6.6 156.2'

3.5 159.3'

680.82' 20. Sect. 99.

3.5 159.3'

9.3 153.5'

11.9 150.9'

17.7 145.1'

Sect. 8.K.

13.37 149.39'

10.2 152.6'

5.1 157.7'

7.83 182.97 (?) 175.14

600' 20. E.H.

E line

5.5 177.5'  
176.5' X



Pignard May

183.0  
182.97 ✓

625' 20.

E line

4.3 178.7 ✓ E 1/4

650' 20.

E line

2.3 180.7 ✓ E line

E cb.

7.7 175.3 ✓

680.82 20. sect. 9g

E cb

7.9 175.1 ✓ E cb.

E line

3.6 6 179.31 ✓

sect. 9.K.

E line

3.6 6 179.31 ✓ E line

E cb.

8.7 174.3 ✓

T.R.

H.I.  
0.17 179.48

179.31

C

sect. 9.L.

E line

0.17 179.31 ✓

5.3 174.2 ✓

E 1/4

9.7 169.8 ✓

w 1/4

C

25

May. 16/13 <sup>Plchills</sup> <sub>atten</sub> 20  
Bunker  
179.48 ✓

25' 20. sect. 9.L.

11.4 168.1 ✓

7.8 171.7 ✓

2.8 176.7 ✓

50' 20.

5.8 173.7 ✓

10.1 169.4 ✓

75' 20.

11.1 168.4 ✓

H.I.  
1.04 167.73 12.79 166.69

sect. 9.L.

3.0 164.7 ✓

9.0 158.7 ✓

25' 20. sect. 9.L.

11.8 155.9 ✓

6.0 161.7 ✓



# Pegman way

167.73 ✓

50' 20.

E 1/4

3.1 164.6 ✓

C

10.1 157.6 ✓

75' 20.

C

14.4 153.3 ✓

9.0 158.7 ✓

E cb.

3.8 163.9 ✓

100' 20.

E line

5.7 162.0 ✓

E cb.

10.0 157.7  
159.0 ✓

125' 20.

E line

14.3 153.4 ✓

J.P.

0.75 <sup>4.5</sup> 155.66 12.88 154.83 ✓

Rect. 9. & L.

White

7.3 148.3 ✓

w cb.

3.1 152.5 ✓

21

155.6

25' 20. Rect. 9. & L.

w cb.

5.4 150.2 ✓

white

10.2 145.4 ✓

50' 20.

white

13.2 142.4 ✓

cb.

8.7 146.9 ✓

w 1/4

5.3 150.3 ✓

75' 20.

w 1/4

9.0 146.6 ✓

w cb.

12.4 143.2 ✓

w

100' 20.

w 1/4

11.5 144.1 ✓

C

6.8 148.8 ✓

E 1/4

1.9 153.7 ✓

125' 20.

E cb.

4.4 151.2 ✓

1/4

7.1 148.5  
158.5 X

C

10.6 145.0 ✓



# Reynard Way

155.60

145' 20.

E 1/4

11.8 143.8 ✓

10.4 145.2 ✓

E line

8.5 147.1 ✓

150' 20.

E line

no. edge of road.

12.6 143.0 ✓

168' 20.

E line

so. edge of road.

11.8 143.8 ✓

200' 20.

E line

10.6 145.0 ✓

E cb.

12.7 142.9 ✓

217' 20.

E 1/4

13.7 141.9 ✓

curb

10.5 145.1 ✓

E line

5.5 150.1  
149.1 X

22

155.6

225' 20.

E line

3.6 152.0 ✓

9.8 145.8 ✓

E 1/4

13.2 142.4 ✓

250' 20.

E 1/4

12.3 143.3 ✓

8.6 147.0 ✓

E line

0.6 155.0 ✓

275' 20.

E line

0.0 155.6 ✓

8.9 146.7 ✓

E 1/4

13.1 142.5 ✓

300' 20.

E 1/4

13.3 142.3 ✓

10.7 144.9 ✓

E line

3.6 152.0 ✓



# Reynard Way

155.60 ✓

325' 20.

E line

3.8 151.8 ✓

46' W

slope bottom of drain

6.5 136.8 ✓

Wb

9.4 <sup>146.2</sup>  
~~146.4~~ X

sect. 9 L.

E 1/4

13.8 141.8 ✓

43' W

slope bottom of drain

7.1 136.2 ✓

350' 20.

25' 20. sect. 9 L.

E 1/4

13.2 142.4 ✓

34' W

slope bottom of drain

7.8 135.5 ✓

9.2 146.4 ✓

50' 20.

E line

3.5 152.1 ✓

30 W

slope

4.8 138.5 ✓

375' 20.

21 W

bottom of drain

9.0 134.3 ✓

E line

6.4 149.2 ✓

75' 20.

E cb.

11.0 144.6 ✓

30' W

slope.

4.0 139.3 ✓

393' 20.

13 W

bottom of drain.

9.5 133.8 ✓

E line

7.7 9.7 145.9 ✓

W line

4.5 138.8 ✓

400' 20.

W

100' 20.

E line

10.5 145.1 ✓

W cb

3.9 139.4 ✓

F.P.

0.25 <sup>145.1</sup>  
~~143.28~~ 12.57 143.03 ✓

W line

bottom of drain.

10.5 132.8 ✓

20' W

slope.

5.6 137.7 ✓



143.28

125' 20.

20' W slope

4.8 138.5 ✓

W line

8.9 134.4 ✓

W line + 4' bottom of draw

11.4 131.9 ✓

Ab.

6.9 136.4 ✓

W 1/4

2.1 141.2 ✓

145' 20.

C

2.8 140.5 ✓

4.6 132.9 ✓

8.2 135.1 ✓

Ab + 7' bottom of draw

12.2 131.1 ✓

W line

8.6 134.7 ✓

20' W slope

4.4 132.9 ✓

150' 20.

20' W slope

6.0 138.3 ✓

W line

8.6 134.7 ✓

W line + 6' bottom of draw

12.4 130.9 ✓

8.5 134.8 ✓

5.2 138.1 ✓

W 1/4

C

E ab.

E ab.

C

W line no. edge of road

20' W slope

20' W slope

W line

C

E ab

143.28

168' 20.

3.2 140.1 ✓

2.1 141.2 ✓

1.5 141.8 ✓

1.2 142.1 ✓

2.3 141.0 ✓

3.3 140.0 ✓

4.5 138.8 ✓

5.3 138.0 ✓

5.4 137.9 ✓

6.2 137.1 ✓

175' 20.

5.3 138.0 ✓

5.3 138.0 ✓

5.1 138.2 ✓

4.3 139.0 ✓

3.0 140.3 ✓

2.2 141.1 ✓

3.4 139.9 ✓



143.28  
175' 20"

143.28

217' 20"

E line 3.2 140.1

20' E slope 3.6 139.7

180' 20"

20' E slope 1.3 142.0

E line bottom of side drain 4.3 139.0

3.9 139.4

3.6 139.7

C

3.8 139.5

4.7 138.6

5.2 138.1

W line S. edge of road 5.3 138.0

20' W slope 5.0 138.3

200' 20"

20' W slope 5.4 137.9

W line 11.3 137.0

W line + 4' bottom of drain 13.7 129.6

ab. 9.5 133.8

W 1/4 57.5 137.8

C 4.2 139.1

E 1/4 2.7 140.6

C

W line bottom of drain.

20' W slope.

225' 20"

20' W slope.

8' W bottom of drain.

W line

C

3.7 139.6

5.6 137.7

8.6 134.7

14.3 129.0

7.2 136.1

8.0 135.3

14.9 128.4

13.1 130.2

8.8 134.5

6.2 137.1

3.7 139.6



143.28

250' 20.

C

3.7 139.6 ✓

5.9 137.4 ✓

7.9 135.4 ✓

white

13.8 129.5 ✓

4' w

bottom of draw.

15.4 127.9 ✓

20' w

slope.

9.1 134.2 ✓

275' 20.

20' w

slope.

11.5 131.8 ✓

4' w

bottom of draw.

15.9 127.4 ✓

white

12.9 130.4 ✓

9.0 134.3 ✓

6.1 137.2 ✓

C

2.5 140.8 ✓

143.28

300' 20.

C

4.0 139.3 ✓

6.8 136.5 ✓

web.

9.4 133.9 ✓

cb + 11'

12.8 130.5 ✓

325' 20.

7' east guideline

12.3 131.0 ✓

w cb.

11.2 132.1 ✓

7.5 135.8 ✓

C

4.9 138.4 ✓

350' 20.

C

6.1 137.2 ✓

10.0 133.3 ✓

w cb.

13.1 130.2 ✓

375' 20.

w 1/4

11.0 132.3 ✓

C

6.6 136.7 ✓

e 1/4

3.0 140.3 ✓



143.28

393' 20.

E cb.

1.0 142.3

W cb.

11.8 131.5

3.2 140.1

11.1 132.2

C

6.2 137.1

C

11.3 132.0

W 1/4

10.3 133.0

10.4 132.9

400' 20.

W 1/4

10.4 132.9

E line

9.2 134.1

C

6.2 137.1

450' 20.

6.8 136.5

3.6 139.7

E line

4.0 139.3

E cb.

1.7 141.6

6.1 137.2

425' 20.

8.9 134.4

E line

3.0 140.3

C

12.5 130.8

5.1 138.2

W 1/4

13.8 129.5

7.2 136.1

C

8.5 134.8

9.4 133.9

11.1 132.2

W line

13.0 130.3



143.28

475' 20.

W 1/4

C

12.6 130.7' E line

9.8 133.5' E cb.

7.4 135.9'

5.4 137.9' E cb.

E line

3.9 139.4' E line

500' 20.

E line

5.4 137.9' E line

7.8 135.5' S.P. rock

9.5 133.8'

C

11.7 131.6' W line

5.25' 20.

2' W bottom of creek.

E 1/4

11.7 131.6' 20' W slope.

9.3 134.0'

E line

6.6 136.7' 20' W slope.

4' W bottom of draw.

W line

143.28

550' 20.

7.8 135.5'

11.1 132.2'

575' 20.

12.4 130.9'

9.2 134.1'

600' 20.

11.7 131.6'

H.I. 12.28 131.00

300' 20.

3.3 128.0'

4.4 126.9'

0.0 131.3'

325' 20.

1.3 130.0'

5.0 126.3'

3.3 128.0'



131.25

350' 20.

W line 3.2 128.1

6' w. bottom of draw. 6.1 125.2

20' w. slope. 1.5 129.8

375' 20.

20' w. slope. 2.4 128.9

W line bottom of draw. 6.5 124.8

W cb. 2.8 128.5

398' 20.

W cb. 2.3 129.0

W line bottom of draw. 7.3 124.0

20' w. slope. 4.6 126.7

400' 20.

20' w. slope. 5.3 126.0

6' w. bottom of draw 7.4 123.9

W line 3.9 127.4

W cb. 1.1 130.2

May, 17/13

131.25

4 25' 20.

35' w slope bottom of draw 8.9 122.4

439' 20.

33' w slope bottom of draw 9.3 122.0

W line 1.8 129.5

450' 20.

W line 1.0 130.3

W line 3.0 128.3

29' w slope bottom of draw. 9.8 121.5

475' 20.

20' w. slope. 8.9 122.4

17' w bottom of draw. 10.4 120.9

W line 6.5 124.8

W cb. 5.2 126.1

Childs  
O'Brien  
Bunker  
Shoemaker

29



131.25

500'20.

w 1/4	1.7	129.6"
	4.1	127.2"
W line	7.3	124.0"
7' w bottom of draw.	10.9	120.4"
20' w slope.	4.8	126.5"

525'20.

20' w slope.	4.3	127.0"
1' W bottom of draw.	11.7	119.6 119.4 X
W line	11.2	120.1"
	7.4	123.9"
	5.9	125.4"
C	3.6	127.7"

131.25

550'20.

E 1/4	2.6	128.7"
C	6.6	124.7"
	8.6	122.7"
W line	10.2	121.1"
cb+7' bottom of draw	12.0	119.3"

W line	8.6	122.7"
10' w slope.	7.0	124.3"

575'20.

10' w slope	5.6	125.7"
W line	7.7	123.6"
	10.7	120.6"
cb+8' bottom of draw	12.3	119.0"
	11.3	120.0"
C	7.8	123.5"
E 1/4	3.8	127.5"



131.25

600' 20.

E cb.	2.3	129.0 ✓
	4.7	126.6 ✓
C	8.8	122.5 ✓
W 1/4 bottoming draw	13.3	118.0 ✓
	11.6	119.7 ✓
White	8.5	122.8 ✓
10' W slope.	5.5	125.8 ✓

625' 20.

White	5.6	125.7 ✓
	10.6	120.7 ✓
cb + 9'	14.4	116.9 ✓
	12.7	118.6 ✓
C	11.2	120.1 ✓
	8.1	123.2 ✓
	5.1	126.2 ✓
E line	2.2	129.1 ✓

131.25

650' 20.

E line	5.4	125.9 ✓
	7.7	123.6 ✓
	11.8	119.5 ✓
C	13.7	117.6 ✓
C + 4' bottom of draw.	14.9	116.4 ✓
	14.8	119.5 ✓
	9.1	122.2 ✓
White	3.2	128.1 ✓

675' 20.

White	2.0	129.3 ✓
	6.8	124.5 ✓
	10.2	121.1 ✓
C	13.6	117.7 ✓
C + 10' bottoming draw.	15.2	116.1 ✓
	14.3	117.0 ✓
	11.3	120.0 ✓
E line	7.6	123.7 ✓



131,25

700'20.

E line

9.3 122.0

13.9 117.4

cb+6' bottom of draw.

15.5 115.8

14.4 116.9

C

12.2 119.1

10.2 121.1

6.2 125.1

W line

1.1 130.2

725'20.

W line

1.4 129.9

6.0 125.3

W 1/4

11.3 120.0

750'20.

W 1/4

12.4 118.9

9.0 122.3

W line

4.0 127.3

32

JP.

652 H.I. 125.14 ✓  
 on hub. 17+85 on curb 1263 118.62 ✓

725'20.

E line

5.8 119.3

9.4 115.9

cb+2' bottom of draw

10.4 114.7

C

8.5 116.6

C

7.2 117.9

750'20.

C

8.4 116.7

9.2 115.9

cb+7' bottom of draw.

10.8 114.3

9.3 115.8

E line

6.2 118.9



125.14

775' 20.

E line

6.3 118.8'

8.5 116.6'

bottom of draw.

11.7 113.4'

C

9.9 115.2'

7.2 117.9'

4.7 120.4'

W line

0.3 124.8'

800' 20.

W line

3.1 122.0'

6.3 118.8'

9.4 115.7'

C

bottom of draw. 12.5 112.6'

10.6 114.5'

8.9 116.2'

E line

7.7 117.4'

May 19/13

} bluffs  
at 33  
Bunker

125.14

825' 20.

E line

9.6 115.5'

10.3 114.8'

11.3 113.8'

C

bottom of draw

12.5 112.6'

11.0 114.1'

8.9 116.2'

W line

6.1 119.0'

850' 20.

W line

9.7 115.4'

11.6 113.5'

12.4 112.7'

C

bottom of draw.

13.0 112.1'

12.6 112.5'

11.7 113.4'

E line

11.1 114.0'



863.13 Bo. Rect. m n

11.8 143.3

12.5 | 12.6

12.9 112.2

13.4 111.9

13.6 111 05

129 112.2

11.63 113.51

Sect. N.O.

11.63 113.51

14.7 110 4 ✓

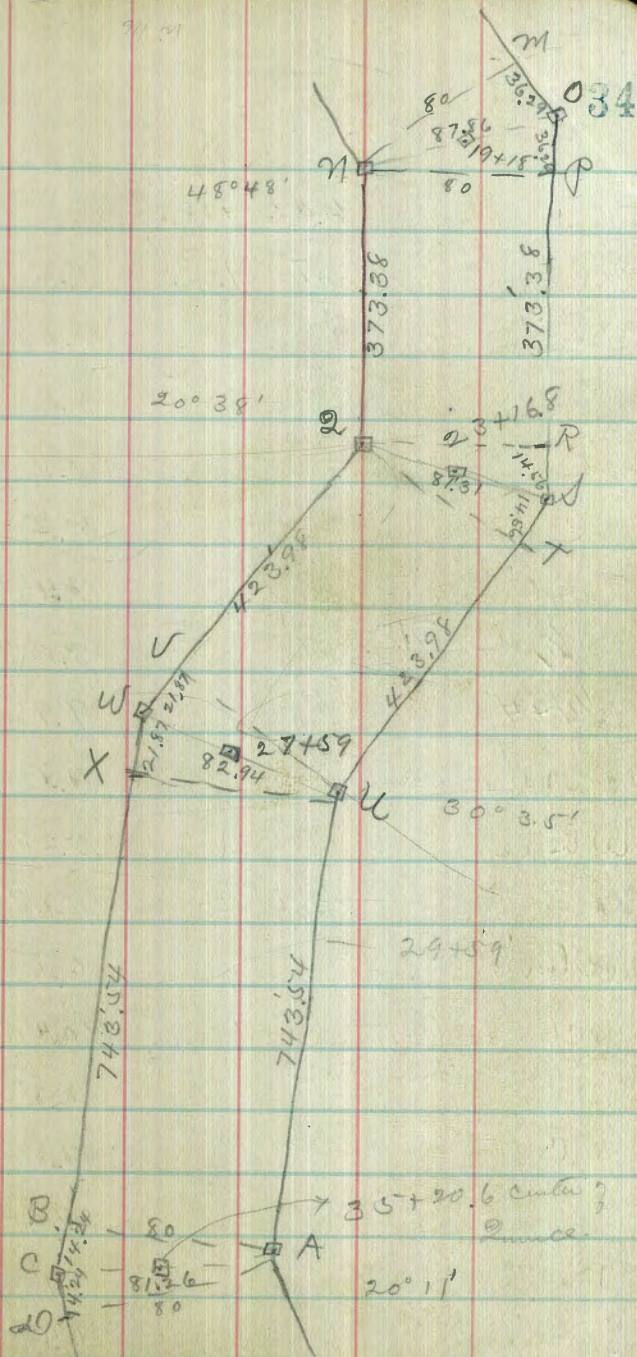
14.1 111.0 ✓

14.2 110.9

13.4 111.7

12.9 112.2

1290 112,24





118.80

T.P. 6.56 118.80 (?) 112.24

50' 20.

sect N.P.

E line

E line

5.9 112.9 ✓

6.8 112.0 ✓

6.6 112.2 ✓

7.5 111.3 ✓

7.1 111.7 ✓

7.8 111.0 ✓

C

8.2 110.6 ✓

8.3 110.5 ✓

C+6 side canyon from  
NE.

9.4 109.4 ✓

cb.

8.5 110.3 ✓

1/4

9.0 109.8 ✓

cb+5 bottom of draw.

10.5 108.3 ✓

1/4+4'

9.9 108.9 ✓

W line

11.5 107.3 ✓

7.9 110.9 ✓

75' 20.

White

5.29 113.51 ✓

White

8.5 110.3 ✓

25' 20. sect. N.P.

White+10' bottom of draw

9.0 109.8 ✓

White

6.5 112.3 ✓

cb

12.3 106.5 ✓

cb.

bottom of draw.  
function

10.4 108.4 ✓

10.7 108.1 ✓

8.5 110.3 ✓

C

9.8 109.0 ✓

C

7.8 111.0 ✓

9.0 109.8 ✓

7.5 111.3 ✓

8.3 110.5 ✓

7.1 111.7 ✓

E line

8.0 110.8 ✓

E line

6.4 112.4 ✓

7.5 111.3 ✓



118.80

100' 20.

E line	8.3	110.5'
	8.6	110.2'
	8.9	109.9'
C	10.1	108.7'
	10.7	108.1'
	10.1	108.7'
cb + 9' bottom of draw	13.0	105.8'
white	11.9	106.9'
10' NW slope	8.5	110.3'

125' 20.

10' NW slope	10.0	108.8'
white bottom of draw	13.0	105.8'
	10.6	108.2'
white	10.5	108.3'
	10.9	107.9'
C	10.8	108.0'
	9.6	109.2'
	9.4	109.4'
E line	8.2	110.6'

118.80

138' 20.

E line	8.2	110.6'
	9.7	109.1'
	10.2	108.6'
C	11.1	107.7'
	11.1	107.7'
	10.8	108.0'
cb + 11' B	11.1	107.7'
white bottom of draw	13.6	105.2'
13' W slope	10.4	108.4'

143' 20.

13' W slope	10.6	108.2'
8' W bottom of draw	14.5	104.7'
white	11.1	107.7'
	10.9	107.9'
	11.3	107.5'
C	11.3	107.5'
	10.4	108.4'
	9.6	109.2'
E line	8.0	110.8'



118.80

150' 20.

Eline

7.9 110.9'

9.7 109.1'

10.8 108.0'

C

11.4 107.4'

11.4 107.4'

11.1 107.7'

11.1 107.7'

white

7' W bottom of draw.

14.6 104.2'

11' W slope.

11.4 107.4'

175' 20.

16' W slope

12.5 106.3'

13' W bottom of draw.

15.6 103.2'

4' W

14.6 104.2'

white

11.9 106.9'

11.8 107.0'

11.8 107.0'

C

11.3 107.5'

10.5 108.3'

118.80

26

9.6 109.2'

Eline

8.2 110.6'

200' 20.

4

Eline

5.9 112.9'

Eline + 6' in old road.

8.2 110.6'

8.0 110.8'

~~by~~

10.2 108.6'

C

11.4 107.4'

12.4 106.4'

12.5 106.3'

12.9 105.9'

13.0 105.8'

white

9' W

15' W bottom of draw.

16.4 102.4'

20' W slope.

13.9 104.9'



May. 20/13 } Childs  
 better 38  
 Bunker

118.80

225' 20.

23' W slope. 14.4 104.4'

20' W bottom of draw. 16.9 101.9'

White 13.1 105.7'

11.4 107.4'

10.1 108.7'

C 9.2 109.6'

7.7 111.1'

1/4 + 11' 7.6 111.2'

cb. 5.5 113.3'

E line 3.1 115.7'

250' 20.

E line 4.2 114.6'

cb. 5.9 112.9'

cb + 8' 6.6 112.2'

+ 10' 8.5 110.3'

1/4 in road. 8.5 110.3'

C 9.1 109.7'

10.4 108.4'

cb

White

15' W

28' W bottom of draw.

23' W slope.

275' 20.

24' W slope.

20' W bottom of draw.

White

C

C + 10'

1/4

E line

118.80

11.0 109.8'

12.4 106.4'

13.9 104.9'

17.6 101.2'

15.4 103.4'

16.0 102.8'

18.2 100.6'

13.7 105.1'

12.0 106.8'

11.7 107.1'

9.8 109.0'

10.8 108.0'

8.5 110.3'

6.9 111.9'

3.8 115.0'



118.80

300' 20.

E line

3.7 115.1

44+9'

6.5 112.3

C

10.5 108.3

C

12.5 106.3

325' 20.

C

13.2 105.6

E line

C+6'

10.0 108.8

sect. 2 S.

1/4

8.7 110.1

E line

26.9 116.11

7.0 111.8

E 1/4

8.4 110.4

E line

3.6 115.2

sect. 2 J.

11.6 107.2

350' 20.

E 1/4

12.7 106.1

E line

2.4 116.4

10.6 108.2

7.7 111.1

E line

5.5 113.3

10.0 108.8

25' 20. sect 2 J.

C

12.0 106.8

E line

9.7 109.1

C+3

14.4 104.4

E line

12.3 106.5



118.80

50' 20.

106.95

325' 20.

E cl	13.0	105.8	18' w slope.	5.6	101.3
E line	11.1	107.7	12' w bottom of draw.	7.4	99.5
75' 20.			white	4.4	102.5
E line	12.1	106.7		3.1	103.8
100' 20			w 1/4	2.3	104.6
E line	14.0	104.8		3.50' 20.	
J.B.	<sup>H.T.</sup> 1.25	<sup>H.T.</sup> 106.95	13.10 105.70 w 1/4	3.2	103.7
300' 20. Sect. 1-P.				4.2	102.7
w 1/4	1.4	105.5	white	5.5	101.4
	2.8	104.1	6' w bottom of draw	8.1	98.8
white	3.9	103.0	10 w. slope.	6.2	100.7
19' w bottom of draw.	6.7	100.2	373.38' Sect. 2-P.		
25 w slope.	4.4	102.5	10 w slope.	6.0	100.9
			1' w	7.2	99.7
			white bottom of draw	8.62	98.33
			white + 6'	6.1	100.8
				4.8	102.1
			1/4	3.4	103.5
			1/4 + 6'	3.6	103.3



106.95

## sect 2.1.

C		1.77	105.18 <del>104.78</del>
C + 5'		4.0	102.9 ✓
K4		3.7	103.2 ✓
Curb		4.8	102.1 ✓
cb + 8'		6.1	100.8 ✓
White	bottom of drain.	8.62	98.33 ✓
10' W	slope.	5.9	101.0 ✓

## sect 2.1.

10' W	slope.	5.9	101.0 ✓
White	bottom of drain.	8.62	98.33 ✓
White + 8'		5.9	101.0 ✓
cb.		5.1	101.8 ✓
		4.1	102.8 ✓
1/4 + 8'		4.2	102.7 ✓
C		2.2	104.7 ✓

106.95

## 25' 20" - sect 2.1.

		2.0	104.9 ✓
		2.7	104.2 ✓
C	in old road.	5.0	101.9 ✓
		4.9	102.0 ✓
1/4 + 9'	bottom of drain.	8.9	98.0 ✓
		7.8	99.1 ✓
White		6.3	100.6 <del>100.3</del>
10' W	slope.	5.7	101.2 ✓
		5.0' det.	
10' W	slope.	6.1	100.8 ✓
White		6.4	100.5 ✓
		7.3	99.6 ✓
1/4	bottom of drain.	9.8	97.1 ✓
1/4 + 6'		4.7	102.2 ✓
C		5.1	101.8 ✓
C + 7'		4.6	102.3 ✓
C 1/4		2.6	104.3 ✓



106.95

75' 20.

106.95

125' 20.

E cb.	2.0	104.9 ✓
	4.6	102.3 ✓
C	6.1	100.8 ✓
C + 7'	5.6	101.3 ✓
	9.3	97.6 ✓
1/4 + 3' bottom of draw.	10.1	96.8 ✓
	7.6	99.3 ✓
W line	6.9	100.0 ✓
10' w slope.	6.3	100.6 ✓
100' 20.		
10' w slope.	7.0	99.9 ✓
W line	8.1	98.8 ✓
cb. bottom of draw	10.5	96.4 ✓
	6.9	100.0 ✓
C	6.6	100.3 ✓
	5.5	101.4 ✓
E cb.	4.6	102.3 ✓

E line	4.1	102.8 ✓
	5.2	101.7 ✓
	6.8	100.1 ✓
C	7.1	99.8 ✓
	6.9	100.0 ✓
	8.0	98.9 ✓
cb + 8' bottom of draw	11.4	95.5 ✓
W line	9.8	97.1 ✓
10' w slope.	8.3	98.6 ✓

135' 20.

10' w slope.	8.8	98.1 ✓
W line bottom of draw.	11.6	95.3 ✓
W line + 3'	10.0	96.9 ✓
	8.1	98.8 ✓
	7.4	99.5 ✓
C	7.6	99.3 ✓
	6.9	100.0 ✓
	4.9	102.0 ✓
E line	3.8	103.1 ✓



106.95

150' 20.

E line

2.7 104.2

4.7 102.2

7.6 99.3

C

8.0 98.9

8.3 98.6

8.5 98.4

W line

9.4 97.5

7' W bottom of draw.

11.7 95.2

13' W slope.

9.5 97.4

175' 20.

19' W slope

10.0 96.9

15' W bottom of draw.

12.0 94.9

W line

9.2 97.7

9.0 97.9

8.9 98.0

C

8.6 98.3

8.6 98.3

E line

5.1 101.8

0.7 106.2

106.95

200' 20.

E line

1.5 105.4

5.8 101.1

cb + 7'

7.3 99.6

1/4

9.6 97.3

C

9.0 97.9

9.0 97.9

8.9 98.0

W line

9.7 97.2

18' W bottom of draw

13.0 93.9

24' W slope.

8.4 98.5

225' 20.

19' W slope

9.7 97.2

15' W bottom of draw

13.2 93.7

W line

10.8 96.1

9.7 97.2

9.5 97.4

9.3 97.6

9.9 97.0



106.95

E cb 9.4 97.5 ✓

E line 5.5 101.4 ✓

247' 20.

E line 9.1 97.8 ✓

10.3 96.6 ✓

10.0 96.9 ✓

C 10.0 96.9 ✓

10.3 96.6 ✓

10.4 96.5 ✓

white bottom of drain 13.7 93.2 ✓

10' w slope. 10.3 96.6 ✓

250' 20. +

10' w slope. 10.2 96.7 ✓

white 12.2 94.7 ✓

white + 2' bottom of drain 13.8 93.1 ✓

10.6 96.3 ✓

10.5 96.4 ✓

C 9.8 97.1 ✓

- 10.3 96.6 ✓

44

106.95

E cb. 10.5 96.4 ✓

E line in old road. 9.9 97.0 ✓

275' 20.

E line 10.5 96.4 ✓

10.5 96.4 ✓

10.9 96.0 ✓

C 10.8 96.1 ✓

11.2 95.7 ✓

cb. bottom of drain. 14.5 92.4 ✓

white 11.1 95.8 ✓

10' w slope. 10.9 96.0 ✓



106.95<sup>✓</sup>

300' 20.

10' w slope.

white

9.5 97.4<sup>✓</sup>11.0 95.9<sup>✓</sup>12.1 94.8<sup>✓</sup>

1/4 bottomy draw.

15.1 91.8<sup>✓</sup>

1/4 + 5'

12.5 94.4<sup>✓</sup>

C

12.0 94.9<sup>✓</sup>12.1 94.8<sup>✓</sup>11.9 95.0<sup>✓</sup>

E line

11.0 95.9<sup>✓</sup>

J.P.

3.16 <sup>HJ</sup> 97.44<sup>✓</sup> 12.67 94.28<sup>✓</sup>

325 20.

E line

2.8 94.6<sup>✓</sup>3.0 94.4<sup>✓</sup>3.9 93.5<sup>✓</sup>

1/4 + 8'

4.1 93.3<sup>✓</sup>

C

bottomy draw

6.2 91.2<sup>✓</sup>

C + 6'

3.5 93.9<sup>✓</sup>

45

97.44

W 1/4

3.4 94.0<sup>✓</sup>2.1 95.3<sup>✓</sup>

white

1.1 96.3<sup>✓</sup>

350' 20.

white

0.6 96.8<sup>✓</sup>1.9 95.5<sup>✓</sup>2.4 95.0<sup>✓</sup>

C

3.2 94.2<sup>✓</sup>3.6 93.8<sup>✓</sup>4.4 93.0<sup>✓</sup>

C + 9' bottomy draw.

7.4 90.0<sup>✓</sup>E?  
white4.2 93.2<sup>✓</sup>

10' E slope.

2.6 94.8<sup>✓</sup>



may 21/13  
 { Childs  
 Atter  
 Bunker 46

97.44

355'20.

10' E. slope. 3.2 94.2

5' E 4.6 92.8

Eline bottom of draw 7.8 89.6

Eline + 5' 4.8 92.6

3.8 93.6

3.6 93.8

C 3.2 94.2

2.4 95.0

2.1 95.3

White 0.3 97.1

360'20.

White 0.1 97.3

2.1 95.3

2.7 94.7

C 3.1 94.3

3.2 94.2

3.8 93.6

Eline 5.2 92.2

97.44

6' E bottom of draw 7.8 89.6

10' E slope. 4.4 93.0

375'20.

18' E slope. 4.2 93.2

12' E bottom of draw. 8.0 89.4

9' E 5.1 92.3

Eline 4.0 93.4

4.0 93.4

3.1 94.3

C 3.8 93.6

3.1 94.3

1.8 95.6

White 0.0 97.4



97.44

400' 20.

White

0.1 97.3 ✓

2.5 94.9 ✓

3.4 94.0 ✓

C

4.2 93.2 ✓

4.5 92.9 ✓

4.5 92.9 ✓

E line.

4.8 92.6 ✓

16' E

5.1 92.3 ✓

23' E

bottom of draw

8.5 <sup>88.9</sup> 89.9 X

30' E

slope.

5.6 91.8 ✓

2

423.98 20. Sect. U.V.

38' E

slope.

5.1 92.3 ✓

31' E

bottom of draw

9.1 88.3 ✓

25' E

4.8 92.6 ✓

E line

5.85 91.59 ✓

6.4 91.0 ✓

5.5 91.9 ✓

C

4.9 92.5 ✓

97.44

47

W 1/4

3.8 93.6 ✓

2.4 95.0 ✓

White

1.2 96.2 ✓

Sect. U.V.

White

0.48 96.96 ✓

2.3 95.1 ✓

3.6 93.8 ✓

5.15 92.29 ✓

C

6.1 91.3 ✓

6.7 90.7 ✓

E line

5.85 91.59 ✓

23' E

4.5 92.9 ✓

27' E

bottom of draw

8.8 88.6 ✓

34' E

slope.

6.2 91.2 ✓



97.44

sect. UX

38' E	slope	5.8	91.6
29' "	bottom of draw	8.6	88.8
24' "		4.6	92.8
E line		5.85	91.59
		6.5	90.9
		6.1	91.3
C		6.2	91.2
		4.3	93.1
		2.8	94.6
W line		1.6	95.8

25' 20. sect UX

W line		3.2	94.2
		5.4	92.0
		7.3	90.1
C		6.3	91.1
		5.6	91.8
		5.5	91.9
E line		5.6	91.8

97.44

15' E

22' " bottom of draw

31' " slope.

50' 20.

24' E slope.

17' " bottom of draw

7' " "

E line

C

W line

5.5 91.9

9.2 88.2

4.8 92.6

5.8 91.6

10.0 87.4

6.5 90.9

6.2 91.2

6.0 91.4

6.0 91.4

5.9 91.5

7.2 90.2

8.1 89.3

4.4 93.0



97.44

75' 20.

W line

5.8 91.6 ✓

8.5 88.9 ✓

7.4 90.0 ✓

C

6.6 90.8 ✓

7.0 90.4 ✓

7.1 90.3 ✓

E line

7.3 90.1 ✓

7' E bottom of draw.

10.3 87.1 ✓

14' " slope.

6.7 90.7 ✓

100' 20.

10' E slope.

7.5 89.9 ✓

E line bottom of draw.

11.0 86.4 ✓

E line + 6'

8.5 88.9 ✓

7.8 89.6 ✓

8.0 89.4 ✓

C

7.8 89.6 ✓

7.9 89.5 ✓

8.7 X 89.7 88.7

6.8 90.6 ✓

W line

49

97.44

125' 20.

W line

6.5 90.9 ✓

8.4 89.0 ✓

8.9 88.5 ✓

C

9.3 88.1 ✓

9.5 87.9 ✓

9.8 87.6 ✓

cb + 5'

10.2 87.2 ✓

cb + 7' bottom of draw.

11.6 85.8 ✓

E line

10.2 87.2 ✓

10' E slope.

8.2 89.2 ✓

147' 20.

10' E slope.

10.7 86.7 ✓

E line bottom of draw.

12.1 85.3 ✓

9.6 87.8 ✓

9.0 88.4 ✓

C

8.4 89.4 ✓

8.3 89.1 ✓

7.3 90.1 ✓

5.4 92.0 ✓

W line



97.44

150' 20

White

5.0 92.4 ✓

7.1 90.3 ✓

8.3 89.1 ✓

C

8.5 88.9 ✓

8.9 88.5 ✓

9.5 87.9 ✓

Elm

10.6 86.8 ✓

4' E

bottom of draw

12.0 85.4 ✓

18' E

slope.

9.1 88.3 ✓

175' 20.

26' E

slope.

9.6 87.8 ✓

20' "

bottom of draw.

12.3 85.1 ✓

15' "

11.0 86.4 ✓

Elm

10.3 87.1 ✓

8.1 89.3 ✓

6.2 91.2 ✓

C

6.2 91.2 ✓

5.5 91.9 ✓

50

97.44

web

4.3 93.1 ✓

White

3.6 93.8 ✓

200' 20.

white

4.0 93.4 ✓

4.4 93.0 ✓

5.4 92.0 ✓

C

4.9 92.5 ✓

6.0 91.4 ✓

6.5 90.9 ✓

Elm

10.7 86.7 ✓

23' E

bottom of draw

12.4 85.0 ✓

33' E

slope

9.4 88.0 ✓



97.44

225' 20.

31' E	slope.	9.6	87.8"
23' "	bottom of draw.	12.6	84.8"
E line		10.8	86.6"
		8.7	88.7"
		6.8	90.6"
C		6.6	90.8"
		6.0	91.4"
		5.5	91.9"
White		5.0	92.4"

250' 20.

White		5.8	91.6"
		6.2	91.2"
		6.9	90.5"
C		7.2	90.2"
1/4		8.2	89.2"
d		9.1	<del>89.3</del> <sup>89.3</sup> X
E line		11.4	86.0"
19' E	bottom of draw	12.7	84.7"
31' E	slope	9.4	88.0"

97.44

275' 20.

21' E	slope.	11.2	86.2"
14' E	bottom of draw	13.1	84.3"
E line		12.1	85.3"
		11.0	86.4"
		9.2	88.2"
C		8.3	89.1"
		8.0	89.4"
		7.1	90.3"
White		6.5	90.9"

300' 20.

White		7.9	89.5"
		8.6	88.8"
		9.4	88.0"
C		9.8	87.6"
		10.3	87.1"
		11.9	85.5"
E line		12.8	84.6"
6' E	bottom of draw	14.0	83.4"
15' E	slope	11.8	85.6"



97.44

321' 20.

12' E slope. 11.8 85.6

E line bottom of draw. 14.1 83.3

11.9 85.5

11.6 85.8

C 10.5 86.9

9.8 87.6

9.2 88.2

white 8.7 88.7

325' 20.

white 8.9 88.5

9.4 88.0

10.2 87.7

C 10.6 86.8

11.9 85.5

12.1 85.3

Cb + 13' bottom of draw. 14.4 83.0

E line 13.7 83.7

10' E slope. 12.0 85.4

97.44

350' 20.

10' E slope. 12.0 85.4

E line 12.7 84.7

E line + 8' bottom of draw. 14.8 82.6

13.3 84.1

13.5 83.9

C 12.1 85.3

11.4 86.0

11.0 86.4

white 10.7 86.7

375' 20.

white 12.7 84.7

12.6 84.8

13.0 84.4

C 13.7 83.7

13.2 84.2

1/4 + 10' 15.2 82.2

14.2 83.2

E line 12.7 84.7

slope. 11.3 86.1



97.44

386' 20.

E line

12.4 85.0

396' 20.

E line

12.1 85.3

400' 20.

E line

12.1 85.3

425' 20.

E line

12.0 85.4

450' 20.

E line

13.0 84.4

474' 20.

E line

11.6 85.8

478' 20.

E line

6.0 91.4

E cb.

13.6 83.8

500' 20.

E cb.

12.3 85.1

cb+12

10.6 86.8

E line

7.9 89.5

97.44

53

5' 25' 20.

E line

11.3 86.1

J.P.

1.58 <sup>H.T.</sup> 86.31 12.71 84.73

386' 20. rect. 24 X.

E cb.

2.9 83.4

cb+6' bottom of draw

4.6 81.7

2.1 84.2

C

3.6 82.7

2.7 83.6

2.5 83.8

white

1.9 84.4

396' 20.

10' w slope

5.0 81.3

white

6.4 79.9

4.8 81.5

3.5 82.8

3.9 82.4

3.2 83.1

1/4+4' bottom of draw

5.2 81.1

E cb

2.9 83.4



86.31

400' 20.

E cb. 3.1 83.2

Cb+11' bottom of draw. 5.0 81.3

3.6 82.7

C 3.8 82.5

3.8 82.5

5.7 80.6

white 4.6 81.7

10' w slope. 6.7 79.6

425' 20.

10' w slope. 5.3 81.0

white 4.5 81.8

3.8 82.5

bottom of ditch 4.3 82.0

C 3.5 82.8

3.4 82.9

E cb. 2.3 84.0

86.31

450' 20.

E cb. 2.7 83.6

2.6 83.7

C 2.1 84.2

1/4 bottom of ditch 5.7 80.6

1/4+5' 3.0 83.3

3.3 83.0

white 3.9 82.4

10' w slope. 4.5 81.8

474' 20.

10' w slope. 4.5 81.8

white 3.9 82.4

3.7 82.6

3.9 82.4

Cb+10' bottom of draw 6.5 79.8

1/4 5.7 80.6

C 2.9 83.4

2.5 83.8

E cb. 2.7 83.6



8631

478'20.

E 1/4		2.4	83.9'
C		2.8	83.5'
1/4	bottom of draw	6.4	79.9'
1/4 + 9'		3.9	82.4'
		4.0	82.3'
white		4.0	82.3'
10' w	slope.	4.6	81.7'
	500' 20.		
10' w	slope.	5.5	80.8'
white		4.8	81.5'
		5.0	81.3'
cb + 4'		5.2	81.1'
cb + 9'	bottom of draw.	7.5	78.8'
1/4		6.3	80.0'
C		3.9	82.4'
E 1/4		2.6	83.7'

55

86.31

525'20.

E cb.		2.9	83.4'
		4.0	82.3'
C		4.8	81.5'
C + 9'		5.8	80.5'
1/4	bottom of draw.	8.3	78.0'
1/4 + 9'		5.8	80.5'
		5.9	80.4'
white		5.9	80.4'
10' w	slope.	6.3	80.0'
	550' 20.		
10' w	slope.	7.6	78.7'
white		7.0	79.3'
		6.3	80.0'
cb + 4'		6.5	79.8'
1/4	bottom of draw.	8.6	77.7'
1/4 + 7'		6.5	79.8'
C		6.1	80.2'
		4.8	81.5'



86.31

E cb.

3.9 82.4'

E line

2.9 83.4'

565' 20.

E line

3.1 83.2'

4.6 81.7'

5.7 80.6'

C

7.9 78.4'

1/4

bottom of draw

9.1 77.2'

1/4 + 4'

6.7 79.6'

6.9 79.4'

W line

9.9 76.4'

10' w slope.

8.0 78.3'

575' 20.

10' w slope.

6.9 79.4'

W line

8.5 77.8'

W line + 7'

10.0 76.3'

8.1 78.2'

cb + 11'

7.6 78.1'

1/4

bottom of draw,

8.9 77.4'

56

86.31

C

8.6 77.7'

6.6 79.7'

5.2 81.1'

3.4 82.9'

600' 20.

E line

4.6 81.7'

7.3 79.0'

8.7 77.6'

C

bottom of draw

9.4 76.9'

1/4

11.0 75.3'

7.5 79.2'

W line

6.2 80.1'



86.31

6 25' 20.

White

2.3 84.0'

4.2 82.1'

5.6 80.7'

1/4 + 6'

6.8 79.5'

C

9.1 77.2'

10.0 76.3'

1/4 + 6'

10.6 75.2'

9.9 76.4'

E line

8.5 77.8'

6 39' 20.

10' E slope.

9.4 76.9'

E line bottom of draw.

11.2 75.1'

10.0 76.3'

9.4 76.9'

C

7.6 78.7'

5.3 81.0'

3.8 82.5'

White

1.5 84.8'

86.31

6 50' 20.

White

0.6 85.7'

3.0 83.3'

5.2 81.1'

7.0 79.3'

9.4 76.9'

9.7 76.6'

10.0 76.3'

E line

8' E bottom of draw.

11.6 74.7'

10' E slope.

10.6 75.7'

6 75' 20.

15' E slope.

10.7 75.6'

E line

9.5 76.8'

9.2 77.1'

9.2 77.1'

7.4 78.9'

4.5 81.8'

1.4 84.9'

Web.



86.31

700' 20.

W cb.

2.6 83.7'

5.1 81.2'

C

6.6 79.7'

8.8 77.5'

9.6 76.7'

E line

10.1 76.2'

15' E. slope.

11.5 74.8'

725' 20

15' E slope.

12.3 74.0'

11' E bottom of draw

13.9 72.4'

7' E

12.0 74.3'

E line

10.3 76.0'

9.8 76.5'

7.1 79.2'

C

4.7 81.6'

3.3 83.0'

W cb.

1.4 84.9'

86.31

58

743.54 20. rect. A B.

W. cb.

0.6 85.7'

3.0 83.3'

C

4.6 81.7'

6.3 80.0'

9.2 77.1'

E line

10.38 75.98'

8' E

12.0 74.3'

11' E bottom of draw.

14.0 72.3'

15' E slope.

12.9 73.4'

sect. A C

15' E slope.

12.7 73.6'

11' E bottom of draw

14.0 72.3'

8' E

11.5 74.8'

E line

10.38 75.98'

9.2 77.1'

6.4 79.9'

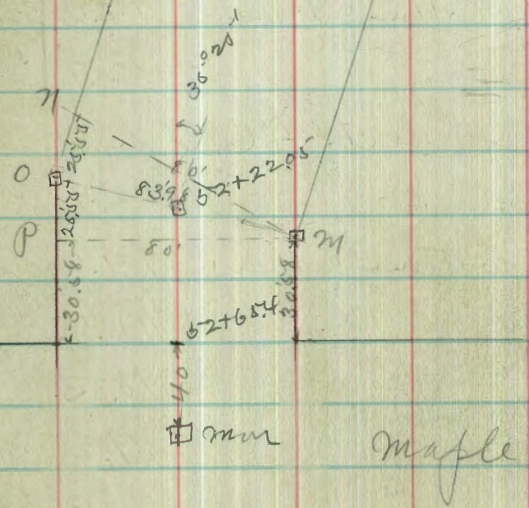
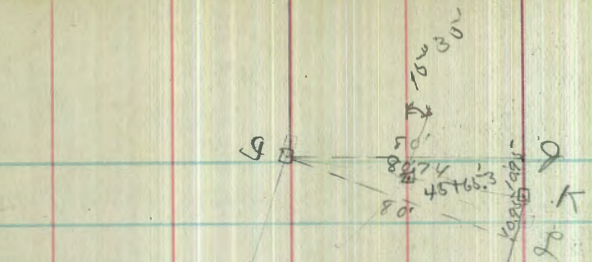
4.49 81.82'

3.3 83.0'

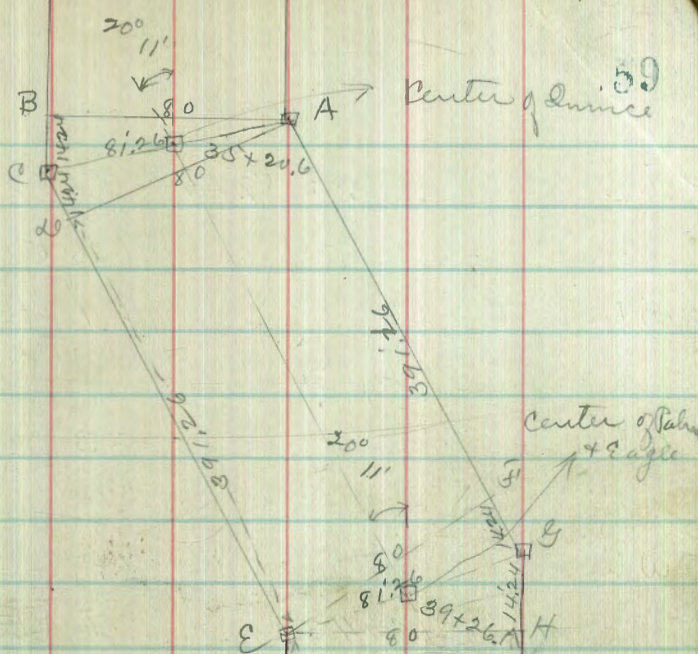
1.0 85.3'

W cb.

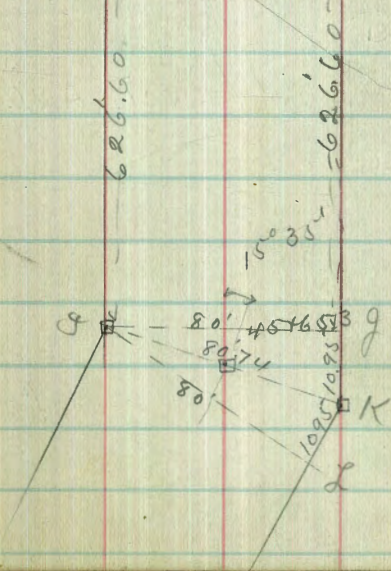




State



See Book 839  
Page 77





89.64

T.P. <sup>H.I.</sup> 7.82 89.64 81.82

675' 20. sect u x

white

2.7 86.9

700' 20.

white

2.3 87.3

725' 20.

white

1.6 88.0

743.54 20. sect A B

white

1.4 88.2

sect A C

white

0.84 89.80

sect. A 20.

white

0.7 88.9

4.0 85.1

7.1 82.5

C

8.5 81.1

9.8 79.8

E.cb.

12.4 77.2

E.cb.

C

white

white

C

C

1/4

1/4

white

25' 20. sect A 20.

13.3 76.3

11.5 78.1

9.6 80.0

7.4 82.2

5.2 84.4

2.0 87.6

50' 20.

4.7 84.9

7.0 82.6

8.9 80.7

11.1 78.5

75' 20.

12.5 77.1

10.7 78.9

8.9 80.7

7.2 82.4

X



89.64

100' 20.

wline

9.8 79.8'

E 1/4

wcb.

11.3 78.3'

J.P.

1.01 <sup>H.S.</sup> 77.43 13.22 76.42

E line

sect A-D

22' E

bottom of draw.

0.0 77.4'

1.8 75.6'

1.7 75.7'

5.7 71.7'

E line

14.6 75.98

75' 20.

8' E

2.8 74.6'

15' E slope.

2.7 74.7'

11' E

bottom of draw.

5.2 72.7'

E line

2.3 75.1'

15' E slope

3.8 73.6'

2.0 74.9'

25' 20. sect A-D

E 1/4

2.7 74.7'

15' E slope.

4.2 73.2'

100' 20.

11' E

bottom of draw

5.4 72.0'

W 1/4

0.5 76.9'

E line

1.6 75.8

C

2.6 74.8'

3.7 73.7'

3.2 74.2'

E line

3.5 73.9'

15' E slope.

3.8 73.6'

77.43

50' 20.



77.43

135' 20.

40' E	bottom of draw	8.5	68.9 ✓
E line		5.9	71.5 ✓
		4.7	72.1 ✓
		4.1	73.3 ✓
C		5.1	72.3 ✓
		4.0	73.4 ✓
		2.7	74.7 ✓
W line		2.3	75.1 ✓

132' 20.

W line		3.2	74.2 ✓
		3.5	73.9 ✓
		4.5	72.9 ✓
C		5.6	71.8 ✓
		4.5	72.9 ✓
		5.9	71.5 ✓
cb+4'		6.3	71.1 ✓
E line	bottom of draw	7.1	68.3 ✓

33' E	bottom of draw	8.5	68.9 ✓
-------	----------------	-----	--------

77.43

150' 20.

E line		5.0	72.4 ✓
E line + 11'		6.6	70.8 ✓
cb.		8.3	69.1 ✓
cb + 7'	bottom of draw	9.6	67.8 ✓
		6.8	70.6 ✓
C		5.4	72.0 ✓
		6.7	70.7 ✓
		4.9	72.5 ✓
W line		4.7	72.7 ✓

175' 20.

W line		5.7	71.7 ✓
W line + 9'		6.0	71.4 ✓
cb		7.7	69.7 ✓
		6.8	70.6 ✓
C	bottom of draw	10.0	67.4 ✓
		6.2	71.2 ✓
		3.4	74.0 ✓
E line		0.7	76.7 ✓



77.43

65

192' 20.

77.43

217' 20.

E cb. -0.3 77.7 ✓

+1.4 76.0 ✓

C 3.4 74.0 ✓

C + 8' 4.9 72.5 ✓

bottom of draw 10.3 67.1 ✓

8.7 68.7 ✓

cb + 11' 9.1 68.3 ✓

white 6.9 70.5 ✓

200' 20.

10' W slope. 6.7 70.7 ✓

white 9.9 67.5 ✓

dr. bottom of draw. 10.2 <sup>67.2</sup> 66.7 X

1/4 5.4 72.0 ✓

C 2.9 74.5 ✓

E 1/4 1.7 76.3 ✓

E cb. 1.8 75.6 ✓

3.3 74.1 ✓

C 5.0 72.4 ✓

6.0 71.4 ✓

6.6 70.8 ✓

cb + 12' 7.8 69.6 ✓

white 9.9 67.5 ✓

7' W bottom of draw. 10.3 <sup>67.1</sup> 66.7 X

15' W slope. 9.3 68.1 ✓

+ 225' 20.

15' W slope. 9.5 67.9 ✓

9' W bottom of draw. 10.3 67.1 ✓

3' " 9.8 67.6 ✓

white 7.3 70.1 ✓

6.7 70.7 ✓

6.3 71.1 ✓

5.5 71.9 ✓

4.6 72.8 ✓

2.4 75.0 ✓

E cb.



77.43

250' 20.

E cb.

1.2 76.2

4.6 72.8

C

6.5 70.9

6.8 70.6

8.1 69.3

white

9.1 68.3

7' W

bottom of draw.

10.6 66.8

15' W

slope.

9.6 67.8

275' 20.

13' W

slope.

5.2 72.2

8' W

B

10.2 67.2

white

11.2 66.2

white + 4'

12.1 65.3

cb.

9.5 67.9

8.4 69.0

C

7.6 69.8

5.4 72.0

E cb.

2.7 74.7

77.43

300' 20.

E line

2.5 74.9

6.2 71.2

7.8 69.6

C

8.9 68.5

C + 11'

10.7 66.7

bottom of draw.

12.7 64.7

1/4 + 7'

10.4 67.0

8.8 68.6

8.8 68.6

white

4' W.

slope.

5.9 71.5

325' 20.

white

7.4 70.0

white + 1

8.6 68.8

8.4 69.0

9.6 67.8

1/4 + 5'

11.0 66.4

1/4 + 10' bottom of draw.

13.0 64.4

C

10.5 66.9

64



77.43

E 1/4

8.9 68.5

E 1/4

5.2 72.2

356' 20.

E 1/4

4.5 72.9

C

bottom of draw

13.7 63.7

Cb

C + 5

11.7 65.7

Cb + 7'

bottom of draw

10.4 67.0

+ 11'

9.4 68.0

white

white

9.0 68.4

10' w slope.

375' 20.

white

9.7 67.7

10' w

white

11.4 66.0

white

13.0 64.4

white + 3'

1/4 + 9'

bottom of draw.

13.8 63.6

+ 7'

bottom of draw

C

4.4 73.0

E 1/4

0.0 77.4

C

E 1/4

See book  
page 77 for East  
side  
839  
77.43

391.26 20 = sect. E F.

64 1/2

0.6 76.8

4.7 72.7

9.0 68.4

11.5 65.9

14.5 62.9

11.6 65.8

11.05 66.38

9.9 67.5

sect. E G.

9.9 67.5

11.05 66.38

11.7 65.7

14.6 62.8

11.6 65.8

8.8 68.6

5.02 72.41

2.5 74.9



77.43

sect E.H.

E 1/4	3.1	74.3	Q line
C	5.8	71.6	
	9.4	68.0	
	11.6	65.8	C
Q + 7' bottom of draw	14.6	62.8	
W line	11.05	66.38	Q + 3' bottom of draw.
10' W.	9.9	67.5	

25' 20. sect. E.H.

10' W. slope.	9.8	67.6	white
W line	10.4	67.0	white
white + 8' bottom of draw.	14.7	62.7	
	12.4	65.0	
	10.7	66.7	1/4 + 5'
C	7.9	69.5	C
	5.0	72.4	
E. cl.	2.0	75.4	

77.43

50' 20.

2.4	75.0
5.2	72.2
8.4	69.0
11.4	66.0
14.5	62.9
15.2	62.2
12.0	65.4
10.2	67.2
11.0	66.4
11.9	65.5
13.0	64.4
16.7	60.7
12.8	64.6
9.0	68.4
6.2	71.2
3.6	73.8

Q line



77.43

100' 20.

E line

4.8 77.6<sup>✓</sup>7.2 70.2<sup>✓</sup>10.6 66.8<sup>✓</sup>

1/4 + 5

12.7 64.7<sup>✓</sup>

1/4 + 11'

bottom of draw.

16.4 61.0<sup>✓</sup>

C

15.0 62.4<sup>✓</sup>12.4 65.0<sup>✓</sup>12.0 65.4<sup>✓</sup>

W line

9.0 68.4<sup>✓</sup>

125' 20.

W line

9.4 68.0<sup>✓</sup>11.8 65.6<sup>✓</sup>12.8 64.6<sup>✓</sup>

C

13.9 63.5<sup>✓</sup>

C + 11'

bottom of draw

17.2 60.2<sup>✓</sup>15.0 62.4<sup>✓</sup>7.9 69.5<sup>✓</sup>

E line

5.9 71.5<sup>✓</sup>

77.43

66

150' 20.

E line

7.2 70.2<sup>✓</sup>

ch

9.3 68.1<sup>✓</sup>

cb. #7

10.3 67.1<sup>✓</sup>

1/4

bottom of draw.

18.0 59.4<sup>✓</sup>14.8 62.6<sup>✓</sup>

C

13.3 64.1<sup>✓</sup>12.2 65.2<sup>✓</sup>

W line

9.6 67.8<sup>✓</sup>

J.P.

low turn

10.09 67.34<sup>✓</sup>

J.P.

high turn

12.21

14.5.4

89.41

0.23 77.20<sup>✓</sup>

192 20. rect. A 10

E line

10.3 79.1<sup>✓</sup>

200' 20.

E line

10.8 78.6<sup>✓</sup>

E cb.

12.0 77.4<sup>✓</sup>



89.41

217'20.

E line

13.6 75.8 ✓

225'20.

E line

11.1 78.3 ✓

250'20.

E line

11.1 78.3 ✓

275'20.

E line

11.7 77.7 ✓

325'20.

E line

10.5 78.9 ✓

350'20.

E line

4.1 85.3 ✓

E cb.

10.3 79.1 ✓

375'20.

E cb.

6.1 83.3 ✓

E line

1.0 88.4 ✓

67

89.41

391.26'20. (sect. E.F.)

E line

2.7 86.7 ✓

E cb.

7.5 81.9 ✓

sect. E.G.

E cb.

8.8 80.6 ✓

E line

4.05 85.36 ✓

sect. E.H.

E line

7.8 81.6 ✓

E cb.

11.6 79.8 ✓

25'20. sect. E.H.

E line

11.7 77.7 ✓



		4.71	72.05	67.34
			175' 20. rect 8 H.	
white		5.2	66.9	
		7.4	64.7	
		8.2	63.9	
C	bottom of draw	11.7	60.4	
C + 9'		7.1	65.0	
		6.4	65.7	
		5.2	66.9	
E line		2.9	69.2	
	200' 20.			
E line		4.6	67.5	
curl		6.6	65.5	
1/4		7.5	64.6	
1/4 + 10'		8.2	63.9	
C		11.2	60.9	
C + 10'	bottom of draw	11.9	60.2	
		11.1	61.0	
1/4 + 6'		8.3	63.8	

72.05

wcb	7.3	64.8
white	5.1	67.0
	225' 20.	
white	2.0	70.1
white + 5'	5.7	66.4
	6.8	65.3
ob + 7'	11.2	60.9
1/4	bottom of draw	12.2
C		9.7
		8.3
		7.3
		5.0
E line		67.1



72.05

250' 20.

E line 5.4 66.7✓

8.1 64.0✓

8.9 63.2✓

C 11.5 60.6✓

C + 6' bottom of draw. 12.1 60.0✓

1/4 10.6 61.5✓

1/4 + 8 4.5 67.6✓

cb. 5.4 <sup>66.7</sup> 66.5✓cb + 5' 4.7 <sup>67.4</sup> 67.5✓

cb + 7' 1.8 70.3✓

w line 0.9 71.2✓

275' 20.

w line 1.0 71.1✓

3.9 <sup>68.2</sup> 66.2✓

cb + 10' 4.4 67.7✓

1/4 5.5 66.6✓

1/4 + 7 7.7 64.4✓

C bottom of draw. 12.1 60.0✓

69

72.05

E 1/4

11.6 60.5✓

9.2 62.9✓

E line 7.5 64.6✓

300' 20.

E line 9.3 62.8✓

10.3 61.8✓

bottom of draw. 12.2 59.9✓

C 8.7 63.4✓

1/4 6.3 65.8✓

1/4 + 3' 6.3 65.8✓

1/4 + 7' 3.4 <sup>68.7</sup> 66.9✓w line 3.6 <sup>68.5</sup> 66.5✓

w line 1.7 70.4✓



72.05  
325' 20.

White	1.9	70.2 <sup>✓</sup>
carb	3.9	68.2 <sup>✓</sup> <del>66.2</del> <sup>X</sup>
1/4	5.7	66.4 <sup>✓</sup>
1/4 + 5'	8.3	63.8 <sup>✓</sup>
C	8.3	63.8 <sup>✓</sup>
	11.5	60.6 <sup>✓</sup>
1/4 + 9' bottom of draw	12.3	59.8 <sup>✓</sup>
cb.	11.7	60.4 <sup>✓</sup>
E line	10.5	61.6 <sup>✓</sup>
10' E. slope.	10.8	61.3 <sup>✓</sup>
E line	11.8	60.3 <sup>✓</sup>
E line + 9' bottom of draw.	12.3	59.8 <sup>✓</sup>
cb.	11.7	60.4 <sup>✓</sup>
	9.9	62.2 <sup>✓</sup>
C	9.5	62.6 <sup>✓</sup>
	6.3	65.8 <sup>✓</sup>
	4.1	68.0 <sup>✓</sup>
White	2.2	69.9 <sup>✓</sup>

72.05  
375' 20.

White	2.4	69.7 <sup>✓</sup>
	3.7	68.4 <sup>✓</sup>
	6.1	66.0 <sup>✓</sup>
C	8.9	63.2 <sup>✓</sup>
	10.2	61.9 <sup>✓</sup>
	11.2	60.9 <sup>✓</sup>
E line bottom of draw	12.3	59.8 <sup>✓</sup>
15' E slope	12.3	59.8 <sup>✓</sup>
	400' 20.	
19' E bottom of draw.	14.8	57.3 <sup>✓</sup>
E line	11.9	60.2 <sup>✓</sup>
	11.3	60.8 <sup>✓</sup>
	10.7	61.4 <sup>✓</sup>
	6.6	65.5 <sup>✓</sup>
	4.7	67.4 <sup>✓</sup>
	3.8	68.3 <sup>✓</sup>
White	2.1	70.0 <sup>✓</sup>



72.05  
425' 20.

White

2.1 70.0✓

1/4 + 6'

curb

3.8 68.3✓

C

1/4

4.9 ~~67.2~~ 65.2✓

C

7.4 64.7✓

10.2 61.9✓

E line

11.1 61.0✓

24' E

bottom of draw.

E line

12.2 59.9✓

450' 20.

25' E bottom of draw.

15.1 57.0✓

17' E

bottom of draw

432' 20.

E line

25' E bottom of draw

15.3 56.8✓

E line

12.4 59.7✓

15.3 56.8✓

12.7 59.4✓

10.6 61.5✓

9.7 62.4✓

6.4 65.7✓

10.8 61.3✓

C

10.1 62.0✓

~~475' 20.~~

C

7.4 64.7✓

4.9 67.2✓

3.8 68.3✓

White

2.1 70.0✓







63.88

10' E bottom of draw 7.5 56.4 ✓

20' E slope. 5.9 58.0 ✓

5' 25' 20.

28' E slope. 5.8 58.1 ✓

22' E bottom of draw 8.2 55.7 ✓

E line 2.8 61.1 ✓

3.6 60.3

4.0 59.9

C

6.3 57.6

7.1 56.8

9.6 54.3

W line

9.4 54.5 ✓

63.88

550' 20.

W line

W line

8.3 55.6 ✓

7.8 56.1 ✓

7.4 56.5 ✓

6.9 57.0 ✓

4.0 59.9 ✓

6.4 57.5 ✓

7.1 56.8 ✓

E line

bottom of draw

8.4 55.5 ✓

13' E

slope.

3.0 60.9 ✓

560' 20.

E line

4.3 59.6 ✓

7.5 56.4 ✓

Cb + 8'

bottom of draw

8.6 55.3 ✓

1/4

8.4 55.5 ✓

C

6.2 57.7 ✓

C + 6'

4.7 59.7 ✓

1/4

7.4 56.5 ✓

Cb

7.8 56.1 ✓

W line

7.6 56.3 ✓



63.88

575' 20.

white

7.7 56.2✓

7.5 56.4✓

7.4 56.5✓

1/4+6'

8.8 55.1✓

C

7.3 56.6✓

6.6 57.3✓

5.8 58.1✓

E line

3.8 60.1✓

600' 20.

E line

3.3 60.6✓

5.2 58.7✓

6.3 57.6✓

C

6.7 57.2✓

7.4 56.5✓

1/4+10'

8.8 55.1✓

cl.

8.1 55.8✓

white

7.5 56.4✓

63.88

6.26.6 20+Rect. 99.

10' w slope.

7.8 56.1✓

white bottom of drain

8.98 54.90

7.7 56.2✓

8.6 55.3✓

7.3 56.6✓

6.5 57.4✓

5.4 58.5✓

4.4 <sup>59.5</sup> 59.5 X

E line

Rect. 9. K.

E line

4.51 59.31✓

6.5 57.4✓

7.7 56.2✓

7.35 56.53✓

9.0 54.9✓

7.8 56.1✓

8.98 54.90

7.8 56.1✓

white

10' w slope



63.88

## sect 9 L.

10' w	slope	7.8	56.1
white	bottom of draw	8.98	54.90
		8.1	55.8
		9.0	54.9
C		7.9	56.0
		8.8	55.1
		8.9	55.0
E line		6.0	57.9

## 46' so. sect 9 L.

20' E	slope	9.3	54.6
E line	bottom of draw	11.6	52.3
		10.2	53.7
		9.8	54.1
C		9.4	54.5
		9.4	54.5
		8.4	55.5
cb + 9'	bottom of draw	9.1	54.8
white		8.1	55.8

63.88

## 25' 20.

white		8.5	55.4
		8.6	55.3
		9.5	54.4
C	bottom of draw	11.0	52.9
		10.0	53.9
		10.1	53.8
E line		10.2	53.7
27' E	bottom of draw	12.3	51.6

## 32' 20.

33' E	bottom of draw	12.2	51.7
E line		10.2	53.7
		10.2	53.7
		10.0	53.9
C		9.7	54.2
		9.1	54.8
		8.4	55.5
white		8.6	55.3



63.88

41' 20.

W line + 5'

8.0 55.9

cb.

8.7 55.2

9.0 54.9

c

9.5 54.4

9.7 54.2

9.3 54.6

E line

9.2 54.7

34' E bottom of draw.

12.4 51.5

50' 20.

36' E bottom of draw.

12.5 51.4

E line

8.4 55.5

8.3 55.6

9.1 54.8

c

9.0 54.9

8.8 55.1

W cb.

8.5 55.4

76

63.88

67' 20.

W cb.

4.9 59.0

cb + 3'

7.1 56.8

6.2 57.7

c

7.8 56.1

7.9 56.0

7.6 56.3

E line

7.0 56.9

37' E bottom of draw

13.1 50.8

75' 20.

39' E bottom of draw

13.2 50.7

E line

7.8 56.1

6.0 57.9

6.6 57.3

c

7.4 56.5

6.6 57.3

8.1 55.8

W line

6.7 57.2



63.88

100' 20.

Wline		8.9	55.0"
		9.2	54.7"
cb + 8'		8.7	55.2"
1/4		13.4	50.5"
C		13.5	50.4"
C + 7'		6.1	57.8"
		6.7	57.2"
		7.3	56.6"
E line		8.9	55.0"
45' E	bottom of draw.	13.2	50.7"
	125' 20.		
45' E	bottom of draw.	13.0	50.9"
E line		11.9	52.0"
		11.5	52.4"
		12.5	51.4"
C		12.5	51.4"
		12.8	51.1"
		11.6	52.3"
Wline		10.4	53.5"

63.88

150' 20.

Wline		11.1	52.8"
		11.8	52.1"
		12.4	51.5"
C		12.9	51.0"
		12.8	51.1"
		13.3	50.6"
E line	bottom of draw.	14.0	49.9" (7.5)
15' E	Alps.	12.9	51.0"
	175' 20.		
E line		12.0	51.9"
		13.1	50.8"
cb + 6'		14.6	49.3"
1/4		13.3	50.6"
C		12.6	51.3"
		12.3	51.6"
		11.9	52.0"
Wline		11.4	52.5"



63.88

200' 20.

W line

3.2 60.7<sup>✓</sup>12.9 51.0<sup>✓</sup>11.6 52.3<sup>✓</sup>

C

11.9 52.0<sup>✓</sup>12.9 51.0<sup>✓</sup>13.3 50.6<sup>✓</sup>

CB + 7'

bottom of drain

14.6 49.3<sup>✓</sup>

E line

13.6 50.3<sup>✓</sup>

10' E

slope.

13.7 50.2<sup>✓</sup>

206' 20.

10' E

slope

14.0 49.9<sup>✓</sup>

E line

bottom of drain.

14.9 49.0<sup>✓</sup>13.0 50.9<sup>✓</sup>12.7 51.2<sup>✓</sup>

C

12.0 51.9<sup>✓</sup>11.3 52.6<sup>✓</sup>13.2 50.7<sup>✓</sup>

W line

3.2 60.7<sup>✓</sup>

63.88

225' 20.

W line

0.0 63.9

8.9 55.0<sup>✓</sup>

CB + 6'

14.2 49.7<sup>✓</sup>14.2 49.7<sup>✓</sup>

C

12.7 51.2<sup>✓</sup>13.2 50.7<sup>✓</sup>12.8 51.1<sup>✓</sup>

E line

14.5 49.4<sup>✓</sup>

20' E

bottom of drain

15.5 48.4<sup>✓</sup>

250' 20.

29' E

bottom of drain.

16.0 47.9<sup>✓</sup>

E line

14.4 49.5<sup>✓</sup>13.2 50.7<sup>✓</sup>13.0 50.9<sup>✓</sup>14.5 49.4<sup>✓</sup>14.5 49.4<sup>✓</sup>9.9 54.0<sup>✓</sup>2.0 61.9<sup>✓</sup>



63.88

275' 20.

Wline	2.9	64.0 ✓
wcb.	10.2	53.7 ✓

300' 20.

wcb.	9.3	54.6 ✓
Wline	2.1	61.8 ✓

325' 20.

Wline	-0.4	64.3 ✓
amb	+6.9	57.0
		57.9 X
cb + 3'	7.2	56.7 ✓
cb + 6'	11.9	57.0 ✓
w 1/4	11.9	57.0 ✓

350' 20.

1/4 + 8'	11.1	57.8 ✓
C	11.1	57.8 ✓
w 1/4	10.1	53.8 ✓
1/4 + 10'	8.1	55.8 ✓
wcb	4.6	59.3 ✓

79

63.88

375' 20.

wcb.	3.0	60.9 ✓
cb + 5'	7.7	56.2 ✓

9.1 54.8 ✓

10.5 53.4 ✓

E 1/4 11.1 52.8 ✓

400' 20.

E 1/4 11.5 52.4 ✓

C 9.4 54.5 ✓

C + 8' 8.5 55.4 ✓

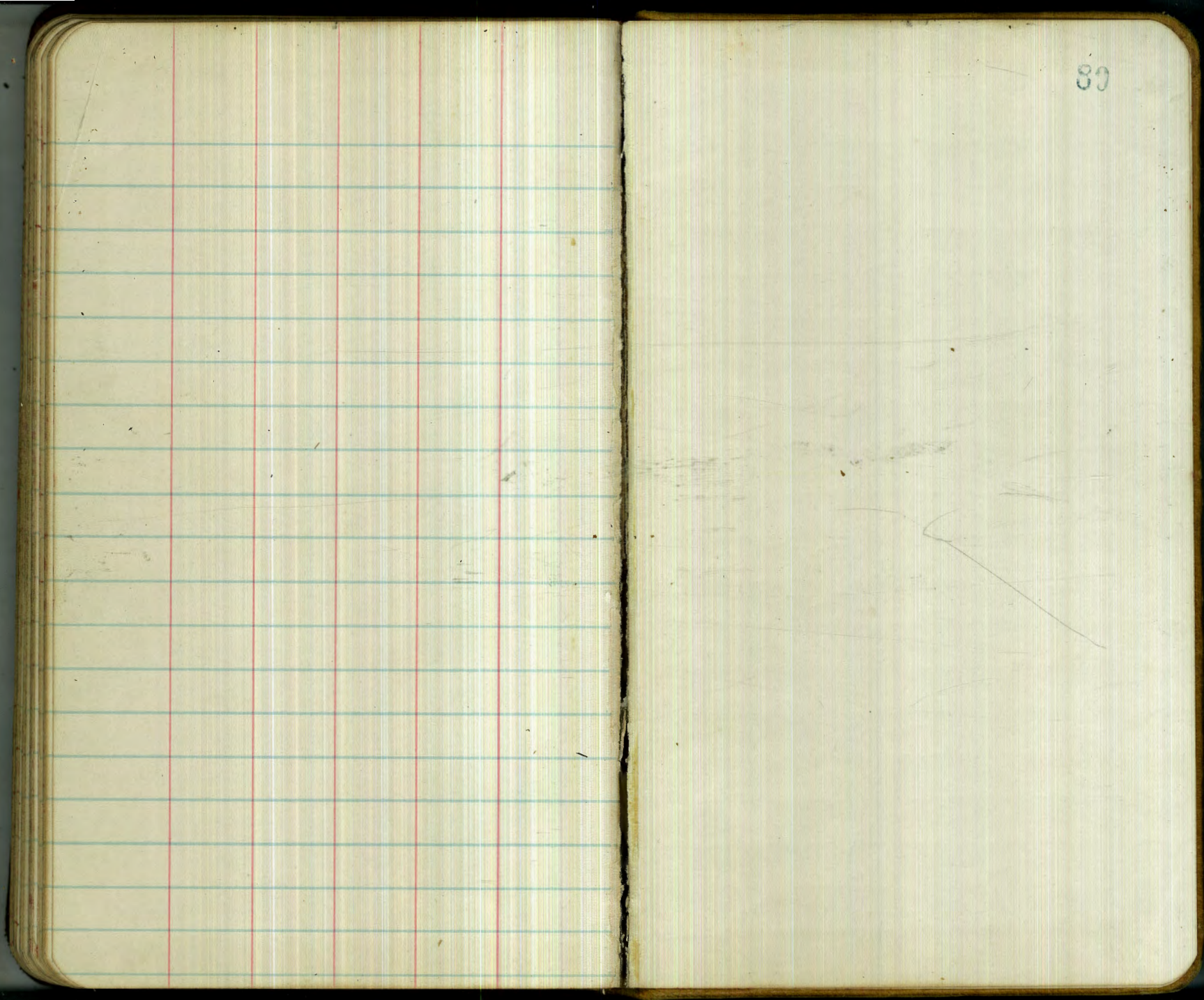
w 1/4 2.6 61.3 ✓

J.P. Lowman 12.75 51.13

Continued in Book 839

(Back part of Book) Page 65







504

9.03  
 56.53 H.I.  
 65.56  
 7.36  
 58.20 J.P.  
 8.16  
 66.36 H.I.  
 5.65  
 60.71 J.P.  
 10.11  
 70.82 H.I.  
 1.53  
 69.29 J.P.  
 6.71  
 76.00 H.I.  
 8.50  
 72.50 J.P. man.  
 72.41  
 8.11  
 80.52 H.I.  
 8.53  
 79.97 J.P.  
 6.63  
 86.60 H.I.  
 6.46  
 80.14 J.P.  
 10.63  
 90.77 H.I.  
 2.02  
 88.75 J.P.  
 6.80  
 96.55 H.I.  
 0.34  
 96.21 J.P.  
 5.29  
 101.00 H.I.  
 18.71  
 92.29 J.P. hub.  
 13.04  
 105.33 H.I.  
 6.39  
 99.94 J.P.  
 11.36  
 117.30 H.I.  
 3.67  
 107.63 J.P.  
 8.56 H.I.  
 116.19  
 2.58  
 113.61 J.P.  
 7.82  
 121.43 H.I.  
 10.78  
 110.65 J.P.  
 2.30  
 153.89 J.P. rock.  
 2.37  
 156.36 H.I.

57.72  
 65.92 H.I.  
 12.98  
 52.94 J.P. rock.  
 0.36  
 53.30 H.I.

4.7  
 111.5

162  
 121.5

117  
 119.4

17.3  
 120.4

14.8  
 116.3  
 72.7

10.78

15.97

123.62 H.I.

3.11

120.21 J.P.

6.36

126.57 H.I.

3.11

123.46 J.P.

130.19 H.I.

2.66

131.12 H.I.

4.19

126.93 J.P.

10.78

137.68 H.I.

3.99

133.70 J.P.

7.76

141.65 H.I.

3.70

137.95 J.P.

9.66

147.61 H.I.

2.91

144.70 J.P.

11.59

156.24 H.I.

2.30

153.89 J.P. rock.

2.37

156.36 H.I.

14.8  
 116.3  
 72.7

10.78

15.97

123.62 H.I.

3.11

120.21 J.P.

6.36

126.57 H.I.

3.11

123.46 J.P.

130.19 H.I.

2.66

131.12 H.I.

4.19

126.93 J.P.

10.78

137.68 H.I.

3.99

133.70 J.P.

7.76

141.65 H.I.

3.70

137.95 J.P.

9.66

147.61 H.I.

2.91

144.70 J.P.

11.59

156.24 H.I.

2.30

153.89 J.P. rock.

2.37

156.36 H.I.

204  
 1 W 96 73  
 9 W 189  
 79 W 101 66  
 93 100 87  
 204 89  
 297 74  
 50 1092  
 47  
 37 52.2 16.92  
 50 101 15.3  
 89 127  
 100 15.4

53 139  
 56 73 517 15.3  
 88 35  
 63.94 41.7  
 60.94 41.5  
 62.94 41.5  
 141 15.7  
 19 15.6  
 31416 15.3  
 4314.16 8.3  
 78.54 7.0  
 21.46 15.4



83.35  
 40  
 43.35  
 12.77  
 56.12  
 30.58  
 351 12.77  
 3520.6  
 29.4  
 115  
 105  
 8  
 95  
 115  
 210  
 58  
 268  
 161 115  
 105 153  
 248 269

\*100 = 52 + 50 25  
 58  
 153 \* 52 + 50 58  
 8  
 161 115  
 105 153  
 248 269

948

166  
 143  
 15.13

8.3

113.3

2.34

154.02

159.96

165.98

H.I.

2.27

163.71