

860

F.B.
F.B.
860

LEVEL BOOK

No. 410

MICROFILMED

DEC 15 1964

Bench on Wells at

681	9433		8752	mon Tennon + Warrington
673	9429	677	8750	on Rail
126	8400	1155	8274	
		444	7950	RR Spine Rd
068	8820		8752	
382	8602	620	8220	
307	7787	1122	7480	n E H
727	7831	693	7094	Nathan
416	7870	417	7414	n E H Whitton
536	7470	936	6934	n W H Xenophon
1020	7629	861	6609	n E H George
827	7904	552	7077	n W H Zouch
197	7183	918	6986	n E H Alert
765	7288	660	6523	n E H Browning
116	6546	858	6430	n W H Lough
113	5440	1219	5327	
68	4207	1301	4139	
20	2922	1306	7901	
24	1646	1300	1622	
54	737	963	683	E. H. on Rd
		527	210	

12 | layout X Sec of Wells St (50')
 23 | Felt S of Western add to
 12 | show

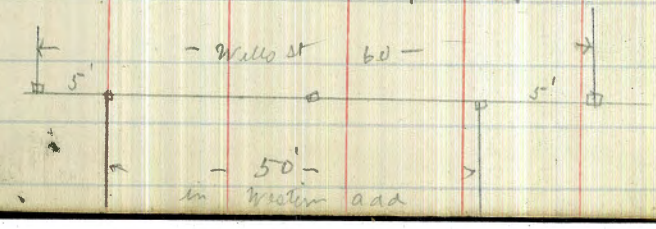
94.29

Wells St

94.29 2m P-1-

50' n of Pd

Pd = S of Western add					
E	18	92.5	E	51	89.2
H	13	93.0	H	49	89.4
Y	13	93.0	Y	48	89.5
L	15	92.8	L	50	89.3
Y	16	92.7	Y	49	89.4
H	16	92.7	H	44	89.9
W	10	93.3	W		
25' n of Pd				75' n of Pd	
W	29	91.4	W	56	88.7
H	34	90.9	H	65	87.8
Y	34	90.9	Y	68	87.5
L	31	91.2	L	67	87.6
Y	30	91.3	Y	68	87.5
H	31	91.2	H	62	88.1
E	33	91.0	E	66	87.7



94.29

	100	n	f	Pd
E				86 85.7
H				83 85.0
y				87 85.6
b				87 85.6
y				87 85.6
H				84 85.9
w				77 86.6

	125	n	f	Pd
w				95 84.8
H				104 83.9
y				106 83.7
b				107 83.6
y				106 83.7
H				97 83.6
E				108 83.5

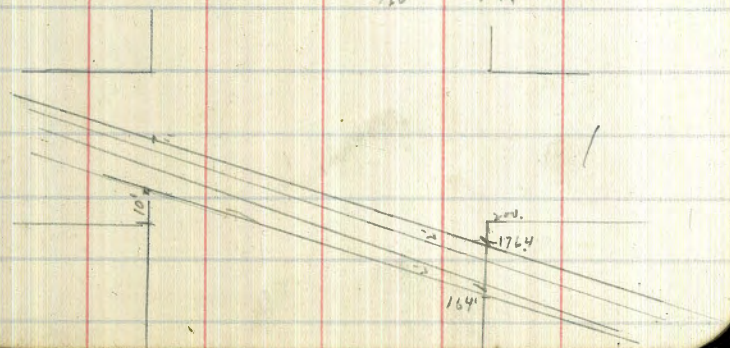
	130	n	f	Pd
E				110 82.7
	131	n	f	Pd
				129 81.4
E				129 81.4

94.29

Wells

	150	n	f	Pd
E				132 81.1
H				134 80.9
y				138 80.5
b				136 80.7
y				134 80.9
H				128 81.5
w				123 82.0

	157	n	f	Pd
w				122 82.1
	158	n	f	Pd
w				129 80.4
TP	126		84.00	1153 82.4
	164	n	f	Pd
				1153 82.4
E				4.6 79.4



	442	8398	7956	Bm stake at RR		S ll of Ordahl st		
EL RR Rail			385	80.15	7956	E	133	70.7
	75'	n of PL			4.7 8398	ll	96	74.4
E (w Truck)			46	79.4		"	63	77.7
ll = v' w of Rail			48	79.2		l	67	77.3
y			53	78.7		y	63	77.7
l			52	78.8		ll	60	78.0
						+5' = v' E Rail		
y			47	79.3		ll	61	77.9
ll			40	80.0		w	63	77.7
w			39	80.1				
						S	1/4 of Ordahl	
	1764'	n = v' n of Rail				w = v' E Rail	65	77.5
E			47	79.3		ll	70	77.0
E	195'	n of PL	57	78.3		y	100	74.0
	200'	n = S ll of Ordahl st (70')				l	100	74.0
w			66	77.4		y	130	71.0
ll			58	78.2		ll	148	69.2
+ v' = v' w Rail			58	78.2		E	165	67.5
y			56	78.4				
+7' = v' E Rail			57	78.3				
l			57	78.3				
y			64	77.6				
ll			60	78.0				
+3'			60	78.0				
E			80	75.4				

no stake required

8398

Center of Adahl

E	176	66.4
ll	158	68.2
γ	154	68.6
h	149	69.1
γ	132	70.8
ll	102	73.8
W	74	76.6

710 132 7250 1270 7128

n 1/4 of Adahl

W	15	71.0
ll	42	68.3
γ	47	67.8
h	47	67.8
γ	52	67.3
ll	56	66.9
E	70	65.5
25° E	110	61.5

7250

Walls

n 1/4 of Adahl

25° E	110	61.5
E	74	65.1
ll	59	66.6
γ	53	67.2
h	53	67.2
γ	50	67.5
ll	49	67.6
W	49	67.6

n 1/4 of Adahl

W	60	66.5
ll	61	66.4
γ	58	66.7
h	55	67.0
γ	51	67.4
ll	54	67.1
E	69	65.6
25° E	120	60.50

7250

25' n of Adahl

$$\begin{array}{r} 7250 \\ 1230 \\ \hline 6020 \\ 89 \\ \hline 6131 \end{array}$$

E	100	62.5
U	68	65.7
7	54	67.1
6	54	67.1
7	64	66.1
U	83	64.2
W	88	63.7

50' n of Adahl

W	127	59.8
U	118	60.7
7	103	64.2
6	85	64.0
7	85	64.0
U	100	62.5
E	128	59.7

TP	590	6620	1270	6030
----	-----	------	------	------

6620

Wills

75' n of Adahl

E	111	55.1
U	98	56.4
7	94	56.8
6	96	56.6
7	98	56.4
U	101	56.1
W	99	56.3

100' n of Adahl

W	130	53.2
U	132	53.0
7	132	53.0
6	134	52.8
7	134	52.8
U	131	53.1
E	117	54.3

117 n

W	134	50.8
---	-----	------

6620

125 mg Adahl.

E	106	55.6
U	117	54.9
Y	120	54.2
L	127	53.5
7	128	53.4
U	133	52.9
W	144	51.8

150 mg Adahl.

W	120	54.2
U	112	55.0
7	108	55.4
L	100	56.2
Y	92	57.0
U	84	57.8
E	70	59.2

6620

175 mg Adahl.

E	27	63.3
U	39	62.3
Y	43	61.9
L	48	61.4
7	56	60.6
U	62	60.0
W	78	58.4

11.40 75.07 253 63.7200 mg = 5 ~~mg~~ of Vallan \pm (70)

W	121	63.0
U	120	63.1
Y	119	63.2
L	112	63.9
7	101	65.0
U	97	65.4
E	93	65.8

Mills6620

253

63.67

11.40

75.07

7507

	S	66 f	Daltan
E	r		81 67.0
U			86 66.5
Y			94 65.8
b			97 65.4
y			102 64.9
U			106 64.5
W			108 64.3

	S	1/4 f	Daltan
W			93 65.8
U			88 66.3
y			86 66.5
b			85 66.6
y			80 67.1
U			68 68.3
			61 69.0

7507

Wells

		Center of Valtan
E		43 70.8
U		50 70.1
y		63 68.8
b		71 68.0
y		73 67.8
U		70 68.1
W		73 67.8

	W	1/4 f	Daltan
W			58 69.3
U			55 69.6
y			54 69.7
b			50 70.1
y			47 70.4
U			42 70.6
E			39 71.2

75-07

N of Valtari

E	40	71.1
N	43	70.8
Y	46	70.5
L	50	70.1
Y	52	69.9
H	52	69.9
W	54	69.7

N line of Valtari

N	56	69.5
H	54	69.7
Y	53	69.8
L	50	70.1
Y	46	70.5
H	43	70.8
E	41	71.0
Bm	409	70.98

Bm NE
Valtari Wells

75-07

Wells

25 N of Valtari

E	40	71.1
N	42	70.9
Y	45	70.6
L	47	70.4
Y	49	70.2
H	54	69.7
W	60	69.1

50 N of Valtari

N	58	69.3
H	52	69.9
Y	50	70.1
L	44	70.7
Y	40	71.1
H	36	71.5
E	33	71.8

7507

	75	n 8	Vallain	7507
E			36	71.5
U			44	70.7
y			44	70.7
t			47	70.4
y			49	70.2
U			52	69.9
W			57	69.4

246
72.61
75.53
80.14

100 n 8 Vallain

W			56	69.5
U			55	69.6
y			53	69.8
t			48	70.3
y			46	70.5
U			39	71.2
E			31	72.0

TP 753 80.14 246 72.61

8014

8014

	125	n 8	Vallain
E			75 72.6
U			82 77.9
y			86 71.5
t			95 70.6
y			106 69.5
U			109 69.2
W			110 69.1

150 n 8 Vallain

W			113 68.8
U			104 69.7
y			99 70.2
t			89 71.2
y			83 71.8
U			73 72.8
E			61 74.0

8014

175 n of Volcan

E	56	74.5
U	68	73.3
Y	76	72.5
L	87	71.4
Y	103	69.8
U	106	69.5
W	115	68.6

200' n = S of Whittier (70)

W	108	69.3
U	97	70.4
Y	90	71.1
L	82	71.9
Y	75	72.6
U	68	73.3
E	59	74.2

8014

Wells st

S 1/4 of Whittier

E	60	74.1
U	68	73.3
Y	72	72.9
L	78	72.3
Y	85	71.6
U	92	70.8
W	106	69.5

S 1/4 of Whittier

W	101	70.0
U	90	71.1
Y	85	71.6
L	78	72.3
Y	72	72.9
U	67	73.4
E	62	73.9

Center of Whittier

E	6.0	74.1
H	6.5	73.6
Y	7.0	73.1
G	7.4	72.7
Y	8.3	71.8
H	8.8	71.3
W	9.6	70.5

N side of Whittier

W	9.3	70.8
H	8.5	71.6
A	7.9	72.2
L	7.1	73.0
Y	6.8	73.3
H	6.4	73.7
E	6.1	74.0

N side of Whittier

E	6.1	74.0
H	6.6	73.5
Y	6.8	73.3
G	7.4	72.9
Y	8.0	72.1
H	8.2	71.9
W	8.8	71.3

N side of Whittier

W	8.9	71.2
H	8.3	71.8
"	8.0	72.1
L	7.5	72.6
"	7.0	73.1
H	6.6	73.5
E BM	6.00	74.14

Mills st

8014

25' n of Whittier

E	E	55	74.6
H	H	61	74.0
Y	Y	66	73.5
G	G	72	72.9
Y	Y	76	72.5
H	H	78	72.3
W	W	83	71.8

8014

493

75.22

3.30

78.4

50' n of Whittier

W	W	85	71.6
H	H	78	72.3
Y	Y	74	72.7
G	G	69	73.3
Y	Y	66	73.5
H	H	61	74.0
E	E	55	74.6

TP 330 7857

493 75.22

7857Whittier

25' n of Whittier

E		39	74.6
H		46	73.9
"		51	73.4
G		53	73.2
Y		56	72.9
H		59	72.6
W		65	72.6

100' n of Whittier

W		70	71.5
H		63	72.1
Y		58	72.7
G		58	72.7
Y		56	72.9
H		52	73.3
E		41	74.4

7851

125 n f Whittier

E	56	72.9
H	61	72.4
"	61	72.4
L	62	72.3
"	66	71.9
H	70	71.5
W	73	71.2

150 n f Whittier

W	77	70.8
H	72	71.3
"	70	71.5
L	65	72.0
"	63	72.2
H	63	72.2
E	60	72.5

7851

175 n f Whittier

E	65	72.0
H	66	71.9
"	66	71.9
L	67	71.8
"	69	71.6
H	74	71.1
W	80	70.5

200 n = Sd Xenophon st (70')

W	72	71.3
H	70	71.5
"	73	71.2
L	73	71.2
"	72	71.2
H	70	71.5
E	70	71.5

Kills ✓

78.5

S 1/4 of Xenophon V

E	72	71.3
H	72	71.2
Y	75	71.0
L	74	71.1
Y	73	71.2
H	74	71.1
W	73	71.2

S 1/4 of Xenophon

W	80	70.5
H	82	70.3
Y	80	70.5
L	78	70.7
Y	77	70.8
H	76	70.9
E	73	71.2

78.57

Willow

Center of Xenophon V

E	75	71.5
H	77	70.8
Y	78	70.7
L	80	70.5
Y	83	70.2
H	85	70.0
W	86	69.9

W 1/4 of Xenophon

W	70	69.5
H	88	69.7
Y	85	70.0
L	83	70.2
Y	80	70.5
H	78	70.7
E	76	70.9

7857

	N	bb	6	Xenophon	
E				76	709
				7857	
				915	
				59.36	
				75.30	
H				79	706
γ				83	702
δ				85	700
H				87	698
H				88	697
W				90	695

N line of Xenophon

W				915	6936	nwn Xenophon
H				89	696	
γ				89	696	
δ				86	699	
γ				82	703	
H				81	704	
E				76	709	
TP	594	75.30		915	6936	nwn Xenophon

7520

Wells

	25	nq	Xenophon	
E			46	707
H			50	703
γ			54	699
δ			55	698
γ			55	698
H			56	697
W			55	697

50 n 8 Xenophon

W			61	692
H			58	695
γ			61	692
δ			57	696
γ			54	699
H			49	704
E			49	704

75-30

75' n of Xenopho

E	46	707
SE	52	701
7	53	700
6	57	696
4	59	694
SE	64	689
W	63	690

100 m of Xenopho

W	64	689
SE	62	691
7	60	693
6	59	694
4	54	699
SE	51	702
E	48	705

75-30

Wells 2

125' n of Xenopho

E	50	703
SE	53	700
4	58	695
6	62	691
4	63	690
SE	64	689
W	65	688

150 m of Xenopho

W	69	684
SE	66	687
4	66	687
6	63	690
4	62	691
SE	60	693
E	59	694

75-30

175 n f Xenophon

E	64	68.1
H	61	69.2
4	62	69.1
6	65	68.8
4	65	68.8
H	66	68.7
W	65	68.8

200 n f SS Youngs (50)

W	64	68.9
H	65	68.8
4	66	68.7
6	69	68.4
4	71	68.2
H	71	68.2
E	73	68.0

75-30

Wells et

S 66 f Youngs

E	77	67.6
H	75	67.8
4	74	67.9
6	71	68.2
4	69	68.4
H	68	68.5
W	67	68.8

S 14 f Youngs

W	66	68.7
H	66	68.7
4	71	68.2
6	76	67.7
4	79	67.4
H	80	67.3
E	81	67.2

75-30

Center of Gauge

E	85	66.8
H	85	66.8
Y	82	67.1
L	78	67.5
Y	72	68.1
H	67	68.6
W	66	68.7

N 1/4 of Gauge

W	74	67.9
H	75	67.8
Y	77	67.6
L	80	67.3
Y	86	66.7
H	87	66.4
E	87	66.6

75-30

Mills et

N 1/4 of Gauge

E	89	66.4
H	89	66.4
Y	91	66.2
L	91	66.2
Y	88	66.5
H	85	66.8
W	82	67.1

N 1/2 of Gauge

W	90	66.3
H	92	66.1
Y	94	65.9
L	96	65.7
Y	95	65.8
H	92	66.1
E	98	66.2

NE 1/4 Gauge

TP

75.30

25' n of Gauge

E	97	65.6
W	98	65.5
4	95	65.8
6	94	65.9
4	99	65.4
W	102	65.1
W	102	65.1

50' n of Gauge

W	107	64.6
W	105	64.8
4	105	64.8
6	103	65.0
4	102	65.1
W	100	65.3
E	99	65.4

75.30

Wells at

75' n of Gauge

E	93	66.0
W	97	65.6
4	99	65.4
6	102	65.1
4	105	64.8
W	107	64.6
W	110	64.3

100' n of Gauge

W	110	64.3
W	105	64.8
4	101	65.2
6	97	65.6
4	94	65.9
W	88	66.5
E	85	66.8

75.30

125' n f

Gaugage

75.30

5.66

69.64

5.72

75.36

E 76 68.7

H 78 67.5

Y 83 68.0

L 88 66.5

Y 91 66.2

H 94 65.9

W 103 65.6

150' n f

Gaugage

W 91 66.2

H 84 66.9

Y 79 67.4

L 77 67.6

Y 71 68.2

H 70 68.3

E 64 68.9

TP

878

7842

566

69.64

7842

Wells #

175' n f

Gaugage

E 81 70.3

H 88 69.6

Y 93 69.1

L 100 68.4

Y 104 68.0

H 110 67.4

W 114 67.0

2000' n - Sd of Zouch (70)

W 105 67.9

H 96 68.8

Y 87 69.7

L 84 70.2

Y 77 70.7

H 71 71.3

E 64 72.0

6

S 1/4 of Zouch

E	56	728
tl	65	719
w	70	714
b	78	706
y	84	700
tl	90	694
w	107	682

S 1/4 of Zouch

w	93	691
tl	85	699
y	75	706
b	69	715
y	65	719
tl	58	726
E	50	734

Center of Zouch

E	52	732
tl	54	730
y	60	724
b	64	720
y	70	714
tl	78	706
w	90	694

N 1/4 of Zouch

w	83	701
tl	74	710
y	68	716
b	64	720
y	59	725
tl	54	730
E	49	735

7842

N bl of Zouch

E	40	743
H	52	737
Y	56	728
L	63	721
Y	67	717
H	72	712
W	78	706

N line of Zouch

W	760	7082
H	69	715
Y	63	721
L	56	728
Y	54	730
H	50	734
E	30	754

nw 1/4
Zouch

7842

wells 1/4

25^c n 1/2 Zouch

E	36	748
H	47	737
Y	56	728
L	60	724
Y	62	722
H	66	718
W	73	711

50 n 1/2 Zouch

W	76	708
H	64	720
Y	59	725
L	54	730
Y	50	734
H	45	739
E	34	750

78.4v

	75'	n 7	Zauch
E			31 75.3
H			40 74.4
3			44 73.8
H			50 73.4
4			60 72.4
H			70 71.4
W			76 70.8

	100'	n 8	Zauch
W			76 70.8
H			68 71.6
4			58 72.6
6			51 73.3
7			46 73.8
H			37 74.7
E			18 76.6

78.4v

Wellsort

	125'	n 8	Zauch
E			12 77.2
H			27 75.7
4			46 73.8
6			60 72.4
9			71 71.3
H			80 70.4
W			89 69.5

	150'	n 8	Zauch
W			103 68.1
H			89 69.5
4			78 70.6
6			68 71.4
4			55 72.9
H			42 74.2
E			27 75.7
TP	102		200 76.4v

78.4v

2.0v

76.4v

1.0v

77.4v

7744

175' n of Zouch

E	27	74.7
H	47	72.7
Y	60	71.4
L	72	70.2
Y	84	69.0
H	99	67.5
W	123	65.1

200' n = 52 Alcott (20')

W	142	63.2
H	108	66.6
Y	90	68.4
L	80	69.4
Y	70	70.4
H	58	71.6
E	39	73.5

7744

Wells et

S 1/4 of Alcott

E	42	73.2
H	64	71.0
Y	78	69.6
L	88	68.6
Y	100	67.4
H	116	65.8
W	143	63.1

S 1/4 of Alcott

W	130	62.4
H	125	64.9
Y	107	66.7
L	95	67.9
Y	85	68.9
H	68	70.6
E	47	72.7

7744

Center of Alcott

E	50	72.4
SE	76	69.8
S	89	68.5
SW	100	67.4
W	113	66.1
WNW	129	64.5
W	150	62.4

N 1/4 of Alcott

W	152	62.2
SE	128	64.6
S	113	66.1
SW	104	67.0
W	97	67.7
NE	82	69.2
E	59	71.5

7744

Mellor

N 1/4 of Alcott

E	70	70.4
SE	91	68.3
S	102	67.2
SW	105	66.9
W	117	65.7
WNW	132	64.2
W	153	62.1

N 1/2 of Alcott

W	151	62.3
SE	134	64.0
S	125	64.9
SW	115	65.9
W	106	66.8
NE	95	67.9
E	75	69.9
TP	105	2095
		75.4
		69.90

7744

754

69.90

110.6

71.95

NEH

Alcott (27)

70.95

25' n f Alcott

E	24	68.4
H	41	66.9
Y	54	65.6
L	63	64.7
Y	72	63.8
H	80	63.0
W	93	61.7

50' n f Alcott

W	95	61.5
H	79	63.1
Y	70	64.0
L	64	64.6
Y	58	65.2
H	47	66.3
E	36	67.4

70.95

Wells II

75' n f Alcott

E	42	66.8
H	47	66.3
Y	58	65.2
L	67	64.1
Y	82	62.8
H	91	61.9
W	98	61.2

100' n f Alcott

W	102	60.8
H	93	61.7
Y	82	62.4
L	74	63.4
Y	65	64.5
H	58	65.2
E	46	66.4

70.95

125' n of Alertt

E	52	65.8
H	69	64.1
Y	75	63.5
b	81	62.9
Y	89	62.1
H	97	61.3
W	110	60.0

150' n of Alertt

W	117	59.3
H	108	60.2
Y	100	61.0
b	93	61.7
Y	84	62.6
H	76	63.4
E	60	65.0

70.95

Wells at

175' n of Alertt

E	69	64.1
H	80	63.0
Y	88	62.2
b	97	61.3
Y	102	60.8
H	107	60.3
W	112	59.8

you n = S of Browning 70 (28 d)

W	112	59.8
H	105	60.5
Y	97	61.1
b	94	61.6
Y	88	62.2
H	80	63.0
E	69	64.1

70.95

S 1/4 Browning

E	70	64.0
H	79	63.1
Y	87	62.3
L	93	61.7
Y	97	61.3
H	103	60.7
W	110	60.0

S 1/4 Browning

W	107	60.6
H	100	61.0
Y	95	61.5
L	90	62.0
Y	86	62.4
H	78	63.2
E	67	64.3

70.95

Wells

Center of Browning

E	70	64.0
H	82	62.8
Y	84	62.6
L	88	62.2
Y	94	61.6
H	99	61.1
W	104	60.6

N 1/4 Browning

W	103	60.7
H	96	61.4
Y	89	62.1
L	85	62.5
Y	82	62.8
H	77	63.3
E	68	64.2

70.95

7457

Wells. II

N bl of Browning

2095

25'

n of

Browning

E	63	647	268 65.27
H	70	640	9.30 79.57
Y	76	634	
L	78	632	
7	85	625	
H	93	617	
N	102	608	

E	84	66.2
H	90	65.6
Y	96	65.0
L	104	64.2
9	112	63.4
H	116	63.8
N	123	62.3

N line of Browning

50'

n of

Browning

N	100	61.0
H	92	61.8
Y	86	62.4
L	78	63.2
7	73	63.7
H	64	64.6
E	57	65.3

N	111	63.5
H	103	64.3
Y	95	65.1
L	88	65.8
4	82	66.4
H	72	67.4
E	63	68.3

TD

930

7457

568

6527

NE of

Browning

7457

7457

Wells 17

75 n f Browning

E	54	69.1
ll	60	68.6
y	66	68.2
l	70	67.6
7	81	66.5
ll	87	65.9
W	97	64.9

100 n f Browning

W	86	66.0
ll	76	67.0
y	71	67.5
l	63	68.3
7	63	68.3
ll	59	68.7
	54	69.2

125 n f Browning

E	56	69.0
ll	60	68.6
y	61	68.5
l	66	68.0
7	70	67.6
ll	76	67.0
W	79	66.7

150 n f Browning

W	80	66.6
ll	70	67.6
y	69	67.7
l	67	67.9
7	65	68.1
ll	61	68.5
E	62	68.3

175 m of Browning

E	71	67.5
H	71	67.5
"	68	67.8
L	71	67.5
"	72	67.4
H	72	67.4
W	72	66.7

200 m = S of Curtis St (70)

W	82	66.4
H	77	66.9
"	77	66.8
L	77	66.9
"	75	67.1
H	78	66.8
E	83	66.3

S 1/4 of Curtis

E	88	65.8
H	83	66.3
"	82	66.4
L	80	66.6
"	80	66.6
H	82	66.4
W	84	66.2

S 1/4 of Curtis

W	88	65.8
H	86	66.0
"	86	66.0
L	85	66.1
"	87	65.9
H	91	65.5
E	97	64.9

7457

Center of Curtis

E	10.3	64.3
SE	10.0	64.6
Y	9.7	64.9
S	9.0	65.6
Y	8.9	65.7
SE	8.8	65.8
W	9.2	65.4

N 1/4 of Curtis

W	9.7	64.9
SE	9.5	65.1
Y	9.6	65.0
S	9.9	64.7
Y	10.3	64.3
SE	10.9	63.7
E	11.3	63.3

7457

Wells

N 1/4 of Curtis

E	12.3	62.3
SE	11.6	63.6
Y	11.2	63.4
S	10.6	64.0
Y	10.2	64.4
SE	9.9	64.7
W	9.9	64.7

S 1/4 of Curtis

W	10.3	64.3
SE	10.5	64.1
Y	10.8	63.7
S	11.4	63.2
Y	11.9	62.7
SE	12.3	62.3
E	13.3	61.3

TP 11.9 65.4 10.2 64.5

NWN
Curtis 29th7457
10.2
14.35
1.19
65.54

6554

25 n f Curtis

E	64	59.1
H	50	60.5
Y	45	61.0
L	40	61.5
7	36	61.9
H	30	62.5
W	26	62.9

50 n f Curtis

W	43	61.2
H	48	60.7
Y	53	60.2
L	57	59.8
7	69	58.6
H	83	57.2
E	101	55.3

6555

75 n f Curtis

E	151	50.4
H	110	54.5
Y	91	56.4
L	78	57.7
7	74	58.1
H	68	58.7
W	63	59.2

100 n f Curtis

W	84	57.1
H	90	56.5
Y	100	55.5
L	120	53.5
7	135	52.0
H	169	48.6
TP	004	54.48
E	133	41.2

Wells st

6554
11.20
54.44
0.9
54.54

5448

125 m of busters

W	0.6	53.9	4448 1310 43100 168
H	3.0	51.5	43100 1024 2276
Y	5.8	48.7	2276 127 3403 1260
L	8.6	45.9	21.43 41
Y	12.0	42.5	21.84 935
H	16.1	38.4	1249 125 1374
E	22.8	21.7	158 2.16

25' E =

150 m of busters

W	4.6	49.9		
H	9.9	44.6		
Y	15.0	39.5		
L	17.9	36.6		
Y	21.8	32.7		
H	28.2	26.3		
E	34.0	20.5		
TP	1.6	4300	1310	41.38

Taken with a hand level

4300

Willow

175 m of busters

W	2.3	39.7			
H	9.5	33.5			
Y	14.0	29.6			
L	16.8	26.2			
Y	19.4	23.6			
H	25.2	18.0			
E	29.0	14.0			
TP	40' E	39.1	4.0	with on rd	
	127	3403	1024	3226	
PL	210	r =	rd	Willow	0.00
W	8.3	25.7			
TP	0.41	21.84	1260	21.43	
H	18	20.0			
Y	8.0	13.8			
L	14.0	7.8			
TP	125	1374	9.35	12.49	
Y	7.6	6.1			
H	9.3	4.4			
E	12.1	1.6			
TP	11.8	2.16	ET on rd		

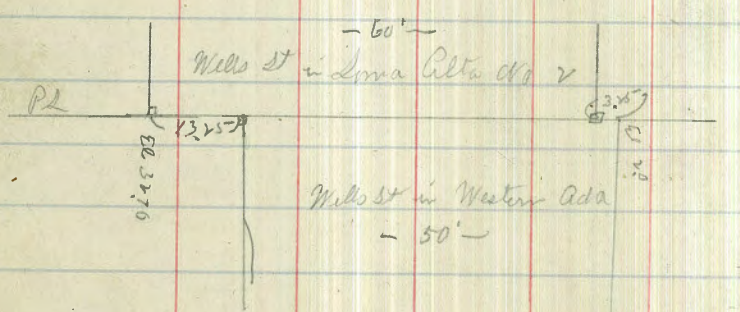
12/12/27
 27/27/27
 12/12/27
 X Sec of Wells St through Loma Alta Cor (60')

1646
 W. 1646

	2922		7 in 21		Pueblo Div			1646
(10)	Pueblo Div S of Loma Alta Cor		center			18	14.7	9.64
W L	+ 3.0	32.70	E 1/4			80	8.5	6.82
th		17	27.5	E 1/4		11.0	5.5	5.4
4 W		68	22.4		25' n of P.L.			7.32
	25' n of P.L.			W 1/4		24	74.1	
W L		7.6	21.6	W 1/4		72	9.3	
TP 024	1646	130	16.22	6		122	4.3	

054 726 963 684

Pueblo Div



E L		530	2.1
	25' n of P.L.		
E 1/4		54	2.0
th		73	0.1
E L		80	-0.6

7.36

	50'	n7	P2	
E			9.6	-1.8
H			9.2	-2.2
y			8.5	-1.1
b			7.4	0.0
y			6.2	1.2
H			3.5	3.9
W			0.8	6.6

	75'	n7	P2	
W			5.9	1.5
bb			8.5	-1.1
y			9.1	-1.7
b			9.4	-2.0
y			9.7	-2.3
H			10.2	-2.8
E			10.5	-3.1

	88'	n		
W2			10.2	-2.4

7.36

Wells

	100'	n8	P2	
E			11.00	-3.6
H			11.00	-3.6
y			10.9	-3.5
b			10.8	-3.4
y			10.7	-3.3
H			10.6	-3.2
W			10.5	-3.1

	125'	n = S of	Mentalen # (60)	
W			11.8	-4.4

Meter
 11.8
 11.8

	7P	208	974	00	7.36
--	----	-----	-----	----	------

114' n of n2 of Mentalen = 300 S of Ripona
 level clear across -3.8

7.36
 2.38
 9.74

974

300' S of Napoma W
E to W EL - 3.8 - 3.8

290' S of Napoma
E line 130 - 3.3

275' S of Napoma
E 110 - 1.3

H 123 - 2.6

7 120 - 3.3

6 120 - 3.3

7 130 - 3.3

H 134 - 3.7

W 137 - 3.8

250' S of Napoma
E 40 5.7

EL 60 3.7

7 80 1.7

6 75' 10.8 - 1.8

110 - 1.3

7 125 - 2.8

H 130 - 3.3

W 137 = 3.5

974

225' S of Napoma
W 130 - 3.3

H 92 0.5

4 72 2.5

4 45 5.2

4 16 8.1

200' S of Napoma
W 100 - 0.3

H 64 3.3

4 32 6.5

to TP 12.30 19.66 258 776

225' S of Napoma

E 55 14.2

ELL 86 11.1

200' S of Napoma

E 00 19.7

H 39 15.8

4 76 12.1

6 103 9.4

226
12.30
19.66

1966

175' n of Nippona st

W	16.6	3.1
H	12.7	7.0
Y	8.8	10.9
L	4.9	15.8
Y	2.4	17.3

TP

579

23152301726

1966

H	2.0	21.2
E	0.1	23.1

$$\begin{array}{r} 19.66 \\ 2.34 \\ \hline 17.32 \\ 1.79 \\ \hline 23.115 \end{array}$$

150' n of Nippona

E	25	20.7
H	37	19.5
Y	61	17.1
L	82	15.0
Y	103	12.9
H	132	10.0
W	165	6.7

2315

W. 11.00

125' n of Nippona st

W	14.0	9.2
H	11.7	11.5
Y	9.5	13.7
L	7.2	16.0
Y	6.1	17.1
H	4.8	18.4
E	2.5	20.7

100' n of Nippona st

E	22	21.0
H	29	20.3
Y	38	19.4
L	52	18.0
Y	62	17.0
H	82	15.0
W	100	13.2

2315

75' n of Ripona

W	68	16.4
bl	53	17.9
y	38	19.4
b	28	20.4
y	18	21.4
bl	10	22.2
E	04	22.8

50' n of Ripona

E	25	20.7
bl	22	21.4
y	15	21.7
b	35	19.7
y	60	17.2
bl	91	14.1
W	106	12.6

TP 392 14.28 12.79 10.36

2315
12.79
10.36
3.92
14.28

1428

Wills st

25' n of Ripona st

W	87	5.6
bl	66	7.7
y	42	10.1
b	23	12.0
y	16	12.7
bl	14	12.9
E	03	14.0

S line of Ripona st (60')

E	73	7.0
bl	86	5.7
y	98	4.5
b	114	2.9
y	127	1.6
bl	147	-0.4
W	165	-2.2

S 1/4 of Ripoma

W	14.3	-4.0
H	16.4	-2.1
Y	14.2	0.1
b	12.8	1.5
y	12.8	1.5
H	11.7	2.6
E	10.5	3.8

TP 1100 883 975 413

S 1/4 of Ripoma

E	8.3	0.5
H	8.8	0.0
y	9.6	-0.8
b	10.3	-1.5
y	11.5	-2.7
H	12.6	-3.8
W	12.6	-3.8

1428
975
4.53
14.30
8183

center of Ripoma

E	10.6	-1.8
H	11.6	-2.8
y	12.6	-3.8
b	12.6	-3.8
y	12.6	-3.8
H	12.6	-3.8
W	12.6	-3.8

Bal of Intersite same as Slough

75' N of Ripoma

W	11.8	-3.0
H	12.6	-3.8
y		
b		
y		
H		
E	12.6	-3.8

Slough
Water
Dune

883

1513

Wells st

	100	mf	Dipoma
W	63		25
ll	70		1.8
γ	94		-0.6
l	100		-1.2
γ	112		-2.4
ll	118		-3.0
E	126		-3.8

	125	mf	Dipoma
E	100		-12
ll	95		-0.7
γ	80		0.8
l	65		2.3
γ	47		4.1
ll	35		3.3
W	23		6.5

TP 633 15.13 009 880

883
03
880
633
15.13

	150	mf	Dipoma
W	49		10.2
ll	63		8.8
γ	80		7.1
l	98		5.3
γ	110		4.1
ll	123		1.8
E	134		1.7

	175	mf	Dipoma
E	105		4.6
ll	96		5.5
γ	84		7.1
l	64		8.7
γ	48		10.3
ll	33		11.8
W	16		13.5

TP 692 21.45 060 1453

15.13
60
1453
692
21.45

2145

	200	mg	Supina
W			57 16.4
H			66 14.9
Y			84 13.1
L			100 11.5
Y			120 9.5
W			138 7.7
E			149 6.6

225 mg Supina

E			134 8.1
H			119 9.6
Y			104 11.3
L			81 13.4
Y			63 15.2
H			50 16.5
W			38 17.7

2145

Wells

	250	mg	Supina
W			10 20.5
H			29 18.6
Y			47 16.8
L			67 14.8
Y			80 13.5
H			93 12.2
E			109 10.6

275 mg Supina

E			68 14.7
H			53 16.2
Y			45 17.0
L			24 18.1
Y			20 19.5
H			05 21.0
TP	936	2926	153 19.90
W			65 22.8

2145
155
1990
936
29.26

29.26

300 n of Rufuma

W	34	25.9
H	47	24.6
Y	62	23.1
L	74	21.9
Y	83	21.0
GL	96	19.7
E	116	17.7

325 n of Rufuma

E	86	20.7
H	64	22.9
Y	50	24.3
L	39	25.4
Y	25	26.8
H	10	28.3
W	702	29.5

TP

707

3899

034

28.92

$$\begin{array}{r} 29.26 \\ 34 \\ \hline 28.92 \\ 2.07 \\ \hline 30.99 \end{array}$$

38.99

Wells st

350 n of Rufuma st

W	115	31.5
H	49	31.1
"	56	30.4
L	72	28.8
Y	89	27.1
GL	107	25.3
E	132	22.8

375 n of Rufuma

E	83	26.7
H	77	28.3
Y	57	30.3
L	44	31.6
Y	34	32.6
H	29	33.1
W	31	34.9

3599

460 n.s. Rifosa

W	25	33.5
ll	22	33.8
y	18	34.2
h	19	34.1
y	34	32.6
ll	46	31.4
E	61	29.9

475 n.s. Rifosa

E	50	31.0
ll	30	33.0
y	16	34.4
h	12	34.8
7	13	34.5
ll	21	33.9
W	26	33.4

3599

Willist

4150 n.s. Rifosa

W	28	33.2
ll	20	34.0
y	16	34.4
h	12	34.8
y	12	34.8
ll	21	33.9
E	40	32.0

475 n.s. Rifosa

E	24	33.6
ll	13	34.7
y	10	35.0
h	13	34.7
y	19	34.1
ll	25	33.5
W	31	32.9

35.99

500 n6 - *Refoma*

W	31	32.9
H	28	33.2
Y	22	33.8
L	1.8	34.2
Y	1.5	34.5
H	1.6	34.4
E	3.2	33.8

525' n6 *Refoma*

E	2.4	33.6
H	1.7	34.3
Y	1.7	34.3
L	2.1	33.9
Y	2.6	33.4
H	3.1	32.9
W	3.6	32.4

TP 294 36.09 2.84 33.13

35.99
 2.84
 33.15
 2.90
 36.09

36.09

Wells at

550 n6 *Refoma*

W	4.4	31.7
H	3.6	32.5
Y	3.0	33.1
L	2.6	33.5
Y	1.9	34.2
H	1.6	34.5
E	1.4	34.7

575' n6 *Refoma*

E	1.7	34.4
H	1.2	33.9
Y	2.6	33.5
L	3.1	33.0
Y	3.7	32.4
H	4.3	31.8
W	4.8	31.3

3609

600 m = S of Garavota St (60')

W	55	30.6
W	50	31.1
Y	45	31.6
U	37	32.4
Y	33	32.8
U	30	33.1
E	27	33.4
TP	296	3609
		272
	3633	3837
		SE. 44
S	3337	
E	32	33.7
U	36	32.7
Y	38	32.5
U	40	32.3
Y	48	31.5
U	54	30.9
W	61	30.2

3633

Willis

S 1/4 of Garavota

W	65	29.8
U	60	30.3
Y	56	30.7
U	47	31.6
Y	45	31.8
U	43	32.0
E	38	32.5
Center of Garavota		
E	44	31.9
U	46	31.7
Y	50	31.3
U	54	30.8
Y	60	30.3
U	63	30.0
W	68	29.5

N	1/2 f	Gavaiata
W		70 29.3
H		67 29.6
Y		62 30.1
b		57 30.6
Y		55 30.8
b		51 31.2
E		46 31.7

N	1/2 f	Gavaiata
E		49 31.4
b		53 32.0
Y		58 30.5
b		62 30.1
Y		65 29.8
H		69 29.4
W		72 29.1

N	1/2 f	Gavaiata
W		76 28.7
H		71 29.2
Y		68 29.5
b		64 29.9
Y		61 30.2
H		56 30.7
E		48 31.5

N	1/2 f	Gavaiata
E		58 30.5
b		63 30.0
Y		66 29.7
b		71 29.2
Y		74 28.9
H		77 28.6
W		81 28.2

36.33

50' n of Garantie

W	88	27.5
H	85	27.8
Y	81	28.2
L	76	28.7
V	72	29.1
A	67	29.6
E	62	30.1

75' n of S

E	66	29.7
H	71	29.2
Y	76	28.7
L	81	28.2
V	85	27.8
A	89	27.4
W	91	27.2

36.33

Wells St

100' n of Garantie

W	96	26.7
H	92	27.1
Y	89	27.4
L	84	27.9
V	78	28.5
A	73	29.0
E	68	29.5

125' n of S

E	70	29.3
H	74	28.9
Y	81	28.2
L	86	27.7
V	90	27.3
A	96	26.7
W	100	26.3

3633

150' n of Garaiota

W	105	25.8
U	101	26.2
Y	95	26.8
L	88	27.5
9	80	28.3
U	74	28.9
E	70	29.3

175' n of G

E	73	29.0
U	77	28.6
Y	84	27.9
L	92	27.1
9	99	26.4
U	104	25.9
W	107	25.6

3633

Wells St

200' n of Garaiota

W	110	25.3
U	106	25.7
Y	102	26.1
L	96	26.7
9	90	27.3
U	83	28.0
E	78	28.5

225' n of G

E	89	27.1
U	85	27.8
Y	94	26.9
L	101	26.2
9	106	25.7
U	111	25.2
W	115	24.8

TP

458

30.07

1084

25.49

26.33
1082
2849
424
30.07

3007

250' n7 Garavito

W 5.7 24.4

bl 5.1 25.0

4 4.6 25.5

b 4.0 26.1

4 3.6 26.5

bl 3.0 27.1

E 2.3 27.8

275' n7 G

E 2.7 27.4

bl 3.1 27.9

4 4.0 26.1

b 4.5 25.6

4 3.0 25.1

bl 3.5 24.6

W 6.2 23.9

3007

Willost

300' n7 Garavito

W 6.7 23.4

bl 6.2 23.9

4 5.8 24.3

d 5.2 24.9

4 4.4 25.7

bl 3.6 26.5

E 3.0 27.1

325' n7 Garavito

E 3.3 26.8

bl 4.2 25.9

4 4.8 25.3

b 5.5 24.6

4 6.1 24.0

bl 6.5 23.6

W 6.9 23.2

3007

350 n f Guarato

W	74	22.7
H	70	23.1
4	63	23.8
6	58	24.3
7	52	24.9
bl	42	25.9
E	33	26.8

375' n f G

E	33	26.6
bl	44	25.7
4	51	25.0
6	57	24.4
4	65	23.6
H	72	22.9
W	74	22.7

3007

Wells

400 n f Guarato

W	79	22.2
H	74	22.7
4	65	23.6
6	58	24.3
4	53	24.8
H	44	25.7
E	37	26.4

425' n f Guarato

E	39	26.2
H	47	25.4
4	55	24.6
6	61	24.0
4	68	23.3
H	77	22.4
W	82	21.9

30.07

1150 m f Garavato

W	87	21.4
U	82	21.9
4	74	22.7
6	68	23.3
4	59	24.2
U	53	24.8
E	45	25.6

475 m f G-

E	51	25.0
U	57	24.4
4	62	23.9
6	70	23.1
4	77	22.2
U	85	21.6
W	92	20.9

30.07

Wells 11

500 m f Garavato

W	97	20.4
U	90	21.1
4	83	21.8
6	77	22.4
4	71	23.0
U	65	23.6
E	54	24.7

525 m f G-

E	63	23.8
U	72	22.9
4	79	22.2
6	84	21.7
4	90	21.1
U	96	20.5
W	103	19.8

3007

550 n of Guarate

W	112	18.9
H	106	19.5
Y	100	20.1
L	93	20.8
Y	86	21.5
H	76	22.5
E	69	23.2

575' n of G-

E	74	22.7
H	83	21.8
Y	93	20.8
L	108	19.3
Y	124	17.7
H	137	16.4
W	150	15.1

580' n of G-

W	165	13.6
---	-----	------

3007

Kellsit

600' n of S 27 Espinosa st (60')

W	155	14.6
H	142	15.9
Y	126	17.5
L	109	19.2
Y	95	20.6
H	85	21.6
E	75	22.6

3007

7.58

22.69

21.60

28.09

TP 5.40 ~~2509~~ 738 ~~2509~~

S 66° E Espinosa st

E	56	22.5
H	63	21.8
Y	74	20.7
L	86	19.5
Y	98	18.3
H	105	17.6
W	123	15.8

2809

S 1/4 of Esperanza

W	11.3	16.8
W	9.8	18.3
W	9.0	19.1
W	8.2	19.9
W	7.2	20.9
W	6.2	21.9
E	5.4	22.7

Center of Esperanza

E	3.2	22.9
W	6.2	21.9
W	6.9	21.2
W	7.7	20.4
W	8.4	19.7
W	9.2	18.9
W	10.4	17.7

2809

Wells

N 1/4 of Esperanza

W	9.6	18.5
W	8.6	19.5
W	8.0	20.1
W	7.1	21.0
W	6.6	21.5
W	5.9	22.2
E	4.9	23.2

N 1/4 of E

E	4.7	23.4
W	5.5	22.6
W	6.2	21.9
W	6.9	21.2
W	7.6	20.5
W	8.4	19.7
W	9.1	19.0

2809

100'

nj

Estancia

W

6.0 22.1

U

4.8 23.3

y

3.8 24.3

b

3.0 25.1

y

1.7 26.4

U

1.3 26.8

E

0.3 27.8

TP

2.70

2981

0.98 27.1

2809
28
27.13
2.20
2981

125'

nj

E -

E

1.2 28.6

U

2.0 27.8

y

3.0 26.8

b

4.0 25.8

y

5.0 24.8

U

5.8 24.0

W

7.0 22.8

2981

Wells

150'

nj

Estancia

W

6.3 23.5

U

5.3 24.5

y

4.3 25.5

b

3.4 26.4

y

2.7 27.1

U

1.5 28.3

E

0.6 29.2

175'

nj

Estancia

E

0.2 29.6

U

1.2 28.6

y

2.4 27.4

b

2.8 27.0

y

4.0 25.8

b

5.0 24.8

W

6.0 23.8

2981

200 n f Esperanza

W		5.9	23.9
H		5.1	24.7
Y		4.0	25.8
L		3.1	26.7
Y		2.4	27.4
H		1.1	28.7
E		0.1	29.9
E	225' n f	E-	
E		0.0	29.8
H		1.1	28.7
Y		2.6	27.2
L		4.3	25.5
L	+3'	5.5	26.5
L		4.0	25.8
H		5.4	24.4
W		7.3	22.5

2981

Wells

250 n f Esperanza

W		9.6	20.2
H		7.7	22.1
Y		6.3	23.5
L		5.7	24.1
Y		4.3	25.5
H		2.8	27.0
E		1.0	28.8
E	275' n f	Esperanza	
E		1.5	28.3
H		3.4	26.4
Y		4.5	25.3
L		6.4	23.6
Y		8.2	21.6
H		9.4	20.4
W		11.6	18.2

2981

300 m f Esperanza

W	84	214
H	80	218
V	64	234
b	52	256
y	33	265
H	19	279
E	07	291

325 m f E-

E	07	291
H	16	282
y	25	273
b	37	261
y	48	250
H	57	241
W	62	236

2981Milost

350 m f Esperanza

W	57	241
H	49	249
y	41	257
b	32	266
y	23	275
H	15	283
E	08	290

375 m f E-

E	10	288
H	17	281
y	26	272
b	30	268
y	42	256
H	48	250
W	54	244

2981

460 m f Estuaria

W	55	24,3
H	50	24,8
Y	42	25,6
L	36	26,2
Y	25	27,3
H	22	27,6
E	15	24,3

425' m f Estuaria

E	16	28,2
H	23	27,5
Y	30	26,8
L	37	26,1
Y	45	25,3
H	56	24,2
W	54	24,4

2981

Wills et

450 m f Estuaria

W	65	23,3
H	80	21,8
Y	91	20,7
L	76	22,2
Y	70	22,8
H	65	23,3
E	54	24,4

0,36 1971 10,46 19,31

E	02	19,5
E	14	18,3
E	27	17,0
E	28	16,9
E	32	16,5
E	31	16,6
E	22	17,5

2981
10,46
19,31
36
19,71

19.71

500 m of Separation

W		84	11.3
H		84	11.3
	+5'	140	5.7
Y		85	11.2
b		72	12.5
Y		66	13.1
H		63	13.4
E		50	14.7

525 m of E-

E		125	7.2
TP	0.36	865	8.79
H		32	5.5
Y		41	4.6
b		40	4.7
Y		49	3.8
H		56	3.1
W		40	4.7

$$\begin{array}{r} 19.71 \\ 11.42 \\ \hline 8.29 \\ 36 \\ \hline 8.63 \end{array}$$

8.65

Mellon

550 m of Separation

W		77	1.0
H		76	1.1
Y		78	0.9
b		79	0.8
Y		85	0.2
H		84	1.03
E		75	1.2

575 m of E-

E		77	1.0
H		87	0.0
Y		89	-0.2
b		90	-0.3
Y		89	-0.2
H		90	-0.3
W		90	-0.3

8.65

600 m = 521 Bodega

N	90	-03
U	89	-02
U	92	-05
b	91	-04
U	85	02
U	79	08
E	74	13
TP	740	1.25

BANSE N

Bodega

Level beyond

13/13/1904
 1/2
 2/ Shemster

Xsec of Brighton at (60)

400' W of Abbott to Spang at

256 1319 1063

8m 74 ft
 Longley + Abbott

70 1.35 2.48 5.05 8.14

400' W of Abbott at

52 6.0 3.50

11 5.3 4.20

7 5.4 4.10

6 5.5 4.0

4 5.2 4.3

11 4.8 4.7

N 2 6.0 3.50

425' W of Abbott

11 6.1 3.4

11 5.0 4.5

7 5.7 3.8

6 5.7 3.8

7 6.6 2.9

11 5.6 3.9

5 5.8 3.7

949

Brighton

450' W of Abbott

5. 7.0 2.5

11 4.6 4.9

7 7.1 2.4

6 8.1 1.4

4 7.5 2.0

11 4.4 5.1

11 4.8 4.7

475' W of Abbott

11 7.9 1.6

11 8.0 1.5

7 8.1 1.4

6 8.2 1.3

4 8.4 1.3

11 7.8 1.7

5 8.3 1.2

949

500 W-Y Abbott

710 m up to this point

S	89	0.6
H	89	0.6
Y	88	0.7
L	90	0.5
Y	90	0.5
h	89	0.6
n	91	0.4

525 W-Y Abbott

n	89	0.6
H	78	1.7
Y	87	0.8
L	82	1.3
Y	80	1.5
H	84	1.1
S	81	1.4

949

Brighton

550 W-Y Abbott

S	85	1.0
H	86	0.9
Y	86	0.9
L	86	0.9
Y	87	0.8
H	86	0.9
n	86	0.9

575 W-Y Abbott

n	88	0.7
H	88	0.7
Y	88	0.7
L	87	0.8
Y	87	0.8
H	86	0.9
S	86	0.9

600' W - E2 Spray st

S	87	08
W	87	08
4	89	06
6	88	07
7	87	08
W	88	07
7	88	07

100' W newly level

1 (Always) X Sec of Landis St (60')
 7 25
 13 Show E. of Alabama to W of Oregon

0.5 27712 27692
 W of Mississippi (Grade) (60)

S	63	270.9	5
h	66	270.6	4
7	68	270.4	6
6	69	270.3	4
9	70	270.2	h
h	71	270.1	h
h	68	270.4	
2' W of Miss			
h	70	270.2	h
h	65	270.7	4
4	62	271.0	6
6	60	271.2	9
7	54	271.8	h
h	49	272.3	5
S	45	272.7	

27717

Landis

25' W of Mississippi

63	270.9	63	270.9
64	270.8	64	270.8
66	270.6	66	270.6
69	270.3	69	270.3
73	269.9	73	269.9
73	269.9	73	269.9
77	269.5	77	269.5

50' W of Miss

87	268.5	87	268.5
88	268.4	88	268.4
89	268.3	89	268.3
87	268.5	87	268.5
81	269.1	81	269.1
79	269.3	79	269.3
76	269.6	76	269.6

62' W of Miss

100	267.2	100	267.2
-----	-------	-----	-------

27717

75 w 8 Mississippi

S 94 267.8

H 102 267.0

y 107 266.5

b 112 266.0

y 124 264.8

TP 025 26567 1175 26542

H 24 263.3

H 48 260.9

100 w 8 Miss

H 79 257.8

H 68 258.9

H 50 260.7

b 33 262.4

y 20 263.7

H 13 264.4

S 06 265.1

26567

Sandis

125 w 8 Mississippi

S 30 262.7

H 42 261.5

y 48 260.9

b 69 258.8

y 83 257.4

H 97 256.0

H 108 254.9

150 w 8 Miss

H 136 252.1

H 122 253.5

y 110 254.7

b 94 256.3

y 85 257.5

H 67 259.0

S 60 259.7

26567

175 207 Mississippi

S 82 257.2

bl. 92 256.5

y 10.5 255.2

l 11.8 253.8

y 13.2 252.5 265.07

TP 144 255.11 120 253.67 253.67

bl 3.6 251.5 1.44 255.11

w 5.2 249.9

200 206 Mas

w 7.8 247.3

bl 5.9 249.2

y 4.8 250.3

l 3.7 251.4

y 2.6 252.5

bl 1.4 253.7

S 0.3 254.8

25511

Sandies

225 207 Mississippi

S 2.5 252.6

bl 4.0 251.1

y 5.2 249.9

l 7.0 248.1

y 8.7 246.4

bl 10.0 245.7

w 11.0 244.8

250 209 Mas

w 14.9 240.2

bl 13.2 241.9

y 11.7 243.4

l 9.9 245.2

y 8.0 247.1

bl 6.7 248.4 255.11

S 5.1 250.0 68.3

TP 0.57 248.79 6.82 248.28 248.28

255.11
68.3
248.28
51
248.59

24879

271 W-E of Alabama (60)

S	07	248.1
H	26	246.2
Y	44	244.4
L	59	242.9
Y	78	241.6
H	97	239.1
N	130	235.8

470 28162

27692

SEH

13m

E line of Mississippi at (60) (Grand)

H	100	271.6
H	102	271.4
Y	102	271.4
L	105	271.1
Y	107	270.9
H	104	271.2
N	105	270.5

28162

Sundis

E line of Mississippi at Top of Burn

N	80	273.6
H	85	273.1
Y	86	273.0
L	80	273.6
Y	79	273.7
H	76	274.0
S	60	275.6

251 E of Miss

S	39	277.7
H	57	275.9
Y	65	275.1
L	68	274.8
Y	67	274.9
H	73	274.3
N	64	275.2

50 E J Mississippi

9	11.0	277.6
H	5.1	276.5
"	5.7	276.5
L	5.2	276.4
4	4.9	276.7
H	3.9	277.7
S	2.6	279.6

75 E J Miss "

S	1.3	280.3
H	2.6	279.0
4	3.2	278.4
L	2.4	279.2
4	2.2	279.4
H	2.3	279.3
9	1.7	279.9

100 E J Mississippi

9	0.5	281.1
H	0.8	280.8
"	0.6	281.0
L	0.6	281.0
4	0.7	280.9
H	0.9	281.2
S	+0.1	281.7

TP 706 288.2 0.37 281.25

125 E J Miss "

S	5.3	283.0
H	5.4	282.9
"	5.4	282.9
4	3.1	281.3
L	7.2	281.1
4	7.4	280.9
H	7.8	280.5
"	7.3	281.0
9	6.5	281.8

281.62
 37
 281.25
 7.06
 288.31

28831

150 E 8 Mississippi

2		55	282.8
H	+31	73	281.0
		72	281.1
7		72	281.1
6		69	281.4
7		65	281.8
H	+21 +5	61	282.2
		48	283.5
		45	283.8
S		45	283.8

175 E 8 Miss

S		38	284.7
H		38	284.5
	+5 +1	40	284.3
7		60	282.3
		60	282.3
6		60	282.3
7		65	281.8
H		69	281.4
	+7	68	281.5
2		50	283.3

28831

Lundie

200 E 8 Mississippi

9		43	284.0
H		56	282.7
H		60	282.3
H		55	282.8
6		48	283.5
H		52	283.1
		51	283.2
		35	284.8
		33	285.0
H	+11 +7	32	285.0
S			

225 E 8 Miss

S		30	285.3
H		34	284.9
	+6 +8	40	284.3
7		48	283.5
		39	283.3
6		47	283.6
7		54	282.9
H		57	282.6
	+7	57	282.6
H		43	284.0

288.21

250 E of Muskegon

A	37	284.6
H	42	284.1
H	40	284.3
Y	43	284.0
L	44	283.9
Y	43	284.0
H	46	283.7
H	39	284.9
H	32	285.1
S	27	285.6

-14
+5

270 S = W of Sanderson (60)

S	30	285.3
H	30	285.3
Y	35	284.8
L	35	284.8
Y	35	284.8
H	32	285.1
H	30	285.3

288.21
235
285.96
20.50
296.46

TP 1050 296.46 235 285.96

286.46

Sands

E of Sanderson

H	102	286.3
H	105	286.0
H	101	286.4
H	102	286.3
Y	105	286.0
H	105	286.0
S	102	286.3

S of Sanderson

S	82	288.3
H	86	287.9
Y	87	287.8
L	87	287.8
Y	89	287.6
H	86	287.9
H	78	288.7

29646

25' E of Louisiana st

n 75 289.0

h 79 288.6

y 80 288.5

b 78 288.7

y 74 289.1

h 76 288.9

S 79 288.6

50' E of Louisiana

S 70 289.5

h 71 289.4

y 70 289.5

b 69 289.6

y 69 289.6

h 70 289.5

h 65 290.0

29646Sandis

75' E of Louisiana

n 50 291.5

h 59 290.6

y 59 290.6

b 58 290.7

y 59 290.6

h 52 290.9

S 57 290.8

100' E of Louisiana

S 38 292.7

h 38 292.7

y 44 292.1

b 45 292.0

y 48 291.7

h 43 292.2

h 38 292.7

29646

125'

E 7

Lansiana

20	2945
24	2937
30	2935
34	2931
37	2933
37	2933
29	2936
27	2938

130'

E 8

Lansiana

18	2947
18	2947
20	2945
20	2945
22	2943
18	2947
11	2954

T10

1126

30794

028 29618

$$\begin{array}{r} 29643 \\ 25 \\ \hline 29618 \\ 1126 \\ \hline 30794 \end{array}$$
30794

125'

E 7

Lansiana

107	2972
116	2963
116	2963
117	2967
116	2963
115	2964
113	2966

120'

E 8

Lansiana

96	2983
94	2985
94	2985
91	2988
88	2991
85	2994
84	2995

30794

225' E of Louisiana

n	60	3019
h	58	3021
y	64	3015
t	68	3011
v	70	3009
u	72	3007
s	74	3005

250' E of Louisiana

s	53	3024
h	52	3027
y	49	3030
t	46	3033
y	42	3037
h	40	3039
n	36	3043

30794

Laudis

269' E of Louisiana

n	21	3058
h	23	3056
y	28	3051
t	31	3048
y	36	3043
h	37	3042
s	40	3039

270' E = W of Texas at (60°) Gradal

s	58	3021
h	60	3019
y	61	3018
t	58	3021
y	58	3021
h	50	3029
n	48	3031

38794

Ed of Texas

N	(38) 00	304.1 307.8
H	(40) 0.0	303.9 307.9
Y	(36) 0.6	304.3 307.6
L	(47) 1.7	303.7 306.8
Y	(52) 1.1	302.7 306.8
H	(50) 1.5	302.9 306.4
S	(48) 1.7	303.1 306.2

25' E of Texas

S	24	305.5
H	20	305.9
Y	16	305.3
L	12	306.7
Y	07	307.2
H	07	307.7
N	04	307.5

30794

Sandis

50' E of Texas

N	22	305.7
H	22	305.7
Y	17	305.5
L	26	305.3
Y	28	305.1
H	29	305.0
S	31	304.8

75' E of Texas

S	64	301.5
H	60	301.9
Y	62	301.7
L	56	302.3
Y	53	302.6
H	51	302.8
N	47	303.2

307.94

100 E of Texas

n	82	299.7	
u	85	299.4	
y	89	299.0	
l	93	298.6	
y	98	298.1	
u	101	297.8	307.94
S	101	297.8	12.95
			294.99
TP	101	295.00	12.95
			294.99
			295.00

125' E of Texas

S	17	293.3	
u	20	293.0	
y	17	293.3	
l	16	293.4	
y	17	293.8	
u	13	293.7	
n	13	293.7	

295.00

Janelis

150 E of Texas

n	55	289.5	
u	55	289.5	
y	55	289.5	
l	53	289.7	
y	53	289.7	
u	51	289.9	
S	53	289.7	

175 E of Texas

S	77	287.3	
u	76	287.4	
y	76	287.4	
l	77	287.3	
y	79	287.1	
u	78	287.1	
n	77	287.3	

295.00

200 E of Texas

n	100	284.8
ll	101	284.8
y	101	284.9
b	99	285.1
y	98	285.2
ll	97	285.3
S	94	285.6

225 E of Texas

S	107	284.3
ll	108	284.2
y	109	284.1
b	110	283.8
y	115	283.5
ll	113	283.7
n	114	283.6

295.00

250 E of Texas

n	129	282.1
ll	126	282.4
y	124	282.6
b	120	283.0
y	121	282.9
ll	119	283.1
S	118	283.2

268 E of Texas

S	121	282.9
ll	126	282.4
y	125	282.5
b	129	282.1
y	129	282.1
ll	133	281.7
n	135	281.5

Dundis

2950

2715 E = rd of Arizona 60

border on ground

n		104	2846
H		111	2839
y		115	2835
b		120	2830
y		117	2833
H		98	2852
S		97	2853

2950
1158
2934
819
2915

TP 819 2916 1158 2834 Arizona

E side of Arizona (border not finished)
E side of ground

S		83	2833
H		84	2832
y		84	2832
b		84	2832
y		83	2833
H		84	2832
n		82	2834

29161

Sandis

25' E of Arizona

n		78	2838
H		81	2835
y		82	2834
b		81	2835
y		82	2834
H		82	2834
S		81	2835

50 E of Arizona

S		76	2840
H		76	2840
y		73	2843
b		72	2844
y		77	2839
H		78	2838
n		76	2840

29161

75' E of Arizona

n	70	2846
bl	70	2846
4	70	2846
6	67	2849
4	63	2853
bl	72	2844
S	69	2847

100' E of Arizona

S	63	2853
bl	66	2850
4	64	2852
6	67	2849
4	67	2849
bl	67	2849
n	66	2850

29161

Sandis

125' E of Arizona

n	60	2856
bl	60	2856
4	60	2856
6	62	2854
4	60	2856
bl	60	2856
S	56	2860

150' E of Arizona

S	50	2866
bl	52	2864
4	48	2868
6	50	2866
4	50	2866
bl	53	2863
n	52	2864

291.61

175' E of Arizona

n	44	287.2
n	45	287.1
y	45	287.1
b	45	287.1
y	42	287.4
n	43	287.3
S	40	287.0

200' E of Arizona

S	37	288.4
n	36	288.0
y	34	288.2
b	40	287.6
y	41	287.5
n	40	287.6
n	38	287.8

291.61

Lander

225' E of Arizona

n	25	289.1
	27	288.9
	30	288.6
b	23	289.3
	22	289.4
	25	289.1
S	25	289.1

2765' E - W of Amald St (65')

S	00	291.6
	01	291.5
	+01	291.7
	00	291.6
	+01	291.7
n	+02	291.8
n	+04	292.0

77 1605 0.20

291.61

291.41

291.41

Continued on B 85-8 P 71

504

Oregon 50 SE 341.62

Texas 1254 303.67

Mississippi 185 E 62 276.92

