

F. B.
861

MICROFILMED

DEC 15 1964

7/18 Hatch
Moss
Hall

Contour levels for bridge over
Challa Creek on W. St.

1

137m Sw 10th 620 2441 3721 Spk in Post

Line 40' S of A.

315' E of 33	57.9 57.9	375 366
325	98	342
335	90	355
350	96	355
350	79	356
360	78	367
365	69	376
377	72	373
370	82	363
387	15.8	332
396	113	332
400	11.1	332
414	10.5	340
424	11.5	330
430	11.1	334
439	61	384
452	63	382
469	61	384

454	58	38 ⁷
Line 30's of H.		
323 E of 33 ^d	67	37 ⁸
331	96	34 ⁹
340	91	35 ⁴
350	93	35 ²
360	91	35 ⁴
369	91	35 ⁴
375	74	37 ¹
381	73	37 ²
389	90	35 ⁵
392	110	33 ⁵
400	110	33 ⁵
409	111	33 ⁴
420	103	33 ²
426	117	32 ⁸
432	109	33 ⁶
440	116	32 ⁹
443	104	34 ¹

448	59	38 ⁶
460	63	38 ²
470	63	38 ²
485	58	38 ⁷
Line 20's of H.		
328 E of 33 ^d	62	38 ²
334	78	36 ⁷
340	98	34 ⁷
350	92	35 ³
361	92	35 ³
368	91	35 ⁴
373	107	33 ⁸
380	99	34 ⁵
383	80	36 ⁵
391	80	36 ⁵
396	100	34 ⁵
400	106	33 ⁹
415	110	33 ⁵
416	110	33 ⁵

427	10.1	34 ⁴
438	10.2	34 ²
448	11.2	33 ³
456	6.1	38 ⁴
470	5.9	38 ⁶
476	6.4	38 ¹
486	5.6	38 ⁹

Line 10' S of H

340 E of 33 ^d	6.3	38 ²
345	6.9	37 ⁶
350	8.4	36 ¹
358	9.2	35 ³
367	9.2	35 ³
384	9.1	35 ⁴
396	9.1	35 ²
400	9.2	35 ³
409	11.1	33 ⁴
420	10.5	34 ⁰
434	9.9	34 ⁶

445	10.2	34 ³
450	10.6	33 ⁹
455	7.0	37 ⁵
463	5.8	38 ⁷
476	5.9	38 ⁶
487	6.1	38 ⁴

J Line A.

350 E of 33 ^e	6.0	38 ⁵
358	6.7	37 ⁸
365	8.3	36 ²
377	8.7	35 ⁸
386	9.2	35 ³
396	8.3	36 ²
400	7.7	36 ⁸
402	7.4	37 ¹
410	10.7	33 ⁸
419	11.0	33 ⁵
428	10.1	34 ¹
441	10.3	34 ²

450	10.9	34 ¹
463	7.0	37 ⁵
464	6.9	37 ⁶
471	5.7	38 ⁸
482	5.5	39 ⁰
S of H.		
350 E of 23 ^d	6.2	38 ²
363	6.3	38 ²
377	7.7	36 ⁸
385	8.8	35 ⁷
395	9.5	35 ⁰
400	9.6	35 ⁹
407	7.4	37 ¹
414	10.2	34 ³
417	10.8	33 ⁷
421	10.5	34 ⁰
445	10.2	34 ³
452	8.9	35 ⁶
460	7.2	37 ³

475	6.6	37 ⁹
485	5.7	38 ⁸
500	6.0	38 ⁵
S 1/2 H.		
370 E of 33 ^d	5.0	39 ⁵
373	6.1	38 ⁴
376	6.3	38 ²
393	7.2	37 ³
400	9.1	35 ⁴
405	8.5	36 ⁰
411	7.5	37 ⁰
424	10.9	33 ⁶
439	10.7	33 ⁸
449	10.4	34 ¹
458	9.1	35 ⁴
469	9.2	36 ³
476	7.3	37 ²
500	5.9	38 ⁶
515	5.7	38 ⁸

On N.

400 E of 33 ^o	49	39 ⁶
410	79	37 ¹
420	76	36 ⁹
426	93	35 ²
434	107	33 ⁸
448	107	33 ⁸
461	105	34 ⁰
471	93	35 ²
486	83	36 ³
495	66	37 ⁹
500	66	37 ⁹
515	56	38 ⁹
530	56	38 ⁹

N 1/4 N.

RISE of 33 ^o	44	40 ¹
426	61	38 ⁴
437	86	35 ⁹
446	104	34 ¹
460	107	33 ⁸

470	105	34 ⁰
485	96	34 ⁹
493	84	36 ¹
500	84	36 ¹
515	75	37 ⁰
530	68	37 ⁷
543	63	38 ²
555	49	39 ⁵

N Ch. N.

136 E of 33 ^o	44	40 ¹
406	66	37 ²
455	101	34 ⁴
461	109	33 ⁵
471	105	34 ⁰
485	10.0	34 ⁵
495	10.0	34 ⁵
500	9.4	35 ¹
515	8.2	36 ³
524	5.0	36 ⁴
538	7.1	37 ⁴

Line 10' N. of N.

551	6.8	37 ²	468 E of 33 ^d	4.2	40 ³
560	5.9	38 ⁶	490	7.0	37 ⁵
570	4.6	29 ⁹	490	8.1	36 ⁴
	N. H.		492	10.2	34 ³
450 E of 33 ^d	4.3	40 ²	500	10.4	34 ¹
460	6.8	37 ²	513	10.5	34 ⁰
470	7.9	36 ⁷	525	10.6	33 ⁹
474	10.4	34 ¹	534	10.0	34 ⁵
480	10.7	33 ⁸	536	8.9	35 ⁶
494	10.6	33 ⁹	545	7.9	36 ⁶
500	10.2	34 ³	564	7.6	36 ⁹
509	10.2	34 ³	583	6.9	37 ⁶
518	8.7	35 ⁸	600	5.7	38 ⁸
529	8.1	36 ⁴	612	5.3	39 ²
544	7.6	36 ⁹	616	4.3	40 ²
539	7.2	37 ³	622	3.9	40 ⁶
570	7.2	37 ³			
586	4.6	39 ⁹			
600	3.6	40 ⁹			
			Line 20' N of N.		
			473 E of 33 ^d	4.4	40 ¹
			491	4.9	39 ⁷

500	67	38 ²	580	97	34 ⁸
505	80	36 ⁵	595	85	36 ⁰
514	104	34 ¹	600	77	36 ⁸
525	106	33 ⁹	618	72	37 ³
544	104	34 ¹	635	65	38 ⁰
558	96	34 ²	647	56	38 ⁹
571	80	36 ⁵	653	22	42 ³
588	71	37 ⁴			
600	63	38 ²	Line 40 'K of H		
613	63	38 ²	531 E of 33 ^Q	71	40 ⁴
622	64	38 ¹	541	73	37 ²
630	57	39 ⁴	551	83	36 ²
636	30	41 ⁵	563	97	35 ⁸
			579	95	34 ⁷
Line 30 'K of H			595	97	34 ⁸
515 E of 33 ^Q	43	40 ²	600	97	34 ⁸
528	58	38 ²	618	87	35 ⁸
534	99	34 ⁶	639	76	36 ⁹
542	101	34 ⁴	654	65	38 ⁰
560	104	34 ¹	664	58	39 ²

665 29 41⁶

Line 50' N of N

565 E of 33^d 52 39²579 68 37²591 87 35⁸600 93 35²605 97 34⁸617 95 35⁰630 91 35⁴646 84 36¹657 79 36⁶669 80 36⁵679 70 37⁵685 30 41⁵

Line 60' N of N

581 E of 33^d 38 41²586 48 39²596 50 39⁵600 63 38²

609

619

630

648

666

679

690

700

75 37⁰88 35²90 35⁵90 35⁵90 35⁵76 35⁹76 36⁹46 39⁹

Line 70' N of N

614 E of 33^d 43 40²623 50 39⁵630 63 38²645 79 35⁶659 93 35²675 92 35³692 83 36²87 35⁸

11/13
 1/2 sec Vermont St.
 North line Concord to 100' N of Anticks



Prof. 127 294.39 288.107 NW corner Concord

Point	Distance	Elevation	Notes	Distance	Elevation
	1/4	288.3	to	59	288.5
W	61	288.3	C	59	289.4
cb	65	287.9	1/4	50	289.4
1/4	62	288.2	cb	50	289.4
C	53	289.1	E	46	289.8
1/4	50	289.4			
cb	48	289.6	E	47	289.7
E	41	290.3	cb	48	289.6
	"B"		1/4	45	289.7
E	41	290.3	C	48	289.6
cb	47	289.6	1/4	57	288.7
1/4	50	289.4	cb	62	288.2
C	52	289.2	W	64	288.0
1/4	62	288.4			
cb	65	287.9	W	65	287.9
W	62	288.2	cb	61	288.3
	25' N		1/4	57	288.7
W	62	288.2	C	49	289.5
cb	61	288.3	cb	50	289.4

50' N

75' N

294.38

d	41	289.5
F	47	289.7
	100' N	
F	47	289.7
cb	50	289.4
1/2	50	289.4
c	50	289.4
1/2	51	289.3
cb	60	288.4
W	64	288.0
	125' N	
W	63	288.1
cb	57	288.7
1/2	53	289.1
c	52	289.2
1/2	51	289.3
cb	48	289.6
E	44	290.0

294.38

	150' N	
E	48	289.6
cb	51	289.3
1/2	47	289.7
c	48	289.6
1/2	54	289.0
cb	57	288.7
W	52	289.2
	175' N	
W	56	288.8
cb	60	288.0
1/2	56	288.8
c	49	289.5
1/2	50	289.4
cb	47	289.7
E	45	289.9
	200' N	
F	43	290.1
cb	46	289.8

294.38

1/2	50	289.4
c	41	289.5
1/2	54	289.0
cb	57	288.7
W	57	288.7
225'		
W	54	289.0
cb	56	288.8
1/2	52	289.2
c	50	289.4
1/2	46	289.8
cb	44	290.0
E	40	290.4
250' N		
E	39	290.5
cb	42	290.2
1/2	45	289.9
c	47	289.7
1/2	56	288.8

294.38

cb	55	288.9
W	53	289.1
275' N		
W	56	288.8
cb	57	288.7
1/2	51	289.3
c	43	290.1
1/2	44	290.0
cb	41	290.3
E	39	290.5
294' N = 210' C		
E	39	290.5
cb	42	290.2
1/2	44	290.0
c	44	290.0
1/2	49	289.5
cb	55	288.9
W	52	289.2

294.38

Sec D

W	52	289.2
b	54	289.0
1/2	57	289.4
c	45	289.9
1/2	45	289.9
cb	40	290.0
E	37	290.7

3 cb Hendricks

E	34	291.0
cb	41	290.3
1/2	44	290.0
c	44	290.0
1/2	48	289.6
D	55	288.9
W	54	289.0

5 1/2

W	55	288.9
cb	57	288.7
1/2	53	289.1

12

294.37

c	1.3	290.1
1/2	4.1	290.3
cb	4.0	290.4
E	3.5	290.9

Cb.

E	3.2	291.2
cb	3.8	290.6
1/2	4.2	290.2
c	4.6	289.8
1/2	5.2	289.2
cb	5.6	288.8
W	5.6	288.8

1/2

W	5.2	288.8
cb	5.6	288.8
1/2	4.9	289.5
c	4.6	289.8
1/2	4.4	290.0
cb	4.1	290.3

294.38

W	F	37	290.7
d	recb.		
1/2	F	36	290.8
c	cb	45	289.9
1/2	1/2	45	289.9
c	c	45	289.9
F	1/2	51	289.3
	cb	55	288.9
F	W	540	288.98
cb	N.P. sec 'E'		
1/2	W	52	289.7
c	cb	54	289.0
d	gutter	57	288.6
	1/2	47	289.7
W	c	41	290.3
	1/2	47	289.7
W	cb	44	290.0
cb	F	37	290.7
1/2			

13

294.38

	Sec F			
F		37	290.7	
cb		46	289.8	
1/2		46	289.8	
cb		46	289.8	
1/2		51	289.3	
gutter		58	288.6	
	25' X			
gutter		62	288.2	
1/2		55	288.9	
c		51	289.3	
1/2		51	289.3	
TP	343	293.10	471	289.67
cb			35	289.6
F			28	290.3
	50' X			
F		30	290.1	
cb		39	289.2	
1/2		42	288.9	

1914

29310

c	4.4	288.7
1/2	4.6	288.5
gutter	5.4	287.7
75' Sec "F"		
gutter	6.2	286.9
1/2	5.3	287.8
c	5.0	288.1
1/2	4.6	288.5
cb	4.2	288.9
F	4.1	289.0
Sec "H"		
F	6.0	287.1
cb	5.3	287.8
1/2	5.1	288.0
c	5.4	287.7
1/2	5.6	287.5
gutter	6.2	286.9
cb,	5.60	287.50

X-section Arnold St Landis to Dwight 257
 " " 65 wide 10 walks 11.25' 195 13 Evans
 1000,

15
15

Bin cut 5K s.w. Arizona 2 Landis 288.00

0+50

Bin 11.67 296.67

S.L. Landis

W 5.2 291.5

Crk 4.5 292.2

1/4 3.5 293.2

M 2.5 294.2

1/4 2.1 294.6

Crk 1.6 295.1

E 1.4 295.3

0+25 5

E 1.6 295.1

Crk 2.2 294.5

1/4 2.4 294.3

M 2.5 294.2

1/4 4.0 292.7

Crk 5.0 291.7

W 5.6 291.1

W 5.6 291.1

Crk 5.0 291.7

1/4 4.2 292.5

M 3.2 293.5

1/4 2.8 293.9

Crk 2.4 294.3

E 1.8 194.9

0+75

E 3.2 294.5

Crk 3.5 293.2

1/4 4.4 292.3

M 4.2 292.5

1/4 4.8 291.9

Crk 5.4 291.3

W 5.8 290.9

296.67

1+0

W	6.1	290.6
Crk	5.6	291.1
"A	5.0	291.7
M	4.3	292.4
"A	4.0	292.7
Crk	2.8	293.9
E	1.8	294.9

1+25

E	1.9	294.8
Crk	2.3	294.4
"A	3.5	293.2
M	3.8	292.9
"A	4.7	292.0
Crk	5.4	291.3
W	6.0	290.7

16

1+50

W	6.0	290.7
Crk	5.5	291.2
"A	5.0	291.7
M	4.6	292.1
"A	3.7	293.0
Crk	3.0	293.7
E	2.4	294.3

1+75

E	4.5	294.2
Crk	3.0	293.7
"A	3.9	292.8
M	4.4	292.3
"A	5.0	291.7
Crk	5.4	291.3
W	5.8	290.9

2967

2+0

17

2+50

N	5.5	291.2
erb	5.1	291.6
1/9	4.6	292.1
M	3.5	293.2
1/4	2.6	294.1
erb	2.1	294.6
E	1.8	294.9

2+25

E	1.4	295.3
erb	2.0	294.7
1/9	2.7	294.0
M	3.4	293.3
1/4	4.4	292.3
erb	4.9	291.8
N	5.5	291.2

N	5.4	291.3
erb	5.0	291.7
1/9	4.5	292.2
M	3.5	292.9
1/4	3.3	293.4
erb	2.5	294.2
E	1.9	294.8

2+75

E	4.9	294.8
erb	2.8	293.9
1/9	3.2	293.5
M	3.6	293.1
1/4	4.3	292.4
erb	4.8	291.9
N	5.2	291.5

296.67

3+0

W	5.3	291.4
Col	4.8	291.9
1/4	4.2	292.5
M	3.7	293.0
1/4	3.0	293.7
Col	2.5	294.2
E	1.9	294.8

3+25

E	1.9	294.8
Col	2.1	294.6
1/4	2.5	293.9
M	3.0	293.7
1/4	3.6	293.1
Col	3.9	292.8
W	3.7	292.8

18

3+50

W	3.3	293.4
Col	3.1	293.6
1/4	3.0	293.7
M	2.5	294.2
1/4	2.5	294.2
Col	1.7	295.0
E	1.7	295.0

3+75

E	1.9	294.8
Col	1.9	294.8
1/4	2.2	294.5
M	2.3	294.4
1/4	2.4	294.3
Col	2.6	294.1
W	2.5	294.2

296.67

440

W	2.1	294.6
erb	2.3	294.4
1/4	2.3	294.4
M	2.1	294.6
1/4	2.0	294.7
erb	1.8	294.9
E.	1.7	295.0

4425

F	2.2	294.5
erb	2.2	294.5
1/4	2.1	294.6
M	2.2	294.5
1/4	2.4	294.3
erb	2.5	294.2
W	2.4	294.3

4450

W	3.1	293.6
erb	3.3	293.4
1/4	3.2	293.5
M	3.0	293.7
1/4	2.7	294.0
erb	2.4	294.3
E	2.1	294.6

4475

E	3.2	293.5
erb	3.5	293.2
1/4	3.8	292.9
M	4.1	292.6
1/4	4.4	292.3
erb	4.8	291.9
W	4.6	292.1

296.67

5+20

W	6.0	290.7
erb	6.3	290.4
1/4	6.2	290.5
M	5.6	291.1
1/4	5.0	291.7
erb	4.9	291.8
E	4.6	292.1

5+25

E	6.0	290.7
erb	6.4	290.3
1/4	6.7	290.0
M	7.2	289.5
1/4	7.6	289.1
erb	7.7	289.0
W	7.2	289.5

19

5+50

W	8.6	288.1
erb	8.9	287.8
1/4	8.7	288.0
M	8.2	288.5
1/4	7.8	288.9
erb	7.4	289.3
F	7.2	289.5

5+75

F	8.2	288.5
erb	8.3	288.4
1/4	8.3	288.4
M	8.9	287.8
1/4	9.5	287.2
erb	9.5	287.2
W	9.3	287.4

79607

6+0 = N.L. Dwight St

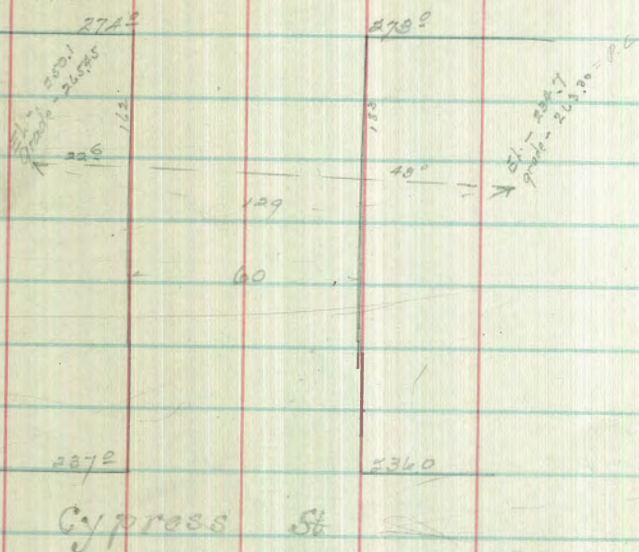
N	10.2	286.5
cb	10.1	286.6
1/4	10.2	286.5
M	9.7	287.0
1/4	9.4	287.3
cb	9.5	287.2
E	9.4	287.3

TP	6.10	261.54	261.44	92
0+00	22.6 W of line			98.1
162' S of Robinson	17 W	11.8	250.7	265.45
	0.15	249.44	12.25	249.29
W/L 0+28.6		3.0	246.4	
0+43		5.0	244.4	
0+63		8.1	241.3	
EL 0+86 (193' S of Robinson)		10.7	238.7	
1+29		14.7	234.7	grade 243.80

4/10/15

Hatch
Mans
HallCulvert Measurements -
Florida South of Robinson

Robinson Ave



31 Hatch
121 7moor
13 Hall

Culvert measurements Florida

237
grade 2360
El. 227.5

60
Florida

236
grade 2355
El. 221.6

Cypress

236

Florida

235

SW Cor Cypress + Florida

239.60

238.60

55.3 232.13 1070 229.90

0+00 = 12' W of line

4.8 227.6

+23

6.1 226.3

+26

4.6 227.8

+54

7.7 224.7

+66

7.0 225.4

+76⁵ El.

5.1 224.3

+98

10.8 221.6

See page 74 for other Florida
street Culvert.

2/10/13
Section of Stockton St 50' WIDE
from W.L. 3rd St to E.L. Bachman

BM. 0.76 287.96 287.20 SE 2nd -
Stockton

W.L. THIRD ST.

S 1.8

ch 1.8

1/4 1.7

C 1.5

1/4 1.6

ch 1.4

N 1.2

25' W.

N 2.0

ch 2.0

1/4 2.0

C 2.1

1/4 2.3

ch 2.2

S 2.2

50' WEST

No.	3.7
cf	3.8
1/4	3.8
c	3.6
1/4	3.6
cf	3.5
So.	3.7

75' W

No.	8.7			
cf	8.1			
1/4	7.4			
c	7.0			
1/4	6.3			
cf	6.0			
So.	5.5			
T.P.	0.53	275.95	12.54	275.42

275.95

100' WEST

No.	11.8
cf	10.7
1/4	9.7
c	9.0
1/4	8.0
cf	6.5
So.	5.0

T.P.	0.33	263.16	13.12	262.83
------	------	--------	-------	--------

125' WEST

No.	11.8			
cf	10.5			
1/4	10.0			
c	9.0			
1/4	7.6			
cf	6.3			
So.	4.2			
T.P.	0.12	250.56	12.72	250.44

250.56

150' WEST

No	8.3
cb	6.9
1/4	6.9
c	6.6
1/4	5.4
cb	3.4
So	1.9

T.P	5.01	243.20	12.37	238.19
-----	------	--------	-------	--------

175' WEST

No	13.3
cb	11.5
1/4	10.4
c	9.3
1/4	8.1
cb	7.1
So	5.3

243.20

195' WEST

No	19.0
cb	17.7
1/4	16.6
c	16.3
1/4	16.1
cb	15.6
So	15.2

200' WEST

No	15.2
cb	17.4
1/4	17.4
c	17.0
1/4	15.4
cb	14.4
So	14.0

2/13.20

230' = E.L. BACHMAN

24

No.	+ 0.5	213.7
cb	0.3	
1/4	0.6	
c	0.9	
1/4	0.9	
cb	1.0	
So.	1.4	

2/10/13
Oregon
Crested

Section of Fifth St.
from S. L. Stockton 325' South
80' WIDE. 10' walks 15' 25

B.M. 7.64 294.84 287.20 SE STOCKTON
4TH RD

T.P. 3.69 291.88 3.65 291.19

S. L. STOCKTON

W 3.5 291.4

cb 3.6

1/4 4.0

c 4.0 290.9

1/4 4.2

cb 4.5

E 4.3 290.6

1' SOUTH

E 3.5 291.4

+3 3.7

+3.5 4.5

cb 4.7

1/4 3.9

c 3.8 291.1

1/4 3.9

cb 3.9

± 4 4.0

294.88

26

+5		2.9		1/4		4.6	
W		3.1	291.8	+12		4.9	
	25' So.			cb.		3.8	
E		3.8	291.1	W		3.9	291.0
+2		3.8			75' So.		
+3		5.1		E		3.5	291.4
cb.		4.8		+2		3.5	
1/4		3.9		+3		5.2	
C		3.8	291.1	cb.		5.2	
1/4		4.3		1/4		5.1	
+11		4.6		C		5.2	289.7
+13		2.8		1/4		5.1	
cb.		2.8		+12		5.6	
W		3.0	291.9	cb.		4.3	
	50' So.			W		4.3	290.6
E		4.0	290.9		100' So.		
+2		4.0		E		4.7	290.2
+3		5.0		+2		4.7	
cb.		4.9		+3		5.4	
1/4		4.7		cb.		5.1	
C		4.4	290.5				

294.55

1/4	5.0	
c	4.9	290.0
1/4	5.3	
cb	5.3	
W	5.2	289.7

125' So.

E	4.7	290.2
cb	5.1	
1/4	5.1	
c	5.0	289.9
1/4	5.6	
cb	5.9	
W	5.7	289.2

150' So.

E	5.2	289.7
cb	5.3	
1/4	5.3	
c	5.3	289.6
1/4	5.6	
cb	6.3	

W	6.7	288.2
---	-----	-------

175' SOUTH

E	6.3	288.6
cb	6.1	
1/4	6.2	
c	6.3	288.6
1/4	6.5	
cb	6.7	
W	6.7	288.2

200' SOUTH

E	7.0	287.9
cb	7.0	
1/4	6.9	
c	6.7	288.2
1/4	6.9	
cb	7.3	
W	7.4	287.5

225' So.

E	9.3	285.6
+3/4	7.9	
cb	7.8	

27

294.88

28

1/4

8.1

c

8.3

286.6

1/4

8.3

cb

8.0

W

8.0

286.9

CANON.

2/11/13
Oregon
Bedford
Shaw
T.P.

X-section of Fifth St from
N.L. Stockton to 375' No. 29 1/4's
80' wide 10' walks

1.25 292.44 291.19 STAKE SW.

N.L. ~~STOCKTON~~ Arbor Drive

W.	0.9	291.5 ✓
cb	1.2	291.2
1/4	1.4	291.0
c	1.4	291.0 ✓
1/4	1.6	290.8
cb	1.6	290.8
E	1.7	290.7 ✓

35' No.

E	1.5	290.9 ✓
cb	1.3	291.1
1/4	1.4	291.0
c	1.2	291.2 ✓
1/4	1.6	290.8
cb	1.8	290.6
W	1.8	290.6 ✓

292.44

50' No.

W	1.6	290.8 ✓
cb	1.9	✓90.5
1/4	1.9	✓90.5
c	1.3	291.1 ✓
1/4	1.7	✓90.7
cb	1.6	✓90.8
E	1.7	290.7 ✓

75' No.

E	1.7	290.7 ✓
cb	1.7	290.7
1/4	1.6	290.8
c	1.4	291.0 ✓
1/4	1.9	290.5
cb	1.8	290.6
W	1.5	290.9 ✓

5th
292.4

50

100' No.

W	1.8	290.6 ✓
cb	1.9	✓90.5
1/4	2.0	✓90.0
c	1.4	291.0 ✓
1/4	1.8	✓90.6
cb	1.8	290.6
E	1.6	290.8 ✓

125' No.

E	1.5	290.9 ✓
cb	1.5	290.9
1/4	1.7	✓90.7
c	1.6	290.8 ✓
1/4	2.0	✓90.4
cb	2.2	290.2
W	2.0	290.4 ✓

292.44

150' No

W	2.0	290.4 ✓
cb	2.2	✓290.2
1/4	2.2	290. ✓
c	1.5	290.9 ✓
1/4	1.7	✓290.7
cb	1.6	✓290.8
E	1.6	290.8 ✓

175' No

E	1.7	290.7 ✓
cb	1.6	290.8
1/4	1.8	✓290.6
c	1.8	290.6 ✓
1/4	2.3	✓290.1
cb	2.1	✓290.3
W	2.1	290.3 ✓

5th

292.4

31

200' No

W	3.3	289.1 -
cb	3.0	✓289.4
1/4	2.9	✓289.5
c	2.2	290.2 -
1/4	2.0	✓290.4
cb	1.9	✓290.5
E	1.5	290.9 ✓

225' No

E	1.6	290.8 ✓
cb	2.2	✓290.2
1/4	2.4	✓290.0
c	2.8	289.6 ✓
1/4	3.4	✓289.0
cb	3.9	✓288.5
W	4.3	288.1 ✓

292.44

250' No

W	6.4	286.0	-
cb	5.1	$\sqrt{87.3}$	-
$\frac{1}{4}$	4.1	$\sqrt{88.3}$	-
C	3.5	288.9	-
$\frac{1}{4}$	2.9	$\sqrt{89.5}$	-
cb	2.5	$\sqrt{89.9}$	-
E	2.2	290.2	-

275' No

E	2.5	289.9	-
cb	2.9	$\sqrt{89.5}$	-
$\frac{1}{4}$	3.6	$\sqrt{88.8}$	-
C	4.4	288.0	-
$\frac{1}{4}$	5.8	$\sqrt{86.6}$	-
cb	7.0	$\sqrt{85.4}$	-
W	8.9	283.5	-

5th

272'

32

300' No

W	11.4	281.0	-
cb	9.9	$\sqrt{82.5}$	-
$\frac{1}{4}$	7.4	$\sqrt{85.0}$	-
C	5.2	287.2	-
$\frac{1}{4}$	4.4	$\sqrt{88.0}$	-
cb	3.5	$\sqrt{88.9}$	-
E	3.3	289.1	-

325' No

E	4.5	287.9	-
cb	5.3	$\sqrt{87.1}$	-
$\frac{1}{4}$	6.2	$\sqrt{86.2}$	-
C	7.0	285.4	-
$\frac{1}{4}$	10.0	$\sqrt{82.4}$	-
cb	12.9	$\sqrt{79.5}$	-
W	14.4	278.0	-

292.44

350' No

W	19.4	273.0 ✓
cb	15.5	
1/4	13.3	
c	11.4	281.0 ✓
1/4	10.0	
cb	8.7	
E	7.3	285.1 ✓

375' No

E	15.0	277.4 ✓
cb	15.7	
1/4	15.8	
c	15.7	276.7 ✓
1/4	20.2	
cb	21.7	
W	22.9	269.7 ✓

CANON

sch

33

Grades. 5" St - 112 ft. from. -
East. West.

M.L. Andr.	289.50	290.50
+25	289.38	290.29
+50	289.25	290.08
+75	289.13	289.87
1+	289.00	289.67
+75	288.88	289.46
+50	288.75	289.25
+75	288.63	289.04
2+	288.50	288.83
+25	288.37	288.62
+50	288.25	288.41
+75	288.13	288.20
3+	288.00	288.00

2/1/3 Section of Greeley Ave (80' wide 1/4 mile)
 from E.L. 30th to W.L. 32nd 34
 Gregory
 Bedford
 Shaw

B.M. 7.79 78.70 70.91 NW. 30th L
 Logan B.P.

E.L. 30th St.

S		3.8	74.9
cb		4.0	74.7
1/4		4.0	74.7
C		4.1	74.6
1/4		3.7	75.0
cb		4.6	74.7
N		4.6	74.1

25' EAST

N		4.5	74.2
cb		5.5	
1/4		4.6	
C		4.3	74.4
1/4		4.2	
cb		5.4	
S		4.5	74.2

78.70

50' EAST

S	5.6	73.1
cb	6.0	
1/4	4.8	
C	4.7	74.0
1/4	4.6	
cb	6.1	
N	5.4	73.3

75' EAST

N	5.8	72.9
cb	6.2	
1/4	5.3	
C	5.1	73.6
1/4	5.3	
cb	6.5	
S	5.4	73.3

78.70

35

100' EAST

S	5.8	72.9
cb	6.8	
1/4	6.0	
C	5.6	73.1
1/4	6.0	
cb	6.7	
N	5.9	72.8

125' EAST

N	6.8	71.9
cb	7.3	
1/4	6.6	
C	6.2	72.5
1/4	6.7	
cb	7.6	
S	7.0	71.7

78.70

150' EAST

S	7.1	71.6
cb	7.7	
1/4	7.1	
C	6.7	72.0
1/4	6.7	
cb	7.8	
N	7.3	71.4

175' EAST

N	7.6	71.1
cb	8.0	
1/4	7.6	
C	7.2	71.5
1/4	7.5	
cb	7.7	
S	7.0	71.7

36

200' EAST

S	7.2	71.5
cb	8.0	
1/4	7.7	
C	7.5	71.2
1/4	7.4	
cb	8.6	
N	8.0	70.7

225' EAST

N	8.8	69.9
cb	9.2	
1/4	7.8	
C	8.0	70.7
1/4	8.2	
cb	8.6	
S	7.6	71.1

78.70

250' EAST

S	8.4	70.3
cb	9.1	
1/4	8.9	
C	8.9	69.8
1/4	8.5	
cb	9.9	
N	9.6	69.1

275' EAST

N	10.1	68.6
cb	11.1	
1/4	9.8	
C	9.8	68.9
1/4	9.5	
cb	10.0	
S	9.0	69.7

78.70

37

300' EAST

S	9.6	69.1
cb	10.7	
1/4	10.7	
C	10.7	68.0
1/4	10.3	
cb	12.1	
N	12.6	66.1

325' EAST

N	13.8	64.9
cb	13.4	
1/4	12.0	
C	11.2	67.5
1/4	11.0	
cb	11.4	
S	10.7	68.0
T.P.	0.11	68.00
	10.81	67.89

65.00

38

350' EAST

S	0.4	67.6
cb	1.4	66.6
1/4	1.2	
c	1.9	66.1
1/4	3.0	
cb	4.2	
N	3.7	64.3

375' EAST

N	5.4	62.6
cb	5.5	
1/4	4.1	
c	3.3	64.7
1/4	3.3	
cb	2.6	
S	0.5	67.5

400' EAST

S	2.2	66.8
cb	3.3	
1/4	4.0	
c	4.0	64.0
1/4	5.1	
cb	6.5	
N	6.7	61.3

425' EAST

N	8.1	59.9
cb	7.7	
1/4	7.0	
c	5.9	62.1
1/4	5.0	
cb	4.5	
S	3.3	64.7

68.00

450' EAST

S	4.5	63.5
cb	5.3	
1/4	5.8	
C	6.6	61.4
1/4	7.8	
cb	9.9	
N	10.3	57.7

475' EAST

N	13.4	54.6
cb	13.4	
1/4	11.6	
C	7.8	59.2
1/4	6.8	
cb	6.3	
S	4.9	63.3

68.00

39

500' EAST

S	5.7	62.3
cb	7.2	
1/4	8.8	
C	11.0	57.0
1/4	14.0	
cb	13.9	
cb	15.8	
N	15.5	52.5

525' EAST

N	18.0	50.0
cb	18.0	
1/4	16.6	
C	14.9	53.1
1/4	11.3	
cb	7.8	
S	6.4	61.6

540' EAST

S	7.5	60.5
cb	8.6	
T.P	0.95	57.12
	11.83	56.17

57.12

40

57.12

1/4	2.4		N	11.2	45.9
C	5.4	51.7		WEST CURB	
1/4	6.7		T.P.	2.15	47.19
cb	7.6		N	3.1	44.1
N	8.0	49.1	cb	3.9	43.3
575' EAST			1/4	3.2	
N	10.3	46.8	C	2.7	44.5
cb	11.0		1/4	1.3	
1/4	10.0		cb	0.4	
C	9.2	47.9	S	7.09	45.1
1/4	8.1		WEST 1/4		
cb	6.4		S	10.4	47.6
S	4.4	52.7	cb	0.8	
600' EAST = W.L. 31 ST ST (60' WIDE)			1/4	2.0	
S	7.7	49.4	C	3.3	43.9
cb	9.0		1/4	3.9	
1/4	10.2		cb	4.5	
C	11.6	46.5	N	3.6	43.6
1/4	12.2				
cb	12.7				

47.19

CENTER

N	4.3	42.9
cb	5.3	
1/4	4.7	
C	4.5	42.7
1/4	3.2	
cb	2.0	
S	0.7	46.5

EAST 1/4

S	1.4	45.8
cb	3.4	
1/4	4.7	
C	5.5	41.7
1/4	5.7	
cb	6.5	
N	5.4	41.8

47.19

41

EAST CURB

N	6.7	40.5
cb	7.6	
1/4	6.4	
C	6.3	40.9
1/4	5.6	
cb	4.3	
S	3.0	44.2

EAST LINE 31st ST

S	4.4	42.8
cb	5.4	
1/4	6.5	
C	7.3	39.9
1/4	7.3	
cb	8.9	
N	7.3	39.9

47.19

85' EAST

N	8.8	38.4
ct	11.0	
1/4	9.4	
C	9.3	37.9
1/4	9.1	
ct	7.3	
S	6.5	40.7

50' EAST

S	7.6	39.6
ct	7.5	
1/4	9.1	
C	11.0	36.2
1/4	11.3	
ct	12.9	
+6	12.6	
N	9.3	37.9

47.2

42

75' EAST

N	11.7	35.5
+8	13.7	
ct	13.3	
1/4	12.4	
C	12.1	35.1
1/4	10.8	
ct	10.1	
S	8.6	38.6

100' EAST

T.P.	4.17	42.32	9.04	38.15
S			4.7	37.6
ct			5.6	
1/4			5.8	
C			8.4	33.9
1/4			8.7	
ct			10.6	
+6			11.3	
N			8.0	34.3

42.32

125' EAST

N	10.3	32.0
+6	12.2	
ch	12.2	
1/4	9.9	32.4
C	8.9	33.4
1/4	6.1	
ch	5.6	
S	5.9	36.4

150' EAST

S	5.8	36.5
ch	8.9	
1/4	8.8	
C	10.3	32.0
1/4	11.5	
ch	13.0	
+8	12.9	
N	10.7	31.6

43

175' EAST

N	11.4	30.9
ch	13.6	
1/4	12.8	
C	11.9	30.9
1/4	9.6	
ch	7.5	
S	5.9	36.4

200' EAST

S	7.7	34.6
ch	9.1	
1/4	9.6	
C	11.5	30.8
1/4	12.7	
ch	14.0	
N	13.0	29.3

42.32

225' EAST

N	13.0	29.3
cb	14.0	
1/4	13.4	
C	11.7	30.6
1/4	10.3	
cb	8.9	
S	6.5	35.8

250' EAST

S	4.6	37.7
cb	6.8	
1/4	8.0	
C	9.8	32.5
1/4	11.9	
cb	14.6	
N	14.1	28.2

44

275' EAST

no	14.3	
N	16.3	26.0
+8	13.4	
cb	12.1	
1/4	11.1	31.2
C	8.7	33.6
1/4	7.1	
cb	5.6	
S	3.6	38.7

300' EAST

S	3.0	40.3
cb	3.7	
1/4	5.8	
C	7.9	34.4
1/4	10.7	
cb	12.5	
N	14.3	28.0
+20	19.5	
+35	18.0	

42.32

325' EAST

- 35	20.1	
- 20	17.4	
N	13.1	29.2
cb	9.4	
1/4	7.5	
C	4.8	37.5
1/4	2.9	
cb	1.6	
+11	1.0	
S	2.5	39.7

350' EAST

S	3.1	39.2
+3	0.8	
cb	1.3	
1/4	1.5	
C	2.7	39.6
1/4	5.4	
cb	8.8	
N	11.9	30.4

45

375' EAST

N	11.0	31.3
cb	8.5	
1/4	5.5	
C	3.0	39.3
1/4	2.0	
cb	2.0	
+11	1.3	
S	3.5	38.5

400' EAST

S	5.4	36.9
+3	3.0	
cb	3.1	
1/4	3.2	
C	3.9	38.4
1/4	5.6	
cb	8.5	
N	10.4	31.9

413' EAST

N	10.8	31.5
cb	7.9	
1/4	5.0	
C	4.2	38.1
1/4	3.9	
cb	4.2	
+11	4.2	
S	6.2	36.1

415' EAST

S	6.4	35.9
+3	4.5	
cb	4.5	
1/4	4.2	
C	4.3	38.0
1/4	5.1	
cb	8.2	
+12	10.5	
N	18.5	23.8

435' EAST

N	20.5	21.8
+7	19.1	23.2
+11	8.4	
cb	7.4	
1/4	5.4	
C	4.9	37.4
1/4	5.0	
cb	5.5	
+11	5.6	
S	7.4	34.9
T.P.	5.30	37.77
	9.85	32.47

432' EAST = 2' so. of s. rail on No.

S	3.6	34.2
+12	2.1	35.7
cb	1.7	36.1
1/4	1.2	36.6
C	1.2	36.6
1/4	2.0	
+8	2.4	

T.P.

0.20

24.94

13.03

24.74

37.77

47

cb

0.4

S

9.0

28.8

N

3.5

21.4

cb

8.5

446.8' EAST = 2' N. of N. rail or No.

1/4

9.0

N

4.3

20.6

N

13.2

24.6

+ 2.6 = No. rail

3.38

500' EAST

+ 9.2 = So. rail

3.15

S

11.8

26.0

+ 11.5 = 2' s. of rail

3.8

cb

13.6

cb

4.1

T.P.

0.20

24.94

13.03

24.74

+ 4

3.9

475' EAST

1/4

0.7

- 8

3.8

T.P.

13.03

37.77

0.20

24.74

+ 3

3.9

33.9

cb

4.9

C

3.5

34.3

+ 6.5 = 2' N. of No. rail

5.1

1/4

3.1

34.7

+ 9. = N. rail

4.13

cb

3.7

1/4

4.1

+ 12

4.6

+ 2.0 = s. rail

3.91

S

5.5

32.3

+ 3.5 = 2' s. of So. rail

4.9

C

5.0

19.9

+ 6

4.7

24.94

500' EAST

N	5.7	19.2
cb	3.1	
+10	6.1	
1/4	6.5	
+10 = 2' N of N rail	5.7	
+12.5 = N rail	4.82	
C	5.1	19.8
+5.5 = S rail	4.56	
+8.0 = 2' S. of S rail	5.4	
1/4	5.2	
+7	5.5	
cb	0.7	
S	+1.2	26.1

525' EAST

S	5.0	19.9
cb	5.4	
+4 = 2' S. of S rail	6.0	
+6.4 = S. rail	5.12	
+12 = N. rail	5.39	

48

1/2 + 1.5 = 2' N. of N. rail

	6.3	
C	6.0	18.9
+6	5.1	
1/4	6.1	
cb	8.5	
N	9.7	15.2

550' EAST

N	11.8	13.1
cb	11.2	
1/4	10.0	
C	9.7	15.2
1/4	8.2	
cb = 2' No. of rail	6.5	
+2.2 = No. rail	5.96	

+7.5 = S. rail

+9.0 = 2' S. of rail

S	6.5	
	6.8	18.1

24.94

560.8 = 2' s. of S rail on So LINE

S = E's. of S. rail	6.9	18.0
+ 2.3 = S. rail	5.9	
+ 7.6 = N rail	6.2	
+ 9.7 = 2' d. of N. rail	7.1	
cb	7.3	
1/4	9.2	
C	10.3	14.6
1/4	11.1	
cb	11.7	
N	12.5	12.4

582.4 = 2' d. of N. rail on So.

N	11.2	13.7
cb	12.3	
1/4	12.9	
C	12.2	12.7
1/4	11.0	
cb	9.7	
S = 2' d. of N rail	7.7	17.2

Gravel

49

602' EAST = W. L. 32ND ST.

S	11.2	13.7
cb	12.0	
1/4	12.9	
C	12.6	12.3
1/4	11.8	
cb	11.4	
N	9.4	15.5

2
18
13
7th
7th
7th

Abbot Sec of Abbott St (60') (10' bus)
rd of Long Branch to rd Brighton

1369

Abbot
50

430 880 450 curb side

N 144 Long Branch

10.07 13.68 5.15 3.62

E 11.4 2.3

rd of Long Branch

W 11.2 2.5

E 10.1 3.6

W 10.9 2.8

W on curb 10.4 3.3
cut 11.0 2.7

W 10.8 2.9

W 11.2 2.5

W 11.2 2.5

W 11.2 2.5

W 11.3 2.4

W 11.4 2.3
cut 11.6 2.1

W 11.4 2.3

W on curb 10.9 2.8

center of Long Branch

W 10.6 3.1

W 11.2 2.5

Abbot is graded & curb side work & returns in

E 11.1 2.6

rd of Long Branch (Return in 2 lines & B)

W 10.8 2.9

N rd of Long Branch

W 10.6 3.1

W on curb 11.0 2.7
(11.6) 2.1

W 10.6 3.1

W 11.6 2.1

W 11.1 2.6

W 11.3 2.4

E 11.3 2.4

W 11.0 2.7

W 11.0 2.7

W 11.2 2.5
cut 11.2 2.5

W on curb 10.4 3.3

1369

S 1/4 of Long Branch

E	11.3	24
H	11.1	26
Y	10.3	32
L	10.2	35
Y	10.6	31
H	11.5	22
W	11.3	24

S 1/4 of Long Branch

W	11.7	20
H	11.7	20
Y	10.5	32
L	10.0	37
Y	10.0	37
	10.3	34
H	11.3	34
E	11.5	32

1369Alt

51

S line of Long Branch

E	11.0	27
H	10.7	30
Y	9.6	4.1
L	9.6	4.1
Y	10.0	37
	11.2	25
H	11.3	24
W	11.3	24

25 S of Long Branch

W	11.3	24
H	11.3	24
	10.7	30
Y	9.2	45
L	8.5	52
Y	8.6	51
	8.8	49
H	10.2	35
E	11.2	25

1369

50' S of Long Branch

E		11.0	2.7
U		9.7	4.0
	73'	8.1	5.7
Y		7.5	6.2
L		7.5	6.2
Y		8.8	4.9
	73'	9.8	3.9
U		10.6	3.1
W		11.2	2.5

75' S of Long Branch

W		11.1	
U		9.6	
Y		7.6	
L		6.6	
Y		6.6	
	76'	6.9	
H		8.3	
E		10.8	

1369

Abbott

52

100' S of Long Branch

E		10.2
U		8.0
	73'	6.1
Y		5.7
L		5.6
Y		6.4
U		8.9
W		11.0

125' S of Long Branch

W		11.0
U		8.0
Y		5.4
L		4.7
Y		4.7
	76'	5.0
U		6.5
E		10.4

1369

150 S of Long Branch

E		10.7	3.5
H		6.5	7.2
	75'	4.0	9.7
Y		3.6	10.1
L		3.3	10.4
Y		4.1	9.6
H		6.8	6.9
W		10.7	3.0

175 S of Long Branch

W		6.5	7.2
H		5.7	8.0
	75'	4.7	9.0
Y		3.0	10.7
L		2.3	11.4
Y		2.5	11.2
	75'	2.7	11.0
H		4.8	8.9
E		8.7	5.0

1369

Abbott

53

200 S of Long Branch

E		6.3	7.4
H		2.2	11.5
Y		1.4	12.3
L		1.3	12.4
Y		1.5	12.2
H		1.6	12.1
W		1.2	12.5

215 S of Long Branch (60')

W		0.5	13.2
H		1.0	12.7
Y		0.8	12.9
L		0.5	13.4
Y		0.7	13.0
H		1.4	12.3
E		3.4	10.3

15
13
75
75

X sec of Lowell St (70') (18' banks)
Rosarians to Rd

15.30

Lowell

54

	852	14.63	611	n.e.S. Lowell + Rosarians	50	W of Rosarians		
	471	15.30	404	10.59	Bm W of Rd Lowell	N	43	11.0
				W side of Rosarians (Gravel)	N		46	10.7
N			56	9.7			48	10.5
H			57	9.6			45	10.8
N			65	8.8			47	10.6
L			60	9.3			42	11.1
N			60	9.3			47	10.6
H			(67)	(8.6)				
S			(57)	(9.6)		75	W of Rosarians	
			(47)	(8.6)			44	10.9
	25'	W of Rosarians					40	11.3
S			47	10.6			37	11.6
H			51	10.2			37	11.6
N			39	11.4			42	11.1
L			47	10.6			40	11.3
N			55	9.8			35	11.8
H			46	10.7				
N			49	10.7				

15-30

100 W of Russians

R	31	12.2
H	34	11.9
Y	34	11.9
b	34	11.9
Y	35	11.8
H	33	12.0
S	36	11.7

125 W of Russians

S	30	12.3
H	32	12.1
Y	30	12.3
b	27	12.6
Y	29	12.4
H	28	12.5
R	26	12.7

15-30

150 W of Russians

R	22	13.3
H	22	13.1
Y	23	13.0
b	20	13.3
Y	23	13.0
H	26	12.7
S	25	12.8

175 W of Russians

S	20	13.3
H	18	13.5
Y	19	13.4
b	17	13.6
Y	17	13.6
H	17	13.6
R	14	13.9

Lowell

55

1530

200 w of Roseau

n	06	14.9
h	09	14.4
y	12	14.1
b	10	14.3
y	14	13.9
h	14	13.9
S	16	13.7

TP 635 2069 896 1434

225 w of Roseau

S	64	14.3
h	62	14.5
y	61	14.6
b	62	14.5
y	59	14.8
h	61	14.6
n	60	14.7

2069

Small

56

250 w of Roseau

n	50	15.7
h	53	15.4
y	56	15.1
b	54	15.3
y	57	15.0
h	56	15.1
S	55	15.2

275 w of Roseau

S	56	15.1
h	52	15.5
y	50	15.7
b	48	15.9
y	51	15.6
h	47	16.0
n	44	16.3

500

1530

$$\begin{array}{r} 96 \\ 1434 \\ \hline 635 \\ \hline 2069 \end{array}$$

2069

300 W = E 27 of August (70')

n	39	16.8
hl	44	16.3
4	46	16.1
6	43	16.4
4	45	16.2
hl	47	16.0
S	52	15.5

E 11 of August

S	51	15.6
hl	45	16.2
7	44	16.3
6	42	16.5
7	43	16.4
hl	43	16.4
n	38	16.9

2069

Swoll

57

E 14 of August

n	34	17.3
hl	40	16.7
4	43	16.4
6	40	16.7
9	42	16.5
hl	44	16.3
S	50	15.7

~~Center of August~~

S	42	16.5
hl	42	16.5
4	40	16.7
8	39	16.8
7	41	16.6
hl	39	16.8
n	33	17.4

2069

W 14 y Locust

2	32	17.5
H	36	17.1
4	39	16.8
6	36	17.1
7	37	17.0
H	38	16.9
S	39	16.8

W 16 y Locust

S	39	16.8
H	36	17.1
7	34	17.3
6	34	17.3
7	36	17.1
H	33	17.4
M	30	17.7

2069

Swell

58

W 14 y Locust

2	28	17.9
H	31	17.6
4	34	17.3
6	31	17.6
7	32	17.5
H	35	17.2
S	37	17.0

25 y W 1 Locust

S	30	17.7
H	28	17.9
7	28	17.9
6	26	18.1
7	29	17.8
H	25	18.2
M	21	18.6

2069

30 w J Doerst

n	16	19.1
h	21	18.6
y	24	18.3
b	22	18.5
y	23	18.4
h	23	18.4
S	24	18.3

75' w J Doerst

S	21	18.6
h	16	18.1
y	16	18.1
b	17	18.0
y	18	18.9
h	16	19.1
n	13	19.4

2069

Dawell

59

100 w J Doerst

n	10	19.7
h	11	19.6
y	11	19.6
L	12	19.5
y	13	19.4
h	12	19.5
S	11	19.6

70
688 27.4
125 w J Doerst
0.23 20.46

S	68	20.3
h	68	20.3
y	68	20.3
L	67	20.4
y	70	20.1
h	68	20.3
n	65	20.5

2069
22
20.46
6.68
27.14

27.14

150 w of Locust

2	5.5	21.6
H	6.2	20.9
4	6.1	21.0
L	5.8	21.3
Y	5.8	21.3
H.	5.8	21.3
S	6.0	21.1

175 w of Locust

S	3.0	22.1
H	4.8	22.3
Y	4.8	22.3
L	5.0	22.1
Y	5.2	21.9
H	5.3	21.8
n	4.6	22.5

27.14

200 w of Locust

2	4.1	23.0
H	4.4	22.7
4	4.7	22.4
H	4.0	23.1
Y	3.9	23.2
H	4.0	23.1
S	4.0	23.1

225 w of Locust

S	3.3	23.8
H	3.1	24.0
4	3.1	24.0
L	3.0	24.1
Y	3.4	23.7
H	3.5	23.6
2	3.3	23.8

Linnell

60

2714

250 W of Luenn-

n	24	24.7
h	25	24.6
y	28	24.3
b	22	24.9
y	20	25.1
h	20	25.1
S	25	24.6

275 W of Luenn-

S	13	25.8
h	09	26.2
y	09	26.2
b	12	25.9
y	20	26.1
h	19	25.2
n	18	25.3

2714

Luenn

61

300 W = S of Evergreen St (70)

h	10	26.1
h	11	26.0
y	11	26.0
b	06	26.5
y	04	26.7
h	04	26.9
S	05	26.6

TP

703

3412

005

2709

2714

E

66.6

Evergreen

2709

703

3412

S	68	27.3
h	67	27.4
y	71	27.0
b	73	26.8
y	72	26.5
h	76	26.5
n	76	26.5

3412

E 1/4 of Emergen

n	73	26.8
u	72	26.9
y	72	26.9
b	67	27.4
y	67	27.4
hh	65	27.6
S	63	27.8

center of Emergen

S	58	28.3
u	58	28.3
y	59	28.2
b	63	27.8
y	67	27.4
u	66	27.5
n	66	27.5

3412

Sawell

62

W 1/4 of Emergen

n	62	27.9
u	62	27.9
y	61	28.0
b	57	28.4
y	55	28.6
u	52	28.9
S	55	28.6

W 1/4 of Emergen

S	51	29.0
u	47	29.4
y	50	29.1
b	53	28.8
y	56	28.5
u	57	28.4
n	57	28.4

3412

W 2 of Evergreen

n	52	28.9
n	52	28.9
y	52	28.9
b	50	29.1
y	47	29.4
h	43	29.8
s	47	29.4

25' W of Evergreen

s	32	30.9
h	35	30.9
y	33	30.8
b	36	30.5
y	39	30.2
h	38	30.3
n	40	30.1

3412

50 W of Evergreen

n	27	31.4
h	24	31.7
y	24	31.5
b	20	32.1
y	20	32.1
h	18	32.3
s	18	32.3

75' W of Evergreen

s	05	33.6
h	08	33.3
y	07	33.4
b	09	33.2
y	10	33.1
h	10	33.1
n	12	32.9

TP	11.64	<u>44.69</u>	1.07	33.25
----	-------	--------------	------	-------

Lowell

63

3412
1.07
33.05
11.64
<u>44.69</u>

4459

100' w of Evergreen

2	104	34.3
1	103	34.4
9	103	34.4
6	101	34.6
4	100	34.7
11	100	34.7
5	96	35.0

125' w of Evergreen

5	77	37.0
11	77	37.0
4	77	37.0
6	81	36.6
7	89	35.8
11	85	36.2
12	93	35.6

4469

Sowell

64

150' w of Evergreen

2	74	37.3
11	69	36.8
11	71	37.6
6	64	38.3
4	61	38.6
11	58	38.9
5	62	38.5

175' w of Evergreen

5	49	39.8
11	43	40.4
4	44	40.3
6	45	40.2
4	52	39.5
11	50	39.7
12	53	39.4

4469

200' w f Evergreen

n	33	41.4
ll	35	41.2
y	34	41.3
b	28	41.9
y	28	41.9
ll	27	42.0
s	32	41.5

225' w f Evergreen

s	18	42.9	43.9
ll	11	43.6	43.6
y	11	44.6	43.6
b	11	44.6	43.6
y	16	44.1	43.1
ll	14	44.3	43.3
s	11	44.6	43.6

218' 5686 0.01 44.68

$$\begin{array}{r} 44.68 \\ - 1.13 \\ \hline 43.55 \end{array}$$

5686

Sawell

65

250' w f Evergreen

n	97	47.2
ll	108	46.1
y	111	45.8
b	105	46.4
y	111	45.8
ll	114	45.5
s	117	45.2

275' w f Evergreen

s	86	48.3
ll	82	48.7
y	79	49.0
b	78	49.1
y	84	48.5
ll	81	48.9
n	71	49.9

5686

300 m = E 2 of Willow St (70)

n	4.8	52.1
n	5.8	51.1
y	5.9	51.0
b	5.4	51.5
y	5.6	51.3
n	6.1	50.8
S	6.6	50.3

E 66 of Willow

S	6.3	50.6
n	5.6	51.2
y	4.9	52.0
b	4.4	52.5
y	4.9	52.0
n	4.7	52.2
n	3.7	53.2

5686

Lowell

66

E 144 of Willow

n	2.9	54.0
n	3.7	53.2
y	4.0	52.9
1	3.7	53.2
y	4.6	52.3
n	4.5	52.4
S	5.2	51.7

Center of Willow

S	4.0	52.9
n	3.5	53.4
y	4.4	52.5
1	3.0	53.9
y	2.9	54.0
n	2.7	54.2
n	1.9	55.0

5686

W 14 f Willow

2 07 56.2

4 17 55.2

4 20 54.9

4 22 54.7

4 24 54.5

4 25 54.4

S 20 54.9

1262 69.13 0.35 55.7

W 14 f Willow

S 127 56.4

4 133 55.8

4 133 55.8

4 138 55.3

4 133 55.8

4 129 56.2

2 123 56.8

69.13

Lowell

67

W 2 f Willow

2 113 57.8

4 123 56.8

4 124 56.7

4 133 55.8

4 130 56.1

4 128 56.3

S 117 57.4

25 20 f Willow

S 88 60.3

4 94 59.7

4 100 59.1

4 100 59.1

4 101 59.0

4 100 59.1

4 96 59.5

5686
56.35
1262
69.13

69.13

50	WT	Willow
n	77	61.4
hl	80	61.1
y	80	61.1
b	73	60.8
y	69	62.2
hl	68	62.3
S	54	63.7

75	WT	Willow
S	33	65.8
hl	39	66.2
y	40	65.1
b	43	64.8
y	48	64.3
y	63	62.8
hl	60	63.1
n	60	63.1

69.13

Jewell

68

105	WT	Willow
n	39	65.2
hl	34	65.7
y	37	65.4
b	21	67.0
b	20	67.1
y	20	67.1
hl	16	67.5
S	14	67.7
TP	1234	8075
	072	6841

125	WT	Willow
S	110	69.8
hl	114	69.4
y	120	68.8
b	11.9	68.9
b	11.8	69.0
y	13.2	67.6
hl	13.0	67.8
n	13.1	67.7

6913
72
6841
1234
8075

80.75

150 W of Willow

N		108	74.0
H		105	70.3
4	+3	102	70.6
		95	71.2
6		85	72.2
4		75	73.2
H		70	73.8
S		80	72.8

175 W of Willow

S		55	75.3
6		50	75.8
4		54	75.4
6	+5	60	74.8
		73	73.5
4		80	72.8
H		82	72.6
N		88	72.0

80.75

Lowell

69

200 W of Willow

N		60	74.8
H		60	74.8
4		60	74.8
6		40	76.8
4		35	77.3
H		32	77.6
S		30	77.8

225 W of Willow

S		05	80.3
H		20	78.8
4		24	78.4
6		28	78.0
4		40	76.8
H		39	76.9
N		43	76.5

70 1185 90.80 1.80 78.95

80.75
 2.85
 78.85
 11.85
 90.80

90.80

250' W of Willow

n	119	79.1
n	118	79.0
y	122	78.6
L	109	79.9
y	106	80.2
n	98	81.0
S	85	81.3

275' W of Willow

S	60	84.8
n	78	83.0
y	81	82.7
L	88	82.0
y	96	81.2
n	97	81.1
n	98	81.0

90.80

Sum

70

300' W - E of Plum st (70)

n	76	83.2
n	74	83.8
y	72	83.6
L	67	84.1
y	60	84.8
n	56	85.4
S	41	86.7

E of Plum st

S	33	87.5
L	46	86.2
y	54	85.4
L	56	86.2
y	63	84.6
n	70	83.8
n	70	83.8

868 96.61

287 87.93

90.80
 287
 87.93
 868
 96.61

96.61

E. 1/4 of Plum St

Dr	118	87.8
H	114	85.2
y	103	86.3
L	101	86.5
y	100	86.6
H	94	87.2
S	80	88.6

Southern of Plum

S	72	89.4
H	87	87.9
y	92	87.4
L	94	87.2
y	97	86.9
H	102	86.4
n	107	85.9

96.61

Lowell

71

W. 1/4 of Plum

n	97	86.9
H	89	87.7
y	85	88.1
L	82	88.4
y	81	88.5
H	79	88.7
S	64	90.2

W. 1/4 of Plum

S	52	91.4
H	67	89.9
y	69	89.7
L	74	89.2
y	73	89.3
H	82	88.4
n	90	87.6

9661

W L of Plum

N	82	88.4
H	74	89.2
Y	67	89.9
L	66	90.0
Y	60	90.6
H	57	90.9
S	46	92.0

25' W of Plum

S	26	94.0
H	31	93.5
Y	37	92.9
L	45	92.1
Y	48	91.8
H	51	91.5
N	54	91.1

TP

940

105.80

021 96.40

9661
9640
940
105.80

10580

Samuel

50' W of Plum

N	121	93.7
H	116	94.2
Y	115	94.3
L	111	94.7
Y	105	95.3
H	99	95.9
S	92	96.6

75' W of Plum

S	66	99.2
H	77	98.1
Y	78	98.0
L	83	97.5
Y	85	97.3
H	86	97.2
N	94	96.4

105.80

100' w of Plum

n	60	99.8
bl	59	99.9
y	57	100.1
b	57	100.1
y	54	100.4
bl	50	100.8
S	42	101.0

125' w of Plum

S	17	104.1
bl	25	103.3
y	25	103.3
b	28	103.0
y	23	103.5
bl	26	103.2
n	22	102.6

TP 1033

114.27

186 103.94

105.80
 1.82
 103.94
 10.33
 114.27

114.27

150' w of Plum

n	72	107.1
bl	77	106.6
y	77	106.6
b	77	106.6
y	80	106.3
bl	81	106.2
S	78	106.5

175' w of Plum

S	44	109.9
bl	47	109.6
y	48	109.5
b	48	109.5
y	46	109.7
bl	45	109.8
n	45	110.1

Sowell

73

1142

203' or on m } Rd W2 Roseville
205' " " S }

n	05	113.8
H	10	113.3
"	10	113.3
-6	12	113.1
"	14	112.9
H	07	113.6
S	02	114.1

3/13/10

Cypress St

74

276

grade 208.10

myrtle

TP. 55 Sub. 1065	211.55	307.20	Myrtle-Point grade
375' of Cypress St E line	7.1	304.75	208.10
383' " " " " " "	6.5	205.4	
393' " " " " " "	6.5	216.4	

3. Change X Sec of Lark St (50)
 8. Feb Bush St So
 13. Show

275.20

Lark
75

343 260.42 ✓
 10.37 265.14 ✓ 565 254.77 ✓
 12.17 277.72 ✓ 008 265.06 ✓
 07.5 275.20 ✓ 298 274.25 ✓

Mr. Sutton
Solid Surfaces

25' n of End

S. Sec of Lark St Rd

E Old Surface 08 274.2
 E 2.6 272.4
 H 31 271.9
 4 32 271.8
 6 33 271.7
 4 37 271.3
 H 41 270.9
 W 2 42 270.8
 W Old Surface 2.6 272.4

W Old Surface 47 270.3
 W 68 268.2
 H 66 268.4
 H Sutton 7.2 267.8
 4 63 268.7
 6 58 269.2
 7 60 269.0
 H Sutton 6.7 268.8
 H 57 269.3
 E 54 269.6
 E Old Surface 32 271.8

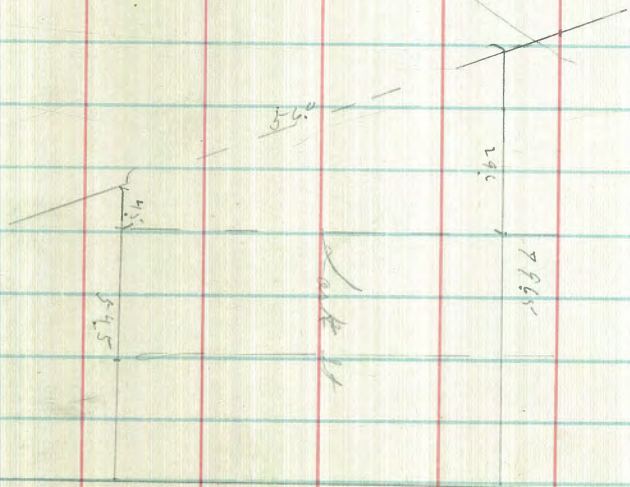
275-00

	50	N 6	End
E Old Surface	56		269.4
E	80		267.0
H	84		266.6
H Gutter	9.1		265.9
7	9.0		266.0
8	8.8		266.2
9	9.7		265.3
H Gutter	10.5		264.5
	10.1		264.9
W	10.7		264.8
W Old Surface	8.0		267.0

275-00

Lark
76

(56.0)	45° m on m } 5 L 8	Bush st
W Old Surface	8.2	266.8
m	11.8	263.2
H	12.1	262.9
9	11.5	263.5
h	11.0	264.0
9	11.4	263.6
H Gutter	11.9	263.1
H	11.6	263.4
E	11.2	263.8
E Old Surface	10.0	265.0



20221

65' S

w	10.8	191.4
cb	10.8	191.4
1/2	10.3	191.9
c	9.9	192.3
1/2	10.3	191.9
cb	9.7	192.5
E	9.6	192.6

71' S

E	8.9	193.3
cb	9.6	192.6
1/2	9.9	192.3
c	10.3	191.9
1/2	10.8	191.4
cb	11.0	191.2
w	11.4	190.8

76' S = N. line Park.

w	10.7	192.1
cb	9.5	192.4

PLOTTED

20221

1/2	9.6	192.6
c	9.8	192.4
1/2	8.9	193.3
cb	8.3	193.9
E	5.2	197.0
Bottom of pipe in N.H.		11.90 190.31
25' S of Park line		

E	2.3	199.9
cb	4.3	197.9
1/2	6.7	195.5
1/2	7.7	194.5
1/2	9.1	193.1
cb	7.4	193.8
w	8.5	193.7

50' S

w	9.2	193.0
cb	9.1	193.1
1/2		192.5
1/2	7.1	195.1

PLOTTED

30221

1/2	55	196.7
cb	39	198.3
E	27	199.5

79

PLOTTED

509

566 two rail on south line

577	-	✓	-	-	✓
577	-	✓	-	No	✓
4350	-	✓	-	No	✓
413.5	-	✓	-	No	✓

125
 32
 1100
 602
 170
 441.8
 600
 167
 730

22
 21.1
 8.6
 22
 166

249
 3.1
 21.8
 249
 1.7
 23.2

208
 190
 18.0

423
 232
 20.5
 19.1

074 with
 P20-21
 777 xcell paper

