

F.B.
862

LEVEL BOOK

No. 413

	HI		
	277.09		Mystic (60' wide)
+20 V.L.		6.2	270.9
cl		7.4	269.7
1/4		7.4	269.7
c		7.0	270.1
1/4		6.6	270.5
cl		6.1	271.0
H.L.		5.9	271.3
+50 H.L.		7.9	269.3
cl		8.2	269.9
1/4		8.6	269.5
c		9.1	269.0
1/4		9.6	267.5
cl		10.4	266.7
V.L.		11.3	265.9
+75 15' South of North line slope		16.2	260.9
+75 V.L.		14.5	262.6
cl		13.4	263.7
1/4		12.5	264.6
c		11.9	265.2
1/4		11.0	266.1

	HI		
	277.09		
cl		10.3	269.8
H.L.		9.7	267.4
1000 slope 15' north of North line		11.7	265.4
1000 H.L.		12.6	264.5
#	264.56	12.92	264.57
cl		1.1	263.5
1/4		1.8	262.8
c		2.8	261.8
1/4		3.8	260.8
cl		5.0	259.6
V.L.		7.0	257.6
1000 slope 20' South of North line		12.8	251.8
" " 60 " " " "		26.5	238.0
" " 75 " " " "		20.6	244.0
+25 " 60 " " " "		20.0	244.6
" " 90 " " " "		23.2	236.4
" " 20 " " " "		25.5	239.1
+25 V.L.		21.4	243.2
cl		15.5	249.1
1/4		11.0	253.6

H.I.
269.56

Myrtle (60' wide)

c		6.9	257.7
1/2		5.3	259.3
cl		4.2	260.4
M.L.		3.4	261.2
145 slope of north of north line		2.4	262.2
1400 " 15' " " "		5.0	259.6
1400 "			
M.L.		7.0	257.6
cl		10.4	254.2
#	2.28	251.27	12.02
1/4		0.9	251.0
c		4.3	247.5
1/4		8.2	243.6
cl		13.0	239.9
S.L.		18.1	233.7
1450 slope of south of south line		9.5	243.3
1475 " 30' " " "		4.0	247.8
" " 15' " " "		10.8	241.0
1475			
S.L.		15.7	236.1
cl		18.8	232.0
1/4		14.6	237.2

H.I.
251.77

3

c		11.7	240.1
1/2		9.7	243.1
cl		5.4	246.4
M.L.		1.6	250.2
1475 slope of south of south line		+4.6	256.4
1400 " 15' " " "		2.2	249.6
2400			
M.L.		8.6	243.2
cl		12.6	239.2
1/4		16.4	235.4
c		19.1	232.7
+5		21.6	230.2
1/4		19.8	232.0
cl		15.4	236.4
S.L.		11.6	240.2
1400 slope of south of south line	5.0		246.4
2425 " " " " "		1.1	250.7
2425			
S.L.		8.7	243.1
cl		13.7	239.1
1/2		17.1	234.7
c		18.9	232.9

H.I.
2571.77

Myrtle (60' wide)

1/4		22.5	229.3
cb		19.0	232.8
M.L.		13.9	237.9
2250 Slope 15' South of North line		5.0	246.8
2450 " 20' " " " "		7.4	244.4
#	4.26	240.25	237.9
2450 M.L.		10.2	233.1
cb		14.9	228.9
+5		15.1	228.2
1/4		14.1	229.2
c		9.8	235.5
1/4		7.2	236.1
cb		3.7	239.6
M.L.		+1.1	244.4
2550 Slope 15' South of South line		+9.0	252.3
2478 ²³ on North line Myrtle 2478 ²³ on North line Myrtle = East line of Alabama			
2478 ²³ Slope 15' South of South line		+11.0	254.3
2478 ²³ M.L.		+3.7	247.0
cb		0.8	242.5
1/4		6.7	236.6

H.I.
243.25

4

c		11.1	232.2
1/4		12.6	230.7
cb		15.7	227.6
M.L.		-15.2	229.1
2478 ²³ Slope 15' South of North line		9.7	239.6
#		12.06	231.19
231.19 = 1/2 S.E. cor of Myrtle & Alabama NE			
231.19 + 1/2 S.E. cor of Myrtle & Alabama NE			
+ H.I.			
	4.65	291.99	276.84
00 = East line of Mississippi graded.			
00			
M.L.		9.2	272.0
cb		9.5	272.0
gutter		9.7	271.8
1/4		9.7	271.9
c		9.9	271.6
1/4		10.1	271.4
gutter		10.4	271.1
cb		10.2	271.3
M.L.		10.3	271.2

+

H.I.
291.49

Mystic St (60' wide)

+

H.I.
297.49

5

+2	V.L.	7.4	274.1	V.L.	4.3	277.2
	cl	7.5	274.0	+75		
	1/2	7.7	273.9	M.L.	4.1	277.4
	c	6.9	274.6	cl	4.9	276.6
	1/2	6.4	275.1	1/2	4.9	276.6
	cl	6.1	275.4	c	5.2	276.3
	M.L.	5.4	276.1	1/2	5.5	276.0
+20	M.L.	4.9	276.7	cl	6.1	275.4
	cl	5.5	276.0	V.L.	5.6	275.9
	1/2	5.6	275.9	+100		
	c	5.7	275.8	V.L.	5.1	276.4
	1/2	6.0	275.5	cl	5.6	275.9
	cl	6.3	275.2	1/2	5.3	276.2
	V.L.	6.3	275.2	c	4.9	276.6
+50	V.L.	5.9	275.6	1/2	4.4	277.1
	cl	6.1	275.4	cl	4.2	277.3
	1/2	5.9	275.7	M.L.	3.5	278.0
	c	5.6	275.9			
	1/2	5.6	275.9			
	cl	5.1	276.4			

+

71, I
281.99

Myrtle St (60' wide)

+

71, I
281.99

6

1+25 M.L.	3.6	277.9
cb	4.1	277.4
1/2	4.0	277.5
c	4.4	277.1
1/4	4.7	276.8
cb	4.9	276.6
M.L. 1+50	4.4	277.1
M.L.	4.4	277.1
cb	4.9	276.6
1/2	5.1	276.4
c	5.3	276.2
1/2	5.1	276.4
cb	4.9	276.6
M.L. 1+75	4.4	277.1
M.L.	5.0	276.5
cb	6.0	275.5
1/2	6.0	275.5
c	6.0	275.5
1/4	6.2	275.3
cb	6.1	275.4

M.L. 2+00	5.6	275.9
M.L.	7.4	274.1
cb	7.3	274.2
1/2	6.7	274.8
c	6.6	274.9
1/2	6.5	275.0
cb	6.7	274.8
M.L. 2+25	5.9	275.6
M.L.	6.7	274.8
cb	7.3	274.2
1/2	6.9	274.6
c	6.3	275.2
1/2	6.4	275.1
cb	6.7	274.8
M.L.	7.1	274.4

H.I.
281.49

Myrtle St (60' wide)

H.I.
282.89

2.50 N.L.	5.8	275.7	c	6.5	276.18
cb	6.5	275.0	1/2	6.7	276.1
1/2	6.3	275.2	cb	6.8	276.5
c	6.3	275.2	M.L. +25	6.8	276.8
1/2	6.4	275.1	M.L.	4.9	277.9
cb	6.3	275.2	cb	5.6	276.2
N.L.	5.8	275.7	1/4	5.3	277.5
2472 ⁰⁰ = East line of Louisiana St. (graded)			c	5.6	277.2
N.L.	5.2	276.3	1/2	5.7	277.1
cb	5.5	276.0	cb	5.7	277.1
1/2	5.7	275.8	N.L. +50	5.7	277.1
c	5.8	275.7	N.L.	5.2	277.6
1/4	6.2	275.3	cb	5.3	277.5
cb	5.9	275.7	1/2	5.0	277.8
N.L.	5.8	275.7	c	4.8	278.0
#	6.89	292.89	1/4	4.9	277.9
00 = East line of Louisiana St			cb	5.2	277.6
00			N.L.	4.0	278.8
N.L.	6.7	276.1			
cb	6.9	275.9			
1/4	6.8	276.0			

HI
282.84

Myrtle St (60' wide)

HI
282.84

8

+75 m.l.	2.6	280.2	V.L. 1450	4.7	276.1
cl	3.9	278.9	V.L.	4.2	276.6
1/4	4.1	279.7	cl	4.1	276.7
c	4.5	278.3	1/2	3.8	279.0
1/4	4.2	278.6	c	3.7	279.1
cl	4.4	278.0	1/2	3.5	279.3
V.L. 1400	4.8	278.0	cl	3.6	279.2
V.L.	4.5	279.3	m.l.	3.5	279.3
cl	4.3	278.5	#	2.10	283.05
1/2	4.2	279.6	1475	6.89	275.85
c	3.9	279.9	m.l.	2.6	280.4
1/2	3.8	279.0	cl	3.0	280.0
cl	3.7	279.1	1/2	3.0	280.0
m.l. 1420	2.4	280.4	c	3.0	280.0
m.l.	3.3	279.5	1/2	3.8	279.2
cl	3.9	278.9	cl	4.1	278.9
1/4	4.0	278.8	S.L.	4.4	278.6
c	4.2	279.6			
1/4	4.2	278.6			
cl	4.4	278.4			

2+00
M.L.

H.I.
280.00

Myrtle H (60' wide)

4.1	279.9
cl	3.5 279.5
1/4	3.4 279.6
c	2.7 280.3
1/2	2.8 280.2
cl	2.7 280.3
M.L.	2.6 280.4
2+25 M.L.	2.2 280.8
cl	2.2 280.8
1/2	2.6 280.4
c	2.7 280.5
1/2	2.5 280.5
cl	3.2 279.8
M.L. 2+50	3.8 279.2
M.L.	2.7 280.3
cl	2.9 280.1
1/4	2.3 280.7
c	2.3 280.7
1/4	2.9 280.1
cl	3.1 279.9

H.I.
283.00

9

N.I.
2+70

3.0	280.0
M.L.	1.6 281.4
cl	2.2 280.8
1/4	2.3 280.7
c	2.0 281.0
1/4	2.0 281.0
cl	2.2 280.8
M.L.	2.1 280.9
2+73 = West limb of Taper H (guided)	
2+73	
M.L.	1.4 281.6
cl	1.6 281.4
gutter	2.5 281.5
1/4	1.9 281.1
c	1.7 281.3
1/2	1.8 281.2
gutter	2.0 281.0
cl	1.1 281.9
M.L.	0.6 282.2
H	2.4 281.67 0.82 282.23

+

H.I.
291.67

Myrtle St (60' wide)

+

H.I.
291.67

10

00- East line of Myrtle St (graded)			c	3.9	287.8
00 M.L.	8.5	283.2	1/2	4.1	287.6
cb	8.7	283.0	cb	4.3	287.4
gutter	9.5	282.2	M.L.	4.3	287.4
1/2	9.0	282.7	+50 M.L.	3.9	287.8
c	9.1	282.6	cb	3.7	288.0
1/2	9.3	282.4	1/2	3.7	288.0
gutter	9.9	281.8	c	3.6	288.1
cb	9.2	282.5	1/2	3.4	288.3
M.L.	9.9	282.8	cb	3.5	288.4
+2 M.L.	5.9	282.8	M.L.	3.1	288.6
cb	5.7	286.0	+75 -1/2	2.5	289.2
1/2	5.7	286.0	cb	2.7	289.0
c	5.6	286.1	1/4	2.9	288.8
1/2	5.6	286.1	c	3.1	288.6
cb	5.6	286.1	1/4	3.4	288.3
M.L.	5.7	286.0	cb	3.6	288.1
+25 M.L.	4.6	287.7	M.L.	3.8	287.9
cb	3.9	287.9			
1/2	3.8	287.9			

+

H.I.
291.67

Myrtle H (60' wide)

+

H.I.
291.67

11

1+00 S.L.	4.4	287.3	1+75 M.L.	5.0	286.7
cl	4.0	287.7	M.L.	7.2	284.5
1/2	3.7	288.0	cl	7.3	284.4
c	3.5	288.2	1/4	7.5	284.2
1/2	3.2	288.5	c	7.8	283.9
cl	2.8	288.9	1/2	8.3	283.4
M.L.	2.5	288.2	cl	8.8	282.9
1+25 M.L.	3.8	287.9	S.L.	9.2	282.5
cl	4.1	287.6	2+00 S.L.	10.7	281.0
1/2	4.5	287.2	cl	10.7	281.0
c	4.7	287.0	1/2	10.5	281.2
1/2	4.9	286.8	c	10.2	281.5
cl	5.1	286.6	1/2	10.1	281.6
S.L.	5.3	286.4	cl	10.0	281.7
1+50 S.L.	6.8	284.9	M.L.	9.9	281.8
cl	6.2	285.5	cl		
1/2	5.9	285.8	1/4		
c	5.6	286.1	c		
1/2	5.3	286.4	1/2		
cl	5.2	286.5	cl		

F.I.
291.67

Myrtle St (60' wide)

2+25 M.L.			10.5	281.2
cl			11.2	280.5
1/2			11.7	280.0
c			11.9	279.8
1/2			11.9	279.5
cl			12.1	279.6
M.L.			12.6	279.1
#	1.12	279.85	12.94	278.73
2+50 M.L.			3.1	276.8
cl			2.5	277.1
1/2			2.4	277.5
c			2.3	277.6
1/4			2.2	277.7
cl			1.9	278.0
M.L.			1.7	278.2
2+74.2 = West line of Georgia St.				
2+74.2 M.L.			3.8	276.1
cl			3.5	276.1
1/4			4.1	275.8
c			4.2	275.7

F.I.
279.85

12

1/2			4.4	275.5
cl			4.9	275.0
M.L.			4.9	275.0
--- East line of Georgia St.				
oo (note) cement curb on north side of Myrtle from East line of Georgia to West line Arnold				
M.L.			6.1	273.8
cl			6.3	273.6
1/4			6.3	273.5
c			6.2	273.7
1/2			6.5	273.4
gutter			4.9	273.0
cl			5.99	273.97
M.L.			5.3	274.6
2+25 M.L.			5.3	274.6
cl			5.4	274.5
gutter			6.3	273.6
1/2			6.2	273.7
c			5.9	274.0
1/4			6.8	273.1
cl			7.4	272.5
M.L.			7.9	272.0

H.I.
279.95

Myrtle St (60' wide)

+50	8.7	271.2
cl	8.3	271.6
1/2	9.0	271.9
+3	8.0	271.9
c	5.4	274.5
1/2	5.9	274.1
gutter	5.6	274.3
cl	5.02	274.83
M.L.	4.9	275.1
+75	4.6	275.3
M.L.	4.71	275.14
cl	5.4	274.5
gutter	5.4	274.5
1/2	4.9	275.1
c	8.4	271.5
+6	8.4	271.5
1/2	8.6	271.3
cl	8.8	271.1
M.L.	9.1	270.8
+100	9.8	270.4
M.L.		
cl		

H.I.
279.85

13

1/2	9.9	271.0
+3	8.7	271.2
c	4.9	275.1
1/2	4.9	275.0
gutter	5.0	274.9
cl	4.31	275.54
M.L.	4.0	275.9
+100 = West line of Park Villa Drive - on the north - (30' wide), graded, mulch & curbs, + 1/2' gutters.		
+100		
M.L.	3.7	276.2
cl	3.92	275.93
gutter	4.7	275.2
1/2	4.6	275.3
c	4.6	275.3
+6	6.9	273.0
1/2	7.3	272.6
cl	7.5	272.4
M.L.	8.0	271.9

F.I.
279.85

Mypete H/60 (wide)

F.I.
279.85

4

West end of Park Villa Drive (on the North)

X.L.	7.0	272.6
cb	6.4	273.5
1/4	6.4	273.5
c	4.4	275.5
1/2	4.4	275.5
gutter	4.6	275.3
1/4 lb { gutter	4.3	275.6
cb	3.80	276.05
Center of Park Villa Drive		
1/4 L.	4.5	275.4
gutter	4.4	275.5
1/2	4.4	275.5
c	4.4	275.5
1/4	6.1	273.8
cb	6.3	273.6
X.L.	6.6	273.3
East end of Park Villa Drive		
X.L.	6.0	273.9
cb	6.0	273.9

1/4	5.4	274.5
c	4.5	275.4
1/2	4.3	275.6
gutter	4.5	275.4
1/4 L. { gutter	4.3	275.6
cb	3.45	276.40
00 = East line of Park Villa Drive		
10		
1/4 L.	3.3	276.6
cb	3.53	276.32
gutter	4.2	275.7
1/2	4.2	275.7
c	4.2	275.7
1/2	5.6	274.3
cb	5.7	274.2
X.L.	5.8	274.1

	H.I. 279.85		
+25 D.L.	4.6	275.3	
cl	4.5	275.4	
1/2	4.3	275.6	
c	4.0	275.9	
1/4	3.7	276.2	
quarters	3.6	276.3	
cl	3.19	276.66	
1/2 +50	3.0	276.9	
1/2	2.5	277.4	
cl	2.89	276.96	
quarters	3.6	276.3	
1/4	3.5	276.4	
c	3.0	276.9	
1/4	3.4	276.5	
cl	3.4	276.5	
D.L. +75	3.6	276.3	
D.L.	3.0	276.9	
cl	3.1	276.8	
1/4	2.8	277.1	
c	2.4	277.5	

Myrtle H (60' wide)

	H.I. 279.85		
1/4	3.1	276.8	
quarters	3.3	276.6	
cl	2.51	277.34	
1/2	2.2	277.7	
# 1400	4.77	292.08	2.54
1/2	4.1	279.0	
cl	4.35	277.73	
quarters	5.0	277.1	
1/2	4.9	277.5	
c	4.5	277.6	
1/2	4.4	277.7	
cl	4.8	277.3	
D.L.	4.5	277.6	
1+23 = West line of Arnold H (gridded, unbedded, walked north) (60' wide) (15' center 1100' quarters)			
1-23 D.L.	3.8	279.3	
cl	4.3	277.8	
1/2	4.2	277.9	
c	4.1	278.0	
1/2	4.6	277.5	

15

H.I.
282.08

Myrtle St (60 wide)

H.I.
282.08

gutter 4.7 277.9

cb 4.02 278.06

1/2 3.9 279.3

West curb of Arnold St.

1/2 { cb 4.02 278.06

gutter 4.7 277.4

gutter 4.2 277.9

1/4 4.5 277.6

c 3.6 278.5

1/2 4.2 277.9

cb 4.2 277.9

1/2 4.0 278.1

West 1/2 of Arnold St.

1/2 4.1 278.0

cb 4.2 277.9

1/2 4.1 278.0

c 3.7 278.4

1/4 4.3 277.8

gutter 4.4 277.7

1/2 4.1 278.0

Center of Arnold St.

1/2 3.5 278.6

gutter 3.8 278.3

1/2 3.9 278.2

c 4.0 278.1

1/2 3.8 278.3

cb 3.9 278.2

1/2 3.7 278.4

East 1/2 of Arnold St.

1/2 3.4 278.7

cb 3.6 278.5

1/2 3.5 278.6

c 3.7 278.4

1/2 3.8 278.3

gutter 4.0 278.1

1/2 3.8 278.3

East curb of Arnold St

0.73

202.73

-FM 202.00 18" to 2" Myrtle & Vella Terrace.

7/8 { cl
gutter

3.00 279.1

-002

289.67

10.04

279.69

+25

3.9 279.2

11/2

9.1

281.6

gutter

3.9 279.2

+5

9.4

1/2

3.7 279.4

cl

9.7

c

3.3 279.8

1/4

10.0

1/2

3.1 279.0

c

10.0

cl

3.4 279.7

1/4

10.1

1/2

3.4 278.7

cl

10.6

00- East line of Arnold St.

1/2

10.4

c

+50

1/2

3.3 279.8

1/2

9.6

cl

3.2 279.9

cl

9.7

1/2

2.9 279.2

1/2

9.4

c

3.0 279.1

c

9.3

1/2

3.2 278.9

1/4

9.5

gutter

3.5 278.6

cl

9.0

cl

3.0 279.1

+5

8.5

1/2

2.6 279.5

1/2

7.7

#

2.63

279.45 Hub NE Cor
Myrtle & Arnold

H.I.
289.67

Impette H (60' wide)

+ 75
M.L.

7.0

U.L.

7.7

cl

7.3

1+50
U.L.

6.1

1/2

7.7

cl

5.5

c

8.0

1/2

4.9

1/2

8.4

c

4.5

cl

8.6

1/2

3.7

U.L.

8.6

cl

2.9

1+00

U.L.

8.4

M.L.

2.4

cl

7.7

1+75

M.L.

2.0

1/2

7.2

cl

0.9

c

6.7

1/2

1.6

1/2

6.4

c

2.6

cl

6.0

1/2

3.3

M.L.

5.9

cl

3.8

1+25

M.L.

4.1

U.L.

4.5

cl

4.5

1/2

5.1

c

5.7

1/2

6.3

cl

6.9

+

H.I.
289.67

Myrtle St (60' wide)

2+00
V.L.

1.9

cl

5.1

297.6

#

13.94

2.0 2.63

+002

289.69

M.L.

4.6

298.0

cl

14.1

288.5

 $2+64^2 =$ West line of Killa Terrace (60' wide) intersection taken with Allen Terrace $\frac{1}{2}$

12.6

290.0

c

11.9

290.8

 $2+6+3$

M.L.

2.9

 $\frac{1}{4}$

11.4

291.2

cl

2.7

cl

11.1

291.5

 $\frac{1}{2}$

2.5

M.L.

10.7

291.9

c

2.3

2+25-

M.L.

9.0

294.6

 $\frac{1}{2}$

2.3

cl

8.4

294.2

cl

2.4

 $\frac{1}{2}$

8.5

294.7

M.L.

3.4

c

8.9

293.7

#

12.96

214.86

0.63

212.00

 $\frac{1}{2}$

8.8

293.8

00 = East line of Killa Terrace

cl

9.4

293.2

00

M.L.

5.4

309.5 ✓

M.L.

10.1

292.5

cl

5.5

309.4 ✓

2+50

M.L.

5.9

296.7

 $\frac{1}{2}$

5.1

309.8 ✓

cl

5.7

296.9

c

5.2

309.7 ✓

 $\frac{1}{2}$

5.7

296.9

 $\frac{1}{2}$

5.4

309.5 ✓

c

5.5

297.1

cl

5.5

309.4 ✓

 $\frac{1}{2}$

5.0

297.6

M.L.

5.6

309.3 ✓

19

+

H.I.
202.63

		H.I. 214.56	Mynette Mt (60 wide)	
+25 m.l.		2.0	312.9 ✓	cl
cl		2.0	312.9 ✓	g
gutter		2.6	312.3 ✓	1/2
1/2		2.1	312.8 ✓	c
c		1.9	313.0 ✓	1/2
1/2		2.1	312.8 ✓	g
gutter		2.2	312.7 ✓	cl
cl		1.6	313.3 ✓	1/2
1/2		1.7	313.2 ✓	1/2
#	1304	227.60	214.56	cl
+50 1/2		11.1	316.3 ✓	g
cl		11.3	316.3 ✓	1/2
g		11.9	315.9 ✓	c
1/2		11.6	316.0 ✓	1/2
c		11.4	316.2 ✓	g
1/2		11.7	315.9 ✓	cl
g		12.1	315.5 ✓	m.l.
m.l.		11.4	316.2 ✓	1/2
m.l.		11.8	315.8 ✓	cl
+75 m.l.		9.2	318.4 ✓	g

	H.I. 227.60		20
	9.6	318.6 ✓	
	9.7	317.9 ✓	
	9.1	318.5 ✓	
	9.0	318.6 ✓	
	9.0	318.6 ✓	
	9.5	318.1 ✓	
	8.9	318.8 ✓	
	9.7	318.9 ✓	
	6.6	321.0 ✓	
	6.6	321.0 ✓	
	7.4	320.2 ✓	
	7.1	320.5 ✓	
	6.9	320.7 ✓	
	7.2	320.4 ✓	
	7.6	320.0 ✓	
	7.0	320.6 ✓	
	7.0	320.6 ✓	
	5.3	322.3 ✓	
	5.2	322.4 ✓	
	6.0	321.6 ✓	

+

H.I.
227.60

Myrtle St (60' wide)

1/2	5.4	322.2 ✓
c	5.2	322.4 ✓
1/2	5.4	322.2 ✓
g	5.3	322.3 ✓
cb	4.5	323.1 ✓
M.L. 1+50	4.6	323.0 ✓
M.L.	3.6	324.0 ✓
cb	3.6	324.0 ✓
g	4.1	323.5 ✓
1/2	4.1	323.5 ✓
c	4.0	323.6 ✓
1/2	4.2	323.4 ✓
g	4.7	322.9 ✓
cb	4.2	323.4 ✓
M.L. 1+75	4.1	323.5 ✓
M.L.	3.4	324.2 ✓
cb	3.5	324.1 ✓
g	4.3	323.3 ✓
1/2	3.4	324.2 ✓
c	3.1	324.5 ✓

+

H.I.
227.60

21

1/2	3.2	324.4 ✓
g	3.6	324.0 ✓
cb	2.7	324.9 ✓
M.L. 2+00	2.8	324.8 ✓
M.L.	2.2	325.4 ✓
cb	2.3	325.3 ✓
g	3.3	324.3 ✓
1/2	2.7	324.9 ✓
c	2.6	325.0 ✓
1/2	2.9	324.7 ✓
g	3.7	323.9 ✓
cb	2.9	324.7 ✓
M.L. 2+25	2.8	324.8 ✓
M.L.	2.1	325.5 ✓
cb	2.3	325.3 ✓
g	3.2	324.4 ✓
1/2	2.5	325.1 ✓
c	2.1	325.5 ✓
1/2	2.3	325.3 ✓
g	2.9	324.7 ✓

HI
227.60

Myrtle St (60' wide)

cl	2.0	325.6 ✓
H.	1.7	325.9 ✓
²⁺⁵⁵ H.	1.5	326.1 ✓
cl	1.6	326.0 ✓
g	2.4	325.2 ✓
1/2	2.0	325.6 ✓
c	1.8	325.8 ✓
1/2	2.1	325.5 ✓
g	2.6	325.0 ✓
cl	1.6	326.0 ✓
m.l.	1.5	326.7 ✓
²⁺⁵⁵ = West line of Oregon St. (graded),		
²⁺⁵⁵ m.l.	1.6	326.0
cl	1.6	326.0
g	2.5	325.1
1/4	2.0	325.6
c	1.7	325.9
1/4	1.9	325.7
g	2.2	325.4
cl	1.6	326.0

HI
227.60

H.	1.5	326.1
#	9.29	239.50
	1.38	226.21
00 = East line of Oregon St.		
H.	7.3	
cl	7.5	
g	9.5	
1/2	7.9	
c	7.6	
1/4	7.9	
g	8.3	
cl	7.5	
m.l.	7.3	
²⁺⁵⁵ m.l.	6.3	
cl	7.0	
g	8.0	
1/2	7.4	
c	7.1	
1/4	7.0	
g	8.0	
cl	7.2	

+

71.1
234.50

Mujita H (60 mude)

+

71.1
234.50

23

V.L.
7.50

7.0

cl

5.7

V.L.

6.5

g

6.7

cl

6.6

1/2

5.9

g

7.5

c

5.5

1/4

6.8

1/2

5.7

c

6.5

g

6.5

1/4

6.6

cl

5.4

g

7.4

M.L.

5.3

cl

6.5

1+25

M.L.

4.7

M.L.

6.2

cl

4.9

+75

M.L.

5.7

g

5.9

cl

6.0

1/2

5.2

g

7.0

c

5.0

1/4

6.2

1/2

5.3

c

6.0

g

6.0

1/4

6.4

cl

5.0

g

7.1

V.L.

4.9

cl

6.1

1+50

V.L.

4.4

V.L.

6.0

cl

4.6

1+00

V.L.

5.3

g

5.5

+

H.I.
239.50

Mojave Mt (60' wide)

1/4	4.8
c	4.5
1/2	4.8
cb	5.5
g	4.9
n.l. 1+75	4.1
n.l.	3.5
cb	3.8
g	5.1
1/2	4.2
c	4.0
1/2	4.4
g	5.1
cb	4.2
v.l. 2+00	3.9
v.l.	3.4
cb	3.6
g	4.6
1/2	4.0
c	3.5

+

H.I.
239.50

24

1/4	3.9
g	4.5
cb	3.4
n.l. 2+25	3.1
n.l.	2.6
cb	3.0
g	4.0
1/2	3.5
c	3.2
1/2	3.4
g	4.2
cb	3.2
v.l. 2+55 north 2+56 south	3.1
v.l.	2.6
cb	2.6
g	3.5
1/2	2.9
c	2.6
1/4	3.1

West line of Mohave Mt

H.L.
239.50

Myrtle St (60' wide) 31-20

Section of Oregon St 55' wide, 10' walk on the West, 6' walk on the East 10' quarters, from the South line of Howard to the North line of Polk. Jan 29-18
Boronia, W. cor El Cajon & Idaho. + MI -
Dunnan, Shaw, Devine.

1
g
cl
n.s.
#

55.49

234.73

5.26 229.24

2.68 231.10 = sph fence -
post Upa near Granada
231.20

(Note) There is a difference in
These datums of 1.08

7.45	373.14	375.69
1.16	375.52	374.38
coastline line of Howard St		
8.1	0.0	375.5
cl	0.7	375.4
1/4	0.7	374.8
c	1.1	374.4
1/2	1.6	373.9
cl	1.6	373.9
0.7	2.7	372.8
+2.5		
0.7	2.7	372.8
cl	1.6	373.9
1/2	1.9	373.6
c	2.2	373.3
1/2	2.0	373.5
cl	0.4	375.1
8.1	0.1	375.4

+50
E.L.

0.5 375.0

M.L.
1+25

2.9 371.6

cl

0.6 374.9

ord.

3.7 371.8

1/2

1.5 374.0

cl

3.2 372.2

c

1.4 374.1

1/2

2.4 372.7

1/2

1.5 374.0

c

1.4 374.1

cl

1.2 374.3

1/2

1.2 374.3

ord.
+70

2.0 373.5

cl

1.0 374.5

ord.

2.5 373.0

E.L.

0.5 375.0

cl

2.0 373.5

1+50
E.L.

0.4 374.9

1/2

1.1 374.4

cl

1.3 374.2

c

0.9 374.6

1/2

1.8 373.7

1/2

0.0 375.5

c

2.3 373.2

cl

0.4 375.1

1/2

3.2 372.3

E.L.

0.2 375.2

cl

3.9 371.6

1+00
E.L.

0.5 375.0

ord.

4.6 370.9

cl

0.6 374.9

1/2

0.6 374.9

c

0.0 375.5

1/2

2.1 373.4

cl

3.1 372.4

1+75 ⁻ OK.L.	4.7	370.8	E.L. 2+50	1.5	374.0
cb	4.0	371.5	E.L.	1.5	374.0
1/4	4.0	371.5	cb	1.9	373.6
c	3.1	372.4	1/4	2.8	373.2
1/4	2.8	372.7	c	3.8	372.2
cb	1.4	374.1	1/4	4.0	371.5
E.L. 2+00	1.2	374.3	cb	3.1	372.4
E.L.	1.4	374.1	OK.L. 2+75	3.8	371.7
cb	1.6	373.9	OK.L.	4.3	371.2
1/4	2.5	372.0	cb	3.3	371.7
c	4.2	371.3	1/4	2.9	372.6
1/4	4.5	371.0	c	2.8	372.7
cb	4.7	370.8	1/4	1.9	373.6
OK.L. 2+20	5.0	370.5	cb	2.2	373.3
OK.L.	4.3	371.2	E.L.	1.6	373.9
cb	3.7	371.8			
1/4	4.2	371.3			
c	4.0	371.5			
1/4	3.5	372.0			
cb	2.0	373.5			

H.I.
375.54

Oregon 44 (58' wide)

H.I.
375.54

28

3+00 B.L.	2.0	373.5
cl	2.2	373.2
1/4	2.5	373.0
c	3.1	372.4
1/4	3.5	372.0
cl	4.0	371.2
cl. 2. 2+25	4.5	371.0
cl. 2.	5.5	370.0
cl	4.5	371.0
1/4	3.7	371.8
c	3.5	372.0
1/4	3.1	372.4
cl	3.0	372.5
B.L. 3+50	2.7	372.8
B.L.	2.9	372.6
cl	3.5	372.0
1/4	3.7	371.8
c	3.9	371.7
1/4	4.4	371.1
cl	5.0	370.5

cl. 2. 3+75	5.6	369.9
cl. 2.	6.2	369.3
cl	5.2	370.3
1/4	5.9	369.6
c	6.0	369.5
1/4	4.4	371.1
cl	3.6	371.9
B.L. 4+00	3.1	372.4
B.L.	3.5	372.0
cl	4.1	371.4
1/4	4.6	370.9
c	5.3	369.7
1/4	7.0	368.5
cl	6.5	369.0
cl. 2.	5.9	369.6

+

H.I.
375.54

Oregon St (58' wide)

4+20 or. L.	7.7	367.8
cb	7.8	367.7
1/2	6.9	368.6
c	5.0	370.5
1/2	4.9	370.7
cb	4.5	371.0
B.L. 4+50	3.8	371.7
B.L.	4.1	371.4
cb	2.9	370.7
1/4	5.1	370.4
c	4.9	370.6
1/4	7.4	368.1
cb	9.3	367.2
or. L. 4+75	9.1	367.4
or. L.	8.1	367.4
cb	7.9	367.6
1/2	7.5	368.0
c	6.0	367.5
1/2	5.6	369.9
cb	5.2	370.3

+

H.I.
375.54

29.

B.L. 5+00	4.7	370.8
B.L.	4.4	371.1
cb	5.5	370.0
1/2	6.2	369.3
c	4.6	366.9
1/2	9.3	367.2
cb	9.3	367.2
or. L. 5+20	4.7	366.8
or. L.	4.9	366.7
cb	6.6	366.9
1/2	4.9	366.6
c	4.9	366.6
1/2	6.5	369.0
cb	5.9	369.6
B.L.	4.7	370.8

H.I.
375.54

Oregon St (58' wide)

H.I.
375.54

30

5+50 E.L.	4.9	370.6
cb	6.2	369.3
1/2	6.7	368.8
c	9.4	367.1
1/4	9.6	366.9
cb	9.0	366.5
OK L. 5+70	9.3	366.2
OK L.	9.5	366.0
cb	9.2	366.3
1/2	9.0	366.5
c	9.4	367.1
1/2	7.0	368.5
cb	6.3	369.2
E.L. 6+00 = North line of Polk St	5.3	370.2
E.L.	3.8	371.7
cb	6.1	369.4
1/4	7.0	368.5
c	7.6	367.9
1/4	9.7	366.8
cb	9.5	366.0

OK L.

10.2

365.3

365.2

9.96

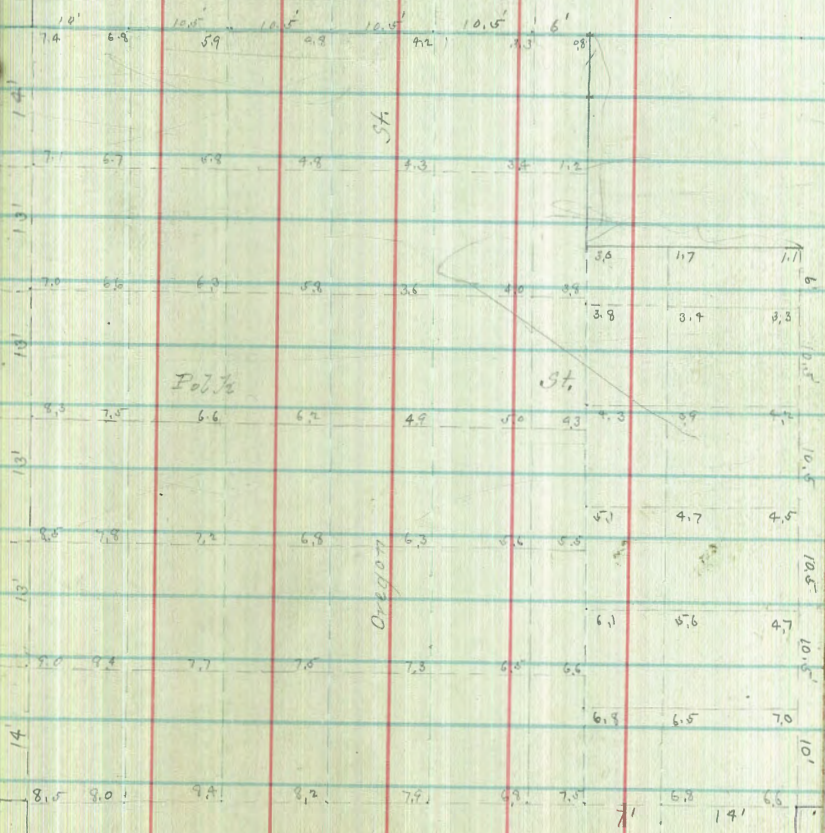
365.58 13' from Oregon & Polk

Check these elevations with old notes, as there was nothing for me to check on at this St.

M.P.D.

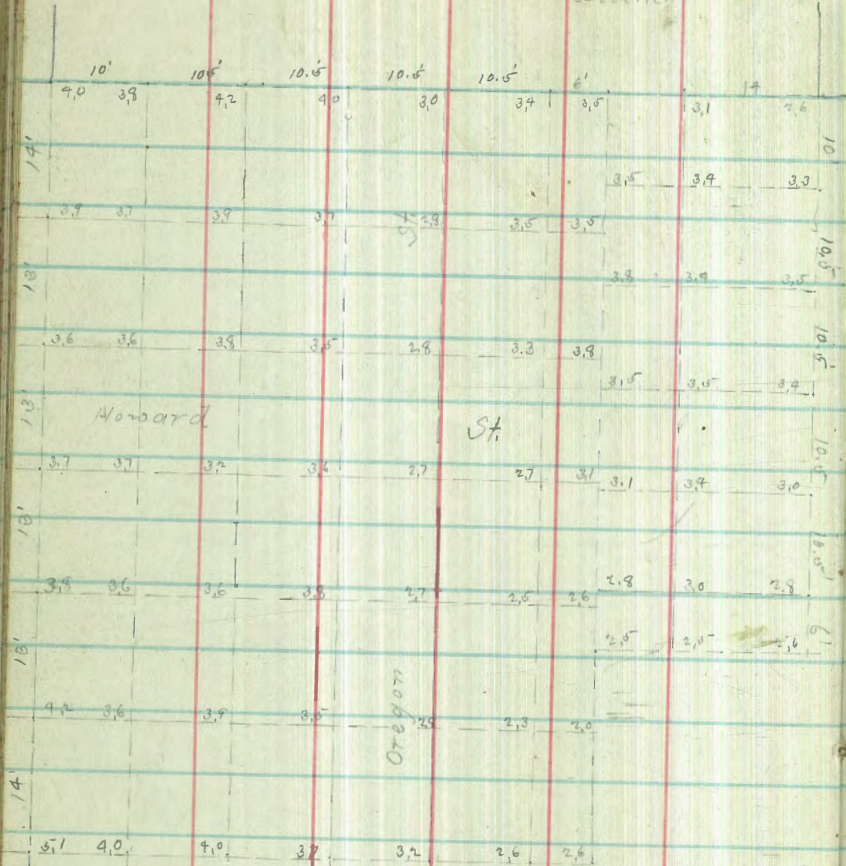
For 366.69 from 13' point for Oregon & Polk
+ 1.02
373.72 HI

Feb 17-18
Dunham,
Shaw,
Tealine

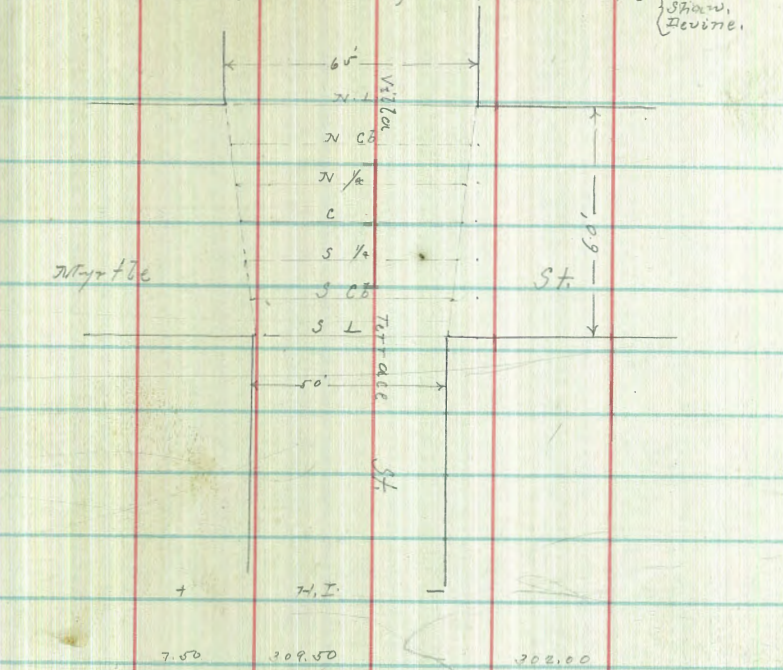


T.P. 377.29 Bolt encement foundation
 73.56
 377.94 HI

Feb 19-13
 (Dorman, Shaw, Devine)



Section of Villa Terrace St. - 50' wide, 10' wide 10' quarters, from the 31
 North line of Myrtle St. to the North line of Balboa Park,
 311 302.00 13 Hub Villa Terrace & Myrtle St. March 10-1913
 (Dorman, Shaw, Devine)



North line of Myrtle St.		
St.		9.6
ab		7.7
1/4		6.7
c		4.4
1/4		2.6
ct		1.3
6.L.		0.1

H.I.
309.50

Val. Terrace (50' wide)

North end of Myrtle St.

E.L.	0.4
cb	1.7
1/2	3.1
c	4.9
1/2	6.9
cb	7.9
OK.L.	9.4

North 1/2 of Myrtle St.

OK.L.	9.8
cb	7.9
1/2	7.1
c	4.8
1/2	3.1
cb	1.5
E.L.	0.3

Center of Myrtle St.

E.L.	0.3
cb	1.5
1/2	3.1

H.I.
309.50

32

c	5.0
1/2	7.0
cb	8.0
OK.L.	8.6

North 1/2 of Myrtle St.

OK.L.	9.8
cb	8.0
1/2	7.0

c	4.9
1/2	4.9
cb	1.3
E.L.	0.3

South end of Myrtle St.

E.L.	0.6
cb	1.9
1/2	3.4
c	4.9
1/2	6.4
cb	7.9
OK.L.	8.8

H.I.
309.00 Villa Terrace (50' wide)

cc = South line of Myrtle St.

OK.L.	9.0
ob	7.4
1/2	6.3
c	5.0
1/2	3.7
ob	2.6
E.L. +25	1.2
E.L.	1.1
ob	2.0
1/2	3.7
c	2.6
1/2	6.1
ob	7.4
OK.L. +50	9.4
OK.L.	9.7
ob	7.4
1/2	6.2
c	5.4
1/2	2.1

H.I.
309.50

33

ob	2.9
E.L. +75	1.4
E.L.	1.9
ob	3.3
1/2	4.3
c	5.6
1/2	7.0
ob	9.6
OK.L. +100	10.3
OK.L.	11.2
ob	9.7
1/2	7.8
c	6.0
1/2	4.8
ob	3.8
E.L.	2.0

Villa Franca (50 wide)

1+20⁵
E.L.

3.3

cb

4.6

1/2

5.7

c

7.3

1/2

9.7

cb

10.0

N.L.

11.3

1+50

N.L.

13.1

cb

11.5

1/4

9.7

c

8.3

1/2

6.3

cb

5.3

E.L.

4.1

1+75

E.L.

4.8

cb

6.5

1/2

8.2

c

9.9

1/2

11.5

cb

13.0

N.L.
2+00

10.3

N.L.

16.6

cb

14.7

1/2

13.2

c

11.5

1/2

9.7

cb

8.2

E.L.
2+20

6.7

E.L.

5.3

cb

9.7

1/2

11.1

c

13.4

#

2.05

294.90

13.05

296.40

1/2

4.3

cb

5.6

N.L.

8.3

H.I.
299.90

Villa Terrace (50' wide)

H.I.
299.90

35

2450 O.L.	9.5
cb	6.9
1/2	5.9
c	4.7
1/2	3.0
cb	1.3
O.L.	+0.6
2475 O.L.	1.1
cb	3.4
1/2	4.7
c	6.3
1/2	9.0
cb	9.7
O.L.	11.8
2400 O.L.	13.9
cb	12.0
1/2	10.3
c	8.0
1/2	5.6
cb	4.4

O.L.	2.9
2420 O.L.	3.7
cb	6.5
1/2	9.0
c	10.0
1/2	12.8
#	5.56 291.69 12.77 286.13
cb	6.9
O.L.	9.0
3454* = North line of Balboa Park	
3454	
O.L.	12.2
cb	9.7
1/2	7.6
c	5.6
1/2	3.7
cb	1.7
O.L.	4.1
#	9.49 282.20 13.44

+

H.I.
372.09

Oregon St.

Center of Palh St.			
E.L.	4.0	368.1	
cb	4.3	367.8	
1/2	4.9	367.2	
c	5.5	366.6	
1/4	6.1	366.0	
cb	6.6	365.5	
Or. L.	7.7	364.4	
North 1/2 of Palh St.			
Or. L.	6.4	365.72	
cb	5.9	366.2	
1/2	5.8	366.3	
c	5.3	366.8	
1/4	4.1	368.0	
cb	4.1	368.0	
E.L.	3.2	368.9	

North end of Palh St.

E.L.	3.1	369.0	
cb	3.4	368.7	
1/2	3.9	368.2	

+

H.I.
372.09

37

c	4.9	367.2	
1/2	5.4	366.7	
cb	6.2	365.9	
Or. L.	6.5	365.6	
North line of Palh St.			
Or. L.	6.8	365.3	
cb	6.1	365.0	
1/2	5.3	366.8	
c	4.2	367.9	
1/2	3.8	365.2	
cb	3.1	369.0	
E.L.	2.5	369.5	

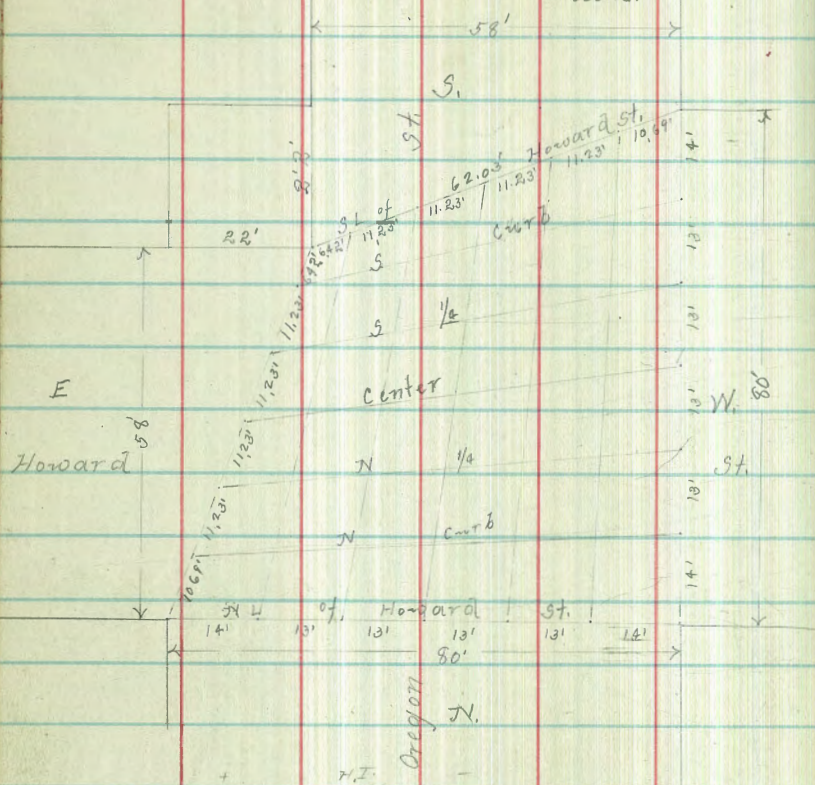
X-section of Intersection of Howard & Oregon St according to Plat below.

March 20-1913

{Tammann
Shaw
Devette.

71.1.
379.40

38



1/4		4.6	374.8
cl		4.7	374.7
E.L.		4.0	375.4
North end of Howard St			
E.L.		5.0	374.4
cl		4.9	374.5
1/4		5.1	374.3
c		4.8	375.1
1/4		5.2	374.2
cl		5.4	374.0
E.L.		5.1	374.3
North 1/2 of Howard St			
E.L.		5.1	374.3
cl		5.5	373.9
1/4		5.0	374.4
North line of Howard St.			
E.L.	5.4	374.0	
cl	5.1	374.3	
1/4	5.4	374.0	
c	4.5	374.9	

711.02.35 Belt in cement foundation NW of Oregon & Howard.

5.02 379.40 379.35

H.I.
379.90

Oregon St.

Center of Howard St.

E.L.	5.0	374.4
cl	4.9	374.6
1/2	4.3	375.1
c	4.8	374.8
1/2	4.9	374.6
cl	5.1	374.3
N.L.	5.2	374.2

South 1/2 of Howard St.

N.L.	5.3	374.1
cl	5.1	374.3
1/2	5.2	374.2
c	5.0	374.4
1/2	4.1	375.3
cl	4.6	374.8
E.L.	4.4	375.0

South end of Howard St.

E.L.	4.3	375.1
cl	4.0	375.4
1/2	4.0	375.4

H.I.
379.90

39

c.	4.9	374.6
1/2	5.9	373.6
cl	5.1	374.3
N.L.	5.6	373.8

South line of Howard St.

N.L.	6.5	372.9
cl	4.9	374.5
1/2	5.3	374.1
c	5.0	374.4
1/2	4.1	375.3
cl	3.8	375.6
E.L.	4.0	375.4

X-section of Trias St from the North line of Chestnut St to the North line of Fort Stockton, 50' wide 10' curbs, 1/2 quarters.

March 26-1913
 {Donnan.
 Shaw.
 Devine.

+ H.I.
 263.31

40

B.M. 259.25 Mon. Cen. Trias @ Chestnut.
 + H.I.

				c		7.2 256.1
	9.06	263.31	259.25	1/4		7.1 256.2
100' North line of Chestnut St.				cl		6.7 256.6
E.L.		7.9	255.4	OK L		6.5 254.8
cl		8.0	255.3	+75 OK L		6.0 257.3
1/4		8.1	255.2	cl		6.0 257.3
c		8.3	255.0	1/4		6.3 257.0
1/4		8.5	254.8	c		6.4 257.1
cl		8.1	255.2	1/4		6.6 256.7
OK L		8.1	255.2	cl		6.4 256.9
+25 OK L		7.7	255.9	E.L.		5.9 257.4
cl		7.2	256.1	+100 E.L.		5.1 258.2
1/4		7.7	256.6	cl		5.8 257.5
c		8.0	256.3	1/4		5.9 257.4
1/4		7.8	256.5	c		5.6 257.7
cl		7.3	256.0	1/4		5.7 257.6
E.L.		7.3	256.0	cl		5.0 258.3
+50 E.L.		6.7	256.6	OK L		5.0 258.3
cl		6.7	256.6			
1/4		7.4	256.9			

H.I.
263.31

Final Mt (50' wide)

1+25
OK.L.

4.4 258.9

OK.L.
2+00

3.1 260.2

cb

4.6 258.7

OK.L.

2.2 260.1

1/2

5.0 258.3

cb

2.7 260.4

c

5.0 258.3

1/2

3.0 260.3

1/2

5.2 258.1

c

3.1 260.2

cb

4.9 258.4

1/2

3.0 260.3

OK.L.

4.3 259.0

cb

2.8 260.5

1+50.

OK.L.

3.6 259.7

OK.L.
2+25

3.9 260.4

cb

4.0 259.3

OK.L.

1.9 261.4

1/2

4.5 258.8

cb

1.9 261.4

c

4.2 259.7

1/2

2.15 260.8

1/2

4.2 259.1

c

2.4 260.9

cb

3.9 259.4

1/2

2.3 261.0

OK.L.

4.0 259.3

cb

2.0 261.3

1+75

OK.L.

3.3 260.0

OK.L.

2.0 261.3

cb

3.3 260.0

1/2

3.7 259.6

c

3.7 259.6

1/2

3.5 259.8

cb

3.2 260.1

41

+

H.I.
263.3)

Trunk H (50 wide)

+

H.I.
263.3)

42

2+00 E.L.	1.5	261.8	cl	0.5	262.8
cl	1.7	261.6	W.L.	0.4	262.9
1/2	1.7	261.6	#	9.00	271.90
c	2.0	261.3		0.41	262.90
1/2	2.0	261.3	oo = north line of Hickory St.		262.90
cl	1.5	261.8	W.L.	8.3	263.6
W.L.	1.4	261.9	cl	8.4	263.5
2+75 W.L.	1.0	262.3	1/2	9.2	263.7
cl	0.9	262.4	c	8.0	263.9
1/2	1.2	262.1	1/2	8.0	263.9
c	1.4	261.9	cl	7.9	264.0
1/2	1.0	262.3	E.L. +25	7.7	264.2
cl	1.1	262.2	E.L.	7.2	264.7
E.L.	1.0	262.3	cl	7.3	264.6
3+00 = Vaulter line of Hickory St (50 wide)			1/2	7.3	264.6
3+00 E.L.	0.6	262.7	c	7.6	264.3
cl	0.4	262.9	1/2	7.5	264.4
1/2	0.7	262.6	cl	8.0	263.9
c	0.7	262.6	W.L.	7.9	264.0
1/2	0.9	262.5			

H.I.
271.90

Tran H (50 wide)

+50 H.L.	7.8	264.6
cl	7.6	264.3
1/4	7.1	264.8
c	7.0	264.9
1/4	6.9	265.0
cl	6.8	265.1
E.L. +70	6.7	265.2
E.L.	6.1	265.8
cl	6.2	265.7
1/4	6.3	265.6
c	6.5	265.4
1/4	6.4	265.5
cl	6.9	265.0
H.L. +100	6.7	265.2
H.L.	6.1	265.8
cl	6.3	265.6
1/4	5.9	266.0
c	5.9	266.0
1/4	5.7	266.2
cl	5.6	266.3

H.I.
271.90

43

E.L. +25	5.5	266.4
E.L.	4.8	267.1
cl	5.0	266.9
1/4	5.2	266.7
c	5.4	266.5
1/4	5.6	266.4
cl	5.8	266.1
H.L. +50	5.8	266.1
H.L.	5.3	266.6
cl	5.2	266.7
1/4	5.0	266.9
c	4.8	267.1
1/4	4.7	267.2
cl	4.6	267.3
E.L.	4.2	267.7

H.I.
271.90

Trial 24 (50' wide)

1+75 E.L.	3.8	268.1
cb	4.2	267.7
1/2	4.2	267.7
c	4.3	267.6
1/2	4.4	267.5
cb	4.8	267.1
OK L.	4.5	267.4
2+00 OK L.	4.4	267.5
cb	4.4	267.5
1/2	4.1	267.8
c	4.1	267.8
1/2	3.7	268.2
cb	3.8	268.1
E.L.	3.6	268.3
2+25 E.L.	3.3	268.6
cb	3.5	268.4
1/2	3.5	268.4
c	3.9	268.0
1/2	4.0	267.9
cb	4.0	267.9

H.I.
271.90

44

OK L.	3.0	268.7
2+50 OK L.	3.9	268.1
cb	4.0	267.9
1/2	3.9	268.0
c	3.8	268.1
1/2	3.4	268.5
cb	3.4	268.5
E.L.	3.2	268.7
2+75 E.L.	3.0	268.9
cb	3.5	268.4
1/2	3.5	268.4
c	3.9	268.0
1/2	3.9	268.0
cb	4.1	267.8
OK L.	4.1	267.8

+ H.I.
271.90

Truss St. (50' wide)

2+99 on the West - South line of Fort Stockton on the East.

2+89 O.L. 4.2 267.7

cl 4.1 267.8

1/4 3.9 268.0

c 3.8 268.1

1/2 3.8 268.1

cl 3.4 268.5

E.L. { 3.1 268.8

Top & Bottom of cut.

{ 5.1 266.8

EAST
2+99 on the 23+00 on the West - South line of Fort Stockton.

E.L. { 3.1 268.8

Top & Bottom of cut.

{ 5.1 266.8

cl 3.4 268.5

1/4 3.8 268.1

1/2 3.7 268.2

1/4 3.9 268.0

cl 3.9 268.0

O.L. 3.8 268.1

+ H.I.
271.90

45

Fort Stockton 20' on the South 14' on the 10' quarters.

Fort Stockton 50' " " North 10' " " 1/2" "

South end of Fort Stockton.

O.L. 4.0 267.9

cl 4.0 267.9

1/2 3.9 268.0

c 4.1 267.8

1/4 4.0 267.9

cl 4.3 267.6

E.L. { 5.4 266.5

cut @ gutter

{ 5.9 266.0

South 1/2 of Fort Stockton

E.L. 5.4 266.5

cl 4.5 267.4

1/2 4.3 267.6

c 4.2 267.7

1/4 4.3 267.6

cl 4.3 267.6

O.L. 4.5 267.4

Center of Fort Stockton

Or. L.	4.3	267.5
cb	4.3	267.5
1/2	4.3	267.5
e	4.2	267.7
1/2	4.2	267.7
cb	4.5	267.4
E.L.	5.1	266.8
North 1/2 of Fort Stockton		
E.L.	5.0	266.9
cb	4.5	267.4
1/2	4.2	267.7
e	4.2	267.7
1/2	4.3	267.6
cb	4.4	267.5
Or. L.	4.5	267.4

North end of Fort Stockton

Or. L.	4.2	267.7
cb	4.3	267.6
1/2	4.2	267.7

e	4.1	267.8	
1/2	4.2	267.7	
cb	4.1	267.8	
E.L.	curl & gutter.	4.9	267.0
		5.6	266.3

North line of Fort Stockton

E.L.	4.3	267.6
cb	4.0	267.9
1/2	4.3	267.6
e	4.2	267.7
1/2	4.3	267.6
cb	4.1	267.8
Or. L.	4.2	267.7
#	3.94	267.96 = 267.96 Non Trias E Fort Stockton NW Cor.

Section of 6th St from the North line of Ugas on the East
to the South line of Pennsylvania, 10' walks from Ugas to Brooks,
18 1/2' walks from Brooks to Pennsylvania. Width of St. & quarters
varying - see sketch.

Honnan,
Shaw, April 2nd 1913.
Levine

U.S. 28491 Fl. g NW Cor. 5th & Ugas

	+	#		
	6.01	291.22	294.91	
#	3.73	292.36	292.64	292.59 Granite Men.

cc - North line of Ugas on the East.

00
E.L.

cl

g

1/2

c

1/2

g

cl

11. L.

+150

11. L.

cl

g

1/4

c

1/2

g

cl

E.L.

1400

E.L.

cl

g

1/2

c

1/2

g

cl

11. L.

1450

11. L.

cl

g

1/2

c

1/4

cl

E.L.

H.L.
292.36

47

3.4

3.0

3.2

3.6

4.1

4.2

4.4

4.6

5.2

4.5

4.4

4.6

4.8

5.3

5.0

4.5

4.4

4.0

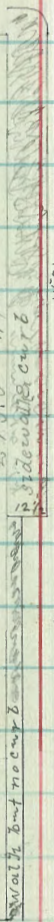
3.5

Anderson Place Cal 54.04

Pennsylvania

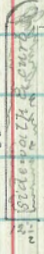
Ave.

60'



St.

60'



375' Ave.

150'

15th

Anderson Place

Anderson Place

Cal 54.01

Cal 54.01

Brooks

275' Ave.

St.

6th

Hmb.

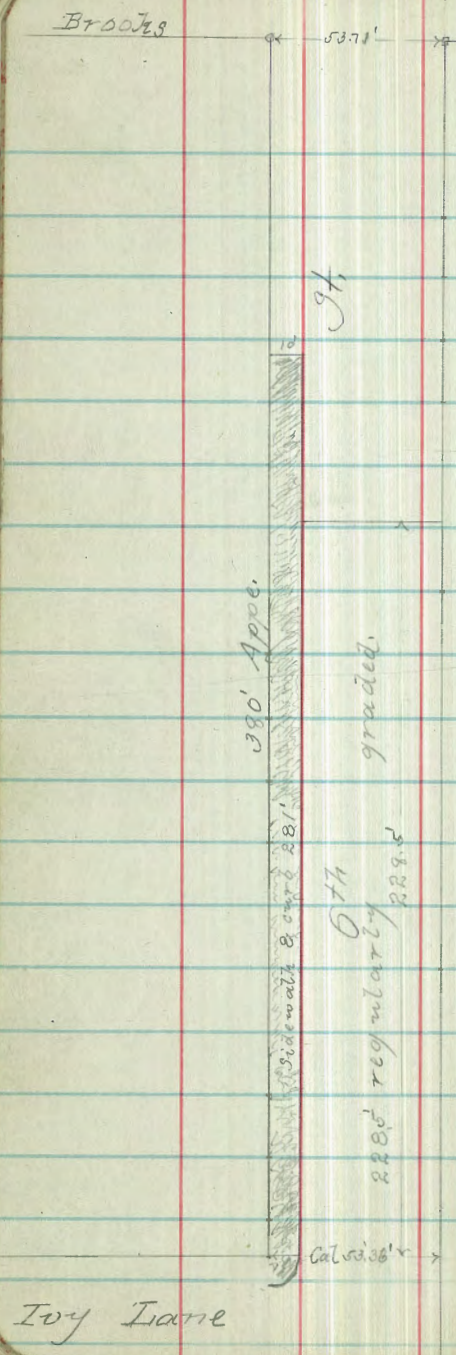
60'

St.

Hmb.

Pin

Measure of Cal 54.01



Brooks

53.71'

St.

390' Appx.

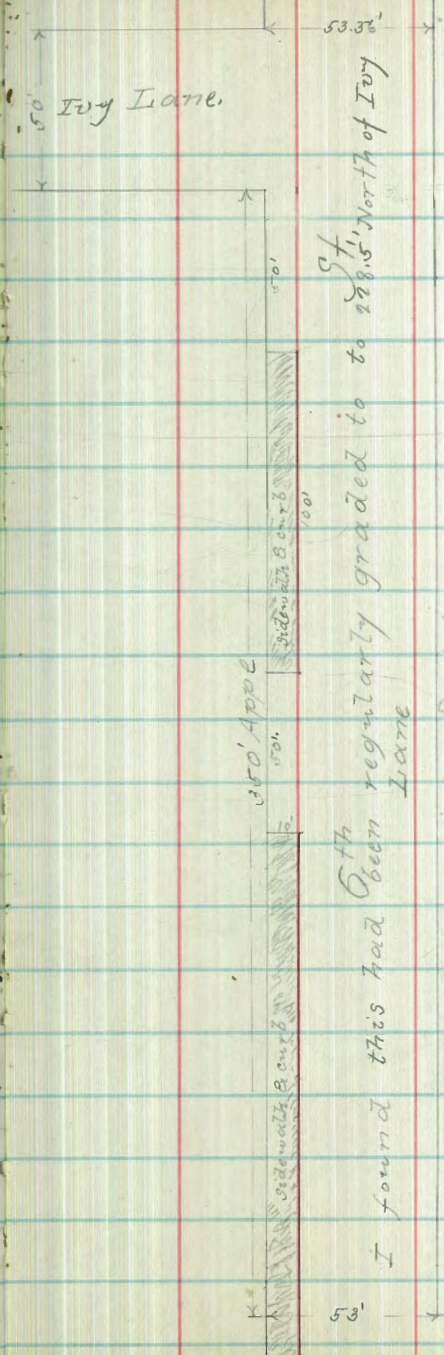
sidewalk 8' curb 28'

228' regularly graded

Calssid 36'

Ivey Lane

St.



Ivey Lane.

50'

53.35'

350' Appx.

sidewalk 8' curb 28'

I found this had been regularly graded to to 228.5' North of Ivey Lane

53'

7pas St.

St.

Brooks

53.71'

St

390' Apple

side walk 8' cur 28'

220' regularly
0th 229.5'

graded.

Calvis's r

Ivy Lane

St

50

Ivy Lane

53.36'

350' Apple

side walk 8' cur 28'

I found this had been
0th regularly graded to to 228.5' North of Ivy
Lane

53'

17pas St

71.
236.58.

5th St.

sc = North line of Hwy Lane.

00	g L.	0.6
	cl	1.0
	g	1.05
	1/2	1.05
	c	1.3
	1/2	1.5
	j	1.7
	cl	1.2
	OK L.	1.0
+50	OK L.	2.9
	cl	3.0
	j	3.3
	1/2	3.4
	c	3.2
	1/2	3.5
	g	3.4
	cl	2.8
	g L.	2.3

71.
236.58

51

1400 L.

cl	4.6
cl	4.7
g	5.4
1/2	5.2
c	4.8
1/2	5.1
g	5.5
cl	4.8
OK L.	4.6
+50	
OK L.	6.3
cl	6.5
g	7.3
1/2	7.1
c	6.6
1/2	6.8
g	7.0
cl	6.5
g L.	6.1

+

H.I.
296.08

67² St

2+00	B.L.		7.6		
	cl		8.2	278.1	
	1/2		8.5		
	c		8.3		
	1/2		8.6		
	g		9.0		
	cl		8.3	278.3	
	O.K.L.		8.2		
0	#	1.08	277.98	10.18	276.90
2+50	O.K.L.		0.9		
	cl		1.0	276.5	
	g		1.6		
	1/2		1.2		
	c		1.2		
	1/4		1.1		
	g		0.8		
	cl		0.4	277.1	
	B.L.		0.0		

+

H.I.
277.98

52

2481 = 2nd mark on the West

2+91	B.L.		1.0	
	cl		1.7	275.8
	g		2.3	
	1/2		2.7	
	c		2.7	
	1/4		3.0	
	g		3.0	
	cl		1.9	275.8
	O.K.L.		1.7	
2+00	O.K.L.		4.1	
	cl		4.4	273.8
	1/2		5.0	
	c		5.1	
	1/4		5.0	
	cl		4.6	272.7
	B.L.		3.9	

7.I.
277.48

677 St.

277.5

3+25 E.L.		11.4	266.1	
cl		10.0	267.5	
1/2		9.6	268.9	
c		7.7	269.8	
1/2		7.1	270.4	
cl		8.5	269.2	
cl		9.5	269.0	
Slope 15' West of Sta 3+25		13.4	264.1	
" " " " "		13.1	264.4	
#	0.41	265.02	12.87	264.31
Slope 20' West of Sta 3+50		10.3	254.7	
3+50 cl		6.9	258.2	
cl		6.2	258.8	
1/2		6.3	258.7	
c		6.7	258.3	
1/2		7.7	257.3	
cl		9.0	256.2	
E.L.		10.0	255.0	
Slope 25' East of Sta 3+50		12.6	252.4	
#	0.22	252.26	12.98	252.04

7.I.
252.26

53
252.3

3+90 = North line of Bonchett. 60' wide 10' curbs 10' gutters			
Slope 45' East of 3+30		14.9	237.4
" 20' " " "		12.7	239.6
E.L.		11.4	240.9
cl		10.0	242.3
1/2		9.3	244.0
c		6.9	245.4
1/2		6.4	245.9
cl		5.9	246.9
cl		4.7	247.6
Slope 9' West of 3+40		5.2	247.1
" 32' " " "		13.5	238.8
" 46' " " "		7.5	244.8
Brook			St



6.7

H.I.
252.2667th St252.3

South end of Bowles St.

244.9

Or. L.		8.1	244 ¹
cl		9.4	242 ⁹
1/2		10.7	241.6
c		11.4	240.9
1/2		12.2	240 ⁰
cl		12.7	238 ⁶
#	4.45	244.92	11.79
E.L.		7.5	237.4

Wp. 20 East on the South End of Bowles

" 4' " " " " " " " 15.0 229.9

" 6' " " " " " " " 15.0 229.9

South 1/2 of Bowles St.

E.L.		11.7	233.2
cl		10.7	234 ²
1/4		9.5	235.4
c		8.3	236.6
1/2		7.1	237.8
cl		6.3	238 ⁶
Or. L.		6.1	238.8

H.I.
244.92

54

244.9

Wp. 26 West on Center of Bowles

		+3.8	248.7
"	7'	"	"
"	"	8.5	236.4
Or. L.		9.9	236.1
cl		9.6	235 ³
1/2		10.6	234.3
c		10.5	234.4
1/2		10.8	234.1
cl		11.0	233 ⁹
E.L.		10.7	234.2

North 1/2 of Bowles St.

E.L.

cl

1/2

c

1/2

cl

Or. L.

71
244.92

67.94

2449

71
244.92

55
257.2

North curb of Baroka St.	7.9	237.0
N.L.	7.4	237.5
cl	5.7	239 ²
1/2	4.4	240.5
c	3.6	241.3
1/4	2.6	242.3
8.L.	1.7	243.2

ci - North line of Baroka St.

Slope at East of Sta. 00	+4.7	249.6
8.L.	+1.8	246.7
cl	+1.2	246.7
1/2	-0.7	245.6
c	0.7	244.2
1/4	2.5	242.4
cl	4.6	240 ³
N.L.	8.3	236.6

Slope 21' West of Sta 00

" 36' " " " "	0.0	244.9
" 46' " " " 25	1.7	243.2
" 31' " " " "	5.9	239.0

#	12.53	257.23	0.22	244.70
+2.5 N.L.			13.0	244.2
cl			9.3	248.2
1/2			6.6	250.6
c			3.6	253.6
1/4			0.6	256.6
cl			+0.4	257.6
8.L.			+2.6	259.8

Slope 16' East of Sta 25.

+5.0 8.L.			+3.9	261.1
cl			+4.2	271.2
cl			+10.3	267.5
1/2			+7.6	264.8
c			+4.9	262.1
1/4			+1.8	259.0
cl			1.0	256.2
N.L.			5.3	251.9

Slope 23' West of Sta +50

" 50' " " " "			17.9	239.3
" 50' " " " "			13.3	243.9
" 40' " " " +75			13.3	243.9
#	12.35	269.45	0.63	256.60

HI
269.45

67th St

269.9

HI
281.53

55

+75			8.1	261.3
cl			3.6	265.8
1/2			1.9	267.5
#	12.40	281.53	0.32	269.13
c			11.4	270.1
1/2			9.6	271.9
cl			5.8	275.2
8.2			2.7	278.3
1+00			0.7	280.8
cl			1.9	279.8
1/2			2.3	279.2
c			2.2	279.1
1/2			4.1	277.4
cl			7.1	274.8
H.L.			13.3	267.2
1/2 c cl 1400			0.0	260.5
1+25 H.L.			4.0	271.5
cl			2.7	272.8
1/2			2.0	279.5
c			1.6	279.9

1/4			1.0	270.5
cl			0.9	280.2
#	7.76	289.54	0.75	280.78
E.L.			6.9	281.6
1+50			6.0	282.5
cl			6.9	281.8
1/2			7.1	281.4
c			7.8	280.7
1/2			8.3	280.2
cl			4.7	279.8
H.L.			9.6	278.9
2+00			7.6	280.9
cl			7.1	281.4
1/2			6.5	282.0
c			6.1	282.4
1/2			5.9	283.1
cl			5.0	283.5
E.L.			3.7	284.8

2+50
E.L.

2.6 285.9

cl

3.2 285.3

1/4

3.5 285.0

c

4.1 284.4

1/4

4.4 284.1

cl

4.7 283.8

N.L.

5.3 283.2

2+75 = South line of Anderson Place (50' wide) 1/5 mile, 5/8 quarter.

2+75
H.L.

4.1 284.4

cl

4.1 284.4

1/4

3.6 284.9

c

3.2 285.3

1/4

2.5 286.0

cl

2.5 286.0

E.L.

1.9 286.6

South curb of Anderson Place:

E.L.

1.6 286.9

cl

2.3 286.2

1/4

2.8 285.7

c

3.2 285.3

1/4

3.5 285.0

cl

4.0 284.5

N.L.

Gutter 4.0 284.5

Curb 3.53 285.01

South 1/4 of Anderson Place

N.L.

3.8 284.7

cl

3.9 284.6

1/4

3.4 285.1

c

3.0 285.5

1/4

2.7 285.8

cl

2.4 286.1

E.L.

1.9 287.1

Center of Anderson Place:

E.L.

1.3 287.2

cl

2.4 286.1

1/4

2.4 286.1

c

2.9 285.6

1/4

3.5 285.0

cl

3.7 284.8

N.L.

3.7 284.8

North 1/2 of Anderson Place:

N.L.	3.7	284.8
cl	3.7	284.8
1/2	3.2	285.3
c	2.8	285.7
1/2	2.3	286.2
cl	2.2	286.3
E.L.	1.2	287.3

North end of Anderson Place:

E.L.	1.0	287.5
cl	2.0	286.5
1/2	2.2	286.3
c	2.6	285.9
1/2	3.1	285.4
cl	3.7	284.8
	3.8	284.7
N.L.	3.42	285.12

ac-Mouth line of Anderson Place:

N.L.	3.2	284.3
cl	3.5	285.0

1/2	3.1	285.4
c	2.3	286.2
1/2	1.7	286.8
cl	1.5	287.0
E.L.	0.4	288.1
+50 E.L.	0.0	288.5
cl	0.4	288.1
1/2	0.7	287.3
c	1.3	287.2
1/2	2.0	286.5
cl	2.4	286.1
N.L.	2.9	285.7
+100 N.L.	2.0	286.5
cl	2.0	286.5
1/2	1.9	286.6
c	1.9	286.6
1/2	1.8	286.7
cl	1.7	286.8
E.L.	0.7	287.8

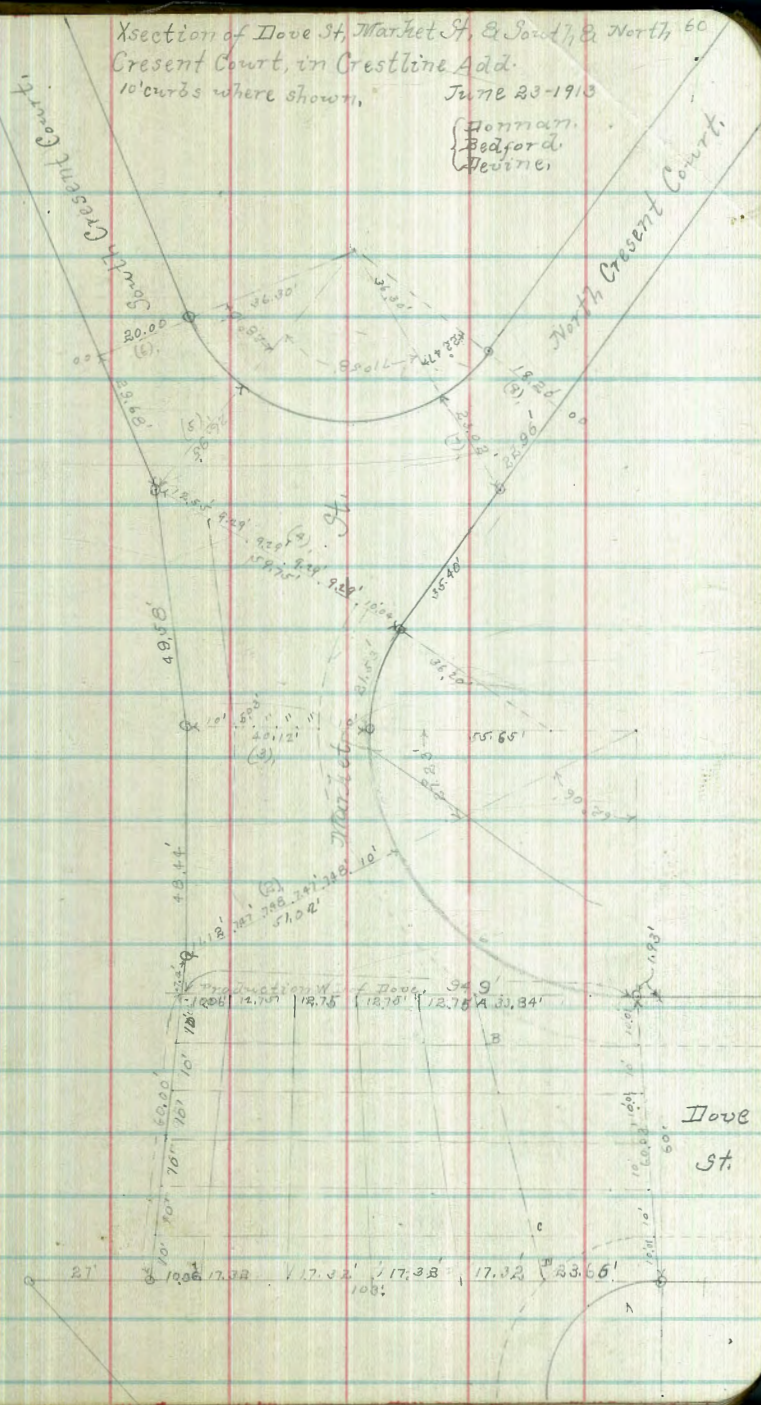
	+	7.I. 288.54	-	677 St.
1+50 E.L.			1.2	287.3
cl			2.2	286.3
1/2			2.3	286.2
c			2.5	286.0
1/2			2.8	285.7
gutter			2.6	285.9
curb			2.4	286.1
W.L.			2.2	286.8
#	4.51	290.71	2.34	286.90
2+00 W.L.			4.1	286.6
cl			4.2	286.5
g			5.0	285.7
1/2			4.8	285.9
c			4.6	286.1
1/2			4.5	286.2
g			4.6	286.1
E.L.			3.9	286.8
2+50 E.L.			3.1	287.6
cl			3.4	287.3
g			4.3	286.4

	+	7.I. 290.71	-	488 86 59
1/2			4.2	286.5
c			4.4	286.3
1/2			4.6	286.1
g			4.9	285.8
cl			3.9	286.3
W.L.			3.7	287.0
2+75 ⁵ = North line of Pennsylvania				
2+75 ⁵ W.L.			3.5	287.2
cl			3.7	287.0
g			4.9	285.9
1/2			4.1	286.6
c			4.0	286.7
1/2			4.0	286.7
g			3.9	286.9
cl			3.2	287.5
E.L.			2.9	287.3
#			3.85	286.96 = 286.86 plus NW Cor Pennsylvania & 67th.
9 1/2 hrs.				

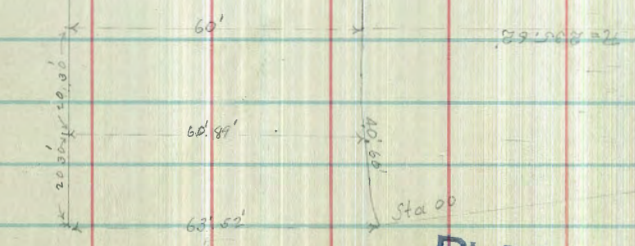
Xsection of Dove St, Market St, & South & North 60
 Crescent Court, in Crestline Add.

10' curbs where shown, June 23-1913

(Donnan,
 Bedford,
 Hevins)

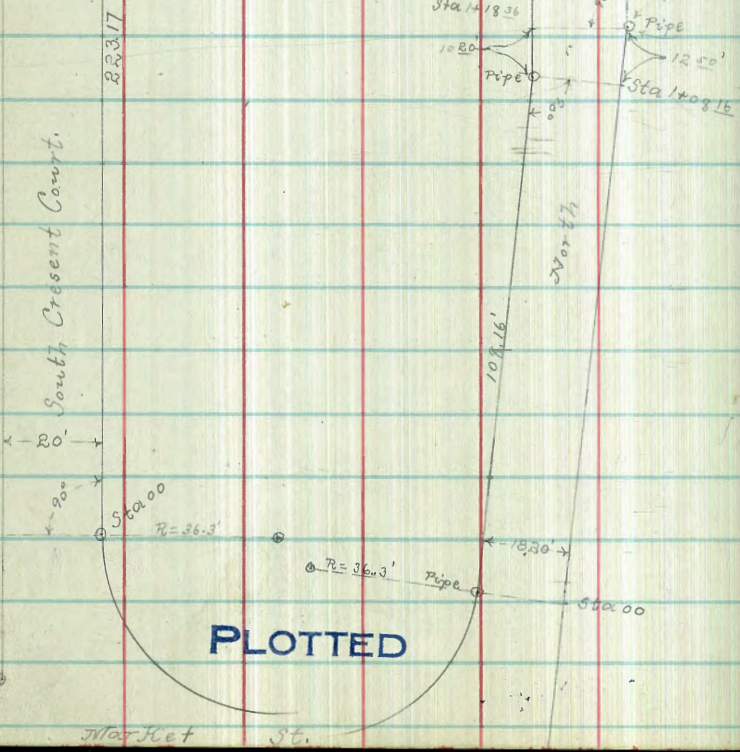
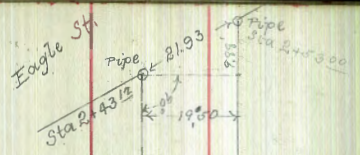
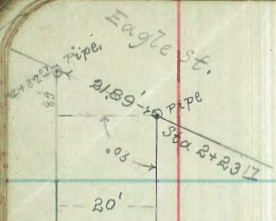


Dove St 10' curbs



Sutter St

PLOTTED



PLOTTED

Bot 156.99 to NW Cor Goldfinch & Suttler, H.I.

7.07	264.36	256.99
11.57	259.96	258.29
0.27	247.41	247.14
0.20	234.75	234.45
0.05	222.09	222.04
0.42	209.63	209.21
0.13	196.84	196.71
0.16	184.11	183.95
6.64	179.88	179.22

178.517 Iron Pipe Intersection N. l. of Dove with South line of Suttler.

Xsection of Dove St, 60' wide, 10' curb. See sketch. cc = South line of Suttler St.

H.L.	1.4	178.5
+4	3.2	76.7
cl	3.1	76.8
1/4	4.2	75.7
c	4.7	75.7
1/4	4.6	75.3
cl	3.4	76.5
E.L.	0.1	79.8

PLOTTED

+

7.5
179.86+20²⁰

E.L.

+0.1

180.0

c

7.0

172.9

cl

3.1

76.8

1/2

6.0

73.9

+4

5.1

74.8

cl

3.4

76.5

1/2

5.1

74.8

OK.L.

3.4

76.5

c

4.9

75.0

1400
OK.L.

3.8

76.1

1/4

4.3

75.6

cl

4.1

75.8

cl

3.0

76.9

1/2

7.0

72.9

+9

3.3

76.6

+5

7.7

72.2

OK.L.

1.5

78.4

c

7.5

72.4

+40⁶⁰ = P.T.
OK.L.

2.5

77.4

1/2

6.6

73.3

cl

3.1

77.8

cl

6.5

73.4

1/4

4.8

75.7

E.L.

4.6

75.3

c

6.3

73.6

1425
E.L.

7.5

72.4

+5

7.4

72.5

cl

7.9

72.0

1/2

4.5

75.4

1/2

8.2

71.7

cl

2.9

77.0

c

7.8

72.1

E.L.

1.8

78.6

1/2

6.6

73.3

+75
E.L.

3.9

76.1

cl

5.3

74.6

cl

4.8

75.1

OK.L.

5.4

74.5

1/4

5.1

74.8

PLOTTED

+

7.5
179.86

Doub Off (60 wide) 62

H.I.
179.88

1450 M.L.	7.0	172.9
cl	7.0	72.9
1/4	7.6	72.3
c	8.0	71.9
1/4	7.8	72.1
cl	9.0	70.9
E.L.	9.0	70.9
1475 E.L.	9.6	70.5
cl	9.8	70.1
1/4	10.0	69.9
c	8.7	71.2
1/4	8.4	71.5
cl	8.0	71.5
M.L.	8.2	71.7
2+00 M.L.	9.3	70.6
cl	9.5	70.4
1/4	10.1	69.8
c	10.7	69.2
1/4	10.0	69.9
cl	9.3	70.6

PLOTTED

H.I.
179.88

Dave M (60 wide) 63

E.L.	7.7	173.2
2+25 E.L.	9.4	70.5
cl	10.0	69.9
1/4	10.3	69.6
c	10.9	69.0
1/4	11.0	68.0
cl	10.2	69.7
M.L.	9.6	70.3
2+50 E.L. - PC. on E.L. M.L.	9.5	70.4
cl	9.9	70.0
1/4	11.1	68.8
c	11.2	68.7
1/4	11.5	68.4
cl	11.7	68.2
E.L.	11.7	68.2

7.I.
179.88

1+5R²⁵ = PC on WL
2+50⁶² = PC on EL
E.L. } = N.L. of Market St intersection.

	11.7	16.93
cl	11.7	6.83
1/4	11.6	6.83
c	11.4	6.85
1/4	11.2	6.87
cl	9.7	70.2
av. L.	9.5	70.4
North end of Market St (see sketch)		
Point A (see sketch) cb & WL intersection	6.9	73.1
cb produced	7.7	73.2
1/2	9.4	70.5
c	11.4	6.85
1/4	12.05	6.74
cb produced	12.5	6.74
cb & EL intersection	12.6	6.73
H	5.96	179.10
	6.64	173.24

PLOTTED

7.I.
179.10

Done at (60' wide) 64

North 1/2 of Market St.

cl	11.3	14.78
	10.6	6.85
	10.0	6.91
	8.9	70.2
	7.6	71.5
	6.2	72.9
av. L.	5.1	74.0
Center of Market St.		
av. L.	5.3	73.8
	6.2	72.9
	7.5	71.6
	8.5	70.6
	9.6	69.5
	10.2	68.9
E.L.	11.2	67.9

179.10

71.1
179.10

South 1/2 of Market St.

E.L.	11.4	167.7
	9.9	69.3
	9.0	70.1
	8.3	70.8
	7.8	71.3
	6.9	72.3
O.L.	5.6	73.5

South curb of Market St.

O.L.	5.5	73.6
	6.5	72.6
	7.0	72.1
	7.7	71.4
	9.5	70.6
	9.6	69.5
E.L.	10.8	68.3

PLOTTED

71.1
179.10

65
Dove St (60 wide)

South line of Market St.

E.L.	10.0	169.1
	9.2	69.9
	8.0	71.1
	6.9	72.3
	5.8	73.3
	5.1	74.0
O.L.	4.4	74.7

for check of levels see pag 69.

Section of Market St from West line of Dove St produced
to North & South Crescent Courts. See sketch

H.I. 179.10 See previous page.

June 25-1913

(Donnan,
Bedford,
Irvine)

H.I.
191.62

66

	H.I.		
00 = West line of Dove St produced.			
N.I. = P.C.	9.8	170.3	
cl	6.0	73.1	
	5.1	74.0	
	5.3	73.8	
	5.6	73.6	
	5.4	73.7	
M.L.	4.4	74.7	
Section (2) M.L.	3.9	75.2	
	4.1	75.0	
	3.8	75.3	
	2.8	76.3	
	2.9	76.3	
cl	2.3	76.8	
+6	1.5	77.6	
M.L.	+1.2	190.3	
#	12.88	191.62	0.36
		179.77	

Section (3) on radial line

M.L.	12.4	179.2
	13.1	78.5
	12.3	79.3
	12.5	79.1
	12.4	79.2
cl	12.0	79.6
+9	11.5	80.1
M.L.	9.6	83.0
Section (3)		
M.L.	9.5	83.1
cl	11.1	80.5
1/4	11.2	80.4
c	11.8	79.8
1/2	11.8	79.8
cl	10.5	81.1
M.L.	8.3	83.2

PLOTTED

H.I.
191.62

Section of North Crescent Court from P.I. at Market St to the 67
East line of Eagle St. See sketch
June 25-1913

H.I. 191.62 See previous page.

Norman,
Bedford,
Weirne.

H.I.
191.62

Section (5)

V.L.	9.3	1833
center	8.0	836
M.L.	5.0	846

Section (6) = E.C.

M.L.	1.9	897
center	3.5	881
V.L.	2.5	871

Section (7)

M.L.	5.3	863
center	6.9	847
V.L.	5.3	863

Section (8) = E.C.

V.L.	4.1	875
center	4.2	874
M.L.	1.6	900

for check of levels see page 69.

PLOTTED

000 E.C.

M.L.	1.6	1900
------	-----	------

center	2.2	874
--------	-----	-----

V.L.	4.1	875
------	-----	-----

#	13.10	203.17	1.55	190.07
---	-------	--------	------	--------

+25	V.L.	11.3	919
-----	------	------	-----

center	13.6	896
--------	------	-----

M.L.	15.9	913
------	------	-----

-50	M.L.	7.5	957
-----	------	-----	-----

c	9.6	936
---	-----	-----

V.L.	10.5	932
------	------	-----

+75	V.L.	6.9	963
-----	------	-----	-----

c	6.8	964
---	-----	-----

M.L.	3.7	995
------	-----	-----

+100	V.L.	1.0	2022
------	------	-----	------

c	2.9	2023
---	-----	------

V.L.	1.8	2014
------	-----	------

HI
203.17

1409¹⁵ = Angle point on South.

V.L.		0.3	2029
c		2.2	2010
M.L.		0.4	2038

13.02 216.01 0.19 202 99 Pipe S point
21 Crescent Court.

1418²⁶ on the South = 1420²⁶ on the North.

M.L.		12.1	2039
c		12.1	2039

V.L.		10.5	2055
------	--	------	------

1425 ²⁵ V.L.		8.7	2073
-------------------------	--	-----	------

c		10.2	2058
---	--	------	------

M.L.		11.0	2050
------	--	------	------

1450 ²⁵ M.L.		5.6	104
-------------------------	--	-----	-----

c		7.9	81
---	--	-----	----

V.L.		5.8	123
------	--	-----	-----

1475 ²⁵ V.L.		0.6	154
-------------------------	--	-----	-----

c		4.7	113
---	--	-----	-----

M.L.		2.5	155
------	--	-----	-----

PLOTTED

#	12.79	228.80	0.80	216.01
---	-------	--------	------	--------

HI
228.80

68

1400 ²⁵ V.L.		9.3	2195
-------------------------	--	-----	------

c		13.0	158
---	--	------	-----

V.L.		10.9	179
------	--	------	-----

1425 ²⁵ V.L.		2.8	260
-------------------------	--	-----	-----

#		3.6	257
---	--	-----	-----

M.L.		1.2	276
------	--	-----	-----

#	13.05	271.04	0.91	227.99
---	-------	--------	------	--------

1423²⁵ on the East = West line of Eagle St.

V.L.		5.3	317
------	--	-----	-----

c		6.3	337
---	--	-----	-----

V.L.		6.6	344
------	--	-----	-----

on diagonal on E of Eagle St. $\pm 43^{\circ} 52' 53''$

V.L.		6.6	344
------	--	-----	-----

c		5.6	344
---	--	-----	-----

M.L.		1.6	394
------	--	-----	-----

#	12.56	258.70	0.90	240.14
---	-------	--------	------	--------

	9.26	261.56	0.60	258.10
--	------	--------	------	--------

	6.12	264.80	3.75	259.29
--	------	--------	------	--------

	7.91	256.99 = 256.99		
--	------	-----------------	--	--

Initial D. W. S. B. Goldjenn.

Section of South Crescent Court from the P.T. at Market St
to the East line of Eagle St. See sketch. June 25-1913

T.P. 183.95 - See page 61.

(Dunham,
Bedford
New York)

		H.I.		
	12.06	196.01	183.95	
002 P.T. S.L.			187.1	
c		9.0	88.0	
M.L.		6.3	89.7	
+25 M.L.		2.1	93.9	
c		3.9	92.1	
S.L.		5.0	90.6	
+50 S.L.		1.1	94.9	
#	12.94	208.44	195.56	
c		12.2	95.2	
M.L.		9.3	99.1	
+75 M.L.		4.3	204.1	
c		6.6	201.8	
S.L.		9.9	199.5	
1250 S.L.		3.7	204.6	
c		2.1	204.3	
M.L.		1.8	206.6	
#	13.04	221.43	209.44	

PLOTTED

H.I.
221.48

69

125 M.L.		9.0	212.5
c		12.5	9.0
S.L.		11.5	10.0
1250 S.L.		5.7	15.8
c		4.0	17.5
M.L.		1.4	20.1
#	12.99	233.68	233.68
1275 M.L.		0.29	221.19
c		6.9	26.8
S.L.		9.5	24.9
c		4.2	22.5
2+00 S.L.		2.9	30.9
c		3.3	30.4
M.L.		2.4	31.3
#	12.91	245.77	245.77
2+237 = East line of Eagle St on the North		0.82	232.86
M.L.		9.5	37.3
c		7.7	38.1
S.L.		5.0	40.8

7.I.
245.77

±23 on north to 2732 on North diagonal along E.L. of Bayley

W.L. 0.7 345.1

C 5.0 40.8

M.L. 9.5 373

12.29 257.59 0.42 245.35

5.45 260.70 2.34 255.25

6.12 264.20 2.42 258.29

7.41 256.90 = 256.97
Initial B.M. on S.W. corner of G. & G. 2/10/13

PLOTTED

Levels for profile on Pine St from the West Line of Conde to the West line of Riley Street 60' wide. 70

July 1913

(Dormant Bedford Irvine)

from N.W. Cor Conde & Whitman 215.07

12.71 227.79 215.07

12.25 239.15 0.88 226.90

10.59 249.27 1.47 237.69

1.39 246.85 from Conde & Irvine

at West line of Conde:

0.0 mt. 2.2 246.1

C 3.3 45.0

W.L. 4.5 43.9

+25 W.L. 7.1 41.2

C 6.2 42.1

M.L. 5.7 42.6

+50 M.L. 9.4 38.9

C 9.2 39.1

W.L. 9.1 39.2

+75 W.L. 11.9 36.2

C 12.3 36.0

M.L. 14.0 34.3

0.16 236.00 12.43 235.84

PLOTTED

H.I.
236.00

Pine St (50' wide)

1+00 M.L.			9.0	275.0
c			5.6	30.4
M.L.			3.7	32.3
1+25 M.L.			8.9	27.1
c			11.2	24.8
M.L.			13.9	22.1
#	0.25	223.60	12.65	223.85
1+50 M.L.			7.5	16.1
c			6.0	17.6
M.L.			1.8	21.8
1+75 M.L.			11.1	73.5
#	0.84	211.26	12.98	210.62
c			2.8	8.7
M.L.			5.2	6.3
2+00 M.L.			16.3	195.2
c			12.8	98.7
M.L.			10.2	201.3
#	0.11	198.45	13.12	198.34

PLOTTED

H.I.
198.45

71

2+25 M.L.			6.1	192.4
c			7.1	91.4
M.L.			8.2	89.3
2+50 M.L.			12.7	85.9
c			11.9	86.6
M.L.			11.5	87.0
#	0.16	185.66	12.95	185.50
2+75 M.L.			2.5	83.2
c			1.9	83.8
M.L.			4.0	81.7
3+00 = East line of Harney (50' wide)				
3+00 M.L.			12.7	73.0
c			9.8	75.9
M.L.			6.4	79.3
Center of Harney St				
M.L.			10.9	74.8
#	0.15	172.76	13.05	172.61
c			6.51	166.25 from Center of Harney & Pine.
c			6.5	44.3
M.L.			10.9	61.9

7.I.
172.76

Pine St (50 wide)

#	0.70	160.55	12.91	159.85
cc = Part line of Hamney St.				
00 M.L.			12.9	147.7
c			7.3	53.3
V.L. +25			+2.0	62.4
V.L.			10.2	50.4
#	0.56	148.25	12.86	147.69
c			7.2	41.1
M.L. +50			14.2	34.1
M.L.			23.8	24.5
c			17.5	30.8
V.L. +75			4.7	43.6
V.L.			3.3	40.0
#	0.12	135.29	13.09	135.17
c			9.2	27.1
M.L. +100			20.3	15.0
M.L.			26.9	108.4
c			14.7	20.6
V.L.			1.9	33.4

PLOTTED

7.I.
135.29

72

6+25				
V.L.			10.8	124.5
#	0.04	122.63	12.70	122.59
c			9.1	13.5
M.L. +50			21.1	101.5
M.L.			30.6	97.0
c			19.2	103.4
V.L.			6.4	14.7
#	0.06	109.81	12.88	109.75
1+75				
V.L.			3.0	6.8
#	1.29	98.03	12.07	96.74
c			2.1	95.9
M.L. +100			10.3	84.7
M.L.			21.6	76.4
c			11.1	84.9
V.L. +25			1.1	96.9
V.L.			8.9	89.1
#	0.30	85.28	13.05	84.98
c			5.9	79.4
M.L.			18.7	68.6
				10.9

+

H.I.
95.28

Pine St (50' wide)

2+50				
M.L.		24.3	61.0	
c		13.7	71.4	
M.L.		7.3	79.0	
#	-0.01	72.26	10.01	72.27
2+70				
M.L.		3.4	68.9	
c		12.1	60.2	
#	0.14	62.45	12.95	59.31
M.L.		11.5	51.0	
3+00 = East line of Twigg St (50' wide)				
3+00				
M.L.		23.2	39.3	
c		10.4	52.1	
M.L.		+4.9	67.4	
Center of Twigg St				
S.L.		+8.5	71.0	
c		8.0	54.5	
M.L.		21.9	40.4	
00 - West line of Twigg St				
00				
M.L.		26.2	41.2	
c		8.9	53.6	
M.L.		+7.2	69.7	

PLOTTED

+

H.I.
62.40

73

2+25				
M.L.		+2.6	65.1	
c		13.4	49.1	
M.L.		26.0	36.5	
+50				
M.L.		30.6	31.9	
c		17.9	44.7	
M.L.		4.0	58.5	
+75				
M.L.		6.5	54.0	
#	0.30	49.72	10.03	49.42
c		7.2	42.5	
M.L.		19.9	29.8	
+100				
M.L.		19.3	30.4	
c		7.1	42.6	
M.L.		+4.2	53.9	
+125				
M.L.		7.4	54.1	
c		7.5	57.3	
M.L.		22.4	27.3	
+150				
M.L.		21.0	28.7	
c		8.7	41.0	
M.L.		+3.7	53.4	

PLOT

H.I.
49.72

Pine St (50' wide)

H.I.
58.08

74

1+75 M.L.		+6.9	56.6
c		6.6	43.1
M.L.		19.4	30.3
2+00 M.L.		20.5	29.3
c		7.9	41.9
M.L.		+10.4	60.1
2+25 M.L.		+15.4	65.1
c		6.4	43.3
M.L.		21.1	28.6
2+50 M.L.		31.3	18.4
c		4.6	45.1
M.L.		+19.1	48.8
2+75 M.L.		+16.0	65.7
c		6.2	43.5
M.L.		35.3	14.4
3+00 = East line of Mason St (50' wide)			
3+00 M.L.		38.2	11.5
#	12.87	56.38	4.21
c		16.1	42.3
M.L.		+4.5	62.9

PLOTTED

#	3.31	53.92	12.97	45.51
Center of Mason St.				
M.L.			+5.9	59.7
c			14.9	38.9
M.L.			43.6	10.3
00 = West line of Mason St				
M.L.			45.2	8.4
c			21.6	32.3
M.L.			+2.6	56.4
2+25 M.L.			2.8	48.0
c			23.8	25.0
M.L.			46.7	7.1
2+50 M.L.			46.9	4.9
#	0.39	41.07	12.13	40.69
c			26.5	14.4
M.L.			+2.8	43.9
2+75 M.L.			6.8	34.3
#	0.29	28.41	12.95	29.12
#	0.33	15.76	12.99	15.43
#			14.5	14.31 = 12.12 Dist Along

South side Angle of Protecting wall Pumping Plant

Pine St (60' wide)

Started my Elevations on Wheeler's B.M. noted on Page 74 = 16.12

	16.25	15.57	16.12	
+75				
c			5.4	10.2
M.L.			9.0	7.6
1+0.0				
M.L.			9.0	7.6
c			6.9	8.7
M.L.			4.4	19.9
1+25				
M.L.			5.0	10.4
c			6.5	9.1
M.L.			6.7	8.9
1+50				
M.L.			6.5	9.1
c			6.9	8.7
M.L.			5.0	10.4
1+75				
M.L.			5.1	10.5
c			5.9	9.7
M.L.			7.3	8.2
2+00				
M.L.			7.6	8.0
c			5.8	9.8
M.L.			5.9	9.7

PLOTTED

2+25			5.1	10.5
M.L.				
c			6.2	9.4
#	6.27	14.39	1.45	14.12 B.M. Plug
M.L.			4.6	9.8
2+50				
M.L.			5.3	9.1
c			3.9	10.5
M.L.			4.1	10.3
2+75				
M.L.			4.2	10.3
c			5.0	9.4
M.L.			6.2	8.3
3+00 = East line of South St (60' wide)				
3+00				
M.L.			5.8	8.6
c			5.4	9.0
M.L.			4.7	9.7
Center of South St.				
M.L.			5.4	9.0
c			6.1	9.3
M.L.			5.0	8.4

PLOTTED

00 = West line of South St.

M.L.		6.0	8.4
c		5.8	8.4
S.L.		5.3	9.1
#	3.79	17.91	0.27
0+50			14.12 BOT Paving
S.L.		9.2	8.5
c		11.1	6.8
M.L.		11.2	6.7
1+00			
M.L.		9.1	9.8
c		5.7	12.2
S.L.		4.7	73.2
1+50			
S.L.		9.5	8.7
c		10.0	7.9
M.L.		6.8	11.1
2+00			
M.L.		10.0	7.9
c		11.0	6.9
S.L.		10.9	7.0
2+50			
S.L.		11.2	6.7
c		10.6	7.3
M.L.		10.3	7.4

PLOTTED

2+00 = East line of Jackson St (50' wide)

3+00			
M.L.		8.7	9.3
c		10.1	7.8
S.L.		9.9	8.0
Center of Jackson St			
S.L.		9.6	8.3
c		9.9	8.0
M.L.		9.7	8.2
#	3.86	11.97	9.90
			8.01 from Corn of Pine St

00 = West line of Jackson St.

00			
M.L.		9.3	3.6
c		3.9	8.0
S.L.		3.1	8.8
1+50			
S.L.		4.2	7.7
c		5.7	6.3
M.L.		4.1	7.8
1+00			
M.L.		4.1	7.8
c		3.7	8.3
S.L.		4.2	7.7

PLOTTED

Pine St (50 wide)

1+50 V.L.	3.9	8.0
c	3.8	8.1
M.L.	3.9	8.0
2+00 M.L.	4.0	7.9
c	4.1	7.8
V.L.	4.1	7.8
2+50 V.L.	4.4	7.5
c	4.6	7.3
M.L.	4.6	7.3

3+00 = East line of Taylor St (100 wide)

3+00 M.L.	4.3	7.6
c	4.5	7.4
V.L.	4.4	7.5

Center of Taylor St,

V.L.	4.4	7.5
c	4.5	7.4
M.L.	4.3	7.6

00 = West line of Taylor St

M.L.	4.3	7.6
c	4.1	7.8

PLOTTED

V.L.	4.3	7.6
+50 V.L.	4.0	7.9
c	4.3	7.6
M.L.	4.3	7.6
1+00 M.L.	4.2	7.7
c	4.3	7.6
V.L.	4.7	7.2
1+50 V.L.	4.7	7.2
c	4.4	7.5

M.L.	4.3	7.6
2+00 M.L.	3.5	8.4
c	4.3	7.6
V.L.	4.9	7.0

#	4.21	7.30	8.78	-3.09
2+50 V.L.	4.6	7.2		
c	2.9	4.4		
M.L.	3.4	3.9		

3+00 = East line of Scott St

3+00 M.L.	2.8	4.5
c	3.2	4.1

	H.I. 7.30		Price of 50 wide
V.L.	4.2		3.1
center of North St.			
V.L.	4.1		3.2
c	3.7		3.4
M.L.	2.8		4.5
00 = West line of North St.			
00			
M.L.	6.1		1.2
c	5.9		1.4
V.L.	6.0		1.3
+50			
V.L.	6.9		0.4
c	6.4		0.9
M.L.	6.4		0.9
100			
M.L.	6.8		0.5
c	6.8		0.5
V.L.	6.8		0.5
1050			
V.L.	5.3		2.0
c	4.2		3.1
M.L.	5.6		1.7
2000			
M.L.	5.0		2.3
c	6.0		1.3

PLOTTED

	H.I. 7.30		
V.L.		5.6	1.7
2050			
V.L.		5.2	2.1
c		5.4	1.9
M.L.		5.9	1.4
#	11.25	19.25	0.30 7.00
300 = East line of Garner St. 50 wide.			
300			
M.L.		10.3	8.0
c		10.3	8.0
V.L.		10.2	8.1
center of Garner St.			
V.L.		10.2	8.1
c		10.4	7.9
M.L.		10.0	8.3
00 = West line of Garner St.			
00			
M.L.		10.6	7.7
c		10.7	7.6
V.L.		10.5	7.8
+50			
V.L.		10.7	7.6
c		10.8	7.5
M.L.		10.8	7.5

PLOTTED

H.I.
19.25

Pine St (50' wide)

Xsection of Alley in Blk 44 University Hts, 20' wide.
Jan 15-13 (Donnan, Shaw, Evans.)
Blk 552.54 Ping SE Cor Campus & Madison.
H.I. -

79

1400	M.L.	10.9	7.4	
	c	10.7	7.5	
	M.L.	13.6	4.7	
1+50	M.L.	4.3	14.0	
	c	13.0	5.3	
11.2	M.L.	9.9	8.4	
2+00	M.L.	12.3	6.0	
	c	4.1	14.2	
	M.L.	4.2	14.1	
2+50	M.L.	10.8	7.5	
	c	4.1	14.2	
	M.L.	4.0	14.3	
3+00 = East line of Riley St (50' wide)				
3+00	M.L.	9.9	9.5	
	c	11.4	6.9	
	M.L.	11.1	7.2	
Center of Riley St.				
	M.L.	11.3	7.0	
	c	11.9	6.4	
	M.L.	11.0	7.3	
West line of Riley St				
	M.L.	12.2	5.1	
	c	11.6	4.7	
	M.L.	12.2	4.1	
H		12.78	5.47	

PLOTTED

5.47
+12.66
18.13
-3.67
14.46
10.79
19.80
-8.01
11.79
+0.69
12.48
-1.20
11.28
18.66
+6.99
25.65
+1.49
27.14
20.97-20.95=50'
The La Villa Hotel opposite
Harold's farm house.

3.23	355.77	352.54
" = South line of Madison Ave.		
M.L.	2.6	353.2
	2.9	353.0
M.L.	2.3	353.5
M.L.	3.1	352.7
	3.8	352.5
M.L.	2.5	353.3
M.L.	3.2	353.6
	3.0	352.3
M.L.	3.2	352.6
	3.4	352.4
	3.7	352.1
M.L.	3.0	352.8
	3.8	352.0
	3.9	351.9
	3.6	352.2
	3.6	352.2
	4.3	351.6
	4.2	351.6

Guelbeck 74.

TOTAL

H.I.
350.77

1+50 OK.L.		4.3	351.5
c		4.4	351.4
E.L.		4.1	351.7
1+75 E.L.		3.3	352.5
c		4.3	351.6
OK.L.		4.1	351.7
2+00 OK.L.		4.2	351.6
c		4.0	351.8
E.L.		4.1	351.7
#	1.13	353.60	3.90
2+25 E.L.		1.4	352.2
c		1.6	352.0
OK.L.		2.1	351.5
2+50 OK.L.		2.3	351.3
c		2.4	351.1
E.L.		1.6	352.0
2+75 E.L.		2.5	351.1
c		2.3	351.3
OK.L.		2.0	351.6
3+00 OK.L.		2.7	350.9

H.I.
353.60

80

c		3.0	350.6
E.L.		2.6	351.0
2+25 E.L.		3.1	350.5
c		2.9	350.7
OK.L.		3.1	350.5
2+50 OK.L.		3.2	350.4
c		3.3	350.3
E.L.		3.5	350.1
3+75 E.L.		1.1	349.5
c		4.4	349.2
OK.L.		4.6	349.0
4+00 OK.L.		5.2	348.4
c		4.9	348.7
E.L.		4.5	349.1
4+25 E.L.		5.0	348.6
c		5.0	348.6
OK.L.		5.3	348.3
4+50 OK.L.		5.4	348.2
c		5.3	348.3
E.L.		5.3	348.3

	+	HI 353.60	-	
4+70 B.L.			5.7	347.90
c			6.2	347.40
OK.L. 5700			5.8	347.80
OK.L.			6.0	347.60
c			6.3	347.30
B.L. 5725			6.0	347.60
B.L.			6.0	347.60
c			6.1	347.50
OK.L. 5750			6.0	347.60
OK.L.			5.9	347.70
c			6.1	347.50
B.L. 5775			6.3	347.30
B.L.			5.8	347.80
c			5.7	347.90
OK.L.			5.7	347.90
6+00 = North line of Monrue				
6+00				
OK.L.			5.2	348.40
c			5.4	348.20
B.L.			5.3	348.30
Autism NE Corner of Monrue 4.55 349.05				

5565 4
 18.3
 18.3
 549
 14 6 9
 18 3
 334.99 5

19.2
 26.0
 45.2

