

865  
F.B.

---

LEVEL 300Z

No. 420

---

MICROFILMED

DEC 15 1964

x-section Ohio St University to El Cajon  $\frac{1}{2}$  mi  
" " 80' wide 14' walk 13' 14' 5"  $\frac{1}{3}$  mi  
Evens  
Kear

B.M. N.E. RR. SEC. Univ. 3 Ohio 356.08

14

B.M. 9.70 365.78

N.L. University Arc

E 9.9 355.9

cut 10.2 355.6

" 10.1 355.7

M 10.3 355.5

" 10.7 355.1

cut 10.6 355.2

" 10.5 355.3

0+25 N

N 10.5 355.5

cut 10.6 355.2

" 10.3 355.5

M 9.6 356.2

" 9.6 356.2

cut 9.6 356.2

F 9.3 356.5

365.78

0450

E	9.4	356.4
ah	10.1	355.7
"a	9.0	356.8
M	9.2	356.6
"h	10.0	355.8
ah	10.0	355.8
W	10.3	355.5

0475

W	10.3	355.5
ah	9.8	356.0
"h	9.8	356.0
M	9.7	356.1
"h	9.4	356.4
ah	9.5	356.0
E	9.1	356.7

365.78

140

2

E	8.9	356.9
ah	9.4	356.4
"h	9.9	355.9
M	10.5	355.3
"h	10.5	355.3
ah	10.1	355.7
W	10.3	355.5

1425

W	9.9	355.9
ah	9.0	356.8
"h	9.5	356.3
M	8.7	357.1
"h	9.2	356.6
ah	9.4	356.4
E	9.1	356.7

365.78

1750

E	9.0	356.8
erb	9.4	356.6
"	9.8	356.0
M	9.7	356.1
"	9.9	355.9
erb	9.5	356.0
W	10.0	355.8

1775

W	9.7	356.1
erb	9.3	356.5
"	8.9	356.9
M	9.3	356.5
"	9.2	356.6
erb	8.9	356.9
E	8.8	357.0

365.78

270

E	8.4	357.4
erb	8.6	357.2
"	8.8	357.0
M	9.0	356.8
"	9.3	356.5
erb	8.6	357.2
W	9.2	356.6

2725

W	8.7	357.1
erb	8.9	356.9
"	8.9	356.9
M	8.7	357.1
"	9.2	356.6
erb	8.5	357.3
E	6.8	359.0

3

365.78

2+50

E	7.9	357.9
wh	8.3	357.5
"	8.4	357.4
M	7.8	358.0
"	7.3	358.5
wh	8.2	357.6
W	8.7	357.1

2+75

W	7.1	358.7
wh	6.7	359.1
"	7.8	358.0
M	7.2	358.6
"	6.8	359.0
wh	7.3	358.5
E	7.5	358.3

365.88

3+0

E	7.1	358.7
wh	7.1	358.7
"	7.0	358.8
M	7.4	358.4
"	7.7	358.1
wh	7.5	358.3
W	7.4	358.4

3+25

W	7.2	358.6
wh	7.3	358.5
"	5.3	360.5
M	5.2	360.6
"	6.7	359.1
wh	6.7	359.1
E	6.5	359.3

4

365.78

3+50

E	6.3	359.5
cb	6.2	359.6
"	6.3	359.5
M	6.2	359.6
"	6.1	359.7
cb	7.1	358.7
W	7.0	358.8

3+75

W	6.9	358.9
cb	6.3	359.5
"	4.7	361.1
M	5.3	360.5
"	5.5	360.3
cb	5.4	360.4
E	5.8	360.0

366.78

4+0

E	5.2	360.6
cb	5.7	360.1
"	5.7	360.1
M	5.3	360.5
"	5.6	360.2
cb	5.4	360.4
W	6.5	359.3

4+25

W	5.4	360.4
cb	5.5	360.3
"	5.1	360.7
M	5.1	360.7
"	5.4	360.4
cb	5.2	360.6
E	5.5	360.3

5

365:76

4+50

E	4.9	360.9
cb	5.1	360.7
"	5.5	360.3
M	4.4	361.4
"	4.6	361.2
cb	5.2	360.6
W	5.0	360.8

4+75

W	4.7	361.1
cb	3.9	361.9
"	2.7	363.1
M	3.8	362.0
"	4.6	361.2
cb	4.9	360.9
E	4.3	361.5

365:78

5+0

E	4.0	361.8
cb	4.5	361.3
"	4.1	361.7
M	4.2	361.6
"	4.5	361.3
cb	4.6	361.2
W	4.2	361.6

5+25

W	4.3	361.5
cb	4.5	361.3
"	4.3	361.5
M	3.0	362.8
"	3.5	362.3
cb	4.3	361.5
E	3.9	361.9

6



36578

5+50

E	3.9	361.4
erb	4.0	361.8
"A	4.0	361.8
M	4.0	361.8
"A	4.2	361.6
erb	4.2	361.6
W	3.8	362.0

5+75

W	4.2	361.6
erb	4.3	361.5
"A	4.2	361.6
M	4.0	361.8
"A	4.0	361.8
erb	3.9	361.9
E	3.9	361.9

365.8

6+0 = 5.2. Lincoln st 80'

E	1.1	364.7
erb	3.9	361.9
"A	3.6	362.2
M	2.1	363.7
"A	1.9	363.9
erb	3.6	362.2
W	4.0	361.8

5 curb

W	3.9	362.0
erb	3.7	362.1
"A	3.3	362.5
M	3.6	362.2
"A	3.6	362.2
erb	3.7	362.1
E	1.8	364.0

365.78

S 1/4

E	3.7	362.1
crk	3.7	362.1
1/4	3.5	362.3
M	3.4	362.4
1/4	3.7	362.1
crk	3.8	362.0
W	3.6	362.2

Center

W	3.3	362.5
crk	3.2	362.6
1/4	3.2	362.6
M	3.0	362.8
1/4	3.0	362.8
crk	3.1	362.7
E	2.8	363.0

365.78

N 1/4

E	2.5	363.3
crk	2.7	363.1
1/4	3.2	362.6
M	2.8	363.0
1/4	3.2	362.6
crk	3.8	362.0
W	3.6	362.2

N curb

W	3.4	362.4
crk	3.3	362.5
1/4	3.2	362.6
M	2.3	363.5
1/4	2.6	363.2
crk	2.8	363.0
E	2.2	363.6

365.78

N. Line Lincoln

E	2.9	362.9
cb	2.8	363.0
"	2.3	363.5
M	1.9	363.9
"	2.7	363.1
cb	3.5	362.3
W	2.9	362.9

0+25 N

W	3.3	362.5
cb	3.3	362.5
"	2.8	363.0
M	2.8	363.0
"	2.3	363.5
cb	2.5	363.3
E	1.0	364.8

365.78

9

0+50

E	3.1	362.7
cb	3.0	362.8
"	2.8	363.0
M	2.9	362.9
"	1.3	364.5
cb	2.2	363.6
W	3.2	362.6

0+75

W	3.2	362.6
cb	2.6	363.2
"	2.9	362.9
M	2.9	362.9
"	1.4	364.4
cb	1.0	364.8
E	2.7	363.1
T.P.	780	370.96
	2.62	363.16

37096

140

E	7.4	363.6
erb	8.0	363.0
"4	7.4	363.6
M	7.8	363.2
"4	7.1	363.9
erb	6.7	364.3
W	7.7	363.3

1425

W	7.6	363.4
erb	7.7	363.3
"4	7.8	363.2
M	7.5	363.5
"4	6.8	364.2
erb	7.2	363.8
E	7.1	363.9

37096

10

1450

E	7.0	364.0
erb	7.6	363.4
"4	7.4	363.6
M	7.5	363.5
"4	6.9	364.1
erb	6.4	364.6
W	7.6	363.4

1475

W	7.0	363.7
erb	7.4	363.6
"4	7.1	363.9
M	7.3	363.7
"4	6.4	364.6
erb	7.2	363.8
E	7.3	363.7

21096

270

E	7.1	363.9
cb	5.9	365.1
1/4	6.5	364.5
M	7.1	363.9
1/4	7.3	363.7
cb	7.2	363.8
W	6.4	364.6

2125

W	7.3	363.7
cb	7.3	363.7
1/4	7.3	363.7
M	7.2	363.8
1/4	6.8	364.2
cb	7.1	363.9
E	7.0	364.0

21096

2750

E	6.6	364.6
cb	7.2	363.8
1/4	5.8	365.2
M	6.7	364.3
1/4	7.3	363.7
cb	7.4	363.6
W	6.2	364.8

2175

W	7.0	364.0
cb	7.3	363.7
1/4	7.1	363.9
M	7.1	363.9
1/4	7.1	363.9
cb	6.2	364.8
E	6.5	364.5

2110  
6.7  
6.9.8

37096

3+0

F	6.5	364.5
erb	6.9	364.6
1/4	7.0	364.0
1/4	6.0	365.0
1/4	5.8	365.2
erb	7.1	363.9
W	6.6	364.6

3+20

W	5.7	365.3
erb	6.9	364.1
1/4	6.7	364.3
1/4	6.9	364.1
1/4	7.1	363.9
erb	6.8	364.2
F	6.5	364.5

37096

3+50

F	6.5	364.5
erb	6.7	364.3
1/4	5.5	365.5
1/4	5.0	366.0
1/4	6.8	364.2
erb	7.1	363.9
W	6.8	364.2

3+70

W	6.8	364.2
erb	6.9	364.1
1/4	6.9	364.1
1/4	6.6	364.4
1/4	6.7	364.3
erb	6.6	364.4
F	6.5	364.5

12

37096

4+0

F		6.5	364.5
erb		6.3	364.7
"		6.3	364.7
M		6.3	364.7
"		6.8	364.2
erb		6.3	364.7
W	A	6.7	364.3
	4+25		
W		6.3	364.7
erb		6.5	364.5
"		6.6	364.4
M		6.8	364.2
"		6.3	364.7
erb		5.3	365.7
F		6.6	364.4

37096

10

4+50

F		6.3	364.7
erb		5.6	365.4
"		6.2	364.8
M		6.5	364.5
"		6.5	364.5
erb		6.3	364.7
W		6.3	364.7
	4+75		
W		5.0	366.0
erb		5.3	365.7
"		6.4	364.6
M		6.3	364.7
"		6.4	364.6
erb		5.9	365.1
F		6.0	365.0

370.96

5+0

E	6.2	364.8
erb	6.4	364.6
"4	6.5	364.5
M	6.4	364.6
"4	6.2	364.8
erb	6.3	364.7
W	6.3	364.7

5+25

W	6.4	364.6
erb	6.4	364.6
"4	6.3	364.7
M	5.3	365.7
"4	6.1	364.9
erb	6.5	364.5
E	6.1	364.9

370.96

14

5+50

E	6.0	365.0
erb	5.9	365.1
"4	5.8	365.8
M	6.5	364.5
"4	6.5	364.5
erb	6.5	364.5
W	6.1	364.9

5+75

W	5.6	365.4
erb	5.9	365.1
"4	6.8	364.2
M	6.3	364.7
"4	5.2	365.8
erb	5.2	365.8
E	5.6	365.4



370.96

6+0 = S.L. P<sub>0</sub>/K 5/ 80'

E	5.3	365.7
crk	6.1	364.9
1/4	6.2	364.8
M	6.3	364.7
1/4	5.8	365.2
crk	5.3	365.7
W	6.4	364.6
S. curb		
W	6.2	364.8
crk	3.7	367.3
1/4	4.1	366.9
M	6.4	364.6
1/4	6.1	364.6
crk	4.7	366.3
E	4.3	366.7

370.96

3 1/4

15

E	3.5	367.5
crk	4.0	367.0
1/4	5.7	365.3
M	6.3	364.7
1/4	4.3	366.7
crk	4.3	366.7
W	6.4	364.6
Center		
W	6.9	364.1
crk	6.4	364.6
1/4	6.3	364.7
M	6.5	364.5
1/4	6.0	365.0
crk	4.5	366.5
E	4.3	366.7

37096

N 1/4

E	5.2	365.8
crb	5.1	365.9
1/4	5.3	365.7
M	6.3	364.7
1/4	6.4	364.6
crb	6.1	364.9
W	6.8	364.7

N curb

W	6.0	365.0
crb	4.4	366.6
1/4	5.3	365.7
M	6.2	364.8
1/4	5.4	365.6
crb	5.1	365.9
E	4.9	366.1

37096

16

N.L. Polk

E	4.6	366.4
crb	4.7	366.3
1/4	4.9	366.1
M	5.9	365.1
1/4	5.7	365.3
crb	4.6	366.4
W	6.0	365.0

0+25 N

W	5.3	365.7
crb	6.1	364.9
1/4	5.8	365.7
M	5.7	365.3
1/4	4.3	366.7
crb	4.5	366.5
E	4.4	366.6

37096

0+50

E	4.3	366.7
erb	4.3	366.7
"q	4.6	366.4
M	5.2	365.8
"q	5.4	365.6
erb	5.8	365.2
W	5.7	365.3

0+75

W	5.3	365.7
erb	4.4	366.6
"q	3.2	367.8
M	4.2	366.8
"q	3.9	367.1
erb	3.9	367.1
E	3.3	367.7

17

1+0

E	3.0	368.0
erb	3.8	367.2
"q	4.2	366.8
M	4.2	366.8
"q	4.2	366.8
erb	4.5	366.5
W	4.9	366.1

1+25

W	4.2	366.8
erb	4.2	366.8
"q	4.0	367.0
M	3.3	367.7
"q	3.8	367.2
erb	3.6	367.4
E	3.7	367.3

37096

1+50

E	2.5	368.5
erb	3.3	367.7
"A	3.4	367.6
M	3.0	368.0
"A	2.9	368.1
erb	3.2	367.8
W	3.6	367.4

1+750

W	3.5	367.5
erb	3.1	367.9
"A	2.9	368.1
M	3.3	367.7
"A	3.4	367.6
erb	2.9	368.1
E	2.8	368.2

18

2+0

E	2.8	368.2
erb	2.7	368.3
"A	3.0	368.0
M	3.1	367.9
"A	3.2	367.8
erb	3.4	367.6
W	2.6	368.4

2+25

W	2.8	368.2
erb	3.1	367.9
"A	2.9	368.1
M	3.1	367.9
"A	2.9	368.1
erb	2.5	368.5
E	3.0	368.0

370.96

2+50

E	2.9	368.1
erb	2.5	368.5
1/4	2.6	368.4
M	3.1	367.9
1/4	2.8	368.2
erb	2.6	368.4
W	3.1	367.9

2+75

W	3.0	368.0
erb	2.6	368.4
1/4	3.0	368.0
M	2.8	368.2
1/4	2.6	368.4
erb	2.5	368.5
E	2.9	368.1

19

3+0

E	2.9	368.1
erb	2.7	368.3
1/4	2.8	368.2
M	2.6	368.4
1/4	2.1	368.9
erb	2.5	368.5
W	2.6	368.4

3+25

W	2.7	368.3
erb	2.9	368.1
1/4	2.1	368.9
M	2.0	369.0
1/4	2.4	368.6
erb	2.9	368.1
E	3.1	367.9

T.P.	4.23	372.27	2.92	368.04
------	------	--------	------	--------

372.27

3450

E	4.6	367.7
crb	4.5	367.8
1/4	4.2	368.1
M	4.1	368.2
1/4	4.1	368.2
crb	4.2	368.1
W	4.6	367.7

3475

W	3.9	368.4
crb	4.2	368.1
1/4	4.6	367.7
M	4.6	367.7
1/4	4.6	367.7
crb	4.9	367.4
E	4.9	367.4

372.27

470

E	5.1	367.2
crb	4.7	367.6
1/4	3.9	368.4
M	4.8	367.5
1/4	4.7	367.6
crb	3.4	368.9
W	3.0	369.3

4425

W	4.2	368.1
crb	3.6	368.7
1/4	4.4	367.9
M	4.6	367.7
1/4	4.6	367.7
crb	5.4	366.9
E	5.4	366.9

20

37227

4100

E	6.0	366.3
erb	5.9	366.4
"A	5.2	367.1
M	5.2	367.1
"A	5.1	367.2
erb	4.3	368.0
W	4.4	367.9

4175

W	4.5	367.8
erb	4.3	368.0
"A	4.7	367.6
M	5.5	366.8
"A	6.5	365.8
erb	6.3	366.0
E	6.4	365.9

37227

5100

E	6.9	365.4
erb	6.8	365.5
"A	6.8	365.5
M	5.8	365.5
"A	4.9	367.4
erb	4.8	367.5
W	4.8	367.5

5125

W	5.6	366.7
erb	5.9	366.4
"A	6.5	365.8
M	6.7	365.6
"A	7.6	364.7
erb	7.5	364.8
E	8.0	364.3

21

372.27

5450

E	8.4	363.9
erb	7.9	364.4
"A	6.5	365.5
M	6.3	366.0
"A	6.6	365.7
erb	6.2	366.1
W	5.4	366.9

5475

W	6.4	365.9
erb	6.7	365.6
"A	7.7	364.6
M	7.7	364.4
"A	8.1	364.2
erb	8.6	363.7
E	9.0	363.3

372.27

22

bto = 5.1. Howard st 80'

E	9.3	363.0
erb	9.0	363.3
"A	8.7	363.6
M	8.1	364.2
"A	7.4	364.9
erb	7.5	364.8
W	7.0	365.3

5. CURB

W	6.7	365.6
erb	7.6	364.7
"A	8.1	364.2
M	7.7	364.4
"A	8.7	363.6
erb	9.0	363.3
E	9.3	363.0



37227

54

E	9.5	362.8
cb	9.2	363.1
"q	8.6	363.7
M	8.4	363.9
"q	8.4	363.9
cb	7.3	365.0
W	7.4	364.9

Center

W	8.1	364.2
cb	8.1	364.2
"q	8.9	363.4
M	9.1	363.2
"q	9.0	363.3
cb	9.5	362.8
E	10.0	362.3

37227

N 19

23

E	10.2	362.1
cb	9.8	362.5
"q	9.2	363.1
M	9.7	362.6
"q	9.3	363.0
cb	9.0	363.3
W	8.8	363.5

N 0416

W	8.8	363.5
cb	8.8	363.5
"q	9.2	363.1
M	9.2	363.1
"q	8.8	363.5
cb	9.7	362.6
E	10.2	362.1

372.27

N.L. Howard St

E	9.9	362.4
erb	9.7	362.6
"	8.4	363.9
M	8.4	363.9
"	9.1	363.2
erb	8.6	363.7
W	9.2	363.1

0+25 N

W	9.2	363.1
erb	9.9	362.4
"	10.0	362.3
M	9.9	362.4
"	9.8	362.5
erb	9.9	362.4
E	10.0	362.3

372.27

24

0+50

E	9.9	362.4
erb	9.8	362.5
"	9.7	362.6
M	10.0	362.3
"	10.1	362.2
erb	9.7	362.6
W	9.3	363.0

0+75

W	9.9	362.4
erb	9.7	362.6
"	9.8	362.5
M	9.8	362.5
"	9.5	362.8
erb	9.2	363.1
E	9.5	362.8

37227

1+0

E	9.7	3626
erb	9.5	3628
"4	9.5	3628
M	9.5	3628
"4	9.5	3628
erb	9.7	3626
W	9.6	3627

1+25

v	9.3	3630
erb	9.2	3631
"4	9.2	3631
M	9.3	3630
"4	9.4	3629
erb	9.6	3627
E	9.5	3628

37227

1+50

E	9.6	3627
erb	9.5	3628
"4	9.4	3629
M	9.7	3626
"4	9.3	3630
erb	9.3	3630
W	9.2	3631

1+75

v	9.5	3628
erb	9.3	3630
"4	9.3	3630
M	9.4	3629
"4	8.6	3637
erb	9.3	3630
E	9.6	3627

25

37227

270

E	7.7	3646
Crk	9.4	3629
"q	9.2	3631
M	9.3	3630
"q	9.2	3631
Crk	9.4	3629
W	9.3	3630

2425

W	9.3	3630
Crk	8.3	3640
"q	7.7	3646
M	9.4	3629
"q	9.3	3630
Crk	9.2	3631
E	8.8	3635

37227

2450

E	9.0	3633
Crk	8.8	3635
"q	8.0	3643
M	8.6	3637
"q	9.2	3631
Crk	9.2	3631
W	9.1	3632

2475

W	8.3	3640
Crk	8.0	3643
"q	9.2	3631
M	9.1	3632
"q	8.5	3638
Crk	8.7	3636
E	8.7	3636

26

372.27

3+0

E	8.8	363.5
cb	8.6	363.7
"4	7.1	365.2
M	6.8	365.5
"4	9.0	363.3
cb	8.9	363.4
W	8.9	363.4

3+25

W	8.7	363.4
cb	8.8	363.5
"4	8.9	363.4
M	8.9	363.4
"4	8.4	363.9
cb	8.8	363.5
E	8.4	363.9

372.27

27

3+38 = S.L. El Cajon Ave

E	8.2	364.1
cb	8.6	363.7
"4	9.0	363.3
M	8.4	363.9
"4	8.9	363.4
cb	8.4	363.9
W	8.9	363.4

2/12/13  
Laughlin  
July  
Shaw

X Sec of Illinois  
2d University to 2d  
El-bayon

362.76

Illinois  
28

50 28 Univ

638 362.76 356.08 nE Ohio Univ W 38 358.7

NS University 356.08 4.2 358.3

W 4.7 357.8 4.5 358.0

H 4.5 358.0 4.5 358.0

7 4.8 357.7 4.6 357.9

6 4.3 358.2 4.5 358.0

7 4.6 357.9 38 358.7

H (4.3) 358.2 75 28 Univ

E (4.9) 357.6 E 40 358.5

25 28 Univ H 4.7 357.8

E 4.3 358.2 4.2 358.3

H 4.2 358.3 34 359.1

4 4.4 358.1 34 359.1

1 4.3 358.2 4.3 358.2

4 4.5 358.0 W 39 358.6

H 4.3 358.2

W 4.3 358.2

36246

	100	n f	University
W			37 358.8
H			42 358.3
y			40 358.5
L			40 358.6
y			38 358.7
H			35 359.0
E			41 358.4

	125	n f	Univ
E			33 359.2
H			32 359.3
y			31 359.4
L			28 359.7
y			30 359.6
H			30 359.6
EW			40 359.6

36246

Illinois

29

	150	n f	Univ
W			36 358.9
H			34 359.1
y			32 359.3
L			34 359.1
y			32 359.3
H			24 360.1
E			30 359.5

	175	n f	Univ
	547		220 360.2
	175		
E			63 359.5
H			63 359.5
y			59 359.9
L			57 360.1
y			53 360.5
H			64 359.4
W			64 359.4

36246  
 150  
 360.2  
 349  
 360.15

36575

	200	n f	Unit	
W			60	359.8
H			62	357.6
Y			59	357.9
L			57	360.1
Y			53	360.5
M			58	360.0
E			52	360.6

	225	n f	Unit	
E			55	360.3
H			58	360.0
Y			57	360.1
L			55	360.3
Y			60	359.8
H			55	360.3
SW			58	360.0

36575

Illinois  
30

	250	n f	Unit	
W			53	360.5
H			45	361.3
Y			52	360.6
L			52	360.6
Y			55	360.3
H			49	360.9
E			49	360.9

	275	n f	Unit	
E			52	360.6
H			53	360.5
Y			49	360.9
Y			49	360.9
Y			53	360.5
H			49	360.9
W			50	360.8



365.75

300

N of Amir

W	4.6	361.2
W	4.6	361.2
Y	5.2	360.6
L	4.5	361.3
Y	5.0	360.8
W	5.1	360.7
E	4.7	361.1

325

N of Amir

E	4.9	360.9
W	4.5	361.3
Y	4.2	361.6
L	4.4	361.4
Y	5.0	360.8
W	5.0	360.8
W	4.9	360.9

365.75

350

N of Amir

W	4.6	361.2
W	5.0	360.8
Y	4.7	361.1
L	3.9	361.9
Y	4.1	361.7
W	4.4	361.4
E	4.7	361.1

375

N of Amir

E	4.5	361.3
W	4.5	361.3
Y	4.7	361.1
L	4.7	361.1
Y	4.9	360.9
W	5.0	360.8
W	4.6	361.2

Illinois

31

400 n of Univ -

W	4.5	361.3
W	4.7	361.1
Y	3.4	362.4
L	4.2	361.6
Y	4.7	361.1
W	4.5	361.3
E	4.6	361.2

425 n of Univ

E	2.9	362.9
W	3.2	362.6
Y	4.6	361.2
L	4.6	361.2
Y	4.1	361.7
W	4.3	361.5
W	4.5	361.3

450 n of Univ -

W	3.2	362.6
W	4.3	361.5
Y	3.7	362.1
L	3.5	362.3
Y	4.3	361.5
W	4.1	361.7
E	4.3	361.5

475 n of Univ

E	4.1	361.7
W	3.8	362.0
Y	3.0	362.8
L	3.9	361.9
Y	3.3	362.5
W	4.0	361.8
W	3.9	361.9

36575

	500	mg	Univ	
W			36	362.2
H			33	362.5
"			30	362.8
L			41	361.7
"			38	362.0
H			40	361.8
E			40	361.8

	525	mg	Univ	
E			34	362.4
H			38	362.0
"			39	361.9
L			27	363.1
"			36	362.2
H			37	362.1
W			33	362.6

70 473 36753 295 362.80

36575  
2.95  
362.80  
4.73  
367.53

36753

Illinois  
33

	550	mg	University	av
W			51	362.4
H			46	362.9
"			55	362.0
L			55	362.0
"			47	362.8
H			45	363.0
E			55	362.0

	575	mg	Univ	
E			53	362.2
H			58	361.7
"			54	362.1
L			53	362.2
"			54	362.1
H			50	362.5
W			57	362.3

36750

600' n = S of Lincoln St (80)

N	46	362.9
U	53	362.2
y	54	362.1
b	53	362.2
y	49	362.6
U	54	362.1
E	54	362.1

S bb of Lincoln

E	53	362.2
A	52	362.3
y	46	362.9
b	52	362.3
y	53	362.2
U	52	362.3
W	47	362.8

36750

Illinois

34

S 1/4 of Lincoln

N	50	362.5
U	53	362.2
y	53	362.2
b	52	362.3
y	50	362.5
U	53	362.2
E	55	362.0

Center of Lincoln St

E	52	362.3
U	50	362.5
y	49	362.6
b	50	362.5
y	48	362.7
U	48	362.7
W	49	362.6

36753

N 14 of Lincoln St

W	47	362.8
U	47	363.3
4	47	363.3
6	48	362.7
4	47	362.8
H	48	362.7
E	49	362.6

N 16 of Lincoln

E	46	362.9
H	45	363.0
2	47	362.8
6	45	363.0
4	46	362.9
H	44	363.1
W	47	362.8

36753

Illinois

35

N line of Lincoln St

W	44	363.1
U	40	363.5
4	47	362.8
6	51	362.3
4	48	362.7
H	52	362.3
E	51	362.4

25 N of Lincoln

E	49	362.6
H	43	363.2
4	43	363.2
6	50	362.5
4	48	362.7
H	50	362.6
W	48	362.7

36753

50 n of Lincoln

N	49	362.6
NE	47	362.8
E	48	362.7
SE	49	362.6
S	48	362.7
SW	46	362.9
W	46	362.9

75 n of Lincoln

E	44	363.1
NE	46	362.9
E	46	362.9
SE	46	362.9
S	43	363.5
SW	38	363.7
W	44	363.1

36753

Illinois

36

100 n of Lincoln

N	40	363.5
NE	40	363.5
E	42	363.3
SE	36	362.9
S	39	363.6
SW	40	362.5
W	40	363.5

125 n of Lincoln

E	48	362.7
NE	51	362.4
E	49	362.6
SE	41	363.4
S	40	363.5
SW	43	363.2
W	40	363.5

36753

150 n f Lincoln

W	40	363.5
H	41	363.4
Y	44	363.1
L	41	363.4
Y	42	363.3
H	33	364.2
E	40	363.5

175 n f Lincoln

E	44	363.1
H	42	363.3
Y	40	363.5
L	34	364.1
Y	33	364.2
H	43	363.2
W	40	363.5

36752

Illinois

37

200 n f Lincoln st

W	37	363.8
H	42	363.3
Y	38	363.7
L	40	363.5
Y	41	363.4
H	36	363.9
E	35	364.0

36753  
355  
36394  
5-30  
367.30

70 520 36920 355 36394

225 n f Lincoln st

E	54	363.9
L	48	364.5
Y	55	363.8
L	57	363.6
Y	53	364.0
H	57	363.6
W	57	363.6

36930

250 N of Lincoln

W	53	364.0
W	56	363.7
S	54	368.9
S	52	364.1
N	45	364.8
W	49	364.4
E	50	364.3

275 N of Lincoln

E	50	364.3
W	54	363.9
S	47	364.6
S	46	364.7
N	52	364.1
W	53	364.0
W	51	364.2

36930

300 N of Lincoln

W	46	364.7
W	51	364.2
S	49	364.4
S	43	365.0
N	42	365.1
W	48	364.5
E	46	364.7

325 N of Lincoln

E	48	364.5
W	45	364.8
S	43	365.0
S	42	365.1
N	45	364.8
W	43	365.0
W	42	365.1

Illinois

38



36930

350 n f Lincoln

W	38	365.5
U	37	365.6
Y	38	365.5
Z	41	365.2
7	40	365.3
U	35	365.8
E	36	365.7

375 n f Lincoln

E	37	365.4
U	38	365.5
7	40	365.3
6	40	365.3
7	38	365.3
U	37	365.5
W	36	365.7

36930

400 n f Lincoln

W	36	365.7
U	36	365.7
Y	36	365.7
6	36	365.7
7	37	365.6
U	35	365.8
E	37	365.6

425 n f Lincoln

E	35	365.8
U	35	365.8
Y	34	365.9
6	32	366.1
Y	33	366.0
U	35	365.8
W	34	365.9

Illinois

39

369.30

	450	n f	Lincoln
w			35 365.8
h			33 365.8
y			30 366.3
l			33 366.0
y			35 365.8
h			36 365.7
E			34 365.9

	475	n f	Lincoln
E			32 366.1
h			29 366.4
y			35 365.8
l			31 366.2
y			29 366.4
h			29 366.4
w			33 366.0

369.30

Illinois  
40

	500	n f	Lincoln
w			31 366.2
h			32 366.1
y			34 365.9
l			31 366.2
y			32 366.1
h			30 366.3
E			33 366.0

	525	n f	Lincoln
E			29 366.4
h			23 367.0
y			27 366.6
l			30 366.3
y			25 366.8
h			26 366.7
w			25 366.8
TP	327		370.46
			221 367.09

369.30
2.21
367.09
3.37
370.46

37046

550 n f Lincoln

w	36	366.9
h	40	366.5
y	39	366.6
b	44	366.1
y	40	366.5
h	42	366.3
E	37	366.8

575 n f Lincoln

E	40	366.5
h	39	366.6
y	41	366.4
b	41	366.4
y	36	366.9
h	37	366.8
w	37	366.8

37046

Illinois

41

600 n = S 2 Park St (80)

w	33	367.2
h	33	367.2
y	39	366.6
b	41	366.4
y	36	366.9
h	37	366.8
E	46	365.9

S 66 f Park St

E	45	366.0
h	39	366.6
y	41	366.4
b	41	366.4
y	36	366.9
h	36	366.9
w	36	366.9

37046

	S	1/4 of Park		
W		39	366.4	
H		33	367.2	
Y		27	367.8	
L		34	367.1	
Y		32	367.3	
H		32	367.3	
E		42	366.2	

Center of Park

E		42	366.2
H		34	366.9
Y		33	367.2
L		31	367.4
Y		31	367.4
H		33	367.2
W		35	367.0

37046

Illinois

42

	N	1/4 of Park		
W		34	367.1	
H		36	366.9	
Y		36	366.9	
L		37	366.8	
Y		39	366.6	
H		42	366.3	
E		45	366.0	

N 1/4 of Park

E		46	365.9
H		44	366.1
Y		40	366.5
L		39	366.6
Y		38	366.7
H		35	367.0
W		34	367.1

N line of Park st

W	35	367.0
W	37	366.8
W	38	366.7
W	39	366.6
W	42	366.3
W	43	366.2
E	45	366.0

25' n of Park st

E	50	365.5
W	47	365.8
W	45	366.0
W	41	366.4
W	40	366.5
W	38	366.7
W	37	366.8

50' n of Park st

W	39	366.6
W	39	366.6
W	42	366.3
W	45	366.0
W	48	365.7
W	52	365.3
E	55	365.0

75' n of Park st

E	58	364.7
W	54	365.1
W	57	365.3
W	47	365.6
W	47	365.8
W	43	366.2
W	41	366.4

37046

100 n of Park St

W	44	366.2
U	49	365.1
Y	51	365.4
b	53	365.2
y	58	364.7
u	60	364.5
E	64	364.3

125 n of Park

E	67	363.8
u	63	364.2
y	60	364.5
b	57	364.8
y	56	364.9
u	53	365.2
W	49	365.6

37046

150 n of Park St

W	53	365.2
u	56	364.9
y	59	364.6
b	61	364.4
y	63	364.2
u	67	363.8
E	70	363.5

125 n of Park

E	74	363.1
u	70	363.5
y	70	363.5
b	67	363.8
y	63	364.2
u	60	364.5
W	58	364.7

TP

165

366.66

545

365.01

Illinois

44

37046  
 364.1  
 365.01  
 1.66  
 366.66

200 n of Path 11

W	24	364.3
W	28	363.9
W	32	363.5
S	33	363.4
W	34	363.1
W	39	362.8
E	39	362.8

225 n of Path

E	45	362.2
W	43	362.4
W	41	362.6
S	38	362.9
W	36	363.1
W	33	363.4
W	30	363.7

250 n of Path 11

W	35	363.2
W	37	363.0
W	40	362.7
S	43	362.4
W	45	362.2
W	47	362.0
E	50	361.7

275 n of Path 11

E	53	361.4
W	50	361.7
W	49	361.8
S	46	362.1
W	44	362.3
W	42	362.5
W	40	362.7

36666

300 n f Palkst

W	45	362.2
N	47	362.0
Y	49	361.8
L	50	361.7
Y	52	361.5
N	54	361.3
E	55	361.2

375' n f Palk

E	58	360.9
N	57	361.0
Y	55	361.2
L	54	361.3
Y	52	361.5
N	50	361.7
W	48	361.9

36666

Illinois  
46

350 n f Palkst

W	53	361.4
N	52	361.5
Y	55	361.2
L	57	361.0
Y	60	360.7
N	61	360.6
E	62	360.5

375' n f Palk

E	64	360.3
N	63	360.2
Y	61	360.6
L	60	360.7
Y	58	360.9
N	56	361.1
W	55	361.2



36666

450' n of Palk II

W	56	361.1
H	60	360.7
Y	61	360.6
L	61	360.6
Y	64	360.3
H	66	360.1
E	67	360.0

475' n of Palk II

E	70	359.7
H	69	359.8
Y	66	360.1
L	64	360.3
Y	64	360.3
H	61	360.6
W	58	360.9

36666

450' n of Palk II

W	61	360.6
H	63	360.4
Y	65	360.2
L	67	360.0
Y	69	359.8
H	72	359.5
E	74	359.3

7P 513 364.81

475' n of Palk II

E	68	359.68
Y	56	359.2
H	56	359.2
Y	52	357.6
L	51	357.7
Y	48	360.0
H	46	360.2
W	45	360.3

Oleina's  
47

36666  
 698  
 359.68  
 113  
 364.81

500' n of Park St

W	46	360.2
SE	49	359.9
Y	49	359.9
L	49	359.9
Y	51	359.7
H	52	359.6
E	52	359.5

525' n of Park

E	51	359.7
H	50	359.8
Y	48	360.0
L	46	360.2
Y	44	360.4
H	43	360.5
W	42	360.6

550' n of Park St

W	40	360.8
H	42	360.6
Y	44	360.4
L	45	360.3
Y	46	360.2
H	46	360.2
E	47	360.1

575' n of Park St

E	47	360.1
H	46	360.2
Y	44	360.4
L	44	360.4
Y	44	360.4
H	42	360.6
W	41	360.7

36481

600' n = S of Howard (80)

W	38	361.0
bb	40	360.8
y	42	360.6
t	42	360.6
y	43	360.5
H	45	360.3
E	48	360.0

S bb of Howard

E	46	360.2
H	44	360.4
y	41	360.7
t	41	360.7
y	40	360.8
H	37	361.1
W	37	361.1

36481

S 1/4 of Howard

W	32	361.6
H	39	360.9
y	39	360.9
t	40	360.8
y	42	360.6
H	43	360.6
E	47	360.1

Center of Howard

E	47	360.1
H	46	360.2
y	43	360.5
t	45	360.3
y	40	360.8
H	37	361.1
W	33	361.5

Illinois

49

	N	1/4 of Howard	
W		34	361.4
bl		40	360.8
7		43	360.5
6		40	360.8
4		40	360.8
bl		41	360.7
E		46	360.2

	N	1/4 of Howard	
E		41	360.7
H		43	360.5
7		41	360.7
1		33	361.0
7		42	360.6
H		40	360.8
W		37	361.1

	N	line of Howard	
W		37	361.1
H		40	360.8
7		39	360.9
6		42	360.6
7		42	360.6
H		42	360.6
E		36	361.2

	25'	n of Howard	
E		43	360.5
H		42	360.6
7		40	360.8
1		40	360.8
7		36	361.2
H		37	361.1
W		37	361.1

364.81

50' n of Howard

W	36	361.2
bl	36	361.2
	39	360.9
l	42	360.6
y	37	361.1
ll	40	360.8
E	39	360.9

75' n of Howard

E	34	361.4
ll	30	361.8
y	34	361.4
l	39	360.9
y	30	361.8
ll	27	362.1
W	35	361.3

364.81

100' n of Howard

W	35	361.3
ll	35	361.3
y	34	361.4
l	36	361.2
y	36	361.3
ll	35	361.3
E	33	361.5

TP 710 36906 285 361.96

125' n of Howard

E	71	362.0
ll	73	361.8
y	74	361.7
l	74	361.7
y	78	361.3
ll	75	361.6
W	75	361.6

Illinois

51

364.81  
 285  
 361.96  
 364.81  
 361.96

36906

150' n of Howard

w	6.8	361.3
bl	7.0	362.1
y	7.2	361.9
b	6.7	362.4
y	6.7	362.4
bl	6.7	362.4
E	6.6	362.5

175' n of Howard

E	6.8	362.9
bl	6.3	362.8
y	6.5	362.6
b	6.6	362.5
y	6.7	362.4
bl	6.8	362.3
w	7.0	362.1

36906

Illinois

52

200' n of Howard

w	6.7	362.4
bl	6.5	362.6
y	6.4	362.7
b	6.1	363.0
y	5.9	363.2
bl	5.9	363.2
E	6.0	363.1

225' n of Howard

E	5.3	362.8
bl	5.6	363.6
y	5.7	363.4
b	5.8	363.3
y	6.0	363.1
bl	6.2	362.9
w	5.9	363.2

36906

250' n of Howard

N	55	363.6
W	58	363.3
E	57	363.4
S	56	363.5
N	52	363.9
W	51	364.0
E	51	364.0

275' n of Howard

E	48	364.3
W	50	364.1
N	52	363.9
S	49	364.2
E	49	364.2
W	50	364.1
N	52	363.9

36906

Illinois

53

300' n of Howard

N	49	364.2
W	48	364.3
E	46	364.5
S	46	364.5
N	43	364.8
W	42	364.9
E	42	364.9

338' n = S of El Cajon (150')

E	37	365.4
W	41	365.0
N	38	365.3
S	40	365.1
E	41	365.0
W	45	364.6
N	44	364.7
E	39	365.5

= 69.10

3.42

3.15

Bm Whitely





X-section. Redwood St E.L. 30<sup>th</sup> to E.L. Grimm  
 " 60' wide 10' x 10' 4's  
 21 Summit  
 17 Escans  
 13 Kern

55

B.M. 3dth stk N.W. Redwood 230<sup>th</sup> 302.00

B.M. 334 305.34

E.L. 30<sup>th</sup> St

N 2.8 302.5

erb 3.4 301.9

" 3.4 301.9

M 3.6 301.7

" 3.6 301.7

erb 3.3 302.0

S 3.4 301.9

- 20 0+75 E 11.7 293.6

S 4.2 301.1

erb 2.9 302.4

" 2.4 302.9

M 2.6 302.7

" 3.3 302.0

erb 4.4 301.9

N 9.0 296.3

+ 25 20.2 285.1

+ 40 19.5 285.8

305.34

0+75

-40 22.6 282.7

-20 25.7 279.6

N 19.2 286.1

erb 14.8 290.5

" 10.0 295.3

M 6.3 299.0

" 4.4 300.9

erb 3.9 301.4

S 5.8 299.5

+35 25.8 279.5

T.B. 2.28 294.72 12.90 292.99

0+70 E

-40 22.1 272.6

S 10.3 284.4

erb 10.2 284.5

" 11.5 283.2

M 12.8 281.9

" 14.5 280.2

erb 15.6 279.1

N 13.3 281.4

+20 6.4 288.3

		294.72		
- 20	0+90		+ 3.6	298.3
N			1.4	293.3
erb			4.6	290.1
"A			7.4	287.3
M			11.4	283.3
"A			14.7	280.0
erb			17.1	277.6
S			19.3	275.4
+ 30			24.0	270.7
+ 50			25.3	269.4
- 40	1+25		22.3	272.4
S			10.7	284.7
erb			6.6	288.1
"A			2.9	291.8
T.P.	12.71	306.96	0.47	294.25
M			9.3	297.7
"A			6.0	301.0
erb			3.0	304.0
N			+ 0.9	307.9

		306.96		
	1+50			
N			+ 2.4	309.4
erb			+ 1.2	308.2
"A			1.8	305.2
M			5.0	302.0
"A			9.5	297.5
erb			14.2	292.8
S			18.1	288.9
+ 40			35.6	271.4
- 40	1+75			
S			36.2	270.8
S			7.6	299.4
erb			1.3	305.7
T.P.	9.02	313.81	1.17	305.79
"A			6.5	307.3
M			5.8	308.0
"A			6.6	307.2
erb			5.0	308.8
N			3.9	309.9

3/3.81

1+90

N	3.6	310.2
crb	4.2	309.6
1/4	5.3	308.5
M	5.3	308.5
1/4	5.7	308.1
crb	6.4	307.4
5	7.8	306.0
+15	12.1	301.7
-15	2+25	
5	7.6	306.2
crb	7.6	306.2
1/4	6.8	307.0
1/4	4.4	309.4
M	3.8	310.0
1/4	3.5	310.3
crb	3.0	310.8
N	2.4	311.4

3/3.81

57

2+67 = W.L. Grimm st 65' 15" N. 87° 45'

N	2.3	311.5
crb	3.0	310.8
1/4	3.0	310.8
M	3.9	309.9
1/4	4.6	309.2
crb	5.6	308.2
5	6.4	307.4
	W curve	
5	6.0	307.8
crb	5.7	308.1
1/4	4.7	309.1
M	4.2	309.6
1/4	3.8	310.0
crb	4.1	309.7
N	4.6	309.2

313.81

W "A

N	4.7	309.1
erb	4.1	309.7
"A	3.8	310.0
M	3.9	309.9
"A	4.6	309.2
erb	5.8	308.0
S	6.1	307.7

Center

S	5.9	307.9
erb	5.3	308.5
"A	4.2	309.6
M	3.6	310.2
"A	3.5	310.3
erb	4.0	309.8
N	4.9	308.9

58

E "A

N	4.7	309.1
erb	3.6	310.2
"A	3.1	310.7
M	3.5	310.8
"A	4.8	309.5
erb	5.2	308.6
S	6.1	307.7

E curb

S	5.9	307.9
erb	4.9	307.9
"A	4.0	309.8
M	3.6	310.2
"A	3.0	310.8
erb	3.2	310.6
N	4.2	309.6

313.81

E.L. Grimm St

N	4.3	309.5
Crk	1.6	312.2
"A	2.1	311.7
M	3.0	310.8
"4	3.6	310.2
Crk	4.3	309.5
S	5.3	308.5

310/10 Hatch Moore Hall X sec. 33<sup>d</sup> St from H. to N-

50

B.M. SW 33<sup>d</sup> H 297 41.23 35.26 Spikein Fence Post.

56.4 " " 52

W	3.7	37.5
cb	3.9	37.3
+3	4.6	36.6
1/c	4.9	36.3
2	4.4	36.8
1/c	4.9	36.3
cb	4.9	36.3
E	4.7	36.5
	25.5	
E	5.3	35.9
cb	5.5	35.7
1/c	5.0	36.2
c	4.7	36.5
1/c	4.7	36.5
+7	4.7	36.5
cb	4.0	37.2
W	3.8	37.4

PLOTTED

4123

50'S

W	4.0	37.2
cb	4.2	37.0
+3	5.1	36.1
1/4	4.8	36.4
c	4.9	36.3
7/8	4.8	36.4
cb	5.2	36.0
F	5.6	35.6

70'S

E	5.1	36.1
cb	5.4	35.8
1/4	4.9	36.3
c	4.9	36.3
1/4	5.1	36.1
+7	5.1	36.1
cb	4.4	36.8
W	4.1	36.1

PLOTTED

60

4123  
100'S

W	4.3	36.9
cb	4.8	36.4
+3	5.3	35.9
1/4	5.3	35.9
c	4.9	36.3
1/4	5.1	36.1
cb	5.4	35.8
F	5.2	36.0

125'S

E	5.2	36.0
cb	5.7	35.5
1/4	5.2	36.0
c	5.1	36.1
1/4	5.5	35.7
+7	5.7	35.5
cb	4.9	36.3
W	4.4	36.8

	4/23 150's		
W		4.7	36.5
cb		54.9	36.3
		5.8	35.4
1/4		5.5	35.7
c		5.1	36.1
1/4		5.5	35.7
cb		5.6	35.6
E		5.2	36.0
	175's		
E		5.5	35.7
cb		6.1	35.1
1/4		5.3	35.9
c		5.1	36.1
1/4		5.5	35.7
cb		5.8	35.4
		4.8	36.4
W		4.7	36.5
	200's		
W		4.9	36.3
cb		54.9	36.3
		5.6	35.4
1/4		5.3	35.9

PLOTTED

	4/23		
C		5.1	36.1
1/4		5.6	35.6
cb		6.5	34.7
E		5.8	35.4
	225's		
E		5.9	35.3
cb		6.1	35.1
1/4		5.2	36.0
c		5.1	36.1
1/4		5.5	35.7
cb		5.8	35.4
		5.0	36.2
W		5.0	36.2
	250's		
W		5.0	36.2
cb		5.2	36.0
		6.0	35.2
1/4		5.4	35.8
c		5.3	35.9
1/4		5.3	35.9
cb		5.9	35.3

4123

E	5.6	35.6
	270	Nh "I" St.
E	5.6	35.6
cb	5.7	35.5
1/2	5.6	35.6
c	5.2	34.0
1/4	5.6	35.6
cb	5.8	35.4
	5.1	36.1
W	4.9	36.3
	1 cb.	
W	5.3	35.9
cb	5.7	35.5
1/2	5.8	35.4
c	5.6	35.6
1/4	6.0	35.2
cb	5.8	35.4
E	5.6	35.6

PLOTTED

62

4123

N 1/4

E	6.1	35.1
cb	5.8	35.4
1/2	5.8	35.4
c	5.6	35.6
1/4	5.5	35.7
cb	5.4	35.8
W	5.3	35.9
	cb	
W	5.2	36.0
cb	5.2	36.0
1/2	5.4	35.8
c	5.4	35.8
1/4	5.5	35.7
cb	5.7	35.5
E	5.6	35.6



4123

5 1/4

E	6.3	34.9
cb	6.2	35.0
1/2	6.4	34.8
c	6.2	35.0
1/2	6.1	35.1
cb	6.0	35.2
W	5.5	35.7

5cb

W	5.6	35.6
cb	6.1	35.1
1/2	6.1	35.1
c	6.2	35.0
1/2	6.2	35.0
cb	6.2	35.0
E	6.2	35.0

PLOTTED

4123

5h

E

E	6.0	35.2
cb	5.7	35.5
1/2	5.7	35.5
c	5.8	35.7
1/2	5.7	35.5
cb	5.6	35.6
W	5.1	36.1

25's

W	5.6	35.6
cb	6.1	35.1
1/2	5.9	35.3
c	5.8	35.4
1/2	6.5	34.7
+5	6.8	34.4
cb	5.8	35.4
E	6.4	34.8

4123

50's

E		6.8	34.4	
cb		6.6	34.6	
+5		7.1	34.1	
1/4		6.1	35.1	
c		6.1	35.1	
1/2		6.0	35.2	
cb		6.4	34.8	
W		6.0	35.2	
T.P.	312	38.35	6.00	35.23
		75's		
W		3.2	35.2	
cb		3.8	34.6	
1/4		3.4	35.0	
c		3.3	35.1	
1/2		3.6	34.8	
+5		4.2	34.2	
cb		3.4	35.0	
E		3.8	34.6	

PLOTTED

38.35

100's

E		3.8	34.6
cb		3.3	35.1
+5		4.3	34.1
1/4		3.6	34.8
c		3.4	35.0
1/2		3.7	34.7
cb		4.1	34.3
W		3.5	34.9
		125's	
W		3.8	34.6
cb		4.1	34.3
1/4		3.9	34.5
c		3.6	34.8
1/2		3.8	34.6
+5		4.5	33.9
cb		3.7	34.7
E		4.3	34.1

3835

150's

E	4.1	34.3
cb	{ 4.3 4.8	{ 34.1 33.6
1/0	4.2	34.3
c	3.8	34.6
1/0	4.4	34.0
cb	4.3	34.1
W	4.0	34.4

170's

W	4.2	34.3
cb	4.6	33.8
1/0	4.3	34.1
c	4.1	34.3
1/0	4.4	34.0
cb	{ 3.0 4.4	{ 33.4 34.0
E	4.5	33.9

PLOTTED

3835

200's

E	4.7	33.7
cb	{ 4.6 5.2	{ 33.8 33.7
1/0	4.4	34.0
c	4.3	34.1
1/0	4.5	33.9
cb	4.7	33.7
W	4.5	33.9

225's

W	4.7	33.7
cb	4.9	33.5
1/0	4.7	33.7
c	4.5	33.9
1/0	4.8	33.6
cb	{ 5.2 4.8	{ 33.7 33.6
E	5.0	33.4

3835

350's

E	5.1	33.3
cb	{ 5.1 5.8	{ 33.3 32.6
1/2	5.1	33.3
c	4.7	33.7
1/2	4.8	33.6
cb	5.3	33.1
W	5.0	33.4

571 85 = 11h J St.

W	5.2	33.2
cb	5.6	32.8
1/2	5.2	33.2
c	4.9	33.4
1/2	5.5	32.9
cb	{ 5.6 5.2	{ 32.8 33.2
E	5.4	33.0

PLOTTED

3835

neb

E	5.8	32.6
cb	5.7	32.7
1/2	5.8	32.6
c	5.7	32.7
1/2	5.5	32.9
b	5.7	32.7
W	5.5	32.9

N/4

W	5.4	33.0
cb	5.5	32.9
1/2	5.5	32.9
c	5.5	32.9
1/2	5.7	32.7
b	5.5	32.9
E	5.7	32.7

3835

cr

E	5.6	32.8
cb	5.6	32.8
1/4	5.6	32.8
c	5.0	33.4
1/4	5.2	33.2
cb	5.1	33.3
W	5.1	33.3
	5 1/2	
W	5.7	32.7
cb	5.9	32.1
1/4	5.6	32.8
c	5.6	32.8
1/4	5.8	32.6
cb	5.7	32.7
E	5.7	32.7

PLOTTED

3135

s cb

E	5.8	32.6
cb	5.8	32.6
1/4	5.7	32.7
c	5.4	33.0
1/4	5.9	32.1
+5	6.3	32.1
cb	5.5	32.5
W	5.7	32.7
	shine	
W	5.5	32.6
cb	5.7	32.7
+5	6.5	31.7
1/4	5.8	32.6
c	5.4	33.0
1/4	5.7	32.7
cb	5.6	32.3
	5.7	32.7
E	5.8	32.6

37 33

25's

E	5.9	32.5
cb	6.9	32.5
	26.4	32.0
1/2 c	5.8	32.6
c	5.5	32.9
1/2 c	5.8	32.6
7.5	6.5	31.9
cb	5.8	32.6
W	5.9	32.5

50's

W	6.0	32.4
cb	6.0	32.4
	6.5	31.9
1/2 c	5.7	32.7
c	5.5	32.9
1/2 c	6.0	32.4
cb	6.6	31.8
	6.1	32.3
E	6.0	32.4

PLOTTED

75's

E	6.3	32.1
---	-----	------

38 38

cb	6.3	32.1
	6.8	31.6
1/4	6.1	32.3
c	5.6	32.8
1/2 c	6.0	32.4
cb	6.8	31.6
	6.1	32.3
W	6.2	32.2

100's

W	6.6	31.8
cb	6.4	32.0
	6.8	31.6
1/4	6.2	32.2
c	5.9	32.5
1/2 c	6.5	31.9
	6.7	31.4
	6.6	31.8
E	6.4	32.0

125's = 1/2 mile 30' Alley on West

E	6.8	31.6
cb	7.3	31.1
1/4	6.6	31.8
c	6.3	32.1

3835

1/6	65	31.9
cb	69	31.5
W	68	31.6

140' cr Alley

W	7.0	31.4
cb	7.2	31.2
1/6	6.6	31.8
c	6.4	32.0
1/6	7.1	31.3
cb	7.5 7.1	30.9 31.3
E	7.2	31.2

155' - sh Alley

E	7.4	31.0
cb	7.1 7.6	31.3 30.8
1/6	7.1	31.3
c	6.5	31.9
1/6	6.9	31.5
cb	7.5 6.9	30.9 31.5
W	7.1	31.3

PLOTTED

page 87

69

3835

180 S

W	7.2	31.2
cb	7.1	31.2
+3	7.9	30.5
1/6	7.2	31.2
c	6.7	31.7
1/6	7.3	31.1
cb	8.0 7.5	30.4 30.9
E	7.4	31.0

205 S

E	7.4	31.0
cb	7.4 8.1	31.0 30.3
1/6	7.5	30.9
c	7.2	31.2
1/6	7.5	30.9
+7	7.8	30.6
cb	7.2 7.5	31.2 30.9
W	7.5	30.9

3835  
230's

W	7.6	30.8
cb	7.5	30.9
+3	8.0	30.4
1/6	7.5	30.9
c	7.4	31.0
1/6	7.9	30.6
cb	7.8 7.4	30.6 31.0
E	7.3	31.1

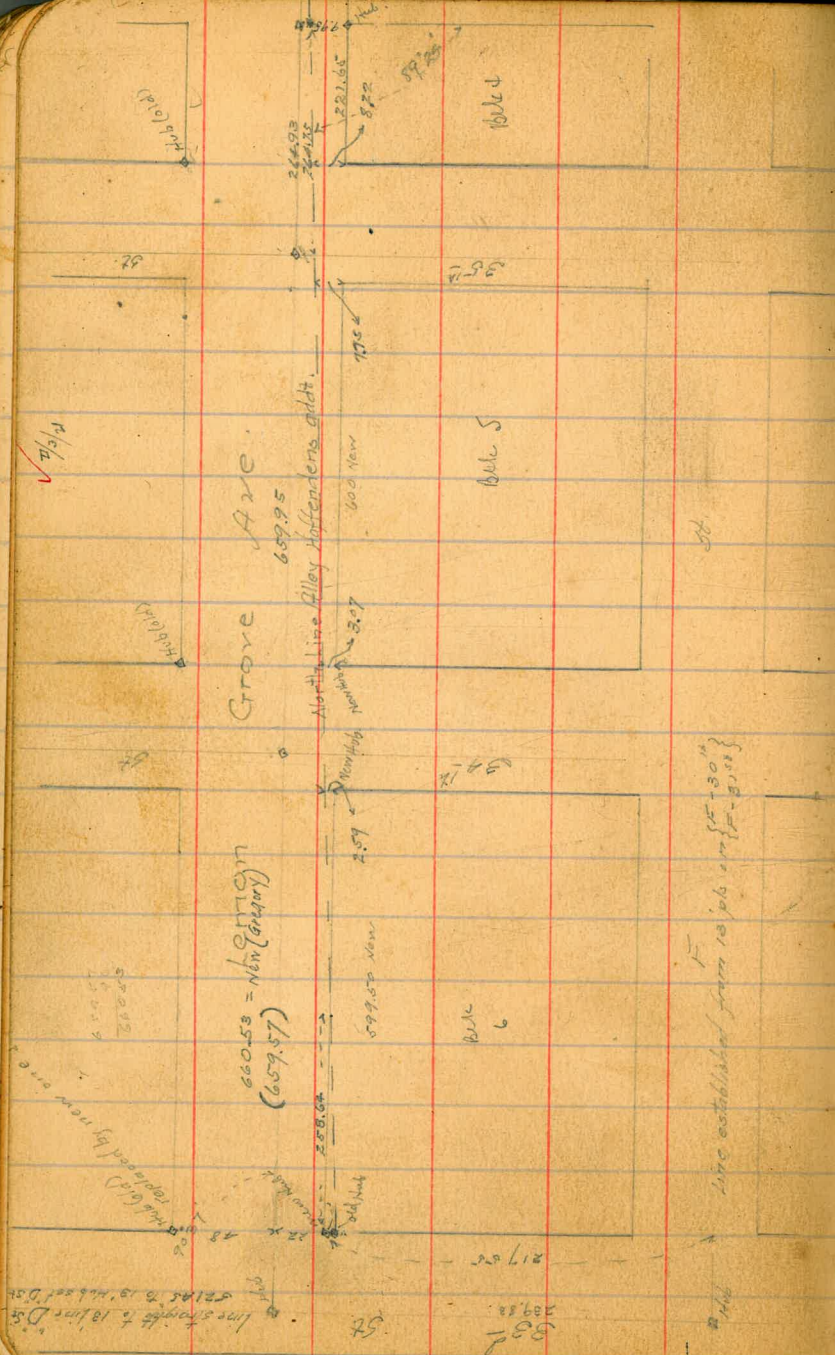
255's

E	7.8	30.6
cb	7.9	30.5
+5	8.3	30.1
1/6	7.6	30.8
c	7.7	30.7
1/6	7.4	31.0
cb	7.4	31.0
W	7.6	30.8
7.5	5.57	32.78

**PLOTTED**

Book 825





line changed to 18 lines D.S.  
 52145 to 18 1/2 1/2 D.S.

660.53 = New Station  
 (659.57)

Grove Ave  
 659.95

North Line Alley Hoffenders addn.

Line established from 18 job in 1930

289.58  
 537

217.02

214.46

214.46

219.56

219.56

219.56



223.5  
 48  
 271.5  
 13  
 259.5

259.70

5/ Blount  
3/ Taylor  
0/ July

Location of Drain through Blk 55-1  
Old town

	0.15	265.28	2	265.13	
	2.10	256.81	10.57	254.71	
TP	0.33	<u>244.66</u>	12.48	244.03	
Hickory St					
Center line 150' W of Hickory St			10.6		
Center Hickory			9.7		
SL "			13.2		
TP	2.44	<u>234.35</u>	12.75	231.91	
40' S of Hickory angle 240° R			8.9		
50' S of angle			8.0		
100' S of angle			9.4		
130' S of angle = angle 240° L			12.2		
TP	9.25	<u>221.55</u>	13.05	221.30	
50' S of angle			5.2		
75' " "			9.0		
100' " "			10.2		
141' S = 2nd Blount St			15.6		

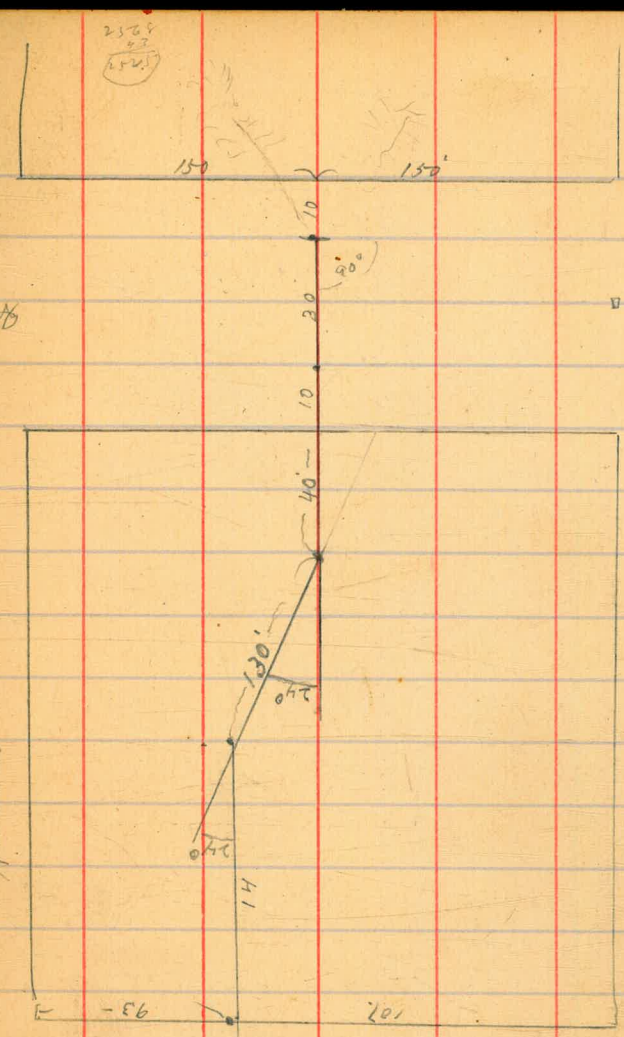
Born Hickory  
Street

Hickory

265.28  
10.57  
254.71  
2.10  
256.81  
12.48  
244.03  
244.66  
12.75  
231.91  
8.9  
8.0  
9.4  
12.2  
13.05  
15.6

Plantation

Blount



8  
2  
13

along X sec of 1st (60')  
Tangle S L S Stockton to Pacific line  
July

299.76

105

73

	590	29387	28797	Play Lewis + 215
	566	29666	287	29102
	372	29976	062	29604
	S L	Stockton St (50')		
E		(74)	292.4	
		(67)	293.1	
C		62	293.6	
1/4		61	293.7	
6		53	294.5	
1/4		58		
C		64		
W		69	292.9	
	S of Stockton			
W		63	293.5	
C		62	293.6	
1/4		60	293.8	
6		60	293.8	
1/4		63	293.5	
6		65	293.3	
E		75	292.3	

S	1/4	Stockton	
	76	292.2	
	67	293.1	
	65	293.3	
	58	294.0	
	59	293.9	
	62	293.6	
	57	294.1	

Center of Stockton		
	53	294.5
	60	293.8
	51	294.7
	50	294.8
	61	293.7
	66	293.7
	76	292.2

28797  
599  
293.87  
287  
291.60  
566  
29666  
32  
29604  
372  
29976  
292.3

299.76

	N	1/4 f	Stock
E			7.6 292.8
			6.8 293.0
			5.3 294.5
b			4.3 295.5
			4.6 295.2
			5.7 294.1
W			5.7 294.1
	b	bank	Stock
W			6.0 293.8
			5.7 294.7
			4.3 295.5
b			4.1 295.7
			4.9 294.9
			6.6 293.7
E			7.2 292.6

299.76

127

74

	N	1/4 f	Stock
E			6.4 293.4
			6.1 293.7
			5.5 294.3
b			4.4 295.4
			4.8 295.0
			5.6 294.2
W			5.8 294.0
	50'	m f	Stock
W			5.2 294.6
			5.1 294.7
			5.4 294.4
b			5.9 293.9
			6.3 293.5
			6.2 293.6
E			6.4 293.4

29976

100 n f Stock

E 66 293.2

63 293.5

64 293.4

b 61 293.7

60 293.8

60 293.8

w 60 293.8

150 n f Stock

w 60 293.8

63 293.5

68 293.0

b 69 292.9

69 292.9

70 292.8

E 73 292.5

29976

200 n f Stock

E 113 288.5

108 289.0

100 289.8

b 104 289.4

102 289.6

94 290.4

w 82 291.6

TP 165 288.41 1300 286.2

225 n f Stock

w 08 287.6

10 287.4

20 286.4

b 24 286.0

22 286.2

25 285.9

E 18 286.6

1.11

75

29976  
12  
286.2  
1.65  
288.71

28841

250

n f

Stock

E

73 281.1

90 279.4

97 276.7

b

86 279.8

70 281.4

54 283.0

W

43 284.1

275

n f

Stock

W

91 279.3

113 277.1

132 275.7

TP

0.39

276.85

11.95 276.46

1

47 277.2

68 270.1

69 270.0

E

67 270.2

27685

101-

76

290

n f

Stock

E

146 262.3

120 264.9

110 265.9

b

90 267.9

63 270.6

48 272.1

W

24 274.5

300

n f

Stock

W

10 275.9

18 275.1

20 274.9

b

45 272.4

63 270.6

82 268.7

E

120 264.9

28841
11.95
276.46
37
276.85

	320	n f	Stock	
E			67	270.2
			35	273.4
TP	1235	28810	110	275.75
			113	276.8
b			88	279.3
			63	281.8
			23	285.8
W			30	285.1

	325	n f	Stock	
W			20	286.1
			22	285.9
			42	283.9
b			76	280.5
			106	277.5
			132	274.9
E			176	270.5

	335	n		
E			178	270.3

Slopes at End of Brook

	350	n f	Stock	
E			120	276.1
			120	276.1
			73	280.8
b			23	285.8
			18	286.3
			14	286.7
W			06	287.5

27685  
110  
275.75  
1235  
288.10  
2.03  
296.07  
9.06  
275.13

	375	n f	Stock	
W			14	286.7
			14	286.7
			14	286.5
b			18	286.3
			19	286.7
			19	286.7
E			23	285.8
TP	256	29513	203	286.07

295.3

400

n 8

Strecke

E

78 287.3

79 287.7

84 286.7

b

83 286.8

82 286.9

78 287.3

w

82 286.9

4.25

n 8

Strecke

w

77 287.4

77 287.4

77 287.4

b

80 287.1

80 287.1

74 287.7

E

67 288.4

295.3

480

n 8

Strecke

E

73 287.8

73 287.8

73 287.8

b

72 287.9

61 289.0

58 289.3

w

56 289.5

470

n = 5

27 Die Runden (50')

w

58 289.3

61 289.0

66 288.6

b

68 288.3

63 288.8

64 288.7

E

68 288.3

111

78



S bank of Dickerson

E	64	288.7
	58	289.3
	63	288.8
L	67	288.4
	69	288.4
	69	288.2
W	67	288.4

S 1/4 of Dickerson

W	62	288.9
	63	288.8
	63	288.8
L	63	288.8
	67	288.9
	67	288.2
E	62	288.9

Center of Dickerson

E	60	289.1
	60	289.1
	60	289.1
b	61	289.0
	62	288.9
	60	289.1
W	60	289.1

W 1/4 of

W	58	289.3
	57	289.4
	59	289.7
b	59	289.2
	55	289.6
	54	289.7
E	58	289.3

295.13

N bl f Dickerson

E	54	289.7
	57	290.0
	50	290.1

b	57	290.0
	55	289.6
	53	289.8

W	54	289.7
---	----	-------

N line of Dickerson

W	49	290.2
	48	290.3
	41	291.0

b	47	290.8
	41	291.0
	46	290.5

E	48	290.3
---	----	-------

295.13

50 N f Dickerson

E	22	292.9
	23	
	23	

b	24	292.7
	21	
	20	

W	21	293.0
---	----	-------

100' or = Pueblo line

W	13	293.8
	11	
	13	

b	15	293.6
	15	
	15	

E	15	293.6
---	----	-------

132	293.7	81	Mon at Hospital
-----	-------	----	-----------------

092	294.67	293.77	Bn
491	292.77	293.80	

Grade at Pd set at 293.00 E 1/2 st

80

295.13  
1.22  
293.91

3  
26  
14

blanch Slopes on 1st St N of  
Station 25

0.37 29410 29327

min to  
Nashua

.40 28279 1171 28239

29327  
29410  
1171  
28239

335' N of Station

EL

123

28239  
1171  
27068

25' E of EL

129

325' N of Station

EL

125 270.3

10' E of EL

177 265.1

30' E of EL

177 265.1

320' N of Station

EL

128

TP 100 27120 1260 27019

13' E of EL

90

30' E of EL

90

300' N of Station

EL

70 264.2

25' E of EL

140 257.2

40' E of EL

130 258.2

325' level 30' E

509

□ 34

□ 17

□ 68.26 □

□ 75.43 □

45

231  
1192  
23116

2  
19978  
48  
24978

3rd 7/1 SW RR 76,536

221  
141  
370

227  
44.75

521.45  
259.70  
261.75

27  
47  
48  
122

521.45  
122  
399.46

248 <sup>22</sup>  
11.70 11.3

2715

248  
236  
2718  
135  
2583

227  
352  
2622



248  
236  
2718  
135  
2583