

867  
F.B.

LEVEL BOOK

No. 410

MICROFILMED

DEC 10 1964



x-section Arnold St. S.L. University to N.L. Park. Elevation  
101  
11 65' wide 10' walks

B.M. N.W. CORNER UNIV. ARIZONA 306.50

B.M. 6.01 307.81

S.L. University

E 1.3 306.5

erb 1.8 306.0

" 2.3 305.5

M 2.4 305.4

" 3.0 304.8

erb 3.2 304.6

W 3.1 304.7

04255

W 4.6 303.2

erb 4.6 303.2

" 4.3 303.5

M 3.6 304.2

" 4.0 303.8

erb 3.2 304.8

F 1.9 305.9



307.81

1456

E	4.1	303.7
Crk	4.2	303.6
1/4	4.7	303.1
M	4.9	302.9
1/4	5.2	302.6
Crk	5.2	302.6
W	5.7	302.1

0+75

W	6.0	301.8
Crk	5.4	302.4
1/4	5.7	302.1
M	6.0	301.8
1/4	5.8	302.0
Crk	5.4	302.4
E	5.1	302.7

2

1+0

E	5.6	302.2
Crk	5.8	302.0
1/4	6.0	301.8
M	6.0	301.8
1/4	6.4	301.4
Crk	6.6	301.2
W	6.8	301.0

1+25

W	7.1	300.7
Crk	7.1	300.7
1/4	7.0	300.8
M	6.7	301.1
1/4	6.4	301.4
Crk	6.4	301.4
E	5.9	301.9



30781

1750

E	6.2	301.6
ct	6.8	301.0
1/4	6.9	300.9
M	7.2	300.6
1/4	7.6	300.2
ct	7.6	300.2
W	7.9	299.9

1775

W	8.6	299.2
ct	8.4	299.4
1/4	7.9	299.9
M	7.9	299.9
1/4	7.8	300.0
ct	7.8	300.0
E	7.2	300.6

3

270

E	7.7	300.1
ct	8.1	299.7
1/4	8.5	299.3
M	8.1	299.7
1/4	8.2	299.6
ct	8.7	299.1
W	9.3	298.5

2725

W	9.8	298.0
ct	9.4	298.4
1/4	9.3	298.5
M	8.9	298.9
1/4	8.3	299.5
ct	8.3	299.5
E	7.6	300.2



307.81

2750 = N.L. Wrightman 60' W to

E	7.4	300.4
ct	7.7	300.1
1/4	8.7	299.1
M	9.0	298.8
1/4	9.3	298.5
ct	9.4	298.4
w	10.0	297.8

N.ct

w	10.3	297.5
ct	9.9	297.9
1/4	9.7	298.1
M	9.3	298.5
1/4	8.7	299.1
ct	8.0	299.8
E	7.3	300.5

N. 1/4

4

E	7.4	300.4
ct	8.0	299.8
1/4	8.6	299.2
M	9.3	298.5
1/4	10.1	297.7
ct	10.2	297.6
w	10.5	297.3

M.

w	10.6	297.2
ct	10.3	297.5
1/4	9.6	298.2
M	9.3	298.2
1/4	8.8	299.0
ct	8.2	299.6
E	9.6	300.2



307.81

S 1/4

E	7.7	300.1
cb	8.0	299.8
1/4	8.9	298.9
M	9.5	298.3
1/4	10.1	297.7
cb	10.7	297.1
W	10.6	297.2

S ct

W	11.0	296.8
cb	10.7	297.1
1/4	10.1	297.7
M	9.5	298.3
1/4	9.3	298.5
cb	8.2	299.6
E	7.8	300.0

5

S.L. Nightman St

E	8.1	299.7
cb	8.5	299.3
1/4	9.4	298.4
M	9.7	298.1
1/4	10.3	297.5
cb	11.0	296.8
W	11.3	296.5

@ + 25 South

W	11.3	296.5
cb	11.0	296.8
1/4	10.0	297.2
M	10.5	297.3
1/4	10.1	297.7
cb	9.2	298.6
E	9.1	298.7



30781

0+50

E	9.5	298.3
cb	9.8	298.0
114	11.0	296.8
M	11.3	296.5
114	11.6	296.2
cb	11.8	296.0
W	12.0	295.8

0+75

W	13.0	294.8
cb	12.6	295.2
114	12.5	295.3
M	12.0	295.8
114	11.3	296.5
cb	11.0	296.8
E	10.1	297.7

6

1+0

E	10.3	297.5	
cb	11.0	296.8	
114	11.6	296.2	
M	12.3	295.5	
114	12.7	295.1	
cb	13.2	294.6	
W	13.8	294.0	
T.P. on 13 <sup>th</sup> point + 2.85	300.49	10.17	297.64

1+25

W	7.0	293.5
cb	6.5	294.0
114	5.8	294.7
M	5.3	295.2
114	4.5	296.0
cb	4.2	296.3
E	4.0	296.5



300.49

7

1+50

E	4.6	295.9
Cl	4.7	295.8
1/4	5.1	295.4
M	5.8	294.7
1/4	6.1	294.4
Cl	6.6	293.9
W	7.3	293.2

1+75

W	6.9	293.6
Cl	6.8	293.7
1/4	6.6	293.9
M	6.6	293.9
1/4	6.3	294.2
Cl	5.9	295.1
E	4.7	295.8

2+0

E	4.6	295.9
Cl	5.4	295.1
1/4	6.1	294.4
M	6.7	293.8
1/4	7.2	293.3
Cl	7.5	293.0
W	7.8	292.7

2+25

W	8.2	292.3
Cl	7.8	292.7
1/4	7.4	293.1
M	6.8	293.7
1/4	6.3	294.2
Cl	5.7	294.8
E	4.9	295.6

8



300.49

2+50c

E	4.6	295.9
erb	5.5	295.0
"	6.5	294.0
M	6.9	293.6
"	7.1	293.4
erb	7.8	292.7
W	7.9	292.6

4+75

W	8.1	292.4
erb	7.8	292.7
S "	7.1	293.4
"	6.6	293.9
M	6.2	294.3
"	5.6	294.9
erb	5.3	295.2

8

3+0

E	4.9	295.6
erb	6.1	294.4
"	6.1	294.4
M	6.6	293.9
"	7.1	293.4
erb	7.5	293.0
W	7.6	292.9

3+25

W	8.1	292.4
erb	8.1	292.4
"	7.8	292.7
M	7.5	293.0
"	7.3	293.2
erb	6.0	294.5
E	4.9	295.6



30049

3+50

F	5.8	294.7
Wb	6.0	294.5
"	6.9	293.6
M	7.1	293.4
"	7.5	293.0
Wb	7.8	292.7
W	8.0	292.5

3+75

W	8.9	292.1
Wb	8.1	292.4
"	7.8	292.7
M	7.2	293.3
"	6.6	293.9
Wb	5.8	294.7
E	5.4	295.1

9

4+0

E	4.3	296.2
Wb	5.3	295.2
"	6.1	294.4
M	6.5	294.0
"	7.0	293.5
Wb	7.5	293.0
W	7.9	292.6

4+25

W	7.8	292.7
Wb	7.3	293.2
"	6.7	293.8
M	6.1	294.4
"	5.2	295.3
Wb	4.6	295.9
E	3.9	296.6



300.49

4150

E	3.5	297.0
wh	4.0	296.5
"A	4.4	296.1
M	5.6	294.9
"A	6.5	294.0
wh	7.5	293.0
W	7.5	293.0

4175

W	7.2	293.3
wh	7.3	293.2
"A	6.5	294.0
M	5.8	294.7
"A	4.7	295.8
wh	4.8	295.7
E	3.7	296.8

10

510

E	3.6	296.9
wh	4.1	296.4
"A	4.7	295.8
M	5.6	294.9
"A	6.7	293.8
wh	7.0	293.5
W	6.8	293.7

5125

W	7.2	293.3
wh	7.2	293.3
"A	6.8	293.7
M	5.7	294.8
"A	4.9	295.6
wh	4.5	296.0
E	3.9	296.6



300.49

5+50

E	4.2	296.3
erb	5.3	295.2
1/4	5.7	294.8
M	6.3	294.2
1/4	6.8	293.7
erb	7.8	292.7
W	7.4	293.1

5+75

W	7.9	292.6
erb	8.0	292.5
1/4	7.2	293.3
M	6.9	293.6
1/4	6.3	294.2
erb	5.3	295.2
E	4.5	296.0

11

6+0 = N.L. Landis 60+side

F	4.0	296.5
erb	5.2	295.3
1/4	6.0	294.5
M	6.7	293.8
1/4	7.3	293.2
erb	8.0	292.5
W	8.1	292.4

N. curb

W	8.7	291.8
erb	8.0	292.5
1/4	7.2	293.3
M	6.5	294.0
1/4	6.2	294.3
erb	4.9	295.8
E	4.4	296.1



30049

N 1/4

E	4.5	296.0
Corb	5.2	295.3
1/4	6.2	294.3
M	6.5	294.0
1/4	7.3	293.2
Corb	7.7	292.8
W	8.6	291.9

center

W	8.4	292.1
Corb	7.8	292.7
1/4	7.0	293.5
M	6.5	294.0
1/4	6.2	294.3
Corb	5.8	294.7
E	5.4	295.1

S 1/4

E	4.9	295.6
Corb	5.8	294.7
1/4	6.1	294.4
M	7.2	293.3
1/4	7.9	292.6
Corb	8.3	292.2
W	9.1	291.4

S CURV

W	9.0	291.5
Corb	8.5	292.0
1/4	7.7	292.8
M	6.8	293.7
1/4	5.7	294.8
Corb	5.8	294.7
E	4.6	295.9



300.49

S.L. Landis St

E	5.2	295.3
Cur	5.5	295.0
"/4	5.7	294.7
M	6.3	294.2
"/4	7.2	293.3
Cur	8.3	292.2
W	8.9	291.6

Note - for x-section of Arnold St from S.L.

Landis to M.L. Dwight see Book 861 Page 15

T.P. 2.31 296.02 6.78 293.71

296.02

18

N.L. Dwight St 60' 5 1/2 of Dwight graded

W	9.4	286.6
Cur	9.5	286.5
"/4	9.5	286.5
M	9.0	287.0
"/4	8.7	287.3
Cur	8.8	287.2
E	8.6	287.4

N curb

E	8.5	287.5
Cur	9.1	286.9
"/4	9.4	286.6
M	9.6	286.4
"/4	10.0	286.0
Cur	9.8	286.2
W	9.9	286.1



296.02

N 1/4

W	9.9	286.1
cut	9.7	286.3
1/4	10.1	286.9
M	9.8	286.2
1/4	9.0	287.0
cut	9.1	286.9
E	8.5	287.5

center Dright

E	9.0	287.0
cut	9.2	286.8
1/4	9.3	286.7
M	10.0	286.0
1/4	10.2	285.8
cut	10.0	286.0
W	10.1	285.9

T.P. 3.40 286.87 12.55 283.47

Note - Arnold st graded from CD right to E Myrtle

286.87

14

E Myrtle - Myrtle st to side

W	8.9	278.0
cut	8.4	278.5
1/4	8.5	278.4
M	8.8	278.1
1/4	8.5	278.4
cut	8.1	278.8
E	7.6	279.3

S 1/4

E	7.7	279.2
cut	7.9	279.0
1/4	8.5	278.4
M	8.6	278.3
1/4	9.1	277.8
cut	9.0	277.9
W	9.0	277.9



286.87

5 corb

W	9.2	277.7
erb	9.0	277.9
1/4	9.0	277.9
M	8.7	278.2
1/4	8.4	278.5
erb	8.3	278.6
E	8.0	278.9

5. in Myrtle

E	8.1	278.4
erb	8.1	278.8
1/4	8.4	278.5
M	8.5	278.4
1/4	8.9	278.0
erb	8.9	278.0
W	8.6	278.3

15

0+25' south

W	9.7	277.2
erb	9.4	277.5
1/4	9.3	277.6
M	9.0	277.9
1/4	9.1	277.8
erb	9.1	277.8
E	8.9	278.0

0+50

E	9.7	277.2
erb	9.8	277.1
1/4	10.0	276.9
M	10.0	276.9
1/4	10.2	276.7
erb	10.3	276.6
W	10.3	276.6



286.87

0+75

W	11.4	275.5
Ork	11.2	275.7
1/4	11.0	275.9
M	10.9	276.0
1/4	10.8	276.1
Ork	10.6	276.3
F	10.7	276.2

1+0

E	12.1	274.8		
Ork	12.4	274.5		
1/4	12.5	274.4		
M	12.8	274.1		
1/4	12.6	274.3		
Ork	12.6	274.3		
W	12.6	274.3		
T.P.	111	275.08	1290	273.97

275.08

1+25

W	2.4	272.7
Ork	2.6	272.5
1/4	2.5	272.6
M	2.5	272.6
1/4	2.7	272.4
Ork	2.5	272.6
F	2.3	272.8

1+50

E	3.8	271.3
Ork	4.4	270.7
1/4	4.6	270.5
M	4.3	270.8
1/4	4.0	271.1
Ork	3.8	271.3
W	3.7	271.4

16



275.08

1495

W	5.2	269.9
Wb	6.1	269.0
W	5.7	269.4
M	6.1	269.0
W	6.2	268.9
Wb	6.5	268.6
F	6.3	268.8

210

F	7.7	267.4
Wb	8.1	267.0
W	8.0	267.1
M	7.8	267.3
W	7.4	267.7
Wb	6.4	268.7
W	6.1	269.0

17

2125

W	7.0	268.1
Wb	7.4	267.7
W	8.3	266.8
M	9.1	266.0
W	9.5	265.6
Wb	9.4	265.7
F	9.8	265.3

2150

E	11.3	263.8
Wb	10.7	264.4
W	10.7	264.4
M	10.3	264.8
W	9.0	266.1
Wb	8.5	266.6
W	7.9	267.2



275.08

2795

r	8.8	266.3
clh	9.4	265.7
1/4	10.1	265.0
1/4	11.2	263.9
1/4	11.6	263.5
wh	11.9	263.2
E	12.2	262.9

370

E	13.8	261.3
clh	13.3	261.8
1/4	12.8	262.3
M	12.2	262.9
1/4	11.6	263.5
clh	10.5	264.6
W	10.0	265.1

T.P.

269

267.53

10.24

264.84

267.53

3725

r	3.0	264.5
clh	3.8	263.7
1/4	4.8	262.7
M	5.6	261.9
1/4	6.4	261.1
wh	6.4	261.1
E	7.3	260.2

3749<sup>6</sup> on E. 4. 8 3748<sup>6</sup> on W. 4. = N. 4. Park

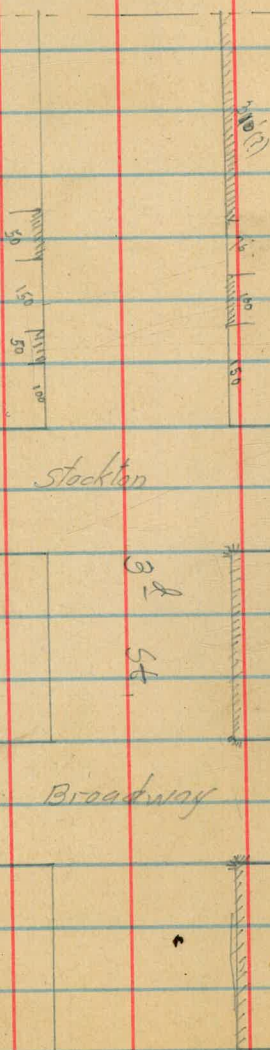
E	9.0	258.5
clh	7.5	260.0
1/4	7.2	260.3
M	6.6	260.9
1/4	5.7	261.8
wh	4.9	262.6
W	4.4	263.1

18



2/26/13 Hatch

Walk and explain on 3<sup>rd</sup> St Lewis to Peble line



2/26/13 1/2 sec 3<sup>rd</sup> St Lewis to Peble line - 19

13771 SW/Cor 253 294.52 ✓ 291.99/ 3<sup>rd</sup> Lewis

Nh. Lewis

E Ch.	45.2	289.0
gutter	5.9	288.6
1/4	5.2	289.3
c	5.0	289.5
1/4	5.1	289.4
+6	4.8	289.7
ch.	3.6	290.9
W	3.3	291.2
	25.1	
W	2.4	291.1
+7	3.5	291.0
ch	5.3	289.2
1/4	5.0	289.0
c	5.1	289.4
1/4	5.8	288.7
gutter	6.4	288.1
ch	5.8	288.6



294.52

50 N

Ecb	6.21	288.3
gutter	6.8	287.7
1/2	6.1	288.4
c	5.5	289.0
1/2	5.6	288.9
cb	5.8	288.7
+3	4.3	290.2
W	1.0	290.5

75 N

W	4.4	290.1
+8	4.6	289.9
b	6.1	288.4
1/2	5.9	288.6
c	3.8	288.7
1/2	6.4	288.1
gutter	7.2	287.3
cb	6.55	287.9

294.52

100 N

Ecb	6.84	287.7
gutter	7.5	287.0
1/2	7.0	287.5
c	6.4	288.1
1/2	6.4	288.1
cb	6.4	288.1
+2	5.4	289.1
W	4.8	289.7

125 N

W	5.1	289.4
cb	{ 5.8 6.9	
1/2	6.7	
c	7.1	287.9
1/2	7.3	
gutter	7.7	
b	7.24	287.3



29452

150' N

Ec b	7.2	287.0
gutter	8.3	
1/2 c	7.6	
c	7.3	287.2
1/2	7.2	
cb	{ 7.5 7.7	
W	6.4	288.1

175' N

W	7.0	287.5
cb	{ 7.3 7.1	
1/2 c	7.6	
c	7.5	287.0
1/2	7.8	
gutter	8.3	
cb	7.9	286.6

29452

200' N

Ec b	8.7	286.3
gutter	8.7	
1/2 c	8.2	
c	8.0	286.5
1/2	8.1	
cb	{ 8.6 8.0	
W	7.8	286.7

225' N

W	8.6	285.9
cb	{ 8.8 9.0	
1/2 c	8.7	
c	8.6	285.9
1/2	8.6	
gutter	9.0	
cb	8.5	286.0



29452

250' W

Feb	885	285.6
gutter	9.5	
1/2	9.1	
c	9.1	285.4
1/2	9.2	
cb	89.5 89.1	
W	89	285.6

275' W

W	9.2	285.3
cb	89.4 89.9	
1/2	9.6	
c	9.3	285.2
1/2	9.5	
gutter	9.7	
cb	9.20	285.3

29452

300' N - 5th Broadway

cb	9.0	285.0
gutter	10.1	
1/2	9.5	
c	9.3	285.2
1/2	9.9	
cb	89.1 89.6	
W	9.3	285.2
TP	21.9	289.43
cb.	9.22	285.30
W	84.3 84.9	285.1 284.5
cb	5.1	
1/2	4.5	
c	4.2	285.2
1/2	4.5	
cb	4.7	
E	85.0 84.4	284.4 285.0



28943

S/O

E 4.7 284.7

cb 4.5

1/2 4.4

S 4.3 285.1

1/2 4.5

cb 3.0

W 4.9 284.5

cr

N 4.5 284.9

cb 4.9

1/2 4.6

E 4.2 285.2

1/2 4.2

cb 4.3

E 4.3 285.1

28943

N 1/2

E 4.7 284.7

cb 4.6

1/2 4.5

c 4.4 285.1

1/2 4.7

cb 5.2

W 5.1 284.3

xcb

N { 5.6 283.8

{ 5.0 284.4

cb 5.5

1/2 4.9

c 4.7 284.7

1/2 4.7

cb 5.0

E { 5.2 284.2

{ 4.5 284.9



28943

N. Broadway

Ec	443	285.0
gutter	5.1	
1/4	49	
c	48	284.6
1/4	5.1	
gutter	56	
cb	49	
W	47	284.7

28 N

W	5.1	284.3
cb	5.1	
gutter	6.0	
1/4	5.2	
c	49	284.5
1/4	4.8	
gutter	5.0	
cb	4.37	285.0

28943

50 N

Ec	428	285.1
gutter	5.0	
1/4	4.8	
c	4.9	284.5
1/4	5.3	
gutter	5.6	
cb	5.2	
W	5.1	284.3

75 N

W	5.0	284.4
cb	5.4	
	5.9	
1/4	5.0	
c	4.6	284.8
1/4	4.7	
gutter	4.9	
cb	4.23	285.2



28943

100' N

Ecb	4.7	285.2
gutter	4.7	
1/2	4.6	
c	4.6	284.8
1/2	5.2	
gutter	6.0	
cb	5.3	
W	4.9	284.5

125' N

W	5.1	284.3
cb	5.3	
gutter	6.0	
1/2	5.1	
c	4.7	284.7
1/2	4.2	
gutter	4.8	
cb	4.07	285.3

28943

150' N

Ecb	3.94	285.5
gutter	4.7	284.7
1/2	4.4	285.0
c	4.5	284.9
1/2	5.0	
gutter	6.2	
cb	5.3	
W	5.1	284.3

175' N

W	4.9	284.5
cb	5.0	
gutter	5.8	
1/2	4.9	
c	4.4	285.0
1/2	4.2	
gutter	4.7	
cb	3.87	285.6



28943

200' N

cb	379	285.7
gutter	4.5	
1/4	4.2	
c	4.2	285.2
1/4 gutter	4.9	
cb	55.5	
	54.9	
W	4.8	284.6

225' N

W	16	284.8
cb	54.9	
	55.5	
1/4	4.7	
c	4.2	285.2
1/4	4.1	
gutter	4.5	
cb	376	285.6

28943

250' N

cb	3.62	285.8
gutter	4.2	
1/4	4.0	
c	4.1	285.3
1/4	4.5	
cb	55.3	
	54.6	
W	4.5	284.9

275' N

W	4.3	285.1
cb	54.5	
	55.1	
1/4	4.3	
c	3.9	285.5
1/4	3.9	
gutter	4.2	
cb	356	285.8



28943  
800 r = Sh Stackton

2cb	347	285.9
gutter	41	
1/2	37	
c	38	285.6
1/2	42	
gutter	51	
cb	44	
W	41	285.3
8cb		
W	43	285.3
cb	49	
1/2	41	
e	35	285.9
1/2	37	
cb	38	
	40	285.4
E	338	286.0

28943  
5 1/2

E	38	285.6
cb	37	
1/2	35	
s	35	285.9
1/2	41	
cb	46	
W	40	285.4
cs		
W	38	285.6
cb	45	
1/2	39	
c	33	286.1
1/2	33	
cb	35	
E	32	286.2



28943

x 1/4

E	3.5	285.9
cb	3.6	
1/4	3.3	
c	3.4	286.0
1/4	3.8	
cb	4.4	
W	3.9	285.5
xcb		
W	3.9	285.5
cb	4.3	
1/4	3.7	
c	3.2	286.2
1/4	3.3	
cb	3.4	
E	3.4	286.0
	2.6	286.8

28943

N. Stockton

E	2.2	287.2
cb	2.8	
gulle	3.5	
1/4	3.1	
c	3.2	286.2
1/4	3.7	
cb	3.2	
W	3.5	285.9
2c'v		
nc	3.5	285.9
cb	3.8	
gulle	4.2	
1/4	3.7	
c	3.3	286.1
1/4	3.2	
gulle	3.4	
cb	2.8	
E	2.4	287.0



28943

50' N

E	2.3	287.1
cb.	2.7	
gutter	3.3	
1/4	3.2	
c	3.4	286.0
1/4	3.9	
gutter	4.2	
cb	3.8	
W	3.6	285.8

75' N

W	3.5	285.9
cb	3.7	
gutter	4.3	
1/4	3.7	
c	3.4	286.0
1/2	3.1	
gutter	3.3	
cb	2.6	286.8
E	2.3	287.1

28943

100' N

E	2.5	286.9
cb	2.7	
gutter	3.3	
1/4	3.1	
c	3.4	286.0
1/4	4.1	
cb	5.43	
	2.372	
W	3.6	285.8

125' N

Wcb	3.93	285.5
gutter	4.5	
1/4	4.0	
c	3.6	285.8
1/4	3.5	
gutter	3.6	
cb	3.1	
E	2.7	286.7



28943

150 N

E		26	286.8
cb		293	
gutter		35	
1/2		36	
c		36	285.8
1/2		44	
gutter		48	
cb		400	
W		40	285.4
TP	393	28921	405 285.38

175 N

W		39	285.3
h		43	284.9
gutter		47	284.5
1/2		40	285.2
c		35	285.7
1/2		34	
gutter		33	
cb		284	286.4

28921

200 N

E cb		287	286.3
gutter		34	
1/2		35	
c		36	285.6
1/2		42	
gutter		49	
cb		42	
W		40	285.2

225 N

W		40	285.2
cb		40	
gutter		49	
1/2		42	
a		37	285.5
1/2		36	
gutter		36	
cb		292	286.3



289.21

250' N

cb	3.03	286.2
gutter	3.7	
1/6	3.7	
c	3.7	285.5
1/4	4.3	
gutter	5.1	
cb	4.5	
W	4.1	285.1

275' N

W	4.1	285.1
cb	4.6	
gutter	4.9	
1/2	4.3	
c	3.8	285.4
1/2	3.8	
gutter	4.0	
cb	3.4	
E	2.9	286.3

289.21

300' N

E	3.0	286.2
cb	3.2	
gutter	4.1	
1/6	3.8	
c	4.0	285.0
1/4	4.7	
gutter	5.2	
cb	4.70	284.5

325' N

cb	4.81	284.4
gutter	5.3	
1/6	4.6	
c	4.0	285.2
1/2	4.0	
gutter	3.9	
cb	3.28	285.9



279.21

350' N

cb 3.42 285.8

gutter 3.8

1/4 4.1

0 4.2 285.0

1/4 4.9

gutter 5.5

cb 4.93 284.3

375' N

W 4.9 284.3

cb 5.1

gutter 5.5

1/4 4.7

0 4.2 285.0

1/4 4.2

gutter 4.1

cb 3.46 285.7

279.21

400' N

cb 3.53 285.7

gutter 4.1

1/4 4.1

0 4.2 285.0

1/4 5.0

gutter 5.8

cb 5.3

W 4.9 284.3

425' N

W 5.1 284.1

cb 5.3

gutter 5.9

1/4 5.0

0 4.3 284.9

1/4 4.0

gutter 4.1

cb 3.63 285.6



27921

450' N

Ec	3.74	285.5
gutter	4.1	
1/2	4.3	
c	4.6	284.6
1/2	5.2	
gutter	5.9	
cb	5.4	
W	5.1	284.1

475' N

W	5.2	289.0
cb	5.5	
gutter	6.0	
1/2	6.3	
c	4.5	284.7
1/2	4.3	
gutter	4.1	
cb	3.80	285.4

27921

500' N

Ec	3.86	285.3
gutter	4.4	
1/2	4.3	
c	4.7	284.5
1/2	5.6	
gutter	5.9	
cb	5.6	
W	5.4	283.8

525' N

W	5.6	283.6
cb	5.6	
gutter	6.1	
1/2	5.5	
c	4.7	284.5
1/2	4.6	
gutter	4.6	
cb	3.97	285.2



28921

550 N

E cb	40	285.2
gutter	46	
1/4	48	
c	50	284.2
1/4	57	
gutter	64	
cb	59	
w	55	283.7

575 N

w	59	283.3
cb	60	
gutter	65	
1/4	57	
c	50	284.2
1/4	49	
gutter	49	
cb	413	285.1

28921 ✓

610 N = Pueblo Line

255.3

EL		
E cb	420	285.0
gutter	46	
1/4	48	
c	52	284.0
1/4	58	
cb	64	
-W	59	283.3



4/26/13  
Hatch  
N. Port  
Hall

Xsec 31<sup>st</sup> St Ups - Retwood

65' wide

13 m 668 326.83 320.15 30<sup>th</sup> Thorn

1168 329.81 570 318.13

12<sup>th</sup> Thorn

W 11.2 318.6

cb 10.7 319.1

1/4 10.1 319.7

c 9.5 320.3

1/2 8.9 320.9

cb **PLOTTED** 9.1 320.7

+5 8.0 321.8

F 7.9 321.9

25<sup>th</sup> N

F 7.6 322.2

+8 8.1 321.7

cb 8.7 321.1

1/4 8.5 321.3

c 9.1 320.7

1/2 9.3 320.5

cb 9.6 320.2

W 10.0 319.8

329.81

50' N

W 9.5 320.3

cb 9.4 320.4

1/4 8.8 321.0

c 8.3 321.5

1/4 8.0 321.8

cb **PLOTTED** 7.3 321.5

+2 7.6 322.2

F 7.3 322.5

75<sup>th</sup> N

F 7.0 322.8

+8 7.4 322.4

cb 7.9 321.9

1/4 7.7 322.1

c 8.0 321.8

1/2 8.7 321.1

cb 9.2 320.6

W 9.5 320.3



31881

329.81

100 N

w	9.2	320.6
cb	9.1	320.7
1/2	8.2	321.6
c	7.5	322.3
1/2	7.4	322.4
cb	7.6	322.2
+2	7.0	322.8
E	6.5	323.3

PLOTTED

125 N

E	6.3	323.5
+8	6.5	323.3
cb	7.2	322.6
1/2	7.2	322.6
c	7.5	322.3
1/2	8.0	321.8
cb	8.7	321.1
w	8.7	321.1

36

329.81

150 N

w	8.8	321.0
cb	8.5	321.3
1/2	7.7	322.1
c	7.3	322.5
1/2	6.7	323.1
cb	6.9	322.9
+2	6.5	323.3
E	5.9	323.9

PLOTTED

175 N

E	6.6	324.2
+8	6.1	323.7
cb	6.8	323.0
1/2	6.4	323.4
c	6.7	323.1
1/2	7.2	322.6
cb	7.5	322.3
w	8.1	321.7



31818

329.81  
200' N

W	7.7	322.1
cb	7.2	322.6
1/0	6.7	323.1
c	6.3	323.5
1/0	5.9	323.9
cb	6.1	323.7
+2	5.4	324.4
E	5.2	324.6

PLOTTED

225' N

E	4.7	325.1
+8	5.0	324.8
cb	3.7	324.4
1/0	5.3	324.5
c	5.8	324.0
1/0	6.2	323.6
cb	6.7	323.1
W	7.2	322.6

37

329.81  
250' N

W	6.7	323.1
cb	6.4	323.4
1/0	6.8	324.0
c	6.4	324.4
1/0	4.8	325.0
cb	5.0	324.8
+2	4.4	325.4
E	4.4	325.4

PLOTTED

275' N

E	4.0	325.8
cb	4.8	325.0
1/0	4.5	325.3
c	4.8	325.0
1/0	5.3	324.5
cb	5.5	324.3
W	5.8	324.0



329.8'

300 N

W	5.7	324.1
cb	5.5	324.3
1/2	5.0	324.8
c	4.5	325.3
1/2	4.2	325.6
cb	4.5	325.3
E	4.0	325.8

PLOTTED

325 N

E	3.6	326.2
cb	4.0	325.8
1/2	3.8	326.0
c	4.2	325.6
1/2	4.6	325.2
cb	5.1	324.7
W	5.1	324.7

329.8'

350 N

W	4.8	325.0
cb	4.6	325.2
1/2	4.1	325.7
c	3.7	326.1
1/2	3.5	326.3
cb	3.7	326.1
E	3.2	326.6

PLOTTED

375 N

E	2.9	326.9
cb	3.2	326.6
1/2	3.0	326.8
c	3.3	326.5
1/2	3.8	326.0
cb	4.1	325.7
W	4.1	325.7



329.5'

400' N

W	38	326.0
cb	35	326.3
1/2	33	326.5
c	31	326.7
1/2	26	327.2
cb	29	326.9
E	23	327.5

PLOTTED

425' N

E	20	327.8
cb	27	327.1
1/2	23	327.5
c	28	327.0
1/2	32	326.6
cb	34	326.4
W	35	326.3

329.5'

450' N

W	31	326.7
cb	30	326.8
1/2	28	327.0
c	24	327.4
1/2	21	327.7
cb	23	327.5
E	18	328.0

PLOTTED

475' N

E	16	328.2
cb	20	327.8
1/2	18	328.0
c	22	327.6
1/2	25	327.3
cb	27	327.1
W	27	327.1



329 J 1

500' N

W	2.0	327.8
d	2.2	327.6
1/0	2.0	327.8
c	1.8	328.0
1/0	1.6	328.3
cb	1.7	328.1
E	<b>PLOTTED</b> 1.4	328.4

520' N

E	1.2	328.6
cb	1.6	328.2
1/0	1.3	328.5
c	1.3	328.5
1/0	1.4	328.4
cb	1.7	328.1
W	1.8	328.0

329 J 1

550' N

W	1.6	328.2
cb	1.5	328.3
1/0	1.2	328.6
c	1.1	328.7
1/0	1.1	328.7
cb	1.5	328.3
E	1.3	328.5

**PLOTTED**

575' N

E	1.2	328.6
cb	1.4	328.4
1/0	1.0	328.8
c	0.9	328.9
1/0	0.9	328.9
cb	1.2	328.6
W	1.5	328.3



31st

31ST ST

2/13 Hatch  
Nurse  
Hall

41

329.51

600' N = 5h Wpa

W		1.0	328.8
cb		1.4	328.7
1/4		0.9	328.9
c		0.7	329.1
1/2		0.8	329.0
d	PLOTTED	1.2	328.6
E		1.0	328.8
TP	5.00	323.13	318.13
		Ncb	Thorn.
W		5.2	317.9
cb		4.6	318.5
1/2		4.2	318.9
c		3.4	319.7
1/2		2.5	320.6
cb		2.3	320.8
E		1.9	321.2

322.13

N 1/2

E		2.1	321.0
		2.5	320.6
		2.6	320.5
ca		3.0	320.1
		3.8	319.3
	PLOTTED	4.2	318.9
W		4.7	318.4
		cr	
W		4.6	318.5
		4.3	318.8
		3.9	319.2
c		3.6	319.5
		3.1	320.0
		2.7	320.4
E		2.3	320.8



31<sup>st</sup>

3187ST

42

32213

5 1/4

E

26 320.5

30 320.1

34 319.7

C

40 319.1

44 318.7

PLOTTED

49 318.2

W

52 317.9

50<sub>6</sub>

K1

56 317.5

60 318.1

45 318.6

C

41 319.0

36 319.5

30 320.1

E

27 320.4

32213

5 1/4 throw

E

26 320.5

34 319.7

38 319.3

C

43 318.8

48 318.3

53 317.8

W

57 317.5

PLOTTED

25 5

W

60 317.1

60 317.1

56 317.5

C

52 317.9

46 318.5

40 319.1

E

37 319.4



31st

31st ST

32313

50' S

E	3.7	319.4
	4.0	319.1
	5.0	318.1
C	5.5	317.6
	6.2	316.9
	6.5	316.6
W	6.8	316.3

PLOTTED

75' S

W	7.4	315.7
	7.3	315.8
	7.0	316.1
C	6.4	316.7
	5.7	317.4
	4.6	318.5
E	4.4	318.7

40' W

32313

100' S

F	5.0	318.1
	5.8	317.3
	6.5	316.6
C	6.8	316.3
	7.4	315.7
	8.0	315.1

PLOTTED

W	8.6	314.5
10' W	10.5	312.6
125' S	12.0	309.1
10' W	10.3	312.8
Kr	8.9	314.2
	7.9	315.2
C	7.2	315.9
	7.0	316.1
	6.0	317.1
E	5.6	317.5



31st

31ST ST

323.13

150'S

E		6.2	316.9
cb		6.8	316.3
1/c		7.4	315.7
c		7.5	315.6
1/a		8.2	314.9
cb		9.4	313.7
TP	260	317.35	8.38 314.75
W		4.9	312.5
10 W1		6.6	310.8
		175'S	
10 W		6.2	311.2
W		5.3	312.1
		4.6	312.8
		3.8	313.6
c		2.9	314.5
		2.2	315.2
		1.6	315.8
E		1.0	316.4

PLOTTED

317.35

200'S

E		1.6	315.8
		2.2	315.2
		2.9	314.5
c		3.8	313.6
		4.6	312.8
		5.1	312.3
W		6.0	311.4
10 W		7.2	310.2
		225'S	
10 W		8.9	308.5
W		7.5	309.9
		6.5	310.9
		5.6	311.8
c		4.5	312.9
		3.6	313.8
		2.6	314.8
E		2.0	315.4

PLOTTED



31st St.

31ST ST

44

317.35

250'S

E	2.7	314.7
	3.5	313.9
	4.3	313.1
C	5.5	311.9
	6.4	311.0
	7.3	310.1
W	8.4	309.0
30 W	10.5	306.9
	27.5'S	
10' W	13.2	304.2
W	10.7	306.7
	8.8	308.6
	7.4	310.0
C	6.2	311.2
	5.2	312.2
	4.0	313.4
E	3.1	314.3

PLOTTED

317.35

300'S

E	3.9	313.5
	4.9	312.5
	5.6	311.8
C	6.7	310.7
	8.0	309.4
	9.7	307.7
W	11.8	305.6
10' W	14.6	302.8
T.P.	540	313.39 936 307.99
	525'S	
15 W	16.2	297.2
W	10.4	303.0
	6.9	306.5
	4.5	308.9
C	3.3	310.1
	2.3	311.1
	1.3	312.1
E	0.6	312.8

PLOTTED



31<sup>st</sup>31<sup>ST</sup> ST

31339

350 'S

E	1.1	312.3
	1.9	311.5
	2.7	310.7
C	4.1	309.3
	6.7	306.7
	11.1	302.3
W	14.8	298.6

PLOTTED

375 'S

VY	15.4	298.0
	10.8	302.6
	6.8	306.6
C	4.9	308.5
	3.8	309.6
	2.9	310.5
E	2.2	311.2

45

31339

100 'S

E	3.2	310.2
	4.1	309.3
	5.5	307.9
C	6.9	306.5
	9.0	304.4
	11.9	301.5
-W	15.0	298.4

PLOTTED

125 'S

W/C	15.0	298.4
C	11.5	301.9
W	9.3	306.1
CA	6.3	307.1
E	4.9	308.5

150 'S

E	7.0	306.4
W	7.4	306.0
W	13.3	300.1



31<sup>st</sup>(31<sup>st</sup> ST

46

313.39

458' S

E 1/4	14.9	298.5
cb	7.8	305.6
E	7.4	306.0

475' S

E	5.1	305.3
+5	10.3	303.1
cb	11.7	301.7
1/4	18.2	295.2

PLOTTED

500' S

E	13.2	300.2
---	------	-------

TP	9/4	300.87	1266	300.73
----	-----	--------	------	--------

350' S

25' W of W line	12.9	288.0
-----------------	------	-------

375' S

25' W of W line	16.5	284.4
-----------------	------	-------

400' S

25' W of W line	11.4	289.5
-----------------	------	-------

300.87

425' S

25' W of W line	17.6	283.3
W line	10.0	290.9
cb.	6.4	294.5

450' S

cr	6.9	294.0
W 1/4	12.5	288.4

PLOTTED

458' S

cr	10.3	290.6
W 1/4	15.2	285.7

475' S

cr	13.5	287.4
----	------	-------

500' S

Ecb	3.1	297.8
-----	-----	-------

E 1/4	7.3	292.6
-------	-----	-------

cr	15.8	285.1
----	------	-------

525' S

E 1/4	13.1	287.8
-------	------	-------

cb	8.2	292.7
----	-----	-------



31st

31ST 87

47

30087

28927 ✓

E	5.1	295.8
10' E	3.3	297.6

4.5	13.3	276.0
-----	------	-------

540'S

15' E	7.2	293.7
-------	-----	-------

10' W	10.2	279.1
-------	------	-------

E	11.2	289.7
---	------	-------

25 W	3.8	285.5
------	-----	-------

cb	14.3	286.6
----	------	-------

25 W	2.9	286.4
------	-----	-------

TP	140	289.27	1200	288.87 ✓
----	-----	--------	------	----------

W	14.0	275.3
---	------	-------

450'S

W cb	6.3	283.0
------	-----	-------

cb	13.0	276.3
----	------	-------

W line	9.8	279.5
--------	-----	-------

1/2	10.6	278.7
-----	------	-------

25 W	9.7	279.6
------	-----	-------

525'S		
-------	--	--

35 W	9.7	279.6
------	-----	-------

cr	6.1	283.2
----	-----	-------

458'S

35 W	8.1	281.2
------	-----	-------

W/c	11.0	278.3
-----	------	-------

W	12.3	277.0
---	------	-------

cb	14.2	275.1
----	------	-------

cb	5.1	281.2
----	-----	-------

White	13.5	273.8
-------	------	-------

475'S

W 1/4	8.3	281.0
-------	-----	-------

20 W	3.8	285.5
------	-----	-------

cb	12.9	276.4
----	------	-------

540'S		
-------	--	--

W	14.9	274.4
---	------	-------

+3	16.3	273.0
----	------	-------

cb	15.3	274.0
----	------	-------

PLOTTED

PLOTTED



31st

(31st ST)

28927

W 1/4	14.0	275.3
C	10.5	278.8
E 1/4	6.0	283.3

550'S

10'E	0.8	288.5
E	4.0	285.3
cb	7.0	282.3
1/4	10.3	279.0
C	14.0	275.3
1/2	16.0	273.3
cb	17.0	274.3
W	12.8	276.5
20 W	14	281.9

PLOTTED

575'S

W	5.9	283.4
cb	11.3	278.0
1/4	15.4	273.9
C	16.6	272.7
1/4	17.9	271.4

48

28927

45	9.0	270.3
cb	16.6	272.7
E	12.3	279.0
15'E	5.9	283.4

600'S = N. Redwood

25'E	5.7	283.6
<del>E</del>	15.2	274.1
45	20.0	269.3
cb	18.5	270.8
1/4	16.5	272.8
C	12.3	277.0
1/4	7.6	281.7
cb	1.5	287.8

PLOTTED

TD	897	296.74	15.0	287.77
W			34	293.3
10 W			40.8	297.5

575'S

15'W	4.6	292.1
------	-----	-------



3/13 Hatch  
moor  
Hall

Sec. Park St. from Mission  
Hills to Malabar

50 wide  
10' Cuts 7 1/2" 14 1/2"

PM. J.E. Or Henry-Warrior 820 218.12 209.92 Concrete Man

274 208.30 1256 205.56

A

W 5.9 202.4

cb 8.5 199.8

1/2 10.0 198.3

c 11.7 196.6

1/2 13.4 194.9

b 14.8 193.5

E 17.2 191.1

TP 806 205.99 1037 197.93

15 E 17.3 188.7

B = 181.5 Mt of Peter-bough

10' E 15.2 190.8

E 12.9 193.1

cb 12.1 193.9

1/4 10.9 195.1

c 9.3 196.7

1/4 7.0 198.0

South line Mission Hills Rd.

W

205.99

182

49

cb 6.3 199.7

W 3.6 202.4

150' N

W 2.0 204.0

cb 4.8 201.2

1/2 7.1 198.9

c 8.6 197.4

1/2 10.0 196.0

cb 11.6 194.4

E 13.2 192.8

10' E 14.8 191.2

125' N

10' E 14.6 191.4

E 12.8 193.2

cb 10.8 195.2

1/2 9.5 196.5

c 8.4 197.6

1/2 6.8 199.7

cb 4.0 202.0



	20599		
W	1.2	2048	
	100' N		
W	2.1	203.9	
cb	4.9	201.1	
1/2	6.8	199.2	
c	8.7	197.3	
1/2	10.6	195.4	
cb	12.0	194.0	
E	13.6	192.4	
10'E	15.2	190.8	
	75' N		
10'E	16.0	190.0	
E	14.7	191.3	
cb	13.2	192.8	
1/2	11.7	194.3	
c	10.1	195.9	
1/2	8.1	197.9	
cb	6.5	199.5	
W	3.7	202.3	

	20599		
	50' N		
W	6.5	199.5	
cb	8.6	197.4	
1/4	10.4	195.6	
c	11.8	194.2	
1/4	13.4	192.6	
TD	26.6	197.36	17.29 199.70 ✓
cb		6.5	190.9
E		8.1	189.3
10'E		10.0	187.4
	25' N		
10'E		11.5	185.9
E		9.6	187.8
cb		8.2	189.2
1/2		6.7	190.7
c		5.0	192.4
1/2		3.7	193.7
cb		1.9	195.5
W		0.0	197.4



19736  
N. Peterbaugh

W	0.8	196.6
cb.	3.2	194.2
1/2	5.0	192.4
c	6.5	190.9
1/2	7.8	189.6
cb.	9.2	188.2
E	11.2	186.2
10'E	12.8	184.6

reb.

10'E	13.4	184.0
E	11.7	185.7
S	9.8	187.6
1/2	8.6	188.8
c	7.4	190.0
1/2	6.0	191.4
cb.	4.7	192.7
N	2.1	195.3

19736  
N 1/2

W	3.8	193.6
cb.	5.8	191.6
1/2	7.4	190.0
c	8.3	189.1
1/2	9.6	187.8
S	10.8	186.6
E	12.3	185.1
10'E	13.8	183.6

cr.

10'E	14.0	183.4
E	13.2	184.2
cb.	11.8	185.6
1/2	10.5	186.9
c	9.5	187.9
1/2	8.0	189.4
S	7.2	190.2
W	5.4	192.0



197.36  
5 1/4

W	6.5	190.9
cb	8.5	188.9
1/4	9.8	187.6
c	11.0	186.4
1/4	12.0	185.4
b	12.7	184.7
E	14.0	183.4
10 E	14.6	182.8

5cb

10'E	15.3	182.1
E	14.6	182.8
cb	13.6	183.8
1/4	12.7	184.7
c	11.3	186.1
1/4	10.3	187.1
cb	9.3	188.1
W	7.5	189.9

11.0

0.35

188.53

9.8

188.18

SW Hub  
Clark-Peterbaugh

188.53 ✓

S.L. Peterbaugh

W	0.4	188.1
cb	2.1	186.4
1/4	3.1	185.4
c	4.2	184.3
1/4	5.2	183.3
b	6.1	182.4
E	7.3	181.2
10'E	9.4	180.1

25.3

10'E	11.6	176.9
E	10.3	178.2
cb	9.2	179.3
1/4	8.3	180.2
c	7.0	181.5
1/4	6.0	182.5
b	5.5	183.0
W	4.0	184.5



18853 ✓

50'S

W	7.5	181.0
cb	8.8	179.7
1/4	9.8	178.7
c	10.6	177.9
1/2	11.7	176.8
cb	12.6	175.9
E	13.6	174.9
10'E	14.4	174.1

75'S

10'E	17.6	170.9
E	16.6	171.9
cb	15.5	173.0
1/2	14.7	173.8
c	14.0	174.5
1/4	13.0	175.5
cb	12.5	176.0
W	11.2	177.3

TP

009

17662

12.00

17653

23

17662

100'S

W	3.0	173.6
cb	4.0	172.6
1/4	4.6	172.0
c	5.3	171.3
1/2	6.1	170.5
cb	7.1	169.5
E	8.1	168.5
10'E	9.3	167.3

125'S

10'E	11.8	164.8
E	11.4	165.2
cb	10.7	165.7
1/2	10.0	166.6
c	9.3	167.3
1/4	8.7	167.9
cb	7.9	168.7
W	7.3	169.3



	17662		
	150' S		
W		11.0	165.6
cb		12.0	164.6
1/2		12.3	164.3
c		12.7	163.9
1/2	0.28	10.97	165.65
1/2	165.93	2.9	163.0
cb		3.3	162.6
E		3.8	162.1
10' E		4.2	161.7
	175' S		
10' E		8.0	157.9
E		7.0	158.9
cb		6.4	159.5
1/2		5.3	160.6
c		4.7	161.2
1/2		4.3	161.6
cb		3.1	162.6
W		2.8	163.1

	16593		
	200' S = N.L. Horton	50' wide	
		10' curb	
10' W		9.1	156.8
W		9.1	156.8
cb		9.2	156.7
1/4		9.5	156.4
c		9.2	156.7
1/2		9.5	156.4
cb		10.1	155.8
E		11.1	154.8
10' E		12.4	153.5
	vcb		
0 E		12.9	151.0
E		13.4	152.5
cb		12.8	153.1
1/2		12.5	153.4
c		12.2	153.7
1/2		12.1	153.8
cb		12.3	153.6
W		12.5	153.4
11' W		12.7	153.2



3/1/3

		165.93			
TP	0.49	157.37	905	156.88	W Hub Horton- Clark.
		x 1/4			
W			7.2	150.2	
cb			6.3	151.1	
1/2			5.5	151.9	
c			5.8	151.6	
1/2			5.8	151.6	
cb			6.2	151.2	
E			6.3	151.1	
		er.			
E			8.5	148.9	
cb			8.0	149.4	
1/2			7.3	150.1	
c			7.4	150.0	
1/2			7.9	149.5	
cb			9.2	148.2	
W			11.5	145.9	
TP	1.81	147.57	11.61	145.76	

55

127.57

5 1/2

W		5.9	141.7
cb		3.2	144.4
1/2		1.2	146.4
c		0.8	146.8
1/2		0.6	147.0
cb		0.9	146.7
F		0.9	146.7
		5 cb	
E		2.8	144.8
cb		4.0	143.6
1/2		4.4	143.2
c		5.1	142.5
1/2		5.8	141.8
cb		7.0	140.6
W		7.5	140.1



14757

Sh. Horton

W		5.7	141.9
b		8.8	138.8
1/4		10.0	137.6
c		11.0	136.6
1/4		11.9	135.7
sb		10.5	137.1
E		8.8	138.8
	15'S		
25'S		12.0	135.6
E		15.1	132.5
b		11.0	136.2
1/4		9.4	138.2
c		7.4	140.2
1/4		4.9	142.7
sb		2.8	144.8
W		0.2	147.4
no	1187	155.92	33.2
15'W		4.4	151.5

15592

25'S

15'W		1.7	154.2
W		5.5	150.1
sb		9.0	146.9
1/4		11.3	144.6
c		13.5	142.4
1/4		15.3	140.6
sb		17.2	138.7
E		20.1	135.8
15'E		25.2	130.7
25'E		25.4	130.5
	50'S		
25'E		23.0	132.9
E		14.0	141.9
sb		11.3	144.6
1/4		9.4	146.5
c		7.5	148.4
1/4		5.7	150.2
sb		3.6	152.3



155.92  
 W 0.4 155.5  
 T.P. 8.20 163.30 0.82 155.10  
 75' 0

W 4.1 159.2  
 cb 7.0 156.3  
 1/2 9.2 154.1  
 c 11.5 151.8  
 1/2 13.5 149.8  
 cb 15.2 148.1  
 E 17.5 145.8  
 15' E 20.6 142.7

100' 51  
 15' E 19.0 144.3  
 E 15.5 147.8  
 cb 12.2 151.1  
 1/2 9.8 153.5  
 c 7.5 155.8  
 1/2 5.5 157.8  
 cb 3.9 159.4

?  
 163.30  
 155.92  
 W 0.9 162.4  
 T.P. 6.32 168.40 1.22 162.08  
 75' 0 159.70  
 125' 3

W 3.5 164.9  
 cb 6.3 162.1  
 1/2 8.8 159.6  
 c 10.6 157.8  
 1/2 12.8 155.6  
 cb 16.1 152.3  
 E 19.4 149.0  
 15' E 23.9 145.0

130' 5  
 15' E 21.8 146.6  
 E 18.1 150.3  
 cb 14.4 154.0  
 1/2 11.7 156.7  
 c 9.0 159.4  
 1/2 6.1 162.3  
 cb 3.8 164.6



56

168.40

~~161.02~~

W		0.4	168.0
T.P	558	<del>166.27</del>	173.65 168.07 <del>160.69</del>
		175	
W		3.9	169.8
cb		7.2	166.5
1/4		9.3	164.4
c		11.4	162.3
1/2		13.7	160.0
cb		16.1	157.1
E		20.0	153.7
15' E		25.7	148.0

500's = N.W. 1/4 50' wide

15' E		24.2	149.5
E		18.7	155.0
cb		15.0	158.7
1/4		12.9	160.8
dr		9.5	164.2
1/4		8.8	164.9
cb		6.3	167.4

173.65

~~166.27~~

58

W		2.5	171.2
		Ncb.	
W		2.0	171.7
cb		5.5	168.2
1/4		8.0	165.7
c		9.9	163.8
1/4		11.8	161.9
cb		14.4	159.3
E		17.9	155.8
15' E		22.6	150.1
		23.1	150.6
15' E		17.5	156.2
E		14.0	159.7
cb		12.0	161.7
1/4		9.9	163.8
c		7.8	165.9
1/4		6.0	167.7
cb		1.9	171.8



173.65

~~16627~~

cr.

W	1.5	172.2
cb	5.4	168.3
1/2	8.1	165.6
c	9.8	163.9
1/4	12.0	161.7
cb	14.0	159.7
E	17.2	156.5
15' E	22.4	151.3

5 1/4

15' E	22.1	151.6
E	17.0	156.7
cb	14.0	159.7
1/2	12.2	161.5
c	10.0	163.7
1/4	7.6	166.1
cb	4.7	169.0
W	1.2	172.5

173.65

~~16617~~

scb

59

W	1.1	172.6
cb	4.5	169.2
1/2	7.6	166.1
c	10.3	163.4
1/4	12.5	161.2
cb	14.3	159.4
E	17.2	156.5
15' E	22.0	151.7

sh.

15' E	22.0	151.7
E	17.3	156.4
cb	14.3	159.4
1/2	12.6	161.1
c	10.3	163.4
1/4	7.5	166.2
cb	4.7	169.0
W	1.0	172.7



173.65

~~166.27~~

25'S

W	1.20	172.5
cb	4.5	169.2
1/4	6.9	166.8
c	9.0	164.7
1/4	11.6	162.1
cb	14.1	159.6
E	18.3	155.4
15'E	22.8	150.9

50'S

15'E	23.4	150.3
E	11.3	155.4
cb	15.0	158.7
1/4	12.2	161.5
c	9.9	163.8
1/4	7.7	166.0
cb	5.4	168.3
W	1.9	171.8

173.65

60

~~166.27~~

75'S

W	3.2	170.5
cb	5.7	168.0
1/4	7.9	165.8
c	10.4	163.3
1/4	12.9	160.8
cb	15.0	158.7
E	15.0	155.7
15'E	23.0	150.7

100'S

15'E	23.6	150.1
E	18.4	155.3
cb	14.2	159.5
1/4	12.0	161.7
c	9.6	164.1
1/4	8.0	165.7
cb	6.2	167.5
W	4.6	169.1



173.65

		<del>166.79</del>		165.86
T.P.	321	169.07	779	<del>158.48</del>
		<del>161.69</del>		
		125'S		
W			1.1	168.0
cb			3.2	165.9
1/4			4.6	164.5
c			6.2	162.9
1/2			8.0	161.1
cb			10.0	159.1
E			13.8	155.3
15'E			18.8	150.3
		150'S		
15'E			19.0	150.1
E			14.3	154.8
cb			11.8	157.3
1/4			10.3	158.8
c			8.7	160.4
1/2			7.1	162.0
cb			5.6	163.5
W			3.4	165.7

169.07

61

		<del>161.69</del>		
		175'S		
W			7.2	161.9
cb			8.7	160.4
1/4			9.9	159.2
c			11.3	157.8
1/2			12.2	156.9
cb			12.9	156.2
			14.6	154.5
15'E			15.9	150.2
		200'S = N.H. Columbia		50' wide 10' Cuts
15'E			18.7	150.4
E			15.0	154.1
cb			14.0	155.1
1/4			13.6	155.5
c			10.1	156.0
1/2			12.8	156.3
cb			12.0	157.1
W			11.2	157.9
T.P.		158.27		157.96
	231	<del>158.89</del>	11.11	<del>150.58</del>



158.27 ✓

~~150.89~~

rcb

W	1.9	156.4
cb	2.5	155.8
1/4	3.3	155.0
c	3.5	154.8
1/4	3.9	154.4
cb	4.4	153.9
E	5.5	152.8

N 1/4

E	6.7	151.6
cb	5.1	153.2
1/4	4.0	154.3
c	4.0	154.3
1/4	3.8	154.5
cb	3.3	155.0
W	2.5	155.8

158.27

~~150.89~~

cr

W	3.6	154.7
cb	4.1	154.2
1/4	4.5	153.8
c	4.8	153.5
1/4	5.5	152.8
cb	6.1	152.2
E	7.6	150.7

S 1/4

E	8.2	150.1
S	7.4	150.9
1/4	6.1	152.2
c	6.0	152.3
1/4	5.5	152.8
cb	5.3	153.0
W	4.6	153.7

62



158.27

70089

seb.

W	6.1	152.2
cb	6.2	152.1
1/2	6.6	151.7
c	6.4	151.9
1/4	7.3	151.0
cb	7.9	150.4
E	9.4	148.9

5h.

E	10.6	147.7
cb	9.4	148.9
1/2	9.1	149.2
c	8.2	150.1
1/4	8.0	150.3
cb	8.1	150.2
W	7.7	150.6

158.27

70089

25's

W		11.9	146.4
cb	146.07	13.0	145.3
1/2	008	<del>12.28</del>	<del>134.67</del>
1/4		1.1	145.99
c			145.0
1/2		1.4	144.7
cb		1.6	144.5
E		2.1	144.0
E		2.5	143.6

50's

E		6.6	139.5
cb		6.0	140.1
1/2		6.0	140.1
c		5.2	140.9
1/4		4.7	141.4
cb		4.0	142.1
W		3.8	142.3

68



146.07

~~128.67~~

75's

W	7.5	138.6
ob	8.4	137.7
1/4	8.8	137.3
c	9.2	136.9
1/4	9.6	136.5
ob	10.0	136.1
E	9.9	136.2

1027.5

136.05

TP

0.98

~~128.67~~

11.00

135.07

~~127.69~~

W

2.4 133.6

ob

3.1 132.9

1/4

3.5 132.5

c

3.5 132.5

1/4

3.5 132.5

ob

3.9 132.1

E

4.4 131.6

106.2 to Columbia

- A

102.7 to Columbia

136.05

64

~~128.67~~

"A"

E

4.4 131.6

ob

4.1 131.9

1/4

3.8 132.2

c

3.8 132.2

1/4

3.7 132.3

ob

3.5 132.5

W

2.9 133.1



3/7/13  
Hotel  
more  
Hall

See Horton from  
Henry & Roark

50' Streets  
10 ft curb

Horton  
85

BM	1247	222.39	20992	Union Henry
	116	220.01	21892	
				E.L. Henry
s		2.0	218.1	
cb		2.6	217.5	
1/2		3.6	216.5	
c		3.8	216.3	
1/2		3.8	216.3	
cb		4.0	216.1	
N		4.2	215.9	
10' N		5.0	215.1	
				25' E
10' N		11.6	208.5	
N		9.2	210.9	
cb		7.7	212.4	
1/2		6.7	213.4	
c		6.5	213.6	
1/2		6.5	213.6	
cb		6.2	213.9	

PLOTTED

	22008			
		5.2	214.9	
	50' E			
		9.0	211.1	
		10.5	209.6	
		10.6	209.5	
		11.4	208.7	
		13.0	207.1	
	15.4	208.80	12.82	207.26
		2.8	206.0	
		5.1	203.7	
		8.1	200.7	
				75' E
		13.3	195.0	
		11.4	197.4	
		10.0	198.8	
		8.3	200.5	
		6.9	201.9	
		5.4	203.4	
		4.3	204.5	



20880 ✓

S		26	206.2
	100' E		
S		8.7	200.1
cb		10.6	198.2
1/4		12.3	196.5
TPO	0.96	197.69	12.07 196.73
c		2.5	195.2
1/2		4.0	193.7
cb		5.4	192.3
N		7.1	190.6
15' N		10.3	187.4
	125' E		
15' N		15.0	182.7
N		13.0	184.7
cb		11.2	186.5
1/2		9.4	188.3
c		8.4	189.3
1/4		7.3	190.4
cb		6.1	191.6

PLOTTED

3/21/3

Horton

66

147.69 ✓

S		4.1	193.6
	150' E		
S		10.4	187.3
cb		12.6	185.1
TPO	0.03	188.65	9.07 188.62
1/2		4.5	183.9
c		6.0	182.7
1/2		7.1	181.6
cb		8.0	180.7
N		10.7	178.0
15' N		12.0	176.7
	175' E		
S		9.4	179.3
cb		11.3	177.4
1/2		12.3	175.9
TPO	0.31	177.23	11.73 176.92
c		3.0	174.2
1/2		3.7	173.5
cb		5.2	172.0



	177.25	✓		
N		6.4	170.8	
15' N		8.4	168.8	
	200' E			
S		5.8	171.4	
cb		7.9	169.3	
1/2		8.8	168.4	
c		10.0	167.2	
1/2		10.5	166.7	
cb		11.7	165.5	
T.P.	5.81	165.17	12.87	169.36
N		1.8	163.4	
10' N		5.6	159.6	
12' "		5.1	157.1	
16' "		10.7	154.5	
	225' E			
25' N		6.7	158.5	
30' N		13.5	153.7	
N		13.1	149.7	
		13.1	152.1	
cb		9.5	155.7	
1/4		7.9	157.3	
c		6.2	159.0	

PLOTTED

	165.17	✓		
1/2		3.9	161.3	
cb		2.8	162.4	
S		0.5	164.7	
	235' E			
S		3.5	161.7	
cb		5.1	160.1	
1/2		7.0	158.2	
c		10.2	155.0	
1/2		12.7	152.5	
cb		15.8	149.4	
25		17.8	147.4	
N		17.3	147.9	
20' "		6.8	158.4	
	250' E			
S		6.8	158.4	
cb		9.5	155.7	
1/4		11.3	153.9	
70	0.58	155.98	9.77	155.90
c		6.6	149.4	



+ 15398 ✓ -

1/4	9.1	146.9
+2	9.6	146.4
cb	8.8	147.2
N	3.1	152.9
7'N	+1.0	157.2

275' E

N	+1.0	157.2
cb	4.3	151.7
1/4	9.6	146.4
c	13.1	142.9
1/4	12.1	143.9
cb	8.0	148.0
S	5.4	150.6

50' wide For Intersection Horton - Clark  
10' wide

TP	462	158.85 ✓	175	154.23 ✓	156.55
check	008	156.96	181	157.04	
TP	263	153.09	750	149.46 ✓	

25' E of Clark.

N	0.3	152.8
cb	2.8	150.3

**PLOTTED**

Horton

68

15329 ✓

1/4	4.6	148.5
c	6.3	146.8
1/4	7.8	145.3
cb	9.2	143.9
S	11.2	141.9
11 S	14.6	138.5
15 S	17.0	136.1

50' E

N	2.0	151.1
cb	4.7	148.4
1/4	6.7	146.4
c	8.5	144.6
1/4	10.0	143.1
cb	11.1	142.0
S	13.2	139.9
15 S	18.8	134.3

75' E

N	6.1	147.0
cb	8.1	145.0



		15309 ✓	
1/4		10.0	143.1
c		11.4	141.7
1/4		12.5	140.6
TR	3.19	143.57	140.38 ✓
cb		3.8	139.8
s		5.4	138.2
15'S		9.7	133.9
		120' E	
15'S		9.2	134.4
s		6.7	136.9
cb		5.1	138.5
1/4		4.9	139.2
c		3.7	139.9
1/4		2.6	141.0
cb		1.5	142.1
N		0.7	142.9
		125' E	
N		4.7	138.9
cb		5.5	138.1

PLOTTED

		14357 ✓	
1/4		6.0	137.6
c		6.8	136.8
1/4		7.1	136.5
cb		8.1	135.5
s		9.8	133.8
15'S		11.9	131.7
		150' E	
15'S		16.9	126.7
s		14.6	129.0
cb		13.7	129.9
1/4		13.0	130.6
c		12.7	130.9
1/4		12.0	131.6
cb		11.8	131.8
N		11.4	132.2
15' N		10.9	132.7
TR	2.11	134.38	132.27 ✓
		175' E	
15' N		8.7	125.7
N		8.9	125.5



3/10/13

13488 ✓

cb		9.3	125.1
1/2		9.7	124.7
c		11.1	123.3
1/2		12.3	122.1
cb		13.4	121.0
s		14.2	120.2
20 s		16.7	117.7 ✓
TP	0.45	122.19	12.64 121.74
20 s	200' E	7.9	114.3
s		6.8	115.4
cb		6.3	115.9
1/2		6.0	116.2
c		5.9	116.3
1/2		7.3	114.9
cb		7.6	114.6
N		7.4	114.8
20 N		6.9	115.3
25 N	205' E	8.0	114.2
N		10.1	111.8
cb		10.6	111.6

PLOTTED

Horton

70

12219 ✓

1/2		11.1	111.1
c		11.1	111.1
1/2		11.5	110.7
cb		10.4	111.8
s		8.2	114.0
20 s		9.6	112.6
20 s	215' E	10.8	111.4
s		12.2	110.0
cb		12.1	110.1
1/2		10.6	111.6
c		10.0	112.2
1/2		9.3	112.9
cb		8.4	113.8
N		8.9	113.3
25 N		8.4	113.8
25 N	225' E	5.3	116.9
N		5.9	116.8
cb		7.1	115.1
1/2		7.9	



12219 ✓

c		8.2	114.0
1/2		8.9	113.3
cb		9.3	112.9
s		10.2	112.0
5' s		12.2	110.0
25' s		14.0	108.2
	340' E		
20' s		11.4	110.8
s		9.5	112.7
cb		8.5	113.7
1/2		7.8	114.4
s		6.8	115.4
1/2		5.5	116.7
cb		4.0	118.2
N		2.4	119.8
30' N		0.2	122.0
	250' E		
20' s		7.4	114.8
s		7.9	114.3
cb		6.5	115.7
1/4		5.4	116.8
c		3.3	118.9

PLOTTED

12219 ✓

1/2		1.3	120.9
1/2	11.94	0.75	121.14
cb		10.9	122.5
N		9.5	124.9
15' N		7.5	125.9
	275' E		
15' s		3.4	130.0
s		3.6	129.8
cb		4.2	129.2
1/2		4.1	129.3
c		3.3	130.1
1/2	12.65	1.99	132.39
1/2		14.0	131.0
cb		12.2	132.8
N		9.8	135.2
15' N		8.6	136.4
	300' E =	W.L. Road 1/2 St	
10' s		5.4	139.6
s		4.7	140.3
cb		4.5	140.5
1/2		4.1	140.9
c		3.5	141.5
1/2		3.8	141.2
cb		1.7	143.2
N		0.5	144.5

50' width  
10' Camp



		14504 ✓		
T.P.	12.87	157.24 ✓ wcb	0.70	144.34 ✓
N			8.6	148.6
cb			10.5	146.7
1/2			11.1	146.1
c			11.1	146.1
1/2			11.7	145.5
cb			12.3	144.9
s			12.8	144.4
		w 1/4		
s			8.0	149.2
cb			8.2	149.0
1/2			8.4	148.8
c			8.6	148.6
1/2			7.9	149.3
cb			6.7	150.5
N			4.9	152.3
		cr		
N			0.8	156.4
cb			3.3	153.9

PLOTTED

		15721 ✓		
1/2			4.4	152.8
c			5.3	151.9
1/2			5.0	152.2
cb			5.3	151.9
s			5.0	152.2
T.P.	13.02	162.13 ✓ 2.10		155.11 ✓
		F 1/4		
s			13.1	155.0
cb			11.7	156.4
1/2			11.5	156.6
c			11.3	156.8
1/2			10.6	157.5
cb			9.9	158.2
N			8.0	160.1
		Fcb.		
N			6.9	162.2
cb			7.0	161.1
1/2			7.3	160.8
c			8.7	159.4



16813 ↓  
 1/2 9.1 159.0  
 cb 9.5 158.6  
 s 9.8 158.3

## Elvise Road.

50' wide  
 10' Cube  
 s 6.1 162.0  
 cb 4.2 163.9  
 1/2 3.7 164.4  
 c 3.6 164.5  
 1/2 2.9 165.2  
 cb 2.5 165.6  
 N 1.4 166.7

T.P. 1285 17940 168 166.55  
 25 E

N 1.6 177.8  
 cb 3.9 175.5  
 1/2 5.1 174.3  
 c 5.9 173.5  
 1/2 6.1 173.3  
 cb 6.6 172.8

PLOTTED

17940 ↓  
 s 7.5 171.9  
 T.P. 1288 18938 290 176.50  
 30 E

s 9.0 180.4  
 cb 7.7 181.7  
 1/2 6.5 182.9  
 c 5.7 183.7  
 1/2 5.0 184.4  
 cb 4.5 184.9  
 N 3.8 185.6  
 T.P. 0.34 189.04

Top 5x2  
white str

PLOTTED



4/3/25

Gregory

CROSS-SECTION OF ALLEY  
BLOCK 207 UNIV. HGHTS  
UNIVERSITY to Lincoln

360.5

74

			511.30 <sup>th</sup>	+2	4.1	356.4	✓
	5.46	360.47	355.01	+5	3.5	357.0	✓
			N.L. University		3.4	357.1	✓
E	on curb + paving	4.78	355.69	+5	3.4	357.1	✓
C	on paving	4.98	355.49	+8	3.9	356.6	✓
W	curb on paving	4.60	355.87	E	3.9	356.6	✓
		13' N	360.5	E = wood floor	3.53	356.94	✓
W		3.7	356.8		68' N		
+1		4.0	356.5	E = dirt floor	3.8	356.7	✓
C		4.1	356.4	+3	3.7	356.8	✓
E		4.0	356.5	+7	3.3	357.2	✓
		45' N		C	3.3	357.2	✓
E	center of door. wood floor	4.15	356.32	+5	3.5	357.0	✓
+2		4.3	356.2	+8	4.0	356.5	✓
C		3.5	357.0	W	3.7	356.8	✓
+7		3.5	357.0		112' N		
+8	Plotted	4.2	356.3	-4.5 = dirt floor	3.6	356.9	✓
W			3.7	356.8	W	3.8	356.7
		55' N		+7	3.1	357.4	✓
W		3.5	357.0	C	3.1	357.4	✓
				+7	3.4	357.1	✓



360.5

E		3.3	357.2 ✓
	129' N.		
E = ctr door to Lumber shop		3.40	357.1 ✓ <sup>cement floor</sup> fit this
C		3.4	357.1 ✓
W		3.6	356.9 ✓
	178' N		
-2.6 = dirt floor		2.70	357.8 ✓
W		3.2	357.3 ✓
C		3.2	357.3 ✓
E		2.9	357.6 ✓
	200' N. S. End Cement Platform on E.		
E		2.49	357.98 ✓
+2		2.7	357.8 ✓
C		2.9	357.6 ✓
W		2.9	357.6 ✓
	235' N.		
W = cement floor.		1.95	358.52 ✓
W		2.1	358.4 ✓
C		2.5	358.0 ✓
E = cement platform		2.40	358.1 ✓

Plotted

360.5

	250' N = End cement platform on E		
E		2.28	358.19 ✓
C		2.5	358.0 ✓
W		2.1	358.4 ✓
T.P.	4.86 36366	1.67	358.80 ✓
	300' N (363.7)		
W = cement floor		4.76	358.90 ✓
C		4.8	358.9 ✓
E		4.8	358.9 ✓
	345' N		
E		4.9	358.8 ✓
C		5.1	358.6 ✓
W		4.8	358.9 ✓
	370' N		
W on cement		4.80	358.9 ✓
C		4.7	359.0 ✓
E		4.8	358.9 ✓
	390' = center of Track		
E on rail		4.36	359.30 ✓
C		4.44	359.22 ✓



363.66

363.7

W on rail

4.50 359.2 ✓

400' N

W

4.8 358.9 ✓

C

4.7 359.0 ✓

E

4.6 359.1 ✓

450' N

E

4.2 359.5 ✓

C

4.0 359.7 ✓

W

4.2 359.5 ✓

T.P.

5.40

365.73

3.33 360.33 ✓

505' N

365.7

- 4.2 - cement floor

4.47 361.26 ✓ can be below this

W

5.1 360.6 ✓

C

5.3 360.4 ✓

E

5.3 360.4 ✓

+ 3 = cement floor

5.05 360.68 ✓

530' N

E

4.6 361.1 ✓

C

4.9 360.8 ✓

W

4.7 361.0 ✓

ALLEY

76

365.7<sup>3</sup>

552' N = 3 end cement apron on W.

- 2.6 = garage

4.31 361.42 ✓

+ 1.4 (Apron 1.4 in alley)

4.44 361.29 ✓

C

4.6 361.1 ✓

E

4.6 361.1 ✓

587.5 = N end cement apron on W

E

4.0 361.7 ✓

C

4.2 361.5 ✓

+ 8.6 = edge cement apron

4.34 361.39 ✓

W + 2.6 = garage

4.27 361.46 ✓

599.3 = S.L. Lincoln

W on cement curb

4.04 361.69 ✓

✓ - dirt

4.3 361.4 ✓

C

4.4 361.3 ✓

E on dirt

4.3 361.4 ✓

E - cement curb

3.91 361.82 ✓











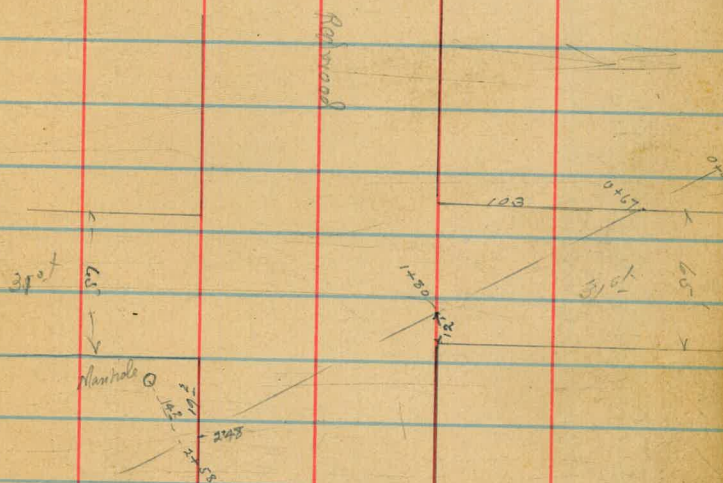
74) Hatch Location Culvert  
 13 Mooring Hall  
 31st Redwood.

198	311.98		302.0
363	314.99	0.62	311.36
124	303.78	12.25	302.54
042	292.47	11.73	292.05
223	283.25	11.65	280.82
0400		1.9	281.7
+20		2.7	280.4
+35		0.7	282.4
+67 Wh 3rd		6.7	276.4
+75 sewer		6.8	276.3
+100 edge of Ditch		6.1	277.0
+25		7.8	275.3
+35		10.1	273.0
+60		10.0	273.1
+80 Wh Redwood		11.0	272.1
+92		12.6	270.5
2+00		11.3	271.8
+25		9.3	273.8
+48 5L		10.9	272.2
+58		12.5	270.6
770	296	273.47	272.52
Bottom pipe in M.H.		8.83	264.64
Top of M.H.		5.0	268.5
+75		5.6	267.9
+78		7.7	265.8
3+00		8.6	265.0
+25		10.0	263.5

79

Sewer crossings

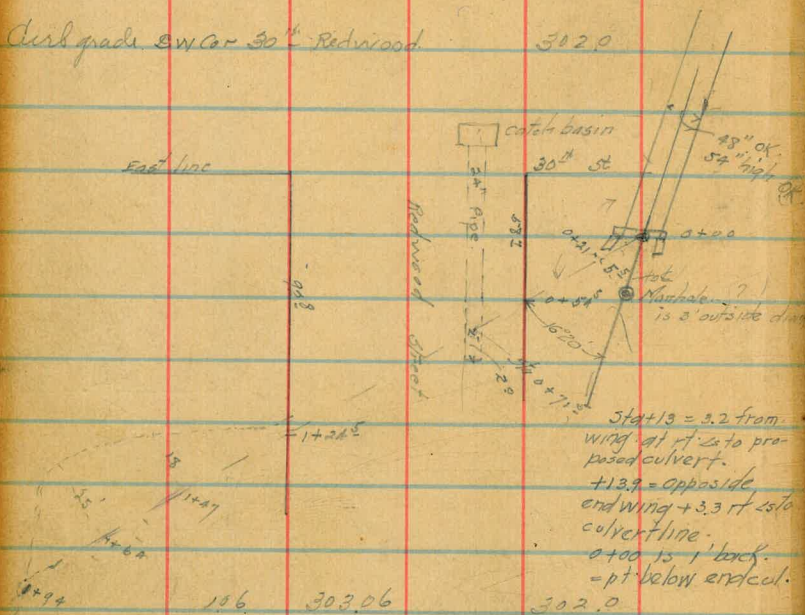
Sta 0+75  
 2+59





Station  
13  
Hall  
Location of Culvert at 30" Redwood.

curb grade sewer 30" Redwood. 302.0



Sta +13 = 3.2 from wing of rt. 2 to proposed culvert.  
+13.9 = opposite end wing + 3.3 ft. 2 to culvert line.  
0+00 is 1' back.  
- pt. below end cul.

156	303.06		302.0
142	293.20	1175	291.28
126	282.16	12.00	280.90
0+00	Bottom inside Pipe	2.9	279.3
+13		3.6	278.6
+21		2.7	279.5
Top Manhole		0.0	282.16
+36		3.7	278.5
+54.5		2.2	280.0
+71.5		5.5	276.4
Bottom of Pipe		8.5	273.7
0+80		4.0	278.7
0+96		6.6	275.6
1+00		7.4	274.8
1+24.5		8.2	274.0
+97		9.9	272.3
+64		11.8	270.4
+92		15.6	266.6

Measure 5.30' across arch culvert on slant at wing walls.

N wall is continuation of line of culvert as constructed.

0+00 is 1 foot back from profile stations + ~~100~~  
out for 0+20 is opposite end of culvert on S side = point at which wing wall angles.

Swing = 6.7' long.  
S wing = 12.2' long.  
30" culvert





509

1.7  
 45  
 1.2  
 48.8  
 45  
 1.2  
 48.8

3486  
 3496 E

