

868

F.B. 868

LEVEL 300Z

No. 410

265.80
1.94
267.74
-21.89
245.85

212.29
5.97
206.32

B 862

27
1.89
1.69
0.9

MICROFILMED

DEC 15 1964

0009
03
001

801
895
212
622
600

91.6
82.86
-94.001

272.15 - 2.02 =
261.20 - 7.10 =
187.33 - 9.38 =

= 13 H. NEALE & WINDERS
= " Terrace "
Sp. SW Cot puterbaugh a (Winders).

Hough = HOE

Section of 3rd St. from the North line of Cedar to the South line of
 Elm St. 80' wide - 14' curbs - 10' quarters.
 BM 109.09 Feing NW cor 3rd & Cedar.

Feb 14 - 1919
 (Jennam,
 Shaw,
 Levine.)

	9.23	117.32	109.09
01 = North line of Cedar St.			
00			
St. Ln.	9.2		109.1
cb	9.3		109.0
g	9.7		107.6
1/2	9.5		109.3
1/2 + 0 ± = 2' West of West rail	9.3		109.0
cm West rail at property line	9.18		109.14
" East " " " "	9.00		109.32
c + 9 ± = 2' East of East rail	9.0		109.3
1/4	7.9		109.4
g	7.9		109.4
cb	7.3		110.0
St. Ln.			
+ 20	7.1		110.2
St. Ln.			
cb	6.3		111.0
cb	6.6		110.7
g	7.2		110.1
1/2	7.3		110.0
+ 3 ±	7.3		110.0
+ 9 ±	7.6		209.7

7.I.
117.32

3rd Mt (80' wide)

1/2	9.0	109.3
g	9.1	109.2
cb	8.6	109.7
OKL. +50	9.3	109.0
OKL	7.7	109.6
cb	8.0	109.3
g	9.5	109.8
1/2	7.3	110.0
+3±	7.0	110.3
c+9±	6.6	110.7
1/2	6.5	110.8
g	6.6	110.7
cb	5.8	111.5
E.L. +75	5.5	111.8
E.L.	4.9	112.4
cb	5.1	112.2
g	6.0	111.3
1/2	5.8	111.5
+3±	5.9	111.4
c+9±	6.4	110.9

7.I.
117.32

2

1/2	6.7	110.6
g	7.7	109.6
cb	7.4	109.9
OKL. +50	7.2	110.1
OKL.	6.5	110.8
cb	6.9	110.15
g	7.3	110.0
1/2	6.2	111.1
+3±	5.9	111.5
c+9±	5.1	112.2
1/2	5.1	112.2
g	5.4	111.9
cb	4.4	112.9
E.L. +75	4.0	113.3
E.L.	3.4	113.9
cb	3.6	113.7
g	4.8	112.5
1/2	4.7	112.6
+3±	4.8	112.5
c+9±	5.3	112.0

+ H.I.
117.32

(3rd of 80' wide)

1/2	5.7	111.6
9	6.5	110.5
cl	6.6	110.7
OK.L. 1+00	6.4	110.9
OK.L.	6.0	111.3
cl	6.0	111.3
9	6.6	110.7
1/2	5.9	111.5
+32	5.1	112.2
c+9E	4.4	112.9
1/2	4.4	112.9
9	3.9	113.4
cl	3.2	114.1
E.L. 1+75	2.4	114.9
E.L.	3.4	113.9
cl	3.7	113.6
9	4.7	112.6
1/2	4.7	112.6
+32	4.7	112.6
c+9E	5.3	112.0

+ H.I.
117.32

3

1/2	5.7	111.6
9	7.0	110.3
cl	6.4	110.9
OK.L. 2+00	6.2	111.1
OK.L.	6.6	110.7
cl	4.9	110.5
9	7.4	109.9
1/2	6.2	111.1
+32	5.7	111.6
c+9E	5.1	112.2
1/2	5.1	112.2
9	5.8	112.0
cl	4.4	112.9
E.L. 2+25	3.9	113.4
E.L.	4.4	112.9
cl	5.2	112.1
9	6.1	111.2
1/2	5.8	111.5
+32	5.7	111.6
c+9E	6.3	111.0

+

H.I.
117.32

(2nd St 80' wide)

1/2	6.7	110.6
g	7.6	109.7
cl	7.2	110.1
OKL. 2+50	7.0	110.3
OKL.	7.6	109.7
cl	7.6	109.7
g	8.1	109.2
1/4	7.1	110.2
+32	6.9	110.5
c+96	6.4	110.9
1/4	6.4	110.9
g	6.7	110.6
cl	5.9	111.4
E.L. 2+70	5.1	112.2
E.L.	5.7	111.6
cl	6.7	110.6
g	7.4	109.9
1/4	7.1	110.2
+32	7.1	110.2
c+96	7.2	110.1

+

H.I.
117.02

4

1/2	7.6	109.7
g	8.6	108.7
cl	8.0	109.3
OKL.	7.8	109.5
3+00=South line of Gate St 3+00		
OKL.	8.2	109.1
cl	8.4	108.9
g	8.8	108.5
1/4	8.0	109.3
+32	7.7	109.6
West rail at property line.	7.56	109.76
East " " "	7.65	109.67
c+96	7.6	109.7
1/4	7.7	109.6
g	7.8	109.5
cl	7.4	109.9
E.L.	6.7	110.6
#	12.10	121.59
12.10	121.59	7.98
129.34= E of 109.34 NW Cor 3rd & Gate.		
00=North line of Gate St 00		
OKL.	11.9	109.6

	+	H.I. 121.49	3rd cut (80' wide)
cl			12.8 109.2
f			11.7 109.8
1/2			11.5 110.0
+30			11.1 110.4
West rail at property line			11.20 110.39
East " " " "			11.21 110.38
c+95			11.1 110.4
1/2			10.6 110.9
cl			9.1 112.4
E.L.			6.4 115.1
+25			6.5 115.0
E.L.			6.5 115.0
cl			7.8 113.7
1/2			9.2 112.3
+30			9.3 112.2
c+95			9.4 112.1
1/2			9.7 111.8
f			10.8 110.7
cl			10.0 111.5
OK.L.			10.1 111.9

	+	H.I. 121.49	-
+50			
OK.L.			7.2 114.3
cl			7.2 114.3
f			7.6 113.9
1/2			7.8 114.2
+30			7.2 114.3
c+95			7.1 114.4
1/2			6.9 114.6
cl			6.0 115.5
E.L.			5.9 115.7
+25			5.0 116.5
E.L.			5.0 116.5
cl			4.3 117.2
1/2			4.7 116.8
+30			4.6 116.9
c+95			4.6 116.9
1/2			4.6 116.9
f			5.2 116.3
cl			4.7 116.8
OK.L.			4.4 117.1

	+	H.I. 121.97	3rd cut (80' wide)	
1400 O.L.			2.1	119.4
cl			2.5	119.0
g			3.1	119.4
1/2			2.4	119.1
+33			2.2	119.3
c+9E			2.2	119.3
1/4			2.3	119.2
cl			1.7	119.8
E.L. 1425			2.9	119.1
E.L.			0.1	121.4
cl			0.0	121.5
1/2			0.1	121.4
+33			0.0	121.5
c+9E			0.0	121.5
1/4			0.2	121.3
g			1.0	120.5
cl			0.3	121.2
O.L.			0.0	121.5
#	12.94	134.43	0.00	121.97

	+	H.I. 134.43		
1450 O.L.				
cl			10.4	124.0
g			10.8	123.6
1/2			11.6	122.8
+33			10.7	123.7
c+9E			10.6	123.8
1/4			10.5	123.9
cl			10.7	123.7
g			11.2	123.2
cl			10.9	123.5
E.L. 1475			10.5	123.9
E.L.			8.4	126.0
cl			8.4	126.0
g			8.9	125.5
1/2			8.4	126.0
+33			8.3	126.1
c+9E			8.3	126.1
1/4			8.4	126.0
g			8.9	125.5
cl			8.3	126.1
O.L.			8.0	126.4

+ H.I.
134.43

3rd Mt (80' wide)

+ H.I.
134.43

2+00 OK.L.	5.6	128.8
cl	6.0	128.4
g	6.8	127.6
1/2	6.0	128.4
+3±	5.9	128.15
c+9±	6.0	128.4
1/2	6.1	128.3
g	6.5	127.9
cl	6.0	128.4
E.L.	5.8	128.6
2+25 E.L.	3.6	130.3
cl	3.9	130.6
g	4.3	130.1
1/2	3.7	130.7
+3±	3.5	130.9
c+9±	3.6	130.8
1/2	3.6	130.8
g	4.6	129.8
cl	3.7	130.7
OK.L.	2.9	131.5

2.50 OK.L.	0.8	133.6
cl	1.5	132.9
g	2.1	132.3
1/2	1.6	132.8
+3±	1.4	133.0
c+9±	1.2	133.2
1/2	1.5	132.9
g	2.2	132.2
cl	1.5	132.9
E.L.	1.3	133.1
#	7.89	141.78
2+75 E.L.	6.4	135.4
cl	6.6	135.2
g	7.2	134.6
1/2	6.6	135.2
+3±	6.4	135.4
c+9±	6.4	135.4
1/2	6.6	135.2
g	7.0	134.8
cl	6.6	135.2
OK.L.	6.1	135.7

H.I.
14176

3rd St (80' wide)

Section of Villa Terrace St from University Ave to the Park.
65' wide 10' curbs, 11.25' gutters,
-37' (31.5') Bolt 72' N.E. Cor Hamilton & University Ave.

Feb 17-1913
Hennrich
Shaw
Levine

8

2+00 = South line of Belmont St.

2+00

O.L.

4.1 137.7

cl

4.3 137.5

g

4.8 137.0

1/4

4.3 137.5

+3±

4.2 137.6

West rail at property line

4.08 137.70

East " " "

3.99 137.79

0+9±

4.3 137.5

1/4

4.4 137.4

g

5.0 136.8

cl

4.3 137.5

O.L.

4.4 137.4

#

2.28 139.50-139.46 24' Elm 8.3' di

11.01

322.52

311.51

00 = South line of University Ave

O.L.

0.8 322.2

cl

0.9 321.7

1/4

1.4 321.1

c

1.8 320.7

1/4

3.0 319.5

cl

2.8 319.7

O.L.

2.6 320.0

+2±

O.L.

5.8 316.7

cl

4.7 317.5

1/4

4.0 318.5

c

3.3 319.2

1/4

2.3 320.2

cl

1.6 321.0

O.L.

0.8 321.7

+

H.I.
322.52

Killa Terrace (65 wide)

+50	6.2	1.8	320.7
	cl	3.0	319.5
	1/4	3.4	319.1
	c	4.3	318.2
	1/2	5.0	317.5
	cl	5.7	316.8
	OK.L.	6.5	316.0
+70	OK.L.	7.6	314.9
	cl	6.7	315.8
	1/4	6.0	316.5
	c	5.2	317.3
	1/4	4.7	317.8
	cl	4.1	318.4
	6.2	3.1	319.4
+100	6.2	4.0	318.5
	cl	5.2	317.3
	1/4	5.6	316.9
	c	6.4	316.1
	1/4	7.2	315.3
	cl	7.5	315.0

7

H.I.
322.52

	OK.L.	9.4	314.1
	1+25	9.2	313.3
	OK.L.	9.6	313.9
	cl	9.1	314.4
	1/4	7.2	315.3
	c	6.6	315.9
	1/4	6.0	316.5
	cl	5.2	317.3
	6.2	7.1	315.4
	1+50	7.2	315.3
	6.2	7.9	314.6
	cl	9.6	313.9
	1/4	9.3	313.2
	cl	9.7	312.8
	OK.L.	10.0	312.5
	#	6.56	324.19
	1+75	4.89	317.63
			13.2 VT & W

H.I.
324.19

Hills Terrace (65' wide)

1475
OK.L.

cl

1/2

c

1/4

cl

E.L.

2+00

E.L.

cl

1/2

c

1/2

cl

OK.L.

2+25

OK.L.

cl

1/4

c

1/2

cl

12.1 311.6

12.3 311.9

12.4 311.8

11.7 312.5

11.3 312.9

10.7 313.5

9.7 314.5

9.7 315.5

11.0 313.2

11.2 312.6

12.0 312.2

12.4 311.8

12.9 311.3

13.2 311.0

12.7 311.5

12.3 311.9

11.7 312.5

11.4 312.8

10.5 313.7

9.8 314.4

H.I.
324.19

10

E.L.

2+50 = North line of Highlitanon Mt. 65' wide - 10' curb 10' quarter

2+50

E.L.

cl

1/2

c

1/2

cl

OK.L.

North end of Highlitanon Mt.

OK.L.

cl

1/2

c

1/2

cl

E.L.

7.8 316.4

6.9 317.3

9.0 316.2

9.8 315.4

9.5 314.7

9.6 314.6

10.0 314.2

10.5 313.7

9.4 314.9

8.9 315.3

9.6 315.6

8.5 315.7

7.9 316.3

7.2 317.0

6.1 318.1

71
324.19

Tulla Terrace (60m wide)

North 1/4 of Nighthman St

E.L.	5.0	319.2
cl	6.2	318.0
1/2	7.0	317.2
c	7.3	316.9
1/2	7.8	316.4
cl	8.3	315.9
O.L.	9.0	315.2

Center of Nighthman St

O.L.	8.6	315.6
cl	7.8	316.4
1/2	7.1	317.1
c	6.6	317.6
1/2	6.2	318.0
cl	5.3	318.9
E.L.	4.0	320.2

South 1/4 of Nighthman St

E.L.	3.0	321.2
cl	4.2	320.0
1/2	5.2	319.0

71
324.19

11

c	5.7	318.5
1/2	6.5	317.7
cl	7.4	316.8
O.L.	8.4	315.8

South end of Nighthman St

O.L.	8.2	316.0
cl	7.2	317.0
1/2	6.0	318.2
c	5.4	318.8
1/2	4.4	319.8
cl	3.3	320.9
E.L.	2.6	322.2

00=South line of Nighthman St

E.L.	1.4	322.8
cl	2.5	321.7
1/2	3.7	320.5
c	4.9	319.3
1/2	5.8	318.4
cl	7.0	317.2
O.L.	8.2	316.0

7.5
329.19

Hilla Terrace (65' wide)

+25	OR.L.		7.4	316.8	
	cb		6.1	318.1	
	1/2		5.1	319.1	
	c		3.9	320.3	
	1/2		2.6	321.6	
	cb		1.3	322.9	
	E.L.		0.1	324.1	
#		+97	328.93	0.13	324.06
+50	E.L.		3.7	325.2	
	cb		4.5	324.4	
	1/2		6.2	322.7	
	c		7.5	321.4	
	1/2		8.8	320.1	
	cb		9.9	318.0	
	OR.L.		11.2	317.7	
+75	OR.L.		11.4	317.5	
	cb		9.8	319.1	
	1/2		8.5	320.4	
	c		7.0	321.9	
	1/4		5.7	323.2	

7.5
328.23

12

	cb		3.8	325.1
	E.L.		2.9	326.0
	1+00			
	E.L.		2.8	326.1
	cb		4.0	324.9
	1/2		5.2	323.7
	c		6.5	322.4
	1/4		8.2	320.7
	cb		9.7	319.2
	OR.L.		11.1	317.8
	1+25			
	OR.L.		11.3	317.6
	cb		9.6	319.3
	1/2		8.3	320.6
	c		6.7	322.2
	1/4		5.3	323.6
	cb		3.9	325.0
	E.L.		2.6	326.3

HI
328.93

(Pilla Terrace (65' wide))

14.50	cl	3.0	325.9
	cl	4.0	324.9
	1/2	5.4	323.5
	c	6.5	322.4
	1/4	7.9	321.1
	cl	9.3	319.6
8	OK.L.	10.9	318.1
14.75			
7	OK.L.	10.0	319.9
15			
8	cl	9.5	320.4
	1/4	7.1	321.8
	c	5.7	323.2
	1/2	4.4	324.5
	cl	3.1	325.8
	E.L.	2.2	326.7
21.00			
8	E.L.	2.0	326.9
23			
0	cl	3.0	325.9
	1/2	4.4	324.5
	c	5.4	323.5
	1/4	6.9	322.0
	cl	8.3	320.6

HI
328.93

13

OK.L.	4.9	319.0
24.25		
OK.L.	9.6	319.3
cl	4.4	320.5
1/2	7.2	321.7
c	5.6	323.3
1/2	4.4	324.5
cl	2.9	326.1
E.L.	1.6	327.3
24.50		
E.L.	1.7	327.2
cl	2.4	326.5
1/2	3.6	325.3
c	5.4	323.5
1/2	7.0	321.9
cl	8.5	320.4
OK.L.	9.6	319.3

	+	H.I. 328.93	(Hila Terrace (65' wide))
2175 M.L.			9.1 319.8
cl.			8.0 320.9
1/2			6.7 322.2
c			4.8 324.1
1/2			3.7 325.2
cl			2.6 326.3
E.L.			1.4 327.5
3+00 E.L.			1.6 327.3
cl			2.6 326.3
1/2			3.9 325.0
c			4.8 324.1
1/2			6.7 322.2
cl			9.1 320.8
M.L.			9.4 319.5
3+25 M.L.			9.6 319.3
cl			8.0 320.9
1/2			6.8 322.1
c			4.9 324.0
1/2			4.0 324.9
cl			2.7 326.2

	+	H.I. 328.93	-	
				14
E.L.			1.7	327.2
3+50 E.L.			2.5	326.4
cl			3.3	325.6
1/2			4.4	324.5
c			5.2	323.7
1/2			6.7	322.2
cl			8.0	320.9
M.L.			9.8	319.1
3+75 M.L.			10.8	318.1
cl			9.2	319.7
1/2			7.6	321.3
c			6.0	322.9
1/2			5.0	323.9
cl			4.0	324.9
E.L.			3.5	325.4

+

H.I.
325.93

Villa Terrace (65' wide)

4400 g.l.	4.0	324.9
cb	4.9	324.0
1/4	6.0	322.9
c	6.8	322.1
1/4	7.9	321.0
cb	8.8	320.1
OK.L. 4425	10.2	319.7
OK.L.	10.5	319.4
cb	9.4	319.5
1/4	8.4	320.5
c	7.2	321.7
1/4	6.0	322.9
cb	5.2	323.7
E.L. 4450	4.4	324.5
E.L.	6.0	322.9
cb	6.6	322.3
1/4	7.7	321.2
c	8.2	320.7
1/4	9.1	319.8
cb	10.2	319.7

+

H.I.
325.93

15

OK.L. 4475	11.1	317.8
OK.L.	11.6	317.3
cb	11.0	317.9
1/4	10.4	318.15
c	9.4	319.5
1/4	8.6	320.3
cb	7.8	321.1
E.L.	7.1	321.8
5400 E.L.	7.8	321.1
cb	9.5	320.4
1/4	9.2	319.7
c	10.0	318.9
1/4	11.1	317.8
cb	12.0	316.9
OK.L.	12.5	316.4

	+	H.I. 328.93	-	Villa Terrace (60' wide)
5+25 O.L.			12.7	316 .2
cb			11.8	317 .1
1/2			10.8	318 .1
c			10.1	318 .8
1/4			9.5	319 .4
cb			8.7	320 .2
O.L.			8.2	320 .7
6+50 O.L.			8.4	320 .5
cb.			9.0	319 .9
1/2			9.9	319 .0
c			10.7	318 .2
1/4			12.1	316 .8
cb			12.9	316 .0
O.L.			13.5	315 .4
6+75 O.L.			14.2	314 .7
cb			13.5	315 .4
1/2			12.5	316 .4
c			11.8	317 .6
1/4			10.7	318 .2
cb			9.4	319 .5

	+	H.I. 328.93	-	
O.L.			9.6	320 .3
6+00 = North line of Landis St 60' wide				10' curb, 10' quarter
6+00 = O.L.			9.6	320 .3
cb			9.9	319 .0
1/2			10.9	318 .0
c			12.0	316 .9
1/2			13.2	315 .7
cb			14.2	314 .7
O.L.			15.2	313 .7
#	9.72	320 .81	12.74	316 .19 78
				North curb of Landis St.
O.L.			7.4	313 .5
cb			6.4	314 .5
1/2			5.3	315 .6
c			4.0	316 .9
1/2			3.4	317 .5
cb			2.2	318 .7
O.L.			0.4	320 .5

+ H.I.
320.91

Villa Terrace (15' wide)

North 1/2 of Landin St.		
E.L.	1.6	319.3
cl	2.7	318.2
1/4	3.3	317.6
c	3.6	317.3
1/2	5.4	315.5
cl	6.5	314.4
O.L.	7.6	313.3
Center of Landin St.		
O.L.	7.9	313.0
cl	6.8	314.1
1/2	5.5	315.4
c	3.5	317.4
1/4	2.9	318.0
cl	2.4	318.5
E.L.	1.8	319.1
South 1/2 of Landin St.		
E.L.	1.7	319.2
cl	2.7	318.2
1/4	3.3	317.6

+ H.I.
320.91

17

c	3.6	317.3
1/2	5.7	315.2
cl	7.1	313.8
O.L.	7.8	313.1
South end of Landin St.		
O.L.	8.1	312.8
cl	7.2	313.7
1/2	6.3	314.6
c	4.5	316.4
1/4	3.9	317.0
cl	3.2	317.7
E.L.	2.3	318.6
00 = South line of Landin St.		
E.L.	1.8	319.1
cl	3.5	317.4
1/4	4.5	316.4
c	5.2	315.7
1/2	6.8	314.1
cl	7.6	313.3
O.L.	8.5	312.4

+
7.I.
320.91

-
Villa Terrace (65' wide)

+25 O.L.	7.4	311.5
cl	7.9	313.0
1/2	6.9	314.0
c	5.6	315.3
1/2	5.1	315.3
cl	3.9	317.0
S.L.	2.9	318.5
+50 S.L.	2.7	318.2
cl	4.3	316.6
1/2	5.4	315.5
c	6.1	314.3
1/2	8.1	312.8
cl	9.6	311.3
O.L.	10.8	310.1
+75 O.L.	11.7	309.2
cl	10.6	310.3
1/2	9.2	311.7
c	7.6	313.3
1/2	6.6	314.3
cl	5.2	315.7

+
7.I.
320.91

18

S.L.	3.9	317.0
+100 S.L.	5.4	315.5
cl	6.7	314.2
1/2	8.0	312.9
c	9.2	311.7
1/2	10.5	310.4
cl	11.2	309.7
O.L.	12.5	308.4
+25 O.L.	14.4	306.5
cl	13.4	307.1
1/2	11.5	309.4
c	10.0	310.4
1/2	8.9	312.0
cl	7.8	313.1
S.L.	6.7	314.2

+ H.I.
320.91

Hilla Terrace (60' wide)

1+50 S.L.			7.4	313.5
cl			9.0	311.9
1/4			10.5	310.4
c			11.1	309.8
1/4			12.5	308.4
#	5.02	313.54	12.39	309.52
cl			6.0	307.5
OK.L.			6.8	306.7
1+75 OK.L.			7.7	305.8
cl			7.4	306.3
1/4			6.3	307.2
c			4.0	309.5
1/4			3.0	310.5
cl			2.3	311.2
S.L. 2+00			1.6	311.9
S.L.			2.0	311.5
cl			3.0	310.5
1/4			3.9	309.6
c			4.9	308.6

+ H.I.
313.54

19

1/4			5.7	307.8
cl			6.8	306.7
OK.L. 2+25			7.5	306.0
OK.L.			7.7	305.8
cl			6.8	306.7
1/4			5.9	307.6
c			4.6	308.9
1/4			3.8	309.7
cl			2.2	311.3
S.L. 2+50			1.2	312.3
S.L.			1.9	311.6
cl			2.6	310.9
1/4			3.8	309.7
c			4.9	308.6
1/4			6.1	307.4
cl			7.0	306.5
OK.L.			8.0	305.5

H.I.
313.54

Hilla Terrace, (65' wide)

2475 ⁻ OK.L.	9.6	304.9
cb	7.8	305.7
1/4	6.9	306.6
c	5.9	307.6
1/2	5.4	308.1
cb	4.3	309.2
E.L. 3+00	2.6	310.9
E.L.	2.5	311.0
cb	3.9	309.6
1/4	5.2	309.3
c	6.0	307.5
1/2	7.0	306.5
cb	7.9	305.6
OK.L. 3+25	8.9	304.6
OK.L.	9.7	303.8
cb	8.9	304.6
1/4	7.6	305.9
c	6.0	307.5
1/4	4.8	308.7
cb	8.4	310.1

H.I.
313.54

50

E.L. 3+50	2.1	311.9
E.L.	2.0	311.5
cb	3.4	310.1
1/4	5.0	309.5
c	6.0	307.5
1/2	7.4	306.1
cb	9.6	304.9
OK.L. 3+70	9.4	304.1
OK.L.	9.2	304.3
cb	9.6	304.9
1/4	8.0	305.5
c	6.6	306.9
1/2	5.3	308.2
cb	3.7	309.9
E.L.	2.6	310.9

F.I.
313.54

Villa Terrace, (65' wide)

4+00 ~~OK.L.~~

cl

1/2

c

1/2

cl

OK.L.

4+25

OK.L.

cl

1/2

c

1/2

cl

E.L.

4+50

E.L.

cl

1/2

c

1/2

cl

3.3 310.2

4.8 308.7

6.2 307.3

7.0 306.5

9.6 304.9

9.3 304.2

10.4 303.1

10.6 302.9

10.3 303.2

9.8 303.7

8.0 305.5

6.9 306.6

5.7 307.8

4.1 309.4

5.5 308.0

6.8 306.7

8.2 305.3

9.2 304.3

10.9 302.6

11.7 301.8

F.I.
313.54

21

OK.L.
1+75

OK.L.

cl

1/2

c

1/2

cl

E.L.

5+00

E.L.

cl

1/2

c

1/2

#

cl

OK.L.

12.0 301.5

13.8 299.7

12.9 300.6

11.7 301.8

10.7 302.8

9.2 304.3

9.3 305.2

6.9 306.6

9.4 305.1

9.6 303.9

11.0 302.5

11.6 301.9

13.0 300.5

3.71 304.32 12.93 300.61

3.8 300.5

4.2 300.1

H.I.
304.32

Hilla Terrace (65' wide)

5+25 O.L.	6.3	298.0
cl	5.6	298.7
1/2	4.9	299.9
c	3.4	300.9
1/2	3.0	301.3
cl	2.1	302.2
E.L. 5+50	0.7	303.6
E.L.	1.5	302.8
cl	3.0	301.3
1/2	3.8	300.5
c	3.9	300.4
1/2	5.3	299.0
cl	6.2	298.1
O.L. 5+75	6.6	297.7
O.L.	7.2	297.1
cl	6.2	298.1
1/2	5.8	298.5
c	5.1	299.2
1/2	4.3	300.0
cl	3.1	301.2

H.I.
304.32

22

E.L.	1.9	302.4
6+00 = North line of Dwight St (60' wide - 10' curb - 10' quarters)		
6+00 E.L.	3.2	301.1
cl	3.9	300.4
1/2	5.0	299.3
c	5.2	299.1
1/2	6.0	298.3
cl	6.1	298.2
N.L.	6.6	297.7
North line of Dwight + 1		
+ O.L.	7.6	296.7
cl	7.2	297.1
1/2	6.6	297.7
c	5.8	298.5
1/2	5.7	298.6
cl	6.3	298.0
E.L.	5.8	298.5

H.I.
309.32

Killa Terrace (65' wide)

North end of Dwight St.

E.L.	6.2	298.1
cl	6.9	297.4
1/2	6.8	297.5
c	6.4	297.9
1/2	7.3	297.0
cl	7.6	296.7
N.L.	8.2	296.1

North 1/2 of Dwight St.

N.L.	7.9	296.5
cl	7.4	296.9
1/4	7.3	297.0
c	7.3	297.0
1/2	7.1	297.2
cl	6.4	297.5
E.L.	6.4	297.9

Center of Dwight St.

E.L.	5.6	298.7
cl	6.3	298.0
1/4	6.5	297.8

H.I.
309.32

23

c	6.5	297.8
1/2	6.3	298.0
cl	6.6	297.7
N.L.	6.6	297.7

South 1/2 of Dwight St.

N.L.	7.9	296.4
cl	7.5	296.8
1/2	7.3	297.0
c	7.0	297.3
1/2	6.9	297.4
cl	6.9	297.4
E.L.	6.6	297.7

South end of Dwight St.

E.L.	6.3	298.0
cl	6.9	297.4
1/2	6.9	297.4
c	7.1	297.2
1/2	7.3	297.0
cl	7.6	296.7
N.L.	7.6	296.7

H.I.
304.32

Killa Terrace (65' wide)

cc - South line of Dwight St.

OK.L.	7.4	296.9
cl	7.6	296.7
1/2	7.4	296.9
c	7.2	297.1
1/4	6.4	297.9
cl	6.2	298.1
E.L.	5.9	298.4
+2 E.L.	3.8	300.5
cl	4.8	299.5
1/2	5.9	298.4
a	6.6	297.7
1/2	7.5	296.8
cl	7.5	296.8
M.L.	8.0	296.3
+20 OK.L.	8.8	295.5
cl	8.3	296.0
1/4	7.4	296.9
c	7.2	297.1
1/4	5.7	298.6

H.I.
304.32

24

cl	5.1	298.2
E.L.	4.2	300.1
+50 E.L.	4.3	300.0
+3	4.8	299.5
cl	5.4	298.9
1/2	6.1	298.2
c	6.7	297.6
1/2	7.3	297.0
cl	7.7	296.6
OK.L.	7.9	296.4
+75 OK.L.	8.6	295.7
cl	7.8	296.5
1/2	7.5	296.8
c	6.9	297.4
1/2	6.2	298.1
cl	5.4	298.9
+7	4.8	299.5
E.L.	4.1	300.2

+ H.I.
304.32

Pilla Terrace (65' wide)

1+00 G.L.

+5

cb

1/4

c

1/4

cb

OR.L.

1+25

OR.L.

cb

1/4

-c

1/4

cb

+6

G.L.

1+50

G.L.

+4

cb

1/4

4.2 300.1

5.8 298.5

6.1 298.2

6.9 297.4

7.6 296.7

7.8 296.5

8.4 295.9

9.0 295.3

9.8 294.5

9.4 294.9

8.7 295.6

8.1 296.2

7.4 296.9

6.0 298.3

5.6 298.7

4.4 299.9

4.8 299.5

6.1 298.2

6.2 298.1

7.7 296.6

+ H.I.
304.32

25

c

1/4

cb

OR.L.

1+75

OR.L.

cb

1/4

c

1/4

cb

+7

G.L.

2+00

G.L.

cb

1/4

c

1/4

cb

OR.L.

9.5 295.8

9.3 295.0

9.2 295.1

10.2 294.1

10.3 294.0

9.8 294.5

9.3 295.0

9.7 295.6

8.0 296.3

6.8 297.5

5.9 298.4

4.7 299.6

4.9 299.4

6.3 298.0

7.4 296.9

8.1 296.2

9.0 295.3

9.8 294.5

10.5 293.8

7.I.
304.32

Villa Terrace (6' wide)

2+25 O.L.	11.0	294.3
cb	9.3	295.0
1/2	8.5	295.8
c	7.5	296.8
1/2	6.8	297.5
cb	5.9	298.4
O.L. 2+50	4.9	299.4
O.L.	4.2	300.1
cb	5.2	299.1
1/2	6.2	298.1
c	7.1	297.2
1/2	8.0	296.3
cb	8.8	295.5
O.L. 2+75	9.6	294.7
O.L.	9.3	295.0
cb	8.5	295.8
1/2	7.6	296.7
c	6.6	297.7
1/2	6.0	298.3
cb	4.8	299.5

7.I.
304.32

26

O.L.	3.7	300.6
3+00 O.L.	3.4	300.9
cb	4.2	300.1
1/2	5.2	299.1
c	5.8	298.5
1/2	7.0	297.3
cb	8.1	296.2
O.L. 2+25	9.0	295.3
O.L.	9.0	295.3
cb	8.0	296.3
1/2	6.7	297.6
c	5.5	298.8
1/2	4.5	299.8
cb	3.5	300.8
O.L.	2.5	301.8

7.15
304.32

Hilla Terrace (65' wide).

3+15
S.L.

cb

1/2

c

1/2

cb

or L.

3+75

or L.

cb

1/4

c

1/4

cb

E.L.

4+00

E.L.

cb

1/4

c

1/4

cb

1.8 302.5

3.0 301.3

4.2 300.1

5.6 299.7

6.8 297.15

8.0 296.3

8.9 295.4

9.5 294.8

8.5 295.8

7.0 297.3

5.3 299.3

4.0 300.3

2.9 301.4

1.4 302.9

0.8 303.5

2.6 301.7

4.6 299.7

6.2 299.1

7.5 296.8

8.5 295.8

or L.

4+25

or L.

cb

1/2

c

1/4

cb

17

S.L.

#

4+50

S.L.

cb

1/2

c

1/2

cb

or L.

9.5 294.8

9.3 295.0

8.2 296.1

7.0 297.3

5.4 298.9

4.2 300.1

2.6 301.7

2.1 302.2

0.8 303.5

7.52

309.77

2.35 301.97

5.1 304.7

6.7 303.1

8.3 301.5

9.6 300.2

11.0 298.8

12.5 297.3

13.4 296.4

304.32
- 7.75
296.57 18' H-3
VT & II 27
309.77
- 7.75
302.02 18' H-3
VT & IV

HI
309.79

Hilla Terrace. (65' wide)

4+75 OK.L.	11.7	299.1
cb	11.9	299.9
1/4	9.9	299.9
c	9.3	301.5
1/4	7.0	302.8
cb	4.7	304.9
OK.L. 5+00	3.1	306.7
OK.L.	2.1	307.7
cb	3.6	306.2
1/4	5.1	304.7
c	7.2	302.6
1/4	9.3	301.5
cb	9.5	300.3
n.2 5+25	10.7	299.1
OK.L.	10.3	299.5
cb	9.4	301.4
1/4	7.3	302.5
c	6.1	303.7
1/4	4.2	305.6
cb	2.5	307.3

HI
309.79

25

OK.L. 5+50	11.0	308.8
OK.L.	0.4	309.4
cb	1.6	308.2
1/4	3.6	306.2
c	5.1	304.7
1/4	6.9	302.9
cb	8.7	301.1
OK.L. 5+75	10.1	299.7
OK.L.	10.0	299.8
cb	8.2	301.6
1/4	6.7	303.1
c	4.9	304.9
1/4	3.0	306.8
cb	1.5	308.3
OK.L.	0.5	309.3

H.I.
309.79

Villa Terrace, (65' wide)

6+00 = North line of Myrtle St. (across 1/4 corner)

6+00
E.L. 0.6 309.2

cb 1.6 308.2

1/4 2.9 307.0

c 5.1 304.7

1/2 7.0 302.8

cb 8.0 301.8

Or.L. 9.9 299.9

North end of Myrtle St.

Or.L. 9.9 300.0

cb 9.2 301.6

1/4 7.3 302.5

c 5.3 304.5

1/2 3.2 306.6

cb 1.9 308.9

E.L. 0.1 309.7

North 1/4 of Myrtle St.

E.L. 0.3 309.5

cb 1.5 308.3

1/4 3.4 306.4

H.I.
309.79

29

c 5.2 304.6

1/4 7.6 302.2

cb 9.5 301.3

Or.L. 9.6 300.2

Center of Myrtle St.

Or.L. 9.4 300.4

cb 9.5 301.3

1/4 7.6 302.2

c 5.3 304.5

1/2 3.2 306.6

cb 1.3 308.5

E.L. 0.1 309.7

North 1/4 of Myrtle St.

E.L. 0.1 309.7

cb 1.1 308.7

1/4 2.7 307.1

c 5.2 304.6

1/2 7.4 302.4

cb 8.7 301.1

Or.L. 9.5 300.3

+ H.I.
309.79

Villa Terrace, (65' wide)

South curb of Myrtle St.

W.L.	9.6	300.2
cb	8.9	300.9
1/4	7.2	302.6
c	5.1	304.7
1/4	2.9	306.9
cb	1.2	308.6
E.L.	0.3	309.5

00-South line of Myrtle St.

E.L.	0.4	309.4
cb	1.8	308.0
1/4	3.3	306.5
c	5.2	304.6
1/4	7.0	302.8
cb	9.1	300.7
W.L.	10.5	299.3
+25		
W.L.	11.0	298.8
cb	9.0	300.8
1/4	7.2	302.6
c	4.9	304.9

+ H.I.
309.79

30

1/4	3.5	306.3
cb	1.7	308.1
E.L.	0.4	309.4
+50		
E.L.	0.9	309.0
cb	2.0	307.8
1/4	3.7	306.1
c	5.5	304.3
1/4	6.9	302.9
cb	9.0	300.8
W.L.	11.6	299.2
+75		
W.L.	12.2	297.6
cb	9.9	299.9
1/4	8.2	301.6
c	6.0	303.8
1/4	4.3	305.5
cb	2.5	307.8
E.L.	1.0	309.9

	H.I. 309.79°	Villa Tenace (65' wide)
1+00 E.L.	1.4	305.4
cl	3.1	306.7
1/4	4.6	305.2
c	6.2	303.6
1/4	9.0	300.8
cl	11.0	298.8
N.L.	13.2	296.6
1+20 N.L.	14.1	295.7
cl	11.5	298.3
1/4	9.7	300.1
c	7.5	302.3
1/4	5.6	304.2
cl	3.5	306.0
E.L.	2.2	307.6
1+50 E.L.	3.1	306.7
cl	4.6	305.2
1/4	6.2	303.6
c	8.6	301.2
1/4	11.2	298.6
cl	12.8	297.0

	H.I. 309.79	
N.L.	15.5	299.3
1+75 N.L.	17.0	292.9
cl	14.6	295.2
1/4	12.9	296.9
c	10.1	299.7
1/4	7.6	302.2
cl	5.5	304.0
E.L.	3.9	305.9
2+00 E.L.	4.9	304.9
cl	7.5	302.0
1/4	9.2	300.6
c	11.7	299.1
#	5.83	303.17
1/4	11.95	297.84
cl	7.6	295.6
cl	9.8	293.4
N.L.	12.1	291.1

H.I.
303.17

Villa Terrace (65' wide)

2+25 O.L.	14.3	288.9
cb	11.6	291.6
1/2	9.4	293.9
c	7.0	296.2
1/2	3.7	299.5
cb	2.4	300.9
E.L.	0.2	303.0
2+50 E.L.	2.2	301.0
cb	4.0	299.2
1/2	6.2	297.0
c	8.5	296.4
1/2	10.6	292.6
cb	12.9	290.3
O.L.	15.4	287.8
2+75 O.L.	17.4	285.8
cb	15.5	287.7
1/2	13.6	289.6
c	10.6	292.6
1/2	8.3	294.9
cb	5.9	297.3

H.I.
303.17

E.L.			3.8	299.4
3+00 E.L.			5.6	297.6
cb			7.6	295.6
1/2			9.2	294.0
c			12.6	290.6
#	5.54	296.22	12.49	290.68
1/2			9.7	287.5
cb			10.5	285.7
O.L.			12.3	283.9
3+25 O.L.			15.0	281.2
cb			12.9	283.3
1/2			10.7	285.5
c			7.4	288.8
1/2			4.8	291.4
cb			1.5	294.7
E.L.			0.0	296.2

+

H.I.
296.22

Villa Terrace (65' wide)

3+54⁵ = North line Balboa Park.3+54⁵

8 L.	1.9	294.3
cb	3.8	292.4
1/4	7.2	289.0
c	10.3	285.9
1/4	13.3	282.9
cb	15.8	280.4
N.L.	18.7	277.5

Check this up with old section, there was no BHT to check on.

X-section of Barr Ave 50' wide, 10' curbs, 1/4' quarters, from the East line of Goldfinch to the pueblo line 98.79' East of Dove St.

Mon 28, 1909 SW cor Hunter & Jackson.

February 20-13

Hornum.
Shard.
Heavne.

33

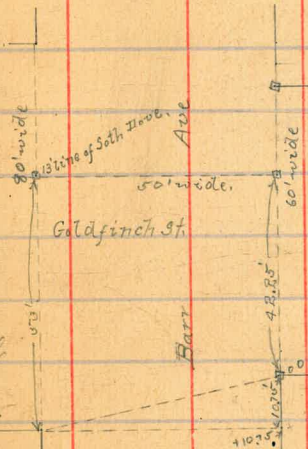
(cite) for distances etc see Washington tie point book page 56.

4.76	273.84	269.09
1.04	269.58	6.30 267.54
2.20	255.90	12.98 255.70
2.30	243.79	12.91 242.89, 502

00 = East line of Goldfinch 44 on North line of Barr Ave to

East line Goldfinch on South side of Barr Ave (Diagonal)

00			
N.L.		1.0	242.8
cb		1.1	242.7
1/4		1.7	242.1
c		2.5	241.3
1/4		3.4	240.4
cb		4.6	239.2
N.L.		6.0	237.8
+1025			
on North = NE Cor on South			
N.L.		6.0	237.8
cb		5.3	238.5
1/4		4.3	239.5
c		3.5	240.8
1/4		2.8	241.0
cb		1.8	242.0
N.L.		1.6	242.2



	H.I. 243.79	Barrel (50 wide)	
+25 on north		2.1	241.7
cl		4.7	239.1
1/2		5.5	238.3
c		6.1	237.7
1/2		7.0	236.8
cl		8.5	235.3
V.L. +50 on north		10.0	233.8
1/2		16.5	228.3
cl		14.5	229.3
1/2		13.4	230.4
c		12.0	231.8
1/2		10.2	233.6
cl		9.9	233.9
1/2		8.6	235.2
#	0.01	231.02	12.79
+75		231.01	
1/2		2.0	229.0
cl		2.1	228.9
1/2		2.5	228.5
c		5.1	225.9
1/2		6.1	224.9

	H.I. 231.02		
		7.3	223.7
cl		8.7	222.3
V.L. 1400		15.5	215.5
V.L.		13.9	217.1
cl		12.3	218.7
c		11.2	219.8
1/2		10.1	220.9
cl		7.5	223.5
m.L.		6.1	224.9
#	0.03	219.29	12.91
1420		218.21	
1/2		2.2	216.1
cl		3.7	215.2
1/2		4.8	213.5
c		6.0	212.3
1/2		8.2	210.1
cl		9.4	208.9
V.L.		11.0	207.3
1450		21.3	197.0
V.L.		19.2	199.1
cl		17.0	201.3
1/2			

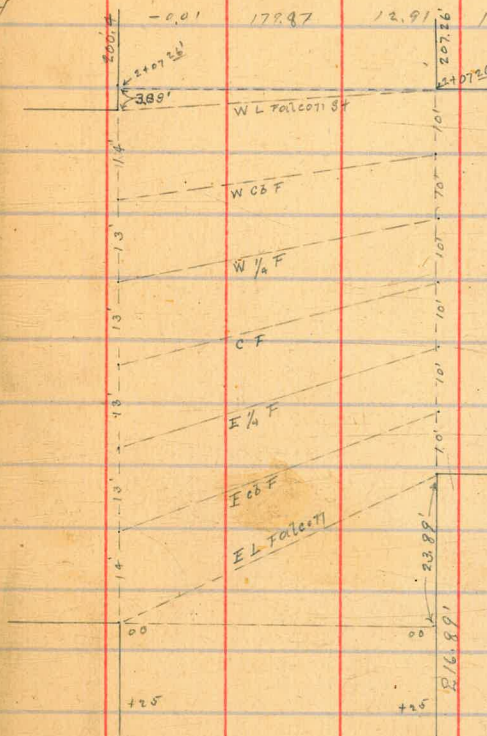
	+	H.I. 219.29	-	Barr Ave (50' wide)
c			16.0	202.3
1/2			14.9	203.5
cb			13.7	204.6
M.L.			11.7	206.6
#	0.15	205.44	13.00	205.29
1175				
M.L.			8.7	196.7
cb			11.9	193.6
#	0.23	192.79	12.98	192.56
1/2			0.9	192.0
c			2.2	190.6
1/2			3.6	189.2
cb			5.7	187.1
V.L.			7.9	185.0

2+07²⁶ = West line of Falcon on the North side of 333 West of

V.V. on Barr Ave & Falcon St.

	+	H.I. 207 ²⁶	-	
V.L.			22.8	169.0
cb			22.0	170.8
1/2			20.5	172.3
c			17.3	175.5
1/2			15.1	177.7

	+	H.I. 192.79	-	
cb			13.9	179.9
M.L.			11.1	181.7
#	-0.01	179.97	12.91	179.88



7
H.I.
17987

Barn Ave (50' wide)

cl			11.6	168.2
M.L.			15.2	164.7
West end of Falcon St.				
M.L.			24.1	155.8
cl			20.7	159.2
1/2			14.4	165.5
c			12.0	167.9
1/4			9.8	170.1
cl			6.9	173.1
M.L.			2.8	177.1
West 1/2 of Falcon St.				
M.L.			8.1	171.8
cl			12.2	167.7
#	0.41	167.48	12.80	167.07
1/4			3.9	163.6
c			8.6	158.9
1/2			12.2	155.3
cl			16.9	150.7
M.L.			19.1	148.4

Center of Falcon St.

36
+
H.I.
16748

36

M.L.			29.0	139.5
cl			25.1	142.4
1/4			21.9	146.1
c			15.4	152.1
1/2			10.0	157.5
cl			5.5	162.0
M.L.			3.3	164.2
East 1/2 of Falcon St.				
M.L.			10.2	157.3
cl			12.1	155.4
#	-0.02	154.55	12.91	154.57
1/4			3.2	151.4
c			6.6	148.0
1/2			11.5	143.1
cl			16.8	137.8
M.L.			23.5	131.1

H.I.
1159.55

Barr Ave (50' wide)

East curb of Falcon St

M.L.		25.1	129.5
cl		19.8	135.8
1/2		15.1	139.5
c		11.05	143.1
1/2		9.8	145.8
cl		6.8	147.8
M.L.		6.1	148.5
#	0.43	148.05	12.93 141.62

East line of Falcon St

1/2		2.9	141.1
cl		3.5	138.5
1/2		5.0	137.0
c		6.3	135.7
1/2		8.7	133.3
cl		12.0	130.0
#	0.06	129.01	12.80 129.25
M.L.		9.4	124.9

000 From the S.E. Cor of Falcon & Barr Ave E 23.89' East of the
N.E. Cor Falcon & Barr Ave

H.I.
1293.1

M.L.		4.4	124.9
cl		1.7	127.6
1/2		0.9	128.4
c		2.0	127.3
1/2		3.9	125.4
cl		2.8	126.5
M.L.		+4.8	134.1
+25 M.L.		+1.4	130.7
cl		2.5	126.8
1/2		5.9	123.4
c		10.5	118.8
#	0.23	116.63	12.91 116.40
1/2		0.9	115.7
cl		3.2	113.4
M.L.		4.5	112.1

7.I.
116.63

Barr Cul (50' wide)

+50 1/2	11.0	105.6
cb	7.6	109.0
1 1/2	5.6	111.0
c	2.9	113.7
1/2	0.7	115.9
cb	+0.4	117.0
1/2	+2.1	118.7
1/2	3.7	112.9
cb	4.6	110.0
1/2	8.3	108.3
c	8.5	107.1
1/2	11.1	105.5
cb	12.8	103.8
1/2	15.6	101.0
1/2	20.6	96.0
cb	18.3	98.3
1/2	17.3	99.3
c	16.2	100.4
1/2	15.2	101.4
cb	13.7	102.9

7.I.
116.63

38

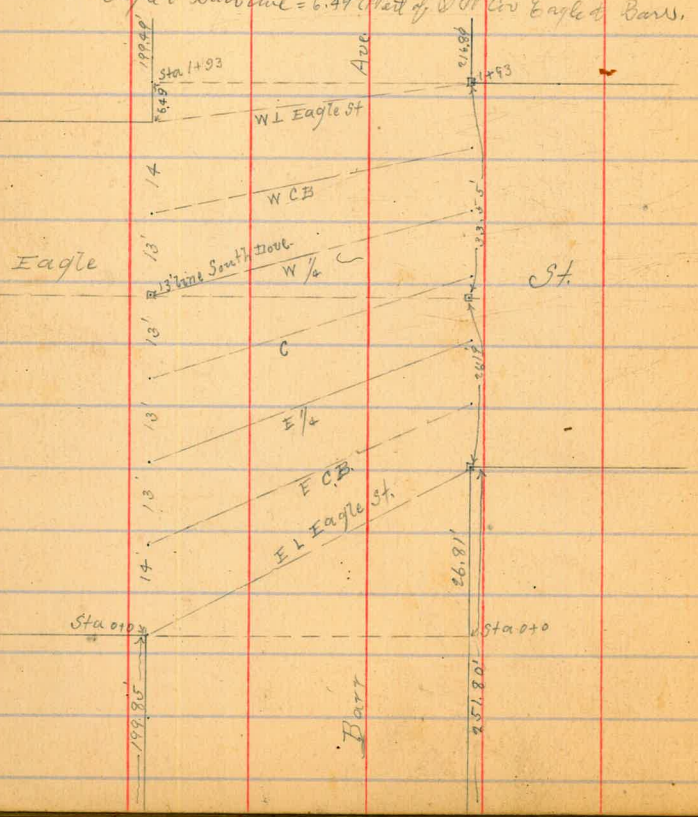
1/2		11.7	104.9
#	0.44	104.09	12.99
1+25			103.65
1/2		5.4	99.7
cb		6.2	97.9
1/2		7.6	
c		8.8	95.3
1/2		10.1	
cb		11.9	
1/2		14.6	89.6
1/2		16.1	88.0
cb		17.9	
1/2		14.6	
c		14.5	89.6
1/2		13.4	
cb		12.2	
1/2		11.2	92.9
#	0.25	91.40	12.94
			91.15

H.I.
91.40

Barr Ave (50 wide)

175 M.L.	3.2	88.2
cl	5.6	85.8
1/2	6.7	84.7
c	6.8	84.6
1/2	6.2	85.2
cl	3.9	87.5
M.L.	1.0	90.4

173 = N.W. Cor Eagle & Barr Ave = 6.49' dist of W of Cor Eagle & Barr.



H.I.
91.40

173 M.L.	1.8	89.6
cl	3.9	87.5
1/2	5.5	85.9
c	6.9	84.6
1/2	8.0	83.4
cl	5.0	83.4
M.L.	2.7	84.7

N.W. Cor 1/2 W of Cor.

M.L.	6.7	84.7
cl	8.2	83.2
1/2	8.8	82.6
c	6.8	84.6
1/2	5.0	86.4
cl	4.0	87.4
M.L.	2.1	89.3

West end of Eagle St.

St.	5.0	86.4
cb	6.8	84.6
1/2	7.6	83.8
c	9.2	83.2
1/2	8.9	82.5
cb	8.9	82.5
M.L. c	8.6	82.8

West 1/2 of Eagle St.

M.L.	11.6	79.8
cb	9.2	82.2
1/2	9.8	81.6
c	9.3	82.1
1/2	9.2	82.2
cb	8.2	83.2
St.	9.4	82.0

Center of Eagle St.

St.	9.0	82.4
cb	8.6	82.8
1/2	11.3	80.1

c	11.8	79.6
1/2	12.0	79.4
cb	10.5	77.9
M.L.	12.4	79.0

East 1/2 of Eagle St.

M.L.	11.9	79.5
cb	9.1	82.3
1/2	6.9	84.6
c	4.9	86.5
1/2	4.7	86.7
cb	5.1	86.3
St.	5.6	85.8

East end of Eagle St.

St.	3.4	88.0
cb	2.6	88.8
1/2	2.6	88.8
c	2.6	88.8
1/2	3.7	87.7
cb	5.3	86.1
M.L.	8.3	83.1

H.I.
91.40

Barrow Ave (50' wide)

East line of Eagle St N.E. Cor to N.E. Cor.

M.L.	4.9	86.5
cl	2.0	89.4
1/2	0.4	91.0
c	0.0	91.4
1/2	+0.2	91.6
cl	+0.4	91.8
N.L.	1.1	90.3

From the N.E. Cor Eagle St to 26.8' East of the N.E. Cor Eagle St.

N.L.	1.1	90.3		
#	12.79	104.19	0.00	91.40
cl	11.4	92.8		
1/2	10.5	93.7		
c	9.5	94.7		
1/2	9.0	95.2		
cl	8.7	95.5		
M.L.	9.3	94.9		
+25				
M.L.	0.6	103.6		
cl	0.9	103.3		
1/2	2.0	102.2		

H.I.
104.19

41

c			2.8	101.4
1/2			4.1	100.1
cl			5.6	98.6
N.L.			5.4	98.8
#	12.87	117.06	0.00	104.19
+50				
N.L.			9.7	107.4
cl			11.2	105.9
1/2			8.9	108.2
c			7.6	109.5
1/2			6.3	110.8
cl			5.4	111.7
M.L.			9.5	112.6
+75				
M.L.			+4.9	122.0
cl			+2.0	119.1
1/2			0.9	116.2
c			3.0	114.1
1/2			6.1	111.0
cl			7.5	109.6
N.L.			4.2	112.9
#	12.71	129.77	0.00	117.06

	+	H.I. 129.77	-	Barr Ave (50' wide)
1400			9.6	120.2
cl			14.2	
1/4			12.7	
c			9.5	120.0
1/2			6.6	
cl			3.9	
1/2			+0.1	129.9
1425			+5.6	135.4
cl			+2.5	
1/4			+0.7	
c			2.3	127.5
1/2			5.7	
cl			7.6	
1/2			2.9	126.9
=	12.40	142.17	0.00	129.77
1/2			7.7	134.5
cl			11.8	
1/4			10.0	
c			6.0	136.2
1/2			2.4	

	+	H.I. 142.17	-	
#	12.08	155.25	0.00	142.17
cl			12.0	
1/2			7.5	149.8
1/2			+2.5	157.8
cl			2.9	
1/4			6.6	
c			10.8	144.5
1/2			14.0	
cl			17.2	
1/2			16.4	138.9
<p>on the South line = the N.W. Corner of Barr Ave & Dove St = 25.29 West of the N.W. Cor of Barr Ave & Dove St for the North line</p>				
1/2			12.0	142.3
cl			7.0	
1/2			4.0	
c			1.0	154.3
1/2			+1.2	
cl			+4.2	
1/2			+9.4	164.7

7.I.
167.63

Baseline (50' wide)

Center of Dome Vt

1/2			7.9	159.8
#	12.99	190.11	0.00	167.63
cl			13.0	
1/4			7.5	
c			2.3	177.8
#	12.75	192.86	0.00	190.11
1/2			10.0	
cl			5.1	
1/2			+1.7	194.6
East 1/2 of Dome Vt.				
1/2			+5.7	198.6
cl			0.7	
1/4			6.3	
c			11.2	181.7
1/2			15.9	
cl			21.0	
1/2			24.9	168.0
East end of Dome Vt				
1/2			17.5	175.4

7.I.
192.86

cl				12.3	
1/4				8.9	
c				9.9	188.0
1/4				1.0	
cl				+3.3	
1/2				+10.0	202.9
East line of Dome Vt Cor to Cor.					
1/2				+13.4	206.3
cl				+9.0	
1/4				+5.3	
c				+2.1	195.0
1/4				1.3	
cl				4.6	
1/2				9.5	183.4

H.I.
192.96

Barrow Ave (50' wide)

00 Ught angle from N & Cor Barrow Ave & Bow St, corner

5th East of V & Cor,

00

V.L.			6.8	186.1	
cb			1.0		
#	12.83	205.69	0.00	192.86	
1/4			11.3		
c			9.1	196.6	
1/2			6.1		
cb			3.0		
1/2			+0.6	206.13	
#	12.88	213.67	0.00	205.69	
+25 1/2			0.9	217.8	
cb			4.3		
1/2			6.3		
c			9.3	209.4	
1/2			12.4		
cb			15.5		
1/2			19.8	198.9	
+50 V.L.			9.2	209.5	
cb			5.4		

H.I.
218.67

45

1/4					2.9
c					0.1
#	12.94	231.61	0.00		218.67
1/2					10.3
cb					7.1
1/2					2.4
+75					228.2
1/2					+3.5
cb					235.1
1/2					+0.2
c					2.6
-c					5.0
1/4					236.6
1/2					9.0
cb					10.0
V.L.					11.8
#	12.94	249.37	0.09		201.58
-97.21 = Public line					
+97.21					
1/2					12.9
cb					232.0
cb					11.4
1/4					9.3
c					7.3
					237.1
1/2					5.3

Wellborn St.

H.I.
265.33

Winder St (60' wide)

H.I.
265.33

47.

X-section A, see sketch

O.L. & public line cov.

cl

1/2

c

X-section B

c

1/2

cl

O.L.

X-section C

c

1/2

cl

E.L. = 00

oo - intersection public line with East line of Winder St.

oo E.L.

cl

1/2

c

1/2

cl

O.L.

#

+25

O.L.

cl

1/2

c

1/2

cl

E.L.

+50

E.L.

cl

1/2

c

1/2

cl

O.L.

5.6

9.3

11.1

9.76

269.00

1.09

13.3

10.9

9.0

9.2

7.9

7.1

5.9

5.6

6.7

7.5

7.8

8.4

9.5

10.5

259.7

257.0

257.2

267.29

255.7

258.1

260.0

260.8

261.1

261.9

263.1

263.4

262.3

261.5

261.2

260.6

260.5

258.6

Wellborn St

H.I.
269.00

Window St (50' wide)

+7.5 ⁰ O.L.	9.5	269.5
cb	8.5	260.5
1/2	7.6	261.4
c	7.1	261.9
1/2	6.9	262.1
cb	6.3	263.7
E.L.	5.3	263.7
100 ²² = North line of Boone St 50' wide 10 curbs 1/2 quarter		
100 ²³ E.L.	4.9	264.2
cb	6.0	263.0
1/2	6.4	262.6
c	1.6	262.4
1/2	7.0	262.0
cb	9.0	261.0
O.L.	9.9	260.2
North curb of Boone St		
O.L.	9.5	260.5
cb	7.9	261.1
1/2	7.0	262.0
c	6.4	262.6

H.I.
269.00

48

1/2	6.3	262.7
cb	5.9	263.2
E.L.	4.7	264.3
North 1/2 of Boone St.		
E.L.	4.9	264.1
cb	5.9	263.1
1/2	6.1	262.9
c	6.4	262.6
1/2	7.0	262.0
cb	7.9	263.1
O.L.	8.9	260.2
Center of Boone St		
O.L.	8.3	260.7
cb	7.4	261.6
1/2	7.0	262.0
c	6.3	262.7
1/2	6.0	263.0
cb	5.5	263.5
E.L.	4.6	264.4

Wellborn St.

HI
269.00

Winder St (50 wide)

HI
269.00

South 1/2 of Boone St.

E.L.	4.2	264.8
cb	5.1	263.9
1/4	5.6	263.4
c	6.1	262.9
1/4	6.7	262.3
cb	7.3	261.7
OR.L.	9.2	260.8

South end of Boone St

OR.L.	3.2	260.8
cb	7.3	261.7
1/4	6.6	262.4
c	6.0	263.0
1/4	5.5	263.5
cb	5.0	264.0
E.L.	4.4	264.6

South line of Boone St.

E.L.	3.9	265.1
cb	5.1	263.9
1/4	5.2	263.8

c	5.6	263.4
1/4	6.2	262.8
cb	7.4	261.6
OR.L. +25	8.0	261.0
OR.L.	7.8	261.8
cb	6.4	262.6
1/4	5.3	263.7
c	4.9	264.1
1/4	4.5	264.5
cb	4.2	264.8
E.L. +50	3.1	265.9
E.L.	1.8	267.2
cb	3.0	266.0
1/4	4.0	265.0
c	4.3	264.7
1/4	4.9	264.1
cb	4.9	264.1
OR.L.	5.9	263.2

Nellborn St

	74.5 269.00	Ohindus St (50' wide)	74.5 272.15	
¹⁷⁵ Or.L.		3.5 265.5		cb 2.6 269.6
cb		3.4 265.6		E.L. 2.3 269.9
1/2		3.1 265.9		1450 E.L. 2.0 270.2
c		2.6 266.4		cb 2.0 270.2
1/4		2.5 266.5		1/4 1.9 270.4
cb		1.7 267.3		c 1.8 270.4
E.L.		0.9 268.2		1/4 2.2 270.0
¹⁺⁰⁰ E.L.		0.0 269.0		cb 2.0 270.2
cb		0.4 268.6		Or.L. 2.1 270.1
1/2		1.2 267.8		¹²⁷⁵ Or.L. 1.5 270.7
c		1.3 267.7		cb 1.5 270.7
1/2		1.7 267.3		1/2 1.5 270.7
cb		1.6 267.4		c 1.4 270.8
Or.L.		1.6 267.4		1/2 1.5 270.7
¹⁺²⁵ Or.L.		0.2 268.8		cb 1.7 270.5
cb		0.0 269.0		E.L. 2.0 270.2
1/4		0.0 269.0		
#	3.23	272.15	0.8	269.92
c		2.9 269.3		
1/2		2.7 269.5		

Nellborn St

H.I.
272.15

Thidw St (50' wide)

H.I.
272.15

51

2100 = north line of Meale St, 50' wide 10 curbs, 7 1/2 quarters

2100
E.L.

cb

1/4

c

1/4

cb

cr.L.

north curb of Meale St.

cr.L.

cb

1/4

c

1/4

cb

E.L.

north 1/2 of Meale St.

E.L.

cb

1/4

2.3

269.9

2.1

270.1

1.2

271.0

1.0

271.2

0.8

271.4

1.0

271.2

1.0

271.2

0.8

271.4

1.0

271.2

1.0

271.2

1.0

271.2

1.3

270.9

2.0

270.2

2.2

270.0

2.9

269.3

2.1

270.1

1.5

270.7

c

1/4

cb

cr.L.

Center of Meale St.

cr.L.

cb

1/4

c

1/4

cb

E.L.

South 1/2 of Meale St.

E.L.

cb

1/4

c

1/4

cb

cr.L.

1.2

271.0

1.1

271.1

1.2

271.0

1.4

270.8

1.6

270.6

1.2

271.0

1.2

271.0

1.3

270.9

1.6

270.6

2.0

270.2

2.6

269.6

2.1

269.6

2.1

270.1

1.7

270.5

1.6

270.6

1.3

270.9

1.4

270.8

1.7

270.5

Mellhorn St

HI
272.15

Winder St (50 wide)

HI
272.15

South curb of Male St.

Or.L.	1.9	270.3
cb	1.8	270.4
1/4	1.6	270.6
c	1.8	270.4
1/2	2.0	270.2
cb	2.5	269.7
E.L.	3.1	269.1

oo = South line of Male St.

E.L.	2.4	268.8
cb	3.1	269.1
1/4	2.3	269.9
c	2.1	270.1
1/4	2.0	270.2
cb	2.0	270.2
Or.L.	1.6	270.6
+25 Or.L.	2.1	270.1
cb	2.6	269.6
1/4	3.1	269.1
c	3.1	269.1

1/4	3.8	268.9
cb	4.4	267.8
E.L.	4.7	267.6
+50 E.L.	6.3	265.9
cb	5.7	266.5
1/4	4.9	267.4
c	4.4	267.8
1/4	4.5	267.7
cb	3.9	268.3
Or.L.	3.3	268.9
+75 Or.L.	4.5	267.7
cb	5.3	266.9
1/4	5.9	266.4
c	5.8	266.4
1/4	6.2	266.0
cb	7.2	265.0
E.L.	7.7	264.5

	+	74I 272.10	Winder Vt (50' wide)
1-100 E.L.			11.0 262.2
ob			8.5 263.7
1/4			7.7 264.5
c			7.2 265.0
1/4			7.2 265.0
ob			6.6 265.6
OR.L.			5.9 266.4
1+20 OR.L.			7.0 265.2
ob			7.9 264.3
1/4			8.3 263.9
c			8.3 263.9
1/4			8.9 263.4
ob			10.1 262.1
E.L.			11.4 260.8
1+50 E.L.			12.6 259.6
ob			11.6 260.6
1/4			10.0 262.2
c			9.0 262.8
1/4			9.1 263.1
ob			8.7 263.5

	+	74I 272.10		
OR.L.			7.2	265.0
1+75 OR.L.			8.4	263.8
ob			9.8	262.4
1/4			10.4	261.8
c			10.9	261.3
1/4			11.5	260.7
ob			12.0	259.2
E.L.			13.9	258.3
2000' north line of Terrace Vt.				
#	0.21	261.20	11.26	260.89
2+100 E.L.			4.3	256.9
ob			3.8	257.4
1/4			2.5	258.7
c			1.9	259.4
1/4			1.5	259.7
ob			1.0	260.2
OR.L.			+0.6	261.8

Nellborn St

H.I.
261.20

Widener St (50' wide)

H.I.
248.40

54

00 = South line of Lawrence St.

OR.L.	5.0	256.2
cb	6.5	254.7
1/4	7.0	254.2
c	7.2	254.0
1/4	7.9	253.3
cb	9.4	251.8
E.L.	10.2	251.0
+25 E.L.	12.9	248.3
cb	12.0	249.2
1/4	11.0	250.2
c	10.1	251.1
1/4	10.0	251.2
cb	9.2	252.0
OR.L.	7.6	253.6
+50 OR.L.	10.8	250.4
cb	12.3	248.9
1/4	12.8	248.4
c	13.0	248.2

0.09 248.40 12.89 248.31
+

1/4	0.8	247.6
cb	2.1	246.3
E.L.	2.6	245.8
+75 E.L.	5.9	242.5
cb	5.1	243.3
1/4	3.8	244.6
c	3.1	245.1
1/4	2.8	245.6
cb	2.6	245.8
OR.L.	1.1	247.3
+91 OR.L.	2.2	246.2
cb	3.1	245.3
1/4	3.8	244.6
c	4.4	244.0
1/4	5.2	243.2
cb	6.2	242.2
E.L.	7.9	240.5

Hellman St

H.I.
248.40

Windsor St (50' wide)

1+00	g.l.		9.8	238.6
	cb		8.1	240.3
	1/2		8.5	239.9
	e		8.0	240.4
	1/2		8.3	240.1
	cb		7.6	240.8
	or.l.		7.3	241.1
#		0.88 237.26	10.09	236.32
1+11	or.l.		2.4	234.8
	cb		2.9	234.4
	1/2		4.2	233.0
	e		3.3	233.9
	1/2		2.2	235.0
	cb		0.1	237.1
	g.l.		1.9	235.4
1+15	g.l.		4.1	233.1
	cb		0.7	236.5
	1/2		6.1	231.4
	e		7.8	229.4
	1/2		8.3	228.9

H.I.
237.20

55

	cb		9.4	227.8
	or.l.		12.4	224.8
	14.25			
	or.l.		12.8	224.4
	cb		14.0	223.2
	1/2		14.5	222.7
	e		14.2	223.0
	1/2		12.9	224.3
	cb		11.7	225.5
	g.l.		11.1	226.1
	#	0.41 224.71	12.90	224.30
	14.30			
	g.l.		1.3	223.4
	cb		1.0	223.7
	1/2		5.5	219.2
	e		6.1	218.6
	1/2		6.6	218.1
	cb		7.2	217.5
	or.f.		5.2	219.5

Nellborn St

H.I.
224.71

Wander St (50 wide)

14+1 O.L.		7.7	217.0
cb		7.7	217.0
1/2		7.5	217.2
c		7.5	217.2
1/2		9.0	215.7
cb		6.9	217.8
E.S.		6.4	218.3
14+3 E.L.		7.3	217.4
cb		8.1	216.6
1/2		10.3	214.4
c		12.1	212.6
1/2		13.5	211.2
cb		12.9	211.8
O.L.		12.2	212.6
#	0.01	212.29	211.88
14+50 O.L.		10.4	212.7
+5		4.9	207.4
cb		4.8	207.5
1/2		4.8	207.5
c		3.2	209.1

H.I.
212.29

56

1/2		1.7	210.6
cb		+1.2	213.6
E.L.		+2.0	214.3
14+75 E.L.		3.5	203.8
cb		10.8	201.3
#	0.01	199.77	199.76
1/2		2.0	197.8
c		4.6	195.2
1/2		5.4	194.4
cb		4.1	195.7
O.L.		+0.3	200.1
2000 = North line of Peterborough St			
2000 O.L.		4.5	195.3
cb		10.6	189.2
1/2		14.7	185.1
c		15.2	184.6
1/2		15.1	184.7
cb		12.2	187.5
E.L.		7.0	192.8

Melhorn St

H.I.
199.77

Wander Vt (5' wide)

0.41 187.33 12.85 186.92

co. South line of Puttburgh St

E.L.

9.8 177.5

cb

13.7 173.6

+4

16.2 171.1

1/2

16.8 170.5

a

16.8 170.5

1/2

13.8 173.6

cb

10.5 176.8

W.L.

6.2 181.1

#

0.16 174.44 13.03 174.30

+20

W.L.

1.6 172.8

cb

4.3 170.1

1/2

6.9 167.5

a

7.6 166.8

1/2

7.6 166.8

cb

7.2 167.2

E.L.

3.1 171.3

+50

E.L.

9.7 164.7

cb

10.3 164.1

H.I.
174.44

57

1/4

10.7 163.7

c

11.0 163.4

1/2

10.9 163.5

cb

10.0 164.4

W.L.

7.5 166.9

+75

W.L.

8.6 165.8

+8

9.9 164.5

cb

11.7 162.7

1/4

12.5 161.9

c

12.4 162.0

1/2

11.8 162.6

cb

11.9 162.6

E.L.

11.7 162.7

+100

E.L.

13.4 161.0

cb

14.0 160.4

1/2

14.4 160.0

c

14.8 159.6

1/4

14.5 159.9

cb

13.5 160.9

W.L.

11.7 162.7

Nellbom St

7

7.I.
174.44

Winder 24 (50 wide)

#	2.35	164.95	12.34	152.10
OK.L.			7.6	157.9
cb			7.0	157.5
1/4			6.9	157.6
c			6.5	158.0
1/2			6.7	157.8
cb			6.3	158.2
+7			5.5	159.0
E.L.			4.2	160.3
14.50				
E.L.			1.1	163.4
cb			6.5	158.6
1/4			8.1	156.4
c			9.7	155.8
1/2			9.4	155.1
cb			9.5	155.0
OK.L.			9.7	154.8
14.75				
OK.L.			11.3	153.2
cb			11.1	153.4
1/4			11.1	153.4
c			10.9	153.6

7.I.
169.45

1/4		7.3	157.2
cb		4.4	160.1
E.L.		+0.4	164.9
2+00 = north line of Harton Ave			
2+00			
E.L.		1.1	163.4
cb		5.4	159.1
1/4		8.6	155.9
c		12.0	152.5
1/4		12.7	157.8
cb		13.1	157.4
OK.L.		13.1	157.4
#	0.13	158.99	5.76
c.c. = south line of Harton Ave.			
OK.L.		11.6	147.3
cb		11.1	147.8
1/4		10.5	148.4
c		10.0	148.9
1/4		7.0	157.9
cb		2.7	154.2
E.L.		+2.0	160.9

158.75 50% Harton

Mellhorn St

7.I.
15-8.89

Kindes 24/50 wide)

+20	E.L.	1.8	157.1
	cb	4.4	154.5
	1/4	7.6	157.3
	c	11.6	147.3
	1/4	12.1	146.8
	cb	13.2	145.7
	OK.L.	13.2	145.7
+50	OK.L.	15.0	143.9
	cb	14.7	144.2
	1/4	14.7	144.2
	c	11.9	147.1
	1/4	9.5	150.4
	cb	6.7	152.2
	E.L.	4.0	154.9
+75	E.L.	1.0	157.9
+2		1.6	157.3
+3		3.9	155.0
	cb	5.7	153.2
	1/4	8.0	150.9
	c	10.8	148.1

7.I.
15-8.89

59

	1/4		14.3	144.6
	cb		16.6	142.3
	OK.L.		17.4	141.3
	#	7.14	12.61	146.27
	+99			
	OK.L.		13.2	140.2
	cb		11.9	141.5
	1/4		9.4	145.0
	c		5.3	148.1
	1/4		2.8	150.6
	cb		+0.8	154.2
	+5		+1.5	154.9
	+7		+4.4	157.8
	E.L.		+5.8	159.2
	+91		+6.2	159.6
	E.L.		+4.8	158.2
	+3		+1.7	155.1
	+5		+0.6	154.0
	cb			
	1/4		2.8	150.6
	+4		9.3	149.1
	+5		12.2	141.2

Nellborn str.

H.I.
153.41

Winder (50' wide)

c	12.3	141.1
1/4	12.7	140.7
cb	12.2	141.2
OK L. 1+00	13.3	140.1
OK L.	13.2	140.2
cb	12.8	140.6
1/2	12.6	140.8
c	12.6	140.8
+4	12.3	141.2
+5	4.0	149.4
1/2	2.6	150.8
cb	+1.0	154.4
+4	+1.5	154.9
+6	+5.2	158.6
8 L. 1+26	+6.3	159.7
8 L.	+5.2	158.6
+5	+4.4	157.8
+7	+0.8	154.2
cb	0.1	153.3
1/2	5.3	148.1

H.I.
153.41

60

+5	6.0	147.4
+7	12.9	141.0
c	12.4	141.0
1/2	12.9	140.5
c	12.6	140.8
OK L. 1+50	12.8	140.6
OK L.	12.8	140.6
cb	12.9	140.5
1/2	12.6	140.8
c	12.1	141.3
+2	5.2	148.2
1/2	2.0	149.4
cb	1.9	151.5
+2	1.5	151.9
+5	+1.0	154.4
8 L.	+2.1	153.5

Nellborn St.

H.I.
153.91

Widths 44 (00 wide)

1475 8.5	0.0	153.4
+0	1.0	152.4
+6	3.3	150.1
ct	4.1	149.3
1/2	5.4	148.0
c	6.6	146.8
+2	12.8	140.6
1/2	13.1	140.3
ct	13.4	140.0
OK L	13.4	140.0
2100 = North line of Union St.		
2400 OK L	15.3	138.1
ct	15.5	137.9
+2	15.5	137.9
+3	12.2	141.2
1/2	10.8	142.6
c	9.0	144.4
1/2	7.6	145.8
ct	6.2	147.2
+5	5.0	148.4

H.I.
153.91

61

+6	3.5	149.9
ct	2.8	150.6
00 = South line of Union St.		
00 ct	10.0	143.4
+3	10.8	142.6
+5	12.5	140.9
ct	13.3	140.1
#	12.00	141.11 Spk Union St.
0.14	141.25	
1/2	2.5	138.8
c	3.6	137.7
1/2	5.1	136.2
ct	7.0	134.3
OK L	8.0	133.3
+20 OK L	11.7	129.6
ct	9.5	131.8
1/2	9.0	132.3
c	7.7	133.6
1/2	6.6	134.7
ct	5.1	136.2
+L	4.6	136.7

Hellborn St.

H.I.
129.25

Winder 24 (50 wide)

+7		2.6	138.7
E.L.		2.4	138.9
+50		7.7	133.4
E.L.		9.2	133.1
+3		9.2	132.1
+4		9.8	131.5
cb		11.3	130.0
1/2		11.9	129.4
c		12.4	128.9
1/2		13.0	128.25
±	129.68	13.0	128.25
cb		1.0	127.7
OK.L.		3.3	126.4
+75		6.0	122.7
OK.L.		4.8	123.9
cb		3.7	125.0
1/2		2.4	126.3
c		2.0	126.7
1/2		1.1	127.6
cb		0.5	128.2
+6		0.4	129.1
+7			

H.I.
129.68

62

E.L.	1400	+0.8	129.5
E.L.		3.1	125.6
cb		9.9	123.8
1/2		5.5	123.2
c		5.6	123.1
1/2		6.2	122.5
cb		7.5	121.2
OK.L.	1425	9.3	120.4
OK.L.		11.4	117.3
cb		10.3	118.4
1/2		9.1	119.6
c		8.3	120.4
1/2		7.9	120.8
cb		8.2	120.5
E.L.		7.0	121.7

Mellhorn St

H.I.
123.69

Winder St (50' wide)

1+48²⁸ intersection East line of Winder St, with Pueblo line

1+49²⁸

E.L. right angle

10.1 118.6

cb

11.3 117.4

1/4

11.2 117.5

c

11.4 117.3

1/2

12.0 116.7

cb

13.8 114.9

OKL.

15.1 113.6

1+49²⁸ to 1+61²⁸ intersection of West line of Winder St & Pueblo line

1+49²⁸ to 1+61²⁸ along Pueblo line

OKL.

17.7 111.0

cb

15.3 113.4

1/4

14.1 114.6

c

12.9 115.5

1/2

11.9 116.5

cb

11.6 117.1

E.L.

10.1 118.6

#

0.12

117.26

11.56

117.12 15' W 47' L

0.37

105.00

12.63

104.63

0.97

93.26

12.61

92.39

H.I.
98.26

63

0.53

83.98

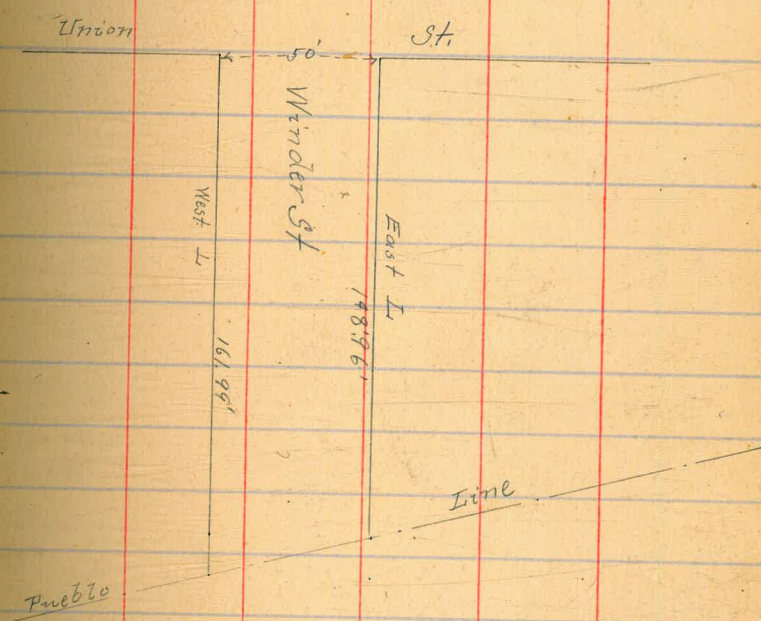
10.31

82.95

5.50

77.98 = Davis paving

B.M. Sp. Pole NW Cor Winder & Indi. 77.96



X-section of Carlew St. sidewalk boards 8 1/2' quarters, from the
 South line of Spruce to the North line of Redwood St.
 March 21st 1913 (Donnan, Sharo, Devine.)
 H.W. 222.91 Peg NW Cor Brant & Spruce.

+	H.I.	-	
0.42	223.33		222.91
0.66	223.77	10.22	223.11
-- South line of Spruce St.			
8.2.		0.5	
cb		0.9	
g		2.1	
1/2		1.8	
c		1.4	
1/2		1.7	
c		2.2	
8.2.		2.7	221.1
+20		4.4	219.4
cb		3.6	
1/2		3.9	
c		3.3	
1/2		3.6	
g		3.7	
cb		2.9	
8.2.		2.7	

HI			
223.77			
	8.2.	4.8	
	cb	5.1	
	g	5.9	
	1/2	5.8	
	c	5.6	
	1/2	6.0	
	g	6.0	
	cb	5.5	
	8.2.	6.0	217.8
	+20	8.4	215.4
	cb	8.2	
	g	8.6	
	1/2	8.0	
	c	7.9	
	1/2	8.0	
	g	8.2	
	cb	7.8	
	8.2.	7.0	

Arlewell (50' wide)

1400
B.L.

9.1

cl

9.3

g

10.2

1/4

10.0

c

9.8

1/4

10.0

g

10.9

cl

10.6

W.L.

9.9

213.9

1425

W.L.

12.3

211.5

cl

12.1

g

12.7

1/4

12.2

c

11.7

1/4

11.9

g

12.0

cl

11.2

B.L.

11.0

1450
B.L.

12.0

cl

12.3

g

13.2

1/4

13.3

c

13.0

#

3.03

212.35

12.95

210.82

1/4

3.5

g

3.5

cl

3.2

W.L.

3.7

210.2

1475

W.L.

4.3

209.6

cl

4.0

g

4.4

1/4

3.9

c

3.7

1/4

4.0

g

4.0

cl

3.1

B.L.

2.8

H.I.
212.85

Current St (50' inside)

2+00	8.2.	3.0	
cl		3.1	
g		4.3	
1/4		4.0	
c		3.7	
1/4		4.0	
g		4.8	
cl		4.1	
Or. L.		4.7	209.2
2+25			
Or. L.		4.7	209.2
cl		4.3	
g		5.0	
1/4		4.3	
c		3.9	
1/4		4.1	
g		4.6	
cl		3.3	
8.2.		3.1	

H.I.
213.85

2+50	8.2.	3.3	
cl		3.5	
g		4.6	
1/4		4.9	
c		4.0	
1/4		4.5	
g		5.1	
cl		4.3	
Or. L.		4.7	209.2
2+75			
Or. L.		5.6	208.9
cl		4.4	
g		5.0	
1/4		4.5	
c		4.2	
1/4		4.5	
g		4.9	
cl		3.5	
8.2.		3.3	

H.I.
213.80

Curlew St (50' wide)

3+00 = North line of Redwood St.

3+00
E.L.

3.3

cl

3.5

g

5.6

1/4

4.7

0

4.7

1/4

4.6

g

6.0

cl

4.8

W.L.

5.0

208.9

#

3.58 210.27 = Property
grade of the NE Cor Curlew &
Redwood

Section of Trias St 50' wide 10' curbs 7 1/2' quarters from the
North line of Pine St to the North line of Cherry St.
March 31-1913
Shannon 67
Shaw.
Devine

Man. E.M. NW Cor Madrona & Trias 267.96

H.I.

4.27

272.23

267.96

00 = North line of Cherry St.

00 W.L.

1.4

+8

1.5

cl

2.5

1/4

2.0

c

1.8

1/4

2.0

+7

2.3

cl

1.9

E.L.

1.7

+50

E.L.

2.2

cl

2.4

+1

3.2

1/4

2.8

c

2.6

1/4

2.8

cl

3.3

+1

1.6

W.L.

2.3

F.I.
272.23

Trin H (50' wide)

1400 OK.L.	2.3
+9	3.0
cb	4.3
1/2	3.8
c	3.6
1/2	3.8
+9	3.8
cb	3.1
8 L.	3.1
1450 8 L.	4.2
cb	4.6
+1	5.4
1/2	5.0
c	4.9
1/2	5.2
cb	5.4
+1	3.9
OK.L.	3.6

F.I.
272.23

65

1400 OK.L.	4.0
+9	5.6
cb	6.9
1/2	6.7
c	6.4
1/2	6.6
cb	7.2
+1	6.5
8 L.	6.4
1450 8 L.	8.9
cb	9.6
+1	9.0
1/2	9.3
c	8.1
1/2	8.4
cb	8.7
+1	7.4
OK.L.	7.0

HI
272.23

Front St (50' wide)

3+00 = South line of Cherry St. 50' wide 10' curb, 7 1/2' quarters

3+00 N.L.	8.5
cl	9.3
+1	10.0
1/2	9.7
c	9.7
1/2	9.8
cl	10.3
E.L.	10.9
South curb of Cherry St.	
E.L.	11.3
cl	10.3
1/2	10.1
c	10.0
1/2	10.0
cl	10.2
+4	10.1
+5	9.3
N.L.	9.0

HI
272.23

69

South 1/2 of Cherry St.

OR.L.	9.3
+2	9.3
+3	10.3
cl	10.3
1/2	10.2
c	10.2
1/2	10.3
cl	10.6
+8	11.0
E.L.	11.6
Center of Cherry St.	
E.L.	11.3
cl	10.8
1/2	10.6
c	10.5
1/2	10.5
cl	10.4
OR.L.	10.4

H.I.
272.43

Trin St. (inside)

North 1/2 of Cherry St.

OK.L.	9.8
+1	10.7
cl.	10.7
1/2	10.7
c	10.6
1/2	10.9
cl	11.0
+9	11.5
B.L.	12.3

North end of Cherry St.

E.L.	12.3
cl	11.4
1/2	11.2
c	10.9
1/2	10.8
cl	10.9
OK.L.	12.0

H.I.
272.23

70

North line of Cherry St.

OK.L.	10.3
cl	11.1
1/4	11.6
c	11.6
1/2	12.4
cl	12.9
E.L.	13.3

#

9.27

267.96 Initial H.M.

Xsection of Whitman St from the West line of Trias to the East
line Ampudia, 56 wide, 10 curbs, 7 1/2 quarters. July 26-1913

Donnan,
Bedford,
Buchanan.

BT 21.87 West Cen of Whitman St. Arista. Private Bench-Book

	13.00	239.87	221.87
3+20 = East line of Ampudia St			
3+00			
1/2 L.	3.3	231.6	
cl	3.6	229.3	
1/2	4.3	229.6	
c	4.8	229.1	
3/2	5.5	229.4	
cl	6.0	228.9	
1/2 L.	6.3	228.6	
2+75			
cl	6.7	228.2	
cl	5.6	229.3	
1/2	4.7	229.2	
c	3.8	229.1	22.8
1/4	3.3	229.6	
cl	2.4	229.5	
1/2 L.	1.8	233.1	

Figures in this column
from 854-5, dated 5-7-12.

71
204.87

2+50 1/2 L.	0.3	234.6	
cl	1.4	233.5	
1/2	2.3	232.6	
c	3.2	229.7	31.6
1/2	4.0	229.9	
cl	5.0	229.9	
1/2 L.	6.9	228.0	
2+25 1/2 L.	12.7	222.2	
cl	9.1	225.8	
1/2	6.8	228.1	
c	5.9	229.0	229.1
1/2	4.5	229.4	
cl	3.6	229.3	
1/2 L.	0.4	234.5	
2+00 1/2 L.	6.0	228.9	
cl	7.2	227.7	
1/2	9.8	225.1	
c	12.8	222.1	222.0
1/2	18.9	216.1	
cl	23.4	211.5	
1/2 L.	26.1	208.8	

	+	H.I. 234.87	Whitman #4 (50' wide)		
1475 1/2			9.4	225.5	
cl			15.4	219.5	
1/2			20.5	214.4	
c			19.8	215.1 ✓	217.7
1/2			13.6	221.3	
cl			9.6	225.3	
1/2			5.4	229.5	
1460 1/2			6.7	227.2	
cl			12.5	222.4	
1/2			14.6	220.3	
c			13.4	221.5 ✓	
1/2			12.4	222.5	
cl			7.7	227.4	
1/2			1.2	233.9	
1450 1/2			+1.2	236.7	
cl			0.6	234.3	
1/2			4.4	230.5	
c			5.8	229.1 ✓	
1/2			7.6	227.3	
cl			10.0	222.9	

	+	H.I. 239.87					
45					12.5	222.4	
1/2					9.0	225.9	
1425 m.l. only					10.3	224.6	
#		13.06	247.33	0.00	239.87		
1425 1/2					8.2	239.1	
cl					7.0	240.3	
1/2					6.3	241.0	
c					6.2	241.1 ✓	41.1
1/2					6.0	241.3	
cl					6.0	241.3	
1/2					6.1	241.2	
1400 1/2					4.0	243.3	
cl					3.6	443.7	
1/2					3.7	43.6	
c					3.6	43.7 ✓	43.7
1/2					3.5	43.8	
cl					3.5	43.8	
1/2					2.6	244.7	

7.I.
247.33

Whitman St (50' wide)

+70 m.l.			1.1	246.2	
cl			1.7	45.6	
1/2			1.1	46.2	
c			1.2	46.1	46.1
1/2			1.7	45.6	
cl			1.7	45.6	
1/2			1.3	246.0	
#	7.09	254.01	0.00	247.33	
+100 1/2			6.2	248.2	
cl			6.3	48.1	
1/2			6.3	48.1	
c			6.4	48.0	47.9
1/2			6.9	47.5	
cl			6.9	47.5	
1/2 +25			6.4	248.0	
1/2			4.9	249.5	
cl			5.0	49.4	
1/2			4.8	49.6	
c			4.8	49.6	49.7
1/2			4.8	49.6	

7.II
254.91

73

cl			5.0	249.4	
1/2			5.2	249.2	
oo = West line of Train St					
1/2			4.3	250.1	
cl			3.7	50.7	
1/2			3.2	51.2	
c			3.3	51.1	51.4
1/2			3.5	50.9	
cl			3.4	51.0	
1/2			3.3	251.1	
#	c.11	247.40	7.09	247.00	
#	c.02	234.59	12.57	234.87	
#			13.01	221.86 = 221.87 Initial B.M.	

W/No/20
Gregory
Miller
Shaw

CROSS SECTION OF
WELL BORN ST
from the North Line of
Neale St to a point 40' S.
of Torrence St.

St. = 50' wide
cb on W = 12' wide
E = 10'
1/4 = 7.00'

SEE BOOK 464-32 also this book page 46

FOR REMAINDER OF NOTES

			W	32	270.8
44	274.03	269.62	cb	31	270.9
	M.L. NEALE ST 43' wide 10' cbs 5.75' / 4		1/4	32	270.8
W	29	271.1	c	34	270.6
10' cbs	26	271.4	1/4	37	270.3
1/4	29	271.1	cb	41	269.9
c	31	270.9	E	47	269.3
1/4	33	270.7			
cb	39	270.1	E	46	269.7
E	43	269.7	cb	40	270.0
	N. Cb. Neale		1/4	37	270.3
E	45	269.5	c	35	270.5
cb	42	269.8	1/4	33	270.7
1/4	35	270.5	cb	33	270.7
c	32	270.8	W	36	270.4
1/4	31	270.9			
cb	30	271.0	W	38	270.2
W	30	271.0	cb	35	270.5
			1/4	35	270.5

N. 1/4

Center Neale

S. 1/4

274.03

Well/born

c	37	270.3
1/4	38	270.2
cb	42	269.8
F	48	269.2
S. Curb.		
F	51	268.9
cb	46	269.7
1/4	41	269.9
c	38	270.2
1/4	37	270.3
cb	38	270.2
W	39	270.1
S.L. Neale. cb on W side cb on E side		
W	35	270.5
+9	39	270.1
cb.	43	269.7
1/4	41	269.9
c	42	269.8
1/4	44	269.6
cb	50	269.0

F	52	268.8
20' S		
F	63	267.7
cb	56	268.7
1/4	52	268.8
c	49	269.1
1/4	48	269.2
cb	48	269.2
+3	41	269.9
W	37	270.3
50' S		
W	51	268.9
+8	54	268.6
cb	63	267.7
1/4	67	267.3
c	66	267.7
1/4	68	267.2
cb	74	266.6
F	79	266.1

274.3

90' 5

E	10.4	263.6
cb.	9.7	264.3

41' 5

cb	10.0	264.0
E	12.0	262.0

100' 5

E	11.6	262.7
cb.	10.4	263.6
1/6	9.9	264.1
C	9.4	264.6
1/6	9.2	264.8
cb.	9.1	264.9
+5	8.2	265.8
W	7.8	266.2

130' 5

W	9.0	265.0
+5	9.4	264.6
cb	10.4	263.6
1/4	10.3	263.7

Wellborn

c

10.5 263.5

1/4

11.0 263.0

cb

12.4 261.6

T.P.

3.49

265.26

12.26

261.77

E

4.6 260.7

150' 5

E

5.4 259.9

cb

4.5 260.8

1/4

3.0 262.3

c

2.6 262.7

1/6

2.1 262.9

cb

2.2 263.1

+5

1.2 264.1

W

0.8 264.5

175' 5

W

2.2 263.1

+7

11.5 262.8

cb.

3.4 261.9

1/4

3.9 261.4

c

1/4 W 261.1

1/4	47	260.6
cb	60	259.3
E	68	258.5
	207.5 = N. Torrence ST 8' cb on N. Side E. of Wellb. 12' - - - W	
E	95	255.8
+10 = cb	82	257.1
1/4	73	258.0
C	66	258.7
1/4	64	258.9
cb	64	258.9
+5	52	260.1
+12 = W	47	260.6
	12' S on W } = N. cb 8' - - - E	
W	63	259.0
+12 = cb	66	258.7
1/4	70	258.3
C	78	257.5
1/4	83	257.0
cb	91	256.2
+10 = E	105	254.8

6.75 S. of C. on E }
5.75 - - - W } = N. 1/4

E	11.2	254.1
cb	99	55.4
1/4	92	56.1
C	88	56.5
1/4	77	57.6
cb	69	58.4
W	68	58.5
	6.75 S. of 1/4 on E } 5.75 - - - W } = center of Torrence.	
W	68	258.5
+6	69	258.4
cb	76	257.7
1/4	87	256.6
C	93	256.0
1/4	97	255.6
cb	102	255.1
E	11.2	253.9 ✓
	6.75 S. of Center of E } 5.75 - - - W } = S. 1/4	
E	12.0	253.3
cb	10.9	254.4

265.26

1/4	10.2	255.1
c	9.9	255.7
1/4	9.3	256.0
cb	8.2	257.1
W	7.1	258.2
$\left. \begin{array}{l} 6.75' \text{ S. of } 5 \frac{1}{4} \text{ on E} \\ 5.75' \text{ " " " " " W} \end{array} \right\} = 5 \text{ Cb.}$		
W	7.8	257.5
cb	9.2	256.1
1/4	10.0	255.3
c	10.6	254.8
1/4	10.9	254.7
cb	11.6	253.7
E	13.0	252.3
$8 \text{ S. of } 5 \text{ Cb} = 5 \text{ L Torrence.}$		
E	14.0	251.3
cb	13.2	252.1
1/4	12.1	253.2
c	11.4	253.9
1/4	11.3	254.0
cb	10.8	254.5

Wellberry

W	9.2	256.1
25' S		
W	11.9	253.7
T.P.	1.15	253.89
cb	13.02	252.24
1/4	1.8	251.6
1/4	2.2	251.2
c	2.2	251.0
1/4	3.2	250.2
cb	4.0	249.7
E	4.9	248.7
50' S		
E	7.8	245.6
cb	7.0	246.7
1/4	6.0	247.7
c	5.2	248.2
1/4	5.0	248.4
cb	4.8	248.6
W	3.3	250.1

45939

70' 5

W	57	247.7
+7	63	247.1
cb	74	246.0
1/2	74	246.0
c	76	245.8
1/2	81	245.3
cb	91	244.3
E	102	243.2

85' 3

E	118	241.6
cb	108	242.6
1/2	99	243.5
c	92	244.2
1/2	85	244.9
cb	77	245.7
W	67	246.7

Wellbort

~~286.25~~

24
24
96
48
57.6

5.17
3.4

18.25
18.25
66.25
26.50
39.75
~~13.25~~

282.71 H.I. 286.45
7.6 275.1
275.1 11.3
11.3 5.7
5.7 17.0

286.45
275.17
11.28
5.64
16.92

13.25
170.5620
294.98
271.64
13.34
6.67
20.01

282.71
-7.54
275.17 FLEG E

282.71 284.98
11.11 271.60
271.60 113.38
113.38 6.67
6.67 20.07

282.71
14.07
271.64

282.71
7.54
275.17

286.45
275.17
11.28
5.64
16.92

286.25
282.71
3.54
1.0
5.0

9/53
13.25

175.56
40
575.06

96180:17:0

6625
17
46375
6625
11,2625

4
3
3 14

25
80.3
58.3 six/7

+ Stakes for Water Dept from North line of Fern St to South line of Date, on a line 7' East of the center of Fern St. grades 4.5' below East 1/2 of Fern St.

Station	240.00	240.00	240.00
Fern St	260.0	260.0	260.0
	261.0	259.0	259.0
	257.07		
	266.04		
	253.01		
	250.99		
	249.94		
	249.0	246.0	246.0
Elm St	246.0	244.0	244.0
	242.66		
	241.21		
	239.77		
	238.33		
	236.98		
	236.0	234.85	235.0
Date St	236.0	233.85	234.0

B.M. 262.08 5/2 pole SE Cor 30th & Fern
 + 3.61
 272.69
 10.66
 262.03
 + 0.11
 262.14 H.I. 249.37 H.I.

N.L. Fern St	S.L. Fern St	0.0	+ 0.5	1.0	1.5	2.0	2.5	3.0
262.24	262.44	262.24	262.29	262.24	262.24	262.24	262.24	262.24
260.70	259.10	257.07	255.04	253.01	250.98	248.94	246.10	246.10
2.54	3.29	5.17	7.20	9.23	11.26	13.30	16.14	
+ 4.5	4.5	4.5	4.5	4.5	4.5	4.5	4.5	
6.04	7.74	9.67	11.70	13.73	15.76	17.80	20.64	
- 1.2	4.2	7.2	9.7	11.7	14.6	16.7	16.2	
+ 4.8	+ 3.5	+ 2.0	+ 2.0	+ 2.0	+ 1.2	+ 1.1	+ 4.2	

S.L. Fern St	0.0	4.5	1.0	1.5	2.0	2.5	3.0
249.39	249.39	249.39	249.39	249.39	249.39	249.39	249.39
244.10	242.66	241.21	239.77	238.33	236.98	234.85	233.85
5.29	6.73	8.18	9.62	11.06	12.51	14.54	15.54
+ 4.5	+ 4.5	+ 4.5	+ 4.5	+ 4.5	+ 4.5	+ 4.5	+ 4.5
9.79	11.23	12.68	14.12	15.56	17.01	19.04	20.04
- 2.6	2.7	4.2	7.0	9.4	10.0	12.9	16.2
+ 7.2	+ 8.5	+ 8.5	+ 7.1	+ 7.2	+ 7.0	+ 6.1	+ 3.8

249.39
 - 12.96
 236.43
 + 5.25
 241.68
 - 4.89
 236.79 = B.M. 236.96 5/2 pole SE Cor 30th & Date.

